

110,000 copies

BARNET BOROUGH NEWS



MEMBER OF THE UNITED PRESS DISTRIBUTORS
THE NATIONAL ASSOCIATION OF TRUSTED DISTRIBUTORS

Barnet Council's monthly magazine for residents No. 45 AUGUST 1988

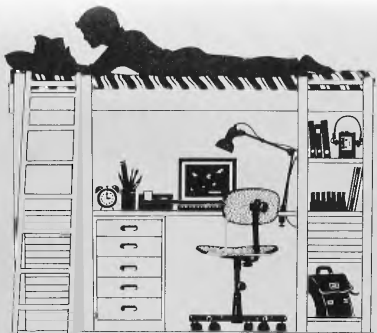


In this issue:
Friern Barnet Summer Show
Mayor visits Trigger
Grahame Park Festival
Job opportunities

Solve those
**BACK TO
 SCHOOL** problems

- Homework
- Studying
- Reading etc.

buy a **UNIVERSAL
 STORAGE SYSTEM**



Durable Solid Pine
 varnished & finished
 to a high standard



**STUDENT
 SYSTEMS TOO!**



Desk units made
 to measure, all sorts
 of combinations to
 choose from. **HURRY**
10% OFF desk
 orders

Placed in August
 with this advert only
FROGNAL PARADE
160 FINCHLEY ROAD
LONDON NW3

01-794 0313

THE SHOP FOR SHELVING

shelfstore
 F U R N I T U R E

Back to School

CAPITAL TUTOR

(AGENCY)

For Qualified and Experienced Local Teachers in all Subjects

PHONE

01-349 4626

August is traditionally a holiday month — but it is also a good time for parents to plan for the new school year which starts at the beginning of September.

School suppliers and education department staff have already laid their plans. For instance, Alfreds children's outfitters, part of a group of three shops who operate under the Schoolcare trade name, have already completed their autumn ordering. They are anticipating a busy season with demand from students attending more than 130 schools in the London area.

They have been in business for nearly 50 years and tradition and care are the criteria for staff and management alike as they help customers choose their schoolwear, dancewear, or uniforms for Scouts, Brownies, Guides and Beavers.

Capital Tutors is an organisation which offers a service geared to the needs of young people who need to improve their marks or master a particular subject in which they have missed out. The summer holiday is often the best time to put in for extra tutoring.

□ □ □

Homework, project work and discovering the scope of a computer call for a quiet area with a good comfortable desk. Shelfstore offer a free planning service and supply everything needed to provide a comfortable study environment.

□ □ □

September will come all too quickly so pre-planning now will lead in to a smooth start for the new school year.

Quality & Value / Most colours & Sizes

Alfreds

YOUR SCHOOLCARE SHOP

(Outfitter to over 130 Schools in London)

Also: Ballet, Dancewear, Scouts, Guide, Brownie, Beavers, Communion Dresses and Boys Suits.

Schoolcare Branches at

Sogans

6 Greyhound Road, London W6

01 385 1055 (Nr. Charing Cross Hospital)

Dolphin House

5 Hill Rise, Richmond.

Tel: 01 940 5949

Address

ALFRED'S

15-17, Silkstream Parade,

Watling Avenue,

Burnt Oak, Edgware.

Tel: 01 959 2515

opp. Burnt Oak Tube

DO YOU BIKE TO SCHOOL?

If the answer is yes— then before you go back

Check it out

LIGHTS

must work and be clean

REAR REFLECTORS

at least one by law

BRAKES

checked for wear

BRAKE CABLES AND MOVING PARTS

keep oiled

TYRES

check pressure

CHECK

any parts that may need

replacing or repaired

FREE FITTING IS OFFERED ON MOST CARPETS ON DISPLAY

QUALITY WITH ECONOMY



928 HIGH ROAD
N FINCHLEY
LONDON N12
446 5331/2
446 5333/4

STOCKED CARPETS FITTED WITHIN 48 HOURS

IF YOU'RE LOOKING FOR QUALITY WITH ECONOMY IN YOUR CARPET REQUIREMENTS LOOK NO FURTHER! AT OUR NEW SHOWROOM YOU'LL FIND AN AMAZING RANGE OF CARPETS AT THE MOST COMPETITIVE PRICES. WE HAVE OVER 5000 CARPETS TO CHOOSE FROM. TALK TO CARPET EXPERTS & ENJOY OUR FRIENDLY SERVICE. WE'RE OPEN MONDAY TO SATURDAY, 9-530

**LONDON BOROUGH
OF BARNET**
The Town Hall
Hendon NW4 4BG
For information phone:
202 8282

CONTENTS

	Page
'Packet of Soap'.....	9
Barnet Diary.....	13 & 14
Lifeline.....	15
Handy Handi-car.....	16
Home Care Plus.....	17
Plans for Grahame Park	24 & 25
Painting Competition.....	30

Barnet Borough News is published by the London Borough of Barnet and Marketing Media Management.

The cost of production is offset by advertising.

VFD: Barnet Borough News certified net distribution from July to December 1987 is 112,823. The print run is 120,000 and it is distributed to homes and businesses in the borough, as well as libraries and council offices.

EDITORIAL ADDRESS
The Town Hall,
Hendon NW4 4BG
Tel. 01-202 8282,
exts. 2071, 2072 & 2073
Editors: Bill White,
Rosemary Jude and Joy
Myers

ADVERTISING ADDRESS
Marketing Media
Management
4 Bellevue Mews
Bellevue Road
Friern Barnet N11 3EF
Tel: 01-361 4223

Advertising Manager
Lesley Mitchell

FRONT COVER

Didn't we have a Lovely Day
The day we went to Barnet.
We cycled along
A smile and a song
Taking the route that the
cycles were told to. . .

Barnet has three cycle routes: A short one helps cyclists manoeuvre through the complexities of the high level junctions on the North Circular Road, and is really for the commuter cyclist.

But the Dollis Brook Route, pictured on our front cover, and the A1 route, which passes Scratchwood and Moat Mount Countryside Park, are both ideal for summer outings. Maps are available from the Traffic Engineers, Barnet House, 1255 High Road, Whetstone, N20 or from local libraries.

St James' are 'Kings of the Road'



Pictured (from left) are Kevin McSharry, Simon Wicks, Axel Monteiro, the Deputy Mayor, Mathew Peiris, Sister Raymunda, St James' head teacher, Patrick Sheehan (captain), Robert Milligan (team coach), The Mayor, Damian Butler and 'Mac' McHallam.

BARNET'S team from St James' Catholic High School, Grahame Park, have won the 14th annual Road Safety Challenge Cup by beating a team representing the South Wales Constabulary.

The Kings of the Road won the Metropolitan Police Clearway Trophy in April. They went on to represent London in the Challenge

Cup competition against an all girls team from Llangwt, South Wales, on July 12. Barnet won by 95 points to 73.

After the quiz, held at the Ford Motor Company's Swansea premises, the 2nd and 3rd year boys were given a civic reception.

The team consisted of Damian Butler from Burnt Oak; Mathew Peiris from Colindale; Simon Wicks from Willesden, Axel Mon-

teiro from Edgware and Patrick Sheehan from Cricklewood.

They were accompanied to the competition by their head teacher, Kevin McSharry and Barnet Road Safety Officer 'Mac' McHallam.

On July 18 the team was invited to the Town Hall, Hendon, and congratulated by the Mayor of Barnet, Cllr Don Goodman, and the Deputy Mayor, Cllr Wilf Lipman.

Selvage Lane closures

WORK on Selvage Lane bridge, Mill Hill, is due to recommence early this month and it will be necessary to close the bridge to northbound traffic.

Barnet will carry out the £200,000 contract as managing agents for the Department of Transport.

During the 18 weeks construction period there will be two occasions when it will also be necessary to completely close the bridge, affecting southbound traffic as well. These closures, each of one week duration, will be during the working day.

There are two phases to the work which will commence on the southside of the bridge. It will be necessary to strip out the existing road surface and temporary beams, inject existing box beams with water resistant foam and fix reinforced steelwork.

The work further entails casting a 150mm (6 inch) thick concrete slab to form the bridge deck, waterproofing the deck, resurfacing the carriageway and relaying the footways.

Once complete, the bridge will again be able to carry all types of traffic and should not require any further major works for the foreseeable future.

POLY MOVE POSTPONED

THE move of Middlesex Polytechnic's Humanities courses from the All Saints, Tottenham site to the polytechnic's Enfield site will take place in July 1989 instead of September 1988.

The postponement follows the discovery of asbestos in the ceiling of the Enfield hall, currently undergoing conversion to become a major new library for both humanities and social science students. Work required to deal with the asbestos will take the polytechnic well into the new academic year which begins in late September.

SIX-A-SIDE CRICKET CHAMPIONS



Pupils of Moss Hall Junior School, Albert Road, North Finchley, after receiving the Williams Primary Schools Cricket Trophy from the Mayor of Barnet, Cllr Don Goodman, in the Mayor's Parlour, Town Hall, Hendon. The boys won the Six-a-Side Primary Schools Competition at the Cophall Show in June. With the Mayor are the Mayoress, Mrs Mary Goodman, and Cllr Tony Antoniou, chairman of the show organising panel. The winning team are, from left to right, Salman Jafri, Graeme Martin, Nikhil Vaswani, Matthew Ash (captain), Mahyar Noursadeghi, Nick Swinden, Nadios Constantinou and Jonathan Lucas.

Sixth-formers prepare for the 1990s

A NEW series of courses which will equip sixth-formers to meet the demands of work and adult life in the 1990s, is being launched in Barnet with the start of the new autumn term in September.

It is part of Barnet's TVEI programme — the Technical and Vocational Education Initiative. This was introduced into four secondary and one special school in the borough in 1986 as a pilot scheme.

The effect was to bring together academic and vocational studies in a realistic way. Sciences, design and technology, communication skills and other subjects were interwoven with life and work related experience.

So successful was the scheme in encouraging students to broaden their attitude to study that the borough has launched TVEI into sixth form curriculums linking with A-level studies and a broader based programme.

Some courses are being run at Barnet or Hendon Colleges of Further Education. Others will be in the TVEI pilot scheme secondary schools: Whitefield School, Cricklewood; St. James's Catholic High School, Burnt Oak; Edgware School; and Cophall School, Mill Hill.

The new sixth form courses include:

Enhanced A-Levels

TVEI has chosen a number of A levels which have been 'enhanced' so that the course is very relevant to modern needs of both higher education and employment. The A-levels include Technology; Business Studies; and Art/Graphic Design. They involve work experience or simulation and a greater use of modern technology.

Enrichment Studies

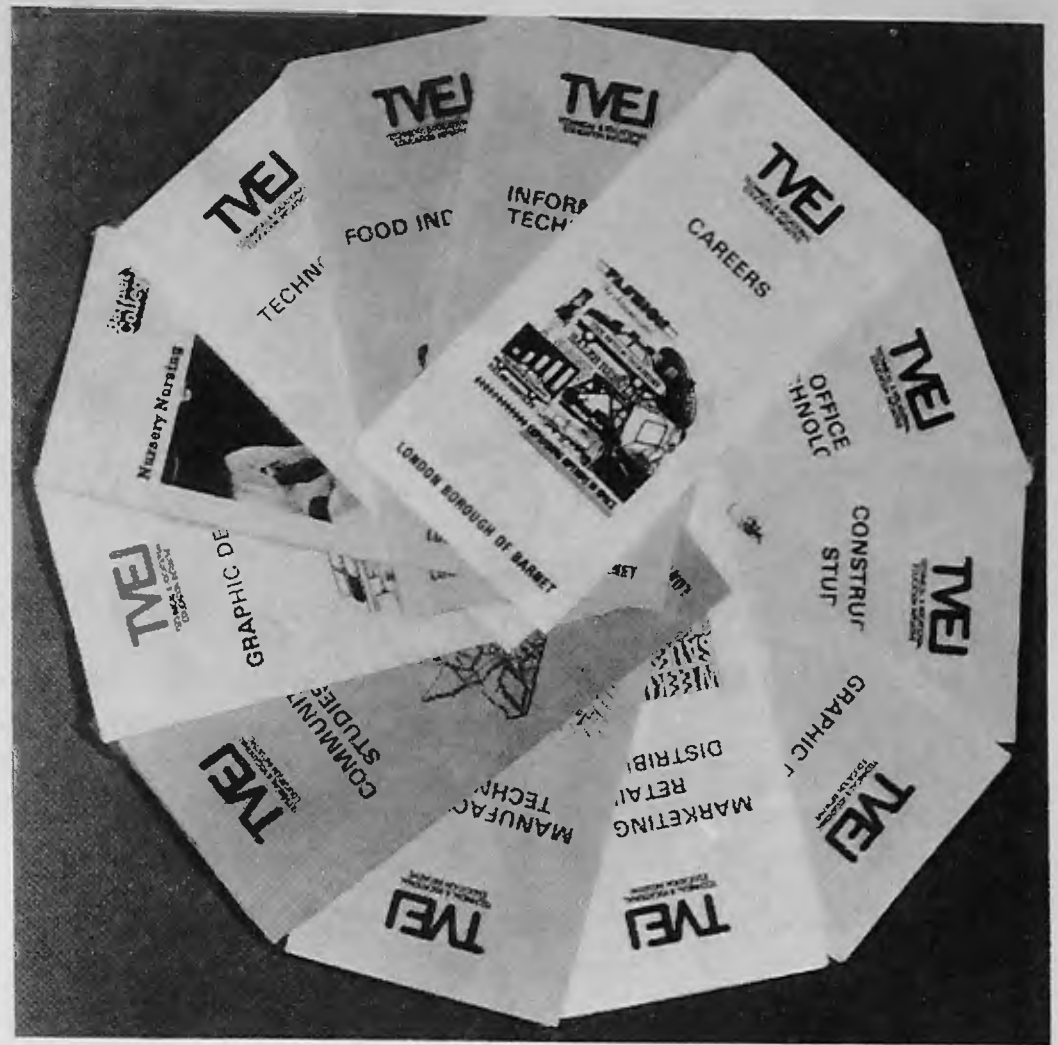
All TVEI students will follow an exciting programme based on a collection of eight-week courses for one afternoon a week. There are 30 different units on offer and the name, Enrichment Studies, reflects the programme which is designed to provide students with a broad-based sixth form education.

The study units are grouped into four categories:

- Humanities and Languages
- Business and Industrial Relevance
- Creative and Aesthetic
- Science and Technology.

Each category has at least eight subjects within it and one-year sixthformers can study three units, each from a different category, and A level students may study six units over two years.

New or improved college courses



within the TVEI network include BTEC National Diploma in Graphic Design and NNEB in Nursery Nursing, both based at Barnet College; and BTEC first diploma in Construction Studies; City and Guilds Catering, Bakery, and Cookery for the Catering In-

dustry, based at Hendon College.

For information about TVEI in Barnet schools and colleges contact the TVEI Unit, Manorside Curriculum Centre, Squires Lane, Finchley N3 2AB. Tel: 349 2793. Project co-ordinator, Derrick Brown.

A FULL SELECTION OF
WARDROBE INTERIORS
AT NO EXTRA COST

FITTED
BEDROOMS
FOR YOU

NEW

EXCITING FINISHES IN WHITE ASH ● BLACK ASH ● GREY ● LEATHERTEX ● MAHOGANY ● MIRRORS HINGED AND SLIDING. ALSO TIMELESS WHITE, CREAM, REGENCY ETC.

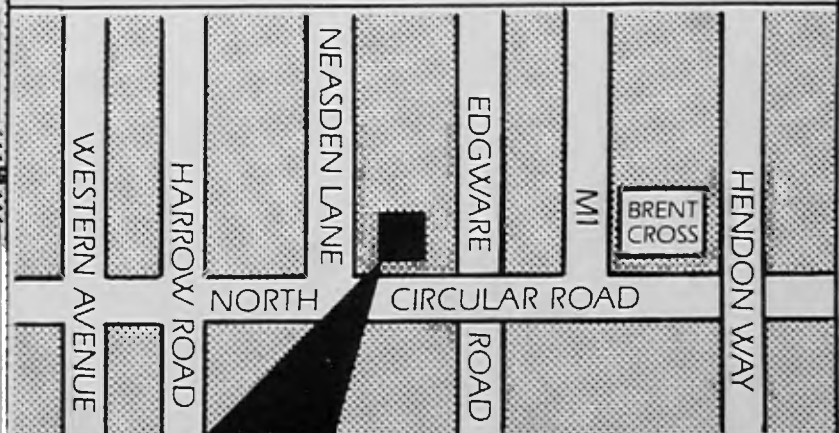
ALWAYS A SALE PRICE

● SUPERB QUALITY AND A DIRECT PRICE FROM OUR FACTORY AND SHOWROOM.

● FULL SELECTION OF DE-LUXE INTERIORS WITH SHELF SYSTEMS, DOUBLE HANGING, SHOE RAILS ETC. AT NO EXTRA COST.

● WE PLAN AND EXPERTLY FIT FREE.

● **IDEAL HOME** magazine said... "STATON FITTED FURNITURE IS QUITE A FIND"... "HIGHER QUALITY"... "LOWER PRICES"



STATON

FACTORY AND SHOWROOM
719 NORTH CIRCULAR ROAD NW2
TELEPHONE 01-450 6581
OPEN EVERYDAY (SUN 10-4)

Mayor's hand on Trigger

AS a nine-year-old schoolboy the Mayor of Barnet, Cllr Don Goodman, then an evacuee in Devon, had to ride on horseback three miles to school and back every day. So when he visited the Trigger riding group for the disabled at Penniwells Farm, Elstree, on Thursday, June 30, he was able to join in with the volunteers as an old hand with the gee-gees.

He and the Mayoress, Mrs Mary Goodman, led horses for the young disabled riders, met the ponies and finally the Mayor gave a hand mucking out.

Barnet people have a special interest in Trigger. When the group had to move from their old home in Burton Hole Lane, Mill Hill, in 1980, the then Mayor of Barnet, Mrs Edna James, chose Trigger as her Mayoral Appeal.

Residents and organisations throughout the borough raised money and the stables were built on Council-owned land at Elstree, to a design by the borough's architects.



Down at the ranch — the Mayor and Mayoress of Barnet, Cllr Don and Mary Goodman, meet Danny the pony, Jonathon, aged three, who suffers from spina bifida, and his parents John and Lesley Scott of Inglis Barracks, Mill Hill all helping out at Trigger Riding School for the Disabled.

Today the work of the group can record an outstanding success. Two different groups of disabled riders come every day. Some are unable to even hold the reins at first but several have graduated to full control of their pony.

The group have six ponies of their own and two on loan. But in some ways they are victims of their own success.

Insurance costs are nearly £2,000 a year. The rent has to be met and the horses cost about £20 each a week for food, vets fees and farriers bills. That adds up to £1,000 a year for each pony.

The Chairman, Mr Arthur Field, said: 'Sometimes we wonder where the next penny is coming from. We need more volunteers to help with our daytime classes and we need money. We have been hard hit since the fire in the lower stables. The cost of rebuilding is more than the insurance and of course while the stables are out of action we are losing income.'

'It would help if groups or

businesses could help us by sponsoring a pony or helping us in a general way. We serve a large area. Although we are just within the boundaries of Barnet we are so close to Hertsmere and the Elstree and Borehamwood communities that children come from all over the area.

'If people could see the way the children respond to the ponies and watch them gain confidence as they discover the excitement of horse riding, they would realise how valuable our work is.'

'If any reader can help we would love to hear from them.'

Trigger riding group can be contacted through their secretary, Angela Weymann, of Ellesmere, Elstree Hill South, Elstree, Herts. Tel: 953 7834.

CRIES OF LONDON



OYEZ, Oyez, Oyez! After ringing his 17½lb handbell at the entrance to the Town Hall, Hendon, on Thursday, July 7, London's Town Crier, Peter Moore, requested the honour of the company of Barnet's Mayor and Mayoress, Cllr Don and Mrs Mary Goodman, at the opening ceremony of The Festival of London at Alexandra Palace, Wood Green, on Saturday, July 23 at 3pm. The festival runs until August 7. Our picture shows the Mayor receiving his traditional greeting.



The Mayor helps to 'muck out' at the stables



The Mayoress tries out the piano in the new music room, watched by the Mayor with Cllr Hadley Hunter, chairman of the governors, and Peter Kent.



Jackie Robson, music teacher, and the school orchestra rehearse for their opening concert.

SUNNYFIELDS IN CONCERT

THE successful outcome of two years of fund raising was celebrated at Sunnyfields School, Hendon, when the Mayor of Barnet, Cllr Don Goodman, opened their newly built music room.

Every section of the school community — parents, staff, children, governors and friends — helped raise the money. Barnet Council provided a £5,000 interest-free loan and the music room leapt from drawing board to reality.

Head teacher Peter Kent said: 'It was wonderful for the school. Everyone was involved and this has built up a tremendous sense of community.'

Sunnyfields is a small school built on the open plan system. This meant that when one class took music all the others had to listen. If a group of children were watching Schools TV all the other classes were distracted.

With only 250 pupils the local education authority was not able to

include a new music room on the building programme. So the parents stepped in. They had already raised about £2,000 and decided to put it towards the music room.

The children undertook sponsored events. Staff and governors joined in. The school fete and other events boosted the building fund.

One parent, an architect, designed the 20ft by 20ft extension so that it was inexpensive and quick to build, requiring a minimum of furnishing. Wide, carpeted steps, amphitheatre-style, provide seating.

The whole project cost in the region of £17,000 to be paid off in five years. A sponsored event raised money for the display panels and shelving. A parent took children's designs and made two stained glass clerestory windows. A contact helped find a bargain in carpeting.

Now the room is one of the most used areas in the school, providing a library, exhibition area and a TV room and the school orchestra has somewhere to rehearse.

GIFFE

LUXURY FITTED KITCHENS

TOP QUALITY AND TOP
DESIGN ITALIAN FITTED
KITCHENS AND DINING
RANGES · SUPERB
MARBLE OR GRANITE
WORKSURFACES



AVAILABLE
NOW FROM:

ARTIZAN

52 THE BROADWAY
CROUCH END
LONDON N8
01-340 3413

A'PEELING KITCHENS

4/5 HALLIWICK CRT PRD
WOODHOUSE ROAD
LONDON N12
01-368 0491

H. HOBBS WILSON

765 GREEN LANES
WINCHMORE HILL
LONDON N21
01-360 2616

BARNET COPTHALL CENTRE



DO YOU ENJOY SWIMMING AS MUCH AS HE DOES?

If you do, you'll no doubt be the proud owner of an RLSS Bronze Medallion.

With it you can earn a place on the Leisure Team at the international-status Copthall Swimming Pools in Mill Hill.

Here you'll have a vital role, mainly in ensuring the safety of the thousands of people who enjoy swimming, diving and keeping fit with us each year.

You'll also be involved in keeping the three pool areas, changing rooms and Fitness Centre in good order and assisting generally. And you'll play an important part in helping to organise and run regular special events – anything from school swimming galas to international diving competitions and celebrity visits.

As Copthall is open 7 days a week and we need pool-side coverage from 7am to 10pm, you must obviously be prepared to work shifts and at weekends. For this, you'll earn a basic of £132.66 for a five day, 39-hour week at age 18, with good opportunities for overtime. (We'd also be interested in talking to people who could join us on a casual basis at short notice to cover for staff holidays and sickness).

In benefit terms, there's a smart uniform – and a chance to develop your leisure and recreational skills as Copthall is a recognised teaching centre for swimmers, divers, life-savers and coaches, where you'll have access to the courses.

So let's get working. If you're aged 16+, fit and like the idea of a future in leisure, contact: Andrew Simpson or Gill Ross on 01-446 8511, extension 4432. (Nearest Tube: Mill Hill East; nearest bus route: the 221).

Closing date: 18th August 1988.

AN AUTHORITY COMMITTED TO EQUAL OPPORTUNITIES



Directorate of Technical Services

Barnet pupils' own 'packet of soap'

BARNET'S own soap opera 'North Circular', written by 25 pupils from secondary schools Boroughwide, is now available as an educational package.

Director of Education Neil Gill introduced the video project to an invited audience at the launch, by Barnet's Arts Office, of the Ideas into Script package on July 11.

A group of children, aged between 11 and 15, embarked on a series of drama script workshops in June 1987. The aim was to write drama for television.

Resident writer

Teachers were recruited to work with professional TV script-writer John Abulafia who is well-known in Barnet for the excellent work he does with young people as resident writer.

The format of a soap opera was used to allow a quick and familiar route towards demystifying the medium, and developing critical awareness in the students.

In January and February this year, the edited script was filmed on location in Barnet, with the assistance of professional TV director Darrol Blake, who has worked on such popular soap operas as Brookside.

The students were involved in casting, auditions and the technical



Some of the script-writing team who worked on Barnet's soap opera project were presented with 'Oscars' at the launch of the educational package. Pictured with them (at the rear of the group) are television director Darrol Blake (left) and script-writer John Abulafia.

side of the production. Some of them actually starred in the video.

Ideas into Script consists of an hour-long colour VHS video, which includes two episodes of North Circular and a short documentary

on the writing workshops.

The package, priced at £7.60 (including VAT, postage and packing), should assist all those who work with young people in subjects such as English, drama and the

media.

Ideas into Script is available from The Borough of Barnet Arts Office, Ravensfield House, The Burroughs, Hendon, London NW4 4BE. Tel: 01-202 1903.

DANTAPINE

SALE NOW ON

1/2 PRICE SHOWROOM DISPLAY UNITS

plus 10% OFF all standard De-luxe tables

FREE PLANNING & DESIGN SERVICE UNITS MADE TO YOUR OWN REQUIREMENTS!



DINING ROOM — see our selection of table, chairs — Welsh dressers.

BEDROOM — Five ranges to choose from, to suit every pocket. We have a budget range or something with that little bit extra — compare value for money.

Call in at:

88 THE BROADWAY, MILL HILL. Tel: 01-959 4292

96 LEAGROVE ROAD LUTON, Tel: Luton 36236

17 HIGH STREET, HEMEL HEMPSTEAD.

Tel: Hemel Hempsted 214040

FUTONS

THERE'S A FUTON IN YOUR FUTURE!

COLOURFUL SOFAS & STYLISH BEDS

Cotton fibre and wool filling is encased in cotton drill fabric. Composition and flexibility make a beautiful sofa by day and a comfortable, healthy bed at night. The bases which complement our full-colour and white Futon are handmade in natural, stained or varnished wood.



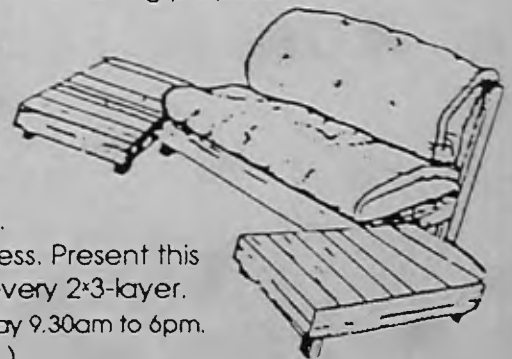
A whole range of sofa furnishing is available to accompany your Futon surroundings.

Futons are ideal for first time furnishers, newly marrieds, backsufferers, spare rooms, extra bedrooms, rumpus rooms-in fact for any furnishing purpose!



SEND FOR OUR NEW COLOUR CATALOGUE TODAY!

Price Range £55 to £350



You can order with confidence.

Buy with cash, cheque, Visa or Access. Present this advert for a **FREE FUTON BASE** with every 2+3-layer.

Visit our showroom (Monday to Saturday 9.30am to 6pm. Sundays and Bank Holidays 11am to 5pm.)



FUTON FURNISHINGS

01-444 7249

COME TODAY 400 yards up the hill from East Finchley Underground Futon Furnishing (Dept BBN1) Lincoln Road, East Finchley, London N2.

A real knockout

FRIERN Barnet Summer show, at Friary Park on August 12 and 13, will be a real knockout. Yes Folks, the mad games are coming. The theme is medieval and teams of six are invited to take part.

It costs £5 to enter a team in the Barnet It's a Knockout Competition. Wear medieval dress or shorts and T-shirts with a team colour, and get in touch as quickly as possible with the shows organiser Pauline Varnals at Barnet House, 1255 High Road, Whetstone N20 0EJ. Tel: 446 8511 Ext 4492.

Once again the two-day show is packed with great family events, starting with the Teddy Bears' Picnic and ending with fireworks at 9.30pm on Saturday.

Friday

Friday, August 12, is Children's Day but once again pensioners and handicapped people are invited for their Special Event, with free entry and free tea.

At 12 noon the Teddy Bear's Picnic will take place in the arena area. Bring teddy and a

picnic lunch. There will be surprise gifts and Meynell Games so there's plenty of fun to join in or just watch.

There's a clown to entertain. The Children's Fancy Dress Competition, sponsored by the Barnet Press, starts at 2.30 with children's Sports 3.30 sponsored by A. Godfrey. At 3.30pm there is the first flight of the Flying Owls. These are owls who have been rescued and are now helping to raise funds to preserve the owl en-

vironment by Heritage Wildlife Rescue. Meet Puff the Barn Owl who is helping to raise money for the Save the Barn Owl campaign.

At 4.30pm it's Pet Show time where children and pensioners have special classes and can win trophies for the best kept pet and children's dogs.

At six o'clock the older generation come into their own. We're having a Tea Dance in the Theatre Marquee with Jack Dennis and his swinging band.

And at 7.30 the heats of It's a Knockout begin.

Saturday

On Saturday the It's a Knockout finals start at 2.15 and the afternoon's entertainment includes lumberjacks, trampolining, the Appollo Steel Band. There's a baby show in the marquee, children's entertainers. The Middlesex Yeomanry Band will play and there's an exemption dog show with entries at the ringside from 11am in the morning.

The speciality of the Summer show is the arts and crafts theme. Local artists are exhibiting and there is a children's art competition sponsored by The Picture Factory. There is also the Collective School Arts competition.

The produce Section is a big feature of the show and the National Dahlia Society are sponsoring the dahlia classes.

On Saturday evening the TJ Four Jazz Band and the Appollo Steel Band will provide the music. There's a barbeque by the Boucherie de Totteridge and a prizegiving by the Mayor, Cllr Don Goodman.

And of course the Fun Fair is open and the charity stalls will be in full swing.

So come to the Show.

● FUN DAY OUT AT FINCHLEY OPEN AIR POOLS ● FUN DAY OUT AT FINCHLEY OPEN AIR POOLS ●

● FUN DAY OUT AT FINCHLEY OPEN AIR POOLS ●

FINCHLEY OPEN AIR POOLS



FOR ALL THE FAMILY

- CAFE
- REFRESHMENTS
- PICNIC AREA
- FREE CAR PARK

★ ★ ★ ★ ★ ★ ★ ★

FABULOUS CHILDREN'S POOL

(Both pools are fully staffed by qualified life guards at all times)

HAVE A GREAT DAY OUT

PRICE: ADULTS £1.10
CHILD 55p
OAP's 55p

The Engineering Services
Division of the Directorate
of Technical Services.

OPEN:
11am—6.45pm
last ticket 6.15pm

HIGH ROAD, NORTH FINCHLEY. Tel: 01-883 6232

● FUN DAY OUT AT FINCHLEY OPEN AIR POOLS ●

● FUN DAY OUT AT FINCHLEY OPEN AIR POOLS ● FUN DAY OUT AT FINCHLEY OPEN AIR POOLS ●

Can you help a student find a home?

Last year over 3,000 local residents registered their vacant rooms and houses with the Polytechnic Accommodation Services.

Every September the Polytechnic is faced with a pressing demand for accommodation. Their own halls of residence house only 600 of the 7,300 students. About 2,000 new students leave home for the first time each year and enrol at Middlesex Polytechnic. Consequently the Accommodation staff are very keen to hear from local residents who have spare rooms in their homes and from property owners wishing to let whole properties in the area on short term leases.

Professional accommodation staff will be pleased to advise all prospective landlords.

Students are put in touch with landlords by the Polytechnic's accommodation offices, each of which is staffed by an experienced accommodation officer who helps and advises landlords registered with the service. Although the Polytechnic cannot become involved in contractual letting arrangements, providing that these are all made clear at the beginning there is no need for misunderstandings to arise.

Middlesex Polytechnic students come from different backgrounds and have diverse personal circumstances, therefore their accommodation needs vary. However,



Accommodation in the Hendon area is in particular demand from students on business studies and management courses at the Middlesex Business School.

the most popular types of rented accommodation are self-contained houses, flats and lodgings.

Accommodation is usually let for one academic year at a time, that is from late September until late June. Although many students will be away during Christmas and Easter holidays, some, especially those on courses involving industrial placements, may wish to stay during the vacations.

Whether letting a house, flat or single room, landlords should provide a bedroom with adequate heating, lighting and ventilation. It needs to be large enough to allow room to study, and should include a desk or table and an upright

chair. There should be enough room to hold the student's books, clothes and general belongings. Most students prefer to have their own rooms rather than share a bedroom.

Students renting accommodation with a resident landlord usually prefer to cook their own meals as their timetables often don't coincide with family meal times. They should, therefore, have access to the kitchen at times that can be agreed at the beginning of the letting. Students usually provide their own food and the landlord provides the utensils.

Ideally, separate cooking facilities can be provided if the student's

room is large enough.

Whilst the needs of individual students may vary, the Polytechnic emphasises that problems shouldn't occur if the landlord makes clear to the student the precise terms of the agreement at the beginning. The rent that the student is to pay, when it is due, the method of payment and what is provided in return should be confirmed in writing. The same applies to the arrangements for bills. Whether smoking is allowed, whether students may have guests, and other specific details should be arranged between the student and the landlord before the start of the letting.

The Polytechnic's main teaching sites are at The Boroughs, Hendon; Cat Hill and Trent Park in Cockfosters; Queensway, Enfield; White Hart Lane in Tottenham and Bounds Green Road, Bounds Green. Students prefer to live close to their place of study or within easy reach of local public transport to their teaching site.

The first step for any interested homeowner with accommodation to let is to contact the Accommodation Officer who will advise landlords and put students in touch with them.

Telephone or written enquiries to The Accommodation Office, Middlesex Polytechnic, College Road, London, N17 8EA. Tel: 01-885-4417 (24 hour).

Room for a Student?



Middlesex Polytechnic students seek

- RENTED HOUSES • FLATS
- ROOMS within easy travelling distance of
- HENDON • ENFIELD
- EDMONTON • SOUTHGATE
- COCKFOSTERS • BARNET
- WOOD GREEN
- BOUNDS GREEN

Single bedrooms with study facilities are particularly welcome.

If you have property to let, telephone for an informal

discussion with one of our professional accommodation officers.

An information pack including helpful advice for those new to letting property is available on request.

Telephone or write with details of your accommodation:

01-885 4417 (24 hour service)

The Accommodation Officer (ref AC1/A), Middlesex Polytechnic, College Road, London N17 8EA.

Middlesex Polytechnic

Primary science on parade



George Aukland, BBC producer of the recent science series *Take Nobody's Word For It*, and many schools science programmes, reveals some of the secrets of the televised experiments made from every-day household objects such as lemonade bottles and foil pie dishes.

CHILDREN in primary schools throughout the borough of Barnet are learning to work out scientific puzzles by building models, making experiments and having fun.

The results could be seen at an open week staged by the Primary Science and Technology Support

Unit at the Teachers' Centre, High Road, North Finchley.

A keynote talk was given by George Aukland, BBC producer responsible for programmes such as *'Take Nobody's Word For It'* and the schools programme, *'Micro Mind Stretcher'*. It attracted a full

house with standing room only for science teachers, attending after school hours.

On show were a robot controlled air strip and railway loop, a lifting crane, models worked by batteries and interlocking cog wheels, and pressure pads.

Air combat on canvas

AN exhibition of work by illustrator Geoffrey Nutkins will be open to the public until September 23 in the Battle of Britain Hall of the Royal Air Force Museum at Hendon.

It will be open from 10am to 6pm daily and is free to museum ticket holders. Many of the works are for sale, including both original paintings and prints.

A son of a Royal Air Force pilot, the 37-year-old artist was born in Kent where he has lived and worked ever since. The county was the hub of the Battle of Britain and it is this momentous period of British history which is the inspiration for the majority of the pictures in the exhibition.

Geoffrey Nutkins chose to learn his trade 'on the job', rather than undergo formal art education. Leaving school when he was 16 he spent seven years working in commercial studios before setting up his own business. He specialises in artwork for animations and TV concepts, but accepts a variety of other commissions.

The artist's aviation work stems from his interest in the Battle of Britain and aviation archaeology. He has produced 13 works for Saudi Arabian Airlines, and the illustrations for three calendars for John Courage Breweries.

Mentmore Crafts Festival and Design for Living Exhibition

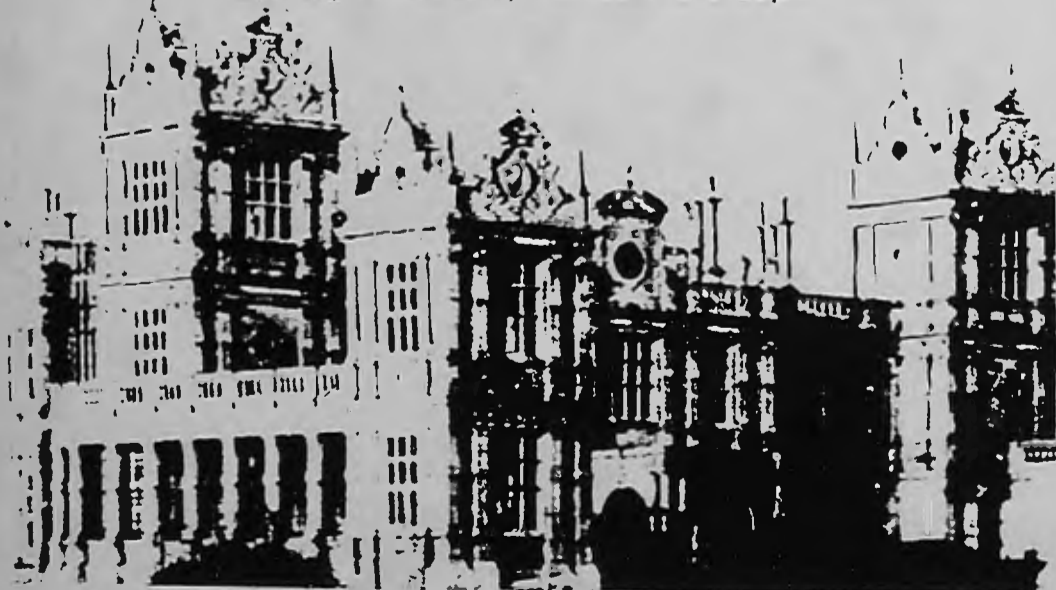
27th, 28th and 29th August 1988

Bank Holiday weekend

MENTMORE TOWERS, MENTMORE, LEIGHTON BUZZARD, BUCKS

Over 100 craftspeople will be exhibiting and selling their wares in the grounds and ornate rooms of Mentmore Towers.

Opening Times: Daily 10.30am to 6.30pm



Come and spend the day at this well established annual event. Something for all the family.

Inclusive admission charge to craft fair, grounds and house: £2 Adults; £1.50 OAPs and children 6-16 years.

Free car park, free entertainment by the Right Royal Revellers, Punch and Judy, Wonderbounce etc; light refreshments available all day. (no dogs allowed in the house and only on leads in the grounds).

PRIMARY EDUCATION IN BARNET



A fresh approach to supply teaching

Do you feel ready to step into part-time teaching but aren't happy with the 'supply' approach?

Well, here at Barnet we've developed a fresh approach to the problem of providing teaching cover.

Each Primary School will have its own part-time teacher to provide cover on a flexible basis with a guarantee of work each week. You will be paid monthly. Holidays included.

You get to know the school, the staff and the children. And what's more, the children get

to know you. You'll become so much more than just a child minder.

To find out more, telephone Iris Phillips on 01 368 1255 Ext. 3014. Or simply complete and mail the coupon to Barnet Education, Town Hall, Friern Barnet, London N11 3DL.

To: Iris Phillips, Barnet Education, Town Hall, Friern Barnet, London N11 3DL.

Please send me an application form and details of the new supply teaching scheme in Primary Schools.

Name _____

Address _____

Tel. No. _____

AN AUTHORITY COMMITTED TO EQUAL OPPORTUNITIES

EDUCATION IN
BARNET

Creating opportunities

BBN

Council Meetings

Members of the public are invited to attend council and committee meetings in the Town Hall, Hendon, at 7pm.

Tuesday, August 2: Special Meeting of the Town Planning and Research on Borough Development Plan

Tuesday, August 17: Town Planning and Research

Tuesday, August 30: Education

Wednesday, August 31: Planning Sub-Committees

Monday, September 5: Housing, Development and Estates.

Tuesday, September 6: Public Works, Social Services.

Due to pressure on space we regret that we are publishing special events, monthly and fortnightly entries only this month. In future the full list with all the standing weekly events will be published once every three months: March, June, September and December so next month Barnet Diary will return to a full list. Please make sure your entry is in time with all correct details.

Entries for the September issue must be received by August 9, and before that date if possible. New entries start on September 3.

Monday August 1

Rotaract Club (Mill Hill), 18-28 yrs. Mill Hill Tennis Club, Sylvan Ave. NW7. 8.15pm. 444 9291 (also Aug 15)

Tuesday August 2

MIND in Barnet, advice and counsell-

ing. Trinity Church, Nether St. N12. No appointment needed, 7.30-9.30pm (also Aug 16, 30)

Alzheimer's Disease Scty. (Barnet Branch). Relatives' group meeting in The Blue Beetle, St Mary's Church, Hendon Lane, N3. 8.15pm. 958 8324

Wednesday August 3

Barnet Animal Rights Group, Quaker Meeting Hse, 58 Alexandra Grove, N12. 8pm. 440 1715

Rotaract Club (Barnet), Barnet Cricket Club, Barnet Lane. 8pm. 441 5892 (also Aug 17)

Rotaract Club (Finchley), Moss Hall Tavern, Ballards Lane N12. 8.30pm. 445 1393 (also Aug 17)

Saturday August 6

New Barnet and Dist Stamp & Postal History Fair, St Peter's Hall, Lyonsdown Rd. 440 8835

Tuesday August 9

Hendon and Dist Cage Birds Assn, Labour Hall, Back La (off Watling Ave), Burnt Oak. 7.30pm. 205 2657

League of Jewish Women (Edgware Group), social meeting. Edgware United Synagogue. 1.30pm. 958 6154. New members welcome.

Wednesday August 10

Orbit Club NW London (25-40) Moss Hall Tavern, Ballards La, N12. 8.30pm. 906 2080

N London HF Group midweek ramble. Meet Hampstead u/g. 11am. 455 2558

Friday August 12

Oakleigh Carers Group, Health Centre, Oakleigh Rd Nth, N20. 2pm. 368 8350

Saturday August 13

British Tinnitus Assn NW London, Meritage Club, Church End, Hendon. 2pm. 349 9353

Tuesday August 16

N London HF Group evening stroll.

Meet Bond St u/g. 7.15pm

N Middx Family History Scty. Barnet Branch, Church Hse, Wood St, Barnet. 7.45pm. 441 0529

Monday August 22

Barnet Action for Mental Health, 154 Station Rd, Hendon. 7.30pm. 203 5879

Friday August 26

Barnet Ratepayers & Residents Assn (Arkley & Hadley), Harold Fern Room, Salisbury Rd. 8pm; Surgery 7.30pm. 449 0807

Thursday September 1

Network Summer Outing to London Zoo for parents with young children. For details phone 368 8621

Barnet/Police Consultative Group meeting, Town Hall, NW4. Introduction of Greater London Action for Racial Equality's report, 'A Fair Cop'. Public welcome.

Saturday September 10

United Nations Assn (Hampstead Gdn Suburb & Golders Grn Branch) are holding a Bring-and-Buy coffee morning at 6 Chatham Close NW11. 10am-12.30pm. Admission 50p. All proceeds to Assn. and its commitments to Refugees

Singles Clubs

Finchley Solo Club for widowed, divorced & single (25-65). 8pm. 445 9810/444 8743 (1st & 3rd Tues)

Horticulture and Floral Art

Barnet and Dist. Fuchsia Scty, Methodist Hall, Brookside Road, E. Barnet. 7.30pm. 440 4085 (2nd Mon)

Barnet Flower Arrangement Scty, Lyonsdown Hall, Lyonsdown Road, New Barnet. 8pm. 0707 57199 (2nd Thur)

Hendon Floral Art Group, St. Johns Church Hall, Algernon Rd. NW4. 7.45pm. 346 8916 (3rd Wed)

Sheaveshill Ave. NW9. Allotments available. 205 4121 (evenings)

Wednesday August 10

New Barnet Amateur Gardeners' & Floral Art Scty, talk 'Wild Flowers of Greece' by Mr Tony Rook at St Peter's Church Hall, Lyonsdown Rd, New Barnet. Members 50p, visitors 75p. 441 0293

Tuesday August 16

Friern Barnet Floral Art Club, Christ Church Hall, Oakleigh Rd Nth, N20. 8pm. 446 0783 (also Aug 30)

Saturday September 3

Mill Hill Horticultural & Allotment Scty., 40th Annual Show, Hartley Hall, Flower La, NW7. 2.30pm. Admission 20p

Dance

Finchley Sequence Dance Club, St Philip's Hall, Gravel Hill, N3. 7pm. 346 8675 (2nd Sat)

20th Century Sequence Dancing Club, Southgate Upper School, Sussex Way, Cockfosters. 7.30pm. 360 2586 (1st Sat)



OF MILL HILL
ESTABLISHED 25 YEARS

We clean Curtains, Carpets and Upholstery Beautifully

HOMES · OFFICES · HOTELS · RESTAURANTS

Curtains:

- Take down and rehang service included ●
- Full repair, alteration and adaption service ●
- Express service upon request ●

Tel: 01-959 6996/7066

62 The Broadway, Mill Hill NW7

PIZZAEXPRESS

The First and Still the Best



820 HIGH ROAD
NORTH FINCHLEY
01-445 7714

The Original String Quartet
Appearing every Wednesday from 8pm

AFTERNOON TEA
NOW BEING SERVED



THE HENDON HALL
HOTEL



Ashley Lane, Hendon NW4 1HF

The ideal venue for your **Dinner & Dance; Wedding; Barmitzvah.** We have superb private rooms for that very special occasion.

As well as having **52** well appointed bedrooms the Hotel boasts
THE PAVILION RESTAURANT & BAR

a first class restaurant offering both fixed price and à la carte menus
SUPERB LUNCH MENU SERVED DAILY

For further information and reservations phone:

203 3341

Pensioners' Clubs

Civil Service Pensioners' Alliance, Avenue Hse, East End Rd. N3. 10am. 445 4821 (3rd Thur)

Golders Green & Dist Pensioners' Assn. Trinity Church, Rodborough Rd. NW11. 1.15pm. 455 7952 (1st Wed)

Pensioners' Voice (Barnet), Methodist Hall, Brookside Rd, E Barnet. 1.30pm. 361 2787 (2nd Wed)

Pensioners' Voice (Colindale/Burnt Oak), Burnt Oak Library, Watling Ave. 1.30pm. 906 2161 (last Thur)

Pensioners' Voice (Whetstone/Finchley), N Finchley Library, Ravensdale Ave. 2pm. 346 6762 (last Thur)

Wednesdays

*Asian Meditation and Music. Methodist Church, Rodborough Rd, Golders Grn. 12-4pm. Free admission & refreshments. 202 2751/440 4633 (also Thurs & Fri)

Women's Clubs

East Barnet (Osidge) TWG, Small Hall, Brookside Methodist Church. 7.45pm 368 7346 (2nd Tues)

East Barnet Valley TWG, Lyonsdown Hall, Lyonsdown Rd, New Barnet. 2.15pm. 449 8601/3885 (1st Thur)

Finchley Redbourne TWG, Etchingham Park Rd Day Centre, N3. 7.45pm. 349 3365 (4th Tues)

Friern Barnet Friary TWG, Christ Church URC Hall, Bellevue Rd, N11. 2pm. 361 9623 (1st Tues)

Hampstead Garden Suburb TWG, St Jude's Church Rooms, Central Sq, NW11. 2pm. 458 3706 (1st Mon)

New Barnet Evening TWG, Brookside Methodist Church Hall, E Barnet. 7.30pm. 440 1934 (1st Mon)

Playgroups and Toddlers

Tuesdays

*Teddy Tots for Mums and toddlers, newborn babies and mums-to-be. Woodcroft Evangelical Church (Gervase Rd entrance) Burnt Oak. 10.30-12 noon. 200 8909

Sport

St Christopher's Cycling Club — easy rides. 10am. Tally Ho Post Office, N12. 346 6609/361 2281 (1st Sun)

London Hash House Harriers. Summer runs. SAE to 'MIC MAC', 12 Parkhurst Rd, Friern Barnet, N11 3EL for details

Thursdays

*Redwing Badminton Club for Ladies, Christchurch Hall, High Rd, N12. 1.30pm. Vacancies for average good players. 446 3454/346 5377

Countryside and Wildlife

Middx Caving Group, St Mary's Hall, Hendon La, N3. 8pm. 803 6008 (1st Wed)

Mill Hill Watch Club (for children 8+) — part of Herts & Middx Wildlife Trust — for details phone 440 6314 (after 6pm)

N London Rambling Club. For details SAE to Joyce Adlington, 4 Melbourne Way, Enfield, Middx, EN1 1XF



August 5 & 6

Lip Service present 'Look What We've Got'. A domestic comedy set in the computer age. 8pm. £4.25, £3.25 conces.

Sunday August 7

The Comic Answer Co present 'A Case of the True Blues', a recording of a new pilot radio programme featuring Chris Barrie, Steve Mallon and their voices from Spitting Image. 6pm. £5.

Saturday August 13

John Canning, Alexander Technique Workshop. 10am-1pm. £4.50, £3.50 conces (also Aug 27)

Friday August 19

Shiva Nova, Out of India, their music draws on both the European and Indian cultures. 8pm. £4.25, £3.25 conces

Saturday August 20

Kav Kavanagh, Rock'n'roll workshop. 11am-1pm. £3.50, £2.50 conces.

Aug 22-Sept 10

Summer Open Exhibition. A chance to submit previously unexhibited work in this open group show.

August 26 & 27

Black Theatre Co-op present 'Temporary Rupture'. A fast and furious revenge comedy by Michael Ellis. 8pm. £4.25, £3.25 conces

September 1-3

September 6-10

Joint Stock Theatre Co present 'Promised Land' by Karim Alwari. A new play tackling the trauma of a bitterly divided Israel. 8pm. Fri & Sat £4.50, £3.50 conces. Tues, Wed & Thurs £3.75, £2.75 conces

CHILDRENS FESTIVAL AUGUST 8-12

Monday August 8

Major Mustard — Day of Activity. A workshop, some games and then the show. Age 8+. 10am-3.30pm. £5 for the day, £4 conces.

Major Mustard Travelling Show. Major Mustard creates delightful comical characters and brings them to life with gusto and glee. All ages. 2.30pm. £1.50 (adults £2)

August 9, 10 & 11

Magic Carpet Theatre Co — Three Days of Activity! 4-11yrs. Incl Day 1, The Magic Circus Show, Day 2, The Wigwam Alakazam, Day 3, The Great Workshop Show 10am-3.30pm. £15 per child for 3 days. £12 conces.

Tuesday August 9

Magic Circus Show, a show full of colour and spectacle and illusions. All ages. 2.30pm. £1.50 (adults £2) (also Aug 12, 10.30am)

Wednesday August 10

Wigwam Alakazam, the exciting world of the wild west. 4-11 yrs. 2.30pm. £1.50 (adults £2) (also Aug 12, 2.30pm)

Thursday August 11

The Great Workshop Show, a show on the theme of magic. All ages. £1

CHILDRENS FESTIVAL AUGUST 22-26

Monday August 22

Wayne Pritchett — Day of Activity. A mime workshop, games, a project and then the show (see below). 10am-3.30pm. Age 7+. £5 for the day, £4 conces

Body Talking Children's Show. Introduces children to the way we talk with our bodies. 2.30pm. £1.50 (adults £2)

Tuesday August 23

Taxi Pata Pata offer the opportunity for children to learn the rhythms and sounds of Soukus music from the Caribbean. £5 for the day, £4 conces

Wednesday August 24

Stop the Clock, Day of Activities, a workshop, games, a project and then the show (see below). Age 5+. 10am-3.30pm. £5 for the day, £4 conces

Hop along to meet Peter Rabbit

COME out of your burrows and hop along to meet Peter Rabbit during the week beginning August 8. He has bounded from the pages of Beatrix Potter's books to visit children in Barnet.

Peter will be at the Barnet Libraries Bookbus, Old Court House Recreation Ground, Wood Street, Barnet on August 8 at 2.30pm.

On Tuesday August 9 he joins the Fire Brigade for an afternoon when he

meets firefighters from Mill Hill Fire Station at Edgware Library, Hale Lane. from 2pm to 3.30pm.

The following day, Wednesday, August 10, he moves on to North Finchley Library, Ravensdale Avenue, N12.

Peter bows out with a finale at the Bookbus, Victoria Park, Finchley, on Thursday, August 12 at 2.30pm. He would be delighted to meet children at any of the venues but warns 'If you feel peckish, bring your own carrots!'

SAYING IT WITH FLOWERS

FINCHLEY Horticultural Society are staging displays in the Church End Library at 24 Hendon Lane, Finchley until August 31 to promote their annual show in September.

From August 1 to 7 there will be floral arrangement sessions. Any local flower arrangers who would like to promote

their organisation's activities are invited to do flower arrangements in the library. Contact Richard Taylor at the library, tel, 346 5711, or Mrs Catherine Schmitt, tel, 346 4359 for further details.

The sessions will be held during library opening hours.

Friday August 12

Tatty Coram Theatre Co present their new production 'Three Sisters'. An original performance by this women's theatre co, drawing on European traditions of mask, melodrama and clowning. All Saints Arts Centre, Oakleigh Rd North, N20. 7.30pm. £2.50, £1.50 conces. 445 8388

Old Bull Arts Centre

Old Bull Arts Centre
68 High Street, Barnet.
449 5189

Phone for details. Ticket prices do not include 25p membership, or 50p children's membership of Bull Eye Club.

August 1-20

Sea Fever Exhibition. Painters, potters and jewellers looking at the theme of the sea

August 2-6

Drama Workshop for Children with Bronwen Rowton. 7-15 yrs. 10am-4pm (except Tues 10am-2pm). £8. (Performance for parents on 6th. 4pm. £1) (also Aug 16-20, except Tues 10am-2pm, performance for parents on 20th. 4pm)

August 3 & 4

Snarling Beasties present 'Gangsters'. (The play contains scenes and language that may offend). 8pm. £4.25, £3.25 conces.

Warden alarm scheme gears up for Lifeline

BARNET'S Central Warden Alarm Scheme is gearing up to open its service to hundreds of elderly people who live alone in the borough. This will be a four year rolling programme of expansion and springs from the selection of Lifeline as the Mayor's Appeal charity for 1988/89, and the setting up of Barnet Lifeline, which works in association with Help the Aged.

When the Warden Alarm centre opened in December 1985 it was serving Barnet's own sheltered housing schemes only. A 24-hour monitoring service was set up in Whetstone with a Tunstall Telecom installation so that every sheltered tenant could be in immediate touch with help in an emergency if their resident warden was off the premises.

Gradually the scheme was extended. Seven Housing Associations, who requested the service, were linked up at a charge of 50p a week per unit. So far 158 units have been connected and a further 78 are planned.

Added on to the scheme is the individual alarm scheme called Lifeline. These can be installed in any dwelling in the community and are not fixtures in the way that the alarm systems in sheltered housing schemes are. The resident has a special telephone with an emergency button and an emergency call pendant.

Social Services Department have



The Prime Minister, Mrs Margaret Thatcher, at the Mayor of Barnet's Lifeline Appeal stall at Finchley Carnival. With her is Mrs Mary Phillips, chairman of the carnival panel.

arranged for 61 Lifelines for elderly people at risk.

Now Barnet Lifeline and The Mayor's Appeal are planning to fund 1,000 Lifelines on a rolling programme.

In a report to the Housing Committee on July 18, the Director of Housing and Environmental Services, Mr. Ray Janering, explained

that with the Lifeline Service people who could afford to buy their own equipment could do so through a donation to the Appeal. The equipment would be for their exclusive use as long as they needed it. After that it could be passed on to another elderly resident.

People who cannot afford to buy the equipment can approach the

charity — or their friends or relatives can do so on their behalf.

At present the charity is only recently formed locally and has a major fund-raising campaign ahead of it. Success could lead to an increased demand which in turn would need additional staffing and equipment. However any such development would be self-funding.

WATERSIDE CONCERTS

**JULY/
AUGUST AT
KENWOOD
LAKESIDE**

SATURDAYS at 8pm
(SUNDAY JAZZ at 6pm)

30th JULY

THE PHILHARMONIA ORCHESTRA

Conductor: Antony Pay

includes

Brahms - *Academic Festival Overture*

Schumann Piano Concerto

(soloist: Ronan Magill)

Dvorak Symphony No. 7

6th AUGUST

SCREEN SPECTACULAR

The Royal Philharmonic Orchestra

Conductor: Sir Charles Groves

includes

Les Trois Mousquetaires, 2001, Elvira Madigan, Bridge

Over the River Kwai, Star Trek, The Music of Henry Mancini and Michel Legrand
Superman with Grand Firework Display
Sponsored by Caldwell Prince Ltd.

13th AUGUST

ITALIAN OPERA NIGHT

The Royal Philharmonic Pops Orchestra

Conductor: Anthony Hose

and Stars of the Buxton Festival Opera

includes excerpts from

Thieving Magpie, Barber of Seville,

Rigoletto, The Force of Destiny, La

Traviata

La Boheme and many more

20th AUGUST

RUSSIAN NIGHT

London Mozart Players Symphony

Orchestra

Conductor: Robin Tear

Soloist: John Lill

Glinka - *Russlann and Ludmilla.*

Rachmaninov - *Piano Concerto No. 3*

Tchaikovsky's 6th - *The Pathétique*

27th AUGUST

ENGLISH NIGHT

Philharmonia Orchestra

Conductor: Sir Charles Groves

includes

Britten - *A Young Person's Guide to the*

Orchestra

Arnold - *Fantasy for Audience and Orchestra*

Elgar - *The Crown of India*

Elgar - *Pomp and Circumstance, March Land of Hope and Glory*

★ GRAND FIREWORK DISPLAY ★

SUNDAY 28th AUGUST AT 6pm

BANK HOLIDAY JAZZ - TOP TRUMPETS

Kenny Ball, Humphrey Lyttelton, Digby

Fairweather and their bands

(Sponsored by Baileys Irish Cream)

ADVANCE TICKETS

From £3 and concessions

Deckchairs and grass from

DUKE OF YORK'S THEATRE

St. Martin's Lane, London W.C.2

Tel: 01-379 5533

or at KENWOOD LAKESIDE on

the night from 6.00pm

KENWOOD LAKESIDE
Hampstead Lane, London NW3

English Heritage

FREE LEAFLET
Tel: 01-734 1877

Handi-car's so Handy

BARNET has a new Handi-car. It is a standard, family sized car which has been fitted with a tail ramp so that a wheelchair can be comfortably pushed into the back.

It is easy to drive, so any Barnet resident who needs a car which will take a wheelchair can hire the Handi-car for £6 plus 30p a mile, so long as there is a friend or a member of family prepared to be the chauffeur. And even if there is no one, a volunteer driver will probably be available.

The gear on the old Handicar finally wore out. The new car, which has an automatic gear box, was purchased for Barnet Volunteer Bureau and DABB (Disability Association in the Borough of Barnet) with grants from the Edward Harvist Charity, the City Parochial Foundation, the Police Property Act Fund and Nissan UK.

The Mayor of Barnet, Cllr Don Goodman, who was chairman of Grants Committee when the Edward Harvest Grant was approved, accepted the keys of the new Nissan Prairie Handi-car and then passed them to the BVB for safe keeping.

The Handi-car is designed to take a severely handicapped person out on individual journeys. Mr. Michael Solomons of Fairacres, Finchley, uses it to visit London art



Michael Solomons has two helpers to push him into the Barnet Handi-car — The Mayor and volunteer driver Syd Ratcliffe

galleries and concert halls. The back of the car is completely clear, so the wheelchair passenger can be comfortably seated behind the driver, facing forward. Because the

Handi-car is saloon-sized, you don't have to take a special driving test. All you need is a clean driving licence and be aged between 25 and 70.

Volunteer drivers are urgently needed not only for the handi-car, but also for the small leisure coaches and to drive their own cars.

Anyone able to help should contact Barnet Volunteer Bureau on 349 2930.

BEDWORLD SALE NOW ON



BUNK BEDS

Over 20 designs (all safety standard). Pine, Antique or Mahogany stain. From only **£149** (complete with mattress)

OPEN BANK HOLIDAY

- ★ Same Day Delivery
- ★ Unbelievable sale prices
- ★ Free Disposal of your own bed
- ★ Expert Advice

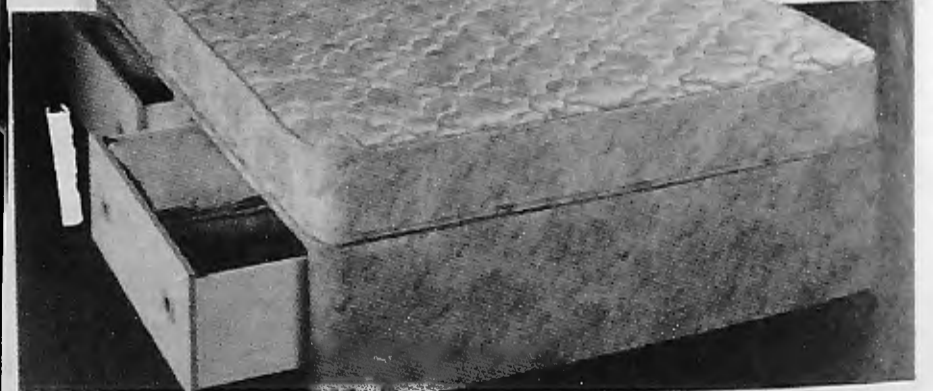
We stock: *Airsprung, Hypnos, Vi-sprung, Sealy, Silentnight, Rest Assured, Myers, Sleepzee, Dorlux*

LUXURY 4 DRAWER DIVAN

10 Year Guarantee by:—

SILENTNIGHT

was £225
now £199



LARGE RANGE OF BRASS BEDS

FROM **£299**



NOVA BED SETTEE

(Choice of covers)

WAS £129
SALE PRICE **£99**



26-28 East Barnet Road, New Barnet.
Tel: 01-441 7875 (next Sainsburys)

95 Fore Street, Edmonton N18
Tel: 01-807 3331

470 Kingsland Road, Hackney, E8
Tel: 01-254 2534

New support scheme opens the door to community care



CHOICE and flexibility are the keys which open the doors to a new service for highly dependent residents, launched on August 1. Home Care Plus, run by Barnet's Social Services, will have three strings to its bow.

- Personal care
- Home care support
- Occupational therapy

ALL three have the aim of providing enough support to enable those wishing to live in their own homes, to do so for as long as possible.

A vital part of the new service is co-operation between the Home Care Plus team, relatives, friends and any voluntary carers to enable the client to enjoy life as fully as possible.

Barnet hopes the Home Careworkers will build close and supportive relationships with their clients and undertake tasks which a caring relative might provide.

Home care support will include a shopping service which will involve collection of lists from clients' homes and delivery of the order back to them at a convenient time. Individual ethnic needs will be taken into account but the shopping service will concentrate on the large supermarkets.

There is an urgent need for volunteers to pack the goods or for any supermarkets willing to do the packing, to contact the Team on 01-440 0987.

An emergency garden clearance service could be offered but this would literally consist of perhaps a twice-yearly blitz on overgrown lawns, if there was no one else able to do it.

Another support service concerns minor maintenance in the home. If a client has an emergency problem such as a broken window or door latch then arrangements would be made for someone to visit to carry out repairs.

A full time occupational therapist will be part of the Home Care Plus team, and will be able to give advice and arrange for any necessary equipment according to the needs of individual clients.

Who are the clients?

The two vital factors are that the client has a home in the Borough and they are willing to receive the service.

All clients will be referred to the new service by social workers either from hospitals, area teams or specialist social work teams.

TWO TEAM MEMBERS



Julia Quinn

Julia Quinn, 22, from Mill Hill, is a former stand-by air stewardess. She has previously worked as a care assistant for a child with spina bifida and looked after a seriously ill relative.

In addition to other qualifications, she has successfully completed a St John's Ambulance course and is able to cope with a number of emergencies.

Having completed a Home Care Plus training course, Julia said: 'The independence and social responsibility offered by the new service seems ideal in satisfying my interest in caring for dependent people, whilst providing them with greater choice and dignity.'

She has a car and, like her colleagues, will be able to care for individuals at weekends and evenings as well as weekdays.

Rajen Ramsarun, 31, from Edmonton, has always been interested in caring for people and began a long nursing career in 1975, working with mentally and physically handicapped people until 1981.

He then specialised in



Rajen Ramsarun

psycho-geriatric care at Friern Barnet Hospital. During this time he developed skills in dealing with disturbed and confused elderly people, which required considerable patience and kindness.

He also worked in the interim rehabilitation wards and this led to his interest in community care. He said: 'I believe that caring should not only happen in a closed environment and, consequently, strongly attest to the belief of working in the community. Given incentives and support, many people can remain in the community and, at the same time, preserve their dignity and individuality as free citizens.'

Rajen will be working for 20 hours a week and is able to offer care at weekends and evenings as well weekdays. He too had a car and will be able to travel easily between individual homes. However it is anticipated he will probably work with only two or three people in order to develop trusting and lasting relationships with them.

Two members of the Management Team will visit those people who have been referred to the service and will carry out a detailed assessment of the individual's needs.

Everyone involved with the client will be invited to a meeting when a plan of care will be agreed. Regular reviews will take place so any plans which need to be altered can be changed. The emphasis is flexibility and choice for all those receiving the service.

Cost of the service

Personal care: Clients will be financially assessed in a similar way to those receiving the Home Help Service.

Those on Income Support will

only pay the same minimum amount as currently charged for the Home Help Service, regardless of the amount of care given. Everyone else will be asked to contribute a certain amount.

Home care support: Those people receiving the shopping service will only pay for the items required. There will be no charge for delivery and collection of orders.

If any minor maintenance is carried out, people will only pay for the parts purchased not for the labour to carry out the work. The garden service will be free.

Occupational therapy: Most aids or adaptations are free to clients and only in exceptional circumstances are contributions required.

Case Histories

Mrs A, aged 39, is paralysed from the neck down and is currently in hospital. Her husband would like her to live at home but he too has mobility problems. His wife needs constant care and attention involving both emotional and physical care.

Sadly there are no other family members to help, so considerable home care support is required if Mrs A is to leave hospital and avoid residential care.

An occupational therapist has agreed to help Home Care Plus by supporting a careworker in meeting Mrs A's daily requirements at home.

Without Barnet's new service Mrs A would certainly have to remain in hospital which, while offering her excellent care, would not give her the opportunity of spending time with her husband in their own home.

□ □ □

Mr B, aged 91, lives alone in the south of the Borough. He is becoming severely confused and has been admitted to hospital on a number of occasions after falls in his home.

He has a close relative and kind neighbours who do their best to keep an eye on him, but they have become increasingly concerned about him.

Mr B remembers some things from long ago but his short term memory is very poor. Many council services have already been involved in an effort to maintain Mr B in the community. His needs, however, have become so great that they can no longer be met by existing services.

It is believed he would agree to move into residential care if asked, nevertheless it is clear he would prefer to stay in his own familiar surroundings.

Home Care Plus has agreed to help Mr B, together with the District Nursing Service, by providing daily care at home from 7am to 9pm. A neighbour and the Night Nursing Service have agreed to make an occasional check on Mr B when the careworker is not there.

These arrangements will give this gentleman an opportunity to remain in his own home for longer than could previously have been achieved in his situation.



Chipping Barnet

Sydney Chapman, MP, first Saturday of month 10.30am to 12 noon, 163 High St. A councillor will also be available.

Arkley Ward — Conservative councillors, first and third Fridays of month 7.30pm, Dollis Valley Community Centre.

Brunswick Park Ward — Conservative councillors available second Saturday of month, 10.30am to 12 noon, Monkfrith Boys' Club hall, Osidge Lane, N14.

East Barnet Ward — Cllr Olwen Evans (Conservative), first Saturday of month 10.30am to noon, Community Centre, Victoria Rd, New Barnet. Contact Cllrs Mrs Mamie Perry and John Perry on 368 4368 for personal appointment.

Hadley Ward — Contact Conservative Cllrs. Mrs Gill Bull 446 7684, Mrs Carol Cender 441 6325, John Hoyle 441 5077.

Totteridge Ward — Contact Conservative Cllrs. Mrs Joan Levinson 368 3298, Victor Lyon 446 4423, Vic Usher 445 4248.

Labour councillors available first Saturday of month 10.30 to 11.30am, 104 East Barnet Road, New Barnet.

Finchley & Friern Barnet

Margaret Thatcher, MP, for constituents only, via constituency office, tel 445 4292.

East Finchley — Labour councillors every Saturday, 10am to 11.30am, East Finchley Neighbourhood Centre, Church Lane N2.

Finchley Ward — Conservative councillors, last Saturday of month 10.30am to noon, Blue Beetle Hall (adj St Mary's Church) Hendon Lane, N3. Cllr Mrs **Barbara Langstone** can be contacted on 445 5443.

St Paul's Ward — Labour councillors Naren Davé, Michael Freeman and Kitty Lyons, every Saturday 11am to 12 noon. Tally Ho Labour Party Stall, North Finchley.

Woodhouse Ward — Labour coun-

cillors Mike Harris, Dennis Reed and Rudolf Vis, every Thursday, 6.30-7.30pm, Friern Barnet Town Hall, N11. Also Saturdays at Tally Ho, Finchley.

Friern Barnet Ward — Contact Cllrs Chris Platford (368 6817), Brian Salinger (368 1329), John Tiplady (445 5734).

Hendon North

John Gorst, MP. Tel 959 1446 or via constituency office, 2 Apex Parade, Selvage Lane, Mill Hill. **Conservative councillors**, Grahame Park, first Wednesday of month, and Mill Hill, every Wednesday.

Burnt Oak — Cllrs Ellis (959 6191), Shamash (458 2679), Williams (906 0576), every Saturday, 10.30am to noon, Labour Hall, Back Lane, Burnt Oak (952 5771).

Colindale — Cllrs Hillman (202 7792), McKendry (444 0594), Manson (455 6379), available first and fourth Saturday each month, 2-3pm, St Augustine's, Grahame Park.

Hendon South

John Marshall, MP, via constituency office (202 7484) by appointment, see local press for details.

Conservative councillors — first Saturday of month 11am to 12.30pm, 166 Station Rd, Hendon (202 7484).

Childs Hill — Liberal/SDP Alliance councillors every second Wednesday of month 7-8pm, Unitarian Church, Hoop Lane, NW11 and every fourth Monday of month, 7-8pm, St Peter's Church Hall, Cricklewood Lane, NW2. Cllrs Cohen (205 1233), Palmer (455 5140), Stone (450 0762).

West Hendon — Phone Cllr Tim Sims (734 8080, office hours) for appointment at West Hendon Ex-Servicemen's Club, The Broadway, NW9. **Labour Cllrs Doreen Neall** (202 9927) and **Agnes Slocombe** (202 4074) by appointment.

Euro MP

John Marshall, Euro MP, contact Euro agent: 440 7328.

Exhibition at Bow House

SET in the Wood Street conservation area of Chipping Barnet, the Bow House Gallery is opening its doors to the public on Thursday, September 15, with a mixed exhibition of paintings, sculpture and textiles by invited artists whose work will also be represented in future shows.

During the past 10 years the Bow House, one of the architectural gems of the area, has been lovingly restored by the artist owners, John and Pauline Brown. This restoration has now been extended to house the new gallery in the cellar area which constituted the former servants' quarters of the 18th century. Pauline and John plan to hold several exhibitions a year of high quality art including painting and sculpture.

John, an associate of the Royal Society of British Sculptors, exhibits widely, his stone carvings and bronzes being in both private and public collections.

Pauline is well known as an embroiderer and teacher. She has

worked on a number of large-scale commissions for places of worship, as well as designing wallhangings and embroidered panels for private clients. She is the author of several books on embroidery and her work will be shown in the gallery from time to time.

Also featured in this inaugural exhibition is the work of Jennie Tuffs, whose London Transport poster of Kew Gardens will be well known to all London Underground passengers. Marise Hepworth, a prizewinner at the Pastel Society's 1987 exhibition will be represented, as well as Claire Peasall, the Lincolnshire watercolourist.

The exhibition runs from September 15 to October 2. Opening times are Thursdays to Saturdays, 10am to 5pm; Sundays, 12 noon to 5pm. At other times by appointment.

Prospective clients and those wishing to add their names to the mailing list should write to The Bow House Gallery, 35 Wood Street, Barnet, Herts EN5 4BE or Tel. 01-440 4672.

Boost for Asian meals service and arts centre

THE allocation of charity and lottery income by the Grants Committee has given a boost for an Asian meals service and brought the Old Bull Arts Centre a step closer to the installation of a lift for the disabled.

The Shree Aden Depala Mitramandal Community Centre, East Finchley, applied for funds towards a kitchen extension to enable them to expand an Asian meals service. A grant of £6,000, from the Borough Lottery income, was agreed.

A further £6,000 was allocated to the Old Bull, towards the cost of installing a lift to assist physically handicapped people with access to the new theatre.

Other awards from the income of the Edward Harvist Charity/Borough Lottery funds were:

LIBRARIES AND ARTS

Local Community Festivals, £1,000; Multi-cultural Arts Week, £3,000 over a two year period; Copying of original postcards for the local history collection, £500; Commemorative Plaques for the following — the Cricklewood site of the Handley Page Aircraft Co; Clovelly Cottage, Park Road, Barnet; and at St Paul's Church commemorating the connection with William Wilberforce. A grant totalling £600 was agreed to provide the plaques.

EDUCATION

Sponsorship of Youth Courses and Events, £1,000; Arts in Schools, £2,250; Music — The extended curriculum, professional musicians in schools, £2,000.

SOCIAL SERVICES

Holidays for carers of handicapped people, £3,000; chairs for elderly frail people, £1,000; participation by mentally handicapped

people in the mini Olympics at Cleethorpes, £1,000; cordless telephones, £1,000.

GENERAL PURPOSES

Fund for insulating the homes of elderly and disabled people, £1,000.

HOUSING

Outings for residents of sheltered schemes, £1,000.

VOLUNTARY PROJECTS

Trigger Riding Group for the Disabled, £2,500; Friend-in-Need Community Centre, £2,000; Barnet P.H.A.B., £250; Community and Recreational Arts in Barnet, £1,500.

OTHER AWARDS

Other awards from the Grants Budget were: Barnet Housing Aid Centre, third and fourth quarterly instalments of the grant of £52,700 approved for the full year; Barnet Borough Conference of Voluntary Youth Organisations, £800; Barnet and District Action for Epilepsy Group, £110; Barnet and District Athletic Club, £413; Edgware and Mill Hill Sea Cadet Unit, £1,950.

The Committee agreed that an interest free loan of £3,000 be made to East Barnet Old Grammarians for the construction of two netball/tennis courts.

A contingency fund of £4,000 was agreed for approval of grants to "community playgroups" following a Committee decision to retain control of grant aid to such groups. The expertise and knowledge of the Pre-School Playgroups Association was recognised by the Committee and the association's advice will be welcomed to maintain the standards of service provision.

TOGETHER WE SAVE OUR HERITAGE

THE finest architecture and the character of the outstanding residential and rural areas of Barnet are protected by a partnership between local people, council officers and Councillors.

Barnet has 12 Conservation areas, each specially designated for its historic or architectural interest. Within these areas much stricter planning regulations exist and there are strong guidelines which ensure that where change and development are permitted they are carried out in sympathy with the area and with a high quality of workmanship and architectural sensitivity.

Barnet has five Conservation Area Advisory Committees made up of local people interested in conservation and people with specialised knowledge.

Every time a planning application comes up in a conservation area it is sent to the relevant advis-

ory committee for their views, and their advice is given full weight when planning consent is discussed. Often the views of the advisory committee lead the Council to either refuse an application or to negotiate for a less intrusive development.

Members of the advisory committees were invited to the Town Hall, Hendon, on Monday, July 4.

Cllr Melvin Cohen, chairman of the Town Planning and Research Committee, welcomed the members and Philip Wilson, head of Barnet's Urban Design section, stressed the importance of local expertise and values in planning.

A slide and sound presentation showed how listed buildings had been restored with the help of grants, and how strict design and quality standards could maintain the character of areas such as the Garden Suburb.

MAINLY FOR WOMEN

Ideas for fat-free days

IT WAS a note from the hospital that sent me to my recipe book. Prior to your appointment, it said, you must have 24 hours on an *absolutely* fat free diet.

No fat, no oil, no meat, no milk, no eggs!

You can have fruit, vegetables and bread with no butter.

What a challenge to any cook.

Well, I consoled myself, I need to lose weight and there was never a better month than August for fruit and vegetables, so why not a fruit salad. Nectarines and peaches are at their most reasonable, strawberries and raspberries are still around.

When I make a fruit salad my first purchase is a melon and at present the small Spanish hon-

eydews are very reasonably priced, I paid 49p. I wanted a ripe one so I made sure that there was a springy feel to the fruit when I gently pressed the base.

Into a large glass bowl I cut up the melon (you can make melon balls if you have the energy) and squeezed over a little lemon juice. Within minutes I had a lovely syrup. In went three nectarine, two peaches (peeled) and a few last raspberries from the garden. As I happen to be on a diet I added a little granulated sugar substitute, but for those with no weight problem, a little sugar adds to the flavour and a dash of kirsch achieves miracles.

Micro casserole

Delicious. But you can't live on fruit alone (well, I can't.) So I turned to the microwave for a non-fat vegetable casserole.

The value of a microwave is that you really do not need fat to start your cooking. The flavours of vegetables, cooked with minimum water and no salt, are so light and fresh. Here's my summer evening favourite. Enough for two to four people depending on whether you are making it a meal or serving like a ratatouille.

Ingredients

- Three courgettes
- Three or four young carrots
- A few cauliflower florets
- 1 lb tomatoes
- 1 large onion
- ½ teaspoon cummin seeds
- Half a cup of water
- Bay leaf
- Salt and pepper to taste

First place a few cummin seeds in the bottom of a glass or microwave-safe casserole and warm quickly.

Peel and quarter the onion and divide into 'leaves'. Peel the tomatoes by covering with boiling water

for a minute, and quarter them. Cut the courgettes and carrots into half inch slices. Make sure the cauliflower florets are small and place all in the casserole with half a cup of water and a bay leaf.

Cook in the microwave without seasoning for three minutes on full heat. Stir, and cook again for three minutes. Add a little salt (less than usual) and a good grind of black pepper. Allow to stand for one minute. Test to make sure the cauliflower is cooked — and serve. You can eat this with dry toast or crispbreads.

Hot tomatoes

Salad without a dressing is my idea of purgatory. But no oil, yoghurt or mayonnaise seemed to add up to just that.

Finally I sliced a large beef tomato and a large spanish onion into rings, and added a few button mushrooms, raw and cut in half. Salt, a pinch of castor sugar, a sprinkle of white wine vinegar and a touch of hot red pepper sauce with a little water mixed together with chopped parsley and trickled over the salad made it very palatable.

RAJ

Why not send your 'healthy eating' recipes to **Borough News.** Let's eat ourselves fit!

GET SLIMMER FOR SUMMER.

RING TODAY.

Call your Counsellor.

DIET CENTRES

15 Flast Walk,
Hampstead NW3

Tel: 435 0709

Open Seven days

THE **Cambridge** DIET

HYPNOTHERAPY can be the answer to your problems of

Mental stress, Lack of confidence, Smoking, Overeating, Panic attacks, phobias, depression, or any other psychosomatic illness?

Do not suffer in silence — book for a consultation NOW — in absolute confidence.

Mrs Vijaya Prasad
DMS, CHP, AMAHP
(Registered Practitioner)

The Chatsworth Clinic
76/78 Park Road, New Barnet
Telephone 01-440 4217/8 or 449 8646 (for appointments only)
or 01-361 4525 (between 6.30 & 7pm and weekends only)

FREE DELIVERY SERVICE



The Nappy Express

TWO NEW NAPPY RANGES NOW IN STOCK

NEW TOGS ULTRA NAPPIES (as advertised on TV) WITH A REVOLUTIONARY ELASTICATED WAISTBAND AND ALSO

A **NEW** BUDGET BRAND OF ULTRA NAPPIES NOW IN STOCK ALL AT EXCELLENT PRICES

THE NAPPY EXPRESS NOW STOCKS **4** DIFFERENT DISPOSABLE NAPPY RANGES OFFERING THE BEST RANGE AVAILABLE ANYWHERE, AND COMBINED WITH EVER INCREASING RANGES OF BABY TOILETRIES AND HOUSEHOLD ITEMS, GIVES YOU THE COMPLETE SERVICE

PHONE ANGELA OR DAVID
ON 01-445 6161

For an established, friendly, efficient and reliable service

SUMMER SALE



INSTANT CREDIT FACILITIES AVAILABLE UP TO £1,000 SUBJECT TO STATUS

GOOD QUALITY SINGLE BED
£80

GOOD QUALITY DOUBLE BED
£132

We specialise in

BEDS • SUITES • FIRE SIDE CHAIRS

We also furnish houses, flats for letting/renting and old peoples homes

MATRESSES OF ALL SHAPES AND SIZES ARE AVAILABLE SEPARATELY

FOLDING BEDS FROM £29.00

VALLEY FURNISHING

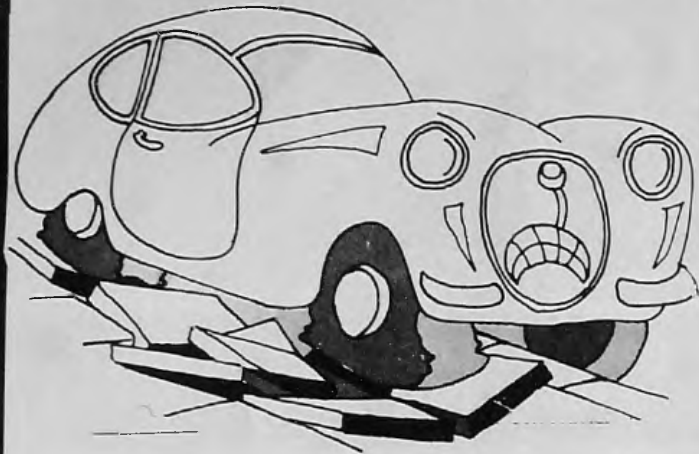
114 BRENT STREET, HENDON NW4

YOU ARE ONLY A PHONE CALL AWAY

Tel: 202 4666 Car park at rear

PARKING ON THE FOOTWAY is Dangerous and Costly

Driving or parking on the footways is an offence for which you may be prosecuted and fined up to £400.



LONDON BOROUGH
barnet

FIAT

0% FINANCE OVER 36 MONTHS — PLUS 3 YEAR WARRANTY ON ALL UNO MODELS.



THE FIAT UNO.

The Uno range of 12 models covers the Uno 45 fitted with the famous economy "Fire" engine. The Uno Selecta Automatic, the world's most advanced automatic transmission. The Uno SX luxury 5-door and top of the range, the 125 mph Uno Turbo.

Telephone us now for full details and a test drive.

Lindsay Bros.

920 High Road, North Finchley. Tel: 01-445 1022.

Showroom Opening Hours Mon-Sat 8.30am — 6.00pm Sun 10.00am — 1.00pm — Viewing only

THE ABOVE DEALER IS A LICENSED CREDIT BROKER OFFER SUBJECT TO STATUS AND AVAILABLE ON ALL NEW UNO'S BOUGHT AND REGISTERED BETWEEN 18TH JUNE AND 30TH AUGUST 1988. WARRANTY OFFER IS VALID FOR 36 MONTHS FIRST YEAR IS MANUFACTURER'S WARRANTY. 2ND AND 3RD YEAR MECHANICAL BREAKDOWN INSURANCE IS CALLED MASTERCOVER. WRITTEN DETAILS AVAILABLE ON REQUEST.

Bond & White Ltd

VISIT OUR NEW FINCHLEY BATHROOM SHOWROOM



MARSHALITE WALLING

Reconstituted York Stone
Pitched face — Natural colour
12" x 4" x 2 1/2"
33p EACH

SAXON DECORATIVE PAVING

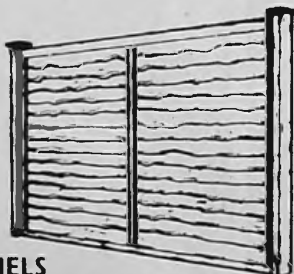
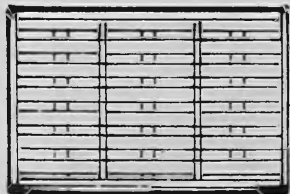
Natural colour
18" x 18"
£1.59 EACH



BATHROOM SUITES

Ideal Standard, Shires, Ariston and Johnsons Trentware are displayed at our Muswell Hill and new Finchley bathroom showrooms

Large choice of taps, mixers, tiles, showers, accessories



FENCE PANELS

Interwoven		Wavey Pine Lap	
6' x 4'	£8.99	6' x 4'	£9.99
6' x 5'	£9.99	6' x 5'	£10.99
6' x 6'	£10.99	6' x 6'	£11.99

40% OFF LIST PRICES PIPES & FITTINGS



THE BEST PLASTIC DRAINAGE SYSTEM

FREE LOCAL DELIVERY



R1 12" ROTARY LAWNMOWER
£29.95

LARGE SELECTION OF

Black & Decker

LAWNMOWERS

PLUMBING & BATH CENTRE
553-563 HIGH ROAD
FINCHLEY N12
346 8384

TEMPLE FORTUNE BRANCH
10 ASHBOURNE PARADE
FINCHLEY ROAD NW11
455 4807

BUILDING MATERIALS CENTRE
40 MUSWELL HILL ROAD
HIGHGATE N6
883 9722

HOME IMPROVEMENTS CENTRE
111-7 MUSWELL HILL ROAD
MUSWELL HILL N10
444 7888

FINCHLEY DECORATING CENTRE
597-599 HIGH ROAD
FINCHLEY N12
446 0856



The Mix pop group on board the Advertiser float collected for the Mayor's Lifeline appeal



College Farm bus had the Carnival Princess on board



Maria Bartha of CRAB face painting at the Library's storytime bus



Copper carnation

FINCHLEY CARNIVAL PHOTOFILE
John Rifkin, Photographer: 958 1370



Fun can be exhausting



Mencap won the charity float prize



Young collectors take a break



Chess game for Bell Lane School at the Recreation tent



Kay and Helen workout



The Red Cross on hand for emergencies

A good time was had by 28,600 people

Planning for the leisure years

Eastwood

Eastwood is a small Residential Home for the Elderly providing twenty-four hour care and attention in a homely and informal atmosphere. The Home is managed by The Senior Citizens Housing Society Limited, a registered charity headed by a Chairman and Committee. It is run on an entirely non-profit-making basis.

To enable the Society to maintain charitable status, a relative or close friend of the prospective resident is required to undertake one

day's work in the Home each week.

Every resident has a light, airy single room with hot and cold basin, full central heating, and emergency bell. Breakfast is served in bed, and meals during the day are taken in the spacious dining-room. There is a comfortable and friendly lounge with television, magazines and library books. A two-month option period exists offering temporary residence before making a final decision to live in our Home permanently.

EASTWOOD

76 HENDON LANE, N3

- ★ Non profit-making home for the elderly.
- ★ Registered charity.
- ★ Seven single rooms, all with washbasins and TV points.
- ★ Full central heating.
- ★ Excellent food.
- ★ 24 hour care.
- ★ TV in lounge.
- ★ Homely atmosphere.

REGISTERED WITH LONDON BOROUGH OF BARNET

For full details please telephone Hon. Secretary:

01-202 7415

KENWOOD NURSING HOME

32, Alexandra Grove, Finchley N12
Luxury Nursing home reopens

A new high quality Nursing Home has recently opened in Finchley. Registered by Barnet Health Authority to care for post-operative convalescent, terminally ill and longstay patients and accepted by Medical Insurance organisations, the Home aims to provide, at reasonable fees, an excellent standard of nursing care combined with all the attributes of a high class establishment.

Kenwood is situated in a pleasant residential road and offers:

Full Nursing care by qualified staff.
Short stays on a day to day basis.
Single or shared accommodation,
many rooms have en-suite facilities
All rooms have colour TV + call points.

Choice of menu — special diets catered for.

Passenger and chair lifts.

Telephone: 01-445 5112 for details

Belmont Lodge

BELMONT LODGE

Residential Home for the elderly



In the Autumn of your years there is no need to be lonely or worried about looking after yourself.

Come and live at Belmont Lodge, where there is a happy family atmosphere which is not found in larger residential homes.

Our qualified staff will care for you, their only concern is for your comfort and happiness.

- Vacancy for large single or double room now available ring 959 4083
- Private telephone + T.V. point
- Short stays can be arranged.

BROCHURE ON APPLICATION TO

OFFICE: 01-959 4083

or MATRON: 0923 222610

Why not just pay us a Visit!

59 Belmont Road, Bushey, Herts

Registered with Hertfordshire County Council



NORTHGATE HOUSE PRIVATE NURSING HOME

12 Hornsey Lane, Highgate N6 5LX

"Our prime concern at Northgate House is to provide each resident with a comfortable, secure and happy home"

- ★ Qualified staff provide 24 hour nursing care for post-operative, long and short stay residents.
- ★ Therapeutic wing with hydrotherapy pool and physiotherapy unit.
- ★ Superb conservatory, dining rooms and lounges overlooking landscaped gardens.
- ★ Single and sharing rooms with nurse call, TV and telephone points. Most rooms have en suite facilities.

We welcome your call on 01-281 3511

A CARING WAY OF LIFE

Grahame Park... Today...

Major refurbishment programme planned

A multi-million pound, seven-to-ten-year programme to refurbish and modernise Barnet Council's housing at Grahame Park has been welcomed by Barnet Housing Committee.

The overall cost is estimated at £28 million, and its aim is to transform the estate to a development with the emphasis on environmental quality and neighbourhood communities, in keeping with today's standards for suburban living.

The stark rooflines will give way to pitched roofs; ground floor flats will have gardens; the links between the 'Spine' blocks of flats will be demolished so that each building is a self contained unit with entry phones and its own internal staircase; and structural defects will be put right.

The project was supported by all members of the committee across party lines.

Cllr Norman Hirshfield, Chairman of Housing Committee, said: 'This would be the largest refurbishment programme to be undertaken in the Borough of Barnet, if our plans can be progressed.'

'The proposals are designed to modernise the estate to living standards compatible with the year 2000 and beyond.'

'Consultation with tenants will take place in due course covering all aspects of the proposed environmental improvements which would flow from the extensive works, planned to be carried out on a rolling programme over the next few years.'

History

Grahame Park, with a population of 6,500, was built in the 1970s by the former Greater London Council. The 1960s design, more in keeping with an intensive inner city development than a suburban green field site, features interlinked blocks of flats up to eight storeys high. It is the type of design which has been identified as leading to social problems, and the building up of the community was made more difficult because tenants came from all over London.

Altogether there are 1,809 dwellings on Grahame Park. At the centre, around the shops, are the Concourse blocks, which are five to eight storeys high.

Spreading from the Concourse in three directions are the 17 'Spine' blocks, four storeys high with access to the maisonettes from internal corridors running along the centre of each block. Around the edge of the estate are smaller blocks and groups of houses which are of



A bleak skyline and no gardens — Grahame Park today

better design and cause fewer problems.

In his report to the Housing Committee the Director of Housing and Environmental Services, Mr Ray Janering, said:

'While some 900 homes on the estate provide a satisfactory living environment, the remaining dwellings on the Spine and Concourse blocks were designed in a 1960s style which is now known to cause social, management and maintenance problems, compounded by poor design and construction in a number of respects.'

'If good standards of management and maintenance are not kept up the estate will quickly degenerate to an unacceptable level. In drawing up proposals for improvements and repairs to Grahame Park I have borne in mind that we are providing homes which need to last well into the next century. The proposals should therefore be viewed as a long term investment in the Borough's housing stock.'

The works would need to be programmed over seven to ten years to fit within the Housing

Committee's annual Housing Investment Programmes, Mr Janering said. New legislation affecting local authority housing finance was pending and he proposed an approach to the Department of the Environment's Estate Action Team in order to seek additional Housing Investment Programme borrowing approval.

The director will be reporting back to the committee with proposals for progressing the improvement works and on funding sources.

The problems

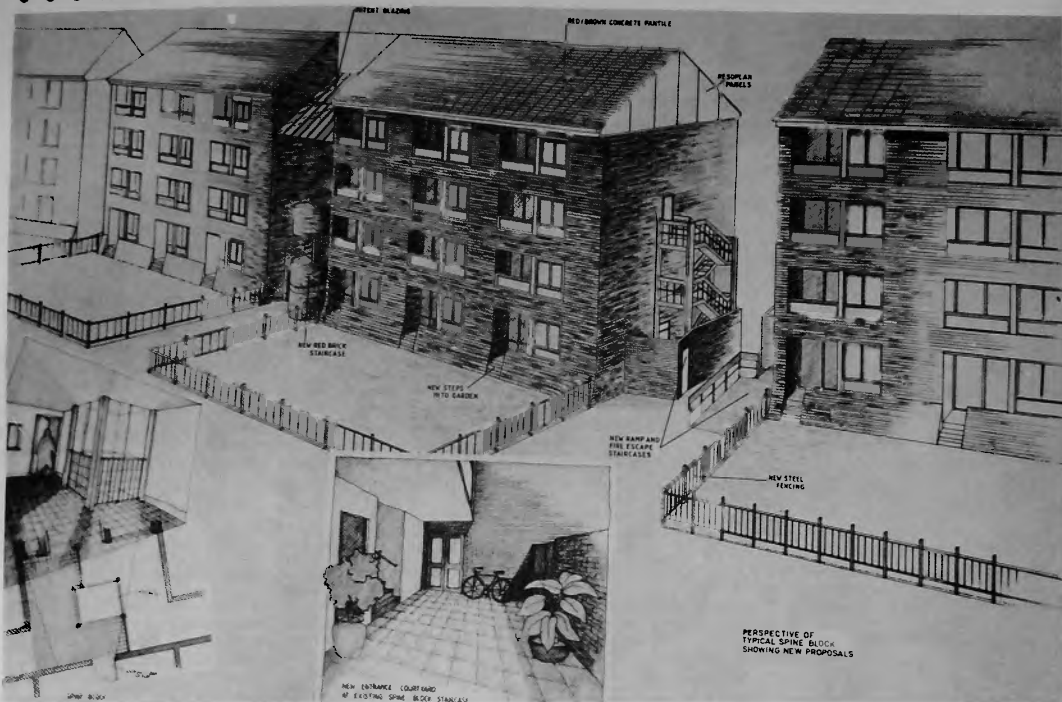
- The blocks forming the spine are linked to one another with long internal corridors, open to residents and non-residents, and making privacy virtually impossible.
- Entrances are dark and dingy.
- The large blocks round the Concourse look unpleasant and are accessible only through small, dark entrances serving a large number of dwellings.
- The cladding of Profilit glazing, enclosing external corridors and staircases is monotonous in appearance and presents severe maintenance difficulties. In some cases the glass cladding panels have had to be removed because they were dangerous.
- The blocks do not lend themselves to entry phones. Where these have been installed they have been vandalised in spite of staff efforts to keep them operational.
- Throughout the estate there is too much public space and too little private space with no gardens for the Concourse or Spine blocks.
- There are many defects springing from the original design and construction.
- The profile of the flat roofs with large brick built water tanks projecting into the sky-line is considered ugly by many people.
- The naming of the blocks is unusual and confusing.
- The arrangements for car parking are unpopular and open to vandalism. Multi-storey car parks are unused.
- There is a constant problem with vandalism and graffiti, particularly around the Concourse and Spine.

The proposals

The proposals, subject to borrowing permission from the Department of the Environment, will take up a major portion of Barnet's Housing Investment Programme spending. They include:

- Shallow pitched roofs for the Spine and Concourse blocks to put right current defects. These will be technically superior, look more attractive and in the longer term be more cost effective.
- On the Spine blocks new entrances to be provided for each block with a central staircase so that there will no longer be a public through route. Each block will be self-contained, the inter-connecting links will be taken down and new fire escapes provided.
- Large water tanks on the roofs to be partially demolished and rebuilt to blend with the pitched roofs.
- The Concourse blocks to be given a new finish to the elevations and the Profilit glazing replaced.
- Nine new access towers with lifts, stairs and new refuse chutes, with entry phones to the flats to be built for the Concourse blocks.
- Existing access towers to be stripped out and reconstructed with enclosure at ground level. Existing mechanical lifts to be converted to hydraulic lifts where possible.
- Four new dwellings and a community centre to be built under the blocks Merlin and Napier which are designed on stilts.
- Extensive landscaping to be carried out, with private gardens for as many ground floor dwellings as possible.
- The four level garage blocks to be demolished and replaced with landscaped open car parks.

...and Tomorrow?



Artist's impression of the spine blocks with central staircases and gardens



PIONEER MIDI'S
The future of sound and vision.

KENWOOD MIDI'S

S.1 SYSTEM 33 WPC, DIGITAL CLOCK/TIMER, T/TABLE, TWIN CASSETTE, DIGITAL TUNER + FULLY REMOTE **£299.90**

S.2 SYSTEM

40 WPC, CLOCK/TIMER TWIN AUTO/REV CASSETTE T/TABLE, DIGITAL TUNER + FULLY REMOTE **£379.90**

COMPACT DISC PLAYER FOR THE ABOVE SYSTEMS PDZ 71

SINGE DISC **£169.90**

PDZ 81

6 DISC **£219.90**

M 31 CDS 30WPC, TWIN CASSTTE, DIGITAL TUNER, T/TABLE + CD **£499.90**

M 71 S 55WPC, TWIN CASSETTE, DIGITAL TUNER, T/TABLE **£599.90**

0% FINANCE OFFER EXTENDED FOR ONE MORE MONTH MUST END 31ST AUGUST

0% INTEREST FREE CREDIT 0%

SALE

ENDS 31-8-88

MANY SPECIAL OFFERS INC. HEADPHONES

@50% OFF NORMAL PRICE E.G. SAVE £82.50 ON KOSS KORDLESS

ALSO A FULL RANGE OF KENWOOD SEPERATES IN STOCK

FREE DELIVERY AND INSTALLATION WITH ALL OUR PRODUCTS SO WHY NOT COME IN SEE FOR YOURSELF WE ARE OPPOSITE SAINSBURYS NORTH FINCHLEY

COME IN AND HEAR THE FULLY PIONEER RANGE. WE WILL GIVE YOU SOUND ADVICE AND FRIENDLY SERVICE WITH CUSTOMER BACK UP THAT YOU WILL FIND HARD TO BEAT. ALL THIS AND 0% FINANCE.

"WE TRY HARDER TO PLEASE"

ALSO TAKE ADVANTAGE OF OUR 0% FINANCE ON OUR FULL PRODUCT RANGE OF:

A.R, DENON, DUAL, HARMAN/KARDON, JAMO, LUXMAN, MARANTZ, RUARK, TEAC, THORENS, TANNOY AND YAMAHA

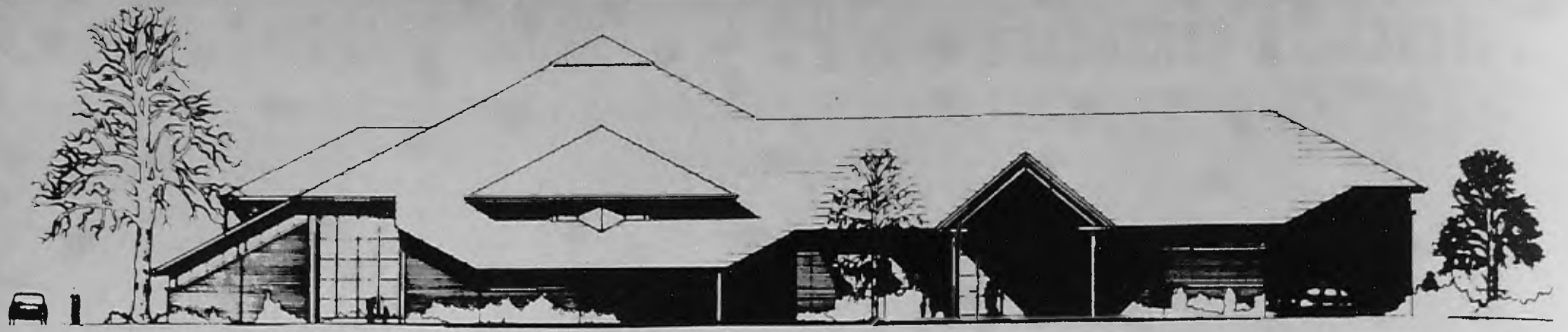
ANALOG AUDIO

849 HIGH ROAD N12 01 445 3267

ACCESS & VISA WELCOME

INSTANT CREDIT UPTO £1000.00

/ 01 445 1443



1989 start for Chipping Barnet Library

THE NEW Chipping Barnet Library, which is to be built behind the Spires Shopping Centre, off Stapylton Road, should be under construction before the end of this financial year.

Work is scheduled to start on site in January 1989 — as soon as the land, now used for a temporary car park, is released by the shopping centre developers.

The new library, framed in a green landscape of trees and shrubs, will make an important architectural and social contribution to the centre of Chipping Barnet.

The present library in Church Passage is too small for the large area it serves. It is rented by Barnet from the Hyde Foundation and the Parish Church House Charities and is unsuitable for a modern library service.

The new library will take up

the whole site bounded by Stapylton Road, Carnarvon Road and Strafford Road, and the sweeping curve of the site has allowed the borough's architects to design a building which is attractive on all facades.

Pyramid roof of Welsh slate

It is a long, low building with a steep, pyramid roof accentuated by gables. Its scale will sit comfortably in the mainly residential setting, but still register as an important civic building.

The walls will feature dark red stock bricks, with floor to ceiling glazing and clerestorey windows running beneath the eaves of the roof picked out in bricks of a contrasting smooth texture. The roof, which is the strongest

architectural feature of the building, will be in natural Welsh slate from Penrhyn.

The structure is on two storeys, with a theme of interlocking octagons. This allows free circulation within the building, but retains a sense of grouping and identity within the various sections of the library.

There will be a combined lending and reference library on two levels, a children's library and special activities room, and areas set aside for quiet study.

Exhibition area

There is an exhibition area, capable of being used for many purposes such as meetings and talks. And this area will have its own kitchen.

Easy access and lifts ensure

that the building is open to disabled people.

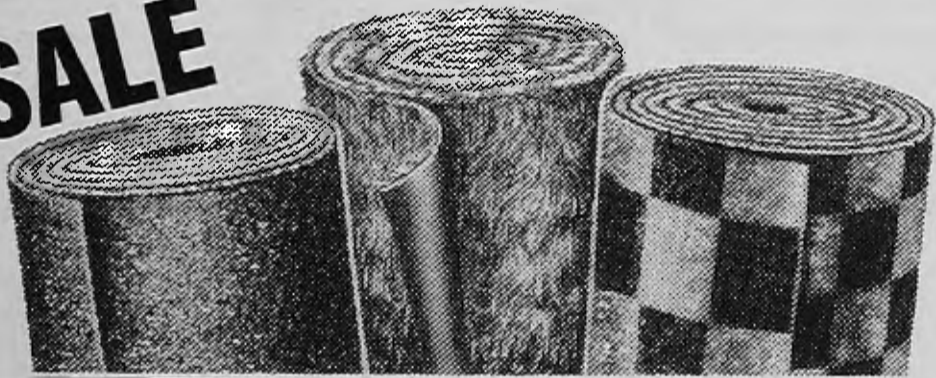
Outside great care is being taken with the landscaping to accentuate the green canopy of Chipping Barnet. Established trees will be preserved, and extensive planting undertaken.

Our own design

The cost of the new library is likely to be in the region of £1.75 million which includes fixtures and fittings. It should be completed during 1990.

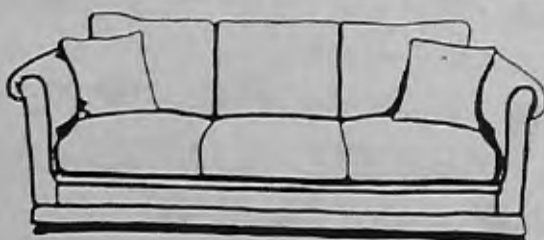
The whole design has been undertaken by the borough's own professional team within the Directorate of Technical Services.

SALE



**100s of Bargains
CARPETS · SOFAS
SUITES · at prices
you can afford!!!**

**SOFA BEDS REDUCED
HURRY WHILE STOCKS
LAST**



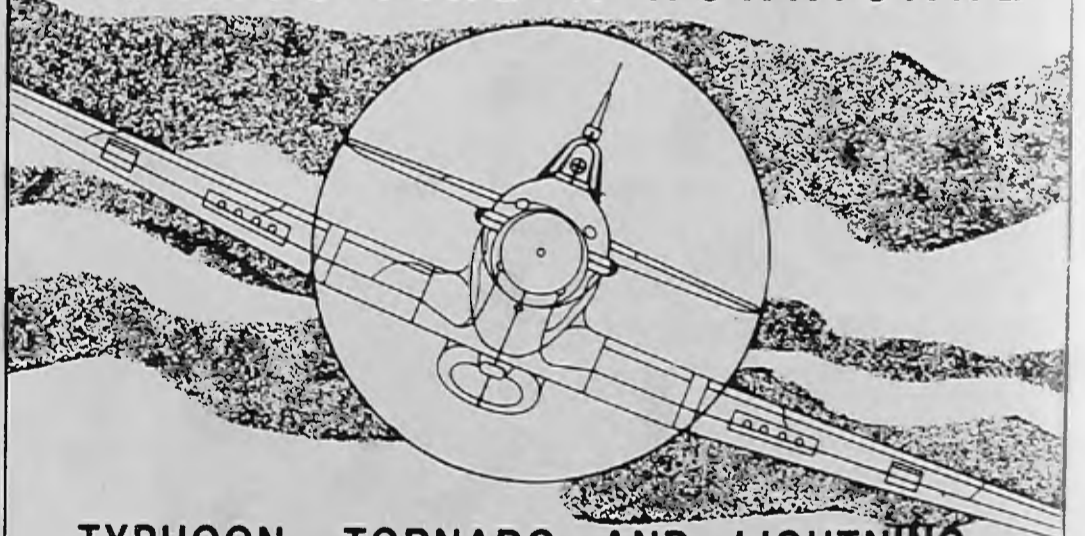
We are licensed credit brokers HP available. Written details on request. Typical APR 30%. All credit subject to status.

THE SUITE WAREHOUSE

725-733 Lordship Lane, N22. Tel. 01-889 4545.
Opening hours: Mon-Sat 9.30am - 6pm. Sun 2pm - 5pm.



**IN HENDON YOU WILL
ALWAYS FIND A HURRICANE**



TYPHOON, TORNADO AND LIGHTNING...

These are just some of the famous aircraft on show at the Royal Air Force Museum at Hendon. There's so much to see and it's all under cover, so the whole family can enjoy a great day out — whatever the weather!

Open daily (including Sundays) 10am-6pm
Free car parking, Restaurant, Shop.

⊖ Colindale
⊖ Mill Hill

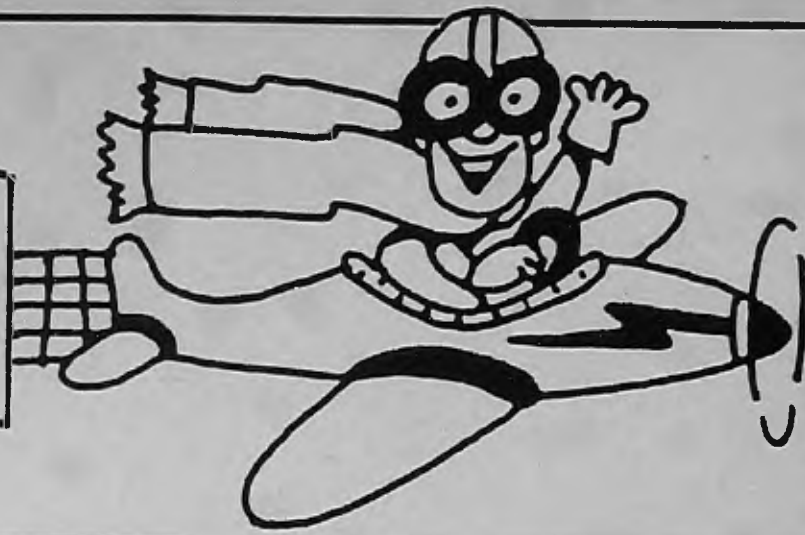
HENDON
ROYAL AIR FORCE MUSEUM

Grahame Park Way, Hendon, London NW9 5LL Tel 01-205 2266

THE GREATEST AIR DISPLAY ON EARTH

Take off for the . . .

Grahame Park Festival



CHOCKS away! There is an aviation theme for this year's Grahame Park Festival on September 2, 3 and 4, to reflect the area's historical connection with the former Hendon Aerodrome.

The Royal Air Force Museum, Grahame Park Way, is supporting the Festival theme with a competition. There are five prizes — each worth £8 — of family admission tickets to the Museum.

Put the answers to the following questions on a piece of paper with your name, address and a daytime telephone if you have one. Hand the entries in either at the Friends of the RAF Museum stall at the Festival or at Grahame Park Library. The closing date is Saturday, September 10.

The winning names will be drawn in the foyer of the RAF Museum at 4pm on Monday, September 11.

If you find the questions difficult, help with the answers can be found in literature which will be available from the Friends of the Museum stall.

The questions

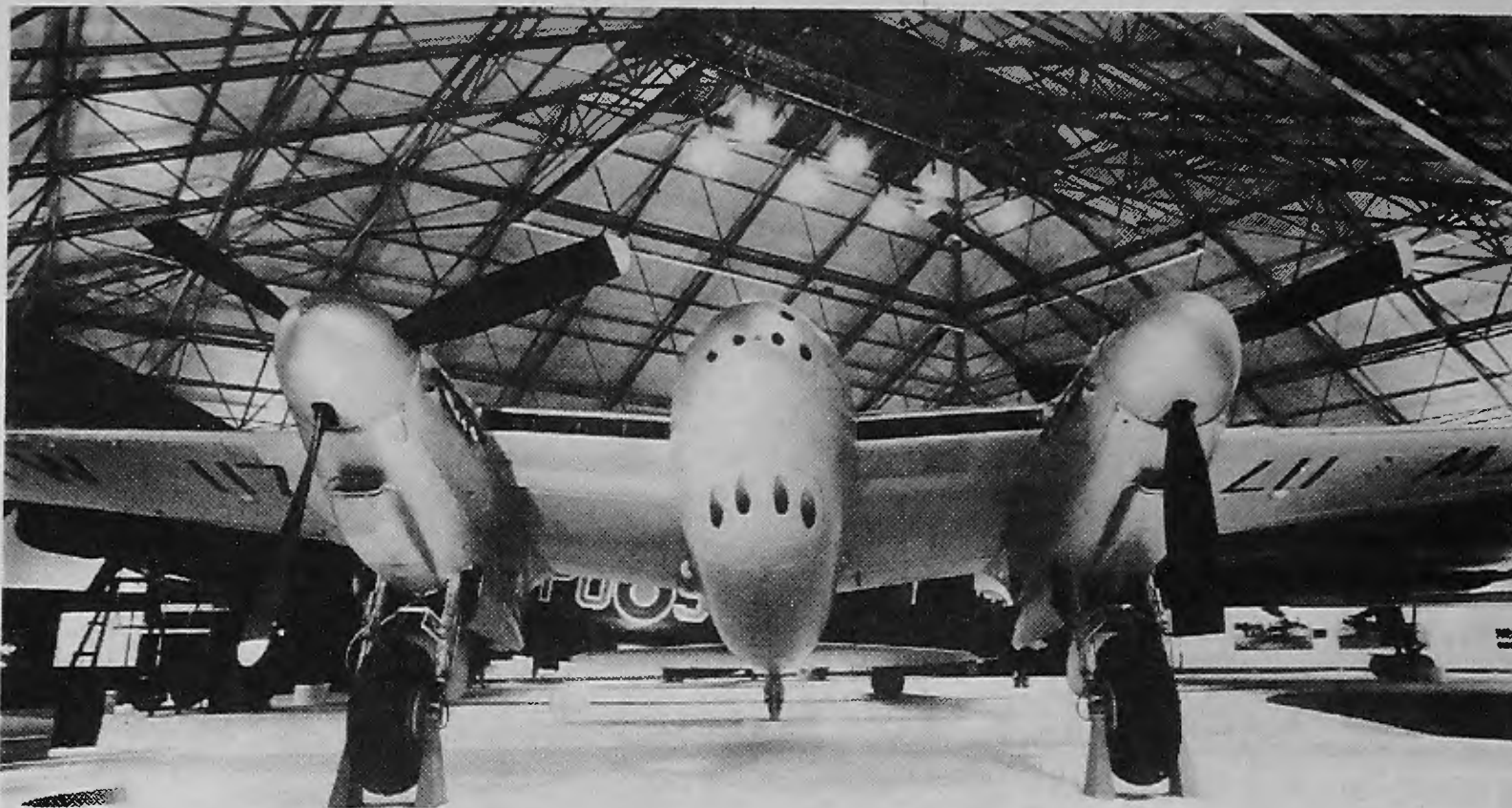
1. How many different aeroplanes can you see at the RAF Museum?
2. What is the name of the Museum's Lancaster bomber?
3. The Battle of Britain Hall has aircraft of three different countries. Can you name the countries?
4. What American aircraft can you see in the Bomber Command Hall?
5. When was the Battle of Britain?
6. How many machine guns did the fighter pilot have in 1940?

Something for all

There will be something for all age groups to enjoy over the three-day Festival including lots of stalls and exhibitions.

On Friday September 2 special highlights include a children's disco in the Community Centre between 3 and 5pm. Entrance 50p.

You don't have to be a fitness fanatic to join in It's A Knockout which begins at 6pm. A desire to join in, have fun and a good laugh is all you need.



Up, Up and Away to the Grahame Park Festival and take part in the RAF Museum Competition, although this Mosquito isn't first prize!

Firework display

A grand firework display sparkles into life at 7pm and adults can go on to the Community Centre at 8pm where they can singalong and swingalong with Cockney Sovereign in a real Londoners night out. Admission to the Cockney

Night is £2, £1 for pensioners.

Other attractions on Friday include the Odsox Dance Company who will have been wowing audiences at the Edinburgh Fringe Festival and, for the youngsters, a giant Inflatable on the Open Space.

Saturday, September 3, gets

underway with a clown cavalcade from 11am until 3pm and there will be plenty of entertainment from wandering players on The Concourse.

A mobile zoo is open from 11am until 4pm and between 12 noon and 2pm there will be a model aeroplane display at the Open Space.

Music to suit all tastes will set toes tapping. The Metropolitan Police Band strikes up between 12 noon and 2pm. Sounds of the Caribbean follow with a steel band between 2 and 3pm and a brass quintet completes the musical afternoon from 3 until 4pm.

Fun of the fair

Swings, roundabouts and all the fun of the fair will be available all day and community and Recreational Arts in Barnet will be arranging face painting. Firefighters from Mill Hill will be bringing a fire engine and joining in the fun.

Dance and music is the theme for Sunday, September 4. There will be a demonstration and a workshop by the Dagarti Arts Company in the morning and an Indian dancing demonstration.

In the afternoon there will be live music with local bands, the results of competitions and the fun fair continues throughout the day.

There is still space for more stalls. Anyone interested in booking a space or volunteers with some time to give in assisting the organisers can contact Storm Evans or Teresa Poland on 200 8525 (24 hours) or 200 4885.



Dagarti Arts will be at Grahame Park Festival on Sunday, September 4.

THE WAY IT WAS

17th Century:

Shakerham — arable farming. Haymaking by the farmers of Middlesex is documented as having been brought to 'a degree of perfection unequalled by any other part of the kingdom.'

The mowers usually begin their work at three, four or five o'clock in the morning and continue to labour until seven or eight at night, resting an hour or two in the middle of the day.

Every haymaker is expected to come provided with a fork and rake of his own.

Domestic life — Cooking meals takes place over an open fire with pothooks, a griddle for some scones etc and a spit for meat.

Water is drawn from an outside pump or well and heated in a copper. Washing and drying takes all week and flat irons are heated in front of the fire

□ □ □

18th Century:

Farmhouses are generally brick as farmers become prosperous with the high price of straw, roofs are, for the most part, covered with tiles.

Many farmhouses in the hay district of the country have the appearance of gentlemen's houses, both in construction and neatness, principally owing to there being no farmyards with cattle.

Domestic life — Open fires use wood which is plentiful in the South East and cheaper than coal. Tallow and beeswax candles are homemade but rushlights are popular as candles are heavily taxed until the mid-18th century.

Servants and some farm labourers probably sleep in the house, although some might have a cottage on the farm land.

Families are large in number but many children die in infancy. Those children who survive will follow in the family tradition of farming.

□ □ □

19th Century:

Farming becomes more intensive and requires less labour. Children of farming families tend to other occupations.

More domestic servants are required by the gentlemen who own country houses. After 1840 cast-iron cooking ranges are installed. Coal as well as wood is used for fuel.

In the latter part of the century outside water closets are replaced by indoor sanitation. After 1860 paraffin wax candles and oil lamps are used for lighting but in the closing years of the century, gas is introduced.



Hidden treasure behind the walls of a school.

17th Century farmhouse discovered

THREE hundred years ago among the green fields of Edgware, Shakerham Farm occupied a large piece of land in Hale Lane. Earlier this year part of the timber frame of the original farmhouse was discovered in a building occupied by St. Antony's RC School.

The find has been compared by Barnet's archivists to discovering a long lost masterpiece in an attic.

Approving a Grade 11 listing for the building, a Department of Environment inspector has described it as 'A rare survival in the London area'.

English Heritage representative, Michael Kilburn and Charmian Baker, a senior Barnet planner, were amazed and delighted to discover timber framing hidden behind plasterwork.

Charmian said 'Despite a survey of the Borough in the 70s it is still possible to find something like this.'

It is believed that during the mid-1600s the house formed an L shape with a lobby entrance. There were probably two storeys, although one upper part of the building may have merely been a loft.

In addition to timber framing, there is a moulded early 17th century door with wrought iron hinges which has survived the test of time.

The Department of Environment inspector also found that the north west wing retains the original roof and original floor joints are visible in the cellar, which had timber storage compartments added in the 18th century.

Mystery surrounds the occupiers of Shakerham Farm in the 1600s. No documents have been found to



The cellar has original floor joints and antique window.

give any clue to the families who must have farmed the land, although it is probable that they shopped in the nearby market town of Edgworth.

There is proof that by 1796 the freeholder of the farm was John Marsh. Shakerham then comprised house, yard, stables, sheds, garden and orchard covering one acre, one rood and 14 perches.

During the 18th century the house appears to have been re-fronted in brick and there was an addition to the back of the building to form a parlour.

In the 19th century the farm underwent major changes. A wing was built to the north-east, a new staircase installed, slate roof and lean-to porch with trellis supports added. It also underwent a change of name to become Maxwelton House, and appears to have been

transformed from a working farm to a gentleman's country home.

In 1935 two parts of Maxwelton House were joined together to form one, but it remained a private residence until 1964 when it became a school.

Two cottages remained on the frontage of the land until 1976 when they were demolished. It is possible they had been staff accommodation in the days when Maxwelton was a private residence.

One man who was associated with the building for 35 years was amazed by its antiquity. John Smith of Buckinghamshire said: 'I would never have believed it was that old.'

He recalled once meeting a seamstress from Mill Hill. 'This lady used to do some work for the owner of the house and remembered him being a high ranking naval officer,' he added.

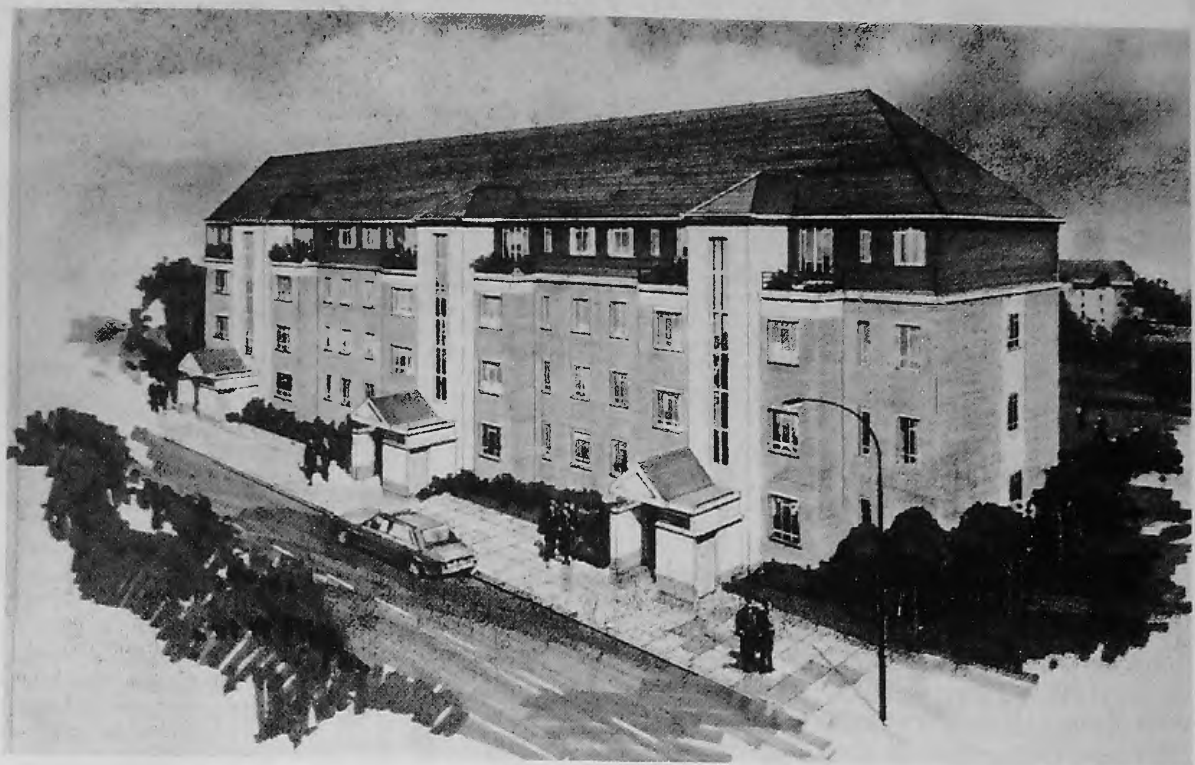
New look for the Grange Estate

TENANTS and leaseholders on the Grange Estate, East Finchley, are to be consulted about a major plan which will give a new look to the whole development.

The scheme, which was approved in outline, subject to consultation, by Barnet's Housing Committee at their meeting on Monday, July 18, is to build new pitched roofs on the blocks of flats which at present have flat roofs. While this work is in hand it is proposed to build two-bedroom flats in the roof space.

A five-year re-roofing and repair programme has been drawn up for the estate, with particular emphasis on 13 flat-roofed blocks. These have a high parapet wall surrounding the roof to protect the clothes drying area. It is the height of these parapets, together with the fact that the flat roofs are nearing the end of their useful life and need renewing over the next few years, that has given Barnet the opportunity to build the 'penthouse' flats.

Thirty flats will be built within the first seven blocks, which will be tackled between



the end of this year and 1990. These are Berwick, Cleveland, Elmfield, Hilton, Lochleven, Myddleton and Todd Houses. Six more blocks, Boucier, Crathorne, East View, Foskett, Garden and Vane Houses, will come into the 1991 to 1993

programme. Oak House will probably be re-roofed in 1998 because it is in a better state of repair than the others.

By building flats in the roof space the Council will achieve new dwelling units at a price well below normal new house

building costs. Details of pricing are not known at present.

If the consultation period goes well the Council will appoint a firm of consultant surveyors to manage the project, apply for planning permission, and progress the design.

LONDON BOROUGH OF BARNET

AUGUST BANK HOLIDAY REFUSE COLLECTIONS

Working arrangements for refuse collections including wheeled bin areas

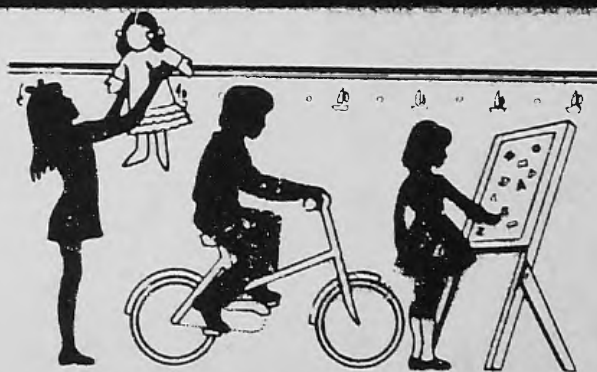
THERE WILL BE NO COLLECTIONS OF REFUSE IN THE BOROUGH ON MONDAY, 29th AUGUST

Collection arrangements:

Monday, 29th August..... No collection
 Tuesday, 30th August Monday's collection
 Wednesday, 31st August Tuesday's collection
 Thursday, 1st September Wednesday's collection
 Friday, 2nd September..... Thursday's collection
 Saturday, 3rd September..... Friday's collection



WATCH OUT !! THERE'S A CHILD ABOUT !!



Please take extra care
 School Holidays are from
 July 22nd — 7th Sept

WATCH YOUR SPEED WATCH THAT CHILD

Public notice from: The Road Safety Unit, The Engineering Division of the Directorate of Technical Services



Nature Notes AUGUST By Clive Herbert

With August being the peak time for holidays, now is an appropriate opportunity to consider wildlife further afield. Although a large proportion of people will head for our coasts at some time during the Summer, few will consider the possibility of watching for whales, dolphins and porpoises.

These creatures make up a quarter of all British mammal species and range from the four foot harbour porpoise to the 60 foot fin whale. The bonus for holiday makers is that Jul to September is by far the best period to watch for these animals.

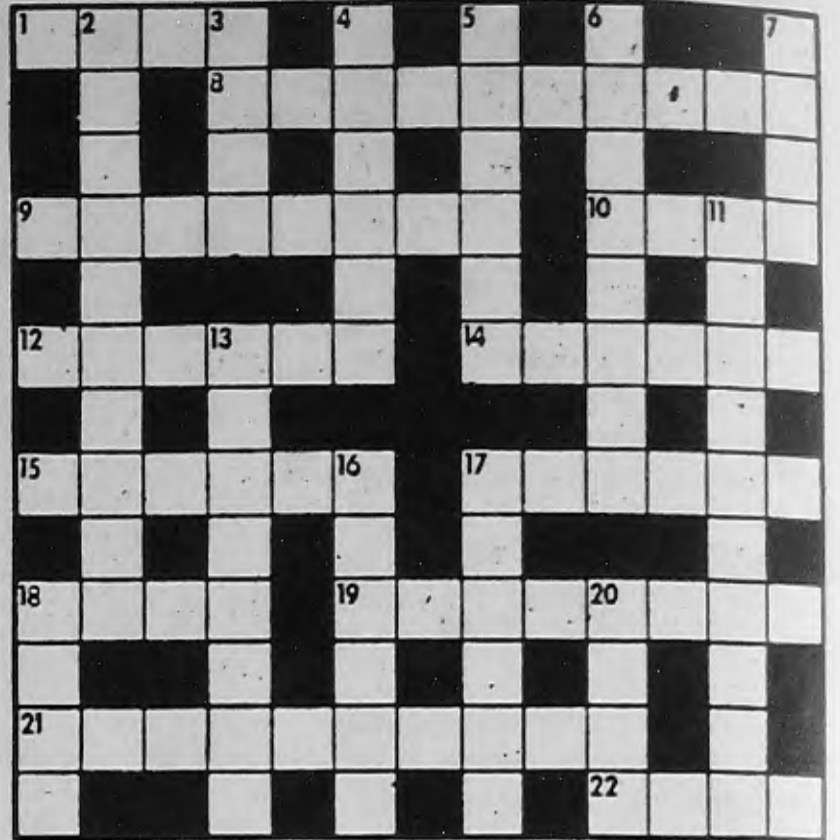
Be patient

Although marine mammals can be seen anywhere around the British Isles, the western seaboard produces most sightings. To increase your chances of a successful watch, choose a calm day when the waves will not obscure the backs of passing animals and if possible observe with binoculars from a cliff. You will certainly need patience — but the thrill of seeing your first dolphin or whale (biologists call them cetaceans) is well worth the time commitment.

All marine mammals have suffered in recent years from hunting, disturbance and pollution. In the North Sea, overfishing of herring stocks has probably reduced the number of dolphins present. Observations of cetaceans can therefore provide valuable information about changing populations. Send your sightings to Dr P Evans, Zoology Dept., Oxford University, OX1 3PS.

CROSSWORD

THIS is the third in our series of crosswords. The first correct entry out of a hat will receive a £5 book token. Entries should reach the Editor, Barnet Borough News, Town Hall, The Burroughs, Hendon NW4 4BG, by Monday, August 15.



ACROSS

1. Ten-legged crustacean (4)
8. Beetle who has had five solo hit singles (5,5)
9. Legendary American science fiction series (4,4)
10. Equipment used by mountaineers (4)
12. A rabbit's hole (6)
14. Soft, felt hat with a narrow brim (6)
15. A series of numbers with no sequence (6)
17. Scottish duke, who married Princess Louise, daughter of Queen Victoria, and became Governor General of Canada (6)
18. Preminger, and famous Austrian film director (4)
19. A 1967 detective film, starring Frank Sinatra (4,4)
21. Coal-mining area of Britain (5,5)
22. The man with the emu (4)

2. 'Alice's _____', a hit film and record for Arlo Guthrie (10)
3. _____ Rabbit, popular children's character (4)
4. The Queen's second son (6)
5. George Stephenson's most famous steam engine (6)
6. Common bird with dark speckled plumage (8)
7. Soft French cheese (4)
11. BBC's centre in Birmingham (6,4)
13. Butlins' workers, the source of 'Hi-Di-Hi' humour (8)
16. Great American record company of the Sixties and Seventies (6)
17. Palmer, the British Open winner in 1961 and 1962 (6)
18. River which enters the Wash north of King's Lynn (4)
20. Welsh striker who left Liverpool for Juventus (4)

The answers to the July crossword were:

ACROSS:
1, Out of Africa; 9, Ali; 10, Anne Frank; 11, Sadat; 13, Lyrical; 14, Ulster; 16, Decant; 18, Clifton; 19, Tyson; 20, Argentina; 21, OBE; 22, Betty Grable.

DOWN:
2, Uri; 3, Op Art; 4, Arnold; 5, Referee; 6, Charcoals; 7, Cassius Clay; 8, Skeleton Key; 12, Dustin Gee; 15, Extinct; 17, Ending; 19, Tiara, 21, Oil.

Last month's winner was E. M. Osborne, Somerset Road, Hendon, who will receive a £5 book token.

Match that!

HOW many objects can you get into a matchbox? That's the challenge from Grahame Park Library for children during this summer holiday.

Fans of the television series Last of the Summer Wine will remember how Nora Batty screamed whenever Compo opened his matchbox. What he kept inside the box was never revealed, but entries for this competition will be opened and inspected at the Library, The Concourse, Grahame Park, on Tuesday, August 30. Bring the matchboxes along at 4pm.

No two objects can be the same and the youngster with the most objects will be the winner. There is a prize of a book of his or her choice up to the value of £3.

Who's the winner?

The winning ticket at the Social Services Healthy Eating stall at Finchley Carnival was number 116. Claim your hamper of goodies, donated by Countryside Wholefoods Ltd by telephoning 01-202 8282 ext 2073 during office hours by Friday, August 19.

COLOURING COMPETITION



Children up to the age of 11 as at August 31, 1988, are invited to take part in this Welephant colouring competition. You can use paint, crayon or any other suitable colouring material. Just paint in the picture above and send your entries to the Editor, Barnet Borough News, Town Hall, The Burroughs, Hendon NW4 4BG, by August 31. Three £3 book tokens will be awarded to the best entries selected by the editors. Please print your age and name and address on your entries, at the bottom of this page. Winners announced in October issue.



Estate Agent James Higgs (Sturt & Tivendale) 2nd right with programme production staff, The Time, The Place.

Those who were in the area of Derwent Crescent, Whetstone, early one dull Friday in the middle of July, will recall the general pandemonium. Four television outside broadcast vans, together with a crane and gantry blocked the road, as technicians ran cables and carried lighting equipment to and from a pleasant three-bedroom semi-detached house.

The house in question featured in the Thames Television programme 'The Time, The Place' and Jimmy Higgs of Whetstone's Sturt & Tivendale office was invited to appear on the live programme, discussing the price increases the

market has experienced over the past eighteen months and relating to rises in other parts of the country.

Jimmy, who has previously 'advised' Thames on 'location' sites in the area, was delighted to accept, and duly 'performed' with professional aplomb.

The programme which has a regular morning audience of 2 million viewers, was 'hosted' by Sheena Macdonald and linked live with different areas, comparing types of property and prices.

"Being live made it all rather nerve-racking, but nevertheless a marvellous experience," says Jimmy.

LUXURY LIVING FOR RETIREMENT

Lychgate Court
FRIERN PARK
NORTH FINCHLEY



Showflat open Thursday to
Monday 11am-5pm
Tel: 4451780

SITE REP AVAILABLE
THURSDAY TO MONDAY
11-5pm. 445 1780

FEATURES OF THE APARTMENTS

- 1 or 2 bedroom spacious designs
- Luxury bathroom
- Fitted wardrobes
- Double glazing
- Security entryphone
- 'Medallion Award' Economy 7 heating
- Lift to all levels
- Resident manager
- NHBC certificate
- Landscaped gardens

PRICES ON APPLICATION

Local Selling office
FINCHLEY, N12
Tel: 01-446 4236



HOUSE

MINDING SERVICES

ARE YOU WORRIED ABOUT
LEAVING YOUR HOUSE UNATTENDED

FOR A DAY, A WEEK OR A MONTH
WE OFFER

- * Security Visits
- * Ultra Sonic Alarm Hire
- * Key-Holding
- * Taking Care of Your Pets and Plants
- * Maintaining Living-in Atmosphere

TOTAL CONFIDENTIALITY ASSURED

REFERENCES AVAILABLE

For peace of mind while you are away

CALL 01 440 8577

HOUSE-MINDING SERVICES

HOUSE-MINDING SERVICES



27 John Adam Street
London WC2N 6HX
Tel: 01-930 5202

WARDS

Avenue Lodge is a superior development of apartments within private landscaped grounds and constructed to the highest standards.

(Price £139,000)
Show Flat open Thur to Mon 10.30am to 5.00pm. For further Details please phone site:

01-341 3344

Features

- Video Entry Phone
- Lift & Staircase Entry to Flats
- Two Bedrooms
- Mirror Wardrobe, TV/Radio Sockets
- Fully Tiled & Mirrored Bathroom — Bath, Bidet, Shower Cubicle
- Living Room onto Balcony through French (Double Glazed) Doors
- Fully Fitted Kitchen with Cooker, Hob, Fridge Freezer, Dishwasher



AVENUE LODGE,
AVENUE ROAD, HIGHGATE N6

Agents Barry Allsuch & Co
09276 2711

Barnet's 6,000th home sale

MRS Gloria Kay of Hamilton Road, East Finchley, will remember Friday, July 15 for the rest of her life. It was the day she bought her flat and the day the Prime Minister came to tea.

For Mrs Kay just happened to be buying the 6,000th council dwelling that Barnet Council has sold and Mrs Margaret Thatcher, as MP for Finchley, was there to congratulate both the Council and the tenant.

Out of these sales 1,400 have been flats, which are sold on 125-year leases. This means the Council retains the freehold interest and manages the properties, submitting annual service charge accounts to the leaseholder.

Mrs Kay, who at the age of 67 has just become a leaseholder, has been a tenant at Hamilton Road since 1981, having been rehoused from Claremont Road, Cricklewood, where she had lived since 1978.

She decided to purchase her one-bedroom flat using the lump sum which she received on her retirement from full time work at Friern Hospital where she is a secretary and still works part-time.

'I think it is something deep in all of us, the need to own a place of our



The Prime Minister with, from left to right, the Mayoress, Mrs Mary Goodman; Cllr Leslie Pym; The Mayor of Barnet, Cllr Don Goodman; Ray Janering; Mrs Kay; and Cllr Norman Hirshfield.

own. I could never seem to save the money but with the lump sum and a small mortgage from the Leeds, I have fulfilled a life-time's ambition', Mrs Kay told the PM.

Then she and Mrs Thatcher started replanning the kitchen. 'It was so easy to talk to her,' Mrs Kay said afterwards. 'It was like having a friend come to visit.'

Councillor Norman Hirshfield, Chairman of the Housing Committee, said: 'The Council is delighted with its success in council house sales. Between 1979 and 1985 there has been a big swing towards owner-occupation in the borough,

and 69 per cent of the residents now own their own home.'

It was a hectic hour. There were flowers for Mrs Thatcher, a gift voucher was presented to Mrs Kay and Mrs Thatcher added a personal gift of a Crown Derby trinket box. Into the flat crowded Mrs Thatcher's entourage, the local press (not forgetting Borough News) and a few policemen.

Undismayed, Mrs Kay provided tea for everyone. Guests included the Leader of the Council, Cllr Leslie Pym, and the Director of Housing and Environmental Services, Mr Ray Janering.

In selling council houses and flats financed by private mortgages, Barnet is able to use the Housing Capital Receipts by re-investing in other housing schemes and in the improvement of the Council's remaining stock. The ability to use these capital receipts is an important plank on which the Borough's Housing Strategy has been based.

Tenants who are interested in purchasing their council house or flat should contact the Sales Team in the Housing and Environmental Health Directorate, Barnet House, 1255 High Road, Whetstone N20. Tel: 446 8511 Ext 4811.

DON'T BE FINED £12 FOR PARKING YOUR LORRY ON THE STREET OVERNIGHT



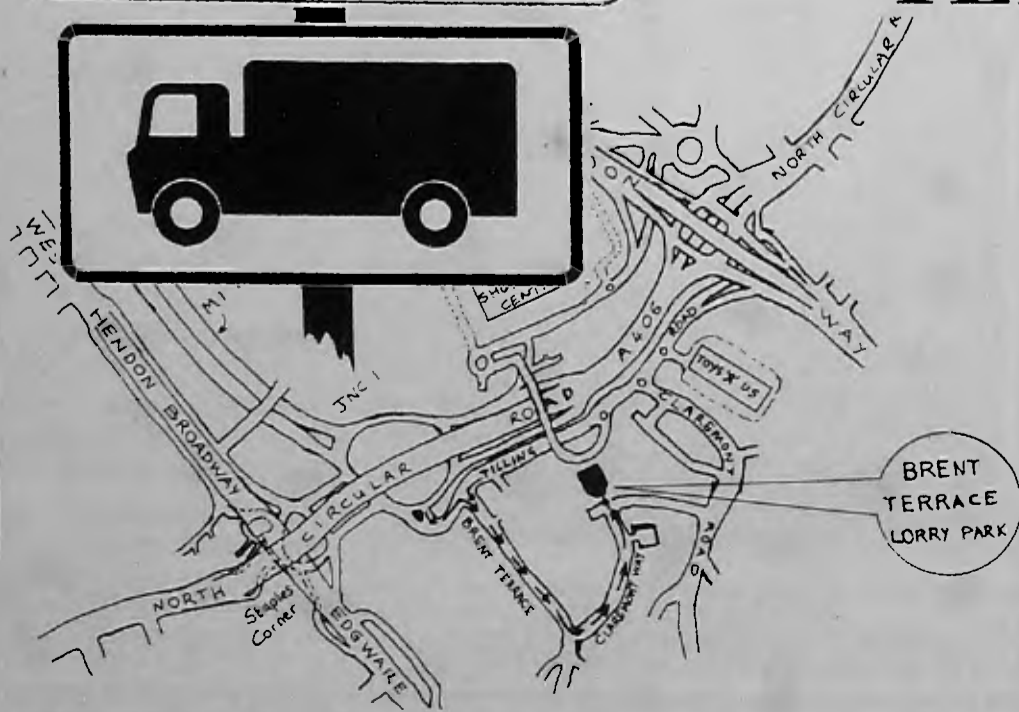
USE THE NEW BRENT TERRACE LORRY PARK

Brent Terrace Lorry Park,
Nr. Staples Corner,
just off the North Circular

Space for 51 Lorries & ten cars

LONDON BOROUGH
barnet

Directorate of Technical Services





Private Nursing Home
12 Hornsey Lane, Highgate N6 5LX

**R.G.N.'s
Full-time and part-time
required for Day Duty**

If you are concerned with quality of care and have empathy with the elderly please ring:

01-281 3511

for application form and further information

**John Lewis Brent Cross
Would you like to work
in Fashion Retailing?**

John Lewis Brent Cross is entering a new and exciting period of development in the Fashions departments. We wish to recruit high calibre sales assistants, with a professional approach, to help maintain our commitment to high standards of service and merchandising.

Pay: £110-£180 per week according to experience **Hours:** 36½ hours (Shift)*

*The Shift involves working five days per week, with alternate Saturdays off. The weekday hours worked are 9.55 am to 6.00 pm with two days working until 8.10 pm, usually having started at mid-day.

or Part-time

Pay: £2.80-£4.05 per hour according to experience **Hours:** Monday 10.00 am-8.10pm
Saturday 8.55 am-4.40 pm
or Monday-Friday 5.40pm-8.10pm

or

One Evening 5.40pm-8.10pm
Saturday 8.55am-4.40pm

Staff benefits include four weeks' holiday (five weeks after three years' service), subsidised dining room and shopping discount in our department stores and Waitrose supermarkets.

John Lewis Brent Cross is part of the John Lewis Partnership — a company owned by those who work in it. This means you will benefit from the best profit sharing scheme in the country. Every year, after provision for future development, the **whole** of the profit is shared among those who work in the business. There can be no guarantee, of course, of this figure for the future, but it is a fact that the average Bonus rate declared over the past five years has been 21% of pay received.

Applications in writing to Staff Office, John Lewis Brent Cross, Brent Cross Shopping Centre, London NW4 3FL, or telephone 01-202 6535 extension 244 for an application form.

John Lewis Brent Cross

ANALYST/PROGRAMMER

We are a highly successful medium size manufacturing company selling our range of pneumatic and electric power tools to worldwide markets.

We currently have a Honeywell DPS7-617 supporting a user base of 65 VDUs and networking to the South Coast. After review of our systems strategy, we are replacing our present batch driven manufacturing and sales order processing system with a Honeywell real-time manufacturing package HMS.

If you would enjoy the challenge of working with a small team on the installation of five modules MRP, CRP, MDC, IRM and PCA and can relate to the demands of factory and office user departments, we should like to hear from you.
At least 2 years good Cobol experience is essential.

The remuneration package includes an excellent pension scheme and participation in a Profit Sharing scheme and a Performance Bouns (after qualifying period).

For an Informal discussion ring Paul Woods on 01-205 7050 (after 7pm ring 01-446 3912) otherwise write with an up to date c.v. or telephone Personnel 01-205 7050 for an application form.

DESOUTTER LIMITED

319 Edgware Road, Colindale, London NW9 6ND



TRAINING FOR YOUR FUTURE

**JUST LEFT SCHOOL? 16 OR 17?
LOOKING FOR A JOB WITH TRAINING?**

HOW ABOUT ONE OF THESE?

S
I
ENGINEER
N
WRITER
A
S FLORIST
U
C JOINER
K
E
CARPENTER
Y
G
HAIRDRESSER
P
H
I
C ESTATEAGENT
DESIGNER
D
N
TYP
P
I
T
U
P
H
O
L
S
T
E
R
E
L
C
L
E
R
K
I
A
R

To find out more ring **01 889 6033**

Or, you could go for jobs on NEW TECHNOLOGY like COMPUTING, DESK TOP PUBLISHING, WORD PROCESSING and how to use the latest SOFTWARE PACKAGES.

To find out more ring **01 800 5689**



CHIEF EXECUTIVE AND TOWN CLERK'S DEPARTMENT

Equal Opportunities Adviser

**Salary: Up to £14,604 p.a. inc.
(Pay award pending)**

'An Authority committed to Equal Opportunities'

The role of the Adviser is crucial to our progress towards our objective. It involves providing a training and advisory service to all Council departments on equal opportunities in employment. Issues of race, sex and disability all come within its scope. The person we seek will be able to offer a considerable depth of knowledge of legislation, codes of practice, current trends and developments in equal opportunities together with a flair for communicating ideas, both orally and in writing, in a positive and sensitive way.

For an informal discussion, please telephone Miss Dace Sejejs on 01 202 8282, ext. 2387.

Benefits include an excellent pension scheme, 30 days' holiday, flexitime scheme, casual user car allowance, staff restaurant and assistance with relocation.

Closing date 5th September, 1988

Application form available from address No. 1. Please quote reference 600/441

Clerical Assistant

Salary: £4,554-£7,749 p.a. inc.

We are looking for an enthusiastic person to provide clerical assistance and other back-up within the Legal Division. The duties will include a variety of routine clerical work and would be ideal for a young person seeking a career in law. Training, including an opportunity to study, will be provided. 20 days' annual leave with additional leave at Bank holiday; staff restaurant, interest free loans for season tickets; removal expenses and separation allowance paid in an approved case.

Closing date 11th August, 1988

Application forms and further particulars from address No. 1. Please quote reference 600/CA

DIRECTORATE OF SOCIAL SERVICES

Managing Hospital Social Work

**Salary: £14,241-£15,417 p.a. inc.
(Pay award pending)**

We need a Senior Social Worker to supervise a group of social workers carrying a small generic workload and, when required, deputise for the head of the team. Social workers are based in Barnet and Finchley Day Hospitals, as well as Barnet General Hospital Assessment Unit. You will be involved in working with elderly people under treatment from the Department of Medicine for the Elderly, and in liaison with

senior health service colleagues. Two other senior colleagues supervise the rest of the Team's work within Barnet General Hospital, a home for people under 65 with a physical handicap and, although this is under review, Barnet Community Mental Handicap Teams. For further information phone Tom Taw or Liss Schild on 01-440 5111, ext. 4283 who can arrange for applicants to meet the Team. Casual Car Allowance payable.

Closing date 11th August, 1988

**Interview date — September 8th, 1988.
Application forms from address No. 4.
Please quote reference 633/49**

Joint Planning Liaison

**Salary: UP to £13,965 p.a. inc.
Initially time limited to 2 years,
subject to review thereafter**

The post of Health Services Office has been established to further develop joint planning between Social Services and the Health Authority. Primarily you will be engaged in: providing administrative support to the Directorate's representatives, co-ordinating administration of the joint finance programme and supplying information to management.

We are looking for someone who is educated to degree level, possesses good communication skills and has the relevant experience/knowledge to undertake the above tasks with initiative. There is a Casual User Car Allowance attached to this post. For further details, contact Tim Hellings, Research and Planning Officer on 01-446 1488, ext. 4219.

Closing date 19th August, 1988

Interview date — 14th September, 1988

**Application forms from address No. 4.
Please quote reference 633/823**

Assistant Manager (Residential Care — Elderly People)

**Salary: Up to £12,492 p.a. (pay
award pending)**

MORTON LODGE is a purpose-built residential setting for 60 elderly people situated in Southgate, where we need an Assistant Manager to complete our management team.

You will be expected to contribute actively to staff management and administrative work and play a major role in assisting with 'in-house' induction and training programmes.

A social work qualification (CSS, CQSW etc.) is preferred although not essential. Rostered hours with paid 'sleeping-in on call' commitment.

For informal discussion contact NANCY NELSON, Manager on 01-368 3857.

Closing date 12th August, 1988

Interview date — 25th August, 1988.

**Application forms from address No. 4.
Please quote reference 633/306**

Senior Careworker Glencairn Residential Setting For Young People

**Salary: NJC4 up to £11,328 p.a.
inc.**

GLENCAIRN has up to 9 places for young people in care who need clear guidelines and a high input from staff. The present staff team is highly motivated and task oriented, and is looking for a competent practitioner with at least two years' current child care experience, to develop staff supervision skills, and take a leading role in the running of the unit.

For further information please contact Steve Humbert, Head, on 01 445 4035.

Closing date 13th August, 1988

Interview date — 6th September, 1988

**Application forms from address No. 4.
Please quote reference 633/511**

Senior Clerical Assistant

**Salary: Up to £8,466 p.a. inc.
(Pay award pending)**

We are seeking an accurate and numerate person to carry out a range of clerical duties in our busy Finance Section. Your duties will involve processing invoices and insurance claims, balancing accounts with suppliers and maintenance of records, together with co-ordinating the processing of Greater London supplies invoices.

You should enjoy figure work and have a pleasant telephone manner to enable you to communicate effectively with staff in outside establishments (which on occasions you will visit) and other Departments and suppliers. You must be flexible and willing to assist other members of the team as necessary.

Closing date 12th August, 1988

Interview date — 5th September, 1988

**Application forms from address No. 4.
Please quote reference 633/599**

Careworkers

**(Full and Part-Time) —
Residential settings for elderly
people**

**Salary: Full-time — £7,914-
£8,466 p.a. inc.
(Between £3.90-£4.17 per hour).**

Why not consider joining our team of Careworkers providing support to frail and vulnerable elderly people living in our residential settings.

Vacancies exist for full and part-time staff in the eastern area of the Borough. If you have some experience of working in a caring capacity, then you may be just the person for us. You must be prepared to work within a shift system, which includes some weekend working.

For informal enquiries phone ANN GREEN, Abbots Lodge, New Southgate, on 01-361 1271, ANN CLARE, Meadowside, North Finchley, on 01-446 0234, OR, NANCY NELSON, Morton Lodge, Southgate, on 01-368 3857 (Part-time only).

LOCAL OPPORTUNITIES

- Regularly reviewed wages
- Generous leave entitlements
- Pleasant working conditions • Opportunities for advancement
- In-service training/supervision • Worthwhile employment helping the community

For full time posts we offer: canteen facilities, a minimum of 20 days basic annual leave and additional leave at most Bank Holidays. Assistance with housing, 100% of removal expenses and interest-free loans for annual seasons tickets may be available in approved cases.

Closing date 12th August, 1988

Interview date — 22nd August, 1988.

**Application forms from address No. 4.
Please quote reference 633/CW**

Part-Time Locum Homefinder

(18 hours per week)

Salary: UP to £6,433 p.a. inc.

The WEST TEAM, based in Burnt Oak, serves a busy multi-cultural population. Committed to keeping children out of homes and institutions, we need to have well developed foster care resources for children and teenagers to help us operate a planned care policy. While expecting high professional standards of care, we offer excellent supervision, training opportunities and encourage the development of initiatives.

If you're social work qualified and interested, contact Eddie Stiven, Principal Management Officer or Gay Hudson, Management Officer. For further information telephone 01-952 7722. Flexible use of hours can be arranged.

You should be a car owner (allowance paid).

Closing date 11th August, 1988

**Application forms from address No. 4.
Please quote reference 633/136BM**

Clerical Assistants

(Part-time — 22 hours per week)

Salary: £4,392 — £5,173 p.a. inc.

(Performance bar at £4,735)

DO YOU ENJOY VARIED CLERICAL WORK?

We are seeking a reliable efficient person who is accurate at figure work, enjoys being busy and is sympathetic to the needs of elderly people.

Your duties will include maintaining an imprest account, safe keeping of residents' funds, completing time sheets, statistical returns and other clerical tasks. Basic typing skills are required. You will be based in New Barnet and will be required to work five mornings per week, but starting and finishing times are negotiable.

Initially, you will be paid at or near the minimum of the above salary scale. However, once the full range of duties are being performed satisfactory, you will progress through the performance bar.

Informal enquiries to JUDITH KENT, Acting Officer-in-Charge, on 01-449 9252.

Closing date 12th August, 1988

Interview date — 9th September, 1988.

**Application forms from address No. 4.
Please quote reference 633/684**

Clerical Assistant

(Part-time — 20 hours per week)

Salary: Up to £4,703 p.a. inc.

DO YOU ENJOY VARIED CLERICAL WORK?

We are seeking a reliable, efficient person who is accurate at figure work, enjoys dealing with a variety of tasks and is sympathetic to the needs of elderly people. You will be based at Springwood Day Centre on the Broadfields Estate in Edgware, and your duties will include maintaining an account, processing orders for goods and materials, submitting returns and general clerical duties. You will be expected to use your own initiative, and have good communication skills. Basic typing skills are required.

Working hours will be 10.00 am — 2.00 pm.

General enquiries to JENNY CALCAGNI on 01-958 8123.

Closing date 12th August, 1988

Interview date — 7th September, 1988

**Application forms from address No. 4.
Please quote reference 633/680A**

Playleader

(Up to 25 hour per week)

Salary: Up to £6,280 p.a.

We have an exciting opportunity for a trained and experienced playleader to run our pre-school playgroup at 'The Croft' in Burnt Oak. Sessions run from 9.30 — 3.00 and provide

a stimulating environment for the children and parents who occupy Homeless Families accommodation and to the wider community. The unit closes during most of the school breaks.

If you have an enthusiastic, imaginative and flexible approach to the development of this service contact DIANA SEARLE, Management Officer on 01-446 1488, ext. 4247.

Closing date 10th August, 1988

Interview date — 16th August, 1988

**Application forms from address No. 4.
Please quote reference 633/PL**

Where to apply

1. Recruitment Office, 16/17 Sentinel Square, Brent Street, Hendon, London NW4 2EN
Tel: 01-202 8282 Ext 2372
(01-202 6602 24 hr ansaphone outside office hours).
2. Assistant Controller (Support Services), Barnet House, 1255 High Road, Whetstone, London N20 0EJ.
Tel: 01-446 8511 Ext 4454
3. Director of Educational Services, Town Hall, Friern Barnet, London N11 3DL
Tel: 01-368 1255
4. Director of Social Services, Ivy House, 1331 High Road, Whetstone, London N20 9HZ
Tel: 446 6857
(24 hr answering service)
5. Borough Librarian Ravensfield House, The Burroughs, Hendon. London NW4 4BE
Tel: 01-202 5625 Ext 48

Please quote the reference number

With a good employer

AN AUTHORITY COMMITTED TO EQUAL OPPORTUNITIES

LONDON BOROUGH
barnet

DIRECTORATE OF SOCIAL SERVICES

Temporary Clerical Assistant

(Part-time — 18 hours)

Minimum salary: £3,594 p.a. inc.

A reliable, efficient person with a degree of maturity and discretion is needed for our Day Centre in Hendon which provides a programme of group therapy and activities for adults experiencing mental health problems and/or emotional difficulties. You should have varied clerical work experience, enjoy being busy, possess good communication, numeracy/bookkeeping skills and be able to type proficiently. General enquiries to CHARLOTTE AMAZON, telephone 01-202 2916.

Closing date 12th August, 1988

Application forms from address No. 4. Please quote reference 633/681A

Part-Time Care Assistant

Rate of Pay: £78 minimum per 25 hour week.

ABBOTS LODGE is home to 91 elderly people in New Southgate, N.11, and has this vacancy for a caring person.

Duties will involve personal care to our residents, including lifting, helping at meal times, bathing, toileting and dressing.

HOURS: 25 per week, comprising 5-hour shifts on any 5 days in 7. Some Bank Holiday and weekend working will occur and a higher rate of pay applies at these times.

Closing date 11th August, 1988

Please apply to Mrs. Ann Green, Abbots Lodge, Brunswick Park Road, New Southgate, London N.11. Telephone 01-361 1271 quoting reference number 633/PTCA.

BOROUGH TREASURER'S DEPARTMENT

General Assistant (2 posts)

Salary: £7,188-£8,466 p.a. inc. (Pay award pending).

These posts are in the Council Tenant/Owner Occupier Group of the Housing Benefit Division based at Fenella, Hendon NW4, where your duties will include assessment of applicants' income and entitlement to Housing Benefit.

A good standard of education is required together with the ability to work under pressure, and deal sympathetically with members of the public. Experience in dealing with telephone and personal enquiries would be an advantage.

Closing date 11th August, 1988

Application forms available from address No. 1. Please quote reference 601/472/485

Assessment Assistants

Salary: £7,188-£8,466 p.a. inc.

You will be based in the Private Tenants Group of the Housing Benefit Group at Fenella, Babington Road, Hendon, NW4. Your duties will include assessment of applicants' income and entitlement to Housing Benefits.

A good standard of education is required together with the ability to work under pressure and deal sympathetically with members of the public. Experience in dealing with telephone and personal enquiries would be an advantage.

Closing date 11th August, 1988

Application forms available from address No. 1. Please quote reference 601/500

General Assistants

Salary: £4,158-£7,749 p.a. inc. (Pay award pending)

Commencing salary according to age and experience. Minimum salary at age 18 — £5,121 p.a. inc.

We are looking for two school leavers (with 'O' levels or equivalent) or people with basic office experience who would like to develop careers in Local Government finance. One post is in our Income Section where you will be involved in mortgage finance and service charges administration, with increasing emphasis on service charges. These functions are being developed through both mainframe and micro-computer facilities. **Ref. 601/614**

For the second post, you will work as part of a team of four officers under the direction of a Group Leader dealing primarily with the function of computerised rent accounting for 20,000 dwellings and garages owned by the Council. **Ref. 601/146**

Maturity of outlook and a feel for computer applications will be important, together with ability to work under pressure and to communicate effectively. We can offer you in-house training and assistance towards professional qualification where appropriate. Both posts are in a non-smoking work environment at Hendon Town Hall.

Closing date 11th August, 1988

Application forms available from address No. 1. Please quote appropriate reference number.

DIRECTORATE OF HOUSING AND ENVIRONMENTAL SERVICES

If you are looking for a supervisor's job which pays £8,950-£9,580 p.a. inc; then read on. . . .

Estate Supervisor (4 posts)

Your duties will include some supervision of a small cleaning team, building a good relationship with residents, together with supervision of cleaning functions, dealing with emergencies and Health and Safety matters, security checks, identifying repairs and assisting Estate Officers on

management matters.

The job involves working a rota system with occasional evening and weekend work and you will be based on your own site location on a housing estate in the NW9 area. You will need to show that you can supervise people effectively, that you react well on stressful situations, and can communicate well.

For an informal discussion about these jobs, please contact Mrs. S. Robinies on 01-952 8911, ext. 35.

Although this job has strenuous physical elements, disabled persons should still apply as their particular type of disability may not affect the tasks required.

Closing date 11th August, 1988

Application forms available from address No. 1. Please quote reference 9/1/3901

Personal Secretary

Salary: £8,625-£10,665 p.a. inc.

(Bar at £9,546 progression dependent on satisfactory performance)

Are you diplomatic and competent with bags of initiative and good communication skills?

These are the qualities needed to work for the Assistant Director who will expect you to be fully involved in all aspects of his work, dealing with his correspondence and queries, arranging meetings and organising his hectic diary. Good typing/audio skills are necessary and Word Processing experience would be an advantage.

You will work in attractive new offices at Whetstone, N.20, in a busy friendly environment with plenty of scope for personal development.

Closing date 11th August, 1988

Application forms available from address No. 1. Please quote reference 9/3/0002

Painter/Decorator

Rate of Pay: Up to £238.4 per week including maximum bonus.

Experienced painters/decorators are required for a 6 month temporary contract, to carry out internal redecorations to vacant and occupied Council owned dwellings. You should preferably have your own transport, for which a travel allowance will be paid. You will enjoy good working conditions and work a 39 hour week.

Informal enquiries to Mr. John Downes, Painting Superintendent, on 01-446 8511, ext. 4791.

Closing date 11th August, 1988

Application forms available from address No. 1. Please quote reference CAM/PDEC

Carpenters

Rate of pay: £194.16 per week including maximum bonus.

Our depot in Barnet needs experienced craftsmen or women who can work as part of a team carrying out repairs and routine maintenance work on the Council's housing estates.

As one of London's largest housing authorities, we have a varied stock of residential buildings which need your traditional and up-to-date skills.

LOCAL OPPORTUNITIES

- Regularly reviewed wages
- Generous leave entitlements
- Pleasant working conditions • Opportunities for advancement
- In-service training/supervision • Worthwhile employment helping the community

For full-time posts we offer - canteen facilities, a minimum of 20 days basic annual leave and additional leave at most Bank Holidays. Assistance with housing, 100% of removal expenses and interest-free loans for annual seasons tickets may be available in approved cases.

In return you will enjoy good working conditions; a 39 hour week, 4 weeks and 1 day holiday per year and travelling allowance. If you have your own transport, you will be particularly welcome.

Closing date 11th August, 1988

Application forms available from address No. 1. Please quote reference CAM/CARP

Driver

(male or female)

Rate of pay: £141.61 per week including maximum bonus, plus 2½ hours overtime per week, for vehicle checking.

(Pay award pending)

At our Depot based at Grahame Park, NW9, we need experienced men or women able to drive Council vehicles up to 3 tonnes. Your duties will include loading and unloading building materials, rubbish and other items, from residential premises and estates and conveying employees to their place of work when directed by the Works Manager. You must hold a clean driving licence and will be expected to undertake a Council driving test to assess your suitability.

Closing date 11th August, 1988

Application forms available from address No. 1. Please quote reference CAM/DRI

ENVIRONMENTAL HEALTH DEPARTMENT

Improvement Grant Officer

Salary: £12,114-£14,867 p.a. inc. depending on qualifications, experience and ability. (Pay award pending)

You should be suitably qualified and experienced in grant work, surveying and estimating. You will supervise a small team processing applications in the Improvement Grant Division. The ability to communicate well with members of the public and other officers is essential.

A computer system is in operation in the Department and the Improvement Grant Division has been integrated into the system

and is now being developed with a linked word processing package.

We can offer you an Essential User Car Allowance/Disabled Mobility Allowance, generous relocation package. The option of car leasing or interest free loan for car purchase is also available.

Closing date 11th August, 1988

Application forms available from address No. 1. Please quote reference 9/2/2310

General Assistant

Salary: £7,188-£7,749 p.a. inc.

(Pay award pending)

Our Ancillary Section is looking for someone to carry out pest control treatments (including rodents and general household pests), the collection of clinical waste and other general duties.

This is an excellent opportunity for an energetic, committed person to join a small successful team providing an important service to the residents of the Borough. If you have any experience in relation to pest control or are keen to carry out this kind of work (training could be given), and have a clean driving licence for driving Council vans, you could be the person we are looking for.

Closing date 11th August, 1988

Application forms available from address No. 1. Please quote reference 9/2/1169

DIRECTORATE OF EDUCATIONAL SERVICES

YOUTH AND COMMUNITY SERVICE

Youth and Community Worker (Detached)

Salary: £10,983-£11,679 p.a. inc. (Pay award pending)

We are looking for an energetic and enthusiastic Youth Worker to undertake detached youth work, as part of a new team approach to initiate work with unattached young people in the 11-21 years age range. Your duties will involve meeting and contacting young people in a variety of situations and settings, in close co-operation with the Senior Youth and Community Worker.

For informal discussion telephone Mr Eric Finestone, District Youth and Community Officer on 01-202 2757.

Closing date 11th August, 1988

Application forms available from address No. 1. Please quote reference 603/YCW

Part-Time Youth Workers, Sports/Activity Instructors And Deputy Managers

The Youth and Community Service frequently requires staff at various Centres throughout the Borough on a part-time basis, for evening or weekend work. Our Centres provide social education for young people, and opportunities for the wider community through activities such as sports, drama and outdoor pursuits.

Do you have interests, skills and experience in dealing with young people? If you feel you have something to offer and can encourage and motivate young people, we would like to hear from you as a

Youth Worker (Ref. 603/YW), or Activity Instructor (Ref. 603/AI).

Do you have management skills, confidence and a friendly manner with the public? You may find an opening as a

Deputy Centre Manager (Ref. 603/DCM).

RATES OF PAY are between £4.02 and £7.61 per hour according to qualifications and experience.

Contact PETER THORN or ERIC FINESTONE for an informal chat on 01-202 2757, between 9 am and 12 noon weekdays. (Answerphone at other times).

Closing date 11th August, 1988

Application forms available from The District Youth and Community Office, Hendon School, Golders Rise, Hendon, London NW4. Please quote appropriate reference number.

WHERE TO APPLY
For list of addresses
see page 35

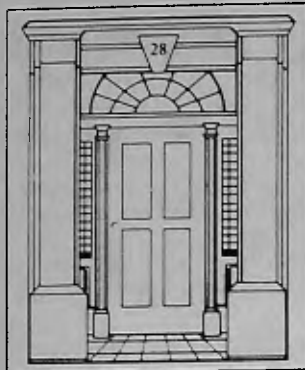
With a good employer

AN AUTHORITY COMMITTED TO EQUAL OPPORTUNITIES

LONDON BOROUGH

barnet

BILLBOARD



Abercorn Place School

This thriving new school in the heart of St. John's Wood opened in September 1987. The completion of the building programme enables it to offer a limited number of additional places in the following age groups.

NURSERY 2½-4 years KINDERGARTEN 4-5 years
 JUNIOR CLASSES 5-8 years SENIOR CLASSES 8-11 years

Headmistress: Mrs A. Grey, B.A. Hons
 Deputy Head: Mrs P. Fanner, B-Ed Hons

The aesthetic appeal of Abercorn Place School, a listed Victorian mansion, complements the modernity of its facilities and its approach. We combine valuable traditional teaching methods with technological innovation for maximum pupil motivation. We aim to provide a firm foundation in basic academic subjects as well as extensive practical and general knowledge project work.

Our highly-qualified, and energetic staff will create an exciting, stimulating environment in which to prepare pupils for successful entrance to a high academic achievement in their future schools.

*Flexible admissions procedure: children are currently admitted at any age between 2½ and 10.

For further information and prospectus, contact:
 Andrea Greystroke, 28 Abercorn Place, London NW8.
 Tel: 286-4785

BARNET BOROUGH NEWS

THE MAGAZINE that sets the scene

to advertise ring
 361 4223

Do you know where to find independent advice in pensions?
 You have found us!

Don't ruin your retirement by buying the wrong pension plan!

Consult
 ASTOR FINANCIAL SERVICES LTD.



01 441 3432

100 East Barnet Road, New Barnet, Herts EN4 8RE

STARBURGER

EAT IN OR TAKE AWAY

The best burgers in Town!

CHILDREN'S PARTIES

Reserve a part of the restaurant to hold a special birthday for your child!



HIGH ROAD EAST FINCHLEY
 Tel: 01-883 1586

Mobell Ltd.

AUTOSOUND & COMMUNICATIONS
 DUBROS HOUSE
 381 EDGWARE ROAD
 opp. COLINDALE AVENUE
 LONDON NW9 6NJ
 TEL: 01 200 9366
 FAX: 01 200 1122

CELLULAR PHONE

£599.00+vat
 Leasing arrangement
 from £4.50 a week
 subject to status

PANASONIC
 MOTOROLA
 NOVATEL
 MOBIRA
 BOSCH
 NEC

MOBILE,
 PORTABLE &
 TRANSPORTABLE
 TELEPHONES



New Installation / Service Centre
 ALSO AT
KINGS CROSS

WE HAVE THE LATEST EQUIPMENT FOR YOU

- * CAR PHONES
- * IN-CAR HI-FI
- * CAR ALARM SYSTEM
- * ELECTRIC WINDOWS & CENTRAL LOCKING SYSTEMS
- * SALES-REPAIR-INSTALLATION ON PREMISES BY PROFESSIONALS
- * ATTRACTIVE PRICES

OUR MOTTO:

'YOUR SATISFACTION IS OUR BUSINESS'

TELEPHONE ENQUIRIES/VISITS WELCOMED.
 CUSTOMERS' PARKING ON FORECOURT

Mobell Ltd.

AUTOSOUND & COMMUNICATIONS
 KINGS CROSS SERVICE CENTRE
 120 CAMLEY STREET
 LONDON NW1 1UU
 TEL: 01 482 4566
 FAX: 01 200 1122

MEMBER



♥ VARIETY CLUB OF GREAT BRITAIN ♥

*You are invited to join the Celebrities
at the*

★ STAR ★ Wonder Walk

**SPONSORED
CHARITY WALK
OPEN TO ALL
WALKERS
EVERYWHERE**



at BARNET
COPTHALL STADIUM
GREAT NORTH WAY
LONDON NW7
SUNDAY SEPT 18, 1988
from 10 a.m.
Entertainment from
1.30 p.m.

1

The Variety Club of Great Britain, together with over 60 celebrities will turn up with the sponsored walkers to raise thousands of pounds for handicapped and under-privileged children.

2

Each sponsored walker will receive a prize. A 'T' shirt for raising £10 right up to a black-and-white television if you raise £500 and over, and the more sponsors you have, the bigger the prize, and the greater the benefit to handicapped and under-privileged children and that's really what it's all about.

3

Collect autographs, be photographed with the stars and have fun helping the greatest children's charity in the world.

4

Apply to: Variety Club of Great Britain, 32 Welbeck Street, London W1M 7PG
Telephone: 01 935 4466.

Number of
Sponsor s
Forms required

LIMIT 10

NAME
(BLOCK CAPITALS PLEASE)
ADDRESS

POSTCODE

You get a better selection at

GODWIN'S



The WESTBURY Suite

Basin & Pedestal	375.00
W.C. Pan	240.00
Cistern (inc. all fittings)	185.00
Flushpipe	78.00
Bidet	235.00
Bath 1800 x 900mm	660.00
Mahogany seat & cover	158.00
High level cistern inc. brackets, pull & chain	220.00
High level flush pipe	172.00
	plus VAT



Package prices available
to personal callers



The ORCHIDEE Suite

WHITE

72cm Basin	255.00
Small wash handbasin	145.00
Counter top inset basin	118.00
Pedestal	101.00
Bidet	199.50
Close couple W.C. complete	570.00
	plus VAT

Satin colours available. Prices on request.

VICTORIANA BATH, 1800 x 925mm

from 690.00
plus VAT



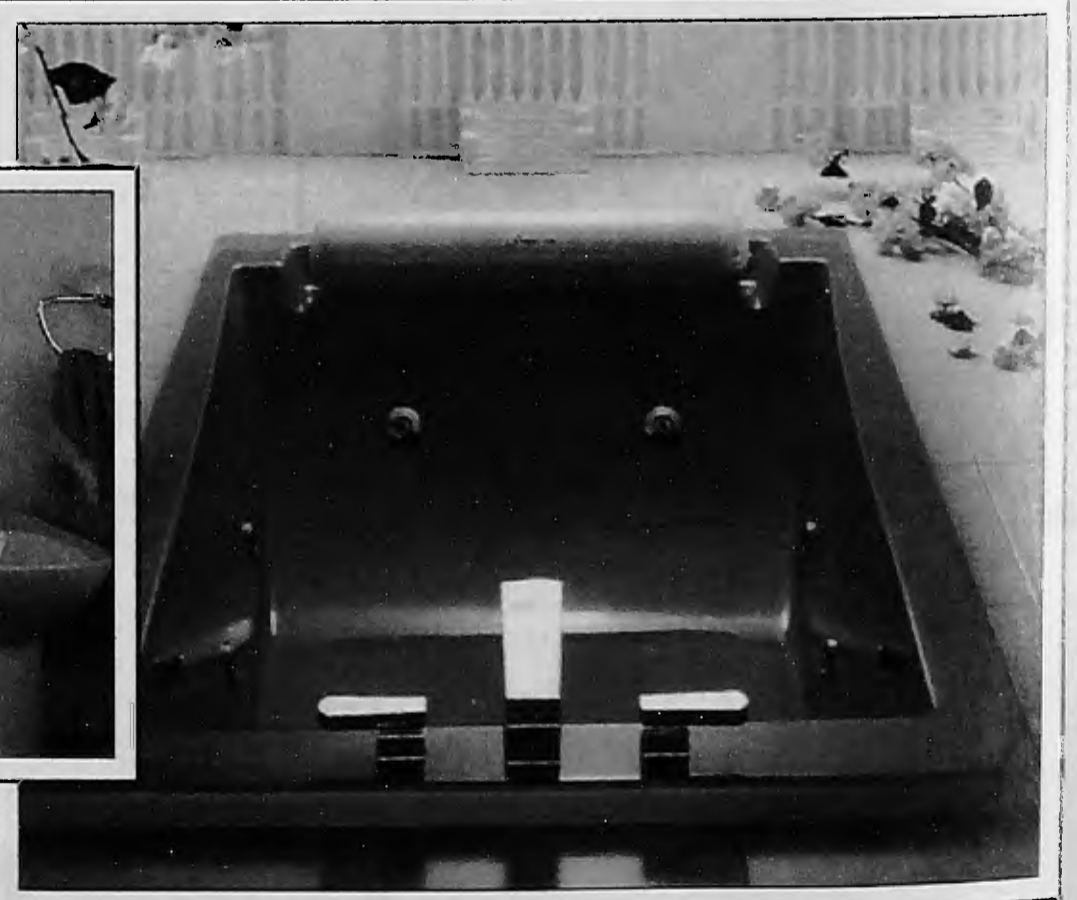
The GIAMO Suite

WHITE

60cm Basin	128.00
90cm Basin	345.00
Pedestal	128.00
Bidet	225.00
Close couple W.C. (complete)	570.00
	plus VAT

Other colours available:

Manhattan Grey, Turquoise Royale, Rose Royale. Prices on request.



The CONCORDE Bath

This unique bath with headrest is sheer luxury
from £700.00

**HUGE RANGE OF BATHROOM SUITES
ON DISPLAY AT COLINDALE SHOWROOM**

Wholesale Bathroom Warehouse
28 Rushrove Avenue
Colindale NW9
Tel: 01-200 0508

Trade Centre
4/5 Apex Parade, Salvage Lane
Mill Hill NW7
Tel: 01-050 3344

Showroom & Design Centre
49 Church Road,
Hendon NW4
Tel: 01-203 1005

Trade & Showroom Centre
176 High Road
East Finchley N2
Tel: 01-444 2311