



CIVIC NEWS

No 38. February 1983



WHEN SWIMMING IS HAPPINESS

HAPPINESS is a warm swimming pool and strong supporting hands for a group of severely handicapped children who meet at Oak Lodge School swimming pool every Tuesday after school. They are members of Barnet Social Services Handicapped Children's Swimming Club which used to meet at John Grooms in Edgware but are using Oak Lodge until their 'home pool' has been repaired.

The water and exercise transform these children. Julian, a born protestor, after five minutes in the water changes his cries of 'I can't' to 'I want to try'. Michelle cannot communicate but in the water her happiness spills over to all. Robert, a paraplegic, finds the water helps his limbs to move and his face mirrors ecstatic pleasure. Tony Seagroatt, social worker from Northern Area Team, who has been involved with the group from its formation eight years ago, believes the club gives the children a chance to play, exercise and enjoy themselves in a new environment. 'It is wonderful to see how swimming helps them shed frustrations. Some have learned to swim since they joined us although we are more a social group than a teaching organisation.'

Sue Phillips is the club secretary and among the voluntary helpers are her mother, Cllr Mrs Mary Phillips, Nigel Baker and Lewis Wilkes. When the club returns to John Grooms they would like to see more children taking part. Details from Sue Phillips, 15 Chiddingfold, North Finchley, N12.

IN THE SWIM — Civic News starts a new series on sport in the Borough with a look at swimming pools and classes. See pages 6 and 7.

BOWTRIGHT 21st ANNIVERSARY SALE



KNOCK-DOWN PRICES ON MOST MARKET LEADERS

2 FREE PILLOWS
WITH EVERY
DOUBLE DIVAN
PURCHASED
WHEN YOU
BRING THIS AD

WE ARE THE LARGEST
STOCKISTS OF QUALITY
BEDS IN THE DISTRICT
WE STOCK MOST
LEADING MAKES

PART EXCHANGE YOUR OLD BED FOR NEW
WE WILL DISPOSE OF YOUR OLD BED AT NO CHARGE
DINING, BEDROOM AND LOUNGE FURNITURE
IN STOCK

INSTANT CREDIT. HP FACILITIES. LOW DEPOSIT

Written details available on request

BUY NOW!

ALL OUR PRICES ARE NEGOTIABLE

BOWTRIGHT

3-4 VARLEY PARADE, EDGWARE ROAD
THE HYDE, COLINDALE, NW9
TEL: 205 5150/5577

Leather Concessionaires

SUEDE

LEATHER • SHEEPSKIN

OUR FACTORY IS OPEN FOR
DIRECT SALES TO THE PUBLIC
LARGEST SELECTION

WE MAKE • WE SELL • YOU SAVE!

SPECIAL FEBRUARY OFFERS

**EVERY GARMENT MADE
ON THE PREMISES
MADE-TO-MEASURE SERVICE
FULLY GUARANTEED**



TEL: Lea Valley 762946

— OPEN —
Monday to Saturday
10am 6pm
FRIDAY UNTIL 8pm

333/5 ORDNANCE RD, ENFIELD LOCK
OVER LEVEL CROSSING — 1ST SHOP FACTORY ON RIGHT

SAVE PLUMBING & HEATING COST

TUBES

KITE MARKED
BENDABLE
COPPER TUBE
15mm — 51p per metre
22mm — 92p per metre
in 30-metre bundles

RADS

(CONVECTORS)
WARMSTYLE..... -52½%
MYSON..... -47½%
STELRAD..... -47½%
FINSTYLE..... -42½%

BOILERS

POTTERTONS IDEALS..... -40%
GLOW-WORM..... -37½%
BAXI..... -35%
VAILLANT..... -25%
OTHERS ON REQUEST

PLASTICS

KEY TERRAIN
SOIL — WASTE — GUTTERING
— 25%
EXPANSION TANKS..... £2.00
50 GAL. ROUND TANK..... £14.00
70 GAL. RECT. TANK..... £18.87

FIRST LINE
BOILER SPARES

CONSULTANT BARNET'S LEADING SPECIALISTS

SECOND LINE SPARES
AVAILABLE AT SHORT NOTICE

BATHROOM

ECONOMY SUITE..... £125.00
SOVEREIGN SUITE..... £230.00
GOLD SOVEREIGN
SUITE..... £330.00

LUXURY ITEMS
AVAILABLE AT
DISCOUNT PRICES

ARMITAGE
TWYFORD

TAPS

(CHROME)
BASIN TAPS..... £8.69
BATH TAPS..... £6.43
BATH SHOWER MIX..... £28.69
BASIN TAPS..... £22.32
BATH TAPS..... £26.84
BATH SHOWER MIX..... £76.76

SHOWERS

MIRA SHOWERS AT
MORE THAN 50%
OFF LIST PRICE
AQUALISA SHOWERS
ALL MAKES OF SHOWER
ENCLOSURE GLASS OR
ACRYLIC — JACUZZI —
BRASS ACCESSORIES

CERAMICS

TOP DISCOUNTS
ON ALL
ENGLISH AND
CONTINENTAL
FLOOR AND WALL
TILES

SHIRES — VOGUE
IDEAL STANDARD

YOU NAME IT — WE OBTAIN IT — TOP NAMES AT LOWEST PRICES

FREE

EXPERT ADVICE
DESIGN AND
QUOTATIONS GIVEN
WITHOUT
OBLIGATION

SERVICE

FULL OR PARTIAL
HEATING INSTALLATIONS
BOILER REPLACEMENTS
AND SERVICING
2-YEAR GUARANTEE

CONTROLS

L&G PROGRAMMER..... £18.40
SMC GRUNDFOS PUMPS..... £18.00
THERMASTIC VALVES..... £5.70
ROOM THERMOSTATS..... £6.95
MOTORISED VALVES..... £24.08
36" x 18" IND. CYLINDER..... £28.00

MISC

TRADESMEN'S TOOLS
PIPE INSULATION
WASTE DISPOSALS
WATER SOFTENERS
GAS FIRES WATER HEATERS
ENFIELD — YORKSHIRE —
COMPRESSION FITTINGS

All prices EXCLUDE VAT

BARNET PLUMBING & HEATING SERVICES

10 Western Parade, Great North Road, Barnet, Herts (Near Barnet Odeon)
OPEN MON-SAT 7.30-5.30

Service & Installation Dept 01-440 9366

Trade Counter Enquiries 01-441 1661

Sanitary Ware Enquiries 01-449 1131

J & H FURNITURE LTD

Furniture Wholesalers Established Over 20 Years Selling Direct to the Public

SAVE UP TO 40% ON RETAIL PRICES

SALE NOW ON



Reproduction Wall Units from Brenner, Beautlux, Meredew, Heritage, Beresford & Hicks from £209.



7ft Dining Table, 6 Solid Mahogany Chairs including 2 carvers from £299 complete. 5ft Dining Suites from £249 complete. 7ft and 8ft 8in Regency Tables with range of 12 types of Mahogany chairs. Solid Mahogany Dining Chairs from £29. Hi Fi Cabinets from £99. Regency Hall Tables from £29. Nests from £39.

Beresford & Hicks Mahogany and Yew New Crystal range wall units at unbeatable prices

5ft 3in Mahogany Units £299



NO GENUINE FIRM CAN COMPETE WITH OUR VAST RANGE, QUALITY AND SERVICE, BEFORE & AFTER SALES. ALL THIS AND ROCK BOTTOM PRICES TOO!

SHOWROOMS: 72 CHASE SIDE, ENFIELD, MIDDLESEX.
(Close to Parsonage Lane)

TEL: 01-366 2437

INSTANT CREDIT NOW AVAILABLE

Open 10am to 5:30pm Monday, Tuesday, Thursday, Friday, Saturday.
Free delivery. Barclaycard, Access Welcome.

fitted bedroom furniture

New

WE ARE NOW ALSO PRODUCING A RANGE OF BEAUTIFUL

LIVING ROOM WALL UNITS

SPECIALLY DESIGNED FOR ANY COMBINATION OF TV, VIDEO, HI-FI, BOOKS, COCKTAILS, ETC., WITH SOFT LIGHTING, TINTED GLASS DOORS AND EXTRA STORAGE SPACE. Costed directly to you at our factory and showroom. Expert planning and fitting included. Telephone for our booklet of various recommended plans for all types of bedrooms.

STATON

FITTED FURNITURE LTD.
719 North Circular Road (North Side), London NW2
1/2 miles west of Brent Cross Shopping Centre (nr. flyover)

Phone 01-450 6581

Customer Parking.
Also open Saturdays.

G & J HARDY

A FULL RANGE OF D.I.Y. MATERIALS, TIMBER CUT TO SIZE

PROMPT DELIVERY

Open
Tuesday to Saturday
9 am till 6 pm

232 Woodhouse Road N12

01-368 4236

Maximum Mortgages, Remortgages, "Top-Ups", Secured, Unsecured Loans. Martin Hasseck Ltd. Incorporated Mortgage Brokers, Freepost, London, NW4 1YB. Tel: 01-346 4653 (24-hr answering).

G.B. Carriers

HOUSEHOLD REMOVALS GENERAL HAULAGE

16 ton, 30cwt
NO JOB TOO SMALL
Estimates Free

Tel: 888 4510 888 9297 886 3903

MODERN CLASSICS AT...

AND KITCHENS

Exclusively MOBALPA — exquisite French design and unsurpassed craftsmanship — a wide range of designs in solid woods and decorative laminates — over 100 colour and texture combinations.

— now available from **AND KITCHENS.**

- ★ Free planning and quotation service
- ★ One Year's unconditional guarantee
- ★ Installation — including electrical work, plumbing and tiling by our own teams of experienced fitters
 - ★ Tax relief advice
- ★ Home loans, subject to status, from 1-10 years

Showroom open Saturday 9.30-5.30, Mon.- Fri. 9.30-7.00, Sunday 10-4.30

Please send me a brochure

Please ask your Kitchen Consultant to call

Name

Address

.....

Tel.

THE MOST ADVANCED CENTRAL HEATING IS NOW AVAILABLE!

FEATURES

- One unit — wall mounted capable of heating your home QUICKLY AND EFFICIENTLY.
- No need for wasteful cylinders or storage tanks.
- Provides INSTANT HOT WATER

Fully controllable and can **SAVE UP TO 30%** on fuel bills!

Every installation is **DESIGNED TO SUIT YOUR HOME** and personal requirements by our trained surveyors.

PLUS — REALISTIC PRICES YOU CAN AFFORD

We **COMBI SERVICES LTD.** appointed installers and service agents for the manufacturers offer **QUICK TIDY INSTALLATIONS** carried out by our own staff to professional standards.

For a **FREE SURVEY** and written quotation Call — **01-881 1511** — Anytime

No deposit finance available if required

COMBI SERVICES LTD, 198 Whittington Road, N22
Licensed Credit Broker

For more information, either fill in the coupon or visit our showroom.

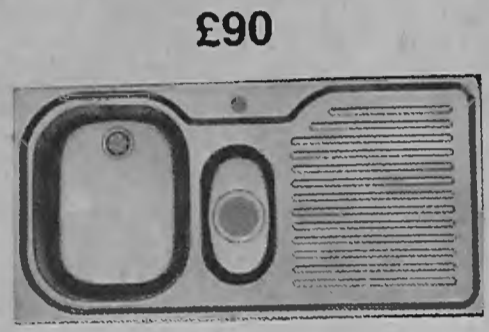
(AND KITCHENS), Ltd.
34, Watford Way
Hendon, NW4 3AL
Tel: 01-202 3031

GET TURNED ON BY A JACUZZI IN HENDON I SELL THEM — PHONE ME

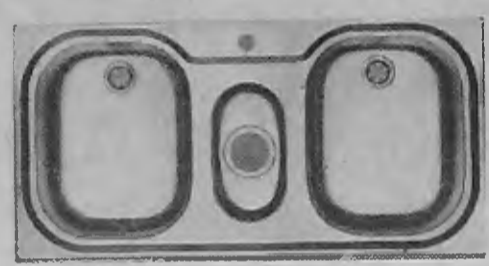


STILL
**PRE-INCREASE
PRICES**

WELL KNOWN
**SWISS SINK
TOPS**
(unable to name make)

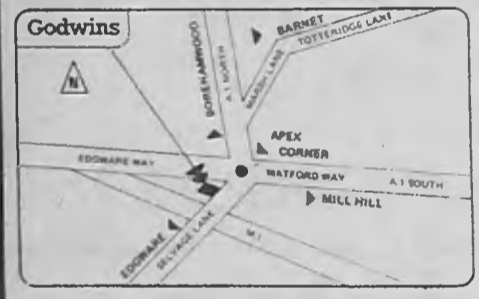


£90



£110

Godwins
Plumbing Supplies



**4/5 APEX PARADE
SELVAGE LANE
APEX CORNER
MILL HILL NW7
959 3344**

BATHROOM SHOWROOM



**49 CHURCH ROAD
HENDON NW4
203 1095**

— OPEN 6 DAYS —
WEEKDAYS 8.30 am — 5 pm
SATURDAY 9 am — 3 pm

THE ROYAL SUITE

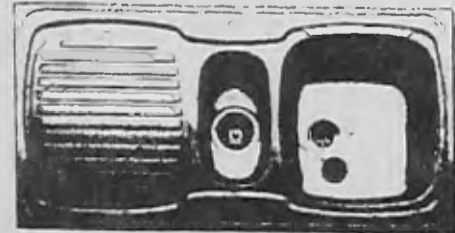


8mm Twingrip bath, 22x16 Basin/Pedestal, China Close Coupled WC Suite complete with Chrome on brass leads. Bath mix with shower and basin taps, Front panels £12 extra, Pop up bath waste £13 extra

PAMPAS, CHAMPAGNE
BEIGE, AVOCADO
£199

SPECIAL PURCHASE

CHAMPAGNE Bath Suite
Twingrip Bath with taps, 22 x 16 Basin and Pedestal Plastic Low-level W.C. Suite
£129.00
Bath Mixer add £25.00



1½ Bowl-Drainer complete with Accessories £75

SILKFLEX



White, red, mocca, beige
Model 127 1½ bowl/drainers..... **£97.00**
Model 122 double bowl..... **£100.00**
Model 121 bowl/drainers..... **£90.00**
Accessories — white and mocca
Deep basket..... **£14.00**
Drawer rack..... **£14.00**
Chopping board..... **£16.00**

ELECTRIC SHOWERS

— **TRITON**
T80 SP — 7kW with sliding rail kit..... **£53.00**
T20 SP — Powerflow shower with pump..... **£48.00**
T40 — Shower with booster pump..... **£25.00**
T50 SFX — 5kW handwash pack..... **£27.00**
Miralec Supreme..... **£74.00**
Miralec SEV..... **£63.50**
Carousel Heatrae 7000..... **£58.50**

WASTE DISPOSALS

Waste King 2600..... **£71.00**
Waste King SS3000..... **£98.00**
Waste King SS5000..... **£136.00**
ISE 333MR..... **£80.00**
ISE77..... **£110.00**
Tweeney De Luxe..... **£133.00**
Maxmatic..... **£130.00**

FOLDOR SHOWER ENCLOSURES

PLASTIC PANELS

	Silver	Gold
FD/BNC corner entry.....	£86.00	£107.00
FD/TR triple sliding.....	£51.00	£63.00
FD/SE side panel.....	£32.00	£43.00
FD/S folding shower door.....	£32.00	—



TAP MATE

Futura chrome.....	£38.00
Futura colours.....	£45.00
Neomix chrome.....	£72.00
Neomix colours.....	£80.00
Starline mixers, chrome.....	£22.00
Starline mixers, colour.....	£30.00
Chrome soap dispenser.....	£8.00
Hot rinse.....	£14.50
Crumb strainer.....	£4.00



Accessories are Waste Basket Strainer, Waste Fixing Clips

THE PRINCESS SUITE



Twingrip Bath, 22 Basin/Pedestal/WC Suite. Complete with Taps.
★ Add £25.00 for Bath Mixer
★ Add £70.00 for Close Coupled WC Suite.
★ Panels extra, ★ Twingrip Steel Add £80.00.
Avocado, Ivory, Beige, Sun King, Pampas, Champagne, Bermuda Blue, Sandalwood.

£149

OTHER BATHROOM SUITES

(Complete with Taps) White Steel. £99.00. Standard Colours £136.00

BIG DISCOUNTS ON DUALUX MIXERS

Plus Michelangelo/Linda

**PINK, PRIMROSE
SKY BLUE, TURQUOISE**
Still available from us

HEATING EQUIPMENT

HONEYWELL

T660B room stat.....	£6.20
L641A1 cylinder stat.....	£6.60
T406A frost stat.....	£6.60
V4043H 22mm Mini Valve.....	£26.00
V4043H 28mm Mini Valve.....	£33.00
V4044C 3 port diverter (W).....	£31.00
V4073A 3 port mid. pos. (Y).....	£43.50
Programmer Landis and GYR.....	£18.50
Programmer Honeywell.....	£27.00

SHOWERS — AQUALISA

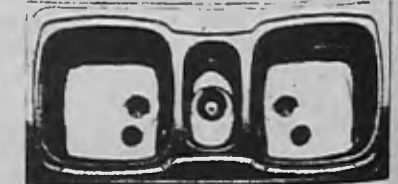
Thermostatic mixer with slide bar.....	£92.00
Manual mixer with slide bar.....	£65.00
Gold thermostatic fixed.....	£226.00
Water Pik head in stock	

WE STOCK SHOWER PUMPS

BATH MIXERS

Bath mixer with shower.....	£29.00
Basin taps.....	£10.00
Chrome on brass heads	
Cloakroom sets, white and colour.....	£70.00

36" x 18" ind cyl.....	£27.00
42" x 16" ind cyl.....	£29.00
48" x 18" ind cyl.....	£44.00
Satchwell's TRV's.....	£5.99
Radvalves.....	£1.40pr
Rolls solder.....	£2.20
Immersion heaters.....	£5.00
Stats for above.....	£3.50
70/50 coffin tanks.....	£19.00
50 gal circular tanks.....	£14.00
15mm stop cock (Kite marked).....	£1.10
22mm stop cock (Kite marked).....	£1.90
15mm stop cock (contract).....	94p
15mm gate valve.....	80p
22mm gate valve.....	£1.25
28mm gate valve.....	£2.00
½" D/O plug.....	20p
½" safety valve.....	70p
¾" safety valve.....	80p
½" HU bibcock.....	£1.35
Auto air vent (bottle type).....	£1.80
P.T.F.E. tape (10).....	£1.20



2½ Bowl complete with Accessories £85

**WE STOCK KEY TERRAIN, SOIL, WASTE, RAINWATER
ALL PRICES DO NOT INCLUDE VAT**



Risoli Reproductions



We don't believe in telling people stories such as 30%, 45% and even as much as 75% discounts off retail prices. As they say "Talk is Cheap".

Being manufacturers, we can offer quality reproduction furniture at rock-bottom factory prices.

For example:

6 Solid Mahogany chairs, including 2 carvers and 7ft Dining table	From £295.00
Wall Units	£199.00
5ft Wall Units	£335.00
3ft Bookcase	£175.00
Nest of Tables	£37.00
Wine Tables	£12.00

AND MANY SPECIAL OFFERS

We also have a wide selection of Hi-Fi, TV and Video cabinets, and a vast range of most types of Reproduction furniture in Mahogany and Yew.

All we are saying is come to
300 Muswell Hill Broadway
 for the finest Italian furniture

Open Monday—Saturday from 9.30 am—6 pm. Closed Thursday afternoon

425 Long Lane, East Finchley, N2. 01-883 5997

Open Monday—Saturday from 9.30 am—6 pm. Closed Thursday afternoon



Flowers and Memorials

JOSLIN MEMORIALS LTD

SEND TODAY FOR OUR BROCHURE WHICH CONTAINS SOME OF THE 70 DESIGNS FOR YOU TO CHOOSE FROM OR CALL IN TO SEE OUR SELECTION DISPLAYED. ALL WORK EXPERTLY FINISHED BY OUR OWN CRAFTSMEN.



Italian White Marble £150
+ £22.50 VAT

Italian White Marble £140
+ £21 VAT

PLEASE TELEPHONE: 883 1536/5541
 JOSLIN MEMORIALS LIMITED
 238 HIGH ROAD, EAST FINCHLEY, N2
 (Adjoining St Pancras and Islington Cemeteries)

J. EVANS DRIVING SCHOOL

FULL HOUR'S
INSTRUCTION
DOOR-TO-DOOR
SERVICE

REDUCTION ON
FIVE LESSONS

TEL: 349 9401

ANSWER PHONE:
959 2969

HYPNOTHERAPY

for lack of confidence, fears and phobias, smoking, slimming.

REGRESSION THERAPY

for deep-rooted psychosomatic problems, tuition in self-hypnosis.

Qualified Psychotherapist
 Mrs. V. Prasad
 DMS, CHP, AMAHP
 01-349 3201

VIDEO REPAIR SPECIALISTS

Colour TVs,
Hi-Fi Systems,
Guaranteed repairs
by qualified engineers
Tel: Tasos on 888 4676
up to 7 pm or
361 2777
Eves & Weekends
TELEVIDEO

**NO
OBLIGATION
FREE
HOME VISIT
ESTIMATING
FITTING**



COSYFIT STRETCH COVERS

MADE-TO-MEASURE
SATISFACTION GUARANTEED
Old suites look as new

Quality cloth, Dracon, 100% nylon, etc. Wide range of colours and patterns (over 120)
 NO DESIGN TOO DIFFICULT
 ALL CUSHION COVERS WITH ZIPS
 Also available replacement foam cushions — all shapes

Telephone for FREE Home Visit
 804 6677, ext 15
 Trade locally with

COSYFIT 62 MOTTINGHAM ROAD
 LONDON, N9

DIAL-A-LOAN

Tenants from £200
 Houseowners from £1,000
 Mortgages up to 100%
 Commercial Finance from
 £5,000

Fast, efficient service giving a quick decision

Written quotations available

Telephone now:
 01-402 6009 (0756) 69358

OBJECT FINANCE
 18 Park Avenue
 Keighley BD20 7JH

VIDEO FILM HIRE

THE BEST 1,000
 FILMS ON VIDEO

£4 for 3 days. No deposit
 No Membership
 We deliver and collect
 free in all areas

PHONE
 01-445 4401

FEBRUARY 1983

Contents	page
In the swim.....	6 & 7
Letters.....	8
Money off rent and rates.....	10
Appeal and half-term fun.....	12
Special feature: Building in the right way	I to XII
Sports tournaments.....	13
Whats On	14 to 18
Museum news	20

EDITORIAL ADDRESS

Civic News,
London Borough of Barnet,
The Town Hall,
The Burroughs,
Hendon NW4 4BG
Tel: 202 8282, Exts. 71 & 479

ADVERTISING ADDRESS

Laurence Marshall (Advertisers) Ltd,
Publicity House,
12 Genotin Terrace,
Enfield EN1 2AF
Tel: 01-366 4626/7, 01-367 0246

Barnet Civic News is a monthly magazine carrying news of Council activities and community organisations. It is distributed door-to-door throughout the borough, reaching more than 109,000 homes and businesses. Copies are also sent to libraries.

The editors are Bill White and Rosemary Jude of the Council's Press and Information Office. All production and distribution costs are covered by advertising. Editorial copyright, Barnet Council.

For the benefit of advertisers who do not require borough-wide distribution Civic News is now in two editions: A, Barnet and Finchley areas; B, Hendon and Edgware. Each represents a circulation of 55,000 approx.

COUNCIL RENTS

FROM APRIL 4 all Council tenants will have their rent increased by 85p a week on a 52-week-year basis. That is 92p a week on the 48-week-year on which Barnet Council operates its rent collection scheme.

People who are renting and buying their homes on the Council's Equity Sharing Scheme will have the rent aspect of their payment increased by £22.08 a year.

The rent for Council garages will go up by 25p a week on a 48 week year basis. This is an increase from £1.75 to £2.

The rent increase is the lowest for four years. Last year the average increase was £3.64 a week and the average rent was £19.31 (52-week year). The average rent now rises to £20.16; or £21.84 on a 48-week year.

With the introduction of the new Housing Benefits Scheme which comes into full effect in April it is anticipated that of the Council's 20,000-plus tenants, 7,000 will receive standard rent and rent rebates and 6,500 will have their rent and rates paid for them through the DHSS certificated scheme.

In line with the Council's policy of setting the charges for heating so that the cost of fuel consumption is fully recovered, heating charges are to go up by £2 a week also from April 4.

Charges in elderly people's dwellings will rise by £2.50 with a maximum of £7.50 a week (48-week-year basis). This is because, over the past three years the charges for heating in elderly people's dwellings have been gradually brought into line with the economic charge policy.

Tackling a big problem

BARNET COUNCIL is responsible for more than 800 miles of public footways and footpaths — that is the pavements which border and link the Borough's 400 miles of trunk, metropolitan and district roads.

To ensure greater flexibility in carrying out the works programme for the relaying and repair of footways, the Council has recently appointed three contractors for a period of three years to supplement its own direct labour force. Previously two such contractors were used.

The works programme falls into three main categories:

- First aid repairs.
- Permanent reinstatement.
- Relaying of footways.

First aid repairs generally follow inspections by Council staff or reports from the public of dangerous or uneven footways and are carried out, in the main, by the Council's own teams of masons.

The Borough Engineer's policy is to follow up reports from the public by an inspection as soon as possible and if conditions are considered to be dangerous the area is repaired as a matter of urgency.

Permanent reinstatement of footways takes place after Statutory Undertakings such as the Gas Board and Water Authority, have carried out works.

A contractor digging trenches in footways has become an all too familiar sight in recent years and generates a lot of public reaction in the form of complaints to the Council as highway authority.

As mains and services become older the need for maintenance and replacement increases and the Statutory Undertakings naturally exercise their rights to open the public highway to carry out their works.

The arrangement between them and the Council is that on completion of their work their contractor carries out temporary rein-

statement of the affected area and is responsible for its maintenance until after a suitable period to allow for settlement the Council carries out, at the expense of the Statutory Undertakings, permanent reinstatement using one of its contractors.

Because of the extensive nature of many of these main laying operations advantage is often taken to relay entire footways following such work.

A programme of relaying footways throughout the borough has been prepared.

Because of the limited finance available this work will be concentrated in shopping and other busy pedestrian areas in strict priority.

The rigours of last winter have caused considerable damage to footways but this is as nothing compared with the havoc caused by motorists parking vehicles on footways.

For this reason the Borough is taking action against these offenders.

Warning notices have been posted in roads where persistent parking on footways occurs and in order to speed up the process the Council has recently authorised two senior members of the Traffic Management Section to undertake prosecutions using evidence obtained by the Parking Control Officers.

Councillor Bill Hart, Chairman of the Public Works Committee, explained: 'Because of the great number of miles of roads in this borough the task of maintaining our roads and footways is a huge undertaking. But we as a Council are very aware of the importance of the work and I am sure that any member of the public who reports a real hazard will find that we respond as quickly as possible'.

Members of the public who wish to report dangerous paving stones or highway hazards should contact the Borough Engineer's Department at Gateway House, 322 Regents Park Road, Finchley, N3, telephone: 349 9121.

Barnet's new housing chief



MR RAY JANERING

MR. RAY JANERING has been appointed Director of Housing Services for the Borough of Barnet. He has been housing manager since 1974 and was appointed acting director on the retirement of Mr. Ken Cooper in November.

Ray Janering, who is a Fellow of the Institute of Housing and a Fellow of the Royal Society of Health, began his local government career with the former Metropolitan Borough of Hampstead on leaving school in 1961. In 1965 on the formation of the London Boroughs he joined the Housing Department of Camden Council and then moved to Lambeth as deputy area housing manager, remaining until he joined Barnet in 1974.

During his service with Barnet he has been closely involved with the development of the borough's housing policies including extensive modernisation and improvement schemes, the take-over of GLC housing estates, and the growth of the Build for Sale and Sale of Council House programmes.

He is a past chairman of the London Branch of the Institute of Housing.

Married with two young children he lives in the borough and is interested in swimming, photography and antiques.

SAMPLE HANDBAGS

By Marion Lerner
(Trade enquiries welcome)

SUPER SALE

Handbag repairs and renovations

183 Bramley Road
Oakwood Shopping Parade, N14
363 0909



Half-day closing Thursday



A DREAM HOME FOR RETIRED GENTLEFOLK
Old age can be wonderful when enjoyed in the comfort of our happy home



Roseacres

82-84 Chandos Ave, Whetstone, London N20 9DS

EVERY CARE AND COMFORT
QUALIFIED NURSES

Beautiful private rooms * Luxurious lounge and sun room * Lovely gardens * Excellent food and service * Resident staff * Day and night attention * A real cosy home atmosphere

LIMITED VACANCIES

L.B.B. REGISTERED

PLEASE ENQUIRE 01-445 5554

SALT



FREE DELIVERY

GRANULAR SALT — for Water Softeners
ROCK SALT — for snow clearing

Tel. 01-883 6047

KAYBANKS & CO.,
STATION ROAD,
NEW SOUTHGATE, N11

PERMUTIT water softeners
supplied and installed



Home into Bang & Olufsen quality for 12 interest-free monthly payments of £49.50

Interest-free credit AND big price savings make Beosystem 5000 the season's best hi-fi bargain. And the most affordable too.

- * Top quality sound from records, cassettes and 3-waveband radio.
- * Advanced 2 x 40 watts low-distortion stereo amplifier. * Matched two-unit speakers.
- * Easy-to-use integrated design. * Fully guaranteed.

You pay only £49.50 down, plus 11 monthly instalments of £49.50* That's a total cash price of £594.

Come in and find out more about this nationally advertised hi-fi offer. It really does combine high performance and big BIG value. We can demonstrate the system for you, and supply the special application form needed to secure zero-interest credit terms on the Beosystem 5000.

But make it soon. These special terms are valid only until 30th April 1983 or while stocks last.

*Credit offered subject to status.



This is your new Abbey Local.

RED CARPET (ESTATE AGENTS)
39 FINCHLEY LANE, HENDON, NW4

Doesn't it make sense to save with the local that's National?

ABBEY NATIONAL ABBEY LOCAL



Published by Abbey National

expert 125 Electrical Shops Nationwide

BRAHAMS

758 GREEN LANES, WINCHMORE HILL, LONDON N21
Tel: 01-360 5088

JMS RADIO tv video hi-fi

WATLING AVENUE, BURNT OAK, EDGWARE
SALES 952 1565 SERVICE 952 3895



Some stocks are limited. Items have been specially reduced but may not have been sold at a higher price for a period of 28 days in the last six months.

IN THE SWIM: Civic News focus

FEW INLAND boroughs can offer better opportunities for swimming than Barnet. With Copthall's triple pool complex in the heart of the borough, the sports centre pools in the North East and West, and Squires Lane Pool in the South East there is reasonable access to heated, well maintained indoor swimming pools from every quarter.

On hand is every type of swimming from recreational fun to serious training to international competition standard, not to mention learning classes for children and adults.

Health experts agree that swimming is probably one of the finest means of exercise, because every part of the body is involved. There is certainly no need to shiver because it is winter time. The pools are maintained at near tropical temperatures and it is like swimming in the Mediterranean. Nor is there any need to buy expensive equipment or pay exclusive club membership fees. You don't need to find a partner or join a team. You don't have to book courts or queue to get your turn.

Above all, swimming is fun. So let's look at what is available: Barnet Council runs two all-year-round indoor swimming baths at Copthall on the Hendon, Mill Hill borders and Squires Lane, Finchley, and, in summer, there is the open air pool in Finchley. In addition at two of our main sports centres, Queen Elizabeth's in Barnet and Centre Point at Grahame Park, school swimming pools are available for community use outside school hours and in the holidays.

Naturally Copthall is the main focus for recreational and serious swimming. Nearly half a million people swim there every year and the pool is in use from 5.30 am to 9.30 pm.

Start of a new series

This month Civic News begins a series of features on sport in the borough. The plan is to focus on one sport to let readers know what is available and how they can make the best of the facilities and coaching in their own area. As the series develops we hope to introduce readers to every type of sport and in order that we can give the fullest possible information we would like coaches and club managers to send details of the sports facilities they have to The Editor, Barnet Civic News, The Town Hall, The Burroughs, Hendon NW4 4BG.

In the dark, cold hours before dawn young swimmers arrive to put in an hour or more of serious training before going to school, college or work. Twice a week on Tuesdays and Thursdays it is open to early morning recreational swimmers who can use part of the main pool for an hour between 7 am and 8 am. Then the pool closes for a short time for cleaning and the doors open to the public at 9 am and remain open until 9.30 pm with the final hour-and-a-half of every day reserved for adults only.

Even when the full training programme is in session lanes are reserved for recreational swimmers and Copthall has pioneered swim jogging, steady exercise swimming in reserved lanes.

The complex was opened in 1977 and the manager, Alan Hime, aimed to run a swimming centre which was intensively used. The number of swimming classes from real beginners to serious competitive swimmers more than justifies his plan. In addition there are keep fit classes, a strength building exercise room and a whole series of courses on life saving, survival and classes for swimming teachers.

However, for those who just enjoy a social swim there is good provision and the attractive restaurant overlooking the pools serves snacks right through to 9.30 pm.

Soon after Copthall opened the Barnet Copthall Swimming Club was formed and today takes part in competitions at all levels. The collection of trophies on show in the upper foyer bears witness to club members' achievements.

Many local schools have their own swimming pool but when it comes to serious competition and training many schools book regular sessions at Copthall and the newly-revived schools league matches are held there. There are sessions set aside for children from the borough's special schools, and these young swimmers have their own galas.

Once a year, as part of the Barnet Sports Gala, the borough swimming championships are held at Copthall and through the generosity of Barnet Joint Chambers of Commerce and other sponsors the collection of trophies to be won is quite spectacular.

Go to Copthall any time of day and the pool will be in use. And yet for the ratepayer the cost is relatively modest. Because the various courses and classes are generating income the running cost to the ratepayer is less than a half-penny rate for all the municipal baths.

Squires Lane is a smaller pool. Local clubs can book it for their club galas and training and it has a friendly atmosphere.

The two sports centres, Centre Point and Queen Elizabeth's



Parents and baby classes are popular at Q E Centre.

both have a club-like atmosphere and are extensively used. Indeed there are waiting lists for Centre Point's swimming classes and 600 people a week are using the pool.

At Queen Elizabeth's there is a full programme of casual recreational swimming and classes and families can book the whole pool at a modest charge and hold a birthday party there. About £25 covers the cost of the pool, a life guard and a room for an hour afterwards.

Several swimming clubs meet there regularly, including STC and Marler Haley sports clubs.

Sessions are set aside for casual swimming. On Mondays there's casual swimming for the family from 6 to 7 pm, for ladies from 9 to 10 pm. On Tuesdays it is reserved for adults from 8.30 to 9.30 pm and on Wednesdays from 9 to 10 pm. On Sunday from 10 to 10.30 am there is a parents and toddlers half hour. No booking is necessary and the cost is 60p for adults and 30p for children.

The range of classes includes beginners, improvers, life saving classes and survival awards and are held both at the QE Centre and at QE Boys' School pool. There is even a sub-aqua club.

At Centre Point Monday is and toddlers session, a school from 5 to 6 pm and a series of classes for beginners, improvers and adults with public swimming at 9 pm.

On Wednesday from 6 to 9 pm the classes are repeated but the pool is open to the public from 9 to 10 pm. On Thursday swimming classes run from 6 to 10 pm.

On Friday Grahame Park Youth Club session is followed by Hendon Swimming Club's two-hour booking with public swimming from 9 to 10 pm.

On Saturday mornings



Schools meet at Copthall for serious swimming coaching, and league matches.

on sport Number One

through to 2.30 pm there are children's swimming lessons and on Sundays from 9 am to noon and from 2 to 5 pm the pool is open to the public. Swimming costs 50p for an adult and 30p for a child.

Centre Point swimming pool can be booked for private parties on Saturday afternoons and evenings and Sunday evenings.

Where to swim

Copthall. Three indoor pools. Entrances to the sports complex and pools in Page Street, Mill Hill and Great North Way, Hendon. For details of classes tel. 203 4187.

Squires Lane Baths, Finchley, N3. Open Monday to Friday 8 am to 9 am; noon to 1.30 pm; 4.15 to 7.30 pm (early closing Wednesday 6 pm); Saturday 8 am to 4.30 pm. Sunday closed. Tel: 346 3962.

Queen Elizabeth's Centre, Meadway, Chipping Barnet. Contact Centre Office for details. Tel: 441 2933.

Grahame Park Centre Point, Cornermead, Grahame Park Way, NW9. Contact centre office for details. Tel: 205 7113.

Finchley Open Air Pool, High Road, N12. Summer months only, opening hours announced seasonally. Tel: 883 6232.

Special Olympics choice

TWO YOUNG swimmers from Copthall who attend special schools in Barnet have been selected to take part in the 1983 Special Olympics in Baton Rouge, Louisiana, USA, in July this year.

The Special Olympics were founded by the Kennedy family to open the way to competitive but friendly sport for mentally handicapped young people from all over the world. Now Ian Cooper, aged 16, and Carolin Woodhouse, 14, who both attend Oak Lodge Special School, East Finchley, have been named for the British Team and Chris Dorkins, of Northway Special School, has been put on the reserve list.

For these youngsters swimming has opened up a new world of opportunity and experience. Recently they and several other children from Barnet Council's Special Schools competed as part of the Greater London team in the British Special Olympics at Kirby, Liverpool, staying at Liverpool University and meeting young people from all over the world.

It all stems from the enthusiasm and encouragement of



Special Olympic hopefuls, left to right: Chris Dorkins, who has been named as a reserve, Carolin Woodhouse and Ian Cooper.

Mrs. Patsy Moy-Beavan who is in charge of the schools swimming programme at Copthall.

Patsy runs the inter-school swimming leagues and several galas and championships for Barnet Schools. Three years ago she developed two galas for children from Barnet's Special Schools, one for the more severely handicapped and one for the less handicapped. The kids loved it. The love joining in

competitive events and shouting encouragement to their friends. Many proved excellent swimmers. Ian Cooper for instance can swim 25 metres in 16 seconds and finds the exercise invaluable at times of frustration.

Now all that remains is to raise the money through appeal and sponsorship to take Barnet's selected swimmers to the United States to compete.

do you need our support...



THE WIGMORE CHAIR
Orthopaedic back support, plus a higher frame for ease of getting in and out.



WALKING FRAMES
Made from lightweight aluminium tubing, available in various designs.



OVER BED TABLES
With full height adjustment and angle facilities plus book ledge. Various models available.

If you are disabled or have friends or relatives in need of help then you can rely on John Bell & Croyden for full support.

A visit to our Wigmore Street showroom where you can see the most comprehensive range of Invalid Aids in the country could be most beneficial. Our friendly expert staff are available to offer professional advice on walking aids, orthopaedic beds, incontinence garments, support stockings, surgical appliances, wheelchairs, back aids, and anything else to provide whatever support is needed. Just ask, we'll be glad to help.

John Bell & Croyden
54 Wigmore Street
London W1H 0AU
Telephone: 01-935 5555



THE HOME CARE BED
Effortlessly changes angles to provide positive support whether lying or sitting.



ELAN ELECTRIC WHEELCHAIR
Two-speed, lightweight chair with detachable sides and footrests. Takes two 12v batteries.

invalid aids

JB&C

Letters to the editor

Help — the Sangam way

FOR SOME TIME now it has been realised that members of the Asian community are constantly finding themselves in an ever changing socio-political environment. As a result it is understandably necessary for the Asian Community to enrich their outlook and to extend their personal and social awareness.

To this end Sangam (Association of Asian Women) are organising a weekly discussion meeting in a friendly and informal spirit to highlight and find practical solutions to the problems faced by members of the Asian society. Such problems may include social isolation, care of the elders in family settings, education grants, cultural difficulties, small business survival, the skills in interviews, marketing and selling, and others.

The emphasis will be on members attending the meetings to air their views and anx-

ieties so that active efforts can be made to help them. There will be invitations to speakers on topical issues such as Immigration Acts, insurance, leadership skills and housing. There will also be social events and outings.

It is for the people concerned to decide what should be done, when, how and why. People should not hold back for any reason even because of a personal crisis. Just come alone and let us help you help yourselves.

There is an open invitation to anyone to attend these free meetings every Thursday from 5.45 to 7.30 pm in the Station Road Centre, 154 Station Road, Hendon.

For further details contact:

Dr Jitendra N. Thackerar,
Ph.D.

235 West Hendon Broadway
NW9

(Tel: 202 4629)

DRIVERS IGNORE CODE

MR JOHN ELKAN is to be congratulated on drawing attention in the December issue to the Highway Code on the subject of the safety of pedestrians and, in particular, its relevance to the 'Cross Now' phase at the Golders Green lights.

This particular section of the Highway Code is ignored by almost all drivers in this country and this non-compliance with the code is further encouraged by local authorities installing 'Cross Now' phases, as at Golders Green. The Golders Green lights are unsatisfactory to all road users as the intervals are too long and they cause considerable hold-ups on many occasions.

Why not adopt the German system where nearly every traffic light in the country has a pedestrian light affixed to it as well? This allows the pedestrian

to cross with the green traffic light in exactly the same way as the road traffic and what is more important, that this priority to pedestrians is scrupulously observed by all road traffic.

If that system were to be operated at Golders Green, it would mean that if the lights were green to proceed north and south along the Finchley Road, it would allow pedestrians to cross the Golders Green Road and the North End Road and any traffic turning into Golders Green Road or North End Road from either side of the Finchley Road would allow the pedestrians to have absolute priority, in the same way as at a pelican crossing with flashing yellow lights.

Herbert Goldsmith
26 The Vale
NW11 8SH

Advice on travel in London

BEARING in mind that many groups and individuals who visit London for social, educational or political purposes are unfamiliar with its geography and how to get around, we are keen to offer advice and information on travel in London.

We can, for example, provide details of the nearest Underground stations and the best way to reach them from railway, coach and air terminals.

Although Underground fares

have changed, the basic structure remains, so that anyone purchasing a return ticket to a station within a Central London fare zone (West End or City) can return from any other station in the zone for no additional payment.

Michael Parker
London Transport
55 Broadway
London SW1H 0BD
(Tel: 222 5600)

Hospital closure opposed

I AM TRYING to stop the closure of West Hendon Hospital. Up to now I have 200 signatures on petitions sent round West Hendon and I have also been in touch with Councillor Doreen Neall who is also willing to help prevent the closure.

Several organisations have agreed to help by having petitions in their clubs for me.

The reason I am against the closure is contained in a letter sent out after a meeting with staff at West London Hospital in December. The paragraph states: 'The transfer of the majority of geriatric patients from West Hendon to Colindale Hospital would be achieved by reducing the number of chest diseases beds at Colindale from 112 to 21 or 26 and probably

offsetting that reduction by a redistribution of some beds at Edgware General Hospital; the Thoracic and ENT surgery at Colindale would not be affected.'

It also seems that it is not West Hendon that's in debt, only that the ground on which the hospital stands will bring in the most money. So within another year or so, another hospital will surely have to close down as it still will be incurring debts.

If any Civic News reader will write to Councillor Neall or contact me at my address to help stop the closure, we will be very pleased.

Mrs B. Dagwell
182 Marsh Drive
West Hendon, NW9

Future of swimming pool

I WAS INTERESTED to read that the future of Finchley open air swimming pool is still uncertain following part closure during the summer. Is it not time that Barnet Council thought seriously of making this pool indoor, with more facilities around the pool area, such as tennis, squash and badminton courts, with an area set aside for sun-bathing? British summers are not reliable enough to warrant open air pools which can only be used three to four months of a year. The residents of the Finchley-Whetstone area are very badly done by for sporting facilities.

The Squires Lane indoor pool is inadequate for the area and very run down. It has only just survived an attempt by the Council to sell into private ownership. If as has been stated, that the open air pool needs

upgrading, would it not be feasible to give North Finchley a decent indoor pool on the existing site and then sell Squires Lane pool to help recoup costs.

I enjoy all year round swimming and would much rather do so in my own area than travel all the way to Cophthall Stadium which involves two bus changes either way at a cost of £1.20 in fares plus 70p entrance fee to the pool. I am not a car owner and I agree with the sentiments of Francis Boyd of Finchley N12 whose letter appeared in the November issue of the Barnet Civic News. It says it all. Perhaps this matter will invite others to express a view, especially our representatives on the Council.

Mrs E. J. Tett
46 Rasper Road
Whetstone, N20

NEW SELF-HELP GROUP

MAY I let your readers know about an association that has been set up for sufferers of Ulcerative Colitis and Crohn's disease? It has several functions, the main ones being a self-help group. It is a registered charity, funds raised go towards medical research into inflammatory bowel disease, and regular newsletters keep members informed of new advances in treatment of the disease.

Meetings are held up and down the country, where members and their relatives can come and hear leading consul-

tants talk on the subject, and meet other members. It is valuable to have this kind of support group as anyone who suffers from this distressing complaint can imagine. Any readers interested should send an SAE for full details to: NACC (National Association for Colitis and Crohn's Disease), 3 Thropefield Close, Marshalswick, St Albans, Herts.

Sandra Hyman
67 Oakdale
N14 5RG



ST VEDAST INDEPENDENT SCHOOL FOR BOYS

Headmaster: Mr. Julian Capper M.A. Cantab

We offer a course in secondary education for boys who join us after their primary or preparatory schooling. We prepare them for 'O' and 'A' level examinations and for University entrance.

We seek to inspire in the boys the courage to defend what is true against what is false; to strive for what is excellent beyond what is second-rate and to value virtue above self-interest.

Prospectus on request

ST VEDAST INDEPENDENT
SCHOOL FOR BOYS

23 West Heath Road, Hampstead, NW3
Telephone 01-435 2405

BUILDERS SUPPLIES

BUILDERS MERCHANTS
KEY CUTTING SERVICE

DIY SUPPLIES & TOOL HIRE

EXTRA SPECIAL OFFERS

Triton T30, T50, T60, T70, T80, powerflow

Good discount

UL Cisterns Coloured	£9.53
Calor Fires from	£38.95
Stainless Steel Inset Tops from	£26.95
Emerald Inset S/S Tops from	£36.00
Leisure Thinking Sinks from	£70.00
Leisure Coloured Bowls & Drainers	£52.14
Stainless Steel round bowls & drainers	£59.95

**WE SPECIALISE IN MADE TO MEASURE
SINK UNITS, BASE UNITS, WALL UNITS
100 COLOURS TO CHOOSE FROM
GOOD DISCOUNTS - 4-7 DAYS APPROX
DELIVERY**

RECONDITIONED WATER HEATERS AND GAS FIRES

A Bowl and a Half Inset	£39.95
Leisure Thinking Sinks from	£62.95
Two Tone Round Sink Sets	£59.95
One hole coloured mixer taps	£29.95
Coloured insets, several colours with waste	£49.95
Complete Sink Units Inc Taps	£59.95
Single Stainless Steel Bowls from	£24.00
54 x 18 S/S Tops	£38.95
Leisure Draining Boards	£3.00
Coloured Bathroom Suites are now	£125.00

All prices excluding VAT

209 Fore Street, Edmonton N18
Phone 01-803 3037

Wrighton Kitchen Living



This is the time of year you start thinking of having the kitchen you've always dreamed of, which is why we've introduced our Wrighton Spring Reductions.

Choose Wrighton and you are choosing great British kitchens.

The Wrighton Herald range combines the ease of polyester with the warmth of oak, or you may choose textured laminates if you prefer. Come and see the Herald range and many other Wrighton kitchens at our Wrighton Studio.

Wrighton Spring Reductions — there's never been a better time to buy a Wrighton Kitchen.

RODNEY GIBBONS

Kitchens Galore

64-66 HIGH STREET
BARNET

Tel 01-441 2606

Open Tuesday to Saturday, 9 am to 5.30 pm
Closed all day Monday



There's cash off rent and rates!

IN APRIL 1983 a new system of help with Rent and Rates will be introduced. The scheme is called Housing Benefits and is available for anyone who is a householder.

We expect that 30,000 Barnet residents will be able to get money off their rent and rates under the new scheme. Might you be one of these 30,000?

To qualify, you must be responsible for paying rent or rates. You could own your own home; rent from the Council; rent from a private landlord; or from a Housing Association.

There are two ways of claiming Housing Benefit.

One: If you are on Supplementary Benefit and up to now have been receiving money from DHSS to help you pay your rent and rates, the DHSS will send a Certificate to the Council, and from April the Council will be responsible for helping you with your housing bills. This means, of course, that the amount of cash you get from the DHSS will be less.

Unless you are a private tenant, or you yourself have tenants living in part of your home, you will have no forms to fill in for the Council.

Private tenants will be given a form to fill in which gives details

of rent. Anyone who sub-lets will have a form to fill in to give details of the rent and rates received. If the DHSS gives you only part of the money you need for rent and rates, your Supplementary Benefit will stop in April. You will be given a form to fill in, and the Council will assess your income and calculate your Housing Benefit.

Two: If you are a Council Tenant with a Council rent and rate rebate, you will not have to claim your Housing Benefit in April. Your rebate will be recalculated under the new rules, and you will be sent a letter telling you how much you are entitled to. A few Council tenants may be asked for more information before this new calculation can be made.

If you have a rate rebate or a rent allowance from the Council which expires in March 1983, you should by now have received an application form for Housing Benefit. Please fill it in and return it to the Council quickly. If you do not receive your form by mid-February, 1983, you should write to the Director of Financial Services at 331 Regents Park Road, Finchley, N3 to obtain one.

If you haven't yet asked either DHSS or the Council for help

with your rent and rates, why not fill out a form to see whether you would qualify? You can get a guide to the new scheme from your nearest Council Office.

How Housing Benefit is Worked Out.

If you are on Supplementary Benefit and the DHSS sends a Certificate, you will get a rebate of all your eligible rent and rates, less a charge for anyone in your household who is not dependent on you. Eligible rent and rates do not include water rates, or charges for heating, lighting, cooking and hot water, and there may be other items collected with your rent on which the Council cannot help you. Any rent and rates you get from a sub-tenant will reduce the amount of your eligible rent and rates.

If you apply direct to the Council, the Council will assess your weekly income, and compare it to the Government scale of needs allowances, so the amount of help you are entitled to will depend on the income of yourself and your spouse, your eligible rent and rates and who is in your household.

If your income is below the needs allowance your rebate will be increased. If it is above the needs allowance, your re-

bate will be reduced. For one year only, rent payers who have a rebate or allowance in March 1983 may get some extra help to compensate for having to pay more.

If you are not in full time employment and your savings are less than £2,500, you may be entitled to extra money. The Council will work out your net housing costs and, if they think you might qualify, suggest that you fill out a DHSS claim form. If you are successful you will be given extra help called Housing Benefit Supplement. This is your passport to free school meals, help with prescription charges and other benefits.

It is impossible to give all the details of the new housing Benefits scheme in a short article. To find out more, guides are available at Council offices. The Assessments staff at King Edward Hall, 331 Regents Park Road, Finchley, N3 will be pleased to help you. Their ground floor enquiry office (the Hendon Lane side of King Edward Hall) is open on weekdays between 9.15 am and 4.30 pm. Council tenants can also get assistance at Stag House, Burnt Oak Broadway.

There's money off rent and rates — claim your entitlement.

COLOUR TVs — ANY SIZE ONLY £47.00
BLACK & WHITE TVs — ANY SIZE ONLY £20.00
 3 MONTHS FULL GUARANTEE
 PART EXCHANGE WELCOME

FREE DELIVERY & INSTALLATION
 INCLUDING FREE INDOOR AERIAL
SAME DAY DELIVERY
 PHONE OR CALL IN
MORGAN ELECTRICS LTD
 6/10 Northwold Road, N16 Tel: 254 4388

Decorative Mouldings for Interior & Exterior use

Cornice, Arches, Columns, Niches, Ceiling Roses, Panelling, Fire Surrounds and Coal/Log Effect Fires

FOR FREE BROCHURE
Tel: 01 455 9398

Parkland Reproduction Mouldings
 352 Cricklewood Lane, NW2

FAST LOANS
£500 to £10,000

- ★ Secured loan for house owners with or without existing mortgage
- ★ No penalty for early redemption (subject only to 3 months notice).
- ★ Same-day decision
- ★ Absolutely no fees of any kind
- ★ Self-employed? No income proof required

S.L.I. Ltd
 Old Established Credit Brokers
 For written details tel: **01-553 1221**
 or evenings/weekends **01-441 4095**

R. TWIGG (LOCKSMITHS) LTD.

THE SECURITY CENTRE

HOME, OFFICE & FACTORY BURGLAR PROTECTION
 CHUBB, INGERSOLL, YALE & UNION LOCKS SUPPLIED & FITTED.
 ALL TYPES OF KEYS CUT, INSURANCE SPECIFICATIONS UNDERTAKEN, DOOR GRILLES, BURGLAR BARS, DOOR CLOSERS

MAKE YOUR WINDOWS SAFE WITH LOCKS FITTED BY THE EXPERTS

440 2073 **449 2438**
37/39 EAST BARNET ROAD, EAST BARNET

UNIVERSAL NI-CAD BATTERY CHARGER

Only **£6.90**
 Incl. of VAT

This unique charger will charge all of the standard consumer Ni-Cad batteries, i.e. AA, C, D, PP3. Batteries can be charged one at a time or any combination of 4 cylindrical cells, i.e. AA, C, D, plus one PP3. There is also a battery test facility to check if a battery needs charging.

RECHARGEABLE BATTERIES

Size D, 1.2v, 4.0AH	£3.95	AA, 1.25v, 500mAH	£1.00
Sub D, 1.2v, 1.2AH	£2.30	AAA, 1.2v, 180mAH	30p
C, 1.2v, 1.8AH	£2.50	PP3, 8.4v, 110mAH	£4.50

CREDIT CARDS ACCEPTED
 Call in or phone order through — Same day despatch

ENFIELD ELECTRONICS
 208 Baker Street, Enfield. Tel: 366 1873

M. B. H. Reproductions
Quality reproduction furniture specialists

BIG WINTER SALE NOW ON!!

Large selection of Regency style dining suites, wall units, corner cabinets, bookcases, nests, coffee tables, etc.



from **£295** including VAT and Delivery

REGENCY STYLE 7ft MAHOGANY DINING TABLE and four dining chairs and two carvers.

£450 including VAT and Delivery



100% LEATHER CHESTERFIELD SETTEES AND CHAIRS



Bargain Prices on Bookcases, corner cabinets, oak Welsh dressers, refectory tables, and all types of occasional pieces.

PLUS MANY MORE GREAT BARGAINS!!

CREDIT FACILITIES AVAILABLE
(Subject to status)



32 Buxton Road
Luton. Tel: 36289
Open: Mon—Fri
9.30 am—5.30 pm
Closed Wed
Sat 10 am—5.30 pm
Sun 10 am—1 pm

8/9 Salisbury Square
Hatfield (Old Town)
Tel: 72727
Open: Fri—Sat
10 am—5.30 pm
Sun 10 am—1 pm
Mon 10 am—5.30 pm

PICTURE FRAMING
(bespoke service)

WE STOCK ALL PICTURE FRAMING EQUIPMENT (if you want to do it yourself!)
250 MOULDINGS ALWAYS IN STOCK

TIMBER & BOARDS
cut to any size

COMPLETE RANGE OF CRAFTSMAN POWER TOOLS IN STOCK
KEY CUTTING SERVICES
TREND PAINT STOCKISTS

TIMBER & PAINT SUPPLIES
320 & 326 DUKES MEWS, MUSWELL HILL, N10
01-883 9605
(rear of Charrington's Coal Merchants)

Ambassador Kitchens

275 EAST BARNET ROAD, EAST BARNET VILLAGE, HERTS 01 441 4231

FREE PLANNING! FREE ESTIMATE
COME AND SEE THE WORLD OF ARTHUR BONNET
FRANCE'S No. 1 KITCHEN MANUFACTURER
BEAUTIFUL LAMINATES TO CLASSIC SOLID OAKS

HOW MUCH DOES THAT KITCHEN COST?



RANGE	MATERIAL	PRICE
Saumur	Laminate	£1,050
Saphir	Laminate	£1,196
Confort	Laminate	£1,297
Cognac	Laminate/Wood	£1,460
Vendome	Laminate/Wood	£1,498
Senlis	Laminate	£1,522
Festival	Laminate/Wood	£1,562
Capri	Laminate/Wood	£1,580
Derby	Laminate/Wood	£1,590
Ohio	Laminate/Wood	£1,753
Troika	Modern Oak	£1,753
Palma	Modern Oak	£1,753
Niagara	Modern Oak	£2,000
Isba	Modern Oak	£2,080
Amboise	Oak/Veneer	£1,900
Chinon	Medium Oak (Solid)	£2,218
Pompadour	Louis XV Style Oak	£2,275
Chambord	Distressed Oak (Solid)	£2,498
Rambouillet	Antique Oak (Solid)	£2,666
Beaulieu	Antique Oak (Solid)	£2,666
Fontainebleau	Distressed Oak (Solid)	£3,122

*EXCLUDING APPLIANCES & ACCESSORIES.

OPEN SEVEN DAYS A WEEK

Now available to the public



THE RE-SEALABLE POLYTHENE BAGS FOR HOME & HOBBY

PULL IT'S OPEN

SNAP IT'S CLOSED



WRITE FOR FREE SAMPLES
PRICES. ORDER FORM TO:
MODISSA MARKETING
Modissa House, Vale Rd. London, N4 10B.

GAS CENTRAL HEATING
FIND OUT HOW LITTLE IT COSTS TO INSTALL AND RUN FROM
D. W. BRANSON & SON

HEATING ENGINEERS AND PLUMBERS
14 PENNINE PARADE, PENNINE DRIVE, NW2
458 9837

INSTALLERS OF — POTTERTON, IDEAL, THORN, BAXI, RADIATION AND GLOW WORM BOILERS



FREE ESTIMATES FOR FULL SYSTEMS AND BOILER CHANGES
SOLID FUEL REG.
CORGI REGISTERED

Treasure chest tops £10,000

THE MAYOR of Barnet's Charity Treasure Chest Appeal has passed the £10,000 mark and still has 3½ months to run with some of the big fund raising events still to come.

The Terenure Club at Totteridge has sent more than £1,200; schools have raised £1,400 and the money is still coming in! The Hendon Band carol concert at Brent Cross raised more than £300 and the Metropolitan Police donated £1,000 from their special funds which are distributed to London charities.

A Danish evening at the Mayor's home was most successful and the Mayor, Councillor Victor Usher, is hoping that many residents may be able to hold supper evenings or coffee meetings to help swell the funds. 'I would like to think that people enjoy fund raising and these small social occasions are fun,' he said.

Join in the fun of the Mayor's Appeal by coming along to:

Saturday, March 12, 6 to 9

Please send me tickets for the Mayor's Civic Charity Dinner and Dance.

I enclose a cheque for £..... (at £15 a ticket)

Name.....

Address.....

pm. Sponsored Swim at Copthall Swimming Pool, Great North Way, Hendon.

Sunday, April 24. International Rugby event. Venue to be announced. Programmes £1 (OAPs and children 50p).

Good as New Shop — watch the press for announcement.

Thursday, April 7. Civic Charity Dinner and Dance, Europa Hotel, Grosvenor Square, London.

Thursday/Friday, April 7/8. Disco Marathon, RAF Hendon. Tel: 202 6577.

Sunday, May 8. Open Day at Inglis Barracks. Grand fete, military and civil displays, charity stalls and competitions.

All donations for the Appeal should be made out to: The Mayor of Barnet's Appeal Fund, and sent to The Mayor's Parlour, The Town Hall, The Burroughs, Hendon NW4 4BG.

FUN AT HALF TERM

HALF-TERM FUN in the Borough of Barnet centres on Queen Elizabeth's Centre at Meadway, Chipping Barnet, Ashmole Centre, Burleigh Gardens, Southgate and Centrepoint, Corner Mead, Grahame Park, for the week February 21 to 25.

The QE Centre, which has a large sports hall and swimming pool as well as a coffee bar and meeting rooms, offers Pay-as-you-play from 10 am to noon at 60p a session and swimming at 60p an hour in the afternoon. Parents are welcome to join in.

There are courses in swimming, tennis, gymnastics, badminton and trampoline — a five-day course costing from £3 to £4.

Full programme and booking forms from the Centre, tel. 441 2933.

Ashmole are running a sports championship for seven to 12 year olds comprising a mixed assortment of exercises, tasks and challenges, on Wednesday, February 23. Prizes to be won, session costs 60p.

Monday and Tuesday mornings offer three hour sessions of mixed sports — trampoline, racket games, table tennis and indoor hockey. Roller skating on Monday, Tuesday and Wednesday at 11.30 am costs

30p an hour for the under 16s and 60p an hour for over 16s.

There's a beginners course in football superskills and casual bookings can be made for badminton, five-a-side football and table tennis.

Programme and booking forms from the Centre, tel. 368 4984.

At Centrepoint there is casual swimming from 2 to 5 pm Monday to Friday — 30p for children and 50p for adults and the Youth Club is open during the day time. Telephone 205 7113 for Centrepoint and 205 7112 for the Youth Centre.

Food check

HAVE YOU ever wondered what exactly is in that tin of baked beans? Well, you can find out because from January 4 all pre-packed foods have to be marked with a list of their ingredients, their country of origin, how long they last, any special storage and preparation instructions, and the name and address of the manufacturer, packer or EEC seller.

If you don't think the food you have bought lives up to its label, contact your local Citizens' Advice Bureau. They can advise you on your rights as a consumer and help you make a complaint, if necessary.

Bereavement Project

THE AIM of the Barnet Bereavement Project is to offer help and support — both emotional and practical — to those who have lost a relative or friend. The project helps the bereaved to express their grief so that they may be able to adjust to this major change in their lives.

The project are looking for members of the community who would be willing to become bereavement visitors. No special qualification is needed but this is sensitive work and volunteers need to be understanding.

Referrals come from medical, social work and voluntary agencies throughout the Borough of Barnet as well as by direct contact by bereaved people. After completing a short basic training course, volunteers will be asked to take a referral and initially go to visit the bereaved person in their own home. In addition the volunteers will be expected to join a support and training group which meets monthly.

This is not a paid job but expenses can be covered. If you are interested please write for further details to: The Co-ordinator, Barnet Bereavement Project, 13 Onslow Gardens, London, N10.

BEWARE THE GHASTLY JOKER

READERS BEWARE. Enter the library if you dare. Fresh from his triumph of sabotaging every Christmas cracker, the Ghastly Joker has penetrated Barnet Libraries, leaving a trail of groaning readers and hysterical children wherever his ghostly laughter is heard.

To arm readers against the worst shocks that he can achieve, we give a few samples of his appalling humour, collected from the Travelling Libraries as they innocently ventured on their Limerick and Joke Competition.

Q. What happened to the budgie that was run over by a lawn mower?

A. He became shredded tweet.

Q. Where does Tarzan get his clothes from?

A. A jungle sale.

Q. What is yellow and stupid?

A. Thick custard.

Q. What did the grape say when it got squashed?

A. Nothing. It just gave a little whine (wine).

Q. Why have elephants got big ears?

A. Because Noddy won't pay the ransom.

Have you met the Ghastly Joker. Share your terror with Civic News. Confession is good for the soul.

Winners in the Limerick competition were:

Aged 8 and under: 1. Stephen Melton, Clitterhouse Road, Cricklewood; 2. Lucy Theo, Hillman Road, Mill Hill; 3. Dominique Solez, Clitterhouse Crescent, Cricklewood.

Aged 9 and 10: 1. Preema Kohli, Cleveland Gardens, Cricklewood; 2. Thomas O'Donnell, Meadow Close, Dollis Valley, Barnet; 3. Hannah Hayes, Riverside, Hendon.

Aged 11 and over: 1. Rochelle Richman, Windsor Avenue, Edgware; 2. Carole Davis, Windsor Avenue, Edgware; 3. Shoshana Jacobsen, 27 Cranbourne Gardens, NW11.

Grant for Home Tutor Scheme

BARNET Home Tutor Scheme has received a one-year grant from the Government's Opportunities for Volunteering Fund to set up a network of small community groups for people who want to improve their English and cannot attend college.

Assistant Organiser, Nayna Kumari, who is a teacher of English as a second language and speaks Gujarati, has started work, and is based at the Barnet Home Tutor Scheme Office in the East Finchley Neighbourhood Centre, 41 Church Lane,

N2, tel: 444 6163.

Four new groups have started this term. They are at:

Clitterhouse Infants' School, Claremont Road, NW2 on Thursdays 2—3.30 pm.

Dollis Valley Community Centre, on Thursdays 10.30 am to 12 noon.

Edgware Infants' School on Tuesdays, 2—3.30 pm.

Oak Lane Clinic, Oak Lane, N2 on Fridays 10—11.30 am. Three existing groups will continue:

BHTS/Sangam Club, St. Paul's Church, Long Lane, N3 on Tuesdays 1.30—3.30 pm.

Grahame Park, St. Augustine's Church on Mondays 1.30—3.15 pm.

Holly Park School, Bellevue Rd, N11 on Mondays 1.30—3.30 pm.

The Home Tutor Scheme needs volunteers to teach in the groups, and on a one-to-one basis in students' homes. Training is given and will start mid-February. Volunteers are also needed to look after creches.

CONTACT YOUR LOCAL EXPERT

CHOOSING a builder or a supplier is often a major problem for any householder thinking of home alterations, extensions or improvements.

As we move out of winter into spring and summer many readers will begin to think about extensions and improvements.

It is most important to take care when contacting your supplier.

It is often a wise step to choose a local firm, providing you make sure they have the appropriate expertise.

A local firm has a reputation to maintain. It can be quickly contacted if anything goes wrong. The staff are on hand for advice.

So in this special advertising feature Civic News introduces you to a wide selection of firms who specialise in the various types of work involved including home improvements, extensions, window replacement, roof repairs, central heating and many others.

Keep these pages by you for future reference.

ILLUMINATED CEILINGS

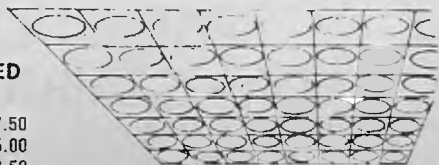
30% OFF RRP PLUS
FREE FITTING



OUR PRICES ARE
EXTREMELY COMPETITIVE
& OUR PRODUCTS
SERVICE ARE SUPERB

Acoustic tiles
for added
beauty and
insulation

COMPARE THESE PRICES -



FOR ILLUMINATED CEILINGS FITTED
IN YOUR OWN HOME

5' x 6'	£31.50	10' x 10'	£87.50
5' x 8'	£42.00	10' x 12'	£105.00
6' x 10'	£52.50	10' x 14'	£122.50
5' x 12'	£63.00	10' x 16'	£140.00
6' x 8'	£56.00	12' x 12'	£126.00
6' x 10'	£70.00	12' x 14'	£147.00
6' x 12'	£84.00	12' x 16'	£168.00

LIGHTING EXTRA

One third of our installations
are from recommendations

COMMERCIAL ENQUIRIES WELCOME

Limited Period — for
February only

Get in touch with us now or
call at our showrooms

Open 9-5, Monday-Saturday

All products are British despite our name!



GRAB YOUR PHONE AND
THIS CHANCE FOR
FREE QUOTE
01-519 4931

If we're too far
We'll come by car
To where you are!

AMERICAN CEILING CO.

HOLLYWOOD HOUSE
104 WOODHOUSE ROAD
LEYTONSTONE, LONDON E11
01-519 4931



SOUTHGATE BUILDERS

ROOFING,
DECORATING,
PLUMBING, EXTENSIONS,
PORCHES, ELECTRICAL
REWIRING

24-Hour Emergency Service
On Plumbing and Electrical
Free Estimates



FREE ADVICE on Building Regulations and Planning Per-
mission plans drawn FREE OF CHARGE

OFFER: Roofs and Gutters Overhauled from £45.00

J. P. CERAMICS

A fantastic display of unusual ceramic tiles
from all over Europe.

Tiles for walls, floors, worktops, patios and
doorsteps.

Hand-painted tiles and beautiful murals
ranging from £5-£50. If it's advice you need
call into our showroom.

JPs is full of good ideas

J.P Ceramics
99 Victoria Road, Ruislip Manor
Middlesex. Tel: 71 39919



TRIED
TESTED AND
APPROVED

HOME EXTENSIONS PROFESSIONALLY DESIGNED AND BUILT
TELEPHONE FOR A FREE BROCHURE WITHOUT OBLIGATION
01-446 4882

MICHAEL CARLISH ASSOCIATES
Building Surveyors and Design Consultants
Woodside Park Station Approach, Woodside Park Road
London N12

DON'T REPAIR YOUR ROTTING WINDOWS

**ACT NOW
REPLACE
THEM WITH**

NOVATEK

**DOUBLE GLAZED
REPLACEMENT
UPVC WINDOWS AND DOORS**

Wide range of styles including patio doors



VISIT THE NOVATEK SHOWHOUSE AT ARLESEY
5 miles north of Hitchin, Open Mon-Sat 9am-5pm.

*** NO ROT, NO RUST,
NO PAINTING**



designed, manufactured & installed
by our own skilled craftsmen

BIGGS WALL

BIGGS WALL (NOVATEK) LTD. **FREEPOST**
Hampden House, Arlesey, Beds SG15 6BR

TEL: HITCHIN 731133

Answer phone service after business hours STD(0462)

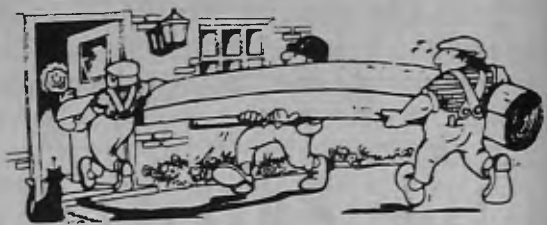
SOUTHGATE CARPET & BEDDING CENTRE

1 STATION PARADE, SOUTHGATE, N14 (Nr. Southgate Tube station)



Telephone now for instant quote
Don't buy a bed until you've checked our prices
BEDS: 01-882 4873

DISCOUNT PRICES
Any make of carpet supplied.
Expertly fitted. Reliable service.
CARPETS: 01-882 5269



EXPRESS ROOFING SERVICES

Council Grant work welcome
Contact the professionals for any roofing work concerning tiled roofs, slate roofs flat roofs and guttering

**FOR A NEW ROOF
OR REPAIRS — 367 1680**

OUR OFFICE IS OPEN 7 DAYS A WEEK 9 am—6 pm
AFTER HOURS ANSWERING SERVICE.

Send now for details BCN

Name _____ Tel _____

Address _____

A reputation founded on 100 years of business

ALTERING? CONVERTING? REFURBISHING?

Your Home or Place of Business. Ensure maximum efficiency and minimum costs by consulting:

BUILDING ADMINISTRATION SERVICES

We offer Computerised Selection of Architect, Builder and Subcontractors. Pricing Cost control, programming at no extra cost to contract. Enquiries without obligation to:

**B.A.S., 56 Abbey Gardens
London, NW8 9AT
Telephone 01-624 4041**

OAKLANDS BUILDERS & DECORATORS

(MEMBERS OF THE FEDERATION OF MASTER BUILDERS)

FOR A FAST & SUPERIOR SERVICE
BY OUR OWN SKILLED CRAFTSMEN

**ALL WORK FULLY GUARANTEED AND
BACKED BY POST-COMPLETION INSPECTIONS**

OUR SERVICE INCLUDES:

- NEW HOUSE BUILDING
- PROPERTY CONVERSIONS
- EXTENSIONS
- LOFT CONVERSIONS
- PLUMBING, HEATING, DECORATING & PLASTERING

**FOR PROMPT ATTENTION RING
01-458 6989/01-640 2013/01-730 9735**

RENOSTRUCT LTD

DESIGN & BUILD



We can manage ALL aspects of RENOVATIONS, CONVERSIONS, EXTENSIONS
We provide: Advice before buying, Drawings and Planning Permissions, also Supervision or Building services.
Also Interior & Garden design and continuing property maintenance.

FOR DETAILS: 458-5340

DOUBLE GLAZING

**InsuGlazing
from Alpine**

The ultimate in double glazing in the superior white finish

For professional advice free estimate:

**A. LAJER
Tel:
01-452 0354**



Edgware Stripp Co.

DOOR STRIPPING

Careful, competitive
01-951 0646



William John



(Building Contractors Ltd)
7a UPPER HEATH ROAD
ST. ALBANS

Telephone: St. Albans 57974 or 31319
Refurbishing. Conversions. Renovations.
Home Enlargement. Loft Rooms. House Building.
Full Property Advisory Service — commercial, residential and private.



**M&G
are
HERE!**

*for all roofing
and building
work, contact
the experts!
Free advice given
on all aspects of
planning permission
and building
regulations, domestic
and commercial*

**Call:
01-346 4383
445 3067**



- ★ SPECIALISTS IN HIGH-QUALITY UPVC (Trocal licensed manufacturers)
- ★ NO DEPOSIT FINANCE AVAILABLE (Written details upon request)
- ★ FULL 10 YEAR GUARANTEE

4 WEEKS' DELIVERY
BUY DIRECT FROM OUR OWN FACTORY

Open 9 am to 9 pm every day

FOR FREE ESTIMATES
Telephone 0638 668607

**This door costs you
NOTHING**

WHEN YOU PURCHASE FOUR OR MORE WINDOWS FROM OUR SUPERB RANGE

"Hard to believe but true. Still in doubt? Then put it to the test at our expense. The quotation and advice are absolutely FREE"

- ALL PRODUCTS AND INSTALLATIONS CARRY A 10-YEAR WRITTEN GUARANTEE
- INSTALLED WITHOUT MESS OR FUSS BY CRAFTSMEN
- WHITE OR SATIN FINISH
- TAILOR-MADE FOR YOUR HOME
- DOUBLE GLAZED AS STANDARD
- LOCAL SHOW-ROOM



**PANAVIEW WINDOWS
ST ALBANS 69847**

Showroom: 401 HATFIELD ROAD, ST ALBANS

**NEW SEASONS
INSTALLATIONS
(COLINDALE) LTD.**

- ★ REPLACEMENT WINDOWS
- ★ GEORGIAN AND LEADED
- ★ PATIO DOORS
- ★ RESIDENTIAL DOORS
- ★ SECONDARY DOUBLE GLAZING

DIRECT FROM THE MANUFACTURER

LOOK WHAT WE OFFER

- ★ FACTORY PRICES
- ★ 4-WEEK DELIVERY
- ★ FREE ESTIMATES
- ★ FINANCE AVAILABLE

10-YEAR GUARANTEE

01-205 3445

COPING WITH BUILDING REGULATIONS

So you want to alter your house?

IN NOVEMBER Civic News carried an article on the subject of planning permission — aimed particularly at householders in Conservation Areas where the regulations are designed to preserve the best of our environmental heritage.

So You Want to Alter Your House? we asked. And gave advice on how to go about planning permission and advice.

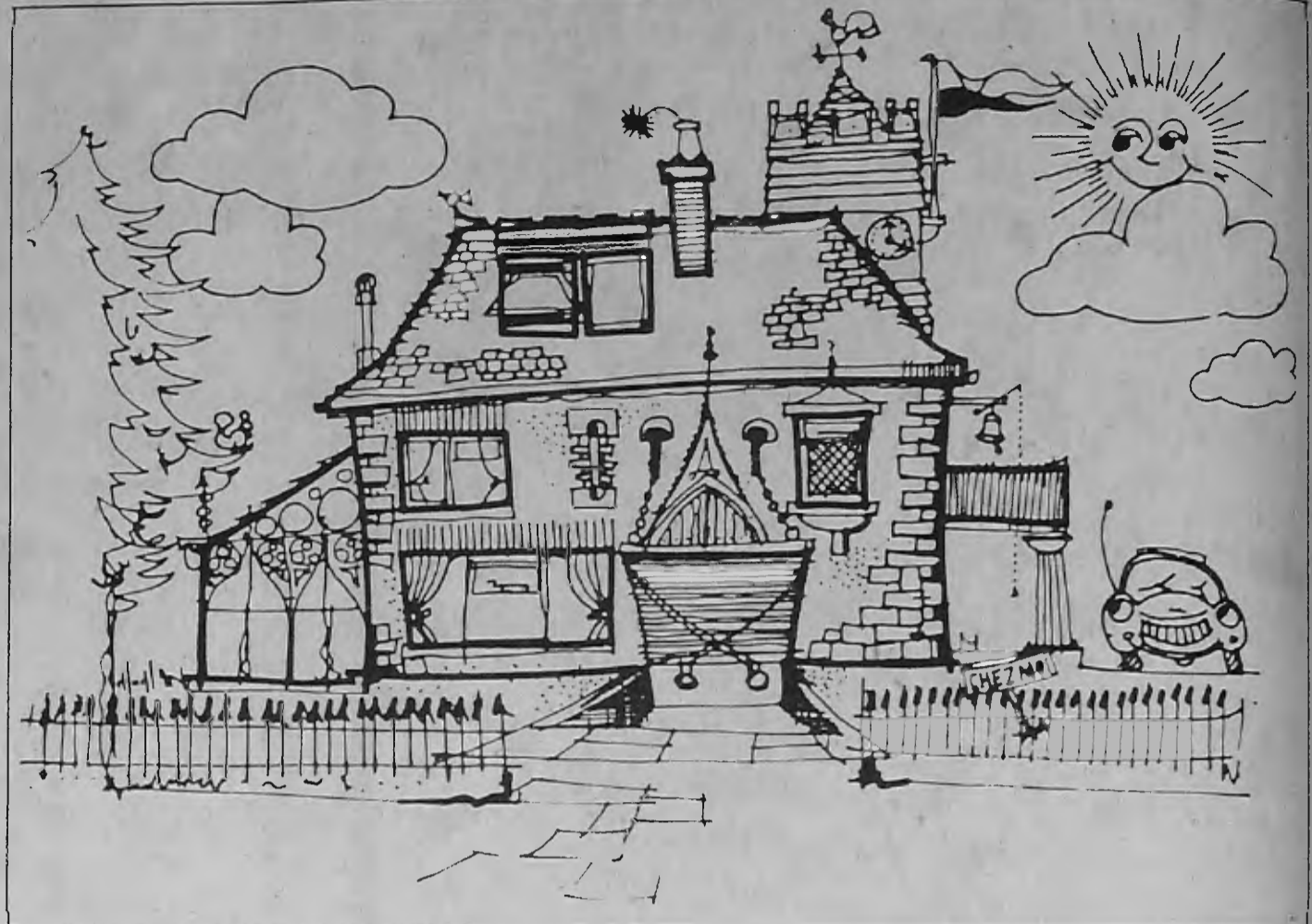
Now that you have got planning permission or found out that you don't need it — steady there. Don't rush in where reputable builders fear to tread.

The next step as you prepare to start work on that room in the loft, the new garage, the front porch or rear extension is — **Building Regulations.**

Anyone who has toured abroad knows the cafe where the only loo is tucked under the stairs with no natural light or ventilation; and the village with fine old stone houses festooned with rough timber extensions and covered ways. Now that can't happen in England.

Safe and suitable

To make sure that new structures and improvements are built to correct standards, are safe and suit the environment, the local council has a team of qualified building surveyors. The Barnet Team are based at Hertford Lodge next to Avenue House in East End Road, Finchley.



Building Regulations exist for the health and safety of the occupants of buildings and the general public. They apply to the multi-million pound building contract and to the do-it-yourself home extension.

When a building regulation application is submitted to the Council it is checked to make sure that the plans are in order and the

work on site is satisfactory. This means officers from the Building Control Department spend a lot of their time visiting building sites to make sure the correct standards have been met.

Among the points they have to consider are:

continued on page VII

BATHS & TILES

Exquisite Bathrooms and Hand-made English Tiles

At Baths and Tiles we can design bathrooms, supply bathroom fittings and accessories to SUIT ALL POCKETS.

We supply only English hand-made tiles including exquisite murals designed by Sally Anderson.

Why not use our design and installation service which we feel is second to none.

Can we introduce you to the ultimate in hydro massage which can be installed in your own home. This unique unit stimulates circulation, eliminates tiredness and pain and tones up the body. Words alone cannot do it justice. So we have recently opened a PRIVATE DEMONSTRATION ROOM where you can experience for yourself the Grandform Balneotherapy System, Jacuzzi and steam shower systems.



FULL COLOUR TREE & FLOWERING REEDS



FRITILLARY SWALLOWTAIL



REVERSE TREE WITH SLIP RESISTANT FLOOR INCORPORATING TREE SHADOW.

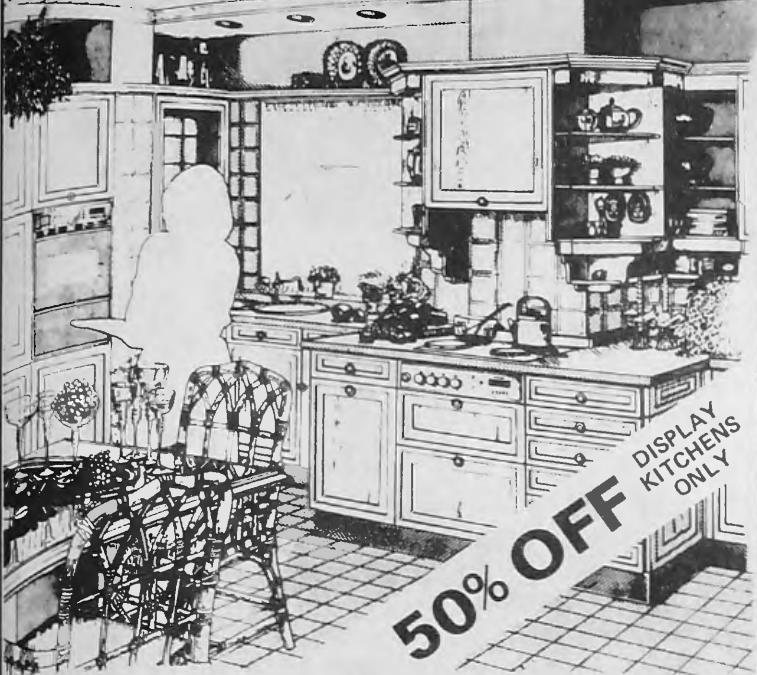
WE ARE THE ONLY AUTHORISED DEALERS IN THIS AREA FOR JACUZZI, JAMESON, PORCELAINE DE PARIS, CERAMIC DECOR, CASTLE, SALLY ANDERSON REGENCY and JACOB DELAFON

290 MUSWELL HILL BROADWAY
LONDON N10

Telephone: 01-444 8200/1

OPEN SIX DAYS
A WEEK

CAN YOU IMAGINE YOURSELF IN A BEAUTIFUL KITCHEN LIKE THIS?



We offer you a professional design and fitting service in a choice of quality kitchens from Beckermann, Cesa and Format, together with a fine range of appliances, tiles and accessories. 5 year written guarantee, finance available and our personal attention at all times.



PARK VIEW Building Supplies

851 & 855 GREEN LANES,
WINCHMORE HILL, LONDON N21

01-360 3633

Opening Hours:

Monday—Saturday 7.45 am — 5.30 pm

QUALITY ALUMINIUM AND uPVC WINDOWS & DOORS

buy direct from the manufacturers & save £££'s



Low deposit Home improvement Loans available

- Full ten year guarantee
- Fitted by our own teams of skilled craftsmen
- All products thermally insulated
- All products manufactured to British standards
- Leaded lights and Georgian available

CRESTA

DOUBLE GLAZING SYSTEMS

01-367 3238

North London Office and Showroom
64 St. Marks Road, Bush Hill Park, Enfield

OPEN ALL DAY SATURDAY - SUNDAYS 10 a.m. - 2 p.m.

EVENINGS & SUNDAYS TELEPHONE

01-367 6762

NICE PEOPLE TO DO BUSINESS WITH

MONARCH give you matching HOME EXTENSIONS

Traditionally built IN ONLY 2 WEEKS

THINKING OF A HOME EXTENSION — LOFT CONVERSION — CONSERVATORY or BRICK GARAGE — only MONARCH handle everything from sketch plans to completion, whilst offering a comprehensive five-year structural guarantee

Some of the many attractions of Monarch

- Built in the same brick as your home or any other matching external finish.
- A permanent extension built in days not weeks.
- We do everything from initial survey to completion including planning permission, foundations, wiring and plumbing.
- Insulation is vastly superior to standard cavity wall construction.
- Free quotations without obligation.
- We arrange finance. Written details available on request.
- Comprehensive guarantee.
- No mess. No fuss.
- Your finest investment.

See Monarch then decide — we guarantee it will be in your best interest.

For Free Colour Brochure write now to:

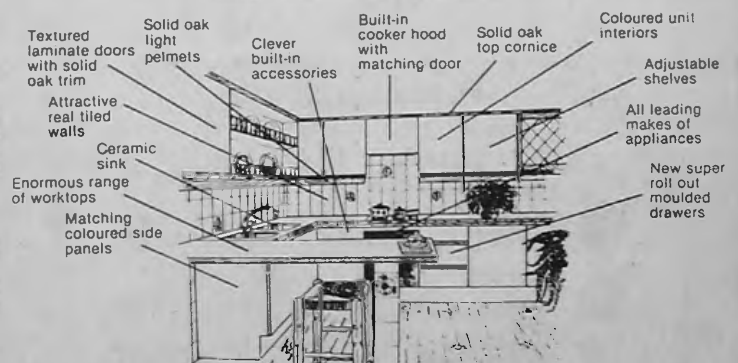
MONARCH HOME EXTENSIONS

Freepost, Monarch Home Extensions
212 Lincoln Road, PE1 2NE

No stamp needed. Or Dial-a-brochure
24-hr. Answering Service or Telephone Luton 605535 ext. 230
Quote Ref. BCN

Fitted Kitchens

Get it together with K-Plan



Eight new Programmes for 1983. *Solid Wood*: Chatsworth, Windsor, Louis, Jacobean. *Laminate*: Oberon, Sandhurst, Blenheim and Hi-Tech. All made in our Essex factory and on display at our studios — Come and discuss your new kitchen or 'phone for our designer to call.

Studio:

21 Station Parade
Cockfosters Road, Cockfosters
Tel: 01-441 5426

Studios at:

Canvey, Hornchurch
Eltham



K-PLAN

We make it - We fit it

HEATING BATHROOMS KITCHENS

GOOD DISPLAYS
EXPERIENCED STAFF
EXCELLENT DISCOUNTS

Quick Delivery
Heating Calculations
Kitchen Planning

INSTALLED OR D.I.Y. SUPPLY ONLY

H. Hobbs Wilson Ltd.

HEAD OFFICE
270-272 HIGH ROAD
WOOD GREEN, LONDON N22 4JY
01-889 2525
BRANCH AT
8 THE BROADWAY
WINCHMORE HILL ROAD
SOUTHGATE N14 6PH 01-882 3034/5
DO NOT DELAY
PHONE STRAIGHT AWAY

The specialists in your area
for Replacement Windows,
Residential Doors,
Patio Doors,
Secondary Glazing.

- **Free Installation**
- **5-year Guarantee**

For free advice and quotation
without obligation phone:

01-458 2177 01-951 3279

01-458 7060 01-455 6554



The London Window Company

LIGHT UP



Marble, Wooden and Steel surrounds
Exterior and Interior Doors
Stained Glass Fireplaces

The Architectural Depot
70 Mountgrove Road, Highbury
London N5 1TB 01-359 8179



COUNTRY & METRO

(ROOFING AND CONSTRUCTION) COMPANY LIMITED
(Works Dept) 44/44 Cranmer Road, London E7 01-555 4455
Telegrams: Roddy Wood



**DON'T LEAVE
YOURSELF WIDE
OPEN FOR THE
WINTER**

WITH A SIMPLE ROOF GENERAL
OVERHAUL YOU CAN SOLVE
THE PROBLEM -



- * To take out all defective tiles or slates & replace with good.
- * To completely clean out all guttering & seal joints where necessary.
- * To check pots, stacks, ridge, valley etc.
- * To overhaul roof making watertight for the winter.
- * **EVERY JOB CARRIES OUR GOLDEN UMBRELLA GUARANTEE FOR 1 YEAR - OBTAINABLE FROM OUR OPERATOR UPON COMPLETION OF WORKS.**

OUR PRICE - £46 (OTHER FIRMS - £100+)
SPECIAL RATES FOR OLD AGE PENSIONERS £36.00

SATISFACTION GUARANTEED!

01-555-4465 - 01-555-0297 - 01-555-2350

BUILDING REGULATIONS continued

continued from page IV

- The foundations are suitable and safe.
- There will be no problems due to damp rising through walls or floor and that the walls and roof are weather tight.
- Walls, floors and roof are of suitable material of sufficient strength to carry their design loads and, where applicable, resist the action of wind.
- Walls, roof, windows and certain floors meet the standard of thermal insulation to prevent loss of heat.
- That the walls, floors and, in certain cases, the doors, will, in the event of fire, remain intact long enough to allow the occupants to escape. Also that the chances of fire spreading to adjacent property will be minimised.
- Heating appliances burning gas, oil or solid fuel are checked to make sure they have been properly installed and that there is sufficient air for the appliances to work correctly and that the flue will carry away the products of combustion.
- New party walls and floors between flats are checked to make sure there will be a reasonable amount of sound insulation.
- Drains are tested and plumbing checked.
- The kitchen, toilets and other rooms are checked to make sure they have adequate ventilation and habitable rooms must have adequate height.
- Staircases are checked for safety.

So you see, even if you didn't need planning permission for a small extension or internal alteration you will probably need Building Regulation approval (often mistakenly described as planning permission) and those regulations are there for your protection.

And here's the tough line: The regulations are not optional and the Council can prosecute if the regulations are contravened and order the demolition of the work. So not getting approval can be an expensive omission.

Because of staff shortages in the Building Control Section enforcement action has, until recently, had to be limited. But the situation has improved and more contraventions are being brought to light so it is possible there may be an increase in prosecutions.

Legal action

Indeed the Council has recently authorised notices to be served on householders where the regulations have been contravened, requiring that the sub-standard work must be pulled down. If the householder or builder does not comply then the Council may carry out the work and recover the cost.

It is almost impossible to list all types of construction which need building regulations permission but the Council's qualified surveyors are only too pleased to advise householders on whether or not the work they are planning needs Building Regulation Approval.

And if you think you may have accidentally contravened the rules it is well worth

contacting the section as the officers will give you every assistance on how to put things right. No one wants to go to court, and the Council only resorts to legal enforcement action if other channels fail.

Surveyors are available without appointment between 9 am and 10.30 am and 4 pm to 5 pm Monday to Friday. Tel: 349 9121.

Check list

For guidance only, here is a check list of the type of work which needs Building Regulation Approval.

- All home extensions apart from small porches with a floor area of less than 2 sq m round an existing front door (and even this exemption is not simple so please check.)
- All structural alterations including removal of load bearing walls to form a through lounge and the removal of a chimney breast.
- Loft rooms, even if there is no staircase or dormer window.
- Attached garages and car ports and detached garages and car ports with a floor area of more than 30 sq m.
- Attached garden sheds or detached garden sheds with a floor area of more than 30 sq m (again certain standards apply even if the job is exempted so please check).
- Conservatories, verandahs and covered ways.
- Conversion of a house into flats.
- Changing a garage into living accommodation.

Which type of central heating is cheapest to install?

Gas	Oil	Solid Fuel	Electric
<input type="checkbox"/>	<input type="checkbox"/>	<input type="checkbox"/>	<input checked="" type="checkbox"/>

Electric Central Heating!

You don't have to win the pools to enjoy electric central heating. Installing is a simple wiring job. You can start with one storage heater and build up. There's no expensive plumbing. No flues to build. No pipes to lay and no storage tanks to buy. Thanks to the Economy 7 tariff it's cheaper to run too! You get 7 hours of less than half price electricity overnight so you make big savings on heating and hot water bills.

Superslim electric storage heaters and heating panels, elegant and stylish, blend ideally with the traditional or modern decor. Yet their advanced design gives you all the heating you need.

Want to know more?

We'll tell you how to get the most out of every penny you spend on your electric central heating and we will send you a running cost guide so you can see how electricity compares with other fuels for heating a home like yours. We'll go into draught-proofing, loft and wall insulation. Send us the coupon today, and we'll send you all the details.



HEAT ELECTRIC
ECONOMY 7
 eastern electricity

To: Eastern Electricity, PO Box 40, Wherstead, Ipswich IP9 2AQ.
 Please tell me all about Electric Central Heating and send me your running costs guide.

Name

Address

.....Tel.....

TRULINE WINDOWS LTD

Contractors to Barnet Council

Bring us your best quote for replacement windows/doors, and give us the chance to offer a true estimate which will save YOU money on top quality units.

- Trustworthy
- Realistic prices
- Unsurpassable unit
- Licensed kitemark
- Installed by experts
- No mess or fuss
- Estimates without obligation

ALUMINIUM
REPLACEMENT
DOORS OR
WINDOWS AND
PATIOS, SINGLE
OR DOUBLE
GLAZED
*Satin-white or
bronze finish
aluminium*
Plain-leaded,
light or
Georgian units

TRULINE WINDOWS LTD
FREEPOST, LONDON N15
Tel: 801 0993 24-hour service

We'll design, plan and build you a luxury German-made kitchen.



W290 The natural quality of solid oak.

At a price you can afford.

- Some 100 solid wood, veneer and laminate finishes to choose from.
- Craftsman-made in Germany.
- Superb range of built-in appliances.
- Large showroom - with extensive displays.
- Finest service - design to installation.

intoto

kitchens + bathrooms



Open Monday to Saturday 8.30am-5.45pm Late viewing by appointment.

G.P. Mckenzie.

Tile & Kitchen CENTRE.



ENGLISH — CONTINENTAL — GLAZED
— UNGLAZED WALL & FLOOR TILES
GIEFFE OPTIMAT GOWER
KITCHEN UNITS

EXPERT
FIXING
GUARANTEED

91 FORE STREET
EDMONTON, N18
807 1388

GAS CENTRAL HEATING NOW. NOTHING TO PAY TILL JULY.

250,000 homes already enjoy the comfort and low running costs of Servowarm gas central heating. We'll give you a free quotation and install your system within four weeks.

And if you take advantage of our special finance offer arranged through leading finance houses, you'll pay nothing until July 1983. For details fill in the coupon now or ring. Tel. Freephone 2040.

Written details available.

To: Servowarm, Freepost, London N18 3BR.
I'd like to know more about Servowarm.

Name _____

Address _____

Postcode _____

Tel. _____

SERVOWARM
GAS CENTRAL HEATING

DON'T FALL INTO THE TRAP OF THINKING ALL GAS CENTRAL HEATING IS THE SAME

So you want to alter your home

JUST a reminder that it is very important to check if you need planning permission before embarking on any major home improvement job.

The Borough of Barnet has nine conservation areas where houses and shops are subject to much tighter control in order to preserve the special character of the environment whether rural or urban.

Where someone outside the zone may be able to put in replacement windows as long as they meet the proper standards a resident within the zone will need to check that the new windows are of an acceptable type and style.

In some areas the materials which may be used are very carefully selected and listed. Even a garden shed must conform.

Building lines, the scale of new additions, ancient lights — the right of your neighbour to have his windows unobstructed — even the change to metric measurement can be very confusing.

Barnet Council's planning department are anxious to offer their expert help and advice to steer members of the public through the legislation and make sure they are on the right lines.

Overlooking planning regulations can be a very expensive error. Barnet Council has a responsibility for both the safety of new buildings and for maintaining good planning lines. So, if something is in contravention of the regulations they have to take action. It may even mean that a new extension has to be pulled down.

So please, before you launch into a major extension, or think about changing the style of your house, check with your local planning office:

Central Division Planning Office, 1 Friern Park, North Finchley. Tel: 446 3291. Covers the wards of Childs Hill; East Finchley, Finchley, Garden Suburb, Golders Green, St. Paul's and Woodhouse.

Northern Division Planning Office, Town Hall, Station Road, New Barnet, Herts. Tel: 449 9181. Covers the wards of Arkley, Brunswick Park, East Barnet, Hadley and Totteridge.

Western Division Planning Office, Barnard House, 158 Edgware, Middx. Tel: 952 7722. Covers the wards of Burnt Oak, Colindale, Edgware, Hale, Hendon, Mill Hill and West Hendon.

THE WORLD OF Bathrooms NOW!

We stock all famous names, ie TWYFORDS, ARMITAGE, SHIRES, ROYAL DOULTON, IDEAL STANDARD etc



It's been exactly six months since the successful launch of Marshalls Bathroom Centre in Topsfield Parade, Crouch End, N8.

During this period the Bathroom Showrooms have been visited by a large amount of people from not just North London but from all over the South East of England due to the fact that this Bathroom Centre has brought the latest in design all ranges of Bathrooms, Jacuzzis and accessories at realistic prices. Complete bathroom suites start from £195 and go on to infinity depending on your choice.

Jacuzzis are fast becoming common in households as they are easy to install and do not take more space allowed than the usual bath. A working Jacuzzi is installed at the showroom for interested buyers to see and try it if they wish!

For a fitted bathroom designed by the perfectionists and makers of individual styles, call in and see our full range. You'll find complete suites in beautiful room settings. Not forgetting all the latest shower fittings and fitted kitchens.

At Marshall and his fully trained staff are always available to assist with qualified advice on aspects of the business.



Compact — and Versatile — Bathroom Luxury for Home Modernisation

A corner bath has always been associated with large bathrooms. Our 'new' Compact design of modern bathroom furniture means that, by careful planning and choice of decor, the ultimate in luxury can be achieved in an area as small as 7ft 6in square. And that, obviously, is good news for many householders in Britain.



341
1347

341
1347

MARSHALLS
(BATH CENTRE OF NORTH LONDON)
40/41 TOPSFIELD PARADE
CROUCH END, N8
TEL: 341 1347, 348 4104

FREE DELIVERY

NORTH LONDON'S LEADING PLUMBERS MERCHANTS

BATHROOM SHOWROOM NOW OPEN

WALTON SUPPLIES LIMITED




SHEDS FROM £80 (Free Erection)
GARAGES 14' x 8' 6" £683 (Erected)
CARPORTS • CONSERVATORIES

Complete Planning/Erection Service
SCAFFOLD TOWERS 4' x 4' x 17' 6"
WORKING HEIGHT £50 inc.
10' x 8' complete, erected, only £232

483 GREEN LANES, N13 882-3161

OPEN 6 DAYS 366 7892 (eves)

CENTRAL HEATING

BY

Redmark

- ★ QUALITY INSTALLATIONS
- ★ FULL 2-YEAR GUARANTEE
- ★ COMPREHENSIVE AFTER SALES SERVICE
- ★ NO DEPOSIT FINANCE AVAILABLE (written details on request)

for

COMFORT with CONFIDENCE

Phone

BRITISH GAS



APPROVED INSTALLER



REGISTERED **881 2626**

or call at our showroom
72 Myddleton Road, Wood Green, N22 4NW

A ROOM IN THE ROOF BY

PORCHWAYS

THE EXPERTS

Get your extra bedroom/bathroom with a room in the roof by North London's leading experts. Remember — it's cheaper to improve than move so call us for a free feasibility survey and guideline on cost without obligation.

OUR SERVICE INCLUDES

- ★ DESIGN & PLANS
- ★ ALL COUNCIL PERMISSIONS
- ★ THE TOTAL CONSTRUCTION THROUGH TO COMPLETION

PORCHWAYS THE COMPANY THAT INSTALLS CONFIDENCE

20 STATION PARADE
COCKFOSTERS, HERTS.
01-440 5432

Checkalow Ltd

CERAMIC TILING BY EXPERTS



Our fully experienced tradesmen ensure your complete satisfaction
Comprehensive showroom
Easy parking

**21 St Albans Road
Barnet, Herts, EN5 4JX
01-440 0927, 01-449 2706**

X

HOME IMPROVEMENTS

WORKTOPS — TRADE & RETAIL



LARGE SELECTION EX-STOCK CUT TO YOUR SIZE INCLUDING HOB AND SINK CUT OUTS FITTING SERVICE IF REQUIRED

D.I.Y. CENTRE (COLINDALE)
2 Varley Parade, Edgware Road, The Hyde, NW9
Telephone 205-4281

GARAGE DOORS at

COMPETITIVE PRICES!!

ALL TYPES OF GARAGE DOORS SUPPLIED AND FITTED

at competitive rates
Automatic door controls and gates

Free Quotation

Elegantly-styled fibre glass doors made to measure
Lift-boy automatic door controls, repairs and maintenance

JOHN BROOKS (GARAGE DOORS) LTD

728 St Albans Road, Garston, Watford, Herts. Tel: 092-73 74623

FREE DELIVERY

GAS CENTRAL HEATING

LAST WINTER WAS A SHOCKER

YOU CAN LIVE IN COMFORT WITH OUR LOW COST 'VAILLANT' COMPLETE HEATING SYSTEM — A UNIQUE SYSTEM GIVING YOU CONSTANT HOT WATER



No deposit finance terms, nothing to pay for 4 months.

'VAILLANT', the most economical system, can save you 25% on your gas bill

ADVANTAGES

- Complete boiler with built tank and cylinder in space 3' 6" x 1' 6"
- Guaranteed temperatures
- Controllable heating
- No wasteful cylinders or expansion tanks
- Fully guaranteed
- Radiators guaranteed for 5 years
- The only system of this type to be gas and water council approved

For immediate FREE Quotation Tel: 01-801 5252/3

Sales and Service

You only fit central heating once, so try the best
VB HEATING, PLUMBING & ELECTRICAL ENGINEERS
144a The Avenue, Tottenham, London N17

Established 1975

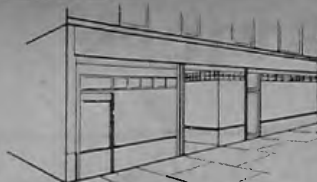
Members of the Guild of Master Craftsmen
Our prices are the lowest — Our system is the most economical to run

GARAGE DOORS

Up and Over, supply supplied and fitted
Electronic operators a speciality.
Please phone for free comprehensive brochures and price lists

MIDDLESEX DOOR CENTRE LTD.

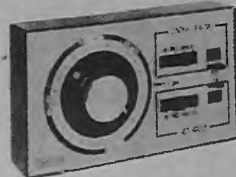
01-898 6991 24 hrs



SPA

PLUMBING & HEATING SUPPLIERS

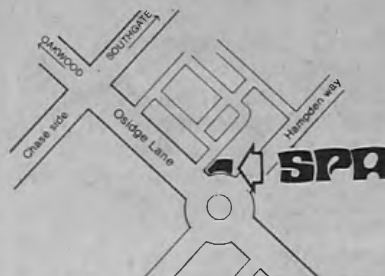
1-5 Hampden Square, Osidge Lane, Southgate, N14 Telephone: 01-368 6463



COPPER FITTINGS/TUBE
BARTOL, WASTE, SOIL, RAINWATER, GUTTER
CYLINDERS/TANKS/JACKETS
CENTRAL HEATING EQUIPMENT
PLUMBING TOOLS & ACCESSORIES

DOMESTIC WATER SOFTENERS
SEE OUR ADVANCED 'PERMO'
MICRO COMPUTER WATER SOFTENER
ALSO SOFTSTREAM RANGE
SOFTENERS FOR THE HOME
WHIRLPOOL BATH SPA KITS
FROM £425.00

WE SUPPLY — INSTALL — GUARANTEE
— SERVICE AND MAINTAIN ALL
PLUMBING & HEATING EQUIPMENT



EASY PARKING: OPEN MON-SAT

Heating Dept — 368 6463

Kitchen/Bathroom Dept — 368 6860

Installation Dept — 361 0883

24 Hr Installation Dept — 367 6166



Showers

5 Barnet Road
Potters Bar
Herts

77-53339

SHOWER AND BATHROOM SPECIALISTS

**MIRA SHOWERS 50% OFF
RECOMMENDED RETAIL PRICE
SANITARY WARE**

by Ideal Standard, Twyfords, Armitage, Shires, Royal Doulton

CUBICLES

Up to 20% off recommended retail price

by Daryl, Matki, Foldor, Guardex and Marley

BRASSWARE

by Dualux, Jetline, Damixa, Aztec and Tantofex

Huge selection of Bathroom Accessories by most leading manufacturers

LARGE SELECTION OF TILES AT DISCOUNT PRICES

For the best service and the best prices, come and see us now!

WILSON'S

COMPLETE
BUILDING
SERVICES &
INTERIOR ARCH
DESIGN

EMERGENCY
24 Hour
ELECTRICAL/
PLUMBING

804 8792

HOUSEHOLD SERVICES

HEATING PROBLEMS?
CONSULT
COHEAT LTD

FOR NEW INSTALLATIONS MAINTENANCE and SERVICING

- Members of H.V.C.A
- Corgi Gas Installers
- Potterton appointed service contractors
- Stockists of Potterton and Ideal/Stelrad spares

UNIVERSAL HOUSE
LINCOLN WAY
ENFIELD, MIDDX.
Tel. 01-805 2070

HOOVER
ELECTROLUX SERVICE

OTHER MAKES REPAIRED WORK GUARANTEED
HOOVER TRAINED ENGINEERS
NO CALL OUT CHARGE
P. JARVIS
WORKSHOPS
01-441 5152
Eves 0727 72918
(local)

HOOVER CLEANERS AND WASHING MACHINES WANTED

CABINET MAKER DESIGNS

and makes Cupboards for Bedrooms, Loft Conversions and anything in wood! Furniture repaired, etc
No job too small
Free Estimate
346 8975
Messages 759 9681

J. E. RIGDEN
Decorator
25 years in the trade
Call 440 0809 for estimate

BUILT-IN WARDROBES by experienced
CABINET MAKER
Photos shown
All work fully guaranteed
804 6439
ALL ESTIMATES FREE

WEST & SONS BUILDERS AND DECORATORS

Extensions Kitchens Bathrooms Roofing
Decorating Rag-Rolling Plumbing Conversions

REFERENCES AND PHOTOS AVAILABLE
01-953 4174

BARNARD & SON HOUSE CLEARANCE SPECIALISTS

PHONE DAYTIME 803 6163 PHONE EVENINGS 803 5065

DECEASED EFFECTS BOUGHT AND CLEARED
24-HOUR SERVICE SEVEN DAYS A WEEK
MODERN AND ANTIQUE ITEMS BOUGHT.
60 BOUNCES ROAD EDMONTON, N9

We also buy:
Postcards, records, old books, set of chairs, bookcases, display cabinets, ivories, water colours, oil paintings, old tables, bronzes.
IN FACT, ANYTHING OLD OR ANTIQUE

J. K. GIBSON (REGISTERED)
NEW ROOF & GUTTERING SPECIALIST
SPECIALISING IN STRIPPING AND RECOVERING OF OLDER ROOFS

New PVC Guttering, Overhauls, Chimney Pointing/Removals, Flat Roofs and all aspects of the trade
For prompt free no obligation estimates and reliable service
Phone 445 1332
Council grants accepted

ALPINE CONSTRUCTION
Roofing Contractors

All types of roofing work undertaken

- ★ Three layer built-up felt roofing
- ★ Re-slating ★ Re-roofing ★ General roof repairs

Every job is carried out by qualified tradesmen and is fully guaranteed

Private and confidential finance arranged in your own home. Written quotation on request

Council grant work undertaken
For quotations and free advice phone:
01-366 4555 or Lea Valley 764858



ALPINE CONSTRUCTION pride themselves in giving their clients a complete service from initial design service to completion.

LEAKY ROOF?

For new roofs contact:
PRESTIGE ROOFING

Free survey — No obligation
Grant work
HP arranged

15 years guarantee on workmanship
50 years guarantee on materials

Also flat roofs, 3-layer built-up felt roofing
Tel: 01-800 2316 (8 lines)

SPA PLUMBING & HEATING ENGINEERS
PROMPT 24-HOUR SERVICE

Boiler Servicing, Plumbing, Maintenance

Specialists in Central Heating and plumbing installations
Free estimates. All work guaranteed
Credit terms available
Tel: 361 0883 for details
367 6166 after 6.00 pm

dampcure/woodeure/30

B.W.P.A. & B.C.D.A. MEMBERS ★ ESTABLISHED 1959
30-YEAR GUARANTEE ★ FREE SURVEYS

WATFORD 41514/23842 LUTON (0582) 841978
BUSHEY 01-950 0070 LONDON (01) 986 4840

KLEENTEX

Specialist cleaning in the home

CARPETS UPHOLSTERY CURTAINS

Scotchgard Carpet Protector 01-886 7602

Phone now for Free Quotation

BARCLAY CARD ACCEPTED BARCLAYCARD VISA

ESTABLISHED 1977
COSYTOP
LOFT INSULATORS

GOVERNMENT GRANTS AVAILABLE

Our Installations are Guaranteed to meet Council Approval.
Our Materials to BS 5803.
Free Estimates

Phone: Waltham Cross (97) 36598
Waltham Cross (97) 21279

EXTENSIONS CONVERSIONS ALTERATIONS

FOR FREE ADVICE ESTIMATES RELIABLE PROMPT SERVICE TELEPHONE

REEFE CONSTRUCTION
On 954 3341 for all your building work

Say goodbye to the winter blues with Gas Central heating

Don't spend this winter suffering from the same winter blues as last year. Think about the benefits of Gas Central Heating, which is still the cheapest fuel with which to heat your whole house. It's clean, controllable and efficient and it has none of the storage and supply problems associated with oil or solid fuel.

For a free estimate or friendly advice, ring us now.

Telephone: St Albans 37020

Our central heating installations are **guaranteed** by the Heating and Ventilating Contractors' Association.



SPECIAL OFFER
to Civic News Readers
FREE ENERGY SAVING THERMOSTATIC RADIATOR VALVES*

CORGI REGISTERED



* Average house with 7 radiators. Saving of £100

ENVIRONMENTAL SERVICES



THE GAS CENTRAL HEATING GROUP

ASTON TIMBER PRESERVATION & DAMPCOURSING LTD



OFFER A PERSONAL SERVICE FOR THE ERADICATION OF RISING DAMP, WOODWORM AND DRY ROT
REPLASTERING QUOTATIONS GIVEN



ALL WORK GUARANTEED FOR 20 YEARS

FOR FREE ESTIMATE **01-346 6300**

10 STATION RD, FINCHLEY CENTRAL, N3

DELUXE CONTRACTORS use your land to E-X-P-A-N-D

All types of Home Extensions — big or small, including: Purpose-built Kitchens to your requirements rebuilding and redesigning of Driveways. All types of new and flat roofs. Planning applications and building regulations free of charge.



Invest and get the best with Deluxe Contractors
Woodside Place
Bell Bar, Hatfield
Tel: Hatfield (30) 69727

CENTRAL HEATING SPECIALISTS

- ★ All plumbing and central heating work undertaken
- ★ No job too small
- ★ Central heating surveys carried out for house purchases
- ★ 24-hour service

FOR FREE ESTIMATES

Tel: Mr. McCarthy 207 1501

P.J. BUILDERS

The Home Extension Specialists
A Complete Building Service Since 1976
EXTENSIONS & LOFT CONVERSIONS

and all types of Building and Maintenance Work
Domestic - Industrial - Commercial

For your free survey and estimate



Tel: **WALTHAM CROSS (97) 31517**



S.J.S. REMOVALS

We go here and we go there, in fact we go almost everywhere, our prices are low, but we're not slow; our estimates are free, and so are our boxes without the tea; no job is too big or too small; so don't delay and give us a call.

- ★ INLAND AND OVERSEAS ★ STORAGE AVAILABLE
- ★ LOCAL ★ SINGLE ITEMS ★ PARCELS

Tel: 455 2040 or 455 9962

ANNEXATIONS TRADING CO.

Building Contractors
Brickwork, Plastering and Carpentry.
All building work undertaken.
Free Estimates.

01-954 5806 (anytime)

AMAZING WORK GUARANTEED

POSMA LTD.

The alternative gas service for all your gas and central heating needs

24 HOUR SERVICE

Visit our showrooms

Tel: 451 4477

219 Church Road, Willesden, NW10

ALWAYS USE SHARPS SKIPS



SHARPS SKIP CONTAINERS FOR A SPEEDY EFFICIENT WASTE DISPOSAL SERVICE
MINI SKIPS AT REASONABLE PRICES
ALSO SAND AND BALLAST DELIVERED

01-363 3512 (2 LINES)

DONKEY LANE, ENFIELD, MIDDX. EN1 3PL

T.M.A. & Co.

(Established 20 years)



Undertake all aspects of building work, electrical rewiring, central heating, plumbing.

Interior and Exterior Decoration

FREE ESTIMATES

Tel: 01-328 2535

Spice UPVC WINDOWS

NOW OPEN IN HENDON



DOUBLE GLAZED HIGH SECURITY PLASTIC FRAMED WINDOWS RESIDENTIAL AND PATIO DOORS

- NO TIMBER
- NO PAINTING
- NO ROTTING
- NO DRAUGHT

Manufactured and installed by our own experienced staff.
The thermal barrier-sealed unit which outdates all other double glazing. Available in leaded and Georgian effects.
OPEN 7 DAYS A WEEK, Monday-Saturday 9.30 a.m.-5 p.m.; Sunday 9.30 a.m.-1 p.m.
LICENSED CREDIT BROKERS
Head Office:
149 High Street, Ruislip, Middx.
Tel. Ruislip (71) 74247/74287

Spice UPVC WINDOWS
7 Finchley Lane, Hendon, NW4 Tel. 203-6585

MORRIS MEN

ARE YOU interested in Morris Dancing in the North West 'Clog' tradition? If so you are invited to join the Old Bull Morris Men who are a newly formed team and unique in two ways.

In Barnet Borough Arts Council January magazine it says they are the first ever Morris team to be based within the Borough of Barnet and they are the first all male team from outside the north of England to dance solely in the north-west tradition.

The team are at present learning dances from Lancashire towns and villages and plan to perform these dances in public in the summer.

There is a considerable difference between the local Cotswold traditional Morris dances and those of the north-west tradition. The Cotswold dances are those which we are accustomed to watching in the south of England and the dancers wear shoes, wave handkerchiefs or clash sticks and wear mainly white costumes. The north-western dancers wear brightly coloured costumes, invariably wear clogs with irons on them, hold slings or sticks bound with coloured ribbons and with bells attached which they twirl or shake while dancing.

The north-west teams generally have a larger band of musicians than their Cotswold counterparts.

The Old Bull Morris Men are eager to welcome dancers whether experienced or absolute beginners. They also extend a warm welcome to any folk and brass instrumentalists who would like to play for the team. Suitable instruments include cornet, trumpet, trombone, tuba, bass drum and side drums.

The team practice every Thursday evening between 8 and 10 pm at the Queen Elizabeth's Centre, Meadway, Barnet, but hope to transfer to the Old Bull when

Continued in next column

Two sporting events

A TABLE tennis tournament and a Netball Rally are to be staged by Barnet Education Department's Youth and Community Service on Sunday, March 27.

In the Table Tennis Tournament there are to be ladies' and men's singles, and ladies' and men's doubles for the under 14s, under 17s and under 21s, all competitors to be under that age on August 1, 1983. Competitors must only enter the event in the age range for which they are eligible.

All entries must reach the tournament secretary by Friday, February 25, entrance fee is 50p per person per event.

The tournament will be played at the Barnet Table Tennis Centre, Barnet Lane, Barnet, and all players must live in the borough or belong

NETBALL RALLY

The netball Rally is to be played at Grahame Park Centre Point, Cornermead, Colindale. There are two age groups — for the 11-13 year olds and 13-18 year olds. Qualifying birthday date September 1, 1982.

A player should either be a member of an affiliated organisation or go to school or live in the borough. A team will consist of seven players and one reserve and each team must provide their own umpire.

Entrance fee is £1 a team and closing date is March 18.

Further details about the tournament and rally, and application forms, can be obtained from the Town Hall, Friern Barnet, N11 3DL (tel: 368 1255, ext 218).

FREE LEGAL ADVICE

THE Barnet Law Centre Steering Group will be offering free legal advice at the East Finchley Neighbourhood Centre, 42 Church Lane, East Finchley, every Wednesday evening between 6.30 and 8 pm beginning February 16. Advice will be given in the areas of housing, debt, employment, family, immigration, social security and welfare law.

The Burnt Oak advice sessions, which began in July, 1982, will continue on Tuesday evenings from 6.30 to 8 pm at Barnard House, 158 Burnt Oak Broadway, Edgware.

For further information about the sessions, please contact Pat Reddin on 348 4674 or Jane Phipps, 71 39788.

Falling school rolls

BARNET Education Department's consultative document on Secondary Schools and Falling Rolls has now been widely circulated to all interested people, including governing bodies, teacher associations and parents.

The document contains *Continued from previous col* the new rehearsal area is completed.

Anyone who would like to know more about the Old Bull Morris Men, would like to join the team or even provisionally book the team for a function in 1983 should telephone Tony Gill on 0422 62389 or turn up at any Thursday practice session.

factual and statistical information and all interested people are reminded that their comments should be returned to the Director of Educational Services, Town Hall, Friern Barnet, N11 3DL, by March 5 with a view to the authority making a final decision on this important issue by the early summer of this year.

Congratulations

Congratulations to Aubrey Harris Limited, of East Barnet Road. They have been awarded the Royal Warrant for printing and stationery by Her Majesty the Queen. They already hold the Royal Warrant of the Prince of Wales, awarded in 1980.

TAKE ADVANTAGE OF THE BEST OFFERS IN TOWN

FREE MEMBERSHIP NO DEPOSIT

VHS VIDEO CLUB HIRE ENGLISH AND INDIAN FILMS

JVC E180 £5.90 each

VIDEO AND CAMERAS FOR HIRE FROM £8

I. C. VIDEO 115 FRIERN BARNET RD, N11 01-368 1661

OPEN SIX DAYS A WEEK MONDAY TO SATURDAY 9 am TO 7 pm

Irene Joss



FABULOUS NEW SPRING FASHIONS NOW ARRIVING

As always 20% below recommended prices FEELING DOWN IN THE DUMPS?

COME ALONG TO OUR LUXURY SUN LOUNGE AND RELAX AND TAN ON OUR MEDICALLY APPROVED SUN BEDS — TRY OUR FACIAL TANNING UNIT TO DISPEL THOSE WINTER BLUES

SPECIAL FEBRUARY OFFER TRIAL SESSION ON EACH MACHINE £3.00

Bring this advertisement with you for the February offer

Open Sundays 10 am—1 pm Tuesdays Wednesdays, Thursdays and Fridays 10 am—5 pm

Thirty-One Bell Lane, Hendon, NW4 Tel: 203 2909 weekdays before 7.30 pm.

WHAT'S ON IN BARNET

THIS LIST of activities in the Borough is open, free of charge, to all voluntary and community groups.

Entries for the April issue (April 16 to May 14) must reach the editor by March 11.

Entries to Civic News, address: page 4.

***Asterisk denotes regular weekly meeting.**

Saturday February 12

- British Tinnitus Association (NW London), The Meritage Club, Church End, Hendon. 2 pm (444 9657).
- *East Finchley Councillors' surgery, Neighbourhood Centre, Church Lane. 10—11.30 am.
- *Drama Workshop for children, The Old Bull, 68 High St, Barnet. Ages 7—10, 10.30 am—12.30 pm; 10—12, 1.30—3.30 pm. 50p per session (449 0048).
- *Art/craft and drama workshop for children, Elizabeth Allen Centre, Wood St, Barnet. 9.30 am term time (368 2772).
- *Dolphin Swimming Club. Tuition for all ages. Warm indoor pool in Hampstead. 2—5 pm (349 1844).
- *Social Singles Club for unattached people 30 to 50; 8 pm (441 2622) or SAE to 62 Hand-side Lane, Welwyn Garden City.
- *Barnet Thirty Plus Group unattached people 30 to 50. 8 pm (405 4821 or SAE to Ms Stella Lemos, Camacha, 1st Silkfield Rd, NW9 6QT).
- *High Barnet Baptist Church bookstall, 197 High St, Barnet — sale of 'Teacraft' materials, cards. 10 am—4 pm.

Sunday February 13

- Octopus Swimming Club for handicapped, Squires Lane Baths, Finchley, N3. 12.30—1.30 pm (346 5944).
- *Barnet and District Athletic Club, youngsters training, Victoria Hall, Park Rd, East Barnet. 10.30 am (882 3265).
- *Barnet Table Tennis Centre, Barnet Lane, Barnet. Every evening. 7.30—11 pm. Training for youngsters. Sundays 3—5 pm (440 1721).
- *Up-to-the-Centre Square Dance Club, 145 Orange Hill Rd, Burnt Oak. Beginners 8 pm (959 5204).
- *Bridge Lane Bridge Club, 71 Bridge Lane, Golders Green. Every day except Friday evening. 1.30—6 pm and 7.45—11.40 pm (455 3711 and 458 1764 after 2 pm).
- *Mind (voluntary mental health organisation) Social Club, Day Centre, Etchingham Park Rd, Finchley, N3. 3.30—7 pm (455 2850).
- *Zen Meditation, 91 Nether St, North Finchley. 8 pm (445 1819).
- *Bible Talk, Christadelphian Meeting House, 51 Station Rd, New Barnet. 6.30 pm (441 0060 or 449 2055).
- *Tae Kwon Do Club, Grahame Park Centre Point. 2—4 pm (200 7112).
- *Finchley Crusaders, Youth Group for boys and girls. Ages

- 5-11. 3—4 pm, 46 Dollis Ave, N3 (346 6715); 11—18, 3—4 pm, St Mary's Hall, Hendon Lane, N3 (346 1277).
- *120 (Hendon) Squadron ATC, RAF Hendon, Aerodrome Rd, Colindale. Boys 13½-15½. 10 am—12.30 pm (205 7297).
- *Wembley Sailing Club, Birchen Grove, NW9. Welsh Harp. Beginners welcome (455 5073).
- Mini Rugby, 6—11, Mill Hill Rugby Club, Page St, Mill Hill. 10.30 am (203 0685; 959 8680).
- *New Barnet and Whetstone Crusaders, boys and girls groups, 4—18 yrs. St. John's URC Hall, Somerset Rd, New Barnet. 3—4 pm (440 2871).
- *Barnet Shotokan Karate Centre. Beginner's class, St Mary's Church House, Greyhound Hill, Hendon. 2 pm (449 3444).

Monday February 14

- WEA Barnet Branch — 6-week course ('Marriage and the Family throughout the World'), Queen Elizabeth's School, Meadway, Barnet. 8 pm. Tutor: Dr. Helen Kanitkan. £5 (449 6756).
- Annunciation Youth Centre, Thirleby Rd, Burnt Oak. 6 pm Judo; Guitar; Football, girls and boys 11-16; 8 pm. General activities 13-17. **Tuesdays:** Irish dancing 5 pm; Popmobility girls 7.30 pm, ladies 8 pm. **Wednesdays:** 6.15 pm Brownies; 8 pm girls' football general club 13-17 yrs; **Thursdays:** Over 60s 2 pm; Guides 7 pm; **Fridays:** Junior Youth Club (9-12 yrs) 6 pm; General Club (12-14 yrs), 7.30 pm; Friday's People (18-25 yrs) 8 pm; **Saturdays:** Irish dancing 10 am; Boppers Disco (9-12 yrs) 7.30 pm (959 7840).
- *Woodcraft Folk (High Barnet) — Barnet Hill School, Dollis Valley Way, boys and girls 6-10 yrs 6.15 pm (440 5369), 10-13 yrs 7.45 pm (449 7709); Foulds School, Byng Road, Barnet, 6-10 yrs 6.15 pm (449 0361), 10-13 yrs 7.30 pm (449 6038).
- *4th East Barnet Mixed Venture Scout Unit (16-20), Netherlands Rd, New Barnet. 8 pm (30 66649).
- *Barnet Chess Club, Harold Fern Room, Salisbury Rd, Barnet. 7.45 pm (445 0635).
- *Dog obedience training. All Saints' Parish Hall, Oakleigh Rd North, Friern Barnet. Beginners 7.30 pm; Advanced 8.45 pm (449 4155 after 6 pm).
- *Ladies' meeting, East Finchley Baptist Church, Creighton Ave, Finchley, N2. 2.30 pm.
- *Boys' Brigade, 4th Finchley, Finchley Methodist Church, Essex Hall, Essex Park, Finchley. 6 to 11 years, 6.30 pm (446 2690).
- *Silver Threads — Senior Citizens' Club, Salvation Army Citadel, Salisbury Rd, Barnet. 2 pm (440 8303).
- *North London Karate Club, QE Girls' School, Meadway, Barnet. 7.30 pm and 8.30 pm (440 7733/8633).
- *Bridge, Mill Hill East Free Church, Salcombe Gdns, Mill Hill. 7.30 pm (959 4723/346 6925).
- *Edgware Sea Cadet Corps Boys and Girls 12-18 yrs. Daws Lane, Mill Hill. 7.30 pm (959 0711).
- *Livingstone Club, National Association of Women's Clubs, Bevan Park Baptist

- Church, Grove Rd, New Barnet. 8 pm (449 3094).
- *Hendon Sea Cadet Corps — Sea and Marine Cadets 12 yrs plus. Cool Oak Lane, NW9. 7.30 pm (200 6286).
- *Barnet Shotokan Karate Centre, URC Hall, Oakleigh Rd North, Whetstone. 8 pm. Beginners 7 pm.
- *1st Hendon Boys' Brigade, United Reformed Church, Eversfield Gdns, Mill Hill. 6-8 yrs. 4.30 pm; 8-11 yrs. 6.30 pm; 11-17 yrs. 8 pm (427 6237).
- *Pop-Flexibility (exercise to music), Finchley Sports Hall. 7.30 pm (349 1844).
- *Modern sequence and old time dancing, Ashmole Sports Centre, Burleigh Gdns, Southgate. 7.30 pm (886 3799).
- *Self-defence for girls, Bunyan Hall, Trinity Church, Ballards Lane, North Finchley. 7 pm (346 3621).
- *Visual Arts Club, Old Bull Centre, 68 High St, Barnet — 1.30 pm, adults £1, 7-12-yrs. 4 pm, 50p (449 0048).
- *Music and Movement, mime, percussion, contemporary dance, children 3—12, All Saints Church, Talbot Rd, N6 (& Wed.) (349 0974).
- *Friendship Social Club for over 60's, St. Peter Le Poer Hall, Albion Ave, N10. 2 pm (446 4221).
- *Finchley Pensioners' Club, St. Paul's Hall, Long Lane, Finchley. 1.30 pm (346 0564).
- *Ladies — come and find a new meaning to life, Salisbury Chapel, Salisbury Rd, Barnet. 2.15 pm (449 7026).
- *Yoga — fit or disabled — Tudor Hall, Barnet College, Wood St, Barnet. 7.30 pm. Disabled Group 4.30 pm (440 1828).
- *New Barnet Literary and Debating Society, Lyonsdown Hall,

- Lyonsdown Rd, New Barnet. 8 pm (440 3859).
- Barnet Tae Kwon Do Club, Finchley Manorhill School, Summers Lane, Finchley. 7.30 pm (77 50635).
- *Ladies Keep Fit, Silk House Community Centre, Annesley Ave, Colindale. 7.30 pm (206 0072). £1 per session.
- *Bridge lessons and play for improvers (intermediate standard) St. Michael's School, Nether St, North Finchley. 7.45 pm (349 4707).
- *Barnet Contemporary Dance Company, QE Centre, Meadway, Barnet. Beginners 7—8 pm, intermediates 8—9 pm (441 5984).

Tuesday February 15

- Finchley Solo Club for widowed, divorced and single (26-60). 8 pm (441 5532/889 0513).
- Barnet Branch North Middlesex Family History Society, Church House, Wood St. Breakthrough, mini talks by members. 7.45 pm (449 6153/5080).
- 'After Eights' Young Wives, Brunswick Park Road Health Centre, N11. 8 pm (368 9630).
- Barnet National Trust Association, St. Mary Magdalen Hall, Athenaeum Rd, Whetstone. Illustrated talk on Sir Edwin Lutyens, 8 pm (449 5896).
- Amnesty International (Friern Barnet), Ovington Room (behind St. John's Church, Friern Barnet Rd). 8.15 pm (368 8131).
- *Friern Barnet and Totteridge Camera Club, Dollisfield Library, Totteridge Lane. 8 pm (445 2617).
- *Training, Mill Hill Rugby Club, Page St, Mill Hill. 7 pm (203 0685).
- *Barnet and District Athletic Club

- Training, Victoria Hall, East Barnet. 7.15 pm (441 1589).
- *English Country Dancing, Holy Trinity Hall, Church Lane, N2. 7.30 pm (445 4772).
- *Modern ballroom and Latin American dancing, Shakespear Hall, Manor Park Crescent, Station Rd, Edgware. 8.30 pm (346 5868).
- *Judo. Quinta Club, Mays Lane, Barnet (449 2914).
- *Hendon South Young Socialists. 7 Sunnyfields Rd, Hendon. 8 pm.
- *Hendon South Young Conservatives, 166 Station Rd, Hendon. 8.15 pm (455 9136).
- *West Hendon Handicraft Group, Community Centre, West Hendon Estate. 2 pm (205 0514).
- *Herbert Wilmot Youth Centre, Market Place, East Finchley. After School Club, 5 to 12 yrs and parents. Senior Youth Club. 7.30 pm (444 8422).
- *Prayer and Bible Study, Salvation Army Citadel, Salisbury Rd, Barnet. 7.15 pm (440 8303).
- *57 Nursing Division, St John Ambulance Brigade, Carey Hall, Clarendon Rd, Cricklewood. 7.30 pm (428 4529).
- *Barnet Hockey Club training session, Grahame Park all-weather floodlit pitch. 8 pm (445 8968 or 61 22668).
- *East Finchley Sisterhood, Methodist Hall, High Rd, East Finchley. 2.30 pm (444 5756).
- *Hendon Arts Theatre Workshop, open to all, 7.45 pm (202 6242).
- *Manor Drive Methodist Church Wives' Club, York Way, N20 (during term-time). 2 pm. Creche available (368 2193).
- *Home League women's meeting, East Finchley Salvation Army, Hertford Rd, East Finchley. 2.15 pm (444 0207).
- *Barnet Shotokan Karate Centre, Children's class, East Barnet Lower School, Westbrook Cres, 7 pm.
- *Home League women's meeting, Hendon Salvation Army, Brampton Grove, Hendon. 2.15 pm.
- *Tae Kwon Do Club, Centre Point, Grahame Park. 8 pm (200 7112).
- *Ladies' Fellowship, United Mission, Pembroke Rd, Muswell Hill. 2.15 pm (444 5536).
- *Friends of Clitterhouse Junior School — Bingo session term time — Clarendon Rd, Cricklewood. 8 pm.
- *120 (Hendon) Squadron ATC, RAF Hendon, Aerodrome Road, Colindale. Boys 13½-15½. 7.30 pm (205 7297).
- *Goodwyn Avenue Badminton Club, Methodist Church, Goodwyn Ave, Mill Hill, 8 pm (953 2021, ext. 82).
- *Spark Community Social Club (for anyone who has had a stroke), Watling Community Centre, Orange Hill Rd, Burnt Oak. 7 pm (952 3322).
- *Slenderquest, Small Room, St. Mary's Hall, Church Hill Rd, East Barnet (203 0898).
- *Mother and Children's Club, Essex Hall, Essex Park, Finchley, during term-time. 2 pm.
- *20th Century Sequence Dancing Club, All Saints Hall, Oakleigh Rd North, Whetstone. 7.45 pm (360 2586).
- *Mothers and Toddlers Group, Salvation Army Citadel, Albert Rd, New Barnet. 1 pm (449 8200).
- *Evergreen Club for over 60s. Baptist Hall, High Rd. New

EXHIBITIONS

Until March 13

An exhibition by Stanmore and Harrow Historical Society, Church Farm House Museum, Greyhound Hill, Hendon. Opening: Mon—Sat (except Tues.) 10 am—1 pm, 2—5.30 pm; Tues: 10 am—1 pm; Sun. 2—5.30 pm (203 0130).

Until February 25

Work by students of Leone Bunn, Stanhope Road Centre, Stanhope Rd, North Finchley. Open: Mon—Fri. 10 am—12 noon, 1.30—3.30 pm, 6.30—8.30 pm (445 6068).

February 12

Valentine's Fair (crafts and charities), The Old Bull, 68 High St, Barnet. Open 11 am—5 pm (449 0048).

Until February 26

Winter exhibition open to all artists, The Old Bull, 68 High St, Barnet. Open: Mon—Fri. 10 am—6 pm. (449 0048).

Until March 5

Selection of work by Finchley Art Society, Hendon Library, The Burroughs. Normal library opening hours (202 5625).

Until end of March

The Old Bull Dig, exhibition of findings by Hendon and District Archaeological

Society, 68 High St, Barnet. Open: 10 am—6 pm (449 0048).

February 18 to March 12

Oil paintings by Anthony Viney, The Crest Gallery, Totteridge Library, Totteridge Lane, N20. Open: Tues and Wed 2—5.30 pm; Fri 11 am—1 pm, 2—5.30 pm; Sat 11 am—1 pm, 2—4 pm (485 6993).

February 28 to March 19

Paintings by Stewart McIntyre, The Old Bull Centre, 68 High St, Barnet. Open: Mon—Sat 10 am—6 pm (449 0048).

March 3 to 18

Finchley Art Society, Stanhope Road Centre, Stanhope Rd, North Finchley. Open: Mon—Fri 10 am—12 noon, 1.30—3.30 pm, 6.30—8.30 pm (445 6088).

March 4 to 12

Harris Fine Art, Castle Mews Gallery, Castle Rd, North Finchley. Watercolours by Philip Lucas. Open: Mon—Sat 8 am—5.30 pm (446 5579).

March 5 to 31

Studio North Three Members' exhibition, North Finchley Library, Ravensdale Ave. Normal library opening hours (445 4081).

WHAT'S ON

Southgate. 1.30 pm (446 2497).
 *Scottish dancing. St. Albans Hall, West Heath Drive, NW11. 8 pm. Children 6.30 pm (435 5152).
 *Prams and Pushchairs — Mothers, babies and toddlers meeting, Union Church, Northiam, Totteridge. 2 pm.
 *Music and Movement, mime, percussion. Children 3½-7. St. Michael's Church Hall, Golders Green. 2 pm (349 0974).
 *Umpires training course. Cockfosters CC, Chalk Lane. 8 pm. No fees (449 5496/360 7129).
 *Mind in Barnet (Voluntary Association for Mental Health), 154 Station Rd, Hendon. Advice and counselling in strict confidence. No appointment necessary. No charge. Tuesdays 1—3 pm; Wednesdays, 2—4 pm; Thursdays 8—10 pm.
 *Disabled sports for all ages. King Alfred's School, North End Road, NW11. 8 pm (449 9181).
 *West Hendon Liberal Association. 7.45 pm (202 8087 Sunday to Thursday evenings).
 *Hendon and Edgware 18-plus group, the Cavalier Rooms, Prince Albert, Golders Green Road. 8.15 pm (207 4875).

Wednesday February 16

Library Lectures. North Finchley Library, Ravensdale Ave. Vivien Langsten tells you how to set about 'Tracing your Ancestors'. 8.15 pm.
 National Trust Edgware & District Centre, John Keble Hall, Deans Lane, Edgware. Illustrated lecture 'Our splendid heritage of colour and decoration'. 7.30 pm (951 1578).

Barnet & District Local History Society, Council Offices, Wood St. 8.15 pm. 'Competition between Road and Rail' (77 54150).
 Lions Club of Finchley, Hendon Hall Hotel, Ashley Lane, Hendon. 7.30 pm (951 2196).
 *Woodside Park TWG, Old Finchleians Club House, Southover. 2 pm (445 6593).
 Finchley Rotaract Club, Moss Hall Tavern, Ballards Lane, North Finchley. 8.30 pm (361 0454).
 Hendon Floral Art Group, Church House, Greyhound Hill. 7.30 pm (959 6111).
 Friary Ladies Club, Assembly Rooms, Colney Hatch Lane, Friern Barnet (entrance at rear Lyndhurst Ave). 8 pm (368 0638).
 *Women's League of Health and Beauty, Christ Church Hall, High Rd, North Finchley. Graded classes from 7 pm (30 61448).
 *Snack lunch (from 30p). Church House, Wood St, Barnet. Proceeds to Christian Aid. 12 noon (449 9902).
 *Barnet Caving Group, Joiners Arms, Ballards Lane, N3. Beginners and experienced cavers welcome. 9 pm (449 0374 or 444 4374).
 *Wednesday Bridge Club, St. Andrew's Small Hall, Chase Side, Southgate. 1.30 pm (440 9682).
 *Barnet Cycling Club, Victoria Hall, Victoria Rd, East Barnet. 8 pm (446 1762).
 *Old Time and modern sequence dancing, BSCA, Mays Lane,

Barnet. 8 pm (440 4424).
 *Friary Sequence Dance Club, Manor Drive Methodist Hall, Whetstone. 8 pm (446 4816).
 *Up-to-the-Centre Square Dance Club, Watling Community Centre, Orange Hill Rd, Edgware. 8 pm (959 5204).
 *Dog training, St. Philip's Hall, Gravel Hill, Finchley. Beginners 7 pm; Intermediate etc. 8 pm (455 9820).
 *Finchley & Friern Barnet YCs, 212 Ballards Lane, North Finchley, 8 pm (445 9426).
 *Edgware Amateur Cine Society, Orange Hill Junior School,

Hamonde Close, Edgware. 8 pm (204 7484).
 *Whist at Fellowship House, Wilfield Green, Golders Green. 7.45 pm. 25p. (458 3933).
 *Yoga, Whitchurch Institute, Buckingham Rd, Edgware. 2.30 pm (203 1935).
 *Edgware Photographic Society, Edgware Library, Hale Lane. 8 pm (952 4786).
 *Ballroom, sequence, old tyme and party dancing, St. Mary's Hall, 54 Church Hill Rd, East Barnet. 8 pm (803 9028).
 *Home League ladies meeting, Salvation Army Citadel, Albert Rd, New Barnet. 2.15 pm (449 8200).
 *Pymmes Judo Club for children, East Barnet School, Westbrook Cres, New Barnet. 6.30 pm (440 6473).
 *Judo, Herbert Wilmot Youth Centre, Market Place, East Finchley. Juniors 8 yrs plus. 5.15 pm and 6.15 pm. Girls and ladies self defence. 7.30 pm (444 8422).
 *Over 60s Meeting, West Hendon Community Centre. 2 pm (202 4847).
 *North London & District Divorced and Separated Club, St. Paul's Hall, High Rd, New Southgate. 8 pm (363 4130).
 *Incognito Theatre Group, Holly Park Rd, New Southgate. 8 pm. New members welcome (445 1576).
 *Daniel Court Social Club, North Acre, Grahame Park. 2 pm (200 1759 after 6 pm).
 *West Hendon Dog Training Club, Christ Church Hall, The Crest, Brent St, Hendon, 7 pm.

Council meetings

Members of the public are invited to attend Council and Committee meetings which are held in the Town Hall, Hendon at 7 pm.

Monday, February 14: General Purposes.
 Tuesday, February 15: Education.
 Wednesday, February 16: Libraries and Arts.
 Monday, February 21: Finance.
 Wednesday, February 23: Planning Sub-Committees.
 Tuesday, March 1: Education Sub-Committees.
 Monday, March 7: Finance.
 Tuesday, March 8: Council Meeting.

Beginners, intermediate and competition levels (445 3031/455 5889).
 *East Finchley Theatre Group, Methodist Hall, High Rd, East Finchley, N2. 7.30 pm.
 *Mothers and Toddlers Group, Christadelphian Meeting House, 51 Station Rd, New Barnet. 1.30 pm (440 7058).
 *Mountfield Old Time and Modern Sequence Dance Club, Martin School, Finchley. 7.30 pm.
 *East Finchley Neighbourhood Centre, 42 Church Lane, N2. Social Work Surgery. 1.30—3.30 pm (444 6265).
 *Drama Workshop, children 5—7, Old Bull Centre, 68 High St, Barnet. 4.15 pm. Teenagers 6.30 pm. 50p per session (449 0048). Adults 8.30 pm (77 58636).
 *Lyonsdown Parent and Toddler Group, Lyonsdown Hall, Lyonsdown Rd, New Barnet, term time. 10 am (441 0352).
 *Yoga — fit or disabled — 2 pm, St. Mary's Hall, East Barnet; 7.30 pm, Stanhope Rd Centre, Stanhope Rd, North Finchley (440 1828).
 *Brent Divorced and Separated Club, Supper Room, The Hog's Grunt, Production Village, 100 Cricklewood Lane, NW2. 8 pm (452 2912).
 *Barnet Shotokan Karate Centre. Beginners Class, St John's Hall, Friern Barnet Lane, N20. 8 pm (449 3444).
 *Gymnastics, Manor Arrows Youth Centre, Finchley Manorhill School, Summers Lane, N12. 6 pm (368 8976).
 *Badminton, East Finchley (883 4437).
 *Training, Mill Hill Rugby Club,

BRIDGE CORNER

NORTH

♠ A Q
 ♥ A K 7
 ♦ A K Q 5
 ♣ 9 6 4 3

EAST

♠ J 5
 ♥ Q 9 8 3
 ♦ 8 4 2
 ♣ J 10 5 2

WEST

♠ K 10 9 8 7 4 2
 ♥ J 10 5
 ♦ 10 6
 ♣ 8

SOUTH

♠ 6 3
 ♥ 6 4 2
 ♦ J 9 7 3
 ♣ A K Q 7

DEALER SOUTH N/S GAME

After a pass by South, West opened a pre-emptive three Spades. North eventually became Declarer in 6NT. East led the Jack of Spades. Declarer studied the two hands for some time, then proceeded to stake everything on a three

two Club break, going one down. No justice he remarked to his partner. There is no possibility of a squeeze due to the duplication of the hands and the Clubs splitting three two is a 68 per cent chance.

Declarer failed to allow for the fact that the 68 per cent chance was likely to be somewhat lower after West's pre-emptive opening or to take advantage of the information given by West's bid. After the lead eleven tricks are on top. The contract depends entirely on the Club distribution and by careful play Declarer can check this before tackling the suit.

After winning the opening lead with the Queen Declarer plays off A and J of Diamonds. The crucial play now is to lead a small Heart from hand, win the Spade return and proceed to take a count of the West hand. Declarer now plays the Club A, A and K of Hearts and the K of Diamonds. West announced seven Spades with the opening bid, has shown with three Hearts and two Diamonds and one Club. His complete distribution is 7-3-2-1 and East must hold J 10 X X in Clubs.

Declarer now plays a small Club. If East plays low the seven is inserted. If East splits his honours Declarer wins, returns to his hand with the Diamond Queen and takes the finesse against the last two clubs.



TIRED, LISTLESS, ALWAYS SHOUTING AT THE CHILDREN, never have any energy or spare money. I can help you overcome the symptoms of the 1980s by introducing you to a company that understands your problems. So if you want to feel better or to earn extra cash in your spare time (No capital or stock investment required) and you are interested in Health Nutrition and Beauty, telephone ROSALIND on **440 9716**

Join the rush to the great



SALE!



HURRY! SALE ENDS SOON

HUGE REDUCTIONS UP TO 22% OFF our superb fitted bedrooms!!!

* More choice * More value * More experience from the oldest-established fitted bedroom manufacturers

FREE

No obligation plan and quotes! Delivery and installation! 5 year Guarantee of quality and workmanship!

Call in or phone your local showroom for FREE colour brochure

EASY CREDIT TERMS
 LOW DEPOSIT
 NOTHING TO PAY FOR 3 MONTHS
 (written details on request)

LOCAL GKD SHOWROOMS

WHETSTONE
 1376 High Road, N.20
 01-445 4853

HENDON
 9 Finchley Lane NW4 (Nr Odeon)
 01-203 5767

ST. ALBANS
 25 High Street, near Cathedral
 St. Albans 32553

- 16
- Page St, Mill Hill. 7 pm (203 0685).
- *North Side Bridge Club, Methodist Church, High Rd, East Finchley. 7.30 pm (445 7788).
 - *Activities Evening (10 to 18 year olds) badminton, five-a-side football, indoor hockey etc, Manor Arrows Youth Club, Finchley Manorhill School, Summers Lane, North Finchley. 6 pm (368 8976).
 - *Finchley Old Time and Modern Sequence Dance Club, Martin School, East Finchley. 7.30 pm.
 - *National Council for the Divorced and Separated (NW London Branch), Cavalier Rooms, Prince Albert, Golders Green Rd, NW11. 8 pm.
 - *Mental Health Association (MIND) Social Club, 154 Station Rd, Hendon. 8 pm (455 2850).
 - *Finchley Chess Club, Day Centre, Etchingham Park Rd, Finchley. 7 pm (445 7560).
 - *Silver Circle, Senior Citizens' Club, Salvation Army Citadel, Albert Rd, New Barnet. 2 pm (449 8200).
 - *Ridgeway Club, National Association of Women's Clubs, St. Mary's Hall, Church Hill Rd, East Barnet. 7.30 pm (449 2852).
 - *Barnet and District Athletic Club Joggers night, Victoria Hall, Park Rd, East Barnet. 7 pm (441 1589).
 - *Barnet Youth Hostels Association Group, Scout HQ, Triangle Passage, New Barnet. 8 pm (77 54216).
 - *Pymmes Judo Club for adults,

WHAT'S ON

- East Barnet School, Westbrook Cres, New Barnet. 8 pm (440 6473).
- *Herbert Wilmot Youth Centre, Market Place, East Finchley. 3 pm. After School Club (5 to 12s and parents). Senior Youth Club (13 to 18 yrs). 7.30 pm (444 8422).
- *Boys' Brigade, 4th Finchley, 11-18 yrs, Finchley Methodist Church, Essex Hall, Essex Park, Finchley. 8 pm (446 2690).
- *North London Karate Club, QE Girls' School, Meadway, Barnet. 7.30 pm and 8.30 pm (440 7733/8633).
- *Duplicate Bridge, Friends of the Jewish Day Centre, Michael Sobell House, Limes Ave, Golders Green. 7.45 pm. £1.20 inc. refreshments.
- *Dancing, Conservative Hall, High Rd, New Southgate. Modern Sequence and Old Time. 8.30 pm (361 9847).
- *Barnet PHAB Group (physically handicapped and able-bodied), Alyth Youth Centre, Alyth Gdns, Temple Fortune. 8.15 pm (906 1505).
- *Old Time and Sequence Dance Club, Cadets HQ, Long Lane, Finchley. 7.30 pm (445 3610).
- *Boys Club, Salvation Army Citadel, Salisbury Rd, High Barnet. 6.30 pm (204 7213).
- *Edgware Sea Cadet Corps, girls' 12-18 yrs, Daws Lane, Mill Hill. 7.30 pm (959 0711).
- *8th Barnet Scout Group (Cubs) 8-11 yrs, The Scout Hut, St. Albans Rd, Barnet. 6.30 pm (440 7457)
- Ladies' Meeting, Salvation Army

- Citadel, Salisbury Rd, Barnet. 2.30 pm (440 3899).
- *Burnt Oak Salvation Army Over 60s Club, Barnfield Rd, Burnt Oak. 2 pm (906 1606).
- *Tae Kwon Do Club, Centre Point, Grahame Park. 8 pm (200 7112).
- *9th Hendon Boys' Centre, Edgware Methodist Church, Garratt Rd, 8-11 yrs. 6.45 pm (958 8285).
- *Boys' Brigade, 1st New Barnet, Brookside Methodist Church, East Barnet. 6-8 yrs. 6 pm; 8-11 yrs. 6.30 pm (441 2042).
- *Hendon Chess Club, 7 Sunningfields Rd, Hendon. 7.30 pm (200 5823).
- *Sequence Dancing, St. Stephen's Hall, Bells Hill, Barnet. Beginners 7.30 pm; General dancing 8.30 pm (77 52949).
- *High Barnet Woodcraft Folk, Underhill School, Mays Lane, Barnet. Boys and girls 6-10 yrs

- 6.15 pm (441 3233).
- *8th Hendon Boys' Brigade (Pre-Junior) 5-8 yrs 6 pm, Mill Hill East Church, Salcombe Gdns (205 3182/346 6167).
- Russell Club (National Association of Women's Clubs), Southaw School, Russell Lane, Whetstone. 8 pm (361 1553).
- *JACS (Finchley). Cultural club for retired people, Caller Wing, Finchley Synagogue, Kinloss Gdns, Finchley. 1.30 pm (446 0787).
- *Retirement Club, Montagu Rd Centre, Montagu Rd, Hendon. 1.45 pm (202 2233).
- *Over 60s Club, Salvation Army Citadel, Brampton Grove, Hendon. 2 pm.
- *Pop-flexibility, Finchley Sports Centre, High Rd. 7.30 pm (349 1844).
- *3rd East Barnet Scout Group (11-16 yrs), Vernon Cres, East Barnet. 6 pm.
- *Ballard Jewish Friendship Club, Ruben Shine House, 184 Ballards Lane, Finchley. 7 pm (346 4393/455 8710).
- *Church Farm Square Dance Club, Church Farm Hall, Church Hill Rd, East Barnet. 8 pm (363 5247).
- *Women's Friendship Club, Union Church, Northiam, Totteridge. 2.15 pm (445 7993).
- *1st Friern Barnet Boys' Brigade, Manor Drive Methodist Church, Whetstone. 6-8 yrs. 5.45 pm; 8-11 yrs. 6.30 pm; 11-17 yrs. 7.45 pm (446 0882).
- *3rd Colindale (St Matthias) Brownie Guides 6.30 pm. Guides, 8 pm, HQ, St Matthias

- Parish Centre. Rushgrove Ave, Colindale (205 5159. Brownies. 205 0684 Guides).
- *Old Bull Morris Men, Morris and traditional clog dancing, QE Centre, Meadway, Barnet. 8 pm (0442 62387).
- *Barnet Women's Place, John Hampden Annexe, Victoria Rd, New Barnet. 8 pm (440 2099; 446 3339).

- Friday February 18**
- Broadfields Evening TWG, Orange Hill Junior School, Hamonde Close, Edgware. 7.30 pm (958 4845).
 - Barnet Afternoon TWG, Church House, Wood St. 2 pm (449 0714).
 - *St. George's Swimming Club, QE Boys' School, Queens Rd, Barnet. Beginners and improvers. 7 pm (449 9104).
 - *International folk dancing, Hadley Memorial Hall, Hadley Highstone. 8 pm (368 5345).
 - *Hendon Camera Club, Fellowship House, Willifield Way, Golders Green. 7.45 pm (455 0837).
 - *Barnet & Finchley Photographic Society, rear 37 Salisbury Rd, Barnet. 8 pm (368 3917).
 - *Mill Hill Over 60s Handicraft Club, Moreton Close Lounge (behind shops Salcombe Gdns, Mill Hill). 2 pm (959 3858).
 - *Herbert Wilmot Youth Centre, Market Place, East Finchley. Junior Youth Club (8-13 yrs), general. 5.45 pm (444 8422).
 - *Finchley Cine Society, Avenue House, East End Rd, Finchley. 8 pm (346 4265).
 - *Edgware Sea Cadet Corps, boys 12-18 yrs. Daws Lane, Mill Hill. 7.30 pm (959 0711).
 - *8th Barnet Scout Group, 11-16 yrs, Scout Hut, St. Albans Rd, Barnet. 7.30 pm (440 7457).

SCHOOL SPORTS EVENTS

Wednesday February 16
Schools Trampoline Championships, Southaw School, Russell Lane, Whetstone. 4 pm.

Saturday March 12
Primary Schools Netball championships, Queen Elizabeth's Centre, Meadway, Barnet. 9 am to 1 pm.

Sunday March 13
Schools Basketball finals. 10 am to 7 pm. Queen Elizabeth's Centre, Meadway, Barnet.



KEEP FIT

Learn
TAE KWON DO
(Korean Art of Self-Defence)
at: Finchley Manor Hill,
School's Gym,
Summers Lane, N12
on Monday 7.30—9.30 pm
Queen Elizabeths Boys School,
Assembly Hall,
Queens Road, Barnet,
Friday 7.30—9.30 pm
Instructors: S. W. PAN 3rd Dan,
A. PATEL 2nd Dan
Details: Call at the Training Centres

THE GALLERIES

FOR GIFTS AND TABLEWARE

CHINA BY AYSLEY

ROYAL DOULTON

WEDGWOOD WORCESTER

POOLE & HORNSEA

LEAD CRYSTAL BY DARTINGTON,

EDINBURGH, TUDOR, THOS. WEBB,

ROYAL DOULTON CAITHNESS

1 HEDDON COURT PARADE

COCKFOSTERS ROAD

BARNET, EN4 0DB

01-449 2690

NOW OPEN

See out working GAS LOG AND COAL EFFECT FIRES and take advantage of our special opening offers



Also open Sundays 12-4 pm

The London Gas Log Fire Centre

71 THE HYDE
COLINDALE, NW9
(Near the junction with Kingsbury Road)

TEL: 200 7445

GREEN'S SECRETARIAL SCHOOLS

LEARN TO TYPE!

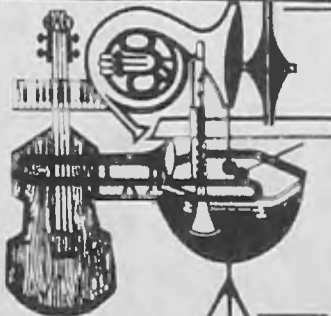
EXPERT INDIVIDUAL TUITION
IN TYPING — AUDIO
AND PITMAN'S SHORTHAND

Beginners, Refreshers, Crash Courses, etc., to R.S.A. standards. Small groups — flexible hours
VERY HIGH SUCCESS RATE

NEW COURSES COMMENCING SHORTLY. DAY AND EVENING IN HENDON, MILL HILL, EDGWARE, CRICKLEWOOD, GOLDERS GREEN

TEL. MRS GREEN, 01-202 9598
or 01-203 1424

SPECIAL DIPLOMA COURSES



programme

HANDEL Water Music: Suite in F

MOZART Violin Concerto in D, K.218

BOROUGH OF BROXBORNE Presents at

BROXBORNE CIVIC HALL
High Street Hoddesdon (Hoddesdon 4 4 1946)

SUNDAY, FEBRUARY 27 1983

7 for 7.30 p.m.
by public demand

LONDON MOZART PLAYERS

Director and Soloist **JOHN GLICKMAN**
Assisted by the Arts Council of Great Britain, B.P. and Eastern Authorities Orchestral Association

MOZART Divertimento in D, K.136

HAYDN Symphony No. 45 in F sharp minor "Farewell"

Tickets £3.50 Raised, £3.00 and £2.50

Tickets from Broxbourne Civic Hall, AND Wolsey Hall Box Offices and usual agents.

WHAT'S ON

*Over 60s Fellowship, East Finchley Salvation Army, Hertford Rd, East Finchley. 2.30 pm (444 0207).
 *Barnet Arts Workshop Dance/Keep Fit Class, Avenue House, East End Rd, Finchley. 7.5p (creche). 10 am and 11.15 am (346 7120).
 *Hendon Unit Sea Cadet Corps. Girls 12 years plus. Cool Oak Lane, NW9. 7.30 pm (200 6286).
 *Bible Fellowship, Salvation Army Citadel, Albert Rd, New Barnet. 7.45 pm (449 8200).
 *Barnet Tae Kwon Do Club. QE Boys' School, Queens Rd, Barnet, 7.30 pm (77 50635).
 *5th Hendon Boys' Brigade, Orange Hill Junior School, Hamonde Close, Edgware. 8-11 yrs, 6.30 pm; 11-18 yrs. 8 pm (952 3385).
 *Barnet Blind Bowls Club, Drill Hall, St Albans Rd, Barnet. 2 pm (449 7058).
 *High Barnet Woodcraft Folk Venturers 13-16+ (enquire QE Sports Centre for location) (440 2426).
 *Mother and Toddlers Group, The Hyde URC Hall, Colin Close, Colindale. 2 pm. During term (200 5375).
 *120 (Hendon) Squadron ATC, RAF Hendon, Aerodrome Rd, Colindale. Boys 13½-15½. 7.30 pm (205 7297).
 *3rd East Barnet Cub Scout Pack (8-11 yrs). HQ, Vernon Cres, East Barnet. 6.30 pm.
 *1st Golders Green Ranger Guides (14-19 yrs), St. Albans Church Hall, West Heath Drive, NW11. 7.45 pm (360 6456 day).
 *Siddha Meditation — Satsangs — chanting, talks and meditation. 7.45 pm (446 1650).
 *Ranger Guides — 8th West Finchley, Finchley Methodist

Hall, Ballards Lane, Finchley, 14-18 yrs. 7.30 pm (349 9081).
 *Barnet International Folk Dance Club, Hadley Memorial Hall, Hadley Highstone. 8 pm (368 5345).

Saturday February 19

You are invited to meet your Garden Suburb Ward Councillors. to discuss any problems you may have relating to Local Government matters, The Tea House, Northway, NW11. 10 am to 12 noon.
 Advice Bureau held by John Major, GLC member for Chipping Barnet, and a Barnet Councillor, 163 High St, Barnet. 10.30 am to 12 noon (449 7345).
 London Hash House Harriers — Milling about Mill Hill. 11 am Mill Hill East tube station (349 2338).

Monday February 21

Hampstead Garden Suburb Antiques Circle, Bigwood House Community Room, Bigwood Rd, NW11. 8 pm Domestic Byegones. Non-members £1.25 (202 0269).
 Friern Barnet Council for Voluntary Service Whist Drive, Priory Hall, Friern Barnet Lane. 2.15 pm (368 4278).
 Barnet & District Philatelic Society, Council Chambers, Town Hall, Station Rd, New Barnet. 8 pm President and Chairman entertain (449 2536).
 Mill Hill Rotaract Club, Mill Hill Lawn Tennis Club, Sylvan Ave. 8 pm (202 4509).
 Loyal Flower of Hendon Lodge of Odd Fellows, Post Office,

Brampton Grove, Hendon, 7.45 pm (952 5576).
 Amnesty International (Friern Barnet), Jubilee Room, St. James' Church, Friern Barnet Lane. 8 pm 'Let's look at birds' (368 8131).

Tuesday February 22

Calling all learner drivers. Pre-driving test lecture, Road Safety Centre, East Barnet Town Hall, Station Rd, New Barnet. 7.30 pm. £1. Contact Barnet Council's Road Safety Section, Smith's Field, East End Rd, Finchley, N3 (349 9212, ext 422).
 Finchley Redbourne TWG, Etchingam Park Centre, Etchingam Park Rd, N3. 7.45 pm (346 8596).
 Barnet Anglo-French Club, Council Chambers, 29 Wood St. 8.15 pm. 'Conferencier' (440 9267).

Wednesday February 23

Library Lecture, Hendon Library, The Burroughs. Dr. Leo Batten talks on 'Wild Life of the Welsh Harp'. 8.15 pm.
 Finchley Church End Afternoon TWG, St. Mary's Hall, Hendon Lane. 2.15 pm (346 4178).
 Amnesty International, Unitarian Church, Hoop Lane, Golders Green. 7.30 pm (346 3138).
 Finchley Antiques Appreciation Group, Avenue House, East End Rd. 7.50 pm '... And so to bed'. (445 7247).
 Finchley Society, Methodist Hall, Ballards Lane, Church End, Finchley. Travels and Travails of a Councillor. 8 pm (349 2066).

Family Holiday Association open meeting, Bigwood House, Bigwood Rd, NW11. 8 pm. Guest Speaker: Mr. Gordon Infield of Marks and Spencer, 'St. Michael and its attitude to social responsibility'. (455 1777).

Thursday February 24

Circassian Circle Folk Dance Club, Harwood Hall, Mill Hill B'way. 7.45 pm (950 5756).
 Hendon & District Aquatic Society, Hendon Library, The Burroughs. 8 pm (368 8430).
 Osidge Branch (Women's Section) Chipping Barnet Conservative Assn., St. Andrews Hall, Chase Side, Southgate. 2 pm (368 5414).
 Pensioners' Voice (Whetstone/Finchley), North Finchley Library, Ravensdale Ave. 1.30 pm (445 7143).
 Finchley & Barnet CND, Friends Meeting House, 56 Alexandra Grove, North Finchley. Films & discussion. 8 pm.

Friday February 25

Grafton Radio Society, 'Five Bells' Public House, East End Rd, Finchley, N2. 8 pm (346 5841).

Saturday February 26

English Folk Dance and Song Society, Barn Dance, Church House, Wood St, Barnet. Caller, Colin Roker. £2 (449 4425).

Sunday February 27

Octopus Swimming Club for the Handicapped, Squires Lane Baths, Finchley, N3. 12.30—1.30 pm (346 5944).

Tuesday March 1

Finchley Solo Club for widowed, divorced and single (26-60) 8 pm (441 5532/889 0513).
 Friern Barnet Friary TWG, Christ Church United Reformed Church Hall, Bellevue Rd, Friern Barnet. 1.45 pm (445 8011).
 'After Eights' Young Wives, Brunswick Park Road Health Centre, N11. 8 pm (368 9630).

Wednesday March 2

Hendon & Hampstead Antique Ceramic and Glass Society, Hendon Library, The Burroughs. Victory pottery and porcelain. 8 pm. Visitors £1.25 (202 9508).
 Ecology Party (Barnet/Finchley). (449 8297).
 Finchley Rotaract Club, Moss Hall Tavern, Ballards Lane, North Finchley. 8.30 pm (361 0454).
 Pensioners' Voice (Colindale/Burnt Oak), Burnt Oak Library, Watling Ave. 1.30 pm (959 4683).
 Lions Club of Finchley, Hendon Hall Hotel, Ashley Lane, Hendon. 7.30 pm (951 2196).
 British Ceramic and Glass Society, Church Hill Primary School, Burlington Rise, East Barnet. 7.45 pm. Tea bowls and saucers. (446 1022).
 Friary Ladies Club, Assembly Rooms, Colney Hatch Lane, Friern Barnet (entrance rear in Lyndhurst Ave). 8 pm (368 0638).
 Milldon Art Society, Harwood Hall, Union Church, The Broadway, Mill Hill. 7.30 pm. 'Framing' — practical advice by Tom Cooper. Guests 20p.

Thursday March 3

East Barnet Valley TWG, St. John's Hall, Mowbray Rd. New

WARNING!

Do not read this

unless you are a prisoner in your own home

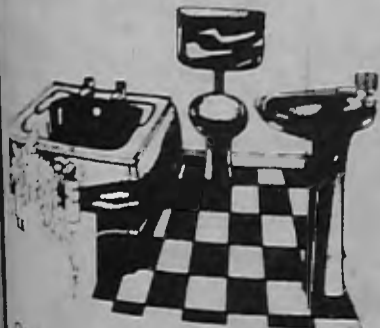
Were you confined to one heated room last year? If so don't spend another year around a solitary heater. We can offer you the freedom to use each and every room, without breaking the piggy bank. We design, install, service, guarantee and insure the freedom of your own home for less than a third of a 'Y' reg family saloon car. Which is more important, the comfort in your home or impressing the neighbours? Our tailor-made central heating systems in theory are free! Your investment is redeemed on the sale of your home, usually with a profit. He who hesitates is lost.



BATHROOMS!

Special for one month only!

A coloured bath suite supplied and fitted **£330**



Don't delay phone for a friendly no nonsense approach for your heating requirements.

A.1. HEATING COMPANY

Telephone 0582-422589/415803

LICENSED CREDIT BROKERS

Probably the best investment you'll ever make

DISCO LATIN BALLROOM KEEP FIT JAZZ



CLASSES AND PERSONAL TUITION FOR ALL AGES
 RING 202 9911 NOW FOR FREE BROCHURE
 LEARNING IS FUN AT THE FRIENDLY

HENDON DANCENTRE

QUEENS PARADE, HENDON, CENTRAL
 (Opposite station)

SELECTACARPET Discount Carpets

New Year Bonus
 Free portable TV on any cash order over £500

PLUS Stock vinyl from £1.99 square yard
 PLUS 50% Wool Berbers £5.95 square yard
 PLUS Free fitting on all carpet orders

11 Long Lane Finchley
 Tel: 346 6764

279 Archway Road Highgate
 Tel: 341 3310

RELIABLE DISCO AVAILABLE

ANY OCCASION
 REASONABLE RATES
 MANY RECOMMENDATIONS
 Tel: COLIN ON
 01-368 2921

BETWEEN 8 & 18?

INTERESTED IN DRAMA, SINGING OR DANCING?

KIDSNCO

Studio Agency offers a thorough training in dramatic arts

Saturdays 10 am—1 pm
 Campbourne Community Centre, N8

For further information regarding auditions, please contact the director: Ray Hughes, 1023 High Road, Whetstone, N20. Tel: 446 0340

SLOT COLOUR TV

No deposit

Tel: 888 8900
 9—5.30

or 366 5871
 Evenings and weekends

WHAT'S ON

Barnet. 2.15 pm (449 4227).
Local History Group of the East Finchley Village Society, East Finchley Neighbourhood Centre, 42 Church Lane. 8 pm.
Hendon Afternoon TWG, Cheshir Hall, Foster St. 2 pm (202 6081).
Women's Aid monthly meeting. Contact (449 4847).
Multiple Sclerosis Society (Barnet & District), Lyonsdown Hall, Lyonsdown Rd, New Barnet. 7.30 pm (366 4282).
Chipping Barnet WI, Wesley Hall, High St. 10 am (441 4103).

Friday March 4

Women's World Day of Prayer (Edgware & Mill Hill): St. Michael & All Angels, Mill Hill. 10.30 am. St. Augustine's, Grahame Park, 2.15 pm; St. Anthony's, Edgware, 2.30 pm; All Saints, Queensbury, 2.30 pm.

Saturday March 5

Advice Bureau held by Sydney Chapman MP, Chipping Barnet, and a Barnet Councillor, 163 High St. 10.30 am to 12 noon. (449 7345).
Friern Barnet Council for Voluntary Service Whist Drive, Priory Hall, Friern Barnet Lane. 8 pm (368 4278).
London Hash House Harriers — Pymmes Brook. 11 am. Arnos Grove Tube station. (349 2338).
Barnet Deanery Overseas Sale, Church House, Wood St. 10.30 am—12.30 pm. (445 2154).

Monday March 7

Barnet & District Philatelic Society Junior Section, Council Chambers, Town Hall, Station Rd, New Barnet. 6.30 pm (449 2536).

Mill Hill Rotaract Club, Mill Hill Lawn Tennis Club, Sylvan Ave. 8 pm (202 4509).

Finchley Chrysanthemum Society, Manorside School, Squires Lane, Finchley, N3. 8 pm AGM. (346 2974).

Loyal Flower of Hendon Lodge of Odd Fellows, Post Office, Brampton Grove, Hendon. 7.45 pm (952 5576).

New Barnet Evening TWG, Methodist Hall, Brookside, East Barnet. 7.30 pm.

Tuesday March 8

Mill Hill Flower Club, Harwood Hall, Mill Hill Bd'way. 8 pm (954 4944).

National Schizophrenia Fellowship (NW London), Temple Fortune Health Centre, Temple Fortune Lane. 8 pm (455 5113).

Open House — social and cultural meetings, S.A.E. to 146 Oakleigh Road South, New Southgate.

Institute Society Arts Group, Bigwood House, Bigwood Rd, NW11. 8 pm. 'The making of a picture'. Non-members 30p. (455 3244).

Barnet Anglo-French Club, Council Chambers, 29 Wood St. 'Mad Hatter's Tea Party'. 8.15 pm (440 9267).

Wednesday March 9

Brunswick Park Ladies, Church Farm Hall, Church Hill Rd, East Barnet. 2 pm (368 0383).

British Computer Society (North London), West Lodge Park Hotel, Cockfosters. 7.45 pm. 'What's new in Banking'. (368 5339).

Hendon Horticultural Society, Lecture Hall, Hendon Library, The Burroughs. 8 pm. 'History and the work of Kew'. (346 7392).

Pensioners' Voice (Barnet), Methodist Church Hall, High St. 1.30 pm (449 6023).

Hendon & District Aquatic Society, Hendon Library, The Burroughs. 8 pm (368 8430).

North Finchley Royal British Legion, Legionway, off Summers Lane. 8 pm (445 9911).

Barnet Friends of the Earth. Varied venue. (441 0792).

Finchley Floral Art Society, Friends Meeting House, Alexandra Grove, North Finchley. 8 pm (446 0835).

Finchley Antiques Appreciation Group, Avenue House, East End Rd, N3. 7.50 pm. '18th/19th Century Embroidery'. (445 7247).

Totteridge Afternoon WI, Village Hall, Badgers Croft, Totteridge Lane. 2.15 pm.

Thursday March 10

Circassian Circle Folk Dance Club, Harwood Hall, Mill Hill Bd'way. 7.45 pm (950 5756).

Pensioners' Voice (East Finchley), East Finchley Library, 226 High Rd. 1.30 pm (444 5950).

Finchley & Granville TWG, Finchley Methodist Hall, Ballards Lane, N3. 2 pm (445 5865).

Barnet & District Fuchsia Society, Council Offices, 29 Wood St. Speaker: Mr. G. Bartlett. 8 pm (565 9989).

Barnet Flower Arrangement Society, Lyonsdown Hall,

Lyonsdown Rd, New Barnet. 8 pm. 'With Spring in the air'. (775 2924).

Friday March 11

The Historical Association (North London), Junior Library, Cecil Rd, Enfield. 8 pm 'Parson Woodforde and his diary' (9-719866).

Grafton Radio Society, 'Five Bells' Public House, East End Rd, Finchley, N2. 8 pm (346 5841).

Mill Hill & Hendon Historical Society, Mill Hill Library, Hartley Ave. 'The Cemeteries of London'. 8.15 pm (203 2611).

Finchley Branch UNA, Methodist Church Hall, Ballards Lane, N3. AGM followed by talk on 'Science and the U.N.' by Dr. Margaret Joachim. 8 pm (445 3748).

Saturday March 12

Guide Dogs for the Blind Association Spring Fair, Barnet Church Hall, High St. 10.30 am to 3.30 pm.

British Tinnitus Association (NW London), The Meritage Club, Church End, Hendon. 2 pm (444 9657).

LATE ENTRIES

Tuesday February 15

Acorns, women's non-sectarian club, East Finchley Methodist Hall, High Rd. 9.45—11.30 am. Creche available (449 8613/349 2148). Also Tuesday, March 1.

Haydn, Frank Bridge and Beethoven. 7.30 pm (202 6242).

Tuesday March 1

East Barnet Library Gramophone Society, 85 Brookhill Rd. 8 pm 'The composer behind the facade' (440 4376).

Thursday March 3

Friern Barnet Library Gramophone Society, Friern Barnet Rd. 8.10 pm. 'The symphonies of Vaughan Williams' (368 2680).

Saturday March 5

Barnet & District Choral Society, Barnet Parish Church, High St. Works by Kodaly, Vivaldi, Randall Thompson and Tchaikovsky. Tickets £1.75 (449 7760).

Tuesday March 8

Hendon Library Gramophone Society, Hendon Library, The Burroughs. 7.30 pm Offbeat (202 5625).

Saturday March 12

London Charity Concert Orchestra, Grahame Park Centre Point, Cornermead, Colindale. 7.30 pm Programme to be announced (346 0203).

LOCAL THEATRE GUIDE

February 18 to 26

Hampstead Garden Suburb Dramatic Society presents 'Troy', a musical based on Helen of Troy, The Institute Theatre, Central Square, NW11. 7.30 pm (455 6476)

Saturday February 19

Gala Performance of 'Troy', Institute Theatre, NW11. Proceeds in aid of Institute Hall Rebuilding Fund. Tickets: £4 with wine and re-

freshments after the show. £2 (without wine etc.) (455 6476).

February 23 to 26

Harlequin Players present 'Sinbad the Sailor', Hartley Hall, Flower Lane, Mill Hill. 7.45 pm (Wed.-Fri.), 1.30, 5 and 8.15 pm (Sat.) (360 1104).

February 26 and 27

Barnet Youth Drama Centre,

142 High Rd, East Finchley. 'Death takes a holiday.' Sat., 7.30 pm; Sun., 4 pm. Tickets 80p (959 5052)

March 1 to 5

Good Companions Golden Jubilee Production 'Cabaret', John Keble Hall, Deans Lane, Edgware. 8 pm. Tickets: £1.50, £2 (959 4003)

Music in Barnet

Saturday February 12

*Morning Music Club for children, Trent Park Music Centre, Middlesex Polytechnic, Cockfosters. 10.30 am—12 noon (440 5181). Until March 19.

Sunday February 13

Barnet Schools Music Association. Woodwind Orchestra, Friern Barnet County School, Hemington Ave. 7.30 pm (368 1255).

Mill Hill Toc H Music Club, Civic Hall, Borehamwood, The Nash Ensemble. 7.45 pm (953 9872/959 1173).

Monday February 14

Hendon Music Society, Hendon Library, The Burroughs. 'How to be an armchair critic' by Peter Gammond. 8 pm (203 0929).

*Finchley Choral Society, Moss Hall Junior School, Nether St, Finchley. 7.45 pm (445 8401).

*Barnet Orchestra at Hendon, Whitefield School, Claremont Rd, Cricklewood. 7.45 pm (205 2418).

*Tudor Orchestra, East Finchley Methodist Church Hall, High Rd, Finchley, N2. 7.45 pm.

Tuesday February 15

East Barnet Library Gramophone Society, 85 Brookhill Rd. 8 pm. 'Night Music' (440 4376).

*Finchley Chamber Choir, Finchley Methodist Church, Ballards Lane, Finchley. 8 pm (959 2681).

*Hendon String Orchestra, Whitefield School, Claremont Rd, Cricklewood, 7.45 pm.

*Apollo Singers, Hendon's Male Voice Choir, Grahame Park

School, Corner Mead, Colindale, 7.45 pm (959 1244).

Wednesday February 16

*Barnet and District Choral Society, Wesley Hall, Methodist Church, High St, Barnet. 7.45 pm (368 5897/440 1157).

*Senior Citizens' Light Orchestra, Friends Meeting House, by Winchmore Hill Green. 10.30 am. More wind and string players needed (360 2013).

Thursday February 17

Friern Barnet Library Gramophone Society, Friern Barnet Rd. 8.10 pm. 'Morning, evening and night in Vienna' (368 2680).

*Finchley Chamber Orchestra, Moss Hall Junior School, Finchley, N3. 7.30 pm.

*Barnet Band, QE Boys' School, Queen's Rd, Barnet. 8 pm (405 3474, ext 43 day: 723 5968).

*London Pro Arte Choir, Grahame Park School, Colindale,

NW9. 7.30 pm (959 2688).

Saturday February 19

Finchley Chamber Choir, Finchley Methodist Church, Ballards Lane, Finchley, N3. Concert of English music. 7.45 pm. Tickets: £1.50 (students/OAPs £1). (449 7076).

Tuesday February 22

Hendon Library Gramophone Society, Hendon Library, The Burroughs. 7.30 pm. Brahms: Piano quintet in F minor and Mine own opera. (202 5625).

Saturday February 26

Music in Central Square, St. Jude's Vestry, NW11. Lecture on 'Three kinds of Classical Music'. 8 pm.

Barnet College Concerts in Hall, Fitzjohn Ave. London Collegiate Brass Ensemble. 7.30 pm (440 6321).

Hendon Music Society, Hendon School, Golders Rise. Delma String Quartet. Works by

Wednesday February 16
Rotaract Club of Barnet, The Salisbury, High St., Barnet. 8 pm (77 55630). Also Wednesday, March 2.

Thursday February 17

NSPCC Centenary Development Appeal meeting, Town Hall, Hendon. 7 pm. Chairman, The Mayor, Speaker, Ronald Hawker, national organiser. It is hoped to form NW London Sector committee (440 3657).

Friday February 25

Barnet Ratepayers & Residents' Association, WRVS Luncheon Room, Salisbury Rd., Barnet. Surgery 7.30 pm. Committee meeting 8 pm.

Wednesday March 2

Barnet Evening TWG, Church House, Wood St. 7.45 pm 'Famous women in the Theatre'. (449 6809).

Thursday March 3

Church Hill JMI School PTA, Burlington Rise, East Barnet. Cookery demonstration. 7.30 pm. Tickets 50p (368 4778).

Saturday March 5

Church Hill JMI School PTA. Jumble sale, School Hall, Burlington Rise, East Barnet. 11 am.

Monday March 7

Finchley League of Jewish Women, Kinloss Synagogue, Kinloss Gardens, N3. 1.30 pm Talk on Marks & Spencer Ltd. (882 3064).

Pensioners' Voice (Mill Hill), John Keble Church, Deans Lane, Edgware. 1.30 pm.

Thursday March 10

Auction at Northway School, The Fairway, Mill Hill in aid of Northway School Association. 8 pm (959 2308).

Mondays

*St. John Ambulance Cadets, boys and girls 8-16. 7 pm; Adults 7.45 pm. Watling Community Centre, Orange Hill Rd, Edgware (959 5391).

*Yakar Educational Foundation (Jewish educational lectures). 2 Egerton Gdns, Hendon. 8 pm (202 5551 2). Also Tuesdays.

*Canada Villa Senior Youth Club, Youth Centre, Pursley Rd., Mill Hill. 7.30 pm. Also Wednesdays and Fridays. (959 2811).

*Over 60s Club, St. Mary Magdalen Hall, Holders Hill Rd, Mill Hill. 2 pm.

Tuesdays

*Canada Villa Judo Club, Youth Centre, Pursley Rd., Mill Hill. 6.30 pm (959 2811).

*Ballroom and Latin Dancing, Lyonsdown Hall, New Barnet. Beginners 7.30 pm. General 8.30 pm (77 52169).

*BHTS/Sangam Club, St. Paul's Church Hall, Long Lane, N3. 1.30 pm.

*Finchley Ferris Wheelers Square Dance Club — beginners class, St. Mary's Hall, Hendon Lane, Finchley. 7 pm.

Wednesdays

*Yoga — all levels, Avenue House, East End Rd, N3. 10.30 am. (346 1365). Also Thursdays, 6.30 pm.

Saturday February 12

London Lodges Charity Committee present musical revue in aid of new day centre for the elderly, Danescroft Synagogue Hall, Danescroft Ave, Hendon. 7.15 pm. Tickets £3.50. (907 5333).

LYONS GAINSLEY NEWMAN & CO
CHARTERED
ACCOUNTANTS

Wilberforce House, Station Road
 London NW4 4QE

TELEPHONE 202 0833

SERVICES OFFERED: Auditing, accountancy, preparation of accounts, COMPUTERISED and manual book-keeping, trusts, Personal and company taxation, management consultancy and general financial advice.

The fee basis will be discussed before we accept an assignment.

The very best nursing care
couldn't be closer to home

- * Fully qualified local nurses
- * In your own home
- * 24 hours a day, 7 days a week service
- * Available from as little as an hour a day
- * Private Insurance schemes accepted



BNA

British Nursing Association

HENDON 202 8112

14 Central Circus, London NW4 3AS

The Complete
Financial Service

Business and Investment Finance
 Re-financing Full Insurance Service
 Bridging Loans
 Mortgages 1st or 2nd Fast Decisions

Investment Consultant Services

20 Cecil Court
 St Martins Lane, WC2N 4HE
 01-379 3303/6975

ACCOUNTING
SERVICES

For the Self Employed and Limited Companies. VAT Returns, PAYE, Financial Accounts, Taxation, Establishment of Limited Companies, Corporate Secretarial and related work.

Computerised Accounting System available for Payroll, Profit and Loss and Balance Sheet. Financial and Taxation Advisory Service.

Warlena Investments Limited
 Telephone: 883 7074

BRITISH & CONTINENTAL
RADIATORS LARGE STOCKS —
 MOST TYPES FITTED WHILE-YOU-WAIT
 Repairs and specialist work undertaken on the premises
 estimates free
FUEL TANK REPAIRS & EXCHANGES

Visa **BARCLAYCARD**

Vic Smea (Radiators)
 Co. Ltd.
 168 Chapter Road, London NW2
 TEL 459-8467/8230

Thinking of Fostering
or Adoption?

Give us a ring, or drop us a line, and we'll send you our booklet, which has photos and descriptions of children in our care who need homes now. Enquiries welcome from single people too. Contact Andrea Jenkinson on 486 5711 ext 57, or write to Adoption and Fostering, Westminster City Hall, Victoria Street, London SW1.



We want a family

CITY OF WESTMINSTER



"My name is Kate. I am eleven years old. I have been living in a Children's Home for a year. I like school, particularly games and swimming. Sometimes I am sad, but Kate has
 an Westminter City Council but
 would do not wish sit.

ADVERTISING SPACE
SALESMEN/WOMEN
LOCAL
NEWSPAPERS

Experienced Sales Staff required by old established publishing company to sell space on Local Papers in the North West London and Hertfordshire area

Must be of good appearance and car owner

Salary plus generous commission payable to successful applicants

For appointment:
 Phone: 01-366 4626

COVERS!
MADE TO MEASURE



Supportaback Ltd.
 769 8567/4530/3847
 928 8810 evenings

TENDROSE LTD

Builders and Home Improvements Specialists

Large or small contracts and maintenance

Telephone
 01-802 9267

The history of Barnet's neighbour

DID YOU KNOW that at Brockley Hill, where the Boroughs of Barnet and Harrow meet, the Romans set up their first staging post out of London on the Watling Street leading to St. Albans and points North-West?

And that the people of Barnet and Harrow were even then endowed with a good sense of business because before long Sulloniaca, as the post was known, became a thriving brick and pottery production centre.

Did you know that the gold and coloured mosaic work in the choir of St. Paul's Cathedral came from a glass works in Wealdstone which had to close down in the year they celebrated their foundation 300 years ago?

Find out more about the history of the North-West boundary of London at the exhibition which is being staged by Stanmore and Harrow Historical Society at Church Farm House Museum, Greyhound Hill, Hendon. The Society celebrated their Golden Jubilee last year and the exhibition reflects the research, discovery and con-



Craftsmen's corner, a collection of glass blowing instruments from the Whitefriars Glassworks, formerly at Wealdstone. Mr Jack Richardson, chairman of Stanmore and Harrow Historical Society, with Mr Alf Porter, vice-chairman, set out the display.

servations of the past 50 years. On show are valuable cartoons — the coloured art work which was the first stage in designing stained glass windows for churches and palaces produced by the Whitefriars Glassworks.

Scrapbooks of Eliza Brightwen, a well known Victorian naturalist who lived at the Grove, Stanmore, are on display.

Roman pottery and tiles from Sulloniaca testify to the archaeological skills of the society, while photographs of Stanmore and Harrow in Victorian and Edwardian days bear witness to the conservation and recording interests.

The Museum is open to the public free of charge. Opening hours are: weekdays (except Tuesday) 10 am—1 pm and 2—5.30 pm; Tuesday, 10 am—1 pm; Sunday, 2—5.30 pm.

Noise nuisance—a difficult problem

EVERY SO OFTEN Citizens' Advice Bureaux get a visit from someone who is having trouble with a neighbour. Complaints range from disputes over repairs to shared amenities, such as drains, to problems over noisy late-night parties in a neighbour's flat.

One of the major difficulties in dealing with these complaints is that unless the case is somewhat extreme — for example, the hi-fi system is on very loud until 5 o'clock every morning — it is difficult to use the law to bring about any change in the situation.

However, this does not mean that people have to sit back and accept a very high level of noise and there are several courses of action available depending on the individual circumstances of the case.

Problems associated with noise are fairly common nowadays and they are particularly difficult to deal with since people's reaction to noise differs tremendously. What one person can tolerate might cause another to suffer ill-health.

How neighbours should behave is not governed so much by laws as by commonly accepted rules of behaviour. These are based on the belief that each

household has a right to enjoy life in their own way, providing neighbouring households do not suffer as a result. Conversely, being a good neighbour involves a certain degree of tolerance and understanding of the different lifestyle and needs of others.

One lady complained that her neighbour often played her stereo very loud until 2 o'clock in the morning, keeping her and her family awake. She told us that she had approached her neighbour and asked her if she could turn the volume down. This did not bring any positive response and indeed had started a row on the doorstep.

The caller was asked if she

rented the flat or whether she owned it, because if she rented it she should contact her landlords to see if they could take up the matter. Since she was the owner of the flat this did not apply and after further discussion with one of our advisers it was agreed that the bureau would write direct to the neighbour on the caller's behalf.

The letter detailed the stress that the neighbour's action was causing the family because they were unable to get a proper night's sleep several nights a week. It went on to suggest that the neighbour might visit our caller to hear for herself the actual noise level in the flat.

when her stereo was being played.

Then, we received another visit from our enquirer. She said she had now had a visit from her neighbour who had heard the terrible noise and realised for the first time just how thin the walls were! She said she would try to remember to turn the volume down, particularly late at night.

Hopefully, a satisfactory solution has been found to this problem, but unfortunately so many of these types of disputes can never be solved satisfactorily. Our caller asked what would have happened if her neighbour had not been so co-operative after receiving the letter from the bureau.

It was explained to her that local authorities have extensive powers to deal with noise nuisances and she would have been advised to contact the local Environmental Health Officer so that he could come out and examine the noise. If the officer considers there is a noise nuisance and is unable to resolve the matter by discussion, the authority can serve an abatement notice on the owner of the property. If this doesn't solve the problem then it is a matter for legal proceedings.

Your local Citizens' Advice Bureaux

Hendon: 25 Bell Lane, Hendon, NW4 2SP (Tel: 202 3801).

East Barnet: Town Hall, Station Road, New Barnet, EN5 1QN (Tel: 441 2384).

Edgware/Burnt Oak: Watling Community Centre, 145 Orange Hill Road, Edgware, HA8 0TR (Tel: 959 0915).

Finchley: Hertford Lodge Annexe, East End Road, N3

3QE (Tel: 349 0954).

Friern Barnet: Priory Hall, Friern Barnet Lane, N11 3LU (Tel: 361 0727).

Grahame Park: The Concourse, Grahame Park, NW9 5XT (Tel: 205 4141).

West Hendon: 133 West Hendon Broadway, NW9 7DX (Tel: 202 5177).

TRAVEL PERMITS

A NEW STYLE of travel permit for senior citizens is being introduced this year. It will last for five years.

The new permits will be issued on Mondays to Fridays only over a six-week period which started on Monday, February 7. You must go to the Post Office in person on any of the dates reserved for the first letter of your surname as follows:

- A to D
February 7 to 11
- E to H
February 14 to 18
- I to L
February 21 to 25
- M to P
February 28 to March 4
- Q to T
March 7 to 11
- U to Z
March 14 to 18

Take your existing permit, a completed application form, two identical photographs of yourself and proof that you live in London to your local Post Office where application forms are available. Please go to the Post Office on the dates shown for your surname but at the latest by Tuesday, March 29.

Your existing permit must not be used after March 31, 1983.

London Borough of Barnet

JOB OPPORTUNITIES

We welcome applications from Registered Disabled people

HOUSING DEPARTMENT

Clerical Assistant (Contracts) — Grade C2 £5,949—£6,279 pa inclusive.

A Clerical Assistant is required to carry out promptly and efficiently, under minimum supervision in a busy office dealing with contracts for housing improvement and maintenance, the following duties: Collation and issuing of tender documents.

Liaison with Legal Department, Consultants and Contractors on contract particulars, etc.

Maintaining and filing of all contract documentation, records, etc. Maintenance of records relating to tendering procedures and payments.

Liaison with tenants by telephone and letter and ensuring office cover at all times.

General duties including maintaining stationery, distribution of post, telephone.

Closing date: February 18 Ref: 606/11

Clerical Assistant Grade S1/2 £4,611 (age 21) — £5,805 pa inclusive.

A Clerical Assistant is required to carry out promptly and efficiently, under minimum supervision in a busy office dealing with contracts for housing improvement and maintenance, the following duties:

Maintenance of records on Aids and Adaptations for disabled tenants; liaison with other Council Departments and outside bodies by telephone and letter; liaison with tenants; and general clerical duties.

Closing date: February 18 Ref: 606/140

For both the above posts typing ability would be an advantage and accuracy in figure work is essential. The post holder will be expected to undertake relief duties for the other Clerical Assistant in the Section.

Basic annual leave is 20 days with additional leave at most Bank Holidays. 36-hour week within a flexible hours

scheme; subsidised canteen facilities; and interest-free loans are available for the purchase of travel season tickets.

Application forms from Director of Housing Services, 65 Watford Way, Hendon, London NW4 3AY. Tel: 202 0355 (24-hour answering service).

CHIEF EXECUTIVE AND TOWN CLERK'S DEPARTMENT

Temporary Legal Assistant — Salary £7,470 — £8,142 pa inclusive (AP4)

A temporary Legal Assistant is required to supplement the existing staff of the Legal Division to deal with the work concerned with the sale of Council houses, and to assist in the investigation of title deeds. The successful applicant will be an experienced domestic conveyancer able to cope with a large workload with minimum supervision. Local government experience is not essential. The post will be specially suitable for experienced Legal Executives seeking interesting and rewarding employment for a period of up to two years.

Twenty-one days' annual leave with additional days at Bank Holidays; flexible working hours; interest-free loans for the purchase of season tickets; subsidised restaurant.

Closing date: February 28 Ref: 407

Application forms available from the Chief Executive and Town Clerk, Town Hall, The Burroughs, Hendon, NW4 4BG or tel: 202 8282, ext. 439.

PLANNING DEPARTMENT

Clerical Assistant Grade Scale 1/2 (£2,844—£5,208 pa plus London Weighting).

Clerical Assistant required to assist in the running of the General Office within the Headquarters Administration Group

dealing with a range of routine office duties.

Closing date: February 21 Ref: HA/100

Application form and job description available from the Borough Planning Officer and Deputy Director of Technical Services, Gateway House, 322 Regent's Park Road, Finchley, N3 2LP. Tel: 01-349 9121, ext. 388

EDUCATION DEPARTMENT

Barnet College of Further Education Technician Salary Grade: Tech. 3, rising to £7,290 pa inclusive.

Technician required at Barnet College in the Science Laboratories. Should have industrial experience and appropriate City and Guilds or HNC Certificates.

Ref: 336

Technician Salary Grade: Scale 1/2 rising to £5,805 pa inclusive.

Technician Salary Grade: Scale 1/2 rising to £5,805 per annum inclusive.

Technician required at Barnet College in the Technology Laboratory. Should have two 'A' levels in Mathematics, Physics and Computing.

Ref: 339

Application forms available from the Bursar, Barnet College of Further Education, Wood Street, Barnet, Herts EN5 4AZ. Tel: 01-440 6321. Please quote appropriate reference.

Administrative Assistant. Salary: AP4 £7,470 to £8,142 inclusive.

Administrative Assistant required in School Catering Section. Duties include organisation and supervision of busy office, compilation of statistics and varied work in connection with catering services for which the Department is responsible.

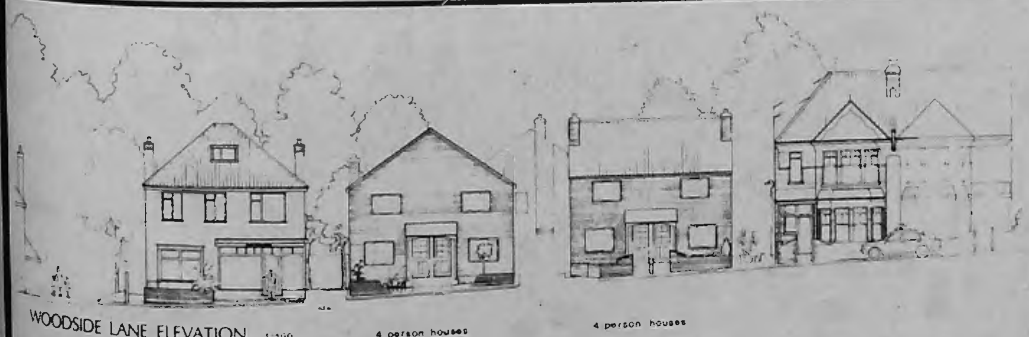
Ref: Adm/E/56

Application forms and further details available from the Director of Educational Services, Town Hall, Friern Barnet, N11 3DL. Tel: 01-368 1255, ext. 225.

FREEHOLD LAND

FOR SALE BY TENDER

Freehold land of approximately one acre in Southgate, N14. Full details and documents may be obtained from the Borough Estates Officer (Ref: SH), Gateway House, 322 Regent's Park Road, Finchley, N3 2LP. (Tel: 349 9121, ext. 513.) Tenders for the purchase of this land must be returned by 12 noon on April 29, 1983.



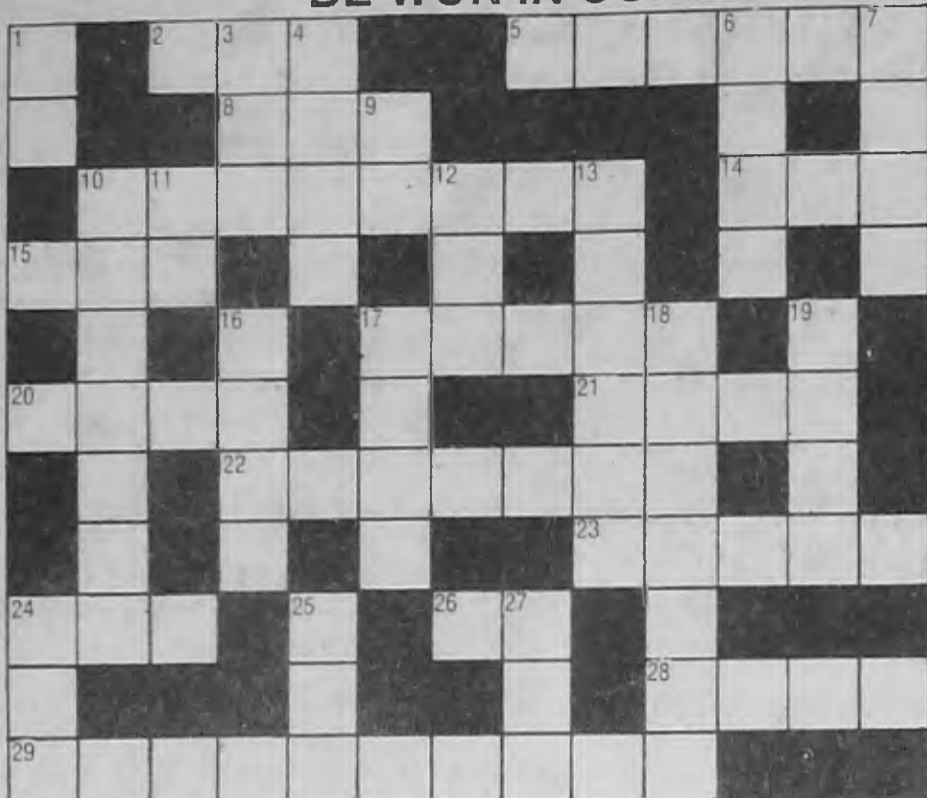
HOUSES FOR SALE: WOODSIDE LANE, N12

Four two-bedroomed and two three-bedroomed semi-detached, centrally-heated houses for sale to eligible families living in the Borough of Barnet. Accommodation includes: lounge, kitchen/diner, bathroom and wc, own garden and car space. £35,000 and £37,500 approximately. Further information from Sales Team, Director of Housing Services, 94 Burnt Oak Broadway, Edgware, Middlesex. Tel: 952 8911, ext. 46/50.

WILLIAMS SPORTS

366 Ballards Lane, Tally Ho Corner, Finchley, N12. Tel: 445 3596
 Gateway House, 328 Regents Park Road, N3. Tel: 346 2398

25 KEVIN KEEGAN LEATHER FOOTBALLS TO
 BE WON IN OUR FREE EASY TO ENTER COMPETITION
 CLUES



ACROSS

- 2 Cost, Insurance, Freight (abbrev.) (3)
- 5 Well-known (6)
- 8 Opening of mouth (3)
- 10 Our name (8)
- 14 Criminal Investigation Dept (abbrev.) (3)
- 15 One more than nine (3)
- 17 Not very well liked sports (5)
- 20 Capable (4)
- 21 Stand Up! (4)
- 22 We manufacture them (7)
- 23 Upright (5)
- 24 Type of bread (3)
- 26 Financial Times (abbrev) (2)
- 28 Nothing (4)
- 29 Competition (10)

DOWN

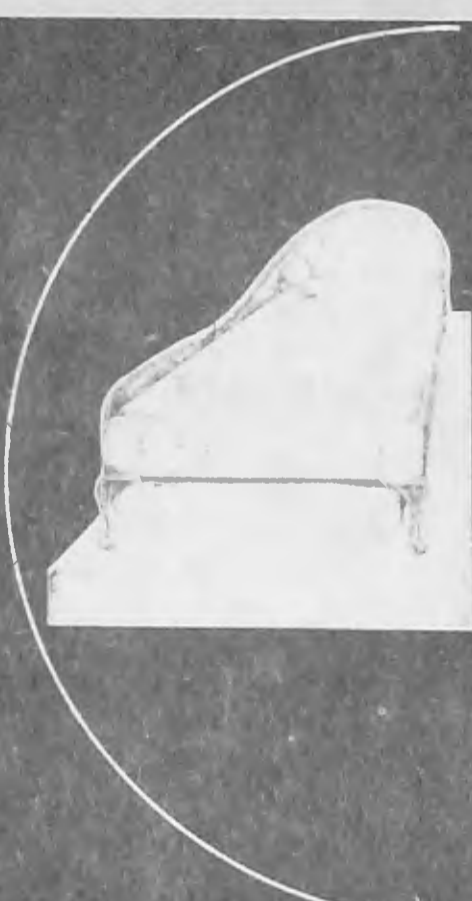
- 1 Anno Domini (2)
- 3 Poorly (3)
- 4 Put away (4)
- 6 upon a time (4)
- 7 Team (4)
- 9 Greek letter (2)
- 10 Home of England F.C. (7)
- 11 Preposition (2)
- 12 Everybody (3)
- 13 Pastimes (6)
- 16 Parts of the body (4)
- 17 Brentford F.C. Nickname (4)
- 18 Far away (7)
- 19 Feathery plant (4)
- 24 Beaten track (3)
- 25 Central body of Solar System (3)
- 27 Golf equipment (3)

Name.....
 Address.....
 Tel. No.....
 All entries to N12 branch by February 28, 1983

**Ski Anoraks, Salopettes, Ski Suits
 at HALF-PRICE**

**CLOSED
 THURSDAYS**

INTERSPORT



**“we’re being
 modest
 when we say
 we’re
 the best.”**

WITH A NAME LIKE THE BRITISH BATHROOM CENTRE — WE HAVE TO BE, TO SUIT YOU, THE DESIGNER, THE ARCHITECT, THE CONTRACTOR, THE FILTHY RICH AND THE SKINT.

IF YOU’RE THINKING ABOUT A NEW BATHROOM, COME TO OUR LONDON SHOW ROOMS WHERE YOU’LL SEE OVER 40 BEAUTIFUL DISPLAYS FOR EVERYONE’S BUDGET AND TASTE.

WITH OUR FACTORIES IN WALES PROVIDING PERFECTLY CO-ORDINATED TILES AND SANITARY WARE, YOU’LL BE ABLE TO CREATE YOUR OWN EXCLUSIVE BATHROOM.

IF YOU DON’T HAVE THE CONFIDENCE TO STYLE YOUR OWN BATHROOM OUR VERY OWN DESIGN SERVICE HEADED BY PAUL BITTON WILL BE ABLE TO CREATE SOME STYLISH DESIGNS

TO SUIT THE AMBIENCE OF YOUR HOME WHETHER MODERN OR TRADITIONAL.

WE ARE OPEN MON-FRIDAY 8.30-6 AND FOR YOUR CONVENIENCE SUNDAYS 9.00-2.00 —

THERE IS AMPLE PARKING.

FOR EXPORT ENQUIRIES
 TEL 01-800 0536

01-802 6493
 01-800 2538
 01-802 6696

British Bathroom Centre

602-604 SEVEN SISTERS ROAD, TOTTENHAM N15