

Barnet CIVIC NEWS



No 9: September 1980

Summer fun in Friary Park



Friern Barnet Summer Show again provided summer fun for all the family. Top left, the Mayor of Barnet, Councillor Mrs. Edna James, receives a bouquet from Victoria Halsey, winner of the children's fancy dress competition. Top right, Clown Roma and his dog were popular with the children. Below, inflatable fun. More pictures on page 32.



Special feature: Barnet's gross expenditure for 1979/80 was £103.8 million. Where the money came from and how it was spent is set out on pages 18 to 21.

AGENCY RADIO CARS

Central Control for all Areas

202 3644 North London
Office

637 5988 West End
Office

We welcome Business Accounts. Our Account clients receive special attention at all times.

RIDE-ON

Express Parcel and
Courier Service
637 5988



AIRPORT CAR SERVICE

To all Air, Rail
and Sea Ports

WE'D LOVE TO GET YOU STONED !!!

The individuality you've always wanted. These rugged facings fitted to perfection, as FACEIT demand, increases the value of your property and adds character.

- 20-year guarantee
- Waterproof
- Weatherproof
- Maintenance free
- Insulates (noise and heat)
- Add character and charm
- Can be clad to any surface
- Personal loans available



NEW
PLIOLITE RESIN
BASED
WALLCOATINGS
FROM
GOODYEAR.
ANY COLOUR
15 YEAR
GUARANTEE

**FOR INSTANT
ATTENTION PHONE
HEMEL HEMPSTEAD
832659 NOW**

For a **FREE** estimate fill in the coupon, send **FREEPOST**
STONE IS BEAUTIFUL

TO: **FACE IT Stone Cladding Co. Ltd.**
Freepost HH 99, Hemel Hempstead
or tel 832659 **FREEPOST** No stamp required

Name

Address

Tel No.

Tick appropriate box

Bungalow

Semi-detached

Detached

Hotels & Busi-
ness Premises

Farmhouse

Terraced



**ARCTIC
WINDOW CO**

IT'S AS CLEAR AS GLASS

UP TO 20% DISCOUNT ON

★ DOUBLE GLAZING

★ RESIDENTIAL AND
PATIO DOORS

★ ALUMINIUM
REPLACEMENT WINDOWS

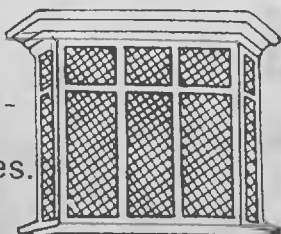
**NEVER KNOWINGLY UNDERQUOTED
5 YEAR GUARANTEE**

**TAILOR MADE IN OUR OWN
WORKSHOPS**

*Only the best materials
used, all meeting British
standard specifications.*

TUDOR AND GEORGIAN-
STYLE WINDOWS in
bronze, white or satin finishes.

TRADE ENQUIRIES WELCOME.
CONTACT US NOW, WHILE OFFER
LASTS, FOR A FREE ESTIMATE.



ARCTIC WINDOW CO.

39-41 NORTH ROAD, LONDON N7 9DP
01-607 4567 01-607 4223

FCS FARM SHOP

**COST OF LIVING BONUS
UNREPEATABLE REDUCTION ON ALL
FRESH CREAM GATEAUX**

BLACK FOREST £2.95 18 portions
STRAWBERRY GATEAUX £2.99 18 portions
PLUS MANY OTHERS

WHOLE OR HALF PRIME ENGLISH LAMB
AT ITS VERY BEST NOW 69p lb

ENGLISH PORK RAISED ON OUR OWN FARM
WHOLE OR HALF 56p lb

UNBELIEVABLE VALUE PORK CHOPS
ONLY 88p lb
WHOLE LEGS 68p lb

PRIME ENGLISH BEEF
ROLLED TOPSIDE £1.45 lb
WHOLE RUMP £1.68 lb

WE SPECIALISE IN PREPARING AND CUTTING
MEAT TO YOUR OWN REQUIREMENTS AT NO
EXTRA COST. HINDQUARTERS — FOREQUAR-
TERS — WHOLE CARCASSES, ALWAYS READILY
AVAILABLE. CALL US FOR PRICES NOT
SHOWN.

FCS FARM SHOP



WHITINGS HILL FARM

MAYS LANE BARNET

(OPPOSITE SHELFORD ROAD)
FREE PARKING FOR OVER 50 CARS
(Adjacent to shop)

TEL: 01-449 0077/0078

J & H FURNITURE LTD

Furniture Wholesalers Established Over 20 Years Selling Direct to the Public
SAVE UP TO 40% ON RETAIL PRICES

NO GENUINE FIRM CAN COMPETE WITH OUR VAST RANGE, QUALITY AND SERVICE, BEFORE & AFTER SALES. ALL THIS AND ROCK BOTTOM PRICES TOO!



7ft Dining Table, 6 Solid Mahogany Chairs, including 2 carvers £329 complete 7ft and 8ft 6in Regency Tables with range of 12 types of Mahogany chairs.

Solid Mahogany Dining Chairs from £32. Hi Fi Cabinets from £89. Regency Hall Tables from £29.

Reproduction Wall Units from Brenner, Beutloux, Hubbinett, Heritage from £209.



Regency Bookcases
 2 door, 3 door,
 4 door
 from £99



CORNER CABINETS
 FLAT FROM £95
 BOW FRONT £99

SHOWROOMS: 72 CHASE SIDE, ENFIELD, MIDDLESEX.
 (Close to Parsonage Lane)

TEL: 01-366 2437

INSTANT CREDIT NOW AVAILABLE

Open 10am to 5:30pm Tuesday, Thursday, Friday, Saturday.
 Free delivery. Barclaycard, Access Welcome.



Beautiful FITTED bedroom furniture with backs (no extra) sold directly to you from our factory and showroom. This beautiful fitted bedroom setting illustrated, in attractive Georgian panelled style, floor to ceiling complete with backs.

Comprising three large double wardrobes only £449 inclusive of measuring, planning, fixing and V.A.T. Matching headboard with side tables £69 extra.

STATON

Staton Fitted Furniture Ltd

Factory & Showroom at

719 North Circular Rd. (Nth Side) London NW2

1/2 mile West of Brent Cross Shopping Centre. (Nr Flyover)

Customer parking. Also open Saturday

Phone 01-450 6581

Let us quote you before you decide to buy!

DIAMOND CARPETS WAREHOUSE



SEEING IS BELIEVING!
CUT PRICE BEDS AND CARPETS
LOOK AT THESE PRICES

SINGLE DIVANS £39.95 PLUS VAT
 SUPERIOR QUALITY 5-YEAR GUARANTEE

DOUBLE DIVANS £59.95 PLUS VAT
 STAR VALUE 5-YEAR GUARANTEE

KADETT
 LOW PRICE VINYL

- ★ 6'6" WIDE
- ★ 12 DESIGNS
- ★ STAR VALUE

ONLY

£3.25 SQ. YD.
 GREAT VALUE

SUPERCORD
 HARD WEARING BROADLOOM

- ★ AMAZING VALUE
- ★ BUILT-IN UNDERLAY
- ★ 5 GREAT SHADES

ONLY

£2.25 SQ. YD.
 SENSATIONAL!

CALIFORNIA
 AMERICAN BROADLOOM

- ★ SCULPTURED PILE
- ★ SUPERB QUALITY
- ★ BUILT-IN UNDERLAY

ONLY

£4.99 SQ. YD.
 WORTH DOUBLE

DECADE
 LUXURY WOVEN BROADLOOM

- ★ PLAIN VELVET
- ★ ACRILAN PILE
- ★ SUPERB QUALITY ONLY

£4.99 SQ. YD.
 WORTH DOUBLE

FREE
 MEASURING AND ESTIMATING

DIAMOND CARPETS

25 Oakleigh Road North
 Whetstone N20
 Telephone 01-446 2105/6

CREDIT TERMS
 NO PROBLEM!



BE SURE BEFORE YOU OPEN THE DOOR



COME ALONG TO
CEPCO
AND SEE OUR DISPLAY OF
DOOR ENTRY SYSTEMS

WE HAVE MODELS WITH VIDEO OR WITHOUT VIDEO
COMPETITIVE PRICES : 48 HOUR DELIVERY : INSTALLATION SERVICE

We also stock a wide range of:

- ★ INTERCOMS
- ★ RADIO TELEPHONES AND PAGERS
- ★ BURGLAR ALARMS
- ★ MULTI-FUNCTION TELEPHONES
- ★ FIRE PROTECTION SYSTEMS
- ★ SECURITY AND SURVEILLANCE SYSTEMS

Expert advice always available

COMMUNICATIONS & ELECTRONIC PRODUCTS CO.

176 COPENHAGEN ST., N1 TEL: 837 2266/278 3627

FUNDRAISERS!
BUY NOW — PAY LATER!



Net Profit **£16.95** per min. order
DELIVERY FREE to your front door

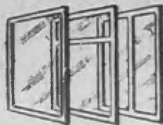
Send for full details to:
LANE & PARTNERS LTD.
69 South Audley Street,
London W1.

BROADWATERS REMOVALS

Removals, Storage, Office Moves and House Clearance
Specialists in Pianos and Antique Moves
Local and Long Distance
Careful Handling at Competitive Rates
Fully Insured

For Free Estimate
01 455 4278

WHOLESALE ALUMINIUM FABRICATORS TO THE TRADE
(Supply Only)



NEW FROM LERMROY LTD

The patio doors of the 80s, designed and fabricated exclusively by Lermroy Ltd with you, the customer, and the first-class tradesman in mind, in the new brilliant white Syntha Pulvin 75 Micron finish or Satin Silver Anodised 25 A A. Tested to a very high standard. All doors are fitted with 24mm sealed unit in 6mm glass and the new Schlegel hook bolt locks with adjustable toughed steel strike plates and locks.

THE COMPANY WHERE QUALITY AND SERVICE COME FIRST

- ★ LEADED LIGHTS — GEORGIAN, ALL PRODUCTS
- ★ PATIO DOORS
- ★ REPLACEMENT WINDOWS
- ★ RESIDENTIAL DOORS
- ★ SECONDARY DOUBLE GLAZING
- ★ SEALED UNITS
- ★ HARDWOOD SUB-FRAME — ALL MORTISE & TENON
- ★ ALL PRODUCTS ARE TAILOR-MADE TO YOUR REQUIREMENTS
- ★ PROMPT DELIVERY SERVICE
- ★ FIVE YEARS GUARANTEE

For free estimates telephone St Albans 32786 or call in and see our showroom, Monday to Friday, 9 am to 5 pm.

LERMROY LTD

18 GUILDFORD ROAD, ST ALBANS AL1 5JY. Tel. St Albans 32786

THE FRIENDLIEST SUN-PARLOUR IN TOWN

Unique Combination Sun-Systems
Sun-bed, Solarium and SIDE PANEL
Luxurious lounge and shower
Experienced and friendly staff in attendance.
Privacy assured
AIR-CONDITIONING ensures tanning in total comfort
LADIES ONLY
DAYTIME AND SUNDAY MORNING
(Evening appointments for men)



Irene Goss at Thirty-One

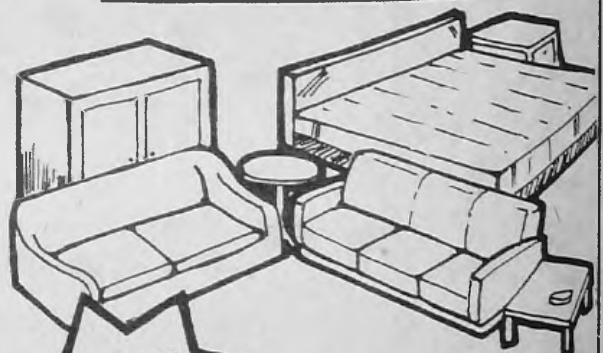
Thirty-One Bell Lane, Hendon, NW4. Tel: 01-203 2909 (before 7.30 pm)
Parking no problem
Licensed by London Borough of Barnet

HENDON OFFICE SERVICES

for all your office requirements
PRINTING ★ PHOTOCOPYING ★
TYPING ★ STATIONERY ★
OFFICE FURNITURE (new and used)

55 Watford Way,
Hendon NW4 3AX
Tel. 01-202 8621

BARGAINS!



FURNITURE & BEDDING AT AMAZING PRICES!

Most Manufacturers' Furniture and Bedding Supplied

GREATLY REDUCED PRICES

If not in stock in our showrooms it can be obtained at . . .

Come and visit our showrooms and take advantage of our
SPECIAL OFFERS

JOYSLEEP LTD

220/222 The Broadway, West Hendon NW9. Tel: 202 2747

The Perfect Cleaning Service

N.W. London offers a unique service in cleaning, from clothes to curtains, with care and pride in the standard of workmanship, plus the personal attention and advice that is so often sadly lacking in business today.

Cleaning by K is a family business under the personal direction of Mr. Gerald Kaye, who has been in the field of cleaning for more than 16 years. He has studied every aspect of the industry and uses modern techniques that are calculated to give complete satisfaction. He caters for the requirements of the home and industry, with a shop in Mill Hill Broadway and a shop and factory in Colindale. His methods include the use of a special pleat machine for cleaning curtains. This ensures no more hem distortion, no more unacceptable shrinkage, uniform folds, every pleat has its own fold and is set accordingly, delivery in tube form in as little as 24 hours.

Advice freely given is only part of Mr. Kaye's success. His satisfaction is derived from the large number of satisfied clients his business embraces over a wide area. His experience is yours to command at any time. Call him by phone, or visit his premises. Domestic or industrial he will dissolve your cleaning problems as rapidly as he dissolves the dirt and grime in the articles he cleans.



CLEANER CURTAINS BY

FAST COLLECTION & DELIVERY
HOMES, HOTELS, SCHOOLS, OFFICES ETC.
MAKE YOUR DAY WITH CLEANER CURTAINS BY

Tel: 959 6996

or 205 2000



London Equestrian Centre



THE COMPLETE CENTRE FOR EQUESTRIAN TRAINING

Riding lessons for absolute beginners, novice, intermediate and advanced riders.

RIDE OUTS : INSTRUCTIONAL RIDES ROUND 40 ACRES : HACKS : INSTRUCTION FOR JUMPING, GYMKHANA AND DRESSAGE

All instruction given by the Gill Family and qualified staff.

LULLINGTON GARTH, FINCHLEY, N12
(close to Finchley Golf Club)

01-349 1345



A Touch of Brass!

Door Handles & Knobs,
Knockers & Letter-Plates,
Porcelain & Crystal Knobs,
Bathroom Accessories,
Firescreens & Fenders,
Locks & Security Fittings.



DANICO BRASS LIMITED
31 WINCHESTER RD.
SWISS COTTAGE N.W.3
Telephone: 586 7398

STRETCH FURNITURE COVERS

The genuinely Made-to-Measure personal service FROM £15 FOR 3-PIECE SUITES including materials and fittings



Home measure service. Free fitting on delivery. All sizes and styles of furniture. Choose from a very wide range of fabrics including: Dralon, Tweeds, Linen Look, etc. Also Stretch Caravan Covers

SANDERSON Tailored Covers

Tel. V. Fisher
01-769 4530/3847
SPECIAL SALES DISCOUNT
Delivery approx 21 days or sooner.
Also at Bourne, Oxford Street

adastra fine art.



A choice of 600 oils and watercolours to suit every taste and pocket

~ adastra fine art ~

Brings the West End to Finchley at great savings to you, the client, in cost, time and convenience.

We shall be holding exhibitions and welcome local artists to contact us.

401-5 Nether St., Finchley Central,
London N3 1JG · 01-346 6666

ASK for the answers

CONTENTS

September 1980

ASK for help with children ...	4
Barnet's Pupil-Teacher Ratio ..	6
Fun for the family	7
For all the best music	10
Council staff on the move ...	12
New bus services	13
Your letters	14
Financial Review — Barnet's	
End of Year Report ..	18 to 21
What's On	24 to 26
More letters	28
Moped boosts Road Safety ..	29
Friern Barnet Summer Show ..	32
Your Councillors	34
Social Services	38
Chemists' Rota	39

EDITORIAL ADDRESS

Civic News,
London Borough of Barnet,
The Town Hall,
The Burroughs,
Hendon NW4 4BG
Tel. 202 8282, Exts. 71 & 479

ADVERTISING ADDRESS

Laurence Marshall
(Advertisers) Ltd,
Publicity House,
12 Genotin Terrace,
Enfield EN1 2AF
Tel. 01-366 4626/7, 01-367 0246

Barnet Civic News is a monthly magazine carrying news of Council activities and local voluntary organisations. The What's On in Barnet diary is open to all local community organisations and carries a comprehensive list of events and meetings taking place within the borough.

Civic News is distributed door-to-door throughout the borough, reaching more than 109,000 homes and businesses and further copies are sent to libraries and council offices. It is produced at no additional cost to the ratepayer, all management, printing and distribution costs being covered by advertising.

□ □ □

Barnet Civic News is edited jointly by Bill White, the Council's Press and Information Officer, and Rosemary Jude, Press Officer.

It is produced and published on behalf of the London Borough of Barnet by Laurence Marshall (Advertisers) Ltd. Editorial features are the copyright of Barnet Council.

□ □ □

Copies of most photographs may be obtained by contacting the editor, Barnet Civic News, The Town Hall, The Burroughs, Hendon NW4.

WHERE DO YOU GO for help if your child is ill or handicapped in any way? To help you find the answer a new publication called ASK is available at council offices, libraries and Area Health Authority offices and clinics.

ASK is published jointly by the London Borough of Barnet Social Services Directorate and Barnet Area Health Authority. It is a very simple directory of addresses and organisations which parents can turn to in times of difficulty. No advice is given, just straightforward contacts, addresses and telephone numbers.

For easy reference there is a detailed index at the back and the main publication is divided into chapters on Health, Welfare, Education, Finance, and Leisure. Another chapter deals with long term planning for when the child leaves school, and two chapters give details of groups which parents can join and voluntary organisations which specialise in services and advice for the handicapped.

Health: This chapter tells you how to get a local doctor, lists the 16 child health clinics in the borough, and explains about speech therapists, school doctors, the community nursing service and hospitals.

Welfare: Social Services in Barnet work through six area teams and all the addresses and telephone numbers are given. Then comes information on occupational therapy, day nurseries and family centres, the toy library, short stay residential care and specialist workers for the deaf and blind.

Education: Starting with information about pre-school play groups and

nursery classes for the under-fives, and listing all the special services such as the home teacher, the day special schools and residential special schools, this chapter takes in a wide range of educational services for children with handicaps. It leads naturally to the chapter on long term plans for handicapped adults and lists the five special centres which are run within the borough as well as the Rosa Morrison Day Hospital.

Finance: This chapter helps parents find their way through the very difficult maze of grants and allowances which may be available to them — everything from free milk and disabled driver parking badges to mobility allowances and supplementary benefits.

Leisure: No disabled child needs to be cut off from society, as this chapter reveals. Toy libraries, swimming and riding groups for the disabled, play schemes and a whole list of clubs taking in music and sport as well as social activities, are listed.

Organisations: Fifty-four national organisations with local branches where they exist are listed for parents to contact, dealing with every type of handicap from Arthritis to the Voluntary Council for Handicapped Children.

But any directory soon gets out of date or additional information should be included so at the end the name of Imelda Cummins, principal occupational therapist with Barnet Social Services, is given, together with her address, now 1331 High Road, Whetstone N20, and telephone number, 446 1488. She compiled the book and would welcome new contacts and additions.

Cash in on your spare room

WHY NOT MAKE some extra money by letting that spare room to a student? By housing a student as a paying guest you could not only make the room pay for itself, but also help Middlesex Polytechnic, which is trying to find accommodation for some 2,000 new students who begin their studies in September.

Although the polytechnic does have its own halls of residence, there are not nearly enough places to accommodate the total of 5,500 full-time students. The vast majority have to find somewhere to live in the private rented sector.

'Local residents have been marvellous in previous years in helping us with our student housing problem,' said head of polytechnic

accommodation services Mr. David Barnard. 'We hope they will help us out again. It is also the chance for landlords and landladies to make some extra money.'

The polytechnic has six major sites — All Saints, Tottenham; Cat Hill and Trent Park in Cockfosters; Enfield, Hendon and Bounds Green. Most students like to live reasonably near the site where they are based.

Mr. Barnard would like to hear from anyone who has rooms to let or self-catering flats or houses. Please contact the accommodation officer at: Middlesex Polytechnic, Cat Hill, Barnet, Herts, EN4 8HU, telephone 440 7431 or Middlesex Polytechnic, The Burroughs, London NW4 4BT, telephone: 202 6545.

Display problem?

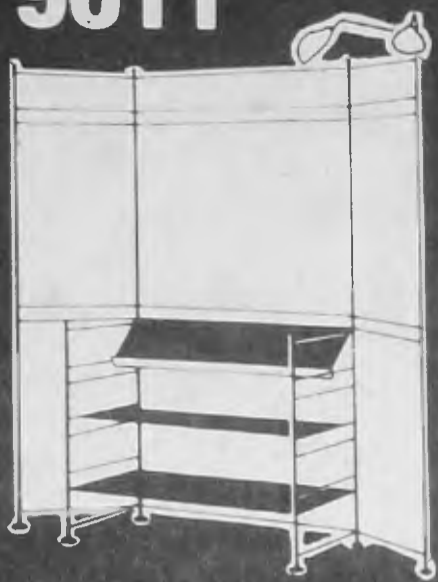
01-449 9611

could be the answer

Ask for our catalogues on:

**DISPLAY KITS
WINDOW DISPLAYS
SHOWROOM DISPLAY
COUNTER UNITS
& LIGHTING**

or visit our Showrooms at:



Marler Haley ExpoSystems Limited DEPT BCN 3
ExpoSystems House, 7 High Street, Barnet, Herts EN5 5UF
Telephone 01-449 9611

ALBANY NURSING AGENCY

SUPPLY ALL GRADES OF

Private Nurses

— DAY OR NIGHT —
24-HOUR SERVICE

S.R.N.s, S.E.N.s and
AUXILIARY
STAFF ON CALL

7-7a STATION ROAD
FINCHLEY, LONDON N3
(01)-346 3507/8274

Ashmore & Co.

DO YOU HAVE A FURNISHED PROPERTY TO LET?
THEN CONTACT
ASHMORE & CO

We urgently require good quality furnished houses and flats for company executives from abroad with impeccable references and able to pay good rentals for suitable properties.

CALL OR TELEPHONE OUR OFFICES AT
5 FINCHLEY LANE
HENDON NW4

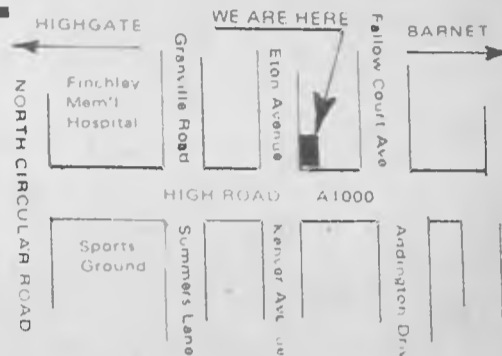
Telephone 01-203 1177/9

London Plant Hire

HIRE CENTRE, 585 HIGH ROAD, FINCHLEY, LONDON, N12 0DY. Phone: 01-446 4231/2

YOUR OWN POWER TOOL REPAIRED

D.I.Y. DECORATING CAR MAINTENANCE GARDENING
HUNDREDS OF DIFFERENT ITEMS
EXPRESS DELIVERY SERVICE
OPEN MONDAY TO FRIDAY 8.30 till 5.30
SATURDAY 8.30 till 1.00



A CROW PROPS
ANGLE GRINDERS
ARC WELDERS
AXLE STANDS
BELT SANDERS
BOLT CROPPERS
BURN-OFF GUN
BRICK CUTTERS
CAR ROOF RACKS
CARPET SHAMPOOER
CEMENT MIXERS
CHAIN SAWS
CIRCULAR SAWS
CHAIN HOIST
CONCRETE GRINDER
CONCRETE BREAKERS
CULTIVATORS
DEHUMIDIFIERS
DRAIN RODS

DRAIN STOPPERS
DRAIN TESTING EQUIPMENT
DUST SHEETS
ENGINE HOISTS
EXTENSION LEADS
FAN HEATERS
FLOODLIGHTS
FLOOR SANDERS
FLAME GUNS
FLOOR SCRUBBERS
FLOOR POLISHERS
GAS
GARDEN ROLLERS
GAS FIRES
GENERATORS
GINN WHEELS

HAMMER DRILLS
HYDRAULIC JACKS
JIG SAWS
KANGOS
LADDERS
LADDER CRIPPLES
LADDER STAYS
LAMINATE TRIMMER
LIGHTWEIGHT STAGING
MASTIC GUNS
PAINT SPRAYERS
PASTE TABLE
PARAFFIN HEATERS
PSIMAT
PICK AXE
PIPE CUTTERS

PIPE/TUBE BENDERS
POST HOLE BORERS
PLANERS
POWER TOOLS
POP RIVETER
PUMPS
ROOF LADDERS
RAMMERS
ROAD LAMPS
SAW BENCH
SASH CRAMPS
SCAFFOLD BOARD
SPLITHEADS
SANI SNAKE
SLATE RIP
SLAB CUTTER
STAPLERS

(ELECTRIC) STAIRCASE UNITS
STEPS
TARPAULINS
ORQUE WRENCH
TOWERS
TRANSFORMERS
TRESTLES
TYROLEAN GUNS
THREADERS (RIGID)
VACUUM CLEANERS
VIBRATING POKERS
VIBRATING PLATE
WALLPAPER STRIPPERS
WATER BUTTS
WHEELBARROWS
WALL CHASERS
ZIP-UPS

For the eradication of Woodworm, Rising Damp and Dry Rot

20 YEAR GUARANTEE

ASTON TIMBER PRESERVATION & Dampcoursing Ltd.

For Free Estimate Phone: 01-346 6300
10 STATION ROAD, FINCHLEY N.3

SAVE UP TO 25% ON NEW 1980 DESIGNS GKD FITTED BEDROOMS



RARE 3 YEAR GUARANTEE

FREE FITTING

GKD
FITTED FURNITURE TO FIT YOUR POCKET



Send for FREE brochure to GKD Ltd., FREEPOST, London E14, or call into your local showroom.

HEAD OFFICE/FACTORY SHOWROOM:
Lanrick Road, E14. 01-515 5151

- * **FREE** no obligation estimate and home planning service.
- * **25 Different designs** including mirrors and new shading effects.
- * **No deposit, low interest, special home improvement scheme.**
- * **Individually tailored** to suit your bedroom.

GKD SHOWROOMS IN THE LONDON AREA.

- WHETSTONE** 1376 High Road, N20
01-445 4853 (Closed Mon.)
- HENDON** 9 Finchley Lane, NW4 (Nr Odeon)
01-203 5767 (Closed Wednesdays)
- HORNSEY** 68A Park Road, N8
01-348 0493 (Closed Mondays)

To: GKD Ltd., FREEPOST, LONDON E14.
Dear Gerald Harper, please send me your company's new colour brochure describing Fitted Bedroom Furniture.

Name _____
Address _____
Home Tel. _____ Business _____

BARNET'S PUPIL-TEACHER RATIO

Classes are getting smaller

THE DECLINE in the birth rate is now affecting schools, and classes in most primary schools in the Borough are getting smaller in size. Parents have welcomed this trend, and teachers have been quick to grasp the opportunities which it has offered.

Smaller numbers are beginning to be seen in the age groups entering secondary school but there are more children staying on at school beyond the age of 16.

The figure in January 1980 was 3,127 which was higher than ever before in Barnet's history. This, too, is a very pleasing trend and is one of the criteria which may be used to judge the efficiency or quality of Barnet's education service.

Possibly one of the most frequently misunderstood statistics in our education system is the pupil teacher ratio (P.T.R.).

What is P.T.R.? Well, it is simply the total number of children attending maintained schools divided by the total number of teachers. For the national statistics for England and Wales, the Department of Education and Science uses a census taken each January. The P.T.R. can be calculated for an individual school; for each local education authority; on a national basis or in a variety of other ways.

Calculations

Why then can the P.T.R. be misleading or, at the best, an unreliable index? This stems mainly from the lack of precision in reaching the calculation. For instance, some pupils and teachers attend school or are employed on a part-time basis and have to be converted into full-time equivalents. Two or three part-time teachers may equal one full-timer.

Other teachers — for example heads of schools or heads of large departments — may, because of their pastoral or other professional duties, have only a limited time for class teaching and may, in some statistics, be omitted from the calculation. The P.T.R. may be based solely on the number of teachers who are employed specifically to work in schools, that is, those who are attached to a school's establishment.

Alternatively, a more generous P.T.R. may be obtained by taking into account specialist and visiting teachers who do not have normal class responsibilities but are engaged to support the main teaching force, such as specialists for hearing-impaired children, instrumental music teachers, swimming instructors and teachers working with children who are hospital in-patients.

In making comparisons it is not possible to assume therefore that there is

Since Barnet was formed as a borough in 1965 there has been a clear trend for the pupil teacher ratio to improve. The following tables show the pattern.

NUMBER OF SCHOOLS			
	1965	1975	1980
Secondary	33	29	26
Primary	88	91	91
Special schools	3	6	6

NUMBER OF PUPILS			
	Jan 1966	Jan 1975	Jan 1980
Secondary	17,599	21,754	21,508
Primary	21,057	25,224	22,349

PUPIL TEACHER RATIO			
	Jan 1966*	Jan 1975	Jan 1980
Secondary	18.0:1	16.5:1	15.2:1
Primary	27.6:1	24.6:1	21.3:1

*No figures available earlier than Spring term 1966

a simple relationship between the P.T.R. and the size of classes or that by using the P.T.R. it is possible to judge the 'good' or 'bad' authorities. The size of classes is influenced by a number of other factors — the distribution of children between schools, the shape of age groups within a school, the nature of the accommodation available, the way in which a school is organised, the range of optional subjects offered, the proportion of children from non-English speaking homes or with learning difficulties — all these and others are relevant and important constraints.

Nevertheless, once it is understood that a P.T.R. of say, 20:1 does not mean that schools on average have classes of 20 children, the P.T.R. can be seen in useful perspective. It effectively shows trends can certainly help to forecast nationally future teacher training requirements.

Over a long period of time both in Barnet and nationally, the P.T.R. has been improving. For England and Wales it was 23.9:1 in 1962 and 20.0:1 overall in 1978 (the latest figures were published in June 1980). The Barnet figures are 22.3:1 in January 1966 (the earliest available for the Borough) and 18.4:1 for 1978.

Successive Governments have aimed to provide enough teachers to eliminate classes of over 30 pupils. It is not known precisely what P.T.R. would be needed to achieve this aim nationally but in 1965 the National Advisory Council for the Training and supply of Teachers suggested Primary 19.7:1 and Secondary

15.5:1. In July 1978 the Barnet Education Committee decided that as a matter of policy classes in primary schools should not normally exceed 30 children.

We have been making good progress since then. The most commonly occurring class size in primary schools in 1978 was in the range of 29-32 children, and in 1979 it was 25-28 children.

Classes in secondary schools are often divided into smaller teaching groups for practical work and for subject options. Moreover the size of teaching groups for sixth form studies are invariably much smaller than for pupils in the first five years of the secondary course.

Above average

The P.T.R. for Barnet primary schools is currently 21.3:1 and for secondary schools it is 15.2:1. These are good figures and will probably be seen to be better than the national averages when these are published (the 1978 figures for England and Wales were primary 23.6:1 and secondary 16.9:1).

Bearing in mind the Education Committee's decision on class sizes exceeding 33 pupils per class, it is interesting to see how the latest Barnet primary P.T.R. compares with the 1965 NACTST target of 19.7:1 for primary schools.

The P.T.R. for Barnet secondary schools needs to be good. Not only are there more sixth formers than ever before, but Barnet has an exceptionally high percentage of pupils staying on beyond the statutory school age. Our 49 per cent compares with an average for England and Wales of only 25 per cent and this is one of the reasons why Barnet is usually among the top three or four authorities when it comes to entrants to universities and other forms of higher education.

Join the Hendon gymnasts

HENDON SPORTS CENTRE, which has an outstanding reputation for its gymnastics training, is able to offer over 100 places for boys aged 8-11 who wish to take the beginners training in gymnastics and a further 100 places for boys and girls in trampolining.

The trampoline sessions will be under the guidance of Brian Moore who coached Paul Luxon, the only British World Trampoline Champion.

The charges are £5 for membership, plus £7.50 per term for one session a week.

Further details can be obtained from Evan Tuck, Organiser, Hendon Sports Centre, Algonon Road, NW4. Telephone 202-6027.

Fun for all the family

COME AND ENJOY yourselves and give the kids a great day out at a grand fete to be held at Inglis Barracks, Bittacy Hill, near Mill Hill East Station on Saturday, September 20, from 2 pm to 6 pm.

You will also be helping a good cause for all the proceeds will be in aid of the Mayor of Barnet's Charity Appeal for the Trigger Riding Group, a local voluntary organisation which helps handicapped people to ride.

A host of activities is being organised by the Army personnel at Inglis Barracks including a parascending display, rifle shooting, music by the Band of the Corps of Royal Engineers, a Police dog display, a celebrity cricket match, a Noddy train, pony rides, pancake tossing, a philatelic display, tug-of-war competition, a coconut shy and a Royal Military Police crime prevention display. Army vehicles will also be on show.

You will also have a chance to

win a new car for 50p; see the Mounted Police; there are cartoon film shows for the children and air beds on which they can play; and numerous other displays and stalls.

And if you feel hungry or thirsty there are hot dogs, ice cream, tea, coffee, soft drinks and a beer marquee.

Councillor Mrs. Edna James, Mayor of Barnet, will attend and hopes you will be there as well to give her appeal fund a big boost.

That's life in England

The BBC are launching a series of 20 programmes to help British residents whose first language is not English, to cope with the British way of life.

'Speak for Yourself' is a programme which will encourage immigrants build up a colloquial vocabulary and help them through the complexities of western society, such as the emergency services, parent-teacher relations and calling the doctor to a sick child.

Isla St. Clair, of the Generation Game, is the star presenter. The series is based on the experiences of a group of people living in a block of flats.

There is a book to accompany the series and glossaries in 13 languages — Arabic, Bengali, Chinese, English, Greek, Gujerati, Hindi, Italian, Portuguese, Punjabi, Spanish, Turkish and Urdu — are available free of charge from Barnet's local libraries.

The libraries also have the names and addresses of organisations to help those at whom the series is directed.

The first programme is on Friday, October 17, on BBC2 at 6.55 pm with repeats on Tuesday, BBC2, 11.25 am, and Wednesday, BBC1, 3 pm.

English the friendly way

NEW FRIENDSHIPS which span totally different backgrounds have blossomed across the borough in the four-and-a-half years' existence of the Barnet Home Tutor Scheme.

Several hundred Barnet citizens — ranging from sixth formers to the elderly retired — have given their services as volunteers to help their non-English speaking neighbours learn some everyday English. Usually they go for about one hour once a week to the home of a local ethnic minority family whose adult members find it

impossible to get to an English language class because of their working hours and domestic commitments.

Over the years hundreds of students have taken part in the scheme, most of them women of Asian origin.

Tutors and students soon become friends, enjoying getting to know each other and about each other's way of life and cultural heritage.

Set up in May, 1976, as a one-year pilot project with a

part-time organiser, the scheme has staggered along on a shoe-string budget. Now they have been given an urban aid grant to expand their work so they are looking for a full-time organiser to take on this unusual but rewarding job.

Anyone interested should get in touch with:

**Rose Grant,
34 Powls Gardens,
NW11 8HH**

for a job description and application form. The closing date is September 15, so hurry.

PORCHWAYS—WHERE PRICE REALLY MATTERS



OVER 2500 LOCAL INSTALLATIONS BY OUR STAFF
OVER 70% OF OUR WORK FROM RECOMMENDATION
Ask yourself why?

and then find out why we have thousands of delighted clients who come to us for the highest standards of planning and construction by our own specialists at most competitive prices. Practical, modern improvements that make life more comfortable now and increase the value of your home!

OUR ALUMINIUM DIVISION INSTALL THE FINEST BRITISH ALUMINIUM PRODUCTS IN SILVER OR WHITE FINISH AT LOWER PRICES THAN ANY OTHER REPUTABLE COMPANY

EASY PAYMENTS PERSONAL LOAN PLAN

FOR FREE ESTIMATES WITHOUT OBLIGATION

ALUMINIUM WINDOWS PATIO AND RESIDENTIAL

FRONT AND BACK DOORS

- * SINGLE OR DOUBLE GLAZED & LEADED LIGHTS
- * LOCKS ON ALL WINDOWS
- * HARDWOOD OR SOFTWOOD MAIN FRAMES

OUR JOINERY DIVISION INSTALL

STORM PORCHES TIMBER WINDOWS

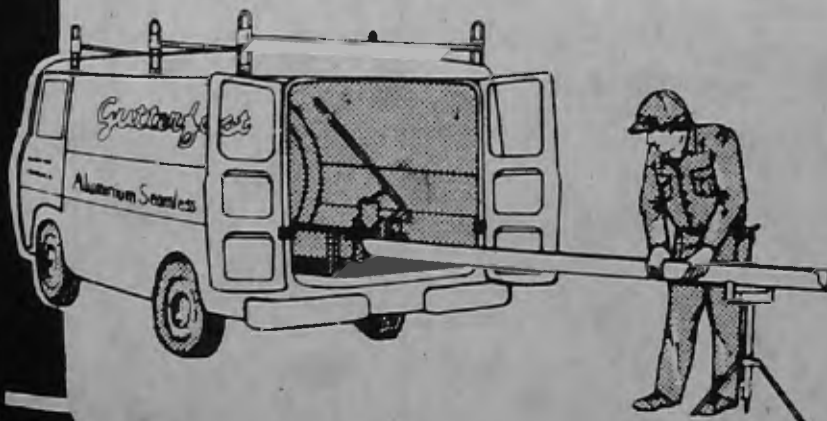
* CUSTOM MADE TO ALL DESIGNS

DON'T MISS OUT ON THE COMPANY WITH THE BIG REPUTATION

AT 55 CHURCH HILL RD. EAST BARNET
SO PHONE 01-440 5432

PORCHWAYS ALUMINIUM LIMITED

REGUTTER YOUR HOUSE FROM ONLY £2.50 PER WEEK GUTTERFAST SYSTEM



Gutterfast/Pargold Ltd.
115 Bath Road
Hounslow, Middlesex
Telephone 01-572 2196

*Usually made and fitted in one day

*30 year life expectancy

*Classic lines, large capacity

*No more costly maintenance

*Superb Quality

*Tough stove enamelled finish

For further details send coupon to Freepost HL131

Name _____

Address _____

Tel _____

Barclaycard and access welcome.

Tailor made on site

Keep the Burglar OUT OF YOUR HOME

COMPLETELY protect your home or office with this unique proven system which can Detect and Deter the burglar BEFORE HE GETS IN.
 No beams — No rays. ONE simple plug-in fully automatic unit can give you TOTAL CONSTANT SECURITY (not just one room or one point of entry) for as little as £175 complete.
 No rental charges — No maintenance costs — No installation costs.
 Complete the coupon for more details or prove it to your complete satisfaction with a FREE No obligation demonstration at your home or office.

I am interested in your home/office security systems.
 Please send me more details.
 Please arrange a FREE Home demonstration.

Name

Address

Tel:

Existalarm Ltd., 32 Muswell Hill, London N10 3TA
 Tel: 01-883 7277 — 01-444 5282
 — Ansaphone 01-883 0139

"LIGHT UP"

Your Party, Disco, Garden or Show
 Hire or Buy your Lights from

STAGE CONTROL
 Station Parade
 Whitchurch Lane
 Edgware, Middx.
 Tel 01-952 8982

Unipools Ltd

MAINTENANCE, SERVICING, CHEMICALS,
 POOL EQUIPMENT, COMPUTER WATER
 ANALYSIS, WATER SOFTENERS

T/A POOL SUPPLIES MIDDX
 87b Stanmore Hill, Stanmore, Middx.
 Tel: 954 7275 (24-hour answer service)
 Shop open Weekdays 9-3, Sat 10.2

Kreepy Krauly
 Automatic Pool Cleaner

CHISWELL POOLS

Tel. King's Langley 62908 or St Albans 52547

THIS YEAR'S WINNERS OF THE "CASCADE AWARD OF EXCELLENCE"

Sole area distributors

CASCADE

The world's largest manufacturers of vinyl lined pools

We supply installation, DIY Kits, from £800 ex. VAT, heating, maintenance, chemicals, accessories and full advisory service.
 Saunas, Sunbeds and Derbyshire paving stones also available.

End of Season offer for limited period only. A free gas boiler (value £600) or 9% interest on finance up to £5,000.

VISIT OUR SHOWCENTRE AT: AYLETT'S NURSERIES

On A405 North Orbital Road
 London Colney, St Albans, Herts.
 Tel. Bowmans Green 22585



Telephone: 01-346 2942

Clements of Finchley

FLORISTS & NURSERYMEN

315 Regents Park Road
 London, N.3

BARGAIN SHEDS OFFER

Example: 6' x 4' £98.50
 including delivery and erection.
 All other sizes and types available.
 Also all fencing materials.

H. W. Robinson Enterprises Ltd.

24 Stacey Avenue,
 Edmonton, N18
 Tel:
 807-1118/3445
 Mon.—Sat.
 8 am—5.30 pm



Artstone
 Gardens Centre,
 9 High Road,
 Broxbourne
 Tel: (61) 41313
 7 days a week
 10 am to 5 pm

EVERYTHING FOR THE GARDEN

ALL PLANTS, TREES
 SHRUBS, DUTCH BULBS
 SWIMMING POOLS AND CHEMICALS
 GARDEN FURNITURE, PAVING
 FENCING, SHEDS, ORNAMENTS
 FLOWERING PLANTS AND
 GREEN PLANTS FOR THE HOUSE

PERSONAL SERVICE, QUALITY GOODS
 REASONABLE PRICES

OPEN 7 DAYS A WEEK UNTIL DUSK

THE DUTCH NURSERY BELL BAR, HATFIELD

TEL: Potters Bar (77) 53372

DUKE O' YORK GARDEN CENTRE

BENTLEY HEATH, BARNET. 01-440 4734

GERANIUMS — BEDDING PLANTS
 DAFFODILS, HYACINTHS AND CROCUSES
 SEDGE PEAT — £2.30 per cwt
 IRISH PEAT — Discount Prices

Agents for Sun Greenhouses — Seaford Sheds
 Full range of garden tools — Syon Wheelbarrows. £14.25
 Forest Bark 20% off

SALE OF
 GARDEN FURNITURE & BARBECUES
 UP TO 15% DISCOUNT
 ON PRODUCTION OF THIS ADVERTISEMENT

SWIMMING POOL CHEMICALS

Padding Pools, Swings, etc
 Silver Sand — Ballast — Shingle — Sand — Soil in bags
 Stockists of Walling, Paving & Rockery Stone, Fencing & Trellis.
 Fountain Pumps & Pools by Glass Art
 Our Landscape Service has a team to build your garden walls —
 patios — pools — rockeries — turfing — major planting



Open 7 days a week, 9 am—5.30 pm

F34P

LUXURY FLAT

FOR SALE
 IN NEW BARNET.
 LARGE LOUNGE
 RECENTLY DECORATED.
 FULLY FITTED
 KITCHEN, INCLUDING
 SPLIT LEVEL COOKER
 AND HOB, WASTE
 DISPOSAL UNIT.
 PLUMBED FOR
 WASHING MACHINE.
 TWO BEDROOMS, MAIN
 BEDROOM WITH
 FITTED WARDROBES.
 FULLY TILED
 BATHROOM.
 SEPARATE W.C.
 GAS C.H., BALCONY.
 LONG LEASE.

PRICE £39,950
 TELEPHONE
 440 9716

TO ADVERTISE
 IN THIS
 PUBLICATION
 PHONE

01-366 4626
 01-367 0246

R. & H. MALKA LTD

174 Deans Lane, Edgware, Middx.

959 5112

959 1923

The Polite, Understanding
Kosher Butcher of Edgware

*Ruth & Henry wish to convey to
friends and customers old and new a
Very Happy Yom'tov and Well over the
Fast. Good Health for the New Year.*

Service and Civility at all Times

KUTE KIDS — Store for the Young

The main stockists for all English and Continental
baby and children's wear in the area.

Sizes from birth to 13 years with an especially
beautiful range of Christening clothes and an
outstanding variety of trews, dresses, etc.

Do visit us

714 High Road, Tally Ho Corner, Finchley, N12.

Tel: 445 1445

ESTABLISHED 30 YEARS

P. A. COOK & SONS

EXTENSIONS, CONVERSIONS
DECORATING, ROOF WORK
AND ALL GENERAL REPAIRS



PHONE 804 6412 — 803 8056/7

BIG ENOUGH TO COPE
SMALL ENOUGH TO CARE

HUGE DISCOUNTS

on

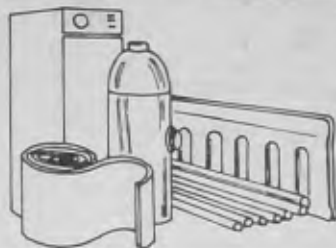
* HEATING *

RADIATORS up to 40% off
MYSONS, STEELRAD THORN, BARLO

LOFT INSULATION £4.00
80mm THICK
(Approx. 16" wide 27" long) per roll

**GAS FIRED BOILERS
up to 35% off**

POTTERTON, IDEAL, THORN,
GLOWORM, CHAFFOTEAUX



HUNTER PLASTICS
GUTTERS, WASTES, SOIL SYSTEMS

less 25%

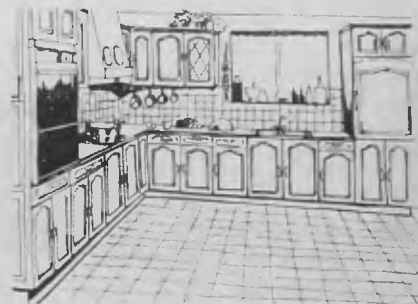
* KITCHENS *

**REAL OAK DOORS
SINK UNIT FOR ONLY
£106.00**

**SELF ASSEMBLY BASE
UNIT WITH CHOICE OF
FINISHES FOR ONLY**

£31.88

*If these units can be bought for less elsewhere
we will gladly refund the difference.*



Check our prices for any kitchen

LEGEND (OAK) EASTHAM BURCO
OLYMPIC QUALCAST
HYGENA EASTHAM
MOST MAKES AVAILABLE INCLUDING
CONTINENTAL

* BATHROOMS *

PRESSED STEEL SUITES
Comprising: bath, basin, pedestal, low level
toilet, seat, taps, waste and panel

White £126.61 Coloured £148.07

ACRYLIC BATH SUITES
Twin grip acrylic bath, 8mm basin, pedestal,
low level toilet, seat, taps, waste and panel

White £186.78 Coloured £191.95



All makes available
**CAST IRON BATH
SUITES**

Twin grip
Caribbean bath,
close coupled toilet, seat, basin, pedestal, taps,
waste, panels

White £287.37 Coloured £310.49

TILES Johnsons, Spinx,
Pilkingtons,
Spanish and Italian less 1/3



Park View Building Supplies

855 GREEN LANES, WINCHMORE HILL, N21.
360-3633/0370

Double Glazing to suit the individual home



Double-glazed, leaded-light windows



Double-glazed, Georgian-style windows



Double-glazed, modern-style windows



Double-glazed, coloured glass windows

Masterseal present the largest range of replacement windows,
doors and patios in the U.K. Until October 31st we are offering a
15% discount over the entire product range.

For details: Telephone St Albans 66521 anytime or fill in the
coupon.

NAME:

ADDRESS:

TEL:

Send coupon for details to:

MASTERSEAL, A MEMBER OF THE TUDOR GLASS GROUP
Unit 12 Pasadena Industrial Estate, Pasadena Close, Hayes, Middlesex.

'FOR ALL THE BEST MUSIC'

IN SEPTEMBER Hendon (St. Mary's) Music Society begins its most ambitious season of concerts and lectures since its foundation in 1959. Renewed sponsorship by the Langham Life Assurance Company of Hendon, has made this possible.

The Society has two main activities. Firstly the Hendon Recital Series held on Saturday evenings in Hendon Methodist Church, The Burroughs, Hendon. The season opens on Saturday, September 17, with the London Symphony Orchestra Wind Ensemble which includes such well-known artists as Jack Brymer, Roger Lord and Anthony Camden.

Other outstanding artists taking part this season include Benjamin Luxon (baritone), John McCabe (piano), the Endellion String Quartet, the Zingara Piano Trio and David Wilson-Johnson (baritone).

After the opening recital other events will be held at roughly fortnightly intervals.

Their other main activity is the Monday evening series of lectures in Hendon Libraries. This year's distinguished visiting lecturers include Felix Aprahamian, Julian Budden, Gwen Catley, Peter Gammond, Anthony Hodgson, Gerald McDonald, Geoffrey Norris,

Michael Oliver, Eric Parkin and John Steane.

The society also promotes young artist concerts, record recitals and visits to the opera and concerts.

Hendon Music Society believes that their slogan 'For the best music without the need to go to Town' is an accurate assessment of their programme.

Taking out a subscription to the Society makes sound musical and financial sense. Full details of the Society can be obtained from the secretary, Mrs. M. Hickinbotham, 44 Egerton Gardens, Hendon, NW4 (202 6908) or the chairman and administrator, Geoffrey Pearce (203 2355).

FEW AREAS in Britain are so rich in music. Mill Hill Toc H Music Club was formed 26 years ago and since that time has been organising concerts with such international artists as Yehudi Menuhin, Dame Janet Baker, Artur Schnabel and Daniel Barenboim.

These concerts take place at the Civic Hall, Borehamwood, and the new season opens on Saturday, October 18 with the English Chamber Orchestra and a programme of Bach, Haydn, and Gluck.

Sunday, November 16 sees a return visit of the Chilingarian String Quartet with Andrew Marriner, clarinet.

Sunday, December 14 is reserved for the Oxford Pro Musica and a programme including Mendelssohn's Scottish Symphony.

There are concerts in January, February and March and the season closes on Sunday, April 5 with an evening with the Amadeus Quartet.

Tickets for each concert cost between £2.50 and £2.90 but a season ticket covering the seven concerts can be obtained for £16. Details from the concert secretary, Wilfred Ransome, 17 Lawrence Gardens, Mill Hill. Telephone 959 1173.

Society go independent

THE 1980/81 SEASON for Barnet and District Choral Society promises to be particularly challenging. After many years under the aegis of Barnet College the Society has chosen to become independent.

Among the advantages of this move is the ability to fix their own fees and more flexibility of rehearsal dates.

Rehearsals start on September 17 at 7.45 pm at the Methodist Church Hall, High

Street, Barnet, and new members can be assured of a warm welcome on that enrolment evening.

Alan Barlow remains the society's musical director and he will be rehearsing Beethoven's 'Mass in C' and Vivaldi's 'Gloria' for the first concert of the season on November 1. The joint Carol Concert with Finchley Choral Society will be on December 20.

'St. Nicholas' by Britten, 'Seven Lincolnshire Folk Songs' by Phyllis Tate (the society's

president) and 'Songs from the Bavarian Highlands' by Elgar, is the programme for the first concert of 1981, on February 21. These three concerts will be held at Queen Elizabeth's Girls' School, Barnet.

The last concert of the season will be of a new work by Gerald Schumann, who lives in Finchley. The work is inspired by the medieval chronicle 'Piers Plowman'. The programme will also include 'Blest pair of Sirens' by Parry.

UNDER NEW MANAGEMENT DIAMOND DRY CLEANERS

Special two-hour Service for Dry Cleaning
Alterations & Repairs
Friendly Personal Service & Attention

PHONE 202 3057
122 BRENT STREET, NW4

K.J.D. LOFT INSULATORS

We supply and fit loft insulations
Council grants available

SPECIAL OFFER
FREE HOT WATER JACKET

Tel: 531 1608

GOLDERS GREEN TYRE CENTRE

Tyres at discount prices.
Prices start from £9.65

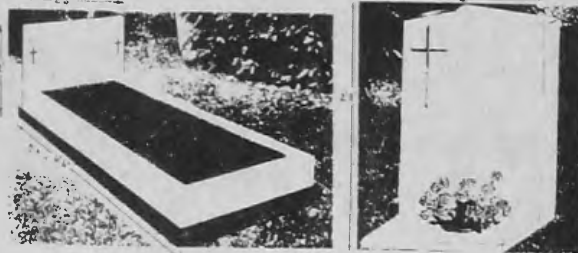
Free Fittings All makes available
Punctures repaired FREE Tracking Check

Check out our prices at
PARK PARADE AUTO CENTRE
Armitage Road, Golders Green, NW11
01-458 9233

Opening hours 8.30 am—6 pm

JOSLIN MEMORIALS LTD

SEND TODAY FOR OUR BROCHURE WHICH CONTAINS
SOME OF THE 70 DESIGNS FOR YOU TO CHOOSE FROM
OR CALL IN TO SEE OUR SELECTION DISPLAYED. ALL
WORK EXPERTLY FINISHED BY OUR OWN CRAFTSMEN.



Italian White Marble £120
+ £18.00 VAT
Natural Stone £98
+ £14.70 VAT

Italian White Marble
£80 + £12.00 VAT
Natural Stone £70
+ £10.50 VAT

ALL PRICES SUBJECT TO INCREASE
AT ANY TIME

PLEASE TELEPHONE 883 1536/5541
JOSLIN MEMORIALS LTD
238 HIGH ROAD, EAST FINCHLEY, N2.

BY APPOINTMENT TO
ST PANCRAS & ISLINGTON CEMETERIES

PLUMBING & HEATING PROBLEMS?

WE CAN HELP YOU!

Prompt 24-hour service

Telephone
889 9537/7645
(office)
367 6166
(nights)

all inquiries

**OAKLEY PLUMBING
&
HEATING ENGINEERS**

Specialists in
Plumbing and Heating
Installations

BSM

**Passmaster
Loan Plan**

**Pass the Test
the BSM way**

9
For Example:
20 hours for £14 per month
(approx. 12 months)
This is equivalent to a weekly
cost of only £3.23

The British
School of Motoring
1284 High Road,
Whetstone, N20
Tel: (01) 445 0757

BSM

We're here to help you through

**FOR ALL YOUR
ADVERTISING PHONE 366
4626. WE REACH APPROX. 1/4
MILLION READERS.**

Middlesex Polytechnic

Leisure Learning Courses

- **The Pleasures of Dickens' Novels**

Ten meetings, 1.30-3.30pm,
Wednesdays 8 October - 10 December
at the Polytechnic's Ivy House,
North End Road, NW11 location

- **The Thirties**

Ten meetings, 11am-1pm
Wednesdays 8 October - 10 December
at the Polytechnic's Ivy House,
North End Road, NW11 location

- **Effective Speaking**

Eight meetings, 7-9pm,
Wednesdays 8 October - 26 November
at the Polytechnic's Trent Park,
Cockfosters location

- **Religion in Present-Day Society**

Ten meetings, 7-9pm,
Wednesdays 8 October - 10 December
at the Polytechnic's White Hart Lane,
Tottenham N17 location

For further information on the above four courses contact: Humanities Short Courses Unit, Middlesex Polytechnic, All Saints, White Hart Lane, Tottenham N17 8HR. 01-801 3434.

HOUNSOM LTD

22 Watford Way, Hendon
London, NW4 3AD
Tel: 01-202 8921

*THE FAMILY BUSINESS
WITH THE PERSONALISED SERVICE*

Established 1930

Under the direction of Mr D. S. Farrow
Miss S. D. Farrow

TELEVISION HI-FI — VIDEO

Sales and Service
Service Manager: Mr R. Langley

RECORD CENTRE

For Classical Records and Tapes
Top 100 Pop Records kept in stock plus
comprehensive range of oldies

MUSIC

Selection of Sheet Music

Educational and Associated Board Publications
'Show' and 'Pop' numbers also kept in stock

We are prepared to order any item not in stock

RODNEY AND DAVID GIBBONS OFFER YOU THE COMPLETE KITCHEN PLANNING SERVICE



25 Kitchen Displays from the following manufacturers: Castle, English Rose, Gower, Grovewood, Hygena, Newage, Schreiber, Thomas Eastham

PLUS! A "Carry Home" Department from Schreiber in stock

Also available: Ceramic Wall Tiles and Armstrong Flooring
Fitting service available where required

WE CAN TRANSFORM YOUR KITCHEN AT A PRICE YOU CAN AFFORD

Kitchens Galore

Open: Mon., Tues., Thurs., Fri., Sat. 9 a.m.-5.30 p.m. Wed. 9 a.m.-1 p.m.

112 BRENT STREET, HENDON, NW4. Tel. 202-0291

NEW SHOWROOMS NOW OPEN AT:
64/66 HIGH STREET, BARNET. TEL. 441-2606

WE ARE
HERE



Council staff move

The staff at the head office of Barnet Council's Social Services Directorate have moved from Winston House, Church End, Finchley, to new premises at 1331 High Road, Whetstone.

The move involved about 100 members of staff as well as the specialist services for the blind and deaf, and the principal occupational therapist and community worker previously based at 1 Friern Park, North Finchley.

The new headquarters is a refurbished and extended building and which has been leased by the Council. The telephone number is 446 1488.

Members of the public should still contact their local area team office when in need of help or advice as, apart from the specialist services, the headquarters directorate are mainly managerial or administrative officers.

The Council's Central Planning

Division Office, also based at Winston House, which deals with planning applications in the Childs Hill, East Finchley, Finchley, Garden Suburb, Golders Green, St. Paul's and Woodhouse Wards, will move into the vacant offices at 1 Friern Park, telephone 446 3291.

The Home Improvements Section who were also based in Winston House, have moved back to Gateway House. The telephone number is unchanged, 349 9121.

This move by the Council from Winston House comes at the satisfactory conclusion of negotiations with Murco Petroleum from whom the Council leased the offices in 1972. This space will now revert to Murco who will be using it for steady expansion resulting from their successful involvement in North Sea Oil exploration and production.

Library Lectures

Barnet Library Services are planning a full programme of illustrated lectures for the winter season. Next month Civic News will carry a detailed report of the programme.

The first lecture is at North Finchley Library on Wednesday, October 15, at 8.15 pm, when Brian Sage, a local ecologist illustrates the plant and animal life in the rain forests of Borneo.

HELP

The WRVS (the Women's Royal Voluntary Service) are in urgent need of two people who will run the Darby and Joan Club at Garth House, Granville Road, Childs Hill, NW2, on a voluntary basis. The club is held every Wednesday afternoon and help is wanted from September onwards. If you can help please contact Mrs Syres, Hendon WRVS, on 202 9684.

BRING OUT YOUR BOOKS FOR OXFAM

BOOKS, BOOKS, bring out your books! is the cry of the Temple Fortune Oxfam Group. They are collecting now for their third mammoth Book Market at Rosslyn Hill Unitarian Church, Hampstead, NW3 from 10.30am to 5pm on Saturday September 27.

They are spurred on by last year's achievement of more than £3,000 which went to fund Oxfam projects to provide clean water in the Third World. This year's proceeds will go to help Oxfam's work with the millions of refugees in Asia and Africa.

The tireless enthusiasts

Estelle Russell	435 6996
Philip Barbour	458 2847
Jean Neal	455 1876

will be delighted to collect saleable books, from first editions and signed copies to paperbacks. Classics and books on cookery, art, music, gardening etc. are especially welcome. Further details from Mrs. Rona Wood, 88 Hampstead Way, NW11, tel: 455 4395.

SPECIAL AUTUMN OFFER 10% DISCOUNT ON ALL ORDERS OF £1000 & OVER

Now your home
can be made
brighter, warmer,
safer, more elegant



We will visit you in your own home, measure and estimate without charge or obligation, offer advice about long term benefits and home improvement loans on any of our extensive range of aluminium products.

- * Patio Doors
- * Secondary Double Glazing
- * Entrance Doors
- * Porch Entrance's or Replacement Windows

- COMPREHENSIVE GUARANTEE
- HOME LOANS AVAILABLE IMMEDIATELY!
- LICENSED UNDER THE CONSUMER CREDIT ACT
- CONFORMING TO C.P.152

01-863 0722

337 HIGH ROAD, HARROW WEALD,
HARROW, MIDDLESEX HA3 5BR

CONDITIONS OF ACCEPTANCE

- Acceptability: The company reserves the right in its absolute discretion to decline or cancel any order or advertisement of series of such at any stage without notice.
- Liability: Whilst every endeavour is made to insert advertisements as ordered, the company does not accept liability for consequences arising from error or delay in publication of advertisements, subject to the provision of the Unfair Contract Terms Act 1977.
- Series: Advertisements booked at special discount rates are not subject to cancellation. In all series advertisements, it is the advertiser's responsibility to check that the first insertion is published correctly, and without delay to notify the publishers of any errors.
- The Law: The advertiser warrants that the information provided by him to the publishers for purposes of preparing and publishing any advertisement relating to the advertiser's trade or business is true and accurate and such information and subsequent advertisement, does not infringe copyright and complies with the provisions of The Trade Descriptions Act 1969 or later legislation. Should any breach of copyright arise from the printing of the advertiser's advertisement, the advertiser undertakes to indemnify the publishers in full.
- The placing of an order or contract will be deemed an acceptance of the publishers' conditions (contained in Barnet Civic News) or on the publishers' order form which cancel any conditions which may accompany any advertiser's order.
- Revision: The publishers reserve the right to revise the conditions and rates from time to time, and to make alterations to advertisements to ensure conformity to the publishers' standards and current law.

High Barnet gets link to Brent Cross

A NUMBER OF CHANGES are planned to bus services in the Barnet area from Saturday September 27. These changes aim to match the services to present-day usage, and to give economies wherever possible, including the extension of one-man operation to more routes, while providing new facilities where these can be justified, and the necessary resources can be made available.

ROUTE 26 (Barnet, Chesterfield Road — New Barnet Station — Golders Green Station and Brent Cross).

10-minute peak period frequency will be scheduled between Chesterfield Road and New Barnet Station (15 minutes outside the peaks), with alternate buses running through to Brent Cross.

On Saturdays, a 15-minute service will be scheduled with buses every 30 minutes in the early morning and in the evening over the New Barnet — Golders Green/Brent Cross section.

There will be no change to the Sunday service between Chesterfield Road and Golders Green.

ROUTE 84 (St. Albans — New Barnet Station)

Route 84 will be extended on Mondays to Saturdays from its present terminus at New Barnet through to Arnos Grove Station over route 261, part of which it will replace. There will also be one morning and one afternoon Monday to Friday journey which will divert from the normal route to run between Arnos Grove and Barnet, Chesterfield Road to provide this link for schoolchildren travelling to and from schools in Oakleigh Park.

In the peak periods, Mondays to Fridays, there will be a 15-minute service between St. Albans and New Barnet, with alternate buses running through

to Arnos Grove. Between the peaks, a 24-minute service will be scheduled, with a half-hourly evening service.

During Saturday shopping hours, a 20-minute service will be scheduled throughout the route, with a 30-minute service in the early morning, and in the evenings. A half-hourly service will continue to run on Sundays between St. Albans and New Barnet Station.

ROUTE 107 (Queensbury — Edgware — Oakwood — Enfield — Enfield Lock).

On Mondays to Saturdays, the section of Route 107 which now runs between Enfield Lock and Oakwood station will terminate at Enfield Town.

In the peak hours on Mondays to Fridays a 15-minute service will be scheduled between Enfield Highway (Ponders End in the early morning) and Edgware with alternate buses running through to Queensbury.

Additional journeys will operate between Ponders End and Borehamwood. Outside peak periods, a 20-minute service will run between Enfield Highway (Ponders End in the late evening) and Queensbury.

On Saturdays, Route 107 will run two overlapping sections, with buses every 20 minutes

between Ponders End and Queensbury, and also every 20 minutes between Enfield Lock and Enfield Town (extended to Arkley during shopping hours). There will be no change to the Sunday service.

ROUTE 261 (Barnet, Chesterfield Road — Arnos Grove Station).

This route will be withdrawn.

ROUTES 298 and 299 (Turnpike Lane Station — Cockfosters and Southgate — Clare Hall/Borehamwood).

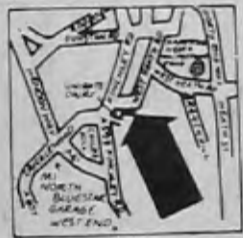
Route 298 will be converted to one-man operation, and will be linked with Route 299 to run from Turnpike Lane via Cockfosters and Potters Bar to South Mimms, Clare Hall Hospital, with peak hour journeys as now, diverting to the Cranborne Road Industrial Estate in Potters Bar, and Turnpike Lane will be co-ordinated with Route 121 to provide a regular combined timetable.

ROUTE 299 (Southgate Station — Potters Bar — South Mimms — Borehamwood).

The number 299 will be discontinued, the service being provided by an extension of route 298.

Route 26 will be converted to one-man operation daily. It will be extended on Mondays to Fridays until about 9.00 pm and on Saturdays until about 6.30 pm from Golders Green to run by way of The Vale, Pennine Drive and Claremont Road (Clitterhouse Estate) to and from Brent Cross Shopping Centre, providing a long-desired bus link to this important centre from many parts of the Borough of Barnet. At its northern end the route will be extended from New Barnet Station to Chesterfield Road, Barnet, daily (it replacing part of route 261 which will be withdrawn).

On Mondays to Fridays, a



CORNER WEST HEATH ROAD AND FINCHLEY ROAD LONDON NW3 TELEPHONE 01 458 4388

FINE + EVERYDAY WINES AT WHOLESALE PRICES!!

OUR WAREHOUSE IS CRAMMED WITH 100'S AND 100'S OF CASES OF BARGAIN WINES, SPIRITS + REAL ALES, HERE IS A SMALL APPETIZER

FRENCH REGIONAL REDS

	EX. VAT PER CASE 12 BOTTLES
DOMAINE CAYLUS Vin du Pays du L'Herault...	14.40
COTES DU LUBERON VDQS delightful fruit...	17.52
COTES DU ROUSSILLON VILLAGES AC Pleasingly heavy and fruity	21.00
FITOU 76 AC heavy and well-aged	21.24

COTES DU VENTOUX Rhonish Red	16.68
------------------------------	-------

FRENCH REGIONAL WHITES

COMPAGNON VIGNERON dryish Vin de Table	15.60
BLANC DE BLANCS Vaucluse	15.00

CLARET

1961 CH CALON AC Montagne St. Emilion CB a rare glimpse at this great vintage without breaking the bank!	58.80
1970 CH DES JAUBERTES AC Graves CB	42.00
1972 CH DE FRANCE - Bordeaux bottled by Calvet	28.00

RED BURGUNDY

RESERVE DE L'ORATOIRE AC Bourgogne Grand Ordinaire - Chanson Pere et Fils	23.40
1970 PERMAND VERGELESSES LES VERGELESSES AC Chanson Pere et Fils	51.60
1973 SAVIGNY LES BEAUNE AC Barthelemy Guesnier	45.60
1975 BEAUNE BELLISANDS AC Bouchard Paul Bouchard	46.80

* MINIMUM PURCHASE 1 CASE (12 bottles) * WHICH MAY BE MIXED

WHITE BURGUNDY

1976 MACON SUPERIEUR AC Chanson Pere et Fils unusual weight and at its peak	34.20
1975 PERMAND VERGELESSES AC Chanson Pere et Fils	44.40
1971 CHASSAGNE MONTRACHET AC Paul Bouchard	68.40

RHONE

COTES DU RHONE AC St. Pierre	17.88
1977 CUVÉE DE ROCHE FINE AC Cote du Rhone Jaboulet Vercherre	25.80
1978 CROZES HERMITAGE AC Jaboulet Vercherre	30.00

LOIRE

MUSCADET AC Sevre et Maine	21.00
1978 MUSCADET SUR LIE AC Sautejau	28.80

ALSACE

1979 GEWURTZTRAMINER AC Popff + Irion	28.80
---------------------------------------	-------

CHAMPAGNE

LANSON BLACK LABEL	59.88
--------------------	-------

BULGARIA

CABERNET SAUVIGNON All the weight you expect from this grape at amazing prices...	17.38
-----------------------------------------------------------------------------------	-------

JUGOSLAVIA

* 1976 CABERNET strong well aged red	16.68
--------------------------------------	-------

GERMAN WINES

1979 NIERSTEINER GUTES DOMTHAL QBA unusually dry	17.40
1976 SCHLOSS BOCKLEHEIMER MUHLBERG RIESLING SPATLESE QMP	27.60
1978 PIESPORTER MICHELSBURG QBA	20.40
1976 ZELTINGER DEUTHERRENBURG EEC TAFELWEIN per case 6 x 150cl magnums	13.92

HUNGARY

PECS OIBSZ RIESLING light fresh fruity white	15.60
TOKAY ASZU 1973 5 putton yos	28.80

SOUTH AFRICA

1979 CHEWIN BLANC KWV medium dry well balanced and fruity	18.00
NV BELLINGHAM CAPE GOLD fresh fruity white	20.76
1979 SYLVANER Est Bott. Obergaauw text book Sylvaner superbly made	28.80
1976 CABERNET SAUVIGNON KWV fruit and good finish	21.60

ARGENTINA

1973 ANDEAN CABERNET SAUVIGNON long in cask and bottle with lots of style	22.80
---------------------------------------------------------------------------	-------

CALIFORNIA

ZINFANDEL Paul Masson	27.60
PINOT NOIR Christian Brothers	30.60

AUSTRALIA

1972 D'Arnyberg SHIRAZ - depth and great character	32.40
----------------------------------------------------	-------

SPAIN

1975 BANDA AZUL popular Rioja a knockout price	18.24
YARELA SHERRIES Cream Pale Cream Amontillado Fino + Manzanilla	17.64
OLD OLOROSO SOLEIRA 1847 more like vintage port than sherry with a wonderful hint of oak to the nose	28.80

REAL ALES AND BEERS

Real Ales in polyfins, Pils, Finkins and Kils brewed by Greene King, Fullers, Theakstons Wadworth and Charles Wells from £10.19 exc. vat per pun

BOTTLED ENGLISH BEERS

Ruddies Bitter £4.90 per case 24 x 1002 exc. vat
Ruddies County £5.70 per case 24 x 1002 exc. vat
Theakstons Best Bitter £4.50 per case 12 x 50cl exc. vat

minimum purchase 1 case of beer

REGULAR WEEKEND WINE TASTINGS

FROM THE WESTERN SLOPES OF HAMPSTEAD HEATH - WITH A PRONOUNCED FINCHLEY ROAD NOSE. 'D SAM'



ALL WINES ARE BOTTLED IN THE COUNTRY OF ORIGIN EXCEPT WHERE MARKED



ICRESPO OIL
£1.59
a litre

TEL: 458-4388

PLUS MANY MORE SENSATIONAL BARGAINS!! ALL MAJOR CREDIT CARDS ACCEPTED (except for Spirits)

CULINARY SPECIAL - ITALIAN RED £9.00 per doz vin de cuisine

OPEN TO THE PUBLIC!

WHOLESALE WINE WAREHOUSE

PHONE FOR FULL LIST AND VISIT THE WAREHOUSE - OPEN TUE-FRI 11 to 8. SAT 10 to 7. SUN 11 to 5.

Letters to the editor

Views of the past

I received a copy of July Civic News and found it very interesting, especially the early photographs of the area.

However, may I comment on the caption to one of the Edgware views. The photograph with a tramcar, c.1928, has a caption referring to the tramcar as one of type C. The car in the picture is one of the type B class (Nos. 1-70). Sixteen of these were fitted with top covers between 1913 and 1915, becoming type B/2. There were 15 type C cars. These were Nos. 151-165, and all were fitted with top covers between 1913 and 1915 becoming type C/2, type C becoming extinct. I have many photographs of all the M.E.T. cars in every condition from the start of the system onwards.

The line from The Crown, Cricklewood to Edgware was the second of the Metropolitan Electric Tramways routes to open, on 3rd December, 1904, the first being Wood Green to Finsbury Park and Manor House to Seven Sisters Corner on July 22, 1904.

The street lighting in Edgware, c.1928, was electric. The lamp in the picture is an electric one replacing the earlier gas



The view of Edgware in the past showing the tramcar to which Mr. Smeeton refers in his letter.

lanterns. By 1928 the street furniture relating to the tramways can be seen to have been considerably simplified. The early views on the page show tram standards complete with ornamental iron scrollwork and collars. All except the bases had gone by 1928 and the ornate finials of cast-iron replaced with simpler turned wooden ones.

In the 'Focus on Finchley Shopping' feature, there are interesting references to Ballards Lane and High Road (formerly High Street), North Finchley. Ballards Lane is indeed of early origin, but it may have been named after a family of that name, as there is a record of a Henry Ballard in Finchley in 1323, with Ballards Lane being

named as such in 143 1/2 in some unpublished Court Rolls.

The name 'Tally Ho! Corner' has nothing to do with hunting. On land close to the site of the present bus station and Gaumont Cinema there stood the extensive stables and coach houses of William Chaplin. Here he kept the famous Royal Mail Coach 'The Tally Ho!', and some 150 horses, from c.1816. The name 'Tally Ho! Corner' applied to the road junction from about this time, before the present hotel and its predecessor were built.

The earlier hotel, demolished in 1926/7 was known as The Park Road Hotel officially, and photographs taken of the old building clearly show this. I clearly recall the name on the

building. However, it was popularly called The Tally Ho! and doubtless this was made 'official' when the new building came into use in 1927.

The Park Road part of the old building's name doubtless refers to 'Regents Park', as the whole of the 'new road' including Ballards Lane up to Tally Ho! Corner was loosely referred to in the later 1800s when the road was opened right through to London, as Regents Park Road. Regents Parade (from Nether Street northwards) and Park Parade (on the east side from Castle Road northwards) are names derived from this association, now numbered into Ballards Lane and High Road respectively. High Street, North Finchley was numbered from 1 at the Belgrave Tavern to a point north of Avenue Road where it became High Road.

I am preparing a history of the Metropolitan Electric Tramways which is nearing completion and would welcome any information from any reader who has any recollection of the system in the area.

C. S. Smeeton
(Member, Finchley Society and
Tramway Museum Society and
native of North Finchley)
'Glan Aber',
Newbridge Road,
Ambergate, Derbyshire
DE5 2GR

A great deal for your money

The local Marriage Guidance Council which covers the area of Barnet, Haringey and Herts mere dealt with 863 requests for help during a 12-month period in 1979/80. The number of children under 16 in families counselled was 538 and if only six of these children were saved from going into care by the help of the Marriage Guidance Counsellors, it would more than offset the total grant aid from all three Local Authorities.

The Marriage Guidance Council is a registered charity and is totally dependent on local authority grants and contributions from clients and friends. Since Counsellors give their time and expertise voluntarily, the running costs of this excellent service are minimal, but so that no one in distress facing the possible pain of divorce and separation has to wait long for an appointment, there is an urgent need for far more Counsellors to cope with the ever-growing demand for help in personal relationships. Counsellors, as well as helping married people

with relationship problems, also counsel divorced, separated, single, homosexual, engaged couples and teenagers, and undertake 'Personal Relationship' sessions in schools.

The above are our constant concern but in addition, several of our Counsellors work closely with doctors in surgeries; one Counsellor takes a regular group of parents of handicapped infants at a Muswell Hill Clinic, and three Counsellors are involved with Court Welfare Officers in the Family Conciliation Bureau helping parents in contention over access to their often unhappy and bewildered children.

Men and women wishing to become Counsellors need not be academically qualified but be somewhere in the age groups of 27 to 45 and possess those therapeutic talents of empathy, sensitivity and the ability to work through the clients' pain and distress.

Pat Gilks, the Director of Barnet, Haringey and Herts mere Marriage Guidance Council will be pleased to hear

from anyone with the time to give to this more than worthwhile commitment, so please telephone 445 9549/8522 or write to her at 5 Woodhouse Road, Tally Ho Corner, Finchley, N129 EN.

Pat Gilks

Eczema and its problems

I see from the Barnet Civic News that you are interested in the activities of local voluntary organisations and groups.

There is a local branch of the National Eczema Society which draws members from Barnet in the north, Central London in the south and Ealing in the west.

The National Eczema Society was formed five years ago to fill the gap left by busy doctors with no time to explain fully about eczema and its attendant problems. Eczema is an irritating and painful skin condition which affects more than two million children and adults at some time during their lives. Our members give mutual support, exchange

information and raise money to fund research into the causes and cures of eczema. We provide a sympathetic ear and even a shoulder to cry on when the sight and sound of a child tearing at its itching skin becomes unbearable.

As a local branch we hold informative meetings where doctors come to talk to us. We hold regular fund-raising events and theatre visits and our members gather together for social events where people can just meet and talk. It is amazing how therapeutic it can be to talk to someone who understands.

Mrs. Pat Meadows, 48 Hadley Road, New Barnet, tel: 440 2257, or Mrs. Marilyn Becker, 42 Lake View, Edgware, tel: 958 7128, can give more information about the Society and its local branches and have a selection of pamphlets available about eczema and its treatment, including a new pamphlet especially written for children.

Marilyn Becker

Letters to the editor should be sent to: Civic News, Town Hall, The Burroughs, Hendon, NW4 4BG.

HOME IMPROVEMENTS

WORKTOPS AND MATCHING LAMINATES

Non-standard worktops and breakfast bars made to order on the premises.

LARGE SELECTION EX-STOCK
Full range of thicknesses textures/colours
D.I.Y. CENTRE (COLINDALE)
2 Varley Parade, Edgware Road, The Hyde, NW9
Telephone 205-4281

e.g. 12ft Run From £52.00

VISIT US ON STAND NO. 1539a at the HOME IMPROVEMENTS EXHIBITION EARLS COURT, 4th and 5th October

1 HOUR

FITTED WARDROBES

YES! That's all the time it takes to fit a 12ft run of these beautiful doors.

IT'S NEVER BEEN SO EASY

By using the world famous KAZED bi folding door system you can create modern fitted wardrobes with a 100 per cent professional look. Simply position the top and bottom tracks and slip in the doors.

THE BIGGEST CHOICE!

Three heights (up to 96in), 12 different widths that combine to fill any space. White or off white finish with a choice of moulded trim. Plus silver or bronze mirrors.

WE HAVE THE FINEST DISPLAY ANYWHERE

Bedroom Fittings
Open 9.5.30 Closed all day Wednesday
339 Baker Street, Enfield.
Tel 01-366 1480

LOW DEPOSIT FINANCE
Upto 10 years to pay

A GREAT DOUBLE OFFER!

YOU JUST CAN'T AFFORD TO MISS

FREE WINDOW PLUS AN ENTRANCE DOOR
FOR A LIMITED PERIOD ONLY £120

YES! When you replace Two Bays or four picture windows with WINDOWCRAFT'S beautiful Aluminium Replacement Windows, we will supply and install your bathroom or similar window absolutely FREE! Also to complete the WINDOWCRAFT transformation we will replace your Entrance Door in elegant aluminium, double glazed in the pattern of your choice for the ridiculously low price of only £120 (complete with hard wood sub-frame)

This double offer represents genuine discounts from the current WINDOWCRAFT Price List only made possible by supplying you direct from the factory, cutting out the middleman and passing the savings on to you.

- MAINTENANCE-FREE
- NO ROT, NO RUST
- 5 YEAR GUARANTEE BACKED BY THE GROUPS 17 YEARS EXPERIENCE
- EASY LOW INTEREST REPAYMENT PLAN

OVER 20 STYLES IN REPLACEMENT WINDOWS ALONE

WINDOWCRAFT

THE RIGHT CHOICE IN ALUMINIUM REPLACEMENT WINDOWS AND DOORS

TELEPHONE 360 4450 or 440 9237
FOR ENQUIRIES & FREE ESTIMATES NOW



PRIMA

FOR TOP VALUE IN QUALITY FITTED KITCHENS

Wide choice of traditional and contemporary European designs
Free planning and advisory service.
Full installation service

- | | |
|----------------------------------------------------------------------|---------------------------------------------------------------------|
| HARROW
377 Station Road
01-427 6344 | POTTERS BAR
35 High Street
Potters Bar 56239 |
| EDGWARE
5-7 Lanson House
Whitchurch Lane
01-952 9951 | FINCHLEY
118 Ballards Lane
Finchley N.3
01-346 9650 |
| Head Office: 01-427 4447 | |



Window Wize

ALL KINDS OF SUPERB BLINDS AT REASONABLE PRICES



ROLLER BLINDS TRIMMED TO SIZE WHILE-U-WAIT ALL ON DISPLAY
01-804 2299
01-808 5555

ALSO
★ Electric Blinds ★ Dutch Blinds
★ Vertical Blinds ★ Lean to Blinds
★ Blackout Blinds ★ Roof Light Blinds
51 Brimsdown Ave., Enfield, Middx
94 Church Road, Tottenham, N17

UP AND OVER GARAGE DOORS

ALL SIZES AVAILABLE

SUPPLY — FITTING — REPAIRS — PARTS
SPECIALISTS IN REMOTE-CONTROL DOORS
FREE BROCHURES ON REQUEST

PHONE: 01-898 7234 (Day or Evening)



SHOWROOM: 122 HIGH STREET, WHITTON, TWICKENHAM

TIMBER & PAINT SUPPLIES

For all your do-it-yourself materials, tools, boards, timber, mouldings, plastic laminates and ironmongery. Picture framing. Timber and board cut to size. We deliver anywhere.



**320 DUKES MEWS
MUSWELL HILL, N10**
(Behind Charringtons, near Muswell Hill Roundabout)

Telephone: 01-883 9605

SPEND SUNDAY MORNING AT DAVID JACOBS TILE CENTRE

178 Bowes Road, N11. (North Circular Road) 881 0141

PERSONAL SERVICE
FREE TECHNICAL
ADVICE — FREE
DELIVERY WITHIN 10
MILE RADIUS
OPEN EVENINGS
BY
APPOINTMENT

Mon—Thurs
9 am—6 pm
Fri 9 am—1 pm

Sun
9.30 am—1.30 pm
CLOSED
SATURDAY

SPD Roofing & Building Contractors

Save 100s of pounds.
Have your Roof repaired.

We specialise in repair/renovation of all types of roofing. All works if undertaken fully guaranteed.

We also specialise in repointing/removal of chimney stacks.

Through lounges, painting and decorating interior/exterior.

RING US WE ARE THE SPECIALISTS

Tel: 01-808 8536

HOME EXTENSIONS

IF YOU HAVE PLANS APPROVED M.S. CONSTRUCTION WILL GIVE YOU AN IMMEDIATE STARTING DATE

EIGHT GOOD REASONS FOR CHOOSING M.S. CONSTRUCTION

- 1 An Association of Builders specialising in Home Extensions
- 2 Plans drawn by our own expert staff and speedily submitted for planning (consent if required)
- 3 An average extension can be built within 4 weeks
- 4 All building is given a 10 year structural guarantee
- 5 Full insurance cover on all jobs
- 6 100 per cent loans available
- 7 Finest quality materials used on all jobs
- 8 It's our eighth year in business so you know you are dealing with a well established company with a reputation to uphold

PLAN NOW FOR YOUR AUTUMN EXTENSION
Council grant extension work undertaken



M.S. CONSTRUCTION CO.
A Good Deal better
Est 1973

Tel: 01-367 5454 OFFICE or Hod. (61) 60722 anytime - 1 HARMAN RD., ENFIELD

MYRIAD PLUMBING SUPPLIES

THE CREST BATHROOM SUITE

Luxury twin-grip acrylic bath with front panel. 22in x 16in basin and pedestal, W.C. suite with low level cistern and double flap seat. Suite supplied complete with waste fittings and Deltaflow taps.

FAIRLINE SINK MIXER



5 YEAR GUARANTEE

FROM £36.00

WHITE £138.99	COLOURS £149.99	End panel extra £6.50 Bath/Shower Mixer extra £17.50
-------------------------	---------------------------	---------------------------------------------------------



MIRA SHOWERS

The most popular range of showers. Mixers from leading manufacturers at the Lowest Prices.

Full Range available at Discount prices including Thermostat.

Available in Pampas, Avocado, Sun King, Sepia, Autumn, Sorrento Blue, Harvest Gold, Kashmir, Bali Brown, Mink.

NOW AVAILABLE FROM

CREST BATHROOM CENTRE

2 Station Parade, Whitchurch Lane, Edgware, Middx.
(Adjacent to Canons Park underground station)
Tel: 01-951 0243
Open Mon-Sat 9.00am-5.30pm

DOORS

TRADE ANNOUNCEMENT

CASH & CARRY

We have in excess of 2,000 doors, in many styles, IMMEDIATELY AVAILABLE in our warehouse! CHIPBOARD, HARDBOARD, PLYWOOD & TIMBER ALSO AVAILABLE

QUANTITY DISCOUNTS!
All sizes in stock!!

Trade Prices
Hardboard Flush from £4.20
Plywood Flush from £5.10
Firecheck from £12.20

A large selection of exterior doors also available

THE WHOLESALE DOOR CENTRE

CHARLES BARTLETT LTD

Mercantile House, All Saints Street,
London N1 (off Caledonian Road, by Canal).
Tel: 01-278 2366 Ext.234

EDGWARE STRIPPING CO.

Doors stripped from £7.50
IN-SITU STRIPPING AND
WAXING UNDERTAKEN
FREE COLLECTION & DELIVERY
TEL: 951 0646 ANYTIME

THE TILE CENTRE

Contractors & Suppliers of Ceramic Wall
& Floor Tiles

Call and Inspect our
Wide Selection at Competitive Prices

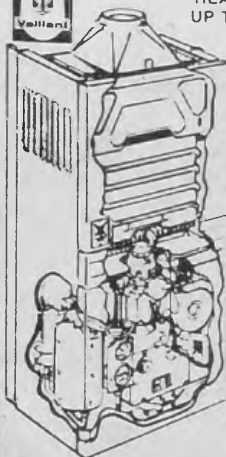
134 Shepherds Bush Road, Hammersmith, W.6.
Phone: 602 0076

Open: Mon—Sat. 9.30 a.m. — 7.00 p.m. Sunday 11.00 a.m. — 5 p.m.

CENTRAL HEATING INSTALLED BY THE EXPERTS



WE OFFER THE MOST ECONOMIC GAS CENTRAL HEATING BOILER IN EUROPE GIVING UP TO 30% LESS IN RUNNING COSTS!



THE BENEFITS:

- ★ ROOM TO ROOM WARMTH
- ★ ABUNDANT HOT WATER
- ★ LOW RUNNING COSTS
- ★ EXPERTLY FITTED INSTALLATION
- ★ FULL 12 MONTHS GUARANTEE
- ★ PROMPT TIDY TRADESMEN
- ★ AFTER SALES SERVICING
- ★ FINANCE FACILITIES AVAILABLE

Plus low budget prices that you can afford

CALL US NOW FOR YOUR FREE ESTIMATE AND SURVEY

01-881 1941

COMBI SERVICES LTD

E. J. (CEBRAS) THORNLEY

Catering equipment
Service Engineer
Corgi Gas Registered
Prompt and efficient
service given.
Water boilers
serviced and
de-scaled.
All catering
equipment serviced
Tel: 200 0403

GRANTS TO WARM YOUR HOME

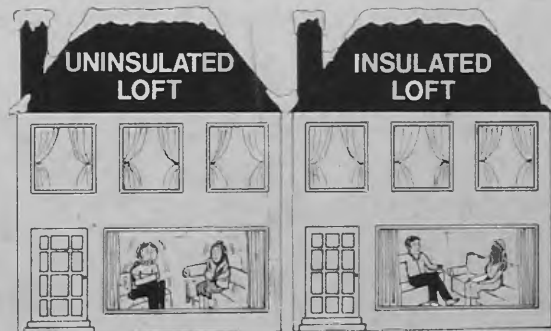
A house that wastes money on unnecessary heat is a liability on your budget. A house that constantly suffers from loss of heat is a liability on the Country's effort to conserve energy.

This is considered so important that your local Council will give you a grant to help insulate your loft or roof space, to enable you to prevent heat loss and save fuel.

These grants are available to homes which have no insulation at present in their roof space and includes water tank covers and jackets and pipe insulation. Provided your roof is completely uninsulated a grant of 66% or £65.00 whichever is the lower, is available towards the cost of insulating the roof space to the recommended thickness of at least 3" for lagging pipes and cold water tanks in the roof space and for insulating hot water cylinders.



**INSULATE NOW —
BEFORE NEXT
WINTER
YOUR HOME WILL
BE COSIER TO
LIVE IN AND MORE
ECONOMICAL TO
HEAT**



LOFT INSULATION SUPPLIED AND FITTED BY EXPERTS TO BRITISH STANDARDS 5803

	COUNCIL PAYS	YOU PAY		COUNCIL PAYS	YOU PAY
Up to 450 sq. ft. = £90	£60	£30	500—600 sq. ft. = £120	£65	£55
450—500 sq. ft. = £100	£65	£35	600—700 sq. ft. = £140	£65	£75

All prices approximate and include supply and fitting.
NO HIDDEN CHARGES

- *Add £6 for cold water tank cover WHEN necessary.
- *Add £7 for hot water tank jacket WHEN necessary.

Special reduction for senior citizens. Available for local authority work i.e. Churches, Schools, Hospitals.

ALL WORK GUARANTEED — FULLY INSURED — ESTIMATES FREE

Will any client wishing to take advantage of this offer please telephone MR. PATTERSON, Contracts Manager, for further details on 01-207 2490 9 am — 7 pm

THEX INSULATION SERVICES



THE FINANCIAL PICTURE

Barnet's end of year report

IN SEPTEMBER of each year the London Borough of Barnet publishes details of its actual income and expenditure for the financial year ending in the previous March.

Every Local Authority is, of course, obliged by law to publish its accounts. Over the years Barnet has given considerable thought to producing its detailed accounts in a style which is both attractive and interesting. The result is a colourful booklet called "Financial Review" and Civic News has selected some extracts from the latest 1979/80 edition.

As the Director of Financial Services, Mr. George Hopkins, says in his introduction, the Review has always had a strong graphical section with the object of illustrating the role and scope of the Local Authority. A very good example of this is in the two drawings which are shown below and on the facing page. The first represents the make-up of the Council's expenditure and income,

which for the first time exceeded £100m. The other illustrates the relationship between a local authority and the community it serves by using a fictional street scene to picture the various services provided and their cost in the year.

The London Borough of Barnet is, of course, now a very large organisation and when we talk of expenditure of £100m or more in a year, the figures are so big that it is difficult for the individual to understand what he actually pays for each service.

services and relate the figures to day-to-day items of expenditure.

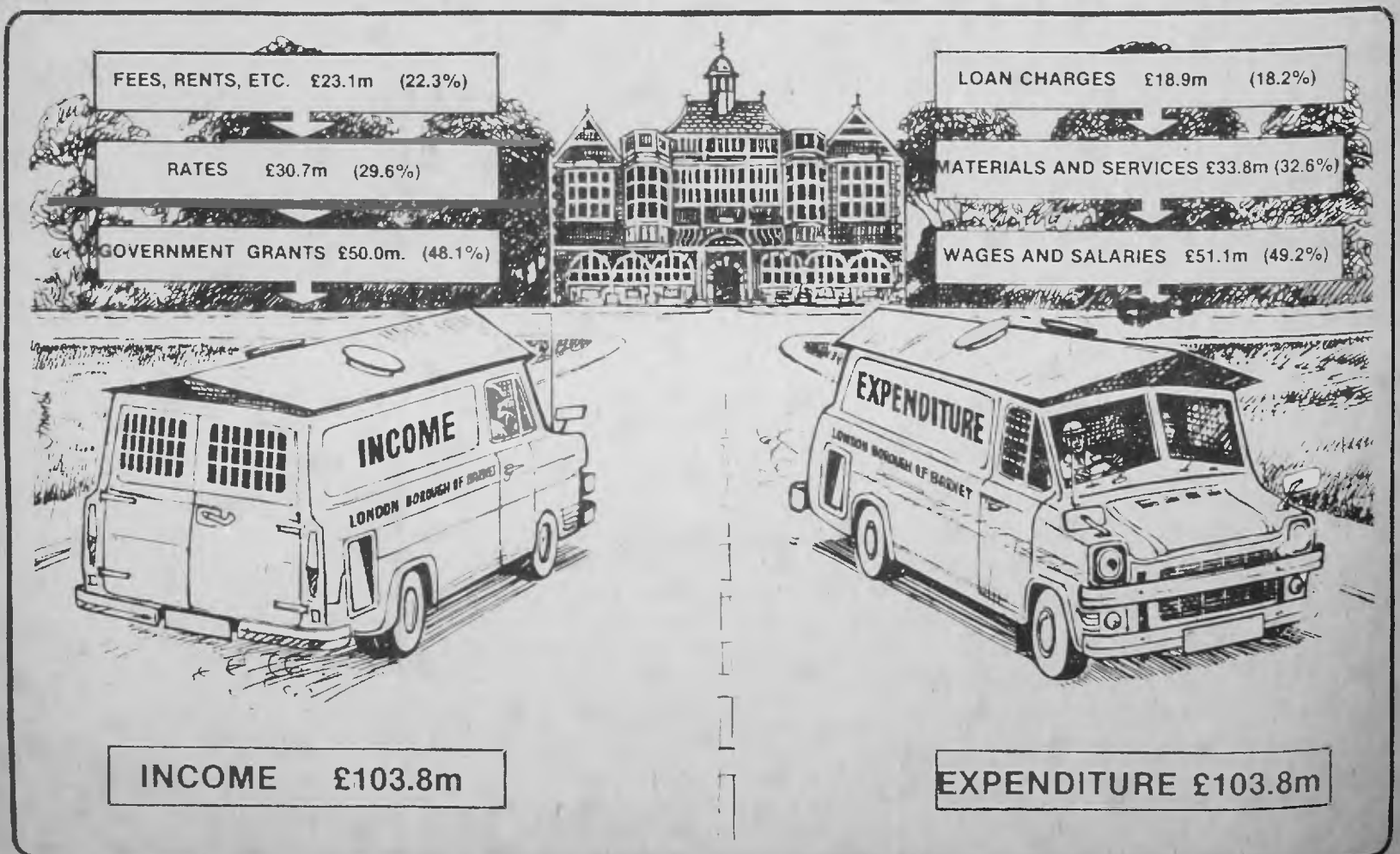
For example, Transport — that is highways, lighting and public transport — at 34p a week cost less than a packet of ten cigarettes. Another example — a party of four in a pub will spend much the same for a round of drinks as the weekly bill for Education. Try the exercise yourself, it really does put the cost of your local authority in a new light.

Local government generally is often criticised for not exercising real control over its spending. To find out whether the criticism was justified in Barnet's case, some research was undertaken to relate the average domestic rate bill locally to national figures of disposable income over the ten-year period from 1970 to date. The results, which are reproduced on the following page, are very interesting — in 1970 local rates were equivalent to 5.4% of income, by 1979 the proportion had declined to 4.6%. Whilst some part of the reduction is due to the enforced curtailment of

Less than a fiver a week

One way of illustrating this is shown on the following page with the title 'Rates — your weekly bill'. You will see that in 1979/80 the average domestic ratepayer (remember that generally means a household, not an individual) paid the equivalent of £4.68 a week for local authority services. It is also interesting to look at the weekly cost of some individual

How the money was raised and spent in 1979/80



IN THE BOROUGH

spending, the figures clearly demonstrate the very tight control that is exercised over spending locally and the positive efforts that are made throughout the Authority to give the community value for money.

It is not possible in the space available to show more than a limited number of extracts from the 'Financial Review'. Prospective readers will, however, be interested to know that the booklet is not solely concerned with figures and statistics. There is a feature entitled 'Spotlight' which looks in depth at a particular local government activity. The feature this year is the Environmental Health Service and provides an unusual insight into the kind of work people in local government do in the community and the service they provide.

Copies available

Copies of the 'Financial Review 1979/80' will shortly be in all the Public Libraries in the Borough.

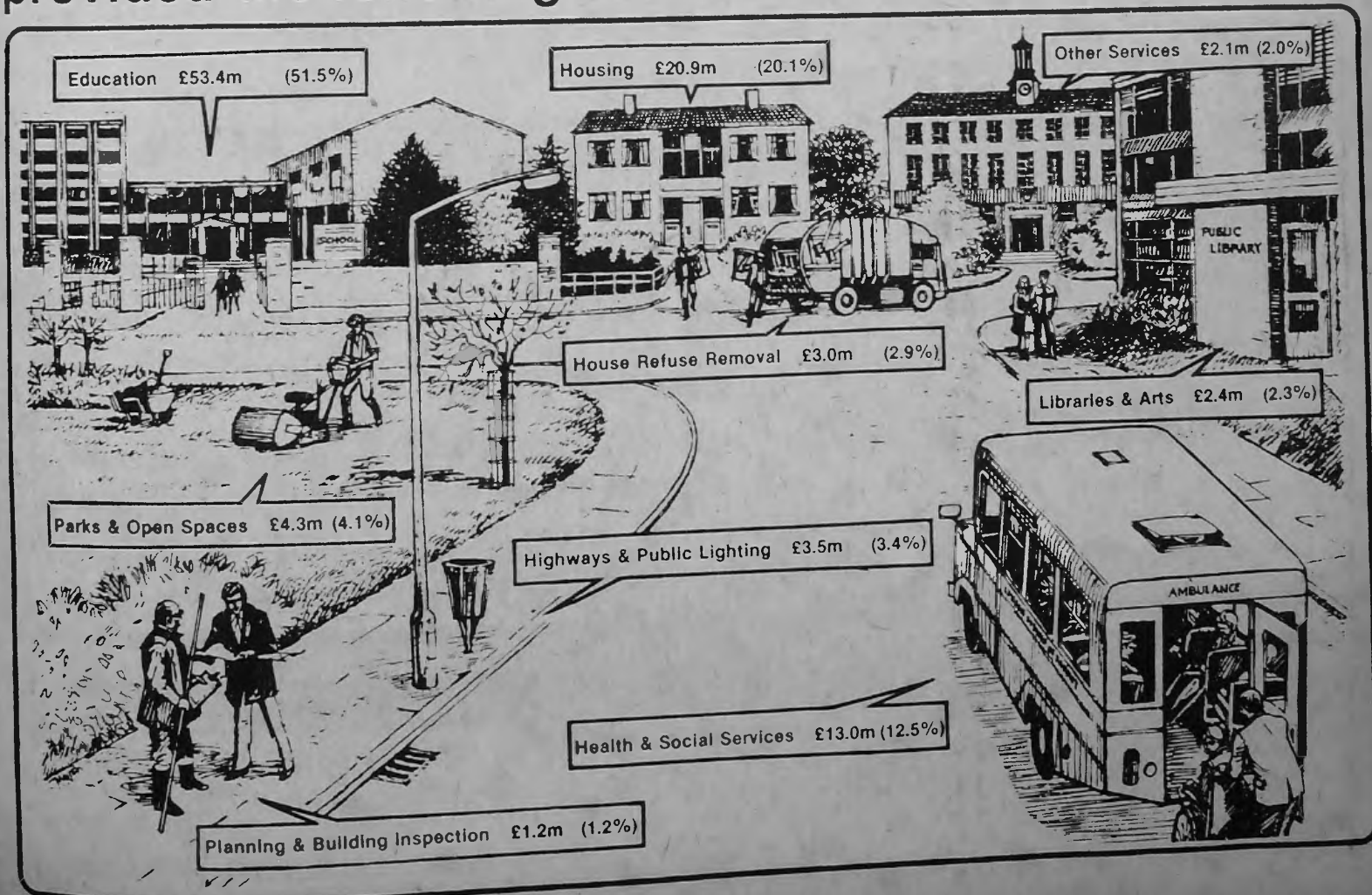
A limited number of copies are also available for sale to interested local organisations or individuals.

Facts and Figures

The following are a selection of facts from the 1979/80 edition of the Borough's 'Financial Review'.

- It cost £483 to educate one child at a primary school and £742 at a secondary school. There were 22,349 at primary schools and 21,508 at secondary schools.
- 3,700 further education awards were made at an average cost of £1,612, including tuition fees.
- 4,244,560 library books were issued during the year. This equated to a daily average of 15,422. The net cost of all library services was £7.21 per head of population.
- There are 28,000 street lighting columns on the Borough's 410 miles of highways. The net cost of street lighting was £15.18 per column.
- There are 334 miles of district roads within the Borough, for which the Council has specific financial responsibility. The cost of maintaining and repair for each mile was £6,212.
- 90,979 tonnes of household refuse was collected during the year, at an average net cost of £25.31 per tonne.
- The cost of maintaining parks, nurseries and open spaces was £7.45 per head of population.

The expenditure of £103.8 million provided the following services



Rates and your income

THE DIAGRAM on this page shows how the average domestic rate, payable in the London Borough of Barnet, compares with the average household disposable income.

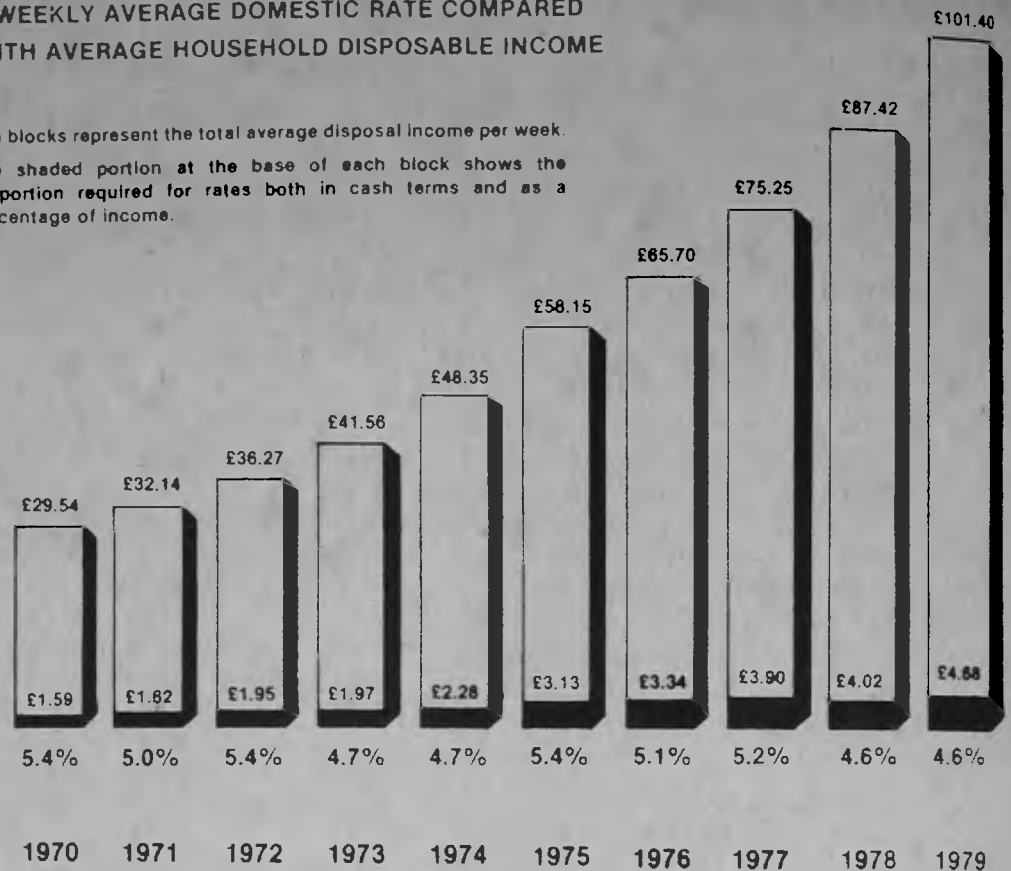
Disposable income is defined as original income less income tax and National Health contributions and the figures are taken from the Department of Employment's Family Expenditure Survey. The figure for 1979 was, however, unavailable at the time of printing, and is an estimate.

From 1st April 1974, Personal Health Services were transferred to the Barnet Area Health Authority and ceased to be a function of the Borough. Similarly, from 1st April 1978, the Sewerage and Environment Services Charge was collected direct by the Thames Water Authority. In order to provide a consistent basis for comparison, the elements relating to these services have been excluded from all rates figures used.

Although, in cash terms, rates have risen over the ten year period, the illustration shows that, as a proportion of income, they have remained steady.

WEEKLY AVERAGE DOMESTIC RATE COMPARED WITH AVERAGE HOUSEHOLD DISPOSABLE INCOME

The blocks represent the total average disposal income per week. The shaded portion at the base of each block shows the proportion required for rates both in cash terms and as a percentage of income.

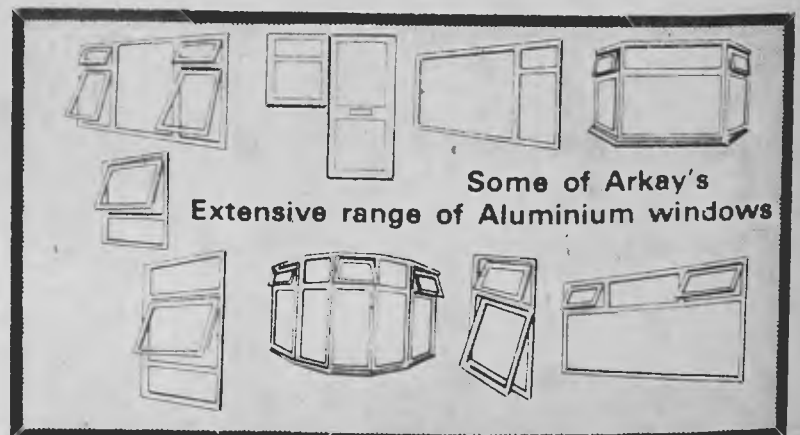


ARKAY DOUBLE GLAZING

MANUFACTURERS, DESIGNERS AND INSTALLERS OF ALUMINIUM REPLACEMENT WINDOWS, PATIO DOORS, FRONT AND BACK DOORS, SEALED UNITS AND PORCHES, AND SHOP FRONTS.

- ★ All our products are **individually** made in our own factory.
- ★ Over **80** designs to choose from.
- ★ Aluminium section anodised to British Standard 1615 Grade A.A. 25 (this is 25 microns, which for easy reference is .001in. thick).
- ★ Only Pilkingtons float glass is used.
- ★ **Finance facilities** with tax relief.
- ★ All our products are **fully guaranteed**.

MODERNISE YOUR HOME, ENJOY GREATER COMFORT AND INCREASE THE VALUE OF YOUR PROPERTY.



FOR FREE ESTIMATE, ADVICE AND SURVEY, **WITHOUT OBLIGATION**, CALL INTO OUR SHOWROOM at:
67 WATLING AVENUE, BURNT OAK, EDGWARE, OR RING 01-952 6661

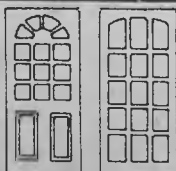
TIMBERCLAD

204 WATFORD ROAD, CROXLEY GREEN
Near Croxley Met. Station

TEL:
WATFORD 32992

HARDWOOD
DOORS
OVER 12
DESIGNS
ON SHOW

Kentucky
£149.50



£146.00
Dakota
Internal
£139.10

INTERNAL HARDWOOD DOORS

6 and 8 panel, only £43.70
Also fibre panelled doors
at £28.75

Prices include 15% VAT

LOUVRE DOORS
PINE & RAMIN PANEL
DOORS

WALL CLADDINGS

10% off
R.R.P. on
PLYDEL
WALLBOARDS

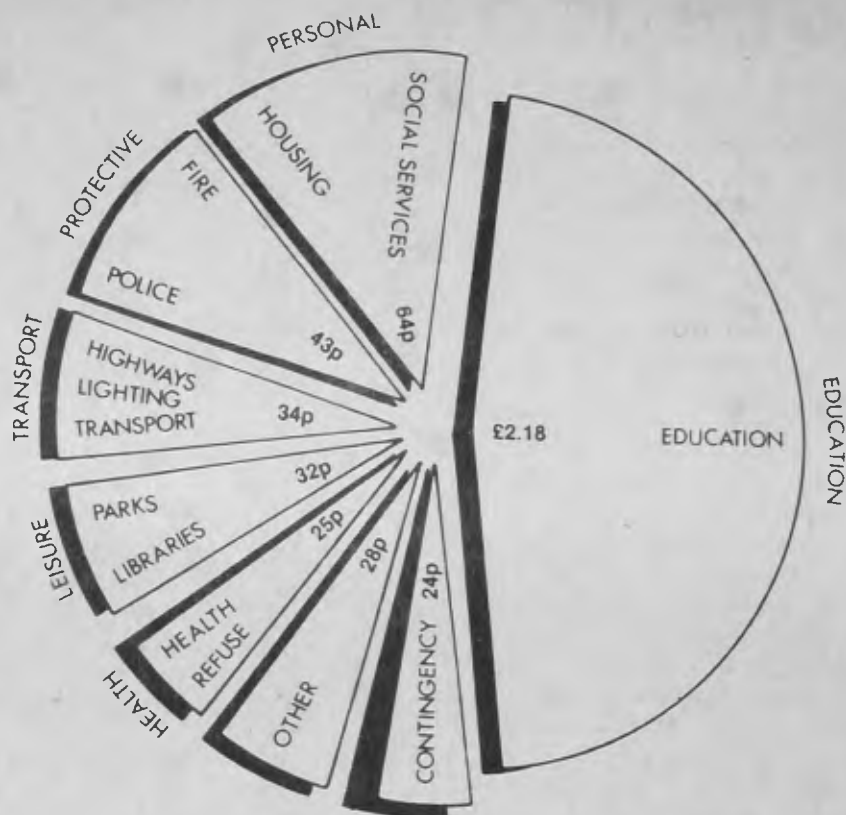
Rates—your weekly bill

A DOMESTIC ratepayer in the Borough occupying a property with an average rateable value of £380 would have paid an inclusive sum of £243.20 in 1979/80 for services rendered by the London Borough of Barnet, the Greater London Council and the Metropolitan Police. This is the equivalent of £4.68 per week and the diagram shows how that expenditure would have been spread across the various services.

The item shown as 'Contingency' is a specific sum set aside to meet anticipated increases in expenditure due to pay awards or price rises.

Included under the heading 'other' are such services as Town Planning and Building Inspection, Allotments, Consumer Protection, Registration of Electors and Registration of Births, Deaths and Marriages.

Enquiries concerning the 1979/80 Financial Review should be made to
 The Borough Treasurer
 London Borough of Barnet
 The Town Hall
 The Burroughs
 Hendon NW4 4BG.



AN AVERAGE WEEKLY RATE OF £4.68p WOULD HAVE BEEN SPENT LIKE THIS

25% off CEDAR SHEDS

SPECIAL PURCHASE OF CEDAR HAS MADE THIS BIG REDUCTION POSSIBLE

"ECONOMY" DEAL SHEDS

VERY KEEN PRICES

"44" £79.00

"65" £99.99

"64" £89.00

"86" £129.00

LADDERS

ALUMINIUM • DOUBLE EXTENSION

1/2
manufacturer's list prices

18' 10" £38.00

22' 2" £45.00

25' 5" £54.00

28' 9" £63.00

LADDER STAYS FOR ONLY £14.00

Garden Furniture GREENHOUSES

COMPLETE WITH GLASS

6' x 4' £89.00

8' x 6' £99.99

AT BARGAIN! PRICES!

FENCING • DOORS

SHEET MATERIALS

TIMBER • MOULDINGS

TONGUED & GROOVED FLOORING
 ROOFING FELTS • HARDWARE

PRICES INC. VAT. • DELIVERY EXTRA • SUBJECT TO AVAILABILITY

LAWSONS

1208 High Rd., Whetstone, N20
 opposite Every Ready tower block.

01-446 1321

301 Burnt Oak Broadway, Edgware
 opposite Edgware General Hospital.

01-952 0111

PHONE OR CALL IN FOR PRICE LISTS

LONDON BREAD ROLL CO

- ★ READY BAKED
- ★ IDEAL FOR FREEZING
- ★ NO ORDER TOO SMALL — ONE PACK OR MORE DELIVERED FREE TO YOUR DOOR

£1

- 30 Soft Round Rolls £1
- 30 Wheatmeal Rolls £1
- 25 Baps £1
- 25 Long Rolls £1
- 18 American Hamburger Buns (topped with sesame seeds) £1
- 35 Bridge Rolls £1
- 12 1/2 pounder Hamburger Buns (topped with sesame seeds) £1

TELEPHONE YOUR ORDER NOW



01-803 8311

Remember any quantity delivered free



"YOU WON'T BEAT THE PRICES AND SERVICE AT JMS RADIO ON TV, VIDEO AND HI-FI"

HITACHI CTP210
20" Colour TV £299.95

This superb Hitachi tv with instant view sound and picture at an amazing price WITH the JMS two year guarantee. Or rent it and get the first years licence FREE



Sanyo 12"
Black/white portable tv

£64.95

GEC 14"
Colour portable tv

199.95

Atari TV
Video game

£99.95



JVC HR3330
Video Recorder

8 day timer remote pause £479.95



JMS give you the best prices and service second to none



HITACHI VT5000ER
Video Recorder

10 day timer still frame £499.95



JMS RADIO tv video hi-fi

Watling Avenue, Burnt Oak, Edgware.
952 1565 sales. 952 3895 service.

Expert
The more we help you, the more likely you are to come back.

THE GALLERIES

FOR CHINA BY AYNLEY,
ROYAL DOULTON,
WEDGWOOD and
WORCESTER

LEAD CRYSTAL BY DARTINGTON,
EDINBURGH, TUDOR, THOS. WEBB
and WEBB CORBETT

1 HEDDON COURT PARADE
COCKFOSTERS ROAD
BARNET, EN4 0DB

01-449 2690

CLOSED CIRCUIT TELE VISION

Industrial & Domestic
Security Equipment
For Sale or Hire

Complete Door Entry Systems
From as little as £250 exc. VAT

J.M.F. VIDEO SUPPLIES

The Lindens Estate Office, Friern Park
North Finchley N12 9DJ. Tel: 01 445 0452

MR SWEIRY'S
"HOME MADE" PIZZA
DELIVERED TO YOUR HOME

£2.00 for 6 Large Pizza in Freezer Pack

£2.20 for 5 French Bread Pizza.
£2.00 for 8 packets Pitta Bread.

We also supply at competitive prices. Taramosalata, American Cheesecakes, Quiches, Pate, Salads, Olives, Halva, Fish Balls, Latkes, etc.

Telephone your order Now:
01-958 3018

Agents wanted in all areas
Trade Enquiries welcomed

FREEZER ORDERS DELIVERED DAILY
TO ALL AREAS WITHIN THE BARNET BOROUGH



LICENSED BY THE
LONDON BOARD OF SHECHITA

20 ASHFIELD PARADE
SOUTHGATE, LONDON N14

Tel.: 01-886 9810/882 5775





SKI SPECIALISTS

EVERYTHING FOR
YOUR WINTER HOLIDAY
TOP QUALITY, REASONABLE PRICES

HIRE SERVICE — Schools a Speciality
DON FARRELL LTD. 14/15 Holmstall Parade
Burnt Oak (On main Edgware Road, Adj. Bingo)
Tel: 205 6693 — CLOSED THURSDAYS



DISCO LATIN BALLROOM KEEP FIT

CLASSES AND PERSONAL
TUITION FOR ALL AGES

RING 202 9911 NOW
FOR FREE BROCHURE

LEARNING IS FUN
AT THE FRIENDLY

HENDON DANCENTRE

QUEENS PARADE, HENDON, CENTRAL
(Opposite station)

MIDDLESEX COUNTY CRICKET & SQUASH CLUB

*Squash membership
enquiries invited*

3 ADDITIONAL HIGH-CLASS COURTS
NOW OPEN

5 COURTS (2 GLASS BACKED)
SAUNA, SPACIOUS CHANGING
FACILITIES, 2 BARS & CAR PARK

MEMBERSHIP OPEN TO ALL

RING 01-289 1300 FOR APPLICATION FORM
OR WRITE TO
M.C.C.C., LORDS CRICKET GROUND,
LONDON NW8 8QN

BODYSHAPE

SUPER CONDITIONING EXERCISES
FOR A BEAUTIFUL BODY

Classes Daily, Evenings and Weekends

Phone: 203 5535 for details
10 Parson Street, Hendon, NW4

J. W. PULLEN

SUPPLIERS TO OVERSEAS ROYALTY

Always in Stock a wide selection of Diamond Rings, Gold Jewellery in fascinating designs and Quartz Watches. **Big Discounts** within reach of all pockets. Call and inspect without obligation. Purchase for pleasure and investment.

(TAX FREE
FOR EXPORT)

Workshops on the premises for all your Jewellery Repairs.

*Valuations for
Insurance*

56 GOLDERS GREEN ROAD,
NW11
Telephone:
458 5054

— Nova —

Guitar Centre

Guitar Specialists

Large selection of New, Secondhand
and Reconditioned Guitars

Professional Advice

34 Watford Way, Hendon Central, NW4
202 3031

AU PAIRS, DEMI PAIRS, DEMI PAYANTS available

Let Jolaine take the strain by providing busy mums with help in the home and baby sitting. Short- or long-term stays.

★ Jolaine Paying Guest Agency, Spare Room — Extra income. Families urgently required for paying guests part or full board.

JOLAINE AU PAIR & DOMESTIC AGENCY
01-441 0640
9.30 am—5 pm Mon.—Fri.

CHEAP AND RELIABLE FLIGHTS TO

Australia	Pakistan
Far East	Tanzania
India	Kenya

RING
METRO TRAVEL
01-435 1408

enjoy a good video movie from



VISIONS

219 CHASE SIDE ENFIELD, MIDDX

Full Length Features — £2 for 4 days

01-363 1370



Irene Joss

at
THIRTY-ONE BELL LANE
HENDON NW4

BEAT INFLATION
20% SAVING on
NEW SEASON'S
EXCLUSIVE
BRANDED
FASHIONS

Open Sundays 10 am—1 pm
Tuesdays Wednesdays
Thursdays Fridays
10 am—5 pm
Tel: 01-203 2909
Parking no problem

WHAT'S ON

WHAT'S ON IN BARNET is a monthly list of activities taking place in the Borough.

Your entry, and contact telephone number, should be sent to the Civic News, Town Hall, The Burroughs, Hendon, NW4 4BG, tel: 01-202 8282, ext. 71.

Entries for each issue must be received by the first of the preceding month. For example, for the November issue, published mid-month, entries must arrive by October 1.

*Asterisk denotes regular weekly meeting.

Saturday September 13

*Drama Workshop for children, The Old Bull, 68 High Street, Barnet. Ages 6—8, 4—5 pm; 7—10, 10.30 am—12.30 pm; 8—16, 1.30—3.30 pm (449 0048).

*Barnet & District Athletic Club — Senior team races. Afternoon. For details tel: 61 67888.

*Divorced, Single and Separated Club, Hendon Central Beefeater Ballroom, Hendon Way. Social evening, 8 pm.

Colindale Allotment and Garden Association Autumn Show, St. Matthias Church Hall, Rushgrove Avenue, Colindale. 2.30 pm.

Finchley Horticultural Society Autumn Show, Christ's College, Hendon Lane, Finchley N3. 2.30 pm.

Pointalls Allotments 30th Exhibition at Tudor School, Queens Road, Finchley N3. 3 pm (883 4906).

John Grooms Association for the Disabled, Edgware Way, Edgware. Open Day, 2—5 pm. See how this Charity helps the disabled to help themselves.

Sunday September 14

*Table Tennis training for youngsters, Barnet Table Tennis Centre, Barnet Lane. 3—5 pm (440 1721).

*Barnet Dance Workshop, St. Peter's Hall, Albion Avenue, Muswell Hill. 6—8 pm (444 0160).

*Table Tennis, Barnet Table Tennis Centre, Barnet Lane, Barnet. Every evening, 7.30—11 pm (440 1721).

*Orange Tree Folk Club, Orange Tree, Friern Barnet Lane, Friern Barnet. 8 pm (863 3608).

*Bernie Tyrrell's Salisbury Stompers and Shirley (Jazz Club). The Salisbury Hotel, High Street, Barnet. 12 noon—2 pm (449 0081).

*Public meetings at Salvation Army Citadel, Albert Road, New Barnet. 10.30 am and 6.45 pm. Adventurers 3 pm.

*Barnet & District Athletic Club. Youngsters and newcomers. Tudor Sports Ground, New Barnet. 10.45 am (882 3265).

*Up-to-the-Centre Square Dance Club, 145 Orange Hill Road, Burnt Oak. Beginners 8 pm (959 5204).

*Bridge Lane Bridge Club, 71 Bridge Lane, Golders Green. Every day except Friday evening, 1.30—6 pm and 7.45—11.40 pm (455 3711 and 458 1764 after 2 pm).

*Rock & Blues, Torrington Arms, Lodge Lane, High Road, North Finchley. 8.30 pm (445 4710).

Shaftesbury Harriers — Junior Inter area championships, Cophall Stadium, Gt. North Way, Hendon. 1.45—5.30 pm (428 6221).

Monday September 15

*Barnet Chess Club, Harold Fern Room, Salisbury Road, Barnet. 7.45 pm (445 0635).

*Barnet & District Athletic Club — Gym, keep fit, joggers, Finchley Catholic High School, Woodside Lane, North Finchley. 7—9 pm (368 6605 or 349 0409).

*Dog obedience training, All Saints' Parish Church Hall, Oakleigh Road North, Friern Barnet. Beginners 7.30 pm; Advanced 8.45 pm (449 4155 after 6 pm).

*Herbert Wilmot Youth Centre,

Market Place, East Finchley. Football. General Club. 7—10 pm (444 8422).

*Ladies meeting, East Finchley Baptist Church, Creighton Avenue, Finchley, N2 (2.30 pm).

*Boys' Brigade, 4th Finchley Company, Finchley Methodist Church, Essex Hall, Essex Park, Finchley, N3. Pre-junior Section 6—8 years, 5.30 pm; Junior Section 8—11 years, 6.30 pm (446 2690).

*Silver Threads — Senior Citizens' Club, Salvation Army Citadel, Salisbury Road, Barnet. 2 pm (440 8303).

*North London Karate Club, Queen Elizabeth's Girls' School, Meadway, Barnet. Beginners and all grades welcome. 7.30 pm and 8.30 pm (440 7733 or 440 8633).

*Rushgrove Avenue Old Time and Modern Sequence Dance Club, St. Matthias Church Hall, Colindale. 8 pm (205 1239).

*Keep Fit and Dance Workshop, East Barnet Road. Monday to Friday, evenings and day time. For all information telephone 441 0780.

Mill Hill Highwood Townswomen's Guild, Hartley Hall, Flower Lane, Mill Hill. 2 pm (906 1034).

EXHIBITIONS

Saturday September 13 to October 25

Watercolours and drawings by Malcolm Green at Hendon Library, The Burroughs, Hendon. Normal library opening hours.

Until Sunday September 21

Silver Years 1930-80 — Photographs by John Maltby, Church Farm House Museum, Greyhound Hill, Hendon. Open weekdays (except Tuesdays) 10 am—12.30 pm, 1.30—5.30 pm. Tuesdays 10 am—1 pm; Sundays 2.30—6 pm.

Until Saturday September 27

Weaving by Hilary Shrimpton and Drawings and pastels by Edward Eves, The Crest Gallery, Dollisfield Library, Dollisfield, Totteridge Lane, N20. Open Tues., Wed. 2—5.30 pm; Fri. 11 am—1 pm, 2—5.30 pm; Sat. 11 am—1 pm, 2—4 pm.

Art photographer Philip Evans and furniture maker Maxine Naylor, The Old Bull Art Centre, 68 High Street, Barnet. Open Mon.—Sat. 10 am—6 pm.

Monday September 29 to October 18

Watercolours by Derek Radden, a member of Enfield Art Circle, The Old Bull Art Centre, 68 High Street, Barnet. Open Mon.—Sat. 10 am—6 pm.

Wednesday October 1 to October 22

Paintings by Pamela Chard at The Crest Gallery, Totteridge Library, Totteridge Lane, N20. Open Tues. & Wed. 2—5 pm; Fri. 11 am—1 pm, 2—5.30 pm; Sat. 11 am—1 pm, 2—4 pm.

Wednesday October 1 to October 31

Finchley Art Society, North Finchley Library, Ravensdale Avenue, North Finchley. Normal library opening hours.

Thursday October 2 to October 20

Paintings, drawings and jewellery by Muriel Yates, Joyce Harvey and Lesley Harvey, Stanhope Road Adult Centre, North Finchley. Mon.—Fri. 10 am—12 noon, 1—3 pm, 6—8 pm.

Thursday October 2 to November 15

Oils, watercolours and drawings by Margaret Fairnington, The Old Bull Gallery, 68 High Street, Barnet, Herts. Open Mon.—Sat. 10 am—6 pm.

Saturday October 4 to November 30

What goes on in the Borough of Barnet — activities of the Barnet Borough Arts Council, Church Farm House Museum, Greyhound Hill, Hendon. Open weekdays (except Tuesdays) 10 am—12.30 pm, 1.30—5.30 pm. Tuesdays 10 am—1 pm; Sundays 2.30—6 pm.

First Aid Course, The Pavilion, Finchley Open Air Swimming Pool, High Road, North Finchley, by St. John Ambulance Brigade. £10 for 8-week course (883 3738).

Tuesday September 16

*20th Century Sequence Dancing Club, All Saints' Hall, Oakleigh Road North, Whetstone. 7.45 pm (360 2586).

*Scottish dancing, St. Albans Church Hall, West Heath Drive, NW11. 8—10 pm. Children's Scottish dancing, 6.30—7.30 pm.

*Modern ballroom and Latin American dancing, Shakespear Hall, Manor Park Crescent, Station Road, Edgware. 8.30 pm (346 5868).

*Judo, The Quinta Club, Mays Lane, Barnet (449 2914).

*Hendon South Young Socialists. Discussions and social activities, 7 Sunnyfields Road, Hendon. 8 pm.

*Hendon South Young Conservatives meeting, 166 Station Road, Hendon. 8 pm (202 7484).

*Friern Barnet Photographic Society, St. John's Hall, Friern Barnet Lane, N20. 8 pm (445 2617).

Hendon String Orchestra, St. Mary's School, Sunningfields Road, Hendon. 7.45 pm (455 5005).

*West Hendon Handicraft Group, West Hendon Community Centre, West Hendon Estate. 2—4 pm (205 0514).

*The Light Brigade — club for those aged 6—12 years at the Salvation Army Citadel, Albert Road, New Barnet. 6.30 pm (449 6893).

*Herbert Wilmot Youth Centre, Market Place, East Finchley. Football, 6—9.30 pm; General Club (over 13) 7—9.30 pm (444 8422).

*Prayer and Bible Study, Salvation Army Citadel, Salisbury Road, High Barnet. 7.15 pm (440 8303).

Acorns, women's non-sectarian club, East Finchley Methodist Church Hall, High Road. 'Homoeopathy', 9.45—11.30 am. Creche available (346 1507 or 346 0232).

Wednesday September 17

*Wednesday Bridge Club, St. Andrew's Small Hall, Chase Side, Southgate. 1.30 pm (440 9682).

*Barnet Cycling Club, United Reformed Church Hall, Oakleigh Road North, Whetstone. 8 pm (888 7143).

*Modern dancing, Barnet South Community Association, Mays Lane, Barnet. 8 pm (440 4424).

*Modern/old time dancing, Manor Drive Methodist Church, Manor Drive, Whetstone. 8 pm (445 7127).

*Up-to-the-Centre Square Dance Club, Watling Community Centre, Orange Hill Road.

IN BARNET

Edgware, 8 pm (959 5204).

*Old Time and modern dancing, St. Luke's Hall, Mountfield Road, Finchley, N3. 8 pm.

*Dog training, St. Philip's Church Hall, Gravel Hill, Finchley, N3. Beginners 7—8 pm; Intermediate etc. from 8 pm (458 7399).

*West Hendon Liberal Association, 78 Bertram Road, NW4. 8 pm (202 9013).

*Women's League of Health and Beauty, Christ Church Hall, High Road, North Finchley. Elementary 7 pm; technique 7.45 pm; medium 8.15 pm; sequence 9 pm (455 3904).

*Chipping Barnet YCs, Harold Fern Room, Salisbury Road, Barnet. 8.15 pm.

*Finchley & Friern Barnet YCs, 212 Ballards Lane, North Finchley, 8 pm (445 9426).

*Edgware Amateur Cine Society, Orange Hill Junior School, Hamonde Close, Edgware. 7.45 pm (959 7783).

*Whist at Fellowship House, Willifield Green, Willifield Way, Golders Green. 8 pm.

*Yoga, Whitchurch Institute, Buckingham Road, Edgware. 2.30 pm (203 1935).

*Drama Workshop for children 12—18, The Old Bull, 68 High Street, Barnet. 6 pm (449 0048).

*Edgware Photographic Society, Edgware Library, Hale Lane, 8 pm (952 4786).

*Ballroom, sequence, old tyme and party dancing, St. Mary's Hall, 54 Church Hill Road, East Barnet. 8 pm (803 9028).

*Home League ladies meeting, Salvation Army Citadel, Albert Road, New Barnet. 2.30 pm (449 6893).

*Pymmes Judo Club for children, East Barnet School, Westbrook Crescent, New Barnet. 6.30 pm (440 6473).

*Judo, Herbert Wilmot Youth Centre, Market Place, East Finchley. Beginners, 6 pm; Juniors, 7 pm; Seniors, 8 pm. (444 8422).

*Over 60s Meeting, West Hendon, Community Centre. 2—4 pm (202 4847).

*North London & District Divorced and Separated Club, St. Paul's Church Hall, High Road, New Southgate. 8 pm (800 9826).

*Incognito Theatre Group, Holly Park Road, New Southgate. 8 pm. New members welcome (445 1576).

*Daniel Court Social Club, North Acre, Grahame Park. 2—5 pm (200 1759 after 6 pm).

*Dog Training, Christ Church Hall, The Crest, Brent Street, Hendon. Beginners 6.45 pm and 7.15 pm; intermediate and competition until 10 pm (202 2888).

Finchley and District Philatelic Society, Avenue House, East End Road, Finchley, N3. 7.30 pm (883 8724).

Hendon Floral Art Group, Henry Burden Hall, The Burroughs,

Hendon. 'A time to remember' 7.30 pm (959 6111).

National Trust (Edgware & District), John Keble Church Hall, Deans Lane, Edgware. 'Slide exhibition — British Wild Flowers' 8 pm (952 2688).

Woodside Park Townswomen's Guild, Old Finchleians Club House, Southover, North Finchley. 2.15 pm (445 8952).

Meeting of Barnet Association for the Advancement of State Education, Hendon School, Golders Rise, Hendon. 'Prospects for secondary education in Barnet', introduced by Councillor Brian Jarman, Vice-Chairman, Education Committee and Councillor Harold Davies, member of Education Committee. 7.45 pm (346 0358 or 958 4199).

Thursday September 18

*North Side Bridge Club, East Finchley Methodist Church, High Road, East Finchley. 7.30 pm (445 7788).

*Contemporary dancing, Manor Arrows Youth Club, Finchley Manorhill School, Summers Lane, North Finchley. 6.30 pm (368 9876).

*Finchley Old Time and modern sequence dance club, Martin School, East Finchley. 7.30 pm.

*Hendon & Edgware 18 Plus Group, Hendon Way Hotel, Hendon Way, Hendon. 8.15 pm (954 6929).

*National Council for the Divorced and Separated (NW London Branch), Cavalier Rooms, Prince Albert, Golders Green Road, Golders Green. 8 pm (959 2048).

*Twenty to Thirty Plus Club. 8.15 pm (445 1593).

*Mind Social Club, Meritage Club, Church End, Hendon. 8—10 pm (200 5138 between 6—7 pm).

*Black Bull Folk Club, Black Bull Public House, High Road, Whetstone. 8 pm (77 58631).

*Finchley Chess Club, Etchingam Park Centre, Etchingam Park Road, Finchley, N3. 7 pm (445 4927).

*Problem Centre — Salvation Army Citadel, Albert Road, New Barnet. 10 am—12.30 pm (449 6893).

*Silver Circle, Senior Citizens' Club, Salvation Army Citadel, Albert Road, New Barnet. 2 pm (449 6893).

*Ridgeway Club, National Association of Women's Clubs, St. Mary's Hall, Church Hill Road, East Barnet. 7.30 pm (449 2852).

*Barnet Youth Hostels Association Group, The Scout HQ, Triangle Passage, New Barnet. 8 pm (440 0226 or 440 1983).

*Pymmes Judo Club for adults, East Barnet School, Westbrook Crescent, New Barnet. 8 pm (440 6473).

*Herbert Wilmot Youth Centre, Market Place, East Finchley. Badminton, 6—8 pm; Football, 6—10 pm; Keep-fit, 8—10 pm;

General Club, 7—10 pm (444 8422).

*Boys' Brigade, 4th Finchley Company, 11—18 years, Finchley Methodist Church, Essex Hall, Essex Park, Finchley, N3. 8 pm (446 2690).

*Home League ladies meeting, Salvation Army Citadel, Salisbury Road, High Barnet. 2.30 pm (440 8303).

Welsh Harp Otters Angling Society, The White Bear Public House, The Burroughs, Hendon (205 5670).

*North London Karate Club, Queen Elizabeth's Girls' School, Meadway, Barnet. Beginners and all grades welcome. 7.30 pm and 8.30 pm (440 7733 or 440 8633).

*Dancing, Conservative Hall, High Road, New Southgate. Children's: old time, Latin, disco. Adults: sequence and modern. 6—10.30 pm (361 9847).

*Rock and Blues, Torrington Arms, Lodge Lane, High Road, N12. 8.30 pm (445 4710).

*Barnet PHAB Group (physically handicapped and able-bodied), Alyth Youth Centre, Alyth Gardens, Temple Fortune. 8.15 pm (906 1505).

Civil Service Pensioners' Alliance (NW London Group). Coffee morning and discussion, Avenue House, East End Road, Finchley, N3. 10.15 am (883 3689).

Barnet National Trust Association, Barnet College Hall. 'Conservation of Nature'. 8 pm (449 5896).

Friday September 19

*International folk dancing, Hadley Memorial Hall, Hadley Highstone. 8 pm (368 5345).

*Hendon Camera Club, Fellowship House, Willifield Way, Golders Green. 7.45 pm (455 0837).

*Divorced, Single and Separated Club, Orange Tree Public House, Friern Barnet Lane, N11. Social evening. 8 pm.

*Barnet & Finchley Photographic Society, Club Room rear of 37 Salisbury Road, Barnet. 8 pm (368 3917).

*Mill Hill Over 60s Handicraft Club, Moreton Close Lounge (behind shops at Salcombe Gardens, Mill Hill). 2—4 pm (906 1760 or 446 4221).

*Judo and General Club, Herbert Wilmot Youth Centre, Market Place, East Finchley. 6—8 pm (444 8422).

*Finchley Cine Society, Avenue House, East End Road, Finchley, N3. 8 pm (346 4265).

Barnet Afternoon Townswomen's Guild, Church House, Wood Street, Barnet. Elsenham Foods. 2.30 pm (449 6826).

Broadfields Evening Townswomen's Guild, Broadfields Junior School, Broadfields Avenue, Edgware. 7.30 pm (958 4845).

Saturday September 20

Autumn Market, St. Jude's

Church, Central Square, Hampstead Garden Suburb. 11 am—4.30 pm (455 6309).

Finchley Chrysanthemum Society. Early show, Tudor School, Queens Road (off Squires Lane), Finchley. 3—5 pm (346 2974).

Jumble sale, St. Matthias Church Parish Hall, Rushgrove Avenue, Colindale. 10.30 am—12 noon. Admission 5p (205 0684).

Bring & Buy sale with stalls and competitions, Wimbush House, Westbury Road, Woodside Park, North Finchley. 2 pm. Admission 15p. In aid of sheltered housing residents.

Fete in aid of Mayor of Barnet's Appeal, Inglis Barracks, Bittacy Hill, Mill Hill. 2—6 pm (see special feature).

Monday September 22

Independent Order of Odd Fellows (Loyal Flower of Hendon Lodge), Hendon Ex-Service Men's Club, Heriot Road, Hendon (202 6461).

Tuesday September 23

Finchley Redbourne Evening Townswomen's Guild, Etchingam Park Centre, Etchingam Park Road, Finchley. 7.45 pm (346 4048).

Wednesday September 24

Amnesty International Golders Green Branch, Unitarian Church, Hoop Lane, Golders Green. 7.30 pm (883 4893 or 959 3249).

What is the purpose of my life? talk on Eckankar. Committee Room, Friern Barnet Town Hall, Friern Barnet Lane, N11. 8 pm (346 4356).

Hendon Salvation Army Band Charity Concert for Save the Children Fund, Citadel, Brampton Grove, Hendon 8 pm.

Thursday September 25

National Federation of Old Age Pensioners Association (Barnet, Whetstone & Finchley Branch), St. Albans Parish Centre, Gainsborough Road, North Finchley. 1.45 pm (445 7413).

Finchley Society, Avenue House, East End Road, Finchley. 'Your Environment' by Sidney Chapman, MP. 8 pm (883 4154).

Friday September 26

Eckankar — the way of total awareness — talk and discussion, Avenue House, East End Road, Finchley. 8 pm (952 0932).

Saturday September 27

Hendon (St. Mary's) Music Society Recital Concerts. London Symphony Orchestra Wind Ensemble, Hendon Methodist Church, The Burroughs, Hendon. Admission £3. 7.30 pm (202 6908).

10th Finchley Scottish Scout Group nearly-new sale, Gordon Hall, Nether Street, Finchley 2.30 pm.

WHAT'S ON IN BARNET

Monday September 29

Royal Society for the Protection of Birds (Potters Bar & Barnet) 1, Oakmere House, High Street, Potters Bar. 'Birds of the Reservoirs'. 8 pm. Admission 25p (250 0011 ext. 219).

Finchley Chrysanthemum Society. Evening show, Tudor School, Queens Road (off Squires Lane), Finchley. 8-10 pm (346 2974).

Good Gardeners' Association. Composting Day at Arkley Manor, Arkley. Demonstrations on how to make proper compost 10.30 am. Eight-acre organic gardens open 2.30-6 pm. Entrance fee 30p in aid of charity. Lecture at 3.30 pm on 'No-dig Gardening'.

Tuesday September 30

Acorns non-sectarian women's club, East Finchley Methodist Church Hall, High Road. 'Pot Pourri'. Creche available. 9.45-11.30 am (346 1507 or 346 0232).

Wednesday October 1

Barnet Evening Townswomen's Guild, Church House, Wood Street, Barnet. Wildlife in

Hertfordshire. 7.30 pm (449 5062).

Saturday October 4

20th Century Sequence Dancing Club dance. All Saints Hall, Oakleigh Road North, N20. 7.30 pm (360 2586).

Friends of Barnet Schools Music Centres — musical entertainment and AGM, Elizabeth Allen Teachers' Centre, Wood Street, Barnet. 7.30 pm. 638 2855 (day) 959 7888 (evening).

Book sale, Golders Green Parish Church, North End Road, Golders Green. 9 am-5 pm. Proceeds. East African emergency relief fund.

Barnet College Hall — Keith Ramsell, Violin, and Gordon Kirkwood, Piano.

Monday October 6

Finchley League of Jewish Women, Kinloss Synagogue Hall, Kinloss Gardens, Finchley, N3. 'Things I have learned' by Miss I. Grangor. 1.30 pm (882 3064).

Reopening of season, New Barnet Literary and Debating Society, the Vestry Room, St. James' Church, East Barnet

Road, New Barnet. 8 pm weekly meetings (440 3859).

Finchley Chrysanthemum Society, The Tudor School, Queens Road, Finchley, N3. 8 pm (346 2974).

National Federation of Old Age Pensioners' Associations (Mill Hill Branch), John Keble Church Hall, Deans Lane, Mill Hill. Speaker: Mr. W. Paynter, Focus on caring for elderly dependants, Elizabeth Allen Teachers' Centre, Wood Street, Barnet. Panel of speakers. 12.30 pm, light lunch at small charge. Organised by Barnet Voluntary Services Council.

Wednesday October 8

Hendon Horticultural Society, Henry Burden Hall, Egerton Gardens, Hendon. AGM. 8 pm (203 3467).

Hendon North Conservative Association. Quiz supper, Shakespear Hall, Edgware Conservative Club, 49 Manor Park Crescent, Edgware. 8 pm. Admission £2 (958 5520).

British Computer Society, North London Branch, West Lodge Park, Cockfosters Road, Hadley Wood. 8 pm.

Thursday October 9

Welsh Harp Otters Angling Society, White Bear Public House, The Burroughs, Hendon (205 5670).

Friday October 10

Hendon & District Cage Birds Association, Carey Hall, Wilberforce Road, West Hendon. 7.30 pm (205 2647).

COUNCIL MEETINGS

Members of the public are invited to attend Council and committee meetings which are held in the Town Hall, Hendon, at 7 pm.

Monday, September 15: General Purposes.

Wednesday, September 17: Allotments.

Monday, September 22: Finance.

TUESDAY, OCTOBER 7: COUNCIL MEETING.

Monday, October 13: Housing: Development and Estates.

Tuesday, October 14: Public Works; Social Services.

Wednesday, October 15: Town Planning and Research.

WHAT'S NEW IN ST. ALBANS THE GOLF DRIVER



The Golf Driver, a special limited edition version of Volkswagen's best-selling car, is now on sale in St. Albans.

Despite the sluggish car market, demand for the VW Golf has continued to outstrip supply. The Golf Driver is available thanks to extra production earmarked by the manufacturers for the British market in anticipation of the August 'W' registration peak.

The Golf Driver has a 1300cc engine, and a range of special equipment taken from the Golf GTi, including sports seats, sports steering wheel, wide wheels and tyres, a centre console and extra instruments.

It comes in a choice of red, orange or green paintwork and costs £4,347 including all taxes.

EXECUTIVE MOTORS (ST. ALBANS) LTD
223 HATFIELD ROAD, ST. ALBANS, HERTS
Tel ST. ALBANS 60536/7



AUTHORISED DEALER



**TATTOO REMOVAL, GENERAL
& COSMETIC SURGERY
& HAIR TRANSPLANTATION**

Carried out by Private Clinic

- ★ A Major Breakthrough in Tattoo Removal
- ★ Credit Facilities Available

For further details, please fill in counterfoil and mail today to the Crestford Clinic Limited, 588 Barking Road, London, E13 9JY. Or phone 01-518 0437 or 01-518 0438 (Daytime). For evening and weekend phone 01-534 3528.

Name

Address

Telephone No.

BCN1

**MANOR FARM MEAT DEPOT
CRANBORNE PARADE, POTTERS BAR**

OFFER YOU FAIR PRICES
FOR GOOD QUALITY

FREEZER ORDERS A SPECIALITY AND CUT TO
CUSTOMERS REQUIREMENTS

LOCAL FREE DELIVERY

POTTERS BAR 53017

WANT SOME CASH?

Find out the latest prices for all forms of
scrap metal and the best place to sell it.

Telephone: 368 5444

New Southgate Metals Ltd.,
Station Road Goods Yard,
New Southgate, N.11
(On bridge over North Circular)

Opening hours 8 am-5.30 pm Mon-Fri
8 am-12.30 Midday Sat.

**SUNBED SOLARIUM SAUNA
BEAUTY TREATMENT MASSAGE**

WE ARE A UNISEX SALON
OPEN 7 DAYS A WEEK

Ladies only sessions Tuesday and
Thursday

Mornings 10 am-1 pm and
Sunday Afternoons 2 pm-7 pm

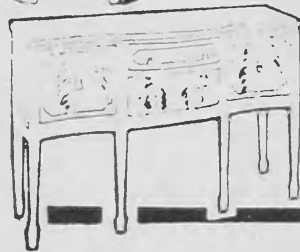
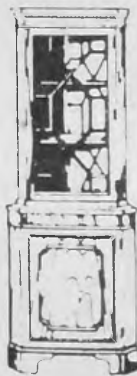
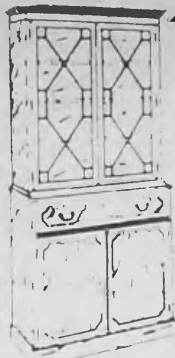
Ladies, where can you have
Sunbed, Sauna and Massage plus a
Facial for only £9.00!!!?

At

**EDGWARE SAUNA
& BEAUTY SALON**

(Licensed by the London Borough of Barnet)
96 HIGH STREET, EDGWARE
PHONE 952 5952

We will allow up to 33 1/3% reduction
for a course of treatment according
to number of sessions



Risoli Reproductions
presents

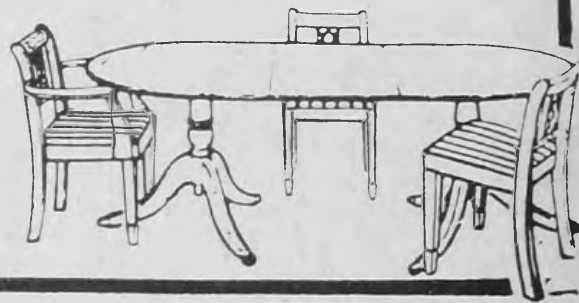
As manufacturers we offer excellent
quality at highly competitive prices

7ft. Dining Table, 6 Chairs, inc. 2 Carvers, inc. Sideboard only	£445
3ft. Bookcase	£183
5ft. Bookcase	£370
5ft. Serpentine Sideboard	£165
TV Cabinet	£125
Hi-fi Cabinet	£110
Corner Cabinet	£78
Bureau, Bureau Bookcase, Coffee Tables and Nests	from £49

Large Stock of Mahogany and Yew

Why not come and see for yourselves!

425 LONG LANE, FINCHLEY, N2
01-883 5997



Call Us Cleaners



PHONE:

226-1068



- ★ FUR COATS CLEANED, LINED & FULLY RENOVATED
- ★ LEATHER RESURFACING & CLEANING SUEDE & SHEEPSKIN
- ★ DYEING OF GARMENTS & HOUSEHOLD FURNISHINGS
- ★ DRY CLEANING & HAND PRESSING A SPECIALITY
- ★ CURTAINS & HOUSEHOLD FURNISHINGS EXPERTLY CLEANED
- ★ REPAIRS & ALTERATIONS

7 day free collection and delivery service

CARPET & UPHOLSTERY

CLEANING ON YOUR PREMISES

Use our equipment — you hire our cleaning machine at a fraction of the cost of the professional — operate it yourself.

Free demonstration on how to operate on delivery.

The amazing new Escort carpet cleaner by Sterling Health.

All cleaning liquids tested and guaranteed safe.

Our guarantee is satisfaction



154 Essex Road, Islington, N.1.
Phone: 226 1068

BARCLAYCARD

VISA

MORE LETTERS TO THE EDITOR

Praise for the staff

Having read your article on Abbots Lodge, Brunswick Park, I would very much like, through Civic News, to add my words of praise to the superintendent, Mr. Arthur Westbury, his wife, Mrs. Margaret Westbury, who is matron, and all the staff who help to run this lovely home. A nicer, warmer atmosphere you couldn't wish for.

My own mother is very fortunate to be a resident there, and although she is 83 years old, is still very sound in mind. That being so, if there is anything to celebrate in the family, such as birthdays, she knows she would normally be included. But not all restaurants are too happy or even equipped to cope with a disabled person plus a wheelchair and zimmer frame. At Abbots Lodge our problem is solved — Mum in a wheelchair and an evening meal for half a dozen people. The food, I might add, is first class. And you'll never believe this, she really thinks she's been out on the Town.

To all at Abbots Lodge, many thanks for all you do, not only for

my mum but for all the other mums and dads who are fortunate to be residents.

Mrs. S. Kempzell,
33 Hamilton Road,
Cockfosters

Speeding bicycles

I must write to endorse the heartfelt complaints voiced by several of your correspondents recently regarding the ubiquitous practice of cycling on pavements, especially by children and young people.

In the part of Barnet where I live we have a number of council flatlets for the elderly, not to mention bungalows for retired couples, and some of these residents are partially sighted or deaf, and, in most cases, physically fragile.

On many occasions I have seen such people forced to flatten themselves against fences and walls to avoid speeding bicycles zooming down the pavements, ridden by youngsters who spare scarcely a glance for the nervous elderly pedestrian trying to get out of their way. Even I, relatively young and agile, on many occasions, have to

get to one side hurriedly in order to protect myself.

Surely, if children are not old enough, responsible enough, or intelligent enough, to learn their highway code and acquire a minimum of road sense, they should not have a bicycle. The place for any bicycle is the road; pavements are for pedestrians, which means people travelling on foot. Is it not possible for some official action to be taken to prevent this reckless and dangerous bicycling in prohibited areas?

(Dr.) Helen A. Kanitkar,
83 Bulwer Road,
New Barnet, Herts.

I would like to add my comment about the 'cycling menace on the pavements'.

Recently my sister and I were in East Barnet where we came to a narrow part of the pavement outside a shop. There, flung down on the pavement were two cycles stretching out from the shop doorway to the kerbstones. I stepped round them by putting one foot in the road but my sister, who is made of sterner stuff, enquired in the shop for the owner.

A voice called out 'It's mine'. 'Then come out and move it, I can't get by', she said.

Out came a boy of about 10 or 11 who moved his cycle a little way and said: 'Some people don't half make a fuss over some little things'.

'Suppose', I said, 'a blind man came along, how would he manage?'.

'Oh', replied this little darling with a look of contempt on his face as he evidently didn't suffer fools gladly, 'he'd feel it with his stick'.

Upon hearing this I was so 'needed' that I offered him 'a clip on the ear'.

Totally unabashed he challenged me to do it.

If one of us had been hurt by tripping over one of these cycles, who would have been responsible for compensation? If I had clipped him round the ear, would I have landed up in court? Or should I have stumbled badly and put my foot through the shining spokes of one of the wheels? Which is exactly what I feel like doing in future should anything like this happen again. And with both feet.

I should add that my sister and I are both over 70 and have been cyclists all our lives. But the 'menace' is getting worse.

North Finchley resident
(Name and address supplied)

UNLIMITED
INTRODUCTIONS

GOOD NEWS

ONLY £12.50
1 YEAR'S MEMBERSHIP

FOR LONELY PEOPLE

SHY : LONELY : SEPARATED : WIDOW : WIDOWER : DIVORCED

CLARENDON BUREAU IS TRUSTED BY THOUSANDS
TO FIND THAT PERSON

SEEKING YOUR MATCH

To capture those happy moments

We don't claim to be the best —
WE ARE

FRIENDSHIP AND MARRIAGE
CAPTURE THOSE HAPPY MOMENTS



May we introduce you to others seeking companionship, deciding to join a friendship and marriage bureau we know is one of the most difficult decisions a person can make. It can either lead to a lifetime of happiness or complete and utter disillusionment. Happy ever after for better or worse. It won't take a minute, but it could make the difference of a lifetime. Consider the facts — £12.50 could be the best investment you have ever made.

Apply now

CLARENDON BUREAU LTD

340-350 Linburn House, Kilburn High Road, Kilburn, London, NW6
328 9521

Moped gift boosts road safety

ROAD SAFETY plays an important part in the specialised motor vehicle and motor-cycle study courses at the Barnet Curriculum Centre in Byng Road, Barnet.

The centre provides the only C.S.E. motor-cycle studies course in the country and caters for about 100 fourth and fifth form students a year from comprehensive schools in the northern end of the borough and two special schools, Northway, Mill Hill, and Oak Lodge, East Finchley.

As well as teaching them motor-cycle maintenance and repair the course also places great emphasis on road safety. As motor-cyclists are among the most vulnerable of road users the staff are convinced that their professional approach to traffic education plays a large part in the students good safety record after they have completed their two-year course.

At the end of last term the centre's emphasis on road safety received a big boost when they were given a brand new moped for their own use by Jeff Brett Motor Cycles of 87 High Road, East Finchley.

The moped was handed over to Mr. Ron Smith, head of the centre by Mr. Clive Cohen, sales director of Jeff Brett



Motor-Cycles. Also present were Mr. Jeff Brett, Mr. Bob Hart, the Education Department's adviser on design and technical studies, and Mr. Bob Simmons, teacher of motor-cycle studies.

The moped will be an extra 'tool' in the centre's motor-cycle training programme to educate the young riders who would not be able to gain similar experience elsewhere. The centre uses its own simulated course for instruction.

The centre offers two traffic education certificates. The centre's own certificate means the students have some experience but are not up to road

standard, and the bronze indicates they have a reasonable chance of passing the motor-cycle driving test. After finishing the course they can try externally for the silver and gold awards, the latter being the advanced standard.

And in Bob Simmons the centre has an expert motor-cyclist. Since 1966 he has taken part in the Isle of Man T.T. junior and senior amateur events.

In addition to the motor vehicle and motor-cycle studies, the centre also caters for building and decorating and design studies. About 500 boys and girls a week attend the centre.



CAR CLEANING CENTRE (hand washed cars)

Car Park Abbey Road, Corner of Belsize Road, St. Johns Wood, London, NW6
Telephone: 01-328 1548

Drive through, no revolving brushes. Done in minutes by a team of top cleaners with years of experience

OUTSIDE WASH

Hand wash, paying particular attention to wheels and chrome, leathered dry
£2.50 inc. VAT

INSIDE-OUT

Interior, vacuumed, windows cleaned, ashtrays emptied, plus our outside wash
£3.50 inc. VAT

WASH & SHINE

Hand washed using Liquid wax polish, interior vacuumed, windows cleaned, ashtrays emptied and facia polished
£10.00 inc. VAT

FULL PROTECTIVE SWEDISH LACRO SERVICE



HOURS OF OPENING
MON-SAT 8am-8pm
SUNDAY 9am-5pm
LUNCH BREAK 12.30pm-1.30pm

Kilburn High Road

Maida Vale, Edgware Road

10% OFF ALL PRICES ON PRESENTATION OF THIS ADVERTISEMENT

Extra charges will be made for exceptionally dirty car and the larger than average car

JEFF BRETT HONDA

5 Star Service

Service comes first at Jeff Brett Honda. Full 5-Star Honda workshops, plus a comprehensive spares stock.

New Hondas in Stock

Huge selection of new and used Hondas always in stock at Jeff Brett Honda. Take your pick from mopeds and commuter bikes, to tourers and superbikes. Part exchanges welcomed, particularly low mileage Hondas. Competitive credit and insurance rates.

Accessories

Jeff Brett Honda is the place to come to for accessories and clothing. Vast stocks of all leading makes in all sizes and colours, especially Hondastyle.

THERE ARE TWO JEFF BRETT HONDA BRANCHES. BOTH EASY TO GET TO IN LONDON AND BOTH NEAR TO UNDERGROUND STATIONS.



315 EUSTON ROAD, NW1
Tel: 01-387 1952/01-388 1988

87 HIGH ROAD, EAST FINCHLEY, N2
Tel: 01-883 3853

MOTURING GUIDE & SERVICES

TOYOTA

**Come to Pannell's and view the
EXCITING RANGE OF TOYOTA CARS
FROM THE STARLET TO THE SUPER CROWN**

The Starlet from £3,094
The Corolla from £3,378
The Carina from £4,076
The Celica from £4,573

The Cressida from £4,675
The Corona from £5,268
The Crown from £8,840

All models currently in stock — COME AND HAVE A TEST DRIVE
Full servicing and after sales service. Export and leasing facilities available.

PANNELL'S OF LONDON

HORNSEY N.8
01-348 4407

GOLDERS GREEN N.W.11
01-455 3563/4

FINCHLEY N.2
01-349 2792/3

DATSUN



TOWER

FOR IMMEDIATE DELIVERY
ON ALL DATSUN MODELS



Coupe

- Spares • Service • Sales

Thames Rico Garages Ltd., Finchley Road NW3
(corner of Hendon Way). Tel. 01-435 6043

DATSUN

HADLEY GREEN GARAGE LTD.
BARNET

Talbot Rentals

SALES & SERVICE

Tel: 01-449 9558

Please telephone for quotation.
Unlimited mileage

All cars with radio. Automatic transmission available.
We supply quality Talbot cars, all tried, tested and
ready to drive away.

IT'S TYRE BARGAIN TIME

FULLY GUARANTEED
TUBELESS TYRES FROM



£7.90
+ VAT

ELECTRONIC WHEEL BALANCING
PUNCTURE REPAIRS FREE FITTING
We specialise in
JAGUAR/DAIMLER/FERRARI
PORSCHE
HUGE DISCOUNTS ON ALL MAKES



**BLUE STAR
BATTERIES**

FROM ONLY

£14.50 + VAT



Save! Save! at FIVEWAYS TYRES
1 PAGE STREET, NW 7
OPEN 7 DAYS A WEEK 203 2088/5381



RENAULT

TEMPLE FORTUNE GARAGE LTD.

1089 Finchley Road,
London NW11 0QJ.
455 9955

THE OLDEST ESTABLISHED RENAULT DEALER
IN THE LONDON BOROUGH OF BARNET



RENAULT

BOB THOMAS (MOTOR CYCLES) of THE FINCHLEY HONDA CENTRE

Full Sales Service and Spares. Excellent allowances on Part Exchange.



201 & 207 REGENTS PARK ROAD
FINCHLEY, N3 3LN. Tel: 01-346 4083



HADLEY GREEN GARAGE LTD.



Official Appointed
ROLLS-ROYCE & BENTLEY DISTRIBUTORS

We have a large selection of guaranteed pre-owner motor cars available for your inspection.

Full Service and Parts Facilities
Chauffeur collection and delivery.

202/204 High Street, Barnet, Herts.
01-449 0332/5968



VANS AND TRUCKS 6 cwt to 44 tons (32 tons GVW) FOR U.K.

7 ST ALBANS
ROAD, BARNET
449-1137

OTHER LOCAL
DEPOTS:
BARKING
594-7889
710456

ENFIELD
366 4321

LEA VALLEY
(9) 710 456

LIDO BODY REPAIR CENTRE

COMPREHENSIVE CRASH REPAIRS BY EXPERTS

ACCIDENT RECOVERIES AT
COMPETITIVE RATES
APPROVED BY
LEADING INSURANCE
COMPANIES

255 LORDSHIP LANE
N 17

TEL: 01-808 2313



LEICESTER ROAD GARAGE LTD.
18 LEICESTER ROAD, NEW BARNET
HERTS.

Telephone:
01-449 7048/4587

Self-Drive Car Hire

Servicing, Coachwork and Mechanical Repairs

YOUR CAR COLLECTED & DELIVERED

Serviced and maintained on all the latest diagnostic equipment.
Work carried out by trained mechanics — at very competitive prices.

ALL MOT WORK CARRIED OUT
DOOR-TO-DOOR SERVICE

Tel: 986-4445
907-0379
459 2680 EVES. ONLY

AUTO TALK



I always offer
new cars



Now I offer
new models,
the Morris Ital



446-3701
446-0777

Budget
rent a car

Better cars at budget prices

- Retail Sales
- Fast, Reliable Parts Service



40 New cars for Immediate Delivery
Demonstrations at Your Home or Office

Fleet Sales
and Leasing

Specialist
Servicing

Always a Large Selection of Ex Demo and One Owner Used Cars

THE PROFESSIONALS

LONDON SPORTS CAR CENTRE

Gemini House, High Street, Edware, Middlesex
01-952 6171

VANS WITH DRIVER

7 cwt. £6.50 per hour
18 cwt. £7.50 per hour
35 cwt. £8.50 per hour

Parcel Delivery Service
from
£3.50 per drop

LINKLAND VANS
01-907 7793
01-904 0893

FRIERN BARNET SUMMER SHOW

Pictures by Maria Bartha
telephone 449 2154



Prizewinners in the children's fancy dress competition with the Mayoress, Helen James, Nicola Goode (Wonder Woman); Louise Carroll (Bo-Peep); Victoria Halsey (Hawaiian girl); and Joanne Louise Rowe (Andy Pandy).



The Mayor, Councillor Mrs. Edna James (second right) with (from left) Mrs. Pauline Fisher, Miss Daphne Greenwood and Mrs. Mavis Reavell of Friern Barnet Floral Art Club, winners of the flower arrangement section.



The craft market and demonstrations proved very successful. Here Miss Mary Avery demonstrates corn dollies and Brian Smith, who was demonstrating cane work, tries his hand at a new skill, succeeding in spite of being blind.



Leo Kusi Appiah of Monkfrith Boys' Club was the winner of the senior penalty kick competition scoring 11 out of 11.



Members of Flightways Day Centre for the disabled at Grahame Park celebrating the success of their potterly and art exhibit which won the cup and first prize in the domestic hobbies and handicraft section.

1,000 BEDS IN STOCK

Singles still only £29.90. Doubles £69.90. Childs £27.90. Bunk beds full size including matts £49.90

BACKACHE

Orthopaedic range Silentnight £139. Myers £149
Pocket sprung £239 Double sizes
Special one half soft, one half firm £239
Bargain offer, 10 year guarantee Orthopaedic only £99.90

GUESTS

Put U up settee only £139 whole suite £239
Day beds £99. Z beds folding beds, recliner chairs.

AMBRIDGE DISCOUNT

2B Star Street, Ware, Herts.
Tel: Ware 66262

Opening hours Ware
10 am—5 pm every day 10 am—1 pm Sunday

175 Stroud Green Road, London N4
Tel: 01-272 1289

Opening hours London
10 am—5.30 pm everyday 10 am—7 pm Friday

YOU FIND THE HOUSE WE'LL FIND THE MORTGAGE

Maximum advances always available for home purchase and improvement

Information on how to plan for a future mortgage

Telephone now and we'll tell you exactly how much you can borrow and at what cost

*Insurance and mortgage brokers
Personal finance planners*



NEWMAN, WRIGHT AND ASSOCIATES

Ridge House, Mill Ridge
Edgware, Middx. HA8 7PE
Tel: 01-958 3222
or Weybridge (97) 51880
or Epsom (78) 41917

VIDEO—YOUR OWN PERSONAL SERVICE

is now available for

WEDDINGS : PARTIES
FAMILY CELEBRATIONS
DRAMA : CONCERTS : POP GROUPS
SPEECH DAYS : SPORTS EVENTS
ALL ORGANISED FUNCTIONS, etc

Have your own, professionally made video recording to keep as a personal memento of your own special occasion

EARLY BOOKING AN ADVANTAGE
PRE-FILMING LOCATION VISITS
AND EXPERT ADVICE AVAILABLE

For details of this exclusive new service

Tel:
VIDEO PRESENTATIONS
on 445 7141 or 446 2377 (eve)
440 4056 (day)



TOTTERIDGE HOTEL AND RESTAURANT

A small Country House Hotel of charm and quality. An ideal and favourite place for your Accommodation, Wedding, Company Meeting, or Private Party.

Unquestionably some of the very best food, service, and atmosphere for miles around.

TOTTERIDGE VILLAGE, LONDON N20 8AE
TELEPHONE 01-445 3666



A WORLD OF FASHION
where value is really in Fashion

Mavis Castle

For the well-dressed woman

New Autumn range in stock

**EXCLUSIVE LADIES' FASHIONS FROM
TOP CONTINENTAL HOUSES**

1 ASHBOURNE PARADE, FINCHLEY ROAD, NW11.
PHONE 455 2229

STEP OUT SMARTLY STYLED
& DRESSED BY

Ronnie Castle

For the well-dressed man

Complete Autumn range now in stock

**STOCKISTS OF TOP CONTINENTAL SUITS
JACKETS, TROUSERS,
SHIRTS and ACCESSORIES**

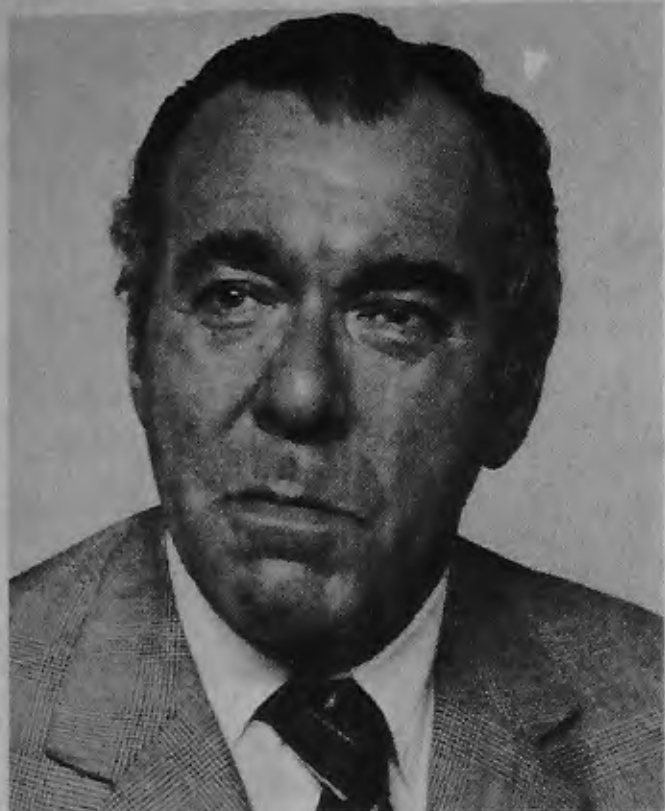
1179 FINCHLEY ROAD, TEMPLE FORTUNE, NW11.
PHONE 455 4083



Your Councillors

FINCHLEY

Finchley Ward, heart of the former Borough, is centred on the conservation area of Church End. It is mainly residential, but is bisected by the busy Regents Park Road with its commercial developments, and it also contains Avenue House, a centre of art and community work, with fine grounds open to the public.



COUNCILLOR MILES GOLDING, Freeman of the City of London, has lived in the Borough since he was a child, and was educated at Wessex Gardens School and the City of London College.

When his family were young he found he had time available for public service. With the encouragement of his wife, he stood for Council and has represented Finchley since 1968.

A Fellow of the Royal Institution of Chartered Surveyors and a senior partner in a practice of Chartered Surveyors in the City of London and the West End, he takes particular interest in Town Planning, Development and Estates, and the new Building Resources Committee. He is Chairman of the Community Land Committee, and serves on Establishment and Libraries and Arts Committees.

His early professional studies were interrupted by the 1939-45 war. He served with the Second Tactical Air Force in the Normandy Landings and later with the occupying forces in Berlin. After the war he resumed his studies at the College of Estate Management and at evening classes.

'I am able to look at the commercial aspects of property as it affects and enhances the Borough', he explained. When he joined the Council a major debate on the future of the land in Regents Park Road, behind Avenue House was ensuing. He is in favour of the present plan for this important site — housing on the southern half of the land and a high quality commercial development between The Avenue and Gateway House.

He has always held the view that offices in the Borough should be encouraged because of its strategic position in relation to the City and West End, and the availability of high standard clerical and technical staff derived from the education that the Borough provides.

His interests include music, biographies and history and he enjoys swimming and walking. His wife assists him in his Council duties and last year was active in the Mayor's Charity Appeal.



COUNCILLOR MISS JEAN PARMER is known as a tireless campaigner for environmental improvement and the preservation of a sense of community.

Born in India, she came to Finchley as a girl and it has been her home ever since, although she has travelled widely. She is a freelance secretary and for five years worked for hospitals, government departments and leading companies in Canada, New Zealand and Australia.

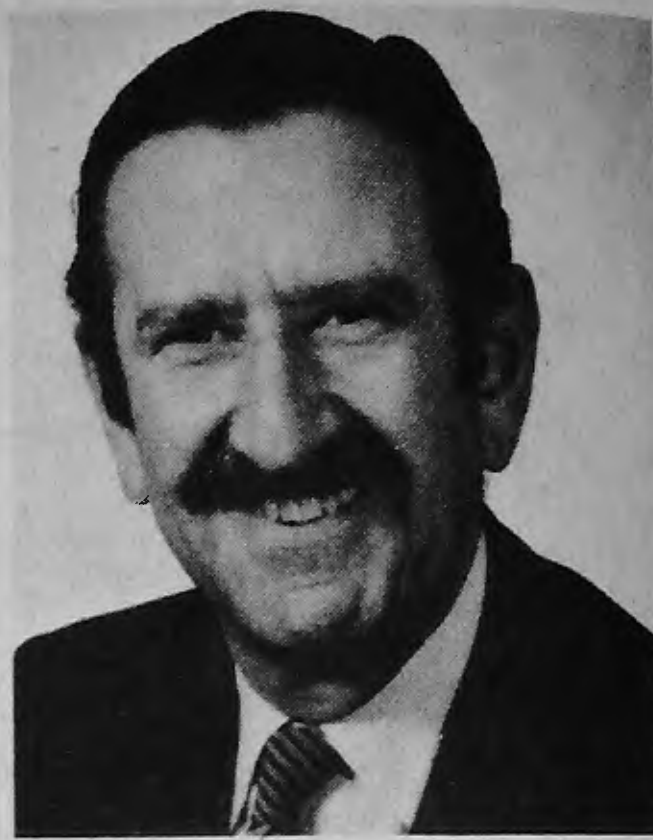
As a Young Conservative she found herself helping at elections and fund raising events. Later she joined St. Mary's Branch of Finchley Conservative Association and in 1974 was elected to Council.

She has served on many Council committees and is at present on Public Works, and Town Planning and Research, through which she is able to contribute in those areas on which she feels particularly strongly — road safety for children, good traffic management and preservation of the community environment. She is also on the Carnival and Shows Committee.

'It is terribly important that the lives of people in our borough should be as pleasant as possible. I feel very involved and very close to the people who live in Finchley. With the pressures of London development I want to make sure we take the right decisions — the decisions people want. I know we have to be financially aware but we also have to be community conscious,' she said.

She is a Governor of St. Mary's C.E. Primary School and Christ's College, and of Bell Lane, Brooklands, Chalgrove and Garden Suburb primary schools.

Active in local organisations she serves on Finchley Old People's Welfare Committee; the Central Road Safety Committee; Barnet, Haringey and Hertsmere Marriage Guidance Council executive committee; North Thames Gas Consumers' Council; the Alma Housing Co-operative; and Southern and Western Regional Association for the Blind executive committee.



COUNCILLOR LESLIE SUSSMAN has served on three councils: the former Borough of Hornsey (1961 to 1965); the Borough of Haringey from its charter year in 1964 to 1968; and Barnet Council (since 1968).

'I have always felt a strong sense of identity with the community in which I live and feel I want to do something for the people of that area,' he told Civic News. 'This led me to stand for the Council.'

He is chairman of the Establishment Committee and a member of the Finance and General Purposes Committees. In these times of financial restraint, the Establishment Committee is under pressure to maintain a tight control on the number of staff employed. As the borough employs more than 11,000 people, the committee has to tackle employment problems on a scale faced by many a national business enterprise.

In local government there is a tradition of joint consultation and Councillor Sussman is chairman of the Council and Staff Joint Sub-Committee and Whitley Works Sub-Committee on which employees and councillors serve in equal numbers.

He is also on the Greater London Whitley Council and the National Council for Administrative, Technical and Clerical Staff.

His business interests have prepared him for this involvement. He owns a family business in Ilford, manufacturing lingerie. It was founded by his father and now his eldest son has joined him in the firm.

Councillor Sussman is chairman of a group of primary schools, Brooklands, Garden Suburb, Chalgrove and Bell Lane; a governor of Christ's College and also of Haberdashers' Aske's School. His wife, Adrienne, is a Cub Scout leader with the 4th Hendon. With heavy council commitments he finds little time these days to watch his favourite sport — Rugby Football — for which he was a referee with the London Society of RFURs.

BARNET'S COMPLETE WORD PROCESSING SERVICE

THE FIRST OF ITS KIND IN THE UK

The LETTER FACTORY, which began trading as a word processing bureau just over 4 years ago has recently opened its new showroom and word processing retail centre in the Borough of Barnet which probably provides the most complete word and data processing service in the country.

From its Ballards Lane premises at the busy Tally Ho Corner, North Finchley it serves the local and indeed the national business community with a total range of requirements for today's automated office.

Believed to be the first of its kind in England, businessmen can walk in off the street to utilise the 9 keyboard word processing bureau service for anything from standard letters, sales mail shots or credit control letters to long document report typing for proposals, tenders, leases etc. Alternatively one could wait while a mere handful of standard letters or perhaps a prestige form is being typeset and then reproduced by fast photocopying or printing procedure.

Proprietor Vince Summers claims that the theme of the place is that anything a modern business conceivably might want to do to a piece of paper is the *raison d'être* of THE LETTER FACTORY. Originally, he says when the bureau service was formed the only thing people seemed to understand about word processors was their ability to produce standard letters — and so it wasn't long before the company became a mailing house offering a standard personalised letter/envelope stuffing service to estate agents, building

companies, computer companies and finance houses trying to generate sales through direct mail.

Soon however the local business community became aware of the real power of word processing to generate all other kinds of typewritten work from long reports going through the conventional editing and revision procedure to 'building block'



text from standard paragraphs. It was then that the customer base grew from clients with their own word processors unloading overflow work to all kinds of business with a peak typing load they couldn't handle or maybe simply because the 'temp' hadn't turned up.

From the customers with their own word processors the supplies division PAGREED

LIMITED evolved. Many enquiries were from companies wanting to buy new or used word processing machines or who simply wanted to buy ribbons/floppy discs and were disappointed by the lengthy delivery delays and excessive prices charged by the manufacturer.

PAGREED, distributors in the United Kingdom for Memorex, have now been in existence for over 3 years. A complete range of Floppy Discs, Qume/Diablo Ribbons, Printwheels, Magnetic Cards, Typewriter Ribbons, Acoustic Hoods and Word Processing Storage Systems are available ex-stock at prices generally about half those charged by the manufacturers. PAGREED, which claimed a first in offering specially formatted mini-diskettes for the A.E.S. Plus, have an extensive selection of Floppy Discs for IBM, Xerox, Phillips, Vydec, Cassettyper, Wang, Adler Word Processors and a wide range of Mini-Computers. Additionally a selection of new and used Word Processors/Electric Typewriters and other business machines are available.

All these products and services are offered direct to the public over the counter, via mail order or prompt delivery nationwide from the LETTER FACTORY, Word Processing Centre, 327/329, Ballards Lane, Tally Ho Corner, London N12 8LT. Telephone for Bureau and Direct Mail Services 01-445 1572 and for World Processing supplies PAGREED 01-446 0782, a brochure and price list are available on request.

LOOKING AT WORD PROCESSING?
THERE MAY BE A BETTER WAY —
BY USING THE COMPLETE SERVICES OF:-

The Letter Factory

WORD PROCESSING CENTRE

327/329 Ballards Lane, Tally-Ho Corner, London N12 8LT
Telephone: 01-445 1572

DIRECT MAIL

ALL TYPING TASKS

Standard Letters
Sales Mail Shots
All Error Free
Personalized
And Individually
Typed

Instant Print
Typesetting/Artwork
Photocopying
Legal Typing
Mailing Lists
W.P. Operator Training



MEMOREX

Floppy Discs
Correctable Ribbons
Print Wheels

WORD PROCESSING SUPPLIES

Qume/Diablo Ribbons
Magnetic Cards
Photocopying Toner

Word Processing Equipment

WE INVITE YOU TO VISIT US IN OUR NEW SHOWROOM



COME ALONG AND INSPECT THE LATEST OLYMPIC KITCHENS NOW ON DISPLAY

WHY NOT REALISE YOUR HEART'S DESIRE WITH A HIGH-QUALITY FULLY ASSEMBLED MODERN KITCHEN AT AN UNBELIEVABLY ATTRACTIVE PRICE

We specialise in planning, plumbing and designing of new kitchens and bathrooms.

Call today and find out about our special introductory offers

D.L.S. PLUMBING & KITCHEN DESIGNERS

HEATING, SANITARY AND KITCHEN MERCHANTS

206 WEST HENDON BROADWAY
EDGWARE ROAD, NW9.
TEL. 202 3079 or 202 5682

HEATSAN GAS LTD
DISCOUNT PLUMBERS MERCHANTS

UP TO 40% OFF BARLO RADIATORS 'Round Top'

TRADE & DIY
ΚΥΤΤΙΑΚΗ ΕΤΑΙΡΕΙΑ
BOILERS up to 35% off
Myson and Stelrand Radiators up to 40% off. All fittings and controls 20% off. Key Terrain Soil and Waste Pipe 20% off.

Bathroom Suites
White £125.95
Colour £137.95

Easy Parking
172 Bowes Road, N11
Tel. 889 6006

As Prices Exclusive of VAT
Opening Hours:
Mon-Sat: 8 a.m. - 6 p.m.
Sundays: 10 a.m. - 1 p.m.

FUR FABRIC PLUS
868a High Road, Finchley, N12. 445 6743

SPECIALISTS IN FUR FABRIC

A very large selection stocked.

Also for the toymaker a complete range of eyes, noses, felt, filling and patterns.

COME AND SEE OUR WIDE RANGE OF FUR FABRIC JACKETS AT COMPETITIVE PRICES!

Beautiful soft toys always in stock

BUSINESS SERVICES

ALL furniture and antiques wanted urgently. Prompt attention Cash paid. Tel: 445 9039 anytime

LEEDAN Kitchen Fitting Service. Any type of kitchen units fitted, also gas, plumbing, electric, tiles. 205 8477.

BUILDERS AND DECORATORS

R. C. MOODY & SONS, Builders and Decorators (Registered). No useless guarantees offered. Only good workmanship. References available. Telephone: Day 70 23460, evening 01-906 2200; 01-599 4851.

FOR SALE

PERIOD settee and chair for sale. £25. 202-9171.

RALEIGH Ranger Child's Bicycle for sale. Excellent condition. £30. Please Tel: 959-3119 evenings.

HOUSES FOR SALE

EAST FINCHLEY. Victorian three bedroom terrace with character, close tube. Superb sitting room, otherwise modernised retaining original features. Replumbed, rewired, gas C.H., cellar, garden. Freehold £50,000 o.n.o. Phone: 883 8320.

PHOTOGRAPHY

YOUR wedding photography in colour by experienced wedding photographer. Previews same day. Montage effects etc. Details 01-203 4428 Evenings.

TUITION

READING/Spelling difficulties? Trained Teacher and Dyslexia Therapist available. 203 1004.

CARS FOR SALE

CORTINA 1600E, Gold, H reg, taxed, MOT June, 1981. Original engine, only 45,000 miles, excellent condition throughout. Must be seen. £895 ono. Phone 440 1781.

SITUATIONS VACANT

A golden opportunity with a silver lining if you are bored or could use some extra cash then telephone me on 200-7395.

FLATS FOR SALE

E. FINCHLEY, N.2. New conversion of three flats built in kitchens. Coloured bathrooms. Central heating. 99 yr. lease from £23,600. 883 8677.

ARTICLES WANTED

WANTED old postcards, books about stamps, old postal orders, labels. Graham, 23 Rotherwick Road, NW11. Exercise Cycle for Therapy. Phone: 883 0716.

CARPETS AND UPHOLSTERY STEAM CLEANED IN YOUR HOME

FOR FREE ESTIMATE

Contact
COLINDALE CLEANING SERVICE
Tel: 427 1226

Member of the Federation of Master Carpet Cleaners

STOP LEAKING GUTTERS

Guaranteed 25 Years
Continuous Aluminium Seamless Gutters

Our factory on wheels tailor makes the big 5" capacity gutters at your home. No sectional joints means no leaks, never rusts, pre-painted in colour, never paint again. Free estimate without obligation.

Ginty Construction Ltd., Seamless Gutters Dept, Freepost, Barnet, Herts, EN5 2BR. Tel: 01-449 2209.

CLANCY BROS. BUILDERS

EXTENSIONS COMPLETED IN 4 TO 6 WEEKS

Free Estimates
10 year Guarantee

Phone Now 882 4832

D. J. & SONS

BUILDERS AND DECORATORS
440 8380

Roof repairs, plastering, gutters, plumbing, conversions, through lounges.
Your local builder.

For free estimate ring now.

Southgate Kitchens 121-123 BOWES ROAD, N13
01-881 2255

FREE PLANNING AND ADVICE BY EXPERTS ON EVERY ASPECT OF YOUR KITCHEN

STOCKISTS OF NEFF, FRANKE, BEEKAY BAUKNECHT AND PROWODA

CREDIT FACILITIES AVAILABLE

Closed all day Thursdays
Open 5 days a week, 10am-5.30pm

BY USING THIS PUBLICATION YOU WILL REACH MORE PEOPLE AT THE LOWEST POSSIBLE COST

PHONE
01-346-4626/7
01-367-0246
FOR ALL ENQUIRIES

RICHARDSON & SONS (BUILDERS)
01-882 3549

Roof work, Gutters,
Plastering, Plumbing
Bathroom and Kitchen
conversions a speciality

01-882 3549



**Skull Roofing
Contractors
Limited**

Roofing Contractors and Merchants

7 NORTH PARADE, MOLLISON WAY
EDGWARE, HA8 5QH
Telephone: 01-951 1659/1640

WATERJET

PLUMBING, HEATING & DRAINAGE

INSTALLATION, MAINTENANCE AND REPAIRS
BATHROOMS ● TOILETS ● KITCHENS ● CENTRAL
HEATING ● ROOFS ● GUTTERS ● INSULATION ●
DOMESTIC OR INDUSTRIAL

01- 958 6633

01-906 0214

01-431 2969

24 Hour Service

J. S. & L. HEATING ENGINEERS

(Reg'd Co.)

For all types of heating and plumbing installations

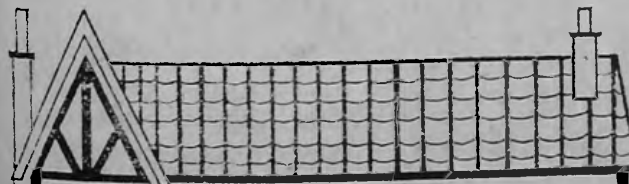
FREE ESTIMATES

All work fully guaranteed.
Recommended Fernox Heating Engineers
Registered Corgi Installer
Credit facilities available

PHONE NOW

01-804 6167

24 Hour Answer Service



DON'T MOVE — IMPROVE!

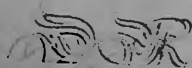
ADD SPACE AND VALUE TO YOUR PROPERTY WITH DELUXE
CONTRACTORS — THE SPECIALISTS IN HOME IMPROVEMENTS

- ★ Survey and Professional Drawings ★
- ★ Full Planning Permission obtained at no extra cost ★

RE-ROOFING BY EXPERTS

ADD LIFE AND VALUE TO YOUR PROPERTY AND REDUCE
HEATING COSTS WITH OUR HIGH QUALITY RE-ROOFING AND
INSULATING SERVICE

- ★ Free Surveys by experts ★
- ★ 50 years materials guarantee. 10 years workmanship guarantee



Deluxe Roofing Ltd.
Woodside Place
Bell Bar, Hatfield, Herts
Tel: Hatfield 69727

ESTABLISHED
1977

COSYTOP

LOFT INSULATORS

GOVERNMENT GRANTS AVAILABLE

Our Installations are Guaranteed to meet
Council Approval.
Our Materials to BS 5803.
Free Estimates

Phone: Waltham Cross 36598
Waltham Cross 21279

R. & G. ROOFING

Established 10 years

COMPLETE NEW ROOFS OR REPAIRS

- ★ Repointing and rebuilding of chimney stacks.
- ★ Zinc and lead work
- ★ Also guttering renewed and repaired
- ★ Soil pipes renewed

Estimates free

01-446 2056

BUILDING CONSULTANTS

All types of plans, etc., prepared for
submission to local authorities

D.L.S.

Tel: 202 3079 or 202 5682

FLAMEOUT



Member of CORGI
Potterton international
Appointed Service Agents.
Approved by British Gas
and Local Authorities.

Telephone: Hatfield 69947/8

24-HOUR SERVICE

HEATING SERVICE & INSTALLATION ENGINEERS

**ADD VALUE
TO YOUR HOME WITH A NEW ROOF
CONSULT THE EXPERTS**



will completely strip your old roof, insulate with heat
conserving Hessian backed felt. Renew all battens, re-tile
with any colour tiles.

- Free Survey (No obligation)
- 10 year guarantee
- All repairs undertaken
- Credit Facilities Available
- Vinyl gutters
- Flat Roofing
- Invest in a Rainy day

DAY & GIBSON
ROOFING SPECIALISTS, REGISTERED
COMPANY
50 RYECROFT CRESCENT, BARNET
HERTS 440-6625 441-1950/77-44584

ROOF SYSTEMS

(BARNET)

Registered Roofing
Specialists. New roofs
(10 year guarantee)
roof repairs & overhauls
flat roofing — Vinyl
guttering, chimney
pointing & removal.
No obligation estimates
All work professionally
carried out
Phone:

01-449 8515

**CENTRAL HEATING
from £900**

C.O.R.G.I.
registered installers

Tel: Mr. D. Baylis
01-458 9837 or
0442-832614 (Evenings)
for specification

HOOVER

**ELECTROLUX
SERVICE**

Work guaranteed.
Quotations Free. Hoover
trained engineers.
Hoover cleaners and
Hoovermatics wanted.

Contact P. Jarvis

01-441 5152

**D. S. Repairs
and Service**

Washing Machines
Tumble-Driers
Dishwashers
Spin-Driers
Manufacturer
Trained Engineer

Telephone: 200 5246

**DOMESTIC
REFRIGERATION
REPAIRS**

ALL MAKES OF
FRIDGES
AND FREEZERS
REPAIRED IN
YOUR HOME
ALL WORK GUARANTEED

CALL 01-951 1081
ANYTIME
7 DAYS A WEEK
PROMPT SERVICE

Phone

01-367 0246,
366 4626-7

Ask for Gay for
Advertising
Rates.

PEOPLE

ONE OF THE MOST WORRYING problems facing all who are engaged in social work today is the fact that many state benefits and local authority services are not being taken up by those who are most vulnerable and who most need this help. Three out of every 10 people who are eligible for supplementary benefits from Social Security do not claim them.

About 1½ million families lost more than one regular payment of benefit in one year; 750,000 pensioners did not claim the £2 to £5 to which they had a right, and some 850,000 families failed to apply for the rent and rate rebates to which they were entitled.

There are many reasons for this. Some people feel too proud to ask for what they still look upon as 'charity'. Others are too tired or too bewildered to claim.

This article sets out to give an introduction to the scope of Social Services in the Borough of Barnet. In future articles Civic News will carry more details of these services and the grants and benefits which are available.

□ □ □

UNDERSTANDABLY people are often confused about the difference between Social Security and Social Services.

Social Security is Government financial aid under the Department of Health and Social Security.

Social Services are run by the local authority — in this case the London Borough of Barnet — and are much more tied up with the care and welfare of local residents, particularly those who are vulnerable, or need special support.

This confusion results in some frustration and a lack of take up of services to which many people are entitled. In times of cuts and increased hardship through unemployment, isolation, or homelessness, the elderly, handicapped and those in need of protection or support ought to make sure that they are not losing rights to insurance or supplementary benefits or the range of free or low-cost services.

The personal Social Services of the local authority are required by a variety of Acts of Parliament to provide services to children, who are 'at risk', by being deprived of a normal home, or are delinquent, disturbing or disturbed, and to their families. Advisory, counselling, recreational, residential, foster care services are available according to the needs of the children and those around them.

Similarly Acts of Parliament require or suggest the provision of services to elderly or handicapped people to enable them to remain as independent as possible or to take up residence in a particular establishment for short or long periods.

Barnet's Social Services are divided into Departments or Divisions.

The Family Care Department embraces the area and hospital social work and specialist services and the domiciliary (home support) services. It is headed by an Assistant Director, Robin Jones.

The Day and Residential Department includes six nurseries, and a mother and child home, seven children's establishments, three residential and 10 day centres for handicapped and/or elderly adults and 12 residential homes for old people. It is also responsible for registration of, and advice and support to, numerous private and voluntary homes. It is headed by the Deputy Director, John Norman.

The Administrative Division is responsible for personnel and administrative/clerical services. The Principal Administrative Officer is Norman Jupp.

Generally the first point of contact for most people, who come to Social Services, is the local Area Team Office. There are six such offices, in Barnet, Whetstone, Finchley, Golders Green, Burnt Oak and Hendon. Other service users come into contact with social workers based in hospitals at Edgware, Barnet or Napsbury.

The home support services include home helps, home makers, meals at home, and specialist services for blind, deaf or otherwise handicapped people. Most people prefer to remain at home and in Barnet there is a range of Council services helping them to do so, augmented by established voluntary organisations and newer mutual help groups.

That's what Barnet's Social Services are really all about

Only the most dependent, handicapped or vulnerable people are now entering residential homes and many stay for only a short time to help them or their families to get back on their feet. The larger part of Social Services budget of nearly £10 million, is spent on the residential and home support services. The social and crisis intervention workers use their liaison and counselling skills to find alternatives to residential care or even to extended day care.

In the belief that for most people there's no place like home, time and energy is spent seeking substitute homes for children, adolescents and, in the future, handicapped or elderly adults. For handicapped children, disturbed or disturbing adolescents who would previously have required a controlled and costly residential placement, Social Services are prepared to pay foster parents special rates of up to £65 a week to take them into their own home. These payments are, of course, less than the cost of residential care. We believe that a home environment is best for most children and young people.

So Social Services are eager to hear from people who could give a room in their home to selected children and young people and also to adults, for whom special payments are also available.

Lack of money causes many personal and group problems. It can lead to homelessness, delinquency, a poor diet, depression, family conflict, misuse of drugs or alcohol. The so-called cycle of deprivation is not confined to particular families but is, in a sense, contagious in run-down areas or among such groups as the unemployed or single parent families.

With adequate finance, employment opportunities, housing and education services, these vulnerable groups are supported

and prevented from becoming costly burdens on the range of welfare services.

The Social Services only assist financially in exceptional circumstances, for instance, to prevent a family breaking up. But they help with material aids such as telephones, bus passes for handicapped people or aids and adaptations in the homes of the handicapped. They encourage voluntary groups to befriend and support people at home, to provide lunch clubs and to stimulate mutual aid amongst those with particular interests or problems.

Advertising on television, radio, the press or in libraries and shopping centres helps to reduce the problem of non take-up of benefits but the personal approach is more effective. Various voluntary organisations, particularly the Citizens' Advice Bureaux, have been central in this area, and some social service workers also become heavily involved.

There is a clear need to inform people of the benefits, programmes and facilities provided by the Social Services and related organisations. Brochures and action plans on particular themes, such as nurseries, centres and units for children, handicapped, mentally ill or elderly persons, are being produced, as are those on field services for parents of handicapped children or adolescents. Such brochures include advice on making suggestions or complaints about services.

In times of reduced expenditure it is crucial to plan our services to provide for those most in need. This task of discriminating in favour of our most vulnerable citizens presents managers, professionals, volunteers and elected members with an immense challenge.

Alan Gorst,
Director of Social Services,
London Borough of Barnet

AREA TEAMS

Team A: 28/30 Station Road,
New Barnet, Herts. Telephone 449 5511.

Team B: Fiboard House,
Oakleigh Gardens, Whetstone, N20. Telephone 446 4354 or 446 4350.

Team C: Barnard House, 158
Burnt Oak Broadway,
Edgware, Middlesex.
Telephone 952 7722.

Team D: 16/17 Sentinel
Square, Hendon, NW4.
Telephone 202 5233.

Team E: 294/296 Regents
Park Road, Finchley, N3.
Telephone 349 2651.

Team F: Tudor House,
Llanvanor Road, Crick-
lewood, NW2. Telephone
458 8344 or 458 8340.

CHEMISTS' ROTA

THE BASIS of this rota was supplied by the Barnet Family Practitioner Committee and lists those chemists which are open by agreement during evenings, Sundays and Bank holidays. To help residents we are hoping to print this rota on a monthly basis if space permits. Any other chemist open outside normal shopping hours on a regular basis may send details to Civic News, Town Hall, The Burroughs, Hendon, NW4.

BARNET

Sundays/Bank holidays 11.30 pm—12.30 pm.
 Weekdays 6—7 pm.
 Sun 7.9 to Fri 12.9 Parry Jones, 61 Hight St.
 Sun 14.9 to Fri 19.9 Boots, 142 High St.
 Sun 21.9 to Fri 26.9 A. Wilkinson, 190 High St.
 Sun 28.9 to Fri 3.10 C. Harris, 16 Greenhill Pde.
 Sun 5.10 to Fri 10.10 Parry Jones, 61 High St.
 Sun 12.10 to Fri 17.10 Boots, 142 High St.

FINCHLEY CENTRAL

Weekdays 6—7 pm. Sundays 11.30 am—12.30 pm. Bank holidays 11 am—12 noon.
 Mon Adrian Russells, 158 Ballards Lane.
 Tues Newtons, 332 Regents Park Rd.
 Wed Newtons, 332 Regents Park Rd.
 Thur Garnett Pickles, 73 Ballards Lane.
 Fri Boots, 110 Ballards Lane.
 Sun Kings, 222 Regents Park Rd.

FINCHLEY CHURCH END

Weekdays 6—7 pm. Sundays 12 noon—1 pm.
 Mondays, Tuesdays, Thursdays, Fridays and Sundays: Gordon Smith, 176 Long Lane.

NORTH FINCHLEY

No Sunday rota. Weekdays 6—7 pm. Bank holidays 12 noon—1 pm.
 Mon 8.9 to Fri 12.9 A. Leiter, 601 High Rd.
 Mon 15.9 to Fri 19.9 C. Sampson, 839 High Rd.
 Mon 22.9 to Fri 26.9 Auklands, 321 Ballards Lane.
 Mon 29.9 to Fri 3.10 A. Leiter, 601 High Rd.
 Mon 6.10 to Fri 10.10 C. Sampson, 839 High Rd.
 Mon 13.10 to Fri 17.10 Auklands, 321 Ballards Lane

EAST FINCHLEY

Monday to Saturday to 9 pm. Sundays/Bank Holidays 12 noon to 1 pm.
 Cory Bros, 168 High Road.
 Monday to Saturday to 7 pm.
 Shilcrofts, 32 High Road.

WHETSTONE & SOUTHGATE

Sundays/Bank holidays 11.30 am—12.30 pm.
 Weekdays excluding Saturdays 6—7 pm.
 Mon 8.9 to Sun 14.9 Co-op, 245 Oakleigh Rd. Nth. N20
 Mon 15.9 to Sun 21.9 H. J. Shore, 87 Russell Lane, N20.
 Mon 22.9 to Sun 28.9 Aldington & Jones, 23 Hampden Sq. N14.
 Mon 29.9 to Sun 5.10 E. Lipkin, 5 Dollis Pde, Totteridge Lane.
 Mon 6.10 to Sun 12.10 C. H. R. Chemists, 1292 High Rd., N20.
 Mon 13.10 to Sun 19.10 Aldington & Jones, 23 Hampden Sq. N14.

FRIERN BARNET

Weekdays 6—6.30 pm. No Sunday rota.
 Mondays, Tuesdays, Thursdays, Fridays: Kingswoods, 209 Woodhouse Rd.
 Mondays to Fridays 6 to 7 pm H. Haria, 25 Friern Barnet Rd.

GOLDERS GREEN

Weekdays including Sundays (except Thursdays*) 6—7 pm. Sundays/Bank holidays 12 noon—1 pm.
 Mon 8.9 to Sun 14.9 G. John, 768 Finchley Road.
 Mon 15.9 to Sun 21.9 Warman Freed, 45 Golders Green Rd.
 Mon 22.9 to Sun 28.9 Landys, 1191 Finchley Rd.
 Mon 29.9 to Sun 5.10 Boots, 638 Finchley Rd.
 Mon 6.10 to Sun 12.10 G. S. Raivid, 229 Golders Green Road.
 Mon 13.10 to Sun 19.10 G. John, 768 Finchley Rd.
 *Thursdays, 2.15 to 6.30 pm G. John, 768 Finchley Rd.

BURNT OAK & EDGWARE

Weekdays 6—7 pm. Early closing days 5—6 pm. Bank holidays 11 am—12 noon.
 Mon 8.9 to Fri 12.9 Heron Pharmacy, 6 Silkstream Pde, Watling Avenue.
 Mon 15.9 to Fri 19.9 Heron Pharmacy, 193 Edgware Rd., The Hyde*.
 Mon 22.9 to Fri 26.9 Derek Clarke, 85 Station Road, Edgware†.
 Mon 29.9 to Fri 3.10 Heron Pharmacy, 6 Silkstream Pde., Watling Avenue.
 Mon 6.10 to Fri 10.10 Heron Pharmacy, 193 Edgware Rd., The Hyde*.
 Monday 13.10 to Fri 17.10 Derek Clarke, 85 Station Rd. Edgware†.
 *Not Thursdays. †Derek Clark also open Mon to Fri to 9 pm. Sun/Bank Holidays 10 am to 1 pm.

EMERGENCY DENTAL SERVICE

For the emergency dental service on Saturdays, Sundays and Bank Holidays between 9.30 am and noon.
 Hendon and Edgware, phone 205 0337
 Finchley and Barnet, phone 446 1222

USE BARNET CIVIC NEWS FOR CLASSIFIED ADVERTISING

110,000 COPIES FOR £1.00 PER LINE 2 LINES MINIMUM

CLASSIFIED ADVERTISEMENT FORM — BLOCK CAPITALS PLEASE — One word per box

Remember!

This publication will reach upwards of 250,000 readers! Send your copy coupon and remittance to the publishers. Cheques and postal orders made payable to Laurence Marshall (Advertisers) Ltd.

Name
 Address
 I enclose remittance value
 No. of insertions

LAURENCE MARSHALL (ADVERTISERS) LTD
 PUBLICITY HOUSE, 12 GENOTIN TERRACE, ENFIELD EN1 2AF
 Phone: 01-366 4626-7 01-367 0246

SITUATIONS VACANT

MANAGER TRAINEE MANAGER

£4,000—£7,000, plus generous bonus

THE COMPANY

We are a young, successful company. National and rapidly expanding — 70 new shops opened last year — yet we still believe in treating employees as individuals.

THE JOB

You will be working in a two/three person team, running a busy local high street store which offers a wide range of top quality accessories and parts to the motorist. The work is varied and demanding, from cleaning the shop to merchandising, selling and problem solving. Whether you are an experienced manager or a trainee, you will know your responsibilities and how to fulfil them.

WHAT CAN YOU OFFER?

Enthusiasm, ability to think and act logically in a busy shop, a pleasant and helpful manner, flexibility, a willingness to learn and the desire to see results through your own efforts.

You don't need particular qualifications or experience, but a working knowledge of motor vehicles would be advantageous.

WHAT CAN WE OFFER?

An interesting job and a secure career with prospects based on your own efforts and ability. Our employment conditions are good, and include pension scheme, incentive bonuses, practical training and concessionary purchase of company products.

NEXT STEP?

If you are aged between 18 and 35, write or telephone for an application form and further details to:

THE PERSONNEL DEPARTMENT
MOTORIST DISCOUNT CENTRE
CASTLE MEADOW ROAD, NOTTINGHAM, NG2 1AG.
Telephone: 0602 47701

(INTERVIEWS TO BE HELD LOCALLY)

MOTORIST DISCOUNT CENTRE

All the car care in the world

SENIOR PROGRAMMERS

(up to £8,400)

PROGRAMMERS

(up to £7,500)

ENFIELD, MIDDLESEX

Freight Computer Services, a member company of Britain's largest freight distribution business, are currently seeking Senior Programmers and Programmers to join their expanding Systems and Programming Department.

Applicants for the Senior Programmers posts must have 2/3 years solid programming experience whilst a minimum of 6 months practical COBOL experience is sought for the Programmer positions.

Location is the Pickfords building, 400 Great Cambridge Road, Enfield, Middlesex, easily accessible by road (on the A10) and rail (Southbury Station 5 minutes walk).

A competitive starting salary will be paid and career prospects are excellent. Employee benefits include 4 weeks annual holiday, extra days off at most Bank and Public holidays, company pension scheme and flexible working hours plus sports and social club.

Please write or telephone for an application form to
Mrs. M. Kennard

FCS

FREIGHT COMPUTER
SERVICES LIMITED

19 AMWELL STREET,
HODDESDON, HERTS.

Tel: Hoddesdon (61) 43366
extension 39

DHSS

Clerical Vacancies in Hendon

YOU GIVE US:

- Your commitment to an exacting, demanding job.
- Your ability to deal with people.
- Your qualifications for Clerical Officer; 5 'O' levels including English Language (at grades A, B or C from Summer 1975 examination) or CSE (Grade 1 only).
- Your qualifications for Clerical Assistant; 2 'O' levels including English Language (at grades A, B or C from Summer 1975 examination) or CSE (Grade 1 only).

Registered disabled candidates with or without the required qualifications may apply.

WE GIVE YOU:

- A job that's hard work but very satisfying.
- The opportunity to work close to home.
- A friendly atmosphere to work in.
- Training when you start, so that you're soon quite confident and competent.
- Contact with people on the phone or over the counter. This can be difficult but you soon learn to cope (for Clerical Officers).
- Flexitime and non-contributory pension scheme.
- 4 weeks paid holiday.

CLERICAL OFFICERS:

Starting salary of £2,721 at age 16, £3,382 at age 18 and £4,034 at age 21 rising to £5,252 by annual increments.

CLERICAL ASSISTANTS:

Starting salary of £48.14 at age 16, £59.45 at age 18 and £65.36 at age 19 rising to £78.83 by annual increments.

Please apply in writing to: Department of Health & Social Security, 10 Finchley Lane, Hendon, London NW4 1DP.

DHSS

URGENTLY REQUIRED FOR PERMANENT POSITIONS

Experienced Drilling & Milling Setter
N.W.10 Area. £100+ p.w.

Experienced Senior Electrician
N.18 Area. £7,000+

Good Promotion Prospects.

TOOLMAKERS,

PLASTICS INDUSTRY EXPERIENCE
All over North London. £5,000 p.a.+

PHONE: TRUDI on 01-801 3131



MARKSMAN INDUSTRIAL

**LONDON BOROUGH
OF BARNET
BOROUGH ENGINEER
AND SURVEYOR'S DEPARTMENT**

Appointment of
**Technical
Assistants (Two)
Energy Conservation**

Grade: AP3. Ref: 422/423.
Salary **£4,971—£5,520** per annum inclusive.

Applicants should be studying for City and Guilds qualification in electrical and/or heating subjects and have had several years experience with gas or electricity undertakings, analysing tariffs and/or consumption problems and records. Further education facilities will be made available for applicants studying for a technical qualification.

Closing date 29th September 1980.

Appointment of
**Assistant
Bonus Surveyor**

Grade: Tech. 2. Ref: 177.
Salary **£4,380—£4,866** per annum inclusive.

Applicants should have had some experience in work-study-based incentive bonus schemes and show an aptitude for further training in this type of work. Basic knowledge of trades associated with building maintenance an advantage. Aptitude for figure work essential. Casual car allowance payable.

Closing date 25th September 1980.

Appointment of

Engineering Technician

Grade: Tech. 1/2. Ref: 78.

Salary **£2,571—£4,866** per annum inclusive.

The successful applicant will be required to assist in the General Engineering and Survey Section, with land and engineering and highway survey work, outdoors for approx. 60% of time, in calculations, in plotting and fair drawing results and in routine survey office procedures. The applicant must be physically fit with good eyesight, and have a minimum of four 'O' levels or equivalent. Training will be given. Possession of a full driving licence is desirable. Commencing salary according to age and experience.

Closing date 25th September 1980.

Appointment of

Post A:

**District Foremen/Women
(Refuse Collection)**

Grade: Misc. 8. Ref: 318 and 320.

Salary: **£4,971—£5,373** per annum inclusive.

Applicants should be competent to supervise refuse collection. Possession of a current driving licence essential.

Post B:

Assistant Caretaker

Grade: Misc. 4. Ref: 210.

Salary: **£3,888—£4,134** per annum inclusive.

Experience in attending heating systems desirable. Hours of duty to be arranged within a 40-hour week. The above quoted salaries subject to a national award.

Closing date 25th September 1980.

Application forms from the **Borough Engineer & Surveyor's Dept., Gateway House, 322 Regents Park Road, Finchley, London, N3 2LP.**

CRAFTSMEN

Experienced

WOODWORKER

required for work in our pattern making and model making departments

Age immaterial, good prospects of advancement. Skilled rates

Apply to:

Mr. Courtney

Laser Engineering (Developments) Ltd.
89 Worship Street, London, EC2

Tel: 01-247 9961

**STATE REGISTERED NURSES
AND
STATE ENROLLED NURSES**

Full and Part-time. Accomodation available

Please apply to the Matron

MANOR HOUSE HOSPITAL
North End Road
Golders Green
London NW11 7HX
Telephone 01-455 6601

mhh Manor
House
Hospital
Golders Green NW11

GROW WITH US

We are in the middle of a major expansion programme.

Our Company, Therm A Stor, has shot to the top selling the most advanced products in the U.K. Our salesmen and managers enjoy very high rewards, last year they earned between £10,000 and £25,000.

This year they will earn much more. You can join them if you are prepared to work hard, own a car and are between 18 and 45 years of age. We provide full field and classroom training, to help you forge a new and exciting career with rapid promotion.

Telephone me now and convince me you have what it takes: Chris Bassant

THERM A STOR anytime on 01-642 0902

WE HELP

TO FILL YOUR

SITS-VAC

FOR

FULL DETAILS

TELEPHONE

366-4626/7

367-0246

**LONDON BOROUGH OF BARNET
EDUCATION DEPARTMENT**

BARNET COLLEGE

**TEMPORARY PART-TIME
WELFARE OFFICER**

required (term-time only)

Duties include First Aid and general care of students and staff. Nursing qualifications essential. Hours 10 am to 4 pm. Salary on AP2 grade rising pro-rata to £4,866 inclusive per annum. Application forms and further details from the **Senior Administrative Officer,** Barnet College, Wood Street, Barnet, Herts, EN5 4AZ. Telephone: 440 6321. Ref: 356.



INTERSPORT

SPORTACTULAR

**SAVE
£4**
ON NORMAL
PRICE



SIZES FROM 3-13

**Adidas Santiago
Football Boot**
PREVIOUSLY £16.99
OUR PRICE £12.99

OFFER AVAILABLE
Until 27th September 1980
Offers subject to availability.

GENUINE AMERICAN
JOG SUIT

**FANTASTIC
VALUE**

£12.95

S.M.L.XL. GUNMETAL GREY



BUY SCHOOL SPORTS KIT NOW

Football boots, 25 Models	from £9.55	P.E. Vests	from £2.10
Soccer Shirts	from £3.25	P.E. Shorts	from £1.50
Admiral Shorts	from £1.50	P.E. Hose	from 99p
Nylon Hose	from £1.25	Girls' P.E. Blouses	from £4.99
Plimsols	from £2.99	Girls' P.E. Shorts	from £2.95
Hockey Boots	from £3.95	Girls' P.E. Skirts	from £4.75
Hockey Sticks	from £4.95	Track Suits	from £8.95
		Shoe bags (draw string)	£1.75
		Holdalls & kit bags	from £4.99

WILLIAMS SPORTS

366 Ballards Lane, Tally Ho Corner, Finchley, N12. Tel: 445 3596 Gateway House, 328 Regents Park Road, N3. Tel: 346 2398

CLOSED ALL DAY THURSDAYS

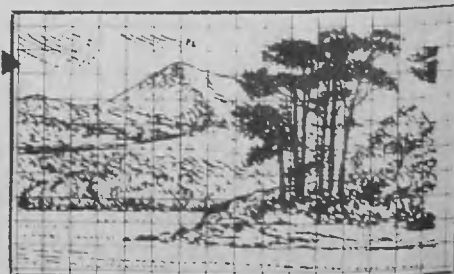
BATHROOMS

**A BATHROOM TO
SUIT EVERYBODY**



At British Bathroom Centre, you will see a superb range of bathroom suites to suit everyone's budget; prices range from £195 to £6000 including fittings. Don't miss our complete SHIRES showroom. You will find a vast range of fittings and accessories in:—Gold plate, Brass, Chrome and a full range of colours. We guarantee to refund the difference if you buy a bathroom suite from us and see it sold for

less elsewhere. See also our extensive range of BARBEE Amtico and other English and Continental tiles, as well as EXCLUSIVE HAND PAINTED scenery tiles.



BBC British Bathroom Centre

OPEN: MONDAY-FRIDAY 8.30-6.00 (OPEN BANK HOLIDAYS)
OPEN: SUNDAY 9.00-2.00. CLOSED ALL DAY SATURDAY.

602/4 SEVEN SISTERS ROAD · TOTTENHAM · LONDON · N.15 · 01-802 6493/6696 · 01-800 2538