

# BARNET BOROUGH NEWS

Barnet Council's monthly magazine for residents

No.68 June 1990



MEMBER OF THE VERIFIED DISTRIBUTION LTD THE HALLMARK OF TRUSTED DISTRIBUTION 113,794 JULY-DEC 1989

## Local Elections 1990

### BARNET LONDON BOROUGH COUNCIL ELECTION 3 MAY 1990 COMPOSITION OF COUNCIL

	CON	LAB	LIB/DEM	OTHERS
ARKLEY WARD	3	3		3
BRUNSWICK PARK				
BURNT OAK			3	
CHILDS HILL				
COLINDALE	3		3	
EAST BARNET				
EAST FINCHLEY		3		
EDGWARE		3		
FINCHLEY		3		
FRIERN BARNET		3		
GARDEN SUBURB		3		
GOLDERS GREEN		3		
HADLEY		3		
HALE		3		
HENDON		3		
MILL HILL		3		
ST PAUL'S		3		3
TOTTERIDGE		3		3
WEST HENDON				3
WOODHOUSE				
<b>TOTALS</b>		39	18	3

#### THIS ISSUE

Barnet's new Mayor takes office  
News of Barnet Council's Shows  
A survey to help Social Services

Who  
are your  
Councillors?  
See inside

## Fitted Lounge and Bedroom Furniture

**MADE TO MEASURE**  
FACTORY SPECIAL NOW SAVE 20%



BUILT IN STEREO



BUILT IN CD'S & SPEAKER



BUILT IN TV & VIDEO



VIDEO & CASSETTE STORAGE

### HAND CRAFTED WALL UNITS

- ★ From small alcoves to complete wall systems, made to your requirements.
- ★ Finest quality materials used such as Mahogany, Oak, Teak, Pine, Lacquers and laminates.
- ★ Flexible designs. TVs, Videos, Hi-Fi's and computers built in. Fireplaces, radiators, windows and doors built around.

### SUPER SPACE SAVING BEDROOMS

- ★ From luxurious master bedrooms, to study bedrooms. Incorporating fold-down beds, computers, Hi-Fi and TV.
- ★ A unique custom colouring service for wood finishes and lacquers.
- ★ Furniture made specifically for you to reflect your individual needs.



- ★ Free design and estimates ★ Top quality materials
- ★ Free installation ★ 5 year guarantee

DESIGNER HOTLINE

081 - 881 9868

Buy from a local business  
Established 10 yrs

Your local showroom at  
164 BOWES ROAD,  
London, N11

Mon-Fri 9.30-5pm,  
Sat 10-4pm Sun 10.30-1pm

# THEMESETTER

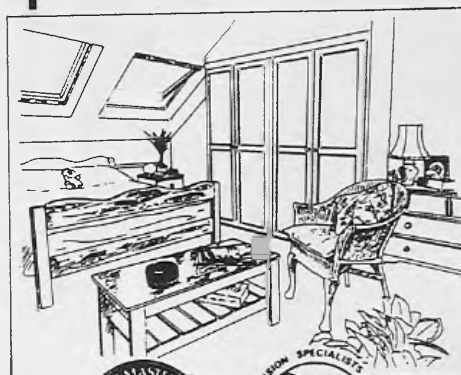
## IS 1/3 OF YOUR HOUSE GOING TO WASTE?

- Unique fixed price guarantee - No "hidden" extras.
- Building regulations and planning permissions obtained.
- In house surveyors, draughtsmen, architects and engineers.
- All works carried out by our own professional tradesmen.
- **NO SUB CONTRACTING OF CONTRACTS.**
- Every stage of work supervised by one of our directors.
- Shower rooms and bathrooms fitted.
- All types of loft conversions carried out.
- **ROOF WINDOW, DORMER, HALF/FULL MANSARD.**
- Only top quality materials used throughout.
- A total service with a full 10 year unconditional guarantee.

• FOR A FREE SURVEY, ADVICE ESTIMATE

TELEPHONE  
081-804 4347

**ROOM AT THE TOP**  
Your local friendly family firm



**CAPITAL**  
LOFT FABRICATIONS  
421 HERTFORD ROAD  
ENFIELD HIGHWAY,  
ENFIELD, MIDD, EN3 5P

25% Discount off first 25 orders.  
Offer applies to orders over £1,500

★ RECENTLY OPENED ★

A TOTALLY NEW CONCEPT IN FITTED BEDROOMS

Bedroom Design Studios offer you a unique package for your bedroom all under one roof



WE OFFER:

- ★ A complete range of solid wood and real veneered wardrobes. ★ 6 styles of carved doors. ★ Over 180 colour combinations. ★ Over 70 beaded doors.
- ★ Sliding mirrored doors with 30 colour co-ordinated trims. ★ All electrical and small building work undertaken. Existing furniture removed.

Why settle for less when our top quality ranges are so affordable. For free planning and design service, call into our showroom or phone

0707 - 47945

Bedroom Design Studios

Open 9.30 - 5.30 Monday - Saturday 14 High Street, Potters Bar.

## More shops join Barnet Council's payment network

BARNET Council's "pay-at-your local shop" scheme for council rents and community charge payments has been so successful that nine more shops have joined the network.

Local residents are making good use of the plan which is operated by Western Union Payments Network Limited.

To date 40 shops are taking part in the scheme, which means that almost all residents can go to a neighbourhood shop to pay their council bills.

### Fast payment

Each shop is equipped with a computer terminal so that transactions are registered very quickly. Payment can be made at any time when the shop is open.

Council bills can be paid wherever the circular sign showing that the retailer is an authorised agent for the London Borough of Barnet is displayed.

A list of retailers in the network is available at Barnet Council libraries and information points.

### The shops are:

**Mountford Chemist**  
11 East Barnet Road  
New Barnet, Herts

**Poole Newsagent**  
179 Burnt Oak Broadway  
Edgware, Middx

**Yoginaryan**  
833 High Road  
North Finchley N12

**Jays Newsagent**  
658 High Road  
North Finchley N12

**Gayatri Newsagent**  
19 Burnt Oak Broadway  
Edgware, Middx

**Natashas Newsagent**  
16 Cricklewood Lane  
Cricklewood NW2

**Mick's Convenience Store**  
153-155 Sydney Road  
Muswell Hill N10

**Friern News**  
99 Friern Barnet Road  
Friern Barnet N11

**Cory (Pharmacy) Ltd**  
166/168 High Road  
East Finchley N2

## SUMMER SALE NOW ON

Extra discounts on all suites + wall units

WALL UNITS & DINING TABLES CUSTOM  
MADE & POLISHED TO ORDER.

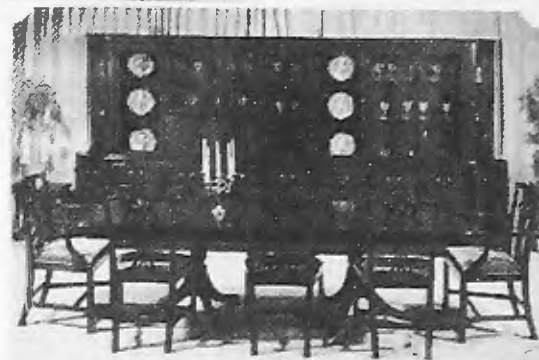


7ft Mahogany Dining Table and Six Mahogany Chairs, Including two Carvers from £335 complete.

15 different chair designs, covered in Regency stripe or Dralon. Ten types of table. All Dining Room Suites can be polished to customers' own requirements

Beresford & Hicks Crystal Range Wall Units And Dining Room Furniture All at Unbelievable Discount prices.

Regency Bookcases, 2-door, 3-door, 4-door from £349. Solid Mahogany Dining Chairs from £45. Oak Dressers from £299. Wheelback Chairs £49. Carvers from £69. T.V. Video and Hi-Fi Cabinets from £99.



## J&H FURNITURE LTD

Reproduction furniture manufacturers and wholesalers  
selling direct to the public

21 Heddon Court Parade Cockfosters Rd.,  
Cockfosters, Herts. Tel: 081 440 0790

Closed Thursdays

NOW OPEN SUNDAYS 10 a.m. to 3 p.m.  
Cockfosters only



72 Chase Side,  
Enfield, Midd.

Tel: 081 366 2437

Closed Wednesdays

# Give yourself a free Mammogram this spring. You could save more than just money.



Many women will die needlessly this year of breast cancer, so this simple procedure could be a lifesaver.

A mammogram is a safe, low-dosage x-ray that can detect breast cancer years before you or your doctor can feel a lump.

That's why you owe it to yourself to have one.

Beginning 1st April, the Barnet Breast Screening Service will offer **FREE** breast screenings to all women over 50 years of age who are Barnet Borough residents.

This **FREE** service will be available for three months until 30th June 1990.

This method of early detection can dramatically increase your chances for successful treatment. It may even save your life or the life of someone you love.

Don't hesitate to reserve your **FREE** screening by calling the Barnet Breast Screening Service **NOW**.

Telephone 01-951 4045 to book your free appointment and please have your N.H.S. number to hand when you call or if you are not on the phone then send this certificate immediately. Barnet Screening Service, The Gatehouse, Edgware General Hospital, Edgware, Middlesex HA8 0AD.



EDGWARE GENERAL  
HOSPITAL

Getting Better

Barnet Breast Screening Service, The Gatehouse, Edgware  
General Hospital, Edgware, Middlesex HA8 0AD

Name: \_\_\_\_\_

Address: \_\_\_\_\_

Post Code: \_\_\_\_\_

Birth Date: \_\_\_\_\_

BBN

London Borough  
of Barnet  
The Town Hall  
The Burroughs  
Hendon NW4 4BG



### Contents

	Page
More shops in payment network	3
New Mayor takes office	8
Success of Mayor's Appeal for MIND	9
Double century at Meadowside	9
St John HQ opens	10
Your councillors	14-15
Barnet Diary	16 & 18

Editorial Address:  
Barnet Council  
The Town Hall  
Hendon NW4 4BG  
☎ 081-202 8282 ext: 2072  
Contact: Rosemary Jude

Advertising Address:  
Marketing Media Management  
185 Angel Place  
Fore Street N18 2UD  
☎ 081-807 7676  
Contact: Lynette Fernandes

Barnet Borough News is published by Barnet Council and Marketing Media Management. It is distributed to homes and businesses throughout the borough. It is also available from libraries.

The VFD certified net distribution from July to December 1989 was 113,794.

### FRONT COVER

The Local Government elections were held on Thursday 3 May and 60 Barnet councillors were elected to serve for the next four years. The board on the magazine cover shows the political composition of the council

There were many changes and 20 new councillors joined 40 who were re-elected.

## Ethel pays her council bills at the local shop



### Pay where you see this sign

ETHEL RAYNER of Clitterhouse Road, Cricklewood, was one of the first of hundreds of Barnet residents to pay their council bills at a local shop when a new scheme being run by Barnet Council came on stream on 1 May.

On her way home from her job at Middlesex Polytechnic in Hendon, Ethel called at Smokemart on Finchley Road, Golders Green, to pay her rent.

"I think it's a marvellous idea. I don't have a bank account so it's very convenient to pay cash at the shop," she said. The Post Office charges me 60p to pay and the banks £2. At the shop it's free and they gave me a coupon to deduct from my shopping bill. I shall pay



Nailesh Patel accepts Ethel Rayner's council rent under the scheme which Barnet Council has introduced so that residents have an easy way to pay community charge and other council bills

my community charge this way as well."

Smokemart is one of 40 shops throughout the Borough offering this service to make it easier for people without banking facilities to pay council bills.

It has been made possible through Western Union Payments Network Limited. All payments are processed by a computer in the shop

and details are forwarded to the council overnight. Barnet Council encourages chargepayers to pay by direct debit but has organised this service for people who prefer to pay by cash or cheque.

Nailesh Patel, the shopkeeper, is delighted with the scheme: "It will increase trade and my long opening hours make it easy for people to pay."

## Japanese Mayors test Barnet's Wheeled Bins



Four mayors from Tokyo visited the borough to learn about Barnet Council's wheeled bin refuse collection. The delegations were greeted by the Mayor of Barnet at the Town Hall, Hendon, and then went out to see wheeled bins being emptied in Fuller Street, Hendon. Their tour included a council civic amenity site where refuse for recycling is taken. Barnet Council deals with 100,000 tonnes of domestic refuse each year.

### Make a date for Barnet Council's Showtime

**COPTHALL SHOW** Friday Saturday Sunday 8 9 & 10 June

At Barnet Copthall Centre, Great North Way, Hendon. Sport and entertainment, fun fair and horse show. Admission free, plenty of car parking.

**FINCHLEY CARNIVAL** Friday Saturday Sunday 13 14 & 15 July

At Victoria Park, Finchley. Fun fair, entertainment, competitions, charity stalls and on Saturday, a carnival procession from East End Road to Tally Ho Corner.

**FRIERN BARNET SUMMER SHOW** Friday Saturday 10 & 11 August

At Friary Park, Friern Barnet. A family show with an arts and crafts marquee, fun fair and full programme of entertainment.

For details contact the shows organiser on 446 8511 Ext 4992

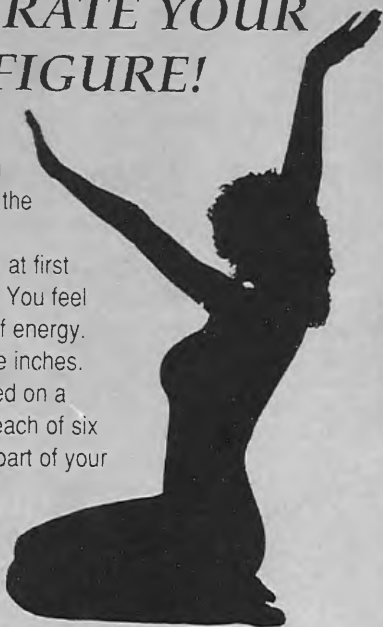
## WE WOULD LIKE TO CELEBRATE YOUR NEW FIGURE!

As soon as you try a Slender You exercise programme you'll notice the difference.

The effect is difficult to believe at first - we call it 'the Slender You high'. You feel warm and alive, healthy and full of energy. And you begin to tone up and lose inches.

A Slender You work out is based on a series of toning tables. By using each of six tables in turn you exercise every part of your body. But because you work along with the tables there's no strain.

We have recently opened a new Slender You figure salon near you. We're so convinced that you'll find the most enjoyable way to exercise that we'd like you to come along and try for free. Just call to book an appointment. Also why not book now for your manicure, waxing or sunbed session!!



# Slender You®

Figure Salons

245 Oakleigh Road North, Whetstone N20 0TX.  
081 - 368 7168

15% OFF

## SPRING OFFERS ON COMPLETE SUITES



Marlborough suite above from Ashley House Rackstraw, Burtons, Reprodux, Jaycee, Old Charm, Charles Barr and Youngers, Top quality upholstery by Air Forma, Parker & Farr, Collins & Hayes, Derwent, Bridgecraft, Wade, Parker Knoll, Marlborough suite, Peter Guild and Cintique, Loose cover suites, mahogany, yew, oak and pine. Olympus bedroom furniture, Beds and Carpet, Allibert garden furniture.

### Sheraton House Furnishers Ltd

5-6 Sheraton House, Lower Road, Chorleywood  
Tel (09278) 3457  
297 Watling Street, Radlett, Herts  
Tel (0923) 855386

Opening times: 9.15 am-5.30 pm. Closed all day Wednesday  
OPEN SUNDAYS FOR VIEWING 11 am-4 pm (CHORLEYWOOD ONLY)  
ALL CREDIT CARDS ACCEPTED. EASY PARKING

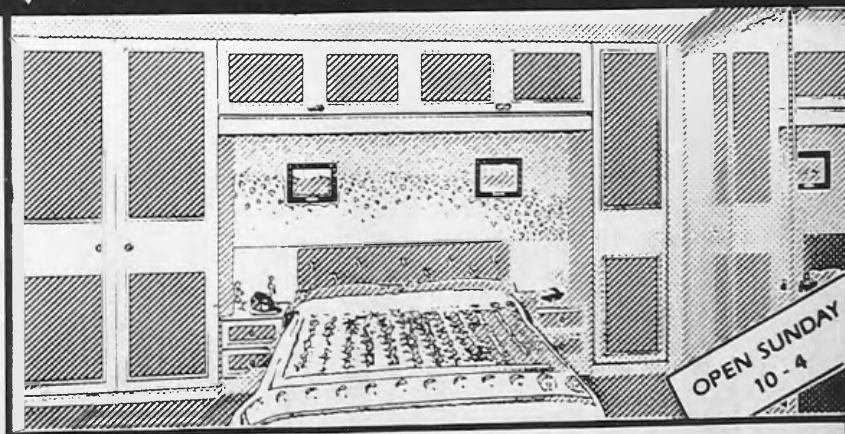
**FULLY  
FITTED BEDROOMS  
ALWAYS A WORKS PRICE**

**SUPERB NEW RANGE** of Designs with hand textured panels, inset windows and mirrors including White Ash and Black Ash finishes with carved panels. You really should see these super **NEW DESIGNS** (and PRICES).

Open Mon-Fri 9 - 5.30 Sat 9 - 5.00 Sun 10-4. Easy Parking.

Works and Showroom  
719 North Circular Road NW2 081 450 6581.  
Opposite World of Leather. ¾ mile from Brent Cross

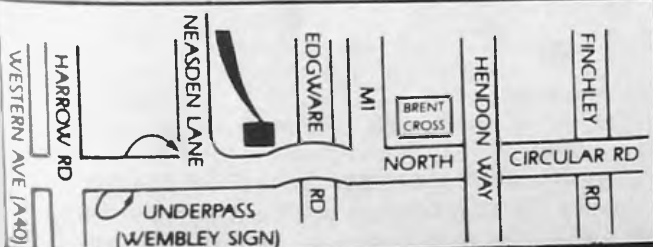
**NEW DESIGNS...  
SPECIALLY FOR YOU**



OPEN SUNDAY  
10 - 4

ALSO **SLIDING DOOR** mirror wardrobes. Safer robust construction and silent gliding. (Glass has rubber fillet to frames).

PLANNING AND FITTING INCLUDED  
VAT IS NOT EXTRA



# STATON Fitted Bedrooms

Interested in Independent Education for Boys?

Come to  
**OPEN DAY**



## BELMONT SCHOOL

Wednesday 4th July 1990.

1.45pm conducted tours of the school and grounds.

2.45pm Open Forum with The Master and Senior Staff.

Normal entry age 7, 10 or 11  
(Assisted Place Scheme operated)

Belmont, The Mill Hill Junior School,  
The Ridgeway NW7. Tel: 081 959 1431

## PACE-SETTING PREP SCHOOL

Belmont School, Mill Hill, prepares boys for Common Entrance and Scholarship examinations, most pupils transferring to Mill Hill School at 13.

Entrance is usually at age 7, but there is a significant intake at both 10 and 11, Entrance at 10 is particularly advantageous for late arrivals, while for parents who wish to transfer their eleven year olds from the State sector, financial help may be available through the Government Assisted Place Scheme.

As well as rugby, soccer and cricket, many other sports are offered - including tennis, swimming, athletics and Eton fives - and numerous club activities. For these, Belmont's 35 acres of park and woodland provide a beautiful setting.

Facilities comprise two well-equipped science laboratories, specialist maths, computer, art and CDT rooms, gymnasium, and library complex with professional librarian.

Special features are educational outings, ski trips, French exchanges, and Summer adventure camp in Cornwall. A strong musical tradition is revealed in the orchestra, wind band, brass groups, string quartets, and senior and junior choirs.

*Advertising feature*



## THE PURCELL SCHOOL

Patron: HRH The Prince of Wales  
President: Simon Rattle

The only specialist Music School in Greater London, The Purcell School offers outstanding musical opportunities and training, together with an excellent general education up to A level. The school is coeducational and has 160 pupils. Day and boarding places are available. A number of Government Aided Scholarships, Bursaries and Local Authority support are available where appropriate.

For information and Prospectus please contact: The Registrar,  
**THE PURCELL SCHOOL,**  
Mount Park Road, Harrow on the Hill, Middlesex HA1 3JS. Tel: 081-422 1284

## HENDON CHILDCARE CENTRE

Quality education keeping 3-5s safe, loved and learning



OPEN 50 WEEKS A YEAR 8 a.m.-6 p.m.  
Choose your child's own schedule

- ◆ Excellent facilities,                      ◆ Individual attention from well-equipped classrooms                      qualified teaching staff
- ◆ Wide, structured curriculum            ◆ Childcare Vouchers accepted

## HENDON PREPARATORY SCHOOL

(FOUNDED 1874)

Girls 5-11 Boys 5-13

The School provides a sound education for boys and girls and prepares them for Common Entrance to Independent Secondary Schools.

The School is proud of its fine academic reputation and its high success rate. Expansion of the existing building is now taking place and there are a few places available in the 5-7 year age group for boys and girls from September 1990.

Provision for after-school care is available until 6 p.m.

20 Tenterden Grove, Hendon, London NW4 1TD  
Please telephone 081-203 7727 for further details



# WOODSIDE PARK SCHOOL

There are a few vacancies for September,  
in some age-groups



PRE-PREPARATORY DEPARTMENT & PLAYGROUP  
(HOLMEWOOD)  
88 Woodside Park Rd N12



PREPARATORY DEPARTMENT  
(ST. ALBANS)  
Woodside Lane N12

A long established Preparatory School for children from 3-13 years. Tuition follows the Common Entrance syllabus for entry to Public School at the age of 13+ (11+ for girls)

Apply to the Preparatory Department  
Telephone: 081 - 445 2333

give us your views about  
mental health services in Barnet

BARNET Council Social Services are holding a meeting later in the year on mental health services. They want to know what is important to the people of Barnet.

Which of the following four topics do you think should be the theme of the Barnet Mental Health Forum. Please tick one box only.

**Care in the community**

In the future more mentally distressed people will be cared for at home than in hospital. I would like the forum to discuss what this is likely to mean in Barnet.  (1)

**Advocacy**

It has been said that people with mental health difficulties feel that their views are not being heard by those who provide services. I would like the forum to look at ways of improving this.  (2)

**Housing**

People with mental health difficulties are said to have special housing needs. I would like the forum to focus on this issue.  (3)

**Needs of Carers**

It has been said that people who have to care for a long-term mentally distressed family member often feel unsupported and believe that others do not appreciate the pressure they are under. The forum should look at the needs of carers.  (4)

If there is another topic which you feel is more important please indicate below  (5)

**WE NEED YOUR HELP**

In the council libraries and on this page is a short questionnaire. Please fill it in and post it in the boxes in the libraries

- Please tick YES or NO to the next three statements YES NO
- I have used Barnet mental health services myself   (6)
- I take care of someone who has used Barnet mental health services   (7)
- I will come to the forum   (8)

To which ethnic group would you say you belong? Please tick the most appropriate box.

- |                    |                          |             |                          |         |                          |
|--------------------|--------------------------|-------------|--------------------------|---------|--------------------------|
| White              | <input type="checkbox"/> | Indian      | <input type="checkbox"/> | Irish   | <input type="checkbox"/> |
| Black              | <input type="checkbox"/> | Pakistani   | <input type="checkbox"/> | Italian | <input type="checkbox"/> |
| Caribbean          | <input type="checkbox"/> | Bangladeshi | <input type="checkbox"/> | Cypriot | <input type="checkbox"/> |
| African            | <input type="checkbox"/> | Japanese    | <input type="checkbox"/> | Chinese | <input type="checkbox"/> |
| East African Asian | <input type="checkbox"/> |             |                          |         |                          |

If you do not feel that any of these groups is appropriate please name the ethnic group you feel you are most accurately described as belonging to.

Thank you for your help. We will be publishing the results of this questionnaire with the date and place of the forum in the local press in October. Please return this form to Peter Keeble, Barnet Council, Grove Lodge, 287 Regents Park Road, London N3 3JY, or you can use the questionnaires which will be in council libraries in June and post them in the box provided in the library.

**COSMOS FITTED BEDROOMS**  
CRAFTSMANSHIP AND SERVICE FROM YESTERYEAR



MADE TO MEASURE

Superior selection of frame finishes including solid woods, hand polished and finished by craftsmen. Fresh silver, soft bronze or subtle peach mirrors. The alternative to mirrors:- High quality decorative designer panels. FOR PEACE OF MIND and luxury fitted bedroom furniture fitted wall to wall, floor to ceiling by our own craftsmen. Call or phone for a free Design and Planning Service.



INDIVIDUALLY DESIGNED

- Wide range of exclusive styles and finishes on laminates, wood veneers and sculptured doors, including hand painted inserts in any colour.
- Endless combinations of designs and interior finishes made individually for you.

WE DESIGN YOU A BEDROOM.  
WE DON'T SELL YOU A COMPROMISE.

Established since 1978



SELECTION OF REAL WOODS

SHOWROOMS  
OPEN 7 DAYS

1180 HIGH ROAD  
WHETSTONE N20  
081-446 2416  
081-446 1332  
(Opp B&Q)

5 HALL LANE  
CHINGFORD E4  
081-524 7888  
081-524 7889  
(Next to Sainsburys)

5 HIGH ROAD  
CHADWELL HEATH  
ROMFORD  
081-590 2642  
081-598 9022



# Mayor in a proud tradition



CLLR ROY SHUTZ who has been a Barnet councillor for eight years, and Chairman of Education Committee for the past five years, is the new Mayor of Barnet.

Roy Shutz is a barrister who began his career as a teacher after reading law at Birmingham University. He held administrative posts in universities while studying for his bar exams and practised as a barrister from 1974 to 1990.

## Garden Suburb home

He is taking a sabbatical year while continuing to manage family business interests in Birmingham where his parents settled after coming to England as refugees just before the outbreak of the Second World War.

He lives in Hampstead Garden Suburb, sharing his home with his cat, Thimble. His interests include the theatre, golf and Rugby Union.

His Mayoress is Mrs Denise Lehrfreund, an artist who lives in Hendon.

On his election, the Mayor said: "I believe in robust, healthy and active local government. The Mayoralty has a strong part to play in this and I am very proud to be a part of this great tradition."

## Tribute to Cllr Dot Benson

The retiring Mayor, Mrs Dot Benson, was presented with an inscribed parchment recording her service to the borough, her friendliness and enthusiasm and the great success of her charity appeal in aid of Mind in Barnet.



The Mayor of Barnet, Cllr Roy Shutz, with his Mayoress, Mrs Denise Lehrfreund

## Deputy Mayor

The Deputy Mayor is Joan Levinson who has been a councillor since 1986, serving on Housing, Social Services, Establishment and Estates Committees. Her daughter, Naomi, will be Deputy Mayoress



## Mayor's Appeal will help all local charities

THE MAYOR'S Appeal this year is in aid of Barnet Community Trust which has been formed to foster an awareness of community needs and act as a bridge between local charities and local businesses and individuals.

The long term aim is to establish an endowment fund from which all local charities will be able to benefit. One of the first priorities will be to raise funds for carers.

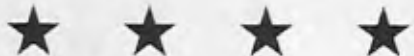
In the borough there are 30,000 carers looking after relatives or friends. Of these 5,000 are in action 24 hours a day, seven days a week, 52 weeks a year.

The chairman of the appeal committee is Geoffrey Davis, a leading member of the business community, and the Barnet Community Trust Administrator is Mrs Frances Slowe. Among the trustees are Barnet councillors representing all political parties on the council: Don Goodman, Monroe Palmer, Agnes Slocombe and Leslie Sussman.

## Treasure Hunt

One of the first events is a borough-wide treasure hunt, starting on 28 June and running for seven weeks. Clues will be published in the Hendon Times Group but the third week clue will have to be purchased from Barnet Council libraries.

## HENDON HALL HOTEL



Superb smaller private rooms for that very special occasion

- Christnings ● Barmitzvahs ● Coming of Age ● Small Weddings
- Birthdays ● Anniversaries ● Business functions



### JOHNSON

- for up to 30 people
- Comfortable
- U-Shaped setting for weddings

### GARRICK

- for up to 40 people
- Own bar



For more details of the rooms above or our Mount Charlotte Suite that can hold up to 240 people please telephone

**081 203 3341**

Ashley Lane, (off Parson St.) Hendon, NW4 1HF

## FIGURE CONTOURING FOR ALL AGES!

### AT SHAPERS TRIMTONE SALON

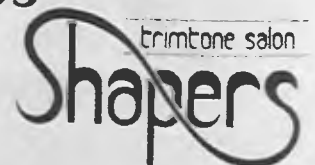


Improve your shape- and all you have to do is lift a finger! Shapers provide a range of exercise machines to work on muscle groups in specific problem areas- such as tummy, waist, hips and thighs. All you do is press a button and let high-tech take over! And because Shapers toning system is non-rigorous it's suitable for all ages.

### NOW OPEN

**081-367 8163**

Phone to-day for an appointment. Remember dialling our number is more effort than you'll make at Shapers!



**167 BRAMLEY RD. OAKWOOD N14.**

# Thank You Barnet

## The retiring Mayor's Appeal reaches £60,000

DOT BENSON, retiring Mayor, was delighted to know that her mayoral appeal had reached the £60,000 mark as she completed her year in office.

The 1989/90 Mayor of Barnet's appeal, raised money for a day centre for MIND in Barnet.

The Mayor's charity ball raised over £3,600 and the sponsored swim at Cophall Pools, which is strongly supported by local school children, raised nearly £5,000.

The most successful event of the year - in terms of money raising - was a ten mile sponsored walk by the Mayor's Escort (her husband) Ron Benson, the chairman of the appeal committee Dennis Signy, and local businessman Ron Hobson. Between them they raised £14,000 in sponsorship.

"It has been a wonderful response by the people of Barnet," Mrs Benson said. "We have had donations from so many groups and private individuals, and people have organised events to raise this marvellous sum.

"I would like to say a special 'thank You' to Dennis Signy and his wife Pat, appeal secretary George Hopkins, appeal treasurer, and all the committee for their hard and enthusiastic work. And I wish great success to the new Mayor of Barnet's Appeal."



## Double century at Meadowside

On one of the last engagements in her mayoral year, the 1989/90 Mayor of Barnet, Mrs Dot Benson, met two centenarians, Mrs Gina Tappy who celebrated her 105th birthday on Saturday 12 May, and Mrs Naomi Flowers, who is 102.

Both live at Meadowside, one of Barnet Council's residential homes. On the right is Ray Janering, Director of Community Services, which includes both Council Housing and Social Services.

"It is wonderful to meet these elderly ladies. They are obviously enjoying life at Meadowside and it is a tribute to the care they receive from the council and the staff in the home, that they are so happy and well looked after," Ray Janering said.

"With more resources being directed to care in the community people are staying in their own homes for much longer and the average age in residential homes has risen by 10 years. I think these two centenarians prove that quality of life is the key to happiness and wellbeing, and in bringing the expertise of staff in housing and social services under one banner we are able to offer the best of both worlds to those for whom we provide care."

## TOP TO TOE TREATMENT

Come and visit Shapers Salon, 167 Bramley Road, Oakwood. Tel: 081 - 367 8163 and slim those unwanted inches away on the revolutionary new exercising system designed to tone different parts of your body.

There are eight tables, each one designed to isolate a different set of muscles. You spend 7 minutes on each table giving you an hours "workout", after only 5 sessions you should achieve a significant 1" loss. Pop in and have a free trial for the first visit.

Whilst improving your figure why not treat yourself to a beauty treatment, and try out our new "Quadro" Halsgen Lamp sunbed with its water bed base, which gives out 100% UVA in intense dosage for a greatly accelerated tanning process whilst being kinder to the skin.

*Advertising feature*

## SIMMONS FAMILY IN FINCHLEY

Those of you who remember the Simmons Flower Shop in Ballards Lane, Finchley, N.3. will be sad to hear of the recent deaths of Mr. & Mrs. F.R. Simmons, at the great age of 95.

Their son, Bill, who is at the unique friendly garden centre in Nether Street, Finchley, N.3., has continued the family involvement in horticulture locally since 1920 and welcome customers, old and new, at the start of another season.

Stock is increasing rapidly now

and, in particular, some very interesting patio roses in pots, shrubs, trees, chinese pots and even Gnomes!!

As the weather improves bedding plants in greater variety than ever before will be ready for planting. Everything is ready for that instant gardening effect, including a nice range of Allibert garden furniture.

Tucked away behind the houses, near West Finchley station, the garden centre is worthy of an outing.

*Advertising feature*

# Limelight

BEDROOMS BY PETER LYONS LTD.



## TRUST A FAMILY BUSINESS TO LOOK AFTER YOU

- ♥ Peter Lyons Ltd have been specialists in the design and installation of Limelight Bedroom furniture since 1965. Visit our showrooms and see the quality for yourselves.
- ♥ Installation carried out by our own experienced craftsmen.

- ♥ Quality designs in real wood veneer and hand finished satin smooth lacquer are shown in attractive room sets.
- ♥ Real hardwood frame construction and roller action drawers are just two features which make Limelight the quality choice.

PHONE NOW FOR A FREE COLOUR BROCHURE

**081 - 449 7023**

**28 Crescent West, Hadley Wood, Barnet, Herts EN4 0EJ**

# THE BATIK GUILD

DISCOVER the art of Batik and silk painting. Come and see how it's done.

Demonstrations will be given on Sunday afternoons, as part of an exhibition by the Batik Guild at Barnet Council's Church Farm Museum, Greyhound Hill - running until 8 July.

Practised on wallhangings, clothing and accessories, Batik is a subtle and expressive method of dyeing fabrics. The flow of molten wax used in the process encourages painter-like techniques.

It allows even the most individual experiments to merge gracefully with traditional designs.

Batik was first chronicled in English by the Governor of Java and founder of Singapore, Sir Stamford Raffles, in his book, *A History of Java*. Raffles lived at Highwood House, Mill Hill, and is buried in St Mary's Churchyard Hendon.

The museum is open Monday-Saturday (except Tuesdays) 10.00-1.00pm and 2.00-5.30pm; Tuesdays 10.00-1.00pm; Sundays 2.00-5.30pm. Admission is Free.

DONATIONS from thousands of people contributed towards the new Borough of Barnet headquarters of St John Ambulance, which was opened by the Duke of Westminster, and the Prime Minister, Mrs Margaret Thatcher MP, recently.

Cllr Barbara Langstone, who was Mayor of Barnet in 1985/86, raised money for a joint St John Ambulance and Red Cross project through her mayoral charity appeal.

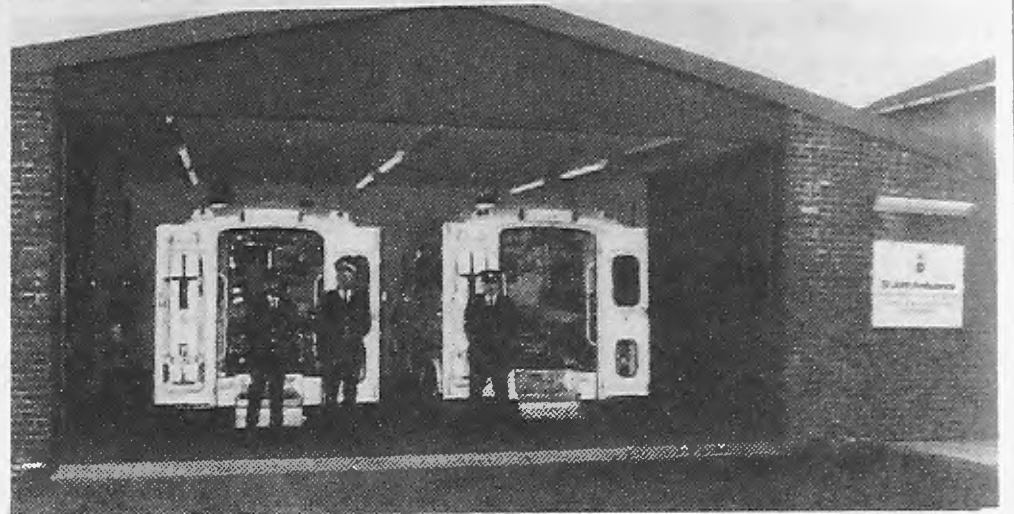
## New headquarters

More than £42,000 was raised. £5,000 went to the Red Cross for medical equipment. The rest went towards building the new borough HQ for St John Ambulance in Barnet, which also includes a Red Cross store.

The building cost £240,000 and includes a hall and kitchen and an ambulance garage.

"I was so thrilled to see this project come to reality," Cllr Langstone said. "The people of Barnet were so generous. Money came from businesses, local groups, school children and individuals. Now they can see for themselves the centre which their gifts have helped to build."

For Barbara the big surprise



Top: Cllr Barbara Langstone discovers the hall's name. Above: The ambulance garage

came at the end of the opening ceremony. It was only then she discovered the hall had been named the Barbara Langstone Hall.

Among the guests present at the opening was Field Marshall

## The centre which Barnet people helped to buy

A past Mayor's Appeal  
becomes concrete reality

Lord Bramall, President, St John Council for London; the Hon Mrs Kate Villiers, President of the London Branch of the British Red Cross, and Harvey Thomas who was Chairman of the 1985/86 Mayor's Appeal Committee.



# THERE IS A WAY OUT.

## TALK TO US



905 9955 or 905 9966

BARNET HEALTH AUTHORITY

## Retirement Means Peace of Mind at Lychgate Court

Many people look anxiously towards the future when they reach retirement age. Some with worries about financial or personal security, others concerned with loneliness or failing health.

To begin to tackle some of these problems Lifestyle Homes (part of the giant Wilson Connolly Group) was set up several years ago to specialise in building and selling luxury apartments for retired people in London and the Midlands.

Lychgate Court at Friern Park, Finchley, is one of the carefully designed developments presently available in North London. Here only three apartments remain to be sold at prices from only £65,000. Each apartment is finished to a high standard, with fitted kitchen units and carpets, tiled bathroom with shower, full Economy 7 double heating, double glazed windows and even a security door entry phone system.

The development itself is in a secluded location, but only 100 yards from the bustling

Finchley High Street. It boasts a residents lounge, a lift to the first floor and a guest suite for friends or relatives who want to stay overnight. The resident manager, ensures the smooth running of the apartment whilst keeping a discreet eye on well being of the occupants.

Karen Dent, the Sales and marketing manager for Lifestyle Homes said "With only three apartments left to sell, the community at Lychgate Court is well established with a friendly group of home-owners waiting to welcome the final purchasers. We now wish to complete matters so that our sales team can move out, leaving residents free to enjoy the freedom and independence provided by the attractive, comfortable environment here".

If you would like to find out more about Lychgate Court, why not visit the development yourself, or ring Cathy Elliot-Clark, Thursday, Friday or Saturday from 11.00 am to 5.00 pm, on 081 445 1780. When the office is closed contact our National Sales Centre on 0604 34323.

Advertising feature

# LUXURY RETIREMENT APARTMENTS FROM ONLY £65,000!!

Lifestyle Homes' **SPRING SALE** at Lychgate Court-Friern Park-North Finchley makes it possible.

**ONLY 3 REMAINING!!**  
Excellent One Bed Apartment  
GUIDE PRICE FROM ONLY £65,000  
Superb Two Bed Apartment  
GUIDE PRICE ONLY £90,000  
**COME & TALK IT OVER NOW**

All finished to a high standard with:

- ★ Double Glazed Windows
- ★ Economy 7 Heating
- ★ Fitted Wardrobes
- ★ Fitted Carpets
- ★ TV Points in Living Room and Master Bedroom
- ★ Security Phone Entry Systems
- ★ Landscaped Gardens
- ★ Resident Manager with 24 Hour Alarm Call System
- ★ Guest Suite

**SPACE STYLE AND VALUE - THEY'VE GOT IT ALL!**



**THE LARK**  
Superb two bedroom accommodation. Only **£90,000**



**THE ROBIN**  
A top value single bed apartment. From only **£65,000**

SALES OFFICE OPEN 11.00am TO 5.00pm  
THURSDAYS, FRIDAYS, AND SATURDAYS  
FOR DETAILS CONTACT CATHY  
ELLIOT-CLARK ON 081 445 1780



WILCON LIFESTYLE HOMES LTD.,  
6 CHEYNE WALK,  
NORTHAMPTON NN1 5PT TEL 0604 34323  
We reserve the right to improve or change specification and to vary the price accordingly. Prices are correct at time of going to press, but customers should enquire about prices of specific properties.

## Beautiful Fitted Bedrooms

SEND TODAY FOR OUR FREE COLOUR BROCHURE WHICH PORTRAYS OUR EXCLUSIVE COLLECTION OF BEAUTIFULLY DESIGNED BEDROOMS. THERE ARE NINE EXCITING NEW STYLES FOR THE 90'S, INCLUDING SOLID WOOD DESIGNS WITH A HOST OF ATTRACTIVE ACCESSORIES.



OVER 35 SHOWROOMS NATIONWIDE

PHONE FREE

**0800-181551**

PHONE DAY OR NIGHT  
7 DAYS A WEEK

HEAD OFFICE & FACTORY SHOWROOM  
LANRICK HOUSE, LANRICK ROAD,  
LONDON E14 0JF TEL. 071 515 5151

**20% OFF**  
ALL FITTED BEDROOMS



CALL INTO YOUR LOCAL SHOWROOM TODAY

ST. ALBANS  
25 HIGH STREET  
HERITAGE COURT PRECINCT  
0727 32553

ENFIELD  
1 LONDON ROAD  
081 363 8555

EDGWARE  
171 STATION ROAD  
081 952 0378

## ★ Residential Nursing and Care Homes ★

### RIDGEWAY NURSING HOME

With pleasant, easily accessible gardens, the home provides 24 hour nursing care for short-stay and long term patients. Its small size ensures a high degree of individual attention and all rooms are single.



REGISTERED NURSING HOME ASSOCIATION

**RADLETT**  
**(0923) 856646**

Park Road, Radlett

### ROSEACRES RAISE MONEY FOR ITV TELETHON '90

Roseacres Residential Care Home of Whetstone, London are to hold an extravaganza on Friday 26th May 1990 at 3 o'clock for ITV Telethon '90.

The party has been organised by the Residents' Committee at Roseacres. Money will be raised by relatives, friends and guests.

The event will be even more special because the elderly at Roseacres and the youngsters of Sylvia Young Theatre School are combining their efforts to raise money.

The Mayor of Barnet will be present to lead and encourage donations and present the cheque to the charity.

Tilly Lehman aged 86 will play the piano, Flossie Hawson aged 88 will play old time favourites and will accompany Hyman Lesner, tenor, aged 89. Normie Muriel Deputy Head of Home will play the guitar and sing, Emily Casacang the night nurse will dance the Hawaiian dance and the children of Sylvia Young Theatre School will entertain.

There will be a games room with tombola, roulette, raffles and lots of fun.

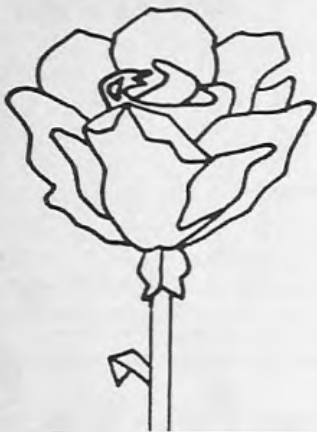
Anyone interested in participating in the event will be welcome.

For further information contact Shirley Wilson on 081 445 5554.

*Advertising feature*

## FOR A GRACIOUS RETIREMENT START LIVING AT

# ROSEACRES



where the Staff are caring round the clock, blending home comforts with luxurious facilities (en suite, Lift, Garden etc), sterling service and cuisine, and so much more at rates you can afford. Call us anytime.

**ROSEACRES 80-84 Chandos Ave., Whetstone N20 Tel: 445 5554**

**LLB Registered**

*The same caring management for the past 22 years*

### YOUR OWN HOME IN COLINDALE AT A PRICE YOU CAN AFFORD

The London Borough of Barnet is nominating buyers to a new shared ownership development by ADDISON HOUSING ASSOCIATION LTD. The scheme will be known as PAGEANT GREEN and is situated between Fulbeck Drive and Lanacre Avenue.

The first phase of the project is underway and consists of 32 one bedroom flats, 19 two bedroom houses and 5 three bedroom houses.

Under this scheme, you buy a share of the property and pay a rent to Addison for the remaining share.

**THE PROPERTIES WILL BE SOLD ON SHARED OWNERSHIP TERMS AT BETWEEN 50% AND 80% OF THE VALUE.**

At current value, a 50% share of a one bedroom flat would cost £36,250. ★

The one, two and three bedroom homes will be ready from July 1990.

Viewing will be in June.

We are expecting a large demand, so register your interest now.

For further details, please contact:- Barnet Council:  
Housing Initiative Section,  
Barnet House, 1255 High Road, Whetstone,  
London N20 0EJ. Tel: 081 - 446 8511 Ext. 4863

★ This is based on current values.



**Heathbourne Road,  
Bushey Heath,  
Hertfordshire WD2 1PB**

Situated in 3 acres of secluded and spacious grounds, Birchville Court is one of the most luxuriously interior-designed nursing and retirement homes in the area.

- Professional and dedicated staff
  - Post operative medical, convalescent and long or short stay care
  - All dietary requirements catered for
- Excellent facilities + services include:*
- Lift
  - Nurse call system
  - Colour TV in all rooms
  - Smoke and fire detection system
  - Specially equipped assisted bathroom
  - Telephone points in all bedrooms

For further details and brochure please telephone Matron or Mr Adams  
**081 - 950 6206**

# ALMENAR RESIDENTIAL HOME

We at Almenar would love to look after your loved one in our family run care home.



- Comfortable rooms ● TV's available ● Washing facilities in all rooms ● Close to all public amenities ● Reasonable rates ● All diets catered for.

Rooms available immediately

Contact: Sharon on 081-449 1584

**PERMANENT OR TEMPORARY CARE AVAILABLE**

**7, 8, 9 Ravenscroft Park, Barnet, Herts**

# Goldsborough PRIVATE NURSING HOME Enfield



76 Wellington Road, Enfield EN1 2PL. TEL: 360 5977

Situated in the pleasant Bush Hill Park area of Enfield, Goldsborough Private Nursing Home is a purpose-built delightful home offering full nursing and residential facilities for the elderly.

All rooms are en-suite and have a pleasing outlook. The homely environment extends to the spacious lounge and dining room from where residents may enjoy the pleasures of a secluded patio garden.

For further details, and an invitation to view, please complete the coupon below.

TO: Sue Allen, Matron, Goldsborough Private Nursing Home, 76 Wellington Road, Enfield EN1 2PL. TEL: 360 5977

Please send me, without obligation, full details of the Goldsborough Private Nursing Home.

Name \_\_\_\_\_

Address \_\_\_\_\_

Post Code \_\_\_\_\_ Tel: \_\_\_\_\_

BBN. 6. 90

THE COMPLETE PRIVATE CARE SERVICE



We'll share  
the cost of buying your  
retirement apartment.

**Now Available From £52,460\***

If it's a puzzle working out whether you can afford your new McCarthy & Stone home at Homan or St. Elizabeth Court, Finchley, our new Shared Ownership Scheme could be the answer.

You can buy the retirement apartment of your choice for only 75% of the purchase price, and we'll make up the difference.

More importantly, you don't have to saddle yourself with an expensive mortgage. When you come to sell the property, we simply retain a percentage of its value to cover our costs in operating the scheme.

If you would like to know how you can secure one of these apartments, and secure your future, telephone our sales consultant, Lynda Owen on 081 445 1050.

Better still come and see for yourself. You'll find us at Homan & St. Elizabeth Court, Mayfield Avenue, Finchley, London.

Our showflat is open Tuesday to Saturday from 10.30 am to 5.00 pm.

\*This offer only applies to apartments purchased as part of our Shared Ownership scheme, when reserved by 31st July.

4BBN6.90



Together we'll get things moving.

# Your Councillors

You may write to your councillors at The Town Hall, Hendon NW4 4BG or telephone them at the number shown



**Jim Anani**  
East Barnet Ward  
*Conservative*

☎ 445 3872



**Anthony Antoniou**  
Mill Hill Ward  
*Conservative*

☎ 959 1304



**Gillian Bull**  
Hadley Ward  
*Conservative*

☎ 446 7684



**Edward Bunn**  
Hendon Ward  
*Conservative*

☎ 906 2793



**Anita Campbell**  
Arkley Ward  
*Labour*

☎ 440 2703



**Jack Clarfelt**  
Hale Ward  
*Conservative*

☎ 959 5235



**Jack Cohen**  
Childs Hill Ward  
*Liberal Democrat*

☎ 445 3981



**Melvin Cohen**  
Golders Green Ward  
*Conservative*

☎ 346 0191



**Pam Coleman**  
Arkley Ward  
*Labour*

☎ 449 6254



**Stan Cross**  
Woodhouse Ward  
*Labour*

☎ 444 9178



**Julian Czarny**  
Edgware Ward  
*Conservative*

☎ 958 6999



**John Davies**  
East Finchley Ward  
*Labour*

☎ 883 8749



**Frank Davis**  
Garden Suburb Ward  
*Conservative*

☎ 455 0403



**Denis Dippel**  
Mill Hill Ward  
*Conservative*

☎ 959 5538



**Olwen Evans**  
East Barnet Ward  
*Conservative*

☎ 368 1986



**Anthony Finn**  
Hendon Ward  
*Conservative*

☎ 202 9689



**Leslie Foster**  
Golders Green Ward  
*Conservative*

☎ 458 3592



**Mike Freer**  
St Paul's Ward  
*Conservative*

☎ 446 5396



**Don Goodman**  
Brunswick Park Ward  
*Conservative*

☎ 368 0383



**Eva Greenspan**  
Finchley Ward  
*Conservative*

☎ 203 1598



**Mike Harris**  
Woodhouse Ward  
*Labour*

☎ 444 0479



**Helena Hart**  
St Paul's Ward  
*Conservative*

☎ 346 3128



**John Hart**  
Mill Hill Ward  
*Conservative*

☎ 959 5182



**John Hedge**  
Golders Green Ward  
*Conservative*

☎ 203 0137



**Ellis Hillman**  
Colindale Ward  
*Labour*

☎ 202 7792



**Barbara Langstone**  
Finchley Ward  
*Conservative*

☎ 445 5443



**Malcolm Lester**  
Edgware Ward  
*Labour*

☎ 349 2595



**Joan Levinson**  
Totteridge Ward  
*Conservative*  
Deputy Mayor

☎ 368 3298



**Victor Lyon**  
Totteridge Ward  
*Conservative*

☎ 446 4423



**Liz Mammatt**  
Hadley Ward  
*Conservative*

☎ 361 9720

Councillors represent the interests of all residents. Their political party is given for your information

# Your Councillors



**Tom McKendry**  
Colindale Ward  
*Labour*

☎ 444 0594



**Doreen Neall**  
West Hendon Ward  
*Labour*

☎ 202 9927



**Ashley Newman**  
Hadley Ward  
*Conservative*

☎ 441 1588



**Monroe Palmer**  
Childs Hill Ward  
*Liberal Democrat*  
Group Leader

☎ 455 5140



**Rene Palmer**  
Brunswick Park Ward  
*Conservative*

☎ 368 7800



**John Perry**  
East Barnet Ward  
*Conservative*  
Deputy Leader

☎ 368 4368



**Mary Phillips**  
St Paul's Ward  
*Conservative*

☎ 445 9426



**Chris Platford**  
Friern Barnet Ward  
*Conservative*

☎ 368 6817



**Fred Poole**  
Hendon Ward  
*Conservative*

☎ 203 0813



**Leslie Pym**  
Hale Ward  
*Conservative*  
Leader of the Council

☎ 959 5484



**John Rawles**  
Brunswick Park Ward  
*Conservative*

☎ 368 3522



**Dennis Reed**  
Woodhouse Ward  
*Labour*  
Group Leader

☎ 361 8901



**Joan Ryan**  
East Finchley Ward  
*Labour*

☎ 444 6400



**Brian Salinger**  
Friern Barnet Ward  
*Conservative*

☎ 368 1329



**Malcolm Sargeant**  
Burnt Oak Ward  
*Labour*

☎ 455 1070



**Sheila Scott**  
Hale Ward  
*Conservative*

☎ 906 0825



**Gerald Shamash**  
Burnt Oak Ward  
*Labour*

☎ 458 2679



**Roy Shutz**  
Garden Suburb Ward  
*Conservative*  
Mayor of Barnet

☎ 455 2248



**Tim Sims**  
West Hendon Ward  
*Labour*

☎ 734 8080



**Agnes Slocombe**  
West Hendon Ward  
*Labour*

☎ 202 4074



**Archie Smith**  
Edgware Ward  
*Conservative*

☎ 952 7025



**Kevin Smith**  
Arkley Ward  
*Labour*

☎ 440 4828



**Veronica Soskin**  
Garden Suburb Ward  
*Conservative*

☎ 455 9023



**Brian Stone**  
Childs Hill Ward  
*Liberal Democrat*

☎ 450 0762



**Leslie Sussman**  
Finchley Ward  
*Conservative*

☎ 346 6775



**John Tiplady**  
Friern Barnet Ward  
*Conservative*

☎ 445 5734



**Victor Usher**  
Totteridge Ward  
*Conservative*

☎ 445 4248



**Rudolf Vis**  
East Finchley Ward  
*Labour*

☎ 444 4051



**Alan Williams**  
Burnt Oak Ward  
*Labour*

☎ 906 0576



**David Williams**  
Colindale Ward  
*Labour*

☎ 343 1082

## Council

Members of the public are invited to attend Council and main committee and sub-committee meetings in the Town Hall, Hendon, at 7pm.

**Monday 4 June**  
Recreation, Leisure & Arts

**Tuesday 5 June**  
Social Services

**Wednesday 6 June**  
Area Planning sub-committees

**Thursday 7 June**  
Lands & Buildings sub-committee

**Monday 11 June**  
General sub-committee

**Tuesday 12 June**  
Public Works

**Wednesday 13 June**  
Grants

**Thursday 14 June**  
Eastern Area Road Safety Advisory

**Tuesday 19 June**  
Western Area Road Safety Advisory

**Wednesday 20 June**  
Town Planning & Research

**Wednesday 27 June**  
Personnel sub-committee

**Thursday 28 June**  
Budget, Financing & Performance Review sub committee

**Tuesday 3 July**  
Schools and General/Further Education sub committees

**Wednesday 4 July**  
Policy & Resources

## General

N London Holiday Fellowship. Varied activities. 455 1622

**Sunday 3 June**  
Anglo-Italian Circle of Barnet. 205 5611

**Saturday 6 June**  
Barnet Friends of the Earth. 449 5830 (also 11 Jun, 25 Jun)

**Saturday 9 June**  
Finchley UNA Coffee morning. 445 3748

**Tuesday 19 June**  
"L" drivers pre-test briefing lecture organised by Barnet Council's Road Safety Unit, Road Safety Cntr, E Barnet. 446 8511, ext 4341

**Wednesday 20 June**  
National Trust. 'The Little Things Count, Preserving Historic Towns and Villages', talk by John Fiddler from English Heritage. Edgware. 8pm. 952 2688/951 1578

**Sunday 24 June**  
Council of Christians & Jews (Golders Grn & Hendon). Annual Garden Party. 346 2288

**2 - 6 July**  
Leo Baeck College. East European Jewry past & present study week. 349 4525

**Thursday 5 July**  
Manor Hse Scty & Anglo-Israeli

# Barnet Diary

## We need your entries in writing

The number of entries received for inclusion in the diary has increased and from this month individual entries will only give essential information.

If you have sent in an entry would you please confirm in writing that the details (name of organisation, date of meeting and phone number of contact) are still correct so that the entry can continue to appear in the diary.

Archaeological Scty. 'The Synagogue and Temple in Late Antiquity', talk by Martin Goodman. 8pm. Tickets 346 2288

**Monthly**  
Barnet Animal Rights Group. N Finchley. 440 1715 (1st Wed)

Philosophy of Yoga. Discussion Mtg. Hendon. 203 0062 (1st Sat)

Finchley Business Club. 446 6742 (2nd Tues)

Middx Business Club. New Barnet. 447 1000 (2nd or 3rd Tues)

Royal British Legion (N Finchley). 445 9911 (3rd Tues)

London & N Middx Family History Scty, Barnet Branch. 441 0529 (3rd Tues)

Golders Grn & Hendon Amnesty Group. 346 3138 (last Wed)

Hard of Hearing Club for all ages. N Finchley. 446 4354 (last Wed)

Barnet Ratepayers & Residents Assn (Arkley & Hadley). 449 0807 (last Fri)

**Bi-monthly/Fortnightly**  
Finchley & Dist Philatelic Scty. 883 8724 (1st & 3rd Wed)

Barnet & Dist Philatelic Scty. 346 3549 (alt. Mon)

Barnet Anglo-French club mtg. 440 6805 (alt. Tues)

## Advice & Support Groups

Carers Self Help Support Groups (over 20 in the Borough). Details, Janet Byrne, Barnet Borough Voluntary Service Council, 346 9723/8644

**Thursday 7 June**  
Alzheimer's Disease Scty (Barnet). AGM. 958 8324 (Relatives' group, 1st Tues)

**Monthly**  
Cruse social mtg for bereaved people. Highgate. 272 8785 (1st Thur)

National Schizophrenia Fellowship. Temple Fortune. 455 5133 (2nd Tues)

British Diabetic Assn (Barnet & Dist). 368 6993 (2nd Wed)

Cancerlink (Barnet & dist) for people with cancer, their relatives & friends. 440 2043/449 7020 (weekly & 2nd Thur, last Wed)

Oakleigh Carers Group. Whetstone. 368 8350 (2nd Fri)

British Tinnitus Assn NW London. Hendon. 349 9353 (2nd Sat)

Barnet Epilepsy Support Group. 446 2003/444 4453 (3rd Mon)

## Countryside & Wildlife

Interested in helping with conservation work on Hadley Common & Woods? Contact George Berger, 441 5530

**Sunday 10 June**  
Herts & Middx Wildlife Trust. Task day at Darlands Lake Nature Reserve (also 24 Jun, Midsummer Events at Darlands Lake NR). 346 5258

**Thursday 14 June**  
RSPB (N London). Car outing to Broxbourne Woods. 885 3318 (also 17 Jun, coach outing to Stodmarsh, 359 1621; 24 Jun, car outing to Thursley Common, 885 3318)

**Monthly**  
Middx Caving Group. Finchley. 803 6008 (1st Wed)

Amateur Geological Scty. Finchley. 449 1903/346 1056 (12 Jun, talk on 'Earthquakes')

## Dance

**Monday 4 June**  
Hobby Horse Club (children's folk dancing); Chipping Barnet Folk Dance Club. 449 4425/0724 (also 18 Jun & 2 Jul)

**Saturday 9 June**  
Mountfield Club Sequence Dance. Finchley. 959 5185

**Thursday 14 June**  
Circassian Circle Folk Dance Club. Mill Hill. 950 5756 (also 28 Jun)

**Monthly**  
Barn dancing. Totteridge. 368 8335 (eves) (1st Wed)

20th Century Sequence Dancing Club. Cockfosters. 360 2586 (1st Sat)

**Mondays**  
Sunshine Modern Sequence Dance Club. Burnt Oak. 952 8529 (also Thursdays, Good Companions Modern Sequence Dance Club)

**Tuesdays**  
Adult dance classes, mainly contemporary, other styles available. Barnet Drama Centre. 883 9957 (also Thur, 12-16yrs)

## Drama

Stagecrew, new theatre group for all ages. Barnet Drama Centre, E Finchley. 883 9957

## 18+ Groups

Barnet 18+ group (18-29yrs). 883 8756

**Monthly**  
Orbit Club NW London (25-40yrs). Finchley. 906 2080 (2nd Wed)

**Bi-monthly**  
Rotaract Club (Mill Hill). 959 1317 (1st & 3rd Mon)

Rotaract Club (Barnet). 449 7553 (1st & 3rd Wed)

Rotaract Club (Finchley). 445 1393 (1st & 3rd Wed)

Rotaract Club (Friern Barnet & Whetstone). 346 0438 (1st & 3rd Thur)

Rotaract Club (Hampstead, Hendon & Golders Grn). 458 6789 (2nd & 4th Mon)

Rotaract Club (Edgware & Stanmore). The Green Man Pub, Honeypot La. Stanmore. 8.15pm (2nd & 4th Wed)

## Fetes, Fairs & Sales

**Saturday 2 June**  
New Barnet & Dist Stamp & Postal History Fair. 440 8835  
Friends of Barnet Hospital Fete. 2pm

**Saturday 9 June**  
Christ Church URC Fayre, Friern Barnet Rd. 11.30am

Fayre. Rosa Morison House, 83 Gloucester Rd. New Barnet. 2pm

Fair. Christ Church JMI Sch, Barnet. 2pm. 440 2198

St John's Sch Fete. Friern Barnet. 2pm. 368 1154

**Saturday 16 June**  
Finchley Community Forum Information Fair. Methodist Ch, Ballards La. 10am. 346 5711

11th Finchley Scouts Fair. Woodside Club, Southover, N12. 12 noon

Fete. Queen Elizabeth's Boys Sch, Barnet. 1pm

Fair. St Mary's Sch, E Barnet. 2pm. 440 4201

**Sunday 17 June**  
Monkfrith Sch Fete. Southgate. 1pm.

Holly Park Sch Fair, Friern Barnet. 2pm. 368 1434

**Friday 29 June**  
8th W Finchley Guides Jumble Sale. Finchley Methodist Hall. 445 4250

**Saturday 30 June**  
Key Stamps Fair. Finchley. 446 1562

St Mark's Church Fete. New Barnet. 2pm

**Saturday 7 July**  
Fantastic themed Fair. Ravenscroft School, Barnet. 449 8239

## Horticulture & Floral Art

The National Gardens Scheme. By courtesy of the owners these private gardens will be open: 17 Jun, The Bow House, Barnet; 11 Hampstead Way, NW11; 43 Hill Top, NW11; 3 Wellgarth Rd. NW11. 1 Jul, 10 Wildwood Rd. NW11. 0483 211535

**Tuesday 5 June**  
Finchley Horticultural Scty. 346 4359 (also 3 Jul)

**Wednesday 13 June**  
New Barnet Amateur Gardeners & Floral Art Scty mtg. 449 4470 (also 23 Jun, Summer Show, St John's Church Hall, Mowbray Rd, 2pm)

**Saturday 30 June**  
Barnet Horticultural Scty. Summer Flower & Floral Art Show. Ewen Hall, Wood St. 2.30pm.

**Monthly**  
Barnet & Dist. Fuchsia Scty. 207 3176 (2nd Mon)

Mill Hill Flower Club. 959 3530 (2nd Tues)

Hendon Horticultural Scty. 203 1187 (2nd Wed)

Barnet Flower Arrangement Scty. 0707 57199 (2nd Thur)

Totteridge Floral Art Group. 445 9307 (3rd Tues)

Hendon Floral Art Group. 202 8756 (3rd Wed)

**Fortnightly**  
Friern Barnet Floral Art Club. 446 0783 (alt. Tues)

## Music

**Monday 4 June**  
Hendon Music Scty. Young Artists Concert. 203 2355 (also 2 Jul, Peter Gammond 'My Forty Years with the Long-Player')

**Tuesday 5 June**  
East Barnet Library Gramophone Scty. 440 4376 (also 19 Jun)

**Tuesday 12 June**  
Hendon Library Gramophone Scty. 202 5625 (also 26 Jun)

**Thursday 14 June**  
Friern Barnet Library Gramophone Scty. 449 7111

**Mondays**  
Vocal workshops for 7-11yrs & 16yrs+. Barnet Drama Centre, E Finchley. 883 9957

Continued on page 18

**Splash Out  
- it's Summer!**



**FINCHLEY · OPEN · AIR  
· POOLS ·**

**NOW OPEN DAILY . 11am - 6.15pm  
PHONE  
081 883 6232  
FOR FURTHER DETAILS**

**REFRESHMENTS** **active** **life** **COME ALONG AND BRING A FRIEND!**  
*Leisure activities for 40+*  
**COME AND JOIN THE  
MULTI-SPORT SOCIAL CLUB**

*Every Wednesday 10am - 12noon*

**ONLY £2.00 PER SESSION**

*at: St Micheal and All Angels Church Hall,  
Flower Lane, Mill Hill NW7*

**FOR INFORMATION RING 081 203 9711**

**options**

*Sports for women*

**KEEP-FIT**

at

*Finchley Catholic High School,  
Woodside Lane, Finchley, N12*

**EVERY THURSDAY**

**7-8PM**

**JUST £2.50 PER SESSION**



**ADULT SWIMMING LESSONS**

at

**SQUIRES LANE**

**SWIMMING POOL + FITNESS CENTRE  
Finchley N3**

*Whatever your age, whatever your  
standard, it's never too late to  
learn to swim*

*COURSE DETAILS AVAILABLE FROM  
SQUIRES LANE POOL TELEPHONE: 081 346 3962*

**JOIN THE LEARN-TO-SWIM SCHEME  
AT**

**“Q. E. BOYS”**

*Every term we run a range of  
swimming classes for children of all  
ages and abilities and for adults too  
at Queen Elizabeth Boys School,  
Queens Road, Barnet EN5 4DQ  
Details and Bookings at Copthall Pools 081 203 4187*

**·BARNET·  
·COPTHALL·  
·POOLS·**

**HENDON · NW4**



**AUTUMN PROGRAMME  
OF COURSES BOTH IN AND  
OUT OF THE POOL  
AVAILABLE IN EARLY JUNE**

*Pick up your copy or  
ring 081 203 4187 for details*

# Barnet Diary



## Pensioners' Clubs

### Thursday 14 June

Finchley Old Peoples Welfare AGM. 346 8736/3511

### Monthly

Pensioners' Voice (Mill Hill). 959 6180 (1st Mon)

Golders Green & Dist. Pensioners' Assn. 202 0891 (1st Wed)

Pensioners' Voice (Barnet). 441 3185 (2nd Wed)

Northern Heights Probus Club. business/professional people. Highgate, Hampstead & Golders Grn. 883 2863 (3rd Wed)

Civil Service Pensioners' Alliance. Finchley. 445 4821 (3rd Thur)

Edgware Over 60's Health Group. 952 2500/7722, ext. 3593

Pensioners' Voice (Colindale/Burnt Oak). 906 2161 (last Thur)

Pensioners' Voice (Whetstone/Finchley). 346 6762 (last Thur)

## Pets

### Monthly/bi-monthly

Hendon & Dist Cage Birds Assn. Burnt Oak. 205 2647 (2nd Tues)

Hendon Tropical Fish Keeping Scty. 458 5826 (2nd & 4th Thur)

## Arts & Crafts

### Mondays

Adult Art Group. Barnet Drama Centre. E Finchley. 883 9957 (also Tues, arts & crafts, 8-14yrs)

## Playgroups & Under 5s

### Monthly

Finchley Twins Club. 346 1418 (last Thur)

### Mondays

High Barnet Toy Library. 441 5388

## Singles Clubs

Spectrum social group for unattached 25-45's. Programme of varied events. 449 9893/883 8146

Unattached, 40-60? Clan social club for theatre, exhibition, restaurant outings, wine & cheese evenings. 346 2016/0932 856154

### Monthly/bi-monthly

New Friends Social Club (30-45). N Finchley. 444 0076/446 4058 (4th Thur)

Finchley Solo Club for widowed, divorced & single 445 9810/446 5238 (1st & 3rd Tues)

## Sport

Manorhill Cntr, Women's Recreation Group. Summers La. N12. 11 Jun, Ten pin bowling; 18 Jun, Netball; 25 Jun, Pop Lacrosse; 2 Jul, Country Dancing; 9 Jul, Football; 16 Jul, Swimming. 368 6316

### Monthly

St Christopher's Catholic Cycling Club. Easy rides from Finchley. All welcome. 361 2281/427 2251 (1st Sun)

## Women's Clubs

### Wednesday 20 June

Care Programme for Beautiful Hair. Cophall Stadium. 203 4017

### Monthly

Ashley TG. Mill Hill. 906 1952 (1st Thur)

Barnet Afternoon TG. 449 2697 (3rd Fri)

Barnet Evening TG. 440 1526 (1st Wed)

Broadway Mill Hill TG. 959 0995 (2nd Thur)

Chipping Barnet WI. 440 8807 (2nd Thur)

East Barnet Brookside TG. 361 9097 (1st Wed)

East Barnet Monkfrith TG. 0707 57092 (1st Thur)

East Barnet (Osidge) TG. 368 7346 (2nd Tues)

East Barnet Valley TG. 449 8601/6083 (1st Thur)

Edgware League of Jewish Women. 958 4562 (2nd Tues)

Finchley Church End TG. 455 7152 (4th Wed)

Finchley Granville TG. 346 6822 (2nd Thur)

Finchley Redbourne TG. 346 3305 (4th Tues)

Friern Barnet & Whetstone TG. 446 4816 (3rd Tues)

Friern Barnet Friary TG. 361 9623 (1st Tues)

Golders Green TG. 455 4156 (1st Mon)

Hampstead Garden Suburb TG. 458 5072 (1st Mon)

Mill Hill Afternoon TG. 959 1505 (2nd Wed)

Mill Hill Highwood TG. 959 2519 (3rd Mon)

Montrose WI. Edgware. 205 4960 (4th Tues)

National Council of Women. Barnet & Dist. 368 1442 (4th Mon)

New Barnet Evening TG. 440 1394 (1st Mon)

Royal British Legion Women's Section (N Finchley). 445 9911 (1st Tues)

Totteridge WI. 445 5700 (1st Tues)

Woodside Park Afternoon TG. 445 0911 (3rd Wed)

## Fortnightly

National Women's Register. Discussion groups. Barnet branch, 445 4777. alt. Tues eves; Finchley/Whetstone branch, 446 5862. alt. Wed eves

Acorns. Talks, socials, creche. Finchley. 349 4188/346 7378

Wives Group. Mill Hill East. 906 0489

## Youth

### Mon - Fri

Grahame Pk After-School Latchkey Scheme. 5-12yrs. 952 7722, ext 3593

### Saturdays

Gujarati classes. 5-15yrs. Grahame Pk. 205 7383



### Tuesday 5 June

Manor House Lunchtime Recital. Robert Max (cello) & Rebecca Holt (piano), works by Beethoven, Bush & Saint Saens. 80 East End Rd. N3. 1.15pm. Admission £1. 346 2288 (also 19 Jun, Muriel Levin (piano), works by Schumann & Haydn)

### Saturday 9 June

Musicians' Overuse Syndrome Support Group Concert. Jennifer Bate (organ), Margaret Lion (piano), Georgina Dobree (clarinet), Linda Hirst (mezzo-soprano) & Sterling Trio. URC, Tetherdown, N10. 7.30pm. Tickets 883 2175

### Sunday 10 June

Manor Hse Scty. 'Mums and Lovers'. Music, verse & songs with Chrys Salt & Morgan Gordon. 8pm. Tickets 346 2288

### Saturday 16 June

Hendon String Orchestra Concert. Programme incl. Bach Double Violin Concerto, soloists Marianne Olyver & Jan Schmolk. St Jude's Ch, Central Sq. NW11. 8pm. Tickets 455 5005/4518

### Wednesday 20 June

Barnet Schs Music Assn Musical Evening. St John's JMI School, Whetstone. 7.30pm. 455 3269

### Saturday 23 June

Finchley Choral Scty. Music for voices & brass incl. John Rutter's 'Gloria'. Brass ensemble, Richard Harvey, organ. St Barnabas Ch, Holden Rd. N12.

7.45pm. Tickets 888 0189

Trent Park Music Cntr. Penelope Lynex (cello) & Alexander Wells (piano). Works by Dvorak, Mendelssohn, Prokofiev, Faure. Middx Poly, Bramley Rd. N14. 8pm. 449 2963

### Saturday 30 June

Barnet Choral Scty. Brahms Song of Destiny, Germany Requiem, London Pro Arte Orchestra. Queen Elizabeth's Girls Sch, Barnet. 7.45pm. 441 5502

Barnet College. Terroni Piano Trio; Beethoven Trio in E flat major, Op. 1 No. 1; Robert Simpson New Trio; Smetana Trio. 7.30pm. 440 6321

## All Saints' Arts Centre

122 Oakleigh Rd Nth, N20. For ticket prices & bookings contact 445 8388

### Saturday 2 June

The Ionian Clarinet Choir. Light music from Mozart to Scott Joplin, incl. music for flutes. Proceeds to Motor Neurone Disease Assn. 7.30pm

### 6, 8 & 9 June

Dudendance Theatre presents 'Excuse Me, I Just Have to Strangle Myself'. 8pm

### Saturday 23 June

Tooth & Claw Theatre presents 'The Changeling'. 8pm

### Saturday 30 June

Bach's Cantata No 51 with Rosalie Osmond (soprano) & Richard Osmond (harpsichord & organ). 6pm

## Old Bull Arts Centre

68 High St. Barnet. For ticket prices & bookings contact 449 0048

### Saturday 2 June

Bobby Carcasses 'Afro Jazz'. 8pm

### 6 & 7 June

Nomad Dance and Guests. 8pm

### Friday 8 June

Vali Subbiah: Maagam. 8pm

### Saturday 9 June

Orchestra Rafiki. 8pm

### 11 - 30 June

Exhibition: Sofi Sculptures by Sally Preisig

### Tuesday 12 June

Tara Arts Co: The Government Inspector. 8pm

### Thursday 14 June

Soweto Youth Drama Scty: Where is My Son? 8pm

### Friday 15 June

Graeae Theatre Co: Why? 8pm

### Saturday 16 June

Wayne Bachelor Quartet & Talvin Singh Trio. 8pm

### Thursday 21 June

Scarabeus & Skin and Blisters. 8pm

### Saturday 23 June

Whippersnapper. 8pm

## Thursday 28 June

Umoja Theatre Co: One Stop Driver. 8pm

## 2 - 21 July

Exhibition: The Jazz Tailor by Jude Nwimo

## Sunday Shows for Children, 3pm

### 3 June

Martin Bridle: Adventures of Mr Punch

### 10 June

Mimgruppen Rainbows: Nonsense!!!

### 17 June

Small Change Theatre: At The Beach

### 24 June

Snap: The Children

### 1 July

20/20: Neville & The Time-Stone

## Just Jazz N London Festival

### Friday 29 June

Clifford Jarvis & The Jazz Prophets

### Saturday 30 June

Andy Sheppard & Keith Tippett

### Sunday 1 July

Annie Whitehead Band

### Thursday 5 July

Django Bates' Powder Room Collapse

### Friday 6 July

Carol Grimes & Jan Ponsford

### Saturday 7 July

Steve Williamson

## Sundays

Bananas Up The Bull Comedy Club. Cabaret. 8pm

## Courses at Old Bull

### Saturday 16 June

Stunts with Terry Walsh

### Tues 19 Jun - 10 Jul

Ways into Writing with Katherine Gallagher

### Mons 2 - 23 July

Drums with Clifford Jarvis

## Exhibitions

Rose Gallery at Totteridge Library, Totteridge La. N20. Pictures at affordable prices. Tues, Wed & Fri 2-5pm. Sat, 10am-1pm, 2-5pm. Details, Arts Office, 202 1903

### Until 8 Jul

Batik exhibition with demonstrations of batik and silk painting Sun afternoons (also Church End, Hendon. Paintings & drawings of old Hendon 1790's to 1930's) Church Farm House Museum, Greyhound Hill, NW4. Mon-Sat (except Tues) 10am-1pm, 2-5.30pm. Tues 10am-1pm. Sun 2-5.30pm. Admission free. 203 0130

### 14 Jun - 1 Jul

Exhibition of garden sculpture and paintings. Bow House Gallery, 35 Wood St. Barnet.

### 2 - 4 July

Hampstead Gdn Suburb Institute open week, displays of artwork by students. Central Sq. NW11. 7-9pm. 455 9951

# What's on . Where to go . What to do



Established 1984

**PROBABLY  
THE BEST  
VEGETARIAN  
RESTAURANT  
IN LONDON**

**CLOSED ALL DAY MONDAY**  
7 LONG LANE, FINCHLEY, N3  
Tel: 081-349 4386/2636

## DO YOU HAVE PROBLEMS?

**DO YOU LACK OF CONFIDENCE?  
DO YOU RESORT TO OVEREATING  
OR SMOKING UNDER STRESS?  
OR DO YOU SUFFER FROM ANY  
OTHER PSYCHOSOMATIC ILLNESS  
FOR WHICH YOU NEED  
TRANQUILLISERS?**

If your answer is **YES** to any of the above, HYPNOTHERAPY by qualified Psychotherapist may be an answer.

Do not suffer in silence - book for a consultation NOW.

**Mrs V. K. Prasad** DMS, CHP, NHP  
(Registered Practitioner)  
Telephone: 081 - 361 4525  
24 hour Answering Service



## ANTIQUES & COLLECTORS FAIR

Admission 75p, accompanied children Free, 11am - 4pm, trade £1.50, with trade card or £2.50.

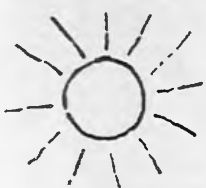
### SUNDAY 10th JUNE

### 230 STANDS

Part of the  
**Lee Valley  
Park**

**PICKETTS-LOCK LEISURE CENTRE,**  
Picketts-Lock Lane (off Montague Rd, off N. Circular),  
Edmonton, London, N9.  
W8 bus from Lower Edmonton BR Station

All enquiries and bookings to JAX FAIRS Tel: (0444) 400570



**Beautiful private villa in  
exotic surroundings at  
Villacana near  
MARBELLA, SPAIN.**



Just off the Beach.  
Sleep six. Ideal for families.  
Private swimming pools,  
Tennis, Squash, Snooker  
on the complex.  
Phone for availability

**June / July**

Small parties of Golfers welcomed  
as Golf nearby

Tel: 081 660 6286

## WANTED

SUPER 8mm sound/silent films.  
9.5mm and 16mm. Films.  
Most 8mm Equipment.  
Enlargers/Darkroom equipment.  
Slide Projectors.  
Binoculars.  
Almost anything Photographic.  
Firm-Fair prices paid.

Call - write - phone  
**071-272 8809**

'CLEARVUE' (established 25 years)  
92, Stroud Green Road,  
Finsbury Park, N4.

## DENTAL HOME VISITING SERVICE FOR

Housebound,  
Handicapped, Elderly  
and Infirm. NHS  
treatment free to those  
claiming income support.

**AVRIL KAY**  
LDS RCS Eng.

**Tel: 445-7879**  
for an appointment

## REGENCY CRAFT FAYRE

AT THE WORLD FAMOUS

## NATIONAL ROSE SOCIETY GARDENS

CHISWELL GREEN, ST. ALBANS, HERTS

(AA Signposted from Junction 21A on M25 - 1/2 Mile)



### JUNE 9/10



**OVER 125 CRAFTS**

**INCLUDING SCULPTURE, BROOM MAKING & CANEWORK  
MANY CRAFT DEMONSTRATIONS PLUS**

**FALCONRY, PERIOD MUSIC,  
MORRIS DANCING, ACTING GROUPS,  
STILT WALKING, FIREATING, RAT CATCHER,  
SINGING CHIMNEY SWEEPS  
AND MUCH MORE**

Admission Charges include entrance to Rose Gardens  
**ADULTS £2.50 SENIOR CITIZENS £2.00  
CHILDREN £1.00**

**FREE PARKING**

**OPEN DAILY** Refreshments available including Spit Roast  
10am - 6pm **25% DISCOUNT ON GROUP BOOKINGS**

**FOUR SEASONS EVENTS LTD**  
0926 813374

THE ORGANISERS WILL NOT ACCEPT A RESPONSIBILITY  
FOR THE APPEARANCE OF ANY ENTERTAINER



## X.U.K. CHILDREN'S ACTIVITY CAMPS



Junior and Inters Camps 3-12 years  
Senior Camps 12-17 years - April, May Half Term and Summer

### EVERY ACTIVITY UNDER THE SUN (almost)

- ★ Driving lessons ★ water skiing
- ★ trampolining ★ discos ★ sailing
- ★ archery ★ dance ★ canoeing
- ★ motor bikes ★ abseiling ★ go-karts
- ★ dry skiing ★ bowling ★ wind surfing
- ★ ice and roller skating ★ swimming
- ★ drama ★ arts and crafts and many many more!



**VEGETARIAN  
OPTIONS!**

**TRANSPORT  
SERVICE**



**FOR A TERRIFIC HOLIDAY,  
DAY or RESIDENTIAL  
EDWARE, FINCHLEY AND SOMERSET**

Telephone: Jeremy Fow or Judy Davies  
081 349 1444 / 1945

# Local opportunities...

WORKING FOR THE COMMUNITY

Barnet is a borough changing with the times. To achieve our plans for the 1990's we need the skills and abilities of a wide range of people. The Council offers excellent pay and conditions with training and career development tailored to the individual and promotion on personal merit.

- \* Excellent Pension Scheme
- \* Opportunities to progress
- \* Flexible working hours
- \* Generous leave
- \* Pleasant conditions
- \* Restaurant facilities

## EDUCATIONAL SERVICES

### HEAD OF SPECIAL EDUCATION SECTION & PLACEMENTS OFFICER

£13,872-£14,736 pa inc.

The Section is mainly concerned with managing assessment procedures for children with special needs. This includes arrangements for their admission to special schools or units and the provision of additional services to mainstream schools.

There will also be the opportunity for the successful candidate to be involved in the preparation of statements of special educational needs.

To succeed in this role you should have previous administrative experience and the ability to deal helpfully and sensitively with clients, colleagues, parents and support services. Good letter writing and telephone skills are also important as is the ability to keep accurate computerised and manual records. Ref: ADM/E/678.

Closing date: 8th June 1990.

Application forms available from Address No. 1.

### PERSONAL SECRETARY TO ASSISTANT DIRECTOR

(Professional Services)

£9,879-£12,213 pa inc.

Are you a first class secretary with excellent word processing skills and feel ready to take on the challenge and responsibility of providing all-round support to the Assistant Director of Professional Services within the Directorate of

Educational Services? If so, this position should suit you.

You must be self-motivated, have good organisational skills and the ability to work on your own initiative. In return, we can offer you a job that offers variety and plenty of opportunity to deal with people at all levels. Ref: ADM/E/114.

Closing date: 8th June 1990.

Application forms available from Address No. 1.

### NURSERY NURSE (NNEB)

Childs Hill School, Dersingham Road, NW2

£7,233-£9,276 pa inc.

32.5 hrs pw — 39 weeks pa

This is an exciting and challenging opportunity to work in the Nurture Unit of this small, friendly school. If you are an NNEB qualified Nursery Nurse, this will be an ideal opportunity to broaden your experience.

The Nurture Unit is privately funded through a trust. This arrangement is therefore subject to annual review.

We welcome visits from prospective candidates, please contact the Head Teacher at Childs Hill School, tel: 081-452 4531.

Ref: ADM/E/025/611.

Closing date: 8th June 1990.

Application forms available from Address No. 1.

### NURSERY NURSES

32.5 hrs pw — 39 weeks pa

£7,233-£9,276 pa inc.

Barnet has long been a special place for children, and for those who care for them.

If you're part of the latter group — experienced, NNEB qualified Nursery Nurses — we now offer two distinct opportunities to make a professional contribution while enjoying the benefits of a happy, caring work environment.

**Wessex Gardens Infant School, Wessex Gardens, Golders Green, NW11.**

ADM/S/081/611.

or

**St. Mary's School, Dollis Park, Finchley, N3.**

ADM/S/097/611.

Please quote reference number.

Closing date: 8th June 1990.

Application forms available from Address No. 1.

Youth and Community Service

### PART-TIME CLERICAL ASSISTANT

5 hrs pw

£7,233-£8,919 pro rata

To help us operate this service effectively, we need your help at the Herbert Wilmot Youth Centre. Situated in

East Finchley, N2, the Centre is well served by public transport.

You'll give vital assistance with all aspects of general office routine, such as typing, duplicating and dealing with telephone enquiries. There will also be an involvement with the Centre's weekly accounts.

This is an ideal opportunity for someone who is interested in youth work, well versed in office routine and used to working on their own. Ref: 603/209.

Closing date: 8th June 1990.

Application forms available from Address No. 1.

### FULL & PART-TIME CLERICAL ASSISTANTS

£6,684-£8,247 pa inc.

36 hrs pw — 52 weeks pa

£5,570-£6,872 pa inc.

36 hrs pw — 40 weeks pa

Woodhouse 6th Form College, Woodhouse Road, North Finchley, N12 9EY has a busy college office. This is where we need the help of a good typist, who has general clerical skills and a pleasant telephone manner.

You could be working either full-time or part-time. Ref: ADM/S/178/121.

Closing date: 8th June 1990.

Application forms available from the Principal. Tel: 081-445 1210.

### PART-TIME RECEPTIONIST/TELEPHONIST

£2,511 (min. at age 21) — £3,097 pa inc.

9am-12 noon or 12 noon-3pm

If you are an accurate typist and have a good telephone manner, then perhaps this is the part-time job you have been looking for.

Based at Queen Elizabeth Girl's School, High Street, Barnet, you will provide a vital Receptionist/Telephonist service.

Please write to the Headteacher, giving any previous experience, name and address of two referees and the earliest date you could commence duties.

Ref: ADM/S/171/131.

Closing date: 8th June 1990.

### ASSISTANT CARETAKER

39 hrs pw — £144.98 pw inc.

The Education Department is facing ever increasing demands on its services. In order to maintain our high standards we are looking to employ an assistant Caretaker, at Parkfield School.

You will assist the Caretaker at Parkfield School, St David's Place, Park Road, Hendon, NW4 3UB with a range of duties including cleaning, security and portage.

There is a possibility of overtime and letting duties, for which the appropriate rate will be paid.

We will give you full on-site training. Other benefits include an excellent pension scheme and 4 weeks annual leave. Ref: ADM/S/JW/12.

Closing date: 8th June 1990.

Application forms available from Address No. 1.

### MEAL TIME SUPERVISORS

Help! We are desperate for meal time supervisors in 2 of our Boroughs Schools: Goldbeaters, Thirleby Road, Edgware, HA8 0HA. Tel: 081-959 6033, and Manorside, Squires Lane, Church End, Finchley, N3 2AB. Tel: 081-346 4847.

You will supervise school children at lunch time during term time.

The rate of pay is approximately £3.58 per hour, with a free meal on completion of duty, a half pay retainer for established staff during school closure and an annual leave payment.

Interested? Then please apply direct to one of the schools listed above.

Alternatively, you can contact the Headmaster at a school of your choice, where there could be a vacancy.

Ref: ADM/E/DKM/11.

### Catering Opportunities

Barnet is a lively, forward looking local education authority and we feel that we have every right to be proud of the results our approach produces. However, we don't just provide pupils with food for thought. They need another kind of sustenance too. For that, we try our best to offer the best school catering facilities possible. If you want to be part of it, we have at present the position of:

### COOK CHILL END UNIT SUPERVISOR

(Cook 2)

£3.57 per hour approx.

Northside School Kitchen, Albert Street, N12. 18.75 hours per week.

For an application form please contact Education Catering on 081-368 1255 ext 3231 or 3232.

### SUPPORT OFFICERS

£9,092-£10,935 pa inc.

(pay award pending)

We currently have a range of part-time and full-time, interesting administrative and secretarial posts at our Russell Lane and Wood Street sites. Each post is based in a different section and requires excellent keyboard, administrative and secretarial skills.

### GCE Board of Studies

Ref: 892/400

Based at Wood Street you will provide secretarial and administrative support principally to the Colleges GCE Board of Studies. The ability to work well under pressure, to liaise with a large number of staff, handle queries from students and the public is essential.

## Adult Education Office

Ref: 892/341

An extensive range of part-time, day and evening courses are provided as part of the Adult and Continuing Education programme. The office provides a focal point for staff, students and members of the public who are involved in the programme.

Based at our Adult Education Office at Russell Lane you will have a great deal of telephone contact with the public so a friendly and helpful telephone manner is essential. Equally important is the ability to work well under pressure and excellent WP skills.

## Learning Resources Unit

Ref: 892/358

Based at Wood Street you will provide administrative and secretarial support to the staff of the Learning Resources Unit. You should have extensive experience in a secretarial/administrative role and the maturity to work efficiently on your own initiative.

## INSET

£4,399-£5,290 pa inc.

22 hours per week,

38 weeks per year

Ref: 892/401

Staff Development and Inservice Training (INSET) have a high priority at Barnet College. Working out of our Russell Lane site, you will be responsible for providing the secretarial and administrative support needed for the successful implementation of the programme. You should have a patient, friendly disposition and will need to demonstrate flexibility, initiative and a professional approach to your work. The willingness to work unsupervised and under pressure is essential. Previous experience within Staff Development and/or Education would be an advantage.

Closing date: 8th June 1990.

If you have the necessary skills, experience and enthusiasm for any of the above posts, please ring the Personnel Section, Barnet College, Russell Lane, Whetstone, London N20 0AX. Tel: 081-361 5101 ext 354.

## COMMUNITY SERVICES

### Community Services

## ADMINISTRATIVE OFFICER

£15,144-£15,993 pa inc.

Based in Whetstone, N20, our busy team provides a Borough wide service to people with physical and sensory disabilities.

We need an experienced administrator to lead and support the Administrative/clerical staff. This will involve participating in planning, developing, delivering and monitoring services. You will also give advice on administrative procedures and policies, and control the budget, premises, equipment and stores. Some of our staff are in outlying teams, and it is important that you give them support.

In order to carry out these duties effectively, you'll need at least 3 years administrative experience, including budget monitoring and word processing. This experience should include at least 1 year managing/supervising staff, preferably in a Local Government context.

As well as a commitment to the implementation of equal opportunities, you will need an understanding of the needs of people with disabilities. It will be an advantage to hold, or be studying for, an

appropriate administrative qualification (i.e. ICSA, DMS).

Applications are particularly welcome from black people and ethnic minority communities, as they are under-represented at this level of the directorate.

The duties, responsibilities and location of this post may change as the Directorate reorganises in response to the White Paper on community care.

Enquiries welcomed by Mrs I. Mearns, tel: 081-446 4354. Ref: 633/629.

Closing date: 8th June 1990.

Application forms available from Address No. 4.

### Residential care for people with learning difficulties

## SENIOR CAREWORKER

£11,202-£12,972 pa inc.

The Leys, Elstree, Herts is a large house set in pleasant rural grounds, and is home for up to 23 people with learning difficulties. We operate on the basis of choice and self-determination for residents, and a high standard of care. We offer a positive team work approach and regular supervision.

We currently need a resourceful person who can support and encourage care staff to maintain a high standard of care, whilst promoting client choice. You will have the opportunity to perform keywork with a small number of clients, and actively participate in the management team working towards future developments.

Relevant experience is essential, and any specialist training and/or qualifications an advantage.

Enquiries welcomed by Mr Ron Cordell, tel: 081-207 0122. Ref: 633/287.

Closing date: 8th June 1990.

Application forms available from Address No. 4.

### Community Services Services for elderly people — North area

## SOCIAL WORK ASSISTANT

£9,879-£10,935 pa inc.  
plus essential car allowance  
and interest free car loan  
scheme

We are seeking a well organised, capable, articulate person to join our team, based in New Barnet providing services to elderly people.

Your work will involve assessing, and seeking to meet the needs of frail, dependent elderly people living in the Northern part of the Borough. A sensitive awareness of, and a strong commitment to, enabling the elderly to maintain their dignity and quality of life is essential, as we wish to enable them to make real and informed choices about their future.

A willingness to participate on a rota basis in the team's duty system is also essential, as is the ability to drive.

Experience of working with elderly people and their carers, in a voluntary or other capacity will be an advantage. Supervision and in-service training will be provided.

As part of its equal opportunities policy Barnet welcomes applications from black and ethnic minority communities, who at present are under-represented in this area of work.

Informal enquiries welcomed by Roy Clark on 081-449 5511. Ref: 633/107.

Closing date: 8th June 1990.

Interview date: 27th June 1990.

Application forms available from Address No. 4.

## PART-TIME CLERICAL ASSISTANT

£4,716-£5,388 pa inc.

(20 hour week)

We are looking for a part-time Clerical Assistant to work at Springwood, a Day Centre for physically frail and mentally infirm older people in Springwood Crescent, Edgware.

You would be responsible for all the clerical/administrative tasks generated by the Centre's management team and for the provision of information for Departmental purposes. Specific duties include: receipt of telephone calls, maintaining the Centre's petty cash and amenities fund, undertaking any typing required, and a wide variety of other clerical duties.

You will have some clerical experience, typing skills, and the ability to maintain a system such as the petty cash account. As the work involves some contact with our clients, we are looking for a person who is sympathetic to the needs of both older people and clients from ethnic minorities.

Hours: preferably 8.30am-12.30pm, Monday to Friday, but some flexibility can be negotiated. Enquiries welcomed by Mrs S. Rogers, tel: 081-958 8123/4. Ref: 633/680.

Closing date: 8th June 1990.

Application forms available from Address No. 4.

## TEMPORARY PART-TIME SENIOR CLERK/TYPIST

18 hrs per week

£4,546-£4,849 pa inc.

We are looking for an efficient, reliable person to provide typing and clerical support to our small team of Occupational Therapists and Social Work Assistants based in East Finchley.

The position will be temporary until 30th April 1990.

You will undertake a variety of duties including copy and audio typing, answering the telephone and maintaining a filing and index system. You should also be used to working with minimum supervision and be able to oversee the work of two Clerk/Typists.

There is the option of working your 18 hours during 5 mornings or 5 afternoons per week.

Enquiries are welcomed by Mrs K. Moody, tel: 081-446 4354. Ref: 633/1103.

Closing date: 8th June 1990.

Application forms available from Address No. 4.

### Care for elderly people

## PART-TIME CARE ASSISTANT

£3.83 min. per hour

The Cedars is a small residence for elderly people in New Barnet

We are looking for a caring person, who can help undertake physical care tasks for

our residents by helping them at toilet times and with washing, shaving, shaving the toilet.

You will work 20 hours per week on a rota basis. When on duty you will be on duty or public holidays an approved rate of pay will be paid.

Closing date: 8th June 1990.

Please apply to Mrs P. Burwell, The Cedars, 12 Richmond Road, New Barnet, Herts. Tel: 081-449 9262.

## TECHNICAL SERVICES

### Architecture Group

## TECHNICAL ADMINISTRATIVE ASSISTANT

up to £2,699 pa inc.

The Building Services Maintenance Unit provides programmed maintenance to all the Council's non-housing premises and as part of this team, you will be providing front-line support in the shape of orders and invoice processing on our computer system.

It's a role that calls for at least two years administrative experience, ideally within a technical environment and your keyboard skills should exceed 20-40 wpm. Not only will you have sound knowledge of computerised record and retrieval systems, but you should have the ability to draft reports and ideally have report writing experience and some knowledge of building contract conditions.

In addition to a competitive salary, we offer a range of benefits including 26 days holiday, BUPA discount, an excellent pension scheme and participation in the flexible working hours scheme. Ref: DTS/MET.

For more details about this opportunity, contact Ray McNeill, Chief Surveyor (Building Maintenance) on 081-446 8511 ext 4319.

Closing date: 7th June 1990.

Interview date: 21st June 1990.

Application forms available from Address No. 4.

## where to apply

1 Recruitment Office, 16-17 Sentinel Square, Brent Street, Barnet, London NW4 3EH. Tel: 081-202 8202 ext. 2372. Tel: 081-202 8802 (24 hour answer service).

2 Assistant Controller (Support Services), Barnet House, 1255 High Road, Whetstone, London N20 0EL. Tel: 081-446 8511 ext. 4464.

3 Director of Educational Services, Town Hall, Friar Barnet, London N11 3DL. Tel: 081-363 1355.

4 Director of Social Services, Ivy House, 1331 High Road, Whetstone, London N20 9HZ. Tel: 081-446 8897 (24 hour answer service), or 081-446 1656 ext. 4213.

5 Borough Librarian, Ravensfield House, The Burroughs, Hendon, London NW4 5BE. Tel: 081-272 5625 ext. 45.

AN AUTHORITY COMMITTED TO EQUAL OPPORTUNITIES

LONDON BOROUGH  
**barnet**

AN AUTHORITY COMMITTED TO EQUAL OPPORTUNITIES



Community Services

### **REGISTRATION AND INSPECTION OFFICERS**

**£17,655 - £19,137 pa inc.**

Increased demands on local authorities, due to the Registered Homes Act 1984, and the requirement to establish free standing inspection units as part of the Government's White paper "caring for people", have led to the creation of this key position.

The Inspection Unit will have an important role to play within our newly restructured Directorate, ensuring that the principles of a quality service are put into practice and that common standards are set and maintained, in both the directly provided and independent sectors.

Currently the Authority has over 60 lettings registered under the Act, providing over 1600 places across all the major user groups. A considerable number of new enquiries are regularly received.

This is an opportunity to play a leading role in shaping the Directorate's response to these new and wider demands. It is therefore essential, that you are an effective communicator, who has the ability to bring about change, whilst acting sensibly and sensitively in an enforcement role.

The position will suit someone with experience as an Inspection Officer, home owner or manager within the independent or voluntary sector, or who has nursing or therapy skills. A social services background would be an advantage.

A flexible approach is essential, as periodic out of hours visits are required. Although the post is full-time, some consideration will be given to part-time hours or Job Share.

For further details please contact Geoff Fish, Controller of Environmental and Consumer Services, Tel: 081-446 8511 ext 4805. Ref: 9/2/1180.

Closing date: 8th June 1990.  
Interview date: week commencing 25th June 1990.

Environmental Health

### **STUDENT ENVIRONMENTAL HEALTH OFFICER**

**£6,900 - £9,699 pa inc.**

If you have enthusiasm and commitment, we can offer you the opportunity to embark on a worthwhile career in Environmental Health.

You will be part sponsored by the London Borough of Barnet to study for a 4 year BSc Honours Degree in Environmental Health. The Course is at Thames Polytechnic, and will include periods of practical training within our Department.

The minimum qualifications required are, 5 GCE/GCSE passes including English Language, Mathematics and Biology (or another Science subject), plus 2 subjects at 'A'-Level, one of which must be a Natural Science.

The salary quoted is payable during practical training periods only. This will be on a pro-rata basis, in addition to any education grant obtained. The starting salary will depend on age and qualifications. Progress through the grade will depend on future examination success.

For further information, telephone Andrew Benstead on 081-446 8511 ext 4761. Ref: 9/2/1150.

Closing date: 8th June 1990.

### **CLERICAL ASSISTANT (JOB SHARE)**

**£4,546 - £4,849 pa inc.**

Barnet is one of London's largest and most attractive boroughs combining as it does, a semi-rural environment with pleasant residential areas. Currently, we have a vacancy for a Clerical Assistant, to work at our Stag House Office, Burnt Oak, Edgware.

The role will mean working Thursday and Friday 9am - 5pm and Wednesday 1pm - 5pm. Duties will include supervising a team of Clerical Assistants, raising, monitoring and controlling repairs to the Department's housing stock using a VDU. It will also be your responsibility to ensure that all filing and other office work is carried out efficiently. Ref: 9/1/3271.

Closing date: 8th June 1990.

Community Services

### **JOIN US NOW AS A RESIDENT CARETAKER OR RELIEF CARETAKER**

**£145.00 per 39 hour week**

We're looking for 2 people with a hardworking and enthusiastic attitude, a high standard of cleanliness and a willingness to help people.

Your duties will be varied, including identifying and reporting repair work, cleaning, dealing with emergencies, taking care of refuse systems and providing advice and assistance to residents. Priorities are changing all the time, therefore the duties are never predictable.

A diplomatic and confident manner is essential. You'll need to be authoritative and accustomed to working with the public, handling complaints and able to deal firmly with difficult tenants. Previous Caretaking experience would be useful but is not essential.

The Resident Caretaker position will be located in the Finchley area, 2 bedroomed accommodation will be provided, although not necessarily in Finchley.

The Relief Caretaker position will be provided with similar accommodation, and will be required to undertake caretaking duties at Housing Estates throughout the Borough, when and where required.

Although the accommodation provided is free, you will be liable for the Community charge, for which there will be a payment of £11.45 per week.

The other benefits this post attracts include, a good wage, paid overtime, and the opportunity to join an excellent pension scheme. Ref: CAM/RC (1).

Closing date: 8th June 1990.

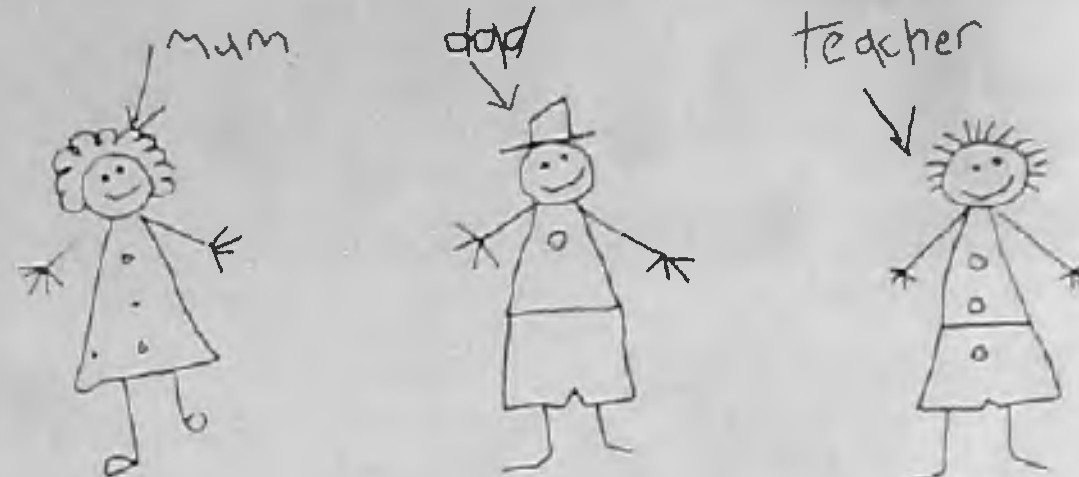
Application forms available from the Recruitment Office, London Borough of Barnet, 16/17 Sentinel Square, Brent Street, Hendon, NW4 2EN. Tel: 081-202 8282 ext 2372 (081-202 6602 outside office hours).

AN AUTHORITY COMMITTED TO EQUAL OPPORTUNITIES



## PRIMARY TEACHERS

After mums and dads, probably the most influential figure in a young person's life.



In Enfield, we recognise the central role that a teacher plays in a child's development. We offer:-

## ALL TEACHERS

- wide scope for professional development
- strong advisory team and thriving teachers' centre
- excellent opportunities for promotion
- job share register
- flexible approach to meet your requirements
- possibility of nursery places in local schools

## RETURNING TO WORK

- taster courses
- individual career counselling
- returners courses - to brush up your skills

## FINDING OUT MORE

Whether you are available NOW or SEPTEMBER we would like to talk to you.

Contact Karen Graham (081 - 982 7373) for more details and a comprehensive information pack or write to Education Personnel Unit, PO Box 56, Civic Centre, Enfield, EN1 3XQ.

## TEACHING IN ENFIELD ... LEARNING AND GROWING TOGETHER



An Equal Opportunity Employer

## Barnet Council brings in a new committee structure

Following the Annual Meeting of the Council in May, Barnet Council has introduced a new committee structure. It is part of the new strategy which establishes Barnet Council as a business-like, caring organisation. In the words of Max Caller, Chief Executive, "the Can Do Council."

### Some change, some don't

Some committees, such as Grants, Public Works, Social Services, Town Planning and Research are virtually unchanged.

Education Committee now has only two main sub-committees reporting to it.

The former Development and Estates and Libraries and Arts committees are now brought together under the Recreation, Leisure and Arts Committee; and Housing and Environmental Services Committee has a wider responsibility than the former Housing Committee taking in environmental health.

A major introduction is the Policy and Resources Committee which has a series of executive committees reporting to it.

Members of the public are welcome to attend all major committees, executive committees and sub-committees which are held at the Town Hall, The Burroughs, Hendon. These committees are listed below.

## COMMITTEES & SUB-COMMITTEES OF BARNET COUNCIL

### EDUCATION COMMITTEE:

Chairman, Cllr Victor Usher; Vice-Chairman, Cllr Olwen Evans

#### Schools and General Purposes Sub-Committee:

Chairman, Cllr Anthony Antoniou; Vice-Chairman, Cllr John Tiplady

#### Further Education Sub-Committee:

Chairman, Cllr Chris Platford; Vice-Chairman Cllr John Hedge

### GRANTS COMMITTEE:

Chairman, Cllr Gillian Bull; Vice-Chairman Cllr Malcolm Lester

### HOUSING & ENVIRONMENTAL SERVICES COMMITTEE:

Chairman, Cllr John Rawles; Vice-Chairman, Cllr Malcolm Lester

### POLICY & RESOURCES COMMITTEE:

Chairman, Cllr Leslie Pym; Vice-Chairman, Cllr John Perry

#### Budget, Financing & Performance Review Executive Committee:

Chairman, Cllr John Perry; Vice-Chairman, Cllr Brian Salinger

#### Land & Buildings Executive Committee:

Chairman, Cllr Leslie Sussman; Vice-Chairman, Cllr Anthony Antoniou

#### Personnel Executive Committee:

Chairman, Cllr Fred Poole; Vice-Chairman, Cllr Leslie Sussman

#### General Executive Committee:

Chairman, Cllr Melvin Cohen; Vice-Chairman, Cllr Rene Palmer

#### Direct Service Organisations Executive Committee:

Chairman, Cllr Leslie Foster; Vice-Chairman, Cllr Victor Usher

### PUBLIC WORKS COMMITTEE:

Chairman, Cllr Don Goodman; Vice-Chairman, Cllr Fred Poole

### RECREATION, LEISURE & ARTS COMMITTEE:

Chairman, Cllr Victor Lyon; Vice-Chairman, Cllr John Hart

### SOCIAL SERVICES COMMITTEE:

Chairman, Cllr Barbara Langstone; Vice-Chairman, Cllr Joan Levinson

### TOWN PLANNING & RESEARCH COMMITTEE:

Chairman, Cllr John Tiplady; Vice-Chairman, Cllr Denis Dippel

#### Central Area Planning Sub-Committee:

Chairman, Cllr Mary Phillips; Vice-Chairman, Cllr Melvin Cohen

#### Northern Area Planning Sub-Committee:

Chairman, Cllr John Tiplady; Vice-Chairman, Cllr Don Goodman

#### Western Area Planning Sub-Committee:

Chairman, Cllr Denis Dippel; Vice-Chairman, Cllr Sheila Scott

## Councillors and MPs surgeries

### Chipping Barnet

Sydney Chapman, MP, first Saturday of month 10.30am to 12 noon, 163 High Street, Barnet.

**Arkley Ward:** Contact councillors Anita Campbell 440 2703, Pam Coleman 449 6254; Kevin Smith 440 4828.

**Brunswick Park Ward:** Conservative councillors available second Saturday of month. 10.30am to 12 noon, Monkfrith Boys' Club hall, Osidge Lane, N14

**East Barnet Ward:** Cllr Olwen Evans (Conservative), first Saturday of month 10.30am to noon, Community Centre, Victoria Rd, New Barnet. Contact Cllr John Perry 368 4368, or Cllr Jim Anani 440 2703, for personal appointment.

**Hadley Ward:** Councillors Gillian Bull, Liz Mammatt and Ashley Newman hold a surgery on the third Saturday of every month at 163 High Street, Barnet, 10.30am to noon.

**Totteridge Ward:** Contact Conservative councillors Joan Levinson 368 3298, Victor Lyon 446 4423, Victor Usher 445 4248.

Labour councillors available third Saturday of month 10.30 to 11.30am, 104 East Barnet Rd, New Barnet.

### Finchley & Friern Barnet

Margaret Thatcher, MP, holds regular surgeries for constituents only. Appointments can be made by phone: 445 4292 or 445 0856 (24hr message line).

Conservative councillors, first Saturday of month, 10.30am to noon, 212 Ballards Lane, N3 or phone as above.

**East Finchley Ward:** Labour councillors every Saturday, 10am to 11.30am, East Finchley Neighbourhood Centre, Church Lane, N2.

**Finchley Ward:** Cllr Eva Greenspan surgery first Friday of the month between 10.30am and 12 noon or contact councillors Barbara Langstone 445 5443, Eva Greenspan 203 1598, Leslie Sussman 346 6775.

**St. Paul's Ward:** Surgery every third Saturday of the month 10.30am to 12 noon at 212 Ballards Lane, Finchley, or phone Cllr Mike Freer 446 5396, Cllr Helena Hart 346 3128, Cllr Mary Phillips 445 9426

**Woodhouse Ward:** Labour councillors Mike Harris, Dennis Reed and Stan Cross, every Thursday, 6.30-7.30pm, Friern Barnet Town Hall, N11. Also Saturdays at Tally Ho, Finchley.

**Friern Barnet Ward:** Surgery every third Saturday of month at 212 Ballards Lane, Finchley or contact councillors Chris Platford 368 6817; Brian Salinger 368 1329; John Tiplady 445 5734.

### Hendon North

John Gorst, MP, by appointment. 959 1446 or via constituency office. Apex Parade, Selvage Lane, Mill Hill.

**Edgware, Hale and Mill Hill Wards:** Conservative councillors, constituency office, fortnightly on Mondays or by appointment 959 1446.

**Burnt Oak Ward:** Contact Labour councillors Malcolm Sargeant 455 1070; Gerald Shamash 458 2679; Alan Williams 906 0576. Also every Saturday, 10.30am to noon, Labour Hall, Back Lane, Burnt Oak 952 5771.

**Colindale Ward:** Councillors Ellis Hillman 202 7792; Tom McKendry 444 0594; David Williams; available first and fourth Saturday each month, 2-3pm, St Augustine's, Grahame Park.

### Hendon South

John Marshall, MP, via constituency office, 202 7484 by appointment, see local press for details.

**Hendon, Garden Suburb, Golders Green:** Conservative councillors - by appointment, first Saturday of month, 202 7484.

**Childs Hill:** Liberal Democrat councillors every second Tuesday of month 7-8pm, Garth Hall Community Centre, Mortimer Close, Granville Rd, NW2. Contact Cllrs Cohen 445 398; Palmer 455 5140; Stone 450 0762.

**West Hendon:** Labour councillors every second Saturday of month 11am, West Hendon Youth Club, 4A Park Rd. NW4 by appointment. Contact Cllr Sims 734 8080; Cllr Doreen Neall 202 9927; Cllr Agnes Slocombe 202 4074.

### Euro MP

Pauline Green. Contact on 365 1892.

## Students look for higher things

EVERYTHING they ever wanted to know about higher education but were afraid to ask.

That was what over 1,500 Barnet sixth-formers and college students were able to find out at the Higher Education Conference held by Barnet Council Careers Service at the RAF Museum, Hendon, on Thursday 10 May.

Their questions on subjects ranging from arts to environmental sciences, student life to graduate careers, were answered by offi-

cers from the council's Education Awards Section and 50 delegates from universities, polytechnics and colleges.

The conference has a high reputation among academic establishments in Britain, many of whom take part.

Its main achievement is ensuring that Barnet students are well briefed and prepared for the decisions that confront them in their choice of higher education and career.



# Vernon Tutbury

Makers of exclusive bathrooms at

# GODWIN'S



## ● The CLAREMONT Bathroom ●

Simple, geometric purity of early Art Deco which has a particular contemporary appeal. A perfectly proportioned angled theme, echoed in everything from basin through to tiles.

	White
62 cm Basin	£209
Pedestal	£105
Close Coupled WC	£363
Ash Seat C/P fittings	£90
Claremont Bath 170 X 75	£346
Ash Front Panel	£250
Ash End Panel	£145
Claremont Shower Mixer	£450
Claremont Basin Mixer	£163
Claremont Basin Taps	£99

Prices +VAT

## ● The COTSWOLD Bathroom ●

Strong, romantic influence with a choice of seventeen decorative options including 6 subtle background colours, to complement the gentle curves of the porcelain.

	White	Dec
56 cm Basin	£172	£245
65 cm Basin	£200	£280
Pedestal	£50	£72
WC Pan/Barrell Cistern	£277	£485
WC Pan/Box Cistern	£264	£380
WC Seat	£96	£96
Bidet	£158	£200

Prices +VAT

Exclusive colour +40% Approx.



Basin & Pedestal Lavender with Ribbons from £430  
Prices +VAT

**PACKAGE DISCOUNTS**  
To Personal Callers  
**PLEASE ASK!**

- ◀ COTSWOLD WC Barrel Cistern
- COTSWOLD
- ▶ Box Cistern

**Taps & Accessories**  
Choice of  
Antique Gold  
or Chrome

- ▲ COTSWOLD Bidet
- COTSWOLD
- ◀ Basin & Pedestal



Main Showroom  
28 Rushgrove Avenue  
Colindale NW9  
Tel: 081-200 0508

Trade Centre  
4/5 Apex Parade, Selvage Lane  
Mill Hill NW11  
Tel: 081-959 3344

Shower & Clearance Centre  
49 Church Road  
Hendon NW4  
Tel: 081 203 1095

Trade & Showroom Centre  
176 High Road  
East Finchley N2  
Tel: 081-444 2311

Central London Showroom  
103 Lancaster Road  
Ladbroke Grove W11  
Tel: 071-792 8091