

Barnet



CIVIC NEWS

No. 25: January 1982

Singing their New Year greetings



Singing their New Year greetings are the members of Henrietta Barnett School Madrigal Choir. At the December library lecture in Hendon Library they joined their music teacher, Mrs Joy Richardson, to illustrate her lecture on traditional madrigal singing, linking two Elizabethan eras.

Barnet Borough Development Plan

We invite residents to send in their views on local employment policies. Help us to plan the future of our Borough. See pages 6 and 7.

GRAYT EXPECTATIONS £500,000 SALE

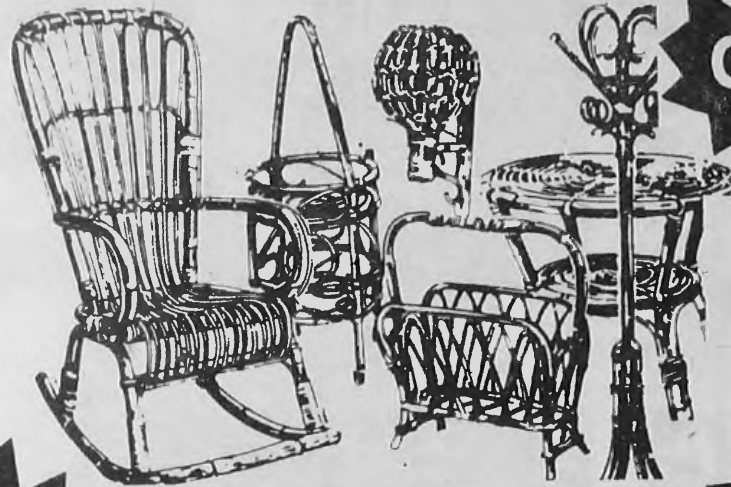
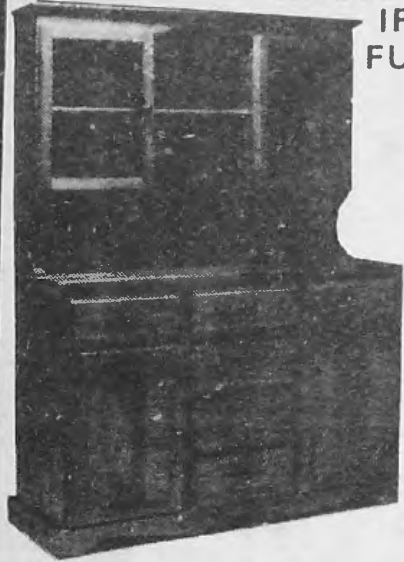
LEADING BRAND NAME FURNITURE

IF YOU'VE EVER CONSIDERED BUYING PINE FURNITURE (OR EVEN IF YOU HAVEN'T) YOU MUST BUY NOW!

DRESSERS, TABLES, CHAIRS,
CORNER UNITS,
BEDROOM FURNITURE,
ETC., ETC.

SOLID SCANDINAVIAN
PINE DRESSERS
FROM £99!

CHEST OF DRAWERS
FROM £35



CANE FURNITURE

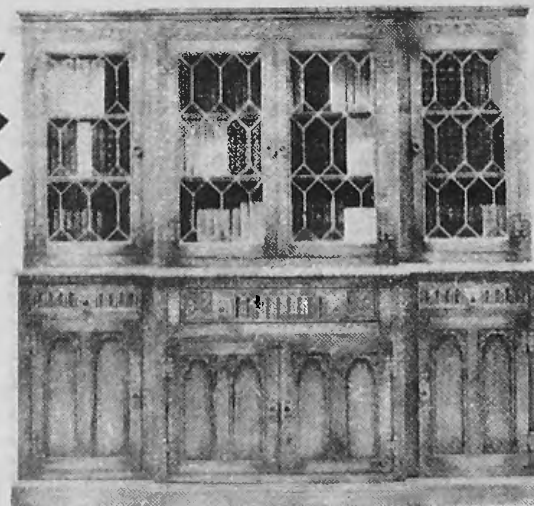
EVERYTHING
REDUCED FROM
PLANT HOLDERS
TO THREE PIECE
SUITES

FANTASTIC KITCHEN OFFERS ON LEADING BRAND NAMES

Bosch Double Oven when you spend	£1,400 or more
Bosch Dishwasher when you spend	£1,200 or more
Bosch Refrigerator when you spend	£ 875 or more
Tefal Super Fryer when you spend	£ 150 or more
Russell Hobbs Perculator when you spend	£ 150 or more
Sandwich Maker when you spend	£ 150 or more
Holiday Accommodation when you spend	£ 150 or more
Castle Gas Hob when you spend	£ 775 or more
Maxmatic Waste Disposal when you spend	£ 775 or more

(Exclusive of V.A.T.)

FREE



OAK FURNITURE

UNREPEATABLE
OFFERS
ON "OLD CHARM"
LOUNGE UNIT £243
69½" (APPROX.)

VAT FREE ON OAK
FURNITURE

454 FORE STREET EDMONTON, N.9.

Telephone 01-807 8606 and 01-807 2482

FULL PLANNING AND FITTING SERVICE ON KITCHEN

J & H FURNITURE LTD

Furniture Wholesalers Established Over 20 Years Selling Direct to the Public

SAVE UP TO 40% ON RETAIL PRICES

SALE NOW ON



Large range of Stanley Wood Oak Furniture at colossal savings.

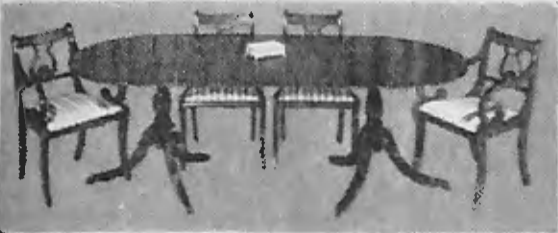
Reproduction Wall Units from Brenner, Beutilux, Meredew, Heritage, Beresford & Hicks from £209.



5ft 3in Mahogany Units £299

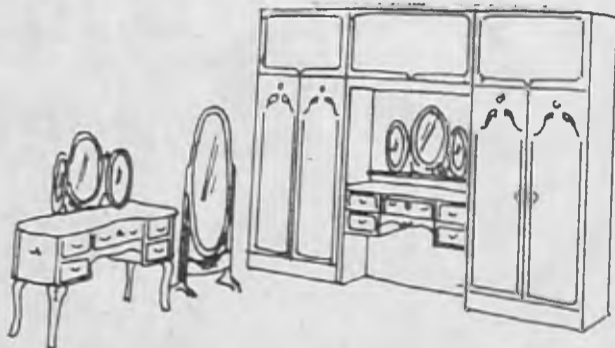


Mahogany Book Case 3ft x 6ft High £199



7ft Dining Table, 6 Solid Mahogany Chairs including 2 carvers from £299 complete. 5ft Dining Suites from £249 complete. 7ft and 8ft 8in Regency Tables with range of 12 types of Mahogany chairs.

Solid Mahogany Dining Chairs from £29. Hi Fi Cabinets from £99. Regency Hall Tables from £29. Nests from £39.



French Style or Plain White Bedroom Units up to 9ft wide, 7ft 4in high, from £250 complete.

Kidney or Serpentine shape Dressing Tables from £55.

Large range of chests and bedside cabinets to match.

NO GENUINE FIRM CAN COMPETE WITH OUR VAST RANGE, QUALITY AND SERVICE. BEFORE & AFTER SALES. ALL THIS AND ROCK BOTTOM PRICES TOO!

SHOWROOMS: 72 CHASE SIDE, ENFIELD, MIDDLESEX. (Close to Parsonage Lane) TEL: 01-366 2437

INSTANT CREDIT NOW AVAILABLE

Open 10am to 5:30pm Monday, Tuesday, Thursday, Friday, Saturday.

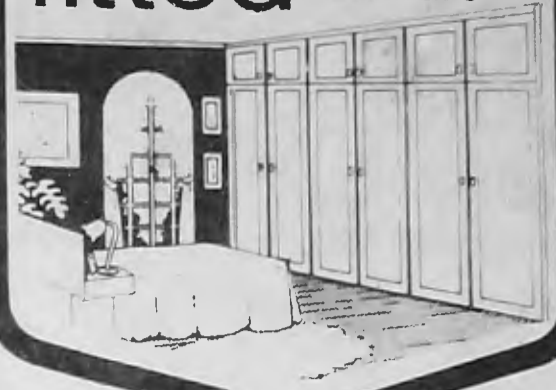
Free delivery. Barclaycard, Access Welcome.

EXAMPLE PRICE

THREE BEAUTIFUL DE-LUXE DOUBLE WARDROBES IN SATIN MELAMINE, DIVISIONS & BACKS (NO EXTRA) FLOOR TO CEILING WITH TOP & SIDE SCRIBED PANELS AND COVERING 12ft WIDTH £489 PLANNED AND FITTED.

FULL RANGE OF DESIGNS AT OUR FACTORY AND SHOWROOM.

fitted bedroom furniture



also now available

BESIDES OUR NORMAL DE LUXE FITTED WARDROBES WE NOW ALSO OFFER A SIMPLE RANGE OF WARDROBE FRONT UNITS INCLUDING SHELF, HANGING RAIL AND BOTTOM BASE FLOOR TO CEILING FITTED TO YOUR EXACT WALL SIZE

from **£30** per foot run

IDEAL HOME MAGAZINE SAYS -

"STATON FURNITURE IS QUITE A FIND"....."YOU BENEFIT FROM THE MONEY THE COMPANY MIGHT HAVE SPENT ON A CHAIN OF SHOWROOMS, SOME OF THESE SAVINGS ARE PASSED TO YOU IN LOWER PRICES, SOME IN EXTRA QUALITY."

Printed by kind permission of IDEAL HOME MAGAZINE.

Why Do It Yourself?

WHEN WE CAN SUPPLY & FIT FOR PROBABLY LESS THAN YOU WILL PAY FOR SELF-ASSEMBLY WARDROBES

WORKS PRICES STATON

FITTED FURNITURE LTD.

719 North Circular Road (North Side), London NW2

1/2 mile west of Brent Cross Shopping Centre (nr. flyover)

Phone 01-450 6581

Customer Parking. Also open Saturdays.

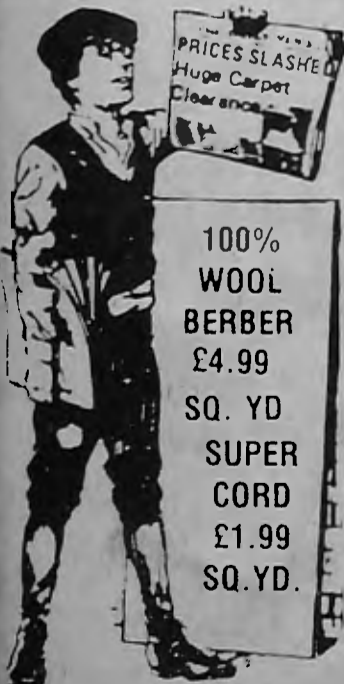
AMAZING JANUARY CLEARANCE SALE

WAREHOUSE CARPET BARGAINS

- * FREE FITTING on most orders over £100
- * FREE UNDERLAYS on all Axminsters
- * FREE ESTIMATING
- * FREE DELIVERY
- * ON PRODUCTION OF THIS ADVERTISEMENT

SUPER CARPET OFFERS - UP TO 50% REDUCTIONS ON ROLL ENDS

IDEAL FOR SMALL AREAS: i.e. Cars — Bathrooms — Caravans, etc. ALSO: HUNDREDS OF LARGE ROOM SIZES UP TO 30' x 12'



100% WOOL BERBER £4.99 SQ. YD SUPER CORD £1.99 SQ. YD.

NO OBLIGATION FREE HOME VISIT ESTIMATING FITTING



COSYFIT STRETCH COVERS MADE-TO-MEASURE

SATISFACTION GUARANTEED Old suites look as new

Quality cloth, Dralon, 100% nylon, etc. Wide range of colours and patterns (over 120) NO DESIGN TOO DIFFICULT ALL CUSHION COVERS WITH ZIPS Also available replacement foam cushions — all shapes.

Telephone for FREE Home Visit 804 6677, ext 15 Trade locally with

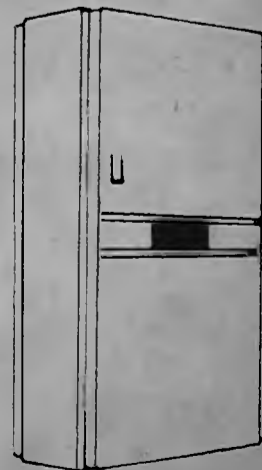
COSYFIT 62 MOTTINGHAM ROAD LONDON, N9

CENTRAL HEATING

INSTALLED BY THE EXPERTS COULD SAVE YOU UP TO 30%

We offer the most economical gas central heating boiler available! Your benefits:

- * Room to room warmth with guaranteed temperatures.
- * Instant hot water available anytime.
- * No wasteful cylinders or expansion tanks.
- * Each system designed and fitted to suit your home by our own trained engineers.
- * Full 12-month guarantee.
- * Free Estimates.



NO DEPOSIT TERMS WITH UP TO 10 YEARS TO PAY AVAILABLE UPON REQUEST **COMBI SERVICES LTD.**

01-881 1511

DIAMOND CARPETS WAREHOUSE

25 Oakleigh Road North Whetstone N20



Telephone 01-446 2105/6

J. & R. Floor Services Ltd. New Flooring Superstore

Announce their
1982 SALE AT 1981 PRICES



Ceramics

Carpets

Vinyls

- OVER -**
3,500 Ceramic
Floor & Wall
Tiles
- OVER -**
2,000 Carpets
& Carpet Tile
patterns
- OVER -**
2,000 Cushion Floor
patterns - including
Armstrong, Nairn, Gafstar,
& other leading makes.

We specialize in Nairn, Marley, Vinyl Tiles, Amtico Tiles, Cork, Cork-O-Plast
FREE ADVICE & ESTIMATES
EXPERT FITTING SERVICE AVAILABLE



**Up to 45% off
all ceramics**

**SPECIAL
SALE**
CORK-O-PLAST
103 NATURAL
£8.49 per
sq. yd.
+VAT.

We wish all our clients past, present and future a Happy and Prosperous New Year.

9 & 11 East Barnet Rd, New Barnet. Phone: 01-441 5311



Aubrey Harris Ltd

Suppliers of STATIONERY
OFFICE EQUIPMENT
FURNITURE
COMPUTER ACCESSORIES



SPECIAL OFFER

- FIRE RETARDANT TWEED FABRIC AND FOAM
- FULLY ADJUSTABLE
- DESIGNED FOR COMFORT

only £39-95 + VAT

for delivery to your door, phone:
01-449 9216

119-121 EAST BARNET ROAD
NEW BARNET, HERTS EN4 8RG

Cash and Carry Vegetable Shop

RETAIL & WHOLESALE

We sell Fruit, Vegetables, Logs, Coalite and Coal, all at very competitive prices.

**QUALITY FRESH FISH
FOR YOUR FREEZER**
LARGE 7/8 oz PIECES
Cod, Plaice, Rock and Haddock
£7 for 5 lbs £13 for 10 lbs


TRADE ENQUIRIES WELCOME

161 IVERSON ROAD, NW6
(off West End Lane, adjacent to Hampstead Garden Centre)
Tel 624 4854

PRIVATE PARKING FOR EASY COLLECTION

KEEP FIT

Learn
TAE KWON DO
(Korean Art of Self-Defence)
at: The North Finchley Trinity
Church Hall Ballards Lane
(Entrance in Dale Grove) N12
on Tuesdays and Thursdays
from 7 pm
The Kingsbury Swimming Pool
Kingsbury Road, NW9
on Wednesdays and Fridays from 7 pm
Instructors: S. W. PAN 3rd Dan,
A. PATEL 2nd Dan
Details: Call at the Training Centres



SCRAP METAL WANTED

WE PAY CASH FOR - SCRAP
30-TONNE WEIGHBRIDGE



(Entrance in goods yard — look for our crane)
Weekdays 8 am—5.30 pm. SATURDAY 8 am—12 noon

**NEW SOUTHGATE METALS LTD
(NSM) STATION ROAD
NEW SOUTHGATE, N11**
Tel: 368 5444

SALT

London Salt Co, Station Road, New Southgate, N.11, 883 6047

For Dishwashers,
Water Softeners
and Snow Clearing

FREE DELIVERY

Suppliers and
Installers of
Domestic
Water Suppliers

SUNBED
8 sessions - £2ea
10 sess. - £1.70ea
15 sess. - £1.50ea
(Free sauna if required with each session)

WE OPEN THE DOOR TO

**SAUNA
SUNBED
MASSAGE
FACIALS
BEAUTY
TREATMENT**

LADIES ONLY
Tues. Wed., Thurs.,
10am - 2pm
Sun. afternoons
2pm - 7pm

**EDGWARE
HEALTH &
BEAUTY
SALON**
96 HIGH ST.
EDGWARE
Tel: 952 5952

RELAXATION

Licensed by the London Borough of Barnet

SPECIAL OFFER
During Ladies sessions

SUNBED SAUNA MASSAGE FACIAL

only £8!!

also at our
COLINDALE SALON
at
291 EDGWARE RD., NW9
on
Thurs. evenings
7:30 - 10pm
for Ladies ONLY
Bookings: 952 5952
(No Sunbed)

LADIES ONLY PRICES
Massage - £3
Facial - £3
Sauna - £1.50

FURNITURE & BEDDING

Sale

LOW-LOW PRICES

Specialists for: SLUMBERLAND, SLEEPEZEE, SILENTNIGHT, DUNLO-PILLO, RELYON, VISPRING, REST ASSURED, SEALY, MYERS etc. etc.
Free Delivery in GLC AREA.

JOYSLEEP

220 THE BROADWAY, EDGWARE ROAD, WEST HENDON, NW9
01-202 2747



BARCLAYCARD
VISA

CREDIT FACILITIES AVAILABLE DETAILS ON REQUEST

Risoli Reproductions presents

- 7ft. Dining Table, 6 Chairs, inc. 2 Carvers, inc. Sideboard only £445
- 3ft. Bookcase £195
- 5ft. Bookcase £370
- 5ft. Serpentine Sideboard £185
- TV Cabinet £125
- Hi-fi Cabinet £110
- Corner Cabinet £89
- Bureau, Bureau Bookcase, Coffee Tables and Nests..... from £49

As manufacturers we offer excellent quality at highly competitive prices

Large Stock of Mahogany and Yew

Why not come and see for yourselves!

425 LONG LANE, FINCHLEY, N2
01-883 5997



Decorative Mouldings for Interior & Exterior use

Cornice, Arches, Columns, Niches, Ceiling Roses, Panelling, Fire Surrounds and Coal/Log Effect Fires

FOR FREE BROCHURE
Tele: 01 529 2327

Parkland Reproduction Mouldings
49-51 Station Rd, Chingford E4

ALL AIRPORTS AND SEASIDES ECONOMY CAR SERVICES 959 6473

HEATHROW — £10
LUTON — £12
GATWICK/STANSTED/SOUTHEND — £17
BRIGHTON — £25
EASTBOURNE & BOURNEMOUTH — £30

ADVANCE BOOKINGS

VIDEO FILM HIRE

THE BEST 500
FILMS ON VIDEO

£4 for 3 days. No deposit
No Membership
We deliver and collect
free in all areas

PHONE
01-445 4401

KKB
£2 MILLION STOCK MUST BE CLEARED
WE ARE CLOSING DOWN OUR KINGSLAND ROAD (Shoreditch) WAREHOUSE



KITCHENS UP TO 50% OFF BATHROOMS

Complete fitted displays, plus a huge stock of Schreiber, Olympic, Rational, Sarila, Lynley etc.
Up to 50% OFF

31 complete displays, plus a massive stock, including Lotus, Carron, Vogue, Twyford, Ideal Standard, must be sold at **Up to 50% OFF**

TILES! TILES!

A whole warehouse has to be emptied, over 1,000 ranges of English and Continental ceramic, wall and floor tiles.



TILES! TILES!

Plus a full department of slightly seconds at giveaway prices. Tile your room for the fraction of the real cost.

KINGSLAND KITCHEN & BATH CENTRE
78-96 KINGSLAND ROAD, LONDON E2. Telephone 729 4955
MON.-THURS. 9 a.m.-6 p.m. • FRI. 9 a.m.-1 p.m. • SUN. 9 a.m.-2 p.m.

CONTENTS

January, 1982

	page
Employment study.....	6 & 7
Your letters	10
Bells Hill homes	12
Frost damage.....	12
Caring for the homeless.....	15
Three special gifts	18 & 19
What's On	22 to 26
A question of security	28
Twin town Tempelhof	31
Home tutor scheme	34
New homes plan.....	37

EDITORIAL ADDRESS

Civic News,
London Borough of Barnet,
The Town Hall,
The Burroughs,
Hendon NW4 4BG
Tel. 202 8282, Exts. 71 & 479

ADVERTISING ADDRESS

Laurence Marshall
(Advertisers) Ltd,
Publicity House,
12 Genotin Terrace,
Enfield EN1 2AF
Tel. 01-366 4626/7, 01-367 0246

Barnet Civic News is a monthly magazine carrying news of Council activities and local voluntary organisations.

Civic News is distributed door-to-door throughout the borough, reaching more than 109,000 homes and businesses and further copies are sent to libraries and council offices. It is produced at no additional cost to the ratepayer, all costs being covered by advertising.

Editorial pages are edited jointly by Bill White, the Council's Press and Information Officer, and Rosemary Jude, Press Officer. Copyright of editorial matter, Barnet Council.

It is produced and published on behalf of the London Borough of Barnet by Laurence Marshall (Advertisers) Ltd.

Mayor's New Year message

WE STAND on the brink of a New Year and although I know that for our country as a whole and for our borough, 1982 will bring its problems and its challenges, I feel a personal sense of optimism as I look back over the past eight months of my mayoralty and ahead to the coming year.

There is a strength in this borough and a sense of purpose which will carry us forward in the face of all difficulties. There is a spirit of service which unites the members and officers of Barnet Council, the voluntary workers and the members of local organisations. There is an enthusiasm which springs up among the pupils in our schools and the young people of the borough even though they are facing one of the most difficult employment situations that we have seen in post-war years.

History and tradition

We have a borough in which we take great pride. It has history and tradition, its parks and open spaces make it one of the most pleasant places in which to live. But life is not static. On older industrial estates new industries are taking the place of those which have closed and are bringing new employment opportunities.

In my many visits to local organisations as Mayor of Barnet I have been greatly encouraged by the enthusiasm and enterprise being shown by groups and societies in all walks of life. The kindness and generosity of individuals who do not happen to be members of organisations is also very impressive.

In 1981 we were all horrified to see violence erupt on the streets of London and to learn of people whose frustrations and sense of grievance had driven them to such lengths.

This is why I feel greatly encouraged

in our own borough when I meet with the community leaders from the many religious and cultural groups resident in our borough and find that their outward-looking and constructive attitudes are building strong bridges between their members and the rest of the community.

Barnet is the richer because its residents come from many cultural and religious backgrounds and as we work together in the fields of welfare and charity we build up new strengths, new commitments, mutual respect and understanding.

As a former chairman of the Education Committee I know the tremendous part our schools and colleges are playing in preparing our children and young people for their adult years.

Parents, teachers and pupils share a tremendous sense of drive and dedication making sure that we offer the best possible opportunities in education so that the young may be encouraged to develop special interests and undertake projects and training which will enable them to cope with life today and become the leaders of the future. Our schools are leaping forward into the new technologies of computers and electronics and are working closely with local industries and employers. Although we cannot shield our school leavers from the effects of the national employment situation we can make sure they are well equipped to grasp opportunities as they arise.

So I stand by my optimism, confident that the challenges of 1982 will be met, and I wish to all residents of our London Borough of Barnet a peaceful, prosperous and stimulating New Year.

Rosa Freedman,
Mayor

CHILDREN'S AND ADULT WORKSHOPS

BARNET ARTS COUNCIL Workshop at Avenue House, East End Road, Finchley Central, can help you solve your publicity problems.

Instead of spending hours with felt tip pens or worrying about costs, groups and individuals can silk-screen their own posters at cost price. No advance knowledge of silk-screening or artistic talent is needed: just time and patience.

The print workshop is open on Thursday and Friday every week with a worker available on both mornings to provide technical advice and help. Users should phone in advance to book and bring the information needed on the poster with them, as well as any design ideas they have.

The project is new to Barnet but it in no way competes with commercial printers. It offers a facility to groups who could not otherwise afford posters and scope to groups who wish to put their own creative ideas into practice in their publicity. While the print workshop could be a great asset to voluntary and community groups in the borough, its success depends on response. Please support it by using it to the full.

The 1982 Spring term at the workshop is from January 11 to April 12 with half-term from

February 22-26. There are children's and adult workshops and the details are:

Children's workshops

Membership, 10p. Cost per session, 40p. Sessions from 5—6.30 pm.

Monday — Video, 10-16 year-olds (Ann Latimer). Learn to use video. Make your own TV stories and programmes.

Photography — 10-16 year-olds.

Wednesday — Silk-screening and printing, 10-16 year-olds (Maureen Rapanakis). Introduction to silk-screening and other ways of printing. Design and make your own poster and print. Bring an overall.

Drama, 8-10 year-olds (Mike Kelly). Basic theatre games, mime, improvisation around everyday situations.

Thursday — Art/craft, 7-12 year-olds (Ann Latimer). Painting, puppets and various art and craft activities from collage to junk modelling. Bring an overall.

Drama, 11-16 year-olds (Mike Kelly). Theatre games, improvisations around everyday activities and basic drama technique.

Adult workshops

Monday — 10—11 am. Dance/keep fit. (Pauline Cox). Shared creche. 75p a session.

Wednesday — 1.30—3 pm. Women's silk-screening group (Frances Sanders). Shared creche facilities. Introduction to silk-screening. Design your own print and poster. £3 a term and 50p a session.

Thursday — Drama, 2—4 pm (Mike Kelly). A new series of sessions for young people and adults who are interested in developing individual and group drama skills and who want to attend a daytime workshop. Beginners welcome. 75p a session (25p students and unemployed).

Friday — 10—11 am and 11.15 am—12.15 pm. Dance/keep fit. 75p a session.

Further information about all activities is available from the Arts Workshop Organiser, Ann Latimer at the Avenue House office. Booking can be made by telephoning 346 7120 (24-hour Answerphone service).

The workshop is assisted by the Borough of Barnet Youth Service.



4'6 PINE BEDS
INC MATTRESS
FROM
£149.

January Sale

NOW ON



PINE CHAIRS
FROM £24.95



PINE DRESSERS
FROM £99.00.

PINE TABLES
FROM £49.95

WHY PAY MORE?

WE CHALLENGE YOU TO FIND THESE BEDS AT LOWER PRICES

3' Divan Sets	£34.95	4'6" Vi Spring S/E Herald Divan Set	£337.00
3' Silentnight Contract Divan Set	£59.50	4'6" Sleepeeze Senator Divan Set	£253.00
4'6" Relyon Braemar Divan Set	£384.00	4'6" Dunlopillo S/E Saraband Divan Set	£337.00
3' Relyon Orthorest Divan Set	£124.50	3' Mattress	£19.95
4'6" Myers Jumbo Drawer Divan Set	£212.00	3' Stackbed Complete	£149.00
4'6" Slumberland Economy Drawer Divan Set	£179.50	3' Pinewood Drawer Divan Set	£179.00

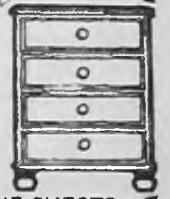


Open Sunday 10am to 2pm Monday to Thurs 9am to 5.30pm
Fri & Sat 9am to 6pm

WELDON'S

11 High Street, Barnet, Herts
Tel: 440 3174 5

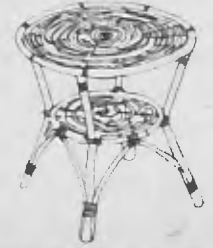
ALMOST OPPOSITE POLICE STATION
- FREE CAR PARKING AT REAR
ALL PRICES CORRECT AT TIME OF GOING TO PRESS



PINE CHESTS
FROM £29.50



PINE
WARDROBES
FROM £99.00



CY'S MENSWEAR LTD

205 BRAMLEY ROAD, OAKWOOD, N14
(Oakwood Shopping Parade) 367 - 3982

SUPER 1982 SALE AT LESS THAN 1981 PRICES SAVE UP TO 50%

	Usual Price	Sale Price
Shirts	£5.99 — £7.99	£2.99
Trousers	£17.95	£9.95
Cotton Jeans	£9.99	£4.99
Denim Jeans	£15.95	£9.95
Sweatshirts	£8.95 — £9.95 (Levi/Wrangler)	£6.95
Tee Shirts	£3.99	£1.99
Suits	£49.95	£24.95
Raincoats	£29.95	£19.95
Boys' Blousons	£9.95	£4.99
Boys' Trousers	£9.75	£4.99

Boss and Quest suits, assorted jackets, Honor built trousers.
Knitwear by Gabicci, Morley, Byford, Wolsey
Shirts: Leroy, John Langford, Arnold Palmer, etc.
Assorted Anoraks etc.
Levi, Falmer, Arnie, Wrangler Cords
Plus oddments and end of range stocks
at greatly reduced prices

MAKE YOUR NEW YEAR RESOLUTION BE WISE — BUY AT CY'S

COME & SEE THE BEST FITTED BEDROOMS IN TOWN

at your local



HENDON
9 Finchley Lane NW1
(Nr Odeon) 01-203 5767

WHETSTONE
1376 High Road, N.20 01-445 4853

HORNSEY
68A Park Road, N8 01-348 0493

ST. ALBANS
25 High Street, near
Cathedral 56-32553



FREE

12" FIDELITY
BLACK & WHITE T.V.
WITH ALL FITTED BEDROOM
ORDERS OF £ 500 OR MORE
HURRY - LIMITED OFFER ONLY
Bring this advertisement
with you for details

LOW, LOW PRICES

- CRAFTSMAN MADE
- FREE PLANNING & MEASURING to individual requirements
- PROFESSIONAL FITTING
- 3 YEAR GUARANTEE

For more details
TELEPHONE
01-515 5365
anytime
AND FREE BROCHURE



• TOP QUALITY RANGE OF
FITTED BEDROOM FURNITURE
to suit your home

TOPIC FOR TODAY: Employment

Four clear aims are set out in the new Topic Study on Employment:

- Retain the maximum number of jobs in the borough.
- Encourage more job opportunities in the borough, particularly in industry.
- Help the disabled to find employment.
- Assist where possible the satisfactory relocation of intrusive industries.
- To improve the environment of commercial areas.

Behind these objectives are figures that show a growing unemployment in the borough, particularly among the unskilled and school leavers — although the local situation is far better than London and national figures.

There is a swing from industry to commerce and trade.

There are 3,000 disabled people of working age in the borough.

And there is a shortage of land for industrial development and at the same time a number of industrial sites situated in mainly residential areas.

Employment is one of the most important issues to be covered by the Borough Development Plan. While local wealth largely depends on the state of the national economy, everybody living and working in the Borough will be affected by the Council's employment policies. The Employment Topic Study is mainly concerned with the Council's role in controlling the use and development of land for activities which provide jobs. It also provides a useful economic context for other topics covered by the Borough Development Plan.

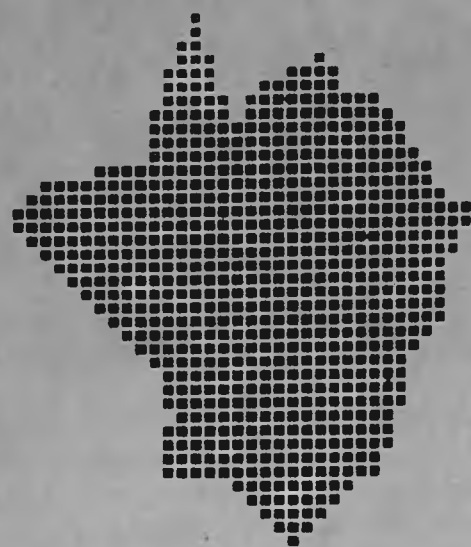
Barnet is not a major area of employment and big changes are not likely to occur in the pattern of employment in the Borough. The Council is committed to retaining the Green Belt and there is a shortage of vacant land in the built-up area for new development.

A large part of the Topic Study looks at the existing and possible future employment structure of the Borough in four parts:

Labour supply

There were about 155,000 workers living in Barnet between 1951 and 1971. Then there was a predicted sharp fall in the Borough's workforce between 1971 and 1981, but a slight rise of 2,800 (2%) is expected between 1981 and 1991.

Borough Development Plan



This expected increase is largely male since any rise in the number of working married women is almost offset by a predicted decline in the number of single, widowed and divorced women.

The 1971 Census showed that the Borough had a much greater proportion of professional and managerial workers than the average for Greater London or Great Britain and a relatively lower proportion of semi-skilled and unskilled workers.

Labour demand

Information about the number of jobs in the Borough shows a relatively static picture. A fall in the number of jobs from 1966 to 1971 has been followed by a slight rise to 1975 and a subsequent fall to 1977.

It seems likely that in the period to 1991 the number of jobs in the Borough will decline slightly from the past level of 100,000. However, this fall may be much greater if the introduction of new technology based on the micro-chip, such as word processors and mini-computers, leads to a rapid fall in demand for clerical jobs.

There has been a significant shift from employment in manufacturing, 26.5% of all jobs in 1966 to 16.8% in 1977, to the distribution and service sectors of the local economy, 49.6% in 1966 to 59.1% in 1977.

Floor space

From 1971 to 1976 there has been an overall increase in the floor area of buildings in the Borough associated with employment use, i.e. factories, warehouses, offices and shops. However, within this increase there has been a slight fall in the amount of industrial floor space in the Borough of 5.5%. This has been offset by an increase of about 13% in offices, 12% in warehouse floor space, and of 22% in shopping floor space, largely due to the opening of Brent Cross Shopping Centre.

A new Topic Study forming part of the Borough Development Plan has just been published and deals with employment. It takes a close look at the pattern of employment in the borough and the way this might change in the future.

The Borough Development Plan is an overall study of the borough looking into all aspects of local life such as housing, environment, transport, local services and population trends. It is a corporate exercise being prepared within the Borough's Planning Department with the assistance of other Council departments and is essentially an exercise in the gathering of information, policy making and consultation with local groups and individuals. By using this plan to guide development the Council will be able to influence the forms of new development to meet the needs of the community and preserve the best of our heritage.

Copies of the Topic Study are available from the Borough's Planning Department, Gateway House, 322 Regent's Park Road, Finchley N3, price £1.50. It can also be viewed or borrowed from public libraries. The Council hope that residents and those who work in the borough will send in their views and observations on the study to the Borough Planning Officer, at the above address, by the end of February.

Most of the major employment areas are concentrated along the main routes out of London, particularly the Edgware Road (A5), and in town centres; there are also many industrial and office sites scattered throughout the Borough. There appears to be a strong demand for commercial developments of all types in the Borough, but particularly for warehousing.

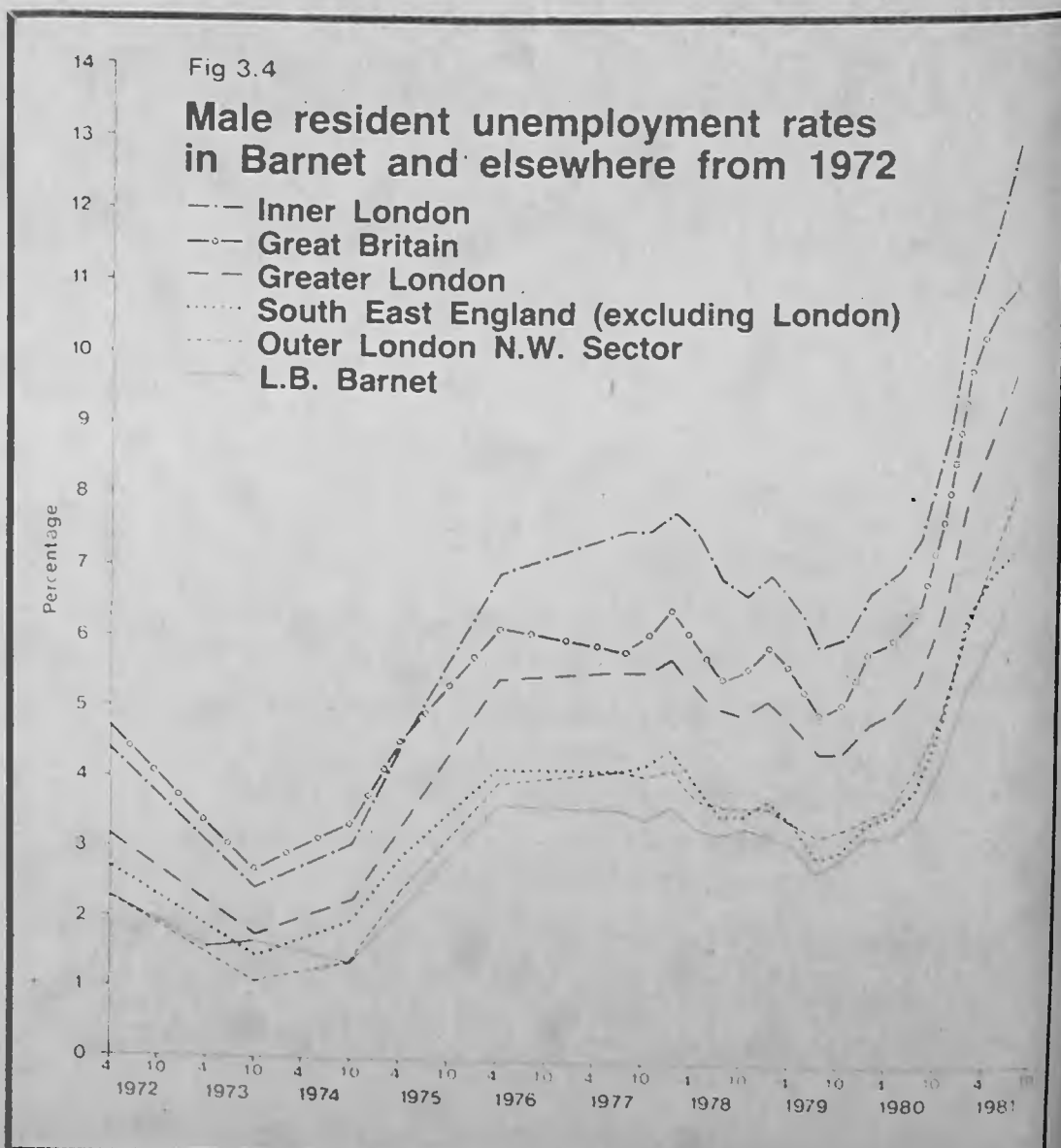
Unemployment

Compared to many other parts of the country Barnet appears to have a relatively healthy local economy. However, unemployment figures for the four employment exchange areas covering the Borough, show that Barnet has been suffering rising unemployment in common with the rest of the country.

The graph shows that the rate

of 7.4% for male unemployment in October, 1981, is slightly lower than the figure for the South-East (excluding London) and much lower than the rate for Greater London (10.7%) and Great Britain (11.8%). The number of young people unemployed is also relatively low compared to other areas of London and the country as a whole. However, the position is much worse than a year ago. The most serious problems of long-term unemployment in Barnet appear to be concentrated among the older age groups and unskilled workers.

Although unemployment in the Borough is high compared to historic levels, the number of vacancies notified to the Department of Employment suggests that to some extent there is a mismatch of skills rather than a severely flagging local economy.



Problems

The survey of employment in the Borough has brought to light some problems which fall broadly into two groups: employment structure, and environmental and land use.

Apart from the effects of recession it seems likely that there could be a shortage of jobs in future years.

Barnet has always been a net exporter of labour, particularly office workers, to other parts of London and the South-East. This gap between workers and jobs could widen if the number of workers increases as estimated and the number of jobs remains static or falls slightly.

The spread of new technology may reduce the number of office jobs in a similar way to the fall in manufacturing employment. Related to this is another structural problem, the shortage of skilled workers.

Perhaps the most serious land-use problem is the lack of sites for new development or expansion. Many firms in the Borough are located in residential areas, and some of them cause particular nuisance to residents. A separate problem concerns the poor environment in some mainly industrial and warehousing areas.

Detailed aims are set out to

deal with the specific problems and the final section of the Employment Topic Study outlines a set of suggested policies which should meet these aims. Many of these policies are concerned with retaining and creating the maximum number of jobs, especially industrial jobs.

It is suggested that new office development be encouraged in major town centres and other suitable areas.

New industry should be encouraged by the allocation of new sites; preparing planning briefs and guidelines for major private sites; and granting planning permission for industry on the fringe of town centres. It is suggested that warehouses should take up no more than 50 per cent of the floor space on new industrial development sites in order to provide the greatest number of local jobs.

On a more general note the Study suggests the promotion of an employment information service, adequate transport infrastructure for local firms, and facilities for disabled workers.

Finally, policies are suggested for relocation, where possible, of particularly intrusive industries, the environmental improvement of some commercial areas, and the good design of new commercial developments.



Osyth Peddar, a disabled member of Flightways Day Centre, Grahame Park, took this photograph of Ruby in the pottery workshop.

Speaking for themselves

Don't Speak for Me is the title of a touring exhibition which is an unpatronising documentary on the lives of some disabled residents of Barnet, recorded by disabled and able-bodied photographers.

It has been organised by CRAB (Community and Recreational Arts in Barnet) under the guidance of their resident photographer Maria Bartha whose work is well known to Civic News readers.

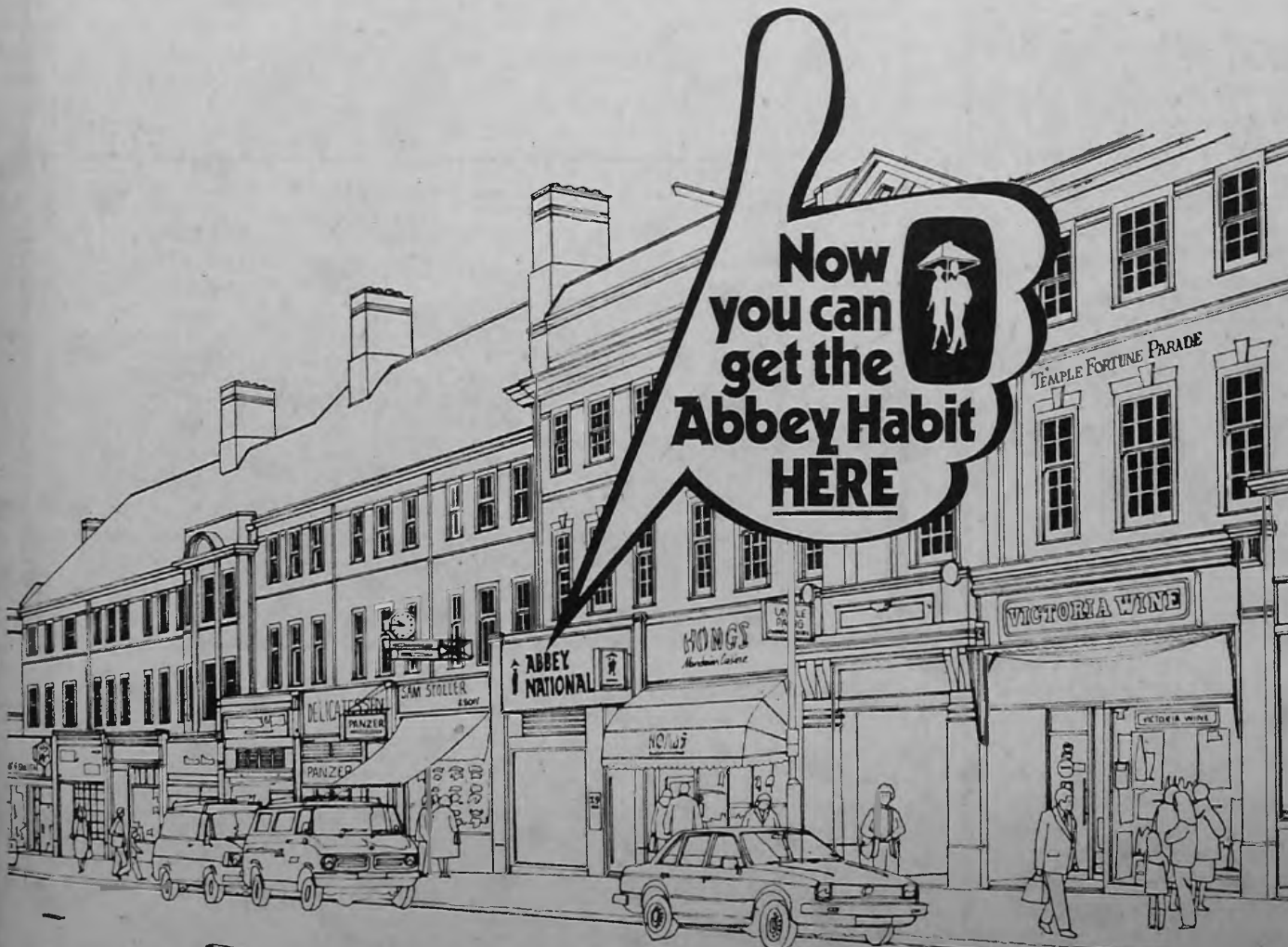
After being staged on a smaller scale in several local libraries the exhibition opens at the Old Bull Gallery, 68 High Street, Barnet, on January 11, remaining on view until January 28.

There will be a special view-

ing on Saturday, January 16, at 2.30 pm when Councillor Frank Gibson, chairman of the Council's General Purposes Committee will attend.

Maria, who organises photography workshops for disabled people at Flightways and John Grooms, is hoping that centres for disabled people will hire the exhibition and explore the possibilities of developing photographic skills as a social or even therapeutic interest. Many of the people she has taught, using specially adapted cameras when necessary, are showing their own work in the exhibition.

Details can be obtained from Maria Bartha, CRAB, Avenue House, East Eand Road, Finchley N3. Telephone: 346 7120.



We're now open at 29 Temple Fortune Parade, Finchley Road, which makes us your handiest Abbey National branch.

You'll find a warm welcome and a whole range of schemes to get your money growing. Share Accounts, Open Bond-shares, Build-Up Shares, Gift Cheques & Save As You Earn are all available. Some can even be started for as little as £1.

Ask Irene Ballard or any of the staff who are, Dot Holmes, Anne Trainor, Sue Massey and Jan Pepper, they'll be pleased to help.

And don't forget, Abbey National is the handy building society for everyone, with over 2,000 branches and agencies country-wide at your service.

Next time you're in Temple Fortune Parade, come on in.

We're open every weekday and Saturday morning too. Or ring us on 01-458 8038/9.

ABBNEY NATIONAL
The handy one

Abbey National Building Society,
27 Baker Street, London W1M 2AA.

EVERYTHING FOR THE GARDEN

ALL PLANTS, TREES
SHRUBS, DUTCH BULBS
SWIMMING POOLS AND CHEMICALS
GARDEN FURNITURE, PAVING
FENCING, SHEDS, ORNAMENTS
FLOWERING PLANTS AND
GREEN PLANTS FOR THE HOUSE

PERSONAL SERVICE, QUALITY GOODS
REASONABLE PRICES

OPEN 7 DAYS A WEEK UNTIL DUSK

THE DUTCH NURSERY
BELL BAR, HATFIELD
Tel: Potters Bar (77) 53372

BARGAIN SHEDS OFFER

Example: 6' x 4' £83.72 with the advert including delivery and erection.
All other sizes and types available.
Also all fencing materials.

H. W. Robinson Enterprises Ltd.

24 Stacey Avenue,
Edmonton, N18
Tel:
807 1118/3445
Mon.—Sat.
8 am—5.30 pm



Artstone
Garden Centre,
9 High Road,
Broxbourne
Tel: (61) 41313
7 days a week
10 am to 5 pm



FOR BETTER HOMES AND GARDENS

Levingtons

Sowing & Potting Compost

Godwins Peat £3.00 plus VAT

Forest Bark £1.85

Irish Moss Peat only £5.25

Also Available at Competitive Prices

Black & Decker Lawn Mowers, Hedge Trimmers, Chain Saws, Power Drills, Wolf Tools for Gardens & Lawns

Everything for the Home Building Enthusiast CARSONS SUNWAY PAINT STOCKISTS, PLUMBING, FITTINGS IN COPPER — PLASTIC AND CLAY PIPES, GUTTERING

M. SAUNDERS & SON LTD,
BUILDERS MERCHANTS
BEAONSFIELD POTTERIES
POTKILN LANE, BEAONSFIELD
TEL: 02407-4116 Ext. 10

IF YOU'VE GOT 50p YOU CAN AFFORD A COLOUR TV

FROM **EASIVIEW**

Only £5 deposit and £10.40 monthly brings you a 22in. colour set complete with stand and meter. Guaranteed no rental increase for at least two years.

Minimum rental period one year

Ring for your EASIVIEW TV now on 01-902 5345/6

EASIVIEW LTD

Unit 4, Fourth Way, Wembley, Middlesex

FURNITURELAND

Winter

NOW ON

SALE

SUITES

ARISTOCRAT 3 piece suite with recliner chair, a traditional button backed suite covered in Vienna Dralon
Normally £825.00

Sale Price **£799.00**

LO 3 piece suite, solid oak frame, reversible cushions
Normally £599.00

Sale Price **£429.00**

COLONIAL 3 piece suite with two wing chairs covered in Montana cloth
Normally £505.00

Sale Price **£445.00**

LIFESTYLE CORNER GROUP covered in easy clean velour
Normally £499.00

Sale Price **£335.00**

HENLEY 3 piece suite covered in plain velour reversible seat cushions, choice of colours
Normally £499.00

Sale Price **£365.00**

TOOTHILL MALAGA 3 piece suite with SHOWOOD frame covered in velour
Normally £815.00

Sale Price **£689.00**

BLENHEIM 2 seater suite with teak frame covered in green luxurious Dralon also available
Normally £659.00

Sale Price **£469.00**

BLENHEIM 3 seater suite as above BUT with 3 seater sofa
Normally £699.00

Sale Price **£499.00**

G-PLAN 3 piece suite in top quality M range cover
Normally £1,021.00

Sale Price **£599.00**

FLORENCE 3 piece suite inc recliner chair in silk effect Dralon
Normally £951.00

Sale Price **£799.00**

G-PLAN MIKADO 3 piece suite inc top quality cover ONE ONLY
Normally £930.00

Sale Price **£599.00**

RYHAD 3 piece suite covered in REAL LEATHER all over modern style
Normally £859.00

Sale Price **£795.00**

CABINETS

NEW JENTIQUE TURN-KEY RANGE Example 961 1 1/2 metre mahogany finish wall unit, HOME ASSEMBLY
Normally £295.00

Sale Price **£199.00**

965 D END TABLE plus 4 chairs to match above green tweed seats, HOME ASSEMBLY
Normally £315.00

Sale Price **£225.00**

3 DOOR SOLD 6ft LIVING ROOM UNITS teak finish
Normally £355.00

Sale Price **£299.00**

MCINTOSH KELVIN wall units TEAK FINISH K.V.1
Normally £420.00

Sale Price **£325.00**

K.V.4.
Normally £154.00

Sale Price **£119.00**

K.V.2.
Normally £436.00

Sale Price **£345.00**

G-PLAN 1 x 4388 FRESCO OVAL DINING TABLE, 4 X 4540 CHAIRS STICK BACK. Complete set
Normally £591.00

Sale Price **£439.00**

CAMBRIDGE TABLE & 6 Chairs plus 3ft wall unit display, American style furniture
Normally £629.00

Sale Price **£425.00**

G-PLAN CHEVRON RANGE 7. wall units COMPLETE GROUP
Normally £1,303.00

Sale Price **£835.00**

G-PLAN DINING SET comprising: HARVESTER 4406 table 4 x 4564 chairs cane back 2 x 4565 carvers. ELM FINISH
Normally £741.00

Sale Price **£555.00**

YOUNGER VOLNAY dining set 601 sideboard 611 table 6 x 621 chairs in OATMEAL TWEED. All in OILED TEAK SOLIDS & VENEERS
Normally £1,145.00 set

Sale Price **£775.00**

Plus wide range of occasional furniture including telephone seats, coffee tables, etc. all at GREATLY REDUCED PRICES.

JENTIQUE WALL UNITS, ALL GREATLY REDUCED, AMERICAN WALL FINISH. Example 405
Normally £129.00

Sale Price **£95.00**

CARPETS

CHALLENGER 4 Heavy domestic plain foam back. 7 year guarantee
Sale Price **£4.50** per sq yd

BOUCLE BERBER 50% wool foam back. 5 year guarantee
Sale Price **£4.95** per sq yd

CLERMONT Plain velvet hard back for use anywhere in the home
Sale Price **£5.00** per sq yd

SAMARRA Heavy domestic Berber 50% wool, 5 year guarantee
Sale Price **£5.50** per sq yd

ROYAL KINGDOM Twist & Berber twist heavy domestic 80% wool 20% nylon
Sale Price **£7.95** per sq yd

BERKLEY Heavy domestic pattern Axminster 80% wool 20% nylon
Sale Price **£11.95** per sq yd

WINDERMERE Heavy domestic pattern Axminster 80% wool 20% nylon
Sale Price **£11.95** per sq yd

WILTSHIRE Heavy domestic pattern Axminster 80% wool 20% nylon
Sale Price **£14.00** per sq yd

SELECTION OF PLAIN WILTONS 80% wool 20% nylon at
Sale Price **£8.75** per sq yd

FLOTEX 21 kitchen carpets as seen on T.V.
Sale Price **£8.50** per sq yd

SELECTION OF RUGS & CARPET SQUARES
Sale Price from **£9.00** upwards

VINYLS
Sale Price from **£1.80** per sq yd

BEDS

DORLUX 3ft Deep Drawer Divan Set
Normally £119.00

Sale Price **£99.00**

3ft Monarch Divan Set
Normally £59.50

Sale Price **£49.50**

4ft 6in Canberra Sprung Edge Divan Set
Normally £149.00

Sale Price **£129.00**

SLUMBERLAND 5ft Silver Seal Sprung Edge Divan Set
Normally £349.00

Sale Price **£315.00**

4ft 6in Red Seal Sprung Edge Divan Set
Normally £199.00

Sale Price **£175.00**

SLEEPEEZE 4ft 6in Connaught Sprung Edge Divan Set
Normally £375.00

Sale Price **£349.00**

NESTLEDOWN 4ft 6in Belmont Drawer Divan Set
Normally £149.00

Sale Price **£139.00**

3ft Belmont Drawer Divan Set
Normally £95.00

Sale Price **£85.00**

SILENTNIGHT DQ100 3ft Divan Set
Normally £74.00

Sale Price **£68.00**

4ft 6in Contract Drawer Divan Set
Normally £135.00

Sale Price **£129.00**

MYERS 4ft 6in Sterling Orthopaedic Divan Set
Normally £165.00

Sale Price **£155.00**

BEDROOM FURNITURE
AUSTINSUITE Commodore 5 Door Robe with Centre Mirror, teak & ivory finish
Normally £209.00

Sale Price **£189.00**

ALSTONS Carnival 7ft 6in Bedroom Unit, teak finish
Normally £225.00

Sale Price **£199.00**

CONSORT Bedroom fitment, cream:gold finish
Normally £209.00

Sale Price **£189.00**

- * FREE LOCAL DELIVERY
- * FREE REMOVAL OF OLD FURNITURE
- * FREE PARKING

FURNITURELAND

886/902 HIGH ROAD, NORTH FINCHLEY, N2
9AM-8PM MON-TUE; THUR-FRI. 9AM-6PM SAT-WED
TELEPHONE
MAIN — 446-5151/2 BEDS — 445-8355 CARPETS — 445-8381



HANOVER HOUSING ASSOCIATION

Warden and Assistant Warden at Hanover Court, Colindeep Lane, NW9. Free accommodation plus allowances are offered to two mature married couples for the above posts on this small estate provided for retired persons. The work is mainly Social and Administrative. Previous experience not essential. The spouse should have full outside employment. Vacancies occasionally occur in other parts of the country. Details and application forms from Hanover Housing Association, Sanford House, 5 Medwin Walk, Horsham, Sussex. Tel: Horsham (0403) 69197.

BARNET CIVIC NEWS IS DISTRIBUTED THROUGHOUT THE WHOLE OF THE BOROUGH OF BARNET FOR ADVERTISING RATES PHONE 366-4626

STOCKTAKING

SALE

**BARGAINS
BARGAINS
BARGAINS ON
TV, VIDEO & HI-FI
AT JMS RADIO**

EXRENTAL
Colour ^{from}
TV's **£49**

£50.00 OFF

SOLARA
22" Colour TV
with full remote control

WAS **£399.99** NOW **£349.99**

£40.00 OFF

BANG & OLUFSEN
20" remote colour TV
three years guarantee

WAS **£479.99** NOW **£439.99**

£30.00 OFF

MATTEL INTELLIVISION
3 dimensional TV
game with soccer cartridge

WAS **£199.99** NOW **£169.99**

£40.00 OFF

JVC
Video Recorder
10 day timer and
remote control

WAS **£539.99** NOW **£499.99**

TELEVISION

Hitachi 13"	£229.99	£209.99
Hitachi 20" remote	£379.99	£359.99
Grundig 16"	£249.99	£229.99
B&O 22" remote	£516.99	£489.99
B&O 26" remote	£599.99	£559.99
Expert 20"	£317.99	£299.99
Expert 22" remote	£399.99	£359.99
Solara 20" remote	£359.99	£329.99

VIDEO

JVC 7700	£719.99	£699.99
JVC HR2200	£599.99	£549.99
Hitachi VT8300	£539.99	£499.99
Hitachi VT8700	£639.99	£599.99
Sanyo 9300	£389.99	£369.99
B&O 8800	£719.99	£695.99

CAMERAS

Hitachi VKC750	£359.99	£329.99
Hitachi VKC800	£729.99	£689.99
JVC GX33	£399.99	£359.99
JVC GX88	£549.99	£499.99

AMPLIFIERS

Hitachi HA2800	£79.99	£69.99
Hitachi HA3800	£99.99	£89.99
JVC AX2	£129.99	£99.99

TUNERS

Hitachi FT3500	£84.99	£69.99
JVC TX2	£149.99	£134.99
JVC TX6	£179.99	£159.99

TURNTABLES

Hitachi HT20	£54.99	£49.99
Hitachi HT50	£84.99	£69.99
JVC LA31	£74.99	£69.99

CASSETTE DECKS

Hitachi D25	£89.99	£74.99
Hitachi D55	£129.99	£104.99
JVC KDD4	£169.99	£154.99
JVC KD35	£124.99	£114.99

SPEAKERS

Hitachi 8470	£54.99	£49.99
JVC SK41	£69.99	£59.99
Bose 301	£139.99	£99.99
Bose 501	£329.99	£289.99
Bose 601	£459.99	£399.99
Bose 901	£799.99	£629.99

BANG & OLUFSEN HI-FI

Beomaster 1700	£169.99	£139.99
Beocentre 3300	£399.99	£399.99
Beosystem 2400		£490.00

CB RADIO

DNT 40F	£94.99	£74.99
Fidelity 1000	£64.99	£59.99
Fidelity 2000	£84.99	£79.99

Big savings on accessories too

PLUS - OPTIONAL
FIVE YEAR PARTS &
LABOUR COVER ON
TV AND HI-FI AND
THREE YEARS ON VIDEO
ASK FOR DETAILS



£60.00 OFF

JVC
63 watt
amplifier
with built in
graphic equalizer

WAS **£199.99** NOW **£169.99**

£30.00 OFF

HITACHI
16" Colour TV
2 year guarantee

WAS **£269.99** NOW **£239.99**

1/2 PRICE

DEC
Stereo Radio
Cassette Recorder

WAS **£99.99** NOW **£49.99**

HITEC radio alarm clock

WAS **£29.99** NOW **£14.99**

SANYO mono radio
cassette recorder

WAS **£59.99** NOW **£29.99**

MAINS battery radio

WAS **£19.99** NOW **£19.99**



JMS RADIO tv video hi-fi

Watling Avenue, Burnt Oak, Edgware
Sales 952 1565 Service 952 3895

EXPERT
The more we help you
the more likely you are
to come back.

Letters to the editor



Hendon RAF Museum launches Bomber Command



AS CHAIRMAN of our Appeals Committee I would like to tell you about our Appeal. The history of air power is inescapably bound up with the illustrious past of the Royal Air Force. A most significant part is the development of the bomber, carving as it does a testimony to the courage, determination and perseverance of the men and women who built, maintained and flew these aircraft down the years. We also wish to commemorate the remarkable operations of the United States Army Air Forces.

This is why we are going ahead with a memorial to Bom-

Appeal

ber Command and the 8th, 9th and 15 USAAF. The Bomber Command Museum is going to cost £2.5 million to complete and this vast sum must be raised by Appeal. I therefore ask all men and women of this country who value the freedom given to us by the 126,000 Britons and Americans who died in Bomber activities to help us financially. Give for those who gave their all — let us not forget them.

Sir Neil Cameron
Marshal of the Royal Air Force

AS FOUNDING Director of the Royal Air Force Museum I am well aware that to do justice to the Service it represents a continuing programme of expansion is necessary. First, we built the main museum; then came the Battle of Britain Museum, closely followed by the Cosford Aerospace Museum. Now, at last, a fitting memorial is to be built to the men and women who served in Bomber Command. We will not forget our allies and they too will find a place in the new Museum. This country could have done but a small part of what it did to save the world

without them.

Hendon's standards, like those of all museums, are there for all to see, and in the present RAF and Battle of Britain Museums we exhibit the standards to be attained when creating and projecting this new and important additional theme. Above all, I would wish you to know that we at Hendon will make certain that your valuable contribution will be used in the optimum way, ensuring that Bomber Command's achievements will be presented correctly and objectively to present and future generations.

Dr. John Tanner

RNLI's new offices

PEOPLE in the Borough of Barnet may like to know about volunteers who work as fundraisers for the Royal National Lifeboat Institution in the Borough of Barnet. We have branches and organisers in Arkley, Barnet, Edgware, Finchley and Friern Barnet, Golders Green, Hendon and Totteridge. All these raise a good deal of money for the R.N.L.I. and they deserve to be 'put on the map'.

There is another reason too that the Borough should be made aware of the presence of the R.N.L.I. as recently the District Office for the London (North) Area was moved to Barnet. We have now settled in to our new premises at 10/12 St. Albans Road, Chipping Barnet, and are busy with arrangements for various events including London Lifeboat Week, March 15-23, 1982.

Please come along and meet us at our offices — open normal hours — we would be very happy to have a chat with anyone about the work of the R.N.L.I. and we would especially welcome new volunteers. Sue Steer, Regional Organiser
Robin Sharp, Area Organiser

Handcraft exhibition

ON APRIL 16, 1982, Finchley Old People's Welfare Committee will be holding a bi-annual Handcraft Exhibition at St. Mary's Hall, Hendon Lane, Finchley, N3, which is open — either as competitors, exhibitors or visitors — to all people over the age of 60 who are resident in the former Finchley Borough area.

There will be a number of classes, including needlework, knitting, crochet, art and woodwork, and advance publicity in Civic News will enable any possible participants to prepare entries.

A. Owens
(Organising Secretary)
9 Long Lane
Finchley, N3 2PR

Fancy being a Pirate?

ALTHOUGH our Society is not strictly within your circulation area, many of our members live in your borough and many Barnet people come to see our shows. As we are looking for new members I felt Civic News could be very helpful in telling local people about our next production.

We have just started rehearsals for The Pirates of Penzance which will be presented in the Civic Theatre, Boreham Wood, on March 2 to 6, 1982. We would welcome members of all voices to join our happy band.

We rehearse on Thursdays and all you have to be able to do is sing in tune. A telephone call is all it takes. Just ring me on 906 1453.

Mrs Edna Jury
Boreham Wood Operatic Society
20 Rowlands Close
Bunns Lane
Mill Hill

Forty years of song

THE APOLLO SINGERS, a male voice choir, were formed in Edgware in 1941 and have subsequently built up a large circle of friends in the Borough of Barnet and surrounding area.

Our wide programme includes popular songs from musical shows and Welsh ballads to Gilbert and Sullivan choruses and folk songs. During the past year we have given about 14 concerts and to keep ourselves fresh and enable us to present a varied selection to our many fans we always have new items in course of rehearsal. Singing with the Apollo is fun

and worthwhile. Our present membership is 25 and we always welcome new prospective members and invite them to visit us at rehearsal at 7.45 pm. in the Centre Point, Grahame Park School, Colindale. Alternatively please phone the following for further details:

Tom Irven 445 2443
Roz Heasman 959 1244

Please clean little pond

IN A RECENT issue of Civic News I read that some volunteers had cleaned out a small pond on the Totteridge-Woodside Park boundary.

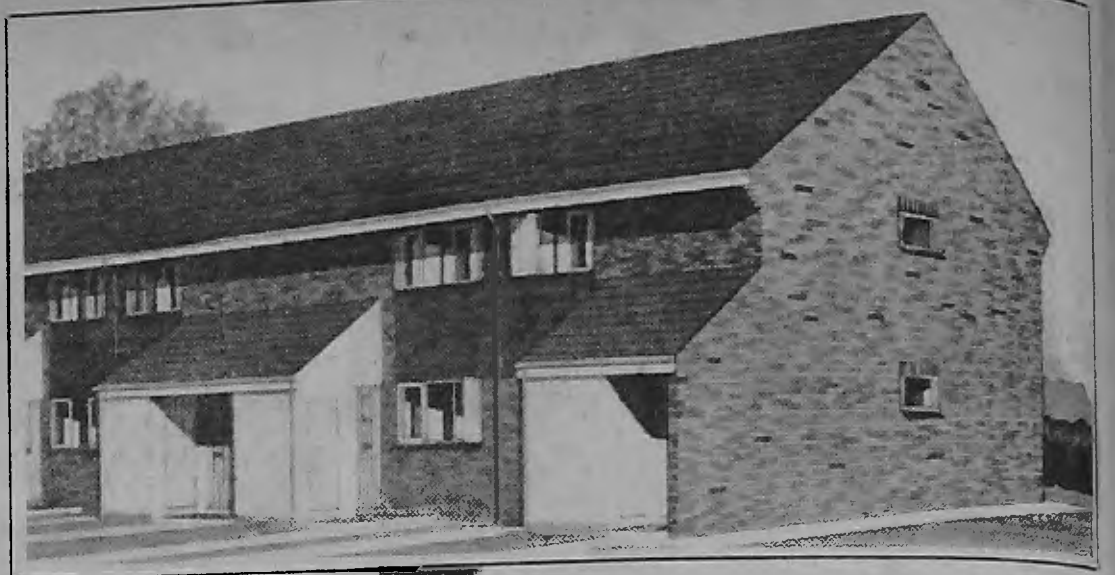
In the ground of the Church Farm House Museum, Greyhound Hill, Hendon, there is a little pond covered with stagnant slime as well as extraneous rubbish. If this small pond was likewise to be cleaned up it would enhance the charm of the attractive garden.

Henry Rayner
15 Audley Road
Hendon

Letters to the editor should be sent to: Civic News, Town Hall, The Burroughs, Hendon, NW4 4BG.



The Trent: a two bedroom terraced house



The Dee: one bedroom maisonette

A new home at Bells Hill, Barnet

THE NEW housing estate at Bells Hill, Barnet, is aimed at first time buyers. Clustered on this south-facing slope are small maisonettes and houses with good mortgage facilities ranging in price from £23,700 for a one-bedroom maisonette to £33,750 for an end-terrace, three-bedroom house with garage.

This is an estate which has been developed by Wimpey Homes under the aegis of Barnet Council. The Council sold the land, formerly used for allotments, to Wimpey, on condition that they built homes at the lower end of the housing price market and that Council tenants and people on the housing wait-

ing list should have nomination rights to purchase.

It is part of the Council's policy to work in this way with a contractor in order to provide homes at as reasonable a cost as possible to encourage young people to stay in the borough rather than moving away to towns where house prices are lower.

The estate at Bells Hill is close to bus routes and lies about one mile away from Chipping Barnet Shopping Centre and High Barnet Underground Station. It lies close to Green Belt countryside and the King George V playing fields and there are good local schools serving the area.

The development will include one-bedroom maisonettes, and

one, two and three-bedroom houses and planning permission is being sought for self-contained studio apartments.

Houses on a rent-and-buy basis may be available through a housing association. Details of this later.

SHOW HOUSES

Show houses are now open on the site and plans of the house types are available at Barnet Council's Housing Office at Stag House, Burnt Oak Broadway. The show houses are open from 10 am to 6 pm on Thursdays, Fridays, Saturdays, Sundays and Mondays and full information on prices and schedules can be obtained from the sales and information staff on site.

If you are a Barnet Council tenant wanting to buy a new maisonette or house on a private development or a first time buyer living in Barnet and with the residential qualification of having lived in the borough or the GLC area for the past three years, you are likely to be eligible for nomination.

Mortgages are arranged through building societies, banks or other lending sources and the developers can put prospective buyers in touch with Building Societies with whom they have a business connection.

You can telephone the site sales office on 441 5265 or the Council's housing sales office on 952 8911 for more information.

Council face heavy frost repair bill

BARNET COUNCIL could be facing a bill of £200,000 or more to repair the frost damage to district roads after the December freeze. The Borough Engineer, Mr. Alan Stringer, reported to Public Works Committee on Tuesday, January 5, that road surfaces were showing signs of extensive deterioration in the shape of pot holes after the December snows which had been accompanied by temperatures of minus 10°C.

Temporary repairs

He already had teams out to undertake temporary repairs but permanent work could not be undertaken in this wet weather.

The Committee agreed to request the Finance Committee for an additional £200,000 over and above their approved road maintenance budget towards the cost of repairs which would be put in hand as soon as weather conditions permitted.

The severe December weather has already taken its toll of Barnet's finances. At the beginning of the winter the borough had 5,000 tons of salt for road gritting — a stockpile equal to that required for the worst win-

ters of recent years. By the end of December more than 2,700 tons had been used. New stocks were on order but with the whole country in the same situation deliveries were slow.

The Council had already spent most of a full winter's budget on snow clearance.

The first warning of snow had come at 3 am on the Tuesday morning. By 5 am the gritting teams had reported for duty. The Council had 13 drivers qualified to take out the large gritting vehicles and those men had worked virtually round the clock for nearly three weeks to keep the roads clear.

The Council had also used private contractors for gritting and street orderlies and parks staff had worked on snow clearance in shopping centres.

The refuse collectors had managed to complete 70 per cent of their rounds in spite of freezing conditions.

The public had complained because side roads were not gritted and cleared. But the borough had had to give priority to motorways, trunk roads, metropolitan roads, bus routes and hills which presented special dangers. The problem was that Barnet had a very high propor-

tion of trunk roads and with temperatures holding down below freezing for almost three weeks it meant that the salt itself was freezing and the crews had to return regularly to the main roads.

Councillor Bill Hart, chairman of the Public Works Committee, said: 'I know this is true. I had a member of the public 'phone to tell me that Brent Street had not been gritted. And yet I knew it had been salted not once but twice. It had just remained frozen.'

Thank you

'We have to take a borough-wide view of the situation in these emergencies. I know it is difficult when side roads are not cleared, especially for the elderly, but people have to realise the extent of the problem. We have nearly 350 miles of district roads and nearly twice that of footpaths to deal with and we can only set our priorities and do the best possible to keep main roads clear.'

'I think we owe a debt of gratitude to the men who worked all hours in those freezing conditions to keep the main routes clear and I congratulate them on their efforts.'

RETIREMENT CLUB

ARE YOU retired? And interested in a variety of activities? Are you free on Thursday afternoons?

The first meeting of the new year of the Retirement Club at Montagu Road Centre, Hendon, will be held on Thursday, January 21 at 1.45 pm. There will be a talk and discussion on Welfare Rights in Retirement.

For further details contact Mrs Jenny Reeves at Hendon College. Tel. 202 2233.

Appointment

COUNCILLOR David Dell, chairman of Barnet Council's Social Services Committee, has accepted an invitation from the Minister for the Arts, Mr. Paul Channon, to serve on the Information and Library Service Council until the end of 1982.

Anti-vandal patrols

THE Police are to intensify their patrols in areas in which fairs are being held in the Borough of Barnet in order to combat vandalism. This follows a request from the Council's Development and Estates Committee.

If you're a first time buyer. Welcome home.



available for purchase by Council Nominees. Ring Rodney Smith our Homes Buying Advisor on (01) 441-5265 or the Council's housing Sales Office on (01) 952-8911 for details



When you buy your Wimpey home you'll only pay a sensational 7½% mortgage† to help you over the first year.

You also get a guaranteed 95% mortgage offer.* You pay no legal fees, no survey fees and no stamp duty on homes up to £30,000. And you could move in for just £500.

So come and see us this weekend.

The Bells Hill Development is a joint venture with the London Borough of Barnet. Homes are initially

on 1, 2 and 3 bedroom homes from £23,700. We're open from Thursday to Monday inclusive (10.00 to 5.15) and closed on Tuesday and Wednesday.

WIMPEY WELCOME HOME

Bells Hill: Chesterfield Road, Barnet.

HAVE A MODEL NEW YEAR

We have a great selection of

- Hornby Trains
- Scalextric
- Airfix Kits
- Radio controlled cars and planes

H. A. BLUNT & Son Ltd.

133 The Broadway
Mill Hill
NW7
Tel. 959-2877



PROPERTY WANTED by JAPANESE EXECUTIVES AND DIPLOMATS

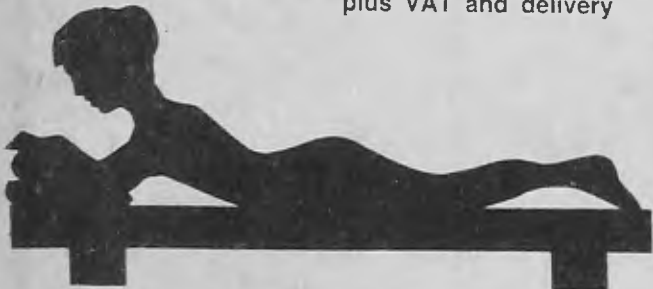
Japanese executives and diplomats are looking for furnished houses and flats to rent for one to three year periods in this area.

PLEASE CONTACT US:

Japan Agency
348-356 Regents Park Road,
London N3 2LJ
Telephone 01-349 0011 (10 lines)

POPULAR SUNBED £280

plus VAT and delivery



Colne Development Co Ltd
2 Station Road
Twickenham, Middlesex
Phone: 01-892 4119 Ex 26

SALE NOW ON PHILIPPINE HANDICRAFT

Beautiful things made from Capiz Shell, 15 different models of Chandeliers, Kleenex Boxes, Trays, Salad Sets, Wood Carvings, Placemats, etc, etc.

We are Direct Importers

Why not pay us a visit

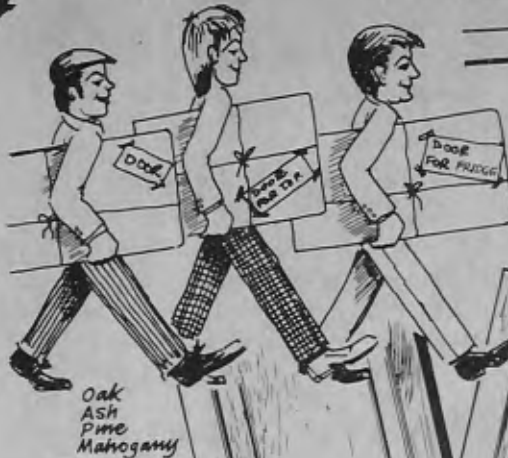
85 EAST BARNET RD, NEW BARNET 449 0588

Just down the road from Sainsburys

GIVE YOUR KITCHEN A "NEW LOOK" WITH

Replacement DOORS

a NEW kitchen in SOLID WOOD....



Oak
Ash
Pine
Mahogany
PHONE US NOW ON....

- Choice of STYLES
- Choice of TIMBER
- Choice of COLOURS

**Converted by our own skilled fitters in a day
*Minimum disruption to the housewife during conversion
Made by British craftsmen specially for your kitchen

Replacement DOORS

01-597 2436/7
or write **REPLACEMENT DOORS**
FREEPOST ROMFORD RM6 1BR

FIRST IS STILL THE BEST
3315 SAY SO

CHANNEL 4 VIDEO LIBRARY, 148 BALLARDS LANE
FINCHLEY, N3. 01-349 4341



In the children's playroom, left to right, Helen Mayer, Project Architect; Councillor Fear; John Gray of the Homeless Families Unit and Derek Buckman, Borough Architect.

COUNCILLOR GRAHAM FEAR, Chairman of the Housing Committee, paid a pre-opening visit to the new homeless families unit in Friern Barnet Road, New Southgate, on Thursday, November 19 and met the team who planned the hostel.

The council is strongly against placing homeless families in bed and breakfast accommodation.

Six years ago the council were spending £400,000 a year on bed and breakfast places but in recent years only in an emergency will such accommodation be used. Even so, with rising numbers of homeless people coming to the council for help, there has been heavy pressure on the existing accommodation. The new unit provides a further 22 bed-sitters, all newly decorated and furnished. Kitchens and bath-



Barnet Council's new homeless families unit in Friern Barnet Road.

NEW HOMES FOR THE HOMELESS

rooms are shared between two bed-sitters and each pair of rooms has its own lockable front door.

Barnet Council has spent approaching £¼ million on this project including £8,000 on furnishing and curtains.

The unit was originally three late Victorian family houses. Eighteen months ago Barnet Council began the extensive repair, restoration and conversion

work needed. Major structural work had to be undertaken to put the building into good fettle.

One of the basements has been converted into a meeting room and children's play room.

The design for the restoration, conversion and decoration has been carried out in the departments of the Borough Architect and Borough Engineer and Surveyor and the management will be undertaken by the council's Homeless Families Unit.

RODNEY AND DAVID GIBBONS OFFER YOU THE COMPLETE KITCHEN PLANNING SERVICE



Kitchen Displays from the following manufacturers: Castle, English Rose, Elizabeth-Ann, Grovewood, Hygena, Schreiber, Thomas Eastham

JANUARY SUPERSALE LOTS OF SPECIAL OFFERS

Your kitchen will be planned by our skilled designers who will give you a firm price quotation for supply and fitting if required. We pride ourselves on giving a service second to none.

Kitchens Galore

Open: Mon., Tues., Thurs., Fri., Sat. 9 a.m.-5.30 p.m. Wed. 9 a.m.-1 p.m.

112 BRENT STREET, HENDON, NW4. Tel. 202-0291

64/66 HIGH STREET, BARNET. TEL. 441-2606

OUR HENDON
BRANCH IS HERE



SAMPLE HANDBAGS

By Marion Lerner
(Direct from Factory)
Half-day closing Thursday

SUPER SALE

Handbag repairs
and renovations

183 Bramley Road
Oakwood Shopping Parade, N14
363 0909

Half-day closing Thursday




CLUB TIE SPECIALISTS
HERALDIC TEXTILES
Dept. C-N
46 Watford Way
(1st Floor)
Hendon, NW4
Tel. 01-202 6038

Miss Marie (formerly Smarta)

Hampden Square Tel: 361 2269

January Sale now on

Huge reductions on dresses, suits and knitwear

NOW UNDER NEW MANAGEMENT

We have something for everyone at great prices



LADIES DRESSES AND SUITS (up to size 22). TEENAGE STYLES also available
RANGE OF SEPARATES — SKIRTS, TROUSERS AND KNITWEAR. FALMERS STRETCH JEANS AND CORDS always in stock. WOOL COATS AND FUR FABRIC JACKETS

14 Onslow Parade, Hampden Square, Southgate N14

Humla Childrens Shop

Knitwear and Crochet in pure wool. Clothes, Books and Toys. 0-8 yrs Playarea for toddlers Londons most exciting childrens shop!



235 Camden High St. NW1. 267 7151

Mini-togs

Babies' & Children's Wear
up to 12 years

SALE NOW ON

31 Church Hill Road, East Barnet
Tel: 449 4988

CURTAIN MAKING

Your material or select from our wide range

CARPETS

Supplied and fitted

WALLPAPER

Sanderson, etc.

KNITTING WOOLS

DRESS PATTERNS & HABERDASHERY

K. & K. FABRICS, 48 Mill Lane, NW6
431 0885/0309

BOOKS MAKE WONDERFUL GIFTS

- | | |
|-----------------------------|------------------------------|
| 1 Annuals and Perennials | 7 Creative Cooking |
| 2 Complete Gardener | 8 Patchwork and Applique |
| 3 Knitting and Crochet | 9 Colourful World of Animals |
| 4 Great World Encyclopaedia | 10 Charles II |
| 5 Guns and How they Work | 11 Royal Families of Europe |
| 6 Home Making Made Easy | 12 Mysteries of the Universe |

ALL PUBLISHED AT £6.95 OFFERED AT £3.95
HUNDREDS OF OTHERS!

S.a.e. for list of Hundred Bargain Books!

THE BOOKSHOP,

13 SENTINEL SQUARE, HENDON

Tel: 202 5301

MENSWEAR HIRE SERVICE

Whether hiring or buying a made-to-measure suit, come to the specialists

Customers' own material made up

DAVID LOW Tailors 368 2804

(Also alterations service)

CLOSED ALL DAY WEDNESDAY OPEN TILL 12 SATURDAY

BETHKATH VIDEO CLUB

Life Membership £35.00 — VHS

£1.50 for 3 days, plus £1.00 p & p

24-hour answering and delivery service

Full list sent on joining

Reduced price on tapes

Telephone 01-200 6574

PO Box 464, 39 The Hyde
London, NW9 6LD

HIGH QUALITY COOKED MEAT PRODUCTS

French Garlic, Bierwursht Frankfurters
Continental Liver, Enfield Liver sausage
Saveloys, Salami, Cabanos, Pastrami,
Salt Beef

Other products made to customer requirements

Golden Star Meat Products Ltd

38A Holmesdale Road, Highgate

Tel: 01-341 0957/0425

HIDDEN WORD TREASURE HUNT COMPETITION RESULTS

AFTER MUCH
DELIBERATION
THE WINNERS
WERE ADJUDGED
AS FOLLOWS:

**1st Prize
£25 Voucher**

Hazel Hyman,
4 Teynham Court,
Woodside Ave, N12.

**2nd Prize
£15 Voucher**

Mrs. J. Baum,
155 Edgwarebury Lane,
Edgware, Middx.

**3rd Prize
£10 Voucher**

Mrs. A. R. Bradford,
49 Lyonsdown Ave,
New Barnet.

THE SAYING
HIDDEN
AMONGST
THE ADVERTS
WAS

'Alas,
Poor Yorick,
I knew him,
Horatio.'

ANTHONY GAULT MOTORS

SPECIALIST AUTOMOBILE
ENGINEERS

MoT CENTRE

SPECIALIST IN ROLLS-ROYCE
EXHAUST SYSTEMS

For example — Shadow system —
£320.

All other models, including Corniche,
Phantom, etc.
available. Parts supplied or fitted.

01-624 5280

01-328 9623

ANTHONY GAULT MOTORS

34 THE ARCHES
IVERSON ROAD
LONDON NW6

When it comes to value
TIGER doesn't pussyfoot around



FREE (WORTH £37)

VIDEO FILM CLUB LIFE MEMBERSHIP TO EVERY
PURCHASER OF A SANYO BETACORD VIDEO RECORDER

Sanyo Betacord Colour Video Recorder can be set for up to 72
hours ahead, records one programme while you watch another,
can record automatically at the same time every day, or even
record with the TV set off.

SENSATIONAL
VALUE
ONLY
£399.95
complete



PARMENTERS

26 BRECKNOCK ROAD,
LONDON N7 0DD.
Tel: 01-607 2076

SPECIAL NO
DEPOSIT
RENTAL
TERMS
AVAILABLE
PLUS FREE
VIDEO Film
MEMBERSHIP



TIGER

A member of The Independent Group of Electrical Retailers

BRING BACK AN OLD FLAME!

GAS LOG & GAS COAL FIRES FROM £75.00



emaire

DESIGNERS AND INSTALLERS OF FINE FIREPLACES

MANY DIFFERENT STYLES OF
FIRE BASKETS

11A WHITCHURCH LANE, EDGWARE, MIDDX. PHONE 01 951 0220/1



D. A. BROWN & SONS

PLUMBING AND
HEATING
SPECIALISTS

**WE WANT YOUR
BUSINESS**

Don't go anywhere else
until you have tried us first!

SAVE
££££

**WE HAVE THE BEST
PRICES!
AND GUARANTEE
FIRST-CLASS WORK**

Domestic and Commercial
Sinks — Washing Machines — Bathroom Suites
Central Heating and all Domestic Plumbing Work
Large or Small

24 HR
EMERGENCY

01-552 4587
01-552 4597

Radio
Controlled

(6 LINES)



THREE 'WONDERFUL' CHRISTMAS PRESENTS

'S' Division of the Metropolitan Police have distributed more than £9,000 to local charities in the Borough of Barnet and Hertsmerston this Christmas. Among those to benefit have been local old people welfare associations and the Harry Brown Bus Society.

On December 15, Commander Donald Hanson paid a surprise visit to the Mayor's Parlour in Hendon Town Hall to present her with a £1,000 cheque for her appeal in aid of Crohn's in Childhood Research Association. 'I knew nothing about this,' said the Mayor, Councillor Mrs. Rosa Freedman. 'It is a wonderful, wonderful Christmas present.'

The money for these charitable gifts comes from the sale of lost or stolen property in the hands of the Metropolitan Police which for various reasons cannot be returned to the owners. It is distributed at the advice of Commanding Officers of the Police Divisions.



EIGHTEEN months ago volunteers and staff at Edgware Hospital organised a fund-raising campaign to buy a minibus for elderly people attending the geriatric department. On Thursday, December 10, they saw dreams turn to reality.

The Mayor of Barnet, Councillor Mrs. Rosa Freedman, accepted the keys of a new minibus complete with tail-lift from Mr. John Pearson, a director of Help the Aged. She then handed the keys to the Rev. Richard Heafield, local Methodist minister and chairman of the fund-raising organisation, the Harry Brown Bus Society.


Harry Brown was an Edgware resident who gave time to helping elderly people until he, himself, was struck by a disabling illness and became dependent on voluntary transport. When he died his wife, Rene, and friends, formed the HBBS in his memory. Local organisations joined in. Volunteers manned a produce stall at Daws Lane market, Mill Hill Services Club donated £1,000 for the tail lift. Help the Aged contributed a large cheque. At the handover, Supt. Donald Richardson, of West Hendon Police, presented the society with a £1,000 cheque from the Metropolitan Police Commissioner's charity fund towards the running costs.



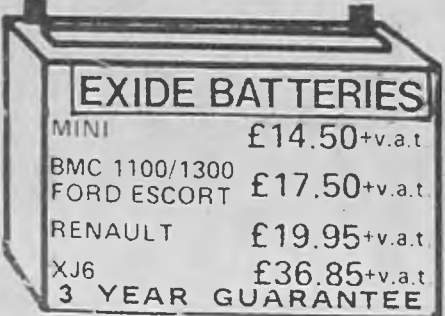
WINTER SALE OF TYRES AND BATTERIES

LOOK AT THESE PRICES

ALL SIZES STOCKED



SIZE	MAKE	PRICE
PIRELLI		
145SR10	P3	£9 95
155SR12	P3	£12 45
155SR13	P3	£13 95
165SR13	P3	£14 50
175/70SR13	P3	£19 50
185/70SR13	P3	£19 50
175SR14	P3	£18 40
185SR14	P3	£21 50
185/70SR14	P3	£19 50
DUNLOP		
ER70VR15	Sports	£46 50
MICHELIN		
Best discounts around		
All other tyres stocked		
Phone us for a quote on all your tyre requirements. All prices are exclusive of VAT		



EXIDE BATTERIES

MINI £14.50+v.a.t.
 BMC 1100/1300 £17.50+v.a.t.
 FORD ESCORT £17.50+v.a.t.
 RENAULT £19.95+v.a.t.
 XJ6 £36.85+v.a.t.
3 YEAR GUARANTEE

WE ONLY SELL TOP QUALITY WELL KNOWN BRANDED PRODUCTS CAN YOU AFFORD NOT TO RING US.

TRACKING
WHEEL BALANCING
ENGINE
STEAM
CLEAN

AVAILABLE WHILE STOCKS LAST,

NORTHWAY TYRE & BATTERY CENTRE

137 GREAT NORTHWAY HENDON NW4
 01-203 3834 01-203 4745

M.O.T. WHILE-U-WAIT BY APPOINTMENT

CHEVRON
 THE SIGN FOR ALL SEASONS
 ALL MAJOR CREDIT CARDS ACCEPTED

LADIES - LOOK!

Your chance to buy:
 fur simulations,
 cloth coats
 coneys
 sheepskins

Direct from the factory!




Special January Offer

Sundays only 10 am to 4 pm
 17th Jan - 24th Jan - 31st Jan

TEMPLEBEST

MARTINBRIDGE TRADING ESTATE,
 240/2 LINCOLN ROAD, ENFIELD, MIDDXX
 TEL: 805 0705



WONDERFUL MOMENTS

THE GENEROSITY of Finchley Golf Club members brought smiles of happiness and greater nobility to two handicapped local children, 13-year-old Claire Bollard, of Meadway, Barnet, and Peter Pearse (11) of Cloister Gardens, Childs Hill, when they each received a powered wheelchair at the Finchley clubhouse on Sunday, December 13.

The wheelchairs were presented to Claire and Peter by Henry Cooper, former European and British heavyweight boxing champion on behalf of the Marley Wheelchair Association.

Our picture shows Mr. Cooper holding Claire's hand after the presentation ceremony. Behind her are her father, Keith Bollard, and her sister, Wendy. Standing behind Peter are his parents, Marie and Peter Pearse.

Also in the photograph are, from left to right: John Pearce (club secretary); Charles Elliott (club captain); Councillor Barry Francis, Deputy Mayor of Barnet; Ray Harker (club president); Councillor David Dell, chairman of Barnet Social Services Committee; and George Makey.

At the ceremony too were Alan Forst, Director of Barnet's Social Services Department, Robin Jones, his Deputy, and Imelda Earns, principal occupational



therapist.

It all started when the enthusiastic members of Finchley Golf Club decided to support the 1981 Marley Wheelchair Classic Golf Tournament, founded the previous year by George Makey, with the final being held at Gleneagles, Scotland, in August. The aim of the tournament is to raise funds to provide powered wheelchairs for handicapped children in the United Kingdom. So far 43 such 'magical' chairs have been presented.

The entrance fee was £1 for each round with members being

able to play more than one round if they wished in an effort to qualify for the final. Each additional round also cost £1.

It started on Captain's Day when £150 was raised towards part of a wheelchair. The club decided to carry on. A special sponsored golf tournament for cricketers helped swell the total as did President's Day and various other events.

Although none of the Finchley golfers quite managed to qualify for the final, the club raised a total of £1,200, enough to provide

two powered wheelchairs for two of the borough's handicapped children.

In fact the club did so well that they also qualified for a special award of a Waterford crystal decanter for the best supporting club.

Next time Finchley are hoping to do even better and also hope that one of their members will qualify for the 1982 final.

A 'thank you' poem was composed and typed by Peter Pearse and read by Henry Cooper.

EXQUISITE LUXURY BATHROOMS

CORNER BATHS
SUNKEN BATHS



FROM £200 - £10,000
PLANNED FREE

At Bathcharm you can see a magnificent range of English and Continental luxury bathrooms and suites in over 100 colours, to suit everyone's pocket, with many exclusive designs.

Inspect our vast range of fittings and accessories, our enormous selection of English and Continental tiles.

Utilize our free estimating and planning service - telephone **445 4503**

Our trade counter for plumbing and heating supplies - probably the cheapest in London - telephone **445 4682**

BATHCHARM

OPEN 9am - 5.30pm - Five days a week.
Thurs. 9am - 1pm. SUNDAY 9am - 12.30pm.

281 Ballards Lane, Finchley, N12. Tel: 01-445 4503

EVERYDAY IS SALE DAY AT GODWINS



HOMESTYLE STARTER PACK
(3 colours)

1000 x 500 Sink Base	£32.00
500 x 500 Base Unit	£23.00
500 x 500 Drawer Pack	£40.00
1000 x 500 Base Unit	£31.00
1000 x 500 Worktop	£17.00
500 x 300 Wall Unit	£21.00
1000 x 300 Wall Unit	£29.00
1000 x 500 Sink Top	£24.00

ORDER NOW KITCHENS

Inset Bowl Drainer	£28.00
100 60 Sink Top	£26.00
150 60 Sink Top	£53.00
42 21 Sink Top	£24.00
Sink Mixers from	£13.00
Sink Taps	£6.00
Round Bowls (colours)	£25.00
Round Drainer	£25.00
Franke Compact	
1/2 Bowl Drainer	£90.00
2 1/2 Bowl CP	£110.00
FUTURA TAPMATE CP	£34.00
FUTURA TAPMATE COLOUR	£39.00

COLOURED FRANKE BOWLS STOCKED

BRASSWARE

End Feed Fittings

15mm. Coupling	4p
15mm. Elbows	7p
15mm. Tees	9p

Solder Ring

15mm. Coupling	10p
15mm. Elbows	18p
15mm. Tees	30p
15mm. Stopcocks	£1.10
HV Bibcock	£1.20
BSS Ball Valve H/P	£1.15
BSS Ball Valve L/P	£1.60
Rad Valves PR	£1.40
Washmac PR	£2.20
15mm. Gate Valve	99p
22mm. Gate Valve	£1.15
28mm. Gate Valve	£1.99
Draw Off Plugs	20p
Immersion Heaters	£5.00

BIG DISCOUNTS ON DUALUX MIXERS PLUS MICHELANGELO

PLUMBING THIS WEEKEND

COPPER TUBE 3m. lengths

15mm — per metre	48p
22mm — per metre	87p
28mm — per metre	£1.30
8 mm — 20mt. coil	£7.80
10mm — 20mt. coil	£10.50
50-gal. Circular Tank	£14.00
70-gal. Coffin Tank	£19.00
36 x 18 Ind. Cop Cyl.	£27.00
42 x 16 Ind. Cop Cyl.	£35.00
60 x 12 Ind Cop Cyl.	£25.00
72 x 12 Ind Cop Cyl.	£27.00

PRICES EXCLUDE V.A.T.
TEL: 959 3344
*MENTION THIS ADVERT TO GUARANTEE PRICES

HEATING

Drayton Rad Valve	£7.80
Thermostatic Valve	£4.99

HONEYWELL

T6060B Room Stat	£4.80
L641A1 Cyl Stat	£5.50
V4043H 22m. Mini Val	£21.50
V4043H 28m. Mini Val	£26.00
ST699 Programmer	£21.00

RANDALL

103 Time Clock	£14.20
30:60 Programmer	£19.80
FP Tower Programmer	£16.75
Landis & Gyr Programmer	£18.50
Sopac Room Stat	£3.75

PUMPS 22mm. VALVE

Myson Grundfoss	£19.00
S.M.C. Commodore	£20.00

CLOAKROOM SETS
WC Suites with Wall Basin and Taps

WHITE	£55
STD Colours	£64
Lux Colours	£80

THE PRINCESS SUITE
10mm. Twingrip Bath
22 x 16 Basin/Ped
Slimline/WC Suite
complete with taps
Add £24 for Bath Mixer
Add £70 for close-coupled suite
Panels extra

STOCK COLOURS Avocado, Ivory, Beige, Sunking, Pampas, Champagne, Bermuda Blue
Also available Sandalwood, Alpine, Mink

OTHER BATHROOMS
complete with taps

White Steel	£99.00
STD Colour Steel	£130.00

TWINGRIP 10mm. close-coupled WC

Indian Ivory	£139.00
Avocado	£139.00
Red, Burgundy	£260.00
Also in Steel, add	£60.00

Other colours available

THE HEIGHT OF LUXURY
TWO-TONE COLOURS
BLUE, PINK, £230 — LILAC
ADD £50 FOR GOLD FITTINGS



WATER SOFTENERS NOW AVAILABLE FROM US

JANUARY OFFERS ONLY

AQUALISA SHOWERS

Chrome Thermostatic Concealed Mixer with Slide Rail £89.00
Chrome Manual Exposed Mixer with Shower Head/Hose £59.00

22 x 16mm Basins	£9.99	Triton Heaters	
Pedestal	£10.00	T80 SP	£49.99
HO White Pans	£12.00	T40 Pump	£25.00
China Cisterns	£24.00	Powerflow	£45.00

GODWINS PLUMBING SUPPLIES

4/5 APEX PARADE, SELVAGE LANE, APEX CORNER, MILL HILL, NW7
OPEN 6 DAYS - PARKING ADJACENT - SAT 9-3



★ SIGNS ★

MADE TO ORDER

House name and number, cottage, professional, yacht and boat name, technical signs for engineering apparatus, or any sign requirements.

Permanently engraved on material.

Solid Burma teak, Brazilian mahogany, Formica, Gravoply, brass-coloured aluminium, solid brass & pre-polished brass.

Various shapes & sizes.

eg:

MANDALAY

SIZE: Teak, size 5/8" x 5" x 18"

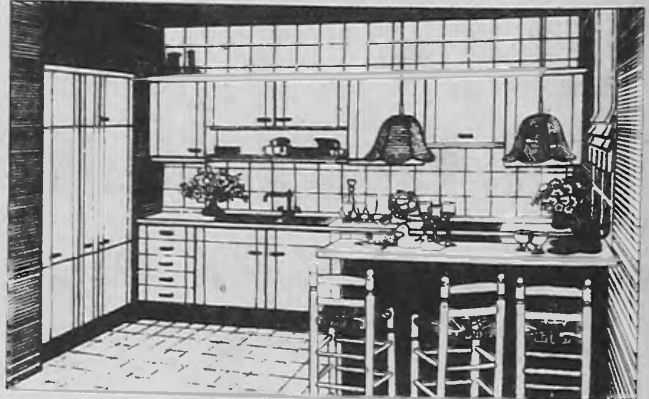
Write or telephone for leaflet and price list.

Order despatched within 7-10 days.

G.B.O. TIMBER & HANDICRAFTS LTD.
299 CRICKLEWOOD LANE,
CHILDS HILL, LONDON NW2 2JL

Tel: 455 9669

gruco kitchens



QUALITY - DESIGN - PRICE

from the company established since 1912.

We offer you 29 exquisite designs to choose from, ranging from solid wood to laminate finishes.

Contact us now for a top flight service including quotation, installation, electrical and plumbing services.

Mr. H. W. Stephan

gruco kitchens (Distribution) Ltd
385 Hendon Way, London NW4 3PL.
Telephone: 01-202 2408

HOME IMPROVEMENTS

UP AND OVER GARAGE DOORS

ALL SIZES AVAILABLE



SUPPLY — FITTING — REPAIRS — PARTS
SPECIALISTS IN REMOTE-CONTROL DOORS
FREE BROCHURES ON REQUEST

PHONE: 01-898 7234 (Day or Evening)

SHOWROOM: 122 HIGH STREET, WHITTON, TWICKENHAM



SPEND
SUNDAY
MORNINGS
AT

DAVID JACOBS TILE CENTRE

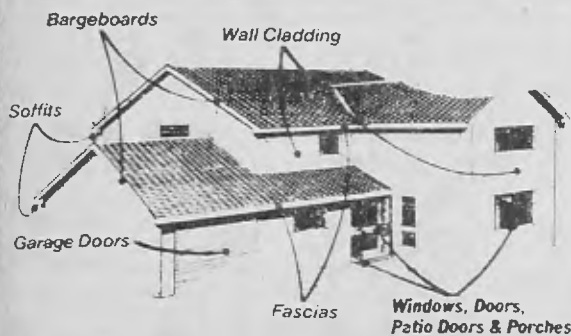
178 Bowes Road, N11, 881 01 41

Thousands of colours
and designs of wall,
floor tiles and mosaics
fixing service available

MON. TO
THURS.
9—6 pm
FRI.
9—1 pm

Phone:
01-881 0141

SUN
9.30—1.30 pm
CLOSED
SATURDAY



TO:



FREEPOST
HENLEY-ON-THAMES,
OXON RG9 1BR
or telephone
Henley 77844

I am interested in UPVC
Cladding Residential
Doors Windows Patio
Doors Garage Doors
Porches

HOME IMPROVEMENT LOANS AVAILABLE

Name

Address

Tel No

Free quotations without obligations

THE LOCAL COMPANY WHO REALLY CARE FOR YOU!!

WORKTOPS AND MATCHING LAMINATES

Non-standard worktops
and breakfast bars made
to order on the premises

LARGE
SELECTION EX-STOCK
Full range of thicknesses textures/colours
D.I.Y. CENTRE (COLINDALE)
2 Varley Parade, Edgware Road, The Hyde, NW9
Telephone 205-4281

e.g. 12ft Run From £52.00

GAS CENTRAL HEATING

*The most economical system could save you
up to 28% on your gas bill*

ADVANTAGES:

- ★ Complete boiler with built-in tank and cylinder in space 3' 6" x 1' 6"
- ★ Built in instantaneous hot water when you require it
- ★ Guaranteed temperatures
- ★ Controllable heating
- ★ No wasteful cylinders or expansion tanks
- ★ Full 12 month guarantee
- ★ Free estimates



NO DEPOSIT AND NOTHING TO PAY FOR 3 MONTHS
WRITTEN DETAILS ON APPLICATION

V.B. HEATING, PLUMBING & ELECTRICAL CONTRACTORS
EST. 1975

For immediate FREE quotation phone:
01-529 1379

YOUR COMPLETE PLUMBING & ELECTRICAL SERVICE

CENTRAL HEATING

- Economic Systems at Competitive Prices
- Installation Standards second to none
- Finance Available
- Free Written Estimates



Redmark

PHONE
272 2774

or write: Redmark Ltd.,
Freeport, London N6 5BR

CARPENTRY

DECORATING,
PLASTERING,
WALL AND FLOOR TILING,
HAND BUILT
KITCHEN AND BEDROOM
FURNITURE.

TEL: 200-6444

MILTON TOOL & LOCK CO. LTD.

(The Paint Pot)



Keys cut for most locks. Locks fitted to insurance standards. Large stocks of Chubb, Yale, Ingersoll, Union, Legg Locks.

458 Bowes Road,
Betstyle Circus,
New Southgate, N11 1NL
Tel. 01-368 2583

Closed Wednesday
5% discount
on production
of this advertisement

PICTURE FRAMING

(bespoke service)

WE STOCK ALL PICTURE FRAMING EQUIPMENT (if you want to do it yourself!)
250 MOULDINGS ALWAYS IN STOCK

TIMBER & BOARDS

cut to any size

COMPLETE RANGE OF CRAFTSMAN
POWER TOOLS IN STOCK
KEY CUTTING SERVICES
TREND PAINT STOCKISTS

TIMBER & PAINT SUPPLIES

320 DUKES MEWS, MUSWELL HILL, N10
01-883 9605

(rear of Charrington's Coal Merchants)

TO ADVERTISE IN THIS
SECTION, TELEPHONE 366-4626
ASK FOR DEBBIE, TONY OR ALAN

WHAT'S ON IN BARNET

THIS LIST of activities in the Borough is open, free of charge, to all voluntary and community groups.

Entries for the March issue (March 13 to April 10) must reach the editor by February 8.

Send your entries to Civic News, address: page 4.

***Asterisk denotes regular weekly meeting.**

Saturday January 16

- Friary Sequence Dance Club, Queen Elizabeth's Centre, Meadway, Barnet. 7.30 pm
- Chipping Barnet Conservative Association — John Major, GLC Member, and a Barnet Councillor holding an Advice Bureau, 163 High Street, Barnet. 10.30 am—12 noon.
- *Drama Workshop for children, The Old Bull, 68 High Street, Barnet. Ages 6—8, 4—5 pm; 7—10, 10.30 am—12.30 pm; 8—16, 1.30—3.30 pm (449 0048).
- *Art/craft and drama workshop for children at Elizabeth Allen Teachers' Centre, Wood Street, Barnet. 9.30 am in term time (368 2772).
- *Dolphin Swimming Club. Tuition in swimming for adults and children of all ages. Warm indoor pool in Hampstead. 2—5 pm (349 1844).
- *Barnet Social Singles Club (for unattached people 30 to 50). 8 pm (440 5075).
- *Indian Classical Dance Class, Queen Elizabeth Sports Centre, Meadway, High Barnet. 11 am—12 noon (368 0842 after 6 pm, 574 0371, day).
- *Barnet Thirty Plus Group (unattached people 30 to 50). 8 pm. Social events (531 5993 or SAE to 43 Abbots Crescent, Chingford).

Sunday January 17

- Octopus Swimming Club for the Handicapped, Squires Lane Baths, Finchley, N3. 12.30—1.30 pm (346 5944).
- Finchley & Barnet CND — Film 'The China Syndrome', All Saints Church Hall, Oakleigh Road North, Whetstone. 7.30 pm (449 3416).
- *Barnet and District Athletic Club, youngsters training, Victoria Hall, Park Road, East Barnet. 10.30 am (882 3265).
- *Barnet Table Tennis Centre, Barnet Lane, Barnet. Every evening. 7.30—11 pm. Training for youngsters. Sundays 3—5 pm (440 1721).
- *Up-to-the-Centre Square Dance Club, 145 Orange Hill Road, Burnt Oak. Beginners 8 pm (959 5204).
- *Bridge Lane Bridge Club, 71 Bridge Lane, Golders Green. Every day except Friday evening. 1.30—6 pm and 7.45—11.40 pm (455 3711 and 458 1764 after 2 pm).
- *Mind (voluntary mental health organisation) Social Club, Day Centre, Etchingham Park Road, Finchley, N3. 3.30—7 pm (349 2930).
- *Zen Meditation meetings, 91 Nether Street, North Finchley. 8 pm (445 1819).
- *Bible Talk, Christadelphian Meeting House, 51 Station Road, New Barnet. 6.30 pm (441 0060 or 449 2055).

- *Tae Kwon Do Club, Grahame Park Centre Point. 2—4 pm (200 7112).
- *Finchley Crusaders. Christian Youth Group for boys and girls. Ages 5-11, 3—4 pm, 46 Dollis Avenue, N3 (346 6715); 11-18, 3—4 pm, St. Mary's Church Hall, Hendon Lane, N3 (346 1277).
- *120 (Hendon) Squadron Air Training Corps, RAF Hendon, Aerodrome Road, Colindale, NW9. Boys 13½-15½. 10 am—12.30 pm (205 7297).

Monday January 18

- Hampstead Garden Suburb Antiques Circle, Bigwood House, Bigwood Road, NW11. 'Clocks and Watches'. 8 pm (455 9951).
- *Annunciation Youth Centre, Thirleby Road, Burnt Oak. 6 pm Judo; Guitar; Football, girls and boys 11-16; 8 pm. General activities 13-17. **Tuesdays:** Irish dancing 5 pm; Popmobility girls 7.30 pm, ladies 8 pm. **Wednesdays:** 6.15 pm Brownies; 8 pm girls' football general club 13-17 yrs; **Thursdays:** Over 60s 2 pm; Guides 7 pm; **Fridays:** Junior Youth Club (9-12 yrs) 6 pm; General Club (12-14 yrs), 7.30 pm; Friday's People (18-25 yrs) 8 pm; **Saturdays:** Irish dancing 10 am; Boppers Disco (9-12 yrs) 7.30 pm (959 7840).
- *New Barnet Literary and Debating Society, East Barnet Baptist Church Hall, corner of East Barnet Road and Crescent Road. 8 pm (440 3859).
- *Woodcraft Folk (High Barnet) — Barnet Hill School, Dollis Valley Way, boys and girls 6-10 years 6.15—7.30 pm (440 5369), 10-13 years 7.45—9.15 pm (449 7709); Foulds School, Byng Road, Barnet, 6-10 years 6.15—7.30 pm (449 0361), 10-13 years 7.30—9 pm (449 6038).
- *4th East Barnet Mixed Venture Scout Unit (16-20), Netherlands Road, near Oakleigh Park Station, New Barnet. 8 pm (449 1210).
- *Barnet Chess Club, Harold Fern Room, Salisbury Road, Barnet. 7.45 pm (445 0635).
- *Dog obedience training, All Saints' Parish Church Hall, Oakleigh Road North, Friern Barnet. Beginners 7.30 pm; Advanced 8.45 pm (449 4155 after 6 pm).
- *Ladies' meeting, East Finchley Baptist Church, Creighton Avenue, Finchley, N2. 2.30 pm.
- *Boys' Brigade, 4th Finchley Company, Finchley Methodist Church, Essex Hall, Essex Park, Finchley, N3. 6-8 years, 5.30 pm; 8-11 years, 6.30 pm (446 2690).
- *Silver Threads — Senior Citizens' Club, Salvation Army Citadel, Salisbury Road, Barnet. 2 pm (440 8303).
- *North London Karate Club, Queen Elizabeth's Girls' School, Meadway, Barnet. 7.30 pm and 8.30 pm (440 7733 or 440 8633).
- *Bridge at Mill Hill East Free Church, Salcombe Gardens, Mill Hill. 7.30 pm (346 5125).
- *Edgware Sea Cadet Corps Boys and Girls 12-18 years. Daws Lane, Mill Hill. 7.30—9.30 pm (959 0711).
- *Livingstone Club, National Association of Women's Clubs, Bevan Park Baptist

- Church, Grove Road, New Barnet. 8 pm (449 3094).
- *Hendon Sea Cadet Corps — Sea and Marine Cadets 12 years plus. Cool Oak Lane, NW9. 7.30 pm (200 6286).
- *Barnet Karate Centre, Reynolds Hall, East Barnet Road. Beginners classes, 7.30 pm (203 3991). Ladies' Keep Fit/Karate, 1.30 pm (346 0630).
- *Yoga, Jewish Vegetarian Society, Finchley Road, Golders Green. 10.30—noon. Beginners welcome (388 2813)
- *Rhythm, movement and dance workshop, Church End, Finchley, N3. All week, evenings and daytime (364 4558).
- *1st Hendon Company Boys' Brigade, United Reformed Church, Eversfield Gardens, Mill Hill. 6-8 years. 4.30 pm; 8-11 years. 6.30 pm; 11-17 years. 8 pm (427 6237).
- *Pop-Flexibility Sessions (exercise to music), TA Gymnasium, High Road, North Finchley. 7.30—9.30 pm (349 1844).
- *St. John Ambulance 368 Barnet Combined Division. Start of 10-week first aid course, Vale Drive Clinic, Vale Drive, Barnet. 7.30—9.30 pm. Cost £12 (449 8493/440 8808).
- *Modern sequence and old time dancing, St. Paul's Church Hall, High Road, New Southgate (end of Woodlands Road). 7.30 pm (886 3799).

Mental Health Association (MIND) Advice Centre, 154 Station Road, Hendon. Mondays 10 am—1 pm; Wednesdays 2—4.30 pm; Thursdays 8—10 pm. No appointment necessary.

Tuesday January 19

- Solo Club for widowed, divorced and single (26-60) Finchley area. 8 pm (346 7466/445 9810).
- Barnet Branch, North Middlesex Family History Society, Church House, Wood Street, Barnet. 7.45 pm (449 5080/6153).

EXHIBITIONS

January 26 to February 13

- Oils, watercolours and pastels by Clara Thubrun, Evelyn Barrett, Eric Barrett, The Crest Gallery, Dollisfield Library, Totteridge Lane, N20. Open: Tues., Wed. 2-5.30 pm; Fri. 11 am-1 pm, 2-5.30 pm; Sat. 11 am-1 pm. 2-4 pm (361 9648).

January 14 to 29

- GCE 'O' and 'A' level art work from the June 1981 examinations, Stanhope Road Adult Centre, Finchley, N12. Open: Mon.-Fri. 10 am-12 noon, 1-3.30 pm, 6.30-8.30 pm (445 6068).

Until January 30

- Photographs of and by the disabled, arranged by CRAB and Maria Bartha, The Old Bull, 68 High Street, Barnet. Open: Mon.-Sat. 10 am-6 pm (closed Thursday pm) (449 0048).

- *Barnet and District Athletic Club Training Night, Victoria Hall, East Barnet, 7.15 pm (441 1589).
- *20th Century Sequence Dancing Club, All Saints' Hall, Oakleigh Road North, Whetstone. 7.45 pm (360 2586).
- *Scottish dancing, St. Albans Church Hall, West Heath Drive, NW11. 8—10.30 pm. Children's Scottish dancing, 6.30—7.30 pm.
- *Modern ballroom and Latin American dancing, Shakespear Hall, Manor Park Crescent, Station Road, Edgware. 8.30 pm (346 5868).
- *Judo, The Quinta Club, Mays Lane, Barnet (449 2914).
- *Hendon South Young Socialists meeting. 7 Sunnyfields Road, Hendon. 8 pm.
- *Hendon South Young Conservatives meeting, 166 Station Road, Hendon. 8.15 pm (455 9136).
- *Friern Barnet Photographic Society, St. John's Hall, Friern Barnet Lane. 8 pm (445 2617).
- *West Hendon Handicraft Group, West Hendon Community Centre, West Hendon Estate. 2—4 pm (205 0514).
- *Herbert Wilmot Youth Centre, Market Place, East Finchley. 2—4 pm open for unemployed young people 16-21 years; 7.30—10 pm Senior Youth Club 13-21 years — occasional disco, general club activities (444 8422).
- *Prayer and Bible Study, Salvation Army Citadel, Salisbury Road, Barnet. 7.15 pm (440 8303).
- *57 Nursing Division, St. John Ambulance Brigade, Carey Hall, Claremont Road, Cricklewood. 7.30 pm (428 4529).
- *Drama workshops for 12-16-year-olds, The Old Bull Centre, 68 High Street, Barnet. 6.30-8.30 pm (449 0048).
- *Barnet Hockey Club training session, Grahame Park all-weather floodlit pitch. 8 pm (445 8968 or 61 22668).
- *East Finchley Sisterhood, Methodist Church Hall, High

February 1 to 22

- Sculpture by Ian Nickson, The Old Bull Arts Centre, 68 High Street, Barnet. Open: Mon.-Sat. 10 am-6 pm (closed Thursday pm) (449 0048).

February 5 to 25

- Watercolours by students of William Huntley, Stanhope Road Adult Centre, Finchley, N12. Open: Mon.-Fri. 10 am-12 noon, 1-3.30 pm, 6.30-8.30 pm (445 6068).

Until February 6

- Milentijevic Art Group, North Finchley Library, Ravensdale Avenue. Normal library opening hours.

February 6 to March 6

- Finchley Art Society — selected works — Hendon Library, The Burroughs, Hendon. Normal library opening hours.

- Road, East Finchley. 2.30 pm (444 5756).
- *Hendon Arts Theatre Workshop, Church House, Greyhound Hill, Hendon. 7.45 pm. £1 per session (non-members £1.50). Junior Workshop 6.15 pm (202 6242).
- *Old Bull Morris Dancers. Mixed Sex Clog Morris Team, Assembly Hall, Queen Elizabeth's Girls' School, Meadway, Barnet. 7.45—9.45 pm (440 1861).
- *Manor Drive Methodist Church Wives' Club, corner of York Way and Manor Drive, N20 (during term-time). 2—3.15 pm. Creche available (368 2193).
- *Jewish Association & Culture Society, Henriques House 120 Oakleigh Road North, N20. 1.30—3.30 pm (368 3986).
- *Home League women's meeting, East Finchley Salvation Army, Hertford Road, East Finchley. 2.15 pm (444 0207).
- *Barnet Tae Kwon Do Club, Trinity Church Hall, Dale Grove, North Finchley. 7—9 pm (77 50635).
- *Barnet Karate Centre — Ladies Keep Fit/Karate, Finchley Synagogue, Hutton Grove, North Finchley. 1.30 pm (346 0630). Children's class, Underhill Junior School, Mays Lane, Barnet. 7 pm. Ladies' Karate 8.30 pm (203 3991).
- *Home League women's meeting, Hendon Salvation Army, Brampton Grove, Hendon. 2.30 pm.
- *Tae Kwon Do Club, Centre Point, Grahame Park. 8—9 pm (200 7112).
- *Ladies' Fellowship, United Mission, Pembroke Road, Muswell Hill. 2.15 pm (444 5536).
- *Friern Barnet Photographic Society, St. John's Hall, Friern Barnet Lane (next to Whetstone Police Station). 8 pm (445 2617).
- *Umpires Training Course, Cockfosters Cricket Club Pavilion, Chalk Lane. 8 pm. All umpires and aspiring umpires welcome. No fees. (449 5496 368 5771).
- *Friends of Clitterhouse Junior School — Bingo session during term time — Claremont Road, Cricklewood. 8 pm.
- *English Country Dancing, Holy Trinity Church Hall, Church Lane, East Finchley, N2. 7.30 pm (445 4772).
- *120 (Hendon) Squadron Air Training Corps, RAF Hendon, Aerodrome Road, Colindale. Boys 13½-15½. 7.30—9.30 pm (205 7297).

Wednesday January 20

- Friary Ladies Club, Assembly Rooms, Colney Hatch Lane, N11 (entrance at rear in Lynchhurst Avenue). 8 pm (349 0638).
- Finchley Rotaract Club, Moss Lane, North Finchley. 8.30 pm (349 2709).
- Woodside Park TWG, The Old Finchleians Club House, Southover, North Finchley. 2.15 pm (346 2095).
- Hendon Floral Art Group, Hemm Burden Hall, Egerton Gardens, Hendon. 7.30 pm (959 6111).
- Lions Club of Finchley, Hendon Hall Hotel, Ashley Lane, Hendon. 7.30 pm (951 2196).
- West Hendon Labour Party monthly meeting and council

- lors' report. Details from Bob Richardson (202 9751).
- *Barnet Caving Group. The Joiners Arms, Ballards Lane, N3. Beginners and experienced cavers welcome. 9 pm (959 4615 or 444 4374).
- *Wednesday Bridge Club, St. Andrew's Small Hall, Chase Side, Southgate. 1.30 pm (440 9682).
- *Barnet Cycling Club, United Reformed Church Hall, Oakleigh Road North, Whetstone. 8 pm (888 7143).
- *Old Time and modern sequence dancing, BSCA, Mays Lane, Barnet. 8 pm (440 4424).
- *Friary Old Time and sequence dancing, Manor Drive Methodist Church Hall, Whetstone. 8 pm. 7.30 Beginners (445 7127).
- *Up-to-the-Centre Square Dance Club, Watling Community Centre, Orange Hill Road, Edgware, 8 pm (959 5204).
- *Dog training, St. Philip's Church Hall, Gravel Hill, Finchley, N3. Beginners 7-8 pm; Intermediate etc. 8 pm (458 7399).
- *West Hendon Liberal Association. 7.45 pm (202 8087 Sunday to Thursday evenings only).
- *Women's League of Health and Beauty, Christ Church Hall, High Road, North Finchley. Graded classes from 7 pm onwards (Hatfield 61448).
- Chipping Barnet YCs, Barnet Conservative Club, 33 High Street. 8 pm (449 7345 daytime).
- *Finchley & Friern Barnet YCs, 212 Ballards Lane, North Finchley, 8 pm (445 9426).
- *Edgware Amateur Cine Society, Orange Hill Junior School, Hamonde Close, Edgware. 8 pm (959 7783 or 428 9659).
- *Whist at Fellowship House, Wil-

WHAT'S ON

- liffield Green, Golders Green. 8 pm (458 4023).
- *Yoga, Whitchurch Institute, Buckingham Road, Edgware. 2.30 pm (203 1935).
- *Edgware Photographic Society, Edgware Library, Hale Lane. 8 pm (952 4786).
- *Ballroom, sequence, old tyme and party dancing, St. Mary's Hall, 54 Church Hill Road, East Barnet. 8 pm (803 9028).
- *Home League ladies meeting, Salvation Army Citadel, Albert Road, New Barnet. 2.15 pm (449 8200).
- *Pymmes Judo Club for children, East Barnet School, Westbrook Crescent, New Barnet. 6.30 pm (440 6473).
- *Judo, Herbert Wilmot Youth Centre, Market Place, East Finchley. Beginners, 5.15 pm; Juniors, 6.15 pm; Seniors, 7.15 pm. Girls' and ladies' self defence: 8-9 pm. Yoga and football (444 8422).
- *Over 60s Meeting, West Hendon Community Centre. 2-4 pm (202 4847).
- *North London & District Divorced and Separated Club, St. Paul's Church Hall, High Road, New Southgate. 8 pm (360 0879).
- *Incognito Theatre Group, Holly Park Road, New Southgate. 8 pm. New members welcome (445 1576).
- *Daniel Court Social Club, North Acre, Grahame Park. 2-5 pm (200 1759 after 6 pm).
- *Dog Training, Christ Church Hall, The Crest, Brent Street, Hendon. Beginners 6.45 pm and 7.15 pm; intermediate and

- competition until 10 pm (202 2888).
- *East Finchley Theatre Group, Methodist Church Hall, High Road, East Finchley, N2. 7.30 pm.
- *Mothers and Toddlers Group, Christadelphian Meeting House, 51 Station Road, New Barnet. 1.30-3 pm (440 7058).
- *Yoga classes (fit or disabled), St. Mary's Church Hall, East Barnet. 2-3.30 pm (440 1828). Multiple sclerosis group starting soon.
- *Mountfield Old Time and Modern Sequence Dance Club, Martin School, Finchley N2. 7.30 pm.
- *East Finchley Neighbourhood Centre, 42 Church Lane, N2. Social Work Surgery. 1.30-3.30 pm (444 6265).
- *Friary Sequence Dance Club, Manor Drive Methodist Church Whetstone. 8 pm (446 4816).
- *Women's Consciousness Raising Group. 8 pm. For venue telephone 200 1964.

- Green Road, Golders Green. 8 pm.
- *Mental Health Association (MIND) Social Club, 154 Station Road, Hendon. 8-10 pm (444 5847 between 6-7 pm).
- *Finchley Chess Club, Day Centre, Etchingam Park Road, Finchley, N3. 7 pm (445 4927).
- *Silver Circle, Senior Citizens' Club, Salvation Army Citadel, Albert Road, New Barnet. 2 pm (449 8200).
- *Ridgeway Club, National Association of Women's Clubs, St. Mary's Hall, Church Hill Road, East Barnet. 7.30 pm (449 2852).
- *Barnet and District Athletic Club - Joggers night at Victoria Hall, Park Road, East Barnet. 7 pm (441 1589).
- *Barnet Youth Hostels Association Group, The Scout HQ, Triangle Passage, New Barnet. 8 pm (449 1983).
- *Pymmes Judo Club for adults, East Barnet School, Westbrook Crescent, New Barnet. 8 pm (440 6473).
- *Herbert Wilmot Youth Centre, Market Place, East Finchley. Senior Youth Club (13 to 21 years) and general activities. 7.30 pm (444 8422).
- *Boys' Brigade, 4th Finchley Company, 11-18 years, Finchley Methodist Church, Essex Hall, Essex Park, Finchley, N3. 8 pm (446 2690).
- *North London Karate Club, Queen Elizabeth's Girls' School, Meadway, Barnet. 7.30 pm and 8.30 pm (440 7733 or 440 8633).
- *Duplicate Bridge, Friends of the Jewish Day Centre, Michael Sobell House, Limes Avenue, Golders Green. 7.45 pm. £1.20 inc. refreshments.
- *Dancing, Conservative Hall, High Road, New Southgate.

Thursday January 21

- Friern Barnet Branch Labour Party, The Turrets Public House, Friern Barnet Road. 8.15 pm.
- Mill Hill Preservation Society, St. Pauls Church Hall, The Ridgeway, Mill Hill. Illustrated talk on the Green Belt Management Experiment. 8 pm (959 5013; 959 5318).
- *Hampstead Scientific Society, Burgh House, New End Square, Hampstead. 'Volcanoes'. 8 pm (794 9341).
- *North Side Bridge Club, Methodist Church, High Road, East Finchley. 7.30 pm (445 7788).
- *Contemporary dancing, Manor Arrows Youth Club, Finchley Manorhill School, Summers Lane, North Finchley. 6.30 pm (368 9876).
- *Finchley Old Time and Modern Sequence Dance Club, Martin School, East Finchley. 7.30 pm.
- *Hendon & Edgware 18 Plus Group, The Bell, Bell Lane, Hendon. 8.15 pm (954 6929).
- *National Council for the Divorced and Separated (NW London Branch), Cavalier Rooms, Prince Albert, Golders

Council Meetings

Members of the public are invited to attend Council and Committee meetings held in the Town Hall, Hendon, at 7 pm.

- Monday, January 18: Finance.
- Tuesday, February 2: Council meeting.**
- Monday, February 8: Housing; Development and Estates.
- Tuesday, February 9: Public Works; Social Services.
- Wednesday, February 10: Town Planning and Research.



IT'S AS CLEAR AS GLASS

UP TO 20% DISCOUNT ON

- ★ DOUBLE GLAZING
- ★ RESIDENTIAL AND PATIO DOORS
- ★ ALUMINIUM REPLACEMENT WINDOWS

NEVER KNOWINGLY UNDERQUOTED

5 YEAR GUARANTEE

TAILOR MADE IN OUR OWN WORKSHOPS

Only the best materials used, all meeting British standard specifications.

TUDOR AND GEORGIAN-STYLE WINDOWS in bronze, white or satin finishes.

TRADE ENQUIRIES WELCOME. CONTACT US NOW, WHILE OFFER LASTS, FOR A FREE ESTIMATE.





ARCTIC WINDOW CO.

39-41 NORTH ROAD, LONDON N7 9DP

01-607 4567 01-607 4223

SALE

YOU WON'T BELIEVE OUR PRICES!

Full range of suites and corner units from **£200!**

ALL STOCK ITEMS MUST BE CLEARED



BRIDGE

FURNITURE

4/5 Temple Fortune Parade
Bridge Lane, London NW11
01-458 7565
MON - SAT 9.30 - 5.30



WHAT'S ON

Children's: old time, Latin, disco. Adults: sequence and modern. 6—10.30 pm (361 9847).

*Barnet PHAB Group (physically handicapped and able-bodied), Alyth Youth Centre, Alyth Gardens, Temple Fortune. 8.15 pm (906 1505).

*Old Time and Sequence Dance Club, Cadets HQ, Long Lane, Finchley, N3. 7.30 pm (445 3610).

*Boys Club, Salvation Army Citadel, Salisbury Road, High Barnet. 6 pm.

*Edgware Sea Cadet Corps, girls' 12-18 years, Daws Lane, Mill Hill. 7.30—9.30 pm (959 0711).

*8th Barnet Scout Group (Cub Scouts) 8-11 years, The Scout Hut, St. Albans Road, Barnet. 6.30—8 pm (440 7457)

Ladies' Meeting, Salvation Army Citadel, Salisbury Road, Barnet. 2.30 pm. Boys' Club, 6.30—8 pm (440 8303).

*Hendon and District Aquatic Society, Henry Burden Hall, Egerton Gardens, Hendon. 8 pm (458 5826).

*Barnet Tae Kwon Do Club, Trinity Church Hall, Dale Grove, North Finchley. 7—9 pm (77 50635).

*Burnt Oak Salvation Army Over 60s Club, Barnfield Road, Burnt Oak. 2 pm (906 1606).

*Over 60s Club, Hendon Salvation Army, Brampton Grove, Hendon. 2.15 pm.

*Tae Kwon Do Club, Centre Point, Grahame Park. 8—9 pm (200 7112).

*9th Hendon Boys' Centre, Edgware Methodist Church, Garrat Road, Edgware, 8-11 years. 6.45 pm (958 8285).

*Boys' Brigade, 1st New Barnet, Brookside Methodist Church, East Barnet. 6-8 years. 6 pm;

8-11 years. 6.30 pm (441 2042).

*Hendon Chess Club, 7 Sunningfields Road, Hendon, 7.30 pm.

*Sequence Dancing, St. Stephen's Hall, Bells Hill, Barnet. Beginners class 7.30—8.30 pm; General dancing 8.30—10 pm (77 52949).

*High Barnet Woodcraft Folk, Underhill School, Mays Lane, Barnet. Boys and girls 6-10 years 6.15—7.30 pm (441 3233).

*8th Hendon Company Boys' Brigade (Pre-Junior) 5-8 years 6 pm, Mill Hill East Church, Salcombe Gardens (205 3182; 346 6167).

Russell Club (National Association of Women's Clubs), Southaw School, Russell Lane, Whetstone. 8 pm (361 1553).

*JACS (Finchley Branch) — cultural club for retired people, The Caller Wing, Finchley Synagogue, Kinloss Gardens, Finchley, N3. 1.30 pm (368 3986).

Bible Study, Lt.Col. Fred Hoyle, Salvation Army Citadel, Albert Road, New Barnet. 7.45 pm (440 4649).

Friday January 22

*International folk dancing, Hadley Memorial Hall, Hadley Highstone, 8 pm (368 5345).

*Hendon Camera Club, Fellowship House, Willifield Way, Golders Green. 7.45 pm (455 0837).

*Barnet & Finchley Photographic Society, rear of 37 Salisbury

Road, Barnet. 8 pm (368 3917).

*Mill Hill Over 60s Handicraft Club, Moreton Close Lounge (behind shops at Salcombe Gardens, Mill Hill). 2—4 pm (959 3858).

*Herbert Wilmot Youth Centre, Market Place, East Finchley. Junior Youth Club (8-13 years), general activities. 5.45 to 8.15 pm (444 8422).

*Finchley Cine Society, Avenue House, East End Road, Finchley, N3. 8 pm (346 4265).

*Edgware Sea Cadet Corps, boys 12-18 years, Daws Lane, Mill Hill. 7.30—9.30 pm (959 0711).

*8th Barnet Scout Group, 11-16 years, The Scout Hut, St. Albans Road, Barnet. 7.30—9.30 pm (440 7457).

*Over 60s Fellowship, East Finchley Salvation Army, Hertford Road, East Finchley. 2.30 pm (444 0207).

Barnet Arts Workshop Dance/Keep Fit Class, Avenue House, East End Road, Finchley. 75p (creche). 10—11 am and 11.15 am—12.15 pm. (346 7120).

*Hendon Unit Sea Cadet Corps — Girl Sea Cadets 12 years plus. Cool Oak Lane, NW9. 7.30 pm (200 6286).

*Bible Fellowship, Salvation Army Citadel, Albert Road, New Barnet. 7.45 pm (449 8200).

*5th Hendon Boys' Brigade, Orange Hill Junior School, Hamonde Close, Edgware. 8-11 years, 6.30 pm; 11-18 years, 8 pm (952 3385).

*Barnet Blind Bowls Club, Drill Hall, High Barnet. 2.30 pm (449 7058).

*High Barnet Woodcraft Folk Venturers 13-16+ (enquire at Queen Elizabeth's Sports Centre for location) (440 2426).

*Mother and Toddlers Group, The Hyde URC Hall, Colin Close, Colindale. 2—3.30 pm. During school term (200 5375).

*120 (Hendon) Squadron Air Training Corps, RAF Hendon, Aerodrome Road, Colindale, Boys 13½-15½. 7.30—9.30 pm (205 7297).

Saturday January 23

East Barnet Conservative Branch Dinner Dance, Apollo Suite, Cockfosters. 7.30 pm for 8 pm (449 7167).

Tuesday January 26

Finchley Redbourne TWG, Etchingam Park Centre, Etchingam Park Road, Finchley, N3. 7.45 pm (346 8596).

Wednesday January 27

Finchley Antiques Appreciation Group, Avenue House, East End Road, Finchley, N3. 7.50 pm. 'Jewellery — Georgian to Edwardian' (906 1869/445 7247).

Amnesty International (Golders Green Branch), Unitarian Church, Hoop Lane, NW11. 7.30 pm (346 3138).

Federation of Ratepayers Associations for Borough of Barnet, North Finchley Library, Ravensdale Avenue. 8 pm (449 0807).

Thursday January 28

The North London Society (Association of Certified Accountants), Royal Chase Hotel, The Ridgeway, Enfield. 8 pm. Window on the Accounting World (445 7498).

Osidge Branch (Women's Section) Chipping Barnet Conservative Association, St. Andrew's Hall, Chase Side Southgate. 2 pm. AGM (322 5414).

Pensioners' Voice (Colindale & Burnt Oak), Burnt Oak Library, Watling Avenue, Burnt Oak. 1.30 pm (959 4683).

Pensioners' Voice (Whetstone & Finchley), St. Albans Parish Centre, Gainsborough Road, North Finchley. 1.30 pm (449 7413).

Finchley & Barnet CND, Friends Meeting House, 56 Alexander Grove, North Finchley. 8 pm (449 3416).

Tuesday January 29

Barnet Ratepayers' & Residents' Association, WRVS Luncheon Room, Salisbury Road, Barnet. Surgery: 7.30 pm, Committee meeting, 8 pm (449 0807).

Sunday January 31

Octopus Swimming Club for the Handicapped, Squires Lane Baths, Finchley, N3. 12.30—1.30 pm (346 5944).

Monday February 1

Introductory talk on Eckankar, Hendon Library, The Burroughs. 8 pm.

Tuesday February 2

Solo Club for widowed, divorced and single (26-60), Finchley area. 8 pm (346 7466/449 9810).

DISCO LATIN BALLROOM KEEP FIT



CLASSES AND PERSONAL TUITION FOR ALL AGES
RING 202 9911 NOW
FOR FREE BROCHURE
LEARNING IS FUN AT THE FRIENDLY

HENDON DANCENTRE
QUEENS PARADE, HENDON, CENTRAL
(Opposite station)

BLITZCREST LTD

THE LARUTAN HAIRPIECE. READY MADE HAIRPIECES FROM £60 OR OUR HAND MADE ONES.

MANUFACTURED ON OUR PREMISES TO OUR CLIENTS SPECIFICATIONS.

OUR HAIRPIECES CARRY A 2-YEAR WRITTEN GUARANTEE.

PRIVATE CONSULTATION ROOMS AVAILABLE.

EVENING AND SATURDAY APPOINTMENTS WELCOME.

FREE CONSULTATIONS WITHOUT OBLIGATION.

TAPES AND ACCESSORIES AVAILABLE BY POST.

CLEANING AND RESTYLING, RELINKING AND FULL RENOVATION SERVICE.

ALL TYPES OF ENQUIRIES WELCOME.

FOR OUR BROCHURE TELEPHONE 487 3420 TODAY

VIDEO VIDEO VIDEO

FOR ALL THE LATEST VIDEOS DELIVERED TO YOUR HOME RING 836 7311 NOW

10.30 am—7.00 pm
7 DAYS A WEEK

£3 + VAT
FOR 3 DAYS NO DEPOSIT

THE SALON (UNISEX HAIRDRESSING SALON)
37 MARYLEBONE LANE, LONDON, W.1.
487-3420

Would like to wish all their customers A Prosperous New Year.

Our specialities are Perming and Highlighting
Cut and Blow Dry from £8.00
Dry cut from £4.00

Late night Thursdays and Fridays until 7pm
Also open Saturday from 9.30-1pm
Manicurist available
Salon Fully Staffed from January 4th
Beautician in attendance for private consultations.

Stockists of PENS by PARKER SHEAFFER and PAPERMATE Commercial and Social Stationery

Christmas Decorations and Stocking Fillers

FOR THE BEST SELECTION OF GIFT IDEAS

Come to **Brays**

COMMERCIAL STATIONERS
84 HIGH STREET POTTER BAR 52151

Open: Mon., Fri., 6 a.m.-6 p.m.
Sat., 6 a.m.-5.30 p.m.
Sun., 7 a.m.-11 a.m.

VIDEO VIDEO VIDEO

CHERRY CHILDE SCHOOL OF DANCING
Golders Green
BALLET, TAP and MODERN
Enquiries: Phone: 458 6962; 458 5021

FINCHLEY/SOUTHGATE COACHES LTD

FLEET OF 15 LUXURY COACHES FOR HIRE

53 SEATERS
246 WOODHOUSE RD, N12

RING: 01-368 0040
01-361 1934
01-368 3190

TODAY FOR A PERSONAL AND FRIENDLY SERVICE
COMPETITIVE RATES

WHAT'S ON

Thursday February 4

Inaugural meeting to form a new Women's Institute branch in High Barnet at the Methodist Church Hall, High Street. 9.30 am. Young mums welcome — creche available.

Barnet SDP, Finchley Catholic High School, Woodside Avenue, North Finchley. Ian Wrigglesworth, MP, will address meeting. 7.30 pm.

Wednesday February 10

Family Holiday Association Annual Meeting, Bigwood Hall, Bigwood Road, NW11. 8.15 pm. Guest speaker: Ann Shearer (455 1777).

Nearly new shop

A "nearly new" shop is to be opened at 1332 High Road, Whetstone, N20, in aid of the Mayor of Barnet's appeal for research into Crohn's Disease in childhood.

The shop will open from Monday to Saturday for two weeks from January 18. Volunteers will man the sales side and the Mayor is hoping for generous support from the public. She plans to visit the shop at 11 am on opening day and to help behind the counter when time permits.

Anyone who has 'nearly new' clothes or articles to donate should take them to the shop.

LATE ENTRIES

Sunday January 17

Curtain Call (a fund-raising organisation for charity) New Year fun-run. Starts 10 am, Stanmore Cricket Club, Warren Lane, Stanmore Common. Entrance forms from 6 Bellamy Drive, Stanmore, Middlesex (907 1615).

Thursday January 21

Greater London Old English Sheepdog Club, Hendon Football Club, Claremont Road, NW2. Grooming/obedience training. 8 pm (458 7028).

*Retirement Club, Montagu Road Centre, Montagu Road, Hendon. First meeting of New Year. 1.45 pm. Lecture and discussion (202 2233).

Wednesday January 27

Hendon South SDP, Bishop Douglass School, Hamilton Road, East Finchley. Christopher Brocklebank-Fowler, MP, will address the meeting. 8 pm (455 8333).

Thursday January 28

Hendon & District Aquatic Society, Henry Burden Hall, Egerton Gardens, Hendon. 8 pm (368 8430).

Sunday February 7

Public meetings conducted by Lt. Col. Gordon H. Bailey, Salvation Army Citadel, Albert Road, New Barnet. 10.30 am and 6.30 pm (440 4649).

Tuesday February 9

Mill Hill Flower Club, Harwood Hall, Mill Hill Broadway. 8 pm (954 4944).

National Schizophrenia Fellowship (NW London). Temple Fortune Health Centre, Temple Fortune Lane. 8 pm (455 5113).

Barnet Friends of the Earth, 72 Cranbrook Road, East Barnet. 8 pm (440 2580).

Open House — Social and cultural meetings. Details s.a.e. 146 Oakleigh Road South, New Southgate, N11.

20th Century Sequence Dancing Club, All Saints Hall, Oakleigh Road North, Whetstone. 7.30 pm. AGM (360 2586).

Wednesday February 10

Finchley Antiques Appreciation Group, Avenue House, East End Road, Finchley, N3. 7.50 pm. '19th Century Watercolours' (906 1869/445 7247).

Hendon Horticultural Society, Henry Burden Hall, Egerton Gardens, Hendon. 8 pm. Fuchsias, Pelargoniums and Geraniums (346 7392).

Pensioners' Voice (Barnet), Council Chamber, Wood Street. (449 6023).

British Computer Society (North London Branch), West Lodge Park Hotel, Cockfosters Road, Hadley Wood. 8 pm. 'Electronic Mail — The theory and practice' (363 8879).

Thursday February 11

Welsh Harp Otters Angling Society, White Bear Public House, The Burroughs, Hendon (205 5670).

Pensioners' Voice (East Finchley), East Finchley Library, 226 High Road. 2 pm (444 5950).

Finchley & Barnet CND, Harold Fern Room, Salisbury Road, Barnet. 8 pm (449 3416).

Barnet and District Fuchsia Society, Council Offices, Wood Street. Speaker: Mr. Ken Spriggs. 8 pm (St. Albans 59989).

Friern Barnet Branch Labour Party, 3 Beaconsfield Road, Friern Barnet. 8.30 pm (368 9414).

Friday February 12

The Historical Association (North London Branch), Enfield Civic Centre, Silver Street. 7.45 pm. 'The Exclusion Crisis 1979-81 (Lea Valley 719866).

Hendon and District Cage Birds Association, Carey Hall, Wilberforce Road, West Hendon. 7.30 pm (205 2647).

Friern Barnet Friary TWG, Christ Church URC Hall, Bellevue Road, Friern Barnet. 1.45 pm (445 8011).

Wednesday February 3

Ecology Party (Barnet/Finchley) (449 8297).

Finchley Rotaract Club, Moss Hall Tavern, Ballards Lane, North Finchley. 8.30 pm (349 2709).

Friary Ladies Club, Assembly Rooms, Colney Hatch Lane, N11. (Entrance at rear in Lyndhurst Avenue). 8 pm (368 0638).

Lions Club of Finchley, Hendon Hall Hotel, Astley Lane, Hendon. 7.30 pm (951 2196).

Barnet Evening TWG, Church House, Wood Street. 7.45 pm (449 6809).

Thursday February 4

Women's Aid Monthly meeting (449 4847).

Hendon Afternoon TWG, Cheshir Hall, Foster Street, Hendon. 2 pm (202 6081).

Saturday February 6

Friern Barnet Council for Voluntary Service, Whist Drive, Day Centre, Friern Barnet Lane, N11. 8 pm (368 4278).

Sydney Chapman, MP for Chipping Barnet, and a Barnet Councillor, holding an advice bureau, 163 High Street, Barnet. 10.30 am — 12 noon (449 7345).

20th Century Sequence Dancing Club, Queen Elizabeth's Centre, Meadway, Barnet. 7.30 pm (360 2586).

GENERAL PLUMBING & ROOFING SERVICES

TRADE AND DO-IT-YOURSELF SPECIALISTS

We supply both trade and the general public at **TRADE PRICES!**

We can supply:

Armitage, Ideal Standard, Twyford Ceramic Ware, all heating equipment including Potterton boilers, Ideal E Type, Concord, Cylinders, radiator valves and radiators, Myson & Barlo, range of Aquaseal products and roofing felts, Triton showers, Osma Plastics, sink units, shower cabinets...

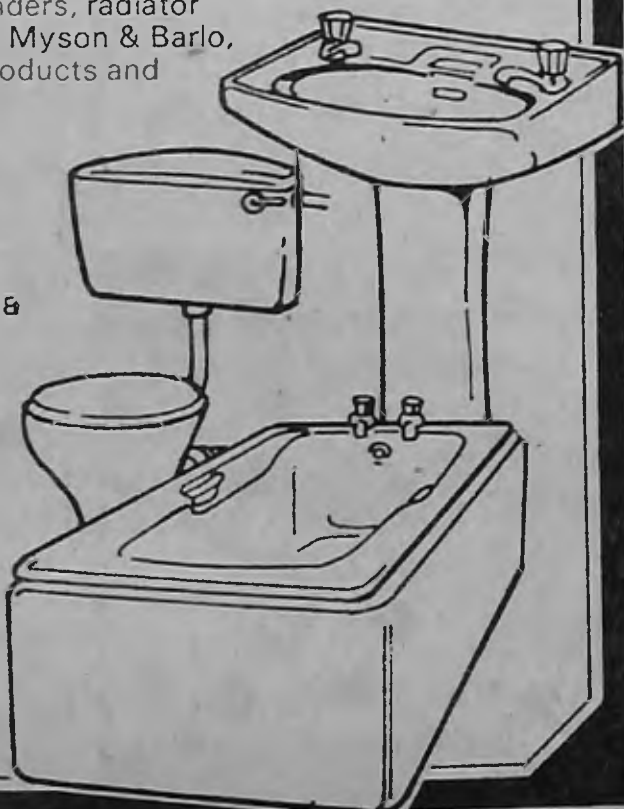
GENERAL PLUMBING & ROOFING SERVICES,

85 PANCRAS RD, LONDON NW1

(between Kings Cross and St. Pancras Stations)

Tel: 837 2344/2466

Open: Mon—Fri 8—5 pm Sat 8 am—Noon



GUARANTEED CENTRAL HEATING SEVEN RADIATORS PLUS HOT WATER



TYPICAL SYSTEM for average type semi

- Wall mounted boiler
- RADIATORS:
 - Lounge: One 6ft radiator
 - Dining: One 6ft radiator
 - Hall: One 5ft radiator
 - Bathroom: One 3ft radiator
 - Bedroom 1: One 4ft radiator
 - Bedroom 2: One 4ft radiator
 - Bedroom 3: One 2ft radiator
- Hot water conversion
- Time clock and pump

For a FREE estimate on your home

TEL: (0533) 22748 or (0203) 619183

WILKINSON
36 MILNER CRESCENT
POTTERS GREEN
COVENTRY

Sunday January 17

Music in Central Square, St. Jude on the Hill, NW11. Recital by Suzanne Pinkerton (soprano). 3 pm. Tickets £1.

Monday January 18

*Finchley Choral Society, Moss Hall Junior School, Nether Street, Finchley, N3. 7.45 pm (445 8401).

*Barnet Orchestra at Hendon, Whitefield School, Claremont Road, Cricklewood, 7.45 pm (205 2418).

*Tudor Orchestra, East Finchley Methodist Church Hall, High Road, Finchley, N2. 7.45 pm.

Tuesday January 19

East Barnet Library Gramophone Society, 85 Brockhill Road, East Barnet. Sir Arthur Sullivan — self-indulgent composer. 8 pm (440 4376).

*Finchley Chamber Choir, Finchley Methodist Church, Ballards Lane, Church End, Finchley. 8 pm (959 2681).

*Hendon String Orchestra, Whitefield School, Claremont Road, Cricklewood. 7.45 pm.

Wednesday January 20

*Barnet and District Choral Society, Wesley Hall, Methodist Church, High Street, Barnet. 7.45 pm (368 5897 or 440 1157).

Thursday January 21

Friern Barnet Library Gramophone Society, Friern Barnet Road. 'I Paggiacci'. 8.10 pm (368 2680).

*Finchley Chamber Orchestra, Moss Hall Junior School, Finchley, N3. 7.30 pm.

Saturday January 23

Hendon (St. Mary's) Music Society Recital Series, Hendon Methodist Church, The Burroughs, Hendon. Endellion String Quartet. Works by Mozart, Beethoven and Dvorak. 7.30 pm (959 1257).

Tuesday January 26

Hendon Library Gramophone Society, Hendon Library, The Burroughs. Excursions of a music librarian. 7.45 pm (202 5625).

Mill Hill School Music Club, Mill Hill School, The Ridgeway, Mill Hill. Chopin recital by Janusz Stechley. 8 pm (959 4208).

Saturday January 30

Hendon Singers and Players, Christ Church (Hendon), Brent Street, Hendon. Admission £1 (959 3215).

Sunday January 31

Mill Hill Toc H Music Club, Civic Hall, Borehamwood. Eugene Sarbu, Violin recital. Tickets £3.25. 7.45 pm (959 1173 or 953 9872).

Monday February 1

Hendon (St. Mary's) Music Society, Hendon Library, The Burroughs. Stanley Sadie, editor

Music in Barnet

of The New Grove Dictionary of Music and Musicians. 8 pm (959 1257).

Tuesday February 2

East Barnet Library Gramophone Society, 85 Brockhill Road, East Barnet. Spanish Ladies. 8 pm (440 4376).

Thursday February 4

Friern Barnet Library Gramophone Society, Friern Barnet Road. Gerald Finzi. 8.10 pm (368 2680).

Saturday February 6

The Chantry Trust for promotion of music therapy for mentally and physically handicapped children presents Osian Ellis, celebrated harpist, All Saints Arts Centre, Oakleigh Road North, Whetstone. 3 pm. Tickets £3, £2, £1. Space for

wheelchairs. Creche provided (445 7131).

Tuesday February 9

Hendon Library Gramophone Society, Hendon Library, The Burroughs. The Baryton: king of instruments and instrument of kings. 7.30 pm (202 5625).

Saturday February 13

Barnet Parish Church Recitals. Brahms's Requiem. 7.30 pm (449 7760).

Crowndale Orchestra, St. Jude's Church, NW11. Soloist: Robert Stevenson (piano). Works by Brahms, Rachmaninoff. Admission by programme £1 (children/OAPs 50p). 8 pm (886 6348).

Pub Music**Sundays**

*Jazz Club (Bernie Tyrrell). The

Salisbury Hotel, High Street, Barnet. 12 noon—2 pm (440 0081).

*Bob Guthrie Jazzmen, Queen's Head, 248 Regent Park Road, N3. 8.30—10.30 pm (346 1012).

*Rock and Blues, Torrington Arms, Lodge Lane, High Road, North Finchley. 8.30 pm (440 4710).

Library Lectures**Wednesday February 3**

Library Lecture, East Finchley Library, High Road, East Finchley. Robert Gentle recounts a further journey 'Across South America'. 8.15 pm.

Wednesday February 10

Library Lecture, Burnt Oak Library, Watling Avenue, Burnt Oak. An account by Paul Pratt of an exciting journey by motorcycle through the Far East. 8.15 pm.

Local Theatre Guide

January 13-16

Incognito Theatre Group present 'Outside Edge' by Richard Harris, Incognito Theatre, Holly Park Road, Friern Barnet. 8 pm (368 0202 for tickets).

Concorde Players present pantomime 'Ali Baba', Barnet College Hall, Fitzjohn

Avenue. 7.30 pm (Saturday matinee 2.30 pm). Tickets £1.90 adults, £1.50 children/OAPs (881 2471, 449 0048).

January 20-23

Barnet South Community Association Players present Robinson Crusoe, BSCA Hall, Mays Lane,

Barnet. Tickets £1.25, 75p children (440 6858).

February 4-6

Woodside Park Club Players present 'The Secretary Bird' by William Douglas Home, Woodside Park Club, Southover, N12. 8 pm. Tickets £1 (346 2150).

HELLENIC AGENCIES

(Property & Financial Consultants)

104 High Road, London N2

Tel: 01-444/4127/8

Telex 295631

Through our Agency we can provide the following services:

- * Residential and Commercial Properties wanted and for sale.
- * Feasibility Studies, Development Planning, Planning Permissions, Specifications and Construction Documents.
- * Total Design, Construction Projects, Management and Finance Package.
- * Arrangement of Finance through Building Societies and Banks for any viable propositions.
- * General Insurance, Pensions, Goodwills and a lot of other schemes available.

Invest correctly now!

- * Invest in a property, a flat, house or even a plot of land in Cyprus or Greece.
- * We can assure you with full confidence that our well studied plans will be a success with your investments.
- * Take the opportunity now to enjoy the full facilities as a member of the European Community.
- * The growth of your money overseas.
- * The wonderful climate and low cost of living while you are in permanent or temporary residency.
- * Alternate arrangements can be made for your retirement at £80 per week including your Air return ticket, full medical care, 3 meals a day and living in a luxury apartment.

For further details please ring the office between 9.30 am to 5.30 pm MON/SAT

Simpsons Cycles

116 Malden Road, NW5
Tel: 485 1706

Over 300 cycles and frames
visibly on show

Extra discounts during January



CARPET YOUR ENTIRE HOME

From £2.00 Per Week
NO DEPOSIT

If you can't visit our showroom, we will visit you
with samples, completely free of charge.

Carpet Bargains Showroom

MODERN HOME PLANNING

24 WEST GREEN ROAD
TOTTENHAM, LONDON, N15

(The Shop on the Corner) Licensed Brokers

APR 44.8%

HUGE RANGES
£2.00
per week
x104 £208.82
CASH PRICE
£147



NORMANS

CHARTERED SURVEYORS, AUCTIONEERS and ESTATE AGENTS

AUCTION SALE

Tuesday 19th January 1982 at 2.30 p.m., at THE MICHAEL SOBELL SPORTS CENTRE, HORNSEY ROAD, ISLINGTON, LONDON N7.

(unless previously sold)

VACANT & PART VACANT HOUSES

17 Bedford Road, N17
45 Staples Road, Loughton
372 Seven Sisters Road, N4
40 Lankaster Gardens, N2
145 Rushmore Road, E5
1 Elms Avenue, N10
333 Wightman Road, N8
10a St. Peters Street, N1

VACANT FLAT

158 Sirdar Road, N22

VACANT OFFICES & FOUR VACANT SELF CONTAINED FLATS

227/229 New North Road, N1

VACANT SHOP & UPPER PART

219 East India Dock Road, E14

RESIDENTIAL INVESTMENTS

10 Raleigh Road, N8
11 North Road, N6
66 Kings Cross Road, WC1
68 Kings Cross Road, WC1
85 Camden Street, NW1

SHOP INVESTMENTS

540 Holloway Road, N7
22 Highgate Hill, N19
(with Vacant Rooms above)
643 High Road, N17
(with Vacant Offices above)
95 Stoke Newington High St., N16
(with Vacant Flat above)

VACANT CORNER HOUSE WITH PLANING PERMISSION TO CONVERT INTO TWO S/C FLATS & NEW HOUSE ADJOINING

142 Colney Hatch Lane, N10

also Freehold Ground Rents at Palmers Green & Woodside Park

The list for this sale is now closed—OUR NEXT AVAILABLE AUCTION SALE is on 16th MARCH 1982—LIST NOW OPEN FOR ENTRIES

Particulars and Conditions of Sale from Auctioneers

NORMANS, 816/818 High Road, Tottenham, N17
Telephone: 01-808 9192

Offices also at Islington, Muswell Hill, Wood Green



TALHOES

Reheeling free of charge at any future
date on footwear purchased from now
until 15 January, 1982.

669 FINCHLEY ROAD
CHILDS HILL, NW2

Telephone: 435 9995

SUNES FISH & CHIP SHOP

16 HAMPSTEAD HIGH STREET

435 0360

Open 12 to 11.30 Mon—Sat. Closed Sunday

All fresh fish supplied daily

COD — HADDOCK — PLAICE
ROCK SALMON — SKATE

We fry and grill to order
Dover Sole, Scampi & Salmon

Why not pay us a visit

R.S.J.s

PHONE
200 1616

R. J. DULIEU
9-5.30
MON-FRI

THE BANDY CAT

LICENSED RESTAURANT

NOW OPEN FOR
TRADITIONAL
THREE COURSE
SUNDAY LUNCH
Only £4.95
12-3 p.m.



Reservations 01-902 1849

307 Harrow Road, Wembley. Ex 26
(near the Triangle)

THE ORIGINAL KITCHEN REFIT COMPANY

SAVE £££s
DON'T BUY A NEW
KITCHEN
LET US REPLACE THE DOORS

NAME.....

ADDRESS.....

TEL.....

Please send brochure

BCN

I would like a FREE quotation

THE COUNTY COLLECTION, C/O MJR GROUP, ESSEX WHARFE,
BARKING ROAD, LONDON E16 1DR
TEL. 01-476 4686 TELEX 8952698



CONVERT TO A
SOLID WOODEN KITCHEN
WITH THE BEAUTY OF OUR
NATURAL HARDWOOD DOORS
Drawfronts and matching trim
Every order custom made

Selection of styles
and colours in
SOLID OAK, ASH
WALNUT,
MAHOGANY
& PINE

Complete installation
service or
save by fitting
Yourself!
Credit facilities
available

ALSO
Complete new
Kitchen Installations

A question of crime prevention

JACK BRADLEY, Security Officer for Barnet Council, answers questions with some advice on how to foil thieves and con-men.

□ □ □
What can I do about my home when I go away for a few days holiday? (W.D.C. Golders Green).

First of all, don't discuss your holiday arrangements with too many people, particularly strangers. Book through a reputable holiday or travel agent, preferably an ABTA member, so that you are sure this is a properly registered business. Then arrange for a trusted friend or neighbour to keep an eye on the house and visit it occasionally even if they only walk past to check the exterior.

Before you leave make certain all the windows are properly secured; that the bolts top and bottom on the back door are pushed home; and carefully lock the front door by the mortise lock. Don't rely on an ordinary type night latch.

Stop the milk and papers and make sure the letter box is clear to allow mail and free newspapers to fall through. Take off the letter cage if you have one, it soon gets full and that is a thieves' give-away. By the way, don't leave a note for the milkman.

Then tidy up the front garden. It

soon starts to look neglected and that attracts unwelcome attention.

I am the landlord of a public house. Can you suggest a few basic security ideas? (F.A.L. Edgware).

Make certain that all the windows are shut properly and fastened. Then check the cellar flaps are bolted and padlocked from the inside. If you have a dog allow it the freedom of the building after closing time. Leave a light or two on and, better still, get a time switch attached to a couple of table or standard lamps.

When the customers have left it is very important to search the premises thoroughly, particularly the men's and women's lavatories. It is a good idea to take the dog round when you make these checks. Leave the till empty and open and keep as little money on the premises as is absolutely necessary. Get a safe, the underfloor types are excellent.

Have a telephone by your bed and don't walk into danger if you suspect that intruders are on the premises. Just dial 999.

Lock your car in the garage and even in there leave the car itself locked.

Never discuss money matters or stock with a customer or in front of customers. And always take up references for bar staff.

My friend had his car stolen from the street although it was locked. Can you advise me how to avoid this happening? (D.E.S. Hendon)

I wonder if your friend's car was really locked. Perhaps a window was left open. It is of course far better to keep the car garaged or at least parked on the front garden area of the house. But I realise that in many parts of our borough this is just not possible. So let's look at what can be done.

A simple, cheap, secret 'immobiliser' switch can be fitted in minutes or a simple alarm installed at a relatively low cost. It is worth it.

Car locks are fairly standard and the specialist thief has a whole bundle of keys. But you can have better quality locks fitted — talk to your car dealer or D-I-Y motor shop. And you can fit a metal locking device between the steering column and the clutch (not the brake!) but this type of useful lock is not suitable for automatics.

Valuables left inside a car are often an invitation to a thief to break in so don't leave cameras, radios, tape recorders, parcels and packages on view. Lock them out of sight in the boot.

Be especially careful in multi-storey and big car parks and don't leave the parking ticket in the car.

Last year I went to Spain on holiday by air. When I arrived I found some items missing from my luggage. Can I do anything to prevent this in the future. (R.B.H. Finchley)

Don't pack money, travellers cheques, jewellery or small items like electric razors and transistor radios. Take them in your hand baggage and don't let that out of your sight. Lock your main cases properly and then put a good leather strap round the case. Remember that if there is a thief at work he is going to be in a hurry so if you can delay him getting into your cases he will probably be an easier meat.

Take out insurance to cover the possibilities of holiday upsets on the flight or the journey as well as the holiday itself.

□ □ □
 More useful crime prevention hints will be published later. Meanwhile, remember we are in the worst motoring weather of the year. Check your tyres and lights and drive safely.

J.B. (Hendon)



Mr. Bradley regrets that he is unable to enter into personal correspondence on security matters. Questions for this page should be addressed to The Editor. Address P4.

MOIRA NURSING SERVICES

All grades of nurses provided for Hospitals, Nursing Homes, Industrial organisations and Private Homes.

We provide a fast efficient service and take bookings in advance. 24 Hour service available.

660 Holloway Road
 N19

Tel: 24 Hour Nos. 263-4056
 Day: 263-2221 272-7485 272-5192

69-71 Praed Street
 Paddington

262-7229
 262-8426

AVR TRAVELS

Bargains of the month

LONDON — BOMBAY — DELHI
 £275 return
 LONDON — HONG KONG
 £399 return
 LONDON — NAIROBI — DAR-ES-SALAAM
 £405 return
 LONDON — JO'BURG
 £380 return

Many more destinations. Please phone for quote.

TEL: 423 — 144

2 Merivale Road, West Harrow

Training Opportunities

THE BRICK DEVELOPMENT ASSOCIATION TRAINING SERVICES LTD

offer young people from 19-25 the chance to train as
**BRICKLAYERS, CARPENTERS AND JOINERS
 PLASTERERS, PAINTERS AND DECORATORS**

Five-day week for six months. CITB Grants available.

For further details tel:
BDATS 205 2329

WANT A JOB?

Place yourself on Job-Tel and let the jobs chase you

205 0205



COBRA SECURITY SYSTEMS LTD.



(ALL SYSTEMS EXPERTLY INSTALLED OR D.I.Y. WITH FULL INSTRUCTIONS)

- BURGLAR ALARMS
- VEHICLE ALARMS
- MOTOR CYCLE ALARMS
- FIRE AND SMOKE ALARMS
- AUDIO AND VIDEO ENTRY SYSTEMS
- CLOSED CIRCUIT T.V. SYSTEMS
- DOOR AND WINDOW LOCKS
- STEEL DOOR PANELS
- BURGLAR BARS
- DOOR AND WINDOW GRILLES
- PORTABLE, WHEELED, AND AUTOMATIC FIRE EXTINGUISHERS
- REMOVABLE FOLD AWAY FIRE ESCAPE LADDERS

SEND S.A.E. FOR D.I.Y. PRICE LIST OR VISIT OUR NEW SHOWROOM AT:

155 STATION ROAD
CHINGFORD, LONDON, E4

01-529 5710



BURGLAR & FIRE ALARMS LOCKS SAFES, C.C.T.V.

- ★ FREE SURVEYS
- ★ 24-HOUR EMERGENCY SERVICE

Phone: Rickmansworth 73153
Milton Keynes 663607

Gable House
40 High Street
Rickmansworth, Herts



Approved Installer

SMITH GREEN & CO. LTD.

212 — 214 Fortis Green Road
Muswell Hill, N10

Telephone:
885 9871 (4 lines)

Motor, Life, General Insurance

TONY McDONAGH & CO. LTD.

93 Bowes Road
Palmer's Green, N13

Insurance and Mortgage Consultants

Telephone: 889 0234/0235
Phone for friendly professional advice and quotations

UNIVERSAL VIDEO FILMS

The Video Store that offers you more
OUR LIST INCLUDES

INTERVISION ALL THE LATEST TITLES
ROCKY I, ROCKY II, ROLLERBALL
THE DEERHUNTER, CONVOY,
BREAKER BREAKER, THE JAZZ SINGER,
THE LONG GOOD FRIDAY, FLASH GORDON,
THE ENFORCER

WARNER ALL THE LATEST TITLES
EXORCIST II, ENFORCER, GAUNTLET,
EVERY WHICH WAY BUT LOOSE

M.G.M. ALL THE LATEST TITLES
BEING THERE, FAME, THE CHAMP, 2001 SPACE ODYSSEY

★ ★ ★
Take advantage of being a member of our Video Club
MOST FILMS FOR £1 PER NIGHT
(cheaper than the West End)
RENT AND BUY AND EXCHANGE

★ ★ ★
Membership entitles you to discount on many of our video accessories.

NO HIDDEN EXTRAS

149 FORTRESS RD, NW5

(opp Tufnell Park Tube, NW5)

Telephone: 267 1665

GOODMANS Chartered Accountants

34 Newark Way
NW4

Fees Discussed before any work is commenced

Phone: V. Goodman
01-203 5227
(anytime)

COME TO J.W. PULLEN JEWELLERS

GENUINE JANUARY SALE

FROM 25% TO 30% OFF

CATALOGUE PRICES OF SELECTED WATCHES

FROM 20% TO 25% OFF OF

GOLD JEWELLERY

ALL GOODS FULLY GUARANTEED

56 Golders Green Road
NW11
Tel 01-458 5054

Three in One at Thirty-One!

Irene Joss

THREE IN ONE AT THIRTY-ONE
FINAL REDUCTIONS ON
WINTER FASHIONS

MANY GARMENTS HALF-PRICE AND LESS

FEELING THE COLD? COME TO OUR SUN-LOUNGE AND SWITCH ON YOUR OWN PERSONAL SUNSHINE OUR LUXURY SUN-BEDS NOT ONLY GIVE YOU THE TANNED LOOK BUT THOSE TIRED MUSCLES RELAX AND YOU FEEL GREAT — THE WARMED THROUGH FEELING LASTS HOURS.

Licensed by London Borough of Barnet. Parking no problem
Open Sundays 10-1 pm Tuesday, Wednesdays, Thursdays and Fridays 10-5

Thirty-one Bell Lane, Hendon, NW4. Tel: 203 2909



NORMANS

Contact our insurance department for competitive quotes and expert advice

818 High Road, Tottenham N17

01-808 4406

LOCAL AERIAL SPECIALISTS

- ★ Colour TV and FM installations
- ★ Communal systems
- ★ Multipoints
- ★ All work guaranteed
- ★ Reasonable rates
- ★ Prompt personal service

Tel: 01-906 2712

Sale on everything at half price
THE SANDRA JAFFE COLLECTION
 EXCLUSIVE TO NORTH LONDON

Mix exclusively with quality and value and you get a couture range of French and Italian Co-ordinates including knitwear, shirts, knitted suits, jackets, trousers, skirts and co-ordinate tops.

Dresses for day and cocktail wear

4 Monville Parade,
 Temple Fortune,
 London NW11.
 Tel: 01-455 8057

OPEN MONDAY TO FRIDAY
 10 am — 5.30 pm
 SUNDAY 10 am — 2 pm
 (Closed Saturday)



Q How can you ensure your gas central heating keeps you warm this winter?

A Have it serviced by our expert service engineer and be safe and sure!

We are offering for 1 month, a gas heating overhaul, for only £9.50 + parts, if any

Just contact us NOW on

01-204 8683

for an appointment, quoting this newspaper
 Offer ends 11 February 1982

SO PHONE NOW!

L. B. JOYCE & ASSOCIATES
 145 CHARLTON ROAD, KENTON, MIDDX.

We also carry out boiler changes, breakdown calls and pump changes



FIGHT THE FLAB WITH THE INSTITUTE

TO HELP you get rid of those unwanted extra pounds which you've managed to put on as a result of the Christmas festivities, the Hampstead Garden Suburb Institute offer you the following courses:

For the more energetic there is Badminton for players of some experience who want to progress to club standard. Alternatively, there is the American Modern Dance/Keep Fit class which will remove any surplus weight and leave you feeling good.

For those who think that relaxation is more beneficial than all that running around, we are opening a new Yoga Class for complete beginners which will meet on Monday evenings at 7.30 p.m. — the ideal way to unwind after a

hard day at the office or at home!

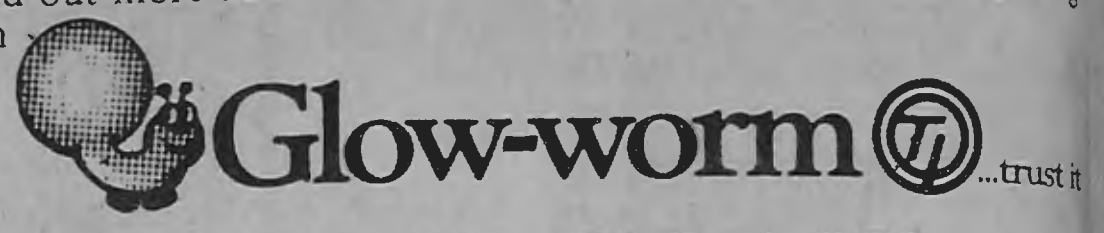
The more serious student would probably feel that attending the lecture course on Modern Jewish History (organised together with the Spiro Institute) would be more rewarding. This series of 10 lectures will be held on Tuesday evenings at 7.30 p.m.

It may be a little early to start thinking about Christmas 1982, but those students who attend Martin Pulver's short lecture series on Staffordshire Blue Pottery will quickly find themselves able to keep a look-out for bargain pieces which will make ideal presents in 1982.

For details please contact the Principal on 455 9951.

Glow-worm gas central heating. Find out how little it costs to run

Find out more about what Glow-worm can offer you by getting in touch with us at the address below.



D.W. BRANSON & SON
 HEATING ENGINEERS & PLUMBERS
 14 PENNINE PARADE, PENNINE DRIVE, NW2
01-458 9837
 FREE ESTIMATES FOR FULL SYSTEMS AND BOILER CHANGES



VILLA DEL BOSCO

Top Quality Furniture Direct from Italy at Unbeatable Prices



"SANTA RITA"
 FREE DELIVERY IN LONDON AREA
 264 WEST HENDON BROADWAY
 EDGWARE ROAD, NW9
 202-3074/3241

ONLY £699
A CHOICE OF 9 COLOURS

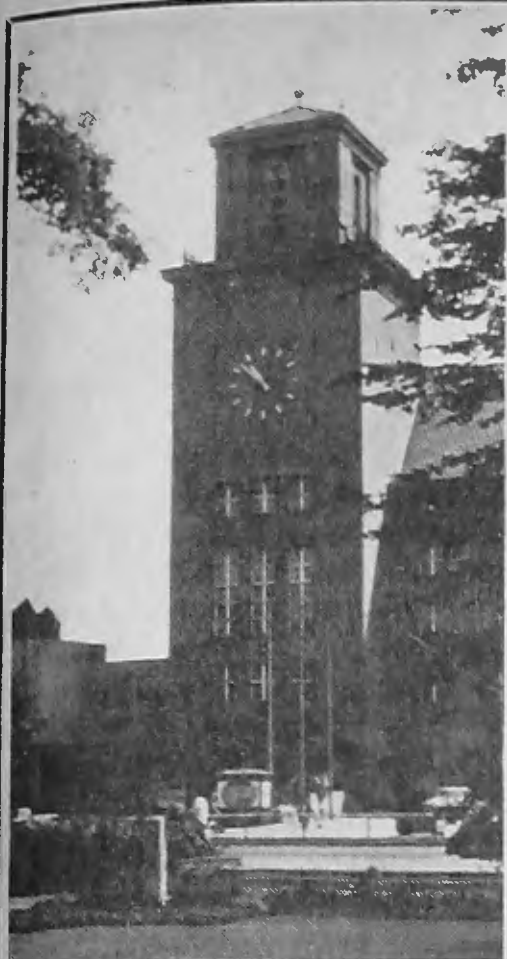
Badminton Course — Spring Term 1982

The Institute's Badminton Course for players who want to progress to Club standard concentrate on tactics and further development of strokes. Numbers are limited to 16 so enrolment is advised. The dates and venue of the course are:

Thursday 14 January	Free Church Hall	7.30 p.m.
Thursday 21 January	Free Church Hall	7.30 p.m.
Thursday 28 January	Bigwood House Hall	7.30 p.m.
Thursday 4 February	Bigwood House Hall	7.30 p.m.
Thursday 11 February	Bigwood House Hall	7.30 p.m.
Thursday 18 February	Bigwood House Hall	7.30 p.m.
Thursday 25 February	— Break for Half Term	
Thursday 4 March	Bigwood House Hall	7.30 p.m.
Thursday 11 March	Bogwood House Hall	7.30 p.m.
Thursday 18 March	Free Church Hall	7.30 p.m.
Thursday 25 March	Free Church Hall	7.30 p.m.

Fee for Course of 10 lessons — £12

Instructor: Mrs J. L.



The Town Hall, Tempelhof.

Greetings to the citizens of our twin town in the London Borough of Barnet.

Last autumn we were delighted to welcome your Mayor, Councillor Mrs. Rosa Freedman, Town Clerk, Mr. Michael Bennett, and councillors as our guests here in Tempelhof.

It is very important, particularly for us in this divided city of Berlin, to form new contacts and to develop and cherish the established friendships which we have built up over the past years. Therefore I believe that out of our official civic visits and exchanges, the residents of our two towns, and particularly the young people, will find opportunities to make new contacts and friendships.

In this spirit, as Bezirksbürgermeister (Mayor) of Tempelhof and in the name of the citizens of our town, I send to the people of Barnet, most sincere greetings. May our twin towns flourish in the spirit of partnership.

Siegmond Jaroch
Bezirksbürgermeister von
Berlin-Tempelhof

TWIN TOWN TEMPELHOF Of book lifts and the Berlin Wall



Parish Church of Tempelhof.

IN THE 1950s Britain was recovering from the effects and attitudes of war and Germany was desperately trying to build up a new economy and adapt to a divided country. Against this background the British Government realised that there was a need for a grass roots movement, something which would help the people of the two nations to forget past hostilities and move closer together in a new and united Europe.

So began a movement of establishing twin towns. One of the first to be brought into existence was the link between the former Borough of Hendon and Tempelhof. The two towns had so much in common. Both were centres of flying. Both were residential boroughs lying on the outskirts of a capital city. The populations were about the same — 130,000; and even the shape of the two borough's was similar — long and narrow. The main difference was that Tempelhof lies to the south of Berlin in roughly the same position as Hendon lies to the north of London.

At the time that the first link was being set up a young councillor had just joined Hendon Council — John Gordon-Lee became involved in the project and today he is Chairman of the Friends of Tempelhof with Councillor Mrs. Margaret Laskey as Secretary and Councillor Brian Jarman, Treasurer.

In some ways it has not been as easy a link to establish. Berlin being islanded by East Germany, it means that most visits have to be made by plane which is expensive. Accommodation in Tempelhof is at a premium and so it has not been possible to arrange large-scale exchanges of young people.

Nevertheless Finchley Rugby

Club have paid a sports visit and contacts between the two local councils are very strong.

In the year that John Gordon-Lee was Mayor of Barnet he led a delegation to Tempelhof to install the name sign for Barnet Street — yes 'Street'. It bears the name in English and the Barnet coat of arms. But at the other end there is a smaller sign on a house wall saying Barnet Strasse. Here in Barnet we have a Tempelhof Avenue just off the Brent Cross Shopping Centre.

It was in this year that the Berlin book lift came into being. Tempelhof had just built a new central library and were delighted to show their Barnet civic guests round the new building. The visitors noted that the English section was understocked and on their return launched an appeal for new books in English to go to Tempelhof. These books had to be taken out in small packages with parties flying in to Berlin, as it was not felt advisable for them to go

through East German customs as they would have to if freighted through.

Over the years the collection has grown considerably. They are widely used by students and Berliners wanting to improve their English, and as each one carries a special gift plate. Barnet's contribution is well known among the Tempelhof residents.

In the Autumn a group of Barnet Councillors led by the Mayor, Councillor Mrs. Rosa Freedman, and accompanied by the Town Clerk, Mr. Michael Bennett, visited Tempelhof to exchange gifts and to work with their counterparts on the local authority to develop the link between the two towns.

It was a hard working visit with tours of schools, factories and civic amenities.

Tempelhof is still similar to Barnet although with the mergers our borough is now much larger. The industries include Siemens, Philips and a chocolate factory. The citizens usually

go to Central Berlin as we go to the West End for major theatre and arts productions. But the great difference is a physical one. The Berlin Wall cuts across the north boundary of the town. It is as if the residents of Cricklewood and Burnt Oak were not allowed to cross the Edgware Road into Brent, or those of Barnet were separated by armed soldiers and concrete barricades from those of Potters Bar. It is perhaps this awareness of being cut off from Western Europe that makes the Barnet link so important to the people of Tempelhof.



Barnet Street, Tempelhof.

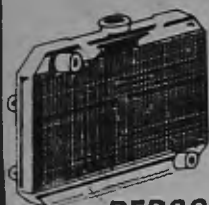


The trotting race stadium at Mareindorf, a district of Tempelhof.

MOTORING GUIDE

BRITISH & CONTINENTAL RADIATORS
 LARGE STOCKS - MOST TYPES FITTED WHILE-YOU-WAIT

Repairs and specialist work undertaken on the premises



FUEL TANK REPAIRS & EXCHANGES

VIC SMEE (Radiators) CO LTD.
 168 Chapter Road, London, NW2

TEL. 459-6467/6230
 PERSONAL CALLERS WELCOME

VINYL ROOFS FROM £15.99!

GLASS ROOFS — VINYL ROOFS — SUN ROOFS
 CAR SEATS REPAIRED — CAR HOODS
 ANY INTERIOR WORK
 ALSO STEAM CLEANING
 AND STEAM UNDERSEALING



WHY NOT HAVE YOUR SEATS RE-COVERED CHEAPLY



WIDE CHOICE OF COLOURS AND MATERIALS!

MOTOR TRIMMINGS
 (Winning Post Service Stn)
 13 Bedford Road, N22
 Bottom of Alexandra Palace
 Tel: 888 5710



MINI CABS

You Drink — We Drive

Weddings, airports and parcel deliveries. Round the clock Service
 50p a mile — £1 min charge

Tower & Tudor Radio Cars
 889 3311 444 0123 889 1133 444 5111

JOYRIDE

NORTH LONDONS MAIN DEALER
 Specialist Colt & Peugeot Service



Sales/Hire
 987 High Road
 N. Finchley N12
 445 5244

Service/Parts/Hire
 Rear of 300-310 Green Lanes
 Palmers Green N13
 886 1441

SELF DRIVE HIRE MINIS £6.50 DAY or
 COLT 3 DOOR HATCH £7. COLT 5 DOOR £8
 COLT AUTOMATIC £8.50 DAY

IT'S TYRE BARGAIN TIME

FULLY GUARANTEED TUBELESS TYRES FROM

£7.90 + VAT



ELECTRONIC WHEEL BALANCING
 PUNCTURE REPAIRS FREE FITTING
 We specialise in
 JAGUAR/DAIMLER/FERARRI
 PORSCHE
 HUGE DISCOUNTS ON ALL MAKES

BLUE STAR BATTERIES FROM ONLY



£14.50 + VAT

Save! Save! at FIVEWAYS TYRES
 1 PAGE STREET, NW7
 OPEN 7 DAYS A WEEK 203 2088/5381

BARNET & COCKFOSTERS MINI-CABS

(Inside Tube Station)
 Motor cycle delivery service.
 Also Parcel delivery.
 For a reliable service phone
 Day or Night 01-441 4227

Spectacular Offer



From our rapid Service Centre
 GENUINE RENAULT EXHAUSTS KITS FROM £35.90 + VAT
 MICHELIN TYRES FROM £20.96 + VAT
 VARTA BATTERIES FROM £27.05 + VAT
 Free Fitting Competitive Prices



CONTACT MR ANTONIADES ON
 440 8412 EXT 8 OR 3
 * GLASS ROOFS * RESPRAYS
 CONTACT MR BARRATT ON 440 8412 EXT 4
VICTORIA MOTORS
 (NEW BARNET) LTD.
 65 & 131 EAST BARNET ROAD, NEW BARNET

B.T.A. MOTORS LIMITED

North Yard
 Park Avenue
 Edmonton
 London
 N18 2UH

Vehicle maintenance and repairs, a varied selection of quality used motor cars available at all times

Please ring for details

Telephone:
 01-803 7637

DARKES LANE AUTOS AT HUDSONS GARAGE

1979 PRINCESS 1700L. Red.....	£2,195
1978 CORTINA 2.0GL Auto. Blue.....	£2,795
1978 CORTINA 2.0GL. Beige.....	£2,595
1978 ESCORT 1.3L. White.....	£2,295
1978 CORTINA 2.0GL Est. Brown.....	£2,795
1977 AVENGER 1.6 Super. Brown.....	£1,695

UDT 2-years breakdown insurance included.

DARKES LANE
 (OPPOSITE TESCO'S)
 Potters Bar 45764/54232

Falcon Motor Accessories

OPEN 7 DAYS! 9AM - 7PM
 SUNDAY 10AM - 2PM

TUNE IN NOW!

ALL MOTOR PARTS AND ACCESSORIES FOR THE D.I.Y. MOTORIST

CALL US ON
 346 8828
 233 Nether Street
 (Near West Finchley Underground)



STONES CAR HIRE LIMITED (Above Autoport Garage) ALLUM LANE, ELSTREE

WE OFFER A WIDE CHOICE — ECONOMICAL MODELS at £8.50 per day (£51 per week), OR MORE LUXURIOUS VEHICLES ALSO AVAILABLE

SPECIAL OFFERS AT WEEKEND

SHORT PERIODS AT SPECIAL RATES

COMPREHENSIVE INSURANCE

AA or RAC MEMBERSHIP FITTED RADIOS

TEL 01-953 0051 2

London Borough of Barnet

FOR SALE BY BINDING TENDER PRIME RESIDENTIAL LAND WITH OUTLINE PLANNING CONSENT FOR THREE DETACHED HOUSES IN FINCHLEY, LONDON.

This excellent building site of approximately 0.5 acre of freehold land is situated in Hendon Avenue, Finchley N3. Full details and documents may be obtained from The Borough Estates Officer (Ref: SH), Gateway House, 322 Regents Park Road, Finchley, N3 2LP. (Tel: 01-349 9121 Ext. 525/503). Tenders for the purchase of this land must be returned by 21st January, 1982.

L DRIVERS: TAKING YOUR DRIVING TEST SOON?

Come to a **Pre-Driving Test Lecture** in the Road Safety Centre, East Barnet Town Hall, Station Road, New Barnet.

- See the film: Driving Test
- Talk to experts about your driving.

Fee: £1 towards administration.

Apply to The Road Safety Office London Borough of Barnet Council Offices, Smith's Field, East End Road, Finchley N3. Tel: 349 9121 Ext. 422.

or to your driving instructor.

Lecture dates: **February 16 — 10 to 11 am**
March 16 — 7.30 to 9 pm
April 20 — 7.30 to 9 pm

Also at Burnt Oak Library, Watling Avenue.
February 9 — 10 to 11.30 am.

Do you like teenagers?

COULD you offer a home to either of the following children?

MICHAEL (13) is a lively affectionate lad who would respond to firm and consistent handling, coupled with a warmth and affection. He would be a challenge but a rewarding child to care for.

For information contact Linda Raymond or Pat Hender on **952 7722**.

SONYA (14) is a likeable girl, unable to live with her own family. She can be withdrawn but relates well to children of similar age, and given time and caring attention, could be rewarding to care for. Ideally, she should remain within reasonable travelling distance of her school in the Finchley/Mill Hill area.

For information, contact Bryan Collins or Sue Nunn on **202 5233**.

Barnet Social Services will offer help and advice, and allowances will be paid.

JOB OPPORTUNITIES

HOUSING DEPARTMENT

Clerical Assistant — Grade C2 £5547 — £5859 per annum inclusive

A Clerical Assistant is required for the Pre-Housing Division based at 65 Watford Way, Hendon, NW4.

This post is part of a small team reporting to the Allocations Officer, who is responsible for ensuring the efficient allocation of the Borough's housing stock.

Duties include recording and monitoring progress of vacant properties, dealing with enquiries from the public and general clerical duties relating to the effective operation of the team.

Applicants must be able to work under considerable pressure whilst retaining a tactful and patient manner and have sufficient clerical experience to appreciate that accuracy and the ability to work without close supervision is essential.

A 36 Hour week is worked within a flexible hours scheme.

Basic annual leave is 20 working days with additional leave at most Bank Holidays. Subsidised canteen facilities and interest-free loans towards the purchase of travel season tickets.

Ref. 606/75

Application forms from the Director of Housing Services, 65 Watford Way, Hendon, NW4 3AY (Tel: 202 8282 Ext. 550/445). To be returned by 22 January, 1982.

SOCIAL SERVICES DIRECTORATE

CENTRE ATTENDANT required to assist with the general care of the physically handicapped at Flightways Day Centre, Grahame Park, NW9. Duties include bathing, toileting, feeding, etc. 36 hours per week.

Hours: 9 am — 5.15 pm Monday to Thursday
9 am — 5.00 pm Friday

Rate of Pay: £67.50 per week inclusive.

Apply to Manager, Tel: 205 5803.

BOROUGH ENGINEER AND SURVEYOR'S DEPARTMENT

Weighbridge Operator/Assistant Storekeeper

Grade: Misc. 5.

Salary: £5,103 — £5,409 per annum inclusive

Experience on modern electronic weighbridge desirable. However, training will be given. The successful applicant will also be required to assist in stores when not engaged on weighbridge duties. Knowledge of building and civil engineering materials and stores procedure desirable.

Ref. 321

Clerical Assistant. Grade: Scale 1/2.

Salary: £3,174 — £5,409 per annum inclusive.

Applicants should have suitable clerical experience. Knowledge of the building industry would be an advantage and the successful candidate will be based at Long Lane Depot.

Application forms from the Borough Engineer and Surveyor's Dept., Gateway House, 322 Regent's Park Road, Finchley, London, N3 2LP, to be returned by the 29th January, 1982.

Ref. 287

EDUCATION DEPARTMENT

Laboratory Assistant/Technician

Required for 17 hours per week, 40 weeks per annum at Orange Hill Senior High School, Abbotts Road, Edgware, HA8 0QR. Duties include work in computer science laboratory and any other tasks that may be required. Commencing salary within Technician Grade 1 Scale 1/2 £1,404 — £2,129 per annum inclusive. Additional allowance for recognised qualifications. Prescribed conditions.

Application forms from Director of Educational Services, Town Hall, Friern Barnet, London N11 3DL. Telephone 368 1255 Ext. 224.

Ref. ADM/E/S/168/2.4.1.



TACKLING A WHEEL CHALLENGE

BOYS FROM the Curriculum Centre at Barnet are hard at work on two cars as their entries in the nationwide 1982 BP Buildacar Competition.

One is a 'dodg'em' Fiat, the other used to be a Ford Anglia until the boys cut the roof off. It is now well on the way to becoming a dual-control trainer with two steering wheels and a duplicate set of controls.

The 'dodg'em' started life as a Fiat 600cc scrounged from the neighbouring Automobile Centre at Edgware School, after it failed its MoT. It was cut in half for transporting by truck to Barnet, where the boys proceeded to shorten it by two feet.

'We're trying to produce a genuine two-seater "City" car,' explained Bob Simmons, car engineering teacher at Barnet Centre and well known in motorcycle racing circles. 'The boys are fitting a roll-bar and lowering the front of the car to counteract the weight of the rear engine in the shorter frame.'

Other refinements include: double rear wheels for safety, new steel arches, a thirties-style running board and a detachable hood. It is likely that the Fiat engine will be replaced — if the cash holds out.

The Anglia was given to the Centre by a friend after it, too, failed its MoT.

Trevor Ulvett, head of automobile engineering at the Centre explained. 'Our idea is to have a car on which the boys can learn to drive within the grounds. We've fitted swing-shackles at the rear to raise it and we're modifying the body to make it look sporty, as well as fitting a roll-bar.'

Two other projects at the Centre are also being entered in the BP Buildacar Competition: an electronic anti-theft device and an hydraulic lifting device which will fasten on to a car's tow-bar ball-joint.

Another teacher involved in the projects is Alan Whitaker, responsible for design and decoration.

The 1982 BP Buildacar Competition is being organised under BP's Challenge to Youth scheme in association with REME. This was set up to stimulate creativity among young people and to encourage them to aspire to the highest standards through a series of challenges or competitions which involve innovation and inventiveness.

This is the sixth in the series of BP Buildacar Competitions, with the theme: build any kind of car you like as long as it's roadworthy. Entry is open not only to schools but to all young people under 20 on September 1, 1982.

Prize money totals £5,825 and the finals will be held at the Army's School of Electrical and Mechanical Engineering in October.

In the picture, working on their cars, are left to right: Graham Burke, Liam Hehir (at wheel of Fiat), Scot Crane, James McAnulty, Gerard Collier, Huw Cookson, Paul Rouse and Paul Scammell.

Volunteers who break the silence barrier

BRITAIN in the 1980s can be a very lonely place for those who cannot speak English. Imagine arriving in a land where the customs and pace of life are entirely different to anything you have ever known and being unable to communicate with your English-speaking neighbours, officials, shopkeepers. Only when the family return in the evening after work can you break the long silence.

But in Barnet 87 volunteers are helping to break through the communications barrier. These are members of the Barnet Home Tutor Scheme which was formed five years ago to teach English as a second language to adults settled in the borough who, for various reasons, were unable to attend the various classes arranged in schools and

colleges.

Most of the home students come from the Asian community and the Barnet Home Tutor Scheme is run by a co-ordinating committee on which the Community Relations Council, Neighbourhood English Classes and the colleges of further education are represented as well as tutors and students. The scheme receives a Government Urban Aid Grant and the organiser, Shirley Sadler, is based at Trinity Church Hall, Dale Grove, North Finchley, in the Barnet Community Relations Council offices.

The volunteer tutors, eight of whom are Asian, are teaching 103 students and take their work very seriously indeed. New tutors take a six-session training course and attend general dis-

cussion sessions on teaching techniques.

The organiser and several of the home tutors attended a special course at Montagu Centre on The Asian Community which gave very helpful background information. It also provided an opportunity to meet other people from other welfare and social fields who are working with the Asian community.

There is close co-operation with Barnet and Hendon Colleges, both of which provide English as a second language in classes for all levels. Home tutors often sit in on these classes as part of their training and some go on to take professional qualifications in the teaching of English as a second language.

Although the scheme has been running in Barnet since

Old Bull makes room for crafts

THE DEVELOPMENT under way at the Old Bull offer up to a dozen places for resident craftsmen.

It's all part of the conversion of the present premises, formerly a public house in Chipping Barnet High Street, into a purpose-built arts centre. The very spaces are being redesigned for showing crafts and exhibitions, and a new theatre built.

The first phase is the upgrading of a stable block at the rear of the building into two stores of purpose-built crafts workshops which should be ready in March, 1982.

Later in the year three workshops will become available on the side of the building in a new pedestrian arcade as the exhibition, meeting and new rehearsal spaces are opened up on the ground floor.

Finally the 180-seat theatre will be fitted out on the first floor to replace the present small studio theatre. The community have made a contribution of £23,750 from Borough Lottery and Charity funds and there is a grant of £37,500 from the Department of Education and Science.

Many local artists bring their work to the gallery for a permanent exhibition and the gallery also offers crafts space on Saturdays. The workshops will also be offering more retail spaces for craftsmen and applications are now being considered.

Enquiries to Pam Edwards, Barnet Centre Association, 11 High Street, Barnet, Herts (0048).

1976 their inaugural annual meeting was held in October last year.

Mrs. Sadler reported that new tutors were taking training courses and that the Club which is being organised jointly with Sangam, the Asian Women's Organisation, is going well and offers students opportunity to meet and use language they are learning.

Most tutors are recruited through Barnet Volunteer Bureau and through publicity in libraries, and several responded to a helpful article in the Barnet Press. But there are still students waiting for tutors and any reader of Civic News is asked to help they should contact Shirley Sadler at Trinity Church Hall, Dale Grove, London N12, or telephone 445 245.

HOUSEHOLD SERVICES

HOOVER

ELECTROLUX SERVICE

Work guaranteed.

Quotations Free. Hoover trained engineers.

Hoover cleaners and Hoovermatics wanted.

WHY PAY MORE

Contact P. Jarvis

01-441 5152

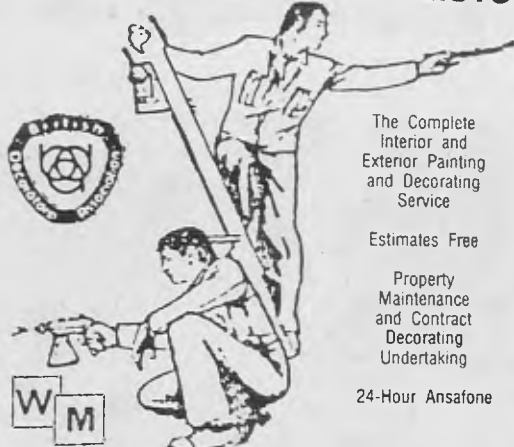
STRIPPING

DOORS AND FURNITURE

IN-SITU STRIPPING & HAND WAXING
SAME DAY COLLECTION & DELIVERY

EDGWARE STRIPPING CO 951 0646

CONSULT THE SPECIALISTS



The Complete Interior and Exterior Painting and Decorating Service

Estimates Free

Property Maintenance and Contract Decorating Undertaking

24-Hour Ansafone

W. M. DECORATING CO

92b HIGH ST, EDGWARE 01-952 8733

HEATING PROBLEMS?

CONSULT

COHEAT LTD

FOR NEW INSTALLATIONS MAINTENANCE and SERVICING

- Members of H.V.C.A.
- Corgi Gas Installers
- Potterton appointed service contractors
- Stockists of Potterton and Ideal/Stelrad spares

UNIVERSAL HOUSE
LINCOLN WAY
ENFIELD, MIDDX.
Tel. 01-805 2070

Tel: 01-883 3191
01-883 0819

BILL BOUNDY TRANSPORT

Express Delivery Service
Haulage Removals

CENTRAL HEATING from £900

C.O.R.G.I.

registered installers

D. W. BRANSON & SON
14 Pennine Parade
Pennine Drive, NW2
Tel: 01-458 9837

ANDREWS DAMP PROOFING

Rising Damp — Woodworm — Dry Rot
Guttering — Electrical Work — Specialists

20 years Guaranteed — Free Test

Telephone Mr Andrews on

801 3267

L. McCAUL & SONS ROOFING SPECIALISTS

We specialise in all forms of Roofing, New Roofs, all Roof Repairs, Felting, Asphalting, Loft Insulation, Guttering.

ALL WORK FULLY GUARANTEED

20-year guarantee on all new roofs

24-hour Emergency Service

TELEPHONE 794 8339

HOME EXTENSIONS

Adds value & space to your home.

- ★ Plans drawn at no extra cost.
 - ★ 10 year guarantee. ★ 100% loans available.
 - ★ An Association of Builders
- Specialising in Home Extensions.



KINGSWAY

HOME EXTENSIONS

FOR FREE ESTIMATES AND ADVICE

RING ANYTIME **01-960 0953**

DI DAMP

★ FREE TEST

For Rising Damp, Woodworm & Dry Rot

RING NOW

01-428 3124

01-951 1853

20 Year Guarantee

MBM

(WAREHOUSES LTD)

BUILDERS & PLUMBERS MERCHANTS
CHEAPEST IN THE AREA FOR

KITCHEN UNITS
HEATING & PLUMBING SUPPLIES
and all makes of SANITARY WARE

Free advice and plans on heating and plumbing given

Phone us first for the best prices

185/189 THE BROADWAY
SOUTHALL, MIDDX

01-574 2571
01-574 0755

H. W. Hewlett & Co. (Enfield) Ltd

BUILDING CONTRACTORS

CONTACT US FOR YOUR
EXTENSIONS, IMPROVEMENTS,
REPAIRS

ONE OF ENFIELD'S RELIABLE
BUILDERS

MEMBERS OF THE MASTER BUILDERS FEDERATION

200 HIGH STREET, PONDER'S END, ENFIELD
Telephone: 01-804 9746



ESTABLISHED
1977

COSYTOP

LOFT INSULATORS

GOVERNMENT GRANTS AVAILABLE

Our Installations are Guaranteed to meet
Council Approval.
Our Materials to BS 5803.
Free Estimates

Phone: Waltham Cross (97) 36598
Waltham Cross (97) 21279



RICHARDSON & SONS (BUILDERS)

Offer a comprehensive building service to suit your needs.

Our services include roof work, gutters, plastering, plumbing, through lounges and arches, extensions, bathroom and kitchen conversions.

For a free estimate telephone:
882 3549

OAKLEY PLUMBING & HEATING ENGINEERS
PROMPT 24-HOUR SERVICE

Boiler Servicing
Plumbing, Maintenance

Specialists in Central Heating and plumbing installations
Free estimates. All work guaranteed
Credit terms available
Tel: 889 9537/7645 for details

DOUBLE GLAZING
InsuGlazing from Alpine

The ultimate in double glazing in the superior white finish

For professional advice free estimate:

A. LAJER
Tel: **01-452 0354**

For the career with a future
alpine double glazing

STOP LEAKING GUTTERS



Guaranteed 25 Years
Continuous Aluminium Seamless Gutters

Our factory on wheels tailor makes the big 5" capacity gutters at your home. No sectional joints means no leaks, never rusts, pre-painted in colour, never paint again. Free estimate without obligation.

Ginty Construction Ltd., Seamless Gutters Dept. Freepost, Barnet, Herts, EN5 2BR. Tel: 01-449 2209.

M & M HEATING SERVICES

GAS CENTRAL HEATING SPECIALISTS
DOMESTIC PLUMBING INSTALLATIONS & REPAIR
ARC & GAS, PIPE WELDING & CUTTING

FREE QUOTATIONS
ALL WORK GUARANTEED
92b High Street, Edgware

01-951 1577
(24-hr. ANSAFONE)

MEMBER OF THE INSTITUTE OF DOMESTIC HEATING ENGINEERS





CABINET MAKER DESIGNS

and makes Cupboards for Bedrooms, Loft Conversions and anything in wood! Furniture repaired, etc.

No job too small!
Free Estimate

346 8975
Messages 759 9681

ADD VALUE TO YOUR HOME WITH A HOME EXTENSION BY PEARMAN & SONS



TEN YEAR WRITTEN GUARANTEE SOME EARLY STARTS AVAILABLE FULL ARCHITECTURAL SERVICE AVAILABLE

SOME OF THE SERVICES WE OFFER

- ★ NEW BUILDINGS
- ★ HOME EXTENSIONS
- ★ CONVERSIONS
- ★ NEW KITCHENS
- ★ NEW BATHROOMS

CONTACT MR. PEARMAN ON 01-367 1092

Look at the advantages of having your extension built by PEARMAN & SONS

- ★ We pride ourselves in matching the existing house exactly, whether modern or period.
- ★ An average single storey extension can be completed in two weeks.
- ★ Our advisory service is always pleased to call without obligation.
- ★ Quality craftsmanship — have your extension built by people you know you can trust.
- ★ First-class finish, because only the best materials are used.
- ★ Reliability and fixed prices because you know that you are dealing with one of Enfield's most reputable builders who can't afford to let you down.
- ★ We take great care over all details.
- ★ Our prompt estimating service ensures that you have no 'Long Winded' delays.
- ★ We offer after sales care.
- ★ You have no worries about insurance — contractor's all risk insurance cover (unlimited claim value) — public liability cover up to £250,000.
- ★ Small works department for repairs and improvements. (Through lounges — removing chimney breasts, etc.)

PEARMAN & SONS BUILDERS

46 WELLINGTON ROAD ENFIELD, MIDDX



BARNET NEWS, JANUARY

BAR

H

fi

b

BA

buil

the

Top

ley

two-

sula

sell

rang

buil

TI

bedr

coup

pare

ried

suita

sing

buy

ple

List

O

a bo

high

You

mov

buy

Hou

some

the

buy

situ

T

QUAL

for ty

Mrs V

DAVIS

1972.

mates

N

01

Homes for first-time buyers



Architect's impression of the maisonettes at Torrington Park.

BARNET COUNCIL is to build 42 new homes aimed at the first-time buyer at 92/94 Torrington Park, North Finchley. These traditional brick, two-storey maisonettes with insulated cavity walls, are likely to sell in the £24,500 to £27,000 range, subject to fluctuations in building costs.

The maisonettes will have two bedrooms, suitable for young couples with one child, single parents with one child, or married couples, or one bedroom, suitable for married couples or single people. Those eligible to buy are council tenants or people on the Housing Waiting List.

One of the problems faced by a borough such as Barnet is the high price of London housing. Young people often have to move away when they seek to buy their first home. Barnet's Housing Policy is to provide some homes which fall within the price-range of first-time buyers to try and meet this situation.

The market price of the

maisonettes is estimated at between £26,000 and £29,000 but buyers receive a discount which is why the purchase price is lower. For the first five years of ownership they have to repay a proportion of the discount should they decide to resell.

The Council itself has no funds to provide mortgages on these properties so buyers will make their own arrangements with their own building societies or loan sources. Generous support has been arranged with the Gateway Building Society of Finchley.

It is difficult to be precise about income levels and mortgage availability but if the price valuation is £27,000 then

£25,650 might be lent on joint incomes of £7,500 and £5,100, or on a single income of £9,400, but age, job security and prospects all come into calculation. A £25,000 mortgage over 25 years at the current rate of 16.25 per cent entails monthly repayments of £346.50 but there is considerable tax relief.

Full details from the Borough's Housing Sales officer, Stag House, Burnt Oak Broadway. Telephone 952 8911. Plans can be seen during office hours (closed 12.30 to 1.30 pm). Call direct or send in the form on this page. Applications should arrive by February 28. If there are more applications than properties there will be a ballot.

To: The Sales Office
London Borough of Barnet
Housing Department
Stag House
Burnt Oak Broadway
Edgware, Middx.

Please send me/us details and application forms for Torrington Park maisonettes.

I am a Council tenant
On the waiting list
Not on the waiting list
(tick as appropriate)

Name

Address

QUALIFIED SECRETARY is available for typing. Working from home, call Mrs V. Rigden 01-440 0809.

FITTED BEDROOM FURNITURE. Custom made by experienced Craftsman. 01-368 1521.

DAVIS AND SON REGISTERED. Est. 1972. Decorators and Plumbers. Estimates Free. 01-959 0552.

ELECTRICIAN for house rewires and electrical jobs. Ring 205-5878.

T.O.T. SUPPLIES BUILDING MATERIALS

SAND — BALLASTS FROM £3.00

CEMENT ON SPECIAL

NEW BRICKS FROM £35.00 PER 1,000

THERMALITE BLOCKS

3in £3.00 per yard 4in £3.75 per yard

8in £7.50 per yard

PAVING — SLAB — WALLING

RSJs 7 x 4 — 8 x 4

ROOFING SLATES

NEW SAWN TIMBER

6 x 1 flooring 15p ft. 6 x 1 Tag 15p ft.

2 x 1 6p ft. 2 x 2 9p ft. 3 x 2 14p ft. 4 x 2 16p ft.

6 x 2 30p ft. 7 x 2 34p ft.

ALL OTHER SIZES

8 x 4 3/4 Chipboard £4.75

8 x 4 1/2, 8 x 4 3/4 Plywood

ROOFING FELT

ALSO FENCING PANELS IN STOCK

SKIP HIRE

IT'S WORTH A CALL

01-808 0342

01-808 7795

79 Garman Road, of Willoughby Lane
Tottenham, London N17

TELEVISION & VIDEO REPAIRS AND SALES

By experienced, qualified (City & Guilds) engineer

Tel: 445 3483 ANYTIME

ARTEXING SPECIALIST

Walls and Ceilings

Free Estimates

Tel: 254 1627

No job too small

RONWAY REMOVALS

Expert moves
Competitive rates
Local/long distance
Piano/storage
Also Continental door-to-door services

For free quotations
446-1873 any time

57a Woodhouse Road
N12

KLEENTEX

Specialist cleaning in the home

CARPETS

UPHOLSTERY

CURTAINS

01-886 7602



Phone now for Free Quotation

PET SPECTRUM

G. E. & J. A. FINNETT LTD.

A wide selection of pets for your family
Pedigree puppies

- Exotic Fish
- Aquaria/Ponds
- Pets of Every Kind
- Food & Accessories
- Full Pet Grooming Service

Open 9 am—6 pm Mon—Sat
Closed Thurs.

Visit us now we'll be happy to see you at:

387-389 Lordship Lane
Tottenham
N17 6AE

Tel. 01-808 5370.
or Potters Bar
(77) 45599
after 6 pm.



WILLIAMS SPORTS

366 Ballards Lane, Tally Ho Corner, Finchley, N12. Tel: 445 3596
 Gateway House, 328 Regents Park Road, N3. Tel: 346 2398

DUNLOP GREEN FLASH TENNIS SHOES

£45.50

EACH

MAXPLY FORT TENNIS RACKETS

£375.00

PER STRING

OTHER BARGAINS:

Snooker Tables complete with accessories
 7' Cambridge ~~£298.00~~ £198.00 **Save £100.00**
 6' Chingford ~~£164.90~~ £134.90 **Save £30.00**
 6' Woodford ~~£141.20~~ £116.20 **Save £25.00**
 5' Woodford ~~£119.25~~ £99.25 **Save £20.00**
 4' Woodford ~~£83.30~~ £68.30 **Save £15.00**
 Dunlop Courtelle Sweaters ~~£12.95~~ £5.95
 Dunlop White Flash Shoes ~~£5.99~~ £4.99
 Badminton Rackets ~~£4.95~~ 1/2 price £2.50 Seconds
 Rucanor T.T. Bats ~~£1.95~~ £1.50
 Butterfly T.T. Bats **Less 30%**
 Winmau bristle dartboard — m.r.r.p. £16.49
 Special promotion price £10.99
 All cricket bats **less 20%**
 RSL Victor shuttlecocks ~~£5.25~~ £3.95
 Admiral Bankrupt stock:
 Nylon football shorts £1.00
 England/Spurs pre-1982 jerseys £3.00
 Weightlifting equipment up to 20% off
 Junior Bullworkers £5.00 to clear
 Disco Skates (damaged) £5.00 to clear

Guns and Pistols **less 15 1/2**
 Ballet oddments 1/2 price (N.3 branch only)
 Mens tights, fairy good style, bottom prices
 Subbuteo game oddments 1/2 price
 Dunlop footballs **less 20%**
 All tennis rackets **less 20%**
 Swinfloat Trainer ~~£3.45~~ £2.45
 Ski goggles ~~£2.55~~ £1.95

PLUS

Many footwear oddments, soiled white clothing
 discontinued equipment

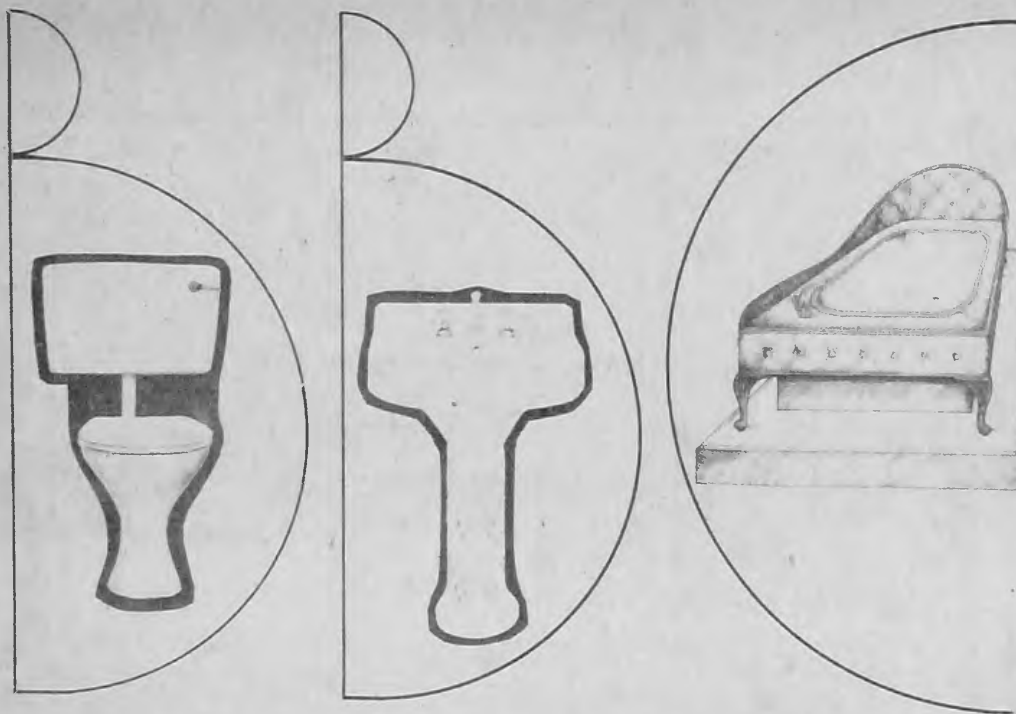
**TO CLEAR AT SILLY PRICES
 SEE WINDOWS**

**ALL ITEMS NOT SPECIFICALLY
 ON SPECIAL OFFER
 LESS 10%
 DURING SALE**

FOR TWO WEEKS ONLY 9th to 23rd JAN. 1982. SUBJECT TO AVAILABILITY

**CLOSED
 THURSDAYS**

**INTER
 SPORT**



**“we’re being
 modest
 when we say
 we’re
 the best.”**

WITH A NAME LIKE THE BRITISH BATHROOM CENTRE — WE HAVE TO BE, TO SUIT YOU, THE DESIGNER, THE ARCHITECT, THE CONTRACTOR, THE FILTHY RICH AND THE SKINT

IF YOU'RE THINKING ABOUT A NEW BATHROOM, COME TO OUR LONDON SHOW ROOMS WHERE YOU'LL SEE OVER 40 BEAUTIFUL DISPLAYS FOR EVERYONE'S BUDGET AND TASTE.

WITH OUR FACTORIES IN WALES PROVIDING PERFECTLY CO-ORDINATED TILES AND SANITARY WARE, YOU'LL BE ABLE TO CREATE YOUR OWN EXCLUSIVE BATHROOM.

IF YOU DON'T HAVE THE CONFIDENCE TO STYLE YOUR OWN BATHROOM OUR VERY OWN DESIGN SERVICE HEADED BY PAUL BITTON WILL BE ABLE TO CREATE SOME STYLISH DESIGNS

TO SUIT THE AMBIENCE OF YOUR HOME WHETHER MODERN OR TRADITIONAL

WE ARE OPEN MON-FRIDAY 9.30-6 AND FOR YOUR CONVENIENCE SUNDAYS 9.00-2.00

THERE IS AMPLE PARKING

FOR EXPORT ENQUIRIES TEL: 01-800-0529

01-802 6493
 01-800 2538
 01-802 6666

British Bathroom Centre

602 - 604 SEVEN
 SISTERS ROAD,
 TOTTENHAM N 9