

BARNET BOROUGH NEWS

Barnet Council's monthly magazine for residents No. 65 MARCH 1990



MEMBER OF THE VERIFIED DISTRIBUTION LTD THE HALLMARK OF TRUSTED DISTRIBUTION 114,653 JAN-JUN 1989



In this issue:

A visit to the Welsh Harp

Storm Damage – Barnet counts the cost.



ALDENHAM SCHOOL

A small independent boarding and day school for boys aged 13-18 and girls in the 6th form.

Aldenham provides a unique education of the highest quality

- A fine site
- Excellent facilities
- First class teaching

Its small size and strong community ethos encourage the individual not only to succeed but to grow in confidence and responsibility. The academic and sporting results befit a school twice the size. The weekly and daily programme encourage school commitment but maintain full family support.

Entry is by Common Entrance or Special Test. Bursaries and Assisted Places are available.

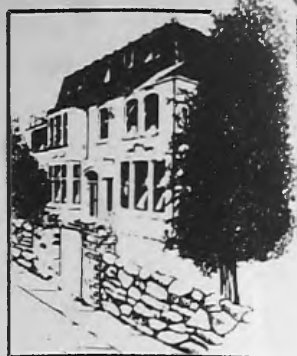
Come and visit us and see just how much we could offer to your son or daughter.

For prospectus or appointment ring:
Michael Higginbottom, Headmaster,
Aldenham School, Elstree, Herts. WD6 3AJ.
Telephone: (0923) 858122.

THE HENDON PREPARATORY SCHOOL

(FOUNDED 1874)

20 Tenterden Grove, Hendon,
London NW4 1TD
Telephone: 01-203 3465



MAIN SCHOOL (Girls 5-11, Boys 5-13)

The School provides a sound education for boys and girls and prepares them for Common Entrance to Independent Secondary Schools. The School is proud of its fine academic reputation and its high success rate. Expansion of the existing building takes place soon, and a few places are still available for 5 and 6-year-old boys and girls from September 1990.

Provision for after-school care is available until 6pm.

PRE-PREPARATORY (Boys and Girls 3-5) 'Education in Childcare Hours' 8am-6pm 50 WEEKS PER YEAR

- A Pre-Preparatory School unmatched in North London.
- Quality childcare providing a wide, structured curriculum.
 - Excellent facilities, well-equipped classrooms.
 - Individual attention from qualified teaching staff.
- New class opening in May 1990: some places still available.

Full prospectuses are available.
Please telephone 01-203 3465 for further details.

THE MOUNT SCHOOL MILL HILL

Offers your daughter the full range of GCSE and A level subjects in a caring and supportive environment



Details of entrance exams and interviews for September 1990 entry are available now from:-

The Headmistress	Girls Day School
The Mount School	Senior School - 11-18 yrs.
Milespit Hill	Junior School - 7-11 yrs.
Mill Hill	Number of pupils: 450
London NW7 2RX	Fees available on request
(01) 959 3403	

Headmistress: Mrs. M Pond BSC (Lond) M1 Biol

DEVONSHIRE HOUSE

PREPARATORY SCHOOL, Hampstead

For girls and boys from 3-13.

For further information
and interviews
please contact
the School Secretary at:
**69 Fitzjohn's Avenue,
Hampstead,
London NW3 6PB.
Tel: 01-435 1916**

Children raise £200 for charity

Children at Woodside Park School recently raised £200 in the course of a "Mufti Day" for the Helen House Hospice, in Oxfordshire, one of the school's chosen charities this term. The children, clad in all colours of the rainbow, listened very carefully, as Father Kingsley Joyce from St. John the Evangelist Church in Friern Barnet, spoke of the great work carried out at the hospice, which cares for terminally ill children and their parents. Father Joyce accepted the cheque on behalf of the hospice, and a visit is planned later in the year, when pupils from the school will see how the hospice works at first hand.

Lose inches for the Spring

THERE you are one week, size 14 or 16, all flabby, non-existent waist, spreading hips and thighs. And there you are three or four weeks later, a size 10 or 12, flab all gone, feeling gloriously firm and shapely.

And this miracle does exist. It's an exercising system that took off in the States, eight years ago and has now come to the UK - Toning Tables. Toning table salons are springing up all over the country fast. The market leader both in the USA and here is 'Slender You'.

The toning system consists of six 'tables' each with motorised elements that work to exercise different parts of your body. You spend 10 minutes on each table, giving a complete one-hour stretch and tone 'workout' equivalent to several hours of floor exercises - you can try out the system free first time, and there's no membership fee or block booking required.

You could achieve similar results with an intensive daily workout at home. But how many busy mothers or working women can find that sort of time?

Why not book your first session at Slendertone, 245 Oakleigh Rd North, Whetstone. Tel: 01 - 368 7168.

Advertising feature

Kay & Kompany



REDKEN APPOINTED SALON
Hair, Health and Beauty
for Men & Women

- ▼ PRECISION CUTTING
- ▼ ARTISTIC COLOURING
- ▼ SPECIALISED PERMING
- ▼ BEAUTY TREATMENT

GOOD PROFESSIONAL SERVICE

- WE LISTEN ● WE ADVISE
- WE RECOMMEND ● WE KNOW

Closed Mon. Late night Thur/Fri till 7.30pm
69 COLNEY HATCH LANE,
MUSWELL HILL N10
01 - 883 5528

SURYA

*Indian vegetarian
Restaurant*

for Nutritious and
Delicious food from
northern India

For Reservations please phone

01 - 435 7486

59/61 Fortune Green Rd.,
West Hampstead NW6.

Tremarrak Roofing

Are you still
waiting for repairs
to your roof?

Ring now for
immediate attention

01 445 9446

between 5-9pm
eves/weekends



WOODSIDE PARK SCHOOL



PRE-PREPARATORY DEPARTMENT & PLAYGROUP
(HOLMEWOOD)
88 Woodside Park Rd N12

PREPARATORY DEPARTMENT
(ST. ALBANS)
Woodside Lane N12

A long established Preparatory School for children
from 3-13 years. Tuition follows the Common Entrance
syllabus for entry to Public School at the age of
13+ (11+ for girls)

Apply to the Preparatory Department
Telephone: 01 - 445 2333



Why not lose inches for Spring!!

We'd like to celebrate a new feeling too. Because after a Slender You work out that's what you'll appreciate - even more than your new shape.

You see, Slender You is a totally new kind of exercise programme based on a series of toning tables. It's a work out that doesn't leave you worn out. In fact it leaves you feeling better than ever before: relaxed, invigorated, warm and bursting with energy.

We have now opened a Slender You figure salon near you. We're so convinced that you'll find it the most enjoyable way to exercise that we'd like you to come along and try it for free, just call to book an appointment. We'll be delighted to see you - and your new figure.



Slender You
Figure Salons

245 Oakleigh Road North,
Whetstone, London N20 0TX
01 368 7168

London Borough
of Barnet
The Town Hall
The Burroughs
Hendon NW4 4BG
For information
Tel: 01-202 8282



Contents

	Page
New library	6
Welsh Harp tour	6
London Youth Games	8
Find a Family	9
Energy savings	10
Storm report	14 & 15
Councillors surgeries	18

Editorial Address:
Barnet Council
The Town Hall
Hendon NW4 4BG
Tel: 01-202 8282 ext: 2072
Contact: Rosemary Jude

Advertising Address:
Marketing Media Management
185 Angel Place
Fore Street N18 2UD
Tel: 01-807 7676
Contact: Lynette Fernandes

Barnet Borough News is published by
Barnet Council and Marketing Media
Management. It is distributed to
homes and businesses throughout the
borough. It is also available from li-
braries.

The VFD certified net distribution
from January to June 1989 is 114,653.

FRONT COVER

Red sails in the youth set at
the Welsh Harp Reservoir.
Barnet Council has its own
Youth Sailing Base here for
sailing and canoeing. The
surrounding open country-
side is a nature reserve and
you can now join a guided
tour led by Barnet Council
Parks Rangers. See page

COMMUNITY CHARGE ACTION PLAN

ON THURSDAY 8 March Barnet Council will set its first Community Charge. Soon after that the first community charge bills will be dropping through the letter boxes of Barnet.

A recommended charge of £338 will be presented to the Council's finance committee on Monday 26 February. If it is agreed it will go as a recommendation to a special charge-setting meeting of the full council on 8 March, and if approved, it will be the first Community Charge for the Borough of Barnet.

The figure of £338 is made up of £268 plus the safety net subsidy of £70 which Barnet chargepayers are required to pay for this year only.

You and the Community Charge

EVERY adult over 18, whose permanent address is in the Borough of Barnet, will almost certainly be a Barnet chargepayer.

This is a local tax which replaces the domestic rate. Act now if you are in any doubt about registration, rebates, how to pay, or whether it will affect your rent.

The Register

The Community Charge Register is updated continuously. If you are a new resident or have changed your address within the borough, or if through any circumstance you have not yet registered, now is the time to act.

Contact Barnet Council Community Charge Registration Unit, Hatchcroft, The Burroughs, Hendon NW4 4BG. Phone 202 8282 Ext 2800, 2801, 2814.

Private tenants

ONE OF the most frequent questions asked of the Community Charge Helpline team, was "What happens about my rent?"

From 1 April tenants who now pay rates in with their rents should no longer do so.

Rent for all tenants, except those in short stay or hostel type accommodation, should not contain a community charge or rate element.

Check with your landlord to make certain that the rate element has been removed, because from 1 April you will receive your personal community charge bill. **If necessary seek professional advice.**

Council tenants

COUNCIL tenants will no longer pay rates in with their rent. Although they will still pay water rates with rent.

In future all adults living in council housing will receive a separate community charge bill.

If you have any problem contact your estates officer.

Community Charge HELPLINE



203 9588

Rebates

If you are on income support or housing benefit this will have been taken into consideration when your community charge bill is prepared. The bill you receive will include your rebate.

However even if you are not on income support or housing benefit you may qualify for a rebate.

Barnet Council has set up four teams to help you. The teams are:

North (Chipping Barnet, East Barnet, New Barnet, Hadley, Friem Barnet, Arkley, Totteridge and Whetstone) Phone 203 9588.

East (North Finchley, Finchley, East Finchley, Muswell Hill and part of Whetstone) Phone 203 7718

West (Edgware, Burnt Oak, Colindale, Mill Hill) Phone 203 5569

South (Hendon, West Hendon, Golders Green, Garden Suburb and Childs Hill) Phone 203 7991

How to pay

YOU CAN pay the charge annually, half-yearly, or in 10 monthly instalments.

It is helpful if people who wish to pay by monthly instalments would use the direct debit method.

Many residents did not want to send in the direct debit form before knowing what the charge would be. They should now send it in as soon as possible.

This will save Barnet Council the unnecessary cost of printing and posting out surplus monthly payment books.

So if you intend to use direct debit please return the form.

Transitional Relief

TRANSITIONAL Relief is a means of limiting large increases faced by residents in the change from last year's rates to this year's community charge.

It is an extremely complicated formula based on this year's rate charges, an increase of £156 a year (£3 a week), and the difference between the actual charge set by the Council, and a "notional charge" set by the Government.

The good news:

For most chargepayers Barnet Council staff will work out the calculation, and for those who qualify the relief will be automatically included in the community charge bill.

The bad news:

The Government has set an assumed charge for transitional relief purposes of £315. So if the recommended community charge goes through at £338 chargepayers who qualify for transitional relief will still have to pay the difference between the two figures.

This applies to single people, couples, and groups of adults who are equally responsible for the home they share.

Pensioners and disabled people

THERE IS also transitional relief for pensioners and disabled people who have not previously paid rates and are not the partner of a ratepayer.

If you feel that you are in this group it is important to contact your local team: **North:** 203 9588; **East:** 203 7718 **West:** 203 5569; **South:** 203 7991

Remember this is **not** a means tested benefit. It is aimed at pensioners and disabled people who have not previously paid rates.

Details of a new way of paying community charge through newsagents and corner shops will be announced shortly

**HUGE STOCKS OF
THE LATEST DESIGNS
AT THE RIGHT PRICE**

You'll be amazed at the versatility of our range of products to satisfy all your requirements from BATHROOMS & KITCHENS, to HALLS, CONSERVATORIES & PATIO'S etc.

**HUGE RANGES TO SUIT
ALL TASTES & PRICES
TO SUIT ALL POCKETS**

You can benefit from our vast trade experience and bulk, direct from the factory, buying policy. No middleman!

LATEST IMPORTS & BRITISH MADE - First class installation & advisory service

CERAMIC WALL AND FLOOR TILES, MARBLE, QUARRY, TERRACOTTA, SLATE etc.



*Exquisite
range of
exclusive
bathrooms
cabinets*

Checkalow Limited

1-7 MOXON STREET, BARNET, HERTS EN5 5TY

Easy parking, open 6 days a week, Mon-Sat. 01-441 7070/01-449 2706

FITTED BEDROOMS SALE NOW ON

Superb **NEW** range of wardrobe designs with special hand textured panels, inset windows and mirrors including white ash and black ash finishes with carved panels. You really should see these super new designs (and prices).

Also **SALE** of previous showroom models to be sold at up to 30% reduction and a limited number of oddment wardrobes with "Trial Design" doors to clear.

WE PLAN AND EXPERTLY FIT FREE

WORKSHOPS AND SHOWROOMS

719 NORTH CIRCULAR ROAD NW2

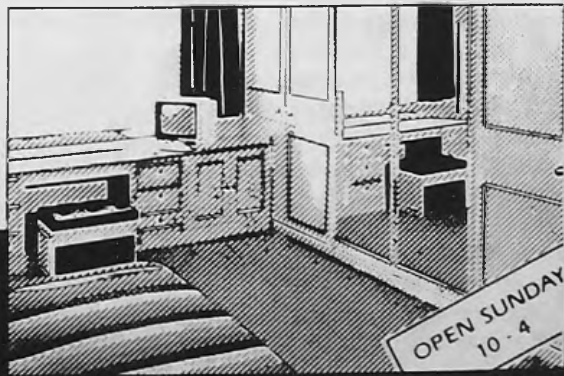
Telephone 01-450 6581

OPEN MON - FRI 9 - 5.30
SAT 9 - 5.00
SUN 10 - 4.00

EASY PARKING

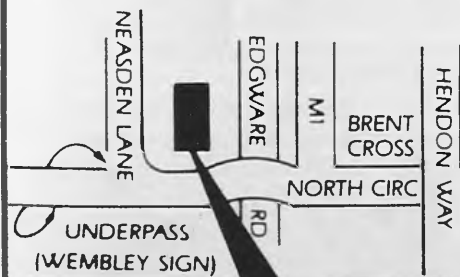
WE PUT MORE INTO THE **PRODUCT.**

CREDIT TERMS LICENCED BROKER
ASK FOR WRITTEN DETAILS



**OPEN SUNDAY
10 - 4**

STATON



Chipping Barnet's new library is on target to open this year

ANOTHER chapter in the story of Barnet Council's new library for Chipping Barnet has been completed, and the last page is on target to be written later this year.

At a site visit on Thursday 8 February, Colin Simmons, for the contractors, said: "Despite the recent storms, the roof has stayed where it was put - on top of the building!"

Looking forward

Libraries and Arts Committee Chairman Cllr Gillian Bull, said: "We are looking forward to the completion of this exciting project which will benefit all the residents in this part of the borough."

"The design of this new library is sympathetic to its surroundings. The exhibition area will give an opportunity for a broad range of activities including meetings of local societies and business groups as well as exhibitions."

Wide range of services

Borough Librarian David Ruddom, who retires this month, added: "While a lot of people



have grown to love our old library, and it certainly has character, Barnet Council will be able to

provide a much wider range of services in this new building.

"There will be easy access for

disabled people and a large children's library on the ground floor.

Spacious and pleasant

"I am happy to have been involved in this major project for the Council's Library Service and hope residents, of all ages, will enjoy this spacious and pleasant new library when it opens its door later this year."



Cllrs Gillian Bull and Miles Golding inspect the plans with David Ruddom (second right) and contracts manager Ian Pape (left)



POOP SCOOPS ARE COMING

PLANS are going ahead to introduce the "poop scoop" system to Barnet Council parks on a voluntary basis. Special bins will be provided in the parks and dog owners asked to clear up after their pets.

Cllr Victor Lyon, Chairman of Barnet's Development and Estates Committee, said: "We are not banning dogs from our parks, only from areas which need special protection. Responsible dog-owners will welcome the introduction of poop scoops on a voluntary basis, until we can obtain byelaw approval from the Home Secretary."

Barnet Council's cleaner parks scheme is a three-tier system.

1: Dogs banned from children's playgrounds, sports pitches and some ornamental gardens.

2: Dogs allowed in most park areas. Owners asked to use poop scoops to clear up after their pets.

3: Dogs exercised free of restraint in other areas.

When the scheme went to consultation 9,000 cards were returned with 86 per cent in favour.

Lists of parks involved can be seen at your local council library.

Secrets of the Welsh Harp



Dollis Juniors are joined on the bank of the reservoir by Cllr Tim Sims, chairman of the Welsh Harp Joint Consultative Committee, as they discover the rich wildlife of the nature reserve

THE SUN came out and the rain kept away - a rare occurrence recently - for the first guided walk organised by Barnet Council's Parks Rangers around the Welsh Harp nature reserve.

Pupils from Dollis Junior School, Mill Hill, were the first group to take this tour of discovery and benefit from the specialist knowledge of the Rangers.

The Welsh Harp is home to a large number of rare and interesting wildlife. The most famous attraction is the great-crested grebe, which has established a large breeding colony on the reservoir.

Rangers William Griffin, Maria Darling, Lisa Stringer and Damon Rostron, have become experts in the flora and fauna of the whole nature reserve and can reveal

the fascinating attractions of this haven of urban countryside.

Individuals or groups, of all ages, who wish to take guided walks with the Rangers either at the Welsh Harp, Cool Oak Lane, West Hendon or Scratchwood and Moat Mount Countryside Park, Mill Hill should write to David Bliss, Chief Ranger, Barnet House, 1255 High Road, N20 0EJ.

LET'S TALK BUSINESS

There can be no doubt that from 1992 the ability to speak one or more of the major European languages will prove to be an advantage. Our most ambitious companies started training key staff in these skills some time ago. For companies such courses are tax deductible and when taken at the Acol, surprisingly inexpensive.

BUSINESS FRENCH

Our first special course of the season starts on 14 March and then every Wednesday for 10 weeks from 4-6.30pm. Limited to 12 students, the course fee is £200 inc.

For details of this and our conversation courses in French, German, Spanish and Italian contact:

THE ACOL ACADEMY
86 West End Land,
London NW6. Tel: 624 7407

Expert tuition - in absolute comfort

E T Stores

Recently opened in High Barnet, for all your food needs from, a fully stocked frozen food, delicatessen, off licence and video club.



Open 14 hours a day, 7 days a week,
from 8.30am - 11pm.

4 Alston Road, Barnet, Herts
Tel: 01 - 447 0656

COSMOS FITTED BEDROOMS

CRAFTSMANSHIP AND SERVICE FROM YESTERYEAR



MADE TO MEASURE

Superior selection of frame finishes including solid woods, hand polished and finished by craftsmen.

Fresh silver, soft bronze or subtle peach mirrors.

The alternative to mirrors:-

High quality decorative designer panels. FOR PEACE OF MIND and luxury fitted bedroom furniture fitted wall to wall, floor to ceiling by our own craftsmen. Call or phone for a free Design and Planning Service.



INDIVIDUALLY DESIGNED

- Wide range of exclusive styles and finishes on laminates, wood veneers and sculptured doors, including hand painted inserts in any colour.
- Endless combinations of designs and interior finishes made individually for you.

WE DESIGN YOU A BEDROOM.
WE DON'T SELL YOU A
COMPROMISE.

Established since 1978



SELECTION OF REAL WOODS

SHOWROOMS
OPEN 7 DAYS

1180 HIGH ROAD
WHETSTONE N20
01-446 2416
01-446 1332
(Opp B&Q)

5 HALL LANE
CHINGFORD E4
01-524 7888
01-524 7889
(Next to Sainsbury's)

5 HIGH ROAD
CHADWELL HEATH
ROMFORD
01-590 2642
01-598 9022



LONDON BOROUGH OF BARNET
 Directorate of Educational Services
YOUTH & COMMUNITY SERVICE
 will be entering teams for



to be held at
CRYSTAL PALACE NATIONAL SPORTS CENTRE
 on
Saturday 7th and Sunday 8th July 1990
All events for under 19's include:

ANGLING	FOOTBALL FEMALE	SHOW JUMPING
ARCHERY	FOOTBALL MALE	SKIING
ATHLETICS FEMALE	GYMNASTICS FEMALE	SQUASH
ATHLETICS MALE	GYMNASTICS MALE	SWIMMING FEMALE
BADMINTON	HOCKEY FEMALE	SWIMMING MALE
BASKETBALL FEMALE	HOCKEY MALE	TABLE TENNIS
BASKETBALL MALE	JUDO FEMALE	TRAMPOLINING
CANOEING	JUDO MALE	TRIATHLON
CYCLING	KARATE	VOLLEYBALL FEMALE
DIVING	LAWN TENNIS	VOLLEYBALL MALE
FENCING	NETBALL	WEIGHTLIFTING

Young People wishing to be considered must reside in Barnet and should contact The Co-ordinator on 368 1255 Ext 3305 in order to be put in touch with the appropriate team managers.





Help the council to help the children in National Foster Care Week



In March and April Barnet Council's Fostering Service is linking in with the countrywide campaign for National Foster Care Week from 16 to 25 March, and Independent Television's Find A Family series. Our Fostering and Adoption Unit is to host an Open Meeting at Hendon Library on Thursday 5 April, starting at 8pm.

We are hoping to interest residents in being foster-carers either on a short-term or a long-term basis. Adoptive homes are also needed for youngsters in the borough.

At the meeting in the Lecture Room at the library, The Burroughs, Hendon, social workers and foster carers will be on hand to give information as well as answering questions.

TV campaign

During the television campaign there will be daily features on individual children who are waiting for long-term fostering or adoption. Discussion groups will centre on the needs of these youngsters.

Many people may be interested in fostering but are unable to offer a permanent home and there is always a need for carers who can offer a loving atmosphere on a temporary basis in an emergency. Short term homes are also needed for children with disabilities to enable parents to take a well-earned break.

There is a particular need for carers for teenagers. Over half the number of young people who come into the care of the local authority each year are aged between 13 and 18.

Solving problems

These teenagers may be experiencing difficulties at home or at school. They often need a temporary period away from their families during which help can be given to resolve the problems, so they can return home.

Support, understanding and encouragement from a caring foster family may prevent a young person from getting into more trouble. It can help them deal with the demands of every-



day life and relationships and give them a better grounding for their own future development.

You don't have to be married, or rich, or own or your home.

You do have to like children and be prepared to work with the youngster's parents and social workers.

You will receive training, support and weekly payments ranging from £52.50 to £200, depending on the age of the child and the type of fostering that you undertake.

Fostering is not all sweetness and light. Carers face challenging situations and it is not a task for everyone. But for those who do take it up there is the reward of knowing they have helped a child or young person at a critical point in their lives.

I/We are interested in finding out more about fostering/adoption
Please tick the appropriate box/boxes

- | | |
|---|--|
| <input type="checkbox"/> Short stay fostering | <input type="checkbox"/> Two or more children from the same family |
| <input type="checkbox"/> Long term fostering | <input type="checkbox"/> Asian/Afro Caribbean children |
| <input type="checkbox"/> Adoption | <input type="checkbox"/> Children with disabilities |
| <input type="checkbox"/> Relief care for children with disabilities | <input type="checkbox"/> Teenagers |

I/We can/cannot come to the open meeting on 5 April

Name(s).....

Age (s).....

Ethnic Group.....

Address.....

.....

.....Tel.....

Please return to:
Barnet Council
Fostering and Adoption Unit,
16 High Road
East Finchley N2 9PJ



Keys to a Spectrum of Endeavour

Spectrum, London's multi-national radio station, is moving into Barnet Council's Endeavour House, Brent Cross. The keys were presented to Spectrum's Chairman, John Kyriakides at an informal ceremony in the Town Hall, Hendon.

Spectrum plans to go on air in mid-May covering Greater London from its Barnet base. There is a diversity of languages and cultures in the broadcasting team which will serve ethnic communities including Arabic, Asian, Chinese, Greek, Italian, Jewish, Spanish and Afro-Caribbeans.



Large cheque for Mayor's Appeal

One thousand pounds for the Mayor of Barnet's Appeal from the Shah family of Edgware. The cheque was presented to the Mayor, Cllr Dot Benson, by Mr Popat Shah, his wife Shanta, and their daughter, Bijal, at the Town Hall, Hendon, on Thursday 25 January. This year the Shahs have raised over £2,000 for the Mayor's Appeal by organising a sponsored walk and a raffle. The money will go towards a day centre for MIND in Barnet, a charity which helps the mentally ill and their families.

COUNCIL ACHIEVES HUGE ENERGY SAVINGS

A MIXTURE of high-tech and common sense has saved rate-payers £803,000 over the past year through Barnet Council's fuel efficiency programme.

This is being applied to council buildings, from schools and offices to Cophall Swimming Pools,

where the new gas fired combined heat and power plant is achieving energy savings in excess of £30,000 a year.

The Cophall scheme received the regional Gas Energy Management (GEM) Award from British Gas. The combined heat and

power plant achieves 90 per cent fuel efficiency and will pay for itself in four years.

A pilot scheme to provide computer controlled energy management in council buildings has been set up at 11 sites including Friern Barnet and Hendon

town halls and Barnet House.

Cllr Jack Clarfelt, Chairman of General Purposes Committee, said: "This shows our commitment as a Council to conserving precious energy resources. We have saved money and are making a very real contribution to the environment."

YOUR OWN HOME IN COLINDALE AT A PRICE YOU CAN AFFORD

The London Borough of Barnet is nominating buyers to a new shared ownership development by ADDISON HOUSING ASSOCIATION LTD. The scheme will be known as PAGEANT GREEN and is situated between Fulbeck Drive and Lanacre Avenue.

The first phase of the project is underway and consists of 32 one bedroom flats, 19 two bedroom houses and 5 three bedroom houses.

Under this scheme, you buy a share of the property and pay a rent to Addison for the remaining share.

THE PROPERTIES WILL BE SOLD ON SHARED OWNERSHIP TERMS AT BETWEEN 60% AND 90% OF THE VALUE.

At current value, a 65% share of a one bedroom flat would cost £43,500. ★

The one, two and three bedroom home will be ready from July 1990.

Viewing will be in March / April.

We are expecting a large demand, so register your interest now.

*For further details, please contact:- Housing Initiative Section,
The London Borough of Barnet Barnet House, 1255 High Road, Whetstone,
London N20 0EJ. Tel: 01 - 446 8511 Ext. 4863*

★ This is based on current values, actual price will be set in April 1990

Even if you can't sell, you can still move.

You can move into the comfort and safety of one of our award winning retirement apartments right now, with "Property Bridge" from McCarthy & Stone.

It's a special kind of part exchange scheme which buys you the time you need to sell your house, at the price you want.

Even if, after two years, you still haven't managed to sell your property, we guarantee to buy it from you at the price we both agree now.

There are lots of ways we can help you move now. Write for our information pack "Together, we'll get things moving" which tells you more.

Send to: "Together, we'll get things Moving", Colin Davison, McCarthy & Stone (Developments) Ltd., FREEPOST, BF 853
1 Hammond Road, Viking Industrial Estate, Bedford MK41 0XX
or telephone 0234 272505.

Together we'll get things moving.

Please tell me more about how McCarthy & Stone can help me move now and send me details of the following McCarthy & Stone properties: (tick box)

Finchley Harrow

(please print clearly)

Name _____

Address _____

Post Code _____

Tel. No. _____



Fitted Lounge and Bedroom Furniture

FACTORY SPECIAL NOW SAVE 20%



HAND CRAFTED WALL UNITS

- ★ From small alcoves to complete wall systems, made to your requirements.
- ★ Finest quality materials used such as Mahogany, Oak, Teak, Pine, Lacquers and laminates.
- ★ Flexible designs. TVs, Videos, Hi-Fi's and computers built in. Fireplaces, radiators, windows and doors built around.

SUPER SPACE SAVING BEDROOMS

- ★ From luxurious master bedrooms, to study bedrooms, incorporating fold-down beds, computers, Hi-Fi and TV.
- ★ A unique custom colouring service for wood finishes and lacquers.
- ★ Furniture made specifically for you to reflect your individual needs.



- ★ Free design and estimates
- ★ Top quality materials
- ★ Free installation ★ 5 year guarantee



Buy from a
local business
Established 10 yrs

DESIGNER HOTLINE

01 - 881 9868

Your local showroom at
164 BOWES ROAD,
London, N11

Mon-Fri 9.30-5pm,
Sat 10-4pm Sun 10.30-1pm

MADE TO MEASURE

THEME SETTER

DO YOU HAVE PROBLEMS WITH ...?

- Blocked Drains ● Street Lighting
- Development ● Street Cleaning
- Refuse Collection ● Abandoned Cars
- Pavements & Roads ● Trees
- Parks ● Sports

Call us at our

CUSTOMER COMPLAINTS UNIT

01-446 5237 01-446 5219

Open 9am - 5pm

Or write to:

Directorate of Technical Service,
Customer Complaints Unit, Barnet House,
1255 High Road, Whetstone, N20 0EJ.

We care about the Service we give

LONDON BOROUGH
barnet
Directorate of Technical Services

★ Residential Nursing and Care Homes ★

The Ravenscroft Park Nursing Home

Licensed by the Barnet Health Authority
Established and managed for the last 20 years by the same caring family

Beautiful Victorian buildings, refurbished to the highest specifications, with single/double rooms and bath/toilet, en-suite facilities.

Newly built section incorporating physiotherapy room/hairdressers and hydrotherapy pool.

Dining room/recreation hall, overlooking and leading to extensive landscaped gardens.

HIGH QUALITY 24 HOUR NURSING CARE

for all our patients, long or short stay.

KOSHER CUISINE MODERATE TERMS

2-6 Ravenscroft Park, Barnet, Herts EN5 4ND.

Telephone: 01 - 440 3454 01 - 449 8500 and 01 - 449 3630

Required
○ REGISTERED NURSE

for days

○ REGISTERED
GENERAL NURSE

4 nights per week

○ NURSING
AUXILIARIES

for days

*Quiet Nursing Home in
beautiful residential area
in North Finchley*

Contact the Matron

KENWOOD NURSING HOME

01 445 5112

Tremarrak Gardens

- Maintenance
- Clearance
- Landscaping
- Tree Surgery
- Roses expertly pruned

01 445 9446

between 5-9pm
eves/weekends

HOUNDWOOD HOUSE

RESIDENTIAL HOME FOR THE ELDERLY

HARPER LANE,

RADLETT, HERTFORDSHIRE. WD7 7HU.

RADLETT (0923) 856819

Delightful Edwardian property set in 5 1/2 acres of beautiful grounds and woodland; superior grade of accommodation in a sympathetic and luxurious ambience.

Single and Double Bedrooms, a number with ensuite facilities; excellent cuisine, special dietary requirements catered for; personal laundry service; television and telephone points in all Bedrooms.

NOW OPEN

17 STUDIOS WITH ENSUITE
FACILITIES AND KITCHENETTE

Individual Care and Attention Always Assured

Allow us to ensure that your Retirement Years are both Happy and Comfortable.

EASTWOOD

Residential Home for The Elderly

76 Hendon Lane, Finchley, N3

Small, comfortable home for seven residents. Private rooms with wash basins and TV points, own furniture if required. Comfortable lounge, dining room, lift, pleasant garden and excellent food.

UNIQUE SYSTEM OF RELATIVE INVOLVEMENT

Registered with London Borough of Barnet

Please telephone Secretary on 01 202 7415
or Chairman on 01 959 2979

NEW RESIDENTIAL HOME

“CORNERSTONE”

FINCHLEY CENTRAL N3.

ONE VACANCY

- ★ Personal caring family environment.
- ★ 24hr quality care by experienced staff.
- ★ Full ch throughout ★ Delicious home cooked meals.
- ★ Extremely reasonable rates:- to include free hairdressing, laundry, library service, chiropodist, visiting doctor, and all personal toiletries.

Residential or short stay.

Tel: 01-346 0764 Mary Gillan R.M.N.

FOR A GRACIOUS RETIREMENT START LIVING AT

ROSEACRES

where the Staff are caring round the clock, blending home comforts with luxurious facilities (en suite, Lift, Garden etc), sterling service and cuisine, and so much more at rates you can afford. Call us anytime.

ROSEACRES 80-84 Chandos Ave., Whetstone N20 Tel: 445 5554

LLB Registered

The same caring management for the past 22 years



CARE STAFF

Required in home for adults with a mental handicap. Some experience or knowledge would be an advantage but not entirely necessary. Hours of work are based on a 2-week shift pattern involving weekends, averaging 39 hours per week, and sleeping-on-call for which extra is paid.

The successful candidate will eventually be required to operate a key-worker system and will be expected to attend reviews and meetings accordingly. Other duties are involved with the day to day care, supervision and attention to residents.

Working night staff also required
10pm - 7am weekdays
10pm - 9am week out

For further information
please telephone or write to:
Roger Gale, 111 Leicester Road,
New Barnet, Herts.
Tel: 01 441 2988

ALMENAR

RESIDENTIAL CARE HOME

*CARING FOR YOUR
ELDERLY RELATIVES?
CAN'T COPE ANYMORE?*

We at Almenar would love to look after your loved one in our family run Residential Care Home.

Rooms available immediately,
permanent or temporary care available.

Very Reasonable rates.

Close to all public amenities

Contact Sharon on 01-449 1584

**7, 8, 9 Ravenscroft Park
Barnet, Herts.**



Heathbourne Road,
Bushy Heath,
Hertfordshire WD2 1PB

Situated in 3 acres of secluded and spacious grounds, Birchville Court is one of the most luxuriously interior-designed nursing and retirement homes in the area.

- Professional and dedicated staff
 - Post operative medical, convalescent and long or short stay care
 - All dietary requirements catered for
- Excellent facilities + services include:*
- Lift
 - Nurse call system
 - Colour TV in all rooms
 - Smoke and fire detection system
 - Specially equipped assisted bathroom
 - Telephone points in all bedrooms

For further details and brochure
please telephone Matron or Mr Adams
01 - 950 6206

Goldsborough

PRIVATE NURSING HOME

Enfield



76 Wellington Road, Enfield EN1 2PL. TEL: 360 5977

Situated in the pleasant Bush Hill Park area of Enfield, Goldsborough Private Nursing Home is a purpose-built delightful home offering full nursing and residential facilities for the elderly.

All rooms are en-suite and have a pleasing outlook. The homely environment extends to the spacious lounge and dining room from where residents may enjoy the pleasures of a secluded patio garden.

For further details, and an invitation to view, please complete the coupon below.

TO: Sue Allen, Matron, Goldsborough Private Nursing Home, 76 Wellington Road,
Enfield EN1 2PL. TEL: 360 5977

Please send me, without obligation, full details of the Goldsborough Private Nursing Home

Name _____

Address _____

Post Code _____ Tel: _____ BBN.3.90

THE COMPLETE PRIVATE CARE SERVICE

STORM DAMAGE:

Barnet Council counts the costs

BARNET Council is counting the cost of damage across the borough in the wake of the storm of 25 January and the weeks of gale force winds and heavy rain which followed.

Teams from all departments worked long hours and through weekends to make buildings safe, repair leaking roofs, get schools back into action and clear storm debris from streets and parks.

Prepared

If Barnet Council had not been prepared the situation could have been far worse. Taking to heart the lessons of the 1987 storm, The council had drawn up emergency procedures.

As the early storm forecasts came in, contractors who work for the council, were put on standby. Engineers, surveyors and other technical staff were nominated to



Council teams working in Whetstone, on the night the storm struck

join the emergency teams to give on the spot professional advice.

Between noon and 6pm on 25 January Barnet House, Whetstone, where the council's Technical Services are based, and the Town Hall, Hendon, took more than 4,240 calls.

The Night Emergency Telephone Service came into action at 5.15pm.

Building control and highways staff and Barnet's Parks Rangers transferred to the emergency control centre in Hendon Way depot, staying on duty until the number of calls tailed off at 8pm.

During the storm the council responded to 35 calls for help on dangerous structures, mainly damaged roofs and chimney stacks, scaffolding, collapsed walls and trees which had fallen on buildings.

The Housing Department made three halls available to take in families in case any residents had to evacuate their homes and had nowhere to go. But these were not called into use.

Ranger patrol

In the following week heavy rain hampered repair work and the streams in the parks ran dangerously high. Park Rangers patrolled the banks, keeping children away, and danger warnings were posted.

Across the borough 3,000 trees were lost or seriously damaged in streets and parks.

Damage at Longford Court

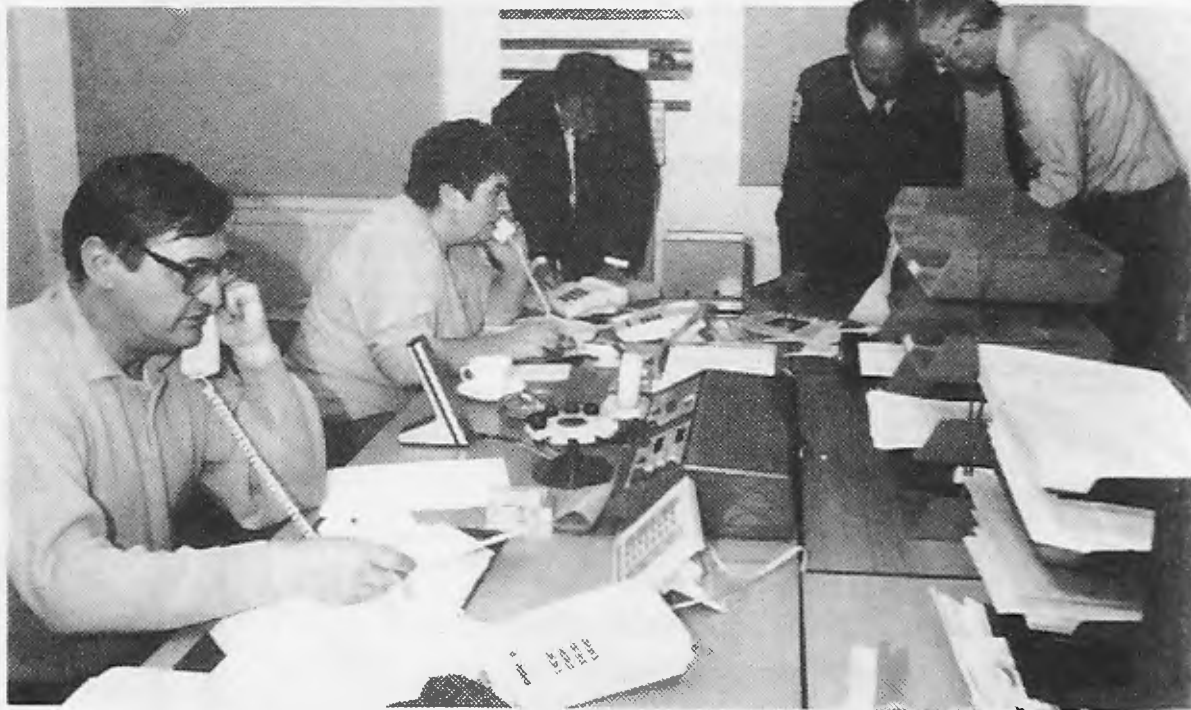


A brick and concrete screen surrounding the lift motor room and plant room on the roof of Barnet Council's Longford Court, Belleview Estate, Hendon, crashed down, damaging the roof.

Residents from the eight top floor flats were evacuated. One was housed in the guest room of Leemount Close sheltered housing scheme, Bell Lane. Others stayed with family or friends.

Barnet Council called in a mobile crane with a 150ft jib, pictured above, to remove the structure and repair the roof.

The structure was a decorative feature and will not be replaced



Barnet Council's Emergency Control Centre: Left to right: Alan Whitby and Allana Hopcroft deal with phone calls while Nigel Howes, principal building surveyor; Gill Moss, area parks ranger, and David Bliss, senior parks ranger, plan th action

View from the roof



Cllr Norman Hirshfield, Chairman of Barnet Council's Housing Department (right), and Ray Janering, Director of Housing and Environmental Health, with Terry King, on the roof of flats at Marsh Drive, West Hendon, when they toured housing estates on the day after the storm to see the extent of the storm damage

3,000 trees lost in streets and parks

Three thousand trees were uprooted or seriously damaged in Barnet's streets and parks as a result of the storm.

This one was at Glengall Road, Edgware.

By the morning after the storm all but one of the uprooted trees had been cleared from the roads. This was an old cedar in the Ridgeway, Mill Hill, which needed a heavy crane to move it.

Already an additional 500 young trees in protective sheaths have been purchased to be planted in the immediate future. More mature trees will be planted in the autumn.



Raising the roof at Mill Hill County High

A TEMPORARY steel roof spanning a classroom block at Mill Hill County High School is to be built by contractors for Barnet Council during the half-term break.

This will allow the building to be brought back into use pending the design and construction of a new roof.

Stoprm toll

The school was seriously damaged during the storm and Barnet Council teams have worked seven days a week, to carry out temporary repairs and get the building weathertight and dry.

Local schools and colleges were among the worst victims of the storm and recent high winds and heavy rain have hampered repairs.

Eight buildings - Hendon and Barnet colleges, three secondary schools, two junior schools and a curriculum centre - were seriously damaged and 60 other

education buildings needed minor repairs.

Mill Hill County High School was among the most seriously hit. On many buildings slates fell and the surface of the flat roof of one of the main teaching blocks was ripped off.

Teams were on site next morning, but work could not begin on the roof until a safety rail was built. This was in place by Monday and work began on temporary repairs.

High winds, heavy rain and the flexible structure of the roof made the task almost impossible. Water continued to seep in.

Temporary classrooms

The decision was made to build a temporary steel roof so that the building would be weathertight until a new permanent roof could be built.

On Friday 2 February four

demountable classrooms were ordered at a cost of £12,000. These were delivered, built and fully operational within one week.

Quick response

Head teacher Derek Culley said it had been a difficult and frustrating time, but the school had kept going.

"Thankfully no one was hurt, and we could have had serious injuries. Even with the demountable classrooms we are eight classes short.

"Nevertheless we were able to keep the examination classes running without interruption and the council managed to get the language laboratory back as a priority. In fact the council responded very quickly, and although there have been continuing problems we should be back in full action after half term."

A word of praise

John Bailey, Barnet Council's Deputy Director of Education, said:

"As an education authority we have been able to use the resources of Barnet Council to respond quickly, carry out emergency repairs and provide temporary accommodation. Permanent repairs are in hand or completed. I would like to thank the teaching staff and the children for the way in which they have coped in a very difficult situation."



Tom Jeffrey, Barnet Council's Controller of Development Services, said:

"I have been really pleased with the way in which the Council's teams of surveyors and architects have coped with the very difficult conditions of the last few weeks.

"They have worked extremely hard to repair the damage to the schools and other council buildings, often in quite dangerous conditions. They deserve all our thanks"

"A marvellous team"

AT FRITH Manor School the roof of one of the temporary classrooms was stripped off in the storm. Incredibly the classroom was empty and the roof blew onto the empty sportsfield and not into the school area.

Barnet Council's surveyors were at the school within the hour. The classroom was unsafe. The walls had collapsed inwards and electric cables hung from the remains of the ceiling.

Next day response

Contractors were on site the following day, working through the weekend, and the classroom was fully repaired with a new roof, lighting, new windows and fully decorated by Friday 9 February.

Head teacher Sylvia Read said: "The council team has been marvellous. They have worked in terrible conditions, and they even went into the classroom to rescue the bags and coats of the teacher and children."



Second year pupils in one of the new temporary classrooms

Local opportunities...

WORKING FOR THE COMMUNITY

Barnet is a borough changing with the times. To achieve our plans for the 1990's we need the skills and abilities of a wide range of people. The Council offers excellent pay and conditions with training and career development tailored to the individual and promotion on personal merit.

- * Excellent Pension Scheme
- * Opportunities to progress
- * Flexible working hours
- * Generous leave
- * Pleasant conditions
- * Restaurant facilities

barnet

EDUCATIONAL SERVICES

This role in our Catering Section could be a taste of bigger things to come.

CLERICAL ASSISTANT

£9,018-£9,624 inc.

You'll be joining our busy Catering Section, based at Friem Barnet Town Hall, where you will be responsible for providing the team with general clerical support.

Among your many duties will be typing/word processing, telephone work, the maintenance and updating of staff records, and advanced figure work.

To succeed in this role, you must have relevant office experience, including sound keyboard skills that will be assessed in accordance with the Authority's Keyboard Operators Scheme.
Ref: ADM/E/234.

Closing date: 9th March 1990.

Application Forms available from Address No. 1.

P/T PERSONAL/ CLERICAL ASSISTANT

£3,788-£4,041 pa inc.

**18 hours per week,
40 weeks per annum**

Required as soon as possible at Edgware Secondary School, Green Lane, Edgware, to give support to Technical and Vocational Courses. Times of duty are negotiable.

It is desirable that applicants possess a sense of humour, good typing skills coupled with some shorthand, familiarity with word processing and an ability to adapt to other office duties as and when required. The post is initially on

a fixed term contract to March 1992, with the possibility of becoming an established post thereafter.

Ref: ADM/E/159/139.

Closing date: 9th March 1990.

For an informal discussion please telephone Ray Ollver at the school on 01-958 5310.

Application forms and further information available from the Headteacher, Edgware School, Green Lane. Tel: 01-958 5310.

barnet

HOUSING & ENVIRONMENTAL SERVICES

CLERICAL ASSISTANT

Up to £8,919 pa inc.

We have a vacancy for a full-time Clerical Assistant to be based at our Stag House Offices in Burnt Oak.

The person we are looking for must be able to provide clerical/administrative support to the District Maintenance Manager and his team.

The working environment is busy and friendly, and specific duties will include dealing with our clients' enquiries by phone and in person in a sympathetic and understanding manner. You will also undertake general record keeping and filing.

Good keyboard skills are essential and VDU experience would be an advantage, as would previous experience of general office routine.
Ref: 9/1/3274.

Closing date: 9th March 1990.

Application forms available from Address No. 1.

barnet

TECHNICAL SERVICES

Engineering Group RESIDENT ENGINEER

(2 years fixed term contract)

c. £28,000

(benefits include car allowance, performance related pay, and overtime)

We are looking for an experienced Resident Engineer capable of supervising a programme of works in both the highways and drainage fields. The two year programme includes major trunk road reconstruction and relief sewer projects.

In addition to the supervision of major works, you will also be responsible for the direction and deployment of a team of Clerks of Works within the Engineering Group in order to achieve contract compliance and value for money across a broad range of municipal works.

Your skills should include:

- ★ Chartered Engineer status with at least 3 years site experience at senior level.
- ★ A sound knowledge of site supervision and administration.
- ★ Experience of both Department of Transport and Water Authorities Association specifications.
- ★ Competence in interpretation and application of the ICK Conditions of Contracts.

As the major highways may include lane rental contracts, experience of the procedures involved would be an advantage. *Ref: DTS/110.*

Closing date: 16th March 1990.

Interview date: 2nd April 1990.

For further details of the post or of the Group's future contracts, telephone Phil Skinner, Assistant Controller (Engineering) on 01-446 8511 ext 4361 or Peter Adams, Operations and Contract Manager on ext 4395.

Application forms available from Address No. 2.

SENIOR ELECTRICAL ENGINEER

Architecture Group

£19,655 pa inc.

Our multi-disciplinary Electrical section provides a consultancy service to all departments of the Council. We are looking for a highly motivated Electrical Engineer to both resource and manage this team of Engineers and Clerks of Works.

As a qualified Electrical Engineer with five years design experience, you will have covered a range of projects and now be ready to move into a management role. In this role, you will be responsible for setting standards, the design input to complex projects, preparing contract documents for design and maintenance work, and monitoring the successful completion of contract works.

A knowledge of telecommunications and lifts will be an advantage, along with sufficient enthusiasm and initiative to implement the CAD System being introduced into the group.

You will be eligible for an essential car user allowance and interest free car loan so a current driving licence is desirable.

Competitive salary aside, you'll also enjoy a BUPA discount, generous leave entitlement, excellent pension scheme and flexible working hours. Relocation allowances will also be paid in certain cases. *Ref: DTS/570.*

Closing date: 14th March 1990.

Interview date: 30th March 1990.

For an informal discussion about this opening, contact John Chapman, Principal Mechanical and Electrical Engineer, on 01-446 8511 ext 4570.

Application forms available from Address No. 2.

Engineering Services Division

PROJECT ENGINEER

(Highways)

Up to £17,993 pa inc.

+ essential car user's allowance

From parts of the M1 to the humblest private street, Barnet is covered by more than 650 km of roads. Among the busiest in Britain, they are also some of the best maintained. We are now looking for an Engineer to join the dynamic team that is responsible for ensuring that things stay that way.

This is an excellent opportunity to broaden your experience in design, contract preparation and site control.

Initially you will be working as part of the Borough's Road Improvements Unit, where you will become involved in controlling a variety of projects. This will require you to liaise with developers and other outside organisations, deal with correspondence and reports, and to represent the Council at meetings.

Although we would like you to have a degree in Civil Engineering and relevant post-graduate experience, your application will also be welcomed if you have an HNC in Civil Engineering plus several years' experience of this type of work. This should be backed by a good working knowledge of highway design practices, procedures, materials and contracts. Membership in an appropriate professional institution would also be an advantage. In addition, we will also expect you to have good verbal and written communication skills and, because you will visit sites throughout the Borough, a valid driving licence.
Ref: DTS/152.

Closing date: 15th March 1990.

Interview date: 28th March 1990.

For an informal chat about this post, contact Eric Lawson, Chief Engineer (Highways), on 01-446 8511 ext 4363.

Application forms available from Address No. 2.

BUILD a career in leisure

RECREATION SUPERVISOR

**Squires Lane Swimming Pools
£172.38 per 39 hr wk**

To meet the challenge of compulsory competitive tendering, Barnet's Recreation Group is being restructured. As a result we are now looking for one more Recreation Supervisor to join the team.

Although based at the recently refurbished Squires Lane Swimming Pools, you will be responsible for a number of indoor and outdoor pools throughout the Borough.

It is an important role calling for someone with proven leadership and organisational skills, initiative, a flexible

approach, and the ability to motivate others.

You should also be professionally qualified, and have at least two years' experience in a similar environment. A Pool Bronze Medallion is essential.

If this sounds like a description of you, we'd like to hear from you.

Ref: DTS/RS.

Closing date: 8th March 1990.

For an informal chat, please contact Graham Surry on 01-346 3962.

Application forms available from Address No. 2.

barnet

SOCIAL SERVICES

MANAGEMENT OFFICER

West Team

£16,308-£17,655 pa Inc.

+ Interest free car loan + essential car user allowance (Job share considered)

These are challenging times and we need to recruit a manager with energy, experience and enthusiasm to lead a busy Children & Families Team with high proportion of child protection work and a lead function for under 5's.

The teams are innovative, committed and keen to provide a quality service. The managers participate in our generic duty assessment system. In service training and sound administrative support are essential components of the West Area experience. Applicants must have a minimum of 3 years post qualification experience and a demonstrable knowledge and understanding of Children & Family work and Child Care legislation.

Applications from Black and Ethnic minority communities are particularly welcome.

In approved cases we offer generous removal expenses and separation allowances, and the possibility of temporary housing. Ref: 633/121.

Closing date: 8th March 1990.

Interview date: 23rd March 1990.

Informal enquiries to: Mr E. Stiven, PMO, West Team, 158 Burnt Oak Broadway, Burnt Oak, Edgware, Middx HA80UH. Tel: 01-952 7722 ext. 3543.

Application forms from Address No. 4.

Residential Settings for Children and Young People

MANAGER

£14,736-£15,993 pa Inc.

+ essential car user's allowance

"25 Parkhurst Place" is a 10-place intake unit for young people aged 12+, who are coming into care.

We pride ourselves on providing a welcoming, safe environment and work hard to resolve problems and, wherever possible, to prevent drift into long-term care.

We currently require a committed professional with proven skills in both working with young people in care and

managing staff in a residential setting.

While we would prefer a professional qualification, we welcome applications from candidates who simply have relevant experience.

Barnet offers good in-service training and has a strong commitment to staff supervision. Ref: 633/485.

Closing date: 9th March 1990.

Interview date: 27th March 1990.

For an informal chat about this position, ring Mr D. Fry on 01-446 1488 ext 4271.

Application forms available from Address No. 4.

Care for Older People

The Rosa Freedman Centre, Clarendon Way, Cricklewood

MANAGER

£18,666-£20,076 pa Inc.

+ essential car user allowance and interest free loan scheme

DEPUTY MANAGER

£14,736-£17,172 pa Inc.

Barnet is currently embarking on a path of substantial change with the goal of providing services that are truly responsive to community needs. The first step has been the creation of a Community Services Directorate, amalgamating the Housing, Social Services and Environmental Health departments. The new Directorate will provide flexible and responsive services to the consumers and this will be reflected within the community care plan.

The Rosa Freedman Centre was opened in May 1989 and is an innovative project which consists of day and residential care together with a sheltered housing block with extra care facilities. The Centre has an important part to play in providing services to older people from all sections of the community in the Cricklewood area of North West London.

We are now looking for a new Manager and Deputy Manager to take the Centre into the 90's, meeting all the challenges of change — both national and local.

Both posts require commitment to providing a service that is shaped by the needs of residents and day care users. You must be able to balance the needs of users within the day care unit and sheltered housing flats as well as the centre. The posts also require extensive teamwork skills and the ability to develop the skills of all staff as well as to involve the local community in the running of the centre. The Manager post requires previous experience of managing a residential setting while the post of Deputy Manager does not.

We offer generous removal, separation and lodging allowances in approved cases, plus the possibility of temporary housing. Ref: 633/1024.

Closing date: 9th March 1990.

Interview date: 26th and 27th March 1990.

Informal enquiries welcomed by Ms A. Brown on 01-446 1488 ext 4261.

Application forms available from Address No. 4.

People with Learning Difficulties DAY CARE WORKER

at the Leys, Elstree

£11,202-£12,213 pa Inc.

(up to £12,972 Inc. if qualified — salary grade under review)

Are you well organised? Determined? Highly motivated? Horticulturally minded?

Because we need you to: — develop our small day care unit (which operates in the grounds of a large residential home) into a work training scheme for up to ten people with learning difficulties.

Could you: — work collaboratively with colleges, 'Pathway' schemes, and develop links with potential employers?

We offer: — good support and supervision, a stimulating working environment and good opportunities for the right candidate. Ref: 633/288.

Want to know more? For informal enquiries phone the Officer in Charge, Ron Cordell on 01-207 0122.

Closing date: 9th March 1990.

Interview date: 3rd April 1990.

Application forms available from Address No. 4.

DAY CENTRE CAREWORKER

For physically and mentally frail older people

£8,490-£11,859 pa Inc.

(Up to £12,579 if qualified)

Springwood is a 45-place day care facility in Edgware, which offers an integrated service for physically and mentally frail older people.

We are currently looking for a careworker who will be responsible for developing and providing a structured programme of arts, crafts and drama activities on a group work basis, as well as acting as keyworker to a small group of users.

Additionally, you will be involved in monitoring care plans and assessing levels of personal hygiene. The latter will be carried out with a view to promoting independence and supporting older people in their decision to remain in their own homes. Ref: 633/269.

Closing date: 9th March 1990.

For an informal chat about this challenging and rewarding position, please contact the Manager, Miss J. Calcagni, on 01-958 8123.

Application forms available from Address No. 4.

"AS AND WHEN" CARE ASSISTANTS

£3.83 ph

Are you interested in the welfare of elderly people? And do you often have a day or two spare, or some mornings or afternoons? Then you should think about working at Abbots and Brunswick Lodge in New Southgate.

You will primarily be responsible for providing personal care and attention to our residents. This will include helping out at meal times and assisting with bathing and toileting.

Closing date: 9th March 1990.

If you have the time and the dedication, learn more or request an application form from Mrs A. Green, Abbots Lodge, Brunswick Park Road, New Southgate, N11.

Telephone: 01-361 1271.

DOMESTIC ASSISTANT

£3.40 ph Inc.

10am to 1pm/Mon to Fri

If you'd like a job that serves people and still leaves you time for other activities, come to Deansbrook, a day centre for the elderly in Edgware.

Your duties will include assisting the cook, washing up, and serving coffee and meals to our 45 clients.

For more information and an application form, telephone Mrs Sally Sparrows on 01-952 7667, or write to her at Deansbrook Day Centre, Deansbrook Road, Edgware.

Application forms available from the Director of Social Services, London Borough of Barnet, Ivy House, 1331 High Road, Whetstone, N20 9HZ. Tel: 01-446 6857 (24 hour answering service) or 01-446 1488 ext 4213.

where to apply

1 Recruitment Office, 16-17 Sentinel Square, Brent Street, Hendon, London NW4 2EN. Tel: 01-202 8282 extn. 2372 or 01-202 6602 (24 hour answer service)

2 Assistant Controller (Support Services), Barnet House, 1255 High Road, Whetstone, London N20 0EJ. Tel: 01-446 8511 extn. 4454.

3 Director of Educational Services, Town Hall, Friern Barnet, London N11 3DL. Tel: 01-368 1255.

4 Director of Social Services, Ivy House, 1331 High Road, Whetstone, London N20 9HZ. Tel: 01-446 6857 (24 hour answer service), or 01-446 1488 extn. 4213.

5 Borough Librarian, Ravensfield House, The Burroughs, Hendon, London NW4 4BE. Tel: 01-202 5625 extn. 48.

AN AUTHORITY COMMITTED TO EQUAL OPPORTUNITIES



You
will be
amazed
OUR PRICES

Change your image instantly with our
special offer contact lenses

Soft Lenses
Gas Permeable
Extended Wear
Colour Chargers (Durasoft)
Colour Enhancers

NOW £39

NOW £58

NOW £60

NOW £155

One hour service
in most cases

HALF-PRICE FRAMES
with every pair of
contact lenses purchased

MAJORS

CONTACT LENS CENTRE

219 Woodhouse Road, Friern Barnet
(nr Town Hall) N12

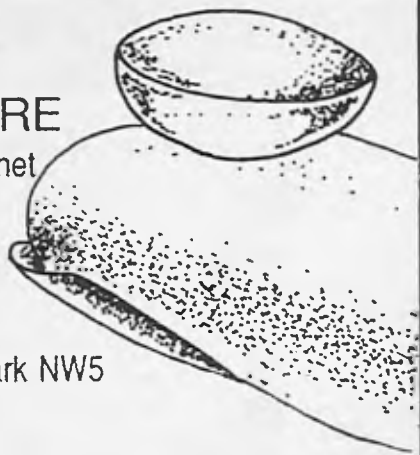
Tel: 01-368 4091

Open Mon-Fri 9am-5.30pm
Wed & Sat Half Day

ALSO AT: 141 Fortess Road, Tufnell Park NW5

Tel: 01-267 0183 / 267 1216

Open Mon-Fri 9am-6pm
Thurs & Sat Half Day



PERSONAL AND PROFESSIONAL SERVICE

**GOOD QUALITY
DOUBLE BED
£132**



**GOOD
QUALITY
SINGLE BED £80**

We specialise in
BEDS ● SUITES ● FIRESIDE CHAIRS

We also furnish houses, flats for letting / renting

Mattresses of
all shapes &
sizes available
separately

and old peoples homes
SAME DAY DELIVERY

VALLEY FURNISHING

Folding beds
from
£32.00

114 Brent Street, Hendon, NW4 Tel: 202 4666

Councillors and MPs surgeries

Chipping Barnet

Sydney Chapman, MP, first Saturday of month 10.30am to 12 noon, 163 High Street, Barnet.

Arkley Ward: Conservative councillors, first and third Fridays of month 7.30pm, Dollis Valley Community Centre & fourth Friday of month, 7.30pm, St. Stephen's Vicarage, Spring Close, Bells Hill.

Brunswick Park Ward: Conservative councillors available second Saturday of month. 10.30am to 12 noon, Monkfrith Boys' Club hall, Osidge Lane, N14

East Barnet Ward: Cllr Olwen Evans (Conservative), first Saturday of month 10.30am to noon, Community Centre, Victoria Rd, New Barnet. Contact Cllrs Mrs Mamie Perry and John Perry on 368 4368 for personal appointment.

Hadley Ward: Contact Conservative councillors Gillian Bull 446 7684, Carol Cender 441 6325, John Hoyle 441 5077.

Totteridge Ward: Contact Conservative councillors Joan Levinson 368 3298, Victor Lyon 446 4423, Victor Usher 445 4248.

Labour councillors available first Saturday of month 10.30 to 11.30am, 104 East Barnet Rd, New Barnet.

Finchley & Friern Barnet

Margaret Thatcher, MP, for constituents only, via constituency office, on 445 4292.

Conservative councillors, first Saturday of month, 10.30am to noon, 212 Ballards Lane, N3.

East Finchley Ward: Labour councillors every Saturday, 10am to 11.30am, East Finchley Neighbourhood Centre, Church Lane, N2.

Finchley Ward: Cllr Barbara Langstone can be contacted on 445 5443

St. Paul's Ward: Labour councillors Naren Dave, Michael Freeman and Kitty Lyons, every Saturday 11am to 12 noon, Tally Ho Labour Party Stall, North Finchley.

Woodhouse Ward: Labour council-

lors Mike Harris, Dennis Reed and Rudolf Vis, every Thursday, 6.30-7.30pm, Friern Barnet Town Hall, N11. Also Saturdays at Tally Ho, Finchley.

Friern Barnet Ward: Councillors Chris Platford 368 6817; Brian Salinger 368 1329; John Tiplady 445 5734.

Hendon North

John Gorst, MP, by appointment. 959 1446 or via constituency office, 2 Apex Parade, Selvage Lane, Mill Hill.

Edgware, Hale and Mill Hill Wards: Conservative councillors, Grahame Park, first Wednesday of month, and Constituency Office, Apex Parade, Selvage Lane, Mill Hill, every Wednesday.

Burnt Oak Ward: Contact Labour councillors Peter Ellis 959 6191; Gerald Shamash 458 2679; Alan Williams 906 0576. Also every Saturday, 10.30am to noon, Labour Hall, Back Lane, Burnt Oak 952 5771.

Colindale Ward: Contact Cllrs Hillman 202 7792; McKendry 444 0594; Manson 455 6379; available first and fourth Saturday each month, 2-3pm, St Augustine's, Grahame Park.

Hendon South

John Marshall, MP, via constituency office, 202 7484 by appointment, see local press for details.

Hendon, Garden Suburb, Golders Green: Conservative councillors - by appointment, first Saturday of month, 202 7484.

Childs Hill: Social and Liberal Democrat councillors every second Tuesday of month 7-8pm, Garth Hall Community Centre, Mortimer Close, Granville Rd, NW2. Contact Cllrs Cohen 445 398; Palmer 455 5140; Stone 450 0762.

West Hendon: Labour councillors every second Saturday of month 11am, West Hendon Youth Club, 4A Park Rd. NW4 by appointment. Contact Cllr Sims 734 8080; Cllr Doreen Neall 202 9927; Cllr Agnes Slocombe 202 4074.

READERS' SURVEY

We had a very good response to the Barnet Borough News Readers' Survey. Thank you for taking part.

Barnet Council now has a better picture of distribution - and are trying to put right the gaps in the service.

The responses are being collated and will help to plan future issues.

Prizewinners

The winners of our prize draw are:

Miss Inge Roeder, of NW3; Stephanie Lafferty, Grahame Park; A.G. Walton, Mill Hill; Ms S.M. McCarthy, New Barnet; J.G. Sutherland, West Hendon; R.H. Beardon, Mill Hill; Mrs G.C. Barnes, Totteridge; Miss I.B. Jonsson, Hendon.

Entries for the April issue must be received by 9 March and before that date if possible. Entries will start on 8 April.

Barnet Council

Members of the public are invited to attend Barnet council and committee meetings in the Town Hall, Hendon, at 7pm

Monday 5 March
Housing

Tuesday 6 March
Education

Wednesday 7 March
Libraries & Arts

Thursday 8 March
Special Community Charge Setting Mtg

Monday 12 March
Development & Estates

Tuesday 13 March
Social Services

Wednesday 14 March
Planning Sub-Committees

Monday 19 March
General Purposes

Tuesday 20 March
Public Works

Wednesday 21 March
Grants

Thursday 22 March
Establishment

Monday 26 March
Finance

Tuesday 3 April
Education Sub-Committees

Wednesday 4 April
Town Planning & Research

General

Weds 7 - 28 March

Other Faiths than Ours. Christianity, Islam, Buddhism & Hinduism. Alyth Cntr, NW Reform Synagogue, Alyth Gdns. NW11. 8.15pm. 455 6763

Thursday 8 March

London Fire & Civil Defence Authority. County Hall, London SE1. Personnel Ctte. 2pm. Details. Mrs Eustace, 633 7715 (also 15 Mar, Scrutiny Sub-Ctte, 2.30pm, contact Ms Saini, 633 3634; 22 Mar, Policy & Resources Ctte, 2pm, contact Mrs Miller, 633 8162; 5 Apr, Authority Mtg, 2pm, contact Mrs Miller, 633 8162)

Monday 12 March

Barnet Friends of the Earth. Steering Group mtg. 103 Station Rd. Barnet. 8pm. 449 5830. All welcome (also 26 Mar, Discussion mtg on how to apply FoE ideas in our everyday lives; 31 Mar, Peat Day of Action)

Tuesday 13 March

Manor House Scty. 'Who Needs God?', talk by Rabbi Harold Kushner. Sternberg Cntr, 80 East End Rd. N3. 8pm. £3, members £2. 346 2288 (also 3 Apr, 'You Don't Have to Keep Taking the Tablets', talk on alternative medicine by Michael Van Straten. 8pm,

£7.50, members £5.50)

Wednesday 14 March

Finchley Antiques Appreciation Group. Eve King 'The Revolution in European Art 1760-1830. Victoria Hall, Victoria Ave. N3. 7.50pm. 441 1399/203 3735 (also 28 Mar, Christopher Hanson-Smith, AGM, Ickworth House)

Sunday 18 March

Anglo-Italian Circle of Barnet. AGM. IMPORTANT decisions re: future activities. All those interested in Italian culture are welcome. 205 5611

Monday 26 March

'Why Thrillers?'. Talk by crime novelist Celia Fremlin. Finchley Church End Library. 8pm. Coffee. All welcome

Tuesday 27 March

'Talking Rubbish, What a Waste', talk by Bernard King (Works Services, Barnet Council). Golders Grn Friends of the Earth, King Alfred Sch, North End Rd. 8pm. 455 2859

Barnet Ratepayers & Residents Assn (Arkley & Hadley). AGM. Lower Hall, Church House, Wood St. Barnet. 8pm. 449 0807

Wednesday 28 March

Barnet Family Practitioner Ctte. FPC House, 313 Ballards La. N12. 2pm. 446 5351

Fed. Ratepayers & Residents Assns of LBB. N Finchley Library, Ravensdale Ave. N12. 8pm. 449 0807

Thursday 29 March

Finchley Scty. 'The Inns & Pubs of Finchley' by Fred Davis, local author. Finchley Reform Synagogue, Fallowcourt Ave. N12. 8pm. 445 8422

Sunday 1 April

Interested in Quaker history? Mtg at Friends Mtg House, Rectory La. Edgware. 3pm. Light refreshments. 958 8429

Wednesday 4 April

United Nations Assn (Barnet Borough branches). Discussion evening on 'Children's Rights at Home & Abroad'. Speakers, The Baroness Ewart-Biggs, President of UNICEF's UK Ctte; Nicholas Hinton, Director-General Save The Children Fund; Neil Gill, Director Educational Services, Barnet Council; Lord David Ennals, former Minister of Health. St Margaret's UR Church, Victoria Hall, Victoria Ave. N3. 7.45pm. 458 1741

Thursday 5 April

Open mtg about Fostering in Barnet. Hendon Library, The Burroughs, NW4. 8pm.

Saturday 7 April

Guide Dogs for the Blind Assn. Fish & Chip Evening & films. Brookside Methodist Church, E Barnet. 7.30pm. £3. 449 8690/0807

Saturday 28 April

Over 40's Sponsored Swim in aid of N London Hospice at Cophall Baths between 6 &

9pm. To take part or help 346 9343(day)/445 0678(eve) or call at Oak La Clinic, E Finchley.

Monthly

Barnet Animal Rights Group. Quaker Mtg Hse, 58 Alexandra Grove, N12. 8pm. 440 1715 (1st Wed)

Philosophy of Yoga. Discussion Mtg. Patanjali Yoga Cntr, 190 Watford Way, Hendon. 4pm. 203 0062 (1st Sat)

Finchley Business Club. Torrington Arms. 1pm. 446 6742 (2nd Tues)

Middx Business Club. Enterprise Hse, St Wilfrids Rd. New Barnet. 7.30pm. 447 1000 (2nd or 3rd Tues)

Royal British Legion (N Finchley). Legionway, Summers La. N12. 8pm. 445 9911 (3rd Tues)

N Middx Family History Scty, Barnet Branch. Church Hse, Wood St. 7.45pm. 441 0529 (3rd Tues)

Golders Grn & Hendon Amnesty Group. Unitarian Church, Hoop La. NW11. 7.45pm. 346 3138 (last Wed)

Hard of Hearing Club for all ages. Trinity Church Cntr, Nether St. N12. 2pm. 446 4354 (last Wed)

Barnet Ratepayers & Residents Assn (Arkley & Hadley). Harold Fern Rm, Salisbury Rd. 8pm. Surgery 7.30pm. 449 0807 (last Fri, not March)

Bi-monthly

Finchley & Dist Philatelic Scty. Carey Rm, Trinity Church Hall, Nether St. N12. 7.30pm. 883 8724 (1st & 3rd Wed)

Jubilee Group. St John's URC, small hall, Mowbray Rd. New Barnet. Creche available. 1.30pm. 449 6097 (2nd & 4th Tues)

Fortnightly

Barnet & Dist Philatelic Scty. St John's Church Hall, Mowbray Rd. New Barnet. 8pm (alt. Mon)

Barnet Anglo-French club mtg. Ewen Hall, Wood St. 8pm. 440 6805 (alt. Tues)

Advice & Support Groups

Carers Self Help Support Groups (over 20 in the Borough). Details, Janet Byrne, Barnet Borough Voluntary Service Council, 346 9723/8644

Wednesday 14 March

Barnet Community Health Council mtg. Meritage Club, Church End, Hendon, NW4. 7.30pm. 959 2038

Mons 19 & 26 March

Basic Counselling Skills course. Relate. 5 Woodhouse Rd. Finchley, N12. 445 9549/8522 (also 1 Apr)

Monthly

Alzheimer's Disease Scty (Bar-

net Branch). Relatives' Group. Blue Beetle Hall, St Mary's Church, Hendon La. N3. 8.15pm. 958 8324 (1st Tues)

Cruse social mtg for bereaved people. Jackson's Lane Cntr, Archway Rd. N6 (opp. Highgate u/g). 4pm. 341 4515 (1st Thur)

National Schizophrenia Fellowship. Health Cntr, 23 Temple Fortune La. NW11. 8pm. 455 5133 (2nd Tues)

British Diabetic Assn (Barnet & Dist). Postgraduate Medical Cntr, Barnet General Hospital. 8pm. 368 6993 (2nd Wed)

Oakleigh Carers Group. Health Cntr, Oakleigh Rd Nth. N20. 2pm. 368 8350 (2nd Fri)

British Tinnitus Assn NW London. Meritage Club, Church End, Hendon. 2pm. 349 9353 (2nd Sat)

Barnet Epilepsy Support Group. Trinity Church Cntr, Nether St. N12. 7.30pm. 446 2003/444 4453 (3rd Mon)

Barnet Action for Mental Health. 154 Station Rd. Hendon. 7.30pm. 203 5879 (last Mon)

Weekly

Cruse support groups for people under 45yrs. Jackson's Lane Cntr, Archway Rd. N6 (opp. Highgate u/g). Details contact Brian or Anita, 794 6715/272 8785

Wednesdays

Cancerlink (Barnet & dist). Information & emotional support for people with cancer, their relatives & friends. WRVS Room, adj. Fern Room, Salisbury Rd, Barnet. 2pm. 440 2043/449 7020 (also monthly, Fern Room, 2nd Thur, 7.45pm & last Wed, 7.30pm)

Bridge, Whist & Chess

Sunday 25 March

Manor House Scty presents 4th Annual Chess Simul with the British Chess Champion Jonathan Speelman. Sternberg Cntr, 80 East End Rd. N3. 2pm. Registration fee, closing date 12 Mar. 346 2288

Monthly

Bridge Duplicate. 41 Northumberland Rd. New Barnet. 2pm. 449 0960 (1st Wed)

Countryside & Wildlife

Sunday 4 March

RSPB (NW London). Carouting to Stokers Lake Nature Reserve, 9am, Edgware u/g stn. 441 8742 (also 7 Mar, Talk 'How to attract birds to your garden' by Country Gardens, Mill Hill. Harwood Hall, Mill Hill Circus. 2.30pm; 18 Mar, Coach trip to Elmley RSPB Reserve, details, 959 0204; 27 Mar, Talk 'Holme Sweet Holme' by Peter Lathwell & David Stevens, Har-

wood Hall, Mill Hill Circus, 7.45pm)

Wednesday 7 March

Herts & Middx Wildlife Trust. Talk on 'British & European Orchids' by Alec Cooper, Trust Director. N Finchley Library, Ravensdale Ave. N12. 8pm. 346 5258 (also 11 Mar, Task day at Darlands Lake Nature Reserve, 10am; 25 Mar, Wildlife walk at Darlands Lake Nature Reserve, 9.30am; 4 Apr, 'Wildlife in Trust' by Trevor James, N Finchley Library, 8pm)

Thursday 8 March

RSPB (N London). John Buckingham 'A Look at the Birds of India'. Holy Innocents Church Hall, Tottenham La. N8. 7.45pm. 801 8581 (also 11 Mar, coach outing to Abberton Reservoir & Tollesbury, 359 1621)

Monthly

Middx Caving Group. St Mary's Hall, Hendon La. N3. 8pm. 803 6008 (1st Wed)

Kingsbury/Brent Geological Scty. 200 1700 (1st Wed)

Dance

Monday 5 March

Hobby Horse Club (children's folk dancing), 6.45pm. Chipping Barnet Folk Dance Club, 7.45pm. Church Hse, Wood St. 449 4425/0724 (also 19 Mar & 2 Apr)

Thursday 8 March

Circassian Circle Folk Dance Club. Harwood Hall, Mill Hill Bdway. 7.45pm. 950 5756 (also 22 Mar & 5 Apr)

Saturday 10 March

Mountfield Club Sequence Dance. St Mary's Hall, Hendon La. N3. 7.30pm. 959 5185

Monthly

Barn dancing. Northiam Union Church, Longland Dv (off Tottenham La.) N20. 8pm. 368 8335 (eves) (1st Wed)

20th Century Sequence Dancing Club. Southgate Upper Sch, Sussex Way, Cockfosters. 7.30pm. 360 2586 (1st Sat)

Drama

Non-Stop Workshop Theatre Co. with centres in Finchley, Stanmore & Southgate areas. Shows for 5-18 yr olds. Raises money for research into leukaemia. 346 5507

Monthly

Open mtg for people interested in community arts. The Neighbourhood Cntr, 42 Church La. N2. 8pm. 883 2832 (3rd Thur)

18+ Groups

Sunday 18th March

A local film maker talks to Barnet 18+ group (18-29yrs), Bull & Butcher PH, High Rd, Whetstone, N20. 8.30pm. Details of this & other activities, 0707 53536

Monthly

Orbit Club NW London (25-

Barnet Diary



40yrs). Moss Hall Tavern, Ballards La. N12. 8.30pm. 906 2080 (2nd Wed)

Bi-monthly/Fortnightly

Rotaract Club (Mill Hill). 18-28yrs. Mill Hill Tennis Club, Sylvan Ave. NW7. 8.15pm. 959 1317 (1st & 3rd Mon)

Rotaract Club (Barnet). Barnet Cricket Club, Barnet La. 8pm. 449 7553 (1st & 3rd Wed)

Rotaract Club (Finchley). Moss Hall Tavern, Ballards La. N12. 8.30pm. 445 1393 (1st & 3rd Wed)

Rotaract Club (Friern Barnet & Whetstone). Bull & Butcher Pub, High Rd. N20. 8.15pm. 346 0438 (1st & 3rd Thur)

Rotaract Club (Hampstead, Hendon & Golders Grn). 18-29 yrs. Upstairs Rm, Jack Straw's Castle PH, North End Way, NW3. 8pm. 458 6789 (2nd & 4th Mon)

Rotaract Club (Edgware & Stanmore). The Green Man Pub, Honeypot La. Stanmore. 8.15pm (2nd & 4th Wed)

Hendon & Edgware 18+ group (18-29 yrs). Social mtgs & varied activities. Brampton Grove

Tennis Club. 8.45pm. Details, 346 5345 (alt. Wed)

Fetes, Fairs & Sales

Saturday 3 March

Bargain Bonanza. St Mary's Church Hall, Church Hill Rd. E Barnet. 10am-noon. Admission free

Monday 5 March

Community Arts Fair followed by an open discussion on community arts with invited speakers. Barnet Drama Cntr, 142 High Rd. N2. 6pm. 883 9957

Saturday 10 March

New Barnet & Dist. Stamp & Postal History Fair. St Peter's Hall, Lyonsdown Rd. 10am-5pm. 440 8835 (also 7 Apr)

Acorns Annual Bazaar. St Mary's Hall, Hendon La. N3. Cakes, toys, clothes, raffle, teas. Admission 20p. Goods wanted, 349 4188

Saturday 17 March

Barnet Deanery Overseas Sale. Church House, Wood St. Barnet. Stalls & refreshments. 10.30am-12.30pm. Proceeds to Papua New Guinea. 445 2154

RSPB (N London) Jumble Sale. Christchurch Hall, High Rd. N12. 1.30pm. 801 8581

Saturday 24 March

Craft Fair. Main hall, Friern Hospital, Friern Barnet Rd. N11. 11am-5pm. 368 1288

Car Boot Sale. Christ Church JMI Sch, Byng Rd. Barnet. 440 2198

Saturday 31 March

Friends of Rosa Morison House Jumble Sale. Rosa Morison Hse, 83 Gloucester Rd. New Barnet. 2pm

Horticulture & Floral Art

Wednesday 14 March

New Barnet Amateur Gardeners & Floral Art Scty mtg. St Peter's Church Hall, Lyonsdown Rd. New Barnet. 8pm. 449 4770 (also 7 Apr, Spring Show, St John's Church Hall, Mowbray Rd. New Barnet, 2pm, admission 10p; 19 Apr, Special mtg. with Anne Swithinbank, Lyonsdown Hall, New Barnet, 8pm, for tickets (£2.50) 449 4770)

Monthly

Tuesday 6 March

Finchley Horticultural Scty. 'Sowing Seeds Successfully'. Moss Hall Jun Sch, Nether St. N3. 8pm. 346 4359 (also 3 Apr, AGM, 8pm)

Finchley Chrysanthemum Scty. Manorside Sch, Squires La. N3. 8pm. 445 1742 (1st Mon)

Barnet & Dist. Fuchsia Scty. Methodist Hall, Brookside, E Barnet. 7.30pm. 207 3176 (2nd Mon)

Mill Hill Flower Club. Harwood

Hall, Mill Hill Bdw. 8pm. 959 3530 (2nd Tues)

Hendon Horticultural Scty. Hendon Library, The Burroughs. 8pm. 203 1187 (2nd Wed)

Barnet Flower Arrangement Scty. Lyonsdown Hall, Lyonsdown Rd, New Barnet. 8pm. 0707 57199 (2nd Thur)

Totteridge Floral Art Group. Badgers Croft, Totteridge Village. 2pm. 445 9307 (3rd Tues)

Hendon Floral Art Group. St John's Church Hall, Algernon Rd, NW4. 7.45pm. 202 8756 (3rd Wed)

Fortnightly

Friern Barnet Floral Art Club. Christ Church Hall, Oakleigh Rd Nth. N20. 8pm. 446 0783 (alt. Tues)

Keep Fit

Weekdays

Douglass Fitness Cntr, Hamilton Rd. N2. 16 station multi-gym, sauna, sunbed, instruction available. Mon-Thur, 6-10pm; Fri, 6-8pm. Details, 444 5798

Mondays

Women's Keep Fit. All abilities. Creche provided. Canada Villa Cntr, Pursley Rd. NW7. 10am. 959 2811 (also Fri)

Tuesday

Body-time keep fit dance. St Mary's Hall, Church Hill Rd, E Barnet. 8.15pm. 441 1336 (also Sat, 9.35am) (also Wed, Hatha

Yoga for ladies. Beginner classes. Sorry no problem backs. 7.15pm)

Music

Tuesday 6 March

East Barnet Library Gramophone Scty. 85 Brookhill Rd. 8pm. 440 4376 (also 20 Mar)

Thursday 8 March

Friern Barnet Library Gramophone Scty. Friern Barnet Rd. N11. 8.10pm. 449 7111 (also 22 Mar)

Tuesday 13 March

Hendon Library Gramophone Scty. The Burroughs. 7.45pm. 202 5625 (also 27 Mar)

Monday 2 April

Hendon Music Scty. 'Two Sides of the Piano'. A lecture-recital by Angela Brownridge on solo piano music of Gershwin & Schumann's Album for the Young. Trinity Church, Golders Grn. 8pm. Tickets £4 (conces). 203 2355

Pensioners' Clubs

Monthly

Golders Green & Dist. Pensioners' Assn. Trinity Church, Rodborough Rd, NW11. 1.15pm. 202 0891 (1st Wed)

Pensioners' Voice (Barnet). Methodist Hall, Brookside, E Barnet. 1.30pm. 441 3185 (2nd Wed)

FINCHLEY MANOR FOR TENNIS, SQUASH and FITNESS

LYNDHURST GARDENS, FINCHLEY N3.

NEW TOP CLASS TENNIS PROFESSIONAL

- 9 COURTS (4 RELAID & FLOODLIT)
- 4 SQUASH COURTS
- FITNESS (MULTIGYM)

KIM 346 6106 (Work)

- MODERN CLUB HOUSE & FRIENDLY BAR
- PHONE HELEN FOR MEMBERSHIP

346 6835



ANTIQUES & COLLECTORS FAIR

Admission 75p, accompanied children Free, 11am - 4pm, trade £1.50, with trade card or £2.50.

SUNDAY 4th MARCH PLUS FIRST SUNDAY IN EVERY MONTH

230 STANDS

Part of the Lee Valley Leisure Park

PICKETTS-LOCK LEISURE CENTRE, Picketts-Lock Lane (off Montague Rd, off N. Circular) Edmonton, London, N9. W8 bus from Lower Edmonton BR Station

All enquiries and bookings to JAX FAIRS Tel: (0444) 400570

LEARN TO SWIM SCHEME

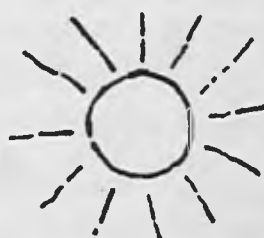
Queen Elizabeth Boys School, Queens Rd., Barnet, EN5 4DQ. Saturday 28th April to 14th July (No lesson 26th May)

- | | | | |
|---------|-------------|-----|---------------------------|
| 9.15am | Duckling | and | Novice |
| 9.45am | Non Swimmer | and | Bronze & Silver Challenge |
| 10.15am | Non Swimmer | and | Novice |
| 10.45am | Non Swimmer | and | Improver |
| 11.30am | Adults | and | Adults |

COST: £26.40 per 11 lessons

How to book: From 26th Feb., 1990 Tel: 01 203 4187 for a booking form and return to:

The Sports Officer, Copthall Pools, Great North Way, Hendon NW4 1PS



Beautiful private villa in exotic surroundings at Villacana near MARBELLA, SPAIN.



Just off the Beach. Sleep six. Ideal for families. Private swimming pools, Tennis, Squash, Snooker on the complex.

Phone for availability for bookings after Easter Small parties of Golfers welcomed as Golf nearby

Tel: 01 660 6286

Barnet Diary



Northern Heights Probus Club. For business/professional people who live/have lived in Highgate, Hampstead & Golders Grn areas. Details, 883 2863 (3rd Wed)

Civil Service Pensioners' Alliance. Avenue Hse, East End Rd. N3. 10am. 445 4821 (3rd Thur)

Pensioners' Voice (Colindale/Burnt Oak). Burnt Oak Library, Watling Ave. 1.30pm. 906 2161 (last Thur)

Pensioners' Voice (Whetstone/Finchley). N Finchley Library, Ravensdale Ave. 2pm. 346 6762 (last Thur)

Pets

Monthly

Hendon & Dist Cage Birds Assn. Labour Hall, Back La. (off Watling Ave.) Burnt Oak. 7.30pm. 205 2647 (2nd Tues)

Bi-monthly

Hendon Tropical Fish Keeping Scty. Hendon Library, The Burroughs. 8pm. 458 5826 (2nd & 4th Thur)

Photography, Arts & Crafts

Wednesday 14 March

Finchley Art Scty present lecture on Van Gogh, his life & paintings by Anthony Slinn (Slade). N Finchley Library, Ravensdale Ave. 7.30pm

Monthly

Barnet Ceramic & Glass Scty. E Barnet Upper Sch, Chestnut Grove, off Cat Hill. 446 1022 (1st Wed)

Milldon Art Scty. Harwood Hall, Union Church, The Broadway, NW7. 7.30pm. 907 5740 (1st Wed)

Open mtg for those interested in Community Arts. The Neighbourhood Centre, 42 Church La. N2. 8pm. 883 2832 (3rd Thur)

Playgroups & Under 5s

Bi-monthly

'Pram' Service. Songs, stories & prayers. St James' Church, New Barnet. 10am. 449 4043 (1st & 3rd Wed)

Weekly

Wednesdays

Jumping Beans. Gym for parents & 1-4yrs. Canada Villa Cntr, Pursley Rd. NW7. 10am. 959 2811 (also Thur)

Singles Clubs

Unattached, 40-60? Clan social club for theatre, exhibition, restaurant outings, wine & cheese evenings. 346 2016/0932 856154

Monthly

New Friends Social Club (30-45). The Torrington PH, N Finchley. 8.30pm. 444 0076/446 4058 (4th Thur)

Bi-monthly

Finchley Solo Club for widowed, divorced & single (25-65). 8pm. 445 9810/446 5238 (1st & 3rd Tues)

Weekly

Sundays

N London & Dist Divorced/Separated Club. Social Club. Cheshunt Football Club, Theobalds La. 8pm. 449 0656/0992 33414 (also Tues, The Fox PH, Green Lanes, N13 8pm)

Sport

Mill Hill Rugby Football Club. Home Games, 1st XV: **10 Mar** (Twickenham), **24 Mar** (Elizabethans), **31 Mar** (Finchley), 2nd XV: **17 Mar** (Brentwood), **7 Apr** to be announced

Monthly

St Christopher's Catholic Cycling Club. Easy rides from Finchley. All welcome. 10am. 361 2281/427 2251 (1st Sun)

Women's Clubs

Monthly

Ashley TG. Mill Hill East Free Church, Salcombe Gdns. 7.30pm. 906 1952 (1st Thur)

Barnet Afternoon TG. Church House, Wood St. 2pm. 449 2697 (3rd Fri)

Barnet Evening TG. Church House, Wood St. 7.45pm. 440 1526 (1st Wed)

Broadway Mill Hill TG. Hartley Hall, Flower La. 2pm. 959 0995 (2nd Thur)

Chipping Barnet WI. Church House, Wood St. 10am. 440 8807 (2nd Thur)

East Barnet Brookside TG. Brookside Methodist Church Hall. 1.30pm. 361 9097 (1st Wed)

East Barnet Monkfrith TG. British Legion Hall, Nursery Rd. N14. 1.45pm. 0707 57092 (1st Thur)

East Barnet (Osidge) TG. Small hall, Brookside Methodist Church. 7.45pm. 368 7346 (2nd Tues)

East Barnet Valley TG. Lyonsdown Hall, Lyonsdown Rd. New Barnet. 2.15pm. 449 8601/6083 (1st Thur)

Edgware League of Jewish Women. 958 4562 (2nd Tues)

Finchley Church End TG. St Mary's Hall, Hendon La. N3. 2.15pm. 455 7152 (4th Wed)

Finchley Granville TG. Finchley

Methodist Hall, Bailards La. N3. 2pm. 346 6822 (2nd Thur)

Finchley Redbourne TG. Etchingham Pk Rd Day Cntr, N3. 7.45pm. 346 3305 (4th Tues)

Friern Barnet & Whetstone TG. Manor Drive Methodist Church, York Way, N20. 2.15pm. 446 4816 (3rd Tues)

Friern Barnet Friary TG. Christ Church URC Hall, Bellevue Rd, N11. 2pm. 361 9623 (1st Tues)

Golders Green TG. St Alban's Church Hall, Golders Green. 2pm. 455 4156 (1st Mon)

Hampstead Garden Suburb TG. St Jude's Church Rooms, Central Sq, NW11. 2pm. 458 5072 (1st Mon)

Mill Hill Afternoon TG. Harwood Hall, The Bdway. NW7. 2pm. 959 1505 (2nd Wed)

Mill Hill Highwood TG. Hartley Hall, Flower La. 2pm. 959 2519 (3rd Mon)

Montrose WI. Parish Room, St Alphage Church, Montrose Ave. 7.45pm. 205 4960 (4th Tues)

National Council of Women. Barnet & Dist St John's URC Hall, Mowbray Rd. New Barnet. 1.30pm. 368 1442 (4th Mon)

New Barnet Evening TG. Brookside Methodist Church Hall, E Barnet. 7.30pm. 440 1394 (1st Mon)

Royal British Legion Women's Section (N Finchley). Legionway, Summers La. N12. 8pm. 445 9911 (1st Tues)

Jewish Vegetarian Restaurant

855 Finchley Road
London NW11

Specialising
in Jewish
Cuisine,

Opening hours
Sun - Thurs 6-10
Sunday Lunch 12-3
Tel: 01-455 0692



Established 1984

**PROBABLY
THE BEST
VEGETARIAN
IN LONDON**

CLOSED ALL DAY MONDAY
7 LONG LANE, FINCHLEY, N3
Tel: 01-349 4386/2636

Swing into Summer at...



BARNET COPHTHALL POOLS

SUMMER PROGRAMME OF 'WET' AND 'DRY' COURSES FOR CHILDREN AND ADULTS

Learn to Swim ; Synchronised ; Snorkelling ; Diving ;
Yoga ; Karate ; Easter Holiday Crash Courses

Pick up your copy today from
Barnet Cophthall Centre
or ring **01 203 4187**

LONDON BOROUGH
barnet
Directorate of Technical Services

BARNET COPHTHALL CENTRE
GREAT NORTH WAY
(ENTRANCE PAGE ST.)
HENDON NW4

CRAFT FAIR

SATURDAY 24TH
MARCH 1990

11.00am to 5.00pm

Wide variety of crafts
Snacks and light meals
all day

Main Hall, Friern Hospital,
Friern Barnet Road,
N11 3BP

Ample free parking

Adults 50p.

Children 11+ and Senior Citizens 20p.

Children under 11 free

DO YOU HAVE PROBLEMS?

DO YOU LACK OF CONFIDENCE?
DO YOU RESORT TO OVEREATING
OR SMOKING UNDER STRESS?
OR DO YOU SUFFER FROM ANY
OTHER PSYCHOSOMATIC ILLNESS
FOR WHICH YOU NEED
TRANQUILLISERS?

If your answer is YES to any of the
above, HYPNOTHERAPY by
qualified Psychotherapist may
be an answer.

Do not suffer in silence -
book for a consultation NOW.

Mrs V. K. Prasad DMS, CHP, NRHP

(Registered Practitioner)

Telephone: 01 - 361 4525

24 hour Answering Service

Barnet Diary



Totteridge Wl. Village Hall, Badgers Croft, Totteridge La. N20. 7.30pm. 445 5700 (1st Tues)

Woodside Park Afternoon TG. Old Finchleians Club House, Southover, N12. 2pm. 445 0911 (3rd Wed)

Fortnightly

National Women's Register (Barnet Branch). Discussion group. 445 4777 (alt. Tues eves)

Acoms. Talks, socials, creche. St Paul's Church, Long La. N3. 9.45am. 349 4188/346 7378

Wives Group. Mill Hill East Church Hall, Salcombe Gdns. 8pm. 906 0489

Youth

Weekly Sundays

Canada Villa Cntr, Senior Club (13-18yrs). Trips out & centre based activities. Pursley Rd. NW7. 3.30pm. 959 2811 (also Mon)



7, 8, 10 & 11 March

The Cameo Players present Neil Simon's comedy 'Chapter Two'. Production Village Theatre, 110 Cricklewood La. NW2. Tickets £3. Details 953 5893 (eves & weekends)

Monday 12 March

Hendon Music Scty presents The Diana Kiverstein Singers in Concert. Trinity Church, Hodford Rd. NW11. 8pm. Tickets £4 (& conces). 203 2355

13 - 17 March

Incognitos Theatre Club presents 'Candida' by George Bernard Shaw. Incognito Theatre, Holly Park Rd. N11. 8pm. 368 0202

Saturday 17 March

Barnet Schools Symphony Orchestra (guest soloist Hideko Udagawa) & Brass Schools Ensemble Concert. E

Barnet Sch, Chestnut Grove. 7.30pm. 346 9507

Finchley Chamber Orchestra Concert. Works by Sibelius, Pelleas & Melisande Suite; Prokofiev, Violin Concerto No. 2 (soloist Tasmin Little); Beethoven, Symphony No. 2. Conductor David Lardi. Trinity Church, Nether St. N12. 7.45pm. Tickets £4 (& conces). 449 2604

Thursday 22 March

'Listen to the Band'. Barnet Schs Brass Ensemble & Training Band. Christ Church Sec Sch, Hilton Ave. N12. 7.30pm. 346 9507

Saturday 24 March

Finchley Music Centre Concert. Moss Hall Jun Sch, Nether St. N3. 9.45am. 346 9507 (also E Barnet Music Centre Concert, E Barnet Sch, Chestnut Grove. 10am)

London Pro Arte Choir. Works by Brahms, Mass; Palestrina, Missa Brevis; Bruckner, Ave Maria; Kodaly, Laudes Organi. St. Michael's Church, Mill Hill, NW7. 7.30pm. Tickets £4, 959 5909 or at door

Robert Crick and his Faustus on the Wildside Collective with Wendy Van Blankenstein and her Barnet Madrigal Scty with 'Voyces of Spring'. Tudor Hall, Wood St. Barnet. 7.30pm. Tickets £3 incl. wine. 440 6321

Hendon Music Scty & Arts Office, Barnet Council. Hurwitz Piano Quartet Concert. Emmanuel Hurwitz (violin), Gordon Back (piano), Edward Vander-spar (viola) & Michael Hurwitz (cello). Works, Mozart, Piano Quartet in G major K478; Faure, Piano Quartet No 1 in C minor & Brahms, Piano Quartet in G minor. Trinity Church, Hodford Rd. NW11. 7.45pm. Tickets £5 (& conces). 203 2355

Finchley Choral Scty. Works, Kodaly: Pange Lingua & Honegger: King David. Elisabeth Clarke (soprano), Gordon Pullin (tenor), Gabriel Woolf (narrator), Gerald Barnes (organ) & Woodside Sinfonia. 7.45pm. Tickets £4.50 (& conces). 888 0189

Friday 30 March

Barnet Schs Wind Orchestra Concert. Moss Hall Jun Sch, Nether St. N3. 7.30pm

Saturday 31 March

Hendon Music Centre Concert. St Mary's Sec Sch, Sunningfields Rd. NW4. 10am.

Barnet Choral Scty. Bach's St John Passion. Barbara Kendall-Davies (soprano), Linda Hirst (mezzo-soprano), Gerard O'Beirne (tenor), Giles Davies (baritone), Christopher Davies (bass) & London Pro Arte Orchestra. St John the Evangelist, Friern Barnet, N11. 7.45pm. Tickets £3.50

Sunday 1 April

Barnet Choral Scty & Barnet Orchestra. Works by Rossini, Overture 'The Italian Girl in Algiers'; Bruch, Violin Concerto No. 1 in G minor, soloist Roy Gillard; Giuzunov, Ballet Suite 'The Seasons'. St John's

Church, Friern Barnet Rd. N11. 8pm. Tickets £4 (& conces) incl programme. 205 2418/881 9780(pm)

5. 6 & 7 April

Brookland Players present 'Ring Round the Moon' by Jean Anouilh. Old Bull Theatre, High St. Barnet. 8pm. 207 2114

Saturday 7 April

Finchley Chamber Orchestra. 'Music for Holy Week'. Organist, John Winter. Conductor, David Lardi. Works by Stainer, Crucifixion; Mendelssohn, Hear my Prayer; Elgar, Ave Verum; Vaughan Williams, O Taste and See. Trinity Church, Nether St. N12. 7.45pm. Tickets £4 (& conces). 203 0178

25 - 28 April

Finchley & Friern Barnet Operatic Scty presents 'Guys & Dolls'. Town Hall, Hornsey, N8. Tickets, 445 3391

Old Bull Arts Centre

68 High St. Barnet. For ticket prices & bookings contact 449 0048

Sunday 4 March

Alien Handbag: Laugh Lines and Crows Feet. Acrobatics, juggling & clowning bringing together two people, one young, one young at heart. 3pm. Ages 4-11

Tues 6 - 27 March

Course: Odissi, Indian Dance with Sanjeevini Dutta. 7.30pm

Wednesday 7 March

Scarlet Theatre Co: (R)age. Blackly humorous play looking at our obsession with age through the characters of three very different women. 8pm

Thursday 8 March

Touchdown Theatre Co: Drawing the Devil on the Wall by Nicholas McInerney. Study of marriage and murder. 8pm

Friday 9 March

Sensible Footwear: Spit It Out. Hilarious show from the spiky threesome, inspired by their heroine and mentor, Doris Day. 8pm

Saturday 10 March

Lunchtime Poetry Reading. Amanda Eason, Katherine Gallagher, Katie Campbell, three women poets sharing their secrets and stories. 12 noon.

Spare Tyre: Gone Shopping. Musical concoction of song, wit, sketch and fun on the subject of money. 8pm

Sundays 11 Mar - 1 Apr

Course: Hat Making with Penny Dowdney. 10am.

11 - 31 March

Exhibition: Spring Forward. Art & craft work created by people with learning difficulties from local day centres. 12am

The Puppeteers Co: The Happy Prince. An adaptation of the story by Oscar Wilde. 3pm. Ages 5-12

Louise Elliott & The Laka Daisical Quintet. 8pm

Thursday 15 March

Alpana Sengupta: Kathak Dance. 8pm

Friday 16 March

Sanjeevini Dutta with Bisaka Sarkar: Odissi Dance. 8pm

Saturday 17 March

Puppetry Workshop with Chris Leith teaching the special skills of puppet animation. Featuring a session with Spitting Image puppeteer Nigel Plaskitt. 10.30am

Dudu Pakwana's Zila. 8pm

Sunday 18 March

Upstream Children's Theatre: The Little Mermaid. An adventure story packed with comedy, music & songs. 3pm. Ages 4-11

Bananas Up The Bull: Draylon Underground & Mark Hurst (Aka Miwurdz). 8pm

23 & 24 March

London Bubble: The Gambler. A musical comedy about the seedy underworld by Mel Smith, Bob Goody & Peter Brewis. 8pm

Sunday 25 March

Jactito Puppets: The Emperor's Time Tunnel. Deep in the centre of the earth exists a strange world of sorcerers & mysterious creatures. 3pm. Ages 6-11

Ian Shaw & Tony Remy: The Premier of 'Lateral Thinking'. 8pm

Sunday 1 April

Richard Cuming, clown, with his eccentric acrobatic children' show 'The Puzzle'. 3pm

Cabaret with Robert Sprackling, Allison Goldie & John Maloney. 7.30pm

From 2 April

Exhibition '15 years of the Old Bull, a celebration'

See Saw Children's Theatre

Christ Church Hall, High Rd. N Finchley. Facilities for disabled. Tickets £1.50 (& conces). 446 4864

Saturday 31 March

Pipsqueak in the Picture. Puppets & audience participation. 11am. Ages 3-7

Saturday 7 April

Little Company presents Rubberface the Clown in London Life. Mime, music & participation. 11am. Ages 3+

Tricycle Theatre

269 Kilburn High Rd. NW6. For ticket prices & bookings contact 328 1000

From 1 March

'Joe Turner's Come and Gone' by August Wilson. Directed by Claude Purdy. A portrayal of black American experience.

Saturday Shows for Children, 11.30 & 2pm

10 March

Parachute Theatre Co: 'Punk & Judy'. Punch & Judy with a difference. Puppets, music & songs. Ages 4+

17 March

The Great Kovari's Magic Show. Ages 4-10

24 March

Palfi the Laughologist in The Laughology Show. Ages 5-12

31 March

Little Jest Puppets: 'Tales of A Far and Wide Cat'. An Arabian Tale, 11.30. A Rumanian Tale, 2pm. Ages 4-11

Exhibitions

Until 24 March

Exhibition by Jill Confavreux - paintings & drawings. N Finchley Library, Ravensdale Ave. N12. Open library hrs. Admission free

Until 28 March

Exhibition of photographs of the Warsaw Ghetto by Joseph Heydecker. Manor House Scty. 80 East End Rd. N3. Mon-Thur 10am-5pm; Fri 10am-1pm. 346 2288

Until 31 March

Original prints by nationally known artists, incl works by Charles Bartlett, John Brunsdon, Michael Carlo. All works for sale. Hendon Library, The Burroughs, NW4. Open library hrs. Admission free

15 March - 1 April

Exhibition of paintings by Lesley Faux, Liz Moon & Betty Tadman; sculpture and watercolours by Fiona Goldbacher. The Bow House Gallery, 35 Wood St. Barnet. Thur-Sat 10am-5pm. Sun 2-5pm. Admission free. 440 4672

From 17 March

Women Artists in Wartime. Paintings & drawings from World Wars 1 & 2 from David Cohen's collection & also Collection of RAF posters from World War 2. Church Farm House Museum, Greyhound Hill, NW4. Mon-Sat (except Tues) 10am-1pm, 2-5.30pm. Tues 10am-1pm. Sun 2-5.30pm. Admission free. 203 0130

Other Exhibitions

Rose Gallery at Totteridge Library, Totteridge La. N20. Pictures at affordable prices. Tues. Wed & Fri 2-5pm. Sat, 10am-1pm, 2-5pm. Details, Arts Office. 202 1903

College Farm Gallery, Fitzalan Rd. N3. 1-6pm. Admission charge (1st Sun of month & open days) 349 0690

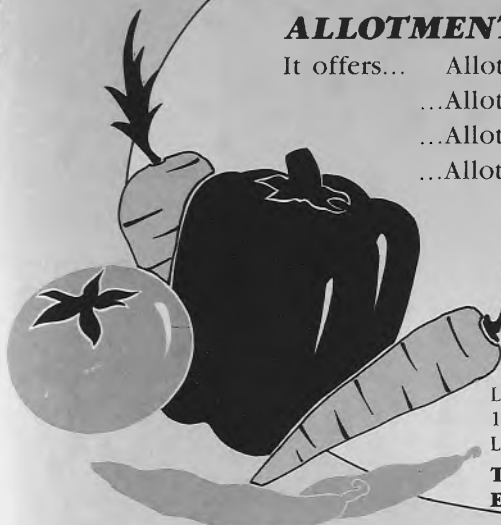
Saturdays

Anna Pavlova Memorial Museum. Ivy House, Middx Poly, North End Rd. NW11. 2-6pm

Next month we publish the full diary with weekly events. Please get your entries in early

HAVE YOU EVER CONSIDERED ALLOTMENT GARDENING?

- It offers...
- ...Allot of fitness and fun
 - ...Allot of satisfaction
 - ...Allot of home-grown, healthy produce
 - ...Allot of enjoyment for minimum outlay
 - ...Allot of relaxation in your spare time



To find out more about renting an allotment garden near you, please contact: **Colin Nash**

London Borough of Barnet, Barnet House,
1255 High Road, Whetstone,
London N20 0EJ.

Telephone: 01-446 8511
Ext 4479



HAMPSTEAD GARDEN SUBURB ADULT EDUCATION CENTRE

THE INSTITUTE, CENTRAL SQUARE, LONDON, NW11 7BN
TELEPHONE: 01 - 455 9951 / 01 - 458 5669

INTENSIVE EASTER COURSES - MARCH / APRIL 1990

Art & Craft

- History of Art
- Jewellery Workshop
- English Country Houses of the 18th Century
- Life Drawing & Painting
- Marbling, Graining & Decorative Finishes
- Picture Framing & Mounting

Languages

- French
- German
- Spanish

General Interest

- Cake Decoration
- First Aid -St. John Certificate
- Fresh Start for Women
- Poetry for Everyone
- Stress Management in Everyday Life

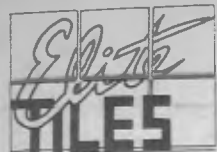
These daytime courses which take place just before Easter will suit most students who wish for a more concentrated period of study than is provided by our regular weekly programme.

SUMMER TERM COURSES
April - July

HOLIDAY COURSES
July

YOUNG PEOPLE'S COURSES
April - August

Please ring 01 - 455 9951 for our brochure
SPRING & SUMMER COURSES
FOR ADULTS AND YOUNG PEOPLE
SUMMER TERM BEGINS 23 APRIL 1990



100,000 SQUARE
YARDS OF TILES
AND MARBLE
AVAILABLE
EX-STOCK

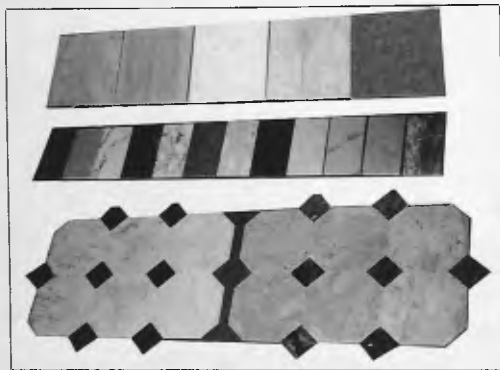
Unbeatable trade
Prices £2m in stock



40% DISCOUNT
ON ALL
KITCHENS
Over 40
Italian Designer
ranges to
choose from

Luxury "Pierre Danielle" designs
for your bathroom!

**WE ARE LONDON'S LEADING IMPORTERS
OF EXCLUSIVE ITALIAN CERAMIC WALL AND
FLOOR TILES, MARBLE, QUARRY AND MOSAICS!!**



Exquisite Marble Wall and Floor Tiles
Lots of colours available from **£13.90** sq.yd

WALL TILES from **£3.99** sq.yd
QUARRY TILES from **£5.60** sq.yd
FLOOR TILES from **£6.90** sq.yd



Silks and Hand painted Tiles
in a variety of designs and colours

**CAST IRON BATH SUITE
ONLY £299 COMPLETE**

(e.g. Cast iron twin-grip bath, basin/ped, WC)

Visit our warehouse at:
ELITE HOUSE, THE BROADWAY, WEST HENDON, LONDON, NW9
TELEPHONE 01 202 1806
OPEN 7 DAYS A WEEK