



OCT. / NOV.
1967

BARNET

LONDON BOROUGH COUNCIL

CIVIC NEWS

PLEASE! — MAKE SURE OF YOUR VOTE

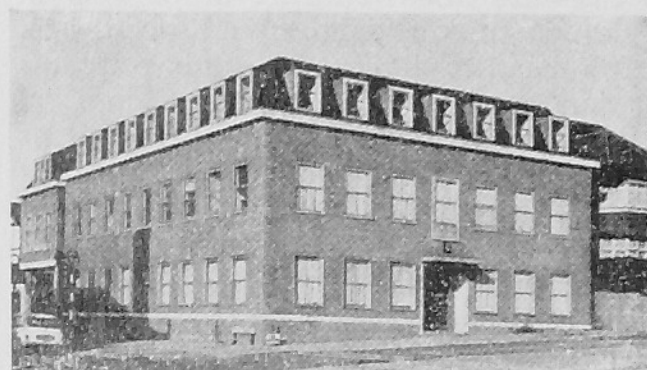
Now is the time for you to ensure that your name appears in the next Register of Electors to be published on 15th February, 1968, and to check this when the Registers are on deposit during the period 28th November to 16th December, 1967, at the Council Offices, principal post offices and libraries.

All householders in the London Borough of Barnet should have received, during a period commencing 5th September, 1967, a buff-coloured "Form A" which should be completed as soon as possible, in any event on or

before 10th October, 1967, and returned to the Town Clerk, as Electoral Registration Officer, at the Town Hall, Hendon, London, N.W.4. This is an annual procedure, because the Register of Electors is revised once every year.

When completing this form, the notes printed on the right-hand side for guidance should be carefully studied.

Each year when the Forms "A" are sent, you must be sure to see that your name is included, or you may not be registered in the new list, and then will not be able to vote.

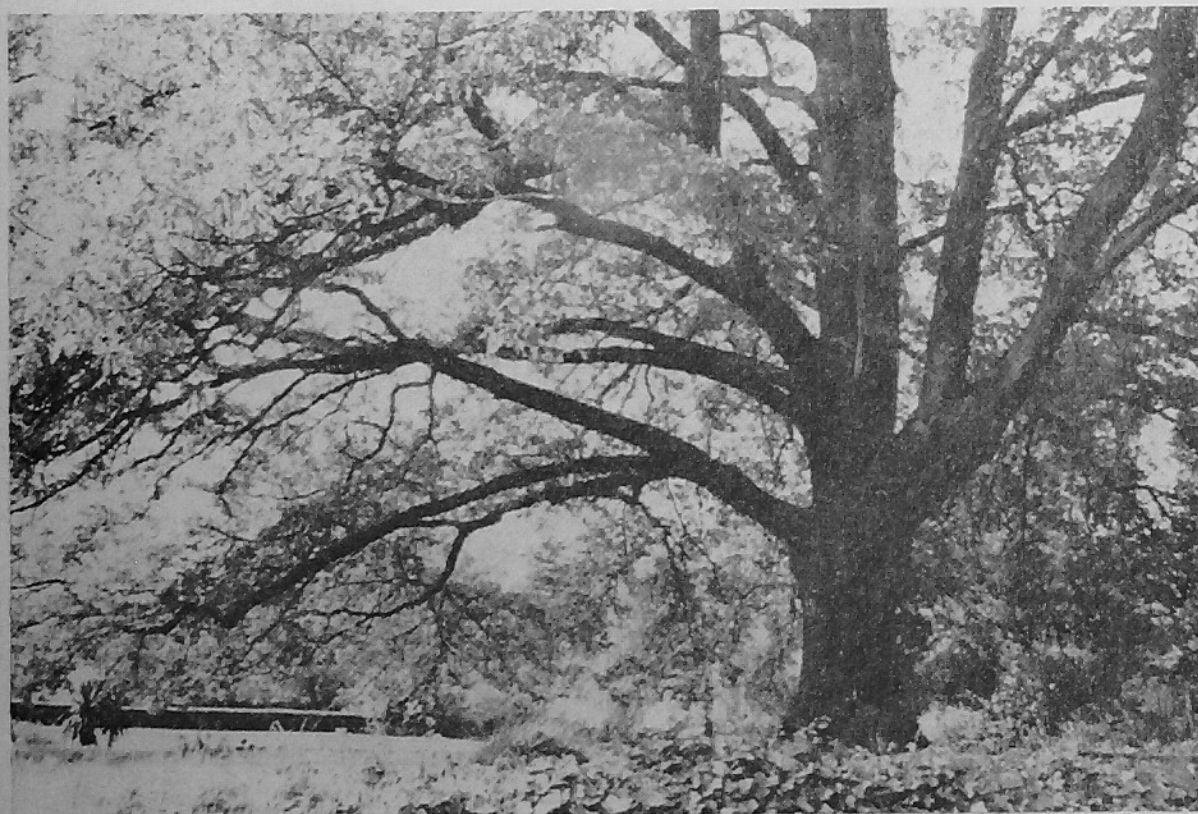


The new headquarters of the Housing Department at 65 Watford Way, Hendon, N.W.4. Telephone: 202 8282.

The largest tree in the Borough?

Turkey Oak, (Quercus Cerris) in the grounds of Lyenells, Totteridge Green, N.20

This magnificent specimen is probably the largest tree in the Borough. Its height is conservatively estimated to exceed 80 ft. with a spread of about 120 ft. Its branch formation is particularly attractive, being an outstanding example of the classical parkland tree. The species is particularly useful where this form of tree is desired; it is much faster growing than native Oaks and more amenable to good growth in difficult conditions. The age of this specimen is not known with any certainty, but could be only 120 years.



Initial work on the Dollis Valley Housing Estate personally carried out by Councilor W. G. Hart, Chairman of the Housing Committee.

HOUSING PROGRESS

Situation as at 30th September, 1967

Pre-war houses and flats	4,115
Houses and flats built since war	7,743
Private dwellings purchased for Housing Pool of accommodation	} 877
Properties acquired in housing areas	
Sundry dwellings purchased	
TOTAL:	12,735
Garages erected since war	1,625
Shops erected since war	50

WELFARE SERVICES

The Council's Welfare Services are provided by the Health and Welfare Department under the overall responsibility of the Medical Officer of Health, Dr. M. Watkins, M.R.C.S., L.R.C.P., D.P.H. The Chief Welfare Officer is Mr. J. T. Benson, D.M.A., F.I.S.W., situated at Gateway House, 322, Regents Park Road, Finchley, N.3, with a Welfare Office at 308, Regents Park Road from where two teams of Social Workers operate for the Borough as a whole.

The Council's responsibilities under the National Assistance Acts extend to the care and wellbeing of persons in the community who, by reason of age, physical disability, or other circumstances, have needs which cannot be met from other sources, either local or national. Principally, these services are (1) residential accommodation and (2) domiciliary welfare services. They call for an ascertainment of need and the provision of services to meet that need. For this purpose the Council can utilise assistance from voluntary organisations, and has power to assist these bodies financially. At a time when the elderly population is increasing rapidly, too rapidly for community services to be developed at the same pace, a constant review of priorities is necessary, and more important, an accurate assessment of need in terms of depth of service and quantity required.

Residential Accommodation is provided for persons who, by reason of age, infirmity, or any other circumstances, require care and attention which is not otherwise available to them. Accommodation is provided in Homes managed by the Council, or by arrangement with voluntary organisations. Though mainly for the elderly, there is accommodation for special groups, such as the blind, deaf, and physically handicapped. The Council maintains seven residential homes for the elderly situated in various parts of the Borough. The largest of these, Redhill House, Edgware, is a former Poor Law Institution, and whilst considerable improvements have been carried out over the years, it is the Council's policy to close the premises as soon as possible, and an extensive building programme will shortly be commenced, to build four homes during the next four years to achieve this aim.

An important aspect of the Residential Service is the assistance given by short-stay admission for varying reasons, and 44 persons were accommodated last year. It is hoped to use the Council's Homes also in a limited way to provide day care, where this is possible.

Within the Borough boundary are 33 Voluntary Organisation Homes and 26 Private Homes, all registered with the Council, and providing care for elderly or disabled persons. These are frequently inspected to ensure standards of maintenance and care are at the required level.

Temporary Accommodation

The Council has two units of temporary accommodation provided for persons who are in urgent need. Though mainly intended to cover unforeseen circumstances, in practice the accommodation is used for homeless families.

Valuable work is performed at these premises by the resident staff, family caseworkers, and, particularly, active voluntary groups who give support. Ultimate rehousing and resettlement is the aim, and good progress has been made this year thanks to the efforts of the Borough Housing Officer.

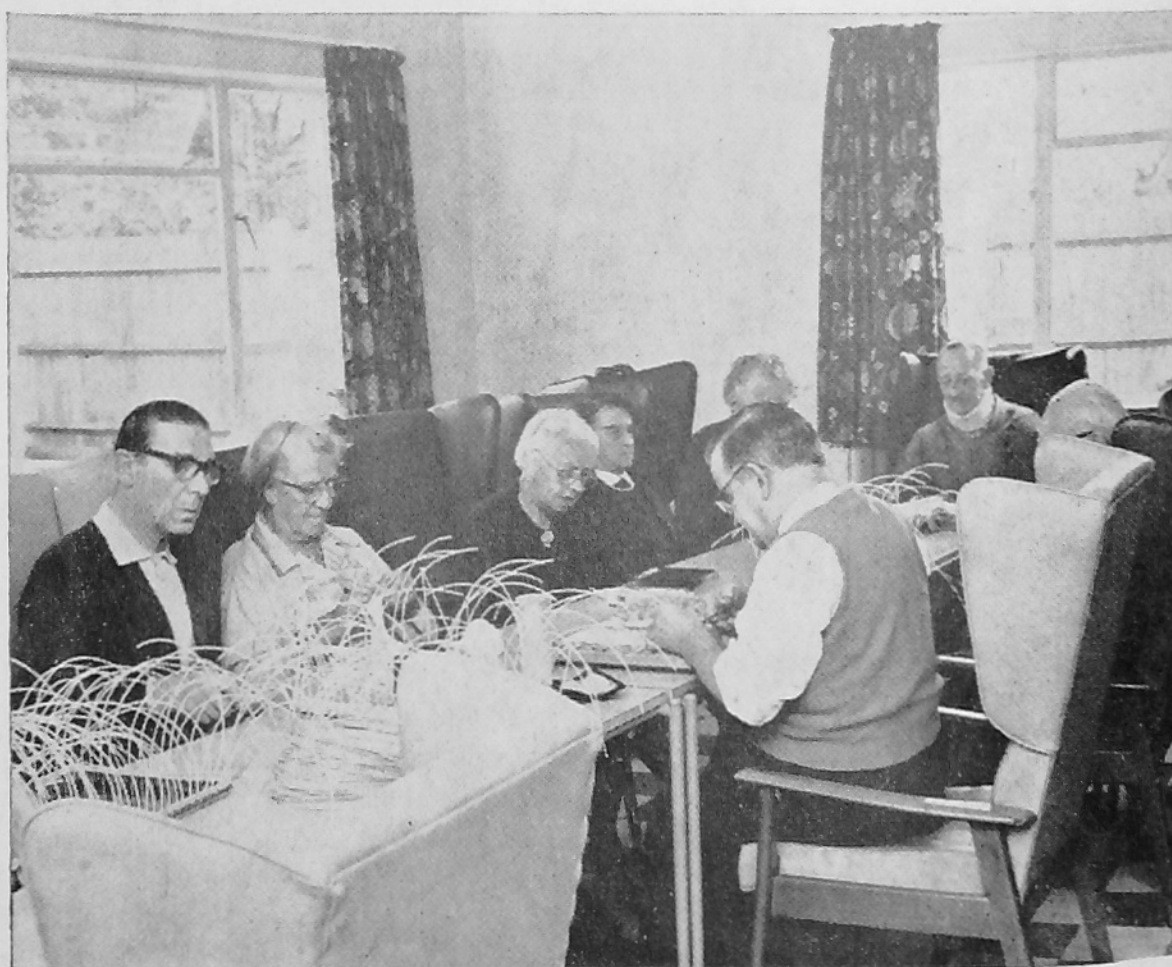
The Council has a scheme for the Prevention of Homelessness, and the

Medical Officer of Health acts as Co-ordination Officer.

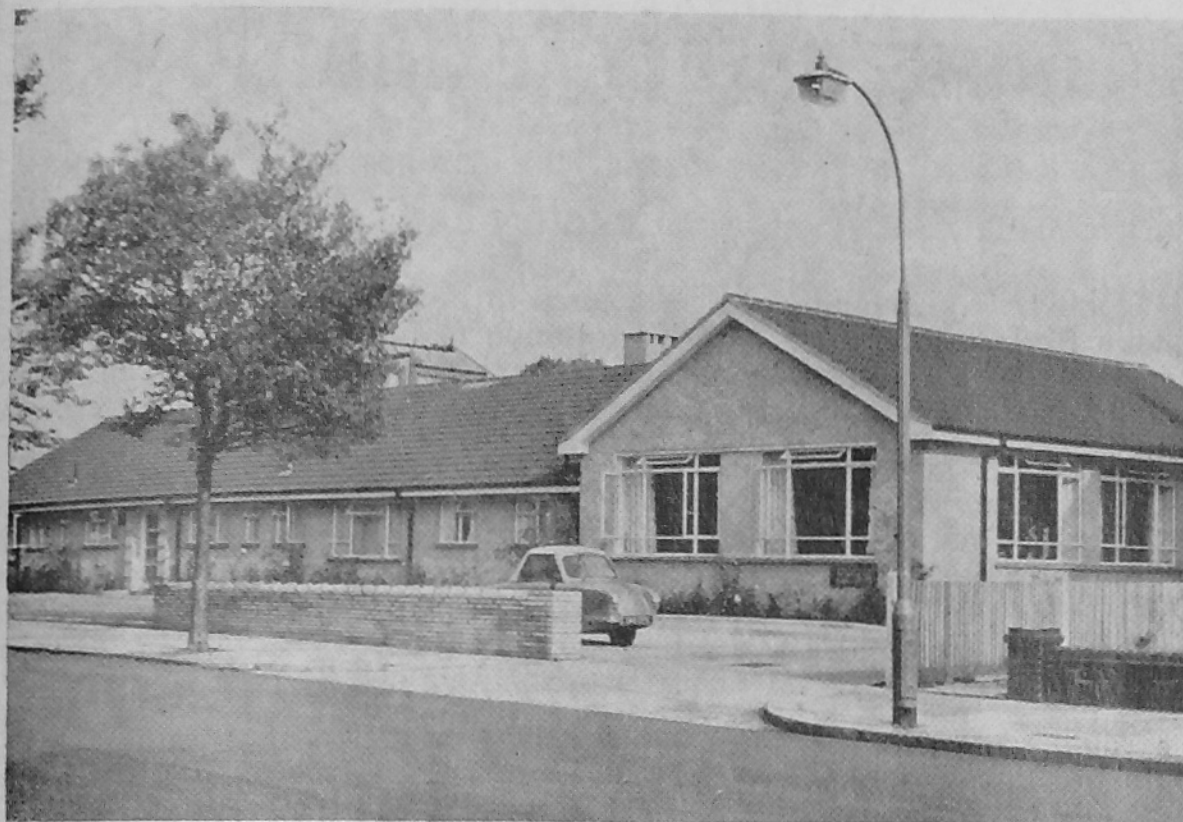
Services for the Elderly in their own homes

Alongside the Health Visitors, Home Nurses, Home Helps, Chiropody, and other services provided by the Department under the National Health Service Act, there are many workers and services operating to benefit the elderly. Apart from an advisory and counselling service provided by Social Welfare Officers, Meals-on-Wheels are delivered by the Women's Royal Voluntary Service, and in parts of the Borough Luncheon Clubs are run by them or by Old People's Welfare Committees or Associations. The activities of these Committees and Associations embrace clubs, meals, visiting, holidays, outings, and many social functions. Close contact is maintained with all these bodies, and recently a Borough of Barnet Old People's Welfare Association has been set up to provide a better liaison and co-ordination of effort in which the Council is a partner. The Council financially supports these voluntary bodies.

Day Centres and Clubs for the Elderly, organised by the Old People's Welfare Committees, and other bodies throughout the Borough, have recently been supplemented by the opening of a combined Day and Work Centre at Etchingham Park, N.3. Here a Council Service is being developed, which will include a preventive geriatric



Etchingham Park Day Centre, Finchley—keeping mind and body active!



Etchingham Park Day and Work Centre, Finchley, showing Elderly Persons' Flats adjacent.

clinic, incorporating chiropody, eye testing, etc. In addition, a combined Meals Kitchen and Old People's Centre has been completed at Brookhill Road, East Barnet, to meet meals and luncheon club needs in the area, and provide premises for the Old People's Welfare Association, and a daily meeting place for elderly people of the district.

Services for the Handicapped

The Council has a duty to make arrangements for promoting the welfare of all people who are blind, deaf, or otherwise substantially or permanently handicapped by illness, injury or congenital deformity. In carrying out these services directly, or through a voluntary organisation acting as agent, the emphasis is placed on meeting the social, vocational, recreational and rehabilitative needs of these persons, at all times striving to retain their independence in the community.

(i) The Blind and Partially Sighted

Qualified Social Welfare Officers for the Blind are employed; to promote their general social welfare; to provide occupation and recreational facilities, and generally to co-operate with other local and national agencies to ensure that persons capable of benefiting by training for employment, or otherwise undertaking rehabilitation courses are advised accordingly.

There are three weekly handicraft classes held, four social clubs, dancing and cookery classes,

and other activities in various parts of the Borough. Wireless, talking books, library facilities, and many aids are available for use by blind or partially sighted persons. In addition, the Council has an Assisted Holiday Scheme, in many cases arranging holidays direct for individuals or groups.

(ii) The Deaf and Hard of Hearing

The Welfare Officer for the Deaf is concerned with counselling and interpretation for the deaf without speech, and generally promoting their social welfare. She undertakes case work with the deaf, and advises other disciplines on the specific problems of deafness.

Voluntary organisations, for long the sole workers among the deaf, continue to provide spiritual and social activities, the nearest Centre being at 258, Green Lanes, N.4. Whilst no Council clubs have yet been established, facilities will be available later this year when the rehabilitation centre at Edgware is opened.

Contact is maintained with flourishing Hard of Hearing groups at Barnet and Hendon who have frequent meetings and functions, and with Regional and National Associations for the Deaf.

Lip reading classes are held at Whitefield School, Claremont Road, N.W.2, on Wednesday nights.

A repairs service for Hearing Aids is carried out at Barnet General Hospital on Wednesdays, 5—6.00 p.m., when an Audiometrician attends. Repairs can also be done at the hospitals of issue, and batteries and leads can be supplied by the Welfare Officer to those unable to obtain them otherwise.

(iii) General Classes of Physically Handicapped

This group includes spastics, epileptics, sufferers from multiple sclerosis, muscular dystrophy, arthritis, poliomyelitis, tuberculosis, and other diseases and injuries.

The number of persons registered is increasing rapidly. Particular help is given by Social Welfare Officers with personal and family problems arising from the disability, and assistance in overcoming its effects, including the supply of aids in the home and adaptations to property.

The Council operates a daily morning Work Centre at Heriot Road, N.W.4, and some 30 persons attend. A limited amount of outwork is provided for handicapped persons unable to attend.

Afternoon handicraft classes are run by the British Red Cross in Edgware, Hendon, Finchley and High Barnet each week.

There is an Assisted Holiday Scheme, and the Department's special transport is used extensively for Council and Voluntary Organisations' activities. A wide range of social functions are carried on by the latter throughout the Borough.

Work has recently commenced on the new Rehabilitation Centre for Blind and Physically Handicapped Persons at Edgware. When the premises are in use early next year, it will provide a much needed service in assisting all groups to retain or regain social and occupational independence.

It will be seen from this description of the Welfare Services that much work is already being undertaken, and a great many people derive benefit from it. There is still much to be done, and the Council's Ten Year Development Programme is kept constantly under review. Many old people are still living in "at risk" situations in their own homes because there is not sufficient residential accommodation to provide a home for them.

Continued on page eight column one

MEMBER OF THE COUNCIL



Councillor (Mrs.) N. I. Cullinane

Councillor (Mrs.) Cullinane has been a resident in Hendon for 36 years and is married with one son.

She was until recently co-Principal of a school in Park Ward. Elected to the former Hendon Council in May, 1960, she served on many Committees and was Chairman of the Libraries and Museums Committee for 1963, 1964 and 1965.

Now elected on the London Borough of Barnet Council since its formation in 1964, she serves on the Appeals, Estates, Education and Health Committees, and was elected Chairman of the Libraries and Arts Committee this year. She represents the Council on a number of Governing Bodies of local schools and is Chairman of one of these Groups.

Councillor (Mrs.) Cullinane is a member of the Home Safety Committee, the Old People's Welfare Association, and the Home Safety Group Committee.

Apart from her many Council duties, she is also a keen member of the Hendon Afternoon Townswomen's Guild, being Chairman of the Social Studies Group, also a very active member of the Park Ward Conservative Association—now re-christened "West Hendon Ward"—and is Vice-Chairman of the Women's Committee.

CAMPAIGN FOR GREATER LONDON SAVINGS

Many events are being arranged by the London Borough of Barnet Savings Committee to support a campaign for Greater London savings which is being held from 18th to 25th November, 1967, full details of which will appear in the local newspapers.

His Worship the Mayor of the London Borough of Barnet, Councillor P. G. H. Woodruff, J.P., as President of the local Committee is sending a special message to residents in the London Borough of Barnet calling upon them to support this first campaign in the new Greater London area.

HOME SAFETY EXHIBITIONS

at

FINCHLEY CARNIVAL AND FRIERN BARNET SUMMER SHOW

Home Safety Exhibitions were entered in both of the above events by the London Borough of Barnet. Each exhibition featured displays of fire prevention, safety with oil heaters, medicine, gas and electricity. Hazards in and around the house, water safety and the purchase of safe articles were given prominence.

Throughout the three days of both events a "Spot the Hazards" Competition was organised for children in two age groups up to the age of 16 years. The children were given ten minutes in which to find as many points of danger in a picture as possible and the organisers were kept busy most of the time "clocking" the children in and out. Altogether, nearly 500 children took part in the competition and prizewinners are being notified by post.

Another attraction of the exhibition was the demonstration of mouth-to-mouth breathing, using the model "Resusci-Anne". This project was manned by members of the British Red Cross Society and the Order of St. John Ambulance Brigade. The interest shown by the public paid testimony to the admirable efforts of the officers taking part.

Home Safety compared with Road Safety receives little attention partly due to the fact that the "Englishman's home is his castle" and therefore no laws and regulations can be made to govern what happens inside the home. Home Safety Education is a real must and steps will have to be taken to ensure that this project is given maximum publicity and money made available for this purpose.

One only hopes that these exhibitions and the children's competition have gone some way to making the public aware of the need for care in and around the home and if this is so, then the organisers will feel the time and effort put in will have been worthwhile.

A demonstration of mouth-to-mouth resuscitation. The Red Cross Officer is holding a model of the nasal air passages to explain how these must be kept clear to effect this method of artificial respiration. (The background shows how not to plug in your electric iron.)



PRACTICAL WORK IN BARNET SCHOOLS

Some months ago a display of practical creative work from Barnet Schools was arranged in the window at Gateway House. From the moment the first exhibits were put on show members of the public stopped and could be observed looking at the window, pointing, and passing what were obviously complimentary remarks. During the three weeks in which the display was held it attracted a great deal of attention. Many enquiries were made at the Hall Porter's desk regarding the possible sale of the exhibits and surprise at the high level of attainment was expressed.

Unless one has some direct contact with schools there is little understanding by the general public of the breadth and standard of creative work carried out by children today. Although the exhibition was small it represented all age groups and all types of schools within the Borough. Infant and junior children contributed among other things paintings, models, fabric prints, needlecraft articles, pottery figures and dolls. From secondary schools there were paintings, three-dimensional constructions, wood sculpture, fabric prints, felt toys, pottery, engineering tools, enamelled and other jewellery, pewter work, wrought-iron work and furniture.

The wide range of this work helps to illustrate how different the pattern of teaching practical subjects is now from what it has been in the past. Education is always changing, with new methods and approaches being employed to improve the learning process and to orientate this with present-day conditions in life. Formerly in art and craft work, children have been allowed to copy the teacher and follow him slavishly. Today, however, in addition to branching out along new avenues of practical experience, teachers are encouraging children to use their own creative imagination far more and to design their own models. By so doing a personal identity is achieved and the pleasing and original interpretations given to what have been traditional problems have shown the argument that children cannot design to be a myth.

The dining chair exhibited at Gateway House was one from a suite comprising four chairs, table, sideboard and two fireside chairs designed and made by a sixth-form boy at a secondary modern school. The guitar was made by a fourth-year secondary modern school boy who uses it regularly with his pop group. Two junior school girls, aged ten, made the large dolls that were exhibited, all articles of clothing and other appendages being designed by them. One girl had written a forty-page essay on life in Roman times while gathering background information for the costume of her Roman lady.

Another aspect of practical work is to be seen in local grammar schools. At one a group of boys are at present engaged in making a clock to be mounted on the school roof. At another, such things as a model hovercraft and wind tunnel have been made. These projects represent an amalgamation of craft education and design solving problems dealing with engineering technology, science and mathematics. They serve, just as the girl's studies associated with her Roman doll have done, to emphasise that no single subject can be studied in isolation, all knowledge being diffused across the whole range of subjects.

So much of this knowledge is learned visually that it seems obvious that more serious attention should be given to visual perception in such subjects as art, craft and technical studies. Our exhibition has shown that the beginnings of an awareness of this need have been realised in Barnet schools. It is hoped that future exhibitions will provide evidence that this trend has been extended.

PAYMENT OF COUNCIL RENTS

Payment of rent can now be made to the following rent offices during the times indicated:—

COUNCIL OFFICES, Wood Street, Barnet, Tel. 449 9148.

Monday to Thursday 9 a.m. to 4.30 p.m.

Friday 9 a.m. to 6.30 p.m. (only).

COUNCIL OFFICES, 28, Station Road, East Barnet, Herts. Tel. 449 9181.

Monday to Friday 9 a.m. to 5 p.m.

TOWN HALL, Friern Barnet, N.11.

Tel. 368 1101.

Monday to Thursday 9 a.m. to 4.30 p.m.

Friday 9 a.m. to 6.30 p.m. (only).

KING EDWARD HALL, 331, Regent's Park Road, N.3. Tel. 349 9121.

Monday 9 a.m. to 6.30 p.m. (only).

Tuesday to Friday 9 a.m. to 5 p.m.

RENT OFFICE, 25, Bell Lane, Hendon, N.W.4. Tel. 202 5573.

Monday 9 a.m. to 4 p.m.

Wednesday 9 a.m. to 1 p.m.

Thursday 2 p.m. to 4.30 p.m.

TOWN HALL, The Burroughs, Hendon, N.W.4. Tel. 202 8282.

Friday 5.30 p.m. to 6.30 p.m. (only).

HOUSING DEPARTMENT, 65, Watford Way, Hendon, N.W.4. Tel. 202 8282.

Monday to Friday 9 a.m. to 5.35 p.m.

SUGGESTIONS WELCOME

The Council will be pleased to receive your comments regarding the "Barnet Civic News", and invite your suggestions on the layout and type of article or information appearing in this new publication, which endeavours to keep you informed as to the functions, departments and committees of the Council. Please write to the Town Clerk, Town Hall, Hendon, N.W.4.



Beach Lodge Residential Home, Finchley—rear garden view.

MEMBER OF THE COUNCIL



Councillor (Mrs.) C. D. Hopkins

Councillor (Mrs.) Hopkins is a comparative newcomer to Council work. Sponsored by the local Labour Party in the 1964 elections, she was elected to represent the Arkley East Ward in the newly formed London Borough of Barnet. She has served on the following Committees — Education, Libraries and Arts, Children's, Health and Welfare, Highways.

Councillor (Mrs.) Hopkins who is herself a painter, is a Council representative on the Executive Committee of the Barnet Arts Council, now financially assisted by the Borough. The Arts Council exists to help and co-ordinate the efforts of local societies and individuals to develop cultural and recreational activities—music, acting, dancing and the visual arts.

Councillor (Mrs.) Hopkins feels that, besides its orators, the Council and particularly its minority groups need "intelligence" branches. In the matter of education, for example, she has organised a study group to examine the facts relating to the reorganisation of Borough Secondary education, and to recommend policy. Councillor (Mrs.) Hopkins has a family of four, and is a graduate of the University of London.

DIARY OF EVENTS

Details of events taking place in the London Borough of Barnet, at which the public may attend are sought, for inclusion in Diary of Events, issued every fortnight.

Particulars should be sent, giving three weeks' notice to the Town Clerk, Town Hall, Hendon, N.W.4, or for convenience, telephone the Information Section, Hendon 8282, Ext. 27

LIBRARY LECTURES

Admission Free

The Library Lectures to be held during November are listed below. All lectures begin at 8.15 p.m. and most are illustrated with colour slides.

CENTRAL LIBRARY, The Burroughs, N.W.4.

Thursday, 2nd November, 1967.

"To Russia and Back" by Bernard Newman.

Chairman: Councillor M. B. Passingham.

Mr. Bernard Newman, the celebrated author and lecturer, describes his third visit to Russia, which he made during the summer of 1966, travelling out via Czechoslovakia, and returning via Poland, East Germany and the Berlin Wall.

Thursday, 9th November, 1967.

"The Modern Olympic Games 1896-1964" by Harold Abrahams.

Chairman: Councillor J. Webb, J.P., M.C.S.P., M.Inst.S.M.

Mr. Abrahams has participated in nine Olympics either as a competitor or as a commentator. He won a Gold Medal for the 100 metres in 1924.

Thursday, 16th November, 1967.

"15 months in a Volcanic Paradise" by David Balfour.

Chairman: Councillor F. L. Tyler, B.A.

During his sojourn in the Galapagos Islands, Mr. Balfour lived among the present-day settlers.

Thursday, 23rd November, 1967.

"Summer in Spain" by Antony Brown.

Chairman: Councillor Mrs. N. I. Cullinane.

Mr. Brown, well known for his work in journalism, radio and television is making a return visit to Hendon to give another of his popular travel lectures.

Thursday, 30th November, 1967.

"Up the Nile to Abu Simbel" by Elizabeth Hemelryk.

Chairman: Councillor L. A. Hills.

This lecture is devoted to the High Dam project and consequent evacuation of Nubia, with detailed cover of the great temples of Abu Simbel.

NORTH FINCHLEY LIBRARY, Ravensdale Avenue, N.12.

Wednesday, 1st November, 1967.

"Across the Black Sea" by C. M. Dixon.

Chairman: Alderman J. G. Bryson, J.P.

Mr. Dixon's recent tour of the Balkans and Black Sea together with his interest in climbing inspired many beautiful scenic photographs.

Wednesday, 15th November, 1967.

"Travellers in Bolivia and Peru" by Tony Smyth.

Chairman: Councillor K. M. Klean.

Mr. and Mrs. Smyth recently spent seven months touring 10,000 miles of South America.

EAST FINCHLEY LIBRARY, High Road, N.2.

Wednesday, 8th November, 1967.

"London Birds" by David Wolfe-Murray.

Chairman: Councillor N. R. Sutton, A.I.B.

Lt.-Col. Wolfe-Murray ("Fish-Hawk"), the author and illustrator of numerous natural history books, illustrates this lecture with spontaneous drawings.

Wednesday, 22nd November, 1967.

"Underground exploration at home and abroad" by L. B. Cook.

Chairman: Councillor A. C. D. Miller, B.Sc.(Eng.).

Mr. Cook takes us potholing and caving with his colour camera.

"LETTERING ART AND DESIGN"

An Exhibition of work by students and staff of the Art Department of the Hampstead Garden Suburb Institute, Central Square, N.W.11. Arranged from 4th November to 4th December at the Church Farm House Museum, Greyhound Hill, Hendon, N.W.4, by The Libraries Department.

For virtually half a century the Institute has provided facilities for the study and practice of Hand Lettering and associated Design. In this Exhibition are to be found illustrations of some of the fine work of the past which has so profoundly influenced that of

the present, and will serve as a spring-board for the future. A substantial section of the Exhibition puts forward a convincing argument for legible and elegant handwriting, while visitors will find representative work by past and present staff, and students on both traditional and contemporary lines. Hand lettering techniques include work upon vellum, parchment, paper, metals, stone, wood and other media. There is also some indication of the Lettering artist's contribution to 20th century type face design and of contemporary coinage, seal, medallion and memorial applications.

FROM FARM AND FOREST TO GREATER LONDON

An exhibition arranged by the Mill Hill and Hendon Historical Society at the Church Farm House Museum. The exhibition shows by means of maps, photographs and paintings the growth of Hendon, particularly Mill Hill from a rural to an urban area. Documents and illustrations concerned with local families (including the Lords of the Manor of Hendon) and material relating to historic houses and their inhabitants in Mill Hill Village. The exhibition is open until 30th October.

MEMBER OF THE COUNCIL



Councillor (Mrs.) J. E. Pudney

Councillor (Mrs.) Pudney was born in New Barnet, in the area of the former East Barnet Urban District, then known as the East Barnet Valley Urban District. She is married, and has two sons, both of whom are draughtsmen.

She has been a member of the local Labour Party, of which she is now Secretary, for eight years. Prior to the formation of the London Borough of Barnet, Councillor (Mrs.) Pudney was for two years a member of the Barnet Urban District Council. She now represents the Arkley West Ward. Councillor

(Mrs.) Pudney was a long-term member of the former Barnet Urban District Council Tenants' Association.

She is especially interested in the social services, health, welfare and housing, and is a member of all these committees. She is also a member of the Establishment and the Allotments Committees, and serves on the Governing Bodies of Queen Elizabeth Boys and Girls Grammar Schools and Ravenscroft Secondary Modern School.

In her spare time, Councillor (Mrs.) Pudney pursues her hobbies of gardening, reading and solving cross-word puzzles.

HOME SAFETY TIP!

Home Safety Sam Says — Fireworks Can Be Fun!



But the fun is short-lived when a child loses his sight or is severely burned through accident. Accidents usually occur through negligence or through horse-play.

SHOPKEEPERS ! Don't sell fireworks too early or sell them to children.

PARENTS ! Supervise your children's firework displays and bonfires.

CHILDREN ! Don't carry fireworks or fool around with them.

ENJOY YOUR FIREWORKS SAFELY

COUNCIL MEETINGS

You are invited to attend meetings of the Council of the London Borough of Barnet held at the Town Hall, Hendon, N.W.4, at 7.00 p.m. on Tuesdays as shown below:

28th November, 1967.

19th December, 1967.

Copies of Committee Reports are available in all public libraries before the Council Meetings take place, and for members of the public attending the meetings of the Council.

EDUCATION COMMITTEE MEETING

You are invited to attend the next meeting of the Education Committee to be held at the Town Hall, The Burroughs, Hendon, N.W.4 on Wednesday 22nd November, 1967 at 7 p.m.

WELFARE SERVICES

Continued from page three

An increase in demand for community services with the Blind, Elderly and Handicapped places a strain on the available staff. There is need for residential accommodation for young physically handicapped persons, as at present such persons are mainly accommodated by voluntary societies in various parts of the country. In an emergency, they have to be admitted to existing Council homes for the elderly—not good for them, or for the elderly with whom they reside. Day and Work Centre facilities for both the elderly and handicapped are included in the development programme, and meantime various short-term measures are being explored.

All these services cost money, and become an extra burden on the ratepayer. For this reason alone, they cannot all be provided immediately, but it is hoped that, in due course, the Borough will have a Welfare Service of which it can be justly proud.

Members of the public desiring further information on the activities of the Welfare Section of the Department are invited to write to the Chief Welfare Officer, or telephone 349 9121, Ext. 147.

THE LOCATION OF THE ELEVEN DEPARTMENTS OF THE COUNCIL

1. TOWN CLERK

Town Hall, The Burroughs, Hendon, N.W.4. Tel. 202 8282.
Enquiries and callers to Town Hall, Hendon.

2. BOROUGH TREASURER

Town Hall, The Burroughs, Hendon, N.W.4. Tel. 202 8282.

Enquiries and callers to Town Hall, Hendon. Payment of rates may also be made at certain specified times at the following district offices:—

Council Offices, Wood Street, Barnet.

Council Offices, 28, Station Road, New Barnet.

Town Hall, Friern Barnet, N.11.

King Edward Hall, 331, Regent's Park Road, N.3.

Rome's Shop, 14, Hampden Square, N.14.

3. BOROUGH ENGINEER AND SURVEYOR

Gateway House, 322, Regent's Park Road, N.3 (4th & 5th floors). Tel. 349 9121.

Enquiries may be made at Gateway House, but those relating to building inspection should be made to the appropriate division:—

Central Division (Finchley, Golders Green and Cricklewood), 294/296, Regent's Park Road, N.3. Tel. 349 9121.

Northern Division (Barnet, East Barnet, Friern Barnet), Town Hall, Station Road, New Barnet, Herts. Tel. 449 9181.

Western Division (Hendon area), Green Shield House, Station Road, Edgware. Tel. 952 7722.

4. MEDICAL OFFICER OF HEALTH

(Health and Welfare Department).

General enquiries to:—

Gateway House, 322, Regent's Park Road, N.3 (1st & 2nd floors). Tel. 349 9121.

Specific enquiries for certain services based on other premises may be made as follows:—

Mental Welfare Officers, Ravenscroft House, 61, Wood Street, Barnet, Herts. Tel. 449 5511.

District Welfare Officers, 308, Regent's Park Road, Finchley, N.3. Tel. 349 9121.

Public Health Inspectors (for Barnet, East Barnet, and Friern Barnet), Church Farm, Church Hill Road, East Barnet. Tel. 368 1116/17.

Public Health Inspectors (for Hendon, Mill Hill, West Hendon, Burnt Oak and Colindale), *Green Shield House, Station Road, Edgware. Tel. 952 7722.

*Green Shield House—other enquires may also be made in respect of Health and Welfare Services.

5. CHIEF EDUCATION OFFICER

Town Hall, Friern Barnet, N.11. Tel. 368 1101.

All enquiries to Town Hall, Friern Barnet.

6. BOROUGH ARCHITECT

Gateway House, 322, Regent's Park Road, N.3. Tel. 349 9121.

All enquiries to Gateway House.

7. BOROUGH PLANNING OFFICER

Gateway House, 322, Regent's Park Road, N.3. Tel. 349 9121.

Enquiries may be made to Gateway House, but those relating to development application should be made to the appropriate divisional planning office:—

Central Division (Finchley, Golders Green, Cricklewood), 294/296, Regent's Park Road, N.3. Tel. 349 9121.

Northern Division (Barnet, East Barnet and Friern Barnet), Town Hall, Station Road, New Barnet, Herts. Tel. 449 9181.

Western Division (Hendon, Mill Hill, Edgware), Green Shield House, Station Road, Edgware. Tel. 952 7722.

8. BOROUGH LIBRARIAN

Central Library, The Burroughs, Hendon, N.W.4. Tel. 202 5625.

All enquiries to the Central Library.

9. BOROUGH HOUSING OFFICER

65, Watford Way, Hendon Central, N.W.4. Tel. 202 8282.

10. BOROUGH ESTATES OFFICER

Hertford Lodge, East End Road, Finchley, N.3. Tel. 349 9121.

11. BOROUGH CHILDREN'S OFFICER

Town Hall, Friern Barnet, N.11. Tel. 368 1101.

Enquiries for service to Family Advice Centres:—

Western Division (Postal Districts of Edgware, N.W.4, N.W.7 and N.W.9), Green Shield House, Station Road, Edgware. Tel. 952 7722.

Eastern Division (Postal Districts of N.2, N.3, N.10, N.12, N.W.2 and N.W.11), 1, Friern Park, N.12. Tel. 445 4264 and 445 4772.

Northern Division (Postal Districts of Borehamwood and Barnet, N.11, N.14 and N.20), 42, Lytton Road, New Barnet, Herts. Tel. 449 9222.