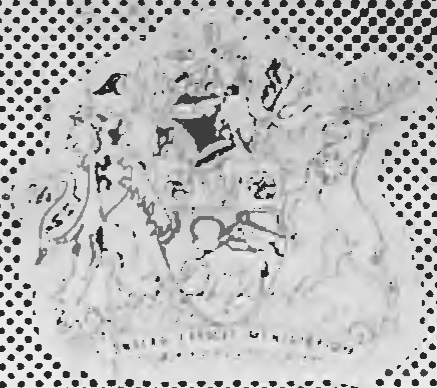


# Barnet



# CIVIC NEWS

No 16 April 1981



Hendon and District Archaeological Society are staging a wide-ranging exhibition at Church Farm House Museum, Church End, Hendon, which spans the centuries of Barnet's history from Roman times to the 20th century. Almshouses, churchyards, farming and industry are featured. Pictured above (left) is a display of Roman-style catering and (right) a group of pottery bowls and pitchers of Roman date found at Brockley Hill.

## THE NEW RATE

BARNET COUNCIL, at its special meeting on March 18, set the new rate for 1981/82.

Domestic and commercial/industrial ratepayers in the borough will be paying 22p in the pound more than last year. The new rates are:

Domestic property: 101p in the pound — increase 27.8 per cent.

Commercial/industrial: 119.5p in the pound — increase 22.6 per cent.

Full details on pages 4, 6 and 7.

## Refuse collection

THERE WILL BE no refuse collection in the Borough of Barnet on Good Friday, April 17, or Easter Monday, April 20.

However, arrangements have been made for all household refuse in the borough to be collected during those two weeks.

During the week commencing Monday, April 13, before the holiday period, you are requested to place out your dustbin for collection a day early so that collections can be completed by Thursday, April 16.

Refuse collection will re-commence on Tuesday, April 21, with Monday's collection. Dustbins should be placed out on the normal day of collection.

Please place your dustbins in an easily accessible position during those two weeks.

King's  
Wedding  
Photography  
Reviews same day on  
Saturday weddings  
Montage effects, etc.  
01-203 4128 evenings  
or write:  
Edmund J. King  
Freepost  
London NW4 1VA  
No stamp required  
For details  
without  
obligation

**STRETCH FURNITURE COVERS**  
The genuinely  
Made-to-Measure  
personal service  
FROM £15 FOR  
3-PIECE SUITES  
including  
materials and fittings  
Home measure service. Free fit-  
ting on delivery. All sizes and  
styles of furniture. Choose from a  
very wide range of fabrics includ-  
ing: Dralon, Tweeds, Linen Look,  
etc. Also Stretch Caravan Covers  
**SANDERSON**  
**Tailored Covers**  
Tel. V. Fisher  
01-769 4530/3847  
**SPECIAL SALES DISCOUNT**  
Delivery approx. 21 days  
or sooner  
Also at Bourne, Oxford Street

**JOYSLEEP LTD**  
220/222 THE BROADWAY  
WEST HENDON, NW9  
1/2 DAY THURS.  
202 2747

REDUCED PRICES!  
COME AND VISIT OUR SHOWROOMS AND TAKE ADVANTAGE  
OF OUR SPECIAL OFFERS. FREE DELIVERY IN THE GLC AREA.  
CREDIT FACILITIES AVAILABLE

IF NOT IN STOCK, IT CAN BE OBTAINED AT GREATLY  
REDUCED PRICES!

**ANNIVERSARY OFFER**  
MOST BIG NAMES  
IN FURNITURE &  
BEDDING SUPPLIED!

**SINGLE BEDS - DOUBLE BEDS**  
FROM £39.95  
FROM £69.95

**FURNITURE & BEDDING AT AMAZING PRICES**

**EXTRA 5% OFF ALL MARKED PRICES**  
THIS OFFER LASTS  
UNTIL 14th APRIL

**THE GALLERIES**  
FOR GIFTS AND TABLEWARE  
CHINA BY AYNLEY,  
ROYAL DOULTON,  
WEDGWOOD,  
WORCESTER  
LEAD CRYSTAL BY DARTINGTON,  
EDINBURGH, TUDOR, THOS. WEBB,  
ROYAL DOULTON  
1 HEDDON COURT PARADE  
COCKFOSTERS ROAD  
BARNET, EN4 0DB  
01-449 2690

**CURTAINS**  
Curtains expertly made  
and fitted. Complete  
service for supplying  
with rails or poles,  
Pleating, pelmets and  
blinds.  
Large range of quality  
fabrics brought to your  
home.  
For personal attention  
Telephone Mr. de Grasse  
01-958 7680  
Day or Evening

**DEES**  
AMERICAN CHEESECAKE LTD.  
LONDON

Famous Cheesecakes available in 42  
different flavours and 7 sizes including  
our Liqueur Range and our Cheesecake  
topped with Fresh Fruit.  
TRADE ENQUIRIES WELCOME  
Always the best in Cheesecakes  
1023 FINCHLEY ROAD LONDON NW11 7ES  
TEL: 01-455 1825 01-458 7974

enjoy a good  
video movie  
from Visions  
THE NEW NAME  
IN VIDEO  
ENTERTAINMENT

You can rent a full-length feature film or purchase at the very  
best terms. Over 400 titles in stock. Any film you require can be  
obtained in a few days.

**VISIONS**  
219 CHASE SIDE  
ENFIELD, MIDDLESEX  
01-363 1370

Stand on your head  
to read our advert  
— BUT NOT TO WATCH  
OUR FILMS!

Join our Club  
and exchange  
films for  
£2.00 only




**ARCTIC WINDOW CO.**  
39-41 NORTH ROAD, LONDON N7 9DP  
01-607 4567 01-607 4223

Only the best materials  
used, all meeting British  
standard specifications.  
TUDOR AND GEORGIAN-  
STYLE WINDOWS in  
bronze, white or satin finishes.  
TRADE ENQUIRIES WELCOME.  
CONTACT US NOW, WHILE OFFER  
LASTS, FOR A FREE ESTIMATE.

**WORKSHOPS**  
TAILOR MADE IN OUR OWN  
5 YEAR GUARANTEE  
NEVER KNOWINGLY UNDERQUOTED  
REPLACEMENT WINDOWS

★ ALUMINIUM  
★ RESIDENTIAL AND  
★ PATIO DOORS  
★ DOUBLE GLAZING

UP TO 20% DISCOUNT ON  
**IT'S AS CLEAR AS GLASS**

**ARCTIC WINDOW CO.**




# J & H FURNITURE LTD

Furniture Wholesalers Established Over 20 Years Selling Direct to the Public

**SAVE UP TO 40% ON RETAIL PRICES**

NO GENUINE FIRM CAN COMPETE WITH OUR VAST RANGE, QUALITY AND SERVICE. BEFORE & AFTER SALES. ALL THIS AND ROCK BOTTOM PRICES TOO!



3ft Mahogany Unit £379 Hi-Fi Unit £99.  
3ft 4in unit £289.

7ft Dining Table, 6 Solid Mahogany Chairs, including 2 carvers from £299 complete. 5ft Dining Suites from £249 complete. 7ft and 8ft 8in Regency Tables with range of 12 types of Mahogany chairs.

Solid Mahogany Dining Chairs from £29 Hi Fi Cabinets from £99 Regency Hall Tables from £29

Reproduction Wall Units from Brenner, Beauflux, Hubbinett, Heritage, Beresford & Hicks from £209.



French Style or Plain White Bedroom Units up to 9ft wide. 7ft 4in high. from £250 complete. Kidney or Serpentine shape Dressing Tables from £55. Large range of chests and bedside cabinets to match.



**SHOWROOMS: 72 CHASE SIDE, ENFIELD, MIDDLESEX.**  
(Close to Parsonage Lane)

TEL: 01-366 2437

**INSTANT CREDIT NOW AVAILABLE**

Open 10am to 5:30pm Tuesday, Thursday, Friday, Saturday

Free delivery. Barclaycard, Access Welcome.

## fitted bedroom furniture



Beautiful FITTED bedroom furniture with backs (no extra) sold directly to you from our factory and showroom. This fitted bedroom setting, floor to ceiling complete with backs, comprising three large double wardrobes, only £449 inclusive of measuring, planning, fixing and VAT. Matching headboard with side tables £69 extra. Full selection of designs.

### STATON

Staton Fitted Furniture Ltd

Factory & Showroom at

719 North Circular Rd. (Nth Side) London NW2

½ mile West of Brent Cross Shopping Centre. (Nr Flyover)

Customer parking. Also open Saturday

Phone 01-450 6581

**It pays to travel to our factory.**

# APRIL SHOWERS MANY BARGAINS

**SUPER CARPET OFFERS**

**UP TO  
50% REDUCTIONS  
ON ROLL ENDS**

IDEAL FOR SMALL AREAS: i.e. Cars — Bathrooms — Caravans, etc.  
ALSO: HUNDREDS OF LARGE ROOM SIZES UP TO 30' x 12'

**FREE FITTING  
ON ALL CARPETS OVER £75.00  
PLUS FREE UNDERLAY**

ON ALL  
AXMINSTER RANGES



## DIAMOND CARPETS

25 Oakleigh Road North  
Whetstone N20

Telephone 01-446 2105/6



## NOW AT OUR NEW EDMONTON FACTORY.



Viscount Aluminium Windows

*We specialise in:*

- ★ Sealed unit replacement windows
- ★ Leaded-light Georgian and Contemporary
- ★ Secondary glazing
- ★ Residential and patio doors

*For free estimate*

Tel: 01-808 8618/8518

**NO OBLIGATION FREE HOME VISIT ESTIMATING FITTING**

**COSYFIT STRETCH COVERS**  
MADE-TO-MEASURE  
SATISFACTION GUARANTEED

Old suites look as new  
Quality cloth, Dralon, 100% nylon, etc. Wide range of colours and patterns (over 120)  
NO DESIGN TOO DIFFICULT  
ALL CUSHION COVERS WITH ZIPS

Telephone for FREE Home Visit  
804 6677, ext 15  
Trade locally with  
**COSYFIT** 62 MOTTINGHAM ROAD LONDON, N9



CUT OUT

**VIDEO CLUB**

HUNDREDS OF FILMS AVAILABLE FOR ONLY £5.50 IN OUR CLUB!! Also Weddings, Discounts, Special Services, Cameras etc.

**RING 0225 63403**

Day or evening (cheap rate) or send coupon to:  
VIDEO EXCHANGE LTD., FREEPOST, BATH, AVON, BA2 4BA  
Please send FREE details. I am over 18.

Name .....

Address .....

Phone .....

Please remember to fill in your telephone number 'BCN'

CUT OUT

**PHILIPS**

AC480 AM STEREO CASSETTE CAR RADIO

MW/LW radio with Turnlock push-button tuning of six pre-selected stations. IC output stage ensures high output power with low distortion. Stereo balance and continuously variable tone controls. Cassette has lockable fast wind and rewind controls with automatic switch to radio at end of tape.



● SEE AND HEAR IT AT ●

**HENDON CAR STEREO CENTRE**  
01-203 4160 8 PARSONS STREET, HENDON 01-203 5225


**VIDEO FILM LIBRARY**

**The Ancient Mariner**

**RESTAURANT & TAKE AWAY**  
**75 UXBRIDGE RD. STANMORE**  
**Tel: 954 8275**



BEAUTIFUL AIR-CONDITIONED RESTAURANT  
**FULLY LICENSED**



COME AND TRY OUR FRESH FISH IN MATZO MEAL OR BATTER

**A LA CARTE MENU**

FISH SUPPER PARTIES DELIVERED TO THE DOOR

INTIMATE ATMOSPHERE - COME AND SEE US SOON, YOU'LL BE PLEASANTLY SURPRISED

**Risoli Reproductions**  
presents

7ft. Dining Table, 6 Chairs, inc.	
2 Carvers, inc. Sideboard only	£445
3ft. Bookcase	£195
5ft. Bookcase	£370
5ft. Serpentine Sideboard	£185
TV Cabinet	£125
Hi-fi Cabinet	£110
Corner Cabinet	£89
Bureau, Bureau Bookcase, Coffee Tables and Nests	from £49

As manufacturers we offer excellent quality at highly competitive prices  
*Large Stock of Mahogany and Yew*  
**Why not come and see for yourselves!**  
**425 LONG LANE, FINCHLEY, N2**  
**01-883 5997**




**LINCOLNSHIRE — IDEAL RETIREMENT AREAS**

Pleasant sites in or around attractive Market Towns. Two bedroom semi-detached bungalows from £16,410. Three bedroom semi-detached houses from £16,250. Two bedroom detached bungalows from £17,975. Three bedroom detached bungalows from £20,450. Two bedroom flat 'one only' from £21,500. All properties built to high specification by small private building firm. Please state price limit when applying.


For brochure and further information contact:

**HUGH BOURN DEVELOPMENTS (WRAGBY) LTD**  
Louth Road, Wragby, Lincs Telephone (06734) 8831

**Buywise with**

**Voguewise**

Choose your new suite direct from the manufacturer. A wide choice of 4, 3 and 2 seater settees made from quality beech frames and steel springs to seats.



TEN CUSHION SUITE IN DRALON  
**£349**

FINISHED IN HIGH QUALITY DRALONS OR MIX AND MATCH TO COMPLEMENT ANY LOUNGE.  
MOST PEOPLE WHO SEE OUR SUITES BUY ONE!  
Open Mon-Sat 9 am till 5.30 pm

**VOGUEWISE**  
770 GREAT CAMBRIDGE ROAD, ENFIELD. 01-363 7572

**COBRA SECURITY SYSTEMS LTD**  
Protect You & Your Home

Unubb 5 Lever Mortice Lock Supplied & Fitted	£25*
Window Locks Fitted from	£3*
Window Grilles & Bars supplied & fitted	
Self-contained Smoke Alarm	£12
Fire Extinguishers from	£12
Vehicle Alarms Fitted from	£30*
Fire Blankets	£12

**DOMESTIC INTRUDER ALARMS**  
including NO WIRING SYSTEMS  
INSTALLED FROM **£198**  
SELF INSTALLED FROM **£72\***

For a Free Security Check with No Obligation  
PHONE: **01-529 5710**  
THE COACHWORKS, GARFIELD ROAD, CHINGFORD, E4.  
\* Prices plus VAT

**CLEANER CURTAINS BY**

FAST COLLECTION & DELIVERY  
HOMES, HOTELS, SCHOOLS, OFFICES ETC.  
MAKE YOUR DAY WITH CLEANER CURTAINS BY

**Tel: 959 6996**



**or 205 2000**

**FREE & EASY HOLIDAYS**



NEW AND USED CARAVANS FOR SALE OR HIRE

NEW SPRITE EUROPA ECCLES FAIRHOLME PLUS! THE EXCITING NEW SPRITE SV

Visit our well stocked accessory and leisure shop.

There's never been a better time to buy from **CALOR Gas** MAIN DEALER

**MANOR CARAVANS**  
74 High Rd, Wormley Broxbourne, Herts Hoddesdon 41617

**DOUBLE PATIO DOORS** | **GLAZING ENTRANCE DOORS**

★ Interest Free Loan ★ Fast Installation ★ White Windows+U.P.V.C.  
★ 10-year guarantee ★ Free Estimates

The company with the reputation you can trust

**REGLAZE REGLAZE** **ALUMINIUM WINDOWS LTD.**  
171 St. Albans Road, Watford, Herts.  
959-1081 92-48512 (24 hours)

**THE CORNER SHOP** (Sub-Post Office)  
5 Princes Parade Golders Green Road London, NW11 9PS 01-455 3321

**THE GIFT CENTRE**  
18 Temple Fortune Parade Finchley Road London, NW11 0QS 01-455 1931

**FANTASTIC VALUE**

Havana and other cigars  
Come and see our low prices  
Cut price cigarettes  
High class confectionery  
Very good selection  
Newspaper delivery service

**TOYS, GAMES & STATIONERY**

**GOOD SELECTION OF GREETINGS CARDS**

**PARKING NO PROBLEM**

**SPECIAL OFFER FOR LADIES**

**SUNBED** £8 (with free sauna when course booked)

£2 per session  
£14 for 8 sessions  
£15 for 10 sessions  
£18 for 15 sessions  
(complete privacy, showers and rest area)  
Qualified staff always in attendance

**EDGWARE N N BEAUTY SALON**  
(Licensed by Barnet Borough Council)  
96 HIGH STREET, EDGWARE, MIDDX  
TEL. 01-952 5952

**MORE FOR THE LADIES!**  
We are extending our ladies only sessions to TUES., WED. & THURS. 10 a.m.-2 p.m. SUNDAYS 2 p.m.-7 p.m.

FROM FEBRUARY 12

We are opening our COLINDALE salon on THURSDAY EVENINGS from 7.30 p.m.-10 p.m. FOR LADIES ONLY. For sauna, facial and massage.  
For reservations tel. 952-5952 (No Sunbed)  
Massage £3, Facial £3, Sauna £1

Sauna Massage Facials etc.

# BARNET'S RATES RISE 22p

## Civic News presents the reasons behind the increase

### CONTENTS

April 1981

	page
The rates report.....	4, 6 & 7
Blind hazards.....	8
Fostering the disabled.....	12
Easter surprise.....	14
Chemists' Rota.....	14
The gadget team.....	16 & 17
Your letters.....	18
Scouting in Barnet.....	21, 22, 23
Trigger news.....	24
What's on.....	26 to 31
Jobs wanted.....	32
Your Councillors.....	35

#### EDITORIAL ADDRESS

Civic News,  
London Borough of Barnet,  
The Town Hall,  
The Burroughs,  
Hendon NW4 4BG  
Tel. 202 8282, Exts. 71 & 479

#### ADVERTISING ADDRESS

Laurence Marshall  
(Advertising) Ltd,  
Publicity House,  
12 Genotin Terrace,  
Enfield EN1 2AF  
Tel. 01-366 4626/7, 01-367 0246

Barnet Civic News is a monthly magazine carrying news of Council activities and local voluntary organisations.

Civic News is distributed door-to-door throughout the borough, reaching more than 109,000 homes and businesses and further copies are sent to libraries and council offices. It is produced at no additional cost to the ratepayer, all costs being covered by advertising.

Editorial pages are edited jointly by Bill White, the Council's Press and Information Officer, and Rosemary Jude, Press Officer. Copyright, Barnet Council.

It is produced and published on behalf of the London Borough of Barnet by Laurence Marshall (Advertisers) Ltd.

### Council Meetings

Members of the public are invited to attend Council and Committee meetings in the Town Hall, Hendon, at 7 pm.

Tuesday, April 14: Council Meeting

Monday, April 27: Housing; Development and Estates

Tuesday, April 28: Public Works; Social Services

Wednesday, April 29: Town Planning and Research

Thursday, April 30: General Purposes

Tuesday, May 5: Education

Tuesday, May 12: Annual Meeting of the Council

THE NEW RATE for domestic and commercial properties in the borough is up by 22p in the £. This means domestic ratepayers will be paying 101p in the £, an increase of 27.8 per cent over last year, and the general rate levied on commercial and industrial properties is 119.5p in the £, a rise of 22.6 per cent.

Although this is the highest increase ever imposed by the borough it is still one of the smallest percentage increases in the London area which has been hard hit by changes in the Government's financial support for local authorities.

The rate was agreed at a special meeting of Barnet Council on Wednesday, March 18, following one of the longest and most demanding budgeting exercises ever undertaken by the Council.

Earlier in the year, in response to Government directives, the spending committees of the council had planned their budgets to make a saving of £1.8 million. Then, throughout February they met again, often in special session, to prune their original plans and find further savings of £3,275,000 — a total saving of more than £5 million.

Two major factors contributed to this cut and cut again exercise. The first was a cut in the Rate Support Grant — the money paid by central government to local authorities. This amounted to a loss of almost £6 million to Barnet.

The second was the Government warning that unless local authorities kept their spending within government guidelines the grant money would be clawed back. Those authorities who overspent and disregarded government advice would be the first to feel the effect of the claw-back. In general, local authorities are expected to achieve a 5.6 per cent reduction on the actual expenditure for 1978/79 but with an allowance made for inflation.

In his statement to the Special Rates Meeting of the Council the Chairman of the Finance Committee, Councillor Norman Hirshfield, said: 'This year I am sure that I do not need to convince anyone of the difficulties that have been encountered in compiling the budget for 1981/82 to achieve a reasonable balance between the standard and level of services provided and the size of the rate increase which has to be passed on to the ratepayers.'

When all the requirements of the spending committees are added together the bill comes to £138,235,930, of which almost half (49 per cent) goes on education.

When income is taken into account this total is nearly £8.5 million more than the estimate for 1980/81. But almost a million of this is for the collection of the rate, a figure previously deducted from the product of the penny rate and so did not have to be

*Continued on page 6*

### A few facts and figures for 1981/82

□ Barnet has 91 primary schools and 26 secondary schools. The total number of school children in 1980/81 was 43,382 and this number is expected to drop to 42,840 by the end of the current year.

★ ★ ★

□ There are 20,393 dwellings owned by Barnet Council and on average each dwelling costs £1,100 to administer and maintain. Of this £690 (two-thirds) is accounted for by debt charges — that is paying off the capital costs of Barnet's housing programme. These charges are covered by rent income and are not a charge on the general rate.

★ ★ ★

□ Barnet has 17 public libraries and its travelling libraries call at 21 different sites. Together they issue 4½ million books in one year. Cost per head of population £7.95.

□ The refuse collection services cost the borough £3.3 million a year.

★ ★ ★

□ The average rateable value for a house in the borough is £380. Which means the average ratepayer will pay £383.80 a year in rates — an increase of £83.60.

★ ★ ★

□ A penny rate is expected to produce £585,000 in the current year.

★ ★ ★

□ During the pruning of the committee estimates £1.5 million had to be cut from the education budget. The largest cuts were in building maintenance where only essential repairs will be undertaken and in teachers' salaries, mainly due to the falling number of pupils in schools.

★ ★ ★

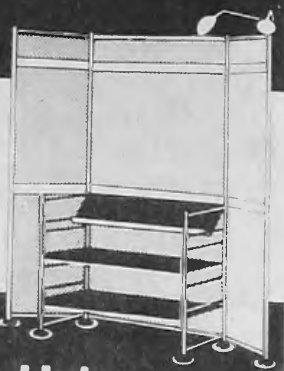
□ The estimates have been based on pay awards for employees being kept to 7½ per cent.

# DISPLAY PROBLEM? 01-449 9611

could be the answer

Ask for our catalogues on:

- Display Kits
- Showroom & Window Displays
- Conference & Reception Units
- Lighting



or visit our showrooms at:



Portable display and exhibition equipment  
Marler Haley ExpoSystems Limited Dept BCN81  
ExpoSystems House, Queens Road, Barnet, Herts EN5 4DW

*Irene Joss*

at  
THIRTY-ONE BELL LANE  
HENDON NW4

BEAT INFLATION  
20% SAVING on NEW SEASON'S  
**EXCLUSIVE BRANDED FASHIONS**

Open Sundays 10 am—1 pm Tuesdays, Wednesdays, Thursdays,  
Fridays 10 am—5 pm  
Tel: 01-203 2909  
Parking no problem

# D.L.S. PLUMBING & KITCHEN DESIGNERS

HEATING, SANITARY AND KITCHEN MERCHANTS

CALL AND INSPECT THE LATEST KITCHENS AND BATHROOMS NOW ON DISPLAY

**MODERNISE YOUR KITCHEN AND BATHROOM AT AN UNBELIEVABLY ATTRACTIVE PRICE**

OPEN MONDAY TO FRIDAY CLOSED SATURDAY  
OPEN SUNDAY 9 am—2 pm



UP TO 40% DISCOUNT OFFERED ON EQUIPMENT

**206 West Hendon Broadway  
Edgware Road, NW9.  
Tel: 202 3079 or 202 5682**

## STARCURVE

are pleased to announce the opening of their new video centre at DOWNTOWN HOUSE

1st Floor, 5 Newburgh St, London, W1 (Nr. Oxford Circus Tube)  
Tel: 01-734 9825

A FULL RANGE OF FILMS AVAILABLE FROM OUR BRANCHES.

49 High Street, Penge, SE20  
01 778 9303

234 London Road, Croydon, Surrey  
01 686 6550

294 High Street, Sutton, Surrey  
01 643 9900

Send £1 for Starcurve's bumper film catalogue refundable against your first purchase to:

**STARCURVE LTD.**  
Head Office

7 Albion Place, High Street  
South Norwood, London SE25 6HD.

Please find enclosed £1 for my Starcurve Catalogue.

Name .....

Address .....

Tel: .....

SUPER SPRING SAVINGS

# 20% DISCOUNT

on our luxurious 'CHAMPAGNE' Fitted Wardrobes with the Tinted Mirrors Including planning and installation



# GKD

The Champagne suite is a fine example of the modern mirror finish that visually adds an extra dimension to the size of any room. The clear simplicity of its styling allows it to blend with most other units — each wardrobe comes complete with hanging rail and shelving.

Save 20% on these beautiful units or make other attractive savings on our other ranges during our Spring 'Discount' Season.

GKD offer a choice of 10 styles to choose from. Each carries our famous 3 year Guarantee for quality and workmanship and after your initial deposit you don't pay the balance until the day of installation — and remember planning and installation are part of our service.



Save £255 on a 14ft run

Examples	Size	List Price	Spring Offer	Save
'Champagne Mirror'	7ft width	£638	£510	£128
	10ft 6in width	£957	£765	£192
Range:	14ft width	£1,275	£1,020	£255

Offers end May 31st, 1981 — Prices revert to list price from this date.

WHETSTONE 1376 High Road, N20 01-445-4853 (Closed Mondays)	HENDON 9 Finchley Lane, NW4 (Nr Odeon) 01-203 5767 (Closed Wednesdays)	HORNSEY 68A Park Road, N8 01-348 0493
---	--	---



See all these lovely bedrooms at your nearest GKD Showroom or use coupon for our NEW super colour brochure and price list or ring 01-515 5365 (24 hour service).

GKD — Freepost, London, E14.  
Dear Gerald Harper, please send me new catalogue and price list of the full GKD Range of Fitted Bedrooms.

Name .....

Address .....

Phone No, Home ..... Bus ..... 9

# THE RATES REPORT

budgeted for separately.

So while Barnet has kept its spending in line with inflation, there is the loss of rate support grant to be made up. More money is required by both the Greater London Council and the Metropolitan Police who levy a precept on the Borough for their services, and this year we cannot draw as much from the balances of the General Rate Fund as we did last year.

The reasons for the increase of 22p in the £ can be summarised in the following table:

	pence	%
<b>Barnet Council</b>		
Increased expenditure arising from inflation	4.88	6.1
Lower appropriation from balances	0.72	0.9
Loss of Rate Support Grant	10.20	13.0
<b>Greater London Council</b>	3.55	4.4
<b>Metropolitan Police</b>	2.65	3.4
	<u>22.00p</u>	<u>27.8%</u>

This shows that Barnet's own spending would have needed an increase of only seven per cent on last year's rate if the rate support grant had not been cut.

As can be seen the Greater London Council and the Metropolitan Police precepts amount to a quarter of the rate. Last year Barnet's contribution to

the GLC was £11,885,210, this year it will be £14,140,100, up by £2¼ million. The Metropolitan Police bill is £8,979,800, up by more than £1½ million.

The new rate of 101p is 2p less than the Council's first expectation. At the end of the second pruning session it looked as if the rate would be rising by 24p in the £. At this stage the Council took a most unusual step.

With encouragement from the Secretary of State for the Environment, Mr. Michael Heseltine, and the agreement of the Chairman of the Finance Committee, Councillor Norman Hirshfield, the Town Clerk, Mr. Michael Bennett, and the Borough Treasurer, Mr. George Hopkins, the Leader of the Council, Councillor Leslie Pym, invited one of the country's leading firms of accountants, Arthur Andersen and Company, to examine the Council's books of accounts.

They spent three days looking in depth at the accounts and at the end of that time they gave the council 'a clean bill of health'. But they also saw some of the problems faced by a borough council and it is hoped that their independent survey of the figures could lead to a more sympathetic understanding from Whitehall.

One suggestion they made was that the balances in the various funds

held by the Council could be looked at in total rather than individually and on the strength of their total balance a larger contribution to the general rate expenditure could be made.

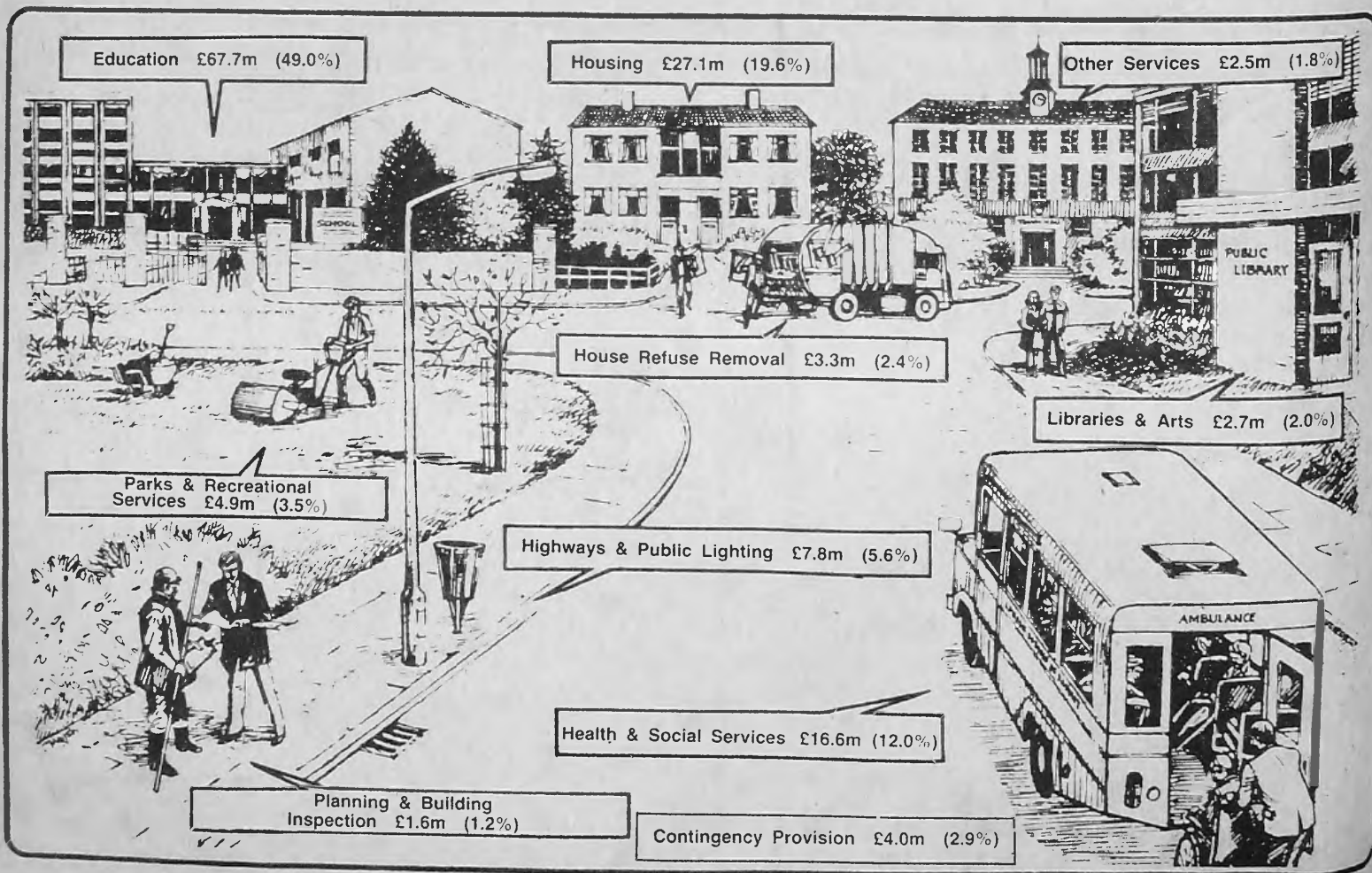
The Council has three Funds: the General Rate Fund, the Insurance Fund, and the Capital and Renewals Fund which together hold a balance of £6.2 million. When the proceeds of the sale of property is added to this the total is £10.5 million.

The General Rate Fund is now, in the opinion of the Borough Treasurer, at a minimum level and should not be reduced further. Nor should the Insurance Fund be reduced in view of the risks which face any local authority or business.

Which leaves the Capital and Renewals Fund which provides finance for such things as the replacement of vehicles and equipment. By suspending the contribution which would have been made to this fund in March this year, and by also withholding the contribution for March 1982 it has been possible to utilise £1,170,000 to reduce the rate rise from 24p to 22p.

In his report to the Finance Committee, the Borough Treasurer said: 'The rate increase recommended for consideration is the highest since the inception of the Borough in 1965 and follows in succession the previous highest increase

## The local budget



## WHERE THE MONEY COMES FROM

of 23.4 per cent in the domestic rate in 1980/81. This record increase in the rate in 1981/82 is despite reductions in the 1980/81 level of expenditure of approximately £5 million.

'Domestic ratepayers will thus have had their rate bills increased by more than 50 per cent in two years, which quite clearly demonstrates the inability of the rating system to cope with times of high inflation because unlike national taxation the system has no buoyancy and rate poundages are in no way indexed to compensate for inflation.'

One new feature of this year's rate levy is that 'Mixed' domestic and commercial properties will not all be subject to the same rate. Instead a sliding scale has been introduced.

Fully domestic properties receive a subsidy from the Government of 18½p in the £ which is why the general rate is 119.5p and the domestic rate is 101p in the £.

Under the new scale for Mixed properties the rates are:

More than half domestic — 110.3p in the £.

Between a quarter and a half domestic — 114.9p in the £.

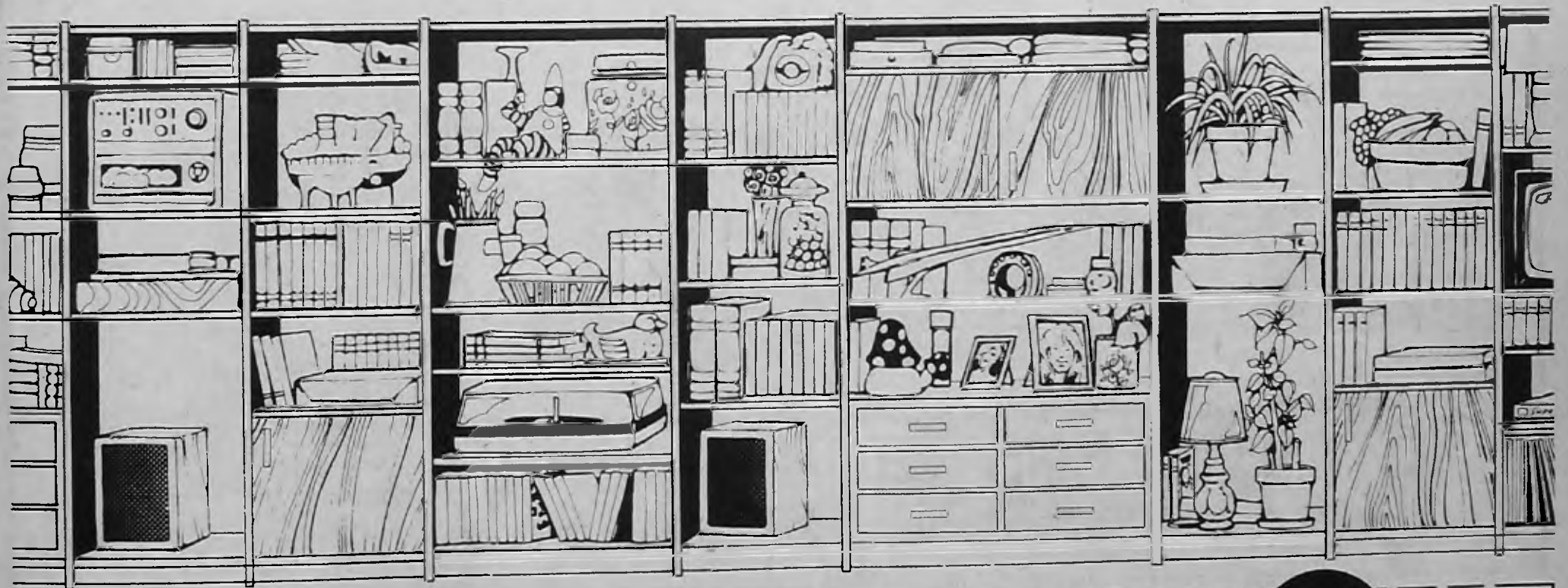
Between one eighth and a quarter domestic — 117.20p in the £.

1980/81 £	% of Total		1981/82 £	% of Total
20,835,530		Rents and other charges for services	26,509,180	
7,892,620		Reimbursement by public and local authorities	8,816,750	25½
28,728,150	23			
10,510,660		Government Grants		
5,298,100		Housing Subsidies	8,025,600	10½
		Other	6,348,800	
15,808,760	13			
80,089,800	64	Balance to be met from rates, Rate Support Grant, the General Rate Fund, balance and Domestic Rate Aid Grant	88,535,600	64
124,626,710	100		138,235,930	100

## HOW THE MONEY WILL BE SPENT

1980/81 £	% of Total		1981/82 £	% of Total
58,540,870	47	Education	67,673,690	49
25,020,100	20	Housing	27,141,100	20
12,520,320	10	Social Services	14,633,720	10½
5,997,940	5	Highways	6,804,190	5
4,700,900	4	Parks and Recreational Services	4,938,610	3½
3,148,860	2½	House Refuse Removal	3,282,890	2
2,539,550	2	Libraries	2,685,360	2
1,189,610	1	Health Services	1,345,010	1
1,344,600	1	Planning and Building inspection	1,585,700	1
824,990	½	Public Lighting	1,004,130	½
549,130	½	Sewers	581,660	½
2,449,840	2	Other Services	2,509,870	2
5,800,000	4½	Contingency provision for pay and prices increases	4,050,000	3
124,626,710	100		138,235,930	100

## Realwood storage. Basically simple. Simply beautiful.



As often as not, good design is synonymous with simplicity.

And what could be more simple than the natural look of pinewood, the basis of all Lundia home assembly furniture, complemented with a range of accessories in other materials.

The true character of Lundia is its immense flexibility throughout the home. Whether it's shelving for a hi-fi system, storage cupboards for kiddies clothes or drawers for cutlery in the kitchen, Lundia has the answer!

Now, doesn't that sound like argument enough for you to give Lundia houseroom!

# Lundia

Pinewood home fitments by Remploy

See Lundia Pinewood fitments at Remploy House Showroom or send to Remploy, Ashton Road, Oldham OL8 3JG for FREE full colour brochure.

**SHOWROOM NOW OPEN**  
Mon-Sat 9am-5pm  
Thurs 9am-7pm

Name \_\_\_\_\_

Address \_\_\_\_\_



BCN/4

# Blind hazards of the High Road

A borough-wide survey on access for disabled people to buildings and recreation centres is being carried out by voluntary groups and individuals as part of the local contribution to the International Year of Disabled People. Co-ordinating the survey are members of the Barnet Voluntary Service Council at 275 Regents Park Road, Finchley N3, in association with the Disabled Association of the Borough of Barnet (DABB). Two volunteers are blind people who undertook to check on the hazards in busy shopping parades. In our pictures John Richardson of Lambert Road, North Finchley, who is almost blind, sets out with his volunteer 'surveyor' Mrs Millicent Habenberg, to discover the problems of Tally Ho Corner. A similar survey was carried out by Mrs Joan Williams in Edgware and Grahame Park, and she was accompanied by Fiona Mabert, Barnet Council's Mobility Officer for the Blind. Anyone who would like to volunteer to help with the survey as an individual or as a group should contact Miss Chris Willcox at Barnet VSC. Telephone 346 9723 (afternoons).



Danger ahead, a seat for the bus stop is a danger for a blind man.



Even a litter bin standing proud of a lamp post is a potential obstacle.



Refuse collection day means a pile of trouble for Mr. Richardson.



Parked cars and a forest of road signs create problems at the bus station.

## NEW CITIZENS' RIGHTS GROUP FORMED

A NEW Citizens' Rights Group is being formed within the borough and their inaugural meeting, which is open to all, will be held at The Meritage Club, Church End, Hendon, on Tuesday, April 28 at 8 pm.

The speaker will be Dr. Ruth Lister, director of the Child Poverty Action Group, a national charity active in the welfare rights field.

The formation of the new group springs from a meeting, held nearly a year ago, between Mr. Alan Gorst, Barnet's Director of Social Services, members of his staff and representatives from local voluntary organisations.

They are concerned because so often members of the public facing financial difficulty do not claim the rights that they have. They struggle alone instead of taking up the financial assistance and benefits which are their due.

The first meeting led to a welfare rights course which was held in November and a small group of concerned people continued to meet and, with the help of the established Harrow Citizens' Rights Group, look into matters relating to claiming and receiving benefits and study methods of raising public awareness.

Now they are ready to form a Barnet

Group which will be a local branch of the Child Poverty Action Group, a registered charity. Copies of the CPAG constitution are available and can be obtained before the meeting from Cynthia Gregory, telephone 446 2701, or from Jack Sklar, community projects officer at Barnet Social Services Department, telephone 445 1488.

Already the group are carrying out a survey concerned with the availability of basic information and they hope to report on this at the inaugural meeting. Coffee and tea will be served from 7.30 pm — so do come along, and equally important, be prepared to be involved.

# FURNITURELAND

NORTH LONDONS **BIG NEW** DISCOUNT SUPERSTORE



OPENING IN

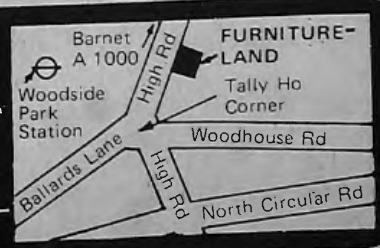
**NORTH FINCHLEY**



stockist of:- **G-Plan** etc. **Englander** etc. **Nathan** etc. **Cintique** etc. **Slumberland** etc.

- \* FREE LOCAL DELIVERY
- \* FREE REMOVAL OF OLD FURNITURE
- \* FREE PARKING

9am-8pm Mon Tue Thur Fri  
 9am-6pm Sat, Wed  
**FURNITURELAND 886/902**  
 High Rd NORTH FINCHLEY, N12  
 Tel. main: 01-446 5151



# TERRY ALLAN PLUMBING SERVICE

Member Institute of Plumbing

Private and Commercial Property Maintenance  
Bathrooms, Toilets, Drains, Wall Tiling,  
Washing Machines, Burst Water Mains,  
Water Tanks, etc.

VERY RELIABLE

27 RYDAL WAY, ENFIELD  
804 8619 969 2510



Lighten your life with a  
chandelier from Safila

Choose from our extensive range from only  
£25 to £4,600!

Come along to our showroom today and see  
for yourself how we can transform your  
home. Also view our range of onyx, occa-  
sional furniture and gifts.



**SAFILA** (GREAT BRITAIN)

2 SALISBURY PROMENADE, GREEN LANES,  
LONDON N8 0RX

Telephone: 01-802 2535

## SCRAP METAL WANTED

WE PAY CASH FOR - SCRAP

CAR BATTERIES, COPPER TANKS and PIPES,  
LEAD PIPE and SHEET, ROOFING ZINC,  
ALUMINIUM POTS and PANS, COPPER WIRE,  
BRASS TAPS, CAST-IRON BATHS and RADIATORS,  
ETC. ETC. ETC.

TOP PRICES WILL BE PAID!

NEW SOUTHGATE METALS LTD. (NSM)  
STATION ROAD, NEW SOUTHGATE, N11

Tel: 368-5444

(Entrance in goods yard — look for our crane)

Decorative Mouldings  
for  
Interior & Exterior use

Cornices, Arches, Columns,  
Niches, Ceiling Roses and  
Panelling, etc

FOR FREE BROCHURE

Tel: 01-529 7147

Parkland Reproduction  
Mouldings

4 Kings Road, Chingford E4

CARPETS AND UPHOLSTERY  
STEAM CLEANED  
IN YOUR HOME

FOR FREE ESTIMATE

Contact

COLINDALE CLEANING SERVICE

Tel: 427 1226

Member of the Federation of Master Carpet Cleaners

## OPENING APRIL 14th

DAVID GODWIN Doesn't Promise to be the  
Cheapest, just check us out!

COME AND SEE ME  
AND

ASK FOR DAVID  
Coloured Bath  
Suites

from £130 complete  
for Cash Customers



DISCOUNT  
KITCHENS  
HYGENA  
GOWER  
GROVEWOOD  
EASTHAM

DISCOUNT  
BATHROOMS  
ARMITAGE  
TWYFORDS  
IDEAL  
DOULTONS

### Godwins Top Ten Prices

15mm Copper Tube	.47
15mm Stockcocks	1.10
H/U Bibcocks	1.20
B.S.S. Ballvalves	1.15
22mm Gate Valves	1.15
Solder Wire, Rolls	2.20
Sink Mixers	13.00
Wash Mac Valves	pr. 2.20
Chrome Rad. Valves	1.40
Immersion Heaters	5.00
Prices + VAT	
Per Metre, Bundles Only	

OPEN ALL DAY 6 DAYS A WEEK  
Weekdays 8.30-5 Sats 11-3

## Godwins Plumbing Supplies

4/5 Apex Parade, Selvage Lane, Apex Corner,  
Mill Hill NW7. 959-3344

Godwins

MANY  
CONTINENTAL  
TILES  
IN STOCK

# TILE with STYLE at Edgware Tile Centre

1000s OF DESIGNS OF ENGLISH &  
CONTINENTAL WALL & FLOOR CERAMICS

We have Tilers & Plasterers available  
3 LANSOM HOUSE  
WHITCHURCH LANE  
EDGWARE

01-952 4654

Service with  
a smile

THE BEST SELECTION OF  
FRESH FRUIT, VEGETABLES  
+ EGGS DAILY  
SALADS

**Bob's**

In the interest of hygiene  
your fruit sold in these  
stores is untouched by other  
shoppers, unlike other large  
stores.

Where the Quality is high  
and the prices are low

Good quality  
Good value  
Finding the  
best is easy  
Just visit  
our stores

PERSONAL SERVICE - FREE DELIVERIES

\* 253 OAKLEIGH ROAD NORTH, WHETSTONE, N20 01-368 5007

\* 63a UNION STREET, BARNET

# WINTER FLOORING SALE STILL ON - BARGAINS GALORE



**Armstrong Floor Fashion Centre**



Choose your floor from 2,000 Cushion Floor patterns OR 1,000 Continental Ceramic Floor & Wall Tiles OR 2,000 Carpet & Carpet Tile patterns  
We specialize in Nairn, Marley, Amtico Tiles Cork, Cork-O-Plast

**Plus LOW, LOW PRICES**

**J. & R. FLOOR SERVICES LTD.**

9-16 EAST BARNET ROAD, NEW BARNET  
PHONE: 01-441 5311

## DOUBLE GLAZING

InsuGlazing from Alpine

The ultimate in double glazing in the superior white finish

For professional advice free estimate:

**A. LAJER**  
Tel: 01-452 0354



### KEY CLEANING SERVICES

For Office Cleaning Windows and all general Cleaning Free Estimates

01-205 9180

## CURTAINS FOR YOU?

*That is our business!*

We also sell: Fabrics  
Wallpapers  
Wallcoverings  
Tracks  
Local crafts

### MICHAELS FABRICS

128 High Street

Edgware, Middx. Tel: 01-951 0371

Opening hours: Mon. — Fri. 10 am to 4 pm  
Sunday morning by appointment

#### £5 DISCOUNT VOUCHER:

For all wallpaper orders over £25

**£5**

Cut this out and bring it in to us.  
Valid until 30th April, 1981

## Angel Upholstery Company Limited

(Manufacturers to the trade and the public)

For re-upholstery and repairs by experienced craftsmen. Contact Mr. Bleach on

**807 6431**

Choice of many "Bayer" plain Dralons, top-quality figured Dralons and Velours.

We also specialise in deep buttoned hide work.

# RODNEY AND DAVID GIBBONS OFFER YOU THE COMPLETE KITCHEN PLANNING SERVICE



25 Kitchen Displays from the following manufacturers: Castle, English Rose, Elizabeth-Ann, Grovewood, Hygena, Schreiber, Thomas Eastham

**STOP PRESS!**

**SPRING SALE — SAVE 15% — WE PAY YOUR VAT**

WE WILL TRANSFORM YOUR KITCHEN AT A PRICE YOU CAN AFFORD

**Kitchens Galore**

Open: Mon., Tues., Thurs., Fri., Sat. 9 a.m.-5.30 p.m. Wed. 9 a.m.-1 p.m.

112 BRENT STREET, HENDON, NW4. Tel. 202-0291

NEW SHOWROOMS NOW OPEN AT:

64/66 HIGH STREET, BARNET. TEL. 441-2606

WE ARE HERE



# Can YOU help US to help THEM?

**WHO MAKES a good foster parent?** It's impossible to generalise but if you have done a reasonable job of being a parent then the chances are that you could be a wonderful Foster Mum or Dad. Because what we need are families who can take one more child under their wing.

Civic News would like to introduce you to a group of children who all face life with a handicap. Somewhere someone could ease that by offering them a caring home. You won't be alone. Grant support is offered by your Social Services teams, and you need never be out of pocket. Please think about it and see if you can help one of these children.

## DAVID

David has special difficulties which means he goes to a special school which helps him with his particular problems. He is very happy there but like every other kid he wants a family of his own and a home where he spends his holidays with a 'Mum and Dad' who will write to him at school and visit him sometimes.

David is 13, small for his age,

quite a handful but lively and affectionate. He wants his new family to live in North London so that he can occasionally visit his mum and his gran.

If you would like to hear more about David please get in touch with Maggie Francis on 01-449 5511 or write to her at Barnet Social Services, 28/30 Station Road, New Barnet, Herts.

## PETER

Peter, aged 11, is dark haired and wears glasses. He is an old-mannish, serious little boy but is very friendly and likes to have other children around.

He is registered partially sighted, is epileptic and also has a slight spasticity which makes his co-ordination poor. He is unsteady on his feet at times and has difficulty in dressing himself. He can play on his own but needs supervision.

He is at a hospital school but needs a home for school holidays. His mother is dead and his father can only see him at weekends. It is important for Peter that his holiday foster parents are able to accept his very good relationship with his father.

If you feel you can help Peter and his father please contact

Pat or Doreen at Enfield Fostering Section, 01-366 6565, extension 2437.

## SOPHIE



Sophie, an attractive six-year-old girl, is mentally handicapped and attends a special school. Despite her handicap she gets a lot of fun out of life and specially enjoys music. She is making good progress, is able to feed herself and can stand when she has something to hold on to. Her sight is not very good but she can get round very well on her bottom without bumping into things. She can be mischievous and has a knack for getting attention.

Sophie has lived in hospital for several years. Although she does not need medical or nursing care she needs the security

and stimulation of living in a family, but her mother wants to stay in touch.

## JAMIE

Jamie was born in December, 1980, and is an appealing white mongol baby with brown eyes and dark hair. He is taking an interest in his surroundings and sleeps through the night.

Jamie is a bonny baby and has no feeding problems. He has a small hole in the heart which is not causing him any problems, but it will mean hospital visits in the years to come. He is available for adoption and we are looking for either an adoptive or permanent foster home.

If you would like to hear more about Sophie or Jamie and feel you can offer a home, please contact Lesley Campbell, Camden Social Services, Willing House, 356/364 Grays Inn Road, WC1X 8BH, tel. 01-278 4444, ext. 2243.

To find out more about fostering contact Vanessa Wiseman, Fostering Officer, Barnet Social Services, 1331 High Road, Whetstone, N20. Tel: 445 1488.

## Watch for the April Lyrids

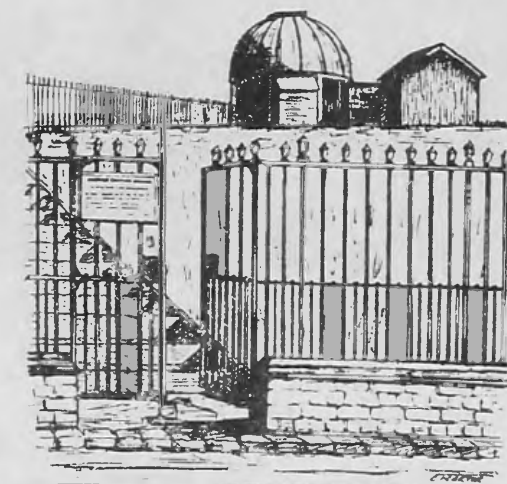
ALL OVER THE COUNTRY, Britain's astronomers, amateur and professional alike are planning to make their science and its achievements more widely known.

The spring of 1981 was chosen as it marks the bicentenary of the discovery of the planet Uranus by Britain's most famous amateur astronomer, William Herschel. Herschel's discovery marked a turning point in our understanding of the Universe. Uranus was the first planet to be discovered by means of a telescope made by Herschel himself beginning the tradition of today's amateur astronomers.

### Amateur contribution

Since Herschel's time amateurs have contributed significantly to much of our knowledge and understanding of the Universe. In fact, prior to the launching of the first space probes equipped with cameras most of our observations of the moon and planets were made by amateurs, many of them using equipment that they had made themselves.

The Hampstead Scientific Society was formed 82 years ago to promote locally an interest in all branches of Science and



The Society's observatory

from its very beginnings had a section devoted to Astronomy.

The Society is participating in National Astronomy Week by opening the Observatory at Lower Terrace, Hampstead from Monday, April 20 to Sunday April 26 nightly from 8 pm to 10 pm.

During these times members of the public are invited to use the fine six inch Cooke Refracting Telescope, a demonstrator will be on hand to show them interesting sights and answer questions

and there will be a small exhibition including examples of members' work.

On one of the nights of either the 20th, 21st or 22nd of April, it is planned to hold an all night meteor watch for the April Lyrids. This shower usually produces very bright meteors. The activity is of course wholly dependent upon the weather and will be held on the first clear night from the three dates listed above.

### Members welcome

Anyone who wishes to participate — and everyone is welcome — should contact Robin Gandy on 631 0923 nearer the date.

We hope that many people will take advantage of these opportunities to make their acquaintance with the Universe.

For further information about the Hampstead Scientific Society, The Observatory or National Astronomy Week please contact Doug Daniels on 346 1056.

Diary date: Thursday, May 14, at 8 pm. Dr Heather Cooper will speak on 'Exploding Galaxies' at Burgh House, New End Square, Hampstead.

**VISIT THE**

# TV·VIDEO·HI-FI EXHIBITION 81

Sponsored by  **JMS RADIO**

**Fri 24, Sat 25, Sun 26 April**

**Watling Ave, Burnt Oak, Edgware**



I'll be giving away 30 Seats  
**FREE** each day for a  
 night out at the  
**DOMINION Theatre**  
 Tottenham Court Road.  
 One double ticket with each  
 major purchase made during  
 the show . . . So Hurry Along

After last year's successful show, this year will prove to be even **BIGGER** and **BETTER**, with lots more to see. The very latest in TV, Video, Hi-Fi, Cameras, TV Games, Prestel, and Home Computers. A chance also to talk about the much publicised CB Radio on our special show stand. A spectacular Audio/Visual demonstration of Loudspeakers by Bose will amaze you! The latest 3D TV Games will thrill you! Just look at some of the big names who will be there:

- ★ **HITACHI • BANG & OLUFSEN • JVC • BOSE • VIDEOCLUB**
- PRESTEL • ATARI • MATTEL • SENNHEISER • GEC**
- ITT • CB RADIO • ACE-TELECOM**

Dates and times:

Friday 24th April  
 Saturday 25th April  
 Sunday 26th April

10am-7pm.  
 10am-7pm.  
 10am-4pm.

How to get there:

Burnt Oak Underground Northern Line  
 Junction 4 from M1 down Edgware Rd.  
 Bus Routes: 140-52-292-79.

**STUDIO DEMONSTRATIONS EVERY HOUR**

## TV·VIDEO·HI-FI EXHIBITION 81



**FUN FOR ALL THE FAMILY!**



**JMS RADIO tv video hi-fi**  
 Watling Avenue, Burnt Oak, Edgware  
 Sales : 952 1565 Service : 952 3895



**Expert**  
 The more we help you,  
 the more likely you are  
 to come back.



## Easter chick says 'That's Life'

This Easter chick, Buzby, was a welcome arrival in the first year classroom at Whitings Hill Junior School, Barnet. Held lovingly by Helen Bowley and Yuki Hamada, he proves the nicest sort of introduction to biology. The class have an incubator and 12 eggs were supplied by Barnet's Environmental Education Studies Centre at Byng Road. In due course they hatched and nine chicks were raised, looked after and fed by the children, with the help at weekends from school caretaker Mr. Edward Finlay. At the end of term the chicks will go to a local farm.

## Aids & interests for the disabled

THE SOCIAL SERVICES Departments and Disablement Associations of the Boroughs of Barnet and Brent invite you to a Display of Aids for the Handicapped.

This will be held in the Foyer of Barclays Bank at Brent Cross Shopping Centre from May 9 to 16 on Monday to Friday from 10 am to 8 pm and on Saturdays from 9 am to 6 pm.

★ ★ ★

THERE IS an Aids section in the gift shop at the Michael Sobell Centre, Limes Avenue, Golders Green. These aids, which are for sale, include equipment to help with walking, eating, housework, cooking, dressing and personal toilet. It is open from 10 am to 2 pm from Monday to Thursday.

★ ★ ★

CALLING disabled people interested in photography. Maria Bartha, resident photographer for CRAB (Community and Recreational Arts in Barnet) is running a series of photography workshops for disabled and non-disabled people. Their club has the name CLIC.

They meet every second Thursday at 1.30 pm at St. Mary at the Cross Convent, Hale Lane, Edgware. Beginners are welcome and experienced photographers are looked for to share their knowledge. Specially adapted camera equipment is available.

Contact Maria at Avenue House, East End Road, Finchley, tel: 346 7120.

## CHEMIST'S ROTA

### BARNET

Sundays/Bank holidays 11.30 am—12.30 pm.  
Weekdays 6—7 pm.

Sun 12.4 to Fri 17.4 Parry Jones, 61 High St.  
Sun 19.4 to Fri 24.4 Boots, 142 High St.  
Sun 26.4 to Fri 1.5 A. Wilkinson, 190 High St.  
Sun 3.5 to Fri 8.5 C. Harris, 16 Greenhill Pde, New Barnet.  
Sun 10.5 to Fri 15.5 Parry Jones, 61 High St.  
Good Friday, Parry Jones; Easter Monday, Boots; May Day C. Harris.

### EAST FINCHLEY

Monday to Saturday to 9 pm. Sundays/Bank holidays 12 noon to 1 pm (see shops for Rota).  
Cory Bros, 168 High Road  
Monday to Saturday to 7 pm.  
C. W. Andrew, 32 High Road.

### FINCHLEY CENTRAL

Weekdays 6-7 pm. Sundays 11.30 am—12.30 pm.  
Bank holidays 11 am—12 noon.  
Mon, Adrian Russell, 158 Ballards Lane.  
Tues, Newtons, 332 Regents Park Road.  
Wed, Newtons, 332 Regents Park Road.  
Thur, Garnett Pickles, 73 Ballards Lane.  
Fri, Boots, 110 Ballards Lane.  
Sun, Kings, 222 Regents Park Road.

Good Friday, Auklands, 27 Ballards Lane; Easter Monday, Auklands, 321 Ballards Lane; May Day, Adrian Russell, 158 Ballards Lane.

### FRIERN BARNET

Weekdays 6—6.30 pm. No Sunday rota.  
Mondays, Tuesdays, Thursdays, Fridays: Kingswoods, 209 Woodhouse Road.  
Mondays to Fridays 6 to 7 pm H. Haria, 25 Friern Barnet Road.

### FINCHLEY CHURCH END

Weekdays 6-7 pm. Sundays 12 noon—1 pm.  
Mondays, Tuesdays, Thursdays, Fridays and Sundays: Gordon Smith, 176 Long Lane.

### NORTH FINCHLEY

No Sunday rota. Weekdays 6—7 pm. Bank holidays 12 noon—1 pm.

Mon 13.4 to Fri 17.4 C. Sampson, 839 High Rd.  
Mon 20.4 to Fri 24.4 Auklands, 321 Ballards Lane.  
Mon 27.4 to Fri 1.5 A. Leiter, 601 High Rd.  
Mon 4.5 to Fri 8.5 C. Sampson, 839 High Rd.  
Mon 11.5 to Fri 15.5 Auklands, 321 Ballards Lane.  
Good Friday, C. Sampson; Easter Monday, Auklands; May Day, C. Sampson.

### WHETSTONE & SOUTHGATE

Sundays/Bank holidays 11.30 am—12.30 pm.  
Weekdays excluding Saturdays 6—7 pm.

Mon 13.4 to Sun 19.4 Aldington & Jones, 23 Hampden Sq., N20.  
Tues 21.4 to Sun 26.4 Co-op, 245 Oakleigh Rd Nth, N20.  
Mon 27.4 to Sun 3.5 H. J. Shore, 87 Russell Lane, Whetstone.  
Tues 5.5 to Sun 10.5 E. Lipkin, 5 Dollis Pde, Totteridge Lane.  
Mon 11.5 to Sun 17.5 C.H.R. Chemists, 1292 High Rd, N20.  
Good Friday and Easter Monday, C.H.R. Chemists; May Day, E. Lipkin.

### MUSWELL HILL

C. S. Abbott, 101 Colney Hatch Lane, open Mon, Tues, Fri, to 6.30 pm; Wednesday to 6 pm. Closed Thursday afternoon.

Muswell Hill Pharmacy, 110 Fortis Green Road. Open Monday to Friday, to 7 pm. Rota Sunday, April 26.

### HENDON

Monday to Friday to 7.30 pm. Saturday to 6 pm.  
Sunday 10 am to 1 pm.  
John Wilson, 19 Vivian Avenue.

### GOLDERS GREEN

Weekdays including Sundays (except Thursdays\*) 6—7 pm. Sundays/Bank holidays 12 noon—1 pm.  
Mon 13.4 to Sun 19.4 Warman Freed, 45 Golders Green Rd.  
Mon 20.4 to Sun 26.4 Landys, 1191 Finchley Rd.  
Mon 27.4 to Sun 3.5 Boots, 638 Finchley Rd.  
Mon 4.5 to Sun 10.5 G. S. Raivid, 229 Golders Green Rd.  
Mon 11.5 to Sun 17.5 G. John, 769 Finchley Rd.  
Good Friday Warman Freed; Easter Monday, Landys; May Day G. S. Raivid.

### BURNT OAK & EDGWARE

Weekdays 6—7 pm. Thursdays 5—6 pm.  
Bank holidays 11 am—12 noon.  
Mon 13.4 to Thurs 16.4 Heron Pharmacy, 193 Edgware Rd, The Hyde\*  
Tues 21.4 to Fri 24.4 Derek Clarke, 85 Station Rd, Edgware\*  
Mon 27.4 to Fri 1.5 Heron Pharmacy, 6 Silkstream Pde, Watling Avenue, Burnt Oak.  
Tues 5.5 to Fri 8.5 Heron Pharmacy, 193 Edgware Rd, The Hyde\*  
Mon 11.5 to Fri 15.5 Derek Clarke, 85 Station Rd, Edgware.  
Good Friday, Easter Monday and May Day: Derek Clarke.

\*Not Thursdays. †Derek Clarke also open Mon—Fri to 9 pm. Sunday/bank holidays, 10 am to 1 pm. Doshi Pharmacy, 121 Burnt Oak Broadway, also open weekdays to 7.30 pm, Saturdays to 6.30 pm.

### Emergency Dental Service

The Emergency Dental Service operates on Saturdays, Sundays and Bank Holidays, 9.30 am to noon.

Hendon and Edgware: phone 205 0337.  
Finchley and Barnet: phone 446 1222.

**AND NOW — THE AMAZING  
GOLDEN SUNBEAM U.V.A. 3000  
HIGH SPEED FACIAL TANNING  
MACHINE**

This Raparound Unit gives a beautiful even tan to head & shoulders without getting undressed. And of course our Superior Sun-Beds with the UNIQUE SIDE PANEL give full body coverage. Air Conditioning keeps you cool and relaxed whilst you Tan



ONLY AT  
**31 BELL LANE, HENDON NW4**  
TELEPHONE 203 2909  
WEEKDAYS BEFORE 7.30 pm  
LICENCED BY LONDON BOROUGH OF BARNET



**MARTIAL ART**  
ENHANCE YOUR MENTAL  
AND PHYSICAL FITNESS  
*LEARN*  
**TAE KWON DO**  
AT NORTH FINCHLEY  
TRINITY CHURCH HALL  
BALLARDS LANE, N12  
(Entrance in Dale Grove)  
TUESDAYS & THURSDAYS from 7 pm  
Beginners Class start every month  
Details: Tel. (77) 50635  
S.W. PAN 3rd DAN

**SAMPLE HANDBAGS**

By Marion Lerner  
(Direct from Factory)

**NEW SPRING FASHIONS  
NOW IN STOCK**

Handbag repairs  
and renovations

183 Bramley Road  
Oakwood Shopping Parade, N14  
363 0909

Closed all day Thursday

**BRING THE CINEMA  
TO YOUR TV!**

**A SELECTION  
OF  
OVER  
350  
FILMS**  
including  
some of the  
following:  
**JAWS,  
THE EXORCIST,  
GREASE,  
SATURDAY  
NIGHT FEVER  
THE  
DEERHUNTER  
ONE FLEW  
OVER THE  
CUCKOOS NEST,  
CONVOY  
SCUM**

**VIDEO FILMS**

**JOIN  
OUR  
CLUB**

**EXCHANGE**

**FILMS**  
for only  
**£3**

**NOW OPEN AT**

**\* 148 Ballards Lane \***  
**London, N3**  
**349 4341**

THE UNIQUE WORLD OF

# les Meublés

CONTINENTAL  
ARE PLEASED TO ANNOUNCE THEIR NEW PRESENTATION  
FEATURING —

PINE FURNITURE From DENMARK, WATFORD & HACKNEY  
CANE FURNITURE From ITALY, CHINA & LEICESTER  
POTTERY From ITALY, JAPAN, PORTUGAL & KENT  
OVEN TO TABLEWARE From FRANCE & STAFFORD  
GIFTS From AMERICA, CHINA & PIMLICO  
CARDS From AMERICA & WEMBLEY  
WRAPPING PAPER, LIGHTS, PINWARE, CANEWARE,  
GIFTS, ACCESSORIES & THINGS FROM ALL AROUND THE  
WORLD

**YOU'VE READ THE COMMERCIAL  
— NOW SEE THE SHOP!**

*The things that make a house a home*

AT 11 BALLARDS LANE, N3  
(Opp. Finchley Central Station)

STILL AT  
77-85 FORTIS GREEN ROAD, N10  
01-444 0424

A WORLD OF FASHION  
where value is really in Fashion

## Mavis Castle

For the well-dressed woman  
New Spring range in stock

**EXCLUSIVE LADIES' FASHIONS  
FROM TOP CONTINENTAL HOUSES**

1 ASHBOURNE PARADE, FINCHLEY ROAD, NW11  
PHONE 455 2229

STEP OUT SMARTLY STYLED  
& DRESSED BY

## Ronnie Castle

For the well-dressed man  
Complete Spring range now in stock

**STOCKISTS OF TOP CONTINENTAL  
SUITS JACKETS, TROUSERS,  
SHIRTS and ACCESSORIES**

1179 FINCHLEY ROAD, TEMPLE FORTUNE, NW11  
PHONE 455 4083



Michael Foster, chairman of Barnet Remap, checks the tray which his group designed and made to fit the Zimmer frame of Mrs. Jean Littman of North Finchley. Mrs. Littman is physically handicapped and has her own flat.



John Flowers, of Mill Hill, working on camera adaptations. He is enlarging the controls to allow the camera to be used by handicapped photographers.

# REMAP—skills help disabled with special needs

THE TROUBLE with people is that, unlike peas in a pod, they come in all shapes and sizes. For most of us that just means trying to get clothes that fit, or cars with enough leg room. For anyone disabled the problem is far more serious.

Adapting a wheelchair to meet a particular requirement; working a camera with arthritic or trembling hands; trying to cope with running a house when your movements are confined to walking with a zimmer frame — these are problems which only the disabled have to face. And only they know how a simple gadget or adaptation can change their lifestyle and give them a new won freedom.

## Special aids

Through the Social Services and Area Health Authority a wide range of special aids can be obtained for those who have some disability. Special door handles and taps can be fitted; rails used to help lift or steady; scissors, knives and tools are fitted with easy-grip handles.

The difficulty is that manufacturers need a mass demand before they can put these aids into production so the individual with a particular problem has to make the best of a product designed for general use.

Which is where an organisation called Remap can help: the Rehabilitation Engineering Movement Advisory Panels.

Five years ago a group of men and women with technical skills got together to form the Barnet branch of Remap — a voluntary service in which engineers use their skills to help disabled people in adapting equipment to meet special needs.

They meet about once a month at Barnet General Hospital, and the group includes professional engineers, doctors, occupational therapists, social workers, electricians and retired professional men and women.

The problems are usually brought to the Panel by a Social Worker and after a group discussion, during which ideas are put forward, the member, or members, with the appropriate skills take the problem home and work on it. Sometimes a visit to the disabled person is made by the engineer to investigate possible

problems involved in providing assistance, which must not conflict with the medical, or other, requirements.

If no solution can be found locally then a search is made in the National Remap case lists to see if any branch has met similar problem.

The problems can be simple or complex. For example, can a camera be modified so that the controls are simplified? How do you make a brake for a wheelchair which can be operated easily with the use of only one hand? How do you adapt a zimmer frame so that the user can carry a tray and house cleaning equipment?

Mike Foster, a chartered mechanical engineer and branch chairman, has been working on the wheelchair problem for several weeks and he has been helped by students at Barnet College who have made up the parts for him.

Another member has been working on the camera controls. This will help disabled youth club members take up a new hobby of photography.

## On sale

One idea designed by the Remap team is a shopping trolley which becomes a seat so that an elderly or partially disabled person can cope with the shopping and sit in queues, bus stops or even take a rest on the way home. This is now being manufactured for sale on the open market by SML of Barnet.

Most ideas, however, are specifically for an individual. One member whose hobby is wine-making, used a standard syphon assembly to make a drinking apparatus for a wheelchair patient unable to use her hands. She is now able to take her drinking pack with her attached to her wheelchair wherever she goes.

One job has not yet been solved. A young guitarist who has lost the use of his right arm wants to continue playing the guitar and needs a specialist adaptation. After a group discussion, the problem was taken up by one of the panel members, and it is at present being worked on as a project by students at a London University.

'When you have a skill it seems only right to try and put that skill to good use', Mike Foster told



Members of the Ramap group — engineers who use their skills in voluntary service at their monthly meeting at Barnet General Hospital.

Civic News. 'We are a national network of professional engineers giving our time and skill on a voluntary basis. We have no funds so we sometimes have to make a small charge for materials

— but that is all. The jobs we are given test our design skills, and as 1981 is the International Year of Disabled People, we are likely to experience an increase in jobs, not only in quantity but also in

difficulty. The skills we possess will be in even greater demand, but I am confident that the members of the panel working on the various problems will come up with satisfactory solutions.'

Further details about Remap can be obtained from:

Michael Foster  
149 Squires Lane  
Finchley, N3

Town &  
Country Gardening

# LARGEST SELECTION IN NORTH LONDON OF LAWN MOWERS, RIDE ON MOWERS, MINI TRACTORS

(FULL SERVICING, REPAIRS & SPARES SERVICE)

GARDEN FURNITURE, POOL FURNITURE  
& EXCLUSIVE IMPORTED FURNITURE  
SPECIALITY GARDEN UMBRELLAS  
GARDEN ORNAMENTS & LIGHTS  
GARDEN EQUIPMENT  
SPECIAL OPENING OFFERS



**SOUTHCHASE (LONDON) LTD.**  
245-247 CHASE ROAD,  
SOUTHGATE, N11  
Tel: 01-882 4722-4723



# Letters to the editor

## RED CROSS WEEK

During this Year of Disabled People and during every year, trained Red Cross VADs will be organising or assisting in clubs throughout the Borough of Barnet. These clubs are for handicapped people of all age groups, to help them lead better, more creative lives. Examples are the Octopus Swimming Club, the British Polio Fellowship Club and handicraft clubs. Local people who are ill, or who are too old to cope without a bit of help, are also assisted by the Red Cross. And there are Red Cross first aid and basic nursing courses as well as first aid coverage at many public events.

But all these voluntary activities need a great deal of money. So, unless you can give your help, the Red Cross simply will not be able to carry on with this invaluable work.

Here are some suggestions.

Why not collect, during Red Cross Week (May 4-10) or sell flags on Flag Day? It's more fun than you would think. Or you might help in other fund-raising projects, although Red Cross Week is the most important. And of course direct cash donations are always welcome.

So don't hesitate. Get in touch with one of the following Red Cross Centre Organisers — Florence Marsh, MBE, 10 Downage, Hendon, 203 0567; Ann Painter, 172 Regents Park Road, Finchley, N3, 346 2588; Pat Fleming, St. Albans Road, Barnet, 449 8969.

I almost forgot to mention. If you do get involved with the Red Cross, you'll have plenty of fun as well as helping those less fortunate than yourself.

Alan Simpson  
(Press Officer, Hendon Red Cross),  
83 Watford Way, Hendon.

## Year's free membership

The International Year of Disabled People 1981, which is arousing widespread support in Great Britain, was originated by the United Nations. Dr. Kurt Waldheim, the Secretary-General, said at the opening of the year: 'Disabled persons have the right to full participation in the life and development of their societies. It is our obligation to enable them to enjoy the right.'

The United Nations Association of Great Britain is engaged in many activities to raise support for work among disabled people and the Barnets Branch recently sent a first contribution to the 'Aid for Blind Children' in Bangladesh.

Our interest however, is not only abroad. We think there may be disabled people who could find mental stimulus and new contacts near at hand, through our association. The Barnets Branch of the association is therefore offering a year's honorary membership (that is free of subscription), to any disabled person living in High, New and East Barnet, Whetstone or Friern Barnet, who cares to get in touch with our membership secretary, Mrs M. Mutch, 30 Oakleigh Gardens, Whetstone N20 9AB (tel. 445 2094). We run a varied programme throughout the year.

Our annual meeting on April 15 will be addressed by UNA's London Regional Officer, Mrs Myriell Davies, who recently

spent two weeks in Bangladesh to see the work among blind children.

The United Reformed Church, Oakleigh Park North, Whetstone, where the meeting is to be held at 8 pm, is on the level and accessible to wheelchairs. Fuller details can be given to any disabled people who take up our offer of free membership for 1980-81, or indeed to any member of the public who is interested.

Stephen Mutch (Secretary),  
The Barnets Branch of UNA.

## Thoughtless

Grass verges have long been a feature of many residential roads in the Borough of Barnet. They are increasingly threatened by motor vehicles which mount the kerb, carve deep furrows in the grass and park there for long periods.

I am particularly concerned about the abuse of the grass verges on both sides of Friary Road, North Finchley, especially opposite Friary Park. The condition is getting noticeably worse and the passer-by must be increasingly disturbed at the sight of grass ploughed up by thoughtless motorists.

Another problem is that dog owners let their dogs run free over the grass or wilfully 'exercise' them with unpleasant results.

Can't we all resolve to do all we can to remedy these conditions.

Name and address supplied.

## Cancer research

Last year the Hendon and District Functions Committee of the Cancer Research Campaign provided £23,000 to buy one specific piece of equipment — a machine which will be a very important tool in the work carried out by Dr. Weiss, the Director of the Institute of Cancer Research at a new laboratory at the Chester Beatty Institute in Fulham Road, London.

This year the committee are hoping to better that amount and we will be grateful for any tombola gifts, competition prizes, donations and, of course, as many guests as possible to attend our Dinner and Ball which is being held in the fabulous new Rainbow Room, The Rainbow Suite, 99 Kensington High Street, London W8, on Sunday, May 17. Tickets are £20 each including pre-dinner drinks wine with dinner and music by the Paul Bailey Sound.

If you can help or would like to attend please telephone Barbara Freedman on 952 7383 or Rita Davies on 203 1294.

Barbara Freedman,  
3 Hillside Drive,  
Edgware, Middlesex.

## Day centre

Your readers might be interested to know about Derwent House, 22 Queens Road, Hendon, which is a private Day Centre for the elderly.

It is open from Monday to Friday from 10.30 am to 4 pm. Morning coffee or tea is served. Lunch, which is varied and freshly cooked in the modern kitchens, is at 12.30 pm and afternoon tea with sandwiches and cake is also served.

The surroundings are luxurious with central heating and the large garden faces Hendon Park.

There are all facilities for the elderly and mildly handicapped, including cards, chess, dominoes, crafts, music, television and a library. Everything is inclusive for 50p a day and transport can be arranged in certain cases, for an extra but nominal charge.

If anyone is interested they should phone for details: 202 6494.

Mrs S. S. Fishman,  
Derwent House,  
Hendon.  
(On behalf of the owner  
Mrs V. Hyams)

## Trigger appeal

I am sure that your readers are aware that the Mayor of Barnet's appeal this year is for the Trigger Riding Group for the Disabled for which thousands of pounds has already been raised. To help us swell this fund even more I am organising a competition helped by many local organisations which are selling tickets.

To these unpaid helpers I would like to extend my grateful thanks together with the information (which should make their task of selling so much easier) that the competition now features goods worth nearly £700.

Finally my small army of volunteer ticket sellers needs all the help it can get. If anyone is able to sell tickets, a book of 10 costs £1, contact me and I can let them have tickets by return of post.

Janet Hildreth,  
P.R. Manager,  
Argos Distributors Ltd.  
Tel: 951 1363, ext 69

## Reflection on cyclists

When will cyclists and motorcyclists stop bleating about supposed injustices meted out by the motorist? While I appreciate the hazards of riding on two wheels — I regularly ride a moped and used to ride a bike — the riders would do well to remember that they are subject to the law of the land.

In my view, many cyclists out after dark do not have lights showing on their bicycles. They make no attempt to wear clothing or reflective aids which can be seen in daylight let alone the dark.

Reflective Sam Brownes or tabards are not expensive.

Don't blame car drivers if you cyclists can't be seen because you are wearing black jackets and trousers on unlit bicycles.

A final thought. When cyclists start paying to use the roads, then they will have cause to complain.

Michael O'Connell,  
59 Ridgeview Road, N20

Letters to the editor should be sent to: Civic News, Town Hall, The Burroughs, Hendon, NW4 4BG.

# WALKER'S NEW SEA FOOD RESTAURANT

IS OPENING ON APRIL 1, 1981



Edith and Len Walker offer an aperitif and half bottle of House Wine from April 8 to 15 to welcome you to their newly created luxury restaurant.

Air conditioned and seating 60, specialising in French classical cuisine and service of the highest standard. Our large variety of fresh fish includes most shell-fish and some meat dishes.

Although designed principally for leisurely dining we cater for early diners, from 6.30 pm, who require speedy service.

Open for Lunch 12 noon. Last orders 2.30 pm

(Executive Menu available)

Dinner 6.30 pm. Last orders 10.30 pm

Closed Sunday evening and all day Monday

BOOK NOW TO AVOID DISAPPOINTMENT

458-5317/458-4750

## WALKER'S Restaurant Ltd

8/9/10 MONKVILLE PARADE  
(near Henlys Corner), Finchley Road, NW11

VIDEO  
VIDEO  
VIDEO  
VIDEO

WEDDINGS  
FROM £75.00  
TAPES VHS E180  
£8.10

ANY VIDEO REPAIRS  
UNDERTAKEN

Engagements • Christenings  
Barmitzvahs • Children's Parties  
or that Special Event

LET US PUT YOU IN THE PICTURE

Telephone for details: 01-278 9246

# OMEGA

FROM OUR FACTORY DIRECT TO YOU!

WE MAKE WHAT WE SELL!



DESIGNED TO PLEASE — MADE TO LAST  
NOW BUY REPRODUCTION  
FURNITURE FROM OUR  
ASSOCIATED COMPANY  
AT FACTORY PRICES!

- \* A choice of over 60 Suites and Units
- \* Made to measure — at no extra cost
- \* Higher backs, varying widths, depths, etc
- \* A choice of over 6,000 top-quality materials
- \* Re-cover service free estimates
- \* Fully-guaranteed after-sales service
- \* Free delivery
- \* Low-interest personal loans (14 1/2% per annum)
- \* Access Barclaycard welcome

## OMEGA FURNITURE

DELAMARE ROAD  
CHESHUNT, HERTS  
Tel: Waltham Cross  
26686/27017

Showrooms open:  
9 am-5.30 pm. Mon.-Fri.  
9 am-4 pm. Sat.  
10 am-2 pm. Sun.

### BRIC-A-BRAC and FINE LACE

Find us at the Mill Hill  
Craft and Antiques Market  
Every Saturday  
9 am to 5 pm

At the  
Old Daws Lane Swimming Pool  
Plants, crafts, antiques,  
gifts, dolls and art  
at Ridgeway Cottage Industries

### CHERRY CHILDE SCHOOL OF DANCING

Golders Green

BALLET, TAP & MODERN

Inquiries:  
Phone 458 6962  
458 5021

OUR OWN  
WORKSHOP  
ON THE  
PREMISES FOR  
RING SIZING  
REMODELLING &  
JEWELLERY  
REPAIRS

56 Golders Green Road  
NW11  
Phone: 01-458 5054



### MIKE VARNEY'S CHASESIDE CLINIC

Mike Varnery,  
Therapist of  
Tottenham Hotspur F.C.



#### PHYSIOTHERAPY

All forms of modern physiotherapy and rehabilitation are offered at competitive prices. Specialising in sports injuries. Be treated by qualified experts.

#### SLIMMING CLINIC

(Medically supervised)  
We offer daily keep fit in our gymnasium

#### U.V.A. SUNBED

7 sessions for £20

A Mediterranean tan for a fraction of the cost

#### REMEMBER

You don't have to be a sportsman or woman to take advantage of our clinic

101 CHASE SIDE  
ENFIELD, MIDDX.

01-367 0321  
between 10 am and 12 noon  
and after 3 pm

# PERRY OF ENFIELD

598 HERTFORD ROAD, ENFIELD, MIDDX.  
OPEN MON-SAT 8.30-5.30

HALF DAY  
WED.

SUNDAY 9.00-12.00

ZINC 8' x 3' 10 GAUGE £8.70 11 GAUGE £9.50 12 GAUGE £11.50	CAST-IRON BATH SUITES COMPLETE WHITE £234.00 COLOUR £269.00	ACRYLIC BATH SUITES COMPLETE WHITE £135.00 COLOUR £159.00	36" x 18" INDIRECT CYLINDERS £29.00	COPPER TUBE PER 30 MTS. 15 MM £14.00 22 MM £27.00 28 MM £36.00
CORNER BATH SUITES COMPLETE £254.00	BARLO RADIATORS LESS 40% — 2 1/2%	70/50 STORAGE £17.00	PENTHOUSE RED ACRYLIC BATH SUITES COMPLETE £254.00	HUGE DISCOUNTS ON ALL BOILERS
UNREPEATABLE OFFER! ACRYLIC BATH SUITES COMPLETE WITH C/C SUITE, BATH MIXERS, PLASTIC PANEL £198.00 MOST COLOURS	COMPLETE 42" x 21" SINK UNIT £59.50 INCLUDING TAPS AND WASTE	42" x 21" STAINLESS STEEL TOPS £21.50	42" x 21" STAINLESS STEEL TOPS £24.50 SINK MIXERS FROM £12.50	

TEL: 804 6776 804 3013/4 CENTRAL HEATING INSTALLATION ALL PRICES  
ARRANGED (CORGI APPROVED) + VAT

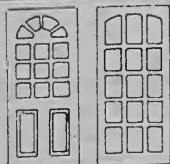
# TIMBERCLAD

204 WATF RD ROAD, CROXLEY GREEN  
Near Croxley Met Station.

TEL:  
WATFORD 32992

HARDWOOD  
DOORS  
OVER 12  
DESIGNS  
ON SHOW

Kentucky  
£49.50



£46.00  
Dakota  
Internal  
£41.40

### INTERNAL HARDWOOD DOORS

6 and 8 panel, only £47.72  
Also fibre panelled doors  
at £28.75



LOUVRE DOORS  
MAHOGANY  
PINE & RAMIN  
PANEL DOORS  
WALL CLADDINGS

10% off  
R.R.P. on  
PLYDEL  
WALLBOARDS  
Prices include 15% VAT

## GARDEN SERVICES

## DO-IT-YOURSELF FENCING CENTRE

EXCELLENT VALUE

Rustic Lap Panels	Wooden Posts	Concrete Posts
6 x 6 £7.50	8' £2.95	8' £4.95
6 x 5 £6.95	7' £2.50	7' £4.75
6 x 4 £6.50	6' £2.35	6' £4.50
6 x 3 £5.95	5' £2.25	5' £4.25

All prices inclusive of V.A.T.  
Erected fencing available to view  
Delivery service available

Tel. 01-882 1603 01-882 4495

FOR PROMPT ATTENTION

TRADE ENQUIRIES WELCOME

## BARGAIN SHEDS OFFER

Example: 6' x 4' £98.50  
including delivery and erection.  
All other sizes and types available.  
Also all fencing materials.

H. W. Robinson Enterprises Ltd.

24 Stacey Avenue,  
Edmonton, N18  
Tel:  
807 1118/3445  
Mon.—Sat.  
8 am—5.30 pm



Artstone  
Gardens Centre,  
9 High Road,  
Broxbourne  
Tel: (61) 41313  
7 days a week  
10 am to 5 pm

## EVERYTHING FOR THE GARDEN

ALL PLANTS, TREES  
SHRUBS, DUTCH BULBS  
SWIMMING POOLS AND CHEMICALS  
GARDEN FURNITURE, PAVING  
FENCING, SHEDS, ORNAMENTS  
FLOWERING PLANTS AND  
GREEN PLANTS FOR THE HOUSE

PERSONAL SERVICE, QUALITY GOODS  
REASONABLE PRICES

OPEN 7 DAYS A WEEK UNTIL DUSK

## THE DUTCH NURSERY

### BELL BAR, HATFIELD

TEL: Potters Bar (77) 53372



## CHISWELL POOLS

Tel. King's Langley 62908 or St Albans 52547

"CASCADE AWARD OF EXCELLENCE"

Sole area distributors  
**CASCADE**

The world's largest  
manufacturers of  
vinyl lined pools

We supply

Installation, DIY Kits from £800 ex VAT, heating, maintenance,  
chemicals accessories and full advisory service  
Saunas, Sunbeds and Derbyshire paving stones also  
available

Come and see our Pools and Spa  
Baths. Also the new Portable Spa —  
try it if you desire

VISIT OUR SHOWCENTRE AT: AYLLETS NURSERIES  
On A405 North Orbital Road  
London Colney, St Albans, Herts. Tel. Bowmans Green 22585  
and at Mill Hill Circus, NW4



## NORTH WEST LONDON'S LEADING GARDEN CENTRE

THE LARGEST SELECTION OF CONTAINER GROWN SHRUBS  
TREES — RHODODENDRONS — AZALEAS — ERICAS  
ALPINES — CONIFERS — HERBACEOUS and BEDDING  
WITHIN 10 MILE RADIUS

Open Monday to Saturday 9 am—5.30 pm  
Sunday 9.30 am—2 pm

Access and Barclaycard Welcome

## RIVERSIDE NURSERIES LTD

Hendon Lane, Finchley, N3 3ET  
01-349 9912

## SPRING INTO GARDEN IMPROVEMENTS

Suppliers  
of building  
materials  
for the trade  
and D.I.Y.

BRICKS, BLOCKS & CEMENT  
PLASTERBOARD & PLASTER  
SAND & BALLAST- LOOSE  
OR PRE- PACKED  
WATERPROOFERS &  
ADHESIVES  
ROOFING TILES-ROOFING  
FELTS  
COLOURED PAVING SLABS  
WALLING BLOCKS  
LARCH-LAP FENCING  
CONCRETE & TIMBER  
POSTS-CONCRETE SPURS  
WOOD PRESERVERS  
SHOVELS  
HEAVY WHEELBARROWS

PLUS MANY OTHER ITEMS

SPECIAL OFFERS EACH  
MONTH

## WALLING & PAVING

All necessary materials

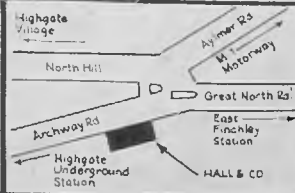


Open Daily Mon.-Fri.: 8:00am-12:45pm  
2:00pm- 4:45pm

Saturday morning: 8:30am-12:00pm

AMPLE CAR PARKING FACILITIES

**HALL & CO.**  
Building Materials Suppliers



WELLINGTON  
SIDINGS,  
ARCHWAY ROAD,  
HIGHGATE, N.6.  
01-348 2251/7

# SCOUTING TODAY IN BARNET

ONE OF THE MOST active — and that is a well chosen word — youth groups in the Borough of Barnet must surely be the Scouts. There are more than 3,000 of them in the borough, members of 59 Scout Groups and their interests range from aviation and angling through forestry and horsemanship to meteorology, music to world conservation and international friendship.

The image beloved of *Punch* of the Scout, busily tying knots, helping reluctant old ladies across the road, or camping in a remote cow field, is long past, although the Scouts do preserve their traditional skills of woodmanship, camping and first aid. But today's Scout has 101 interests from the time he becomes a Cub Scout at the age of eight to the day he completes his Venture Scout service at 20.

The Movement started in 1907 when Lord Baden Powell, author of *Scouting for Boys*, held a camp at Brownsea. From that point the Scout movement seemed to have a self-generating momentum. And right back in those early days boys in Barnet were enthusiastically forming Scout troops. Among those who can trace their unbroken history back to the founding years are the 1st Barnet and the 8th Hendon.



Planning session: left to right, Michael English, Bob Wicks, Ron Lush and Jumbo Davis.

Today the Borough Commissioner, Michael English, liaises with the three District Commissioners: Ron Lush for Barnet and District; Peter 'Jumbo' Davis for Finchley, Friern Barnet and Golders Green, and Bob Wicks for Hendon and Edgware.

Barnet Borough, together with Enfield and Haringey, form the 'County' of Greater London North, one of seven London 'counties'.

'I know of no other youth organisation which offers such a range of interests,' Michael English told Civic News. 'In this borough we have groups doing parascending and gliding; we do a

lot of community service and collect money for charity; we have climbing, sailing, camping and our Venture Scouts organise expeditions which can take them anything from 50 to 150 miles away from home.

'The accent is very much on activity and service with the members of the various Scout groups deciding with their leaders which activities they will take up. Although we are a uniformed organisation there is a strong democratic streak in the way we work and the individual takes a lot of the initiative, especially among the older Scouts.'

(continued on next page)

## GRANTS TO WARM YOUR HOME

Also available for industrial, commercial and all local authority works  
ie, factories, shops, churches, schools, hospitals, etc.

Associate Members,  
Eastern Counties  
Region

### LOFT INSULATION

supplied and fitted by  
experts to British  
standard 5803.

All work Fully  
Guaranteed and  
Insured



### FREE QUOTATION

Provided your roof is completely uninsulated, a grant of 66% or £65, whichever is the lower, is available.

If you are a senior citizen with a low income, you may be entitled to a 90% grant or £90 towards the cost.



**INSULATE NOW —  
BEFORE NEXT  
WINTER**

**YOUR HOME WILL  
BE COSIER TO LIVE  
IN AND MORE  
ECONOMICAL  
TO HEAT**



All property considered —  
Terraced, Semi-detached, Bungalows

Example of size :

**450sq.ft...OVERALL COST £39.00**  
16" JOISTS  
Other sizes on request

Your local Council pays the balance.  
All prices approximate and includes  
supply and fitting.

### NO HIDDEN CHARGES

- \* Add £5 for cold water jacket cover when necessary.
- \* Add £5 for hot water jacket when necessary.
- \* Add 50p. per sq. metre for pipe lagging.

Any client wishing to take  
advantage of this offer

please telephone :

**207 2490**

OR WRITE

### THEX INSULATION SERVICES

53 BAIRSTOW CLOSE,  
BOREHAMWOOD, HERTS.





AIR RESEARCHER



AMBULANCE



MASTER-AT-ARMS



(continued from previous page)

As a Borough, Barnet is fortunate in its facilities for Scouting. There are Scout sites at Frith Lane, Mill Hill East, and Northern Heights off Edgwarebury Lane. There is the Council-owned site at Moat Mount, there is Danesmead near Cheshunt, which is partly owned by Barnet District, and within a 10-mile radius there are at least six major camp sites, all of which can be used by local groups.

Next year, the 75th Anniversary of Scouting, the seven London Counties are all holding international camps and Greater London North will hold theirs in Hertfordshire.

Like so many organisations today the Scout movement is looking for more volunteers to help run the groups, from the Cubs to the Venture Scouts. Back to Mike English:

In the old days many of the senior scouts automatically become assistant leaders. Today the demands of further education and careers mean that young men have to concentrate on their work and gaining qualifications. But I would like to see former Scouts, who have



The 3rd New Barnet at church parade outside St. Mark's Church.

Raph Kenzie 8th Medal of Merit

become established in their jobs, come back to the movement and train to become Leaders.

Many Scout Leaders were not in fact Scouts themselves, but have been attracted to the movement because it has a sense of fun combined with

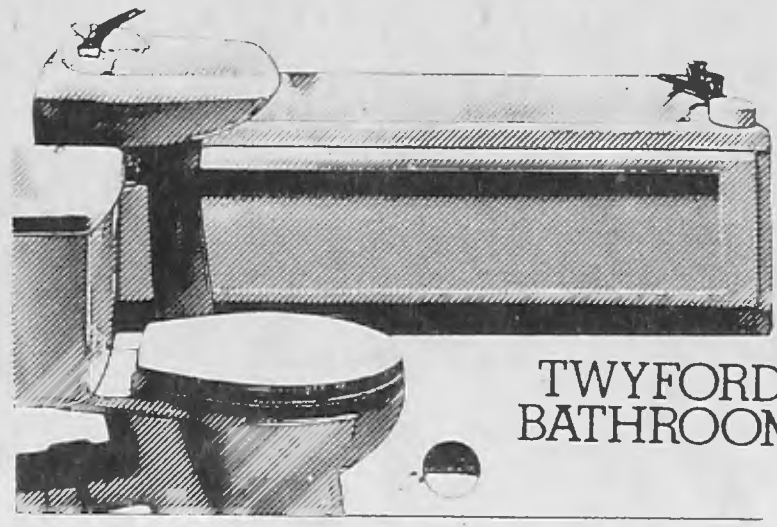
purpose. And many people are helpers or instructors. With such a wide range of activities no Scouter can possibly be expected to know every subject and be able to teach his troop so the movement is always on the look-out for men and women with special knowledge who can

# Bond & White Ltd

# APRIL SPECIALS

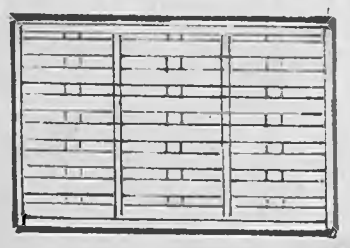
## THE 'DIANA' SUITE

Luxury York bath with shower mixer  
Petra basin & pedestal with taps  
Brampton syphonic w.c. suite  
Our normal price ~~£542~~  
NOW **£375**  
IN ALL TYWFORD'S COLOURS



TWYFORDS BATHROOMS

- 25% off all TWYFORDS BATHROOMS
- 25% off Tantara taps ordered with Twyford suites
- 25% off m.r.p. on tiles in stock ordered with Twyford suites



SAVE OVER 40%

INTERWOVEN	WANEY EDGE
£5.29 — 4' x 6'	£5.99
£5.99 — 5' x 6'	£6.99
£6.99 — 6' x 6'	£7.99

## RYMWAY RAINWATER PIPES & GUTTER

33 1/3% OFF NORMAL TRADE PRICES



33 1/3% OFF LADDER & STEPS

33 1/3% OFF Teebrax Aluminium Shelving & Contiplas Shelving at 39p. PER SQ. FT.

Permoglaze 5L, white £9.72 £6.60

Valspar 2 1/2L white gloss £3.99

Dulux 5L masonry paint £7.99



**BUILDING MATERIAL CENTRE**  
40 MUSWELL HILL ROAD, HIGHGATE, N6.  
TELEPHONE: 01-883 9722

**HOME IMPROVEMENT CENTRE**  
111 MUSWELL HILL RD., MUSWELL HILL, N10.  
FREE LOCAL DELIVERY



MOUNTAINEER



NAVIGATOR



WORLD CONSERVATION and many more



Michael English and Assistant District Commissioner receives the



Cross Country Run for Finchley, Friern Barnet and Golders Green District Scouts

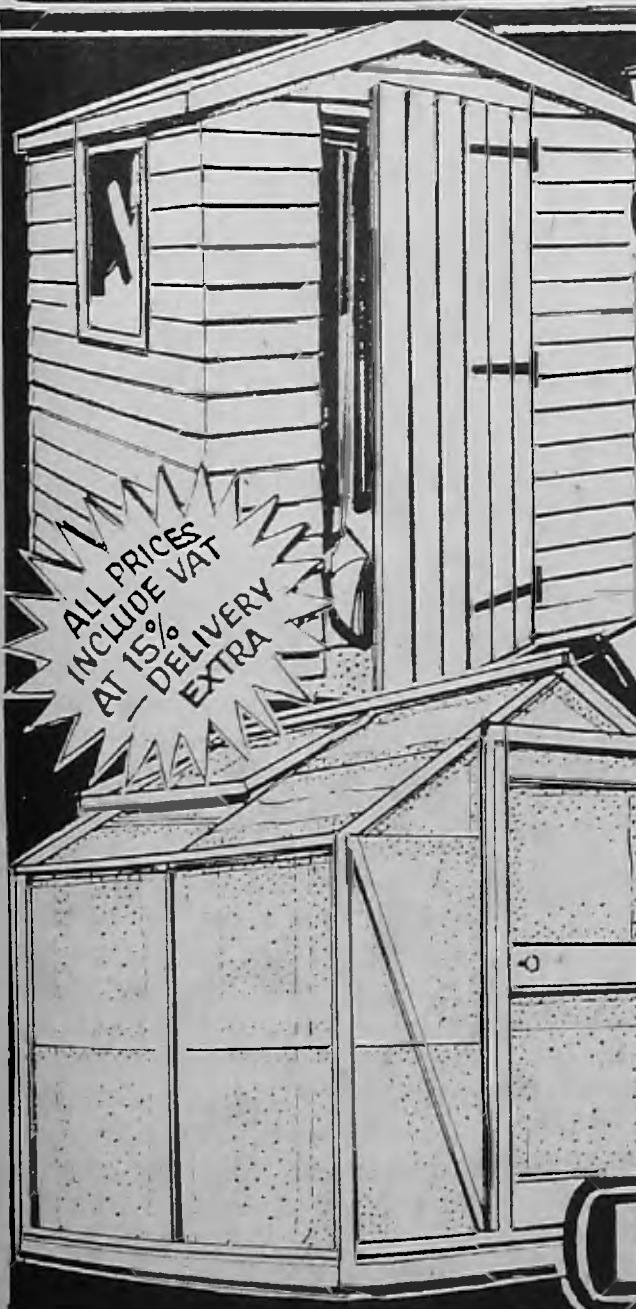
help as instructors or assistants. There is also a need for help with the administrative side — secretaries, treasurers, caterers and newsletter editors — anyone who can help smooth the way for the Scout Leaders so that they can concentrate on the activity side and

on leading the boys in their groups. Over the next few weeks the Scouts in Barnet will be holding special collections and fund-raising activities — the modern version of Bob-a-job week. They will be seeking funds for charity and for Scouting. So this is an ideal time

for anyone who would like to help the movement to come forward as a volunteer.

If you can help, contact the Borough Commissioner, Michael English, 4 High Birch Court, Park Road, New Barnet. Telephone 440 0994.

# LAWSONS your local timber merchant



**SHEDS**  
Over 100 in stock—in many sizes  
Skilled erection service  
Any size made to order

6'x5' **£119**  
8'x6' **£149**

**Greenhouses**  
6'x5' complete with Base, Staging and 'Memivent' as seen on TV (Tomorrows World)  
**ONLY £149**  
Ideal for the small garden  
Other sizes in stock now  
6'x4'...6'x8'...8'x10'...8'x12'  
Skilled erection service available.

**LADDERS**  
Over **40% off**  
18'10" **£45.80**  
Many other sizes and types—in stock—now

**Fencing**  
Everything in stock—NOW  
\*Panels \*Closeboard and fully skilled erection service

**Wrought Iron**  
\*Gates \*Railings  
Special sizes and designs—made to order

**LAWSONS** 1208 HIGH ROAD WHETSTONE N 20 (opposite Ever Tower Btk) 01-446 1321 Ready  
301 BURNT OAK BROADWAY EDGWARE (Opposite Edgware Gen'l Hospital.) 01-952 0111



## Tapping out for Trigger

THE NEW STABLES for the Trigger Riding Group for the Disabled will be opened by Mr. Hugh Rossi, Minister for the Disabled, on Saturday, May 2. The money has been raised by the Mayor of Barnet's Appeal, supported by young people and community groups throughout the borough.

The stables will cost a total of £24,000 and this target figure is now in sight although money is still needed to round off the project and complete the furnishings.

The new stables, at Penniwell

Farm, off Edgwarebury Lane, on the North West corner of the borough, will have stalls for five ponies and a tack room which can be used as a classroom and social gathering point.

The ponies will have a paddock to graze in and there is a safe mounting area.

In our picture with the young riders are the Mayor, Councillor Mrs. Edna James and, from left to right, Mr. Jim Starkins, of Trigger, Mrs. Joan Partridge, chairman of the Appeal Committee, Mr. Derek Buckman, Borough Architect, who is responsible for

the design of the stables, and Mr. G. Doust, director of Hale Construction, the builders. The Mayor was visiting the site to tap in the first structural panel.

'It is wonderful to see this really happening,' said the Mayor. 'Now I am looking forward to the opening and seeing the ponies arrive in their new home.'

□ □ □  
DIARY DATE: Fete at Inglis Barracks, Mill Hill, in aid of the Mayor's Appeal Fund. Sunday, May 10.

## Clitterhouse to get a crossing

THE CAMPAIGN, strongly supported by both Barnet Council and local residents, to have a zebra crossing near Clitterhouse School in Claremont Road, Cricklewood, has been won. The Greater London Council have agreed that it will be installed.

In April last year a child was killed in a road accident on this stretch of road, and parents and councillors combined forces to plead the special case for a crossing at this point.

A petition with 2,000 names was sent to the GLC and Councillor Bill Hart, Chairman of the Public Works Committee, led a delegation of councillors and officers to meet GLC members.

Barnet Council cannot erect a pedestrian crossing without the consent of the GLC who have strict standards which have to be met before permission is given. The traffic surveys in the area did not match up to the GLC's criteria but they gave way to local pressure and the strong arguments put forward by the Council's Public Works Committee.

## 100 YEARS UP

FINCHLEY MANOR Lawn Tennis and Squash Rackets Club is celebrating its centenary in June. The club is short of old photographs recalling the club's history.

If you have any such photographs it would be appreciated if you could send them to the secretary, Mrs Helen Rance, of 21 Wickliffe Avenue, Finchley N3.

## TEMPORARY VENUE

FOR 15 YEARS the Hampstead Garden Suburb Dramatic Society has thrived following the marriage of two earlier rival groups — the Play and Pageant Union, born in the twenties, and the Speedwell Players which came into existence a few years later.

The society stage at least four main indoor productions annually, normally in the Garden Suburb Institute, and one open-air play in Little Oak Wood.

As repairs are to start soon on the Institute roof, the society are using another venue while the work is carried out.

The next production, 'The Promise', by Aleksei Arbuzov, translated by Ariadne Nicolaeff, will be staged in Bigwood Hall, Bigwood Road, just behind the Institute in Central Square, NW11, on May 7, 8 and 9.

Because of licensing prob-

lems, on this occasion at least, admission will be by programme only, obtainable in advance from members at £1.10. Mrs. David Slade is in charge of advance bookings and applications should be sent to her at 9 Temple Fortune Court, NW11 (tel. 455 8204 before 8 pm please). No seats can be paid for at the door.

The programmes are not numbered but everyone is assured of a seat. It will be a case of first come, first served, but seating arrangements are comfortable and roomy, and the acoustics are excellent.

The play came to the West End in 1967 with Judi Dench, Ian McKellen and Ian McShane. Even people who normally shy away from Russian plays could be won over by this one. It is a warm, human love triangle told with humour and sincerity, and it could take place anywhere in the world.

## Junior Police Fives

GOOD NEWS for youngsters — especially the boy who has been telephoning Scotland Yard every week since January. There is to be a repeat of the biggest five-a-side football competition in the world with the final at Wembley Arena.

Once again it will be organised by the Metropolitan Police, sponsored by the Midland Bank and with the support of the Football Association.

The contest is for boys and girls in the 9 to 17 age group and teams from the Borough of Barnet are invited to compete.

Last year the contest attracted an incredible 48,000 youngsters and qualified for an entry in the *Guinness Book of Records*. It was described by Sir David McNee, Metropolitan Police Commissioner, as: 'The largest and most successful community relations project we have ever undertaken.'

Boys and girls in street and estate teams are as eligible to take part as those from schools and youth organisations. Any youngster with six friends (to allow for two substitutes) and an adult to act as team manager, can enter absolutely free.

Entry forms and details are now available from Metropolitan Police stations and closing date for entries is April 12. So hurry along to your nearest police station if you want to enter a team.

Kick-off is on May 11 for local competitions which will be played until August 23. Local heats will be organised in four groups for boys 9-11, 11-13, 13-15 and 15-17, and in three groups for girls 9-11, 11-14 and 14-17.

Finals for the four main areas and overall semi-finals take place in September and October, culminating in the finals at Wembley Arena on November 26.

# HOME IMPROVEMENTS

**WORKTOPS AND MATCHING LAMINATES**  
 e.g. 12ft Run From £52.00

Non-standard worktops and breakfast bars made to order on the premises.

LARGE SELECTION EX-STOCK  
 Full range of thicknesses textures/colours

D.I.Y. CENTRE (COLINDALE)  
 2 Varley Parade, Edgware Road, The Hyde, NW9  
 Telephone 205-4281



**SPEND SUNDAY MORNING AT DAVID JACOBS TILE CENTRE**  
 178 Bowes Road, N11 (North Circular Road) 881 0141

FANTASTIC SELECTION OF WALL AND FLOOR TILES AND MOSAICS AT DISCOUNT PRICES  
 FIXING SERVICE AVAILABLE

Mon-Thurs 9 am-6 pm  
 Fri 9 am-1 pm

Sun 9.30 am-1.30 pm  
 CLOSED SATURDAY



**LONDON'S LARGEST & KEENEST SHOWROOMS**



**KITCHENS**  
 OVER 40 COMPLETE DESIGNS ON DISPLAY



**BATHROOMS**  
 OVER 30 COMPLETE SUITES ON DISPLAY

**TILES**  
 OVER 1,000 DIFFERENT SIZES, SHAPES & DESIGNS OF CERAMIC WALL & FLOOR TILES ON DISPLAY

A large department of slight seconds available from stock at silly reduced prices.

**KKB** See our huge selection for ideas before planning your home

78-96 KINGSLAND RD, E.2.  
 729 4955  
 OPEN SUNDAYS 9-2  
 Mon.-Thurs. 9-6, Fridays 9-2

**Faubel Furniture**

Every unit purposely built to exactly fit your **KITCHEN AND BEDROOM**  
 Our Craftsmen can make your Dream Kitchen and Bedrooms a reality.  
 Individual requirements are our speciality.  
 All at attractive prices. Professional advice.



FREE ESTIMATES READILY GIVEN & COMPLETE INSTALLATION  
**FAUBEL FACTORS LTD**  
 UNIT 5, 11-13 LONG STREET  
 LONDON E2  
 01-739 9598

**SAVE MONEY WITHOUT LOSING QUALITY**

**BATHROOM SUITES**  
 From £120.00 including VAT

Buy a **GOWER** kitchen and we **GIVE** you a sink mixer tap **FREE**

Gas Boilers up to **40% OFF MLP**  
 Radiators up to **45% OFF MLP**

**COPPER PIPE — BRITISH!**  
 15 mlm 61p per metre inc. VAT  
 22 mlm £1.13 per metre inc. VAT  
 Stopcocks 15 mlm £1.57 inc. VAT

OPEN MON. TO FRI. 8 TO 5:30  
 SAT. 9 TO 12

RETAIL AND TRADE WELCOME

**giles**



46 SOUTH PARADE, MOLLISON WAY, EDGWARE  
 01-952 8739

**UP AND OVER GARAGE DOORS**

ALL SIZES AVAILABLE

SUPPLY — FITTING — REPAIRS — PARTS  
 SPECIALISTS IN REMOTE-CONTROL DOORS  
 FREE BROCHURES ON REQUEST

PHONE: 01-898 7234 (Day or Evening)



SHOWROOM: 122 HIGH STREET, WHITTON, TWICKENHAM

**EXTEND!**  
 We are THE specialists

Our expert staff will give you all the help and advice you need to create a bigger better home! Professionally prepared plans will be produced and speedily submitted for planning consent if required

OUR REPUTATION IS YOUR GUARANTEE



Extensions built by M.S. CONSTRUCTION are often hard to spot because they match the original building so well. An average extension can be completed within 4 weeks of starting using the finest quality materials. All building work is given a 10 year Structural Guarantee and Full Insurance Cover is provided on all jobs.  
 Council grant extension work undertaken.

**Loft Conversions too**  
 If your home is in need of extra bedrooms or there is no room to extend around the property, then we'll be pleased to advise you on a LOFT CONVERSION



**M.S. CONSTRUCTION CO**  
 01-367 5454 Est 1973  
 OFFICE  
 804 1449 ANYTIME  
 1 HARMAN RD. ENFIELD

# WHAT'S ON IN BARNET

**THIS LIST of activities in the Borough is open, free of charge, to all voluntary and community groups.**

**Entries for the June issue (June 14 to July 11) must reach the editor by May 11.**

**Send your entries (as brief as possible and with a contact telephone number) to Civic News, address: page 4.**

\*Asterisk denotes regular weekly meeting.

## Saturday April 11

- \*Drama Workshop for children. The Old Bull, 68 High Street, Barnet. Ages 6—8, 4—5 pm; 7—10, 10.30 am—12.30 pm; 8—16, 1.30—3.30 pm (449 0048).
- \*Barnet & District Athletic Club — Senior team races. Afternoon. For details tel: 61 67888.
- \*Art/craft and drama workshop for children at Elizabeth Allen Teachers' Centre, Wood Street, Barnet. 9.30 am in term time (368 2772).
- \*Dolphin Swimming Club, Royal Free Pool, Fleet Road, NW3. 2—5 pm. (349 1844).
- \*Social Singles Club in Barnet area. 8 pm. (440 5075 or 440 6404).
- Acorns Spring Bazaar, St. Mary's Church Hall, Hendon Lane, Finchley N3. 2.30 pm (449 8613).
- Hendon Songster Brigade of the Salvation Army present Stainer's 'Crucifixion', St. Mary's Church, Church End, Hendon. 7 pm.

## Sunday April 12

- \*Barnet Table Tennis Centre, Barnet Lane, Barnet. Every evening. 7.30—11 pm. Training for youngsters. Sundays 3—5 pm (440 1721).
- \*Orange Tree Folk Club, Orange Tree, Friern Barnet Lane, Friern Barnet. 8 pm (863 3608).
- \*Public meetings at Salvation Army Citadel, Albert Road, New Barnet. 10.30 am and 6.45 pm. Adventurers 3 pm.
- \*Barnet & District Athletic Club. Youngsters and newcomers. Tudor Sports Ground, New Barnet. 10.45 am (882 3265).
- \*Up-to-the-Centre Square Dance Club, 145 Orange Hill Road, Burnt Oak. Beginners 8 pm (959 5204).
- \*Bridge Lane Bridge Club, 71 Bridge Lane, Golders Green. Every day except Friday evening. 1.30—6 pm and 7.45—11.40 pm (455 3711 and 458 1764 after 2 pm).
- \*Rock & Blues, Torrington Arms, Lodge Lane, High Road, North Finchley. 8.30 pm (445 4710).
- \*Mind (voluntary mental health organisation) Social Club, Day Centre, Etchingham Park Road, Finchley N3. 3.30—7 pm (349 2930).
- \*Zen Meditation meetings, 91 Nether Street, North Finchley. 8 pm (445 1819).
- \*Bible Talk, Christadelphian Meeting House, 51 Station Road, New Barnet. 6.30 pm (441 0060 or 449 2055).

- \*Tae Kwon Do Club, Grahame Park Centre Point. 2—4 pm (200 7112)
- Apollo Singers 40th Anniversary Concert, Grahame Park Centre Point. 3 pm. Admission £1.50, children/OAPs 75p (445 2443).
- St. Margaret's United Reformed Church, Victoria Avenue, Church End, Finchley. Passiontide Music. 6.30 pm.

## Monday April 13

- \*Barnet Chess Club, Harold Fern Room, Salisbury Road, Barnet. 7.45 pm (445 0635).
- \*Dog obedience training, All Saints' Parish Church Hall, Oakleigh Road North, Friern Barnet. Beginners 7.30 pm; Advanced 8.45 pm (449 4155 after 6 pm).
- \*Ladies meeting, East Finchley Baptist Church, Creighton Avenue, Finchley, N2 (2.30 pm).
- \*Boys' Brigade, 4th Finchley Company, Finchley Methodist Church, Essex Hall, Essex Park, Finchley, N3. 6—8 years, 5.30 pm; 8—11 years, 6.30 pm (446 2690).
- \*Silver Threads — Senior Citizens' Club, Salvation Army Citadel, Salisbury Road, Barnet. 2 pm (440 8303).
- \*North London Karate Club, Queen Elizabeth's Girls' School, Meadway, Barnet. 7.30 pm and 8.30 pm (440 7733 or 440 8633).
- \*Barnet Orchestra at Hendon, Whitefield School, Claremont Road, Cricklewood. 8 pm (205 2418).
- \*Finchley Choral Society, Moss Hall Junior School, Nether Street, Finchley N3. 7.45 pm (445 8401).
- \*Bridge at Mill Hill East Free Church, Salcombe Gardens, Mill Hill. 7.30 pm (346 5125).
- \*Edgware Sea Cadet Corps Boys and Girls 12-18 years. Daws Lane, Mill Hill. 7.30—9.30 pm (959 0711).
- \*New Barnet Literary and Debating Society, St. James' Church, East Barnet Road, New Barnet. 8 pm (440 3859).
- \*Mind in Barnet Advice Centre, 154 Station Road, Hendon. Mondays 10 am—1 pm; Wednesdays 2—4.30 pm; Thursdays 8—10 pm (202 6963 Chairman).
- \*Livingstone Club, National Association of Women's Clubs, Bevan Park Baptist Church, Grove Road, New Barnet. 8 pm. (449 3094).
- \*Hendon Sea Cadet Corps — Sea and Marine Cadets 12 years plus. Cool Oak Lane, NW9. 7.30 pm. (200 6286).
- \*Slimming World, Quakers Meeting Hall, Rectory Lane, Edgware. 7.30 pm. (200 6180).
- \*Barnet Karate Centre, Reynolds Hall, East Barnet Road. Beginners classes. 7.30 pm. (203 3991). Ladies Keep Fit/Karate, 1.30 pm. (346 0630).
- \*Yoga, Jewish Vegetarian Society, Finchley Road, Golders Green. 10.30—noon (388 2813).
- \*Ha'Gan Social Club, Hampstead Garden Suburb Synagogue, Norrice Lea, Finchley N3. 1.30 pm (445 8126 or 455 4918).
- National Council of Women, Barnet and District. Discussion morning, 'Little Croft', Leecroft Road, Bar-

net. 10.30 am (449 5308). Friern Barnet and Whetstone Rate-payers' Association. AGM and slide show, Council Chamber, Town Hall, Friern Barnet. 8 pm (445 9139).

## Tuesday April 14

- \*20th Century Sequence Dancing Club, all Saints' Hall, Oakleigh Road North, Whetstone. 7.45 pm (360 2586).
- \*Scottish dancing, St. Albans Church Hall, West Heath Drive, NW11. 8—10.30 pm. Children's Scottish dancing, 6.30—7.30 pm.
- \*Modern ballroom and Latin American dancing, Shakespear Hall, Manor Park Crescent, Station Road, Edgware. 8.30 pm (346 5868).
- \*Judo, The Quinta Club, Mays Lane, Barnet (449 2914).
- \*Hendon South Young Socialists meeting. 7 Sunnyfields Road, Hendon. 8 pm.
- \*Hendon South Young Conservatives meeting, 166 Station Road, Hendon. 8 pm (202 7484).
- \*Friern Barnet Photographic Society, St. John's Hall, Friern Barnet Lane. 8 pm (445 2617).
- \*Hendon String Orchestra, Whitefield School, Claremont Road, NW2. 7.45 pm (455 5005).
- \*West Hendon Handicraft Group, Community Centre, West Hendon Estate. 2—4 pm (205 0514).
- \*The Light Brigade Club, 6—12 years. Salvation Army Citadel, Albert Road, New Barnet. 6 pm (449 8200).
- \*Herbert Wilmot Youth Centre, Market Place, East Finchley. General Club. 7.30—10 pm.
- \*Prayer and Bible Study, Salvation Army Citadel, Salisbury Road, Barnet. 7.15 pm (440 8303).
- \*57 Nursing Division, St. John Ambulance Brigade, Carey Hall, Claremont Road, Cricklewood. 7.30 pm (428 4529).
- \*Drama workshops for 12-16 year-olds, The Old Bull Centre, 68 High Street, Barnet. 6.30-8.30 pm (449 0048).
- \*Barnet Hockey Club training session, Grahame Park all-weather floodlit pitch. 8 pm (445 8968 or 61 22668).
- \*East Finchley Sisterhood, Methodist Church Hall, High Road, East Finchley. 2.30 pm (444 5756).
- \*Hendon Arts Theatre Workshop, Church House, Greyhound Hill, Hendon. 7.45 pm. £1 per session (non-members £1.50). Junior Workshop 6.15 pm (202 6242).
- \*Old Bull Morris Dancers. Mixed sex Clog Morris Team. Assembly Hall, Queen Elizabeth's Girls School, Meadway, Barnet. 7.45—9.45 pm (440 1861).
- \*Manor Drive Methodist Church Wives' Club, corner of York Way and Manor Drive, N20 (during term-time). 2—3.15 pm. Creche available. (368 2193).
- \*Dog Training, Reynolds Hall, East Barnet Road, New Barnet. Beginners to championship. 7.30—10.30 pm.
- \*Jewish Association & Cultural Society, Henriques House, 120 Oakleigh Road North, N20. 1.30—3.30 pm (368 3986).

## EXHIBITIONS

### April 11—May 9

Hendon Camera Club. Exhibition of work by members, Hendon Library, The Burroughs. Normal opening hours (205 6053)

### Until April 15

Photographs by Denis Reader, The Crest, Totteridge Library, 'Dollisfield', Totteridge Lane. Open: Tues. & Wed. 2—5.30 pm; Fri. 11 am—1 pm, 2—5.30 pm; Sat. 11 am—1 pm, 2—4 pm (361 9648).

### Until April 18

Mirror of Our Times. Newspaper collector John Frost presents highlights of the Daily Mirror through the years. The Old Bull Gallery, 68 High Street, Barnet. Open: Mon.—Sat. 10 am—6 pm. Mr. Frost will be present on April 12 and 17 from 11 am—1 pm and 2—5 pm (449 0048).

### April 20—May 9

Ceramics, stained glass and other crafts by Sally Lieven and Jane Elder, The Old Bull Gallery, 68 High Street, Barnet. Open: Mon.—Sat. 10 am—6 pm (449 0048).

### April 22—May 2

Barnet and Finchley Photographic Society annual exhibition, North Finchley Library, Ravensdale

Avenue. Normal opening hours (445 4081).

### April 28—May 16

Paintings by Susan Carter, The Crest, Totteridge Library, 'Dollisfield', Totteridge Lane. Open: Tues. & Wed. 2—5.30 pm; Fri. 11 am—1 pm, 2—5.30 pm; Sat. 11 am—1 pm, 2—4 pm (361 9648).

### April 29—May 8

Paintings by students of Elizabeth Hepworth, Stanhope Road Centre, Stanhope Road, North Finchley. Open: Mon.—Fri. 10 am—noon; 2—4 pm; 6—8 pm (445 6068).

### Until May 5

Pinning Down the Past. A display of finds from digs and photographs by the Hendon & District Archaeological Society, Church Farm House Museum, Greyhound Hill, Hendon. Open weekdays (except Tuesdays) 10 am—12.30 pm, 1.30—5.30 pm; Tues. 10 am—1 pm; Sun. 2.30—6 pm (203 0130).

### May 13—22

Paintings and drawings by Thea Naylor, Stanhope Road Centre, Stanhope Road, North Finchley. Open: Mon.—Fri. 10 am—noon; 2—4 pm; 6—8 pm (445 6068).

\*Home League women's meeting, East Finchley Salvation Army, Hertford Road, East Finchley. 2.15 pm. (444 0207).

\*Barnet Tae Kwon Do Club, Queen Elizabeth's Girls' School, Meadway, Barnet. 7-9 pm. (77 50635).

\*Barnet Karate Centre — Ladies Keep Fit/Karate, Finchley Synagogue, Hutton Grove, North Finchley. 1.30 pm. (346 0630). Children's class, Underhill Junior School, Mays Lane, Barnet. 7 pm. Ladies Karate. 8.30 pm. (203 3991).

\*English Country Dancing, Holy Trinity Church Hall, Church Lane, N2. 7.30 pm. (445 4772).

\*Home League women's meeting, Hendon Salvation Army, Brampton Grove, Hendon. 2.30 pm.

\*Tae Kwon Do Club, Centre Point, Grahame Park. 8-9 pm (200 7112).

Hendon Red Cross 'Nearly New Sale', 10 The Downage, Hendon. 10.30 am-2 pm (202 6740).

\*Ladies Fellowship, United Mission, Pembroke Road, Muswell Hill. 2.15 pm (444 5536).

Hendon Gramophone Society, Hendon Library, The Burroughs, Wagner and Elgar. 7.30 pm (202 5625).

Mill Hill Flower Club, Harwood Hall, Mill Hill Broadway. 8 pm (954 4944).

National Schizophrenia Fellowship (NW London Group), Health Centre, Temple Fortune Lane. 8 pm. Speaker: Dr Derek Richter (455 5113).

Barnet Anglo-French Club, Council Chambers, 29 Wood Street, Bar-

net. 8 pm (779 5200).

Acorns, non-sectarian women's club, East Finchley Methodist Church Hall, High Road. 'The Anthony Nolan Bone Marrow Appeal.' 9.45-11.30 am. Creche available (346 1507 or 346 0232).

\*8th Hendon Boys' Brigade, Dollis Hill School, Pursley Road, Mill Hill. 8-11 years. 6.30 pm (205 3182).

**Wednesday April 15**

\*Wednesday Bridge Club, St. Andrew's Small Hall, Chase Side, Southgate. 1.30 pm (440 9682).

\*Barnet Cycling Club, United Reformed Church Hall, Oakleigh Road North, Whetstone. 8 pm (888 7143).

\*Old time and modern sequence dancing, BSCA, Mays Lane, Barnet. 8 pm (440 4424).

\*Friary Old Time and sequence dancing, Manor Drive Methodist Church Hall, Manor Drive, Whetstone. 8 pm. 7.30 Beginners (445 7127).

\*Up-to-the-Centre Square Dance Club, Watling Community Centre, Orange Hill Road, Edgware, 8 pm (959 5204).

\*Dog training, St. Philip's Church Hall, Gravel Hill, Finchley, N3. Beginners 7-8 pm; Intermediate etc. 8 pm (458 7399).

\*West Hendon Liberal Association, 78 Bertram Road, Hendon. 8 pm (202 9013).

\*Women's League of Health and Beauty, Christ Church Hall, High Road, North Finchley. Elementary 7 pm; technique 7.45 pm; medium 8.15 pm; sequence 9 pm (455 3904).

\*Chipping Barnet YCs, Harold Fern Room, Salisbury Road, Barnet. 8.15 pm.

\*Finchley & Friern Barnet YCs, 212 Ballards Lane, North Finchley, 8 pm (445 9426).

\*Edgware Amateur Cine Society, Orange Hill Junior School, Hamonde Close, Edgware. 7.45 pm (959 7783).

\*Whist at Fellowship House, Willifield Green, Golders Green. 8 pm (458 4023).

\*Yoga, Whitchurch Institute, Buckingham Road, Edgware. 2.30 pm (203 1935).

\*Edgware Photographic Society, Edgware Library, Hale Lane. 8 pm (952 4786).

\*Ballroom, sequence, old tyme and party dancing, St. Mary's Hall, 54 Church Hill Road, East Barnet. 8 pm (803 9028).

\*Home League ladies meeting, Salvation Army Citadel, Albert Road, New Barnet. 2.15 pm (449 6893).

\*Pymmes Judo Club for children, East Barnet School, Westbrook Crescent, New Barnet. 6.30 pm (440 6473).

\*Judo, Herbert Wilmot Youth Centre, Market Place, East Finchley. Beginners, 6 pm; Juniors, 7 pm; Seniors, 8 pm. Girls and ladies self defence; 8.30-10 pm, Yoga and football. (444 8422).

\*Over 60s Meeting, West Hendon Community Centre. 2-4 pm (202 4847).

\*North London & District Divorced and Separated Club, St. Paul's Church Hall, High Road, New Southgate. 8 pm (800 9826).

\*Incognito Theatre Group, Holly

Park Road, New Southgate. 8 pm (445 1576).

\*Daniel Court Social Club, North Acre, Grahame Park. 2-5 pm (200 1759 after 6 pm).

\*Dog Training, Christ Church Hall, The Crest, Brent Street, Hendon. Beginners 6.45 pm and 7.15 pm; intermediate and competition until 10 pm (202 2888).

\*East Finchley Theatre Group, Methodist Church Hall, High Road, East Finchley N2. 7.30 pm.

\*Mothers and Toddlers Group, Christadelphian Meeting House, 51 Station Road, New Barnet. 1.30-3 pm (440 7058).

Finchley & District Philatelic Society, Avenue House, East End Road, Finchley N3. 'The letter E.' 7.30 pm (883 8724).

Woodside Park TWG, Old Finchleians Club House, Southover, North Finchley. 2.15 pm. (346 2095).

Hendon Floral Art Group, Henry Burden Hall, Egerton Gardens, Hendon. 7.30 pm. Ideas for Spring Show (959 6111).

Finchley Rotaract Club, Moss Hall Tavern, Ballards Lane, North Finchley. 8.30 pm. (349 2709).

Barnet and District Local History Society, Council Offices, Wood Street, Barnet. 8.15 pm. Mesolithic Period in the Lee Valley (77 54150).

Friary Ladies Club, Assembly Rooms, entrance at rear of Lynchhurst Avenue, Friern Barnet. 8 pm (368 0638).

Small Landlords' Association, NW London Branch. Surgery and meeting. Speaker: Cllr. Grahame Fear. Chairman, Barnet Housing

**BUILDERS SUPPLIERS  
BUILDERS MERCHANTS**

**KIS COLOUR KEY CUTTING SERVICE  
D.I.Y. SUPPLIES & TOOL HIRE**

**SPECIAL APRIL OFFERS**

DOUBLE DRAINER S/S TOPS	£20.00
LEISURE INSET S/S TOPS	£34.50
CARRON INSET S/EAGLE	£37.00
LEISURE COLOURED BOWLS & DRAINERS	£52.14
COLOURED SETS ROUND BOWLS & DRAINERS	£75.60

**WE SPECIALISE IN MADE TO MEASURE  
SINK UNITS, BASE UNITS, WALL UNITS  
100 COLOURS TO CHOOSE FROM  
GOOD DISCOUNTS — 4-7 DAYS APPROX. DELIVERY**

**EXTRA SPECIAL APRIL OFFERS**

SKYLINE DOORS TEAK OR WHITE	
21" x 32 1/2" INCLUDING FITTINGS	£3.00
LEISURE COLOURED DRAINING BOARDS	£3.00
63" x 21" SKYLINE WORKTOPS 1 1/4"	£20.00
COLOURED BATHROOM SUITES	£138.00
MIXER BATH TAPS & MATCHING BASIN TAPS	£32.00
COMPLETE SINK UNITS INC. TAPS	£58.40
DOUBLE BOWL S/DRAINER INSETS, CARRON S/EAGLE	£60.00
STAINLESS STEEL ROUND BOWLS & DRAINERS	£52.14

ALL PRICES EXCLUDING VAT

**209 Fore Street, Edmonton, N9  
Phone 01-803 3037**

**CIVIC HALL BOREHAMWOOD**

ENTERTAINMENTS & CATERING OFFICER D J SHAPLAND A I M Ent (DIP)

**Easter Holiday Presentation**

Monday April 20th 2.30pm. Tues 21st, Wed 22nd 10.30am & 2.30pm.  
Thurs 23rd at 3.30pm. Fri 24th at 10.30am & 2.30pm.

Barrie Stacey Productions Present

**a childrens  
musical tale**



tales from

**Hans Christian  
Andersen**

Produced by The Swan Puppets  
& their Supporting Company

Book by  
BARRIE STACEY  
Music & Lyrics  
DAVID AMAN

Tickets Adults £2.00 and £1.50.  
Children/Senior Citizens £1.50 and £1.00.

BOX OFFICE OPEN 10AM-5PM. 01-953 9872

Committee, 166 Station Road, Hendon. 8 pm (202 9269).

Friern Barnet Council for Voluntary Service, Whist Drive, Day Centre, Friern Barnet Lane, N11. 10.30 am (368 4278).

National Housewives Register (Barnet & District). Discussion. 8 pm (440 8093).

National Trust, Edgware & District, John Keble Church Hall, Deans Lane, Edgware. Knole and the Sackvilles. 7.30 pm (952 2688 or 954 2820).

#### Thursday April 16

\*North Side Bridge Club, Methodist Church, High Road, East Finchley. 7.30 pm (445 7788).

\*Contemporary dancing, Manor Arrows Youth Club, Finchley Manorhill School, Summers Lane, North Finchley. 6.30 pm (368 9876).

\*Finchley Old Time and modern sequence dance club, Martin School, East Finchley. 7.30 pm.

\*Hendon & Edgware 18 Plus Group, The Bell, Bell Lane, Hendon. 8.15 pm (954 6929).

\*National Council for the Divorced and Separated (NW London Branch), Cavalier Rooms, Prince Albert, Golders Green Road, Golders Green. 8 pm.

\*Mind Social Club, Meritage Club, Church End, Hendon. 8—10 pm (444 5847 between 6—7 pm).

\*Finchley Chess Club, Day Centre, Etchingam Park Road, Finchley, N3. 7 pm (445 4927).

\*Silver Circle, Senior Citizens' Club, Salvation Army Citadel, Albert Road, New Barnet. 2 pm (449 8200).

## WHAT'S ON

\*Ridgeway Club, National Association of Women's Clubs, St. Mary's Hall, Church Hill Road, East Barnet. 7.30 pm (449 2852).

\*Barnet Youth Hostels Association, Scout HQ, Triangle Passage, New Barnet. 8 pm (449 1983).

\*Pymmes Judo Club for adults, East Barnet School, Westbrook Crescent, New Barnet. 8 pm (440 6473).

\*Herbert Wilmot Youth Centre, Market Place, East Finchley. 7.30 pm, Football; 8 pm, Keep-fit; 7 pm, General Club (444 8422).

\*Boys' Brigade, 4th Finchley Company, 11—18 years, Finchley Methodist Church, Essex Hall, Essex Park, Finchley, N3. 8 pm (446 2690).

\*North London Karate Club, Queen Elizabeth's Girls' School, Meadway, Barnet. 7.30 pm and 8.30 pm (440 7733 or 440 8633).

\*Duplicate Bridge, Friends of the Jewish Day Centre, Michael Sobell House, Limes Avenue, Golders Green. 7.45 pm. £1.20 inc. refreshments

\*Dancing, Conservative Hall, High Road, New Southgate. Children's: old time, Latin, disco. Adults: sequence and modern. 6—10.30 pm (361 9847).

\*Barnet PHAB Group (physically handicapped and able-bodied), Alyth Youth Centre, Alyth Gardens, Temple Fortune. 8.15 pm (906 1505).

\*Old Time and sequence Dance

Club, Cadets H.Q., Long Lane, Finchley N3. 7.30 pm (445 3610).

\*Boys Club, Salvation Army Citadel, Salisbury Road, High Barnet. 6 pm.

\*Edgware Sea Cadet Corps, girls 12-18 years, Daws Lane, Mill Hill. 7.30—9.30 pm (959 0711).

\*8th Barnet Scout Group (Cub Scouts) 8—11 years, The Scout Hut, St. Albans Road, Barnet. 6.30—8 pm (440 7457)

Ladies Meeting, Salvation Army Citadel, Salisbury Road, Barnet. 2.30 pm. Boys' Club, 6.30—8 pm (440 8303).

\*Hendon and District Aquatic Society, Henry Burden Hall, Egerton Gardens, Hendon. 8 pm. (458 5826).

\*Barnet Tae Kwon Do Club, Queen Elizabeth's Girls' School, Meadway, Barnet. 7—9 pm. (77 50635).

\*Burnt Oak Salvation Army Over 60s Club, Barnfield Road, Burnt Oak. 2 pm. (906 1606).

\*Over 60s Club, Hendon Salvation Army, Brampton Grove, Hendon. 2.15 pm.

\*Tae Kwon Do Club, Centre Point, Grahame Park. 8—9 pm (200 7112)

Barnet Friends of the Earth, 72 Cranbrook Road, East Barnet. 8 pm. (440 2580).

Civil Service Pensioners' Alliance (NW London), Avenue House, East End Road, Finchley N3. 'Money and your retirement.'

#### BARNET CIVIC NEWS, APRIL

10.15 am (883 3689).

Friern Barnet Branch Labour Party, The Turrets, Friern Barnet Road. 8.15 pm.

Spiritual teachings of Eckankar, Burnt Oak Library, Watling Avenue. 8 pm (431 2587).

\*9th Hendon Boys' Brigade, Edgware Methodist Church, Garra Road, Edgware. 8-11 years. 6.45 pm (958 8285).

#### Friday April 17

\*International folk dancing, Hadley Memorial Hall, Hadley Highstone. 8 pm (368 5345).

\*Hendon Camera Club, Fellowship House, Willifield Way, Golders Green. 7.45 pm (455 0837).

\*Barnet & Finchley Photographic Society, rear of 37 Salisbury Road, Barnet. 8 pm (368 3917).

\*Mill Hill Over 60s Handicraft Club, Moreton Close Lounge (behind shops at Salcombe Gardens, Mill Hill). 2—4 pm (959 3858).

\*Judo and General Club (ages 7—10), Herbert Wilmot Youth Centre, Market Place, East Finchley. 5.45 pm, Judo: 6—8 pm, General Club (444 8422).

\*Finchley Cine Society, Avenue House, East End Road, Finchley, N3. 8 pm (346 4265).

\*Edgware Sea Cadet Corps, boys 12-18 years, Daws Lane, Mill Hill. 7.30—9.30 pm (959 0711).

\*8th Barnet Scout Group, 11—16 years, The Scout Hut, St. Albans Road, Barnet. 7.30—9.30 pm (440 7457).

\*Over 60s Fellowship, East Finchley Salvation Army, Hertford Road, East Finchley. 2.30 pm. (444 0207).

## KITCHEN AND BATHROOM DESIGN SERVICE

Prompt personal attention to the detailed planning of your kitchen and bathroom

### PLANNING ● SUPPLY ● INSTALLATION ● TILING ● CEILINGS

From start to finish. All it takes is a telephone call (anytime) for that first friendly informal discussion without any obligation whatsoever

**WE ARE ABLE TO SUPPLY ANY MAKE OF KITCHEN UNITS, APPLIANCES, AND BATHROOM FITTINGS**

**STEPHEN SAMPSON DESIGNS**

TEL. 01-459 2574  
(anytime)

### DISCO LATIN BALLROOM KEEP FIT



CLASSES AND PERSONAL  
TUITION FOR ALL AGES

RING 202 9911 NOW  
FOR FREE BROCHURE

LEARNING IS FUN  
AT THE FRIENDLY

**HENDON DANCENTRE**

QUEENS PARADE, HENDON, CENTRAL  
(Opposite station)

*B. Brown & Beautiful.*

NEW KEEP FIT STUDIOS  
INCORPORATING POPMOBILITY, YOGA, MODERN DANCE  
CHILDREN'S DISCO DANCE and BALLET STUDIO

THE WAY YOU WANT TO LOOK IS HOW  
WE'LL MAKE YOU STAY

ON 01-952 0579

### FARM WALK LAWN TENNIS CLUB

Farm Walk, NW11

is looking for new members  
of reasonable standard who  
wish to play both social and  
competitive tennis

Enquiries to:  
Membership Secretary,  
Mrs. Esme Kingsley,  
30 Ashley Lane, NW4  
Phone 203 1731

\*Sally Ann Club. Children 7-11 years. East Finchley Salvation Army, Hertford Road. 5-6 pm. (444 0207).

\*Barnet Arts Workshop Dance/Keep Fit Class, Avenue House, East End Road, Finchley. £1 (creche). 10.30-11.30 am. (346 7120).

\*Hendon Unit Sea Cadet Corps — Girl Sea Cadets 12 years plus. Cool Oak Lane, NW9. 7.30 pm. (200 6286).

\*Bible Fellowship, Salvation Army Citadel, Albert Road, New Barnet. 7.45 pm (449 8200)

\*5th Hendon Boys' Brigade, Orange Hill Junior School, Harmond Close, Edgware. 8-11 years, 6.30 pm; 11-18 years, 8 pm (952 3385).

### Saturday April 18

Hendon & Golders Green Group, World Disarmament Campaign Easter Peace March. Assemble Whitestone Pond, Hampstead. 10 am.

### Monday April 20

Friern Barnet Council of Voluntary Service Whist Drive, Day Centre, Friern Barnet Lane. 2.15 pm (368 4278).

### Tuesday April 21

Solo Club, widowed, divorced and singles 26-60, Finchley area. 8 pm (445 9810 or 346 7466).

Spiritual teachings of Eckankar, Friern Barnet Town Hall, N11. 8 pm (346 4356).

Totteridge Floral Art Club, Village Hall, Badger's Croft, Totteridge. Let's get weaving. 2.30 pm (445 9307).

## Local Theatre Guide

### April 14-16 and 21-25

Barnet Theatre Company presents new adaptation by Veronica Richards of Hans Andersen's **The Ugly Duckling**, Barnet College Theatre, Fitzjohn Avenue. 8 pm (445 7961).

### April 29 and 30; May 1 and 2

The Original Theatre Studio presents **The Merchant of Venice**, Barnet College Theatre, Fitzjohn Avenue, Barnet. 8 pm (445 7961).

### April 23-25

Hendon Arts Centre presents **The Hollow** by Agatha Christie, Church House, Church End, Hendon. £2, OAPs/students £1.50. 8 pm (Sat. mat. 3 pm) (202 6242).

### April 20-May 2

Mill Hill Theatre Club presents **Dangerous Corner** by J. B. Priestley, Hartley Hall, Flower Lane, Mill Hill. 8 pm (203 0023).

### May 7-9

Hampstead Garden Suburb Dramatic Society presents **The Promise** by Aleksei Arbuzov (a love triangle set in Leningrad from the siege in 1942 to 1959) Bigwood House Hall, Bigwood Road, NW11. 8 pm. Admission by programme £1.10 in advance (455 8204 before 8 pm).

### May 13-16

Finchley and Friern Barnet Operatic Society presents **Show Boat** by Jerome Kern, Hornsey Town Hall, Crouch End Broadway, N8. 7.30 pm (Sat. mat. 2.30 pm) (445 3391).

### May 13-16

Incognito Theatre Club presents **Time and Time Again**, by Alan Ayckbourn, Incognito Theatre, Holly Park Road, Friern Barnet. 8 pm. Tickets sold in advance (368 0202).

### May 14-16

Woodside Park Club Players presents **Saloon Bar** by Frank Harvey, Clubhouse, Woodside Park, N12. 8 pm (445 3610). East Finchley Theatre Group presents **Noah**, East Finchley Methodist Church Hall, Park Road, N2. 8 pm (883 1087).

### May 7-9 and 14-16

The Original Theatre Studio presents **The Merchant of Venice**, Village Theatre, Production Village, Cricklewood Lane, NW9. 8 pm (445 7961).

### May 14-16

Christ Church (Hendon) drama group presents **Post Horn Gallop**, Christ Church Hall, The Crest, Hendon. 8 pm. Admission by programme only to members and friends. £1 (202 6660).

### Wednesday April 22

East Barnet Gramophone Society, East Barnet Library, 85 Brookhill Road, Schumann. 8 pm (440 4376).

Stongrove Never Old Club (over 40), Spur Road Community Centre, Green Lane, Edgware. 8 pm (958 2530).

Finchley Church End Afternoon TWG, St. Mary's Church Hall, Hendon Lane. 2.15 pm (349 1686).

### Thursday April 23

Friern Barnet Library Gramophone Society, Friern Barnet Road, N11. More about the organ. 8.10 pm (368 2680).

Hampstead and District Philatelic Society, Trinity Church Hall, Finchley Road (opp. Finchley Road Station), NW3. AGM and auction. 7.30 pm (435 4651).

The Stephenson Locomotive Society, St. John's United Reformed Church, Mowbray Road, New Barnet. Canadian Railways. 7.30 pm.

Ecology Party (Barnet & Finchley), Queen Elizabeth's Girls' School, Meadway, Barnet. Public meeting. 8 pm (449 8297).

The Thaliens (professional actors/actresses), prose and poetry 'Love me; love all the animals of the ark', East Finchley Library, High Road. 8 pm. Admission free.

Osidge Branch (Women's Section) Chipping Barnet Conservative Association, St. Andrews Hall, Chase Side, Southgate. 2.00 pm (368 5414).

Christian Contemplative Prayer, The Cenacle, 11 Cyprus Road,

## WHARFSIDE

*The largest range of Danish Rosewood and Teak Furniture in Europe*



Solid teak table and chairs

*We offer high quality rosewood and teak furniture at warehouse prices.*

*Our craftsmen are always on hand to provide advice and personal attention.*

*In most cases delivery can be immediate.*

Showroom open **SUNDAY 9am - 2pm, Monday to Thursday 9am - 5pm, Friday 9am - 1 pm** (closed Saturday)



66 BUTTESLAND STREET, LONDON N1 01-253 3206/7  
(off Pitfield Street, near Old Street Tube Station)

## reels on wheels

The Unusual

### VIDEO LIBRARY EXCHANGE

**NO RESTRICTIONS, NO LIMITATIONS**

\*CHANGE AS OFTEN AS YOU LIKE  
KEEP AS LONG AS YOU LIKE  
THE CASSETTE IS YOURS UNTIL  
YOU DECIDE TO CHANGE IT  
CALL IN AND MAKE YOUR SELECTION OR  
RING WITH YOUR REQUEST FOR  
IMMEDIATE DISPATCH  
(BY ARRANGEMENT)

**DISCOUNT ON PURCHASE OF BLANK OR PRE-RECORDED CASSETTES**

THE TIME OF SERVICE IS  
WHEN YOU NEED IT MOST  
5 pm to 10 pm

**MEMBERSHIP FOR ONE YEAR  
£140 plus VAT**

**Telephone: 458 6799**

Finchley, N3. 8 pm (346 2783).  
Pensioners' Voice. Whetstone & Finchley, St. Albans Parish Centre, Gainsborough Road, North Finchley. 1.45 pm (445 7413).  
Circassian Circle Folk Dance Club. Harwood Hall, Mill Hill Broadway. 7.45 pm (950 5756).

Edgware/Hendon Community Health Council. Public Meeting. Dining Suite, Edgware General Hospital. 7.30 pm (959 2038).

#### Friday April 24

Folk Rock Gospel Concert by 'Kaleo', St. Paul's Church Hall, The Ridgeway, Mill Hill. 7.30 pm. Admission 50p (959 2288 or 959 1744).

#### Saturday April 25

Hampstead, Hendon and Golders Green Rotaract Club Invitation XI Charity Football Match v. Dennis Waterman XI in aid of Kids (Charity). Barnet Football Club Stadium. 3 pm. Entrance by programme 75p (203 2339).

Brookland Players fair in aid of funds, Church House, Wood Street, Barnet. 11 am. Admission 15p (402 3191).

Good Gardeners' Association. Arkley Manor Gardens. Demonstration of the value of not digging the soil. Special compost on show. 2.30 pm. Non-members 50p (449 2171).

#### Sunday April 26

Octopus Swimming Club for the Handicapped, Squires Lane, Finchley, N3. 12.30 pm (346 5944).

## WHAT'S ON

#### Monday April 27

National Council of Women (Barnet & District), Wesley Hall, High Road, Barnet. 'Energy from Waste'. 1 pm (449 5308).

Hendon (St. Mary's) Music Society, Hendon Library, Gerald McDonald on Schubert's Chamber Music. 8 pm (202 6908).

Hampstead Garden Suburb Antiques Circle, Community Room, Bigwood House, The Rothschild Treasure Houses. 8 pm (202 0269).

#### Tuesday April 28

Hendon Gramophone Society, Hendon Library. 7.30 pm (202 5625).

Finchley Redbourne Evening TWG, Day Centre, Etchingam Park Road, Finchley, N3. 7.45 pm (346 8596).

Pensioners' Voice, Whetstone and Finchley, St. Albans Parish Centre, Gainsborough Road, North Finchley. 1.45 pm (445 7413).

Barnet Anglo French Club, Council Chamber, 29 Wood Street, Barnet. 8 pm. Cheese and wine tasting (779 5200).

Mill Hill School Music Club. Organ Recital by Ian Wicks, School Chapel, The Ridgeway, Mill Hill. 8 pm (959 6899).

#### Wednesday April 29

Amnesty International (Golders Green), Unitarian Church, Hoop

Lane, Golders Green. 7.30 pm (883 4893 or 959 3249).

Friary Ladies Club, Assembly Rooms, entrance at rear in Lyndhurst Avenue, Friern Barnet. 8 pm (368 0638).

National Housewives Register (Barnet & District). Discussion. 8 pm (440 8093).

#### Thursday April 30

North London Society of Certified Accountants, Southgate Council Chambers, Green Lanes, Palmers Green. AGM and debate on a unified accounting profession. Circassian Circle Folk Dance Club, Harwood Hall, Mill Hill Broadway. 7.45 pm (950 5756).

Finchley Art Society, North Finchley Library, Ravensdale Avenue. English painters 1800-1900. 7.30 pm (445 2989).

Finchley Society, Avenue House, East End Road, N3. Twenty Years of Architectural change in North London. 8 pm (883 4154).

#### Saturday May 2

Finchley Stamp Fair, Methodist Church Hall, Ballards Lane, North Finchley. 10 am—5 pm.

Friern Barnet Council for Voluntary Service. Whist Drive, Day Centre, Friern Barnet Lane, N11. 8 pm (368 4278).

St. Mary's Fair, St. Mary's Parish Church, Hendon Lane, Finchley, N3. 10.30 am to 5 pm (346 8646).

#### Sunday May 3

Sussex GSD (Alsatian) Rescue Exemption Dog Show, Brook Farm Open Space, High Road, Whetstone. 30p per entry. Entries accepted on site from 11 am. Judging, 1.30 pm for obedience. 2 pm pedigree (349 0426).

#### Monday May 4

Finchley League of Jewish Women, Finchley Synagogue, Kinloss Gardens, N3. Any Questions 1.30 pm (882 3064).

#### Tuesday May 5

Solo Club for widowed, divorced and single people 26-60, Finchley area. 8 pm (346 7466 or 445 9810).

Barnet REMAP, Occupational Therapy Department, Barnet General Hospital, Wellhouse Lane. 7.30 pm.

Friern Barnet Friary TWG, United Reformed Church Hall, Bellevue Road, Friern Barnet. 2 pm (445 8011).

#### Wednesday May 6

Finchley & District Philatelic Society, Avenue House, East End Road, Finchley. 7.30 pm. France 1849-1875 used everywhere except France (883 8724).

East Barnet Gramophone Society, East Barnet Library, 85 Brookhill Road. Plain man's guide to Benjamin Britten. 8 pm (440 4376).

Barnet and District Local History Society, Council Offices, Wood Street, Barnet. 8.15 pm. Inner Secrets of Westminster and the House of Commons (77 54150).

HOKY LIMITED 18 FRIERN PARK LONDON N12 9DA Telephone 01-445 4943

JOHN LEWIS • ALLDERS  
SELFRIDGES • PERRINGS

NOW  
STOCK

THE AMAZING  
**HOKY**

Over 30 unique design features make HOKY the most advanced and efficient floor & carpet sweeper in the world

HOKY means silent, effortless cleaning power without the need for awkward cables, hoses and attachments

ANY surface, ANY sort of dirt... HOKY even copes with pet hair, and can be adjusted to clean the stairs!

With full  
Warranty and  
30 day Money  
Back Guarantee

YOU'LL BE MORE THAN  
HAPPY WITH HOKY!



**BATHCHARM**

From £200 to £10,000. Nothing is too small or too large for us, to design, provide and build.

We also cater for the building trade and the D.I.Y. man in our trade shop.

We have 12 fully fitted bathrooms on display.

We offer a full planning service.

Give advice freely.

Supply and install all necessary equipment.

Provide estimates free.

Call and avail yourself of our exclusive services.

281 Ballards Lane  
Finchley, N12  
Phone: 01-445 4503

Open 9 am—5.30 pm  
five days a week  
Thursdays, 9 am—1 pm

Ecology Party (Barnet & Finchley). Details 449 8297.  
 Finchley Rotaract Club, Moss Hall Tavern, Ballards Lane, North Finchley. 8.30 pm (349 2709).  
 Stonegrove Never Old Club (over 40) Spur Road Community Centre, Green Lane, Edgware. 8 pm (958 2530).

**Thursday May 7**

Friern Barnet Library Gramophone Society, Friern Barnet Road, N11. An animal symphony. 8.10 pm (368 2680).

Probus Club of Finchley, Finchley Bowling Club, Etchingam Park Road, Finchley, N3. 11 am. Sue Barnet, Volunteer Bureau (445 4727).

'An evening with Cyril Luckham', St. Jude's Church, Central Square, NW11, in aid of St. Jude's Church Appeal. 8 pm (233 7945 day).

Hampstead Garden Suburb Free Church, Central Square, NW11. First of six piano recitals by Martin Offord of Messiaen's 'Meditations sur le Mystère de la Sainte Trinité' in aid of Church funds. 8 pm. Admission £1.25 (455 8021).

**Friday May 8**

Hendon & District Cage Birds Association, Carey Hall, Wilberforce Road, West Hendon. 7.30 pm (205 2647).

**Saturday May 9**

Hendon (St. Mary's) Music Society,

Hendon Methodist Church, The Burroughs. David Wilson-Johnson (baritone). 7.30 pm. Admission £2 (202 6908).

Barnet College concerts, College Hall, Fitzjohn Avenue, Barnet. Eileen Broster, piano. 7.30 pm. Admission £1 (440 6321; 449 2916 or 953 8413).

Barnet Parish Church Recitals — Organ recital by Robin Jackson. 7.30 pm. Admission £1 (449 7760).

Music in Central Square. Mendelssohn's 'Elijah'. Bring and sing/play. Rehearsal at 2.30 pm for 7.30 pm, run through. St. Jude's on the Hill, Central Square, NW11. Admission 50p (935 5461 day).

**Sunday May 10**

Octopus Swimming Club for the Handicapped, Squires Lane, Finchley. 12.30 pm (346 5944).

**Monday May 11**

National Council of Women, Barnet & District. Discussion morning, 'Little Croft', Leecroft Road, Barnet. 10.30 am (449 5308).

Finchley Chrysanthemum Society, bring and buy sale of plants, Tudor School, Queens Road, Finchley N3. 8.10 pm (346 2974).

**Tuesday May 12**

Hendon Gramophone Society, Hendon Library. The private Elgar. 7.30 pm (202 5625).

Barnet Anglo-French Club. Excur-

sion to Hampstead, Assemble at Hampstead Underground. 8 pm (779 5200).

Mill Hill Flower Club, Harwood Hall, Mill Hill Broadway. 8 pm (954 4944).

National Schizophrenia Fellowship (NW London Group), Health Centre, Temple Fortune Lane. 8 pm (455 5113).

**Wednesday May 13**

Hendon Horticultural Society, Henry Burden Hall, Egerton Gardens, Hendon. Mr. N. Crick on Famous Gardens. 8 pm (203 3467).

Pensioners' Voice (Barnet), Council Chambers, Wood Street, Barnet. 1.30 pm (449 6023).

Spiritual teachings of Eckankar, North Finchley Library, Ravensdale Avenue. 8 pm (346 4356).

**Thursday May 14**

Hampstead & District Philatelic Society, Trinity Church Hall, Finchley Road (opp. Finchley Road Station), NW3. Annual Cup Competition and social (large hall). 7.30 pm (435 4651).

North London Society of Certified Accountants, Southgate Council Offices, Green Lanes, Palmers Green. 'Budget Proposals 1981'. 8 pm (445 7498).

New Barnet Floral Art Society, Reynolds Hall, East Barnet Road. 'Colour'. 8 pm (77 52924).

Welsh Harp Otters Angling Society, White Bear Public House, The Burroughs, Hendon (205 5670).  
 Contemplative Prayer meeting, The

Cenacle, 11 Cyprus Road, Finchley, N3. 8 pm (346 2783).

Circassian Circle Folk Dance Club, Harwood Hall, Mill Hill Broadway. 7.45 pm (950 5756).

Barnet National Trust Association, Barnet College Hall, Fitzjohn Avenue. 'The Romance of Great Libraries'. 8 pm (449 5896).

**Friday May 15**

Broadfields Evening TWG, Broadfields Junior School, Broadfields Avenue, Edgware. 7.30 pm (958 4845).

Barnet Afternoon TWG, Church House, Wood Street, Barnet. 2.30 pm (449 0714).

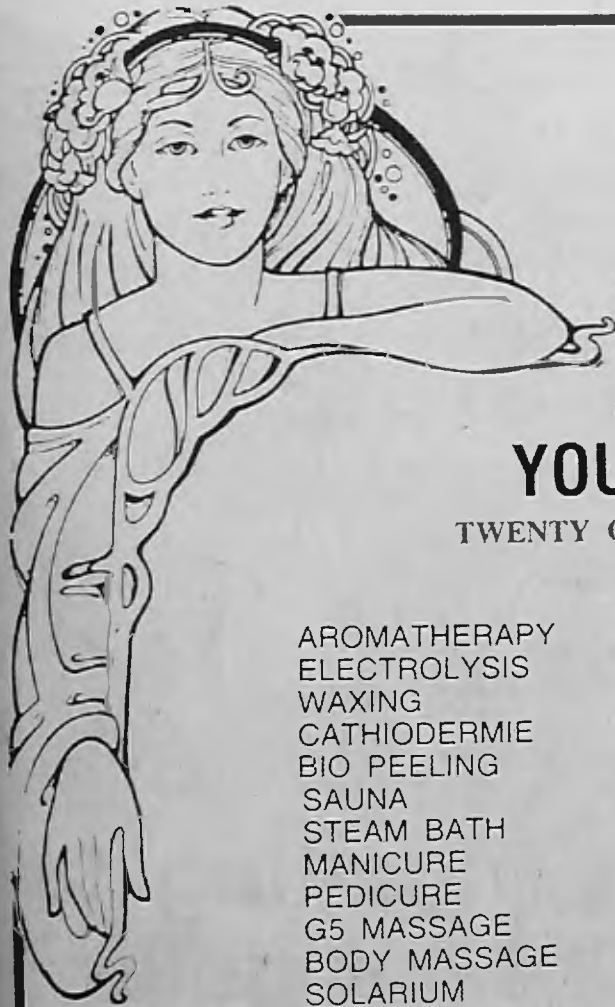
Barnet International Folk Dance Club, Hadley Memorial Hall, French dances. 8 pm (368 5345).

**Saturday May 16**

Barnet & Finchley Choral Society Concert, St. Barnabas Church, Holden Road, North Finchley. Works by Gerard Schurmann, Parry and Delius. 7.45 pm (449 7760 or 440 8624).

5th Hendon Boys' Brigade Parents' Association Spring Fair, St. James' United Reformed Church Hall, Heather Walk, Edgware. 2.30—5 pm (959 0333).

Hampstead Garden Suburb Free Church, Central Square, NW11. Second of six recitals by Martin Offord of Messiaen's 'Meditations sur le Mystère de la Sainte Trinité' for Church funds. 8 pm. Admission £1.25 (455 8021).



**HELEN OF TROY**

**HAIR & BEAUTY CLINIC**

**SPEND A WHOLE DAY OR JUST AN HOUR  
 YOU'LL ENJOY BEING PAMPERED BY OUR STAFF**

TWENTY GIRLS WAITING TO ATTEND YOUR EVERY NEED. ALL TREATMENTS CARRIED OUT BY FULLY-QUALIFIED STAFF. 135 TREATMENTS, INCLUDING:

**20% OFF ALL TREATMENTS WITH THIS ADVERT**

AROMATHERAPY  
 ELECTROLYSIS  
 WAXING  
 CATHIODERMIE  
 BIO PEELING  
 SAUNA  
 STEAM BATH  
 MANICURE  
 PEDICURE  
 G5 MASSAGE  
 BODY MASSAGE  
 SOLARIUM  
 FACE TAN

SUNBED  
 MAKE-UP LESSONS  
 STEAM FACIAL  
 MINILIFT  
 THEATRICAL MAKE-UP  
 CLEANSE MAKE-UP  
 LASH TINTING  
 EYEBROW SHAPING  
 VACUUM SUCTION  
 MASSAGE  
 SLENDERTONE  
 VITATONE

GALVANOMED  
 PARAFANGO WAX  
 PARAFFIN WAX  
 SHAMPOO AND SET  
 CUTTING  
 RAZOR CUTTING  
 BLEACHING  
 HIGHLIGHTS  
 DEMI WAVE  
 HENNA  
 TREATMENT  
 PERMANENT WAVING



**SPEND A DAY OF LEISURE AT HELEN OF TROY ENJOYING YOUR HEALTH AND BEAUTY DAY**

Your treatment will start with a sauna bath to release toxins from the skin, followed by a full 1 1/4 hours massage using radiant heat and essential oils selected for your skin type and personality in an atmosphere of tranquility to relieve all outside pressure. After your sauna and body massage your therapist will attend to your face, commencing with a complete cleaning treatment, followed by a toning — 20 minute massage — mask and moisturiser, eyebrow shape if necessary. Your next treatment attends to your hands and

feet, with a therapeutic manicure and pedicure. After these treatments you move to the hair department for a shampoo and set or blow-dry. To complete your day, your beauty therapist/make-up artist will give you a new make-up for the season. The individual cost of these beauty treatments would cost in excess of £45 — we offer this day for £29.95. During your day you can relax in our lounge. Why not bring a friend with you and qualify for free sunbed treatment? The day's treatment will take approximately six hours.

The Helen of Troy Beauty Clinic is under the direct supervision of Mrs Helen Harding, MA Bth., MF Phys., LCSP, ITEC, Aromatherapist, Cathiodermiste, Theatrical Make-up Artist.

**HOURS OF BUSINESS:**  
 MONDAY, 9.30 am-8 pm  
 TUESDAY, 9.30 am-8 pm  
 WEDNESDAY, 9.30 am-8 pm  
 THURSDAY, 9.30 am-8 pm  
 FRIDAY, 9.30 am-7 pm  
 SATURDAY, 9.30 am-5.30 pm

**HELEN OF TROY  
 HAIR AND  
 BEAUTY CLINIC**  
 71 HIGH STREET,  
 POTTERS BAR, HERTS  
 Telephone Potters Bar 43877

**APPOINTMENTS:**  
 Please telephone  
**POTTERS BAR**  
 43877/52300  
 London code 77. STD code. 0707



**WE ACCEPT CHEQUES**

# Wanted! Jobs for school-leavers

SUMMER will soon be here and with it some 2,000 boys and girls in the 16-18 age group will be leaving Barnet schools. All will be anxious to get the offer of a suitable job so that they can make the all-important good start to their working life and quickly achieve a measure of independence.

For some time now careers officers have been interviewing potential leavers in the schools and many have already sent in their first applications for apprenticeships or training opportunities with the larger organisations.

Traditionally Barnet school-leavers have had no difficulty in finding their first job, although during the last few years, with the decline in manufacturing industry, there has been increased competition for local apprenticeships. Nevertheless, the 70 per cent who have entered service occupations, offices and shops, in particular, have often been spoiled for choice.

But now the situation has changed dramatically and unless all forecasts are proved wrong, 1981 will be the year when school-leavers are faced with the possibility of leaving school and being unemployed for an extended period of time.

Anticipating the difficulties which lie ahead, some leavers

will return to school for further study or begin a college of further education course. Others will want to investigate Government schemes in the hope that a short course of work experience will lead to something better.

The Manpower Services Commission is expanding the Youth Opportunities Programme (YOP) in order to meet an expected rapid increase in unemployment this summer. In Barnet there will be YOP opportunities for continued basic education and initial vocational training in the two local colleges of further education. There will be work experience

places, particularly in shops and offices, and a limited number of short training courses usually of 13 weeks duration, in office work, retail distribution, computer work, and stores and servicing operations in garages.

Some of these courses are local and others situated in neighbouring boroughs. For a YOP trainee the weekly training allowance is £23.50, of which the trainee is expected to pay the first £4 travelling expenses. Any travel expenditure above that sum is reimbursed.

John Ward, Principal Careers Officer for Barnet, welcomes the introduction of YOP opportunities, but he emphasises most

strongly that they are only an alternative to a real job. He hopes that the Careers Service will be able to help most school-leavers find suitable work this year.

He says: "We are particularly depending on the medium and small-size employers in Barnet and hope that they will take an optimistic and positive view of the future and decide to employ school-leavers this summer, even though business may have been affected by the recession.

"It is quite clear that local government and the Civil Service is cutting back on staff this year, and although the major commercial organisations, such as the banks, are as busy as ever, nevertheless, because there has been little or no staff movement recently the number of vacancies open to school-leavers will be well down on the previous year. So it is the smaller employers and there are many of them in Barnet, who can make the biggest contribution to local school-leaver employment."

The local careers offices will be initiating a large-scale canvass of local employers during the next few months. In the meantime, employers who can help now or later this year are asked to contact their nearest area careers office.

## EMPLOYERS 1981! VACANCIES Barnet school-leavers want real jobs!

If you can help please get in touch  
with the nearest careers office!

Barnet College, Town Hall Annexe, Sentinel Square,  
Wood Street, 321 Colney Hatch Brent Street,  
Barnet, Herts. Lane, Hendon NW4  
449 2648 Friern Barnet, N11 202 8282  
368 1255

London Borough of Barnet Education Department

## A NOTORIOUS COMMON

'FINCHLEY COMMON: a notorious place' is the title of Barnet Libraries newest publication written by local headmaster, Fred Davis. It is the first in a series of booklets describing the history of the Finchley area and is on sale at all Barnet libraries and Church Farm House Museum, price 50p.

The author traces the history of the Common over 500 years and the text is illustrated with maps and contemporary drawings, many of which are from the Local History Collection.

Through the centuries, Finchley Common has seen many changes. It once stretched from Totteridge to East Finchley and from Muswell Hill to Dollis Brook. Sheep, cattle and pigs grazed there, wealthy gentlemen hunted; it was used as a refuge from the plague which swept London, and Dissenters and Non-conformists held open air meetings. Regiments paraded, horses were raced and boxing matches held. However, during the 18th and 19th centuries, Finchley Common was considered to be one of the most

notorious places near London — the haunt of highwaymen and footpads who did not hesitate to kill their victims.

Stagecoaches were robbed, the mail, waggons, and other travellers attacked. During one evening in 1772 eleven different carriages were robbed by a single highwayman between the Five Bells Inn . . . and Whetstone. But there was honour among thieves. Those who were robbed were given a password which was accepted by the next highwayman along the line who allowed the traveller to pass unmolested.

In the middle of the nineteenth century the area was enclosed and gradually the area was cultivated and developed. Travel along the North Road became less hazardous as Finchley Common ceased to be the haunt of highwaymen.

Today the only stretch of Finchley Common which remains as open land is an area of some 40 acres which includes the Glebe Land. Barnet Council is now preparing a planning brief so that this land can be more fully used as park and sports grounds for the benefit of the residents of the borough.



Waggons crossing the common in the late 18th century.



## Skating to a gold

Barnet Roller Skating Club's team of Graham Ansell (11), Marie Nutt (12) and Paul Whitacker (11), won the gold medal in their heat at the Imperial Festival at Peterborough at the end of last month.

They now go forward to skate for the Peacock Trophy at Peterborough on May 2 and 3.

The team are trained by Ernie Ansell, Graham's father.

# MOTORING GUIDE & SERVICES



RENAULT

## TEMPLE FORTUNE GARAGE LTD.

THE OLDEST ESTABLISHED  
RENAULT DEALER IN THE  
LONDON BOROUGH OF BARNET

1089 Finchley Road, London NW11 0QJ. 455 9955



RENAULT

## THE ESCORT BEATER



The new 323.

The 323 range will excite you with its totally new front wheel drive transverse engine that runs on 2 star petrol.

You'll fit comfortably into the ergonomically designed seats. And the split rear seat will easily fit the awkward loads.

You'll admire the aerodynamic styling. You'll appreciate the self-compensating rear suspension, the interior hatch release, quartz clock and, of course, the famous Mazda reliability. Given all this and more, you'll probably expect to hand over much more than £3,399. **Yes £3,399.**

**mazda**  
A hatchback to get  
excited about.

## PORTER BROS. LTD.

STATION ROAD  
RADLETT  
TEL: RADLETT 6711

## BRITISH & CONTINENTAL RADIATORS

LARGE STOCKS - MOST TYPES FITTED  
WHILE-YOU-WAIT

Repairs and specialist work undertaken on the premises

FUEL TANK REPAIRS  
& EXCHANGES

VIC SMEE (Radiators) CO LTD.  
168 Chapter Road, London, NW2

TEL. 459-6467/6230

PERSONAL CALLERS WELCOME



## IT'S TYRE BARGAIN TIME



FULLY GUARANTEED  
TUBELESS TYRES FROM

**£7.90**  
+ VAT



ELECTRONIC WHEEL BALANCING  
PUNCTURE REPAIRS FREE FITTING

We specialise in  
JAGUAR/DAIMLER/FERRARI  
PORSCHE

HUGE DISCOUNTS ON ALL MAKES

**BLUE STAR  
BATTERIES**  
FROM ONLY



**£14.50** + VAT

**Save! Save! at FIVEWAYS TYRES**  
1 PAGE STREET, NW 7  
203 2088/5381

OPEN 7 DAYS A WEEK

## CREASEY & BRAY COACH TRIMMING

For all your present and Vintage Car Trim  
e.g. Vinyl Roofs, Hoods, Sun Roof Repairs,  
Carpets, Seating and Panels etc.

Also most trim materials available  
at discount prices

FREE ESTIMATES

TEL:

**01-441 5320**

## MoT Failure?

ALL CHASSIS SILLS  
AND  
FLOORING REPAIRS  
AT  
HIGHEST STANDARDS

**Bunns Lane  
Welding**

Bunns Lane Works,  
Mill Hill, NW7  
Tel: 959 8046

(Open 10 am until 6 pm  
Mon. - Sat.)

## LEICESTER ROAD GARAGE LTD. 18 LEICESTER ROAD, NEW BARNET HERTS.

Telephone:  
01-449 7048/4587

Self-Drive Car Hire

Servicing, Coachwork and Mechanical Repairs

TO ADVERTISE  
IN OUR  
MOTORING GUIDE  
PHONE: 366-4626

ASK FOR  
DEBBIE OR ALAN

**DRIVING TAUGHT BY QUALIFIED PATIENT DRIVING INSTRUCTOR**

**VERY FEW FAILURES**

CONTACT:

**Spencer  
423 2161**

**ALL AIRPORTS AND SEASIDES  
JACK'S EARLY CAR SERVICE  
959 6473 ALSO 423 2161**

HEATHROW — £10  
LUTON — £12  
GATWICK/STANSTED SOUTHEND — £18  
BRIGHTON — £25  
EASTBOURNE & BOURNEMOUTH — £30  
ADVANCE BOOKINGS



**SOUTHERNGAS  
HEATING CO**

**AS THE EXPERTS IN GAS HEATING  
WE CAN NOW REPLACE**

**A MULTIPOINT**

With a boiler to give you instant, constant hot water and controlled central heating. Up to £100 allowed on your old multipoint.

FREE ESTIMATES

TEL: **801 6085  
973 6694**

**HAPPY HOLIDAYS  
CARTOON  
COMPETITION RESULTS**

Our Happy Holidays Competition in the February issue produced a considerable amount of interest and an extremely high number of entries. The competition has undoubtedly been a great success and we will endeavour to run further competitions throughout the year.

**AFTER MUCH DELIBERATION  
THE WINNERS WERE ADJUDGED  
AS FOLLOWS**

- 1st Prize £30 Voucher**  
L. H. Noyce  
191 Church Hill Road, East Barnet, Herts.
- 2nd Prize £20 Voucher**  
Mrs. K. A. Reed  
72 Barfield Avenue, Whetstone, N20
- 3rd Prize £10 Voucher**  
R. A. Clark  
52 Mostyn Road, Burnt Oak, Edgware, Middx.

**HOLIDAY GUIDE**

**TORQUAY  
WINTER GARDEN HOTEL  
TEIGNMOUTH ROAD**

Friendly licensed Hotel. Live music and cabaret. Swimming Pools. Rooms with own showers or suites. Radio intercom and baby listening. Tea making facilities in all rooms. Excellent choice menu. Excellent car parking facilities.

Good concessions — One child free except July and August

**Tel: (0803) 38956**

**ALICE & ALEXANDER  
LUXURY HOLIDAY AND CONVALESCENT  
NURSING HOME**

Spring House Private Nursing Home. Long or short term patients. Holiday care. luxury hotel atmosphere. long weekends, etc. for exhausted business persons. Magnificent grounds in green belt area within easy reach of Central London.

Recognised by B.U.P.A. and P.P.P. etc. Licensed by Essex Area Health Authority.

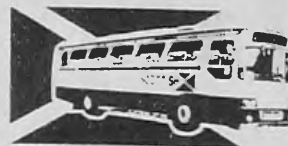
**SPRING HOUSE  
COOPERSALE LANE, THEYDON BOIS,  
ESSEX**

**Tel: THEYDON BOIS 4276 or 01-989 5913**

*Super Coach  
EXPRESS*



**LONDON To  
SCOTLAND**



Book at SCOTTISH COACH TRAVEL CENTRE  
298 REGENT STREET Tel 01 636 9373-4  
or where you see this Sign



**TURNER  
PASSENGER  
TRANSPORT**

12-57-seater luxury touring coaches

Many vehicles fitted with TV and videos  
Weekend breaks and mini holidays  
Whitsun weekend May 22nd for two nights

Rhineland £62.00  
Paris £59.50

Phone: 278 4639/837 5010  
or write to:  
24 Baker Street, London W1

**Luxurious brand new  
3-bedroom holiday  
bungalow**

Colour TV  
Adjacent sea Suffolk coast

**Tel: 203 2394  
(Evenings)**

**TENBY, Sunny SW Wales**

Glorious beaches and breathtaking scenery only 4 or 5 hours drive from London on M4.

**LUXURY CARAVANS TO LET ON  
BEAUTIFUL HOLIDAY PARK from £50 p.w.  
TOURERS WELCOME**

Brochure from:  
Caravanserai, 49 South Parade,  
Mollison Way, Edgware.

**01-952 8789**

**BARNET CIVIC  
NEWS IS  
DISTRIBUTED  
THROUGHOUT THE  
WHOLE OF THE  
BOROUGH OF BARNET  
FOR  
ADVERTISING RATES  
PHONE 366-4626**

# YOUR COUNCILLORS

## HENDON

Hendon Ward is a self-contained centre with its shopping centres in Brent Street and Hendon Central, Underground station, fire station, central library, museum, residential roads and village style centre at Church End. It is a long established community centring on Hendon Town Hall where Barnet Council Chamber is to be found.



**COUNCILLOR JOHN ARCHARD-JONES** has been involved in community service almost from leaving school. His mother, the late Mrs. Betty Jones, founded the Peter Pan Homes in Barnet, a charity with which John is still closely involved and which now has three homes within the Borough.

He joined the Young Conservatives and became chairman of Hendon South branch and vice-chairman of London YCs, and in 1974, still in his mid-20s, he was co-opted on to Social Services Committee through his interest in work for the mentally handicapped and became a valued contributor to debates on services where the voluntary organisations and local authority officers were working in harness.

Four years later he was elected to Council and is still a member of the Social Services Committee as well as serving on Establishment and Town Planning and Research Committees, a heavy commitment in time and service.

A sales manager for International Computers Limited, he studied electronics during his apprenticeship with ICL and his work today involves extensive travel throughout the UK.

He is a member of the Association of Scientific, Technical and Managerial Staffs and feels he is on the left wing of the Conservative Party. He is the national director of development for the Tory Reform Group and in the 1979 elections he was personal assistant to Ted Heath.

His wife Liz, an executive with a leading retail company, is also very interested in local politics, working with him as much as possible, particularly in the field of social voluntary work. They live in an old cottage in Totteridge which they are renovating themselves.

John is on the executive of Barnet Community Relations Council and a member of the Anglo-Asian Conservative Society.



**COUNCILLOR NORMAN HIRSHFIELD**, a former Mayor of Barnet, is Chairman of the Finance Committee which approves the level of the rate each year, directs financial strategy and monitors spending.

Norman Hirshfield, who was educated at the City of London School, is an underwriting member of Lloyds. In 1934 he founded his own firm which later merged with another practice to become Norman Hirshfield Ryde and Browne, well known West End surveyors, auctioneers, valuers and estate agents, of which he is senior partner. He plans to retire from his firm at the end of this month but will continue as a consultant and director of several companies. He is a Fellow of the Incorporated Society of Auctioneers and Landed Property Agents.

He and his wife, Iris, were Mayor and Mayoress in 1975/6 in which year three ambulances for Mobile '75, the voluntary driver service, were purchased through the Mayor's Appeal.

He was elected to Council in 1968 having previously been active in the Junior Imperial League — forerunner of the Young Conservatives. Public service is a family tradition. His late father, Leo, was on Camberwell Council and later represented Golders Green Ward on the former Hendon Borough, and his only brother is a Peer of the Realm.

Norman Hirshfield has served on most of the Council's main administrative committees. For four years he was chairman of Housing and now serves on the Policy Advisory, General Purposes and Finance Committees. He is a Governor of Hendon School and of a group of local primary schools. He is also a Magistrate at Marylebone and Wells Street Courts.

He has lived in the Borough for 50 years and his three children and five grandchildren live nearby. He is a member of Mill Hill Golf Club with a handicap of 12, and is a keen reader of 19th and 20th century biographies.



**COUNCILLOR VICTOR HOCKLEY** has represented Hendon Ward since 1968 and sees the councillor's role as a bridge between the residents of the borough and the Town Hall.

His particular interests are education and finance, two aspects he combines as chairman of the Works and General Purposes Sub-Committee of the main Education Committee, dealing with the maintenance of services and buildings.

He is chairman of the governors of Hendon College and serves on the Joint Education Committee of Middlesex Polytechnic and has been chairman of its Finance Committee. He was formerly a governor and vice-chairman of Grahame Park School and now serves as governor of St. Mary's C.E. School and chairman of a group of primary schools in Hendon and Colindale. During 1978/79 he was Deputy Mayor of the Borough.

'I take a tremendous interest in the schools. It is important that the governors should be fully aware of what is happening in the schools, working with the head teacher, staff and parents to find the best solutions in matters of education and finance,' he said.

Victor Hockley is a chartered accountant and financial consultant, having been in practice in the City of London for over 25 years. He is a lecturer in accountancy and finance at Brunel University, and organises seminars and courses for bankers, accountants and businessmen.

He also uses his skills on behalf of voluntary organisations. For 11 years he was treasurer of the Jewish Blind Society covering the whole country and is honorary auditor of St. Mary's C.E. School. He was a founder of 4th Hendon Scout Group. His wife Freda is a voluntary visitor at Derwent House.

'I am a councillor because I want to serve the community with which I feel a deep sense of involvement,' he said.

His hobbies are reading, particularly 19th century history and political biography and, when possible, foreign travel.

# MILES BETTER VALUE!

**GOODYEAR**  
Grand Prix-S.  
145 x 13 (Marina 1.3, Allegro, Alfasud, Fiat 128) **£18.60**  
155 x 13 (Fiat 850 Coupe, Escort 1100, VW Golf) **£21.70**  
165 x 13 (Cortina, Cavalier, Renault 20, Toyota Carina) **£23.85**

GOODYEAR G.800 + S STEEL  
145 x 10 (Mini) **£13.41**  
155 x 13 (Austin Maxi, Datsun 120Y, Alpine) **£17.40**  
165 x 13 (Audi 80LS, Cortina 1.6, Mazda 616) **£18.88**  
**BRITISH FABRIC RADIALS**  
155 x 12 (Datsun Cherry, Honda Civic, Fiesta) **£13.66**  
155 x 13 (Fiat 850 Coupe, Ford Escort 1100, VW Golf) **£15.50**  
165 x 13 (Vauxhall Cavalier, Renault 20, Toyota Carina) **£16.77**



All prices include VAT and fitting.

## SAVE WITH THE PROFESSIONALS

SAVE ON EXHAUSTS  
SPEND £20 .....GET £3 OFF!  
SPEND £30 .....GET £5 OFF!  
SPEND £40 .....GET £8 OFF!  
SPEND £50 .....GET £12 OFF!  
SPEND OVER £50 .....GET £15 OFF!



LIMITED PERIOD ONLY!

Call in today for a quote on your car

**Barry Payne,**

54a St. Albans Rd., Barnet.

Opening hours: Mon-Fri 8.30am-5.30pm  
Sat 8.30am-12.30pm

**01-440 3255/6**

Cash Sales, credit card and Drivers Club customers only while stocks last

**TYRESERVICES GREAT BRITAIN**



# UNDER 26?



**YOU CAN SAVE UP TO 50% OFF RAIL FARES TO EUROPE**

Cash in on these fantastic savings This is YOUR rainbow and at the end of it is a "pot of gold" full of savings!

- ★ LONDON-PARIS ★ £25.80 RETURN
- ★ LONDON-AMSTERDAM ★ £27.70
- ★ SPECIAL INCLUSIVE WEEKEND IN PARIS ★ £34.55 FOR TWO NIGHTS

These discounts are worth a "pot of gold", so follow the rainbow and collect your savings at —

**836 0087/8**

# TRANSALPINO

214 SHAFTESBURY AVENUE WC2



## A GREAT OPPORTUNITY!

WOULD YOU LIKE TO EARN NEARLY 70% PROFIT ON EACH SALE OF OUR PRODUCT?

We are looking for **MANAGERS/ESSES AND AGENTS**

to work locally (in your own area), promoting our records of a well-known label as sold in all major department stores. All records are new, you are invited to invest a small amount. For example a £60 investment with a **PROFIT RETURN OF 40%** (min. investment of £60, max. unlimited!) We are the Appliance Record Co., an established and respected company offering YOU the opportunity to become self-employed in this busy, exciting and financially rewarding industry, selling a large variety of records, at your leisure, and at discounted prices.

For full details please phone without obligation: **APPLIANCE RECORDS**

0206 44818 Mon.-Sat. 9 am-8 pm Suns. any time  
Or write to: RECORD DEPT. BCN, THE HYTHE, 32-34A BARRACK STREET, COLCHESTER, ESSEX quoting this publication

## ENGINEERING VACANCIES

Montrose Technical Staff a long-established recruitment agency now operating from Harrow can assist you in finding your next permanent or temporary position. We specialise in all trades and disciplines within the engineering, technical and industrial fields. No matter what your trade, skill or profession contact us now.



**MONTROSE TECHNICAL STAFF (agy.)**

**01-863 9414**  
Northern Rock House,  
88/90 College Road, Harrow.  
(By Harrow-on-the-Hill tube)

## CARAVAN FOR SALE

2-berth  
Cynet, 9ft 6in.  
The ideal caravan for the small car. 9 1/2 cwt.  
Nice condition.  
£550 ono.  
Telephone: 959 8055

# SITUATIONS VACANT

## FIVE 'O' LEVELS?

**Your Clerical career with us could start in Barnet or Edgware**

Join us as a Clerical Officer at the Department of Health and Social Security. You'll have an exciting and satisfying job helping us to deal with all kinds of people in need of help. Prospects are good; we'll train you; and you'll have the chance to work near home with flexible hours to suit you.

**QUALIFICATIONS:** You'll need 5 'O' Levels (or equivalent) including English Language (grades A, B or C from Summer 1975).

(Registered Disabled Persons without qualifications may take our special Clerical Test).

**STARTING SALARY:** Up to £4,133 pa, depending on age, rising to £5,351 pa (including London Weighting).

I am interested in being a Clerical Officer

Name..... Age.....

Address .....

Post to: Department of Health and Social Security  
Raydean House  
15 Western Parade  
Barnet, Herts EN5 1AH  
Closing date — April 24th 1981



LONDON BOROUGH OF BARNET  
BOROUGH ENGINEER  
AND SURVEYOR'S DEPARTMENT  
**Receptionist/Secretary**  
Grade AP2. Ref. 199  
Salary £5,073 — £5,631 per annum inclusive  
To Principal Executive. Required to deal with a wide variety of public enquiries. Must be competent shorthand typist. Some clerical duties. Flexible working hours.  
Application forms from the Borough Engineer and Surveyor's Department, 322 Regent's Park Road, Finchley, N3 2LP, to be returned by 30th April, 1981.

## Put your career into top gear with us

As one of the U.K.'s fastest growing, most successful sales companies, we've made a name for ourselves in the top quality car accessories and components field. With nearly 200 retail outlets throughout the U.K., our business is expanding and to meet increasing demands for our products we have the following exciting management opportunities for men and women.

### Managers c.£7,500

For branches throughout Central and Greater London to lead a small team and be totally involved in the day-to-day running of the store. Ideally, applicants will be aged between 18-35, have a good standard of education, a helpful, friendly personality and the desire to succeed. Experience in retail selling or a knowledge of cars would be useful but is not essential, as we provide first class continuous training both in store and at our training school.

You'll be given excellent fringe benefits, including pension scheme, incentive bonuses, and generous staff discounts on all company products.

*Interested? Then contact our Personnel Department for an application form and further details. Interviews will be held locally.*

Motorist Discount Centre,  
Castle Meadow Road,  
Nottingham, NG2 1AG.  
Telephone (0602) 47701  
ext. 39 or 59.



**MOTORIST DISCOUNT CENTRE**



**QUALIFIED NURSES REQUIRED NOW!**  
for private patients, nursing homes hospitals and industry  
Full-time and Part-time  
Telephone us today on 01-202 8112  
Court Nurses, 14 Central Circus, Hendon, NW4

**WE CAN HELP YOU FILL YOUR SITS. VAC. CALL US TODAY ON 366-4626**

# Car sharing scheme can cut nation's fuel bill

Car sharing could soon become one of the most popular forms of travel in Britain. For on October 6, 1980, certain provisions in the 1980 Transport Act became law.

Car owners can now advertise widely their willingness to carry passengers on a shared cost basis. The costs that can be shared include petrol, oil, servicing and repairs, other running expenses and a certain amount for general wear and tear and depreciation related to the time used for car sharing. Of course people whose running costs are met by their firms should not expect again to seek contributions from their passengers towards their costs: the new law does not allow drivers to make profits or run businesses.

## Arrangements

No one is suggesting that car sharing should replace public transport and clearly buses and trains are a more effective way than private cars of moving large

numbers of people. Yet, public transport, however good, cannot cater for all needs economically, and in any case many people simply prefer to drive their own cars. Car sharing is not a substitute taxi service as drivers cannot ply for hire and all arrangements for payment must be made before the journey starts.

## Economy

What Norman Fowler, Minister of Transport, is keen on doing through the 1980 Transport Act is to relieve congestion on the roads and economise in the nation's fuel bill. He is particularly concerned about the large percentage of the working population who travel solo in their cars to work. That is almost nine million people who could be regularly pooling their resources, saving themselves a lot of cash and extending the life of their vehicles.

Overall annual running costs

could be cut by more than £30m and 12m gallons of fuel could be saved if only two per cent of that nine million solitary car commuting workforce organised themselves into a lift-share scheme.

For example, if five car owners came together in such a scheme, and each drove for a week in turn, each person could become a passenger for up to 40 weeks a year, and fuel and running costs would be cut by four-fifths. In fact, in this scheme, no money need change hands at all.

There is no need to worry about insurance because domestic car insurance policies permit lift-share arrangements.

## Isolation

Another of Mr. Fowler's concerns is the lack of adequate rural transport. Here lift-giving schemes can help provide transport for people who would otherwise be isolated because they do not have cars of their own. Drivers may of course reasonably charge the entire cost of a journey to a passenger if they themselves would not have otherwise have taken the journey.

So basically, car sharing is really public spirited common sense coupled with large savings in pounds and pence.

## WHAT'S ON

### Late entries

#### Monday, April 13

\*Mind in Barnet (voluntary association for mental health). Advice Centre, 154 Station Road, Hendon. 10 am—1 pm.

#### Wednesday, April 15

\*Mind in Barnet (voluntary association for mental health) Advice Centre, 154 Station Road, Hendon. 2—4.30 pm.

\*Ladies Health and Body Workout, Reynolds Hall, East Barnet Road. 10.30—11.30 am. Fee £1, toddlers free. (441 0780)

#### Thursday, April 16

\*Mind in Barnet (voluntary association for mental health) Advice Centre, 154 Station Road, Hendon. 8—10 pm.

#### Saturday April 18

Reopening and Rededication of Child's Hill Baptist Chapel, Mortimer Close (formerly Granville Road), NW2. 3 pm.

#### Saturday April 25

Alpine Garden Society (North London) Flower Show, Oakwood Methodist Church Hall, Westpole Avenue. 2—5 pm.

Jumble Sale, Garth Hall, Child's Hill, Cricklewood, 57th Division, St John Ambulance Brigade. 2.30 pm.

#### Tuesday April 28

Barnet Council for Sport and Recreation. AGM, Queen Elizabeth's Centre, Meadway, Barnet. 8.30 pm.

#### Wednesday April 29

Transcendental Meditation, free introductory lecture, North Finchley Library, Ravensdale Avenue. 8.15 pm. (883 0823)

#### Thursday April 30

'An evening with Cyril Luckham', St Albans Church Hall, North End Road, NW11. Sponsored by Arthritis and Rheumatism Council (Hampstead Garden Suburb branch). 7.30 pm. (883 3689)

#### Sunday May 3

Mill Hill Preservation Society, Footpath Walk. Meeting at The Rising Sun, Highwood Hill, Mill Hill. 2 pm.

#### Thursday May 7

Transcendental Meditation, North Finchley Library, Ravensdale Avenue. 8.15 pm. (883 0823)

#### Friday May 8

Edgware Townswomen's Guild coffee morning in aid of Jimmy Savile's Stoke Mandeville Appeal, Parish Hall, Rectory Lane, Edgware. 10.30 am—12.30 pm. (959 5097)

#### Saturday May 9

Finchley Chambers Choir, Ballards Lane Methodist Church, Finchley. 7.30 pm.

#### Sunday May 10

Antique Fair at Michael Sobell House, Limes Avenue, NW11. 10 am—6 pm. Admission 50p. In aid of Sobell Day Centre.

#### Tuesday May 12

Spur Road over 60s Club, Spur Road, Community Centre, Green Lane, Edgware. 1.30 pm. (959 5097)

#### Saturday May 16

Family Holiday Association Spring Fete, Hill Close (off Hampstead Way), Hampstead Garden Suburb. 2 pm.

# READ



## WITH YOUR SUNGLASSES

British Patent No. 1485324 — an invention that amazes wearers of reading spectacles.

Forget that tiresome changing over to reading specs for every price-tag or telephone number.

In minutes convert your favourite sunglasses and read with very adequate clarity.

The 'C-ade', virtually weightless and unnoticeable in use, also bring TV into excellent focus.

Simple and harmless. Send only £3 and coupon to:  
**MARLOW ADES**  
(Dept. B),  
57 QUEENSTOWN ROAD  
LONDON, S.W.8

for material to modify 3 pairs of sunglasses. (Keep a spare pair handy).

I enclose £3 PO-CASH  
CHEQUE for 'C-ADE' Kit.

Mr/Mrs/Miss .....

Address .....

Please use BLOCK LETTERS

## BEECH HILL NURSING HOME

Luxurious nursing home in exclusive London suburbs of Hadley Wood, situated in 2 acres of beautifully landscaped gardens.

- \* Rooms en suite
- \* Single rooms
- \* Sharing and Ward rooms
- \* Medical Post Operative
- \* Convalescent and geriatric patients
- \* 24-hour care and attention, by highly qualified nursing staff
- \* Special diets catered for
- \* Excellent cuisine
- \* Short stays welcome
- \* Private telephones
- \* Lifts to all floors
- \* BUPA and P.P.P. patients welcome

Telephone: 01-449 4181

# HOUSEHOLD SERVICES

## VERSATILE BUILDERS AN EDWIN BROWN COMPANY

156 Mount Pleasant Road, London, N17. Telephone: 01-808 0383 (2 lines)

- ★ Central Heating
- ★ Plumbing
- ★ Brick Work
- ★ Decorating

ALL TYPES OF BUILDING WORKS UNDERTAKEN (NO COWBOYS)

### PLUMBING & HEATING PROBLEMS?

WE CAN HELP YOU!  
Prompt 24-hour service

Telephone  
889 9537/7645  
(office)  
367 6166  
(nights)

all inquiries  
**OAKLEY PLUMBING & HEATING ENGINEERS**  
Specialists in  
Plumbing and Heating  
Installations

## WATERJET

### PLUMBING, HEATING & DRAINAGE

INSTALLATION, MAINTENANCE AND REPAIRS  
BATHROOMS ● TOILETS ● KITCHENS ● CENTRAL HEATING ● ROOFS ● GUTTERS ● INSULATION ● DOMESTIC OR INDUSTRIAL

**01- 958 6633**  
**01-906 0214**  
**01-431 2969**

24 Hour Service




### EDGWARE STRIPPING CO.

Doors stripped from £7.50  
IN-SITU STRIPPING AND  
WAXING UNDERTAKEN

**FREE COLLECTION & DELIVERY**  
TEL: 951 0646 ANYTIME

## ANDREWS DAMP PROOFING

Rising Damp — Woodworm — Dry Rot  
Guttering — Electrical Work — Specialists

*20 years Guaranteed - Free Test*  
Telephone Mr Andrews on  
**801 3267**



## Skull Roofing Contractors Limited

Roofing Contractors and Merchants

7 NORTH PARADE, MOLLISON WAY  
EDGWARE, HA8 5QH  
Telephone: 01-951 1659/1640

## NO PAYMENT REQUIRED

FOR NEW ROOFS OR REPAIRS  
UNTIL ALL WORK IS COMPLETED



## PERMANENT ROOFS LTD.

*have completed over 7,000 new roofs*

ALL OUR WORK IS OF THE HIGHEST STANDARD, FULLY INSURED AND GUARANTEED.

A NEW ROOF FROM £2.00 PER WEEK.

NO DEPOSIT NEEDED

For free estimate without obligation  
TEL: 01-363 3600 (any time)  
or 01-363 9228



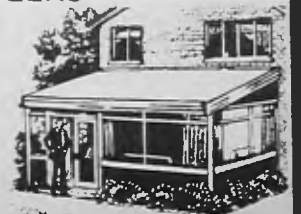
## CLANCY BROS. BUILDERS

EXTENSIONS COMPLETED  
IN 4 TO 6 WEEKS

Free Estimates

10 year Guarantee

Phone Now  
882 4832



## RISING DAMP!

For FREE estimates and survey  
with no obligation

**RING THE EXPERTS  
DAMP GUARD SERVICES**

**TEL: 01-951 3854**

## REASONABLE PRICE FOR A FIRST CLASS JOB

BUILDING THROUGH LOUNGES JOINERY BRICKWORK

ROOFING SLATE TILES GUTTERS AND FLAT ROOF

**BOYDS BUILDING CO.**  
440 0360

ESTABLISHED 1977

## COSYTOP

LOFT INSULATORS

GOVERNMENT GRANTS AVAILABLE

Our Installations are Guaranteed to meet Council Approval.  
Our Materials to BS 5803.  
Free Estimates

Phone: Waltham Cross 36598  
Waltham Cross 21279

# BUILDING FOUNDATION AND FORECOURT CONSTRUCTION

COMPLETE SERVICE  
COMPETITIVE PRICES



Bobcat loaded muck and rubbish away



Excavation and Loading

- ★ Skip Hire
- ★ Machine Excavation and Hire
- ★ Bulk Rubbish Clearance — machine loaded
- ★ Pile Boring
- ★ Concrete Supplied

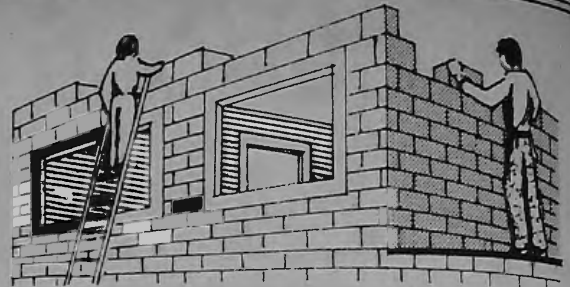


Sand, Ballast and cement supplies



Skip Hire

MILL HILL  
BUILDING SERVICES  
906 2338  
528 Watford Way, NW7



## RICHARDSON & SONS (BUILDERS)

Offer a comprehensive building service to suit your needs.

Our services include roof work, gutters, plastering, plumbing, through lounges and arches, extensions, bathroom and kitchen conversions.

For a free estimate telephone:

**882 3549**

## STOP LEAKING GUTTERS



Guaranteed 25 Years

Continuous Aluminium Seamless Gutters

Our factory on wheels tailor makes the big 5" capacity gutters at your home. No sectional joints means no leaks, never rusts, pre-painted in colour, never paint again. Free estimate without obligation.

Ginty Construction Ltd., Seamless Gutters Dept, Freepost, Barnet, Herts, EN5 2BR. Tel: 01-449 2209.

# EXTENSIONS

# LOFT CONVERSIONS

**PEBBLES**  
Construction Co. Ltd.  
Design • Build • Decorate

YOUR LOCAL SPECIALISTS  
Tel: 01-882 3317/01-886 0429  
(After 6 pm)

- ★ All work guaranteed
- ★ Viewing of completed work can be arranged
- ★ Free and fast estimating service
- ★ Early start possible on approved schemes
- ★ Very competitive rates

## A. & I. P. BEAUMONT & CO

(Inc. C. A. GRUBB & CO)

We are now able to estimate for work starting in May, June '81

All types of work including DECORATING, PLUMBING AND EXTENSIONS UNDERTAKEN.

For further information phone 881-0428 360-4047

4 BROADWAY MEWS  
WINCHMORE HILL  
LONDON N21

## K. J. D. LOFT INSULATORS

COMPLETE SUPPLY AND FIT SERVICE

PHONE:

**531 1608 or 520 7880**

FOR YOUR FREE ESTIMATE

## J. S. & L. HEATING ENGINEERS

(Reg'd Co.)

For all types of heating and plumbing installations

**FREE ESTIMATES**

All work fully guaranteed  
Recommended Fernox Heating Engineers  
Registered Corgi installer  
Credit facilities available

**PHONE NOW**

**01-804 6167**

24-Hour Answer Service

## CENTRAL HEATING from £900

C.O.R.G.I. registered installers  
**D. W. BRANSON & SON**  
14 Pennine Parade  
Pennine Drive, NW2  
Tel: 01-458 9837

# REMEMBER — YOUR PROPERTY IS YOUR BEST INVESTMENT!

### \* ROOFING

All roof repairs, flat roofs, guttering, repointing, zinc bays etc.

### \* NEW ROOFS

Guaranteed for 10 years.

### \* PLUMBING

Washing machines, dishwashers, tanks, toilets, bathroom suites, radiators, burst pipes etc.

### \* HEATING

We repair and fit Central Heating Systems.

### \* DOUBLE GLAZING

All types of single, double and aluminium glazing including replacement windows, patio doors, porches etc.

### \* EXTENSIONS/CONVERSIONS

Plans drawn, Council approval obtained, loft conversions/alterations. All small building work undertaken.

### \* DECORATING/INTERIOR DESIGNING

All painting, decorating, wallpapering, plastering etc. Interior and exterior. No job too small.

### \* FITTED KITCHENS

Designing service. We do everything. Carpentry, plumbing, electrics, wall and floor tiling, kitchen extensions too.

### \* FITTED WARDROBES

Custom made by experienced craftsmen and expertly fitted.

ALL WORK CARRIED OUT FULLY GUARANTEED  
PHONE US TODAY TO ARRANGE YOUR FREE SURVEY AND ESTIMATE

**361 0761**  
(ANYTIME)

# LEEJAY

GENERAL BUILDERS & CONTRACTORS  
THE SPECIALISTS IN HOME IMPROVEMENTS

**361 0761**  
(ANYTIME)

## HEATING PROBLEMS? CONSULT

# COHEAT LTD

FOR NEW INSTALLATIONS, MAINTENANCE and SERVICING

- Members of H.V.C.A.
- Corgi Gas Installers
- Potterton appointed service contractors
- Stockists of Potterton and Ideal/Stelrad spares

UNIVERSAL HOUSE  
LINCOLN WAY  
ENFIELD, MIDDX.  
Tel. 01-805 2070

## BUILDING MATERIALS

SAND — BALLASTS  
£5.00 PER TON

CEMENT ON SPECIAL  
NEW BRICKS FROM £35.00 PER 1,000  
BLOCKS

3in £3.00 per metre. 4in £3.75 per metre.  
8in £7.50 per metre.

PAVING — SLAB — WALLING  
RSJ's 7 x 4 — 8 x 4

ROOFING SLATES  
NEW SAWN TIMBER

6 x 1 flooring 15p ft. 6 x 1 Tag 15p ft.  
2 x 1 6p ft. 2 x 2 9p ft. 3 x 2 16p ft. 4 x 2 20p ft.  
6 x 2 30p ft. 7 x 2 34p ft.

ALL OTHER SIZES

8 x 4 1/4 Chipboard  
8 x 4 1/2, 8 x 4 3/4 Ply-wood.  
ROOFING FELT

SKIP HIRE

IT'S WORTH A CALL

01-808 0342

01-808 7795

## CLIFFORDS ROOFING CONTRACTORS



527 HERTFORD ROAD,  
ENFIELD HIGHWAY

### NEW ROOFS, REPAIRS

Re-slating, 3-layer felting.  
Asphalting, roof coating.  
SPECIALIST. Estimates Free.  
New roofs from £4 per week.

Tel. 805 3987 805 5435  
ANYTIME

Confidential Finance  
Arranged



## TRAILER HIRE

FOR YOUR OWN

REMOVAL

FROM

ROBINSONS

452 5441

## J. E. RIGDEN

Decorator

25 years  
in the trade

Call 440 0809  
for estimate

Tel: 01-883 3191  
01-883 0819

## BILL BOUNDY TRANSPORT

Express  
Delivery Service  
Haulage  
Removals

01-440 1611

RING THIS NUMBER FOR

### AUTHORISED HOOVER SERVICE

CLEANERS, AUTOMATICS AND TWIN TUBS IN  
YOUR OWN HOME BY QUALIFIED HOOVER EN-  
GINEERS FROM

HADLEY SERVICES, 62 High Street, Barnet

Established 1964

## HOME EXTENSIONS

are our speciality

- \* Plans drawn at no extra cost
- \* An association of builders specialising solely in home extensions
- \* 10-year guarantee
- \* 100 per cent loans available

KINGSWAY HOME EXTENSIONS

For Free Estimates and advice ring  
960 0953 any time

## FRENCH POLISHING

MODERN, PERIOD & ANTIQUE  
FURNITURE RE-POLISHED

EXTERIOR WORK UNDERTAKEN

Tel. 01-441 2471

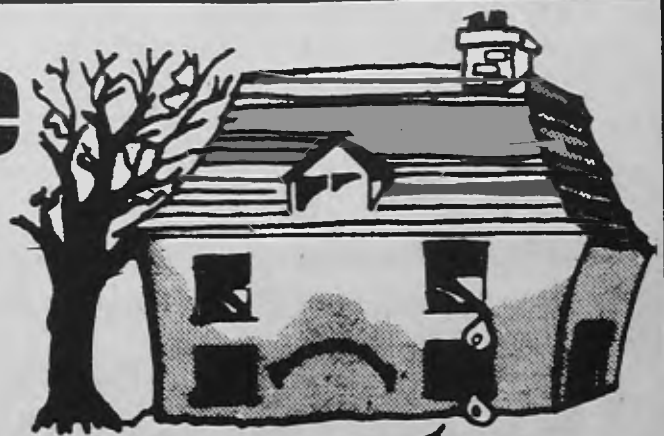
R. P. MOODY Carpenter, Joiner, City  
and Guilds (Registered). Reliable.  
Please phone evening 01-906 2200.

PERMANENT WAVING expertly done  
at your home. 01-368 5076.

R. C. MOODY & SONS, Builders and  
Decorators (Registered). No useless  
guarantees offered. Only good work-  
manship. References available. Tele-  
phone: Day 70 23460, evening 01-906  
2200: 01-599 4851.

FITTED BEDROOM FURNITURE  
Custom made by experienced Crafts-  
man. 01-368 1521.

# Is Your House looking sad



# and tired?



Pebbledashing will improve appearance, waterproof  
and completely insulate your home. Available in a  
variety of colours and applied quickly and quietly  
without any mess, plus we can efficiently effect all  
building alterations and repairs — interior and  
exterior.

For free estimates, telephone:

01-855 6341 any time

# WILLIAMS SPORTS

366 Ballards Lane, Tally Ho Corner, Finchley, N12. Tel: 445 3596  
 Gateway House, 328 Regents Park Road, N3. Tel: 346 2398

## THIS MONTH'S SPECIAL OFFERS

Dunlop White Flash Tennis Shoes  
 Pre-Season Offer ~~£5.99~~ ..... £4.99

R S L Silver Feather Shuttlecocks  
 End of Season offer ~~£14.65~~..... 18.95 doz.

Adidas Running Spikes  
 Special Purchase ~~£13.50~~ ..... £6.75



### CRICKET

Cricket Trousers ..... £7.75 to £9.99  
 Socks ..... £2.30 Supporters ..... £2.50  
 Cricket Sweaters ..... £6.50 to £11.00  
 Batting Gloves ..... £1.75 to £11.95  
 Batting Pads ..... £3.45 to £10.95  
 Cricket Shoes ..... from £11.95

### TENNIS

Tennis Shorts ..... £5.50 to £8.95  
 Tennis Shirts ..... £4.25 to £10.50  
 White Skirts ..... £5.95 to £9.99  
 Tennis Dresses ..... £8.99 to £9.99  
 Socks ..... 99p to £1.25  
 Tennis Shoes ..... £4.99 to £7.99

BE TEMPTED Buy your new Cricket Bat or Tennis Racket Now whilst we have our peak selection  
 Tennis Rackets Restrung on the Premises to your chosen tension

CLOSED  
 THURSDAYS

INTER  
 SPORT



# BATHROOMS

A BATHROOM TO  
 SUIT EVERYBODY



At British Bathroom Centre, you will see a superb range of bathroom suites to suit everyone's budget; prices range from £195 to £6000 including fittings. Don't miss our complete SHIRES showroom. You will find a vast range of fittings and accessories in:—Gold plate, Brass, Chrome and a full range of colours. We guarantee to refund the difference if you buy a bathroom suite from us and see it sold for less elsewhere. See also our extensive range of BARBEE Amtico and other English and Continental tiles, as well as EXCLUSIVE HAND PAINTED scenery tiles.



**British Bathroom Centre**

OPEN: MONDAY-FRIDAY 8.30-6.00 (OPEN BANK HOLIDAYS)  
 OPEN: SUNDAY 9.00-2.00. CLOSED ALL DAY SATURDAY.

602/4 SEVEN SISTERS ROAD · TOTTENHAM · LONDON · N.15 · 01-802 6493/6696 · 01-800 2538