



BARNET

LONDON BOROUGH COUNCIL

CIVIC NEWS

FEB/MAR 1969

VISIT OF H.M.S. TARTAR

A warm welcome awaited the Commanding Officer of H.M.S. "Tartar", Captain C. Rusby, M.V.O., R.N., when he arrived by helicopter recently to pay a call upon The Worshipful the Mayor, Councillor J. D. Gordon-Lee, J.P., at the Town Hall, Hendon. Seen here shortly after the helicopter landed on the green to the rear of the Town Hall, from left to right, are the Pilot, Lt. P. Shaw, R.N., Alderman K. G. Pampin, the Commanding Officer and the Mayor, the Town Clerk, Mr. R. H. Williams, LL.B., and Lt. J. S. Barr, R.M., Liaison Officer.

H.M.S. "Tartar", docked in the Upper Pool of London, was making another visit to the London Borough of Barnet with which it has a long association. This association dates back to Warship Week, 1942, when the original ship, which was broken up following the war, was 'adopted'. The present H.M.S. "Tartar", a 2,700 ton Tribal class frigate, was open for inspection by the public, and a party and film show were held on board during the visit for schoolchildren from the London Borough.



The lower photograph, taken at a Reception held at the Town Hall for the Officers of the Ship, shows the Town Clerk and Mrs. Williams, The

Mayor and Mayoress, and to the right of the picture, the Commanding Officer and Mrs. Rusby.



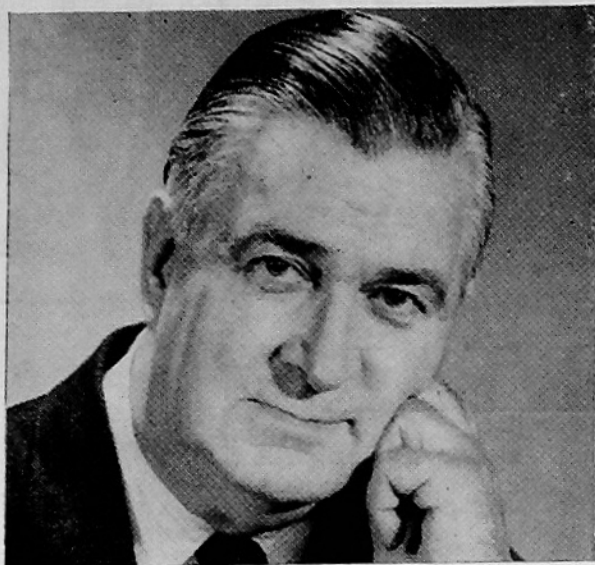
Highway Improvement—

Railway Bridge at the foot of Barnet Hill

It is understood from the Minister of Transport that work will start shortly on rebuilding and widening London Transport's bridge over the Great North Road, A1000, at the foot of Barnet Hill. The cost is estimated at £294,825 towards which the Minister of Transport will make a grant of £182,869. Work will be carried out under the direction of the Greater London Council who are the highway authority.

When the temporary structures for carrying the railway are being provided it is expected that some traffic restrictions will be necessary at certain times at weekends and again later when the existing bridge deck is demolished and the new bridge deck moved into position.

MEMBERS OF THE COUNCIL



ALDERMAN C. H. SHEILL, K.S.G.
Chairman of the Policy
Avisory Committee

In 1946, Alderman Sheill was elected as a Member of the Council of the former Borough of Hendon for the Central Ward and became an Alderman in 1949. He acted as Chairman of the General Purposes, Libraries and Museum, and Estates Committees and also served on the Establishment, Allotments, Public Health, Buildings and Town Planning, Housing, Civil Defence, and Finance Committees of that Council and on the Council and Joint Staff Committee.

Alderman Sheill has lived in Hendon since 1931, and has been headmaster of

St. Agnes' School, Cricklewood, since 1945. He was largely involved in the starting of the Burnt Oak and Edgware Branch Libraries, the Record Library at Hendon and a Members' Library, the Copthall Sports Centre and many other projects.

Elected an Alderman of the London Borough of Barnet, Alderman Sheill was the first Chairman of the General Purposes Committee and is at present the Chairman of the Policy Advisory Committee newly constituted to advise the committees on matters of policy and establish some sort of priorities in their work. He served on the Joint Committees for Borough No. 30 throughout the interim period and is also Whip and Secretary of the Barnet Conservative Group of Members of the Council.

In 1952, he became Secretary of the Catholic Teachers' Federation of England and Wales. He has been Treasurer of the World Union of Catholic Teachers since 1954, and serves on the Executive Committee of the Catholic Education and the Council and Committee of Management of the Institute of Education of London University. Alderman Sheill is also Chairman of the Governors of the New College of Speech and Drama at Golders Green, which has recently been adopted by the Borough Council. His Holiness Pope Paul VI made him a Knight of the Order of St. Gregory in 1964.

BARNET HILL (DOLLIS VALLEY) PRIMARY SCHOOL

Barnet Hill Primary School is sited on part of the Dollis Valley Housing Estate, with its entrance off Mays Lane. The building is located on higher ground at the north end and looks over the playing fields to the Dollis Brook Parkland.

Due to be completed in September, 1969, at a cost of approximately £90,000, the school will commence as a one form entry for 280 pupils, capable of extension later to a two form entry.

A special feature of the school is its hexagonal-shaped classrooms, to encourage modern informal group teaching, which are grouped round the hall.

Architectural Note:—The building is clad in load-bearing brickwork with special hipped roofs over the classrooms and hall which incorporate north lights.

HIGHWAY IMPROVEMENTS

Reconstruction of Bridge — Hendon Lane, junction of Great North Way:

Work has been commenced on the reconstruction of this bridge at an estimated cost of £69,000. The Ministry of Transport will bear 75 per cent of the cost.

Edgware Road — Varley Parade:

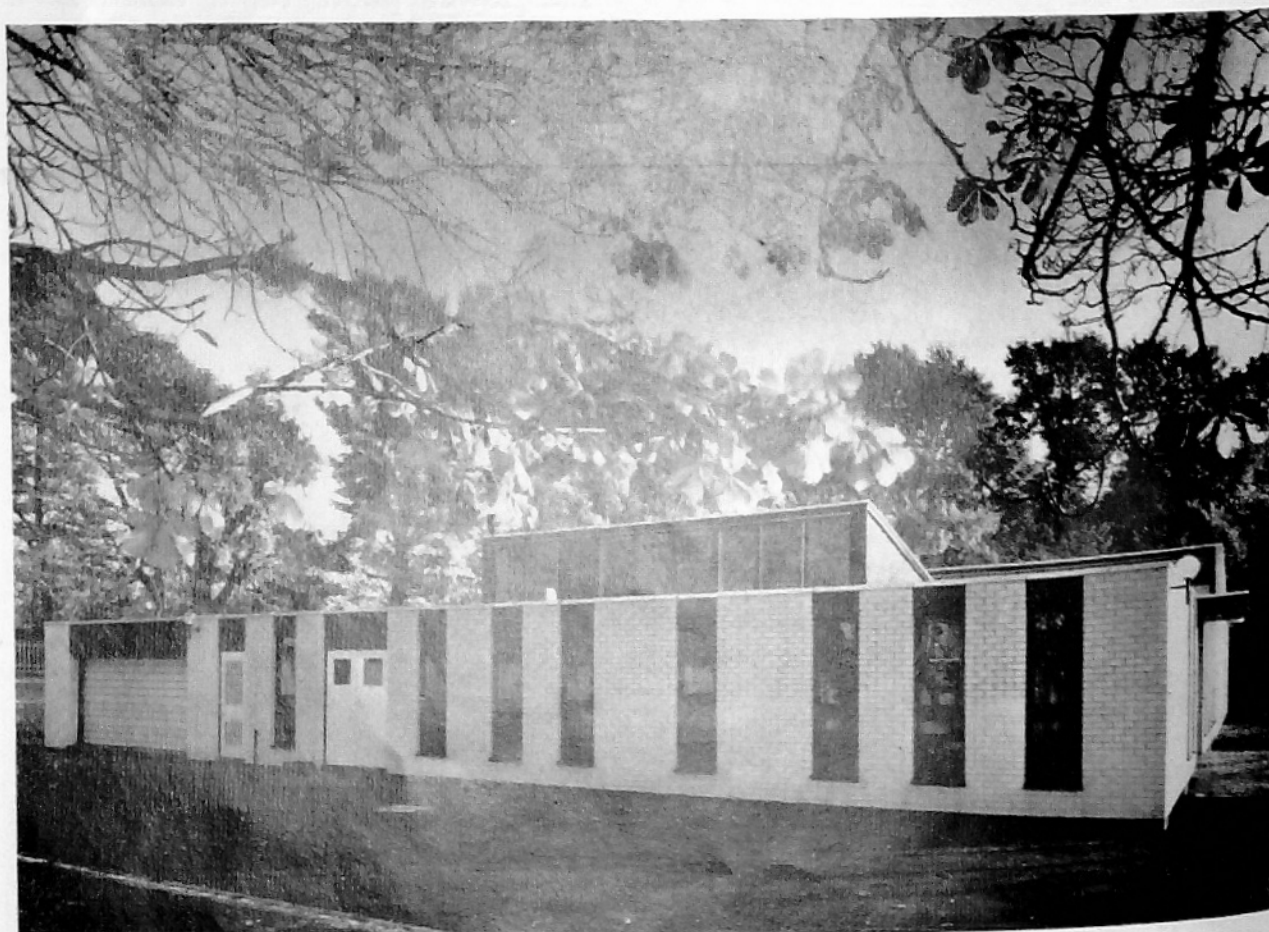
Pedestrian traffic signals have now been installed at Varley Parade—the cost will be borne by the Ministry of Transport.

HENDON ADULT TRAINING CENTRE, FLOWER LANE

This building designed in the Borough Architect's Department, was completed in September, 1968, at a cost of £43,000. The site is to the rear of a large building previously Haberdashers Askes Preparatory School, and now used as a junior training school. Young people progress to the adult training centre whose function is to train and instruct forty mentally handicapped adults of either sex, over the age of sixteen. There they are taught light industrial craftwork and fabrication (book-binding, screen printing, basketry, etc.) and housecraft. In addition there will be a programme of further education.

The accommodation is open planned but intimate in character and comprises dining and handicraft halls, these main spaces being lit by north light clerestories, together with kitchen, administration, stores, etc., with access for the delivery and collection of goods.

Heating is from electric coils in the



floor. The setting is enhanced by the retention of a large number of trees

around the site boundaries and outside sitting areas paved in bricks.

NATIONAL LIBRARY WEEK, 1969

A third "National Library Week" is to be held from 8th to 15th March, 1969, sponsored by the Society of Authors, the British Federation of Master Printers, the Booksellers Association, the Publishers' Association, the Library Association and the National Book League.

The aim of the Week is to encourage as many people as possible to take an interest in books and the services that libraries and booksellers can offer. As in previous years, there is a National Joint Committee, including representatives of the six sponsoring organisations but the success of the Week will depend largely on local activities.

Plans for activities in the London Borough of Barnet during National Library Week have been discussed with other organisations and the following outline programme is being arranged:—

ALL THE WEEK —

EXHIBITION OF THE WORK OF BEATRIX POTTER at the Church Farm House Museum. The Worshipful the Mayor (Councillor J. D. Gordon-Lee, J.P.) has kindly agreed to open the exhibition at 3 p.m. on Saturday, 8th March, 1969 — see page 7.

EXHIBITION OF NEW ADDITIONS TO THE PICTURE LENDING SERVICE at North Finchley Library.

EXHIBITION OF PAINTINGS BY BERT WRIGHT at East Finchley Library.

CHILDREN'S BOOK WEEKS:—Continued on page 8.

EXHIBITION OF PAINTINGS

by
Bert Wright
at

EAST FINCHLEY LIBRARY
High Road, N.2.

Wednesday, Feb. 26th — Saturday, March 29th

Monday to Friday 9 p.m. - 7 p.m.

Saturday 9 p.m. - 6 p.m.

ADMISSION FREE

PICTURE LENDING SERVICE

Exhibition of Recent Additions
at

NORTH FINCHLEY LIBRARY
Ravensdale Avenue, N.12.

Saturday, March 8th — Saturday, March 29th

Monday to Friday 9 p.m. - 7 p.m.

Saturday 9 p.m. - 6 p.m.

ADMISSION FREE

Holly Park Primary School

Part of the old secondary school premises off Bellevue Road had to be demolished to provide the necessary area for Holly Park Primary School now under construction.

Designed in the Borough Architect's Department, this school is being built in two stages with the classrooms on two levels—the building is stepped down a slope—thus taking advantage of the open views to the north. The first stage consists of three classrooms to accommodate 120 pupils, with kitchen and dining facilities for 250 pupils, administration accommodation and a practical/circulation area. When completed it will be a junior mixed infants' school catering for 250 pupils on a one form entry basis. A separate single-storey caretakers' house is to be located along the approach drive.

The school will cost approximately £49,000 and is due for completion in May, 1969.

Fishing

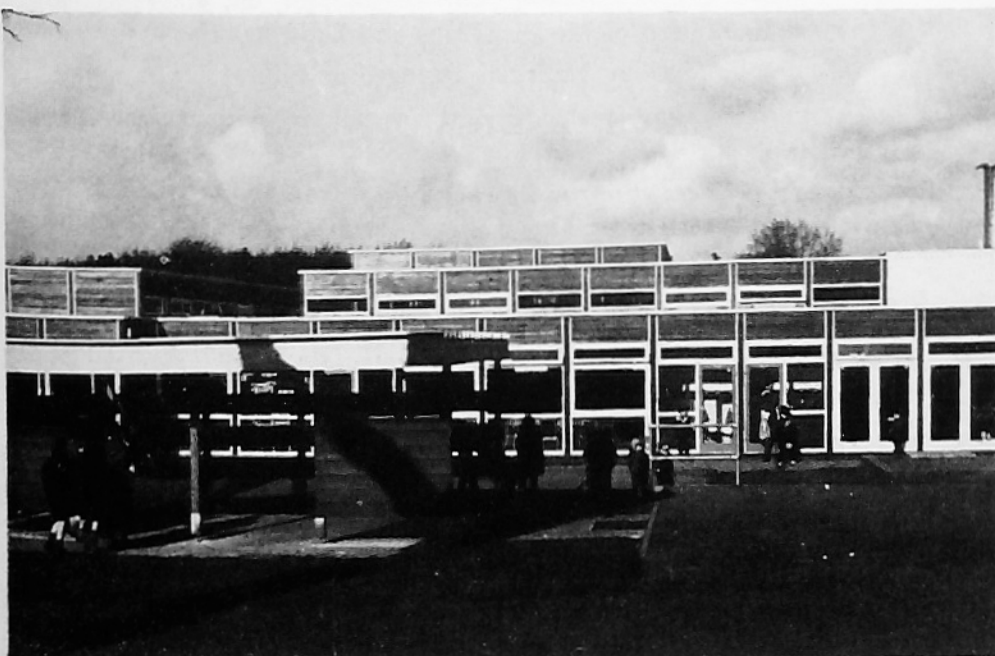
It may not be widely known that fishing permits are issued to residents (provided they are over fourteen years of age) to enable them to enjoy their favourite recreation, in Moat Mount Open Space, N.W.7.

Whilst of course only a limited number of permits are issued, they are obtainable at a charge of ten shillings and sixpence, from the Department of the Borough Engineer and Surveyor.

NORTHWAY SCHOOL THE FAIRWAY, MILL HILL

This is a special school catering for 120 boys and girls from 5 to 16 years of age. The six classrooms are grouped round the hall which also acts as a gymnasium. There are kitchen and dining facilities to cater for all pupils, plus a boys' craft room and girls' house-craft room.

Built at an approximate cost of £73,000, and completed in August, 1967, the buildings are single storey in a prefabricated timber system, with a separate single storey caretaker's house. The site is between a nursery school and a primary school and slopes from the road down to a stream where the north boundary adjoins the golf course.



GRAHAME PARK DEVELOPMENT



The Grahame Park development—a joint venture by the Greater London Council and Barnet London Borough Council—has been named Grahame Park, after Claude Grahame-White, the pioneer flyer.

This project offers an opportunity to create a new environment within the London Borough of Barnet related to and integrated with its surroundings.

The central spine of development will comprise local authority flats and maisonettes rising to a height of eight storeys with local authority two- and three-storey dwellings on either side. To provide a proper balance the two authorities have decided to set aside 25 acres to the west of these buildings for non-local authority housing development.

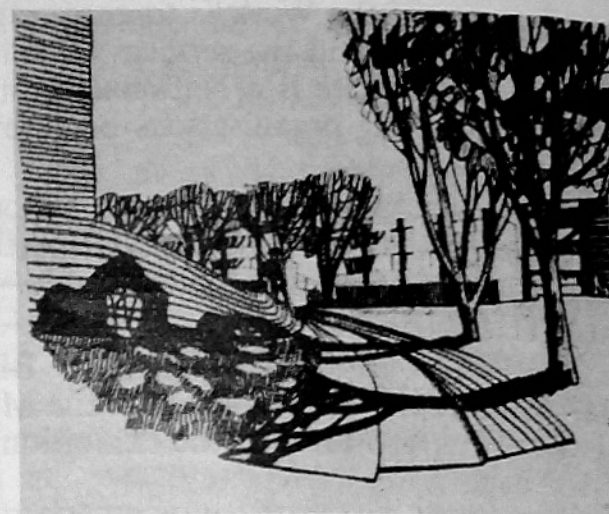
Beyond the dwellings towards the east, provision is made for two secondary comprehensive schools and not far from the central area, to the south-west, two primary schools and a generous public open space.

An existing feature which has to some extent dominated the proposals is the Midland Region railway line along the eastern boundary of the site. The M1 urban motorway extension too is proposed to follow the railway line. Thus a perimeter road and school playing fields will form the eastern part of Grahame Park to act as a noise buffer between the railway and people's homes. It also follows that vehicle access to the east is restricted, consequently the three access points for vehicles are proposed via Bunns Lane in the north, Montrose Avenue to the west and Colindale Avenue to the south. These, together with the various pedestrian walkways, will form con-

necting routes to Colindale and Burnt Oak stations on the London Transport, Northern Line, and the British Railways station at Mill Hill. A new bus service is to be provided by London Transport between Colindale Avenue, the central area of Grahame Park, and Montrose Avenue which will connect with other existing bus routes. Watford Way bus services will be accessible via Aerodrome Road and a pedestrian route to be constructed.

The main feature of the whole development is the provision of local authority dwellings of varying styles and types: one room flatlets for single or old people, flats for two or three people, one and two storey houses for four people and maisonettes for a like number, two and three storey houses for five people and three storey dwellings for six people. It has been agreed that the Greater London Council will nominate tenants for 60 per cent of the dwellings and London Borough of Barnet will nominate 40 per cent.

Ample amenities will be provided for the Grahame Park residents to include shops, bank and public house within a pedestrian precinct; a library, a health centre based on the group practice system and welfare services covering all aspects from welfare foods and ante-natal welfare to mental



health and social workers. A day nursery to provide accommodation for children up to the age of five years is also included together with a welfare centre for the blind, elderly and the handicapped.

The community and social centre will be one of the focal points of the central area and will act as a meeting place for medium-sized activities. Garages and parking spaces are proposed to the ratio of one for every dwelling with an additional one in ten for visitors. Two public car parks are to be provided close to the shops and public buildings in the central area. Also near this area two sites of approximately $\frac{3}{4}$ of an acre have been provided for religious buildings. Each

continued on page 5—column 3

GRAHAME PARK (HENDON AERODROME) DEVELOPMENT

An Exhibition of Models, Plans and Drawings for
Public Viewing has been arranged as follows:

321, COLNEY HATCH LANE (First Floor), FRIERN
BARNET, N.11.

(entrance at rear in Lyndhurst Avenue, N.12)

Monday, 17th February—Saturday, 1st March, 1969

Hours: 10 a.m. - 7 p.m.

CHURCH FARM HALL (Health and Welfare Divisional Offices),
CHURCH HILL ROAD, EAST BARNET.

Tuesday, 4th March—Saturday, 22nd March, 1969

Hours: 10 a.m. - 7 p.m.

MUNICIPAL OFFICES, WOOD STREET, BARNET

Wednesday, 9th April—Saturday, 19th April, 1969

Hours: 10 a.m. - 7 p.m.

ADMISSION FREE

MEMBERS OF THE COUNCIL



COUNCILLOR W. G. HART—
Chairman of The Grahame
Park Committee

Councillor W. G. Hart can truly be said to be a real Finchlean for not only was he born and educated in Finchley, but at least four generations of his family have also lived in Finchley, having known it from the time when it was quite a small village.

He continues to maintain this association for his wife was also born in Finchley and all his three sons were educated at the Woodhouse Grammar School.

For over 37 years he has been associated with Local Government, either as an Officer or as a Member. For 20 years he was with the Electricity Undertaking of the former Finchley Council and then following the nationalisation of the Electricity industry became a member of his old authority, which does not often happen.

For 12 years he represented the Moss Hall Ward, now part of the Finchley Central Ward, and on the setting up of the new Borough of Barnet, has represented the Central Ward for the past five years.

He was appointed Deputy Mayor of Finchley in 1956/57 and again in 1959/60, being elected to the office of Mayor in 1960/61.

He has always been concerned with the welfare of the old and during his mayoral year made his appeal for the building of Old People's flatlets in Woodside Grange Road by the Speedwell Housing Society.

Councillor Hart served on the Joint Committees prior to the amalgamation of the five districts and as a member of the Barnet London Borough Council has served on most of its main Committees, including

Housing, Establishment, General Purposes, Welfare and West Hendon Development.

At the present time he is Chairman of the Grahame Park Development Committee and also a member of the Policy Advisory, General Purposes, West Hendon Development and Housing Committees, in addition to various Sub-Committees.

For four years he was Chairman of the Barnet Housing Committee during which time he was intimately concerned with the large housing development programme now coming to fruition to provide over 5,000 homes within the Borough.

His work for the London Borough does not end here, for he is also a member of the Barnet Group Hospital Management Committee, being Chairman of its Finance and General Purposes Committee and has been a trustee of the Finchley Charities since 1956. In addition, he has served on the Friends of the Finchley Hospitals Committee since its inception and is also a member of the governing body of Christ Church School, Finchley.

Carnival and Summer Show

Of interest to residents of the Barnet London Borough and to likely participants and exhibitors is the news that the Council's Carnival and Shows Committee is making a considerable effort towards a bigger and better Summer Show this coming year. Formerly the "Friern Barnet" Summer Show, it is hoped to widen the scope of interest for this event by inviting the support of organisations beyond the area of Friern Barnet. Those wishing to participate in the Horticultural, Domestic or Floral Art sections will be welcome, likewise for Arena Displays—negotiations are in progress for certain Arena acts—or to arrange exhibits in the marquees.

Dates to remember are the 8th and 9th August at Bethune Recreation Ground, Manor Drive, N.11.

The Finchley Carnival will take place again in Victoria Park, N.3, on the 10th, 11th and 12th July, 1969. In addition to the usual features of the Finchley Carnival—the Carnival Queen Competition, Carnival Procession and the Baby Show—several "star" attractions have already been booked and will be making a first appearance in Finchley.

Please make a note of these dates and help to make this year's events more successful than ever.

Councillor Hart was one of the original members of the 11th Finchley Scout Group and continues to maintain his interests in Scouting and Youth work, being now a trustee of the Scout Group.

For over 30 years he was a member of the Parochial Church Council at St. Barnabas, Woodside Park, having held at one time or other, most of the church offices.

In all his public work Councillor Hart has had the full support of his wife, who also takes an active part in many other activities within the Borough and at the present time is on the Committees of the Friends of Finchley Hospital and the Y.W.C.A.

As Chairman of the Grahame Park Committee he is very conscious of the importance of this large project to the Borough's expansion and believes that it will be one of the finest comprehensive housing developments in the country when completed.

By profession Councillor Hart is an Assistant Secretary with the Central Electricity Generating Board, having been in the Electricity Industry for over 40 years.

EDUCATION COMMITTEE MEETINGS

You are invited to attend meetings of the Education Committee to be held at the Town Hall, The Burroughs, Hendon, N.W.4, at 7 p.m. on Wednesday as shown below

9th April, 1969.

continued from page 4—column 3

site will be large enough to accommodate a church, church hall, clergy accommodation and car parking.

A comprehensive mixed school for 1,080 pupils has been designed to provide for a youth wing, library, gymnasium and swimming pool as well as teaching accommodation. Although it is not expected to be built for several years a site has been provided for a Roman Catholic secondary school. The two primary schools, one a county primary school and one a Roman Catholic primary school, will together accommodate 600 pupils.

Further amenities to be provided are children's playing facilities, an Estate Depot for services, filling station and service garage and possibly an area for the use of youth organisations.

Special attention will be paid to the landscaping of the development.

Cleansing of Private Footways & Accommodation Roads

Last year it was necessary for 39 visits to be paid by the Public Health Inspectors to private passages running

RECREATION

The Barnet London Borough is well served with an abundance of parks and open spaces, amounting in all to 2,895 acres; truly "a green and pleasant land", with 60 parks and open spaces set aside for residents to enjoy a pleasant countryside, or engage in many sports for which such wide facilities exist.

The list of parks and open spaces is most impressive, ranging from over two hundred acres at Moat Mount Open Space to the many smaller areas preserved for all time by the Council.

In the summer months in a number of the parks entertainment is provided by the Council for children, whereas for the sporting enthusiasts tennis and cricket facilities abound, and in winter football pitches are provided at 24 of the parks and open spaces, rugby football at three centres and hockey at seven centres. The Council is ever mindful that additional facilities are required, and at West Hendon Playing Fields a new pavilion incorporating changing accommodation, and a badminton hall which can also be used as accommodation for club social functions, licensed for music and dancing, has recently been completed.

TENNIS

At 26 separate points in the Borough tennis courts are available, for which the charge is 3/- an hour. On Saturdays, Sundays, and Bank Holidays, the charge is increased to 4/-, but facilities are always available.

LAWN TENNIS COURSES

Evening courses of instruction for persons aged 15 years and over are being provided in co-operation with the Central Council of Physical Recreation, at Hendon Park, Queens Road, N.W.4, and Northway Gardens, Hampstead Garden Suburb, N.W.11. They are planned for beginners and players with little experience so that they can gain more enjoyment from their tennis by improving their standard of play. The courses will be staffed by coaches qualified under the L.T.A. Honorary Coaches Training Scheme. Further details available from the Department of the Borough Engineer and Surveyor.

at the rear of houses, and to accommodation roads, in connection with complaints as to their unscavenged condition.

Very few of these passages and roads have been taken over by the Council, paved and made highways maintainable at public expense. The scavenging of the great majority therefore remains the responsibility, under the Public Health Act, 1936, of the occupiers of the premises to which the passages, etc., afford access.

In certain instances the efforts of the Public Health Inspectors, to secure scavenging by verbal and written intimations, were unsuccessful and it became necessary for the Council to carry out the work in default and to proceed to recover the cost from the

occupiers of the premises concerned.

Difficulties arise in attempting to deal with obstructions which occur in the usually three feet wide passages between the rear gardens of houses which are used by the refuse collectors for the removal of refuse from the houses. Neglected fences are sometimes allowed to lean or collapse over the passages, or trees to overhang, so obstructing the refuse collectors in their work, sometimes to an extent that the use of the passage has to be discontinued and refuse collection made from the front of the houses, through which the full bins have to be carried by the householders. Much is done informally by the Council's Officers to deal with the owners of the fences and trees.

HENDON CREMATORIUM

The municipal crematorium at Holders Hill Road, Mill Hill, will be OPEN FOR INSPECTION by the public on Sunday, 27th April, 1969, between the hours of 11.00 a.m. and 4.00 p.m.

Car parking space available.

THE HISTORIC BUILDINGS OF BARNET



Holcombe House, at The Ridgeway, Mill Hill, today forms part of St. Mary's Abbey. The land on which it stands once belonged to David Garrick, the Shakespearian actor. The house was designed by Johnson in 1775 in the style of Robert Adam. Its first owner was Sir John Anderson, who twice became Lord Mayor of London. In 1797, it is reported that he presented Nelson on one of his visits to Holcombe House with a golden casket to celebrate the defeat of the Spanish fleet at Cape St. Vincent. For almost a century, the house has belonged to the Franciscan Sisters who moved there in 1871 from Soho.

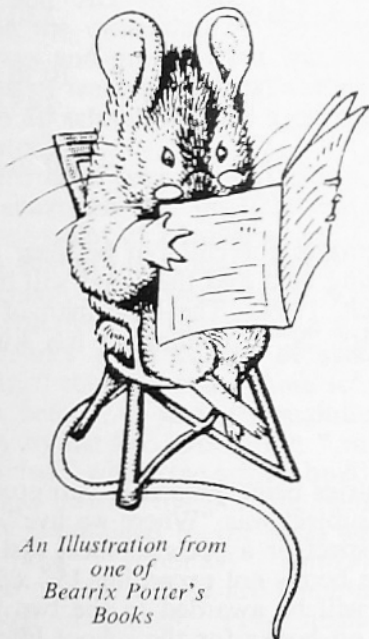
CHURCH FARM HOUSE MUSEUM

(Beatrix Potter Exhibition)

An exhibition of the work of Beatrix Potter (1866-1943) is being held at Church Farm House Museum, Hendon, run in conjunction with National Library Week.

The material has been collected and loaned by Mr. Leslie Linder, author of "The Journal of Beatrix Potter", and it is most fortunate that some items have never previously been on show to the public.

The exhibition traces Miss Potter's work from her animal fantasies which date back to her earliest sketch books when she was a child of nine, to the development of her well-known "Peter Rabbit" books.



An Illustration from
one of
Beatrix Potter's
Books

From the age of twenty-seven until she was thirty-two Beatrix Potter made an intensive study of fungi. Some examples of her paintings are shown of the specimens which she collected, mostly in Scotland and the Lake District. On April 1st, 1897, a paper entitled "Agaricineae," written by her, was read at a meeting of the Linnean Society of London. Her theories were well in advance of the time.

Examples of Miss Potter's work on the subject of Natural History in general are also shown: the painting of the little red fish was mentioned in her Journal when staying at Weymouth in 1885, where on April 14th, she wrote: "In the morning I picked up a strange little red fish which I painted."

Various other items on show include some early German Christmas cards printed in 1890 by Hildesheimer &

continued on page 8

LONDON BOROUGH OF BARNET Gramophone Record Libraries

The following is a selection of new records added to the Central Music Library, The Burroughs, N.W.4, during January, 1969. Any of these can be obtained through either of the branch music libraries at East Barnet, Brookhill Road, East Barnet, or East Finchley, 226 High Road, N.2.

ORCHESTRAL

Shostakovich	Symphony No. 10 in E min., op. 93. Berlin P.O. (Karajan).	* = stereo recording. * SLPM 139020
Brahms	Concerto for piano and orchestra No. 2 in B. fl. major, op. 83. Barenboim. New P.O. (Barbirolli).	* ASD 2413
Bruckner	Symphony No. 5 in B. fl. major. Te Deum. Philadelphia O. (Ormandy). Soloists. Temple Univ. Choir.	* SBRG 77222
Gershwin	Rhapsody in blue. Concerto for piano and orchestra in F maj. Nibley. Utah S.O. (Abravanel).	* SMFP 2107
Mahler	Symphony No. 4 in G. maj. Morison (sop.) Bavarian Radio S.O. (Kubelik).	* SLPM 139339
Mozart	Complete works for violin and orchestra. Schneiderhan. Berlin P.O.	* SLPM 139350-2
Williams, R.	Sea Symphony.	
Vaughan	The Wasps: suite. Soloists. L.P.O. and Cho. (Boult).	* ASD 2439-40

CHAMBER MUSIC

Beethoven	Quartets for strings, op. 18, Nos. 1-6, Hungarian Quartet.	* HQS 1155-7
Berwald	Septet in B. fl. maj., with Nielsen. Wind quintet in A maj., op. 43. Melos Ens.	* ASD 2438
Mozart	Trios for piano, violin and cello, No. 3, K.502, No. 4, K.542, No. 6, K.564. Beaux Arts Trio.	* SAL 3681

INSTRUMENTAL

Bach	Goldberg variations for harpsichord, Marlowe.	* MUCS 127
Beethoven	Variations for piano, Brendel.	* TVS 34162
Liszt	Organ recital. Kynaston.	* 4FO 7004
Messiaen	Reveil des oiseaux. Oiseaux exotiques for piano. Liorid.	* SUAST 50749
Nielsen	Piano music, Ogdon.	RB 6757 * SB 6757

CHORAL

Bach	Magnificat in D. maj. BWV 243, with Buxtehude. Magnificat. Soloists. Stuttgart Gedächtniskirche Choir, and Bach Collegium (Rilling).	* TVS 34173
Berlioz	Vocal works: Irlande, op. 2, etc. Soloists. Monteverdi Choir (Gardiner).	OL 305 * SOL 305
Haydn	The Creation. Soloists. Camerata Singers. N.Y.P.O. (Bernstein).	* SBRG 77221

OPERATIC AND LIEDER RECITALS

	The Incomparable Gigli.	HQM 1170
	Lieder recital. Janet Baker.	* ASD 2431
Strauss, R.	Songs. Weathers.	* SXL 6361

COMPLETE OPERA

Cherubini	Medea. Soloists. Santa Cecilia Acad. (Gardelli).	MET 376-8 * SET 376-8
-----------	--	--------------------------

CONTEMPORARY MUSIC

Henry	Le Voyage, from the Tibetan Book of the Dead, for electronic sound.	* 4FE 8000
Penderecki	Capriccio for violin and orchestra. De Natura sonoris, with Xenakis. Akkata. Pithoprakta. Zufosky. Buffalo P.O. (Foss).	* H 71201
Subotnick	Silver apples of the moon, for electronic music synthesizer.	* H 71174

SPEECH

Chekhov	The Three Sisters.	* TRS 325
Thomas	Child's Christmas in Wales, Fern Hill, etc. Kennedy as we remember him.	* 4FP 9000 L2L 1017

Foster Children and the "Snatch Back"

Public opinion has been stirred recently by newspaper stories of foster children being "snatched back" by parents. These distressing cases occur from time to time in various parts of the country, causing heart-break to foster parents and disruption to the child's upbringing.

To find out how often this really happens the Borough Children's Officer has examined over 90 instances during the twelve months ending 31st March, 1968, in which a foster child in Barnet returned to the care of his parents. In no case was it felt that to return home was against the child's interests.

An evening paper recently published a moving plea from foster parents who said that the child care officer had promised that they could keep the foster children until they were grown-up. Promises like this should not be made to foster parents; if they are made and are not fulfilled the fault lies with the child care officer and not with the law or with the natural parents.

Why have foster homes at all? Why cannot all foster parents be assured that the child is theirs for ever? Those who ask this question are confused about the difference between fostering and adoption. Adoption is for ever, and those couples who are suitably equipped to offer a permanent home and who wish to do so should approach an adoption society. A list of these societies can be obtained from the Borough Children's Officer, Town Hall, Friern Barnet, N.11. It is heartening to know that several Barnet families (often with children of their own) have accepted for adoption children who were hard to place, by reason of mixed racial origins, physical disability or a family history of mental instability.

We also need foster homes—especially for children whose mothers are ill or who are otherwise incapacitated. Most foster children return home within a few weeks. But if a mother is chronically disabled the children may need foster care for months or for years. Some foster children grow into adulthood in their foster homes and only leave to marry or to pursue studies or a career elsewhere. In the nature of things it is difficult to predict the course of a parent's illness or other disability and it is equally difficult to predict how long a child will stay in his foster home.

National Library Week—Continued from Page 3

Burnt Oak Library

Tuesday, 11th March

Michael Bond, "Paddington" 2.30 p.m.

Wednesday, 12th March

Constance Allen, "Characters from books and plays" 10.30 a.m.

Mary Crockett, "What's it like being an author, Miss?" 2.30 p.m.

Under 5 Story Time 2.45 p.m.

Inter-Library Quiz — Finals 6.00 p.m.

Thursday, 13th March

The Around Readers, "Around the World" 2.30 p.m.

Friday, 14th March

Mary Patchett, "Mainly about animals" 10.30 a.m.

East Barnet Library

Monday, 10th March

H. E. Todd, "Bobby Brewster Stories" 2.30 p.m.

Tuesday, 11th March

Michael Bond, "Paddington" 10.30 a.m.

Wednesday, 12th March

Mary Crockett, "What's it like being an author, Miss?" 10.30 a.m.

Constance Allen, "Characters from books and plays" 2.30 p.m.

Thursday, 13th March

The Around Readers, "Around the day" 10.30 a.m.

Under 5 Story Time 2.45 p.m.

Friday, 14th March

Edward Blishen, "This reading lark" 10.30 a.m.

QUIZZES

Libraries in the Borough are arranging quizzes for children between now and National Library Week. The heats are being held and the Final will be at Burnt Oak Library on Wednesday, 12th March, 1969. The Chairman of the Libraries and Arts Committee (Councillor Mrs. N. I. Cullinane) has kindly agreed to take the Chair at the Final.

OTHER ACTIVITIES

Project on Local Studies

A competition was open to all schools—entries being judged in two groups, Primary Schools and Secondary Schools. The subject was "Where we live" and entries took the form of class books on any aspect or aspects of local history, environment, social studies, etc.—the size of the books not exceeding 15" x 20". A first prize of £10 and a second prize of £5 will be awarded to the two best entries in each group—the money to be spent on books for the school library. The awards will be made during National Library Week, when the books will be exhibited. Closing date for the competition was 31st January.

Competition for old people on "Memories of the District"

Details of this competition were circulated to the local press and various organisations—Old People's Welfare Committees, Task Force, Old People's Clubs, residential homes, and housebound readers.

The closing date was 31st January, 1969.

Barnet Film Society

Arrangements are in hand for a film to be shown by the Society on Wednesday, 12th March, at North Finchley Library, and a book display on "Film" will be mounted.

Gateway House Window Display

The window has been reserved for the month of March to publicise Library Services.

Mobile Display on Library Services

It is hoped that the Schools Library van will be available throughout the Week for use as a mobile display van—depicting library services. The van will be sited in various busy shopping areas.

continued from page 7

Faulkner, sketch books of early work, pictures for Appley Dapply, and some manuscripts.

This fascinating exhibition is open from March 8th until April 6th, 1969,

and should prove invaluable in attracting schoolchildren to an appreciation of beautiful and delicate work. Facilities will be provided for children to sit and sketch and also for them to read some of the books.