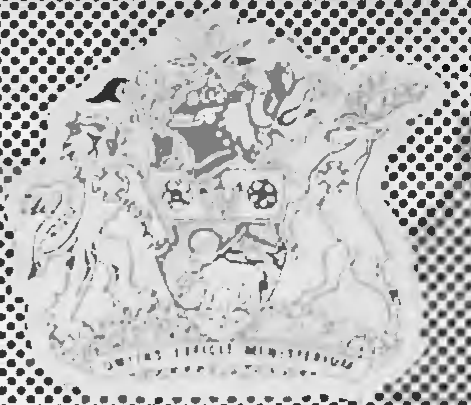
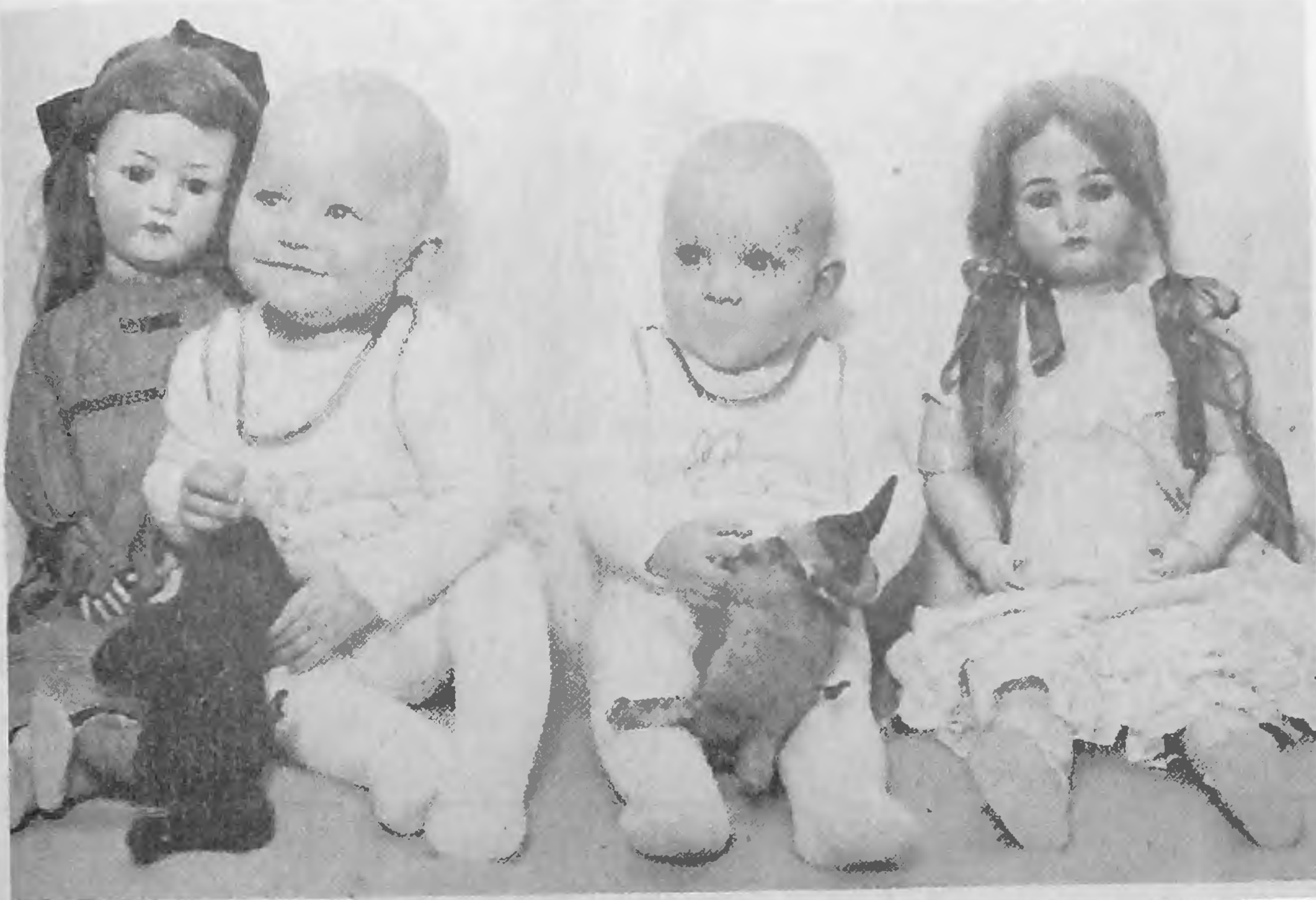


# Barnet CIVIC NEWS



No. 24: December 1981



## Pastimes of times past

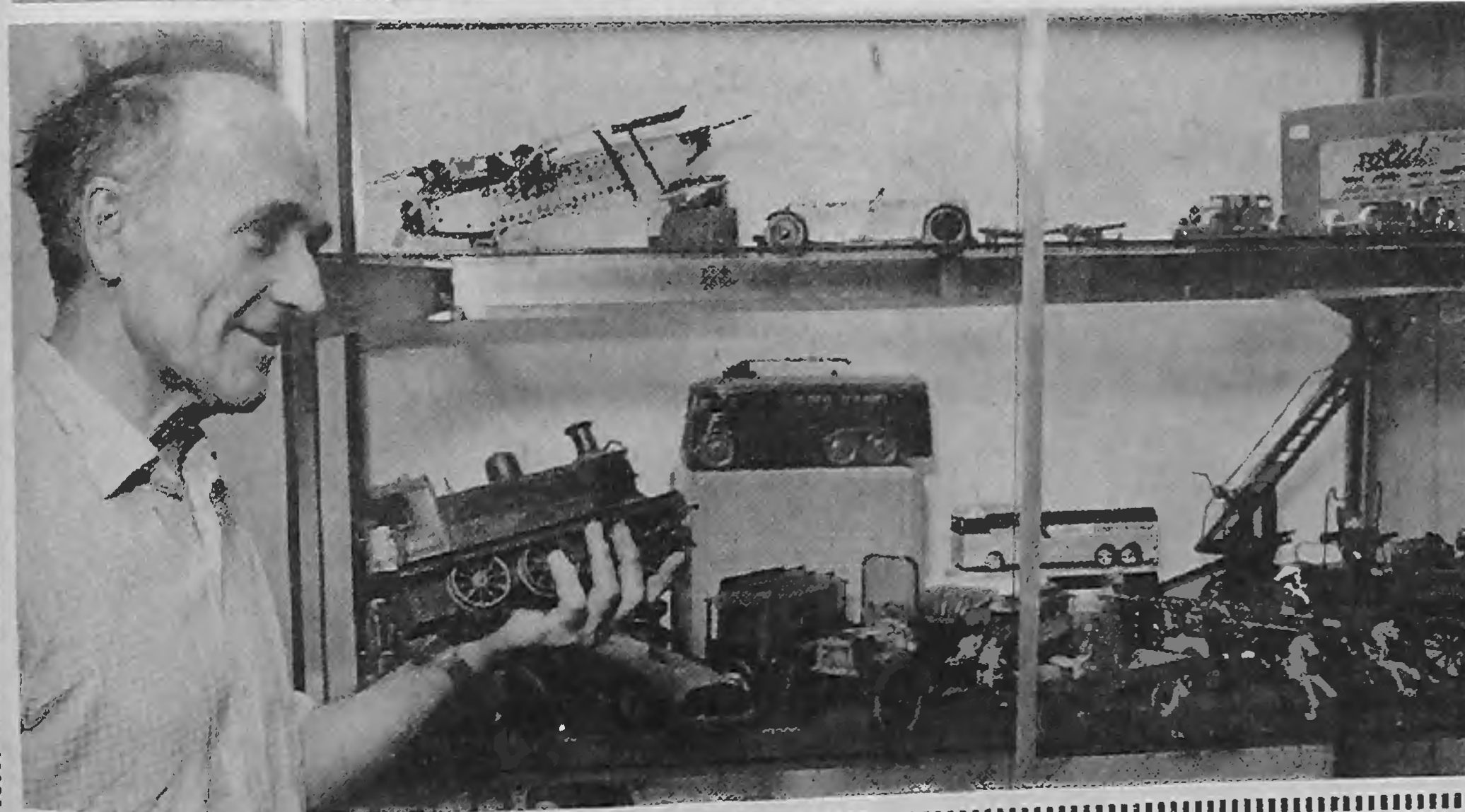
Church Farm House Museum has become a time machine. Visitors to the exhibition now on show will find themselves transported back into a world which H. G. Wells himself would have known well.

'They were Amused' is an exhibition featuring the toys and pastimes of the Victorian and Edwardian age. Here are books with which the young Queen Victoria might well have spent a grim Sunday afternoon, moral tales extolling the virtues of patience and honesty.

Here are dolls which Edwardian children would have played with before the nursery fire while their brothers set up stations in the schoolroom, splashing methylated spirit on the lino while their Hornby trains, puffing clouds of real steam, passed oil lit signal boxes. Conrad and Harriet (above) twin babies of museum curator Gerrard Roots, are not part of the exhibition but the life-size Edwardian dolls are.

This Wonderland is the creation of Tony Parker (left), a local resident, whose hobby is collecting pre-First World War toys. 'I started buying toys for my own children and ended up buying for myself. Perhaps I have never really grown up', Mr Parker said.

In addition to the special exhibition Church Farm House Museum features rooms furnished in the style of the late 19th Century. The current exhibition will be open until January 10. For opening times see 'What's on, Exhibitions'. Entry is free.



## The Council at Work

A review of the  
year 1980/81

See inside pages

## CHRISTMAS REFUSE COLLECTIONS

A guide to refuse collections in the borough over Christmas and the New Year:

Hendon, Mill Hill, Edgware, Burnt Oak, Cricklewood, Golders Green, part of Garden Suburb: No collections between Friday, December 25 and Sunday, January 3 inclusive. In the week before Christmas collections start Saturday, December 19. The teams will clear the full week's round by December 24. Collections may be a day or two earlier than usual. Week, starting Monday, January 4: the men will work through to Saturday to clear the backlog. Finchley including New Southgate, part of

Friern Barnet and part of Garden Suburb: Starting Saturday, December 19, the teams will clear the full round by Thursday, December 24. Collections may be a day or two early. Normal scheduled collection Tuesday, December 29 to Thursday, December 31 inclusive. The Monday and Friday rounds collected the following week.

**Barnet area including Elstree and part of Friern Barnet:** Same as Finchley.

Householders are asked to co-operate by having their refuse bins readily accessible.

# GRAYT EXPECTATIONS

454 FORE STREET EDMONTON, N.9. Telephone 807 8606 & 2482

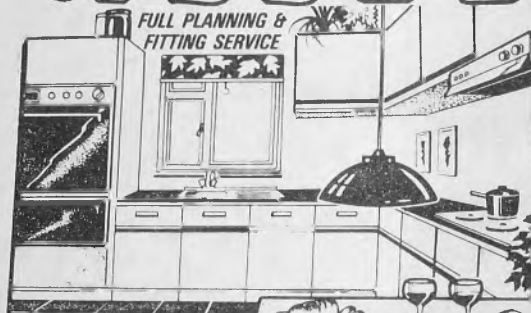
**BEDROOM  
FURNITURE**

● **CANE & WICKER  
ROOMS**

● **OAK  
REPRODUCTION**

● **THE PINE  
ROOMS**

● **KITCHEN  
SHOWROOMS**



## NEW MIRRORED WARDROBES

£326

inc.  
VAT

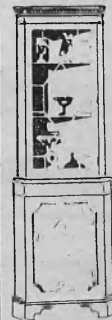
8ft 2½in 5-door run

2-DOOR UNITS £151  
3ft 3½in inc VAT

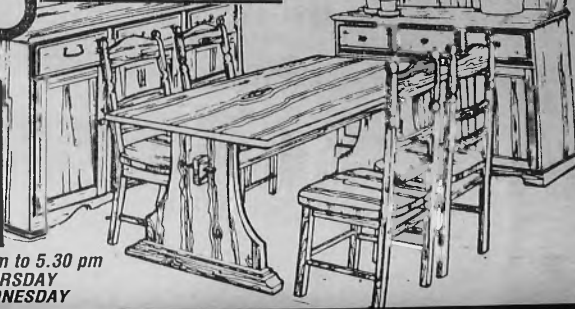
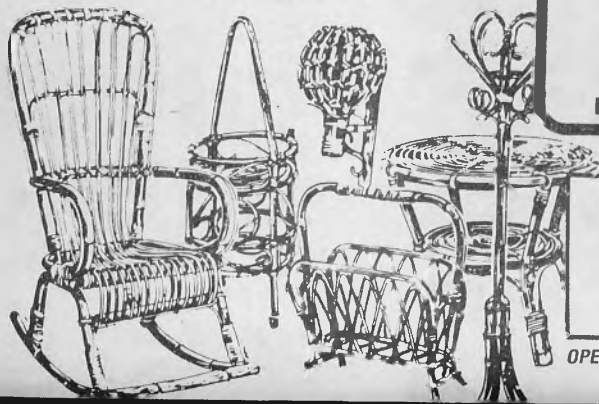
SINGLE-DOOR UNIT £104  
19½in inc VAT

*DELIVERY AND  
FITTING SERVICE  
AVAILABLE*

**HUGE STOCKS  
AVAILABLE  
FOR CHRISTMAS**



**TRADITIONAL OAK  
& SUPERB PINE**



Telephone  
**01-807 8606**  
and  
**01-807 2482**

OPEN SIX DAYS A WEEK - 9 am to 5.30 pm  
CLOSED HALF-DAY THURSDAY  
OPEN TILL 8.00 pm WEDNESDAY

# J & H FURNITURE LTD

Furniture Wholesalers Established Over 20 Years Selling Direct to the Public

**SAVE UP TO 40% ON RETAIL PRICES**

NO GENUINE FIRM CAN COMPETE WITH OUR VAST RANGE, QUALITY AND SERVICE, BEFORE & AFTER SALES ALL THIS AND ROCK BOTTOM PRICES TOO!

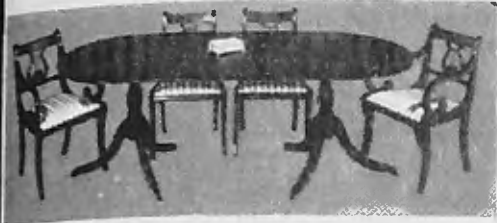


Reproduction Wall Units from Brenner, Beutilux, Meredew, Heritage, Beresford & Hicks from £209.

5ft 3in Mahogany Units £299. Large range of Stanley Wook Oak Furniture at colossal savings.

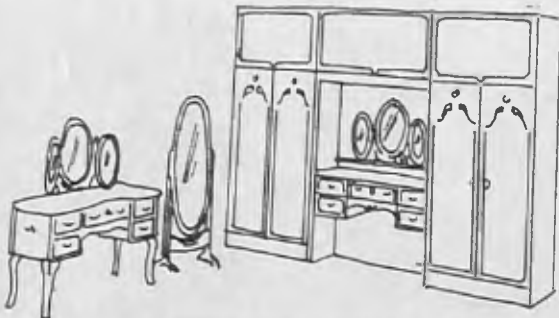
7ft Dining Table, 6 Solid Mahogany Chairs including 2 carvers from £299 complete. 5ft Dining Suites from £249 complete. 7ft and 8ft 8in Regency Tables with range of 12 types of Mahogany chairs.

Solid Mahogany Dining Chairs from £29. Hi Fi Cabinets from £99. Regency Hall Tables from £29



French Style or Plain White Bedroom Units up to 9ft wide, 7ft 4in high, from £250 complete.

Kidney or Serpentine shape Dressing Tables from £55. Large range of chests and bedside cabinets to match.



**SHOWROOMS: 72 CHASE SIDE, ENFIELD, MIDDLESEX.**  
(Close to Parsonage Lane)

TEL: 01-366 2437

**INSTANT CREDIT NOW AVAILABLE**

Open 10am to 5:30pm Monday, Tuesday, Thursday, Friday, Saturday.

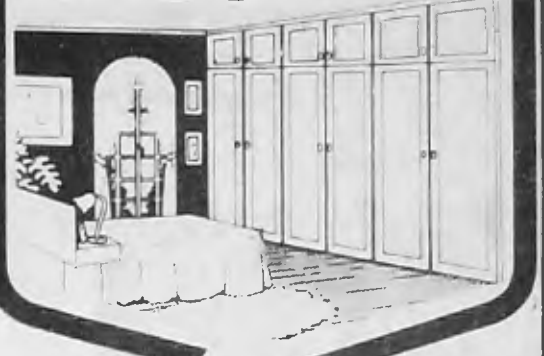
Free delivery. Barclaycard, Access Welcome.

## EXAMPLE PRICE

THREE BEAUTIFUL DE-LUXE DOUBLE WARDROBES IN SATIN MELAMINE, DIVISIONS & BACKS (NO EXTRA) FLOOR TO CEILING WITH TOP & SIDE SCRIBED PANELS AND COVERING 12ft WIDTH £489 PLANNED AND FITTED.

FULL RANGE OF DESIGNS AT OUR FACTORY AND SHOWROOM.

**fitted** bedroom furniture



**IDEAL HOME MAGAZINE SAYS -**

"STATON FURNITURE IS QUITE A FIND"....."YOU BENEFIT FROM THE MONEY THE COMPANY MIGHT HAVE SPENT ON A CHAIN OF SHOWROOMS. SOME OF THESE SAVINGS ARE PASSED TO YOU IN LOWER PRICES, SOME IN EXTRA QUALITY."

*Printed by kind permission of IDEAL HOME MAGAZINE.*

*also now available*

BESIDES OUR NORMAL DE LUXE FITTED WARDROBES, WE NOW ALSO OFFER A SIMPLE RANGE OF WARDROBE FRONT UNITS INCLUDING SHELF, HANGING RAIL AND BOTTOM BASE FLOOR TO CEILING FITTED TO YOUR EXACT WALL SIZE.

from **£30** per foot run

*Why Do it Yourself?*

WHEN WE CAN SUPPLY & FIT FOR PROBABLY LESS THAN YOU WILL PAY FOR SELF-ASSEMBLY WARDROBES

# WORKS PRICES STATON

FITTED FURNITURE LTD.

719 North Circular Road (North Side), London NW2

½ mile west of Brent Cross Shopping Centre (nr. flyover)

Phone 01-450 6581 Customer Parking. Also open Saturdays.

# WAREHOUSE CARPET BARGAINS

- \* FREE FITTING on most orders over £100
- \* FREE UNDERLAYS on all Axminsters
- \* FREE ESTIMATING
- \* FREE DELIVERY
- \* ON PRODUCTION OF THIS ADVERTISEMENT

**SUPER CARPET OFFERS - UP TO 50% REDUCTIONS ON ROLL ENDS**

IDEAL FOR SMALL AREAS: i.e. Cars — Bathrooms — Caravans, etc.  
ALSO: HUNDREDS OF LARGE ROOM SIZES UP TO 30' x 12'



100% WOOL BERBER £4.99 SQ. YD. SUPER CORD £1.99 SQ. YD.

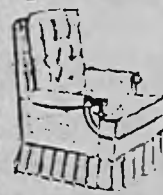
## DIAMOND CARPETS WAREHOUSE

25 Oakleigh Road North Whetstone N20



Telephone 01-446 2105/6

**NO OBLIGATION FREE HOME VISIT ESTIMATING FITTING**



**COSYFIT STRETCH COVERS MADE-TO-MEASURE**

SATISFACTION GUARANTEED Old suites look as new

Quality cloth, Dralon, 100% nylon, etc. Wide range of colours and patterns (over 120) NO DESIGN TOO DIFFICULT ALL CUSHION COVERS WITH ZIPS Also available replacement foam cushions — all shapes.

Telephone for FREE Home Visit 804 6677, ext 15 Trade locally with

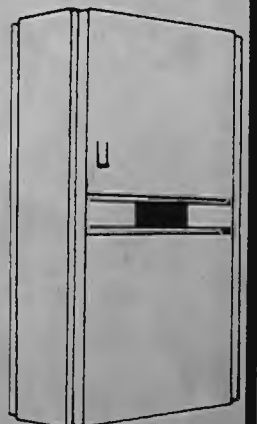
**COSYFIT** 62 MOTTINGHAM ROAD LONDON, N9

## CENTRAL HEATING

INSTALLED BY THE EXPERTS COULD SAVE YOU UP TO 30%

We offer the most economical gas central heating boiler available! Your benefits:

- \* Room to room warmth with guaranteed temperatures.
- \* Instant hot water available anytime.
- \* No wasteful cylinders or expansion tanks.
- \* Each system designed and fitted to suit your home by our own trained engineers.
- \* Full 12-month guarantee.
- \* Free Estimates.



NO DEPOSIT TERMS WITH UP TO 10 YEARS TO PAY AVAILABLE UPON REQUEST **COMBI SERVICES LTD.**

01-881 1511

# J. & R. Floor Services Ltd. New Flooring Superstore

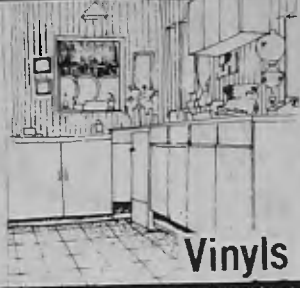
**BARGAIN OFFERS ALWAYS AVAILABLE**



**Ceramics**



**Carpets**



**Vinyls**

**- OVER -**  
3,500 Ceramic  
Floor & Wall  
Tiles

**- OVER -**  
2,000 Carpets  
& Carpet Tile  
patterns

**- OVER -**  
2,000 Cushion Floor  
patterns - including  
Armstrong, Nairn, Gafstar,  
& other leading makes.

We specialize in Nairn, Marley, Vinyl Tiles, Amtico Tiles, Cork, Cork-O-Plast  
FREE ADVICE & ESTIMATES  
EXPERT FITTING SERVICE AVAILABLE

**Armstrong  
Floor Fashion  
Centre**

**Up to 45% off  
all ceramics**

**SPECIAL  
SALE**  
CORK-O-PLAST  
103 NATURAL  
£9.25 per  
sq yd  
+VAT.

We wish all our clients past, present and future a Merry Christmas  
and a Happy New Year.

9 & 11 East Barnet Rd, New Barnet Phone: 01-440 5311



**Aubrey Harris Ltd**

Suppliers of STATIONERY  
OFFICE EQUIPMENT  
FURNITURE  
COMPUTER ACCESSORIES



**SPECIAL OFFER**

- FIRE RETARDANT TWEED FABRIC AND FOAM
- FULLY ADJUSTABLE
- DESIGNED FOR COMFORT

**only £39-95 + VAT**

for delivery to your door, phone:  
01-449 9216

119-121 EAST BARNET ROAD  
NEW BARNET, HERTS EN4 8RG

## HUNDREDS of PLANT HIRE TOOLS

FOR DIY BUILDING & GARDENING COME TO  
LONDON PLANT HIRE 585 HIGH ROAD N12  
446-4231

ALSO YOUR OWN  
POWER TOOLS REPAIRED

OPEN MON—FRI

8.30 AM TO 5.30 PM  
SAT 9 TO 1 PM



### Are you seeking high quality Reproduction Furniture or Bathroom Suites & Accessories?

We will supply you at highly competitive prices.  
Call & examine our extensive ranges without obligation.

**ARLINGTON TEMPLE EXPORTERS LTD.**  
63 Ballards Lane, Finchley, N.3. Phone: 349 3669

DURING  
DECEMBER  
ONLY

**Our Xmas present  
to all of you**

**TREAT  
YOURSELF  
TO A  
SLIM & TONIC  
AT**



## EDGWARE HEALTH & BEAUTY SALON

**GENTS**

REDUCED PRICES ON  
SAUNA & MASSAGE  
(during Unisex sessions)

Mon., Fri. 10am-10pm  
Tues., Wed., Thurs. 2pm-10pm  
Sat. 10am-6pm

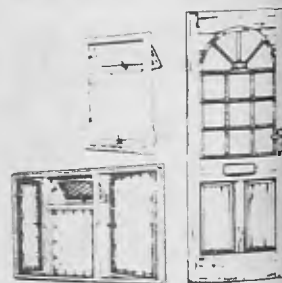
**LADIES**

OUR XMAS OFFER OF SUNBED,  
SAUNA, MASSAGE & FACIAL

Now only £6  
(during Ladies sessions)  
Tues., Wed., Thurs. 10am-2pm  
Sun. 2pm-7pm

**96 HIGH STREET, EDGWARE. TELEPHONE: 952 5952**

## The beauty of solid mahogany windows and doors



Double-glazed for comfort. Good solid real  
wood in the finest solid mahogany. In a wide  
range of styles. And in stained glass if  
required. Ask about our special offer on  
leaded lights.

Ring: 474 8953

**Tudor glass**

## SUSPENDED CEILING AND PARTITIONS

FREE ESTIMATES GIVEN

All types of ceilings with integrated lighting for all  
domestic and commercial areas, supplied and fixed.  
Artex ceilings also.

PROMPT SERVICE: 01-440 4702

**RAFAROY LTD.** 5 Plantagenet Road  
New Barnet



*Prices Slashed  
for Christmas*

**Furniture & Bedding at prices  
you can't afford to miss!**

SINGLE BEDS from <b>£36.95</b>	DOUBLE BEDS from <b>£69.95</b>
-----------------------------------	-----------------------------------



Specialists for  
SLUMBERLAND, SLEEPEZEE,  
SILENTNIGHT — DUNLOPILLO  
RELYON — VISPRING  
REST ASSURED — SEALY  
MYERS etc etc  
*Free Delivery in GLC AREA*

**JOYSLEEP**  
220 WEST HENDON BROADWAY, EDGWARE RD,  
WEST HENDON, NW9 01-202 2747

**CLEANER  
CURTAINS BY**  
FAST COLLECTION  
& DELIVERY  
HOMES, HOTELS, SCHOOLS,  
OFFICES ETC.  
WE ALSO FIRE PROOF  
MAKE YOUR DAY WITH  
CLEANER CURTAINS BY  
**Tel: 959 6996**



**or 205 2000**



**Decorative  
Mouldings for  
Interior & Exterior use**

Cornice, Arches, Columns, Niches,  
Ceiling Roses, Panelling, Fire  
Surrounds and Coal/Log Effect  
Fires

FOR FREE BROCHURE  
Tele: 01 529 2327

Parkland Reproduction Mouldings  
49-51 Station Rd, Chingford E4



**Risoli Reproductions  
presents**

7ft. Dining Table, 6 Chairs, inc.	
2 Carvers, inc. Sideboard only	£445
3ft. Bookcase	£195
5ft. Bookcase	£370
5ft. Serpentine Sideboard	£185
TV Cabinet	£125
Hi-fi Cabinet	£110
Corner Cabinet	£89
Bureau, Bureau Bookcase, Coffee Tables and Nests	from £49

As manufacturers we offer excellent  
quality at highly competitive prices  
*Large Stock of Mahogany and Yew*

**Why not come and see for yourselves!**  
**425 LONG LANE, FINCHLEY, N2**  
**01-883 5997**





**ALL AIRPORTS AND SEASIDES  
ECONOMY CAR SERVICES**  
**959 6473**

HEATHROW — £10  
LUTON — £12  
GATWICK/STANSTED/SOUTHEND — £17  
BRIGHTON — £25  
EASTBOURNE & BOURNEMOUTH — £30

ADVANCE BOOKINGS

**VIDEO FILM HIRE**

**THE BEST 500  
FILMS ON VIDEO**

£4 for 3 days. No deposit  
No Membership  
We deliver and collect  
free in all areas

**PHONE**  
**01-445 4401**

**GARAGE DOOR AUTOMATION LTD**

Automatic remote control from the comfort of your car. Most existing  
up-and-over doors can be automated. New door fitted if required.

**\* Unbeatable Value \* £195 + Fitting and VAT**  
*Free leaflet and details Tel: Potters Bar 43654*

## CONTENTS

December 1981

The Council at Work .....	page 4 to 24
Views of the Past.....	28
What's On .....	35 to 37

## EDITORIAL ADDRESS

Civic News,  
London Borough of Barnet,  
The Town Hall,  
The Burroughs,  
Hendon NW4 4BG  
Tel. 202 8282, Exts. 71 & 479

## ADVERTISING ADDRESS

Laurence Marshall  
(Advertisers) Ltd,  
Publicity House,  
12 Genotin Terrace,  
Enfield EN1 2AF  
Tel. 01-366 4626/7, 01-367 0246

Barnet Civic News is a monthly magazine carrying news of Council activities and local voluntary organisations.

Civic News is distributed door-to-door throughout the borough, reaching more than 109,000 homes and businesses and further copies are sent to libraries and council offices. It is produced at no additional cost to the ratepayer, all costs being covered by advertising.

Editorial pages are edited jointly by Bill White, the Council's Press and Information Officer, and Rosemary Jude, Press Officer. Copyright of editorial matter, Barnet Council.

It is produced and published on behalf of the London Borough of Barnet by Laurence Marshall (Advertisers) Ltd.

## RATE LEVIES

Throughout this report comparative figures are shown for neighbouring Local Authorities.

It is equitable therefore to show the rate figures for each borough to provide readers with the opportunity to make an accurate comparison of each Domestic Rate Levy in the year 1980/81. The standard rate poundage tables are shown on page 22. The following tables should also assist.

	Domestic Rate	Exceeds Barnet by
Barnet	79.0p	
Harrow	101.5p	28%
Brent	109.5p	39%
Enfield	88.5p	12%
Haringey	131.5p	66%

The up-to-date figures (including the Greater London Council Supplementary Rate levy in October 1981) for the year 1981/82 are:

	Domestic Rate	Exceeds Barnet by
Barnet	113.0p	
Harrow	145.9p	29%
Brent	190.8p	69%
Enfield	121.4p	7%
Haringey	200.95p	78%

## The Council at Work

## A REPORT ON THE YEAR 1980/81

## Foreword by the Leader of the Council



LESLIE PYM

I am pleased to introduce this Civic News report on the work of Barnet Council in 1980/81.

Barnet is one of the largest local authorities in the country serving a population of nearly 300,000 people. In 1980/81 the borough spent £81 million in a wide range of services and activities. Unfortunately few people realise the breadth of service which the council offers and I welcome this Report in order to publicise and explain the work of your Council.

The year was a difficult one financially and the current year is proving even more difficult. Local Authorities face financial constraints and Barnet is suffering from overspending by certain councils, particularly the GLC, which has led to the Secretary of State holding back a further £1½ million in grants.

However, I am confident the ratepayers of Barnet receive value for money. Undoubtedly there is now the need for constructive and careful assessment of local government spending. I reassure the ratepayers of Barnet that our criteria is value for money and the continuation of a good standard of service.

This is intended as a stewardship report and I hope that it will also encourage interest in and support for the work of your local council.

## Introduction by the Chief Executive and Town Clerk

BARNET COUNCIL has always been concerned to publicise its work. In the past a number of committees of the Council have published their own comprehensive reports, while detailed information on finance is given in the Annual Financial Review. Since the beginning of 1980 the Council has also published this monthly magazine, giving information on a wide range of Council activities.

New codes of practice have been introduced encouraging local authorities to report to their ratepayers and this year for the first time we are producing an official Annual Report with details of the work of each service committee in 1980/81 supplemented by statistics. This month in Civic News we present a shorter version of this formal Annual Report. The document itself can be seen in all our public libraries and copies can also be purchased from the Town Hall, Hendon.

The work of the Council is so wide and varied that it would be quite impossible if all the matters that have to be considered and the many decisions required to be taken were left to one body of people. Therefore, the Council, like

most local authorities, divides its work into the broad functions for which it is responsible and appoints Committees to discuss relevant matters and problems and make decisions.

The Council consists of 60 Members and each Committee comprises between 12 and 25 Members. Social Services, Education and Allotments Committee also have co-opted members who are able to contribute through specialist knowledge and experience.

In most matters the Committees have delegated powers to make decisions on behalf of the Council but where this is not so the Committees submit recommendations to the full Council. To prevent any unnecessary delay a whole range of matters is delegated to Chairmen and Vice-Chairmen of Committees and to Chief Officers subject to their reporting to the appropriate Committee.

It will be seen therefore that every effort is made to ensure a proper balance between the democratic decision-making process and the need to operate effectively, efficiently and expeditiously.

MICHAEL BENNETT



## WINTER SALE OF TYRES AND BATTERIES

### LOOK AT THESE PRICES

ALL SIZES STOCKED

SIZE	MAKE	PRICE
PIRELLI		
145SR10	P3	£9.95
155SR12	P3	£12.35
155SR13	P3	£13.95
165SR13	P3	£14.50
175/70SR13	P3	£19.50
185/70SR13	P3	£19.50
175SR14	P3	£18.40
185SR14	P3	£21.50
185/70SR14	P3	£19.50
DUNLOP		
ER70VR15	Sports	£46.50
MICHELIN		
Best discounts around		
All other tyres stocked		
Phone us for a quote on all		
your tyre requirements. All		
prices are exclusive of VAT		

AVAILABLE WHILE STOCKS LAST.

## NORTHWAY TYRE & BATTERY CENTRE

137 GREAT NORTHWAY  
HENDON NW4

01-203 3834 01-203 4745

M.O.T.  
WHILE-U-WAIT  
BY  
APPOINTMENT

TRACKING  
WHEEL BALANCING  
ENGINE  
STEAM  
CLEAN

EXIDE



THE SIGN FOR ALL SEASONS

ALL MAJOR CREDIT CARDS ACCEPTED

## BITTEN OR BROKEN NAILS?

WE BUILD ACRYLIC  
ARTIFICIAL NAILS BY  
APPLYING A LIQUID AND  
POWDER MIX

THE ACRYLIC NAIL COVERS  
AND PROTECTS YOUR  
NATURAL NAIL WHILST IT  
GROWS SO YOU CAN  
HAVE BEAUTIFUL LONG  
NAILS NOW!

AND YOUR OWN NAILS  
GROW NATURALLY  
WHILE PROTECTED

Phone or call at our Edgware Salon  
for further details

## THE NAIL STUDIO (AT JEANS JOINT)

160 Station Road, Edgware, Middx  
Tel: 01-952 0837

## CJ VIDEO SERVICE

OFFER YOU DOOR-TO-DOOR  
SERVICE, TO MAKE LIFE  
EASIER FOR YOU . . .

7 DAYS A WEEK ANSWERING SERVICE  
Monday to Saturday 10 am—8 pm  
Sunday 10 am—2 pm

Just pick up the phone  
and RING 01-556 0906

SIT BACK AND SELECT YOUR  
EVENING ENTERTAINMENT OF

- HORROR
- ADULT
- WESTERN
- LOVE
- ADULT FEATURE
- COMEDY
- THRILLER
- MARTIAL ARTS
- WAR
- CHILDREN

£1.50 FOR 3 DAYS  
£20 LIFE MEMBERSHIP

## COME & SEE THE BEST FITTED BEDROOMS IN TOWN

at your local

GKD  
SHOWROOMS

HENDON

9 Finchley Lane NW4  
(Nr Odeon) 01-203 5767

WHETSTONE

1376 High Road, N.20 01-445 4853

HORNSEY

68A Park Road, N8 01-348 0493

ST. ALBANS

25 High Street, near  
Cathedral 56-32553

LOW, LOW PRICES

- CRAFTSMAN MADE
- FREE PLANNING & MEASURING  
to individual requirements
- PROFESSIONAL FITTING
- 3 YEAR GUARANTEE

For more details  
TELEPHONE  
01-515 5365  
anytime  
AND FREE BROCHURE

FREE



12" FIDELITY  
BLACK & WHITE T.V.  
WITH ALL FITTED BEDROOM  
ORDERS OF £ 500 OR MORE  
HURRY—LIMITED OFFER ONLY  
Bring this advertisement  
with you for details

● TOP QUALITY RANGE OF  
FITTED BEDROOM FURNITURE  
to suit your home



## Allotments Committee

THE ALLOTMENTS COMMITTEE has 11 Councillors and five co-opted members from Barnet Federation of Allotment Holders whose practical experience is very valuable.

The committee are responsible for the provision, management and letting of allotments. Some of the Council's sites are leased to societies who organise the letting of the plots. Other allotments are allocated on an individual basis and are dealt with by the Borough Estates Office.

The societies activities are encouraged by the Council and during the year improvements have been carried out to many sites. The renewal of water supplies, for instance, has been paid for out of income arising from the sale of land, such as surplus land forming part of the Bells Hill site in Barnet.

This is why there has been a small reduction in the number of plots. However, although there is a steady demand for plots, both from local societies

and from individuals, this can be met from present allotment holdings.

This year, as in the past, committee members visited selected sites in the spring and autumn and talked to plot holders about their needs and problems.

The administration of the allotments is dealt with by the Estates Department at Gateway House, 322 Regents Park Road, Finchley, N3.

### STATISTICS

#### COUNCIL ALLOTMENTS

Area	104 acres
Sites	44
Plots	1,807
(10 pole site)	
Average rent	£5 p.a.
(incl. water charge)	

#### ALLOTMENTS LEASED TO SOCIETIES

Area	143 acres
Sites	20
Plots	2,127

## Building Resources

IN MAY 1980 the Council established the Building Resources Committee. The land and buildings under the control of the Council represent a valuable resource and the role of the committee is to make sure that the best possible use is made of these capital assets.

A good example of the committee's work is its close involvement with the Council-owned land in Regents Park Road, Finchley, and the re-location of offices on this site.

As a result of the Council's decision not to centralise its offices in the Finchley area, 4½ acres of this land will be sold for residential purposes and future commercial development which will bring further advantages to the borough. The re-location of existing offices avoided the need for the Council to build or acquire additional premises.

It is also considering alternative uses for the former John Hampden School, New Barnet.

## Carnival and Shows

THE COUNCIL organises three major events: **Barnet Sports Gala** at Cophall Stadium which includes the Middlesex Schools Athletic Championships, a major horse show and a host of other sporting events in which well known athletes take part.

The **Finchley Carnival**, a three-day event, includes a special entertainment for senior citizens and a carnival procession.

**Friern Barnet Summer Show** features a major horticultural show as well as charity stands and stalls and entertainments.

### STATISTICS

Numbers attending Shows in 1980

Finchley Carnival	22,559
Friern Barnet Summer Show	8,415
Admission to Barnet Sports Gala is free and no attendance figures are available.	

## Development and Estates Committee

THE DEVELOPMENT AND ESTATES COMMITTEE is mainly responsible for the borough's parks and open spaces, swimming pools and Hendon cemetery and crematorium and for Council lands and premises not directly controlled by other committees.

Barnet has one of the largest areas of public open space of any London borough. Twenty thousand acres come under the Council's control.

There are 80 parks and open spaces in the borough including five major sports grounds, two athletic tracks, six golf courses (three leased to private clubs) and 13 miniature golf courses and putting greens, three swimming baths, and provision for bowls, tennis, football, rugby, hockey, netball, lacrosse, baseball, cricket, horse riding and cycling.

With today's financial difficulties the policy is to provide attractive parks but with economic maintenance in mind and the emphasis is on ground cover and shrubs. A bonus incentive scheme has been introduced and the labour force reduced while in general standards have been maintained.

The borough has three plant nurseries. Ten thousand trees are grown each year to ensure that the borough retains its green tradition and we still produce 200,000 plants each year

for decorative bedding and civic events.

One of the major assets of the borough is Barnet Cophall Sports Centre with its many acres of sports pitches, its athletics stadium offering facilities of a high standard including the all-weather running track.

The stadium is heavily booked by schools and the results are mirrored by the success of Barnet school children taking part in inter-borough and national events. There has been increasing use of the facilities by national organisations but the lack of covered facilities reduces the attractiveness of the venue when compared with Crystal Palace for international meetings.

The swimming pools at Cophall are one of the borough's major recreational assets. In spite of the economic climate and higher charges attendance has risen from 420,385 in 1979/80 to 461,032 in 1980/81. It has become an established venue for major competitions. Barnet Cophall Swimming Club, now one of the top

clubs in the country, organised their second international gala and the ASA national short course championships at the complex. The European Cups event is being held there this month.

The financial situation was such that the Council had to close two of its three open-air pools because of the heavy subsidies necessary to maintain them for a relatively small number of swimmers.

The total number of swimmers using Finchley Open Air Pool, Squires Lane Baths and Cophall pools was 629,987, compared to 581,313 the previous year.

Within the Borough of Barnet there are a number of large cemeteries but only Hendon Crematorium and Cemetery is operated by the borough.

Eleven years ago the Council decided to convert the grounds into a lawn cemetery and now a third of the area has been dealt with. All the flowerbeds have been planted with evergreens and heathers to cut down on the need for expensive bedding

plants and the twice a year seasonal bedding out is only provided for 1,300 graves and paid for by the owners. The number of full time manual workers averaged 15.

### Green Belt management

A joint venture between the Countryside Commission, Hertfordshire County Council, the GLC, Hertsmeire and Barnet Councils, to co-ordinate green belt management, has been a success and will continue.

The work carried out is funded by a 50 per cent contribution from the Countryside Commission. Projects in this borough included the reclamation, drainage and replanting of King George V Playing Fields, the re-establishment of footpaths across Dollis Valley, the recreational footpaths scheme in Totteridge and the creation of a bridle way across the valley from Mays Lane, Barnet, to Totteridge. Future plans include the extension of the bridleway northward and the reclamation and replanting of land in King George's Field, Hadley.

### BOROUGH COMPARISONS

Recreation	Outer London Average	Barnet	Harrow	Brent	Enfield	Haringey
Net Cost per 1,000 population 1980/81	£13,212	£15,107	£11,301	£14,612	£12,749	£16,831
Acreage		1977	860	979	460	489



# ZEBRA INTERIORS

159 BALLARDS LANE, FINCHLEY, N3  
Tel. 346 0498

OPEN MONDAY—SATURDAY 9.30—5.30  
SUNDAY 10 am—1 pm

View London's largest selection of Louis-style sofas and chairs made for us by our associates' factory in Italy. All models have solid wood frames and steel coil springs.

## Buy direct from us at factory prices and save a small fortune

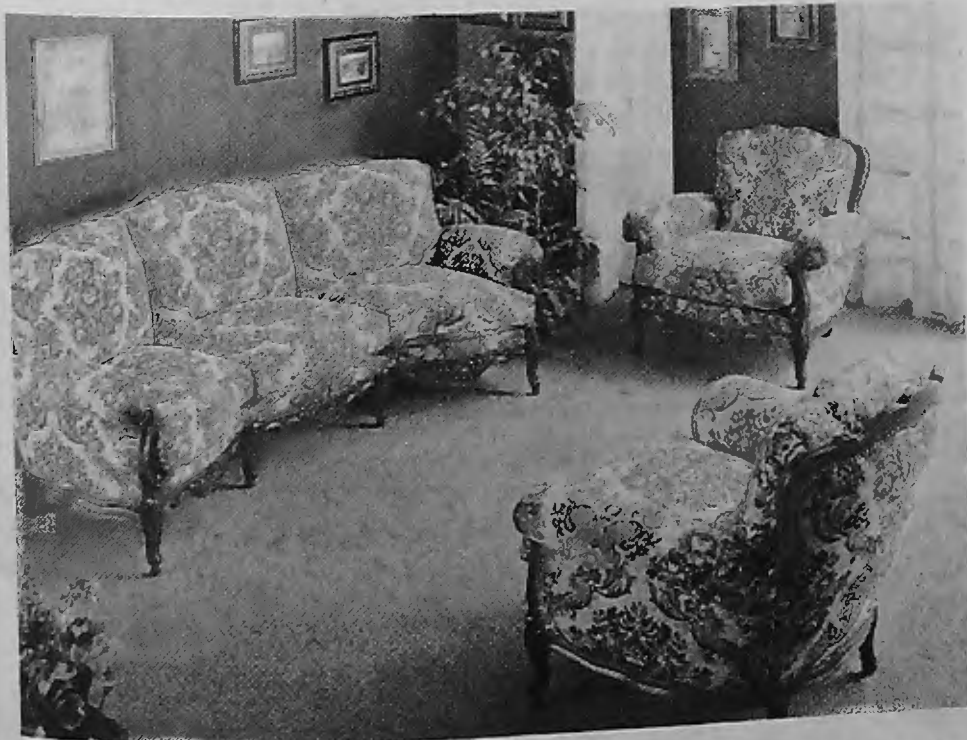
Below are just 4 examples of the superb collection now on view at our Finchley showroom.



Model Filippo Pesante



Model Virginia



Model Panoramico



Model Casanova

# Education Committee

THE WORK of the Education Committee is so broad in its spectrum that it is administered by a number of sub-committees. It covers school education from nursery to sixth form, further education both within and outside the borough, special schools for children with handicaps and special needs, careers advice and a youth and community service for all age groups, and the school meals service.

## Nursery and Primary Education

In 1980 there were 21,892 pupils in nursery and primary schools, 685 fewer than the previous year. However, there was an increase of 80 in the number of children aged 4 and under attending school. The borough is running 30 nursery classes and two more are expected to open in 1981/82.

The committee's policy is to keep classes in primary schools down to 30 pupils and under. Steady progress is being made and there are now 572 infant and junior classes which meet this standard but there are still 194 with more than 30 pupils.

During the year Algernon Road School was closed and the pupils moved to St. David's Place which was renamed Parkfield School.

## Secondary Education

The year's major issue was the organisation of secondary education in the face of falling school rolls. The number of pupils fell by 391 to 21,117. This has led the Council to propose the closure of Southaw and Graham Park Schools in July 1986 subject to ratification of the Secretary of State.

With falling rolls and reduced resources a further review of the organisation of schools and the curriculum opportunities is inevitable.

Pupils have again achieved above national average pass rates in CSE and GCE and an even higher percentage stayed on at school beyond the compulsory leaving age and went on to higher education.

There have been three major building projects, Bishop Douglass School is now on one site, Christ Church School has been developed to four-form entry, and the design and technology accommodation at Ravenscroft School is in full use.

## Special Schools and Services

In this International Year of Disabled People the Education

Committee have worked to improve the special schools and services for children with learning difficulties, in spite of economic constraints.

At Oak Lodge School, East Finchley, a new Work Preparation Department where students can prepare for work in the outside world was opened by The Prime Minister.

An extended education unit at Mapledown School, Cricklewood, will offer a course designed to help pupils with severe difficulties to develop socially and acquire the skills needed for their future lives.

It is the Council's policy, wherever possible, for physically handicapped children to attend ordinary schools. Structural alterations have been carried out at two schools to assist this programme and the Service for the Hearing Impaired has arranged special equipment and support to enable many children to enjoy normal school life.

## School Meals

Every day 28,000 school meals are prepared, 3,000 of which are transported from area kitchens. There were 700 staff employed in 89 kitchens and 28 dining centres and there were 500 meal time supervisors. The service also prepared 500 lunches daily for Meals on Wheels and luncheon clubs and 600 for staff canteens.

A cafeteria style service in secondary schools has proved popular and most secondary schools will have this facility by 1982. A cook-chill unit is planned to come into operation early in 1982.

## Further Education

The Borough has two colleges of Further Education, Barnet and Hendon, catering for more than 17,500 students. In September 1980 the Montagu Road Annexe of Hendon College was opened to provide a language centre for those learn-

ing English as a second or foreign language.

## Barnet College

Student numbers 1980/81	10,430
Full-time	900
Short full-time	120
Part-time day and evening	8,710
Day release	530
Block release	24
Flexi-study	146

## Hendon College

Student numbers 1980/81	7,253
Full-time	555
Short full-time	103
Part-time day and evening	6,351
Day release	244

## Middlesex Polytechnic

Middlesex Polytechnic, the largest in the country, has 7,400 full-time, sandwich and part-time students and is maintained by the Boroughs of Barnet, Enfield and Haringey. It has 687 full-time lecturers.

## Grants

Barnet has one of the highest percentages of students attending further education courses in the country. Most students are awarded a grant when they attend college or university. The majority of these are mandatory grants and for these 90 per cent of the cost is borne by the taxpayer.

For the academic year 1979/80 2,201 university students and 1,242 higher or further education students received grants totalling more than £5.6 million and a further 414 discretionary grants were awarded at a cost of £551,222.

## Careers

The careers service which provides both guidance and job finding facilities for school leavers and young people is based at three area offices and there are specialist advisers for handicapped youngsters and college students.

Until recently the wide range of employment available in Greater London and the growth industries such as banking, insurance and the distributive trades sheltered our school leavers from the worst effects of the economic situation.

Now, however, there is evidence that the recession is affecting business and administration and that outer London is now facing a rapid rise in unemployment.

The decline in the number of vacancies for school leavers and the increased competition for the jobs that are on the market emphasises the value of good educational qualifications and this need is reinforced by the demands of changing technology.

## Unemployed School-Leavers

	Registered unemployed	Vacancies
July 1979	210	414
July 1980	269	165
July 1981	469	48

## Youth and Community

While the accent is still on young people the Youth and Community Service sets out to serve the whole community.

The service promotes Graham Park, Ashmole and Queen Elizabeth's Girls' Schools as community centres for sport and cultural use and it is hoped that a further five centres will eventually be developed. Hendon Sports Centre, specialising in gymnastics, is now a training base for international competitors as well as local youngsters.

## Youth sailing base

The Welsh Harp Youth Sailing Base had an attendance figure of 17,000 during the year and has a high reputation for training in canoeing and dinghy sailing. A number of members have been selected for the British Canoe Squad. Extensive rebuilding work has been carried out at the base which is open seven days a week, and further developments are planned.

BOROUGH COMPARISONS						
	Outer London Average	Barnet	Harrow	Brent	Enfield	Haringey
<b>Primary</b>						
Pupil Teacher Ratio	21.5	22.4	21.1	17.3	22.5	18.3
Gross Cost per pupil	£646	£627	£634	£797	£571	£803
<b>Secondary</b>						
Pupil Teacher Ratio	15.5	14.9	14.4	13.0	15.7	14.7
Gross Cost per pupil	£912	£906	£1,022	£1,066	£815	£1,013
<b>Further education</b>						
Net cost per 1,000 population	£18,294	£14,979	£14,824	£28,231	£17,173	£25,238

# Education Committee

Improvements are also in the pipeline for Moat Mount Camp Site which offers camping, orienteering and expedition facilities and which, it is hoped, will be developed to a full Outdoor Pursuits Centre.

In association with Social Services and voluntary organisations a Holiday Play Scheme is organised. In 1980 there were 22 centres, mainly based in schools and youth clubs, offering a four-week play scheme during the summer holidays and up to 1,000 children between the ages of 5 and 12 attended.

## Advisory Service and Curriculum

The ever changing demands upon the education of young people means that the school curriculum is always under scrutiny, as is the role of the teacher.

During the year conferences at many levels were held, and greater use was made of the Swaylands Study Centre in Kent for weekend meetings and of the Teachers Centre in Barnet.

Examples of the development in the school curriculum include the introduction of mathematics

guidelines which not only set out the whole range of maths teaching but also devised an individual progress card for each child so that no area of work would be missed.

New features have included courses as diverse as the management and leadership role of the Deputy Head, teaching gifted children, micro-electronics, and the establishment of a flourishing branch of the United Kingdom Reading Association.

Advisors continue to support secondary schools through evaluative studies undertaken in individual schools; these examine the curriculum; teaching

methods, resources and organisation of departments. An evaluative study in a primary school was also undertaken for the first time.

For some years certificates of achievement marking the various standards of proficiency in French have been issued. This has now been extended to German and Spanish.

A Business Studies support unit has been established to help with industrial liaison and work experience projects.

## New technology

With the demands of new technology in mind a micro-

electronics teaching module for secondary school science has been devised and computer education has been given considerable impetus by the introduction of desk top computers.

A centralised 'A' level music course has been established and with the opening of a third music centre 700 young people receive special tuition and make music every Saturday morning.

This outline can only give the briefest picture of the character and richness of education offered in Barnet schools. The challenge of the future is to ensure that this is maintained in spite of falling school rolls and reduced finance.

## STATISTICS

### Schools and Colleges

Nursery Schools

4

Scholars

239

Primary Schools

91

Scholars

21,653

Secondary Schools

26

Scholars

21,117

Special Schools (incl. 1 boarding school)

6

Scholars: Day

363

Boarders

107

### Further Education

Colleges

2

Full-time students

1,678

Part-time students

16,005

### Other Establishments

Careers Offices

3

Careers interviews

10,600

Local Authority Youth and

Community Centres

13

Sports and Leisure Centres

6

# TILE FILE

## DISCOUNT TILE CENTRE

FULL RANGE OF ENGLISH & CONTINENTAL TILES ON DISPLAY  
FREE ESTIMATES AND DELIVERY

We also sell —

- ADHESIVES & GROUT
- TILE SPACERS
- TILE NIPPERS
- TILE CUTTERS
- HIRE SERVICE (for Floor Tile Cutter)
- COLOUR MIXES
- MIRROR TILES
- BATH TRIM SETS
- EPOXY GROUT
- THICKBED (for uneven walls)
- SPREADERS

11 THE BROADWAY, DARKES LANE  
POTTERS BAR, HERTS  
Tel: Potters Bar 44646



See our  
"WATERSPLASH"  
Tiles

# General Purposes Committee

THE GENERAL PURPOSES COMMITTEE, as its name suggests, takes in a wide variety of services and administrative functions including trading standards, environmental health, grants to voluntary organisations, the use of charity money, press and information services, the registration of births, deaths and marriages, and the electoral roll.

One way to appreciate the vast range of services which come under the committee's jurisdiction, is to take a look at some of the facts and figures behind the work of its various sections.

## Trading Standards

● Testing weights and measures — 4,379 visits, 32,336 individual tests.

● Consumer protection — 3,326 complaints dealt with involving 3,191 inspections.

● Dog and game licences — 7,402 recorded.

When the inspectors find that the law is being broken they can initiate court prosecutions. These have included the false description of a car engine, and the misrepresentation of the weight and value of scrap gold. One of their major duties is

checking the accuracy of petrol pumps to make sure the public is not being cheated.

## Environmental Health Statistics

<b>Housing</b>	
Inspections made	12,857
Properties made fit	205
Enforcement action re-multiple occupation	46
<b>Pollution</b>	
Complaints investigated	175
<b>Food</b>	
Inspection visits	9,837
Samples examined	638
<b>Health and Safety at Work</b>	
Inspections	3,380
<b>Public Health</b>	
General inspections	9,869
Notices served	442
<b>Pest Control</b>	
Rodent control calls	5,548
Wasps nests etc.	2,641

## Grants to voluntary organisations

In 1980/81, £102,005 was distributed in grants to 31 organisations ranging from £53,013 to the Citizens' Advice Bureaux to £10 for National Almshouses.

The committee administers the income from Edward Harvist Charity and Lottery money.

Among the projects assisted were the creation of a Hendon Room at the RAF Museum, Hendon, a replacement mini-bus/ambulance for Barnet Volunteer Bureau, luncheon clubs at Priory Hall and West Hendon Community Centre, and a swimming pool at Oak Lodge School, Finchley.

The financial assistance given is in addition to that made available by the Development and Estates, Education, Libraries and Arts, Social Services and Town Planning and Research Committees.

## Information Services

The Council aims at providing a comprehensive information service to its ratepayers.

The Information Office deals with about 75,000 enquiries a year on Council, Government and other services. Publications include this magazine, Barnet Civic News, produced at no cost to the Council and distributed free to more than 109,000 homes and businesses in the borough, the Barnet Guide and Street Plan.

The section is responsible for the distribution throughout the borough of a wide range of official leaflets and publications.

Outside office hours the

Council maintains an emergency telephone service which deals with about 10,000 calls a year ranging from flooding and clearing up after road accidents to helping the elderly and needy in distress.

## Twin Towns

The Council is actively linked with five twin towns: Le Raincy and Chaville in France; Templehof and Seigerland in Germany and Ramat Gan in Israel, and exchange visits by young people are encouraged.

## Surplus property

The Committee also deals with the disposal of surplus Council properties. During the year reports on more than 20 properties or sites were considered and the largest move was that of the Social Services headquarters from Finchley to Whetstone. It was also decided to sell 33 Wood Street, Chipping Barnet, and the proceeds will go a long way towards the cost of renovating the Barnet Museum next door.

It also considered many miscellaneous reports such as home defence, energy conservation, fluoridation of water supplies and pollution from leaded petrol.

## Cash and Carry Vegetable Shop

RETAIL & WHOLESALE

We sell Fruit, Vegetables, Logs, Coalite and Coal, all at very competitive prices.

"XMAS TREES STOCKED"

QUALITY FRESH FISH FOR YOUR FREEZER

LARGE 7/8 oz PIECES

Cod, Plaice, Rock and Haddock  
£7 for 5 lbs £13 for 10 lbs

TRADE ENQUIRIES WELCOME

161 IVERSON ROAD, NW6

(off West End Lane, adjacent to Hampstead Garden Centre)

Tel 624 4854

PRIVATE PARKING FOR EASY COLLECTION

## D.L.S. PLUMBING & KITCHEN DESIGNERS

HEATING, SANITARY AND KITCHEN MERCHANTS

CALL AND INSPECT THE LATEST KITCHENS AND BATHROOMS NOW ON DISPLAY

Modernise Your Kitchen and Bathroom at an Unbelievably Attractive Price

Superb display of tiles!



UP TO 40% DISCOUNT OFFERED ON EQUIPMENT

206 West Hendon Broadway, Edgware Road, NW9  
Tel: 202 3079 or 202 5682

OPEN  
MON-FRI  
closed Saturday  
OPEN  
SUNDAY  
9 am—  
2 pm

**DRIPS PLUMBING**

A Network of locally based Plumbers providing an Emergency and Installation Service throughout London and the Home Counties

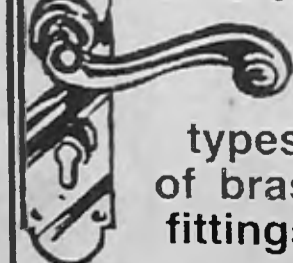
24 hours every day

Fixed scale of call out and time charges

01-888 0 888

For Local Service Information  
Communications Control

Over 1,500 different



types of brass fittings.

DANICO BRASS LTD  
31 Winchester Road,  
Swiss Cottage, NW3  
586 7398



01-485 5600  
KENTISH TOWN ROAD  
LONDON, NW5

Suppliers of all roofing materials

Collection/deliveries within 48 hours

SLATEX 15m x 1m

£6.40 a roll

GREEN MINERAL 10m x 1m

£7.71 a roll

28kg 1B SAND 20m x 1m

£6.83 a roll

95/25 BITUMEN

£194.15 a tonne

or 42kg KEG

£9.20 a keg

GAS 18.5kg

£6.42 a bottle

All types of water proofing membranes in stock

Telephone 01-485 5600 and ask for Catherine Radford for some of the most competitive TRADE DISCOUNTS available

## BUILDERS SUPPLIERS BUILDERS MERCHANTS KIS COLOUR KEY CUTTING SERVICE D.I.Y. SUPPLIES & TOOL HIRE

### SPECIAL DECEMBER OFFERS

TRITON T-30 T-60 T-70 T-80 POWERFLOW. GOOD DISCOUNTS	
LEISURE INSET S/S TOPS	£34.50
CARRON INSET S/EAGLE	£37.00
LEISURE COLOURED BOWLS & DRAINERS	£52.14
COLOURED SETS ROUND BOWLS & DRAINERS	£75.60
DOUBLE DRAINER SINK UNIT AND S/S TOP.	
TEAK OR WHITE RECONDITIONED WATER HEATERS	£65.00

WE SPECIALISE IN MADE TO MEASURE  
SINK UNITS, BASE UNITS, WALL UNITS  
100 COLOURS TO CHOOSE FROM  
GOOD DISCOUNTS — 4-7 DAYS APPROX. DELIVERY

42" x 21" (18.8 GAUGE) STAINLESS STEEL SINK TOPS	£20.00
SINGLE DRAINER INSETS	From £26.95
LEISURE COLOURED DRAINING BOARDS	£3.00
63" x 21" SKYLINE WORKTOPS 1 1/4"	£20.00
COLOURED BATHROOM SUITES	£138.00
MIXER BATH TAPS & MATCHING BASIN TAPS	£32.00
COMPLETE SINK UNITS INC. TAPS	£58.40
DOUBLE BOWL S/DRAINER INSETS, CARRON S/EAGLE	£52.20
STAINLESS STEEL ROUND BOWLS & DRAINERS	£52.14

ALL PRICES EXCLUDING VAT

209 Fore Street, Edmonton, N9  
Phone 01-803 3037



ARCTIC  
WINDOW CO

## IT'S AS CLEAR AS GLASS

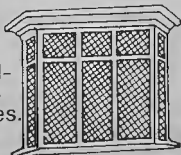
### UP TO 20% DISCOUNT ON

- ★ DOUBLE GLAZING
- ★ RESIDENTIAL AND PATIO DOORS
- ★ ALUMINIUM REPLACEMENT WINDOWS

NEVER KNOWINGLY UNDERQUOTED  
5 YEAR GUARANTEE

TAILOR MADE IN OUR OWN  
WORKSHOPS

Only the best materials  
used, all meeting British  
standard specifications.



TUDOR AND GEORGIAN-  
STYLE WINDOWS in  
bronze, white or satin finishes.

TRADE ENQUIRIES WELCOME.  
CONTACT US NOW, WHILE OFFER  
LASTS, FOR A FREE ESTIMATE.

ARCTIC WINDOW CO.  
39.41 NORTH ROAD, LONDON N7 9DP  
01-607 4567 01 607 4223

# LADDERS

## 50% DISCOUNT

# SHEDS

# GREENHOUSES

# FENCING

WOOD CONCRETE WIRE

# GATES

TIMBER AND WROUGHT IRON

# TIMBER

CHIPBOARD

PLYWOOD • DOORS

PLASTERBOARD

ALL IN STOCK  
AT KEEN PRICES

# LAWSONS

YOUR LOCAL TIMBER  
MERCHANT FOR 60 YEARS

1208 HIGH ROAD, WHETSTONE  
01-446-1321

301 BURNT OAK BROADWAY  
EDGWARE 01-952 0111

59-65 LOWLANDS ROAD, HARROW  
01-864 0088

PHONE FOR ILLUSTRATED PRICE LISTS

# Housing Committee

THE HOUSING COMMITTEE is responsible for managing 20,595 council homes, building new council dwellings for rent and sale, housing families from the waiting lists and also giving advice and assistance to the homeless.

The majority of these responsibilities are financed through the Housing Revenue Account. The council's policy is to balance this account so that there is no major contribution from the rates. The income comes from government housing grants and the rents paid by tenants, which cover such things as property maintenance and repayments on the money the council has borrowed for building and major improvements.

The year was a turbulent one for the committee. There was the transfer of 2,200 dwellings from the GLC, new legislation and difficulties in finding money for the council's housing programme.

Before a council can build new houses or carry out major improvements it has to obtain government permission to borrow the money needed. Each year the council puts forward a figure based on the amount of work it plans to undertake and

the government, having set its strategy and looked at the demands of all local authorities, tells the council how much it can borrow. In 1980/81 the council's allocation was significantly reduced in real terms to just under £9 million. The lion's share of the money had to be spent on remedial works particularly on the industrialised, non-traditional, estates built in the 1960s and early 1970s.

## Housing management

Because there were fewer new dwellings the number of lettings decreased. Nevertheless

at 1,669 it was higher than at first anticipated because the department worked hard to reduce the time that houses were unoccupied and also brought into use empty houses on the GLC estates.

At the same time the housing waiting list has risen, an increase attributed to the continued decline of the private rented housing sector and the fact that the high cost of house purchase puts buying beyond the reach of many residents.

Looking ahead, the continued reduction in building new houses means there will be few-

er lettings and the committee is now reviewing its criteria for allocating dwellings and priority scales.

Rent increases and the general economic climate have led to an increase in rent arrears and in the number of tenants receiving rent rebates.

The 1980 Housing Act has extended the rights of council tenants. There is greater emphasis on consultation, more freedom for tenants, and the right to buy their council homes has been extended to flats and maisonettes as well as houses.

Major improvements and remedial works accounted for nearly half of the housing committee's total capital expenditure. At £5,397,000 this was just over a million pounds more than the previous year. The department also carried out about 1,000 jobbing repairs each week.

During the year 2,230 properties were decorated externally. As a backlog had built up in the maintenance programme, an extra 50p a week was added to the annual rent increase to reduce this backlog and achieve a seven-year decoration cycle.

The Local Government Planning and Land Act 1980 means

## STATISTICS

<b>Housing Stock — 31.3.81</b>		<b>Lettings</b>	
4 or more bedrooms	508	Housing waiting list	562
3 bedrooms	6,275	Homeless families	267
2 bedrooms	7,097	Transfer waiting list	480
1 bedroom	3,512	Others	360
Sundry properties	766	<b>Tenants receiving rebates</b>	3,976
GLC transfers 1980	2,437	<b>Dwellings externally decorated</b>	2,231
	20,595	<b>Capital Programme</b>	
<b>Garages</b>	3,740	Capital spent	£12,111,000
<b>New dwellings — for rent</b>	168	New building	5,626,000
for sale	18	Council House	
<b>Dwellings acquired</b>	6	improvements	5,397,000
<b>Dwellings sold</b>	217	Housing Associations	399,000
<b>Housing waiting list</b>	7,343	Improvement Grants	297,000
<b>Transfers</b>	2,316	Mortgages	392,000



Alexandra  
Rose

Florist of Distinction



Flowers, Plants and Pottery  
— Bouquets and  
Arrangements for  
Christmas and every  
occasion in fresh,  
dried or fabric flowers  
and for Funeral Tributes  
and Sympathy Flowers

You can telephone your  
order — we are always  
pleased to help

383 BALLARDS LANE, TALLY HO, FINCHLEY N12  
01-446 2336



JEWISH



## FUNERAL DIRECTORS

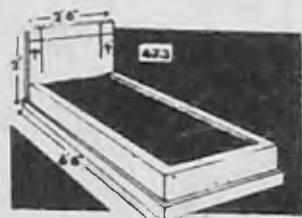
Cremations and burials for non-members  
Help and understanding when you need it most  
For immediate personal attention in all areas  
Telephone any time

808 5585/5313  
L. Mitchell (Funerals) Ltd.  
124 Mount Pleasant Road, N17

Flowers and Memorials

## JOSLIN MEMORIALS LTD

SEND TODAY FOR OUR BROCHURE WHICH CONTAINS SOME OF THE  
70 DESIGNS FOR YOU TO CHOOSE FROM OR CALL IN TO SEE OUR  
SELECTION DISPLAYED. ALL WORK EXPERTLY FINISHED BY OUR  
OWN CRAFTSMEN.



Italian White Marble £130  
+ £19.50 VAT



Italian White Marble £90  
+ £13.50 VAT

PLEASE TELEPHONE: 883 1536/5541  
JOSLIN MEMORIALS LIMITED  
238 HIGH ROAD, EAST FINCHLEY, N2  
(Adjoining St Pancras and Islington Cemeteries)

W.  
NODES

FUNERAL  
DIRECTORS

Resident  
Manager:  
Mr. P. A. Webb

39 HIGH  
STREET,  
BARNET

PRIVATE  
CHAPELS  
OF  
REST

Telephone:  
01-449 3355

## NETHERCOTT

(ESTABLISHED 70 YEARS)

Funeral Directors : Monumental  
Masons

Reverence ● Dignity ● Sympathy

Funerals personally arranged at your home

150 DARKES LANE, POTTERS BAR, HERTS  
EN6 1AF

Telephone: Potters Bar 52288/9

—PRIVATE CHAPELS OF REST—

# Housing Committee continued

that direct labour organisations are treated in a similar way to outside contractors. This legislation has entailed considerable extra work for the department but the new emphasis on competitiveness is welcomed.

## Homelessness

The council has a statutory duty to house homeless people who are considered vulnerable. These include families with young children and the sick and elderly. There is also an advice service for homeless people who are not in this category. In recent years there has been increasing demand on this service because of the shortage of accommodation in London both in the private rented and public housing sectors.

## Home-ownership

The council has a policy to encourage home ownership

through low cost housing. They do this in four ways:

- The sale of council homes to sitting tenants with substantial discounts based on length of tenancy. More than 200 were sold in 1980/81 and this number is expected to increase as flats and maisonettes come on to the market.
- Building low cost housing for sale either by employing a contractor or in joint venture with a developer and offering

these to tenants or people on the waiting list.

- Homesteading — in which the buyers carry out their own repairs on older properties and have the advantage of deferred mortgage repayments and improvement grants.
- Shared ownership which is a buy-as-you-rent scheme in which the buyer/tenant has a mortgage for part of the value of the house and pays rent at the same time until

able to take on the full mortgage.

The decline in the building programme, the increase of homelessness and the growing demand for council housing mean that people on the waiting list will have longer to wait and the council will only be able to house those with the greatest need.

Government policy on council rent levels will lead to further rent increases which in turn will mean greater numbers of tenants receiving rebates.

## BOROUGH COMPARISONS

	Outer London Average	Barnet	Harrow	Brent	Enfield	Haringey
Management and Maintenance dwelling per week 1980/81	£6.16	£5.25	£5.52	£7.28	£4.72	£6.17
Rent Arrears as percentage of rent collectable for the year 1980/81	4.6%	4.4%	5.0%	15.6%	2.0%	8.8%

# Public Works Committee

THE PUBLIC WORKS COMMITTEE deals with roads and sewers, traffic management road safety and refuse collection.

Compared to other boroughs, Barnet has a high proportion of motorway and trunk roads. The M1 runs from Staples Corner to the borders of Elstree and the A1 and A41 and the North Circular Road bisect the borough. The council acts as agents for the Department of Transport for the maintenance of these roads which in 1980/81 cost almost £1¾ million.

The second category of roads in the borough, the Metropolitan roads, come under the GLC but again Barnet council acts as agents for maintenance and major improvements. These roads include the Edgware Road; the A1000 which runs from East Finchley to High Barnet; Wood Street and Barnet Lane and Totteridge Lane which run east to west across the north of the borough; and Golders Green Road. During the year work on this category of roads cost £700,000.

The 340 miles of local or district roads come directly under the council which spent £2,100,000 on maintenance and cleansing, of which £900,000 went on repairing roads and footpaths.

Major capital works undertaken during the year included the reconstruction of the Rowley Lane Bridge over the A1, work on the A41 including resurfacing and reconstruction;

and improvements at the junction of the M1 and North Circular Road.

## Traffic Management

Traffic management, which covers such work as installing traffic lights and pedestrian crossings, implementing one-way systems and parking control, was a major part of the committee's work. Twenty petitions and more than 2,200 letters were received and 165 reports considered on this subject alone.

Fifteen traffic management orders, such as waiting restrictions and right turn bans were brought into force and a further 19 applied for. Six new pedestrian crossings were installed and the GLC have been asked for 11 more.

Whenever traffic management schemes are considered consultation is given high priority and this entailed sending more than 1,100 letters to households concerned.

To provide accurate statistics, national traffic counts were taken on 53 days and a further 79 surveys of both vehicles and pedestrians were undertaken for local traffic management schemes.

The committee decided to take action against pavement parkers and during the year 1,184 warning notices were issued; 750 cases referred to the licencing centre at Swansea; 39 cases taken to court of which 35 resulted in the drivers being fined.

There are three divisional road safety committees each chaired by a councillor from Public Works Committee and on which a wide range of road users, including the police, are represented.

During the year a new road safety centre was opened and 20,000 younger children received road safety instruction at school. Under the national proficiency cycling scheme 1,100 youngsters were trained and tested.

## Sewers

The Thames Water Authority has overall responsibility for sewerage but design and maintenance are carried out by Barnet on an agency basis. There are 800 miles of sewers in the borough, ranging from six to 66 inches in diameter with some a depth of 135 feet. These operate almost unnoticed by the general public until something like an exceptionally heavy rainstorm allied to blocked gullies bring about localised flooding.

Many miles of the sewers are about 100 years old and are inspected manually wherever possible. In other cases TV cameras are lowered along the system. Because of their age an increasing number will require reconstruction in the future and the council is concerned that maintenance funds received from the TWA have been insufficient to prevent deterioration. As a result trouble is being stored up for the future. During the year there were 15 collapses

on sewers, six occurring after heavy rainfall in October 1980, compared with only one collapse in the whole of the previous year.

## Refuse collection

Another main function of this committee is the important service of refuse collection. Almost 100,000 tonnes were collected from more than 105,000 homes and 5,600 commercial properties by an average of 245 men in 50 teams. Over recent months the council has examined where savings could be made. After discussions with private contractors and negotiations with the labour force the committee has decided to opt for a productivity bonus scheme which will result in savings comparable to those to be gained by privatisation.

The collection of trade refuse can be charged for and to increase income from this source an officer was given special responsibility for this aspect of the service and early results are highly satisfactory.

## STATISTICS

The roads and footways of the borough take up one-seventh of its total area of 35 square miles.

Highways	Km	miles
Motorway	20.1	12.5
Trunk roads	37.2	23.1
Metropolitan roads	63.2	39.3
District roads	539.0	334.9
<b>Bridges</b>		
Motorway/trunk roads		150
Metropolitan/district roads		210
Street lights		33,000
Traffic signals		42
Pedestrian crossings		97

# Alan Adèle

"THE WHETSTONE SALON"



Alan with Turk Rena & Russell  
The most experienced team of Stylists must make this salon one of the

Best for Cutting & Soft Perming for your Hair  
445- 8333

# SPLIT-ENZ

24 Danbury Street, N.1  
Tel. 226 6719

Now under New Management  
WE PROMISE YOU  
The best haircut, perm & colour you've ever had

Ladies' cut'n'blow dry £5.00  
Men's cut'n'blow dry £4.00  
Perms from £10.00  
Highlights from £10.00

# Perrin's Hair Styles

928 GREEN LANES, WINCHMORE HILL, N21

**CONDITIONING PERMS REDUCED FOR ONE MONTH!!**

"Zotos" Perms — usually £16.50 reduced to £11.25 (inclusive of cut, set or blow dry)

Phone Elizabeth on 360 1284

also

"Fingertips" will give you beautiful nails and an end to split or broken nails.

Introductory offer telephone 360 1284

# Alan Lawrence

Where cutting is an art, perming a science and the aim is perfection



Alan, David and Carlo can make your hair look great at prices you can afford.

24 Crescent West, Hadley Wood. Tel. 01-449 3412/1161 (near station & easy parking). Open 6 days a week. App. not always necessary

**FOR ALL YOUR ADVERTISING PHONE 366 4626. WE REACH APPROX. 1/4 MILLION READERS.**

# SONY



**SONY C 7 VIDEO**  
Full infra-red and remote control

**VIDEO**  
SLC5 £429.95  
SLC7 £559.95  
**2 L750 TAPES FREE!**

**TV**  
KV-1612 16" £309.95  
KV-2020 20" Ring for best prices  
KV-2204 22" Ring for best prices  
KV-2704 27" £499.95

**FIVE-YEAR GUARANTEE!**

FOR GOOD SERVICE AND KEENEST PRICES COME TO:

# Ferris & Co.

# Panasonic

Pre-Christmas Stock Clearance!



**PANASONIC NV 7200 VIDEO**

14-day 4 programme timer  
Infra-red. Full remote.

**VIDEO**  
NV-2000 £459.95  
NV-7200 Ring for best prices  
NV-3000 Ring for best prices

**TV**  
TC-682G 16" £279.95  
TC-2000 20" £319.95  
TC-2216 22" £369.95  
TC-2622 26" £429.95

**SHARP V.H.S. NEW MODEL £419.95**

96 BRENT St., NW4.  
01-202 9741

# SEE THE LATEST FILMS IN YOUR OWN HOME

A SELECTION OF 450 FILMS

on VHS and Betamax including some of the following:

JAWS,  
THE EXORCIST,  
GREASE,  
SATURDAY NIGHT FEVER  
THE DEERHUNTER  
ONE FLEW OVER THE CUCKOO'S NEST  
CONVOY  
SCUM



JOIN OUR CLUB

THEN EXCHANGE

FILMS

for only

£3

**VIDEO FILMS**

**148 Ballards Lane London, N3**

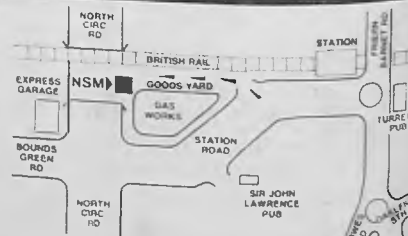
**349 4341**

# SCRAP METAL WANTED

WE PAY CASH FOR - SCRAP  
CAR BATTERIES, COPPER TANKS and PIPES.  
LEAD PIPE and SHEET, ROOFING ZINC,  
ALUMINIUM POTS and PANS, COPPER WIRE,  
BRASS TAPS, CAST-IRON BATHS and RADIATORS, ETC, ETC, ETC.  
CAST IRON and STEEL WANTED

FOR SALE  
REUSABLE STEEL BAR, ANGLE and FLAT, AVAILABLE, S/HAND RSJs.

**NEW SOUTHGATE METALS LTD. (NSM)**  
STATION ROAD, NEW SOUTHGATE, N11  
Tel: 368 5444



(Entrance in goods yard - look for our crane)

Weekdays 8 am-5.30 pm  
SATURDAY 8 am-12 noon

# £20,000 per annum can be yours if you can answer yes to 5 simple questions

- Are you ambitious?
- Can you work hard?
- Can you use your own initiative?
- Are you over 20 and a car owner?
- Are you a Salesman or Saleswoman?

If your answer is yes to all these questions we could be looking for you.

## Laurence Marshall (Advertisers) Ltd

publishers of Barnet Civic News are seeking Salesman/woman to sell this and other Medias. You will be self-employed so your rewards will be directly related to your efforts. Experience is not essential as you will receive top-class training.

For further details write to:  
Laurence Marshall (Advertisers) Ltd.,  
Publicity House, 12 Genotin Terrace,  
Enfield, Middlesex  
or Telephone 366-4626/7

# NORWOOD FURS SPECIAL CHRISTMAS OFFER

10% OFF ALL FUR  
COATS AND JACKETS  
(MINK AND FOX)  
FROM STOCK, UPON  
PRODUCTION OF  
THIS ADVERTISEMENT  
WE ARE MINK  
SPECIALISTS  
GENERALLY  
SUPPLYING  
LEADING FASHION  
HOUSES. NOW  
SELLING TO THE  
GENERAL PUBLIC  
AT PRICES  
YOU CAN AFFORD



**MAKE OUR SPECIAL OFFER YOUR  
CHRISTMAS PRESENT TO HER**  
(Offer lasts until December 31, 1981)

**285 FINCHLEY ROAD, NW3**  
Tel: 01-435 0402

# CHILD'S HILL VINTNERS

346 CRICKLEWOOD LANE, LONDON NW2 01-458 7763

**ALL PRICES INCLUSIVE OF V.A.T.**

### PLEASE LOOK OUT FOR OUR FORTHCOMING WINE TASTINGS

The wines on this sheet are just a small selection, and we invite you to come in and browse around.

#### OPENING HOURS

Mon-Sat 9.00 am-10.00 pm  
Sundays 12-2 pm. 7-10 pm.

GLASS HIRE  
AVAILABLE  
FOR PARTIES

FOR INFORMATION RING 458 7763  
POPULAR BEERS AND SPIRITS

#### SPIRITS

- Highland Malt £5.35
- White Horse £5.99
- 1/2 Bells & Teachers £1.89
- 1/2 Bells & Teachers £3.29
- Bells Whisky £6.35
- Teachers Whisky £6.19
- Smirnoff Vodka £5.95
- Bacardi £6.59
- Gordons Gin £5.85
- (Best price around)
- Emva Cream Sherry
- Emva Medium Sherry
- Emva Dry Sherry
- At an unbelievable price of

**£1.89**

BEST PRICE AROUND!

#### ITALIAN WINES

- 1975 Chianti Classico £2.59
- Chianti 1 1/2 Litre £3.66
- Frascati Superiore £2.15
- Frascati £1.69
- Frascati £1.66
- Valpolicella £1.69
- Valpolicella 2 Litre £3.99
- Valpolicella 1 1/2 Litre £3.32
- 1978 Chianti £1.83 D.O.C
- 1977 Chianti Classico £2.17 D.O.C.
- Lambrusco £1.69 D.O.C.
- Lambrusco Dell'Emilia £1.66
- 1976 Barolo £2.53 D.O.C
- Barbera Del Piemonte £1.69
- Valpolicella Caraffe £2.19
- 1980 Muscadet £2.06
- Frascati Superiore £2.15 D.O.C.
- 1978 Soave £1.69 D.O.C.
- Soave Caraffe £2.19 D.O.C.
- Tocai £1.55
- Merlot £1.55
- (Excellent value)

#### ROSE

- Mateus Rosé £2.63
- 1979 Rosé D'Anjou £1.75
- An excellent choice

#### SPARKLING WINES

- Spumante Contea £1.85
- Asti Spumante £2.52
- Veuve Du Vernay £2.75

This is a small selection of  
the vast stocks available!

#### GERMAN WINES

- Liebfraumich £1.72
- 1 1/2 Litres £3.66 1 Litre £2.40
- Niersteiner Gutes
- Domtal £1.86 1 Litre £2.52
- Blue Nun £2.92
- Oppenheimer £1.86

#### E.E.C. WINES

- Goldene Weinblute
- Tafelwein £1.49 1 Litre £2.06
- Oberon Tafelwein £1.49
- 1 Litre £2.06
- Winzer-Schoppen Tafelwein £1.59

#### FANTASTIC VALUE

- Don Seyero — Red, Rosé, Sweet
- White, Med. Dry, and Dry £1.69
- All Martinis £2.29

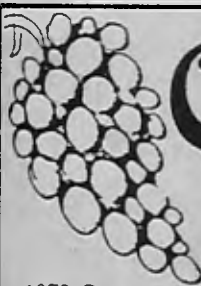
**HARP  
LAGER  
30p  
Large can**

#### BEERS

- All Ciders 69p
- Carlsberg Special Brew 57p
- Pilsner 42p
- Skol 39p
- Heineken 34p
- Pils 59p
- Top Brass 37p
- Heidenbräu 40p
- Tartan 43p
- Long Life 47p
- Coll 45 47p
- Ruddies 58p

**EASY  
PARKING**

**FREE  
DELIVERIES**



# Libraries and Arts Committee

THE LIBRARIES AND ARTS COMMITTEE is responsible for the borough's 17 public libraries, two museums, the housebound reader service and the travelling library. They also arrange library lectures and exhibitions, run music libraries for the loan of records and cassettes and picture libraries, and also maintain the borough local history archives.

The traditional barometer of library use is the number of books issued which in 1980/81 increased by 40,000. Examination of individual library figures showed, with one or two exceptions, a tendency to concentrate upon the larger libraries.

There has been a drop in the

number of book reservations — probably due to higher charges. The number of books borrowed from other library systems increased and this probably reflects the reduced purchasing power of the smaller book fund in the face of rising prices.

No records are kept on the use of reference and information services but the work of these departments has continued to grow and there have been greater demands in terms of research on the local history library.

## Housebound service

One of the most appreciated activities is the Housebound Reader Service. Three members

of the libraries staff and two drivers using two vans take a selection of books to disabled people in their own homes and also provide books for residential homes and nursing homes for the disabled and elderly.

## Museums

Attendance at Church Farm House Museum has increased considerably even though a pattern of fewer but longer running exhibitions was introduced during the year. This testifies to the high standard of the exhibitions and is a credit to the staff.

Barnet Museum was closed during the year and is being refurbished and will be re-opened shortly. Meanwhile Barnet and District Local History Society publications have been available at Chipping Barnet Library, proving very popular.

The annual library lectures series proved to be the most popular ever. On a number of occasions the doors had to be closed on full houses and part of this success is attributed to advance coverage in Civic News.

## The Arts

The Arts form a major part of the committee's debates. During the year grants were made to several societies and organisations including Barnet Borough Arts Council.

Detailed consideration was given to the proposals of the Barnet Centre Association to develop the Old Bull as an arts and community centre.

Barnet continues to be a borough whose residents value and make very good use of its library services. The staff produce work of a very high standard backed by a sense of vocation to meet these heavy demands.

## BOROUGH COMPARISONS

Net cost per 1,000 population

Outer London	
Average	£7,461
Barnet	£8,894
Harrow	£7,645
Brent	£8,014
Enfield	£6,101
Haringey	£12,254

LIBRARY STATISTICS		HOUSEBOUND READERS' SERVICE	
Number of readers	190,912	Readers on 31/3/81	538
Total book issues	4,284,561	Books issued	98,870
Daily average issues	16,116	Cassettes issued	748
Stock at 31/3/81			
Lending books	835,238	Residential homes visited	69
Reference books	69,326	Books lent to homes	29,488
Gramophone Records and Cassettes	36,012		

**HARDWOOD DOORS**  
OVER 12 DESIGNS ON SHOW

Kentucky £49.50

**TIMBERCLAD**

204 WATFORD ROAD, CROXLEY GREEN  
Near Croxley Met. Station

TEL: WATFORD 32992

10% off  
R.R.P. on  
PLYDEL  
WALLBOARDS

Prices include 15% VAT

**INTERNAL HARDWOOD DOORS**

£46.00  
Dakota  
Internal  
£41.40

6 and 8 panel, only £47.72  
Also fibre panelled doors at £28.75

**LOUVRE DOORS MAHOGANY PINE & RAMIN PANEL DOORS**

WALL CLADDINGS

# MOIRA NURSING SERVICES

All grades of nurses provided for Hospitals, Nursing Homes, Industrial organisations and Private Homes.

We provide a fast efficient service and take bookings in advance. 24 Hour service available.

660 Holloway Road  
N19

Tel: 24 Hour Nos. 263-4056  
Day: 263-2221 272-7485 272-5192

69-71 Praed Street  
Paddington  
262-7229  
262-8426

## Tradecor Supplies

34 Queens Road  
Walthamstow E17

THE PAINT 'N' PAPER SHOP

**INTRODUCTORY OFFER**

Big discounts on  
Wallpaper & Fabric  
Co-ordinates

- ★ DOLLY MIXTURES
- ★ JOHN WILLMEN
- ★ LEYLAND LOVEMATCH
- ★ SHAND KYDD TWINSET
- ★ CROWN COMPANIONS
- ★ MAYFAIR MIX 'N' MATCH
- ★ SANDERSON TRIAD COLLECTION

33 1/3%  
OFF ALL VINYL

20%  
OFF ALL WALLPAPERS

10%  
OFF ALL BEDDING

Readymade Curtains and  
Cut-length Materials

TELEPHONE:  
521 0704

# CHRISTMAS SHOPPING

**OVER 25% off**

Hallmarked 9ct gold ingot 1/6oz + chain  
R.R.P. £119.50 **Our Price £88.50**

Hallmarked 9ct gold ingot Earrings  
R.R.P. £53 **Our Price £39.95**

Orders delivered before Christmas  
plus

**FREE MYSTERY  
PRESENT WITH  
each Order**

Send: Cheque/P.O. to  
**ASH**  
c/o 122 Hendon Way  
London, NW2

Allow 14 days for delivery  
Many other exciting offers  
For Catalogue send £1 — refunded with first Order  
Prices include P. & P. or Free delivery

## 5 STAR VIDEO CENTRE

121a THE BROADWAY, MILL HILL, NW7  
TEL. 959-2667

**SPECIAL OPENING OFFER**  
**£28.75 LIFE MEMBERSHIP**

An evening's entertainment for £1.95 per film  
(50p surcharge per day thereafter)  
ACCESS AND BARCLAYCARD ACCEPTED  
Free membership in exchange for an original film  
Open 7 days a week. V.H.S. and BETA

Stockists of  
PENS by PARKER  
SHEAFFER and PAPERMATE  
Commercial and  
Social Stationery  
Christmas  
Decorations  
and Stocking  
Fillers

**FOR THE BEST SELECTION OF GIFT IDEAS**  
Come to **Brays**

**STATIONERS**  
84 HIGH STREET  
POTTER BAR 52151

Open:  
Mon., Fri., 6 a.m.-6 p.m.  
Sat., 6 a.m.-5.30 p.m.  
Sun., 7 a.m.-11 a.m.

## GOLF EQUIPMENT

NEW AND SECONDHAND  
PART EXCHANGE

SPECIAL OFFERS ON MANY LINES STOCKED  
PGA TUITION

LARGE CLOTHING DEPT — REPAIRS

**DAVID BROWN  
THE GOLF SHOP**

FINCHLEY GOLF CLUB, FRITH LAND, NW7  
TEL. 346-5086

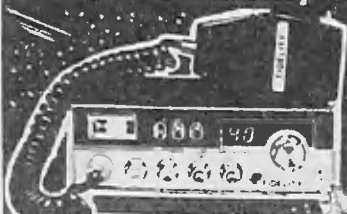
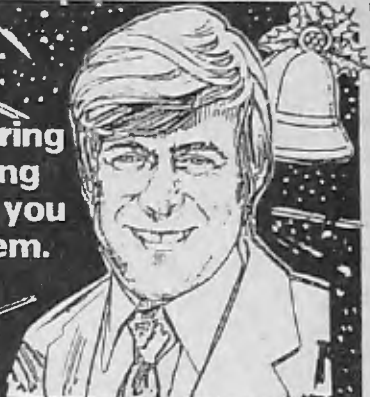
Open at weekends 8 am-dark

DISCOUNTS GIVEN FOR GOODS BOUGHT OVER £10 ON  
PRODUCTION OF THIS ADVERTISEMENT

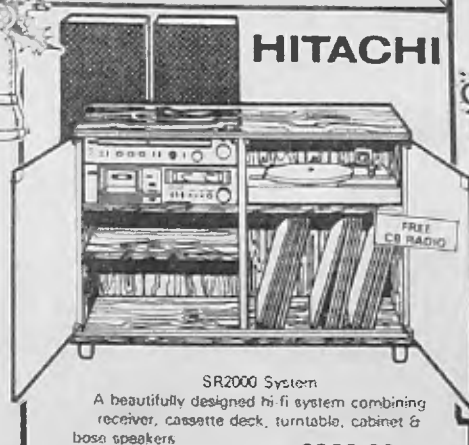
## A CITIZENS BAND RADIO FREE

Yes folks, during  
our expert Christmas Spectacular we're giving  
away this Fidelity CB radio costing £60 when you  
buy a selected hi-fi system.  
Hurry to the big savings  
on TV, video & hi-fi

Mike Yarwood



**HA2800 System**  
A well presented compact  
unit with  
space in  
mind  
**£399.99**  
INCLUDING BOSE  
SPEAKERS

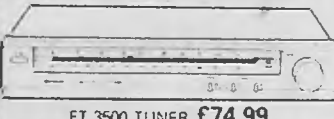


**SR2000 System**  
A beautifully designed hi fi system combining  
receiver, cassette deck, turntable, cabinet &  
bose speakers  
**£369.99**  
ALL OUR HI-FI HAS TWO YEARS GUARANTEE



**JVC  
GEO**  
**£399.99**  
Amplifier, tuner, cassette deck,  
turntable, cabinet & bose speakers

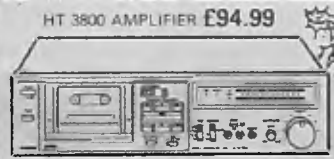
## HITACHI



**FT 3500 TUNER £74.99**



**HT 3800 AMPLIFIER £94.99**



**DE25 CASSETTE DECK £79.99**

## JVC

**E5 mini hi fi system.**  
A superb unit with a big  
punch  
Linear tracking arm

**£569.99**



**LK55 rack extra**



**JVC  
LA1 £94.99**

OR PICK UP A CB  
AERIAL WORTH  
£13 FREE ON  
A SINGLE  
PURCHASE OF  
HI-FI SEPARATES  
FROM JVC,  
BOSE, BANG &  
OLUFSEN AND  
HITACHI

VISIT THE LARGEST SHOWROOM  
IN NORTH LONDON FOR TV, VIDEO, HI-FI,  
CAMERAS, C.B. RADIO & ELECTRONIC GAMES

## JMS RADIO tv video hi-fi

Watling Avenue, Burnt Oak, Edgware.  
Sales 952 1565 Service 952 3895

**Expert**  
The more we help you,  
the more likely you are  
to come back.

*Three in One at Thirty-One!*

*Irene Joss*

**SALE SALE SALE**

**ONE-THIRD OFF**

Current Season's Exclusive  
Dresses, Separates & Knitwear

**40% OFF COATS**

Many Garments HALF-PRICE AND LESS

Tan-an Relax on our Luxury Sun-Beds and Facial  
Tanning Unit

For maximum effect at minimum cost a combined course of six  
sessions on each machine now only £27.50

EXPERT AND FRIENDLY SUPERVISION, MEDICALLY APPROVED

Licensed by London Borough of Barnet. Parking no problem

Open Sundays 10-1 pm Tuesdays, Wednesdays, Thursdays and  
Fridays 10-5

Thirty-one Bell Lane, Hendon, NW4. Tel: 203 2909  
Weekdays before 7.30 pm



## HAVE A MODEL CHRISTMAS

We have a great selection of

Hornby Trains    Radio controlled  
Scalextric       cars and planes  
Airfix Kits

### H. A. BLUNT & Son Ltd.

133 The  
Broadway  
Mill Hill  
NW7  
Tel. 959-2877



Your North West London Store  
For Haberdashery & Fabrics  
No Need To Go To The West End

LATEST DESIGNS IN FASHION  
FABRICS · DRESS PATTERNS BY  
STYLE AND VOGUE · FURNISHING  
FABRICS · COTTONS · THREADS ·  
CROCHET ETC · SEWING AIDS · FUR  
FABRICS · BAG AND TOY  
ACCESSORIES · CRAFT KITS & FELT  
ZIPS OF ALL TYPES · BRAIDS AND  
EDGINGS · RIBBONS · LACES ·  
COSTUME JEWELLERY · BRODERIE  
ANGLAISE · BUTTONS · MOTIFS AND  
PATCHES · EMBROIDERY SILKS ·  
KNITTING WOOLS · WORK BASKETS ·  
SUNARAMA FASHION TIGHTS FUN  
LINGERIE · ALL HABERDASHERY AND  
TRIMMING LINES



**SPECIAL OFFER - END OF  
FABRIC RANGES SOLD AT  
GREATLY REDUCED  
PRICES**

You Can Get Them All At

**MINIVAL Ltd** 207 Kentish Town Road, London  
NW5 2JU Tel 267 2816

## SUGAR & SPICE

NEWSAGENTS — TOBACCONIST  
CONFECTIONERS — GREETING CARDS  
STATIONERY — TOYS

NEWSPAPERS DELIVERED

59 EAST BARNET ROAD,  
NEW BARNET  
440-9392

**POTTERS BAR  
SERVICE STATION  
OFFER YOU  
THIS CHRISTMAS**  
Car Batteries from £14.99 inc. VAT  
2-year guarantee

Cuddly Toys, Jigsaws  
Radio-controlled Cars and  
many other toys and games

We also have a selection of  
Christmas Crackers and Anoraks  
See these items and many more at

**POTTERS BAR SERVICE STATION**  
48-56 HIGH STREET, POTTERS BAR  
Telephone Potters Bar 58022  
Open 24 hours

All major Credit Cards accepted

## Fur International

For Price — Selection —  
Quality

Coney Jackets (all colours)	from £35.00
Blue Fox Jackets	£295.00
Red Fox Jackets	£325.00
Musquash Jackets	£385.00
Musquash Coats	£585.00
Mink Jackets	£650.00
Mink Coats	£925.00
Ladies' Leather Blousons	£42.00
Men's Leather Jackets	£58.00



Fur Cleaning — Valuations —  
Remodels

Made to Measure Service

6 STATION ROAD,  
NORTH CHINGFORD,  
LONDON E.4.

Telephone (01) 524 3091

## SAMPLE HANDBAGS

By Marion Lerner  
(Direct from Factory)

*Handbags and Travel Goods  
make useful presents*



Handbag repairs  
and renovations



183 Bramley Road  
Oakwood Shopping Parade, N14  
363 0909

Half-day closing Thursday

The  
Duke O'York  
Garden Centre

Lifelike Artificial  
Christmas Trees  
from

**£8.39**

Rooted and Pot Grown  
Christmas Trees and  
Decorations and Lights

Many useful and inexpensive  
presents for the Gardener



BENTLEY HEATH, BARNET HERTS  
01-440 4734

BARCLAYCARD  
VISA



**KEVIN KEEGAN  
Electronic  
Soccer Game**

Many other toys and  
games in stock.  
Come and see our  
special Christmas  
offers

**TAWTOYS**  
111 High Street,  
Barnet

449 9828

**NEVER  
RUSH  
TO THE  
PHONE  
AGAIN!**

DIAL ANYWHERE  
WITH THIS NEW  
PORTABLE  
HANDSET

Take calls 600  
ft from  
your phone.  
Or dial out too,  
with our key-pad model +  
paging & intercom. Other models  
up to 5 miles. Cordless telephones  
start at £85 + VAT  
...OR LEAVE  
A RECORD-  
ED ANSWER TO  
EVERY  
CALL.

P.O. certified. Have your own message  
played to anyone who rings while you  
are out...record his message too...and  
check your calls anytime, anywhere via  
your bleeper. Answering machines start  
at £69 + VAT. 1 year guarantee. Ring  
or call for free demonstration.



Melbreak (Enfield) Ltd.,  
3 & 4 Service Industry Bays,  
Bush Fair, Harlow, Essex.  
Harlow 25667 \* No HO certificate

GARDENERS' GIFT TOKENS. PRESENTS FOR GARDENERS

EVERYTHING FOR THE GARDEN

THERE IS A FINE SELECTION OF

SHRUBS & TREES

# CHRISTMAS TREES

ROOTED and UNROOTED  
at  
Your local friendly  
GARDEN CENTRE

**T. SIMMONS & SON LTD.**  
166 Nether St. FINCHLEY, N3  
(near West Ave.)

Tel: 346 2245

Drive in  
No parking problems

**ARE YOU OVERWEIGHT?  
DO YOU NEED REST  
AND RELAXATION?**

WHY NOT COME AND STAY AT

## SUTTONS MANOR HEALTH FARM

We offer all slimming, beauty and relaxation treatments including: Panthermal, Jacuzzi, Isolation Tank, Cathiodermie, Steam and Sauna, Gymnasium, Sunbeds and Solarium, Swimming Pool, Free Yoga instruction, Free Tennis and Free Rhythmic dancing lessons.

The modernised manor house is set in 40 acres of beautiful countryside and each bedroom has its own private bath or shower and colour TV.

**SAVE £50 — £100**

We deduct £7 — £10 off your bill for every 1lb you lose on our diet in a week

Why not treat your wife/husband to a course of beauty treatments as a unique Christmas gift. Gift vouchers available for use pre-Christmas or New Year.

Write or telephone for brochure to:  
**SUTTONS MANOR HEALTH FARM,  
LONDON ROAD, STAPLEFORD TAWNEY,  
ROMFORD, ESSEX**  
Tel: Stapleford (04028) 570/231

NO SALE GIMMICKS — FACTORY PRICES

## AZTEC FURS

Coats, Jackets, etc. for women and men  
All types of fur except coney

MADE-TO-MEASURE — READY-MADE  
REMODELLING — REPAIRS

Garments made on the premises therefore  
all at factory prices  
10/12 Whittington Road  
Bounds Green, N22  
01-888 1567

★★★★★

## KOKOS SHOE & REPAIR CENTRE

★★★★★

72 High Road  
East  
Finchley

Tel:  
883 0876

# J. W. PULLEN

Jewellers

**THIS IS A PERSONAL  
INVITATION TO YOU!!!**

We are now holding a party every day until Christmas. We will be delighted to meet you here where you can purchase all your Christmas gifts.

We welcome you to our establishment where we have a beautiful arcade of ten windows glittering with the most fabulous watches and jewellery in 9 and 18 carat Gold and Diamonds. Only the real thing at Pullens. An investment always holding its value.

Free gift with every purchase over £100.  
Painless Earpiercing.  
Valuations for insurance. on all purchases.

Our own workshops on the premises for immediate ring sizing and quick repairs.

Open: Mon—Sat 9 am to 6 pm

**56 Golders Green Road,  
NW11  
01-458 5054**

A NEW OUTFIT FOR CHRISTMAS? A GIFT  
OR JUST SOMETHING TO WEAR?

**COME TO  
GLENWEAR**

DRESSES, SLACKS, SEPARATES, KNITWEAR,  
GIFT VOUCHERS AVAILABLE  
ACCESS & BARCLAYCARD  
2 PRINCES PARADE, HIGH ST, POTTERS BAR  
TEL: 53842

**VISIT NORTH LONDON'S LEADING ELECTRONIC ORGAN AND MUSICAL INSTRUMENT STORE**

For a wide range of instruments, New and Secondhand, at prices to suit your pocket, from **£75** LEADING MAKES STOCKED INCLUDING: **ELKA — FARFISA TECHNICS** and many more all guaranteed



No deposit terms available. Written quotation on request.

Access — Barclaycard — Free Delivery Part Exchange — Tuition

School instruments supplied Guitars — violins — cellos Recorders — Trumpets — Flutes Clarinets — Percussion, etc.

**PIPES MUSIC GALLERY**

809-811 High Road  
Tottenham N17  
Near White Hart Lane  
Tel: 01-0808 9214



Electric Organ Specialists

**THE GALLERIES**

FOR GIFTS AND TABLEWARE  
**CHINA BY AYSLEY**  
**ROYAL DOULTON**  
**WEDGWOOD**  
**WORCESTER**

**LEAD CRYSTAL BY DARTINGTON,**  
**EDINBURGH, TUDOR, THOS. WEBB,**  
**ROYAL DOULTON**

**1 HEDDON COURT PARADE**  
**COCKFOSTERS ROAD**  
**BARNET, EN4 0DB**  
**01-449 2690**

**MIKE YARWOOD**  
**GREAT expert**  
**CHRISTMAS SPECTACULAR**  
**GREAT GIFTS FOR ALL THE FAMILY**  
**BIG SAVING ON TV, VIDEO & HI-FI**

**SANYO Video Recorder**  
• 72 hour delay period  
• Remote pause editing  
• UHF VHF electronic tuners  
**£379.99**

**HALF PRICE!**  
**GEC stereo Radio Cassette**  
**£49.99**

**JVC VHS Video Recorder** Full remote  
• Front-loading Cassette  
• Shuttle search  
• Digital Fluorescent display  
• Automatic loading system  
**only £749.95** parts labour

**ITT 20 Colour TV**  
• Remote control  
• 8 Channel (1 VCR)  
• Separate volume brightness, contrast and colour controls  
• Colour pre-set underlap only  
**£299.95**  
WITH £50 Trade in only **£249.95**

**expert Portable Radio Cassette**  
• Built-in mike  
• Battery/Mains  
only **£29.99**

**ATARI TV game**  
**£99.99**  
VISIT OUR ELECTRONIC GAMES CENTRE  
Intellivision TV Game, Galaxy Invader, Speak - Spell. AS SEEN ON TV. Car chase **£13.99**

**HITEC Classic 12 B/W portable TV**  
• Battery mains  
• Push button tuning  
**£49.99**

**HITEC Hi Colour TV**  
• Telescopic Aerial  
• Push button tuner  
only **£199**

**JVC Hi-Fi System G50**  
• Stereo integrated amplifier  
• FM/MW/LW/SW Stereo tuner  
• Auto-return belt driven turntable  
• Includes speakers  
only **£399.95**

**expert Colour TV 20"**  
• Full remote control  
• Remote white features on/off video and 6 programme selectors  
• Red neon channel indicator  
• Quick start picture  
• 2 year guarantee  
only **£359.95**

**Bang & Olufsen 2400 System**  
Remote control **£495**

**JMS RADIO tv video hi-fi**  
Watling Avenue, Burnt Oak, Edgware  
Sales 952 1565 Service 952 3895

**expert**  
The more we help you, the more likely you are to come back.

**CHRIS CRAWLEY MODELS**  
121 Lordship Lane  
Tottenham  
London N17  
(opposite Bruce Castle)  
Access and Barclaycard welcome

**HORNBY TRAIN SETS**  
**STOCKISTS OF LIMA, WREN AND MAINLINE RAILWAYS**  
**LARGE SELECTION OF KITS ACCESSORIES AND RAILWAY BOOKS**  
*Tottenham Model Railway Shop*  
Call in today  
Telephone:  
**01-801 8151**  
Hours of business:  
**Monday to Saturday 9 am to 6 pm**

**GREENWOODS**

**● CYCLES ●** SUPER OFFER  
10 speed sports blue and orange **£79.95**  
BMX from **£95**  
(Plus free batteries with this advert)

**● MODELS ●** PRE-CHRISTMAS OFFER  
**15% OFF ALL COMPUTER GAMES**  
Grand Prix £23.75  
Space Invader £21.25  
Earth Invader £22.95  
Invader 1000 £20.35  
Jet Fighters £18.75  
Gun Fighters £23.75

**35 EAST BARNET ROAD, NEW BARNET** (opposite Sainsbury's)  
CREDIT TERMS 01-441 3239

**INTRODUCING HANDMADE VELVET CURTAINS**  
**MADE TO MEASURE**  
E.G.  
Two Curtains each 90in x 54in with 3in pencil pleat, sateen lined, handmade **£65**  
Or for the customer who prefers to make their own. A choice of 25 colours, 48in width at **£3.99 yd.**

**JUST FABRICS**  
4 SOUTHURY ROAD, ENFIELD  
TEL: 363 1690  
(opp Enfield Town Station)

Also —  
Dralon ..... from £4.00 yd  
Duplon ..... from £2.00 yd  
Tapestries ..... from £3.00 yd  
Weaves ..... from £2.00 yd  
+ reversible curtaining from £1.00 yd

**FULL RANGE OF DRESS FABRICS inc. SUITINGS BRIDAL COATING FUR FABRIC, etc.**  
CLOSED ALL DAY WEDNESDAY

# Social Services Committee

THE PRESENT SOCIAL SERVICES organisation was created in 1971 bringing under one umbrella Child Care and most of the health and welfare functions of the local authority. The aim was to provide a more effective service and make better use of the skills of Social Services staff and resources.

Since then services have been adjusted to meet the changing needs and expectations of the community within the constraints of the financial situation. The committee is keen to stimulate local voluntary organisations to play an ever-increasing role in the provision of help to the community supported by the council through liaison and financial assistance.

Up to the mid-seventies it was possible to plan and implement many major developments with the result that three-quarters of our homes for the elderly are purpose built and most of the other residential and day-care establishments, whether in new or converted buildings, represent a standard which affords dignity to their residents and members.

However, the emphasis in earlier years on creating these essential centres now poses problems in making adequate financial provision to meet the higher costs of upkeep and to fund the ever-increasing demand for services to support people in their own homes.

## The elderly

The demands made upon all our services have grown appreciably, especially those for the elderly. Barnet has the highest number of pensioners of any of the London boroughs. A large number of those over 75 live alone and require a wide range of services such as home helps, meals on wheels, household aids and care in day centres.

The increasing number of

sheltered and small housing schemes for the elderly make it possible for many more people to continue to live independently, especially with the provision of more comprehensive services in their homes.

As a result elderly people are coming into our residential homes at a greater age when they are more frail. The average age is now 85. This means that our staff in these homes have to give a much greater degree of care and attention.

## Children

At the other end of the scale Barnet has one of the lowest national rates of children placed in the care of the Council. The 209 children in care represent a figure of just above three in every thousand. Of these, 69 children were placed in residential homes and 83 were housed with foster parents.

Much emphasis is placed on family support work with children and their parents. This is given through the Area Teams backed by such services as day nurseries, childminders, pre-school playgroups and the provision of therapeutic activities.

Large and small local organisations organise support through recreational projects such as holiday play schemes. Social Services help such groups to get their programmes under way with small 'pump priming' grants.

## The disabled

Under the Chronically Sick and Disabled Persons Act and related legislation handicapped people receive support such as aids and home adaptations on the advice of occupational therapists, day care, sheltered housing and employment.

A borough-wide door-to-door survey, Outset, was carried out during the year to identify disabled people who require assistance. This information will give

a more accurate indication of future service needs.

## Mentally handicapped

A far higher proportion of mentally handicapped people could, with help, live independent lives and depend less on hospitals or highly-staffed hostel care provided by the Council. Even so, there is a continuing need for hostel facilities and during the year The Leys in Elstree, in the north-east corner of the borough, formerly an old people's home, was opened as a 23-place hostel for mentally handicapped adults, eight of whom came direct from hospitals. Places are also available for short-term care to give parents a period of freedom and rest. The conversion of this hostel was funded jointly by the Council and Barnet Area Health Authority.

Increasing attention is also being given to helping people with mental health problems. A new small centre in Hendon opened during the year, again jointly financed. This strengthens the service and allows a wide range of activities to take place, geared to the needs of each individual.

With the co-operation of the Housing Committee and local Housing Associations a number of former Barnet patients at Napsbury Hospital and former residents of the Council's own hostels have become tenants in group homes. This allows people who are recovering from mental illness and the mentally handicapped to live independently in the community.

Social services work closely on behalf of their clients with the Housing and Education Departments and the Health Services. Teams of Social Workers are based in local hospitals and the increasing emphasis on community health care brings all Area Teams and the Home Help Service into close contact with doctors, community nurses

and other health workers. Ways in which the local authority can manage and finance small residential or boarding-out schemes for the handicapped are being widely discussed locally and nationally.

## Home Care

One of the many schemes financed jointly with the Area Health Authority is the Home Care Service — a small band of Home Care Assistants who move in and run the house to help clients settle back into their home after a stay in hospital or to give them support which can prevent them having to go into hospital. The way Barnet runs this scheme has won national recognition.

## Voluntary organisations

The committee is strengthening the contribution of the voluntary organisations in providing community-based services.

Many of the voluntary organisations encourage those who use their services to take an active part themselves and contribute to the community. With the support of voluntary or council workers this mutual help is a most positive development.

## STATISTICS 1980/81

Six area teams and three hospital social work teams.

Twelve homes for the elderly (526 places) and 399 places occupied in voluntary and private homes.

Four hostels for the mentally handicapped and mentally ill offering 78 places. In addition 229 physically and mentally handicapped/ill were supported in other homes.

More than 200 children were in the care of the Council, of which 69 were placed in residential care and 83 were boarded out.

One hostel provided nine places for unsupported mothers and children.

Ten centres for the elderly and handicapped persons with 602 places.

Seven day nurseries and family centres with 266 places.

Households receiving assistance from home helps, care assistants and others: 3,411.

Meals served to those at home, luncheon clubs and centres: 251,987.

Households receiving assistance with aids, adaptations, holidays, telephones and television rentals: 3,541.

## BOROUGH COMPARISONS

	Outer London Average	Barnet	Harrow	Brent	Enfield	Haringey
Net cost per 1,000 population 1980/81	£46,247	£43,305	£40,021	£70,925	£37,161	£79,131
Children in Care						
Gross cost per child in care 1980/81	£4,725	£6,425	£4,088	£7,808	£2,791	£4,706
Care of the Elderly						
Gross cost per resident week in local authority homes	£97.63	£98.70	£91.06	£109.47	£106.81	£78.99
Home Helps						
Contact hours per 1,000 population aged 65 and over	10,241	5,988	7,846	9,849	8,240	20,621

# Establishment Committee

## The Council as an employer

THE ESTABLISHMENT COMMITTEE deals with everything relating to the employment of council staff. This covers administrative and clerical staff, manual workers and some educational staff. Because of the range of services and personal involvement demanded, most of the council's expenditure goes on wages and salaries. In 1980/81 employees' costs totalled £63.7 million.

## Close monitoring

The number of staff employed is constantly under review, manpower savings are made wherever possible and overtime is closely monitored. The council aims to reduce the number of employees but new legislation means that extra work is being placed on local authorities. For instance, the 1980 Housing Act with its Tenants' Charter and increased requirements for information and consultation, may lead to a need for more staff. The number of staff in the housing department reflects the staff transferred to the council when the GLC handed over 2,437 of its properties to Barnet.

The council has recently introduced voluntary early retirement for teaching and white-collar staff and a similar scheme is being negotiated for manual workers.

## MANPOWER

	31/3/81	1/4/80
Education Department		
(a) Lecturers and Teachers	3,574	3,638
(b) Other employees	3,595	3,637
Construction	522	535
Social Services	1,491	1,489
Public Libraries and Museums	248	250
Recreation, Parks and Baths	456	474
Environmental Health	120	123
Refuse Collection	294	279
Housing Department	262	165
Town and Country Planning	118	121
Central Services		
Chief Executive	8	8
Finance Services	225	234
Secretarial Services	158	170
Legal Services	41	41
Engineering Services	477	470
Architectural Services	62	65
Estates Services	29	28
Personnel Services	17	19
Management Services	20	14
Computer Services	46	44
Rent Officer Service	18	17
Registrars	17	17
Consumer Protection, Weights and Measures and Trading Standards	20	21
Other Services (Crematorium/Cemetery, Allotments)	25	24
<b>Total</b>	<b>11,843</b>	<b>11,883</b>

# Finance Comm

THE FINANCE COMMITTEE is responsible for the overall control and management of the council's finances and accounts. This includes rating, borrowing and lending, investment and insurance.

For the year 1980/81 the council levied a standard rate of 97.5p in the £, made up as follows:

Local expenses	137
GLC Precept	20
Metropolitan Police Precept	12
<b>Total</b>	<b>170</b>
Less rate support grant	72
<b>Standard rate</b>	<b>97.5</b>

The domestic rate was 18.5p less at 79p in the £.

## GENERAL STATISTICS

Properties and Rateable values at 31/3/81

	Number	Rateable value
Domestic	109,932	£39,937
Shops and cafes	3,712	£5,691
Industrial	316	£2,097
Offices	873	£2,760
Other	17,158	£9,009
<b>Total</b>	<b>131,991</b>	<b>£59,497</b>

Land use	Area
Residential	3,316 hectares
Open space	2,977 hectares
Commerce/industry, etc.	238 hectares
Other (incl. roads, public buildings, public utilities, etc)	2,422 hectares

# SAVE ON YOUR HEATING BILLS THIS WINTER



Landis & Gyr  
Central Heating Programmer  
**£16.95**



Honeywell Room Thermostat  
**£5.79**

Randall Thermostatic Radiator Valves  
**£7.40**



Honeywell Central Heating Microelectronic Time Controller  
**£22.70**



Honeywell Cylinder Thermostat  
**£6.00**



Honeywell Zone Valve  
**£22.71**

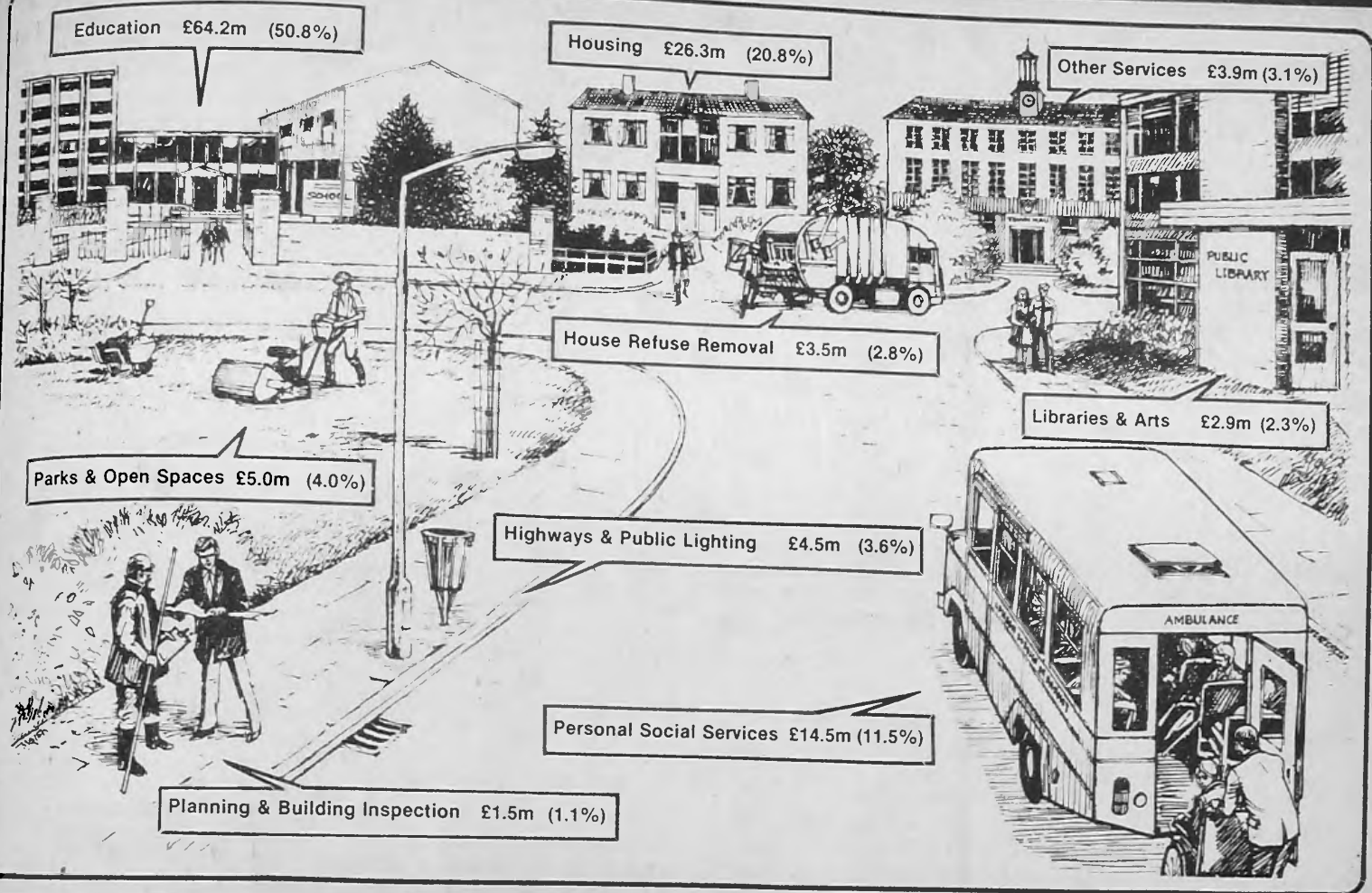
**ALSO IN STOCK**  
COPPER TUBE FITTINGS  
INSULATION  
PUMPS

ALL PRICES EXCLUDE V.A.T.

**BARNET PLUMBING & HEATING SERVICES LIMITED**  
10 Western Parade, Great North Road, Barnet, Herts.  
Near Barnet Odeon

Telephone: 01-441 1661

# Our £126.3m. expenditure provided these local services



# EXQUISITE LUXURY BATHROOMS

CORNER BATHS  
SUNKEN BATHS

FROM £200 - £10,000  
PLANNED FREE



At Bathcharm you can see a magnificent range of English and Continental luxury bathrooms and suites in over 100 colours, to suit everyone's pocket, with many exclusive designs.

Inspect our vast range of fittings and accessories, our enormous selection of English and Continental tiles. Utilize our free estimating and planning service - telephone **445 4503**

Our trade counter for plumbing and heating supplies - probably the cheapest in London - telephone **445 4682**



OPEN 9am - 5.30pm - Five days a week.  
Thurs. 9am - 1pm. SUNDAY 9am - 12.30pm.

281 Ballards Lane, Finchley, N12. Tel: 01-445 4503

# Town Planning and Research Committee

THE TOWN PLANNING AND RESEARCH COMMITTEE, with its three divisional sub-committees, Northern, Central and Western, carries out the Council's planning role to ensure that the borough retains all that is best of its heritage, controls present day developments and looks ahead by monitoring changes in population and life style to give positive direction to the planning of Barnet in the years ahead.

The work of the committee falls within three main areas: plan making, plan implementation and the general consideration of planning applications.

## Borough Development Plan

The Committee is responsible for compiling the Borough Development Plan which will be a guide to policies and new developments in both the private and public sectors over the next ten years or so.

As a step toward this plan topic studies are prepared for public consultation. During the year two topic studies on Population and the Environment were published. Since then the study on Shopping and Town Centres has been approved for consultation and others in the pipeline deal with Employment, Housing, Transportation, Recreation and Leisure, Social and Community Services, Public Utilities and Protective Services, and The Green Belt.

The Committee also monitor the progress and proposals of neighbouring authorities to ensure the borough's interests are protected.

## Information and Research

In order to plan for both the present and the future it is important to have accurate information on population and development trends, and availability of land for housing, commercial, industrial and public development. The committee gathers and analyses this information. During the year preparations were made to undertake a major land-use survey of the Borough and arrangements made to deal with the receipt and analysis of information from the 1981 Population Census.

## Local Plans

As well as dealing with plans for the borough as a whole, the committee deals with localised schemes such as the Central Area Plan for Chipping Barnet, the Glebe Land, a large area of open land to the north of the North Circular Road; and land to the South of Brent Cross Shopping Centre. For these areas planning briefs have been prepared, giving development guidelines as background for widespread public consultation.

Proposals were also put forward for the Percy Road General Improvement Area in North Finchley.

The Committee have taken steps to ensure that they have additional control over any developments in the Wood Street and Monken Hadley Conservation Areas in order to protect their particular qualities. And they have worked closely with Development and Estates Committee on Green Belt Management.

## Planning Applications

The Committee deals with planning applications — everything from demolition or alterations to listed buildings; extensions to private houses; major commercial or industrial developments; housing estates; and even to the protection of trees.

The Committee also deals with development proposals submitted by other Council committees and comments formally on proposals submitted by Government Departments.

## Building Control

There is also control over the standard of new buildings, extensions, and alterations. Over 3,200 building applications were received involving 30,000 site inspections. In May 1980 a charge was introduced for this service and during the year this brought in almost £107,000.

The inspection of dangerous structures, the enforcement of fire escape provision, and even the naming and numbering of streets, is undertaken by the Building Control staff.

## New legislation

Another responsibility of the committee is to study Government proposals for new planning legislation. Important reports dealt with by the committee included a paper on new approaches and the speeding up of the development control system; town and country planning regulations which represented a welcome reduction in the level of GLC involvement in certain planning applications; and a Department of the Environment consultation paper on charges for planning applications.

## Enforcement

Four hundred complaints of alleged planning violations were investigated and in 85 cases enforcement notices were served. In a further 10 cases the Committee took action where the condition of gardens, vacant sites and open land was spoiling the amenity. Similar action was taken in a number of cases over the condition of dilapidated property.

## STATISTICS

Applications dealt with	2,759
Approved	83%
Appeals against the Council's decisions	86
Local enquiries into appeals	13
Decisions received	63
Council decisions upheld	47
Appeals allowed	16
Consultation letters sent out	15,000
Replies received	5,000

## GENERAL BOROUGH COMPARISONS

	Outer London Average	Barnet	Harrow	Brent	Enfield	Haringey
<b>Population</b>						
Estimate June, 1980	—	289,200	196,600	249,800	259,700	221,400
<b>Area</b>						
In hectares	—	8,953	5,082	4,421	8,115	3,031
<b>Total Rate Poundage</b>						
1979/80	—	82.50p	98.00p	97.50p	87.00p	115.00p
1980/81	—	97.50p	120.00p	128.00p	107.00p	150.00p
<b>All Services</b>						
Expenditure						
Net Cost per 1,000 population						
1979/80	£285,763	£258,574	£267,360	£374,418	£260,371	£386,052
1980/81	£346,337	£306,160	£335,962	£469,809	£314,563	£480,394

## Where to find us

**Chief Executive and Town Clerk:**  
**Director of Financial Services and Borough Treasurer:**  
 Town Hall, Hendon NW4 4BG  
 Tel. 202 8282.

**Director of Technical Services:**  
**Borough Planning Officer:**  
**Borough Engineer and Surveyor:**  
**Borough Architect:**  
**Borough Estates Officer:**  
 Gateway House, 322 Regent's Park Road, Finchley N3 2LP.  
 Tel. 349 9121.

**Director of Educational Services:**  
 Town Hall, Friern Barnet N11 3DL  
 Tel. 368 1255

**Borough Librarian:**  
 Ravensfield House, The Burroughs, Hendon NW4 4BE. Tel. 202 5625

**Director of Social Services:**  
 1331 High Road, Whetstone N20  
 Tel. 446 1488

**Director of Housing Services:**  
 65 Watford Way, Hendon NW4 3AY  
 Tel. 202 8282

**Chief Environmental Health Officer:**  
 287 Regent's Park Road N3 3JY  
 Tel. 349 9121

# ALFREDO'S ITALIAN WINE CENTRE

229 West End Lane, NW6  
Telephone 431 2086

We have free tastings on Sunday  
12 noon—2 pm as well as Saturday 11  
am—3 pm  
12-2 as well as Saturday 11-3

OUR PRICES ARE INCREDIBLY LOW AND  
EVEN BETTER IF YOUR BUY A CASE

For example:

- Soave .....bottle £2, Dozen £20.50  
(£1.71 each)
- Valpolicella.....bottle £2, dozen £20.50  
(£1.71 each)
- Liebfraumilch QbA.....bottle £2, dozen £21.60  
(£1.80 each)

SPECIAL OFFER

- Chiarretto.....bargain price £1.69 bottle
- Verdello.....bargain price £1.69 bottle

WE DELIVER

Open 12 Noon—11 pm Monday—Friday; 11 am—11 pm Saturday; 12  
Noon—2 pm, 7.30—10.30 pm Sunday.

## CLUB TIE SPECIALISTS

## HERALDIC TEXTILES

46 Watford Way  
(1st Floor)  
Hendon, NW4  
Tel. 01-202 6038

## CHAMPAGNES! AT BARGAIN PRICES

A RANGE OF  
50 DIFFERENT CHAMPAGNES  
STARTING FROM £5.95

ALL WELL KNOWN MAKES IN STOCK

SIZES FROM ¼ BOTTLE  
TO SALMANAZARS  
All (subject to availability) at

THE  
"CAMDEN WINE & CHEESE"  
SHOP  
214/216 CAMDEN HIGH STREET  
Tel: 485 5895

Open until 7 pm (Monday 6.30 pm), Sunday Noon-2 pm

Give her a beautiful Christmas  
with a Christmas Gift Voucher for any of these  
treatments...

- \* FACIALS
- \* CLEANSE & MAKE-UP
- \* SUNTANNING
- \* BODY MASSAGE
- \* SLENDERTONE
- \* ELECTROLYSIS
- \* CAPILLARY TREATMENT
- \* EYE TREATMENTS
- \* HAND and FOOT CARE

PLUS a comprehensive range of  
individually-prescribed cosmetics

*Carolyn Best* DR. I. P. O. N. C.  
BEAUTY SALON 104 Crown Lane, Southgate, N14

Tel 01-886 4582

## THE IDEAL GIFT

# VIC-20

The Christmas present that will  
make Education and games fun!

Why not come and see Commodore's new  
home computer VIC-20; linked to your own  
television, complete with  
COLOUR AND SOUND

**Price £165  
excl. VAT**

For details,  
ring or call at  
**MICRO-COMPUTATION**  
8 Station Parade  
Southgate N14  
01-882 5104

## MENSWEAR HIRE SERVICE

Whether hiring or buying  
a made-to-measure suit,  
come to the specialists

**DAVID LOW**  
*Tailors*  
368 2804

(Also alterations service)

CLOSED ALL DAY WEDNES-  
DAY  
OPEN TILL 12 SAT.

### TVS TELEVANTIDIS LTD DISCOUNT PRICES

38 BOUNCES ROAD, EDMONTON N9 Tel. 01-803 9700  
We repair any TV, Audio, Video. Service for Video £10  
OPENING HOURS MONDAY TO SATURDAY, 10 am to 6.30 pm

NORMENDE 14" £199

NEW SHARP VC8300 H VCS  
Colour pic, only £459

**VIDEO RECORDERS**

NEW SHARP VC2300 VHS  
Portable, Mains/Battery,  
Forward Picture Search  
only £560

Ferguson 3V24 VHS Port, £529

3V25 Tuner/Timer, £178

3V20a Camera, £495

Sanyo 9300 Beta, £369

3V29 Video Cassette £485

All accessories, VHS and Beta tapes  
always in stock TVs in stock, eg  
Decca 26" colour £290

Complete range of Audio and  
Video Tapes

Cartridges, Styl  
Microphones, etc  
SONY, SANYO, KASUGA  
Personal Stereo  
Hi-Fi, Calculators, CB Radio  
CASIO Digital Watches  
Casio watch, eg A x 1210 £29.80

Scotch  
Videocassette

The great name in tape cassettes

# W. T. Parish

NEW ZEALAND LAMB 66p lb.  
ENGLISH LAMB 79p lb.  
SIDE OF PORK 59p lb.  
10lb. BEEF SAUSAGES £3.90  
10lb. PORK SAUSAGES £4.90  
FINEST QUALITY FRESH NORFOLK TURKEYS  
HENS 79p — COCKS 69p

119 HIGH STREET, BARNET  
01-449 3806

---

TELEPHONE: 444 6760

## ANDREAS TAILORS

27 FORTIS GREEN ROAD LONDON N10  
LADIES AND GENTS HIGH CLASS TAILORS  
CHOOSE FROM OUR EXTENSIVE RANGE OF MATERIALS  
ALSO ALTERATIONS AND REPAIRS

## KEITH DALE (Butchers)

25 Cranbourne  
Parade  
Potters Bar  
Tel: 77-53071

CHRISTMAS FARE.  
FRESH TURKEYS  
FRESH  
CAPONS AND OUR  
SPECIALITY BONELESS  
LEG OF PORK AND  
BONELESS SCOTCH  
AITCH. BONES  
ALL AT  
COMPETITIVE  
PRICES

Thinking of Christmas?  
THINK OF

**GRANTS**  
for the loveliest clothes

EVENING  
& COCKTAIL WEAR

Rainwear, Coats, Skirts, Slacks  
Blouses, Dresses, Simulated Furs, Knitted Suits  
We offer a Christmas Gift Voucher Service

62 HIGH STREET, POTTERS BAR  
Telephone 55082

OPEN 6 DAYS A WEEK — 2 CAR PARKS OPPOSITE



VISA

## UNIVERSAL VIDEO FILMS

The Video Store that offers you more  
OUR LIST INCLUDES

**INTERVISION** ALL THE LATEST TITLES

ROCKY I, ROCKY II, ROLLERBALL  
THE DEERHUNTER, CONVOY,  
BREAKER BREAKER, THE JAZZ SINGER,  
THE LONG GOOD FRIDAY, FLASH GORDON,  
THE ENFORCER

**WARNER** ALL THE LATEST TITLES

EXORCIST II, ENFORCER, GAUNTLET,  
EVERY WHICH WAY BUT LOOSE

**M.G.M.** ALL THE LATEST TITLES

BEING THERE, FAME, THE CHAMP, 2001 SPACE ODYSSEY

Take advantage of being a member of our Video Club

**MOST FILMS FOR £1 PER NIGHT**  
(cheaper than the West End)  
RENT AND BUY AND EXCHANGE

Membership entitles you to discount on many  
of our video accessories.

NO HIDDEN EXTRAS

**149 FORTRESS RD, NW5**

(opp Tufnell Park Tube, NW5)

Telephone: 267 1665

## REPRODUCTION FURNITURE

Direct from factory premises  
Mahogany Pedestal Tables from only £89  
Solid Mahogany and Oak Chairs from only £25  
TV Video Cabinets from only £169  
Tower Stacking Systems only £159  
3-piece Suites from only £399

WIDE RANGE OF UNITS, TOP QUALITY  
ALL AT ROCK BOTTOM PRICES

**COLUMBIA FURNITURE**

41 West Road  
(off Brantwood Road)  
Tottenham, N17

Open: Mon-Sat. Also Sunday viewing

Consult your local  
plumbing and central  
heating  
experts

**PLENTIHEAT**

we specialise  
in gas central  
heating

Telephone us now on  
01-440 5502

3 LEICESTER RD, NEW BARNET, HERTS

## KYPROS WINE SUPPLY CO.

Biggest Selection Wines, Spirits, Beers  
& Liqueurs. Best Prices for miles around.



Whisky from £5.59  
Gins from £5.69  
Vodka from £5.59  
Brandy from £5.99  
Wines from £1.49 per bottle.  
1½ litre Liebfraumilch £3.89  
1½ litre Red & White £3.27  
TOCAI & VALPOLICELLA  
2 litre Merlot £3.99  
2 litre Tocaï £3.99  
Valpolicella £3.99  
Sherry from £1.65

**SPECIAL OF WEEK**  
10oz Can Lager only 25p.  
Light Ale pack of 4 — 99p.  
Newcastle Brown,  
large can 49p.  
Long Life large can  
47p each

Many other special offers.  
Collect your free calendar before the end  
of the month.

115-117 Chaseside, Enfield  
367 0278

## CHRIS FISH BAR



THE BEST SELLER

**GOOD NEWS for FISH FANS!**



My name is Chris and I have just opened a new enterprise offering the highest-quality fried fish to take away. I will give you a personal service to ensure that you get the very best fresh fish, cooked only in pure groundnut oil.

★ FRESH FISH DELIVERED  
DAILY ★ PARTY ORDERS WELCOMED

OPEN: TUES./WEDS. 11.30—3.00 4.00—9.30

THURS. 11.30—3.00 4.00—10.30

FRI./SAT. 11.30 THROUGH TO 10.30

AT ANY TIME OUR PRICES  
ARE COMPETITIVE. SO  
COME IN AND GIVE US  
A TRY

CLOSED BANK HOLIDAY

74 Cricklewood Broadway, NW2. 01-450 0437

01-361  
1447

ALUMINIUM DOUBLE GLAZING

**ORDERCLASS LTD.**

YOUR LOCAL DOUBLE GLAZING FIRM

133, Warwick Road, N. 11

**LOOK NOW ONLY 10% DEPOSIT**



FOR ALL YOUR DOUBLE GLAZING,  
REPLACEMENT WINDOWS,

Optional Extra  
Bronze anodised bead — No extra charge

RESIDENTIAL DOORS,  
PATIO DOORS, PORCHES.

FULL 10-YEAR GUARANTEE  
BEST PRICES

**FREE ESTIMATES**

SUPPLIERS TO THE TRADE AND D.I.Y.

From £5.00 per sq ft

14 DAY DELIVERY

**SALT**

London Salt Co, Station Road, New Southgate,  
N.11, 883 6047

For Dishwashers,  
Water Softeners  
and Snow Clearing  
FREE DELIVERY

Suppliers and  
Installers of  
Domestic  
Water Suppliers

**BRILLIANTLY SIMPLE**



**THE ADLER ALPHATRONIC**

AN INTERNATIONALLY ACCLAIMED MICROCOMPUTER FROM A LOCAL COMPANY

Complete system prices\*

Invoicing ..... from £2,455  
 Business accounts ..... from £2,595  
 Payroll ..... from £2,595

**A Word processing programme worth £350 supplied free with any system ordered before March 1982**

\*Prices exclusive of VAT

**ROBIAN COMPUTING LTD.**

5th Floor, Northway House  
 High Road, Whetstone N20 9LP  
 Telephone 01-445 0248

PLEASE SEND ME DETAILS OF THE ADLER ALPHATRONIC MICROCOMPUTER  
 I AM PARTICULARLY INTERESTED IN:

- Word processing .....
- Business accounts .....
- Payroll .....
- Invoicing .....

Name .....  
 Company .....  
 Address .....  
 Telephone .....

★ **SIGNS** ★

**Requirements:** House, Cottage Business, House number, Professional, Directional, Horse box, Mail box, Desk name, Door name or any sign requirement.

**Method:** Permanently engraved on material.

**Materials:** Solid Teak, Brazilian Mahogany, Tough Laminated Plastics (9 colours), Brass.

Various shapes & sizes.

eg:

**MANDALAY**

Teak, 34"x5"x18":

Despatch within 7-10 days

G.B.O. TIMBER & HANDT LTD.  
 299 CRICKLEWOOD LANE  
 CHILDS HILL, LONDON NW2 2JL  
 TELEPHONE: 01 445 9669

**SEE THE LATEST FILMS IN YOUR OWN HOME**

A SELECTION OF OVER 550 FILMS on VHS and Betamax including some of the following:

- JAWS,
- THE EXORCIST,
- GREASE,
- SATURDAY NIGHT FEVER
- THE DEERHUNTER
- ONE FLEW OVER THE CUCKOOS NEST
- CONVOY
- SCUM



JOIN OUR CLUB

THEN EXCHANGE

FILMS for only £2

**VISIONS**  
 219 Chase Side  
 Enfield, Middlesex  
 01-363 1370

**"ASHLEY'S"**

**NORTH LONDON'S LARGEST SUPPLIERS OF AIDS FOR THE DISABLED**

Wheelchairs, Commode Chairs, Crutches, Walking Aids, Bed Boards, Bed Bottles, Bed Pans, Air Rings.

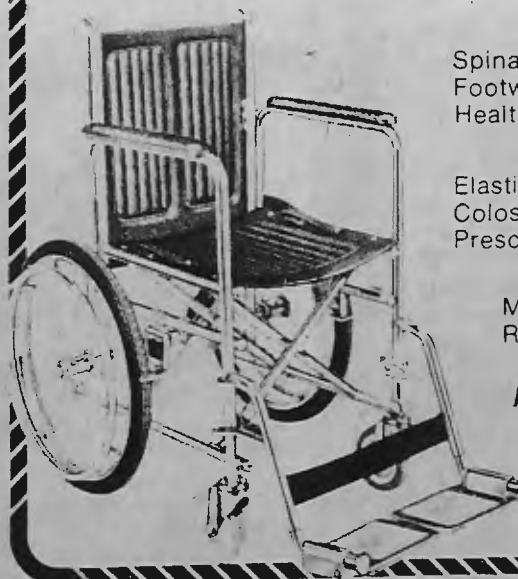
Spinal Belts, Orthopaedic Insoles & Footwear, Infra-Red & Ultra Violet Health Lamps, Massagers.

Elastic Hosiery, Trusses, Ileostomy & Colostomy Appliances, N.H.S. Prescriptions Dispensed.

Male & Female Staff, Fitting Rooms

**ASHLEY & NEPHEWS LTD**  
 276 STAMFORD HILL  
 LONDON, N.16

**01-800 2803**



**GOODMANS**  
 Chartered Accountants

34 Newark Way  
 NW4

Fees Discussed before any work is commenced

Phone: V. Goodman  
 01-203 5227  
 (anytime)

**King's Wedding Photography**

Previews same day on Saturday weddings. Montage effects, etc.

01-203 4428 evenings or write:

Edmund J. King  
 Freepost  
 (No stamp required)  
 London NW4 1YA

Book direct from this advert for free Wedding Album

For details without obligation

**DO YOUR NAILS LET YOU DOWN?**

**Fingertips**

Well-proven, semi-permanent nails have made broken, cracked, unsightly nails a thing of the past. For more information, under no obligation, tel:

Georgina on  
 458 8132/9993

# Views of the past



ABOVE: A horse-drawn bus outside the Two Brewers, Hadley Highstone, in 1887. The bus used to run from Hadley Highstone to New Barnet Station.



LEFT: Barnet High Street in about 1887. The photograph was taken in the High Street just above its junction with St. Albans Road.

RIGHT: The old pond in Wood Street, Barnet, which was on the site of the present Ravenscroft Park. This picture was taken 110 years ago.




BELOW: Barnet Hill, before the turn of the century, looking up towards the old Victoria Cottage Hospital on the right where Queen Elizabeth's Girls' School now stands. The signpost, also towards the right, points over the fields where the Meadway is now.



These are a few of many old photographs now on display in Chipping Barnet Library. They are just part of a collection which used to belong to J.A. Clark, the drapers and furnishers, which is now closed.

If you have any old photographs of any part of the borough then the Libraries Department will be pleased to hear from you on 202 5625.



**TOTTERIDGE RIDING SCHOOL**

Horse and Pony Rides  
From £2 for 1/2 hour  
and Courses Arranged

Also private lessons are available. All ages catered for. Full livery and D.I.Y. Horses and ponies bought and sold. Please telephone and ask for Jean West.

**01-959 7290**

**PLAY SQUASH**

**£1 p.w.**

(plus VAT and joining fee)

**HEATHFIELD SQUASH CLUB**  
BRONDESBURY PARK, NW6  
**459-3456**

**NOW OPEN HUSTLER SNOOKER CLUB**



159A Tottenham Lane,  
Crouch End, N.8  
(opposite YMCA)  
Tel: 348-2429

**SNOOKER AND BILLIARDS**

8 FULL SIZE TABLES  
HANDICAP COMPETITIONS  
£200 CASH PRIZES

Membership Invited, £3.00 pa  
OPEN: 7 days a week from 10 am  
LADIES WELCOME  
LIGHT REFRESHMENTS AND SNACKS ALWAYS AVAILABLE

**LOCAL AERIAL SPECIALISTS**

- ★ Colour TV and FM installations
- ★ Communal systems
- ★ Multipoints
- ★ All work guaranteed
- ★ Reasonable rates
- ★ Prompt personal service

Tel: 01-906 2712

**VIDEO LIBRARY**

MANY TITLES, NO COPIES  
ALL ORIGINALS

**1**

- ★VHS
- ★HIRE OR BUY
- ★OPEN SIX DAYS A WEEK 10 TILL 7 PM
- ★OPEN SUNDAY 10 TILL 1 PM
- ★ONLY £2 EXCHANGE (MEMBERS)
- ★ANY ADDITIONAL FILMS ONLY £2

**VIDEO-ONE** FOR THE BEST IN VIDEO ENTERTAINMENT

148 East Barnet Road, Herts. 01-441 0780

CALL OR PHONE FOR DETAILS  
MON-WED-FRI LATE NIGHTS OPEN TILL 8 pm

**SHARP MZ80K Micro Computers**

**THINKING COMPUTERS?  
SHARP'S THE WORD  
— QUICK'S THE ACTION**



— from only  
**£430 +VAT**

**AND**

**FOR THE BEST IN HARDWARE,  
SOFTWARE & SYSTEMS SUPPORT**

***Bridgewater's the Company!***

BRIDGEWATER OFFICE & ACCOUNTING MACHINES  
1162 High Road, Whetstone N.20. Tel: 01-446 0320/4929

**KKB**

**£2 MILLION** OF HIGH QUALITY STOCK MUST BE CLEARED NOW

WE ARE CLOSING OUR KINGSLAND ROAD (SHOREDITCH) WAREHOUSE

**KITCHENS**

Over 42 completely fitted displays, plus huge stocks of Schreiber, Olympic, Rational, Sarila, etc, must go at up to **50% OFF**



**Bathrooms**

31 complete display suites and massive selection from stock of Lotus, Carron, Vogue, Ideal Standard, Twyford, etc, have to be cleared — up to half price reductions



**TILES** . . . A whole warehouse has to be emptied! Over 1,000 ranges of English and Continental ceramic wall and floor tiles, plus a full department of slight seconds, going at giveaway prices



**PLEASE NOTE:** We are forced to clear our entire stock at genuinely low cost due to the expiry of our lease. First come, first served

**78-96 Kingsland Road, E2. 729 4955**

**HOURS OF OPENING:**  
MONDAY-THURSDAY 9 am to 6 pm  
FRIDAY 9 am to 1 pm  
SUNDAY: 9 am to 2 pm

**KKB**

# HOME IMPROVEMENTS

## UP AND OVER GARAGE DOORS

ALL SIZES AVAILABLE

SUPPLY — FITTING — REPAIRS — PARTS  
SPECIALISTS IN REMOTE-CONTROL DOORS  
FREE BROCHURES ON REQUEST

PHONE: 01-898 7234 (Day or Evening)

SHOWROOM: 122 HIGH STREET, WHITTON, TWICKENHAM



Don't drive yourself up the WALL looking for TILES!

— drive a few miles along the NORTH CIRCULAR TO

DAVID JACOBS TILE CENTRE

178 Bowes Road, N11, 881 01 41

Thousands of colours and designs of wall, floor tiles and mosaics fixing service available

OPEN SUNDAY

MORNINGS

Phone

01-881 0141

MON. TO

THURS

9—6 pm

FRI.

9—1 pm

SUN

9.30—1.30 pm

CLOSED

SATURDAY

TEL

BARNET TIMBER CO.

TEL

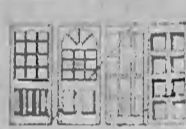
449 3133

COMPARE THESE PRICES!!!

441 5838

ALL PRICES INCLUDE VAT  
TIMBER PER FOOT

	SAWN	PAR	SAWN	TAN
2 x 1	5p	7½p	7p	
2 x 2	9p	15p	11p	
2 x 3	14p	22p	17p	
2 x 4	18p	28p	22p	
2 x 6	28p	34p	32p	
2 x 7	32p	38p	38p	
2 x 8	37p	44p	44p	
2 x 9	42p	49p	48p	
1 x 1	4½p	6p	—	
1 x 3	10½p	11½p	—	
1 x 4	14p	15p	—	
1 x 6	19p	21p	—	
1 x 9	—	34p	—	
4 x ½	TGV	9p		
4 x ¾	TGV	11p		
5 x ¾	Shiplap	15p		
Louvre Doors	—	Cupboard Doors		
Laminates	—	Worktops		
All Sizes				
WALLBOARDS				
V Grooved or Ply 8' x 4'		4.60		
Many Patterns				



FRONT DOORS  
ALL SIZES  
TO 7' x 3'

DOORS FIRST QUALITY

Carolina 6'6" x 2'6"	46.50
Kentucky	46.00
6 Panel	46.50
Half Bow	51.00
Elizabethan	48.50

+ Many Other Patterns

Ply Flush 6'6" x 2'6"	8.50
Ply Flush Asstd. 2nds From	3.00
Pattern 10	22.45
½ Hour Fire Check	15.99
SA6626	37.35
Sapele Flush 6'6" x 2'6"	15.83
2 X G	23.50

White Contiboard	34p sq. ft.
Mahogany	36p sq. ft.
All Sizes in Stock	

CASH AND CARRY  
DELIVERY EXTRA  
SHEETWOODS

4mm Ply. 8x4 1st Qual.	4.30
6mm Ply. 8x4 1st Qual.	5.91
9mm Ply. 8x4 1st Qual.	8.97
12mm Ply. 8x4 1st Qual.	11.41
18mm Shuttering	11.50
12mm Shuttering	7.25
18mm Block. 5 Ply 8x4	14.95
12mm Chip. 1st Qual. 8x4	4.25
18mm Chip. 1st Qual. 8x4	5.75
¾" Plasterboard 8x4	3.50
¾" Plasterboard 6x3	2.25
Hardboard 8x4	2.20
18mm Birch Blockboard	21.50

PAINT ETC

Bergermatt 10 Litres	10.49
Valspar Matt 5 Litres	4.49
Gloss & U/Coat 5 Litres	7.99
Gloss & U/Coat 2½ Litres	4.75
Sandtex White 5 Litres	8.99
Tetratex 5 Litres	5.99
First Quality Woodchip	65p

ALL SIZES ROOFING FELT  
IN STOCK

WHITINGS HILL FARM, MAYS LANE, BARNET, HERTS

OPEN — MONDAY TO FRIDAY 8.00 TO 5.30. SATURDAYS TILL 2.00

CAR PARKING

## HOME OWNERS

### CHRISTMAS BONANZA

0% loans available (limited period) on home improvements, double glazing, windows and doors.

Superb high quality products with the back up of over 15 years experience.

PHONE NOW

**ARGOS**

Aluminium Products Ltd

on 363 2725

## GLAZED IN STYLE!

by the experts in

Secondary double glazing systems

We specialise exclusively in the manufacture and installation of secondary double glazing, custom made to complement your own existing windows, with both white and anodised finished available.

All work is carried out at our factory, and installed immediately by our own team of specialist fitters, fully guaranteed with free estimates and consultations

Double glazing makes your house feel bigger and more comfortable because you can live right up to your windows

AND STILL FEEL WARM!

**NEW SEASON**

Double Glazing

17 Colindale Avenue, Colindale, NW9

Tel. 01-205 5428/3445



## Chingford Portable Buildings

GARDEN and PAVING CENTRE

- ★ Crazy Paving, Coloured Paving from 70p.
- ★ Sand, Ballast, Cement, Walling, Screen Blocks & Garden Ornaments.
- ★ HEAVY DUTY SHEDS from £61.00 + VAT complete. All Sheds ordered by Tuesday — delivered Saturday same week. All types of fencing available.
- ★ New and Old YORK STONE, Walling and Cladding supplied.

ALL GARDEN WORK UNDERTAKEN

Larkshall Road  
Chingford, E4  
(corner Hatch Lane)  
Telephone:  
529 3720

Members of the Master Locksmiths Association

**Krypto**

SECURITY (LOCKSMITHS)

560 Leytonstone High Rd  
London, E.11

We supply and fit all types of locks, burglar alarms, safes etc. All types of safes opened, repaired, bought and sold

NO JOB IS TOO BIG OR TOO SMALL

TRY OUR 24 HR EMERGENCY SERVICE

Telephone: 01-556 1000 (office hours)

01-534 3451 01-472 3714 (after hours)

# COMPOLITE (GAS) Limited

WOODHOUSE SERVICE STATION  
236 WOODHOUSE ROAD, FINCHLEY, N12

Tel. 01-368 1841  
01-361 2580

See our complete range of

**Unigas**

## Appliances

Propane  
and  
Butane

for Industrial, Domestic and Agricultural use.  
Access, Barclaycard, Diners and American Express accepted



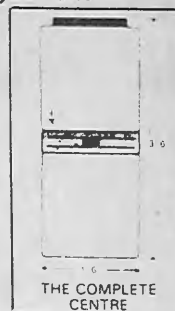
Heater from £69.95

## GAS CENTRAL HEATING

The most economical system could save you up to 28% on your gas bill

### ADVANTAGES:

- ★ Complete boiler with built-in tank and cylinder in space 3' 6" x 1' 6"
- ★ Built in instantaneous hot water when you require it
- ★ Guaranteed temperatures
- ★ Controllable heating
- ★ No wasteful cylinders or expansion tanks
- ★ Full 12 month guarantee
- ★ Free estimates



THE COMPLETE CENTRE

NO DEPOSIT AND NOTHING TO PAY FOR 3 MONTHS  
WRITTEN DETAILS ON APPLICATION

V.B. HEATING, PLUMBING & ELECTRICAL CONTRACTORS  
EST. 1975

For immediate FREE quotation phone:  
**01-529-1379**

YOUR COMPLETE PLUMBING & ELECTRICAL SERVICE



Carpet Bargains Showroom

**CARPET YOUR ENTIRE HOME**  
From £2.00 Per Week  
And get a FREE TV for Christmas  
NO DEPOSIT

If you can't visit our showroom, we will visit you with samples, completely free of charge.

APR 44.8%

## MODERN HOME PLANNING

24 WEST GREEN ROAD  
TOTTENHAM, LONDON, N15

(The Shop on the Corner) Licensed Brokers

**HUGE RANGES**  
£2.00 per week  
x104 £208.82  
CASH PRICE  
£147

## PICTURE FRAMING

(bespoke service)

WE STOCK ALL PICTURE FRAMING EQUIPMENT (if you want to do it yourself!)  
250 MOULDINGS ALWAYS IN STOCK

## TIMBER & BOARDS

cut to any size

COMPLETE RANGE OF CRAFTSMAN POWER TOOLS IN STOCK  
KEY CUTTING SERVICES

## TIMBER & PAINT SUPPLIES

320 DUKES MEWS, MUSWELL HILL, N10

01-883 9605

(rear of Charrington's Coal Merchants)

## IS YOUR LOFT INSULATED?

An insulated loft can save you a lot of money  
... you know it makes sense!

Call in the experts for efficient, clean and guaranteed workmanship — it's probably cheaper than you think.

We have been established for over 18 years and have insulated thousands of properties for the public, Gas Boards, local authorities and other major organisations.

Contact us now for a free quotation, without obligation — and remember you may qualify for a substantial insulation grant from your local authority.

### SPECIAL DISCOUNT OFFER

All orders placed with us for loft insulation to be installed by 31st January, 1982, will qualify for a £10 discount, on presentation of this voucher.  
(Only one voucher per household).

# KEITH YOUNG

(INSULATION SUPPLIES) LIMITED

Approved Eastern Gas loft insulation installers.

ST. ALBANS 35261

A Mallinson Denny member of the Brooke Bond Group

## NORMAN BROWN TILE CENTRE

SUPER NEW SHOWROOM  
NOW OPEN

SPECIAL OFFERS ON WALL AND FLOOR TILES

If your looking for tiles, you can't afford to miss us. Best prices and expert help.

526/528 Hertford Road  
Enfield.

01-804 1480

## GLASS CENTRE

(POTTERS BAR)  
ALUMINIUM LTD.

For all types of  
Double Glazed  
Aluminium & PVC  
products backed by  
31 years' experience  
51 DARKES LANE  
POTTERS BAR  
Telephone 57080 58111

## GRAHAM FLOORINGS LTD



Over 200 beautiful floors to choose from, many exclusive to Floor Fashion Centres.

Wide range of room size remnants always in stock.

All leading makes of 2m, 3m and 4m vinyl on display. Also ceramic tiles and wood flooring. Professional installations by experts if required.

20 Queens Parade, Friern Barnet N11  
(Opposite Town Hall)  
01-361 0983

## HOND & LANGER LIMITED

(Established 1931)

GLASS MERCHANTS & GLAZIERS

CALL IN THE SPECIALISTS FOR  
DOUBLE GLAZING & ALUMINIUM  
WINDOWS AND DOORS

885-887 Green Lanes,  
Winchmore Hill, N21 2QS  
Telephone: 01-360 6744/6877  
Open daily 8 am to 5 pm Saturday 8 am to 12.30



## SHAFTESBURY IN EURO CUP

THE BELGIAN organising committee of the EEC Junior Athletics Championship have issued an invitation to Shaftesbury Harriers to compete in the European Cup being held in Leige on Saturday, October 2, 1982. Birmingham-based Birchfield Harriers were dethroned by Shaftesbury at the National Young Athletes' Final at the Crystal Palace in September but Birchfield the 1980 National Champions had won this year's European Cup. So Cophall Stadium based Shaftesbury will represent England in 1982 with Birchfield taking part as the European Champions.

The European Cup is a very big occasion in Belgium receiving extensive Press and TV coverage. This particular competition includes events for boys, youths and juniors.

## Winter tennis

KEEP FIT this winter with a game of tennis!

In many of Barnet Council's parks there are hard tennis courts which can be played on in all weathers. To encourage the public to use the courts on a year-round basis the Council are offering half-price tennis, from December to the end of March. On weekdays the cost for a court is 40p an hour and at weekends 50p an hour.



## Triumphant prelude to Spring

The flower beds in front of the Town Hall, Hendon, will blaze with scarlet next spring thanks to Mr. Matt Levitt of Riverside Nurseries, Finchley. When he heard that the Council were cutting back on planting bulbs he presented the Mayor with 2,000 tulip bulbs for her appeal and a further 250 for the Town Hall. These are a Triumph variety, Riverside Haze, which made their debut at Chelsea this year. Mr. Levitt has been closely associated with their development.

Packages of the bulbs were also sent to Barnet's twin towns. The Mayor of Le Raincy has arranged for some of them to be planted on the grave of a British soldier. Left to right: Mr. George Smith, parks area superintendent, The Mayor, Councillor Mrs. Rosa Freedman, Mr. Levitt and Mr. Gerry Fedricks, parks manager.

## The case of the moving duck

A RESTAURATEUR offering a take-away service was fined £50 and ordered to pay £25 costs after Barnet Council took action when a customer discovered maggots in a portion of duck.

The cooked duck was purchased by local residents at 9.30 pm and served as soon as they got home. But just before they

started to eat they noticed the duck 'was moving'. They called the police who came very quickly and offered to act as witnesses, and Barnet Council prosecuted, after environmental health officers had investigated the complaint. The officers reported that it was 'one of the most offensive food cases they had ever seen in their careers.'

## BOOKS TO HELP YOU COPE

BARNET Libraries Department have produced two special book lists for the International Year of Disabled People. 'Disabled for Life, Able to Live' contains a selection of biographies which record the lives of men and women who have endured and overcome their disabilities.

The second book list, 'Coping', contains a selection of books and pamphlets of particular interest to disabled people,

their families and those concerned with their care.

The list is arranged in 10 sections and includes publications about access and mobility; parents, children and young people; the home; hobbies; music; sport; work and holidays. The list emphasises practical books which have been published recently — to ensure the information is up-to-date.

Both lists are available from all 17 Barnet libraries.



To mark the end of International Year of Disabled People, Mrs. Anne Davies, co-opted member of Barnet Council's Social Services Committee, presented the Mayor, Councillor Mrs. Rosa Freedman, with a copy of Charter '81 which sets out the aims and objectives of IYDP — to encourage research into the prevention of disease, and to give the disabled greater freedom and opportunity.

To all our readers — The Season's  
Greetings and all good wishes for  
a prosperous New Year

**BARGAIN SHEDS OFFER**

Example: 6' x 4' £83.72 with the advert including delivery and erection.

All other sizes and types available.  
Also all fencing materials.

**H. W. Robinson Enterprises Ltd.**

24 Stacey Avenue,  
Edmonton, N18  
Tel:  
807 1118/3445  
Mon.—Sat.  
8 am—5.30 pm



Artstone  
Garden Centre,  
9 High Road,  
Broxbourne  
Tel: (61) 41313  
7 days a week  
10 am to 5 pm

**CROWTHER**

LANDSCAPE GARDENERS  
AND CONTRACTORS

NURSERIES

ONGAR ROAD  
ABRIDGE  
ESSEX

Telephone: 040-28 581

**NEIL  
FLETCHER  
GARDEN  
CONTRACTS  
LTD.**



22 DOVE LANE, POTTERS BAR, HERTS.

**POTTERS BAR (77) 50499**

PRIVATE AND COMMERCIAL  
HARD AND SOFT LANDSCAPES

Fencing - Stonework - Tree Surgery and Felling  
Maintenance Contracts - Renovations - Rockeries  
Planting Schemes - Rotavating - Commercial Cleaning

**TURF SUPPLIED**

All work fully insured and guaranteed

**Training Opportunities**

THE BRICK DEVELOPMENT ASSOCIATION  
TRAINING SERVICES LTD.

offer young people from 19-25 the chance to train as

**BRICKLAYERS, CARPENTERS  
AND JOINERS, PLASTERERS,  
PAINTERS AND DECORATORS**

Five-day week for six months.

CITB Grants available.

For further details tel:

**BDATS 205 2329**

**EVERYTHING  
FOR THE GARDEN**

ALL PLANTS, TREES  
SHRUBS, DUTCH BULBS  
**SWIMMING POOLS AND CHEMICALS**  
GARDEN FURNITURE, PAVING  
FENCING, SHEDS, ORNAMENTS  
FLOWERING PLANTS AND  
GREEN PLANTS FOR THE HOUSE

PERSONAL SERVICE, QUALITY GOODS  
REASONABLE PRICES

OPEN 7 DAYS A WEEK UNTIL DUSK

**THE DUTCH NURSERY**  
BELL BAR, HATFIELD  
Tel: Potters Bar (77) 53372

LONDON BOROUGH OF BARNET  
*Directorate of Housing Services*

**CLERICAL ASSISTANT  
(CONTRACTS) Grade C2**

**£5,547-£5,859 per annum inclusive**

A Clerical Assistant is required to carry out promptly and efficiently, under minimum supervision in a busy office dealing with contracts for housing maintenance, the following duties:

Collation and issuing of tender documents.

Liaison with Legal Department, Consultants and Contractors on contract particulars, etc.

Maintaining and filing of all contract documentation, records, etc.

Liaison with tenants by telephone and letter.

General duties including maintaining stationery, collection and distribution of post, telephone, etc.

Typing ability would be an advantage.

Basic annual leave is 20 days with additional leave at most Bank Holidays. 36-hour week within a flexible hours scheme. Subsidised canteen facilities and interest-free loans are available for the purchase of travel season tickets.

Ref 606/11

Application form from Director of Housing Services,  
65 Watford Way, Hendon, London NW4 3AY  
(telephone 202 8282, ext. 550)

Closing date: December 21, 1981

**SERVICE ENGINEER**

Required for an expanding company operating gaming machines and amusement equipment in the London area. Experience in this type of equipment is not essential, but a good electrical and TV background would be required. Successful applicant must be between 25-40 years of age and hold a clean driving licence. Good basic salary. Company car provided.

Apply to:

**THREE SERVICES AUTOMATIC LTD**  
53 LYDDEN GROVE, WANDSWORTH, SW18.  
TEL: 870 1886

**GROW YOUR OWN**

plants from seed to maturity. The Sunlighter range of systems incorporate lamps used by commercial growers and research laboratories and are spectrally perfect for healthy plant growth.



**ENJOY POT PLANTS  
ALL YEAR ROUND**

Our systems can grow  
**ANY PLANT INDOORS**

For details write, phone or call:

Mail Order Enquiries:  
120 Acre Lane, SW2

Sunlight Systems at Oddity's  
72 Chalk Farm Road, NW1  
(opposite Roundhouse).  
Open Fri, Sat, Sun 11-6  
Phone 01-267 0152  
Prices from £45 complete

Name .....

Address .....

**SOUTHWOODS  
VILLAGE  
NURSERIES**

*Calor Gas  
You Ring  
We Bring*

Getting a replacement Calor Gas cylinder is simple. Just give us a ring at

**01-340 1041**

and we'll deliver right to your door. If you're looking for a new Calor Gas appliance, pop in and see us.

We're backed by the nationwide Calor Gas organisation and our friendly staff are always ready to give you advice and help.

**CALOR Gas**

Southwoods Village Nurseries,  
Townsend Yard, Highgate High Street, Highgate Village N6. Tel: 01-340 1041. Open: Mon to Sat 9 am-6 pm. Sun 10 am-1 pm

**WANT  
A JOB?**

Place yourself  
on Job-Tel  
and let  
the jobs  
chase you.

**205 0205**

45411  
~~2001!~~  
**A SPACE ODYSSEY**

Or conjure up the Elephant Man, Flash Gordon, Life of Brian and many more from our stock of over 600 film titles.

Join Video Wizard and hire box office hits for only £3 per week. And you need go no further than your telephone.

Our amazing Dial-a-Movie delivery service brings the top movies direct to your door, usually within the hour.

Unlike some dealers, we hold large stocks of the more popular films in both VHS and Betamax formats.

And all our films are guaranteed top quality, manufacturers' originals.

Sounds magical? Then call in and pick up an application form or ring for further details.

We are also experts in the mystic arts of all video and high technology repairs.

Films just in for Christmas: ENFORCER, THE CHAMP, FAME, 10 (with Bo Derek), BEING THERE (with Peter Sellers), LONG GOOD FRIDAY, LIFE OF BRIAN and many more.



**BRINGS HOME THE MAGIC OF THE MOVIES**

VIDEO WIZARD, 195 High Street, Potters Bar. Telephone: 45411

**STOP PRESS:** Video Wizard proudly announce the ultimate video cassette rental system. Once only £30 Life Membership Fee. 3-7 days film rental - £3 48 hour film rental - £2. 24 hour film rental only £1.

**CIVIC HALL BOREHAMWOOD**

01-953 9872

Charles Haley Productions in Association with Hertsmere Borough Council Present

A Traditional  
Pantomime  
for all The  
Family

**ALADDIN**  
and his  
Wonderful  
Lamp

Tina Robinson  
as ALADDIN

Benny Lee  
from  
Are You Being Served  
as  
WISHEE-WASHEE

Roger Walker  
from Children's TV's  
Rainbow  
as 'ABANAZAR'

Geoffrey Russell  
Mr. Watkins in BBC's  
Grange 13  
as  
WIDDOW TWANNEY

Saturday 26th December  
to Saturday 9th January  
Daily at 2.30 and 7.00 pm.  
Saturdays (and Dec 28th) at  
2.30 and 5.30 pm.  
Dec 31st Perf: 10.30 am  
Jan 1st Perf: 3.30 pm

Tickets: £2.00, £1.80, £1.50  
Children and Senior Citizens Half Price. Special Party Rates

Entertainments and Catering Officer: D. J. Shepard A.I.M.E.M.(D.P.)

So you want to buy a home of your own!



Offers first time buyers a free step by step guide to owning your own home

ASK FOR DETAILS AT  
 ABBEY NATIONAL, 136 HIGH STREET, BARNET  
 OR YOUR LOCAL BRANCH

Have you had an operation?

Why not recuperate at

*Ellern Mede*

NURSING HOME

31 Totteridge Common, London N20 20

(Registered by Barnet Area Health Authority)

Recognised by B.U.P.A. and P.P.P.

Luxuriously appointed - Constant medical attention and nursing supervision

Only 10 miles from London. Kosher cuisine and special diets.

In 8 acres of delightful private grounds, overlooking the green belt.

Christmas-time holiday bookings now being accepted

**IDEAL FOR THE POST-OPERATIVE CONVALESCENT**  
 Applications to Matron or Medical Director, 01-959 4221

**ALBERMARLE PIANO SERVICES**

A superb range of used and reconditioned Pianos at sensible prices.

H.P. Facilities, Part Exchange, Piano Stools and Accessories, Tuning and Repair Service

38 Church Lane, East Finchley, N2 883 5430



**KEEP FIT**

Learn TAE KWON DO

(Korean Art or Self-Defence) at: The North Finchley Trinity Church Hall Ballards Lane (Entrance in Dale Grove) N12 on Tuesdays and Thursdays from 7 pm

The Kingsbury Swimming Pool Kingsbury Road, NW9 on Wednesdays and Fridays from 7 pm Instructors: S. W. PAN 3rd Dan, A. PATEL 2nd Dan Details: Call at the Training Centres

**J. M. PET SUPPLIES**

PEDIGREE PUPPIES AND OTHER ANIMALS & BIRDS IN STOCK

HAVE YOU BOUGHT YOUR PETS CHRISTMAS PRESENTS YET? IF NOT PAY US A VISIT

We are open 9.30-5.30 — Mon-Fri  
 Half Day — Thurs  
 9.30-6.00 — Sat

Tel: 886 7410

19-21 Aldermans Hill Palmers Green, N13

# WHAT'S ON IN BARNET

THIS LIST of activities in the Borough is open, free of charge, to all voluntary and community groups.

Entries for the February issue (February 13 to March 14) must reach the editor by January 10.

Send your entries to Civic News, address: page 4.

It is regretted that owing to pressure on space in the December issue that the usual publication of weekly events has had to be omitted. This service will be resumed next month.

## Saturday December 12

10th Finchley (Scottish) Scouts, Gordon Hall, Huntly Drive, Nether Street, Finchley N3. Coffee morning and mini-market. 10.30 am—12 noon.

West Hendon Playgroup Christmas Bazaar, St. John's Church, Algernon Road, Hendon. 2 pm. Admission 10p (202 3068).

1st Lyonsdown Scout Group Christmas Fair, Scout HQ, York Road, New Barnet. 2.30 pm (445 3792).

Hendon and District Committee for Cancer Research Annual Christmas Bazaar, St. Mary's Church Hall, Hendon Lane, Finchley, N3. 11 am (959 4364).

Hendon South Labour Party Christmas Bazaar, St. Peter's Church Hall, Cricklewood. 11

am—3.30 pm. Admission 20p, children 10p (455 2308). British Tinnitus Association NW London, The Meritage Club, Church End, Hendon. 1.30 pm.

## Sunday December 13

\*Wembley Sailing Club, Birchen Grove, NW9. Sailing on Welsh Harp. Beginners welcome (455 5073).

'Sweet Charity' Gift Bazaar in aid of mentally handicapped, Henriques House, Oakleigh Road North, N11. 11 am—4.30 pm. Admission 10p (449 0624).

## Monday December 14

\*Self-defence course for girls, Bunyan Hall, Trinity Church, Ballards Lane, North Finchley. 7 pm (346 3621).

## Tuesday December 15

Barnet Branch North Middlesex Family History Society, Church House, Wood Street, Barnet. 7.45 pm. 'From your attic' (449 5080/6153).

Acorns, women's non-sectarian club, East Finchley Methodist Church Hall, High Road, Finchley, N2. 'The History of Wedgewood'. 9.45—11.30 am. Creche available (346 0232/449 8613).

Finchley and District Model Aero Club Open Day, Manorside School, Squires Lane, Finchley, N3. 7.30—9.30 pm.

\*Goodwyn Avenue Badminton Club, Methodist Church, Goodwyn Avenue, Mill Hill. 8 pm (953 2021, ext. 82 between 9 am—5 pm).

## Wednesday December 16

Finchley Church End Afternoon TWG, St. Mary's Church Hall, Hendon Lane, Finchley, N3. 2.15 pm (349 0686).

Woodside Park Afternoon TWG, The Old Finchleians Club House, Southover, N12. Christmas party. 2.15 pm (346 2095).

Small Landlords Association. Surgery and meeting, Conservative Rooms, 166 Station Road, Hendon. 8 pm (202 9269).

Finchley Rotatact Club, Moss Hall Tavern, Ballards Lane, Finchley, N12. 8.30 pm (349 2709).

Stonegrove Never Old Club (over

## EXHIBITIONS

### Until December 19

Craft Fair — jewellery, pottery, etc. The Crest Gallery, Totteridge Library, 'Dollisfield', Totteridge Lane. Open: Tues. & Wed. 2—5.30 pm; Fri. 11 am—1 pm, 2—5.30 pm; Sat: 11 am—1 pm, 2—4 pm. (361 9648).

The Barnet Artists' Exhibition, North Finchley Library, Ravensdale Avenue, North Finchley. Normal Library opening hours.

### December 12 to January 16

Paintings by Renee Landau and Betty Rotenberg, Hendon Library, The Burroughs. Normal library opening hours.

### Until January 9

Pottery by Pauline Ashley and Wallhangings and Embroidery by Adeline Kraus. The Old Bull, 68 High Street, Bar-

net. Open: 10 am—6 pm (closed Thursday pm). (449 0048).

### January 9 to February 6

Milentijevic Art Group, North Finchley Library, Ravensdale Avenue. Normal library opening hours.

### Until January 10

Parkers' Toys — an exhibition of old toys. Church Farm House Museum, Greyhound Hill, Hendon. Open: weekdays (except Tuesdays) 10 am—1 pm, 2—5.30 pm; Tues: 10 am—1 pm; Sundays: 2—5.30 pm (203 0130).

### January 11 to 28

Photographs of and by the disabled, arranged by CRAB and Maria Bartha, The Old Bull, 68 High Street, Barnet. Open: Mon.—Sat. 10 am—6 pm (closed Thursday pm). (449 0048).

40) Spur Road Community Centre, Green Lane, Edgware. 8 pm (958 2530).

Friary Ladies Club, Assembly Rooms, Colney Hatch Lane, N11 (entrance at rear in Lyndhurst Avenue) 8 pm (368 0638).

Mind in Barnet Fund Raising Committee — Concert by Band of Royal Engineers, Ingilis Barracks, Mill Mill. Tickets £2 (203 0921).

Lions Club of Finchley, Hendon Hall Hotel, Ashley Lane, Hendon. 7.30 pm (951 2196).

## Thursday December 17

Friern Barnet Branch Labour Party, The Turrets Public House, Friern Barnet Road, N11. 8.15 pm.

Hampstead Scientific Society, Burgh House, New End Square, NW3 8 pm 'The problems of high speed railway operation' (794 9341/9675).

Greater London Old English Sheepdog Club, Grooming/obedience training, Hendon Football Club, Claremont Road, NW2. 8 pm (458 7028).

Special Grand Christmas Bingo, Watling Community Association, 145 Orange Hill Road, Watling, Edgware. 7.45 pm. Members only (959 1375).

Pensioners' Voice (Whetstone & Finchley) St. Albans Parish Centre, Gainsborough Road, North Finchley. 1.30 pm (445 7413).

## Friday December 18

New Barnet Floral Art Society Christmas Social, The Reynolds Hall, East Barnet

THE

# NEW

## TEXON RESPRAY CENTRES

under total new management



Beat the recession with a realistically priced respray. There's a choice of four paint services to suit all requirements. Budget, Standard, Deluxe or Executive.

Resprays from only £99

Over 18,000 Manufacturers Colours available

- Resprays from £99 to £599
- From a Mini to a Rolls-Royce
- From 2 coats to 10 coats
- Special metallic finishes
- New panels fitted
- Argon arc welding work
- Crash repairs — insurance work undertaken
- Fast 2 to 4 day repaint service
- Free quotations
- Expert advice by expert paint technicians.

You don't have to buy a new car — just give your present one a new look! Choose your own colour today from your nearest branch:

**Texon** TEXON (CROYDON) LTD 115 Canterbury Rd Croydon 01-684 9384  
 TEXON (ILFORD) LTD 1041 Romford Rd. E12 01-553 1314  
 TEXON (BLACKHEATH) LTD 16-28 Blackheath Rd, SE10 01-691 4838

# BRIDGE

FURNITURE

4/5 Temple Fortune Parade  
 Bridge Lane, London  
 NW11 01-458 7565

MON - SAT 9:30 - 5:30



Visit our showrooms for a superb range of modern and traditional furniture at **LONDON'S LOWEST PRICES!**

French Reproduction style in beautiful Dralon velvet



SELECTION OF SUITES FROM £200-£1000

Road. 8 pm (77 52924).  
Barnet Afternoon TWG, Church House, Wood Street, Barnet, 2 pm (449 0714).

**Sunday December 20**

Octopus Swimming Club for the Handicapped, Squires Lane Baths, Finchley, N3. 12.30—1.30 pm (346 5944).

Mind in Barnet Fund Raising Committee — Christmas Champagne Reception, 22 Cranbourne Gardens, Golders Green. Tickets £3 (203 0962).

**Monday December 21**

Hampstead Garden Suburb Antiques Circle, Bigwood House, Bigwood Road, NW11. 8 pm. Members' Christmas evening (455 9951).

Friern Barnet Council for Voluntary Service Whist Drive, Day Centre, Friern Barnet Lane, N11. 2.15 pm (368 4278).

**Wednesday December 30**

Amnesty International (Golders Green), Unitarian Church, Hoop Lane, NW11. 7.30 pm (883 4893/959 3249).

Stonegrove Never Old Club (over 40), Spur Road Community Centre, Green Lane, Edgware. 8 pm (958 2530).

**Thursday December 31**

Pensioners' Voice (Colindale & Burnt Oak), Burnt Oak Library, Watling Avenue. 1.30 pm (959 4683).

New Year's Eve Social with buffet supper at Salvation Army Citadel, Albert Road, New Barnet. 8 pm. Watchnight service 11.30 pm (440 4649).

**Saturday January 2**

Friern Barnet Council for Voluntary Service Whist Drive, Day Centre, Friern Barnet Lane, N11. 8 pm (368 4278).

**Sunday January 3**

Octopus Swimming Club for the

Handicapped, Squires Lane Baths, Finchley, N3. 12.30—1.30 pm (346 5944).

**Tuesday January 5**

Solo Club for widowed, divorced and single (26-60) meets in Finchley. 8 pm (346 7466/445 9810).

Friern Barnet Friary TWG, Christ Church United Reformed Church Hall, Bellevue Road, N11. 2 pm (445 8011).

**Wednesday January 6**

Finchley Rotaract Club, Moss Hall Tavern, Ballards Lane, North Finchley. 8.30 pm (349 2709).

Lions Club of Finchley, Hendon Hall Hotel, Ashley Lane, Hendon. 7.30 pm (951 2196).

Barnet Evening TWG, Church House, Wood Street, 7.45 pm. 'Bells of London' (449 6809).

**Friday January 8**

Hendon & District Cage Birds Association, Carey Hall, Wilberforce Road, West Hendon. 7.30 pm (205 2647).

**Saturday January 9**

British Tinnitus Association NW London Branch, The Meritage Club, Church End, Hendon. 1.30 pm (444 9657).

**Sunday January 10**

Public meetings at Salvation Army Citadel, Albert Road, New Barnet. 10.30 am conducted by British Commissioner (Denis Hunter) and Mrs. Hunter, 6 pm, a family festival of song and thanksgiving (440 4649).

**Monday January 11**

Finchley Chrysanthemum Socie-

ty, Manorside School, Squires Lane, Finchley, N3. 8 pm. Speaker: Mr. S. Gosling (346 2974).

**Tuesday January 12**

Learner drivers pre-test lecture arranged by Barnet Council Road Safety Section, Road Safety Centre, rear of East Barnet Town Hall, Station Road, New Barnet. 7.30 pm (349 9121).

National Schizophrenia Fellowship NW London Group, Temple Fortune Health Centre, Temple Fortune Lane. 8 pm (455 5113).

Mill Hill Flower Club, Harwood Hall, Mill Hill Broadway. 8 pm (954 4944).

Barnet Friends of the Earth, 72 Cranbrook Road, East Barnet. 8 pm (440 2580).

**Wednesday January 13**

Hendon Horticultural Society, Henry Burden Hall, Egerton Gardens, Hendon. 8 pm (203 3467).

Pensioners' Voice Barnet

Branch, Council Chambers, Wood Street, Barnet. 1.30 pm (449 6023).

Finchley Antiques Appreciation Group, Avenue House, East End Road, Finchley, N3. 7.50 pm (906 1869/445 7247).

Finchley Floral Art Society, Friends Meeting House, 58 Alexandra Grove, North Finchley. 8 pm (349 9207).

**Thursday January 14**

Pensioners' Voice East Finchley, East Finchley Library. 2 pm (444 5950).

Hampstead Scientific Society, Burgh House, New End Square, Hampstead. 8 pm. Colour Measurement and its application to gemstones (794 9341).

**Friday January 15**

Broadfields Evening TWG, Orange Hill Junior School, Hamonde Close, Edgware. 7.30 pm (958 4845).

Barnet Afternoon TWG, Church House, Wood Street. 2 pm (449 0714).

# WHAT'S ON

**LATE ENTRIES**

**Sunday December 13**

Barnet and District Branch of the British Diabetic Association Christmas party for diabetic children in the afternoon at McDonalds, High Street, Barnet. (368 6993).

**Monday January 4**

Finchley League of Jewish Women, Finchley Synagogue, Kinloss Gardens, N3. 1.30 pm. Mr. Jack Goldwhite on his experiences in a prisoner of war camp. (882 3064).

**Thursday January 7**

Barnet/Finchley Community Health Council, Civic Offices, Elstree Way, Boreham Wood. 7.30 pm. (449 3714).

**Wednesday January 13**

British Computer Society North London Branch, West Lodge Park Hotel, Cockfosters Road, Hadley Wood. 8 pm. 'Stop Programming — think about security'. (363 8879).

**Saturday January 16**

Friary Sequence Dance Club, Queen Elizabeth's Centre, Meadway, Barnet. 7.30 pm.

Chipping Barnet Conservative Association — John Major, GLC Member, and a Barnet Councillor holding an Advice Bureau, 163 High Street, Barnet. 10.30 am—12 noon.

**Drama**

**Saturday December 12**

Old Bull Theatre presents The 'Body Talk' Show, 68 High Street, Barnet. Tickets £1.50, £1 students/OAPs. (449 0048) 8.30 pm.

**Saturday January 16**

Old Bull Theatre presents 'Work is the curse of the drinking classes', Oscar Wilde entertainment. As above.

## Council meetings

**MEMBERS of the public are invited to attend Council and Committee meetings held in the Town Hall, Hendon at 7 pm.**

Monday, January 4: Housing; Development and Estates.

Tuesday, January 5: Pub-

lic Works; Social Services.

Wednesday, January 6:

Town Planning and Research.

Monday, January 11: General Purposes.

Tuesday, January 12: Education.

Wednesday, January 13: Allotments.

## DISCO LATIN BALLROOM KEEP FIT



CLASSES AND PERSONAL TUITION FOR ALL AGES

RING 202 9911 NOW FOR FREE BROCHURE

LEARNING IS FUN AT THE FRIENDLY

### HENDON DANCENTRE

QUEENS PARADE, HENDON, CENTRAL

(Opposite station)

# VIDEOLA



## NEW BRANCH OF

North London's leading stockists of video films and accessories in Muswell Hill. Over 1,300 titles in stock, VHS/BETA/2000.

Life Membership £35.00  
No-Time-Limit Hiring £2.00  
4 Days Hiring £1.50

Mon.-Thurs. 10-7.30, Fri.-Sat. 10-8.00, Sun. 10-2.30

6 Pages Lane, London, N10 01-883 3889

HAVE YOU PLANNED YOUR CHRISTMAS PARTY YET? LOOK NO FURTHER — WE WILL DO IT FOR YOU

## LUNCH-TIME OFFICE/WORK PARTIES

Price includes no drinking and driving Local pick-up points+food+entertainment

Caesar's Palace, Luton, Monday to Thursday, 14th to 17th December. VARIETY ENTERTAINMENT Only £10 per person or Blazers, Windsor

Monday — Wednesday 21st—23rd December JIM 'NICK NICK' DAVIDSON only £9.50 per person

Individual bookings welcomed

In addition to above we have fully inclusive arrangements for Jim 'Nick Nick' Davidson in the evenings at Blazers, pre-Christmas and early New Year!

Sampson Travel Coaches

37 Barnet Road, Potters Bar. Tel: Potters Bar 44351 or Waltham Cross 29492

## SUNSET RESTAURANT

FINEST QUALITY SALT BEEF

also

CHICKEN — TONGUE — KEBAB  
LATKAS — FISH — SALADS  
CHOPPED LIVER — SANDWICHES

KOSHER STYLE AND CONTINENTAL FOODS

(FULLY LICENSED)

### SUNSET RESTAURANT

22 BALLARDS LANE LONDON, N3 (FINCHLEY CENTRAL) TEL. 346-3938

TAKE AWAY SERVICE AVAILABLE

## Everybody Knows

# KWIK CARS

MINI CARS ARE CHEAPER!

**CHEAPER!**

**POTTERS BAR 45444**

**VANS WITH WORKING DRIVER**

# MUSIC IN BARNET

## Saturday December 12

Barnet Orchestra at Hendon, Hendon School, Golders Rise, Hendon. Works by Tchaikovsky, Mussorgsky and Dvorak. 7.30 pm. (205 2418).

## Sunday December 13

Mill Hill Toc H Music Club, Civic Hall, Borehamwood. Chilingirian String Quartet. 7.45 pm. (953 9872 or 959 1173).

Carols to mark International Year of the Disabled Person. All Saints Church, corner of Oakleigh Road North/Myddelton Park, Whetstone. 3 pm. (446 2595).

## Monday December 14

Hendon (St. Mary's) Music Society, Hendon Library, The Burroughs. 8 pm. 'A seasonal programme of words and music'. (959 1257).

## Tuesday December 15

East Barnet Library Gramophone Society, 85 Brookhill Road, East Barnet. 8 pm. An Xmas Programme. (440 4376).

Ravenscroft School Carol Service, Barnet Parish Church, High Street, Barnet. 7.30 pm.

## Saturday December 19

Barnet & District and Finchley Choral Societies Carol Concert, St. Margaret's URC Church, Victoria Avenue, N3. 7.30 pm. (445 8401).

Hendon Salvation Army Band's 'Prelude to Christmas', Brampton Grove Citadel, Hendon. 7 pm. They are also playing at Brent Cross Shopping Centre during the day.

Friern Barnet Library Gramophone Society, Friern Barnet Road, Friern Barnet.

Christmas social. 8.10 pm. (368 2580).

## Sunday December 20

Festival of Carols and Readings, Church of St. Philip the Apostle, Gravel Hill, Finchley, presented by members of the Royal Opera House, Covent Garden. 8 pm. (346 4118).

## Monday December 21

Barnet Brass Band jointly with Barnet & District Multiple Sclerosis Society Christmas Carol evening outside Marie Foster Home, Wood Street, Barnet. 7.30 pm (inside if wet) (368 3093).

## Tuesday December 22

Hendon Library Gramophone Society, The Burroughs, Hendon. Christmas party. 7.30 pm. (202 5625)

## Thursday December 24

Barnet Parish Church Recitals. Festival of Nine Lessons and Carols. 7.30 pm. (449 7760)

## Tuesday January 5

East Barnet Library Gramophone Society, 65 Brookhill Road, East Barnet. 'Not a one track mind'. 8 pm. (440 4376)

## Thursday January 7

Friern Barnet Library Gramophone Society, Friern Barnet Road, Friern Barnet. Members' choice. 8.10 pm. (368 2680)

## Saturday January 9

Barnet Parish Church Recitals. Londinium Ensemble. 7.30 pm. Admission £1, OAPs/children. 70p. (449 7740).

A festival of music to mark launching of New Barnet Corps Salvation Army Centenary, Citadei, Albert Road, New Barnet. 7 pm. Guests of honour, British Commissioner, Denis Hunter and Mrs. Hunter. (440 4649).

## Monday January 11

Hendon (St. Mary's) Music Society, Hendon Library, The Burroughs. 'The Mannheim School and their Contemporaries'. 8 pm. (959 1257)

## Tuesday January 12

Hendon Library Gramophone Society, The Burroughs, Hendon. 'Mengelberg: half a century of Dutch music-making'. 7.30 pm. (202 5625)

## Pub Music

### Sundays

\*Jazz Club (Bernie Tyrrell), The Salisbury Hotel, High Street, Barnet. 12 noon—2 pm (449 0081).

\*Bob Guthrie Jazzmen. The Queen's Head, 248 Regents Park Road, N3. 8.30—10.30 pm (346 1012).

\*Orange Tree Folk Club, Orange Tree, Friern Barnet Lane, Friern Barnet. 8 pm (863 3608).

\*Rock and Blues, Torrington Arms, Lodge Lane, High Road, North Finchley. 8.30 pm (445 4710). (Not December 27).

### Thursdays

\*Black Bull Folk Club, Black Bull Public House, High Road, Whetstone, 8 pm (77 58831).

# MAYOR'S APPEAL

A CHEQUE for £100 was presented to the Mayor's Appeal by All Saints Church, Childs Hill, this year celebrating its 125th anniversary.

The presentation was made to the Mayor of Barnet, Councillor Mrs. Rosa Freedman, by Mr. John Button, Church Warden, and Mr. Colin Carne of the Parochial Church Council.

The Appeal stands at almost £10,000. The money will go to research into Crohn's Disease in Childhood and to fund a new laboratory at St. Bartholomew's Hospital London, one of the country's leading research centres. Industry is giving strong support to the fund. Argos of Edgware have contributed a £300 voucher and £200 of other prizes for the Grand Competition to be held in April. Recent contributions include cheques from Whitefield and Edgware Schools.

## Diary Dates

Wednesday December 16: Christmas Concert by the Royal Covent Garden Opera Company at St. Bartholomew's Hospital. 6.30 for 7.15 pm.

Saturday, December 19: 10.30 am. Hendon Band Carol concert, Brent Cross Shopping Centre.

Wednesday, February 24: Supper, Cabaret and race films. Inglis Barracks, Mill Hill. Course opens 7 pm. £5.50 inclusive. Contact Major E. Lyons, Inglis Barracks, Mill Hill. (346 2611).

# Local Theatre Guide

## December 19 and 20

Barnet Youth Drama Centre presents 'The Dragon' by Eugene Schwarr, 142 High Road, East Finchley. Good family entertainment. Sat: 7.30 pm, Sun. 4 pm. Admission 70p. (883 9957)

## January 6 to 9

Hampstead Garden Suburb Dramatic Society presents 'Winnie-the-Pooh', Bigwood House Hall, Bigwood Road,

NW11. Tickets only in advance (455 8204). 6th and 7th, 8 pm; 8th, 6 and 8.30 pm; 9th 3 and 7.30 pm.

## January 13 to 16

Concordé Players present 'Alibaba', Barnet College Theatre, Fitzjohn Avenue, Barnet. 7.30 pm (Sat. mat. 2.30 pm). Tickets: £2.50, OAPs/children £1.50, from The Old Bull, 68 High Street, Barnet and 881 2471.

# Tassit Ltd

BRITISH TRADITIONAL FURNITURE

# PRE-CHRISTMAS SALE

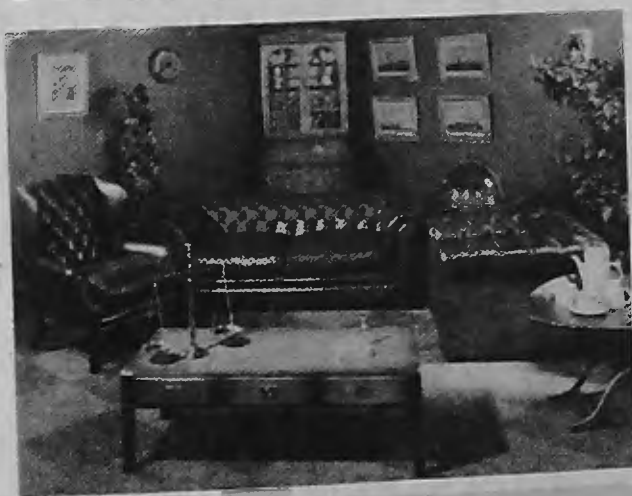
Enormous Reductions on all Furniture

Lounge suites

Dining Room suites

Strachan fitted bedroom display

at half price



339 FINCHLEY ROAD, NW3

Telephone: 01-794 9363

# VERY SPECIAL CHRISTMAS OFFERS

These prices do not include speakers, aerial or fitting charge

Pioneer KEX 23 Component Car Stereo LW, MW, FM



Normal Price	Our Price
£213.70	£170.96
GM 4 amp £45.00	£34.00
VAT £38.80	VAT £30.94
<u>£297.50</u>	<u>£235.90</u>

Pioneer KP 5400 LW, MW Stereo Cassette



Normal Price	Our Price
£85.00	£72.25
VAT £12.75	VAT £10.83
<u>£97.75</u>	<u>£83.08</u>

Radiomobile 520 MW, LW Radio Cassette



Normal Price	Our Price
£138.00	£110.40
VAT £20.70	VAT £16.56
<u>£158.70</u>	<u>£126.96</u>

Philips AC 800 AM, FM Stereo Radio Cassette



Normal Price	Our Price
£149.49	£115.60
VAT £21.67	VAT £17.34
<u>£166.16</u>	<u>£132.94</u>

Radiomobile 435



Normal Price	Our Price
£115.00	£86.25
VAT £17.25	VAT £12.93
<u>£132.25</u>	<u>£99.18</u>



THE CAR AUDIO PEOPLE  
CAR RADIO SERVICES LTD

1144 High Road, Whetstone, London N20. 01-445 1026

# TOYOTA

Come to Pannell's and view the  
**EXCITING RANGE OF TOYOTA CARS**  
**FROM THE STARLET TO THE SUPER CROWN**

Full range of light  
 commercial vehicles

Pick-ups 22cwt. vans  
 Mini buses, etc.

All models currently in stock — COME AND HAVE A TEST DRIVE  
 Full servicing and after-sales service. Export and leasing facilities available.

## PANNELL'S OF LONDON

HORNSEY N.8  
 01-348 4407

GOLDERS GREEN N.W.11  
 01-455 3563/4

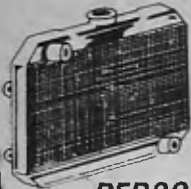
FINCHLEY N.2  
 01-349 2792/3

BRITISH & CONTINENTAL

### RADIATORS

LARGE STOCKS — MOST TYPES FITTED  
 WHILE-YOU-WAIT

Repairs and specialist work undertaken on the premises



FUEL TANK REPAIRS  
 & EXCHANGES

VIC SMEE (Radiators) CO LTD.  
 168 Chapter Road, London, NW2

TEL. 459-6467/6230

PERSONAL CALLERS WELCOME

## IT'S TYRE BARGAIN TIME



FULLY GUARANTEED  
 TUBELESS TYRES FROM

**£7.90**  
 + VAT

ELECTRONIC WHEEL BALANCING  
 PUNCTURE REPAIRS FREE FITTING

We specialise in  
 JAGUAR/DAIMLER/FERRARI  
 PORSCHE

HUGE DISCOUNTS ON ALL MAKES

### BLUE STAR BATTERIES

FROM ONLY

**£14.50** + VAT



**Save! Save! at**

**FIVEWAYS TYRES**

1 PAGE STREET, NW 7

203 2088/5381

OPEN 7 DAYS A WEEK

## NO INCREASE IN OUR LABOUR CHARGES IN 1981 NEW BATTERY OFFER

FORD, HILLMAN, AVENGER, TRIUMPH, DOLOMITE AND VARIOUS B.L. CARS

Commencing from £18.45. Fully guaranteed and various other reductions

### SUN ELECTRONIC MOTOR TESTERS

We now have the latest Tuning equipment for test and report on your motor car. Fix an appointment to get the best economical performance.

LUCAS MOTOR OIL. 5 litre cans at an unbeatable price of **£2.99** + VAT

## AUTO ELECTRICAL SERVICES

WHITCHURCH PARADE, WHITCHURCH LANE, EDGWARE. Tel: 01-952 4372/3

### CRASH REPAIRS SPRAYING

FREE ESTIMATES

### DOLPHIN GARAGE

COCKFOSTERS

NEXT TO TUBE STATION

Tel: 01-440 7456

### S. A. TAPP LTD

AUTO ELECTRICAL SERVICES

- ★ REWIRES
- ★ DYNAMOS
- ★ STARTERS
- ★ ALTERNATORS
- ★ RECONDITIONED UNITS
- ★ REPAIRS
- ★ SERVICE EXCHANGE
- ★ FAULT FINDING



**01-527 3556**

BARCLAYCARD  
 VISA

498 Chingford Mount Road, E4

Lounge Suite for sale — 4 pieces — 3  
 winged chairs one two seater settee all  
 in velvet £250, 952 1636

R. C. MOODY & SONS, Builders and  
 Decorators, National Home Enlarge-  
 ment Bureau, Registered Member.  
 906 2200 599 4851.

QUALIFIED SECRETARY is available  
 for typing. Working from home, call  
 Mrs V. Rigden 01-440 0809.

DAVIS AND SON REGISTERED, Est.  
 1972. Decorators and Plumbers. Esti-  
 mates Free. 01-959 0552.

FITTED BEDROOM FURNITURE.  
 Custom made by experienced Crafts-  
 man. 01-368 1521.

# Letters to the Editor

CAN ANY of your readers help us at the Oxfam Shop, 155 Station Road, Edgware? We still need more voluntary helpers to join the existing friendly team, who would be able to give a regular half-day, or more, a week. Previous shop experience is not necessary.

We are also looking for a caring person who would take responsibility for running the shop, spending probably at least two days a week at the shop. In addition we need someone to look after the overseas handicrafts we sell, as well as donated goods, doing the displays and stocking shelves.

This permanent shop, which opened in June, has been most successful in raising money for Oxfam's work overseas and we are most grateful for the support of our donors and customers. We now have Christmas cards and gifts on sale and a good range of winter clothing. The shop is open daily from 10 am to 5.30 pm.

If anyone can help at the shop, please 'phone me on 348 4225.

**Francis Davison,**  
Oxfam,  
173 Archway Road,  
Highgate, N6 5BB

FM RADIO is Finchley Hospital's own radio station which broadcasts to patients and staff. It was set up three years ago with money donated by the League of Friends, and its main purpose is to provide easy listening music together with interviews, features, news and items of local interest.

The station is manned by volunteers who participate both as presenters and ward visitors, but we now need new volunteers (male and female) to act in either capacity.

If any of your readers can spare some time to help with these worthwhile activities we would be grateful if you would telephone Francis Tymkow on 01-883 9037.

If you can let us have some records to help with our record library please contact me on 01-445 6594.

**Mike Segall,**  
8 Offham Slope,  
Woodside Park, N12 7BZ

## ALLOTMENTS

There are vacant plots on The Crescent and Hatley Close allotment sites, Friern Barnet.

If you want to rent an allotment contact the secretary, Mr. F. L. Edwards, 9 Haslam Court, Waterfall Road, N11 (tel. 368 6090).



## A 'very brave man'

RAYMOND SAYERS, a member of the borough's Building Control Department, is also a hero. On Friday, May 8, he realised that his next door neighbour, a man of 95, was trapped in an upstairs room when fire broke out in the house, in Watford Way, Hendon. Without any thought for his own safety Mr. Sayers fetched a ladder and climbed up and through the window, facing dense smoke and flames, to pull his neighbour to safety.

The Divisional Commander of the Fire Brigade thanked him for his 'excellent and determined reaction to a dangerous situation.' The Mayor and Councillors recorded their congratulations to Mr. Sayers on an illuminated manuscript which was presented to him by the Mayor, Councillor Mrs. Rosa Freedman, during a reception at the Town Hall, Hendon. 'I am very proud to present this vellum to a very brave man,' the Mayor said.

G & R TYRES WISH SEASONAL GREETINGS TO ALL CIVIC NEWS READERS

## BATTERIES

2 YEAR GUARANTEE from £14  
5 YEAR GUARANTEE from £18

Antifreeze 95p per litre Oil £2.39 per gallon

**TYRES** New from **£9**  
Remould **£4**

All + VAT at 15%

ALSO TAXI PARTS IN STOCK

## G & R TYRES

120 KINGSGATE ROAD, KILBURN  
(Just off Quex Road) NW6 Tel: 328 0121

## Falcon Motor Accessories

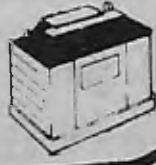
OPEN 7 DAYS! 9AM - 7PM  
SUNDAY 10AM - 2PM

### TUNE IN NOW!

ALL MOTOR PARTS AND ACCESSORIES FOR THE D.I.Y. MOTORIST

CALL US ON 346 8828

233 Nether Street  
(Near West Finchley Underground)



## THIS SPACE COULD BE WORKING FOR YOU

You are reading it — so your client could be reading it  
It would cost you £..... to advertise in this space  
Contact us on 366 4626

## BARNET TYRES MOBILE TYRE & BATTERY SERVICE



	RETAIL	OUR PRICE
145x10	£24.92	£9.95
155x12	£28.90	£12.10
155x13	£31.75	£12.85
165x13	£35.68	£13.65
185/70x13	£46.60	£18.00
Dunlop ER70VR15	£91.60	£55.75

PLEASE STATE SIZE WHEN ENQUIRING

ALL PRICES SUBJECT TO V.A.T.

### ALL MAKES OF TYRES IN STOCK

WHEEL BALANCING!  
TRACKING!  
PUNCTURE REPAIRS!



BATTERIES AT TRADE PRICES  
2 year guarantee from £14.00

**WE COME TO YOU** AT NO EXTRA COST  
SAVE TIME SAVE MONEY SAVE PETROL

OPEN 7 DAYS A WEEK  
Mon - Sat 8.30 a.m. - 6.00 p.m.  
Sunday 10.00 a.m. - 4.00 p.m.  
Phone now 01 449 4708



## SPECIAL OFFER



MASSIVE DISCOUNTS off  
PIONEER—CLARION—BLAUPUNKT  
& Other Leading Makes of Car Audio



We offer a superb Sales and expert fitting service on Radios, Cassettes and Car Hi-Fi Systems.  
Specialist Fitting Centre for:  
Glass Sun Roofs — Car Alarms — Electric Aerials — Child Seats  
— Power Amps and Graphic Equalisers. **RING US FOR A QUOTE ... BEST PRICES AROUND.** Car Audio Systems designed and installed to a very high standard. 12 months guarantee Parts and Labour.

**HAMPSTEAD CAR STEREO CENTRE**  
264 Streatfield Road, Kenton, Middx. Tel. 01-204 2177/8  
57 Fortress Road, London, NW5. Tel. 01-267 9224/5  
Open Sun Kenton Branch, 9 am to 1 pm. 41-21

ALL ADVERTISING ENQUIRIES PHONE 366-4626-7 367-0246

## BARNET CIVIC NEWS

OFFER TRADERS THE ONLY MEDIA WHICH WILL REACH EVERY HOME WITHIN THE BOROUGH OF BARNET EACH MONTH

# HOUSEHOLD SERVICES

## HOOVER

### ELECTROLUX SERVICE

Work guaranteed.  
Quotations Free. Hoover trained engineers.  
Hoover cleaners and Hoovermatics wanted.  
**WHY PAY MORE**

Contact P. Jarvis  
**01-441 5152**

### HEATING PROBLEMS?

### CONSULT COHEAT LTD

FOR NEW INSTALLATIONS MAINTENANCE and SERVICING

- Members of H.V.C.A.
- Corgi Gas Installers
- Potterton appointed service contractors
- Stockists of Potterton and Ideal/Stelrad spares

UNIVERSAL HOUSE  
LINCOLN WAY  
ENFIELD, MIDDX.  
Tel. 01-805 2070

Tel: 01-883 3191  
01-883 0819

## BILL BOUNDY TRANSPORT

Express Delivery Service  
Haulage Removals

### J & J PLUMBERS

#### BLOCKED DRAINS

Toilets, Baths £12

Main Drains £14

1 Month Guarantee

#### PLUMBING

Free estimates given  
Washing Machines £25.50

Toilets £35

(excluding materials)  
Collapsed drains — Free estimates

Roof Installation & Fencing

**24-hour service**

**01-367 4950**

### CENTRAL HEATING from £900

C.O.R.G.I. registered installers

D. W. BRANSON & SON  
14 Pennine Parade  
Pennine Drive, NW2  
Tel: 01-458 9837

### EDGWARE STRIPPING CO.

Doors stripped from £8.00  
IN-SITU STRIPPING AND  
WAXING UNDERTAKEN

### COLLECTION AND DELIVERY SERVICE

TEL: 951 0646 ANYTIME

### CONSULT THE SPECIALISTS



The Complete Interior and Exterior Painting and Decorating Service

Estimates Free

Property Maintenance and Contract Decorating Undertaking

24-Hour Ansafone

### W. M. DECORATING CO

92b HIGH ST, EDGWARE 01-952 8733

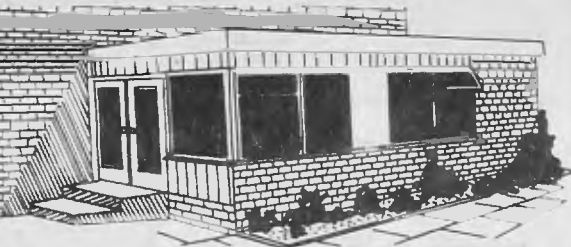
## ANDREWS DAMP PROOFING

Rising Damp — Woodworm — Dry Rot  
Guttering — Electrical Work — Specialists

20 years Guaranteed — Free Test

Telephone Mr Andrews on

**801 3267**



## CHASESIDE HOME IMPROVEMENTS

### SPECIALISTS IN

Extensions, Brickwork and Conversions

Plans and Permission obtained.

STARTING DATES AVAILABLE From January 1982

ESTIMATES FREE

**803-1093 & 366 2261**

## T.O.T. SUPPLIES BUILDING MATERIALS

SAND — BALLASTS FROM £3.00

CEMENT ON SPECIAL  
NEW BRICKS FROM £35.00 PER 1,000

THERMALITE BLOCKS  
3in £3.00 per yard 4in £3.75 per yard  
8in £7.50 per yard

PAVING — SLAB — WALLING  
RSJs 7 × 4 — 8 × 4

### ROOFING SLATES NEW SAWN TIMBER

6 × 1 flooring 15p ft. 6 × 1 Tag 15p ft.  
2 × 1 6p ft. 2 × 2 9p ft. 3 × 2 14p ft. 4 × 2 16p ft.  
6 × 2 30p ft. 7 × 2 34p ft.

### ALL OTHER SIZES

8 × 4 1/2 Chipboard £4.75

8 × 4 1/2, 8 × 4 3/4 Plywood

### ROOFING FELT

ALSO FENCING PANELS IN STOCK

### SKIP HIRE

IT'S WORTH A CALL

**01-808 0342**

**01-808 7795**

79 Garman Road, of Willoughby Lane  
Tottenham, London N17

## FOR AS LITTLE AS £50

We can modify any open Fireplace to work with Gas and burn permanent Coal (Lava Rock). It works just like ordinary coal without ashes, smoke or smell.



Charcoal Grills and Bar-B-Q's Available for any purpose

For details Tel: 01-272 0078

### LAZY-MAN GAS (U.K.)

118 JUNCTION ROAD, N19

## K. J. D.

### LOFT INSULATORS

COMPLETE SUPPLY AND FIT SERVICE

PHONE:

**531 1608 or 520 7880**

FOR YOUR FREE ESTIMATE

ESTABLISHED 1977

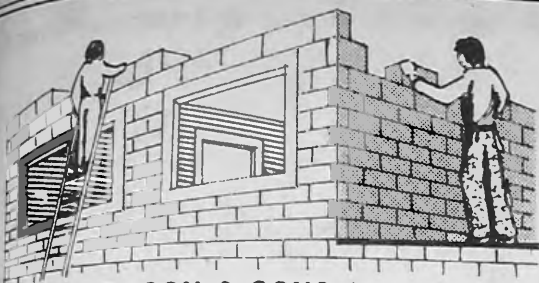
## COSYTOP

### LOFT INSULATORS

GOVERNMENT GRANTS AVAILABLE

Our Installations are Guaranteed to meet Council Approval.  
Our Materials to BS 5803.  
Free Estimates

Phone: (97) 36598  
(97) 21279



## RICHARDSON & SONS (BUILDERS)

Offer a comprehensive building service to suit your needs.

Our services include roof work, gutters, plastering, plumbing, through lounges and arches, extensions, bathroom and kitchen conversions.

For a free estimate telephone:

**882 3549**

## STOP LEAKING GUTTERS



**Guaranteed 25 Years**

Continuous Aluminium Seamless Gutters

Our factory on wheels tailor makes the big 5" capacity gutters at your home. No sectional joints means no leaks, never rusts, pre-painted in colour, never paint again. Free estimate without obligation.

Ginty Construction Ltd., Seamless Gutters Dept, Freeport, Barnet, Herts, EN5 2BR. Tel: 01-449 2209.

## HOME EXTENSIONS

Adds value & space to your home.

- ★ Plans drawn at no extra cost.
  - ★ 10 year guarantee. ★ 100% loans available.
  - ★ An Association of Builders
- Specialising in Home Extensions.



IMMEDIATE STARTING DATE FOR PLANS THAT HAVE BEEN PASSED

## KINGSWAY HOME EXTENSIONS

FOR FREE ESTIMATES AND ADVICE

RING ANYTIME **01-960 0953**

## D. HULL & SONS BUILDERS MERCHANTS

For all building materials

Fast, efficient service. Competitive prices.

Trade enquiries welcome  
Temporary private  
accounts

58 Coombes Road  
London Colney  
Herts AL2 1ND

Tel. BOWMANSGREEN (0727) 22208

## OAKLEY PLUMBING & HEATING ENGINEERS

### PROMPT 24-HOUR SERVICE

Boiler Servicing  
Plumbing, Maintenance

Specialists in Central Heating and plumbing installations  
Free estimates. All work guaranteed  
Credit terms available

Tel: 889 9537/7645 for details

## M & M HEATING SERVICES

GAS CENTRAL HEATING SPECIALISTS  
DOMESTIC PLUMBING INSTALLATIONS & REPAIR  
ARC & GAS, PIPE WELDING & CUTTING

FREE QUOTATIONS  
ALL WORK GUARANTEED  
92b High Street, Edgware

01-951 1577  
(24-hr. ANSAFONE)

MEMBER OF THE INSTITUTE OF DOMESTIC HEATING ENGINEERS



## DOUBLE GLAZING

### InsuGlazing from Alpine

The ultimate in double glazing in the superior white finish

For professional advice free estimate:

A. LAJER  
Tel: 01-452 0354

Put the cover with a future  
**alpine**  
double glazing



## CABINET MAKER DESIGNS

and makes Cupboards for Bedrooms. Loft Conversions and anything in wood! Furniture repaired, etc. No job too small  
Free Estimate

346 8975

Messages 759 9681

## WHY BURN OFF OLD PAINT?

Let us, the professionals, strip your doors and furniture ready for painting or polishing



SAME DAY SERVICE NOW AVAILABLE SATURDAYS

Phone for quotes and interior restoration service

LONDON STRIPPING CENTRE  
13/15 Canfield Place, NW6  
01-328 7728  
555 7996, 45 74213

## KLEENTEX

Specialist cleaning in the home

CARPETS  
UPHOLSTERY  
CURTAINS

01-886 7602



Phone now for Free Quotation

## T.M.A. & CO.

(Established 20 Years)

Interior and Exterior Decoration

We undertake electrical repairs and rewiring to L.E.B. standards Central heating and plumbing

Free Estimates No obligation



01-328 2535

# WILLIAMS SPORTS

366 Ballards Lane, Tally Ho Corner, Finchley, N12. Tel: 445 3596  
 Gateway House, 328 Regents Park Road, N3. Tel: 346 2398

## More for Christmas than just sports gear.

Whatever the sport, when you team-up with Intersport you get a great line-up of Christmas gift ideas and the advice of knowledgeable experts that you would expect from Britain's biggest range of independent sportshops.

**adidas**  
 Sporty Tracksuits £12.99 to £17.99  
 Mamba Trg. shoes £12.15 to £13.99

**DUNLOP**  
 Dunlop Golf Balls  
 Special Xmas Packs  
 Mischief Fort Squash Rackets

**PATRICK**  
 Super Keegan Soccer Boots  
 RRP £23.95  
 Special Promotion £19.95  
 Save £4.00 Nov 23—Xmas

**mitre**  
 Special Promotions  
 Nov 23—Xmas  
 Marauder Football Boots  
 Boy's £8.99 Save £2.00  
 Men's £11.99 Save £1.51  
 Clarino Pro-League  
 Football £8.99 Save £2.00

**Slazenger**  
 Panther Sweater  
 RRP £12.95  
 Special Promotion £9.95  
 Save £3.00 Nov 23—Xmas

**le coq sportif**  
 Spurs Home and Away  
 Football Strip

**SPEEDO**  
 Sport Stripe Story —  
 Matching Swimwear,  
 Tracksuit, Towel and  
 Sports Bag.

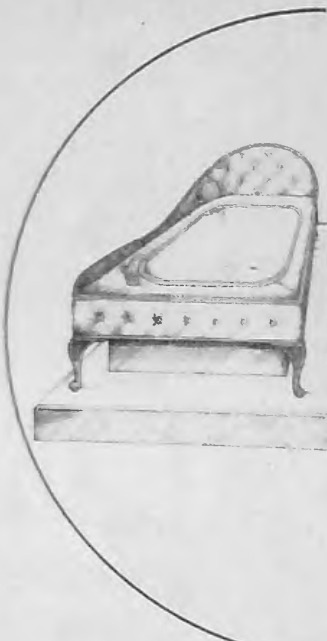
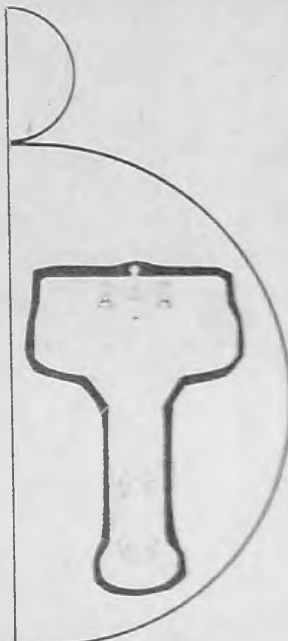
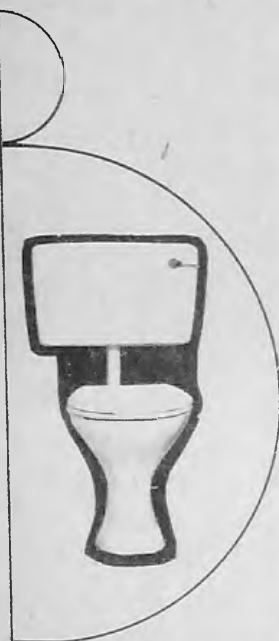
**umbro**  
 Arsenal and Liverpool  
 Football Strip

CLOSED THURSDAYS

**INTER SPORT**



“we’re being modest when we say we’re the best.”



WITH A NAME LIKE THE BRITISH BATHROOM CENTRE — WE HAVE TO BE, TO SUIT YOU, THE DESIGNER, THE ARCHITECT, THE CONTRACTOR, THE FILTHY RICH AND THE SKINT

IF YOU'RE THINKING ABOUT A NEW BATHROOM, COME TO OUR LONDON SHOW ROOMS WHERE YOU'LL SEE OVER 40 BEAUTIFUL DISPLAYS FOR EVERYONE'S BUDGET AND TASTE.

WITH OUR FACTORIES IN WALES PROVIDING PERFECTLY CO-ORDINATED TILES AND SANITARY WARE, YOU'LL BE ABLE TO CREATE YOUR OWN EXCLUSIVE BATHROOM

IF YOU DON'T HAVE THE CONFIDENCE TO STYLE YOUR OWN BATHROOM OUR VERY OWN DESIGN SERVICE HEADED BY PAUL BITTON WILL BE ABLE TO CREATE SOME STYLISH DESIGNS

TO SUIT THE AMBIENCE OF YOUR HOME WHETHER MODERN OR TRADITIONAL

WE ARE OPEN MON-FRIDAY 8.30-6 AND FOR YOUR CONVENIENCE SUNDAYS 9.00-2.00

THERE IS AMPLE PARKING

FOR EXPORT ENQUIRIES TEL 01 500 0586

01 802 6493  
 01 800 2538  
 01 802 6696

British Bathroom Centre

602-604 SEVEN SISTERS ROAD, TOTTENHAM N15