



JULY/AUG '70

# BARNET

## LONDON BOROUGH COUNCIL

# CIVIC NEWS

## THE LONDON TABLE SHOWS:

Only five London  
boroughs have rates  
lower than Barnet

BELOW IS THE Rates Table for 1970-71 for the 32 London Boroughs, excluding water rates and before the application of rate support grant.

It will be seen from the table that only five London Boroughs have lower rates for the current year than the Barnet London Borough's 12s. 8d.

### London Boroughs

Authority	Rate poundage 1969-70		Rate poundage 1970-71		Penny rate product 1969-70	Penny rate product 1970-71
	s.	d.	s.	d.	£'s	£'s
Kensington and Chelsea	11	2	11	11	104,300	103,600
Westminster	11	2	12	2	440,000	450,000
Harrow	11	6	12	6	48,000	49,000
Lewisham	12	0	12	6	48,750	49,250
Hillingdon	11	10	12	7	73,110	74,880
Barnet	11	6	12	8	90,000	90,600
Croydon	12	3	12	8	88,800	93,000
Lambeth	11	10	12	9	80,900	80,750
Wandsworth	12	2	13	1	64,950	65,860
Brent	12	4	13	3	82,100	83,100
Greenwich	12	5	13	5	50,400	51,000
Hounslow	12	6	13	7	70,900	72,800
Kingston upon Thames	12	6	13	7	41,700	42,000
Bromley	13	3	14	2	68,750	70,000
Islington	13	0	14	2	78,750	81,500
Ealing	12	6	14	3	96,000	97,000
Camden	13	0	14	4	137,500	140,500
Merton	13	5	14	4	45,980	46,300
Enfield	12	7	14	6	75,500	76,000
Hammersmith	13	8	14	7	56,000	55,600
Richmond upon Thames	13	7	15	0	44,700	45,200
Sutton	14	2	15	0	41,000	41,500
Hackney	15	0	15	6	57,450	57,450
Bexley	14	9	15	8	46,000	46,200
Tower Hamlets	14	2	16	1	56,750	56,850
Southwark	14	10	16	4	73,750	72,000
Havering	16	0	16	5	51,700	52,350
Redbridge	15	4	16	5	52,900	53,700
Newham	15	4	16	9	58,900	59,200
Waltham Forest	15	11	16	9	48,550	49,400
Haringey	15	8	16	11	54,500	54,750
Barking	15	3	17	0	41,450	41,450



The Civic Procession returning from Hendon St. Mary's Parish Church after the annual Civic Service on 14th June. At the head of the procession are the Mayor and Mayoress, Coun. & Mrs. Ernest Asker.

## WORKSHOP AND TRAINING CENTRE FOR BROADFIELDS

### AREA

A SHELTERED workshop for the mentally ill, and an adult training centre at the Broadfields housing area are included in the Department of Health and Social Security's list for recommended loan sanction in 1970-71.

## FRIERN BARNET SUMMER SHOW

14-15 AUGUST, 1970

Bethune Recreation Ground  
Friern Barnet

### DIARY OF EVENTS

A publication giving details of forthcoming events in the London Borough of Barnet at which the public may attend, is issued fortnightly and is obtainable at any Council Office or Public Library in the London Borough.

This was reported to a recent meeting of the council's health and welfare committee, who received a scheme for the projects which provided for the training centre and sheltered workshop to be linked by a communal kitchen. Other shared facilities will include a staff dining room, a kitchen staff room as well as the boiler house and food stores.

### ACCOMMODATION

Accommodation for the proposed 150-place training centre will have a workshop, two handicraft rooms, personal training and domestic training rooms, a kitchen and laundry.

The 60-place sheltered workshop consists of two group workrooms, a classroom, dining/recreation hall, etc.



# Meet three more members



**Councillor J. S. Champion, J.P.**

Councillor John Champion has lived on the Watling Estate, Burnt Oak, for 42 years and has served as a Labour Party Representative of the Ward continuously for the past 15 years, being elected to the Council of the former Hendon Borough and then the London Borough of Barnet at the inception of the Council in 1964. Before election as a Councillor he was active in local Youth work and continues this interest as a Vice-President of the Hendon Battalion of the Boys' Brigade.

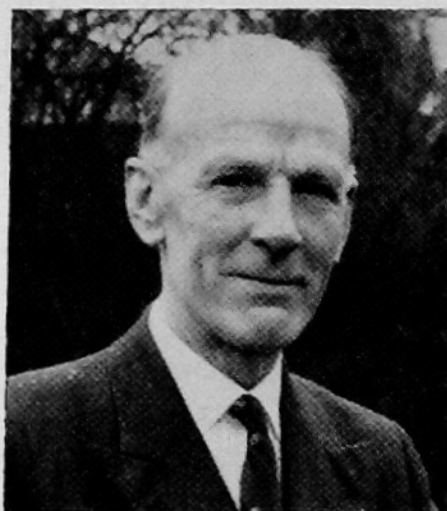
During his 15 years on the Council he has served on most of the main Committees including Education, Finance and Building & Town Planning, at present he serves on the important committees of Grahame Park and Burnt Oak Developments; also the Estates Allotments and Appeals Committees. He currently serves on the Governing/Managing body of the Orange Hill Boys and Orange Hill Girls Grammar Schools, also Edgware Secondary Modern School Edgware J.M.I., and Goldbeaters, Woodcroft, Barnfield and Courtlands, Dollis and the Fairway Schools, being the Vice-Chairman of the Managers of the latter Group.

Councillor Champion served the residents of the Watling Estate as a founder member and Chairman of the Watling Tenants & Residents Association and is now the President of the Association.

As a Railway Clerk he is active in the Trade Union movement. For the past 12 years he has been the Chairman of his Branch of the Transport Salaried Staffs' Association being the Secretary of the Branch prior to that time. He was elected to the National Executive Committee of his Trade Union last year and has represented the T.S.S.A. at the Annual Conference of the Labour Party and the T.U.C.

Councillor Champion has been active in the Local Labour Party since leaving the Army after the

Continued—column 4



**Councillor H. R. Brooks**

Councillor Brooks was born in Southend-on-Sea, was married at Westcliff on an anniversary of American Independence Day, the significance of which he is sometimes reminded, although husbands will appreciate a date easy to remember.

He still maintains a close link with Southend-on-Sea, and discussion and observation regarding local affairs in that County Borough often reveal informative comparisons vis à vis those of our own Borough.

Cllr. Brooks was educated at the Southend Technical School, which nowadays would be classed as a secondary school, one which was originally formed under the Education Act 1902 and still flourishes under the name of Southend High School. Education in those days was not so complex a matter as it is today, and he admits, without regret, that his inclinations then leaned rather to sporting than academic activities, without great harm resulting. He served with the Royal Fusiliers in 1918-1919, came to live in Edgware in 1941, and retired after many years as Chief Accountant to a well-known specialised Insurance Company in the City of London.

Cllr. Brooks was elected as one of the representatives for Edgware Ward to the former Hendon Borough Council in 1962 and to the Barnet London Borough Council in 1964. He has served on many Committees during that period, and is at present Vice-Chairman of the Health and Welfare Committee, a member of the Children's, Establishment and Finance Committees. He is also Chairman of Edgware Secondary School Governing Body, and Vice-Chairman of Group 10 Managing Body covering Edgware, Broadfields and Deansbrook Infants and Junior Schools. In addition he is a Council representative on a number of outside bodies relating to the work of the Health and Welfare Committee, the London Borough of Barnet Savings Committee and the Trustees of the Samuel Atkinsons Almshouses

Continued—column 4



**Councillor K. W. Hughes**

Councillor Hughes was elected to the Council in May 1964 as a representative for Childs Hill Ward, and among the major committees on which he has served are Housing, Highways and Finance. At the present time he is a member of the Buildings & Town Planning, and General Purposes Committees, also the Public Works Committee, and the Committee for Grahame Park & Burnt Oak Developments, to both of which he is Vice-Chairman. Cllr. Hughes also sits on the Greater London (North Western) Rating and Valuation Court, and is a Governor of Henrietta Barnett School, Vice-Chairman of the Governing Body of Orange Hill Schools, and also serves on the Managing Body of a group of Primary Schools.

He has been a resident in Hendon since his demobilisation from wartime service as a pilot in the Royal Air Force. After that time he maintained a link with the R.A.F. at Hendon, flying as a Navigational Instructor in the Volunteer Reserve Training Branch until just before the closing of the aerodrome for flying in 1958. He is married with three children, twin boys of 13½, and a married daughter with a baby girl, who also lives in this London Borough.

Holding an interest in a local building company, he has been actively engaged for many years in the building and improvement of property in most areas of the Borough.

Outside his Council activities, both he and his wife take an active interest in the old people of the Borough, but particularly in his own Ward, where there are a number of Old People's Homes. Both also serve on the committee of the Colindale Hospital League of Friends.

Being a member of the Rotary Club of Hendon since 1957, Cllr. Hughes has interested himself particularly in Community Service and International Service, acting for a time as Chairman for both of these Committees within Rotary.

Continued—column 4

**Councillor K. W. Hughes**  
Continued from column 3

In association with the International Service Committee Cllr. Hughes has been actively engaged in hospitality to the Police Students from all countries associated with the Commonwealth attending the various courses at Hendon Police College. Additionally, he acts as the Rotary representative on the Barnet Overseas Friendship Association, which promotes the extending of British hospitality to young people visiting this country. Since 1966 he has acted as Hon. Treasurer of the Anglo-Israel Friendship League of Hendon.

Cllr. Hughes serves as a representative of the Council on the War Pensions Committee for Barnet, and is a member of the Trustees Board for the Hendon Charities.

**Councillor J. S. Champion, J.P.**  
Continued from column 1

last war. At present he is a Vice-President of the Hendon North Constituency Labour Party in addition to holding office in the Burnt Oak Ward. He is on his Trade Union's Panel of Official Parliamentary Candidates.

In 1966 he was appointed a Justice of the Peace for the Gore Division of Middlesex and regularly sits at Hendon or Harrow Magistrates Court, two years after appointment he was elected to serve on the panel of Juvenile Magistrates.

Still a bachelor he looks after his widowed mother (Mrs. Champion will be 88 next birthday) who used to take an active interest in his public work and was well known at the Town Hall in the days of the Hendon Borough Council and until her incapacity was well known amongst residents of the Watling Estate.

**Councillor H. R. Brooks**  
Continued from column 2

(Edgware).

For those engaged in public life, the support and encouragement of one's wife is invaluable, and Cllr. Brooks is indeed fortunate in this respect. His wife is the present Hon. Treasurer of the London Borough of Barnet Ladies Club, a veritable 'Supporters' Club'.

His personal interests include county and club cricket, shared in a very knowledgeable degree by his wife, music—when he has time to enjoy it—club life, philately, before the flood of commemorative issues emerged, as well as outdoor pursuits generally, and in this latter respect, Cllr. Brooks can recommend Edgware air, particularly following the effect of the Clean Air Act. Likes people—dislikes—not very many—not overfond of London, the West End perhaps the least.



# SAFETY IN THE HOME

## THE PREVENTION OF ACCIDENTS IN THE HOME

Every year well over 8,000 fatal accidents occur in the home and in practically every instance these could be prevented with a little thought and common sense.

Those chiefly affected are children under five years of age and people of 65 and over.

Where there are children in the home the mother should:

★ Guard them whilst they are too young to have a sense of danger.

★ Train them in sensible behaviour from the earliest years.

And, above all,

★ Set them a good example.

Here are some of the more usual types of accidents and how they can be prevented.

### BURNS AND SCALDS

- ★ Guard all fires securely where there are young children or old people. See that the guards are fixed, of small enough mesh to prevent danger from sparks or children putting toys, etc., through the guard.
- ★ Turn the handles of cooking utensils and spouts of kettles in and not out on the stove, to prevent a child pulling the contents on to himself.
- ★ Fix the tablecloth, or turn it under, so that the toddler cannot pull hot tea, food, etc., over himself.
- ★ Place all the containers of hot liquid out of the way of everyone, particularly young children.
- ★ Keep matches out of reach of young children.
- ★ Never air clothes on fireguard, unless at a safe distance; or by hanging from the mantelpiece.
- ★ Remember household fires are most frequently caused by carelessness, i.e., watch those cigarette ends; switch off the iron if called away while ironing; and keep the chimneys swept.
- ★ Celluloid toys are highly inflammable and should never be given to children.

### FALLS

These are frequently caused by over-polished floors, small unanchored rugs, toys on the floor, rickety ladders, chairs and boxes used as ladders, insufficient lighting in passages or on stairways, low hanging clothes lines, loose stair carpets, and grease on floors. Remember others and keep the stairway clear of all obstructions. Attention should be paid to footwear, especially where old folk are concerned.

### SUFFOCATION

- (a) If a pillow is used for baby, let it be a firm one, never down or feathers.
- (b) A separate cot is essential for baby to prevent the tragedy of over-laying.
- (c) Baby's feed should be given in the natural position as if for breast feeding. Take time and do not leave baby to feed alone from a propped-up bottle.  
Baby should be helped to bring up the wind after feeding, to avoid choking. To do this, place him carefully over the shoulder or opposite arm and rub his back gently and firmly until he has brought up the wind.
- (d) If baby wears a plastic bib it should be firmly secured in the front, otherwise it may move and mould itself to the shape of the face and cause suffocation. The safest plan is to take a plastic bib off before putting baby down to sleep.

### CUTS AND STAB WOUNDS

Sharp objects such as knives, scissors, razor blades, pins and needles, should be put away where young children cannot find them. Adults should be careful in their use of sharp instruments.

### POISONING

Accidents from household cleansing aids, etc., are all too common. Keep all poisonous substances out of reach of children and clearly labelled. Medicine cupboards should be kept locked—with poisons in coloured or ridged bottles—and clearly labelled.

Medicines should never be taken in the dark. Follow the instructions on the bottle and measure, don't guess the dose.

Daily drugs are the worst menace where children are concerned—do not leave them on the bedside table.

### GENERAL

Electrical apparatus should only be repaired by an expert and if any serious defect is suspected a qualified electrician should be called in immediately.

A smell of gas should be reported at once and a leak, however small, should not be traced by a naked light.

Exercise care to see all gas taps are properly turned off and that gas burners when turned low cannot be blown out.

### TO SUM UP

CARE not FEAR is required in the prevention of home accidents, and a little thought and care will prevent tragedies which, even if they do not kill, may have the most disastrous and life-long consequences.





*An indication of the activities for boys and girls from the age of four to sixteen*

# CHILDREN'S ENTERTAINMENTS IN PARKS

Great efforts have been made to secure some of the best artistes to entertain the children in the parks for the coming Summer Season.

Programmes have been arranged to give greater variety with conjuring, ventriloquism and the old favourite Punch & Judy.

New names this year include PIET TOVENAAR who has entertained the children of famous families at many stately homes all over the country with his schoolboy dummy "OSCAR". TOM ANGUS an experienced performer who quickly makes friends with his audience. PERCY PRESS (Jnr.) and his brother LESLIE PRESS will each give his own show featuring that old lovable rascal Mr. Punch and his wife Judy. MISTER CHRIS the International entertainer will present his comedy ventriloquism which always causes plenty of laughs. JACK CROSBIE, JACK ROWLANDS and PETER PINNER are other well known entertainers who have been added to the list for your delight.

This does not mean of course that some of your old favourites will not be seen, because who remembers two years ago when "COUNT VERDINI" gave one of his best performances in the pouring rain and the children were sitting under a tree with umbrellas and macintoshes. He will be making you laugh again this year, come rain or snow.

Much thought has gone into the selection of artistes many of whom are members of The Magic Circle as well as being members of the Concert Artistes Association as it is the wish of the Council that only the best is good enough for the Borough of Barnet. Visit the Parks this season and have yourself a good time.

# PLAY LEADERSHIP SCHEME

Once again the London Borough of Barnet is holding a Play Leadership Scheme in Oak Hill Park, East Barnet, from Monday, 27th July, to Friday, 21st August.

All the games and competitions are free and children from the age of four to sixteen are invited to take part, everything is quite voluntary and children can participate in as many games and activities as they like. Numerous small prizes will be awarded to the winners of competitions. The games and competitions will include football, cricket, tennis, padda-tennis, rounders, soft ball, hockey, putting and volley ball, sports competitions, pet shows, fancy dress parades, treasure hunts, tug-of-war, tennis tournaments, putting tournaments, six-a-side football and sand castle competitions.

If wet, Church Hill Farm will be available for film shows, records and dancing, table tennis, draughts, chess, darts, cards and boxing.

**BUS SERVICES**  
**125 and 261**

This year the scheme has been extended to Clitterhouse Playing Fields, Claremont Road, Cricklewood, where the Junior School will be available in the event of inclement weather.

Buses 112, 113, 187a, 226 serve the area.

## Times and Places for Children's Entertainments

**In the Friern Barnet area** from Monday, July 27th, to Wednesday, September 2nd, at 3 p.m.

**Mondays**—Bethune Recreation Ground, Beaconsfield Road, N.11.

**Tuesdays**—Halliwick Recreation Ground, Coppetts Road, N.10.

**Wednesdays**—Friern Park, Friern Barnet Lane, Friern Barnet, N.20.

*continued on facing page*





## ANCIENT HALL AT BARNET

Established in 1573 by charter of Elizabeth I at the request of the Earl of Leicester, the Grammar School at Barnet occupied what is now the Old Tudor Hall. Situated in the grounds of the Barnet Further Education College the first school was simply a large brick hall built around 1575.

the Barnet College of Further Education.

One of its early governors was Thomas Ravenscroft whose alabaster tomb can be seen in Barnet Church opposite.

An upper floor was added later for boarders, its supporting pillar being known as the whipping post. Originally established to educate boys in grammar (Latin) with one senior master and one usher or undermaster, the school had an interesting history counting many notable ecclesiastics as masters.

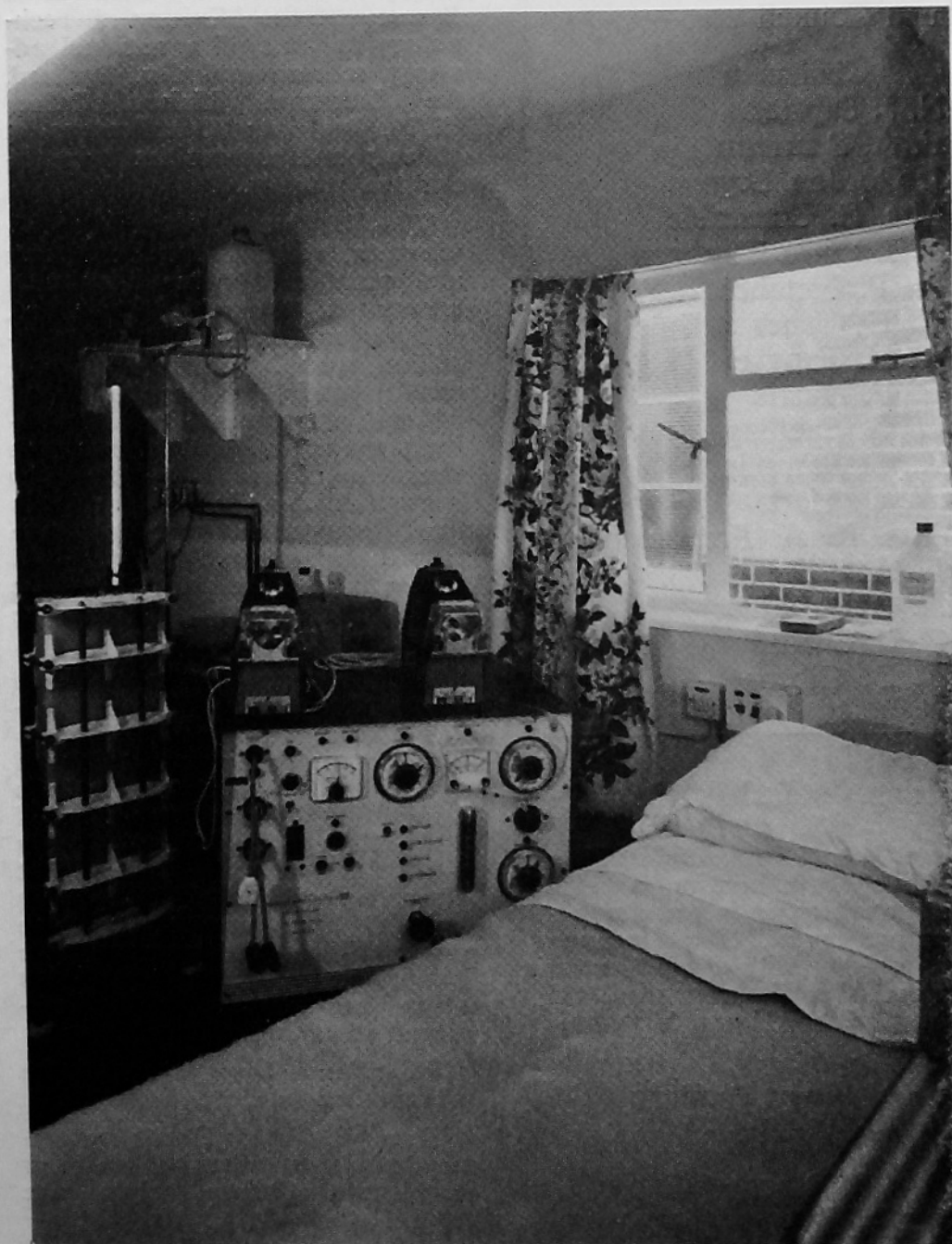
The hall is still in use for education purposes forming part of

## ARTIFICIAL KIDNEY MACHINE

THE PICTURE shows a typical Home Dialysis installation, perhaps more commonly known as an Artificial Kidney Machine, installed in a resident's home.

There are now six of these units installed in the Borough and others are in the pipe line.

Most of the projects have been designed and executed by the Minor Works Group of the Borough Architect's Department, in close liaison with the hospital authorities, who provide and install the specialist equipment which permits the patient to lead a normal life.



*continued from opposite page*

**Hendon and district** from Monday, July 27th, to Saturday, September 5th.

Mondays at 3 p.m.—Watling Park, Watling Avenue, Burnt Oak.

Tuesdays at 3 p.m.—Stonegrove Park, Edgware Road, Edgware.

Wednesdays at 3 p.m.—West Hendon Park, Goldsmith Avenue, Hendon, N.W.9.

Thursdays at 11 a.m.—Riverside Walk, Lullington Garth, Woodside Park, N.12;  
at 3 p.m.—Mill Hill Park, Wise Lane, Mill Hill.

Fridays at 3 p.m.—Basing Hill Park, Hendon Way, Hendon, N.W.4.

Saturdays at 3 p.m.—Hendon Park, Queens Road, Hendon, N.W.4.

**Victoria Recreation Ground, Ballards Lane, Finchley, N.3**, every Thursday at 3 p.m. from 30th July-3rd September.

**Stanhope Open Space, Chesterfield Road, Barnet**, every Wednesday at 6 p.m. from 29th July-26th August.

**Old Court House Recreation Ground, Wood Street, Barnet**, at 3 p.m. Monday to Friday, from 27th July-26th August.

## Free Parking Experiment at Finchley

THE LONDON Borough Council is hoping to arrange for the Finchley Central Station Car Park, Church End, to be opened to the public free of charge for a trial period beginning in September.

The starting date is likely to be September 26 on Saturdays only for 13 weeks.

Mr. G. A. Pentecost, the council's borough engineer and surveyor has been negotiating with officers of the London Transport Executive. When final arrangements are completed, and the go-ahead is given, "free parking" notices will be signposted in the area.

## MORE BLOOD DONORS

are urgently needed for sessions at the Regional Transfusion Centre

Deansbrook Rd., Edgware, or other centres in the area.

Ring 01-952 5511 for an appointment or collect an enrolment form from any Post Office.

**BLOOD DONORS  
SAVE LIVES**





The Works Director of one of the many companies in strong working contact with The Industrial Liaison Centre here discusses a design feature with the Industrial Liaison Officer.

## COMMITTEES OF THE COUNCIL

THE WORK of all Councils is carried out by what are termed "standing Committees". The Chairmen of the Committees, of the Barnet London Borough Council are:—

Committee	Chairman
Allotments	Cllr. N. J. Sapsted
Appeals	Cllr. F. A. Sharman
Buildings and Town Planning	Ald. J. Gordon Bryson
Carnival and Shows	Cllr. Mrs. E. Constable
Children's	Cllr. Mrs. Clara Thubrun
Development and Research	Cllr. A. P. Fletcher
Education	Cllr. V. H. Usher
Establishment	Ald. W. H. Tangye
Estates	Cllr. C. F. Harris
Finance	Ald. L. G. Snelling
General Purposes	Ald. K. G. Pamplin
Grahame Park	Cllr. W. G. Hart
Health and Welfare	Cllr. Mrs. R. A. Freedman
Housing	Ald. L. A. Hills
Libraries and Arts	Cllr. A. C. D. Miller
Policy Advisory	Ald. C. H. Sheill
Public Works	Cllr. F. D. Gibson

### FOR YOUR INFORMATION

Members of the public may enquire at all local Council Offices for information. Where this is not convenient they are invited to telephone the Press and Information Service at the Town Hall, Hendon (01-202 8282) Ext. 27.

### Children's Exhibition

From June 27 to August 31 a Children's Art Exhibition is being held. This exhibition is now a popular annual event. The winning items, together with a selection of commended entries, are exhibited at Church Farm House Museum.

#### Hours of opening:

Weekdays (except Tuesday): 10.00 a.m. - 12.30 p.m.; 1.30 p.m. - 5.30 p.m.  
Tuesday: 10.00 a.m. - 1.00 p.m.  
Sunday: 2.30 p.m. - 6.00 p.m.

## Service that helps industrialists in technical or management problems

A MAJOR difficulty that faces small and medium sized companies in the area, indeed throughout the country, is knowing to whom to turn when a new problem arises that their own resources cannot solve. Too often the problem is shelved, perhaps because they lack the necessary skills or equipment, efficiency can drop and profits eventually fall. However, there is a local organisation that can help.

The Industrial Liaison Centre based at Hendon College of Technology, locates skilled help to solve any technical or management problem raised by a N.W. London manufacturer. It is sponsored jointly by the London Borough of Barnet and the Ministry of Technology as part of a national advisory scheme and Mr. Spillard, the Industrial Liaison Officer (ILO), has over 80 colleagues at colleges and universities throughout the country.

The ILO has a direct link with scientists, technologists, engineers and management and information experts in research laboratories, colleges and universities, consultancies, specialised libraries, technical publishing centres and national companies. Through visiting perhaps four or five firms each week to discuss a problem he knows of capacity and skills in local companies that can be tapped by others. His personal service is free but charges may be made by sources of assistance he recommends.

Independent consultants have shown that the work of the Hendon Centre leads to benefits in local firms worth several thousand pounds a month. Investigations carried out by members of staff at the College itself have naturally contributed to this success, but other factors include the ILO's lack of bias towards any one source of help and his experience in processing related problems where one organisation or individual stood out above the rest.

What have been some of the jobs undertaken?

Through Mr. Spillard's recommendation, an electrical engineer at Hendon College helped one local firm to design new electro-

mechanical vibrators; cost savings expected will be of the order of 50%. Technologists from a Research Association and Harwell's Atomic Energy Establishment worked alongside another to help them save several thousand pounds a year on silver plating musical instruments. A postgraduate student at Brunel University completely redesigned a cleaning machine for another company that will shortly go into full scale production based on his recommendations. A local chemical consultant resolved a very tricky problem concerning impurities in metal powder mixtures prior to fabrication; this saved the company several thousand pounds a year and assured them of large orders for the future. Investigations and test work in Hendon College's strength of materials department helped a car accessory firm to design a new plastic seat belt buckle; several hundred thousand have been made at a cost 25% cheaper than the metal equivalent.

Many companies employing fewer than 50 people have been assisted considerably by planning a new layout or modifying an existing production line. Others have been helped with locating and publicising spare capacity and test facilities, development of new products, materials handling, analysing failures and production breakdowns, installing new equipment, and so on.

Every manufacturing organisation, however small, can benefit from the service offered as a progressive company must have access to outside specialised skills in order to develop profitably. Such help is available via an initial telephone call to the Centre: the number is 01-202 8755.



# LIBRARY SERVICES INVITE YOU TO.

## Choose the record you want to hear most

HERE is a selection of new records kept in the libraries:

### OPERA

- BERLIOZ** The Trojans. Covent Garden Opera (Davis)  
PHI/670 9002 **VKP**
- BRITTEN** The Golden Vanity. Children's Crusade. Wandsworth School Boy's Choir (Burgess). Britten (pf.).  
DEC/SET 445 **VKP**
- LEHAR** Giuditta. Gueden, Kmentt, Loose. Vienna State Opera Chorus & Orch. (Moralt)  
DEC/GOS 583-4 **VKP**

### VOCAL

- BRAHMS** Ein Deutsches Requiem, Vier ernsto Gesange. Caballé, Milnes, New England Conservatory Chorus, Boston S.O. (Leinsdorf).  
RCA/SB 6825 (1-2) **VKP**
- HENZE** Tre Raft of the Frigate "Medusa": Oratorio. Moser, Fischer-Dieskau, Regnier (speaker), North German Radio Cho. & Orch. (Henze).  
DGG/139428-9 **V**
- MADRIGALS** The Triumphs of Oriana. G. Watson (speaker), Purcell Consort of Voices, London Sackbut Ens., Elizabethan Consort of Viols. (Burgess).  
ARG/ZRG 643 **VK**
- VERDI** Requiem mass. Caballé, Cossotto, Vickers, Raimondi. New Philharmonia Cho. & O. (Barbirolli).  
HMV/SAN 267-8 **VP**

### FOLK SONGS

- BRITISH** The Knotty—Cast of the Victoria Theatre.  
ARG/ZTR 125 **P**
- The Lads of Northumbria. The High Level Ranters.  
TRAILER/LER 2007 **P**
- The World of Ewan McColl & Peggy Seeger.  
ARG/SPA 102 **V**

### GREEK MUSIC

- HADJIDAKIS** My Favourite Greek Songs—Songs of Hadjidakis and Theodorakis. Nana Mouskouri.  
FON/STL 5206 **VK**

### INSTRUMENTAL

- BEETHOVEN** Sonatas for pf. No. 4 in E fl. maj. op. 7; No. 25 in G maj. op. 79; No. 28 in A maj. op. 101. Barenboim.  
HMV/HQS 1205 **V**
- DVORAK** Quintet for Strings in A min. op. 1; Sextet for Strings in A major, op. 48. PHI/SAL 3765 **VKP**
- ELGAR** Quintet for Piano and Strings in A minor, op. 84; Concerto allegro for Piano, op. 41; etc. Ogdon, piano: Maguire, Roth violins: Ireland, viola; Schrecker, cello.  
HMV/ASD 2501 **P**
- FRANCAIX** Divertissement for Oboe, Clar. & Brn.; Divertissement for Bsn. and String Quintet, with Poulenc. Trio for Oboe, Bsn. & Pf.; Sonata for Clar. & Bsn.; Ravel; Introduction and Allegro for Flute, Clar., Harp and String Quartet. Members of Melos Ens.  
HMV/ASD 2506 **VP**
- HARP** Spanish Harp Music of the 16th and 17th Centuries. Zabaleta.  
ARC 198458 **VP**
- HAYDN** Trios for Pf., Vn. & Cello, No. 16 in D maj.; No. 27 in C maj. Gilels, Kogan, Rostropovich.  
SAGA/STXID 5311 **V**
- MOZART** Quartet for Strings No. 20 in D maj. K. 499, No. 22 in B flat maj. K. 589. Amadeus Quartet.  
DGG/139355 **KP**
- Sonatas for Piano No. 8 in A min. K 310, No. 17 in D maj. K 576, Rondo in A min. K 511. Ashkenazy.  
DEC/SXL 6439 **VKP**

### MUSIC FOR THE GUITAR

- ARNOLD** Guitar Concerto with Giuliani. Concerto for Guitar. Bream, Melos Ens. (Arnold).  
RCA/SB 6826 **V**
- RODRIGO** Concierto de Aranjuez; Fantasia para un gentilhombre. Yepes. Spanish RTV S.O. (Alonso)  
DGG/139440 **P**
- SONGS with GUITAR** Songs by Dowland, Rosseter, Pilkington, Jones, etc.; with Britten: Songs from the Chinese; Dodgson: 4 poems of John Clare. Brown (Ten.), Williams (guitar).  
CBS 61126 **VKP**

### ORCHESTRAL

- BEETHOVEN** Concerto for Piano and Orch. No. 1 in C maj. op. 15; Choral Fantasia, op. 80. Katchen. L.S. Cho. & O. (Gamba)  
DEC/SDD 227 **V**
- Symphony No. 7 in A maj., op. 92. Leonore Overture No. 3, Vienna P.O. (Schmidt-Isserstedt).  
DEC/SXL 6447 **V**
- Music for the Stage: Overtures to Leonora, Fidelio, King Stephen, Ruins of Athens, etc.: Prometheus; Egmont: incid. music.  
DGG/643628-30 **V**
- BRUCKNER** Symphony No. 2 in C min. Concertgebouw O. (Haitink).  
PHI/SAL 3785 **VK**
- Symphony No. 7 in E. with Wagner (Lohengrin) Prelude to Act 1; Siegfried Idyll. Columbia S.O. (Walter).  
CBS/61128-9 **V**
- CHAUSSON** Poem for Vn. and Orch. Op. 25, with Saint-Saëns, Intro. and Rondo Capriccioso; Vieuxtemps, Vn. Concerto No. 5, op. 37; Wieniawski, Concert Polonaise, op. 4, Zukerman L.S.O. (Mackerras).  
CBS/72828 **VKP**
- ELGAR** Nursery Suite, Severn Suite (Grania and Diarmid), Funeral March. Royal Liverpool P.O. (Groves).  
HMV/ASD 2502 **VKP**
- GRAINGER** Orchestral Works with music by Tovey, Gibbs, Gardiner & Quilter. Light Music Society O. (Dunn).  
COL/TWO 295 **P**
- HENZE** Ode to the West Wind, for 'cello and orch; Violin Concerto. Palm, Schneiderhan, Bavarian Rad. S.O. (Henze).  
DGG/139382 **VP**
- MAHLER** Symphony No. 2 in C min. (Resurrection). Mathis (sop.), Proctor (con.). Bavarian Rad. Cho. & O. (Kubelik).  
DGG/139332-3 **V**
- PROKOFIEV** Concerto for Piano and Orch. No. 5 in C maj., op. 55; with Weill. Kleine Dreigroschenmusik. Browning Boston S.O. (Leinsdorf).  
RCA/SB 6827 **VK**
- SIBELIUS** Symphony No. 4 in A min., op. 63; Rakastava: Suite, op. 14; Romance in C maj., op. 42. Hallé O. (Barbirolli).  
HMV/ASD 2494 **VKP**
- WALTON** Concerto for Viola & Orch.; Concerto for Violin and Orch. Menuhin, New P.O., L.S.O. (Walton).  
HMV/ASD 2542 **VKP**
- WILLIAMS, R. Vaughan** A Sea Symphony. Harper, Shirley-Quirk. L.S.O. & Cho. (Previn).  
RCA/SER 5585 **VK**
- Symphony No. 5; Serenade to Music. Solosists. L.P.O. (Boult).  
HMV/ASD 2538 **VKP**

### ELECTRONIC MUSIC

- WUORINEN** Time's encomium for synthesized and processed synthesized sound. Realised at the Columbia-Princeton Electronic Music Center. New York.  
NON/H 71225 **V**





A window display in Gateway House, 322 Regent's Park Road, Finchley, N.3, is an ideal and popular method of displaying the functions of the various departments of the Council. The display pictured here was presented by the Libraries Department and on view were approximately six hundred books.

### Window Displays

## HEALTH CENTRE

FORMERLY the East Barnet Clinic, alterations and adaptations were carried out during the latter part of last year to the ground floor of these premises to form the first Local Authority Health Centre established under the auspices of the Medical Officer of Health in the Borough.

The accommodation provides for up to five doctors, each with their own consulting and examination rooms, together with a fully equipped treatment room, waiting hall and reception facilities. Each doctor's suite is linked to the reception desk by a light, buzzer and telephone system to ensure the least possible delay to patients.

Facilities have also been made available for the normal Local Authority Health functions such as Mother and Child Welfare Services, Cervical Cytology, Family Planning, Chiropody, etc. Dental, Home Help and Speech Therapy Services remain on the first floor of the building.

Designed, furnished and equipped by the Minor Works Group of the Borough Architect's Department at a cost of approximately £11,000, the premises were brought into operation for their new functions in January of this year.



An interior view of East Barnet Health Centre.

The waiting room, with its pleasant decor.



## ADVICE ON ALTERING DWELLING HOUSES

BARNET London Borough Council has recently considered two cases in which a front porch and a car port had been erected at dwelling houses in the Borough without the necessary consents of the Council being applied for or obtained.

The Council wishes to draw the attention of householders to the fact that the construction of an addition to a house or the erection of a prefabricated structure may require planning permission, approval under the Building Regula-

the building line, consent for highway purposes.

If a householder has commissioned an agent to draw up plans for alterations or additions or to carry out the work, the householder should ensure that the agent has both applied for and obtained any necessary consents.

Failure to obtain these could result in the householder being requested to remove the works after their completion and proceedings being taken against him for a fine.

## 100 PICTURES GO ON VIEW AT NORTH FINCHLEY

AN EXHIBITION, held during June at North Finchley Library, included over 100 new pictures recently added to the Picture Lending Service, which is organised by the Libraries and Arts Committee.

Seventy local artists, professional and amateur, now belong to the scheme, lending their paintings to the Borough for inclusion in the Service.

Any registered reader of the Borough Libraries may borrow pictures, at a cost of 10/- per picture for a three-month loan, and there are pictures to suit all tastes — landscapes, still life, or abstract.

### LONDON BOROUGH OF BARNET LIBRARY SERVICES

Exhibition of Paintings by

W. J. RAYMONT

at

NORTH FINCHLEY LIBRARY

Ravensdale Ave., N.12

Saturday, 11 July—

Saturday, 1 August

and

EAST FINCHLEY LIBRARY

High Road, N.2.

Wednesday, 5 August—

Saturday, 9 August

Monday-Friday, 9 a.m. - 7 p.m.

Saturday, 9 a.m. - 6 p.m.

Admission Free