

BARNET BOROUGH NEWS

Barnet Council's monthly magazine for residents No. 66 APRIL 1990



MEMBER OF THE VERIFIED DISTRIBUTION LTD THE HALLMARK OF TRUSTED DISTRIBUTION 114,653 JAN-JUN 1990



Barnet
Council's
Easter Holiday
Fun programme

Fitted Lounge and Bedroom Furniture

MADE TO MEASURE
FACTORY SPECIAL NOW SAVE 20%



BUILT IN STEREO



BUILT IN CD'S & SPEAKER



BUILT IN TV & VIDEO



VIDEO & CASSETTE STORAGE

HAND CRAFTED WALL UNITS

- ★ From small alcoves to complete wall systems, made to your requirements.
- ★ Finest quality materials used such as Mahogany, Oak, Teak, Pine, Lacquers and laminates.
- ★ Flexible designs. TVs, Videos, Hi-Fi's and computers built in. Fireplaces, radiators, windows and doors built around.

SUPER SPACE SAVING BEDROOMS

- ★ From luxurious master bedrooms, to study bedrooms, incorporating fold-down beds, computers, Hi-Fi and TV.
- ★ A unique custom colouring service for wood finishes and lacquers.
- ★ Furniture made specifically for you to reflect your individual needs.



- ★ Free design and estimates ★ Top quality materials
- ★ Free installation ★ 5 year guarantee

DESIGNER HOTLINE

01 - 881 9868

Buy from a local business
Established 10 yrs

Your local showroom at
164 BOWES ROAD,
London, N11
Mon-Fri 9.30-5pm,
Sat 10-4pm Sun 10.30-1pm

THEME SETTER

Councillors and MPs surgeries

Chipping Barnet

Sydney Chapman, MP, first Saturday of month 10.30am to 12 noon, 163 High Street, Barnet.

Arkley Ward: Conservative councillors, first and third Fridays of month 7.30pm, Dollis Valley Community Centre & fourth Friday of month, 7.30pm, St. Stephen's Vicarage, Spring Close, Bells Hill.

Brunswick Park Ward: Conservative councillors available second Saturday of month, 10.30am to 12 noon, Monkfrith Boys' Club hall, Osidge Lane, N14

East Barnet Ward: Cllr Olwen Evans (Conservative), first Saturday of month 10.30am to noon, Community Centre, Victoria Rd, New Barnet. Contact Cllrs Mrs Mamie Perry and John Perry on 368 4368 for personal appointment.

Hadley Ward: Contact Conservative councillors Gillian Bull 446 7684, Carol Cender 441 6325, John Hoyle 441 5077.

Totteridge Ward: Contact Conservative councillors Joan Levinson 368 3298, Victor Lyon 446 4423, Victor Usher 445 4248.

Labour councillors available third Saturday of month 10.30 to 11.30am, 104 East Barnet Rd, New Barnet.

Finchley & Friern Barnet

Margaret Thatcher, MP, for constituents only, via constituency office, on 445 4292.

Conservative councillors, first Saturday of month, 10.30am to noon, 212 Ballards Lane, N3.

East Finchley Ward: Labour councillors every Saturday, 10am to 11.30am, East Finchley Neighbourhood Centre, Church Lane, N2.

Finchley Ward: Cllr Barbara Langstone can be contacted on 445 5443

St. Paul's Ward: Labour councillors Naren Dave, Michael Freeman and Kitty Lyons, every Saturday 11am to 12 noon. Tally Ho Labour Party Stall, North Finchley.

Woodhouse Ward: Labour councillors Mike Harris, Dennis Reed and Rudolf Vis, every Thursday, 6.30-

7.30pm, Friern Barnet Town Hall, N11. Also Saturdays at Tally Ho, Finchley.

Friern Barnet Ward: Councillors Chris Platford 368 6817; Brian Salinger 368 1329; John Tiplady 445 5734.

Hendon North

John Gorst, MP, by appointment. 959 1446 or via constituency office, 2 Apex Parade, Selvage Lane, Mill Hill..

Edgware, Hale and Mill Hill Wards: Conservative councillors, Grahame Park, first Wednesday of month, and Constituency Office, Apex Parade, Selvage Lane, Mill Hill, every Wednesday.

Burnt Oak Ward: Contact Labour councillors Peter Ellis 959 6191; Gerald Shamash 458 2679; Alan Williams 906 0576. Also every Saturday, 10.30am to noon, Labour Hall, Back Lane, Burnt Oak 952 5771.

Colindale Ward: Contact Cllrs Hillman 202 7792; McKendry 444 0594; Manson 455 6379; available first and fourth Saturday each month, 2-3pm, St Augustine's, Grahame Park.

Hendon South

John Marshall, MP, via constituency office, 202 7484 by appointment, see local press for details.

Hendon, Garden Suburb, Golders Green: Conservative councillors - by appointment, first Saturday of month, 202 7484.

Childs Hill: Social and Liberal Democrat councillors every second Tuesday of month 7-8pm, Garth Hall Community Centre, Mortimer Close, Granville Rd, NW2. Contact Cllrs Cohen 445 398; Palmer 455 5140; Stone 450 0762.

West Hendon: Labour councillors every second Saturday of month 11am, West Hendon Youth Club, 4A Park Rd. NW4 by appointment. Contact Cllr Sims 734 8080; Cllr Doreen Neall 202 9927; Cllr Agnes Slocombe 202 4074.

Euro MP

Pauline Green. Contact on 365 1892.

£2.5m grants for voluntary groups

Barnet Council is having to budget for an increase of £54,000 in its contribution to the London Boroughs Grants Scheme which funds voluntary organisations operating across borough boundaries.

This means estimating £1.3 million for the London-wide scheme as against £1.2 million in grants for local groups.

Recent grants include £48,496 for the Old Barn Community Centre, East Finchley.

The grant allocated for the Barnet group of Citizen's Advice Bu-

reaux is £141,500, an increase of 7.9 per cent. Barnet Housing Aid's allocation is £63,600 - an increase of six per cent; and Sangam, an Asian women's organisation which produces an advice service, education and cultural activities, and lunch clubs for pensioners, was allocated £33,350, an increase of 18.5 per cent, mainly to help in staff recruitment.

For details of the grants scheme and application forms contact Barnet Council Grants Unit, The Town Hall, The Burroughs, Hendon NW4 4BG.

Barnet Council's Clean Parks Campaign Gets Underway

Barnet Council will launch its 'Clean Parks' campaign at 11.45 am on 7 April. Residents with dogs are invited to bring their pets 'walkies' to Oak Hill Park, East Barnet, and pick up a free 'poop scoop'.

The council has agreed a three point plan for the control of dogs in parks:

1. Areas from which dogs will be banned to include children's playgrounds, ornamental garden and sports areas.

2. Parks where owners will be expected to use a 'poop scoop' to clear up after their dogs.

3. Open spaces where dogs can be exercised freely.

Earlier this year, after almost 90 per cent of residents who took part in a public consultation on the Council's proposals gave the thumbs up to the plan, Barnet agreed to introduce a voluntary 'Clean



Parks' campaign pending Home Office approval for changes in the by-laws.

Come along on 7 April. Balloons at the gate of Oak Hill Park, Church Hill Road, East Barnet, will 'sign post' the way to the launch site.

For more details of the campaign and how YOU can help keep Barnet's parks clean, Tel; 01 - 446 8511 extn. 4497.

PET FOOD
CASH & CARRY
HOME DELIVERY AVAILABLE

A friendly reliable service offering a comprehensive range of Pet foods at very competitive prices. Also major supplier of horse foods throughout the area. BURY FARM (Petmobile) Edgwarebury Lane, Edgware, Middex. HA8 8QS.

01 - 958 2932

The
DOG SHOP

Our fully trained staff will cater for all your dogs needs from shampooing, cutting, grooming.

Also offering a wide range of foods, accessories etc. for your dog's, hamster's rabbit's.

39c Bulwer Road,
New Barnet, Herts
Tel: 01 - 449 1802

Alan Brown authorised company representative offers informed, objective advice on . . .

- PENSIONS — Public Sector, A.V. C's and Personal.
- SAVINGS — Friendly Society, Endowments and P. E. P's.
- INVESTMENTS— Unit Trusts and Life Assurance Bonds

Please call him on 01 - 445 1343 (ansaphone)



TEACHERS ASSURANCE

A member of LAUTRO



SUPPORT

BARNET'S CLEAN PARKS

Come along to the Mayoral Launch of the Clean Park Campaign at

OAKHILL PARK, EAST BARNET

(near to the playground area)

Saturday 7th April

11.45am - 1.30pm

DOGS, OWNERS AND PEDESTRIANS WELCOME!

If you care about Barnet's Parks,

Be There!



LONDON BOROUGH

Barnet

Directorate of Technical Services



London Borough
of Barnet
The Town Hall
The Burroughs
Hendon NW4 4BG
For information
Tel: 01-202 8282



Contents

	Page
Young designers	6
Multi-lingual leaflet	6
Youth video	11
Education	12-13
Easter Holiday Fun	14-15
Nursing & Retirement	16-18
What's on/Diary	19-26
City Freeman	27
Jobs	28-19
Housing	30-31

Editorial Address:
Barnet Council
The Town Hall
Hendon NW4 4BG
Tel: 01-202 8282 ext: 2072
Contact: Rosemary Jude

Advertising Address:
Marketing Media Management
185 Angel Place
Fore Street N18 2UD
Tel: 01-807 7676
Contact: Lynette Fernandes

Barnet Borough News is published by Barnet Council and Marketing Media Management. It is distributed to homes and businesses throughout the borough. It is also available from libraries.

The VFD certified net distribution from January to June 1989 is 114,653.

FRONT COVER

Barnet in bloom. For the past two years Barnet Council's parks staff have been planting the road verges and roundabouts with spring bulbs. Last autumn nearly 20,000 daffodil bulbs were planted, and the policy will continue next autumn.

The cover picture was taken at Mill Hill village.

BARNET COUNCIL SETS THE COMMUNITY CHARGE AT

£338

On Thursday 8 March Barnet Council set the Community Charge at £338 for the borough's 226,257 chargepayers. This is £268 per chargepayer to meet Barnet's requirements, plus £70 per chargepayer which is the safety net subsidy the Government has imposed on this borough and which goes to help mainly inner city councils.

FOR THE YEAR 1990/91 Barnet Council's net spending is estimated at just over £167 million.

To help cushion the impact of the £70 safety net, which the Government has said will be an arrangement for this year only, Barnet Council will use just under £10.3 million from balances out of the General Fund, which is the equivalent of £45 per chargepayer.

HELPLINES

MANY PEOPLE will qualify for a reduced level of community charge. To help residents with advice on rebates the council has set up four helplines:

North area

Chipping Barnet, East Barnet, New Barnet, Hadley, Friern Barnet, Arkley, Totteridge and part of Whetstone:



203 9588

East Area

North Finchley, Finchley, East Finchley, Muswell Hill and part of Whetstone:



203 7718

West Area

Burnt Oak, Edgware, Colindale, Mill Hill:



203 5569

South Area

Hendon, Golders Green, Garden Suburb and Childs Hill:



203 7991

For general advice phone the Council's Community Charge helpline on



203 9588

In his report introducing the budget, Barnet Council's Director of Financial Services, Jeremy Jaroszek, said: "The budget making process for 1990/91 has been undertaken within a framework of unprecedented change for Local Government finance."

Changes

The major changes include new restrictions on capital spending; changes in council housing finance; and Local Management of Schools through which more of the spending power is invested in governing bodies of schools.

Gone is the penny rate. Businesses and all non-domestic organisations now pay the national business rate, set by government, collected by the local council, paid into a national pool, and shared out on a population basis.

Private residents over the age of 18, with very few exceptions, will pay the personal community charge.

Rates comparison

The system is very different but it is possible to do a very general comparison with the rates.

The typical rateable value in the Borough of Barnet in 1989/90 was nearly £400. The domestic rate was 195.2p in the £. So the householder paid approximately £781 a year in rates. Allowing for inflation this year a figure of over £800 might have been expected.

Under community charge a single adult not eligible for any rebate pays £338 a year. Two people living in a house will contribute £676 a year; and three adults in a house will contribute £1,014 between them.

HOW THE CHARGE ADDS UP

We have to raise money for:

1 Barnet Council services	£167 million
2 Metropolitan Police	£25.5 million
3 London Fire Brigade and Civil Defence	£9 million
4 Barnet's contribution to the safety net	£15.8 million

We receive:

5 Government grant	£65.3 million
6 Barnet's share of national business rate	£66.2 million

We have used

7 Contribution from Barnet's balances	£10.3 million
---------------------------------------	---------------

These seven figures are the basis of the Community Charge of £338 for the 226,257 chargepayers in the London Borough of Barnet.

We plan to spend on our main services:

Education	£84.4 million
Social Services	£30.7 million
Public Works (highways, drainage etc)	£14.5 million
Housing*	£1.8 million
Libraries and Arts	£4.6 million
Grants to local organisations	£2.5 million
Recreation and Leisure	£4 million

*This figure does not include spending on council housing which comes under the Housing Revenue Account and is self balancing. The Council plans to spend £15 million on building and refurbishment of council housing plus £7 million on repairs and maintenance

Hendon flats have new spring overcoats

BARNET Council has wrapped two high rise blocks of flats in thermal jackets, and on 9 March the new honey-toned spring overcoats were on parade for the Mayor of Barnet, Cllr Dot Benson.

To mark the completion of a £1-million contract to reclad both blocks of flats with an insulating layer, the Mayor planted a cherry tree outside one of the blocks.

In 1986 the twin blocks, called Upper Fosters, in New Brent Street, Hendon, were found to have loose and dangerous rendering on the concrete cladding panels.

Emergency measures were taken for the safety of residents while a remedy was sought. Simple repairs would have been expensive and would not have provided a long-term solution.

Which is why Barnet chose a new approach - a Swedish system which provides a thermal "envelope" on the outside of the building to give insulation and an attractive exterior finish.

At the hand-over, Mr John Bunting, representing the UK branch of the Swedish company, presented the Mayor with a 20-year guarantee for the new cladding.



Upper Fosters in its new colours

PLEASE DON'T
FEED THE
PIGEONS

WILD PIGEONS cause health and nuisance problems. Advice on how to discourage them is given in new leaflets, produced by Barnet Council in three languages, English, Gujarati and Urdu.

Prevent them nesting

Residents are asked not to feed the pigeons and to ensure their property is in good repair to prevent the birds from nesting or roosting in such places as roof spaces.

The pigeons carry infections which can be transmitted to humans. Many household insect pests live in the nesting material used by the birds and may spread inside a building.

Droppings on pavements or external staircases become slippery, particularly in wet weather, and increase the risk of injury to residents.

The leaflets are available on request from:

Barnet Council, Environmental Health Department, Barnet House, 1255 High Road, Whetstone N20 0EJ. Phone 446 8511

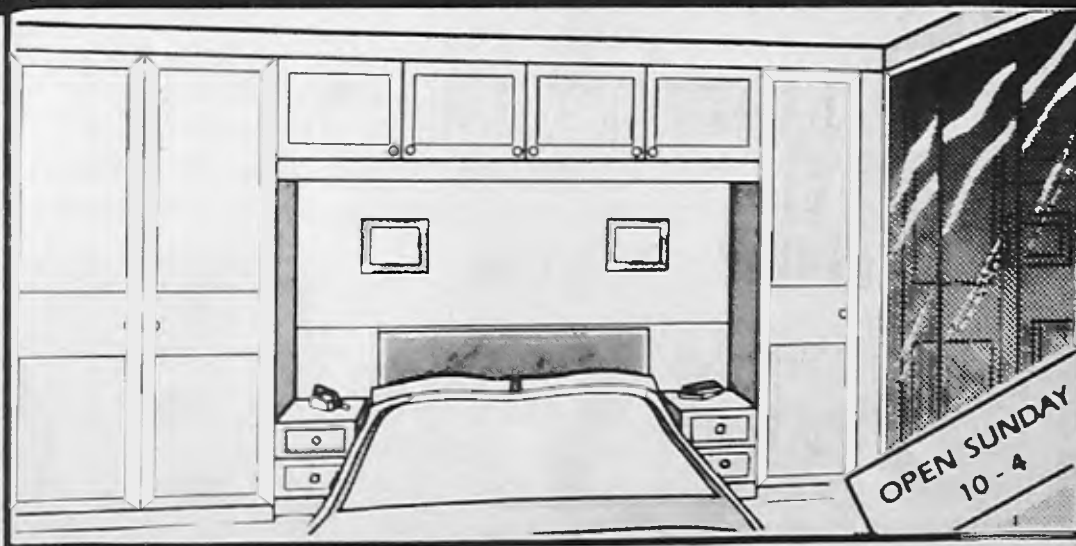
**FULLY
FITTED BEDROOMS
ALWAYS A WORKS PRICE**

**SUPERB DESIGNS...
SPECIALLY FOR YOU**

SUPERB NEW RANGE of Designs with hand textured panels, inset windows and mirrors including White Ash and Black Ash finishes with carved panels. You really should see these super **NEW DESIGNS** (and PRICES).

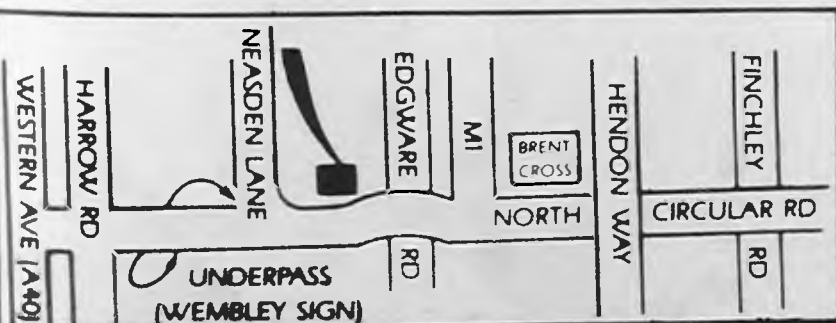
Open Mon-Fri 9 - 5.30 Sat 9 - 5.00 Sun 10-4. Easy Parking.

Works and Showroom
719 North Circular Road NW2 01 450 6581.
Opposite World of Leather. ¾ mile from Brent Cross



ALSO **SLIDING DOOR** mirror wardrobes. Safer robust construction and silent gliding. (Glass has rubber fillet to frames).

PLANNING AND FITTING INCLUDED
VAT IS NOT EXTRA



STATON Fitted Bedrooms



When the Mayor of Barnet, Cllr Dot Benson, visited Technical Services Department at Barnet House, her first stop was a special blood donor session attended by staff. Here Dr Hazel Cockburn explains the system to The Mayor and Tony Williams, Director of Technical Services, while Nurse Tecla Bulling attends to donor Joan Jones.

The Mayor meets the staff

THE MAYOR of Barnet, Cllr Dot Benson, has just completed a week of visits to the main office buildings of Barnet Council on a meet-the-staff tour.

Daily diary

Monday: Spent the day with Technical Services at Barnet House.

Tuesday: Toured the Chief Executive's Department, including Trading Standards.

Wednesday: Visited the Libraries and Arts Department and Hendon Library.

Thursday: Met staff from Financial Services, including the team on community charge.

Friday: Went to see Social Services Department at Whetstone.

"I wanted to meet as many staff as possible, to see for myself the type of work they were doing and the full extent of the services which Barnet Council offers," she said.

"It has been a fascinating experience. Few people realise how important the role of the council is in their daily lives.

Impressed

"I have been very impressed with all that I have seen. New technology is being used but there always seems to be a caring and involved staff back-up. Over the

past two weeks they have been coping with the storm emergency and working long hours.

"I was delighted to have this opportunity to meet the staff and to thank them, on behalf of the people of our borough, for the work they do."

Two more dates

The Mayor visited the staff at the Education Department at Friern Barnet Town Hall, on Monday 12 March and will visit the Housing and Environmental Health Departments at Barnet House before the end of her year of office which closes on 15 May.

Leaflets in four languages

A NEW leaflet, describing the history of Hendon Cemetery, which is now nearly 100 years old, has been published by Barnet Council.

It includes a section on Muslim burials translated into four Asian languages: Urdu, Bengali, Gujarati and Bengali.

The cemetery, at Holders Hill Road, is set in 40 acres of landscaped parkland, shaded by mature trees and laid out with rose gardens and flower beds.

Wall decoration

In the chapel is a rare copy of a terracotta wall decoration depicting The Resurrection by Lucca Della Robbia, the original of which is in the cathedral in Florence.

The grounds and chapel are open to visitors from March to April from 8.30am to 5.30pm. From May to September opening hours are 8.30am to 7pm, and from October to February, 8.30am to 4.30pm. The office is open 9am to 5pm on weekdays. Contact them on 346 0657.

Women artists in wartime

An exhibition of paintings and drawings by women artists from both World Wars started at Church Farm House Museum on 17 March and runs until 7 May.

This free exhibition shows the work of 19 women artists of different styles and attitudes but all showing war from the perspective of women.

The exhibition is open every day except Good Friday. Mon-Sat (except Tues) 10-1; 2-5.30. Tues 10-1. Sun 2-5.30.

THE YOUNG DESIGNERS

TWO PUPILS from Mill Hill County High School were at Barnet Council's Education Committee meeting on Tuesday 6 March to be congratulated on winning one of the ten national awards in the Design Council's schools Young Designers competition.

The girls, Rosie Taylor and Justina Tham, designed a thermo coat for elderly people made from material given to them by Marks and Spencer.

Six thousand schools took part in the competition. As award winners the girls received £75 each plus £200 for their school. At the committee meeting the girls received book tokens and a framed letter of congratulation.

Afterwards they joined the Mayor of Barnet, Cllr Dot Benson, and her Escort, Ron Benson, in the Mayor's Parlour.



It's a frame up: Three framed letters on show. Left to right, Mrs Carol Wilson, head of the school's home economics department, Rosie Taylor, Mr Ron Benson, The Mayor, Cllr Dot Benson, Mr Derek Culley, head teacher, and Justina Tham.

Replace your Winter

STORM CASUALTIES

NOW!

TREES: Good variety from only £15.

SHRUBS: Large New Seasons stock include our popular BUDGET SHRUBS at £3.25 each or 5 for £15.

ROSES: Bush, Climbers, Standard or Ground Cover.
Bedding Plants, Perennials, Alpines and Heathers in profusion.

ALLIBERT GARDEN FURNITURE



Come to your Local Friendly Garden Centre.

T. SIMMONS & SON LTD

166 Nether Street (Nr. West Ave) Finchley, N3.
Tel: 01 346 2245 Open Every Day - Easy Parking.

SALE NOW ON

LARGE SAVINGS ON SHOWROOM STOCK



Marlborough suite above from Ashley House
Rackstraw, Burtons, Reprodux, Jaycee, Old Charm, Charles Barr and Youngers, Top quality upholstery by Air Forma, Parker & Farr, Collins & Hayes, Derwent, Bridgecraft, Wade, Parker Knoll, Marlborough suite, Peter Guild and Cintique, Loose cover suites, mahogany, yew, oak and pine. Olympus bedroom furniture, Beds and Carpets.

Sheraton House Furnishers Ltd

5-6 Sheraton House, Lower Road, Chorleywood
Tel (09278) 3457
297 Watling Street, Radlett, Herts
Tel (0923) 855386

Opening times: 9.15 am-5.30 pm. Closed all day Wednesday
OPEN SUNDAYS FOR VIEWING 11 am-4 pm (CHORLEYWOOD ONLY)
ALL CREDIT CARDS ACCEPTED. EASY PARKING

COSMOS FITTED BEDROOMS

CRAFTSMANSHIP AND SERVICE FROM YESTERYEAR



Superior selection of frame finishes including solid woods, hand polished and finished by craftsmen.

Fresh silver, soft bronze or subtle peach mirrors.

The alternative to mirrors:-

High quality decorative designer panels.

FOR PEACE OF MIND and luxury fitted bedroom furniture fitted wall to wall, floor to ceiling by our own craftsmen. Call or phone for a free Design and Planning Service.



- Wide range of exclusive styles and finishes on laminates, wood veneers and sculptured doors, including hand painted inserts in any colour.
- Endless combinations of designs and interior finishes made individually for you.

WE DESIGN YOU A BEDROOM.
WE DON'T SELL YOU A COMPROMISE.

Established since 1978



SHOWROOMS
OPEN 7 DAYS

1180 HIGH ROAD
WHETSTONE N20
01-446 2416
01-446 1332
(Opp B&Q)

5 HALL LANE
CHINGFORD E4
01-524 7888
01-524 7889
(Next to Sainsburys)

5 HIGH ROAD
CHADWELL HEATH
ROMFORD
01-590 2642
01-598 9022



OVERWEIGHT?

WITH THE HELP OF OUR DOCTORS A SUBSTANTIAL WEIGHT LOSS CAN BE ACHIEVED BY COMBINING CORRECT DIET AND MEDICATION

BARNET DIET CENTRE A SLIM YOU- FOR A NEW DECADE

For further information

01-361 3137/8

2 Bellevue Road, Friern Barnet,
N11 3ET. (Off Friern Barnet Road).



DO YOU HAVE PROBLEMS?

DO YOU LACK OF CONFIDENCE?
DO YOU RESORT TO OVEREATING
OR SMOKING UNDER STRESS?
OR DO YOU SUFFER FROM ANY
OTHER PSYCHOSOMATIC ILLNESS
FOR WHICH YOU NEED
TRANQUILLISERS?

If your answer is **YES** to any of the above, HYPNOTHERAPY by qualified Psychotherapist may be an answer.

Do not suffer in silence -
book for a consultation NOW.

Mrs V. K. Prasad DMS. CHP, NRHP
(Registered Practitioner)

Telephone: 01 - 361 4525
24 hour Answering Service

Training for the 1990's get help from experts

Personal Development Associates opened for business on August 1, 1984, in the world of commercial and management training.

Since that time the company has developed and gone through a variety of changes, currently having more than 20 staff working in three divisions - a Management Development Consultancy; YTS Training; and Vocational Training. While all three divisions are based from the Finchley Head Office, the Management Development and YTS work takes place throughout the country.

The Vocational Training concentrates in North London and provides a wide variety of skill training, some within the Employment Training Programme and some outside.

Training is provided in word processing; secretarial/office skills; computing; typing; English as a second language.

All courses are geared towards nationally recognised qualifications and delegates are involved in a continuous assessment of their progress.

There are special courses for those who have been away from work for some time - bringing up families or looking after elderly relatives - and are now ready to return. Many people feel they are out of touch with modern technology and need to refresh and update their skills. Their confidence often needs a boost and PDA's trainers and placement officers are skilled at helping people achieve this.

Within the Employment Training Programme every trainee is offered the opportunity of work experience while continuing to develop skills and confidence. During this time they continue to receive their training allowance. Through this method many trainees are successful in finding permanent work. For those who are not successful PDA's caring staff are able to guide trainees through the back-up and support of external agencies to find jobs suitable to their needs.

PDA (Training) Ltd is well placed to help with any vocational or management training needs. For many more details of courses or help you can receive contact Jane Marn, Tel. 446 4155

Advertisement feature

Vast Range of Quality

- LEOTARDS ● TIGHTS ● AEROBIC TIGHTS
- TEE-SHIRTS ● SWEATSHIRTS ● SHORTS
- SPEEDO SWIMWEAR

Many fashionable styles and colours

TRADE PRICES e.g. Leotards RRP £25 My Price £13.99

★ For the jogger / runner - quality, heavy weight
LYCRA TRACKSTERS



Gazelle Leisure Wear

Call Jan on 0707 874523

I will visit leisure centres, classes, fitness groups etc.,
enquiries from teachers welcome.

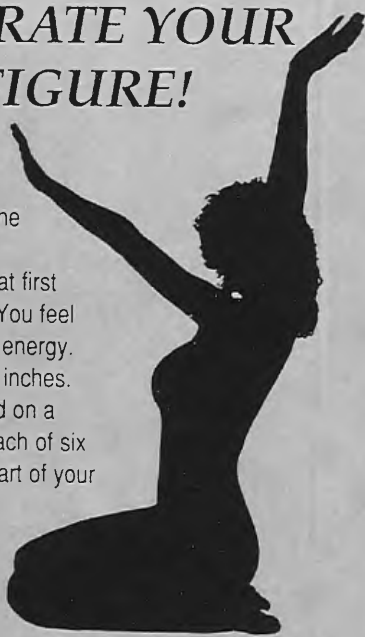
WE WOULD LIKE TO CELEBRATE YOUR NEW FIGURE!

As soon as you try a Slender You exercise programme you'll notice the difference.

The effect is difficult to believe at first - we call it 'the Slender You high'. You feel warm and alive, healthy and full of energy. And you begin to tone up and lose inches.

A Slender You work out is based on a series of toning tables. By using each of six tables in turn you exercise every part of your body. But because you work along with the tables there's no strain.

We have recently opened a new Slender You figure salon near you. We're so convinced that you'll find the most enjoyable way to exercise that we'd like you to come along and try for free. Just call to book an appointment.



Slender You®

Figure Salons

245 Oakleigh Road North, Whetstone N20 0TX.
01 - 368 7168

“HELLO”!

★ SPARE TIME CASH? ★

“Got your attention,
Good now read on”

Sweet Dreams

Linen Parties

Require Demonstrators for the following areas and districts. If you are interested in becoming a demonstrator earning extra cash in your spare time or perhaps first holding a party to see for yourself how easy, interesting and enjoyable it is then either way.

DONT DELAY PHONE TODAY
ST ALBANS 0727 58384

AREAS

Borehamwood, Chingford, Dunstable, Enfield, Harlow, Hatfield, Hitchin, Hemel Hempstead, Luton, St. Albans, Stevenage, Watford, Welwyn Garden City.

PS If your area is not mentioned and you are interested in the above, please still phone as many areas require several demonstrators.

OPPORTUNITIES FOR WOMEN

WOULD YOU LIKE:

- * A NEW CAREER
- * TO RE-VITALISE YOUR OLD SKILLS

WE CAN PROVIDE YOU WITH A NEW JOB OR PROFESSIONAL TRAINING AT

NO EXPENSE



- TYPING -
- WORD PROCESSING -
- SECRETARIAL SKILLS -
- BOOKEEPING & ACCOUNT -
- COMPUTERISED ACCOUNT -
- ENGLISH AS A SECOND LANGUAGE -

P.D.A. (TRAINING) Ltd. are experience trainers in many fields. As part of our involvement in the Government's Employment Training Scheme, we are able to offer high level training resulting recognised qualifications to the following groups:

- Women who have been away from the work place for more than two years, due to domestic commitments
- **ANYONE** unemployed for more than six months
- Lone parents (childcare allowances available)
- Special conditions apply to those people **newly** unemployed, who require this type of training, as the shortage of skilled people in this area has been recognized

A training allowance of £10 per week will be paid to **all** trainees. This is **additional** to unemployment benefit or any other benefit. Help with travel costs is also available.

If you are interested please contact Rita on 446 - 4155



P. D. A. (TRAINING) LTD.

Partners in NETA Ltd. An Equal Opportunities Employer.

FAMILY CARE IN BARNET

BERNARD

Bernard is an able bodied young man of 18 years of age who has a sociable and outgoing disposition. Like many young people, he enjoys a variety of activities, like swimming, theatre, music and outings. Bernard can be a delight to be with and has a great capacity to enjoy himself.

However, Bernard has a learning disability. This means that he has some difficulty with understanding and coping with the world around him. He is unable to amuse himself, and requires others to help occupy him.

The London Borough of Barnet are currently looking around for someone who is willing to befriend Bernard to involve him in various activities. They would need to provide a regular commitment at least once a week. They would need to have a fairly outgoing personality, while at the same time needing to adopt a firm but gentle approach with him. For anyone interested in befriending Bernard, and receiving payment for this service please contact Carol Rogers at London Borough of Barnet (F.L.I.B.), Park House, 16 High Road, London N2 9PJ. Tel: 01 883 5562.

Can you provide Care in the Community for STEPHEN

Stephen 37, has spent 21 years living in institutions, the last 10 years in a hospital for people with learning difficulties but is now ready to move to a family of his own.

He is fairly self-centred and isolated and has swings of mood. He lacks understanding into his condition and help he needs. His great interests are Elvis and supporting Chelsea.

He will need sympathetic, caring family, possibly with psychiatric experience and without young children, able to provide emotional support and practical assistance with tasks like shopping, cooking and handling money.

A generous allowance will be available to the right family. If you would like to find out more, contact either

Francis Lagan - 01 447 1311 or

Jane Sandham - 01 449 5511.

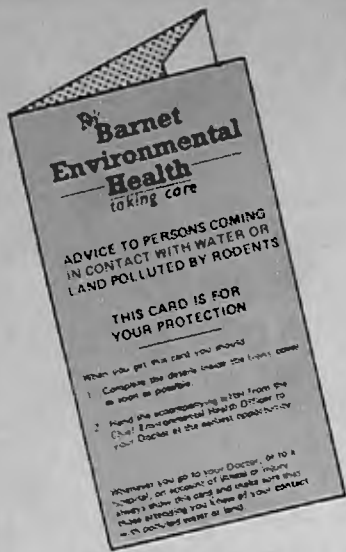
Barnet Social Services Department (B.A.P.S.)

42 Lytton Road

New Barnet

EN5 5BY

**COME TO AN OPEN MEETING ABOUT FOSTERING and ADOPTION of CHILDREN
THURSDAY 5th APRIL 8p.m. HENDON LIBRARY, THE BURROUGHS, N.W.9**



CARRY THE COUNCIL'S CARD

IMPORTANT NEW HEALTH PROTECTION CARD AVAILABLE FOR THOSE INVOLVED IN WATER SPORTS & ANGLING.

'There's nothing as nice as simply messing about in boats' said Ratty in *The Wind in The Willows* and it still holds good. Now more people than ever before enjoy many recreational and sporting activities based around water. Many of you will have heard of Weil's Disease and be concerned about the risk of contacting it. The purpose of this article is to explain what the risk is, how it can be avoided and to put things into perspective.

WHAT IS WEIL'S DISEASE!

Weil's disease (a form of Leptospirosis) is an infection caused by bacteria that can be carried by most mammals but is almost universally present in rats' urine. From this source it can easily contaminate both the banks of canals, reservoirs, gravel pits, ponds, ditches and the water itself. The risk of infection is highest when coming directly into contact with slow moving or stagnant water - the bacteria enters the body through cuts, grazes or via the mouth, nose and eyes.

WHO IS AT RISK

Most waters used for leisure pursuits (except for swimming pools) are potentially contaminated. Thus, in addition to those exposed to risk through their work, anglers, canoeists, rowers, those sailing or boating, water skiers, wind surfers, children playing near or in water, together with those working on conservation projects or clearing out streams etc, are all at risk. Around 20% of cases reported nationally are linked with water sports or bathing.

HOW SERIOUS IS THE RISK?

Around 150 cases of the disease are recorded in the UK each year and of these seven or eight will be fatal. This is a very low figure considering the everyday dangers we all face. No vaccine is available for humans at risk but once diagnosed the disease is normally dealt with by anti-biotics. However, if not spotted and dealt with in the first few weeks the illness can lead to kidney & liver failure with permanent damage or worse. Fortunately the disease is rare, especially when considering the number of people involved in water orientated activities. No cases have been reported as being contracted in the borough for more than 10 years. Water courses and areas of water such as The Welsh Harp Sailing Base are regularly checked by The Environmental Health Department for rodent activity. In more open areas, overgrown or poorly maintained banks to waterways can present a greater risk.

WHAT ARE THE SYMPTOMS AND WHAT SHOULD YOU DO IF YOU HAVE THEM

Symptoms usually start 2-14 days after exposure to contaminated water (the bacteria enters the body through open cuts & grazes or through the mouth, nose and eyes). Early symptoms are similar to 'flu' and can include 'chills', muscle pains, headache, malaise, high temperature and conjunctivitis. Because these are all associated with common conditions - colds, flu & viral infections - they may be ignored and diagnosis is difficult. Thus if you experience any of these and have been in contact with contaminated water in the previous three weeks you must draw your doctor's attention to the fact. He may take a blood test which can be checked by The Public Health Laboratory Service.

HOW CAN YOU REDUCE THE RISK

If you see rats when you are in or by water report the fact to The Environmental Health Department's Pest Control Section - 446-8511 ext 4767 (or to any Local Authority where you are). Always avoid coming into contact with cattle urine or bathing where cattle have access to the water.

Apart from providing them for those at occupational risk Barnet Environmental Health Department have also sent out special cards to all organisations known to be directly or indirectly connected with water related activities. These can be carried and, in an emergency shown to a doctor, they also list precautions against the disease. They will be pleased to send a card to anyone in the borough who feels they would like to carry one. If you require a card please telephone or write to Kathy May on 446-8511 extn 4763. More detailed guide lines are also available for Youth Leaders, those in charge of children or undertaking conservation projects etc.

REMEMBER - RATS AND CONTAMINATED WATER PRESENT A RISK WHEN YOU ARE IN OR BY WATER. SO TO AVOID ILLNESS:

DO

- Cover cuts, sores or scratches with waterproof plasters or gloves.
- Wash your hands before eating food (or hold it in a clean wrapper).
- Wash & Shower after water sports or swimming.
- Avoid capsizing canoes in contaminated water.
- See your doctor if you become ill after involvement in water sports or angling and especially after falling in or swallowing contaminated water.
- Wear gloves when cleaning streams or working in water.
- Protect your feet when entering or near streams or ponds.

DONT

- △ Put wet fishing lines or ropes in your mouth.
- △ Pick up dead animals - especially rats - without wearing gloves.
- △ Leave fishing bait, waste food or litter on the ground to attract rats.



Barnet Environmental Health
taking care

We hope you enjoy your leisure activities but please take care.

Easter refuse collections

THERE WILL be no refuse collections on Good Friday 13 April or on Bank Holiday Monday 16 April.

During the week running up to the Easter weekend there will be normal refuse collections on Monday, Tuesday, Wednesday and Thursday, 9 to 12 April.

In the week after the holiday collections will run one day late. The normal Monday collection will be made on Tuesday 17 April; Tuesday collections will be made on Wednesday; Wednesday collections on Thursday; Thursday collections on Friday.

On Saturday 21 April there will be a double collection for the two normal Friday rounds.

May Day holiday

There will be no collection on the May Day bank holiday, Monday 7 May. All collections that week will be one day later than usual. The Friday collection will be carried out on Saturday.

Passover

Residents who wish to have a special collection for Passover should phone 361 0013.

Talking about us . . .

THE MESSAGE from young people taking part in a video produced by Barnet Council's Youth and Community Service comes over loud and clear in the lyrics of the title song: "Together we can make this world a better place."

The video *Talking About Us* had its premiere at the Town Hall, Hendon, with a reception for youth organisers, business people and community leaders. The Mayor, Cllr Dot Benson, said afterwards: "It's great! A professional, interesting video, which shows the exciting youth activities run by Barnet Council."

Youth work is all about helping young people come to terms with a world which

expects them to behave like adults but still treats them like children.

Abseiling, one of the featured activities, means team work and confidence in the person holding the rope at the top of the rock-face! Discussions on issues such as drugs or capital punishment, help communication skills. Just dropping in at a youth centre can lead to new friendships.



Video cameras capture the fun of abseiling.

Photograph by David Goodstein

... YOUTH AND COMMUNITY SERVICE PRODUCES ITS OWN VIDEO

There are 12 youth and community centres across the borough; four area centres shared with schools or colleges; and four specialist centres including the Sailing Base at the Welsh Harp and the Barnet Drama Centre.

The video was planned by a group of Barnet Council youth workers with Redhouse Productions. The catchy title song was

written and performed by members of two Barnet's clubs - Oxford and St George's, and SPEC.

Copies of the video are available from Barnet Council Education Department, Youth and Community Service, Friern Barnet Town Hall, N11 3DL. Price £15 each (plus £1 for postage and packing). Cheques should be made payable to Barnet Corporation.

EASTER BANK HOLIDAY REFUSE COLLECTIONS

WORKING ARRANGEMENTS FOR REFUSE COLLECTIONS

Residents who wish to have a special collection for PASSOVER please telephone early to make your booking.

There will be a small charge for this service ☎ 01 - 361 0013

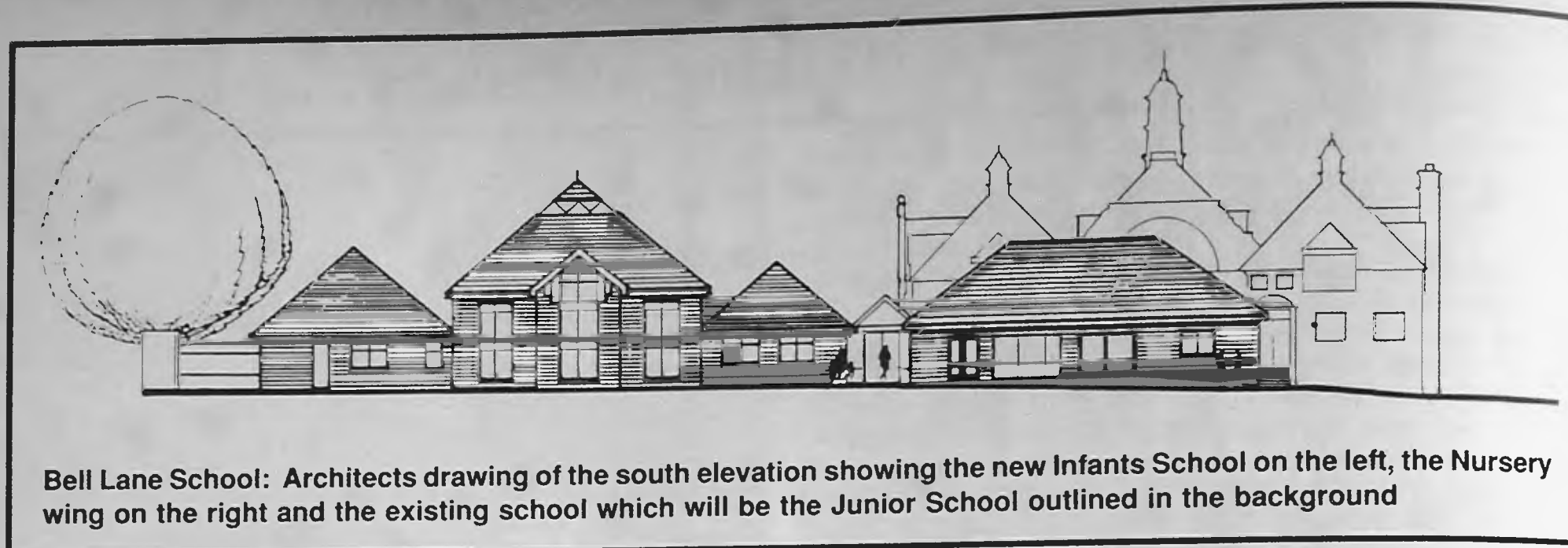
WEEK ONE

Monday, 9 April	Normal Collection
Tuesday, 10 April	Normal Collection
Wednesday, 11 April	Normal Collection
Thursday, 12 April	Normal Collection
Friday, 13 April (Public Holiday)	No Collection

WEEK TWO

Monday, 16 April (Public Holiday)	No Collection
Tuesday, 17 April	Mondays Collection
Wednesday, 18 April	Tuesdays Collection
Thursday, 19 April	Wednesdays Collection
Friday, 20 April	Thursdays Collection
Saturday, 21 April	Fridays Collection (Double)

LONDON BOROUGH
barnet
Directorate of Technical Services



Bell Lane School: Architects drawing of the south elevation showing the new Infants School on the left, the Nursery wing on the right and the existing school which will be the Junior School outlined in the background

Victorian school will have a new look

BELL LANE Primary School, Hendon - Barnet Council's number one priority for school rebuilding - is to have new infants and nursery wings and the existing school will be refurbished.

Work on site will begin early in 1991 with design and planning approval moving ahead throughout the current financial year.

Traditional and practical

The new buildings have been designed to give modern teaching conditions with formal teaching areas and practical work zones.

They are to be built in traditional brick with tiled roofs to blend with the existing school which was built in 1901.

New nursery

A temporary building used as a dining hall will be removed to make room for the new nursery. This will have its own separate entrance and the design of the building will be similar to that of Grahame Park Nursery which has proved very successful. There will be a playroom, quiet room, parents' room, kitchen and cloak-

rooms and a partly covered play area.

The infants building will include classrooms with practical areas and a hall which will serve the whole school as a dining area. There will also be new offices for the head teacher and school secretary.

Science and technology

In the refurbished junior school new practical areas will be created to develop science, craft and technology teaching. Other rooms will be adapted for use as lan-

guage rooms and a library.

Special attention has been given to outdoor teaching areas.

Landscaping

The nature pool, which parents have helped to fund and maintain, will be retained as a feature of the landscaping.

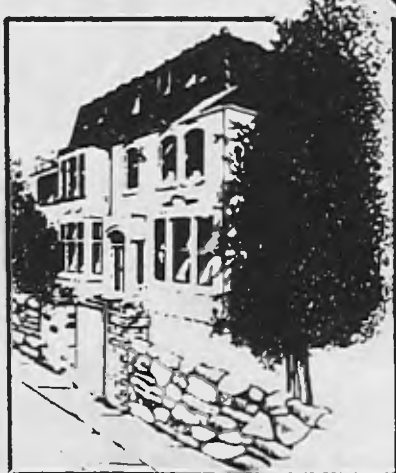
Parking spaces have been included in the plans.

The design has been carried out by Barnet Council's own architects and engineers. Work should begin on site early next year.

THE HENDON PREPARATORY SCHOOL

(FOUNDED 1874)

20 Tenterden Grove, Hendon,
London NW4 1TD
Telephone: 01-203 3465



MAIN SCHOOL (Girls 5-11, Boys 5-13)

The School provides a sound education for boys and girls and prepares them for Common Entrance to Independent Secondary Schools. The School is proud of its fine academic reputation and its high success rate. Expansion of the existing building takes place soon, and a few places are still available for 5 and 6-year-old boys and girls from September 1990.

Provision for after-school care is available until 6pm.

PRE-PREPARATORY (Boys and Girls 3-5) 'Education in Childcare Hours' 8am-6pm 50 WEEKS PER YEAR

- A Pre-Preparatory School unmatched in North London.
- Quality childcare providing a wide, structured curriculum.
 - Excellent facilities, well-equipped classrooms.
 - Individual attention from qualified teaching staff.
- New class opening in May 1990: some places still available.

Full prospectuses are available.
Please telephone 01-203 3465 for further details.

FINEST FACILITIES

Hendon Co-Educational Preparatory School, established in 1874, has recently undergone an extensive modernisation programme, and now boasts some of the finest facilities in the area. Specialist rooms for computers, science and art/CDT together with small classes providing plenty of individual attention all contribute to its excellent academic reputation and its high success rate at Common Entrance. Sport and music play a very important part in the School's curriculum and a number of opportunities exist to further these interest after school hours.

The school adopts a modern approach to today's professional, working parents and offers after-school supervision until 6pm. The Pre-Pre and Childcare Department which takes children from the age of three years is open 50 weeks per year from 8am - 6pm. Parents may choose schedule for their child to suit their particular needs.

If you would like to visit the school please telephone and arrange an appointment with the Headmaster - Mr Michael Abraham - on 01 203 3465.

Advertisement feature

LYALL YOUNGMAN & CO. CHARTERED ACCOUNTANTS

WE OFFER A FULL RANGE OF
PROFESSIONAL SERVICES INCLUDING:
ACCOUNTANCY, BOOK KEEPING
AND PAYROLL SERVICES
PERSONNEL AND BUSINESS TAXATION ADVICE
COMPANY FORMATION AUDITING
PERSONAL ATTENTION GIVEN AT ALL TIMES
01 - 207 1388

17 / 21 SHENLEY ROAD,
BOREHAMWOOD, HERTS. WD6 1AD



AKIVA SCHOOL

The Manor House,
80 East End Road,
Finchley, N3 2SY.

This unique private Progressive Jewish Day School has some vacancies in its Juniors Classes. If you are interested in your child attending a school offering an excellent secular and religious education in small classes with stable staffing, please apply to the Bursar for further information either by post or telephone 01 - 349 4980



THE PURCELL SCHOOL

Patron: HRH The Prince of Wales
President: Simon Rattle

The only specialist Music School in Greater London, The Purcell School offers outstanding musical opportunities and training, together with an excellent general education up to A level. The school is coeducational and has 160 pupils. Day and boarding places are available. A number of Government Aided Scholarships, Bursaries and Local Authority support are available where appropriate.

For information and Prospectus please contact: The Registrar,
THE PURCELL SCHOOL,
Mount Park Road, Harrow on the Hill, Middlesex HA1 3JS. Tel: 01-422 1284

THE MOUNT SCHOOL MILL HILL

Offers your daughter the full range of GCSE and A level subjects in a caring and supportive environment



Details of entrance exams and interviews for September 1990 entry are available now from:-

The Headmistress	Girls Day School
The Mount School	Senior School - 11-18 yrs.
Milespit Hill	Junior School - 7-11 yrs.
Mill Hill	Number of pupils: 450
London NW7 2RX	Fees available on request
(01) 959 3403	

Headmistress: Mrs. M Pond BSC (Lond) M1 Biol



ALDENHAM SCHOOL

A small independent boarding and day school for boys aged 13-18 and girls in the 6th form.

Aldenham provides a unique education of the highest quality

- A fine site
- Excellent facilities
- First class teaching

Its small size and strong community ethos encourage the individual not only to succeed but to grow in confidence and responsibility. The academic and sporting results befit a school twice the size. The weekly and daily programme encourage school commitment but maintain full family support.

Entry is by Common Entrance or Special Test.
Bursaries and Assisted Places are available.

Come and visit us and see just how much we could offer to your son or daughter.

For prospectus or appointment ring:
Michael Higginbottom, Headmaster,
Aldenham School, Elstree, Herts. WD6 3AJ.
Telephone: (0923) 858122.

DEVONSHIRE HOUSE

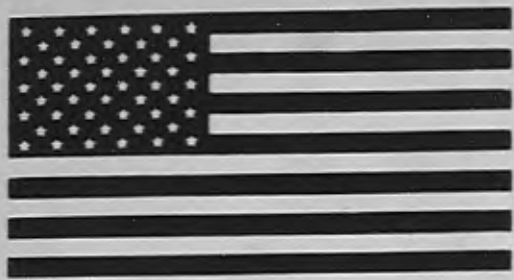
**PREPARATORY SCHOOL,
Hampstead**

For girls and boys from 3-13.

For further information
and interviews
please contact
the School Secretary at:
**69 Fitzjohn's Avenue,
Hampstead,
London NW3 6PB.
Tel: 01-435 1916**

COPTHALL SPORTS CENTRE FLIES THE FLAGS

Easter holidays



**Star Spangled
Banner Week**
9 to 12 April

Superbowl has arrived in the borough. Barnet Council's Copthall Sports Centre is staging a great transatlantic sports event for the Easter Holidays.

Week One, Monday to Thursday, 9 to 12 April, features American sport. Four days of fun trying out the top sports of the USA.

Every day you can join in **Baseball** and **Track 'n' Field** events in the morning. In the afternoon there's **American Football** and **Volleyball**.

Turn up each morning or afternoon and pay the coach £2.50. Or book for four morning or afternoon sessions for £9 - you save £1. Or book for the whole week and pay £18 - save £2.

Make sure of your place by phoning Donna Bagley at Copthall on 203 4017 and sending your enrollment form in to Barnet Copthall Stadium, Great North Way, Hendon NW4. Cheques should be made out to Barnet Corporation.

Easter holidays

**British Bulldog
Week**
17 to 20 April



Top British sports are featured at Barnet Council's Copthall Sports Centre for the second week of the Easter school holidays - a great opportunity to have fun and quality coaching in the sports of your choice. Week Two, Tuesday to Friday, 17 to 20 April, there's a choice of four activities:

Golf, sponsored by the Golf Foundation. Clubs are provided and a professional coach helps young beginners to discover the skills of the game.

Football - the Soccer Star Award Scheme - is open to boys and girls. You can achieve a variety of awards, working with skilled FA coaches.

Cricket, open to boys and girls, includes coaching and match play tactics.

Aerobic Dance is a fun way to keep fit. This course is for 12 to 16-year-olds.

Morning sessions cost £1. Afternoon sessions £2. Or book at Copthall. Phone 203 4017 for details.

CYCLE TRAINING TAKES TO THE ROADS

CYCLE training for Barnet school children is moving out onto the roads. Up to now cycle training by Barnet Council's Road Safety Unit has been carried out in school playgrounds, concentrating on basic handling skills and the Highway Code.

The new scheme includes on-road training at carefully selected sites after students have passed an off-road proficiency test. This helps cyclists relate their handling skills to traffic situations.

Annual report

The plan is described in Barnet Council's Road Safety report for 1988/89. Traffic engineering plays a key role in making Barnet a safer place. The council is introducing Local Safety Schemes to reduce accidents.

In some cases low cost measures, such as road markings and warning signs, have proved to be very effective, cutting the accidents by a third in the first year.

Facts and figures about drink related road accidents show that during the past three years 502 drivers and motorcyclists were breathalysed and 117 were positive. The largest number of offenders



Local children take to the road for the first time in Barnet Council's cycle training scheme. Under the watchful eye of instructor Angela Morton-Filby, Christopher Mackinnon checks for traffic as he approaches the junction of Alverstone Avenue and Gallants Farm Road, East Barnet.

were between 20 and 29. This group accounted for half the positive tests. Lowest were the 55 to 59 age group.

Training in 1989

● 452 children were trained and tested under the national cycling proficiency scheme.

● Every junior school received a visit by a road safety officer.

● Eleven secondary schools took part in a risk assessment exercise.

The Road Safety Unit with the British Motorcyclists' Federation are running motorcycle training courses to raise standards - 42 motorcyclists were trained and

took the part one test during the year with a 79 per cent pass rate.

Details of cycling courses and copies of the annual report can be obtained from Barnet Council's Road Safety Unit, Barnet House, 1255 High Road, Whetstone N20 0EJ. Phone 446 8511 Ext 4341

Barnet Council's Easter Holiday Fun

Ashmole Sports Centre,
Burleigh Gardens,
Southgate, N14.
Phone 368 4984

Wednesday to Friday 18 - 20 April, Junior activities suitable for children aged 4 and 5 years. 9.30am - 12 noon. £9 for three, two-and-a-half hour sessions. Includes trampastics (trampolining and gymnastics) followed by art and craft. **Must be booked in advance.**

Roller skating for 6 to 13-year-olds (with own boots). 11.45am - 2.45pm. 50p for one hour session. **Pay on the day.**

'Sort of Sport' for ages 6 to 13 years. 1 - 4pm. £2 for three hour session. **pay on the day.** (Exciting programme of sports, games, art and craft).

Church Farm Pool

Monday to Thursday 9 to 12 April and Wednesday to Friday 18 to 20 April, Swimming at Church Farm Pool, East Barnet. Parent and toddler (under 4 years), 2.30 - 3pm, £1 for half hour session; Family swimming, 3-3.45pm and 3.45 - 4.30pm, £1 adult, 50p

child for three-quarter hour session. **Pay on the day.**

Term-time tennis

Ashmole Sports Centre tennis courses are held through the summer term for children and adults. Children's courses will be at weekends. Contact Ashmole Centre for details.

Manorhill Centre,
Summers Lane,
North Finchley, N12.
Phone 368 6316

Monday to Thursday 9 to 12 April, Playscheme for six to 12-year-olds. Arts, crafts, videos, sport and outings.

Also football for six to 12-year-olds.

Queen Elizabeth's Centre,
Meadway,
Barnet.
Phone 441 2933

Monday to Thursday 9 to 12 and Wednesday 18 to 20 April. **PAY AS YOU PLAY** (no need to book in advance) for 5 years plus, 10am - 12 noon, £1.50 per session.

Advanced booking is recommended for the following activities:

Under Fives (not younger than three), 10am - 12 noon, 9 - 12 April, £6; 18 - 20 April, £4.50; £1.50 per session.

Gymnastics, 9 - 12 April, 2 - 4 pm, £8, £2 per single session.

Trampolining, 18 - 20 April, 2 - 4pm, £6, £2 per single session.

Junior Superstars, 2 - 4pm, 9 - 12 April, £8; 18 - 20 April, £6; £2 per session

Football superskills/five-a-side, 2 - 4pm, 9 - 12 April, £8; 18 - 20 April, £6; £2 per session

All Day offers for children aged seven plus:

Pay as You Play and gymnastics, 9 - 12 April, £16, £4 per day
Pay as You Play and trampolining, 18 - 20 April, £12, £4 per day

Pay as You Play and junior superstars, 9 - 12 April, £16; 18 - 20 April, £6; £4 per day

Pay as You Play and football superskills/five-a-side, 9-12 April, £16; 18 - 20 April, £12; £4 per day

Barnet Copthall Pools,
Great North Way, Hendon and
Page Street, Mill Hill.
Phone 203 4187

Monday to Thursday 9 to 12 April and Tuesday to Friday 17 to 20 April, 'Duckling' classes, £7.60 (4 x 20 minutes).

Children's and adult's swimming classes, £9.60 (4 x 30 minutes). Children's Learn to Swim (classes for beginners intermediate and improvers), daily 9.15, 9.45, 10.15 and 10.45am.

Adult's Learn to Swim (classes for beginners, intermediate or advanced), daily 11.30am.

Children's Diving classes daily 9.15, 9.45, 10.15am and Adult's Diving classes daily 10.45am.

Book at Copthall Pools

The Old Barn,
Tarling Road,
East Finchley, N2.
Phone 349 4613

Monday to Thursday 9 to 12 and Tuesday to Friday 17 to 20 April from 9am - 6pm. Children's programme includes sport, arts and crafts, gardening and outings. **Bookings taken for each week.**

Camp Aldenham

For
 3-16 year olds
 Specialist Interest Courses
 and
 Multi-Activity Action Camps

Ring (0923) 857553 NOW!
For free brochure

**Free
 Transport
 Available**

**Easter
 Activity
 Holidays
 for children**



X.U.K. CHILDREN'S ACTIVITY CAMPS

EASTER DAY CAMP 3-12 YRS
EASTER RESIDENTIAL CAMP 6-13 YRS
SUMMER DAY AND RESIDENTIAL CAMPS 3-17 YRS
EVERY ACTIVITY UNDER THE SUN (almost)

★ Driving lessons ★ water skiing ★ trampolining ★ discos ★ sailing
 ★ archery ★ dance ★ canoeing ★ motor bikes ★ abseiling ★ go-karts
 ★ dry skiing ★ bowling ★ wind surfing ice ★ ice and roller skating
 ★ swimming ★ drama ★ arts and crafts and many many more!

**VEGETARIAN
 OPTIONS!**

**FOR A TERRIFIC HOLIDAY,
 DAY or RESIDENTIAL**

**TRANSPORT
 SERVICE**

EDGWARE, FINCHLEY AND SOMERSET

Telephone: Jeremy Fow or Judy Davies 349 1444/1945



CAMP TAPUZ ISRAELI SUMMER CAMP

A unique and unforgettable
 holiday for 1990 in Israeli with
CAMP TAPUZ

An exciting opportunity for children from
 6 years - 18 years, to share their summer in an
Israeli International Adventure Camp

For your copy of our brochure, **Tel: 01-458 4355**
16 DORCHESTER GDNS, LONDON NW11 6BN



**CAMP
 TAPUZ**
 INTERNATIONAL
 SUMMER CAMP



Lyndhurst Gardens
 Finchley N3 1TD

POOLSIDE PUFFINS
 Easter afternoon camps for 4-7 yrs

ALSO ● AQUAFIT (POOL KEEP FIT!) ● LANE SWIMMING
 ALL CHILDREN BEGINNER CLASSES ARE FULL

DRY ACTIVITIES

● "SPARKLERS" GYM CLUB. 3-4 AND 5-7 YRS
 ● JUDO ● TAP & JAZZ (CHILDREN & TEENAGERS) ● KEEP FIT
 SUNBED, SAUNA & STEAM.
TEL: 01 349 1444 OR 01 349 1945



SUMMER TERM ACTIVITIES. SWIMMING TUITION

A FEW AVAILABLE PLACES
 ● CHILD IMPROVERS
 ● PARENT AND TODDLERS
 ● ADULT BEGINNERS
 ● ADULT IMPROVERS

ALMENAR RESIDENTIAL HOME

We at Almenar would love to look after your loved one in our family run care home.



- Comfortable rooms
- TV's available
- Washing facilities in all rooms
- Close to all public amenities
- Reasonable rates
- All diets catered for.

Rooms available immediately

Contact: Sharon on 01-449 1584

PERMANENT OR TEMPORARY CARE AVAILABLE

7, 8, 9 Ravenscroft Park, Barnet, Herts

LOOKING FOR A NEW HOME?

Almenar Residential Care Home offers single and double, well furnished, lockable rooms with full amenities, individual heating controls and televisions.

Bathrooms have electric hoists, and baths can be supervised if requested. Chair lifts which go to all floors, and there are three TV lounges, books are also provided, some with large print.

Almenar has a visiting hairdresser, chiropractors, priest and local GP but, residents may make their own arrangements if they prefer. Bingo and screenings of old movies are regularly arranged, as well as weekly outings to the shops and park.

The Spires, Barnet High Street facilities, a library and transport are close by and a post office is within walking distance, visitors are welcomed, and arrangements can be made for them to stay.

Manageress Mrs Sharon Lord heads a staff of one to every three residents, and welcome people for all lengths of stay.

Almenar is 7-9 Ravenscroft Park, Barnet. Telephone 01 - 449 1584.

LOCAL CHARITY CHANGES ITS NAME

The Retarded Children's Aid Society has changed its name to The Tamarisk Trust Homes for the Mentally Handicapped.

This local charity, marked the occasion by holding a re-launch party, attended by The Mayor of Barnet in March at the Duke of York, public house, Barnet Road.

Extensive refurbishment of the homes is now taking and the charity needs to raise £400,000. Any help by the way of donations or people willing to give a little of their time to help fund raise, will be very much appreciated.

The name change reflects the changes which have occurred during

the organisation's overall lifetime, it still retains the primary aim of providing residential settings for people having a mental handicap.

The Tamarisk Tree symbol was chosen for the similarity of its definition to the growth and purpose of the Society. The tamarisk tree has the ability to flourish, despite developing from roots based in poor soil.

In similar vein, the Society developed from the small beginnings of four mentally handicapped children to its current level of 44 adults.

For details please telephone Roger Gale on 01 - 441 2988.

Advertisement feature

ANASTASIA LODGE

Private Residential Care Home for the Elderly

OPEN NOW

Accommodation for 20 residents

10/12 Arundel Gardens, Winchmore Hill, London N21 3AD

Telephone: 081 - 886 1034 or 447 8396 after 5pm



You can enjoy our 24hr service, nice dining room, sitting room or sun lounge or just take tea with your family in our patio overlooking the garden.

Our lift will take you to all floors. All rooms are with CH, with TV point, radio, and call system. We are planning plenty of indoor and outdoor activities.

For further information please contact: Minda F. Dacasin Manager, Residential Home, 10/12 Arundel Gardens, Winchmore Hill, London N21 3AD.

Please send me without obligation full details of Anastasia Lodge.

Name

Address

Post Code Tel:

THE COMPLETE PRIVATE CARE SERVICE

BBN

CARE STAFF

Required in home for adults with a mental handicap. Some experience or knowledge would be an advantage but not entirely necessary. Hours of work are based on a 2-week shift pattern involving weekends, averaging 39 hours per week, and sleeping-on-call for which extra is paid.

The successful candidate will eventually be required to operate a key-worker system and will be expected to attend reviews and meetings accordingly. Other duties are involved with the day to day care, supervision and attention to residents.

Working night staff also required

10pm - 7am weekdays

10pm - 9am week out

For further information
please telephone or write to:
**Roger Gale, 111 Leicester Road,
New Barnet, Herts.
Tel: 01 441 2988**

★ Residential Nursing and Care Homes ★

The Luxury Nursing Home

Ravenscroft Park Nursing Home is a family run and personally supervised luxury home, established some 20 years ago. All patients, be it short or long term, are made to feel at home and are lovingly cared for by professional and dedicated staff 24 hours a day.

The buildings are served by two passenger lifts from the lower ground section incorporating treatment rooms to ground, first and second floors.

There are four lounges, a conservatory and a delightful dining/recreation hall overlooking an impressive land-

scaped illuminated garden with a monumental fountain for the patients' enjoyment all year round.

The home has many single and double rooms incorporating toilet/bath/en suite facilities. Private telephone and nurse call bell by each bed are standard equipment. We offer medical baths with Jacuzzi and underwater massage on each floor.

Kosher cuisine and all medical diets catered for. Member of the Registered Nursing Home Association and is recognized by BUPA and P.P.P.

Advertisement feature

IN NEED OF OTHERS SUPPORT?

Birchville Court is registered as a Nursing Home by South West Herts Health Authority and specialises in post-operative, medical, convalescent and long or short term retirement care.

The staffing team is headed by Matron, Judy Harness, who is assisted by professional team of nurses.

All our rooms have washbasins and vanity units, colour television, nurse call units and telephone points. Some of our rooms have en suite facilities, bathrooms and toilets are conveniently located throughout the Home. Within easy reach of the bedrooms. We also have a specially equipped assisted bathroom, particularly for the use of those residents who have difficulty bathing.

We have a visiting hairdresser, chiropodist, physiotherapist and dentist. Medical care is provided by local G.P.s but residents may continue to receive attention from their own doctor if they so wish.

For those for whom total independence is no longer possible, help is at hand but never intrusive.

Birchville Court is situated at Heathbourne Road, Bushey Heath, Hertfordshire WD2 1PB. Telephone: 01 - 950 6206.

AMBERLEY HOUSE

Home of the Nineties

A beautiful home for the elderly in Palmers Green/Winchmore Hill

- ★ Just reopened
- ★ Refurbished to the highest standards
- ★ En-suite, lifts, assisted bathrooms
- ★ Laura Ashley decor
- ★ Gardens
- ★ 24hr care by professional staff

Contact Inge Sudbury at
Amberley House, 44/48 Amberley Rd., Palmers Green, N13
Tel: 01-886 0611

DENTAL HOME VISITING SERVICE FOR

Housebound, Handicapped, Elderly and Infirm. NHS treatment free to those claiming income support.

AVRIL KAY
LDS RCS Eng.

Tel: 445-7879
for an appointment

The Ravenscroft Park Nursing Home

Licensed by the Barnet Health Authority
Established and managed for the last 20 years by the same caring family

Beautiful Victorian buildings, refurbished to the highest specifications, with single/double rooms and bath/toilet, en-suite facilities.

Newly built section incorporating physiotherapy room/hairdressers and hydrotherapy pool.

Dining room/recreation hall, overlooking and leading to extensive landscaped gardens.

HIGH QUALITY 24 HOUR NURSING CARE

for all our patients, long or short stay.

KOSHER CUISINE

MODERATE TERMS

2-6 Ravenscroft Park, Barnet, Herts EN5 4ND.

Telephone: 01 - 440 3454 01 - 449 8500 and 01 - 449 3630



Birchville Court
Nursing Home

**Heathbourne Road,
Bushy Heath,
Hertfordshire WD2 1PB**

Situated in 3 acres of secluded and spacious grounds, Birchville Court is one of the most luxuriously interior-designed nursing and retirement homes in the area.

- Professional and dedicated staff
- Post operative medical, convalescent and long or short stay care
- All dietary requirements catered for

Excellent facilities + services include:

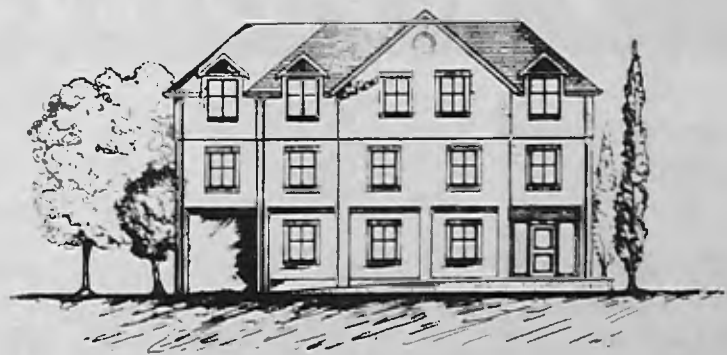
- Lift
- Nurse call system
- Colour TV in all rooms
- Smoke and fire detection system
- Specially equipped assisted bathroom
- Telephone points in all bedrooms

**For further details and brochure
please telephone Matron or Mr Adams
01 - 950 6206**

Goldsborough

PRIVATE NURSING HOME

Enfield



76 Wellington Road, Enfield EN1 2PL. TEL: 360 5977

Situated in the pleasant Bush Hill Park area of Enfield, Goldsborough Private Nursing Home is a purpose-built delightful home offering full nursing and residential facilities for the elderly.

All rooms are en-suite and have a pleasing outlook. The homely environment extends to the spacious lounge and dining room from where residents may enjoy the pleasures of a secluded patio garden.

For further details, and an invitation to view, please complete the coupon below.

TO: Sue Allen, Matron, Goldsborough Private Nursing Home, 76 Wellington Road, Enfield EN1 2PL. TEL: 360 5977

Please send me, without obligation, full details of the Goldsborough Private Nursing Home.

Name _____

Address _____

Post Code _____

Tel: _____

BBN 4.90

THE COMPLETE PRIVATE CARE SERVICE

HOUNDWOOD HOUSE

RESIDENTIAL HOME FOR THE ELDERLY

HARPER LANE,
RADLETT, HERTFORDSHIRE. WD7 7HU.
RADLETT (0923) 856819

Delightful Edwardian property set in 5 1/2 acres of beautiful grounds and woodland; superior grade of accommodation in a sympathetic and luxurious ambience.

Single and Double Bedrooms, a number with ensuite facilities; excellent cuisine, special dietary requirements catered for; personal laundry service; television and telephone points in all Bedrooms.

NOW OPEN
17 STUDIOS WITH ENSUITE
FACILITIES AND KITCHENETTE

Individual Care and Attention Always Assured
Allow us to ensure that your Retirement Years are both Happy and Comfortable.

Belmont Lodge

BELMONT LODGE

Residential Home for the elderly



Why not have a new start in 1990? Without being lonely or worried about looking after yourself.

Come and live at Belmont Lodge, where there is a happy family atmosphere which is not found in larger residential homes.

Our qualified staff will care for you, their only concern is for your comfort and happiness.

- Private telephone + T.V. point in each room
- Short stays can be arranged.

BROCHURE ON APPLICATION TO
OFFICE: 01-959 4083

We offer a
vacancy at reduced
rates for 3 months

Why not just pay us a Visit!

59 Belmont Road, Bushey, Herts

Registered with Hertfordshire County Council

RETURNERS' COURSE FOR PRIMARY TEACHING

Are you currently having a career break?

Are you a qualified primary teacher wanting to return to the classroom?

Are you a secondary school teacher wishing to retrain for primary school teaching?

If so . . . Barnet may be able to help.

We will be offering a free ten week course for people like you who wish to return to teaching.

The idea is to update skills which may have become a little rusty. To put you in touch with changes that have taken place in education since you left, and to learn new skills relevant to good primary practice.

week commencing 21/SEPT. 1989

Names	M	T	W	T	F
TEACHER	X	X	X		
JOHN SMITH	✓	✓			
RONALD SEERS	✓	✓			
MARGARET HALL	✓	✓			
MADHUR SINGH	✓	✓			
ADAM CHRISTOPHER	✓	✓			
MICHELLE LOUIS	✓	✓			

We're missing you at school...

EDUCATION IN
BARNET

Creating opportunities

Here's how it works:

- 1 day each week at Barnet Teachers' Centre.
- 2 days a week in a primary school with professional support.
- 2 days a week free.
- We guarantee you a full-time job in a primary school on successful completion of the course – or we may be able to arrange a job share if you'd prefer it.

APPLY EARLY.

Call Doreen Judge or John Dolan on 01 368 1255 ext 3012 for an information pack. And if October is too soon, we'll be running more courses in the future so please get in touch anyway . . . we're missing you.

BBN. APRIL

Entries for the May issue must be received by 10 April and before that date if possible. Entries will start on 6 May.

Barnet Council

Members of the public are invited to attend Barnet Council and committee meetings in the Town Hall, Hendon, at 7pm

Wednesday 18 April
Planning Sub-Committees

Tuesday 24 April
Council Meeting

General

Thursday 5 April

Open mtg about Fostering in Barnet. Hendon Library, The Burroughs, NW4. 8pm

Monday 9 April

Barnet Friends of the Earth. Steering Group mtg. 103 Station Rd. Barnet. 8pm. 449 5830. All welcome. (also 23 Apr, Discussion mtg on Bus services)

Tuesday 10 April

"L" drivers pre-test briefing lecture organised by Barnet Council's Road Safety Unit, Road Safety Cntr, E Barnet. 7.30pm. £2.15. Details, 446 8511, ext 4341

Sunday 22 April

Finchley Antiques Appreciation Group. Visit to Ickworth House, Suffolk. 441 1399/203 3735

Monday 23 April

"Travel should be fun", talk by Allan Beaver, writer/agent/lecturer. Finchley Church End Library. 8pm. All welcome. Coffee.

Sunday 29 April

Anglo-Italian Circle of Barnet. A talk illustrated by slides on Caravaggio, followed by a debate on modern painting. All those interested in Italian culture are welcome. 205 5611

Monthly

Barnet Animal Rights Group. Quaker Mtg Hse, 58 Alexandra Grove, N12. 8pm. 440 1715 (1st Wed)

Philosophy of Yoga. Discussion Mtg. Patanjali Yoga Cntr, 190 Watford Way, Hendon. 4pm. 203 0062 (1st Sat)

Finchley Business Club. Torrington Arms. 1pm. 446 6742 (2nd Tues)

Middx Business Club. Enterprise Hse, St Wilfrids Rd. New Barnet. 7.30pm. 447 1000 (2nd or 3rd Tues)

Royal British Legion (N Finchley). Legionway, Summers La. N12. 8pm 445 9911 (3rd Tues)

N Middx Family History Scty, Barnet Branch. Church Hse, Wood St. 7.45pm. 441 0529 (3rd Tues)

Golders Grn & Hendon Amnesty Group. Unitarian Church, Hoop La. NW11. 7.45pm. 346 3138 (last Wed)

Hard of Hearing Club for all ages. Trinity Church Cntr, Nether St. N12. 2pm. 446 4354 (last Wed)

Barnet Ratepayers & Residents Assn (Arkley & Hadley). Harold Fern Rm, Salisbury Rd. 8pm; Surgery 7.30pm. 449 0807 (last Fri)

Bi-monthly/fortnightly

Finchley & Dist Philatelic Scty. Carey Rm, Trinity Church Hall, Nether St. N12. 7.30pm. 883 8724 (1st & 3rd Wed)

Jubilee Group. St John's URC, small hall, Mowbray Rd. New Barnet. Creche available. 1.30pm. 449 6097 (2nd & 4th Tues)

Barnet & Dist Philatelic Scty. St John's Church Hall, Mowbray Rd. New Barnet. 8pm. (Alt Mon)

Barnet Anglo-French club mtg. Ewen Hall, Wood St. 8pm. 440 6805 (alt. Tues)

Sundays

Alternative health workshops. The Neighbourhood Cntr, 42 Church La. N2. 2.30pm. 883 2832

Weekdays

John Grooms Activities Cntr for physically handicapped people. Edgware Way, Edgware. Range of daily activities. 959 2418

Mondays

First Aid Course. British Red Cross Scty. 10 Downage, NW4. Details 203 0567

RAF Assn. Royal British Legion Hall, Legionway, Summers La. N12. 8pm. 883 5722

New Barnet Literary & Debating Scty. Foyer Rms, Lyonsdown Hall, Lyonsdown Rd. 8pm. 449 0440

Needing friendship and an uplift to life? Visit Salisbury Chapel, Salisbury Rd. Barnet. 2.15pm. 449 7026

Hendon College Adult Literacy & Numeracy classes for students with special needs. Thirleby Rd. Burnt Oak. 7pm. 200 8300 ext 241, Gus Ayling

Tuesdays

Finchley Writers Group. Moss Hall Tavern (nr Tally Ho Corner). New talent always welcome. 6pm. 444 5903

Colindale Community Care. Mtg open to people in Colindale over 50 yrs. Talks, outings etc. Hyde UR Church, Edgware Rd. NW9. 10am. 205 2621

Hendon College Adult Literacy classes for students whose first language is not English. Montagu Rd Cntr, Hendon. 7pm. 200 8300 ext 241, Gus Ayling (also Adult Literacy class, Thirleby Rd. Burnt Oak. 7pm)

Looking for someone to talk to, advice or some friendly company? Visit Ballards Lane Methodist Church, N12. 7.30-9.30pm. (also Sat, 10am-noon & St Mary's Church, Hendon La. N3, Sat 10.30am-12.30pm)

Assertiveness training. Manorhill Cntr, Summers La. N12. 8pm. 368 6316

Wednesdays

Bingo. St Alphage Church Hall, Playfield Rd. Burnt Oak. 8pm.

Hendon College Adult Numeracy classes. Grahame Park, Corner Mead. 7pm. 200 8300 ext 241, Gus Ayling

Thursdays

Bingo. Community Cntr, Victoria Rd. New Barnet. 7.30pm. 440 2573

Finchley Games Club. Leaside Day Cntr Holden Rd. N12. Board & role playing games. 13yrs+. 6.30pm. 346 2327

PHAB-integrated social club for physically-handicapped & able-bodied people. Golders Green area. 8.30pm. 450 4180

Fridays

Bingo. BSCA Cntr, Mays La. Barnet. 8pm. 441 9387

Advice & Support Groups

Carers Self Help Support Groups (over 20 in the Borough). Details, Janet Byrne, Barnet Borough Voluntary Service Council, 346 9723/8644

Sunday 29 April

Starting Again (divorce experience) course. Relate, 5 Woodhouse Rd. Finchley, N12. 445 9549/8522 (also 14 May (closing date 7 May) Further Counselling Skills course)

Monthly

Alzheimer's Disease Scty (Barnet Branch). Relatives' Group. Blue Beetle Hall, St Mary's Church, Hendon La. N3. 8.15pm. 958 8324 (1st Tues)

Cruse social mtg for bereaved people. Jackson's Lane Cntr, Archway Rd. N6 (opp. Highgate u/g) 4pm. 341 4515 (1st Thur).

National Schizophrenia Fellowship. Health Cntr, 23 Temple Fortune La. NW11. 8pm. 455 5133 (2nd Tues)

British Diabetic Assn (Barnet & Dist). Postgraduate Medical Cntr, Barnet General Hospital. 8pm. 368 6993 (2nd Wed)

Oakleigh Carers Group. Health Cntr, Oakleigh Rd Nth. N20. 2pm. 368 8350 (2nd Fri)

British Tinnitus Assn NW London. Meritage Club, Church End, Hendon. 2pm. 349 9353 (2nd Sat)

British Epilepsy Support Group, Trinity Church Cntr, Nether St. N12. 7.30pm. 446 2003/444 4453 (3rd Mon)

Weekly

Cruse support groups for people under 45yrs. Jackson's Lane Cntr, Archway Rd. N6 (opp. Highgate u/g). Details contact Brian or Anita, 794 6715/272 8785

Sundays

MIND in Barnet 'Libra' Club. Day Cntr, Etchingham Pk Rd. N3. 3.30pm. 455 2850

Weekdays

Advice service on social security, housing, consumer matters etc. E Finchley Neighbourhood Cntr, 42 Church La. N2. 10am-noon, 2-4pm (Tues 6-7pm; Tues 7-8.30pm for legal advice) 444 6265

Disablement Assn. in the Borough of Barnet. 4 Oakleigh Gdns. N20. Mon, Wed & Fri 9.30am-12.30pm; Tues & Thur 9.30am-3.30pm. 446 6935

Mondays

MIND in Barnet. Relatives support group. 2 Schoolway, N12. 7-9pm. 446 1654

Barnet Action for Mental Health, 154 Station Rd. Hendon. 7.30pm. 883 1038 (eves)

Tuesdays

MIND in Barnet luncheon/social club. 2 Schoolway, N12. 10am-4pm. 446 1654 (also Wed, Thur & Fri)

MIND in Barnet. Women's group. UR Church, Wood St. Barnet. 7.30-9.30pm. 446 1654

Emotions Anonymous (emotional living problems). Friends Mtg Hse, 120 Heath St. NW3. 8pm (also Fri)

Al-Anon (help for families & friends of problem drinkers). Carey Room, Trinity Church Cntr, Nether St. N12. 8pm. Information for other local mtgs 403 0888 (24hr service)

Wednesdays

Cancerlink (Barnet & dist). Information & emotional support for people with cancer, their relatives & friends. WRVS Room, adj. Fern Room, Salisbury Rd. Barnet. 2pm. 440 2043/449 7020 (also monthly, Fern Room, 2nd Thur, 7.45pm & last Wed, 7.30pm)

MIND in Barnet Advice Centre. 2 Schoolway, N12. 10am-4pm. By appt. 446 1654/6470 (also Men's Group. 6.30-8.30pm. 446 6470)

Alcoholics Anonymous. Closed mtg for alcoholics. Community Cntr, 154 Station Rd. Hendon. 8pm. (also Fri & Sat) For information about this & other local mtgs phone 352 3001

Thursdays

Drug Concern (Barnet). Regular support group mtg. Woodlands, Colindale Hospital. 6.30pm. For details and/or help & advice on problems with sleeping pills or tranquillisers, 200 9525/9575

MIND in Barnet social club. 154 Station Rd. Hendon. 8-10pm. 446 1654

MIND in Barnet Women's Drop in Cntr. Trinity Church, Rodborough Rd. Golders Grn. 10am-1pm (relaxation 11am) 446 1654

Bridge, Whist & Chess

Monthly

Bridge Duplicate. 41 Northumberland Rd. New Barnet. 2pm. 449 0960 (1st Wed)

Weekdays

Bridge class. All grades. Eves. 445 1108

Mondays

Bridge Club. Old Barn Cntr, Tarling Rd. N2. 1pm. 349 4613

Partner Whist Drive. St Peter's Church Hall, Somerset/Lyonsdown Rds. New Barnet. 8pm. 441 1591

Bridge classes. 41 Northumberland Rd. New Barnet. 2pm & 7.30pm. 449 0960 (also Tues 10am & 7.30pm, Wed 7.30pm)

'Bridge Builders', all levels & ages. Sobell Hse, Limes Ave. NW11. 7.45pm. 458 7411

Barnet Chess Club. The Fern Room, Salisbury Rd. Barnet. 7.30pm. 959 6837

Tuesdays

Barnet Knights Chess Club. Canada Villa Cntr, Pursley Rd. NW7. For beginners to experts. 5.30-9.30pm. 959 2811

Wednesdays

Whist Drive (Friern Barnet Council for Voluntary Service). Friern Barnet Town Hall Canteen. 10am. 368 4278

Whist Club for Men. Old Barn Cntr, Tarling Rd. N2. 1pm. 349 4613

Thursdays

Northside Bridge Club. E Finchley Methodist Church Annexe, High Rd. 7.30pm. 445 7788

Bridge for over 70s. Alyth Social Club. Alyth Gdns. NW11. Noon. 458 5674

NW London Duplicate Bridge Club. Michael Sobell Cntr, Limes Ave. NW11. 7.45pm. 455 3745

Finchley Chess Club. Day Cntr, Etchingham Pk Rd. N3. 7.30pm

Hendon Chess Club. Albany College, 413 Hendon Way, Hendon Central. 7.30pm. 958 8341

Fridays

The Fern Room Whist Club. Salisbury Rd. Barnet. 2pm. 441 4853

Countryside and Wildlife

Sunday 8 April

Herts & Middx Wildlife Trust. Task day at Darlands Lake Nature Reserve. 10am. 346 5258 (also 16 Apr, Open Day at Darlands Lake NR to see Fritillary Flower. Guided tours 10.30am & 2.30pm. £1. Meet in The Close, by Orange Tree PH, Totteridge La. N20; 29 Apr, Wildlife morning at Darlands Lake NR. 9.30am; 2 May, Illustrated talk on Wildlife Gardening by Jon Mason, N Finchley Library, Ravensdale Ave. N12, 8pm)

Sunday 22 April

Barnet Diary



RSPB(NW London). Morning car outing to Lemsford Springs LNR. Meet Edgware Stn, 9.30am. 441 8742 (also **24 Apr**, Members AGM, Harwood Hall, Mill Hill Circus, NW7. 7.45pm; **29 Apr**, Coach outing to Dungeness RSPB Reserve. 6.50. Details, 959 0204)

Sunday 29 April

RSPB(N London). Car outing to Northwood Hill Reserve & Cliffe Pools. 885 3318

Monthly

Middx Caving Group. St Mary's Hall, Hendon La. N3. 8pm. 803 6008 (**1st Wed**)

Kingsbury/Brent Geological Scty. 200 1700 (**1st Wed**)

Sundays

N London Holiday Fellowship Group. Rambles in Home Counties. 346 6795/444 5847

NW London HF Club. Rambles in Home Counties. Details & other activities 997 6079

Wednesdays

Barnet YHA Group. 1st Lyonsdown Scout Hut, York Rd. New Barnet. 8pm. 449 1553/0707 58940

Dance

Thursday 19 April

Circassian Circle Folk Dance Club. Harwood Hall, Mill Hill Bdw. 7.45pm. 950 5756 (also **3 May**)

Monday 23 April

Hobby Horse Club (children's folk dancing), 6.45pm. Chipping Barnet Folk Dance Club, 7.45pm. Church Hse, Wood St. 449 4425/0724

Monthly

Barn Dancing. Northiam Union Church, Longland Dv, off Totteridge La. N20. 8pm. Friendly & informal. 368 8335 (eves) (**1st Wed**)

20th Century Sequence Dancing Club. Southgate Upper Sch, Sussex Way, Cockfosters. 7.30pm. 360 2586 (**1st Sat**)

Weekly

Ballet, tap, modern jazz & choreography. Classes for all ages from 3 yrs+. Michael Sobell Hse. Golders Grn. 794 3027

Mondays

CRAB Dance Club for disabled. Woodhouse College, Woodhouse Rd. N12. 7.30pm. 346 0088

Junior dance classes. Manorhill Cntr, Summers La. N12. 6pm. 368 6316 (also **Tues**)

Tuesdays

20th Century Sequence Dancing Club. All Saints Hall, Oakleigh Rd Nth. N20. 7.45pm. 360 2586

Tap dancing. Centrepoint, Grahame Park. Under 12s 6.15pm;

12+ & adult beginners 7pm; intermediates 7.30pm. 205 7113

Wheelchair dancing. Grahame Park Community Cntr, The Concourse, NW9. Transport available. 1.30pm. 346 0088

Hampstead & Dist. Scots Assn. Golders Green Parish Church Hall, West Heath Dv. NW11. 8pm. 870 6131

Contemporary modern/disco classes (4-14yrs). Lyonsdown Hall, Lyonsdown Rd. New Barnet. Beginners 4.30pm; advanced 6pm. 440 8530

Primary modern. E Barnet Baptist Church Hall. 4.15pm. 368 5871 (also **Thur**, Pre-primary ballet, 4.05pm & Pre-primary tap, 4.45pm; **Fri**, Primary ballet, 4.15pm; **Sat**, Pre-primary ballet, 9.45am & Amateur tap for all, 10.30am)

Dance & General Conditioning. Parish Cntr, off Waterfall Rd, N14. 8pm. 368 6096

Odsox Youth Dance Co. (Seniors). Finchley Manorhill Sch, Summers La. N12. 7.30pm. 346 0088

Finchley Ferris Wheelers. Square dancing. St Mary's Church, Hendon La. N3. 8pm. 368 6361

Wednesdays

West Hendon Old Time & Modern Sequence Dance Club. St Matthias Church Hall, Rushgrove Ave. NW9. 8pm. 952 8529

Mountfield Club Sequence Dance. St Mary's Hall, Hendon La. N3. 8pm. 959 5185

Friary Sequence Dance Club. Manor Drive Methodist Church Hall, N20. 8pm 883 3202

American Square Dancing classes. Watling Community Cntr, Orange Hill Rd. Edgware. 8pm. 906 1582

Tap classes for adults. St Paul's Church Hall, The Ridgeway, Mill Hill. 9.15pm. 906 0854

Sequence with instruction. 7.30pm. Social dancing for beginners to bronze (Ballroom & Latin) 9pm. Subud Hall, 97 East Barnet Rd. 449 3336/6034 (also **Fri**, Ballroom & Latin dancing for beginners and improvers, 8.30pm; **Sat**, Ballroom/latin/party/disco for 3-15yrs, 11am)

Tap dancing. All Saints' Cntr, 122 Oakleigh Rd Nth. N20. 8pm. 445 4654/8388

Kathak dance classes (N Indian style). Beginners 5pm, intermediate 6pm. St Martin's Sch, Goodwyn Ave. NW7. 209 1734/381 4608

Thursdays

De Bohun Sequence Dancing. Christ Church Parish Cntr, Waterfall Rd. N14. 8pm. 886 9878

Fridays

Tap dance for 4-7yrs. Barnet Drama Cntr, 142 High Rd. N2. 4.15pm. 883 9957 (also 7-11yrs, 5pm)

Contemporary Modern/disco classes from beginners to formation and medal work. Stretch & dance classes for 15-25 yrs.

Movement to music & dance for the under 5s. Friends Mtg. Hse. New Barnet. 440 8530

Barnet International Folk Dance Club. Some teaching, no partners required. Church House, Wood St. Barnet. 7.30pm. 368 5345

Saturdays

Jazz dance for beginners (15-50 yrs!). Barnet Drama Cntr, 142 High Rd, N2. 11.30am. 883 7029

Drama

Non-Stop Workshop Theatre Co. with centres in Finchley, Stanmore and Southgate areas. Shows for 5-18yrs. Raises money for research into leukaemia. For details call 346 5507

Monthly

Open mtg for people interested in community arts. The Neighbourhood Cntr, 42 Church La. N2. 8pm. 883 2832 (**3rd Thur**)

Mondays

Barnet Drama Cntr, 142 High Rd. N2. Drama workshop for adults. 7.30pm. 883 9957 (also **Tues**, Theatre skills workshop for 15-18yrs, 7.30pm; **Wed**, GCSE Shakespeare classes for schools, phone for details; **Wed**, Drama for 5-7 yrs, 4pm; **Thur**, Speech & elocution for children, 5.30pm; **Thur**, Performance group for adults, 7.30pm, phone for details; **Fri**, Drama for 11-16yrs, 7pm; **Sat**, Drama for 7-11yrs, 10am) (also **Wed**, Circus skills for children, 5.30pm & adults, 7pm)

Performance group for 11-14yrs. The Neighbourhood Cntr, 42 Church La. N2. 4.30pm. 883 2832 (also **Wed**, Beginners performance group for 8-11yrs, 4.30pm)

Drama group activities. All Saints' Cntr, 122 Oakleigh Rd Nth. N20. 7.30pm. 445 4654/8388

Drama group activities. All Saints' Cntr, 122 Oakleigh Rd Nth. N20. 7.30pm. 445 4654/8388

Performance group for 11-14yrs. The Neighbourhood Cntr, 42 Church La. N2. 4.30pm. 883 2832 (also **Wed**, Beginners performance group for 8-11yrs, 4.30pm)

Drama group activities. All Saints' Cntr, 122 Oakleigh Rd Nth. N20. 7.30pm. 445 4654/8388

Tuesdays

Dunelm Players. St Peter Le Poer Church Hall, Albion Ave. N10. 8pm. 906 4187/800 6891 (**Sun** 6.30pm nr production)

Wednesdays

Incognito Theatre Group, Friern Barnet. 8pm. 368 0202

East Finchley Theatre Group. Methodist Church Hall, High Rd. N2. 7.30pm. 043871 5167

Gainsborough Theatre Club. The Cntr, Gainsborough Rd. N12. 8.15pm. 441 4432

Nether Never Drama Group. Disablement Assn (Barnet). Trinity Church Cntr, Nether St. N12. 8.30pm. 446 6935

Saturdays

Drama for 8-13yrs. E Barnet Baptist Church Hall, Crescent Rd. 11.30am. 368 5871

18+ Groups

Monthly

Orbit Club NW London (25-40). Moss Hall Tavern, Ballards La. N12. 8.30pm. 906 2080 (**2nd Wed**)

Bi-monthly/Fortnightly

Rotaract Club (Mill Hill). 18-28 yrs. The Rising Sun PH, Mill Hill, NW7. 8.15pm. 959 1317 (**1st & 3rd Mon**)

Rotaract Club (Barnet). Barnet Cricket Club, Barnet La. 8pm. 449 7553 (**1st & 3rd Wed**)

Rotaract Club (Finchley). Moss Hall Tavern, Ballards La. N12. 8.30pm. 445 1393 (**1st & 3rd Wed**)

Rotaract Club (Friern Barnet & Whetstone). Bull & Butcher Pub, High Rd. N20. 8.15pm. 346 0438 (**1st & 3rd Thur**)

Rotaract Club (Hampstead, Hendon & Golders Grn). 18-29 yrs. Upstairs room, Jack Straw's Castle PH, North End Way, NW3. 8pm. 458 6789 (**2nd & 4th Mon**)

Rotaract Club (Edgware & Stanmore). The Green Man Pub, Honey Pot La. Stanmore. 8.15pm (**2nd & 4th Wed**)

Hendon & Edgware 18+ Group (18-29yrs). Social mtgs & varied activities. Brampton Grove Tennis Club. 8.45pm. Details, 346 5345 (**alt. Wed**)

Sundays

Barnet 18+ Group. Bull & Butcher Pub, 1277 High Rd. N20. Activities for people 18-30yrs. 8.30pm. 0707 53536

Fetes. Fairs & Sales

Saturday 21 April

Key Stamps Fair. Methodist Hall, Ballards La. N3. 10am. Admission free. 446 1562

Saturday 28 April

New Barnet & Dist. Stamp & Postal History Fair. St Peter's Hall, Lyonsdown Rd. 10am-5pm. 440 8835 (also **5 May**)

Wednesdays

Sale of clothing and bric-a-brac. British Red Cross Scty (Barnet). St Albans Rd. 9.30am-3.30pm. 449 8969

Horticulture and Floral Art

Wednesday 11 April

New Barnet Amateur Gardeners & Floral Art Scty mtg. St Peter's Hall, Lyonsdown Rd. 8pm. £1.50 (members £1) 449 4470 (also **19 Apr**, Special mtg. with Anne Swithinbank, Lyonsdown Hall, New Barnet, 8pm, for tickets (£2.50) 449 4470)

Tuesday 1 May

Finchley Horticultural Scty. "Choosing Plants". Moss Hall Jun Sch, Nether St. N3. 8pm. 346 4359

Monthly

Finchley Chrysanthemum Scty. Manorside Sch, Squires La. N3. 8pm. 445 1742 (**1st Mon**)

Barnet and Dist. Fuchsia Scty. Methodist Hall, Brookside, E Barnet. 7.30pm. 207 3176 (**2nd Mon**)

Mill Hill Flower Club. Harwood Hall, Mill Hill Bdw. 8pm. 959

3530 (2nd Tues)

Hendon Horticultural Scty. Hendon Library, The Burroughs. 8pm. 203 1187 (**2nd Wed**)

Barnet Flower Arrangement Scty. Lyonsdown Hall, Lyonsdown Rd. New Barnet. 8pm. 0707 57199 (**2nd Thur**)

Totteridge Floral Art Group. Badgers Croft, Totteridge Village. 2pm. 445 9307 (**3rd Tues**)

Hendon Floral Art Group. St John's Church Hall, Algernon Rd. NW4. 7.45pm. 202 8756 (**3rd Wed**)

Fortnightly

Friern Barnet Floral Art Club. Christ Church Hall, Oakleigh Rd Nth. N20. 8pm. 446 0783 (**alt. Tues**)

Saturdays/Sundays

Mill Hill Horticultural & Allotment Scty. Hartley Close. Trading hut open Sat 2.30-4pm; Sun 10.30am-12.15pm. Garden plots to let. 959 1230

New Barnet (Clifford Rd) Allotment Scty. Tudor Sports Ground. Site shop (membership 50p p.a.) open Sat/Sun 10.30am-12.30pm. Plots to let 449 2647

Wise Lane Horticultural & Allotment Scty. Moorlands Ave. Mill Hill. Trading hut open Sat 2.30-4pm; Sun 11am-1pm. Garden plots to let 959 3493

Sundays

Burnt Oak Horticultural Scty. Trading hut. Back Lane r/o Woodcroft Hall. 10.30am-noon.

Tuesdays

Sangetsu Japanese Flower Arranging classes. 125 North End Rd. NW11. 6.30pm. 455 8949 (also **Wed & Thur**, 2pm)

Keep Fit

Weekly

Sundays

Yoga classes. Patanjali Yoga Centre, 190 Watford Way. Hendon. Advanced 4pm. 203 0062 (also at 32 Cotswold Gdns, Hendon Way, NW2. Beginners & mixed. 7.30pm. 455 7070)

Keep in Shape. St Mark's Hall, Woodville Rd. New Barnet. 11am. 368 0881

Weekdays

Weight training instruction. Hendon Sports Cntr, Algernon Rd. **Mon-Thur**, 6pm; **Fri**, 5.30pm. 202 6027

Douglass Fitness Cntr. Hamilton Rd. N2. 16 station multi-gym, sauna, sunbed, instruction available. **Mon-Thur**, 6-10pm; **Fri**, 6-8pm. Details, 444 5798

Mondays

Stretch & Tone. Free Church Hall, Northway, NW11. 8.15pm. 883 7029

Workout to Music. Finchley Reform Synagogue Hall, Fal-lowcourt Ave. N12. 10.15am. Creche (3 mths-5yrs). £2.80. 50p per child. 440 5811 (also **Wed**, Brookside Methodist

Barnet Diary



Church Hall, Church Hill Rd. E Barnet)

Women's Keep Fit. All abilities. Creche provided. Canada Villa Cntr, Pursley Rd. NW7. 10am. 959 2811 (also Fri)

Aerobics class. The Body Factory, Mill Hill Bdway. NW7. 7pm. All levels welcome. 202 0982 (also Thur and Wed & Sat 10.15am)

Body Conditioning classes. Christ Church, Oakleigh Rd Nth. N20. 7pm. 445 1846 (also Thur, 7.15pm)

Popmobility. Hendon Sports Cntr, Algernon Rd. 7.30pm. 202 6027 (also Thur)

Aerobic circuit advanced class. Manorside Sch, Squires La. N3. No beginners. 8pm. 349 1449

Low Impact Aerobics & Stretch. All Saints Church Hall, Oakleigh Rd Nth. N20. 7pm. 368 5514 (also Wed)

Body Conditioning classes with supervised creche. Muswell Hill area. 10am. 444 4284 (also Wed, Fri)

Aerobics 9.45am & Body Conditioning 10.45am. St Mary's Hall, Hendon La. N3. In term-time. 349 1449

Pensioners Health Group. Methodist Hall, Rodborough Rd. NW11. 2pm. 60p incl. tea. 794 6376

Ladies fitness & weights training. Mill Hill Sch Sports Cntr, The Ridgeway. 8.15pm. (also Tues, 8pm) & fitness classes for all, 906 2322

Aerobics. Hendon College, Corner Mead, Grahame Park. 8pm. 906 1721

Tai-Chi for all. St Edward's Church Hall, Finchley Rd. entrance Hoop La. Golders Grn. 8pm. 458 9842 (also Wed)

Tuesdays
Body-time keep fit dance. St Mary's Hall, Church Hill Rd. E Barnet. 8.15pm. 441 1336 (also Mon & Sat, 9.35am and Wed, Hatha yoga for ladies. Beginner classes. Sorry no problem backs, 7.15pm)

Aerobics for beginners. Manorside Sch, Squires La. N3. 8pm. 349 1449 (also Thur, general aerobics, 8pm)

Ladies Keep Fit, all ages. Hendon Sch, Golders Rise, off Brent St. 7.30pm. 349 0400 (also Thur)

Gannets Slimming Club. E Barnet. 8pm. 449 4277

Body Focus exercise/dance class. Lyonsdown Hall, New Barnet. 10.15am. incl creche. 368 5871

Aerobics. Copthall Pools. 12.30pm & Hartley Hall, Flower La. NW7. 6.30pm. 906 1721

Exercise to music/aerobics

class. UR Church, Wood St. Barnet. 8pm

Stretch 'n' Tone. Barnet Drama Cntr, 142 High Rd. N2. 10.30am & 8.15pm. 883 7029

Keep fit. Queen Elizabeth's Cntr. Meadway, Barnet. 7 & 8pm. 441 2933

Yoga for all class. All Saints' Cntr, 122 Oakleigh Rd Nth, N20. 10am. 445 8388/368 9621

Wednesdays
Tai Chi movement class. Barnet Drama Cntr, 142 High Rd. N2. 7.30pm. 883 9975 (also Sat, 4pm)

Popmobility. St Mary Magdalen Parish Cntr, Athenaeum Rd. N20. 8.30pm. 070787 5162

Body Conditioning. Copthall Pools. 10 & 11am. In term-time. 203 4187

Health and Beauty, exercise/movement classes. Christ Church Hall, High Rd. N12. 7.15pm. 504 1644

Keep Fit. Manorhill Cntr, Summers La. N12. 8pm. Circuit training 7pm. 368 6316

Body Conditioning/Keep Fit class. Canada Villa Cntr, Pursley Rd. NW7. Creche available. 2pm. 959 2811

Weight Mates Slimming Club. St Mary Magdalen Church Hall, Holders Hill Rd. NW4. 10am. 455 4814

Keep Fit, St Paul's Church Hall, The Ridgeway, Mill Hill. 8.15pm. 906 0854

Relax and get supple with Yoga.

Totteridge Village Hall, Badgers Croft, N20. 1.30pm. 445 2171

Low impact aerobics, 7pm. Stretch 'n' Tone for beginners, 8pm. E Finchley Library, N2. 883 7029.

Thursdays
Yoga. Barnet Drama Cntr, 142 High Rd. N2. 8pm. 883 7029

Contemporary jazz work-out for beginners. Body Action. 40 High St. Barnet. 10.30am. 449 2822

Get Fit Club for young and old. St Stephen's Hospital, Mays La. Barnet. 7.30pm. 906 0974

Yoga. Mixed ability class. British Wheel trained teacher. Union Church Hall, Northiam, N20. 7pm. 349 2972

British Wheel of Yoga Teachers' Diploma Course, Barnet. 7pm. 440 1828

Body Focus exercise/dance class. E Barnet Baptist Hall, Crescent Rd. 8.30pm. 368 5871

Limber, stretch & dance. Hampstead Gdn Suburb Institute, NW11. 6 & 7.30pm. 455 9951

Ladies Keep Fit. Hendon Sports Cntr, Algernon Rd. 10am. 202 6027

Yoga for people with handicaps. Gentle movement, breathing & relaxation. Qualified teacher. Stanhope Rd Cntr, N12. 1.30pm. Other classes available. 440 1828

Aerobics. Copthall Pools

12.30pm & Tenby Hall, Tenby Rd. Edgware 7.45pm. 906 1721

Fridays
Aerobics 9.30am. Body conditioning 10.30am. Christ Church Hall, High Rd. N12. In term-time. 349 1449

Yoga. All abilities. Memorial Hall, Hadley Highstone. 9.30am (term time). 441 0055

Saturdays
Men's exercise class. 9.30am. Low impact aerobics 10.30am. Barnet Drama Cntr, 142 High Rd. N2. 883 7029

Martial Arts

Monday
Karate Kids (5-15yrs) Goju-Ryu style. Finchley Methodist Church, N3. 5.30pm. 346 7329 (also Tues 5 & 6pm; Sat 2 & 3pm) (also Mon 5 & 6pm; Thur 4.15 & 5.15pm, Hartley Hall, Flower La. Mill Hill) (also Wed 5 & 6pm; Sat 2 & 3pm, Ewen Hall, Wood St. Barnet) (also Wed & Fri, 5 & 6pm, Whitchurch Institute, Buckingham Rd. Edgware) (also adult classes, Tues 7.30pm, Thur 8pm & Sat 4pm, Finchley Methodist Church)

N London Karate Club. Mill Hill Sch, The Ridgeway. 8pm & 9pm. 440 7733/8633 (also Thur)

Cobra Karate Club. Christ's College Sch, Hendon La. N3. Beginners 7pm, advanced 8pm. 959 4338 (also Wed)

HENDON HALL HOTEL



Superb smaller private rooms for that very special occasion

- Christnings ● Barmitzvahs ● Coming of Age ● Small Weddings
- Birthdays ● Anniversaries ● Business functions



◀ JOHNSON
for up to
30 people
● Comfortable
● U-Shaped
setting for
weddings

GARRICK ▶
for up to
40 people
● Own bar



For more details of the rooms above or our Mount Charlotte Suite that can hold up to 240 people please telephone

01 203 3341

Ashley Lane, (off Parson St.) Hendon, NW4 1HF

FIGURE CONTOURING FOR ALL AGES!

AT SHAPERS TRIMTONE SALON



Improve your shape- and all you have to do is lift a finger! Shapers provide a range of exercise machines to work on muscle groups in specific problem areas- such as tummy, waist, hips and thighs. All you do is press a button and let high-tech take over! And because Shapers toning system is non-rigorous it's suitable for all ages.

NOW OPEN
01-367 8163

Phone to-day for an appointment. Remember dialling our number is more effort than you'll make at Shapers!



167 BRAMLEY RD. OAKWOOD N14.

Barnet Diary



New Barnet Jiu Jitsu Club. Scout Hut, York Rd. New Barnet. 7.30pm. 886 6758/555 4037 (also Tues, children 6pm, seniors 7.30pm)

Judo. The Old Finchleians Memorial Grnd, Southover, N12. Children 7pm, adults 8.30pm. 444 0156/445 7406 (also Thur)

Sport Karate Club. T.S. Barrosa, Daws La. Mill Hill. (Barnet Karate Squad Coach). 7pm. 906 1701 (also Thur)

Shaolin Nam-Pai-Chuan. Hodford Hall, Hodford Rd. NW11. 6.30pm. 455 8407 (also Sat)

Meadway Ju-Jitsu Club BJJ. MAC. Friern Barnet La. N20. 7.30pm. 2hr 5th Dan tuition. 445 6252 (also Tues)

Finchley Nanbudo Club. St Mary's Church Hall, Hendon La. N3. 8pm. 368 7042/446 3336 (also Wed)

Tuesdays

Shotokan Karate Club. Christ's College, Hendon La. N3. Adults and beginners. 8pm. 202 3171 (also Thur)

Karate. Centre Point, Corner Mead, Grahame Pk. 7-13yrs. 6pm. 906 1701 (also Thur, 7pm)

Karate. Manorhill Cntr, Summers La. N12. Children 6.30pm, adults 7.30pm. 368 6316 (also Thur)

Barnet Goju-Ryu Karate Club (traditional Okinawan Goju-Ryu). Queen Elizabeth's Cntr, Meadway, Barnet. Children 6pm, adults 7pm. 449 8997 (also Thur)

Karate. Barnet Drama Cntr, 142 High Rd. N2. 6.30pm. 883 9957 (also Fri)

Wednesdays

Watling TSKC. Watling Community Cntr, Orange Hill Rd. Burnt Oak. Juniors 7pm, adults 8pm. 906 1701

Finchley Karate Club (Okinawan Goju-Ryu Karate). Manorside Sch. Squires La. N3. Children 7pm, adults 8pm. 346 9505 (also Fri)

N London Gojukan. Finchley Synagogue, Hutton Grove, N12. 8-14yrs. 6.30pm. 449 3150

Ladies self-defence classes. Manorhill Cntr, Summers La. N12. 5pm. 368 6316

Thursdays

Aikido, Queen Elizabeth's Cntr, Meadway, Barnet. 8pm. 0707 53462

Shaolin Nam-Pai-Chuan. Elderkin Hall, Trinity Church, Rodborough Rd. NW11. 6.45pm. 455 8407

Shaolin Nam-Pai-Chuan. St Mary's Church Hall, Greyhound Hill, NW4. 8pm. 203 5452

Fridays

Shin Do Kwai Kendo Club. Whitefield Sch gym, Claremont Rd. NW2. 8.30pm. 863 7574

Lyondown Judo Club. Lyonsdown Hall, Lyonsdown Rd. New Barnet. 8-15yrs 7.30pm, adults 8.45pm. 440 1406

Music

Tuesday 3 April

East Barnet Library Gramophone Scty. 85 Brookhill Rd. 8pm. 440 4376 (also 24 Apr)

Thursday 5 April

Friern Barnet Library Gramophone Scty. Friern Barnet Rd. N11. 8.10pm. 441 3185 (also 19 Apr & 3 May)

Tuesday 17 April

Hendon Library Gramophone Scty. The Burroughs. 7.45pm. 202 5625 (also 1 May)

Wednesday 25 April

Edgware and District Organ Scty. Craig Boswell, Electronic Organ Concert. Watling Community Cntr, Orange Hill Rd. 8pm. 953 3291

Sundays

Jazz, Blues and Rock music. The Torrington Arms, High Rd. N12. 8.30pm. 445 4710 (also Fri)

Mondays

Barnet Orchestra at Hendon. Hendon Sch. Golders Rise. NW4. 8pm. 205 2418. Players welcome, esp. violins & brass

Finchley Choral Scty. Moss Hall

Jun. Sch, Nether St. N3. 7.45pm. 445 4968

Manor House Hospital Operatic Scty. Manor Hse Hospital, North End Rd. NW11. 7.30pm. 346 2104

Tudor Orchestra. E Finchley Methodist Church, High Rd. Players welcome all sections esp. brass. 7.30pm. 445 0563

Mill Hill Operatic Scty. Hartley Hall, Flower La. 8pm. 959 2848

Choir for Japanese Ladies. Trinity Church, Hodford Rd. NW11. 1pm. 202 3585

Tuesdays

The Apollo Singers. Wilberforce Hall, Wilberforce Rd. NW9. 7.45pm. 959 1244

Hendon String Orchestra. Whitefields Sch. Claremont Rd. NW2. 8pm. 455 5005

Finchley Chamber Choir. Rehearsals. Finchley Methodist Church, Essex Pk. 7.45pm. Details, 441 8382

Barnet College Choir. Varied light music. St John's Church Hall, Friern Barnet La. N20. 1.30pm. 445 0384

All Saints Church Choir. Durham Rd. N2. Rehearsals 8pm. On Sunday mornings, a mass setting, psalm & anthem. Singers/would-be singers phone Geoffrey Hanson, 444 9214

Wednesdays

N London Morning Orchestra. Friends Mtg. Hse. Winchmore Hill, N21. 10.30am. 360 2013

Finchley & Friern Barnet Oper-

atic Scty. St Andrew's Church Hall, Alexandra Pk Rd. N10. New members welcome, esp. men. 7.45pm. 368 0770

Barnet Band. Q.E. Boys' Sch, Queens Rd. Brass & reed players needed. 7.30pm. 449 3057

Barnet Choral Scty. Church Hse, Wood St. 7.45pm. New members welcome, esp. male voices. 441 5502

Over 50's Music Club. Barnet Drama Cntr, 142 High Rd. N2. 6.30pm. 883 9957

Hindustani Light & Classical Vocal (N Indian music) & Harmonium classes. Beginners 5pm, intermediates 6pm. St Martin's Sch, Goodwyn Ave. NW7. 209 1734/381 4608

Thursdays

CUE's rehearsals. St John's Vestry, Algernon Rd. NW4. 8pm. New members welcome. 907 3862

Barnet Schs. Brass Ensemble & Training Band. Moss Hall Schs, Nether St. N12. 5pm. 349 4195

London Pro Arte Choir. Mill Hill East Free Church, Salcombe Gdns. 7.30pm. 203 7111

Finchley Chamber Orchestra. Moss Hall Jun Sch, Nether St. N3. 7.30pm. 886 2629

Borehamwood Operatic Scty. Fairway Hall. Welcomes new members. 8pm. 906 1453

Fridays

Barnet Schs. Wind Orchestra. Moss Hall Sch. Nether St. N3. 5pm. 349 4195

Tremarrak Gardens

- New Lawns or Turfing
- Maintenance
- Clearance
- Landscaping
- Tree Surgery
- Fencing Erected & Repaired

01 445 9446
between 5-9pm
eves/weekends



Established 1984

**PROBABLY
THE BEST
VEGETARIAN
RESTAURANT
IN LONDON**

CLOSED ALL DAY MONDAY
7 LONG LANE, FINCHLEY, N3
Tel: 01-349 4386/2636

SINGLE PARENT ? LONELY ?

You don't have to be... JOIN

GINGERBREAD

Barnet's self help group for one parent families.

- New members evenings ● Pub nights
- House parties ● Coach outings to the coast, zoos, leisure parks, etc ● Quiz evenings ● Discos for the family, parents & children.

Plus many more activities to suit you.
Meet more people — Make new friends

Telephone **01 445 4227**

Tuesday or Friday 10am-2pm
1 FRIERN PARK, FINCHLEY, N12.

Just separated? Need advice and support regarding children, finance accommodation etc. Do not hesitate to call, we are here to help.



FINCHLEY MANOR FOR TENNIS, SQUASH and FITNESS

LYNDHURST GARDENS, FINCHLEY N3.

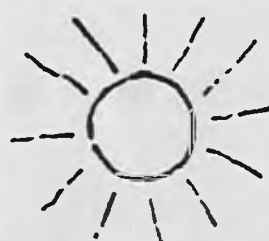
NEW TOP CLASS TENNIS PROFESSIONAL

- 9 COURTS (4 RELAID & FLOODLIT)
- 4 SQUASH COURTS
- FITNESS (MULTIGYM)

KIM 346 6106 (Work)

- MODERN CLUB HOUSE & FRIENDLY BAR
- PHONE HELEN FOR MEMBERSHIP

346 6835



**Beautiful private villa in
exotic surroundings at
Villacana near
MARBELLA, SPAIN.**



Tel: 01 660 6286

Just off the Beach.
Sleep six. Ideal for families.
Private swimming pools,
Tennis, Squash, Snooker
on the complex.

Phone for availability
for bookings after Easter
Small parties of Golfers welcomed
as Golf nearby

Barnet Diary



Ionian Clarinet Choir. Christ Church, Oakleigh Pk Nth. N20. 8.15pm. 445 7095

Saturdays

Barnet Schools Music Centres: Finchley, Moss Hall Sch, Nether St. N12; Hendon, St Mary's CE Lower School, Sunningfields Rd; East Barnet Upper Sch, Chestnut Grove, Hat Hill. 9.30am. 349 4195

Hampstead Gdn Suburb Youth Music Cntr. Henrietta Barnett Sch. Bigwood Hse, Bigwood Rd. NW11. 3-15yrs. All musical activities. 9am-12.45pm. 907 018

Pensioners' Clubs

Monthly

Pensioners' Voice (Mill Hill). John Keble Church, small hall, Dean's La. Edgware. 1.30pm. 59 6180 (1st Mon)

Golders Green & Dist Pensioners' Assn. Trinity Church, Rodborough Rd. NW11. 2.15pm. 202 0891 (1st Wed)

Pensioners' Voice (Barnet). Methodist Hall, Brookside, E

Barnet. 1.30pm. 441 3185 (2nd Wed)

Northern Heights Probus Club. For business/professional people who live/have lived in Highgate, Hampstead & Golders Grn. areas. Details, 883 2863 (3rd Wed)

Civil Service Pensioners' Alliance. Avenue Hse, East End Rd. N3. 10am. 445 4821 (3rd Thur)

Pensioners' Voice (Colindale/Burnt Oak). Burnt Oak Library, Watling Ave. 1.30pm. 906 2161 (last Thur)

Pensioners' Voice (Whetstone/Finchley). N Finchley Library, Ravensdale Ave. 2pm. 346 6762 (last Thur)

Weekdays

WRVS E Barnet Lunch Club. 54-60 Brookhill Rd. New Barnet. Noon. 449 5025 (between 10am-2pm)

Meritage Club, Church End, Hendon NW4. 10am-4pm. Varied leisure activities incl. short mat bowls, table tennis, darts, tea dances. 203 5040

Garth Hall Club, Childs Hill, NW2. **Mon & Fri**, 10am-3pm; **Tues, Wed & Thur**, 10am-2pm. Various activities. 203 5040

Mondays

Handicraft Club for 60+. Evergreen Cntr, 54-60 Brookhill Rd. New Barnet. 2pm. 449 8690

Club for Active Retired. Day Cntr, Friern Barnet La. N11. 11am-4pm. 368 4278

Hadley Darby & Joan Club.

Memorial Hall, Hadley Highstone. 2pm. 441 4853

Village Club for 60+. St Mary's Church Hall, Church Hill Rd. E Barnet. 1pm. 449 2383

Tuesdays

Clitterhouse over 60's Afternoon Club. Hendon Football Club. Various activities. 203 5040

Spur Road Club. Edgware. 10am-3.30pm. Lunch & various activities (also Fri). Transport can be arranged. 203 5040

Pensioners Lunch Club. E Finchley Neighbourhood Cntr, 42 Church La. N2. Noon. 444 6265 (also Fri) (Mon, Asian Vegetarian Menu)

Alyth Social Club (70+). Alyth Gdns. Finchley Rd. NW11. Noon-3pm. Ploughman's Lunch 60p. 458 5674

Luncheon Club for elderly, homebound & lonely. Day Cntr, Friern Barnet La. N11. 10am-4pm. Club. 2-4pm. 368 4278 (also Wed & Thur)

Union St Evergreen Club. Ewen Hall, Wood St. Barnet. 2pm. 441 4853

Fern Evergreen Club. Fern Room, Salisbury Rd. Barnet. 2pm. 441 4853

Osidge Club for 60+. Monkfrith Boys' Club Hall, Osidge La. E Barnet. 2pm. 368 2402

Mount Club for 60+. Baptist Church Hall, Grove Rd. New Barnet. 1pm. 440 6180

Lyonsdown Club for 60+. Evergreen Cntr, Brookhill Rd. New

Barnet. 1.30pm. 449 1277/361 2853

Old Pals' Club (50+) & Bingo. Old Barn Cntr, Tarling Rd. N2. 2pm. 349 4613

WRVS High Barnet Lunch Club. Salisbury Rd. Noon. 449 0158 (between 10am-2pm) (also Thur & Fri)

Wednesdays

Mays Lane Evergreen Club. St Stephen's Church Hall, Bells Hill, Barnet. 2pm. 441 4853

W Hendon over 60s Lunch & Social Club. Community Cntr, Marsh Dv. NW9. Lunch noon: Social Club 1.30pm. 202 5057

Leisure Club for 60+. St James' Church Hall, E Barnet Rd. New Barnet. 1.30pm. 449 5697

Asian Meditation and Music. Methodist Church, Rodborough Rd. Golders Grn. 12-4pm. Free admission & refreshments. 202 2751/440 4633 (also Thur & Fri)

Barnet Asian Old Peoples Assn. Free classes in reading and writing English. Trinity Church, Hodford Rd. NW11. 1-4pm. 202 2751

Edgware Friendship Club (60yrs+). Pauline Glick Hall, Edgware Synagogue, Edgware Way. 12.30pm. Speakers, singers, quizzes, bingo etc. 958 5460

Thursdays

Pensioners Friendship Club. North Rd Community Cntr, Burnt Oak. 1.45pm. 591 2362

Hoop Lane Thursday. Drop in

for a coffee & a chat. Unitarian Room, Hoop La. NW11. 10.30am.

Golden Circle Club. The Salvation Army Hall, Brampton Grove, Hendon. 1.30pm. 203 4823

The Torrington Park Pensioners' Club. Health Cntr, Torrington Pk. N12. 2pm. 446 4201 (alt Thur)

Thursday Club for 60+. Evergreen Cntr, Brookhill Rd. New Barnet. 1.30pm. 441 1269

Fridays

Edgware Friday Club for Senior Citizens. Methodist Church Hall, Garrett Rd. Edgware. 10am. 952 3908

Young in Heart. Conservative Hall, Barnfield Rd. Burnt Oak. 1.30pm. 952 3513

Club for the Elderly. Day Cntr, Friern Barnet La. N11. 2-4pm. 368 4278 (Special activities 1st Fri)

Bells Hill Evergreen Club. St Stephen's Church Hall, Bells Hill, Barnet. 2pm. 441 4853

Over 60s Club. The Salvation Army Hall, Hertford Rd. N2. 2.30pm

Oakhill Club for 60+. Evergreen Cntr, Brookhill Rd. New Barnet. 1.30pm. 440 2573

Pets

Monthly

Hendon & Dist Cage Birds Assn. Labour Hall, Back La. (off

TENNIS COACHING by JOHN CHAMBERS

(LTA Qualified, England International) **New Club Profesional at Finchley Manor Lawn Tennis Club.**

- Adults ● Children
- Groups ● Individuals
- All standards & ages welcome.

Now taking bookings please call

John Chambers on (day) 346 1327 (eves) 343 0090
LYNDHURST GARDENS, FINCHLEY, N3 1TD.

HOLIDAY CAMPS FOR CHILDREN 7 to 15

Teaching Tennis, Games, Exercises & Practice.

Mon 9 Apr-Fri 13 Apr
Mon 16 Apr-Fri 20 Apr

CONTACT **JO ROGGER** 346 7530 for more details



ANTIQUES & COLLECTORS FAIR 450 STANDS

HARROW LEISURE CENTRE

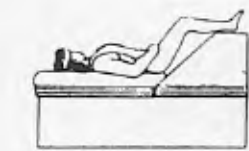
EASTER MONDAY 16th APRIL

Admission to public 11am - 4pm £1.25
Free car parking: Foreign exchange: Refreshments: Bar.

HARROW LEISURE CENTRE, Christchurch Avenue, Harrow, Middx. Nearest station: Harrow & Wealdstone B.R and Tube.
Courtesy coaches from station and town car parks AA signposted

All enquiries and bookings to JAX FAIRS
Tel: (0444) 400570

450 STANDS



Leg Table



The Stretch Table



The Circulation Table



Sandbag Table



Waist-Tummy Hip Table



Body Bender Table



Side Bend Table

THE FIGUREWISE TONING SALON

Now Open at the Luxurious David Lloyd Slazenger Club

FREE TRIAL SESSION
Limited Period Only

LOSE INCHES the EASY WAY

with our revolutionary "NO SWEAT" passive exercise programme.

● TONE, FIRM & REDUCE any problem area by breaking down unwanted cellulite.

7 luxury motorised tables do all the hard work for you. Each designed to improve different areas - stomach, hips, thighs, buttocks, upper arms etc. Also recommended for arthritis, rheumatism, back problems & sports injuries.

● EFFORTLESS ● FUN ● IDEAL FOR ALL AGES & FITNESS LEVELS.

Non-Club Members Welcome
Open 7 days a week

FIGUREWISE OF FINCHLEY Toning Salon.

The David Lloyd Slazenger Club. SUMMERS LANE, FINCHLEY, N12.

01-446 4337



Barnet Diary



Watling Ave.) Burnt Oak. 7.30pm. 205 2647 (2nd Tues)

Hendon Tropical Fish Socy. Hendon Library, The Burroughs. 8pm. 458 5826 (2nd & 4th Thur)

Mondays

Hendon Dog Training Club. Viking Club. Inglis Barracks. Bray Rd. off Bittacy Hill. NW7. Beginners 10 wk courses. 7pm. 455 9820

Bushmead Dog Training Club. Bushmead Social Club. Hamonde Close. Edgware. 7.30pm. 906 0765/200 0621

Edgware & Dist Canine Training Socy. St Alphage Hall, Playfield Rd. Burnt Oak. Ring Class 8.15pm; Obedience Training 9.15pm. 0923 35966

Tuesdays

Dog Training Class, advice on problem dogs. Mill Hill New Church, Pursley Rd. NW7. By appt. eves. 449 7539/441 7312

Finchley Dog Training Club. Old Barn Cntr, Tarling Rd. N2. 7pm. 349 4613 (also Wed, 8pm)

Thursdays

Barnet & Dist. Dog Training Club. Coppetts Rd. N10. 7.30pm. 449 7539

Photography Arts & Crafts

Monthly

Barnet Ceramic & Glass Socy. East Barnet Upper Sch, Chestnut Grove, off Cat Hill. 446 1022 (1st Wed)

Mildon Art Socy. Herwood Hall, Union Church, The Broadway, NW7. 7.30pm. 346 7481 (1st Wed)

Open mg for those interested in Community Arts. The Neighbourhood Cnr, 42 Church La. N2. 8pm. 863 2632 (3rd Thur)

Mondays

Painting. Finchley Art Socy. Trinity Church Cntr, 15 Nether St. N12. 7.30pm. (also Wed, St Mary's Church Hall, Hendon La. N3. 1.30pm)

Art classes. All abilities & media. All Saints Arts Cntr, 122 Oakleigh Rd Nth. N20. 2pm. 445 8368/445 4654

Community Links in Cameras (CLIC). Photography group of disabled people. 43 Flower La. NW7. 1.30pm. 200 8353 (also Thur)

Painting. Finchley Art Socy. Moss Hall Sch, Nether St. N3. 7.30pm (also Wed, St Mary's Church Hall, Hendon La. N3. 1.30pm)

Hand knitting Circle. Old Barn Cntr, Tarling Rd. N2. 1pm. (creche provided) 349 4613 (also Thur, Machine knitting class, tuition at all levels)

Life drawing class for all abilities. Christ Church Lower Hall, Oakleigh Pk. N20. 7pm. 363 8503

Tuesdays

Studio North Three adult classes in art. College Farm, Fitzalan Rd. N3. 10am. 959 1498/6175

Finchley and Dist Model Aircraft Club. Manorside Sch, Squires La. N3. 14yrs+. 8pm. 904 5449

Friern Barnet & Totteridge Camera Club. Totteridge Library, Totteridge La. Beginners to advanced. 8pm. 445 2617

Art & Craft Workshop for 8-14yrs. Barnet Drama Cntr, 142 High Rd. N2. 6pm. 883 9957

Wednesdays

Community & Recreational Arts in Barnet (CRAB). Photography. Open access 10am-3.30pm; 6-9pm. After school group for disabled children and their friends ages 8-18. 3.30-5.30pm (some transport is available in Barnet area). Community Focus, Tedder Lounge, Wiggins Mead, Grahame Pk Way, NW9. 200 8353

Charterhouse Camera Club. The Winchenden Assn Clubhouse, Bramley Rd. N14. 8pm. 888 5589

Homesay one - Scene Two. St Peter's La Poer Hall, Albion Ave. N10. 8.15pm

Thursdays

Sculpture class for women. Old Barn Cntr, Tarling Rd. N2. 7.30pm. (creche) 349 4613

Fridays

Barnet & Finchley Photographic Socy. rear of 37a Salisbury Rd. Barnet. 8pm. 886 7071

Finchley Cine Socy. 8pm. 346 4265

Hendon & Hampstead Gdn Suburb Camera Club. Fellowship Hse, Willifield Way, NW11. 8pm. 205 6053

Playgroups & Under 5s

Bi-monthly

'Pram' Service. Songs, stories & prayers. St James' Church, New Barnet. 10am. 449 4043 (1st & 3rd Wed)

Weekdays

Crescent Playgroup (3-5 yrs). E Barnet Baptist Church Hall. 9.30am. 449 5095/5320 (also Mon & Thur, Bridge Playgroup (2-3 yrs). 1.45pm)

Under 5's activities. Old Barn Cntr, Tarling Rd. N2. 9.30am. 349 4614

Mother & Toddler Group. The Pavilion Cntr, Lyttelton Playing Fields, N2. 9.30am & 11am. 455 1573/883 4690 (also Tues, Music classes for 3-5yrs, 2pm & 2.45pm; Wed, Mother and Baby music class, 2pm)

Mondays

Tumble Tots. Gym for the under 5's. Hodford Hall, Hodford Rd. NW11. 9.59 4261 (also Fri at St Mary's Hall, Hendon La. N3)

Bells Hill Prams & Pushchairs.

St Stephen's Church Hall, Bells Hill, Barnet. 1.30pm. 441 9501

Church Farm Pre-School Activities Group. Barnet College Annexe off Church Hill Rd. E Barnet. 10am. 368 9893

Toddlers Arts & Crafts Group. Barnet Drama Cntr, 142 High Rd. N2. 1pm. 883 9957 (also Tues, Toddlers Music Group, 10.30am; Wed, Drama for Tots, 10.30am)

Tuesdays

Teddy Tots for mums and toddlers, newborn babies and mums-to-be. Woodcroft Evangelical Church (Gervase Rd entrance) Burnt Oak. 10.30am. 200 8909

123 Club for mothers, babies & toddlers. Christ Church Hall, High Rd. N12. 9.30am & 1.15pm. In term-time. 446 5956

Bottoms Up. A club for mothers with first babies. Jubilee Room, St James' Church, Friern Barnet La. N20. 2.30pm. 445 0386

Mother & Toddler Group. Mill Hill Synagogue, Brockenhurst Gdns. NW7. 10am. 958 9550

Mums & Toddlers. Quinta Youth Club, Mays La. Barnet. 9.30am. 449 2914 (also Thur)

Playgroup for the under 5's. Barnet Drama Cntr, 142 High Rd. N2. 1pm. 883 9957 (also Thur, 10am & Fri, 1pm)

Wednesdays

Parent & Toddler Time. E Barnet Baptist Church Hall. 1.45pm. 449 5320 (also Fri)

See-Saw Club for babies and

'TIS TRULY RURAL IN BARNET

Hedge-laying is a rural craft. Who would expect to find it practiced in the London Borough of Barnet?

Members of the British Trust for Conservation Volunteers undertook a little hedgerow management at Moat Mount Open Space, Mill Hill, over a recent weekend.

Thirty three volunteers, including three Barnet Council parks rangers, laid a traditional hedge along the A1 footpath, led by John Hedley of BTCV.

Well established

The new stretch of hedging is next to a length laid last year which has already established itself and is providing a habitat for wildlife.

In the ancient craft of hedge-laying weak growth is cleared away. A series of cuts are made through the trunks of saplings in the hedge which are then bent over and the branches are woven through stakes which have been driven in.

Countryside management

The project is part of the management plan for Barnet Council's Moat Mount and Scratchwood Countryside Park.

By encouraging traditional hedgelaying Barnet Council and the BTCV are maintaining rural skills and improving the countryside. For details of groups and trusts who carry out work in Barnet contact Jim Rea or Catherine Cairns at Barnet House. Tel:446-8511



Volunteers prepare the young tree trunks for bending into the hedge.



And what is happier to have a hedge ready for presentation - last year's model inspected by John Hedley of the BTCV

Barnet Diary



toddlers with special needs. North Road Community Cntr, Burnt Oak Bdw. 9.30am. 441 3714

Mums, Babies & Toddlers Club. St Barnabas Church, Holden Rd. N12. 10am. 368 0367 (also Thur)

Mother & Toddler Group. Yeshurun Synagogue, Stonegrove, Edgware. 10am. 958 5550

Pumping Beans. Gym for parents & 1-4yrs. Canada Villa Cntr, Pursley Rd. NW7. 10am. 59 2811 (also Thur)

Thursdays

Parent & Toddler Time. Victoria Cntr, Victoria Rd. New Barnet. 10am. 449 5511

Tumble Tots, physical activity for pre-school children 6mths-4yrs. Social Cntr, Sacred Heart of Mary Immaculate, Mill Hill Bdw. Classes all day from 9.30am. 958 6579

Bounce, a group for children under 5 with special needs. New Barnet Community Cntr, 48-50 Victoria Rd. 1.30pm. 441 7044

Mother & Toddler Gymnastics (up to 4yrs). Hendon Sports

Cntr, Aigernon Rd. 12.45pm, 1.30pm (2.15pm 2-4yrs only). 202 6027

E Finchley Toy Library. Herbert Wilmot Youth Cntr, Eagans Close, N2. Over 500 toys. 3pm. 883 7915 (also Fri, 10.30am)

Mothers & Toddlers Exercise class. Barnet Drama Cntr, 142 High Rd. N2. 2pm. 883 9957

Mothers & Toddlers (up to 4yrs). Gymnastics. Hendon Sports Cntr, Algernon Rd. 12.45pm. 202 6027

Fridays

Mums & Toddlers Group. Day Cntr, Friern Barnet La. N11. 10am. 368 4278

Singles Clubs

Spectrum social group for unattached 25-45's. Programme of varied events. 449 9893/883 8146

Unattached, 40-60? Clan social club for theatre, exhibition, restaurant outings, wine and cheese evenings, etc. 346 2016/0932 856154

Monthly

New Friends Social Club (30-45). The Torrington PH, N Finchley. 8.30pm. 444 0076/446 4058 (4th Thur)

Bi-monthly

Finchley Solo Club for widowed, divorced & single (25-65). 8pm. 445 9810/446 5238 (1st & 3rd Tues)

Sundays

N London & Dist Divorced/Separated Club. Social Club. Cheshunt Football Club, Theobalds La. 8pm. 449 0656/0992 33414 (also Tues, The Fox PH. Green Lanes, N13. 8pm)

Mondays

Barnet Thirty Plus Group. Badminton at Queen Elizabeth's Cntr, Meadway, Barnet. 8pm. Details of other activities 959 7084

Tuesdays

Single Minds club for 20s-60s. Abercorn Arms, Stanmore Hill, Stanmore. 8pm. 202 3807

Wednesdays

NW London Branch of National Council for the Divorced & Separated. Friendly club evening nr Brent St. Hendon. 455 6967 (day) 959 4231 (eves)

Thursdays

Club 81 (25-45) Old Red Lion PH, Barnet Hill, Barnet. 9pm. 883 2363 (wkdays, 1-5pm)

Sport

Mill Hill Rugby Football Club. Home Games, 1st XV: 28 Apr (Hampstead). 2nd XV: 21 Apr (Chiltern), 28 Apr (Hampstead)

Monthly

St Christopher's Catholic Cycling Club. Easy rides from Finchley. All welcome. 10am. 361 2281/427 2251 (1st Sun)

Barnet Blind Bowls Club. Different venues meeting 2 or 3 times

a week. Details, 449 7058/455 8207

Sundays

Finchley Section of W London DA Cyclists' Touring Club organise rides. 361 9851/446 2634

Shaftesbury Barnet Harriers training sessions. Cophall Stadium, Gt Nth Way, NW4. 11am. 200 1584 (also Tues 6pm; for athletes, Thur 6pm)

Mondays

Monarch Sports Club for people with physical and mental handicap. Bishop Douglass Sch, Hamilton Rd. N2. 7.45pm. 202 4684/953 3276

Cranbourne Badminton Club. Hampstead Gdn. Suburb. New experienced players welcome. 346 5655

Morning Badminton Club. Hartley Hall, Mill Hill. Vacancies for experienced players. 959 4867

Tuesdays

Mill Hill Rugby Club. Rugby training. Barnet Cophall Sports Complex. 7.30pm. Contact, Jim Adam, Captain or Derek Dacey, Club Coach on 203 0685 (also Thur)

Golf Lessons. Mill Hill Sch Sports Cntr, The Ridgeway. 7.30pm. For details of these & other sports classes, 906 2322

Barnet & Dist Athletic Club training session. Bethune Park, N11. 7pm. (Under 11yrs, 5pm) 368 6754

Finchley Angling Scty. Moss Hall Tavern, Ballards La. N12.

Prospective members welcome. 8.30pm. 458 2530

Speedwell Badminton Club for Ladies. Christ Church Hall, High Rd. N12. 1.30pm. Club standard. 446 3517

Swimming for over 50's. Queen Elizabeth's Cntr, Meadway, Barnet. 6pm. 441 2933

Wednesdays

Badminton. Mill Hill Sch. Sports Cntr, The Ridgeway. Beginners & improvers. 7.15pm. Juniors 6.15pm. 906 2322 (also Thur, 10am)

St Margaret's Badminton Club. Rectory La. Edgware. Vacancies. 8pm. 959 3822/440 4572/0923 246953

Hendon Hockey Club. Men's & Women's Teams. All ages welcome. Training at Whitefield Sch, Claremont Rd. NW2, 8pm, or contact Club Secretary, 631 3639(day)/609 4168(eves)

Children's gymnastics. 4-11 yrs. Hendon Sports Cntr, Algernon Rd. Details, 202 6027 (also Thur & Sat)

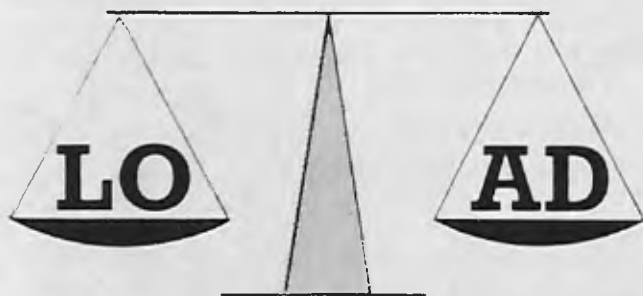
Thursdays

Barnet & Dist Athletic Club training session. Clubhouse, Victoria Rd. New Barnet. 7pm. 368 6754

Badminton Club. Christ Church URC, Bellevue Hall, Bellevue Rd. N11. 8pm. 449 8476

Redwing Badminton Club for Ladies. Christ Church Hall, High Rd. N12. Vacancies for average/good players. 1.30pm. 446 3454/346 5377

Sharing the



As you're no doubt aware, teachers are becoming a scarce resource in many schools in the South East.

In order to give our children the best possible advantage in these challenging times, we've initiated a new scheme here in Barnet to encourage

Job Sharing

If you have domestic commitments which may restrict your availability for full time work, why not consider working for Barnet on a Job Share basis?

This scheme means that two partners can share a full time teaching post on a 50/50 basis, and still provide continuity of teaching for the pupils.

Telephone Doreen Judge on 01 368 1255 ext 3012 for more details or send the coupon for further details to the Teachers' Staffing Section, London Borough of Barnet, FREEPOST, Town Hall, Friern Barnet, London N11 3BR.

PERSONAL AND PROFESSIONAL SERVICE

GOOD QUALITY
DOUBLE BED
£132



GOOD
QUALITY
SINGLE BED £80

We specialise in BEDS ● SUITES ● FIRESIDE CHAIRS

We also furnish houses, flats for letting / renting

Mattresses of
all shapes &
sizes available
separately

and old peoples homes
SAME DAY DELIVERY

Folding beds
from
£32.00

VALLEY FURNISHING

114 Brent Street, Hendon, NW4 Tel: 202 4666

EDUCATION IN
BARNET

To: Doreen Judge, Teachers Staffing Section, London Borough of Barnet, FREEPOST, Town Hall, Friern Barnet, London N11 3BR.

Please send me further details of Barnet's Job Sharing Scheme.

NAME

ADDRESS

.....

.....

TEL.NO

BBN APRIL

Barnet Diary



Fridays

St George's Swimming Club. Q.E. Boys Sch Pool. Teaching 5yrs up to adult 6-8pm; adult swimmers & non swimmers 8-9pm. 440 4990

Table tennis, 11-14yrs (6.30pm) 14-17yrs (7pm). Annunciation Catholic Youth Cntr, 4 Thirleby Rd, Burnt Oak. 959 0911

Women's Clubs

Monthly

Ashley TG. Mill Hill East Free Church, Salcombe Gdns. 7.30pm. 906 1952 (1st Thur)

Barnet Afternoon TG. Church House, Wood St. 2pm. 449 2697 (3rd Fri)

Barnet Evening TG. Church House, Wood St. 7.45pm. 440 1526 (1st Wed)

Broadway Mill Hill TG. Hartley Hall, Flower Lane. 2pm. 959 0995 (2nd Thur)

Chipping Barnet WI. Church House, Wood St. 10am. 440 8807 (2nd Thur)

East Barnet Brookside TG. Brookside Methodist Church Hall. 1.30pm. 361 9097 (1st Wed)

East Barnet Monkfrith TG. British Legion Hall, Nursery Rd. N14. 1.45pm. 0707 57092 (1st Thur)

East Barnet (Osidge) TG. Small Hall, Brookside Methodist Church. 7.45pm. 368 7346 (2nd Tues)

East Barnet Valley TG. Lyonsdown Hall, Lyonsdown Rd. New Barnet. 2.15pm. 449 8601/6083 (1st Thur)

Edgware League of Jewish Women. 958 4562 (2nd Tues)

Finchley Church End TG. St Mary's Church Hall, Hendon La. N3. 2.15pm. 455 7152 (4th Wed)

Finchley Granville TG. Finchley Methodist Hall, Ballards La. N3. 2pm. 346 6822 (2nd Thur)

Finchley Redbourne TG. Etchingham Pk Rd Day Cntr, N3. 7.45pm. 346 3305 (4th Tues)

Friern Barnet & Whetstone TG. Manor Drive Methodist Church, York Way, N20. 2.15pm. 446 4816 (3rd Tues)

Friern Barnet Friary TG. Christ Church URC Hall, Bellevue Rd. N11. 2pm. 361 9623 (1st Tues)

Golders Green TG. St Alban's Church Hall, Golders Green. 2pm. 455 4156 (1st Mon)

Hampstead Gdn Suburb TG. St Jude's Church Rooms, Central Sq. NW11. 2pm. 458 5072 (1st Mon)

Mill Hill Afternoon TG. Harwood Hall, The Bdway. NW7. 2pm. 959 1505 (2nd Wed)

Mill Hill Highwood TG. Hartley Hall, Flower La. 2pm. 959 2519 (3rd Mon)

Montrose WI St Alphage Parish Room, Montrose Ave. 7.45pm. 205 4960 (4th Tues)

National Council of Women, Barnet & Dist. St John's URC Hall, Mowbray Rd. New Barnet. 1.30pm. 368 1442 (4th Mon)

New Barnet Evening TG. Brookside Methodist Church Hall, E Barnet. 7.30pm. 440 1394 (1st Mon)

Royal British Legion Women's Section (N Finchley). Legionway, Summers La, N12. 8pm. 445 9911 (1st Tues)

Totteridge WI. Village Hall, Badgers Croft, Totteridge La. N20. 7.30pm. 445 5700 (1st Tues)

Woodside Park Afternoon TG. Old Finchleians Club Hse, Southover, N12. 2pm. 445 0911 (3rd Wed)

Fortnightly

National Women's Register (Barnet Branch). Discussion group. For details 445 4777 (alt. Tues eves)

Acorn's group. Talks, socials, coffee, creche. St Paul's Church, Long La. N3. 9.45am. 349 4188/346 7378

Wives Group. Mill Hill East Church Hall, Salcombe Gdns. 8pm. 906 0489

Mondays

Recreation Night for Ladies (16yrs+). Coaching in fencing, archery, country-dancing, karate & outings. Barnet Council's Manorhill Centre, Summers La. N12. 8pm. 368 6316

Tuesdays

Barnet Asian Women's Assn. 1 Friern Pk. N12. Vegetarian lunch. 12.30pm. Religious Mtg 'Satsang' 1.30pm.

Springwell Women's Club. St Stephen's Hall, Bells Hill, Barnet. 8pm. 449 0955

Wednesdays

Barnet Asian Women's Assn. Craft classes, talks. Oak La. Clinic, N2. 1pm

Thursdays

Women's Friendship Club. Union Church, Northiam, N12. 2.15pm. 445 6945

Ridgeway Club (Nat. Assn of Women's Clubs). Evergreen Cntr, Brookhill Rd. E Barnet. 7.45pm. 449 2852

Fridays

Barnet Asian Women's Assn. 1 Friern Pk. N12. Harmonium music classes 11am, armchair keep fit 12.30pm, vegetarian lunch 1.30pm, games, cultural discussions 2.30pm

Social Club. Old Barn Cntr, Tarling Rd. N2. 1pm. Creche provided. 349 4613

Saturdays

Barnet Asian Women's Assn. Swimming classes. Squires Lane Pool, N3. 4.30pm

Youth

The Woodcraft Folk. Co-educational & cooperative groups (throughout the borough), ages 6-9, 10-12, 13-15, 16-20. Details, Tony Winsloe, 445 5742

17 - 20 April
Holiday Club. Ages 5-11. Oakleigh Chapel, Oakleigh Rd Nth. N20. 10am-12.30pm. Details, 445 8545

Weekdays

After School Club. Old Barn Cntr, Tarling Rd. N2. 3.30pm. 349 4613

Sundays

Canada Villa Cntr, Senior Club (13-18yrs). Trips out & centre based activities. Pursley Rd. NW7. 3.30pm. 959 2811 (also Mon, 7.30pm) (also Wed, Intermediate Club, 11-13yrs. Organised activities, 6.30pm) (also Fri, Junior Club, 7-11yrs. Working towards integration of children with disabilities, 6.30pm)

Mondays

St John Ambulance. 1st Finchley Badger Set (6 yrs+). Finchley Open Air Pool (Pavilion), High Rd. N12. 6.30pm. 207 3036 (also Fri, C604 Finchley Comb. Cadets (9 yrs+), 7pm

Quinta Youth Club. Intermediates (8-16yrs) 6.30pm. 449 2914 (also Wed 6.30pm. Juniors 8-12yrs)

1st Barnet Boys' Brigade. Ewen Hall, Wood St. Juniors, 6.30pm. 440 7537 (also Thur anchor boys 6pm; company sec. 7pm & girls 7.30pm)

3rd Barnet Boys' Brigade. UR Church, Chesterfield Rd. Juniors, 6.45pm. 440 2915 (also Tues anchor boys 6.15pm & company sec. 7.30pm)

1st Hendon Boys' Brigade. Watling URC, Eversfield Gdns. NW7. Juniors 6.30pm. 959 4736

4th Hendon Boys' Brigade. The Hyde URC. Juniors 6.30pm. 0727 53832 (also Fri company sec 8.15pm)

6th East Barnet Brownie Pack. E Barnet Baptist Church Hall, E Barnet Rd. 6pm. 440 6811

10th Hendon Brownie Pack. St Mary Magdalen Church Hall, Holders Hill Rd. 6.30pm

Tuesdays

1st Childs Hill Guides (10-14yrs). All Saints Church Hall, Church Walk, NW2. 6.45pm. 458 5549

120 (Hendon) Sqn Air Training Corps. Boys & girls 13-16yrs. Colchester Rd. Edgware. 7.30pm. (also Fri & Sun 10am)

1374 East Barnet Sqn Air Training Corps (13-16yrs). Gloucester Rd. New Barnet. 7.30pm. 440 0263 (also Thur)

Wednesdays

Finchley Sea Cadets. T.S. Tartar, 184a Long La. N3. Boys & girls, 12yrs+. 7.25pm. 346 1828 (also Fri)

Youth Club. Old Barn Cntr, Tarling Rd. N2. 6.30pm. 349 4613 (also Fri)

Thursdays

1st Friern Barnet Boys' Brigade. Manor Drive Methodist Church Hall, N20. Boys 5-

18yrs. 5.30-10pm. 361 9698

Brookside Methodist Church Boys' Brigade. E Barnet. Pre-junior 6-8yrs 6.15pm; juniors 8-11yrs 6.30pm; Company 11yrs+. 8pm. 441 2042

2nd Finchley Badger Set. Manorhill Sch. Gym, Summers La. N12. Boys & girls 6yrs+ 7pm. 207 3036

Fridays

5th Hendon Boys' Brigade. St James URC, Heather Walk, Edgware. Juniors 6.30pm; Company sec. 8pm. 958 4922

Friday club, 14-17yrs. Uni-hoc, gym, videos, outings, etc. Annunciation Catholic Youth Cntr, 4 Thirleby Rd. Burnt Oak. 8.30pm. 959 0911.



5-6 April

"Finians Rainbow" presented by Mill Hill Amateur Operatic Society, Hartley Hall, Mill Hill. £2.50. 959 2848.

Saturday 21 April

Hendon Music Scty presents Yonty Solomon, pianist. Works by Debussy, Liszt, Scriabin, Sorabji. Trinity Church, Hodford Rd. NW11. 7.45pm. Tickets £5 (& conces). 203 2355

25 - 28 April

Finchley & Friern Barnet Operatic Scty presents "Guys & Dolls". Town Hall, Hornsey, N8. Tickets, 445 3391

27 & 28 April

Gainsborough Theatre Club presents "Last Holiday" by J.B. Priestley. St Barnabas Hall, Gainsborough Rd. N12. 8pm. 441 4432

3 - 5 May

Guild Players present "The Rivals" by Sheridan. Church hall, Finchley Methodist Church, Ballards La. N3. 7.45pm. 346 6337

Saturday 5 May

Manor House Scty. presents a concert by The Amadeus Piano Trio. Works by Mozart, K 542 in E major; Beethoven, Op 70 No. 1 in D Major - The Ghost Trio; Schubert, Op 100 in E Flat Major. W London Synagogue, Upper Berkeley St. W1. Tickets, 346 2288

Exhibitions

Until 7 May

Women Artists in Wartime. Paintings & drawings from

World Wars 1 & 2 from David Cohen's collection & also RAF posters from World War 2. Church Farm House Museum, Greyhound Hill, NW4. Mon-Sat (except Tues) 10am-1pm, 2-5.30pm; Tues 10am-1pm; Sun 2-5.30pm. Admission free. 203 0130

8th & 9th April

Hampstead Gdn Suburb Institute, exhibition by students on Prefoundation/Portfolio arts and crafts course. Sun 1-5.30pm; Mon 10.30am-4.30pm. Admission free. 455 9951

6 - 12 May

Milldon Art Scty. 50th Exhibition. Hartley Hall, Mill Hill. Sun 2-5pm; Mon-Fri 10am-8pm; Sat 10am-4pm

Permanent Exhibitions

Rose Gallery at Totteridge Library, Totteridge La. N20. Pictures at affordable prices. Tues. Wed & Fri 2-5pm. Sat, 10am-1pm, 2-5pm. Details, Arts Office, 202 1903

College Farm Gallery, Fitzalan Rd. N3. Admission charge (1st Sun & open days)

Saturdays

Anna Pavlova Memorial Museum. Ivy House, Middx Poly, North End Rd. NW11. 2-6pm

Old Bull Arts Centre

68 High St. Barnet. For ticket prices & bookings contact 449 0048

2 - 28 April

"15yrs of the Old Bull"

Sunday 8 April

S E Rogie & Juwon Quintet. 7.30pm

26 - 28 April

The Association present "Green Forms", 6.45pm & "Hobson's Choice", 8pm

Saturday 5 May

Archie's Jazz Club. The Favez Virji Band. 7.30pm

Children's Theatre

17 - 21 April

Children's Easter Drama Workshop. 10am-4pm

Sunday 22 April

Bagatelle Theatre Co in "Zero Green & The Gortians". 3pm

Sunday 6 May

Parachute Theatre Co in "Oh Noah". 3pm. 4-11yrs

See Saw Children's Theatre

Christ Church Hall, High Rd. N Finchley. Facilities for disabled. Tickets £1.50 (& conces). 446 4864

Friday 20 April

The Fleeties present "Minna the Chickie and the Brickie". Songs, music, nursery rhymes old & new. 2.30pm. Ages 3-7

Dollis Juniors play with the First Division

DOLLIS Junior School's football team are playing with the First Division these days. The council primary school pupils from Mill Hill have been getting coaching from Tottenham Hotspur Youth Squad.

On Thursday 8 March Michael Wale, sports presenter and a team from BBC Newsroom South-East were there to film the school with their Spurs trainers. Then who should join them but Gary Lineker - what a day for autographs!



Gary Lineker is holding the ball in the back row and Michael Wale is centre back

Look who's swimming at Cophall!



Olympic gold medallist Duncan Goodhew took Barnet Council's Cophall Pools on to television in March when he swam in the Cadburys Break Swimathon to raise money for ITV's Telethon. Hundreds of local swimmers joined him to raise £20,000

VISIT TO STUTTGART



Antonio Adamis, Kevin Mascarenhas, Teacher Ian Dillon and John Williamson ready for their journey to Stuttgart

THREE 17-year-old students from Barnet's St James' Catholic High School, Edgware, were in Stuttgart in March at the invitation of the Germany company Fischer Technik.

Their teacher, Ian Dillon said: "They are studying an enhanced A level technology course which includes an industrial project. The students had that uppermost in their minds during their visit."

The three have achieved good grades in a two-year General Certificate of Secondary Education Craft, Design and Technology course. During their studies the boys undertook a project at a Harlesden factory where Fischer Technik equipment was in use.

Now the students will be able to build on that experience as they work towards their A level examinations in June.



The Mayor welcomes a City Freeman

ANNE DAVIES, who is a co-opted member of Barnet Council's Social Services Committee, was the guest of the Mayor of Barnet, Cllr Dot Benson, at the Town Hall, Hendon, on 2 March - the day that she received the Freedom of the City of London.

"Anne does so much for the people of Barnet, that I wanted to add my congratulations to those of the Lord Mayor of London," the Mayor said. "She helps disabled people by making sure that their problems are understood."

"Her contribution to the work of Social Services Committee and local voluntary organisations is very valuable indeed."

Anne Davies, who lives in New Barnet, is confined to a wheel-

chair. Her career as an opera singer was cut short when multiple sclerosis was diagnosed.

She is an adviser on disability to HRH The Prince of Wales, a member of his Advisory Group on Disability, serves on the Access Committee for England and is Chairman and founder of Access in Barnet. She is also a member of DABB - Disablement Association in the Borough of Barnet.

Anne is a well known broadcaster and journalist. She broadcasts regularly on items relating to disabled people's access. She has visited the European Parliament and has spoken to MEPs in Strasbourg. She has also advised both the British Tourist Board and Holiday Which.

Local opportunities...

WORKING FOR THE COMMUNITY

Barnet is a borough changing with the times. To achieve our plans for the 1990's we need the skills and abilities of a wide range of people. The Council offers excellent pay and conditions with training and career development tailored to the individual and promotion on personal merit.

- * Excellent Pension Scheme
- * Opportunities to progress
- * Flexible working hours
- * Generous leave
- * Pleasant conditions
- * Restaurant facilities

CHIEF EXECUTIVE'S

TELECOMMUNICATIONS ENGINEER

£15,570-£17,655 pa inc.

Barnet is big business, and, like other large businesses we rely heavily on sophisticated internal/external communication systems.

To maximise our capabilities in this area, we are currently looking for a highly skilled Telecommunications Engineer capable of contributing to the development and implementation of our strategy for voice and data communication.

This will involve you in a range of activities, from the evaluation and technical preparation of projects to providing day to day technical support and user guidance.

Broad-based experience of voice and data telecommunications is essential. Ideally this should include a working knowledge of digital networks, including our own Plessey ISDX and mega-stream system, and a keenness to stay abreast of the latest technologies in order to enhance both personal and section performance. *Ref: 600/TE.*

Closing date: 17th April 1990.

Application forms are available from Address No. 1.

LIBRARIES SERVICES

RECEPTION/DESPATCH ASSISTANT

£5,581-£8,919 inc. pro rata 18 hpw

This is a new post within the Libraries Department at Ravensfield House, Hendon. We require help each morning with unpacking and sorting new books and then delivering them to various locations within the Barnet Library service. You'll also deputise occasionally for the Senior Reception/Despatch Assistant.

If you have a clean driving licence and can drive a small Council van and enjoy working as part of a team, why not join us?

Closing date: 17th April 1990.

Application forms are available from Address No. 5.

TECHNICAL SERVICES

Do you have time on your hands?
Do you want to earn a little extra money?

We are looking for a variety of staff to help run our indoor and outdoor pools throughout the Borough. You could be asked to work at Copthall Pool, Finchley Open Air Pool and recently refurbished Squires Lane Pool.

You will be required to carry out a range of duties on a full/part time and casual basis from locker and deck chair attendant to pool attendant where the appropriate rate will be paid.

The posts available are:

Recreational Supervisor — seasonal — £3.97 per hour

Recreation Attendant — casual — £3.59 per hour

Cashier — casual — £3.46 per hour

Non-qualified Attendant — casual — £3.46 per hour

For an informal chat please contact either Graham Surry on 01-346 3692 or Fred Westphal or Nick Collins on 01-203 4187.

HOUSING & ENVIRONMENTAL SERVICES

DRIVER

£166.54 per week including maximum bonus plus 2.5 hours overtime per week for vehicle checking

We need an experienced person able to drive Council vehicles up to 3 tonnes. You will be based at Grahame Park, NW9 and your duties will include loading/unloading building material, rubbish and other items from residential premises and estates, and conveying employees to their place of work when directed by the Works Manager.

You must hold a clean driving licence and will be expected to undertake a Council driving test to assess your suitability. *Ref: CAM/DRI.*

Closing date: 17th April 1990.

Application forms are available from Address No. 1.

CLERICAL ASSISTANTS

(Job Share)

Barnet is one of London's largest and most attractive boroughs combining as it does, a semi-rural environment with pleasant residential areas.

Currently, we have two vacancies for Clerical Assistants to work 18 hours per week, based at our Stag House office, Burnt Oak, Edgware, where you'll enjoy a busy but friendly atmosphere.

£4,546.50-£4,849.50 pa inc.
Ref: 9/1/3271

The first vacancy is to work Thursday and Friday 9am-5pm and Wednesday 1pm-5pm. Duties will include supervising a team of Clerical Assistants, raising, monitoring and controlling repairs to the Department's housing stock using a VDU. It will also be your responsibility to ensure that all filing and other office work is carried out efficiently.

£4,245-£4,459.50 pa inc.

Ref: 9/1/3273

The other role on offer is for somebody to work mornings and will involve providing clerical/administrative support to the District Maintenance Manager and his team by dealing with clients enquiries, as well as record keeping and filing.

Closing date: 17th April 1990.

Application forms are available from Address No. 1.

EDUCATIONAL SERVICES

Youth and Community Service

DEPUTY CENTRE ORGANISER

£12,579-£14,736 pa inc.

As part of Barnet's innovative approach to youth and community work, Welsh Harp Youth Sailing Base uses the medium of watersports to promote personal and social development.

A busy seven days per week programme provides a stimulating and varied range of activities through a team of three full-time workers, supported by a technician and a number of part-time instructors.

You will be playing a key role within the team, including taking full responsibility in the Organiser's absence. For this reason, you must already have teaching and management experience. You will also need to have an initial qualification in youth and community work or the equivalent (e.g. teacher training). These should be backed by expertise and qualifications in canoeing and sailing. The Service also provides excellent opportunities for further training.

Because of the nature of the programme, you must be prepared to work some unsocial hours. It is also expected that most annual leave will be taken during school holidays. *Ref: ADM/E/194.*

For an informal discussion about this opportunity, ring Harry Mackie 01-202 6672 (Saturday to Wednesday)

Closing date: 17th April 1990.

Application forms are available from Address No. 1.

ADMINISTRATIVE ASSISTANT

(In Special Education Section)

£9,879-£10,935 pa inc.

We need an Administrative Assistant to work as part of a team of four in the Special Education Section. The Section's work is mainly concerned with the administration of assessment procedures for children with special educational needs, the arrangements for their admission to schools, the provision of special services and the maintenance of computerised records.

You should have previous administrative experience, a good memory and a pleasant telephone manner, as well as the ability to write letters and to respond helpfully and sensitively to clients and colleagues. *Ref: ADM/E/15.*

Closing date: 17th April 1990.

Application forms are available from Address No. 1.

COMMUNITY LIAISON OFFICER

£9,093-£9,699 pa inc. (pro rata)

Mill Hill County High School, Worcester Crescent, NW7 4LL, requires a part-time

administrative officer to co-ordinate the School's interaction with the Community and parents. Typical duties include overseeing the Covenant Scheme, producing the Friends' newsletter, promoting and managing recreational and social facilities and helping to resolve parental queries on pastoral matters.

Initially the appointment will be made on a one year contract and will involve 19 hours a week for a 52 week year. Remuneration will be based on Scale 3 of LEA clerical/administrative grades, though the person appointed will be regarded as self-employed and expected to work mainly from home. *Ref: ADM/E/167/144.*

Closing date: 17th April 1990.

Application forms are available from Address No. 1.

TECHNICIAN

General Learning Resources

40 weeks per year

£8,490-£8,919 pa inc.

Among other things, the teaching/learning process at Hendon College calls for a considerable amount of printed material. Much of it is produced by our busy Central Reprographic Service.

In order to cope with the workload, we are currently looking for an enthusiastic person to carry out a range of duties, including duplication using a long-run copier, basic design on a computer-aided desktop publishing system, and first-line maintenance of a range of equipment.

Previous experience, although helpful, is not essential as full training will be given.

You will work 36 hours per week, 40 weeks per year. Occasional evening duty may be required and time off will be given.

Ref: 892/433.

Closing date: 17th April 1990.

Application forms and further information available from Angela Matthew, Hendon College, Corner Mead Grahame Park, Colindale, London NW9 5RA. Tel: 01-200 8300, ext. 218.

SENIOR TECHNICIAN

Audio Visual Services

£9,879-£10,935 pa inc.

Barnet College works hard to provide the people of the Borough with the most responsive and complete range of educational opportunities. These opportunities are enhanced by use of audio-visual resources during the teaching/learning process.

The TV studio at our Russell Lane site has a Panasonic control system, full audio and video editing suite and portable equipment.

In order to ensure that this facility operates at optimum levels of efficiency, we are currently looking for a Technician with a solid background in all aspects of non-broadcast television, including equipment maintenance, recording and editing.

In addition to your professional qualifications, it is important that you have an interest in working with young people and teaching staff as well as an awareness of the creative use of television in education. *Ref: 892/348.*

Closing date: 17th April 1990.

Application forms and further details are available from the Personnel Section, Barnet College, Russell Lane, Whetstone, London N20 0AX. Telephone: 01-361 5101, ext. 354.

LABORATORY TECHNICIAN

£9,879-£10,935 pa inc.
(Plus qualification allowance)

Henrietta Barnet School, Hampstead Garden Suburb is a volunteer-aided grammar school for girls and is currently looking for a Senior Technician to lead a friendly, hard-working team.

In addition to your people-management duties, you will have overall responsibility for the preparation and maintenance of apparatus for science lessons to 'A' level standard, stock control, and all aspects of safety in the labs and prep rooms.
Ref: ADM/S/166/211.

Closing date: 17th April 1990.

Please ring the Head Teacher, Mrs E. J. De Swiet, on 01-458 8999, for more information and an application form.

PERMANENT PART-TIME ASSISTANT NURSERY OFFICER

Child Care Centre
25 hrs pw/38 wks per year
£8,490-£9,699 pa inc.
(pro rata)

In order to make its educational opportunities available to more people, Barnet College provides parents with a Child Care Centre at the Russell Lane site.

The Centre is currently looking for a permanent part-time Assistant Nursery Officer to join a small, friendly team of professionals catering to the needs of children aged 6 months to 5 years.

To qualify, you should be N.N.E.B. trained and, ideally, have experience of caring for children in groups.

The appointment is initially for 38 weeks per year, at 25 hours per week, however this may be extended as the Centre develops. Ref: 892/397.

Closing date: 17th April 1990.

For further details and an application form, please contact the Personnel Section, Barnet College, Russell Lane, Whetstone, N20 0AX. Tel: 01-361 5101, ext. 354.

ADMINISTRATIVE ASSISTANT

£8,232-£9,112 pa inc.

Barnet College provides a range of educational opportunities for part-time and full-time students.

Two of these, Barnet Home Tutor Scheme and English as a Second Language, are based at our Stanhope Road Centre in North Finchley, where we are currently looking for a bright, friendly man or woman to provide administrative support to tutors and students.

This varied, challenging role calls for someone with good typing and admin skills plus experience of working on their own initiative and dealing with the public. Because of the backgrounds of students applying for English as a Second Language, knowledge of a community language would also be an advantage.

The 35 hrs pw post is primarily term time only for 40 weeks of the year, although some work will be required during the holidays. Ref: 892/376.

Closing date: 17th April 1990.

Application forms are available from the Personnel Section, Barnet College, Russell Lane, Whetstone, N20 0AX. Tel: 01-361 5101, ext. 354.

SOCIAL SERVICES

Residential Settings for Children & Young People

CAREWORKER

£9,093-£9,699 pa inc.
(up to £10,224 if qualified)

Barnet is committed to providing comprehensive and caring social services to the people in the Borough who depend on them. Amongst the people who really need the support and assistance we can offer, are the disadvantaged young.

Glencairn, 34 Woodhouse Road, N12, is a 9 bed residential setting for young people aged over 12 years. It provides a warm friendly environment where you'll be working with young people towards family placement (natural or substitute). We work on the principle that we should recognise the needs of individuals and build the institution around them.

At the moment, we are looking for warm, confident people who have the maturity to deal with young people who can at times be difficult and demanding.

Ideally, you'll have relevant experience, although we are prepared to judge applicants on their personalities and individual abilities. Ref: 633/513.

Closing date: 20th April 1990.

Interview date: 2nd May 1990.

For informal enquiries, please contact Mike Daniel, on 01-445 4035.

Application forms are available from Address No. 4.

where to apply

1 Recruitment Office, 16-17 Sentinel Square, Brent Street, Hendon, London NW4 2EN. Tel: 01-202 8282 extn. 2372 or 01-202 6602 (24 hour answer service)

2 Assistant Controller (Support Services), Barnet House, 1255 High Road, Whetstone, London N20 0EJ. Tel: 01-446 8511 extn. 4454.

3 Director of Educational Services, Town Hall, Friern Barnet, London N11 3DL. Tel: 01-368 1255.

4 Director of Social Services, Ivy House, 1331 High Road, Whetstone, London N20 9HZ. Tel: 01-446 6857 (24 hour answer service), or 01-446 1488 extn. 4213.

5 Borough Librarian, Ravensfield House, The Burroughs, Hendon, London NW4 4BE. Tel: 01-202 5625 extn. 48.

AN AUTHORITY COMMITTED TO EQUAL OPPORTUNITIES

LONDON BOROUGH
barnet

barnet

SOCIAL SERVICES

CLERICAL ASSISTANT

Up to £9,699 pa inc.

Can you provide clerical and secretarial support to this busy fostering and adoption team?

This is a varied and stimulating job involving extensive contact with both members of the public and professional staff. Audio typing skills and a good telephone manner are essential. A knowledge of shorthand/speedwriting would be useful, as would experience of using a word processor, although training could be offered. If you enjoy a challenge, working in a friendly environment then we need to talk.

Contact Carol Rogers for an informal chat on 01 883 5562 or send for a form from the address below.

Ref: 663/574

Closing Date: 20th April 1990

Application forms from: Director of Social Services, Ivy House, 1331 High Rd., Whetstone N20 9HZ. Tel: 446 6857 (24hrs) or 446 1488 Ext 4213 quoting reference.

DEPUTY MANAGER

Day Care and Community Service

(Barnet Borough West)

Salary £11,202 - £12,213 inc

An opportunity to do rewarding and important work with elderly people in a voluntary organisation offering day-care, luncheon clubs, home visits, holidays and give advice. Knowledge of services available through statutory, voluntary and private organisations desirable with the ability to organise and communicate and to promote health, social and recreational needs of elderly people.

Application form and job description available from Hendon Retirement Services, THE MERITAGE CLUB, Church End, Hendon, NW4 4JT. Tel: 203 5040.

Closing date 20th April 1990. Interviews 27th April 1990.

DIFFERENT NAME

This small and very successful local employment agency has been steadily expanding over the last 3 years. Ours is a very competitive industry but we have achieved our excellent reputation by never being complacent and giving a very honest and professional service. Small is personal and efficient as our many clients know.

We have a DIFFERENT APPROACH

Here are some DIFFERENT OPPORTUNITIES

Copy Secretary -Barnet £9,000

Sales Support Reps -Finchley £10,500

Stores Administrator -Southgate £10,000

Commercial Insurance Broker -Finchley £15,000 neg

Telephonist/Receptionist -Finchley £8,500 neg

CALL SUE NOW

TEMPS TEMPS TEMPS

Do you want Top Rates from your agency?

Do you want FREE WP TRAINING?

Do you want to brush up your skills?

If you can say YES to all these questions then we require your skills in the following categories:

Sh/Audio/Cops Secs, Accounts, Tele/Recep,

VDU/Clerical, WP Ops

CALL TINA NOW

THE
BODY BANK

117 High Street,
Barnet, Herts.

01-441 6868

RECRUITMENT CONSULTANTS - OFFICE TRAINING CENTRE

POLLARDS

Solicitors

Tel 01-953 4241

Moving House?

We can help you.

We undertake all legal work in conveyancing and also wills – probate matrimonial/company/commercial/ all court work – civil and criminal. All at reasonable and competitive cost

office at 108-112 Shenley Rd,
Borehamwood WD6 1EB

SHARED OWNERSHIP COMES TO COLINDALE

At last there is good news if you want to buy your own home, but can't afford high prices in London.

An exciting development of 200 new homes is being built in Colindale by Addison Housing Association in conjunction with Barnet Council. It will be known as Pageant Green. Addison has many years experience providing low cost home ownership through shared ownership schemes. It was formed in 1980, and since then has provided over 1,200 homes.

Addison intends to sell most of the properties on shared ownership terms. This is a way of reducing the cost of buying your home. Addison sells you a share of the property and charges you a rent for the remainder. You can purchase a share from between 50% and 80%.

Once you have purchased a property it is possible to buy it outright and this is known as staircasing. The price paid for further shares is set by an independent valuer on the basis of the market value at the time you staircase.

All the properties at Pageant Green are architecturally designed and amongst the features are: ● Double glazing ● All houses and ground floor flats have private gardens ● Upper floor flats have balconies ● Medallion standard electric heating and hot water

For commuters the scheme is only ten minutes walk for Burnt Oak underground station and the journey time to central London by tube is 30 minutes.

The first phase of 56 properties will go on sale on shared ownership terms in May 1990, comprising of one, two and three bedroom units. Priority on the scheme is for Barnet Council and Housing Association tenants as rehousing will release valuable units of rented accommodation and secondly to persons on the Barnet Council's Housing Register. If the scheme is oversubscribed then priority will go to persons in the greatest housing need subject to their ability to afford the minimum share.

For further information on this project and other home ownership initiatives please contact Barnet Council: Housing Initiatives, Barnet House, 1255 High Road, Whetstone, London N20 0EJ. Tel: 01 - 446 8511. Future projects are planned for New Barnet and East Finchley.

YOUR OWN HOME IN COLINDALE AT A PRICE YOU CAN AFFORD

The London Borough of Barnet is nominating buyers to a new shared ownership development by ADDISON HOUSING ASSOCIATION LTD. The scheme will be known as PAGEANT GREEN and is situated between Fulbeck Drive and Lanacre Avenue.

The first phase of the project is underway and consists of 32 one bedroom flats, 19 two bedroom houses and 5 three bedroom houses.

Under this scheme, you buy a share of the property and pay a rent to Addison for the remaining share.

THE PROPERTIES WILL BE SOLD ON SHARED OWNERSHIP TERMS AT BETWEEN 50% AND 80% OF THE VALUE.

At current value, a 50% share of a one bedroom flat would cost £35,000. ★

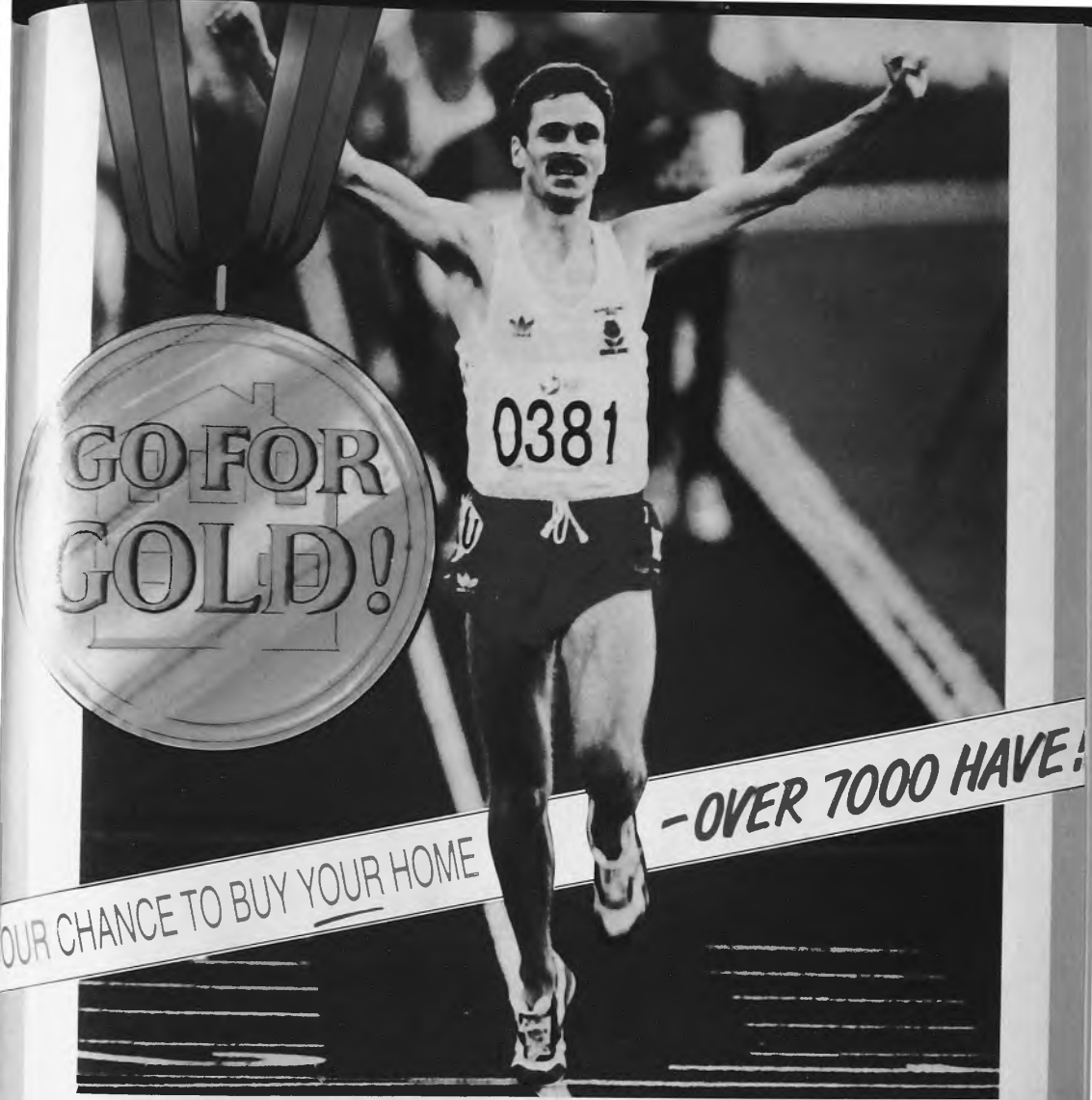
The one, two and three bedroom home will be ready from July 1990.

Viewing will be in April / May.

We are expecting a large demand, so register your interest now.

For further details, please contact:- Barnet Council: Housing Initiative Section, Barnet House, 1255 High Road, Whetstone, London N20 0EJ. Tel: 01 - 446 8511 Ext. 4863

★ This is based on current values, actual price will be set in May 1990



OUR CHANCE TO BUY YOUR HOME

- OVER 7000 HAVE!



TELEPHONE THE SALES TEAM ON **081-446 8511**

OR WRITE TO: THE DIRECTOR OF HOUSING & ENVIRONMENTAL SERVICES
BARNET HOUSE 1255 HIGH ROAD WHETSTONE N20 0EJ



Name _____

Address _____

B 1/90



DIRECTORATE OF HOUSING AND ENVIRONMENTAL SERVICES



THE PROPERTY BUREAU

RESIDENTIAL LETTINGS AND PROPERTY MANAGEMENT

Looking to **LET or RENT ?**

We are the experts in property management

TENANTS

If you are looking for rented accommodation in the Borough and surrounding area we can help. We have the largest selection available from studio flats to luxury apartments and houses. Call today with your requirements.

LANDLORDS

We always have a large number of reliable professional tenants seeking rented accommodation in this area.

If you are considering letting your property we can help.

**OUR SERVICES CAN INCLUDE FULL MANAGEMENT WITH
GUARANTEED RENTS**

All types of self contained properties required from studio flats to houses. Call for free assessment of your property and details of our services.

159 HIGH STREET, SOUTHGATE, LONDON, N14

Also at: 71-73 Stoke Newington High Street, London, N16. Telephone: 01-241 5000

LETTING FOR YOU WITHOUT LETTING YOU WORRY

01-882 9611