



BARNET

LONDON BOROUGH COUNCIL

CIVIC NEWS

NOV/DEC '71

SOCIAL SERVICES DIRECTORATE NOW IN FULL OPERATION

INSIDE INFORMATION

	Page		Page
Blood Donors	8	Hendon (temporary) Library	4
Bonfires	8	International Certificates of Vaccination	5
Buildings Layout & Design	2	Local Organisations	8
Checking Callers	8	Travelling Library, extended service	5
Council's Information Procedure	7	Trees, suggested types	3
Council Members	2	Voluntary Service	8
Driving Licences/Motor Taxation	8	'What's On'	8
Extending your House?	2		
Grahame Park Housing	6		

THE LONDON BOROUGH OF BARNET'S new Social Services Directorate is now in operation. This new Directorate is responsible for the functions formerly carried out by the Children's, Welfare and Mental Health Services and some aspects of the work of the Health Department.

The Social Services Directorate is concerned with those who need help amongst the elderly, children, physically and mentally handicapped, mentally ill, unmarried mothers, homeless families, deaf and blind.

SERVICES PROVIDED INCLUDE THE FOLLOWING

DAY CARE SERVICES

Day Care Centres
Luncheon Clubs
Day Nurseries
Training Centres
Day Care Rehabilitation Centres
Sheltered Employment

RESIDENTIAL SERVICES

Residential Homes
Hostels
Home for Unmarried Mothers
Accommodation for Homeless Families

GENERAL SERVICES

Meals on Wheels
Holidays
Home Helps
Adaptations to homes
Aids for the handicapped
Protection of property of those
in hospital or homes
Daily minding
Private fostering
Pre-School Playgroups

THE LOCATION OF THE DEPARTMENTAL OFFICES

CENTRAL OFFICES

- (i) Gateway House, 322 Regents Park Road, Finchley, N3 2LP (Tel: 01-349 9121)
(ii) Town Hall, Friern Barnet, N11 3DL (Tel: 01-368 1255)

AREA TEAMS

Areas covered :-

WARDS

POSTAL DISTRICTS

AREA OFFICE

(A) Arkley, Hadley and East Barnet

Chipping Barnet, East and New Barnet

Ravenscroft House,
61 Wood Street, Barnet, Herts.
(Tel: 01-449 5511)

(B) Totteridge, Friern Barnet, Brunswick Park
and Woodhouse

N.20, N.14, N.11, N.10 and N.12 (part)

42 Lytton Road,
New Barnet, Herts.
(Tel: 01-449 9222)

(C) Edgware, Hale and Burnt Oak

Burnt Oak, Edgware and N.W.7 (part)

Green Shield House, (10th floor),
Station Road, Edgware, HA8 7AA
(Tel: 01-952 7722)

(D) Mill Hill, Colindale, Hendon and West Hendon

N.W.9, N.W.4, N.W.7 (part)
and N.W.11 (part)

Ravensfield House,
The Burroughs,
Hendon, NW4 4BE
(Tel: 01-202 8282)

(E) St. Paul's, Finchley and East Finchley

N.2 (part), N.3 and N.12 (part)

1 Friern Park,
Finchley, N12 9DE
(Tel: 01-445 4264)

(F) Golders Green, Garden Suburb and Childs Hill

N.W.2, N.W.11 and N.2 (part)

308 Regents Park Road,
Finchley, N3 2JX
(Tel: 01-349 9121)

Advice and assistance are available Monday to Friday from 9.00 a.m. to 5.35 p.m.
Not all the Area Offices are situated within the areas they serve but ultimately all offices will be based within their own area.
Further publicity will be made available to keep members of the public informed.

Meet three more elected representatives



Councillor F. L. Tyler, B.A.

COUNCILLOR F. L. TYLER, has lived in the Hampstead Garden Suburb for 23 years and has represented the West Hendon Ward since 1959, first with the former Hendon Borough Council and later from the amalgamation to form the Barnet London Borough Council in 1965 until 1968. In 1971 he re-joined the Council.

Serving on the Education Establishment and General Purposes Committees of the Council, he is also a Governor of the Hendon College of Technology and a Governor of Christs College. He is also Vice-Chairman of the Management Body of the Primary School Group which includes the Garden Suburb School.

Leader of the Opposition Group on the Council, Councillor Tyler is Chairman of the monthly political magazine "Socialist Commentary" of which the late Hugh Gait-skill was Treasurer.

Councillor Tyler has worked in Fleet Street as a Legal Adviser and in 1969 was appointed Secretary of a National Newspaper Group. Taking a keen interest in Golf with a handicap of 9, he is a Member of the Hendon Golf Club and plays for Lincoln's Inn.



Councillor Kenneth Clarke, T.D.

COUNCILLOR KENNETH CLARKE was elected to the Council in May, 1968 for the new Woodhouse Ward, which had been formed from Friern Barnet South Ward and parts of Glebe (Finchley) and Friern Barnet Central and West Wards.

He has served on Establishments, Finance, Housing, Libraries and Public Works Committees, is a Governor of Woodhouse/Friern Barnet County and Christ Church Secondary Schools and a Manager of St. John's N.12 and St. Paul's N.11 C of E. Primary Schools.

Born in Bury St. Edmunds, Suffolk and first canvassed there in 1923. Coming to London in 1924, served on the Council of the Royal Borough of Kensington from 1937 till 1949.

Councillor Clarke joined the 7th (Southwark) Bn. The Queen's Royal Regiment in 1927 and holds T.D. with two clasps. He is President of North Finchley Branch, Royal British Legion.

He entered the Civil Service in 1955 and moved to Friern Barnet in May, 1959. Closely associated with Friern Barnet Ratepayers Association and has been Hon. Treasurer of Friern Barnet Council of Social Service since 1965. He is also Treasurer of Finchley, Friern Barnet and Whetstone Church of England Children's Society Committee and formerly Hon. Treasurer of Central London Branch, Society of Civil Servants.

He is one of the Council's representatives on the Committee of the Friern Barnet Boys' Club.



Councillor John J. Fischer, B.A.(Hons.)

COUNCILLOR FISCHER has represented the Garden Suburb Ward on Barnet Council since May, 1968, and having been a resident in the Suburb for over 25 years.

He served on the Education, Public Works, Estates and Libraries and Arts Committees in the last Council, and at present is a member of the Finance and Graham Park Committees, in addition to the Education Committee, of whose Youth Employment Sub-Committee he is Chairman.

A Governor of the Henrietta Barnett Senior School in the Garden Suburb and of the New College of Speech and Drama, he is also a member of the Managing Body of Childs Hill, Clitterhouse and Wessex Gardens Junior and Infant Schools.

An investment analyst by profession he previously worked in a Merchant Bank in the City, and has been Hon. Treasurer of his local Ward Branch of the Conservative Association since 1967.

Councillor Fischer attended primary and grammar schools in the Borough, and later a boarding school in the country, graduating with an Arts degree from University College, London, in 1958.

His interests include a number of communal and charitable organisations, e.g. Finchley Council of Christians and Jews, Friends of the Sick, etc., and until his election to the Borough Council had been a member of a local amateur choir for ten years. He is an occasional reader in Synagogues in the district.

Council booklets cover planning

TWO NEW booklets "Layout and design of buildings" and "Extensions to houses" have been produced by the London Borough of Barnet.

The layout and design booklet gives examples of good design and buildings which would assist developers and draw attention to the importance which Barnet Council places on such matters.

It illustrates a number of building projects which have been carried out in the Borough and the particular aspects of the layout and design deserving attention, including the relationship to site features, landscaping, car parking and the position of facilities for children.

Copies of the booklet are to be supplied free of charge to members of the Conservation Area Advisory Committees and to various organisations who are being invited to attend the planning Divisional area meetings which are being organised on the instructions of the Town Planning and Research Committee.

Other persons, organisations, etc. may obtain copies from the Borough Planning Officer, Gateway House, 322 Regents Park Road, Finchley, N3 2LP, or from the Town Clerk, Town Hall, The Burroughs, Hendon, NW4 4BG, price 15p.

"Extensions to Houses" is a revised edition of a previously published booklet on this subject. Copies are being supplied, free of charge, to the organisations attending the Divisional meetings and copies may also be obtained from the Borough Planning Officer or the Town Clerk.

The booklets were printed and produced by the Printing Section of the Town Clerk's Department.

WHAT CAN BE DONE TO REPLACE DEAD ELMS

THERE CAN BE NO doubt that the present outbreak of Elm disease is carrying off a large number of trees in the Borough. Many are already dead and other infected trees are so badly affected that they will need to be removed to prevent a build up of the Elm Bark Beetle.

Regrettable as the losses are, regret will do nothing to remedy the situation and we must consider how best we can use any opportunities that the death of trees will provide to undertake replacement planting.

The Elm is generally a large tree and its replacement with too small specimens of Flowering Cherries, Laburnum etc., will in most cases only add to the long term loss of visual amenity.

Where and when the need for replacement arises we must try to consider that we need to maintain and improve or conserve that part of the character of the Borough provided by the larger trees such as Elm.

There are limitations to this and some of the Elms that die will be lopped and chopped relics stand-

ing too close to building and other structures for their owner's comfort. In these situations replacement with large tree species will be equally wasteful and add to the long term loss of visual amenity.

The following selection of tree species is prepared on the basis of distance to be planted from a main structure such as a house wall. The selected trees are those having few serious vices and which deserve more use in the Borough. In some cases common species are suggested to help replace those

species at present out of fashion.

Firstly, however, a suggestion for those people who still have the courage to plant Elms. The disease is Asiatic in origin and most Asiatic species are resistant to it but unfortunately are not noted for growth performance in this country. But one small Elm that could reasonably be planted to within 30 ft. of a house is the Elm *ULMUS VIMINALIS*: in many respects it is a miniature English Elm with a few of that tree's well known vices; there are several mature specimens in the grounds of Avenue House, Finchley.

Minimum distance from Structure 25 - 30 ft.

Common Name Broadleaved Trees

Swedish Birch
Amelanchier
Field Maple
Lobell's Maple

Botanical Name

Betula Pendula V. *Dalecarlica*
Amelanchier Canadensis
Acer Campestre
Acer Lobelli

Size to plant

6' — 10' Feathered
5' Standard
5' Standard
6' — 8' Feathered

Coniferous Trees

Arizona Cypress
Maidenhair
Eastern Hemlock

Cupressus Pyramidalis c/v *Conica*
Ginkgo Biloba
Tsuga Canadensis

2' Conifer Transplant
2' — 3' Conifer Transplant
2' Conifer Transplant

30 - 40 ft.

Broadleaved Trees

Italian Maple
Erman's Birch
Crab Apple
Pagoda Tree

Acer Opalus
Betula Ermani
Malus c/v *John Downie*
Sophora Japonica

5' Standard
6' — 10' Feathered
5' Standard
4' — 5' Feathered

Coniferous Trees

Serbian Spruce
Nootka Cypress

Picea Omorika
Chamaecyparis Nootkatensis

2' — 3' Conifer Transplant
2' Conifer Transplant

40 - 50 ft.

Broadleaved Trees

Norway Maple and Varieties
Yellow Birch
False Acacia
Manchurian Willow

Acer Platanoides (type)
Betula Lutea
Robinia Psuedocacia
Salix Matsudana

5' Stand
6' — 10' Feathered
4' — 5' Feathered
5' Standard

Coniferous Trees

Swamp Cypress
Metasequoia
Lodgepole Pine

Taxodium Distichum
Metasequoia Glyptostrobides
Pinus Contorta v. *Latifolia*

2' — 3' Conifer Transplant
2' Conifer Transplant
2' Conifer Transplant

50 - 60 ft.

Broadleaved Trees

Indian Chestnut
Pin Oak
Honey Locust
Common Walnut

Aesculus Indica
Quercus Palustris
Gleditschia Tricanthos
Juglans Regina

5' Standard
4' — 5' Feathered
4' — 5' Feathered
4' — 5' Feathered

Coniferous Trees

Leyland Cypress
Japanese Larch
Western Hemlock

Cupressocyparis Leylandii
Larix Leptolepis
Tsuga Heterophylla

2' — 3' Conifer Transplant
2' — 3' Conifer Transplant
2' — 3' Conifer Transplant

60 ft. Plus

Broadleaved Trees

Commelin Elm
Turkey Oak
Common Beech
London Plane

Ulmus (variety)
Quercus Cerris
Fagus Sylvatica
Plantanus Acerifolia

As Available
4' — 5' Feathered
5' Standard
5' Standard

Coniferous Trees

Corsican Pine
Atlantic Cedar
Lebanon Cedar

Pinus Nigra c/v *Maritima*
Cedrus Atlantica
Cedrus Libanii

2' Conifer Transplant
2' — 3' Conifer Transplant
2' — 3' Conifer Transplant

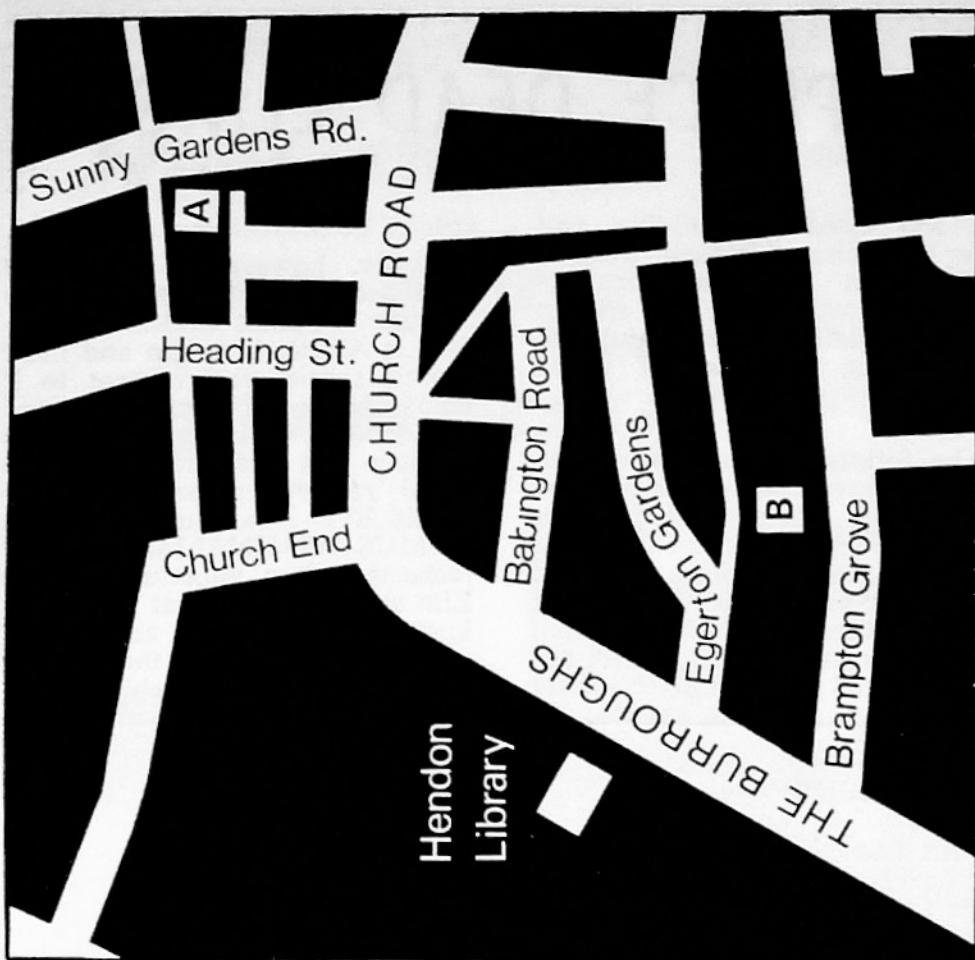
In ordering any such trees, use both common and botanical names to avoid unfortunate errors in supply of plants.

Small plants are more econom-

ical, have a greater chance of successful establishment, and in the end often produce a good tree quicker than a struggling too large specimen.

If you are in a hurry, and remember nature never is in this state, you are invited to consult with the Council's officers who will be pleased to advise: The Borough

Planning Officer, Gateway House,
322 Regents Park Road, Finchley,
N3 2LP, telephone no. 01-349 9121
ext. 320.



(A) Temporary Adult Lending Library, Music Library and Children's Library.

(B) Temporary Reference Library.

HENDON LIBRARY will be closed for extension and alteration from Monday, December 20, 1971, for approximately 18 months.

During this period a temporary service will be provided at the following locations:

Adult Lending Library
Music Library
Children's Library
Sunny Gardens Road, Hendon, N.W.4

Reference Library
**St. Mary's Community Centre,
Egerton Gardens, Hendon, N.W.4
FIRST FLOOR**

Hours of opening will be as at present :-

Mon. - Fri	9 a.m. - 8 p.m.
Saturday	9 a.m. - 6 p.m.

Borrowers' tickets may be used at any of the libraries in the Borough.

Temporary Library Arrangements at Hendon

HOME SAFETY TIP

HOME SAFETY SAM SAYS . . .

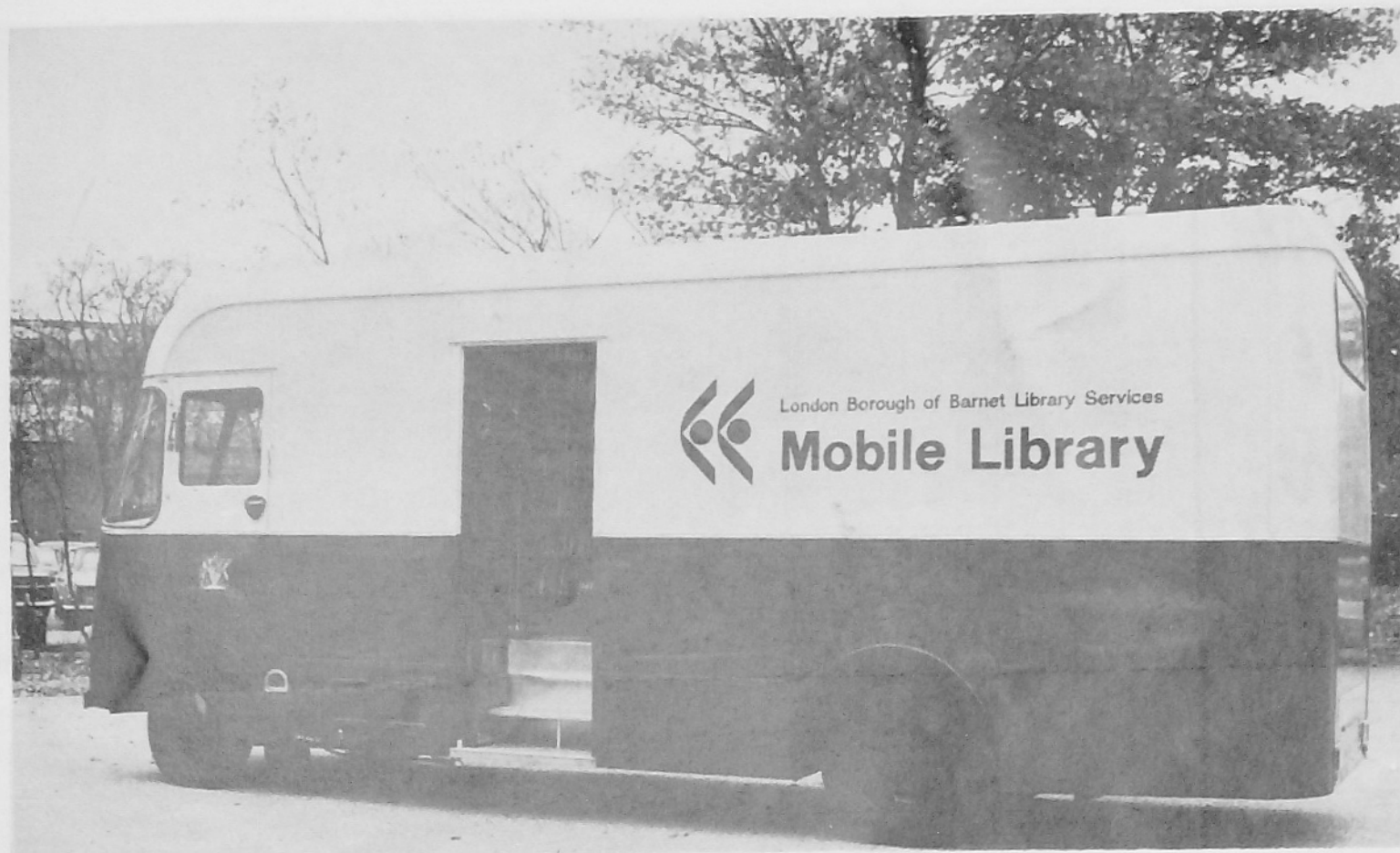
IS YOUR OLD WIRING SAFE?

- ★ Unsafe wiring can mean danger from fire or electric shock to the occupants.
- ★ For the sake of your family and neighbours call in an approved contractor to rewire.
- ★ A list of Approved Electrical Installation Contractors in this Borough is available from :

The Medical Officer of Health,
Gateway House,
Regents Park Road,
Finchley,
London, N3 2LP
Tel : 349 9121 Ext : 171

TAKE HIS TIP





The new Mobile Library.

Travelling library service extended in the borough

BARNET LONDON BOROUGH Council's travelling library service has now been extended to operate in the Chipping Barnet and Finchley Constituency areas.

As from Monday, October 11 residents will be able to select books from a modern travelling library, which carries a stock of nearly 3,000. A special section is reserved for children's books.

In addition, borrowers may reserve books at the counter of the mobile unit and the Council's Library Service Department will arrange for the books to be brought out on the van as soon as they are available.

The new service operates as follows:

Bulwer Road, New Barnet
(nr. junc. with Hadley Road)
Tuesdays 2.30 p.m. - 4.45 p.m.

Garthland Drive, Barnet
(nr. junc. with Endersby Road)
Tuesdays 5.45 p.m. - 7.00 p.m.
and
Wednesdays 2.30 p.m. - 4.45 p.m.

Lyonsdown Road, New Barnet
(near The Drive)
Wednesdays 5.45 p.m. - 7.00 p.m.
and
Fridays 10.00 a.m. - 12.30 p.m.

Mays Lane, Barnet
(nr. junc. with Connaught Road)
Tuesdays 10.00 a.m. - 12.30 p.m.
and
Fridays 2.30 p.m. - 4.30 p.m.

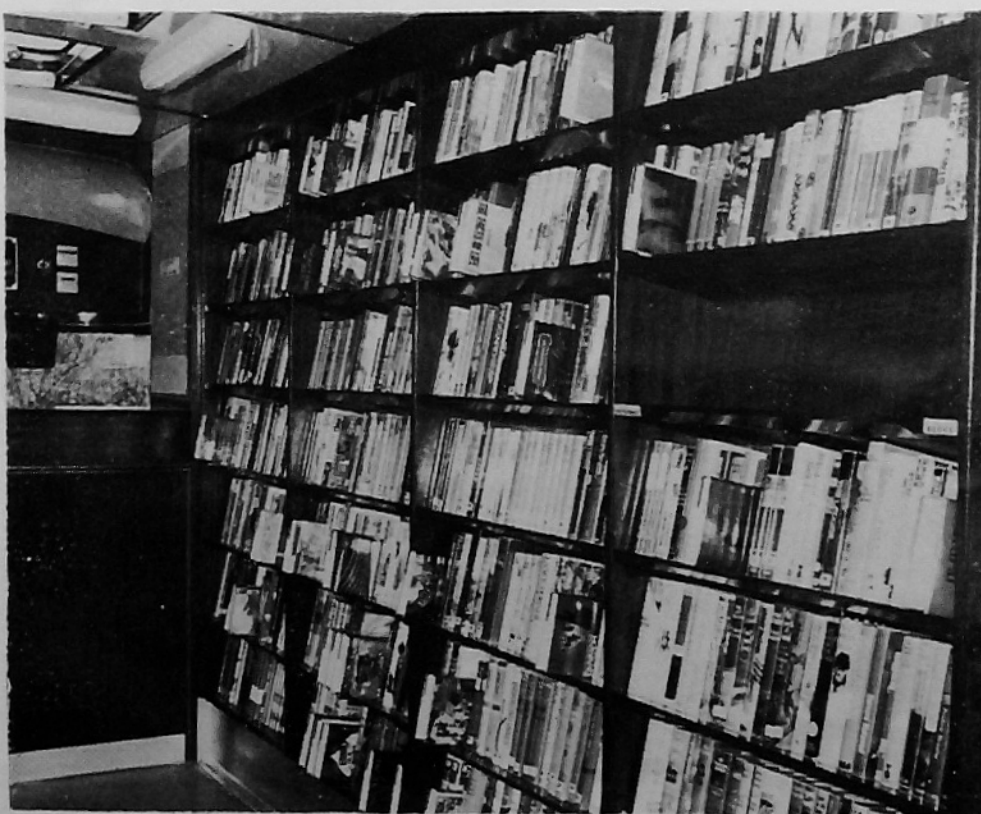
Whetstone High Road, N.20
(nr. junc. with Buckingham Ave.)
Thursdays 10.00 a.m. - 12.30 p.m.
and
Saturdays 10.00 a.m. - 12.00 noon

In addition, the travelling library service at Colindale and Frith Manor is to be extended as follows:

Colindale, Woodfield Ave., N.W.9
Mondays 4.30 p.m. - 7.00 p.m.
Wedn'days 10.00 a.m. - 12.30 p.m.
Fridays 2.00 p.m. - 7.30 p.m.
Saturdays 1.00 p.m. - 4.00 p.m.

Frith Manor, Sussex Ring, N.12
Tuesdays 2.30 p.m. - 7.00 p.m.
Thursdays 2.30 p.m. - 7.00 p.m.
Saturdays 10.00 a.m. - 5.30 p.m.

The interior of the new Mobile Library.



International certificates of vaccination

FORMS ARE obtainable from the Ministry of Health, Alexander Fleming House, Elephant & Castle, London, S.E.1, although supplies may be held by the medical practitioner, the local health authority or the travel agent and, after being signed by the doctor who gave the vaccination, must be authenticated by the local authority. Provided that the medical practitioner practises within the London Borough of Barnet the certificate may be taken or sent to the Medical Officer of Health's Department at any of the addresses below:-

Gateway House, 322 Regents Park Road, Finchley, N3 2LP

Green Shield House, Station Road, Edgware, HA8 7AA

Church Farm, Hill Road, East Barnet, Herts.

These offices are open from 9 a.m. to 5.35 p.m., Monday to Friday.

FROM OPERATIONAL AERODROME TO HOUSING FOR THE PEOPLE

THE WORSHIPFUL the Mayor of Barnet London Borough Council, Councillor K. W. Hughes, F.I.O.B., F.R.S.H., officially handed over the key to the first occupants of a Council house at Grahame Park, at a special ceremony on Saturday, October 23.

The Grahame Park development is a joint scheme between the London Borough Council and the Greater London Council, and leading officials from both authorities were present at the ceremony.

They included the Chairman of the Barnet Housing Committee (Councillor A. Pares), the Chairman of the Barnet Grahame Park Committee (Councillor J. D. Gordon-Lee), the Chairman of the GLC Housing Committee (Mr. G. Chase Gardener) and the Vice-Chairman (Miss Shelagh Roberts).

After the simple ceremony of handing over the key to the first occupants, Mr. and Mrs. Richard Griffith of 12 Anson, Lower Strand, Grahame Park Way, N.W.9, a reception followed in the Officers' Mess at nearby Royal Air Force, Hendon.



Here is a bird's eye view of the former Hendon Aerodrome taken 40 years ago.



Picture shows Mrs. Griffith opening the front door of her house for the Mayor and Mayoress. Also in the picture are two of the three children of the family, Linda aged 8, and Jacqueline aged 6.

HOW INFORMATION REACHES PRESS AND PUBLIC

AT THEIR LAST meeting, members of the General Purposes Committee of Barnet London Borough Council received a report from the Town Clerk on the system carried out in his department of the dissemination of information to the press and to the public.

The Town Clerk reported that the dissemination of information to the press and public fell into two main categories:

- (a) requests for information, that is requests received from the press and the public by telephone and written enquiries and
- (b) information issued, that is information circulated to the local press and local organisations, etc., or deposited in various Council offices, including libraries.

In connection with the requests for information, the Press and Information Section of the Town Clerk's Department handles in the region of 130 telephone calls a day, in addition to personal callers to the Town Hall.

Other 'phone calls out of normal office hours are dealt with by an emergency telephone staff. With these two links the Council therefore operates a service to the public daily throughout the year.

(1) Edited reports of Chief Officers

As far as information issued to the press and public is concerned,

this is handled in various ways, including sending out after the meeting of each committee the edited reports of the Chief Officers as background material.

(2) Advance copies of Reports and Decisions of Committees

Further, as soon as committee reports and decisions have been considered by the Chairman concerned, and before circulation to Members of the Council, typewritten drafts of reports and decisions of committees are circulated. The press also receive, at the same time as Members, copies of the printed decisions and printed advance copies of reports of committees.

(3) Circulation of Committee Reports and Decisions

In connection with the circulation of committee reports and decisions, copies are sent by post, free-of-charge, to the press and to those members of the public and organisations who have made written application, and the decisions of committees, apart from the circulation mentioned, are sent

free-of-charge in bound volume form to those members of the public and organisations who have requested copies.

(4) Weekly lists of Planning Applications received

Another source of channelling information to the press includes the circularising of weekly lists of applications for planning permission received by the Borough Planning Officer. Again, these lists are also sent to certain organisations and are available for inspection in all public libraries in the Borough.

(5) Press statements and conferences

Press statements are issued regularly concerning the work of the Council and its committees and press conferences are also arranged from time to time.

(6) Barnet Civic News, Information Bulletins, etc.

Barnet Civic News, a bi-monthly newspaper, has a wide circulation also, giving information concerning the Council's activities and an Information Bulletin appears from time to time.

Both these documents are circulated to the press, organisations and individuals free-of-charge and copies are available from all Council offices and libraries.

Barnet Council will continue in the future its policy of keeping both the press and the public informed of its activities, with a steady flow of information, as outlined.

All day-time enquirers should telephone the Town Hall, The Burroughs, Hendon, NW4 4BG, telephone no. 01-202 8282, and ask for the Press and Information Officer, Mr. T. E. Bevin. Members of the public seeking information after normal office hours will be answered by a member of the staff of the emergency telephone service.

FURTHER PELICAN CROSSINGS IN BARNET

NEW TYPES OF pedestrian crossings known as a 'Pelican crossing', have been erected at High Road, Finchley, N.12, near to its junction with Lodge Lane, and Tally Ho Corner.

The new signalling equipment has been developed by the Department of the Environment, and Barnet Council is erecting it on behalf of the Department and the GLC. Pedestrians wishing to cross at this point—where previously there has been an uncontrolled zebra crossing—will have to observe three figures.

A red figure denotes that it is dangerous to cross and the pedestrian will have to press a button. When a green figure appears on an illuminated panel, pedestrians have priority to cross the road. A flashing green signal denotes that the lights are about to change and warns pedestrians that they should not start to cross.

From the driver's viewpoint, the traffic signals are similar to those already in general operation, except that a flashing amber light warns the motorist to give way to pedestrians and only proceed if the crossing is clear. Amber on its own warns the driver to stop unless it is unsafe to do so.

A simple leaflet, giving details on the new crossings, is available for members of the public, explaining how the 'Pelicans' operate, and these leaflets may be obtained from the following locations:

- (a) Town Hall, The Burroughs, Hendon, NW4 4BG,
- (b) Gateway House, 322 Regents Park Road, N3 2LP,
- (c) Friern Barnet Town Hall, Friern Barnet, N11 3DL,
- (d) North Finchley Library, Ravensdale Avenue, N12 9HP.



Woolworths N. Finchley 1948

HOW TO GO ABOUT MOTOR AND DRIVING LICENCES

JUDGING FROM the numerous enquiries which continue to be received by the Press and Information Service of the Town Clerk's Department there is a misunderstanding by many local residents as to where they may obtain vehicle and driving licences.

The guidance notes on the forms of application advise that (apart from the conditional facility to re-license a motor vehicle through Post Offices) the completed forms, together with certain necessary requirements, should be taken or sent to the Local Taxation Department of the County or County Borough Council.

In the case of applicants who reside within the area covered by the Barnet London Borough Council, it should be noted that the nearest Taxation Department, which is under the control of the Greater London Council, is situated at the following addresses:—

For Motor Vehicle Licences:

84 Uxbridge Road, West Ealing,
W13 8RB.

For Driving Licences:

91 Uxbridge Road, Ealing,
W5 5TJ.
(Telephone: 567 7755)

Register of local organisations

A REGISTER is maintained in the Town Clerk's Department of all known local organisations, to which reference is often made to satisfy the many enquiries received from residents wishing to take part in their own hobby, sport or entertainment.

There are 700 local organisations in the register, although it is felt that in a London Borough as large as Barnet there may be many more.

Reply-cards to amend details contained in the register are sent to secretaries of local organisations, and it is requested that Honorary Secretaries of organisations which are not recorded, should inform the Town Clerk, Town Hall, Hendon, NW4 4BG (Ref. Press & Information.)

Voluntary service helps community

THE IMMENSE services for health and welfare provided by the Health Department and the Directorate of Social Services are greatly assisted by voluntary service.

There are many opportunities for voluntary service, and residents who wish to give their services are invited to write to the Town Clerk at the Town Hall, Hendon, NW4 4BG, where a list of all local organisations is maintained by the Press and Information Section.

'WHAT'S ON' IN THE BOROUGH

A PUBLICATION giving details of forthcoming events in the London Borough of Barnet at which the public may attend, is issued fortnightly and is obtainable at any Council Office or Public Library in the London Borough.

Members of the public, wishing to enter any function in the 'What's On' are invited to send particulars giving, if possible, three weeks' notice, to the Town Clerk, Town Hall, Hendon, NW4 4BG or telephone the Press and Information Section, 01-202 8282, Ext. 72.

Bonfires can be an offence...

NUMEROUS ENQUIRIES are received from householders regarding the burning of garden rubbish in Smoke Control Areas.

The position is that smoke from bonfires, if a nuisance to the inhabitants of the neighbourhood, is, by virtue of Section 16 of the Clean Air Act, 1956, a statutory nuisance liable to be dealt with under the Public Health Act, 1936, irrespective of whether the bonfire is in a Smoke Control area or not. It follows, therefore, that bonfires should never be lighted on calm or foggy days but only when there

is a fairly strong wind blowing which will quickly disperse the smoke without blowing it into adjoining properties so as to be a nuisance to the occupants.

Materials should also be dried before burning so that the bonfire burns briskly and is not allowed to smoulder for prolonged periods. It is better to have smaller bonfires at more frequent intervals which are burned out quickly than large bonfires which might have a tendency to smoulder.

Whenever possible, of course, disposal should be by composting.

BLOOD DONORS UP—BUT EVEN MORE NEEDED IN THE BOROUGH

THE NUMBER of blood donors attending the Blood Transfusion Centre, Edgware, has grown to well over two thousand. All local people. A record to be proud of.

But even more people are needed to give blood now. Modern medicine uses more and more blood. Nothing substitutes for it. So please offer to give **your** blood now.

Giving this wonderful gift—often a gift of life—costs you nothing, except a little time, and everything is organised to save

you as much of that as possible. Call Marjorie Vaughan on 01-952 5511 to make your appointment today, or just walk into the Donor Clinic.

**North London
Blood Transfusion Centre,
Deansbrook Road, Edgware
Open daily, Mon. - Friday
8.00 a.m. - 7.30 p.m.**

If the journey to Edgware is prohibitive, telephone the Centre for details of your nearest Donor Clinic.

CHECK YOUR CALLERS

RECENTLY AN INCIDENT has been brought to the notice of Barnet London Borough Council, regarding a young woman who represented herself as a welfare officer when calling on two elderly ladies in the Burnt Oak area, at nine o'clock at night. After the woman had left, one of the elderly ladies reported that her handbag was missing.

The Council reminds residents in the London Borough of Barnet that officers of the Council who are authorised to make calls or inspect premises within the London Borough are provided with credentials of authorisation and identification.

Residents are advised to refuse admission to any person not producing the necessary authority and to report the matter immediately to the local police.

COUNCIL MEETINGS

You are invited to attend a meeting of the Council of the London Borough of Barnet held at the Town Hall, Hendon, N.W.4, at 7 p.m. on Tuesday, December 21 and Tuesday February 1, 1972.

Copies of Committee Reports are available in all public libraries before the Council Meeting takes place, and for members of the public, attending the meetings of the Council.

LAND CHARGES

Barnet London Borough Council wishes to draw the attention of members of the public to the fact that the Local Land Charges Section of the Town Clerk's Department has temporarily moved to 331 Regents Park Road, Finchley, N3 1DS, telephone no. 01-349 9121, extensions 350, 351, 358, 359 or 368.