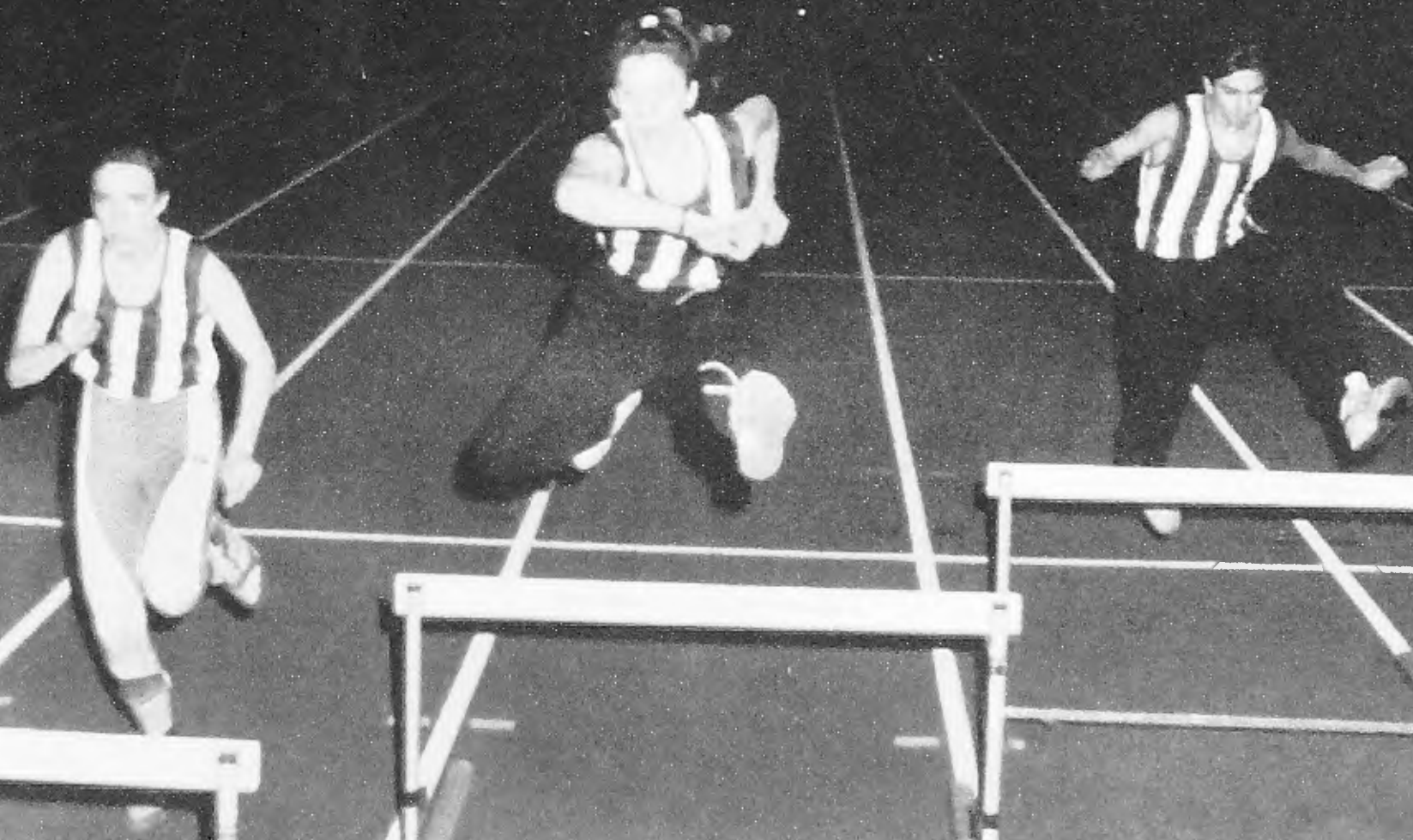


# BARNET BOROUGH NEWS

Barnet Council's monthly magazine for residents No. 63 JANUARY 1990



MEMBER OF THE VERIFIED DISTRIBUTION LTD THE HALLMARK OF TRUSTED DISTRIBUTION 114.653 JAN JUN 1989



**INSIDE:**  
Revenue House: We ask for your views on its future  
Shopping Bennett: How the parking zone will work  
Clean Streets Campaign: It's all happening now!

*Greetings from Barnet Council for 1990 and the New Decade*

# THE GREAT ONCE IN A YEAR

QUALITY CARPET CLEARANCE

1000'S OF OFF CUTS ROOM-SIZE REMNANTS From Cash & Carry

**CARPETS**  
FROM £2.50 PER SQ. YARD

**FREE** LOCAL DELIVERY  
SAVE £'s NOT PENNIES

*Come in and see for yourself!*

**SALES**

WEST END  
*Carpets*

928 HIGH ROAD  
NORTH FINCHLEY  
N12

446 5331/2/3/4



Mon-Sat 9-5.30

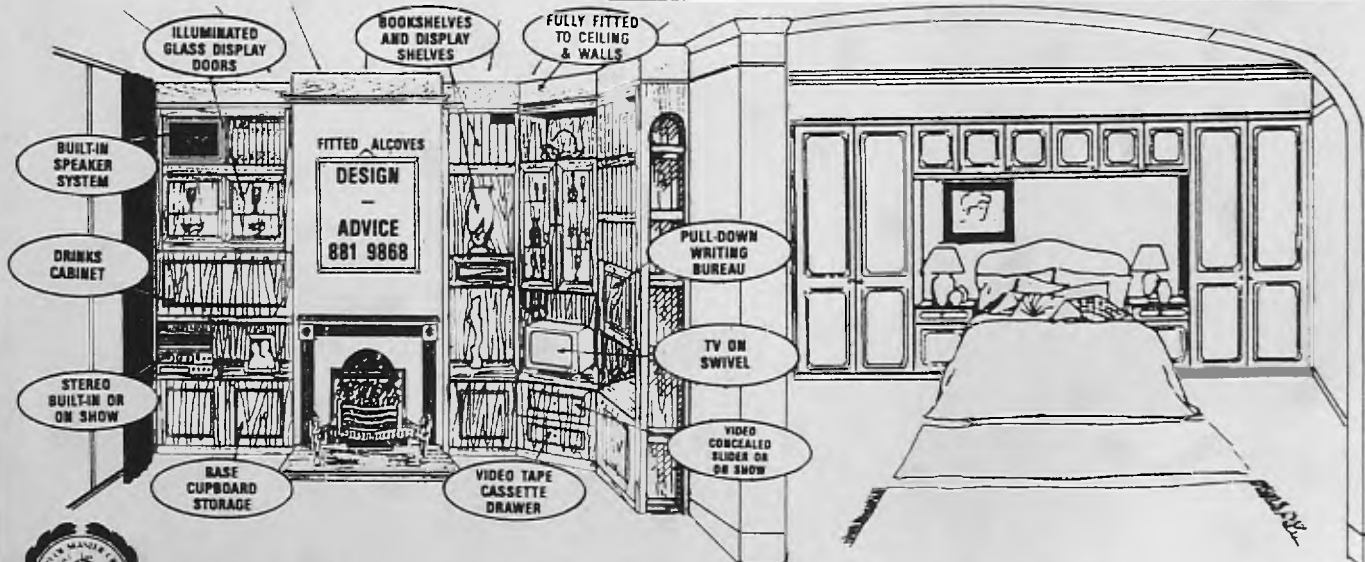
Open Bank  
Holiday  
Monday  
2nd January

**NOW ON**

## FITTED LOUNGE, DINING ROOM AND BEDROOM FURNITURE

MADE TO MEASURE

JANUARY SALE 20% OFF



Buy from a  
local business  
Established  
10 yrs

All furniture available in top quality materials such as mahogany, teak, oak, pine, dragged oak and laquers.

Your local showroom at: 164 BOWES ROAD, LONDON N11 **01-881 9868**  
Mon-Fri 9.30-5pm. Saturday 10-4pm. Sunday 10.30-1pm. **Open New Year's Day** 10-2pm.

**THEMESETTER**

12 months interest  
FREE credit

## 1st Birthday Celebrations

Poolside Manor celebrated its 1st birthday with a party and cabaret for clients and friends. At the celebration, Poolside Manor and sister company X.U.K. Camps, held an auction in aid of its two nominated charities "Children In Need" and "Greenpeace". A place at the day camps and Maureen Lipman's swimming costume were two of the items auctioned, making a total, with the money already raised, of over £200.

Poolside Manor operates all year round with swimming classes for children and adults of all ages and abilities. Groups of six children are allocated to one qualified instructor. Regular water fitness classes are held for adults of all abilities, run by qualified Aquafit teachers. Adults do not need to swim to participate.

Other groups include "Sparklers", a weekly activity group for children aged 4-7 years in which they experience a variety of mobile activity, including bouncing, dancing, tumbling, stretching, rolling etc. with the latest up-to-date equipment and a qualified gym teacher. There is also a regular judo group and tap and jazz for children, keep fit, sun bed sauna and steam cabinet for adults, and all this is situated in the beautiful pine log centre with activity room, studio and refreshment bar.

The pool is in Lyndhurst Gardens Finchley N3, and for further details of the above or membership for leisure swimming, please telephone 01-349 1945 or 01-349 1444

*Advertising feature*

P O O L S I D E



Lyndhurst Gardens . Finchley N3 1TD

**SWIM**

Private Swimming Lessons for all ages and abilities, in superb surroundings. Qualified Teachers - 6 pupils per class, book now for Christmas crash course and January term.

## Sparklers

A weekly term time activity at Poolside Manor for 3-4 years and 5-7 years. Bouncing, dancing, climbing, swinging, tumbling etc.!! Qualified Gym Teacher.



**POOLSIDE PUFFINS**



January 2nd-5th inc. 2pm-4pm. 4-7 years. Drama, singing, magic shows etc. coupled with an hour of fun swimming every afternoon.

☎ 01-349 1945 or 01-349 1444

**SALE STARTS WED 3rd JAN 1990**

**OUTSIDE INSIDE  
Conservatory Interiors**

*Antique and modern furniture, planters,  
plants, cache-pots, pictures, light fittings  
mirrors, blinds, tiles cards, gifts  
and decorative items.*

Closed Mon. Open Tues to Sat 10am - 6pm.

19 Aylmer Parade, Aylmer Road, N2

Tel: 01 - 341 5631

## OPPORTUNITIES FOR WOMEN

WOULD-YOU LIKE:

- \* A NEW CAREER
- \* TO RE-VITALISE YOUR OLD SKILLS

WE CAN PROVIDE YOU WITH A NEW JOB OR PROFESSIONAL TRAINING AT

**NO EXPENSE**



- TYPING -
- WORD PROCESSING -
- SECRETARIAL SKILLS -
- BOOKEEPING & ACCOUNTS -
- COMPUTERISED ACCOUNTS -

Personal Development Associates Training Ltd are experienced trainers in many fields. As part of our involvement in the Government's Employment Training Scheme, we are able to offer high level training to the following groups:

- Women who have been away from the work place for more than two years, due to domestic commitments
- **ANYONE** unemployed for more than six months
- Lone parents (childcare allowances available)
- Special conditions apply to those people **newly** unemployed, who require this type of training, as the shortage of skilled people in this area has been recognized

A training allowance of £10 per week will be paid to all trainees. This is **additional** to unemployment benefit or any other benefit. Help with travel costs is also available.

If you are interested please contact Rita on 446 - 4155



**PERSONAL DEVELOPMENT ASSOCIATES TRAINING LTD.**

Partners in NETA Ltd. An Equal Opportunities Employer.

London Borough  
of Barnet  
The Town Hall  
The Burroughs  
Hendon NW4 4BG  
For information  
Tel: 01-202 8282



### Contents

	Page
War on litter .....	6
Avenue House - the future? .....	8
Councillors surgeries .....	10
Chipping Barnet parking plan .....	11
Barnet in Bloom .....	12
Barnet Diary .....	13 to 21
Community charge news ..	15
Back to teaching .....	16
A tree heritage .....	17

Editorial Address:  
The Town Hall  
Hendon NW4 4BG  
Tel: 01-202 8282 ext; 2072  
Contact: Rosemary Jude

Advertising Address:  
Marketing Media Management  
185 Angel Place  
Fore Street N18 2UD  
Tel: 01-807 7676  
Contact: Lynette Fernandes.

Barnet Borough News is published by Barnet Council and Marketing Media Management. It is distributed to homes and businesses throughout the borough. It is also available from libraries.

The VFD certified net distribution from January to June 1989 is 114,653.

### FRONT COVER

Shaftesbury Barnet Harriers leap into 1990 which is their Centenary year. The Harriers made Barnet Copthall Sports Centre their base when the stadium was built and the facilities have helped them become one of the country's top athletics clubs. They offer coaching to young athletes helped by funding from Barnet Council.

## 1990: and the Mayor sends New Year greetings

I don't know quite why it is but somehow the start of a new decade is a time of hope, anticipation and excitement. And indeed there are many encouraging signs that the 1990s will be a decade of achievement.

Here in Barnet we are also poised ready for a new era. Reading this issue of Borough News you will see two trends.

One is a very active campaign to improve our environment with new recycling plans and a war declared on the litter louts who spoil our town centres.

The second is the increasing communication between the Council and the residents of our borough. There are consultations in progress on such aspects as the future of Avenue House and the traffic schemes for the Aerodrome Traffic Zone, and just look at the response of residents to the boundary commission meetings.

I have had a personal demonstration of this great support from local residents in the way people have responded to my Mayoral Appeal this year. As you know we are raising money towards a new day centre for MIND in Barnet. So far the committee have been very active and donations have come from groups and individuals in all walks of life.

So may I thank you all, and join with my husband, Ron, to wish every resident in the borough and all the business people who work here a very happy and prosperous 1990 and may the new decade fulfill our hopes and an era of peace throughout the world.

Dot Benson

Mayor, London Borough of Barnet

## NO GLOOM FOR BARNET COUNCIL

A SEVEN YEAR street lighting plan to chase away the shadows and make the streets safer for pedestrians at night is to be introduced by Barnet Council. The scheme will start in 1990.

Barnet is responding to new British Standards for street lighting, likely to be introduced next year. Under the new code pedestrians become the important factor and lighting of pavements and verges has high priority.

### £4.5m plan

The new standards call for a much higher standard of illumination. Over the seven year programme the lighting levels on all the 20,000 street lights in residential and principal roads will be upgraded under Barnet's £4.5 million scheme.

Before the Public Works Committee meeting on Tuesday 12 December, the Parliamentary Lighting Group - a group of MPs



Cllr Don Goodman, Vice-chairman of Public Works Committee (left) and John Bragg, senior lighting engineer (right) at the exhibition with John Skehens of the British Parliamentary Lighting Group

from all parties who are encouraging boroughs to improve lighting - staged an exhibition to show the difference good bright street lights could make.

Commenting on Barnet's proposals, Cllr Victor Usher, Chairman of Barnet Council's Public Works Committee, said: "A good

standard of street lighting is an essential part of modern day life. It makes the streets safer and I am delighted that we are going ahead with a first class scheme which our officers have produced. The Committee gave it unanimous approval and so Barnet will see the bright nineties coming in."

### BARNET COUNCIL'S CHIEF EXECUTIVE SAYS:

## "Thank you" to residents

BARNET Council's Chief Executive, Max Caller has publicly thanked residents for their support at two meetings called by the Local Government Boundary Commission to consider proposals to re-align borough boundaries with Enfield.

Speaking at the December meeting of the General Purposes Committee, he said: "Almost

1,000 people turned out on two very cold evenings and the vast majority demonstrated vocally and with a show of hands their full support for Barnet."

### Great support

"I would like to thank all of them. I, personally, was deeply moved by the support and I am sure that everyone associated with

the Borough of Barnet, members and staff alike, wish to express their appreciation to our residents in our efforts to prevent Enfield from making a take over bid."

The Committee noted the anxiety felt by Barnet's residents in that area of the Borough and authorised Mr Caller to publicise the decision of the Boundary Commission as soon as it is known.

# PORTAGAS

Plumbers Merchants  
01 361 2105

VALOR HEATERS  
complete with FREE  
BOTTLE for only  
£69.02  
FOR ALL YOUR  
HEATING REQUIREMENTS  
call in at  
74 Brunswick Park Road,  
New Southgate  
London N.11



## WINTER SALE NOW ON

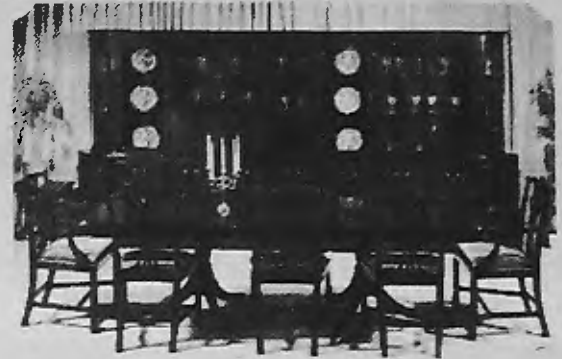
Extra discounts on all suites + wall units

WALL UNITS & DINING TABLES CUSTOM  
MADE & POLISHED TO ORDER.



7ft Mahogany Dining  
Table and Six Mahogany  
Chairs, Including two  
Carvers from £395  
complete.  
15 different chair designs,  
covered in Regency stripe  
or Dralon. Ten types of  
table. All Dining Room  
Suites can be polished to  
customers' own  
requirements

Beresford & Hicks Crystal  
Range Wall Units And  
Dining Room Furniture  
All at Unbelievable  
Discount prices.  
Regency Bookcases, 2-  
door, 3-door, 4-door from  
£349. Solid Mahogany  
Dining Chairs from £45.  
Oak Dressers from £299.  
Wheelback Chairs £49.  
Carvers from £69.  
T.V. Video and Hi-Fi Cabinets from £99.



### DENTAL HOME VISITING SERVICE FOR

Housebound,  
Handicapped, Elderly  
and Infirm. NHS  
treatment free to those  
claiming income support.

AVRIL KAY  
LDS RCS Eng.

Tel: 445-7879  
for an appointment



### WHAT IS B.A.W.A.?

Barnet Asian Womens Association  
(B.A.W.A.), is a group of local women who  
meet regularly and organise Social, Cultural  
and Educational activities for themselves.

An e.g. of some activities:-

Language Classes - Sat. 10.30-11.30am.  
Lunch Club - Tue. & Fri. 12.30-2.00pm.  
Swimming Classes Squires Lane  
Swimming Pool, Finchley N3. - Sat. 4.30-  
5.30pm.

Harmonium Classes - Thus. 7.30-9.30pm.

Contact Prem or Miss Jiva on 446 9897.

Friern Park Centre, 1 Friern Park,  
N12 9DE.

Financially Assisted by London Borough Barnet

## J&H FURNITURE LTD

Reproduction furniture manufacturers and wholesalers  
selling direct to the public

21 Heddon Court Parade Cockfosters Rd.,

Cockfosters, Herts. Tel: 01 440 0790

Closed Thursdays

NOW OPEN SUNDAYS 10 a.m. to 3 p.m.

Cockfosters only

72 Chase Side,

Enfield, Midd.

Tel: 01 366 2437

Closed Wednesdays



# NEW SUPER HI LINE FITTED BEDROOMS

Superb **NEW** range of wardrobe designs with special hand  
textured panels, inset windows and mirrors including white ash  
and black ash finishes with carved panels. You really should see  
these super new designs (and prices).

Also **SALE** of previous showroom models to be sold at up to 30%  
reduction and a limited number of oddment wardrobes with  
"Trial Design" doors to clear.

WE PLAN AND **EXPERTLY FIT FREE**

### WORKSHOPS AND SHOWROOMS

719 NORTH CIRCULAR ROAD NW2.

Telephone 01-450 6581

OPEN MON - FRI 9 - 5.30

SAT 9 - 5.00

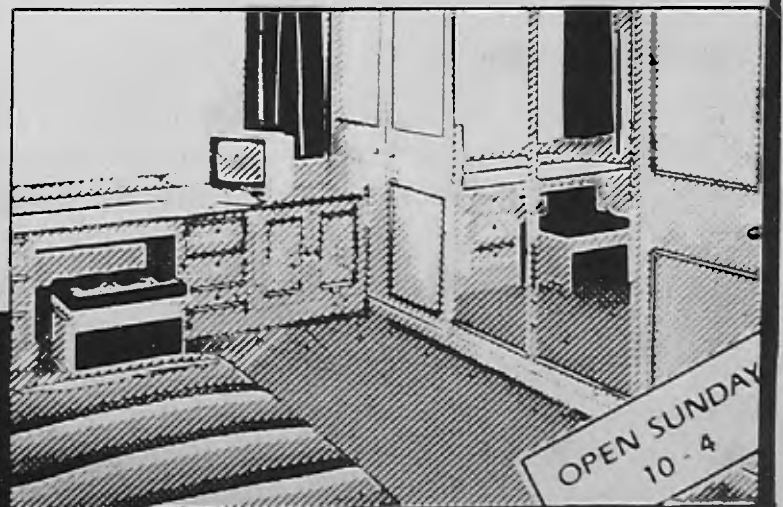
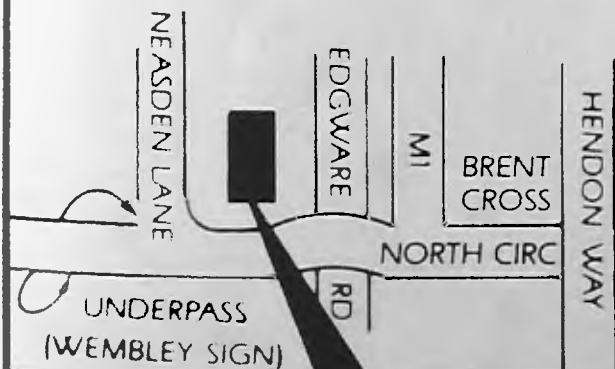
SUN 10 - 4.00

EASY PARKING

WE PUT MORE INTO THE **PRODUCT.**

**CREDIT TERMS** LICENCED BROKER

ASK FOR WRITTEN DETAILS



OPEN SUNDAY  
10 - 4

# STATON



The Mayor of Barnet launches the suction sweepers at Finchley Central with a little help from her friends



Cllr Victor Usher and Cllr Don Goodman start off the Edgware clean sweep

## Barnet's Battle for Cleaner Streets

SHOPPERS in the Borough of Barnet could not believe their eyes. There was the Mayor, Cllr Dot Benson, wearing the chain of office - sweeping the pavements outside Tescos in Finchley.

In Edgware two well known former mayors, Cllr Vic Usher, Chairman of Public Works Committee, and Cllr Don Goodman, Chairman of Keep Barnet Tidy, were seen cleaning the pavement by Sainsbury's.

In Burnt Oak former deputy mayor Cllr Fred Poole, was at

work on Watling Avenue, and in Golders Green, John Marshall, MP for Hendon South, hijacked the machine and invited passers by to try it out for themselves.

In North Finchley another former mayor, Cllr Barbara Langstone, vacuumed the pavements in High Road and in Chipping Barnet Cllr John Rawles got rather enthusiastic and worked his way along the High Street.

It all happened on Saturday 9 December, when Barnet Council launched its Cleaner Streets

Campaign with a clean sweep for Christmas in Edgware, Burnt Oak, Golders Green, Chipping Barnet, North Finchley and Finchley Central.

### Six Centres

It started in Edgware when the two chairmen, watched by Barnet Council's Chief Executive, Max Caller, set in action one of the new powerful suction sweepers which are now at work on a daily basis cleaning the pavements in six of the borough's main shopping centres.

Two more machines are being used by mobile squads to clean other centres regularly.

Each machine, which is hand operated rather like a giant household vacuum cleaner, can clear 1,395 metres of pavement in an hour. It has brushes to sweep the litter into the large capacity collection bag. It can cope with bottles and cans and there are water jets to clean up difficult patches - including dog mess.

For the operator the job is clean and involves no litter handling.

The teams came together in Finchley Central, where the Mayor of Barnet and her Escort Ron Benson joined in. The group were joined by Tony Williams, Barnet's Director of Technical Services and Graham Beattie, Controller of Engineering Services.

Cllr Don Goodman, handing the Finchley sweeper back to the competent hands of the operator, said: "These machines are a great advance. But there is one thing I want to say.

### War on litter

"Litter does not get on to the streets and pavements on its own. Someone puts it there. So please everybody, help us to keep our borough clean. Barnet Council is playing its part with more litter bins and better street cleaning programmes. So let's all declare war on the litter louts who make our borough a less pleasant place than it should be."

### MARCH OF THE LITTER BINS



As part of the cleaner streets campaign Barnet Council are providing 100 more large litter bins in shopping centres throughout the borough. In the picture the first of the new bins are unloaded outside East Finchley Underground Station, and the first customer, even before the bins touched ground, was Zoe Fitzpatrick, held up by Monika Feuke from Germany. With the new large bins in place some of the smaller, post mounted bins, are being relocated to serve fringe areas.



Cllr Fred Poole tests the sweeper in Burnt Oak

# Please help save lives

Blood donors take holidays — Patients do not! This is the message that flows out from a small building tucked into the back of Edgware Hospital in Deansbrook Road, Edgware.

In these dark winter months with the likelihood of fog, ice and snow, and an increase in accidents, it is essential that donors give blood on a regular basis so that lives can be saved in hospitals throughout the area.

At the Blood Transfusion Centre and in mobile centres which serve the whole of the North West Thames Regional Health Authority, 180,000 volunteers are regular donors, but more are needed.

London hospitals need 2,000 pints of blood a day but sometimes the situation is critical and by becoming donors Barnet people can contribute to a truly life-saving

exercise.

It is so simple, so easy and quite painless. The centre is equipped with comfortable, reclining couches. A tiny prick, just to test and check the blood, and then just a few minutes under the supervision of a doctor and nurses.

Then you take a short rest and a cup of tea or a cold drink is served. Biscuits are offered and then you leave. It's all so friendly and comfortable.

If you have been a blood donor but have recently got out of the habit of reporting every six months or so, please get in touch with the centre as soon as possible.

If you have never given, please become a blood donor. You will be providing a vital service and at little cost to yourself.

Phone 952 9281 to find out more or just drop in at the centre.



# RED ALERT

**DON'T LET US RUN OUT OF BLOOD**

**BE A BLOOD DONOR**

**RING 952-9281**

**YOU KNOW IT MAKES SENSE.**



THE NATIONAL BLOOD TRANSFUSION SERVICE

*We're asking you to help us.*

# AVENUE HOUSE: What will be it's future?

**We are seeking  
your views.**

RESIDENTS can help Barnet Council by submitting their ideas on the future of Avenue House, which was badly damaged by fire in May, 1989.

The east wing of this distinctive building in East End Road, Finchley, was virtually destroyed in the blaze and demolition of this part of the house is recommended.

## Forms in the libraries

Consultation documents outlining the condition of the building, a choice of options, and questionnaires for you to give your ideas, are available in all Barnet Council libraries and also at the Town Hall, Hendon; Barnet House, 1255 High Road, Whetstone; Friern Barnet Town Hall, N11 and Avenue House itself.

A display, including photographs and a plan of the damaged area, can be seen at Avenue House.

Barnet's Chief Executive, Max Caller, said: "The Council would like to hear from as many people as possible. We are keen to get on with the work, so please complete the questionnaire and return it to us not later than Tuesday, 6 February.

"This questionnaire is separate from the consultation which the Council, as the local planning authority, will conduct in due course when we have a proposed design for Avenue House."

Send the form to: The Chief Executive (AH), The London Borough of Barnet, Town Hall, Hen-



**Avenue House after the fire**

don, NW4 4BG, or pop it in a collecting box at your local library or the council offices listed above.

## Historic Building

Avenue House was bought in 1874 by Henry Stephens, whose father invented the famous blue/black ink. One of the tragedies of the fire this year was the destruction of the Stephens' laboratory and its museum collection.

Henry Stephens died in 1918, leaving Avenue House, its stables and grounds (but not Hertford Lodge) to Finchley Council for the "use and enjoyment always of the public...."

For many years it was used as offices and Council meeting rooms for the former Borough of Finchley.

In recent years it has provided a social meeting place for many local groups and an office base for local voluntary organisations such as Community and Recreational Art in Barnet (CRAB) and the Finchley Society.

The fire started in the drawing room on the ground floor of the east wing and it is this room and the rooms over it which suffered the most damage.

What is left of the roof is so badly burnt that it is irreparable and damage elsewhere is so extensive that it is recommended that most of the east wing is demolished and rebuilt.

## The Future?

Avenue House is in Finchley Church End Conservation Area and is included in Barnet Council's

Schedule of Buildings of Local Architectural or Historic Interest.

Any development which is to take place at Avenue House will have to follow legal and planning procedures. Planning permission will be given by Barnet Council. If the house should gain inclusion on the statutory list, currently being considered by the Department of the Environment, then Listed Building Consent will be required from the Secretary of State.

There are a number of possibilities for the future ranging from a complete copy of the original wing to replacement with something completely different.

When putting forward their ideas, residents should be aware of many constraints which are spelled out in the full document.

## Take-off for traffic plans

A PUBLIC consultation on new traffic proposals begins on Friday, 5 January, and Barnet Council wants residents views.

The Aerodrome Zone, covering an area from Colindale to Burnt Oak, is the first section of the Borough to be targeted with detailed proposals to control traffic on an area-wide basis.

### Exhibition

There will be an exhibition on Friday, 5 January, at Hendon College, Abbots Road, Burnt Oak, from 10am to 8pm when council

staff will be on hand to discuss the proposals.

They will also be there on Saturday, 6 January, from 10am to 5pm and on Monday, 8 January, from 10am to 8pm.

### One-way system

A total of 41 streets are involved in the proposals which include a suggested one-way system around Barnfield, Silkstream and Gaskarth Roads.

Other measures include proposals to reduce traffic speed in Clayton Field and Field Mead,

Grahame Park, Colindale; a width restriction in Gervase Road, Burnt Oak; off-street parking incentives and new cycling facilities in Burnt Oak's Silk Stream Park, Montrose Playing Fields, Colindale, Woodcroft Park, Burnt Oak, and Colindale Park, Colindale.

Reply paid questionnaires will be delivered to homes in the area during 27 to 29 December.

### Contact point

Full information will be available at the exhibition so do call in and see the plans for yourselves.

**And we also want  
your views on  
traffic  
management  
plans for  
Colindale and  
Burnt Oak:**

**THE  
AERODROME  
ZONE**

## UNIQUE PRE-PREP CONCEPT

A unique concept in day care is how one would describe the Hendon Pre-Preparatory School, which opened last year in Tenterden Grove, Hendon NW4. The school which shortly will be adding capacity to its existing full Nursery will be holding a **Public Open Day on Saturday 20th January 1990 between 12 noon and 4pm** when interested parents are invited to come and view the attractive, purpose-built, modern facility.

The Pre-Prep Department which is attached to a traditional Prep School, established in 1974, offers an early education for boys and girls aged 3 - 5 years. The carefully structured cur-

riculum operates within an educational environment that is colourful, stimulating and fun. It is open from 8am until 6pm 50 weeks per year, supporting today's professional, working parents, and providing a service tailored to their needs. The cost works out at only a little more than that for a child minder yet the girls and boys are receiving the attention of trained teachers and qualified assistants.

The school is situated only minutes away from the North Circular, A1 and M1.

*Advertising feature*

## Events at Woodside

A new school hall, named RADY HALL, was officially opened in November by Reverend Howard Rady - Headmaster, from 1960 to his retirement in 1985, when the school was called Holmewood Prep School.

Under new management the school merged with the former St. Albans Prep School and changed its name. The names Holmewood and St.

Albans have been retained for The Pre-prep and Prep departments respectively.

The Pre-preparatory (ages 3+ to 8) raised a magnificent £1,163.00 for the Malcolm Sargent Cancer Fund for Children, in a sponsored Readathon, based on individual sponsorship of the number of books read by the pupil during 2 weeks in October.

*Advertising feature*

## HENDON PREPARATORY SCHOOL

(FOUNDED 1874)

20 TENTERDEN GROVE, HENDON, LONDON NW4 1TD  
TELEPHONE: 01-203 3465

### MAIN SCHOOL (5-13)

The school provides a traditional education for boys and girls from 5-13 years and prepares them for the Common Entrance Examination for entry to Independent Secondary Schools.

The Chairman of the Governors is Roger Ellis C.B.E., M.A. (former Headmaster of Marlborough College).

### PRE-PREPARATORY (3-5)

"Education in Childcare Hours."

A pre-preparatory school unmatched in North London offering individual attention from qualified teaching staff. Registration for a main school place is optional. Extended hours available.

*Full prospectuses are available:*

Telephone: 01-203 3465 Fax: 01-347 8535.

## SALE NOW ON

### BACKCARE BEDS

Available from £129



### BACKCARE CHAIRS

From £90 to £200

### FOLDING BEDS FROM £30.00

Mattresses of all shapes and sizes are available separately



### WE SPECIALISE IN QUALITY

○ BEDS ○ SUITES ○ FIRESIDE CHAIRS ○

GOODS AVAILABLE FOR DELIVERY BEFORE CHRISTMAS

We also furnish houses, flats for letting/renting and old peoples homes

## VALLEY FURNISHING

YOU ARE ONLY A PHONE CALL AWAY

114 BRENT STREET, HENDON NW4 TEL: 202 4666 Car park at rear



## WOODSIDE PARK SCHOOL

ENTRANCE SCHOLARSHIPS 10+ and 11+



PRE-PREPARATORY DEPARTMENT & PLAYGROUP

(HOLMEWOOD)

88 Woodside Park Rd N12

PREPARATORY DEPARTMENT

(ST. ALBANS)

Woodside Lane N12

Woodside Park School - Independent, co-educational day Preparatory School (4+ to 13+) - will be holding examinations and interviews at the School for academic scholarships and awards for all-round ability ranging up to 75% of the tuition fees for boys born between 1. 9. 78 and 31. 8. 80 (Inclusive), at present attending a state school.

The examinations and interviews will be held on 1st February 1990. Completed applications must be received by 26th January 1990.

Please write to the Headmaster for full details at: Woodside Park School, Woodside Lane, North Finchley, N12 8SY Tel: 01-445 2333

Belmont  
Lodge

## BELMONT LODGE

Residential Home for  
the elderly



**Why not have a new start in 1990? Without being lonely or worried about looking after yourself.**

Come and live at Belmont Lodge, where there is a happy family atmosphere which is not found in larger residential homes.

Our qualified staff will care for you, their only concern is for your comfort and happiness.

- Private telephone + T.V. point in each room
- Short stays can be arranged.

BROCHURE ON APPLICATION TO  
OFFICE: 01-959 4083  
or MATRON: 0923 222610

*Why not just pay us a Visit!*

59 Belmont Road, Bushey, Herts

Registered with Hertfordshire County Council



## Councillors and MPs surgeries

### Chipping Barnet

Sydney Chapman, MP, first Saturday of month 10.30am to 12 noon, 163 High Street, Barnet.

**Arkley Ward:** Conservative councillors, first and third Fridays of month 7.30pm, Dollis Valley Community Centre & fourth Friday of month, 7.30pm, St. Stephen's Vicarage, Spring Close, Bells Hill.

**Brunswick Park Ward:** Conservative councillors available second Saturday of month, 10.30am to 12 noon, Monkfrith Boys' Club hall, Osidge Lane, N14

**East Barnet Ward:** Cllr Olwen Evans (Conservative), first Saturday of month 10.30am to noon, Community Centre, Victoria Rd, New Barnet. Contact Cllrs Mrs Mamie Perry and John Perry on 368 4368 for personal appointment.

**Hadley Ward:** Contact Conservative councillors Gillian Bull 446 7684, Carol Cender 441 6325, John Hoyle 441 5077.

**Totteridge Ward:** Contact Conservative councillors Joan Levinson 368 3298, Victor Lyon 446 4423, Victor Usher 445 4248.

Labour councillors available first Saturday of month 10.30 to 11.30am, 104 East Barnet Rd, New Barnet.

### Finchley & Friern Barnet

Margaret Thatcher, MP, for constituents only, via constituency office, on 445 4292.

Conservative councillors, first Saturday of month, 10.30am to noon, 212 Ballards Lane, N3.

**East Finchley Ward:** Labour councillors every Saturday, 10am to 11.30am, East Finchley Neighbourhood Centre, Church Lane, N2.

**Finchley Ward:** Cllr Barbara Langstone can be contacted on 445 5443

**St. Paul's Ward:** Labour councillors Naren Dave, Michael Freeman and Kitty Lyons, every Saturday 11am to 12 noon. Tally Ho Labour Party Stall, North Finchley.

**Woodhouse Ward:** Labour councillors Mike Harris, Dennis Reed and Rudolf Vis, every Thursday, 6.30-

7.30pm, Friern Barnet Town Hall, N11. Also Saturdays at Tally Ho, Finchley.

**Friern Barnet Ward -** Contact councillors Chris Platford 368 6817; Brian Salinger 368 1329; John Tiplady 445 5734.

### Hendon North

John Gorst, MP, by appointment, 959 1446 or via constituency office, 2 Apex Parade, Selvage Lane, Mill Hill..

**Edgware, Hale and Mill Hill Wards:** Conservative councillors, Grahame Park, first Wednesday of month, and Constituency Office, Apex Parade, Selvage Lane, Mill Hill, every Wednesday.

**Burnt Oak Ward:** Contact Labour councillors Peter Ellis 959 6191; Gerald Shamash 458 2679; Alan Williams 906 0576. Also every Saturday, 10.30am to noon, Labour Hall, Back Lane, Burnt Oak 952 5771.

**Colindale Ward:** Contact Cllrs Hillman 202 7792; McKendry 444 0594; Manson 455 6379; available first and fourth Saturday each month, 2-3pm, St Augustine's, Grahame Park.

### Hendon South

John Marshall, MP, via constituency office, 202 7484 by appointment, see local press for details.

**Hendon, Garden Suburb, Golders Green:** Conservative councillors - by appointment, first Saturday of month, 202 7484.

**Childs Hill:** Social and Liberal Democrat councillors every second Tuesday of month 7-8pm, Garth Hall Community Centre, Mortimer Close, Granville Rd, NW2. Contact Cllrs Cohen 445 398; Palmer 455 5140; Stone 450 0762.

**West Hendon:** Labour councillors every second Saturday of month 11am, West Hendon Youth Club, 4A Park Rd, NW4 by appointment. Contact Cllr Sims 734 8080; Cllr Doreen Neall 202 9927; Cllr Agnes Slocombe 202 4074.

### Euro MP

Pauline Green. Contact on 365 1892.

## THE CHAIR CENTRE

LONDON'S LARGEST STOCKIST OF  
HIGH SEATED AND  
ORTHOPAEDIC CHAIRS

*Over 80 Chairs Always in Stock!*

PARKER KNOLL CINTIQUE GOMM &  
GOODEARL CHAIRS From £60 to £600

We also stock: BALANS, KNEELING CHAIRS,  
COMMODE CHAIRS, OFFICE & RECLINER CHAIRS

Settees available to  
match most High Seated  
& Orthopaedic Models

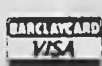
★ WE AIM TO FIND THE  
RIGHT CHAIR FOR YOU ★

Please ask for  
'Choose At Home'  
Service for the Housebound.



THE CHAIR CENTRE (Greenwood Furnishing)  
386 Bowes Road, Arnos Grove, London N11.  
(50 yards Arnos Grove Tube Station)

01-368 0281



### Clive Herbert's January Nature Notes

THE PAST year will be remembered as a notable finish to the decade. A mild, dry winter led into an early warm spring. Wild flowers appeared out of season and bird migration was a week or two ahead of 1988. For most people it is the summer which will remain in our memories. The hot weather provided excellent conditions for dragonflies and damselflies in those ponds which did not dry up. A new species, the Emerald Damselfly, was added to the borough list.

Butterflies too seemed more numerous with a remarkable number of Holly Blues gracing gardens. Small Coppers and Common Blues appeared in greater numbers, while the Speckled Wood continued to colonise areas in the borough where it was formerly absent. Warm weather in early autumn seemed to delay migration south, with Spotted Flycatchers still present in mid-September at Oak Hill Woods Nature Reserve. A Wryneck (a relative of the woodpeckers) was at Brent Reservoir briefly in the same month and vied with the Waxwings, present at Arkley at the end of January, for the title 'Barnet Bird of the Year'.

# New year - New parking plan

## CHIPPING BARNET CONTROLLED PARKING ZONE STARTS 29 JANUARY

BARNET Council's controlled parking zone for Chipping Barnet comes into effect from 29 January.

The scheme, intended to improve parking facilities in and around the shopping centre, includes several types of on-street parking catering for residents and long and short term visitors. There will also be car parks for shoppers and business people.

### When

Regulations within the zone will apply from 8am to 6.30pm Mondays to Saturdays. Outside those times all bays and car parks, except the Spires Car Park, will be free for anyone to use.

Some existing yellow lines will be removed and replaced by parking bays. Regulations covering the single yellow lines which remain, will be in force during the hours covering the zone. There will be double yellow lines on approaches to traffic lights or where parking could cause accidents or congestion.

Parking bays, exclusively for the use of residents with parking

permits during the zone's operational hours, will be clearly marked.

Other signs will show which bays can be used by visitors as well as residents. Residents with permits may park free of charge. Visitors can purchase tickets from nearby Pay and Display machines.

### Where

Application forms for residents' parking permits are available from 3 January, at the Parking Office, 53 High Street, Barnet. 01-447 1717. The current cost of each yearly permit is £5. Additional permits may be applied for, if there is more than one car per household.

Any resident who obtains a permit should contact the Parking Office if the vehicle or address is changed, the permit is lost or becomes mutilated, defaced or illegible.

There will also be 35 parking meters in the zone. These are intended for very short periods of parking and will operate between 9.30am and 4.30pm.

**During peak hours (8 to 9.30am and 4.30 to 6.30pm) it will be an**

**offence to park in the meter bays.**

Three car parks will operate within the zone. Stapylton Road and Fitzjohn Avenue car parks are Barnet Council owned and intended for long term users who will have to purchase Pay and Display tickets.

The Spires Car Park is privately owned and intended for short term parking for shoppers. Entry is from Stapylton Road and it operates on a Pay As You Leave basis.

Disabled drivers with orange badges may park in all council-operated parking spaces within the zone, free of charge.

### Discounts

A pre-payment card, bought in advance, offers discounts of up to 30 per cent in pay and display parking areas for long term visitors. A green £25 card represents £30 in parking fees and a red £50 card represents £65 in parking fees. In addition a refundable deposit of £1 will be charged for each card.

These cards can be bought, from 3 January, at the Parking Office.

They are reusable and, to keep operating costs down, the cards should be returned to the Parking Office when the units are almost used up. Unused units will be credited against a new card.

### Parking Patrols

Loading and unloading restrictions remain largely unchanged but new restrictions in Chipping Close will prohibit loading/unloading Mondays to Saturdays between 8am and 6pm. Parts of Chipping Barnet High Street, St Albans Road and Wood Street will also be affected by restrictions. Loading/unloading in those areas will be banned between 8 and 9.30am and 4 to 6.30pm.

Barnet Council will employ its own parking patrol officers based at 53 High Street, Barnet. Police and the traffic warden service will continue to enforce waiting restrictions within the area.

Information leaflets on the new scheme will be delivered to homes and businesses in the area during January. Details can also be obtained from the Parking Office, 53, High Street, Barnet.

## YOUR OWN HOME IN COLINDALE AT A PRICE YOU CAN AFFORD

*The London Borough of Barnet is nominating buyers to a new shared ownership development by ADDISON HOUSING ASSOCIATION LTD. The first phase of the project at Fulbeck Drive, NW9 is underway and consists of 32 one bedroom flats, 19 two bedroom houses and 5 three bedroom houses.*

*Under this scheme, you buy a share of the property and pay a rent to Addison for the remaining share.*

### THE PROPERTIES WILL BE SOLD ON SHARED OWNERSHIP TERMS AT BETWEEN 60% AND 70% OF THE VALUE.

*At current value, a 65% share of a one bedroom flat would cost £43,500. ★*

*The one, two and three bedroom homes will be ready from July 1990.*

*Viewings will be in March / April.*

*We are expecting a large demand, so register your interest now.*

*For further details, please contact:-*

*Housing Initiatives Section*

*The London Borough of Barnet*

*Barnet House, 1255 High Road, Whetstone,*

*London N20 0EJ. Tel: 01 - 446 8511 Ext. 4863*

*★ This is based on current values, actual prices will be set in March 1990*

# Barnet's blooming beautiful

THANKS TO OUR AWARD WINNERS

ELEVEN local establishments, ranging from a Police Station to a hair boutique in New Barnet, received certificates in the London in Bloom Awards Scheme.

The presentations were made at the Town Hall, Hendon, on Thursday 14 December, by the Mayor of Barnet, Cllr Dot Benson.

She congratulated all the winners on helping to keep the borough beautiful.

The Awards are organised by the London Tourist Board and Barnet Council gave support by assisting with the judging and organising a local presentation ceremony.



Husband and wife team Ray "Rusty" and Sheila Rigglesford won an award for their gardening efforts at the Police Station at Whetstone. In the picture, left to right, The Mayor, Inspector Graham Bardwell, Rusty and Sheila Rigglesford, and Cllr Olwen Evans, vice-chairman of Barnet's Development and Estates Committee.



## The Barclays Touch >

Two branches of Barclays Bank, in the London Borough of Barnet, received awards. In the picture, left to right, are Bob Griggs and Len Hollywood of Barclays Bank, Whetstone; the Mayor of Barnet; Michael Warner and Mrs Julia Simpson, of Barclays Bank, New Barnet; and Cllr Leslie Pym, Leader of Barnet Council, a former manager of Barclays Bank in Enfield.



## < Local landmarks

Five pubs received awards. In the frame, left to right, Jill Smith of the Railway Tavern, New Barnet; Michael Fowgies of the Orange Tree, Totteridge Village; James Cooney of the Joiners Arms, Finchley; The Mayor of Barnet; David Mitchell of the Prince of Wales, East Barnet; Stan Dean, of Barnet's Recreation Group; and Peggy and Peter Reynolds of the Railway Engineer, Mill Hill.

## < Business is blooming

Business in Barnet is blooming. In the picture, left to right, are Dave Richards, Vice President and Sally White, facilities manager of McDonald's; Terry Bond, landscape designer, and Eleanor Phillips of John Laing plc; The Mayor of Barnet; Mrs Joyce Foster, Deputy Mayoress; Cllr John Hart, chairman of Barnet's Allotments Committee; and Helen Silverton and Lisa Newbury of The Hair Shop, New Barnet.

# Barnet Diary

Entries for the February issue must be received by 11 January and before that date if possible. Entries start on 3 February.

## Council

Members of the public are invited to attend Council and committee meetings in the Town Hall, Hendon, at 7pm

**Tuesday 9 January**  
Education Sub-Committees

**Tuesday 16 January**  
COUNCIL MEETING

**Wed 17 January**  
Allotments Committee

**Monday 22 January**  
Housing Committee

**Tuesday 23 January**  
Education Committee

**Wed 24 January**  
Town Planning & Research Ctte

**Monday 29 January**  
Development & Estates Ctte

**Tuesday 30 January**  
Social Services Committee

**Wed 31 January**  
Grants Committee

## General

### Saturday 6 January

Manor House Scty & Progressive Jewish Students present 'Sound off about Israel', public speaking by students. 8pm. Details 346 2288. Admission free.

### Monday 8 January

Barnet Friends of the Earth mtg. 91 Bedford Ave. Barnet. 8pm. 449 5830 (also 15 Jan, AGM & talk on environmental education and 'Watch' children's nature group, Church House, Wood St. Barnet. 8pm)

### Starting 9 January

WEA. Job-search counselling. Free 10 wk course. E Finchley Neighbourhood Cntr, 42 Church La. N2. 2pm.

### Wed 10 January

Finchley Antiques Appreciation Group. Wellesley Clinton 'Ormolu', Victoria Hall, Victoria Ave. N3. 7.50pm. 441 1399/203 3735 (also 24 Jan, Imogen Stewart 'Dress in 19th Century Literature')

Dorfler Memorial Lecture. Rabbi Tovia Ben Chorin, 'The Desert as a Source for Values in the Bible and Rabbinic Literature'. Leo Baeck College, Sternberg Cntr, Manor Hse, 80 East End Rd. N3. 349 4525

### Starting 10 January

WEA Barnet Unwaged Branch. Developing Your Potential. 10 wk course. George Richardson Hse, 7 Sunningfields Rd. NW4. 7.30pm. Waged, £37.50, unwaged, £7.50

### Thursday 11 January

London Fire & Civil Defence Authority. County Hall, London SE1. Fire Brigade Ctte. 2.30pm. Details, Mrs Duffy. 633 6146

(also 18 Jan. Personnel Ctte, 2pm. contact Mrs Eustace, 633 7715; 25 Jan, Scrutiny Sub-Ctte, 2.30pm, contact Ms Saini, 633 3634; 1 Feb, Policy & Resources Ctte, 2pm, contact Mrs Miller, 633 8162)

### Wed 17 January

National Trust 'Art Treasures of Florence and Rome', lecture by Mrs Pam Wright. John Keble Church Hall, Dean's La. Edgware. 8pm. 50p. 952 2688/951 1578.

### Weds 17 Jan - 21 Mar

Women's lectures programme. Leo Baeck College, Sternberg Cntr, Manor Hse, 80 East End Rd. N3. 8pm. Details, 349 4525

### Wed 24 January

Barnet Family Practitioner Ctte. FPC House, 313 Ballards La. N12. 2pm. 446 5351

### Monday 29 January

"Nothing to do with the Moon". Friends of the Library welcome author Janina David reading her latest short story. Finchley Church End Library. 8pm. Coffee. All welcome.

### Monthly

Barnet Animal Rights Group. Quaker Mtg Hse, 58 Alexandra Grove, N12. 8pm. 440 1715 (1st Wed)

Philosophy of Yoga. Discussion Mtg. Patanjali Yoga Cntr, 190 Watford Way, Hendon. 4pm. 203 0062 (1st Sat)

Finchley Business Club. Torrington Arms. 1pm. 446 6742 (2nd Tues)

Middx Business Club. Enterprise Hse, St Wilfrids Rd. New Barnet. 7.30pm. 447 1000 (2nd or 3rd Tues)

Royal British Legion (N Finchley). Legionway, Summers La. N12. 8pm 445 9911 (3rd Tues)

N Middx Family History Scty, Barnet Branch. Church Hse, Wood St. 7.45pm. 441 0529 (3rd Tues)

Friern Barnet Amnesty group. Jubilee Rm, St James' Church, Friern Barnet La. N12. 8pm. 368 9487/361 3320 (3rd Tues)

Golders Grn & Hendon Amnesty group. Unitarian Church, Hoop La. NW11. 7.45pm. 346 3138 (last Wed)

Barnet Ratepayers & Residents Assn (Arkley & Hadley). Harold Fern Rm, Salisbury Rd. 8pm; Surgery 7.30pm. 449 0807 (last Fri)

### Bi-monthly

Finchley & Dist Philatelic Scty. Carey Rm, Trinity Church Hall, Nether St. N12. 7.30pm. 883 8724 (1st & 3rd Wed)

Jubilee Group. St John's URC, small hall, Mowbray Rd. New Barnet. Welcomes anyone at home during the day. Creche available. 1.30pm. 449 6097 (2nd & 4th Tues)

### Fortnightly

Barnet & Dist Philatelic Scty. St John's Church Hall, Mowbray Rd. New Barnet. 8pm. (alt. Mon)

Barnet Anglo-French club mtg. Ewen Hall, Wood St. 8pm. 440 6805 (alt. Tues)

### Weekly Sundays

Alternative health workshops. The Neighbourhood Cntr, 42 Church La. N2. 2.30pm. 883 2832

### Weekdays

John Grooms Activities Cntr for physically handicapped people. Edgware Way, Edgware. Range of daily activities. 959 2418

### Mondays

First Aid Course. British Red Cross Scty. 10 Downage, NW4. Details 203 0567

RAF Assn. Royal British Legion Hall, Legionway, Summers La. N12. 8pm. 883 5722

New Barnet Literary & Debating Scty. Foyer Rms, Lyonsdown Hall, Lyonsdown Rd. 8pm. 449 0440

Needing friendship and an uplift to life? Visit Salisbury Chapel, Salisbury Rd. Barnet. 2.15pm. 449 7026

Hendon College Adult Literacy & Numeracy classes for students with special needs. Thirleby Rd. Burnt Oak. 7pm. 200 8300 ext 241, Gus Ayling

'Let our people go'. A look at the history, present and future of Soviet Jewry. 8-29 Jan, 8.15pm. Alyth Cntr for Education, NW Reform Synagogue, Alyth Gdns, NW11. 455 6763 (also Thur, 11 Jan-1 Feb, 8.15pm, 'The Liturgy and music')

### Tuesdays

Colindale Community Care. Mtg open to people in Colindale over 50 yrs. Talks, outings etc. Hyde UR Church, Edgware Rd. NW9. 10am. 205 2621

Hendon College Adult Literacy classes for students whose first language is not English. Montagu Rd Cntr, Hendon. 7pm. 200 8300 ext 241, Gus Ayling (also Adult Literacy class, Thirleby Rd. Burnt Oak. 7pm)

Looking for someone to talk to, advice or some friendly company? Visit Ballards Lane Methodist Church, N12. 7.30-9.30pm. (also Sat, 10am-noon & St Mary's Church, Hendon La. N3, Sat 10.30am-12.30pm)

Assertiveness training. Manorhill Cntr, Summers La. N12. 8pm. 368 6316

### Wednesdays

Bingo. St Alphage Church Hall, Playfield Rd. Burnt Oak. 8pm.

Hendon College Adult Numeracy classes. Grahame Park, Corner Mead. 7pm. 200 8300 ext 241, Gus Ayling

### Thursdays

Bingo. Community Cntr, Victoria Rd. New Barnet. 7.30pm. 440 2573

Finchley Games Club. Leaside Day Cntr Holden Rd. N12. Board & role playing games. 13yrs+. 6.30pm. 346 2327

PHAB-integrated social club for

physically-handicapped & able-bodied people. Golders Green area. 8.30pm. 450 4180

### Fridays

Bingo. BSCA Cntr, Mays La. Barnet. 8pm. 441 9387

## Advice & Support Groups

### Monthly

Alzheimer's Disease Scty (Barnet Branch). Relatives' Group. The Blue Beetle Hall, St Mary's Church, Hendon La. N3. 8.15pm. 958 8324 (1st Tues)

Cruse social mtg for bereaved people. Jackson's Lane Cntr, Archway Rd. N6 (opp. Highgate u/g) 4pm. 341 4515 (1st Thur). Also contact Brian or Anita for details of support groups. 794 6715

National Schizophrenia Fellowship. Health Cntr, 23 Temple Fortune La. NW11. 8pm. 455 5133 (2nd Tues)

British Diabetic Assn (Barnet & Dist). Postgraduate Medical Cntr, Barnet General Hospital. 8pm. 368 6993 (2nd Wed)

Oakleigh Carers Group. Health Cntr, Oakleigh Rd Nth. N20. 2pm. 368 8350 (2nd Fri)

British Tinnitus Assn NW London. Meritage Club, Church End, Hendon. 2pm. 349 9353 (2nd Sat)

British Epilepsy Support Group, Trinity Church Cntr, Nether St. N12. 7.30pm. 446 2003/444 4453 (3rd Mon)

Barnet Action for Mental Health, 154 Station Rd, Hendon. 7.30pm. 203 5879 (last Mon)

### Weekly

#### Sundays

MIND in Barnet 'Libra' Club. Day Cntr, Etchingham Pk Rd. N3. 3.30pm. 455 2850

#### Weekdays

Advice service on social security, housing, consumer matters etc. E Finchley Neighbourhood Cntr, 42 Church La. N2. 10am-noon, 2-4pm (Tues 6-7pm; Tues 7-8.30pm for legal advice) 444 6265

Disablement Assn. in the Borough of Barnet. 4 Oakleigh Gdns. N20. Mon, Wed & Fri 9.30am-12.30pm; Tues & Thur 9.30am-3.30pm. 446 6935

#### Mondays

MIND in Barnet. Relatives support group. 2 Schoolway, N12. 7-9pm. 446 1654

#### Tuesdays

MIND in Barnet luncheon/social club. 2 Schoolway, N12. 10am-4pm. 446 1654 (also Wed, Thur & Fri)

MIND in Barnet. Women's group. UR Church, Wood St. Barnet. 7.30-9.30pm. 446 1654

Emotions Anonymous. Friends Mtg Hse, 120 Heath St. NW3. 8pm (also Fri)

Al-Anon (help for families & friends of problem drinkers). Carey Room, Trinity Church

Cntr, Nether St. N12. 8pm. Information for other local mtgs 403 0888 (24hr service)

### Wednesdays

MIND in Barnet Advice Centre. 2 Schoolway, N12. 10am-4pm. By appt. 446 1654/6470 (also Men's Group. 6.30-8.30pm. 446 6470)

Alcoholics Anonymous. Closed mtg for alcoholics. Community Cntr, 154 Station Rd. Hendon. 8pm. (also Fri & Sat) For information about this & other local mtgs phone 352 3001

### Thursdays

Drug Concern (Barnet). Regular support group mtg. Woodlands, Colindale Hospital. 6.30pm. For details and/or help & advice on problems with sleeping pills or tranquillisers, 200 9525/9575

MIND in Barnet social club. 154 Station Rd. Hendon. 8-10pm. 446 1654

MIND in Barnet Women's Drop in Cntr. Trinity Church, Rodborough Rd. Golders Grn. 10am-1pm (relaxation 11am) 446 1654

## Bridge, Whist & Chess

### Monthly

Bridge Duplicate. 41 Northumberland Rd. New Barnet. 2pm. 449 0960 (1st Wed)

### Weekly

#### Weekdays

Bridge class. All grades. Eves. 445 1108

#### Mondays

Bridge Club. Old Barn Cntr, Tarling Rd. N2. 1pm. 349 4613

Partner Whist Drive. St Peter's Church Hall, Somerset/Lyonsdown Rds. New Barnet. 8pm. 441 1591

Bridge classes. 41 Northumberland Rd. New Barnet. 2pm & 7.30pm. 449 0960 (also Tues 10am & 7.30pm, Wed 7.30pm)

'Bridge Builders', all levels & ages. Sobell Hse, Limes Ave. NW11. 7.45pm. 458 7411

Barnet Chess Club. The Fern Room, Salisbury Rd. Barnet. 7.30pm. 959 6837

#### Tuesdays

Barnet Knights Chess Club. Canada Villa Cntr, Pursley Rd. NW7. For beginners to experts. 5.30-9.30pm. 959 2811

#### Wednesdays

Whist Drive (Friern Barnet Council for Voluntary Service). Friern Barnet Town Hall Canteen. 10am. 368 4278

Whist Club for Men. Old Barn Cntr, Tarling Rd. N2. 1pm. 349 4613

#### Thursdays

Northside Bridge Club. E Finchley Methodist Church Annexe, High Rd. 7.30pm. 445 7788

Bridge for over 70s. Alyth Social Club. Alyth Gdns. NW11. Noon. 458 5674

NW London Duplicate Bridge Club. Michael Sobell Cntr, Limes Ave. NW11. 7.45pm. 455 3745

# Barnet Diary



Finchley Chess Club. Day Cntr, Etchingham Pk Rd. N3. 7.30pm

Hendon Chess Club. Albany College, 413 Hendon Way, Hendon Central. 7.30pm. 958 6505

## Fridays

The Fern Room Whist Club. Salisbury Rd. Barnet. 2pm. 441 4853

## Countryside and Wildlife

### Sunday 7 January

RSPB (NW London). Car outing to Staines Reservoirs & Wraysbury Gravel Pits. Details, 959 0204 (also **23 Jan**, David Cottridge 'Birds of Israel', Harwood Hall, Mill Hill, 7.45pm; **28 Jan**, Coach trip to Slimbridge Wildfowl & Wetlands Cntr)

### Sunday 14 January

Herts & Middx Wildlife Trust. Task day at Darlands Lake Nature Reserve. Work on hedges & ditches. 10am-4pm. Details, 346 5258 (also **21 Jan**, Winter birds at Brent Reservoir, meet 10.30am, at bridge Cool Oak La. NW9; **28 Jan**, Wildlife morning at Darlands Lake Nature Reserve, plotting squirrel dreys, 9.30am-12.30pm.

## Monthly

Middx Caving Groups. St Mary's Hall, Hendon La. N3. 8pm. 803 6008 (**1st Wed**)

Kingsbury/Brent Geological Scty. 200 1700 (**1st Wed**)

## Weekly

### Sundays

N London Holiday Fellowship Group. Rambles in Home Counties. 346 6795/444 5847

NW London HF Club. Rambles in Home Counties. Details & other activities 997 6079.

### Wednesdays

Barnet YHA Group. 1st Lyonsdown Scout Hut, York Rd. New Barnet. 8pm. 449 1553/0707 58940

## Dance

### Monday 8 January

Hobby Horse Club (children's folk dancing), 6.45pm. Chipping Barnet Folk Dance Club, 7.45pm. Church Hse, Wood St. 449 4425/0724 (also **22 Jan**)

### Thursday 11 January

Circassian Circle Folk Dance Club. Harwood Hall, Mill Hill Bdw. 7.45pm. 950 5756 (also **25 Jan**)

## Monthly

Barn Dancing. Northiam Union Church, Longland Dv, off Totteridge La. N20. 8pm. Friendly & informal. 368 8335 (eves) (**1st Wed**)

20th Century Sequence Danc-

ing Club. Southgate Upper Sch, Sussex Way, Cockfosters. 7.30pm. 360 2586 (**1st Sat**)

## Weekly

Ballet, tap, modern jazz & choreography. Classes for all ages from 3 yrs+. Michael Sobell Hse. Golders Grn. 794 3027

## Mondays

CRAB Dance Club for disabled. Woodhouse College, Woodhouse Rd. N12. 7.30pm. 346 0088

Junior dance classes. Manorhill Cntr, Summers La. N12. 6pm. 368 6316 (also **Tues**)

## Tuesdays

20th Century Sequence Dancing Club. All Saints Hall, Oakleigh Rd Nth. N20. 7.45pm. 360 2586

Tap dancing. Centrepoint, Grahame Park. Under 12s 6.15pm; 12+ & adult beginners 7pm; intermediates 7.30pm. 205 7113

Wheelchair dancing. Grahame Park Community Cntr, The Concourse, NW9. Transport available. 1.30pm. 346 0088

Hampstead & Dist. Scots Assn. Golders Green Parish Church Hall, West Heath Dv. NW11. 8pm. 870 6131

Contemporary modern/disco classes (4-14yrs). Lyonsdown Hall, Lyonsdown Rd. New Barnet. Beginners 4.30pm; advanced 6pm. 440 8530

Primary modern. E Barnet Baptist Church Hall. 4.15pm. 368 5871 (also **Thur**, Pre-primary ballet, 4.05pm & Pre-primary tap, 4.45pm; **Fri**, Primary ballet, 4.15pm; **Sat**, Pre-primary ballet, 9.45am & Amateur tap for all, 10.30am)

Dance & General Conditioning. Parish Cntr, off Waterfall Rd, N14. 8pm. 368 6096

Odsox Youth Dance Co. (Seniors). Finchley Manorhill Sch, Summers La. N12. 7.30pm. 346 0088

Finchley Ferris Wheelers. Square dancing. St Mary's Church, Hendon La. N3. 8pm. 368 6361

## Wednesdays

West Hendon Old Time & Modern Sequence Dance Club. St Matthias Church Hall, Rushgrove Ave. NW9. 8pm. 952 8529

Mountfield Club Sequence Dance. St Mary's Hall, Hendon La. N3. 8pm. 959 5185

Friary Sequence Dance Club. Manor Drive Methodist Church Hall, N20. 8pm 883 3202

American Square Dancing classes. Watling Community Cntr, Orange Hill Rd. Edgware. 8pm. 906 1582

Tap classes for adults. St Paul's Church Hall, The Ridgeway, Mill Hill. 9.15pm. 906 0854

Sequence with instruction. 7.30pm. Social dancing for beginners to bronze (Ballroom & Latin) 9pm. Subud Hall, 97 East Barnet Rd. 449 3336/6034 (also **Fri**, Ballroom & Latin dancing for beginners and improvers, 8.30pm; **Sat**, Ball-

room/latin/party/disco for 3-15yrs, 11am)

Tap dancing. All Saints' Cntr, 122 Oakleigh Rd Nth. N20. 8pm. 445 4654/8388

Kathak dance classes (N Indian style). Beginners 5pm, intermediate 6pm. St Martin's Sch, Goodwyn Ave. NW7. 209 1734/381 4608

## Thursdays

De Bohun Sequence Dancing. Christ Church Parish Cntr, Waterfall Rd. N14. 8pm. 886 9878

## Fridays

Tap dance for 4-7yrs. Barnet Drama Cntr, 142 High Rd. N2. 4.15pm. 883 9957 (also 7-11yrs, 5pm)

Contemporary Modern/disco classes from beginners to formation and medal work. Stretch & dance classes for 15-25 yrs. Movement to music & dance for the under 5s. Friends Mtg. Hse, New Barnet. 440 8530

Barnet International Folk Dance Club. Some teaching, no partners required. Church House, Wood St. Barnet. 7.30pm. 368 5345

## Saturdays

Jazz dance for beginners (15-50 yrs!). Barnet Drama Cntr, 142 High Rd, N2. 11.30am. 883 7029

## Drama

Non-Stop Workshop Theatre Co. with centres in Finchley, Stanmore and Southgate areas. Shows for 5-18yrs. Raises money for research into leukaemia. For details call 346 5507

## Monthly

Open mtg for people interested in community arts. The Neighbourhood Cntr, 42 Church La. N2. 8pm. 883 2832 (**3rd Thur**)

## Weekly

### Mondays

Barnet Drama Cntr, 142 High Rd. N2. Drama workshop for adults. 7.30pm. 883 9957 (also **Tues**, Theatre skills workshop for 15-18yrs, 7.30pm; **Wed**, GCSE Shakespeare classes for schools, phone for details; **Wed**, Drama for 5-7 yrs, 4pm; **Thur**, Speech & elocution for children, 5.30pm; **Thur**, Performance group for adults, 7.30pm, phone for details; **Fri**, Drama for 11-16yrs, 7pm; **Sat**, Drama for 7-11yrs, 10am) (also **Wed**, Circus skills for children, 5.30pm & adults, 7pm)

Performance group for 11-14yrs. The Neighbourhood Cntr, 42 Church La. N2. 4.30pm. 883 2832 (also **Wed**, Beginners performance group for 8-11yrs, 4.30pm)

Drama group activities. All Saints' Cntr, 122 Oakleigh Rd Nth. N20. 7.30pm. 445 4654/8388

**Tuesdays**  
Dunelm Players. St Peter Le Poer Church Hall, Albion Ave. N10. 8pm. 906 4187/800 6891 (Sun 6.30pm nr production)

**Wednesdays**  
Incognito Theatre Group,

Friern Barnet. 8pm. 368 0202

East Finchley Theatre Group. Methodist Church Hall, High Rd. N2. 7.30pm. 043871 5167

Gainsborough Theatre Club. The Cntr, Gainsborough Rd. N12. 8.15pm. 441 4432

Nether Never Drama Group. Disablement Assn (Barnet). Trinity Church Cntr, Nether St. N12. 8.30pm. 446 6935

## Saturdays

Drama for 8-13yrs. E Barnet Baptist Church Hall, Crescent Rd. 11.30am. 368 5871

## 18+ Groups

## Monthly

Rotaract Club (Mill Hill). 18-28 yrs. Mill Hill Tennis Club, Sylvan Ave. NW7. 8.15pm. 959 1317 (**1st & 3rd Mon**)

Rotaract Club (Barnet). Barnet Cricket Club, Barnet La. 8pm. 441 5892 (**1st & 3rd Wed**)

Rotaract Club (Finchley). Moss Hall Tavern, Ballards La. N12. 8.30pm. 445 1393 (**1st & 3rd Wed**)

Rotaract Club (Friern Barnet & Whetstone). Bull & Butcher Pub, High Rd. N20. 8.15pm. 346 0438 (**1st & 3rd Thur**)

Rotaract Club (Hampstead, Hendon & Golders Grn). 18-29 yrs. Upstairs room, Jack Straw's Castle PH, North End Way, NW3. 8pm. 458 6789 (**2nd & 4th Mon**)

Rotaract Club (Edgware & Stanmore). The Green Man Pub, Honey Pot La. Stanmore. 8.15pm (**2nd & 4th Wed**)

Orbit Club NW London (25-40). Moss Hall Tavern, Ballards La. N12. 8.30pm. 906 2080 (**2nd Wed**)

## Weekly

### Sundays

Barnet 18+ Group. Bull & Butcher Pub, 1277 High Rd. N20. Activities for people 18-30yrs. 8.30pm. 0707 53536

### Tuesdays

Hendon & Edgware 18+ Group. Games Room, Royal Oak Pub, Finchley Rd. Temple Fortune. 8.30pm. 952 2243

## Fetes, Fairs & Sales

## Weekly

### Wednesdays

Sale of clothing and bric-a-brac. British Red Cross Scty (Barnet). St Albans Rd. 9.30am-3.30pm. 449 8969

## Horticulture and Floral Art

## Monthly

Finchley Chrysanthemum Scty. Manorside Sch, Squires La. N3. 8pm. 445 1742 (**1st Mon**)

Barnet and Dist. Fuchsia Scty. Methodist Hall, Brookside, E Barnet. 7.30pm. 440 4085 (**2nd Mon**)

Mill Hill Flower Club. Harwood

Hall, Mill Hill Bdw. 8pm. 959 3530 (**2nd Tues**)

Hendon Horticultural Scty. Hendon Library, The Burroughs. 8pm. 203 1187 (**2nd Wed**)

Barnet Flower Arrangement Scty. Lyonsdown Hall, Lyonsdown Rd. New Barnet. 8pm. 0707 57199 (**2nd Thur**)

Totteridge Floral Art Group. Badgers Croft, Totteridge Village. 2pm. 445 9307 (**3rd Tues**)

Hendon Floral Art Group. St John's Church Hall, Algernon Rd. NW4. 7.45pm. 202 8756 (**3rd Wed**)

## Fortnightly

Friern Barnet Floral Art Club. Christ Church Hall, Oakleigh Rd Nth. N20. 8pm. 446 0783 (**alt. Tues**)

## Weekly

### Saturdays/Sundays

Mill Hill Horticultural & Allotment Scty. Hartley Close. Trading hut open Sat 2.30-4pm; Sun 10.30am-12.15pm. Garden plots to let. 959 1230

New Barnet (Clifford Rd) Allotment Scty. Tudor Sports Ground. Site shop (membership 50p p.a.) open Sat/Sun 10.30am-12.30pm. Plots to let 449 2647

Wise Lane Horticultural & Allotment Scty. Moorlands Ave. Mill Hill. Trading hut open Sat 2.30-4pm; Sun 11am-1pm. Garden plots to let 959 3493

## Sundays

Burnt Oak Horticultural Scty. Trading hut. Back Lane r/o Woodcroft Hall. 10.30am-noon.

## Tuesdays

Sangetsu Japanese Flower Arranging classes. 125 North End Rd. NW11. 6.30pm. 455 8949 (also **Wed & Thur**, 2pm)

## Keep Fit

## Weekly

### Sundays

Yoga classes. Patanjali Yoga Centre, 190 Watford Way, Hendon. Advanced 4pm. 203 0062 (also at 32 Cotswold Gdns, Hendon Way, NW2. Beginners & mixed. 7.30pm. 455 7070)

## Weekdays

Weight training instruction. Hendon Sports Cntr, Algernon Rd. **Mon-Thur**, 6pm; **Fri**, 5.30pm. 202 6027

## Mondays

Yoga. St Mary's Church Hall, Hendon La. N3. 7pm. 455 2476 (also **Wed** 9.45am)

Aerobics class. The Body Factory, Mill Hill Bdw. NW7. 7pm. All levels welcome. 202 0982 (also **Thur**) (also **Wed & Sat** 10.15am)

Body Conditioning classes. Christ Church, Oakleigh Rd Nth. N20. 7pm. 445 1846 (also **Thur**, 7.15pm)

Popmobility. Hendon Sports Cntr, Algernon Rd. 7.30pm. 202 6027 (also **Thur**)

Aerobic circuit advanced class. Manorside Sch, Squires La. N3. No beginners. 8pm. 349 1449

# Barnet Diary



Low Impact Aerobics & Stretch. All Saints Church Hall, Oakleigh Rd Nth. N20. 7pm. 368 5514 (also Wed)

Body Conditioning classes with supervised creche. Muswell Hill area. 10am. 444 4284 (also Wed, Fri)

Aerobics 9.45am & Body Conditioning 10.45am. St Mary's Hall, Hendon La. N3. In term-time. 349 1449

Pensioners Health Group. Methodist Hall, Rodborough Rd. NW11. 2pm. 60p incl. tea. 794 6376

Ladies fitness & weights training. Mill Hill Sch Sports Cntr, The Ridgeway. 8.15pm. (also Tues. 8pm) For details of these & fitness classes for all. 906 2322

Aerobics. Hendon College, Corner Mead, Grahame Park. 8pm. 906 1721

Tai-Chi for all. St Edward's Church Hall, Finchley Rd. entrance Hoop La. Golders Grn. 8pm. 458 9842 (also Wed)

Women's keep fit. All levels. Canada Villa Cntr, Pursley Rd. NW7. 10am. 959 2811

## Tuesdays

Body-Time energetic dance keep fit routines. Beginners welcome. 7.15pm. St Mary's Hall, Church Hill Rd. E Barnet. 441 1336 (also Mon)

Keep in Shape. Oaktree Special Sch, Chase Side, N14. 7.30pm. 368 0881 (eves) (also Thur, 7pm; Sun, 11am (Barnet))

Aerobics for beginners. Manorside Sch, Squires La. N3. 8pm. 349 1449 (also Thur, general aerobics, 8pm)

Ladies Keep Fit, all ages. Hendon Sch, Golders Rise, off Brent St. 7.30pm. 349 0400 (also Thur)

Gannets Slimming Club. E Barnet. 8pm. 449 4277

Body Focus exercise/dance class. Lyonsdown Hall, New Barnet. 10.15am. incl creche. 368 5871

Aerobics. Copthall Pools. 12.30pm & Hartley Hall, Flower La. NW7. 6.30pm. 906 1721

Exercise to music/aerobics class. UR Church, Wood St. Barnet. 8pm

Stretch 'n' Tone. Barnet Drama Cntr, 142 High Rd. N2. 10.30am & 8.15pm. 883 7029

Keep fit. Queen Elizabeth's Cntr, Meadway, Barnet. 7 & 8pm. 441 2933

Yoga for all class. All Saints' Cntr, 122 Oakleigh Rd Nth, N20. 10am. 445 8388/368 9621

## Wednesdays

Hatha Yoga for lady beginners.

St Mary's Hall, Church Hill Rd. E Barnet. 7.20pm. Sorry no problem backs. 441 1336

Tai Chi movement class. Barnet Drama Cntr, 142 High Rd. N2. 7.30pm. 883 9975 (also Sat. 4pm)

Popmobility. St Mary Magdalen Parish Cntr, Athenaeum Rd. N20. 8.30pm. 070787 5162

Body Conditioning. Copthall Pools. 10 & 11am. In term-time. 203 4187

Health and Beauty, exercise/movement classes. Christ Church Hall, High Rd. N12. 7.15pm. 504 1644

Keep Fit. Manorhill Cntr, Summers La. N12. 8pm. Circuit training 7pm. 368 6316

Body Conditioning/Keep Fit class. Canada Villa Cntr, Pursley Rd. NW7. Creche available. 2pm. 959 2811

Weight Mates Slimming Club. St Mary Magdalen Church Hall, Holders Hill Rd. NW4. 10am. 455 4814

Keep Fit. St Paul's Church Hall, The Ridgeway, Mill Hill. 8.15pm. 906 0854

Relax and get supple with Yoga. Totteridge Village Hall, Badgers Croft, N20. 1.30pm. 445 2171

Low impact aerobics. 7pm. Stretch 'n' Tone for beginners. 8pm. E Finchley Library. N2. 883 7029.

## Thursdays

Contemporary jazz work-out for beginners. Body Action. 40

High St. Barnet. 10.30am. 449 2822

Get Fit Club for young and old. St Stephen's Hospital, Mays La. Barnet. 7.30pm. 906 0974

Mixed exercise class for people with problem backs. Q.E. Girls' Sch, Meadway, Barnet. 8pm. 445 6986

Yoga. Mixed ability class. British Wheel trained teacher. Union Church Hall, Northiam, N20. 7pm. 349 2972

British Wheel of Yoga Teachers' Diploma Course, Barnet. 7pm. 440 1828

Body Focus exercise/dance class. E Barnet Baptist Hall, Crescent Rd. 8.30pm. 368 5871

Limber, stretch & dance. Hampstead Gdn Suburb Institute, NW11. 6 & 7.30pm. 455 9951

Ladies Keep Fit. Hendon Sports Cntr, Algernon Rd. 10am. 202 6027

Yoga for people with handicaps. Gentle movement, breathing & relaxation. Qualified teacher. Stanhope Rd Cntr, N12. 1.30pm. Other classes available. 440 1828

Aerobics. Copthall Pools 12.30pm & Tenby Hall, Tenby Rd. Edgware 7.45pm. 906 1721

Gentle tone-up class introducing callanetics. St James' Hall, E Barnet Rd. 10.15am (also 8pm, Chase Side, N14) 368 0881

## Fridays

Aerobics 9.30am. Body conditioning 10.30am. Christ Church Hall, High Rd. N12. In term-time. 349 1449

Yoga. All abilities. Memorial Hall, Hadley Highstone. 9.30am (term time). 441 0055

## Saturdays

Men's exercise class. 9.30am. Low impact aerobics 10.30am. Barnet Drama Cntr, 142 High Rd. N2. 883 7029

Body-Tune keep fit dance. Beginners welcome. St Mary's Hall, Church Hill Rd. E Barnet. 9.45am. 441 1336

## Martial Arts

### Weekly Mondays

Karate Kids (5-15yrs) Goju-Ryu style. Finchley Methodist Church, N3. 5.30pm. 346 7329 (also Tues 5 & 6pm; Sat 2 & 3pm) (also Mon 5 & 6pm; Thur 4.15 & 5.15pm. Hartley Hall, Flower La. Mill Hill) (also Wed 5 & 6pm; Sat 2 & 3pm. Ewen Hall, Wood St. Barnet) (also Wed & Fri, 5 & 6pm, Whitchurch Institute, Buckingham Rd. Edgware) (also adult classes. Tues 7.30pm. Thur 8pm & Sat 4pm. Finchley Methodist Church)

N London Karate Club. Mill Hill Sch, The Ridgeway. 8pm & 9pm. 440 7733/8633 (also Thur)

Cobra Karate Club. Christ's College Sch, Hendon La. N3.

BARNET Council has now issued the "Notifications of Entry" confirming details of each resident's entry on the Community Charge Register. This means that Barnet is keeping to the Government programme laid down over a year ago.

Cllr John Perry, Chairman of Barnet Council's Finance Committee, said: "The staff in the Community Charge Section have achieved quite excellent results. By early planning and good computer programming we have been ready for each stage.

"This has been achieved by our own efforts. We have not contracted out the sorting of community charge returns or the compil-

## See your Community Charge entry on a computer screen

ing of the register. The staff, from the Director to the newest recruit, have worked long hours to complete the work on time - and the ratepayers have responded as we would expect from past experience."

A public extract of the Register will be available for inspection

from mid-January. This shows only the surname, initials and address of each person on the Register. Entries for which anonymous registration applies will not be displayed.

This public extract can be seen in the Community Charge Office at Hatchcroft, The Burroughs, Hendon NW4, during normal working hours, by means of a display on a computer terminal. A member of staff will assist people who wish to inspect their own entry. Wider access will be made available as soon as possible.

Under the laws governing Community Charge a member of the public cannot copy the Register and it may not be sold.

## Barnet is helping employers plan creche services for working parents

BARNET Council are helping parents with young children to return to work with the Council by providing nursery places so that they can be cared for in safety while their parents are at work.

Places for 20 children have been arranged and Barnet are committed to establishing more child care facilities in the new year.

Now the Council are looking further afield to set up joint ventures with other local employers to provide more nursery places.

In the 1990s there will be fewer school leavers, because of the low birth rate in the 1970s. As the effects of this are felt employers will be seeking ways of making it easier for parents, particularly mothers, to remain at work.

So Barnet are setting up an open meeting to which local employers are invited on Wednesday 24 January 1990 at Barnet House. Details can be obtained from Barnet Council Central Personnel Department on 202 8282 Ext 2389.

## BIG CHEQUE FOR MAYOR'S APPEAL



A giant cheque for £740 was presented to the Mayor of Barnet, Cllr Dot Benson. To launch the new Rover 200 series Mann Egerton of Whetstone held a casino evening in aid of the Mayor's Appeal which this year is for a day centre for MIND in Barnet. The cheque was presented at the Town Hall, Hendon by Malcolm Pease, general manager (left) and Colin Hoad, general sales manager with Cllr Olwen Evans who helped to organise the event

# Barnet Diary



Beginners 7pm, advanced 8pm. 959 4338 (also Wed)

New Barnet Jiu Jitsu Club. Scout Hut, York Rd. New Barnet. 7.30pm. 886 6758/555 4037 (also Tues, children 6pm, seniors 7.30pm)

Judo. The Old Finchleians Memorial Grnd. Southover, N12. Children 7pm, adults 8.30pm. 444 0156/445 7406 (also Thur)

Sport Karate Club. T.S. Barrosa, Daws La. Mill Hill. (Barnet Karate Squad Coach). 7pm. 906 1701 (also Thur)

Shaolin Nam-Pai-Chuan. Hodford Hall, Hodford Rd. NW11. 6.30pm. 455 8407 (also Sat)

Meadway Ju-Jitsu Club BJJA. MAC. Friern Barnet La. N20. 7.30pm. 2hr 5th Dan tuition. 445 6252 (also Tues)

Finchley Nanbudo Club. St Mary's Church Hall, Hendon La. N3. 8pm. 368 7042/446 3336 (also Wed)

## Tuesdays

Shotokan Karate Club. Christ's College, Hendon La. N3. Adults and beginners. 8pm. 202 3171 (also Thur)

Karate. Centre Point, Corner

Mead. Grahame Pk. 7-13yrs. 6pm. 906 1701 (also Thur. 7pm)

Karate. Manorhill Cntr, Summers La. N12. Children 6.30pm, adults 7.30pm. 368 6316 (also Thur)

Barnet Goju-Ryu Karate Club (traditional Okinawan Goju-Ryu). Queen Elizabeth's Cntr, Meadway, Barnet. Children 6pm, adults 7pm. 449 8997 (also Thur)

Karate. Barnet Drama Cntr, 142 High Rd. N2. 6.30pm. 883 9957 (also Fri)

## Wednesdays

Watling TSKC, Watling Community Cntr, Orange Hill Rd. Burnt Oak. Juniors 7pm, adults 8pm. 906 1701

Finchley Karate Club (Okinawan Goju-Ryu Karate). Manorside Sch, Squires La. N3. Children 7pm, adults 8pm. 346 9505 (also Fri)

N London Gojukan, Finchley Synagogue, Hutton Grove, N12. 8-14yrs. 6.30pm. 449 3150

Ladies self-defence classes. Manorhill Cntr, Summers La. N12. 5pm. 368 6316

## Thursdays

Aikido, Queen Elizabeth's Cntr, Meadway, Barnet. 8pm. 0707 53462

Shaolin Nam-Pai-Chuan. Elderkin Hall, Trinity Church, Rodborough Rd. NW11. 6.45pm. 455 8407

Shaolin Nam-Pai-Chuan. St

Mary's Church Hall, Greyhound Hill, NW4. 8pm. 203 5452.

## Fridays

Shin Do Kwai Kendo Club. Whitefield Sch gym, Claremont Rd. NW2. 8.30pm. 863 7574

Lyondown Judo Club. Lyonsdown Hall, Lyonsdown Rd. New Barnet. 8-15yrs 7.30pm, adults 8.45pm. 440 1406

## Music

### Tuesday 9 January

East Barnet Library Gramophone Scty. 85 Brookhill Rd. 8pm. 440 4376 (also 23 Jan)

### Thursday 11 January

Friern Barnet Library Gramophone Scty. Friern Barnet Rd. N11. 8.10pm. 441 3185 (also 25 Jan)

### Monday 15 January

Hendon Music Scty. Ted Perry of Hyperion Records presents a programme of recorded music from the recent releases of this company. Hendon Library, The Burroughs. 8pm. 203 2355

### Tuesday 16 January

Hendon Library Gramophone Scty. The Burroughs. 7.45pm. 202 5625 (also 30 Jan)

### Wed 24 January

Edgware and District Organ Scty. Michael Wooldridge, Electronic Organ Concert. Watling Community Cntr, Orange Hill Rd. 8pm. 953 3291

### Saturday 4 February

British Flute Scty & Schools Music Assn (NW Thames). Day

course for flautists (Grade 3+). Moss Hall Jun Sch. Details, 346 9507

## Weekly Sundays

Jazz, Blues and Rock music. The Torrington Arms, High Rd. N12. 8.30pm. 445 4710 (also Fri)

## Mondays

Barnet Orchestra at Hendon. Hendon Sch. Golders Rise, NW4. 8pm. 205 2418

Finchley Choral Scty. Moss Hall Jun. Sch, Nether St. N3. 7.45pm. 445 4968

Manor House Hospital Operatic Scty. Manor Hse Hospital, North End Rd. NW11. 7.30pm. 346 2104

Tudor Orchestra. E Finchley Methodist Church, High Rd. Players welcome all sections esp. brass. 7.30pm. 445 0563

Mill Hill Operatic Scty. Hartley Hall, Flower La. 8pm. 959 2848

Choir for Japanese Ladies. Trinity Church, Hodford Rd. NW11. 1pm. 202 3585.

## Tuesdays

Apollo Singers. Wilberforce Hall, Wilberforce Rd. NW9. 7.45pm. 959 1244

Hendon String Orchestra. Whitefields Sch. Claremont Rd. NW2. 8pm. 455 5005

Finchley Chamber Choir, Finchley Methodist Church, Essex Pk. 7.45pm. 441 8382

Barnet College Choir. Varied light music. St John's Church

Hall, Friern Barnet La. N20. 1.30pm. 445 0384

All Saints Church Choir. Durham Rd. N2. Rehearsals 8pm. **Sunday am:** mass setting, & anthem. Singers phone Geoffrey Hanson, 444 9214

## Wednesdays

N London Morning Orchestra. Friends Mtg. Hse. Winchmore Hill, N21. 10.30am. 360 2013

Finchley & Friern Barnet Operatic Scty. St Andrew's Church Hall, Alexandra Pk Rd. N10. New members welcome. 7.45pm. 368 0770

Barnet Band. Q.E. Boys' Sch, Queens Rd. Brass & reed players needed. 7.30pm. 449 3057

Barnet Choral Scty. Church Hse, Wood St. 7.45pm. New members welcome, 441 5502

Over 50's Music Club. Barnet Drama Cntr, 142 High Rd. N2. 6.30pm. 883 9957

Hindustani Light & Classical Vocal (N Indian music) & Harmonium classes. Beginners 5pm, intermediates 6pm. St Martin's Sch, Goodwyn Ave. NW7. 209 1734/381 4608

## Thursdays

CUE's rehearsals. St John's Vestry, Algernon Rd. NW4. 8pm. New members welcome. 907 3862

Barnet Schs. Brass Ensemble & Training Band. Moss Hall Schs, Nether St. N12. 5pm. 349 4195

London Pro Arte Choir. Mill Hill East Free Church, Salcombe

# TEACHERS GO BACK TO SCHOOL

TEN former teachers are going back to teaching with contracts with the Borough of Barnet.

Part of Barnet's programme to attract much-needed primary school teachers are the Return to Teaching Courses held at the borough's Teachers' Centre in Finchley.

Students on the most recent course, which ran for nine weeks, have completed their studies and in-school training where they worked alongside experienced teachers. Now they will all be joining schools in the borough when the term opens in January.

## Helpful introduction

Most of the students were returning after leaving teaching to have a family. With the developments in computers, maths, science and technology, many would have felt doubtful about going back to teaching without the introductory course.

Other teachers had changed professions but now wished to return. One student explained: "I qualified as a teacher but became attracted to the theatre. Now I want to return to teaching and this has been a great opportunity."



Former teachers who completed a Return to Teaching Course with Barnet Council, with course tutors

The courses are free and students may choose to return full-time or part-time or arrange a job sharing agreement.

The next course starts early in January and now is the time to book for the course which starts in the spring.

Any qualified teacher or graduate wishing to return to teaching in Barnet, a borough with an outstanding record of achievement in education, should contact Tony Tidey, Head of Teacher Staffing, London Borough of Barnet, the Town Hall, Friern

Barnet, N11 3DL, 368 1255 Ext 3005. Or for an informal chat contact the course organisers, Mrs Pam Brazier, Headteacher, St John's School, Hendon, on 202 7703; or Mrs Daisy McKie, Headteacher, Edgware Infants School on 952 1696.

# Barnet Diary



Gdns. 7.30pm. 203 7111

Finchley Chamber Orchestra.  
Moss Hall Jun Sch, Nether St. N3.  
7.30pm. 886 2629

Borehamwood Operatic Scty.  
Fairway Hall. New members  
welcome. 8pm. 906 1453

## Fridays

Barnet Schs. Wind Orchestra.  
Moss Hall Sch. Nether St. N3.  
5pm. 349 4195

Ionian Clarinet Choir. Christ  
Church, Oakleigh Pk Nth. N20.  
8.15pm. 445 7095

## Saturdays

Barnet Schools Music Centres:  
Finchley, Moss Hall Sch,  
Nether St. N12; Hendon, St  
Mary's CE Lower School, Sun-  
ningfields Rd; East Barnet  
Upper Sch, Chestnut Grove,  
Cat Hill. 9.30am. 349 4195

Hampstead Gdn Suburb Youth  
Music Cntr. Henrietta Barnett  
Sch. Bigwood Hse, Bigwood  
Rd. 3-15yrs. All musical activi-  
ties. 9am-12.45pm. 907 8018

## Pensioners' Clubs

### Monthly

Golders Green & Dist Pension-

ers' Assn. Trinity Church,  
Rodborough Rd. NW11.  
1.15pm. 202 0891 (1st Wed)

Pensioners' Voice (Barnet).  
Methodist Hall, Brookside, E  
Barnet. 1.30pm. 441 3185 (2nd  
Wed)

Northern Heights Probus Club.  
For business/professional  
people who live/have lived in  
Highgate, Hampstead & Gold-  
ers Grn. areas. Details, 883  
2863 (3rd Wed)

Civil Service Pensioners' Alli-  
ance. Avenue Hse, East Eng  
Rd. N3. 10am. 445 4821 (3rd  
Thur)

Pensioners' Voice (Colindale/  
Burnt Oak). Burnt Oak Library,  
Watling Ave. 1.30pm. 906 2161  
(last Thur)

Pensioners' Voice (Whetstone/  
Finchley). N Finchley Library,  
Ravensdale Ave. 2pm. 346  
6762 (last Thur)

### Weekdays

WRVS E Barnet Lunch Club.  
54-60 Brookhill Rd. New Bar-  
net. Noon. 449 5025 (between  
10am-2pm)

### Weekly

#### Mondays

Handicraft Club for 60+. Ever-  
green Cntr, 54-60 Brookhill Rd.  
New Barnet. 2pm. 449 8690

Club for Active Retired. Day  
Cntr, Friern Barnet La. N11.  
11am-4pm. 368 4278

Hadley Darby & Joan Club.  
Memorial Hall, Hadley  
Highstone. 2pm. 441 4853

Village Club for 60+. St Mary's

Church Hall, Church Hill Rd. E  
Barnet. 1pm. 449 2383

### Tuesdays

Pensioners Lunch Club. E  
Finchley Neighbourhood Cntr,  
42 Church La. N2. Noon. 444  
6265 (also Fri) (Mon, Asian  
Vegetarian Menu)

Alyth Social Club (70+). Alyth  
Gdns. Finchley Rd. NW11.  
Noon-3pm. Ploughman's  
Lunch 60p. 458 5674

Luncheon Club for elderly,  
homebound & lonely. Day Cntr,  
Friern Barnet La. N11. 10am-  
4pm. Club, 2-4pm. 368 4278  
(also Wed & Thur)

Union St Evergreen Club. Ewen  
Hall, Wood St. Barnet. 2pm. 441  
4853

Fern Evergreen Club. Fern  
Room, Salisbury Rd. Barnet.  
2pm. 441 4853

Osidge Club for 60+. Monkfrith  
Boys' Club Hall, Osidge La. E  
Barnet. 2pm. 368 2402

Mount Club for 60+. Baptist  
Church Hall, Grove Rd. New  
Barnet. 1pm. 440 6180

Lyonsdown Club for 60+. Ever-  
green Cntr, Brookhill Rd. New  
Barnet. 1.30pm. 449 1277/361  
2853

Old Pals' Club (50+) & Bingo.  
Old Barn Cntr, Tarling Rd. N2.  
2pm. 349 4613

WRVS High Barnet Lunch Club.  
Salisbury Rd. Noon. 449 0158  
(between 10am-2pm) (also  
Thur & Fri)

### Wednesdays

Mays Lane Evergreen Club. St

Stephen's Church Hall, Bells  
Hill, Barnet. 2pm. 441 4853

W Hendon over 60s Lunch &  
Social Club. Community Cntr,  
Marsh Dv. NW9. Lunch noon:  
Social Club 1.30pm. 202 5057

Leisure Club for 60+. St James'  
Church Hall, E Barnet Rd. New  
Barnet. 1.30pm. 449 5697

Asian Meditation and Music.  
Methodist Church, Rodbor-  
ough Rd. Golders Grn. 12-4pm.  
Free admission / refreshments.  
202 2751/440 4633 (also Thur  
& Fri)

Barnet Asian Old Peoples  
Assn. Free English classes.  
Trinity Church, Hodford Rd.  
NW11. 1-4pm. 202 2751

Edgware Friendship Club  
(60yrs+). Pauline Glick Hall,  
Edgware Synagogue, Edgware  
Way. 12.30pm. Speakers, sing-  
ers, quizzes, bingo etc. 958  
5460

### Thursdays

Pensioners Friendship Club.  
North Rd Community Cntr,  
Burnt Oak. 1.45pm. 591 2362

Roundabout Club pensioners  
group. Friary Hall, UR Church,  
Oakleigh Pk Nth. N20. 2pm.  
441 3185

Hoop Lane Thursday. Drop in  
for a coffee & a chat. Unitarian  
Room, Hoop La. NW11.  
10.30am.

Golden Circle Club. The Sal-  
vation Army Hall, Brampton  
Grove, Hendon. 1.30pm. 203  
4823

The Torrington Park Pension-

ers' Club. Health Cntr, Torring-  
ton Pk. N12. 2pm. 446 4201 (alt  
Thur)

Thursday Club for 60+. Ever-  
green Cntr, Brookhill Rd. New  
Barnet. 1.30pm. 441 1269

### Fridays

Edgware Friday Club for Senior  
Citizens. Methodist Church  
Hall, Garrett Rd. Edgware.  
10am. 952 3908

Young in Heart. Conservative  
Hall, Barnfield Rd. Burnt Oak.  
1.30pm. 952 3513

Club for the Elderly. Day Cntr,  
Friern Barnet La. N11. 2-4pm.  
368 4278 (Special activities 1st  
Fri)

Bells Hill Evergreen Club. St  
Stephen's Church Hall, Bells  
Hill, Barnet. 2pm. 441 4853

Over 60s Club. The Salvation  
Army Hall, Hertford Rd. N2.  
2.30pm

Oakhill Club for 60+. Evergreen  
Cntr, Brookhill Rd. New Barnet.  
1.30pm. 440 2573

## Pets

### Monthly

Hendon & Dist Cage Birds  
Assn. Labour Hall, Back La. (off  
Watling Ave.) Burnt Oak.  
7.30pm. 205 2647 (2nd Tues)

Hendon Tropical Fish Keeping  
Scty. Hendon Library, The Bur-  
roughs. 8pm. 458 5826 (2nd &  
4th Thur)

### Weekly Mondays

Hendon Dog Training Club.

## Barnet - Green borough of trees



Barnet Council is planting 3000 trees in open spaces and residential roads during the Autumn to Spring planting season, helping to replace those lost in the storm of October '87 and to make the borough an even better place in which to live.

Left: The Mayor, Cllr Dot Benson, plants a tree to commemorate her year in office—a tradition which has resulted in a grove of trees being planted in Arrandene Arboretum, parkland where fine specimen trees are specially planted to build a green heritage for the future.

Right: The Deputy Mayor and Mayoress, Cllr Leslie and Mrs Joyce Foster, plant a tree in Simmonds Mead, Mill Hill. Trees were also planted by local organisations, including Mill Hill Ratepayers and Residents Association and Mill Hill Townswomen's Guild, and on behalf of several local residents.



THINKING about home improve-  
ments Barnet Council's Trading Stan-  
dards staff warn "beware of cow-  
boys".

A Colindale man parted with £150  
for redecorating work. Half-an-hour  
later the workmen disappeared. So  
did his cash.

An Edgware resident was given an  
estimate of £1,100 for laying a con-  
crete driveway. He handed over £700  
cash. After the first day the workmen  
disappeared.

In both cases the estimates were on

badly printed notepaper showing  
what proved to be false addresses and  
telephone numbers.

Be careful about giving money in  
advance. "Up front" cash is often  
requested to purchase materials. It  
may be safer to buy materials yourself  
or wait until the goods are on site.

Help protect yourself by following  
Barnet Council's advice:

- Obtain a written estimate showing  
a traceable name, address and tele-

phone number. Then check it out.

### Tips

- If your contractor visits make a  
note of the type of his vehicle and reg-  
istration number.

- Consider any request for payment  
in advance very carefully. It may be  
safer to pay on a progressional basis -  
stage by stage as the work is carried  
out.

- If it becomes apparent during the

progress of a job that extra work is  
necessary get an additional written es-  
timate.

- It is wise to employ a company  
which belongs to the appropriate  
trade organisation such as the Con-  
federation for the Registration of Gas  
Installers.

The Office of Fair Trading booklet,  
'Home Improvements' gives useful  
advice and addresses. Pick up a copy  
from Trading Standards, Hatchcroft,  
The Burroughs, Hendon NW4 4BE.  
Tel: 01-202 8282 ext 2062/2067.

# Barnet Diary



Viking Club, Inglis Barracks, Bray Rd. off Bittacy Hill, NW7. Beginners 10 wk courses. 7pm. 455 9820

Bushmead Dog Training Club. Bushmead Social Club. Hamonde Close, Edgware. 7.30pm. 906 0765/200 0621

Edgware & Dist Canine Training Scty. St Alphage Hall, Playfield Rd. Burnt Oak. Ring Class 8.15pm; Obedience Training 9.15pm. 0923 35968

## Tuesdays

Dog Training Class, advice on problem dogs. Mill Hill New Church, Pursley Rd. NW7. By appt. eves. 449 7539/441 7312

Finchley Dog Training Club. Old Barn Cntr, Tarling Rd. N2. 7pm. 349 4613 (also Wed, 8pm)

## Photography Arts & Crafts

### Monthly

Barnet Ceramic & Glass Scty. East Barnet Upper Sch, Chestnut Grove, off Cat Hill. 446 1022 (1st Wed)

Millon Art Scty. Harwood Hall, Union Church, The Broadway,

NW7. 7.30pm. 907 5740 (1st Wed)

Open mtg for those interested in Community Arts. The Neighbourhood Cntr, 42 Church La. N2. 8pm. 883 2832 (3rd Thur)

### Weekly Mondays

Art classes. All abilities & media. All Saints Arts Cntr, 122 Oakleigh Rd Nth. N20. 2pm. 445 8388/445 4654

Community Links in Cameras (CLIC). Photography group of disabled people. 43 Flower La. NW7. 1.30pm. 200 8353 (also Thur)

Painting. Finchley Art Scty. Moss Hall Sch. Nether St. N3. 7.30pm (also Wed, St Mary's Church Hall, Hendon La. N3. 1.30pm)

Hand knitting Circle. Old Barn Cntr, Tarling Rd. N2. 1pm. (creche provided) 349 4613 (also Thur, Machine knitting class, tuition at all levels)

Life drawing class for all abilities. Christ Church Lower Hall, Oakleigh Pk. N20. 7pm. 363 8503

### Tuesdays

Finchley Writers' Workshop. Moss Hall Tavern. 6pm. 349 1948

Studio North Three adult classes in art. College Farm, Fitzalan Rd. N3. 10am. 959 1498/6175

Finchley and Dist Model Aircraft Club. Manorside Sch, Squires La. N3. 14yrs+. 8pm. 904 5449

Friern Barnet & Totteridge Camera Club. Totteridge Library, Totteridge La. Beginners to advanced. 8pm. 445 2617

Art & Craft Workshop for 8-14yrs. Barnet Drama Cntr, 142 High Rd. N2. 6pm. 883 9957

### Wednesdays

Community & Recreational Arts in Barnet (CRAB). Photography. Open access 10am-3.30pm; 6-9pm. After school group for disabled children and their friends ages 8-18, 3.30-5.30pm (some transport is available in Barnet area). Community Focus, Tedder Lounge, Wiggins Mead, Grahame Pk Way, NW9. 200 8353

Chanticleer Camera Club. The Minchenden Assn Clubhouse, Bramley Rd. N14. 8pm. 888 5669

Hornsey cine - Scene Two. St Peter Le Poer Hall, Albion Ave. N10. 8.15pm

### Thursdays

Sculpture class for women. Old Barn Cntr, Tarling Rd. N2. 7.30pm. (creche provided) 349 4613

### Fridays

Barnet & Finchley Photographic Scty. rear of 37a Salisbury Rd. Barnet. 8pm. 886 7071

Finchley Cine Scty. 8pm. 346 4265

Hendon & Hampstead Gdn Suburb Camera Club. Fellowship Hse, Willifield Way, NW11. 8pm. 205 6053

## Playgroups & Under 5s

### Bi-monthly

'Pram' Service. Songs, stories & prayers. St James' Church, New Barnet. 10am. 449 4043 (1st & 3rd Wed)

### Weekdays

Crescent Playgroup. E Barnet Baptist Church Hall. 9.30am. 449 5095

Under 5's activities. Old Barn Cntr, Tarling Rd. N2. 9.30am. 349 4614

Mother & Toddler Group. The Pavilion Cntr, Lyttelton Playing Fields, N2. 9.30am & 11am. 455 1573/883 4690 (also Tues, Music classes for 3-5yrs, 2pm & 2.45pm; Wed, Mother and Baby music class, 2pm)

### Weekly

#### Mondays

Tumble Tots. Gym for the under 5's. Hodford Hall, Hodford Rd. NW11. 9.59 4261 (also Fri at St Mary's Hall, Hendon La. N3)

Bells Hill Prams & Pushchairs. St Stephen's Church Hall, Bells Hill, Barnet. 1.30pm. 441 9501

Church Farm Pre-School Activities Group. Barnet College Annexe off Church Hill Rd. E Barnet. 10am. 368 9893

Toddlers Arts & Crafts Group. Barnet Drama Cntr, 142 High Rd. N2. 1pm. 883 9957 (also Tues, Toddlers Music Group, 10.30am; Wed, Drama for Tots, 10.30am)

### Tuesdays

Teddy Tots for mums and toddlers, newborn babies and mums-to-be. Woodcroft Evangelical Church (Gervase Rd entrance) Burnt Oak. 10.30am. 200 8909

123 Club for mothers, babies & toddlers. Christ Church Hall, High Rd. N12. 9.30am & 1.15pm. In term-time. 446 5956

Bottoms Up. A club for mothers with first babies. Jubilee Room, St James' Church, Friern Barnet La. N20. 2.30pm. 445 0386

Mother & Toddler Group. Mill Hill Synagogue, Brockenhurst Gdns. NW7. 10am. 958 9550

Mums & Toddlers. Quinta Youth Club, Mays La. Barnet. 9.30am. 449 2914 (also Thur)

Playgroup for the under 5's. Barnet Drama Cntr, 142 High Rd. N2. 1pm. 883 9957 (also Thur, 10am & Fri, 1pm)

### Wednesdays

Parent & Toddler Time. E Barnet Baptist Church Hall. 1.45pm. 449 5320 (also Fri)

See-Saw Club for babies and toddlers with special needs. North Road Community Cntr, Burnt Oak Bdway. 9.30am. 441 3714

Mums, Babies & Toddlers Club. St Barnabas Church, Holden Rd. N12. 10am. 368 0367 (also Thur)

Mother & Toddler Group. Yeshuron Synagogue, Stonegrove, Edgware. 10am. 958 9550

## OFFICIAL 1990 FOOTBALL CALENDARS

● ARSENAL ● LIVERPOOL ● MANCHESTER UTD ● EVERTON ● CHELSEA ● MANCHESTER CITY ● GLASGOW RANGERS ● CELTIC ● ASTON VILLA ● NEWCASTLE UTD ● NORWICH CITY ● LEEDS UNITED ● DUNDEE UNITED ● NFL AMERICAN FOOTBALL



AVAILABLE NOW AT ONLY **£3.49** +95p p&p UK, +£2.00 p&p Europe (Airmail) +£3.65 p&p other countries (Airmail)

## KICK OFF WITH OFFICIAL FOOTBALL DIARY YEARBOOKS

Superb, pocket-sized books packed with facts about *your* favourite club

TEAMS AVAILABLE: ● LIVERPOOL ● EVERTON ● MAN. UTD. ● CHELSEA ● ASTON VILLA ● GLASGOW RANGERS ● \*CELTIC ● HEART OF MIDLOTHIAN ● PORTSMOUTH \*Does not include diary

Contains information about current and past players. Forewords from club officials. Full statistics for last season. Shop details and Supporters' Club information. Plus photos and travelling information. All this - and a diary running from September 1989 to December 1990 - a full 16 months.

Price per Diary Yearbook **£2.70** +50p p&p UK, +£1.30 p&p Europe (Airmail) +£1.85 p&p other countries (Airmail)

## OFFICIAL LIVERPOOL YEARBOOK 1989/90

**£3.30** +60p p&p UK, +£1.60 p&p Europe (Airmail)

+£3.00 p&p other countries (Airmail)

Contains colour pictures of last season's dramatic League and Cup campaigns plus articles, interviews and reviews.

## GIANT TEAM POSTERS

Side one features: Articles, Action Photos, Statistics, Reviews

Side two features: Full Colour Team Photo, Portraits Ideal Wall Poster, Opening up to 23.5 X 33 inches

TEAMS AVAILABLE: ● LIVERPOOL ● EVERTON

● GLASGOW RANGERS ● CELTIC ● HEART OF MIDLOTHIAN

Price **£1.60** +40p p&p UK, +85p p&p Europe (Airmail)

+£1.20 p&p other countries (Airmail)



Please make cheques/P.O.'s payable to: **EAGLE FOOTBALL DIARIES LIMITED**  
Eire: British Postal Orders or Bank Drafts only accepted for delivery to R. of Ireland

Send for free list of Football, Golf and Pop Calendars

**EAGLE FOOTBALL DIARIES LIMITED BBN**

Dept. H/C, 185 ANGEL PLACE, FORE STREET, LONDON N18 2UD

Telephone: 01 - 807 7676

# Barnet Diary



**Jumping Beans Club.** Informal gymnastics & play. Canada Villa Cntr, Pursley Rd. NW7. 10am. 959 2811 (**also Thur**)

## Thursdays

**Parent & Toddler Time.** Victoria Cntr, Victoria Rd. New Barnet. 1pm. 449 5511

**Tumble Tots,** physical activity for pre-school children 6mths-5yrs. Social Cntr, Sacred Heart of Mary Immaculate, Mill Hill Bdw. Classes all day from 9.30am. 958 6579

**Bounce,** a group for children under 5 with special needs. New Barnet Community Cntr, 48-50 Victoria Rd. 1.30pm. 441 7044

**Mother & Toddler Gymnastics** (up to 4yrs). Hendon Sports Cntr, Algernon Rd. 12.45pm, 1.30pm & 2.15pm. 202 6027

**E Finchley Toy Library.** Herbert Wilmot Youth Cntr, Eagans Close, N2. Over 500 toys. 3pm. 883 7915 (**also Fri**, 10.30am)

**Mothers & Toddlers Exercise class.** Barnet Drama Cntr, 142 High Rd. N2. 2pm. 883 9957

**Mothers & Toddlers** (up to 4yrs). Gymnastics. Hendon Sports Cntr, Algernon Rd. 12.45pm. 202 6027

## Fridays

**Mums & Toddlers Group.** Day Cntr, Friern Barnet La. N11. 10am. 368 4278

## Singles Clubs

**Unattached, 40-60?** Clan social club for theatre, exhibition, restaurant outings, wine and cheese evenings, etc. 346 2016/0932 856154

## Monthly

**New Friends Social Club** (30-45). The Torrington PH, N Finchley. 8.30pm. 444 0076/446 4058 (**4th Thur**)

## Bi-monthly

**Finchley Solo Club** for widowed, divorced & single (25-65). 8pm. 445 9810/444 8743 (**1st & 3rd Tues**)

## Weekly

### Mondays

**Barnet Thirty Plus Group.** Badminton at Queen Elizabeth's Cntr, Meadway, Barnet. 8pm. Details of other activities 959 7084

### Tuesdays

**Single Minds club** for 20s-60s. Abercorn Arms, Stanmore Hill, Stanmore. 8pm. 202 3807

### Wednesdays

**NW London Branch of National Council for the Divorced & Separated.** Friendly club evening nr Brent St. Hendon. 455 6967 (day) 959 4231 (eves)

**N London & Dist Divorced/Separated Club.** St Paul's Church, High Rd. New

Southgate. 8pm. 0707 42849

## Thursdays

**Club 81** (25-45) Old Red Lion PH, Barnet Hill, Barnet. 9pm. 883 2363 (wkdays, 1-5pm)

## Sport

**Mill Hill Rugby Football Club.** Home Games, 1st XV: **27 Jan** (Tabard), **3 Feb** (London New Zealand), 2nd XV: **20 Jan** (Barclays Bank), **3 Feb** (London New Zealand)

## Saturday 20 January

**Hash House Harriers.** Alexandra Pk & Wood Green Common run. Meet 11am, Alexandra Pk BR str.

## Monthly

**St Christopher's Catholic Cycling Club.** Easy rides from Finchley. All welcome. 10am. 361 2281/427 2251 (**1st Sun**)

## Weekly

### Sundays

**Finchley Section of W London DA Cyclists' Touring Club** organise rides. 361 9851/446 2634

**Shaftesbury Barnet Harriers** training sessions. Cophall Stadium, Gt Nth Way, NW4. 11am. 200 1584 (**also Tues** 6pm; for athletes, **Thur** 6pm)

## Mondays

**Monarch Sports Club** for people with physical and mental handicap. Bishop Douglass Sch, Hamilton Rd. N2. 7.45pm. 202 4684/953 3276

**Cranbourne Badminton Club.**

**Hampstead Gdn. Suburb.** New experienced players welcome. 346 5655

**Morning Badminton Club.** Hartley Hall, Mill Hill. Vacancies for experienced players. 959 4867

**Barnet Blind Bowls Club.** Bishop's Wood Tudor, Summers La. N12. 2pm. 449 7058 (**also Tues & Fri**)

## Tuesdays

**Mill Hill Rugby Club.** Rugby training. Barnet Cophall Sports Complex. 7.30pm. Contact, Jim Adam, Captain or Derek Dacey, Club Coach on 203 0685 (**also Thur**)

**Golf Lessons.** Mill Hill Sch Sports Cntr, The Ridgeway. 7.30pm. For details of these & other sports classes, 906 2322

**Elmgate Badminton Club.** Church Hall, Rectory La. Edgware. Vacancies. 8pm. 959 4757

**Barnet & Dist Athletic Club** training session. Cophall Stadium. 7pm. (Under 11yrs, 5pm) 368 6754

**Speedwell Badminton Club** for Ladies. Moderate to good standard. Christ Church Hall, High Rd. N12. 1.45pm. 449 6401

**Finchley Angling Scty.** Moss Hall Tavern, Ballards La. N12. Prospective members welcome. 8.30pm. 458 2530

**Speedwell Badminton Club** for Ladies. Christ Church Hall, High Rd. N12. 1.30pm. Club standard. 446 3517

**Swimming for over 50's.** Queen

**Elizabeth's Cntr, Meadway.** Barnet. 6pm. 441 2933

## Wednesdays

**Badminton.** Mill Hill Sch. Sports Cntr, The Ridgeway. Beginners & improvers. 7.15pm. 906 2322 (**also Thur**, 10am; **Wed**, juniors, 6.15pm)

**St Margaret's Badminton Club.** Rectory La. Edgware. Vacancies. 8pm. 959 3822/440 4572/0923 246953

**Hendon Hockey Club.** Men's & Women's Teams. All ages welcome. Training at Whitefield Sch, Claremont Rd. NW2, 8pm, or contact Club Secretary, 631 3639(day)/609 4168(eves)

**Children's gymnastics.** 4-11 yrs. Hendon Sports Cntr, Algernon Rd. Details, 202 6027 (**also Thur & Sat**)

## Thursdays

**Barnet & Dist Athletic Club** training session. Clubhouse, Victoria Rd. New Barnet. 7pm. 368 6754

**Badminton Club.** Christ Church URC, Bellevue Hall, Bellevue Rd. N11. 8pm. 449 8476

**Redwing Badminton Club** for Ladies. Christ Church Hall, High Rd. N12. Vacancies for average/good players. 1.30pm. 446 3454/346 5377

## Fridays

**St George's Swimming Club.** Q.E. Boys Sch Pool. Teaching 5yrs up to adult 6-8pm; adult swimmers & non swimmers 8-9pm. 440 4990

**Barnet Blind Bowls Club.** TAVR

# ANY TREE PROBLEMS

## JACK FLETCHER

ESTABLISHED IN 1939

TREE SURGEON AND CONSULTANT

GOFFS OAK HOUSE, GOFFS OAK,  
WALTHAM CROSS, HERTS

**CUFFLEY (0707) 874333 — 873030**

0836 - 281519

EMERGENCY SERVICE ONLY, AFTER 5PM

(0992) 32411/552446

TREE SURVEYS & CONSULTANCY  
TREE PRUNING TO BRITISH STANDARD 3998  
FELLING & SITE CLEARANCE  
ROOT PRUNING OR REMOVAL  
TREE STUMP GRINDERS AND BRUSHWOOD  
CHIPPERS FOR HIRE  
£2,000,000 PUBLIC LIABILITY INSURED

CONTRACTOR FOR THE BOROUGH OF BARNET, BRENT,  
HARINGEY AND THE I.E.L.A.

### ARE YOU PLANNING TO RE-PLANT A TREE?

LOGS FOR WOOD BURNERS  
FOR COLLECTION OR DELIVERY



# Barnet Diary



Drill Hall, 444 High Rd. N12. 2pm. 449 7058

Table tennis, 11-14yrs (6.30pm) & 14-17yrs (7pm). All standards. Annunciation Catholic Youth Cntr, 4 Thirleby Rd, Burnt Oak. 959 0911

## Women's Clubs

### Monthly

Ashley TG. Mill Hill East Free Church, Salcombe Gdns. 7.30pm. 906 1952 (1st Thur)

Barnet Afternoon TG. Church House, Wood St. 2pm. 449 2697 (3rd Fri)

Barnet Evening TG. Church House, Wood St. 7.45pm. 440 1526 (1st Wed)

Broadway Mill Hill TG. Hartley Hall, Flower Lane. 2pm. 959 0995 (2nd Thur)

Chipping Barnet W1. Church House, Wood St. 10am. 440 8807 (2nd Thur)

East Barnet Brookside TG. Brookside Methodist Church Hall. 1.30pm. 361 9097 (1st Wed)

East Barnet Monkfrith TG. British Legion Hall, Nursery Rd. N14. 1.45pm. 0707 57092 (1st Thur)

East Barnet (Osidge) TG. Small Hall, Brookside Methodist Church. 7.45pm. 368 7346 (2nd Tues)

East Barnet Valley TG. Lyonsdown Hall, Lyonsdown Rd. New Barnet. 2.15pm. 449 8601/6083 (1st Thur)

Edgware League of Jewish Women. 958 4562 (2nd Tues)

Finchley Church End TG. St Mary's Church Hall, Hendon La. N3. 2.15pm. 455 7152 (4th Wed)

Finchley Granville TG. Finchley Methodist Hall, Ballards La. N3. 2pm. 346 6822 (2nd Thur)

Finchley Redbourne TG. Etchingham Pk Rd Day Cntr, N3. 7.45pm. 346 3305 (4th Tues)

Friern Barnet & Whetstone TG. Manor Drive Methodist Church, York Way, N20. 2.15pm. 446 4816 (3rd Tues)

Friern Barnet Friary TG. Christ Church URC Hall, Bellevue Rd. N11. 2pm. 361 9623 (1st Tues)

Golders Green TG. St Alban's Church Hall, Golders Green. 2pm. 455 4156 (1st Mon)

Hampstead Gdn Suburb TG. St Jude's Church Rooms, Central Sq. NW11. 2pm. 458 5072 (1st Mon)

Mill Hill Afternoon TG. Harwood Hall, The Bdw. NW7. 2pm. 959 1505 (2nd Wed)

Mill Hill Highwood TG. Hartley Hall, Flower La. 2pm. 959 2519 (3rd Mon)

Montrose W1. Parish Room, St Alphege Church, Montrose

Ave. 7.45pm. 205 4960 (4th Tues)

National Council of Women, Barnet & Dist. St John's URC Hall, Mowbray Rd. New Barnet. 1.30pm. 368 1442 (4th Mon)

New Barnet Evening TG. Brookside Methodist Church Hall, E Barnet. 7.30pm. 440 1394 (1st Mon)

Royal British Legion Women's Section (N Finchley). Legionway, Summers La, N12. 8pm. 445 9911 (1st Tues)

Totteridge W1. Village Hall, Badgers Croft, Totteridge La. N20. 7.30pm. 445 5700 (1st Tues)

Woodside Park Afternoon TG. Old Finchleians Club Hse, Southover, N12. 2pm. 445 0911 (3rd Wed)

**Fortnightly**  
National Women's Register (Barnet Branch). Discussion group. For details 445 4777 (alt. Tues eves)

Acorn's group. Talks, socials, coffee, creche. St Paul's Church, Long La. N3. 9.45am. 349 4188/346 7378

Wives Group. Mill Hill East Church Hall, Salcombe Gdns. 8pm. 906 0489

### Mondays

Ladies Recreation Night (16yrs+). Coaching in fencing, archery, country-dancing, karate & outings. Manorhill Centre, Summers La. N12. 8pm. 368 6316

### Tuesdays

Barnet Asian Women's Assn. 1 Friern Pk. N12. Vegetarian lunch. 12.30pm. Religious Mtg 'Satsang' 1.30pm.

Springwell Women's Club. St Stephen's Hall, Bells Hill, Barnet. 8pm. 449 0955

### Wednesdays

Barnet Asian Women's Assn. Craft classes, talks. Oak La. Clinic, N2. 1pm

### Thursdays

Women's Friendship Club. Union Church, Northiam, N12. 2.15pm. 445 6945

Ridgeway Club (Nat. Assn of Women's Clubs). Evergreen Cntr, Brookhill Rd. E Barnet. 7.45pm. 449 2852

### Fridays

Barnet Asian Women's Assn. 1 Friern Pk. N12. Harmonium music classes 11am, armchair keep fit 12.30pm, vegetarian lunch 1.30pm, games, cultural discussions 2.30pm

Social Club. Old Barn Cntr, Tarling Rd. N2. 1pm. Creche provided. 349 4613

### Saturdays

Barnet Asian Women's Assn. Swimming classes. Squires Lane Pool, N3. 4.30pm

## Youth

The Woodcraft Folk. Co-educational & cooperative groups (throughout the borough), ages 6-9, 10-12, 13-15, 16-20. Details, Tony Winsloe, 445 5742

### Weekdays

After School Club. Old Barn Cntr, Tarling Rd. N2. 3.30pm. 349 4613

### Mondays

Quinta Youth Club. Intermediates (8-16yrs) 6.30pm. 449 2914 (also Wed 6.30pm. Juniors 8-12yrs)

1st Barnet Boys' Brigade. Ewen Hall, Wood St. Juniors. 6.30pm. 440 7537 (also Thur anchor boys 6pm; company sec. 7pm & girls 7.30pm)

3rd Barnet Boys' Brigade. UR Church, Chesterfield Rd. Juniors, 6.45pm. 440 2915 (also Tues anchor boys 6.15pm & company sec. 7.30pm)

1st Hendon Boys' Brigade. Watling URC, Eversfield Gdns. NW7. Juniors 6.30pm. 959 4736

4th Hendon Boys' Brigade. The Hyde URC. Juniors 6.30pm. 0727 53832 (also Fri company sec 8.15pm)

St John Ambulance 1st Finchley Badger Set. Finchley Methodist Church, Ballards La. N3. Age 6+. 6.15pm. 207 3036

6th East Barnet Brownie Pack. E Barnet Baptist Church Hall, E Barnet Rd. 6pm. 440 6811

10th Hendon Brownie Pack. St Mary Magdalen Church Hall, Holders Hill Rd. 6.30pm

Senior Club, 13-18yrs. Canada Villa Cntr, Pursley Rd. NW7. 7.30pm. 959 2811 (also Thur. discos, barbecues, interclub events, games) (also Wed, Intermediate Club, 11-13yrs. Organised activities, incl. girls'

## ANTIQUES & COLLECTORS FAIR



Admission 75p, accompanied children Free, 11am - 4pm, trade £1.50, with trade card or £2.50.

**SUNDAY 7th JANUARY**

**230 STANDS**

Part of the **Lee Valley Leisure Park**

**PICKETTS-LOCK LEISURE CENTRE,**  
Picketts-Lock Lane (off Montague Rd, off N. Circular),  
Edmonton, London, N9.  
W8 bus from Lower Edmonton BR Station

All enquiries and bookings to JAX FAIRS Tel: (0444) 400570  
FUTURE DATES FIRST SUNDAY IN THE MONTH



## Accountancy Personnel

### LOCAL JOBS BOOM!

Accountancy Personnel, the country's largest specialist recruitment consultancy, is based in Barnet to help local people find local jobs. Our specialist consultants are happy to discuss your career opportunities. So whether you are a VDU Operator, accounts clerk, bookkeeper or Financial Controller looking for temporary or permanent work, - phone today, or simply pop in to see us.

96 High Street, Barnet EN5 5SN  
Tel: 449 9974



## MARQUEES

A Complete Hire Service  
Undercover agents for all occasions

Phone or write now for our colour brochure  
M & B MARQUEES  
15 HIGHLANDS ROAD,  
BARNET, HERTS.

BARNET:  
01-441 3636  
(Ansaphone)

WARE:  
0920 830388

## DO YOU HAVE PROBLEMS?

DO YOU LACK OF CONFIDENCE?  
DO YOU RESORT TO OVEREATING  
OR SMOKING UNDER STRESS?  
OR DO YOU SUFFER FROM ANY  
OTHER PSYCHOSOMATIC ILLNESS  
FOR WHICH YOU NEED  
TRANQUILLISERS?

If your answer is **YES** to any of the above, HYPNOTHERAPY by qualified Psychotherapist may be an answer.

Do not suffer in silence - book for a consultation NOW.

**Mrs V. K. Prasad** DMS, CHP, NRHP  
(Registered Practitioner)  
Telephone: 01 - 361 4525  
24 hour Answering Service



Established 1984

**THE MOST EXPENSIVE VEGETARIAN RESTAURANT AND YET REASONABLY PRICED.**

CLOSED ALL DAY MONDAY  
7 LONG LANE, FINCHLEY, N3  
Tel: 01-349 4386/2636

## Bumpsadaisy

A Wide Selection of Designer Outfits For All Occasions to fit 8 - 20



- \* Weddings/Balls
- \* Dinner Dances/After 6
- \* Holidays/Swimwear

If you would be interested in running your own home business also  
Call Penelope - Mill Hill 01-959 1856  
The Established Specialist for Maternity Wear Hire



## Barnet Diary



football team, 6.30pm) (also Fri, Junior Club, 7-11yrs. Working towards integration of children with disabilities. 6.30pm)

### Tuesdays

1st Childs Hill Guides (10-14yrs). All Saints Church Hall, Church Walk, NW2. 6.45pm. 458 5549

120 (Hendon) Sqn Air Training Corps. Boys & girls 13-16yrs. Colchester Rd. Edgware. 7.30pm. (also Fri & Sun 10am)

1374 East Barnet Sqn Air Training Corps (13-16yrs). Gloucester Rd. New Barnet. 7.30pm. 440 0263 (also Thur)

### Wednesdays

Finchley Sea Cadets. T.S. Tartar, 184a Long La. N3. Boys & girls, 12yrs+. 7.25pm. 346 1828 (also Fri)

Youth Club. Old Barn Cntr. Tarling Rd. N2. 6.30pm. 349 4613 (also Fri)

### Thursdays

1st Friern Barnet Boys' Brigade. Manor Drive Methodist Church Hall, N20. Boys 5-18yrs. 5.30-10pm. 361 9698

Brookside Methodist Church Boys' Brigade. E Barnet. Pre-junior 6-8yrs 6.15pm; juniors 8-11yrs 6.30pm; Company 11yrs+. 8pm. 441 2042

2nd Finchley Badger Set. Manorhill Sch. Gym. Summers La. N12. Boys & girls 6yrs+ 7pm. 207 3036

### Fridays

5th Hendon Boys' Brigade. St James URC, Heather Walk, Edgware. Juniors 6.30pm; Company sec. 8pm. 958 4922

St John Ambulance Finchley Cadets. Finchley Open Air Pool (Pavilion), High Rd. N12. 10yrs+. 7pm. 207 3036

Friday club, 14-17yrs. Uni-hoc, gym, videos, outings, etc. Annunciation Catholic Youth Cntr, 4 Thirleby Rd. Burnt Oak. 8.30pm. 959 0911.

## Exhibitions

### Until 7 January

Finchley Art Scty Winter Exhibition. Church Farm House Museum, Greyhound Hill, NW4. Mon-Sat (except Tues) 10am-1pm, 2-5.30pm. Tues 10am-1pm. Sun 2-5.30pm. Admission free. 203 0130 (9 Dec-21 Jan, Collection of Dolls from around the world; 20 Jan-4 Mar, Oils and watercolours of Hendon and surrounding area by 19th & 20th century artists; 1 Feb-1 Mar, The History of London's Canals, a small exhibition prepared by British Waterways)

### 13 Jan - 10 Feb

Original prints: etchings, lithographs & silk-screen prints by well-known artists, including Charles Bartlett, John Brunson, Michael Carlo & David Gentleman. All works for sale. N Finchley Library, Ravensdale Ave. N12. Library hrs.

### Permanent Exhibitions

Rose Gallery at Totteridge Library, Totteridge La. N20. Pictures at affordable prices. Tues, Wed & Fri 2-5pm. Sat, 10am-1pm, 2-5pm. Details, Arts Office, 202 1903

College Farm Gallery, Fitzalan Rd. N3. Admission charge (1st Sun & open days)

### Saturdays

Anna Pavlova Memorial Museum. Ivy House, Middx Poly, North End Rd. NW11. 2-6pm

## Library Lectures

**Barnet Libraries popular series of free evening lectures starting 8.15pm**

### Wednesday 17 January

Wildlife in Southern India, an audio-visual presentation by Brian Barton & Clive Banks. E Finchley Library, 226 High Rd.

### Wednesday 24 January

The Globe Reborn, Patrick Spottiswoode's account of the reconstruction of the new Globe Theatre, Hendon Library, The Burroughs, NW4

### Wednesday 31 January

East African Safari, Heather Maclean's adventures in Kenya & Tanzania. N Finchley Library, Ravensdale Ave. N12



### Sunday 14 January

Manor House Scty presents Kerry Shale in 'An Evening with Hyman Kaplan' recreating his Radio 4 readings. Sternberg Cntr, 80 East End Rd. N3. 8pm. Tickets £5 (£4 members), 346 2288

### Saturday 27 January

Claudia Meinardus (piano), Scarlatti, Beethoven, Chopin & Schumann. Recital Rm, Music Block, Middx Poly. Trent Pk, Bramley Rd. N14. 8pm. Tickets, 449 2963

### Saturday 3 February

Finchley Chamber Choir & Finchley Chamber Orchestra. Vivaldi, Magnificat; Handel, Oh Come Let us Sing unto the Lord; J.S. Bach, Mass in G Minor. Trinity Church, Nether St. N12. 7.45pm. Tickets £4 (conces. £3), 203 0178

## Old Bull Arts Centre

68 High St. Barnet. For ticket prices & bookings contact 449 0048

### Mondays 8 - 29 Jan

Sax masterclasses with Jean Toussaint.

### Mondays 8 Jan - 12 Mar

Stage Skills & Barnet College: Practical foundation course covering all aspects of theatre. 7-10pm.

### Tues 9 Jan - 13 Feb

Women and Writing Course with Katherine Gallagher. 12.45-2.45pm.

### 11 & 12 January

Young Bull Theatre Co: Never Can Say Goodbye. Jan & Julie look back on their careers, songs, laughter, tears & dark secrets! 8pm

### Saturday 13 January

Acting & Mask workshop with John Wright. 10.30am-4pm

Linton Kwesi Johnson & The Rhythmites. Dub poetry & reggae. 8pm

### Sunday 14 January

Nutmeg: Fishfingers & The Waterwolf. Most suitable 5-10yrs. 3pm

The Ivor Goldberg Quartet (jazz). 8pm

### Sundays 14 Jan - 4 Feb

Dance the Lindy Hop Course with Ellen Miller. 11am-12.30pm

### 16 & 17 January

Sound Space Course.

### 18 & 19 January

Habbe & Meik: Nose Missing (mime). 8pm

### Saturday 20 January

Microgroove (jazz funk). 8pm

### Sats 20 Jan-3 Mar (not 10 Feb)

Dance Rock'n'Roll Course with Kav Kavanagh. 12.30-2pm

### Sunday 21 January

Dan Kamin: The Pantomime Man (mime & physical theatre). Most suitable 4-12yrs. 3pm

Bananas Up The Bull with Owen O'Neill, Frank Skinner & Michelle Read (cabaret). 8pm

### Tues 23 Jan - 13 Feb

Acapella masterclasses with Jan Ponsford.

### Wed 24 January

Black Mime Theatre: Rainbow. Mime used to amuse but tackling a sensitive subject - the conditions of black people in mental institutions. 8pm

### Thursday 25 January

Taktyle: Mother of Millions. Physical theatre, music & visuals to give a new perception of enigmatic Russia. 8pm

### 26 & 27 January

Manact: Radio Sing Sing. Mime with two explorers in New Guinea. 8pm

### Fridays 26 Jan-23 Mar (not 23 Feb)

Alexander Technique Course

with John Canning. 1-4pm

### Sunday 28 January

Young Oxmad: Searching for Dreams. Una is looking for her unicorn but the evil Obnokshuss tries to stop her. Music & mime. Suitable 6-11yrs. 3pm

Don Weller Quartet (jazz). 8pm

### 29 Jan - 1 Feb

Course with Trestle Mask Theatre.

### 29 Jan - 17 Feb

Photographic exhibition. Jason Shenai with a view of Japan.

### 31 Jan & 1 Feb

Trestle Theatre Co: Executive Stress. The Wonderful Plastic Toy Co. James Clark, employee, finds himself locked in a desperate battle for his sanity. 8pm

### Friday 2 February

Adenoid Quartet (new music). 8pm

### Saturday 3 February

Grand Union (world music). 8pm

### Weekly

Children's classes. **Mon.** Art & Craft (7-11yrs) 4.15pm; **Tues.** Parents & Toddlers 9.30 & 10.30pm. Drama (7-12yrs) 4.15pm; **Wed.** Modern & Creative Dance (7-10yrs) 4.15pm; **Thur.** Drama (5-7yrs) 4.15pm; **Sat.** Drama Club (8-12yrs) 10.30am & Barnet Youth Theatre (12-16yrs) 2pm

## Tricycle Theatre

269 Kilburn High Road

### 5 Jan - 10 Feb

'Boots for the Footless' by Brian Behan. An anarchic and hilarious Irish tale. Details & tickets 328 1000

### Saturday Shows for Children

11.30am & 2pm. **6 Jan.** 'Jigsaw Pieces', live music, movement, comedy & mime, 5yrs+; **13 Jan.** Pop Up Theatre 'Cuckoo Time', a new musical play, 3-7yrs; **20 Jan.** Lucie & Roddy Skeaping 'Musical Mystery Tour', a journey back in time starting with minstrel songs, 5-10yrs; **27 Jan.** Pekko's Puppets 'Mollie Whuppie'. Mollie outwits the giant, 5-10yrs; **3 Feb.** Little Co. presents 'Rubberface the Clown in Animal Magic', musical fun to join in. 4-10yrs

## Enter the Youth Drama Festival

THERE'S still time to enter for Barnet Council's Drama Festival, organised by the Youth and Community Service, for young people in the borough.

Entry forms must be in by 19 January. Any individual, youth group or school within the Borough can join in.

The stage is set at the Council's Barnet Drama Centre, 142 High Road, East Finchley, for any type of entry-mime, cabaret, monologues, excerpts from plays, scripted plays or improvisation.

The Festival opens on Monday, 26 March, and runs until

Saturday, 31 March, when there are performances at Grahame Park Centre Point of selected entries from the previous five evenings.

Forms are available from the Director of Educational Services (FE), Friern Barnet Town Hall, N11 3DL. Tel: 368 1255 ext 3218.

Fees range from £2 for monologues, £3.50 for duologues, £7 for items with six performers or less and £9.50 for groups with more than six performers. Cheques should be made payable to Barnet Corporation.

THE WORLD of mime comes to the Old Bull Arts Centre, High Street, Barnet, this month with international artists from West Germany and America.

### Clowning

On Thursday, 18 January, and Friday, 19 January, Habbe and Meik bring their own distinctive clowning to the art of mime. On Sunday, 21 January, there is a special show from Pantomime Man, Dan Kamin, who has performed at The White House

for former President Ronald Reagan.

The season, part of the London International Mime Festival 1990, continues up to 1 February with workshops and performances from Britain's leading companies.

Full details are in the Arts Centre's new Spring pro-

gramme. To get your copy telephone 449 0048.

Stop press: It is curtain up from 3 January to 5 January inclusive for Tales from Hans Christian Anderson performed by Arena. Call the box office today, on the above phone number to book your tickets.

# Local opportunities...

WORKING FOR THE COMMUNITY

Barnet is a borough changing with the times. To achieve our plans for the 1990's we need the skills and abilities of a wide range of people. The Council offers excellent pay and conditions with training and career development tailored to the individual and promotion on personal merit.

- \* Excellent Pension Scheme
- \* Opportunities to progress
- \* Flexible working hours
- \* Generous leave
- \* Pleasant conditions
- \* Restaurant facilities

**barnet**

EDUCATIONAL SERVICES

## LABORATORY TECHNICIAN

Biology Department

**£9,093-£9,699 pa inc.**  
+ qualification allowance where applicable

Duties include care and maintenance of laboratories, apparatus and equipment, provision of materials for practical work, and care of animals and plants.

You will work in a large Biology Department but will be expected to make a contribution to the work of the Science Department generally.  
*Ref: ADM/S/155/222.*

Closing date: 5th January 1990.

For further details please telephone the Headteacher at the school on 01-346 1607.

Application forms available from Address No. 1.

## ADMINISTRATIVE ASSISTANT

Admissions Section

**£9,879-£10,935 pa inc.**

This is an interesting and challenging position which involves liaising with parents and schools concerning all matters relating to school admissions.

Whilst there is a certain amount of routine clerical work, much of it is varied and includes dealing with numerous telephone enquiries.

The position is suitable for someone with a good memory and a pleasant manner who can handle paperwork efficiently, compose standard letters and work under pressure. *Ref: ADM/E/654.*

Closing date: 5th January 1990.

Application forms available from Address No. 1.

## ADMINISTRATIVE ASSISTANT

Youth and Community Service

**£9,093-£9,699 pa inc.**

Are you energetic and enthusiastic and looking for challenging and varied work?

If so, this post in our Youth and Community Service could be just the job for you.

Part of a stimulating and supportive team based at Grahame Park Centre Point, you will be encouraged to participate fully in the work of the Team, including staff meetings.

Your main duties will be:

- \* dealing with members of the public, both in person and by telephone in a sympathetic and calm manner
- \* providing routine financial information to the Senior Worker
- \* processing incoming and outgoing mail
- \* typing and duplicating
- \* maintaining systematic files
- \* controlling stationery and certificating invoices

*Ref: ADM/E/270.*

Closing date: 5th January 1990.

For an informal discussion please contact: Peter Thorn, Deputy Principal Youth and Community Officer on 01-368 1255 ext 3023.

Application forms available from Address No. 1.

## Catering Opportunities

Barnet is a lively, forward looking local education authority and we feel that we have every right to be proud of the results that our approach produces. However, we don't just provide pupils with food for thought. They need another kind of sustenance, too. For that, we try to offer the best school catering facilities possible. If you want to be part of it, the following positions are currently available.

## GENERAL ASSISTANTS

**£3.52 per hr approx.**

St Paul's Ridgeway Kitchen

London NW7.  
(Cook Chill End Unit)  
22.5 hrs pw

Parkfield Kitchen

St Davids Place, London NW4.  
(Cook Chill End Unit)  
20 hrs pw

## GENERAL ASSISTANTS

**£3.40 per hr approx.**

Edgware Secondary Kitchen

Green Lane, Edgware, Middlesex.  
(Cash Cafeteria)  
15 hrs pw

Cophall South Kitchen

Page Street, Mill Hill, NW7.  
17.5 hrs pw

St Mary's Secondary School Kitchen

Sunningdale, Greyhound Hill,  
London NW4.  
10 hrs pw

For more information please contact Ann Speed on 01-368 1255 ext 3313.

Application forms available from Address No. 1.

## DEPUTY YOUTH AND COMMUNITY WORKER

Youth and Community Service

**£9,879-£13,374 pa inc.**

This challenging post offers the chance to manage and develop Grahame Park Log Cabin - the Borough's only Adventure Playground. As part of a supportive team structure you will work with other full-time professionals engaged in Youth and Community work in Grahame Park, NW9.

The Log Cabin Adventure Playground offers children between 5 and 12 years, opportunities for structured and unstructured adventurous play, with the aims of personal development and social education. You will have scope to employ part-time staff, plan programmes of activities, as well as contribute to the development plans for the site. You will also have responsibility for security, maintenance and Health and Safety issues.

The post calls for proven experience with children in this kind of environment and appropriate training. Opportunities for further training are available and a commitment to training is expected.

This post is only available to current employees of the London Borough of Barnet. *Ref: ADM/E/270.*

Closing date: 21st December 1989.

Application forms available from Address No. 1.

## where to apply

Recruitment Office, 16-17 Sentinel Square,  
Brent Street, Hendon, London NW4 2EN.  
Tel: 01-202 8282 extn. 2372  
or 01-202 6602 (24 hour answer service)

AN AUTHORITY COMMITTED TO EQUAL OPPORTUNITIES



Bang & Olufsen's latest numbers.  
The quality will make your head turn.



Meet Bang & Olufsen's new MX5000 TV and VX5000 video. The ultimate in advanced technology and stunning style. With a remote controlled motorised swivel platform to give you a great view from any angle. And all the technology you'll ever need - from up to 16 live pictures of what's on, to full glorious stereo sound. We think you'll be as impressed as we are with Bang & Olufsen's outstanding new TV/video system. So we'd like you to have the opportunity of experiencing it for yourself. You may also be interested in the flexible finance we can offer. Just call in and see us - we will always be pleased to see you.

**Brahams**  
**Bang & Olufsen**  **Center**

758 Green Lanes, Winchmore Hill, London N21 ☎ 01 360 5088



# DIAMOND JUBILEE SPORTS SALE

## 60 YEARS OF SERVICE TO FINCHLEY

ONE DAY ONLY SAT 6th JANUARY 1990  
STARTING 8.30 am SHARP

### 60 ITEMS AT 60 PENCE ONLY

(Window contents only)

- |                      |                        |                         |
|----------------------|------------------------|-------------------------|
| 1. SQUASH RACKET     | 21. GOLF UMBRELLA      | 41. FOOTBALL            |
| 2. BADMINTON RACKET  | 22. FOOTBALL SHIRT     | 42. SKI GLOVES          |
| 3. TENNIS RACKET     | 23. GENTS SWIM COSTUME | 43. GOAL KEEPER GLOVES  |
| 4. JUDO SUIT         | 24. TRACK SUIT         | 44. SUPPORTER STRAP     |
| 5. KARATE SUIT       | 25. JNR. SKI POLE SET  | 45. JAZZ SHOES          |
| 6. BOWLS SHOES       | 26. BALLET SHOES       | 46. BALLET TIGHTS       |
| 7. GOLF SHOES        | 27. FOOTBALL PADS      | 47. FOOTBALL SHORTS     |
| 8. CRICKET SHOES     | 28. CUB CAP            | 48. JODPHUR TROUSERS    |
| 9. FOOTBALL BOOTS    | 29. BROWNIE DRESS      | 49. RUGBY SHIRT         |
| 10. RUNNING SPIKES   | 30. RIDING HAT         | 50. JOGGING TROUSERS    |
| 11. RUGBY BOOTS      | 31. TROPHY             | 51. SKI SOCKS           |
| 12. TRAINING SHOES   | 32. WHITE SOCKS        | 52. GOAL KEEPERS SHORTS |
| 13. WALKING BOOTS    | 33. SWIM ARMBANDS      | 53. TEE SHIRT           |
| 14. MOON BOOTS       | 34. SET DARTS          | 54. TABLE TENNIS BAT    |
| 15. TENNIS SHOES     | 35. FOOTBALL SOCKS     | 55. SWIM GOGGLES        |
| 16. ROLLER BOOTS     | 36. BALLET BAG         | 56. SKI POLO SHIRT      |
| 17. BASKETBALL BOOTS | 37. MINI FOOTBALL      | 57. LADIES SWIM COSTUME |
| 18. CRICKET BAT      | 38. CRICKET PADS       | 58. CRICKET SWEATER     |
| 19. HOCKEY STICK     | 39. SHUTTLECOCKS       | 59. LEOTARD             |
| 20. SNOOKER CUE      | 40. SPORTS HOLDALL     | 60. LADIES SHORTS       |

★ One item per customer

**PLUS** FOR ONE WEEK ONLY SAT 6th - 13th JAN 1990

**PAY ONLY 60% OF NORMAL REGULAR PRICE**

FOR ALL OTHER GOODS CURRENTLY IN STOCK (UNLESS SALE PRICE IS CHEAPER)  
DURING DIAMOND JUBILEE WEEK ONLY SAT 6th - 13th JAN 1990



Established  
1930

## WILLIAMS Sports & Leisure Ltd

366 BALLARDS LANE, NORTH FINCHLEY,  
LONDON N12 0EE 01-445 3596 01-446 3797



**INTER  
SPORT**



Today  
1990