

# BARNET BOROUGH NEWS



MEMBER OF VERIFIED FREE DISTRIBUTION TO THE HALLMARK OF TRUSTED DISTRIBUTION

Barnet Council's monthly magazine for residents No. 39 FEBRUARY 1989



In this issue:  
New syllabus  
for Religious  
Education

# shelfstore.

FURNITURE

## THE SYSTEMA DESKING SYSTEM



**OFFICE FURNITURE YOU'LL  
BE PROUD TO HAVE IN  
YOUR HOME!**

- *Elegant Danish design*
- *High Quality Lacquered Finish*
- *Available in black & white*
- *Optional Monitor Shelf*
- *Wall mounted and Free standing shelving*
- *various combinations*

**SYSTEMA**



**RING FOR PRICE LIST AND CATALOGUE**

**01-794 0313**

**FROGNAL PARADE 160 FINCHLEY ROAD LONDON NW3**



**NEW**  
**STOCKS JUST ARRIVED**

*Get in Quick*  
**AND SAVE 40%**  
**ON THIS LUXURY NEW RANGE**  
Oakley QSA superb traditional wood finish kitchens. Self assembly price.

Schreiber  
*Get in Quick*  
PRICES AS LOW AS THIS... WON'T LAST!  
**SALE**  
QUALITY FITTED  
KITCHENS & BEDROOMS

MORE TIME · LESS TRAFFIC  
EASIER PARKING  
LESS RUSH · NO CRUSH  
WHEN YOU SHOP AT  
SCHREIBER ON SUNDAY

**LIMITED QUANTITIES**



*Get in Quick*  
**HALF PRICE**  
New Yorker QSA kitchen. Schreiber quality. Self Assembly price.

*Get in Quick*  
**£100 DEPOSIT**  
PAY NOTHING TILL MAY  
Typical  
**APR 26-8%**  
Variable  
**FREE**  
DESIGN AND PLANNING SERVICE  
**FREE**  
DELIVERY SERVICE

**LIMITED QUANTITIES**



*Get in Quick*  
NEW RANGE  
**SAVE 20%**  
Country Pine. Brings a warm, country feeling to a kitchen for today.

**LIMITED QUANTITIES**



*Get in Quick*  
**SAVE 20%**  
Classic bedroom. Subtle and elegant in cool white or warm almond.

This is it! the famous Schreiber January Sale. Now you can have the superb quality of Schreiber fitted furniture in your kitchen or bedroom and save as much as 50% on the normal price. What you see here are just a few examples of the superb bargains you can pick up. Magnificent solid woods or hard wearing melamines, fully fitted or self-assembly. And every kitchen and bedroom in the Schreiber range is reduced in this sale. The choice at the showroom is endless. A living

world of kitchens and bedrooms for you to browse through. Staffed by friendly and informed consultants to help you without any hassle or the pressure of 'direct' sales organisations - so why not 'see before you buy'. Schreiber kitchens and bedrooms are manufactured by craftsmen at one of Britain's largest furniture plants, equipped with the latest in modern technology - and with a name that's been around for over 40 years, you'll know they are built to last.

**WHY LOOK AT A BROCHURE WHEN YOU CAN SEE THE REAL THING** **Schreiber**

**OPEN 7 DAYS A WEEK**  
MONDAY - SATURDAY  
9.30am-5.30pm  
**OPEN ALL DAY SUNDAY**  
11am-5pm

**VISIT US TODAY**  
**88 CHASE SIDE**  
**SOUTHGATE** Telephone: 01-882 9101  
**101 BAKER STREET**  
**LONDON W1** Telephone: 01-486 0664



**FITTED FURNITURE LTD.**  
1 Hatters Lane, The Croxley Centre,  
Watford, Herts., WD1 8YJ.  
Tel: (0923) 34436  
Builders and Architects enquiries welcome

Showrooms at:  
Baker Street, W1, (01) 486 0664  
Basingstoke, (0256) 479386  
Farnborough, (0252) 518169  
Southgate, (01) 882 9101  
Teddington, (01) 943 4184  
Uxbridge, (0895) 37059  
Watford, (0923) 247066

\*Savings are based on prices which will be charged after the January Sale and apply to kitchen and bedroom cabinets only i.e. Prices as illustrated during the sale: Country Pine Kitchen £4938.00. After Sale Price £3671. Classic Bedroom £2800. After Sale Price £3500. Savings on New Yorker QSA and Oakley QSA kitchens are based on Self Assembly Price v Fully Fitted Price. Schreiber and your local centre are licensed credit brokers. Example: Cash Price £2500 £100 deposit 60 monthly payments of £60.31 nett (£69.05 gross). Totalling £3718.60 nett (£4245 gross). Nett figures are quoted nett of tax relief at 27% for qualifying borrowers. Ask for written details. Limited period offers.

**LONDON BOROUGH  
OF BARNET**  
The Town Hall  
Hendon NW4 4BG  
For information phone:  
202 8282

## CONTENTS

	Page
Helplines .....	6
Religion in schools .....	7
News and pictures .....	8
Artscene .....	10
Half-term fun .....	12
Allotments .....	15
Royal visit .....	16
Education .....	17 to 19
Buying your Council home .....	20
New homes guide .....	22 & 23
Leisure years .....	26 & 27
Barnet Diary .....	32 to 38

Barnet Borough News is published by the London Borough of Barnet and Marketing Media Management. It carries news of Council activities and community organisations.

The cost of production is offset by advertising.

VFD: Barnet Borough News certified net distribution from July to December 1986 is 114,871. The print run is 120,000 and it is distributed to homes and businesses in the borough, as well as libraries and Council offices.

Editorial features are copyright.

### EDITORIAL ADDRESS

The Town Hall,  
The Burroughs,  
Hendon NW4 4BG  
Tel. 01-202 8282,  
exts. 2071, 2072 & 2073  
Editors: Bill White,  
Rosemary Jude and Joy  
Myers

### ADVERTISING ADDRESS

Marketing Media  
Management  
4 Bellevue Mews  
Bellevue Road  
Friern Barnet  
N11 3EF  
Tel: 01-361 4223  
Advertising Manager  
Lesley Mitchell

## FRONT COVER

Tahera Alhaddad, from Bell Lane School, Hendon, shows the Qur'an, the holy book of her religion, Islam, to other members of her class. A feature on Barnet's new syllabus for religious education appears on page 10.

# Mayor's Appeal touches £40,000

THE Mayor of Barnet's Appeal in aid of the North London Hospice has almost reached the £40,000 mark, an excellent total at this stage of the Mayoral year, announced Mr George Hopkins, treasurer, at a meeting of the Appeal Committee in the Town Hall, Hendon.

Among the bigger amounts received recently was £2,336 from the Metropolitan Police Training School; £1,886, a record, from the Brent Cross Shopping Centre at the annual band concert collection before Christmas; and £1,000 from Popat Shah's grand Christmas draw.

There are several major events to come. The Marafun from Cophall Stadium being organised by the Barnet Press on March 20, includes the Barnet junior heats to qualify for the junior section of the London marathon. This is the only route for Barnet youngsters to enter this big London event. A sponsored swim is to be held at Cophall Pools on March 26.

Plans are well in hand for the Charity Ball at the Intercontinental, Hotel, London, on March 25 — the main event of the year. Gifts are required urgently for the tombola, raffle and auction, always money spinners. Gifts will be welcome from commerce, industry and individuals to ensure success again this year. The Information Centre in Ravensfield House, The Burroughs, Hendon, will be pleased to hear from you or receive your gifts. Details of ticket prices and where to apply will be publicised in the near future.

On Saturday, February 6, a Supper Quiz evening is to be held at the Sports Club, Inglis Barracks, Mill Hill, at 7pm. Tickets £7.50 including supper. Tel 445 9426.



Popat Shah, of Pharmco Chemists, Deansbrook Road, Edgware, and his family, have now raised more than £3,500 for Mayor's appeal. Mr Shah has held a number of fund-raising events the latest of which, a grand Christmas draw, realised £1,000. Our picture shows his wife, Shanta, accompanied by their two daughters, Priya (aged 11) and Deepa (7), presenting the cheque to the Mayor, Cllr Malcolm Lester, in the Mayor's Parlour on Monday, January 4. Earlier during the Mayor's year of office, Mr Shah raised £2,501, the result of a sponsored walk he organised, and an 'Outrageous Car Rally' which realised a further £165.

Calling all snooker clubs in and just outside the borough. Follow the example of Whetstone Snooker club and get your tournaments under way as soon as possible so that a grand finals night can be arranged. Contact Chief Insp. Gareth Wakeford at West Hendon Police Station.

The Mayor, Cllr Malcolm Lester, will be pleased to receive donations for his appeal. Cheques and postal orders can be sent to him at the Mayor's Parlour, Town Hall, Hendon NW4 4BG. They should be made out to The Mayor's Appeal Fund.

## Consultation exercises under way

PUBLIC consultation will play an important part in the preparation of Strategic Planning Guidance for London and the first of three consultation exercises this year is already under way.

The London Planning Advisory Committee (LPAC) has just published a document 'Strategic Planning Advice for London — Policy Issues and Choices,' and is seeking comments from everyone who is interested in the future of London.

LPAC is a joint committee consisting of representatives from the planning committees of all London Borough councils. It has the task of advising the Government — through the Secretary of State for the Environment — on planning

issues in London so that he can issue strategic guidance for the Capital early in 1989.

This strategic guidance will provide the context with which all London Boroughs, including Barnet, will be required to prepare Unitary Development Plans to guide development in their areas. This will have a considerable influence on the way in which the character of the borough will change over the next decade. These changes will affect the environment and the quality of life for everyone living or working in the borough.

The contents of the document together with any comments received, will be considered by:

## MUSIC FESTIVAL ENTRIES

THE 1988 North London Music Festival begins on April 21 but entries and fees must be submitted by February 12.

Last year more than 1,300 people of all ages entered competitive classes in instrumental playing, piano-forte, singing, speech and drama.

The choral, solo singing, piano-forte and instrumental categories

will be held at the United Reformed Church, Tetherdown, Muswell Hill. Speech and drama will be at St Alban the Martyr Church Hall, North End Road, Golders Green.

A syllabus with details of the festival from the secretary, Mrs M. D. MacGillivray, 18 Chandos Avenue N20 9DX.

- Barnet's Town Planning and Research Committee on February 24.
- The London Planning Advisory Committee on March 29.

Copies of the LPAC document are available, for reference only, at Barnet House, 1255 High Road, Whetstone N20 0EJ, and at libraries throughout the borough.

The main topics covered are Housing; Open Space; Shopping; Economy and Employment; Physical Structure; Physical Environment; and Traffic and Transportation; High Buildings; and Tourism.

Anyone wishing to comment on the 'issues and choices' facing borough councils, LPAC and the Government on these topics and planning for the future development of London, should send them to Controller of Development Services, Barnet House, address above.

Copies of all correspondence received before March 29 will be forwarded to LPAC for consideration and correspondence received by February 19 will be reported to the February meeting of Barnet's Town Planning and Research Committee.

# GRANTS COMMITTEE SEEK HARMONY

A GRANT of £9,190 plus urban aid has been agreed, in principle, to Barnet Community Relations Council. It will be paid in stages and is subject to further talks between the CRC and Barnet Council.

'I have great respect for the work which the CRC are doing for their communities but we do need to have further discussions. Community relations should be about creating harmony,' Cllr Don Goodman, committee chairman, said.

Barnet will contribute £1,240,515 to the London-wide Boroughs Grants Scheme in 1988/89 — an increase of £61,265, or 5.2 per cent on the previous year.

Grants Committee agreed at their meeting on Wednesday to recommend the amount to the Council but Chairman, Cllr Don Goodman said:

## Fair shares

'We have agreed to the contribution but we feel very strongly that organisations, who may have a base within our Borough but who are serving much wider areas and, therefore, should be getting support from the London-wide organisation, are not getting their fair

share of the money available.'

'We are determined to put this point of view to the London-wide organisation in the strongest possible terms.'

The Committee provisionally earmarked a total of £205,219 to help local community organisations in 1988/89. The awards are pending the approval of the Committee's budget in March.

A total of £167,590 was agreed for three major organisations in the Borough, at the December meeting.

● Barnet Citizens Advice Bureau: £120,000.

● Barnet Volunteer Bureau: £27,830.

● Friern Barnet Council for Voluntary Services: £19,760.

Other proposed grants were:

## Social Services

British Tinnitus Association (NW London Branch, £500; Middlesex Association for the Blind, £2,016; Barnet Borough Talking Newspaper, £2,325; Grahame Park Mothers and Toddlers, £970; Childs Hill Pensioners' Group, £260; Grahame Park Coffee Morning club, £225; Mill Hill Churches Neighbourhood Care Scheme, £5,745.

Over 65s Club, £50; Give-A-Lift Project, £1,270; Barnet and District Cancerlink, £1,580; See Saw Club, £500; Barnet Blind Bowls Club, £280; Barnet Victim Support Group, £3,405; Barnet Gingerbread Advice Centre, £4,230;

Colindale Community Care, £630; Dollis Valley Mother and Toddler Group, £940 and Grahame Park Project, £2,260.

## Youth and Community

Barnet Jewish Youth Club, £425; Hendon Sea Cadets/Juniors/Sea Pirates/Girls Nautical Training Corps, £200; 5th Hendon Boys Brigade, £215; Lyonsdown Football Club, £370; Finchley and Friern Barnet Division Girl Guides Association, £250; 4th Southgate Brownies, £155; Catalyst (Hampstead Garden Suburb Youth Club, £810.

St Philips Youth Club, £470; 6th Finchley Scout Group, £350; 3rd Friern Barnet Scout Group, £410; Ichthus Youth Club, £250; Burnt Oak Slotcar Club, £170; Hollickwood Playscheme Group, £450; West Hendon Youth Association £1,290.

6th Hendon Girls Brigade, £146; St Mary's Holiday Playscheme, £570; 10th Finchley (Scottish) Scout Group, £850; 4th Friern Barnet Guide Company/Brownie Pack, £305; Northern Heights Scout and Guide Centre £1,560; Stonegrove Estate Playscheme, £250; 3rd Barnet Company Boys Brigade, £120; 393 (Finchley) Squadron Air Training Corps, £340 and East Finchley Holiday Club, £250.

## Transitional funding

Transitional funding of £8,000 was agreed for the Welsh Harp Conservation Group of which half will come from the Borough and the remainder from the Department of the Environment.

The overall position regarding grants this year could be critical, Cllr Goodman told members at their January meeting. 'We are already up by £200,000 on the total we received for the whole of last year. We are going to have to be very careful,' he added.

Grants in principle were made as follows: Valley Playgroup, £1,970; Friern Barnet Parish Playgroup, £430; Canada Villa Judo Club, £360; St Andrew's Church Playgroup, £280.

Alyth Youth and Community Centre, £3,000; Langdale Playgroup, £900; St Mary's Playgroup, £300; St Matthias Playgroup, £300; Barnet and District Athletic Club, £925; Finchley Methodist Playgroup, £395.

Old Barn Youth and Community Centre, £38,070 plus transitional funding of £8,392, Barnet being responsible for 50 per cent of the latter. Sakhi Milap Barnet Branch (Oshwal Women), £4,400; High Barnet Toy Library £425.

The friends of Chaville Society, £850 guarantee against loss. The Friends of Ramat Gan, £270; Friends of Templehof, £200.

## Request

Social Services Committee asked the Grants Committee to increase the allocation from the Edward Harvist Charity Trust for their Amenities Fund, which helps individual residents in particularly needy circumstances.

It was agreed to allow a fixed sum of £10,000 for one year, with allocation of any amount of £500 or above from that fixed sum, to come before Grants Committee.

A FULL SELECTION OF  
WARDROBE INTERIORS  
AT NO EXTRA COST

FITTED  
BEDROOMS  
FOR YOU

NEW

EXCITING FINISHES IN WHITE ASH ● BLACK ASH ● GREY ● LEATHERTEX ● MAHOGANY ● MIRRORS HINGED AND SLIDING. ALSO TIMELESS WHITE, CREAM, REGENCY ETC.

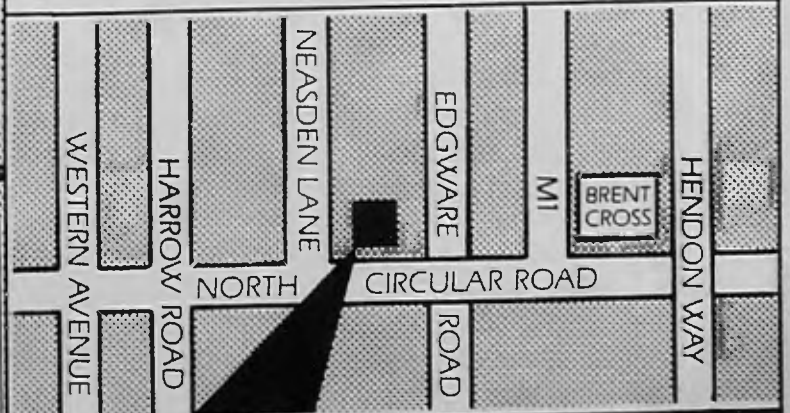
ALWAYS A SALE PRICE

● SUPERB QUALITY AND A DIRECT PRICE FROM OUR FACTORY AND SHOWROOM.

● FULL SELECTION OF DE-LUXE INTERIORS WITH SHELF SYSTEMS, DOUBLE HANGING, SHOE RAILS ETC. AT NO EXTRA COST.

● WE PLAN AND EXPERTLY FIT FREE.

● IDEAL HOME magazine said... "STATON FITTED FURNITURE IS QUITE A FIND"... "HIGHER QUALITY"... "LOWER PRICES"



**STATON**

FACTORY AND SHOWROOM  
719 NORTH CIRCULAR ROAD NW2  
TELEPHONE 01-450 6581  
OPEN EVERYDAY (SUN 10-4)

## Helplines

# Can't we stop this threat of closure

SEVENTEEN mentally handicapped children who meet after school on Thursdays may lose their club.

Every Thursday the ambulance bus arrives at Mapledown and Northway Schools to pick up members and takes them to Finchley Catholic High School where club leader Richard Padfield welcomes them to a fun-style session.

### Programme

There's music, soft-ball games, painting and parties. Some of the children come in wheelchairs, others are more active, so the programme is tailored to them as individuals.

For the children it's a chance to be themselves, make friends and perhaps stretch their horizons a little.

For their parents it's a chance to get the shopping done or take a break. For this club is the only

After School Club which Mencap run locally.

At about 6pm the club closes and the ambulances take the children home. Some mothers have until just before 7pm to catch up with a little extra time of their own, because having a handicapped child is a great tie for their parents.

But the club may have to close because they cannot find volunteer drivers to collect the children or take them home.

You see it takes three voluntary drivers every Thursday. And each driver is accompanied by an escort. One driver collects the children from the schools. Two drivers are needed to take them home, each covering a section of the borough.

Could any reader volunteer to help this urgent need.

Drivers must be between 25 and 70 years of age and have a valid licence. They are needed on one or two Thursdays a month either from 2.30 to 4pm or from 5.30 to 7pm. They drive a Council ambulance

minibus. Tuition is given, you can steer the bus round in the safety of the yard until you feel confident.

### Other clubs also face closure

The Mencap club is not alone in facing closure. Drivers are urgently needed for a blind club in Edgware; the Hordens Helpers club for arthritics in Barnet; three clubs for housebound pensioners on Mondays, one in North Finchley, one in Finchley, and one in Golders Green. And the Stroke Club in North Finchley which meets on Wednesdays may not be able to continue unless a driver can be found.

Barnet Volunteer Bureau are leading the search for volunteer drivers. Joy Wowrek, the organiser and secretary, says: 'We are desperately short of volunteer drivers to drive our small, 10-seater ambulances which are used in the borough seven days a week every week of the year.'

'If we cannot find them, many of the clubs, which make all the difference in the quality of life for local people, may have to close.'

'Drivers who do volunteer will find they get so much out of this service. They can stay with the club members if they wish and join in. Or they can go off once their delivery is complete. If a driver can only offer to cover one slot a month, that will be a tremendous help.'

### Contact

'Do contact us if you can help and on behalf of all the housebound and elderly handicapped, and the children who want to go to "Their Club" — Thank You.'

To help or find out more about what is needed just contact Joy or her colleagues at Hertford Lodge, East End Road, Finchley. Tel: 349 2930.

## BE A GOOD NEIGHBOUR

MUSWELL Hill area's good neighbour scheme 'Neighbours' has been officially launched at St Peter le Poer Church Hall, Albion Avenue, N10.

The aim is to provide a network of neighbourhood support in the Muswell Hill area of the borough where 'Neighbours' help other members of the community. This includes help with shopping, small domestic repairs, visits to people, and by offering transport to doctors' surgeries, clinics and elsewhere.

Anyone wanting help should contact the co-ordinator Mrs Bobby Thornton, phone 883 3625 (day-time only). She will then try to match up a request for help with an available volunteer.

Anyone who has time to spare and would like to volunteer to help the scheme should also contact Mrs Thornton.

Further information from Bobby Thornton, or Ted Walsh, North Team Social Services. Tel. 449 5511.

## Lip reading

CAN you lip read? Lip reading is a useful skill, especially for those whose hearing is not as good as it was.

There has been nowhere to learn lip reading in the north west of the borough for some time, but now Hendon College has opened a class at their Adult Education Centre at 43 Flower Lane, Mill Hill.

The class, taught by Mrs Rosalind Josephs, is on Fridays from 1 to 3pm. You pay once a term at the specially reduced rate of 20p an hour.

If you would like to join go along on a Friday afternoon or telephone Anne Heagney on 200 8300, ext. 239.

## Talking newspaper — 10 years old

THE Barnet Borough Talking Newspaper (BBTN), have just completed their first 10 years of service to blind and partially sighted people in the area.

They now have just over 400 blind friends on their books but believe that, with people's help, they may reach an even wider audience. They have a weekly service throughout the year of an hour-long cassette of local news and information culled from the pages of the weekly local newspapers and Barnet Borough News, provided free by editors.

### Volunteers

All the work is carried out free by volunteers — nobody is paid — from the administrative and editorial teams, to the leaders and production specialists. Their contacts with their blind friends and their

committee of volunteer officers, from the chairman downwards, give their services free.

Every Thursday throughout the year BBTN goes out to those who cannot read, giving them a contact with each other with up to date local news and information. It is encouraging that schools, Rotary and Round Table clubs. Mothers' Unions, Church organisations and youth clubs are joining BBTN in providing this service free to those who need it.

### You can help

If any schools, clubs or other organisation would like to hear first hand how the talking newspaper is produced and how the sophisticated technical equipment is used to get the cassettes out to listeners, then Charles Tavner, their public relations officer, of 62 Highview

Avenue, Edgware, Middlesex HA8 9UA, tel. 958 8826, will be pleased to give a talk.

Anyone wishing to assist BBTN's work or administration on Thursday mornings, the editorial team in the afternoons, as reader or even as a contact in their own area where blind friends have a problem with the play-back machine or cassette, please contact Mr Tavner now.

BBTN's equipment is expensive and wears out with such constant use, and donations to their chairman, Alan Stone of 10 Tudor Road, New Barnet, Herts EN5 5NL will be gratefully acknowledged. And please let Alan or Charles know of any blind or partially sighted people who you believe would appreciate the talking newspaper's weekly service.

## Rotary's big fight to beat polio

POLIO Plus is another charity but is slightly different and worthy of just a moment's consideration, says Bill Simmons, president of the Rotary Club of Finchley.

Polio is one of the scourges of mankind and may of us remember the epidemics in the fifties when infantile paralysis affected so many young people in this country. Nowadays, with the help of a drop of vaccine on a lump of sugar, our children are safe.

Not so in the rest of the world. Every day 75 children are crippled by polio. It will be the same tomorrow and every day afterwards until it is stopped by that little lump of sugar.

Rotary International, of which the Rotary club of Finchley is part, are making a promise to wipe out this disease by 1990 by providing the vaccine to enable the World Health Organisation and the UN Children's Fund to provide worldwide immunisation for all children.

### 42 countries

That amounts to 240,735,000 children in 42 countries at a cost of £80 million for the vaccine along — a daunting target.

Every rotary club, including Finchley, is pledged to guarantee this amount and they need our help.

● Firstly by a straightforward donation.

● Secondly — more effective — a covenanted donation.

● Thirdly, by giving an item of value to be auctioned at a Grand Public Auction on April 23, 1988. This date is some time away but items are wanted now to ensure that the auction is a great success.

If you want to help the children of the world then contact Bill Simmons, 166 Nether Street, Finchley N3 1PF, tel. 346 2245, or Eric Burton, 1 Green Lawns, Moss Hall Grove, Finchley N12, Tel. 445 5114.

Please don't delay. Even now money is being spent in advance of the collection as the children can't wait.

# A new look for Religious Education

## TO TEACH — NOT PREACH

BARNET is to introduce a new religious education syllabus into local authority schools which will take into account the multi-cultural background of the pupils and the breadth of religious belief in the borough.

For two years the Conference for the Revision of the Agreed Syllabus in Religious Education has been working through committees on which representatives of major faiths and denominations within the borough, teachers organisations and the local education authority served.

### 'Living Faiths'

The syllabus, entitled Living Faiths, was submitted to the Schools and Special Services Education Sub-Committee at their meeting on January 5.

The committee were asked to endorse the report, to make financial provision for introducing the syllabus, and to set up a Standing Advisory Council for Religious Education.

The introduction describes the syllabus as a lively and dynamic approach to religious education. The focus is on religion as a vital, contemporary aspect of life. Pupils encounter religious belief and practice in their daily lives and the syllabus is concerned with explor-

### CULTURAL SPREAD

Just under a quarter of Barnet's 40,000 school children speak English as their second language. The largest single group speak Gujarati and are mainly of the Hindu religion. But the second largest number come from Greek parentage, following the Greek Orthodox Church.

The third largest group are the Japanese and the fourth from Pakistan where Islam is the main religion.

Also Barnet has one of the largest Jewish populations in the country.

This shows the wide spread of cultural backgrounds from which the pupils come.

ing ways in which they can make sense of these experiences.

It recognises the variety and diversity of religious belief and the plurality of faiths in society today.

Such an approach to religious education will help pupils to understand the place and importance of religion in the lives of believers and its influence in both a local and global setting.

Traditionally there has been a Christian emphasis in religious education. The previous Barnet Agreed Syllabus of 1971 reflected this approach. Recognition of the

multi-faith nature of society has added a richness and diversity to our culture and in recent years classroom practice has adopted a broader perspective, which has led to the new agreed syllabus.

Religious education aims to enable pupils to understand the nature of religion and fundamental questions of human existence.

To achieve this the syllabus has five objectives:

- To develop an understanding of the beliefs, practices and insights of religious faiths.
- To help children appreciate the

place of religion in the human life and the important ways it affects the actions and attitudes of people.

- To encourage awareness of the cultural, religious and spiritual heritage of all members of the community.

- To develop a respect for the rights of others to hold beliefs different to their own.

- To safeguard the confidence of a child in his or her own faith.

The syllabus plans for continuity and progression in religious education for pupils aged from five to 16 years. It has a vital part to play in achieving cultural harmony and avoiding bias and stereotyping.

Approaches are set out for both primary and secondary education and for GCSE examination candidates.

### Representatives

The Barnet Religious Education Agreed Syllabus Conference was chaired by Mr T. Bainbridge, head-teacher of Moss Hall Primary School, and the membership included representatives from the Church of England Dioceses of St. Albans and London; the Jewish, Muslim, and Hindu faiths, the Roman Catholic Diocese of Westminster; the Free Churches and the Greek Orthodox Church. A Buddhist was co-opted onto the drafting sub-committee.

**FREE FITTING IS OFFERED ON MOST CARPETS ON DISPLAY**

# QUALITY WITH ECONOMY



**WEST END Carpets**

**928 HIGH ROAD  
N FINCHLEY  
LONDON N12  
446 5331/2  
446 5333/4**

**STOCKED CARPETS  
FITTED WITHIN  
48 HOURS**

**IF YOU'RE LOOKING FOR QUALITY WITH ECONOMY IN YOUR CARPET REQUIREMENTS  
LOOK NO FURTHER!  
AT OUR NEW SHOWROOM YOU'LL FIND AN AMAZING RANGE OF  
CARPETS INCLUDING SUPER WASHED CHINESE RUGS AT THE  
MOST COMPETITIVE PRICES.  
WE HAVE OVER 5000 CARPETS TO CHOOSE FROM  
TALK TO CARPET EXPERTS & ENJOY OUR  
FRIENDLY SERVICE.  
WE'RE OPEN MONDAY TO FRIDAY 9-6  
SATURDAY 9-5**

# Concrete start to Spires development

THE Mayor, Cllr Malcolm Lester, made a concrete start to construction work on the Spires Development, Chipping Barnet, when he unveiled a stone plaque on the Stapylton Road site.

He was welcomed by Mr Paul Butcher, managing director of Lovell Developments and Mr Ben Du Brow, estates manager of the Norwich Union Insurance Group.

Mr. Butcher paid tribute to the work of Council officers — the unsung heroes of planning and development — and to local Councillors who had piloted the scheme to the present stage and who had put in many unpaid hours in discussion and research to ensure that a scheme which was right for Chipping Barnet was selected.

The Spires Shopping Centre is being developed by Lovell in partnership with Norwich Union. When completed early in 1989 the

project will include a 26,000 sq ft supermarket for Waitrose; 25 shops and a food court at the first floor of a 'galleria' fronting the high street.

A multi-storey car park with direct access to the shopping mall, together with ground level parking will provide 510 parking spaces.

The character of the old Barnet town centre will be reflected by the quality of the brickwork and slate roofs. Among the special features of the development are the retention of the spires of the former Methodist Church on the High Street and the open garden courtyards and generous landscaping.

□ □ □

Mr Ben Du Brow (left) and Mr Paul Butcher (right) help the Mayor and Mayoress to unveil the plaque for the start of work of the Spires Shopping Centre.



## DABB GETS KEYS FOR NEW AMBULANCE



Pictured (from left) DABB driver, Ronald Napier; John Parry of Hammersons; Mayoress, Mrs Adelaide Lester; Mayor, Cllr Malcolm Lester; Lady Marre, chairman of DABB and David Jenkins, chairman of the Brent Cross Association.

THE keys of a new ambulance coach, donated by the traders and owners of the Brent Cross Shopping Centre to the people of the Borough were handed over at a ceremony at the centre.

Barnet's Mayor, Cllr Malcolm Lester, thanked John Parry, joint managing director of the Hammerson Group who own the centre and David Jenkins, chairman of the Brent Cross Traders Association, for the fund-raising efforts which resulted in the new vehicle.

**£16,000**

The £16,000 was raised at the celebrations for the 10th birthday of the centre in 1986.

Presenting the keys to Lady Marre, chairman of the Disablement Association in the Borough of Bar-

net, Mr Parry said the ambulance coach was a successor to one which was presented to DABB when the Centre opened in 1986.

Lady Marre said the new vehicle would be a tremendous asset but appealed on behalf of DABB for volunteers to boost a pool of drivers.

### Drivers wanted

The driver is Ronald Napier who has been with DABB for five years, Lady Marre said: 'He is a splendid fellow but we would like more of him. Drivers, like the rest of us, tend to get older and, when they get to the age of 70 we run into problems with insurance.'

'If anyone has just retired or is coming up to retirement, please think about helping us out with some driving.'

Any volunteers can contact DABB on 446 6935.

## Postman Pat opens High Barnet Toy Library

CHURCH House, Wood Street, Barnet, was packed with children and their mums when 'Postman Pat' arrived to open the new High Barnet Toy Library which can now be used every Monday from 2 to 3.30pm during term time. Just come along.

The toys, one large and one small can be borrowed for each child aged five and under, for a fortnight. Because of limited funds and storage space the membership is limited to that age group but a handicapped child of any age may use the library.

There is an annual membership fee of £1.50 and a small loan charge of 20p for a large toy and 10p for a small one. For people who cannot afford these charges special

arrangements can be made. Speak to one of the helpers who are all volunteers.

### Funding

The library, funded by a grant from Barnet Council, money from Capital Radio's Help a London Child and the Hyde Institute, is starting with a large percentage of second-hand toys but it is hoped to buy new ones as soon as funds permit.

Toys do get rough treatment and some will get broken. Please bring back a toy if it is broken. There are no fines.

Donations and gifts of toys will be welcome. If you are able to help please contact Jenny Arnold, High Barnet Toy Library, 89, Byng Road, Barnet, Herts EN5 4NP, Tel. 449 0211.



Postman Pat with some of the young children and their mums.

Beautiful Beds at  
in East Barnet

# BEDWORLD



SALE



## BUNK BEDS

Over 20 designs (all safety standard). Pine, Antique or Mahogany stain. From only **£149** (complete with mattress)

## SALE NOW ON

- ★ Same Day Delivery
- ★ Unbelievable sale prices
- ★ Free Disposal of your own bed
- ★ Expert Advice

We stock: *Airsprung, Hypnos, Vi-sprung, Sealy, Silentnight, Rest Assured, Myers, Sleepezee, Reclun, Dorlux*

## POSTUREPEDIC

Designed with help from orthopaedic surgeons to highest standards of comfort and support



WAS £329  
**SALE PRICE ONLY £259**



## LARGE RANGE OF BRASS BEDS

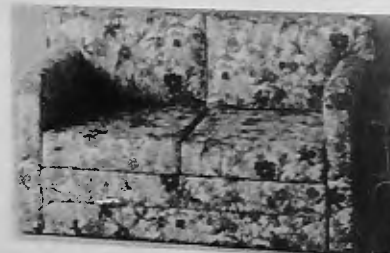
FROM **£299**



## NOVA BED SETTEE

(Choice of covers)

WAS £129  
**SALE PRICE £99**



26-28 East Barnet Road, New Barnet.  
Tel: 01-441 7875 (next Sainsburys)



95 Fore Street, Edmonton N18  
Tel: 01-807 3331



470 Kingsland Road, Hackney, E8  
Tel: 01-254 2534

## NELSON JAMES FURNITURE

Purveyors of Fine Quality Home Furnishings



Until the end of February — our complete interior design service is available to all enquiries

## THE FURNITURE

For Bedrooms, bathrooms, lounges, around corners and into alcoves. Made to measure by craftsmen, fitted by experts.

## THE QUALITY

Simply superb — only the best materials (no chipboard, no laminate), dovetailed joints, hand painted in the latest finishes, and half the price of our competitors.

## THE SERVICE

A quick efficient, no obligation design service from professionals. No high pressure salesmen. We'll meet your deadlines and budget.

*All this is 10 seconds away on  
01-328 8932  
Ask David Kenderick for further details.*

**LINBURN HOUSE, 342 KILBURN HIGH ROAD NW6**

## Artscene

# Curtain up at the Old Bull theatre

IT'S curtain up at the new 180 seat main theatre in the Old Bull Arts Centre, Barnet, on February 28 for a Gala concert featuring a star-studded cast.

Getting the evening off with a swing will be Arts Centre president and jazz master Humphrey Lyttelton, with his band.

A host of guest celebrities appearing with him include characters from television's Spitting Image programme.

Completion of the theatre has been made possible by substantial grants from the Borough, and an enormous voluntary fund-raising campaign by individuals and groups.

Tickets, priced at £10 each, will be in demand for the official opening concert so the advice is — book early.

### Highlight

The concert is the highlight of a three-month Gala Season at the theatre. In addition to major drama productions, including the Cornwall Theatre Company's adaptation of *The Three Musketeers* on February 12 and 13, there is a variety of music and dance.

On February 6 leading British mime artist David Glass presents a selection of his work. The Union Dance Company appears on February 27 with a production of *Just Up Their Street*.

Musical offerings include the

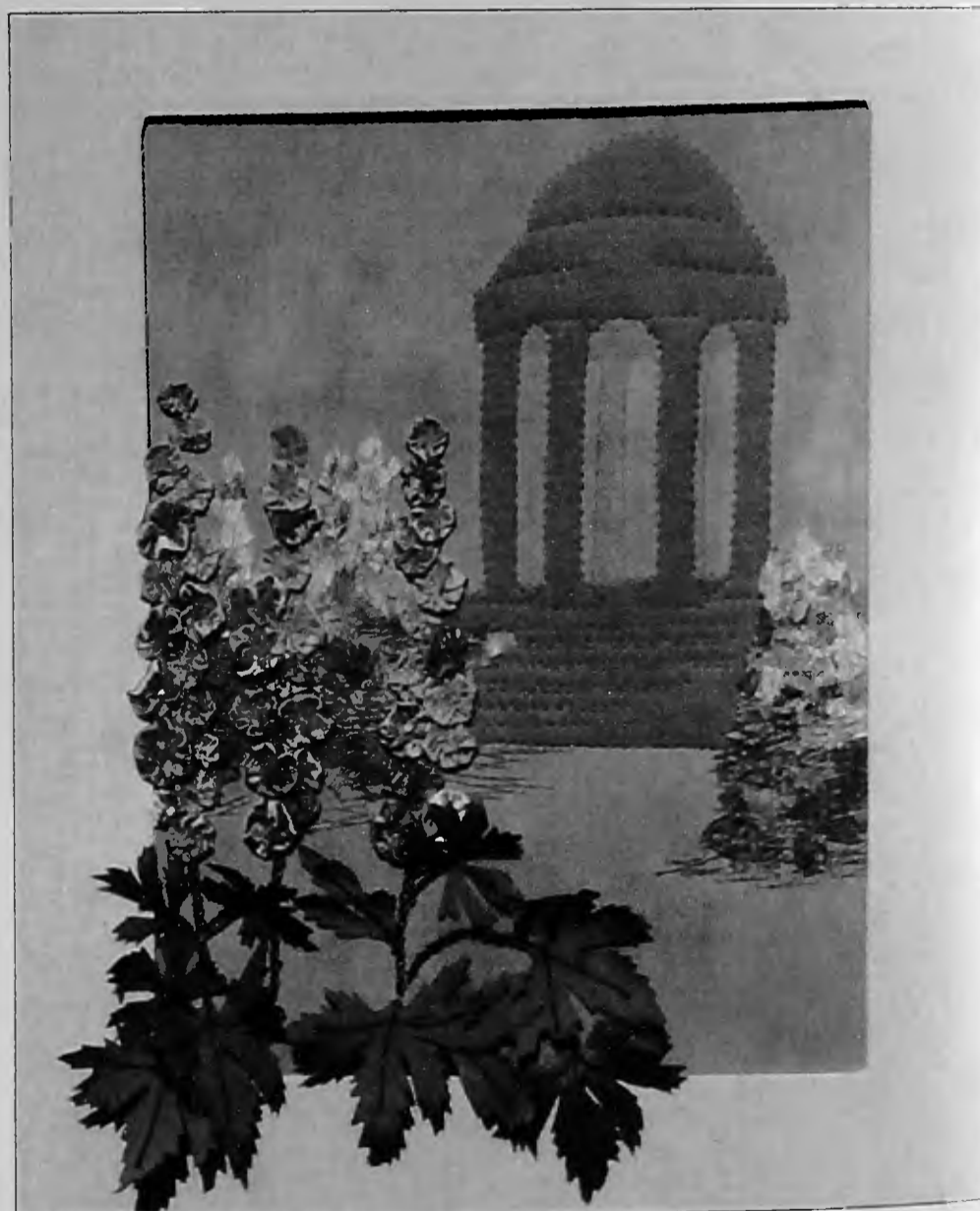


Arts Centre president, Humphrey Lyttelton and his band get on the road to the Old Bull's Gala Concert.

Janimar Trio on February 7 with a performance of familiar classics, the Concertante Ensemble play Schubert and Brahms on March 6 and folk star, Jake Thackray appears on March 11.

Tickets and details of all the events during the Gala Season can be obtained from the Old Bull Arts Centre, 68 High Street, Barnet, EN5 5SJ. The Box Office can be phoned on 449 0048.

## WORKS OF ART



One of the exhibits will be Pauline Brown's Dephinium Temple.

## Artist inspired by love of music and nature

CONCENTRATION camp survivor Vera Karloy, who was featured with her paintings in a television documentary last year, exhibits her work at the Sternberg Centre, East End Road, Finchley from February 8 until March 1.

The centrepiece of the exhibition is a painting entitled *After Auschwitz* which portrays in one corner her camp number and yellow star while, in the other corner, the emergence of vivid colour and life.

Born near Budapest, Vera spent two years of her adolescent life in concentration camps, ending up in Auschwitz.

After coming to Britain in 1947 she earned a living teaching music but also began to study art. She now holds certificates in painting, experimental abstract painting and, last year, gained a Diploma in Fine Art.

The Holocaust is rarely the subject of her art. Her paintings are mostly inspired by her love of music and nature.

There will be a private view and official opening of the exhibition on February 7 by Rabbi Hugo Gryn, a fellow survivor of Auschwitz.

The opening hours for the exhibition will be from Mondays to Thursdays between 10am and 5pm. Entrance free.

### Book Launch

The Manor House Society presents author Kathryn Salomon at a launch of her new book entitled *Jewish Ceremonial Embroidery* on February 25 at the Sternberg Centre.

After a reception at 7.30pm during which many of the illustrations from the book will be on display, there will be a lecture by the author, beginning at 8.15pm.

The book, published by B. T. Batsford at the price of £14.95, contains many photographs by Muswell Hill resident, Harold Rose.

In her book Kathryn looks at the various demands of sacred tradition, traces the origins and customs of embroidered work and examines particular items including the Chuppah, in detail.

Entrance to the book launch and lecture is free.

For further details of events at the Centre, phone 346 2288.

EMBROIDERED textiles go on show at the Old Bull Arts Centre, High Street, Barnet from February 16 until March 6.

The exhibition of panels and decorative textiles is the work of tutor Pauline Brown and her students from Hampstead Garden Suberb Institute.

Pauline's work can be seen in several local places of worship as well as being popular buys for

homes and offices. She is also the author of two books on the craft.

The exhibition covers a wide variety of techniques and subject matter, including embroidered and painted landscapes and three dimensional pieces

There will be demonstrations of the art of embroidery on Saturdays between 2.30pm and 4.30pm during the course of the exhibition.

## Councillors' & MPs' Surgeries

### Chipping Barnet

**Sydney Chapman, MP**, and a councillor, February 6 & March 5, 10.30am to 12 noon, 163 High St.

**Arkley Ward** — Conservative councillors, Fri February 19 & March 4, 7.30pm, Dollis Valley Community Centre.

**Brunswick Park Ward** — Conservative councillors available second Saturday of month, 10.30am to 12 noon, Monkfrith Boys' Club hall, Osidge Lane, N14.

**East Barnet Ward** — Cllr Olwen Evans (Conservative), Sat February 6 & March 5, 10.30am to noon, Community Centre, Victoria Rd, New Barnet. Contact Cllrs Mrs Mamie Perry and John Perry on 368 4368 for appointment. **Labour councillors** available February 6 & March 5, 10.30 to 11.30am, 104 East Barnet Road, New Barnet.

### Finchley & Friern Barnet

**Margaret Thatcher, MP**, for constituents only, via constituency office, tel 445 4292.

**Conservative councillors**, February 6 & March 5, 10.30am to noon, 212 Ballards Lane, N3.

**East Finchley** — Labour councillors every Saturday, 10am to 11.30am, East Finchley Neighbourhood Centre, Church Lane 2.

**Finchley Ward** — Conservative councillors, Saturday February 27 10am to noon, Blue Beetle Hall (adj St Mary's Church) Hendon Lne, N3. **Cllr Mrs Barbara Langstone** can be contacted on 445 5443.

**St Paul's Ward** — Labour councillors Naren Davé, Michael Freeman and Kitty Lyons, every Saturday 11am to 12 noon. Etchingam Park Day Centre, Etchingam Park Road, N3, and at Tally Ho Corner.

**Woodhouse Ward** — Labour councillors Mike Harris, Dennis Reed and Rudolf Vis, every Thursday, 6.30-7.30pm, Friern Barnet Town Hall, N11.

Also Saturdays at Tally Ho, Finchley.

**Friern Barnet Ward** — Contact Cllrs Chris Platford (368 6817), Brian Salinger (368 1329), John Iplady (445 5734).

### Hendon North

**John Gorst, MP**, February 19 by appointment. At other times tel 959 1446 or via constituency office, 2 Apex Parade, Selvage Lane, Mill Hill. **Conservative councillors**, Grahame Park and Mill Hill, Weds February 10, 17, 24 & March 2.

**Burnt Oak** — Cllrs Ellis (959 6191), Shamash (458 2679), Williams (203 3234), every Saturday, 10.30am to noon, Labour Hall, Back Lane, Burnt Oak (952 5771).

**Colindale** — Labour councillors available first and fourth Sat each month, 2-3pm, St Augustine's, Grahame Park.

### Hendon South

**John Marshall, MP**, via constituency office (202 7484) by appointment, see local press for details.

**Conservative councillors** — Sat February 6 & March 5, 11am to 12.30pm, 166 Station Rd, Hendon (202 7484).

**Childs Hill** — Liberal/SDP Alliance councillors every second Wednesday of month 7-8pm, Unitarian Church, Hoop Lane, NW11 and every fourth Monday of month, 7-8pm, St Peter's Church Hall, Cricklewood Lane, NW2. Cllrs Cohen (205 1233), Palmer (455 5140), Stone (450 0762).

**West Hendon** — Phone Cllr Tim Sims (734 8080, office hours) for appointment at West Hendon Ex-Servicemen's Club, The Broadway, NW9. Cllrs Doreen Neall (202 9927) and Agnes Slocombe (202 4074) by appointment.

**Labour Councillors** available at George Richardson House, 7 Sunningfields Road, Hendon, on February 29 between 6.30 and 7.30pm.

## February Nature Notes

A slight change of style this month, but the topic is relevant as owls are particularly active now — Clive Herbert (Barnet Group, London Wildlife Trust).

### The Hunting Owl

by Zoe Popper, aged 12, of Barnet Watch Club

*The wind was a tempest of mischief, teasing crimson leaves  
But the old mother tree just sat there with all her silly grieves  
The moon was an icy snowball hurdled through the darkness of  
the sky*

*And the owl just sat there — sat there — sat there  
And he started to blink his eye as though he might be thinking to  
fly.*

*He'd a little pointed peak between his beady eyes, some feathers  
for his ears*

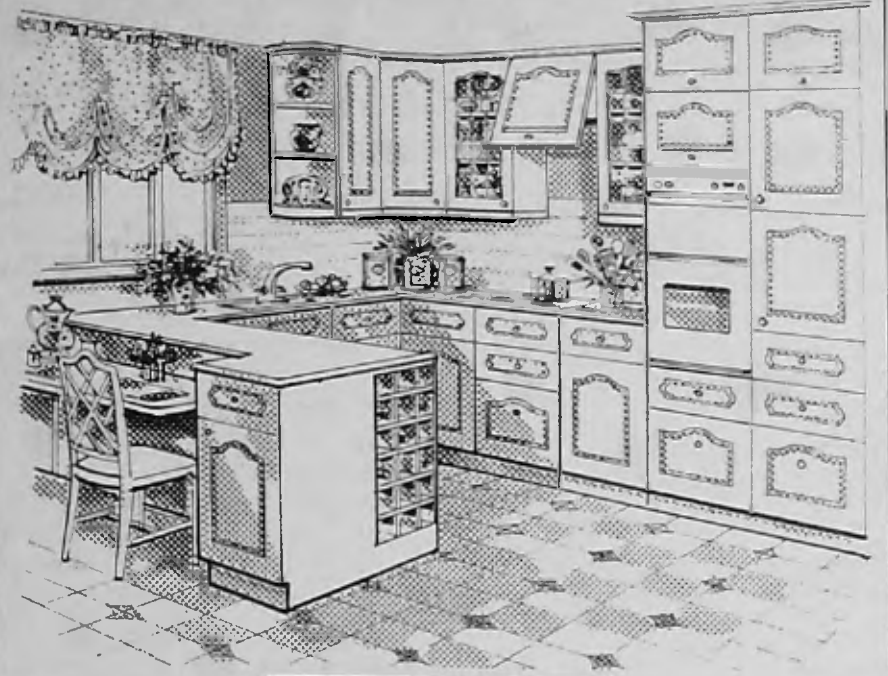
*A coat of softly dappled feathers, but in his eyes shone tears  
And they were set a twinkle, his claws were knives.  
And he flew with the sadness of the plight — the plight — the  
plight*

*For now this very night as hunger was unconquered, it must be  
lives.*

*He swooped o' the shady barn amid a right thick mist  
A mouse below did run and he was on the owls list  
Careful, careful, the wind whispered and mumbled  
But the mouse into the night ran on — ran on — ran on  
And the owl flew down, and the mouse was humbled.*

*The wind was a tempest of mischief, teasing crimson leaves  
But the old mother tree just sat there with all her silly grieves  
The moon was an icy snowball hurled through the darkness of the  
night*

*And the owl just flew back — flew back — flew back  
And he started to think about the mouse as he sat there till  
morning light.*



KITCHEN SHOP SAVOY RANGE

Highest Quality - Made to Measure

## Fitted Kitchens

Guaranteed for 5 years

*Every kitchen fitted by us is professionally designed and made-to-measure to fit perfectly. We not only fit the units, but also carry out all electrical, plumbing and building work ourselves, to ensure a constant high standard.*

*Call today for your free design and survey.*

**FREE!**

**£10 HOLIDAY SPENDING MONEY VOUCHER  
WITH EVERY DESIGN AND SURVEY**

**FREE!**

**£30 VOUCHER WITH EVERY KITCHEN SOLD  
VOUCHERS VALID UNTIL 1990**

**VISIT OUR SHOWROOM**

**Thousands of other styles available**

AEG · NEFF · KUPPERSBUSCH · JUNO · ZANUSSI · PHILIPS · BLANCO  
FRANKE · TAPMATE · MAXMATIC · DUROPAL · FORMICA

**D.I.Y. KITCHENS SUPPLIED TO THE TRADE**



KITCHEN SHOP PICARDY RANGE

**The  
KITCHEN  
Shop**

**554 HERTFORD ROAD, ENFIELD WASH EN3 5ST  
Telephone: 01 804 4450**

# LINE-UP FOR HALF-TERM FUN

## February 15 to 19

**BBN Fun Special**



**HALF-TERM** in Barnet sees a whole programme of fun and activity on offer. But hurry up and book the courses. The places go very quickly. For a selection of sport, arts and crafts take a look at the line-up below.

### Join in with Barnet Sport

Anyone for tennis, cricket, athletics or football? Coaching in all these sports is on offer during the half-term holiday. All are free.

#### Tennis

For the age group 10 to 16 years there are coaching sessions between 12 noon and 1pm at the following venues: Hendon Park from February 15 to 18; Victoria Park on February 16; Edgwarebury Park from February 16 to 19; Oakhill Park on February 17 and 18.

#### Short Tennis

For the age group eight to 12 years on February 19 at West Hendon Indoor Pavilion between 10am and 11.30am.

#### Cricket

For the age group eight to 12 years at West Hendon Indoor Pavilion from February 15 to February 17 at 10am until 12 noon and 2pm until 4pm.

#### Athletics

Two-day courses will be held at Copthall Stadium. On February 15 and 16 there will be sessions from 10am until 12 noon and from 1pm until 3pm for the age group 7 to 14 years.

On February 17 and 18 at the same times there will be courses for the 14-plus age group.

There are special weights and circuits sessions for parents from 1pm until 3pm at the Stadium on February 16 and 17.

#### Football

For the age group seven to 17 years there will be coaching sessions from 10am until 1pm at the following venues: Oakhill Park on February 15; Edgwarebury Park on February 16; Copthall Stadium on February 17 and 18.

No previous experience is necessary, all equipment is supplied and expert coaching is provided.

#### Copthall Pools

There are a variety of activities in and out of the water at Copthall

Pools during the half-term holiday.

**Duckling Classes** (four years old) daily at 12 noon, 12.20pm and 12.40pm. The course costs £7.

**Children's Learn to Swim Classes** daily at 9.15am, 9.45am, 10.15am, 10.45am and 11.30am. There will be groups for beginners 1, 2 and 3; intermediate and improver — £9.

**Adult Learn to Swim Classes** daily at 12 noon and 12.30pm. Beginners and intermediate — £9.

**Children's Diving** (seven years or older) daily at 12 noon and 12.30pm — £9.

**Karate** £10 for five one-hour lessons. Daily 9.30am for six to nine years; 10.30am for nine years plus.

**Mini Gym** £9 for five half-hour lessons. Daily 11.30am and 12 noon for the age group four to six years.

#### Ashmole Centre

Burleigh Gardens  
Southgate N14  
Tel: 368 4984

### Courses for beginners

**Badminton** for age seven plus: 9.30am and 10.30am. £6 for five one-hour sessions.

**Soccer Superskills** for age seven plus: designed for blue or red award standards. 4pm. £7.50 for five 1½-hour sessions.

**Gymnastics** for five and six-year-olds. For the BAGA 5 and 6 award. 9.30am and 10.30am. £6 for five one-hour sessions.

**Trampolining** for age five plus. 4.15pm. £6 for five one-hour sessions.

#### Open to all

**Pay-on-day Rollerskating** for six to 12-year-olds, 11.45am. 50p per hour session.

**Sort-o-Sport** — a variety of sport activities for the six to 12 age group. Includes soccer, netball, cricket, table tennis and trampoline. 1pm. £2 per three-hour session.

#### Church Farm Pool

Book via Ashmole Centre  
Splash courses for non-swimmers aged five plus. 9.30am, 10am and 10.30am. £6 for five half-hour sessions.

Casual swimming, pay on the day.

**Mums and Toddlers** 2pm. 80p mum and toddler, 40p per extra toddler. Open sessions 2.30pm; 3.15pm, adults 80p, children 40p per 45-minute sessions. Children under seven must be accompanied by a swimming adult.

#### Queen Elizabeth Centre

Meadway  
Barnet

Tel: 441 2933

Every morning the Pay-as-you-Play scheme is open for all age groups from 10am to noon. Costs £1. Children under six must be accompanied by an adult. There's a full range of sports to enjoy.

Football superskills for all ages from six plus will be held in two sessions every afternoon. These start at 2pm and 3.30pm and cost £8 for five 1½-hour sessions.

#### Old Barn

Tarling Road  
East Finchley

Tel: 349 4613

The Old Barn Play Scheme runs from 9am to 6pm to help working parents. This year the scheme has been divided into three groups, each of which will follow a programme of sport, crafts, entertainment and outings.

Among the visits are trips to Whipsnade, Hayes Hill Farm and a swimming pool.

The scheme is virtually sold out as parents join a savings scheme on an annual basis, but you can try for a place or join in now for next season.

## ARTS

### At the Institute

Both young people and adults can enjoy half-term courses at Hampstead Garden Suburb Institute between February 15 and 18.

There are daily art workshops for ages seven to 12; stained glass courses for ages 10 to 16; badminton for eight to 11 and 12 to 15; and soccer training for eight to 10 and 11-14 year olds (indoor coaching in the event of very bad weather). Adults have the opportunity for intensive sessions in tapestry weaving and crochet.

Further details, including prices, from the Institute, Central Square, NW11. Tel: 455 9951.

### Old Bull

There is entertainment and fun galore at the Old Bull Arts Centre for half-term.

The Lambeth Children's Theatre Company present an entertaining play for three to seven year olds on February 14. The curtain goes up on *Oh Crumbs* at 3pm and the performance lasts for 45 minutes.

There are two performances and two workshops on February 15. Kazzum Arts Project present a performance/workshop for four to seven year olds at 10.30am. Festivals Around the World is a performance/workshop at 1.30pm for seven to 11 year olds.

The popular series of half-term drama workshops for seven to 15 year olds begins on February 16. Advance booking is essential — phone 449 0048 — and the course fee is £8.

There is a performance on Saturday, February 20 at the conclusion of the workshop £1 tickets can be purchased for the show.

For full details of all the entertainment on offer at the Old Bull, tel: 449 5189.

### Mini Series

FOUR subjects will be covered in a mini series of lectures by Rosemary Lambert, panel lecturer at the Victoria and Albert Museum and Lyndon Skeggs, director of the New Academy for Arts Studies.

The topics to be covered will be Kardinsky, East Finchley Library, 226 High Road, N2, on February 10; Picasso, Old Bull Arts Centre, High Street, Barnet, on February 17; Matisse, North Finchley Library, Ravensdale Avenue, N12, on February 24 and German Expressionists, North Finchley Library on March 2.

Single lectures cost £2 each or the series at a cost of £6.

### Exhibitions

TWO exhibitions are showing at Barnet Libraries this month.

Work by Whetstone artist Angela Pizzigallo, 24, will be on display at North Finchley Library, Ravensdale Avenue, until February 13.

Hendon lawyer Francis Deutsch hopes to encourage other amateur photographers with an exhibition at Hendon Library, The Burroughs, until February 6.

## Kung Hee Fat Choy Happy New Year

February 17 is the Chinese New Year — the Year of the Dragon. So we wish all our Chinese residents a happy New Year. Mill Hill Library invite all kids to a Dragon storytime and Dragon making session on Wednesday February 17, 10.30am to 12 noon.





**LONDON BOROUGH OF BARNET**  
 Directorate of Educational Services  
**YOUTH & COMMUNITY SERVICE**  
 will be entering teams for



to be held at  
**CRYSTAL PALACE NATIONAL SPORTS CENTRE**

on  
**Saturday 9th and Sunday 10th July 1988**

**Events include:**

ANGLING	U 18's	FENCING	U 20's	NETBALL	U 21's
ARCHERY	U 19's	FOOTBALL FEMALE	U 18's	SHOW JUMPING	U 21's
ATHLETICS FEMALE	U 18's	FOOTBALL MALE	U 18's	SKIING	U 18's
ATHLETICS MALE	U 18's	GYMNASTICS FEMALE	U 21's	SQUASH	U 19's
BADMINTON	U 21's	GYMNASTICS MALE	U 21's	SWIMMING FEMALE	U 21's
BASKETBALL FEMALE	U 19's	HOCKEY FEMALE	U 19's	SWIMMING MALE	U 21's
BASKETBALL MALE	U 19's	HOCKEY MALE	U 19's	TABLE TENNIS	U 21's
CANOEING	U 21's	JUDO FEMALE	U 18's	TRAMPOLINING	U 19's
CYCLING	U 19's	JUDO MALE	U 18's	VOLLEYBALL FEMALE	U 19's
DARTS	U 19's	KARATE	U 21's	VOLLEYBALL MALE	U 19's
DIVING	U 21's	LAWN TENNIS	U 18's	WEIGHTLIFTING	U 20's

Young People wishing to be considered must reside in Barnet and should contact The Co-ordinator on 368 1255 Ext 3134 in order to be put in touch with the appropriate team managers.

Jerseys for the Games will be sponsored by



**WILLIAMS SPORTS**  
 NORTH FINCHLEY, LONDON N12 0EE 01-445 3596

# THIS LAND AWAITS YOU

## Join Barnet's allotment gardeners

DO YOU realise that if you contacted the Council today and arranged to rent an allotment you could be gathering your own broad beans, eating fresh lettuce and picking out the first baby beets within four months.

In July and August would come the early crop of new potatoes and the first runner beans. And all next winter you could be eating your own cabbages, sprouts and root vegetables, freshly picked.

That is the taste of the Good Life which Barnet can offer any resident. All you do is to take an allotment and start digging.

February is a wonderful month to take on an allotment. Broad beans can be planted this month and the shops are full of new season's seeds. The Garden shops and centres have restocked their shelves and Spring is only eight weeks away. Nature has even been at work for you with frosts helping to break up the soil.

Wherever you live in the borough you are near an allotment garden site. There are more than 60 sites in the borough taking up a total of 250 acres of land. Most have their own water laid on. Many have off-street car parking. There are trading huts where members can purchase seeds and fertilisers cheaper than in the shops. Some even offer rotivators for hire to take the hard work out of digging.

If you join the ranks of Barnet allotment holders, even if you are an absolute beginner, you are joining an elite corps of growers. For Barnet has won the national allotment competition and held the Bledisloe Trophy for three out of the past four years.

The best about taking an allotment is that you can be a novice or an expert and enjoy your new leisure pursuit. Keen and experienced gardeners will find the benefit of having a large area of land which they can cultivate with fruit, flowers and vegetables without having to think about the area in terms of the garden.

New gardeners will find that because other plot holders are working alongside they will have plenty of people to turn to for advice.

In England gardening has always been a national hobby and there is a real sense of history in taking an allotment. It dates back to when cottagers were given small allotments of land to cultivate for family use.

In Barnet there are about 40 allotment societies which link together under the Barnet Federation of Allotment Societies.

Many of the larger societies lease their site from the Council and run the whole site on behalf of the allottees.

Other sites are managed by the Council itself. The rent is set each year on the historic unit of a pole. (Remember your school books and rods, poles and perches?). The standard allotment is 10 poles — that is 30 ft by 100 ft or 90 metres by 30 metres. The rent for a plot of this size will be £13 a year from April 1, plus £3.50 for water.

However you can have half a plot for half the rent and pensioners qualify for a 50 per cent rent

reduction. And where the societies lease the site rents may even be slightly cheaper.

Barnet encourage plot holders to do their own thing. Allottees are allowed to put up sheds and green houses as long as they are not bigger than 8ft by 10ft, so that an allotment can soon become a hobby for the whole family. You can grow pot plants in the green house as well as bringing on seedlings.

Many of the Societies hold their own horticultural shows each year, so for the skilled gardener there is a chance to compete. And Barnet Council holds a borough wide com-

petition for the best individual plots and the best sites. The prizes are presented, usually by the Mayor, at the Town Hall in November.

If you would like to know more about local allotments or would like to take over a plot you can contact: Colin Nash, Directorate of Technical Services, Barnet House 1255 High Road, Whetstone N20 0EJ. Tel: 446 8511 Ext 4479 ... or

Ted Green, Secretary, Barnet Federation of Allotment Societies, 65 Ravensdale Avenue, North Finchley N12 9HR. Tel 445 9305.



## Try a Taste of the Good Life

Join the 4,000 Barnet people who already enjoy allotment gardening.

This popular leisure activity combines exercise, relaxation and a great sense of satisfaction with healthy, fresh food production all year round.

What other pastime can offer all of this? Even more, it's inexpensive and suits people of all ages.

*To find out more about renting an allotment garden near you, please contact:*

Colin Nash  
Directorate of Technical Services, Barnet House,  
1255 High Road, Whetstone N20 0EJ  
Telephone: 446 8511 ex 4479

LONDON BOROUGH  
**barnet**



The Princess of Wales with head teacher, Mr Derek Culley and Mr Eddie O'Gorman, walks to the memorial garden



Jason Rastogi, who is fighting leukemia, helps the Princess to plant a tree in the memorial garden

## Princess plants a garden

THE PRINCESS of Wales visited Mill Hill County High School on Tuesday, January 12, as a tribute to a former pupil, Paul O'Gorman, who died of leukemia at the age of 14, just a year ago. Paul's father, Eddie, responded to tragedy by a mammoth effort to aid other children. In 10 months he had helped to raise £100,000 for Leukemia Research and now a new charity, the Paul O'Gorman Foundation for Children with Leukemia, has been set up. It aims to raise £2 million and establish a London centre for their care.

During her visit the Princess unveiled a plaque in Paul's memory and planted a tree in his memorial garden at the school.

Photos by Peter Dyer. Tel: 363 2456. Profits go to the fund.



Happiness is a Royal walk-about for children from Mill Hill County and St. Paul's, Edgware and Fairway Primary Schools



A proud moment when fifth year pupils, all friends of Paul, were presented. Left to right: Tony Aidah, Michelle Fennel, Emma Wicks, Tracy Finn, Paula Mummery, David Tkaczyk and William Reeves. Mrs Marion O'Gorman is on the right.



Mr Eddie O'Gorman presents (l to r) Mr Neil Gill, chief education officer, Mrs Gill, Cllr Dot Benson, vice-chairman, Education Committee, head teacher Mr Derek Culley, Mrs Culley, Cllr Leslie Pym, Leader of the Council, and Cllr Jack Clarfelt.

## BARNET PLANS TVEI EXTENSION

BARNET'S Education Committee are to seek Government funding of £3.25 million through the Manpower Services Commission, to extend the Technical and Vocational Education Initiative (TVEI) to all secondary schools and colleges within the local authority.

A TVEI pilot project was set up in 1986 in five local schools: Cophall, Edgware, St. James' Catholic High, Whitefield and Oak Lodge. A total of 462 fourth and fifth year students are now taking part. The first GCSE examinations in this curriculum project will be held in June this year and in September the participating schools will extend the project to 16 to 18 year olds.

TVEI draws together the classroom and the outside world of work and further education. The TVEI pathways, for fourth and fifth year students of all abilities, include Information Technology; Community Care; the Food Industries; Marketing and Retail



Pupils at Whitefield School, Cricklewood, one of Barnet's TVEI pilot schools, carried out a survey of opportunities in the distribution industry locally, discovering a range of careers from shop floor to marketing and buying.

Distribution; Construction Studies; Graphic Design; Office Technology; Technology and Manufacturing Technology.

This means that the pupils work in many disciplines, combining experience with computers and new technology with more traditional classroom subjects. They spend time on work experience with local employers and take part in a residential project.

The Government has stated

that TVEI should be extended to all schools and colleges in local education authorities who wish to take part in the initiative.

### Success

Barnet's pilot scheme has been very successful and the local education authority is keen to extend the programme to all secondary schools in the borough.

The Schools and Special Ser-

vices Education Sub-committee, at their January meeting, approved in principle to submit a bid for the TVEI Extension funding to include all secondary schools and colleges within the borough, beginning in September 1989 — a total sum of £3.25 million index linked. And to appoint a senior adviser, funded by the TVEI Development Fund, so that work on the extension of TVEI can be developed and co-ordinated.



**Anglo  
World**  
EDUCATION LTD

### FORMERLY THE LINGUISTS SCHOOL OF ENGLISH

- Recognised by the British Council
- Established in 1954
- General and intensive courses throughout the year
- Cambridge examination courses
- 2 minutes from Hendon Central
- Maximum 15 in a class
- Accommodation service
- Member of ARELS/FELCO
- Part of the Anglo-World Group with schools in the Bournemouth, Cambridge and Oxford areas

8 Queen's Road, London NW4 2TH

**01-202 4361**

## MONEY PLANNERS LTD

*Experts on money matters*

specialists for school fees and financial planning

- Planned school fees
- Immediate school fees at a very competitive interest rate

For further information telephone us on:

**01-272 5443**

Money Planners House  
30 Stroud Green Road, London N4 3EA

## CHANNING SCHOOL

Highgate N6 5HF

01-340 2328

*INDEPENDENT DAY SCHOOL  
FOR GIRLS (GSA)*

440 pupils 5-18

*Channing offers a wide ranging education based on a traditional academic curriculum with excellent opportunities in music, art and sport. Set in ample grounds, the school is small enough for very favourable pupil/staff ratios, and has a tradition of developing the talents of each individual girl.*

*Normal entry is at 5 and 11 by examination and interview.*

*Girls are also accepted into the rapidly expanding Sixth Form.*

*For a copy of the prospectus write to:*

*The Headmistress, Mrs I R Raphael MA (Cantab)*

## Education

# ISIS: A source of advice for parents

THE Independent Schools Information Service (ISIS) was founded in 1972 to inform the public of the nature and activities of independent schools and to answer parents' questions about schooling and helping them with educational problems.

To achieve these objectives there are eight regional offices covering the United Kingdom, each with its Director and publishing its own handbook, and a National office with a National Director, a Press Officer and a Liaison Officer. In addition there is ISIS International which helps parents from abroad wishing to send their children to school in this country, and the ISIS Association — a supporters' club.

The office covering the South-East Region is at 3 Vandon Street, London SW1H 0AN (telephone: 01-222 7274/5). The address and telephone numbers of the other Regions can be obtained from the office mentioned above. The other Regions comprise Central, Eastern, Northern with North Wales, South and West, South Wales, Scotland and Ireland.

The Regional offices all provide a handbook listing over 1300 schools for children aged 4 — 18 with basic details about each, an introductory section and a list of insurance firms specialising in school fee planning. There is also a number of leaflets on various

aspects of education such as planning ahead, scholarships and grants, boarding, the Assisted Places Scheme, and questions to ask when visiting a school.

### Aim high

The independent sector believes in excellence and, in competition, in encouraging each pupil to aim as high as he/she can in both internal and external examination. Witness the selection of candidates in order to ensure that each entrant to a school will not only benefit from, but also thrive in, the particular

ethos of the school. Hence the diversity of schools catering for boys and girls with varying attributes including those suffering from learning difficulties.

For those in need of personal advice and help, there is a consultancy and placement service, for which a fee is charged, and two telephone lines are open during office hours for more straightforward enquiries. The London & South-East handbook costs £1.50 and a list of pre-preparatory schools by counties and for London is also available (two first-class stamps is asked for each) from the London & South-East Regional office.

In September 1988 Holmewood School will merge with St Alban's Preparatory School, thereby continuing the programme of expansion envisaged by the International School of London when they took over the management of Holmewood in 1985. The new (combined) school to be known as 'Woodside Park School', will be co-educational. A pre-school morning playgroup for children over three years is also in preparation.

The preparatory part of the combined schools will operate in the present Holmewood school buildings by Woodside Park Station and the present St Albans school buildings in Woodside Lane will house the upper part of the school in the 8-13+ age group.

There will be a limited number of vacancies in some age-groups in September 1988. Interested parents should apply without delay.

**A long Established preparatory school for children from 3-13 years.**

**Tuition follows the common Entrance Syllabus for entry to Public Schools at the age of 13+**

**A prospectus may be obtained from the Secretary.**

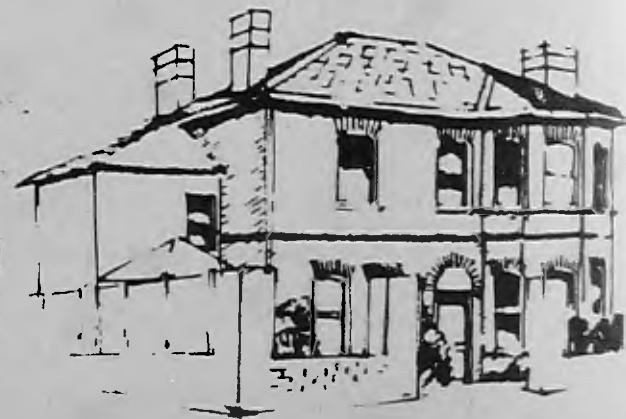
**Telephone:  
01-445 9670**



# WOODSIDE PARK SCHOOL



PRE-PREPARATORY DEPARTMENT & PLAYGROUP  
(HOLMEWOOD)  
88 Woodside Park Rd N12



PREPARATORY DEPARTMENT  
(ST. ALBANS)  
Woodside Lane N12

# Mill Hill School



Mill Hill is an independent boarding and day school for boys aged 13-18 and girls in the sixth form. Of the 540 pupils about 300 are boarders and 60 are girls. The Head Master is a member of the Head Masters' Conference. A high level of tutorial guidance is maintained through a staff:pupil ratio of 1:11. The School has its own junior (preparatory) school, Belmont, for boys aged 7-13 which is situated in its own grounds a few hundred yards away.

Founded in 1807 by a group of non-conformist Christian Ministers and City Merchants, the School moved to its present buildings in 1827. There has been much development since, the most recent addition being a sports hall completed in 1983.

The beautiful and extensive grounds, rich in fine trees and shrubs, are in part a legacy from Peter Collinson the botanist (1649-1768) whose garden was on part of the present school site.

Entry to the School is at 13+ and 16+ for the Sixth Form.

The majority of boys enter the School at 13+ and although most come from Preparatory Schools, increasing numbers come from state schools. Government assisted places are available at this level and most of these must by the rules of the scheme, be offered to state school candidates. Under the scheme a proportion of the day fees is paid by the Government — the exact amount depending on parental income; in some cases the complete cost is covered. If boys on this scheme wish to be boarders the School can usually provide Bursaries to make this possible. The entrance tests are designed for candidates from different educational backgrounds and no common syllabus of study is assumed. Boys who are not eligible for an Assisted Place but who have not been prepared for the Common Entrance Examination can also use these tests for entry to the school. If a boy has the ability to cope with a course leading to between 8 and 10 subjects at GCSE he should be offered a place.

The School accepts pupils, boys or girls, for the Sixth Form on condition that they gain at least 6 C or better grades in the GCSE. Up to 5 Assisted Places are available at this level. A wide range of A-Level subject combinations is offered together with numerous subsidiary and general studies.

## FRIENDS' SCHOOL — READY AND ABLE

FOR many years Friends' School, Saffron Walden, has looked forward to the introduction of a common exam at 16-plus. We welcome the GCSE and have made our preparations for the new exam positive, thorough and determined.

The basic aim of GCSE, to replace a test of knowledge and information with a test of skills, techniques and disciplines for problem solving, accords with the philosophy of a Quaker School. GCSE provides an impetus and stimulus to develop our approach to the curriculum along lines already in progress.

Our transition is being completed without undue upheaval. Staff have taken a professional, dedicated and constructive approach in adapting to change. Selection of syllabuses enabled departments to develop their work in directions they were already taking.

We have undertaken a major classroom reorganisation so that all subjects have a teaching base with appropriate facilities and equipment. This involved reconstruction of rooms and reorganisation of school routine. The transition has been smooth, the prospect is exciting.

Pupils can have confidence that their teachers have the skills, facilities, resources and equipment the new exam requires.

The proposed national syllabus

presents few problems. It may not even apply to independent schools, a few adjustments may be necessary but Friends School will maintain sufficient flexibility to provide a distinctive approach to a nationally conceived curriculum.

Parents want exam results to reflect generously the academic ability of their child and provide basic qualifications for education, training or employment after school. Friends' School does both. Examination results bear comparison with leading selective schools. Our pupils also acquire the skills and discipline needed as a foundation for universities and polytechnics where they will have the confidence to sustain and master the courses they undertake.

### Challenge

The correlation between performance at school and successful results afterwards is high because pupils have acquired confidence, independence and discipline and have discovered the resilience to face the personal, social, emotional and moral challenges of young adulthood.

For information please contact: John C. Woods, The Head, The Friends' School, Saffron Walden, Essex. Tel: Saffron Walden (0799) 25351.

**TO ADVERTISE  
RING 01-361 4223**

ADVERTISING FEATURE

## MILL HILL SCHOOL

**HMC Independent Boarding and Day  
540 pupils 13-18**

A school for the academically able, the majority boarding, which accepts 30 girls to the Sixth Form each September. normal entry is at 13, based on the Common Entrance Examination or the School's own examination, and an entry into the Sixth Form after GCSE.

### 1. 13 YEAR OLD ENTRY — SEPTEMBER 1988

for boys who are considering transfer from the maintained sector and are progressing in their studies; the examination for this entry will be held at the School at

**9.00am on SATURDAY 13th FEBRUARY 1988**

### 2. Some ASSISTED PLACES

will be given for September 1988 to boys aged 12/13, and to entrants to the Sixth Form. Assessment for these will also be held on SATURDAY 13th FEBRUARY, and applicants should be made as soon as possible.

### 3. MUSIC

Some Bursaries are available (including free individual tuition) to pupils entering at any of the above levels who show outstanding promise on one or more orchestral instruments; auditions by arrangement.

For further details and a copy of the Prospectus contact:  
The Head Master  
MILL HILL SCHOOL  
Mill Hill Village, London NW7 1QS. Tel: 01-959 1176

## The Friends' School Saffron Walden

A sure foundation for your child's future life



Questions parents ask are answered in our prospectus available on request to:  
The Head · The Friends' School · Saffron Walden · Essex CB11 3EB (0799) 25351

### AN INDEPENDENT SCHOOL for your child?

What are the  
schools like?  
Where are they?

What is the cost?  
What are the  
advantages?

Independent Schools Information Service  
offers a handbook with Directory of over 50  
schools for boys' and girls' junior and  
senior school for children 3 to  
18 in London and South  
East England



There are over 500  
schools in London &  
S.E. England. For  
Handbook send  
£1.50 to:

ISIS  
3 Vandon Street  
London SW1H 0AN  
Tel: 01-222 7274

# OWNING YOUR OWN HOME

Owning your own home can give you a completely different outlook on life. It is fun planning decorations and home improvements and just turning the key in your own front door gives a real sense of pride.

With London property prices so high council tenants have an opportunity to buy their own homes at bargain prices: a two-bedroom flat for about £22,000 or a terrace house for about £35,000 depending on discounts!

## Here's how it works.

If you are a council tenant and live in a house you qualify for a 32 per cent discount after two years. Then you add 1 per cent for each year of tenancy so that after 10 years you get 40 per cent discount and after 30 years you qualify for the maximum 60 per cent discount. However the maximum discount allowable for both houses and flats is £35,000.

For flats the discounts are even more attractive.

The starting point is 40 per cent after two years, which rises by 2 per cent up to 70 per cent after just 15 years.

With discounts like these and

with leading building societies mortgage rates starting at 10.1 per cent — the lowest for many years — home purchase for tenants is an attractive proposition. However, buying your home is a major step and finances have to be considered very carefully.

Take the case of a family who are going to buy their fairly typical two-bedroom council flat.

Say the market price is £55,000 and they have lived there 10 years. They will get a 60 per cent discount (40 per cent plus 2 per cent for each year of tenancy). So the price they pay is £22,000.

Their monthly mortgage repayment over 25 years (at current Building Society rates) is £163 a month.

When buying a flat an annual service charge is payable to cover such items as building maintenance, insurance, caretaking and water rates. This figure varies considerably from property to property but as an example a service charge of £396 a year would mean a monthly payment of £33.

Domestic rates at present

levels will be about £37 a month.

So that means that the family will have to find about £233 a month for housing payments.

It is a lot of money but joint purchase is available so that not only husband and wife can jointly purchase, but also adult sons and daughters who are living at home can join in with the purchase.

House purchase is a very important step. That is why the sales team at Barnet House are trained to help steer tenants through the difficulties and set them on the right path.

They can offer free, informal mortgage advice to tenants and explain in detail the costs involved in buying your home.

While tenants are entitled to a council mortgage they are likely to do better with a Building Society or Bank mortgage. The mortgage advisers in the housing Department at Barnet House will gladly help tenants to find the loan that best suits their circumstances.

For all enquiries about the sale of council houses phone 446 8511 and ask for the Housing Sales Team.

## Chesterfield beetle drive

PEST control specialists have declared war on the beetles which infest Chesterfield Road flats in Barnet. They started the extermination just before Christmas, with a programme to tackle 35 flats, and in January work began on the treatment of the loft spaces.

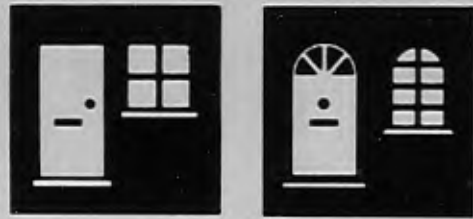
The problem is a black beetle with the name of *Dermestes Peruvianus* which manages to live on dead birds and animals, and on foodstuffs.

When officers from Barnet's Environmental Health Department inspected the loft space, following complaints by tenants, it was found that birds were able to enter the roof.

The beetle is not classified as a public health risk but because of the number of flats involved and the rapid spread of the insect, Barnet's Housing Department decided to carry out disinfection.

Complaints by the tenants were raised at the November meeting of the Housing Committee but at that time Housing Officers had been able to inspect only a small number of flats and a preliminary inspection of the roof space had not revealed any infestation there.

Further inspection with Environmental Health Officers, however, showed that the beetles were on the increase, and so the go-ahead for infestation treatment was given.



## ADAM KENNEDY

### FINANCIAL SERVICES

**UP TO 100% MORTGAGES  
AVAILABLE NOW**

**to council tenants wishing to purchase under the  
advertised 'RIGHT-TO-BUY' Scheme. To find out more call  
us on 01-367 8787 or fill out the coupon and send it  
Freepost today**

NAME \_\_\_\_\_

ADDRESS \_\_\_\_\_

\_\_\_\_\_

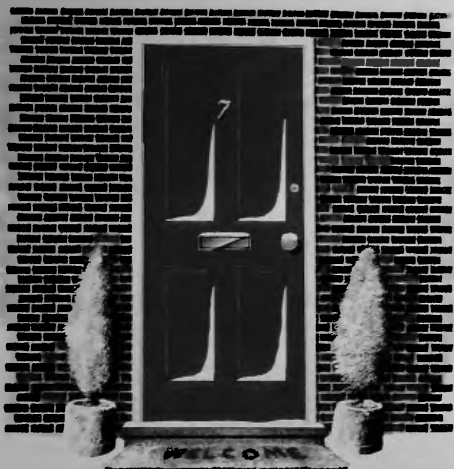
TEL: \_\_\_\_\_

Send your coupon to  
**ADAM KENNEDY FINANCIAL SERVICES  
FREEPOST  
THE TOWN HOUSE, 48 LONDON ROAD  
ENFIELD, MIDDX EN2 6BR**

**Mark your envelope FREEPOST  
No stamp required**

# MAKE IT YOURS!

If you're a Barnet Council Tenant



**30% — 70% DISCOUNTS**  
**UP TO £35,000 OFF**

For Further Information Phone SALES TEAM on 446 8511

LONDON BOROUGH

**barnet**

BBN/2/88

*Or Send This Card*

Name \_\_\_\_\_

Address \_\_\_\_\_

\_\_\_\_\_

Please send coupon to: Sales Team, Directorate of Housing & Environmental Services, Barnet House, 1255 High Rd, Whetstone, N20 0EJ.



## New Homes

# INGLEBOROUGH

THE RIDGEWAY, ENFIELD

## A NEW DEVELOPMENT OF 2 BEDROOM LUXURY RETIREMENT APARTMENTS

PRICES FROM £72,500

FULL GAS CENTRAL HEATING, DOUBLE GLAZING THROUGHOUT  
SUPERB FITTED KITCHENS, LUXURIOUS BATHROOMS  
TWO RESIDENT WARDENS, SECURITY LOCKS & ENTRY PHONES  
LIFTS TO UPPER FLOORS, MOST APARTMENTS WITH BALCONIES

SHOW APARTMENT OPEN EVERY DAY

INCLUDING SUNDAYS, 11am - 12.30pm and 1pm - 4pm



# PRUDENTIAL

Tel: 01-367 7610

or contact our Enfield office: 01-367 5577

## What does Martin's Walk offer besides quality homes at an affordable price?

### Pass.

Martin's Walk, Borehamwood is a fine development of studio, and two and three bedroom houses which reflect the care Crest traditionally take when they build new homes.

They have fitted kitchens, landscaped communal gardens to the studios, and generous provision for parking.

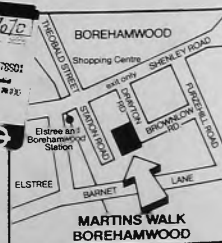
And an important extra. If you reserve before Feb 29th and exchange contracts within 4 weeks of reservation we'll give you a **FREE** 6 month Capital Card allowing you unlimited travel on the Underground, many buses and Green Line Services and British Rail.

Studio, two and three bedroom homes from £51,750.

Visit our superb showhomes open Thursday to Monday inclusive 11am to 5pm.  
Telephone: 01-207 0766. Or contact selling agents:

**REMMERS**

6 Furzehill Parade, Shenley Road, Borehamwood,  
Herts WD6 1DX. Telephone: 01-953 1212 (3 lines).



# CREST

## New Homes



### THE FIRST STEP

With house prices spiralling ever upward in Greater London, it's a wonder that young couples of today ever get a foot on the property escalator. Thankfully Crest Homes still cater for the genuine first time buyer, offering the investment security of a new home, at a price most of us can still afford.

Prices at Martin's Walk, Borehamwood start from as low as £51,000, with 2 bed houses featured at a very reasonable £74,000. The quality is high, and the location superb. Elstree British Rail is literally around the corner, with Euston just 30 minutes away.

Maximum 100% mortgages are available on many homes, so a large deposit is unnecessary, and to help the money conscious still further Crest are offering a free Capital Card providing 6 months free travel throughout the Greater London area.

Interested? For further details ring Ruth Spooner on (01) 207-0766.

## A CLOSER LOOK AT INGLEBOROUGH

**Gas central heating:** Each apartment incorporates its own independent and fully controllable gas central heating system. A neatly designed boiler supplies radiators throughout the apartment, and also supplies hot water for the kitchen and bathroom.

**Kitchen:** The professionally planned kitchens feature the latest high quality built-in units and worktops. There is a wide choice of finishes, all kitchens incorporate built-in Zanussi appliances including a split level oven and hob and a washing machine/ tumble dryer. Other features include an extractor hood above the cooker and a waste disposer.

**Bathroom:** Bathroom suites comprise a wash hand basin, low level wc, and a specially designed low sided no-slip bath with shower unit. There is a wide choice of colours for fittings. Bathrooms are fully tiled around the bath area.

**Finishes:** All flooring within each apartment will be finished ready to receive carpet, except kitchens and bathrooms which will have luxury vinyl sheet floor covering already laid. Walls will be emulsioned in a pastel shade, ceilings will be emulsioned in white. Curtain track will be fitted to all windows. Internal doors are in beech with brass fittings. Most apartments have a fitted wardrobe in at least one bedroom.

For further details and brochure, contact Prudential Property, Enfield. Tel: 01-367 7610 or 01-367 5577.

# Award-winning homes from the Barratt Premier Collection

## DARLEY HEIGHTS, LUTON

One, two, three and four bedroom homes from £49,950.

(5 minutes M1 - Junction 10)

Fully furnished showhomes open every day 11 am to 6 pm.  
Tel: (0582) 401457.

## LETCWORTH GATE, LETCWORTH

Two, three and four bedroom homes from £62,950.

(2 minutes A1 - Junction 9)

Fully furnished showhomes open every day 11 am to 6 pm.  
Tel: (0462) 678179.



**BARRATT**  
Britain's Premier House Builder

Barratt Luton Limited.

P.O. Box 5, Barratt House, 668 Hitchin Road,  
Luton, Beds LU2 7XJ Tel (0582) 422771





# LEARN TO DRIVE THE EASY WAY

WITH **FREE PICK UP SERVICE**

- Dual control Mini Metro cars.
- Friendly, professional tuition.

BSM MUSWELL HILL 883 1243

BSM WHETSTONE 445 0757

BSM EDWARE 958 9029

BSM GOLDERS GREEN 455 5449

BSM CRICKLEWOOD 452 2909



*We're right by your side.*

# ATTENTION

- ★ PEDESTRIANS ★
- ★ CYCLISTS ★
- ★ MOTORCYCLISTS ★
- ★ HORSE RIDERS ★

BE SEEN

BE SAFE  
NOT SORRY!



Wear something light at night. A large percentage of accidents can be avoided if you wear reflective clothing or luminous bands.

THIS IS A PUBLIC NOTICE FROM



## DRIVERS PRE-TEST LECTURES

Evening Learner-Driver pre-test illustrated lectures 7.30pm-9pm

Book Now For: 8th March 12th Apr, 10th May, 7th June, 12th July (provisional details)

For further information and course dates contact:

The Road Safety Unit of the Engineering Services Division of the Directorate of Technical Services on

01-446 8511 ext 4340 LONDON BOROUGH **barnet**



PHONE FOR DETAILS



## MOTORCYCLISTS MOPED RIDERS SCOOTERISTS

Attend on six Sunday mornings for training to prepare you for the Department of Transport Tests — Part I and II. The Part I Test can be booked through The Road Safety Unit of the Engineering Services Division of the Directorate of Technical Services.

Courses start 1988: 28th Jan, 7th Apr, 2nd June, 8 Sept and 27 Oct. Phone 446 8511 ext 4340 for details.

## MAINLY

## FOR

## WOMEN

## WORRIED ABOUT YOUR WINTER WAISTLINE?

Television star Wendy Richard who plays Pauline in *Eastenders* talks about her success with the CAMBRIDGE DIET.

"A few months ago, when I stepped onto my bathroom scales. I was horrified to see my weight (usually 10st) had gone up to 11st 6lbs. I began to feel like I'm often seen on TV — fat, frumpy and grumpy!

Then some friends of mine recommended the Cambridge Diet. With a busy filming schedule and daily rehearsals, I needed a diet that was quick and easy to use. The Cambridge Diet fitted the bill perfectly and my Cambridge Counsellor was marvellous. I don't know what I would have done

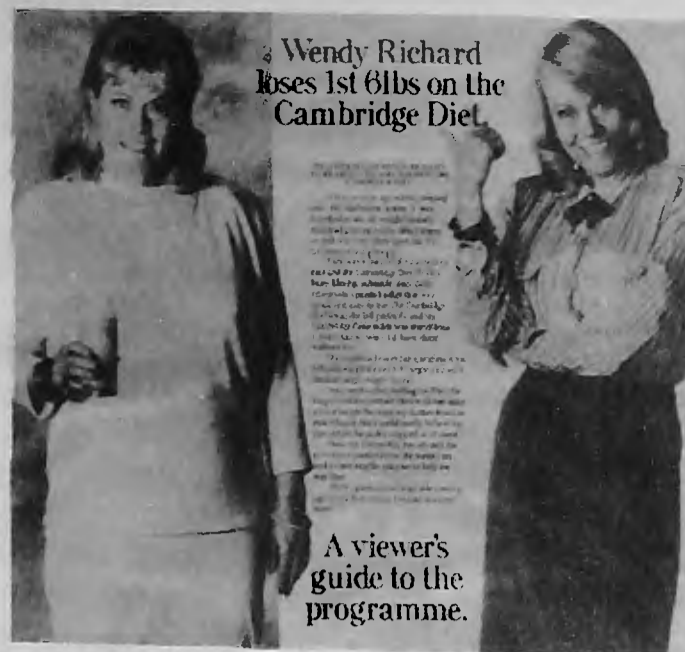
without her.

She explained everything, told me what I should weigh for my 5'5" height and set a realistic target weight for me.

Four weeks after starting the Diet, the magic moment arrived. I knew I'd lost quite a lot of weight because my clothes fitted so much better, but I could hardly believe my eyes when the scales stopped at 10 stone.

Now my counsellor has advised me to be more careful about the foods I eat and to take regular exercise to help me stay slim.

With a glamorous stage role coming up, it's the best advice I've had in a long time."



A viewer's guide to the programme.

**"Doctors spent fourteen years developing this diet.**

**It changed my life in as many days."**

Mrs. Susan Walsh of Tooting explains how the Cambridge Diet has changed her life.

'I'd never been pleased with my weight and always felt I could do with losing a couple of stone or so. But the worst point came after the birth of my second child when I reached 12 stone 2lbs. That's when I really started getting depressed.

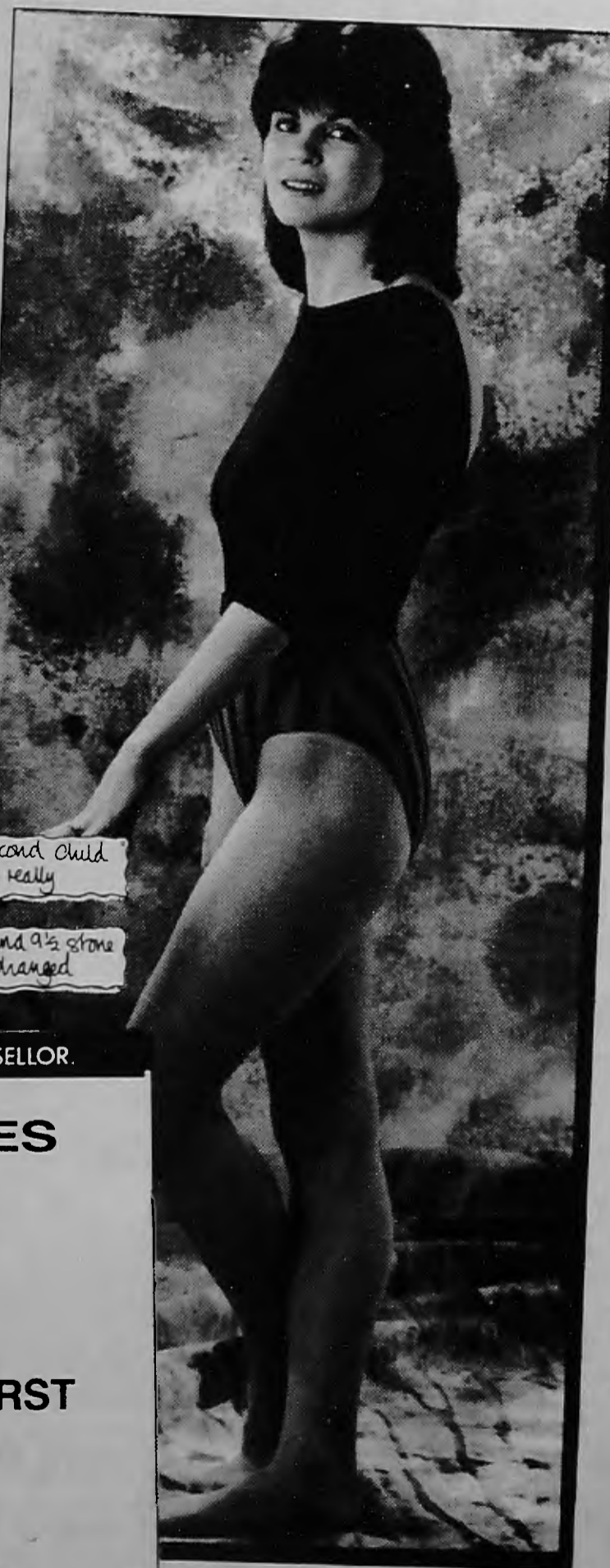
Unfortunately, diets never seemed to work for me however hard I tried, but at that time one of my friends had just reached her target weight on the Cambridge Diet.

'If she can do it, then so can I,' I said to myself - and I was right. Within a month on the Diet I'd lost well over a stone. From then on, even though I am 5'9" tall, I knew I could reach my 'dream' weight of around 9½ stone and two months later I had.'

'It's completely changed my life!'

The worst point came after the birth of my second child when I reached 12 stone 2 pounds. That's when I really started getting depressed.

I knew I could reach my 'dream' weight of around 9½ stone and two months later I had. It's completely changed my life!



FIND OUT MORE. CALL YOUR COUNSELLOR.

## DIET CENTRES

## JON HOWARD

15 Flask Walk,  
Hampstead NW3  
Tel: 435 0709

## BRENDA SONGHURST

8-10 Station Road,  
Finchley N3  
Tel: 349 1284

**THE Cambridge DIET**

The Cambridge Diet should not be taken as a sole source of nutrition for a continuous period exceeding four weeks. Directions for usage beyond this point are given in the Instruction Booklet. The testimonial used in this advertisement has followed this procedure as part of a calorie-controlled diet.

## AT LAST - The True Facts on Low Calorie Diets

The Coma Report on very low calorie diets has just been published and is welcomed by the DHSS and Cambridge Nutrition.

Recommendations set out by the report are ones already in use by the Cambridge Diet. In fact they could have almost written the report themselves.

There is only one minor change as a result, concerning the 330 calorie sachets. The addition of Skimmed Milk has been advised to make the daily intake up to 400 calories. This introduces the required amount of protein the report recommends.

Around 2 million people in Britain are using the diet today with professional counselling which enables patrons to reach and maintain their target weight.

Everybody's progress is monitored by these counsellors, many of which have received more training in nutrition than some doctors.

The conclusion of the Coma Report is that despite all the recent controversy from the press, it reinforces what Cambridge Nutrition have said all along — the 330 calorie diet is safe to healthy users. But as with starting any diet, consult your G.P. first. Scientific research will still go on and high standards will always be maintained by Cambridge Nutrition, for effective weight loss.

# Planning For the Leisure Years

## Beating the Big Freeze

### Good News for the Elderly from Eastern Electricity

Although spring is not far away, there are several more weeks of potentially fatal freezing weather left, and it certainly not too late to be concerned for the welfare of old people, who are especially vulnerable to the cold.

Age Concern have issued some guidelines on basic precautions against cold weather. These are:

- Keep one room warm at all times
- wear several layers of clothing
- keep adequate stocks of food in the house
- keep in touch with neighbours

Eastern Electricity are very aware of the problems of old age pensioners, who always suffer the most. The elderly are more at risk from hypothermia and chest diseases because they are

less mobile and their circulations is poor. But many live on low fixed incomes and the fear of being unable to pay heating bills forces them to try to cut their heating costs.

#### Warmth on a budget

In response to these problems Eastern Electricity has introduced an economical heating system called Budget Warmth, which works like this: Eastern Electricity installs special heaters in a living room which provide warmth 24 hours a day whatever the weather, with no controls to worry about. Heating is normally provided from 1 October to 30 April but this period is extended if the cold weather continues.

The cost of the heating is spread evenly in equal

payments across the year, and the weekly sum is fixed for a 12 month period so you know exactly what you are going to pay from the outset. This means that no matter how cold the weather, the bill remains the same. The weekly amount covers all electricity used, the rental of the system and any maintenance required.

In the South Herts area of Eastern Electricity there have already been over 350 installations of Budget Warmth, one of which was in the North Finchley home of Mr & Mrs Eric and Isabel Parker. Eric, 76, loves gardening and the outdoors, but his wife Isabel has recently become diabetic and is now house-bound. For her, round the clock warmth makes all the difference. She says, "Now we can get up first thing in

the morning or in the night to beautifully warm rooms. With Budget Warmth, their heating costs were cut from over £10 per week to just £4.01, and this year-round charge guarantees them adequate warmth for 24 hours a day.

#### Open all hours

Eric & Isabel are typical of many elderly people who are delighted with Budget Warmth. But the system is available to any one of Eastern Electricity's customers, not just pensioners, so if you think that you, or anyone you know would benefit from Budget Warmth, then simply fill in the coupon below or contact Michelle Wolstencroft at Eastern Electricity's Borehamwood office on 01-953 6282.

# BUDGET WARMTH

The weekly payments answer to single room heating FROM YOUR LOCAL EASTERN ELECTRICITY BOARD

Were you cold last winter? Did you worry about heating bills?

Well, there is no need to be afraid about this winter. Eastern Electricity's NEW BUDGET WARMTH PLAN will keep one room in your home really warm day and night, so ring 953 6282 or send in the coupon

You pay by the size and number of heaters we install. For example:-

Heater Size	Budget Warmth fully inclusive Weekly Cost throughout the year
1 medium (2.55kW)	£2.28
1 Large (3.33kW)	£2.64
2 medium (2×2.55kW)	£3.64
1 med+1 large (1×2.55kW+1×3.3kW)	£4.01
2 large (2×3.3kW)	£4.37



eastern electricity

Pictured are happy Budget warmth customers Mr & Mrs Parker of Grosvenor Road, Finchley

CUT OUT AND SEND TO: Eastern Electricity, Manor Way, Borehamwood, Herts or Tel 953 6282 ext 2365 or 2240 for help and INFORMATION

Name..... TEL NO:.....  
 Address..... BBN4

# Planning For the Leisure Years

## GABLE HOUSE OPENS NURSING HOME IN GOLDERS GREEN

North-west London's newest nursing home — the luxury 40-bed The Grove in Finchley Road, NW11, is now ready for occupation and will be officially opened by John Marshall, MP for Hendon South, on February 1. The home is part of the Gable House Group which has 15 other establishments in the UK.

Every available modern convenience to make life easier, more comfortable and more enjoyable, has been included in this showcase home. All the rooms have their own ensuite facilities — many

with specialised baths — and have been tastefully decorated with co-ordinated wallpapers and fabrics by Cheryl Hart Interior Design Consultants, Hendon.

It has accommodation on four floors with a reception, dining room and lounge leading out to a terrace and landscaped gardens.

The home mainly caters for those who need permanent care and residents are looked after by a professional team of trained nurses on call 24 hours a day.

Brochures and further information can be obtained from Lynn Silver, Gable House Retirement Homes Limited, Viatron House, 928 High Road, London N12 9RW. Tel: 01-446 8151.

## Beechcroft Care Home

RETIREMENT HOME FOR THE ELDERLY  
REGISTERED WITH DEVON COUNTY COUNCIL & R.R.H.A.



### WHY NOT RETIRE TO TORQUAY, DEVON

*Our primary concern is your well being. Here you can enjoy the privacy, security and freedom of a warm and caring family. Guests may choose single or double rooms and bring items of their own furniture if desired.*

FULL CENTRAL HEATING · 24 HOUR NURSE CALL SYSTEM · YOUR OWN PERSONAL PHONE OR TV, IF REQUIRED · LIFT · GOOD HOME COOKING

Overlooking park and bowling green level to shops, sea & churches.

★ STATE BENEFIT WILL COVER OUR FEES ★

For further information please phone Mr & Mrs McCandish on (0803) 37360 or write for brochure  
PALERMO ROAD, BABBACOMBE, TORQUAY TQ1 3NW

## The Grove



837 Finchley Road London NW11  
A GABLE HOUSE NURSING HOME

### Your Home from Home

Home is where the heart is. That's why at Gable House we've spared no effort in creating an outstanding series of nursing and retirement homes, each exhibiting its own special character and each guaranteed to win a lasting place in the heart of every potential resident.

- Quality care from professional and sympathetic staff.
- Long or short stays including convalescence or post operative care.
- Purpose built luxury accommodation.
- Kosher style cuisine.
- Superb facilities from tasteful decor to specialist equipment.
- Rehabilitation and occupational therapy encouraged.



For further details and colour brochure describing all our homes, please contact Gable Retirement Homes Ltd, Viatron House, 928 High Road, Finchley, London N12 9RW.  
Telephone: 01 446 8151

Belmont  
Lodge

## BELMONT LODGE

Residential Home for the elderly



A charming and well furnished residential house with a resident matron providing full 24 hour care.

- Private telephone and TV point in every room
- Lift
- Special diets arranged
- Full central heating
- 24 hour care

All bedrooms are fitted with call alarm facilities and some rooms have their own en-suite bathroom and toilet.

A friendly, family atmosphere is maintained and residents' own interests are encouraged whenever possible.

Short holidays can be arranged

FREE COLOUR BROCHURE CAN BE OBTAINED ON APPLICATION FROM

OFFICE: 01-959 4083

or RESIDENT MATRON: 0923 222610

59 Belmont Road, Bushey, Herts

Registered with Hertfordshire County Council

## KENWOOD NURSING HOME

32, Alexandra Grove, Finchley N12  
Luxury Nursing home reopens

*A new high quality Nursing Home has just opened in Finchley. Registered by Barnet Area Health Authority to care for post-operative convalescent, terminally ill and longstay patients. The Home aims to provide at reasonable fees an excellent standard of nursing care combined with all the attributes of a high class establishment.*

Kenwood is situated in a pleasant residential road and offers:

Full Nursing care by qualified staff.

Short stays on a day to day basis.

Single or shared accommodation, many rooms have en-suite facilities  
All rooms have colour TV + call points.

Choice of menu — special diets catered for.

Passenger and chair lifts.

Telephone: 01-445 5112 for details

## DIRECTORATE OF SOCIAL SERVICES

### Information Technology Officer

**Salary: PO2. £14,241—£15,417 per annum inclusive. Plus Casual user Car Allowance**

You should have proven experience of work directly involved with new technology, and a relevant degree or management qualification will be essential. A knowledge of Social Services' administrative systems/procedures would be an advantage but not crucial, although imagination, vision and the ability to communicate with all levels of staff most certainly are.

For further information telephone Michael Hadley, Head of Support Services, on 01-446 1488, ext 4237.

**Closing date:**  
15th February, 1988.  
**Interview date:**  
10th March, 1988.

Requests for application form and job outline from address No. 4. Please quote reference 633/879.

### Senior Careworker

Abbots and Brunswick Lodge, New Southgate, N11

**Salary: NJC 3. £8,625—£10,047 per annum inclusive**

To arrange an informal visit telephone: Anne Green — Manager, on 01-361 1271.

**Closing date:**  
12th February, 1988.  
**Interview date:**  
1st March, 1988.

Application forms from address No. 4. Please quote reference 633/341.

### Administrative Assistant

**Salary: Scale 4. £8,625—£9,546 per annum inclusive**

Are you enthusiastic and energetic? Can you provide the following services to our Family Care Section?

- ★ Administrative/Clerical support to the Courts Officer;
- ★ Maintain records of juveniles who come to the notice of the police and courts, and produce a weekly list of

children who appear before the Juvenile Court.

- ★ Monitor progress and adoption/custodianship cases where notification of application is made to the Council.

You should possess good communication and organisation skills and be able to use your own initiative in implementing administrative procedures. You should also have experience and understanding of clerical/administrative work.

Preference will be given to those who have previous Local Government experience and who possess or are pursuing an administrative/management qualification. Typing skills would be an advantage.

**Closing date:**  
12th February, 1988.  
**Interview date:**  
29th February, 1988.

Application forms from address No. 4. Please quote reference 633/571.

### Administrative Assistant

**Salary: Scale 4. £8,625—£9,546 per annum inclusive**

We're looking for an energetic person to work in our busy office providing support to the Day and Residential Care Division. You will assist three Management Officers who are responsible for the day and residential care services to people with a handicap, but will also be required to act with initiative in implementing administrative procedures.

You will need to have a sound knowledge and experience of office practice with good all round communication skills. This will include the ability to express yourself verbally, and also to write reports, minute meetings and write detailed letters. A large amount of statistical information is prepared in this office, therefore accuracy and numeracy are important facets of the post. Preference will be given to those who have knowledge of local government procedures, have an interest in services for people with a handicap, and who possess or are pursuing an administrative/management qualification.

Informal enquiries to Chris Sudbery, telephone 01-446 1488, ext 4246.

**Closing date:**  
12th February, 1988.  
**Interview date:**  
1st March, 1988.

Application forms from address No. 4. Please quote reference 633/581.

### Careworker

#### Residential Care for People with a Mental Handicap

**Salary: £7,914—£8,925 per annum inclusive**

The Leys situated in Elstree, Hertfordshire, is a home for 23 people who have varying degrees of learning disability. It is set in eight acres of rural grounds.

We are looking for a mature person who has some previous experience of this type of work. A relevant qualification would be an advantage. There is a commitment to regular supervision and a teamwork approach.

This is an exciting time to join a fairly new staff team who are working with the clients towards developing their self-advocacy and a more normalised service. This post is 39 hours per week and will involve shift work on a rota basis. In addition, you will be required to sleep-in at least once per week, for which £12.06 per night will be payable. Informal enquiries to Ron Cordell — Officer-in-Charge on 01-207 0122.

**Closing date:**  
12th February, 1988.  
**Interview date:**  
2nd March, 1988.

Application forms from address No. 4. Please quote reference 633/716.

#### Nursery Officer Day Care Under Fives Lakeview Day Nursery

**Salary: Day Grade 2. £7,914—£8,466 per annum inclusive**

Applicants, who must be qualified (eg, CSS, NNEB) should have, in addition to all the skills required to work with young children, an understanding and supportive approach to parents and preferably experience in working with families under stress. Informal enquiries to: Christine Brown, Officer-in-Charge, Lakeview, West Hendon, NW9. Tel: 01-202 7960.

**Closing date:**  
12th February, 1988.  
**Interview date:**  
29th February, 1988.

Application forms from address No. 4. Please quote reference 633/387.

#### Temporary Night Care Assistant

**Rate of Pay: £43 per night**

Morton Lodge, a home for 60 elderly people in Southgate, is

seeking someone to cover the sickness absence of one of our permanent staff.

Your duties will include attending to the personal physical needs of the residents, such as toileting, washing and feeding, together with offering emotional comfort.

**Hours:** Four nights per week, Wednesday to Saturday inclusive, 9.00pm—8.00am. There may be the possibility of a permanent appointment at a later date.

**Closing date:**  
11th February, 1988.

Please apply to Mrs N. Nelson, Morton Lodge, Ashfield Road, Southgate, London N14. Telephone 368 3857. Please quote reference TNCA/MORTON.

### Part-Time Domestic Assistant

**Rate of pay: £72.50 per 25 hour week**

We are looking for someone to work five mornings per week, Monday to Friday, 8.00am—1.00pm, at Storth Oaks, a hostel for unsupported single parents and their children.

The duties will include general cleaning and tidying around the building, excluding the kitchen.

**Closing date:**  
11th February, 1988.

Please apply to Jean James or Sheila Smith, telephone 01-203 0660. Please quote reference PTDA/STORTH.

### Home Helps (Full or Part-Time)

**Rate of pay: £3.11 per hour**

We are looking for enthusiastic, caring, and able-bodied people to work in the High Barnet, New Barnet and East Barnet areas, Monday to Friday, hours and timing by arrangement.

Your duties would include domestic work such as cleaning, cooking and washing; personal tasks, eg, dressing, washing and feeding clients; and other duties such as shopping. You would also help clients to maintain their social and family contacts.

**Closing date:**  
11th February, 1988.

Please apply to the Domiciliary Services Officer, Barnet Social Services, 42 Lytton Road, New Barnet, Herts. Telephone 01-449 5511. Please quote reference 633/HH.

# LOCAL OPPORTUNITIES

- Regularly reviewed wages
- Generous leave entitlements
- Pleasant working conditions • Opportunities for advancement
- In-service training/supervision • Worthwhile employment helping the community

For full-time posts we offer - canteen facilities, a minimum of 20 days' basic annual leave and additional leave at most Bank Holidays. Assistance with housing, 100% of removal expenses and interest-free loans for annual seasons tickets may be available in approved cases

**Leaside, a Day Centre for 45 elderly people in Woodside Park, N12, has a vacancy for:**

## Part-Time Centre Attendant

**Rate of pay: £2.92 per hour**

Duties will include bathing, toileting, feeding and any other physical care required by our elderly members. You should be caring and sympathetic to the needs of elderly people.

**Hours:** 20 per week, Monday—Friday, 9.15am—1.15pm.

**Closing date:**  
11th February, 1988.

Please apply to Shelagh Clarke (Manager), Leaside Day Centre, 58 Holden Road, London N12 7DY. Telephone 01-446 2603. Please quote reference PTCA/LEA.

## Mobile Cleaner (Heavy Duty Work)

**Rate of pay: £125 per week, plus car allowance**

The Borough's Domiciliary (Home Help) Services sometimes has to tackle major house cleaning jobs for new clients.

We are seeking, therefore, an able-bodied person, who is in possession of a clean, valid driving licence, to undertake this type of work anywhere within the Borough.

**Hours:** 36 per week, Monday to Friday.

**Closing date:**  
11th February, 1988.

Please apply to Mrs D. Townson, Barnet Social Services, 42 Lytton Road, New Barnet, Herts. Telephone 01-449 5511. Please quote reference 631/MC.

**Meadowside, a home for 60 elderly people in Woodside Park, N12, has two vacancies:**

## Cook

**Rate of pay: £125 per 39 hour week. Plus weekend enhancement**

You will be responsible for the organisation of our busy kitchen, planning and preparing a varied and interesting menu for up to 60 people per day (we serve three cooked meals per day). You should be trained, preferably, to City and Guilds standards and have a broad experience of catering, together with insight into the dietary requirements and tastes of older people

Alternate weekend working will be involved, when a higher rate of pay applies.

**Ref: C/MEADOW**

## Kitchen Assistant (Part-time)

**Rate of pay: £2.90 per hour**

Duties involve preparation of vegetables and cleaning of equipment. This is an ideal opportunity for someone wishing to acquaint themselves with large-scale catering.

**Ref: KA/MEADOW**

**Closing date:**  
11th February, 1988.

Please apply to Alan Clare (Officer-in-Charge), Meadowside Home, 58 Holden Road, London N12 7DY. Telephone 01-446 0234. Please quote appropriate reference number.

## DIRECTORATE OF EDUCATIONAL SERVICES

### Administrative Assistant

**Salary: Scale 3/4. £7,914 rising to £9,546 per annum inclusive dependant on skills, experience and qualifications.**

You will be based at Friern Barnet Town Hall, N11, working in a small busy clerical team providing general personal, clerical and administrative support for a group of Advisers. The duties are interesting and varied involving a great deal of telephone contact with schools, colleges and the Teachers' Centre. A good telephone manner is therefore essential. Shorthand/audio experience within an office environment and an interest in word processing will be an advantage.

If, in addition, you have a lively disposition, possess good all round office skills and can type accurately, this post should suit you.

For an informal chat, please telephone Mrs Val Hawkins on 01-368 1255, ext 3116.

**Closing date:**  
11th February, 1988.

Application forms available from address No. 1. Please quote reference 603/78.

## General Assistants

Interested in Catering? Then we would like to hear from you. If you are reliable and energetic and would like to work for the Education Catering Services, we have vacancies throughout the Borough for General Assistants on varying hours. Rate of pay is approximately £2.91 per hour — plus a free meal. Protective clothing is provided.

You would work 40 weeks a year and would be paid annual leave/retainer payment during school holiday closure (on the understanding that you will be available for work if required).

For further information, or application form please contact the Catering Office, address No. 3. Please quote reference 603.

## Cleaner

**Deansbrook School, Hale Drive, Mill Hill, London NW7**

Cleaner required for 12½ hours weekly. Hours of duty normally Monday to Friday 3.30pm—6.00pm.

**Rate of pay:** £2.90 per hour inclusive.

Four weeks holiday per year, plus eight Statutory Public Holidays and a further six days per year.

**Closing date:**  
11th February, 1988.

Application forms available from address No. 1. Please quote reference C/DEANS

### Where to apply

1. Recruitment Office, 16/17 Sentinel Square, Brent Street, Hendon, London NW4 2EN  
Tel: 01-202 8282 Ext 2372  
(01-202 6602 24 hr ansaphone outside office hours).
2. Application forms from the Assistant Controller (Support Services), Barnet House, 1255 High Road, Whetstone, London N20 0EJ.  
Tel: 01-446 8511 Ext 4460 (ansaphone during office hours) or Ext 4454
3. Director of Educational Services, Town Hall, Friern Barnet, London N11 3DL  
Tel: 01-368 1255
4. Director of Social Services, Ivy House, 1331 High Road, Whetstone, London N20 9HZ  
Tel: 01-446 6857 (24 hr answering service)
5. Borough Librarian, Ravensfield House, The Burroughs, Hendon, London NW4 4BE  
Tel: 01-202 5625 Ext 48

**Please quote the reference number**

With a good employer

AN AUTHORITY COMMITTED TO EQUAL OPPORTUNITIES

LONDON BOROUGH  
**barnet**

## Clean air in Barnet

The entire Borough of Barnet will be cleaner from August 1, 1988 when the final Smoke Control Order comes into effect.

Residents of Arkley, Mill Hill, Totteridge, Barnet Gate and Rowley Green currently burning solid fuel, which is not smokeless, are eligible for a grant to make the necessary approved adaptations.

The Borough-wide programme which started in 1965 is completed by the issue of this final Order by the Council.

### August deadline

From August 1 next year it will be illegal to emit smoke from a chimney anywhere in the borough.

Information concerning the Order and procedures for claiming grants can be obtained from the Environmental Health Department, Barnet House, 1255 High Road N20 0EJ. Telephone 446 8511.

Householders wishing to claim a grant must do so before August 1, 1988 and must first obtain the Council's written approval of the proposed works.

## Bringing up teenagers

DO you think you'll ever survive bringing up a teenager? Do you find yourself saying: turn that music down; tidy your bedroom; or be home by 10.30pm?

Adolescence is a time of rapid and often turbulent change and coping with that change is often difficult, for parents as well as teenagers.

Barnet, Haringey and Hertsmerre Marriage Guidance Council's Education and Groupwork Department are aware of the need for groups of people to come together to share experiences in our ever changing patterns of family life to help avoid minor problems becoming major cases.

The first in their series of Family Lifecycle Workshops is entitled 'Parents of Teenagers' where a small group of parents, led by trained group leaders, will have the opportunity to discuss their experiences, joys and frustrations of bringing up teenagers.

The Workshop will be on Saturday, March 12, at 5 Woodhouse Road, North Finchley, N12 9EN from 10am to 4pm. The cost is £15 a person. Places limited so book early. Booking forms and further details from the Development Officer, above address, or telephone 445 8522. Registration closes February 27. A detailed programme will be sent later.

## DIRECTORATE OF EDUCATIONAL SERVICES

### FURTHER EDUCATION DIVISION

#### Careers Officer — Edgware

**Salary: Scale 5/6.  
£9,780—£11,679 per  
annum inclusive.**

Following an expansion of the Service we are looking for an experienced or newly qualified Careers Officer or someone who is about to complete their Diploma in Vocational Guidance. Salary depending upon training and experience.

**Closing date:  
11th February, 1988.**

Application forms available from address No. 1. Please quote reference ADM/E/623.

### HENDON COLLEGE OF FURTHER EDUCATION

#### Chief Technician

**Salary: Scale 6.  
£10,983—£11,679 per  
annum inclusive**

You should have considerable experience in the computing area and offer this as your area of technical expertise. The College has a range of equipment but has recently concentrated on purchasing RML Nimbus hardware. The supervisory role includes the work pattern, deployment and other general administrative matters relating to all College Technicians.

The post is based at the College site at Grahame Park, although visits to other sites will be required.

**Closing date:  
11th February, 1988**

Application form and further details available from Chief Administrative Officer, Hendon College of Further Education, Corner Mead, Grahame Park, Colindale, London NW9 5KA. Telephone 01-200 8300, ext 219. Please quote reference 899/450.

#### Maintenance Engineer

**Salary: Scale 4/5.  
£8,397—£10,392 per  
annum inclusive**

We are looking for a resourceful and capable person with experience in the maintenance of buildings. Your main tasks are to identify items for repair and then to arrange for action to be taken. There is also a

responsibility to control stocks of materials held for maintenance and repair.

You will supervise three other members of the maintenance team including the College van driver. Close liaison with the College Caretaker and staff of the Directorate of Technical Services will be necessary.

You should possess a relevant qualification (eg, CGLI or equivalent) and must have experience in maintenance work.

**Closing date:  
11th February, 1988.**

Application form and further details are available from Chief Administrative Officer, Hendon College of Further Education, Corner Mead, Grahame Park, Colindale, London NW9 5KA. Telephone 01-200 8300, ext 219. Please quote reference 603/458.

#### Technician (Learning Resources)

**Salary: Scale 2.  
£6,963—£7,724 per  
annum inclusive**

You will be based in the College's Learning Resources section, at Grahame Park. Your duties will include "first line" maintenance of audio visual equipment, use of a wide range of audio/visual aids, and technical assistance to teaching staff including the production of graphics and audio/video material. An appropriate City and Guilds or equivalent qualification is desirable.

**Closing date:  
11th February, 1988.**

Application form and further details available from the Chief Administrative Officer, Hendon College of Further Education, Corner Mead, Grahame Park, Colindale, London NW9 5KA. Telephone 01-200 8300, ext 219. Please quote reference 899/453.

#### Technician (General Science)

**Salary: Scale 2.  
£6,963—£7,524 per  
annum inclusive**

This is a newly established full-time post at our Grahame Park Site. Your main task will be to provide support to the Science component of vocational courses, including Human Biology, Hairdressing Science and BTEC First Diploma in Engineering Science. You should have 4 GCE 'O' Levels. A BTEC Diploma in Science or similar qualification would be desirable.

**Closing date:  
11th February, 1988.**

Application form and further details available from Chief Administrative Officer, Hendon College of Further Education, Corner Mead, Grahame Park, Colindale, London NW9 5KA. Telephone 01-200 8300, ext 219. Please quote reference 899/464.

## DIRECTORATE OF HOUSING AND ENVIRONMENTAL SERVICES

### Senior Technical Officer

**Salary: Scale SO1.  
£12,114—£14,617 per  
annum inclusive of  
London Weighting,  
depending on  
qualifications,  
experience and ability.  
Plus Essential User Car  
Allowance. A Mobility  
Allowance may be  
available to Disabled  
Applicants. A generous  
relocation package is  
also attached to the  
post**

A sound all-round knowledge of building construction will be required, with at least ten years experience of working in the Building Industry, at least three years of which were in a supervisory capacity. Preference will be given to applicants possessing the mCIOB or similar qualifications.

**Closing date:  
11th February, 1988.**

Application forms from address No. 1. Please quote reference 9/1/3230.

### Where to apply

1. Recruitment Office,  
16/17 Sentinel Square, Brent Street,  
Hendon, London NW4 2EN  
Tel: 01-202 8282 Ext 2372  
(01-202 6602 24 hr ansaphone  
outside office hours).
2. Application forms from the  
Assistant Controller  
(Support Services),  
Barnet House, 1255 High Road,  
Whetstone, London N20 0EJ.  
Tel: 01-446 8511 Ext 4460  
(ansaphone during office hours) or  
Ext 4454
3. Director of Educational Services,  
Town Hall, Friern Barnet,  
London N11 3DL  
Tel: 01-368 1255
4. Director of Social Services,  
Ivy House, 1331 High Road,  
Whetstone, London N20 9HZ  
Tel: 01-446 6857  
(24 hr answering service)
5. Borough Librarian,  
Ravensfield House, The Burroughs,  
Hendon, London NW4 4BE  
Tel: 01-202 5625 Ext 48

Please quote the reference  
number

# LOCAL OPPORTUNITIES

- Regularly reviewed wages
- Generous leave entitlements
- Pleasant working conditions • Opportunities for advancement
- In-service training/supervision • Worthwhile employment helping the community

For full time posts we offer - canteen facilities a minimum of 20 days basic annual leave and additional leave at most Bank Holidays Assistance with housing 100% of removal expenses and interest-free loans for annual seasons tickets may be available in approved cases

## Technical Officer

**Salary: Scale 4/5/6. £8,625—£13,179 per annum inclusive, depending on qualifications, experience and ability. Plus Essential User Car Allowance. A Mobility Allowance may be available to Disabled applicants. A generous relocation package is also attached to the post.**

You will supplement the work of a group dealing with the implementation of 'Right to Buy' Surveys. You should have a basic training in building estimating and, in conjunction with our Principal Technical Officer, you will prepare budget estimates from outline scheme design for use in our Forward Plan programme.

**Closing date:**  
11th February, 1988.

Application forms from address No. 1. Please quote reference 9/1/2067.

## Administrative Officer

**Salary: Scale 5. £9,780—£10,665 per annum inclusive**

Can you cope with the challenge of managing a busy Accounts for Payment Unit? Ideally you will have previously worked in a finance section, be numerate and have some experience of staff supervision. You should also be ambitious with a keen desire to succeed.

**Closing date:**  
11th February, 1988.

Application forms from address No. 1. Please quote reference 9/3/2012.

## Clerical Assistant

**Salary: Scale 3. £7,914—£8,466 per annum inclusive**

We would like to hear from people interested in working in a busy Finance Section where the duties will include work connected with Stores, Purchasing and Payment of Accounts.

You should be good at figure work, have some keyboarding skills as VDU's are used, and be willing to take on a variety of tasks as circumstances require.

**Closing date:**  
11th February, 1988.

Application forms from address No. 1. Please quote reference 9/3/2053.

## DIRECTORATE OF TECHNICAL SERVICES

### DEVELOPMENT DIVISION

## Senior Valuer

**Salary: £13,596—£18,713 per annum including London Weighting, depending on qualifications, experience and ability.**

Ref: DTS/658

## Valuer

**Salary: Scale 6/SO1/2. £10,983—£13,965 per annum inclusive.**

Ref: DTS/661

The Senior Valuer post presents an interesting career development opportunity for a qualified Valuer with the drive and ability to handle a varied case load. Experience in general property management/disposal/acquisition and valuation is required and a

practical knowledge of agricultural/green belt holdings management would be desirable.

The Valuer post would suit a recently qualified candidate or graduate undergoing TPC interested in undertaking a wide range of valuation/management duties, on own initiative and in support of more senior staff. Applicants who have practical experience but await final qualifications will also be considered.

If you wish to discuss these opportunities informally, please telephone John Davies, Assistant Controller (Property Services), on 01-446 8511, ext 4681.

Both posts carry Essential User Car Allowance, Mobility Allowances may be payable to disabled applicants.

**Closing date:**  
11th February, 1988

Interviews will be held on 23rd February, 1988 for post DTS/658 and 24th February, 1988 for post DTS/661.

Application forms and further details from address No. 2. Please quote appropriate reference.

## CHIEF EXECUTIVE AND TOWN CLERK'S DEPARTMENT

### Legal Assistants — Conveyancing

**Salary: Scale 6. £10,983 to £12,679 per annum inclusive. Starting salary according to qualifications, experience and ability**

Associate Members of the Institute of Legal Executives preferred although previous local government experience is not essential. We will provide training and give you the

opportunity to study for ILEX examinations.

**Closing date:**  
12th February, 1988

Application forms from address No. 1. Please quote reference 600/497.

## LIBRARIES DEPARTMENT

### Temporary Clerical Assistant

**Bibliographical Services Centre (36 hours)**

**Salary: Scale 1/2. £4,554—£7,749 per annum inclusive. (Minimum salary at age 21: £6,267 per annum inclusive.)**

The temporary full-time post is to cover maternity leave until the end of October, 1988.

You will be based in the Inter-Lending Section of the Bibliographical Services Centre at Ravensfield House, NW4. Drive and initiative, together with willingness to learn to use new technology will be essential qualities.

**Closing date:**  
13th February, 1988

Application forms and further details from address No. 5. Please quote reference 607/230.

*where to apply*

For application forms please apply to the appropriate address listed on the facing page.

For addresses see facing page

*with a good employer*

AN AUTHORITY COMMITTED TO EQUAL OPPORTUNITIES

LONDON BOROUGH  
**barnet**

# BARNET DIARY

## Council Meetings

Members of the public are invited to attend council and committee meetings in the Town Hall, Hendon, at 7pm

**Monday February 8:** Finance  
**Wednesday February 10:** Planning Sub-Committees  
**Thursday February 16:** Education Sub-Committees  
**Tuesday February 23: Council Meeting**  
**Thursday February 25:** Grants (7.30pm)  
**Wednesday, February 24:** Town Planning and Research  
**Monday February 29:** Finance Special Meeting

Entries for the March issue must be received by February 9, and before that date if possible. New entries start on March 6.

\*Asterisk denotes weekly meeting.

### Saturday February 6

London Hash House Harriers run — Mill Hill Village and The Ridgeway — Mill Hill East tube stn. 11am  
 \*Tennis Squad, Barnet College, Russell Lane, N20. 10am. Details Manorhill Centre, 368 6316  
 \*Melanies Latest Charts and Imports Club, 407 Hendon Way, Hendon. 202 7289  
 \*North London Rambling Club organised Saturday walks. Contact (SAE) Ray Todd, 31 Blair Close, St Paul's Rd, London N1 2YP  
 \*Mill Hill School Sports Centre, The Ridgeway, Mill Hill, Junior activities 7-14 yrs, 10.30am. 906 2322  
 \*Saturday Club for children 3-11yrs, Old Barn Community Centre, Tarling Rd, N2. 9.30am-12.30pm and 1.30-3.30pm. 349 4613

### Sunday February 7

\*Finchley Section of the Cycling Touring Club organise Sunday rides. Phone 361 9851  
 \*Tennis and Short Tennis for 5 yrs to adult, Christ's College Lower School, East End Rd, N3. Details Manorhill Centre 368 6316  
 \*North West London HF Club. Sunday rambles in Home Counties. 997 6079  
 \*Mind in Barnet 'Libra' Club, Etchingham Park Day Centre, Etchingham Park Rd, Finchley. 3.30pm. 455 2850  
 \*Shaftesbury Harriers training sessions, Cophall Stadium, Gt Nth Way, NW4. 11am. 200 1584. Also Tuesdays 6pm  
 \*North London Holiday Fellowship Group. Sunday rambles in Home Counties. 346 6795/444 5847  
 \*Finchley Zen Society, 91 Nether Street, N12. 8-9pm. 445 1819  
 \*Youth Club for hearing impaired, Grahame Park Youth Centre, Corner Mead, Grahame Park Way. 10.30am. 202 3811  
 \*Barnet 18 Plus Group, Bull & Butcher Public House, 1277 High Rd, Whetstone. 8.30pm. 0707 59373

### Weekdays

Playgroup 3-5yrs, SPEC Community Centre, 87 Brookside St, E Barnet. 9.15am-12.15pm. 368 0891  
 Crescent Playgroup, East Barnet Baptist Church Hall. 9.30am. 449 5095  
 Old Barn children's activities, Tarling Rd, N2. Under Fives, 9.30am; After School Club, 3.30-6pm. 349 4613  
 \*Brookside Play Group (3-5 yrs), Barnet Pre-School Playgroup Assn, 87 Brookside St, East Barnet. 9.15pm-12.15pm. 368 9891

Advice service on social security, housing, consumer advice etc, East Finchley Neighbourhood Centre, 42 Church Lane, N2. 10am-12 noon, 2-4pm. 444 6265

### Monday February 8

RSPB Potters Bar & Barnets, Oakmere House, Potters Bar. 8pm  
 \*St John Ambulance. 1st Finchley Badger Set, Finchley Methodist Church, Ballards Lane, Finchley, N3. Age 5½ upwards. 6.15pm. 207 3036  
 \*Cranbourne Badminton Club, Hampstead Garden Suburb. New experienced players welcome. 346 5655  
 \*Art Classes. Courses in Life Drawing, Portraiture, Still Life, General drawing and painting, Colour Theory and Practice Graphics. For Beginners, Intermediate, Advanced, O & A Level and Pre-foundation. At All Saints Arts Centre, 122 Oakleigh Road North, N20. 445 8388/445 4654  
 \*CRAB — photography group for disabled people (CLIC), 43 Flower lane, NW7. 1.30pm. 346 9789  
 \*Bells Hill Prams & Pushchairs St. Stephen's Church Hall, Bells Hill, Barnet. 1.30pm. 441 9501  
 \*Edgware & Dist Canine Training Soc, St Alphage Hall, Playfield Rd, Burnt Oak. Ring class 8.30pm; obedience training 9.15pm. 0923 35968  
 \*Information and Advice Drop In, Sutton Road Health Clinic, Muswell Hill. CAB and Social Services worker available. 2-4pm. Housing Estates Officer attends first Monday of month  
 \*Morning badminton club, Hartley Hall, Mill Hill. Vacancies for experienced players. 959 4867  
 \*Brownies at East Barnet Baptist Church Hall, East Barnet Rd. 6pm. 440 6811  
 \*Hendon College Adult Literacy classes (students with mental handicap), Thirleby Rd, Burnt Oak. 7pm. 200 8300  
 \*East Barnet Toy Library, Community Centre, Victoria Rd, E Barnet. 2-3.30pm. 449 6772  
 \*RAF Association, Royal British Legion Hall, Legionway, Summers Lane, N12. 8pm. 883 5722  
 \*New Barnet Literary & Debating Soc, Foyer Rooms, Lyonsdown Hall, Lyonsdown Rd, New Barnet. 8pm. 449 0440  
 \*London Hash House Harriers meet for runs all over London until end of September at 7pm, then at weekends at 11am during winter months. Details of programme, s.a.e. 'Mic Mac', 12 Parkhurst Rd, Friern Barnet, N11 3EL. 361 0887  
 \*Church Farm Pre-school Activities Group, Church Hill Rd, East Barnet. 9.45-11.15am. 368 9893  
 \*10th Hendon Brownie Pack, St Mary Magdalen Church Hall, Holders Hill Rd, Hendon. 6.30pm  
 \*Needing friendship and an uplift to life? Visit Salisbury Chapel, Salisbury Rd, Barnet. 2.15pm. 449 7026

### Tuesday February 9

Hendon & Dist Cage Bird Assn, Labour Hall, Back Lane, off Watling Ave, Burnt Oak. 7.30pm. 205 2647/709 2433  
 Arthritis Care, Cranley Dene, Muswell Hill Rd, N10. 2pm. 883 2441  
 National Schizophrenia Fellowship, Health Centre, 23 Temple Fortune Lane, NW11. 8pm. 455 5113  
 Totteridge Ward Labour Party, N Finchley Library, Ravensdale Ave. 8pm. 449 6524  
 \*Finchley Writers' Workshop, Moss Hall Tavern, 6pm. 349 1948  
 \*Friern Barnet and Totteridge Camera Club, Totteridge Library, Totteridge Lane, beginners to advanced. 8pm. 445 2617  
 \*Mind in Barnet Luncheon/Social Club, 2 Schoolway, Woodhouse Road,

N12. 10am-4pm. 446 1654 (also Thurs & Fri)

\*British Red Cross Society, 10 Downage, Hendon. Sale of nearly new clothes. 10am-3pm  
 \*123 Club for mothers, babies and toddlers, Christ Church Hall, High Rd, N12. 9.30-11.30am. 368 4659  
 \*Mill Hill School Sports Centre, The Ridgeway, Mill Hill. Golf lessons, 7.30pm. 906 2322  
 \*Hendon and Edgware 18 Plus Group, Games Room, Royal Oak Pub, Finchley Rd, Temple Fortune. 8.15pm. 952 2243  
 \*Mother & Toddler Group, Rendezvous Centre, Coppets Rd, N10. 9.30-11.30am. Barnet Play Association's Play Bus and inflatables at these times. 444 7839  
 \*North London Holiday Fellowship Group, Harris Room, Trinity Church, Hodford Rd, Golders Green. 346 6795/444 5847  
 \*Basketball, 9-16 yrs Christ College Lower School, East End Rd, N3. 6pm. 368 6316  
 \*Colindale Youth Club 11-16 yrs, St Matthias Church Hall, Rushgrove Ave. 7pm. 205 7774  
 \*Emotions Anonymous (emotional living problems). St Albans Church, West Heath Drive, Golders Green. 7.30pm. 837 4456/959 1003 (also Fridays)  
 \*Tumble Tots — physical activity for pre-school children (six months to five years), Bushmead Social Club, Hammonds Close, Edgware. Classes all day from 9.30am. 958 6579  
 \*MIND in Barnet, advice and counselling, Trinity Church, Nether Street, N12. No appointment needed. 7.30-9.30pm  
 \*Al-Anon — help for families and friends of problem drinkers — Carey Room, Trinity Church Centre, Nether St, N12. 8pm. Further information for other local meetings 403 0888 (24 hour service)  
 \*Bottoms Up. A club for mothers with first babies, Jubilee Room, St James' Church, Friern Barnet Lane, N20. 2.30-4.30pm. 361 3320  
 \*Friendship Club for over 40s, Christ Church Hall, High Road, N12. 346 7657/349 0670  
 \*The Toddle Club. 2.30-4.30. New members welcome. Bring your babies and toddlers to Church House, behind St John's Church, Friern Barnet Road, N11. 368 7074  
 \*Studio North Three adult classes in art, College Farm, Fitzalan Rd, Finchley. 10am-1pm. 959 1498/6175  
 \*Elmgate Badminton Club, Church Hall, Rectory Lane, Edgware (vacancies). 7.30pm. 959 4757  
 \*Finchley & Dist Model Aircraft Club, Manorside School, Squires Lane, N3. 14+. 8pm. 904 5449  
 \*Computer Courses, Mill Hill School Sports Centre, The Ridgeway. 8pm. 906 2322  
 \*120 (Hendon) Sqn Air Training Corps, boys and girls 13½ to 16, RAF Hendon, Aerodrome Rd, NW9. 7.30pm (also Fri & Sun 10am-12.30pm). 205 7297  
 \*Legal Advice, East Finchley Neighbourhood Centre, 42 Church Lane, N2. 7-8.30pm. 444 6265  
 \*Hendon College Adult Literacy classes (students whose first language is not English), Montagu Rd Centre, Hendon. 7pm. 200 8300  
 \*Hendon College Adult Reading & Writing classes, Thirleby Rd, Burnt Oak. 7pm. 200 8300  
 \*Barnet & Dist Athletic Club training session, Cophall Stadium. 7pm. 368 6754  
 \*1st Childs Hill Guides (10-14), All Saints Church Hall, Church Walk, NW2. 6.45pm. 458 5549  
 \*MIND in Barnet — Relative Support Group — Woodlands, Colindale

Hospital, Colindale Ave. 7-9pm. 446 1654

\*1374 East Barnet Squadron Air Training Corps (13-16yrs), Gloucester Rd, New Barnet. 7.30pm. 440 0263

### Wednesday February 10

Rotaract Club of Edgware & Stanmore, The Green Man Pub, Honeypot Lane, Stanmore. 8.15pm. 722 4439 (also Feb 24)  
 Finchley Antiques Appreciation Group, Avenue House, East End Rd, N3. 7.50pm. 906 1869/203 3735  
 Library Lectures, Burnt Oak Library, Watling Ave. John Harrison gives a graphic account of a hazardous adventure 'Up the Creek — An Amazon Adventure'. 8.15pm  
 Orbit Club of NW London, (25-40), Moss Hall Tavern, Ballards Lane, N12. 8.30pm. 906 2080  
 \*CRAB — Circus Skills — children aged 8+ 5pm, 50p a session; adults 7pm, £1 a session. Barnet Drama Centre, 142 High Rd, East Finchley. 346 9789  
 \*Parent & Toddler Time, East Barnet Baptist Church Hall, East Barnet Rd. 1.45pm (also Friday)  
 \*Good as new sale, Chipping Barnet Conservative Association, 163 High Street, Barnet. 10.00am to 1.00pm. (Also 1st and 3rd Saturdays of the month)  
 \*Barnet YHA Group 1st Lyonsdown Scout Hut, York Rd, New Barnet. 8pm. 449 1553/202 7574  
 \*Bingo, St Alphage Church Hall, Playfield Rd, Burnt Oak. 8pm  
 \*Barnet Caving Group, Bull and Butcher Pub, High Rd, Whetstone. 9.30pm. 446 1070/1868  
 \*Bingo, Community Centre, Victoria Rd, New Barnet. 7.30pm. 440 2573  
 \*Mill Hill School Sports Centre, The Ridgeway, Mill Hill, Junior badminton, 6pm; adult badminton, 7pm. 906 2322  
 \*St Margaret's Badminton Club, Rectory Lane, Edgware. 8pm. 440 4572/0923 46953. Vacancies for players  
 \*See-Saw Club for babies and toddlers with special needs, North Road Community Centre, Burnt Oak B'way. 10am. 368 6291  
 \*Sale of clothing and bric-a-brac, Barnet Centre British Red Cross Soc, St Albans Rd, Barnet. 9.30am-3.30pm. 449 8969  
 \*Badminton — 3 courts, first class facilities. Few vacancies for experienced players — friendly club, 883 4437 (also Thursdays evenings).  
 \*Hendon Woodcraft Folk (during term time), Hendon School, Golders Rise. 6.15pm. 202 7140  
 \*Old Barn Youth Club 10-14 yrs, Tarling Rd, N2. 7pm. 349 4613 (also Fridays)  
 \*Hornsey Cine — Scene Two, St Peter Le Poer Hall, Albion Ave, N10. 8.15pm  
 \*Hendon College Adult Numeracy classes, Thirleby Rd, Burnt Oak. 7pm. 200 8300  
 \*Chanticleer Camera Club, The Minchenden Association Clubhouse, Bramley Rd, N14. 8pm. 888 5669  
 \*MIND in Barnet Advice Centre, 2 School Way, North Finchley. 10am-4pm. No appointment needed. 446 1654/6470  
 \*Self-development course, Barnet Unwaged Branch WEA, George Richardson House, 7 Sunningfields Rd, Hendon. 2-5pm. Half or full day. Unemployed free, others small charge. 440 9430

### Thursday February 11

RSPB Nth London, Holy Innocents Church Hall, Tottenham Lane, N8. 7.45pm. £1.50. 361 2658  
 \*Church Farm Mother & Toddler Club, Church Hill Rd, E Barnet. 10am-11.30am. 368 4191  
 \*Brookside Methodist Church Boys'

# BARNET DIARY

Brigade, East Barnet. Pre-Junior 6-8, 6.15pm; Juniors 8-11, 6.30pm; Company 11+ 8pm. 441 2042

\*Hendon Chess Club, Hyde United Reformed Church, Edgware Rd, Colindale, 7.30pm. 952 3129

\*MIND in Barnet Thursday Club, 154 Station Rd, Hendon. 8pm. 446 1654

\*High Barnet Woodcraft Folk, Underhill School, Mays Lane, Barnet. 6-9 yrs, 6pm (440 5369); 10-13 yrs. 7.15pm (440 2426)

\*Carpentry for disabled, John Grooms, Stoneyfields Rd, Edgware. 1.30pm. Ring lan at CRAB 346 9789.

\*MIND in Barnet — Women's Drop in Centre, Trinity Church Rodborough Rd, Golders Green. 9.30am-1pm (relaxation 11am). 446 1654

\*Mums, babies & toddlers club, St Barnabas Church, Holden Rd, N12. 10am-12 noon. 368 0367

\*Parent and Toddler Time, Victoria Centre, Victoria Rd, New Barnet. 1pm. 449 5511

\*Badminton Club, Christ Church URC, Bellevue Hall, Bellevue Rd, N11. 8pm. 449 8476

\*Community Links in Cameras (Clic), photography group of disabled people, 43 Flower Lane, NW7. 1.30pm. 346 9789

\*Badminton (adults), Manorhill Centre, Summers Lane, N12. 7pm. 368 6316

\*Canada Villa Youth Centre pre-school gymnastics club 'Jumping Beans', Pursley Rd, Mill Hill. 10am-12noon. £2 registration, then £1 per session. 959 2811

\*Bounce, a group for children under five with special needs. New Barnet Community Centre, 48-50 Victoria Rd. 1.15pm for 30 minutes. 25p. 346 7120

\*Short tennis for juniors, Mill Hill School Sports Centre, The Ridgeway. 6pm. 906 2322

\*East Finchley Toy Library, Herbert Wilmot Youth Centre, Eagans Close, N2. Over 500 toys available. 3pm. 883 0244

\*Finchley Chess Club, Etchingham Park Day Centre, Etchingham Park Rd, N3. 7.30pm

\*Talks on Social Effectiveness. 202 3373

\*Machine Knitting Class, Old Barn Centre, Tarling Rd, N2. Tuition at all levels. 1pm. 349 4613

\*Hendon College Adult Reading & Writing classes, Montagu Rd Centre, Hendon. 7pm. 200 8300

\*Barnet & Dist Athletic Club training session, Clubhouse, Victoria Rd, New Barnet. 7pm. 368 6754

\*PHAB-integrated social club for physical handicapped and able-bodied people. Details 450 4180

\*Alcoholics Anonymous, Temple Fortune Health Clinic, 23 Temple Fortune Lane, NW11. 8pm. 352 3001

\*1st Friern Barnet Boys' Brigade, Manor Drive Church Hall, Whetstone. Boys aged 5-18. 5.30-10pm. 361 9698

**Friday February 12**  
Finchley Branch UNA, 51 Church Crescent, Finchley, N3. Talk on UNESCO. 7.45pm  
Oakleigh Carers Group, Health Centre, Oakleigh Rd Nth, Whetstone. 2pm. 368 8350

\*Mums & Toddlers Group, Friern Barnet Day Centre, Friern Barnet Lane, N11. 10-11.30am. 368 4278

\*Hendon & Hampstead Garden Suburb Camera Club, Fellowship House, Willifield Way, NW11. 8pm. 205 6053

\*Barnet and Finchley Photographic Soc, rear of 37a Salisbury Rd, Barnet. 8pm. 368 3917

\*Barnet Blind Bowls Club, TAVR Drill Hall, 444 High Road, N2. 2pm. 449 7058

\*Finchley Cine Society, Avenue

House, East End Rd, N3. 8pm. 346 4265.

\*Brookside Community Group Senior Youth Club (11-16), Union Church, Northiam, N12. 7.15-10.15pm. 445 5958.

\*Social afternoon, Old Barn Community Centre, Tarling Rd, N2. All ages. 1-3pm. 349 4613.

\*Basketball sessions for juniors and seniors, Mill Hill School Sports Centre, The Ridgeway. 7pm. £1.50 juniors, £2 seniors. 906 2322

\*Mill Hill School Sports Centre, The Ridgeway, Mill Hill. Squash coaching — juniors 6.15-7.15pm; adults 7.15-8.15pm. 906 2322

\*Bingo, BSCA Centre, Mays Lane, Barnet. 8pm. 441 9387

## Saturday February 13

British Tinitus Assn, NW London, Meritage Club, Church End, Hendon. 2pm. 444 9657

RSPB Nth London — coach outing to Titchwell. Alexandra Park Gates, Priory Rd, N8. £6. 7.30am. 348 5300

## Monday February 15

British Epilepsy Support Group, Trinity Church Hall, Nether St, N12. 7.30pm. 446 2003

## Tuesday February 16

North Middx Family History Soc, Barnet Branch, AGM, Church House, Wood St. 7.45pm. 441 0529

Friern Barnet Amnesty Group, Jubilee Room, St James' Church, Friern Barnet Lane, N20. 8.15pm. 368 9487

Royal British Legion (N Finchley), Legionway, Summers Lane, N12. 8pm. 445 9911

Barnet National Trust, St Mary Magdalen Hall, Athenaeum Rd, Whetstone. 8pm. 449 5896

Barnet Anglo-French Club, 29 Wood St, Barnet. 8pm. 440 6805 (also Mar 1)

RSPB NW London, Harwood Hall, Mill Hill Circus. 8pm. 952 3192

## Wednesday February 17

National Trust, Edgware & Dist Centre, John Keble Hall, Deans Lane, Edgware. 8pm. 952 2688/951 1578.

Herts & Middx Wildlife Trust, North Finchley Library, Ravensdale Ave. 8pm. 346 5258

Library Lecture, East Finchley Library, 226 High Rd. John Pilkington takes 'The Silk Road to China' — from Venice to eastern China. 8.15pm.

Finchley Philatelic Soc, Avenue House, East End Road, N3. 8pm. 883 8724 (also Mar 2)

Finchley Rotaract Club, Moss Hall Tavern, Ballards Lane, N12. 8.30pm. 445 1393 (also Mar 2)

Barnet Rotaract Club, Barnet Cricket Club, Barnet Lane. 8pm. 441 5892 (also Mar 2)

## Thursday February 18

Friern Barnet & Whetstone Rotaract Club, Bull & Butcher Pub, High Rd, N20. 8.15pm. 368 3383 (also Mar 3)

RSPB NW London — car outing to Staines Reservoir & Wraysbury Gravel Pits. Edgware Stn. 9.30am 959 0204

## Tuesday February 23

Job search counselling, Barnet Unwaged Branch WEA, East Finchley Neighbourhood Centre, 42 Church Lane, N2. Help and advice with application forms etc. 2pm. 440 9430 (also Mar 1)

## Wednesday February 24

Library Lecture, Hendon Library, The Burroughs. Leo Batten talks on 'Wildlife of the Welsh Harp'. 8.15pm

## Thursday February 25

British Diabetic Assn (Barnet & Dist) AGM, Post Graduate Medical Cen-

tre, Barnet General Hospital, Wellhouse Lane, Barnet. 8pm. 368 6993

## Friday February 26

Barnet Ratepayers & Residents Assn (Arkley & Hadley Wards), Harold Fern Room, Salisbury Rd, Barnet. 8pm; surgery 7.30pm. 449 0807

## Sunday February 28

RSPB Nth London — car outing to Bedgebury Pinetum & Bough Beech. Alexandra Park Gates, Priory Rd, N8. 8am. 801 8581

## Monday February 29

Barnet Action for Mental Health, 154 Station Rd, Hendon. 7.30pm. 203 5879

## Wednesday March 2

Herts & Middx Wildlife Trust, Hendon Library, The Burroughs. 8pm. (Repeat of Slide Show at North Finchley, Feb 17). 346 5258

Barnet Animal Rights Group, Christ Church Hall, High Rd, N12. 8pm. 440 1715

Milldon Arts Soc, Union Church, The Broadway, Mill Hill. 7.30pm. 958 5126

RSPB NW London, Harwood Hall, Mill Hill Circus. 3pm. 952 3129

## Saturday March 12

Barnet, Haringey and Hertsmere Marriage Guidance Council Day Workshop for parents of teenagers, 5 Woodhouse Rd, N12 9EN. 10am to 4pm. Booking forms from development officer, above address. Applications by February 27. Cost £15.

## Horticulture and Floral Art

### Tuesday February 9

Mill Hill Flower Club, Harwood Hall, Mill Hill B'way. 8pm. 959 3530

### Wednesday February 10

New Barnet Amateur Gardeners' & Floral Art Soc, St Peter's Church Hall, Lyonsdown Rd. 8pm. 75p. 441 0293

Hendon Horticultural Soc, Hendon Library, The Burroughs. 8pm. 203 1187

### Thursday February 11

Barnet & Dist Fuchsia Soc, Council Chambers, 29 Wood St, Barnet. 7.30pm. 445 6112

Barnet Flower Arrangement Soc, Lyonsdown Hall, Lyonsdown Rd, New Barnet. 8pm. 0707 57199

### Tuesday February 16

Friern Barnet Floral Art Club, Christ Church Hall, Oakleigh Rd Nth, Whetstone. 8pm. 446 0783 (also Mar 1)

Totteridge Floral Art Group, Badger's Croft, Totteridge Village. 2pm 445 9307

### Wednesday February 17

Hendon Floral Art Group, West Hendon Community Centre, Marsh Drive, NW9. 7.30pm. 346 8916

### Saturdays/Sundays

\*Mill Hill Horticultural & Allotment Soc, Hartley Close, Mill Hill. Trading hut open Sat 2.30-4pm, Sun 10.30am-12.15pm. Garden plots to let. 959 2848

### Sundays

\*Burnt Oak Horticultural Society Trading Hut, Back Lane, r/o Woodcroft Hall. 10.30am-noon

### Thursdays

\*Sabgetsu Japanese flower arranging classes, 125 North End Road, NW11. 10am and 2pm. 445 8949 (starting January 21)

## Women's Clubs

### Tuesday February 9

East Barnet (Osidge) TWG, Church Farm, Church Hill Rd, E Barnet. 7.45pm 368 7346

Wives Group, Mill Hill East Church Hall, Salcombe Gdns. 8pm. 346 9430 (also Feb 24)

### Wednesday February 10

Friary Club (NA of WC) Canteen, Friern Barnet Town Hall, N11. 8 pm. 445 8493 (also Feb 24)

Brunswick Park Ladies Section, Chipping Barnet Conservative Assn, Church Farm Hall, Church Hill Rd, E Barnet. 2pm. 449 7345

Mill Hill Afternoon TWG, Harwood Hall, The Broadway, NW7. 2pm. 959 1505

### Thursday February 11

Finchley Granville TWG, Finchley Methodist Hall, Ballards Lane, N3. 2pm. 346 7056

Broadway Mill Hill TWG, Hartley Hall, Flower Lane, 2pm. 959 1333

Chipping Barnet WI, Church House, Wood St, Barnet. 10am. 440 8807

### Monday February 15

Mill Hill Highwood TWG, Hartley Hall, Flower Lane. 2pm. 959 1994

### Tuesday February 16

Friern Barnet & Whetstone TWG, Manor Drive Methodist Church, York Way, N20. 2pm. 368 5571

### Wednesday February 17

Woodside Park Afternoon TWG, Old Finchleians Club House, Southover, N12. 2.15pm. 445 0911

Friary Club (NA of WC), Friern Barnet Town Hall, N11. 8 pm. 445 8493

'Acorns', non-sectarian club for women, St Paul's Church Hall, Long Lane, N3. 9.45am. Creche available. 346 7945/7378 (also Mar 2)

### Friday February 19

Barnet Afternoon TWG, Church House, Wood St. 2pm. 449 0367

Broadfields Evening TWG, Mill Hill County High School, Hammonde Close, Edgware. 7.30pm. 958 4692

### Monday February 22

Barnet & Dist Branch National Council of Women, St John's URC Hall, Mowbray Rd, New Barnet. 1.30pm. 20p. 449 2062

### Tuesday February 23

Montrose WI, Parish Room, St Alphage Church Montrose Ave. 7.45pm. 951 1140

Finchley Redbourne TWG, Etchingham Park Rd Day Centre, N3. 7.45pm. 349 3365

### Wednesday February 24

Finchley Church End TWG, St Mary's Church Hall, Hendon Lane, N3. 2.15pm. 455 7152

### Tuesday March 1

Totteridge WI, Village Hall, Badgers Croft, Totteridge Lane, N20. 7.30pm. 445 5700

Friern Barnet Friary TWG, Christ Church URC Hall, Bellevue Rd, N11. 2pm. 361 9623

Royal British Legion Women's Section (N Finchley), Legionway, Summers Lane N12. 8pm. 445 9911

### Wednesday March 2

Barnet Evening TWG, Church House, Wood St. 7.30pm. 449 6809

### Thursday March 3

East Barnet Monkfrith TWG, British Legion Hall, Nursery Rd, N14. 1.45pm. 0707 51896

Ashley TWG, Mill Hill East Free Church, Salcombe Gdns. 7.30pm. 906 1952

# BARNET DIARY

## Keep Fit

East Barnet Valley TWG, Lyonsdown Hall, Lyonsdown Rd, New Barnet. 2.15pm. 449 8601/3885

### Mondays

- \*SupaSlim Slimming Club, Avenue House, East End Rd, N3. Sensible dieting and group therapy. 10am. 445 3195 (also Tuesdays 8pm)
- \*Ladies self defence, Canada Villa Youth and Community Centre, Pursley Rd, Mill Hill. 2pm. £1.50. 959 2811
- \*Women only recreational sessions. Sport for Fun. Manor Hill Centre, Summers Lane N12. 368 6316

### Tuesdays

- \*MIND in Barnet — women's drop-in, Barnet United Reformed Church, Wood St, Barnet. 7.30pm
- \*Ladies Home League, Salvation Army Hall, Hertford Rd, East Finchley. 2.15pm.
- \*Speedwell Badminton Club, moderate to good standards, Christ Church Hall, High Rd, N12. 1.45pm. 449 6401

### Thursdays

- \*Barnet Asian Women's Assn, Barnet Health Education Unit, Oak Lane Clinic, East Finchley. 1.30pm. 883 1075/444 4411
- \*Women's Friendship Club, Union Church, Northiam, Totteridge. 2.15pm. 445 6945
- \*Ridgeway Club (Nat Assn of Women's Clubs), Evergreen Centre, Brookhill Rd, East Barnet. 7.45pm. 449 1373
- \*Sculpture Class, Old Barn Centre, Taring Rd, N2. 7.30pm. 349 4613 for enrolment details.

### Sundays

- \*Yoga classes at Patanjali Yoga Centre, 190 Watford Way, Hendon. Beginners: 1pm & 3pm, advanced 5pm. 203 0062
- \*Stretchout, East Finchley Neighbourhood Centre, 42 Church Lane, N2. 11.30am. 883 7029

### Mondays

- \*Stretch, tone & trim to music, Brookside Methodist Church, East Barnet. 10.15am. Creche facilities. 440 5811.
- \*Body-tune St Mary's Church Hall Church Hill Rd, E Barnet. 7.15pm. 441 1336 (also Tues & Wed)
- \*Pensioners Health Group, Methodist Hall, Rodborough Rd, NW11. 2pm. 794 6376. 60p
- \*Yoga, St Mary's Church Hall, Hendon Lane, N3. 7pm. 455 2476. Also Weds 9.45am
- \*Aerobics 9.30am; body conditioning 10.30am. St Mary's Hall, Hendon Lane, N3 (during term-time). 349 1449
- \*Body conditioning classes, Christ Church, Whetstone, Oakleigh Rd Nth, N20. 7.15pm (also Thurs). Phone 445 1846
- \*Aerobic workout, Mill Hill School Sports Centre, The Ridgeway, Mill Hill. 7pm, advanced 8pm. £2. 958 7596 (also Thurs 8pm)
- \*Popmobility, Hendon Sports Centre, Algernon Rd. 7.30pm. £1.80 per session. 202 6027
- \*Aerobics, Centre Point, Corner Mead, Grahame Park. 8pm. 906 1721 (Also Thursdays, 8.30pm)

- \*Weight and fitness training, Mill Hill School Sports Centre, The Ridgeway, Mill Hill. 8.15pm. 906 2322
- \*Aerobic advanced class, Manorside School, Squires Lane, N3. No beginners. 8pm. 349 1449
- \*Keep Fit, Manorhill Centre, Summers Lane, N12. 7pm. 368 6316
- \*Low Impact Aerobics and Stretch, All Saints Church Hall, Oakleigh Rd Nth, N20. 7.30pm. 368 5514

### Monday-Friday

- \*Weight Training instruction, Hendon Sports Centre, Algernon Rd. 6-8pm Mon-Thurs; 5.30-7.30pm Fri. £1.80 per session or £15 per term. 202 6027

### Tuesdays

- \*Popmobility/aerobics, Queen Elizabeth Centre, Meadway, Barnet. 7pm and 8pm. 441 2933.
- \*Keep fit, Centre Point, Corner Mead Grahame Park, 8.30pm. 205 7113
- \*Aerobics, Manorside School, Squires Lane, N3. 8pm. 349 1449 (also Thursdays 8pm)
- \*Ladies Keep Fit — suitable all ages — Hendon School, Golders Rise, Hendon. 7.30pm. 349 0400. (also on Thursdays)
- \*Body conditioning classes, Oaktrees Special School, Chase Side, Southgate. 7.30pm. 368 0881
- \*Keep Fit and self defence with Nanbudo, St Mary's Hall, Hendon Lane, N3. 8pm. 349 4421
- \*Stretch and Shape, Oak Tree Special School, Chase Side, Southgate. 7.30pm. 368 0881
- \*Slenderquest Slimming Club, St Mary Church Hall, Church Hill Rd, East Barnet. 8pm. £2. 449 4277
- \*Body Focus exercise/dance class, Lyonsdown Hall, New Barnet.

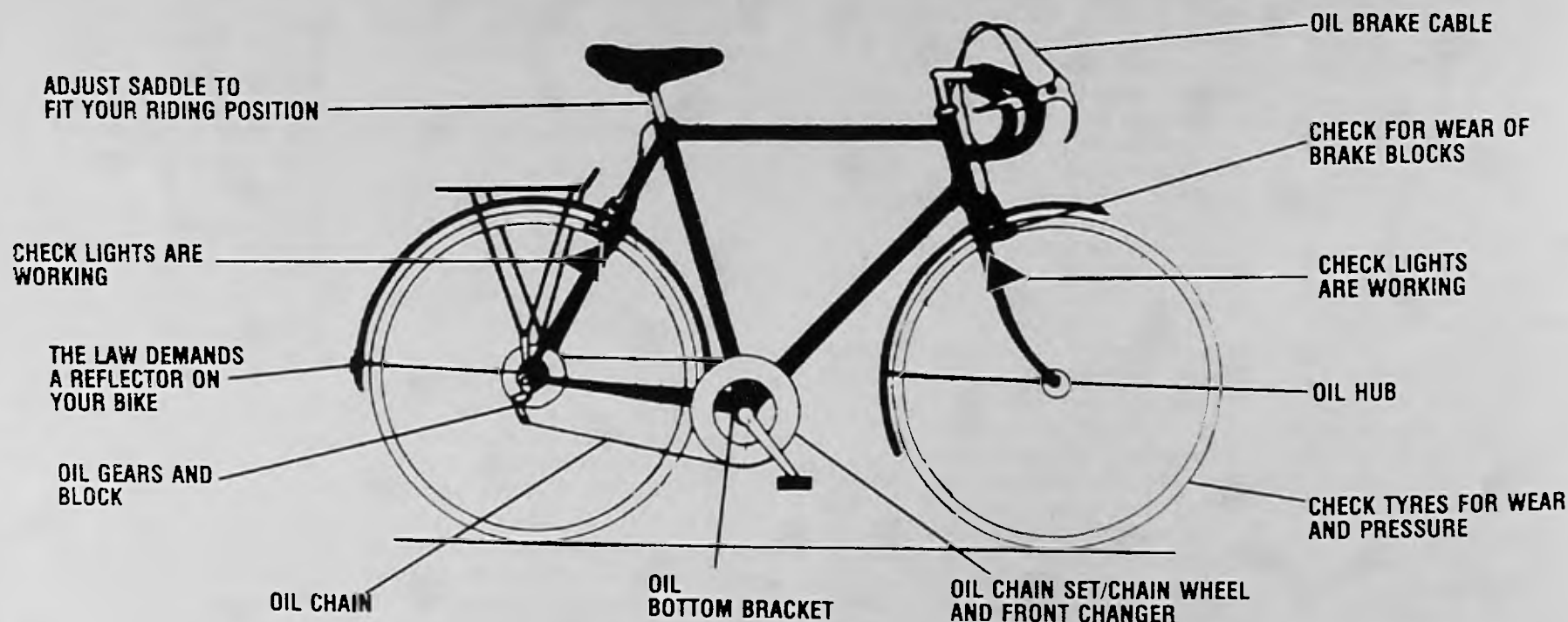
10.15am. £1.50 creche inclusive. 368 5871

- \*Ladies Weight training, Hendon Sports Centre, Algernon Rd. 10.30-11.30am. £1.80 per session, £15 per term. 202 6027
- \*Exercise to music — keep fit/aerobics — URC Hall, Wood St, Barnet. £1.50. 8pm
- \*Hatha Yoga for beginners, St Mary's Church Hall, Church Hill Rd, E Barnet. 1.45 and 8.30pm. 441 1336 (also Wed 8.30pm)

### Wednesdays

- \*Fitness through movement, exercise & stretching, East Finchley Library, 226 High Rd. 7-8pm; beginners 8-9pm. 883 7029
- \*Popmobility, St Mary Magdalen Parish Centre, Athenaeum Rd, N20. 8pm. 445 8410
- \*Body conditioning classes, Christ Church, Whetstone, Oakleigh Rd Nth, N20. 10am. 445 1846
- \*Stretch, tone & trim to music, Manor Drive Methodist Church Hall, Manor Drive, N20. 10.15am. Creche facilities. 440 5811 (also Fridays)
- \*Pop exercise, Centre Point, Grahame Park. 7.30. Gym fit/swim, 8pm. 205 7113.
- \*Aerobics, Copthall Swimming Pool, Page St, Mill Hill. 9.45am (during term-time). 349 1449
- \*Mixed Volley Ball Training Club, Queen Elizabeth Centre, Meadway, Barnet Juniors 6pm; seniors 7pm. 441 2933
- \*Health and Beauty, exercise and movement classes, Christ Church Hall, High Rd, N12. 7.15-9.45pm. 504 1644
- \*Keep Fit, Manorhill Centre, Summers Lane, N12. 7-8pm & 8-9pm. 368 6316

## CARING FOR YOUR BIKE & YOUR SAFETY



**IT ONLY MAKES SENSE.** Regular maintenance checks will not only improve the performance of your cycle but can also ensure your safety.

Your lighting system must work during the hours of darkness and should be checked before starting your journey.

In addition to your lights the law demands that all cycles have at least one rear reflector.

Your braking system should be checked for wear and lubrication on a weekly basis. Do not let your brake blocks wear down too near to the metal shoe.

Do not forget to keep the inside of your brake cables oiled. They will work much better if you do.

Your tyres are an important part of your bike. Check them regularly for pressure, cuts, bulges and general wear this can prevent a blow out in heavy traffic.

Moving parts of your bike such as the gears and chain need oiling to make them work smoothly and thus prevent wear.

Wipe off any oil which is not strictly needed as the excess not only ruins your clothes but attracts dirt which forms a gritty paste which accelerates wear.

As with all machinery, parts need replacing or repairing from time to time. Some jobs can be done by the owner, others require the expertise of a professional cycle repairer.

When a part is in need of replacement or repair do not continue to use your bike regardless. Get the necessary works done. The cost is likely to be small but the benefits to you could be great. It could save your life. A poorly maintained cycle can be dangerous.

The Engineering Services Division of the Directorate of Technical Services

**LONDON BOROUGH**  
**barnet**

# BARNET DIARY

\*Yoga classes for beginners, Patanjali Yoga Centre, 190 Watford Way, Hendon. 10.30am to 12 noon. 203 0062

\*Body conditioning: keep fit class — Canada Villa Centre, Pursley Rd, Mill Hill. 2-3pm. £1.50 per session. Creche available. 959 2811

\*Weight Mates Slimming Club, St Mary Magdalen Church Hall, Holders Hill Rd, NW4. 10am. 455 4814

\*Tai-Chi for all, St Edward's Church Hall, Finchley Rd/Hoop Lane, Golders Green. 8pm. 458 9842

\*Keep fit, St Paul's Church Hall, The Ridgeway, Mill Hill. 8.15pm. 906 0854

\*Relax and become supple with Yoga, Totteridge Village Hall, Badgers Croft, N20. 1.30pm. 445 2171

## Thursdays

\*Get Fit Club for young and old, St Stephen's Hospital, Mays Lane, Barnet. 7.30pm. £1.50. 906 0974

\*Mixed exercise class for people with problem backs, Queen Elizabeth's Girls' School, Meadway, Barnet. 8pm. 445 6986

\*Aerobics, Centre Point, Corner Mead, Grahame Park, 8.30pm. 205 7113

\*Yoga, British Wheel trained teacher, Union Church, Northiam, N20. 7-8pm. 349 2972

\*British Wheel of Yoga Teachers Diploma Course, Barnet. 7pm. Details 440 1828

\*Jumping Beans — pre-school gymnastics — Canada Villa Centre, Pursley Rd, Mill Hill. 10am-12 noon. £2 enrolment fee and £1 per session. 959 2811

\*Body Focus exercise/Dance class, East Barnet Baptist Hall, Crescent Rd. 8.30pm. £1.50. 368 5871

\*Mother and Toddler Gymnastics (up

to 4yrs old), Hendon Sports Centre, Algernon Rd. Sessions: 12.45-1.30pm, 1.30-2.15pm, 2.25-3.10pm. Last session 2½-4yrs only. £1.50 per family. 202 6027

\*Ladies Keep Fit, Hendon Sports Centre, Algernon Rd. 10am. £1.80 per session. 202 6027

\*Yoga Class for Women, Old Barn Centre, Tarling Rd, N2. 7.30pm. 349 4613

\*Aerobics, St Augustine's Church, Great Field, Grahame Park. 8.30pm. 906 1721.

\*Yoga for people with handicaps. Special class, Stanhope Road Centre, N12. Gentle movement, breathing and relaxation. Qualified teacher. Other classes available. 1.30pm. 440 1828

## Fridays

\*Aerobics 9.30am; Body conditioning 10.30am, Christchurch Hall, High Rd, N12 (during term time). 349 1449

\*Anita's keep fit class, Michael Sobell Centre, Limes Avenue, Golders Green. 10.15am. 458 7411 ext 379 (day), 455 9195.

\*Keep Fit at the Old Barn Centre, Tarling Rd, N2. 1.30pm. 349 4613

\*Keep Fit, Church House, Wood St, Barnet. 9.30am. 368 0881

\*Body conditioning class for problem backs and joints, Christ Church Hall, Oakleigh Rd Nth, Whetstone. 10am. 445 1846

## Saturdays

\*Body-Tune, St Mark's Church Hall, Potters Rd (entrance Woodville Rd), New Barnet. 9.30am. 441 1336

\*Aerobic low impact workout, United Reformed Church Hall, East End Rd, N2. 11am. 883 7029 (also Wednesdays 7-9pm)

\*Fitness through movement, exercise & stretching, East Finchley Library, 226 High Rd. 10.30am. 883 7029

## Bridge and Whist

### Saturday March 5

Whist Drive, Day Centre, Friern Barnet Lane, Friern Barnet. 8pm. 368 4278

### Mondays

\*Bridge Classes, 41 Northumberland Rd, New Barnet. 7.30pm. 449 0960. Also Tuesdays 10am, Wednesdays 2pm.

\*Bridge Class, second year students, Woodside Park Club, Southover, N12. 8pm. 445 1108 (also Tuesdays)

\*Partner Whist Drive, St Peter's Church Hall, Somerset/Lyonsdown Rd, New Barnet. 8pm. Admission 40p. 441 1591

\*'Bridge Builders' — all levels of play for all ages, Sobell House, Limes Avenue, off Golders Green Rd, NW11. 7.45pm. £1.50, special instruction for beginners £2. 458 7411

\*Bridge Club, The Old Barn Community Centre, Tarling Rd, N2. 1pm. 349 4613

### Tuesdays

\*Chase Bridge Club, St Andrew's Church Hall, Southgate. 9.30am. 360 5098

### Wednesdays

\*Friern Barnet Council for Voluntary Service whist drive. Priory Hall, Friern Barnet Lane. 10.30am. 368 4278

\*Whist Drive, Fellowship House, Willifield Way, NW11. 7.45pm. 458 3933

### Thursdays

\*Contract Bridge, Trinity Church, Hodford Rd, Golders Green. 1pm. Admission free. 202 2751/200 1839

\*Northside Bridge Club, E Finchley Methodist Church Annexe, High Rd. Duplicate first Thursday, rubber remaining Thursdays. 7.30pm. 445 7788

\*NW London Duplicate Bridge Club, Michael Sobell Centre, Limes Ave, NW11. Admission £1.50. 7.45pm. 455 3745

\*Bridge and whist for over 70s, Alyth Social Club, Alyth Gdns, Finchley Rd, NW11. 12 noon. Ploughman's lunch (60p). 458 5674

### Fridays

\*The Fern Room Whist Club, Salisbury Road, Barnet, 2pm. 441 4853

\*Contract bridge, Trinity Church, Rodborough Rd, NW11. 1pm

## Martial Arts

### Mondays

\*North London Karate Club, Mill Hill School, The Ridgeway, Mill Hill, 8-9pm, 9-10pm. 440/7733/8633 (also Thurs)

\*Barnet Shotokan Karate Centre. Recreation Hall, Barnet General Hospital, Wellhouse Lane, Barnet. Children 8-14 yrs; 6.30-7.30pm. 449 3150

\*Cobra Karate Club, Christ's College School, Hendon Lane, N3. Beginners 7pm; advanced 8pm. 959 4338. Also Wednesdays

\*Watling Karate Club, Watling Boys' Club, Dryfield Rd, Burnt Oak. Under 12, 6-7pm; over 12, 7-8pm. 40p a session (and Wednesdays)

## == MAINLY FOR WOMEN ==

### HYPNOTHERAPY

CONSULTANT  
PSYCHOLOGIST/  
HYPNOTHERAPIST

**MRS J. ALLEN**

(Regd) M.A.P.H., L.M.M.A.

Qualified, many years  
experience in local practice.

Successful treatment:

**Depression, Obesity,  
Phobias, Skin problems,  
Smoking, Psychosomatic  
problems etc.**

**01-441 2704**

**Cockfosters**

Ensure you get the best help

After the feastive celebrations many of you must be thinking of various ways to get rid of your recent weight gain or pondering about the right therapy or treatment for your overweight problems.

Many of you will no doubt choose the easy way of rapid loss diets of fluid diets. 90% of you will regain your weight and add more pounds on these diets (maybe you read the recent article in the Sunday Times magazine by Christine

Waplier). This year make it a point to tackle your eating habits and maintain them, don't battle on year after year in the old vein. Everytime you take off weight and put it on, it gets much harder to lose it the next time.

Hypnotherapy is very safe and has no side effects. Consult a reputable psychologist who uses hypnotherapy. Various problems including obesity can be treated by hypnotherapy. Food can represent a form of oral gratification which arises when childhood has been associated with insecurity, trauma and illness. Eating therefore produces feelings of comfort, contentment reward etc, when the person is under stress, or feeling low, or emotionally upset. Through analysis suggestion therapy, and self hypnosis you can be helped to control and overcome your problems without taking risks with your health and also avoiding further fruitless years fighting with your diet and yourself. **Ad Feature**

### IS YOUR LIFE BECOMING DIFFICULT DUE TO:

Mental stress, Lack of confidence, Smoking, Overeating, Panic attacks, phobias, depression, or any other psychosomatic illness?

HYPNOTHERAPY can help you. Do not suffer in silence — book for a consultation NOW — in absolute confidence.

**Mrs Vijaya Prasad, DMS, CHP, AMAHP**

(Registered Practitioner)

The Chatsworth Clinic, 76/78 Park Road, New Barnet. Telephone 01-440 4217/8 or 449 8646

(for appointment only)

or 01-361 4525 (between 6.30 & 7pm weekends only)

# LOOK

**A PAIR OF SOFT LENSES AND  
EXTENDED WEAR LENSES FOR ONLY £90**

SOFT LENSES £45  
GAS PERMEABLE  
£58

EXTENDED WEAR  
£58

BI-FOCAL  
SOFT CONTACT LENSES  
£150

COSMETIC LENSES  
COLOUR CHANGES  
(Mistique)  
£125  
COLOUR ENHANCER  
£80

Change your glasses now and take advantage of our **LOW** prices!  
Vari-focals from only £70  
Lots of frames in stock

**ALL PRICES FOR CONTACT LENSES INCLUDE**  
● FREE CONSULTATION  
● FREE STARTER PACK  
● 1 YEAR'S AFTERCARE  
● NO EXTRAS

**FRIERN BARNET OPTICIANS**  
219 Woodhouse Road, Friern Barnet (Nr Town Hall) N12  
Tel: 01-368 4091  
OPEN MON-SAT 9-5.30pm. HALF DAY WED & SAT  
Evenings by appointment

**TUFNELL PARK OPTICIANS**  
141 Fortess Road, Tufnell Park NW5.  
Tel: 01-267 0183 & 267 1216  
OPEN MON-SAT 9.30-6.30pm  
NEAREST TUBE: TUFNELL PARK (1 min)

**ON SITE OPTICAL LAB**  
● DESIGNER FRAMES

# BARNET DIARY

\*London School of Karate, East Barnet Upper School, Chestnut Grove. 8pm. 359 0381  
 \*New Barnet Jiu Jitsu Club, Scout Hut, York Rd, New Barnet. 7.30pm. Also Tues with children, 6pm. 446 1733  
 Nanbudo Martial Arts Club, St Mary's Church Hall, Hendon Lane, N3. 8pm. 349 4421 (also Tuesdays and Wednesdays, Children 6.30pm. Wed)

**Tuesdays**

\*Shotokan Karate Club, Christ's College, Hendon Lane, N3. 8pm. Adults and beginners. 202 3171 (also Thursdays)  
 \*Karate Centre Point, Corner Mead, Grahame Park. 7-13 yr olds 6pm; 13 plus and adults. 7pm. 205 7113 (also Thursdays, 7pm and 8pm)  
 \*Barnet Shotokan Karate Centre, Penefather Hall, St Albans Rd, Barnet. Adults 7.30-9.30pm. 449 3150  
 \*J.L. Kung Fu Centre, All Saints Church Hall, Durham Rd, N2. 7.30pm. 959 2605  
 \*Barnet Goju-Ryu Karate Club, (traditional Okinawan Goju-Ryu), Queen Elizabeth's Sports Centre, Meadway, Barnet; children 6-7pm, adults 7pm. 449 8997 (also Thurs)  
 \*Meadway Goju-Ryu Karate Club, St Marks Hall, off Meadway, Barnet. 8.30pm. 274 6376 (children's classes)  
 \*Sport Karate Club, Beaver Hall, Fairmead Cres, Edgware. 8pm. 906 1701 (Barnet Karate Squad coach)

**Wednesdays**

\*Kateda School of self-defence for women, All Saints Church, Durham Rd, East Finchley. 7.30pm. 866 3058  
 \*Watling SKC, Watling Community Centre, Orange Hill Rd, Burnt Oak.

Juniors 7pm, adults 8pm. 906 1701  
 \*Barnet Shotokan Karate Centre, Adults Christchurch School, Hilton Ave, N12. 8-9pm. 449 3150  
 \*Judo for children, Pymmes Youth Centre, East Barnet Lower School, Westbrook Crescent, E Barnet. 6.30-7.30pm; 7.30-8.30pm. 440 6473. Adults Thursday 7.30pm.  
 \*Kateda Self Defence Association, King Alfred School, North End Rd, NW11. 7pm. 904 6720  
 \*Finchley Karate Club (Okinawan Goju-Ryu Karate), Manorside School, Squires Lane, N3. 8pm. (Children 7pm) 346 9505 (also Fridays)

**Thursdays**

\*Aikido, Queen Elizabeth Centre, Meadway, Barnet. 8pm. 0707 53462  
 \*Women's self defence, Manorhill Centre, Summers Lane, N12. 7.30pm. £8 for 6 week course. 368 6316

**Fridays**

\*Shin Do Kwai Kendo Club, Whitefield School (gym) Claremont Rd, NW2. 7.30pm. 863 7574  
 \*Martial Arts Academy. Science-of-Combat, Hendon High School, off Brent Street, Hendon. 7pm. 0865 726772  
 \*Lyonsdown Judo Club, Lyonsdown Hall, Lyonsdown Rd, New Barnet. Children 8-15yrs, 7.30pm; adults 8.45pm. Ladies self-defence 8.30pm. 449 4831 (eves)

Methodist Church, E Barnet. 1.30pm. 361 2787

**Thursday February 11**

Pensioners' Voice (E Finchley), E Finchley Library, 226 High Rd. 2pm. 883 2155

**Thursday February 18**

Civil Service Pensioners' Alliance, Avenue House, East End Rd, N3. 10am. 346 6994

**Thursday February 25**

Pensioners' Voice (Colindale/Burnt Oak), Burnt Oak Library, Watling Ave. 1.30pm. 959 4683

Pensioners' Voice (Whetstone/Finchley), N Finchley Library, Ravensdale Ave. 1.30pm. 445 7413

**Wednesday March 2**

Golders Green & Dist. Pensioners' Assn, Trinity Church Hall, Rodborough Rd, NW11. 1.15pm. 455 7952

**Mondays**

\*Pensioners Lunch Club (Asian Vegetarian Menu), East Finchley Neighbourhood Centre, 42 Church Lane, East Finchley. Noon. 444 6265

\*Handicraft Club for over 60s, Evergreen Centre, 54-60 Brookhill Rd, New Barnet. 2pm. 449 8690

\*Club for active retired, Friern Barnet Day Centre, Friern Barnet Lane, N11. 11am-4pm. 368 4278

\*Hadley Darby & Joan Club, Memorial Hall, Hadley Highstone. 2pm. 441 4853

\*Social Club, Old Barn, Tarling Rd, N2. 1pm. 349 4613

**Tuesdays**

\*Pensioners Lunch Club. Home Cooked Food at East Finchley Neighbourhood Centre, 42 Church

Lane, East Finchley. Noon. 444 6265 (and Fridays)

\*Alyth Social Club (70+), Alyth Gdns, Finchley Rd, NW11. 12 noon-3pm. Ploughman's lunch (60p). 458 5674

\*Luncheon Club for elderly homebound and lonely, Friern Barnet Day Centre, Friern Barnet Lane, N11. 10.30am-3.30pm; Club 2-4pm. Also Wed. & Thurs. 368 4278

\*Union Street Evergreen Club, Ewen Hall, Wood St, Barnet. 2pm. 441 4853

\*Fern Evergreen Club, Fern Room, Salisbury Rd, Barnet. 2pm. 441 4853

**Wednesdays**

\*Bingo and Tea. East Finchley Neighbourhood Centre, 42 Church Lane, Finchley, N2. 2.00pm. 444 6265

\*Mays Lane Evergreen Club, St Stephens Church Hall, Bells Hill, Barnet. 2pm. 441 4853

\*West Hendon over 60s Lunch and Social Club, Community Centre, Marsh Drive, NW9. Lunch 12.30pm; Social Club. 1.30pm. 202 5057

\*Old Pals Club, Bingo, Old Barn Tarling Rd, N2. 2pm. 349 4613

**Thursdays**

\*Pensioners 'Friendship Club', North Road Community Centre, Burnt Oak. 1.45pm. 951 1726

\*Arts and Crafts — open CRAB sessions for the elderly. The Meritage Club, Church End, Hendon. 1.30pm

\*Roundabout Club pensioners group, Friary Hall, URC Church, Oakleigh Park Nth, N20. 2pm. 361 2787

\*Hoop Lane Thursday — drop in for coffee and a chat — Unitarian Room, Hoop Lane, NW11. 10.30am.

\*Golden Circle Club, The Salvation Army Hall, Brampton Grove, Hendon. 1.30pm. 203 4823

## Pensioners Clubs

**Wednesday February 10**  
 Pensioners' Voice (Barnet), Brookside



### THE HENDON HALL HOTEL



Ashley Lane, Hendon NW4 1HF

The ideal venue for your Dinner & Dance, Wedding; Barmitzvah. We have superb private rooms for that very special occasion.

As well as having 52 well appointed bedrooms the Hotel boasts

#### THE PAVILION RESTAURANT & BAR

a first class restaurant offering both fixed price and à la carte menus

For further information and reservations phone:

203 3341

### Dial-a-Can for your Valentine



Be different this Valentine's Day. Fabulous champagne cans are the latest way to say: 'I love you'.

Contains: ¼ bottle of champagne, glass, silk carnation, chocolate heart, I love you mini-balloon.

All for only £14.95 plus £2.95 postage & packing

#### DIAL-A-CAN

01-445 6161

Sent anywhere in UK



### DENTAL SURGEON

AVRIL KAY LDS, RCS, Eng

#### HOME VISITS

undertaken for house-bound patients who need dentures (Private and NHS)

Surgery:

131 Friern Barnet Lane N20 OXZ

01-445 7879

### NORTH LONDON LANDSCAPE

Complete garden layout service, plus garden maintenance from only

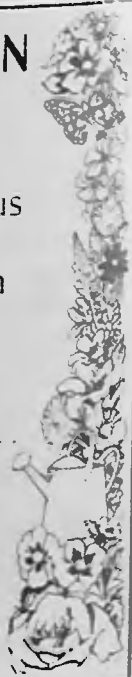
£6.00 a week!

SPECIAL CONTRACT CLEANING FOR FLATS...

cleaning of all common areas and grounds Fencing

For fast efficient service call

01-361 1640



# BARNET DIARY

\*The Torrington Park Pensioners' Club, Health Centre, Torrington Park, N12. 2pm. 446 4201

## Fridays

\*Edgware Friday Club for Senior Citizens, Methodist Church Hall, Garratt Rd, Edgware. 10am. 952 3908

\*Young at Heart, Conservative Hall, Barnfield Rd, Burnt Oak. 1.30pm. 952 3513

\*Club for the Elderly, Friern Barnet Day Centre, Friern Barnet Lane, N11. 2-4pm. 368 4278

\*Bells Hill Evergreen Club, St Stephens Church Hall, Bells Hill, Barnet. 2pm. 441 4853

\*Over 60's Club, Salvation Army Hall, Hertford Rd, East Finchley. 2.30pm.

## Dance

### Thursday February 11

Circassian Circle Folk Dance Club, Harwood Hall, Mill Hill B'way. 7.45pm. 950 5756 (also Feb 25)

### Saturday February 13

Finchley Sequence Dance Club, St Philip The Apostle Hall, Gravel Hill, N3. 7pm. 346 8675

### Monday February 15

Chipping Barnet Folk Dance Club, Church House, Wood St. 7.45pm. 449 4425 (also Feb 29)

### Thursday February 18

English Country Dancing, United Reformed Hall, East End Rd, N2. 7.30pm. 445 4772 (also Mar 3)

### Saturday February 20

Mountfield Club Sequence Dance, St

Mary's Hall, Hendon Lane, Finchley. 7.30pm. 959 5185

### Saturday March 5

20th Century Sequence Dancing Club, Southgate Upper School, Sussex Way, Cockfosters. 7.30pm. 360 2586

### Mondays

\*CRAB dance club for disabled, Woodhouse Sixth Form College, Woodhouse Rd, N12. 50p per session. 7pm. 346 9789

\*Ballet for 4+, Michael Sobell House, Limes Avenue, NW11. Pre-primary 4.30pm; primary 5.15pm. 203 4358

### Tuesdays

\*20th Century Sequence Dancing Club, All Saints Hall, Oakleigh Rd North, Whetstone. 7.45pm. 360 2586

\*Tap dancing, Centrepoint, Grahame Park. Under 12s 6.15pm; 12+ and adults, beginners 7pm, intermediate 7.30pm. 205 7113

\*Wheelchair dancing, Grahame Park Community Centre, The Concourse, NW9. 1.30-3pm. 346 9789. Transport available

\*Ballroom and Latin-American classes, Van's Studio, 1 Middleton Rd, NW11. 8.30pm. 455 7468 (also Thurs)

\*Hampstead & Dist Scots Assn, Golders Green Parish Church Hall, West Heath Drive, NW11. 8pm. 870 6131

\*Contemporary modern/disco classes for children 4-14 yrs, Lyonsdown Hall, Lyonsdown Rd, New Barnet. Beginners 4.30pm; advanced 5.30pm. 440 8530

### Wednesdays

\*Dancing, ballroom and Latin Amer-

ican, St Philip the Apostle Parish Hall, Gravel Hill, N3. Children 5-7pm, adults 7.30pm and 8.30pm. 360 0826

\*Mountfield Old Time & Modern Sequence Dance Club, Martin School, High Rd, East Finchley. 8pm. 959 5185 (in term time)

\*Friary Sequence Dance Club, Manor Drive Methodist Church Hall, N20. 8pm. 883 3202 (commence Sept 23)

\*American square dancing classes, Watling Community Centre, Orange Hill Rd, Edgware. 7.5p 8pm. 906 1582

\*Odsox Youth Dance Company, Friern Barnet County School, Hemington Ave, N11. (12-21 yrs). 6-10pm. 346 9789

\*Adult tap classes, St Paul's Church Hall, The Ridgeway, Mill Hill. 9.15pm. 906 0854

### Thursdays

\*De Bohun Sequence Dancing, Christ Church Parish Centre, Waterfall Road, Southgate. 8pm. 886 9878

\*Folk and country dancing, Whetstone URC Church, Oakleigh Road North. 1.30pm. 449 8434

\*Finchley Sequence Dance Club, Martin School, High Rd, E Finchley. 7.30pm 346 8675

\*Pre-Primary ballet (3-5 yrs) 4pm, Primary Tap 4.45pm, Primary modern 5.30pm, East Barnet Baptist Hall, Crescent Rd. 368 5871

### Fridays

\*Latin & Ballroom, Subud Hall, 97 E Barnet Rd, New Barnet. 8.30pm. 449 3336/6034

\*Barnet International Folk Dance Club, Hadley Memorial Hall, Hadley Highstone. 8pm 427 8042

\*Primary to elementary ballet, East

Barnet Baptist Hall, Crescent Rd. 4pm onwards. 368 5871

## Music

### Monday February 8

Hendon Music Soc, Hendon Library, The Burroughs. 8pm. 203 2355

### Tuesday February 9

Hendon Library Gramophone Soc, The Burroughs. 7.45pm. 202 5625 (also Feb 23)

### Tuesday February 16

East Barnet Library Gramophone Soc, 85 Brookhill Rd. 8pm. 440 4376 (also Mar 1)

### Thursday February 18

Friern Barnet Library Gramophone Soc, Friern Barnet Rd. 8.10pm. 361 2787 (also Mar 3)

### Mondays

\*Barnet Orchestra at Hendon, Hendon School, Golders Rise, NW4. 8pm 205 2418

\*Finchley Choral Society, Moss Hall Junior School, Nether St, N3. 7.45pm. 445 8401

\*Manor House Hospital Operatic Soc, Manor House, Hospital, North End Rd, NW11. 7.30pm. 346 0237

\*Tudor Orchestra, East Finchley Methodist Church, High Rd, Players welcome all sections, particularly brass. 7.30pm. 445 0563

\*Mill Hill Amateur Operatic Soc, Hartley Hall, Flower Lane, Mill Hill. 8pm. 959 2848

\*Music for Fun — informal choir, St Jude's Church, Hampstead Garden Suburb. 8pm. 886 0284

## MEET YOUR VALENTINE... at MELANIES NIGHT CLUB

*Divorced, Separated and Singles Club*  
Every **SUNDAY** Night 9pm-1am.  
*Food available at no extra charge.*

\*\*\*\*\*

**CARIBBEAN NIGHT every THURSDAY**  
Six piece band, Go Go + Limbo Dancers  
(over 25's). Lots of fun.  
Tel: 01-202 3101/7289

\*\*\*\*\*

Hold your single club venue here  
at MELANIES — Licensed till 2.30a.m.  
407/411 Hendon Way, NW4

## LEAVE YOUR GARDEN TO THE EXPERTS!

### JEFF McINNES & Co

*Landscape Gardeners  
Maintenance — Clearing  
Fencing — Tree Work  
Pavings & Patios*

Fully Insured for public liability

Satisfaction Guaranteed

Tel 203 4976

24hr Answer service

38c Sunny Gardens Rd  
Hendon NW4 1RX

## LOOK!

This space could be yours for the equivalent of

**£12** a week

Reach 115,000 homes and over 4,000

Businesses each month.

With your special service.

Call Sue or Lesley on

**01-361 4223**

For details! To reach  
EDGWARE • HENDON • HAMPSTEAD  
BARNET • FINCHLEY  
ARKLEY • HENDON

## WINTER SALE NOW ON



INSTANT  
CREDIT FACILITIES  
AVAILABLE UP TO  
£1,000  
SUBJECT TO  
STATUS

GOOD  
QUALITY  
SINGLE BED  
£80

GOOD  
QUALITY  
DOUBLE BED  
£132

*We specialise in*

**BEDS • SUITES • FIRE SIDE CHAIRS**

We also furnish houses, flats for letting/renting and old peoples homes

MATRESSES OF ALL  
SHAPES AND SIZES ARE  
AVAILABLE SEPARATELY

**FOLDING BEDS  
FROM £29.00**

**VALLEY FURNISHING**

**114 BRENT STREET, HENDON NW4**

**YOU ARE ONLY A PHONE CALL AWAY**

**Tel: 202 4666** Car park at rear

# BARNET DIARY

\*Entertaining the elderly in Barnet — 'Music Hall' rehearsals, Baptist Church Hall, Green Lanes, N13. 7.45pm. 449 4507

## Tuesdays

\*The Apollo Singers, Wilberforce Hall, Wilberforce Rd, W Hendon. 7.45pm. 959 1244  
 \*Hendon String Orchestra, Whitefields School, Claremont Rd, NW2. 8pm. 455 5005  
 \*Guitar classes for children, teenagers and adults, New Seekers Music School, Mill Hill School, The Ridgeway. Enquiries 09278 2151  
 \*Finchley Chamber Choir, Finchley Methodist Church, Ballards Lane, N3. 8pm. 346 0502

## Wednesdays

\*Finchley & Friern Barnet Operatic Soc, St Andrew's Church Hall, Alexandra Park Rd, N10. 7.45pm. 368 0770. New members welcome, especially men  
 \*Barnet Band, Queen Elizabeth's Boys' School, Queens Rd, Barnet. 7.30pm. Brass and reed players required. 449 3057  
 \*Barnet Choral Soc, Church House, Wood St, Barnet. 7.45pm. 440 1157

## Saturday February 6

David Glass, leading British mime, present Glassworks, Old Bull Theatre, High St, Barnet. 8pm. £4.25, £3.25 conces +25p membership. 449 0048  
 Tudor Symphony Orchestra, Mozart/Beethoven Concert, Trinity Church Hall, Nether Street, North Finchley. 8pm. £2.50, £1.50 senior citizens, £1 students and children. Programmes 445 0563/883 0679.  
 East Finchley Theatre Group present an evening of one act plays, entitled 'All for Love', East Finchley Methodist Church Hall, High Rd. 8pm. 883 2633

## Sunday February 7

The Janimar Trio play familiar classics at the Old Bull Theatre, High St, Barnet. 8pm. £4.25, £3.25 conces +25p membership. 449 0048

## Fri/Sat Feb 12/13

The Cornwall Theatre Co present 'The Three Musketeers', Old Bull Arts Centre, High St, Barnet. 8pm. £4.25, £3.25 conces +25p membership. 449 0048

## Saturday February 13

Finchley Choral Soc Celebrity Recital — John McGreal, harpsichord and Michael Selby, bass-baritone — St Barnabas Church, Holden Rd, N12. 7.45pm. £3, £1.50 children & students. 445 4968

## Saturday February 20

Finchley Chamber Choir present an evening of 17th and 20th Century Sacred Music, Trinity Church, Nether St, N12. 7.45pm. Admission £3.75, conces £2.50. 346 0502  
 Wire-Less present 'The Third Programme', Old Bull Arts Centre, High St, Barnet. 8pm. £3.75, £2.75 conces +25p membership. 449 0048  
 Hendon Saturday Recital Series — Raphael String Ensemble play works by Mozart, Richard Strauss and Brahms, Trinity Church, Hodford Road, Golders Green. 7.45pm. Admission £4. 203 2355

## Wednesday February 24

Electronic Organ Concert, Edgware & District Organ Soc, Douglas Reeve, Watling Community Centre, Orange Hill Rd, Burnt Oak. 8pm. 953 3291

## Saturday February 27

Union Dance Co present Just Up Their Street, Old Bull Theatre, High Street, Barnet. £4.25, £3.25 conces +25p membership. 8pm. 449 0048

## Thursdays

\*London Pro Arte Choir, Mill Hill East Free Church, Salcombe Gdns, Mill Hill. 7.30pm. 959 7050  
 \*Finchley Chamber Orchestra, Moss Hall Junior School, Nether St, N3. 7.30pm. 881 3619  
 \*Borehamwood Operatic Soc, Fairway Hall, Borehamwood. 8pm. 906 1453

## Saturdays

\*Hampstead Garden Suburb Youth Music Centre, Henrietta Barnett School, Bigwood House, Bigwood Rd, NW11. 9am-12.45pm. 907 8018.

## Arts Workshops

Barnet Arts Workshops run regular activities throughout the term. Youth workshops (4-16) in drama, arts and crafts. £3.50 per half-term. Adult workshops: Dance/Keep fit; photography; video; screenprinting. (£1.50 per session, £10 per term, Free for unemployed.) Details 346 7120

## Sundays

\*The Mix — a creative workshop for all

ages/abilities. The Drama Centre, 142 High Rd, East Finchley. 2.30pm. 444 1893

## Drama

## Tuesdays

\*Dunelm Players, St Peter Le Poer Church Hall, Albion Ave, Muswell Hill. 8pm. 906 4187/444 7762 (also Sundays 6.30pm)

## Wednesdays

\*Incognito Theatre Group, Theatre, Friern Barnet. 8pm. 368 0202  
 \*East Finchley Theatre Group, Methodist Church Hall, High Rd, N2. 7.30pm. 883 2633  
 \*Gainsborough Theatre Club, The Centre, Gainsborough Rd, N12. 8.15pm. 205 8352  
 \*Barnet Youth Drama Centre, 142 High Rd, E Finchley. Sessions for seven to 11-year-olds, 6pm. Also **Thursdays** (16+), 7pm; **Fridays** (12-15), 7pm; and **Saturdays** (7+), 10am. 883 9957 (workshop hours)  
 \*Nether Never Drama Group, Disablement Assn in the Borough of Barnet,

Trinity Church Centre, Nether St, N12. 8pm. 446 6935

## Singles Clubs

## Friday February 12

Spectrum for unattached people 25-45, Old Red Lion, Underhill, Barnet. 8.30pm. 449 9893

## Tuesday February 16

Finchley Solo Social Club for widowed, divorced & separated (25-65). 8pm. 445 9810/444 8743 (also Mar 1)

## Tuesday February 23

Spectrum for unattached people 25-45, Moss Hall Tavern, 283 Ballards Lane, N12. 8.30pm. 449 9893

## Sundays

\*Singles Club party night get together, 411 Hendon Way, Hendon, 202 3101.

**It is regretted that owing to pressure on space most of the weekly entries for Singles Clubs have been omitted this month. They will appear again in the March issue.**



## Sunday February 28

Gala opening of new Old Bull Theatre, featuring Humphrey Lyttelton and his band plus Spitting Image and a host of guest celebrities, Old Bull, High St, Barnet. 7pm. Tickets £10, which include donation of £5 to Building Fund. 449 0048

## Thurs-Sat March 3/5

The Association present 'Jack and Jill — The Legend', Old Bull Arts Centre, High St, Barnet. 8pm (Sat mat 2.30pm). £4, £2.50 conces +25p membership. 449 0048

## See Saw Children's Theatre

The See Saw Children's Theatre is a company which engages various professional acts to perform at a regular venue on Saturday mornings to provide entertainment for 200 children weekly.

The venue is Christ Church Hall, High Road, North Finchley, and has facilities for the disabled. Bus routes to Tally ho Corner are Nos. 13, 17, 26, 82, 125, 221, 260 and 263. Doors open at 10.30am and performances begin 11am. Tickets £1.25, concessions available.

There are two special performances during the February half term, one starting at 2.30p.

## Saturday February 6

Rhubarb the Clown (ages 3+)

## Saturday February 13

Frantic Antics — The Great Magic Banana Mystery (ages 5 to 10)

## Wednesday February 17

Double Dutch — Sydney's Circus (aged 5+). Starts 2.30pm

## Friday February 19

The Fleeties — Sula's Amazing Day (ages 2 to 8)

## Saturday February 20

Richard Robinson — The Oggie Oggie Box and Toby the Spell Dragon (ages 6+)

## Saturday February 27

Parachute Theatre Company — Punk and Judy (all the family)

## Saturday March 5

The Great Feat Show — Great Feats Required (all the family)

## Old Bull Arts Centre

68 High Street, Barnet. 449 5189

Phone for details. Ticket prices do not include 25p membership, or 50p children's membership of Bulls Eye.

## Tues-Thurs Feb 9/11

Middlesex Poly BAPA present 'The Club'. 8pm (Wed mat 3pm.) £2.50, £1.50 conces.

## February 16 to March 6

Embroidered Textiles — work of Pauline Brown and students from Hampstead Garden Suburb Institute. Main Gallery 10am-7.30pm. Demonstrations Sat afternoons Feb 20, 27 and Mar 5

## Until February 13

Open Photographic Exhibition, Main Gallery. 10.30am-7.30am

## Sat/Sun February 20/21

Weekend Workshops — John Canning Alexander Technique. 10am-1pm. £7.

## Friday February 19

Half Term Workshop and performance with John Eastwood (5-10yrs). 10am-12.30pm. £2

## Wednesday February 17

Half Term Workshop and performance (under 8yrs). Jactito Puppet Co. present 'Kan Kan the Kangaroo'. 10am-3pm

## Tues-Sat February 16/20

Half Term Drama Workshop with Bronwen Rowton (7-15yrs). 10am-4pm (except Tues until 2pm). Performance 4pm Sat. Course Fee £8, performance ticket price £1

## Monday February 15

Half Term Workshop and performance — Flying Chestcoffs present 'Stop that Box' (4-7yrs) 10.30am; Festivals Around the World (7-11yrs) 1.30pm. £2

## Sunday February 14

Lambeth Children's Theatre Co present 'Oh Crumbs'. 3pm. Adults £2, children £1.25

## Tuesday February 23

Afternoon arts for the over 50's. 2pm-5pm

## Saturday February 27

Rock and Roll Workshops with Kavanagh. 11am-1.15pm. £2.50

## Exhibitions

## Until February 13

Paintings by Angelo Pizzigallo. North Finchley Library, Ravensdale Ave. Open library hours.

## Until February 28

The Spirit of Japan — colour prints by Harold Rose. Church Farm House, Museum, Grayhound Hill, Hendon. Open Mon-Sat (except Tues) 10am-1pm, 2-5.30pm; Tues 10am-1pm; Sun 2-5.30pm. 203 0130

## February 20 to March 26

Work by students at Hendon College. Hendon Library, The Burroughs. Open library hours

## February 27 to March 31

Paintings by Nathalie Semlyen. North Finchley Library, Ravensdale Ave. Open library hours

## Pop, Rock, Folk and Western

## Sundays

\*Live music — Rock & Blues — Torrington Pub, 4 Lodge Lane, N12. 8.30pm. 445 4710 (also Fridays)

## Fridays

\*Melanies Jazz Funk Night (strictly over 21 years). 407 Hendon Way, Hendon. 202 7289.



# ACE SUPPLIERS

1-5 Hampden Square, Osidge Lane  
Southgate N4. Tel: 01-368 6463/361 0883

LUXURY  
BATHROOM  
CENTRE



ALLAN WHEATLEY  
Sales Manager

★  
Ring me for more information  
on Ace bathrooms and equipment  
01-368 6463

**ACE ARE MOTORING INTO 1988  
STARTING WITH A MASSIVE SALE  
ON ALL STOCK ITEMS!**



**FANTASTIC  
WORKING  
TURBO JET  
SHOWERS  
ON SHOW**

**IN STOCK:  
LARGE RANGE OF LUXURY  
WATER SOFTENERS AND  
WATER FILTER  
EQUIPMENT**

#### PRESSED STEEL BATHROOM SUITE

Close coupled wc, basin and pedestal.

Taps not included.

£185.00



#### CAST IRON SUITE

1700 x 700 twin grip cast-iron bath, close coupled wc suite, large basin and pedestal.

Taps not included.

£315.00



#### SUPERSTEEL SUITE

1700 x 700 luxury supersteel twin grip bath, close coupled wc suite, large basin and pedestal.

Taps not included.

£305.00



#### 4ft CORNER BATH SUITE

Including panel, close coupled wc suite, basin and pedestal.

Taps not included.

£326.20



**We display over 25 luxury bathrooms**

Working Whirlpools ● Air Bath ● Pumped Shower ● Shower Enclosures ●  
Offering a range of UK and European Styles ● Accessories to match and much,  
much more from top to bottom at prices you can't beat

#### TAPS ON DISPLAY

Antique Styles ● Colour ● Taps ● Heads ● Lever Action ● Ceramic  
Disk ● Many other taps available ● UK ● European Styles ● Chrome ● Gold ●  
Colour ● Brass

Edwardian Old Time Bathroom Suites with Mahogany/Panels Vanity Units ● Corner  
Bathroom Suite ● Cast Iron Bathroom Suite ● Vanity Units made to measure to your  
design ● Colour ● Shower doors

**OPEN SATURDAY  
8am-5pm  
MONDAY-FRIDAY  
9am-5pm**

**Branch at: 40/41 TOPSFIELD PARADE, TOTTENHAM LANE  
CROUCH LANE END, N8 — TEL: 01-341 1347**

INSTANT CREDIT UP TO £1,000 — WRITTEN DETAILS ON REQUEST



**GODWIN'S**

**LOOKING GOOD IN 88**



**ART DECO MIRRORS, We have lots to choose from**



Basin 64cm from Pedestal from Victoria Beveled Mirror from  
*(all prices plus VAT)*

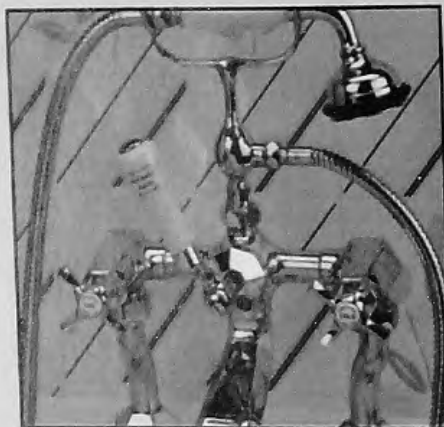
**£230  
£140  
£198**



**THE SAVOY**

*Coming soon ... The latest from Sanitan*  
Basin & Ped from **£390**  
Close couple WC from **£344**  
Mahogany seat from **£90**  
Mahogany handle add £35 + VAT  
All prices plus VAT  
*(NB These prices are as a guide so check before you buy)*

**TAPS & MIRRORS ON SHOW AT COLINDALE**



**MASTERCRAFT BATHMIXERS**

Chrome from **£350**  
Antique from **£390**  
*(all prices plus VAT)*

**TAPS • TAPS • & MORE TAPS •**

**Package Prices Available**

**Ask for details**



**BALMORAL SCULPTURE SUITE**

Large basin & ped **£260** Hide away cistern  
Back to wall pan **£140** China hand for above  
Back to wall bidet **£136** Solid mahogany seat  
*(all prices plus VAT)*

**£270  
£230  
£280**

**HUGE RANGE OF TAPS ON SHOWER AT COLINDALE**



**WHOLESALE BATHROOM WAREHOUSE**  
28 RUSHGROVE AVENUE  
COLINDALE NW9  
Tel 01 200 0508

**TRADE CENTRE**  
4/5 APEX PARADE, SELVAGE LANE  
MILL HILL NW7  
Tel 01 959 3344



**THE PALACE SUITE**

Basin & Ped from **£230**

WC from **£330**  
Seat from **£95**

**SHOWROOM & DESIGN CENTRE**  
49 CEURCH ROAD, HENDON NW4  
Tel 01 203 1095

**TRADE & SHOWROOM CENTRE**  
176 HIGH ROAD  
EAST FINCHLEY N2  
Tel 01 444 2311