

Spring 1992

 **BARNET**  
LONDON BOROUGH

*News*

**BARNET**

Issue Six



**Inside:**  
**BARNET COUNCIL'S**  
**PLANS FOR**  
**THE COMING YEAR**

**Important Notice regarding Community Charge in Barnet**

# THERE IS NO AMNESTY FOR NON-PAYERS

It has been the policy of the London Borough of Barnet to pursue the recovery of the Community Charge as rigorously as possible, whilst ensuring that uptake of benefit for those entitled is maximised.

In the interests of the great body of chargepayers who pay their Community Charge bills as required, this policy will continue for as long as it is necessary.

Refusal or delay in paying can affect others because provision of services may be jeopardised by lack of funding.

Recent Government legislation has closed the loophole regarding the admissibility of computer evidence in the Magistrate's Courts and those cases adjourned in February for this reason have been re-listed to be heard in April.

The number of Court days in Barnet available to deal with payment defaulters has been doubled for 1992/3 thereby allowing more time to deal with the committal of defaulters to prison for non payment.

Any chargepayer currently in arrear is advised to bring his/her payment up to date or contact my office immediately. Defaulters and bad payers will have to pay Court costs in addition to the charge.

Finally, chargepayers who do not pay by the due date in 1992/3 will be the subject of speedy recovery action.

## IS THIS YOU?

The chart, which is based on the Barnet Council community charge of £287 per chargepayer, is only a guideline as people's circumstances differ greatly. Net income is all income after deductions for income tax, national insurance and half of any private pensions contribution. You qualify for community charge benefit if your net income is below the guide figure in the column on the right.



PROFILE	NET INCOME
Single person aged 18-24	£62.85
Single person aged 25-59	£71.70
Single person aged 60-74	£86.40
Single person aged 75-79	£88.35
Single person aged 80 or over	£92.45
Single parent one child under 11	£106.15
Single parent one child 11-15	£113.00
Single parent one child 16-17	£117.15

PROFILE	NET INCOME
Couple - one of whom is aged over 18	£125.15
Couple - one of whom is aged 60-74	£147.50
Couple - one of whom is aged 75-79	£150.15
Couple - one of whom is aged 80 & over	£154.70
Couple with one child under 11	£149.00
Couple with one child aged 11-15	£155.85
Couple with one child aged 16-17	£160.00

For each additional child add a further personal allowance according to age:

Under 11	£14.55
11-15	£21.40
16-17	£25.55
18	£33.60

For each additional child add a further personal allowance according to age:

Under 11	£14.55
11-15	£21.40
16-17	£25.55
18	£33.60

The above amounts are net of earned income disregards: £5 for a single person; £10 for a couple and £25 for a single parent. Forms, advice and information are available from: Barnet Council, Director of Finance, Fenella, Babington Road, Hendon, London NW4 2YP, or by telephoning the number on your bill.

*Barnet News*: is produced by the London Borough Of Barnet in association with The Advertiser North London Group Holdings Ltd.

**Issue Six**

**Editor:** Russell Jones, Marketing and Public Relations Unit, The Town Hall, The Burroughs, Hendon NW4 4BG.

Also available in Barnet Council Libraries and council receptions.

Barnet News VFD certified distribution 1 July to 31 December 1991: 117,621 copies.

**Advertising Manager:** Michael Page, Advertiser North London Group Holdings Ltd, 281 Bal-lards Lane, London N12 8NR. 081-449 5577

**Distribution enquiries:** Delhome Distribution. 0707-49797

**Origination:** Computer Graphics 071-250 4086

**Printed by:** BPCCAnglia Webb 0379-651041

# Community Charge

## Total charge for residents £287

**On Thursday 5 March Barnet Council approved a Community Charge of £287 for residents. For the year 1992/93 Barnet Council's own spending needs are estimated at just over £215 million.**

Five key sums of money go to make up the Community Charge:

1. Barnet Council's own needs £215,266,900
2. Metropolitan Police precept £28,521,020
3. London Fire & Civil Defence Authority £10,127,300
4. Grant contributed by the Government £126,796,210
5. Barnet's share of national non-domestic rates £73,468,670

In his report introducing the budget, Barnet Council's Director of Finance, Jeremy Jaroszek, commented that the council's budget is a financial expression of its services and levels of provision; and that it reflected the Council's views on the needs of the public, having regard to the availability of resources and the taxation consequences of spending decisions, within the framework of Local Government finance set by Central Government.

Many people will qualify for reduced level of community charge through the Community Charge Reduction Scheme and through the Community Charge and Housing Benefits Scheme.

To help residents with advice on rebates the Community

When the global figures are broken down to make up the personal community charge for Barnet's 210,596 chargepayers, this is how it works

	£ per chargepayer
London Fire and Civil Defence Authority	48.09
Metropolitan Police	135.43
London Borough of Barnet	1022.17
	<u>1205.69</u>
Less:	
Government standard spending grant	602.08
Business rates	<u>348.86</u>
	950.94
Charge before adjustment	<u>254.75</u>
Add:	
Other adjustments	32.25
Total personal Community Charge	<u>£287</u>

Charge team has staff to assist visitors to Barnet Council's offices at Fenella, Babington Road, Hendon, NW4 or by telephone to the number on individual chargepayers' literature.

## Help with your bill

### Community Charge Benefit

**Under Community Charge regulations many local residents qualify for a rebate.**

Barnet Council has drawn up a personal and family profile chart to help chargepayers identify their circumstances and find out if they qualify for benefit (opposite).

Barnet Council has processed over 100,000 assessments in the current year. All applications are treated in strictest confidence.

If you think you qualify please act quickly as claims are rarely backdated.

### Where to apply?

Forms, advice and information are available from: Barnet Council, Director of Finance, Fenella, Babington Road, Hendon, London NW4 4BS.

### Community Charge reduction scheme

This scheme introduced by the Government in 1991/92 has been retained subject to minor amendments for this last year of Community Charge.

Generally those registered adults who lived in a property with a low rateable value in 1989/90 and still reside at the same address will receive assistance with their Community Charge bills. The scheme also applies to the elderly and disabled chargepayers who did not pay rates in 1989/90, and people living in certain sheltered housing schemes.

Eligibility depends upon you being shown in the Community Charge Register as at 31 March 1992 and still being resident at the same address.

To qualify for a reduction under the scheme in Barnet from April 1992, a single qualifying adult household must have had a rates bill in 1989/90 for less than £195.00 (rateable value £100) and a qualifying household of 2 adults, a

rates bill of less than £442.00 (rateable value £226), a qualifying household of 3 adults, a rates bill of £637.00 (rateable value £326) and a qualifying household of 4, adults a rates bill of less than £832.00 (rateable value £426).

The calculation of the Community Charge reduction for the elderly and disabled who were not former ratepayers or partners of former ratepayers does not follow the above criteria.

Typically an old age pensioner (who reached pensionable age on or before 1 April 1991) or disabled person who was not a former ratepayer and who does not qualify for Community Charge Rebate will pay only £92 in Community Charge in 1992/93.

Reductions have been afforded automatically on your bill where Barnet Council is aware of the appropriate circumstances.

If your bill for 1992/93 does not include any Community Charge reduction but you consider that you might qualify in accordance with the above terms, please apply immediately.

### Payment of April instalments

Please note that chargepayers who pay by instalment booklet method should use the counterfoil on the bottom of their Community Charge bill to pay the April instalment. A payment book with nine counterfoils will follow.

### Direct Debit

Direct Debit remains the easiest and cheapest way for you to pay your Community Charge.

Don't delay ask for a Direct Debit instruction today.

Contact the telephone number on your bill.

Full Annual and Half-Year payments can also be paid this way.

### Payment at Post Offices

For chargepayers without a Bank or Building Society account, arrangements have been made between Barnet Council and the Post Office so that for a small fee of 25p you can pay your Community Charge at any Post Office.

## DO YOU HAVE PROBLEMS?

DO YOU LACK CONFIDENCE?  
DO YOU RESORT TO OVEREATING  
OR SMOKING UNDER STRESS?  
OR DO YOU SUFFER FROM ANY  
OTHER PSYCHOSOMATIC ILLNESS  
FOR WHICH YOU NEED  
TRANQUILLISERS?

If your answer is YES  
to any of the above,  
HYPNOTHERAPY by qualified  
Psychotherapist may be an answer.

Do not suffer in silence -  
book for a consultation NOW  
Mrs V. K. Prasad DMS, CHP, NRHP  
(Registered Practitioner)  
Telephone 081-361 3525  
24 hour answering service

## TAROT STUDIO

Absolute Beginners'  
Classes

For Ladies who wish to learn  
the meaning of the ancient  
Tarot Cards. Pack of Cards  
included in first fee payment.  
Classes are held fortnightly -  
Saturday mornings 10.15am -  
the studio is near East Barnet  
Village - easy car parking.

**081-441 1336**

## How massage can make a world of difference

●FOR thousands of years massage or the laying-on of hands has been used to heal and relieve pain. The therapeutic value of massage is often underestimated or ignored in today's world of medicines, machines and sophisticated technology. Improving the health of the body by way of massage is definitely the trend of the 90s, according to Sheila Dainow DCS, DTM. Trained at the College of

Holistic Medicine, New Southgate resident, Sheila, who has been a counsellor for many years, has set up a local therapeutic massage practice. She feels that the natural progression from working to relax the mind is helping to relax the body. Her theory is that you can liken your body to a car. Therapeutic massage is akin to regular servicing, "you don't wait for it to break down. Regular upkeep and attention will keep it going."

Sheila points out that it is quite wrong to think that massage need only be for the rich and sporty. Massage loosens and relaxes taut and painful muscles and stimulates the circulation of lymph and blood, resulting in the expulsion of toxins. This in time helps and benefits all the systems of the body. In times of stress, circulation does not function efficiently. Internal organs become strained or clogged with toxins. This can cause a general feeling of being under the weather or even later on lead to more serious problems.

Sheila bases her treatment on a Swedish massage used together with the pressure principals of the East. "Some people come on a servicing idea, say monthly, to help them maintain a feeling of well being". Some people pop in for specific problems such as back pain, headaches, arthritis, asthma and heart

### ADVERTISER'S ANNOUNCEMENT

problems, all of which can be helped by massage. Sheila is quick to add that, massage is "not magic, no more magic than taking pills, but at least it won't do you any harm".

At your first appointment, you will have a chance to give your medical history. You may well want to discuss any problems or ask questions, which is all part of the procedure. It is probable that you will be given a full body massage, which at first may cause some discomfort in painful areas.

Be prepared for perhaps a headache or temporary worsening of symptoms, as toxins are released from the cells into the bloodstream. It's a sign that the treatment is working and the discomfort will not last.

Sheila has definitely found her niche in practising massage, and if she had the chance - and is more than welcome to hear from any institutions - would like to explore the benefits of massage for people who wouldn't have it readily available to them, for instance for the aged, children in homes, the disabled and the infirm.

For further information contact Sheila Dainow on 081-368 3605.



FOR DETAILS OF  
THE SUMMER  
BARNET NEWS  
RING

MICHAEL PAGE  
ADVERTISING MANAGER  
ON 081-449 5577

## SHIATSU THERAPY

Japanese finger pressure  
therapy for natural healing the  
benefits are:

- ◆ promotes calmness and well being
- ◆ assists stress relief
- ◆ pain relief
- ◆ strengthens immune response
- ◆ alleviates depression

Counselling and therapy  
available, please ring:

Deena Marcus DIP, AD MRSS ITEC  
on 081-441 8353



## SLIM AND TONE

### For Spring . . .

Lose 6 inches in one hour!!  
With LA Lifestyle Body Wrap

Lose 10 inches from all over!!  
Using our toning tables only 4 times  
Especially for tummy, buttock *and*  
thigh muscles. First session is FREE!!

**12 SESSIONS:**

**£50**

All you need for a beautiful  
slender you

At: Slender You  
245 Oakleigh Road North  
Whetstone, London N20  
081-368 7168



## AU PAIRS

For a caring and efficient  
service at competitive rates

**ANGLO-IBERIAN AGENCY**  
**081-446 5566**

## THENAPPY EXPRESS

Pampers, Peadouce & Togs  
Delivered to your door  
Cloth Nappy Washing Service

Also, Baby Toiletries  
Baby Food and Baby Milk  
Household items, Childrens videos  
Environmentally friendly products

ALL AT COMPETITIVE PRICES  
5 Days a week free home delivery



Please call for details and your free price list  
081-361 4040 (2 lines) 081-361 4040 (2 lines)

Baby Equipment Hire Specialists

BOOK NOW FOR EASTER

Car Seats, Buggies  
Travel Cots, Playpens  
and much more . . .

All equipment  
regularly replaced

Long or short term  
hires welcome

# FOR ARTS SAKE

## The Complete Picture and Framing Service

PRINTS . POSTERS .  
LIMITED EDITIONS . MIRRORS



Our Custom Framing Service features a choice of 400 frame mouldings, and includes hand stained and polished frames. Also amongst our specialist services are:

GILDING, TAPESTRY AND CANVAS STRETCHING,  
AND THE CLEANING AND RESTORATION OF OIL  
PAINTINGS, ANTIQUE PRINTS AND WATER COLOURS.

20% DISCOUNT ON ANY PURCHASE OF FARMED PRINTS OR  
CUSTOM FRAMING ON PRESENTATION OF THIS ADVERT



43 THE BURROUGHS HENDON LONDON NW4 4AX TEL 081 - 202 3822 FAX 081 - 20 2 1641

FOR ARTS SAKE was established in Hendon in 1978, and opened its second gallery in Ealing in 1984. Starting as a purely retail outlet, it soon established a reputation for unusual prints and fine quality picture framing.

Their innovative ideas soon enabled the Company to brake into the contract picture and framing market, and they are now one of the country's leading suppliers of framed artwork to pubs, restaurants, hotels and offices, including such diverse household names as Taylor Walker, Pizza Hut, The Ritz Hotel and Arsenal Football Club.

To maintain the high standards of workmanship, they have their own workshop in Hendon, where every picture is expertly framed. Skilled framers carry out all stages of the work, employing a combination of traditional hand skills and modern techniques.

The gallery in the Burroughs is open 7 days a week and as well as offering over 400 picture frame mouldings, there is a wide range of modern and traditional prints, limited edition silk screens and engravings, as well as framed mirrors. Experienced staff offer advice on the framing of customers' own artwork.

The company has recently launched 'The Gallery Collection' featuring high quality reproductions representing all major international museums and galleries. Prices start as low as £25.00, mounted and framed.

FOR ARTS SAKE is located near Barnet Council's Town Hall at 43 The Burroughs, with a free car park adjacent.

Open 7 days a week. Tel No 081-202 3822.

NEW EXTENSION — NOW THE

# LARGEST *fitted* BEDROOM SHOWROOM

FREESTANDING OR *fitted*

- Superb Quality - Works Discount
- Master Bedroom - As shown £2200
- Teenager Rooms from £790
- Office at Home - Sofa Bedrooms
- We make for **YOU**

**EXPERT FITTING INCLUDED**

OPEN MON-FRI 9am-5.30pm. SAT 9am-5pm. SUN 10am-4pm

FACTORY and SHOWROOM - 719 NORTH CIRCULAR RD NW2



**ALWAYS  
SPECIAL OFFERS**

# STATON *Fitted* Bedrooms

# Your MEP and Local Councillors

## Details of surgeries

**Arkley Ward:** Contact Labour councillors Anita Campbell 440 2703, Pam Coleman 449 6254, Kevin Smith 440 4828. Councillors available first and third Saturdays of month, 10.30-11.30am, St Stephen's Church, Bells Hill and at "Homefield" (common room), Dollis Valley Estate. Advice surgery with a Labour councillor second Saturday of month, 10.30-11.30am, 104 East Barnet Rd.

**Brunswick Park Ward:** Conservative councillors available second Saturday of month, 10.30am-noon, Monkfrith Boys' Club hall, Osidge Lane, N14.

**Burnt Oak Ward:** Contact Labour councillors: Gerald Shamash, 458 2679, Allan Turner 952 2106, Alan Williams 906 0576. Also every Saturday, 10.30am-noon, Labour Hall, Back Lane, Burnt Oak,

952 5771 (24hr message line).

**Childs Hill Ward:** Liberal Democrat councillors second Tuesday of month, 7-8pm, Garth Hall Community Centre, Mortimer Close, Granville Rd, NW2 or phone councillors Jack Cohen 445 3981, Monroe Palmer 455 5140 or Brian Stone 450 0762.

**Colindale Ward:** Labour councillors available first Saturday of month 2-3pm, St Augustine's Church, Grahame Park or phone councillors Ellis Hillman 202 7792, Tom McKendry 444 0594 or David Williams 343 1082.

**East Barnet Ward:** Cllr Olwen Evans (Conservative) available first Saturday of month, 10.30am-noon, Community Centre, Victoria Rd, New Barnet. Contact Cllr Jim Anani 445 3872 or Cllr John Perry 368 4368 for personal appointment.

**East Finchley Ward:** Labour councillors every Saturday, 10-11.30am, East Finchley Neighbourhood Centre, Church La, N2.

**Edgware, Hale and Mill Hill Wards:** Conservative councillors, constituency office, alternate Mondays by appointment 959 1446.

**Finchley Ward:** Contact Conservative councillors Eva Greenspan 203 1598, Barbara Langstone 445 5443 or Leslie Sussman 346 6775. Eva Greenspan available first Friday of month, 10.30am-noon at 212 Ballards Lane, N3.

**Friern Barnet Ward:** Contact Conservative councillors Chris Platford 368 6817, Brian Salinger 368 1329, John Iplady 445 5734.

**Garden Suburb, Golders Green and Hendon Wards:** Conservative councillors, first Saturday of month, 202 7484.

**Hadley Ward:** Conservative councillors Gillian Bull, Liz Mammat and Ashley Newman available third Saturday of month, 10.30am-noon, 163 High St, Barnet.

**St Paul's Ward:** Contact Conservative councillors: Mike Freer 446 5396, Helena Hart 346 3128 or Mary Phillips 445 9426, or on every third Saturday of month from 10.30-noon, 212 Ballards La, N3.

**Totteridge Ward:** Contact Conservative councillors Joan Levinson 368 3298, Victor Lyon 446 4423 and Victor Usher 445 4248.

**West Hendon Ward:** Labour councillors second Saturday of month, 11am, West Hendon Youth Club, 4A Park Rd, NW4 by appointment, contact councillors Doreen Neall 202 9927, Tim Sims 071-734 8080 or Agnes Slocombe 202 4074.

**Woodhouse Ward:** Labour councillors Stan Cross, Mike Harris and Dennis Reed, every Thursday, 6.30-7.30pm, Educational Services (formerly Friern Barnet Town Hall) N11.

## Euro MP

Pauline Green. Phone 365 1892

### EXPERIENCE A TRULY PROFESSIONAL & PERSONAL SERVICE AT VALLEY FURNISHING



We Specialise in:-

**BEDS-** Good quality single beds from £96  
Good quality double beds from £149  
**QUALITY MATTRESSES-** 3ft from £55  
4ft from £85

- 3 PIECE SUITES • FIRESIDE CHAIRS •
- FOOT STOOLS • DRESSING TABLE STOOLS •
- POUFFES • HEADBOARDS • FOLDING BEDS •

114 BRENT STREET HENDON NW4  
Tel: 081-202 4666

We also furnish houses & flats letting/renting, and retirement homes.

### EXTRA LARGE - STRONG PLASTIC LINERS

They generously overlap the rim and are not drawn back inside when full - 54" long



**NO MORE WASHING OUT, SMELLS, MOULDS OR FLIES. KEEPS YOUR BIN HYGIENICALLY CLEAN EVERY WEEK!**

YEARS SUPPLY OF 52 LINERS

**£11.94** per pack, delivered

Telephone orders by Access and Visa

OR send cheques by post, payable to "Wheeled Bin Plastic"



Your cheque will not be cashed until after delivery and your satisfaction

**WHEELED BIN PLASTIC**  
Tilford, Farnham, Surrey (025125 3296)

### EXECUTIVE CAR SERVICE

SALOON OR LIMOUSINE

**081-205 4979**

**0836 372 453**

**ALL OCCASIONS**

### B & C KNIGHT

The gardeners with over 50 years' experience available for all your gardening requirements

We can help with anything from turfing to tree surgery



Does your garden match your home?

Does your lawn match your carpet?

**081-203 2169**

Barnet News-Spring 1992

## Obituary

**Mrs Clara Thubrun MBE, former Mayor of Hendon, Alderman and freeman of the Borough of Barnet, died on Saturday 8 February.**

The funeral took place at Bury St Edmunds on Thursday 13 February and was attended by the Mayor of Barnet, Cllr Leslie Pym and the Chief Executive, Max Caller.

In 1951 Mrs Thubrun was elected to the former Hendon Borough Council as a representative for Mill Hill Ward. She served on all the main committees and was Mayor of Hendon in 1963/64. In May 1964 Mrs Thubrun was elected to the London Borough of Barnet as a councillor for Mill Hill Ward and was made an Alderman ten years later. She retired from the council in 1978.

Mrs Thubrun was later the first woman to be granted the Freedom of the Borough of Barnet. Mrs Thubrun leaves two daughters, four grandchildren, and ten great grandchildren.

## Contents

- 3 ● Community Charge details
- 6 ● Your MEP and Councillors
- 7 ● Mayor's Charity Ball
- New Mayor announced
- 12 ● Housing spending
- New Deal for Tenants
- 13 ● Social Services Budget
- Renovation of Avenue House
- 14 ● Journalist praises school
- 15 ● Education Budget
- New youth Fundraiser
- 16 ● Opening of Merrivale
- Vandalism danger
- 17 ● Living History
- Alcohol-free bar
- 23 ● Boundary battle
- Travel permits
- 29 ● Public Works Budget
- Drainage alterations
- 30 ● Judge Dredd hits town
- Library hours increase

## Charity Ball

### Mayor's Appeal

More than 300 guests, representing all facets of the community in Barnet, are expected at the London Metropole on 11 April for the highlight of the Mayoral year - the Civic Charity Ball.

This year's Appeal by the Mayor, Councillor Leslie Pym C.B.E., has already raised more than £55,000 for Children with Leukaemia.

The Pipes and Drums of the London Scottish Regiment are due to entertain guests and music for dancing will be provided by the Paul Bailey Sound.

● The annual sponsored swim, organised by Councillor Mrs Mary Phillips, took place at the Cophall Pool on 14 March and a celebrity golf tournament at the South Herts Golf Club in Totteridge is planned for 27 April.

## New Mayor and Mayoress

### Cllr Fred Poole

Cllr Fred Poole and his wife, Phyllis, are Barnet's Mayor and Mayoress Designate and will take over from Cllr Leslie Pym and his wife, Gwen, at the Council's Annual Meeting on Tuesday 12 May.

Cllr and Mrs Poole were Deputy Mayor and Mayoress during 1987/88 and also took over as Deputies following the sudden death of Cllr Wilf Lipman in 1989.

The couple who live in Hendon, have two daughters and three grandchildren.

Cllr Chris Platford and his fiancée, Gill Mansbridge, have accepted an invitation from Cllr Poole to serve as Deputy Mayor and Mayoress.

# SPACE

## SAVING FURNITURE IN SOLID WOOD



**SITTING ROOM  
BEDROOM  
BOX ROOM  
GAMES ROOM  
LOFT ROOM  
UTILITY ROOM...**



*Your furniture solution starts here!*

**SHELFSTORE** 071-7940313  
Swedish Component Pine Furniture

Frognaal Parade,  
158 Finchley Road,  
London NW3



# Whats On?

## SPRING COURSES IN IKEBANA

(JAPANESE FLOWER ARRANGING)

This traditional art teaches relaxation as well as how to create beauty through simplicity and discipline

Contact: Mrs Nunn, MOA, Ikebana School of Flower Arranging on  
**081-455 8949**

## The COUNTRY LIFESTYLES Show

Sunday 3rd & Bank Holiday Monday, 4th May

Special attractions include:

- Country Crafts Marquee
- The Country Clothes Show
- Fabulous falconry flying
- Laser clay pigeon shooting
- Shire horse and cart rides
- Cacti & Succulent Show
- 30 acres beautiful gardens
- Educational Farm open
- Refreshments available
- AA sign posted, free car parking.

Show opens: 10 am - 6 pm

Admission: £4.00 adults, £2.00 conc., £10.00 family ticket

### Capel Manor

Bullsmoor Lane, Enfield, Middlesex. By J25/M25, 0992 763849

Bring more of the countryside into your way of life!



## Turning the tables on your own battle to lose inches

AFTER years of dieting Myrna Julius had at last found the answer to not only losing inches, but toning up as well. Joining a toning salon she found that she enjoyed using the tables and at the same time reduced her measurements and improved her shape and posture. So much did she believe in the benefit of using the tables that she decided to have her own salon and spread the word.

'Figurewise' at the David Lloyd Club, Finchley, N12, opened in February this year. Completely refurbished, the six new toning tables in the wonderfully relaxed atmosphere are used under the eagle eyes of a fully trained team of instructors. Myrna welcomed me to try for myself the ease at which one could thoroughly work-out. The toning tables which help tone and firm all those problem areas, are accompanied by a circulation table with vibrates away excess fluid, toxins and cellulite.

On experiencing the 'Waist-Tummy-Hip' table I was surprised to find that I had done over 400 kick-backs in eight minutes. I was amazed, as I found the experience, if anything, relaxing. One hour on the toning tables is equal to five hours of floor exercise, without the hassle of having to warm up beforehand, of feeling a wreck afterwards.

Recommended by physiotherapists, the tables are designed to tone without strain. Sessions are ideal for all ages, with each exercise individually supervised. People who suffer muscle related diseases - like Arthritis,

### ADVERTISER'S ANNOUNCEMENT

Rheumatism, Osteoporosis, M.E and sports injuries - can benefit, as muscle wastes through lack of use, and mobility can be restored gradually.

For many, the sessions at Figurewise are an escape to a 'sanctuary' where it is possible to pass an hour and forget the pressures and stress of life. Myrna likes to see her clients benefit as she understands the need to exercise and retain good health, "It's heart warming to see", she says. Make Myrna's day and pop in for a free trail session.

'Figurewise', The David Lloyd Club, 'Gleblands', High Road, Finchley, N12 OBR. Appointments on 081-446 4337.



Toning tables at the Figurewise salon

# Figure Wise

Tone ● Stretch  
Relax ● Reduce

Our fully-trained team of instructors will guide you through your Personal Exercise Programme while our new modern toning tables take the strain.

Problem areas i.e. hips, stomach, upper arms, thighs, will be stretched and toned giving your body sleek and reduced contours.

Medically recommended only at Figurewise, David Lloyd Club, Finchley, our tables can also be used to relieve muscle-related diseases i.e. rheumatism, athritis, osteoporosis, M.E., sports injuries, by special mobility exercises.

Concessions for O.A.P.s. Please call in or telephone for your free trial so that you can judge the benefits for yourself.

## FIGUREWISE

THE DAVID LLOYD TENNIS CLUB, HIGH ROAD, FINCHLEY, N12

OPEN 7 DAYS/WEEKLY - MONDAY TO FRIDAY 9AM-10PM - SATURDAY AND SUNDAY 9AM-5PM

TELEPHONE: 081-446 4337

NON MEMBERS WELCOME ● CRECHE FACILITIES ● LARGE FREE CAR PARK  
EXCELLENT RESTAURANT AND BAR

On producing this advertisement one extra 'FREE' session will be added to any course booked

PRIVATE APPOINTMENTS AVAILABLE UPON REQUEST



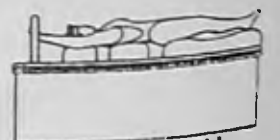
The Circulation Table



Sandbag Table



Waist - Tummy Hip Table



The Stretch Table



Body Bender Table



Leg Table



Side Bend Table

# Restaurant Guide

## Diner's American dream

'DOWN The Hatch' is an American dream at the foot of Muswell Hill. The diner offers a great selection of yankee food, without travelling to the States or a West End restaurant, to taste it.

The diner is a bright and lively meeting place - a paradise for lovers of Americano.

The hands-on partners of 'Down The Hatch', Dominic Allodi and Hugo Marengi, boast a varied background in the catering field, and give the impression that the diner is purely run for the love of it. When my partner and I popped in to taste the fare at the diner, we were amazed at the size of the portions and how economical it was.

Crammed with burgers, ribs, steaks and pizzas, (it's worth asking if you don't see what you want) the menu is also available for take-away. To start, we chose a garlic bread for two. Followed by a 'B-B-Q Delight',

### ADVERTISER'S ANNOUNCEMENT

which was half a chicken and half a rack of ribs and a side portion of chips. And, for myself, half a rack of ribs and portion of chips, priced at £3.95, that I struggled to finish.

All the family are encouraged to visit the restaurant, and young children are ably catered for, with high chairs and a menu varying from a quarter-pound cheeseburger, fries and salad to pizza for just £2.75 with a soft drink.

If you don't fancy a gigantic meal, just pop in for a chinwag over a cappuccino, there is no minimum fee. With good food, competitive prices and a relaxing atmosphere, don't forget to go 'Down The Hatch'.

● 'Down The Hatch', 148 Colney Hatch Lane, Muswell Hill, N10. Open and fully licensed from 11am-12pm, seven days a week. Reservations and take away on 081-444 7782.



## New Himalaya Restaurant

Fully Licensed

Probably the finest  
**INDIAN CUISINE**  
in London



**1/3 OAKLEIGH ROAD NORTH  
WHETSTONE LONDON N20**

*Sunday Buffet 12 - 2.30 pm*

**EAT AS MUCH AS YOU CAN,  
AS OFTEN AS YOU CAN**      *Children*      **£3.50**  
**FOR AS LITTLE AS:**      *Adults*      **£6.95**

*The dishes available on buffet are: TANDOORI DISH, CURRIES,  
VEGETABLES, RICE, NAN, DAL, SALADS  
VEGETARIAN DISHES ALSO AVAILABLE*

*10% Discount on Take Away Meals*

*For Reservations & Take Away Service*

*Call -*

**081-445 5213 & 446 6997**

*Easy car parking at the front of the restaurant*



**148 Colney Hatch Lane  
Muswell Hill, N10  
Licensed 'til 12pm  
Very Reasonable Prices**



**SPECIALISING IN AUTHENTIC AMERICAN COOKING**

Juicy Baby Back Ribs, Steaks, freshly-made Burgers (try the 16oz)

We have children's menu and high chairs

★ SATELLITE TELEVISION ENTERTAINMENT ★ GREAT ATMOSPHERE ★

When you need a cappuccino or a gut-busting meal, you're always welcome

★ 10% DISCOUNT FOR O.A.P.s ★ BREAKFASTS SERVED FROM 10AM ★

VEGETARIAN DISHES AND TAKE-AWAYS AVAILABLE

**DOWN THE HATCH DINER**

**Phone 081-444 7782**

# Opportunities for council and housing association tenants

We will be running several shared ownership schemes with housing associations in 1992 and 1993 in High Barnet, Southgate and Colindale.

Shared ownership is a way of purchasing a property but at a reduced cost.

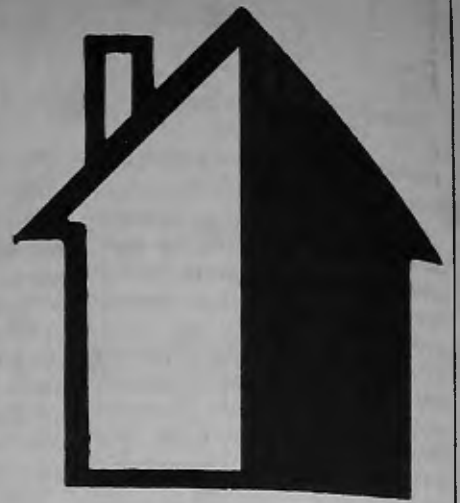
You buy a percentage share in a property, usually new, but at a reduced cost, whilst renting the remainder. If your income increases you can buy further shares in the property and eventually if desired you can purchase outright. Shared ownership is ideal for tenants who would like to buy but do not want to buy their present council home, and cannot afford to buy privately.

This year we are also running a do it yourself shared ownership (DIYSO) scheme. DIYSO is similar to the scheme described above, however, the prospective purchaser chooses a suitable property (within set down price limits and rules) and buys the property on a shared ownership basis. DIYSO will be particularly aimed at council and housing association tenants to release properties for reletting.

Priority is also given to council and housing association tenants on all other shared ownership schemes.

To register on the mailing list for more details of future developments telephone Housing Initiatives on 081-446 8511 ext 4863, or write to:

Housing Initiatives, Community Services, Barnet House,  
1255 High Road, Whetstone, London N20 0EJ



**SHARED  
OWNERSHIP**

**BARNET**  
LONDON BOROUGH

## Restaurant Guide

*Ashapuri*



*Tandoori*

FULLY LICENSED INDIAN RESTAURANT

189 Woodhouse Road, London N12

Telephone:

**081-361 3720 081-368 2028**

ALL MAJOR CREDIT CARDS ACCEPTED

FOR AN  
UNFORGETTABLE  
TRADITIONAL  
GREEK MEAL

**COME TO US**

**PEFKA  
TAVERNA**

45 HIGH STREET  
BARNET  
HERTS

TEL: 081-441 7377

*Restaurant Francais*  
*"Le Saint Pierre"*

Open Every Day

Lunch 12-3pm Evening 7-11pm

Le Saint Pierre is now open. This beautiful, authentic French restaurant has been totally refurbished & will be offering a new menu of mouth-watering French delicacies.

23 Green Hill Parade, Great North Road  
New Barnet, Herts EN5 1EU  
Telephone: 081-449 1478

**BARNET**  
*News*

FOR DETAILS OF  
THE SUMMER  
BARNET NEWS

RING

**MICHAEL PAGE**  
ADVERTISING MANAGER

ON **081-449 5577**

*Belare Restaurant*  
**Turkish Cuisine**

One of the best  
in North London

We welcome you for  
private parties with  
Special Discounts

Open 7 days  
Mon-Sun 12-12

355 BALLARDS LANE

N. FINCHLEY

TALLY HO N12

Tel: 081 445 4632

Barnet News-Spring 1992

## Poolside fun for all of the family

Poolside Manor situated in Lyndhurst Gardens, Finchley N3, is a leisure centre owned and operated by Judy and Ivor Davies, and is a development of the swimming classes run by their other company Experience UK Ltd (X.U.K).

X.U.K is best known for its reputation as an activity camp for children, with day-camps in North London and residential camps around the UK.

Poolside Manor's distinctive pine-log building houses a superb swimming pool (18m x 8m), refreshment/coffee bar, activity room, and health facilities (sauna, steam cabinet, sunbed).

Meeting the ever-increasing demand for swimming tuition is the core of Poolside Manor's operation. Personal attention in small groups, under the supervision of qualified A.S.A instructors, is the hallmark - continuing the excellent reputation for quality developed by the Davies' at X.U.K., exemplified by the constant stream of parents letters:

"The tuition that Jamie has received for the last couple of terms has been outstanding and I wish I swam with the style he already has at 4! Ilana looks set to make the same kind of progress. It is a great relief when our children are safe and confident in the water and we are certainly achieving that aim."

"I would like to take this opportunity to say what a joy membership of Poolside Manor is. The girls adore their visits and I think the quality of

### ADVERTISER'S ANNOUNCEMENT

life has been improved!"

"I am writing to let you know how very much we enjoyed our swimming party last Sunday; we'll definitely be back next year. Please pass on our thanks to Toby and Lizzie who were unsurpassable in their joint roles."

Poolside Manor also caters for specialist demands, such as courses for parents and toddlers, Aquafit (keep fit in the water), Sparklers (gym club for 3-4 and 5-7 year olds), Tap & Jazz, Judo, and the Poolside Young Members Club for 9-13 year olds with both wet and dry fun activities and superb safe supervision.

Leisure swimming facilities are also available.

Poolside Manor was built in the grounds of the Finchley Manor Tennis and Squash Club (which also boasts an excellent gymnasium) and the combined facilities of both clubs make this one of the most attractive and friendly centres in London.

Applications for swimming tuition or leisure membership can be made by contacting Judy or Ivor Davies on 081 349 1945/1444, where information can also be obtained about X.U.K. holiday camps.

## Scouting for fresh talent

FOR all budding actors and actresses, this is a real opportunity not to be missed.

Auditions are being held for an exciting and original new musical for young people aged from 10 to 20 years.

The musical, "Loco Parentis", will be performed in July, with the initial rehearsals being held at an Easter Drama Workshop in Finchley N2.

The workshop will also cover a variety of performing arts skills including improvisation, stage make-up, song & dance and stage

fighting amongst many others.

"Loco Parentis" has been written by Judy and Danny Davies.

Judy is renowned for her substantial experience in the drama field, including previous workshops and award winning musicals.

Danny is a talented composer and recently reached the Regional finals of the Panasonic Rock Awards.

So if you or your child can act, dance or sing, telephone Judy Davies for further details and audition dates on 081-349 1945/1444.

### ADVERTISER'S ANNOUNCEMENT



## AUDITIONS REACT!

### CAN YOU ACT, DANCE OR SING?

We are auditioning talented young people (aged from 10 to 20 years) for an exciting and original musical to be performed in July. Initial rehearsals to be held at an Easter Drama Workshop in Finchley N2.

FOR FURTHER DETAILS AND AUDITION DATES PHONE JUDY DAVIES ON

**081-349 1945/1444**

POOLSIDE



## SWIMMING COURSES

### EASTER CRASH COURSE

Maximum 6 pupils per class

Excellent teachers

Warm comfortable pool

Registration also for SUMMER term

For ages 3 months to 103 years!

ALSO ● AQUAFIT (POOL KEEP FIT)

LANE SWIMMING ● POOL PARTIES

### DRY ACTIVITIES

● "SPARKLERS" GYM CLUB. 3-4 AND 5-7 YRS

● JUDO ● TAP & JAZZ (CHILDREN)

● PYM'S CLUB 9-13 YRS

KEEP FIT, SUNBED, SAUNA & STEAM



### POOLSIDE PUFFINS



EASTER HOLIDAYS 2pm-4pm. 4-7 years.

Drama, singing, magic shows etc. coupled with an hour of fun swimming every afternoon.

ALL AT POOLSIDE MANOR!

Telephone: 081-349 1945 or 081-349 1444



## GIVE YOUR KIDS A SUPER "TWEET"!

### X.U.K CHILDREN'S ACTIVITY CAMPS



DAY & RESIDENTIAL CAMPS - Edgware, Finchley & Suffolk

AGE GROUPS 3 - 17 YEARS

An exceptional programme of sports, arts and excursions. Renowned for our caring and qualified staff

FOR FURTHER DETAILS PHONE:

**081-349 1945/1444**



# Housing Investment Programme

## Barnet Council's Spending Plans

**Barnet Council has unveiled its housing spending plans for 1992/93 and has an extra £4.7m to spend as a result of its impressive performance in recent years.**

This year the Government has given extra funds to well run, efficient council Housing Departments and it classed Barnet's performance as above average.

The total of the new programme that has been agreed by the Housing and Environmental Services Committee is £18m and the bulk of the money will be spent on renovating council homes and providing for homeless families.

However, the Government has reduced subsidy to all boroughs on the day to day expenditure side of housing departments.

This, coupled with inflation, accounts for the bulk of the 14.9 per cent rent increase which Councillors agreed on at their meeting.

The planned spending comprises a number of key measures:

- To combat the growing problems for homeless people in the borough, £6.4m is to be distributed to Housing Associations to provide approximately 140 new homes in the borough.

Housing Associations are being invited to submit projects which will provide affordable rented homes, with the aim of providing the maximum number of homes as quickly as possible for families currently in B + B accommodation or other temporary housing.

- A further £1m will be used to fund a Cash Incentive Scheme whereby council tenants will get a cash grant of up to £20,000 to help them buy accommodation in the private sector, thus releasing their council home for a homeless family.

- At the same time Barnet will be spending £1.7m on improvement grants to repair and renovate homes in the private sector.

---

### *Barnet has also been able to incorporate significant service improvements into its budget.*

---

- Nearly £9m will be spent on much needed renovations to Barnet Council's own homes.

- Funding has been identified to continue the programme of rewiring and renewal of heating systems as well as works to remove asbestos lining from flues.

- To meet the needs of disabled people a budget of £350,000 for adaptations to council homes has been set aside.

Barnet Council has listened to what its customers want and is planning to spend extra money this year on security. £100,000 will go towards entryphone systems, another £100,000 towards providing extra security to front doors on 500 of the more vulnerable ground floor flats and house. This is a major contribution to crime prevention and to peace of mind for many tenants.

Barnet Council has also announced the setting up of a Customer Research Unit as part of the authority's drive towards increased customer involvement and greater responsiveness to the needs and wishes of its tenants. The Unit will be carrying out market research on customer satisfaction with the services provided, as well as collecting information for Barnet's new ethnic monitoring project agreed by the council last year.

## Green light for unit Funding available

Barnet Council's Director of Community Services, Ray Janering, told the Social Services Committee on Tuesday 3 March that he had heard funding was going to be available to provide a residential unit in the borough for people with multiple disabilities.

"Today I received written confirmation from the Housing Corporation that funding is available in 1993/94," he said. "MENCAP and parents will be delighted at this news. We will be urgently looking for a site."

Mr Janering said the project would be undertaken by the Notting Hill Housing Trust and he would report to a future Social Services Committee on available sites.

## 'New Deal' for tenants & leaseholders

### Join your local Residents Association

**Barnet Council has launched a major initiative to give its Housing Department tenants and leaseholders a say in the running of the Housing Service.**

The council has also announced a major recruitment drive to encourage tenants and leaseholders to join their local Residents' Associations.

Key points of the new deal for Barnet Council's residents include:-

- full recognition by the council of the Barnet Federation of Tenants and Residents as the recognised residents' representative body.

- a new Borough Advisory

Group of tenants, leaseholders and senior officers to discuss changes and improvements to council service.

- four new Area Housing Advisory Groups meeting every six months with the residents and area housing officers to discuss performance and service delivery of the area offices.

- a major customer satisfaction survey, following on from the council's successful survey on repairs which established that 90 per cent of people were currently happy with the council's service.

- £100,000 has been set aside to spend on improvements to

estates at the suggestion of recognised Residents' Associations.

- resident participation in joint estate inspections with council officers.

- a detailed Consultation Procedure on all major works to council estates.

As part of the initiative, all existing Residents' Associations are being encouraged to seek recognition with Barnet Council, and every tenant and leaseholder will be contacted in the next few weeks encouraging them to join their associations or to set up an association if one does not already exist.

Lyndon Robbins, Chairman of the Barnet Federation of Tenants' and Residents' Associations said:

"We welcome this initiative from the council and urge all tenants and leaseholders to join their local association."

**Barnet News-Spring 1992**

# Substantial increase in Budget for Social Services

Up by more than twice inflation

The budget for Barnet Council's Social Services Committee in 1992/93 is approximately £39m - up 9.2 per cent on the 1991/92 figure. In cash terms this increase represents £3.24m.

This substantial increase gives the opportunity to address the needs of users and carers of the service, and many of their identified wishes have been taken into account when drawing up the proposals for development in the coming year.

In Children and Family Services the identified priorities are:-

- the development of services under the Children Act 1990 including field work, working with children with disabilities, home finding, after care, home support services, a day care review, registration and inspection staff in the area of services for under eights and child protection.

A sum of almost £1m has been identified to facilitate these needs and other developments which may arise out of the introduction of the Criminal Justice Act 1991.

Within Specialist and Disability Services new resources are identified:-

- to provide additional occupational therapy at Flightways in Colindale and the Rosa Morison Centre, New Barnet.

- to increase the staffing ratios at day care centres to recognise the increased dependency levels of many of the clients.

Services for people with mental illness are addressed under the terms of the Mental Illness Specific Grant for which Barnet has had a provisional allocation of approximately

£99,000 for new schemes.

The council's contribution is approximately £29,000 and this year the council, together with

## *In cash terms this increase represents £3.24 million*

the District Health Authority and the voluntary sector, have proposed schemes which address the need for:-

- respite care.
- increased day care provision on a 7-day a week basis.
- a night sitting service for

suffers of dementia

The grant also seeks to find a limited number of bus passes for people with mental illness

who are supported in residential care settings.

New developments in the Elderly Persons Services include:-

- funding of an Asian community specialist worker, to assess the needs of the Asian

community and seek to make services culturally appropriate to those needs.

- increasing the Home Support Services budget by a further £500,000.

- increasing concessionary fares to eligible people.

Under the Capital Programme, major refurbishments of Abbots Lodge, Brunswick Park Road, N11 and Chandos Lodge, Grahame Park, Colindale, are planned in 1992/93 to bring these settings up to Registration Standard and provide modern facilities for the elderly residents.

## Avenue House - work underway

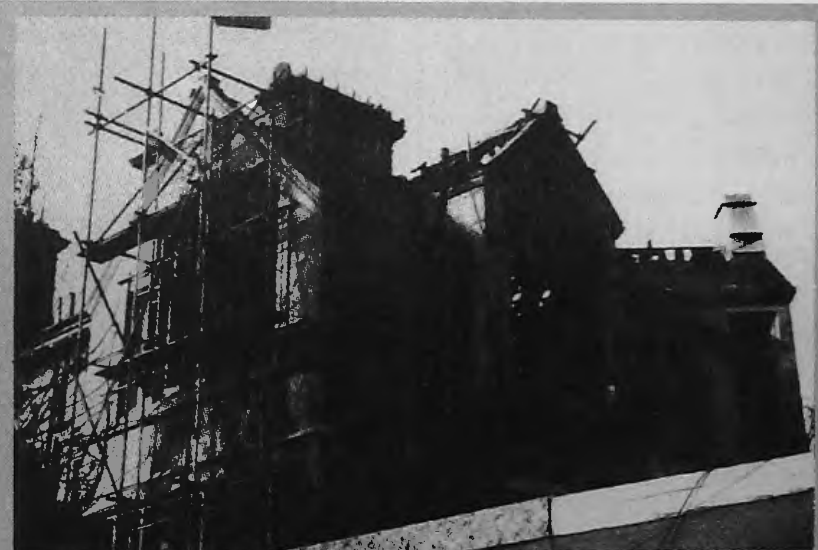
### Major renovation

Barnet Council is to oversee an £800,000 programme of major renovation work during the coming year, designed to reinstate part of one of the borough's most famous buildings.

The council will be supervising building work at Avenue House in Finchley, the 19th century house ravaged by fire in May 1989.

The work, which will continue until the beginning of October, involves reconstructing the East Wing of the building in East End Road. This includes renovating the drawing room in period style and redesigning of the first floor of the wing to create a large meeting room.

Avenue House, which is set in extensive, beautifully landscaped gardens, was built in approximately 1859 and in 1874 was acquired by Henry Stephens,



familiarly known as "Inky", the son of the inventor of the famous blue/black writing fluid.

Henry Stephens died in 1918 leaving the Avenue House estate to the Urban District Council of Finchley for the "use and enjoyment always of the public..."

It was formally opened to the public in May 1928 and after going through a variety of different uses has become a meeting place for local interest groups.

Since the fire the comparatively unharmed western "half"

has been cleaned, redecorated and brought back into use, so that the majority of groups who were using the house beforehand are now doing so again.

The work on the East Wing follows extensive consultation with residents and groups that use Avenue House.

The majority of those who responded wanted to see the exterior reinstated as it was prior to the fire, but they also wanted the interior altered slightly to create bigger rooms more suitable for group meetings.

# TVEI

## Initiatives Praised

Barnet Council's plans for post 16 initiatives in its schools and colleges have been praised by the Department of Employment and described as "very effective and coherent."

The council's education department has had to submit proposals to the DoE outlining its plans to support and develop the extension of TVEI (Technical and Vocational Educational Initiative) to over 16 year olds in the borough, in order to secure funding.

In accepting the submission a spokesman for the DoE said: "Barnet had submitted a very strong proposal which addressed the post 16 issues in a very effective and coherent way and provided clear evidence of a firm management structure for the delivery of the post 16 phase of TVEI."

Barnet's submission was based on a statement of "curriculum entitlement" for over 16s in the borough which includes:

- information on the range of post 16 courses available in the local education authority.
- a course or combination of courses leading to nationally recognised qualifications and designed to prepare students for employment, further training or higher education.
- the opportunity for a period of work experience, work shadowing and/or involvement in industry related projects.

The acceptance of the post 16 submission leaves the education department with a balance of £2,613,193 for future TVEI initiatives.



## "Sage of Cricklewood" impressed with dedicated staff

### Journalist visits Whitefield

Alan Coren, the "Sage of Cricklewood", declared himself hugely impressed with the dedication and professionalism of staff when he visited Whitefield School in Claremont Road on Wednesday 26 February.

Mr Coren, (above centre) who has popularised the allegedly unfashionable NW2

postal district in his column in The Times, was at the school to plant a lilac tree. He was given a guided tour of the buildings and grounds by headteacher Hazel Taylor.

"What we see here is a classic example of good people doing a good job under enormous pressure," he said.

"It is extraordinary when you

consider how many different things a teacher has to be these days. An administrator, a social worker, sensitive to the cultural nuance of all the pupils. It is remarkable, I certainly couldn't do it."

The lilac tree was one of 25 trees that have been donated to the London Borough of Barnet by local garden centre Country Gardens in Mill Hill, Daws Lane, NW7.

The other trees have been distributed to schools throughout the borough.

## Probationary teachers to start personal portfolios

### Pilot programme

New teachers in Barnet are being invited to take part in a pilot programme in which they monitor their own career development in a scheme called personal portfolios.

Teachers are encouraged to scrupulously note each achievement in the classroom, and each course taken, in a specific file for the purpose, and then discuss their experiences with other teachers at a similar level.

The technique is already used successfully in industry and, if a portfolio is kept up over a number of years, a comprehensive record of the working life of the individual is built up.

Pat Marvell, Barnet Council's Assistant Organiser for In Service Training, said: "It is really quite a simple idea, yet it proves highly successful."

"The act of monitoring your own progress leads to thorough

self-examination and enhances the teacher's ability."

Nine probationary teachers have started on a pilot programme and have held a number of productive meetings to discuss their portfolios and progress in Barnet schools.

The portfolio scheme has Government backing and Barnet is one of the most advanced authorities in London for its implementation.

Barnet News-Spring 1992

# Barnet Council's Budget for Education

## Taking account of change

Next year Barnet Council plans to spend a staggering £108 million on Education, which represents the largest amount the Council spends on any area.

Producing this year's budget has been a major task for Council education and finance officers because of enormous amount of change in Education stemming from central government.

The continuation of local management in schools (LMS) and colleges means that all Barnet's 109 primary and secondary schools as well as Hendon and Barnet Colleges will be managing their own financial affairs from April 1. Schools will have approximately £72 million delegated to them for 1992/93 and the two colleges will receive approximately £12 million.

The amount of grant Barnet receives from Central Government for Education will be affected after the authority's responsibility for the two colleges is withdrawn from April 1993. Barnet's five special schools will be operating a pilot scheme of LMS in 1992/93 with a total budget of £6.5 million in preparation for full delegation in April 1994.

The number of children wanting school places in Barnet, which has one of the best academic records in the country, will increase next year. Barnet recognises this and will spend an additional £545,000 on accommodating the influx in September.

However the main weapon in the Council's armoury in dealing with increased pupil numbers is the opening of The

Compton School, Summers Lane, Finchley. Barnet is spending £480,000 on staffing the school and the first year running costs.

The majority of the cash spent on education forms the revenue budget, or, in other words, money needed on the day-to-day running of educational establishments. The revenue budget for next year will be £104,637,700.

### *The staggering sum of £108 million shows Barnet's commitment to maintaining educational excellence*

Some £3.7 million will be spent on the capital programme, or major works. The most important of these in the next year will be the start of refurbishment work at Whitefield School, Cricklewood. Over a period of years, £3.8 million will be spent on a new teaching block and an external facelift

for all the existing buildings.

Major works are also planned for Ravenscroft School, Barnet Lane, Whetstone, including a new classroom block, science laboratories and home economics rooms.

The biggest expenditure contained within the budget is teachers and lecturers salaries, standing at just over £68 million, but there are a number of other less obvious costs, for

example building maintenance will cost the borough nearly £4 million.

Barnet Council's Youth Service, which is responsible for developing programmes and facilities for young residents aged 14-25, receives £1.2 million and the careers service just over half a million.

## Development Officer appointed to raise funds

### Help for Youth Projects

Barnet Council has appointed a development officer/fundraiser to help with a variety of youth projects throughout the borough.

Michele Hayward will be making contact with trusts, businesses and individuals to raise funds for the Council's Youth Service, which caters for residents aged between 14 and 25.

She said: "I am delighted to be working for Barnet as I want



to help the community. I am particularly interested in youth work."

Ms Hayward, who has lived in the borough since the age of eleven, was formerly a busi-

## Milly Apthorp Trust

### Apply Now

Applications are invited for awards from the Trust, which makes £1/2 million a year available to borough residents. Awards can be made to voluntary organisations and sponsored individuals.

Funds are available for a variety of charitable purposes in the following categories:

**A Young People** - character building activities, job training, sports, health and fighting drug abuse.

**B Sports** - for disabled and able-bodied people.

**C Illness/Disability and Health** - equipment and facilities.

**D Elderly people** - homes including building and equipment, care of the elderly.

**E General community benefit** - social, cultural, educational and recreational activities

Application forms can be obtained from the Grants Unit, The Town Hall, The Burroughs, Hendon, London NW4 4BG. 081-202 8282 Ext 2092.

ness development manager with a major London advertising agency. Prior to this appointment, Ms Hayward worked with a local newspaper.

"I believe that the skills I learnt in the private sector could be put to good effect on behalf of the borough," said Ms Hayward.

Part of Ms Hayward's time will be spent on secondment to a registered charity, The Friends of Moat Mount Campsite, which is hoping to raise funds for a permanent lodge, for use by the borough's youth, to be built on the Moat Mount site in Countryside Park, Barnet Way, Mill Hill.



## Merrivale - Official Opening

### Residents in the pink

Residents of Merrivale, East Road, Burnt Oak, were in a party mood when they welcomed visitors to the new day centre, which has a 'pink' theme, for an official opening ceremony on Monday 2 March.

The pensioners, who are temporarily joined at Merrivale by some residents of Abbots Lodge, Brunswick Park Road, N11 where refurbishment work is currently

underway, were presented with a picture to be placed in the entrance hall at Merrivale to mark Monday's event.

Merrivale's manager, Madeleine Ambrose, was full of praise for the residents who had co-operated with contractors, Mansells, during the building work.

"Everyone has coped very well, because it has been major renovation many of the residents had

to move around as it went on," she said.

The £500,000 refurbishment includes a five-bedded semi-independent unit, eight units for group living, a day centre as well as facilities for highly dependent residents and physically frail elderly people.

Mrs Frances Harris, 85, accepted the presentation picture on behalf of all the residents.

## Vandalism endangers children

### Residents' views sought

Vandals have set out to injure children with attacks on a playground in Barnet.

Since Barnet Council refurbished the Barnet Playing Fields play area in 1990, at a cost of £52,000, vandalism has included broken glass being hidden in equipment and metal climbing nets and bolts being severed by wire cutters.

Much of the once attractive equipment has had to be re-

moved for safety reasons. Barnet Council has just distributed questionnaires to residents in the Grasvenor Avenue area near the playing fields in an attempt to find a solution which will not only ensure the future of play facilities for children in the area but will avoid the continuing expense for repairs to the equipment as a result of these mindless acts of vandalism.

Alan Burrige, Barnet Council's Head of Recreation, said:

"The questionnaires asked for local residents' comments on the way ahead to help us meet the needs of the community in that part of the borough."

"It is very sad that despite all our efforts to provide an attractive play area for the youngsters that vandals have deliberately set out to injure the children who get so much pleasure from the playground."

"We are seeking a co-ordinated approach to improve the situation in the area" he added.

Any resident who has a query about the questionnaire should telephone 081-4468511 ext 4488.

## Grahame a Alcohol-free Education on sense

Barnet Council's Grahame Park youth centre serves a large isolated housing estate west Hendon. It is the venue specifically designed for young people on the estate.

The centre wants to attract young people between the ages of 13-18 to the club to educate them on sensible drinking and other health issues. To do this an extension to the existing building is planned which will provide a separate alcohol-free area.

A grant from the Milly Appeal charity will cover most of the building costs, and the youth leaders, club members and residents are raising funds to get out the shell.

Club leader Dave Allen, who is the architect of the new extension, Will Hudson, are raising money for the appeal by running in the Paris Marathon on June



"The Wing" art the interior

# Park Free Bar

## le drinking

March. Dave is also organising a 3-day trip to the new Euro Disney resort in Paris on 23 May to raise funds for the bar - if you are interested in one of the few remaining places ring Dave on 081-205 7112.

All these efforts will be needed to get just the basics for the club's fitting-out:

Dave Allen is appealing for any useful items like pub furniture or carpets, so if you know of any pub, club or restaurant that is refurbishing and throwing anything out please let Dave know.

Building work is planned to begin on Drinkwise Day, 9 June, which will also mark the first anniversary of the fundraising effort which was launched by the Mayor, Cllr Leslie Pym, on 9 June last year.



artists view of  
the new bar.



## Captain Cook comes to Barnet

### Living history presentation

Barnet Council's Teacher's Centre in High Road, North Finchley, played host to intrepid explorer Captain James Cook on Thursday, 13 February.

The man who discovered Australia was at the centre in East Finchley, at 4.30pm to give a special presentation to pupils and teachers from around the borough.

Captain Cook was represent-

ing Inter-action Productions, a charitable organisation that specialises in creating living history through such presentations.

In full costume, he brought along maps and orienteering equipment to help him as he retold his life story.

Pupils and teachers from Dolis Junior School, in Pursley Road, Mill Hill; Colindale JMI, in Woodfield Avenue, Colindale;

Rosh Pinah School in Glengall Road, Edgware and Manorside JMI School in Squires Lane, Finchley, Church End, got the chance to see Captain Cook and question him about his life and his travels.

Helena Knight, Advisory Teacher for History and Geography, who is based at the centre said: "The idea of the presentation is to demonstrate a new way of teaching history and to make historical events more vivid for pupils."

"It will also give teachers the chance to arrange for Inter-action Productions to give a presentation at their school at a later date," she said.

## Centralisation Of Development Control

### Plus - Introduction of evening sessions

Barnet Council's planning group has unveiled plans to centralise its Development Control offices as from August 1992 in order to provide a more efficient and inviting service.

The planning group will also be introducing evening sessions one day a week (on different

days) at both Hendon Town Hall and Barnet House for people who want to examine planning applications but are unable to do so during the day.

The scheme to centralise development control has three main advantages:

- duplication of administrative tasks will be avoided

- greater day to day management control of the area offices allowing more consistency in decision making and more flexibility in allocating staff resources.

- It will avoid delays which can arise at the moment in communications between Barnet House and the area planning offices

# WOODSIDE HOUSE



- Modern Purpose Built Residential Home for Ladies set in Superb Grounds
- Well appointed Single Rooms, Dining Room, Lounge and all Amenities
- Homely atmosphere with full care
- Current inclusive room charges £650 per month
- Woodside House is a non-profit making Charitable Trust

Full details and brochure from:  
**The Warden**  
**Woodside House, Baxendale**  
**Totteridge, London N20**

# CATHERINE LODGE

40-42 WOODSIDE PARK ROAD  
 NORTH FINCHLEY, N12 8RP

LUXURY REST HOME WITH  
 A SPECIAL ATMOSPHERE  
 EXCELLENT ATTENTION BY  
 QUALIFIED STAFF  
 FACILITIES INCLUDE LIFTS TO ALL FLOORS  
 AND FOUR LOUNGES  
 CENTRAL LIFT SERVICE, EN-SUITE FACILITIES,  
 OCCUPATIONAL THERAPIST,  
 FREE CHIROPODY, VISITING MANICURIST

**081-446 4292**  
**081-445 1150**

# Training to maintain the best care for the elderly

ADVERTISER'S ANNOUNCEMENT

WITH a workforce of more than 800 staff, Country House have for some time recognised how important training is in caring for the elderly.

Comprehensive in-house training programmes are provided for all levels of personnel.

Area manager, Jill Fogg, is responsible for training.

"We have found that our staff are better motivated and maintain higher standards of care if they are trained to understand fully the needs of their residents.

One important benefit is that this helps us to retain staff, which is reassuring for residents and their families".

The core of the in-house training centres on the nursing auxiliaries/care assistants who attend a one week course held every month and which culminates in the annual "Best student of the year" competition.

This years winner was Debbie Evans, a care assistant from Pirton Hall, one of Country House's premier nursing homes, situated four miles from Hitchin.

Her project, Judged by a panel of

● *Country House's training programme keeps staff better motivated, retains them for longer and leads to higher standards of care, providing a more stable environment for their elderly residents.*

experts, highlighted the life of one of the home's residents.

Entitled "Life to the end of their days - not days to the end of their life", it demonstrated at a very practical level how good care can benefit and enhance the quality of life offered to residents.

If you would like to find out more about what makes a Country House home that extra bit special please contact one of our Matrons.

A warm welcome awaits you.

# COMPLETE CARE



**NURSING CARE IN ST. ALBANS - HARPENDEN - HITCHIN - UXBRIDGE**

Visit any of our homes where the warmth of the welcome is as individual as the nursing care we provide. For further details please call our Matron to discuss your requirements:

- ★ 24 hour qualified nursing care
- ★ Active lifestyle - unique centres
- ★ "Home from Home" atmosphere
- ★ Beautiful settings
- ★ Long, short-respite, holiday & convalescent care
- ★ Excellent food

Tenterden House - St. Albans/Watford  
 Field House - Harpenden  
 Pirton Hall - near Hitchin  
 Clare House - Uxbridge

0923-679989  
 0582-765966  
 0462-711626  
 0895-272766

COUNTRY HOUSE

Nursing Homes of Distinction



VISITORS WELCOME

Barnet News-Spring 1993

## Community care with a special Jewish touch

Jewish Care is a new organisation based on over 300 years experience. In January 1990 two long established and highly respected charities, the Jewish Welfare Board and Jewish Blind Society, merged to form what is now one of the country's major voluntary social service organisations.

Providing services for elderly, mentally ill, visually impaired and physically disabled people and their families, Jewish Care supports 5,000 people each day.

Growing old can be hard to come to terms with, gradually losing one's sight, becoming less and less mobile or mentally frail can make it even harder.

Families are less in a position to cope with elderly relatives now than in the past, smaller homes, both partners working greater distances between two homes, there are many contributory factors.

With a combination of residential homes, day centres, domiciliary care, social workers and specialist support services Jewish Care can ensure that elderly, frail people are able to live with dignity, independence and freedom of choice.

Residential homes, four of which are in the Borough of Barnet, offer a

warm, caring environment with a distinctly Jewish atmosphere.

Craft, social and cultural activities take place in all the homes and friends and relatives join in the daily life of the residents.

Where possible it is preferable for an elderly person to remain living in their own homes and Jewish Care has a number of resources to help people achieve this.

Day centres provide companionship, a hot daily meal, counselling, social and cultural activities and much more.

Bustling vibrant communities in their own right they often mean a new lease of life to people.

For those who find it difficult to care for themselves, domiciliary care workers provide assistance in people's own homes with such tasks as washing, dressing and eating.

Special day care units offer care for mentally frail elderly people, giving relatives and carers a much needed break.

Mental illness is something which can affect anyone of us, at any time,

either directly, or because a relative or friend may be suffering.

Jewish Care is the largest provider of mental health services for the community, one for people who will benefit from a relatively short stay - one or two years - the other for those who require longer term support.

There are group homes for people who are ready for a more independent life but still need some support, rehabilitation groups, supper clubs and support groups for people with mental health problems and their carers.

Perhaps the most 'revolutionary' resource is Shalvata (meaning peace of mind), Jewish Care's centre in Hendon.

The centre is open to anyone aged

18 or over who is experiencing emotional difficulties related to the pressures of everyday life.

No referral is necessary and the centre has a relaxed, informal atmosphere.

A wide variety of other resources combine to offer a comprehensive service.

These include a residential home and resource centre for younger, physically disabled people; sheltered housing; rehabilitation workers, and a communications centre.

Jewish Care's commitment to provide for the more vulnerable members of the community also involves social work teams, counselling, careers and employment advice and holiday homes.

*Craft, social and cultural activities take place in all the homes and friends and relatives join in the daily life of the residents*

ADVERTISEMENT FEATURE

## A LEGACY TO JEWISH CARE LIVES ON IN OUR COMMUNITY

Jewish Care is our largest home Jewish charity and we are dedicated to providing services for frail, elderly, physically disabled, mentally ill and visually impaired people and their families.

Sadly, there are thousands of vulnerable people in our community who depend on our support and understanding.

Jewish Care provides the day centres, residential homes, mental health centres and specialist counselling services so essential to everyday care, and this is an enormous commitment.

But just as the people who turn to Jewish Care are dependent on us, so we in turn are dependent on your continuing support in the form of a Legacy. You will be helping us to not only meet the cost of caring in the future but, more importantly, making a real difference to the lives of those people who turn to us for help.

Leaving a Legacy to Jewish Care really is the most generous and far-seeing way you can help us continue to care.

**SO PLEASE REMEMBER US IN YOUR WILL**

**JEWISH**  
WELFARE BOARD • BLIND SOCIETY  
**CARE**

Registered Office: Stuart Young House,  
221 Golders Green Road, London NW11 9DQ.

Registered Charity No. 802559.

Registered in England No. 2447900

Jewish Care - a company limited by guarantee

C111042





Come and join our family home  
**THE CARING WORLD OF  
 GOLDSTAR WELCOMES YOU  
 TO OUR EXCLUSIVE HOMES  
 FOR THE ELDERLY AND  
 CONVALESCENT**

Situated in the heart of Hampstead close to all major amenities, we offer you a unique homely atmosphere.

*"STRICTLY KOSHER"*

Together with our 24 hour dedicated nursing staff, you will receive the best care and personal attention you deserve.

For further details contact:

**HEAD OFFICE**

1 Platts Lane, NW3      Also at: 477/479 Cranbrook Road  
 Tel: 081-431 0563      Ilford. Tel: 081-554 8480

# Former MP opens new nursing home

Hertsmere's former MP Cecil Parkinson, who is to retire at the next General Election, officially opened an unusual new nursing home in Borehamwood on February 28, making it one of his last public engagements.

Cardinal Court, based in Cardinal Avenue, is based on an entirely new concept of retirement apartments, where domestic and care services can be provided on site.

Known as 'close care', the concept offers a variety of advantages over traditional sheltered housing



Cecil Parkinson: opened Cardinal Court

**ADVERTISER'S ANNOUNCEMENT**

apartments. Apartments are available for rent and attractions include assistance with household chores, catering and laundry.

Personal care is also readily available, and the purpose built apartments have been designed with safety, comfort and convenience in mind.

For added safety, a 24-hour nurse call facility, security entry phone system, smoke detectors and a modern lift linked to the first floor are provided.

One of the most favoured residential districts in north London, Borehamwood is ideally located for those who like to be within easy reach of London and the beautiful Hertfordshire countryside.

The day-to-day management of Cardinal Court is provided by Associated Nursing Services, a leading health care group which operates more than 20 nursing centres throughout the country.

● For further details, contact Cardinal Court, Cardinal Avenue, Borehamwood, Hertfordshire WD6 1EP. Tel: 081-207 0305.

## Assured Care Centres plc

*introduces a unique lifestyle offering care, security and independence*

Assured Care Centres plc is pleased to introduce an exciting new idea in retirement accommodation.

Our unique close care concept at Cardinal Court offers the opportunity for an independent life-style with the reassurance of nursing care available on your door step and

all without the need for any capital reinvestment

**NOW OPEN**

The purpose built apartments are designed with safety, comfort and convenience in mind, and reflect all our experience, our commitment to caring and our attention to detail. All the apartments at Cardinal Court are fully carpeted, have fitted kitchens, luxury bathrooms, waist-high sockets, easy turn twin taps, telephone sockets, TV aerial points and a Medallion electric heating system chosen for its simplicity, cleanliness and economy.

**SAFETY**

For your safety and peace of mind we provide 24 hour nurse call facility, smoke detectors linked to an alarm system, a modern lift services the first floor.

**LOCATION**

Borehamwood is one of the most favoured residential districts north of London. Its location is ideal for those who like the best of both worlds - to be within easy reach of London yet close to some of the most beautiful countryside in Hertfordshire.

**ADDITIONAL SERVICES**

**Housekeeping:** Provision can be made for providing basic domestic services to complete housekeeping, including all meals, so tiresome chores can be completely forgotten, to leave time for more fulfilling activities.

**Nursing Care:** Provision can be made for the services of an auxiliary nurse to assist with bathing and dressing to a fully qualified nurse to assist in the administration of medication and dressings.



**CARDINAL COURT**  
 CARDINAL AVENUE, BOREHAMWOOD,  
 HERTFORDSHIRE WD6 1EP  
**Tel: 081-207 0305**

**THE ACCOMMODATION**

The spacious one-bedroomed apartments are for single or double occupancy. All of the apartments are fully carpeted, have fitted kitchens, luxury bathrooms, waist-high sockets, easy turn taps, telephone sockets, TV and telephone points and a Medallion electric heating system, chosen for its simplicity, cleanliness and economy.

**MANAGEMENT**

The day to day management of Cardinal Court will be provided by Associated Nursing Services plc (ANS). ANS is a leading health care group which has extensive experience in the provision of care particularly for the elderly.

ANS currently operates over twenty nursing centres throughout the country caring for over 1,000 residents. ANS also operates similar Close Care schemes in Wiltshire, Cheshire and Berkshire.

PLEASE SEND ME FURTHER INFORMATION ON CLOSE CARE APARTMENTS AT:

- CARDINAL COURT, BOREHAMWOOD
- STOCKCROSS, NEWBURY, BERKS
- ALDERLEY EDGE, CHESHIRE
- MARKET LAVINGTON, near DEVIZES, WILTS

Name .....  
 Address .....

# CALLING ELDERLY AND DISABLED RESIDENTS

## DO YOU NEED?

- (a) Insulation, to modern standards, of lofts, tanks and pipes?
- (b) Draughtproofing of windows and doors?
- (c) Essential minor repairs?
- (d) Electrical or plumbing works?
- (e) Basic Safety and Security measures?
- (f) Provision of adequate heating?
- (g) Adaptations to make your home more comfortable?
- (h) Adaptations to a property to enable an elderly friend or relative move in with you?

## AND DO THE WORKS COST UP TO £1000?

The grants may be available for the full costs of the work AND we can arrange the works for you.

## TOO GOOD TO BE TRUE? Read on to see if you qualify.

If you are over 60, an owner occupier or tenant of a private landlord AND in receipt of one of the following benefits: **Income Support, Family Credit, Housing Benefit or Community Charge Benefit**, then you could apply to the council for Minor Works Assistance, and once the grant is approved the works can commence.

Environmental and Consumer Services operate an Agency Services Scheme which gives advice on all of the works covered by the Minor Works Grant. Assistance can also be given with filling in forms, organising the works and providing details of local builders.

So if you would like further information, telephone Mrs Donnelly on 081-446 8511 ext 4745 or Mrs Harrison on ext 4718 or complete the attached slip and return to:-

**Community Services, Environmental and Consumer Services, Barnet House,  
1255 High Road, Whetstone, London N20 OEJ. ☎ 081-446 8511**

CUT OUT THIS FORM      Ref EH/RES/FLH/Agency

1. I am over 60 years, in receipt of income-related benefit and would like further information on the Minor Works Grant.
2. Please send me information on the other services offered by the Agency Services Scheme.

Name .....

Address .....

.....

.....

Tel No .....

*All enquiries will be treated in confidence by our Council Officers*



# EXCLUSIVE HEALTH CLUB OFFERS

## OPPORTUNITY TO WIN FREE MEMBERSHIP -

**WORTH £1,000!**



**1a Hall Lane, Hendon NW4**  
**A PRIVATE MEMBERS ONLY CLUB**

### SPRING SPECIALS

*No joining fee for 1st 100 members ...*

You will also be entered into a  
**FREE PRIZE DRAW**  
to win an additional membership.

For the fitness enthusiasts, our  
New **'GOLD MEMBERSHIP'**  
is ideal for you.

Or take advantage of our off-peak  
club hours **WEEKDAY MEMBERSHIP**  
is available for  
**Mon-Fri 7am to 6.30pm**

And for part-time fitness fanatics  
our new  
**STUDIO AND POOL MEMBERSHIP**  
entitles the holder to use of pool and  
aerobic classes, Mon-Fri 9 to 5pm



*Getting fit in the gym*



*Relax and unwind by the pool*

#### FACILITIES

- Spacious, Luxurious Bar, Restaurant and Reception areas
- Unisex Gym and Dance Studios
- Therapy suite, including sports clinic, Osteopath, and Hypnotherapist
- 8 Squash Courts
- Steam room, Sauna, Jacuzzi and massage
- Sunbeds
- Huge Indoor heated pool
- Free creche



*Burn that fat and have fun!*

**PHONE TODAY  
FOR A  
FREE TRIAL  
081-  
203 4249**



# The battle for Barnet's boundaries

Council gets support of AMA

The Association of Metropolitan Authorities (AMA) has called on its Parliamentary Vice-Presidents to pray against an Order when it comes before the House of Commons which would result in the transfer of part of the Borough of Barnet to Hertsmere.

Barnet Council and residents in the affected area have consistently opposed proposals by the Local Government Boundary Commission which involves an area in the north of the borough.

*"The Council and residents have vigorously opposed the proposals from day one"*

The plans to redraw the boundary there were approved by the Secretary of State for the Environment and an Order is to be laid before the House in the near future.

The AMA has responded to a call from Barnet's Policy and Resources Committee in January for support in opposing the Order.

Cllr Jeremy Beecham, Chairman of the AMA said: "The Commission first proposed the transfer on the grounds that the land affected is agricultural and within the Green Belt, and, therefore, inappropriate to a London Borough."

"It later represented the land involved as 'mainly recreational and used for leisure', but persisted in the view that it should be transferred to Hertsmere.

In fact, the bulk of the land is farmland, with only 47.77 out of 460.75 acres entirely in recreational use. AMA member authorities - particularly those

in London - are horrified at the idea that a metropolitan authority is an unfit custodian of Green Belt land."

"The Commission's arguments for the transfer are neither reasonable nor satisfactory, nor do they reflect the views of local people, who have petitioned against the transfer."

"Barnet has proposed that the M25 be recognised as the northern boundary of London in this area, which would be consistent with the approach adopted by the Commission towards the

London Borough of Enfield," he added.

Barnet Council's Chief Executive, Max Caller, welcomed the support of the AMA. "The Council and residents have vigorously opposed the proposals from day one. We believe that the piecemeal approach of the Boundary Commission and the fact that the Local Government Commission has been set up makes any firm decision on Barnet's boundaries totally inappropriate."

"We will continue to press this point of view and appreciate the backing of our fellow member authorities."

● Further draft proposals have also been issued on Barnet's boundary with Enfield which are putting forward realignments to property curtilages and transfer of some properties in the Cat Hill area. These are due to be reported to Barnet Council's Policy and Resources Committee.



## Pensioners' Travel Passes

Dedicated system

It's just over a month since Barnet Council began issuing bus/tube passes to the borough's pensioners, and a total of 30,775 permits have already been given out (total to 7 March).

Nick Georgiou, Barnet's Controller of Strategy and Policy, said:

"Early feedback from pensioners indicates that the majority of elderly people who have collected bus passes are

*Pensioners pictured at the Meritage Club, Church End, Hendon on 3 February, to renew their bus/tube passes.*

very happy with the new arrangements, which offers them a dedicated system with a friendly service from the issuing staff."

"When the eight-week issue period comes to an end, new or replacement passes will be issued from Ivy House, Whetstone; Park House, East Finchley and Barnard House, Burnt Oak Broadway. Duplicate passes will be available by post from Ivy House," he added.

## Central site

Single borough depot

A major project to centralise the council's depots is set to come to fruition over the next few weeks.

The site is the former REME Depot, which was part of Inglis Barracks, used for the storage and repair of army vehicles. It was bought by the council in March 1991 following the army's decision to vacate the site.

The £1.2m project to refurbish the site will see the establishment of a single depot in the borough in Bittacy Hill, Mill Hill.

Graham Beattie, Controller of Engineering Services, who has been in charge of the project said: "This move sees the cul-

mination of 12 months hard work. Meeting the needs of all the different sections that will be based at the depot has proved an enormous logistical exercise but will be rewarded by reduced running costs and a more efficient service in the future."

The new depot will have a number of advantages:

- It will allow for a streamlined and centralised management of services.
- Reduced overhead costs.
- Central location in the borough
- The release of existing sites for redevelopment

The scheme was designed and carried out by the council's Architecture & Building Practice.

# The questions parents ask about independent schools

**PARENTS** are as worried as ever about the education their children will receive.

They are concerned about standards in basic skills. They are concerned that discipline should be firm as well as friendly. They are concerned that the balance between recreation and hard work should be sensible.

They are wise to be concerned.

Here are the answers to some of the questions they will ask.

## THE MOUNT SCHOOL

Independent Girls - 7 to 18 Years

Milespit Hill, Mill Hill  
NW7 2RX

Wide Range GCSE  
and "A" levels

It is not too late to register for entrance in September 1992. Ring Admissions Officer 081-959 3405 for a prospectus and application form

### ● Are independent schools only for clever children?

A few are and have exacting entry requirements at 11 or 13, but most look after a wide range of ability. Some cater especially for children with a problem of one sort or another.

### ● Are they strict?

Except those who cater especially for children with a disability, most independent schools prepare their pupils for public examinations or University Entrance, so they believe in hard work.

Guidance will be available to set attainable targets for the ability level of the individual child.

### ● Will he/she have to board?

No. Most independent schools are day schools, and some cater for both day pupils and boarders. Weekly boarding may be a good compromise; children go home for weekends.

Of course, boarding does have its advantages.

The most obvious is that pupils live in an environment designed exclusively in the interests of their own age group.

The timetable, the meal times and menus, the bed times and recreational opportunities: all the freedoms and all

the restraints are what are judged best for young people.

And boarding schools today know that it is important for the child not to lose touch with his or her home.

Many from troubled families find security in a boarding school.

### ● Are independent schools sports-mad?

No. They rightly insist on healthy activity, and organised games play a part. But often there is also a choice of sailing, golf, climbing, judo, fencing, swimming and orienteering, and many others as well.

### ● Is religion still important?

Many independent schools began as Christian foundations and believe that religious education is an essential part of a child's upbringing.

But this does not entail endless Chapel services - broad minded discussion is welcomed.

For those of other faiths, special arrangements can usually be made.

### ● What is available out of class?

In addition to sporting opportunities, most schools provide a full range of activities to meet all interests.

### ● How much will it cost?

Boarding fees at the secondary level

may range from £2,000 to £3,000 a term. At preparatory schools, the fees will be lower.

For day places, fees may be about £600 a term for infants and range up to £1,500 a term for seniors.

ISIS (the Independent Schools Information Service) will advise about savings schemes, scholarships, bursaries and Government-assisted places.

### ● What are the aims of independent schools?

They are threefold: To encourage each child to reach his or her own potential, to develop an unselfish responsibility and to provide the enjoyment, fun and friendships that come from a full range of activities in good company.

There is nothing to lose by looking into the possibility of independent education.

ISIS is there to help you.

For a start you could phone 071-222 7274 for a free handbook or write to ISIS (London & South East England) at 3 Vandon Street, London SW1H 0AN.

**ADVERTISING FEATURE**

## OPPORTUNITIES FOR TRAINING

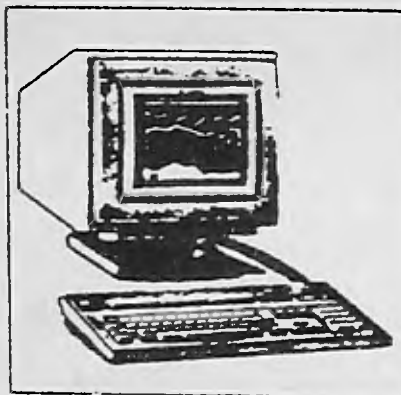
WOULD YOU LIKE:

\* A NEW CAREER

\* TO RE-VITALISE YOUR OLD SKILLS

\* GAIN NATIONALLY RECOGNISED QUALIFICATIONS?

WE CAN PROVIDE YOU WITH TRAINING AT NO EXPENSE



TYPING

- WORD PROCESSING - WORD PERFECT 5.1
- WORD STAR 5.0
- DATA BASE - RAPID FILE
- SPREADSHEET - SUPERCALC 5.0
- BOOK KEEPING/ACCOUNTS - SAGE
- SECRETARIAL SKILLS

ALL TRAINING ACCREDITED BY  
LCCI EXAMINATION BOARD

Personal Development Associates (Training) Ltd are experienced trainers in many fields. As part of our involvement in the Government Employment Training Scheme we are able to offer high level training to:-

- People aged 18-49 and unemployed for more than 6 months
- People becoming unemployed during the last 6 months due to redundancy
- People who are motivated to learn new skills and gain employment

Additionally we can offer a limited number of people a place on our A.A.T. Course accredited by the LBA.

A training allowance of £10 per week will be paid to all trainees. This is additional to unemployment benefit or any other benefits. Help with travel costs is also available

If you are interested please contact:  
**LINDA on 081-446 4155**

**AD** PDA TRAINING LTD 315-317 BALLARDS LANE NORTH FINCHLEY N12 8LY TEL 081-446 4155

# A winter fairyland in blitz torn London

During the Christmas of 1940 Fred and Florrie met and fell in love.

Their days of courting were spent in London at the height of the blitz, and from the top of Muswell Hill they would look down on a city ravaged and in flames.

Yet they felt they were walking in a winter fairyland.

"Life is like an epic film", writes the author, "the difference being that you are part of the action, instead of watching it from the stalls.

"If you are lucky, as I have been, that beautiful leading lady is yours ..."

This book is a true story about ordinary people, a couple of north Londoners, who led a far from ordinary life.

Spanning four and a half decades, it is the story of an enduring love between two people who were "real good mates" and who, despite the inevitable tears, knew better than most how to share a good laugh.

Above all, this is the portrait of a unique woman who had a real gift for life, and "one of the luckiest blokes who ever lived".

Largely set in and around the borough of Barnet, this is a book to cherish.

At £14.95 hardback 'I Love You



'Sixpence' is available from Faculty Books (98 Ballards Lane, Finchley) and Muirs (198 High St, Barnet).

Alternatively please send a cheque for £14.95 to the Book Guild Ltd, 25/26 High St, Lewes, BN7 2LU.

ADVERTISER'S ANNOUNCEMENT

"LOOK AT THE REST THEN COME TO THE BEST"

ESTABLISHED 1971

**Serena** SWIMMING POOLS LTD  
081-368 2275

Pool Installers & Suppliers of:-  
DIY KITS, ABOVE GROUND POOLS  
CHEMICALS, ACCESSORIES  
MAINTENANCE & SERVICE

Serena House, 51 Friern Barnet Barnet  
London N11 3EG

Fax: 081-361 3081

BEST PRICES TO BOTH  
TRADE AND RETAIL



## COSMOS FITTED BEDROOMS PROMISE...

£50 IS ALL YOU PAY UNTIL YOU ARE COMPLETELY SATISFIED

NO GIMMICKS NO INFLATED PRICES NO IMAGINARY DISCOUNTS  
NOTHING FREE EXCEPT QUALITY, SERVICE & VALUE.

The widest selection of beautiful sliding mirror doors, traditional and designer bedrooms in the area, with endless combinations of designs and finishes from laminates to wood veneers, including sculptured doors.

Sprayed, ragged or marbled by our own company artist.

Superior quality, value and choice,  
made individually for you.

Fresh silver - Soft bronze - Subtle peach - Smoked grey.  
Mirrors available in over 50 coloured frames, or solid wood frames.

Installations by our own expert and conscientious craftsmen.



TRADITIONAL BEDROOMS



CHINGFORD  
5 Hall Lane, E4  
(near to Sainsbury's)  
081-524 7889

WHETSTONE  
1180 High Road, N20  
(opp. B & Q)  
081-446 1332

See the quality of our range first hand. Cosmos showrooms are open 7 days a week. One is near you.



A Family Business Established 1978



SLIDING MIRROR DOORS

### WHY CHOOSE COSMOS?

Customers realise nothing in life is free so Cosmos don't try to kid you it is!

Our reputation for unsurpassed quality and friendly service which ensures your complete satisfaction, makes it unnecessary for us to offer you free gimmicks. We will design WITH YOU, rather than SELL TO YOU, and fit your bedroom for only £50 deposit.

You only pay the balance when you are completely satisfied. You can have TOTAL CONFIDENCE as after exhaustive checking, we are able to use the coveted 'Safe Buy UK' Seal of Approval, a consumer protection scheme backed by Judith Chalmers, a well-known TV Consumer Rights Champion, and Sir Cyril Smith, MP.

WE GUARANTEE WE CANNOT BE BEATEN ON PRICE, QUALITY, CHOICE OR SERVICE!

ROMFORD  
5 High Road,  
Chadwell Heath.  
081-590 2642  
Late night  
Thursday 8 pm  
Mon.-Sat.  
9.30 am-5.30 pm  
Sunday  
10 am-2 pm



## THE HABERDASHERS' ASKE'S SCHOOL

(H.M.C.)

HEADMASTER: KEITH DAWSON M.A.  
BUTTERFLY LANE, ELSTREE, BOREHAMWOOD, HERTS WD6 3AF 081-207 4323

Independent day school 1300 boys from 7 to 18.

Admission is by examination at ages of 7 and 11 years. A small number of Common Entrance places are available at 13, and Sixth Form places at 16 for those with GCSE qualifications.

Assisted Places under the Government Scheme are available at ages 11 and 16.

A number of Governors' Bursaries are also available, including special music Bursaries, and 5 Scholarships at the age of 11.

The School is served by coaches running daily from 60 pick-up points in South Herts, Middlesex and North and North-West London.

Prospectus and further information, including the date of the next Open Day may be obtained from the Admissions Secretary, The Haberdashers' Aske's School, Elstree, Herts WD6 3AR. Tel: 081-207 4323.

## CALLING ALL PARENTS!

IF YOU ARE LOOKING FOR A LOCAL JEWISH PRIVATE SCHOOL WHICH OFFERS:

- ◆ An excellent all-round education
- ◆ Individual attention in small classes
- ◆ A warm, caring environment
- ◆ Boys and Girls from 3-11
- ◆ Full day kindergarten from 3 years
- ◆ Daily transport from NW London

THEN MATHILDA MARKS-KENNEDY JEWISH PRIMARY SCHOOL AND KINDERGARTEN IS THE SCHOOL FOR YOUR CHILDREN. TO VIEW THE SCHOOL, TELEPHONE MRS JEAN SHINDLER, HEADTEACHER, ON 081-959 6089 FOR AN APPOINTMENT

Some assisted places available for Reception Class, September 1992.

MATHILDA MARKS-KENNEDY SCHOOL  
68 HALE LANE, MILL HILL, NW7 3RT

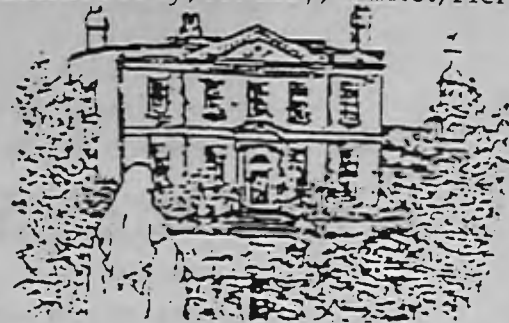
## THE ROYAL SCHOOL HAMPSTEAD FOUNDED 1855 INDEPENDENT BOARDING AND DAY SCHOOL GIRLS AGED 5 TO 18 YEARS

Traditional Curriculum including two foreign languages and three science subjects. High teacher to pupil ratio. Continuity of education from 5 to 18 years. Small friendly school in pleasant surroundings and with ample parking. Flourishing activities include Physical Education, Drama, Dance, Music and Speech.

If further information is required please contact the Principal, Mrs. C.L. Griffiths B.A., at the Royal School, Hampstead, 65 Rosslyn Hill, Hampstead, London, NW3 5UD. Telephone: 071-794 7708.

## ST MARTHA'S SENIOR SCHOOL

Camlet Way, Hadley, Barnet, Herts



The Mount House (18th century) has become the centre of a large complex - class rooms, Science Labs, Music/Drama Studio, Dining Hall, Gym, Home Economics, Arts & Crafts & CDT Centres. The old house has become the VIth Form Centre.

We offer a wide range of subjects to GCSE and A Levels and University entrance.

For details please telephone the School - 081-449 6889



## ALDENHAM SCHOOL

*A small independent boarding  
and day school for boys aged 11-18  
and girls in the 6th form.*

Entry at 11 by testing and interview

Entry at 13 by Common Entrance or Special Test from the State System

Entry at 16 by GCSE results and interview

Assisted Places available

School Bursaries at all stages, especially 6th Form level

Tremendous opportunities for Girls

If you want a small school with a strong community ethos that encourages and develops the individual, produces first class academic results, and has an excellent sporting, musical and artistic record, come and visit us to see how much we could offer your son or daughter.

For prospectus or appointment ring:  
Michael Higginbottom, Headmaster,  
(0923) 858122

Aldenham School, Elstree, Herts WD6 3AJ



## HABERDASHERS' ASKE'S SCHOOL FOR GIRLS

ALDENHAM ROAD, ELSTREE, HERTS, WD6 3BT

HEADMISTRESS: MRS P. A. PENNEY BA

An Independent School for 1100 girls, set in 50 acres of park and woodland. The School has a long tradition of academic excellence and almost all girls on to higher education. It provides a broad range of opportunities for girls to develop their talents and to discover their strengths within a happy and busy environment.

The School has excellent sport and musical facilities, and a full coach service from over 50 pick-up points covering North West London and South West Herts.

**Open Afternoon: Saturday 27th June 2pm to 5pm**

Applications for 1993 are now being accepted.

5 year entry - girls born between 1.9.87 - 31.12.88

11+ entry - girls born between 1.9.81 - 31.12.82

16+ entry - girls born between 1.9.76 - 31.12.77

For further details on all applications,  
please contact the Admissions Secretary on 081-953 4261

## WOODLANDS NURSERY SCHOOL

We are pleased to announce that the EARLY YEARS NURSERY CENTRE is now becoming a nursery school. We shall be known as Woodlands Nursery School.

- ★ Full and Part Time places
- ★ A high ratio of qualified staff
- ★ Emphasis on all-round development
- ★ A fun-packed educational programme

A limited number of places are available for September 1992

Please telephone for an appointment

**081-447 1914**

## HENDON PREPARATORY SCHOOL

(FOUNDED 1874)

20 Tenterden Grove, Hendon, London NW4 1TD

### A HEAD START FOR YOUR CHILD

Give your child a HEAD start in life. Send her/him to a school that is working to secure their future today.

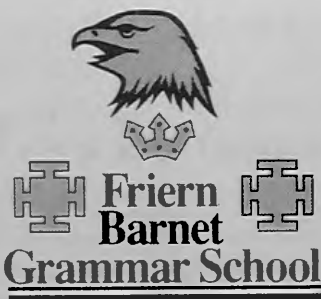
- ◆ Coeducational Day School 5-13+
- ◆ Happy, friendly, family school
- ◆ Small classes - Individual attention
- ◆ Total care 8 am to 5.30 pm daily

Our syllabus is carefully tailored to meet the needs of the National Curriculum, the Common Entrance and Public School Scholarship Examinations and to maximise the potential of EVERY child.

### PRE-SCHOOL (3-5)

- ◆ Open 50 weeks a year 8 a.m. - 6 p.m.
- ◆ Individual attention from qualified teaching staff
- ◆ Happy, stimulating and caring environment
- ◆ Designed for learning

For further details tel: 081-203 7727, fax: 081-203 3465



Friern Barnet Grammar School is a small 10-16 boys' independent school in the North London suburbs with convenient road, rail and bus access

Our Church of England foundation dates from 1884

The academic programme of the school is designed to provide a successful general education leading up to the top grades of the GCSE

Last year our ABC pass-rate was 28% above the national average for boys

We have small classes and a strong homework book policy

Our entrance exams take place each November, January, May and July

Boys may enter the school at 10+, 11+, 12+ or 13+

Specimen entrance exam papers are available on request

Parents are invited to telephone the School Secretary on

**081 368 3777**

Friern Barnet Grammar School, London N11 3DR



## WOODSIDE PARK SCHOOL



PRE-PREPARATORY DEPARTMENT & PLAYGROUP  
(HOLMEWOOD)  
88 Woodside Park Rd, N12

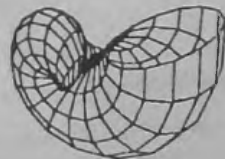
PREPARATORY DEPARTMENT  
(ST ALBANS)  
Woodside Lane, N12

A long established Preparatory School for children from 3-13 years. Tuition follows the Common Entrance syllabus for entry to Senior Independent School at the age of 13+ (11+ for girls)

Apply to the Secretary  
Telephone: 081-445 2333

## THE HIGHGATE MONTESSORI SCHOOL

Wesley Hall  
Stapylton Road  
Barnet  
Herts EN5 4JJ



Highgate Montessori School is now established in High Barnet at Wesley Hall after having been in Highgate and East Finchley for the last twenty years. It is an Association Montessori International (AMI) registered school and closely follows the teaching methods found to be so successful by Dr Maria Montessori.

The school is now housed in a new light and comfortable hall close to the Spires shopping centre and new library. If you are interested please phone me at home and I can arrange an appointment for you to have a look at the school in session, and discuss the needs of your children and you.

### Children 3-5 years

**Monday-Friday**  
**9.15am-12.15pm**

**Pickup time 12.00 noon**

**Wednesday-Friday**  
**12.45-3.45pm**

**Pickup time 3.30pm**

Ms S. S. Goh B.A., Mon. Dip., AMI (UK)  
261 East End Road  
East Finchley, London N2 8AY  
081-883 6849 (evenings)

# REFUSE COLLECTION EASTER 1992

Check below to see if your collection dates have changed for the holidays

NORMAL COLLECTION	REVISED ARRANGEMENT
MONDAY 13 APRIL	NORMAL COLLECTION
TUESDAY 14 APRIL	NORMAL COLLECTION
WEDNESDAY 15 APRIL	NORMAL COLLECTION
THURSDAY 16 APRIL	NORMAL COLLECTION
GOOD FRIDAY, 17 APRIL	* NORMAL COLLECTION *
EASTER MONDAY, 20 APRIL	MONDAY 27 APRIL
TUESDAY 21 APRIL	NORMAL COLLECTION
WEDNESDAY 22 APRIL	NORMAL COLLECTION
THURSDAY 23 APRIL	NORMAL COLLECTION
FRIDAY 24 APRIL	NORMAL COLLECTION



\* In 1992 the day prior to the start of the Jewish Festival of Passover coincides with Good Friday.

It has therefore been decided to operate a domestic refuse collection service on that day, rather than the previously advertised deferred collection.

Collections will be made throughout the normal hours of work. Wheeled bins will be returned to within property boundaries.

If the above proposal is not suitable Passover Special Collections can be arranged for a reasonable charge by Telephone to 081-446 5235 or 081-446 5219.

## DON'T LET YOUR DOG

## GET TOWED AWAY!



Everyone knows, if you leave your car where it's not supposed to be, it may get towed away. From 1 April the same thing applies to dogs.

On 1 April 1992, new laws come into force which mean that any dog found straying in the borough may be caught by our dog wardens. If the owner can be identified at once, the dog will be returned for a fee of £35. But if the dog needs to be taken to the kennels, the fee

payable by the owner will be £100.

Dogs will be kept at the council's kennels at Cool Oak Lane, West Hendon, NW9. Those dogs not claimed by their owners will be taken to a dog's home.

Members of the public who see a stray dog can either take it to a police station, or phone the dog warden with details. The number to call is 081-205 2134, and the wardens can be contacted between 9am - 5pm, Monday to Friday.



# Public Works

## Budget for 1992/3

### Improving your borough

Councillors on the Public Works Committee have set aside £200,000 for a new scheme to give residents a say in the implementation of local traffic and safety measures across the borough.

● The "Ward Initiatives" scheme forms part of the committee's spending plan for 1992/93 and shows a positive commitment to improving the environment of the borough in line with the council's objectives as stated in the Vision

document.

Up to £10,000 has been set aside for each ward and residents are asked to contact their local councillors with ideas for local traffic schemes and safety measures - the best ideas will be implemented during the coming year.

● The council has also set aside £390,000 for environmental improvements around the borough over the next 12 months.

The council's Public Works Committee budget is made up of

major blocks of spending to maintain and improve the borough's infrastructure and environment.

For the coming financial year it includes £1,375m for street cleansing of borough roads, £3,264m on waste disposal, £1,619m on refuse removal and £1,094m on public lighting.

● The borough roads budget of £6.2m includes a £3.51m investment in road resurfacing and footway repairs - during the coming year the plan is to

resurface some 240,000 square miles of road and relay over 112,000 square metres of footway.

● Rigorous standards have been set for the borough's street cleansing programme, now being carried out by Tyler Waste Management.

● The council's five-year street lighting programme aimed at making the borough a safer place continues with a further £550,000 having been set aside for 1992/93.

Of that, £30,000 has been set aside to improve the lighting at selected car parks and on high priority public footpaths.

● The main development in the traffic and transportation section during the coming year will be the preparation and introduction of a CPZ (Controlled Parking Zone) in Mill Hill and the extension of the existing CPZ in High Barnet.

In coming years there are plans for zones in Finchley Central and Edgware and a less comprehensive controlled parking scheme in West Hendon. As a result of the Road Traffic Act 1991, the council will be able to take over the enforcement of waiting restrictions on all but major traffic routes.

● The committee will also continue its commitment to recycling.

A recycling plan is to be presented to the April committee meeting, though the committee has already set new recycling targets for the coming year. The council is aiming to recycle 1500 tonnes of glass as compared to 1000 tonnes this year, 800 tonnes of metals as against 650 tonnes during 91/92 and 2000 tonnes of paper compared with 1200 tonnes this year.

● In the Drainage section officers will be beginning a £9.89m capital programme of works running until 1995/96 including a £4m scheme in East Barnet and a £1.5m scheme in Holders Hill Road.

*Right: Barnet Council's Senior Engineer (Drainage), V Ganesalingam, in a 2400mm diameter tunnel which will provide surface water storage for the Longmore Avenue Flood Relief Scheme.*

● The council's Direct Labour force offer a competitive service for clearing blocked private drains, including out of hours calls and can be contacted on 081-346 0039.

● Barnet Council is responsible for over 1800 km or 1120 miles of main public sewers on which there are some 30,000 manholes. They also maintain 8 pumping stations and approximately 15 miles of non-main river watercourses.

● Care must be taken when installing washing machines or dishwashers. It is essential that the waste pipes are connected to the foul water drainage system and not the surface water. Several instances of pollution to streams and watercourses have been reported as a direct result of wrongly connected kitchen appliances.



## Drainage - Alterations

### Procedures to change

As from 1 April the way in which Barnet Council deals with sewerage matters will change.

The council has previously acted as Agents to Thames Water but on 1 April they become Management Contractors to the company, initially for a three year period, having bid successfully for the Sewerage Management Contract.

Under the new arrangements many procedures will change, one important area being the clearing of blocked drains. The Water Authority are now fully responsible for former "section 24"

sewers, (i.e. those sewers serving two or more properties constructed before 1 October 1937). These often run along the back or front, or both, of a number of properties and connect to the main sewer, which is normally in the road, at various points.

The clearing of blockages or the maintenance of these sewers will be carried out free of charge by the council.

The Drainage Section has compiled a list of former "section 24" sewers from available records and this is available for inspection at Barnet House, either by visit or telephone. Reports of blockages or other defects, or requests for information, should be made to 081-446 8511 ext 4394.

# Here comes the Judge

## Graphic exhibition

Where in Barnet can you go during April and May to see Batman, Superman, Dan Dare and Judge Dredd all under one roof, taking part in a unique educational exhibition?

The answer is Barnet Council's Church Farm House Museum in Greyhound Hill.

The council is joining forces with independent film company Naked Eye Productions to stage **Graphic Nouvelle**, a celebration of visual storytelling.

The exhibition, the first of its kind to be held in the country, runs from 14 April to 31 May.

The sponsorship of **Graphic Nouvelle** by Kall Kwik Printing of Chiswick and Don Gresswell Ltd, has been recognised by an award under the Government's Business Sponsorship Incentive Scheme, which is administered by the Association for Business Sponsorship of the Arts. In plain terms, this means that the Minister for the Arts has agreed to match sponsorship pound for pound.

The exhibition will be using video films, sound recording, computers and displays to trace the development of visual narrative from its origins in cave-man's drawings and the Bayeux tapestry to present day virtual



Judge Dredd ©Fleetways Editions 1992

reality (a new technology that allows people to actually take part in computer generated adventures).

In between those two extremes the exhibition will feature the evolution of sequential art (comics), the origins and development of animation and the way picture strip techniques have influenced the media of film.

The organisers have built a whole new interior to help stage the exhibition at the Museum.

Each room will be devoted to one aspect of visual storytelling, ranging from the 18th century satirist William Hogarth, through the contemporary social realism of 'The Dark Knight Returns', a study of urban decay in 1990s New York, to visions of the future.

There will also be a special shop, sponsored by Stateside Comics PLC, where visitors can buy examples of the work featured in the exhibition.

The Museum is open from 11am - 5pm Tues - Sun, with an extension till 8pm on Thursday. Children under 9 years must be accompanied by an adult.

# Increase in opening hours

## East Barnet Library

Library users in East Barnet can look forward to longer opening hours from 1 April 1992, thanks to a review carried out by Barnet Council.

East Barnet Library in Cat Hill, one of the borough's five level one libraries, will be open an extra 17 hours a week. Users will get the chance to decide the pattern of the opening hours through a public consultation exercise to be carried out by the Libraries Service.

The change in hours from 34 to 51 per week brings East Barnet in line with the other level one libraries in the borough (Hendon, Chipping Barnet, Church End and Edgware).

The Controller of Libraries, Arts and Museums, Martyn Kempson said: "This was the 4th busiest library in the borough before the revision of opening hours in June 1991, it houses the 2nd largest collection of records, compact discs and cassettes in Barnet and the 4th largest collection of books."

"A questionnaire will be available in the library so that users can assist us in arranging the hours for the benefit of all."

A general review of the use of the libraries since the revision

# Mobile Library Review

## Five sites under-used

Barnet Council is to change a number of the visiting points of its mobile libraries to get the best use out of the service.

The changes are a result of the council's review of the mobile libraries service, and will take effect from this April.

Five stops have been identified as being particularly under-used (average use less than 20 customers per hour) and are to be deleted.

The times and length of stay at other sites are to be changed to maximise the use of the mobile libraries.

The proposed new stopping sites and times will be well publicised through neighbourhood council offices, residents and tenants associations and the usual library outlets.

Details of the proposed new sites and times can be obtained in Libraries throughout the borough.

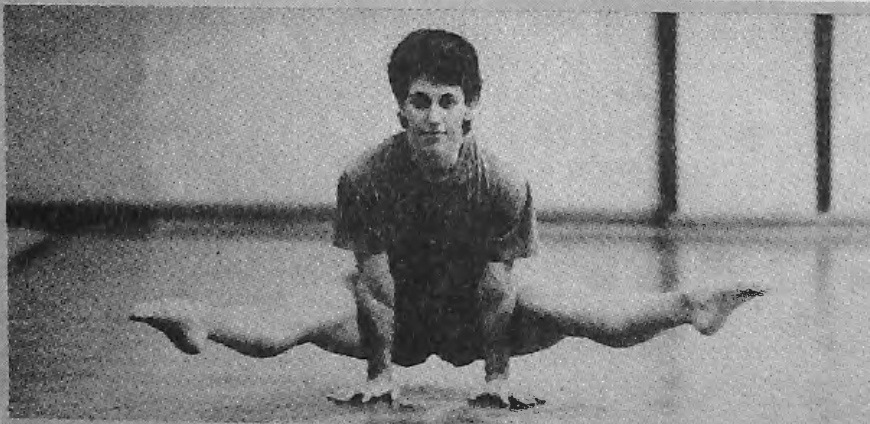
of opening hours in June 1991 is currently taking place and a report based on the findings will be presented to the Recreation, Leisure and Arts Committee no later than October.

# Making all the right moves

## Hendon Sports Centre

Champion gymnast Philippa Musikant, is making all the right moves as she prepares to defend her British Tumbling title at the Lilleshall National Sports Centre in April.

Philippa (24), of Grange Avenue, Totteridge, is deep in training at Hendon Sports



Centre for the annual event.

She is hoping to carry off her 4th British title in six years to add to her bronze medals in

the European Championships and World Cup, both in 1991.

Philippa, who trains 5 to 6 days a week, under the guid-

ance of coach and centre manager, Martin Ling, is also preparing for the World Championships in France in November.

She said: "That should be a real challenge, following the break-up of the USSR there will be representatives from each of the member countries of the Commonwealth of Independent States taking part, and that means a tougher competition with more competitors."

## NEW CENTRAL DEPOT

A new central depot for the Borough of Barnet will be opening in Bittacy Hill, during 1992.

Mill Hill Depot will be the home for the services such as the transport section, grounds Maintenance and the Emergency service currently based at the depots in Squires Lane Grahame Park and Hendon way.

The move taking place between April and July 1992 will mean new telephone numbers for those services which have direct contact with the public.

**The new phone numbers are as follows:**

### Support Services (Rechargeable works)

**081- 343 2917 from 27 April**

Enquires Re. vehicle crossing applicants and claims for personal injury and damage to property caused by the council.

### District Officer Service

**081-343 2917 from 7 June**

Enquires Re. highway problems, including footway parking, abandoned vehicles, obstruction caused by traders & shoppers.

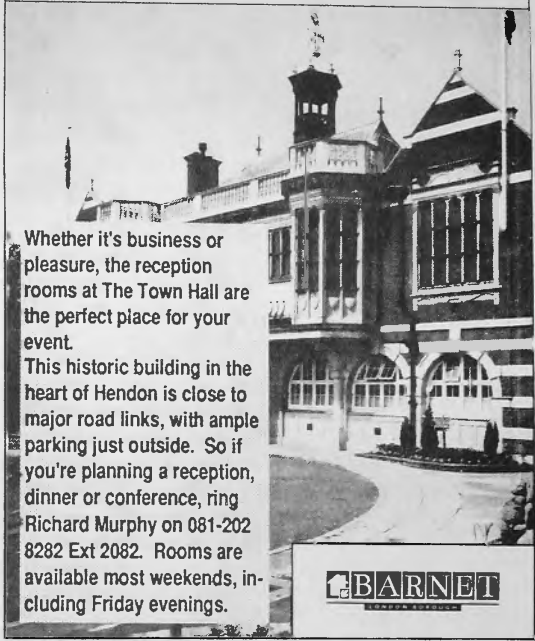
### Civil Engineering

**081-343 3907 from 31 May**

Enquires Re. blocked drains, cess pool clearance and drain surveys.



**The Town Hall, Hendon**  
**A perfect venue for any occasion**



Whether it's business or pleasure, the reception rooms at The Town Hall are the perfect place for your event.

This historic building in the heart of Hendon is close to major road links, with ample parking just outside. So if you're planning a reception, dinner or conference, ring Richard Murphy on 081-202 8282 Ext 2082. Rooms are available most weekends, including Friday evenings.



## DID IT DROP THROUGH YOUR LETTERBOX?

**Barnet News is delivered FREE**  
**to all borough households**  
**and businesses.**

**If you know of examples of**  
**non-delivery, please report them**  
**to Russell Jones, The Editor,**  
**by calling**  
**The Barnet News Publicity Hotline**  
**on 081-203 8356.**

**Comments and suggestions con-**  
**cerning the magazine can also be**  
**left on the Publicity Hotline.**

# The key to your future

Just fill in and post this key to:  
The Director of Community Services  
Barnet House 1255 High Road Whetstone  
N20 0EJ

Name .....

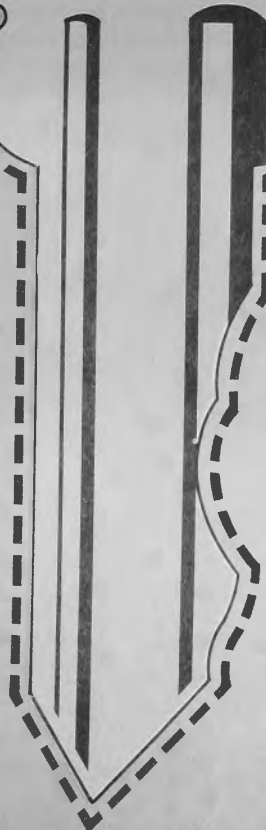
Address .....

.....

.....

.....

.....



If you are a Barnet Council tenant,  
why not join our 7500 ex-tenants  
who have bought their homes at  
big discounts?

Take the first step onto the home  
ownership ladder and acquire a  
substantial family asset at  
a bargain price.

Fill in and post the key.

