



BARNET BOROUGH NEWS

Barnet Council's monthly magazine for residents

No. 42 MAY 1988



MEMBER OF VERIFIED PUBLICATIONS ASSOCIATION
THE TRADE MARK OF TRUSTED DISTRIBUTION



In this issue
Hendon College Open Day
Half term fun
Anyone for tennis
Job opportunities

shelfstore

FURNITURE

UNIVERSAL WILL KNOCK YOU SIDEWAYS



**PHONE FOR DETAILS OF OUR FREE DESIGN SERVICE
AND FREE CATALOGUE ON
01-794 0313**

The Universal system consists of 7 heights of uprights, 4 widths of shelving in 2 depths and, together with right angle and corner shelves, you can plan an installation which will fit neatly into almost any size or shape of room.

With the addition of cupboard and drawer units, beds, desks, tables, wardrobes, etc. you can create the unit you have always been looking for.

Cupboards and wardrobe frames can be fitted with pine slatting to give a louvre effect, or our white hardboard panels can be covered in matching wallpaper or fabric, paint, hessian, etc. (even glass or mirror fronts can be used) to give your unit that personal touch no other system can match.

**CALL INTO OUR
FABULOUS SHOWROOM AND
PLACE YOUR ORDER NOW!**

FROGNAL PARADE, 160 FINCHLEY ROAD, LONDON NW3

Beautiful Beds at
in East Barnet

BEDWORLD



BUNK BEDS

Over 20 designs (all safety standard). Pine. Antique or Mahogany stain. From only **£149** (complete with mattress)

OPEN MAY BANK HOLIDAY

- ★ Same Day Delivery
- ★ Unbelievable sale prices
- ★ Free Disposal of your own bed
- ★ Expert Advice

We stock: *Airsprung, Hypnos, Vi-sprung, Sealy, Silentnight, Rest Assured, Myers, Sleepzee, Relaxon, Dorlux*

POSTUREPEDIC

Designed with help from orthopaedic surgeons to highest standards of comfort and support



WAS ~~£329~~
SALE PRICE ONLY £259

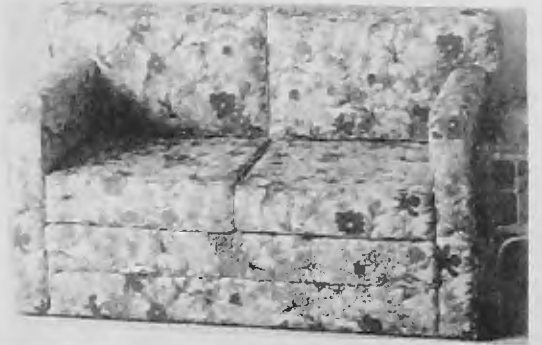
LARGE RANGE OF BRASS BEDS



FROM **£299**

NOVA BED SETTEE

(Choice of covers)

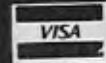


WAS ~~£129~~
SALE PRICE £99

26-28 East Barnet Road, New Barnet.
Tel: 01-441 7875 (next Sainsburys)



95 Fore Street, Edmonton N18
Tel: 01-807 3331



470 Kingsland Road, Hackney, E8
Tel: 01-254 2534



QUALITY WITH ECONOMY



928 HIGH ROAD
N FINCHLEY
LONDON N12
446 5331/2
446 5333/4



IF YOU'RE LOOKING FOR QUALITY WITH ECONOMY IN YOUR CARPET REQUIREMENTS LOOK NO FURTHER!
AT OUR NEW SHOWROOM YOU'LL FIND AN AMAZING RANGE OF CARPETS INCLUDING SUPER WASHED CHINESE RUGS AT THE MOST COMPETITIVE PRICES.
WE HAVE OVER 5000 CARPETS TO CHOOSE FROM.
TALK TO CARPET EXPERTS & ENJOY OUR FRIENDLY SERVICE.
WE'RE OPEN MONDAY TO FRIDAY 9-6 SATURDAY, 9-5

**LONDON BOROUGH
OF BARNET**
The Town Hall
Hendon NW4 4BG
For information phone:
202 8282

CONTENTS

	Page
Wheelie bins for all	7
Reader's letters	8
Picture Lending Service ...	10
Silver on show	12
Councillor's surgeries	14
Pavlova festival	20
Sponsored litter bins	20
Focus on health	23
College Open Day	24 & 25
Anyone for tennis	26 & 27
Youth events	28
Teen Care Plus	29
Nature Notes	31
Half-term fun	33
Barnet Diary	40-46

Barnet Borough News is published by the London Borough of Barnet and Marketing Media Management. It carries news of Council activities and community organisations.

The cost of production is offset by advertising.

VFD: Barnet Borough News certified net distribution from July to December 1986 is 114,871. The print run is 120,000 and it is distributed to homes and businesses in the borough, as well as libraries and Council offices.

Editorial features are copyright.

EDITORIAL ADDRESS

The Town Hall,
The Burroughs,
Hendon NW4 4BG
Tel. 01-202 8282,
exts. 2071, 2072 & 2073
Editors: Bill White,
Rosemary Jude and Joy
Myers

ADVERTISING ADDRESS

Marketing Media
Management
4 Bellevue Mews
Bellevue Road
Friern Barnet
N11 3EF
Tel: 01-361 4223

Advertising Manager
Lesley Mitchell

FRONT COVER

Silversmiths are displaying their work and giving weekend and Bank Holiday demonstrations of their craft at the Church Farm House Museum, Hendon, this month. One of the group is Maro Murphy who is pictured at work on a silver bowl. For full details of the exhibition, turn to the Artscene page.

Bundle of cheques for Mayor



The total amount of money raised for the North London Hospice, subject to the Mayor of Barnet's Appeal is up by another £680 thanks to residents of the Borough's sheltered housing schemes.

Representatives from schemes in all parts of Barnet gathered at Moreton Lodge, Milesplit Hill, Mill Hill, on Thursday to present the Mayor, Cllr Malcolm Lester, with their cheques and receive his thanks for their generosity.

Barnet's Director of Housing, Ray Janering, attended the ceremony together with residents from

the following areas:

Booth Road, Colindale; Wood Court, Edgware; Hart Lodge, Barnet; Wimbush House, Finchley; Little Larkins, Barnet; Lashford House, Burnt Oak; Tadbourne Court, Edgware; Deans Close, Edgware.

Wendover Lodge, West Hendon; Taylorsmead, Mill Hill; Homefield, Barnet; Dellfield Court, Finchley; Prospect Place, East Finchley; Vale Court, New Barnet; Spencer House, Hendon.

Grendon Lodge, Edgware; Cheshire House, Hendon; Garth House, Cricklewood; Benesley

The Mayor, Cllr Malcolm Lester, is pictured with representatives of the Borough's sheltered housing schemes who presented him with donations for his Charity Appeal.

Close/Summers Lane, North Finchley; Gadsbury Close, Colindale.

Sarnes Court/ Deans Close, Friern Barnet; Derby House, Hendon; The Potteries, Barnet; Adamson Court/Market Place, East Finchley and Goodwin Court, East Finchley.

WE ARE THE CHAMPIONS

A team of 13-year-old boys from St James' Catholic High School, Grahame Park, Colindale, has won the Metropolitan Road Safety competition to become London champions.

The 2nd and 3rd year boys, representing the Borough of Barnet, beat a team from Plashet Girls School in the Borough of Newham, by one point in the final, held at the City of London Guildhall on April 18.

St James' will hold the Clearway Trophy, presented by the Met's Traffic Division, for a year, and represent London in a national competition this summer.

The team consisted of Damian Butler from Burnt Oak; Mathew Peiris from Colindale; Simon Wicks from Willesden; Axel Monteiro from Edgware and Patrick Sheehan from Cricklewood.

They were accompanied to the final by their head teacher, Kevin McSharry who said: 'We are all very proud of them.' The question master at the finals was Shaw Taylor from television's Police 5 series.

The Deputy Mayor and Mayoress of Barnet, Cllr Fred Poole and his wife, Phyllis, together with Cllr Dot Benson, vice chairman of Education and Public Works Committees and her hus-



band, Ron, were present at the Guildhall to see the St James' pupils triumph.

In addition to the Trophy, the team members were each given a replica shield and a souvenir plaque. Hosts, City of London, presented each of the boys with a £5 book token and the Metropolitan Police are treating them to a day out including a trip along the River Thames.

St James' School receives a cheque for £200 and runners-up,

We are the champions! St James' winning team pictured with the Clearway Trophy (from left) Damian Butler; Simon Wicks; Mathew Peiris; Axel Monteiro and Patrick Sheehan.

Plashet who won the London competition in 1981, receives £100.

The previous local winners of this competition were from Queen Elizabeth's Girls School, Barnet, in 1977.

Don't miss...

**The Essential Guide to Barnet
College Part-Time Courses
with next month's issue
of the Barnet Borough News.**

There are details of all our recreational and vocational part-time courses for the coming year and instructions for postal and personal enrolment.

Wood Street Barnet Hertfordshire EN5 4AZ · Tel: 01-440 6321
Russell Lane Whetstone London N20 0AX · Tel: 01-361 5101

**A FULL SELECTION OF
WARDROBE INTERIORS
AT NO EXTRA COST**

**FITTED
BEDROOMS
FOR YOU**



EXCITING FINISHES IN WHITE ASH ● BLACK ASH ● GREY ● LEATHERTEX ● MAHOGANY ● MIRRORS HINGED AND SLIDING. ALSO TIMELESS WHITE, CREAM, REGENCY ETC.

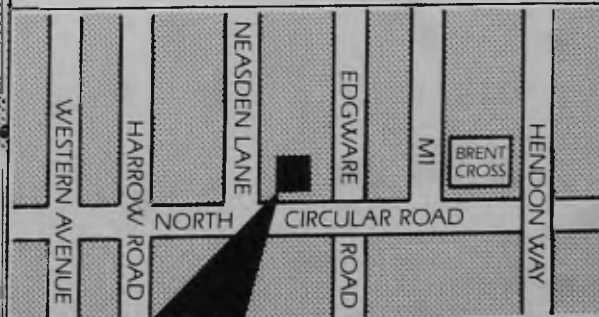
● SUPERB QUALITY AND A DIRECT PRICE FROM OUR FACTORY AND SHOWROOM.

● FULL SELECTION OF DE-LUXE INTERIORS WITH SHELF SYSTEMS, DOUBLE HANGING, SHOE RAILS ETC. AT NO EXTRA COST.

● WE PLAN AND EXPERTLY FIT FREE.

● **IDEAL HOME** magazine said... "STATON FITTED FURNITURE IS QUITE A FIND"... "HIGHER QUALITY"... "LOWER PRICES"

ALWAYS A SALE PRICE



STATON

FACTORY AND SHOWROOM
719 NORTH CIRCULAR ROAD NW2
TELEPHONE 01-450 6581
OPEN EVERYDAY (SUN 10-4)

The

SOFABED

HAVE DONE IT AGAIN

Shop

FACTORY CLEARANCE

SCOOP PURCHASE



Another super deal with one of Britains leading Sofabed manufacturers means we can now offer Top Quality designer sofabeds with spring interior mattress and slatted base

FROM JUST
£349
WHILE STOCKS LAST



STOP PRESS
... MAY BANK HOLIDAY BONANZA.
CHOOSE FROM OUR STANDARD RANGE* OF SOFAS, SOFABEDS AND THREE PIECE SUITES.
OPEN ALL BANK HOLIDAY MONDAY

SAVE 10%



* STANDARD RANGE = OVER 100 DIFFERENT MODELS IN ANY ONE OF 10,000 DIFFERENT FABRICS

Open 7 days Sundays 11am-6pm (Viewing)
Late night Thursday and Friday till 8pm
43a Colney Hatch Lane, Muswell Hill, N10



01-444 7463



Gift of a greenhouse



A GREENHOUSE at Springwood Day Centre, Springwood Crescent, Edgware, was one of the casualty's of the October gale but on Thursday, April 21 a new one was ceremonially opened thanks to the generosity of a Colindale resident.

After the storm John Routley from Annesley Avenue, considered sponsoring the replacement of some trees in the Borough, but then heard how the Day Centre's greenhouse was smashed by the wind.

With the help of a friend, Neil Sillers, also of Annesley Avenue,

John Marsden, Barnet Social Services Head of Day and Residential Care, is pictured with Mr Routley (centre) and Mr Sillers as the ribbon is cut to officially open the greenhouse.

Mr Routley cleared away the base of the smashed greenhouse.

Mr Routley then supplied a new 8ft by 6ft greenhouse which staff and members of the Day Centre have already begun to fill with plants.

WHEELIE BINS FOR ALL

After pilot scheme gets thumbs up

THE wheeled bin refuse collection service is to be introduced borough-wide on a phased programme starting later this summer.

This follows a survey carried out in the trial area which showed very strong support for the scheme.

Area by area householders will receive a new wheeled refuse bin, free of charge, and an explanatory leaflet. The bins come in three sizes. The smallest, a 125-litre bin, is slightly larger than an ordinary household dustbin. The standard bin holds 250 litres — about 2½ times as much as a dustbin. And there is a 500 litre bin suitable for large families. Because of the wheels they are easy to move about. Pushing the small bin is very like pushing a shopping trolley.

Protected

The bins are emptied by lifting gear on the back of the refuse lorry so that the refuse collectors are fully protected from handling possibly dangerous rubbish such as broken glass. This means that householders can put in almost any refuse they like including garden prunings and a reasonable amount of DIY rubble.

Householders are expected to wheel their bins to their front gate on collection day and the refuse men will wheel them back to the

gate or front drive after emptying.

To test the scheme 10,000 bins were placed on refuse rounds in Whetstone, West Finchley and Mill Hill East. After they had been in place for three months householders were sent a questionnaire to find out their reaction to the scheme.

More than 53 per cent replied — the biggest response Barnet has ever had to a questionnaire. Of these 72.2 per cent were in favour of the scheme being made permanent with 21.6 per cent against and 6.2 per cent uncommitted.

At the April Council Meeting, when the scheme to go borough-wide was approved, Cllr Victor Usher, chairman of Public Works Committee, assured residents that people who faced problems in coping with wheelie bins would be able to consult a surveyor from the Technical Services Directorate. If the surveyor agreed the scheme was not practicable a plastic sack collection would be arranged.

Saving

To introduce such a scheme involves a high capital expenditure but because collection is faster, and two teams can do the work of three, there should be a net saving in the region of £500,000 a year.



LUXURY FITTED KITCHENS

TOP QUALITY AND TOP DESIGN ITALIAN FITTED KITCHENS AND DINING RANGES · SUPERB MARBLE OR GRANITE WORKSURFACES



AVAILABLE NOW FROM:

ARTIZAN

52 THE BROADWAY
CROUCH END
LONDON N8
01-340 3413

A'PEELING KITCHENS

4/5 HALLIWICK CRT PRD
WOODHOUSE ROAD
LONDON N12
01-368 0491

H. HOBBS WILSON

765 GREEN LANES
WINCHMORE HILL
LONDON N12
01-360 2616

A 'fig leaf' of our imagination

LAST month's picture story about bronze male statue given to the borough as a companion for The Naked Lady, attracted several letters. We thank readers for joining in our April Fools Day fun which, as you have guessed, was a 'fig leaf' of our imagination. Here are a selection of the replies.

□ □ □

I understand that a bronze statue has been given to Barnet by an anonymous benefactor as a companion piece to La Deliverance. I note that it has been proposed to locate this facing her in Regents Park Road.

The form and sitting of public statutory is a matter on which the Fine Art Commission would normally comment. In my opinion this should be referred to them for their views without delay.

The proposed site is surely inappropriate given the forthcoming road improvements at Henly's Corner. I would like to recommend as an alternative the triangular open space at the junction of Hampstead

Watch those bonfires

Having escaped a hard winter it is lovely to have warm spring sunshine so early in the year. It's a shame you cannot sit in the garden in a warm spot to enjoy it or smell the freshness of your washing blowing in the wind. Why not? Because along with the warm sunshine come bonfires.

I appreciate that not everyone can take their garden refuse to the local dump and that garden bonfires are a necessity. But why oh why can't people light them after dusk? Is it really too much to ask?

This week, in my road, not only have we had two really healthy, smoky bonfires at 2pm, but doors and windows closed promptly and washing taken in. To give them their due, when I asked for the fires to put out and lit later, they were. It just was not thought they would cause a nuisance.

So, Barnet residents; be friendly neighbours. Please don't light bonfires until after dusk. And then, if your neighbour still has washing on the line, go and tell them what you intend to do. It will give them a fighting chance to get things indoors and not be full of sooty deposits.

Leave the fresh air and sunshine smoke free. Let's face it - sunny days are rare enough and the air already has enough pollutants. So on weekdays and weekends, bonfires at dusk please.

Jane Southam,
Church End,
Finchley

Way and Willifield Way in Hampstead Garden Suburb, situated either in the garden area, where it could be enjoyed in quiet repose, or on an expanded paved area in front of the gardens.

I look forward to your reply. A copy of this letter has been sent to the Royal Fine Art Commission for their information.

Philip Davies
NW11

□ □ □

I was unable to write to you about the new statue before April 1 as my Borough News was delivered after that date.

At first I thought it was a serious news item but having noted the

date of reply I gather it's supposed to be a hilarious joke coming out of (of all places), our beloved Town Hall.

But is it a joke? I can just imagine this being a serious item and someone would erect this monstrosity near La Deliverance. Both statues would be appearing to 'joust' with each other.

However, if such a statue does exist, might I suggest it be sited on Henly's Corner. People and traffic would then avoid the area like the plague. Hence no need for road improvements there and a speedy end to the Ministry of Transport enquiry.

Edna S Weiss (Mrs)
NW11

Before anything is done about the gift of this statue, would it not be a good idea to advise your readers:

- Whether the statue is of any significance?
- Whether it represents a Greek god, an idea, an event - or what?
- How big is it?
- Whether it has any local interest
- In what sense will it be a 'companion' to the Naked Lady?
- And finally, for the ultra sensitive of your readers, whether the two statues will be sited - decorously - back to back?

George F. Thurmer,
Finchley

FRESH NEW DESIGNS ARE "SPRING-ING" INTO OMEGA

To help forget winter and bring new life into your home, this month omega are showing their *new designs at incredible introductory prices.*

For example the VIENNA normally from £687, this month will be from £625.

Naturally all our models are made to the highest standard of safety possible, (including the new safer C.M.H.R. Foam) and can be made to your own size and specification, *all at no extra cost*, in a choice of over 10,000 fabrics.



For our new colour brochure, write, FREEPOST, Omega Furniture, Delamare Road, Cheshunt, HERTS EN8 9TF, or phone our 24 hr. Brochureline on (0992) 37820.

SPECIAL CLEARANCE OFFERS

Many showroom models at up to £250 OFF to make space for our new designs.

We can arrange delivery throughout the UK. Our normal delivery time is 4-6 weeks.

OMEGA

SHOWROOMS AT

Furniture that fits

CESHUNT-FACTORY/SHOWROOM

Delamare Road, Herts EN8 9TF

Exit 25 on the M25. ☎ (0992) 26686

KENSINGTON HIGH STREET

27 Wrights Lane, London W8

2 mins High St. Ken. Tube. ☎ 01-938 2817

STEVENAGE 21 High Street, Old Town. ☎ (0438) 722412

OPEN: 10am-5.30pm Mon.-Sat. FACTORY: Sunday 10am-2pm viewing only.

Switch on to safety with new electric plugs

NEW style square pin electric plugs became law in March. The regulations apply only to new plugs not to any bought secondhand.

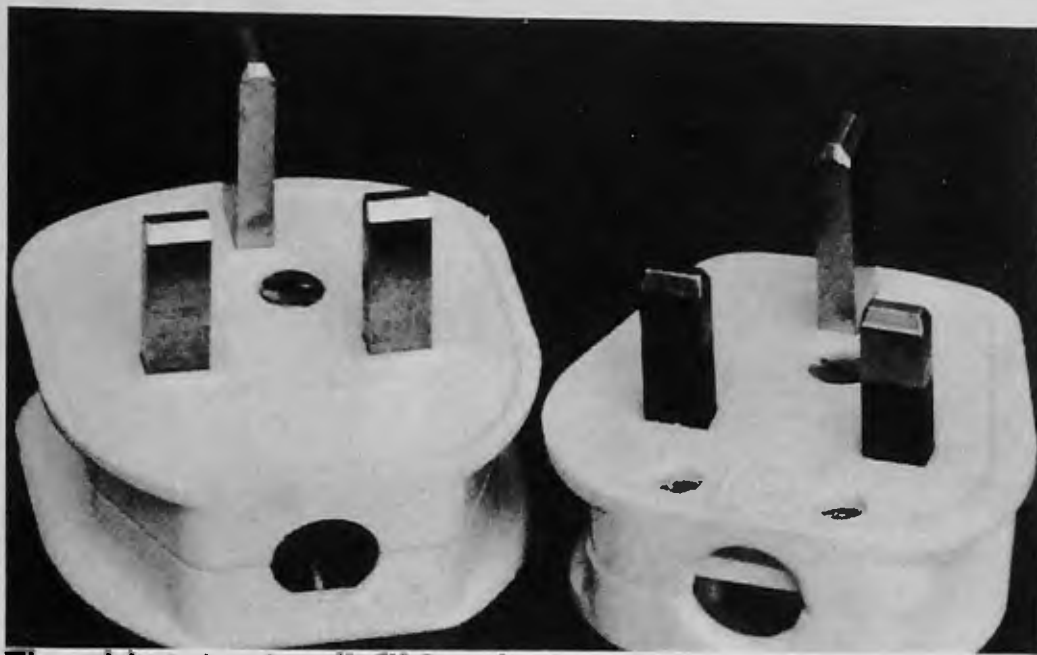
Two pins on the plugs must now have black sleeves as a safety measure. This type of plug can often make an electrical connection without being fully inserted into the socket. Young children's fingers could penetrate the gap between the plug and socket — a potentially dangerous situation. The black protective sleeves are an additional safeguard.

Barnet's Trading Standards officers on 202 8282 are anxious to hear from residents if any old style square pin plugs are being sold, as new, in the Borough.

Any household items, such as extension leads or washing machines, sold with plugs attached must carry the new sleeved square pin plug.

The new regulations do not apply to round pin plugs or, as yet, adaptors but all plugs must be marked to indicate that they are made to British Standards. From September 1 this year, they must also be marked 'Approved September 1, 1988'.

Trading Standards officers are also asking the public to check items, such as television sets, where the plug is frequently pulled out of the socket or garden tools which



The old style plug (left) has been replaced with a safer plug (right).

might not have been used since last year.

On plugs where wires are threaded through pins, it is vital to ensure that the wires are correctly threaded to the right pins, that all screws are tightened with a screwdriver and cannot be loosened with the fingers.

Don't Be Shocked

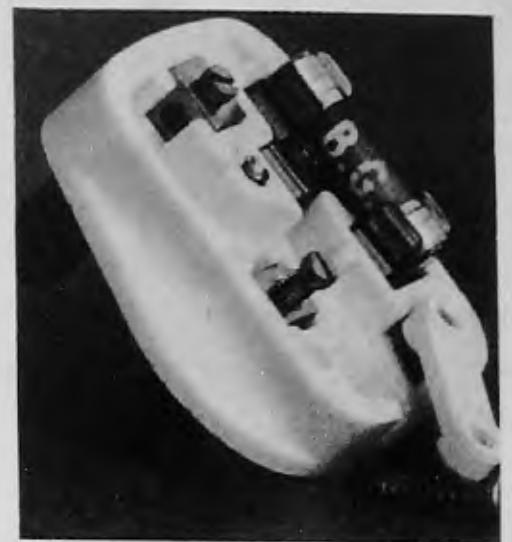
A national electrical safety awareness campaign, launched on April 25, is prompting the use of residual current devices. In plain language the RCD monitors electrical current and switches off the supply if there is a problem.

Fans of the television soap

Brookside will remember one of the characters receiving an electric shock after getting out of the bath to turn on, with wet hands, a faulty light switch.

Leading electrical accessory manufacturer, MK Electric, believe the installation of an RCD would have saved the incident from happening.

Only three per cent of new homes have an RCD, although the devices are mandatory in other countries. electrical current is monitored 24 hours a day and the supply can be switched off in a fraction of a second — quick enough to save a life — should a potentially dangerous leakage of



All pins must be tightened with a screwdriver.

current to earth occur. The individual is protected from electrocution and the property from risk of fire.

Ensure the RCD features a test button, robust casing and is made by a well-known manufacturer. Portable RCD devices provide convenient circuit protection.

Silent and invisible

MK Electric are concerned that people regard house wiring as a low priority. 'It doesn't cause alarm like faulty plumbing, blocked drains or gas leaks. Electricity is silent and invisible. As long as it appears to work you think it's OK.'

For further information on RCD's or the new style plugs contact the Trading Standards Department.

The latest 'Pickle Pine' designer furniture, now on show at EUROSTILES NEW contemporary section. The 'Pickled Pine' is also available in any shade along with lacquered finishes to blend in with your home...



EUROSTILE INTERIORS

Salisbury Promenade, Green Lanes, London N8 1
Tel: 01-802 2115/2519. Open Mon-Sat 9am-6pm

Getting a new look with pictures



Works by Rembrandt and Lowry are among the reproductions under the care of Peter Pullen at East Finchley.

NEW wallpaper or furnishings can change the appearance of a room but it can be an expensive exercise. An easier and cheaper way of getting a new look is with pictures.

Auctions of rare originals such as Van Gogh's Sunflowers, which recently went under the hammer for an astronomical price, are out of reach of the majority but a reproduction of the same picture can be hanging on someone's living room or office wall in the Borough for three months at a cost of just £2.50.

The range and style of reproductions available is enormous. From Canaletto to Constable; Degas to Derain; Gainsborough to Goya or Modigliani to Monet.

Modernists may appreciate a wall full of Picasso's and traditionalists Renoir or Vermeer.

There are 350 pictures in the Borough's collection based at East Finchley Library but librarian Peter Pullen has had popular reproductions out on loan to the same people for as long as five years.

Selection of reproductions

The scheme, which could put a Lowry in the lounge or a Rembrandt in reception, started in 1971. A selection of the reproductions are exhibited in the hall at East Finchley Library to assist borrowers in making their choice.

Reproductions are not for sale but another branch of the Libraries' Picture Lending Service has originals which can be purchased.

Sheila Wilson is the librarian at North Finchley and guardian of a collection of original paintings, limited edition prints and etchings.

The present lending scheme is an extension of that started by the former Finchley Borough Council

more than 25 years ago.

Local artists are invited to submit work for inclusion in the scheme and pictures are accepted subject to the approval of the Borough Librarian.

The lending fee of £2.50 per three month period is paid to the artists, less an administrative charge, and the pictures remain the property of the artists. Negotiations for sale are between the artist and would be buyer.

Some works at North Finchley are by Jill Gibbs, a former member of the Library staff who went on to exhibit at the Royal Academy.

From time to time artists need to withdraw their work and one of the most popular, Sydney Arrobus, is currently collating pictures for an exhibition in September.

Delighted

On the day Borough News called at North Finchley, Sheila was delighted to announce that a new borrower had just chosen ten pictures for the walls of premises in Wood Street, Barnet.

Pictures from the Lending Service can be displayed in private homes or sheltered housing, residential homes or businesses.

Some firms have had the same pictures hanging on their walls for as long as ten years and make regular payments by post for the lending fees.

The North Finchley collection is housed on unique racks which were specifically designed for the original scheme under Finchley Borough Council.

There is something to suit all tastes and enough in stock at any one time to enable a borrower to ring the decorative changes at will.



Sheila Wilson arranges the North Finchley collection.

THE MONKEY KING



Tai Shen perform The Monkey King.

THE Barnet-based Tai Shen Theatre will be performing The Monkey King at Woodhouse Sixth Form College Hall, Woodhouse Road, North Finchley, next month.

After successful appearances at the Edinburgh Festival, York Festival and before The Princess of Wales in Plymouth, the Chinese theatre company is to perform in the Borough which has been its base for three years.

On June 4 the performance begins at 8pm and on June 5 at 3pm.

Tickets are £2 (£1 concession) at the door.

Tai Shen's founder, Brian Wang, came to London from Liverpool four years ago. He gathered together a group of ten artists who now rehearse in a clinic at Regents Park Road, Finchley.

The company's fame has spread across the Atlantic. New York's Chinese community has invited Tai Shen Theatre to perform at the Lincoln Center Plaza in February next year.

A new Schreiber kitchen in your home for only

Enjoy it first, pay later!

Enjoy the splendour of any new Schreiber Kitchen or bedroom - fully fitted in your home - for just £100† deposit.

That's the new special offer from Schreiber, Britain's most experienced fitted kitchen company.

When you order through the Schreiber Home Improvement Plan, you'll then have three full months to decide how to pay the balance. Either in cash - or continue with the Home Improvements Plan, taking up to 10 years to pay.

Call into our Schreiber showroom today. We'll be glad to show you the complete picture.

14 SCHREIBER KITCHEN RANGES

Warm, rich wooden doors such as Oak, Mahogany and Pine, plus the latest fashion effects in Pearl Grey, Soft White and Subtle Hessian.



£100[†] DOWN

and nothing more to pay for 3 full months

£100 DEPOSIT

Pay nothing for 3 months

Typical

APR 24.6%

variable

FREE design and planning

FREE delivery service

PLUS Price includes complete craftsman fitting

OPEN ALL DAY SUNDAY 11am - 5pm

25% OFF

selected ranges NOW*

FREE

FREE STANDING MICROWAVE OVENS

On qualifying kitchens. Ask for details.



WHY LOOK AT A BROCHURE WHEN YOU CAN SEE THE REAL THING

Schreiber

OPEN 7 DAYS A WEEK

MONDAY - SATURDAY 9.30am - 5.30pm

OPEN ALL DAY

SUNDAY 11am - 5pm



VISIT US TODAY

88 CHASE SIDE

SOUTHGATE Telephone: 01-882 9101

101 BAKER STREET

LONDON W1 Telephone: 01-486 0664



FITTED FURNITURE LTD.

1 Hatters Lane, The Croxley Centre, Watford, Herts., WD1 8YY. Tel: (0923) 34436

Builders and Architects enquiries welcome

Showrooms at:

Baker Street, W1, (01) 486 0664

Basingstoke, (0256) 479386

Farnborough, (0252) 518169

Southgate, (01) 882 9101

Teddington, (01) 943 4186

Uxbridge, (0895) 37059

Watford, (0923) 247004

*Savings are based on prices which will be charged after the current promotion and apply to cabinets only in Cameo White, Cotswold and Cheltenham Mahogany. Substantial discounts on other ranges. Limited Period Offers. †Schreiber and your local centre are Licensed Credit Brokers. Place an order on the Schreiber Home Improvement Plan. Example, Cash Price £2500, £100 deposit, 60 monthly payments of £58.63 nett (£66.55 gross), Totalling £3617.80 nett (£4093 gross). Nett figures quoted are nett of tax relief at 27% for qualifying borrowers. Ask for written details.

Silver on show at museum

THE art of designing and working with precious metals is intricate and time-consuming but an exhibition at Church Farm House Museum, Hendon, will enable visitors to follow the whole process from sketches to finished pieces.

A group of local designers, jewellers and craftsmen will be presenting a wide range of work at the Greyhound Hill museum until May 30.

Demonstrations by the exhibitors will take place on Saturday, Sunday and Bank Holiday afternoons throughout the month. Many of the pieces will be for sale although potential buyers will have to wait until the end of the month to collect their purchases.

One of the group, Gail Miller from Mill Hill said: 'After qualifying at Harrow College about five of us decided to work together. We



Gail Miller at work in her studio

have been involved in exhibitions and asked other former fellow-students to join us in this particular show and the demonstrations of our

work.'

'We will be showing some traditional methods of enamelling, lapidary, forging, repousse, stone-

setting and the many other techniques which are involved in the making of a piece of jewellery or silverware.'

Mrs Miller said the items of silverware include small bowls, spoons, letters knives, thimbles and attractive Victorian-style book-marks.

Many of the items which at first glance would appear to be modelling from one piece of silver can, in fact, be made up of as many as 20 different pieces.

'A small bowl with a guilloche border, for example, can be the result of between two and three weeks concentrated work,' said Mrs Miller. 'That's why hand-crafted pieces are such good value. There are no short cuts. A steady hand and a good eye are necessary. One slip and it is back to the beginning!'

The museum is open Monday and Saturday (except Tuesday but including Bank Holidays) from 10am until 1pm and 2pm until 5.30pm. On Tuesdays from 10am until 1pm and on Sundays from 2pm until 5.30pm.

For further details of the demonstrations by the exhibitors, ring 203 0130.

New director at the Old Bull Arts Centre

WHEN Nick Ewbank, 27, took over as the new director at the Old Bull Arts Centre, High Street, Barnet, in January he was immediately plunged into the arrangements for the Gala Opening of the new 180-seat main theatre.

He remembers the week prior to the opening when, among other last minute jobs, carpets still had to be laid. 'But it was all right on the night. Everything went very well,' he said.

Next stage

Now the time has come for Nick to take the 'bull by the horns' in the next stage of the Arts Centre's development. 'It is planned to make the lower theatre into a cabaret/music venue. This will give us two very different but very adaptable and useful spaces. We are already attracting people from South London and Surrey as well as from north of the Thames, and we hope the expansion will continue to bring people from a wide area,' he continued.

'I would also like to see the work of the centre going out into the community more often to, for example, hospitals, old people's homes and schools.'

It was during his time at Durham University that Nick first became involved with the theatre. He was part of the student team which took a stage version of Joe Orton's diaries to the Edinburgh Festival, where it received rave reviews and played to packed houses.

He later became involved in the running of two 150-seat theatres at the Edinburgh Fringe Festival before being faced with a choice of



Nick Ewbank plans for the future at the Old Bull.

sampling the delights of Turkey with a theatre group, or becoming administrator of the Tamworth Arts Centre, Staffordshire. Tamworth won.

Just before taking up the post at the Old Bull he was working in administering street theatre events nationwide.

Now his plans for the future include exploring a much more

adventurous type of programme in terms of what will be staged at the Old Bull.

The May programme at the Old Bull spans music, drama, dance and poetry.

One of the original Liverpool Poets and founder-member of the Scaffold, Roger McGough appears on May 20 with his latest collection which is touching, funny and re-

vealing.

Among the many drama productions are the black comedy *When The Wind Blows* and the classic *Lion In Winter*.

Music varies from a Tribute to Irving Berlin to the Spanish and Latin-American guitars of Carlos Bonell and Mara Del Sol.

For full details of what's on at the Old Bull, see the Barnet Diary.

DRAMA FESTIVAL

The last four presentations in the 1988 Drama Festival organised by Barnet Borough Arts Council begin this month with the Brookland Players' staging of *The Lion In Winter* by James Goldman.

Venue is the Old Bull Arts Centre, High Street, Barnet on May 12, 13 and 14 and the curtain goes up at 8pm. For tickets phone 207 2114.

The Gainsborough Theatre Club present their production of *Breaking The Silence* by Stephen Piliakoff at St Albans Parish Centre, Gainsborough Road, Finchley on May 19, 20 and 21 at 8pm. For tickets phone 445 7455.

Harlequin Theatre Club are presenting *Outside Edge* by Richard Harris at the Hartley Hall, Flower Lane, Mill Hill on June 2, 3 and 4. Curtain goes up at 8pm. For tickets phone 360 1104.

The final production in the Festival is *Round And Round The Garden* by Alan Ayckbourn which will be presented by the Good Companions at the John Keble Church Hall, Church Close, Deans Lane, Edgware on June 2, 3 and 4, starting at 8pm. For tickets phone 959 6234.

100,000

CUSTOMERS CAN'T BE WRONG

Cotton fibre and wool filling is encased in cotton drill fabric. Composition and flexibility make a beautiful sofa by day and a comfortable, healthy bed at night. The bases which complement our full-colour and white Futons are handmade in natural, stained or varnished wood. A whole range of soft furnishing is available to accompany your Futon surroundings.

Futons are ideal for first time furnishers, newly marrieds, back-sufferers, spare rooms, extra bedrooms, rumpus rooms—in fact for any furnishing purpose!



SEND
FOR OUR
NEW
COLOUR
CATALOGUE
TODAY!

PRICE
RANGE
£55 TO
£350

FUTON FURNISHINGS

COME TODAY! 400 yards up the hill
from East Finchley Underground.
Futon Furnishing (Dept. BBN1)
Lincoln Road, East Finchley,
London N2.



01-444 7249



Councillors' & MPs' Surgeries

Chipping Barnet

Sydney Chapman, MP, May 7, June 4, 10.30am to 12 noon, 163 High St. A Councillor will also be available.

Arkley Ward — Conservative councillors, Fri May 20, June 3, 7.30pm, Dollis Valley Community Centre.

Brunswick Park Ward — Conservative councillors available second Saturday of month, 10.30am to 12 noon, Monkfrith Boys' Club hall, Osidge Lane, N14.

East Barnet Ward — Cllr Olwen Evans (Conservative), Sat May 7, June 4, 10.30am to noon, Community Centre, Victoria Rd, New Barnet. Contact Cllrs Mrs Mamie Perry and John Perry on 368 4368 for personal appointment.

Hadley Ward — Contact Conservative Cllrs. Mrs Gill Bull 446 7684, Mrs Carol Cender 441 6325, John Hoyle 441 5077.

Totteridge Ward — Contact Conservative Cllrs. Mrs Joan Levinson 368 3298, Victor Lyon 446 4423, Vic Usher 445 4248.

Labour councillors available May 7, June 4, 10.30 to 11.30am, 104 East Barnet Road, New Barnet.

Finchley & Friern Barnet

Margaret Thatcher, MP, for constituents only, via constituency office, tel 445 4292.

Conservative councillors, May 7, June 4, 10.30am to noon, 212 Ballards Lane, N3.

East Finchley — Labour councillors every Saturday, 10am to 11.30am, East Finchley Neighbourhood Centre, Church Lane N2.

Finchley Ward — Conservative councillors, Saturday May 28 10.30am to noon, Blue Beetle Hall (adj St Mary's Church) Hendon Lne, N3. Cllr Mrs Barbara Langstone can be contacted on 445 5443.

St Paul's Ward — Labour councillors Naren Davé, Michael Freeman and Kitty Lyons, every Saturday 11am to 12 noon. Tally Ho Labour Party Stall, North Finchley.

Woodhouse Ward — Labour councillors Mike Harris, Dennis Reed and Rudolf Vis, every Thursday, 6.30-

7.30pm, Friern Barnet Town Hall, N11. Also Saturdays at Tally Ho, Finchley.

Friern Barnet Ward — Contact Cllrs Chris Platford (368 6817), Brian Salinger (368 1329), John Tiplady (445 5734).

Hendon North

John Gorst, MP, May 20th, by appointment. At other times tel 959 1446 or via constituency office, 2 Apex Parade, Selvage Lane, Mill Hill. **Conservative councillors**, Grahame Park and Mill Hill, every Wednesday.

Burnt Oak — Cllrs Ellis (959 6191), Shamash (458 2679), Williams (906 0576), every Saturday, 10.30am to noon, Labour Hall, Back Lane, Burnt Oak (952 5771).

Colindale — Cllrs Hillman (202 7792), McKendry (444 0594), Manson (455 6379), available first and fourth Sat each month, 2-3pm, St Augustine's, Grahame Park.

Hendon South

John Marshall, MP, via constituency office (202 7484) by appointment, see local press for details.

Conservative councillors — Sat May 7, June 4, 11am to 12.30pm, 166 Station Rd, Hendon (202 7484).

Childs Hill — Liberal/SDP Alliance councillors every second Wednesday of month 7-8pm, Unitarian Church, Hoop Lane, NW11 and every fourth Monday of month, 7-8pm, St Peter's Church Hall, Cricklewood Lane, NW2. Cllrs Cohen (205 1233), Palmer (455 5140), Stone (450 0762).

West Hendon — Phone Cllr Tim Sims (734 8080, office hours) for appointment at West Hendon Ex-Servicemen's Club, The Broadway, NW9. Cllrs Doreen Neall (202 9927) and Agnes Slocombe (202 4074) by appointment.

Labour Councillors available at George Richardson House, 7 Sunningfields Road, Hendon, for appointment ring 230 1916.

Euro MP

John Marshall, Euro MP, contact Euro agent: 440 7328.

FAMILY EXHIBITION

THREE artists from the same family will show their range of work at a major exhibition which opens on May 3 at the Manor House Society's Sternberg Centre, East End Road, N.3.

Roman Halter is well known for work including 18 stained-glass windows at the North-Western Reform Synagogue, Alyth Gardens, Golders Green. He is designer and maker of armorials at the College of Arms, providing stained-glass coats of arms to embassies and courts of law. On exhibition will be examples of Mr Halter's studies in watercolour and oils as well as designs for stained glass windows.

Ardyn Halter who, as a child, held a number of solo exhibitions of paintings in London and abroad, has worked on large scale oils and a series of commissioned portraits including that of Henry Moore. In 1986 he started work on his striking 'Kettubot' (Marriage Certificates) and some fine examples of these will be on show.

Aviva Halter, the youngest of the three, is a former pupil of the North London Collegiate School, Edgware, where her ceramic 'Rhino' is exhibited outside the school art block.

Coats of arms

Miss Halter has worked with her father on stained-glass windows and on Royal Coats of Arms. Her work has been exhibited in a number of group shows in London and her diploma show in October, 1987, at the Camberwell Art School was entitled 'Works in Ceramics'. She will exhibit water colours, silks and ceramics.

For details of opening times phone 346 2288. The exhibition will run until June 1, except May 22, 29 and 30. There will be a lecture in conjunction with the Leo Baeck College, on May 24 at 8pm when the three artists will discuss 'Art in our experience'. Admission will be £1.50 for non-members, £1 for members.

Practising new skills

TWO separate courses on 'Conductive Education for Profoundly Handicapped People' are being held on May 16 and June 6. The fee is £15 and details of the venue and times can be obtained by contacting the Physiotherapy Department, Barnet General Hospital, Tel. 440 5111 ext 366.

In a brief article on Conductive Education, Rowena Kinsman, district physiotherapist at the hospital, writes:

'Conductive Education is a system of education which expects people with central nervous system damage to actively take part in solving their motor problems. It was developed by Prof. Andras Peto in Hungary during the 1940s.

Belief

'He believed that brain damaged people's inability to function efficiently was due to a learning difficulty and that they needed to be taught how to control their bodies. With this conviction of the importance of teaching and learning, the principles of the system are beginning to be used in Barnet to help people with cerebral palsy, Parkinson's disease, multiple sclerosis, hemiplegia and profound handicap.

'The whole system and each of its parts works to make the environment conducive to learning. Students eligibility for Conductive Education is dependent on their ability to learn rather than the severity of their handicaps.

Learning new skills

'Learning is made as easy as possible by conductors who lead groups throughout the day. Tasks are broken down into parts in order to make them achievable. Language is used in a rhythmical way to describe the movements required to complete the tasks to guide students through them. Much attention is centred on practising new skills in the course of a normal day rather than setting aside isolated exercise sessions.

Positive approach

'People with brain or spinal cord damage are educated so that they will learn to function in spite of their problems. This creates a positive approach.

'The ultimate goal is that the students themselves will find their own best way to live as full a life as possible in spite of their difficult bodies. Surely this is a hopeful prospect for people with neurological problems in Barnet.'

WEATHERWELL of Cricklewood

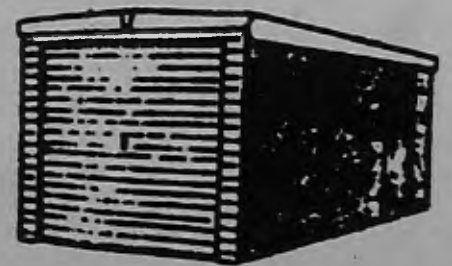


CAR PORTS

EXAMPLE 8'x12' £421 INC
DELIVERY ERECTION AND VAT

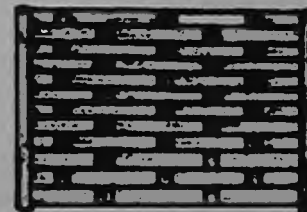
GARAGES

EXAMPLE 8x16
£817.30 INC
INC DELIVERY, ERECTION AND VAT



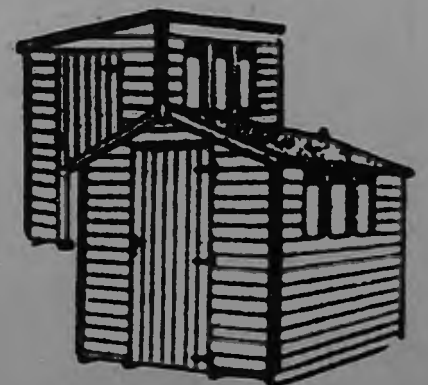
SHEDS

6x4 £179 INC
7x5 £199 INC
8x6 £229 INC
ALL PRICES INC ERECTION AND VAT



FENCING

LAPPED 6x6 £11.75 INC
INTERWOVEN £11.75 INC
TRELLIS 6x6 £12 INC
STOCKISTS OF FEATHEREDGE etc



60-70 HASSOP ROAD,
CRICKLEWOOD NW2

Tel: 450 9555/6

OPENING HOURS: 9-5.30 Mon/Fri, 9-1.00 SAT

PALMERS

MILL HILL OFFICE. TEL: 349 4444



FINCHLEY, N3 £69,950-£80,950

A selection of 1 and 2 bed flats, sit within mins walk to local shops and station. Entryphone, new Lease, parking, garage, comm gdns.
349 4444



MILL HILL, NW7 £95,950

Modern 2 bed house in imm cond. 2 dble beds, 21ft recept, lux fit kitchen, bathroom/w.c. gardens, garage.
349 4444



FRIERN BARNET, N11 £101,950

Elegant 3 bed end of terr built 4 years ago, set in this picturesque complex, 3 beds, 23ft recept, lux kitchen, bathroom/w.c. garden, parking.
349 4444



MILL HILL, NW7 £96,000

Superb 2 bed spacious house, sit in the heart of Mill Hill. 2 dble beds, 21ft recept, fit kitchen, ds cloak-room, bathroom/w.c., large garden, garage available.
349 4444



MILL HILL, NW7 £112,000

Stunning 2 bed, 2nd floor flat, having tranquil views over London. 2 dble beds, large recept, fit kitchen, bathroom/w.c. balcony, entryphone, 99 years lease.
349 4444



STANMORE £114,950

Spacious 3 bed semi, being within easy access to local shops and transport. Large recept fit kitchen, bathroom/w.c., garden, garage.
349 4444

HENDON OFFICE. TEL: 202 3833



**£72,950 HENDON NW4
SOLE AGENTS**

Attractive 2 bed, grd flr conv. Lounge/diner, kit, bath, gdn. **202-3833.**



**£73,950 HENDON NW4
SOLE AGENTS NEW INSTRUCTIONS**

Tudor style 1 bed raised grd flr flat. 17ft recep, lge lux kit, mod bath, lge bed with robes, private patio. **202-3833**



**£84,950 HENDON NW4
SOLE AGENTS
NEW INSTRUCTIONS**

Lge 3 bed 1st flr maisonette. Recep, kit, bath, gnd, low outgoings. **202 3833.**



£110,950 HENDON NW4

3 bed end-of-terrace in convenient location. Recep, conservatory, kit, bath, grounds. **202 3833.**



£130,000 HENDON NW4

Spacious 3 bed semi with 2 receptions, kitchen, utility room, bathroom and separate w.c., garden. **202 3833.**



£139,950 HENDON NW4

Immaculate 3 bedroom, 2-year-old house. Guest w.c., lge recep, lux fitted kitchen, bathroom, grounds, garage. **202-3833.**

**MILL HILL OFFICE
10 Thornfield Parade
Dollis Road
Mill Hill
NW7 1LN**

**HENDON OFFICE
127 Brent Street
Hendon
NW4 2DX**



INGLEBOROUGH

THE RIDGEWAY, ENFIELD

A NEW DEVELOPMENT OF
2 BEDROOM LUXURY

RETIREMENT APARTMENTS

PRICES FROM £75,000

FULL GAS CENTRAL HEATING, DOUBLE
GLAZING THROUGHOUT
SUPERB FITTED KITCHENS, LUXURIOUS
BATHROOMS TWO RESIDENT WARDENS,
SECURITY LOCKS & ENTRY PHONES
LIFTS TO UPPER FLOORS, MOST APARTMENTS
WITH BALCONIES

**VIEWING STRICTLY
BY APPOINTMENT**

11am - 12.30pm and 1pm - 4pm



PRUDENTIAL

Tel: 01-367 7610

or contact our Enfield office: 01-367 5577

STOREY COURT — BREAKING THE MOULD And All Within a short Bowl of Lord's Cricket Ground!



Ellis & Co launched the final phase of a unique new development on Sunday, April 24. It consists of 16 one and two bedroom apartments in Storey Court, situated in St Johns Wood.

The scheme has been developed by Orbit the national non-profit-making housing association. As a result the prices are quite exceptional considering the quality and the area they are situated in and represent excellent value, ranging from £87,950 to £99,950 for 123 year leases.

Although Storey Court offers the security of a resident manager, the block has been designed with the active middle-aged in mind. There are no communal rooms or lobbies, no organised activities or any of the things normally associated with retirement homes, as the emphasis is on providing homes for people wanting an active independent middle-age and retirement.

To qualify residents must be aged 55 or over but you can be any age to purchase a flat. This, therefore offers an ideal opportunity for children looking to secure their parent's futures, or for active people with an eye to their own futures and approaching retirement.

If you would like to know more contact:

**Ellis & Co, Site Sales Office, tel: 286-0344
or Ellis & Co's Development Marketing Office,
tel: 458 3252**



INGLEBOROUGH:

SUPERB VALUE FOR MONEY

Prudential Property Services invite you to view at your leisure a new development of luxury retirement apartments constructed by Messrs. Farrans and finished to a very high standard with quality being the dominant factor. This estate is situated in a most desirable part of Enfield and set in professionally landscaped grounds. These two bedroom flats, most with balconies, offer spacious well planned accommodation and include features such as lifts to all upper floors, full gas-fired central heating, double glazed windows, modern, fully fitted kitchens together with luxury bathrooms.

For the security conscious there are the added benefits of a resident warden service, security locks and an entryphone system.

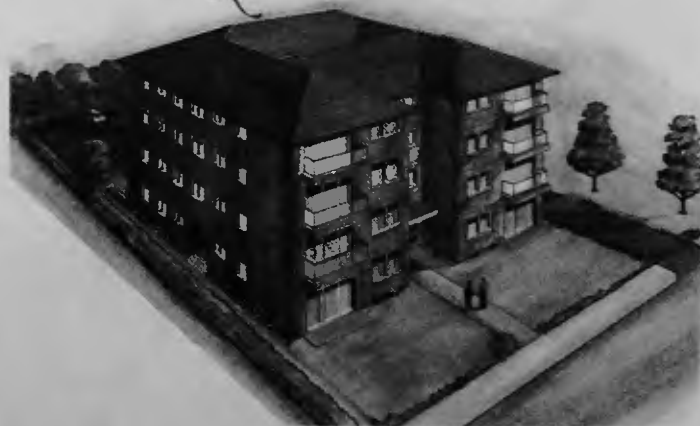
Prices start from £72,500.

For further details and a brochure please contact the owners sole agents Prudential Property Services, 39 Windmill Hill, Enfield, Middlesex.

**Telephone 01-367 7610 (Sites sales office)
or 01-367 5577 (24 hours).**

GA Property Services

Rossanne House



SIXTEEN LUXURY APARTMENTS FOR SALE

Two Bedroom, Two Bath & 1 Bedroom, 1 Bath
Etchingam Park Road, Finchley N3

Superior Specification Throughout

To include ★ Lift To All Floors
★ Video Entryphone
★ Fully Fitted Kitchens

Prices from £173,000.

For full details, please contact sole Selling Agents.

**JOHN H. JAMES & CO Telephone 88/96 Fore Street,
NEW HOMES DIVISION (0992) 587311 Hertford SG14 1A**

OPEN
VIEWING THIS
SUNDAY 2-5 pm

LAUREL COURT

7-9 St. Mary's Avenue, Finchley N3



Ellis & Co are delighted to offer for sale 8 distinctive 2 and 3 bedroom apartments, beautifully converted from an impressive residence in one of Finchley's most sought after locations.

Infinite care and attention to detail have been given to the high specification and interior design of these luxury apartments.

Features include beautifully designed Italian kitchens with luxury electrical appliances, marble tiled bathrooms, high quality carpeting, video entry phones, car parking, communal and private gardens and gas central heating.

We now invite purchasers to view the first phase of this prestigious development on Sunday 24th April between 2-5 pm when reservations can be made.

Phase 1 includes an outstanding penthouse of large proportions offering 3 bedrooms, 2 bathrooms, dressing room en-suite, drawing room, galleried dining room, large kitchen, breakfast room and utility room.

APARTMENTS AVAILABLE IN PHASE 1:

Flats 4 & 5: 2 bedroom maisonettes, prices from £135,000. Flats 6 & 7: 2 bedroom apartments, prices from £140,000. Flat 8: 3 bedroom penthouse, price £225,000. 3 bedroom garden flat, price £205,000.

For further information contact the Finchley Office on 01 349 3131.

FINCHLEY OFFICE

341 Regents Park Road
London N3 1DP

Tel: (01) 349 3131



Ellis
& Co

Award-winning homes from the Barratt Premier Collection

DARLEY HEIGHTS, LUTON off Wigmore Lane

Two, three and four bedroom homes
from £62,750.

(5 minutes M1 — Junction 10)

Fully furnished showhomes
open every day 11 am to 6 pm.
Tel: (0582) 401457.

LETCHWORTH GATE, LETCHWORTH off Radburn Way

Two, three and four bedroom homes
from £63,950.

(2 minutes A1 — Junction 9)

Fully furnished showhomes
open every day 11 am to 6 pm.
Tel: (0462) 678179.



BARRATT

Britain's Premier House Builder

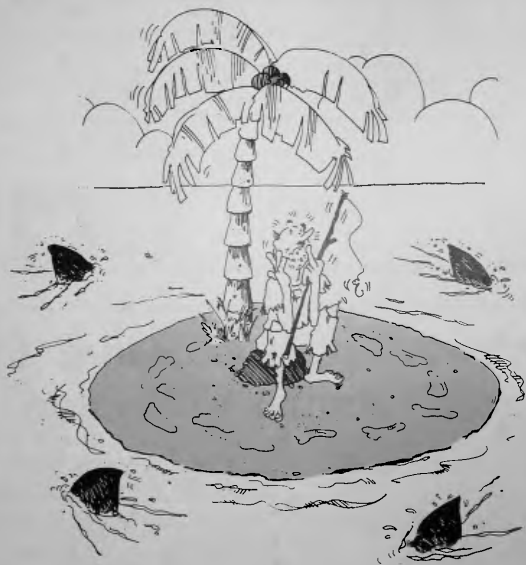
Barratt Luton Limited.

P.O. Box 5, Barratt House, 668 Hitchin Road,
Luton, Beds LU2 7XJ. Tel: (0582) 422771



Hotblack & Co.

Problems?



Buying or selling, give us a call.

01-458 8411

17 Market Place
Hampstead Garden Suburb
NW11 6JY

LUXURY LIVING FOR RETIREMENT

Lydgate Court
FRIBERN PARK
NORTH FINCHLEY

Bairstow Eves
NEW HOMES



Showflat opening
2nd MAY

SITE REP AVAILABLE
THURSDAY TO MONDAY
11-5pm. 445 1780

FEATURES OF THE APARTMENTS

- 1 or 2 bedroom spacious designs
- Luxury bathroom
- Fitted wardrobes
- Double glazing
- Security entryphone
- 'Medallion Award' Economy 7 heating
- Lift to all levels
- Resident manager
- NHBC certificate
- Landscaped gardens

PRICES ON APPLICATION

Local Selling office
FINCHLEY, N12
Tel: 01-446 4236



CEDAR HOUSE FINANCIAL SERVICES LIMITED



INDEPENDENT FINANCIAL ADVISERS

- ★ LIFE INSURANCE
- ★ PERSONAL + CORPORATE PENSIONS
- ★ RESIDENTIAL + COMMERCIAL MORTGAGES
- ★ INCOME PROTECTION
- ★ SAVINGS + INVESTMENT
- ★ SCHOOL FEES PLANNING
- ★ FINANCIAL PLANNING
- ★ INHERITANCE TAX MITIGATION
- ★ BUSINESS RESIDENTIAL + MOTOR INSURANCE

For the **BEST ADVICE** for all your Financial Services requirements
Telephone Richard Kafton
01-364 1155

Cedar House, 698 Green Lanes, Winchmore Hill N21

TWO NEW DEVELOPMENTS by ...



27 John Adam Street
London WC2N 6HX
Tel: 01-930 5202

WARDS

LUXURIOUS LARGE DETACHED HOMES ON THE RIDGEWAY ENFIELD

OPEN BANK HOLIDAYS



5 Bedroom Homes

This luxury Tudor development, is set close to all local amenities

Features include!

- Dream kitchen all fully fitted
- Gas central heating
- Double glazing throughout
- Garage
- Many more

Prices From £265,000 (Showhouse available at £275,00)
OPEN THUR-MON 10.30am-5pm



Avenue Lodge is a superior development of apartments within private landscaped grounds and constructed to the highest standards.

(Prices from £133,000 to £173,000)

Show Flat open Thur to Mon 10.30am to 5.00pm. For further Details please phone site:

01-341 3344

Features

- Video Entry Phone
- Lift & Staircase Entry to Flats
- Two Bedrooms
- Mirror Wardrobe, TV/Radio Sockets
- Fully Tiled & Mirrored Bathroom - Bath, Bidet, Shower Cubicle
- Living Room onto Balcony through French (Double Glazed) Doors
- Fully Fitted Kitchen with Cooker, Hob Fridge Freezer, Dishwasher

Avenue Lodge, Avenue Road, Highgate N6
(Seven Flats & Two Penthouses)

Agents Barry Allsuch & Co 09276 2711
OPEN THUR, FRI, SAT, SUN, MON 10.30am-5pm

Site Office No: 01-363 5801
AGENTS PAUL WALLACE & PTNERS 0992 27781

Pavlova festival a celebrated success

THE first Pavlova Festival to celebrate the life and art of the great ballerina reunited members of her Company at her former home, Ivy House, North End Road, Golders Green.

In a souvenir programme Victor Dandre, the dancer's companion for more than 20 years, recalled Pavlova's affection for her English home.

He said: 'In character the building was a typical old English mansion, containing in the middle a large hall which extended up through two storeys. This hall served Pavlova for her exercises and partly for rehearsals, thus saving her from the necessity of going for these purposes into town.'

'Above all Pavlova was fondest of birds and flowers. The garden of Ivy House made it possible for her to keep swans, flamingoes and pigeons while the big greenhouse, turned into a huge cage, made an excellent home for a number of small birds, brought from various lands.'

During the five-day Festival visitors were able to see exhibitions including costumes worn by the dancer herself, furniture loaned by Dame Alicia Markova and used by Pavlova in St Petersburg, and film of the ballerina at the height of her career.

A programme of lectures, discussions and master-classes included recollections for former members of the Anna Pavlova Company and an



Pictured at the ceremony (from left) are: Edward Kurtz; Jean Adrienne; the Mayor of Barnet, Cllr Malcolm Lester; Thurza Rogers; The Mayoress, Mrs Adelaide Lester; Rita Glynde; former Barnet Mayor, Frank Gibson; Chairman of the Borough's Libraries and Arts Committee, Cllr Miles Golding; Mlle Nanita; Cllr Agnes Slocombe, a member of the Libraries and Arts Committee.

introduction to archive ballet material in England.

The terrace where Pavlova lay in hammock and watched birds taking their bath in a little pool, was bathed in sunshine for the official Festival opening on April 12.

A Sir Frederick Ashton rose was planted in the small garden adjacent to the lake to commemorate the Festival.

The Festival was produced by the Anna Pavlova Memorial

Museum, the London Borough of Barnet and the Middlesex Polytechnic with financial assistance from Barnet Council and Greater London Arts. The buffet for the opening ceremony was catered by Rosemary Jude.

FIRST SPONSORED LITTER BIN

WHEN the Borough's first commercially sponsored litter bin was launched by Cllr Dot Benson, chairman of Keep Barnet Tidy, and Mrs Brenda Harvey, President of Barnet's Joint Chambers of Commerce, they ceremonially tore up their speeches and deposited the paper in the bin.

Mrs Harvey is also President of the Edgware and Burnt Oak Chamber of Commerce, the first group to take up sponsorship of litter bins in the Borough's new scheme.

Cllr Benson formally handed over the bin outside Petals florists in Station Road, Edgware, and thanked the Chambers of Commerce for their co-operation in

backing the aims of the Keep Barnet Tidy Group.

Mrs Harvey said she hoped the public would take note of the campaign to achieve a cleaner borough, and make use of the bin.

Mighty Bin — a 20ft high inflatable litter bin — with the logo of the Tidy Man hovered in the background during the ceremony.

Shops and commercial premises throughout the Borough can sponsor a bin which will then carry the logo of the Tidy Man and the name of the sponsoring shop or business.

A small, post-mounted bin will cost the sponsor £28 plus VAT as a single payment to cover three years. A large free-standing bin is £95 plus VAT, single payment for three years, or £35 plus VAT annual payment.

Cllr Benson said she was pleased to see the Council and the Business Sector working together to improve the shopping environment and hoped residents would take an interest and responsible attitude to keeping streets and parks litter free.

To sponsor a bin contact Bernard King. Tel: 361 0013.

Barnet's Director of Technical Services, Max Caller, is pictured with Cllr Benson (left) and Mrs Harvey at the ceremony.



Wrong number

OUR sincere apologies to Lord Aylmer for the insertion of an incorrect telephone number in last month's Barnet Borough News which caused him great inconvenience because of the volume of enquiries received about special classes for adults at Hendon College which started on April 18. The number should have read 200 or 8300 exts. 240/241 and not as stated.

LONDON BOROUGH OF BARNET

MAY DAY BANK HOLIDAY REFUSE COLLECTIONS

Working arrangements for refuse collections
including wheeled bin areas

**THERE WILL BE NO COLLECTIONS OF REFUSE
IN THE BOROUGH ON MONDAY, 2nd MAY**

Collection arrangements:

Tuesday, 3rd May Monday's collection
Wednesday, 4th May Tuesday's collection
Thursday, 5th May Wednesday's collection
Friday, 6th May Thursday's collection
Saturday, 7th May Friday's collection

SPRING BANK HOLIDAY REFUSE COLLECTIONS

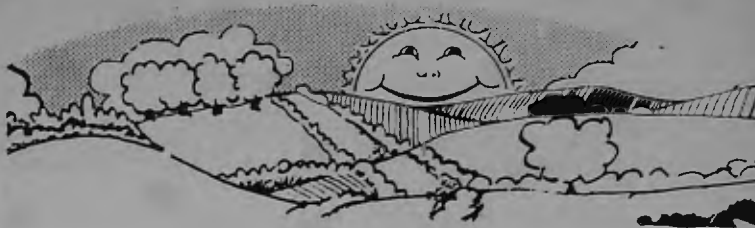
Working arrangements for refuse collections
including wheeled bin areas

**THERE WILL BE NO COLLECTIONS OF REFUSE
IN THE BOROUGH ON MONDAY, 30th MAY**

Collection arrangements:

Tuesday, 31st May Monday's collection
Wednesday, 1st June Tuesday's collection
Thursday, 2nd June Wednesday's collection
Friday, 3rd June Thursday's collection
Saturday, 4th June Friday's collection

A BRIGHTER BARNET



lets keep our borough clean and
tidy! don't be a litter lout

● PUT YOUR LITTER IN THE BIN

● BOTTLE BANKS are situated at:

1. Strafford Road, Stapylton Road
Car Park, Chipping Barnet.
2. Behind Tesco's in Ballards Lane.
3. Lodge Lane Car Park, North
Finchley.

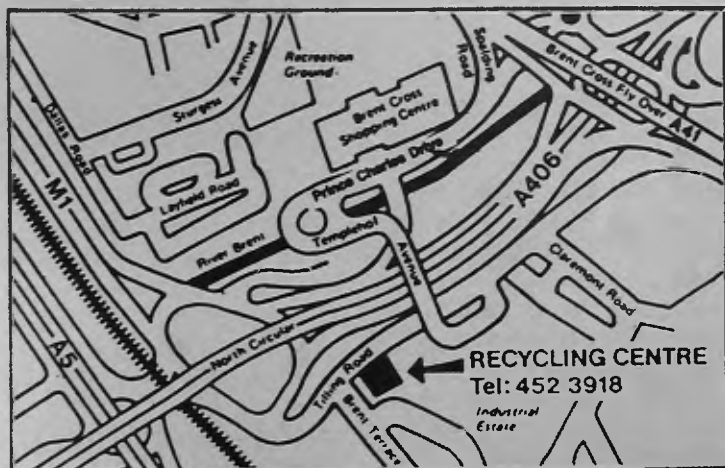
**DUMPING IS GETTING MORE
EXPENSIVE AND CAN COST
YOU A FINE, UP TO £1,000**

DON'T BE CAUGHT USE THE FACILITIES PROVIDED BY



LONDON BOROUGH BARNET WASTE RECYCLING CENTRES

The London Borough of Barnet has two Recycling Centres where the public are encouraged to bring glass containers, old clothing and furnishings, metal goods and cans, waste sump oil . . . for recycling which saves energy resources.



The Centres are at:

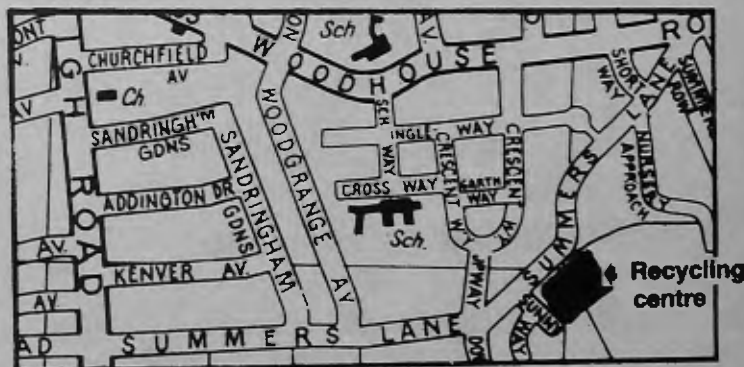
BRENT CROSS, Tilling Road, NW2 (Tel: 452 3918) (see map)

Opening hours Mon-Sat: 08.00-16.00.
Sun 08.00-1600

SUMMERS LANE, Finchley, N12 (Tel: 368 8083) (Between Woodhouse Road and High Road, North Finchley)

Opening hours Mon-Sat: 08.00-16.00.
Sun: 08.00-1600

In addition, the Centres also accept bulky items and garden waste that borough refuse vehicles cannot accept. There is no charge to householders for this service.



● BOTTLE BANKS are situated at:

1. Stapleton Road car park Chipping Barnet.
2. Behind Tesco's in Ballards Lane.
3. Lodge Lane Car Park, North Finchley.

The Engineering Services Division of the Directorate of Technical Services



MAINLY FOR WOMEN

Brilliant Blush Strokes

There's so much choice when it comes to buying blusher that it's tempting to simply go without. Don't! Blusher is a real beauty must. Whether you're opting for a porcelain pale or a fresh healthy look, a dash of colour skilfully applied

can pull your whole face into perfect focus!

If your powder blush comes complete with a tiny brush, throw it away and treat yourself instead to a long handled blusher brush — the biggest and best you can afford. This will give you more control and help create a natural looking bloom. Work the brush over the surface of the blusher and pick up colour, then tap it on the back of your hand to remove any excess. Dab the brush on to your skin in the correct place and brush up and away, blending away hard lines.

Creams can only successfully be applied with the fingers. Resist the temptation to vigor-

ously scrub it into the skin — it needs to sit on the surface, not to be rubbed into your pores. Position it in the same but this time pat it into your complexion with the pads of your

fingers, then gently tap and smooth to blend away hard edges. If you simply can't get cream blush to perform well, smooth it on with a moist cosmetic sponge.



Snappies

FREE HOME DELIVERY SERVICE

Nappies - Milks - Baby Foods - Toiletries

ULTRA PAMPERS

Carry Packs £6.49 Value Packs £12.39

PEAUDOUCE

New Super Absorbent Jumbo packs £12.25

For Your Free Price List Telephone

01-440 5798

FREE DELIVERY SERVICE



The Nappy Express

"ALL BABY'S NEEDS AT VERY HIGH SPEEDS"

PEAUDOUCE

NEW RANGE OF SUPER ABSORBANT NAPPIES NOW IN JUMBO VALUE PACKS

SUPER 96, MAXI 80, CHILDSIZE 72 £12.49 or £12.25 if you buy two or more packs

NEW BABYKINI

SUPER 48, MAXI 40, CHILDSIZE 36 £6.99 or £6.79 if you buy two or more packs

FULL RANGE OF ULTRA PAMPERS IN STOCK. PLEASE ASK FOR DETAILS

FULL RANGE OF BABY TOILETRIES, HOUSEHOLD ITEMS, CHILDREN'S VIDEOS, STORY BOOKS AND CASSETTES.

PHONE ANGELA OR DAVID

ON 01-445 6161

For an established, friendly, efficient and reliable service

DIET SAFETY CONFIRMED

A DHSS doctor is advising GPs that very low calorie diets, such as the successful Cambridge Diet, are a safe and effective way of losing weight.

Dr Dennis Craddock is a GP,

and member of the working party which recently published the Government's COMA report, "The Use of Very Low Calorie Diets in Obesity". Known as VLCD's these meal replace-

ment diets provide under 600 calories a day enabling very fast weight loss. The most popular, the Cambridge, diet, introduced in 1984, has now been used by some 2 million people in the UK.

Dr Craddock writes in "Pulse", a leading magazine for the medical profession:

"Many fat people lose motivation after weeks, months or years of trying to avoid eating those pleasure foods for which they crave. Some form of 'magic' is what they are seeking and VLCD's satisfy this need in some measure."

He goes on to confirm that when used in their proper context, these diets are effective and absolutely safe in treating both moderately and severely overweight people.

The British Medical Association has this month endorsed

the findings of the COMA report and Cambridge Nutrition's Managing Director, Dr Alan Wallace, commented:

"We were pleased with the coma report because it confirmed the safety of the diet. We have been able to implement all of the recommendations made and are in consultation with the Department of Health at this moment to establish a voluntary code of conduct for the industry. This medical confirmation of the safety and efficiency of VLCD's from Dr Craddock will be welcomed by the many people trying to lose weight who need a diet that really works."

For further information please contact:

The Leeds Diet Centre, 82 Street Lane, Leeds LS8 2AL.

THE FAST DIET THE SAFE DIET THE EFFECTIVE DIET

Call your Counsellor today

DIET CENTRES:

15 Flask Walk,
Hampstead NW3
Tel. 435-0709
Open 7 days

8-10 Station Road,
Finchley N3
Tel. 349-1284
Open 6 days

**GET SLIMMER
FOR SUMMER
RING TODAY.**

THE Cambridge DIET

Advice from COMA — what GPs should say to patient about VLCDs

- Never takes less than the daily amount recommended by the manufacturers. Even the minimal daily intake of 400kcal for shorter women and 500kcal for men and women over 5ft 8in, which the report recommends, ensures rapid weight loss. It is pointless and potentially dangerous to take less.
- Never use the diet for longer than three or four weeks, and never recommence dieting except after a break of at least a week.
- Report any unexpected symptoms.
- On stopping the diet adopt healthy eating habits as a way of life by eating food high in fibre and low in sugar, white flour and animal fat.

FOCUS ON HEALTH

PUPILS from schools throughout the Borough will take part in a Fun Run at Copthall Stadium this month as part of a week-long focus on health education.

Barnet's Director of Education, Neil Gill, and a representative of the District Health Authority will officially launch the 'Choices in Health' week at 3 pm on Monday, May 9 at the Teachers' Centre, High Road, North Finchley.

On display will be a range of material promoting health education across the curriculum and throughout school life from infant to upper secondary classes.

Judging

Judging will take place of Art and Design competitions submitted by various schools. Primary schools have been working on SMILE (Dental Health) and secondary schools on designing a poster for ASH (Action on Smoking and Health).

Refreshments will be provided by the Barnet School Meals Service and visitors to the Centre will be able to view, and sample, the variety of food choices available in the Borough's schools.

On Wednesday, May 11 Barnet Schools Athletic Association, supported by the Look After Your Heart campaign, have invited schools to participate in a Fun Run at the stadium, starting at 4.30 pm.

Teams have been asked to design heart-shaped boards, which will be entered in a competition and runners are invited to come in fancy dress.

The emphasis is on running for health and enjoyment and it is aimed at being non-competitive. Primary school children will jog or run for one and a half miles and older students for two miles.

Among other activities during the week are a discussion on Health Resources in Barnet at the Teachers' Centre on Tuesday, May 10 and, on the same day, a production by the Breakout Theatre Company at Barnet Youth Drama Centre, East Finchley, about attitudes of young people to AIDS.

On Thursday, May 12 there is a Healthy Eating workshop aimed at pupils in Junior Schools, when the children can take part in five projects including tastings.

For older students there is a workshop to promote health related fitness and discover how new technology can promote a healthy lifestyle.

The week concludes on Friday, May 13, with a one-day practical workshop at the Teachers' Centre for primary teachers on the topic of Drama and Role Play in Primary Health Education.

In addition to these activities many of the Borough's schools working on a variety of projects, highlighting the subject of health.

SIMPLY THE BEST IN KITCHEN DESIGN



**OUR SPECIAL OFFER FOR MAY:
A FREE NEFF MICROWAVE WITH EVERY ALNO KITCHEN**

MASTER FIXIT STUDIO FOR ALNO & CHABERT DUVAL

**COME IN AND SEE US AT
103 THE BROADWAY, MILL HILL
or call
FREEFONE MASTER FIXIT
FOR MORE DETAILS**

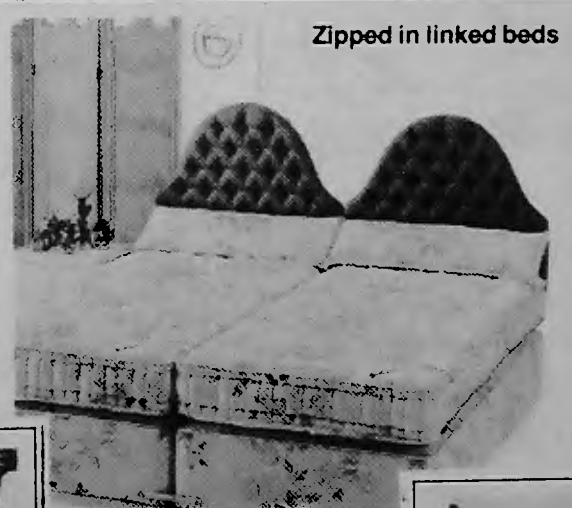
World of Beds NOW OPEN IN COCKFOSTERS

WE SELL THE BEST BEDS IN THE WORLD



Back care beds

Specialist in Quality Beds & Brass Bed Steads



Zipped in linked beds

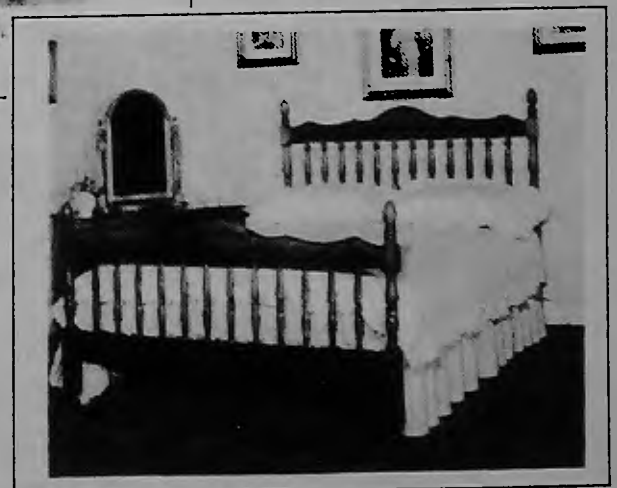
Price Guarantee

After purchase if you see the same bed cheaper we will gladly refund the difference

All leading makes including Relyon, Myers, Vispring, Silentnight, Millbrook, Hypnos etc.



After 25 years we offer expert advice, service value



★ FREE DELIVERY

01-440 0389

FREE DISPOSAL OF YOUR BED ★

21 STATION PARADE, COCKFOSTERS RD, COCKFOSTERS



Opportunity's the theme at Hendon College Open Day. This is the model office at Grahame Park site.



Careers counselling by Angelique Gainza for BTEC business studies student Marleen Batson (left)



BTEC Travel and Tourism students Neal Cohen, Hilary Shaw help Mrs Audrey Festa in the Travel Bureau



Students studying for GCSE maths in a science laboratory at Burnt Oak

LOTS TO DO AT COPTHALL LOTS TO DO AT COPTHALL

HALF TERM HOLIDAY CRASH COURSES AT BARNET COPTHALL CENTRE SWIMMING POOLS

Tuesday, 31 May-Saturday, 4 June

★ LEARN-TO-SWIM CLASSES
FOR DUCKLINGS (4 year
olds), CHILDREN AND
ADULTS

**BOOK NOW
TO MAKE SURE
OF YOUR PLACE**

*Bookings can be made any time in
person at the pools.*

All enquiries to: Sports Officer,
Barnet Copthall Centre Swimming
Pools, Great North Way, Hendon
London NW4 1PS

01-203 4187

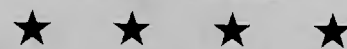
LONDON BOROUGH
barnet

The Directorate of
Technical Services

LOTS TO DO AT COPTHALL LOTS TO DO AT COPTHALL



THE HENDON HALL HOTEL



Ashley Lane, Hendon NW4 1HF

The ideal venue for your **Dinner & Dance;**
Wedding; Barmitzvah. We have superb
private rooms for that very special occasion.

As well as having 52 well appointed
bedrooms the Hotel boasts

**THE PAVILION RESTAURANT
& BAR**

a first class restaurant offering both fixed
price and à la carte menus
SUPERB LUNCH MENU SERVED DAILY

*For further information and
reservations phone:*

203 3341

LOTS TO DO AT COPTHALL LOTS TO DO AT COPTHALL

Open Day



Gita Kunbiredia hand painting — a tradition at Indian weddings.



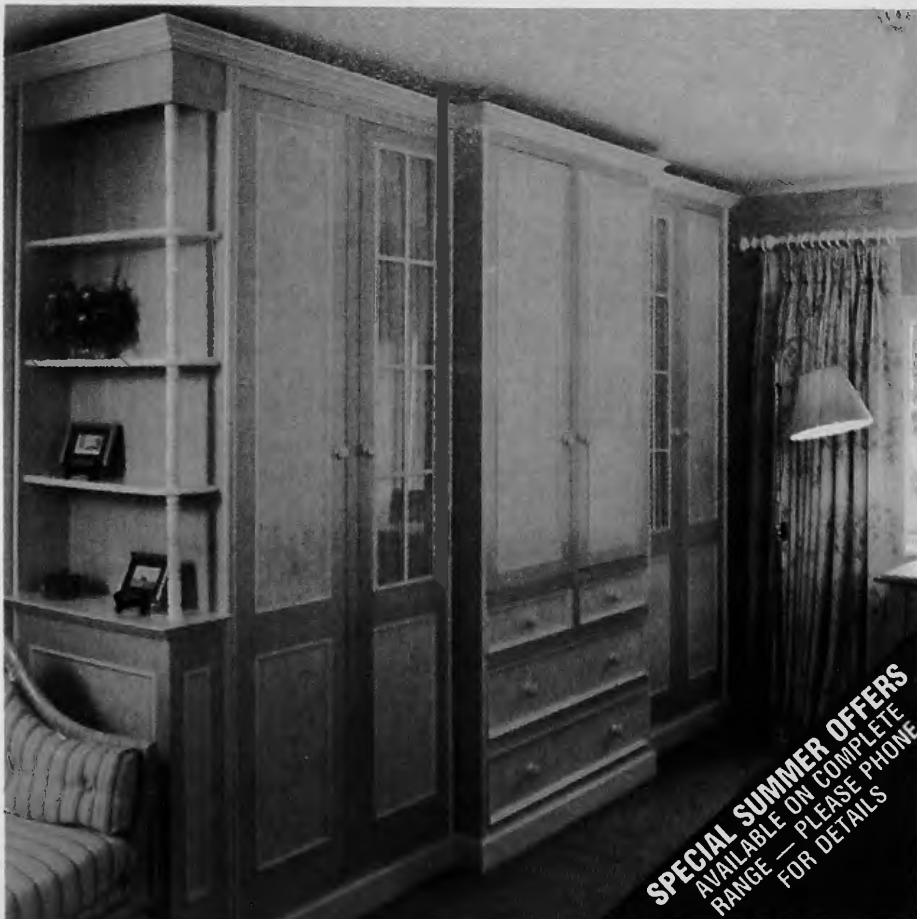
Montagu Road Centre, West Hendon, specialises in teaching English as a second language and to foreign students and so has an international ethos.



Chris Holford, head of technical section, demonstrates an oscilloscope in the Electronics Workshop.



Len Warner, computer network manager, demonstrates a model in the computer suite at Burnt Oak.



NELSON JAMES FURNITURE

Purveyors of Fine Quality Home Furnishings

LINBURN HOUSE, 342 KILBURN HIGH ROAD NW6 2QJ

TEL: 01-328 8932 (5 Lines)

A PAINT FINISH THAT WON'T GET UNDER YOUR FINGERNAILS

Hand dragged Furniture is a drag if you find it chipping and scratching from day one (ever heard of Smallbone giving a 10-year guarantee? — because we will).

Our hand painted bedroom furniture is oven lacquered using a unique wipe clean process that will not get under your nails. It will last and last, it will also pay for itself the same way as German Kitchens and Italian Bathrooms do today. "Add On Value", its called.

Unlike our competitors we are not expensive. In fact we will better any quotation you have from them. We deliver in around five weeks and usually complete the fitting in one day.

Our designers will be delighted to call without obligation any time.

We are now offering a range of made to measure conservatories, ideal for summer, for installation within 8 weeks of order.

TENNIS: It's everyone's game

GET ready to serve, lob and smash for a game, set and match on one of Barnet's 113 tennis courts Borough wide! Age is no barrier. Andrea Jaeger was the youngest seeded competitor at Wimbledon when she was 14 and England's 1926 women's champion, Kitty Godfrey, was still playing tennis well into her 80s.

Wimbledon

The 1988 Wimbledon Championships are looming and interest in tennis is always accelerated by this annual event. Most people are not aiming for championship standard so why not get in early and reach for a racquet now?

Beginners can get help from a wide range of tennis coaching courses run by the Council's Recreation Group. There is still time to enrol on the women's beginners courses which start on June 15 and on the 50 plus courses, beginning in July. The closing date for the women's courses is Monday, June 2. Book now to avoid disappointment.

To get further information or register on the course, phone 446 8511 extn 4668.

Free coaching

The Barnet Sport project has a tennis section which works Borough wide, setting up free coaching sessions for all ages. Their sessions run from Monday to Wednesday each week throughout the year, with special activities organised for children during school holidays.

Their work is centred around four parks — Edgwarebury; Oakhill, East Barnet; Victoria, Finchley; and Hendon. For up to date information about their coaching sessions, contact Paul Haslam on 203 2752.

Booking

If all you want is the use of a court, booking is very simple. You can book a tennis court either on the day, or up to 24 hours in advance. This can be done in two ways. Either go to the park of your choice and book in person or phone the park on the numbers given on the next page. Please be patient when you ring, as staff are not always available to answer the phone immediately.

The current charges from April

1, 1988 are: Casual hire per person per hour — 60p between 9am and 4pm on weekdays, excluding public holidays, during the period March 1 until November 30. Concessions not available at weekends or public holidays. At all other times including weekends and public holidays, the charge will be 90p. Between December 1 and February 28 the all day, weekday charge will be 55p per person per hour.

Tennis Rating System

The Lawn Tennis Association Volkswagen Ratings is a scheme for all tennis players, from the beginner to a player who is nationally ranked. Each participant, on payment of a small annual membership fee, is allocated a rating irrespective of their playing standard or age.

Players can then take part in any of the Ratings Tournaments held all over the country between March and November. Competitors will be matched against someone of their own ability to ensure a good game. There are four venues used in Barnet and further information about the scheme is available from the local co-ordinator: Barbara Davis, Park House, 8 Totteridge Common, N20 8NL. Tel: 446 4620.

There are many leaflets which detail tennis activities, one of which will be produced by the

Recreation Group this summer, showing the locations of all the tennis courts in the parks. Residents will be able to pick up a copy of that leaflet in local libraries.

Other leaflets include: What's Your Sport? Tennis — available from libraries or from the Recreation Group at Barnet House, 1255 High Road, Whetstone.

LTA, Where to play tennis in London 1988 or Tennis in Greater London — available from the LTA or from the Recreation Group.

Information booklets are also available from the Lawn Tennis Foundation. The Queens Club, West Kensington, London W14 9EQ. Tel: 01 385 4233.

Details of courses and venues

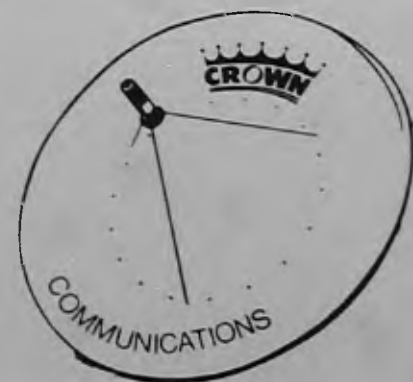
For details of courses and venues in the Borough contact Mike Behnke, Sports Development Officer, Barnet House, 1255 High Road, Whetstone. Tel: 446 8511 extn 4668.

On the opposite page is a map of the borough showing where the tennis courts are located. They are numbered and circled from 1 to 29. The key to the locations, the telephone numbers and the number of courts available are at the bottom of the map.



'THE WORLD IN YOUR LIVING ROOM'

CROWN Communications are proud to announce the launch of their amazing **MULTI CHANNEL** satellite television systems using the very latest technology



SEE

- ★ Worldwide sporting events LIVE
- ★ Enjoy 24 hours of pop videos, jazz, opera, ballet from around the world
- ★ Watch major world events as they happen
- ★ Films 10 hours a day, 7 days a week

PLUS MUCH MORE!

- ★ Readers who are prepared to participate in our special monitoring service could have the cost of their systems

GREATLY REDUCED

- ★ THIS A LIMITED OFFER SO TELEPHONE NOW!



01-959 3155
01-959 3155 (day)
01-904 7744 (eve)

Where to play



KEY

Park	Tel No.	No. of Courts		
1. Old Court House Rec. Grnd, Wood Street, Barnet	449 6808	7	14. Northway Gdns, Northway N2	455 6006 9
2. Tudor Sports Grnd, Clifford Road, New Barnet	449 0282	5	15. Princess Park, Oak Fields Rd, NW11	455 6234 2
3. Victoria Rec. Grnd, Park Road, New Barnet	449 0458	6	16. Childs Hill Park, Nant Rd, NW2	455 6107 2
4. Oak Hill Park, East Barnet	368 3949	4	17. Basing Hill Park, Wayside NW2	455 6081 2
5. New Southgate Rec. Grnd. Brunswick Park Rd N14	368 2410	3	18. Hendon Park, Queens Road NW4	202 5573 8
6. Bethune Park, Manor Drive N11	368 8153	2	19. Woodfield Park, Cool Oak Lane, West Hendon	205 5939 3
7. Friary Park, Friern Barnet Lane	368 2084	4	20. West Hendon Playing Fields	205 3042 2
8. Riverside Walk, Longland Drive, Woodside Park	—	2	21. Rushgrove Park, Rushgrove Ave, NW9	205 3046 4
9. Victoria Park, Ballards, Lane, Finchley	346 3002	6	22. Sunnyhill Park, Watford Way NW4	203 4100 4
10. Glebeland, High Road, N Finchley	444 0458	8	23. Montrose Park, Burnt Oak	205 3045 2
11. Halliwick Rec. Grnd, Albion Ave, N10	883 9624	2	24. Bittacy Hill Park, Sanders Lane, Mill Hill	349 1813 2
12. Cherry Tree Woods, Summerlee Ave, East Finchley	444 0352	3	25. Mill Hill Park, Wise Lane, Mill Hill	959 0573 4
13. Lyttelton Playing Fields, East Finchley	455 2989	6	26. Watling Park, Burnt Oak	959 0290 2
			27. Deansbrook Road Sports Complex, Burnt Oak	446 8511 3
				(Ext 4494)
			28. Stonegrove Park, Stonegrove, Edgware	958 2456 2
			29. Edgwarebury Park, Edgwarebury Lane, Edgware	958 2575 4

Variety is keynote of youth events



JOIN in the fun! A youth camp in Cornwall, a visit to a twin town, as well as chess, five-a-side football and uni-hockey tournaments have been arranged by Barnet's Youth and Community Service for the Borough's young people this summer.

Youth Camp

Bookings are now being taken for a trip to Cornwall in July. The International Youth Camp is situated above Porthpean overlooking the beautiful St. Austell Bay. From July 23 until July 30 there is a chance for 20 young people, aged between 15 and 21, from the Borough to visit this beautiful part of Cornwall.

Communal facilities include permanent toilet blocks with hot showers and hand basins, a purpose-built dining hall and kitchen, a first aid centre and camp bank.

There is also a Post Office, a camp shop, coffee bar and social and recreation areas.

Accommodation will be under canvas which, together with transport to and from Cornwall and a daily camp programme, is included in the cost of £69 for the trip.

It will be possible to arrange, at an extra charge, sea fishing, horse riding and various other activities away from the camp. All activities are organised by experienced, qualified staff.

Four group leaders will accompany the Barnet party and it is likely that departure will be late on Friday, July 22 to avoid the South West traffic jams.

The evening programme during the week will be varied and may include a concert, film evening, folk evening and discos.

Application forms are available from the Directorate of Educational Services, Youth and Community Service, Friern Barnet Town Hall, N11 3HL.

Siegerland Exchange Visit — 1988

Arrangements are being made for the 1988 exchange visit between young people from the Borough and Barnet's twin town of Siegerland, West Germany.

Each year the Youth and Community department organise a home to home exchange for 20 young people between the ages of 15 and 21.

The Siegerland group will be visiting Barnet from July 22 until August 5 this year. The return visit by the Borough's young people will

be from August 6 until August 20.

In 1988 this popular exchange will be 37 years old. The visit will be an opportunity for young people to experience living in a West German home and visiting places of interest. Social events with young Siegerlanders are arranged.

The cost, provisionally fixed at £110, will include air travel by Lufthansa, insurance, accommodation, food and programme costs in Siegerland. The charge for those who cannot accommodate a young visitor from Siegerland will be about £150.

Applicants from the Borough for the Siegerland visit will be expected to ask their parents to accommodate a young visitor from the twin town, in their homes free of charge. The home offered must be within the boundaries of the Borough of Barnet.

The exchange is limited to young people living in the Borough, going to school in Barnet or belonging to a youth organisation in the Borough.

Application forms can be obtained from The Director of Educational Services (FE), Town Hall, Friern Barnet, N11 3DL.

There will be at least two meetings for all participants before the visit and one afterwards.

Sport

The 1988 Chess Tournament will be held on May 15 at Centre Point, Cornermead, Grahame Park. There are four age groups: under 10; under 12; under 14 and under 19 and the Tournament is open to

members of youth organisations in the Borough, young people resident in Barnet or at school in the Borough.

Competitors will be asked to arrive at Centre Point at 9am to enable the Tournament to begin promptly at 9.30am. The format will consist of several rounds on the one day, none of which will be a knockout.

All rules of chess will apply including the touch-piece move it rule. Clocks will be used on the under 19 section and elsewhere, if the Controller deems it to be necessary. Please note that when castling you must touch the king first.

Players will be asked to bring a packed lunch but light refreshments and drinks will be on sale in the coffee bar. A bookshop facility will be provided should the numbers entering the tournament make it feasible.

Parents are welcomed and encouraged to attend the tournament to supervise their child while they are not playing the games. Parents will not be allowed in the playing area.

Trophies and prizes will be presented shortly after the conclusion of the final round at approximately 5.30pm. The winner in each section will receive a small cup/trophy to keep and will be designated Barnet Champion for that age group for 1988.

The entry fee is £2. Forms are available from Mrs A. Hutchins on 368 1255 extn 3135. Forms should be returned to the Director of Educational Services (FE), Town



Hall, Friern Barnet, N11 3DL. Cheques or postal orders should be crossed and made payable to 'Barnet Corporation'.

Further information is available from The Controller on 0707 59080 (up to 10pm) and entries will be accepted after May 6 if space is available. The total number of places is restricted to 120.

Five-a-side soccer

An expanded Five-A-Side Football Tournament will be held at Grahame Park's Centre Point on the Redgra pitches on Sunday, June 5.

The tournament is open only to youth groups which are not specialist football clubs. The competition is intended to encourage any interested young people and does not compete with established league or cup events. It would be wrong for ordinary players to be overwhelmed by teams who normally play at much higher levels.

Play will start at 10.30am and games will last seven minutes each way. The competition will be played on a group basis, so each team will play two or three matches.

A trophy and individual plaques will be presented to the winners and certificates to runners-up. A separate competition will be held for girls' teams on the same day.

Entries are invited from teams in three age groups: over 11 but under 13 on August 1; over 13 but under 15 and over 15 but under 18. Entry fee is £1.50 per team and winners of the senior events will be asked to represent the Borough at the London Youth Games at the Crystal Palace National Sports Centre on Saturday, July 9 and Sunday, July 10.

Forms are available from the Education Department at Friern Barnet Town Hall. Closing date for entries is May 20.

Uni-Hockey

A Uni-Hockey Tournament in the gymnasium at Centre Point, Grahame Park will be held on Friday, June 17 from 6pm until 9pm.

There are two age groups: under 11 and under 14 and the entry fee per team is £2. Cheques or postal orders should be made payable to the 'London Borough of Barnet.'

Each team shall consist of five players and two substitutes. There may be boys' and girls' mixed teams and there will be no goalkeepers.

All entries and fees must be received before Friday, June 10. Forms available from the Education Department, Friern Barnet Town Hall. Cheques or postal orders should be made payable to 'Barnet Corporation.'

Adventure challenge

GROUPS of young people who enjoy a challenge can find adventure in the Borough's annual 'Now get Out Of That' open days at Moat Mount Campsite, Mill Hill.

This popular event, organised by Barnet's Youth and Community Service, will take place on June 11 and 12. It is open to any group of young people who can organise themselves but is only suitable for those aged between 11 and 21. There is a limit on entries to a maximum of two teams per club.

The days are not competitive. The challenge is in the activities themselves, rather than competition against other groups.

Activities, which are expertly supervised, include abseiling, archery, air-rifle shooting, an assault course and a giant Tarzan swing.

Groups should consist of between four and six members and the challenge is to get all the group through all the activities. The entry fee is £2 per group.

Each group must provide a

manager who will be responsible for the conduct of the team and a helper who can assist in the organisation of the activities.

A barbecue, where refreshments can be bought, will operate on each of the two days.

Entrants are advised to wear old clothes and bring a change of clothing as the going maybe a bit muddy.

On Saturday, June 11 between 3pm and 5pm there will be six events for groups of young people with handicaps.

Sunday is divided into two sections with 10 events between 10.30am and 1pm and 10 events between 2pm and 4.30pm.

For further information about the event, phone Peter Thorn on 01-202 2757. The closing date for entries is May 25 and forms should be returned to The Director of Educational Services, Town Hall, Friern Barnet, N11 3DL with the entry fee. Cheques or postal orders should be made payable to 'Barnet Corporation.'

BIG WELCOME FOR THE 'WORST GIRL IN BARNET'

AT the age of 13, Suzie was already labelled "the worst girl in Barnet". When things finally broke down at home she went into care fighting every inch of the way . . . then she met her foster parents.

'I was really scared,' says Suzie. 'I didn't know what to expect. But they were alright, really sort of cheerful and happy. It was just welcome straight away.'

Mike and Linda already had three children of their own when they decided to become foster parents four years ago. They describe fostering as really exciting, and say they can't understand why everybody doesn't want to do it.

'When a teenager arrives in our home they are often quite distressed and full of uncertainty,' says Mike. 'They have had very little say in what's happened, and don't know where the end of the line is likely to be.'

'It is an awkward period,' admits Linda. 'But having other children around helps. I try to be a mother-friend, a calm presence, and not put any pressure on them. Every child is different and we take a day at a time, gradually we gain their trust.'

When Suzie arrived in Mike and Linda's home she only expected to stay until her problems could be resolved. Now she is building a closer relationship with her own

family, but will probably live with Mike and Linda until she's an adult. She feels that she has changed a lot:

It's because of teenagers like Suzie that Barnet Social Services has launched Teen Care Plus. Many young people with problems are anti-education and anti-authority, and view children's homes with great distrust. They respond better if they can go straight into a short term foster home until their difficulties can be sorted out and a long term plan can be agreed.

Barnet hopes to set up a team of foster parents, single or married, who feel that they can help young people over the age of 13 through the trauma of finding themselves in care. Although the experience of bringing up a family of one's own is useful, you don't have to be a parent to foster.

Qualities

A genuine liking for teenagers heads the list of qualities Barnet are looking for — others are a sense of humour, tolerance, patience, understanding, maturity and a realistic attitude to the difficulties of fostering teenagers with problems that would defeat many adults.

Teen Care Plus foster parents will be asked to be available to care for a teenager at short notice, for anything for a few days to several

months. Some teenagers find themselves in care via the courts, others come straight from home. They may be abused, at risk, homeless, into petty crime or solvent abuse, they may be their own worst enemies. Barnet runs training workshops for foster parents, and supports both the foster parent and the child on a 24 hour basis.

Teen Care Plus fostering rates are above those recommended by the London Boroughs Association, and a retainer will be paid between placements or for a maximum of 46 weeks.

Carol Rogers is Barnet's Senior Management Officer for Fostering and Adoption and will treat all enquiries in confidence.

Big step

'Fostering is a big step for people,' acknowledges Carol. 'Anyone who thinks they would like to be a foster parent should telephone me for more information. If they want to go further they can meet me or one of the fostering team, or come along to one of our meetings to talk to other foster parents who are doing the job already. We do take up references, but only with the signed consent of the prospective foster parents.'

Fostering teenagers is not a soft option, but Mike and Linda feel that the rewards outweigh the difficult days.

'To me it's giving somebody a

chance,' says Linda. 'I just feel that every kid has a right to have a good family life, to have security — not in a material sense — but through love.'

Suzie says that foster parents have to be really caring, and really understand what it is like to be young. 'I just had to be myself,' she says. 'That was it, that was all they asked of me — and to respect the house and respect them. It's really easy as long as you've got the right attitude.'

Teen Care Plus foster homes are needed within easy reach of: Barnet, Edgware, Burnt Oak, Hendon, East Finchley, Finchley, and Golders Green. Children go into care from a variety of cultural, racial and religious backgrounds, and need families that reflect these differences. For example, a Muslim teenager will make better progress within a Muslim family than within the alien culture of a Christian family.

To find out more about Teen Care Plus, pick up a leaflet from your local library or contact Carol Rogers at Ivy House, 1331 High Road, Whetstone, N20. Telephone: 01-446 1488 ext. 4218.

There will also be informal meetings for people who want to know more about fostering at Hendon Town Hall, at 8pm, on Tuesday, May 3 [not May 5 as advertised], and on Wednesday, May 18.

Teen Care Plus . . . an open invitation

- Teen Care Plus is a new short term fostering scheme for teenagers in the Barnet area, who are unable to live with their own families.
- Teen Care Plus foster parents can be men or women, married or single, who like young people — and feel that they can help them sort out their lives.
- Teen Care Plus foster parents are paid £170 a week when a teenager is placed in their care, and are trained and supported by the social work team.
- To find out more come to one of our informal open meetings: Tues, 3rd May, or Wed, 18th May. They both start at 8pm at Hendon Town Hall. Or phone: 01-446 1488 ext. 4218.



LONDON BOROUGH
barnet



LEARN TO DRIVE THE EASY WAY

WITH **FREE** PICK UP SERVICE

- Dual control Mini Metro cars.
- Friendly, professional tuition.

BSM MUSWELL HILL 883 1243

BSM WHETSTONE 445 0757

BSM EDWARE 958 9029

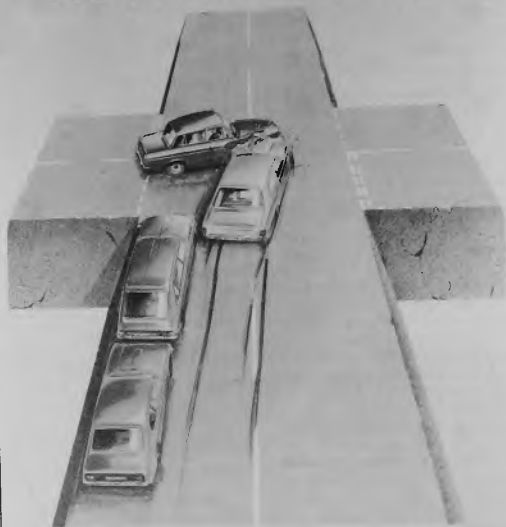
BSM GOLDERS GREEN 455 5449

BSM CRICKLEWOOD 452 2909



We're right by your side.

DON'T PARK NEAR JUNCTIONS



You could cause an accident and it could be you!!

DRIVERS PRE-TEST LECTURES

Evening Learner-Driver pre-test illustrated lectures 7.30pm-9pm

Book Now for: 10th May, 7th June, 12th July (provisional details) — £1.60 per lecture.

For further information and Application Forms contact Technical Administration

Phone 01-446 8511 ext 4392/4/6



PHONE FOR DETAILS



MOTORCYCLISTS MOPED RIDERS SCOOTERISTS

Attend on six Sunday mornings for training to prepare you for the Department of Transport Tests — Part I and II. The Part I Test can be booked through The Road Safety Unit. For further information and Application Forms contact Technical Administration.

Courses start 1988: 2nd June, 8 Sept and 27 Oct.
Phone 01-446 8511 ext 4392/4/6.

Nature Notes

MAY

By Clive Herbert

The start of the summer months can mean a welcome opportunity to go in search of our many wild flowers. To promote the conversation and knowledge of plants the Royal Society for Nature Conservation will again be organising National Wildflower Week from May 21. In Barnet, however, the Herts and Middlesex Wildlife Trust will be holding a Flower Ramble on May 18, around Darlands Lake Nature Reserve.

Everyone else is welcome to join in and experience the wealth of colour to be found at one of the borough's prime wildlife sites. Join the walk at 7.30pm outside the Orange Tree Public House in Totteridge Lane.

Hay raking

If you want to help encourage and conserve flowers in Barnet, you might like to consider spending a couple of hours hay raking at Rowley Green Common Nature Reserve in Arkley from 10.30 on May 22.

Each year the grass is mown and hay must be removed to lower the fertility of the soil. If this is not done, high nutrient levels will benefit the tall, competitive grasses instead of flowers such as Devil's Bit Scabious and Heath Bedstraw.

The work will not be hard and there will be ample opportunity to look around the reserve, so why not make helping wild flowers a family event? More details from 440 6314.

Home support service

A new support service for highly dependent residents such as handicapped, housebound people is to be launched this summer by Barnet Social Services.

At a meeting of the Social Services Committee members unanimously agreed to the purchase of three vehicles and the employment of four drivers for the Home Maintenance and Delivery Services. It is hoped to start the new service on August 1.

Social Services Director, Alan Gorst, said: 'Over a period of years home helps and, more recently, home careworkers have spent a disproportionately large part of their time doing shopping for users of the home support services.'

Time wasting

'Clearly handicapped, housebound people need such a service but these trips to supermarkets waste too much time. The home based tasks are, therefore, not being given sufficient time. With the increasing number of highly dependent and medium dependent people now living in the community, this is not cost effective.'

'Many home helps and careworkers are undertaking weekly shopping at a variety of stores. With

long waits for buses or costly use of cars, time spent obtaining lists and money and in shopping at supermarkets or shops, one or more hours are being used per trip.'

Mr Gorst said it had been shown that a shopping service is preferred by many people and provides a greater opportunity to maintain independence. 'The provision of a regular, co-ordinated shopping delivery service would allow more hours to be spent in household and personal support tasks.'

Bulk shopping

'Initially the service will be concentrated on shopping for 40-50 highly dependent and another 400-450 dependent and isolated people. Written lists would be given to drivers who will undertake bulk shopping, delivering the goods later the same day. Clearly the nearest appropriate supermarket will be used and the person will have to accept the goods stocked by that supermarket.'

The service would also be used for delivery of equipment for home support, drivers could be deployed in emergencies to transport people to day centres or assist in other areas such as delivery of meals.

It is hoped the service can incorporate the provision of minor maintenance and odd jobs in the homes of eligible highly dependent people.



PIONEER®

The future of sound and vision.

"JUST ARRIVED": THE NEW S-1, S-2 AND S-3 MIDI SYSTEMS. ALL FULLY REMOTE CONTROL, AND IT WON'T COST YOU "LOADSAMONEY." PRICES START FROM £299.95

PIONEER SYSTEM S1 — HI-FI MIDI SYSTEM WITH REMOTE CONTROL

- Turntable — Auto-return belt drive
- Tuner — Digital 24 Random presets FM/MW/LW, timer
- Amplifier — 33 Watts per channel at 8 ohms (DIN). Surround Sound/Stereo wide
- Graphic Equaliser — five band per channel
- Cassette — Double deck with auto reverse on Deck 1 and high speed copying, Dolby B NR (Registered Trademark. Dolby Laboratories)
- Speakers — 2 way system

Shown here with optional PD-Z71 Compact Disc Player which can be operated from the system's remote control.

We also stock: A. R., DENON, DUAL, HARMAN/KARDON, JAMO, KENWOOD, LUXMAN, MORDAUNT-SHORT, MARANTZ, NAD, ONKYO, PROTON, ROTEL, TEAC, THORENS, TANNOY & YAMAHA.

"NOW IN STOCK THE NEW MONITOR PC CABLES FOR SOUND IMPROVEMENT"

SO FOR SOUND ADVICE & FRIENDLY SERVICE, GIVE US A VISIT. YOU WILL FIND US ON NORTH FINCHLEY HIGH ROAD, N12. (OPPOSITE SAINSBURYS).



ANALOG AUDIO 849 HIGH RD N12 TEL: 445-3267

(ACCESS & VISA WELCOME) INSTANT CREDIT UP TO £1,000. APR 26%

Better Communications for Everyone



For your free copy of British Telecom's Guide to Equipment and Services for Disabled Customers 1988 -- contact your local BT Sales Office: The address and telephone number is in the Phone Book or dial 100 and ask for FREEFONE TELECOM SALES

 Action for Disabled Customers

BRITISH TELECOM has a wide range of equipment and services enabling disabled people to use the telephone. For those who are hard of hearing there are amplifying handsets with adjustable volume control, lamp signalling devices and extension bells of varying tone. Inductive couplers fitted into handsets help to make conversations clearer for people who use hearing aids which have a 'T' position switch.

Modern electronic telephones incorporate features like lightweight handsets and memory re-dial facilities are useful for people with arthritis. Loudspeaking phones remove the need to hold the handset at any time. Cordless telephones provide freedom for people who use a wheelchair. Mobile phones are particularly useful for disabled

drivers who in an emergency can call for assistance from their cars.

Tribune — BT's latest push-button telephone offers large well spaced buttons, last number redial and a secrecy button. A 'pip' has been placed on the number 5 button to help visually handicapped users. New for 1988 are two enhanced versions: Model E1 features an inductive coupler, lamp signalling and amplified handset. Model E2 has all this and a watch receiver — an extra earpiece which enables the user to listen to incoming speech with both ears reducing the level of noise interference from other sources.

BT's guide to equipment and services for disabled customers is a comprehensive 36 page book — freely available from all BT Sales Offices.

EASTWOOD SINGLE ROOM AVAILABLE NOW

76 HENDON LANE, N3

- ★ Non profit-making home for the elderly.
- ★ Registered charity.
- ★ Seven single rooms, all with washbasins and TV points.
- ★ Full central heating.
- ★ Excellent food.
- ★ 24 hour care.
- ★ TV in lounge.
- ★ Homely atmosphere.

REGISTERED WITH LONDON BOROUGH OF BARNET

For full details please telephone Hon. Secretary:

MRS EDWARDS, 01-202 7415

*Belmont
Lodge*

BELMONT LODGE

Residential Home for
the elderly



In the Autumn of your years there is no need to be lonely or worried about looking after yourself.

Come and live at Belmont Lodge, where there is a happy family atmosphere which is not found in larger residential homes.

Our qualified staff will care for you, their only concern is for your comfort and happiness.

- Private telephone + T.V. point
- Short stays can be arranged.

BROCHURE ON APPLICATION TO
OFFICE: 01-959 4083
or MATRON: 0923 222610

Why not just pay us a Visit!

59 Belmont Road, Bushey, Herts
Registered with Hertfordshire County Council

KENWOOD NURSING HOME

32, Alexandra Grove, Finchley N12

Luxury Nursing home reopens

A new high quality Nursing Home has recently opened in Finchley. Registered by Barnet Health Authority to care for post-operative **convalescent, terminally ill and longstay patients and accepted by Medical Insurance organisations**, the Home aims to provide, at reasonable fees, an excellent standard of nursing care combined with all the attributes of a high class establishment.

Kenwood is situated in a pleasant residential road and offers:

Full Nursing care by qualified staff.

Short stays on a day to day basis.

Single or shared accommodation,
many rooms have en-suite facilities
All rooms have colour TV + call
points.

Choice of menu — special diets
catered for.

Passenger and chair lifts.

Telephone: 01-445 5112 for details

HALF TERM FUN FOR SUMMER

Half Term in Barnet is a three-day programme of fun and activity. At the time of going to press some centres had not finalised their programmes so in addition to the programme printed on this page check libraries and sports centres.

Asmole Centre Burleigh Gardens Southgate N14 Tel: 368 4984

Drop-in pay-on-day activities at the Sports Centre and casual swimming at Church Farm Pool

Sports Centre

Roller Skating for 6 to 12 year olds with their own boot-style skates. 11.45am to 12.45pm 50p per session.

Sort-O-Sport for 6 to 12 year olds. A variety of activities including soccer, netball, cricket, table tennis, trampolining, gymnastics and tennis. 1pm to 4pm. £2 per session.

Church Farm Pool

Pay-on-Day parent and toddler session. One toddler up to the age of four, free. Adult £1 and extra toddler 50p. From 2pm to 2.30pm.
Casual swimming £1 adults, 50p children. 2.30pm until 3.15pm or 3.15pm until 4pm.
Children under seven years

must be accompanied by a swimming adult.

Summer holiday activities at Ashmole are detailed in a leaflet now available in libraries or from the Centre.

Queen Elizabeth Centre Meadway Barnet Tel: 441 2933

Every morning the **Pay-as-you-Play** scheme is open for all age groups from 10am to noon. Cost £1.

Casual swimming from 2pm to 3.30pm. £1 adults, 50p children.

Football from 3pm to 4.30pm. Pay on the day. Cost £1.

Barnet Sport Based at Cophall Stadium Great North Way NW4 Tel: 203 2752

Holiday Coaching in soccer, tennis, cricket and athletics at various venues round the borough – and it's free. Contact the office for details – there will be something going on in the park near you.

June 1, 2 & 3

Log Cabin Grahame Park Contact via Centrepont Tel: 205 7113

The Log Cabin will be open 10am to 6pm for the half term holiday.

Old Bull Arts Centre Bullseye Club 68 High Street Barnet Tel: 449 0048

Drama workshops for 7 to 12 year olds: Tuesday, May 31, 10am to 2pm; Wednesday, June 1 to Saturday June 4, 10am to 4pm. £8 per week. Performance Saturday 4pm. Tickets £1. Advance booking essential.

Libraries

There are two special events at Golders Green Children's Library during half term.

On Wednesday, June 1 between 2.15pm and 4pm, youngsters can learn about fingerprints from the Home Beat police officer. This session is suitable for seven to 11 year olds.

On Friday, June 3 between 2.15pm and 3.15pm, there will be stories and song. Tales and Tambourines is for children under the age of seven.

Other libraries may also have special events. Ask at the enquiry desk.

Cophall Pools Great North Way, NW4 or Page Street, NW7 Tel: 203 4187

Crash courses to learn to swim are being held from Tuesday, May 31 to Saturday, June 4. The Duckling classes for four-year-olds are £8 for five days, and the adult and children's classes are £10. Classes start at 9.15am and run through to 1pm.

They must be booked in advance through the Pools Training Section.

LIBRARY FUN

EAST Barnet Children's Library is holding a special event for youngsters under three on Thursday May 12 between 10.30am and 11.30am. The youngsters can join in finger plays and rhymes as well as playing with toys, board games, chalks and crayons.

On May 12 at Grahame Park Library the Thursday club children aged seven to 11 years is holding a Make A Caterpillar session. The club meets between 5.30pm and 6.45pm. The events are free.

JOBS



LONDON BOROUGH OF ENFIELD SOUTHGATE TECHNICAL COLLEGE

Principal: W A C Easton MA CEng FIMechE FRSA

LECTURING STAFF REQUIRED FOR SEPTEMBER 1988

DEPARTMENT OF BUSINESS STUDIES

Post Ref B21 LECTURER IN OFFICE TECHNOLOGY

(Information Technology, Office Practice, Office Management). To be responsible for the Practice Office and to teach on Secretarial and Business Studies Courses. Candidates should possess a background in Office Management and or teaching with at least 5 years relevant experience.

DEPARTMENT OF ENGINEERING

Post Ref D17 LECTURER IN ELECTRICAL INSTALLATION WORK

To teach practical skills and associated electrical installation technology in accordance with 15th Edition IEE Wiring Regulations on City and Guilds Course 236. A knowledge of Security Alarms would be a distinct advantage. Teaching will on full-time, block release, day release and evening courses in Electronic Engineering BTEC and City and Guilds courses.

Minimum qualifications of City and Guilds 236 course 'C'. Previous teaching or instructing experience helpful but not essential. Formal teacher training will be provided.

Post Ref D22 LECTURER IN ELECTRONIC ENGINEERING

Candidates should be recent engineering graduates who are enthusiastic to teach a variety of electronic engineering subjects to students at ONC and HNC levels. Additionally, candidates should have one or two years experience working with the hardware of 16 bit microcomputer systems, since it is anticipated that the person appointed will make a significant contribution to the development of course material in this field.

DEPARTMENT OF MOTOR VEHICLE STUDIES

Post Ref H11 LECTURER TO TEACH MOTOR VEHICLE SUBJECTS

Applicants should have recent experience in the motor vehicle repair trade and possess appropriate qualifications. The successful candidate will be expected to teach a broadly based timetable with a high proportion of practical work. A sound understanding of vehicle electrics/electronics or body repair would be an advantage.

LECTURER'S SALARY SCALE (from 1/7/88) £9,276 — £16,164 including London Weighting Allowance.

SUPPORT STAFF VACANCIES

Post Ref S117 TEMPORARY COMPUTER

SUPPORT OFFICER required as soon as possible

Based at the College to set up and maintain microcomputer systems, co-ordinating the production and distribution of materials for use with software packages, assisting Staff/Students using micros.

SALARY SCALE 6 £10,983 — £11,679 including London Weighting Allowance. Commencing salary is usually at minimum of Scale.

Post Ref S126 SENIOR TECHNICIAN — ELECTRONICS

To be mainly responsible for the preparation and maintenance of computer equipment including the construction of electronic equipment, in classrooms and laboratories, and assisting with demonstrations where required. A knowledge of computers and micro-electronics is essential.

SALARY SCALE 4 £8,625 — £9,546 per annum (including London Weighting Allowance.)

Application forms and further details may be obtained from the Principal, Southgate Technical College, High Street, LONDON N14 6BS, on receipt of an sae which should be marked clearly with the job reference in which case no letter is necessary. Completed applications should be returned within two weeks of the appearance of the advertisement.

John Lewis Brent Cross

(a branch of the John Lewis Partnership)

Has the following vacancies:

Approved Electrician

for the **Services Department**

Applicants should have the IEE 15th Edition Regulation Certificate

Pay: £4.55-£5.10 per hour

Hours: Monday to Friday 8.00 am to 5.00 pm

Part-time Cleaners

for the **Services Department**

Pay: £2.76-£3.35 per hour

Hours: Monday to Saturday 7.30 am to 10.00 am

Full-time Catering Assistants

for the 'Place to Eat'

The 'Place to Eat' is our restaurant providing customers with a varied menu from different servers throughout the day. Catering Assistants have direct contact with the public as well as carrying out other catering duties.

Pay: £108.00-£146.00 per week

Hours: Shift. The Shift involves working five days per week, with alternative Saturdays off. The week day hours worked are 8.45 am to 6.15 pm with two days working from 10.45 am to 8.15 pm, and Saturdays 8.15 am to 4.45 pm.

Staff benefits include four weeks' holiday (five weeks after three years' service), subsidised dining room and shopping discount in our department stores and Waitrose supermarkets. John Lewis Brent Cross is part of the John Lewis Partnership — a company owned by those who work in it. This means you will benefit from the best profit sharing scheme in the country. Every year, after provision for future development, the **whole** of the profit is shared among those who work in the business.

Applications in writing to:

Staff Office, John Lewis Brent Cross,
Brent Cross Shopping Centre,
London, NW4 3FL,
or telephone 01-202 6535
extension 244 for an application form.

John Lewis Brent Cross 

**NORTH LONDON
BLOOD TRANSFUSION
CENTRE**
Deansbrook Road,
Edgare Middx HA8 9BD

HEAD PORTER

Required to supervise a small team of four porters and three cleaners working within the Centre. Uniform provides Annual leave 20 days. Pay for basic week of 40 hours £117.59 plus regular overtime. Please apply in writing to Support Services Section quoting reference number A29/83 for application form and job description.

Closing date for completed applications two week from appearance of the advertisement.



12 HORNSEY LANE
HIGHGATE N6 5LX

A CRAFT/ACTIVITY ORGANISER

for the elderly

This position would suit a person who enjoys all types of handicraft and has a flair for organising outings and arranging for visiting speakers.

Hours approx. 12 per week.

Please contact the matron:

TEL: 01-281 3511

A CARING WAY OF LIFE



SNAP UP A JOB FOR SUMMER

BonusPrint, the market leader in quality photo processing are now going into their very busy season and have a range of

SEASONAL EVENING JOBS

involved with our processing operation at Borehamwood, we wish to fill.

The range of jobs could well suit your skills so snap up a job now.

Hours of work:
Production 5-10 pm, 6-10pm
Accounts 5-9pm

We are offering competitive wage rates together with an END OF SEASON BONUS.

Telephone Sue or Wendy on 01-207 4114 during office hours or write to:

**The Personnel Officer,
BonusPrint, Stirling Way,
Borehamwood, Herts WD6 2AZ.
Tel: 01-207 4114**

LOCAL OPPORTUNITIES

• Regularly reviewed wages

• Generous leave entitlements

• Pleasant working conditions • Opportunities for advancement

• In-service training/supervision • Worthwhile employment helping the community

For full time posts we offer - canteen facilities, a minimum of 20 days basic annual leave and additional leave at most Bank Holidays. Assistance with housing, 100% of removal expenses and interest-free loans for annual seasons tickets may be available in approved cases

DIRECTORATE OF HOUSING AND ENVIRONMENTAL SERVICES

Senior Technical Officer

(Gas/Heating)

Salary: £12,114-£16,465 per annum inc.

Ideally you should have around 10 years' experience and be qualified with HVCA certificate, however if you have different, but relevant experience and/or qualifications this may still be the job for you.

Find out more by calling Mr Maskell, Central Repairs Officer on 01-446 8511, ext. 4772.

Closing date: 12th May, 1988.

Application forms available from the Recruitment Office, address No. 1. Please quote reference 9/1/2141

Homeless Persons Officer

Salary: £10,983-£11,679 per annum inc.

If you are currently working in a local authority housing department or housing association, have an up-to-date knowledge of homeless legislation and case law, and feel you can bring sensitivity, imagination and straightforward communication skills to this demanding job, then you could be the person we're looking for.

An Essential User Car Allowance / Disabled Mobility Allowance is also available.

Closing date: 12th May, 1988.

Application forms available from the Recruitment Office, address No. 1. Please quote reference 9/1/1078

Personal Secretary

Salary: Scale 4/5 £8,625-£10,665 per annum inc.

Are you enthusiastic and hard working? Do you have a pleasant and sensitive attitude to the public?

If so, you could be just the person we're looking for in our Technical Services Division.

You will work directly to the Divisional Head and your duties will include processing

enquiries from Council Members, Members of Parliament and the public. You will also be experienced at arranging meetings and appointments, dealing with telephone calls and correspondence, shorthand, typing and general record keeping.

There is a bar at £9,546, progression through which is subject to satisfactory performance appraisal.

Closing date: 12th May, 1988.

Application forms available from the Recruitment Office, address No. 1. Please quote reference 9/1/2002

Clerical Assistant

Salary: £7,914-£8,466 per annum inc.

A new post has been created to ensure the continuous review of cases on both the Housing Waiting and Transfer lists. The main duties of the post will involve contact with the public by correspondence, telephone, and some office interviews. Our aim is to ensure that limited housing resources are allocated to those in the highest need, so you must have the ability to deal with cases in a realistic but sympathetic way.

If you are interested in pursuing a future in housing or wish to change to a more rewarding career, please contact us, we offer:

- ★ 20 days' annual leave;
- ★ additional Bank Holiday leave;
- ★ flexitime;
- ★ staff restaurant;
- ★ a happy working environment.

Closing date: 12th May, 1988.

Application forms available from the Recruitment Office, address No. 1. Please quote reference 9/1/1037

Estate Assistant

Salary: £7,914-£8,466 per annum inc.

Are you looking for a professional career in Housing? If you have the necessary drive and ability to relate sympathetically but firmly to members of the public you may be the person we are looking for.

As Estate Assistant you will be attached to a District Team and offered the opportunity to gain experience in all aspects of Estates Management. These will include arrears control, tenancy problems, consultation,

Tenants' Associations and supervision of Caretakers. You will combine training with the opportunity to gain practical experience, including both office based administrative tasks and supervised fieldwork.

You should be educated to at least 'O' level standard, preferably 'A' level, and experience in other fields will also be taken into account. Study facilities for the Institute of Housing professional qualification will be available in most cases.

A Casual User Car Allowance is also payable.

Closing date: 12th May, 1988.

Application forms available from the Recruitment Office, address No. 1. Please quote reference 9/1/3126

where to apply

1. Recruitment Office, 16/17 Sentinel Square, Brent Street, Hendon, London NW4 2EN
Tel: 01-202 8282 Ext 2372
(01-202 6602 24 hr ansaphone outside office hours).
2. Assistant Controller (Support Services), Barnet House, 1255 High Road, Whetstone, London N20 0EJ.
Tel: 01-446 8511 Ext 4454
3. Director of Educational Services, Town Hall, Friern Barnet, London N11 3DL
Tel: 01-368 1255
4. Director of Social Services, Ivy House, 1331 High Road, Whetstone, London N20 9HZ
Tel: 446 6857
(24 hr answering service)
5. Borough Librarian Ravensfield House, The Burroughs, Hendon, London NW4 4BE
Tel: 01-202 5625 Ext 48

Please quote the reference number

With a good employer

AN AUTHORITY COMMITTED TO EQUAL OPPORTUNITIES

LONDON BOROUGH

barnet

DIRECTORATE OF HOUSING AND ENVIRONMENTAL SERVICES

Resident Warden

NW4 Area

Salary: £7,188-£7,749 per annum inc.

Ideally you should have had previous experience of working with the elderly, be genuinely concerned with their physical and mental well being and be able to liaise with outside agencies when required.

Although cleaners are employed in Sheltered Schemes, the Warden is responsible for the overall cleanliness, security and smooth running of the scheme. There are 47 units with common room. The Warden's accommodation, 2 bedroom, 3 person ground floor flat; which is on a service tenancy basis, rent and rate free in lieu of any overtime worked.

Closing date: 12th May, 1988.

Application forms available from the Recruitment Office, address No. 1. Please quote reference 9/1/3616

Heating and Ventilation Engineer

Rate of pay: Up to £211.31 per week, including maximum bonus.

Your duties will involve carrying out maintenance work to small Boiler Houses and installations.

You should have sound knowledge and experience of fault finding and remedial work, and the ability to use initiative and work on your own if required.

A car owner is preferred and a generous car allowance is paid.

Closing date: 12th May, 1988.

Application forms available from the Recruitment Office, address No. 1. Please quote reference CAM/HV

DIRECTORATE OF SOCIAL SERVICES

Fieldwork Service to Physically Handicapped People

Occupational Therapists Management Officer

Salary: £13,596-£14,604 per annum inc.

You will have had at least 3 years' post qualification experience, preferably in a Social Services setting, and demonstrate an involvement with project development to meet the special needs of handicapped people. The team is located in Whetstone, London N20.

An Essential User Car Allowance / Disabled Mobility Allowance is available. Interest free car loan or leasing are also available.

Closing date: 13th May, 1988.

Interview date: 9th June 1988.

Application forms from Director of Social Services, address No. 4. Please quote reference 633/15

Residential Care For Elderly People

Assistant Officer-in-charge

Salary: £10,665-£12,492 per annum inc.

You must have a sense of humour. Your application will be very welcome if you have relevant work experience with elderly people — preferably in residential care — and can demonstrate the ability to work under pressure, and take responsibility for running meetings, giving staff supervision and supporting our management and administrative programmes.

Closing date: 12th May, 1988.

Application forms from Director of Social Services, address No 4. Please quote reference 633/339

Art/Craft Instructor

Broadfields Day Centre

Salary: £7,749-£9,234 per annum inc, rising to £10,047 per annum subject to an appropriate qualification.

Qualifications, CSS with relevant remedial art/craft teaching experience. Mental Health experience preferred.

Closing date: 13th May, 1988.

Interview date: 7th June, 1988.

Application forms from Director of Social Services, address No 4. Please quote reference 633/251

Locum Instructors

Flightways Day Centre

(Minimum 4 months)

Salary: £7,749-£9,234 per annum inc, rising to £10,047 subject to appropriate qualification.

Pending a service review, we have temporary posts available for people experienced in groupwork in many different areas. These include work with computers, craft activities, keep fit and sailing, current affairs and quiz sessions, printing and work with young people with learning difficulties. Qualification (e.g. CSS, CQSW) desirable but not essential.

Informal enquiries to Sheridan Lynch, telephone 01-205 5803.

All applicants will be expected to make an informal visit prior to interview.

Closing date: 13th May, 1988.

Interview date: 3rd June, 1988.

Application forms from Director of Social Services, address No 4. Please quote reference 633/210

Beach Lodge, a home for 34 elderly people in Finchley, N3, has the following vacancies:

Cook

(full time)

Rate of pay: £125 per week minimum.

Your duties will include food preparation, maintenance of high standards of hygiene and safety, and stock control. You will also

be responsible for menu planning, taking into account individual needs.

Hours: 39 per week, including some weekends and public holidays (when a higher rate of pay applies). Ref. CAM/CBL

Care Assistant

(part-time)

Rate of pay: £59 minimum for 19 hours per week.

Your duties will involve providing personal care to our clients, including feeding, toileting, bathing and dressing. Rota working will be required and you should be prepared to work some weekends and bank holidays (when a higher rate of pay applies). Ref. CAM/CABL

Domestic Assistants

(part-time)

Rate of pay: £2.91 per hour, higher at weekends and public holidays.

We have three vacancies:

Laundry work

Hours: 30 per week. Monday to Friday.

Ref. CAM/BLL

Kitchen work

Hours: 10 per week, Monday to Friday (mornings).

Ref. CAM/BLK

General Cleaning/Tidying

Hours: 12½ per week, Friday evenings,

Saturday and Sunday 9 a.m. to 2 p.m. Ref. CAM/BLC

(This is a temporary appointment until 31st March, 1989).

Closing date: 12th May, 1988.

Please apply to Ms. Patricia Burchill, Beach Lodge, 66 Hendon Lane, Finchley, N3. Telephone: 01-346 5522. Please quote appropriate reference number

Meadowside, a home for 60 elderly people in North Finchley, N12, has the following vacancies:

Care Assistants

(part-time)

Rate of pay: £62 minimum per 20 hour week.

Your duties will include offering physical, emotional and social support to our client groups. We particularly wish to recruit people who can display considerable insight into the needs of older people and who are able to be involved in the submission of reports.

Hours: 7 a.m.-11 a.m. or 5 p.m. - 9 p.m., five days per week. Weekend and public holiday working will be required in rotation.

Ref. CAM/MCA

Domestic Assistant

(part-time)

Rate of pay: £82 minimum per 20 hour week.

Your duties will involve general cleaning and tidying around the home. You must have some relevant experience.

This is a temporary appointment until 31st March, 1989.

Hours: 9 a.m.-1 p.m., 5 days per week including alternate Saturdays.

Ref. CAM/MDA

Closing date: 12th May, 1988.

LOCAL OPPORTUNITIES

- Regularly reviewed wages
- Generous leave entitlements
- Pleasant working conditions • Opportunities for advancement
- In-service training/supervision • Worthwhile employment helping the community

For full time posts we offer - canteen facilities, a minimum of 20 days basic annual leave and additional leave at most Bank Holidays. Assistance with housing 100% of removal expenses and interest-free loans for annual seasons tickets may be available in approved cases

Please apply to Alan Clare, Meadowside, 58 Holden Road, Finchley N12. Telephone 01-446 0234. Please quote reference number

Care Attendant (full-time)

Rate of pay: £105 per week.

This vacancy is at LEASIDE, a Day Centre for 45 elderly people in North Finchley. Your main duties involve meeting the physical care needs of our clients, such as bathing, toileting and other aspects of personal hygiene. There will also be opportunities to assist in the therapeutic and educational activity programmes designed to enable people to continue to live in the community as independently as possible.

Hours: 36 per week, Monday to Friday.

Closing date: 12th May, 1988.

Please apply to Shelagh Clarke, Leaside Day Centre, Holden Road, Finchley, N12. Telephone 01-446 2603. Please quote reference CAM/LCA

Care Assistant (part-time)

Rate of pay: £3.11 per hour, minimum.

This vacancy is at THE LEYS, a home for 23 people with a learning disability (mental handicap), in Elstree, Herts.

We are looking for an energetic, practical person to work as an integral part of our very enthusiastic staff team. Your duties will involve all aspects of client care.

Hours: approximately 20 per week, timing negotiable, on a rota basis including some weekends and public holidays when a higher rate of pay applies.

Closing date: 12th May, 1988.

Please apply to Mr. Ron Cordell, The Leys, Barnet Lane, Elstree, Herts. Telephone 01-207 0122. Please quote reference CAM/LCA

Gardener/Jobbing Assistant

(temporary post)

Rate of pay: £107 per 35 hour week.

ABBOTS LODGE, a large home in New

Southgate, N11, is looking for someone to undertake gardening and routine building maintenance work, e.g. heavy-duty cleaning, simple woodworking, etc. This appointment is expected to end 30th September, 1988.

Closing date: 12th May, 1988.

Interviews will be held on 23rd May, 1988.

Please apply to Mrs H. Green, Abbots Lodge, Brunswick Park Road, New Southgate, N11. Telephone 01-361 1271. Please quote reference CAM/GJA

LIBRARIES DEPARTMENT

Library Assistant — Edgware Library

(Full-time — 36 hours per week)

Salary: to a possible maximum of £6,957 plus London Weighting (up to 18 years of age £396 per annum, 18 years and over £792 per annum). Minimum salary at age 21 £5,475 per annum.

Evening and Saturday work included but time and a half paid for hours worked on Saturdays. Interesting and varied duties. This appointment will involve the use of VDU screens and therefore you will need to produce a certificate of eye-health for VDU work issued by an Ophthalmic Optician before the commencement of employment.

Closing date: 14th May, 1988.

Application forms available from Borough Librarian, address No. 5. Please quote reference 607/111

CHIEF EXECUTIVE AND TOWN CLERK'S DEPARTMENT

Junior Clerk

Salary: £4,554—£7,188 per annum inc.

If you are a recent school or college leaver wishing to pursue a career in local government, then this position is likely to be of interest.

Working in our busy Local Land Charges

Section, you will fulfil an essential clerical role by collating, recording and filing local searches and related correspondence; completing and despatching associated forms; dealing with enquiries; photocopying and carrying out general office duties. All training will be provided.

Commencing salary dependent upon age and qualifications.

Closing date: 12th May, 1988.

Application forms available from the Recruitment Office, address No 1. Please quote reference 600/125

Where to apply

1. Recruitment Office, 16/17 Sentinel Square, Brent Street, Hendon, London NW4 2EN
Tel: 01-202 8282 Ext 2372
(01-202 6602 24 hr ansaphone outside office hours).
2. Assistant Controller (Support Services), Barnet House, 1255 High Road, Whetstone, London N20 0EJ.
Tel: 01-446 8511 Ext 4454
3. Director of Educational Services, Town Hall, Friern Barnet, London N11 3DL
Tel: 01-368 1255
4. Director of Social Services, Ivy House, 1331 High Road, Whetstone, London N20 9HZ
Tel: 446 6857
(24 hr answering service)
5. Borough Librarian Ravensfield House, The Burroughs, Hendon, London NW4 4BE
Tel: 01-202 5625 Ext 48

Please quote the reference number

With a good employer

AN AUTHORITY COMMITTED TO EQUAL OPPORTUNITIES

LONDON BOROUGH
barnet

DIRECTORATE OF EDUCATIONAL SERVICES

Word Processor Operator

Town Hall, Friern Barnet, London N11 3DL

Salary: £7,188-£8,466 per annum inc with possible progression to £9,546 per annum inc. subject to satisfactory performance and tested ability to perform at specified levels of skills and aptitude.

Are you an experienced Word Processor Operator and Audio Typist looking for a post which will offer you the opportunity to develop your skills?

If so, this post, which is based at Friern Barnet Town Hall, may suit you.

You should:

- ★ be able to cope well under pressure;
- ★ be prepared to use your initiative
- ★ have a flexible attitude to work;
- ★ be well organised.

Closing date: 12th May, 1988.

If you have the above skills/qualities and possess the advanced RSA Typing Certificate, please contact the Recruitment Office, address No. 1. Please quote reference 603/235

Nursery Nurse

(NNEB Qualified)

Barnet Hill School, EN5 2DY

Salary: £5,985-£7,188 per annum inc.

Hours: 30½ per week, 40 weeks per annum.

Closing date: 12th May, 1988.

Application forms available from the Recruitment Office, address No. 1. Please quote reference 016/631

YOUTH & COMMUNITY SERVICE

Judo Instructor

Church Farm Youth Centre,
Church Hill Road, East Barnet,
Herts.

Rate of pay: £7.77 per hour inc.

Judo coach required to work on Wednesday evenings 6.30 p.m. to 9.30 p.m. Must be club coach standard.

Informal enquiries welcome. Telephone Mrs I. Bowen, 01-368 0323.

Closing date: 12th May, 1988.

Application forms available from the Recruitment Office, address No. 1. Please quote reference 603/268

HENDON COLLEGE OF FURTHER EDUCATION

Maintenance Engineer

Salary: £8,625-£10,665 per annum inc.

We're looking for a resourceful and capable person with experience in the maintenance of buildings. Your main tasks are to identify

items for repair and then to arrange for action to be taken. There is also a responsibility to control stocks of materials held for maintenance and repair. You will supervise three other members of the maintenance team including the College van driver. Close liaison with the College Caretaker and staff of the Directorate of Technical Services will also be necessary. You should possess a relevant qualification (e.g. CGLI or equivalent) and must have experience in maintenance work.

Closing date: 12th May, 1988.

Application form and further details are available from Chief Administrative Officer, Hendon College of Further Education, Corner Mead, Grahame Park, Colindale, London NW9 5RA. Telephone 01-200 8300, ext. 219. Please quote reference 603/458

Clerical Assistant

Salary: £7,188-£7,749 per annum inc.

You will be involved in the new MSC sponsored market-research project based at our Abbots Road site. You will work directly with the project manager and be expected either to be familiar with new technology or be willing to undergo training in this area. This is initially a temporary one year appointment.

Closing date: 12th May, 1988.

Application form and further details from Chief Administrative Officer, Hendon College of Further Education, Corner Mead, Grahame Park, Colindale, London NW9 5RA. Telephone 01-200 8300, ext. 219. Please quote reference MSC/HC

BARNET COLLEGE OF FURTHER EDUCATION

Wood Street, Barnet EN5 4AZ

Cook Supervisor

Rate of pay: £3.40 (approx.) per hour.

Hours: 35 per week, 40 weeks per annum.

We are seeking a skilled and enthusiastic caterer to be responsible for the efficient running of our busy College Refectory. You must have practical experience in all aspects of large scale catering and be able to work well under pressure as the College deals with approximately 400 meals per day. Professional qualifications would be an advantage but are not essential.

Closing date: 12th May, 1988.

Application forms available from the Recruitment Office, address No. 1. Please quote reference 603/147

BOROUGH TREASURER'S DEPARTMENT

Management Accountants

(2 posts)

Salary: £19,986-£22,731 per annum inc.

For these 2 posts we are seeking highly skilled self-motivating, experienced CIPFA

members who can communicate fluently and are able to liaise with Directors, Chief Officers and other senior staff in Service Departments. Starting salary is dependent upon qualifications and experience. An Essential User Car Allowance / Disabled Mobility Allowance is payable.

Closing date: 12th May, 1988.

Application forms available from the Recruitment Office, address No. 1. Please quote reference 601/532

Assistant Principal Rating Officer

(Development)

Salary: £16,713-£18,943 per annum inc.

A highly motivated and experienced R. & V.A. member with established communication and management skills is required for this senior management post in the Rating Division.

An Essential User Car Allowance / Disabled Mobility Allowance is also payable.

Closing date: 12th May, 1988.

For application forms contact the Recruitment Office, address No. 1. Please quote reference 601/528

DIRECTORATE OF TECHNICAL SERVICES

ARCHITECTURE GROUP

Our busy Building Surveying section is responsible for an extensive on-going programme of adaptations for disabled people in their own homes, as well as a very varied programme of housing refurbishment, modernisation and repair, and alterations and extensions to Educational and other Council premises. We can offer opportunities for training and career development and are seeking energetic and able staff to fill the following vacancies.

A generous benefit package is available including car leasing scheme, relocation and possible housing assistance. We also offer day release facilities, flexitime, staff restaurant and very generous annual leave.

Building Surveyor / Assistant Building Surveyor

Salary: Up to £15,965 per annum inc. Plus Car Allowance.

This post will appeal to ambitious surveyors wishing to further develop their professional skills. Experience is more important than qualifications but you should ideally have or be progressing towards membership of one of the Surveying Institutions. Ref. DTS/562

Building Surveying Technician

Salary: Up to £9,546 per annum inc.

We would like to hear from technicians with a minimum of four years experience and proven ability in draughtsmanship.

Ref. DTS/566

LOCAL OPPORTUNITIES

- Regularly reviewed wages
- Generous leave entitlements
- Pleasant working conditions • Opportunities for advancement
- In-service training/supervision • Worthwhile employment helping the community

For full-time posts we offer - canteen facilities, a minimum of 20 days' basic annual leave and additional leave at most Bank Holidays Assistance with housing, 100% of removal expenses and interest-free loans for annual seasons tickets may be available in approved cases

Building Surveying Trainee

Salary: Up to £8,466 per annum inc. Plus Car Allowance

This post will appeal to people with the academic qualifications and desire to pursue a recognised course of study leading to professional Building qualifications.

Ref. DTS/567

Closing date: 12th May, 1988.

For an informal discussion regarding any of these positions, please contact the Principal Building Surveyor, Mr Anton Shoolheifer on 01-446 8511, ext. 4545 or for an application form and further details contact address No. 2. Please quote reference number.

DEVELOPMENT SERVICES DIVISION

ARCHITECTURE GROUP

Fuel Efficiency Officer

Salary: £9,780-£11,679 per annum inc.

The post also carries an Essential User Car Allowance / Disabled Mobility Allowance. Preferably qualified in Energy Management, Building Services or an associated professional discipline, you should be able to demonstrate an alert and imaginative approach.

Ref. DTS/580

Fuel Efficiency Technical Assistant

Salary: £7,188-£8,466 per annum inc.

Reporting to the Fuel Efficiency Officer, your primary duties will include site surveys for the revision of energy audits, maintain records on fuel consumptions, tariff analysis, reviews on fabric, plant and controls, promoting energy conservation among staff, contract administration and financial control. You should possess the qualifications required for entry into a B.Tec Course, as you will undertake a course of study through day release and in addition will be given practical training and experience.

Ref. DTS/582

Closing date: 12th May, 1988.

Interview dates: 23rd and 24th May, 1988.

If you would like an informal discussion concerning either of these opportunities, contact Ian Taylor, Principal Mechanical and Electrical Engineer on 01-446 8511, ext. 4570.

Application forms available from address No. 2. Please quote appropriate reference number.

SUPPORT SERVICES GROUP

Assistant Bonus Clerk— Finance sub-group

Salary: £7,914-£8,466 per annum inc.

We are looking for a reliable and hardworking person to join our Support Services Group based at Barnet House. The work involves the processing of Bonus Sheets including the input of information on to a computer. You will also be required to provide statistical information when necessary.

You should have a good telephone manner, accurate methodical approach, and the ability to meet deadlines. Previous experience would be an advantage but is not essential as full training will be given.

Closing date: 12th May, 1988.

Interview will be held on 26th May, 1988.

Application forms available from address No. 2. Please quote reference DTS/63

RECREATION SERVICES

Do you have time on your hands during the summer months?

Why not join us in doing a worthwhile job at Finchley Open Air Pool.

We are looking for self-motivated people for the following posts:

Pool Attendants

Ref. DTS/PA/FP

Rate of pay: £3.12 per hour.

You should be at least 18 years old and will be required to supervise swimmers and

perform general cleaning duties as required. You must hold the RLSS Bronze Medallion.

Cashiers

Ref. DTS/C/FP

Rate of pay: £3.05 per hour.

You should be a pleasant presentable person and will be required to work as a cashier / receptionist. Experience is preferred though not essential as training will be given.

The hours of duty on the above posts are negotiable.

Closing date: 12th May, 1988.

Application forms available from address No. 2. Please quote appropriate reference number.

Where to apply

1. Recruitment Office, 16/17 Sentinel Square, Brent Street, Hendon, London NW4 2EN
Tel: 01-202 8282 Ext 2372
(01-202 6602 24 hr ansaphone outside office hours).
2. Assistant Controller (Support Services), Barnet House, 1255 High Road, Whetstone, London N20 0EJ.
Tel: 01-446 8511 Ext 4454
3. Director of Educational Services, Town Hall, Friern Barnet, London N11 3DL
Tel: 01-368 1255
4. Director of Social Services, Ivy House, 1331 High Road, Whetstone, London N20 9HZ
Tel: 446 6857
(24 hr answering service)
5. Borough Librarian Ravensfield House, The Burroughs, Hendon, London NW4 4BE
Tel: 01-202 5625 Ext 48

Please quote the reference number

With a good employer

AN AUTHORITY COMMITTED TO EQUAL OPPORTUNITIES



Council Meetings

Members of the public are invited to attend council and committee meetings in the Town Hall, Hendon, at 7pm

Tuesday May 3: Education
Wednesday May 4: Town Planning & Research
Tuesday May 10: Council Annual Meeting
Monday May 16: General Purposes
Tuesday May 17: Libraries and Arts
Wednesday May 18: Planning Sub-Committees
Thursday May 19: Establishment
Tuesday May 24: Education Sub-Committees
Wednesday May 25: Grants
Thursday May 26: Education (Special meeting on secondary schools provision)
Tuesday May 31: Finance

Entries for the June issue must be received by May 10, and before that date if possible. New entries start on June 5.

Sunday May 8

N London Holiday Fellowship, Coach Ramble to Weald and Downland Open Air Museum and Parham Hse & Gdns. 444 5847

Tuesday May 10

Barnet Anglo-French Club, Council Offices, 29 Wood Street, Barnet. 8pm. 440 6805. (Also May 24)
 Totteridge Labour Party, Finchley Library, Ravensdale Ave. 8pm. 449 6524
 Hendon and Dist Cage Birds Assn, Labour Hall, Back Lane (off Watling Ave), Burnt Oak. 7.30pm. 205 2657/709 2433
 National Schizophrenia Fellowship, Health Centre, 23 Temple Fortune Lane, NW11. 8pm. 455 5113

Wednesday May 11

Orbit Club NW London (25-40) Moss Hall Tavern, Ballards Lane, N12. 8.30pm. 906 2080
 Barnet Family Practitioner Committee, public meeting, FPC House, 313 Ballards Lane, N12. 2pm. 446 5351
 Leo Baeck College and The Raphael Centre present fourth series of lecture discussions on Judaism and Psychotherapy at Sternberg Centre, The Manor House, 80 East End Rd, N3 (also May 18,25; June 1,8) £4, £2 concs. 349 4525

Friday May 13

Finchley Branch UNA, 51 Church Cres, N3. 7.45pm
 Oakleigh Carers Group, Health Centre, Oakleigh Rd Nth, N20. 2pm. 368 8350

Saturday May 14

British Tinnitus Assn NW London, Meritage Club, Church End, Hendon. 2pm. 444 9657
 Barnet Anglo-French Club Annual Dinner, French or non-French speakers welcome. 440 6805

Sunday May 15

N London Holiday Fellowship, Car Ramble, Hambleton. Meet in car park behind 'The

Stag & Huntsman'. 10.30am. 0734 733034

Monday May 16

British Epilepsy Support Group, Trinity Church Hall, Nether Street, N12. 7.30pm. 446 2003

Tuesday May 17

Middx Family History Scty, Barnet Branch, Church Hse, Wood St, Barnet. 7.45pm. 441 0529

N London Holiday Fellowship, Final Fling Social. 346 6795/368 1555

Friern Barnet Amnesty Group, Jubilee Room, St James' Church, Friern Barnet Lane, N20. 8.15pm. 368 9487

Royal British Legion (N Finchley), Legionway, Summers Lane, N12. 8pm. 445 9911

Wednesday May 18

Finchley & Dist Philatelic Scty AGM, Avenue House, East End Rd, N3. 7.30pm. 883 8724 (also June 1)

N London Holiday Fellowship, visit Docklands Light Railway. Meet at Tower Hill U/G. 11.15am. 348 4369

Saturday May 21

New Barnet and Dist. Stamp and Postal History Fair, St Peter's Hall, Lyonsdown Rd, New Barnet. 10am-5pm.

Sunday May 22

N London Holiday Fellowship, Godalming 10.08am. Waterloo 9.25am. 997 0429

Wednesday May 25

Federation of Ratepayers and Residents Assns of LBB, North Finchley Library, Ravensdale Ave, N12. 8pm. 449 0807

Thursday May 26

Finchley Council of Christians and Jews AGM, Methodist Church, Ballards Lane, N3. 7.45pm. 349 2951

Friday May 27

Barnet Ratepayers and Residents Assn (Arkley and Hadley), Harold Fern Room, Salisbury Road, 8pm. Surgery 7.30pm. 449 0807

Sunday May 29

N London Holiday Fellowship, visit Bushey Park & Grounds, Hampton Court. 446 1744

Sunday May 30

Barnet Action for Mental Health, 154 Station Road, Hendon. 7.30pm. 203 5879

Wednesday June 1

Barnet Animal Rights Group, Quaker Meeting Hse, 58 Alexandra Grove, N12. 8pm. 440 1715

Middx Caving Group, St Mary's Hall, Hendon Lane N3. 8pm. 803 6008

Sunday June 5

N London Holiday Fellowship, Ramble to Bayford. 958 8858

N London Holiday Fellowship, Ramble to Chorley Wood. 450 3470

Saturdays

Melanies Latest Charts and Imports Club, 407 hendon Way, Hendon. 202 7289

BARNET DIARY

Sundays

Mind in Barnet 'Libra' Club, Etchingham Park Day Centre, Etchingham Park Rd, Finchley. 3.30pm. 455 2850

North London Holiday Fellowship Group, Sunday rambles in Home Counties. 346 6795/444 5847

Finchley Zen Society, 91 Nether Street, N12. 8-9pm. 445 1819

Barnet 18 Plus Group, Bull & Butcher Public House, 1277 High Rd, Whetstone. Activities for people between 18 & 30. 8.30pm. 0707 53536

Weekdays

Advice service on social security, housing, consumer advice etc, East Finchley Neighbourhood Centre, 42 Church Lane, N2. 10am-12 noon, 2-4pm. 444 6265

Mondays

Art Classes. Courses in Life Drawing, Portraiture, Still Life, General drawing and painting, Colour Theory and Practice Graphics. For Beginners, Intermediate, Advanced, O & A Level and Pre-foundation. At All Saints Arts Centre, 122 Oakleigh Road North, N20. 445 8388/445 4654

Edgware & Dist Canine Training Soc, St Alphage Hall, Playfield Rd, Burnt Oak. Ring class 8.30pm; obedience training 9.15pm. 0923 35968

Information and Advice Drop In, Sutton Road Health Clinic, Muswell Hill. CAB and Social Services worker available. 2-4pm. Housing Estates Officer attends first Monday of month

Hendon College Adult Literacy classes (students with mental handicap), Thirleby Rd, Burnt Oak. 7pm. 200 8300

RAF Association, Royal British Legion Hall, Legionway, Summers Lane, N12. 8pm. 883 5722

New Barnet Literary & Debating Soc, Foyer Rooms, Lyonsdown Hall, Lyonsdown Rd, New Barnet. 8pm. 449 0440

Needing friendship and an uplift to life? Visit Salisbury Chapel, Salisbury Rd, Barnet. 2.15pm. 449 7026

Tuesdays

Finchley Writers' Workshop, Moss Hall Tavern, 6pm. 349 1948

Mind in Barnet Luncheon/Social Club, 2 Schoolway, Woodhouse Road, N12. 10am-4pm. 446 1654 (also Thurs & Fri)

British Red Cross Society, 10 Downage, Hendon. Sale of nearly new clothes. 10am-3pm

Hendon and Edgware 18 Plus Group, Games Room, Royal Oak Pub, Finchley Rd, Temple Fortune. 8.15pm. 952 2243

Emotions Anonymous (emotional living problems), St Albans Church, West Heath Drive, Golders Green. 7.30pm. 837 4456/959 1003 (also Fridays)

MIND in Barnet, advice and counselling, Trinity Church, Nether Street, N12. No

appointment needed. 7.30-9.30pm

Al-Anon — help for families and friends of problem drinkers — Carey Room, Trinity Church Centre, Nether St, N12. 8pm. Further information for other local meetings 403 0888 (24 hour service)

Friendship Club for over 40s, Christ Church Hall, High Road, N12. 346 7657/349 0670

Studio North Three adult classes in art, College Farm, Fitzalan Rd, Finchley. 10am-1pm. 959 1498/6175

Finchley & Dist Model Aircraft Club, Manorside School, Squires Lane, N3. 14+. 8pm. 904 5449

Computer Courses, Mill Hill School Sports Centre, The Ridgeway. 8pm. 906 2322

Legal Advice, East Finchley Neighbourhood Centre, 42 Church Lane, N2. 7-8.30pm. 444 6265

Hendon College Adult Literacy classes (students whose first language is not English), Montagu Rd Centre, Hendon. 7pm. 200 8300

Hendon College Adult Reading & Writing classes, Thirleby Rd, Burnt Oak. 7pm. 200 8300

MIND in Barnet — Relative Support Group — Woodlands, Colindale Hospital, Colindale Ave. 7-9pm. 446 1654

Wednesdays

Good as new sale, Chipping Barnet Conservative Association, 163 High Street, Barnet. 10.00am to 1.00pm. (Also 1st and 3rd Saturdays of the month)

Bingo, St Alphage Church Hall, Playfield Rd, Burnt Oak. 8pm

Sale of clothing and bric-a-brac, Barnet Centre British Red Cross Soc, St Albans Rd, Barnet. 9.30am-3.30pm, 449 8969

Hendon College Adult Numeracy classes, Thirleby Rd, Burnt Oak. 7pm. 200 8300

MIND in Barnet Advice Centre, 2 School Way, North Finchley. 10am-4pm. No appointment needed. 446 1654/6470

Thursdays

MIND in Barnet Thursday Club, 154 Station Rd, Hendon. 8pm. 446 1654

MIND in Barnet — Women's Drop in Centre, Trinity Church Rodborough Rd, Golders Green. 9.30am-1pm (relaxation 11am). 446 1654

Carpentry for disabled, John Grooms, Stoneyfields Rd, Edgware. 1.30pm. Ring lan at CRAB 346 9789.

Talks on Social Effectiveness. 202 3373

Machine Knitting Class, Old Barn Centre, Tarling Rd, N2. Tuition at all levels. 1pm. 349 4613

Hendon College Adult Reading & Writing classes, Montagu Rd Centre, Hendon. 7pm. 200 8300

Alcoholics Anonymous, Temple Fortune Health Clinic, 23 Temple Fortune Lane, NW11. 8pm. 352 3001

Jubilee Group, St John's URC small hall, Mowbray Rd, New Barnet. 1.30pm. A warm wel-

come to anyone at home during the day. Creche available. 449 4275

Bingo, Community Centre, Victoria Rd, New Barnet. 7.30pm. 440 2573

Fridays

Social afternoon, Old Barn Community Centre, Tarling Rd, N2. All ages. 1-3pm. 349 4613.

Bingo, BSCA Centre, Mays Lane, Barnet. 8pm. 441 9387

Women's Clubs

Ashley TWG, Mill Hill East Free Church, Salcombe Gdns. 7.30pm. 906 1952 (1st Thur)

Barnet Afternoon TWG, Church House, Wood St. 2pm. 449 0367 (3rd Fri)

Barnet Evening TWG, Church House, Wood St. 7.45pm. 440 1526 (1st Wed)

Broadway Mill Hill TWG, Hartley Hall, Flower Lane, 2pm. 959 0995 (2nd Thur)

Chipping Barnet WI, Church House, Wood St, Barnet. 10am. 440 8807 (2nd Thur)

East Barnet Monkfrith TWG, British Legion Hall, Nursery Rd, N14. 1.45pm. 0707 51896 (1st Thur)

East Barnet (Osidge) TWG, Small Hall, Brookside Methodist Church. 7.45pm. 368 7346 (2nd Tues)

East Barnet Valley TWG, Lyonsdown Hall, Lyonsdown Rd, New Barnet. 2.15pm. 449 8601/3885 (1st Thur)

Finchley Church End TWG, St Mary's Church Hall, Hendon Lane, N3. 2.15pm. 455 7152 (4th Wed)

Finchley Granville TWG, Finchley Methodist Hall, Ballards Lane, N3. 2pm. 346 7056 (2nd Thur)

Finchley Redbourne TWG, Etchingham Park Rd Day Centre, N3. 7.45pm. 349 3365 (4th Tues)

Friern Barnet & Whetstone TWG, Manor Drive Methodist Church, York Way, N20. 2pm. 368 5571 (3rd Tues)

Friern Barnet Friary TWG, Christ Church URC Hall, Bellevue Rd, N11. 2pm. 361 9623 (1st Tues)

Golders Green TWG, St Alban's Church Hall, Golders Green. 2pm. 455 4156 (May 9)

Hampstead Garden Suburb TWG, St Jude's Church Rooms, Central Sq, NW11. 2pm. 458 3706 (1st Mon)

Mill Hill Afternoon TWG, Harwood Hall, The Broadway, NW7. 2pm. 959 1505 (2nd Wed)

Mill Hill Highwood, TWG, Hartley Hall, Flower Lane. 2pm. 959 1994 (3rd Mon)

Montrose WI, Parish Room, St Alphage Church Montrose Ave. 7.45pm. 951 1140 (4th Tues)

National Council of Women, Barnet & Dist, St John's URC Hall, Mowbray Rd, New Barnet. 1.30pm. 20p. 368 1442 (4th Mon)

New Barnet Evening TWG, Brookside Methodist Church Hall, E Barnet. 7.30pm. 440 1934 (May 9)

Royal British Legion Women's Section (N Finchley), Legionway, Summers Lane N12. 8pm. 445 9911 (1st Tues)

Totteridge WI, Village Hall, Badgers Croft, Totteridge Lane, N20. 7.30pm. 445

BARNET DIARY

5700 (1st Tues)
Wives Group, Mill Hill East Church Hall, Salcombe Gdns. 8pm. 346 9430 (May 10, 24)
Woodside Park Afternoon TWG, Old Finchleians Club House, Southover, N12. 2pm. 445 0911 (3rd Wed)

Mondays

SupaSlim Slimming Club, Avenue House, East End Rd, N3. Sensible dieting and group therapy. 10am. 445 3195 (also Tuesdays 8pm)
Ladies self defence, Canada Villa Youth and Community Centre, Pursley Rd, Mill Hill. 2pm. £1.50. 959 2811
Women only recreational sessions. Sport for Fun, Manor Hill Centre, Summers Lane N12. 368 6316

Tuesdays

MIND in Barnet — women's drop-in, Barnet United Reformed Church, Wood St, Barnet. 7.30pm
Ladies Home League, Salvation Army Hall, Hertford Rd, East Finchley. 2.15pm.

Thursdays

Barnet Asian Women's Assn, Barnet Health Education Unit, Oak Lane Clinic, East Finchley. 1.30pm. 883 1075/444 4411
Women's Friendship Club, Union Church, Northiam, Totteridge. 2.15pm. 445 6945
Ridgeway Club (Nat Assn of Women's Clubs), Evergreen Centre, Brookhill Rd, East Barnet. 7.45pm. 449 1373
Sculpture Class, Old Barn Centre, Tarling Rd, N2. 7.30pm. 349 4613 for enrolment details.

Fridays

Mixed activities for women, Old Barn Community Centre, Tarling Road, N2. 1pm. 349 4613 (with creche).

Horticulture and Floral Art

Monday May 9

Barnet & Dist Fuchsia Soc, Brookside Methodist Hall, Brookside Rd, E Barnet. 7.30pm. 440 4085

Tuesday May 10

Mill Hill Flower Club, Harwood Hall, Mill Hill B'way. 8pm. 959 3530
Friern Barnet Floral Art Club, Christ Church Hall, Oakleigh Rd Nth, N20. 8pm. 446 0783 (also May 24)

Wednesday May 11

Hendon Horticultural Soc, Hendon Library, The Burroughs. 8pm. 203 1187

Thursday May 12

Barnet Flower Arrangement Soc, Lyonsdown Hall, Lyonsdown Rd, New Barnet. 8pm. 0707 57199

Sunday May 15

Finchley Horticultural Soc, plant sale. 10am to noon. Allotments, Gordon Road, N3

Tuesday May 17

Totteridge Floral Art Group, Badger's Croft, Totteridge Village, N20. 2pm 445 9307

Wednesday May 18

Hendon Floral Art Group, West Hendon Community Centre,

Marsh Drive, NW9. 7.30pm. 346 8916

Saturday May 21

New Barnet Amateur Gardeners and Floral Art Soc coffee morning/plant bring-n-buy. 57 Northumberland Rd. 25p

Saturdays/Sundays

Mill Hill Horticultural & Allotment Soc, Hartley Close, Mill Hill. Trading hut open Sat 2.30-4pm, Sun 10.30am-12.15pm. Garden plots to let. 959 2848

New Barnet (Clifford Road) Allotment Soc, Tudor Sports Ground. Site shop (membership 50p pa) open Sat/Sun 10.30am-12.30pm. Plots to let. 449 2647

Wise Lane Horticultural & Allotment Soc, Moorlands Ave., Mill Hill. Trading hut open Sat 2.30-4pm, Sun 11am-1pm. Garden plots to let. 959 3493

Sundays

Burnt Oak Horticultural Society Trading Hut, Back Lane, r/o Woodcroft Hall. 10.30am-noon

Thursdays

Sangetsu Japanese flower arranging classes, 125 North End Road, NW11. 10am and 2pm. 445 8949

Keep Fit

Sundays

Yoga classes at Patanjali Yoga Centre, 190 Watford Way, Hendon. Beginners: 1pm & 3pm, advanced 5pm. 203 0062

Weekdays

Weight Training instruction, Hendon Sports Centre, Algernon Rd. 6-8pm Mon-Thurs; 5.30-7.30pm Fri. £1.80 per session or £15 per term. 202 6027

Mondays

Stretch, tone & trim to music, Brookside Methodist Church, East Barnet. 10.15am. Creche facilities. 440 5811.
Body-tune St Mary's Church Hall Church Hill Rd, E Barnet. 7.15pm. 441 1336 (also Tues & Wed)

Pensioners Health Group, Methodist Hall, Rodborough Rd, NW11. 2pm. 794 6376. 60p

Yoga, St Mary's Church Hall, Hendon Lane, N3. 7pm. 455 2476. Also Weds 9.45am

Aerobics 9.30am; body conditioning 10.30am. St Mary's Hall, Hendon Lane, N3 (during term-time). 349 1449

Body conditioning classes, Christ Church, Whetstone, Oakleigh Rd Nth, N20. 7.15pm (also Thurs). Phone 445 1846

Aerobic workout, Mill Hill School Sports Centre, The Ridgeway, Mill Hill. 7pm, advanced 8pm. £2. 958 7596 (also Thurs 8pm)

Popmobility, Hendon Sports Centre, Algernon Rd. 7.30pm. £1.80 per session. 202 6027

Weight and fitness training, Mill Hill School Sports Centre, The Ridgeway, Mill Hill.

8.15pm. 906 2322

Aerobic advanced class, Manorside School, Squires Lane, N3. No beginners. 8pm. 349 1449

Keep Fit, Manorhill Centre, Summers Lane, N12. 7pm. 368 6316

Low Impact Aerobics and Stretch, All Saints Church Hall, Oakleigh Rd Nth, N20. 7.30pm. 368 5514

Body-tone routine to shape & tone, St Mark's Church Hall, Potters Rd, New Barnet. 10.30am. 441 1336

Tuesdays

Stretch tone and trim to music, Freston Gardens Church Hall, Freston Gdns, Cockfosters. 8.15pm. (AM workouts, creche available). 440 5811

Body workshop — exercise and beauty, Christ Church Hall, The Green, Southgate. 8.15pm. 368 3831

Popmobility/aerobics, Queen Elizabeth Centre, Meadway, Barnet. 7pm and 8pm. 441 2933.

Keep fit, Centre Point, Corner Mead Grahame Park, 8.30pm. 205 7113

Aerobics, Manorside School, Squires Lane, N3. 8pm. 349 1449 (also Thursdays 8pm)

Ladies Keep Fit — suitable all ages — Hendon School, Golders Rise, Hendon. 7.30pm. 349 0400. (also on Thursdays)

Body conditioning classes, Oaktrees Special School, Chase Side, Southgate. 7.30pm. 368 0881

Keep Fit and self defence with Nanbudo, St Mary's Hall, Hendon Lane, N3. 8pm. 349 4421

Stretch and Shape, Oak Tree Special School, Chase Side, Southgate. 7.30pm. 368 0881

Slenderquest Slimming Club, St Mary Church Hall, Church Hill Rd, East Barnet. 8pm. £2. 449 4277

Body Focus exercise/dance class, Lyonsdown Hall, New Barnet. 10.15am. £1.50 creche inclusive. 368 5871

Ladies Weight training, Hendon Sports Centre, Algernon Rd. 10.30-11.30am. £1.80 per session, £15 per term. 202 6027

Exercise to music — keep fit/aerobics — URC Hall, Wood St, Barnet. £1.50. 8pm

Hatha Yoga for beginners, St Mary's Church Hall, Church Hill Rd, E Barnet. 1.45 and 8.30pm. 441 1336 (also Wed 8.30pm)

Wednesdays

Popmobility, St Mary Magdalen Parish Centre, Athenaeum Rd, N20. 8pm. 445 8410

Body conditioning classes, Christ Church, Whetstone, Oakleigh Rd Nth, N20. 10am. 445 1846

Stretch, tone & trim to music, Manor Drive Methodist Church Hall, Manor Drive, N20. 10.15am. Creche facilities. 440 5811 (also Fridays)

Pop exercise, Centre Point, Grahame Park. 7.30. Gym fit/swim, 8pm. 205 7113.

Aerobics, Copthall Swimming Pool, Page St, Mill Hill. 9.45am (during term-time). 349 1449

Mixed Volley Ball Training Club, Queen Elizabeth Centre, Meadway, Barnet Juniors 6pm; seniors 7pm. 441 2933

Health and Beauty, exercise and movement classes, Christ Church Hall, High Rd, N12. 7.15-9.45pm. 504 1644

Keep Fit, Manorhill Centre, Summers Lane, N12. 7-8pm & 8-9pm. 368 6316

Yoga classes for beginners, Patanjali Yoga Centre, 190 Watford Way, Hendon. 10.30am to 12 noon. 203 0062

Body conditioning: keep fit class — Canada Villa Centre, Pursley Rd, Mill Hill. 2-3pm. £1.50 per session. Creche available. 959 2811

Weight Mates Slimming Club, St Mary Magdalen Church Hall, Holders Hill Rd, NW4. 10am. 455 4814

Tai-Chi for all, St Edward's Church Hall, Finchley Rd/Hoop Lane, Golders Green. 8pm. 458 9842

Keep fit, St Paul's Church Hall, The Ridgeway, Mill Hill. 8.15pm. 906 0854

Relax and become supple with Yoga, Totteridge Village Hall, Badgers Croft, N20. 1.30pm. 445 2171

Thursdays

Get Fit Club for young and old, St Stephen's Hospital, Mays Lane, Barnet. 7.30pm. £1.50. 906 0974

Mixed exercise class for people with problem backs, Queen Elizabeth's Girls' School, Meadway, Barnet. 8pm. 445 6986

Aerobics, Centre Point, Corner Mead, Grahame Park. 8.30pm. 205 7113

Yoga, British Wheel trained teacher, Union Church, Northiam, N20. 7-8pm. 349 2972

British Wheel of Yoga Teachers Diploma Course, Barnet. 7pm. Details 440 1828

Jumping Beans — pre-school gymnastics — Canada Villa Centre, Pursley Rd, Mill Hill. 10am-12 noon. £2 enrolment fee and £1 per session. 959 2811

Body Focus exercise/Dance class, East Barnet Baptist Hall, Crescent Rd. 8.30pm. £1.50. 368 5871

Limber, stretch & dance, Hampstead Gdn Suburb Institute, NW11. 6-7.30pm; 7.30-9pm. 455 9951

Mother and Toddler Gymnastics (up to 4yrs old), Hendon Sports Centre, Algernon Rd. Sessions: 12.45-1.30pm, 1.30-2.15pm, 2.25-3.10pm. Last session 2½-4yrs only. £1.50 per family. 202 6027

Ladies Keep Fit, Hendon Sports Centre, Algernon Rd. 10am. £1.80 per session. 202 6027

Yoga Class for Women, Old Barn Centre, Tarling Rd, N2. 7.30pm. 349 4613

Aerobics, St Augustine's Church, Great Field, Grahame Park. 8.30pm. 906 1721

Yoga for people with handicaps. Special class, Stanhope Road Centre, N12. Gentle movement, breathing

and relaxation. Qualified teacher. Other classes available. 1.30pm. 440 1828

Fridays

Aerobics 9.30am; Body conditioning 10.30am, Christchurch Hall, High Rd, N12 (during term time). 349 1449

Anita's keep fit class, Michael Sobell Centre, Limes Avenue, Golders Green. 10.15am. 458 7411 ext 379 (day), 455 9195.

Keep Fit, Church House, Wood St, Barnet. 9.30am. 368 0881

Body conditioning class for problem backs and joints, Christ Church Hall, Oakleigh Rd Nth, Whetstone. 10am. 445 1846

Saturdays

Body-Tune, St Mark's Church Hall, Potters Rd (entrance Woodville Rd), New Barnet. 9.30am. 441 1336

Aerobic low impact workout, United Reformed Church Hall, East End Rd, N2. 11am. 883 7029 (also Wednesdays 7-9pm)

Fitness through movement, exercise & stretching, East Finchley Library, 226 High Rd. 10.30am. 883 7029

Keep Fit, St Marks Church Hall, Potters Rd, New Barnet. 11am. 368 0881

Bridge, Whist and Chess

Saturday May 7

Whist Drive, Day Centre, Friern Barnet Lane, N11. 8pm. 368 4278 (also June 4)

Mondays

Bridge Classes, 41 Northumberland Rd, New Barnet. 7.30pm. 449 0960. Also Tuesdays 10am, Wednesdays 2pm.

Bridge Class, second year students, Woodside Park Club, Southover, N12. 8pm. 445 1108 (also Tuesdays)

Partner Whist Drive, St Peter's Church Hall, Somerset/Lyonsdown Rd, New Barnet. 8pm. Admission 40p. 441 1591

'Bridge Builders' — all levels of play for all ages, Sobell House, Limes Avenue, off Golders Green Rd. NW11. 7.45pm. £1.50, special instruction for beginners £2. 458 7411

Bridge Club, The Old Barn Community Centre, Tarling Rd, N2. 1pm. 349 4613

Tuesdays

Chase Bridge Club, St Andrew's Church Hall, Southgate. 9.30am. 360 5098

Wednesdays

Friern Barnet Council for Voluntary Service whist drive, Priory Hall, Friern Barnet Lane. 10.30am. 368 4278

Thursdays

Contract Bridge, Trinity Church, Hodford Rd, Golders Green. 1pm. Admission free. 202 2751/200 1839

Northside Bridge Club, E Finchley Methodist Church Annexe, High Rd. Duplicate first Thursday, rubber remaining Thursdays. 7.30pm. 445 7788

NW London Duplicate Bridge Club, Michael Sobell Centre,

Limes Ave. NW11. Admis-
sion £1.50. 7.45pm. 455
3745

Bridge and whist for over 70s.
Alyth Social Club. Alyth
Gdns. Finchley Rd. NW11.
12 noon. Ploughman's lunch
(60p). 458 5674

Hendon Chess Club. Albany
College, 413 Hendon Way,
Hendon Central. 7.30pm.
958 8505

Finchley Chess Club, Etching-
ham Park Day Centre,
Etchingham Park Rd. N3.
7.30pm

Fridays

The Fern Room Whist Club,
Salisbury Road, Barnet,
2pm. 441 4853

Contract bridge, Trinity Church,
Rodborough Rd. NW11. 1pm

Martial Arts

Mondays

North London Karate Club, Mill
Hill School, The Ridgeway,
Mill Hill, 8-9pm, 9-10pm.
440/7733/8633 (also Thurs)

Cobra Karate Club, Christ's
College School, Hendon
Lane, N3. Beginners 7pm;
advanced 8pm. 959 4338.
Also Wednesdays

Watling Karate Club, Watling
Boys' Club, Dryfield Rd,
Burnt Oak. Under 12, 6-7pm;
over 12, 7-8pm. 40p a ses-
sion (and Wednesdays)

London School of Karate, East
Barnet Upper School, Chest-
nut Grove. 8pm. 359 0381

New Barnet Jiu Jitsu Club,
Scout Hut, York Rd, New
Barnet. 7.30pm. Also Tues
with children, 6pm. 446 1733
Nanbudo Martial Arts Club, St
Mary's Church Hall, Hendon

Lane, N3. 8pm. 349 4421
(also Tuesdays and
Wednesdays. Children
6.30pm. Wed)

Judo. The Old Finchleians
Memorial Ground, South-
over, N12. Children 7pm;
adults 8.30pm. 444 0156/
445 7406 (also Thurs.)

Tuesdays

Shotokan Karate Club, Christ's
College, Hendon Lane, N3.
8pm. Adults and beginners.
202 3171 (also Thursdays)

Karate Centre Point, Corner
Mead, Grahame Park. 7-13
yr olds 6pm; 13 plus and
adults, 7pm. 205 7113 (also
Thursdays, 7pm and 8pm)

J.L. Kung Fu Centre, All Saints
Church Hall, Durham Rd,
N2. 7.30pm. 959 2605

Barnet Goju-Ryu Karate Club,
(traditional Okinawan Goju-
Ryu), Queen Elizabeth's
Sports Centre, Meadway,
Barnet; children 6-7pm,
adults 7pm. 449 8997 (also
Thurs)

Meadway Goju-Ryu Karate
Club, St Marks Hall, off
Meadway, Barnet. 8.30pm.
274 6376 (children's clas-
ses)

Sport Karate Club, Beaver Hall,
Fairmead Cres. Edgware.
8pm. 906 1701 (Barnet Ka-
rate Squad coach)

Wednesdays

Kateda School of self-defence
for women, All Saints
Church, Durham Rd, East
Finchley. 7.30pm. 866 3058

Watling SKC, Watling Com-
munity Centre, Orange Hill
Rd, Burnt Oak. Juniors 7pm,
adults 8pm. 906 1701

Judo for children, Pymmes
Youth Centre, East Barnet
Lower School, Westbrook
Crescent, E Barnet. 6.30-
7.30pm; 7.30-8.30pm. 440
6473. Adults Thursday
7.30pm.

Kateda Self Defence Associa-
tion, King Alfred School,
North End Rd, NW11. 7pm.
904 6720

Finchley Karate Club (Okina-
wan Goju-Ryu Karate), Man-
orside School, Squires Lane,
N3. 8pm. (Children 7pm) 346
9505 (also Fridays)

North London Gojuigan, Fin-
chley Synagogue, Hulton
Grove, N12. 8-14 yrs.
6.30pm. 449 3150

Thursdays

Aikido, Queen Elizabeth Cen-
tre, Meadway, Barnet. 8pm.
0707 53462

Women's self defence, Man-
orhill Centre, Summers
Lane, N12. 7.30pm. £8 for 6
week course. 368 6316

Fridays

Shin Do Kwai Kendo Club,
Whitefield School (gym)
Claremont Rd, NW2.
7.30pm. 863 7574

Martial Arts Academy,
Science-of-Combat, Hendon
High School, off Brent Street,
Hendon. 7pm. 0865 726772
Lyonsdown Judo Club, Lyons-
down Hall, Lyonsdown Rd,

New Barnet Children 8-
15yrs. 7.30pm; adults
8.45pm. Ladies self-defence
8.30pm. 449 4831 (eves)

Saturdays

North London Gojuigan, Heart
Beat Fitness Studio, High
Rd, Whetstone. 8-14 yrs
1pm; Adults 4pm. 449 3150

Pensioners' Clubs

Wednesday May 11

Pensioners' Voice (Barnet),
Methodist Hall, Brookside
Rd, E Barnet. 1.30pm. 361
2787

Thursday May 12

Pensioners' Voice (E Fin-
chley), Library, 226 High Rd,
N2. 2pm. 883 2155

Thursday May 19

Civil Service Pensioners'
Alliance, Avenue Hse, East
End Rd N3. 10am. 346 6994

Thursday May 26

Pensioners' Voice (Colindale/
Burnt Oak), Burnt Oak Lib-
rary, Watling Ave. 1.30pm.
906 2161

Pensioners' Voice (Whetstone/
Finchley), N Finchley Lib-
rary, Ravensdale Ave.
2.00pm. 346 6762

Wednesday June 1

Golders Green & Dist Pension-
ers' Assn, Trinity Church,
Rodborough Rd NW11.
1.15pm. 455 7952

Mondays

Pensioners Lunch Club (Asian
Vegetarian Menu), East Fin-
chley Neighbourhood Cen-
tre, 42 Church Lane, East
Finchley. Noon. 444 6265

Handicraft Club for over 60s,
Evergreen Centre, 54-60
Brookhill Rd, New Barnet.
2pm. 449 8690

Club for active retired, Friern
Barnet Day Centre, Friern
Barnet Lane, N11. 11am-
4pm. 368 4278

Hadley Darby & Joan Club,
Memorial Hall, Hadley High-
stone. 2pm. 441 4853

Social Club, Old Barn, Tarling
Rd, N2. 1pm. 349 4613

Tuesdays

Pensioners Lunch Club, Home
Cooked Food at East Fin-
chley Neighbourhood Cen-
tre, 42 Church Lane, East
Finchley. Noon. 444 6265
(and Fridays)

Alyth Social Club (70+), Alyth
Gdns, Finchley Rd, NW11.
12 noon-3pm. Ploughman's
lunch (60p). 458 5674

Luncheon Club for elderly
homebound and lonely,
Friern Barnet Day Centre,
Friern Barnet Lane, N11.
10.30am-3.30pm; Club 2-
4pm. Also Wed. & Thurs.
368 4278

Union Street Evergreen Club,
Ewen Hall, Wood St, Barnet.
2pm. 441 4853

Fern Evergreen Club, Fern
Room, Salisbury Rd, Barnet.
2pm. 441 4853

Wednesdays

Mays Lane Evergreen Club, St
Stephens Church Hall, Bells
Hill, Barnet. 2pm. 441 4853
West Hendon over 60s Lunch
and Social Club, Community

DANTAPINE

QUALITY HANDMADE PINE

DESIGNED AND MADE IN OUR WORKSHOPS

PINE FITTED KITCHENS

with quality hand wax finish giving a hard wearing
surface that brings out the richness of the pine. Our
team of experienced fitters are available

FREE PLANNING SERVICE

DINING ROOM — see our selection of table, chairs
— welsh dressers.

BEDROOM — Five ranges to choose from, to suit
every pocket. We have a budget range or something
with that little bit extra — compare value for money.



Call in at:

88 THE BROADWAY, MILL HILL. Tel: 01-959 4292
96 LEAGROVE ROAD LUTON, Tel: Luton 36236
17 HIGH STREET, HEMEL HEMPSTEAD,
Tel: Hemel Hempstead 214040

MAY MADNESS

INSTANT
CREDIT FACILITIES
AVAILABLE UP TO
£1,000
SUBJECT TO
STATUS



GOOD
QUALITY
SINGLE BED
£80

GOOD
QUALITY
DOUBLE BED
£132

We specialise in

BEDS • SUITES • FIRE SIDE CHAIRS

We also furnish houses, flats for letting/renting and
old peoples homes

MATRESSES OF ALL
SHAPES AND SIZES ARE
AVAILABLE SEPARATELY

FOLDING BEDS
FROM £29.00

VALLEY FURNISHING

114 BRENT STREET, HENDON NW4

YOU ARE ONLY A PHONE CALL AWAY

Tel: 202 4666 Car park at rear

BARNET DIARY

Centre, Marsh Drive, NW9.
Lunch 12.30pm; Social Club.
1.30pm. 202 5057
Old Pals Club, Bingo, Old Barn
Tarling Rd, N2. 2pm. 349
4613

Thursdays

Pensioners 'Friendship Club',
North Road Community Cen-
tre, Burnt Oak. 1.45pm. 951
1726

Arts and Crafts — open CRAB
sessions for the elderly. The
Meritage Club, Church End,
Hendon. 1.30pm

Roundabout Club pensioners
group, Friary Hall, URC
Church, Oakleigh Park Nth,
N20. 2pm. 361 2787

Hoop Lane Thursday' — drop
in for coffee and a chat —
Unitarian Room, Hoop Lane,
NW11. 10.30am.

Golden Circle Club, The Salva-
tion Army Hall, Brampton
Grove, Hendon. 1.30pm. 203
4823

The Torrington Park Pension-
ers' Club, Health Centre,
Torrington Park, N12. 2pm.
446 4201

Fridays

Edgware Friday Club for Senior
Citizens, Methodist Church
Hall, Garratt Rd, Edgware.
10am. 952 3908

Young at Heart, Conservative
Hall, Barnfield Rd, Burnt
Oak. 1.30pm. 952 3513

Club for the Elderly, Friern Bar-
net Day Centre, Friern Bar-
net Lane, N11. 2-4pm. 368
4278

Bells Hill Evergreen Club, St
Stephens Church Hall, Bells
Hill, Barnet. 2pm. 441 4853

Over 60's Club, Salvation Army
Hall, Hertford Rd, East Fin-

chley. 2.30pm.

Countryside and Wildlife

Sunday, May 8

RSPB NW London, Harwood
Hall, Mill Hill. 2.30pm. 952
3129 (also Tuesday, May 17,
8pm)

Herts and Middx Wildlife Trust,
task day, Darlands Lake.
Meet 10am, The Close,
Orange Tree Pub, Totteridge
Lane, N20. 346 5258

Thursday, May 12

RSPB N. London, Holy Inno-
cents' Hall, Tottenham Lane,
N8. 7.45pm. £1.50. 361 2658

Saturday, May 14

RSPB N London coach outing
to Minsmere. 8am Alexandra
Park gates, Priory Rd N8.
£6.50. 348 5300

Sunday May 15

RSPB NW London visit to Dar-
lands Lake nature reserve.
Meet 9am Bunns Lane car
park, NW7 or 9.30am
Orange Tree Pub, Totter-
idge. 346 5258

Tuesday, May 17

Barnet National Trust, St. Mary
Magdalen Hall, Athenaeum
Rd, N20. 8pm. 449 5896

Wednesday, May 18

Herts and Middx Wildlife Trust,
wildflower walk, Darlands
Lake. Meet 7.30pm, The

Close, Orange Tree Pub,
Totteridge Lane, N20. 346
5258 (also Thurs. May 26,
2.30pm)

Monday, May 23

RSPB Potters Bar and Barnets,
Oakmere Hse, Potters Bar,
8pm

Saturday, June 4

The Ramblers' Assn, walk in
Hadley Woods. Meet
2.30pm, High Barnet Stn.
385 4934

Saturdays

North London Rambling Club
organised Saturday walks.
Contact (SAE) Ray Todd, 31
Blair Close, St Paul's Rd,
London N1 2YP

Sundays

North West London HF Club.
Sunday rambles in Home
Counties. 997 6079

Wednesdays

Barnet YHA Group 1st Lyons-
down Scout Hut, York Rd,
New Barnet. 8pm. 449 1553/
202 7574

Barnet Caving Group, Bull and
Butcher Pub, High Rd, Whet-
stone. 9.30pm. 446 1070/
1868

Sport

Monday May 16

London Hash House Harriers
trotting in Trent Pk. 7pm at
Oakwood Underground Stn

Saturdays

Tennis Squad, Barnet College,
Russell Lane, N20. 10am.
Details Manorhill Centre, 368
6316

Melanies Latest Charts and Im-
ports Club, 407 Hendon
Way, Hendon. 202 7289

Mill Hill School Sports Centre,
The Ridgeway, Mill Hill,
Junior activities 7-14 yrs,
10.30am. 906 2322

Sundays

Finchley Section of the Cycling
Touring Club organise Sun-
day rides. Phone 361 9851

Tennis and Short Tennis for 5
yrs to adult, Christ's College
Lower School, East End Rd,
N3. Details Manorhill Centre
368 6316

Shaftesbury Barnet Harriers
training sessions, Cophall
Stadium, Gt Nth Way, NW4.
11am. 200 1584. Also Tues-
days 6pm

Mondays

Monarchs Sports Club for peo-
ple with physical and mental
handicap, Bishop Douglass
School, Hamilton Rd, N2.
7.45pm. 50p per session.
202 4684/953 3276.

Cranbourne Badminton Club,
Hampstead Garden Suburb.
New experienced players
welcome 346 5655

Morning badminton club, Hart-
ley Hall, Mill Hill. Vacancies
for experienced players. 959
4867

London Hash House Harriers

meet for runs all over London
until end of September at
7pm, then at weekends at
11am during winter months.
Details of programme, s.a.e.
'Mic Mac', 12 Parkhurst Rd,
Friern Barnet, N11 3EL. 361
0887

Barnet Blind Bowls Club,
Bishopswood Tudor Bowls
Club, Summers Lane, N12. 2
pm. 449 7058

Tuesdays

Mill Hill School Sports Centre,
The Ridgeway, Mill Hill, Golf
lessons, 7.30pm. 906 2322

Basketball, 9-16 yrs Christ Col-
lege Lower School, East End
Rd, N3. 6pm. 368 6316

Elmgate Badminton Club,
Church Hall, Rectory Lane,
Edgware (vacancies).
7.30pm. 959 4757

Barnet & Dist Athletic Club
training session, Cophall
Stadium. 7pm. 368 6754

Speedwell Badminton Club,
moderate to good standards,
Christ Church Hall, High Rd,
N12. 1.45pm. 449 6401

Barnet Blind Bowls Club, STC
ground, Denham Rd, New
Southgate. 2pm. 449 7058

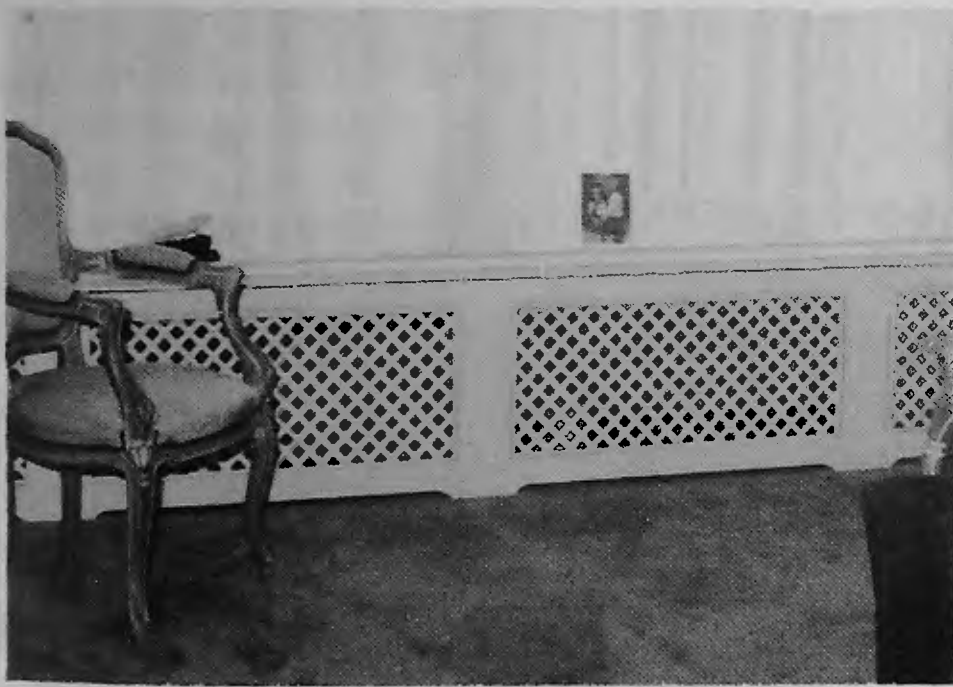
Wednesdays

Mill Hill School Sports Centre,
The Ridgeway, Mill Hill,
Junior badminton, 6pm; adult
badminton, 7pm. 906 2322

St Margaret's Badminton Club,
Rectory Lane, Edware. 8pm.
440 4572/0923 46953.
Vacancies for players

Thursdays

Badminton Club, Christ Church
URC, Bellevue Hall, Belle-
vue Rd, N11. 8pm. 449 8476
Badminton (adults), Manorhill



IS YOUR DECOR SPOILT BY UNSIGHTLY RADIATORS?

Our cabinets elegantly conceal radiators and will
enhance any room in your home. Easy access to
valves, and made to any required size in either wood
or painted finish. To see wide choice of styles and
grille patterns plus quotation to your requirements
please ring 01-455 9962 or write for details.

**Monogram Cabinets, 291 Cricklewood Lane
London NW2 2JL**

SPRING OFFER

15% off complete suites



Mayfair range by Wade

Sheraton House Furnishers Ltd.

Dining furniture by Titchmarsh and Goodwin, Reprodux, Jaycee,
Rackstraw, Luptons, Old Charm, Burtons, Youngers, Ercol and Charles Barr

Top quality furniture by Art Forma, Bridgecraft, Collins and
Hayes, Wade, Derwent, Parker Knoll, Aritistic and Parker & Farr

Loose cover suites. Olympus bedroom furniture and beds

**297 WATLING STREET, RADLETT
TEL: 09276 5386**

**5-6 SHERATON HOUSE, LOWER ROAD
CHORLEYWOOD, HERTFORDSHIRE
TEL: CHORLEYWOOD 3457**

Opening times 9.15am-5.30pm. Closed all day Wednesday
OPEN SUNDAYS FOR VIEWING 11am-4pm (only at Chorleywood)
ALL CREDIT CARDS ACCEPTED — EASY PARKING

BARNET DIARY

Centre, Summers Lane, N12. 7pm. 368 6316
Short tennis for juniors, Mill Hill School Sports Centre, The Ridgeway. 6pm. 906 2322
Barnet & Dist Athletic Club training session, Clubhouse, Victoria Rd, New Barnet. 7pm. 368 6754

Fridays

Barnet Blind Bowls Club, Old Court House Rec, Wood St, Barnet. 2pm. 449 7058

Basketball sessions for juniors and seniors, Mill Hill School Sports Centre, The Ridgeway. 7pm. £1.50 juniors. £2 seniors. 906 2322

Mill Hill School Sports Centre, The Ridgeway, Mill Hill. Squash coaching — juniors 6.15-7.15pm; adults 7.15-8.15pm. 906 2322

Youth

Wednesday May 11

Rotaract Club (Edgware & Stanmore), The Green Man Pub, Honeypot Lane, Stanmore. 8.15pm. 722 4439 (also May 25)

Wednesday May 18

Rotaract Club (Finchley), Moss Hall Tavern, Ballards Lane N12. 8.30pm. 445 1393 (also June 1)

Rotaract Club (Barnet), Barnet Cricket Club, Barnet Lane. 8pm. 441 5892 (also June 1)

Thursday May 19

Friern Barnet and Whetstone Rotaract Club, Bull and Butcher Pub, High Road, N20. 8.15pm. 368 3383 (also June 2)

Sundays

Youth Club for hearing impaired, Grahame Park Youth Centre, Corner Mead, Grahame Park Way. 10.30am. 202 3811

Weekdays

Old Barn children's activities, Tarling Rd, N2. Under Fives, 9.30am; After School Club, 3.30-6pm. 349 4613

Mondays

St John Ambulance, 1st Finchley Badger Set, Finchley Methodist Church, Ballards Lane, Finchley, N3. Age 5½ upwards. 6.15pm. 207 3036
Cranbourne Badminton Club, Hampstead Garden Suburb. New experienced players welcome. 346 5655

Brownies at East Barnet Baptist Church Hall, East Barnet Rd. 6pm. 440 6811

10th Hendon Brownie Pack, St Mary Magdalen Church Hall, Holders Hill Rd, Hendon. 6.30pm

Tuesdays

Colindale Youth Club, 11-16 years, St Matthias Church Hall, Rushgrove Ave. 7pm. 205 7774

120 (Hendon) Sqn Air Training Corps, boys and girls 13½ to 16, Colchester Rd, Burnt Oak, Edgware 7.30pm (also Fri & Sun 10am-12.30pm). 205 7297 (and Thursday)

1st Childs Hill Guides (10-14), All Saints Church Hall, Church Walk, NW2. 6.45pm.

458 5549

1374 East Barnet Squadron Air Training Corps (13-16yrs), Gloucester Rd, New Barnet. 7.30pm. 440 0263

Wednesdays

CRAB — Circus Skills — children aged 8+ 5pm, 50p a session; adults 7pm, £1 a session. Barnet Drama Centre, 142 High Rd, East Finchley. 346 9789

Hendon Woodcraft Folk (during term time), Hendon School, Golders Rise. 6.15pm. 202 7140

Old Barn Youth Club 10-14 yrs, Tarling Rd, N2. 7pm. 349 4613 (also Fridays)

Thursdays

Brookside Methodist Church Boys' Brigade, East Barnet. Pre-Junior 6-8, 6.15pm; Juniors 8-11, 6.30pm; Company 11+ 8pm. 441 2042

High Barnet Woodcraft Folk, Underhill School, Mays Lane, Barnet. 6-9 yrs, 6pm (440 5369); 10-13 yrs. 7.15pm (440 2426)

Canada Villa Youth Centre pre-school gymnastics club 'Jumping Beans', Pursley Rd, Mill Hill. 10am-12 noon. £2 registration, then £1 per session. 959 2811

PHAB-integrated social club for physical handicapped and able-bodied people. Details 450 4180

1st Friern Barnet Boys' Brigade, Manor Drive Church

Hall, Whetstone. Boys aged 5-18. 5.30-10pm. 361 9698

Fridays

Brookside Community Group Senior Youth Club (11-16), Union Church, Northiam, N12. 7.15-10.15pm. 445 5958.

Dance

Monday May 9

Chipping Barnet Folk Dance Club, Church House, Wood St. 7.45pm. £1. 449 4425 (also May 23)

Saturday May 14

Finchley Sequence Dance Club, St Philip's Hall, Gravel Hill, N3. 7pm. 346 8675

Thursday May 19

Circassian Circle Folk Dance Club, Harwood Hall, Mill Hill B'way. 7.45pm. 75p. 950 5756 (also June 2)

Saturday June 4

20th Century Sequence Dancing Club, Southgate Upper School, Sussex Way, Cockfosters. 7.30pm. 360 2586

Sundays

Ballroom and Latin American dances, Van's Studio, 1 Middleton Rd, NW11. 8.15pm. 455 7468

Mondays

CRAB dance club for disabled, Woodhouse Sixth Form College, Woodhouse Rd, N12.

50p per session. 7pm. 346 9789

Ballet for 4+, Michael Sobell House, Limes Avenue, NW11. Pre-primary 4.30pm; primary 5.15pm. 203 4358

Tuesdays

20th Century Sequence Dancing Club, All Saints Hall, Oakleigh Rd North, Whetstone. 7.45pm. 360 2586

Tap dancing, Centrepoint, Grahame Park. Under 12s 6.15pm; 12+ and adults, beginners 7pm, intermediate 7.30pm. 205 7113

Wheelchair dancing, Grahame Park Community Centre, The Concourse, NW9. 1.30-3pm. 346 9789. Transport available

Hampstead & Dist Scots Assn, Golders Green Parish Church Hall, West Heath Drive, NW11. 8pm. 870 6131

Contemporary modern/disco classes for children 4-14 yrs, Lyonsdown Hall, Lyonsdown Rd, New Barnet. Beginners 4.30pm; advanced 5.30pm. 440 8530

Absolute beginners ballroom and Latin-American group classes, 1 Middleton Rd, Golders Green. 8pm. £2.25

Wednesdays

West Hendon Old Time and Modern Sequence Dance Club, St Matthias Church Hall, Rushgrove Avenue, Colindale. 8pm. 952 8529

Dancing, ballroom and Latin American, St Philip the Apostle Parish Hall, Gravel Hill, N3. Children 5-7pm, adults 7.30pm and 8.30pm. 360 0826

Mountfield Old Time & Modern Sequence Dance Club. Mar-

SPECTACULAR SALE

ON FRIDAY 13th MAY* FOR ONE DAY ONLY
ALL FRAMES ½ PRICE (INCLUDING LATEST DESIGNER FRAMES)
*CHRISTIAN DIOR • NINA RICCI • PLAYBOY • DUNHILL •

BUDGET FRAMES FROM £4.50
IT'S OPEN DAY - NO APPOINTMENT NEEDED!

DESPITE THE GOVERNMENT BILL ALL EYE TESTS
BOOKED ON THIS DATE ARE STILL FREE - BUT HURRY!

FAMOUS FOR OUR CONTACT LENS SERVICE
— NOW COME & SEE OUR GLASSES

FRIERN BARNET OPTICIANS
219 Woodhouse Road Friern Barnet (nr Town Hall) N12
Tel: 01-368 4091
OPEN MON-SAT 9-5.30pm
EARLY CLOSING WED & SAT 2pm
Evenings by appointment

ALSO AT: TUFNELL PARK OPTICIANS
141 Fortess Road Tufnell Park NW5 Tel: 01-267 0183
OPEN MON-SAT 9.30-6.30pm
HALF DAY CLOSING THURS

MAKES IT EASY TO FIND
20 MINS FROM OXFORD ST
3 STOPS FROM ELSTON

*SALE ON SATURDAY 14th MAY
AT TUFNELL PARK OPTICIANS



OF MILL HILL
ESTABLISHED 25 YEARS

We clean Curtains, Carpets and Upholstery Beautifully

HOMES • OFFICES • HOTELS • RESTAURANTS

Curtains:

- Take down and rehang service included ●
- Full repair, alteration and adaption service ●
- Express service upon request ●

Tel: 01-959 6996/7066

62 The Broadway, Mill Hill NW7

HURRY... BOOK TODAY

ROYAL ASCOT

TUESDAY, JUNE 14
Price of Wales Stake Day

THURSDAY, JUNE 16
Ladies' Day

ROYAL ASCOT COUPON

Name

Address

Tel

Date choice Please send

me tickets. I enclose full remittance
Made payable to: London Tour Co Ltd.,
and sent to the address below

WEDNESDAY, JUNE 15
Hunt Cup Day

Tickets at £25 per person
includes:

- ★ Return coach transport to and from Ascot from your local pick-up point
- ★ Admission into Ascot silver ring
- ★ Packed traditional lunch with a ¼ bottle of wine

Pickup points and times:
London, Victoria.

We can offer Tatterstalls tickets on
Wednesday 15th & Thursday 16th June
at an additional charge of £12.50.

THE ROYAL PROCESSION TAKES PLACE EACH DAY
LONDON TOUR COMPANY LTD

618 Linen Hall, 162-168 Regent Street, London W1R 5TB. Tel: 01-734 3502/3

BARNET DIARY

Playgroups and Toddlers

Weekdays

Playgroup 3-5yrs. SPEC Community Centre, 87 Brookside Sth, E Barnet. 9.15am-12.15pm. 368 0891

Crescent Playgroup, East Barnet Baptist Church Hall. 9.30am. 449 5095

Brookside Play Group (3-5 yrs), Barnet Pre-School Playgroup Assn), 87 Brookside Sth, East Barnet. 9.15pm-12.15pm. 368 9891

Mondays

Bells Hill Prams & Pushchairs St. Stephen's Church Hall, Bells Hill, Barnet. 1.30pm. 441 9501

East Barnet Toy Library, Community Centre, Victoria Rd, E Barnet. 2-3.30pm. 449 6772

Church Farm Pre-school Activities Group, Barnet College Annexe, off Church Hill Rd, East Barnet. 10.00-11.30am. 368 9893

Tuesdays

123 Club for mothers, babies and toddlers, Christ Church Hall, High Rd, N12. 9.30-11.30am. 368 4659

Mother & Toddler Group, Rendezvous Centre, Coppets Rd, N10. 9.30-11.30am. Barnet Play Association's Play Bus and inflatables at these times. 444 7839

Bottoms Up. A club for mothers

with first babies, Jubilee Room, St James' Church, Friern Barnet Lane, N20. 2.30-4.30pm. 361 3320

The Toddle Club. 2.30-4.30. New members welcome. Bring your babies and toddlers to Church House, behind St John's Church, Friern Barnet Road, N11. 368 7074

Wednesdays

Parent & Toddler Time, East Barnet Baptist Church Hall, East Barnet Rd. 1.45pm (also Friday)

See-Saw Club for babies and toddlers with special needs, North Road Community Centre, Burnt Oak B'way. 10am. 368 6291

Thursdays

Church Farm Mother & Toddler Club, Church Hill Rd, E Barnet. 10am-11.30am. 368 4191

Mums, babies & toddlers club, St Barnabas Church, Holden Rd, N12. 10am-12 noon. 368 0367

Parent and Toddler Time, Victoria Centre, Victoria Rd, New Barnet. 1pm. 449 5511

Mother & Toddler Group, Yeshuron Synagogue, Stonegrove, Edgware. 10am. 958 9550.

Tumble Tots — physical activity for pre-school children (six months to five years), Social Centre, Sacred Heart of Mary Immaculate, Mill Hill B'way. Classes all day from

9.30am. 958 6579. Bounce, a group for children under five with special needs. New Barnet Community Centre, 48-50 Victoria Rd. 1.15pm for 30 minutes. 25p. 346 7120

East Finchley Toy Library, Herbert Wilmot Youth Centre, Eagans Close, N2. Over 500 toys available. 3pm. 883 0244

Fridays

Mums & Toddlers Group, Friern Barnet Day Centre, Friern Barnet Lane, N11. 10-11.30am. 368 4278

Music

Tuesday May 10

East Barnet Library Gramophone Scty, 85 Brookhill Rd. 8pm. 440 4376 (also May 24, June 7)

Thursday May 12

Friern Barnet Library Gramophone Scty, Friern Barnet Rd, N11. 8.10pm. 361 2787 (also May 26, June 9)

Tuesday May 17

Hendon Library Gramophone Scty, The Burroughs. 7.45pm. 202 5625 (also May 31)

Monday May 23

Hendon Music Scty, Hendon Library, The Burroughs. 8pm. 203 2355 (also June 6)

Mondays

Barnet Orchestra at Hendon.

Hendon School, Golders Rise, NW4. 8pm 205 2418

Finchley Choral Society, Moss Hall Junior School, Nether St, N3. 7.45pm. 445 8401

Manor House Hospital Operatic Soc, Manor House, Hospital, North End Rd, NW11. 7.30pm. 346 0237

Tudor Orchestra, East Finchley Methodist Church, High Rd. Players welcome all sections, particularly brass. 7.30pm. 445 0563

Mill Hill Amateur Operatic Soc, Hartley Hall, Flower Lane, Mill Hill. 8pm. 959 2848

Music for Fun — informal choir, St Jude's Church, Hampstead Garden Suburb. 8pm. 886 0284

Tuesdays

The Apollo Singers, Wilberforce Hall, Wilberforce Rd, W Hendon. 7.45pm. 959 1244

Hendon String Orchestra, Whitefields School, Claremont Rd, NW2. 8pm. 455 5005

Guitar classes for children, teenagers and adults, New Seekers Music School, Mill Hill School, The Ridgeway. Enquiries 09278 2151

Finchley Chamber Choir, Finchley Methodist Church, Ballards Lane, N3. 8pm. 346 0502

Wednesdays

North London morning orchestra, Friends Meeting House, Winchmore Hill, N21. 10.30am. 360 2013

tin School, High Rd, East Finchley. 8pm. 959 5185 (in term time)

Friary Sequence Dance Club, Manor Drive Methodist Church Hall, N20. 8pm. 883 3202 (commence Sept 23)

American square dancing classes, Watling Community Centre, Orange Hill Rd, Edgware. 75p 8pm. 906 1582

Odsox Youth Dance Company, Friern Barnet County School, Hemington Ave, N11. (12-21 yrs). 6-10pm. 346 9789

Adult tap classes, St Paul's Church Hall, The Ridgeway, Mill Hill. 9.15pm. 906 0854

Thursdays

De Bohun Sequence Dancing, Christ Church Parish Centre, Waterfall Road, Southgate. 8pm. 886 9878

Folk and country dancing, Whetstone URC Church, Oakleigh Road North. 1.30pm. 449 8434

Finchley Sequence Dance Club, Martin School, High Rd, E Finchley. 7.30pm 346 8675

Pre-Primary ballet (3-5 yrs) 4pm, Primary Tap 4.45pm, Primary modern 5.30pm, East Barnet Baptist Hall, Crescent Rd. 368 5871

Fridays

Latin & Ballroom, Subud Hall, 97 E Barnet Rd, New Barnet. 8.30pm. 449 3336/6034

Barnet International Folk Dance Club, Hadley Memorial Hall, Hadley Highstone. 8pm 427 8042

Primary to elementary ballet, East Barnet Baptist Hall, Crescent Rd. 4pm onwards. 368 5871

PROBLEM SOLVED

NEW COMPANY BASED IN NORTH FINCHLEY OFFERING A PROFESSIONAL CLEANING SERVICES
FLATS, HOUSES & OFFICES CLEANED. FOR ALL LANDLORDS, LETTING AGENCIES & ESTATE AGENTS CONTRACTS ACCEPTED
NO JOB TOO BIG OR SMALL

Backed up by a team of experts
All areas considered
Phone for a free quote

TEL: 01-446 5863
24 HOUR ANSWERING SERVICE

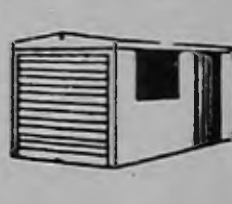
ENGLANDS STATIONERS

51-53 ENGLANDS LANE
LONDON NW3 4YD
TEL: 01-722 5494/5

Stockists of full range of commercial and students stationery and artists material

OPEN 7 DAYS A WEEK
QUICK DELIVERY SERVICE

SHEDS CONSERVATORIES



SCAFFOLDING TOWERS

GARAGES FENCING

SHEDS chalets, workshops, summerhouses. Erection FREE from £129.

GARAGES solid pre-cast concrete. FREE site survey and quote.

CONSERVATORIES modern or victorian styles — erection service, base work, brick work etc. FREE no obligation quotation.

FENCING panels from £7.70. Erection service available. Posts, metal posts etc.

SCAFFOLD TOWERS work safely — phone for quote.

882
7353



DENSHEDES

Rear of 483 Green Lanes, N13



366
7892

BANANA BOAT IMPORT CO. LTD

SELLING DIRECT TO THE PUBLIC
NORTH LONDON'S OWN GENERAL STORE

Imported goods from around the world
— cookware, caneware and kitchenware
at unbeatable prices ie cane back chairs from £14.50

77-85 Fortis Green Road, Muswell Hill
Tel: 01-444 0424

(Formerly Les Meubles Continental)

BARNET DIARY

Finchley & Friern Barnet Operatic Soc, St Andrew's Church Hall, Alexandra Park Rd, N10. 7.45pm. 368 0770. New members welcome, especially men

Barnet Band, Queen Elizabeth's Boys' School, Queens Rd, Barnet. 7.30pm. Brass and reed players required. 449 3057

Barnet Choral Soc, Church House, Wood St, Barnet. 7.45pm. 440 1157

Thursdays

Barnet Schools Brass Ensemble and Training Band, Moss Hall Schools, Nether St, N12. 5pm. 349 4195

London Pro Arte Choir, Mill Hill East Free Church, Salcombe Gdns, Mill Hill. 7.30pm. 952 7050

Finchley Chamber Orchestra, Moss Hall Junior School, Nether St, N3. 7.30pm. 881 3619

Borehamwood Operatic Soc, Fairway Hall, Borehamwood. 8pm. 906 1453

Fridays

Barnet Schools Wind Orchestra, Friern Barnet County School, Hemington Ave, N11. 5pm. 349 4195

Ionian Clarinet Choir, Christ Church, Oakleigh Pk Nth, N20. 8.15pm. 445 7095

Saturdays

Barnet Schools Music Centres: Finchley, Moss Hall Schools, Nether St, N12; Hendon, St Mary's CE Lower School, Sunningfields Rd, Hendon; Barnet, East Barnet Upper School, Chestnut Grove, Cat Hill. 9.30am. 349 4195
Hampstead Garden Suburb

Youth Music Centre, Henrietta Barnett School, Bigwood House, Bigwood Rd, NW11. 9am-12.45pm. 907 8018.

Singles Clubs

Thursday May 5

Forte Plus Music Lovers, Sobell Centre, Limes Ave, Golders Green. 8.15pm. 440 0213 (also June 2)

Tuesday May 17

Finchley Solo Club for widowed, divorced & single (25-65). 8pm. 445 9810/444 8743 (also June 7)

Sundays

Singles Club party night get together, 411 Hendon Way, Hendon, 202 3101.

Mondays

Barnet Thirty Plus Group. Play badminton at Queen Elizabeth Centre, Meadway, Barnet. 8pm. Details of other activities from 959 7084

Club 81 for 24-45s, Load of Hay, Brent St, Hendon. 8.45pm. 349 0026

Tuesdays

Divorced/separated club, 411 Hendon Way, Hendon. 202 3101

Wednesdays

National Council for the Divorced Separated, North West London Branch. Friendly club evening near Brent St. Hendon. Details:

226 3752, 203 57389/3269
North London and District Divorced/Separated Club, St Paul's Church, High Rd, New Southgate. 8pm. Potters Bar 42849

Club 81 for 24-45s, Green Man, corner of Nth Circular Rd/High Rd, N2. 8.45pm. 349 0026

Fetes and Fairs

Monday, May 2

All Saints' Arts Centre, Craft Fair, incl. Morris men, clowns, jugglers, puppet circus. 122 Oakleigh Rd North, N20. 11am-5pm. 50p. 445 4654/8388

Saturday, May 7

Grand Sale for Missionary Festival Weekend in Church House, Chalk Lane, Cockfosters. 10.30am-2.30pm. 449 1301

Guide Dogs for the Blind Association May Fayre, Church House, Wood Street, Barnet. 10.30am-1.30p. 449 8690

Saturday, May 21

Family Holiday Association Fete, Central Sq. Garden Suburb NW11. 349 4044. 2pm.

Car Boot Sale for North London Hospice, Ravenscroft School, Barnet Lane, Barnet. 445 9928

Monday, May 30

Friern Barnet Council for

Voluntary Service, Spring Fete, Friary Pk, Friern Barnet Lane, N20. 1.30-5pm. 368 4278

Saturday, June 4

John Groom's Home for the Disabled, Annual Fete, Stoneyfields Lane, Edgware. 2-5pm. 959 6384.

Drama

Tuesdays

Dunelm Players, St Peter Le Poer Church Hall, Albion Ave, Muswell Hill. 8pm. 906 4187/444 7762 (also Sundays 6.30pm)

Wednesdays

Incognito Theatre Group, Theatre, Friern Barnet. 8pm. 368 0202

East Finchley Theatre Group, Methodist Church Hall, High Rd, N2. 7.30pm. 883 2633

Gainsborough Theatre Club, The Centre, Gainsborough Rd, N12. 8.15pm. 346 9032

Barnet Youth Drama Centre, 142 High Rd, E Finchley. Sessions for seven to 11-year-olds, 6pm. Also Thursdays (16+), 7pm; Fridays (12-15), 7pm; and Saturdays (7+), 10am. 883 9957 (workshop hours)

Nether Never Drama Group, Disablement Assn, Trinity Church Centre, Nether St, N12. 8pm. 446 6935



May 7

Young Artists Concert (incl Robert Max, cello), Trinity Church, Golders Green. 7.45pm. 203 2355

May 10-14

Manor House Hospital Operatic Scty present Fiddler on the Roof at the Institute, Hampstead Gdn Suburb, NW11. 7.30pm. Tues-Wed £4, Thur-Fri £5, Sat £6 (conces available). 348 3872

May 14

Concert by the Music Makers, St John's Church, Mowbray Rd, New Barnet. 7.30pm. In aid of Save the Children. £2.50 (conces. £1.50). 346 2928

May 27-29

All Saints' Arts Centre present Lambeth Theatre Co in The Hunting of the Snark by Lewis Carroll at 122 Oak-

leigh Rd Nth, N20. Fri 7.30; Sat-Sun 3pm, 7.30pm. £2.50, £1.50 conces. 445 8388/4654

June 4 & 5

Tai Shen Theatre present The Monkey King at Woodhouse Sixth Form College Hall, Woodhouse Rd, N12. Sat 8pm; Sun 3pm. £2, £1 conces (at door)

Old Bull Arts Centre

68 High Street, Barnet. 449 5189

Phone for details. Ticket prices do not include 25p membership, or 50p children's membership of Bulls Eye Club.

Bulls Eye

Sunday May 8

Nutmeg Puppet Company presents Return of the Ludham Serpent. 3pm. £1.25, adults £2

Sunday May 22

Circus of Poets present Fun with Words. 3pm. £1.25, adults £2

Poetry

Saturday May 20

Roger McGough presents Melting into the Foreground. 8pm. £4.75, £3.75 conces

Drama

Tuesday May 3/

Wednesday May 4

Volcano Theatre Co presents Greek. 8pm. £3.75, £2.75 conces

Thursday May 5/Friday May 6

Trickster Productions present Cabbages and Queens. 8pm. £4.25, £3.25 conces

Saturday May 7

Zip Theatre Company presents When The Wind Blows. 8pm. £4.25, £3.25 conces

Thursday May 12/Friday May 13/Saturday May 14

Brookland Players present The Lion in Winter. 8pm. £4, £3 conces

Friday May 20/Saturday May 21

The Association presents Irving Berlin — One Hundred Years ... A Tribute. 8pm. £4.25, £3.75 conces

Wednesday May 25/

Thursday May 26

Faulty Optic — Theatre of Animation presents My Pig Speaks Latin. 8pm. £3.75, £2.75 conces

Friday May 27

Women's Theatre Group presents The Picture Palace. 8pm. £4.25, £3.25 conces

Thursday June 2/Friday June 3/Saturday June 4

Bottleneck Theatre Co presents Woyzeck. 8pm. £4, £3 conces

Music

Sunday May 22

Carlos Bonell and Mara Del Sol, Spanish and Latin-American Guitars. 8pm. £3.75, £2.75 conces

Dance

Sunday May 1

42nd Street Workshop with Vanessa Perry. 2.30pm. £2.75, £1.75 conces

The Broadway Babies present The Best of Broadway. 8pm. £4.75, £3.75 conces

See Saw Children's Theatre

The See Saw Children's Theatre provide entertainment for 200 children weekly.

The venue, Christ Church Hall, High Road, North Finchley, has facilities for the disabled. Bus routes to Tally Ho Corner are Nos. 13, 17, 26, 82, 125, 221, 260, and 263. Doors open at 10.30am, performances begin 11am. Tickets £1.25, concessions available. Tel. 346 3789.

Saturday, May 7

Frantic Antics presents The Great Magic Banana Mystery (ages 5 to 10)

Saturday May 14

The Fleeties present The Mighty Mo Show (ages 4 to 8)

Saturday, May 21

Rhubarb the Clown (aged 3 upwards)

Saturday, May 28

Mme Souhami and Co presents three shadow puppet

Photography

Mondays

CRAB — photography group for disabled people (CLIC), 43 Flower Lane, NW7. 1.30pm. 346 9789

Bells Hill Prams & Pushchairs St. Stephen's Church Hall, Bells Hill, Barnet. 1.30pm. 441 9501

Tuesdays

Friern Barnet and Totteridge Camera Club, Totteridge Library, Totteridge Lane, beginners to advanced. 8pm. 445 2617

Wednesdays

Hornsey Cine — Scene Two, St Peter Le Poer Hall, Albion Ave, N10. 8.15pm

Chanticleer Camera Club, The Minchenden Association Clubhouse, Bramley Rd, N14. 8pm. 888 5669

Thursdays

Community Links in Cameras (Clic), photography group of disabled people, 43 Flower Lane, NW7. 1.30pm. 346 9789

Fridays

Hendon & Hampstead Garden Suburb Camera Club, Fellowship House, Willifield Way, NW11. 8pm. 205 6053

Barnet and Finchley Photographic Soc, rear of 37a Salisbury Rd, Barnet. 8pm. 449 6809

Finchley Cine Society, Avenue House, East End Rd, N3. 8pm. 346 4265.

stories — The Kalikantjari, a Cypriot story about cheeky demons; Goodnight Dandy, about Dandy the cat; and Silly Songs with silly actions (ages 4 to 10)

Saturday, June 4

Kazzum — Festivals around the world. Songs, dance and animated stories about the Chinese New Year; Rosh Hashanah; Holi and Hola in India; Christmas in Britain; Mardi Gras and carnivals in the Caribbean (ages 6 to 11)

Exhibitions

Until May 14

Illustrated display of the work of The Finchley Charities, East Finchley Library, 226 High Road. Normal opening hours

Until May 30

Shimmer of Silver — Craftsmen in silver jewellery — Church Farm House Museum, Greyhound Hill, Hendon. Open: Mon-Sat (except Tues) 10am-1pm, 2-5.30pm; Tues 10am-1pm; Sun 2-5.30pm. 203 0130

Friday May 20

Hendon & Hampstead Garden Suburb Camera Club, Open Evening, Fellowship House, Willifield Way, includes display of work. 7.30-10pm

May 22-28

Milldon Art Society, 28th Annual Exhibition of Members' Work, Hartley Hall, Flower Lane, NW7. Sun 2-5pm; Mon-Fri 10am-8pm; Sat 10am-4pm

BILLBOARD

DENTAL SURGEON

AVRIL KAY LDS, RCS, Eng

HOME VISITS

undertaken for house-bound patients who need dentures (Private and NHS)

Surgery:

131 Friern
Barnet Lane
N20 OXZ

01-445 7879

CARTOONS by Andy Spencer



Personalised Cards, Tee-shirts designed & printed

PHONE
FOR
DETAILS

445-8609

HADLEY MEMORIAL HALL
29 Hadley Highstone - Barnet
(Recently rebuilt)

AVAILABLE 7 DAYS A WEEK FOR
Wedding Receptions,
Barmitzvahs, Birthday and
Private Parties, Club and
Board Meetings, Etc.

Large and Small Halls -
up to 150 Persons

Excellent Large Kitchen
For further information and
bookings

Phone 449 9664

STATE REGISTERED CHIROPODIST

David B. Harris
M.ch.S. S.R.ch

Surgery:

4 Delamere Gardens
Mill Hill, London NW7 3EB
Tel: 959 7869

Evening Surgeries Available
DELAMERE GARDENS SITUATED BETWEEN DOWNHURST AVENUE AND HALE DRIVE
Domiciliary visits on request

LEAVE YOUR GARDEN TO THE EXPERTS!

JEFF McINNES & Co

Landscape Gardeners
Maintenance - Clearing
Fencing - Tree Work
Pavings & Patios

Fully Insured for public liability

Satisfaction Guaranteed

Tel 203 4976

24hr Answer service
38c Sunny Gardens Rd
Hendon NW4 1RX

TONY JENKINS

Specialist
Paperhanger

Silk—Suedes—Fabrics—
Hand Printed Papers

Day: 01-883 2143
Night: 01-883 0149

EXPRESS BLINDS LTD

Micros · Roller · Venetian
Louvre · Conservatory

FREE
QUOTE
AND
FITTING

TEL:
441
7698



Mobell Ltd.

AUTOSOUND & COMMUNICATIONS
DUBROS HOUSE
381 EDGWARE ROAD
opp. COLINDALE AVENUE
LONDON NW9 6NJ

Free Parking in Forecourt

TEL: 01-200 9366

Fax: 01-200 1122
Visit us or telephone



PANASONIC
BOSCH
MOTOROLA
NEC
MOBIRA
NOVATEL
MOBILE,
PORTABLE &
TRANSPORTABLE
TELEPHONES

New Service Centre opening shortly at KINGS CROSS

enquire about our
special opening offers

— WE HAVE THE LATEST EQUIPMENT FOR YOU

- CAR PHONES
- IN-CAR HI-FI
- CAR ALARM SYSTEMS
- ELECTRIC WINDOWS & CENTRAL LOCKING SYSTEMS
- SALES-REPAIR-INSTALLATION ON PREMISES BY PROFESSIONALS
- ATTRACTIVE PRICES

OUR MOTTO:

"YOUR SATISFACTION IS OUR BUSINESS"



MEMBER



MOBELL

GODWIN'S

F O R T H E

VICTORIAN RANGE

WASH STANDS



1. Corner wash stand.
2. Freestanding wash stand.
Both available in antiqued pine or light satin mahogany.

VICTORIAN RANGE

	Logo/ Non Logo	Pattern
Large basin	256.00	313.00
Pedestal	157.00	202.00
Small basin	164.00	202.00
Bidet	256.00	313.00
Closet*	256.00	313.00
Low level cistern inc fits	139.00	183.00
High level cistern inc fits	164.00	219.00
Victoria inset basin (Non Logo only)	98.00	
Coquet Basin (Non Logo only)	98.00	
*China converter available to form 'S' trap	24.00	

VICTORIAN BASIN FITTINGS

ANTIQUÉ OR CHROME

Ornate sml basin brackets (white - per pair)	32.00
1/2" Basin pillar taps	84.00
1/2" Basin pillar mixer (6" or 8")	136.00
1/2" Basin 3 hole set & pop-up	145.00
Monobloc basin mixer & pop-up	129.00
1 1/4" Basin waste, plug, chain	21.00
1 1/4" Pop-up waste & rod assembly	34.00
1 1/4" Bottle trap	42.00

VICTORIAN BIDET FITTINGS

ANTIQUÉ OR CHROME

Monobloc bidet mixer & pop-up waste	134.00
1/2" Hole bidet set & pop-up waste	204.00

VICTORIAN BATH FITTINGS

ANTIQUÉ OR CHROME

3/4" Bath pillar taps	112.00
3/4" Bath shower mixer (wall or deck mount)	327.00
3/4" Bath shower mixer & fixed riser	422.00
3/4" Bath filler (wall or deck mount)	182.00
3/4" 3 hole bath set	174.00
3/4" 4 hole bath set, hose & handset	304.00
1 1/2" Bath waste and overflow	29.00
1 1/2" Extended pop-up waste	58.00
Bath/shower mix C/W floor mounted legs	582.00
Wall bracket & knuckle	21.00
Shower sliding rail & knuckle	42.00



SHOWERS

Sanitan shower tray 800mm	139.00
Sanitan bath shower screen	403.00
Sanitan shower door 765mm	438.00
Sanitan corner enclosure 765mm	654.00
Compensating shower profiles (pair)	32.00
1/2" 2 hole shower unit with:	
Sanitan thermostatic mixer with fixed head	447.00
1 1/2" Shower waste	12.00

WASHSTANDS

Pine corner	263.00
Satin Mahogany corner	343.00
Pine freestanding	329.00
Satin Mahogany freestanding	439.00

WOODEN FURNITURE

Toilet seat	85.00
Single vanity unit	279.00
Mirror and shelf	219.00
Corner cabinet	209.00
Wall cabinet	209.00
Mahogany/pine medicine chest	209.00
Towel stand	79.00
Linen chest	279.00

Specify: light/dark satin/gloss mahogany/antique pine/natural

BATH PANELS

WINDSOR-1700

1 Side	185.00
1 End	86.00



Wholesale Bathroom Warehouse
28 Rushrope Avenue
Colindale NW9
Tel: 01-200 0508

Trade Centre
4/5 Apex Parade, Selvage Lane
Mill Hill NW7
Tel: 01-959 3344

Showroom & Design Centre
49 Church Road,
Hendon NW4
Tel: 01-203 1095

Trade & Showroom Centre
176 High Road
East Finchley N2
Tel: 01-444 2311

GERRY ROOFS