



MARCH  
1965

# HENDON CIVIC NEWS

## The Work of the Estates Committee in Hendon

An article by Alderman W. LLOYD-TAYLOR (Chairman of the Estates Committee).

The rush of development in north-west London following the extension of the underground railway system first to Golders Green and then to Edgware threatened to envelop the whole area of what is now the Borough of Hendon as is evidenced by the comparative lack of public open spaces in those parts of Golders Green, Hampstead Garden Suburb, Mill Hill and Edgware where large scale building operations first started.

In order to provide for open air relaxation and recreational facilities and to preserve the green belt round the north-eastern perimeter of the Borough, the Council, during that period, acquired many undeveloped areas of land for future development as parks and open spaces. This far sighted action has preserved for posterity much fine natural scenery and has made possible the provision of a network of open spaces probably unequalled in any London Borough of comparable size and population.

There are some fifty separately defined public parks and open spaces varying in size from under one acre to the 217 acres of Moat Mount Open Space.

A progressive programme of development has been undertaken since the earliest acquisitions and this has been especially evident during the past twelve years during which period additional tennis courts, football, cricket and hockey pitches have been provided, new changing accommodation has been provided at Edgwarebury Park, Copthall and West Hendon Playing Fields, whilst the accommodation at Clitterhouse and Montrose Playing Fields has been much improved. The outstanding achievement is undoubtedly the development of Copthall Stadium with a fine running track,

stand, changing accommodation and club facilities.

It may be of interest to know that many of the leading clubs play on grounds owned by the Council and the list includes Hendon Football Club, Hendon and Mill Hill Rugby Clubs, Brondesbury, Hendon and Mill Hill Village Cricket Clubs, Mill Hill Golf Club and Mill Hill and Watling Bowls Clubs.

There are 27 children's playgrounds equipped with swings, see-saws and roundabouts.

In addition to recreational facilities many of the open spaces are provided with attractive flower beds and shrubberies whilst in others the natural rural setting is maintained.

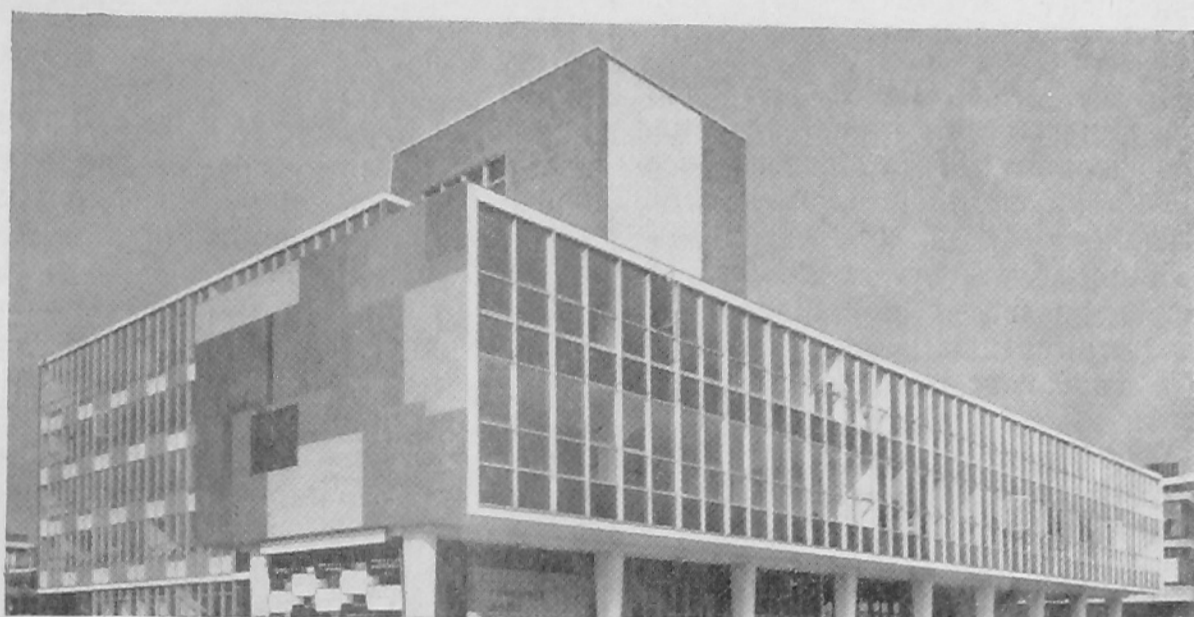
Included in the area acquired in the green belt are two farms which are leased to tenant farmers and other large areas which are let temporarily for agricultural or grazing purposes. There is access by means of public footpaths to some of these areas but the farming activities ensure the preservation of their natural character and, at the same time, make beneficial use of the land.

The Hendon Cemetery and Crematorium acquired by the Council in 1956 has been extensively improved in

almost every respect. The burial areas have been tidied, the roads and footpaths have been surfaced and new roads and sewers have been constructed for further development. The chapels have been improved in appearance and provided with better heating and furnishings. A new crematorium room has been added, adjoining the Crematorium Chapel and has been fitted with modern equipment. It is hoped that a start will shortly be made on further improving the appearance of the Cemetery by converting the oldest burial area to a modified lawn cemetery layout.

The Estates Committee, which is responsible for the public parks and open spaces, provides a service for other Committees of the Council including the maintenance of many miles of roadside grass margins and gardens, and some 24,000 street trees, the maintenance of open spaces on housing estates and the layout of gardens at public buildings.

To make possible a continuous display of flowers throughout the Borough a vast number of plants is needed and, for this purpose, Woodfield Nursery was established in Cool



*Endeavour House, the Flatted Factory of the Council on the North Circular Road*

*Continued on page two*

*Continued from page one*

### The Work of the Estate Committee in Hendon

Oak Lane. To meet the growing need this nursery, which covers an area of about  $7\frac{1}{2}$  acres, has been enlarged and modernized and in addition to propagation some interesting research is carried out by the staff. Recently a Banksian medal of the Royal Horticultural Society was awarded for exceptional cultivation of cyclamens and crotons at the Society's Hall at Vincent Square, Westminster.

An entirely different sphere of activity for which the Estates Committee is responsible is the acquisition and development of land for the relocation of non-conforming industries from residential areas and this part of the Committee's work has helped the provision of housing accommodation. The largest project undertaken is the building of Endeavour House on the North Circular Road, which now houses seventeen separate industrial firms formerly occupying space in residential areas.

Although much has been achieved there still remains great scope for further improvements and new developments and much work of interest lies ahead.

The future programme includes the building of a new indoor swimming establishment with three separate pools and ancillary provision for indoor bowls and squash at Copthall Sports Centre. Whilst this will probably be the largest single project and will be a major centre of interest, the many other essential features and works to provide fully for amenity, relaxation and recreation will find their places in succeeding budgets.

### ENDEAVOUR HOUSE

In 1960, the then Minister of Housing and Local Government gave his consent to the erection by the Council of a multi-storey factory on 1.8 acres of land on the north-west side of the North Circular Road, N.W.2. The land, which had been purchased many years earlier for sewage disposal purposes, was the only land owned by the Council which was zoned for industrial purposes.

The factory, the name of which is taken from the motto on the Borough Arms, contains a gross area of 73,900 square feet with a total lettable area of 59,391 square feet. It is unique in a number of ways and is of interest as an example of this type of industrial development. It provides accommodation for 17 separate units of light mixed industry, varying in type from a car dealer to an electronic component manufacturer.

These units are designed with the utmost flexibility and could be rearranged to provide different floor areas from a minimum of 1,000 square feet to a maximum of 17,000 square feet. This easy adaptation is designed to satisfy the changing needs of industry during the life-time of the building, which is estimated to be 60 years.

The factory consists of a main building comprising a two, three and five storey structure. The central tower houses the main entrance hall, ventilation ducts, goods lift, passenger lift, staircase and toilets, and is capped by accommodation for the lift motor room and storage tanks. Thus all the services are centralised.

The ground floor comprises 16,756 square feet of lettable area, containing four factory units, all with direct vehicular access. The first floor has a

total lettable area of 20,606 square feet in seven units, and three of these units, totalling 9,983 square feet, have direct vehicular access by means of access roads at first floor level. The ramps to the access roads are electrically heated to keep them open in winter conditions of snow and ice.

On the three further floors there is a lettable floor space of 22,029 square feet in six units. These are accommodated in a narrow slab block, which allows adequate daylighting standards and ventilation to be provided to the larger areas on the second floor. In a separate building there is a canteen, kitchen, directors' dining room and caretaker's two-bedroomed flat and office.

Included in the rent are such items as the services of a resident caretaker, the use and maintenance costs of the goods and passenger lifts, hot water, a medical room, the cleaning of the communal parts, and the maintenance of the building.

It is believed that whilst a few authorities have provided flatted factories, the design of Endeavour House is unique and has made the best possible use of a difficult site. It is also felt that the flatted factory is of architectural merit, and materially assists the carrying out of residential redevelopment without putting small firms out of business.

### RECREATION

Hendon is well served with an abundance of parks and open spaces, amounting in all to one thousand four hundred and eighty-three acres. A remarkable total when it is considered that the total area of the Borough of Hendon is approximately ten thousand acres; truly a green and pleasant land, when more than one-tenth of the area is set aside for residents to enjoy a pleasant countryside, or engage in the many sports for which such wide facilities exist.

The list of parks and open spaces is most impressive, ranging from over two hundred acres at Moat Mount Open Space to the many smaller areas preserved for all time by the Council.

In the summer months in a number of the parks entertainment is provided by the Council for children, whereas for the sporting enthusiasts, tennis and cricket facilities abound. The Council is ever mindful that additional facilities are required, and at West Hendon Playing Fields a new pavilion incorporating changing accommodation, and a badminton hall which can also be used as accommodation for club social functions, licensed for music and dancing, has recently been completed.



*Councillor (Mrs.) Clara Thubrun, J.P., M.B.E. (Deputy Mayor)—then Mayor of Hendon, with Mrs. Williams (Wife of the Town Clerk of Hendon), and Mr. P. Cable a member of the staff of the Parks Section, in the potting sheds during the "open day" at the Woodfield Nurseries of the Council.*

## HENDON CREMATORIUM

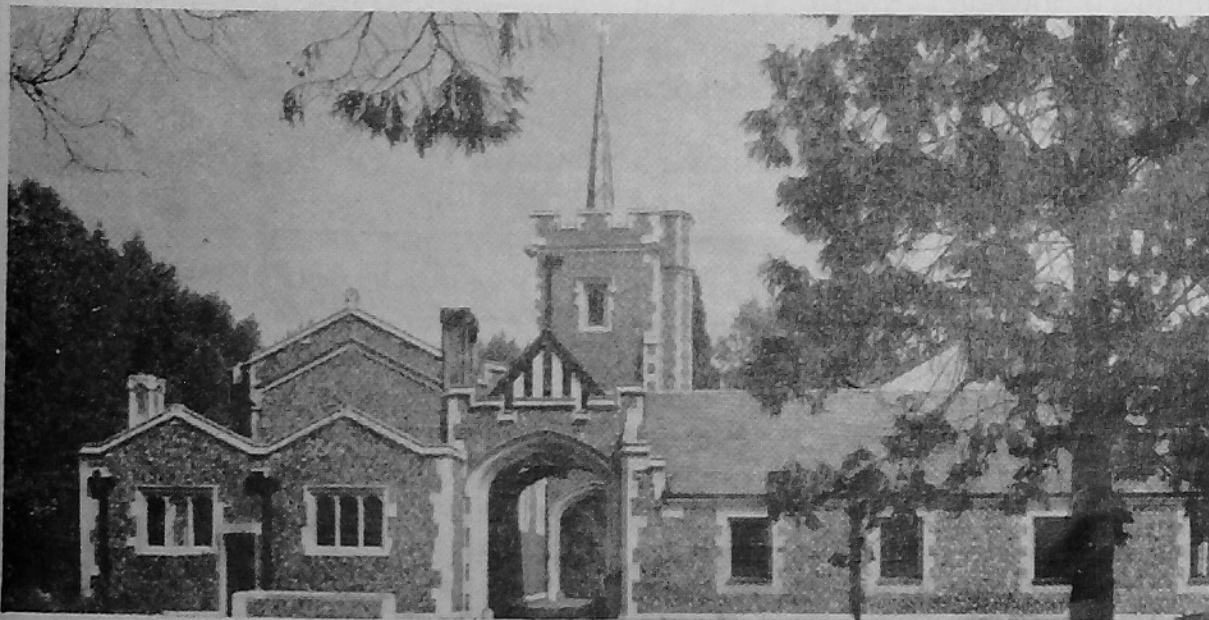
Hendon Crematorium was brought into being in 1922 by the then owners, the Abney Park Cemetery Company Limited, and in 1956 was purchased from the Company by the Hendon Corporation.

Since the Council's acquisition of the Crematorium extensive improvements have been carried out, to bring the Crematorium up to a standard worthy of the Borough and the purpose which it serves. These include an extension to the chapel building and the installation of modern cremators, a new heating system and the complete repair and decoration of the Crematorium Chapel. A modern electric organ has been provided and is manned by qualified organists.

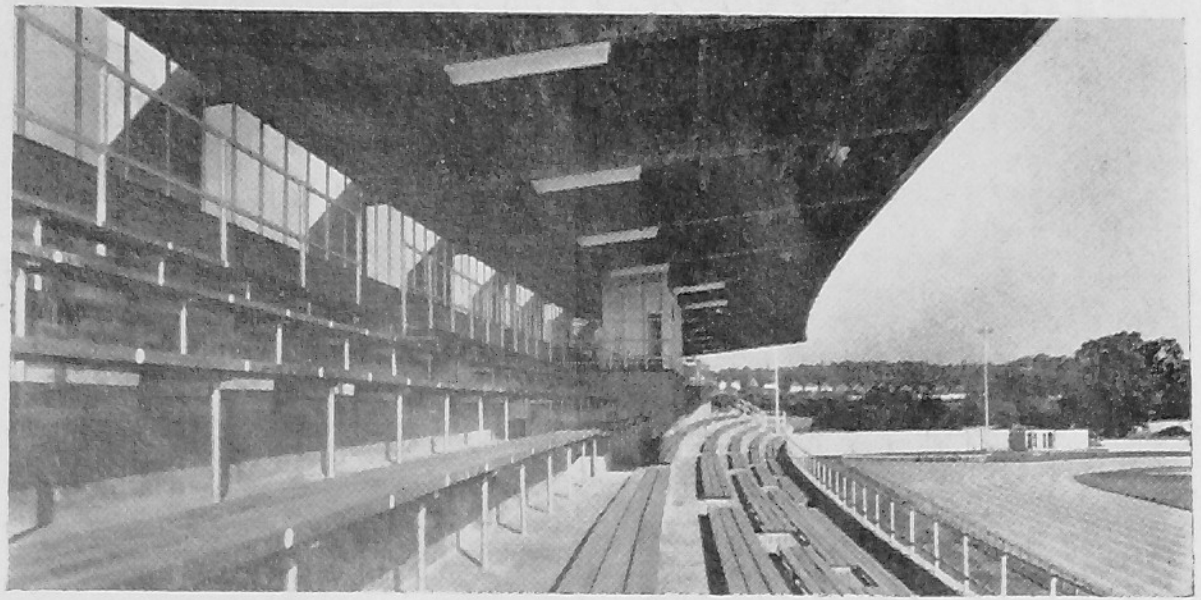
The Crematorium building is situated within Hendon Cemetery, comprising some 40 acres, in Holders Hill Road, Mill Hill, N.W.7. The Crematorium Chapel provides seating accommodation for 80 people and is illuminated by indirect lighting which, together with the new thermostatically controlled heating system, goes far to dispel any sense of chill and depression so often associated with such chapels. The floor of the eastern end is raised and paved with marble on which stand the Minister's Pulpit, the Holy Table and the Catafalque, tastefully decorated on either side with flowers.

Visitors may inspect the Crematorium at any time between the hours of 10 a.m.-4 p.m. (Mondays to Fridays) and 10 a.m.-11 a.m. (Saturdays), provided a cremation is not taking place at the time.

The nearest railway station is Mill Hill East (Northern Line—Underground) and London Transport buses, on routes Nos. 240 (Golders Green to Mill Hill Broadway) and 125 (Golders Green to Southgate—weekdays only) pass the gates at frequent intervals.



*Entrance to Hendon Crematorium.*



*View of the stand and running track at Copthall Sports Centre.*

## COPTHALL SPORTS CENTRE

Copthall Playing Fields, comprising an area of approximately 140 acres, are situated almost in the geographical centre of the Borough of Hendon. A start has been made on providing within this area a multi-purpose sports centre.

The land in its original state was unsuitable for immediate use for organised games, but during the past twelve years various fields have been levelled and brought into use for cricket, "soccer" and rugby football. The pitches are let to schools and private clubs and the two leading rugby clubs in the Borough—Hendon and Mill Hill—have established their headquarters here. The clubs have built their own club premises on land leased by the Council.

The most recent addition to the sports centre, a Sports Stadium (which was opened by His Royal Highness Prince Philip Duke of Edinburgh on

17th July, 1964), provides facilities for all field and track events. The running track complies with full A.A.A. standards and has six additional straight lanes adjoining and parallel to the front straight so that short distance races may be held concurrently with the longer distance races if necessary. This is one of the few tracks equipped for the steeplechase. The athletic arena has floodlighting facilities for winter training and winter sports.

The Sports Stadium contains a grandstand and pavilion, erected as part of the programme of sports buildings. The structure is divided into two sections, the grandstand itself providing seating accommodation for 650 spectators, six press booths and a commentators' box with observation windows looking on to the track. The space below the seating accommodates changing rooms with toilet and shower facilities for both sexes, an officials' room, first aid rooms, a restaurant, a kitchen and other services. New access and distribution roads, and a car park for 300 cars have also been constructed.

The Hendon Borough Council have provided a new building, which includes changing rooms, ablutions, and tea rooms, for use in connection with the cricket and "soccer" pitches.

Plans have already been approved by the Council for the other main component in this multi-sports Centre; the erection, on a site adjoining the Stadium, of a building housing Indoor Swimming Pools, an Indoor Bowling Green of three rinks and Squash Courts, together with changing rooms, Clubrooms and refreshment facilities. The swimming section has been designed to include three pools, one of routine size for swimming a teaching pool, and a separate diving pool with a ten metre board.

Correspondence and enquiries should be addressed to the Superintendent, Hendon Crematorium, Holders Hill Road, Mill Hill, N.W.7. (Telephone No. FINchley 0657).

# YOUR REPRESENTATIVES FOR WEST HENDON WARD



**Councillor W. P. Ashman**

Councillor Ashman, who has been resident in Hendon for most of his life, is married and has two daughters.

He was first elected to represent the West Hendon Ward in 1956 and has served on the Finance, Education, Estates, Allotments, Housing, Buildings & Town Planning, Establishment, Public Health, Libraries & Museum, Works, Civil Defence, Appointments, and Area 4 Health Committees. Since 1958 he has been Whip to the Labour Group on the Council.

He is a member of the Governing body of the Orange Hill Boys' and Girls' Grammar Schools and Edgware Secondary Modern School, a Manager of St. John's C.E. Primary School, and a Council representative on the Hendon Old People's Welfare Committee.

For many years a member of the Labour Party and a former President of the Hendon South Constituency Party, he is at present Treasurer of the Borough Labour Party and Chairman of the Park Ward Committee.

For health reasons he did not seek election to the Barnet London Borough Council.

## FISHING

It may not be widely known that fishing permits are issued to residents of Hendon (provided they are over fourteen years of age) to enable them to enjoy their favourite recreation, in Moat Mount Open Space.

Whilst of course only a limited number of permits are issued, they are obtained for a charge of ten shillings and sixpence, from the Department of the Borough Engineer and Surveyor.



**Councillor B. E. McCormack**

Councillor McCormack has been a resident of Hendon since 1928. He was elected to Hendon Borough Council to represent West Hendon Ward in 1961, and in May, 1964, was elected to the new Borough of Barnet.

Being a member of the Supplementary Reserve Royal Corps Signals he saw service with the B.E.F. (1939-1940). He returned on "W" Reserve to G.P.O. Engineering Inspection Branch, and joined an inspection team for P.L.U.T.O.

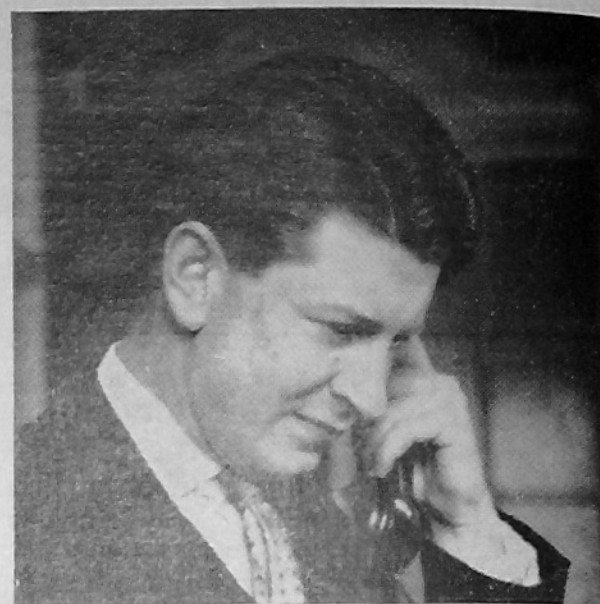
On Hendon Borough Council he serves on the Highways, Works, Establishment, Council and Staff Joint Committees, Road Safety Sub-Committee, Car Parking Sub-Committee and is a Council's representative on the London Accident Prevention Council. On the London Borough of Barnet Council he serves on similar Committees, and is also a member of the Housing and Research and Development Committees.

Since 1962 he has been pressing for maximum use of surplus railway land for the M.1 extension, to incorporate a large commuter base with a fast British Railways connection to the City and West End eliminating the passenger over-crowding experienced on the London Transport Board Edgware Line.

He is Vice-President of Hendon North Constituency Labour Party, and Vice-President of Hendon Borough Labour Party.

## TENNIS

At fifteen separate points in the Borough of Hendon tennis courts are available, for which the charge is two shillings an hour during the week up to 2 p.m. on Saturday, and even after, including Sunday and Bank Holidays, the charge is only slightly increased to 2s. 6d., but facilities are always available.



**Councillor F. L. Tyler, B.A.**

Councillor Tyler has lived in Hampstead Garden Suburb for 17 years, and has represented West Hendon Ward since 1959. He is married and has four children of school age.

In between war service in the Army and completing his law degree at Cambridge, he stood as a Labour candidate for a Cheshire constituency in the 1945 General Election. He was called to the Bar by Lincoln's Inn in 1947.

On the Buildings and Town Planning Committee of Hendon Borough Council he has been able to continue an earlier interest in problems of local government, planning and development, which went back to the days when he had been on investigation into modern flats and new roads in Leeds, Manchester and Stockport. One of the country's major problems, he believes, is Britain's building and road legacy from the Industrial Revolution.

Councillor Tyler is President of the Hendon Borough Labour Party, and also represents West Hendon on the Barnet London Borough Council where he serves on the Children's, Buildings and Town Planning, General Purposes and Welfare Committees.

He has also served on the General Purposes, Civil Defence, Libraries and Museum, Health and Estates Committees of the Hendon Council.

He is Governor of several secondary modern schools, and takes a great interest in the Moat Mount School in Mill Hill.

## GOLF AND BOWLING

For nine-pence a round miniature golf may be enjoyed at Mill Hill Park, which is also remarkable for the beauty of its trees. Bowling greens have been provided in Childs Hill, Mill Hill and Watling Parks and, although mainly let to bowling clubs, facilities are available for casual players at one shilling per hour.