

Barnet CIVIC NEWS



No 36: December 1982

The Council at Work: the 1981/82 Annual Report
pages 4 to 21



These little pigs went to charity

When the Mayor, Councillor Vic Usher, visited Dollis School, Mill Hill, he spotted a papier mâché pig which one of the children had made. 'Just the thing for a collecting box for the Mayor's Charity Chest Appeal', he said. So the children made four pink piggy banks and presented them to the Mayor. They will be used in the Mayor's Parlour and other vantage points to collect money. In the picture with the Mayor are Nicholas Heckscher, Kerry Ann Gosling, Lisa Smith and Elaine Pope.

CHRISTMAS ARRANGEMENTS

cy Services on tel. no. 202 8282, but it must be stressed that this is only for real emergencies.

Libraries will be closed on Friday, December 24th to Tuesday, December 28th, inclusive reopening Wednesday, December 29th. They will also be closed on Saturday, January 1st and Monday, January 3rd. Hours and opening times vary and readers should check at their local library where notices will be displayed.

Meals-on-wheels will be delivered on weekdays as normal except that there will be no service on Monday, December 27th and Monday, January 3.

Social Security Offices

The four local Social Security Offices will be closed on Friday, December 24 and Monday and Tuesday, December 27 and 28 and Monday, January 3. People who receive benefits will either

receive payments in advance or will be advised about advance payments by their Post Office. Anyone in doubt about receipt of benefit should contact their local office: Hendon, tel: 203 0091; Edgware, tel. 952 2323; Barnet, 449 5522; Southgate, 886 6853.

Refuse collections

There will be no refuse collections in the borough on December 27, 28 and 29 and January 3. See page 28 for details.

F YOUR HOME
ADDITIONAL.
Y 8.30-6
NCE

04 SEVEN
RS ROAD.
NHAM N15

21st BOWTRIGHT ANNIVERSARY SALE



KNOCK-DOWN PRICES ON MOST MARKET LEADERS

2 FREE PILLOWS WITH EVERY DOUBLE DIVAN PURCHASED WHEN YOU BRING THIS AD

WE ARE THE LARGEST STOCKISTS OF QUALITY BEDS IN THE DISTRICT WE STOCK MOST LEADING MAKES

PART EXCHANGE YOUR OLD BED FOR NEW WE WILL DISPOSE OF YOUR OLD BED AT NO CHARGE

DINING, BEDROOM AND LOUNGE FURNITURE IN STOCK

INSTANT CREDIT, HP FACILITIES, LOW DEPOSIT

Written details available on request



BUY NOW!



ALL OUR PRICES ARE NEGOTIABLE

BOWTRIGHT

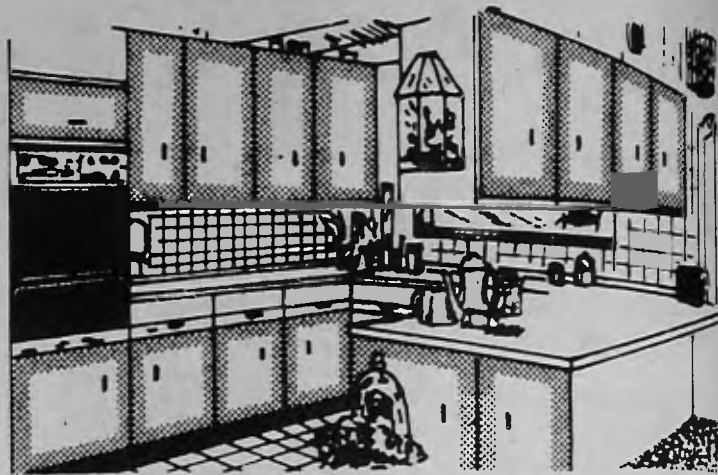
3-4 VARLEY PARADE, EDGWARE ROAD THE HYDE, COLINDALE, NW9

TEL: 205 5150/5577

COME TO THE SPECIALISTS

Roger Kitchens

SALE



VARIOUS KITCHEN DISPLAYS AT HALF PRICE OR LESS ALL STOCK MUST GO TO MAKE WAY FOR NEW RANGES

2 KILBURN BRIDGE KILBURN HIGH ROAD, LONDON NW6

TEL: 01-624 8911/2

Open Weekdays 9 a.m. to 5 p.m.

ULTRA SONIC

HI-FI, VIDEO & TV SPECIALIST
418 High Road, Tottenham, London N17

GRAND PRE-CHRISTMAS SALE

WE WILL BEAT ANY GENUINE ADVERTISED PRICE ANYWHERE!!



- ★ A full range of latest Hitachi and JVC Videos is available in stock at the best going prices
- ★ First Class After Sales Service
- ★ Written HP Terms available on request
- ★ Hitachi ★ JVC ★ Sansui ★ Pioneer ★ Aiwa ★ Marantz ★ Luxman ★ Dual ★ Sharp
- ★ Aurex ★ Tensai ★ Technics
- ★ AR ★ Bose ★ Celestion ★ Koss & B&W ★ Wharfdale Mordaunt ★ Short ★ Krystal
- ★ Sennheiser ★ Koss ★ Audio Technica ★ Shure ★ Ever Ready ★ QED ★ TDK
- ★ Maxwell ★ Sony ★ Philips ★ Nagaoka ★ Metrosound ★ Condor
- ★ Hitachi ★ Ferguson ★ JVC ★ Sony ★ Mitsubishi ★ National Panasonic ★ Sharp
- ★ Sanyo ★ Akai ★ Toshiba

TELEPHONE NUMBER 801 5494

J & H FURNITURE LTD

Furniture Wholesalers Established Over 20 Years Selling Direct to the Public

SAVE UP TO 40% ON RETAIL PRICES



Large range of Stanley Wood Oak Furniture at colossal savings.



5ft 3in Mahogany Units £299

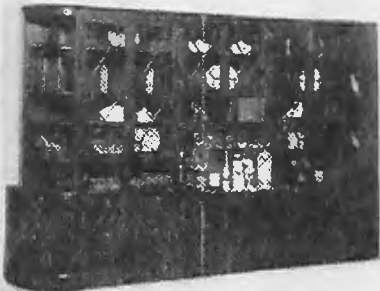


Mahogany Book Case 3ft x 6ft High £199



7ft Dining Table, 6 Solid Mahogany Chairs including 2 carvers from £299 complete. 5ft Dining Suites from £249 complete. 7ft and 8ft 8in Regency Tables with range of 12 types of Mahogany chairs. Solid Mahogany Dining Chairs from £29. Hi Fi Cabinets from £99. Regency Hall Tables from £29. Nests from £39.

Beresford & Hicks Mahogany and Yew New Crystal range wall units at unbeatable prices



NO GENUINE FIRM CAN COMPETE WITH OUR VAST RANGE, QUALITY AND SERVICE, BEFORE & AFTER SALES. ALL THIS AND ROCK BOTTOM PRICES TOO!

SHOWROOMS: 72 CHASE SIDE, ENFIELD, MIDDLESEX.
(Close to Parsonage Lane)

TEL: 01-366 2437

INSTANT CREDIT NOW AVAILABLE

Open 10am to 5:30pm Monday, Tuesday, Thursday, Friday, Saturday.
Free delivery. Barclaycard, Access Welcome.

fitted bedroom furniture



New

WE ARE NOW ALSO PRODUCING A RANGE OF BEAUTIFUL LIVING ROOM WALL UNITS

SPECIALLY DESIGNED FOR ANY COMBINATION OF TV, VIDEO, HI-FI, BOOKS, COCKTAILS, ETC., WITH SOFT LIGHTING, TINTED GLASS DOORS AND EXTRA STORAGE SPACE. Costed directly to you at our factory and showroom. Expert planning and fitting included. Telephone for our booklet of various recommended plans for all types of bedrooms.

STATON

FITTED FURNITURE LTD.
719 North Circular Road (North Side), London NW2
1/2 miles west of Brent Cross Shopping Centre (nr. flyover)

Phone 01-450 6581

Customer Parking.
Also open Saturdays.

FREE
SAMPLES

SLIMMERS

FREE
SAMPLES

IF YOU LIKE POTATOES, PASTA AND BREAD, BUT YOU WANT TO LOSE WEIGHT, YOU NEED —

STARCH BLOCK

1 Tablet Can Block Up to 400 Calories from Starch!

STARCH BLOCK™ is:

- A revolutionary new concept in natural weight control.
- A natural product that blocks excess starch digestion.
- So effective we back it with a complete money-back guarantee.

STARCH BLOCK™ is:

- Not a chemically synthesised drug.
- Not a stimulant.
- Not another appetite suppressant.

STARCH BLOCK™ is an amazing discovery that lets you eat your favourite starchy foods but keeps your body from absorbing all those fat-producing calories. Now there is no need to force yourself to give up your favourite starchy foods to try and lose weight on some boring diet. Let STARCH BLOCK™ help you lose weight!

Dr John Marshall, a world famous Scottish Biochemist working at the Howard Hughes Medical Institute over a period of 12 years, developed a natural protein extract of kidney beans which inhibits the bodies absorption of Starch calories.

Are you interested to read the background history and clinical tests which led to the marketing and manufacturing in Britain of this exciting new concept in natural weight control.

THE FIRST 100 REPLIES WILL RECEIVE FREE SAMPLES PLUS INFORMATION

Name.....

Address.....

Tel:.....

GOODSCALE LABORATORIES

40 Triton Square

London NW1

STRETCH COVERS & TAILORED SANDERSONS MADE TO MEASURE AT SPECIAL DISCOUNTS

From £20 for 3-piece suites

FREE HOME MEASURE AND DELIVERY SERVICE

Choose from over 200 Fabrics, including Dralons, Flotals, Tweeds and Sandersons etc.

Custom made by the Experts, your guarantee.

V. FISHER

01-769 4530 or 3847

Delivery approx 21 days or sooner

THE MOST ADVANCED CENTRAL HEATING IS NOW AVAILABLE!

FEATURES

One unit — wall mounted capable of heating your home QUICKLY AND EFFICIENTLY.

No need for wasteful cylinders or storage tanks.

Provides INSTANT HOT WATER

Fully controllable and can SAVE UP TO 30% on fuel bills!



Every installation is DESIGNED TO SUIT YOUR HOME and personal requirements by our trained surveyors.

PLUS — REALISTIC PRICES YOU CAN AFFORD

We COMBI SERVICES LTD. appointed installers and service agents for the manufacturers offer QUICK TIDY INSTALLATIONS carried out by our own staff to professional standards.

For a FREE SURVEY and written quotation Call — 01-881 1511 — Anytime

No deposit finance available if required

COMBI SERVICES LTD, 198 Whittington Road, N22
Licensed Credit Broker



THE MANAGEMENT and STAFF OF

Godwins

Plumbing Supplies

APEX CORNER, MILL HILL, NW7
and
CHURCH ROAD, HENDON



WISH ALL OUR CUSTOMERS THE
COMPLIMENTS OF THE SEASON AND REMIND
THEM TO WATCH OUR ADVERTISEMENTS
FOR OUR FABULOUS PRICES IN 1983

SECRETARIAL TRAINING CENTRE

Learn to type quickly on Electronic
and Electric Typewriters

Individual and group tuition in Pitman's shorthand (also
Teeline), Typing and Audio-typing to RSA standard.

Experienced, qualified tutor

Tel: Mrs Millin 360 6659

UPHOLSTERY

Have your suite re-covered
by expert craftsmen

Enjoy the luxurious feel of Dralon. The ex-
quisite prints of Sanderson and Warner's fab-
rics, or warm tweed. Whichever material you
choose, you will be delighted at the results.

For quick service tele-
phone: 01-520 1795; or
evenings 01-363 0983; or
call at our factory.

B&H UPHOLSTERY LTD

213a Hoe Street
Walthamstow E17
(Almost opposite Walthamstow
Central Victoria Line)



GAS AND OIL COSTS REDUCED

ENSAVER users have reduced their heating costs by
25% OR MORE in the first year. Saving an average of
£80.00 per annum.

**GUARANTEE: IF ENSAVER DOES NOT REDUCE YOUR
HEATING COST BY UP TO 25% IN THE FIRST YEAR WE
WILL GIVE YOU A 100% REFUND. PROOF OF A 51%
REDUCTION.**

ENSAVER will cost you less than £1.00 (one pound)
PER WEEK and will pay for itself over a two-year
period.

COMMERCIAL AND INDUSTRIAL ENQUIRIES WEL-
COMED. Telephone or send us this coupon to obtain
your FREE SURVEY. SURVEYS carried out by appoint-
ment only.

Name Tel. No.

Address



Z WHITEHOUSE WAY
SOUTHGATE N14 7LX
Tel. No. 01-368 4906

OR
Watford 39186
(24 HOUR ANSAPHONE)



THE PROFESSIONAL SCHOOL

People Matter To Us

Our personal service is available to help you pass your test. By
tailoring our courses to meet your specific requirements you will
be assured of the best tuition available in the latest cars.
Telephone us today for further details of how we can help you.
Our area is covered by this newspaper.

OF MOTORING 01-446 3601

R C M HARDWARE



IRONMONGERY, GARDENING TOOLS, BLACK & DECKER AND
STANLEY TOOLS AT VERY COMPETITIVE PRICES
RELIABLE SHARPENING SERVICE
SEEDS & GARDENING REQUIREMENTS

OPEN MON-SAT INCLUDING THURSDAY
ALL DAY 8.30-5.30

256 EAST BARNET ROAD, BARNET, HERTS. 01-449 6915

Sebaste shoes NOW OPEN

195 WOODHOUSE ROAD, FRIERN BARNET, LONDON N11

Specialising in fine Italian fashion shoes for men, in leather

Until Christmas we are giving a complimentary
sample bottle of wine with each pair purchased

Open all week 10-5 (Closed Wednesday)

TEL: 01-368 5976

TOYOTA

Come to Pannell's and view the
EXCITING RANGE OF TOYOTA CARS
FROM THE STARLET TO THE SUPER CROWN

Full range of light
commercial vehicles

Pick-ups 22cwt. vans
Mini buses, etc.

All models currently in stock — COME AND HAVE A TEST DRIVE
Full servicing and after-sales service. Export and leasing facilities available.

PANNELL'S OF LONDON

HORNSEY N.8
01-348 4407

GOLDERS GREEN N.W.11
01-455 3563/4

FINCHLEY N.2
01-349 2792/3

Risoli Reproductions

We don't believe in telling people stories such as 30%, 45% and even as much as 75% discounts off retail prices. As they say "Talk is Cheap".

Being manufacturers, we can offer quality reproduction furniture at rock-bottom factory prices.

For example:

6 Solid Mahogany chairs, including 2 carvers and 7ft Dining table	From £295.00
Wall Units	£199.00
5ft Wall Units	£335.00
3ft Bookcase	£175.00
Nest of Tables	£37.00
Wine Tables	£12.00

AND MANY SPECIAL OFFERS

We also have a wide selection of Hi-Fi, TV and Video cabinets, and a vast range of most types of Reproduction furniture in Mahogany, Yew and Oak.

All we are saying is come to Risoli Reproductions and buy quality furniture at unbelievable prices

300 Muswell Hill Broadway, N10
on the Roundabout. 01-883 6020

Open Monday—Saturday from 9.30 am—6 pm. Closed Thursday afternoon

425 Long Lane, East Finchley, N2. 01-883 5997

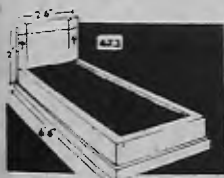
Open Monday—Saturday from 9.30 am—6 pm. Closed Thursday afternoon



Flowers and Memorials

JOSLIN MEMORIALS LTD

SEND TODAY FOR OUR BROCHURE WHICH CONTAINS SOME OF THE 70 DESIGNS FOR YOU TO CHOOSE FROM OR CALL IN TO SEE OUR SELECTION DISPLAYED. ALL WORK EXPERTLY FINISHED BY OUR OWN CRAFTSMEN.



Italian White Marble £130
+ £19.50 VAT



Italian White Marble £100
+ £15 VAT

PLEASE TELEPHONE: 883 1536/5541
JOSLIN MEMORIALS LIMITED
238 HIGH ROAD, EAST FINCHLEY, N2
(Adjoining St Pancras and Islington Cemeteries)

SIDNEY BAGINSKY & CO.

CHARTERED ACCOUNTANTS
10 Derwent Avenue,
Mill Hill NW7 3DZ
Tel: 959 8317

ACCOUNTANCY
TAXATION
AUDITING
MANAGEMENT
CONSULTANCY
and
GENERAL FINANCIAL
ADVICE

Fee basis discussed
prior to accepting
assignment

**NO
OBLIGATION
FREE
HOME VISIT
ESTIMATING
FITTING**



COSYFIT STRETCH COVERS MADE-TO-MEASURE

SATISFACTION GUARANTEED
Old suites look as new

Quality cloth, Dralon, 100% nylon,
etc. Wide range of colours and
patterns (over 120)
NO DESIGN TOO DIFFICULT
ALL CUSHION COVERS WITH ZIPS
Also available replacement foam cushions --- all
shapes

Telephone for FREE Home Visit
804 6677, ext 15
Trade locally with

COSYFIT 62 MOTTINGHAM ROAD
LONDON, N9

BOREHAMWOOD

COACH

& TRAVEL

12-seater
Mini-Bus Hire
with driver
at reasonable rates

Also Coach Hire and
Day Trips
to the continent

Tel:
207 0457

DIAL-A-LOAN

Tenants from £200
Houseowners from £1,000
Mortgages up to 100%
Commercial Finance from
£5,000

*Fast, efficient service giving a
quick decision*

Written quotations available

Telephone now:
01-402 6009 (0756) 69358

OBJECT FINANCE
18 Park Avenue
Keighley BD20 7JH

VIDEO FILM HIRE

THE BEST 500
FILMS ON VIDEO

£4 for 3 days. No deposit
No Membership
We deliver and collect
free in all areas

PHONE
01-445 4401

THE COUNCIL AT WORK

CONTENTS

December 1982

	Page
Annual Report	4 to 21
What's On	23 to 25
Allotments prizes	27
Letters and News	29

EDITORIAL ADDRESS

Civic News,
London Borough of Barnet,
The Town Hall,
The Burroughs,
Hendon NW4 4BG
Tel. 202 8282, Exts. 71 & 479

ADVERTISING ADDRESS

Laurence Marshall (Advertisers) Ltd,
Publicity House,
12 Genotin Terrace,
Enfield EN1 2AF
Tel. 01-366 4626/7, 01-367 0246

Barnet Civic News is a monthly magazine carrying news of Council activities and local voluntary organisations. Civic News is distributed door-to-door throughout the borough, reaching more than 109,000 homes and businesses and further copies are sent to libraries and council offices. It is produced at no additional cost to the ratepayer, all costs being covered by advertising.

Editorial pages are edited jointly by Bill White, the Council's Press and Information Officer, and Rosemary Jude, Press Officer. Copyright of editorial matter, Barnet Council.

For the benefit of advertisers who do not require borough-wide distribution Civic News is now in two editions: A, Barnet and Finchley areas; B, Hendon and Edgware. Each represents a circulation of 55,000 approx. Editorial pages are the same throughout.

In November the London Borough of Barnet published their Annual Report for 1981/82. Copies of the report can be obtained from The Information Office, The Town Hall, The Burroughs, Hendon NW4 4BG, price £1, but as a service to all local residents Civic News presents a digest of the report giving as much detail as space will allow.

A year dominated by finance

FOREWORD BY THE LEADER OF THE COUNCIL



Councillor Leslie Pym

IN HIS foreword to the report the Leader of the Council, Councillor Leslie Pym, says that in many ways the year 1981/82 was dominated by financial changes for Government Grants.

During the year the Government in its quest to place firm controls on public expenditure, introduced new arrangements for the distribution of Rate Support Grant.

He states that ratepayers will understand that a local authority does not raise from rates income the full extent of its spending. The Government makes substantial grants through Rate Support Grant to enable overall expenditure costs to be met.

'Whilst I recognise the need to curb the financial excesses of those local authorities who appear to have little or no regard for national economic considerations, the new grants system has had an initial adverse effect on nearly every local authority, including Barnet,' he says.

The grant loss which had to be covered was nearly £6 million and all Committees had to take careful decisions to limit some expenditure while at the same time maintaining the key aspects of all services.

'Despite this need to restrict some spending the main work of individual Committees continued through the year and I remain confident that the ratepayers of Barnet obtained value for money from their local authority.

'The Council,' he says, 'will continue its policy of careful assessment of spending, maintaining a balance between service requirements and financial calls upon the ratepayers.

'This Annual Report is primarily intended as a stewardship report but I hope that it will also encourage further interest in and support for the work of local government,' he says.

HOW THE COUNCIL IS ORGANISED

THERE ARE 60 elected Members of Barnet Council with three councillors representing each of the borough's 20 wards.

The work of the Council is divided among its major standing committees and all elected Members serve on two or more of these. Some committees, such as Education and Town Planning and Research, are further divided into sub-committees.

Most committees comprise between 12 and 25 elected Members. Some, such as Education, Social Services, and Allotments, have co-opted members who are appointed because of their special knowledge.

While ultimate responsibility rests with the full Council the committees have considerable delegated powers, and most of their debates are held in public session. The aim at all times is to ensure a proper balance between the democratic decision-making process and the need to operate effectively, efficiently and expeditiously.

Increasing role for new technology

MR. MICHAEL BENNETT, Chief Executive and Town Clerk, in his introduction says: 'The Annual Report is designed to stimulate your interest in the vitally important role of the Council in the lives of the Borough's residents and if it achieves that it will have been more than worthwhile.

'Should a perusal of the report give rise to questions or a desire for further facts, my Department has an information service which is always ready to help you. Once again I would like to commend to you the Council's monthly publication 'Civic News'; it is delivered to every household and is full of up-to-date information about the Council's activities.

'In a time of recession we have followed the Government's policy in reducing our manpower requirements wherever possible, yet, at the same time, we have always sought to maintain and improve the services provided to all sections of the community ranging from the very young to the old and the handicapped. Naturally, modern technology plays an ever increasing part in our organisation. The various Council departments are actively involved in extension of computerisation and this is a significant factor in the constant endeavour to maintain services within acceptable manpower levels. It is worth mentioning that the importance of computer education is very well recognised in the Borough's schools and colleges and we take pride in the level of the training given.

'In conclusion I would stress that the prime objective of the Members of the Council and its officers remains to provide a helpful, sympathetic, balanced and effective service to the Borough's inhabitants.'

INTRODUCTION BY THE CHIEF EXECUTIVE AND TOWN CLERK



R. TWIGG (LOCKSMITHS) LTD.

THE SECURITY CENTRE

HOME, OFFICE &
FACTORY BURGLAR
PROTECTION
CHUBB, INGERSOLL,
YALE & UNION LOCKS
SUPPLIED & FITTED.

ALL TYPES OF
KEYS CUT.
INSURANCE
SPECIFICATIONS
UNDERTAKEN.
DOOR GRILLES
BURGLAR BARS
DOOR CLOSERS

WALL AND FLOOR SAFES SUPPLIED AND FITTED

440 2073 449 2438
37/39 EAST BARNET ROAD, EAST BARNET

**GREEN'S SECRETARIAL
SCHOOLS**

**LEARN
TO TYPE!**

EXPERT INDIVIDUAL TUITION
IN TYPING — AUDIO
AND PITMAN'S SHORTHAND

Beginners, Refreshers, Crash Courses, etc., to R.S.A.
standards. Small groups — flexible hours
VERY HIGH SUCCESS RATE

NEW COURSES COMMENCING SHORTLY, DAY AND EVENING IN
HENDON, MILL HILL, EDGWARE, CRICKLEWOOD, GOLDERS GREEN

TEL. MRS GREEN, 01-202 9598

SPECIAL DIPLOMA COURSES

**A DREAM HOME
FOR RETIRED GENTLEFOLK**

*Old age can be wonderful when enjoyed in the
comfort of our happy home*



Roseacres

82-84 Chandos Ave, Whetstone,
London N20 9DS

EVERY CARE AND COMFORT
QUALIFIED NURSES

Beautiful private rooms * Luxurious lounge and sun room * Lovely
gardens * Excellent food and service * Resident staff * Day and
night attention * A real cosy home atmosphere

LIMITED VACANCIES

L.B.B. REGISTERED
PLEASE ENQUIRE 01-445 5554

**How do you know it's
Santa at the door?**

You know it can't be Santa; he's coming
down the chimney! So who is it?
With an Entryphone it's so easy and safe
to find out who's at the door
before you open it.

*Triple M Electrics make your home more
secure. Entryphones at prices you can afford.*



Supplied and fitted
from as low as
£130

All installation completely
guaranteed for 1 year + 1 year's
free maintenance.

So telephone now for a free estimate

TRIPLE M ELECTRICS
346-0526



**GAS CENTRAL HEATING
FIND OUT HOW LITTLE IT
COSTS TO INSTALL AND RUN FROM
D. W. BRANSON & SON**

HEATING ENGINEERS AND PLUMBERS
14 PENNINE PARADE, PENNINE DRIVE, NW2
458 9837

INSTALLERS OF — POTTERTON, IDEAL,
THORN, BAXI, RADIATION AND GLOW WORM BOILERS



CORGI REGISTERED

FREE ESTIMATES FOR
FULL SYSTEMS AND BOILER CHANGES

SOLID FUEL REG.

**Can your telephone
follow you around?**

An excellent device for the
small business or
professional person that
allows incoming calls to be
diverted from the office to
associated offices or home
telephone is now available.

The instrument known as
the 976 performs without
callers even being aware of
the diversion.

Furthermore, it can be
programmed to transfer
calls anywhere in the world
on the STD system. It can
be switched at will in or out
of any telephone system,
and referral numbers are
easily changed.

The 976 has push-button
controls for fast number
programming, digital display
confirming transfer number
in memory, 15-digit

-capability plus automatic
memory retention in case of
power failure.

Two exchange lines are
required: one for incoming
calls and one to
automatically dial the
number programmed.

Calls from the diverter to
the referral number are
charged against the lines to
which the diverter is con-
nected.

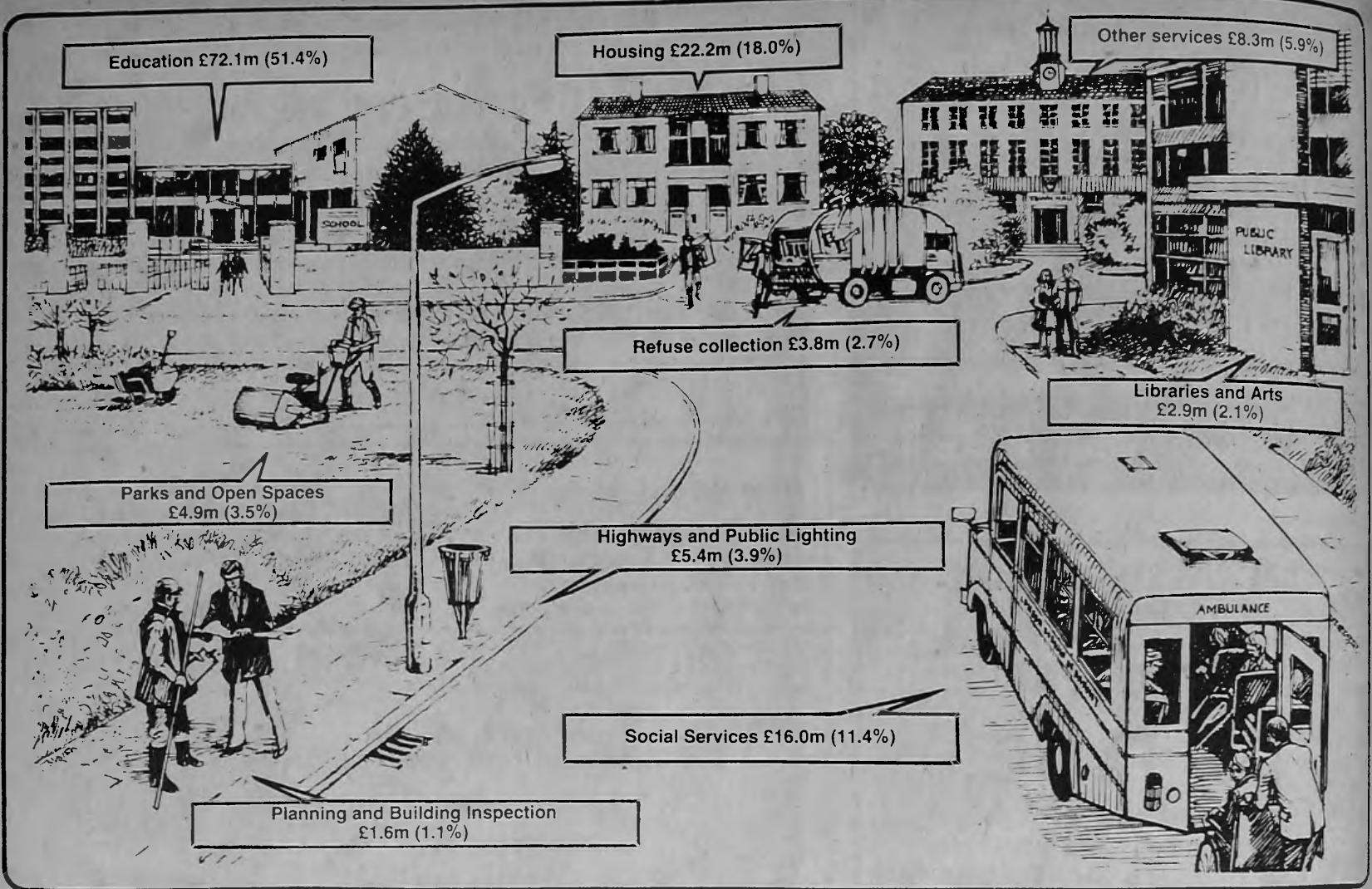
The cost of the diverter is
£425 plus VAT.



RSJ DISTRIBUTORS LTD.
166 The Broadway
West Hendon, NW9 7AA

01-202 4288/9

Our £140.2m. expenditure provided these local services



RATE LEVIES

Throughout this feature committee reports are accompanied by tables showing comparisons with neighbouring Outer London Authorities. It is important to be aware of the level of domestic rate levied by each of the authorities in 1981/82.

The Domestic Rate carries a Government Subsidy of 18p in the £. Comparisons of Standard Rate — the rate charges to commercial premises — appear on page 12. This Rate comparison Table shows that Barnet continues to impose the lowest rate in the area.

	Domestic Rate	Exceeds Barnet by
BARNET	101.0p	
ENFIELD	109.5p	8.4%
HARROW	134.0p	32.7%
BRENT	161.8p	60.2%
HARINGEY	188.7p	86.8%

£6m. rate support grant loss

THE FINANCE COMMITTEE has overall management of the Council's finances. One major decision taken during the year was the disposal of a large part of the Council's interest in Brent Cross Shopping Centre. The £17 million received was invested immediately in fixed interest securities for a five-year term.

The year was notable for the introduction of new arrangements for Rate Support Grant — that is the money paid by Government to the local authority and which amounted to nearly 40 per cent of the borough's income in 1981/82.

The Director of Finance estimated that under the new system Barnet lost approximately £6 million. This posed serious budgeting problems and all committees were forced to limit their spending.

Rates had to be increased by 22p in the £. The main reasons for this were:

Barnet Council	p
Increased expenditure arising from inflation	4.86
Inability to appropriate 1.66p rate from balances as in 1980/81	0.72
Loss of Rate Support Grant Greater London Council	10.20
Metropolitan Police	3.57
	<u>2.65</u>
	<u>22.00</u>

For the year 1981/82 Barnet Council levied a standard rate of 119.50p made up as follows:

	p
Local expenses	150.40
Greater London Council Precept	24.17
Metropolitan Police Precept	15.35
	<u>189.92</u>
Less Rate Support Grant	70.42
	<u>119.50</u>

The Domestic Rate was 18.5p less at 101.0p.

GENERAL STATISTICS

Previous year's figures in brackets

Total Rateable Value	£59,938,264	(£59,497,702)
Average domestic rateable value	£380	(£380)
Product of 1p rate	£592,324	(£580,242)

Properties and Rateable Values

Type of Property	Number	Total Rateable Value
Domestic (Houses, Flats etc.)	110,408 (109,932)	£40,155,003 (£39,937,705)
Shops (including Cafés)	3,701 (3,712)	£5,740,868 (£5,691,886)
Industrial (Factories etc.)	318 (316)	£2,047,692 (£2,097,981)
Offices	883 (873)	£2,897,012 (£2,760,379)
Other	17,232 (17,158)	£9,097,689 (£9,009,751)
	<u>132,541</u>	<u>(131,991)</u>
		<u>£59,938,264</u>
		<u>(£59,497,702)</u>

Financial Review

Copies of the Financial Review for 1981/82 can be obtained from the Borough Treasurer's Department, The Town Hall, Hendon, NW4 4BG. A charge is made to cover costs.

DEVELOPMENT
AND ESTATES

Catering for recreation

A GLANCE at the map shows immediately the extent of the borough's parks and open spaces with nearly 2,000 acres of countryside, parks, recreation and sports grounds.

Few people realise the burden of management responsibility which this places on the borough, a responsibility taken on by the Development and Estates Committee.

Their job is to administer the borough's 80 parks and open spaces, the three swimming pools and the Copthall Sports Complex, liaise on the management of the Green Belt land which forms Barnet's countryside, and care for the land and buildings at Hendon Cemetery and Crematorium.

To maintain standards in this vast undertaking and at the same time work with reduced manpower a bonus incentive scheme has been established.

The heavy rains and high temperatures of early summer set the grass growing but made it difficult, because of soft ground conditions, for the mowing machines to work well.

Barnet's three nurseries produce the 10,000 trees and 200,000 bedding plants which help to make our parks and

countryside so pleasant. Woodfield Nursery is being rebuilt.

An encouraging factor this year has been the increased number of bookings for the outstanding track and field events facilities at Copthall Stadium. Indeed, there is some concern that the grassed pitches are being over used.

The swimming pools at Copthall continue to prove their value as one of the major recreation facilities of the borough and during 1981-2 there were 455,260 admissions. The training scheme is very popular and 77,852 people joined the courses run at the pool — an increase of more than 13,000.

Copthall proved its quality by being chosen for the venue of the European Swimming Cup competition in December in which 17 nations took part.

Finchley open air pool

attracted 71,750 swimmers during the summer season and Squires Lane indoor pool was used by nearly 100,000.

Children's interests are watched over and in addition to the 42 playgrounds, school summer holiday entertainment was provided in parks throughout the borough.

Crematorium & cemetery

There are several large cemeteries within the borough but only Hendon Crematorium and Cemetery is owned and run by Barnet Council.

During the year the figured stonework at the entrance was restored and the stonework in the Crematorium chapel is to be similarly treated next year. During 1981-2 the numbers of burial and cremations were little changed with 316 burials and 1,305 cremations, and the in-

come to the borough was £138,490.

The grounds have been landscaped and planted with evergreens and heathers to avoid the annual costs and labour of annual bedding plants displays.

The cemetery grounds are inter-denominational, but an arrangement has been made for Islamic burials to take place at the far end of a particular plot.

Green Belt

Under the joint venture between the Countryside Commission, Hertfordshire County Council, the GLC and Barnet and Hertsmeire Councils, a bridle path in Burtonhole Lane was complete and tree planting undertaken. Future plans include the extension northwards of the bridlepath and reclamation and planting in King George's Field, Hadley.

BOROUGH COMPARISONS

Previous year's figures in brackets

	Outer London Average	Barnet	Brent	Enfield	Haringey	Harrow
Recreation Net Cost per 1,000 population	£13,400 (£13,212)	£14,142 (£15,107)	£13,586 (£14,612)	£14,599 (£12,749)	£16,711 (£16,831)	£11,123 (£11,301)
Acreeage (approx)		1,935	990	1,350	715	870

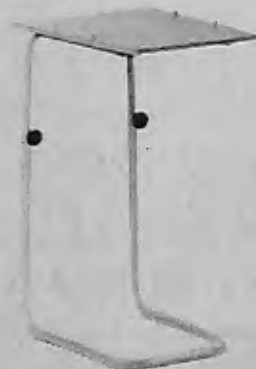
do you need our support...



THE WIGMORE CHAIR
Orthopaedic back support, plus a higher frame for ease of getting in and out.



WALKING FRAMES
Made from lightweight aluminium tubing, available in various designs.



OVER BED TABLES
With full height adjustment and angle facilities plus book ledge. Various models available.

If you are disabled or have friends or relatives in need of help then you can rely on John Bell & Croyden for full support.

A visit to our Wigmore Street showroom where you can see the most comprehensive range of Invalid Aids in the country could be most beneficial. Our friendly expert staff are available to offer professional advice on walking aids, orthopaedic beds, incontinence garments, support stockings, surgical appliances, wheelchairs, back aids, and anything else to provide whatever support is needed. Just ask, we'll be glad to help

John Bell & Croyden
54 Wigmore Street
London W1H 0AU
Telephone: 01-935 5555

invalid aids

JB&C



THE HOME CARE BED
Effortlessly changes angles to provide positive support whether lying or sitting.



ELAN ELECTRIC WHEELCHAIR
Two-speed, lightweight chair with detachable sides and footrests. Takes two 12v batteries.

CHRISTMAS SHOPPING

12 interest-free monthly payments of

£33

moves you up to Bang & Olufsen

The hi-fi brand you've always wanted, on terms you never thought possible. Here and now! Just £33 deposit and 11 interest-free monthly payments of £33 (total cash price £396) gets the Beosystem 2002 high quality sound into your home.

3-waveband radio, automatic record deck, Dolbyised cassette recorder and 2 x 25 watts stereo amplifier all integrated into an easy-to-use, easy-to-live-with unit, plus handsome loudspeakers.

Come in and find out more about this nationally-advertised Bang & Olufsen offer. It really does combine high performance and big BIG value. We can demonstrate the system for you, and supply the special application form you need to secure zero-interest credit terms (subject to status) on this Beosystem 2002 bonanza deal.

But don't delay. These generous terms are valid only until 31st December 1982, or while stocks last.



ZERO INTEREST CREDIT

Expert
The more we help you,
the more likely you are
to come back.

expert 125 Electrical Shops Nationwide
BRAHAMS
758 GREEN LANES, WINCHMORE HILL, LONDON N21.
Tel: 01-360 5088

DOLLS HOUSE KITS & FURNISHINGS

1/12th Scale

Strong Wooden Dolls House Kits, plus a wide range of Wooden Furniture, Plastic Furniture Kits, Accessories, Carpets and Wallpaper.

Also a full range of Model Railways, Aircraft, Cars, Boats, Radio Control, Meccano Sets, Plastic Kits, etc., etc.

H. A. BLUNT & SONS LTD.

133 The Broadway, Mill Hill, NW7
Access & Barclaycard Tel: 959 2877

MILL HILL TOYS



Unbelievable Prices
at Mill Hill Toys

**SPECIALLY
LOW PRICES
FOR
CHRISTMAS**

Opening Offer
Petite
Typewriter
£15.99
Our price
£8.99

**MILL HILL'S NEW TOY SHOP
DON'T MISS OUR
UNREPEATABLE BARGAINS**

87 The Broadway, Mill Hill, NW7

During
December
only

**PRICE REDUCTIONS
CHRISTMAS PRESENTS FOR ALL
DISCOUNT ON ALL TREATMENTS
(EXCEPT SUNBEDS)**

PRESENT LIST

**LADIES!! OUR OFFER OF SUNBED
SAUNA MASSAGE and FACIAL
ONLY £6 (NORMALLY £8)
and £1 OFF ALL TREATMENTS
DURING LADIES ONLY SESSIONS**
Tuesday, Wednesday and Thursday
10 am—2 pm, Sunday 2 pm—7 pm

GENTS and COUPLES

**£1 OFF ALL TREATMENTS
DURING MIXED SESSIONS**

Monday and Friday 10 am—10 pm

Tuesday, Wednesday and Thursday 2 pm—10 pm
Saturday 12 noon—6 pm



EDGWARE HEALTH AND BEAUTY SALON

96 HIGH STREET, EDGWARE, 952-5952

BRING THIS ADVERTISEMENT WITH YOU TO OBTAIN OUR SPECIAL DISCOUNT

THE UNIQUE CHRISTMAS GIFT

from **ULTRAGLAZE**
on 01-807 9455

Your favourite photographs glazed on to any of these beautiful items. Any picture can be transformed into a personalised gift.



SOUTHGATE MUSIC SHOP

- ★ Sheet Music: Popular and classical
- ★ Guitars: electric, acoustic, classical
- ★ Electric Keyboards: Special Offer

15% off marked price

- ★ Saxophones, Strings,
- ★ Leads, Practice amps, etc.
- ★ Orchestral Instruments

110 Chase Side,
Southgate, N14.

01-886 9901



PRESENTS FOR GARDENERS
GARDENER'S GIFT TOKENS
EVERYTHING FOR THE GARDEN

THERE IS A FINE SELECTION OF CHRISTMAS TREES

BE PREPARED FOR WINTERS ICE & SNOW
WE HAVE GOOD STOCKS OF
SALT SAND LOGS COALITE HOMEFIRE

SHRUBS & TREES
 at
Your local friendly GARDEN CENTRE

T. SIMMONS & SON LTD.
 166 Nether St. FINCHLEY, N3
 (near West Ave.)

Drive in No parking problems

Tel: 346 2245

NOW OPEN

See out working GAS LOG AND COAL EFFECT FIRES and take advantage of our special opening offers

Also open Sundays 12-4 pm
The London Gas Log Fire Centre
 71 THE HYDE COLINDALE, NW9
 (Near the junction with Kingsbury Road)
TEL: 200 7445

FOR SALE

FASHIONED CANADIAN SQUIRREL COAT

SIZE 12
Tel: 360-3953

J. W. PULLEN JEWELLERS

FINE DIAMONDS
 9ct, 18ct GOLD JEWELLERY
 EARRINGS, PENDANTS
 BRACELETS
 DIAMOND ENGAGEMENT RINGS
 SWISS WATCHES
 Agents for Cartier, Ebel, Sarcar, Longines, Eterna and Seiko
 Big Discounts on selected watches

FREE GIFT
 with every purchase over £100
SHOP EARLY FOR ALL YOUR CHRISTMAS GIFTS

CRAFTSMAN ON THE PREMISES FOR REMODELLING AND REPAIRS

VALUATIONS FOR INSURANCE

PAINLESS EARPIERCING

56 GOLDERS GREEN ROAD LONDON, NW11 01-458 5054

SAMPLE HANDBAGS

BY MARION LERMER
 (Trade Enquiries Welcome)

HANDBAGS, WALLETS UMBRELLAS AND TRAVEL GOODS MAKE WONDERFUL PRESENTS UNBEATABLE PRICES

183 Bramley Road
 Oakwood Shopping Parade, N14
 363 0909 Half day Thursday

BARCLAYCARD VISA

KLOCREATIONS

STOP RACKING YOUR BRAINS FOR THAT DIFFERENT XMAS GIFT COME AND SEE OUR WONDERFUL CLOCK DISPLAY
 (osite the Green Dragon, near Firs Hall. Closed Mondays)
848 GREEN LANES, WINCHMORE HILL N21 01-360 2570

COLOUR TVs — ANY SIZE ONLY £47.00
BLACK & WHITE TVs — ANY SIZE ONLY £20.00
 3 MONTHS FULL GUARANTEE
 PART EXCHANGE WELCOME

FREE DELIVERY & INSTALLATION
 INCLUDING FREE INDOOR AERIAL
SAME DAY DELIVERY
 PHONE OR CALL IN

MORGAN ELECTRICS LTD
 6/10 Northwold Road, N16 Tel: 254 4388

AN IDEAL CHRISTMAS GIFT

The Nights Are Long Now . . .

DIGITAL MULTI-METER

SO WHY NOT MAKE THE MOST OF YOUR SPARE TIME AND TAKE UP ELECTRONICS

We Stock thousands of electronic components:
 TRANSISTORS, LINEAR I.Cs., COMPUTER I.Cs., TRANSFORMERS, C.MOSS, TTL, OPTO ELECTRONICS, VERO PRODUCTS, ANTEX SOLDERING IRONS, RELAYS, CRYSTALS, RESISTORS, CAPACITORS, BOOKS, SWITCHES, VOLTAGE REGULATORS, DIL SOCKETS, COPPER CLAD BOARDS, FERRIC CHLORIDE, PHOTO LAK, KITS, MULTI-METERS, BURGLAR ALARM KITS, AUDIO LEADS, AUDIO ACCESSORIES, OSCILLOSCOPES.

ALL AT — ENFIELD ELECTRONICS
208 BAKER STREET, ENFIELD Tel: 01-366 1873

EDUCATION COMMITTEE

Concern over falling numbers of

A DOMINANT factor in the Education scene is the falling number of children in primary and secondary education.

Falling school roles, which result from the lower birthrates of the late 1960s and 1970s, has been the subject of detailed studies by the Education Committee and wide scale consultation with interested groups.

A count taken in January 1982 showed that there were 21,296 children in the borough's nursery and primary schools, a reduction of 596 in a year. In secondary schools, although there was an increase in the number of pupils staying on beyond compulsory school age, the number of pupils fell by 343 to 20,774.

There has been continued growth in the provision made for pre-school age children and by September 1982 34 of the 71 infants' schools had nursery classes.

In primary schools the committee's policy is to keep class sizes to 30 pupils or less and there has been steady progress towards this goal. The number of classes with under 30 pupils rose from 572 to 635 and the number with 30-plus fell from 194 to 129.

At secondary level Barnet pupils continued to achieve above national average pass rates in GCE and CSE examinations. It was encouraging that 54 per cent stayed on for a year in the sixth form, 32 per cent completed their year in the Upper Sixth, and 16 per cent went on to higher education.

A high priority is given to the education of children with special needs. Further education opportunities for older pupils with severe learning difficulties has further developed with the opening of a specialised department at Mapledown School for 16- to 19-year-olds. Hendon College also organises day and evening courses for mentally handicapped adults.

The Language Unit at Copetts Wood Primary School opened and provides for nursery and infant children who have

particular speech and language difficulties.

In January 1982 677 Barnet children attended special schools and 22 children were encouraged to attend normal primary and secondary schools, their handicaps being counterbalanced by specialist equipment and teaching support. Thirteen children received intensive help from the service for hearing-impaired children so that they could remain in ordinary schools and a further 47 children with more moderate hearing loss received regular support.

The individual needs of some children are helped by the Special and Home Tuition Service. There are 53 children who are unable to attend school for medical or emotional reasons and seven children in school who need special support. Children in hospital in Edgware and Barnet have tuition from teachers based in the children's wards.

The Remedial Service provides specialist help for 256 children with specific learning difficulties and the English Language Teaching Service has 22 teachers advising and teaching 650 pupils with limited knowledge of English.

Barnet as a responsible education authority is concerned with the general welfare of pupils in the borough's schools and welfare officers visit the homes of children with problems and follow up cases of non-attendance. During the year 131 written warnings were issued and 39 cases referred to the courts.

Catering

During the year the new Cook Chill kitchen came into operation at Copthall, supplying more than 2,000 meals a day mainly to primary schools. This system helps to maintain a high quality of service and stabilise costs, and is to be extended.

In secondary schools the cash cafeteria system has been successfully introduced and will be in all schools by the end of the

current year. Altogether 29,000 meals are served daily and the service provides 870 meals for Social Services luncheon clubs and 1,200 meals for staff canteens.

Further education

At a time when school leavers find it increasingly difficult to go straight into full-time employment the borough's two colleges of Further Education at Barnet and Hendon are playing an important role in helping young people to gain commercial and industrial skills which will enhance their job prospects.

The numbers attending the two colleges were:

Barnet College	
Student numbers.....	9,593
Full-time	1,069
Short full-time	42
Part-time day/evening	8,036
Day release.....	431
Block release	15
Flexi-study	146
Hendon College	
Student numbers.....	7,103
Full-time	636
Short full-time	74
Part-time day/evening	6,197
Day release.....	196

Middlesex Polytechnic

The number of students attending Middlesex Polytechnic rose by more than 1,000 to 8,432. Maintained by Barnet, Enfield and Haringey Councils it is the largest polytechnic in the country and has 645 full-time lecturers and some part-time lecturers.

Grants

Barnet has one of the highest national percentages of students attending further education courses. Most students are awarded a grant on being accepted by a university or college. The majority of these are mandatory grants and 90 per cent of the cost is borne by Government. Grants were awarded to 2,201 University students and 1,176 higher or further education students, at a total cost of more than £6.6 million — £1 million more than the previous year. There were also 466 discretionary awards made at a cost of £756,054.

Careers Service

Until recently a decline in manufacturing and construction industries was compensated for by a higher proportion of young people entering service industries such as commerce, distributive trades, catering and public administration. Although Greater London offers an attractive range of employment there is evidence that the recession is affecting business and administration and that Outer London is facing a rapid rise in unemployment.

The increased competition in the job market emphasises the value of good qualifications. This need is reinforced by the change to new technologies in industry and commerce, which both offers new job opportunity and at the same time reduces the traditional fields of employment.

Barnet has three careers offices and specialist officers helping the handicapped and advising further and higher education students.

The employment situation is illustrated by the following table.

Unemployed school-leavers		
	Unemployed	Vacancies
July 1979	210	414
July 1980	269	165
July 1981	469	48
July 1982	446	45

Youth and Community

The work of the Youth and Community Service continues to expand, serving all age groups. There are three community activity centres based within schools — Queen Elizabeth's, Ashmole and Grahame Park, and Hendon Sports Centre specialises in gymnastics and trampolining, coaching to international competition standards.

More facilities are provided at the Welsh Harp Sailing Base and further development is planned. It is open seven days a week and the annual attendance figure was 17,000.

Improvements have been completed at Moat Mount Camp Site.

BOROUGH COMPARISONS

Previous year's figures in brackets

	Outer London Average	Barnet	Brent	Enfield	Haringey	Harrow
Primary Schools						
Pupil Teacher Ratio	21.5 (21.5)	21.1 (22.4)	19.4 (17.3)	22.7 (22.5)	17.6 (18.3)	20.8 (21.1)
Gross Cost per pupil	£720 (£646)	£725 (£627)	£902 (£797)	£651 (£571)	£892 (£803)	£724 (£634)
Secondary Schools						
Pupil Teacher Ratio	15.5 (15.5)	15.3 (14.9)	14.0 (13.0)	15.8 (15.7)	13.8 (14.7)	14.3 (14.4)
Gross Cost per pupil	£1,021 (£912)	£1,034 (£906)	£1,249 (£1,066)	£935 (£815)	£1,169 (£1,013)	£1,163 (£1,022)
Further (Non-advanced)						
Net cost per 1,000 population	£21,312 (£18,294)	£17,908 (£14,979)	£33,570 (£28,231)	£19,829 (£17,173)	£30,631 (£25,238)	£19,357 (£14,824)

children in Barnet schools

In association with Social Services and voluntary organisations 20 Children's Holiday Play Schemes were run during the summer holidays and financial support was given to a wide range of voluntary organisations.

Curriculum

Grants from the Department of Industry and the Council made it possible to purchase

many more micro-computers and computer terminals for secondary schools and the Government sponsored micro-electronics projects gave a further boost to the development of computer education. Barnet is now one of eleven authorities served by the Chiltern Region MEP Information Centre at Hatfield.

The borough initiated a study of the local environment by

Primary schools and development of the Byng Road Environmental Education Centre continued with the formation of a paddock, several ponds and a tree planting scheme to attract more wild life.

Among many interesting developments was the setting up of a working party which is making good progress in producing guide lines on a multi-cultural curriculum reflecting 'grass roots' interest in this topic.

Workshops in dance, music and poetry, run by visiting artists, were made possible by a grant from the Edward Harvist Charity. Now four Barnet pupils are junior associate students at the Royal Ballet School.

An annual drama festival was launched this year and the number of pupils entered on the Centralised A Level Music Course doubled to 45.

ALLOTMENTS COMMITTEE

BARNET can take pride in the work of the Council's Allotments Committee, and local plot holders. In 1981/82 Barnet came third in the Bledisloe Trophy, competed for by all local authorities with a population of more than 200,000. This year Barnet came first!

The committee concentrated on improving water supplies and fencing, sites were inspected and a visit made to Birmingham where leisure gardening has been introduced.

Some allotment sites are managed by the Borough Estates Department, others are let to societies who undertake their own letting and management. Demand for plots varies. By and large demand can be met and the council is keen to encourage more people to take up allotment gardening.

STATISTICS

Previous year's figures in brackets

Schools and Colleges		
Nursery Schools	4	(4)
Scholars	252	(239)
Primary Schools	91	(91)
Scholars	21,043	(21,653)
Secondary Schools	26	(26)
Scholars	20,774	(21,117)
Special Schools	6	(6)
(incl. 1 boarding school)		
Scholars Day	359	(363)
Boarders	95	(107)
Further Education		
Colleges	2	(2)
Full-time students	1,705	(1,678)
Part-time students	14,991	(16,005)
Other Establishments		
Careers Offices	3	(3)
Careers interviews	11,300	(10,600)
Local Authority Youth and Community Centres	13	(13)
Sports and Leisure Centres	6	(6)

Review

This report cannot do justice to the character and richness of education in Barnet schools. The ever changing demands upon the service mean that the curriculum is always under review and while new developments are encouraged strong emphasis is always placed upon the basic subjects of education.

STATISTICS

Council Allotments

Number of sites	44
Total Area	104 acres
Total number of plots	1,807
Average rent (excluding water)	£5.00 p.a. per pole plot
charge	10 pole plot

Allotments leased to Societies

Number of sites	20
Total area	143 acres
Number of plots	2,127



DALLIN CARPET ASSOCIATES

NOW OPEN

Special Opening Offers to discerning customers seeking fine quality Chinese, Indian, Pakistan Rugs and Superb Woollen Worsted Wiltons

TABRIZ WILTONS 11ft 6in x 8ft 3in £115.00

TABRIZ WILTONS 9ft 9in x 6ft 7in £79.35

TABRIZ WILTONS 6ft x 2ft 10in £20.70

SUPER KESHAN WILTONS 12ft x 9ft £299.00

BOKHARA 5ft 2in x 3ft 1in £199.00

WASHED CHINESE 5ft x 2ft 6in £195.00

Samples can be viewed at home

Genuine savings up to 30%

RELIANT HOUSE
OAKMERE MEWS
REAR OF 151 HIGH STREET
POTTERS BAR
PHONE POTTERS BAR
77 42875

EVENINGS
01-440 2068

Christmas Special

DON'T MISS OUT!

A COMPLETE HOME BASE SYSTEM:

1. 40 Channel CB Transceiver
2. Sirtel Signal Keeper
3. SWR Meter
4. Patch Lead
5. Power Supply Unit
6. 20ft Cable and Plugs

USUAL PRICE £67.35. **SPECIAL PRICE £49.95**

NOW OPEN SUNDAYS 10.00am - 13.00pm

BREAKER ONE-FOUR

London's first and foremost CB store.

OPEN
9am-6.30pm
Mon.-Sat.

130 HIGH STREET, EDGWARE, MIDDLESEX.
TELEPHONE: 01-952 8860/8185/7488.

HOUSING COMMITTEE

Fewer built but more improved

THE YEAR was a difficult one for the housing service. The national picture of less money to spend on council housing was reflected locally and staff shortages added to the problems.

As the figures for the year show, only 22 new dwellings were available for rent, the numbers on the housing waiting lists rose and the number of completed lettings fell. Nevertheless the Housing Committee improved its service to tenants with an increased number of homes repaired and improved. A full emergency service was maintained throughout the very severe winter, and improved consultation arrangements were made following the introduction of the new Tenancy Agreement.

The department has also reduced the number of dwellings standing empty between lettings.

In April 1981 rents were increased so that a seven year maintenance programme could be achieved. As a result 3,366 dwellings were dealt with compared with 2,230 the previous year and the backlog which had built up, was being cleared.

The national economic climate, coupled with a 37 per cent rent increase, meant that more tenants found their incomes reduced while their outgoings increased. The number of tenants on Supplementary Benefit increased by 25 per cent. Rent arrears increased to £511,013, but of this £244,778 was in the pipeline from the DHSS.

Government policies indicate that restrictions on local authority housing spending will continue and only limited numbers of new houses will be built. Rehousing opportunities diminish and only those with the greatest need will be housed.

Money to build new houses or carry out major modernisation programmes is controlled by Government. The Local Authorities put in a bid to the Government indicating how much they would like to borrow to finance this side of the housing programme during the year. Not only was Barnet's bid reduced by more than one-third, it

STATISTICS

Previous year's figures in brackets

Housing Stock		
4 or more bedrooms	497	(508)
3 bedrooms	6,072	(6,275)
2 bedrooms	7,038	(7,097)
1 bedroom	3,534	(3,512)
Total including GLC transfers	20,425	(20,595)
New dwellings for rent	22	(168)
for sale	19	(18)
Dwellings acquired	13	(6)
Dwellings sold	331	(217)
Lettings		
Housing waiting list	487	(562)
Homeless Families	190	(267)
Transfer Waiting List	356	(480)
Others	192	(360)
Housing Waiting List	8,847	(7,343)
Transfer Waiting List	1,759	(2,316)
Homelessness		
Number of referrals	533	(403)
Number permanently rehoused	190	(267)
Tenants receiving Rent rebates	5,100	(3,976)
Dwellings externally decorated	3,366	(2,230)
Capital Programme	£000s	£000s
Capital spent	7,686	(12,111)
New building	1,540	(5,626)
Improvements to		
Council stock	5,184	(5,397)
Housing Associations	454	(399)
Improvement Grants	447	(297)
Mortgages	61	(392)
Dwellings repaired	5,621	(3,444)
Dwellings improved	2,214	(1,957)

was £646,000 less than 1980/81.

So Barnet had £8,352,000 to spend on major building work and in order to maintain the housing stock two-thirds of that money was spent on improvements and renovations. This meant the Housing Committee's new building programme was very limited and the amount of support for housing associations was below the level the council had hoped to provide.

The number of people on the

Housing Waiting List reached 8,847 of whom 1,028 are in priority need. The list is to be reviewed and the points system revised to give a more accurate assessment of needs during the year 1982/83.

The continued demand for houses is probably the result of the increased number of small households, the number of elderly people, the decline of the private rented sector and the high cost of home ownership.

The Council encourages the principle of home ownership and during 1981/82, 331 Council dwellings were sold to Council tenants, and a further 22 new dwellings were sold to tenants or families on the housing waiting list.

The Council's Build for Sale programme is aimed at producing starter homes to encourage young families to stay in the borough.

In order to gain financial advantage from these sales the purchasers are encouraged to raise their mortgages from the private sector and negotiations have been held with Building Societies. The money can then be used to finance further building.

The first homesteading scheme of 11 houses in Finchley was started in 1980/81 and the sales on deferred mortgages completed in 1982.

The Council assists local housing associations who rehoused 82 Council nominees during the year. The Council also encourages housing associations to purchase and improve older properties.

The Council has important responsibilities towards the homeless who are vulnerable because of their age, health or family situation.

A new hostel was opened in Friern Barnet to provide temporary accommodation for 14 homeless families. This means that the Council has not had to resort to the costly bed and breakfast accommodation.

A grant was made to Barnet Women's Aid to establish a refuge for battered women.

BOROUGH COMPARISONS

Previous year's figures in brackets

	Outer London Average	Barnet	Brent	Enfield	Haringey	Harrow
Management and Maintenance — Dwelling per week	£6.67 (£6.16)	£6.21 (£5.25)	£7.39 (£7.28)	£5.36 (£4.72)	£7.12 (£6.17)	£7.18 (£5.52)
Rent Arrears as a percentage of rent collectable for the year	5.0% (4.6%)	5.0% (4.4%)	14.9% (15.6%)	3.2% (2.0%)	10.2% (8.8%)	6.8% (5.0%)

GENERAL BOROUGH COMPARISONS

Previous year's figures in brackets

	Outer London Average	Barnet	Brent	Enfield	Haringey	Harrow
Population Estimate June 1981	—	295,900 (289,200)	253,900 (249,800)	262,000 (259,700)	207,500 (221,400)	198,200 (196,600)
Area in hectares	—	8,953	4,421	8,115	3,031	5,082
Total Rate Poundage	—	119.50p (97.50p)	180.30p (128.00p)	128.00p (107.00p)	207.20p (150.00p)	152.50p (120.00p)
All Services Expenditure Net Cost per 1,000 population	£372,543 (£346,337)	£324,989 (£306,160)	£505,772 (£469,809)	£347,997 (£314,563)	£568,121 (£480,394)	£368,573 (£335,962)

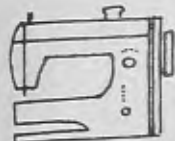
Housing Aid Centre

THE BARNET Housing Aid Centre is sorry to announce that, because of shortage of staff, an appointments system has had to be implemented. It is hoped that this situation will not last long, but if you do wish to visit the Centre, please phone 349 2456 to make an

appointment. The Centre is staffed during normal office hours, and is located at 317 Regents Park Road, Finchley Central, N3.

Over the Christmas period, the Centre will be closed from December 24 to January 3 inclusive.

More people are knitting



PINGUIN, TWILLEYS, LISTER-LEE, SUNBEAM, ARAN MACHINE KNITTING WOOL ALL CROCHET COTTON

DISCOUNTS ON ALL MAKES OF SEWING & KNITTING MACHINES & WOOLS

166 Cricklewood Lane, NW2
01-452 6788

OPEN TILL 6 p.m. WEDS. (Closed Thurs.)



BELTONES CHRISTMAS BONANZA

We pride ourselves in service and prices that you used to know

TABLE CLOTHS, CAR RUGS, TOWEL SETS, MEN'S AND LADIES' HANDKERCHIEFS, FLEECY UNDER BLANKETS, PLUS OUR NORMAL RANGE OF LINES, DUVETS, SHEETS AND CURTAINS

BELTONE



STORES LTD.

85 Ballards Lane, Finchley Central N.3
Telephone: 01-349 3771

CHRISTMAS SHOPPING IS FUN WITH US

THE GALLERIES

FOR GIFTS AND TABLEWARE

CHINA BY AYSLEY

ROYAL DOULTON

WEDGWOOD WORCESTER

POOLE & HORNSEA

LEAD CRYSTAL BY DARTINGTON, EDINBURGH, TUDOR, THOS. WEBB, ROYAL DOULTON CAITHNESS

1 HEDDON COURT PARADE
COCKFOSTERS ROAD
BARNET, EN4 0DB

01-449 2690

GOLF CLUBS SECOND-HAND MATCHING SET

9 IRONS and 4 WOODS

also

FULL SIZE BAG

ALL IN EXCELLENT CONDITION

PHONE 366-4626 DAY 360-3953 EVE

Spend Christmas with expert



Your big leading independent store, big in video, big in colour TV, big in Hi-Fi, big in video films and big in service with our 5 year optional parts and labour guarantee and skilled back up second to none. Come and see our exciting video production studio where we can produce your special occasion. So hurry along now.

HITACHI 14" Remote Control TV



VT9500 Video
Full infra-red remote control
3 programme 10 day timer
£499.99

14" Remote Control TV



Fully remote control TV
£239.99

TRK 1EW Double Cassette Deck



Mini Hi-Fi System which turns into a personal stereo
£199.99

SUPER PRICE

VT11 Video
New VHS video
£399.99

Sony C6 Video

Front loading video
£359.99



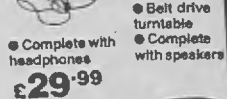
SANYO VTC 5000

Budget price video recorder
With picture search
£299.99



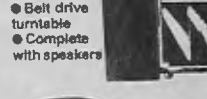
Personal Stereo

Complete with headphones
£29.99



1020 Stereo Rack System

£199.99
20W per channel
LW/MW/FM stereo tuner
Stereo Dolby cassette deck
Belt drive turntable
Complete with speakers



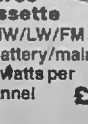
Atari Console

£94.99
NEWS FLASH
Intellivision Tron & Voice Cartridge are here.



HITEC 410 Radio Stereo Cassette

£49.99
MW/LW/FM stereo
Battery/mains
4 Watts per channel



12" Black & White TV

BT319
Battery/Mains
ONLY £49.99



Console Cartridges • Pac Man, Asteroids, Night Driver
Many more available from £15.99



VISIT OUR VIDEO CAMERA STUDIO



JMS RADIO tv video hi-fi

Watling Avenue, Burnt Oak, Edgware
Sales 952 1565 Service 952 3895

Expert Electrical Shops

Irene Joss

ONE-THIRD OFF new autumn fashions

EXCLUSIVE DRESSES, SEPARATES, KNITWEAR, SUITS AND COATS by MANSFIELD, CACHE D'OR, MEDICI, TEREINO, PETER BARRON, PETRA, JERSEYMASTERS, QUIMO, BILLY BONNY, etc

SELECTION OF GARMENTS FROM FIVE POUNDS ONLY

TAN — AN' RELAX ON OUR LUXURY SUNBEDS AND FACIAL TANNING UNIT AT NEW LOW RATES.

EXPERT AND FRIENDLY SUPERVISION, MEDICALLY APPROVED
LICENSED BY THE LONDON BOROUGH OF BARNET
Parking no problem

Open Sundays 10 am — 1 pm, Tuesdays, Wednesdays, Thursdays and Fridays 10 am — 5 pm

Thirty-One Bell Lane, Hendon, NW4

Tel: 203 2909 weekdays before 7.30 pm.



RADIO CONTROL

By far the biggest selection locally to suit all age ranges

Come in and see our video film
GOOD QUALITY AND KEEN PRICES
OAKMERE

HOBBIES & CRAFTS

161 High Street, Potters Bar
(opposite Bus Garage). Tel: 42462

1/10 SCALE CARS FOR FUN ON ALL TYPES OF TERRAIN



The residents of Barnet borrowed more than four million books from its 17 local libraries and three travelling libraries during 1981/82 — a slight fall on the previous year. This was probably due to the terrible weather conditions in December and January, but it is still one of the highest readerships in the country.

It was a difficult year for the libraries. They faced a 39 per cent reduction in the fund used to buy new books each year. It was necessary to cut down on the periodicals in the reading rooms and the number of books purchased fell by more than 20,000 to 77,294. However, in considering the estimates for 1982/83 a partial restoration of money allocated to the book fund was made.

Information

The public look on the libraries as a local information service, the reference sections are well used and the local history collection maintains steady growth.

A much appreciated aspect of the department's work is the Housebound readers' service. Librarians take books and cassettes to the homes of elderly and disabled people, providing a friendly contact for those who cannot get out and about. For those with poor or failing sight

the libraries have a good stock of large print books.

Museums

Attendances at Church Farm House Museum increased, 12,537 people visiting the exhibitions, several of which attracted national publicity. Several interesting donations of domestic artifacts were made.

Barnet Museum was closed during the year for major renovations and Barnet and District Local History Society are now engaged in the task of preparing the exhibits display.

Lectures and art

The winter lecture programme proved exceptionally popular and several art exhibitions were held, including Barnet Artists' Exhibition.

Grants were made to various arts societies and it was agreed that the Greater London Arts Association should commission a report on the state of the arts in Barnet and the way forward.

Nearly all the staff in the libraries department have daily contact with the public and the rarity of complaints is a tribute to their professional capability.

STATISTICS

Previous year's figures in brackets

Readers	189,705	(190,912)
Book issues	4,141,477	(4,284,561)
Daily average book issues	15,657	(16,116)
Stock at 31.3.82		
Lending books	837,842	(835,238)
Reference books	70,901	(69,326)
Records and Cassettes	39,442	(36,012)
Housebound Reader service		
Readers	539	(538)
Books issued	105,368	(99,118)
Cassettes issued	1,337	(748)
Residential Homes visited	71	(69)
Books lent to homes	24,316	(29,488)

BOROUGH COMPARISONS

Net cost per 1,000 population

Outer London Average	£ 8,363	(£ 7,461)
Barnet	£ 9,629	(£ 8,894)
Brent	£ 7,989	(£ 8,014)
Enfield	£ 7,194	(£ 6,101)
Haringey	£15,019	(£12,254)
Harrow	£ 8,213	(£ 7,645)

ESTABLISHMENT COMMITTEE

The council as an employer

THE WIDE range and personal aspect of the Council's services means that the largest item on the Council's expenditure is the wages and salaries bill. In 1981/82 employees costs totalled £76.14 million.

The Establishment Committee is responsible for all matters relating to the employment of staff and is constantly reviewing the numbers employed. Savings are made in manpower wherever possible and, as the accompanying table shows, the overall number of employees dropped by 549 during the year.

However, while the Council is striving to contain staff numbers the Government is placing an extra workload on local authorities with the introduction of new legislation.

For example the new Social Security and Housing Benefits Act will mean a heavy increase in the Council's responsibilities in this field and entail new staff being employed.

The voluntary early retirement scheme for white collar and teaching staff is an aid to the reduction in manpower and through these schemes and redeployment of staff the Council has been able to reduce manpower and avoid the need to make staff redundant.

The accompanying table shows the number of employees of Barnet Council at March 31, 1982 and April, 1981.

EMPLOYEES	31st Mar 1st Apr	
	1982	1981
Education Department		
(a) Lecturers and Teachers	3,489	3,574
(b) Other employees	3,380	3,595
Construction	475	522
Social Services	1,422	1,491
Public Libraries and Museums	250	248
Recreation, Parks and Baths	422	456
Environmental Health	100	120
Refuse Collection	253	294
Housing Department	236	262
Town and Country Planning and Building Control	124	118
Central Services		
Chief Executive	7	8
Finance Services	225	225
Secretarial Services	154	158
Legal Services	42	41
Engineering Services	474	477
Architectural Services	57	62
Estates Services	29	29
Personnel Services	16	17
Management Services	20	20
Computer Services	44	46
Rent Officer Service	16	18
Registrars	15	17
Consumer Protection, Weights and Measures and Trading Standards	19	20
Other Services (Crematorium/Cemetery, Allotments)	25	25
TOTAL	11,294	11,843

BUILDING RESOURCES

LAND AND buildings under the control of the Council represent valuable assets and the job of the Building Resources Committee is to make sure they are used to maximum effect. For instance when a building is no longer required for its original purpose it is important that it should either be used for another purpose as quickly as possible, or disposed of to generate capital.

The committee makes its recommendations to the appropriate service committee and, where two committees disagree, it can act as arbiter.

Needs and surplus

All property owning committees have been asked to identify any buildings which are now surplus to their requirements and to make sure their own accommodation needs are reported to the Building Resources Committee.

The committee also receives requests from local organisations who need land or buildings.

A comprehensive schedule of buildings owned or rented by the Council has been prepared and a detailed survey is to be carried out so that the Council can ensure that its buildings are being put to the most beneficial use and that it is achieving the best financial returns on its assets.

Area Teams

The Council has a broad policy of vacating rented premises and using existing accommodation wherever possible.

During the year the reorganisation of the Social Services Area Teams has been planned concentrating on three sites — Bernard House, Burnt Oak, East Barnet Town Hall and Park House, East Finchley.

Alternative use

Arrangements have also been made to accommodate the new Housing Benefits Service which the Council is required to set up under new legislation.

The committee has been involved in the relocation of offices from the Regents Park Road site where the Council has been able to dispose of a 4½ acre site for residential development. Other matters considered included alternative use for the site of the former John Hampden School and the question of a new site for St Mary's CE Primary School, Finchley.

**FREE
DELIVERY
WITHIN
LONDON
ON ALL
ORDERS
OVER £100**

THE CANE SHOP

**12/14 WHYMARK
AVENUE
WOOD GREEN
N22
881 0164**

Nearest tube station
Turnpike Lane
Buses 29, 144, 298, 121, 123,
141, 221, 67

**CANE PAPANAN
SUITES £220.00**

*CANE PATAYLA
SUITE £250.00
inc. COFFEE TABLE*

**INDONESIAN SWIVEL
CHAIRS £89.95
CHOICE — 4 COLOURS**

*FROM SINGAPORE
THE 1201
LUXURY SERIES
NORMALLY £575.00
LIMITED SUPPLY
£399.00*

*BOTH DARK
AND LIGHT CANE*

**CANE DINING SUITES
4 or 6 CHAIRS
GREATLY REDUCED**

**JUST OPENED
OUR NEW
HOUSEWARE DEPT**

**OVER 500
BASKET WARE
LINES
NOW AVAILABLE
LIGHTING
GLASSWARE
FANCY GIFT WARE
COOK WARE
HOUSEHOLD LINES**

ALL AT CUT PRICES

Monday—Saturday

9 am—6 pm

NOW

open for viewing
10 am to 2.30 pm Sundays

CREDIT TERMS AVAILABLE
ACCESS and BARCLAYCARD ACCEPTED



SOCIAL SERVICES COMMITTEE

A caring service

WITH AN increasing proportion of frail elderly people and an additional number of families who have moved into new estates in the borough demands on Social Services are growing. The physically disabled, mentally ill and the handicapped need support to enable them to live more independent lives in their own homes and keep them as part of the community. This also reduces pressure on hospital and residential establishments.

However, as an outer London Borough, Barnet has advantages over many inner urban areas.

The Social Services Committee works closely with other Council committees and the local Health Authority, the Police, the DHSS and many voluntary organisations to make sure the service offered is the best and most effective possible.

In 1982 there were 19,400 people over 75 and one in five of Barnet residents are pensioners.

Most people prefer to live in the community rather than in residential homes and a greater use is being made of warden-supported sheltered housing and of small housing units for single people who can live enriched lives as part of a group.

Through joint financing with the Health Authority it has been possible to develop home support and residential services.

There were fewer children in the care of the Council in March

1982, the majority being adolescents with special difficulties.

The Council's aim for children in care is to prepare them to return to their own homes, live with foster parents or, in the case of older teenagers, to live in semi-independence.

An increasing number of physically or mentally handicapped people are helped towards independence, primarily in group homes. The demand for residential places has risen to a point where more are required and urgent attention is being given to how this can be achieved.

Short term care is provided for elderly and handicapped people to enable them and their families to have a break.

The Adult Boarding Out Scheme, introduced during the year, aims to place suitable people with selected families.

Area Teams

The Area Teams had a busy year. The 14.5 per cent increase over the previous year related mainly to services for the elderly and disabled. Those referred to an occupational therapist increased by 216.

A cost benefit study demonstrated the ways in which social workers, care staff, child minders, volunteers and others can prevent problems which lead to children going into care.

Hospital workers provide a service to patients and their

families, usually at a time of crisis. In the mental health field they work closely with medical staff and community services.

Domiciliary care

Giving people support so that they can continue to live in their own homes is an important aspect of the Social Services policy. Home Helps provide help in the home when people cannot cope for themselves; Homemakers assist in an emergency to prevent the need of residential care; and Home care assistants give intensive help to people discharged from hospital.

The amount of help required by very elderly people alone has increased although the total number of home help recipients dropped slightly. The contribution of good neighbours, volunteers, friends and relatives organised on a neighbourhood basis adds to the support of people in their own homes.

The Meals-on-Wheels Service provides hot meals five days a week for many housebound people and increased attention is being given to covering weekends. Delivery is largely undertaken by the WRVS and the Kosher Meals Service.

Day Care

Day Care services encourage independence. They include day nurseries for children under five; social education centres for

mentally handicapped adults; and centres for the elderly, people with mental health problems and the physically handicapped.

The demand for places at day nurseries and centres for the elderly is never fully met in spite of the development of such services as childminders, play groups, lunch and social clubs.

Indeed without the support of many independent organisations, volunteers and self help groups, the burden on Social Services would be infinitely greater.

A joint study carried out by Social Services Committee and the Voluntary Services Council looked at the way services can be developed and improved.

To assist new groups to become established, small grants are made by the Committee and the application for grants made by established organisations reflect their developing services.

STATISTICS

- 6 area teams and 3 hospital based social work teams.
- 12 residential homes for 526 elderly people for long and short term stays.
- 460 places in other local authority, voluntary and private homes for elderly and physically handicapped adults.
- 4 local authority residential homes for up to 72 mentally handicapped/ill persons.
- 175 places in other establishments
- 192 children in the care of the Council of whom 82 were in residential homes and 80 with foster parents.
- 10 day centres for elderly and handicapped adults.
- 7 nurseries and family centres for 261 children aged under 5.
- 3,320 households received assistance from home helps, homemakers and home care assistants.
- 167,894 meals-on-wheels were served at people's homes.
- 81,113 meals were served at lunch-noon clubs and centres.
- 4,239 households received assistance with aids home adaptations, holidays, telephone and television rental.

BOROUGH COMPARISONS

Previous year's figures in brackets

	Outer London Average	Barnet	Brent	Enfield	Haringey	Harrow
Net Cost per 1,000 population	£52,954 (£46,247)	£46,447 (£43,305)	£79,763 (£70,925)	£44,687 (£37,161)	£95,718 (£79,131)	£43,916 (£40,021)
Gross cost per child in care	£5,567 (£4,725)	£7,783 (£6,425)	£8,258 (£7,808)	£5,188 (£2,791)	£5,858 (£4,706)	£6,289 (£4,088)
Gross cost per resident week in Local authority homes	£105.20 (£97.63)	£106.47 (£98.70)	£118.00 (£109.47)	£103.65 (£106.81)	£88.31 (£78.99)	£98.17 (£91.06)
Home Helps						
Contact hours per 1,000 Population aged 65 and over	10,812 (10,241)	7,350 (5,988)	9,700 (9,849)	7,359 (8,240)	22,300 (20,621)	7,763 (7,846)

CARNIVAL AND SHOWS

Festival, fun and sport

THE WORK of the Carnival and Shows Committee illustrates the fun and sporting side of Council work.

Barnet Council hold three major events every year: Barnet Sports Gala, Finchley Carnival and Friern Barnet Summer Show. Organising panels of volunteers, many representing local organisations, co-operate with the councillors on the committee.

Barnet Sports Gala is a feast of sport which takes place at

Copthall Sports Complex in early June. It runs for three days, opening with the heats of the Middlesex Schools' Athletic Championships. Barnet's young athletes, many of whom use Copthall's superb facilities for their training, again carried off the top honours.

The Gala makes use of all the facilities of the complex — the stadium, the sports pitches and the indoor swimming pools. Few events can offer such a variety of sport. There is even a

horse show organised by North London area committee of the British Horse Society. This event deserves far greater support from the public as admission is free.

The poor summer had its effect on attendances at both Finchley Carnival and Friern Barnet Summer Show. Attendance at Finchley Carnival dropped by 7,000 and Friern Barnet by 2,000. Nevertheless more than 22,000 people enjoyed the two events.

Senior Citizens and disabled people were welcomed free of charge to a special entertainment at both events, and at the Finchley Carnival greater emphasis was given to the original concept of it being a charity fund-raising event.

At the summer show a craft market proved a great attraction and once again the marquees held the produce show of the London Borough of Barnet Federation of Allotments Holders and Horticultural Societies.

HOME IMPROVEMENTS

WORKTOPS — TRADE & RETAIL



Non-standard worktops and break fast bars made to order on the premises.

LARGE SELECTION EX-STOCK CUT TO YOUR SIZE INCLUDING HOB AND SINK CUT OUTS FITTING SERVICE IF REQUIRED

D.I.Y. CENTRE (COLINDALE)
2 Varley Parade, Edgware Road, The Hyde, NW9
Telephone 205-4281

GARAGE DOORS at

COMPETITIVE PRICES!!

ALL TYPES OF GARAGE DOORS SUPPLIED AND FITTED at competitive rates Automatic door controls and gates

Free Quotation

Elegantly-styled fibre glass doors made to measure Lift-boy automatic door controls, repairs and maintenance

JOHN BROOKS (GARAGE DOORS) LTD
728 St Albans Road, Garston, Watford, Herts. Tel: 092-73 74623

FREE DELIVERY

GAS CENTRAL HEATING

THE MOST ECONOMICAL SYSTEM COULD SAVE YOU UP TO 25% ON YOUR GAS BILL

No deposit finance with nothing to pay for 4 months

ADVANTAGES:

- Complete boiler with built tank and cylinder in space 3' 6" x 1' 6"
- Built-in instantaneous hot water when you require it
- Guaranteed temperatures
- Controllable heating
- No wasteful cylinders or expansion tanks
- Fully guaranteed
- Radiators guaranteed for 5 years

The only system of this type to be gas and water council approved

You only fit central heating once so why not fit the best

DIY packs designed for your own home For immediate free quotation phone

01-801 5252/3

Sales and Service

VB Heating, Plumbing and Electrical Engineers

144A The Avenue, N17 Est 1975

Members of the Guild of Master Craftsmen



GARAGE DOORS

Up and Over, supply/supplied and fitted Electronic operators a speciality. Phone or write for free comprehensive brochures and price lists.

MIDDLESEX DOOR CENTRE LTD
122 High Street, Whitton, Middx.

Doors from £68.00 free delivery



01-898 6991



**NEED CURTAINS?
DON'T GET INTO DEEP WATER,
COME TO DOLPHINS**

We specialise in all types of Curtains, Blinds and Tracks

SO LET ALL YOUR DRAPERY WORRIES FLOAT AWAY, AND RING US NOW ON 01-272 0222

DOLPHIN DRAPES LTD



SPA
PLUMBING & HEATING SUPPLIERS

1-5 Hampden Square, Osidge Lane, Southgate, N14 Telephone: 01-368 6463

COPPER FITTINGS/TUBE
BARTOL, WASTE, SOIL, RAINWATER, GUTTER
CYLINDERS/TANKS/JACKETS
CENTRAL HEATING EQUIPMENT
PLUMBING TOOLS & ACCESSORIES

DOMESTIC WATER SOFTENERS
SEE OUR ADVANCED 'PERMO'
MICRO COMPUTER WATER SOFTENER
ALSO SOFTSTREAM RANGE
SOFTENERS FOR THE HOME

WHIRLPOOL BATH SPA KITS
FROM £425.00

WE SUPPLY - INSTALL - GUARANTEE
- SERVICE AND MAINTAIN ALL
PLUMBING & HEATING EQUIPMENT



EASY PARKING: OPEN MON-SAT

Heating Dept — 368 6463
Kitchen/Bathroom Dept — 368 6860
Installation Dept — 361 0883
24 Hr Installation Dept — 367 6166

TEL 449 3133 BARNET TIMBER CO. TEL 441 5838

COMPARE THESE PRICES!!!

ALL PRICES INCLUDE VAT
TIMBER PER FOOT

	SAWN	PAR	SAWN	TAN
2 x 1	5p	7½p	7p	
2 x 2	9p	15p	11p	
2 x 3	14p	22p	17p	
2 x 4	18p	28p	22p	
2 x 6	28p		32p	
2 x 7	32p		38p	
2 x 8	37p		44p	
2 x 9	42p		48p	
1 x 1	4½p	6p	—	
1 x 3	10½p	11½p	—	
1 x 4	14p	15p	—	
1 x 6	19p	21p	—	
1 x 9	—	34p	—	
4 x ½	TGV		9p	
4 x ¾	TGV		11p	
5 x ¾	Shiplap		15p	
Louvre Doors	Cupboard Doors			
Laminates	Worktops			
All Sizes				

FORMICA WORKTOPS

10 round edge £30

10 square edge £19 50

Assorted colours

FRONT DOORS ALL SIZES TO 7' x 3'

DOORS FIRST QUALITY

Carolina 6'6" x 2'6" 47.50
Kentucky 47.00
6 Panel 47.50
Half Bow 52.00
Elizabethan 49.50

+ Many Other Patterns

Ply flush 6'6" x 2'6" 10.00
Ply Flush Asstd. 2nds From 3.00
Pattern 10 22.45
½ hour Fire Check 23.50
SA6626 42.00
Sapele Flush 6'6" x 2'6" 18.25
2 x G 26.50

White Contiboard 36p sq. ft.
Mahogany 43p sq. ft.
All Sizes in Stock

CASH AND CARRY DELIVERY EXTRA SHEETWOODS

4mm Ply 8x4 1st Qual	4.77
6mm Ply 8x4 1st Qual	6.50
9mm Ply 8x4 1st Qual	9.85
12mm Ply 8x4 1st Qual	12.60
18mm Shuttering G.I.S.	12.50
12mm Shuttering G.I.S.	7.99
18mm Block. 5 Ply 8x4	15.45
12mm Chip. 1st Qual. 8x4	4.25
18mm Chip. 1st Qual. 8x4	5.75
¾" Plasterboard 8x4	3.75
¾" Plasterboard 6x3	2.39
Hardboard 8x4	2.20
Wallboards Asstd Types	4.95
18mm Birch Blockboard	21.50

PAINT ETC

Valspar Matt 10 Litres	9.49
Valspar Matt 5 Litres	5.49
Gloss & U/Coat 5 Litres	8.49
Gloss & U/Coat 2½ Litres	5.25
Sandtex White 5 Litres	8.99
Tetratex 5 Litres	5.99

ALL SIZES ROOFING FELT IN STOCK

WHITINGS HILL FARM, MAYS LANE, BARNET, HERTS
OPEN — MONDAY TO FRIDAY 8.00 TO 5.30. SATURDAYS 9 am TO 1 pm
CAR PARKING

PLUMBERS! CAN YOU BEAT THESE PRICES? RADSON CONVECTOR RADIATORS

52% OFF

COMPLETE RADSON RANGE ALWAYS IN STOCK

VAILLANT BOILERS	COPPER TUBE
B/F 18	£385
C/F 20	£343
C/F 25	£359
Yorkshire Table X	15mm £14.20
	22mm £26.95

FULL RANGE OF WATER HEATERS. PRICES ON REQUEST
ALL PRICES EXCLUDE VAT



VB HEATING AND PLUMBING
144a The Avenue N17
01-801 5252/3

PUBLIC
WORKS

Worst winter for many years

THE SEVERE WINTER of 1981/82, the worst for many years, caused so much frost damage to roads and footpaths that Barnet Council allocated the Public Works Committee an additional £200,000 for high-ways maintenance.

More than 6,000 tonnes of rock salt were used in an extensive salting and gritting operation over a two month period to keep the roads open to traffic especially the many miles of motorways, trunk roads and bus routes. The programme for re-surfacing all frost damaged roads in the borough is continuing.

During the year £1.75 million was spent on maintaining motorway and trunk roads; £850,000 on Metropolitan roads and £2.95 million on the 335 miles of district roads and footpaths.

Major schemes which began or were in preparation during the year included A41 Apex Corner to The Grove reconstruction work; North Circular junction with M1, provision of a running lane to take motorway traffic; and widening of the North Circular Road at Pinkham Way with central barrier.

The conflicting interests of

pedestrians and traffic and between road users and the environment is a well aired public issue. The traffic management section received 2,300 letters, including 18 petitions on matters of public concern, sent out 1,000 consultation letters and submitted 140 reports to the committee.

In 11 areas new waiting restrictions were introduced and the GLC asked to approve a further 11 schemes. Three zebra and three pelican crossings were installed and approval sought for four more. A plan was drawn up for a controlled parking zone round Brent Cross Shopping Centre and will be introduced shortly. A number of traffic census surveys were also carried out.

Barnet Council took a strong line with pavement parkers, issuing 328 warning notices and referring 129 cases for prosecution. Abandoned vehicles also placed heavy demands on the authority and altogether 1,477 were removed from the streets.

Road Safety

The Road Safety section is involved with education, and publicity. During the year 10,000 children received road

safety instruction and 1,100 were trained and tested under the National Cycling Proficiency Scheme. The section staff visited 80 schools and publicity posters were well displayed.

Refuse collections

Refuse collection is of vital importance to the public and in September 1981 the service was reorganised and a bonus incentive scheme introduced. This projected a saving of £400,000 a year. The section is now building up the trade refuse service which could bring in additional income of £300,000.

The weekly collection service visits 105,000 households and 5,000 commercial premises.

Street cleansing is another matter of public interest and studies were carried out to provide a more efficient service. The results, which involve a bonus incentive scheme and the use of gang beats, will be introduced in 1982/83.

The provision and maintenance of sewers is the responsibility of the Thames Water Authority but the work is undertaken by the council on an agency basis. During the year the major relief surface water sewers at Chesterfield Road,

Chipping Barnet, was completed and the water authority are being pressed to provide more money for essential work to be carried out.

Sewers serving the older parts of the borough, some of which are over 100 years old, have caused concern and a number of feasibility studies have been undertaken involving inspection by TV cameras and physical surveys of their condition.

The overstressing of the sewage system has been highlighted by an increase in the number of sewer collapses.

STATISTICS

The roads and footways of the borough take up one seventh of the total area of 35 square miles.

	Km	Miles
Motorway	20.1	12.5
Trunk roads	37.2	23.1
Metropolitan roads	63.2	39.3
District roads	539.0	334.9
Bridges		
Motorway/trunk roads		150
Metropolitan/district roads		210
Street lights		33,000
Traffic signals		42
Roundabouts and mini roundabouts		37
Pedestrian crossings		
Zebra		74
Pelicans		23
Signal controlled		5
House refuse (tonnage collected)		85,478

BUY YOUR FROZEN FOODS
AT
WHOLESALE PRICES

from



Eiger

FROZEN FOODS LTD

We deliver to your home
on orders over £25



2lb GARDEN PEAS 16p per lb
2lb BUTTON BRUSSELS SPROUTS 23p per lb
72 POTATO WAFFLES 2oz 6.6p each
5lbs CHIPS 22p per lb
48 BEEFBURGERS 2oz 'MERIT' 8½p each
30lb PORK SAUSAGES 41½ per lb

CHICKENS from 41p per lb
TURKEYS from 64p per lb
4 BLACK FOREST GATEAUX £2.68 each
(18 portions)
36 MINCE PIES 'FRESH BAKE' 7½p each
4 LITRES DAIRY VANILLA ICE CREAM £2.51
4 LITRES VANILLA ICE CREAM £1.57

Phone 01-803 7373

PRICES SUBJECT TO
CHANGE WITHOUT
PRIOR NOTICE

TOWN PLANNING
AND RESEARCH

Conserving Barnet's heritage

BARNET has many advantages. Its pleasant residential areas are grouped round a heartland of open space and countryside. Many areas are of outstanding architectural quality and even the most densely populated areas are within easy reach of parks and recreation areas.

It is the duty of the Town Planning and Research Committee to make sure that the borough conserves its fine heritage and at the same time moves forward to supply the needs of its residents today and those of their children tomorrow.

Borough development
Plan

The key to this is the Borough Development Plan which will be used to guide both public and private development in Barnet over the next 10 years. The plan is based on a series of in-depth topic studies. So far Population, Environment, Shopping and Town Centres, and Employment studies have been published. In the pipeline are Housing, Transportation; Recreation and Leisure; Social and Com-

munity Services, Public Utilities and Protective Services and The Green Belt.

Although the main concentration is always on what is happening within the borough the Committee also keeps a close watch on what is happening along Barnet's borders.

The Planning Department gathers and analyses information and carries out research to assist the Council's Committees in their decision making. During the year a survey on the use of land in the borough was largely completed and preliminary information from the 1981 Population Census was received providing useful information which will help the borough to plan for the future.

Local plans

While looking at the Borough as a whole the Committee are also concerned with the special interests of a number of local areas.

The Central Area Plan for Chipping Barnet is monitored for progress; the Glebeland at Finchley, a large open space north of the North Circular Road, is being looked at for its

recreational possibilities; and a planning study for the Cricklewood area was produced for widespread consultation.

Proposals were approved for the Percy Road Area in North Finchley which is designated a General Improvement Area.

The Committee has three sub-committees based on areas — Northern, Central and Western. All planning applications are considered and they range from a small extension to a house to the demolition of non-listed buildings in one of the borough's 10 Conservation Areas.

Even the Council's own plans for development have to come before the Committee and they also comment on the development plans within the borough of Government Departments.

Enforcement

Where planning regulations have been breached or ignored the Committee can issue an enforcement notice to put matters right. During the year 500 complaints were investigated and 60 enforcement notices were served. There were five prosecutions in connection with

the display of advertisements.

The Committee takes a close interest in new legislation affecting planning and the environment. In August 1981 the new Local Government and Planning (Amendment) Act was introduced, substantially changing the 1971 Act for the enforcement of planning control and control over listed buildings.

Fees for planning applications were introduced in April 1981 and during the year almost £88,000 was collected.

The Committee is responsible for maintaining building standards and during the year 3,180 applications were received and 31,000 site inspections made. Fees for Building Inspections brought in £227,00.

STATISTICS

Previous year's figures in brackets

Applications dealt with	2,350	(2,759)
Approved	88%	(83%)
Appeals against decisions	60	(86)
Local enquiries into appeals	20	(13)
Decisions received	65	(63)
Decisions upheld	42	(47)
Appeals allowed	23	(16)
Consultation letters	15,000	(15,000)
Replies received	5,000	(5,000)

SEE BRITAIN'S MOST BEAUTIFUL BEDROOMS

AT THE **Strachan** STUDIO

When you buy a 'Strachan' bedroom you'll have the most elegant, finely crafted bedroom possible — a bedroom that has been especially made for you.

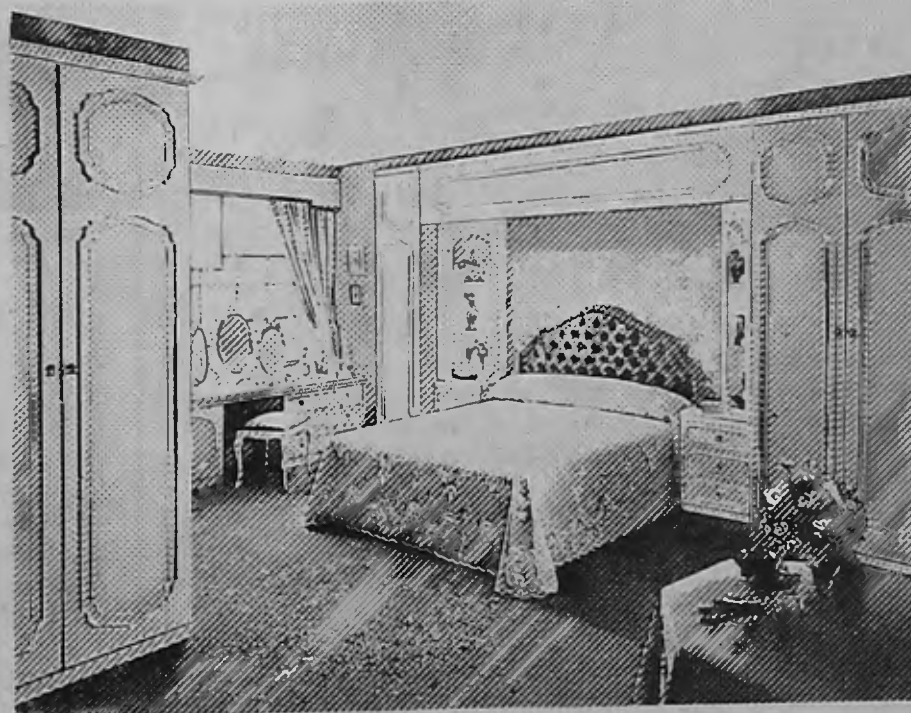
First of all, our consultant designer will plan your ideal bedroom — elegant, luxurious and with remarkable storage accommodation. Then the units are constructed from hand-selected best seasoned timber, brassed hinges, and matched wardrobe interior veneers.

Finally, our highly trained craftsmen will install Britain's most beautiful bedroom in your home.

FREE PLANNING

FREE FITTING

THE STRACHAN STUDIO
139/141 Chase Side, Enfield
Tel: 01-363 7727



You'll love the French Collection...
a classical bedroom from Strachan.

The
Strachan
Studio

Round-up

AT a recent meeting in the Percy Road Teachers' Centre, North Finchley, it was decided to form a retired Members' Section of the Barnet Teachers' Association (N.U.T.).

About 20 retired members attended and Mr. Jack Jones of the National Union of Teachers, explained the function of such a section.

Any retired N.U.T. members who have taught or who are resident in the Borough of Barnet, will be welcome to join. Further information may be obtained from the secretary, Mrs. G. K. Wilkinson, 15 Manor Drive, Southgate, N14 5JH (360 7414).

SINCE the Golders Green and Childs Hill branch of Pensioners' Voice was founded, several disabled pensioners are keen to join but because of their physical handicaps are unable to attend the monthly meetings.

The branch are appealing to car owners to take these pensioners to and from the Methodist Church Hall, Hodford Road, Golders Green, where meetings are held on the first Wednesday of each month from 1-3 pm.

A good response to this appeal will be much appreciated by both the committee and pensioners. Petrol costs will be refunded and offers of help should be made to Mr. Len Ingram, tel. 455 3115.

BARNET & District Motor Cycle Club offers you the opportunity to find out about this exciting and skillful branch of motorcycling. They offer "off the road" practical instruction at monthly sessions.

This experience should be fun and help you to cope with modern traffic conditions.

It is not our intention to assist you in passing your driving test, but it is intended to make you a better and more competent motorcyclist. Are you interested? Further details available from Fred Sparkes, 23 Peplins Way, Brookmans Park, Hatfield, Herts, AL9 7UR.

Note our aim is to interest the 15 to 20 year olds, but we are willing to consider anyone over 7 years of age.

Each monthly session will be limited to 30 drivers.

MIDDLESEX Polytechnic offer a Master's Degree in business management through part-time study. Open evening to find out more, January 12, Middlesex Polytechnic, The Burroughs, Hendon. Tel: 886 6599.

BEECH HILL NURSING HOME

Luxurious nursing home in exclusive London suburbs of Hadley Wood, situated in 2 acres of beautifully landscaped gardens.

- ★ Rooms en suite
- ★ Single rooms
- ★ Sharing and Ward rooms
- ★ Medical Post Operative
- ★ Convalescent and geriatric patients
- ★ 24-hour care and attention, by highly qualified nursing staff
- ★ Special diets catered for
- ★ Excellent cuisine
- ★ Short stays welcome
- ★ Private telephones
- ★ Lifts to all floors
- ★ BUPA and P.P.P. patients welcome

Telephone 01-449 4181

CHANNING SCHOOL

GIRLS' INDEPENDENT DAY SCHOOL

Foundation Scholarship and Entrance Examination 1983

Three Foundation Scholarships, each to the value of two-thirds tuition fees, are offered by the Governors. (Awards of lesser value may be made).

Candidates born between 1st September, 1969, and 31st August, 1972, are eligible and may be entrants or girls already in the School. Preliminary papers will be taken at Channing School on 28th and 29th January, 1983. Closing date of application 10th January, 1983.

Particulars of the above available from:

**The Secretary
CHANNING SCHOOL
Highgate, N6 5HF**

EVERYTHING FOR THE GARDEN

- ALL PLANTS, TREES
- SHRUBS, DUTCH BULBS
- SWIMMING POOLS AND CHEMICALS
- GARDEN FURNITURE, PAVING
- FENCING, SHEDS, ORNAMENTS
- FLOWERING PLANTS AND
- GREEN PLANTS FOR THE HOUSE

PERSONAL SERVICE, QUALITY GOODS
REASONABLE PRICES

OPEN 7 DAYS A WEEK UNTIL DUSK

THE DUTCH NURSERY
BELL BAR, HATFIELD
Tel: Potters Bar (77) 53372



CENTRO SERVIZI COMUNITA' ITALIANA

Se vuoi trovare un contatto utile per risolvere qualsiasi tuo problema iscriviti al Centro Servizi. Associazione privata che puo' curare i tuoi interessi sotto tutti gli aspetti, e fornirti una reale assistenza attraverso agevolazioni economiche e sociali.

I servizi ottenibili al centro sono i seguenti:
Informazioni generali, consulenza legale (avv. Italiani ed Inglesi), pratiche legali (Italia e Inghilterra), assicurazioni (auto, casa, vita, etc.), finanziamenti (privati e commerciali), agenti di viaggio, arredamenti per negozi, compra-vendita immobili, consulenza sanitaria, consulenza commerciale, stime e perizie, consulenze tecniche, progettazioni, realizzazione progetti.

Tutti i servizi saranno curati da personale bilingue qualificato e specializzato nei vari settori.

SEDE CENTRALE:
1158 HIGH RD, WHETSTONE, LONDON, N20 0RA
TEL: 01-445 3635, 01-445 3636
Orario d'apertura: 10.00-19.00; Sabato, 10.00-14.00

If you need help to solve any kind of problem, join the Italian Service Centre. This is a friendly association that will take care of all your needs and provide you with real economic, social and cultural assistance.

Some of the services we provide are:
General information, English and Italian solicitors and barristers, document requests, fiscal advice, finance (private and commercial), insurance (car, house, life, etc.), doctors and specialists, surveyors, estimates, building contractors, technical advice, business consultants, shopfitting and furniture, properties (buying and selling), projects realisation, travel.

All these services are provided by qualified and specialist bilingual personnel

MOBILE VIDEO LIBRARY

ALL THE LATEST VIDEO RELEASES

No copies, originals only
Selected at your own home

£3 FOR 3 DAYS

NO DEPOSIT OR MEMBERSHIP

E180 Blanks £6.95

TEL: 01-449 9672

Member of the Video Trade Association

Rest Assured



BED CHAIRS
SMART, VERSATILE, SIMPLE
CHAIRS WHICH UNFOLD TO
BECOME COMFORTABLE SINGLE BEDS.
THE SETTEE UNFOLDS INTO A FULL-SIZE
DOUBLE BED

FROM £89.90

GREENWOOD FURNISHING CO. LTD.
386 BOWES ROAD, ARNOS GROVE, LONDON, N11 1AH
Telephone: 01-368 0281

S.J.S. REMOVALS

(inland and overseas)

Local office, storage available, packing cases supplied, quotations free, covering a 15-mile radius.

Tel. 455-2040 and 455-9962

GENERAL PURPOSES COMMITTEE **Range of service**

The range of services demanded of local authorities today is illustrated by the work of the General Purposes Committee which deals with all those functions not specifically allocated to the other standing committees.

Central administration, trading standards, environmental health, public information, electoral registration, the Registrar's office and many other responsibilities come under its control.

Few people realise that every year the Council gives financial help to local voluntary organisations and many of these grants come under the 'GP' Committee. The grants ranged from £70,573 to the local Citizens' Advice Bureaux, to £10 for the National Almshouses. The Committee administers the income from the Edward Harvist Charity and projects helped with these funds included a minibus for a junior school, a garage for another minibus, and resuscitation equipment for the St John Ambulance Brigade.

Keeping an open line to the public is important and the Press and Information Section dealt with 62,000 enquiries from the public, while Civic News kept residents in touch with Council and Community news.

Twin Towns

Active links were maintained with Le Raincy and Chaville in France; Siegerland and Tempelhof in Germany; and Ramat Gan in Israel. Many young people from Barnet and the twin towns made exchange visits to foster better international understanding and friendship.

Trading Standards

The Trading Standards Section carries out its duties under the authority of 30 Acts of Parliament and is also responsible for some licencing and registration. For example, under the Weights and Measures Acts officers visited 1,536 trade premises and tested 6,752 pieces of equipment of which 547 were defective. They also checked the weight or quantity of more than 10,000 items of food and 172 were found to be less than was claimed.

Under the Trade Descriptions and Fair Trading Acts five second-hand car dealers were charged with supplying cars to which a false description had been applied and with failing to disclose in their advertisements that they were dealers. Fines totalling £4,500 were imposed with costs of £475 awarded to the Council.

One complainant was awarded £500 compensation.

Environmental Health

Environmental Health, not to be confused with the National Health Service, deals mainly with the protection and improvement of public health at home, at work and in the community. For instance, pest control, complaints about food, housing conditions which could affect health, animal welfare and pollution all come within the orbit of the department's inspectors.

The figures in the statistics panel illustrate the scope of their work.

STATISTICS

Previous year's figures in brackets

Legal Services		
Conveyances — house sales	355	(249)
Others	129	(87)
Landlord & tenant complaints	715	(591)
Local land charge searches	11,837	(11,137)
Emergency Telephone Service		
Calls received	10,322	(9,394)
Trading Standards		
Inspection Visits	5,490	(6,126)
Articles tested or Examined	51,242	(57,440)
Licensing and Registration	7,122	(8,447)
Registration of Electors		
Number on Register	224,733	(222,954)
Registration of Births, etc.		
Births	3,545	(3,467)
Marriages (Civil and religious)	1,847	(1,999)
Deaths*	3,668	(3,620)
Rent Officer		
Applications received	2,720	(2,912)
Certificates of fair rent etc.	2,828	(3,151)
ENVIRONMENTAL HEALTH		
Housing		
Inspections made	13,744	(12,857)
Properties made fit	220	(205)
Enforcement action re multiple occupation	75	(46)
Pollution		
Complaints investigated	199	(175)
Food		
Visits	10,108	(9,837)
Samples examined	715	(638)
Public Health		
General inspections	8,796	(9,869)
Notices served	344	(442)
Pest Control		
Calls to control rodents	5,945	(5,548)
Wasp nests etc. treated	2,829	(2,641)

Lady Fayre

LADIES FASHION WEAR

NOW OPEN

Hours 9.00-5.30 Monday
Tuesday, Wednesday,
Thursday and Saturday

Late night Friday
9.00-6.00



323 Green Lanes,
Palmer's Green,
London N13.

Telephone:
01-886 6799



- ★ SPECIALISTS IN HIGH-QUALITY UPVC (Trocal licensed manufacturers)
- ★ NO DEPOSIT FINANCE AVAILABLE (Written details upon request)
- ★ FULL 10 YEAR GUARANTEE

★ 4 WEEKS' DELIVERY
BUY DIRECT FROM OUR OWN FACTORY

Open 9 am to 9 pm every day

FOR FREE ESTIMATES
Telephone 0920 67706

THE MANAGEMENT AND STAFF
OF

The Railway Hotel

Wish all our customers a Merry Christmas
and a Happy New Year with special seasonal greetings
from The Carvery

Always the best cuisine at

The Railway Hotel
Station Road, Edgware 952-1560



LA CAVE RESTAURANT

117 CHASESIDE,
ENFIELD, MIDDX.

Tel: 01-367 4052

We also have an Exclusive Cocktail Bar.
The only one of its style in North London.

Alternatives — the Health Food Shop

1369 High Road, Whetstone, N20
01-445 2675

Mon—Wed 10 am—6 pm Fri 9 am—6 pm
Sat 9 am—5 pm
Closed all day Thursday

For health aiding foods, natural body care, vitamin and
mineral supplements, books, magazines, takeaway
lunches.

CHRISTMAS SPECIALITIES

Christmas cakes, Christmas puddings,
raw sugar marzipan, mincemeat, dried
fruits and nuts. A full range of gift
suggestions including gift packed natural
toiletries, gift packed nuts, hampers, books
on cookery, beauty, health and fitness, herbs, etc.

Kiddie Care

- ★ Want a day to call your own?
 - ★ And somewhere to leave your children after school?
 - ★ Somewhere they can play, study or watch video tapes?
- We offer attractive, warm surroundings with adult supervision
and physician on call at all times.
If you need your child collected from school, we can arrange this
also.
We will play with them, help them with their homework and also
provide snacks for them.

CALL FOR DETAILS
01-441 4343

5-STAR VIDEO CLUB

FREE MEMBERSHIP

Trial offer up to and expiring
December 24, 1982

DELIVERY SERVICE AVAILABLE

£6.50 3-HOUR VIDEO BLANK TAPE

NEW VIDEO RECORDERS TO RENT
FROM £13.95 PER MONTH

01-959 2667

121A THE BROADWAY
MILL HILL, NW7

Barnard's Jewellers

BARNARD'S JEWELLERS LTD.
1272 High Road
Whetstone, N20
Telephone 01-445 9897
By the lights

This long-established shop is
now in the hands of an old
family jeweller where you will
always find something different
at fair prices.

SEE OUR SECOND-HAND JEWELLERY, OLD SILVER, CULTURED
PEARLS, EARRINGS, RINGS AND PULSAR WATCHES — SOME
WITH DIAMONDS!

CIVIC HALL 01-953 9872 BOREHAMWOOD

Hertsmere Borough Council In Association With Charles-Haley Productions
presents

BABES IN THE WOOD

A Traditional Pantomime For All The Family
starring

LINDA BARON
"OPEN ALL HOURS"
AS ROBIN HOOD

J. J. PALLO and
GEORGE CAMILLER
As The Bad Robbers

with
ROGER WALKER
"RAINBOW"
As The Sheriff Of Nottingham



Monday 27th December — Saturday 8th January
Tickets £1.80 — £2.50 Children and Senior Citizens Half Price
Book Now — Ring 01-953 9872 for details

FRANCE

You Mediterranean dream home

Become FREEHOLD timeshare
OWNER of a beautiful MARINA
HOUSE on a PRIVATE ISLAND

- ★ Superb LOCATION with OWN BEACH
- ★ YACHT and WINDSURFER provided
- ★ CAR included
- ★ Easy ACCESS from UK
- ★ In an area of BEAUTY, WINE,
HISTORY, MARVELLOUS FOOD
SOPHISTICATION and SUNSHINE

Something very special

GET THE FACTS at a local informal
SLIDE SHOW/DISCUSSION
For details CONTACT MIKE WOOD NOW:
PHONE: 272-3317/441-3602 (24 hrs)

HELMWOOD PROPERTIES INTERNATIONAL
16 JACOBS WELL MEWS, LONDON W1

BRITISH & CONTINENTAL

RADIATORS

LARGE STOCKS — MOST TYPES FITTED
WHILE-YOU-WAIT

Repairs and specialist work undertaken on the premises

FUEL TANK REPAIRS
& EXCHANGES

VIC SMEE (Radiators) CO. LTD.
168 Chapter Road, London, NW2

TEL. 459-6467/6230
PERSONAL CALLERS WELCOME



WE'RE NOW AT YOUR SERVICE!

That's right, now
there's an Alfa
Romeo service
centre near you.
Staffed by fully
trained and quali-
fied Alfa engineers
who use genuine
parts and care for
your car no matter
how new or how old
it is.

So when your
next service comes
up, give us a ring.
We're only around
the corner!

ALFARAMA
44 Kilbys Yard,
(Off Bacon Lane)
Edgware,
Middlesex
HA8 5AR
Telephone:
951 0552

Alfa Romeo

WHAT'S ON IN BARNET

THIS LIST of activities in the Borough is open, free of charge, to all voluntary and community groups.

Entries for the February issue (February 12 to March 12 1983) must reach the editor by January 11.

Entries to Civic News, Address: page 4.

It is regretted that owing to pressure on space in this month's issue, regular weekly events have been omitted. They will be published again in the January issue. New weekly events have been included and are marked with an asterisk.

Saturday December 11

British Tinnitus Association (NW Branch), The Meritage Club, Church End, Hendon. 2 pm (444 9657).

Sunday December 12

Hendon Corps Salvation Army Toy Service and Carols, Citadel, Brampton Grove. 6.30 pm.

Monday December 13

Hampstead Garden Suburb Antiques Circle. Visit to Chris Beetles Watercolour Gallery. (202 0269).

Barnet & District Philatelic Society. Council Chambers, Town Hall, Station Rd. 7.30 pm. Members Christmas Auction. (449 2536).

*Ladies Keep Fit, Silk House Community Centre, Annesley Ave, Colindale. 7.30 pm. (206 0072). £1 per session.

*Bridge lessons and play for improvers (intermediate standard) St. Michael's School, Nether St, North Finchley. 7.45 pm (349 4707).

Tuesday December 14

Pre-driving test lecture, Road Safety Centre, East Barnet Town Hall, Station Rd, New Barnet. 7.30 pm £1 (349 9121, ext 422).

Mill Hill Flower Club, Harwood Hall, Mill Hill Broadway. 8 pm (954 4944).

National Schizophrenia Fellowship, Temple Fortune Health Centre, Temple Fortune Lane, Golders Green. 8 pm (455 5113).

Open House, social and cultural meetings. SAE 146 Oakleigh Rd South, New Southgate, N11. Barnet Anglo-French Club, Council Chamber, 29 Wood St. 'Un avant-goût de Noël'. 8 pm (440 9267).

Acorns, women's non-sectarian club, East Finchley Hall, High Rd. 9.45—11.30 am. Creche provided. 'Quiz' (449 8613/349 2148).

'After Eights' Young Wives, Brunswick Park Rd Health Centre, N11. 8 pm (368 9630).

Wednesday December 15

Finchley Church End Afternoon TWG, St. Mary's Hall, Hendon Lane. 2.15 pm (346 4178).

Woodside Park TWG, The Old Finchleians Club House,

Southover. 2 pm. Christmas party (445 6593).

Small Landlords Assn. NW London Branch. 'Surgery' meeting, Hendon South Conservative Assn. Committee Rooms, 166 Station Rd. 8 pm (202 9269).

Finchley Rotaract Club, Moss Hall Tavern, Ballards Lane, North Finchley. 8.30 pm (349 2709).

Loyal Flower of Hendon Lodge of Odd Fellows. Post Office, Brampton Grove, Hendon. 7.45 pm (952 5576).

Lions Club of Finchley, Hendon Hall Hotel, Ashley Lane, Hendon. 7.30 pm (951 2196).

Friary Ladies Club, Assembly Rooms, Colney Hatch Lane, Friern Barnet (entrance Lyndhurst Ave) 8 pm (368 0638).

Thursday December 16

Greater London Old English Sheepdog Club, Hendon Football Club, Claremont Rd. NW2. 8 pm. Grooming/obedience training (458 7028).

Circassian Circle Folk Dance Club, Harwood Hall, Mill Hill Broadway. 7.45 pm (950 5756).

Osidge Branch (Women's Section) Chipping Barnet Conservative Assn, St. Andrews Hall, Chase Side, Southgate. 2 pm (368 5414).

Finchley Christian Spiritualist Church, Woodberry Grove, North Finchley. Address and Clairvoyance. 7.30 pm.

Friday December 17

Broadfields Evening TWG.

Orange Hill Junior School, Hamonde Close, Edgware. 7.30 pm (958 4845).

Barnet Afternoon TWG, Church House, Wood St. 2 pm (449 0714).

Saturday December 18

Advice Bureau held by John Major, GLC Member for Chipping Barnet, and a Barnet Councillor, 163 High St. Barnet. 10.30 am to 12 noon (449 7345).

Sunday December 19

High Barnet Baptist Church, 197 High St. Music, carols and readings. 6.30 pm.

London Hash House Harriers. Trekking in Trent Park. 11 am from car park half a mile from Cockfosters Rd. entrance to park (349 2338).

Octopus Swimming Club for the handicapped, Squires Lane Baths, Finchley N3. 12.30—1.30 pm (346 5944).

Finchley Christian Spiritualist Church, Woodberry Grove, N12. Address and clairvoyance. 6.30 pm.

Hendon Salvation Army Young People's 'Christmas Presentation' 6.30 pm.

Monday December 20

Mill Hill Rotaract Club, Mill Hill Lawn Tennis Club, Sylvan Ave. 8 pm (202 4509).

Friern Barnet Council for Voluntary Service Whist Drive, Priory Hall, Friern Barnet Lane. 2.15 pm (368 4278).

Tuesday December 21

Finchley Solo Club for widowed,

EXHIBITIONS

December 11 to January 15

Paintings by Elaine Gould, Peter Sutton and Monica Gordon, Hendon Library, The Burroughs. Normal library opening hours.

Until December 18

Craft Fair, The Crest Gallery, Totteridge Library, Totteridge Lane (346 7120).

8th Barnet Artists' Exhibition, North Finchley Library, Ravensdale Ave. Normal opening hours (445 4981).

Until January 10

Ceramics by Susan Bennett

and Earl Hyde, The Old Bull, 68 High St, Barnet. Open: Mon—Sat, 10 am—6 pm (449 0048).

Until January 16

Collectable English Ceramics in conjunction with the Hendon and Hampstead Antique Glass and Ceramics Group, Church Farm House Museum, Greyhound Hill, Hendon. Open weekdays (except Tuesday), 10 am—1 pm, 2—5.30 pm; Tuesday, 10 am—1 pm; Sunday 2—5.30 pm (203 0130).

DISCO LATIN BALLROOM KEEP FIT JAZZ



CLASSES AND PERSONAL TUITION FOR ALL AGES
RING 202 9911 NOW
FOR FREE BROCHURE
LEARNING IS FUN
AT THE FRIENDLY

HENDON DANCENTRE

QUEENS PARADE, HENDON, CENTRAL
(Opposite station)

KEEP FIT

Learn

TAE KWON DO

(Korean Art of Self-Defence)
at: Finchley Manor Hill, School's Gym, Summers Lane, N12
on Monday 7.30—9.30 pm
Queen Elizabeths Boys School, Assembly Hall, Queens Road, Barnet.
Friday 7.30—9.30 pm
Instructors: S. W. PAN 3rd Dan.
A. PATEL 2nd Dan
Details: Call at the Training Centres



DO YOU WANT TO DANCE?

Wednesdays 8.30 pm—9.30 pm

DISCO FUN

Fridays 8.30 pm—9.30 pm

BALLROOM & LATIN RHYTHMS

Enquiries:

SYLVIA LEWIS DANCE STUDIOS

Subud Hall,

97 East Barnet Road,

449-3336 449-6034



WE ARE PLEASED TO BE ABLE TO OFFER YOU REPRODUCTION FURNITURE THAT IS CRAFTSMEN BUILT AT PRICES THAT YOU CAN AFFORD

Included in our vast stocks are HI-FI AND T.V. CABINETS, DINING SUITES, NESTS OF TABLES, BOOKCASES, COCKTAIL CABINETS AND OCCASIONAL FURNITURE



VISIT US NOW AND SEE JUST HOW FAR YOUR MONEY WILL STRETCH

RENOWN REPRODUCTIONS LTD.

6 Station Parade, Southgate, N14

886 3633

HYPNOSIS

can be the answer to your PROBLEMS — Nervous fears and Phobias, Lack of Confidence, Smoking, Overeating OR ANY OTHER PSYCHOSOMATIC ILLNESS

QUALIFIED PSYCHOTHERAPIST
Mrs. V. Prasad DMS, CHP, MAHP
Phone 01-349 3201

INTRODUCTION TO COMPUTERS

Courses for adults and children
Children's Christmas holiday. Course £25.

RING 203 5696

KEEP THEM OUT SECURITY GRIDS AND FRAMES

Made and fixed to customers requirements

Please ring
Potters Bar 42860 (day)
Potters Bar 56648 (night)

FOR ALL YOUR

ADVERTISING PHONE 366

4626. WE REACH APPROX. 1/4

MILLION READERS.

divorced and single (26-60). 8 pm (441 5532/889 0513 eves). Barnet Branch of the North Middlesex Family History Society, Church House, Wood St. 7.45 pm. 'Heirlooms from the attic' (449 6153).

Thursday December 23

Circassian Circle Folk Dance Club, Harwood Hall, Mill Hill Broadway. 7.45 pm (959 5756).

Wednesday December 29

Amnesty International, Unitarian Church, Hoop Lane, Golders Green. 7.30 pm (346 3138). Loyal Flower of Hendon Lodge of Odd Fellows, Post Office, Brampton Grove. 7.45 pm (952 5576).

Thursday December 30

Pensioners' Voice (Whetstone/Finchley), North Finchley Library, Ravensdale Ave. 1.30 pm (445 7143).

Pensioners' Voice (Colindale/Burnt Oak), Burnt Oak Library, Watling Ave. 1.30 pm (959 4583).

Friday December 31

20th Century Sequence Dancing Club, New Year's Eve buffet dance, All Saints Hall, Oakleigh Rd North, Whetstone. 7.45 pm (360 2586).

Saturday January 1

London Hash House Harriers, Hogmanay Hangover, Hampstead Heath. 3 pm from car park at junction of East Heath Rd and Downshire Hill, NW3. Bring torch (349 2338).

Sunday January 2

Octopus Swimming Club for the

Handicapped, Squires Lane Baths, Finchley N3. 12.30—1.30 pm (346 5944).

Monday January 3

Mill Hill Rotaract Club, Mill Hill Lawn Tennis Club, Sylvan Ave. 8 pm (202 4509).

Tuesday January 4

Finchley Solo Club for widowed, divorced and separated (26-60) 8 pm (441 5532/889 0513).

Friern Barnet Friary TWG, Christ Church URC Hall, Bellevue Rd. 1.45 pm (445 8011).

After Eights' Young Wives, Brunswick Park Rd Health Centre, New Southgate. 8 pm (368 9630).

Wednesday January 5

Ecology Party (Barnet/Finchley). (449 8297).

Finchley Rotaract Club, Moss Hall Tavern, Ballards Lane. 8.30 pm (361 0454).

Pensioners' Voice (Golders Green/Childs Hill), Methodist Hall, Rodborough Rd, Golders Green. 1.30 pm (458 1479).

Lions Club of Finchley, Hendon Hall Hotel, Ashley Lane, Hendon. 7.30 pm (951 2196).

Milldon Art Society, Harwood Hall, Mill Hill. 'Taking notes and how to use them'. Non-members 20p (958 5126).

Barnet Evening TWG, Church House, Wood St. 7.45 pm (449 6809).

WHAT'S ON

Thursday January 6

East Barnet Valley TWG, St. John's Hall, Mowbray Rd. New Barnet. 2.15 pm (449 4227).

Hendon Afternoon TWG, Cheshir Hall, Foster St. 2 pm (202 6081).

Women's Aid monthly meeting (449 4847).

Multiple Sclerosis Society, Barnet & District, Lyonsdown Hall, Lyonsdown Rd. New Barnet. 7.30 pm (Hatfield 64282).

Council meetings

Members of the public are invited to attend Council and Committee meetings in the Town Hall, Hendon at 7 pm.

Tuesday, December 14: Council meeting.

Monday, December 20: Development and Estates.

Tuesday, January 4: Public Works; Social Services.

Wednesday, January 5: Town Planning and Research.

Monday, January 10: Housing; General Purposes.

Tuesday, January 11: Education.

Wednesday, January 12: Allotments Committee.

Chipping Barnet WI, Wesley Hall, High St. 10 am (441 4103).

Saturday January 8

Advice Bureau held by Sydney Chapman, MP for Chipping Barnet, and a Barnet Councillor, 163 High St. Barnet. 10.30—12 noon (449 7345).

British Tinnitus Assn (NW London), The Meritage Club, Church End, Hendon. 2 pm (444 9657).

Monday January 10

Barnet & District Philatelic Society (Junior Section), Council Chambers, Town Hall, Station Rd. 6.30 pm British Naval Occasions. (449 2536).

Finchley Chrysanthemum Society, Manorside School, Squires Lane, N3. New varieties. 8 pm (346 2974).

Tuesday January 11

Mill Hill Flower Club, Harwood Hall, Mill Hill Broadway. 8 pm (954 4944).

National Schizophrenia Fellowship (NW London), Temple Fortune Health Centre, Temple Fortune Lane. 8 pm (455 5113).

Open House — social and cultural meetings — SAE 146 Oakleigh Rd South, New Southgate, N11.

Finchley and Granville Afternoon TWG, Methodist Hall, Ballards Lane. 2.15 pm (445 5865).

Wednesday January 12

Brunswick Park Ladies, Church Farm Hall, Church Hill Rd.

East Barnet. 2 pm (368 0383). British Computer Society (North London), West Lodge Park Hotel, Cockfosters. 7.45 pm 'The Communications Quarterly' (368 5339).

Hendon Horticultural Society, Lecture Room, Hendon Library, The Burroughs. 8 pm (203 3467).

Pensioners' Voice (Barnet), Methodist Hall, High St. 1.30 pm (449 6023).

Loyal Flower of Hendon Lodge of Odd Fellows, Post Office, Brampton Grove, Hendon. 7.45 pm (952 5576).

North Finchley Royal British Legion, Legionway, off Summers Lane. 8 pm (445 9911).

Barnet Friends of the Earth, Varied Venues (441 0792).

Finchley Floral Art Society, Friends Meeting House, Alexandra Grove, North Finchley. 8 pm (446 0835).

Hendon & Hampstead Antique Ceramic & Glass Society, Hendon Library, The Burroughs 'Josiah Spode and his wares' 8 pm. Visitors £1.25 (202 9508).

Enfield & Northern London Group, Soil Association, Fern Room, Salisbury Rd, Barnet. 'Growing and using Herbs' 7.30 pm (441 1414).

Thursday January 13

Circassian Circle Folk Dance Club, Harwood Hall, Mill Hill Broadway. 7.45 pm (959 5756).

Hendon & District Aquatic Society, Hendon Library, The Burroughs. 8 pm (368 8430).

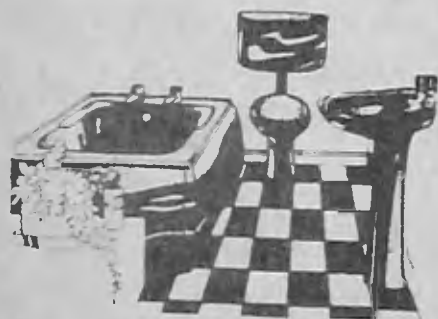
Pensioners' Voice (East Finchley), East Finchley Library, 226 High Rd. 1.30 pm (444 5950).

Barnet Women's Place collective, John Hampden Annex.

WARNING!

Do not read this unless you are a prisoner in your own home

Were you confined to one heated room last year? If so don't spend another year around a solitary heater. We can offer you the freedom to use each and every room, without breaking the piggy bank. We design, install, service, guarantee and insure the freedom of your own home for less than a third of a 'Y' reg family saloon car. Which is more important, the comfort in your home or impressing the neighbours? Our tailor-made central heating systems in theory are free! Your investment is redeemed on the sale of your home, usually with a profit. He who hesitates has lost.



BATHROOMS!

Special for one month only!

A coloured bath suite supplied and fitted **£330**

Don't delay phone for a friendly no nonsense approach for your heating requirements.

A.1. HEATING COMPANY

Telephone 0582-422589/415803

LICENSED CREDIT BROKERS

Probably the best investment you'll ever make

THE BROOKMANS

the pub for all the family



Family Room

Restaurant

Football Trophy Bar

Evening a la carte Restaurant

Tuesday — Saturday 7.30 — 10.00 reservations

Traditional Sunday Lunch
£4.75 Adults. £2.75 Children
Reservations only

Special Christmas Lunch
20-24 December

Bookings taken for Office Parties

Every Monday evening — Wine and Music
Bring your own tapes

New Year's Eve — Masquerade and Cocktails

BROOKMANS PARK
Potters Bar 53577

ALL AIRPORTS AND SEASIDES
JACKS ECONOMY CAR SERVICES

445 1497 — 959 6473

HEATHROW — £10 LUTON — £12
GATWICK/STANSTED & SOUTHEND — £20
BRIGHTON — £25

EASTBOURNE & BOURNEMOUTH — £30
ADVANCE BOOKINGS

FOR A HAND-TAILORED SUIT VISIT

DAVID LOW
Ladies' & Gentlemen's Tailors

Wide range of materials to choose from, or your own cloth made up. Also alterations and repairs including suede and leather. Gent's Dresswear Hire Service. Customers visited by appointment

Tel: 368 2804

Closed all day Wednesday
Open till 12 Sat.

RELIABLE DISCO
AVAILABLE

ANY OCCASION
REASONABLE RATES
MANY
RECOMMENDATIONS

Tel: COLIN ON
01-368 2921

Success is routine for

QUALITY CATERERS

Buffets or sit-downs
1st class service and efficiency for your wedding dinner or party reception

Menu's for EVERY price and taste
Tel: 01-953 7545

WHAT'S ON

Community Centre, Victoria Rd. New Barnet. 8 pm (440 2099/446 3339).

Saturday December 18

Finchley Children's Music Group, East Finchley Methodist Church, High Rd. New work about King Wenceslas and carols. 7.30 pm (794 3615).

Finchley Choral Society Carol Concert, St. Margaret's United Reformed Church, Victoria Ave, N3. 7.30 pm (445 8401).

East Barnet Music Centre, Clayton Hall, East Barnet Upper School, Chestnut Grove, Cat Hill. 11 am Juniors; 7.30 pm Seniors (449 5484).

Wednesday December 22

Barnet and District Choral Society Family Carol Concert, Methodist Church, High St, Barnet. 7.30 pm (449 7760).

Friday December 24

Barnet Parish Church Recitals — Christmas Eve Festival of Nine Lessons and Carols (449 7760).

Thursday January 6

Friern Barnet Library Gramophone Society, Friern Barnet Rd. Music of Duke Ellington. 8.10 pm (368 2680).

Monday January 10

Hendon Music Society, Central Library, The Burroughs. 'Tchaikovsky and the Opera'. 8 pm (203 0929).

Tuesday January 11

Hendon Library Gramophone Society, The Burroughs. Beethoven (202 5625).

DRAMA

January 6 to 9

Concorde Players present a pantomime 'Jack and the Beanstalk', Barnet College Theatre, Fitzjohn Ave. 7.30 pm (Sat. and Sun. mats. 2.30 pm). Tickets £1.75, children £1.25. (888 9029/881 2471).

LATE ENTRIES

Tuesday December 14

Ravenscroft School Annual Service of Lessons and Carols, Chipping Barnet Parish Church. 7.30 pm.

Saturday December 18

BSCA Modern Sequence Club, Mays Lane, Barnet. Christmas Party, dance. 7.30 pm (440 5898).

Thursday, January 6

Local History Group of East Finchley Village Society, East Finchley Neighbourhood Centre, Church Road. 8 pm.

Monday January 10

Finchley District League of Jewish Women, Kinloss Synagogue, Kinloss Gardens, N3. Demonstration of flower arranging (882 3064).

*Tuesdays

Disabled sports for all ages. King Alfred's School, North End Road, NW11. 8 pm (449 9181).

Mayor's Civic Charity Dinner and Dance

Europa Hotel, 7th April 1983

Tickets £15 from:

Dennis Signy, Hendon Times, 71 Church Road, Hendon NW4 and Councillor Mrs Ena Summers, 22 Cranbourne Gardens, Golders Green NW11.

Arts Workshops

BARNET Borough Arts Council, who run regular

term-time workshops for children and adults, have announced their Christmas holiday programme with workshops on December 22 and 23.

On Wednesday, December 22 there will be two art and craft workshops; one from 10.30 am—12.30 pm for 6 to 10-year-olds and one from 2.30—4.30 pm for 8 to 12-year-olds.

On Thursday, December 23, Trestle Theatre will be coming. They will run theatre workshops specialising in mask and mime work from 11 am—12.30 pm for 8 to 12-year-olds and 13 to 18 age groups.

In the afternoon, they will perform 'Jack and the Landlord', a show suitable for 5 to 11-year-olds. All workshops cost 50p a session, 60p non-members. Show tickets 50p.

For further details of bookings for all of the above contact Barnet Arts Workshop, Avenue House, East End Road, Finchley, N3, tel.

346 7120.

The new term begins on January 10. The following workshops are available:

Children — 5 to 6.30 pm

Mondays — Photography (10 to 18 years); Drama (8 to 10 years); Art and craft (7 to 12 years)

Wednesdays — Silkscreen and printing (10 to 18 years); Video (10 to 18 years)

Thursdays — Art and Craft (7 to 12 years); Drama (11 to 18 years)

Adults

Mondays — Dance, Keep-fit (10.30—11.30 am, 12 noon—1 pm). Creche available.

Wednesdays — Drama (10.30 am—12.30 pm). Reduced rates, 25p per session for unemployed; Women's screen printing 1.30—3.30 pm. Creche available.

Fridays — Dance, Keep-fit (10 am—11 am; 11.15 am—12.15 pm). Creche.

Saturday January 15

Advice Bureau held by John Major GLC Member for Chipping Barnet and a Barnet Councillor, 163 High St. Barnet. 10.30 am to 12 noon. (449 7345).

MUSIC

Saturday December 11

Barnet and District Choral Society, Ewen Hall, Wood St. Works by Brahms and Tate. 7.45 pm.

Hendon Salvation Army Corps Band presents 'Prelude to Christmas', Citadel, Brampton Grove. 7 pm (428 7647).

Classical Concert, East Barnet Baptist Church. 8 pm. Admission free (collection). (368 1929).

Barnet Schools Hendon Music Centre, St. Mary's CE School, Sunnyfields Rd, Hendon. 10.30 am (449 5484).

Barnet Schools Finchley Music Centre, Moss Hall JM School, Nether St, N3. 7.30 pm (449 5484).

Monday December 13

Hendon Music Society, Central Library, The Burroughs. 'A seasonal programme of words and music'. 8 pm (203 0929)

Tuesday December 14

East Barnet Library Gramophone Society, Brookhill Rd. 'We wish you a merry Christmas'. 8 pm (440 4376).

S & L SPORTS SKI CENTRE

St Albans Hill
Hemel Hempstead, Herts

WE ARE SNOWED UNDER

So if you want to take advantage of our:

- ★ SKI SCHOOL
- ★ MODERN SHOP
- and
- ★ APRES SKI

You'll have to 'phone and book up. It'll be worth it because we have the finest slope in the country, open from 9 am to 9.30 pm, and apres skil facilities in a true Tyrolean atmosphere.

So keep this number handy
HEMEL HEMPSTEAD (0442) 41321

Function room available for hire



BETWEEN 8 & 18?

INTERESTED IN DRAMA, SINGING OR DANCING?

KIDSNCO Studio Agency offers a thorough training in dramatic arts

Saturdays 10 am—1 pm
Campbourne Community Centre, N8

For further information regarding auditions, please contact the director: Ray Hughes, 1023 High Road, Whetstone, N20. Tel: 446 0340

SLOT COLOUR TV

No deposit

Tel: 889 5555 9-5.30

or 366 5871

Evenings and Weekends

HYPNOTHERAPY

for Slimming, Smoking, Lack of Confidence and other problems.

Psychic development tuition in self-hypnosis.

882-6722

I. G. BRUMMITT B.A.
PSYCHOLOGIST/HYPNOTHERAPIST

EST. 25 YEARS

ROUNDCROFT KENNELS LTD ARE REALLY 5 STAR



THE KENNEL WITH THE PERSONAL TOUCH

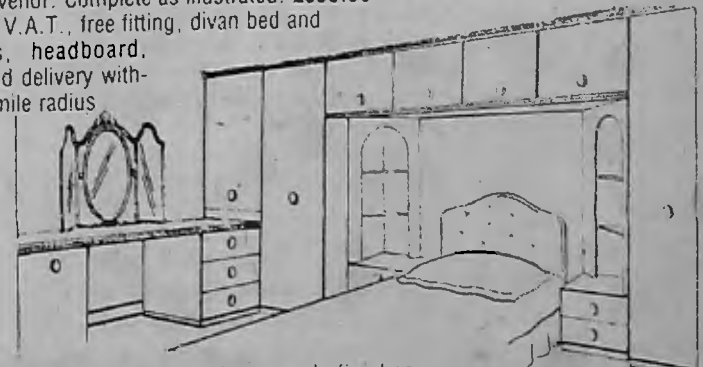
- ★ Fully Heated Accommodation and Large Exercising Runs for Each Dog
- ★ Veterinary Surgeon in Regular Attendance
- ★ Piped Music installed to give Home Atmosphere
- ★ Fully Experienced and Sympathetic Staff under Personal Direction of John Marchant
- ★ Full Facilities All Year Round
- ★ Obedience Training Undertaken.

Prop: J. Marchant
Sandy Lane, off Watford By-Pass
Bushey Heath
Nr. Watford
WO2 8HE

01-950 1895

Beautiful fitted Bedrooms at prices that'll give you a good night's sleep

The Grosvenor. Complete as illustrated. £999.30 including V.A.T., free fitting, divan bed and mattress, headboard, mirror and delivery within a five mile radius



Choose from the many designs and finishes. A top quality beautiful fitted bedroom at direct from factory prices. We also have a large range of superb fitted kitchens and Reproduction furniture in Solid Oak, Yew and Mahogany.

Flairline Furniture Showrooms

Factory Showroom, (Rear of Boots Chemist) High Street, Barnet. 01-440 4833.

We are here
Boots Chemist
High St. Barnet

103, Station Road, Chingford 01-524 3297 Closed Thursdays

The local furniture warehouse where you've got it made.

Decorative Mouldings for Interior & Exterior use

Cornice, Arches, Columns, Niches, Ceiling Roses, Panelling, Fire Surrounds and Coal/Log Effect Fires

FOR FREE BROCHURE
Tele: 01 529 2327

Parkland Reproduction Mouldings

49-51 Station Road, Chingford E4
352 Cricklewood Lane, NW2

*The Directors and Staff
wish all past and
prospective Customers
A Merry Christmas
and Happy New Year*

**OUR 1983 MODELS
ARE AVAILABLE
FOR YOU TO TEST DRIVE**

CALL IN FOR A DEAL TO SUIT YOU —
ADVANTAGEOUS LEASING
AND HP TERMS AVAILABLE
(with quotations on request)

PORTER BROS (1982) LTD

ASK ABOUT OUR QUALITY USED CARS

STATION ROAD, RADLETT
TELEPHONE: RADLETT 6711

Mazda

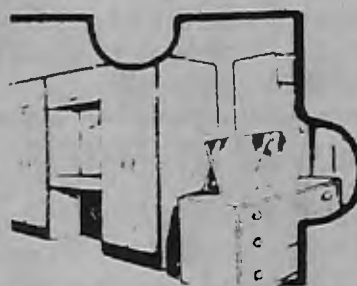
Faubel Furniture

Every unit purposely built to exactly fit your

KITCHEN AND BEDROOM

Our Craftsmen can make your Dream Kitchen and
Bedrooms a reality.

Individual requirements are our speciality.
All at attractive prices. Professional advice.



FREE ESTIMATES READILY GIVEN &
COMPLETE INSTALLATION

FAUBEL FACTORS LTD
UNIT 5, 11-13 LONG STREET
LONDON E2

01-739 9598



We are pleased to announce

The National Home Enlargement Bureau
have appointed

MICHAEL CARLISH ASSOCIATES

Design & Building Division
the reliable status of



To celebrate we are presenting 2lb boxes of luxury hand-made Belgian chocolates to all our clients booking our initial Feasibility Study. Bonded Builder Completion Guarantees will be given to the first twenty home extensions designed and built in 1983. For a fully detailed brochure about our home extensions and to receive our special offer call Hazel Scott without delay on

446 4882

Woodside Park Station Approach, Woodside Park Road, London, N12

The National Hospitals for Nervous Diseases
Post Graduate Teaching Hospitals for
Neurology and Neurosurgery
The National Hospital, Queen Square, WC1

Sister/Charge Nurse

Required full time, day duty for an 11-bed private patients ward with both Neurological and Neurosurgical cases. Applicants should be State Registered Nurses with considerable and varied experience in the speciality, particularly in managing the nursing care of patients who have had a major Neurosurgical operation.

The National Hospital, Queen Square, WC1 and
Maida Vale Hospital, W9

Staff Nurses

For full- and part-time day duty in the Recovery Room/Intensive Care Units at both Hospitals, and in the Respiratory Failure Unit at Queen Square. Applications are invited from State Registered Nurses who have JBCNS Course 148 or 100, or who have previous experience in neuro intensive nursing or the care of patients requiring ventilation. Successful applicants will be expected to spend their first week in post in the Nursing Studies Unit at Queen Square in orientation and induction. Residential accommodation is available at both hospitals which are situated in very attractive parts of central London. Informal enquiries/visits welcomed.

For further information and an application form please contact: Miss B M Johnston, Director of Nursing, The National Hospitals for Nervous Diseases, Queen Square, London WC1N 3BG. Telephone 01-837 3611 extension 102.

**NH
ND**

The National Hospitals
For Nervous Diseases

STRIPPERS RETAIL

Stripping specialists of
doors and furniture

Free local collection
and delivery

Discount on quantity

We also sell pine
and antique furniture

Tel: 01-441 2944/440 3403

ALL ADVERTISING ENQUIRIES PHONE

366-4626-7
367-0246

BARNET CIVIC NEWS

OFFER TRADERS
THE ONLY MEDIA
WHICH WILL
REACH EVERY
HOME WITHIN
THE BOROUGH
OF BARNET
EACH MONTH

C.A.S.S. ALARMS

The inexpensive way to all aspects of
total security.

- ★ Industrial & Private residents
- ★ C.C.T.V.'s
- ★ Burglar Alarm
- ★ Vehicle Alarm
- ★ Entry Phone Systems

Phone now for a free survey.

01-444 0654

SALT



GRANULAR SALT — for Water Softeners
ROCK SALT — for snow clearing

Tel. 01-883 6047

KAYBANKS & CO.,
STATION ROAD,
NEW SOUTHGATE, N11

PERMUTIT water softeners
supplied and installed

Mr. Carroll's allotment

FOR Richard Carroll of Windsor Avenue, Barnet, allotment gardening is a way of life.

He has three plots on the Bells Hill Allotments site in Barnet and every year since 1977 he has won the award for the best kept allotment in the London Borough of Barnet. 1982 was no exception and on Friday, November 12 at Hendon Town Hall he received his trophy from the Deputy Mayor, Councillor Stan Sorrell. He first won his trophy in 1972 then he had to change plots and it was in 1977 that he started his winning round.

A building worker, Dick Carroll finds the allotment a totally satisfying and challenging hobby. 'But I don't think I am the best gardener at Bells Hill. George Juniper, our Secretary, is a far better gardener than I am. I just enjoy organising the allotment and growing vegetables and flowers,' he said.

The best kept allotment site in the Borough award went to Colindale Allotments and Garden Association. This very active Association runs its own trading hut and encourages members to cultivate their plots to a very high standard.

Other awards:



Mr. Dick Carroll (right) and Mr. George Juniper, Secretary of Bells Hill Allotments Association, at the door of Mr. Carroll's greenhouse on his prize-winning allotment.

Best kept allotment site — Central Division — Pointalls and District Allotment Society. Northern Division, Friern Barnet (Central) Allotment Holders Association. Western Division, Colindale Allotments and Garden Association.

Best cultivated allotment — Central Division, Miss E. Puling, Pointalls and District

Allotment Society. Northern Division, Mr. R. Carroll, Barnet Allotment Holders Association (Bells Hill Allotments). Western Division, Mr. G. Westley, Colindale Allotments and Garden Association.

Best runner-up for best cultivated plot — Mr. G. B. Walsh, Archfield Allotment Association.

Collectors' corner at museum

FINE, delicate and amusing ceramics, mainly from the 19th century will be on show at Church Farm House Museum, Greyhound Hill, Hendon, until January 16.

The title of the new exhibition is Collectible English Ceramics and the collection on view has been assembled by Hendon and Hampstead Antique Ceramic and Glass Club.

Special emphasis has been placed on the major English factories, Wedgwood, Spode, Royal Worcester and Minton.

Some of the items on display are rare, collector's items. Others are the type of piece which the average enthusiast can afford. There will be a puzzle corner and a special display to illustrate the difference between old and new which often have the same design.

For opening hours see the 'Exhibitions' panel in What's On. The museum will be closed on the following days over the Christmas — New Year period: December 24 to 28 inclusive and January 1, 2 and 3.

SAVE

PLUMBING & HEATING

GOST

CONSULT BARNET'S LEADING SPECIALISTS

**FOR INSTALLATION & SERVICE
INSTALLATIONS — 2 YEAR GUARANTEE
BOILER REPLACEMENTS & SERVICING**

FREE QUOTATION PLUS EXPERT ADVICE — WITHOUT OBLIGATION
PHONE 01-440 9366

**BOILER BREAKDOWN SERVICE HOT WATER TANKS REPLACED
PUMP REPLACEMENT SERVICE BATHROOM INSTALLATIONS**

FIRST LINE BOILER SPARES
IN STOCK

TRADE COUNTER

SECOND LINE SPARES
AVAILABLE AT SHORT NOTICE

GUARANTEED DISCOUNT STRUCTURE

(Radiators)		(Boilers)	
Warmstyle convectors	52½%	Potterton & Ideals	40%
Myson convectors	47½%	Glow Worm	37½%
Stelrad Accord	47½%	Baxi	35%
Finstyle convector	42½%	Others on request	

Key Terrain Waste 25%

50 gal rect tank £18.87 — 36 x 18 ind cyl £28.00

Grunfoss pump £18.00 — L & G programmers £18.40

Enfeed — Yorkshire — compression fitting — maximum discount

Thermostatic polytronic radiator valve £5.70

All prices exclude VAT



BARNET PLUMBING & HEATING SERVICES LIMITED

10 Western Parade, Great North Road, Barnet, Herts (Near Barnet Odeon)

OPEN MON-SAT 7.30-5.30

Service & Installation Dept 01-440 9366

Trade Counter Enquiries 01-441 1661

Sanitary Ware Enquiries 01-449 1131

London Borough of Barnet

BOROUGH ENGINEER AND SURVEYOR'S DEPARTMENT

**Appointment of Assistant Caretaker — Grade: Misc. 4
Salary £5,094 — £5,415 per annum inclusive**

Based at Gateway House. We deputise for the Caretaker in his absence, when he will be responsible for the cleaning staff in evenings. Hours to be arranged within a thirty-six hour week.

Application forms from the Borough Engineer and Surveyor's Dept., Gateway House, 322 Regents Park Road, Finchley, London, N3 2LP, to be returned by December 20, 1982. Ref: 210

BARNET PLAY ASSOCIATION

Community Play Organiser

(Salary £8,322 including Outer London Weighting)

This is a new post suitable for one full-time or two part-time workers. Applicants should have all or most of the following:

- Experience of play provision with school-age children.
- Knowledge of working with voluntary organisations.
- Administrative ability — report writing, co-ordinating information etc.
- Organise publicity, fund-raising and special projects.
- Ability to support, liaise and negotiate at all levels.
- Valid driving licence.

Conditions of work include:

Being prepared to work through the summer holidays.
Flexible hours.

Letter of application, cv and names, addresses and telephone numbers of three referees, no later than 7th January, to: Hon. Secretary, 55 Silk House, Annesley Avenue, Colindale, NW9.

PROPOSALS SOUGHT FOR LEISURE/RECREATION OR GARDEN CENTRE USE

**Mill Hill NW7
former Swimming Pool**

125-year lease
2¼-acre site
Low fixed ground rent

For particulars ring Alan Davies on 01-349 9121, ext 522, or write to the Borough Estates Officer, London Borough of Barnet, Gateway House, 322 Regents Park Road, Finchley, London N3 2LP



Clitterhouse/Whitefields Estate, NW2 PREMISES TO LET

Area 830 sq. ft. Suitable for Community use subject to planning consent.

Interested parties contact Alan Davies by telephone on 01-349 9121 Ext. 522

**Borough Estates Officer
London Borough of Barnet
Gateway House,
322 Regents Park Road,
Finchley, N3 2LP**

Holiday period refuse collections

THERE WILL be no refuse collections in the borough over the holiday period — Monday, December 27, Tuesday, December 28, Wednesday, December 29, and on Monday, January 3.

Arrangements for the service during the period Thursday, December 30 to Friday, January 7, are as follows:

Normal collection day	Holiday collection day
Monday	Thursday Dec 30
Tuesday	Tuesday Jan 4
Wednesday	Wednesday Jan 5
Thursday	Thursday Jan 6
Friday	Friday Dec 31 & Friday Jan 7

Whilst every effort will be made to keep to this programme there may be some collections which will not be able to take place strictly to schedule. Residents are therefore advised that if their dustbin has not been collected according to the timetable above to have the bin accessible for collection on the following day.

Normal collection schedules resume on Monday, January 10, 1983.

Snow and Ice Emergencies

THE COUNCIL'S gritting staff will be on duty for the next 18 weeks as part of the winter programme to cope with snow and ice conditions.

Gritting of roads throughout the Borough will be carried out on a priority basis — that is major traffic routes, bus routes and roads with steep gradients.

To assist residents, yellow grit bins have been located at strategic points for use by residents on roads and footpaths (but not private driveways and garden paths).

In addition manual staff from various council services will carry out snow clearance in shopping centres.

In emergencies calls on the Council's resources can be made as follows:

During Office Hours Telephone 349 9121
Outside Office Hours Telephone 202 8282
(including holiday period)

Residents will appreciate that if conditions get very wintry there will many calls coming in and consequently there may be delays in answering telephones or responding to calls. It is important to be brief and precise.

Staff will deal sympathetically with requests but clearly priorities will be established and resources are limited so public expectations must be realistic.

In last winter's severe weather there were many complaints of roads not having been gritted when in fact they had. The Council uses ground rock salt on the icy roads which leaves no trace other than a wet surface as the ice and snow melts. Grit is only used in exceptional circumstances.

Callers reporting snow and ice problems are asked to code their calls with the words Ice and Snow Emergencies.

Letters to the Editor

ALTHOUGH resident in a London borough, with a London (01) telephone number, I am one of thousands who, because their postal address is one of the Home Counties, is denied entry in the London telephone directory, and also denied access to the latter other than at a major Post Office, the local library, and a few public call-boxes.

I wrote to British Telecom a few weeks ago asking that this discrimination be rectified, but apart from an acknowledgement I still await a reply. If anyone else feels strongly on the subject I should be glad if they would tell British Telecom so — the address is Dial House, 151 Shaftesbury Avenue, London WC2.

Mrs A. R. Bradford
49 Lyonsdown Avenue
New Barnet

I WAS PLEASSED that Mr Andrews wrote (November issue) on the subject of pedestrians ignoring traffic lights at Golders Green, since this has prompted me to write with a different view of the matter.

The Highway Code says under the heading 'The Safety of Pedestrians' that 'when turning at a road junction (drivers

should) give way to pedestrians who are crossing the road into which you are turning.' This, to my mind, is one of the most valuable rules of the Highway Code in protecting the interests of pedestrians, and if it were better observed there would be no need for the 'Cross Now' phase of traffic lights.

The 'Cross Now' phase of the Golders Green lights is a pity, because (i) it goes against the right of pedestrians to cross the road, given them by the rule I have just quoted; (ii) it annoys pedestrians, because they have to wait extra time to cross; and (iii) it annoys motorists because it is unnecessary (for the reason I have just said) and keeps traffic standing for an unnecessary time.

John Elkan
13 Temple Gardens, NW11

MOST people will not be surprised to hear that the borough is having to spend large amounts of money to keep subways graffiti-free.

When will planners realise that these are havens not only for scribblers but for muggers as well and send the traffic underground leaving pedestrians on the surface?

R. B. Lewis
Southgate, N14

Your money aids medical breakthrough

THE GENEROSITY of Barnet residents and the work of a small, Harrow-based charity, have made it possible for an eminent medical researcher from New York to come to Britain to lead a research team at St Bartholomew's Hospital.

Former Councillor Mrs Rosa Freedman, Mayor of Barnet in 1981/82, chose for her mayoral appeal to support research into Crohn's Disease in Childhood. She worked closely with CICRA (Crohn's In Childhood Research Association) which grew up round a small group of parents whose children were stricken with the disease.

Bart's has become a centre for research into this mystery disease which attacks the intestine and in children is debilitating, stops growth and prevents development. It can be treated but not cured. The mayoral appeal raised more than £40,000 which, together with money from CICRA, has gone towards the equipping and staffing of a new laboratory at St Bartholomew's.

On Tuesday, November 16 Mrs Freedman unveiled a small

plaque to commemorate the contribution made by the mayoral appeal.

It was at this ceremony that Dr John Walker-Smith, Consultant Paediatric Gastroenterologist at St Bartholomew's, announced the exciting news that two doctors working at St Bartholomew's and Queen Elizabeth's Hospital for children had identified a particle which seemed to appear only in the intestine of sufferers of Crohn's Disease. Meanwhile, Dr Robert Dourmashkin of Mount Sinai Hospital, New York, was in England on a lecture tour as a leading authority in the field of Crohn's Disease and children's ailments of the intestine. The doctors compared notes and Dr Dourmashkin had also identified a particle in his research.

Because the new laboratory was available and the doctors wished to look further into this particle discovery which, Dr Walker-Smith warned, 'may or may not be significant', Dr Dourmashkin has come to England to take charge of the research in the new laboratory.

THE DAYS when Barnet was the first staging post out of London or the last halt before the City for businessmen and travellers from the north, are recaptured in a new book published by Barnet Libraries: *Coaching days in Barnet*.

Between Monken Hadley and the bottom of Barnet Hill and clustered along the side streets were 42 inns, taverns and ale houses, some of which were serving refreshment when the Battle of Barnet was fought in 1471. The Red Lion, which over the Centuries has changed its name from The Cardinal's Hat to the Antelope, although greatly altered, is still in business.

We learn of the feud between the Red Lion, the Tory stronghold, and the Green Man where the Whigs were entrenched. We read of the day the justices met to deal with the riotous behaviour at Barnet Fair — only to imbibe too generously so that their own behaviour came under censure. And there's the story of the postmaster who threw his trousers into the stage coach in mistake for the mail-bag.

The author, Suzan Carr, gained work experience with Barnet Libraries Department during her studies to qualify as a Librarian. The book can be obtained at local libraries, price 50p.

Coaching days in Barnet

by Suzan Carr



KINNERET YZS

and Zionist topics to games evenings and quizzes. The group are also keen fundraisers and two events this year raised quite a lot of money which went towards re-furnishing a youth club.

The Kinneret monthly magazine, 'Special K' keeps members informed of regular meetings and national events, and members can contribute articles on any topic they care to choose.

For more details of meetings and fundraising events telephone Susan on 958 7128.

KINNERET YZS are a 19-plus youth group who hold regular weekly meetings mainly in members' homes in the Edgware, Mill Hill and Stanmore areas. Recently the group have been attracting members from a wider area and meetings are now being held in Hendon and Golders Green.

Subjects for meetings range from Jewish

HOUSEHOLD SERVICES

Checkalow

Ltd

**CERAMIC
TILING
BY
EXPERTS**

Our fully experienced tradesmen ensure your complete satisfaction
Comprehensive showroom
Easy parking

21 St Albans Road
Barnet, Herts, EN5 4JX
01-440 0927
01-449 2706

**HEATING
PROBLEMS?**

CONSULT

COHEAT LTD

FOR NEW
INSTALLATIONS
MAINTENANCE
and SERVICING

- Members of H.V.C.A.
- Corgi Gas Installers
- Potterton appointed service contractors
- Stockists of Potterton and Ideal Stelrad spares

UNIVERSAL HOUSE
LINCOLN WAY
ENFIELD, MIDDX.
Tel. 01-805 2070

HOOVER

**ELECTROLUX
SERVICE**

OTHER MAKES REPAIRED
WORK GUARANTEED
HOOVER TRAINED ENGINEERS
NO CALL OUT CHARGE

**P. JARVIS
WORKSHOPS
01-441 5152**

Eves 0727 72918
(local)

HOOVER CLEANERS AND
WASHING MACHINES WANTED

**CABINET MAKER
DESIGNS**

and makes Cupboards for
Bedrooms Loft Conversions
and anything in wood!
Furniture repaired etc.
No job too small
Free Estimate

**346 8975
Messages 759 9681**

J. E. RIGDEN

Decorator

25 years
in the trade

Call 440 0809
for estimate

**BUILT-IN
WARDROBES**
by experienced
CABINET MAKER
Photos shown

All work fully guaranteed
804 6439
ALL ESTIMATES FREE

McLAREN

MEANS BUILDING!



ALL ARTEXING, PAINTING AND
PAPERHANGING, STONE FIREPLACES,
ALTERATIONS AND EXTENSIONS
CARRIED OUT

CONCRETING/CEMENTING
CARPENTRY

PLASTERWORK
PLUMBING

Bathrooms and Kitchens re-tiled — Fencing
erected — Roofs repaired or renewed

Driveways and patios re-chipped or crazy paved, also tar-
mac repointing work carried out. Guttering repaired or
replaced.

J. McCLAREN
Tel. (Luton) 0582 31869
(after 6 pm)

STRIPPING

DOORS AND FURNITURE

IN-SITU STRIPPING & HAND WAXING
SAME DAY COLLECTION & DELIVERY

EDGWARE STRIPPING CO 951 0646

ROGERS REMOVALS Ltd

- ★ Household
- ★ Office
- ★ Antique removers and storers

For free advice and estimate please tel:

01-346 0488/01-349 0825

BARNARD & SON

HOUSE CLEARANCE
SPECIALISTS

PHONE
DAYTIME
803 6163

PHONE
EVENINGS
803 5065

DECEASED EFFECTS BOUGHT AND CLEARED

24-HOUR SERVICE SEVEN DAYS A WEEK

MODERN AND ANTIQUE ITEMS BOUGHT.

**60 BOUNCES ROAD
EDMONTON, N9**

We also buy:

Postcards, records, old books, set of chairs,
bookcases, display cabinets, ivories, water col-
ours, oil paintings, old tables, bronzes.
IN FACT, ANYTHING OLD OR ANTIQUE

dampcure / 30

woodcure / 30

B.W.P.A. & B.C.D.A. MEMBERS ★ ESTABLISHED 1959
30-YEAR GUARANTEE ★ FREE SURVEYS

WATFORD 41514/23842
BUSHEY 01-950 0070

LUTON (0582) 841978
CHESHAM (0494) 782431

SPA PLUMBING & HEATING ENGINEERS

PROMPT 24-HOUR SERVICE

Boiler Servicing, Plumbing, Maintenance

Specialists in Central Heating
and plumbing installations
Free estimates. All work guaranteed
Credit terms available

Tel: 361 0883 for details
367 6166 after 6.00 pm

new look decorators ltd

PRIVATE AND INDUSTRIAL
FIRST-CLASS PAINTING

WALLPAPERING AND GENERAL
PROPERTY MAINTENANCE WORK
CARRIED OUT. ESTIMATES FREE

Telephone: 455 2700 days
878 0793 evenings

KLEENTEX

*Specialist cleaning
in the home*

CARPETS

UPHOLSTERY

CURTAINS

Scotchgard
Carpet Protector

01-886 7602

Phone now for Free Quotation

BARCLAY CARD ACCEPTED

ESTABLISHED
1977

COSYTOP

LOFT INSULATORS

GOVERNMENT GRANTS AVAILABLE

Our Installations are Guaranteed to meet
Council Approval.
Our Materials to BS 5803.
Free Estimates

Phone: Waltham Cross (97) 36598
Waltham Cross (97) 21279

REPAIRS TO ALL TYPES OF
ROOFS, TILES, SLATES, FELT,
GUTTERING, DOWN PIPES
REPAIRED/REPLACED. ALL
INTERIOR/EXTERIOR
DECORATING

EMERGENCY SERVICE

ROOFING

01-346 4383
01-445 3067

Say goodbye to the winter blues with Gas Central Heating

Don't spend this winter suffering from the same winter blues as last year. Think about the benefits of Gas Central Heating, which is still the cheapest fuel with which to heat your whole house. It's clean, controllable and efficient and it has none of the storage and supply problems associated with oil or solid fuel.

For a free estimate or friendly advice, ring us now
Telephone: St Albans 37020



Our central heating installations are **guaranteed** by the Heating and Ventilating Contractors' Association

CORGI REGISTERED



**ENVIRONMENTAL
SERVICES**



THE GAS CENTRAL HEATING GROUP

ASTON TIMBER PRESERVATION & DAMPCOURSING LTD



OFFER A PERSONAL SERVICE FOR THE ERADICATION OF RISING DAMP, WOODWORM AND DRY ROT
REPLASTERING QUOTATIONS GIVEN



ALL WORK GUARANTEED FOR 20 YEARS

FOR FREE ESTIMATE **01-346 6300**

10 STATION RD, FINCHLEY CENTRAL, N3

E. GREATOREX & SONS (Building Contractors) LTD



BUILDING & DECORATING CONTRACTORS

TO HOSPITALS AND LOCAL GOVERNMENT BODIES ETC.

6a Shaftesbury Road
London N19
01-272 2566 & 01-263 0202

CENTRAL HEATING SPECIALISTS

- ★ All plumbing and central heating work undertaken
- ★ No job too small
- ★ Central heating surveys carried out for house purchases
- ★ 24-hour service

FOR FREE ESTIMATES
Tel: Mr. McCarthy
207 1501

McBAR & SONS Roofing & Building Co



- ★ New roof's & roof repairs.
- ★ All general building work.
- ★ House painting.
- ★ Pebble dashing, Yorkstone cladding.
- ★ Chimney breast removal.
- ★ Through lounges.
- ★ Brick work & pointing.

12 year guarantee on new roof's
Call now for your free estimate
Tel. 888 2207

J. K. GIBSON

(REGISTERED)

**NEW ROOF & GUTTERING SPECIALIST
SPECIALISING IN STRIPPING
AND RECOVERING OF OLDER ROOFS**
New PVC Guttering, Overhauls, Chimney Pointing/Removals, Flat Roofs and all aspects of the trade
For prompt free no obligation estimates and reliable service
Phone 883 1197. Potters Bar (77) 44584



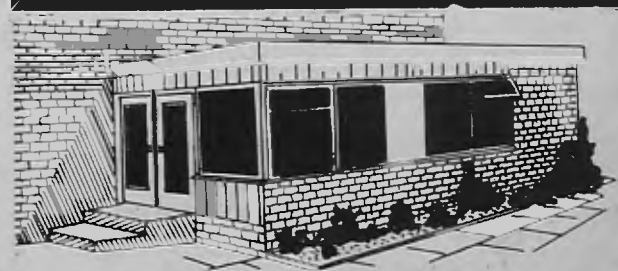
**2 cu. yd.
MINI SKIP
£17.50**
Home Plant Hire Co. Ltd.
01-427 6275

DELUXE CONTRACTORS use your land to E-X-P-A-N-D

All types of Home Extensions — big or small, including: Purpose-built Kitchens to your requirements rebuilding and redesigning of Driveways. All types of new and flat roofs. Planning applications and building regulations free of charge.



Invest and get the best with Deluxe Contractors
Woodside Place
Bell Bar, Hatfield
Tel: Hatfield (30) 69727



CHASESIDE HOME IMPROVEMENTS SPECIALISTS IN Extensions, Brickwork and Conversions Plans and Permission obtained.

STARTING DATES AVAILABLE
ESTIMATES FREE
803-1093 & 366 2261

LET US TAKE CARE OF YOUR RUBBISH

Phone us now for your SKIP HIRE requirements
 Sizes of skips from 2 cubic yards to 8 cubic yards
 Prices from £15
 Walls and fences no obstacle for small skips.

Ring **TURNER GOW LTD**

Day: **01-794 1191**
 Evenings and weekends: **01-349 4219**

Television Repairs

Qualified engineer specialising in:
 Ferguson HMV/Ultra/Pye Philips
 Decca Bush Murphy.
 All makes of music centres and VHS
 videos repaired.

All areas.
Tel: 01-360 8815



GAS CORGI REG
 BRITISH GAS APPROVED

MAINTENANCE SERVICE

The alternative gas service for all your gas and central heating needs.

24 HOUR SERVICE
 Visit our Showrooms

Tel. 451 4477

219 Church Road, Willesden, NW10



Dennis Bozier Ltd GENERAL BUILDING & DECORATING CONTRACTORS

17 Sandpit Lane, St. Albans, Herts AL1 4DY
 EXTENSIONS, INTERNAL ALTERATIONS,
 CONVERSIONS, PLANS DRAWN &
 SUBMITTED TO THE LOCAL AUTHORITY.
 BUILDING MAINTENANCE, FENCING,
 ELECTRICAL WORKS ALL CARRIED OUT
 TOGETHER WITH A COMPLETE RANGE OF
 DECORATING SERVICES.

All Estimates Free Without Obligation
ST. ALBANS 34324/5

SKIP HIRE



Efficient and speedy service.
 Reasonable rates for all areas.
SHARPS CONTAINERS
 363 3512

MINI-SKIPS AT REASONABLE PRICES
 Also sand and ballast delivered.

JACK DARRELL

(Builders)
 All types of brickwork catered for

**ROOF REPAIRS FENCING
 GUTTERING PAINTING**

General property and factory maintenance
 Also a seasonal checkup for your house starting at **£35**

Please telephone **367 6431**



ALPINE CONSTRUCTION BUILDING AND ROOFING CONTRACTORS SPECIALISTS IN



- ★ Extensions/Conversions
- ★ Full Architectural plans for Local Authority Approval
- ★ Private and confidential finance arranged in your own home
- ★ Three-layer built-up felt roofing
- ★ Re-slating
- ★ Re-roofing
- ★ All types of roof repairs

- ★ All work carried out by qualified tradesmen
- ★ All work carried out is fully guaranteed

For Quotations and Free Advice Phone **01-366 4555**
 Lea Valley 764858



ALPINE CONSTRUCTION pride themselves in giving their clients a complete service from initial design stage to completion

LEAKY ROOF?

For new roofs contact:

PRESTIGE ROOFING

Free survey — No obligation
 Grant work
 HP arranged
 15 years guarantee on workmanship
 50 years guarantee on materials

Also flat roofs, 3-layer built-up felt roofing

Tel: 01-800 2316
 (8 lines)



William John



(Building Contractors Ltd)
 7a UPPER HEATH ROAD
 ST. ALBANS

Telephone: St. Albans **57974** or **31319**
 Refurbishing. Conversions. Renovations.
 Home Enlargement. Loft Rooms. House Building.
 Full Property Advisory Service — commercial, residential and private.

E.E.B. Apprentice served



ELECTRICIAN

(R. Schüller)
 Works to IEE regulations
 Professional Rewires
 (free advice or estimates)

Extra sockets, lights, shower immersion, cooker, circuits etc

Phone: **803-2348** for immediate attention

JUST STARTING

in your area

WEEKLY LAUNDRY/DRY CLEANING COLLECTION

Commercial or Domestic

VAN SERVICE
 Call **01-254 4746**

DOUBLE GLAZING

InsuGlazing from Alpine

The ultimate in double glazing in the superior white finish

For professional advice free estimate:

A. LAJER

Tel: **01-452 0354**

alpine

LOCAL AERIAL SPECIALISTS

- ★ Colour TV and FM installations
- ★ Communal systems
- ★ Multipoints
- ★ Video points
- ★ All work guaranteed
- ★ Reasonable rates
- ★ Prompt personal service

Tel: **01-906 2712**

SENTINEL TELEVISION SERVICES

You've tried the rest. Now try the best

Specialising in Philips TVs, videos and other makes. Qualified & Guilds engineers. free estimates. work guaranteed.

Tel: Days **01-207 2555**
 Evenings/Weekends: **01-366 0455**

J & J PLUMBERS BLOCKED DRAINS

Toilets, Baths £12
 Main Drains £14
 1 Month Guarantee
PLUMBING
 Free estimates given
 Washing Machines £25.50
 Toilets £35
 (excluding materials)
 Collapsed drains — Free estimates
 Roof Installation & Fencing
24-hour service
01-367 4950

P.J. BUILDERS

The Home Extension Specialists

A Complete Building Service Since 1976
EXTENSIONS & LOFT CONVERSIONS

and all types of
Building and Maintenance Work
Domestic - Industrial - Commercial

For your free survey and estimate

Tel:
WALTHAM CROSS
(97) 31517



CHIMNEY SWEEP SERVICE

Brush and Vacuum
Domestic
and Industrial
883 3407

FRANKTONS

(Regd.)



- * New Roofs
- * Repairs to all Types of Roofing
- * Lead and zinc valleys
- * Re-pointing of chimneys

All work guaranteed

Tel: 01-363 6420
Anytime



PLASTER CASTINGS

Manufacturers and suppliers of decorative and ornamental fibrous plasterwork. Specialists in design and all types of plastering, screeding and granolithic.

363 7565

No job too small

SUSPENDED CEILINGS AND PARTITIONS

FREE ESTIMATES GIVEN

All types of ceilings with integrated lighting for all domestic and commercial areas, supplied and fixed. Artex ceilings also.

PROMPT SERVICE: 01-440 4702

RAFAROY LTD. 5 Plantagenet Road
New Barnet

DO YOU NEED AN ELECTRICIAN?

We're here to help you

Telephone:
01-446 1132

BASINGDOWN LTD.

Guttering Specialists
New Guttering to your home front and rear from as little as £110.00
For free estimate telephone
Lea Valley 762900

WANTED

Scrap Copper
Brass Load
Batteries
and Cables
EDGWARE METALS
952 3155

SOUTHGATE BUILDERS

ROOFING,
DECORATING,
PLUMBING, EXTENSIONS
PORCHES, ELECTRICAL
REWIRING

24 Hour Emergency Service
On Plumbing and Electrical
Free Estimates



805 2862

OFFER: Roofs & Gutters Overhauled From £45.00

SKIP HIRE

STOP THAT MOAN'IN
AND GET PHON'IN
YOUR LOCAL FIRM

C. F. CRONIN

KEEP FOR A WEEK

Tel. J. SMITH
450-9667/8/9

T.M.A. & Co.

(Established 20 years)

Undertake all aspects of building work, electrical rewiring, central heating, plumbing, Interior and Exterior Decoration
FREE ESTIMATES
Tel: 01-328 2535



CUT HERE

ROOF REPAIRS FOR YOUR HOME

RING 367 6431
JACK DARRELL (BUILDERS)

GUTTERING REPAIRS OR REPLACEMENTS

RING 367 6431
JACK DARRELL (BUILDERS)

PAINTING EXTERIOR AND INTERIOR

RING 367 6431
JACK DARRELL (BUILDERS)

FENCING LARGE AND SMALL

We do it all!
RING 367 6431
JACK DARRELL (BUILDERS)

GENERAL PROPERTY AND FACTORY MAINTENANCE

RING 367 6431
JACK DARRELL (BUILDERS)

BRICKWORK INDOORS OR OUTDOOR

All types catered for
RING 367 6431
JACK DARRELL (BUILDERS)

JACK DARRELL (BUILDERS)

CUT THIS ADVERTISEMENT AND KEEP IT IN A SAFE PLACE AS ONE DAY YOU WILL NEED US!

- * ROOF REPAIRS
- * GUTTERING
- * PAINTING
- * FENCING
- * BRICKWORK
- * GENERAL PROPERTY AND FACTORY MAINTENANCE
- * SEASONAL CHECK-UP FOR YOUR HOUSE FROM £35

FOR FULL DETAILS
TEL: 367 6431

WILLIAMS SPORTS

366 Ballards Lane, Tally Ho Corner, Finchley, N12. Tel: 445 3596
 Gateway House, 328 Regents Park Road, N3. Tel: 346 2398

SPEND CHRISTMAS WITH US

GIFT TOKENS from £1.00

TABLE TENNIS TABLES from £79.95
 SNOOKER TABLES from £129.00
 LIVERPOOL and ARSENAL REPLICA KITS from £14.99
 TOTTENHAM HOTSPUR HOME AWAY KITS
 WEIGHTLIFTING EQUIPMENT
 MOON BOOTS at £14.95
 HOLDALLS by PUMA, ADIDAS,
 RUCANOR and others
 HOCKEY and LACROSSE STICKS
 TENNIS RACKETS
 DISCO ROLLER SKATES
 TRACKSUITS from £8.95
 BALLET WEAR
 BADMINTON RACKETS from £4.95
 RUNNING SHOES
 EXERCISE CYCLES from £49.95
 TENNIS SHOES SKI WEAR
 "WINMAU" BRISTLE DARTBOARDS at £12.95
 SQUASH RACKETS
 SWIMWEAR
 TRAINING SHOES
 'V' NECK SWEATERS from LE COQ
 FRED PERRY and SLAZENGRS
 SQUASH SHOES
 ROLLER SKATES
 YELLOW WELLINGTONS at £5.95



CHRISTMAS SPECIAL OFFER

KEVIN KEEGAN MITRE
 LEATHER FOOTBALLS
 REDUCED FROM
 £8.50 TO £5.99

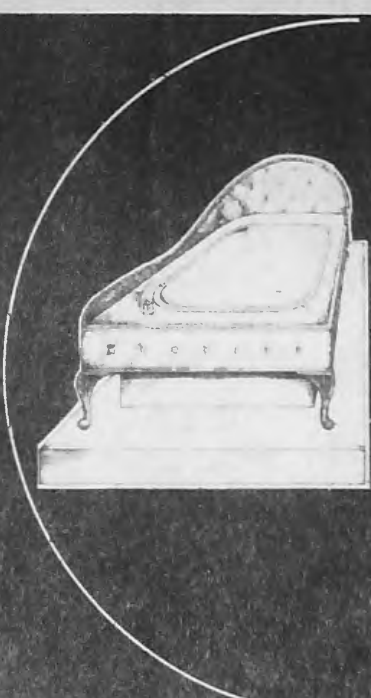
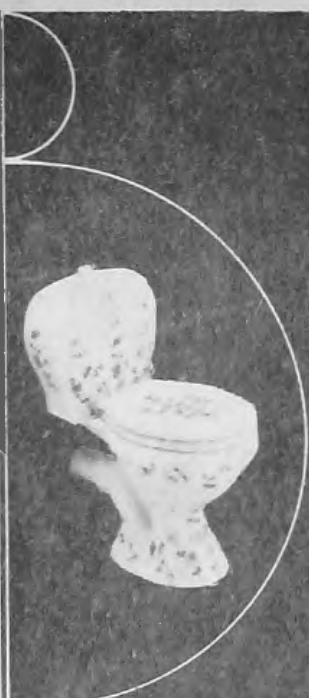
STOCKING FILLERS

GOALKEEPER GLOVES from £1.95
 VOLLEY TENNIS BALLS (TIN OF 3) £1.95
 FOOTBALL SOUVENIRS including GLOVES
 HATS, SCARVES, PENNANTS, BADGES,
 MUGS, TANKARDS, ROSETTES, especially
 for TOTTENHAM HOTSPUR, ARSENAL,
 LIVERPOOL and WEST HAM,
 GOLF ACCESSORIES
 SQUASH BALLS from 60p
 DARTS ACCESSORIES
 TOWELS
 WRISTLETS from 95p
 SNOOKER/BILLIARD ACCESSORIES
 SWIMMING GOGGLES from £1.95
 SPORTS SOCKS
 TOWELLING GRIPS
 SHINPADS including TOTTENHAM HOTSPUR,
 ARSENAL and LIVERPOOL
 SKIPPING ROPES from £1.00
 POKKIT SOCCER at 75p
 GAMES including BACKGAMMON, CHESS
 and DRAUGHTS
 SPONGE BALLS
 AIRSTREAM BALLS in 3 SIZES

SLAZENGER 'AFTERSPORT' (MEN'S TOILETRY KIT) at £5.99 DUNLOP SQUASH PACK at £3.99 Offer closes 31/1/83 — subject to availability

N3 BRANCH
 CLOSED
 THURSDAYS

INTER We're your
SPORT local sports shop
 - worldwide.



“we're being
 modest
 when we say
 we're
 the best.”

WITH A NAME LIKE THE BRITISH BATHROOM CENTRE — WE HAVE TO BE, TO SUIT YOU. THE DESIGNER, THE ARCHITECT, THE CONTRACTOR, THE FILTHY RICH AND THE SKINT.

IF YOU'RE THINKING ABOUT A NEW BATHROOM, COME TO OUR LONDON SHOW ROOMS WHERE YOU'LL SEE OVER 40 BEAUTIFUL DISPLAYS FOR EVERYONE'S BUDGET AND TASTE.

WITH OUR FACTORIES IN WALES PROVIDING PERFECTLY CO-ORDINATED TILES AND SANITARY WARE, YOU'LL BE ABLE TO CREATE YOUR OWN EXCLUSIVE BATHROOM.

IF YOU DON'T HAVE THE CONFIDENCE TO STYLE YOUR OWN BATHROOM OUR VERY OWN DESIGN SERVICE HEADED BY PAUL BITTON WILL BE ABLE TO CREATE SOME STYLISH DESIGNS

TO SUIT THE AMBIENCE OF YOUR HOME WHETHER MODERN OR TRADITIONAL.

WE ARE OPEN MON-FRIDAY 8.30-6 AND FOR YOUR CONVENIENCE SUNDAYS 9.00-2.00 —

THERE IS AMPLE PARKING.

FOR EXPORT ENQUIRIES
 TEL 01-800 0536

01-802 6493
 01-800 2538
 01-802 6696

British Bathroom Centre

602-604 SEVEN
 SISTERS ROAD,
 TOTTENHAM N15