

ARCHIVIST

5

# Barnet Borough News

*(In association with Marketing Media)*

No. 10 September 1985



114,000 Copies



**Barnet Council's monthly magazine for residents**

# British Bathroom Centre

Europe's Number One



At the British Bathroom Centre we believe in setting a standard. We have on display in our showrooms the best bathroom products Europe has to offer, among them we have the Kaldewei range of luxury baths, whirlpools and showers.

We also have a vast selection of bathroom suites ranging from Victorian to the very modern as well as our own exclusive hand decorated chinaware and matching tiles.

So come and visit us and see for yourself what makes us the number 1 in Bathrooms.

## British Bathroom Centre

Europe's Number One

602-4 Seven Sisters Road  
London N15 6HT  
Tel. 01-802 6696/6493  
01-800 2538/0536  
Opening hours 9am-6pm  
Sun 9am-2pm

Units 29-29a  
Grainger Road  
Industrial Estate  
Southend-on-Sea, Essex  
Tel: 0702-66929/616776

New  
Showroom

## Truck of the year title for new Mercedes 7.5 tonner

Europe's leading truck manufacturer, Daimler-Benz AG of Stuttgart, West Germany, have won the prestigious "Truck of the Year" title for their new 7.5 tonner. Against fierce competition from British and Continental manufacturers, the range of 7.5 and 11 tonner lightweight delivery trucks provide clear winners by a considerable margin. A report from the *Financial Times* recently states that "Daimler-Benz the West German group which makes Mercedes vehicles, boosted its share of the market to a record 11.46 per cent in the first six months of the year. This was an unexpected jump from the 8.92 per cent Mercedes-Benz achieved in the same period last year. The company is now close to overtaking Bedford General Motors British subsidiary, in the truck sector of more than 3.5 tonnes."



Mercedes-Benz said that it had reached its record penetration without using substantial extra financial incentives for customers or dealers. With the launch of the 7.5 tonne truck — the LN range — at the end of 1984 had been much more successful than expected.

Along with the introduction of the new range, Daimler-Benz took the opportunity to produce a very advanced design making full use of the latest technology, particularly in materials such as plastics in order to keep weight down and reduce

maintenance and repair requirements as far as possible. The opportunity was also taken to ensure that the economics of the design make life easier for the driver — a classical use for vehicles of this type is urban delivery work, with frequent entry and exit. Thus the cab design now features driver's step and door ahead of the front axle, requiring less effort to climb in and out. Driving comfort approaches that of a nor-

mal car with power steering as standard equipment, excellent visibility and low noise inside the cab thanks to good insulation.

Engines for the range are also completely new. The 7.5 tonners feature either a 3.97-litre four-cylinder diesel offering 80bhp (66kW) or a six-cylinder, 5.9 litre diesel developing 134bhp (100kW). Output characteristics are similar to those of the large capac-

ity naturally aspirated V's which power the top-of-the-range long distance heavy trucks, giving good fuel economy at high average speeds.

If you require any further information call into Mercedes-Benz, 403 Edgware Road, Colindale NW9, where you can inspect for yourself the complete range of vehicles.

ADVERTISING FEATURE

## TIME FOR A COMMERCIAL BREAK



Mercedes Benz at Edgware Road offers one of the most up to date sales, parts and services facilities for 1 ton vans up to 38 tonne tractor units in the country. So if you're looking for a break from your commercial vehicle problems, telephone or call into Edgware Road — we'll satisfy your every requirement.

**MERCEDES BENZ**



**EDGWARE ROAD**

403 Edgware Road, Colindale, London NW9.

Telephone 01-205 1212 (24 hours).

## CONTENTS

September 1985

	page
Helplines	5
Health	6
Nature Notes	7
What's On	8-12
Recreation & Sport	17
Arts	18
Money Matters	19 & 21
Housing	20
Social Services	22
Views of the Past	24

## EDITORIAL ADDRESS

Barnet Borough News,  
London Borough of Barnet,  
The Town Hall,  
The Burroughs,  
Hendon NW4 4BG  
Tel. 01-202 8282,  
exts. 71 and 75

## ADVERTISING ADDRESS

Marketing Media,  
K House,  
Two Monks Way,  
off Monkville Avenue,  
Golders Green, NW11 0AF  
Tel. 01-209 1655

Advertising Manager  
Lesley Mitchell

Barnet Borough News is a monthly magazine carrying news of Council activities and community organisations. The What's On in Barnet diary is open to local organisations and carries a comprehensive list of events and meetings taking place within the Borough.

Barnet Borough News is distributed door-to-door throughout the Borough reaching some 113,000 homes and businesses. Further copies are sent to libraries and council offices. The cost of production and distribution will be offset by advertising.

Barnet Borough News is edited by the Press Office of Barnet Council by Bill White, Rosemary Jude and Fiona Harcombe.

The co-publishers are the London Borough of Barnet and Marketing Media. Editorial features are the copyright of Barnet Council.

Copies of most photographs can be obtained by contacting the Editor.

## Front cover

This Grade 1 listed building is Hampstead Garden Suburb Institute, in Central Square. Founded by Dame Henrietta Barnett in 1909 as an adult education centre, it also caters for the teaching of English as a Foreign Language and is the community centre of the Suburb.

## Lab unveils mock-up of road system



Councillors Mary Phillips and Roy Shutz try riding bicycles along the track and over the series of lights, closely watched by colleagues.

BARNET councillors visited the Transport and Road Research Laboratory at Crowthorne, Berkshire, recently to see for themselves the effect of the low-profile traffic control lights which the Department of Transport has proposed for the peak flow system at Fallosen Way.

All members of the Public Works and Town Planning Committees, they were greeted by Transport Minister, Mrs Lynda Chalker, and the department's regional engineer, Miss Sonia Crutchlow.

Out on the research track a section of carriageway had been marked out to represent Fallosen Way, Hampstead Garden Suburb. The three lanes were defined and a series of the lights, set into the road like large red cats' eyes, had been installed.

Members were able to drive cars and vans and ride cycles over them. They watched tests to record visibility and visual impact and asked engineers and traffic management experts about problems relating to

snow and ice, fog, breakdowns and timing.

The scheme was proposed following strong objections throughout Hampstead Garden Suburb to the plan to introduce a peak flow system with overhead gantries carrying directional lighting.

The system is to use the centre lane as a second lane for traffic going into London in the mornings and for traffic coming from London in the evenings.

Two sets of lights run down either side of the central lane. At 3.30am and 11.30am the direction will change. There will be a short period when both sets of lights show to clear the central lane and the new directional flow will start.

The low-profile lights show red and traffic signs at either end of the road and at side roads warn traffic of controls and forbid the crossing of the red lights.

The importance of visibility to motorcyclists and cyclists was stressed and Cllr Mary Phillips, chair-

man of Town Planning and Research, with Cllr Dennis Dippel, chairman of Western Region Road Safety Committee, rode cycles up and down the track and over the lights.

Reflecting the still strong opposition from residents of the Garden Suburb, Cllrs Clifford Halfon and Roy Shutz were armed with 32 questions relating to research and safety.

The Minister assured the Barnet councillors that the scheme, based on systems used in the United States, had been fully developed and adapted to conditions at Fallosen Way.

There would be a public inquiry and the Inspector would listen to local views and would make his report accordingly.

The Minister also announced that she had invited local interest groups to visit the Transport and Road Research Laboratories in September.



Photos by  
Maria Bartha  
Tel: 449 2154



The long (but young) arm of the law in fancy dress.



MORE than 8,000 people braved the mud to join the fun at the Friern Barnet Summer Show, in Friary Park, last month as rain failed to stop play.

Stalls, sideshows, competitions, displays and the funfair ensured that there was something for all ages, and Shows Organiser Pauline Varnalls said it had been a great success, despite the weather.

Entertainment was provided by The Rhythm Makers Caribbean Steel Band, Barney the Magic Clown, Bob Davis and his sheepdogs, the St John Ambulance Brigade, the Red Tailed Falconry Display Team, and a collection of mini-stagecoaches gave rides for children — see our picture above.

# Help Lines

## 'Support link for victims of cancer

CANCERLINK is an organisation which promotes the formation of support groups for people with cancer, relatives and friends, and provides training and back-up for these groups.

They also run an information service about forms of cancer, forms of treatment and sources of practical and emotional advice.

This autumn CancerLink are running a training course at Mount Vernon Hospital, Northwood, for people wishing to set up local groups. There are 12 sessions on Monday afternoons from 1.00-5pm, September 30 to December 6.

The sessions in communication skills will be run by CancerLink's course teachers and the sessions on cancer information by medical staff from Mount Vernon.

Places on the course are available to people from groups independent of CancerLink, subject to availability.

More information and application forms for the course from Sheila Ritchie, CancerLink, 46A Pentonville Road, London N1 9HF, Monday to Friday, 9.30am-5.30pm (tel: 833 2451).

## Learning how to cope

WOMEN under stress who would like to learn to cope with their feelings will have their own drop-in centre from this month.

MIND in Barnet and Barnet Social Services South-East Team will hold weekly sessions for women struggling to cope who lack confidence, feel unhappy and helpless and don't know what is wrong.

They can drop in every Thursday morning from 9.30am-1pm at Trinity Church, Rodborough Road, Golders Green, from September 5.

The team will offer women the opportunity to share experiences and feelings with others, with individual counselling and

support.

Aims are to provide a safe place for talk and exploration of feelings and offer alternative ways of responding to situations.

The focus will be on preventing mental illness for women with no history of psychiatric involvement and those who have been admitted to hospital on a short-term basis.

Individuals are encouraged to go along up to 11.45am and between 12 noon and 1pm there will be group sessions. In the future a creche may be provided.

Further details: phone Dee Kraaij on 444 4411, or Sue Towns on 202 5845.

## Ten years of service to the community

BARNET Volunteer Bureau celebrates ten years of service this month. The organisation was opened on September 10 1975 by the Mayor of Barnet at the time, Cllr Norman Hirshfield.

This followed a successful campaign by Mrs Rita Levy with the help of a small steering committee and other friends.

From September 1975 to the end of July 1985, no fewer than 4,422 volunteers have been interviewed and placed in voluntary work; 6,983 jobs have been filled, in addition to referrals of volunteers to community organisations for long-term projects.

The Volunteer Bureau acts as a centre for anyone interested in taking up the work. Opportunities are unlimited and there is up-to-date information on every type of job going.

For many people, this service gives a chance to learn new skills, explore new careers and make new friends and many employers accept voluntary experience as part of a person's work history.

Could you be a volunteer? Find out by phoning 349 2930.

### CENTRE'S OPENING HOURS

UNFORTUNATELY a mistake was made in the opening hours of East Finchley Neighbourhood Centre.

The centre is open:

Mornings..... 10am to 12 noon  
 Afternoons..... 2pm to 4pm  
 Tuesday evenings..... 6pm to 7.30pm  
 (not every evening as reported last month)



**THE PROFESSIONALS FOR THE LATEST IN SECURITY SYSTEMS**

HAVE THE PIECE OF MIND OF HAVING ONE OF OUR BURGLAR ALARM SYSTEMS INSTALLED IN YOUR PREMISES (HOME · OFFICE · SHOP)

WE CAN ALSO SUPPLY AND INSTALL CLOSE CIRCUIT TV, LIGHT SWITCHING, AUTOMATIC DOOR OPENER, AUTOMATIC GATE OPENER

WE CAN SUPPLY + INSTALL THE **AUTOMATIC GARAGE DOOR OPERATOR TO YOUR EXISTING UP AND OVER, OR WINGED GARAGE DOORS**  
**FREE SURVEY + ESTIMATES**

PHONE

**889 - 3342**

1a MAIDSTONE RD. NEW SOUTHGATE N11 2TR

## FREE ADVICE — ON YOUR DOORSTEP CHARTERED ACCOUNTANTS

We provide a full range of professional accountancy and taxation services, for Limited Companies, Small Businesses and the Self Employed, including:

- ★ AUDITS
- ★ ACCOUNTS
- ★ BOOKKEEPING
- ★ PAYE
- ★ VAT
- ★ TAXATION
- ★ CASH FLOWS
- ★ MORTGAGES
- ★ PENSIONS
- ★ COMPUTER CONSULTANCY

Let us visit you, at your convenience, to discuss your requirements, we will not charge you for this initial meeting and will not oblige you to take the matter further.

JUST CALL THE NUMBER BELOW —  
 DAYS, EVENINGS OR WEEKENDS  
 AND LET US SEE HOW WE CAN HELP YOU.

**THEMIS & CO**

**01-368 5930**

# Health

## Cervical cancer — Prevention the best form of defence

More than 2,000 women die of cancer of the neck of the womb, the cervix, each year in this country. But it IS a curable disease.

More than 80 out of 100 women treated at an early stage are cured completely, but few survive if the disease is far advanced when first discovered.

The number of deaths could be cut if every woman who has, or has had, a sex life had a regular cervical smear test, which is designed to find skin cell changes that may turn into cancer later.

### Regular tests can help stop disease

When these are found — and it happens at most to only six or seven women in every 1,000 — steps can be taken to prevent the cancer from developing.

Doctors are convinced about the value of the smear test, so Barnet Health Authority are planning a

screening blitz on the 35-65 age group, starting next year with the aid of the Family Practitioner Committee.

Within five years all women in that age group who come forward to be screened should be on a computer register to be set up by the FPC. Younger women who want the test will also be included.

### Reminder

When that happens, everyone on the register will be reminded automatically by letter every five years about the need for a new test.

This is part of local and national policy, but the reminder could come sooner if the doctor or laboratory decide it should, and as the BHA are still making their plans, the position could well change.

It has been estimated that screening of all women in this age group every five years would cut deaths by 80 per cent, while 90 per cent of women over 45 who die of cervical cancer have never had a smear test.

At the moment, there are no plans to provide a second test one year after the first negative, which

is acknowledged by some to be the ideal procedure.

### Overloaded

BHA's laboratories are normally overloaded which, added to the fact that each test costs £7, they feel justifies their concentration on the group most at risk rather than on repeating tests more often.

However, the possibility of providing extra laboratories for this work is being looked into.

And they do plan to follow up cases of women who don't accept the invitation to have a smear test. All those aged 35-65 who don't will receive two reminders, stressing reasons for being tested, at two-monthly intervals.

### Choice

Should this fail, a phone call or visit will be arranged. If anyone refuses to have the test it will be recorded.

Many women prefer to be tested by doctors of their own sex and they will be able to have the choice in the BHA scheme.

Results of tests are normally sent

to a patient's GP, but it is always as well for a woman to check the result with her own doctor.

If the smear is positive, or if the results aren't clear, a second test will probably be necessary. If that is positive, a small operation may be recommended to remove a portion of the cervix for examination.

Usually, the beginning of cancer is not present, but if it is, further treatment will stop it developing.

### Computer will keep track of patients

When the Barnet plan is complete, they intend to co-operate closely with other health authorities over women moving in and out of the borough.

The FPC will have a computer age/sex register of GPs' patients and the proposed system will, therefore, record the date of their last test or whether they need to be invited for a first test.

All records of women leaving the borough will be passed on to other authorities.

## THE FOOTPATH TO HEALTH

They work 16 hours a day. They carry a load six or seven times their own length. They are a superb piece of engineering design — but they need care and maintenance and they grow old.

What are we talking about? FEET.

Many an elderly person is crippled not by illness or disease but by painful feet. And all too often better care and early professional attention could have prevented the problem.

### Survey looks at problems and services for elderly

Just think for a little about what happens to the quality of an elderly person's life when feet become painful. They can't get to the shops, it is too distressing to get to their clubs or to go and visit friends.

It may sound ridiculous but corns and ingrowing toenails can actually result in people becoming housebound.

Which is why Barnet Community Health Council has been car-

rying out a survey of foot problems and chiropody services for the elderly throughout the borough and will be holding an open meeting to discuss the results of the survey and some of their ideas for improving the local situation. The meeting will be held on Thursday, October 10, at The Meritage Club, Church End, Hendon, at 2.15pm.

In their survey the CHC talked to 203 pensioners and they found that 121 reported difficulties with their feet.

Well over half (56 per cent) had problems with the nail cutting. For the over 75 age group nearly three quarters (74 per cent) faced problems.

Surprisingly few were helped by relatives — only 10 per cent of people with callouses and 11 per cent of people with corns. Most treated themselves but between 30 and 40 per cent had help from a chiropodist.

### Campaign ideas

When the research team asked how the pensioners coped they had a mixed response. Some used the private sector because they preferred it. Some because they had failed to get NHS treatment. Some were very satisfied with NHS treatment.

They also found a need to get

more information out to the public.

Some of the ideas which will be put before the open meeting include:

- A higher level of staffing for the NHS chiropody service.
- Establishment of an emergency clinic where people with an urgent foot problem could attend without appointment.
- A mobile service which would visit clubs and homes to provide an efficient and safe nailcutting and basic treatment service.
- The development of publicity on foot care health for the elderly.

### Consumer Council for NHS

Barnet Community Health Council is 'The People's Friend'. Based at 104 Watling Avenue, Burnt Oak, it might be described as the consumer council for the hospital service, helping people with problems and keeping an eye on local hospital services. The full time secretary is Shirley Sadler but the Council members are all from the voluntary sector and represent a wide spectrum of the community. Tel. 959 2038

## Ready? get fit!

BARNET HEALTH Authority has launched its campaign to promote health in the Borough. The main issues targetted for immediate action are the prevention of coronary heart disease, and healthy eating, to be followed by numerous other topics for maintaining health.

The health promotion team draws together health service, medical and local authority specialists. The inaugural meeting in August was chaired by Cllr Leslie Sussman, last year's Mayor, and was attended by Mr Jack Dawkins, director of educational services, Mr Alan Gorst, director of social services, Ms Judith Fears, district nursing officer, Ms Elizabeth Merrick, district health education officer, the chairman of Barnet Community Health Council, Mrs Betty Joule, medical consultants and a general practitioner.

The multidisciplinary team will be looking at health issues of relevance to people living and working in Barnet, and aims to promote good health and to prevent disease.

'It will take a great deal of commitment and hard work and the results will not be immediately apparent, but I am sure it will be worth the effort in the long run', said Cllr Sussman.

## Nature Notes

### SEPTEMBER

By Clive Herbert of the Barnet Wildlife Group

The start of the bird migration season began largely unnoticed several weeks ago. However, September is the period when the majority of birds which arrived to breed only four or five months ago will be departing to spend the winter in the warmer climes of Africa and southern Europe. Here they will still be able to find the insect life on which many of them feed.

Some of our summer visitors will remain into October but you cannot fail to notice the Swallows signalling the coming of autumn as they gather in rows on the telegraph wires.

An interesting area to visit this month is Brent Reservoir. In addition to the resident waterfowl, there is always the possibility of discovering an unusual wader on passage.

Even if there isn't a rarity to be found, the increased variety of birds at this time of the year makes it well worth visiting. Try to get there as early as possible in case the birds are disturbed later in the day.

The Barnet Wildlife Group is always willing to answer readers questions about wildlife matters — either individually, or through this column. Send them to me at 67A, Ridgeway Avenue, East Barnet, Herts.

## Councillors' and MPs' surgeries

### CHIPPING BARNET

**John Major**, GLC councillor, and a borough councillor available Saturday, September 21, 10.30am to 12 noon, 163 High St, Barnet.

**Sydney Chapman, MP**, and a borough councillor available Saturday, September 7 and October 5, 10.30am to 12 noon, 163 High St, Barnet.

**Arkley Ward** — Councillor Wilf Lipman available Friday, September 20 and October 4, 7.30pm, Dollis Valley Community Centre.

### FINCHLEY AND FRIERN BARNET

**Conservative** councillors available Saturday September 7 and October 5, 10.30am to 12 noon, 212 Ballards Lane, N3.

**Margaret Thatcher, MP**, can be contacted by constituents only at her local Constituency Office, 212 Ballards Lane, N3, telephone 445 4292.

**East Finchley Ward** — Labour councillors available Saturdays, September 14, 21, 28, and October 5, 10am to 11.30am, East Finchley Neighbourhood Centre, Church Lane, N2.

### HENDON NORTH

**John Gorst, MP**, available Friday, September 13 by appointment, or at other

times, by phoning 959 1446 or visiting the Constituency Office, 2 Apex Parade, Selva Lane, Mill Hill. **Conservative** councillors surgeries at Grahame Park and Mill Hill on Wednesdays, September 11, 18, 25 and October 2 by appointment at above number and address.

**Bryan Cassidy**, GLC Member available by contacting the Constituency Office as above.

**Colindale Ward** — Labour councillors available Saturday, September 28, 11am to 12 noon, St Augustine's Church, Grahame Park.

### HENDON SOUTH

**Peter Thomas, MP**, available by appointment with secretary (219 4079). **Conservative** councillors available for consultation (202 7484)

**West Hendon** — Phone Cllr Tim Sims (734 8080, office hours) for appointment at West Hendon Ex-Servicemen's Club, The Broadway, NW9. Cllrs Doreen Neall (202 9927) and Agnes Slocombe (202 4074) available by appointment.

### EURO MP

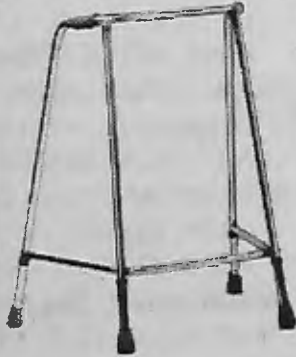
**John Marshall, Euro MP**, may be contacted at 2 Birkdale Rd, London, W5, for appointments.

# do you need our support...

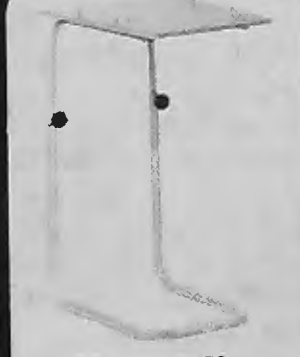
**THE WIGMORE CHAIR**  
Orthopaedic back support, plus a higher frame for ease of getting in and out.



**WALKING FRAMES**  
Made from lightweight aluminium tubing, available in various designs.



**OVER-BED TABLES**  
With full height adjustment and angle facilities plus book ledge. Various models available.



**THE CONTROLLED COMFORT BED**  
Attractive mahogany power-operated fully adjustable bed. Provides excellent support and comfort when resting or sleeping. Remote hand control unit maintains independence.



**THE ELITE POWER CHAIR**  
The ultimate in power chair comfort and style. Features include Kerbmaster attachment, anti-tipping wheels, safety belt and 2 rechargeable 12v batteries. Can fold down or be dismantled for easy transport.



If you are disabled or have friends or relatives in need of help then you can rely on John Bell & Croyden for full support.

A visit to our Wigmore Street showroom where you can see the most comprehensive range of Invalid Aids in the country could be most beneficial. Our friendly expert staff are available to offer professional advice on walking aids, orthopaedic beds, incontinence garments, support stockings, surgical appliances, wheelchairs, back aids, and anything else to provide whatever support is needed. Just ask, we'll be glad to help.

John Bell & Croyden  
54 Wigmore Street  
London W1H 0AU  
Telephone: 01-935 5555

invalid aids  
**JB&C**

# What's On

**WHAT'S ON IN BARNET** is a monthly list of activities taking place in the Borough.

Your entry, and contact telephone number, should be sent to the Borough News, Town Hall, The Burroughs, Hendon, NW4 4BG, tel. 202 8282, ext. 479.

Entries for the October issue must be received by Thursday, September 12 and before that date if possible.

\*Asterisk denotes regular weekly meeting.

## Thursday, September 5

Barnet Volunteer Bureau AGM, Avenue House, E End Rd, N3. 349 2930

## Saturday, September 7

Jumble sale, 1st Lyonsdown Scouts, Scouts HQ, York Rd, New Barnet. Admission 10p. 2pm

Abbeyfield Edgware Soc Ltd. Coffee Morning, Eversfield Gdns, Mill Hill. 10am-12 noon

\*North London Rambling Club organise Saturday walks. Contact (SAE) Ray Todd, 31 Blair Close, St Paul's Rd, London N1 2YP

## Sunday, September 8

\*Sailing and sailboarding, Wembley Sailing Club, Birchen Grove, NW9. 455 5073

\*Mind in Barnet 'Libra' Club, Etchingham Park Day Centre, Etchingham Park Rd, Finchley. 3.30pm. 455 2850

\*Shaftesbury Harriers training sessions, Cophall Stadium, Gt Nth Way, NW4. 11am. 200 1584. Also Tuesday 6pm

## Monday, September 9

\*Bells Hill Prams & Pushchairs, St Stephen's Church Hall, Bells Hill, Barnet. 1.30pm.

\*Community Links in Cameras, photography group primarily for disabled, 43 Flower Lane, NW7. 1.30pm. Contact Maria Bartha 346 9789

\*Barnet Blind Bowls Club, Finchley Tudor. 449 7058.

## Tuesday, September 10

National Schizophrenia Fellowship (NW London), Temple Fortune Health Centre, Temple Fortune Lane, NW11. 'The Haven Project'. 8pm. 455 5113

\*Prams and Pushchairs, club for mothers and young children, Union Church, Northiam, Totteridge. 2pm. 445 7287

\*Friern Barnet and Totteridge Camera Club, Totteridge Library, Totteridge Lane, beginners to advanced. 8pm. 445 2617

\*Hendon and Edgware 18 Plus Group, Games Room, Royal Oak Pub, Finchley Rd, Temple Fortune. 8.15 pm. 205 1455

\*Barnet Blind Bowls Club, STC

Sports ground, New Southgate, 2pm. 449 7058

\*Mind in Barnet Luncheon/Social Club (in term time), The Old Barn, Tarling Rd, East Finchley. 1.30pm. 202 5845

\*Barnet Women's Place, Community Centre, Victoria Rd, New Barnet. 1.40pm. 360 5171/440 1114

\*Brookside Community Group Junior Youth Club (5-10) Union Church, Northiam, N12. 4.15-5.45pm. 446 4571

## Wednesday, September 11

Pensioners' Voice (Barnet), Wesley Hall, High St, Barnet. 1.30pm. 361 2787

\*National Council for the Divorced Separated, North West London Branch. Friendly club evening near Brent St, Hendon. Details: 226 3752, 203 5739/3269

\*North London and District Divorced/Separated Club, St Paul's Church, High Rd, New Southgate. 8pm. 363 4130/452 3591.

\*Club 81 for unattached people 24-45, Torrington Arms, High Rd, Finchley. 9pm. 349 0026.

\*Barnet YHA Group, 1st Lyonsdown Scout Hut, York Rd, New Barnet. 8pm. 449 1553/445 3492

\*Bingo, St Alphage Church Hall, Playfield Rd, Burnt Oak. 8pm

\*Barnet Caving Group, Bull and Butcher Pub, High Rd, Whetstone. 9.30pm. 446 1070/1868

## Thursday, September 12

Pensioners' Voice (E Finchley), E Finchley Library, 226 High Rd. 2pm. 883 2155

\*Rollerskating, Ashmole Sports Centre, Burleigh Gdns, Southgate. Under 11s 6pm. 368 4984

\*Brookside Methodist Church Boys' Brigade, East Barnet. Pre-Junior 6-8, 6.15pm; Juniors 8-11, 6.30pm; Company 11+ 8pm. 441 2042

\*Hendon Chess Club, Hyde United Reformed Church, Edgware Rd, Colindale. 7.30pm. 952 3129

\*Mind in Barnet Thursday Club, 154 Station Rd, Hendon. 7.45pm 202 5845

\*High Barnet Woodcraft Folk, Underhill School, Mays Lane, Barnet. 6-9 yrs, 6pm (440 5369); 10-13 yrs. 7.15pm (440 2426)

\*Carpentry for disabled, John Grooms, Stoneyfields Rd, Edgware. 1.30pm. Ring Ian at CRAB 346 9789.

\*Barnet Women's Place, Community Centre, Victoria Rd, New Barnet. 10am-12.30pm. 8-10.30pm. 360 5171/440 1114

\*MIND in Barnet — Women's Drop in Centre, Trinity Church, Rodborough Rd, NW11. 9.30am-1pm (relaxation 12-1pm). 202 5845

## Friday, September 13

\*Hendon & Hampstead Garden Suburb Camera Club, Fellowship House, Willifield Way,

NW11. 8pm. 205 6053

\*Barnet and Finchley Photographic Soc, rear of 37a Salisbury Rd, Barnet. 8pm. 368 3917

\*Barnet Blind Bowls Club, Old Court House Rec. 2-5pm. 449 7058

\*Finchley Cine Society, Avenue House, East End Rd, N3. 8pm. 346 4265

\*Brookside Community Group Senior Youth Club (11-16), Union Church, Northiam, N12. 7.15-10.15pm. 446 4571

## Saturday, September 14

British Tinnitus Assn (NW London), Meritage Club, Church End, Hendon. 2pm. 444 9657

New Barnet & Dist Stamp & Postal History Fair, St Peter's Hall, Lyonsdown Rd, New Barnet. 10am-5pm. 440 8835

## Saturday, September 14-Monday 16

Flower Festival, Finchley Methodist Church, Ballards Lane, N3. Also craft exhibition. 10am-8pm. Church services 11am-12 noon, 6.30-7.30pm Sunday

## Sunday, September 15

Exemption Dog Show, Brook Farm, High Rd, Whetstone. Classes: pedigree, novelty, obedience. Entries from 11am. 883 4504/801 0208

Cockfosters and Hadley Wood Round Table Fun Run, Trent Park, Cockfosters. 10am. 449 0391

## Monday, September 16

Cranbourne Badminton Club open evening, Institute, Bigwood Road, Hampstead Garden Suburb, NW11. 7pm. 346 5655

## Tuesday, September 17

Single, widowed and divorced (25-65) Finchley area. 8pm. 889 0513/441 5532

Barnet Anglo-French Club, Council Chambers, 29 Wood St. 8pm. 440 9267/346 1428

Royal British Legion (N Finchley), Legionway, Summers Lane, N12. 8pm. 445 9911

Barnet Nat Trust, St Mary Magdalen Church Hall, Athenaeum Rd, N20. 8pm. 449 5896

## Wednesday, September 18

Finchley & Dist Philatelic Soc, Avenue House, E End Rd, N3. Philip D'Arcy Trophy Comp. 8pm. 883 8724

## Thursday, September 19

British Diabetic Assn (Barnet Dis), Post-Grad Medical Centre, Barnet General Hospital, Wellhouse Lane. 8pm. 368 6993

Friern Barnet & Whetstone Rotaract Club, Bull & Butcher Pub, High Rd, N20. 8.15pm. 446 4008

Civil Service Pensioners' Alliance, Avenue House, E End Rd, N3. 10am. 346 6994

## Friday, September 20

Barnet Community Health Council conference on care in community, Town Hall, Hendon. 9.30am-4.30pm. 959 2038

## Saturday, September 21

London Hash House Harriers,

Gloucester Rd Tennis Club, New Barnet. 11am.

## Monday, September 23

Film on arthritis care, St Peter-le-Poer Church, Colney Hatch Lane, N10. 3pm 883 8394

Barnet and Dist Branch of Nat Council of Women, Wesley Hall, High Rd, Barnet. 1.30pm. 368 1315

Potters Bar & Barnets Group of RSPB, Oakmere House, Potters Bar. 8pm. 449 9652

## Wednesday, September 25

Federation of Ratepayers' & Residents' Assns, N Finchley Library, Ravensdale Ave. 8pm

## Thursday, September 26

Pensioners' Voice (Whetstone & Finchley), N Finchley Library, Ravensdale Ave. 1.30pm. 445 7413

DABB AGM and talk, Meritage Club, Church End, Hendon. 7.30pm

## Friday, September 27

Barnet Ratepayers' & Residents' Assn (Arkley & Hadley Wards), WRVS Luncheon Room, Salisbury Rd, Barnet. 8pm. Preceded by surgery 7.30pm

Jewish Gay Group monthly Chavuca, Alyth Youth & Community Centre, Alyth Gdns, NW11. 7.45pm.

## Saturday, September 28

New Barnet & Dist Stamp & Postal History Fair, St Peter's Hall, Lyonsdown Rd, New Barnet. 10am-5pm. 440 8835. Also October 5

## Monday, September 30

East Finchley Community Festival AGM, 42 Church Lane, N2. 8pm. 346 1681.

Social club for hearing impaired, Trinity Church Centre, Nether Street, N12. 7.30-10pm

\*New Barnet Literary and Debating Soc, Lyonsdown Hall, Lyonsdown Rd, New Barnet. 8pm. 440 3859

## Tuesday, October 1

Single, Widowed and Divorced (25-65) Club, Finchley area. 8pm. 889 0513-441 5532

## Wednesday, October 2

Barnet Animal Rights Group, Christ Church Hall, High Rd, N Finchley. 8pm. 440 1715

Pensioners' Voice (Golders Green), Trinity Church Hall, Rodborough Rd, NW11. 1.15pm. 455 7952

## Thursday, October 3

Friern Barnet & Whetstone Rotaract Club, Bull & Butcher Pub, High Rd, N20. 8.15pm. 446 4008

## Saturday, October 5

Guide Dogs for the Blind Assn — Fish & chip supper and film show, Meritage Club, Church End, Hendon. Donation £2. 7.30pm. 449 8690/0807

## Keep fit

### Mondays

\*Stretch and shape, Christchurch Hall, High Rd, North Finchley.

# What's On

11 am. 349 1449 (also Fridays)  
 \*Pensioners Health Group, Methodist Hall, Rodborough Rd, NW11. 2pm. 794 6376. 60p  
 \*Get Fit & Trim Workouts to music, St John's Hall, Friern Barnet Lane, N20. 6.45pm. 440 5811. Also Weds 7.50pm.  
 \*Aerobics, Christchurch Hall, High Rd, N12. 10am. 349 1449  
 \*Freston Fitness Club, Freston Hall, Freston Gardens (off Cat Hill), Cockfosters. £1.50 per session. 7-8pm.  
 \*Yoga, St Mary's Church Hall, Hendon Lane, N3. 7pm. 455 2476. Also Weds 9.45am

## Tuesdays

\*Popmobility/aerobics, Queen Elizabeth Centre, Meadway, Barnet. 7pm and 8pm. 441 2933  
 \*Keep Fit, Centre Point, Corner Mead Grahame Park. 7.30pm. 205 7113  
 \*Aerobics, Manorside School, Squires Lane, N3. 8pm. 349 1449 (also Thursdays 7.30pm)  
 \*Yogacise 7.15pm; body-tune, dance, keep fit, 8.10pm, All Saints School, Oakleigh Rd N, Whetstone. Also Thursdays and daytime classes. 441 1336

## Wednesdays

\*Popmobility, Centre Point, Grahame Park. 7.30-9.30pm. 205 7113  
 \*Yoga for people with handicaps. Special class, St Mary's Hall,

East Barnet. Gentle movement, breathing, relaxation. 4-6pm. Qualified teacher. Other classes available. 440 1828

\*Aerobics, Cophall Swimming Pool, Page St, Mill Hill. 9.45am. 349 1449  
 \*Mixed Volley Ball Training Club, Queen Elizabeth Centre, Meadway, Barnet Juniors 6pm; seniors 7pm. 441 2933  
 \*Get Fit & Trim Workouts, Manor Drive Hall, N20. 10.15am (creche). 440 5811. Also Fridays.

## Thursdays

\*Mixed exercise class for people with problem backs, Queen Elizabeth's Girls' School, Meadway, Barnet. 8pm. 445 6986  
 \*Aerobics, Centre Point, Cornermead, Grahame Park, 8pm. 205 7113  
 \*Yoga. British Wheel trained teacher, Union Church, Northiam, N20. 7-8pm. 349 2972

## Martial Arts

### Mondays

\*North London Karate Club, Mill Hill School, The Ridgeway, Mill Hill. 8-9pm, 9-10pm. 440/7733/8633  
 \*Barnet Shotokan Karate Centre. Recreation Hall, Barnet General Hospital, Wellhouse Lane, Barnet. Children 8-14 yrs; 6.30-

7.30pm. 449 3150  
 \*Cobra Karate Club, Christ's College School, Hendon Lane, N3. Beginners 7pm; advanced 8pm. 959 4338. Also Wednesdays  
 \*Watling Karate Club, Watling Boys' Club, Dryfield Rd, Burnt Oak. Under 12, 6-7pm; over 12, 7-8pm. 40p a session (and Wednesdays)

### Tuesdays

\*Karate, Centre Point, Corner Mead, Grahame Park. 7-13 yr olds 6pm; 13 plus 7pm. 205 7113 (also Thursdays)  
 \*Barnet Shotokan Karate Centre, Pennefather Hall, St Albans Rd, Barnet. Adults 7.30-9.30pm. 449 3150  
 \*J.L. Kung Fu Centre, All Saints Church Hall, Durham Rd, N2. 7pm. 959 2605  
 \*Hampstead Garden Suburb Shotokan Karate Centre, Nautilus Fitness Club, 39 Market Place, Falloden Way, NW11. 7.30pm. 959 8228/973 0917

### Wednesdays

\*Barnet Shotokan Karate Centre. Adults Christchurch School, Hilton Ave, N12. 8-9pm. 449 3150  
 \*Judo for children, Pymmes Youth Centre, East Barnet Lower School, Westbrook Crescent, E Barnet. 6.30-7.30pm; 7.30-8.30pm. 440 6473  
 \*Wing Chun Kung Fu, Simon Lau Martial Arts Academy (Mill Hill

Division), Hartley Hall, Flower Lane. 7pm. 998 1055  
 \*Finchley Karate Club (Okinawan Goju-Ryu Karate), Manorside School, Squires Lane, N3. 8pm. 346 9505

### Thursdays

\*North London Karate Club, Mill Hill School, The Ridgeway, Mill Hill. 8-9pm, 9-10pm. 440 7733/8633  
 \*Goju-Ryu Karate, Queen Elizabeth Girls' School, Meadway, Barnet. 6pm. 906 4372/449 8997  
 \*Judo for Adults, Pymmes Youth Centre, East Barnet Lower School, Westbrook Crescent, Barnet. 7.30-9pm. 440 6473

### Fridays

\*Shin Do Kwai Kendo Club, Whitefield School (gym) Claremont Rd, NW2. 7.30pm. 863 7574

## Women's clubs

### Thursday, September 12

Broadway Mill Hill TWG, Hartley Hall, Flower Lane. 'Special Royal Occasions'. 2pm. 954 1684  
 Finchley Granville (afternoon) TWG, Finchley Methodist Hall, Ballards Lane. 'Australia'. 2pm. 455 2227  
 Chipping Barnet Morning WI, Wesley Hall, Methodist Church,

## Halcyon Days

### A NEW CONCEPT IN RETIREMENT ACCOMMODATION OF QUALITY

Halcyon Days provide at The Old Rectory near Hitchin a beautiful well-appointed country residence set amidst three acres of gardens, offering a new concept in the care of the retired elderly.

*Short-stay and convalescent guests are welcome.*

**ACCOMMODATION:** Single and double rooms available, furnished or part furnished as preferred. All with 24-hour emergency call system, sanitary unit, tea-making facilities, central heating, television and telephone points.

**SERVICE:** Luxurious dining room offering choice of daily menus, special diets catered for. Meals with friends and relatives. Hairdressing salon, visiting chiropodist and physiotherapist.

**LEISURE:** Heated swimming pool, bowling green and croquet lawn, residents' bar, three lounges (one no-smoking), and library

*If these facilities make retirement sound a pleasant experience, please write to:*



The Old Rectory, Church Lane, Graveley, near Hitchin, Herts  
 or telephone Stevenage 315588 for more detailed information.



PHONE FOR DETAILS

## MOTORCYCLISTS MOPED RIDERS SCOOTERISTS

A six week training course is available to prepare you for the Department of Transport Tests — Part I and II. The Part I Test can be booked through the road Safety Office.

*Courses start Sept 5th, October 24th  
 Phone 349 9121 for details.*

# What's On

High St. 10am. 440 8807

## Monday, September 16

Mill Hill Highwood TWG, Hartley Hall, Flower Lane. London's Town Crier. 2pm. 959 1994

## Tuesday, September 17

Wives Group, Mill Hill E Church Hall, Salcombe Gdns, NW7. 8pm. 346 9430. Also October 1

## Wednesday, September 18

Woodside Park Afternoon TWG, Old Finchleians Club House, Southover, N12. 2.15pm. 445 0911

## Friday, September 20

Broadfields Evening TWG, Orange Hill Junior School, Hamonde Close, Edgware. 7.30pm. 958 5718

Barnet Afternoon TWG, Church House, Wood St. 2pm. 449 0367

## Tuesday, September 24

Finchley Redbourne TWG, Etchingham Park Day Centre, Etchingham Park Rd, N3. 7.45pm. 349 3365

## Tuesday, October 1

Totteridge WI, Village Hall, Badger's Croft, Totteridge Lane, N20. 7.30pm. 445 5700

Friern Barnet Friary TWG, Christ Church URC Hall, Bellevue Road, N11. 2pm. 445 8011

Royal British Legion (N Finchley) Women's Section, Legionway, Summers Lane, N12. 8pm. 445 9911

## Wednesday, October 2

Edgware TWG, Parish Hall, Rectory Lane. 'New Zealand'. 2pm. 952 3311

Barnet Evening TWG, Church House, Wood St. 'British Airways'. 7.30pm. 449 6809

## Thursday, October 3

Ashley Evening TWG, Mill Hill E Free Church, Salcombe Gdns. 7.30pm. 906 1952

East Barnet Valley TWG, St John's Church Hall, Mowbray Rd, New Barnet. 2.15pm. 449 8601/3885

## Horticulture and floral art

### Saturday, September 7

Finchley Horticultural Soc Autumn Show, Christ Church School, Hilton Ave, N12. 2.30-5pm.

Mill Hill Horticultural and Allotment Soc 37th Annual Show, Hartley Hall, Flower Lane, 2.30pm. Presentation of awards by Mayor 5pm. 959 2848

### Tuesday, September 10

Mill Hill Flower Club, Harwood Hall, Mill Hill B'way. 'Variety — the spice of life'. 8pm. 959 3530

### Wednesday, September 11

Hendon Horticultural Soc, Hendon Library, The Burroughs. 'Houseplants and their propagation'. 8pm. 346 7392

## Thursday, September 12

Barnet & Dist Fuchsia Soc, Council Chambers, Wood St. 8pm. 0727 59989

## Saturday, September 14

New Barnet Amateur Gardeners' & Floral Art Soc Autumn Show, St John's Church Hall, Mowbray Rd, New Barnet. 10p. 2pm. 440 3787

## Tuesday, September 17

Totteridge Floral Art Club, Totteridge Village Hall, Badger's Croft. 'Nature's Profiles'. 2pm. 445 9307

## Wednesday, September 18

Hendon Floral Art Group, West Hendon Community Centre, Marsh Drive. 'Purely for pleasure'. 7.30pm. 346 8916

## Saturday, September 21

Hampstead Garden Suburb Horticultural Soc Flower Show, Free Church Hall, Northway, NW11. 3-6pm. 455 6507

## Bridge/Whist

### Mondays

\*Intermediate Bridge Class, 41 Northumberland Rd, New Barnet. 7.30pm. 449 0960. Also Tuesdays, 10am

\*Bridge Class, second year students, Woodside Park Club, Southover. 8pm. 445 1108 (also Tuesdays)

### Wednesdays

\*Intermediate bridge class, 41

Northumberland Rd, New Barnet. 2pm. 449 0960

### Thursdays

\*Northside Bridge Club, E Finchley Methodist Church Annex, High Rd. Duplicate first Thursday, rubber remaining Thursdays.

\*NW London Duplicate Bridge Club, Michael Sobell Centre, Limes Ave, NW11. Admission £1.50. 7.45pm. 455 3745

### Fridays

\*Beginners' bridge class, 41 Northumberland Rd, New Barnet. 7.30pm. 449 0960

\*The Fern Room Whist Club, Salisbury Road, Barnet, 2pm. 441 4853

## Council meetings

Members of the public are invited to attend council and committee meetings in the Town Hall, Hendon, at 7pm.

**Monday, September 9:** Finance  
**Tuesday, September 10:** Education Sub-committees

**Wednesday, September 11:** Town Planning and Research

**Thursday, September 19:** Council Meeting

**Thursday, September 26:** Planning Sub-committees

**Wednesday, October 2:** Education Committee, followed by Education Sub-committees

## Claradon House

RETIREMENT HOME FOR THE ELDERLY

REGISTERED WITH DEVON COUNTY COUNCIL & R.R.H.A.



### WHY NOT RETIRE TO TORQUAY, DEVON

At Claradon our primary concern is your well being. Here you can enjoy the privacy, security and freedom of a warm and caring family. Guests may choose single or double rooms and bring items of their own furniture if desired.

FULL CENTRAL HEATING · 24 HOUR NURSE CALL SYSTEM · YOUR OWN PERSONAL PHONE OR TV, IF REQUIRED · STAIR LIFT · GOOD HOME COOKING · HEATED SWIMMING POOL

Close to shops, churches, bus route and Torquay harbour. Short stay and convalescent welcome.

★ STATE BENEFIT WILL COVER OUR FEES ★

For further information please phone Mr & Mrs McCandlish on (0803) 24402 or write to us at

454 BABBACOMBE ROAD, TORQUAY, SOUTH DEVON

## AT LAST THE COMPLETE BEAUTY TREATMENT

Heather, our qualified beauty therapist is able to provide: FACIAL TREATMENTS for all skin types and conditions, including: basic facial, deep-cleansing facial, acne treatment, specialised facial.

### BODY TREATMENTS

including: massage, bleaching, slendertone, steam cabinet, G5 — mechanical massager.

HAIR REMOVAL including: waxing electrolysis, manicure and pedicure.

TREAT YOURSELF TO A DAY OF BEAUTY

JENNY our make-up artist, will create a new look and advise you on the best choice of cosmetics and skin treatments, from our ranges, which include Charles of the Ritz, Lancôme, Helena Rubenstein, Revlon, Biotherm, Vichy, Almay & Mary Quant.

And for that final touch — perfume and eau de toilette by Christian Dior, Givenchy, Yves St Laurent, Chanel, Hermes, Rochas and Cacharel.

AND OF COURSE — THE NEWEST ACCELERATED SUN BED FROM SWEDEN

Cory Bros Beauty Centre  
166-168 High Rd, East Finchley  
London N2 9AS

## PART-TIME BTEC HNC/D courses in ENGINEERING

**ENROLMENT**  
Wednesday  
11 SEPTEMBER  
10am — 8pm

at Middlesex Polytechnic, Bounds Green Road, N11. Students must bring detailed evidence of qualifications and three passport-sized photographs, fees or sponsorship letter

**NEW**  
for 1985/86  
Options in  
★ INDUSTRIAL  
ROBOTICS and  
★ COMPUTER  
NUMERICAL  
CONTROL (CNC)

- BTEC HNC in Mechanical Engineering
- BTEC HND in Mechanical Engineering
- BTEC HNC in Production Engineering
- BTEC HND in Production Engineering

These BTEC programmes are held at the polytechnic's Bounds Green location in Bounds Green Road, N11, close by Bounds Green underground and New Southgate BR stations. Each programme requires two years of part-time study, one day and evening a week.

A brochure describing the courses is available from: Admissions Enquiries, (ref C966H), Middlesex Polytechnic, 114 Chase Side, London N14 5PN. Telephone 01-886 6599 (24 hours).

**Middlesex Polytechnic**

# Villa del Bosco Ltd

## FANTASTIC SPECIAL OFFER



**AN AMAZING OFFER: 6 PIECE LEATHER SUITE**  
 Normal price £1,599 — now only **£999**. But hurry limited  
 stock (available in various colours) **FREE DELIVERY**

**6 PIECE SUITES IN MATERIAL from £699** CHOICE OF COLOURS

*Villa del Bosco Ltd has over 8,000 sq ft of showroom for you to browse around at your leisure. They are the Specialists in traditional and modern Italian furniture, yet you won't have to pay West End prices. New and exciting designs are easily available and individual tastes are catered for. So go along and see for yourself their outstanding range . . .*

**New Line . . .**  
**Chinese ornamental Furniture now in stock**

*£1,000 instant credit available 36.3%. Credit cards accepted*

**256/258 West Hendon Broadway (main Edgware Rd) NW9 01-202 3241/3074**

# What's On in the Arts

## Music

### Mondays

\*Barnet Orchestra at Hendon, Whitefield School, Claremont Rd, NW2. 8pm 205 2418

### Tuesdays

\*The Apollo Singers, Wilberforce Hall, Wilberforce Rd, W Hendon. 7.45pm. 959 1244

\*Hendon String Orchestra, Whitefields School, Claremont Rd, NW2. 8pm. 455 5005

### Thursdays

\*London Pro Arte Choir, Mill Hill East Free Church, Salcombe Gdns, Mill Hill. 7.30pm. 959 1659

### Monday, September 9

Hendon Music Soc, Hendon Library, The Burroughs. 8pm. 203 2355. Also Sept 16 and 30

### Saturday, September 14

Live Music Now, Mill Hill Library, Hartley Ave. Cathy Thom, Guitar. 11am. 202 5625 ext 56  
Live Music Now, N Finchley Library, Ravensdale Ave. Aline Brewer, harp. 11am

### Tuesday, September 17

Hendon Library Gramophone Soc, The Burroughs. 7.30pm. 202 5625. Also October 1

### Thursday, September 19

Friern Barnet Library Gramophone Soc, Friern Barnet Rd, N11. 8.10pm. 368 4024. Also October 3

### Saturday, September 21

Live Music Now — South Friern Library, Colney Hatch Lane, N10. Aline Brewer, Harp. 2.30pm

Barnet Orchestra at Hendon, St Barnabas Church, Holden Rd, N12. 263 6770

### Tuesday, September 24

East Barnet Library Gramophone Soc, 85 Brookhill Rd. 8pm. 440 4376

### Wednesday, September 25

Home organ concert. Minns Music Society, Watling Community Centre, Orange Hill Rd, Burnt Oak. 8pm. 953 3291

### Friday, September 27

London Pro Arte Choir concert, St Michael and All Angels, Flower Lane, NW7. Works by Schutz and Dvorak. 7.30pm. 959 1659

### Wednesday, October 2

Trent Park Music Centre, Recital Room, Cockfosters Rd, Cockfosters. Helen Thatcher, cello, and Nicole Thatcher, piano. 1pm

## Dance

### Mondays

\*CRAB dance club for disabled, King Alfred School, Manor Wood, North End Rd, NW11. 50p per session. 7pm. 346 9789

### Tuesdays

\*Sequence dancing, 20th Century Sequence Dancing Club, All Saints Hall, Oakleigh Rd North, Whetstone. 7.45pm. 440 6508

\*Tap dancing, Centrepont, Grahame Park. Under 12s 6.15pm; all ages 6.45pm. 205 7113

\*Wheelchair dancing, Grahame Park Community Centre, The Concourse, NW9. 1.30-3pm. 346 9789. Transport available

### Wednesdays

\*Contemporary Dance Classes for Adults, Queen Elizabeth's Sports Centre, Meadway, Barnet. 7.45-8.45pm. £1.25 per class or £5 per half-term. 441 5984

\*Mountfield Old Time & Modern Sequence Dance Club, Martin School, High Rd, East Finchley. 8pm. 959 5185

\*CRAB Creative dance for mentally handicapped adults, Outlook House, 59 Flower Lane, NW7. 2-3pm. 346 9789.

\*Friary Sequence Dance Club, Manor Drive Methodist Church Hall, N20. 8pm. 446 4816

### Thursdays

\*Finchley Sequence Dance Club, Martin School, High Rd, E Finchley. 7.30pm

### Fridays

\*Latin & ballroom, Subud Hall, 97 E Barnet Rd, New Barnet. 8.30pm. 449 3336/6034

### Saturdays

\*Children's disco & ballroom, Subud Hall, 97 E Barnet Rd, New Barnet. 11.30am. 449 3336/6034

### Thursday, September 5

Circassian Circle Folk Dance Club, Harwood Hall, Mill Hill B'way. 7.45pm. 950 5756. Also Sept 19 & Oct 3

### Saturday, September 14

Finchley Sequence Dance Club, Church Hall, St Philip the Apostle, Gravel Hill, N3. 7.30pm

### Saturday, October 5

20th Century Sequence Dancing Club, Queen Elizabeth's Centre, Meadway, Barnet. 7.30pm. 440 6506

## Old Bull Arts Centre

68 High St, Barnet. 449 5189

Until September 14

Open Art Exhibition. 9.30am-5.30pm

### Saturday September 14

Earthmovers Club. £2. 8pm

### Mon Sept 16-Sat Oct 5

Exhibition of photographs by Sister Aquinata Evans and Colin Tyler. 9.30am-5.30pm

### Friday, September 20

The Regular Guys, jazz-influenced group. £1.25+25p membership. 8pm

### Saturday, September 21

Tripsichore Theatre Company. 'Blood on the Streets'. £2.50 (£1.50) +25p membership. 8pm

### Sunday, September 22

Bob Thingumybob Puppet Theatre. £2 (£1). 2.30pm. Steve Lane and his Southern Stompers. 20's evening. Supper available. £2 (£1) +25p mem-

bership — in aid of Old Bull building fund. 8pm

### Wednesday, September 25

Peri Aston. Commedia Del'Arte workshop. Performance Saturday. £1.50 (£1). 2.4pm

### Mondays

Drama for unemployed. 50p, unemployed 25p. 10.30am-12.30pm; Art class for adults. £2 (£1). 1.30-3.30pm; Art class for children. 75p. 3.45-5.15pm; Guitar class. £2 (£1). 6.15-7.15pm; Youth Theatre Club, 16-25s. £1. 4-7.30pm

### Tuesdays

Mother and Toddler creative movement. £1 per family. 10.30-11.30am; Music-Drama, 5-15s. 75p. 4-6pm; Poster design and printing, 5-15s. 75p. 3.30-5pm; Modern Dance/Theatre, 7-12s. 75p. 6.30-7.30pm; Drama with Concorde Players. 8pm. 881 2471

### Wednesdays

Drama, 5-7. 75p. 4-5pm; Children's crafts. 75p. 4-5.30pm; Drama for Teenagers. 75p. 6.30-8.30pm; Drama after Six Club. £1. 6.30-7.30pm; Beginners Tap Dance. £2. 6.30-7.45pm

### Thursdays

Disabled drama workshop. £3 per term. 1-3pm; Poster Design and Printing, 5-15s. 75p. 3.30-5pm; Drama for those with learning difficulties. £3. 3.30-5pm

### Fridays

Art Class. £2 (£1). 1.30-3.30pm

### Saturdays

Drama. 7-9s. 75p. 10.30am-12.30pm; 9-12s. 75p. 1.30-3.30pm

## Festivals

**Barnet Borough Arts Council Festival 1985. Fri, Sept 27 to Sat, Oct 19**

### Friday, September 27

Launching of festival with social evening, All Saints' Centre, Oakleigh Road Nth, N20. 8pm

### Saturday, September 28

Peri Aston — Commedia Del'Arte with workshop. Old Bull Centre, 68 High St, Barnet. 8pm

Terpsichore — Dance history display, All Saints'. 8pm

### Tues, Oct 1 to Sat, Oct 2

Scandinavian art exhibition, All Saints'. 10am-7pm

Exhibition at Barnet Museum, Wood St, Tues-Thurs & Sats throughout festival. 10am-12 noon, 2.30-4.30pm

### Wednesday, October 2

Spink's Old English Water Colours & Prints, The Gallery, Totteridge Library, Totteridge Lane, N20. 7.30pm daily

Brookland Players Open Club Night, The Mitre, High St, Barnet. 8pm

### Friday, October 4

Barnet Folk Club. Johnny Silvo, Old Bull. 8pm

An evening with the Colin Peters

Trio & Barnet Brass Quintet, Woodside Park Club Theatre, Southover, N12. 8.30pm

### Saturday, October 5

Dancing out with Old Bull Morris Men via Inns of High Barnet. 12 noon-2.30pm

Uphill Arts & Crafts Demonstrations, Church Farm House Museum, Greyhound Hill, Hendon. 2-4.30pm. Also Sunday and each weekend of festival College Farm Autumn Fair, Regents Park Road, N3. 2-6pm  
Dial Square Cabaret. Old Bull. 8pm

Mill Hill WEA open evening. 8pm  
Gainsborough Theatre Club open evening. 8pm

Further details and tickets: 445 4654/6831 or 449 5189

More details follow in October.

**Michaelmas Festival of Music and Drama. Sep 21-29 — in aid of Hendon Christian Housing Association and MENCAP**

Music, dance, drama and other events. Bookings for all items, Mrs M Graves, 5 Beech Walk, Mill Hill, NW7, tel: 959 3079

## Exhibitions

### Sat Sept 14 to Sat Oct 19

Paintings by Denise Nemtzov, Hendon Library, The Burroughs. Library opening hours.

### Sat Sept 21 to Sun Nov 3

Uphill Crafts Group exhibition, Church Farm House Museum, Greyhound Hill, Hendon. Opening hours: Weekdays (except Tuesday) 10am-1pm, 2-5.30pm; Tuesday 10am-1pm; Sunday: demonstrations of craft making. 2-5.30pm. 203 0130

### Sat Sept 28 to Fri Oct 25

Finchley Art Society 37th Exhibition, North Finchley Library, Ravensdale Ave, N12. Library opening hours.

## Drama

### Wednesdays

\*Incognito Theatre Group. Theatre, Friern Barnet. 8pm. 886 5791

\*East Finchley Theatre Group, Methodist Church Hall, High Rd, N2 7.30pm. 883 2633

\*Gainsborough Theatre Club. The Centre, Gainsborough Rd, N12. 8.15pm. 202 8352

## Pop, rock and Western

### Sundays

\*Top Rock and Blues Bands. Torrington Arms Pub, Lodge Lane, High Rd, N Finchley. 8.30pm. 445 4710 (also Fridays)

\*Bernie Tyrell's Sunday Jazz. Salisbury Hotel, High St, Barnet. 12-2pm

# E d u c a t i o n

## YAKAR

invites you to a

### PRE ROSH HASHANA SEMINAR

Monday 2nd/9th September, 8.00pm

Make this your year to learn about the  
Festivals before they happen

Autumn Adult Education Term begins  
14th October. Send for programme

YAKAR, 2 Egerton Gdns NW4. 202 5551

## Training courses with employment agency services

Hendon Secretarial College uses modern, highly effective, audio-visual training methods which provide students with the skills to meet the vacancies offered by today's employers.

Courses can be commenced on any day at any time, and there are flexible time limits on each course dependent on the student's ability.

Evening classes are available on Monday and Wednesday nights and finish at 9pm.

There is no age limit for enrolment and students may attend both Day and Evening Classes if they so desire.

Many local companies have used our facilities for the training and retraining of their staff, usually on a day-release basis, and have been most pleased with the results achieved.

Should you require any further information about our Courses, please ring on 202-4188 or call in and see us for a chat.

There is no obligation, and if in doubt, a free trial lesson is available.

Don't delay — ring today.

## HENDON SECRETARIAL COLLEGE

15 WATFORD WAY NW4  
(Opposite Hendon Central Station)

- ◆ COURSES IN SHORTHAND (PITMANS OR TEELINE)
- ◆ AUDIO & COPY TYPING
- ◆ SPEED DEVELOPMENT & REFRESHER COURSES
- ◆ KEYBOARD TRAINING
- ◆ BOOK KEEPING

WORD PROCESSING TRAINING  
Courses running throughout the year

★ START ANY TIME ★

EMPLOYMENT AGENCY SERVICE AVAILABLE

ESTABLISHED SINCE 1971  
DEALING WITH BOTH PERMANENT & TEMPORARY JOBS

PART OR FULL TIME, DAY OR EVENING

FLEXIBLE TIME LIMITS ON COURSES

HOURS TO SUIT

202-4188

## Middlesex Polytechnic launches Action Learning for Managers

Owners and managers of small companies planning to establish a sound basis for development and expansion can join a new Manpower Services Commission management training programme starting in September at Middlesex Polytechnic.

Entitled Action Learning, the programme is a radical departure from traditional training practice, with opportunities for participants to learn from each other, visits to participants' companies, and developing skills and expertise in areas including finance, marketing, operations and personnel.

A brochure describing the programme is available from Admissions Enquiries, Middlesex Polytechnic, 114 Chase Side, London N14 5PN, telephone 01-886 6599.

Participants will include company owners who have so far run their business by hunch and experience, and who may now have arrived at the point where they need more sophisticated planning. Others may have already taken MSC sponsored business start-up courses and now feel they need more extensive consolidation of training and experience.

Numbers are restricted to two working groups of eight under the direction of Middlesex Polytechnic management training experts. Teaching is out of normal working hours, with an introductory weekend day, 15 three-hour evening sessions, and one-to-one advice sessions from polytechnic specialists as required.

## RUNNING YOUR OWN BUSINESS?

Join our new part-time MSC-sponsored  
training programme:

### Action Learning for Managers

September 1985 -  
March 1986

A new work-centred learning programme for managers and owners of small companies, offering participative problem-solving of your business problems, and access to free advice from polytechnic management specialists.

Further information: Admissions Enquiries  
(ref. C985A), Middlesex Polytechnic, 114 Chase  
Side, London N14 5PN. 01-886 6599 (24 hours).



Middlesex Polytechnic  
Middlesex Business School MSC







LONDON BOROUGH OF BARNET

# HENDON COLLEGE

THE BURROUGHS HENDON NW4 4DE

## EXAMINATION CLASSES

(COURSE WITH 'V' IN THE CLASS CODE)

**ONLY****TUESDAY 10th SEPTEMBER 1985****2.00pm to 8.00pm**

## RECREATIONAL CLASSES

(COURSES WITH 'R' IN THE CLASS CODE)

**ONLY****WEDNESDAY 11th SEPTEMBER 1985****2.00pm to 8.00pm**

ENGLISH AS A FOREIGN LANGUAGE AND  
ENGLISH AS A SECOND LANGUAGE —  
ENROL AT MONTAGU ROAD CENTRE,  
MONTAGU ROAD, HENDON ON THURSDAY  
12th SEPTEMBER 1985, 10am to 4.00pm

TELEPHONE US FOR COURSE DETAILS

**TEL 202 3811**

## TOMORROW'S WORLD TODAY AT HENDON COLLEGE

Preparing students for the technology they will meet at work has always been a priority at Hendon College. The rapid pace of technological change has not made this easy but it is fair to say that the range of equipment available to students is excellent. Facilities include four computer suites, typing rooms equipped with electronic machines, a model office and travel agency.

In order to keep up-to-date, the College has recently placed orders for a microfiche reader/copier, Prestel, telex, fax transmission and a range of personal computers used in business. Next year's courses are being amended to incorporate these new additions.

### NEW COURSES IN ADULT EDUCATION

Travelling in China, Explaining Feminism, Graphology, Japanese, Navigation and Seamanship (for small boat sailors), Squash (at Mill Hill Squash Club).

Our Art classes have been popular for many years, and we are now starting a GCE Art class for students who want to gain a recognised qualification as well as enjoying their painting and drawing in the pleasant, atmosphere of Flower Lane.

### GET PAID WHILE YOU TRAIN AT HENDON

There are a number of courses starting in September at Hendon College that provide people with financial support while they are training. These courses are sponsored by the Manpower Services Commission through the TOPS Programme.

The courses on offer cover clerical and secretarial work and are open to adults (18+) who have been away from full-time education for two years. The courses are of 16 or 18 weeks duration and cover Typewriting, Office Practice, Word Processing, Audio and/or Shorthand skills.

To find out more about these courses, visit your nearest Job Centre or contact the College on 202 3811 extension 215.

### RETURNING TO STUDY

You may be interested to hear of two new courses starting this September at the Grahame Park School site. The DAYTIME OFFICE TRAINING SCHEME will offer a flexible timetable which will include typewriting, audio typewriting, word processing, individual help with job seeking and office practice. Hours attended may range from two to five per day, between 10.00am and 3.00pm. The course aims to equip unemployed people with relevant skills for today's office world and so improve their job prospects.

For those with less time to spare, there is a one day per week, 9.30am to 3.45pm course. "Stepping Out" offers the opportunity to sample office skills and develop self confidence.

### MOVING SOON

In September 1986, Hendon College will take over the premises of Grahame Park Comprehensive School and Orange Hill Senior High. Planning for the above is well under way. The College will vacate the Silkstream Road site but continue to run classes at Montagu Road and Flower Lane. Details of changes to course locations will be publicised over the coming year.

## A CAREER WITH A FUTURE!

Back to school for your last year?

Wondering what O levels or A levels you ought to take?

Starting to think about the future and what job you might like?

Perhaps you should consider a career as an Environmental Health Officer, which offers a wide range of professional experience. Whereas doctors, dentists and nurses care for your personal health, an Environmental Health Officer is responsible for many aspects of the environment which may affect your health as well. Among the areas that Environmental Health Officers will concern themselves with, the air you breathe, the water you drink or swim in, the safety of your workplace and your home — it can even include noise levels which you may find upsetting.

There are a variety of organisations with similar aims that specialise in various aspects of the work and the Environmental Health Officer will work with them all, in a spirit of coordination and cooperation. As a field worker the Environmental Health Officer is out of the office a great deal of the time, dealing with people and their problems. The

Environmental Health Officer will rely upon their scientific and technical background to decide on the best action to correct these problems. Most of an Environmental Health Officer's activities are supported by legislation but they prefer to persuade people to cooperate by using rational argument and common sense.

As you might imagine, such a responsible job requires extensive training. The student is sent to complete a BSc Honours Degree in Environment Health. This is one of the few degrees where you are required to work in the Environmental Health Department in order to gain practical experience outside of term time. Normal arrangements are made regarding salary, leave, etc. The minimum entry requirements are 5 GCE's (which must include English, mathematics, biology and one other science) and 2 A levels (including one natural science).

If a career as an Environmental Health Officer sounds interesting to you and you would like more information, please contact: **Mr. M.R. Ruocco, Assistant Chief Environmental Health Officer on 349-9121. ext 160.**



ENVIRONMENTAL  
HEALTH  
DEPARTMENT



PROFESSIONALS  
PROMOTING  
PUBLIC HEALTH

# Recreation and Sport

## Short tennis the answer

TENNIS is great fun — but not if the court is too big, the nets too high, the balls too lively and the racket too heavy. These are just some of the obstacles that face the 6 to 10 age group who, perhaps inspired by watching Wimbledon, want to have a go at playing the game.

All too often, because of these drawbacks, such eager starts end in frustration and disillusionment, and many of the youngsters will drop out.

This is one of the main reasons why tennis has, in the past, found it difficult to attract the number of recruits the game deserves, especially from non-tennis playing backgrounds. It is not a problem confined to this country alone and, in Sweden, extensive specialist re-

search came up with the answer — Short Tennis.

This version of the game is catching on and short tennis can be played at Grahame Park Centre Point, Grahame Park School, Corner Mead, Grahame Park Way, Colindale, on Sunday mornings. There are sessions for 5 to 7 year olds from 10-11am and for 7 to 10 year olds from 11am to 12 noon. No booking necessary — just come along.

Short tennis is no gimmick. It is a proportionally reduced realistic version of the full scale game. Apart from a simplified points system and larger service areas, the rules are the same as for tennis. It is played indoors or out on a badminton size court and with specially produced rackets, balls and nets.

## SPORT MATCHMAKERS

ONE of the problems of wanting to keep up with any sport after leaving school is finding a partner at your own standard. You may not wish to join a club but just to play for enjoyment.

This is where a new organisation, Sportsclub of North Finchley, can help. Sportsclub is a service de-

signed to match members with sports partners of similar ability and age in a wide range of sports. It can also put you in touch with qualified instructors.

For details send a self-addressed envelope to Sportsclub, P.O. Box 149, London, N12 7QA.

## Walk-A-Bout with 'Energ

COME along to Copthall Stadium, off the Great North Way, Hendon, and Page Street, Mill Hill, from 10am on Sunday, September 15, and enjoy a great day with former Heavyweight boxing champion, Henry Cooper, when he stages his 1985 Walk-A-Bout.

The Hendon Times are backing this Variety Club of Great Britain project, sponsored by Quaker Oats Limited, to help raise thousands of pounds for handicapped and under privileged children.

You can walk five, 10 or 15 laps with 'Energ who expects a number of his celebrity friends such as Warren Mitchell, Wendy Craig and Andrew Sachs, to take part. The celebrities will be happy to meet walkers and sign autographs. The Mayor of Barnet, Cllr. Mrs Barbara I angstone, will be there to add her support.

There will be awards for walkers — a tee shirt for raising £10 and a black and white TV for £500.

If you would like to join in the fun complete the form below and return it to the Variety Club of Great Britain, 32 Welbeck Street, London, W1M 7PG (tel: 953 4466).

Please send me the official entry and sponsorship form.

Number of sponsor forms required.....

Name .....

Address .....

Postcode.....

(Block capitals please)

Because the number of sponsored laps are known, and to minimise administration costs, walkers MUST collect sponsorship monies in advance so that they are paid in on the day.

## JF VALET SERVICE

DOMESTIC



COMMERCIAL

### CARPET AND UPHOLSTERY CLEANERS



CARPETS ONLY  
**7p**  
sq ft

- ★ General fabric cleaning
- ★ Curtains
- ★ Stain proofing
- ★ Flame retardant
- ★ Anti static
- ★ Acoustic ceilings
- ★ Attics cleared



CAR SEATS & CARPETS  
**£12**



3-PIECE SUITES ONLY  
**£28**

FULLY-INSURED

**01-449 0209**  
**01-952 2260**

ALSO CAR VALETING

## VALLEY FURNISHING

### ★ AUTUMN PROMOTION ★

Folding Beds from £26  
Good Quality Beds 3'0" from £64  
Good Quality Beds 4'6" from £105

ALL TYPES OF BED SETTEES AVAILABLE  
GOOD SELECTION OF FIRESIDE CHAIRS  
ALL STYLES OF 3-PIECE SUITES  
STOCKISTS OF IGOE BEDROOM FURNITURE

*There are two floors for you to browse round at your leisure.*

*Call in and see our selection*

### HURRY WHILE STOCKS LAST



INSTANT CREDIT FACILITIES AVAILABLE UP TO £1,000 SUBJECT TO STATUS

MATTRESSES OF ALL SHAPES AND SIZES ARE AVAILABLE SEPARATELY

*We also furnish houses, flats for letting/renting and old peoples' homes*

**114 BRENT STREET, HENDON NW4**  
**YOU ARE ONLY A PHONE CALL AWAY**  
**Tel: 202 4666** Car park at rear

Dear Reader,

If you have any complaints about the distribution of Barnet Borough News or if you know anyone who lives in the Borough and is not receiving a copy then please phone **446 6519** and ask for the Distribution Department

# Artscene

## Blood dance thriller

THERE'LL be Blood on the Street at the Old Bull Arts Centre this month when it stages a vampire thriller in dance form. 'Blood on the Street' is a full-length dance narrative by the Tripsichore Performing Company which resembles a silent movie in its effect.

Tripsichore will perform their dance thriller at the Old Bull, 68 High Street, Barnet, at 8pm on September 21.

It examines what the company call the contemporary problem of blood addiction through the case history of Mme V whose father, a vampire, passed on the V family legacy to his daughter. Her life progresses until its culmination in a career as an ultra-glamorous film star luring susceptible young people into blood slavery.

Tickets £2.50 (concessions £1.50) plus 25p membership. Further information from Edward Clark on 459 2416, or Sarah Ross Winder on 449 5189.

## THEATRE WORKSHOPS

THE GRAEAE Theatre Company will be visiting the borough next month to run a series of workshops and are looking for people interested in hosting sessions. With the co-operation of Barnet Libraries and Arts, they hope to have a full programme from November 11-15.

GRAEAE were formed in February 1980 to encourage the active participation of disabled people in the performing arts. They have been running drama-based workshops since then and have visited more than 500 groups in that time.

Interested in taking part? Then contact Ashley Grey, community liaison worker, on 935 5588, or Hazel Sharples, Barnet Arts Officer, on 202 5625, ext 56.



● Edward Clark and Sharon Stott in 'Blood on the Street'.

## Arts festival

A CHANCE to have a look at the state of the Arts in the borough comes with Barnet Borough Arts Council's autumn festival this month and next.

Running from September 27 to October 19, it covers the whole spectrum of the Arts (see full details in What's On in the Arts).

The festival will be launched at the All Saints Centre, 122 Oakleigh Road North, N20, on September 27 with a social evening and samples of what's in store.

Societies are invited to display their wares and recruit new members.

The latter, in fact, is one of the objects of the festival. Daisy McKay, Chairman of BBAC, said: 'We decided a year ago to have a festival at a time when people were thinking about what to do in the way of classes in the new academic year.'

'We thought it would give local societies the chance to recruit new members.'

Another aim was to prove that the arts council, which has been running for 25 years, is still alive and kicking.

Tickets and details: All Saints' Centre, 445 4654/6831, and Old Bull Centre, 449 5189.



Left to right at the sponsorship announcement: David Kimche, Bank Leumi; David Grant, VAT Watkins; Cllr Olwen Evans, chairman Libraries and Arts; Hazel Sharples, Arts Officer; Stewart Brodie and Barry Gesthuysen, Mary Kay; Tony Etherton, SML

## Arts gain £4,550 from business

LEADING local businesses are sponsoring the Arts in Barnet with a total of £4,550. This has allowed the borough to approach the Arts Minister for a further £2,100 under the Business Sponsorship Incentive Scheme.

This announcement of the sum pledged was made at a sponsors' meeting in the Town Hall, Hendon. Sponsors present were:

**Bank Leumi** — They have pledged £1,500 to cover a recital by the Israel Piano Trio at the Finchley Reform Synagogue, Fallowcourt Avenue, N12, on January 26. The largest banking group in Israel, they have branches in Golders Green and Edgware.

**Mary Kay Cosmetics** — Their £1,200 goes towards Barnet Libraries and Arts' Music for

Pleasure series in Hendon Library. The company are skin care specialists with a parent company in Dallas. The UK operation is based at West Hendon Broadway.

**SML** — Live Music Now! events at North Finchley Library — see separate story on this page — will benefit from their £350. SML are manufacturing electrical engineers based at Station Road, Finchley.

**VAT WATKINS Ltd** — They have pledged £1,500 for a recital by Marisa Robles, harp, and Susan Milan, flute, at The Institute, Central Square, Hampstead Garden Suburb, on December 2. VAT Watkins are a firm of builders who have a head office in High Road, Whetstone.

## LISTEN WHILE YOU BROWSE

RECRUITS to Barnet's business sponsorship of the Arts scheme are SML, a family firm of manufacturing electrical engineers, who will help bring live music to North Finchley Library starting this month.

With their pledge of £350, they are sponsoring three informal recitals at the library in Ravensdale Avenue, N12.

Aline Brewer, a young harpist, heads the programme which begins on Saturday September 14 at 11am.

She won this year's Marisa Robles Harp Prize and plays with the European Community Youth Orchestra. Her second recital, at the same time, is on November 16.

Cathy Thom, the other musician on the programme, is a guitarist who made her debut at the Wigmore Hall last year. She is associated with Yehudi Menuhin's Live Music Now! scheme and will be at the library at 2.30pm on Saturday October 12.

Mr Tony Etherton, a director of SML, of Station Road, Finchley, said he had a personal love of music and felt his firm's sponsorship was a way of putting something back into the community.

# Money Matters

## PERSONAL TAX HEADACHES

### Article No. 2: Your Tax Code Number

Do you understand how it is calculated?

Are there other allowances you can claim?

The code number operated against your wage or salary is merely 10% of the total net income tax allowances due to you, ie, if your allowances are £3,455 then your code number will be 345.

The Allowances currently include:

Personal Reliefs:

Married Man .....	3,455
Single Person .....	2,205
Wife's Earned Income Relief .....	2,205
Age Allowance	
Married .....	4,255
Single .....	2,690
Widow's Bereavement Allowance .....	1,250
Housekeeper Relief .....	100
Single Parent Relief .....	1,250
Blind Person .....	360
Dependent Relative Relief .....	100
Son's or Daughter's Services .....	55
Superannuation/Pension Fund Contributions .....	Premiums Paid

Other Reliefs include:

- Mortgage interest not covered under MIRAS scheme.
- Other Interest.
- Flat Rate Expense Allowances.
- Other Expense Allowances.

Deductions from Allowances include:

- Untaxed Interest.
- Benefits in Kind on company cars.
- Other Earned Income/Pensions untaxed.
- Excessive basic rate restriction.
- Underpayment for earlier years.

If this all sounds too complicated for you to cope with then you should consult a chartered accountant who will be only too pleased to help and advise you.

Mary Hase

Hereward Scott Davies.



**KLEINMAN  
KLARFELD  
SOLICITORS**

*Stanley Klarfeld of Kleinman Klarfeld is now practicing at new offices at 248 Hendon Way, Hendon Central NW4 3NL, where he and his colleagues will offer professional advice on all legal matters.*

**TEL: 202 3444  
TELEX: 946240 (CWEASY G)  
EASYLINK 190160**

ACCOUNTS, AUDIT, TAXATION  
ADVICE ON SETTING UP IN BUSINESS  
HELP WITH VAT and PAYE  
FINANCIAL PLANNING  
CAPITAL TRANSFER TAX and CAPITAL GAINS TAX ADVICE  
MANAGEMENT ACCOUNTS and ADVICE  
COMPUTER CONSULTANCY  
TRUST and ESTATE ACCOUNTS

The complete financial service from a local firm, established 60 years and proud of the personal service provided by 13 partners and over 80 staff.

**HEREWARD SCOTT DAVIES**  
CHARTERED ACCOUNTANTS



HILLSIDE HOUSE 2-6 FRIERN PARK  
LONDON N12 9BY  
Telephone: 01-446 4371  
Telex: 24535 HSD

**‘Wimpey Homes...  
have not allowed anything to  
detract from their requirement for  
consistently high standards.’**

NATIONAL HOUSE BUILDING COUNCIL ANNUAL REPORT 1984

**‘Wimpey... Britain's best  
value for money builder.’**

WHAT HOUSE? MAGAZINE 1984 AWARDS

**‘...even in the present highly  
competitive climate, this Company  
sacrifices nothing for quality.’**

REGIONAL DIRECTOR NATIONAL HOUSE  
BUILDING COUNCIL ANNUAL REPORT 1983

**‘Wimpey Homes...  
Housebuilder of the Year.’**

WHAT HOUSE? MAGAZINE 1985

For details of our developments in:  
Aylesbury, South Oxhey, Islington, Letchworth, Bourne End, Houghton Regis, Stevenage,  
Bishops Cleeve, Thame, Harrow, Muswell Hill, and Luton, please telephone (0582) 503248

In an ever changing world, one builder  
consistently gives the best value.

**WIMPEY**  
WELCOME HOME

# Housing

## Welcome home for the Mayor

A LESSON in indoor gardening, a critical look at bathroom fittings and a promise to look into window cleaning problems — all part of a Mayor's day when the Mayor of Barnet, Cllr Barbara Langstone, visited some of Barnet's sheltered housing schemes.

Sheltered housing has high priority in Barnet which has the largest elderly population in Greater London.

The borough has 29 schemes offering independent sheltered housing to about 900 people. A new scheme is due for completion in Colindale next month and two large schemes, one in West Hendon and one in Cricklewood, are at the planning stage.

The idea of offering elderly people their own independent home with the support of warden service began 20 years ago — coinciding with the formation of the Borough of Barnet — and in her visits the Mayor was able to see the development and success of the schemes.

Accompanied by Mrs Margaret FitzHugh, welfare officer for the elderly, her first stop was Wimbush House, Westbury Road, North Finchley, built six years ago and one of Barnet's most successful schemes.

Nearly all the residents moved in when the scheme opened — and they are still there living a busy social life thanks to the encouragement of their warden Mrs Gillian Riley.

Barnet College run keep fit classes on Mondays and cookery-for-one on Tuesdays. Tuesdays and Thursdays are Bingo nights with Mr Percy Tiney (the racing tipster) as caller, and on Fridays there's a coffee morning.

Wimbush has been planned on



Miss Elizabeth Pryor, of Christchurch Close, shows the Mayor her corridor garden. The knitting she is holding is for the Save the Children fund.

the newer design which means that every resident has a fully self-contained flat with its own kitchen, loo and washroom and storage cupboard. There are shared bathrooms with one specially designed for the visiting nurse. The large community room includes a library stocked by the Housebound Library Service.

There are personal alarm systems in every flat and at key points in communal areas.

The next stop was Christchurch Close, an older scheme where residents have bed-sitters with small kitchens, but individual lavatories and shared bathrooms are separate on the other side of the corridor.

New laundry equipment, such as washing machines and tumble dryers, has been installed.

The Mayor was welcomed by the mobile warden, Mrs Veronica Agyekum, who visits the scheme daily and checks that each resident is well.

The last stop of the afternoon was to St John's Close, Rasper Road, Whetstone, one of the first schemes to be built.

A guest bedroom on the ground floor, which was rarely used, has been converted — at the tenants' request — into a small community lounge and when a new warden takes over next month it is hoped to increase social activities within the scheme.

One of the residents told the Mayor, 'When I came here 17 years ago I was a sick woman, but having this safe little home of my own where things are made easy for me, my health has improved and things are fine', she said.

### Pleased

The first resident to meet her was Miss Florance Handscomb, who had bought a posy of flowers for the Mayor — 'If she takes the trouble to come and see us we ought to tell how pleased we are,' she said.

'It has been a really interesting afternoon,' the Mayor told them. 'I can you enjoy living here, and it has been a great pleasure to be invited to see your homes and meet you all.'

Afterwards she commented, 'Few services are more important than sheltered housing. In a borough like this, with such a large elderly population, we need to be very active in this type of project.'

'The tenants here have full independence. They have their own front door and they can be completely at home in their own rooms. But if they need support it is close at hand. Many have meals-on-wheels delivered to the scheme and some have home helps. And most important of all there is the warden scheme so that even if the warden is off duty or away a mobile warden calls in every day.'

'But what impresses me most of all is the way the residents have created a community for themselves with caring friendship all around them.'

Later the Mayor visited Prospect Place, East Finchley, opened in 1983, Drummond House, East Finchley and Sarnes Court, New Southgate, and during her year of office she hopes to visit other schemes.



Flowers for the Mayor — Miss Florance Handscomb and Mr Willi Mura welcome Cllr Barbara Langstone to St John's Close.



The Mayor helps Mr Frederick Whitmill, of Wimbush, fold blankets in the laundry room.

# Housing

## Homes to appreciate

Buying a home is probably the most important purchase that the majority of people ever make and McLean Homes are very conscious

of this fact. As builders of repute throughout the Northern Home Counties much of their success is due to the thought and care that is

put into providing people with attractive, well designed homes, set in pleasant locations. For example, whenever McLean clear a site ready for building, as many existing trees, shrubs and hedgerows as possible are left untouched, front gardens are turfed and all homes are traditionally built to a very high specification. As much thought goes into the planning and design of a one bedroom 'starter' home as it does to a luxurious detached property — after all, both are equally important to the people that buy them.

The McLean development at Borehamwood is an example of this care and thoughtful planning. Aptly named 'The Woodlands' these attractive homes in Studio Way, Borehamwood are set in pleasant wooded surroundings, conveniently placed for shops, schools, leisure and sporting amenities and excellent road and rail links.

The one, two and three bedroom homes are all traditionally built in a variety of pleasing styles thus catering for the needs of the first time buyer and families alike. As always, however, when considering buying a brand new house it is sometimes difficult to imagine the finished result but McLean go to great pains to make sure you can appreciate how our new home will look by providing not one, but *four* fully furnished showhomes in a variety of house styles. Full of exciting decor ideas, the showhomes are open every week from Thursday-Sunday, 11am-6pm and on Mondays 1pm-6pm. You will be able to judge for yourself the high quality of these homes and delight at the well fitted kitchens and heat saving features such as Supawarm cavity insulation. Mortgages are readily available (subject to status) and McLean also have a special Build-up Deposit Scheme aimed at helping first time buyers save for their deposit. A home can be reserved for £200 and the rest of the deposit can be built up over a planned period with the price guaranteed. Karen Burns, our sales representative, will be pleased to give you full details concerning this, and any other query you may have regarding 'The Woodlands', telephone 01-207 1791.

McLean are also building in a number of other locations including Hoddesdon, Sawbridgeworth, Hitchin, Royston, Ware in Hertfordshire and North Weald and Roydon in Essex. Future developments include Welwyn Garden, Chingford, Luton, Ware and Cherry Hinton, Cambridge. For details of any of these developments please telephone McLean Homes Hertford 552671.

# MOVE UP TO A McLean HOME



**FOUR**  
fabulous  
show homes  
open this  
weekend

**2 & 3 bedroom homes  
Prices from £45,750**

**BOREHAMWOOD**

# WOODLANDS

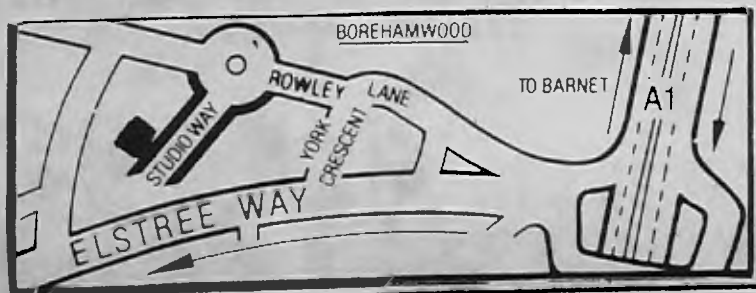
Thinking of moving? Then a visit to 'The Woodlands' is a must. Situated in the Hertfordshire town of Borehamwood with its full range of amenities — shops, transport, schools and leisure pursuits all close at hand and within easy reach of attractive countryside, the two and three bedroom homes set in wooded

surroundings are all finished to a high standard including attractive fitted kitchens and well planned accommodation throughout and make an ideal home for the family. One bedroom homes also available from £34 500.

Sales Reception open Thurs-Sun 11am-6pm  
Monday 1pm-6pm  
Tel: 01-207-1791

ALL MCLEAN HOMES ARE TRADITIONALLY BUILT!

**McLean**  
Creative Builders  
Bell Lane, Hertford, Hertfordshire  
Tel: Hertford 552671.  
Member of the Housing Division of Tarmac.



ADVERTISING FEATURE

# Social Services

## Opening up new horizons

COMPUTERS have opened up new horizons for physically handicapped people at Flightways Day Centre on the Grahame Park Estate.

Since last year they have been taking part in a project which gears the machines towards their specific needs and uses, with the help of 10 hours' instruction each week from an occupational therapist.

Now the project is being upgraded with a proposal to give the therapist, Mrs Jenny Devos, more hours for instruction.

Barnet Council Social Services Committee recommended that the 27-hour-a-week part-time post be established to give members of the centre more tuition on computers.

They have three at Flightways, two BBCs and an Apple. Two were bought with part of a donation of more than £6,000 from the King's Fund in 1984, and the benefits have been tremendous.

Apart from the obvious one of



A computer session at the centre

Photo by John Holt

providing an opportunity for training in office work using new technology, there have been other rewards.

Members with speech impairments now have a further means of communication, slow learners can take part in remedial education schemes and those suffering from diseases which weaken the muscles are able, with the help of adapted switches, to take part in community projects and leisure

activities.

There are programmes for those who have had head injuries or a stroke and programmes to promote an awareness of how to help the blind and deaf. The whole project serves as a model of how handicapped people can benefit from modern technology.

All the disabled members involved have become aware of the immense scope of independence available to them through the in-

telligent and imaginative use of computers.

The creation of the new post would be an attempt to make the most of the generosity of the King's Fund and the enthusiasm of the people at the centre.

And there would be the additional bonus that once the initial teaching work on computers was finished, the therapist would still be available to help in other ways at Flightways.

# OUR CHILDREN NEED YOUR CARE

Barnet Social Services need more people who can look after children for short periods when they cannot be with their own families. We are having an informal meeting for interested people to meet some of our foster parents and social workers to find out what fostering other peoples kids is all about and how to become a foster parent. We would also like to meet people who might be interested in acting as relief parents to children with handicaps.

The meeting will be on

**Monday, 23rd September,**

at 8pm at Meadowside Day Centre, 58 Holden Road, Woodside Park, N12.

Please contact **Barbara Powell at Barnet Social Services, 1331 High Road, N20.**

**Telephone 446 1488** if you can join us that evening or for more information.

We also need **TEENCARERS** — people who really like teenagers and can respond to the challenge of caring for an older adolescent — 14 plus. Here the emphasis is on helping young people work on their problems and acquire some of the skills necessary for independent living. There are concrete objectives set for each teenager, realistic time limits, regular assessment on progress, special rates of payment and extra group support from other Teencarers. If you are interested, wish to talk this over or maybe come to a support group of other Teencarers and hear how the job is done — telephone

**Catherine Bunch on 449 5511 or write to her at Barnet Social Services, 42 Lytton Road, New Barnet.**

LONDON BOROUGH  
**barnet**

Only the prices show someone has already owned them.



All the superb vehicles listed have been previously owned.

But you wouldn't know it to look at them. And you wouldn't think so to drive in them. Come and see why. Right away.

Contact Nick Haw or Gary West  
Tel: 205 4031

**CAR OF THE MONTH**

1985 JAGUAR XJS CABRO-LET 3.6, manual. Antelope with buck skin, 16,000 miles only. This is a fantastic opportunity to own the latest model, must be seen ..... POA

1985 (B) JAGUAR SOV 4.2. Finished in claret with doeskin, 3,500 miles only .....£17,995

1983 (A) JAGUAR 4.2. 1 owner from new. Finished in cranberry with doeskin. FSH. Immac. maintained .....£12,495

1984 (A) JAGUAR XJS HE. 17,000 miles. 2 owners. Finished in cranberry red with doeskin. Immaculate throughout .....£17,995

1982 (X) JAGUAR XJS HE. Seabring red with black. 33,000 miles. A fine example priced at .....£13,750

1985 (B) JAGUAR XJS 3.6 manual. Colbalt blue with doeskin. Only 3,500 miles. Superb car .....£17,995

1985 (B) JAGUAR XJS HE. Silver with mulberry. 1 owner from new. 5,500 miles. FSH. ....£20,995

**JUST ARRIVED**

1984 JAGUAR SOV. 4.2 Silver with Isis blue. 16,000 miles from new. Superb condition throughout. FSH. 1 owner. ....£15,995

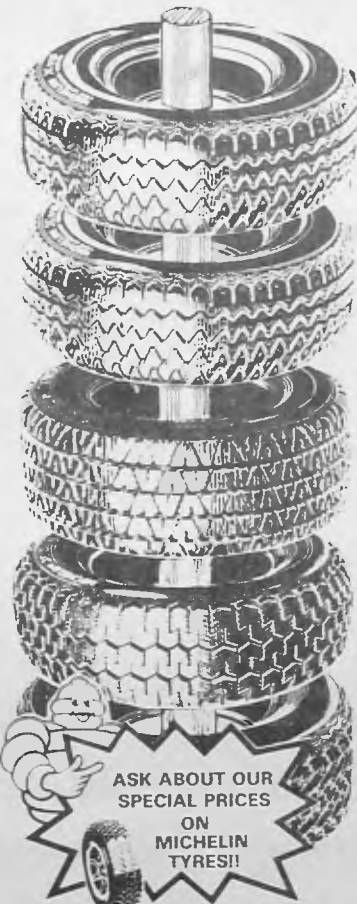


**HENLYS HENDON**  
The Hyde  
01-205 4031



# 5 WAYS TYRES

## SEPTEMBER OFFERS...



- 135 x 12 £13.80
- 145 x 12 £14.90
- 155 x 12 £14.40
- 135 x 13 £12.80
- 145 x 13 £13.80
- 155 x 13 £14.80
- 165 x 13 £15.80
- 165 x 14 £18.40
- 175 x 14 £20.80
- 185 x 14 £22.90

All prices exclude VAT

**WE SPECIALISE IN TYRES FOR YOUR FERRARI, PORSCHE, JAGUAR, ROLLS ROYCE**  
**ALL HIGH PERFORMANCE TYRES**  
**AT DOWN TO EARTH PRICES!**

ASK ABOUT OUR SPECIAL PRICES ON MICHELIN TYRES!!

Switch to **MICHELIN** and insist on no other.

**PERRYS AT EDGWARE**

**LONDON'S LOWEST LEASING DEALS ON VANS**

FOR ONLY **£99** DEPOSIT

DRIVE OFF IN A BRAND NEW FORD ESCORT, TRANSIT, FIESTA OR P100 PICK UP. THREE OR FOUR YEAR CONTRACT. TRUCKS ALSO AVAILABLE BUILT TO YOUR SPECIFICATION

FOR DETAILS CONTACT: **BOB ADAMS, COMMERCIAL SALES**

**51-55 HIGH STREET, EDGWARE**

**01-952 2353**

**GO PERRYS**

The garage you'd recommend to a friend

FIVEWAYS HAVE INSTALLED THE VERY FIRST OF ITS KIND IN BRITAIN:

## A BEAR TELEMATIC ALIGNMENT MACHINE

CAPABLE OF PRECISE MEASUREMENTS ON STEERING AND WHEEL ALIGNMENT — TWO AND FOUR WHEELS IF REQUIRED

NOW STOCKING • BRAKE PADS DISC PADS • SHOCK ABSORBERS STEERING JOINTS, ETC ETC

DRIVE SAFE, CHECK OUT YOUR CAR TODAY AT FIVEWAYS

YOU WON'T BUY QUALITY TYRES CHEAPER



1 PAGE STREET, MILL HILL, NW7  
Tel: 203 5381

# Views of the past



**ABOVE:** children coming home through Church Fields, Finchley, across the footbridge over Dollis Brook in 1904.



**LEFT:** in 1904 horses were means of getting about and the ford across Dollis Brook, Finchley, near Dollis Road, was a link through to Mill Hill. The viaduct is still a familiar landmark.

**RIGHT:** Dollis Brook would cause flooding in Dollis Road but was still fordable by carriages and horse wagons as seen in this 1910 photograph.



**BELOW:** charming scene on the footbridge over Dollis Brook, Finchley, in 1912.



## DOLLIS BROOK

**THESE** are four of a set of five postcards featuring Dollis Brook in the days before the First World War. They are on sale at all borough libraries price 40p a set or they can be purchased singly for 8p each at Church Farm House Museum, Greyhound Hill, Hendon.

If you have any old photographs featuring the borough and suitable for reproduction in postcard size then the Special Services section of the Libraries Department would like you to contact them on 202 5625.

# PRIME RESIDENTIAL SITE FINCHLEY N3

(Outline Planning Consent)  
Approximately 0.9 acres

**FREEHOLD  
For Sale By Binding Tender**

For further details please contact:

London Borough of Barnet  
Directorate of Technical Services  
Development Division  
Land Agency Group  
Gateway House  
332 Regents Park Road  
Finchley N3 2LP  
Tel: 01-349 9121 Ext. 503/513



DO YOU HAVE

- ★ GOOD HEALTH
- ★ A SPARE ROOM ON THE GROUND FLOOR
- ★ A VERY LARGE HEART?

IF YOU HAVE ALL THREE,  
COULD YOU CARE FOR

**DEBBIE?**

She is 16 years old, and is a responsive lovable person. She was born with Down's Syndrome, and recently suffered a stroke which has rendered her wheelchair bound — at least temporarily.

She urgently needs a family to help and encourage her until she leaves her special school.

Please contact:

Mavis Brown, Barnet Social Services,  
South East Team, 16 High Road, N2.  
Tel: 01-444 4411.



## BARNET SOCIAL SERVICES

### NAPSURY HOSPITAL Qualified Social Worker

Salary: £9,636 to £11,295 per annum inclusive

Napsbury Hospital Social Work Service is located at two sites, at Napsbury Hospital and Barnet General Hospital. This internationally renowned service continues to develop and meet the challenge of the 1983 Mental Health Act.

Both teams operate a 24-hour multi-disciplinary crisis intervention and community psychiatric service and this particular post is based at Napsbury.

In this unique setting, we can help you combine and develop:

- A preventative multi-disciplinary approach to crisis intervention. and there is ample opportunity and encouragement to develop specialist skills.
- Skills of an approved social worker operating in the community. Further information or to arrange informal interview telephone:
- Regular use of a wide range of treatment skills including intensive individual marital and family therapies. **Margaret Matthews or Tony Riley, Bowmans Green (0727) 23333.**
- A generic unified service to the referred client and family incorporating group and community approaches to prevention. Additional pay at national rates for Stand-by duty (rota basis).  
Essential User Car Allowance.  
Separation allowance and 100 per cent removal expenses in approved cases.

This post is exciting, rewarding but often demanding. You will be an enthusiastic, energetic qualified social worker who is ready to specialise, enjoy new ways of working, with commitment to a family/community approach to mental disorders.

Formal and informal support is excellent

Applications from employees of the GLC and MCC's with relevant experience will be welcome.

Closing date 23rd September, 1985.

Application forms, quoting reference 30, from address No. 4.

1 Personnel Officer, Room 35 Ravensfield House, The Burroughs  
Hendon, London NW4 4BE. Tel: 01-202 8282 Ext. 481  
(01-202 6602 24 hr answering service)

4 Director of Social Services  
Ivy House, 1331 High Road, Whetstone  
London N20 9HZ. Tel: 01-446 6857 (24 hr answering service)

2 Directorate of Technical Services  
Gateway House, 322 Regents Park Road  
Finchley, London N3 2LP. Tel: 01-349 9121

5 Borough Librarian, Ravensfield House,  
The Burroughs, Hendon, London NW4 4BE  
Tel: 01-202 5625 Ext. 48

3 Director of Educational Services  
Town Hall, Friern Barnet  
London N11. Tel: 01-368 1255

6 Geoff Fish, Chief Environmental Health Officer  
Grove Lodge, 287 Regents Park Road  
Finchley, London N3 3JY. Tel: 01-349 9121 Ext. 151

AN AUTHORITY  
COMMITTED TO  
EQUAL OPPORTUNITIES



# BILLBOARD

CALL  
**IAN FLYNN**  
for  
**UPHOLSTERY**

(10 years experience)

All types of surfaces covered

- \* Domestic furniture
- \* Restaurant
- \* Pubs
- \* Car seats

*You name it I will cover it!*

For FREE ESTIMATES phone

**906 2441**

**HYPNOTHERAPY**  
for Lack of Confidence,  
Overeating, Smoking, Fears &  
Phobias etc.,

**REGRESSIONS**  
for Repressed Emotions.

**MAGNETOTHERAPY**  
for specific ailments.

Also  
**RESIDENTIAL TUITION  
IN SELF-HYPNOSIS**

Qualified Consultant:

**Mrs Vijaya Prasad**  
DMS, CHP, AMAHP  
The Chatsworth Clinic  
Tel: 01-440 4217/8 (Daytime)  
and 01-361 4525 (Evenings)

**VIDEO YOUR  
WEDDING**

Capture your  
special occasion  
forever. Filmed  
by professionals.

Competitive  
rates. VHS or  
Beta copies.

*Call in and  
see our  
demonstra-  
tion at our  
studio.*



**VIDEO TAKE 1**

46 Watling Avenue  
Burnt Oak 952 8182

**Improve your  
tennis!**



Private  
tuition  
from an  
experienced  
coach

**Peter Neri** Tel: 346 2113

**YOUR CATERING  
PROBLEMS  
ARE OVER . . .**

Experienced Temporary Staff  
available for — Waitressing  
Bars — Cooks — General Asst  
Make that special occasion  
run smoothly. No worries!  
Contact Rose Matthews on  
906 3661 — 906 0911 or  
207 3199 (24 hrs)

.....

If you require a temping  
position and have experience  
make an appointment today!

**HEATHFIELD**



- 6 squash Courts
- 3 Tennis Courts
- Sports Shop
- Bar
- Sunroom

- Tennis & Squash Coaching
- Beginners welcome
- Annual & Temporary Membership 1, 3, 6, 12 months

Pay a full year's sub  
— 3 months FREE

**THE HEATHFIELD CLUB**  
BRONDESBURY PARK, NW2  
**459 3456**

**'G' FORCE  
CONTACT**

**TREE FORCE**

HEDGES reduced/removed, fruit  
trees pruned (book now),  
roses pruned, major tree work,  
root removal.

OVERGROWN GARDENS cleared,  
outbuildings/sheds taken down,  
house rubbish, furniture/carpets,  
etc, removed.

**VILLAGE NURSERIES**

**01 959 3025**

Very special prices for OAPs and  
disabled people

**ALIEN  
SOFTWARE**



PRICES OUT OF  
THIS WORLD

**TOP BRANDED  
COMPUTER GAMES**

From **99p** Bankrupt  
only stock

For a full list, send SAE to:

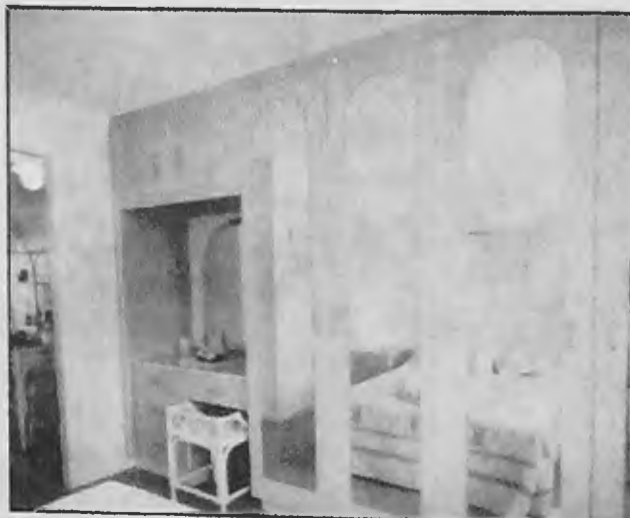
**Alien Software (FP1)**  
46 Watling Avenue  
Edgware, Middx HA8 0LT

## Knightswood — so much to offer

Barratt, Britain's largest housebuilder, has just opened a major housing scheme in Edgware in conjunction with the London Borough of Barnet.

Initially a wide variety of flats and houses will be available only to those in rented council accommodation, or on the housing waiting list. The designs vary from studios, single and two bedroom apartments, to one, two and three bedroom houses — so there should be something to suit every taste and pocket.

The architect-designed development — traditionally constructed — offers all that is best in today's modern living. Superb fitted kitchens, gas central heating with radiators in the houses, and Medallion Award heating in the flats. Bathrooms are beautifully equipped and include a hand-set shower. For peace of mind, windows have been fitted with security locks. There are



security chains on the doors and the apartments have an entry-phone system.

The grounds and communal areas will be

landscaped and maintained by a professional management company.

For those who would like to reserve their new home now for sometime in the future, Barratt have introduced the Deposit Savings Scheme. For every £100 you save as a deposit towards your new home Barratt will give you £25. Details of this scheme are available from the representative on site.



Knightswood is situated off Springwood Crescent in North Edgware, making access extremely easy for all major routes to and from Central London.

Full details can be obtained from the Housing Department, London Borough of Barnet, 65 Watford Way, Hendon, NW4 3AY. Telephone (01) 202 8282 or from the 'Knightswood' furnished show complex open every day 11am to 6pm. (Closed Wednesday.) Telephone (01) 958 8133.

# KNIGHTS



# WOOD

off Springwood Crescent, Edgware

An exceptional development  
of studios, 1 & 2 bedroom apartments  
and 1, 2 & 3 bedroom houses.

---

Developed by Barratt Luton Limited  
in conjunction with the London Borough  
of Barnet.

---

Preference will be given to tenants in  
rented council accommodation and on the  
housing waiting list.

Prices on application.

---



Full details are available from the Housing Dept.,  
London Borough of Barnet, 65, Watford Way,  
Hendon, London NW4 3AY.  
Telephone: 01-202 8282

or from Barratt Luton Limited, P.O. Box 5,  
Barratt House, 668 Hitchin Road, Luton,  
Beds LU2 7XJ. Telephone: Luton (0582) 422771



**Barratt**



London Borough  
**Barnet**

REMEMBER . . . YOU'VE SEEN IT FIRST AT . . .

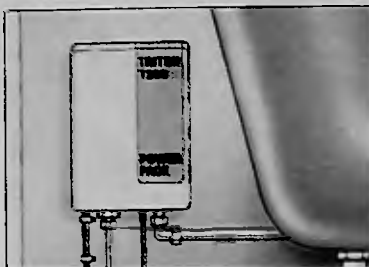
# GODWINS PLUMBING SUPPLIES



## THE NEW TRITON T200RE

### The 'Power Pack'

The Triton T200RE 'power pack' can be installed out of sight, in the loft, in an adjacent wardrobe, under the bath or in an airing cupboard. In fact anywhere within 3.5 metres (11ft) of the control panel.



Under the bath . . .

TRITON T200E comes in: ALL WHITE, GOLD and SILVER.

Prices from £110.00 + VAT. Available from our shops in September.

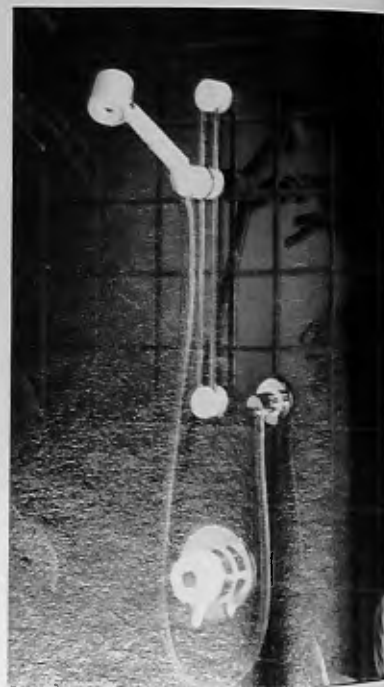
### The Ornate Swan

Finished in a choice of gold or chrome.



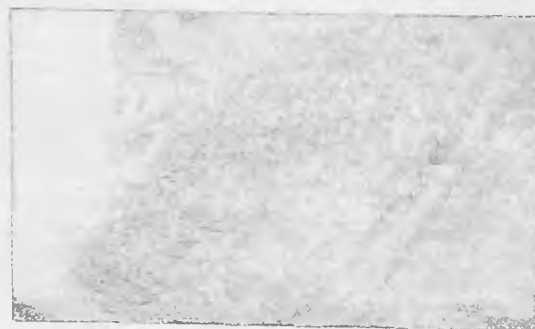
### The Classical Regency

Choice of gold, black, white, green, blue, brown and red or gold or chrome plate



### HIGH PERFORMANCE SHOWER BY AQUALISA

Prices from £125 + VAT. Suitable for installation on Combination Boilers.

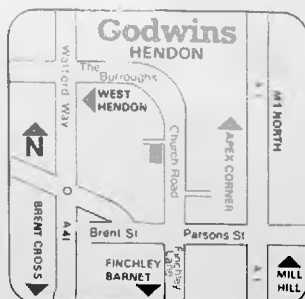


### DEEP CAST IRON BATHS ARE BACK AT GODWINS . . .

From France and Germany. Choice of colours.



4/5 APEX PARADE, SELVAGE LANE  
APEX CORNER, MILL HILL NW7  
TELEPHONE: 01-959 3344. Trade Centre.



Main Bathroom Showroom:  
49 CHURCH ROAD, HENDON NW4  
Telephone: 01-203 1095



Discount Showroom:  
176 HIGH ROAD, FINCHLEY N2  
Telephone: 01-444 2311