

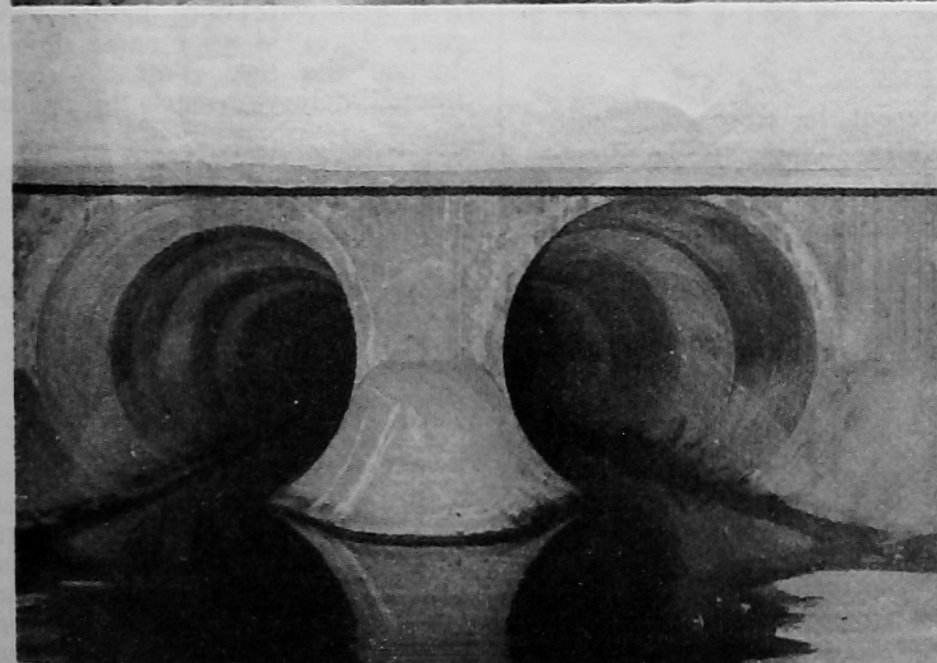


NOV/DEC '70

BARNET

LONDON BOROUGH COUNCIL

CIVIC NEWS



The two pictures reproduced above may have you guessing. No, they are not secret underground tunnels, but the massive drainage systems built in readiness for the new Grahame Park Development. See also pages 4 and 5.

GRAHAME PARK BEGINS TO TAKE SHAPE

SITE WORKS on the Grahame Park Development, a joint undertaking between Barnet London Borough Council and the Greater London Council are now beginning to take shape.

This new development, although not a new town, will be a pleasant part of the London Borough with through traffic routed around the residential part of the development.

The central development will comprise local authority flats and maisonettes up to eight storeys. A shopping precinct of some two dozen shops and a number of public buildings will form the site centre.

To the east will be two secondary comprehensive schools and to the west two primary schools and a generous public open space.

The Ministry of Defence have retained an area of 35 acres adjoining the Grahame Park Development for housing purposes and in all the two sites are expected to accommodate a total of 10,000 people.

Continued on page 8

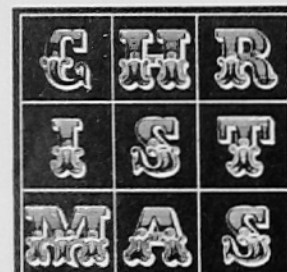
Libraries win publicity awards

FOR THE second successive year Barnet London Borough Council's Library Services Department has gained awards in a national publicity competition organised by the monthly journal "Library World."

In the class on general and special publicity the department took second place for its design and production of a booklet entitled "Christmas in the Children's Libraries". The booklet was issued to give parents and children information on what was going on in Barnet's libraries during the Christmas holidays last year and the judges remarked that they were particularly impressed with the booklet.

In a class on booklists and other bibliographical material the Borough was placed third for its design of a booklet "Reading About Chess". In this class the judges said that the lists showed what could be done by imaginative use of line illustrations, the right type face—plus a flair for layout, and the chess booklet was singled out

as having 'an outstanding cover' and referred to the text as being 'immaculately printed'.

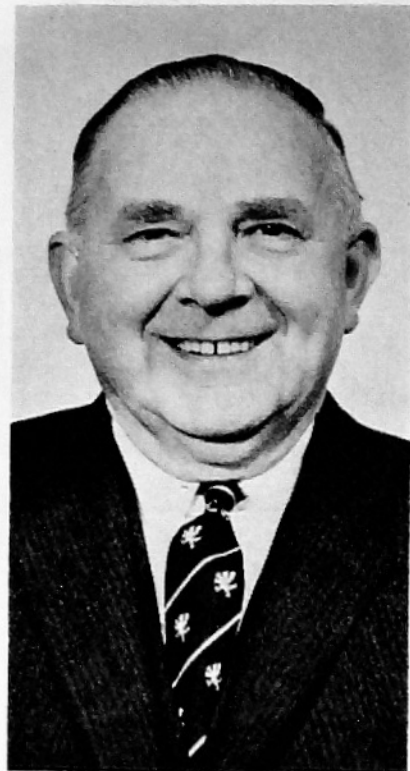


In the Children's Libraries

London Borough of Barnet Library Services



The Mayor and Mayoress with Councillor Mrs. C. M. Thubrun (second left) and Miss Barbara Guss (left) during a visit they made to the Citizens' Advice Bureau at West Hendon.



COUNCILLOR ANDREW PARES was elected to the Council in 1967 for the East Barnet Ward. In the following year he was appointed Vice-Chairman of the Housing Committee, and serves on the Buildings & Town Planning Committee, acting as Vice-Chairman of the Northern Sub-Committee. He is also a member of the Allotments and the Grahame Park Committees. Education is one of his main interests, and he is Chairman of the joint board of governors of East Barnet Grammar and John Hampden Schools, as well as being a manager of the primary schools in his ward.

An active political worker for many years he is a Vice-Chairman of the Barnet Divisional Conservative Association, and President of the Oak Hill Y.C.s. He met his wife in the Young Conservative movement just before the War, when living in Halifax, and they have two children, both of whom have been keen members of Barnet Vale Y.C.s.

This year he is heading a special fund-raising effort for the Church of England Children's Society (formerly Waifs & Strays), the Barnet Appeal for Children 1970, and he is acting as Publicity Officer for the Oak Hill Appeal for the Barnet M.S. Society's Building Fund.

He resides on the edge of Hadley Woods, and is a Trustee of Monken Hadley Common. He was a founder member of Barnet Toastmasters Club, and later President.

He lived in the North of England and Scotland before coming to Barnet in 1959. He holds an Honours degree in Economics from Cambridge University. He was a Territorial and served in the Gunners through the War, rising to the rank of Major, and was awarded the M.B.E.

He is an executive in the Retail Division of the international textile group, Coats Patons Limited of Glasgow.

COUNCILLOR G. F. ALLEN was elected to the Council in May, 1968, being the first Conservative representative for the Colindale Ward for many years.

He is at present serving on the following Committees: — Allotments, Establishment (including the Whitley Works Joint Sub-Committee), Grahame Park and Burnt Oak Developments, and Public Works.

Being a keen motorist actively interested in road safety he also serves on the London Borough of Barnet Western Area Road Safety Committee. He is a member of the Governing Bodies of the Cophall County Grammar and Woodcroft Secondary Schools, and of Moat Mount Bilateral Secondary School, Vice-Chairman of the Managers of Group 7 Primary Schools, comprising Algernon Road Junior Mixed and Infants, Colindale Junior Mixed Infants, The Hyde Junior Mixed and Infants and Sunnyfields Infants Schools. He is also a Manager of St. Paul's (Church of England) Primary School, The Ridgeway, Mill Hill.

Councillor Allen was born and educated in Taunton, and being keenly interested in cricket and rugby he still retains his membership of the Somerset County Cricket Club and Rugby Football Union.

He has been a resident of Mill Hill for 26 years and retired in 1966 after more than 40 years' service in the Lord Chancellor's Department, latterly as Auditor of the accounts of the County Courts and Magistrates' Courts in North London and the counties of Herts, Essex, Bedford and Cambridge.

Since his retirement he has been able to engage in political activities and has found his council work both stimulating and interesting. It has been specially rewarding to be able to help residents in the borough in resolving their various problems.

Cllr. Allen is enthusiastically supported by his wife in his public

Continued in next column

COUNCILLOR F. J. COLLISON was first elected to the Council as representative for Burnt Oak Ward at a bye-election in September 1966, Councillor F. J. Collisson has served on Highways, Estates, Allotments and West Hendon Development Committees.

At present, he serves on Health and Welfare and Public Works Committees and Home Safety and Western Area Road Safety Sub-Committees. He is also the Council's representative on the London Borough of Barnet Old People's Welfare Committee and Trustees of Lawrence Campe's Almshouses.

He is married with 3 children who are also married, and has lived in Burnt Oak for 24-years.

He is secretary of Burnt Oak Labour Party and Executive Committee member of Hendon North Constituency Party.

He describes people as his outside interests.

duties and they have two children, both married; a daughter whose husband is a Principal in the Ministry of Technology, and a son, a Solicitor, who is a Senior Legal Assistant in the Public Trustee Office. The family is able to get together quite often, and the four grandchildren ensure that there's never a dull moment!

Hendon to have show ?

AN OPEN meeting to ascertain public opinion as to whether there should be a Hendon Show is being arranged by Barnet London Borough Council at the Town Hall, Hendon, N.W.4 on Thursday, December 10th, 1970 at 8 p.m.

All organisations within the former Borough of Hendon area which might be interested in taking part in such a show are being invited to attend the meeting together with any individuals who may also be interested.

Members of the public who are interested in supporting a possible Hendon Show are cordially invited to attend the meeting.

IS YOUR NAME ON THE LIST?

MEMBERS of the public are reminded to check that their names are included in the new voters' list on display at Council offices, in Post Offices and libraries.

December 16, 1970 is the last day on which the Electoral Registration Officer can receive claims for inclusion.

If you were born before February 16, 1954 your name should be on the list. You can vote immediately you reach the age of 18.

If you have any doubts you are requested to contact the Electoral Registration Officer.

REVISION OF INCOME LIMITS

IN ORDER to obtain a maximum rebate of rates at the present time, the income of an applicant must not exceed £286 during the relevant six months period for a married couple (i.e. £11 a week) or £234 for a single person (i.e. £9 a week). These limits are increased by £52 (i.e. £2 a week) for each child resident with the applicant.

Within the last year, the Government have authorised increases in the amounts payable for retirement pensions and family allowances. So that, in future, certain applicants shall not suffer a consequent reduction in their rate rebates, the upper limits of income for maximum rebates have been increased to £318.10.0. (i.e. £12.5.0 a week) for a married couple and £260 (i.e. £10 a week) for a single person, increased by £52 (i.e. £2 a week) for each child resident with the applicant.

The increased limits will apply to applications for rate rebates in respect of the rates payable for the 1st half-year commencing the 1st October, 1970, and these applications should be sent to the Borough Treasurer as soon as possible.

CHAMBER ORCHESTRA GROWS FROM STRENGTH TO STRENGTH

AS IT ENTERS its fourth season, the Chamber Orchestra sits in a firm position in the Borough's musical scene. It provides a two way service, presenting tasteful works of both classical and modern composers to the public and giving amateur musicians the opportunity to partake in these concerts and to improve their technique.

Based on the Hendon Music Centre, the evening institute of the Hendon College of Technology, the Orchestra is also an established body in its own right, having a properly constituted committee, and being a member of the Barnet Arts Council and the National Federation of Music Societies.

The driving force behind (or, rather, in front of) the orchestra is its founder and conductor Mr. John Bate, M.A., B.Mus., F.R.C.O., G.T.C.L., who is Professor of Aural Training and Harmony at Trinity College of Music, and a past music director of the Royal Naval College, Dartmouth. The Orchestra is proud to have the well known 'cellist Mr. William Pleeth as its President.

★ ★

Aiming at three concerts per session, last season four were given, one of which was at Richmond with the combined voices of three choirs of Richmond and Putney, and before an audience of nearly 350.

With an initial membership of six, there is now a regular playing team of nearly thirty. The growth rate has been so satisfactory that its name 'Chamber' is now a misnomer in that works of a larger nature than chamber music are undertaken, and a possible re-naming of the orchestra was discussed at the recent annual general meeting.

★ ★

The only losses in membership have been due to job changing, and there is a large number of married people and schoolteachers in the orchestra.

There is a pleasant atmosphere of co-operation prevailing, and this is shown by the very active committee, by the attendance and the vastly improved playing, which even with the best orchestras only comes with experience and by regular playing together under expert coaching. A further example of the spirit among the members is that only two members were absent from the recent annual general meeting.

Many of our members take part in the regular quartets and wind ensembles and theory and instrumental classes of the Hendon Music Centre, all of which are at no extra fee.

A number of players have joined through the instrumental classes after a very short period of tuition. These people were very modest and honest about their ability but with patience and dili-

Continued on page 8

LECTURE SEASON BEGINS

THE BOROUGH COUNCIL'S Libraries & Arts Committee has arranged an interesting and varied programme of lectures at the Hendon, Burnt Oak, North Finchley and East Finchley Libraries during the coming winter months.

The lectures, which start at 8.15 p.m. with a free admission, opened on Wednesday, October 21, at Burnt Oak Library with a talk by Lady Wheeler entitled 'North African Journey'.

Addresses at which the lectures are being held and details of the nearest Underground Station and bus services are as follows:

Hendon Library,
The Burroughs,
London,
NW4 4BQ.
(01-202 5625)

Nearest Underground Station:
Hendon Central. Buses: 83, 143.

Burnt Oak Library,
Watling Avenue,
Edgware, Middlesex,
HA8 0UB.
(01-959 3112)

Nearest Underground Station:
Burnt Oak. Buses: 52, 140, 251,
292.

North Finchley Library,
Ravensdale Avenue,
London,
N12 9HP.
(01-445 4081)

Continued on page 8

LIBRARY LECTURES

Wednesday, November 25, at Burnt Oak Library

LOOKING FOR MY GREEK ISLAND by GEORGE B. MAIR

Chairman: Alderman A. Paul, O.B.E., J.P.

During several long excursions in the Aegean, Dr. Mair and his wife visited some of the most attractive and lesser known islands.

Books to read:

Joseph Braddock	Some Greek islands: the shores of light	1967
Peter Sheldon	Peloponnese and Greek islands	1968
Ernie Bradford	Companion guide to the Greek islands	1970

Thursday, November 26, at Hendon Library.

THE CORONATION OF THE SHAH OF PERSIA by JAMES HALL

Chairman: Councillor C. F. Harris

A frequent and popular lecturer at the Borough Libraries, James Hall was an official guest at the coronation ceremony of the Shah of Persia, and brings his description to life with some excellent colour slides.

Books to read:

Reza Shah Pahlavi, Shah of Iran	Mission for my country	1961
Richard Frye	Persia	1968
Roger Wood	Persia	1969

Thursday, December 10, at North Finchley Library

CHILDREN'S BOOKS by EDWARD BLISHEN

This talk is arranged to coincide with the exhibition CHILDREN'S BOOKS FOR CHRISTMAS and NURSERY ART EXHIBITION at North Finchley Library.

Edward Blishen, who lives in Hadley Wood, has taught for several years, reviewed and edited children's books, and has frequently broadcast and lectured on a wide range of educational topics. He wrote about his teaching experiences in his books "Roaring Boys" and "This Right Soft Lot".

1971

Thursday, January 28, at Hendon Library

THE WESTERN ISLES by ELISABETH PARRY

Chairman: Councillor Mrs. N. I. Cullinane

In view of the overwhelming popularity of this lecture last season it has been decided to repeat it. Elisabeth Parry talks about Skye, which provides some fine mountain walking and rock-climbing, and Rhum, where she stayed one spring.

Books to read:

Alasdair Macgregor	The Western Isles	1952
Samuel Johnson	Journey to the Western islands of Scotland	1775
William Simpson	Portrait of Skye and the Outer Hebrides	1967
William Murray	Hebrides	1966

Wednesday, February 3, at East Finchley Library

SOUTH TO MOROCCO by ANTONY BROWN

Chairman: Councillor C. W. Wildes

Antony Brown describes a trip he made to Morocco in which he travelled from Gibraltar to the port of Tangier along the Rif Coast and then on to Marrakesh.

Books to read:

Robin Bryans	Morocco—land of the farthest West	1965
Nevill Barbour	Morocco	1965
Robert Bell	By road to Tangier and Marrakesh	1960
Nina Epton	Saints and sorcerers: a Moroccan journey	1958

Thursday, February 4, at Hendon Library

ON THE DOWN BEAT by STANFORD ROBINSON

Chairman: Councillor A. C. D. Miller, B.Sc.

This is a continuation of Stanford Robinson's talk, "Is a conductor really necessary?" in which he re-conducts his own recordings to show the role of the conductor in opera and ballet.

Books to read:

Emil Kahn	Conducting	1965
Sir Adrian Boult	Thoughts on conducting	1965
Sir Henry Wood	About conducting	1945

Wednesday, February 10, at North Finchley Library

RECENT DISCOVERIES IN ROMAN AND MEDIAEVAL LONDON by PETER MARSDEN

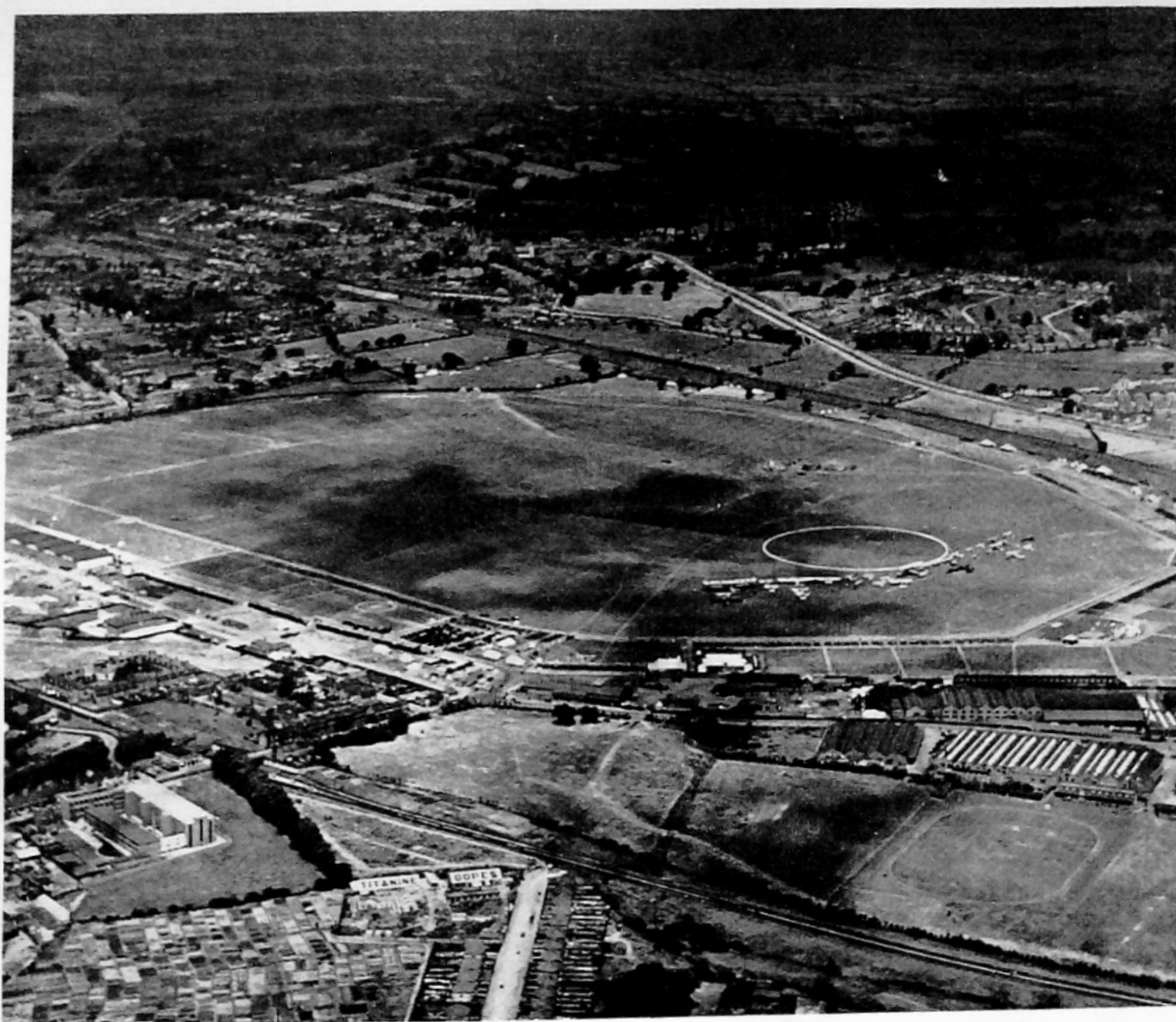
Chairman: Councillor J. C. Tiplady

One of the field officers at the Guildhall Museum, Peter Marsden has the responsibility for carrying out emergency and rescue excavations on site in the City of London.

Books to read:

William Grimes	Excavation of Roman and Mediaeval London	1968
Ralph Merrifield	Roman London	1969
Alan Sorrell	Roman London	1969

FROM THIS MAZE OF ACTIVITY WILL RISE



**40 YEARS
AGO ...**

Here is a birds-eye view of the Hendon Aerodrome taken 40 years ago by Aerofilms at the time when the aerodrome was fully operational.

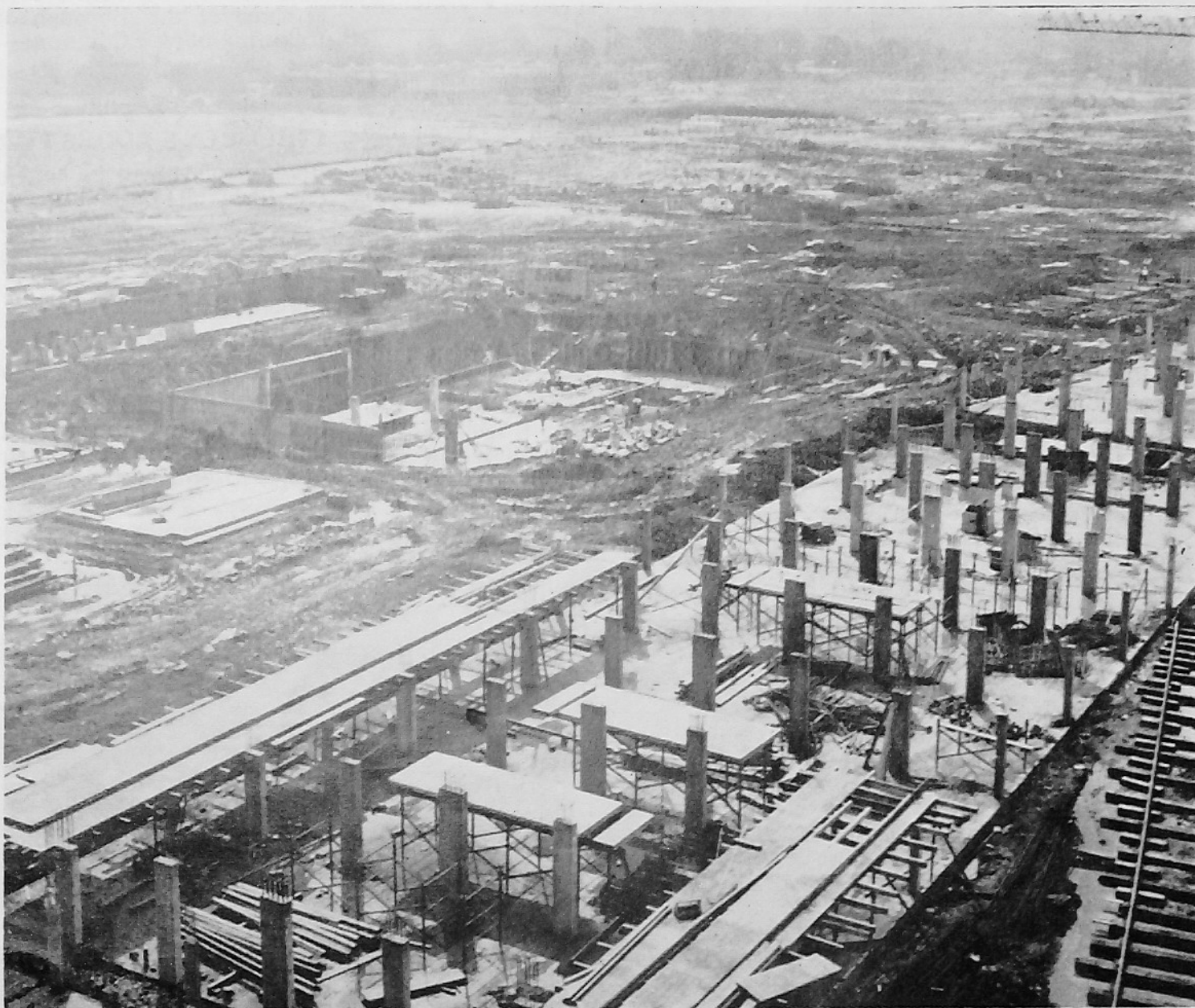


The structure of the Royal Air Force Museum taking shape on the former Hendon Aerodrome.

A NEW COMMUNITY

*Joint scheme
by G.L.C. and
Barnet Council*

In the foreground are columns for the five-storey residential buildings, with shops underneath, and showing the Central Boiler House in the rear.



*10,000 will be
housed at
Grahame Park*

Site for Old People's Home

EXHIBITIONS

November 28—January 3 at Church Farm House Museum

CHRISTMAS CARDS—OLD AND NEW

This interesting exhibition includes a fascinating collection of about 150 Christmas and New Year cards dating from 1870 to 1880. In contrast are those of this century, ranging from home-made cards to the glossy productions of recent years.

November 7—November 28

December 2—December 19

at North Finchley Library

at East Finchley Library

EXHIBITION OF PAINTINGS BY WINIFRED DOBNEY

Winifred Dobney, who is a member of the Barnet Guild of Artists and the Finchley Art Society, was trained at Wakefield Technical and Art College and Leeds College of Art. She has exhibited her work in numerous exhibitions, including those held by the Royal Society of British Artists, Royal Institute of Painters in Water-Colours, Women's International Art Club, United Society of Artists, and the Society of Marine Artists.

December 5—January 2

NURSERY ART EXHIBITION

This exhibition, which consists of a selection of paintings by children at some of the Borough of Barnet play groups, will coincide with the following book exhibition:—

at North Finchley Library

December 5—December 12

CHILDREN'S BOOKS FOR CHRISTMAS

Book displays will be held by the Library Service and local booksellers. A talk for adults on children's books will be given on Thursday, December 10.

at North Finchley Library

1971

January 9—January 30

February 3—February 20

EXHIBITION OF PAINTINGS BY THE BARNET GUILD OF ARTISTS

The Barnet Guild of Artists, which was re-formed after the war, continues to maintain a high standard by careful membership selection. This exhibition includes the work of some of the local artists who are active members of the Guild.

at North Finchley Library

at East Finchley Library

LAKE VIEW DAY NURSERY

THE DAY Nursery has been designed to accommodate sixty-six children and eleven staff, replacing the sub-standard premises which were demolished to make way for the West Hendon Development Housing.

The building is single storey, traditional brick construction, designed to the scale of the children. Maximum sunlight and cross ventilation is achieved by means of the varying sizes and direction of the pitched roofs. Each playroom has its own separate toilet facilities.

BEWARE OF HAZARDS

THE ELECTRICITY Board have asked the Council to draw the attention of residents to recent tragedies involving the deaths of children trapped inside old appliances, and the importance of making sure that disused appliances, particularly refrigerators, are not left so that they are a hazard.

In cases where new refrigerators are purchased from the Electricity Board they will themselves make arrangements to collect old refrigerators, free of charge.

Where new refrigerators are obtained from other sources than the Electricity Board, residents should contact the Council to take away their old refrigerator.

Residents living in the former Borough of Hendon should ring 01-202 8282 and ask for the Refuse Section and those living in the remainder of the London Borough of Barnet ring 01-449 9181.



HOME SAFETY SAM SAYS :-

HOME SAFETY TIP

ANOTHER CHILD SUFFOCATED !

- ★ Dumping old refrigerators is a danger to children.
- ★ Arrange with your local Council for collection.
- ★ In any case make sure the lock of any unused refrigerator is broken so there is no danger of a child locking himself inside.

TAKE HIS TIP

TWENTY-NINE PERCENT INCREASE IN SCHOOL ROLLS

"THERE WAS an old woman who lived in a shoe . . ." This familiar jingle from the well-known nursery rhyme might aptly describe the situation in Barnet, although happily our teachers and others concerned in the education service are skilled in knowing what to do with the children. The fact is that in 1965 there were 38,276 children attending primary and secondary schools maintained by the Borough; early this year there were 42,867 and in 1975 there will be 50,000. The accompanying graph of actual and projected figures shows how this build-up has occurred.

A general increase in the birth rate in the early and mid 60's, and the raising of the school leaving age are the main reasons for this increase.

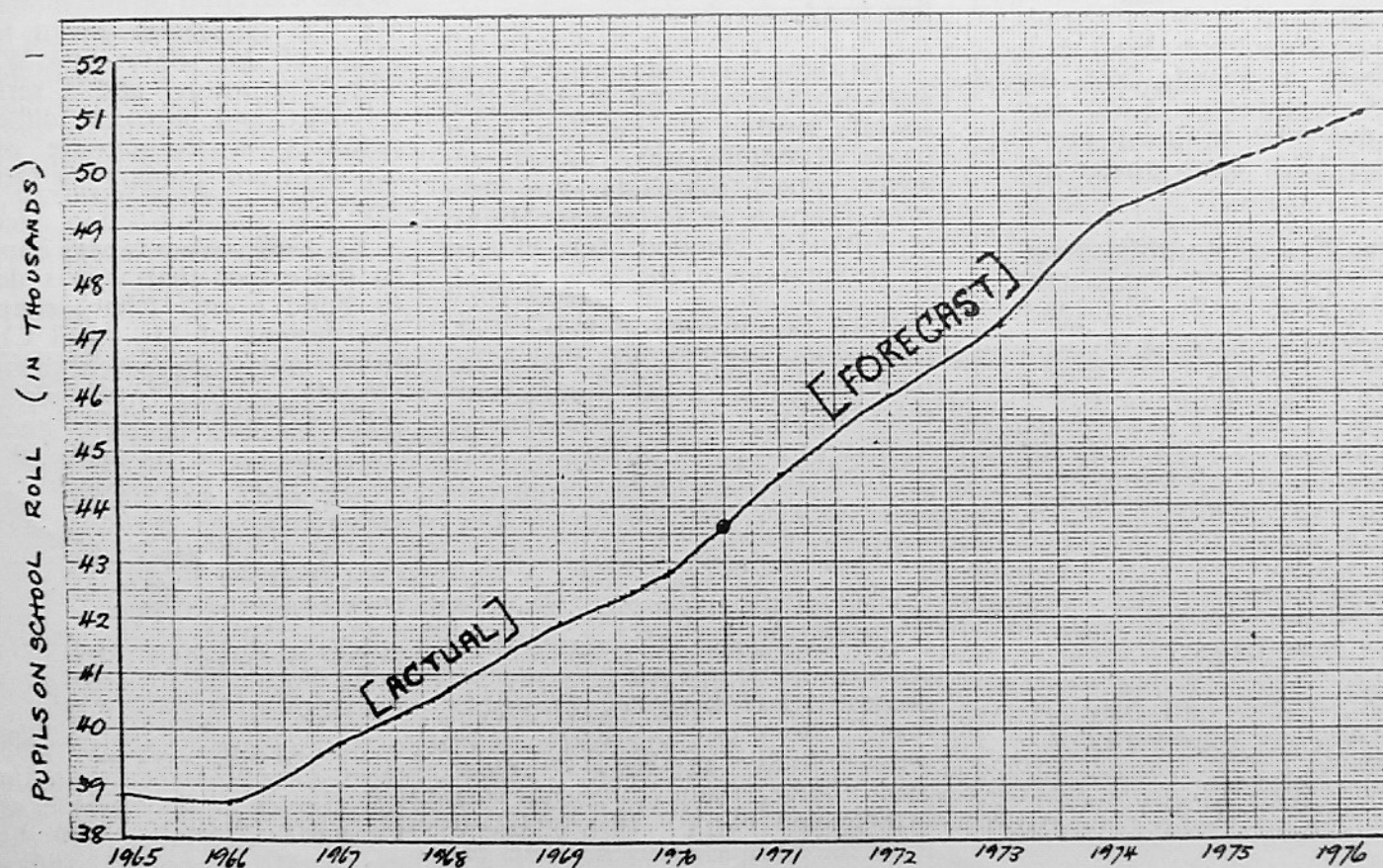
The formerly independent schools, St. Joseph's R.C., Hendon, Sacred Heart R.C., Whetstone, Menorah (Jewish), N.W.11, Rosh Pinah (Jewish), Edgware and Manor House R.C. Convent, Finchley, have also embarked upon extensive rebuilding or re-modelling schemes so as to bring the school buildings up to modern standards in order to become maintained voluntary aided schools. Since 1965 several schools have been enlarged or rebuilt and there have been three entirely new schools—Woodbridge, Barnet Hill and St. Theresa's R.C., all of them for primary aged children. Three more new schools will be needed for the Grahame Park development scheme and the increase in

school roll which will come when these new houses are occupied has been allowed for in the estimated figures for the next five years.

Even if we were not living in a world of continually rising prices, it would be impossible to provide schools, teachers, books and equipment, not to mention some of the ancillary services such as school library facilities, school health, transport and school meals, for 50,000 children, without spending considerably more money than was needed for 38,000 children.

In 1965 Barnet's education bill was £6½m; this year it is £11m. What will it have to be in 1975 with 50,000 children in our schools and with the urgent need to maintain and improve our standards?

Growth in school population with forecast to 1976



COUNCIL SERVICES

THE CLEARANCE of private drains can be undertaken by the Council only in cases of emergency, i.e., when the services of a private builder or plumber are unobtainable without serious delay.

The drain clearing service which is provided by the department of the Borough Engineer and Surveyor is available in appropriate cases on application to Gateway House ('phone 349 9121 ext. 19) during normal working hours, or the Squires Lane Depot ('phone 346 0039) at all times.

The charges for the service are as follows:-

Clearance by rodding during normal working hours	£1.15.0d.
Clearance by rodding outside normal working hours	£3.0.0d.
Clearance by rodding on Saturdays, Sundays and Bank Holidays	£6.0.0d.

LONG SERVING EMPLOYEE

IT IS THE practice of the Barnet London Borough Council to recognise long service and in a recent issue of the Barnet Civic News details of the last occasion when awards were presented to employees who had 35 years' service or over were included.

One of the employees who received an award on this occasion was Mr. Fred Openshaw, Assistant Principal Welfare Officer in the Health and Welfare Department of the Council. Mr. Openshaw in fact completed fifty years' service at the end of May last.

Despite his long service Mr. Openshaw is only 63 years of age, commencing his local government

Continued on page 8



MERRIVALE RESIDENTIAL HOME EDGWARE

THIS BUILDING, opened in February 1970, accommodates 60 elderly people from the nearby Redhill House. The view (left) is taken from the South East and shows the windows of the residents' bedrooms angled for sunlight.

Lounge and dining rooms are provided on each of the 3 floors, served by a hoist from the ground floor kitchen.

Accommodation is also provided for residential staff.



Safe Driving Award Winner

The Chairman of the Barnet Northern Area Road Safety Committee, Councillor J. A. Park, F.C.A., shaking hands with one of the drivers who received a Safe Driving Award at a presentation of awards to Post Office drivers at the Head Post Office, Longmore Avenue, New Barnet, Herts. on Tuesday, 11th August, 1970.

COUNCIL MEETINGS

MEMBERS OF THE public are invited to attend Council Meetings on Tuesday, December 1 and Tuesday, December 22 at the Town Hall, Hendon, N.W.4 at 7 p.m. Copies of the agenda will be available in the public gallery.

Members of the public may also attend a meeting of the Education Committee on Wednesday, December 2 at 7 p.m. at the Town Hall, Hendon.

RENT A LOCK-UP GARAGE

—and protect your car from bad weather and vandalism

GARAGES NOW AVAILABLE

ANYONE MAY APPLY

For further details, please contact :

BOROUGH HOUSING OFFICER

65 WATFORD WAY, HENDON, N.W.4

Tel. 01-202 8282

SURVEY'S INTERESTING STATISTICS

FOUR OUT of every five students attending evening classes last term in the Western Area of Centres of Adult Education in the London Borough of Barnet, were female.

This is revealed in a large scale survey in which nearly 800 students completed a questionnaire designed to learn more about students, their preferences and opinions.

As a result of the survey an even wider range of subjects is being offered at this term's classes which began on September 21.

The fact that there are more female than male students points to the need to offer more mixed or "men only" classes, the survey states.

Nearly 50% of students attending last term found out about their classes from a friend, 36% by reading the prospectus, 6.6% saw classes advertised in local newspapers and 2.3% from poster advertising.

Just over 60% of students agreed that they attended evening classes to learn a skill while 20% said they went for "an evening out".

Among new subjects students intimated they would like to see included classes on yoga, soft toy making, country dancing and swimming.

Continued from page 3

Nearest Underground Station: Woodside Park. Buses: 17, 26, 104, 125, 221, 260.

East Finchley Library, 226 High Road, London, N2 9BB.

(01-883 2664)

Nearest Underground Station: East Finchley. Buses: 17, 104.



ON JUNE 18, 1806 "gentlemen anxious to promote sound learning among Dissenters" gathered together to discuss the founding of an educational establishment.

The intention was to start a day-school and by the end of 1806 sufficient progress was made to enable the choice of headmaster to be determined. The Reverend John Atkinson was chosen as the first head.

The idea of a day-school was soon abandoned and a boarding school, located at least ten miles from London, was substituted. After much searching the premises known as Ridgeway House at Mill Hill, Hendon, were chosen to accommodate the new school.

Once the home of Peter Colinson, the well known naturalist, who introduced many fine trees to the locality, the premises were soon proved to be inadequate and in 1824 the Committee decided to build a new schoolhouse to pro-

vide accommodation for 120 boys, five masters, a housekeeper and four servants, the foundation stone of the new building being laid on 16th June, 1825.

The elevation of the new building was of classic design to the plans of Mr. (later Sir) William Tite. The school had a series of setbacks and financial difficulties resulting in the closure of the school from January to October, 1869.

By 1896 circumstances improved to the extent that it was decided to build a new school chapel to the designs of Mr. Basil Champneys. Today the schoolhouse and chapel together with residential quarters, playing fields and out-buildings stand in some 70 acres of land on The Ridgeway, Mill Hill.

Continued from page 3

gence they have blossomed into regular and competent players. The orchestra has benefited far more from these patient triers, who were initially doubtful of their own ability, than from the very experienced players who feel that they need only come to one rehearsal and the concert.

There are some vacancies for the coming season, particularly for Bassoons, French Horns, trumpets and double bass. Violins, violas and cellos will always be welcome. Rehearsals take place near the Hendon Way Flyover over the North Circular Road.

The next concert will be an all Beethoven one in honour of his bicentenary, and will include his Mass in C and Symphony No. 2, as well as other works. The provisional date is November 14.

Enquiries about concerts and particularly from potential members will be welcomed by the Publicity Officer, Mr. David Schneider 01-459 4111 (evenings). Alternatively, the prospectus of the Hendon Music Centre may be obtained from the Hendon College of Technology, The Burroughs, N.W.4.

Continued from page 7

service at the tender age of thirteen with Bolton Board of Guardians in 1920.

Throughout his service Mr. Openshaw has spent his time in the service of the people and in Barnet deals mainly with helping the blind, physically handicapped and elderly people.

Even in his time away from the office, Mr. Openshaw "serves the people", as secretary to the London Borough's old people's welfare association.

Continued from page 1

The development will also contain a Health Centre, Welfare Centre, Community and Social Centre, Day Nursery, Public conveniences, Old People's home, religious buildings, children's playing facilities, a public library, and a filling station and garage. Great care has been taken with the development and to ensure pleasing features a consultant landscape architect has been appointed by the two authorities to advise on the treatment of the site which is otherwise flat and without landscape features.