



119,000 copies

BARNET BOROUGH NEWS

Barnet Council's monthly magazine for residents No. 34 SEPTEMBER 1987



MEMBER OF VERIFIED FREE DISTRIBUTION LTD
THE HALLMARK OF TRUSTED DISTRIBUTION



In this issue:
Summer Show in pictures
Into the swim at Copthall
Helping the Community with grants

BACK TO SCHOOL

*Solve your Homework Problems with a
Universal BED DESK SYSTEM!*

- ★ *Robust Solid Pine Furniture designed and perfected in Scandinavia*
- ★ *Suitable for all ages — Child to Adult*
- ★ *1,000 + 1 combinations and space saving ideas*
- ★ *Variable sizes of desk tops, plus shelving, drawer units, cupboards, etc*
- ★ *Bed available in two sizes*
- ★ *Delivery and installation available*

Our friendly staff will come along to your home and help you to plan your combination free of charge!



shelfstore.

160 Finchley Road London NW3
Telephone for Free Catalogue
01-794 0313

Back to School

DO YOU BIKE TO SCHOOL?
 If the answer is yes — then before you go back
Check it out
 LIGHTS — must work and be clean
 REAR REFLECTOR — at least one by law
 BRAKES — checked for wear
 BRAKE CABLES AND MOVING PARTS — keep oiled
 TYRES — check pressure
 CHECK any parts that may need replacing or repaired



School entrances should be kept clear at all times by drivers. Inconsiderate parking could prove very dangerous for children.

School Entrances

School entrances should be kept clear at all times by drivers, yet it is the parents that set bad examples every day by inconsiderate parking when collecting their children from school. Do not stop even for a moment on the "School-Keep-Clear" markings. Park the car safely and walk the few extra yards to make the road safe for all pedestrians.

And if you make the effort then make sure other parents do so too. If other parents park outside the school remind them politely of the possible dangers.

A school crossing patrol point is another place where it is dangerous to park, especially at times when lots of children are around. Avoid parking nearby, even if setting down or picking up passengers.

Don't park where you will conceal a traffic sign, or on a footpath, pavement or cycle path.

DON'T GO BACK TO SCHOOL WITHOUT GOING TO WILLIAMS Sports & Leisure Ltd

- P.E.KIT
- FOOTBALL CLOTHING
- BALLET WEAR
- HOCKEY & LACROSSE STICKS
- SWIMWEAR
- TRAINING SHOES
- RACKETS

THE MARK OF A GOOD SPORTS SHOP

INTER SPORT 366 BALLARDS LANE
 NORTH FINCHLEY
 LONDON N12 0EE

TEL: 01 — 445 3596 — 01 — 446 3797

HENDON COLLEGE

SEPTEMBER ENROLMENT FOR PART-TIME COURSES
 at Grahame Park, Colindale (unless otherwise stated)

Business and Secretarial Courses
 Tuesday 8th September — 2.00-8.00


'A' Levels, GCSE, Bakery, Computing, Science and all other vocational courses
 Wednesday 9th September — 2.00-8.00

Recreational Courses
 Thursday 10th September — 2.00-8.00

English as a Second Language
 Friday 11th September at Montague Road

English for Foreign Students
 Monday 14th September at Montague Road

ENQUIRIES PLEASE CALL 200 8300

 **In the interest of ROAD SAFETY**
 ISSUED BY THE LONDON BOROUGH OF BARNET

DRIVERS
 ► DON'T PARK · DON'T STOP · DON'T WAIT ON OR NEAR ENTRANCE MARKINGS

PARENTS waiting outside schools
 (ESPECIALLY THOSE WITH A PRAM)
 ► Keep the KERB and PAVEMENT clear
 To pass you a child may have to step into the road

M-SCHOOL-KEEP-CLEAR-M

**LONDON BOROUGH
OF BARNET**
The Town Hall
Hendon NW4 4BG
For information phone:
202 8282

CONTENTS page

A caring sort of job	6
Councillors' surgeries.....	8
Community grants.....	9
Artscene	10 & 11
They joined the Army	14
Planning for winter	16 & 17
Mainly for women ..	18 & 19
New fitness centre	20
Diving into success	21
Playaway summer.....	22
Hampstead Garden Suburb Institute	24 & 25
Barnet Diary.....	27 to 33
Copthall pools	34
Summer Show.....	36
WEA Classes.....	45

Barnet Borough News is published by the London Borough of Barnet and Marketing Media Management. It carries news of Council activities and community organisations.

The cost of production is offset by advertising.

VFD: Barnet Borough News certified net distribution from July to December 1986 is 114,871. The print run is 120,000 and it is distributed to homes and businesses in the borough, as well as libraries and Council offices.

Editorial features are copyright.

EDITORIAL ADDRESS

The Town Hall,
The Burroughs,
Hendon NW4 4BG
Tel. 01-202 8282,
exts. 71 & 72

Editors: Bill White,
Rosemary Jude and Joy
Myers

ADVERTISING ADDRESS

Marketing Media
Management
4 Bellevue Mews
Bellevue Road
Friern Barnet
N11 3EF

Tel: 01-361 4223

Advertising Manager
Lesley Mitchell

FRONT COVER

This delightful playground at Oak Hill Park, East Barnet, is setting the style for play areas throughout the borough under Barnet's long term Plan for Play programme. The equipment will be imaginative, set on safety surfaces, and dogs will be excluded.

Real life 'Lady'

A CHAPTER of history came to life on Wednesday, August 19, when the real life original of La Delivrance, The Naked Lady, came to Finchley to see the statue for which she had modelled back in 1919.

Louise Curson, a lively, witty 84-year-old, who now lives in Shoeburyness, posed for a series of photos commissioned by French sculptor Emile Guillaume. The bronze statue, which for 60 years has been a landmark at the junction of Regents Park Road and the North Circular Road, was cast in France and was exhibited at the 1920 Salon of French Artists.

It was purchased by Lord Rothermere and presented to the former Borough of Finchley, to be erected on its present site in 1927 as a memorial to the First World War. Lord Rothermere requested the setting as he used the route regularly, visiting his mother who lived in Totteridge.

For 60 years Louise, a leading life model for the Royal Academy from 1918 to 1922 under the name of Doris Wheaton, knew nothing of what happened to the statue. Then she saw it on a BBC2 play.

With help from Philip Wilson of Barnet's Planning Group, and the Press and Information Section, the facts were established and Mrs Curson came to Barnet to see her statue for the first time. She was welcomed by the Mayor and Mayoress, Cllr Malcolm and Ade-



Mrs Louise Curson takes up the pose she held sixty years ago, to show the Mayor and Mayoress, Cllr Malcolm and Adelaide Lester, that she is still a very lively lady.

laide Lester, and drove in the Mayoral car to Finchley. TV and the national and local press were there to greet her. And anyone who saw the Thames News programme knows that she bubbled over with memories and laughter.

Be a good neighbour

A PUBLIC meeting has been arranged to launch a Good Neighbour Scheme to cover the Muswell Hill area of the borough. It will be on September 17 at 8pm at St Peter Le Poer Church Hall, Colney Hatch Lane.

Volunteers are needed to offer time to help in the local community. If anyone is unable to attend the meeting, details of the scheme can be obtained from Ted Welsh on 449 5511.



Hazel Stuart

MISS Hazel Stuart, MA, MIPM, has been appointed Chief Personnel Officer of the London Borough of Barnet. The Authority is the second largest of the London Boroughs and employs approximately 11,000 people.

A graduate of the University of St Andrews where she studied French language and literature, she came to London in 1973 for her first job in the Civil Service. She studied for the Institute of Personnel Management qualifications at the Polytechnic of Central London.

In 1974 she moved to local government and spent the next five

Barnet's new Chief Personnel Officer

years with Hillingdon, in personnel and education.

Later she joined LACSAB - the Local Authorities' Conditions of Service Advisory Board - as a senior administrative officer.

From there she moved to Barnet as a principal officer in the personnel department, and apart from a break of 10 months when she was personnel officer with Westfield College, she has remained with the borough, being appointed assistant chief personnel officer in August 1983.

For the borough it has been a time of change and development in personnel and management services.

There has been a stronger emphasis on management training. The Council's policies on equal opportunities have been further developed.

The role of management services has changed, and is now directed at improving and developing services with cost effectiveness rather than

cost saving as its objective.

'My role in central personnel is to set corporate policies which will meet the needs of the future.

'We are in a period of change, partly because of central government legislation. We are moving towards a very different environment from the working practices of today. New technology is playing a larger role in almost every aspect of the Council's work, and we have to compete in a difficult recruitment market for many key staff.

'So this department has to be a professional service to help management define the services they want and identify the most effective way of achieving the standard of service which is demanded of the local authority,' she said.

Miss Stuart, who is 35, was born in Renfrewshire and now lives in Maida Vale. Her interests include music, particularly choral singing. She plays bridge and 'dabbles' at golf, being a member of Hampstead Golf Club.

Mill Hill library celebrates golden jubilee

CAN you name the year of these events?

- The marriage of Mrs Simpson to the Duke of Windsor
- The coronation of King George VI.
- Billy Butlin's first holiday camp.
- The publication of 'The Hobbit.'
- The opening of Mill Hill public library.

The answer of course is 1937.

Since September 25, 1937, Mill Hill library has served the public in the same building in Hartley Avenue opposite the fire station. There was a slight hiccup almost three years later to repair damage caused by a bomb landing close by on September 26, 1940.

It was the third library to be opened in the then Borough of Hendon and served the Mill Hill, Burnt Oak and Edgware areas. The borough was known for its innovative approach to the promotion of children's library services, under the guidance of Eileen Colwell (children's writer/librarian). Today the library still has a large children's section which is much appreciated and well used.

From outside the library may look very much the same. Inside there have been changes. There are still the same oak shelves, looking very good for their age, and even some of the original furniture —



The new and the old. Gail Potter, in charge of the Children's Library, uses the computer and in the background are the old oak shelves, used since the library was opened.

they don't make it like that any more!

But time has not stood still. There is now a Job Centre board in the entrance hall; an on-line computer system at the counter (the first library to go 'live' in the borough); a photocopier, cassettes for loan; comic 'swap shop' for children; magazine swap for adults; leaflets galore; and other innovations. Why not pay a visit to the library.

If you remember Mill Hill library

50 years ago then you should enjoy their photographic display of Mill Hill in bygone days. People might even recognise themselves in the photographs on view from **September 15 to October 3.**

Anniversary celebrations

To celebrate the launching of the next 50 years at Mill Hill Library a fete is being held in Hartley Avenue on **Saturday, September 26** at 1.30pm. There will be puppet

shows, children's roundabouts, candy floss, popcorn, Morris dancing, stalls of interest and entertainment and, of course, service as usual at the library. Perhaps however, it will be a little noisier than usual, especially as the Fire Station are joining in the fun with an open day at 2pm.

Future events include an Under Five's Week from **October 12 to 16**, and the BBC Domesday Project, on video disc can be seen by the public in November.

A FULL SELECTION OF
WARDROBE INTERIORS
AT NO EXTRA COST

FITTED
BEDROOMS
FOR YOU

NEW

EXCITING FINISHES IN WHITE ASH ● BLACK ASH ● GREY ● LEATHERTEX ● MAHOGANY ● MIRRORS HINGED AND SLIDING. ALSO TIMELESS WHITE, CREAM, REGENCY ETC.

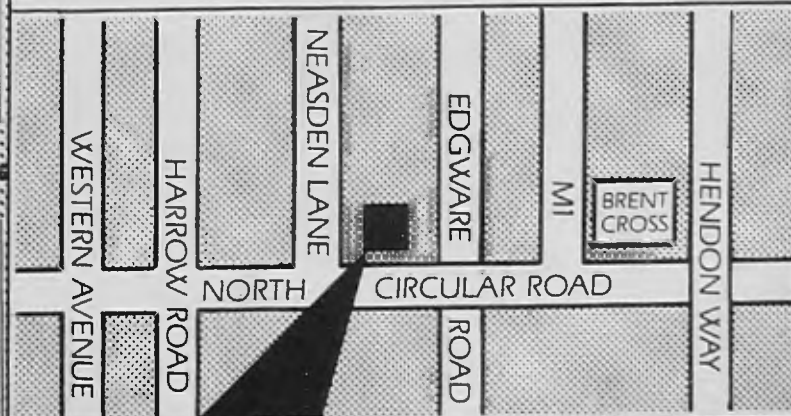
● SUPERB QUALITY AND A DIRECT PRICE FROM OUR FACTORY AND SHOWROOM.

● FULL SELECTION OF DE-LUXE INTERIORS WITH SHELF SYSTEMS, DOUBLE HANGING, SHOE RAILS ETC. AT NO EXTRA COST.

● WE PLAN AND EXPERTLY FIT FREE.

● **IDEAL HOME** magazine said..."STATON FITTED FURNITURE IS QUITE A FIND"... "HIGHER QUALITY"... "LOWER PRICES"

ALWAYS A SALE PRICE



STATON

FACTORY AND SHOWROOM
719 NORTH CIRCULAR ROAD NW2
TELEPHONE 01-450 6581
OPEN EVERYDAY (SUN 10-4)

Play away summer

Photographs by
John Rifkin
01-958 1370



Barnet Play Association take this huge inflatable round the borough, so that play schemes can bring the kids along to jump for joy. Here in Montrose Park, Burnt Oak, the children from Barnfield Play Group, Edgware, have a holiday outing to remember.

Barnet is a fun place to be in the Summer Holidays. There's entertainment and organised play in the parks, sports training at centres all round the borough, and Barnet Sport are organising coaching in a series of sports including tennis, football, cricket and athletics.



Meet Starsky (because he lives in a hutch — *ouch*) the rabbit. He is the travelling companion of Don Robertson who was the entertainer in Avenue House Grounds, Finchley, when the Sharon Kindergarten of Finchley held a picnic there.



Volleyball days are popular with Mike Behnke of Barnet Sport setting up coaching sessions in Montrose Park, Colindale (pictured), Oakhill Park, East Barnet, and West Hendon Playing Fields.



Louise Ridley, play leader at Oakhill Park, East Barnet, leads a painting session to make posters for their sports day.



This swimming pool, which looks as if it came from a travel brochure, is actually the children's pool at Finchley Open Air Swimming Pool.

OFF-PEAK OFFER!

FOR ONE MONTH ONLY ENDS SEPT 30.



25% OFF*

ANY FITTED KITCHEN OR BEDROOM

September is one of our quieter months so here's an offer to shout about: the fitted kitchen or bedroom of your choice at 25% off!
 Why? Because we've got to keep a permanent team of craftsmen busy until the rush starts again in October.
 But remember the offer is strictly one month only. So hurry—don't miss it!

FREE!
DESIGN AND PLANNING SERVICE

FREE!
DELIVERY SERVICE

PLUS!
PRICE INCLUDES COMPLETE CRAFTSMAN FITTING

It could only be...

Schreiber

£100 DOWN
— PAY —
NOTHING TILL 1988

YOUR KITCHEN OR BEDROOM FITTED WITHIN WEEKS!
 When you order through the Schreiber Home Improvement Plan. †
 Typical **APR 26.8%** (variable)



88 Chase Side,
SOUTHGATE
Tel: 01-882 9101

101 Baker St.,
LONDON W1
Tel: 01-486 0664

Open **MON-SAT**
9.30am-5.30pm
Open **SUNDAY**
11am-5pm

ACCESS AND VISA WELCOME

*Savings are based on prices which will be charged after the current Promotion and apply to kitchen and bedroom cabinets only. †Schreiber and your local centre are licensed credit brokers. Example cash price £2500. £100 deposit. 60 monthly payments of £60.31 nett (£69.05 gross) totalling £3718.60 nett (£4245.00 gross). Nett figures are quoted nett of tax relief at 27% for qualifying borrowers. Ask for written details. Limited period offers.

Councillors' & MPs' Surgeries

Chipping Barnet

Sydney Chapman, MP, and a councillor, Sat September 5 and October 3, 10.30am to 12 noon, 163 High St.

Arkley Ward — Conservative councillors, Fri September 18 and October 2, 7.30pm, Dollis Valley Community Centre.

Brunswick Park Ward — Conservative councillors available second Saturday of month, 10.30am to 12 noon, Monkfrith Boys' Club hall, Osidge Lane, N14.

East Barnet Ward — Cllr Olwen Evans (Conservative), Sat September 5 and October 3, 10.30am to noon, Community Centre, Victoria Rd, New Barnet. Contact Cllrs Mrs Mamie Perry at John Perry on 368 4368 for appointment. Labour councillors available Sat September 5, 10.30 to 11.30am, 104 East Barnet Road, New Barnet.

Finchley & Friern Barnet

Margaret Thatcher, MP, for constituents only, via constituency office, tel 445 4292.

Conservative councillors, Sat September 5 and October 3, 10.30am to noon, 212 Ballards Lane, N3.

East Finchley — Labour councillors every Saturday, 10am to 11.30am, East Finchley Neighbourhood Centre, Church Lane 2.

Finchley Ward — Conservative councillors, Saturday September 26, 10am to noon, Blue Beetle Hall (adj St Mary's Church) Hendon Lane, N3. Cllr Mrs Barbara Langstone can be contacted on 445 5443.

St Paul's Ward — Labour councillors Naren Davé, Michael Freeman and Kitty Lyons, every Saturday 11am to 12 noon. Etchingam Park Day Centre, Etchingam Park Road, N3, and at Tally Ho Corner.

Woodhouse Ward — Labour councillors Mike Harris, Dennis Reed and Rudolf Vis, every Thursday, 6.30-

7.30pm, Friern Barnet Town Hall, N11. Also Saturdays at Tally Ho and Sutton Road.

Friern Barnet Ward — Contact Cllrs Chris Platford (368 6817), Brian Salinger (368 1329), John Tiplady (445 5734).

Hendon North

John Gorst, MP, available Fri. September 18, by appointment. At other times tel 959 1446 or via constituency office, 2 Apex Parade, Selvage Lane, Mill Hill. Conservative councillors, Grahame Park and Mill Hill, Weds September 9, 16, 23, 30 and October 7.

Burnt Oak — Cllrs Ellis (959 6191), Shamash (458 2679), Williams (203 3234), every Saturday, 10.30am to noon, Labour Hall, Back Lane, Burnt Oak (952 5771).

Colindale — Labour councillors available first and fourth Sat each month, 2-3pm, St Augustine's, Grahame Park.

Hendon South

John Marshall, MP, via constituency office (202 7484) by appointment, see local press for details.

Conservative councillors — Sat September 5, 11am to 12.30pm, 166 Station Rd, Hendon (202 7484).

Childs Hill — Liberal/SDP Alliance councillors every second Wednesday of month 7-8pm, Unitarian Church, Hoop Lane, NW11 and every fourth Monday of month, 7-8pm, St Peter's Church Hall, Cricklewood Lane, NW2.

West Hendon — Phone Cllr Tim Sims (734 8080, office hours) for appointment at West Hendon Ex-Servicemen's Club, The Broadway, NW9. Cllrs Doreen Neall (202 9927) and Agnes Slcombe (202 4074) by appointment.

Euro MP

John Marshall, Euro MP, contact Euro agent: 440 7328.

Nature Notes

SEPTEMBER

By Clive Herbert, Barnet Wildlife Group

Late summer and early autumn is the peak time for mammal deaths on our roads and most people will be familiar with the many flattened hedgehogs to be found each year. Although the most common mammal to be discovered in this way, the apparent abundance of sightings is no doubt increased by the length of time the tough skin may remain on the road — often several weeks.

Other mammals are also killed on Barnet's highways and include grey squirrel (the next most frequent), brown rat and foxes.

While depressing to find, these casualties do help us to map the distribution of animals which can otherwise be difficult to see. We are always pleased to receive readers sightings. Send details to me at 67a Ridgeway Avenue, East Barnet.

During the month, look out for the ripening fruits and berries in our hedgerows, the start of the main fungi season and the departure of our summer migrant birds.

Anyone wishing to learn more about our natural history can join the course I'm running from September at the Hampstead Garden Suburb Institute entitled 'Discovering our Wildlife and Countryside'. Each animal group will be covered in turn, together with a look at the main habitats in Britain and our changing countryside. Telephone 440 6314 for details.

REVACTOR

an amazing scientific breakthrough for men and women with Hair Problems

REVACTOR Herbal Wonder-growth reactivates the scalp and follicles, and really GROWS YOUR HAIR naturally and quickly:

REVACTOR ARRESTS HAIR LOSS, retarded hairgrowth, premature baldness among males, falling, thinning, split ends and breaking hair. It regrows and restores chemically damaged hair in salons and has no side-effects.

REVACTOR is the only patented pharmaceutical hair and skin tonic in UK.

(as at Jan '87) Try it for 6-8 weeks with regular use for excellent results (British Patent No 2146528)



Suprise yourself with a fuller glossy hair
Price: £10.75 p&p 70p (UK) overseas £3.50

BINA GOLD LTD
TEL. 01281 2471/2

ORDER FORM

NAME

ADDRESS

Qty Required

Amount Enclosed

SEND TO:

BINA GOLD LTD,
2 VINCENT PARADE, HANLEY ROAD,
LONDON N4 3DS.
TEL: 01-281 2471/2
TELEX: 296585 BARPROG

Community

Grants aid local groups

Concern that voluntary organisations active in the Borough of Barnet which also serve a wider area of Greater London could lose out on London-wide funding if Barnet Council gives grant aid, was expressed by Cllr Don Goodman, chairman of Barnet's Grants Committee at their July meeting.

Cllr Goodman represents Barnet on the London Boroughs Grant Scheme which allocates money to voluntary and community organisations operating on an area, rather than a borough basis.

'We have been giving local grants to the voluntary organisations which offer a specific service to Barnet residents,' he said. 'But where they are operating on a wider basis we have advised them to apply for London-wide funding for their general needs although we have sometimes given a grant for their Barnet activities.'

'However it now appears that when these organisations go to London-wide, if Barnet has helped fund a local aspect of their work they are turned down.'

'I am afraid that by giving an organisation say £2,000 for its local work we could put in jeopardy their funding of £20,000 from London-wide resources.'

'Barnet is one of the biggest contributors to the London-wide scheme. We paid in £1.2 million this year. But as far as we can trace only a little over £50,000 has come back to voluntary organisations working in the borough.'

At the July meeting the committee allocated £22,207 from general funds and £42,224 from the Edward Harvist Charity and former Borough Lottery Funds as follows:

General Grants

Youth and Community Services: North Road Youth Club, Edgware, £1,540; Watling Boys Club, Burnt Oak, £7,000; Hendon Sea Cadets, West Hendon, £400; 6th Friern Barnet Scout Group, £1,060; Chickenshed youth theatre workshop, £4,200.

Libraries and Arts: Natraj Arts (Asian culture), £321; Oshwal Association, £400; British Theatre for the Disabled, £70;

General organisations: Barnet Copthall Sub-aqua Club, £500; Moss Hall (After School) Playcentre, Finchley, £300; Margaret Road Playscheme, New Barnet, £220; Finchley Reform Synagogue Youth Groups, £541; New Barnet Holiday Play, £474; Friend in Need Community Centre (day centre staff-

ing), £3,500; Church End Mother and Toddler Group, £100; Barnet Talking Newspaper (supplemental roof repair grant) £1,581.

Edward Harvist Charity & Borough Lottery Funds

Housing Committee: Outings for residents in sheltered schemes, £3,000; Garden furniture and equipment, £1,000.

General Purposes Committee: Improvements to lighting in main room at Avenue House (in association with the Rotary Club of Finchley), up to £1,500.

Education: French learning experience, £2,500; Moat Mount Camp Site orienteering course, £400; Poetry festival publication, £1,000; drama and the media project, £4,000; visiting musicians in schools, £2,000; Mathematics and Your Future conference for lower sixth girls, £300.

Libraries and Arts: Israel week £400 (guarantee against loss); cassette players for partially sighted people £430; commemorative plaques, £400; pump priming grants for 1988 community festivals, £1,450.

Social Services: Holidays for elderly, frail people and carers on low incomes, £2,700. (Other Social

Services requests were deferred for further information).

Voluntary projects: Friern Barnet Council for voluntary service, £1,000; Barnet Mencap, £1,400; East Finchley Theatre Group, £1,250; 332 (Hendon) Division St. John Ambulance, £350; Hendon and District Archaeological Society, £2,000; London Wildlife Trust, £700; Barnet Arts Workshop, £2,500; 5th Edgware Scout Group, £510; Hadley Memorial Club, £5,000; Pensioner's Link, £800; Friend in Need Community Centre, £4,934; Edgware and District Reform Synagogue Isreal Week, £250; Hartley Hall Michaelmas Festival, £450.

BEQUEST GOES TO FINCHLEY CHARITIES

Former Finchley resident, Miss Tempe Boulter, who died in 1963, has left £5,430, under the terms of her will, to the council to be used for housing for elderly spinsters.

The money will be used by Finchley Charities to provide housing for 50 elderly residents to Homefield Gardens, East Finchley.

Barnet College

Full Time Courses

BTEC National Diploma Courses in Science & Engineering, Computer Studies, Computing Technology, Art & Design, Three Dimensional Design, Fashion, Business & Finance.

Also a range of BTEC 1st Diploma courses; CPVE; Secretarial courses; A levels; NNEB; Pre-caring with GCSE; Pre-caring with A levels; Family & Community Care.

Admissions tutors will be available daily 1st-4th September to assist with your choice of course. Call into the College at the Wood Street site or phone 440 6321.

Wood Street Barnet Hertfordshire EN5 4AZ
Russell Lane Whetstone London N20 0AX

Barnet College

Part time courses

ENROLMENT FOR PART TIME COURSES AT BARNET COLLEGE

WOOD STREET SITE

TUES 8th SEPT 1-8pm

PLEASE GO TO GYM ON ARRIVAL

RUSSELL LANE SITE

THURS 10th SEPT 1-8pm

PLEASE GO TO REFECTORY ON ARRIVAL

Wood Street Barnet Hertfordshire EN5 4AZ
Russell Lane Whetstone London N20 0AX

Artscene

FESTIVAL FUN



FESTIVAL fun brings a carnival atmosphere to Grahame Park during the first weekend in September.

Three days of exciting events begin on Friday, September 4, at 5.30pm with a mother and toddler fancy dress competition on The Concourse.

This will be followed an hour later with It's a Knockout until 9pm. For those who want less energetic entertainment, there's a variety of pub performers going through their paces.

The fireworks display at 9.15pm leads into a disco in the community centre.

Meynell Games will keep children and the young at heart happy from 11am-6pm on Saturday and Sunday.

Stalls and wandering players will vie for attention at The Concourse, starting place for the Clown Cavalcade at 11am.

Cabaret comes to the public house at lunchtime and a tea dance, including a search for glamorous grannies, takes place at the Church Hall from 3.30pm.

Bands will strike up on stage until 6pm, followed by a talent contest in the pub.

A Cockney night rounds off the fun.

On The Concourse on Sunday, there will be donkey rides for the children. Dagarti Arts will perform from noon until 6pm and in the evening the festival video will be shown at the Community Centre.

Face painting

MEMBERS of CRAB (Community and Recreational Arts in Barnet) will be on hand at Grahame Park Festival and at Dollis Valley Festival on Saturday, September 12, children will have the chance to experience face painting, badge and kite making.

A highlight of the Dollis Valley event, Dollis Valley Way, which runs from 11am to 4pm, will be members of the Queen's Regiment who will literally dropping in! The regiment's free fall parachute team — The Flying Dragons — will be



making a dramatic appearance from the sky.

Music will be provided by Barnet Band and there will be plenty of stalls, craft workshops and entertainments.

LYMPANY

PLAYS

CHOPIN

THERE is a rare chance to hear one of Britain's finest pianists next month, at a recital arranged by Hendon Music Society.

For 29 years the Society has been providing audiences in the Borough with an extensive range of concerts, lectures and visits to musical events.

On October 10 the Saturday recital series opens with a Chopin concert by pianist, Moura Lympany, at Trinity Church, Golders Green.

Miss Lympany now lives in France and her concerts in London have become relatively rare.

The Saturday recitals continue with the Delme String Quartet presenting a programme of Mozart and Tchaikovsky as well as a new work commissioned by the Society — Nava Rasa — by the Indian composer, John Mayer.

Monday Series

The Monday series are held either at Hendon Library or Hendon Methodist Church, opening on 28th September with a lecture on Chopin at the Library. Subsequent lecturers include John Heddle Nash, Richard Morrison, Peter Gammond, Geoffrey Norris and Felix Aprahamian.

Details of the society's promotions, all of which are open to the public, are available from Hendon Music Society, 3 Southfields, Hendon NW4. Tel: 203 2355.

Help! Standing room only

THE MAIN Theatre at the Old Bull Arts Centre, Barnet, is almost ready to open and an appeal has been launched to pay for items including audience seating.

There are two ways in which the public can help.

One is for employees to nominate the Arts Centre through the new Give-As-You-Earn payroll scheme, operated by the Charities Aid Foundation and available to all companies.

The Centre is run by an educational trust and charity. It is eligible for this type of assistance.

Weekly amounts may be between 25p and £2.30, and the monthly sum between £1 and £10.

Individuals can also purchase one of the 180 seats in the theatre at a cost of £75.

The seat will bear a plaque with the buyer's name and the purchaser will, for two years, be able to buy tickets for the theatre at concessionary prices.

Companies can also buy seats, at a cost of £125 each, and this will include an advertisement in the brochure.

For further details contact Pam

Edwards, Hon. Secretary of The Old Bull Development Trust or Graham Bennett, Director of the Arts Centre at 68 High Street, Barnet.

New Programme

A rumour which becomes a national scandal is the theme of a production opening at the Old Bull Arts Centre, Barnet, early this month.

Kahoon Kahoon's presentation of 'A Vile Rumour' runs on September 4 and 5.

A new play starring former Coronation Street actor, Nigel Pivaro, runs for five nights from Tuesday, September 8.

Written by Rib Davies 'No Further Cause for Concern' centres on a British prison after a riot.

This honest and brutal play is definitely not suitable for children.

Two presentations especially for children are featured on September 13 and 27, each starting at 3pm.

The first, entitled Double Dutch, introduces Captain Horace Spliff who meets Ballerinas Pis-

tachio on an expedition to darkest Africa.

Together they create a marvelous magic show combining juggling, tumbling and hilarious clowning.

On September 26 Moonlight Puppets enact the Ramayana which is a story of great importance to Hindus.

The Jazz Guest Star Series takes place on Friday September 25 at 8pm when it will feature the Colin Peters Trio.

On Saturday September 12 from 10am to 1pm there is an introductory workshop on the Alexander Technique.

This gives an opportunity to be introduced to the basic principles of a technique especially recommended to back sufferers.

A second chance to take part in this workshop will take place on Saturday, September 26.

The Afternoon Arts Club for the over 50's will meet on Tuesday September 22 at 2pm.

Scarlet Harlots open the following month's season with a presentation of 'Appetite of the Heart' on October 2 and 3.

AUTUMN AT THE MANOR HOUSE

THE AUTUMN programme at the Manor House Society gets underway on September 13 with an evening of poetry. Ruth Fainlight will read from her current volume and from selected poems which are due to be published in October.

On September 20 there will be a lecture by Monica Bohm-Duchen to celebrate the centenary of artist, Marc Chagall's life and work.

From September 21 to October 16, is an exhibition entitled 'Artists in Print'. Etchings, lithographs and silk screen prints by 20th century Jewish artists from England, France and Israel will be on display.

The Sternberg Centre for Judaism, East End Road, Finchley, will be closed all day on September 24, 25 and October 8 and 15.

Artscene

The Little Palaces

IN 1930 builders John Laing and Son advertised new homes in Colindale.

They described them as: 'A house, a home, a little palace, in a convenient healthy district, purchasable by anyone with a small capital and regular income.'

The first British exhibition to examine suburban domestic architecture and interior design from 1919-1939, opened on August 22.

It will run until October 4 at

the Church Farm House Museum, Hendon.

The exhibition, by Middlesex Polytechnic's Silver Studio Collection, includes over 170 photographs, estate agents' brochures, household objects and a 1930s room.

Suburbia is now a subject for serious study and the exhibition is the result of a Manpower Services Commission community programme project, with sponsorship from the John Lewis Partnership plc.

Special photo workshop

A TEN week course for disabled photographers begins this month.

CRAB (Community and Recreational Arts in Barnet) is organising the course, which is designed to enable those taking part to pass on their photographic skills effectively.

No previous teaching experience is necessary, but applicants will need an overall working knowledge of photography and an interest in the media.

CRAB has built up a pool of

expertise in working with disabled photographers, but recognises that disabled people play a major role in passing on skills and encouraging others.

It is hoped that people who complete the course will gain the skills and confidence required to run beginners photography workshops for other disabled groups.

The fee is £10 for ten weeks. For details write to CRAB at Avenue House, East End Road, N3 3QE or telephone 346 9789.



OF MILL HILL

ESTABLISHED 23 YEARS

We Clean Curtains, Carpets & Upholstery Beautifully



HOMES — OFFICES — HOTELS — RESTAURANTS

Curtains take down and rehang service included ● Full repair and alteration service (if required) ● Express service upon request

62 THE BROADWAY, MILL HILL, NW7. TEL 01 959 6996/7066

FREE FITTING IS OFFERED ON ALL OUR CARPETS ON DISPLAY.

QUALITY WITH ECONOMY





**928 HIGH ROAD
FINCHLEY
LONDON N12
446 5331/2
446 5333/4**



STOCK CARPETS FITTED WITHIN 48 HOURS

IF YOU'RE LOOKING FOR QUALITY WITH ECONOMY IN YOUR CARPET REQUIREMENTS LOOK NO FURTHER! AT OUR NEW SHOWROOM YOU'LL FIND AN AMAZING RANGE OF CARPETS AT THE MOST COMPETITIVE PRICES. WE HAVE OVER 5000 CARPETS TO CHOOSE FROM. TALK TO CARPET EXPERTS & ENJOY OUR FRIENDLY SERVICE. WE'RE OPEN MONDAY TO WEDNESDAY, 9-6, FRIDAY & SATURDAY, 9-5 LATE NIGHT THURSDAY TILL 8

Build your business on our reputation



If you are thinking of, or are already operating commercial vehicles North of the Thames or in the Hertfordshire area, then complete and return this coupon to find out how we can help keep the wheels of your business turning.

We supply Mercedes-Benz trucks and vans to suit every type of business, large or small. And every vehicle is backed by a service support system that's second to none. So before you buy, talk to us. Because at Edgware Road, we're in business to keep your business moving.

Please send me further information

Light Vans & Chassis Cabs 2.6-7.5 tonnes

Rigids 7.5-30 tonnes

Tractor Units 24-38 tonnes

PLEASE PRINT

Name _____

Position _____

Company _____

Address _____

Telephone no. _____

Tick box

Mercedes-Benz Edgware Road

403 Edgware Road, Colindale, London NW9 0HX. Tel. 01-205 1212. Telex 929447



**GENUINE SALE NOW ON HURRY HURRY HURRY
OVER 100 SOFA — SOFA BEDS — SUITES IN STOCK!!
LEATHER SUITES NOW AVAILABLE UNBEATABLE PRICES**



**NOW OPEN
IN ENFIELD
30-38 LONDON ROAD
(Opposite Woolworths)**

**3 Seater
Sofa
£395**

Our top of the range sofa and sofa beds, are made by using incredibly strong beechwood frames. The unit is filled with wooden slats, supporting a 5" spring interior mattress. An unbeatable combination suitable for every day use giving a full double bed 6' x 4' 6".

Zip off covers (for easy cleaning) with feather filled seat & back cushions for extra comfort. 3 seater sofa £395 · 3 seater sofa bed £495 2 seater sofa £365 · chair £225, a beautiful choice of fabric Liberty, Sanderson, and other leading makes.

We are licensed credit brokers, H.P. available written details on request true APR 30%

THE SUITE WAREHOUSE 725-733 LORDSHIP LANE N22 01-889 4545

Only 50yds from Wood Green tube.



OPEN MON-SAT
9.30-6.00
SUNDAY 2.00-5.00
(for viewing only)

The Venezia suite available in sumptuous white,



or a choice of twelve subtle colours.

Visit the exclusive Italeather showroom on the North Circular Road and you'll see this superb suite in soft supple white leather, styled and manufactured in Italy where design and comfort are the watchword of the finest craftsmen.

Visit the showroom where more than 100 beautiful Italian leather suites, including traditional styles, are tastefully set out for you to make your choice.



Italeather

ITALIAN LEATHER DIRECT FROM THE ITALIANS

INTEREST FREE CREDIT BROKER

Written details available

OPEN 10-00AM-7-00PM

ITALEATHER: SEALAND HOUSE,
NORTH CIRCULAR ROAD,
STONEBRIDGE PARK, LONDON
NW10 7JS. Telephone: 01-965 5717.



Poplar trees are living proof

THIS is the picture they said would never be taken in 1987.

When, in 1986 Barnet had to undertake extensive pollarding work to ensure the safety of the golden poplar trees along the North Circular Road local residents protested that the Council had killed the trees.

Barnet's tree specialists promised that the trees would flourish and reassured residents that even when the road widening scheme had taken place there would still be an attractive tree belt. New young London plane trees were being planted between the older trees to take over when age and disease entailed the felling of the mature poplars. In fact only four trees out of 57 were lost as a result of the work which was undertaken on the orders of the Department of Transport.

The photograph taken in August shows that Barnet's tree specialists were right.



Advice on piercing problem

PUBLIC concern about Aids and Hepatitis B led to a seminar arranged by Barnet's Environmental Health Department for 57 members of various skin piercing professions.

The speakers, Doctors Noah and Vandavelde both from the Public Health Laboratory, Colindale, are the foremost experts in this field.

They outlined their recommendations to an audience of people involved with ear piercing, electrolysis, acupuncture and tattooing.

Dr Noah emphasised that as it was impossible to identify people carrying the Aids virus, every client should be regarded as potentially infectious.

This meant that the highest possible hygiene standards must be applied on every occasion.

The doctor also made the point that only a small amount of infected blood would spread Hepatitis B. One teaspoon measure can infect 60,000 people.

All equipment, if not disposable should be correctly sterilised and good hygiene methods continually practised. This would mean spending a few hundred pounds on a purpose-made autoclave but this was considered essential.

Barnet's Environmental Health staff carry out regular checks on registered premises. They will advise any member of the public who is concerned.

DABB AGM

THE Disablement Association for the Borough of Barnet's AGM will be held on September 29 at 7.30pm at East Barnet Baptist Church, East Barnet Road. The topic will be Access.

Transport can be arranged via DABB, tel: 446 6935. Loop system installed. Access for wheelchairs.

Mayor congratulates young soldiers



A TEENAGER, who had a part time job cutting the grass at the home of the Mayor of Barnet, has joined the Army.

Gregory Gawthorpe, 16, from Mill Hill, met his former employer at a ceremony of enlistment at the Town Hall, Hendon, last month.

The Mayor, Edgware Cllr Malcolm Lester, handed enlistment parchments to 20 teenagers.

The Careers Officer, Major David Metherall, said the ceremony was the first of its kind to be held in the Borough.

Gregory is pictured being congratulated by the Mayor and Mayoress, watched by his mother, Susan; father, Peter, who is a

sergeant in the Catering Corps, and the Major.

The teenager is to be a junior signaller with the Queen's Division.

Amongst the other recruits were: Ian Smyth from Edgware — bandsman, the Royal Regiment of Fusiliers; Christopher Lawrence from New Barnet — junior leader, Queen's Division; Jason Kelly from Mill Hill — junior leader Royal Pioneer Corps and Robert Bell from New Barnet — junior leader, Queen's Division.

After the ceremony, the Mayor said he and his wife Adelaide, had found it necessary to employ "a team of professionals" to replace former gardener Gregory.

Meals on wheels survey

A SIX-WEEK survey is to be carried out in the borough during September and October to examine the existing provision of, and future demands on, the meals on wheels service to housebound people living in Barnet.

At least 10 per cent of existing recipients will be interviewed to determine their needs and how they might best be met. The nature and extent of future demand will also be assessed.

A sessional specialist will be used to conduct the interviews and in conjunction with the Social Services Directorate's research and

planning officer and catering and domestic services officer, will help analyse the information collected.

The results of the survey will be used to assess current and future needs, particularly for highly dependent people, the means by which they might be met, and the extent to which the service might be made more effective, efficient and economic.

It is hoped that the findings will form the basis of a future report on the meals service to the November meeting of the Social Services Committee.

We may have the job you're looking for.



As one of the Professionals.

Over 17½? Then you can join the Army, with its range of over 110 trades and skills. We'll help you choose the job that suits you best, and give you expert training on the finest modern equipment.

You'll make a lot of new friends. Enjoy plenty of sport and travel. Starting pay can be as much as £103 a week.

Under the Notice Engagement, you can leave on 12 months notice at any time after serving your chosen minimum period.



As an Army Junior.

When you leave school you can begin a fast-moving career through an Army Junior Entry scheme.

Join as an Army Apprentice, Junior Leader, or Junior Soldier.

You'll get expert instruction; the chance to further your general education; plenty of time for sports and hobbies; and starting pay of over £57.00 a week.

In the Women's Services.

Here's every girl's chance to find a really interesting career. If you want to nurse The Queen Alexandra's Royal Army Nursing Corps can train you as a Registered General Nurse.

Or, you can learn to be a medical clerk, ward stewardess, dental clerk assistant or pharmacy or laboratory technician.

There's the opportunity to serve abroad as well as in England.

The Women's Royal Army Corps offers you a wide range of training in 20 different jobs. You'll make new friends, travel (some jobs take you abroad) and have a worthwhile career.

Call in or write to the nearest Army Careers Information Office.
The address is in the phone book under 'Army.'

The Professionals 

Plan ahead: Cut those winter bills

AS SUMMER draws to a close and we are all hoping for a warm sunny autumn, a season of mellow fruitfulness, the chill nip in the air in the mornings brings a quick reminder of winter.

Last month Jean Elliott and Jill Hall of Barnet Health Authority wrote about the need to make summer plans for winter warmth. This month they again tackle the problem of planning ahead for winter with the elderly in mind.

For many elderly people particularly for those living alone there is a danger of hypothermia. Many are afraid that heating bills will be too expensive and without realising the danger they cut down on the use of fires and electric heaters.

Food shopping list

Warmth comes from inside through good food and from outside in the sensible use of heating equipment so this month Jean and Jill look at ways to get full value for your money. Many supermarkets reduce items for short periods of time or alternatively if one

item is added weekly to shopping orders the cost is spread and not so damaging to the budget as a large lump sum.

The foods to consider collecting for storage are grouped below:

- A variety of quick, easy, nutritious beverages are a good standby, rather than constantly drinking tea or coffee. Bovril, instant soup, cocoa, Horlicks, favourite fruit drink etc.

- Tins of milk puddings, mince meat, stewed steak, ham, frankfurters, sardines, vegetables, all provide quick, easy meals.

- Stock up on powdered, long life or condensed milk, as this will come in handy if the weather suddenly changes, making shopping difficult.

- Instant potato, instant porridge, breakfast cereals, jams and biscuits.

- Frozen meals and foods can be stocked in the freezer if storage dates are checked for suitability.

Most of these foods are aimed at quick, nutritious easily prepared meals or drinks to encourage people to have at least one hot meal a day, plus plenty of hot, varied drinks. It also helps them avoid standing in cold kitchens if room heating is difficult. Most elderly people should be encouraged to have a hot drink before going to bed at night and to take a hot drink in a thermos flask with them, in case they should wake up during the night.

If preparing or cooking is difficult Social Services may be able to advise on aids to assist and overcome these difficulties, or can arrange meals on wheels.

Look for fire guards, sometimes found in jumble sales or



Jean Elliott

advertised in local papers and shops for quick direct private sale.

Fingerless mittens can be found in jumble sales or market stalls, or can easily be knitted by grandchildren for birthday presents etc. These are useful as they keep hands warm, but leave fingers free for gripping items, especially walking sticks or frames.

The very best nursing care couldn't be closer to home



- * Fully qualified local nurses
- * In your own home
- * 24 hours a day, 7 days a week service
- * Available from as little as an hour a day
- * Private Insurance schemes accepted

BNA

British Nursing Association

HENDON
01-202 8112

FINCHLEY ROAD
01-435 3881

The British Nursing Association

is a nationwide organisation providing nurses and auxiliaries wherever they are needed. There are now over 90 branches throughout the UK all run by nurses, placing nurses in hospitals, nursing homes, private hospitals and industry, and of course in patients own homes. Assignments vary from as little as one hour a day, to permanent positions. Care of the patients in their own home has become an area of speciality to BNA, in particular, the care of the elderly. BNA has responded to the changing requirements of this sector of the population by providing a range of services geared towards their particular needs — sleeper duties, twilight visits and so on. Contact your local branch for further details, you are assured of a warm reception.

Belmont Lodge

BELMONT LODGE

Residential Home for the elderly



Don't worry about huge heating bills this winter. We can offer a **more comfortable alternative**

- Private telephone and TV point in every room
- Lift
- Special diets arranged
- Full central heating
- 24 hour care

All bedrooms are fitted with call alarm facilities and some rooms have their own en-suite bathroom and toilet.

A friendly, family atmosphere is maintained and residents' own interests are encouraged whenever possible.

Short holidays can be arranged

FREE COLOUR BROCHURE CAN BE OBTAINED ON APPLICATION FROM

OFFICE: 01-959 4083

or RESIDENT MATRON: 0923 222610

59 Belmont Road, Bushey, Herts

Registered with Hertfordshire County Council

Ideas for winter warmth

A telephone by a favourite chair or bed can provide reassuring contact in bad weather conditions. Calls can be made during the cheap rate hours. In some cases Social Services can help with phone installation for elderly residents living alone.

Buy a bicycle lamp and attach it to a walking frame, or a torch and leave it by the bedside in case of sudden power failure and to assist if visits to the toilet are necessary during the night and light switches are not in easy reach.

Social Services or Gas and Electricity boards may be able to help adjust levers and switches on fires for any disabled person who may have difficulty turning heaters or other appliances on and off.

Money helpers

DHSS — make enquiries about supplementary pensions, home insulation grants and home improvement grants, to help towards costs for materials for keeping the home in good repair and for draughtproofing to make the home more heat efficient.

For people who are worried about large gas and electricity bills, make enquiries about budget schemes, slot meters, stamps and flexible payment with paying-in books from the local showrooms.

Articles of clothing and budgeting for the bills can all be helped if family members club together and buy recommended articles for birthdays, Christmas, Mother's Day etc.

Fuel saving tips

A lot of these things can be done during the summer months again to spread out the time and cost.

Remember heat tries to get out of buildings every way it can. As much as 25% may be lost through an uninsulated roof, 15-20% through doors and windows.

Insulation

Hardware stores and departmental stores sell material for draughtproofing.

Here are some simple DIY tips:

Doors

Put foam strips around sides. Fit draught excluders at bottom.

Make a snake or sausage dog excluder from old tights etc.

Cover the letter box.

Hang a heavy curtain at main doors leading to outside.

Windows

Seal gaps.

Double glazing — use plastic sheeting and double sided tape.

Line curtains with thermal linings, or blanket between curtain and lining.

Draw curtains earlier in the winter months.

Floors

Seal up cracks in floor boards.

Put underlay under carpet, or use newspapers between floor and carpet.

Hot water tank

For about ten pounds you can buy an approved tank jacket, or use an old coat or blanket. Or better still use an old

They can't cut you off

But above all remember pensioners cannot have heating cut off between 1st October and 31st March.

If they are threatened with this, they should contact the Gas or Electricity Board immediately and state this fact. Social Services can also be contacted for advice and extra emergency heating if appropriate.

feather eiderdown.

Repair dripping taps.

These suggestions are only ideas which we have found useful whilst working in the community and are meant to guide pensioners, interested carers, relations or neighbours. Some ideas might be found to be totally unacceptable or inappropriate, but on the whole we think if one or two suggestions are helpful it will be worthwhile and probably help keep somebody warm this winter.

Jean Elliott
Hospital/Community Liaison Nurse

Jill Hall
Health Visitor for the Elderly.

BUDGET WARMTH

The weekly payments answer to single room heating

FROM YOUR LOCAL EASTERN ELECTRICITY BOARD

Were you cold last winter?
Did you worry about heating bills?

Well, there is no need to be afraid about next winter. Eastern Electricity's NEW BUDGET WARMTH PLAN will keep one room in your home really warm day and night, so ring 953 6282 or send in the coupon.

You pay by the size and number of heaters we install. For example:-

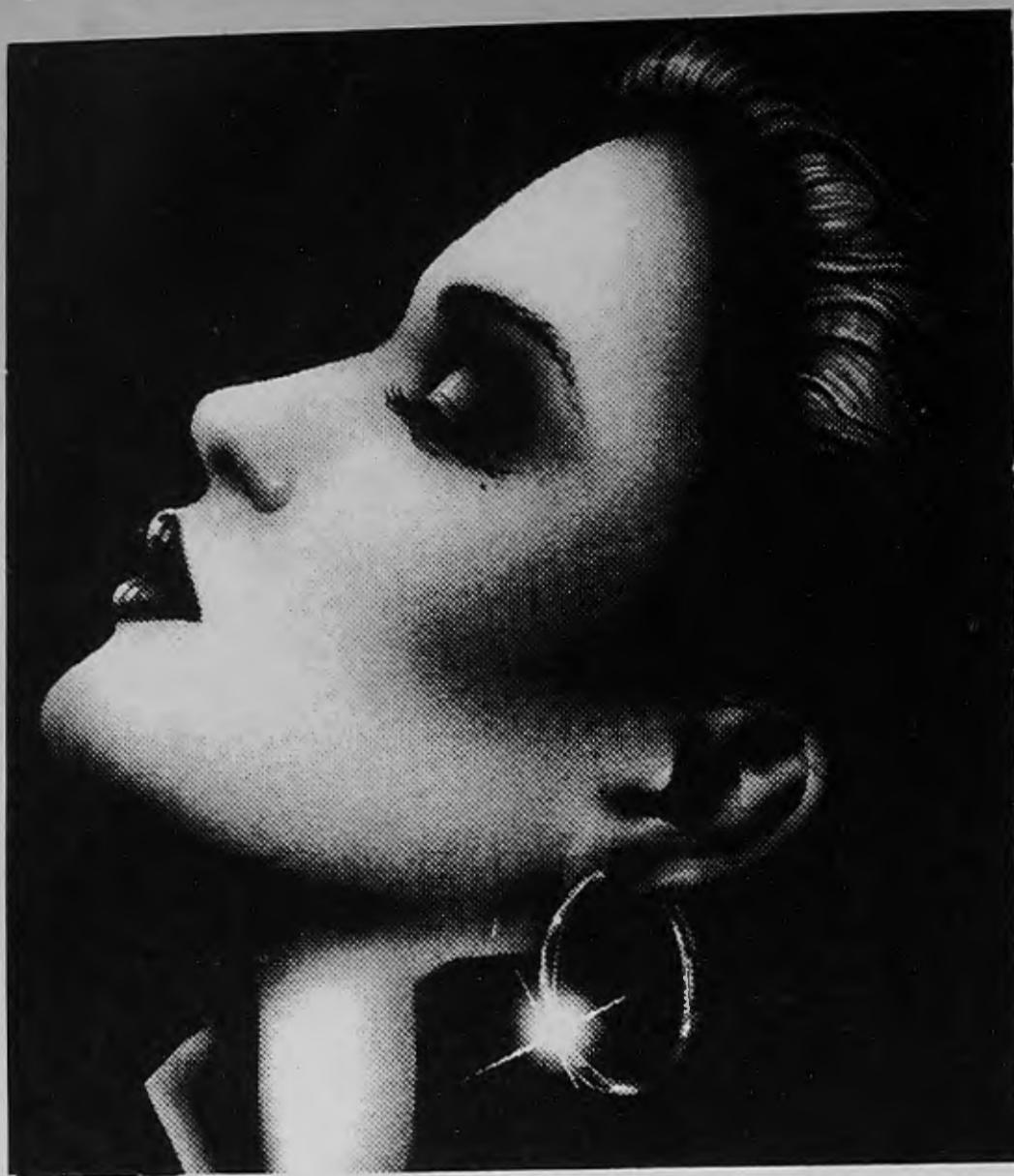
Heater Size	Budget Warmth fully inclusive Weekly Cost throughout the year
1 medium (2.55kW)	£2.28
1 Large (3.34kW)	£2.64
2 medium (2x2.55kW)	£3.64
1 med+1 large (1x2.55kW+1x3.4kW)	£4.01
2 large (2x3.4kW)	£4.37



eastern electricity

CUT OUT AND SEND TO: Eastern Electricity, Manor Way, Borehamwood, Herts. Tel: 953 6282 ext 2385 or 2240. Mr John Sargant will help you and send you FREE INFORMATION.

Name..... TEL NO:.....
Address..... BBN2



Panic attacks

What is a panic attack? — Anxiety is part of all our lives to some extent; it is the price we pay for having intelligent minds with ability to imagine. If stress and pressure builds up in us, our bodies produce more adrenalin and the symptoms

of anxiety (trembling, sweating, faintness, rapid heartbeat, breathlessness, nausea and diarrhoea, painful tense muscles, a sense of impending doom, and so) become distressing.

If these feelings are associated with an obvious trigger — examination, driving test, interview etc., then the symptoms make sense to the sufferer and also disappear after the event. This is

IS YOUR LIFE BECOMING DIFFICULT DUE TO:—

Mental stress, Lack of confidence, Smoking, Overeating, Panic attacks, phobias, depression, or any other psychosomatic illness?

HYPNOTHERAPY can help you. Do not suffer in silence — book for a consultation NOW — in absolute confidence.

Mrs Vijaya Prasad
DMS, CHP, AMAHP
(Registered Practitioner)
The Chatsworth Clinic
76/78 Park Road, New Barnet
Telephone 01-440 4217/8 or 449 8646 (for appointments only)
or 01-361 4525 (between 6.30 & 7pm weekends only)

normal anxiety. However, in some people these feelings occur without any reason — and then the sufferers become even more anxious as they try to work out why they feel so bad, and that makes the feelings increase to abnormal levels due to their brain receiving constant messages of "fear", which results in more anxiety followed by more symptoms! until the whole situation gets completely out of hand and the sufferer has a full blown panic attack.

People may be taken into hospital for a check-up; but they feel very upset when they are told — "There is nothing wrong, it's just your nerves" and perhaps given tranquillisers, which, although of help in the short term, do not cure the problem by getting to its roots. Psychotherapy and hypnosis treats the sufferers by helping them to get an insight into themselves and teaches them the art of relaxation. For more information please phone Mrs V Prasad at the Chatsworth Clinic.

Every Babies needs, at very high speeds

Our aim is to offer you a first class service at very competitive prices, with NO DELIVERY CHARGE in order to save you the trouble of trudging to and from the shops, baby or babies in tow. What could be easier than just making a telephone call and having the goods delivered direct to your front door? You will see from our delivery schedule that we are in most areas at least twice a week, at times which we hope are convenient to you. Being parents ourselves, we know only too well the times you mean to get out, but never quite make it! For your convenience there is an answerphone on at all times for you to leave a message, should we be unable to take your call personally.

We wish to provide a service that will help you at one of the most hectic times of your lives and when you could probably do with all the help you can get. If you have any suggestions or ideas of additional items you would like us to provide, or you can think of any way of improving our existing service, we will be more than happy to hear from you.

Please remember, we are here to help and if at any time an emergency arises, we will always do our very best to assist you.

IF YOU'VE BEEN TRYING TO LOSE WEIGHT FOR YEARS AND YEARS AND YEARS, JUST GIVE IT ANOTHER 28 DAYS.

"After the birth of my second child I reached a depressing 12 stone 2lbs. That's when I decided to try the Cambridge Diet. It was fantastic, and within a month I'd lost well over a stone. From then on, I knew I could reach my 'dream' weight of around 9½ stone and eight weeks later I was there."

The diet should not be taken as a sole source of nutrition for a continuous period exceeding four weeks.

FIND OUT MORE. CALL YOUR COUNSELLOR

DIET CENTRES	
JON HOWARD	BRENDA SONGHURST
15 Flask Walk	8-10 Station Road
Hampstead NW3	Finchley N3
Tel: 435 0709	Tel: 349 1284

THE Cambridge DIET

DEVELOPED BY DOCTORS OVER 14 YEARS. IT COULD CHANGE YOUR LIFE IN AS MANY DAYS.



MRS SESA WASH OF TOTTENHAM LOST 15 STONE 2 POUNDS WITHIN FOUR WEEKS OF STARTING THE CAMBRIDGE DIET

FREE DELIVERY SERVICE



The Nappy Express

"ALL BABY'S NEEDS AT VERY HIGH SPEEDS"

PEAUDOUCE

80 Mini, 60 Super, 48 Maxi, 42 Childsize All £6.99 per pack
75 Super, 60 Maxi Both £8.20 per pack

ALSO A WIDE SELECTION OF BABY TOILETRIES, FOOD AND MILK AND VARIOUS HOUSEHOLD ITEMS AT MOST COMPETITIVE PRICES

Carry Cartons

Mini 78, Super 52
Maxi 44, Maxi Plus 40, all £6.49 per pack

A discount will be given on Pampers purchases of 2 or more packs

PAMPERS

Value Packs

88 Maxi, 80 Maxi Plus
All £12.39 per pack

All Pampers are now the new

SLIM ULTRA PAMPERS

as being advertised nationally by Pampers

FOR YOUR FREE PRICE LIST PHONE ANGELA OR DAVID
ON 958 5267 OR 958 1727

HANWAY CLINIC

A private clinic for family planning, cervical smears, colposcopy, subfertility, gynaecological disorders.

Also confidential counselling and testing of all Sexually Transmitted Diseases including Aids.

Company Health checks plus many other facilities

HANWAY CLINIC
No 1 HANWAY PLACE
LONDON W1P 9DF

Telephone: 01-636 0366
Registered with Bloomsbury Health Authority

All major Credit Cards accepted

PERSONAL SERVICE FROM VALLEY



INSTANT CREDIT FACILITIES AVAILABLE UP TO £1,000 SUBJECT TO STATUS

We specialise in

BEDS • SUITES • FIRE SIDE CHAIRS

We also furnish houses, flats for letting/renting and old peoples homes

MATRESSES OF ALL SHAPES AND SIZES ARE AVAILABLE SEPARATELY

FOLDING BEDS FROM £29.00

VALLEY FURNISHING

114 BRENT STREET, HENDON NW4
YOU ARE ONLY A PHONE CALL AWAY
Tel: 202 4666 Car park at rear

Anthony Ellen

The Salon that cares for you and your hair!

Let us style your hair beautifully at a price you will appreciate.



We specialise in perms and other hair treatments with our NEW sensor computer

Take advantage of our special September offer on production of the coupon below

TEL: 440 5852

for an appointment now

OPEN 9-6pm LATE NIGHT FRIDAY

98A EAST BARNET ROAD
NEW BARNET



20% OFF

**ANY HAIRSTYLE
THROUGHOUT
SEPTEMBER**

Offer ends Sept. 30th 1987

Exercise your way to fitness at new centre

DO YOU want to get fit or keep fit? Then why not go along to the £100,000 brand-new and superbly-equipped Douglass Fitness Centre at Bishop Douglass School in Hamilton Road, East Finchley, especially designed for them by the Universal Gym Company.

The opening of the centre is the culmination of months of planning and fund-raising by the school and its supporters. Having arranged the initial loan with the Wood Green branch of the Allied Irish Bank, the school held a number of fund-raising events including a sponsored calorie burn using equipment especially loaned to them by Universal.

Mike Caulfield, the head teacher said: 'We are very happy with our new fitness centre and proud of ourselves and our supporters for making it happen. We are especially grateful to the Allied Irish Bank and the Universal Gym Company.'

Community links

The school wanted the centre to extend their physical education facilities which were insufficient. They also want to extend their existing links with the local community by opening it up for use out of school hours and at weekends by local companies, sports clubs, past pupils and residents.



Using one of the pieces of equipment is Anne Wraight (right), a former pupil at the school and one of the instructors. Watching pupils using other machines is Floyd Steadman, head of boys' physical education. Both Anne and Floyd have been on multi-gym courses.

Whatever your level of fitness there is something for everyone in the centre. The equipment includes

some of the latest computerised exercise machines from Universal's high-tech range.

These machines, like the aerobicycle, are designed to be 'user friendly' with a range of settings and an easy-to-read display panel, making working out a little easier. The aerobicycle motivates, gives a feed back and is fun to use.

The emphasis is on providing a relaxed and pleasant atmosphere for an enjoyable workout with family or friends.

There is sauna and a solarium.

Further details about the centre including fees and sessional charges can be obtained from Mr M. J. Caulfield, Bishop Douglass School, Hamilton Road N2. Tel: 5211/2. Charges are based on sessions of 40 minutes in the fitness area. There is an additional charge for the use (single sex) of the solarium or sauna for up to 20 minutes.

Barnet Sport activities

BARNET Sport are producing a leaflet giving details of their activities up until Christmas.

It is now available at all libraries, at the Information Centre, Ravensfield House, The Burroughs, Hendon, and at Barnet House, 1255 High Road, Whetstone.

ACADEMY of HYPNOTHERAPY

Estab. 20 yrs

Consultant Harley St. Psychologist P.J Millin

Confidence/Stress/Phobias/Overweight/Smoking/
Anxiety/Blushing/Sexual Problems/etc.

Over 8,000 people helped!

Also Private Tuition become Professional Hypnotist/
Psychologist (Diploma).

Appointments E. Barnet.

Tel. 01-441 9685. Ask for Dept. P.
(before 4 p.m.)

Brochure available

ONCE A CATHOLIC?

'I am a Roman Catholic but don't go to church any more.'

'I was baptised a Catholic but never knew much about it.'

'I've been away so long, I wouldn't know what to do.'

'I've just drifted away and need something to get me started again.'

Are you like one of these people, or would you just like to know more about the Catholic Church? If so, then our two booklets can help you. They explain clearly and simply the basis of the Catholic Faith.

They are sent free and in confidence. There will be no callers, no follow-up, and there is no obligation.

Fill in the coupon below and find out what the Catholic Church really teaches.

BBN3

The Catholic Enquiry Centre London NW3 7TY

Please send me your free booklets on the Catholic Church. I am not a practising member of your Church.

Mr. Mrs. Miss
(Block letters please)

Address

..... Post Code



British Heart Foundation
The heart research charity

Langthorne Hospital,

Langthorne Road, E.11 4HJ

01-539-8828

Sport

Sian is diving for a future Olympics

ONE of Britain's brightest diving prospects for a future Olympic Games and a budding international competitor is 19-year-old Sian Parry of Friern Watch Avenue, North Finchley. Sian is pictured here with her coach, Peter Squires, and another member of his diving squad, 15-year-old Gareth French, of Page Street, Mill Hill, at Barnet Copthall diving pool, before flying to Florida, U.S.A., for a three-week intensive coaching course.

Sian, a full-time catering assistant at the Malt and Hops in the High Road, North Finchley, is being sponsored by customers and the pub owners, Chef and Brewer.

While in Florida Sian will come under the watchful eye of one of America's top Olympic diving coaches, Ron O'Brien.

Before taking up diving two years ago, Sian was a top-class trampolinist. During her seven years on the trampoline she won many competitions and was fifth in the national championship for under 18s. 'I became a little fed up with it,' said Sian. 'Peter suggested I tried diving and after a couple of sessions I decided that I liked it and took it up seriously.'

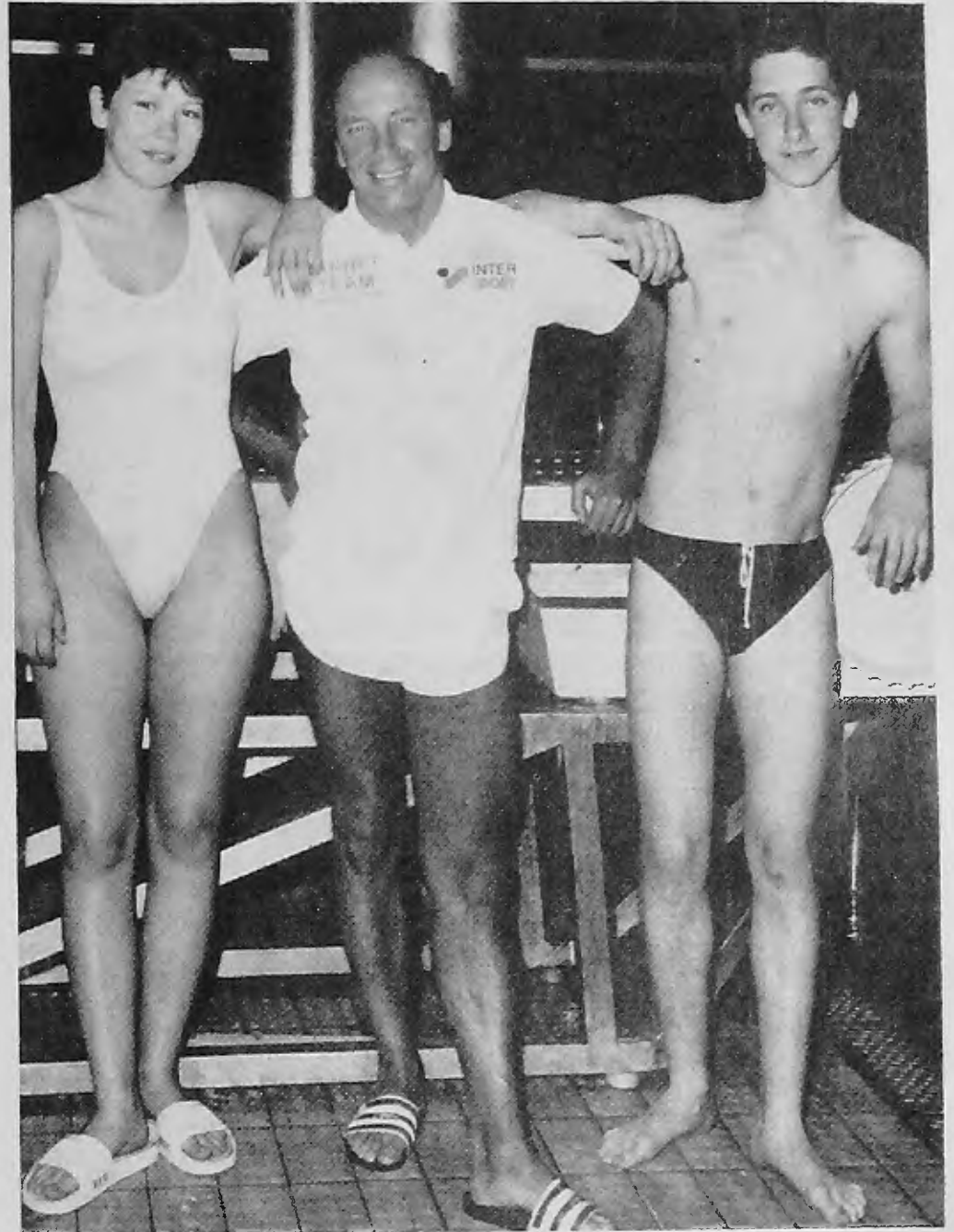
Peter, an accountant who lives in Temple Avenue, Whetstone, is head diving coach at Copthall. He was national diving champion in

1955/56/57 and 1959, and took part in the springboard event at the 1960 Olympic Games in Rome. He was full of praise for Sian's dedication to the sport and rapid progress, adding that trampolining and gymnastics were an excellent springboard for those wishing to take up diving.

A recent indication of Sian's potential was realised in July when she competed in the National Senior Diving Championships at Oldham. She was leading after the preliminary rounds and finished third overall.

Gareth's first real competition was at the London Youth Games when he finished fourth and helped Barnet win the team diving event, Sian winning a gold. Gareth, a pupil at Hendon School, has made good progress in recent weeks, said Peter. Part of their training includes gymnastics, trampolining, stretching, weight-training exercises and dance.

Peter has a number of the country's leading divers in his squad, two of whom travel from as far apart as Sheffield and Plymouth to Copthall Pools each weekend for coaching sessions. Jason Statham, aged 20, who lives in Whetstone, has taken part in international events in Sweden, Germany and Russia and has been to Florida three times for special coaching.



ROOMS FOR RENT?



Brent Education is seeking accommodation for teachers, particularly those new to the Borough, including probationary teachers.

Like all London Education Authorities we are finding that difficulties in obtaining suitable homes for teachers is affecting our recruitment. Pupils and parents suffer in consequence.

We aim to set up an accommodation register with details of accommodation available. Copies will be sent to all prospective teachers who ask for lists of accommodation. It would then be a matter for the teacher to contact the owners of homes direct and for mutually acceptable arrangements to be made.

If you have spare accommodation to let and would like to help us to help our teachers and our schools we would be glad to hear from you. Please complete and return the coupon below.

B B N YES I am willing to consider letting accommodation to teachers employed by the London Borough of Brent. Please put the following details in your register.

NAME _____

ADDRESS _____

TEL: _____

ROOM(S) AVAILABLE: _____

OTHER FACILITIES: _____

APPROXIMATE RENT: _____

Return this coupon to: Teacher Staffing Section, P.O. Box No. 1, Chesterfield House, 9 Park Lane, Wembley, Middlesex HA9 7RW.

BRENT EDUCATION

News

Fun at Finchley Manorhill



FINCHLEY Manorhill Centre, based at Finchley Manorhill School, Summers Lane, opened its doors to the community for a fun day to show off the centre's facilities.

Young people and parents were welcomed by clowns to a centre

where indoor and outdoor activities were on offer. There was free coaching by Chris Maher in the new game of short tennis. There were Gym-Joey gymnastics for the under sevens. Karen McCarthy demonstrated the fun of face painting. And the children could play hock-

Learning to tumble almost as soon as they can walk, under sevens in the Gym-Joey class at Manorhill Centre's fun day.

ey, chess or just have fun on the inflatables.

To book any of the centre's courses phone 368 6316.

PUPPETS, PIGS AND PICNICS

THE traditional tale of The Three Little Pigs is one of several puppet shows planned for an Under Fives Week in the Borough's libraries.

There will also be Teddy Bears' picnics, rhyme and nursery song sessions, visits by 'live' animals, music workshops and a host of other activities.

Barnet Libraries hope the week, which runs from October 12 to 16, will encourage both youngsters and their parents or carers to make visiting the libraries part of their everyday lives.

Theatre group

The Fleeties, a theatre group for under fives, will be performing their new show 'Sula's Amazing Day', and storytime sessions include some in Gujarati, Urdu and Hindi at Burnt Oak library.

While youngsters are entertained by all the activities, including visits from the Barnet Playbus, there will be an opportunity for parents and childminders to view book displays and talk to librarians and staff.

A complete programme of events and activities for the week is available from your local library.

SERVING THE COMMUNITY

Take One

Clare wanted to be a nursery teacher — but did not have the necessary examination passes.

John wanted a career in a caring service — but was not sure of the type of service he was looking for.

Jackie thought she might like to work with children but did not think she had any special ability.

Take Two

Clare spent eight months with Barnet's Social Services as a Community Volunteer, working in a day nursery. This gave her the advantage of experience and she has been accepted to train as a nursery teacher.

John discovered he found working with disabled people very rewarding and is now a full time member of staff at Flightways Centre, Grahame Park.

Jackie discovered she had a talent for teaching arts and craft and she is now waiting to join the staff of an elderly people's centre and will go on to take professional training.

Take you?

Clare, John and Jackie (those are not their real names but their stories are fact) all began their careers in community service as volunteers.

Now Barnet is hoping to increase the number of young community volunteers in day and residential centres for young children, elderly people, disabled people and people with mental handicaps.

The Community Volunteers are a band of young people in the 18 to 30 age group who join Barnet Social Services on placements which run from four to 12 months.

They work 30 or more hours a week in a caring environment. They do not receive a salary but pocket money and allowance come

to £33.75 a week. They also receive travel expenses and at the end of four months a clothing allowance of £2 a week is paid with back pay to the beginning of their service.

Doreen Gardner, assistant management officer with responsibility for volunteers, believes this is an opportunity which many people will enjoy.

'It is a chance for young people to find out more about a career in social work or day and residential care and home support work.

'We are looking for caring people who respond to a challenge. It is the type of opportunity which may appeal to school leavers, or to young people filling in a year between leaving school and starting university or college courses,' she said.

'It could also be a way into a change of career, particularly for people looking for a satisfying and caring job.

'While the community volun-

teers are with us they work under supervision but are given an opportunity to develop their own talents in the service of others. For instance people who are musical might find themselves forming a music club in the centre.

'They have a weekly session discussing their job with their supervisor, there is training and encouragement to go forward. From the day they join they are treated as part of the staff team, and they will be in a supportive role to the professional staff in the centre in which they serve'.

So if you, or young people you know, are looking for an opportunity to work in a caring environment as a volunteer but with training and career development very much in mind, why not phone Doreen Gardner for an informal chat.

She is based at Ivy House, 1331 High Road, Whetstone N20. Tel: 446 1488 Ext 4227.



BARNET'S team in this year's London Youth Games won the London Standard trophy for the most improved team. Competing with young people from the City of London and 32 London boroughs they came 9th overall.

At the last Council meeting

representatives of the team received the congratulations of the Mayor, Cllr Malcolm Lester, and handed in the trophy for safe keeping.

Our picture shows representatives of Barnet's team. On the left three members of the team which

won the pop-lacrosse tournament: Louise Carter, Louise Foster and Joanne Harris, with team coach Peter Squires, games co-ordinator Alan Beesley, diving coach Shari Evans, and diving team representatives Natasha Parry, Sian Parry and Gareth French, all Barnet Cophall swimmers.

From today, you'll spend a lot less time, and money, buying a suit.



From now on, buying a suit is a one-stop business. Because as part of Moss Bros, we can offer a wider choice of famous name suits from under £80. All styles. All sizes (36" to 52" inclusive). All at guaranteed best prices.

In fact, if you find the same suit cheaper somewhere else in the same week, we'll refund the difference.



SUIT CO!

The one-stop suit shop

Come and browse through our helpfully laid out shop. You'll find we offer instant credit, Moss Bros hire, advice on fitting, an alteration service - even a FREE suit bag with every suit purchased.

So don't bother wandering from shop to shop, visit us first. You won't have to look any further for your new suit.

25/27 Muswell Hill Broadway, London N10. Tel: 01-883 1036. (Open 10-8 weekdays, 9-6 Sat, 11-5 Sun).

PART OF MOSS BROS. PLC



THE HAMPSTEAD GARDEN SUBURB INSTITUTE

CENTRAL SQUARE, NW11 7B

Courses Available for Adults 1987/88

- | | | |
|-------------------------------|------------------------|---------------------------|
| Acting and Speaking | Film | Navigation |
| Alexander Technique | First Aid | |
| Archaeology | French | Orchestra |
| Art (Practical) | | Other Faiths |
| Art Appreciation | Gardening | |
| Arts of India | German | Parenting |
| Assertiveness Training | Gilding & Lacquering | Patchwork & Quilting |
| | Greek (Modern) | Photography |
| | Guide to Basic Judaism | Picture Framing |
| | | Play Reading |
| Bookbinding | Hairdressing | Portuguese |
| Bridge | Health & Beauty | Pottery |
| | Hebrew | |
| Calligraphy | | Retirement |
| Chair Caning & Basketry | Italian | |
| China Painting | | Self Defence |
| Computer Appreciation | Jewellery | Singing for Pleasure |
| Cookery | Jewish History | Spanish |
| Corn Dolly Making | | Stained Glass |
| Creative Writing | Keep Fit | |
| Crochet | | Tai Chi |
| | Lace | Tapestry Weaving |
| Diaghilev/Russian Ballet | Limber Stretch & Dance | Tennis |
| Discovering England | Lip Reading | Typing |
| Discovering Wildlife | London's Heritage | |
| Dressmaking | London Walks | Wine Appreciation |
| | | Women in Drama/Literature |
| Embroidery | Marbling | World Issues |
| English as a Foreign Language | Music for Pleasure | |
| | | |
| Fabric Printing | | |

G.C.S.E. Examination Courses

- | | | |
|-------------------|------------------|---------|
| English | Greek (Optional) | Spanish |
| German (Optional) | Italian | |

London University Courses

- | | | |
|-----------------------------------|------------------------|---|
| Certificate in English Literature | Diploma in Art History | Person to Person: Managing Social Relationships |
| | A History of N. London | |
| | And for Juniors | |
| Art | Fun Jewellery | Soccer Training |
| Badminton | Pottery | Tennis |
| Drama | Stained Glass | |

For further details of these and other courses please send or phone for a prospectus. Tel: 01-455 9951/01-458 5669.

Adult's Guide to Basic Judaism

The course is designed for students of all ages and levels and prior knowledge is not required. The traditions, beliefs and practices and the social and personal implications of Judaism will be explored in a 'popular' manner. Class questions and participation will be encouraged. There is an option to continue in the Spring Term.

Art, Design and Decoration in The Twentieth Century

From the first move away from representational art at the end of the 19th Century to the Earth Art of the 1970's we shall look at the important artists and movements which astound and amaze us. Cubism, Futurism, the Bauhaus and the lesser known work of the New

English Art Club to the excitement of New York in mid century will be discussed.

China Painting

This course is arranged to suit the person who wants to learn the beautiful art of painting on china and porcelain in traditional or contemporary designs. Some materials will be provided. Please bring an apron.

Contemporary World Issues Study Group

A different topic of current interest will be explored each week, by means of a brief presentation of the subject, which will provide salient background information, leading into an informal discussion. Possible topics include South Africa, The Middle East, Britain's Econo-

mic Decline, Nuclear Disarmament and the Japanese Miracle.

Creative Writing

The course is primarily an introduction to the joys of writing, but is flexible enough to welcome writers with a range of experience. Beginners will be offered an opportunity to improve their writing in a general way and to attempt a variety of forms in fiction and non-fiction. More experienced writers can expect individual guidance towards marketing. All can benefit from weekly suggestions for writing, periodic workshop sessions and group discussions.

Coping with Retirement

These sessions afford an opportunity to look at ways of dealing with



AUTUMN BEGIN SEPTEMBER

ALL E.F.L. COURSEWORK

English as a Foreign Language

Classes at all levels for foreign students. The English examinations including Cambridge F, London Chamber of Commerce. Facilities include Bar and Book-Shop. There is a counselling service. A booklet containing class times and details available from the Department, Hampstead Garden Suburb Institute.



September

You can enrol in person or by post. Take enrolments as follows:

- PERSONAL ENROLMENT**
- DAY 5 September onwards
- EVENING 16 September onwards

POSTAL ENROLMENT
Complete the Application Form and send to the Institute, with your course fee.

E.F.L. ONLY

- 15 Sept
- 16 Sept
- 17 Sept

LONDON SUBURB INSTITUTE

Tel: 01-455 9951/01-458 5669



TERM
INS

BER 28

WILL START SEPT 21

The Institute is a centre for all main First Certificate and Proficiency and include a Language Laboratory, Coffee service and help with accommodation. Available from The Secretary, E.F.L. Institute, Central Square, NW11.



Enrolment

The Institute Office will be open to

Mon-Fri 9am-4.45pm
Mon-Thurs 6pm-8.30pm

the prospectus and return to the

9.30 & 1.30 Testing/enrolment

10am-12.00 — 2-4pm Enrolment

common issues and particular sets of circumstances which arise at this new and important stage in life. Individuals will be able to share their thoughts and anxieties in an atmosphere of trust and empathy. Topics covered will be tailored to group members' needs, but will probably include relationships, spare time, changes of financial circumstances and status, and loneliness.

Discovering Our Wildlife and Countryside

A general interest course to illustrate our changing countryside and gain greater understanding and enjoyment of the diversity of local and national wildlife. A wide variety of creatures and habitats will be covered and methods will include use of slides, recordings and specimens, as well as at least one field meeting each term.

Diaghilev and the Russian Ballet

Explore the influences of Diaghilev on the arts of the early 20th century and his links with many of the great painters, designers and musicians of our times.

Dressmaking and Fashion Courses

Make yourself a wardrobe of original clothes that fit. Create simple styles using modern dressmaking techniques, or classical tailored garments with intricate details, by traditional methods. Make inexpensive clothes for children, or something smart for your husband. Whatever your ability and experience we have a friendly class suitable for you.

Exploring Other Faiths

This study programme, inspired by last year's exploration of Judaism and Christianity (Beyond the Stereotypes) goes on to an informed dialogue with other world faiths: Islam, Hinduism, buddhism and Sikhism. Chairman/Tutor will be a local Christian leader and it is planned to invite representatives from the other faiths on alternate weeks.

Fabric Printing

In this class beginners will be taught the basic techniques of printing on fabric, using mainly silk-screen. Using one or more colours a wide range of imaginative designs can be produced. These can be single pictures on t-shirts, cushion covers etc, or lengths of fabric can be printed with a repeat pattern for clothes or furnishings. Advanced students are encouraged to develop their own design skills and experiment with different methods of printing.

Focus on Film

An exploration of some of the major stylistic innovations in 20th century

popular cinema. As well as attempting to place these developments in a historical perspective, we will examine the way some films relate to significant concerns and issues of their period; the relationship between the 'star image' and popular culture; and sexual roles in the cinema.

Institute of Linguists French Course

This intensive course is for students with an elementary grounding in French who wish to raise the level of their French to Grade I of the Institute of Linguists Examination, although there is no obligation to take the examination. Grade I is comparable to a good G.C.E. 'O' Level standard.

Modern teaching methods, including the use of video will be used and the restricted number of students will maximise individual attention.

Keep Fit

The classes held on Tuesday evening and Thursday morning offer exercises to improve mobility, flexibility, circulation and muscle tone, and include some aerobics for vital-

and problems which arise at different stages of the parenting experience, and methods of dealing with them.

Person to Person: Managing Social Relationships

How we get on with people has an important influence on success or failure in most areas of our lives. The skill of handling people effectively can be acquired just like any other skill and may lead to enhancement of both our own lives and those of others around us. This London University course examines the art of "getting on" with people.

Photography — Art and Practice

Photography is an essential form of expression and communication today — everybody should be able to use a camera with confidence. But learn also how to put your own feelings into photographs, and how to be creative and obtain joy from your best pictures, well-presented and framed.

Understanding Music

A course in active listening designed to introduce those with li-

FOREIGN LANGUAGES ADVISORY SESSIONS

Saturday 12 September 10.00-12.00 and Wednesday 16 September 7.30-9.00 — The Tea House, Northway, NW11. If you are unsure which language course to join please come along to one of our Foreign Languages' Advisory Sessions. Our Languages' Organiser, Graham Spowart, and part-time tutors will be there to advise you.

ity and stamina.

Lunchtime Spanish

For those who can escape from work in the middle of the day or who can come along anyway, there will be a chance to learn Spanish from absolute zero.

This will be a relatively small group so you can count on a lot of individual attention.

Marbling, Graining and Decorative Finishes

Learn the art of rag-rolling, sponging, stencilling, stippling, graining and marbling for application to furniture, walls, fireplaces and hardwoods. Enhance an old piece of furniture, enliven a dull corner in the home.

Patchwork, Quilting and Applique

Family heirloom quilts and cushions can be yours for the making! This course covers both hand and machine techniques and is suitable for beginners or students with prior knowledge of the craft.

Parenting

This series of 'workshop' sessions is designed to give parents an opportunity to explore common issues

mitted technical knowledge to the basic materials and structures of music. Outings to concerts are a feature, as well as discussion of newspaper reviews and radio broadcasts. The emphasis will be primarily on western art music, although reference will be made to other cultures as well.

Villages & Suburbs: A view of the History of North London

A view of the general development of an area which extends through central Middlesex taking in a variety of long-established communities including Hampstead, Highgate, Hornsey, Barnet, Enfield and Finchley. Starting from the mid-17th century topics to be discussed will include shifts in the ownership of land and in the organisation of selected localities; the erratic extension of the built up area and its relationship to the transport revolution; the emergence of a suburban life style and its manifestation in the garden suburbs of North London. Visits will be arranged to places around the area which illustrate the general process of change into the 20th century.

PULL OUT AND KEEP ● PULL OUT AND KEEP ● PULL OUT AND KEEP ● PULL OUT AND KEEP



NIGHTINGALES LTD

SHOP AT 434 FINCHLEY ROAD,
LONDON NW2 2HG TEL: 01-435 4070



BRUSHED COTTON AND NEEDLECORD
DRESSES: COTTON VICTORIANA BLOUSES
AND NIGHTDRESSES. ALL AT EXTREMELY
REASONABLE PRICES.



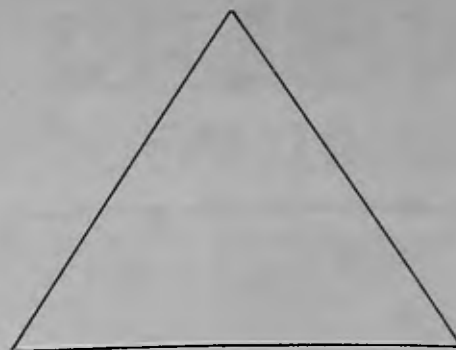
NIGHTINGALES LTD

Or Write to:

NIGHTINGALES LTD for free brochure

Dept BN, 110 St Pancras Way, London NW1 9NB
or ring 01 435 4070/3179

**THIS COUPON MAY BE REDEEMED FOR £1.00
AGAINST ANY ORDER IF BROUGHT INTO THE
SHOP OR SENT IN WITH MAIL ORDER FORM
FROM BROCHURE.**



TEMPTATION

THE CHOICE JEWELLERS



All our goods are direct from our workshop. There is no middle man which simply means, you will not find anyone else offering lower prices than us. **TEMPTATION** exist to make expensive, good quality jewellery, affordable for everyone. Every price in our catalogue is significantly under the price you would expect to see in any jewellers or any other catalogue. You will not find a lower price anywhere.

(All prices include post and package.)

QUITE SIMPLY WE ARE THE BEST



TO OBTAIN YOUR **FREE** COLOUR CATALOGUE
POST THIS COUPON TODAY

Name _____
(Block capitals please)

Address _____

_____ Post Code _____

Telephone No: _____

POST TO: **TEMPTATION PO BOX 356
LONDON N4 3TS**

BARNET DIARY

Council Meetings

Members of the public are invited to attend council and committee meetings in the Town Hall, Hendon, at 7pm

Monday September 7: Housing; Development & Estates

Tuesday September 8: Public Works; Social Services

Wednesday September 9: Town Planning & Research

Monday September 14: General Purposes

Tuesday September 15: Allotments

Wednesday September 16: Grants

Thursday September 17: Planning Sub-Committees

Monday September 21: Finance

Tuesday September 29: Education Sub-Committees

Tuesday, October 6: Council Meeting

Entries for the October issue must be received by September 10, and before that date if possible. New entries start on October 10.

*Asterisk denotes weekly meeting.

Saturday September 5

*Tennis Squad, Barnet College, Russell Lane, N20. 10am. Details Manorhill Centre, 368 6316

*Melanies Latest Charts and Imports Club, 407 Hendon Way, Hendon. 202 7289

*North London Rambling Club organised Saturday walks. Contact (SAE) Ray Todd, 31 Blair Close, St Paul's Rd, London N1 2YP

*Mill Hill School Sports Centre, The Ridgeway, Mill Hill, Junior activities 7-14 yrs, 10.30am. 906 2322.

*Emotions Anonymous, Community Centre, 154 Station Rd, Hendon. 3pm. 458 1504

*Saturday Club for children 3-110yrs. Old Barn Community Centre, Tarling Rd, N2. 9.30am-12.30pm and 1.30-3.30pm. 349 4613

Sunday September 6

British Heart Foundation tombola at Finchley Nursery Open Day, Burtonhole Lane, Mill Hill. 9.30am. 449 4484

College Farm Country Fair — Carriage Procession — 45 Fitzalan Rd, Finchley. 2pm. Adults £1, children & senior citizens 50p (includes entry to Gallery). 349 0690

Family Fete, Hampstead Garden Suburb Residents' Assn, Central Sq, NW11. Includes London Ukrainian Dance Troupe. 2pm

*Finchley Section of the Cycling Touring Club organise Sunday rides. Phone 361 9851

*Tennis and Short Tennis for 5 yrs to adult, Christ's College Lower School, East End Rd, N3. Details Manorhill Centre 368 6316

*North West London HF Club. Sunday rambles in Home Counties. 997 6079

*Mind in Barnet 'Libra' Club, Etchingham Park Day Centre, Etchingham Park Rd, Finchley. 3.30pm. 455 2850

*Shaftesbury Harriers training sessions, Cophall Stadium, Gt Nth Way, NW4. 11am. 200 1584. Also Tuesdays 6pm

*North London Holiday Fellowship Group. Sunday rambles in Home Counties. 346 6795/444 5847

*Finchley Zen Society, 91 Nether Street, N12. 8-9pm. 445 1819

*Youth Club for hearing impaired, Grahame Park Youth Centre, Corner

Mead, Grahame Park Way. 10.30am. 202 3811

*Barnet 18 Plus Group, Bull & Butcher Public House, 1277 High Rd, Whetstone. 8.30pm. 0707 59373.

Weekdays

Playgroup 3-5yrs, SPEC Community Centre, 87 Brookside Sth, E Barnet. 9.15am-12.15pm. 368 0891

Crescent Playgroup, East Barnet Baptist Church Hall. 9.30am. 449 5095.

Old Barn children's activities, Tarling Rd, N2. Under Fives, 9.30am; After School Club, 3.30-6pm. 349 4613

Monday September 7

London Hash House Harriers — Monk-en Hadley Common & Trent Park. Cockfosters Underground Stn. 7pm. 361 0887

*CRAB — photography group for disabled people (CLIC), 43 Flower lane, NW7. 1.30pm. 346 9789

*Barnet Blind Bowls Club, Bishopswood Tudor Bowls Rink, Summers Lane N12. 2pm 449 7058.

*Bells Hill Prams & Pushchairs St. Stephen's Church Hall, Bells Hill, Barnet. 1.30pm. 441 9501

*Edgware & Dist Canine Training Soc, St Alphage Hall, Playfield Rd, Burnt Oak. Ring class 8.30pm; obedience training 9.15pm. 0923 35968

*Information and Advice Drop In, Sutton Road Health Clinic, Muswell Hill. CAB and Social Services worker available. 2-4pm. Housing Estates Officer attends first Monday of month

*Emotions Anonymous, St Agnes Catholic Church Hall, Cricklewood Lane, NW2. 8pm. 961 5567

*Morning badminton club, Hartley Hall, Mill Hill. Vacancies for experienced players. 959 4867

*Brownies at East Barnet Baptist Church Hall, East Barnet Rd. 6pm. 440 6811

*Hendon College Adult Literacy classes (students with mental handicap), Thirleby Rd, Burnt Oak. 7pm. 200 8300

*East Barnet Toy Library, Community Centre, Victoria Rd, E Barnet. 2-3.30pm. 449 6772

*RAF Association, Royal British Legion Hall, Legionway, Summers Lane, N12. 8pm. 883 5722

*New Barnet Literary & Debating Soc, Foyer Rooms, Lyonsdown Hall, Lyonsdown Rd, New Barnet. 8pm. 440 3859

*London Hash House Harriers meet for runs all over London until end of September at 7pm, then at weekends at 11am during winter months. Details of programme, s.a.e. 'Mic Mac', 12 Parkhurst Rd, Friern Barnet, N11 3EL. 361 0887.

*Church Farm Pre-school Activities Group, Church Hill Rd, East Barnet. 9.45-11.15am. 368 9893

Tuesday September 8

Totteridge Ward Labour Party, N Finchley Library, Ravensdale Ave. 8pm. 449 6524

National Schizophrenia Fellowship (NW London), Health Centre, 23 Temple Fortune Lane, NW11. 8pm. 455 5113

Hendon & District Cage Birds Assn, Labour Hall, Back Lane, Watling Ave, Burnt Oak. 7.30pm. 205 2647/709 2433

Arthritis Care, St Peter le Poer Hall, Albion Ave, N10. 2pm. 883 2441

*Finchley Writers' Workshop, Moss Hall Tavern, 6pm. 349 1948

*Friern Barnet and Totteridge Camera Club, Totteridge Library, Totteridge Lane, beginners to advanced. 8pm. 445 2617

*Mind in Barnet Luncheon/Social Club, 2 Schoolway, Woodhouse Road,

N12. 10am-4pm. 446 1654 (also Thurs & Fri)

*British Red Cross Society, 10 Downage, Hendon. Sale of nearly new clothes. 10am-3pm

*123 Club for mothers, babies and toddlers, Christ Church Hall, High Rd, N12. 9.30-11.30am. 368 4659

*Mill Hill School Sports Centre, The Ridgeway, Mill Hill. Golf lessons, 7.30pm. 906 2322

*Hendon and Edgware 18 Plus Group, Games Room, Royal Oak Pub, Finchley Rd, Temple Fortune. 8.15pm. 952 2243

*Mother & Toddler Group, Rendezvous Centre, Coppets Rd, N10. 9.30-11.30am. Barnet Play Association's Play Bus and inflatables at these times. 444 7839

*North London Holiday Fellowship Group, Harris Room, Trinity Church, Hodford Rd, Golders Green. 346 6795/444 5847

*Basketball, 9-16 yrs Christ College Lower School, East End Rd, N3. 6pm. 368 6316

*Colindale Youth Club 11-16 yrs, St Matthias Church Hall, Rushgrove Ave. 7pm. 205 7774

*Emotions Anonymous (emotional living problems). Unitarian Rooms, Hoop Lane, Golders Green. 8pm. 837 4456/959 1003

*Tumble Tots — physical activity for pre-school children (six months to five years), Bushmead Social Club, Hammonde Close, Edgware. Classes all day from 9.30am. 958 6579

*MIND in Barnet, Trinity Church, Nether Street, N12. No appointment needed. 7.30-9.30pm.

*MIND in Barnet, 154 Station Road, Hendon. No appointment needed. Also Thurs 8-10pm.

*Al-Anon — help for families and friends of problem drinkers — Carey Room, Trinity Church Centre, Nether St, N12. 8pm. Further information for other local meetings 403 0888 (24 hour service).

*Bottoms Up. A club for mothers with first babies, Jubilee Room, St James' Church, Friern Barnet Lane, N20. 2.30-4.30pm. 361 3320.

*Friendship Club for over 40s, Christ Church Hall, High Road, N12. 346 7657/349 0670

*The Toddle Club. 2.30-4.30. New members welcome. Bring your babies and toddlers to Church House, behind St John's Church, Friern Barnet Road, N11. 368 7074

*Studio North Three adult classes in art, Colledge Farm, Fitzalan Rd, Finchley. 10am-1pm. 959 1498/6175

*Elmgate Badminton Club, Church Hall, Rectory Lane, Edgware (vacancies). 7.30pm. 959 4757

*Finchley & Dist Model Aircraft Club, Manorside School, Squires Lane, N3. 14+. 8pm. 904 5449

*Computer Courses, Mill Hill School Sports Centre, The Ridgeway. 8pm. 906 2322

*120 (Hendon) Sqn Air Training Corps, boys and girls 13½ to 16, RAF Hendon, Aerodrome Rd, NW9. 7.30pm (also Fri & Sun 10am-12.30pm). 205 7297

*Legal Advice, East Finchley Neighbourhood Centre, 42 Church Lane, N2. Also first Tuesday in month immigration advice. 7-8.30pm. 444 6265

*Hendon College Adult Literacy classes (students whose first language is not English), Montagu Rd Centre, Hendon. 7pm. 200 8300

*Hendon College Adult Reading & Writing classes, Thirleby Rd, Burnt Oak. 7pm. 200 8300

*Barnet Blind Bowls Club, STC, Denham Road, New Southgate. 2pm. 449 7058.

*Barnet & Dist Athletic Club training

session, Cophall Stadium. 7pm. 368 6754

Wednesday September 9

Rotaract Club of Edgware & Stanmore, The Green Man Pub, Honeypot Lane, Stanmore. 8.15pm. 722 4439 (also Sept 23)

Orbit Club of NW London (25-40), Moss Hall Tavern, Ballards Lane, N12. 8.30pm. 906 2080

*CRAB — Circus Skills — children aged 8+ 5pm, 50p a session; adults 7pm, £1 a session. Barnet Drama Centre, 142 High Rd, East Finchley. 346 9789

*Parent & Toddler Time, East Barnet Baptist Church Hall, East Barnet Rd. 1.45pm (also Friday)

*Good as new sale, Chipping Barnet Conservative Association, 163 High Street, Barnet. 10.00am to 1.00pm. (Also 1st and 3rd Saturdays of the month)

*Barnet YHA Group 1st Lyonsdown Scout Hut, York Rd, New Barnet. 8pm. 449 1553/440 8770

*Bingo, St Alphage Church Hall, Playfield Rd, Burnt Oak. 8pm

*Barnet Caving Group, Bull and Butcher Pub, High Rd, Whetstone. 9.30pm. 446 1070/1868

*Bingo, Community Centre, Victoria Rd, New Barnet. 7.30pm. 440 2573

*Mill Hill School Sports Centre, The Ridgeway, Mill Hill, Junior badminton, 6pm; adult badminton, 7pm. 906 2322

*St Margaret's Badminton Club, Rectory Lane, Edware. 8pm. 440 4572/0923 46953. Vacancies for players

*See-Saw Club for babies and toddlers with special needs, North Road Community Centre, Burnt Oak B'way. 10am. 368 6291

*Sale of clothing and bric-a-brac, Barnet Centre British Red Cross Soc, St Albans Rd, Barnet. 9.30am-3.30pm. 449 8969

*Badminton — 3 courts, first class facilities. Few vacancies for experienced players — friendly club, 883 4437 (also Thursdays evenings).

*Hendon Woodcraft Folk (during term time), Hendon School, Golders Rise. 6.15pm. 202 7140

*Old Barn Youth Club 10-14 yrs, Tarling Rd, N2. 7pm. 349 4613 (also Fridays)

*Hornsey Cine — Scene Two, St Peter Le Poer Hall, Albion Ave, N10. 8.15pm

*Hendon College Adult Numeracy classes, Thirleby Rd, Burnt Oak. 7pm. 200 8300

*Chanticleer Camera Club, The Minchenden Association Clubhouse, Bramley Rd, N14. 8pm. 888 5669

*MIND in Barnet Advice Centre, 2 School Way, North Finchley. 10am-4pm. No appointment needed. 446 1654/6470

Thursday September 10

Barnet Volunteer Bureau AGM, Avenue House, East End Rd, N3. 8pm. 349 2930

Barnet Winemakers, Barnet College Staff Common Room, Wood St. 8pm. 440 1016 (also Oct 8)

British Diabetic Assn. Barnet & Dist, Post Graduate Medical School, Barnet General Hospital, Wellhouse Lane. 8pm. 368 6993

*Church Farm Mother & Toddler Club, Church Hill Rd, E Barnet. 10am-11.30am. 368 4191

*Brookside Methodist Church Boys' Brigade, East Barnet. Pre-Junior 6-8, 6.15pm; Juniors 8-11, 6.30pm; Company 11+ 8pm. 441 2042

*Hendon Chess Club, Hyde United Reformed Church, Edgware Rd, Colindale. 7.30pm. 952 3129

*MIND in Barnet Thursday Club, 154

BARNET DIARY

- Station Rd, Hendon. 8pm. 446 1654
- *High Barnet Woodcraft Folk, Underhill School, Mays Lane, Barnet. 6-9 yrs. 6pm (440 5369); 10-13 yrs. 7.15pm (440 2426)
- *Carpentry for disabled, John Grooms, Stoneyfields Rd, Edgware. 1.30pm. Ring Ian at CRAB 346 9789.
- *MIND in Barnet — Women's Drop in Centre, Trinity Church Rodborough Rd, Golders Green. 9.30am-1pm (relaxation 11am). 446 1654
- *Mums, babies & toddlers club, St Barnabas Church, Holden Rd, N12. 10am-12 noon. 445 0572
- *Parent and Toddler Time, Victoria Centre, Victoria Rd, New Barnet. 1pm. 449 5511
- *Badminton Club, Christ Church URC, Bellevue Hall, Bellevue Rd, N11. 8pm. 449 8476
- *Community Links in Cameras (Clic), photography group of disabled people, 43 Flower Lane, NW7. 1.30pm. 346 9789
- *Badminton (adults), Manorhill Centre, Summers Lane, N12. 7pm. 368 6316
- *Canada Villa Youth Centre pre-school gymnastics club 'Jumping Beans', Pursley Rd, Mill Hill. 10am-12noon. £2 registration, then £1 per session. 959 2811
- *Bounce, a group for children under five with special needs. New Barnet Community Centre, 48-50 Victoria Rd. 1.15pm for 30 minutes. 25p. 346 7120
- *Short tennis for juniors, Mill Hill School Sports Centre, The Ridgeway. 6pm. 906 2322
- *East Finchley Toy Library, Herbert Wilmot Youth Centre, Eagans Close, N2. Over 500 toys available. 3pm. 883 0244
- *Finchley Chess Club, Etchingham Park Day Centre, Etchingham Park Rd, N3. 7.30pm
- *Talks on Social Effectiveness. 202 3373
- *Machine Knitting Class, Old Barn Centre, Tarling Rd, N2. Tuition at all levels. 1pm. 349 4613
- *Hendon College Adult Reading & Writing classes, Montagu Rd Centre, Hendon. 7pm. 200 8300
- *Barnet & Dist Athletic Club training session, Clubhouse, Victoria Rd, New Barnet. 7pm. 368 6754

Friday September 11

- Oakleigh Carers Group, Health Centre, Oakleigh Rd Nth, N20. 2pm. 368 8350
- Barnet MENCAP — Open day at Sherrick House, Church End, Hendon. 203 6688
- *Mums & Toddlers Group, Friern Barnet Day Centre, Friern Barnet Lane, N11. 10-11.30am. 368 4278
- *Hendon & Hampstead Garden Suburb Camera Club, Fellowship House, Willifield Way, NW11. 8pm. 205 6053
- *Barnet and Finchley Photographic Soc, rear of 37a Salisbury Rd, Barnet. 8pm. 368 3917
- *Barnet Blind Bowls Club, Old Court Recreation Ground, Wood Street, Barnet. 2pm. 449 7058
- *Finchley Cine Society, Avenue House, East End Rd, N3. 8pm. 346 4265.
- *Brookside Community Group Senior Youth Club (11-16), Union Church, Northiam, N12. 7.15-10.15pm. 445 5958.
- *Social afternoon, Old Barn Community Centre, Tarling Rd, N2. All ages. 1-3pm. 349 4613.
- *Emotions Anonymous, St Albans Parish Church, The Vestry, West Heath Drive, Golders Green. 8pm. 837 4456
- *Basketball sessions for juniors and seniors, Mill Hill School Sports Cen-

- tre, The Ridgeway. 7pm. £1.50 juniors, £2 seniors. 906 2322
- *Mill Hill School Sports Centre, The Ridgeway, Mill Hill. Squash coaching — juniors 6.15-7.15pm; adults 7.15-8.15pm. 906 2322

- *Bingo, BSCA Centre, Mays Lane, Barnet. 8pm. 441 9387

Saturday September 12

- Film on marital problems and solutions, East Barnet Upper School, Chestnut Grove, East Barnet. 8pm. 440 3357
- New Barnet & Dist Stamp & Postal History Fair, St Peter's Hall, Lyonsdown Rd. 10am-5pm. 440 8835
- British Tinnitus Assn (NW London), Meritage Club, Church End, Hendon. 2pm. 444 9657

Monday September 14

- RSPB (Potters Bar & Barnets), Oakmere House, Potters Bar. 8pm.

Tuesday September 15

- Friern Barnet Amnesty Group, Jubilee Room, St James' Church, Friern Barnet Lane, N20. 8.15pm. 368 9487
- RSPB NW London, Harwood Hall, Mill Hill Circus, NW7. 8pm. 90p. 952 3932
- Barnet Anglo-French Club, Council Chambers, 29 Wood St. 8pm. 449 7317
- Nth Middx Family History Soc (Barnet), Church House, Wood St, Barnet. 7.15pm. 441 0529
- Royal British Legion (N Finchley), Legionway, Summers Lane, N12. 8pm. 445 9911
- Barnet National Trust, St Mary Magdalen Hall, Athenaeum Rd, N20. 8pm. 449 5896
- Save a Life Campaign session — St John Ambulance, The Pavilion, Finchley Open Air Swimming Pool, High Rd, N12. 7.30pm. 440 8778

Wednesday September 16

- National Trust, Edgware and District Centre, John Keble Church Hall, Deans Lane, Edgware. 8pm. 952 2688
- Finchley & Dist Philatelic Soc, Avenue House, East End Rd, N3. 8pm. 883 8724
- Finchley Rotaract Club, Moss Hall Tavern, Ballards Lane, N12. 8.30pm. 445 1393 (also Oct 7)

Thursday September 17

- Friern Barnet & Whetstone Rotaract Club, Bull & Butcher Pub, High Rd, N20. 8.15pm. 368 3383 (also Oct 1)

Saturday September 19

- Finchley Branch of the Royal Air Forces Assn will be making a Wings Week street collection in the Finchley and Whetstone area.
- Good as New Sale, Chipping Barnet Conservative Assn, Church House, Wood St, Barnet. 10.30am-3pm. Admission 10p

Sunday September 20

- A Centenary Lecture by Monica Bohm-Duchen — Chagall: His life and works. The Manor House, 80 East End Rd, N3. 346 2288
- Car Boot Sale, Ravenscroft School, Barnet Lane, N20. 12 noon-3pm (inside if wet). Sites £5 in advance, £6 on the day. 446 1930

Monday, September 21

- Barnet Epilepsy Support Group, Trinity Church Hall, Nether St, N12. 7.30pm. 446 2003

Tuesday, September 22

- Save a Life Campaign session, Red Cross Centre, St Albans Rd, Barnet. 8pm. 449 8969

Friday September 25

- Barnet Ratepayers' & Residents' Assn, (Arkley & Hadley Wards), Harold Fern Room, Salisbury Rd. 8pm; 7.30pm surgery. 449 0807

Saturday September 26

- Autumn Market, St Jude's, Central Sq, Hampstead Garden Suburb. 11.30am-4pm. Side shows, fancy dress and stalls. Lunches and teas.
- Grand Bazaar in aid of the Blind (Sightline, Greater London Fund for the Blind), Holy Trinity Church Hall, Finchley Rd, NW3. Bargains galore and refreshments. Admission 25p children under 14 10p
- Fete to celebrate 50 years of Mill Hill Library, Hartley Ave, Mill Hill. Many attractions. Mill Hill Fire Station will hold an open day in conjunction with fete. 2pm. 959 5066

Sunday September 27

- RSPB NW London — coach trip to Minsmere, Suffolk. £6. Details 200 0457

Monday September 28

- Barnet Action for Mental Health, 154 Station Rd, Hendon. 7.30pm. Enquiries Harvey 203 5879

Tuesday September 29

- Disablement Association in the Borough of Barnet AGM, East Barnet Baptist Church. 7.30pm. Speaker: John Dobinson, Director of Access Committee for England.

Wednesday September 30

- Barnet MENCAP, Outlook House Social Centre, 59 Flower Lane, Mill Hill. Speaker Mark Snell, Walsingham and Community Housing. 7.30pm. 203 6688
- Federation of Ratepayers' & Residents' Assns of LBB, North Finchley Library, Ravensdale Ave, N12. 8pm. 449 0807

Friday to Sunday October 2-4

- Harvest Spectacular Flower Festival, St Michael & All Angels Church, Mill Hill. 10am-6pm Fri & Sat, 2-5pm Sun

Wednesday October 7

- Barnet MENCAP — 'Wills & Trusts', talk by Michael Welton, Outlook House, Flower Lane, NW7. 7.30pm
- Milldon Arts Soc, Union Church, The Broadway, Mill Hill. 7.30pm. 958 5126
- Barnet Animal Rights Group, Christ Church Hall, High Rd, N12. 8pm. 440 1715

Friday October 9

- Oakleigh Carers Group, Health Centre, Oakleigh Rd Nth, N20. 2pm. 368 8350

Saturday October 10

- New Barnet & Dist Stamp & Postal History Fair, St Peter's Hall, Lyonsdown Rd. 10am-5pm. 440 8835
- British Tinnitus Assn (NW London), Meritage Club, Church End, Hendon. 2pm. 444 9657

Women's Clubs

Monday September 7

- New Barnet Evening TWG, Brookside Methodist Church Hall, E Barnet. 7.30pm. 440 1934 (also Oct 5)
- Hampstead Garden Suburb TWG, St Jude's Church Rooms, Central Sq, NW11. 2pm. 458 3706 (also Oct 5)
- Golders Green TWG, St Alban's Church Hall, Golders Green. 2pm. 455 4156 (also Oct 5)

Tuesday September 8

- East Barnet (Osidge) TWG, Church Farm, Church Hill Rd, E Barnet. 7.45pm 368 7346
- Wives Group, Mill Hill East Church Hall, Salcombe Gdns. 8pm. 346 9430 (also Sept 22)

Wednesday September 9

- Brunswick Park Ladies Section, Chip-

- ping Barnet Conservative Assn, Church Farm Hall, Church Hill Rd, E Barnet. 2pm. 449 7345
- Mill Hill Afternoon TWG, Harwood Hall, The Broadway, NW7. 2pm. 959 1505
- Friary Club (NA of WC), Friern Barnet Town Hall Canteen, N11. 445 8493 (also Sept 23 & Oct 7)
- 'Acorns', non-sectarian club for women, St Paul's Church Hall, Long Lane, N3. 9.45am. Creche available. 346 7945/7378 (also Sept 23 & Oct 7)

Thursday September 10

- Finchley Granville TWG, Finchley Methodist Hall, Ballards Lane, N3. 2pm. 346 7056 (also Oct 8)
- Broadway Mill Hill TWG, Hartley Hall, Flower Lane. 2pm. 959 1497 (also Oct 8)
- Chipping Barnet WI, Church House, Wood St, Barnet. 10am. 440 8807 (also Oct 8)

Tuesday September 15

- Finchley & Whetstone TWG, Manor Drive Methodist Church, York Way, N20. 2pm. 368 5571

Wednesday September 16

- Woodside Park Afternoon TWG, Old Finchleians Club House, Southover, N12. 2.15pm. 445 0911

Friday September 18

- Barnet Afternoon TWG, Church House, Wood St. 2pm. 449 0367
- Broadfields Evening TWG, Mill Hill County High School Hammonde Close, Edgware. 7.30pm. 958 4692

Monday September 21

- Mill Hill Highwood TWG, Hartley Hall, Flower Lane. 2pm. 959 1994

Tuesday September 22

- Montrose WI, Parish Room, St Alphage Church Montrose Ave. 7.45pm. 951 1140
- Finchley Redbourne TWG, Etchingham Park Rd Day Centre, N3. 7.45pm. 349 3365

Wednesday September 23

- Finchley Church End TWG, St Mary's Church Hall, Hendon Lane, N3. 2.15pm. 883 6538

Thursday October 1

- East Barnet Monkfrith TWG, British Legion Hall, Nursery Rd, N12. 1.45pm. 0707 51896
- Ashley TWG, Mill Hill East Free Church, Salcombe Gdns. 7.30pm. 906 1952
- East Barnet Valley TWG, Lyonsdown Hall, Lyonsdown Rd, New Barnet. 2.15pm. 449 8601/3885

Tuesday October 6

- Totteridge WI, Village Hall, Badgers Croft, Totteridge Lane, N20. 7.30pm. 445 5700
- Friern Barnet Friary TWG, Christ Church URC Hall, Bellevue Rd, N11. 2pm. 361 9623
- Royal British Legion Women's Section (N Finchley), Legionway, Summers Lane N12. 8pm. 445 9911

Mondays

- *SupaSlim Slimming Club, Avenue House, East End Rd, N3. Sensible dieting and group therapy. 10am. 445 3195 (also Tuesdays 8pm)
- *Ladies self defence, Canada Villa Youth and Community Centre, Pursley Rd, Mill Hill. 2pm. £1.50. 959 2811

Tuesdays

- *Ladies Home League, Salvation Army Hall, Hertford Rd, East Finchley. 2.15pm.

Thursdays

- *Barnet Asian Women's Assn, Barnet Health Education Unit, Oak Lane Clinic, East Finchley. 1.30pm. 883 1075/444 4411

BARNET DIARY

*Women's Friendship Club, Union Church, Northiam, Totteridge. 2.15pm. 445 6945
 *Ridgeway Club (Nat Assn of Women's Clubs), St Mary's Church Hall, Church Hill Rd, East Barnet. 7.45pm. 449 1373
 *Sculpture Class, Old Barn Centre, Tarling Rd, N2. 7.30pm. 349 4613 for enrolment details.

*Body-tune dance keep fit, St Mark's Church Hall, Potters Rd, Meadway, New Barnet. Mum can bring baby. 10.30am. 441 1336
 *Pensioners Health Group, Methodist Hall, Rodborough Rd, NW11. 2pm. 794 6376. 60p
 *Yoga, St Mary's Church Hall, Hendon Lane, N3. 7pm. 455 2476. Also Weds 9.45am
 *Aerobics 9.30am; body conditioning 10.30am. St Mary's Hall, Hendon Lane, N3 (during term-time). 349 1449
 *Body conditioning classes, Christ Church, Whetstone, Oakleigh Rd Nth, N20. 7.15pm (also Thurs). Phone 445 1846
 *Aerobic workout, Mill Hill School Sports Centre, The Ridgeway, Mill Hill. 7pm, advanced 8pm. £2. 958 7596 (also Thurs 8pm)
 *Popmobility, Hendon Sports Centre, Algernon Rd. 7.30pm. £1.80 per session. 202 6027
 *Body-tune dance-cise, St Mary's Church Hall, Church Hill Rd, E Barnet. 7.15pm. 441 1336
 *Aerobics, Centre Point, Corner Mead, Grahame Park. 8pm. 906 1721 (Also Thursdays, 8.30pm)
 *Weight and fitness training, Mill Hill School Sports Centre, The Ridgeway, Mill Hill. 8.15pm. 906 2322
 *Aerobic advanced class, Manorside School, Squires Lane, N3. No beginners. 8pm. 349 1449
 *Keep Fit, Manorhill Centre, Summers Lane, N12. 7pm. 368 6316

Grahame Park, 8.30pm. 205 7113
 *Aerobics, Manorside School, Squires Lane, N3. 8pm. 349 1449 (also Thursdays 8pm)
 *Ladies Keep Fit — suitable all ages — Hendon School, Golders Rise, Hendon. 7.30pm. 349 0400. (also on Thursdays)
 *Body conditioning classes, Oaktrees Special School, Chase Side, Southgate. 7.30pm. 368 0881
 *Keep Fit and self defence with Nanbudo, St Mary's Hall, Hendon Lane, N3. 8pm. 349 4421
 *Stretch and Shape, Oak Tree Special School, Chase Side, Southgate. 7.30pm. 368 0881
 *Slenderquest Slimming Club, St Mary Church Hall, Church Hill Rd, East Barnet. 8pm. £2. 449 4277
 *Body Focus exercise/dance class, Lyonsdown Hall, New Barnet. 10.15am. £1.50 creche inclusive. 368 5871
 *Ladies Weight training, Hendon Sports Centre, Algernon Rd. 10.30-11.30am. £1.80 per session, £15 per term. 202 6027
 *Exercise to music — keep fit/aerobics — URC Hall, Wood St, Barnet. £1.50. 8pm
 *Body-tune keep fit, St Mary's Church Hall, Church Hill Rd, East Barnet. 7.15pm. 441 1336
 *Yogacise, Hatha Yoga for ladies, beginners, St Mary's Church Hall, Church Hill Rd, E Barnet. 8.30pm. 441 1336 (also Wed 8.30pm)

Drive, N20. 10.15am. Creche facilities. 440 5811 (also Fridays). No classes from Aug 23-Sept 6.
 *Pop exercise, Centre Point, Grahame Park. 7.30. Gym fit/swim, 8pm. 205 7113.
 *Aerobics, Copthall Swimming Pool, Page St, Mill Hill. 9.45am (during term-time). 349 1449
 *Mixed Volley Ball Training Club, Queen Elizabeth Centre, Meadway, Barnet Juniors 6pm; seniors 7pm. 441 2933
 *Health and Beauty, exercise and movement classes, Christ Church Hall, High Rd, N12. 7.15-9.45pm. 504 1644
 *Keep Fit, Manorhill Centre, Summers Lane, N12. 7-8pm & 8-9pm. 368 6316
 Yoga classes for beginners, Patanjali Yoga Centre, 190 Watford Way, Hendon. 10.30am to 12 noon. 203 0062
 *Body conditioning: keep fit class — Canada Villa Centre, Pursley Rd, Mill Hill. 2-3pm. £1.50 per session. Creche available. 959 2811
 *Body-Tune, dance keep fit, 7.15pm. St Mary's Church Hall, Church Hill Rd, East Barnet. 441 1336
 *Weight Mates Slimming Club, St Mary Magdalen Church Hall, Holders Hill Rd, NW4. 10am. 455 4814
 *Tai-Chi for all, St Edward's Church Hall, Finchley Rd/Hoop Lane, Golders Green. 8pm. 458 9842
 *Keep fit, St Paul's Church Hall, The Ridgeway, Mill Hill. 8.15pm. 906 0854

Wednesdays
 *Body conditioning classes, Christ Church, Whetstone, Oakleigh Rd Nth, N20. 10am. 445 1846
 *Stretch, tone & trim to music, Manor Drive Methodist Church Hall, Manor

Thursdays
 *Get Fit Club for young and old, St Stephen's Hospital, Mays Lane, Barnet. 7.30pm. £1.50. 906 0974

Keep Fit

Saturdays
 *Body-Tune dance-cise, St Mark's Church Hall, Potters Rd (entrance Woodville Rd), New Barnet. 9.45am. 441 1336
 *Aerobic low impact workout, United Reformed Church Hall, East End Rd, N2. 11am. 883 7029 (also Wednesdays 7-9pm)

Sundays
 *Yoga classes at Patanjali Yoga Centre, 190 Watford Way, Hendon. Beginners: 1pm & 3pm, advanced 5pm. 203 0062

Monday-Friday
 *Weight Training instruction, Hendon Sports Centre, Algernon Rd. 6-8pm Mon-Thurs; 5.30-7.30pm Fri. £1.80 per session or £15 per term. 202 6027

Mondays
 *Stretch, tone & trim to music, Brookside Methodist Church, East Barnet. 10.15am. Creche facilities. 440 5811. No classes from Aug 23-Sept 6.



THE HENDON HALL HOTEL



Ashley Lane, Hendon NW4 1HF

The ideal venue for your Dinner & Dance, Wedding; Barmitzvah. We have superb private rooms for that very special occasion.

As well as having 52 well appointed bedrooms the Hotel boasts

THE PAVILION RESTAURANT & BAR

a first class restaurant offering both fixed price and à la carte menus

For further information and reservations phone:

203 3341

DO YOU KNOW YOUR STOPPING DISTANCES?

Without looking at the answers below, see if you can answer the following

- Overall Stopping Distance at 30mph
- Overall Stopping Distance at 50mph
- Overall Stopping Distance at 70mph

Now ask the rest of your family or household if they know, it could save your life.

Answers:
 At 30mph: Thinking distance 30ft. Breaking distance 45ft. Overall stopping distance 75ft.
 At 50mph: Thinking distance 50ft. Breaking distance 125ft. Overall stopping distance 175ft.
 At 70mph: Thinking distance 70ft. Breaking distance 245ft. Overall stopping distance 315ft.

PUBLIC NOTICE FROM THE ROAD SAFETY UNIT

Engineering Services Division



Directorate of Technical Services

BARNET DIARY

*Mixed exercise class for people with problem backs, Queen Elizabeth's Girls' School, Meadway, Barnet. 8pm. 445 6986

*Aerobics, Centre Point, Corner Mead, Grahame Park, 8.30pm. 205 7113

*Yoga. British Wheel trained teacher, Union Church, Northiam, N20. 7-8pm. 349 2972 (not August)

*British Wheel of Yoga Teachers Diploma Course, Barnet. 7pm. Details 440 1828

*Jumping Beans — pre-school gymnastics — Canada Villa Centre, Pursley Rd, Mill Hill. 10am-12 noon. £2 enrolment fee and £1 per session. 959 2811

Body Focus exercise/Dance class, East Barnet Baptist Hall, Crescent Rd. 8.30pm. £1.50. 368 5871

*Mother and Toddler Gymnastics (up to 4yrs old), Hendon Sports Centre, Algernon Rd. Sessions: 12.45-1.30pm, 1.30-2.15pm, 2.25-3.10pm. Last session 2½-4yrs only. £1.50 per family. 202 6027

*Ladies Keep Fit, Hendon Sports Centre, Algernon Rd. 10am. £1.80 per session. 202 6027

*Yoga Class for Women, Old Barn Centre, Tarling Rd, N2. 7.30pm. 349 4613

*Aerobics, St Augustine's Church, Great Field, Grahame Park. 8.30pm. 906 1721.

*Yoga for people with handicaps. Special class, Stanhope Road Centre, N12. Gentle movement, breathing and relaxation. Qualified teacher. Other classes available. 1.30pm. 440 1828

Fridays

*Aerobics 9.30am; Body conditioning 10.30am, Christchurch Hall, High

Rd. N12 (during term time). 349 1449

*Anita's keep fit class, Michael Sobell Centre, Limes Avenue, Golders Green. 10.15am. 458 7411 ext 379 (day), 455 9195.

*Keep Fit at the Old Barn Centre, Tarling Rd, N2. 1.30pm. 349 4613

*Keep Fit, Church House, Wood St, Barnet. 9.30am. 368 0881

*Body conditioning class for problem backs and joints, Christ Church Hall, Oakleigh Rd Nth, Whetstone. 10am. 445 1846

Horticulture and Floral Art

Saturday September 5

Barnet Horticultural Soc Autumn Flower and Floral Art Show, Ewen Hall, Wood St, Barnet. 2.30pm. Admission 10p

Tuesday September 8

Mill Hill Flower Club, Harwood Hall, Mill Hill B'way. 8pm. 959 3530

Wednesday September 9

Flower arranging class for beginners, St Stephen's Hospital, Mays Lane, Barnet. 8pm. 952 3271 (also Sept 23 and Oct 7)

Hendon Horticultural Soc, Hendon Library, The Burroughs, Hendon. 8pm. 203 1187

Thursday September 10

Barnet & Dist Fuchsia Soc, Council Chambers, 29 Wood St. 7.30pm.

445 6112 (also Oct 8)
Barnet Flower Arrangement Soc, Lyonsdown Hall, Lyonsdown Rd, New Barnet. 8pm. 0707 57199 (also Oct 8)

Saturday September 12

Finchley Horticultural Soc Autumn Show, Christ Church School, Hilton Ave, N12. 2.30pm. 346 4359

New Barnet and district Amateur Gardeners' & Floral Art Soc, Autumn Show, St John's Hall, Somerset Rd, New Barnet. 2pm. Admission 10p

Tuesday September 15

Friern Barnet Floral Art Club, Christ Church Hall, Oakleigh Rd Nth, N20. 8pm. 446 0783 (also Sept 29)

Totteridge Floral Art Group, Badgers Croft, Totteridge Village, N20. 2pm. 445 9307

Wednesday September 16

Hendon Floral Art Group, West Hendon Community Centre, Marsh Drive, NW9. 7.30pm. 346 8916

Wednesday October 7

New Barnet Amateur Gardeners' & Floral Art Soc, St Peter's Church Hall, Lyonsdown Rd. 8pm. 75p. 441 0293

Saturdays/Sundays

*Mill Hill Horticultural & Allotment Soc, Hartley Close, Mill Hill. Trading hut open Sat 2.30-4pm, Sun 10.30am-12.15pm. Garden plots to let. 959 2848

Sundays

*Burnt Oak Horticultural Society Trading Hut, Back Lane, r/o Woodcroft Hall. 10.30am-noon

Bridge and Whist

Saturday October 3

Whist Drive, Friern Barnet Day Centre, Friern Barnet Lane, N11. 8pm. 368 4278

Mondays

*Bridge Classes, 41 Northumberland Rd, New Barnet. 7.30pm. 449 0960. Also Tuesdays 10am, Wednesdays 2pm.

*Bridge Class, second year students, Woodside Park Club, Southover, N12. 8pm. 445 1108 (also Tuesdays)

*Hendon College Bridge Club (no teaching, intermediate level), 43 Flower Lane, Mill Hill. 11.45am-1.15pm. 202 3811 ext 240

*Partner Whist Drive, St Peter's Church Hall, Somerset/Lyonsdown Rd, New Barnet. 8pm. Admission 40p. 441 1591

*'Bridge Builders' — all levels of play for all ages, Sobell House, Limes Avenue, off Golders Green Rd, NW11. 7.45pm. £1.50, special instruction for beginners £2. 458 7411

Tuesdays

*Chase Bridge Club, St Andrew's Church Hall, Southgate. 9.30am. 360 5098

Wednesdays

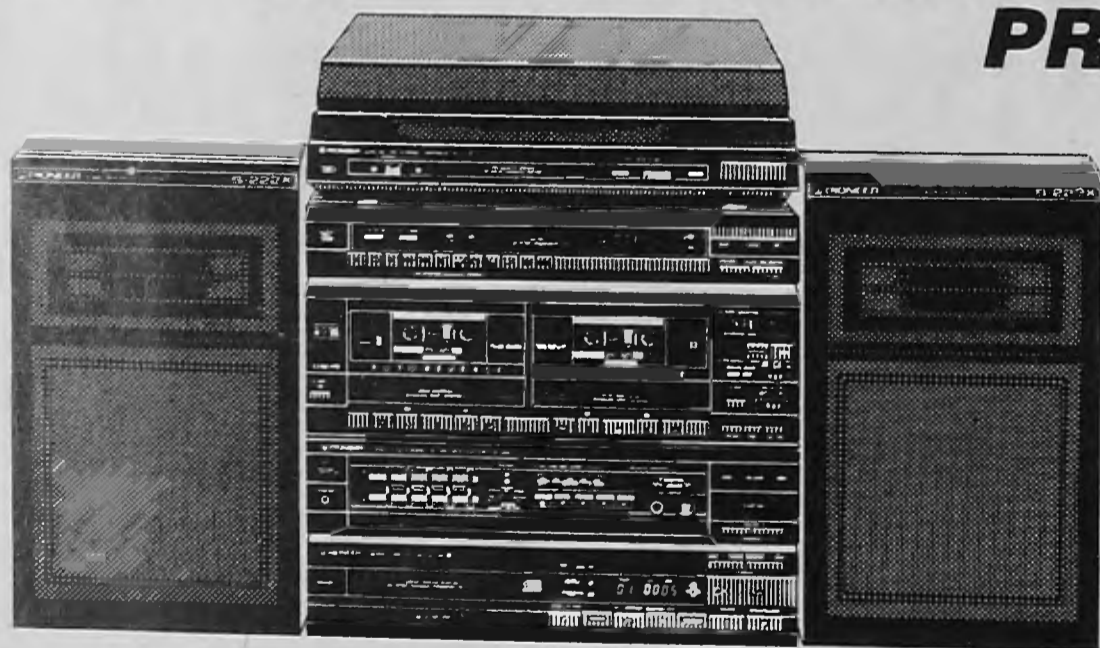
*Friern Barnet Council for Voluntary Service whist drive. Priory Hall, Friern Barnet Lane. 10.30am. 368 4278

*Whist Drive, Fellowship House, Willifield Way, NW11. 7.45pm. 458 3933

Thursdays

*Contract Bridge, Trinity Church, Hodford Rd, Golders Green. 1pm.

TOP QUALITY HI-FI AND AUDIO AT THE BEST PRICES AND SERVICE!



PIONEER

The future of sound and vision.

**PIONEER S-8000
HI-FI MIDI SYSTEM
WITH REMOTE CONTROL**

40 Watts per channel, 1kH/8 OHMS (Din) amplifier, infra red remote control (excluding turntable), belt drive semi-automatic turntable, 5 band graphic equalizer, digital FM, MW/LW synthesized tuner with 24 random pre-sets, auto-reverse twin cassette deck with high speed copy facility and Dolby B NR, and matching 2-way flat look speaker. Shown here with optional PD-X88 Compact Disc Player.

INTRODUCING QUALITY THAT REDEFINES THE WORLD OF SOUND

Model 7000 2 × 33
Watt 24 pre-set tuner
twin cassette deck
including speakers
£329

FREE AKG K2
HEADPHONES WITH
PIONEER MIDI SYSTEM

See the Pioneer's new true Hi-Fi systems:
System 1. All self powered separates 2 × 40
Watt special speakers £449.90

System 2. All self powered separates, 3 way
speaker direct CD input £549.90.

6 disc CD player DD920M with remote
control £349.90

Come along and listen
to our full range of Hi-Fi
on demonstration in the
demo room by top
names.

eg. Nad, Denon,
Marantz, Yamaha, Rotel
plus many other main
Hi-Fi manufacturers.

Tel: 01-445
3267

ANALOG AUDIO
849 High Road N12

The friendly people.
Instant credit up to
£1,000

BARNET DIARY

Admission free. 202 2751/200 1839
*Northside Bridge Club, E Finchley Methodist Church Annexe, High Rd. Duplicate first Thursday, rubber remaining Thursdays. 7.30pm. 445 7788

*NW London Duplicate Bridge Club, Michael Sobell Centre, Limes Ave, NW11. Admission £1.50. 7.45pm. 455 3745

*Bridge and whist for over 70s, Alyth Social Club, Alyth Gdns, Finchley Rd, NW11. 12 noon. Ploughman's lunch (60p). 458 5674

Fridays

*The Fern Room Whist Club, Salisbury Road, Barnet, 2pm. 441 4853

Martial Arts

Mondays

*North London Karate Club, Mill Hill School, The Ridgeway, Mill Hill, 8-9pm, 9-10pm. 440/7733/8633 (also Thurs)

*Barnet Shotokan Karate Centre. Recreation Hall, Barnet General Hospital, Wellhouse Lane, Barnet. Children 8-14 yrs: 6.30-7.30pm. 449 3150

*Cobra Karate Club, Christ's College School, Hendon Lane, N3. Beginners 7pm; advanced 8pm. 959 4338. Also Wednesdays

*Watling Karate Club, Watling Boys' Club, Dryfield Rd, Burnt Oak. Under 12, 6-7pm; over 12, 7-8pm. 40p a session (and Wednesdays)

*London School of Karate, East Barnet Upper School, Chestnut Grove. 8pm. 359 0381

*New Barnet Jiu Jitsu Club, Scout Hut, York Rd, New Barnet. 7.30pm. Also Tues with children, 6pm. 446 1733
Nanbudo Martial Arts Club, St Mary's

Church Hall, Hendon Lane, N3. 8pm. 349 4421 (also Tuesdays and Wednesdays, Children 6.30pm. Wed)

Tuesdays

*Shotokan Karate Club, Christ's College, Hendon Lane, N3. 8pm. Adults and beginners. 202 3171 (also Thursdays)

*Karate Centre Point, Corner Mead, Grahame Park. 7-13 yr olds 6pm; 13 plus and adults, 7pm. 205 7113 (also Thursdays, 7pm and 8pm)

*Barnet Shotokan Karate Centre, Pennefather Hall, St Albans Rd, Barnet. Adults 7.30-9.30pm. 449 3150

*J.L. Kung Fu Centre, All Saints Church Hall, Durham Rd, N2. 7.30pm. 959 2605

*Barnet Goju-Ryu Karate Club, (traditional Okinawan Goju-Ryu), Queen Elizabeth's Sports Centre, Meadway, Barnet; children 6-7pm, adults 7pm. 449 8997 (also Thurs)

*Meadway Goju-Ryu Karate Club, St Marks Hall, off Meadway, Barnet. 8.30pm. 274 6376 (children's classes)

*Sport Karate Club, Beaver Hall, Fairmead Cres, Edgware. 8pm. 906 1701 (Barnet Karate Squad coach)

Wednesdays

*Watling SKC, Watling Community Centre, Orange Hill Rd, Burnt Oak. Juniors 7pm, adults 8pm. 906 1701

*Barnet Shotokan Karate Centre, Adults Christchurch School, Hilton Ave, N12. 8-9pm. 449 3150

*Judo for children, Pymmes Youth Centre, East Barnet Lower School, Westbrook Crescent, E Barnet. 6.30-7.30pm; 7.30-8.30pm. 440 6473. Adults Thursday 7.30pm.

*Kateda Self Defence Association, King Alfred School, North End Rd, NW11. 7pm. 904 6720

*Finchley Karate Club (Okinawan Goju-Ryu Karate), Manorside School, Squires Lane, N3. 8pm. (Children 7pm) 346 9505 (also Fridays)

Thursdays

*Women's self defence, Manorhill Centre, Summers Lane, N12. 7.30pm. £8 for 6 week course. 368 6316

Fridays

*Shin Do Kwai Kendo Club, Whitefield School (gym) Clarendon Rd, NW2. 7.30pm. 863 7574

*Martial Arts Academy. Science-of-Combat, Hendon High School, off Brent Street, Hendon. 7pm. 0865 726772

*Lyonsdown Judo Club, Lyonsdown Hall, Lyonsdown Rd, New Barnet. Children 8-15yrs, 7.30pm; adults 8.45pm. Ladies self-defence 8.30pm. 449 4831 (eves)

Pensioners Clubs

Monday September 7

Pensioners' Voice (Mill Hill), John Keble Hall, Deans Lane, Edgware. 1.30pm. 952 2496

Wednesday September 9

Pensioners' Voice (Barnet), Brookside Methodist Church, E Barnet. 1.30pm. 361 2787

Thursday September 10

Pensioners' Voice (E Finchley), E Finchley Library, 226 High Rd. 2pm. 883 2155

Thursday September 17

Civil Service Pensioners' Alliance, Avenue House, East End Rd, N3. 10am. 346 6994

Thursday September 24

Pensioners' Voice (Colindale & Burnt Oak), Burnt Oak Library, Watling Ave. 1.30pm. 959 4683

Thursday October 1

Pensioners' Voice (Whetstone/Finchley), N Finchley Library, Ravensdale Ave. 1.30pm. 445 7413

Wednesday October 7

Golders Green & Dist. Pensioners' Assn, Trinity Church Hall, Rodborough Rd, NW11. 1.15pm. 455 7952

Thursday October 8

Pensioners' Voice (E Finchley), E Finchley Library, 226 High Rd. 2pm. 883 2155

Mondays

*Handicraft Club for over 60s, Evergreen Centre, 54-60 Brookhill Rd, New Barnet. 2pm. 449 8690

*Club for active retired, Friern Barnet Day Centre, Friern Barnet Lane, N11. 11am-4pm. 368 4278

*Hadley Darby & Joan Club. Memorial Hall, Hadley Highstone. 2pm. 441 4853

*Social Club, Old Barn, Tarling Rd, N2. 1pm. 349 4613

Tuesdays

*Alyth Social Club (70+), Alyth Gdns, Finchley Rd, NW11. 12 noon-3pm. Ploughman's lunch (60p). 458 5674

*Luncheon Club for elderly homebound and lonely, Friern Barnet Day Centre, Friern Barnet Lane, N11. 10.30am-3.30pm; Club 2-4pm. Also Wed. & Thurs. 368 4278

JOIN OUR 1,500 SATISFIED CUSTOMERS WHO ARE ENJOYING OUR GENUINELY LOW PRICES!

SOFT LENSES ~~£85~~ £45 GAS PERMEABLE ~~£120~~ £55 EXTENDED WEAR ~~£160~~ £60

COSMETIC LENSES: Colour Changer £110 Colour Enhancer £80

(GENUINE CHANGE OF EYE COLOUR FROM BROWN TO BLUE OR GREEN WITHOUT DETECTION)

Bi-focal contact lenses £130 Vari-focal spectacle lenses ~~£84~~ £70

ALL PRICES INCLUDE:

● FREE Consultation ● FREE Starter Pack ● ONE Year's After Care ● NO Extras

★ SAME-DAY SERVICE ON SOFT AND EXTENDED WEAR LENSES ★

● 1,000 Contact Lenses in Stock ● Wide Range of Designer Frames to choose from
● On Site Optical Lab ● Designer Frames

FRIERN BARNET OPTICIANS

219 WOODHOUSE ROAD, FRIERN BARNET (near Town Hall) N12

Telephone: 01-368 4091

OPEN MONDAY-SATURDAY 9-5.30pm — EARLY CLOSING WEDNESDAY and SATURDAY 2pm
(Evenings by Appointment)



ALSO AT: TUFNELL PARK OPTICIANS
141 Fortess Road, Tufnell Park, NW5. Telephone 01-267 0183
OPEN MONDAY-SATURDAY 9.30-6.30pm — HALF-DAY CLOSING THURSDAY



NEAREST TUBE — TUFNELL PARK (1 minute) 20 minutes from Oxford Circus — 3 stops from Euston

See us Today for Professional Attention to your Vision Care Needs

BARNET DIARY

- *Union Street Evergreen Club, Ewen Hall, Wood St, Barnet. 2pm. 441 4853
- *Fern Evergreen Club, Fern Room, Salisbury Rd, Barnet. 2pm. 441 4853

Wednesdays

- *Pensioners Bingo Club, East Finchley Neighbourhood Centre, 43 Church Lane, E Finchley. 2pm. 883 2105
- *Mays Lane Evergreen Club, St Stephens Church Hall, Bells Hill, Barnet. 2pm. 441 4853
- *West Hendon over 60s Lunch and Social Club, Community Centre, Marsh Drive, NW9. Lunch 12.30pm; Social Club. 1.30pm. 202 5057
- *Old Pals Club, Bingo, Old Barn Tarling Rd, N2. 2pm. 349 4613

Thursdays

- *Pensioners 'Friendship Club', North Road Community Centre, Burnt Oak. 1.45pm. 951 1726
- *Arts and Crafts — open CRAB sessions for the elderly. The Meritage Club, Church End, Hendon. 1.30pm
- *Roundabout Club pensioners group, Friary Hall, URC Church, Oakleigh Park Nth, N20. 2pm. 361 2787
- *Hoop Lane Thursday — drop in for coffee and a chat — Unitarian Room, Hoop Lane, NW11. 10.30am.
- *Golden Circle Club, The Salvation Army Hall, Brampton Grove, Hendon. 1.30pm. 203 4823
- *The Torrington Park Pensioners' Club, Health Centre, Torrington Park, N12. 2pm. 446 4201

Fridays

- *Young at Heart, Conservative Hall, Barnfield Rd, Burnt Oak. 1.30pm. 952 3513
- *Club for the Elderly, Friern Barnet Day

- Centre, Friern Barnet Lane, N11. 2-4pm. 368 4278
- *Bells Hill Evergreen Club, St Stephens Church Hall, Bells Hill, Barnet. 2pm. 441 4853
- *Over 60's Club, Salvation Army Hall, Hertford Rd, East Finchley. 2.30pm.

Singles Clubs

Tuesday September 15

- Finchley Solo Club for widowed, divorced & single (25-65). 8pm. 889 0513/444 8743 (also Oct 6)

Sundays

- *Singles Club party night get together, 411 Hendon Way, Hendon, 202 3101.

Mondays

- *Barnet Thirty Plus Group. Play badminton at Queen Elizabeth Centre, Meadway, Barnet. 8pm. Details of other activities from 959 7084
- *Club 81 for unattached people 24-45, The Load of Hay Pub, Brent Street, Hendon. 8.45pm. 349 0026

Tuesdays

- *Divorced/separated club, 411 Hendon Way, Hendon. 202 3101

Wednesdays

- *National Council for the Divorced Separated, North West London Branch. Friendly club evening near Brent St. Hendon. Details: 226 3752, 203 57389/3269
- *North London and District Divorced/Separated Club, St Paul's Church, High Rd, New Southgate. 8pm. Potters Bar 42849

- *Club 81 for unattached people 24-45. The Green Man Pub, corner of Nth Circular Rd/High Rd, N2. 8.45pm. 349 0026

Dance

Monday September 7

- Chipping Barnet Folk Dance Club, Church House, Wood St. 7.45pm. 449 4425 (also Sept 21)

Thursday September 10

- Circassian Circle Folk Dance Club, Harwood Hall, Mill Hill B'way. 7.45pm. 950 5756 (also Sept 24, Oct 8)

Saturday September 12

- Finchley Sequence Dance Club, St Philip The Apostle Hall, Gravel Hill, N3. 7pm. 346 8675

Saturday October 3

- 20th Century Sequence Dancing Club, Southgate Upper School, Sussex Way, Cockfosters. 7.30pm. 360 2586

Mondays

- *CRAB dance club for disabled, Woodhouse Sixth Form College, Woodhouse Rd, N12. 50p per session. 7pm. 346 9789
- *Ballet for 4+, Michael Sobell House, Limes Avenue, NW11. Pre-primary 4.30pm; primary 5.15pm. 203 4358

Tuesdays

- *20th Century Sequence Dancing Club, All Saints Hall, Oakleigh Rd North, Whetstone. 7.45pm. 360 2586

- *Tap dancing, Centrepont, Grahame Park. Under 12s 6.15pm; 12+ and adults, beginners 7pm, intermediate 7.30pm. 205 7113

- *Wheelchair dancing, Grahame Park Community Centre, The Concourse, NW9. 1.30-3pm. 346 9789. Transport available

- *Ballroom and Latin-American classes. Van's Studio, 1 Middleton Rd, NW11. 8.30pm. 455 7468 (also Thurs)

- *Hampstead & Dist Scots Assn, Golders Green Parish Church Hall, West Heath Drive, NW11. 8pm. 515 7056

Wednesdays

- *Dancing, ballroom and Latin American, St Philip the Apostle Parish Hall, Gravel Hill, N3. Children 5-7pm, adults 7.30pm and 8.30pm. 360 0826

- *Contemporary Dance Classes, Brookside Methodist Church, Cat Hill, E Barnet. Beginners 7pm; intermediate 8pm. £1.25 per class or £5 per half-term. 441 5984

- *Mountfield Old Time & Modern Sequence Dance Club, Martin School, High Rd, East Finchley. 8pm. 959 5185 (in term time)

- *Friary Sequence Dance Club, Manor Drive Methodist Church Hall, N20. 8pm. 883 3202 (commence Sept 23)

- *American square dancing classes, Watling Community Centre, Orange Hill Rd, Edgware. 7.5p 8pm. 906 1582

- *Odsox Youth Dance Company, Friern Barnet County School, Hemington Ave, N11. (12-21 yrs). 6-10pm. 346 9789

- *Adult tap classes, St Paul's Church Hall, The Ridgeway, Mill Hill. 9.15pm. 906 0854



What on earth are we to do with him?

Darren is one of a number of teenagers whose life is in a mess and whose whole future will be determined by our recommendations.

Could you help us to reach the right decisions? You don't need any special qualifications. Just patience, compassion, understanding and time to spare; the ability to get to know young people and assess their needs; and the nerve to tackle a challenge.

As an assessment/Bridging Parent you would take teenagers of 13 to 18 into your home for short periods.

Whether you're a family or a couple, you

would offer the support of a stable, caring home within the community — a better remedy for the youngster's immediate problems than other alternatives open to us. You would keep in touch with his or her own family; and, as part of a team, with social workers and other professionals, you would help make plans for the future which would involve you in writing a report.

We wouldn't expect you to take on all this commitment for nothing — so a weekly fee of £132.20p is paid plus boarding allowance of up to £58 according to age. And equally

important is the satisfaction of doing a worthwhile job. You would of course receive full training and could rely on comprehensive back-up throughout.

If you live within 10 miles of Westminster and are interested in this important scheme, you'll want to find out more. Please telephone, without any obligation:

Gill Harris 798 2293 or Joy Nield 798 2286 or write to either of us at: Room 504, City Hall, Victoria St. SW1E.



City of Westminster

BARNET DIARY

Thursdays

*Finchley Sequence Dance Club, Martin School, High Rd, E Finchley. 7.30pm 346 8675

*Pre-Primary ballet (3-5 yrs) 4pm, Primary Tap 4.45pm, Primary modern 5.30pm, East Barnet Baptist Hall, Crecent Rd. 368 5871

Fridays

*Latin & Ballroom, Subud Hall, 97 E Barnet Rd, New Barnet. 8.30pm. 449 3336/6034

*Barnet International Folk Dance Club, Hadley Memorial Hall, Hadley Highstone. 8pm 427 8042

*Primary to elementary ballet, East Barnet Baptist Hall, Crescent Rd. 4pm onwards. 368 5871

Music

Tuesday September 15

Hendon Library Gramophone Soc, The Burroughs. 7.45pm. 202 5625 (also Sept 29)

Thursday September 17

Friern Barnet Library Gramophone Soc, Friern Barnet Rd, N11. 8.10pm. 361 2787

Tuesday September 22

East Barnet Library Gramophone Soc, 85 Brookhill Rd. 8pm. 440 4376 (also Oct 6)

Monday September 28

Hendon Music Soc, Hendon Library, The Burroughs. 8pm. 203 2355

Mondays

*Barnet Orchestra at Hendon, Hendon School, Golders Rise, NW4. 8pm 205 2418

Finchley Choral Society, Moss Hall Junior School, Nether St, N3. 7.45pm. 445 8401

*Manor House Hospital Operatic Soc, Manor House, Hospital, North End Rd, NW11. 7.30pm. 346 0237

*Tudor Orchestra, East Finchley Methodist Church, High Rd, Players welcome all sections, particularly brass. 7.30pm. 445 0563

*Mill Hill Amateur Operatic Soc, Hartley Hall, Flower Lane, Mill Hill. 8pm. 959 2848

*Music for Fun — informal choir, St Jude's Church, Hampstead Garden Suburb. 8pm. 886 0284

*Entertaining the elderly in Barnet — 'Music Hall' rehearsals, Baptist Church Hall, Green Lanes, N13. 7.45pm. 449 4507

Tuesdays

*The Apollo Singers, Wilberforce Hall, Wilberforce Rd, W Hendon. 7.45pm. 959 1244

*Hendon String Orchestra, Whitefields School, Claremont Rd, NW2. 8pm. 455 5005

*Guitar classes for children, teenagers and adults, New Seekers Music School, Mill Hill School, The Ridgeway. Enquiries 09278 2151

*Finchley Chamber Choir, Finchley Methodist Church, Ballards Lane, N3. 8pm. 346 0502

Wednesdays

*Finchley & Friern Barnet Operatic Soc, St Andrew's Church Hall, Alexandra Park Rd, N10. 7.45pm. 368 0770. New members welcome, especially men

*Barnet Band, Queen Elizabeth's Boys' School, Queens Rd, Barnet. 7.30pm. Brass and reed players required. 449 3057

*Barnet Choral Soc, Methodist Church Hall, High St, Barnet. 7.45pm. 440 1157

Thursdays

*London Pro Arte Choir, Mill Hill East Free Church, Salcombe Gdns, Mill Hill. 7.30pm. 959 1659

*Finchley Chamber Orchestra, Moss Hall Junior School, Nether St, N3. 7.30pm. 881 3619

*Borehamwood Operatic Soc, Fairway Hall, Borehamwood. 8pm. 906 1453

Saturdays

*Hampstead Garden Suburb Youth Music Centre, Henrietta Barnett School, Bigwood House, Bigwood Rd, NW11. 9am-12.45pm. 907 8018.

We haz jazz

Come to the JAZZ CONCERT

Oakhill Park,
East Barnet

noon to 4.30pm

The bands are

T.J. Four

&

Leaside Jazzmen

Sponsored by the
Local Advertiser

Arts Workshops

Barnet Arts Workshops run regular activities throughout the term. Youth workshops (4-16) in drama, arts and crafts. £3.50 per half-term. Adult workshops: Dance/Keep fit; photography; video; screenprinting. (£1.50 per session, £10 per term, Free for unemployed.) Details 346 7120

Sundays

*The Mix — a creative workshop for all ages/abilities, The Drama Centre, 142 High Rd, East Finchley. 2.30pm. 444 1893

Drama

Wednesdays

*Incognito Theatre Group, Theatre, Friern Barnet. 8pm. 0707 58756

*East Finchley Theatre Group, Methodist Church Hall, High Rd, N2. 7.30pm. 883 2633

*Gainsborough Theatre Club, The Centre, Gainsborough Rd, N12. 8.15pm. 205 8352

*Barnet Youth Drama Centre, 142 High Rd, E Finchley. Sessions for seven to 11-year-olds, 6pm. Also **Thursdays** (16+), 7pm; **Fridays** (12-15), 7pm; and **Saturdays** (7+), 10am. 883 9957 (workshop hours)

*Nether Never Drama Group, Disablement Assn in the Borough of Barnet, Trinity Church Centre, Nether St, N12. 8pm. 446 6935

★ ENTERTAINMENT ★

Sunday September 13

Fifteen to Infinity — an evening of poetry with Ruth Fainlight, The Manor House, 80 East End Rd, N3. 7.30pm. £2.50. 346 2288

Wednesday September 23

Electronic organ concert by Janet Dowsett, Edgware & Dist Organ Soc, Watling Community Centre, Orange Hill Rd, Burnt Oak. 8pm. 953 3291

Wednesday September 30

Song recital entitled 'Autumn Bouquet', St Michael & All Angels Church Michaelmas Festival, Hartley Hall, Flower Lane, Mill Hill. 7.30pm. Tickets £2. 959 3079

Friday October 2

Organ Recital by Ian Wicks/David Roberts, St Michael & All Angels, Hartley Hall, Mill Hill, Michaelmas Festival in aid of North London Hospice. 8pm. 959 3079

Saturday October 3

St Michael & All Angels Michaelmas Festival — Thats Entertainment — Hartley Hall, Flower Lane, Mill Hill. In aid of North London Hospice. 7.30pm. £2.50. 959 3079

Organ recital by Graham Alsop, Free Church, Hampstead Garden Suburb, Central Sq. Music by Bach, Durufle and Vierne. Programmes £1

Piano recital by Simon Nicholls, Trinity Church, Nether St, N12. In aid of Shelter. Works by Beethoven, Haydn, Chopin & Liszt. Tickets £3.50, concs £2.50. 446 0812

Saturday October 10

Chopin Recital by Moura Lympny, Hendon Music Soc, Trinity Church, Hodford Rd, Golders Green. 7.45pm. Tickets £4. 203 2355

Finchley Choral Society presents The Delaware Quartet, St Barnabas Church, Holden Rd, N12. 7.45pm. Tickets £3 (children & students £1.50). 445 8401

Pop, Rock, Folk and Western

Sundays

*Live music — Rock & Blues — Torrington Pub, 4 Lodge Lane, N12. 8.30pm. 445 4710 (also Fridays)

Fridays

*Melanies Jazz Funk Night (strictly over 21 years). 407 Hendon Way, Hendon. 202 7289.

68 High Street, Barnet. 449 5189

Phone for details. Ticket prices do not include 25p membership, or 50p children's membership of Bulls Eye.

Fri/Sat September 4/5

Kahoon Kahoon present 'A Vile Humour'. 8pm. £3.50, £2.50 concs.

Tuesday September 8

Afternoon Arts Club for the Over 50s

Tues-Sat, Sept 8-12

Nigel Pivaro in 'No Further Cause for Concern'. 8pm. £4, £3 concs; Fri & Sat £4.50, £3.50 concs.

Saturday September 12

Alexander Technique Introductory workshop with John Canning. 10am-1pm. £3

Exhibitions

Until September 12

Drawings and Paintings by Henry Fry, North Finchley Library, Ravensdale Ave. Normal opening hours.

Until October 4

Little Palaces: the suburban house in North London 1913-1939, Church Farm House Museum, Greyhound Hill, Hendon. Open: Mon-Sat (except Tues) 10am-1pm, 2-5.30pm; Tues: 10am-1pm; Sun: 2-5.30pm. 203 0130

September 21 to October 16

'Artists in Print' — exhibition of

etchings and lithographs by Israeli and Jewish artists, The Manor House Society, East End Rd, N3. Mon-Thurs 10am-5pm. Closed Sept 24/25, Oct 3, 8 & 15. 346 2288

September 26 to October 23

Finchley Art Society 39th Annual Exhibition, North Finchley Library, Ravensdale Ave. Open library hours.

September 19 to October 24

Paintings by Adrienne Solomon, Hendon Library, The Burroughs. Open library hours.

Saturday September 26

Alexander Technique Introductory Workshop with John Canning. 10am-1pm. £3

One Night Stand — an increasingly popular showcase for new and promising choreographers and dancers. 8pm. £3, £2 concs.

Sunday September 27

Moonlight Puppets — Kids Show. 3pm. £2 adults, £1.25 children.

Fri/Sat October 2/3

Scarlet Harlots present 'Appetite of the Heart'. 8pm. £3.75, £2.75 concs.

Tuesday October 6

Dewi Williams in An Evening with Dylan Thomas. 7.30pm. £3, £2 concs.

Old Bull Arts Centre

Sunday September 13

Double Dutch Magic Show. 3pm. Adults £2, children £1.25

Tuesday September 22

Afternoon Arts Club for the Over 50s. 2pm

Friday September 25

Jazz Guest Star Series with The Colin Peters Trio. 8pm. £3.75, £2.75 concs.

COPTHALL ARE BACK IN THE SWIM

Both pools at Copthall will be back in action from the October Half-term Holiday.

The coaching team are offering a full house of swimming and diving courses. But you need to book early to be sure of a place. For information phone: 203 4187.

Six-week Swimming Courses

Friday, 30th October to Saturday, 12th December

Parent and Baby Classes £7.20 (6 × 20 mins)

Duckling's Classes £8.40 (6 × 20 mins)

Children's and Adult's Classes £10.80 (6 × 30 mins)

Parent and Baby Classes

(There must be an adult with each child)

Thursdays: 1.40pm; 2pm; 2.20pm; 2.40pm; 3pm

Duckling Classes

Tuesdays: 3.30pm; 4pm

Thursdays: 1pm; 1.20pm; 1.40pm; 2pm; 2.20pm; 2.40pm; 3.30pm; 4pm

Saturdays: 1pm

Children's Learn-to-Swim Classes

(All grades: Beginners 1, 2 and 3; Intermediate and Improvers 1 and 2)

Mondays: 4pm; 4.30pm; 5pm

Tuesdays: 4pm; 4.30pm; 5pm

Wednesdays: 4pm; 4.30pm; 5pm

Thursdays: 4pm; 4.30pm; 5pm

Fridays: 4pm; 4.30pm; 5pm

Saturdays: 9.15am; 9.45am; 10.15am; 10.45am; 11.30am; 12 noon; 12.30pm; 1pm

Adult Learn-to-Swim Classes

(Beginners, Intermediate and Advanced)

Mondays: 8.30pm; 9pm; 9.30pm

Thursdays: 12 noon; 12.30pm; 1pm

Half-term Holiday Crash Courses

Monday, 26th October to Friday, 30th October

Duckling Classes £7 (5 × 20 mins)

Children's and Adult's Classes £9 (5 × 30 mins)

Synchronised Swimming and Diving £9 (5 × 30 mins)

Duckling Classes

Daily: 1pm; 1.20pm; 1.40pm

Children's Learn-to-Swim Classes

Beginners 1,2 & 3 Daily: 9am; 9.30am; 10am; 10.30am; 11am; 11.30am; 12 noon; 12.30pm

Intermediates Daily: 9am; 10am; 10.30am; 11.30am; 12 noon

Improvers Daily: 9.30am; 11am; 12.30pm

Adult Learn-to-Swim Classes

(Beginners, Intermediate and Advanced)

Daily: 1pm; 1.30pm

Synchronised Swimming

(Seven-year-olds and over)

Daily: 12 noon; 12.30pm

Diving Lessons

(Seven-year-olds and over)

Daily: 1pm; 1.30pm

Which Course is Right for YOU?

Parent and Baby
Adult with child aged three
months to three years

Ducklings
Four-year-olds only

Learn-to-Swim Scheme

Children: Five years plus

Adults: 16 years plus

Beginners 1: Non-swimmers

Beginners 2: Able to swim
five metres on front and
back in any style

Beginners 3: Able to swim 10
metres on front and back
unaided

Intermediate: 25m on back
and front

Improver: 25m breast stroke,
back crawl, front crawl in
good style

Improver 2: 50 metres all
strokes in good style

Booking can only be made
in person at Copthall Pools.
No telephone reservations
can be accepted.

People who attended the
last course ending in June
are entitled to book Priority
Week, beginning at 9.30am
on Sunday, September 20th
to Friday, September 25th.

Open booking for new
customers is on Sunday,
September 27th from
9.30am.

Half-term Holiday CRASH COURSES

KARATE

£9 for five lessons

10am to 11am: five-to
nine-year-olds

11am to 12 noon: 9 years
plus.

MINI-MOVERS

£7 for five lessons

(a basic introduction to
gymnastics for four-to six-
year-olds)

11am to 11.30am

11.30am to 12 noon

12 noon to 12.30pm

DISCO-FIT

£1 payable on entry

Daily session to music

Open to teenagers and
adults 12.30 to 1.30pm

● LOTS TO DO AT COPTHALL ● LOTS TO DO AT COPTHALL ● LOTS TO DO AT COPTHALL ● LOTS TO DO AT

COPTHALL POOLS

GREAT NORTH WAY, HENDON NW4 01-203 4187

SWIMMING SESSIONS for ADULT ENTHUSIASTS

- **EARLY BIRD** (7am-8.30am Mon, Wed, Fri)
- **EVENING LANE SWIMMING** (8.30pm-9.30pm Mon, Wed, Fri)
- **MASTERS TRAINING SCHEME**

– An adult swimming club run by a professional coach for competent – speedy adult swimmers. Sessions are Tue & Thurs 9.30pm-10.30pm. Plus Sundays 6pm-7pm (*Trials held Tuesdays)

NB. all public swimming will be held in the training pool until the middle of October when both pools will be back in action!

● LOTS TO DO AT COPTHALL ● LOTS TO DO AT COPTHALL ● LOTS TO DO AT COPTHALL ● LOTS TO DO AT

LOTS TO DO AT COPTHALL ● LOTS TO DO AT COPTHALL ● LOTS TO DO AT COPTHALL ● LOTS TO DO AT COPTHALL

LOTS TO DO AT COPTHALL ● LOTS TO DO AT COPTHALL ● LOTS TO DO AT COPTHALL ● LOTS TO DO AT COPTHALL

The Svenska Collection

FROM

Leisure Lodge



Leisure Lodge
 Horley Lodge Lane
 Salfords, Surrey, RH1 5EA
 Phone 0293 772410
 24hr answering service



A RANGE OF PINE BUILDINGS OF STURDY DESIGN WIDELY USED IN SWEDEN AS WEEK-END OR HOLIDAY CHALETs. IDEAL AS TENNIS PAVILION, POOL HOUSE, HOME GYMNASIUM, SAUNA/SPA BATH HOUSE, OR SIMPLY EXTRA ACCOMMODATION. ALSO BARBECUE HOUSES, AND CAR PORTS.

Name.....
 Address.....

 Phone Number..... Post Code

To: Leisure Lodge, Horley Lodge Lane,
 Salfords, Surrey RH1 5EA. Tel: 0293 772410
 (24 hr answering service)



The arena was packed for the Teddy Bears' Picnic



North London Hospice — this year's Mayor's Appeal

FRIERN BARNET SUMMER SHOW

The sun shone and Friern Barnet Summer Show scored a record attendance. Altogether nearly 12,000 joined in the fun. There was free entertainment for the Over Sixties, games and competitions for the children, and family fun all two days long. The photographs were taken by John Rifkin Tel: 958 1370. Other photos can be seen at Friern Barnet Town Hall.



Down among the chessmen. A garden feature of the Recreation Group Exhibit



The Mayor, Cllr Malcolm Lester, with an armfull of kids in fancy dress



College Farm ran donkey rides



Paddywack and Supermouse



Pauline Varnalls, shows organiser, and Carnival Princess Shenda Canning, at the St John Ambulance stall



The Recreation Group offered hats, balloons and bags



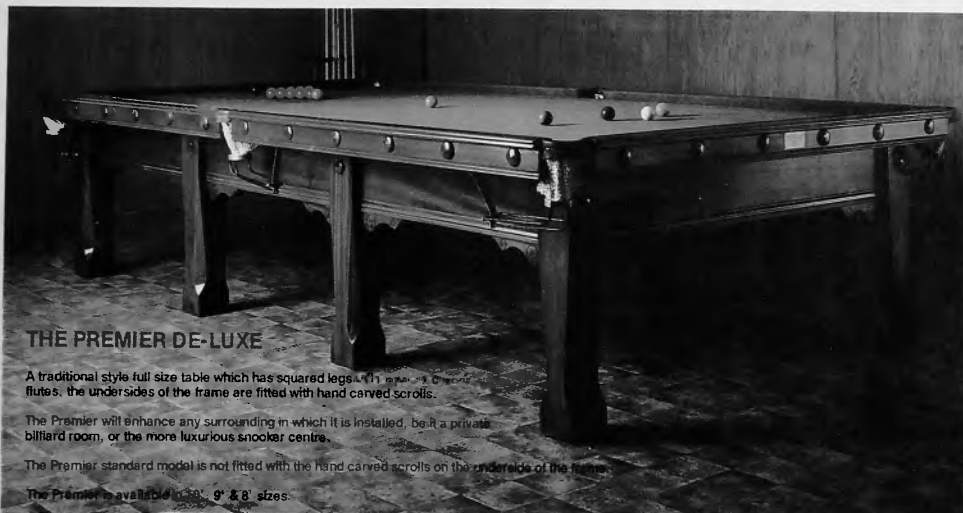
Selling for charity at the Lady Hoare Trust stand

A SPOT ABOVE THE REST

KARNEHM & HILLMAN LTD
(EST. 1965)

THE PROFESSIONAL COMPANY

Members of the Billiards & Snooker Trade
Association



THE PREMIER DE-LUXE

A traditional style full size table which has squared legs. The undersides of the frame are fitted with hand carved scrolls.

The Premier will enhance any surrounding in which it is installed, be it a private billiard room, or the more luxurious snooker centre.

The Premier standard model is not fitted with the hand carved scrolls on the underside of the frame.

The Premier is available in 9' & 8' sizes.

If you are interested in purchasing a quality full size or $\frac{3}{4}$ size snooker table — why not visit our large factory showroom? We have three different models of full size tables on display and a large selection of restored tables: Some extremely ornate. Our tables are not the cheapest available (but then quality and low cost never went hand in glove).

Incidentally we manufactured the tables for The World Professional Snooker Championships held at The Crucible, Sheffield for three consecutive years.

We specialise in supplying the many snooker clubs throughout the United Kingdom and can offer generous discounts for quantity orders.

Please send for colour brochure stating size of table required.

KARNEHM & HILLMAN BILLIARD SUPPLY CO. LTD.
Units 3/4 Middlegreen Trading Estate
Middlegreen Road, Langley, Slough SL3 6DF
Tel: 0753 822308. Telex: 846905 KH Ltd.

FIVEWAYS

TYRES & BATTERIES

1 Page Street, Mill Hill, NW7

We Specialise in tyres for your:
FERRARI, PORSCHE, JAGUAR, BMW,
MERCEDES, DAIMLER, ROLLS ROYCE,
in fact for every type of car on the road today



GET HIGH PERFORMANCE TYRES AT DOWN TO EARTH PRICES



Fiveways have installed the
very first of its kind in Britain:

A BEAR TELEMATIC ALIGNMENT MACHINE

capable of precise
measurements on steering
and wheel alignment — two
and four wheels if required

SPECIAL 10% DISCOUNT

**BATTERIES
FROM ONLY
£15.90 + VAT**

**WE NOW STOCK: BRAKE PADS
DISC ● SHOCK ABSORBERS ●
STEERING JOINTS ● ETC ● ETC**



**TOP QUALITY
TYRES from £13.90
+ VAT**

TEL 203 2088 — 203 5918

**GET ON THE RIGHT
TRACK TO FIVEWAYS**





LEARN TO DRIVE THE EASY WAY

WITH **FREE PICK UP SERVICE**

- Dual control Mini Metro cars.
- Friendly, professional tuition.

BSM MUSWELL HILL 883 1243

BSM WHETSTONE 445 0757

BSM EDGWARE 958 9029

BSM GOLDERS GREEN 455 5449

BSM CRICKLEWOOD 452 2909



We're right by your side.

L DRIVERS

PRE-TEST LECTURES

Evening Learner-Driver pre-test illustrated lectures 7.30pm—9pm.

For further information and dates contact:
The Road Safety Unit of the Engineering Services Division of the Directorate of Technical Services.

A TWO PART ILLUSTRATED LECTURE FOR CAR DRIVERS

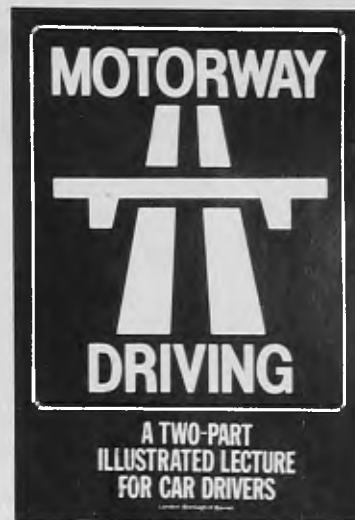
PART 1: Theory on Motorway Driving at the Road Safety Centre.

Part 1: 22nd September
Part 1: 17th November

Part 2: At the Metropolitan Police Garage, Finchley

Part 2: 29th September
Part 2: 24th November

Course Fee £2.50



Ring: 01-446 8511



DRIVERS PRE-TEST LECTURES

Evening Learner-Driver pre-test illustrated lectures 7.30pm-9pm

Book Now For: Sept 15th, Oct 13th, Nov 10th, Dec 8th

For further information and course dates contact:

The Road Safety Unit of the Engineering Services Division of the Directorate of Technical Services on

01-446 8511 ext 4340



PHONE FOR DETAILS



MOTORCYCLISTS MOPED RIDERS SCOOTERISTS

A six week training course is available to prepare you for the Department of Transport Tests — Part I and II. The Part I Test can be booked through The Road Safety Unit of the Engineering Services Division of the Directorate of Technical Services.

*Courses start 10th Sept, 29th Oct
Phone 446 8511 ext 4340 for details.*

DANTAPINE

QUALITY HANDMADE PINE

Designed and made in our workshops

DINING ROOM — see our selection of table, chairs — welsh dressers. Compare Value for Money.

BEDROOM — Five ranges to choose from, to suit every pocket. We have a budget range or something with that little bit extra — compare value for money.



PINE FITTED KITCHENS — Ask about our **FREE PLANNING SERVICE**, our team of experienced fitters are available, compare value for money.

**88 The Broadway
Mill Hill
Tel: 01-959 4292**

**96 LEAGROVE ROAD LUTON, Tel: Luton 36236
17 HIGH STREET, HEMEL HEMPSTEAD,
Tel: Hemel Hempstead 214040**

ABANDONED VEHICLES!!



Don't just leave your vehicle on the street.

It is an offence for which you may be prosecuted and fined up to £1,000

Barnet Council would be pleased to arrange removal of your old car for only an £8.00 removal charge.

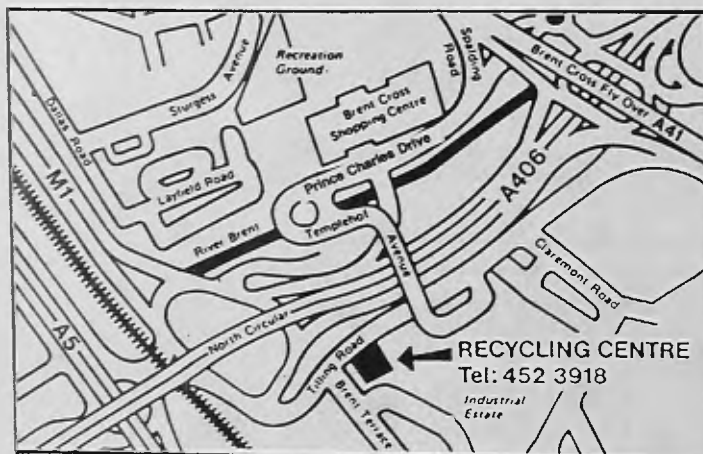
**Please telephone
01-346 0039**

The Engineering Services
Division of the Directorate
of Technical Services.



LONDON BOROUGH BARNET WASTE RECYCLING CENTRES

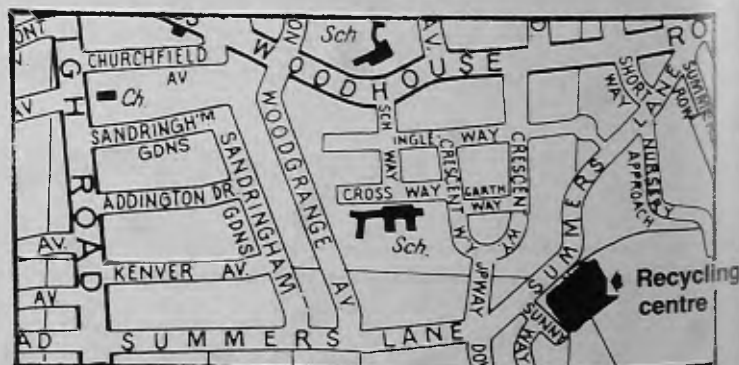
The London Borough of Barnet has two Recycling Centres where the public are encouraged to bring glass containers, old clothing and furnishings, metal goods and cans, waste sump oil . . . for recycling which saves energy resources.



The Centres are at:
BRENT CROSS, Tilling Road, NW2 (Tel: 452 3918) (see map)
Opening hours Mon-Sat: 08.00-16.00.
Sun 08.00-1600

SUMMERS LANE, Finchley, N12 (Tel: 368 8083) (Between Woodhouse Road and High Road, North Finchley)
Opening hours Mon-Sat: 08.00-16.00.
Sun: 08.00-1600

In addition, the Centres also accept bulky items and garden waste that borough refuse vehicles cannot accept. There is no charge to householders for this service.



- **BOTTLE BANKS** are situated at:
1. Stapleton Road car park Chipping Barnet.
 2. Behind Tesco's in Ballards Lane.
 3. Lodge Lane Car Park, North Finchley.

The Engineering Services Division of the Directorate of Technical Services



● **SALE ● SALE ● SALE ●**

Come along to the SUITE WAREHOUSE and pick up a fantastic sofa or sofa bed in our amazing sale. There are 100s to choose from, and most available for immediate delivery.

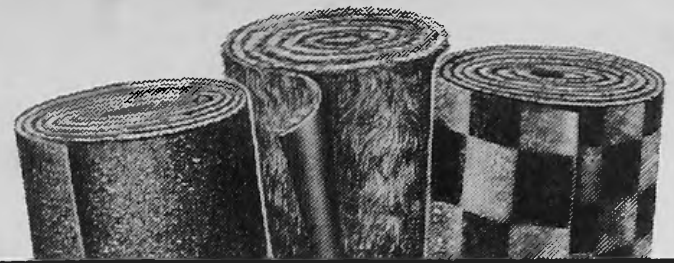
We stock a large selection of three piece suites, all shapes, shades and sizes, at prices we dare not print. Genuine reductions on leading manufacturers makes, many at half price. We assure you our goods are all top quality, with prices starting at £395 to over £1,000, in draylons, prints and quilted fabrics — the choice is yours. Plus, nobody beats our prices, if you can find the same suites offered elsewhere at a cheaper price, we will, within seven days of purchase, refund the difference. So what more could you ask for.

● **Carpets ●**

We have now added a carpet section to the warehouse with over 500 room-size carpets in stock: top quality Berber, Twists and heavy domestic ranges to choose from. We also have a FREE VISITING SERVICE. If you are unable to come to our showroom, well don't worry, one of our reps will visit you at home, measure up, and give you a FREE QUOTE, without obligation, on the spot — day or night.

● **Branching Out ●**

We have just opened a new store at 30-38 London Road, Enfield (opposite Woolworths). Of course we offer the same fantastic bargains there too, so hurry, sale must end soon to make way for the latest autumn ranges. (See our main advert on page 12.)



CARPETS AT PRICES THAT WILL FLOOR YOU

HOME SERVICE
Call 889 4545/6 for our free planning and estimate visiting service and view all our samples in the comfort of your own home.

CARPETS JUST ARRIVED!
Over 25,000 square yards of top quality jute-backed carpet in a choice of 13 colours.

USUAL PRICE £7.99 — OUR CASH & CARRY PRICE £4.99

Or if you prefer, our fully fitted package which includes:
FREE — Tread air underlay; Gripper rods; door bars. Plus FREE FITTING at an all-in price of £7.99. Save a Minimum of £3 per square yard or choose from 100s of top quality samples, all at store-beating prices!

CARPET SALE
You will not see quality carpets at these low prices anywhere else.

	sq. yd	
SAXONY	£7.95	Heavy Domestic
TWIST PILE	£6.75	Heavy Domestic
SHADOW	£4.95	Medium Domestic
SHADOW	£6.75	Heavy Domestic
BERBER	£5.75	Berber Wool Mixture
WILLOW	£4.75	Medium Domestic



We are licensed credit brokers HP available. Written details on request. Typical APR 30%. All credit subject to status.



THE SUITE WAREHOUSE

725-733 Lordship Lane, N22. Tel: 01-889 4545.
Opening hours: Mon-Sat 9.30am - 6pm. Sun 2pm - 5pm.

Beautiful Beds at NOW OPEN IN EAST BARNET

BEDWORLD

(As advertised on LBC)

All sizes stocked from 2' 6" to 6' (4' beds stocked)



4'6" Stafford. Solid brass Bedstead with firm Divan Set **£999**



4' 6" four poster with draped lace curtains special price **£349** complete

Slumberland, Relyon, Rest Assured, Sealy, Silentnight etc.

4' 6" Diamond Bed
2 large drawers in deep base with sprung interior mattress only **£119**



Over 2,000 beds in stock

BUNK BEDS
Over 20 designs (all safety standard). Pine, Antique or Mahogany stain. From only **£149** complete with mattress



● **SAME DAY DELIVERY ● FREE DISPOSAL OF OLD BED ● EXPERT ADVICE**

26-28 East Barnet Road, New Barnet.
Tel: 01-441 7875 (next Sainsburys)

95 Fore Street, Edmonton N18
Tel: 01-807 3331

470 Kingsland Road, Hackney, E8
Tel: 01-254 2534

LOCAL OPPORTUNITIES

- Regularly reviewed wages
- Generous leave entitlements
- Pleasant working conditions • Opportunities for advancement
- In-service training/supervision • Worthwhile employment helping the community

For full-time posts we offer - canteen facilities, a minimum of 20 days' basic annual leave and additional leave at most Bank Holidays. Assistance with housing, 100% of removal expenses and interest-free loans for annual seasons tickets may be available in approved cases.

DIRECTORATE OF TECHNICAL SERVICES

DEVELOPMENT SERVICES DIVISION PLANNING GROUP

Two vacancies exist in the Development Plan Branch:

Senior Planning Assistant — Policy & Research Section

Salary: Scale 6/SO1 £10,704 to £12,543 p.a. plus Essential User Car Allowance (A Mobility Allowance may be available for disabled applicants).

You should be a qualified Planner who is able to demonstrate initiative and the ability to co-operate with a wide range of public and private sector organisations. In addition you should have relative planning experience, the ability to develop retail planning policies and be prepared to contribute in all aspects of the Section's work. George Sims, the Section Leader of Policy & Research, will be pleased to talk to potential candidates — Telephone 01-446 8511, Ext. 4657.

Closing date:
10th September, 1987.

Reference: DTS/24.

Planning Assistant — Strategy & Information Section

Salary Scale 4 £8,397 to £9,297 p.a. Plus Casual Car Allowance.

Due to a recent promotion there is a vacancy in this Section. You will be assisting senior staff in monitoring

progress on the production and review of strategic planning guidance, both for London and the south-east, and helping to investigate the inter-relationship between development trends in the Borough and the rest of the region. The other equally important aspect of the work will be to assist in the improvement and maintenance of development and land use information systems. This will be achieved through the use of effective survey and presentation techniques including more efficient use of computers. You should be studying for a professional planning qualification.

Peter Green, the Section Leader of Strategy & Information, will be pleased to talk to potential candidates — Telephone 01-446 8511, Ext. 4664.

Closing date:
10th September, 1987.

Reference: DTS/11.

Application forms available from Assistant Controller (Support Services), address No. 2. Please quote appropriate reference.

SUPPORT SERVICES GROUP

Assistant Typing Supervisor

Salary: Scale 5. £9,528 to £10,392 p.a. inclusive.

Are you wondering what the next step in your career should be?

Are you ready for the challenge of supervising and assisting with the management of the newly created typing centres of the Support Services Group? If so, we can offer you the challenge you seek. We are currently looking for an Assistant Typing Supervisor who will need to be an experienced Typist or Word Processor Operator. Ideally

you will have had some supervisory experience. We can offer you the chance to:

- ★ work closely with new technology and assist in the training of staff;
- ★ develop supervisory skills;
- ★ work for a progressive organisation where your ideas count.

Can you offer us:

- ★ RSA Stage II (typing speed 60 w.p.m.)?
- ★ a minimum of two years' word processing experience?
- ★ commitment to developing our services?

If you can and would like an informal discussion concerning this post, please contact the Typing Supervisor, Mrs E. Gould, on 01-446 8511, Ext. 4451.

Closing date:
10th September, 1987.

Application forms available from Assistant Controller (Support Services), address No. 2. Please quote reference TS/101.

DIRECTORATE OF SOCIAL SERVICES

Curtis Family Centre

Deputy Organiser

Salary: Scale 6/SO1. £10,704 to £12,543 p.a. inclusive.

If you have a relevant child care qualification (e.g. NNEB, CSS, CQSW or teaching), experience of working with parents and young children, commitment to developing affirmative multi-cultural approaches to child-care practice, and management experience in a day care setting, we are keen to hear from you.

Closing date:
10th September, 1987.

Interview date:
24th September, 1987.

Application forms from the Director of Social Services, address No. 4. Please quote reference 633/426.

Rosa Morison Day Centre, New Barnet

Driver Jobbing Assistant

(39 hours per week — 8am-5pm)

Rate of pay: £3.07 per hour.

This Centre provides for 24 adults who have a severe mental handicap and in most cases a physical or sensory handicap. We are seeking to appoint a Driver/Jobbing Assistant who is required to drive an ambulance to transport people to and from their homes and undertake other local journeys. A number of people use wheelchairs and some lifting of people will be required. Routine cleaning and day-to-day maintenance of vehicles are part of the duties of this post.

The person appointed will also act as a general handyperson in the Centre, undertaking routine maintenance tasks. Applicants must be over 23 years of age.

Closing date:
10th September, 1987.

For more information and an application form, contact Andrew Cowling or Anne Brook at Rosa Morison Day Centre, 83 Gloucester Road, New Barnet, Herts EN5 1NA. Tel: 01-449 0712. Please quote reference CAM/DJA.

Where to apply

For application forms please apply to the appropriate address listed on the facing page.

with a good employer

AN AUTHORITY COMMITTED TO EQUAL OPPORTUNITIES

LONDON BOROUGH
barnet

LOCAL OPPORTUNITIES

- Regularly reviewed wages
- Generous leave entitlements
- Pleasant working conditions • Opportunities for advancement
- In-service training/supervision • Worthwhile employment helping the community

For full-time posts we offer - canteen facilities, a minimum of 20 days' basic annual leave and additional leave at most Bank Holidays. Assistance with housing, 100% of removal expenses and interest-free loans for annual seasons tickets may be available in approved cases.

DIRECTORATE OF SOCIAL SERVICES

Social work in a day care setting

Social Worker

Full-time or part-time (two 18-hour posts).

Salary: £10,704 to £12,543 p.a. inclusive (pro rata for part-time).

We place considerable emphasis in keeping elderly people supported within the community and, to achieve this, our Day Care Centres play a vital role. To develop our Day Care Services further, we wish to appoint a professionally qualified Social Worker (CQSW), or two part-time Social Workers for job sharing, to provide a full social work service to our Centre members and their families at our Deansbrook and Springwood Day Centres in the Edgware area.

To find our more contact Peter King, Management Officer, on 01-446 1488, Ext. 4266.

Closing date:
10th September, 1987.

Interview date:
30th September, 1987.

Application forms from the Director of Social Services, address No. 4. Please quote reference 633/543.

Wellhouse Day Nursery Nursery Officer

Salary: Day Grade 2. £7,689 to £8,241 p.a. inclusive.

Wellhouse Nursery, situated at High Barnet, is seeking an experienced Nursery Officer to join a team of nine. The Team are committed to encouraging parental involvement wherever possible in all aspects of the nursery day.

You should be professionally qualified — NNEB, CSS (Child Care Option), and possess skills in direct work with parents and children under five. You should also be able

to demonstrate a positive commitment to developing an affirmative multi-cultural, non-sexist approach to child care practice.

Informal enquiries to: Maureen King, Officer-in-Charge. Tel: 01-440 7411.

Closing date:
10th September, 1987.

Interview date:
29th September, 1987.

Application forms from the Director of Social Services, address No. 4. Please quote reference 633/404.

Caring for elderly people HIGH CALIBRE CARE STAFF WHO LIKE TO BE 'ON THE GO' AND WORK IN A STIMULATING ENVIRONMENT SHOULD READ ON

BEACH LODGE is an imposing mock Tudor property set in lovely grounds in Finchley Central, and is 'home' for 34 elderly people. However, that is not all: a preventative day care programme, a luncheon club and pensioners' group all operate, and there are a variety of social and recreational activities for day attendees and residents. Yes — it is busy, yes — it is demanding, but at the same time it is fulfilling work. We are seeking to recruit:

Day Careworker

Full-time 39 hours

Salary: NJC.3. £8,398 to £9,297 p.a. inclusive. Plus Essential User Car Allowance, with assisted car loan scheme.

As the organiser of this scheme, which is a valuable alternative to residential care, you will work with a limited number of clients at Beach lodge and ensure their own home circumstances are 'secure', and that they are well provided for.

Reference: 633/296.

Careworkers

Full (39 hours) or Part-time (19½ hours)

Salary: NJC.2. £7,689 to £8,241 p.a. inclusive (pro rata for part-time).

Ensuring the physical well-being of residents, helping them with everyday tasks, including dressing, toileting and bathing, as well as assisting with recreational and social activities.

Reference: 633/297.

Care Assistants

Full or part-time (between 19 and 39 hours), hours by rota.

Similar duties to above.

Basic: £2.98 per hour with plussages for shift, weekend and Bank Holiday working, and the grade is under national review with a likely substantial increase.

Reference: CAM/CA.

All posts require you to have had experience of caring for, and a genuine commitment to, elderly people. The depth and quality of experience (not necessarily in paid employment) will, of course, determine the level of appointment for which you could be considered. The Day Careworker will need a full clean driving licence, organisational abilities and resourcefulness in being able to set up and maintain an interesting programme of activities.

Informal enquiries to: Pat Burchill or Pauline Burnell at Beach Lodge. Tel: 01-346 5522.

Closing date:
10th September, 1987.

Interviews will be held during the week ending 18th September, 1987.

Job Outlines and application forms for Careworkers from: Director of Social Services, address No. 4. Please quote appropriate reference. Forms for Care Assistant post direct from Beach Lodge.

Day Care Manager

At a Centre for People with a Mental Handicap

You should hold a Social Services qualification and have a minimum of two years post-qualifying experience. Applicants should demonstrate an ability to work in a multi-cultural community. Current salary range £10,704 to £12,543 (Scale 6/SO1), starting salary subject to qualifications and experience, and car allowance. Relocation assistance in approved cases. Informal enquiries to Jo Jolley, Management Officer, on 01-446 1488, Ext. 4262.

Closing date:
10th September, 1987.

Interview date:
22nd September, 1987.

Application forms available from Director of Social Services, address No. 4. Please quote reference 633/DCM.

Where to apply

1. Recruitment Office, 16/17 Sentinel Square, Brent Street, Hendon, London NW4 2EN
Tel: 01-202 8282 Ext 424 (01-202 6602 24 hr ansaphone outside office hours).
2. Application forms from the Assistant Controller (Support Services), Barnet House, 1255 High Road, Whetstone, London N20 0EJ.
Tel: 01-446 8511 Ext 4460 (ansaphone during office hours) or Ext 4454
3. Director of Educational Services, Town Hall, Friern Barnet, London N11 3DL
Tel: 01-368 1255
4. Director of Social Services, Ivy House, 1331 High Road, Whetstone, London N20 9HZ
Tel: 01-446 6857 (24 hr answering service)
5. Borough Librarian, Ravensfield House, The Burroughs, Hendon, London NW4 4BE
Tel: 01-202 5625 Ext 48

Please quote the reference number

With a good employer

AN AUTHORITY COMMITTED TO EQUAL OPPORTUNITIES

LONDON BOROUGH
barnet

LOCAL OPPORTUNITIES

- Regularly reviewed wages
- Generous leave entitlements
- Pleasant working conditions • Opportunities for advancement
- In-service training/supervision • Worthwhile employment helping the community

For full-time posts we offer - canteen facilities a minimum of 20 days basic annual leave and additional leave at most Bank Holidays Assistance with housing 100% of removal expenses and interest-free loans for annual seasons tickets may be available in approved cases

DIRECTORATE OF HOUSING & ENVIRONMENTAL SERVICES

Assistant Leaseholder Services Manager

Salary: Scale SO1/2. £11,808 to £13,620 p.a. inclusive. Plus Essential User Car Allowance. (A Mobility Allowance may be available for disabled applicants).

You must have experience in housing or property management. You will be firm but tactful and possess good communication skills.

Closing date:
10th September, 1987.

Application forms available from the Recruitment Office, address No. 1. Please quote reference 9/1/3702

Estate Officer

Salary: Scale 4/5/6. Up to £11,385 p.a. inclusive (£11,525 from 1.2.88) plus Essential User Car Allowance. (A Mobility Allowance may be available for disabled applicants).

Barnet has a proven track record of providing an efficient Estate Management service. We are seeking a person with a professional, mature attitude, who has either previous experience in estate management, or in a related area of work, preferably with housing connections, to replace one of our Estate Officers who is on maternity leave until her return on 20th May, 1988.

Officers need to be car owners and overtime is available subject to approval. The post is based in Whetstone, N20. The starting salary is negotiable within a career grade and is subject to previous related experience and/or qualifications.

Closing date:
10th September, 1987.

Application forms available from the Recruitment Office, address No. 1. Please quote reference 9/1/3411.

Clerical Assistant

Salary: Scale 3. £7,689 to £8,241 p.a. inclusive.

We need an energetic person to provide clerical and administrative support to a busy District Housing Team in the Tenant Services' Division at Barnet House, N20.

The work is varied and involves a great deal of contact with the public, particularly on the telephone.

You must be flexible, able to work under pressure and to deal with the unexpected with tact and understanding.

Closing date:
10th September, 1987.

Application forms from the Recruitment Office, address

ENVIRONMENTAL HEALTH DEPARTMENT

Student Improvement Grant Inspector

Salary: Scale 1-3. £4,596 to £8,241 p.a. inclusive. (Min. salary at age 21 £6,393 p.a. inclusive).

This newly created post should be very attractive to a school-leaver or someone looking for a career in surveying. You will need a minimum of five GCE passes or equivalent, including Mathematics, English and a Science subject.

We have a yearly programme of over £2 million to assist householders in the private sector to repair their properties, and we now wish to train the right person "in house" and by day release at Tottenham Technical College in the administration of improvement grants and building surveyors' skills. Our recently refurbished offices at Whetstone, N20, provide excellent facilities including a staff restaurant and working conditions are stimulating and pleasant. For further information please telephone Peter Robertson or Roger Walker on 01-446 8511, Ext. 4752.

Closing date:
10th September, 1987.

Application forms available from the Recruitment Office, address No. 1. Please quote reference 9/2/2333.

DIRECTORATE OF EDUCATIONAL SERVICES

Grounds Person

Denis Bland Environmental Education Centre, Byng Road, Barnet

Hours: 10 per week. Wages: £2.95 (approx.) per hour inclusive.

Closing date:
10th September, 1987.

Application forms from the Recruitment Office, address No. 1. Please quote reference 603/DB.

EDUCATION CATERING

General Assistants

IN VARIOUS KITCHENS

Wages: £2.78 (approx.) per hour — 40 weeks per annum. Hours: various.

We are looking for reliable and energetic people who would like to work in the Education Catering Service as General Assistants. Half-pay retainer fee is paid during the holiday closure on the understanding that you will be available for work if required. Free meal and protective clothing whilst on duty.

Closing date:
10th September, 1987.

Application forms from the Recruitment Office, address

No. 1. Please quote reference 603/GA.

HENDON COLLEGE OF FURTHER EDUCATION

Maintenance Engineer

Salary: Scale 4/5. £8,397 to £10,392 p.a. inclusive.

We're looking for a resourceful and capable person with experience in the maintenance of buildings. Your main tasks

are to identify items for repair and then to arrange for action to be taken. You will also be responsible for controlling stocks of materials held for maintenance and repair. You will supervise three other members of the Maintenance Team including the College van driver. Close liaison with the College Caretaker and staff of the Directorate of Technical Services will be necessary. You should possess a relevant qualification (e.g. CGLI or equivalent) and must have experience in maintenance work.

Closing date:
10th September, 1987.

Application forms and further details are available from Chief Administrative Officer, Hendon College of Further Education, Corner Mead, Grahame Park, Colindale, London, NW9 5KA. Tel: 01-200 8300, Ext. 219. Please quote reference 603/458.

Where to apply

1. Recruitment Office, 16/17 Sentinel Square, Brent Street, Hendon, London NW4 2EN. Tel: 01-202 8282 Ext 424 (01-202 6602 24 hr ansaphone outside office hours).
2. Application forms from the Assistant Controller (Support Services), Barnet House, 1255 High Road, Whetstone, London N20 0EJ. Tel: 01-446 8511 Ext 4460 (ansaphone during office hours) or Ext 4454
3. Director of Educational Services, Town Hall, Friern Barnet, London N11 3DL. Tel: 01-368 1255
4. Director of Social Services, Ivy House, 1331 High Road, Whetstone, London N20 9HZ. Tel: 01-446 6857 (24 hr answering service)
5. Borough Librarian, Ravensfield House, The Burroughs, Hendon, London NW4 4BE. Tel: 01-202 5625 Ext 48

Please quote the reference number

BARNET COMMUNITY PROGRAMME

Out of Work? Like the outdoor life?

Nature trail construction, woodland management, fencing and bridle path construction are all part of a day's work with the Barnet Countryside Project.

Working as a Countryside Landworker on the Community Programme could lead to a permanent job in parks or other areas.

A range of ten training courses are available as part of the job.

To work in the Countryside programme, the following conditions must be met:

If under 25: 6 out of the past 9 months unemployed

25 and over: 12 out of the past 15 months unemployed

You must also be in receipt of a State Benefit.

Closing date: 10th September, 1987.

Please ring Community Programme on 01-202 8282, Ext. 2396, for an application form. Please quote reference 600/CP.

Library/Clerical Assistant

(Senior)

Salary: Scale 3. £7,698 to £8,241 p.a. inclusive.

Are you an experienced library assistant able to perform a wide range of general library duties? If so, this could be the post for you. You will be working as part of a team to provide an effective College library service, dealing directly with staff and students.

Specific responsibilities include book ordering, inter-library loans, stationery control and recording fines. The post is currently based at Grahame Park site. Staff normally work one late evening per week.

Closing date: 10th September, 1987.

Application form and further details available from the Chief Administrative Officer, Hendon College of Further Education, Corner Mead, Grahame Park, Colindale, London, NW9 5KA. Tel: 01-200 8300, Ext. 219. Please quote reference 603/410.

LIBRARIES DEPARTMENT

Caretaker

Wanted at Hendon Library £115 approx. (inclusive) for 39-hour week. Saturday working with enhanced pay.

Closing date: 11th September, 1987.

Application forms and further details from the Borough Librarian, address No. 5. Please quote reference CAM/CHL.

Caretaker

(Non-resident)

Wanted for Friern Barnet Library/Book Store, Friern Barnet Road, N11.

£115 per week (inclusive) for 39-hour week. Saturday working with enhanced pay.

Closing date: 11th September, 1987.

Application forms and further details from the Borough Librarian, address No. 5. Please quote reference CAM/CFB.

WEA CLASSES

THE Workers Education Association provides classes in a range of topics. All classes are 20 weeks except where stated.

BARNET

Barnet branch has classes on the History of Art; Architecture; Genetics; Geology; London; Literature; Philosophy; Psychology; Alternative Medicine; Music Appreciation; Comparative Religions; India; Ceramics; and/or Historic Houses and their Treasures.

Details from Mr Carter, 445 3193.

Details of Unwaged courses: Rob Whitford on 440 9430.

FINCHLEY

Term starts October 5.

Daytime: Mondays: Women's studies (creche), 1pm. **Tuesdays:** Creative writing, 10.30am; **Wednesdays:** Theatre studies, 1.30pm. **Fridays:** International Affairs, 10am, all at Avenue House, East End Road, Finchley. **Wednesdays:** Literature, 10am, 44 Holly Park Road, Finchley N3. **Thursdays,** house and Gardens, 2pm, Wimbush House, Westbury Road, North Finchley.

Evenings: Tuesdays: Music, 8pm, provisionally at Moss Hall Junior School, Nether Street, Finchley N3. **Wednesdays:** Literature, 8pm, venue to be decided; Birds, 8pm, East Finchley Library. **Thursdays:** Alternative medicine, 8pm, North Finchley Library.

Details from Mr J. McKay, 446 6169.

FRIERN BARNET

Term starts September 21.

Tuesdays: Joys of Classical Music, 10pm, Christ Church URC Hall, Friern Barnet Road N11. Discovering the Countryside, 8pm, South Friern Library, Colney Hatch Lane N10. **Wednesdays:** Art in the Museums of London, 2pm, Christ Church URC Hall. **Thursdays:** Talking about Antiques, 8pm, South Friern Library.

Details from Mrs Battersby, 368 8781.

GOLDERS GREEN

Term starts September 28.

Mondays: International Affairs, 7.45pm, 44 Rotherwick Road, Golders Green (also unwaged). **Tuesdays:** Art, 11am; Vegetarian Society, Finchley Road, Golders Green (also unwaged); Comedy in Drama, 1.30pm, 6 Greenfield Gardens, NW2 (also unwaged). **Wednesdays:** American Women novelists, 10am, 19 Dingwall Gardens, Golders Green. **Thursdays:** European Literature, 1.30pm, 52 Clifton Gardens, Golders Green (also unwaged). **Fridays:** Opera, 10.30am, 52 Clifton Gardens.

Details from Mrs Michaelson, 452 8850.

MILL HILL AND EDGWARE

Term starts September 21.

Mondays: The Language of Music Explored and Explained, 10.30am, Methodist Church, Gar-

ratt Road, Edgware. **Psychology — Understanding Ourselves and Others,** 8pm, Edgware Library, Hale Lane. **Tuesdays:** The Great Art Collections of London, 10.30am, Union Church, Mill Hill Broadway; Art into Photography and Back, 8pm, Mill Hill Library, Hartley Avenue; Opera in all its aspects, 7.45pm, 47 Flower Lane, Mill Hill (starting September 29). **Wednesdays:** Philosophy, from Plato to the present time, 7.30pm, Hendon College, 43 Flower Lane. **Thursdays:** Historic Houses, 10.30am, Methodist Church, Garratt Road; Classic and Contemporary Novels, 1.30pm, Union Church, Mill Hill Broadway; Paintings from the French Revolution to the Impressionists, 7.45pm, Mill Hill Library; Shakespeare's Measure for Measure and sonnets, 8pm, 47 Flower Lane, **Fridays:** London, art and architecture from Norman to Tudor times, 10.30am, Union Church, Mill Hill Broadway.

Details from Peggy Davies, 959 3505.

BARNET WOMEN'S BRANCH

Barnet Women's branch will hold short-term and longer courses in autumn and winter for women for all ages and backgrounds.

Details from Gill Greedman, 444 6616 or Janet Berenson-Perkins, 368 7638.

UNWAGED

Mondays: 2pm, job-search counselling for unemployed or those considering a career change. Friendly, supportive and personal approach from an experienced personnel officer. Help and advice with application forms, interview training and practice, hints on self-presentation, confidence building. Free. East Finchley Neighbourhood Centre, 42 Church Lane, East Finchley. Details 440 9340.

Wednesdays: 10am to 1pm and 2 to 5pm, Self development, communications, assertiveness, confidence building and stress management, George Richardson House, 7 Sunningfields Road, Hendon, half or full day. Unemployed free, others small charge. 440 9430.

Thursdays (starting October 1): Nutrition, health and drawing, 2pm (10 weeks). Exploring life patterns, 11am, (six weeks). George Richardson House. 440 9340;

Wednesdays (starting Oct 7): Introduction to Greek Civilisation, Hendon Library, The Burroughs, 7.45pm, 440 9430.

JEWISH STUDIES

The North West Reform Synagogue, Alyth Gardens, Finchley Road, Golders Green, start their autumn term of Jewish Studies on Wednesday, September 16 for the morning sessions and Thursday, September 17 for the evening sessions. Special registration evening Thursday, September 10. Information from Jan Roseman, 455 6763.

BILLBOARD



BECK & CALL

'Professionals in Education'

Home Tuition: Sports
Coaching & Courses:
Interview Techniques:
Careers Advice: Assessments:
School Admissions
Box 205, Wembley HA9 0AZ
Tel: 01-902 9644

WORTHSHIELD (INSURANCE)

MORTGAGES AND RE-MORTGAGES
MOTOR INSURANCE 'MOST RISKS'
PENSIONS INDIVIDUAL AND COMPANY
PERSONAL HEALTH INSURANCE
HOUSEHOLD — BUILDINGS — CONTENTS
COMMERCIAL INSURANCES



PHONE 01-449 2492

FREEPOST (No stamp req)
98-100 High St. Barnet, Herts. EN5 5BR

DENTAL SURGEON

AVRIL KAY LDS, RCS, Eng

HOME VISITS

undertaken for
house-bound patients
who need dentures
(Private and NHS)

Surgery:

131 Friern
Barnet Lane
N20 0X2

01-445 7879



JOHN WRIGHT

(Est 19 years)

Your Local

**PLUMBING/HEATING
ENGINEER
FULL KITCHEN
INSTALLATIONS**

carried out.

Free Estimates without obligation
Competitive Prices
Personal Service

Call 01-440 8543

Anytime
226 East Barnet Rd. New Barnet

FOCUS

PRINT AND PRODUCTION

QUALITY COLOUR AND
GENERAL PRINTING
PLATEMAKING & SCANNING
Brochures, House Journals
Business Forms
Artwork/Finishing
High Speed Colour Printing

FOR ALL YOUR
PRINTING REQUIREMENTS

01-346 9886

THE PADDOCKS, FRITH LANE
LONDON NW7 1PS

**THE BIBLE
HAS A MESSAGE
FOR YOU**

DIAL 01 653 4935

OR WRITE

FREEPOST (no stamp)

51 Station Road
New Barnet, Herts
EN5 2PR

ADVANCE LOFT INSULATION

Complete Service
Insulated
to Government Grant
Standards

Telephone

01-444 3608

for free quotation

NORTH LONDON LANDSCAPE

Complete garden
layout service, plus
garden
maintenance from
only

£6.00 a week!

SPECIAL CONTRACT
CLEANING FOR FLATS ...

cleaning of all common
areas and grounds
Fencing

For fast efficient
service call

01-361 1640



**DO YOU WANT YOUR BUSINESS TO
REACH 115,000 HOMES AND OVER 4,000
BUSINESSES EACH MONTH?**

Barnets Residents at:

MILL HILL, TOTTERIDGE, ARKLEY, HADLEY WOOD,
BARNET, FINCHLEY, HAMPSTEAD, EDGWARE, HENDON,
GOLDERS GREEN receive this Colour Magazine FREE
through their door!

Fantastic Isn't it?

This space could be yours for just £25 per week!

FIND OUT MORE AND CALL
SUE OR LESLEY ON
01-361 4223 NOW!

CENTRAL MOBILE CAR STEREO SPECIALIST

**Door to Door
Service**

Alarms
Electric Windows
Central Locking
Car Phones — fitted.

Call 01-961 5941

Time available
7am-9am 9pm-10.30pm

BILLBOARD

Most of our customers come highly recommended



Satisfied Customers have been telling their (friends about our superb kitchens — available in over 100 different finishes Solid Oak, Pine or Mahogany.

Take a look at our huge selection on display, designed and fitted to your own specifications.

★ **FREE worktops on all kitchens**

Let us fit the bedroom of your dreams — choose from our many designs + finishes all with a 5 year guarantee. Free planning and design service with no obligation.



Our vast showroom holds scores of quality Solid Oak, Yew + Mahogany Reproduction Furniture bargains at direct from factory prices.

7ft Mahogany Dining Table, 6 chairs from £325 PLUS OTHER OFFERS

TEL 01-440 4833



**FLAIRLINE
FURNITURE**

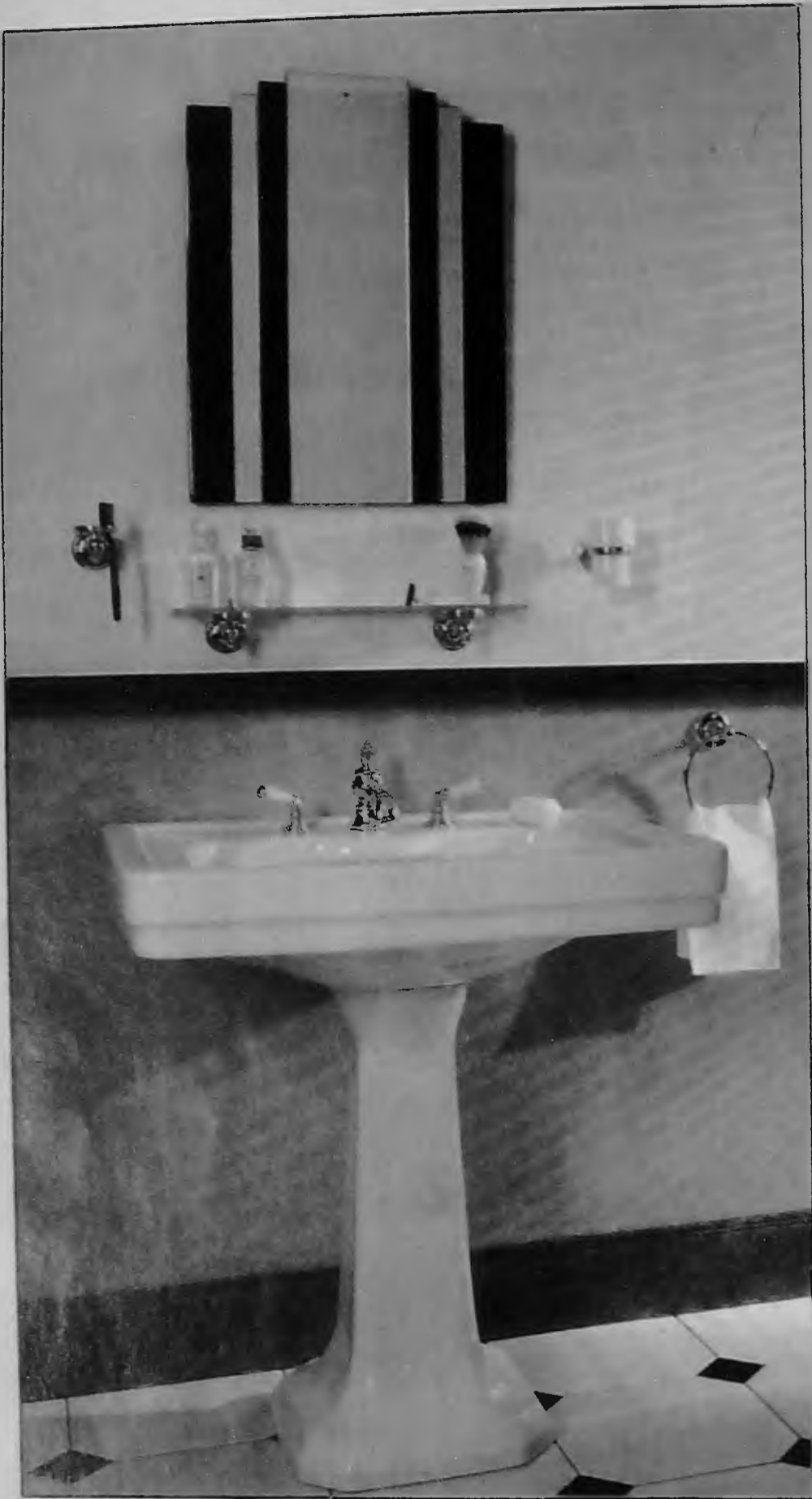
Also at
103, Station Road
Chingford
E4

Tel: 01 524 3297

Factory Showroom, (Rear of Boots Chemist), High Street, Barnet.
AMPLE CAR PARKING

★ We are here
Boots Chemist
High St Barnet
Molano Bar*

GODWINS



THE BERKELEY SUITE

The Berkeley Suite comprises a vitreous china basin and pedestal, close-coupled toilet and bidet, together with a GRP bath. Authentic down to the last detail, the look is completed by Art Deco level taps, ceramic floor tiles and chrome accessories — all available from the extensive BC Sanitan range, at Godwins Plumbing Supplies — NOW!



BERKELEY RANGE

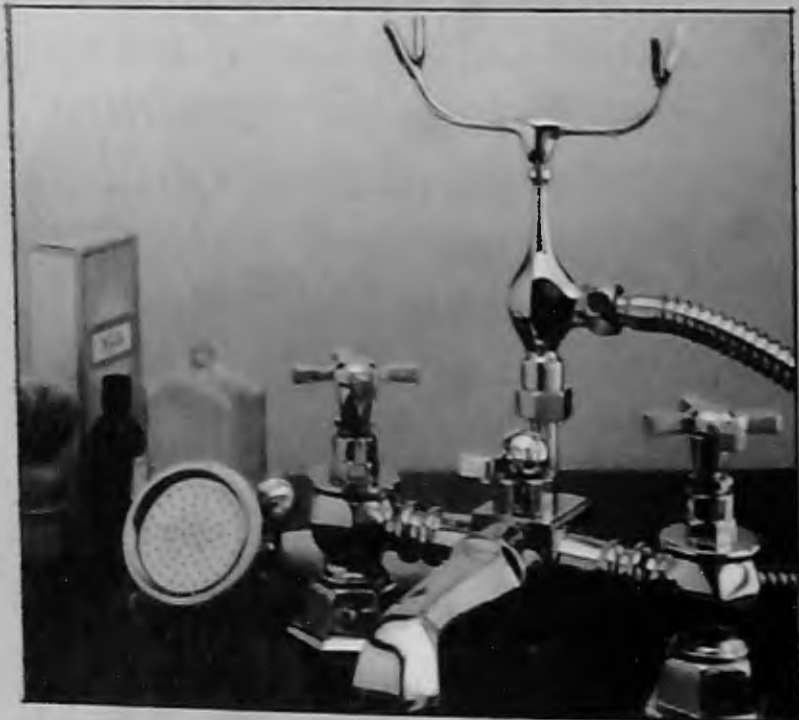
	WHITE
Basin and Pedestal	224.00
Close & Cistern inc. syphon & fittings	224.00
WC Seat	78.00
Bidet	138.00
	+VAT

BERKELEY FITTINGS

	CHROME
Basin 3 Hole Set & Pop Up Waste	132.00
3 Hole Bidet Rim Set & Pop Up Waste	185.00
Bath Pillar Taps	108.00
Bath Shower Mixer	297.00
Bath Mixer	156.00
Extended Pop Up Bath Waste	51.00
Bath Waste Plug & Chain	17.00
	+VAT



New Range Pilla Taps
Now Available at Godwins
in Traditional Chrome or Antique



HEXAGONAL TAPE — ALL THE RAGE — PRICE GUIDE

1/2" Basin Pillar Taps (per pair)	89.00
1/2" Basin Mixer 3H with plug and chain	99.00
1/2" Monobloc Basin Mixer with plug and chain	109.00
1/2" Monobloc Bidet Mixer with plug and chain	109.00
3/4" Pillar Bath/Shower Mixer Deck Mounted with hose and handset	250.00

WHOLESALE BATHROOM
WAREHOUSE
28 RUSHGROVE AVENUE
COLINDALE NW9
Tel 01 200 0508

TRADE CENTRE
4/5 APEX PARADE, SELVAGE LANE
MILL HILL NW7
Tel 01 959 3344

SHOWROOM & DESIGN CENTRE
49 CHURCH ROAD, HENDON NW4
Tel 01 203 1095

SHOWROOM & TRADE CENTRE
176 HIGH ROAD
EAST FINCHLEY N2
Tel 01 444 2311