

Barnet CIVIC NEWS

REFERENCE

BE TAKEN



Nº 7: July 1980



WE ARE THE CHAMPIONS

Barnet's young athletes swept the board to take the Boys' and Girls' Aggregate Trophies and the overall Gurr Shield in the Middlesex Schools Athletic Association Championships which brought 1,279 overall pupils from schools in the nine boroughs of Middlesex to Barnet Copthall Stadium to compete at the Barnet Sports Gala. In our picture, left to right: Melinda Cave (Moat Mount School), Mark Roberts (Queen Elizabeth's Boys), Dawn Wilson (Moat Mount) and Eric Kimani (Christ's College) celebrate the winning of the trophies. More pictures of the Sports Gala on pages 26 and 27.

SMALL IS BEAUTIFUL

Although Marconi is a big company, we're looking for people to work in a small, friendly unit. If you've got the kind of aptitude that makes it easy and enjoyable for you to do small fine work of any kind, Marconi have just the job for you - highly specialised, highly important, and very easy to learn. And just look at these benefits!

- * Friendly all-girls unit in really pleasant surroundings.
- * Choose full-time or part-time employment.
- * Earn at least £2.10 an hour.
- * Work 'on your own doorstep' without complex travel problems.
- * You could be early 20s to mid 40s.
- * Subsidised canteen with other 'big company' benefits.

For more details, men or women should contact Jill Aplin on 01-954 2311 or write to **Marconi Space and Defence Systems Limited**, The Grove, Warren Lane, Stanmore, Middlesex HA7 4LY.

**Marconi
Space & Defence
Systems (Stanmore)**
A GEC Marconi Electronics Company

BLUE ARROW EXECUTIVE SELECTION

**ACCOUNTANT
(Newly
Qualified)
To £8,000**

For Chartered Accountants' Practice who require at least five years' experience dealing with sole traders' accounts up to medium-sized family companies.
Ref: 28123/030

**SENIOR
PRODUCTION
ENGINEER
To £7,500**

HNC plus Industrial Engineering experience. To prepare for the smooth introduction of new products into manufacture. Liaison with designers. Major company producing electronic equipment.
Ref: 28119/210

**SENIOR TEST
PLANNING
ENGINEER
To £7,000**

HNC Electronics plus experience designing or developing test equipment using computer programming techniques. To set up techniques and methods and prepare ATE programmes for new products.
Ref: 28113/180

**WORK STUDY
ENGINEER
To £7,500**

ONC and knowledge of MTM, plus experience in light electronic equipment manufacture. Time Studies, layouts, cost reductions, and some supervision.
Ref: 28118/220

**QUALITY
ENGINEER
To £6,000**

Experience in a high volume technology industry. To plan and implement procedures and standards to ensure cost effective control of quality. Investigate manufacturing problems.
Ref: 28109/260

For details of these and similar situations please contact:
A. C. RICHARDSON
Mon-Fri 9-5.15 Sat 10-12

17 Church Street, Enfield
Middx.
01-366-7779

01-341 1347

DELIVERY FREE

40% OFF
BARLO RADIATORS
LANDIS
& GYR PROG
£18.75

**FANTASTIC OFFER
ON ALL CENTRAL
HEATING EQUIPMENT**

30% OFF
BOILERS

SPECIAL OFFER ON BATHROOM SUITES

£6.50
THERMOSTATIC
RAD VALVES

COMPLETE FROM £115 DELIVERY FREE

ALSO SINK UNITS

42in x 21in Sink Base Unit, Stainless Steel Top, taps and waste, only **£59.50**
We Stock Copper-Tube Fittings, — Soil Pipe, Cisterns, Pans, Basins, Bidets, Showers

MARSHALL

**PLUMBERS
MERCHANTS**

**Fantastic
4x46"
Corner Baths
ANY COLOUR
ONLY £158**

41 Topsfield Parade, Crouch End, London N8.

Phone 01-341 1347 again 01-341 1347

FREE DELIVERY FREE DELIVERY FREE DELIVERY FREE DELIVERY FREE

J & H FURNITURE LTD

SALE NOW ON

Furniture Wholesalers Established Over 20 Years Selling Direct to the Public

SAVE UP TO 40% ON RETAIL PRICES

Reproduction Wall Units from Brenner, Beautilux, Hubbinett, Heritage from £209.



7ft Dining Table, 6 Solid Mahogany Chairs, including 2 carvers £329 complete. 7ft and 8ft 8in Regency Tables with range of 12 types of Mahogany chairs.

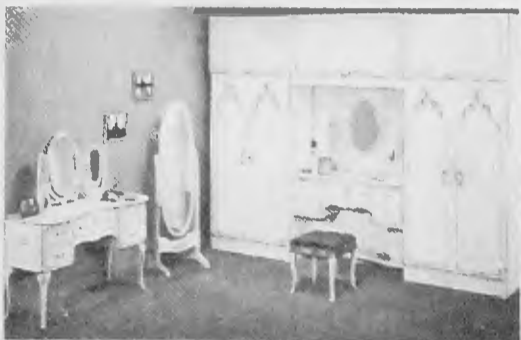
Regency Book-Cases, 2 door, 3 door, 4 door, from £99.

Solid Mahogany Dining Chairs from £32. Hi Fi Cabinets from £89. Regency Hall Tables from £29.



NO GENUINE FIRM CAN COMPETE WITH OUR VAST RANGE, QUALITY AND SERVICE, BEFORE & AFTER SALES ALL THIS AND ROCK BOTTOM PRICES TOO!

French style and melamine bedroom units from 6ft to 9ft 6in width. Kidney dressing tables from £49. Extensive range of chests, wardrobes and top boxes in various styles. Available in teak, white or magnolia.



SHOWROOMS: 72 CHASE SIDE, ENFIELD, MIDDLESEX.

(Close to Parsonage Lane)

TEL: 01-366 2437

INSTANT CREDIT NOW AVAILABLE

Open 10am to 5:30pm Tuesday, Thursday, Friday, Saturday.

Free delivery. Barclaycard, Access Welcome.

fitted bedroom furniture



Beautiful FITTED bedroom furniture with backs (no extra) sold directly to you from our factory and showroom. This beautiful fitted bedroom setting illustrated, in attractive Georgian panelled style, floor to ceiling complete with backs.

Comprising of three large double wardrobes only £408 inclusive of measuring, planning, fixing and V.A.T. Matching headboard with side tables £59 extra, or with hessian inlays £484 (headboard £77).

STATON

Staton Fitted Furniture Ltd

Factory & Showroom at

719 North Circular Rd. (Nth Side) London NW2

1/2 mile West of Brent Cross Shopping Centre. (Nr Flyover)

Customer parking Also open Saturday

Phone 01-450 6581

Let us quote you before you decide to buy!

DIAMOND

CREDIT TERMS? NO PROBLEM!



FREE MEASURING AND ESTIMATING

CARPETS

JULY SPECIAL OFFERS!

1/2 PRICE UNDERLAY WITH ALL CARPETS

1/2 PRICE FITTING WITH ALL CARPETS

These special offers available on production of this voucher

HUNDREDS OF ROOM SIZED ROLL ENDS & REMNANTS AT MASSIVE DISCOUNTS

a few examples		
9' x 12'	FOAM BACKED	£25
19'3" x 12'	50% WOOL AXMINSTER	£102
29' x 12'	GOLD FOAM BACKED	£106
24' x 12'	FLORAL PINK	£95
14'9 x 13'	DARK BROWN CORD	£50
15' x 12'	PLAYBOY SHAGGY BLUE	£59

48 HOUR FITTING SERVICE

WE WANT TO GET UNDER YOUR FEET.



DIAMOND CARPETS

25 Oakleigh Road North, Whetstone N20

Telephone: 01 446 2105 6

other branches at Hayes Harrow and Guildford

THE GALLERIES

FOR CHINA BY AYNLEY,
ROYAL DOULTON,
WEDGWOOD and
WORCESTER

LEAD CRYSTAL BY DARTINGTON,
EDINBURGH, TUDOR, THOS. WEBB
and WEBB CORBETT

1 HEDDON COURT PARADE
COCKFOSTERS ROAD
BARNET, EN4 0DB

01-449 2690

THE 80s WAY TO BUY OR SELL A HOUSE TELE-HOMES

SELLING?

For only £10 per week up to four weeks (it's free thereafter) we can help you to sell your home.

BUYING?

Free service to buyers.

**SAVE POUNDS WITH US
NO COMMISSION
NO HIDDEN EXTRAS**

PHONE TODAY - DON'T DELAY!

285 Fore Street, N9. Mon—Sat 9 am—5 pm
TEL: 803 8056/8057

SUNBED SOLARIUM SAUNA BEAUTY TREATMENT MASSAGE

**WE ARE A UNISEX SALON
OPEN 7 DAYS A WEEK**

Ladies only sessions Tuesday and
Thursday
Mornings 10 am—1 pm and
Sunday Afternoons 2 pm—7 pm

Ladies, where can you have
Sunbed, Sauna and Massage plus a
Facial for only £9.00!!!!?
At

EDGWARE SAUNA & BEAUTY SALON

Licensee by the London Borough of Barnet
96 HIGH STREET EDGWARE
PHONE 952 5952

We will allow up to 33 1/3% reduction
for a course of treatment according
to number of sessions

STRETCH FURNITURE COVERS

The genuinely
Made-to-Measure
personal service
FROM £15 FOR
3-PIECE SUITES
including
materials and fittings



Home measure service. Free
fitting on delivery. All sizes and
styles of furniture. Choose from
a very wide range of fabrics
including: Dralon, Tweeds,
Linen Look, etc.
Also

SANDERSON Tailored Covers

Also Stretch Caravan Covers

Tel. V. Fisher
01-769 4530/3847

SPECIAL SALES DISCOUNT

Delivery approx. 21 days
or sooner.

London Equestrian Centre



THE COMPLETE CENTRE FOR
EQUESTRIAN TRAINING

Riding lessons for absolute beginners,
novice, intermediate and advanced riders,
**RIDE OUTS : INSTRUCTIONAL RIDES ROUND
40 ACRES : HACKS : INSTRUCTION FOR
JUMPING, GYMKHANA AND DRESSAGE**

All instruction given by the Gill Family
and qualified staff.

LULLINGTON GARTH, FINCHLEY, N12
(close to Finchley Golf Club)

01-349 1345

"ASHLEY'S"

**NORTH LONDON'S LARGEST SUPPLIERS
OF AIDS FOR THE DISABLED**

Wheelchairs, Commode Chairs,
Crutches, Walking Aids, Bed Boards,
Bed Bottles, Bed Pans, Air Rings.

Spinal Belts, Orthopaedic Insoles &
Footwear, Infra-Red & Ultra Violet
Health Lamps, Massagers.

Elastic Hosiery, Trusses, Ileostomy &
Colostomy Appliances, N.H.S.
Prescriptions Dispensed.

Male & Female Staff, Fitting
Rooms

ASHLEY & NEPHEWS LTD
276 STAMFORD HILL
LONDON, N.16

01-800 2803



BURGLARIES !!!

Statistics show that burglaries
are increasing in Hampstead,
Golders Green and Finchley area.

ARE YOU PROTECTED?

For comprehensive
Home Contents Insurance
TELEPHONE

ARTHUR HETTIGODA
Insurance Consultant

01-455 9924
(24 hour answering service)

MANOR FARM MEAT DEPOT CRANBORNE PARADE, POTTERS BAR

OFFER YOU FAIR PRICES
FOR GOOD QUALITY

FREEZER ORDERS A SPECIALITY AND CUT TO
CUSTOMERS REQUIREMENTS

LOCAL FREE DELIVERY

POTTERS BAR 53017



LEISURETIME

— the leading solarium in North London!

A golden suntan in just 10 visits —
no goggles, no burning!

Private Cubicles

(Showers Available)

FULL COURSE — £25.50 ONLY

Introduce a friend and get your session FREE

**We use the latest German equipment as approved
by the Royal College of Surgeons**

Telephone 888 4321 for appointment
158 Bowes Road, N.11
(underneath the Carlton Club)
Open 7 Days per Week 9 — 9

WROUGHT IRON

Gates from stock. Railings. Wall panels, stairways, fire escapes, spiral staircases, flowerpot stands, radiator shelves, chimney breast gallows and general iron work.

MIKLEN LIMITED

166 Lincoln Road, Enfield, Middx.
366-5861 or 5393

GAS LOG AND COAL FIRES

A clean living fire
Dog grates supplied for all types of fireplaces

R. P. SHEET METAL (78) LIMITED

166 Lincoln Road, Enfield, Middx.
366-5861 or 5393

CARPETS AND UPHOLSTERY STEAM CLEANED IN YOUR HOME

FOR FREE ESTIMATE

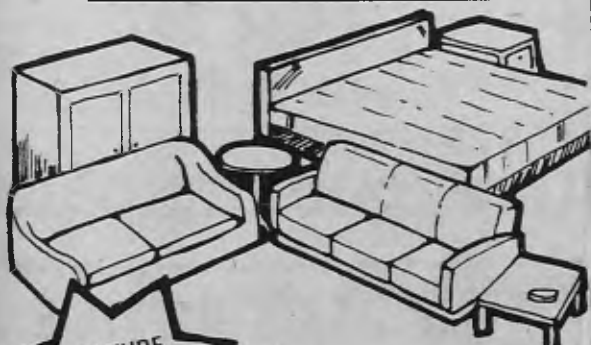
Contact

COLINDALE CLEANING SERVICE

Tel: 427 1226

Member of the Federation of Master Carpet Cleaners

BARGAINS!



FURNITURE
& BEDDING
AT AMAZING
PRICES!

Most Manufacturers'
Furniture and Bedding
Supplied

GREATLY
REDUCED
PRICES

If not in stock in our showrooms
it can be obtained at . . .

Come and visit our showrooms and take advantage of our
SPECIAL OFFERS

JOYSLEEP LTD

220/222 The Broadway, West Hendon NW9. Tel: 202 2747

CLEANER CURTAINS BY

FAST COLLECTION
& DELIVERY
HOMES, HOTELS, SCHOOLS,
OFFICES ETC.
MAKE YOUR DAY WITH
CLEANER CURTAINS BY

Tel: 959 6996



or 205 2000

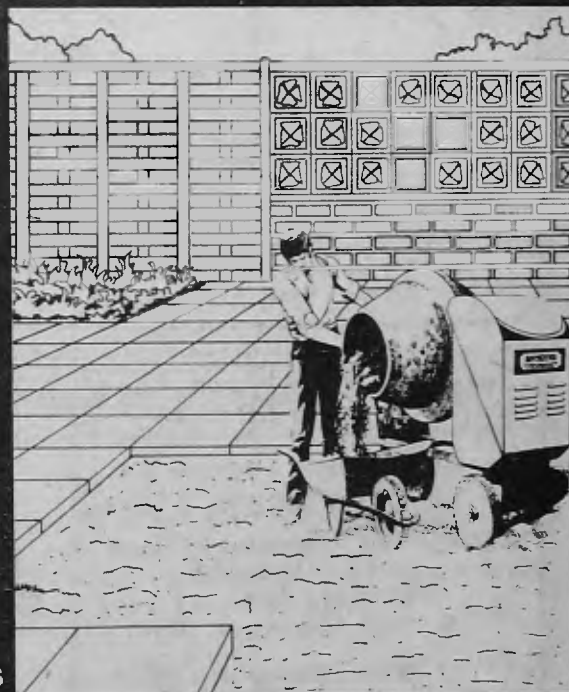
THE BUILDING CENTRE

*Suppliers
of building
materials
for the trade
and D.I.Y.*

BRICKS, BLOCKS & CEMENT
PLASTERBOARD & PLASTER
SAND & BALLAST - LOOSE
OR PRE-PACKED
WATERPROOFERS &
ADHESIVES
ROOFING TILES - ROOFING
FELTS
COLOURED PAVING SLABS
WALLING BLOCKS
LARCH-LAP FENCING
CONCRETE & TIMBER
POSTS-CONCRETE SPURS
WOOD PRESERVERS
SHOVELS
HEAVY WHEELBARROWS

PLUS MANY OTHER ITEMS

SPECIAL OFFERS EACH
MONTH

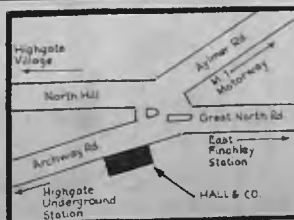


Open Daily Mon.-Fri: 8:00am-12:45pm
2:00pm- 4:45pm
Saturday morning: 8:30am- 2:00pm
AMPLE CAR PARKING FACILITIES



HALL & CO. (EASTERN COUNTIES) LTD.

WELLINGTON SIDINGS,
ARCHWAY ROAD, HIGHGATE, N.6.
01-348 2251/7



CONTENTS

July 1980

	Page
Northern Line visit	4
Bubble Theatre returns	4
Conservation areas	6 & 7
Chipping Barnet Town Centre	10
What's On	12, 13, 14 & 17
Letters	21 & 41
Summer Entertainments	22 & 23
Barnet Sports Gala	26 & 27
Help in Times of Stress	28
Skating to a success	29
Friern Barnet Summer Show	30
Your Councillors	33
Chemists' Rota	36
Our friendly homes	38 & 39
Views of the Past	40
Aids Amnesty	42

EDITORIAL ADDRESS

Civic News,
London Borough of Barnet,
The Town Hall,
The Burroughs
Hendon NW4 4BG
Tel. 202 8282, Exts. 71 & 479

ADVERTISING ADDRESS

Laurence Marshall
(Advertisers) Ltd,
Publicity House,
12 Genotin Terrace,
Enfield EN1 2AF
Tel. 01-366 4626/7, 01-367 0246/2

Barnet Civic News is a monthly magazine carrying news of Council activities and local voluntary organisations. The What's On in Barnet diary is open to all local community organisations and carries a comprehensive list of events and meetings taking place within the borough.

Civic News is distributed door-to-door throughout the borough, reaching more than 109,000 homes and businesses and further copies are sent to libraries and council offices. It is produced at no additional cost to the ratepayer, all management, printing and distribution costs being covered by advertising.

□ □ □

Barnet Civic News is edited jointly by Bill White, the Council's Press and Information Officer, and Rosemary Jude, Press Officer. It is produced and published on behalf of the London Borough of Barnet by Laurence Marshall (Advertisers) Ltd. Editorial features are the copyright of Barnet Council.

□ □ □

Copies of most photographs may be obtained by contacting the editor, Barnet Civic News, The Town Hall, The Burroughs, Hendon NW4.

Councillors visit control centre of . . . THAT NORTHERN LINE

SIX COUNCILLORS from Barnet Council's Public Works Committee spent the evening of Monday, June 2, seeing for themselves the problems faced by the controllers of London Transport's Northern Line to provide an efficient underground service.

The group was led by Councillor Bill Hart, Chairman of the Committee, and accompanied by Alan Stringer, Borough Engineer and Surveyor. They spent an hour in conference with Mr. Walter Matthews, Divisional Manager, responsible for the Northern and Victoria Lines, at London Transport's Control Centre at Euston, and then visited the control room itself.

The visit was arranged in response to a request by members who had been dealing over many years with complaints from Barnet and Edgware residents that trains were being stopped short of their final destination, resulting often in long waiting periods between trains going to the outer stations of the line.

Mr. Matthews explained that the Northern Line with its twin routes through to Barnet and Edgware, its spur line to Mill Hill East, and its alternative routes through the City and West End of London, was the most complex underground transport system in the world.

The timetable for the line required 95 trains making 1,100 journeys a day but because of various factors the highest number achieved recently has been 93. On the evening of the visit there were 12 trains short, eight of these due to staffing problems.

A few of the facts and figures given were surprising: 40,000 more people used the Edgware Line than the Barnet Line: only 2,000 people a day used the Mill Hill East spur.

Some news was encouraging. Closed circuit television linked back to the control room had already been installed

at four major central stations, helping to improve service. This development would be extended as soon as capital became available. It is also planned to bring in direct communication between drivers and the control room.

Asked why it was not possible to interchange services so that there would not be occasions when three Edgware trains ran one after the other with no Barnet trains in between, Mr. Matthews explained that if they switched a train and its crew from one route to the other it could not only result in staff being in the wrong position for the rest breaks and return trains, it could also result in a build-up of a timetable problems which could affect the service for several hours. But, if it was practicable to divert a train this was done. Use of a computer to aid this process was now being developed.

Councillor Stan Sorrell, who uses Mill Hill East station, said there seemed to be a problem of trains stopping at Finchley Central and taken into the sidings. Mr. Matthews promised to look into the matter.

Then, by chance, when the party entered the control centre there was a hold up at Mill Hill East due to signal failure.

The difference between the simplicity of the Victoria Line and the complex Northern Line was illustrated in the control room. The Victoria Line needed only one regulator, the Northern Line needed five. The running of the trains is shown visually by a plan of the line running along one full wall of the room, the movements of trains and pattern of signals being represented by coloured lights.

As the Councillors watched problems were being sorted out at six different points on the line, including Finchley Central: just as they left the Mill Hill East train got through.

Bubble Theatre is coming back

THE BUBBLE THEATRE, so popular with audiences of all ages, is returning to Hendon Park again this year for two weeks instead of a week, from August 26 to 30 and September 2 to 6.

There are two shows each day — for children in the afternoons and adults in the evenings.

Included in the Bubble's repertoire this year is 'A Knight at The Bubble', an uproarious new show based on the comedy 'The Knight of the Burning Pestle'. It is full of laughs with a specific London flavour.

For the younger children there is 'Mario's Magnificent Marvels'. Mario, the conjurer is robbed of his two

priceless jewels and needs the help of the audience to find the culprit.

Hendon Park, off Queens Road, Hendon, is situated between Hendon Central Station and the Brent Cross Shopping Centre.

Tickets are available at the door during the two weeks or in advance from Holiday Finders' Travel Agency, 20 Bell Lane, Hendon. Tel. 202 4131 and 202 4477 after July 28.

The Bubble Theatre is assisted by the Greater London Arts Association and in Barnet by Barnet Council.

More details will appear in the August issue.

Display problem?

01-449 9611

could be the answer

Ask for our catalogues on

**DISPLAY KITS
WINDOW DISPLAYS
SHOWROOM DISPLAY
COUNTER UNITS
& LIGHTING**

or visit our Showrooms at




MarlerHaley

Marler Haley ExpoSystems Limited DEPT BCN 60
ExpoSystems House 7 High Street Barnet Herts EN5 5UF
Telephone 01-449 9611

TREMENDOUS SAVINGS

on all

PARKER KNOLL

suites
chairs
rockers
recliners

Tel: 01-986 7256

Ashmore & Co.

DO YOU HAVE A FURNISHED PROPERTY
TO LET?
THEN CONTACT
ASHMORE & CO

We urgently require good quality furnished houses and flats for company executives from abroad with impeccable references and able to pay good rentals for suitable properties.

CALL OR TELEPHONE OUR OFFICES AT
5 FINCHLEY LANE
HENDON NW4

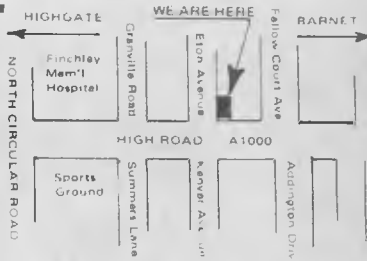
Telephone 01-203 1177/9

London Plant Hire

HIRE CENTRE, 585 HIGH ROAD, FINCHLEY,
LONDON, N12 0DY. Phone: 01-446 4231/2

YOUR OWN POWER TOOL REPAIRED

D.I.Y. DECORATING CAR MAINTENANCE GARDENING
HUNDREDS OF DIFFERENT ITEMS
EXPRESS DELIVERY SERVICE
OPEN MONDAY TO FRIDAY 8.30 till 5.30
SATURDAY 8.30 till 1.00



For the eradication of Woodworm, Rising Damp and Dry Rot

20 YEAR GUARANTEE

ASTON TIMBER PRESERVATION & Dampcoursing Ltd.

For Free Estimate Phone: 01-346 6300
10 STATION ROAD, FINCHLEY N.3

PLANT AND TOOLS FOR HIRE AND SALE

AGROW PROPS
ANGLE GRINDERS
ARC WELDERS
AXLE STANDS
BELT SANDERS
BOLT CROPPERS
BURN-OFF GUN
BRICK CUTTERS
CAR ROOF RACKS
CARPET SHAMPOOER
CEMENT MIXERS
CHAIN SAWS
CIRCULAR SAWS
CHAIN HOIST
CONCRETE GRINDER
CONCRETE BREAKERS
CULTIVATORS
DEHUMIDIFIERS
DRAIN RODS

DRAIN STOPPERS
DRAIN TESTING
EQUIPMENT
DUST SHEETS
ENGINE HOISTS
EXTENSION LEADS
FAN HEATERS
FLOODLIGHTS
FLOOR SANDERS
FLAME GUNS
FLOOR SCRUBBERS
FLOOR POLISHERS
GAS
GARDEN ROLLERS
GAS FIRES
GENERATORS
GINN WHEELS

HAMMER DRILLS
HYDRAULIC JACKS
JIG SAWS
KANGOS
LADDERS
LADDER CRIPPLES
LADDER STAYS
LAMINATE TRIMMER
LIGHTWEIGHT
STAGING
MASTIC GUNS
PAINT SPRAYERS
PASTE TABLE
PARAFFIN HEATERS
PSIMAT
PICK AXE
PIPE CUTTERS

PIPE/TUBE BENDERS
POST HOLE BORERS
PLANERS
POWER TOOLS
POP RIVETER
PUMPS
ROOF LADDERS
RAMMERS
ROAD LAMPS
SAW BENCH
SASH CRAMPS
SCAFFOLD BOARD
SPLITHEADS
SANI SNAKE
SLAB RIP
SLAB CUTTER
STAPLERS

(ELECTRIC)
STAIRCASE UNITS
STEPS
TARPAULINS
TORQUE WRENCH
TOWERS
TRANSFORMERS
TRESTLES
TYROLEAN GUNS
THREADERS (RIGID)
VACUUM CLEANERS
VIBRATING POKERS
VIBRATING PLATE
WALLPAPER
STRIPPERS
WATER BUTTS
WHEELBARROWS
WALL CHASERS
ZIP-UPS

HARRIS GARDEN CENTRE

28-30 Totteridge Lane
Whetstone, N20
Telephone: 01-445 9494

WHATEVER YOUR
GARDENING REQUIREMENTS,
IN OR OUT OF DOORS,
EXPERT OR AMATEUR,
YOU WILL NOT FIND A MORE
COMPREHENSIVE RANGE
OR A MORE ATTRACTIVE
DISPLAY ANYWHERE

HARRIS GROUP

Harris Fine Art

Picture Frame Makers — Fine Art
Suppliers

*The largest stock in
North London of ready-made
and easy-assemble frames*

*Always a good stock of
Original Oil Paintings,
Fine Art Prints, Etchings
and*

Engravings, Limited editions, etc

*All artists' paints,
materials and accessories*

712 HIGH ROAD,
TALLY HO,
FINCHLEY, N12
01-445 2804



HARRIS GROUP



Drawing of the Rising Sun, Mill Hill, by Marion Rhodes, loaned to Civic News by courtesy of John Maxfield, 93 Broadway, Mill Hill, from whom mounted prints can be obtained.

Guarding our heritage

OVER THE PAST 13 years Barnet has created nine conservation areas ranging from the stately homes and rural villages in the north of the Borough to the 20th-century architecture of Hampstead Garden Suburb in the south. Each has a special character which it is important to protect in these fast-changing times.

A Conservation Area is selected as a place of historical importance or architectural and environmental merit. It allows the Council to make sure that all that is best in the area is preserved — buildings, trees and landscaping. But it does not mean the area is petrified. Indeed, it often paves the way for environmental improvements such as tree planting and traffic controls. It also allows new development to take place as long as they are designed in a style sympathetic to the area and fit in with the existing buildings.

The idea of conservation areas began in 1967 with the Civic Amenities Act which gave local councils the right to prevent the piecemeal erosion of the special character of local areas. The movement was given a boost by European Architectural Heritage Year in 1975 which awoke people's interest in the environment.

Barnet, one of the most attractive of the London Boroughs with its extensive

parks and open spaces, treelined roads and attractive architecture, owes much to the work of councillors, planners and local amenity groups who work together to make sure that the best shall not be submerged in big new developments and so lost to future generations.

It should be understood that a conservation area is about the whole area, not just the buildings or the settings. It is important not just to be able to appreciate the skills of past craftsmen but also to sense the life-style which grew up around the buildings and to see the way the past has adapted to the present.

It is pleasing, if only for sentimental reasons, to preserve things that were made in ways which are no longer possible, practical or fashionable. Old buildings are, to many people, familiar and reassuring. They express a sense of continuity through time and history. They serve as examples of traditional building methods and crafts as well as styles of architecture. They express the ever-changing continuity of human society and the spirit of past ages.

The care of our environment is very much a community-based activity and there are Conservation Advisory Committees for the major conservation areas. In Barnet schools, children take part in live projects studying and appreciating their local environment.

BARNET'S CONSERVATION AREAS

The nine conservation areas and their basic characteristics are:

Hampstead Garden Suburb: One of the finest examples in this country of early 20th-century domestic architecture. Its layout and design are based on principles originated by Dame Henrietta Barnett, and include acceptable criteria for housing density, road widths and distribution of trees, hedges and open spaces.

□ □ □

Wood Street, Chipping Barnet: Its historical associations extend as far back as the 15th century. The existing development represents an example of the style and character of small market towns of the 18th and early 19th centuries. Most of the buildings are of historical and architectural interest.

□ □ □

Mill Hill: The village is an attractive survival of rural Middlesex. The settlement retains much of its village character. The buildings — often belonging to religious and educational establishments — are sited on a ridge amid agricultural land and extensive open spaces which afford excellent views over London.

□ □ □

Totteridge: Fine country residences set within spacious grounds as well as the wide, tree-lined verges of Totteridge

CONSERVATION AREAS

Lane are the distinguishing features of the area. In contrast, near the junction with Barnet Lane, the scale changes to that of a village with closely-spaced cottages, remnants of an earlier agricultural community.

□ □ □

Monken Hadley: On the northern borders of the borough, Monken Hadley is a settlement of considerable charm. It has examples of the finest Georgian architecture with large mansions and attractive groupings of small cottages and almshouses near the church. The surviving parts of Hadley Green and Common provide a pleasant landscape setting.

□ □ □

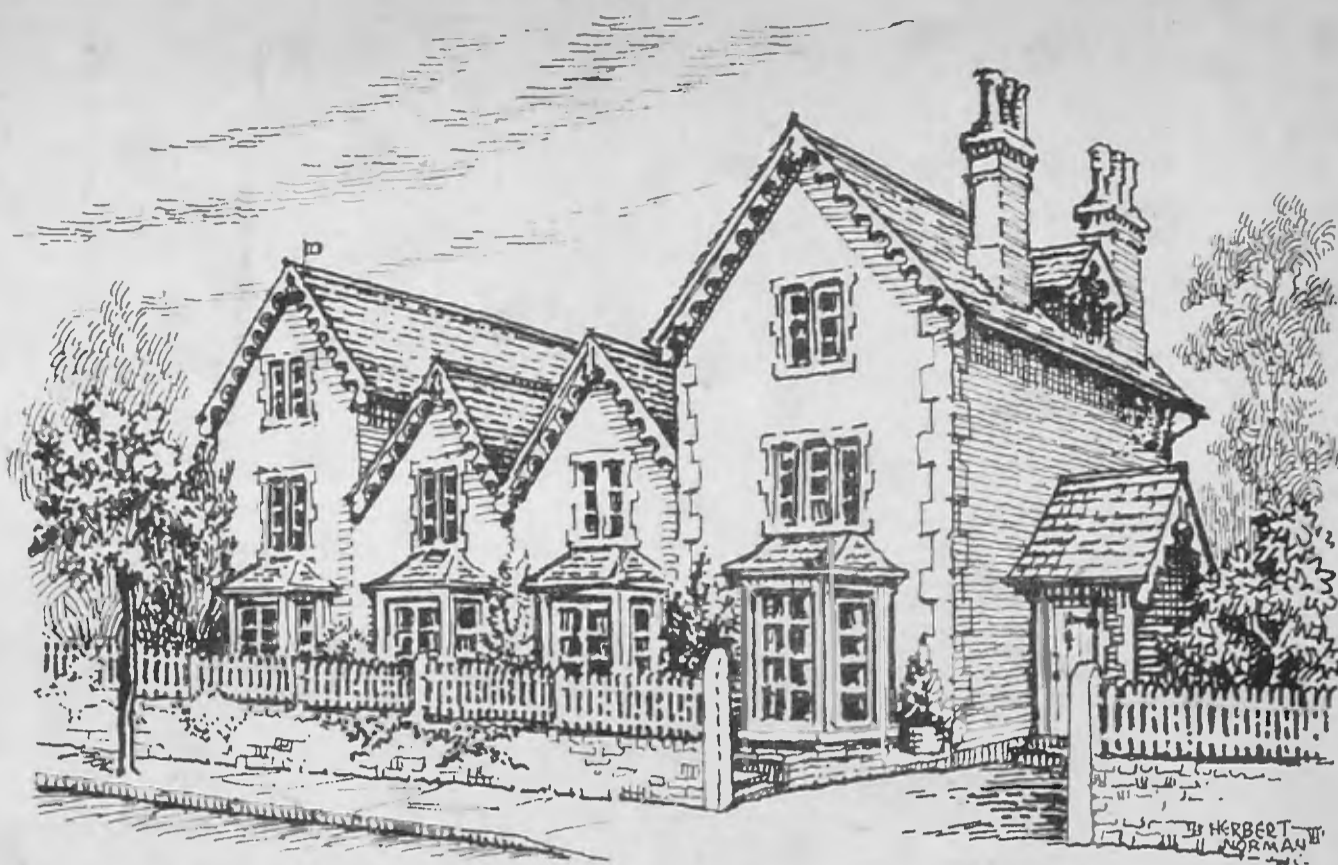
Elstree Village: Another pleasant settlement of largely rural origin and character situated along the line of an original Roman road.

□ □ □

Moss Hall Crescent, North Finchley: A pleasing example of carefully-laid-out, well-designed Victorian villas, currently undergoing restoration.

□ □ □

Church End, Finchley: The conservation area corresponds roughly to one of the three original settlements in the parish



Gothic Cottage, Gravel Hill, Church End, Finchley, drawn by Herbert Norman and loaned to Civic News by courtesy of The Finchley Society.

of Finchley, centred on the Church of St. Mary. Some attractive examples of Georgian, Victorian and Edwardian architecture exist.

□ □ □

Finchley Garden Village: This consists of a group of residential properties straddling a 'village green'. The design and layout were based on garden movement principles predominant in the early 20th century.

Brochures listing the special features of the Conservation Areas are available from the Planning Department, Gateway House, 322 Regents Park Road, Finchley, N3 and Town Trails, designed for people who like to explore the areas of interest in their borough, may be obtained from local libraries or local amenity societies.

PORCHWAYS-WHERE PRICE REALLY MATTERS

The local home improvement company with the big reputation

WE BUILD

- ★ LOFT CONVERSIONS
single or double dormers and
- ★ BRICK BUILT EXTENSIONS
single or double storey
We design, draw the plans and obtain all necessary permissions from the authorities
- ★ Easy personal loan facilities through Lloyds & Scottish

OVER
2500 LOCAL
INSTALLATIONS
OVER 70% OF OUR WORK
IS RECOMMENDATION
ASK YOURSELF WHY?
AND PHONE US FOR
A FREE ESTIMATE
WITHOUT OBLIGATION

WE INSTALL

- ★ ALUMINIUM WINDOWS
 - ★ PATIO and RESIDENTIAL DOORS
British Aluminium to AA25
 - ★ AT LOWER PRICES THAN ANY OTHER
REPUTABLE COMPANY
- WE MANUFACTURE**
- ★ STORM PORCHES AND TIMBER
WINDOWS

55 CHURCH HILL ROAD
EAST BARNET, HERTS

PORCHWAYS Aluminium Ltd 440 5432

FREEZER ORDERS DELIVERED DAILY
TO ALL AREAS WITHIN THE BARNET BOROUGH



LICENSED BY THE
LONDON BOARD OF SHECHITA

20 ASHFIELD PARADE
SOUTHGATE, LONDON N14
Tel.: 01-886 9810/882 5775



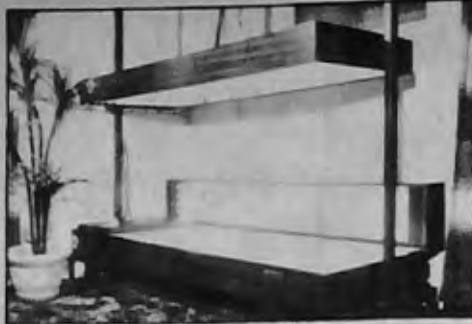
THE FRIENDLIEST SUN-PARLOUR IN TOWN

- The very best UVA Combination Sun System
- Gives overall tan without turning over. No goggles needed.
- Relaxes tired muscles and makes you feel great
- Improves the appearance, leaves you glowing
- Top skin specialists say no harm can result
- Absolute privacy assured

(Evening appointments for men)

The demand for our Sun-System has been so great, we have now installed another system as well as luxurious lounge and shower facilities

OPEN SUNDAYS 10 am — 1 pm
Tuesdays, Wednesdays, Thursdays
and Fridays 10 am — 5 pm



Irene Joss at Thirty=One

Thirty-One Bell Lane, Hendon, NW4 Tel: 01-203 2909. Parking no problem

**DISCO LATIN BALLROOM
KEEP FIT**



CLASSES AND PERSONAL
TUITION FOR ALL AGES

RING 202 9911 NOW
FOR FREE BROCHURE

LEARNING IS FUN
AT THE FRIENDLY

HENDON DANCENTRE

QUEENS PARADE, HENDON, CENTRAL
(Opposite station)

GARDEN & NURSERY SERVICES

Unipools Ltd 

MAINTENANCE, SERVICING, CHEMICALS,
POOL EQUIPMENT, COMPUTER WATER
ANALYSIS, WATER SOFTENERS

T/A POOL SUPPLIES MIDDX

87b Stanmore Hill, Stanmore, Middx.
Tel: 954 7275 (24-hour answer service)
Shop open Weekdays 9-3. Sat 10-2

Kreepy Krauly
Automatic Pool Cleaner

BARGAIN SHEDS OFFER

Example: 6' x 4' £98.50
including delivery and erection.
All other sizes and types available.
Also all fencing materials.

H. W. Robinson Enterprises Ltd.

24 Stacey Avenue,
Edmonton, N18
Tel:
807-1118/3445
Mon.—Sat.
8 am—5.30 pm



Artstone
Gardens Centre,
9 High Road,
Broxbourne
Tel: (61) 41313
7 days a week
10 am to 5 pm

**CONDITIONS OF
ACCEPTANCE**

1. Acceptability: The company reserves the right in its absolute discretion to decline or cancel any order or advertisement of series of such at any stage without notice.
2. Liability: Whilst every endeavour is made to insert advertisements as ordered, the company does not accept liability for consequences arising from error or delay in publication of advertisements, subject to the provision of the Unfair Contract Terms Act 1977.
3. Series: Advertisements booked at special discount rates are not subject to cancellation. In all series advertisements, it is the advertiser's responsibility to check that the first insertion is published correctly, and without delay to notify the publishers of any errors.
4. The Law: The advertiser warrants that the information provided by him to the publishers for purposes of preparing and publishing any advertisement relating to the advertiser's trade or business is true and accurate and such information and subsequent advertisement, does not infringe copyright and complies with the provisions of The Trade Descriptions Act 1969 or later legislation. Should any breach of copyright arise from the printing of the advertiser's advertisement, the advertiser undertakes to indemnify the publishers in full.
5. The placing of an order or contract will be deemed an acceptance of the publishers' conditions (contained in Barnet Civic News) or on the publishers' order form which cancel any conditions which may accompany any advertiser's order.
6. Revision: The publishers reserve the right to revise the conditions and rates from time to time, and to make alterations to advertisements to ensure conformity to the publishers' standards and current law.

**WATER
GARDENING**

PUMPS, POOLS & LINERS ALL AT COMPETITIVE PRICES
GOLDFISH FROM £1.25 FOR TEN KOI CARP ALL SIZES
EVERYTHING FOR THE WATER GARDEN AT:
HERTFORDSHIRE FISHERIES
145 Park Street Lane,
Park Street Village, Nr. St. Albans
Tel: Park Street (0727) 72128

Telephone: 01-346 2942

*Clements
of Finchley*

FLORISTS & NURSERYMEN

315 Regents Park Road,
London, N.3.

**EVERYTHING
FOR THE GARDEN**

ALL PLANTS, TREES
SHRUBS, DUTCH BULBS
SWIMMING POOLS AND CHEMICALS
GARDEN FURNITURE, PAVING
FENCING, SHEDS, ORNAMENTS
FLOWERING PLANTS AND
GREEN PLANTS FOR THE HOUSE

PERSONAL SERVICE, QUALITY GOODS
REASONABLE PRICES

OPEN 7 DAYS A WEEK UNTIL DUSK

**THE DUTCH NURSERY
BELL BAR, HATFIELD**

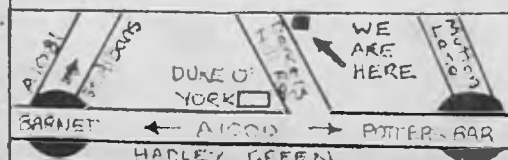
TEL: Potters Bar (77) 53372

FM FABRICATIONS & MOWERS LIMITED
THE WHITE HOUSE
DANCERS HILL ROAD
BARNET, HERTS
TEL: 01-440 6165

**SALES, SERVICE
AND SPARES
FOR
GARDEN AND
HORTICULTURAL
MACHINES**



Opening hours:
8.30 am—5.30 pm
Monday to Friday:
9 am—1 pm
Saturday



ALBANY NURSING AGENCY
 SUPPLY ALL GRADES OF
Private Nurses
 — DAY OR NIGHT —
 24-HOUR SERVICE
 S.R.N.s, S.E.N.s and
 AUXILIARY
 STAFF ON CALL
 •
 7-7a STATION ROAD
 FINCHLEY, LONDON N3
 (01)-346 3507/8274

MR SWEIRY'S
"HOME MADE" PIZZA
 DELIVERED TO YOUR HOME
 £2.00 for 6 Large Pizza in Freezer Pack
 £2.20 for 5 French Bread Pizza
 £2.00 for 8 packets Pitta Bread
 We also supply at competitive prices. Taramosalata, American Cheesecakes, Quiches, Pate, Salads, Olives, Halva, Fish Balls, Latkes, etc.
Telephone your order Now:
01-958 3018
 Agents wanted in all areas
 Trade Enquiries welcomed

LUXURY FLAT
 FOR SALE
 IN NEW BARNET.
 LARGE LOUNGE
 RECENTLY DECORATED.
 FULLY FITTED
 KITCHEN, INCLUDING
 SPLIT LEVEL COOKER
 AND HOB, WASTE
 DISPOSAL UNIT,
 PLUMBED FOR
 WASHING MACHINE.
 TWO BEDROOMS, MAIN
 BEDROOM WITH
 FITTED WARDROBES.
 FULLY TILED
 BATHROOM.
 SEPARATE W.C.
 GAS C.H., BALCONY.
 LONG LEASE.
PRICE £39,950
TELEPHONE
440 9716

BY USING
 THIS
 PUBLICATION
 YOU WILL
 REACH
 MORE PEOPLE
 AT THE
 LOWEST
 POSSIBLE COST

 PHONE
 01-346-4626/7
 01-367-0246
 FOR ALL
 ENQUIRIES

OFFER ENDS
AUGUST 2nd

GREAT STEEL DEAL!

BRITISH STEEL RADIALS

145 x 10 (Mini)	£13.41
155 x 13 (Austin Maxi, Datsun 120Y, Talbot Alpine)	£17.40
165 x 13 (Audi 80LS, Cortina 1.6, Mazda 616)	£18.88

BRITISH FABRIC RADIALS

155 x 12 (Datsun Cherry, Honda Civic, Fiesta)	£13.66
155 x 13 (Fiat 850 Coupe, Ford Escort 110, VW Golf)	£15.50
165 x 13 (Vauxhall Cavalier, Renault 20, Toyota Carina)	£16.77
BRITISH CROSSPLY 560 x 13 (Vauxhall Viva, Toledo and Avenger)	£11.98

All prices include VAT and fitting.

- * Tyres fitted by trained professionals
- * Only leading makes of tyres stocked
- * Wheel-balancing service also available.

Cash Sales and Drivers' Club Customers Only While Stocks Last

Barry Payne,
 54a St. Albans Rd., Barnet.
 Opening hours: Mon-Fri 8.30am-5.30pm
 Sat 8.30am-12.30pm

01-440 3255/6

TYRESERVICES GREAT BRITAIN

GOOD YEAR Grand Prix-S
 A major contribution to road safety
 BUY WITH DRIVERS CLUB

- * Up to 25% higher mileage
- * Up to 18% better wet grip
- * Up to 10% improvement in handling
- * Up to 10% less rolling resistance for greater fuel economy

PAY THE EASY WAY WITH DRIVERS CLUB
 ask for details

GOODSHOWS
 CLOTHING AND EQUIPMENT
 FOR THE OUTDOOR LIFE
 CAMPING — WALKING — CLIMBING
 BACKPACKING
 All Leading Brands Stocked
 33 HIGH STREET
 POTTERS BAR HERTS.
 77-44141
 39 CHURCH HILL ROAD
 EAST BARNET HERTS.
 01-449 3552

LOFT INSULATION UNDER THE COUNCIL GRANT SCHEME
 FREE ESTIMATES
THEX INSULATION SERVICES
 53 BAIRSTOW CLOSE, BOREHAMWOOD, HERTS.
 TEL: 01-207 2490

HOME EXTENSIONS

SEVEN GOOD REASONS WHY M.S. CONSTRUCTION SHOULD HANDLE YOUR EXTENSION

1. An Association of Builders specialising in Home Extensions.
2. Plans drawn by our own expert staff and speedily submitted for planning consent (if required).
3. An average extension can be built within 4 weeks.
4. All building is given a 10 year structural guarantee.
5. Full insurance cover on all jobs.
6. 100 per cent loans available.
7. Finest quality materials used on all jobs.

PLAN NOW FOR YOUR SPRING HOME EXTENSION

Immediate Start! Date for People with Approved Plans

01 367 5454 OFFICE 804 1449 ANYTIME 1 HARMAN RD ENFIELD

Town centre plan at vital stage

BARNET COUNCIL is now inviting developers and commercial undertakings to put forward specific plans for the large area of land running at the back of Barnet High Street, and which is now largely taken up by Stapylton Road car park.

This marks an important stage in a long process of planning, consultation and replanning within what is known as the Chipping Barnet Central Area Plan.

The story dates back to the years before the London Borough of Barnet was formed. Barnet inherited from Hertfordshire County Council a town centre plan which, typical of those early 1960s, involved a pedestrianised High Street and a by-pass.

In its early years Barnet Council presented a revised version of this plan to the local residents to meet with strong and outspoken opposition. As a result of this the plan was scrapped and Barnet began again, with a promise of full consultation with local residents at all stages of the development.

In 1973 a residents' consultative committee called the Chipping Barnet Town Centre Proposals Committee was set up by the Council. This was composed of representatives from 15 local organisations and has played an important part in the drawing up of the plans from its foundation to the present day.

The Chipping Barnet Central Area Plan was appraised in 1978. It had been the subject of many major planning

documents, public exhibitions, Press reports and widely circulated leaflets. After the consultation exercise which led to its final approval, there have been over 1,000 replies from the public which were debated by the Council with the Proposals Committee and local individuals and organisations.

The plan contained proposals for the extensive development of the town's conservation areas and improvement of housing areas. It identified three areas in which redevelopment would take place:

- The open land to the West of the High Street, which was once a barracks and parade ground.
- Land round Moxon Street on the East of the High Street and adjacent to the Barnet Trading Estate.
- Land owned by London Transport at High Barnet Underground Station.

It is the first area, the Stapylton Road Car Park and parts of Bruce Road with a small strip of land running south west of the present Barnet Stall Market, which is now reaching detailed planning stage. A draft planning brief to guide the development of the area has now been prepared and comments on the draft have been made by the Proposals Committee.

It is anticipated that the Council will approve the brief, modified as necessary, shortly. At this point no architectural or structural schemes have been approved but the Council, following long and careful consultations, are proposing a commercial shopping development, a

new public library, possibly a small number of houses and offices and car parking for about 600 cars — that is enough car parking spaces to replace the 370 spaces in the existing car parks and provide additional car parking to meet the requirements of the new development.

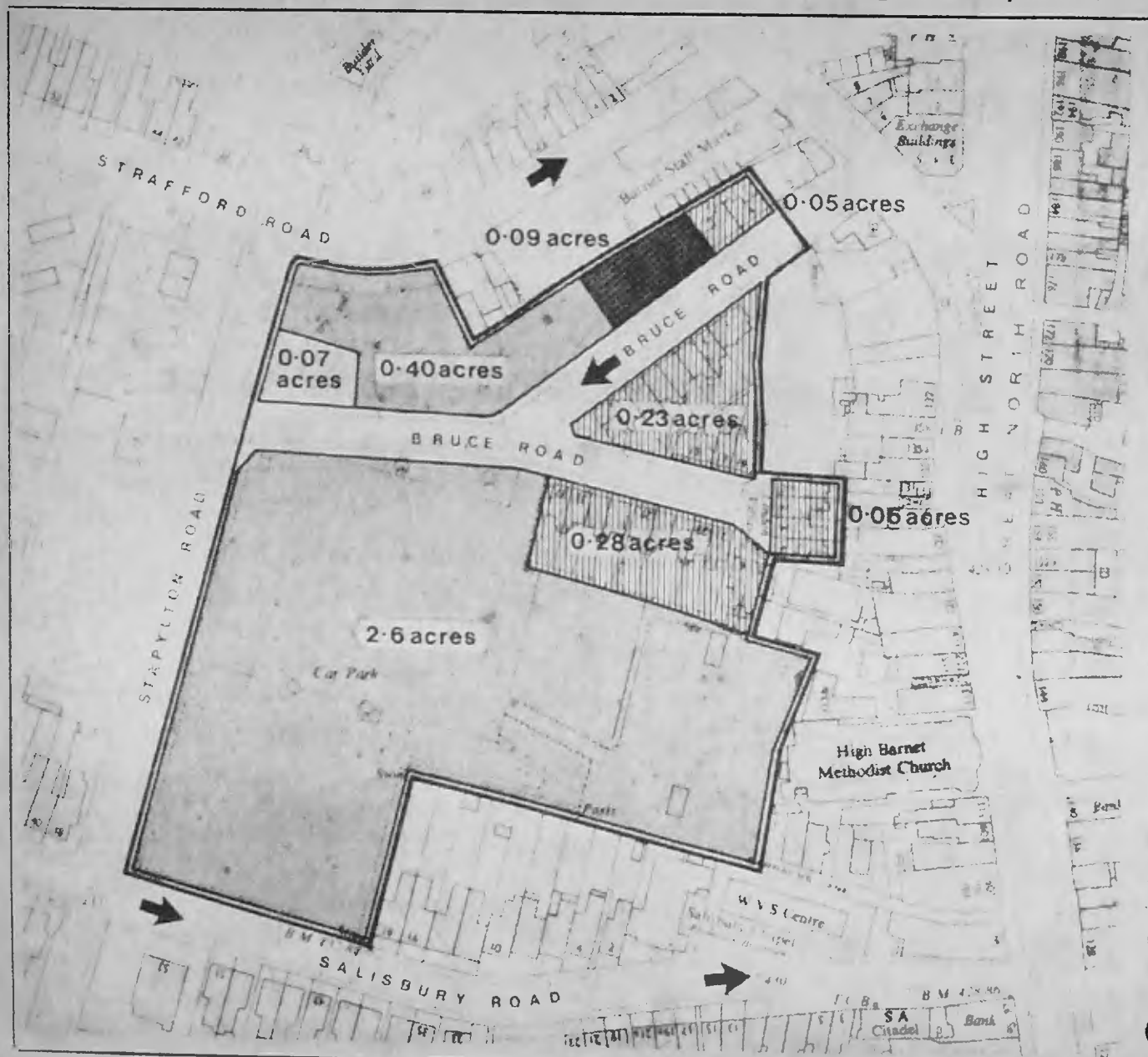
The planning brief will lay down that every effort shall be made to preserve the horse chestnuts and lime trees which form a screen along Stapylton Road and Salisbury Road and that the development shall conform to the existing character and scale of the area. The existing sky line of Barnet with its visual emphasis on the old parish church will be maintained by limiting the height of the new development.

It is for the successful developer to implement a specific scheme and set the architectural style, but the Council will consult the Proposals Committee to help ensure that the eventual development meets the requirements of the local people.


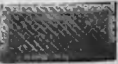



Watching role

The proposals committee will continue to play their watching role as the plan reaches the development period. The chairman is Jon Finlayson, a lecturer in architecture, who has been in practice in Barnet for 15 years, and the organisations now represented on the committee are:

Barnet Centre Association; Barnet Chamber of Commerce; Barnet Residents' and Ratepayers' Association; Barnet Society; Chipping Barnet Conservative Association; Chipping Barnet Labour Party; Chipping Barnet Liberal Association; Hadley Residents' Association; Hadley Ward Residents' Association; the National Council of Women Barnet and District Branch; North London Federation of Townswomen's Guilds; the Rotary Club of Barnet and East Barnet; and the Wood Street and Monken Hadley Conservation Area Advisory Committee.



EXISTING LAND USES

- Car Parking 
- Lorry Parking 
- Residential 
- Vacant 
- Total area of site (including Bruce Road) 4.4 acres 1.8 hectares
- One-way traffic flow 

Middlesex Polytechnic

NEW COURSES starting this September

Middlesex Polytechnic continues to develop new courses in response to the challenging demands of industry and commerce and the fast-changing world of the 1980s. Among the new courses starting this September are:

- **Part-time BSc in Electrical Engineering — Power Applications**
Four years, one day a week, based at Bounds Green
- **MA in History of Design**
Two years full-time, based at Cat Hill, Cockfosters
- **BA Honours in Contemporary Cultural Studies**
(post-DipHE course)
One year full-time or two to three years part-time, based at Cat Hill, Cockfosters
- **Live, work and study in Germany** on the new link of the Polytechnic's
BA Honours in European Business Administration
Four years full-time, based at Reutlingen and Enfield
- **Train to teach Home Economics** on the Polytechnic's **BEd and BEd Honours**
Three or four years full-time, based at Trent Park

Further information: Admissions Office (ref. C456), Middlesex Polytechnic, 114 Chase Side, London N14 5PN. 01-886 6599

THE GREAT JMS RADIO SUMMER SAVERS EVENT ... ON NOW

Genuine Reductions

on tv video hi-fi

GEC 14'
Colour portable tv
£199.95



EXPERT 20'	269.95
EXPERT 22'	299.95
HITACHI 20'	315.95
B&O	445.00
2 YEAR GUARANTEE	

Rental 20" from 7.99 per month including FREE LICENCE

Visit our video centre where you can see the latest machines, cameras and portables
RENTAL: HITACHI or JVC 17.00 per month



HITACHI
Stereo System and Speakers
£349.95

We have on display the biggest range of hi-fi in this area all with our TWO year guarantee and unbeatable prices.
A Bang & Olufsen system and speakers for only 399.95.
JVC systems from 299 pounds to 900.
BOSE speakers with five years guarantee.

ATARI TV GAME including Space Invaders



£149.95



HITACHI 3band Stereo Radio Cassette Recorder
£74.95



JMS RADIO tv video hi-fi

44/46 Watling Avenue Burnt Oak Edgware 952 1565

RODNEY AND DAVID GIBBONS OFFER YOU THE COMPLETE KITCHEN PLANNING SERVICE



25 Kitchen Displays from the following manufacturers: Castle, English Rose, Gower, Grovewood, Hygena, Newage, Schreiber, Thomas Eastham

PLUS! A "Carry Home" Department from Schreiber in stock

Also available: Ceramic Wall Tiles and Armstrong Flooring
Fitting service available where required

WE CAN TRANSFORM YOUR KITCHEN AT A PRICE YOU CAN AFFORD

Kitchens Galore

Open: Mon., Tues., Thurs., Fri., Sat. 9 a.m.-5.30 p.m. Wed. 9 a.m.-1 p.m.
112 BRENT STREET, HENDON, NW4. Tel. 202-0291

NEW SHOWROOMS NOW OPEN AT:
64/66 HIGH STREET, BARNET. TEL. 441-2606

WE ARE HERE



WHAT'S ON

WHAT'S ON IN BARNET is a monthly list of activities taking place in the Borough.

Your entry, giving the name of your club or organisation, the event, date, venue, time and contact telephone number, should be sent to the Civic News, Town Hall, The Burroughs, Hendon, NW4 4BG, tel: 01-202 8282, ext. 71.

Entries for each issue must be received by the first of the preceding month. For example, for the September issue, published mid-month, entries must arrive by August 1.

*Asterisk denotes regular weekly meeting.

Saturday July 12

FINCHLEY CARNIVAL, ALL DAY, VICTORIA PARK.

*Drama Workshop for children, The Old Bull, 68 High Street, Barnet. Ages 6—8, 4—5 pm; 7—10, 10.30 am—12.30 pm; 8—16, 1.30—3.30 pm (449 0048).

Barnet & District Athletic Club — Senior team races. Afternoon. For details tel: 61 67888.

*Divorced, Single and Separated Club, Hendon Central Beefeater Ballroom, Hendon Way. Social evening, 8 pm.

Hendon Horticultural Society Annual Show, Middlesex Polytechnic, Hendon. 2.30 pm (203 2903).

Annual Strawberry Fair organised by the Friends of Grasvenor School Association, Grasvenor Avenor, Barnet. 2.30 pm.

All Barnet Schools Music Centres. Concert, East Barnet Music Centre, East Barnet Upper School, Chestnut Grove, Cat Hill, East Barnet. 11 am (368 1255).

Totteridge Horticultural Society Summer Show, The Green, Totteridge Lane, Totteridge. 2.45 pm (445 7884).

New Barnet Floral Art Society Summer Show, St. Mark's Hall, Potters Road/Woodville Road, New Barnet. 2 pm (449 3362).

Whitefield School Silver Jubilee Concert, Hendon St. Mary Parish Church, Church End, Tendon. Faure's Requiem, 7.30 pm. Admission £1.

Sunday July 13

*Table Tennis training for youngsters, Barnet Table Tennis Centre, Barnet Lane. 3—5 pm (440 1721).

*Barnet Dance Workshop, St. Peter's Hall, Albion Avenue, Muswell Hill. 6—8 pm (444 0160).

*Table Tennis, Barnet Table Tennis Centre, Barnet Lane.

Barnet. Every evening, 7.30—11 pm (440 1721).

*Orange Tree Folk Club, Orange Tree, Friern Barnet Lane, Friern Barnet. 8 pm (863 3608).

*Bernie Tyrell's Salisbury Stompers and Shirley (Jazz Club). The Salisbury Hotel, High Street, Barnet. 12 noon—2 pm (449 0081).

*Public Meetings at Salvation Army Citadel, Albert Road, New Barnet. 10.30 am and 6.45 pm. Adventurers 3.00 pm.

*Barnet & District Athletic Club. Youngsters and newcomers. Tudor Sports Ground, New Barnet. 10.45 am (882 3265).

*Up-to-the-Centre Square Dance Club, 145 Orange Hill Road, Burnt Oak, Edgware. Beginners 8 pm (959 5204).

*Bridge Lane Bridge Club, 71 Bridge Lane, NW11. Every day except Friday evening. 1.30—6 pm and 7.45—11.40 pm (455 3711 and 458 1764 after 2 pm).

Monday July 14

*Barnet Chess Club, Harold Fern Room, Salisbury Road, Barnet. 7.45 pm (445 0635).

*New Barnet Literary and Debating Society, The Vestry Room, St. James' Church, East Barnet Road, New Barnet. 8 pm (440 3959).

*Barnet & District Athletic Club — Gym, keep fit, joggers, Finchley Catholic High School, Woodside Lane, N12. 7—9 pm (368 6605 or 349 0409).

*Dog obedience training, All Saints' Parish Church Hall, Oakleigh Road North, Friern

Barnet. Beginners 7.30 pm; Advanced 8.45 pm (449 4155 after 6 pm).

*Herbert Wilmot Youth Centre, Market Place, East Finchley. Football. General Club. 7—10 pm (444 8422).

*Meeting for ladies at East Finchley Baptist Church, Creighton Avenue, N2. 2.30 pm.

*Boys' Brigade, 4th Finchley Company, Finchley Methodist Church, Essex Hall, Essex Park, N3. Pre-Junior Section 6—8 years, 5.30 pm; Junior Section 8—11 years, 6.30 pm (446 2690).

Barnet & District Philatelic Society, Council Chamber, Town Hall, Station Road, New Barnet. 8 pm (441 0300).

*Silver Threads — Senior Citizens' Club, Salvation Army Citadel, Salisbury Road, High Barnet. 2 pm (440 8303).

Tuesday July 15

*20th Century Old Time Dance Club, All Saints' Hall, Oakleigh Road North, Whetstone. 7.45 pm (360 2586).

*Scottish dancing, St. Albans Church Hall, West Heath Drive, NW11. 8—10 pm. Children's Scottish dancing, 6.30—7.30 pm.

*Instruction in modern ballroom and Latin American dancing, Shakespear Hall, Manor Park Crescent, Station Road, Edgware. 8.30 pm (346 5868).

*Judo, The Quinta Club, Mays Lane, Barnet (449 2914).

*Hendon South Young Socialists. Discussions and social activities, 7 Sunnyfields Road, Hendon. 8 pm.

EXHIBITIONS

Mon. July 14—Sat. September 6

Barnet Festival open exhibition, Old Bull Art Centre, High Street, Barnet.

Tues. July 15—Sat. July 19

Institute Society Arts Group — Arts and Crafts, The Tea House, Northway, NW11. Tues.—Sat. 2.30—8.30 pm.

Tues. July 15—Sat. July 26 (closed Sunday)

Barnet Guild of Artists 32nd Annual Exhibition, Church House, Wood Street, Barnet. 11 am—8 pm, closes 6 pm July 26 (449 4315).

Sat. July 19—Sun. Sept. 21

Silver Years: 1930-80 in the photographs of John Maltby, whose studios were in Hendon. Church Farm House Museum, Greyhound Hill, Hendon. Weekdays (except Tuesdays) 10 am—12.30 pm; 1.30—5.30 pm; Tuesdays, 10 am—1 pm; Sundays, 2.30—6 pm.

Sat. July 19—Sat. August 16

Paintings by Molly Course, Ella Oconway and Etain Casey at North Finchley Library, Ravensdale Avenue, North Finchley. Normal library opening hours.

Tues. July 22—Sat. August 9

Landscapes by local artists. (Lillian Gallop, Sheila Hunt and Mary Kirkpatrick). The Crest, Totteridge Library, Dollisfield, Totteridge Lane, N20. Tues. & Wed. 2—5.30 pm; Fri. 11 am—1 pm, 2—5.30 pm; Sat. 11 am—1 pm, 2—4 pm.

Sat. July 26—Sat. Sept. 6

Photographs by David Hicks, Specialising in landscape and natural history. Hendon Library, The Burroughs, Hendon. Normal library opening hours.

Mon. July 21 to Sat. July 26

Children's Art Exhibition, Ewen Hall, Wood Street, Barnet.

*Hendon South Young Conservatives. Meetings at 166 Station Road, Hendon. 8 pm (202 7484).

*Friern Barnet Photographic Society, St. John's Hall, Friern Barnet Lane, N20. 8 pm (445 2617).

*Hendon String Orchestra, St. Mary's School, Sunningfields Road, Hendon. 7.45 pm (455 5005).

*West Hendon Handicraft Group, West Hendon Community Centre, West Hendon Estate. 2—4 pm (205 0514).

*The Light Brigade — club for those aged 6—12 years at the Salvation Army Citadel, Albert Road, New Barnet. 6.30 pm (449 6893).

*Herbert Wilmot Youth Centre, Market Place, East Finchley. Football, 6—9.30 pm; General Club (over 13) 7—9.30 pm (444 8422).

*Jewish Association & Cultural Society — cultural club for retired people, Oxford & St. Georges Club, 120 Oakleigh Road North, Whetstone. 1.30—3.30 pm (346 4742).

*Prayer and Bible Study meeting, Salvation Army Citadel, Salisbury Road, High Barnet. 7.15 pm (440 8303).

Wednesday July 16

*Wednesday Bridge Club, St. Andrew's Small Hall, Chase Side, Southgate. 1.30 pm (440 9682).

*Barnet Cycling Club, United Reformed Church Hall, Oakleigh Road North, Whetstone. 8 pm (888 7143).

*Modern dancing, Barnet South Community Association, Mays Lane, Barnet. 8 pm (440 4424).

*Modern/old time dancing, Manor Drive Methodist Church, Manor Drive, Whetstone. 8 pm (445 7127).

*Up-to-the-Centre Square Dance Club, Watling Community Centre, Orange Hill Road, Edgware. 8 pm (959 5204).

*Old Time and modern dancing, St. Luke's Hall, Mountfield Road, Finchley, N3. 8 pm.

*Dog training, St. Philip's Church Hall, Gravel Hill, Finchley, N3. Beginners 7—8 pm; Intermediate etc. from 8 pm (458 7399).

*West Hendon Liberal Association, 78 Bertram Road, NW4. 8 pm (202 9013).

*Women's League of Health and Beauty, Christ Church Hall, High Road, North Finchley. Elementary 7—7.45 pm; technique 7.45—8.15 pm; medium 8.15—9 pm; sequence 9—9.30 pm (455 3904).

*Chipping Barnet YCs, The Harold Fern Room, Salisbury Road, Barnet. 8.15 pm.

*Finchley & Friern Barnet YCs, 212 Ballards Lane, North Finchley. 8 pm (445 9426).

*Edgware Amateur Cine Society, Orange Hill Junior School, Hamonde Close, Edgware. 7.45 pm (959 7783).

IN BARNET

*Whist at Fellowship House, Willifield Green, Willifield Way, Golders Green. 8 pm.
 *Yoga, Whitchurch Institute, Buckingham Road, Edgware. 2.30 pm (203 1935).
 *Drama Workshop for children aged 12-18, The Old Bull, 68 High Street, Barnet. 6 pm (449 0048).
 *Edgware Photographic Society, Edgware Public Library, Hale Lane, Edgware. 8 pm (952 4786).
 *Ballroom, sequence, old tyme and party type dancing, St. Mary's Hall, 54 Church Hill Road, East Barnet. 8 pm (803 9028).
 *The Home League — meeting for ladies — Salvation Army Citadel, Albert Road, New Barnet. 2.30 pm (449 6893).
 *Pymmes Judo Club for children, East Barnet School, Westbrook Crescent, New Barnet. 6.30 pm (440 6473).
 *Judo at Herbert Wilmot Youth Centre, Market Place, East Finchley. Beginners, 6-7 pm; Juniors, 7-8 pm; Seniors, 8-9 pm (444 8422).
 Hendon Floral Art Group, Henry Burden Hall, The Burroughs, NW4. 7.30 pm. 'Lucky Dip' (959 6111).

Woodside Park Townswomen's Guild, The Old Finchleians Club House, Southover. 2.15 pm (445 8952).
 Mill Hill Gramophone Society, Small Hall, Union Church, Mill Hill Broadway, Mill Hill. 8 pm (959 5097).
 West Hendon Over Sixties Club, opening meeting, 2 pm to 4 pm, West Hendon Community Centre, Marsh Drive. (202 4847).

Thursday July 17

*North Side Bridge Club, East Finchley Methodist Church, High Road, East Finchley. 7.30 pm (445 7788).
 *Contemporary dancing, Manor Arrows Youth Club, Finchley Manorhill School, Summers Lane, North Finchley. 6.30 pm (368 9876).
 *Finchley Old Time and Modern Sequence Dance Club, Martin School, East Finchley. 7.30 pm.
 *Hendon & Edgware 18 Plus Group, Hendon Way Hotel, Hendon Way, Hendon. 8.15 pm (954 6929).
 *North West London Club for Divorced or Separated, Cavalier Rooms, Prince Albert, Golders Green Road, Golders Green. 8 pm (959 2048).

*Twenty to Thirty Plus Club. 8.15 pm (445 1593).
 *Mind Social Club, The Meritage Club, Church End, Hendon. 8-10 pm (200 5138 between 6-7 pm).
 *Black Bull Folk Club, Black Bull Public House, High Road, Whetstone. 8 pm (77 58631).
 *Finchley Chess Club, Etchingham Park Centre, Etchingham Park Road, Finchley N3. 7 pm (445 4927).
 *Problem Centre — Salvation Army Citadel, Albert Road, New Barnet. 10 am-12.30 pm (449 6893).
 *Silver Circle — Senior Citizens' Club — Salvation Army Citadel, Albert Road, New Barnet. 2 pm (449 6893).
 *Ridgeway Club, National Association of Women's Clubs, St.

Mary's Hall, Church Hill Road, East Barnet. 7.30 pm (449 2852).
 *Barnet Youth Hostels Association Group, The Scout Hut, Triangle Passage, Barnet. 8 pm (440 0226 or 440 1983).
 *Pymmes Judo Club for adults, East Barnet School, Westbrook Crescent, New Barnet. 8 pm (440 6473).
 *Herbert Wilmot Youth Centre, Market Place, East Finchley. Badminton, 6-8 pm; Football, 6-10 pm; Keep-fit, 8-10 pm; General Club, 7-10 pm (444 8422).
 *Boys' Brigade, 4th Finchley Company — Company Section 11-18 years, Finchley Methodist Church, Essex Hall, Essex Park, N3. 8 pm (446 2690).
 Barnet Theatre Company present a comedy '33.3 RPM' by Max Bradley at Barnet College Theatre. 8 pm. Also on July 18 and 19 (445 7961).
 *The Home League. Meeting for ladies, Salvation Army Citadel, Salisbury Road, High Barnet. 2.30 pm (440 8303).

COUNCIL MEETINGS
 Members of the public are invited to attend Council and committee meetings which are held in the Town Hall, Hendon, at 7 pm.
 Tuesday, July 15: COUNCIL.
 Wednesday, August 13: Town Planning and Research.

Friday July 18

*International folk dancing, Had-

Continued on page 14

WHY PAY MORE FOR YOUR BEDROOM?

AND OTHER QUESTIONS YOU SHOULD ASK BEFORE BUYING

25% OFF CHATEAU RANGE

(INTRODUCTORY OFFER UNTIL 1st SEPTEMBER 1980)

WHO ELSE OFFERS SUCH VALUE IN FITTED FURNITURE?

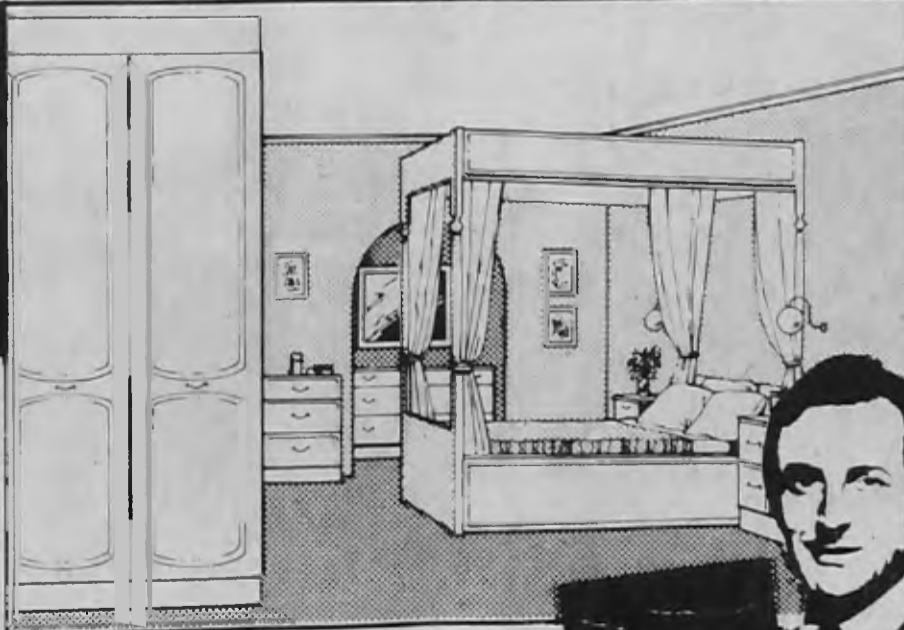
GKD offer you genuine craftsmanship at factory-direct prices plus 25% OFF current list prices on these two ranges until 1st September 1980.

THE CHATEAU SUITE

ONE OF A RANGE OF 9 BEDROOMS

WHO ELSE OFFERS SUCH A CHOICE?

Choose the wall-to-wall luxury of a romantic, French-style fitted bedroom. Or choose from a range of 8 other bedrooms, each in several colour finishes, including mirrored doors. But whatever you choose, make sure its labelled GKD.



FINAL PAYMENT

TO OUR FITTER ON THE DAY OF INSTALLATION
 (Are our terms of payment.)

WHY CONSIDER ALTERNATIVE METHODS OF PAYMENT?

Before you arrange for any company to give you an estimate for a fitted bedroom, ask if you will have to pay in full before you see delivery and a satisfactory standard of fitting!
 "GKD'S TERMS OF TRADING" 4RD DEPOSIT BALANCE OF 4RDS TO OUR FITTER ON DAY OF INSTALLATION

3 YEAR GUARANTEE

ON WORKMANSHIP AND MATERIALS

WHO ELSE HAS THAT CONFIDENCE?

Our rare 3 year guarantee shows the trust we place in our expert free fitting service, and proves the quality of our materials. Check our guarantee against others before you decide.

TO GKD LTD., LANRICK HOUSE, LANRICK ROAD, LONDON E14.
 Dear Gerald Harper please send me details of your Fitted Bedroom and Lounge Design Service.

Name _____
 Address _____
 Telephone _____
 Business _____

YOUR LOCAL GKD SHOWROOMS

CANNING TOWN:
 Factory Showroom
 Lanrick Road, E.14
 01-515 5151 (Open Mon-Sat)

HENDON:
 9 Finchley Lane, N.W.4.
 (Nr. Odeon) 01-203 5767
 (Closed Wednesdays)

WHETSTONE:
 1376 High Road, N.20
 01-445 4853 (Closed Mondays)

GKD

FITTED FURNITURE TO FIT YOUR POCKET

WHAT'S ON IN BARNET

Continued from page 13

- ley Memorial Hall, Hadley Highstone. 8 pm (368 5245).
- *Hendon Camera Club, Fellowship House, Willifield Way, Golders Green. 7.45 pm (455 0837).
- *Divorced, Single and Separated Club, Orange Tree Public House, Friern Barnet Lane, Friern Barnet. Social evening. 8 pm.
- *Barnet & Finchley Photographic Society, Club Room rear of 37 Salisbury Road, Barnet. 8 pm (368 3917).
- *Mill Hill Over 60s Handicraft Club, Moreton Close Lounge (behind shops at Salcombe Gardens, Mill Hill). 2—4 pm (906 1760 or 446 4221).
- *Judo and General Club at Herbert Wilmot Youth Centre, Market Place, East Finchley. 6—8 pm (444 8422).
- *Finchley Cine Society, Avenue House, East End Road, Finchley, N3. 8 pm (346 4265).
- Barnet Afternoon Townswomen's Guild, Church House, Wood Street, Barnet. Slides of America. 2.30 pm (449 6826).
- Broadfields Evening Townswomen's Guild, Broadfields Junior School, Broadfields Avenue, Edgware. 7.30 pm (958 4845).

Saturday July 19

- Summer Affair, Northway School, The Fairway, Mill Hill. 10 am—12 noon (959 4232).
- All Barnet Schools Music Centres. Concert, Hendon Music Centre, Hendon School, Golders Rise, Hendon. 11 am (368 1255).
- Barnet Schools Symphony Orchestra, Wind Orchestra and Brass Ensemble present a concert at Woodhouse School, Woodhouse Road, North Finchley. 7.30 pm (368 1255).
- Arkley Fete, Village Hall. 2.30 pm. 'The Windmill' garden open for visits (449 3853).
- Summer Fete, St. Augustine's Church, Grahame Park. 2 pm. Admission 10p.
- Shaftesbury Harriers — Southern League match, Barnet Cophall Stadium, Great North Way, Hendon. 2.30 pm (428 6221).
- Brookland Infants School Parents' Association, Summer Fete at school, Hill Top, Golders Green. 12.30 pm. Come and have lunch. Admission 20p.
- Craft Fayre — 50 stalls from London craft markets. Ewen Hall, Wood Street, Barnet. 11 am—5 pm.
- Electric Palace — silent movie with pianist and amateur films by Finchley Cine Society. Ewen Hall, Wood Street, Barnet. 8 pm. Tickets 60p.

Monday July 21

- Hampstead Garden Suburb Antiques Circle, Community Room, Bigwood House, Bigwood Road, NW11. 8 pm (202 0269).
- Orchestral and choral concert with choirs from Barnet schools. Director Kriss Rusmanis. Ewen Hall, Wood Street, Barnet. 7.30 pm. Tickets £1 (75p students and pensioners).

Tuesday July 22

- Finchley Redbourne Evening Townswomen's Guild, Etchingam Park Centre, Etchingam Park Road, Finchley, N3. 7.45 pm (346 4048).
- 'Middle C' — a group for women aged 24—45 — 212 Ballards Lane, North Finchley. 8.15 pm (445 4292).
- Barnet Bulletin. Satire on Barnet presented by A Load of Old Bull and comedy revue by Potters Bar and Little Heath Drama Workshop. Ewen Hall, Wood Street, Barnet. 8 pm. Tickets 50p.

Wednesday July 23

- National Trust (Edgware Branch), John Keble Church Hall, Deans Lane, Edgware. 8 pm. 'The History of the Livery Companies' (952 2688).
- Barnet Theatre Company present

a musical revue 'Knock, Knock — who cares' at Barnet College Theatre. 8 pm. Until July 26 (445 7961).

The National Theatre of Brent. The Do-it-Yourself Pop-up panto show for children aged 5—11 years. Ewen Hall, Wood Street, Barnet. Tickets 50p. 7.30 pm.

Thursday July 24

Coffee morning, Hendon Red Cross, 10 The Downage, Hendon. 10.30 am—12 noon. Admission 20p.

William Tell, presented by Covent Garden Community Theatre. Ewen Hall, Wood Street, Barnet. 8 pm. Tickets £1 (students, pensioners 75p).

Friday July 25

Eckankar — the way of total awareness — Talk and discussion at Avenue House, East End, Road, Finchley, N3. 8 pm (458 5020).

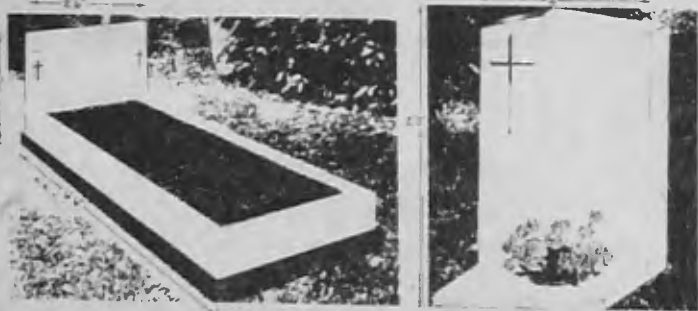
Disco Date in the Community Centre, Grahame Park, Colindale. Age 12—18. 7.30 pm. Admission 60p.

Due Pianisti. Classical piano duets on one piano. Ewen Hall, Wood Street, Barnet. 8 pm.

Continued on page 17

JOSLIN MEMORIALS LTD

SEND TODAY FOR OUR BROCHURE WHICH CONTAINS SOME OF THE 70 DESIGNS FOR YOU TO CHOOSE FROM OR CALL IN TO SEE OUR SELECTION DISPLAYED. ALL WORK EXPERTLY FINISHED BY OUR OWN CRAFTSMEN.



Italian White Marble £120
+ £18.00 VAT
Natural Stone £98
+ £14.70 VAT

Italian White Marble
£80 + £12.00 VAT
Natural Stone £70
+ £10.50 VAT

ALL PRICES SUBJECT TO INCREASE
AT ANY TIME

PLEASE TELEPHONE 883 1536/5541
JOSLIN MEMORIALS LTD
238 HIGH ROAD, EAST FINCHLEY, N2.
BY APPOINTMENT TO
ST PANCRAS & ISLINGTON CEMETERIES

BODYSHAPE

SUPER CONDITIONING EXERCISES
FOR A BEAUTIFUL BODY
Classes Daily, Evenings and Weekends
Phone: 203 5535 for details
10 Parson Street, Hendon, NW4



ANOTHER SENSATIONAL OFFER
EXCLUSIVE TO WESTERN MUSIC
THE
!! WESTERN DUO — SPECIAL !!
WITH

PIANO, HARPSICHORD, HONKY-TONK, GUITAR, CHORD-MEMORY, PEDAL,
MEMORY-ALTERNATING BASS, 16' 8' FLUTES, SUSTAIN, 5 ORCH. VOICES,
HEADPHONE SOCKET, AUX. JACK-INPUT-OUTPUT-TAPE JACK.



GREATEST VALUE EVER
OFFERED TO THE
BEGINNER FOR ONLY



LIMITED NUMBER ONLY
AT THIS PRICE

FULL MANUFACTURERS WARRANTY. 12 MONTHS FREE SERVICE. FREE DELIVERY IN
LONDON & HOME COUNTIES. PART EXCHANGES. LOW DEPOSIT AND UP TO 5 YEARS TO
PAY. OUR REPUTATION IS YOUR GUARANTEE WRITE, CALL OR PHONE.
THE HOME OF MUSIC AND LEISURE

WESTERN MUSIC CO.

130-132 King Street, Hammersmith W6
53-59 High Street, Croydon, Surrey
102 The Broadway, Wimbledon SW19
125 High Street, Sutton, Surrey
Unit 43, Queensmere, Slough, Berks.
Tricity House, High Street, Maidenhead
112-114 Burnt Oak Broadway, Edgware, Middlesex

01-748 5824/1446
01-688 1248
01-540 0494
01-661 1167
Slough 28899
Maidenhead 21463
01-952 9525

WE INVITE YOU TO VISIT US IN OUR NEW SHOWROOM



COME ALONG AND INSPECT THE LATEST OLYMPIC KITCHENS NOW ON DISPLAY

WHY NOT REALISE YOUR HEART'S DESIRE WITH A HIGH-QUALITY FULLY ASSEMBLED MODERN KITCHEN AT AN UNBELIEVABLY ATTRACTIVE PRICE

We specialise in planning, plumbing and designing of new kitchens and bathrooms.

Call today and find out about our special introductory offers

D.L.S. PLUMBING & KITCHEN DESIGNERS

HEATING, SANITARY AND KITCHEN MERCHANTS

206 WEST HENDON BROADWAY
EDGWARE ROAD, NW9.
TEL. 202 3079 or 202 5682

HUGE DISCOUNTS

on

*** HEATING ***

RADIATORS up to 40% off

MYSONS, STEELRAD THORN, WARMASTYLE

LOFT INSULATION £3.80

80mm THICK (Approx. 16 in wide, 27 ft long) per roll



HUNTER PLASTICS

GUTTERS, WASTES, SOIL SYSTEMS

less 25%

GAS FIRED BOILERS

up to 35% off

POTTERTON, IDEAL, THORN, GLOWORM, CHAFFOTEAUX

*** KITCHENS ***

**REAL OAK DOORS
SINK UNIT FOR ONLY
£106.00**

**SELF ASSEMBLY BASE
UNIT WITH CHOICE OF
FINISHES FOR ONLY
£31.88**

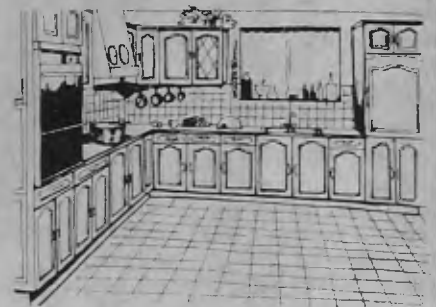
If these units can be bought for less elsewhere we will gladly refund the difference.



CAST IRON BATH SUITES

Twin grip Caribbean bath, close coupled toilet, seat, basin, pedestal, taps, waste, panels

White £287.37 Coloured £310.49



Check our prices for any kitchen

LEGEND (OAK) EASTHAM BURCO
OLYMPIC QUALCAST
HYGENA EASTHAM
MOST MAKES AVAILABLE INCLUDING CONTINENTAL

*** BATHROOMS ***

PRESSED STEEL SUITES

Comprising: bath, basin, pedestal, low level toilet, seat, taps, waste and panel

White £126.61 Coloured £148.07

ACRYLIC BATH SUITES

Twin grip acrylic bath, 8mm basin, pedestal, low level toilet, seat, taps, waste and panel

White £186.78 Coloured £191.95

TILES Johnsons, Splinx, Pilkingtons, Spanish and Italian less 1/3

Park View Building Supplies

855 GREEN LANES, WINCHMORE HILL, N21.

360-3633/0370

R. & G. ROOFING

Established 10 years

COMPLETE NEW ROOFS OR REPAIRS

- ★ Repointing and rebuilding of chimney stacks.
- ★ Zinc and lead work
- ★ Also guttering renewed and repaired
- ★ Soil pipes renewed

Estimates free

01-446 2056

TIMBER & PAINT SUPPLIES



For all your do-it-yourself materials, tools, boards, timber, mouldings, plastic laminates and ironmongery. Picture framing. Timber and board cut to size. We deliver anywhere.

320 DUKES MEWS
MUSWELL HILL, N10

(Behind Charringtons, near Muswell Hill Roundabout)

Telephone: 01-883 9605

WATERJET

PLUMBING, HEATING & DRAINAGE

- DAMAGED, FAULTY OR BLOCKED PIPES ● CYLINDERS ● PUMPS ● BOILERS ● TANKS ● RADIATORS ● WASTES ● SINKS ● BATHS ● TOILETS ● DRAINS ● SEWERS ● GULLIES

24 HOUR SERVICE

01-958 6633

K.J.D. LOFT INSULATORS

We supply and fit loft insulations
Council grants available

Tel: 531 1608 — 445 8966

D. J. & SONS

BUILDERS AND DECORATORS
440 8380

Roof repairs, plastering, gutters, plumbing, conversions, through lounges.
Your local builder.

For free estimate ring now.

SPD Roofing & Building Contractors

Save 100s of pounds.
Have your Roof repaired.

We specialise in repair/renovation of all types of roofing. All works if undertaken fully guaranteed.

We also specialise in repointing/removal of chimney stacks.

Through lounges, painting and decorating interior/exterior.

RING US WE ARE THE SPECIALISTS

Tel: 01-808 8536

WHAT'S ON IN BARNET

Continued from page 16

Tickets £1 (students, pensioners 75p).
Salisbury Public House, High Street, Barnet. The Germans — rock band. 8 pm. Admission £1.

Saturday July 26

Disco for Under-16s, Ewen Hall, Wood Street, Barnet. 2—5 pm. Tickets 60p.

Monday July 28

Barnet Arts Council summer holiday workshops for children aged 7—16 years, Avenue House, East End Road, Finchley, N3. 10.30 am—12.30 pm; 2.30—4.30 pm (346 7120). Until August 8.

Summer courses in pottery and screen printing at Centre Point Arts & Leisure Centre, Grahame Park School, Corner Mead, Grahame Park Way, NW9. Enquiries tel. 205 7113. Until Friday, August 8.

Wednesday July 30

Amnesty International (Golders Green Branch), Unitarian Church, Hoop Lane, Golders Green. 7.30 pm (883 4893 or 959 3249).

Shaftesbury Harriers — Open Meeting, Barnet Copthall

Stadium, Great North Way, Hendon (428 6221).

Thursday July 31

National Federation of Old Age Pensioners Association (Barnet, Whetstone and Finchley Branch), St. Albans Parish Centre, Gainsborough Road, North Finchley. 1.45 pm (445 7413).

Saturday August 2

20th Century Dance Club Saturday Dance. All Saints Hall, Oakleigh Road North, Whetstone. 7.30 pm (360 2586).

Children's Homes at 25/33 Parkhurst Road, N11, a garden fete, grounds of Friern Hospital, Friern Barnet Road, N11. 2 pm (368 6335).

Monday August 4

National Federation of Old Age Pensioners Association, general meeting at John Keble Church small hall, Deans Lane, Mill Hill. 1.30 pm. Guest speaker Dr. A. J. Price (959 4935).

Poetry Appreciation Circle. Robert Browning by Vivienne Browning, local author and descendant of poet. The Old Bull, High Street, Barnet. 8 pm.

Wednesday August 6

Ecology Party meeting (Barnet & Finchley Branch). For details telephone 449 8297.

Green Belt Motor Club, Trent Park Golf Club, Bramley Road, Oakwood, 8.30 pm. (45 43326).

Thursday August 7

Eckankar — the way of total awareness — talk and discussion. Hendon Library, The Burroughs, Hendon. 8 pm (952 0932).

Friday August 8

Hendon & District Cage Birds Association, Carey Hall, Wilberforce Road, West Hendon. 7.30 pm (205 2647).

Saturday August 9

Shaftesbury Harriers — 10-Mile Road Race, Barnet Copthall Stadium, Great North Way, Hendon. 3 pm.

Monday August 11

Flower of Hendon Lodge — M.U. Odd Fellows at Hendon Ex-Service Men's Club, Heriot Road, Hendon. 7.30 pm (202 6461).

Wednesday August 13

Eckankar — know your divine self — introductory talk. North Finchley Library, Ravensdale Avenue, N12. 8 pm (346 4356).

Thursday August 14

Welsh Harp Otters Angling Society, The White Bear Public House, The Burroughs, Hendon (205 5670).

Saturday August 16

Exemption Dog Show, Methodist Church Hall, Goodmayes Avenue, Mill Hill, 2 pm, in aid of Conservative funds. Four pedigree and four novelty classes. Entries at the hall from 1 pm on the day or enquiries to the secretary on 205 5021 (evenings).

DON'T FORGET

Friern Barnet Summer Show. Friary Park, on Friday and Saturday, August 15 and 16.

WHAT'S ON IN ST ALBANS



JUST ONE OF OUR MANY CUSTOMERS TAKING
DELIVERY OF HER NEW CAR

EXECUTIVE MOTORS (ST ALBANS) LTD
223 HATFIELD ROAD, ST ALBANS, HERTS
Tel ST ALBANS 60536/7



AUTHORISED DEALER



Car Rental

UNLIMITED MILEAGE



Budget
rent a car

MANN EGERTON
1085-1097 HIGH RD., WHETSTONE, N.20
01-446 3701 01-446 0777

FUR FABRIC PLUS

868a High Road, Finchley, N12. 445 6743

SPECIALISTS IN FUR FABRIC

A very large selection stocked.

Also for the toymaker a complete range of eyes, noses, felt, filling and patterns.

COME AND SEE OUR WIDE RANGE OF FUR FABRIC JACKETS AT COMPETITIVE PRICES!

Beautiful soft toys always in stock

EVE SEPARATES

376
Ballards Lane
Finchley, N12

Telephone:
445 4678

COME INSIDE AND LOOK AROUND AT THE BEST COLLECTION TO BE FOUND

Engagement rings, Wedding rings, Necklaces, Earrings, Bracelets, Clocks and all manner of exciting trinkets

HAVE YOU GOT MORE SENSE THAN MONEY?

Then come to
SEATON'S
777 High Road, N12
Tel: 01-445 3181

THE LETTER FACTORY

327 Ballards Lane,
London, N12.
Tel: 01-445 1572

GRAB BRITAIN'S MOST COMPLETE WORD PROCESSING SERVICE

BUREAU SERVICES:—
Standard Letters for Sales Mail Shots
Full Direct Mail Service
Copying and Printing
All typing tasks
REPORTS, TENDERS, LEASES

Also Sale of Consumables, Floppy Discs, Ribbons, Etc.
A complete service

YOU LOCAL PRINTER

THORN PRINTING

General, commercial and colour printers, Lithographic and Letterpress

1146 High Road, Whetstone, N20 0RA
Instant print service available

FASHION ACCESSORIES

Specialists in high-class Hair and Fashion Accessories. French Automatic Hairslides, Sequins, Beads.

HABERDASHERY, TRIMMINGS, LACES, BUTTONS, RIBBONS, COTTON, DYLAN DYES, ZIPS, MOTIFS, PATCHES, ETC., SWISS EMBROIDERY, CHIFFON, SILK MATERIALS and SAREES

Fashion Arcade

26/28 Ballards Lane, Finchley Central, London, N3 2BJ.
Tel: 01-346 6110/1542
Mon.—Sat., 9 am—6.30 pm
Closed Fri., 12 noon—2.30 pm

C. HARRIS LTD. — SHOE REPAIRS

The Shoe Repairers who care for your Feet

Stockists of Fine Leather Goods including Belts, Wallets, Purses, Bags, Luggage, Brief Cases, etc.

851 HIGH ROAD, N12
445 0478



BILLSON REPROGRAPHICS LTD.

Dyeline Printers and Drawing Office Supplies

302 Ballards Lane
Finchley, N12

Telephone:
01-445 8461
01-446 4914

ALEXANDER JEROME

161 Ballards Lane, N.3. 349 2627/8/9

Telescopes, Binoculars, Magnifying-glasses, Sunglasses, barometers.

Open Monday — Friday 9.00 a.m. — 5.30 p.m.
Saturday 10.00 a.m. — 12.00 noon.

W. CHANNON
Member of the Master Locksmiths Assoc
SPEEDY LOCK FITTING SERVICE

TALLY HO CORNER
365 BALLARDS LANE
NORTH FINCHLEY, N12 8LJ
01-445 8714

45 THEOBALDS ROAD
LONDON, WC1X 8SP
01-242 8045



JUST-A-SECOND

135 BALLARDS LANE LONDON, N.3

HAVE CASE WILL TRAVEL

Luggage, Travel goods, Handbags, Wallets, Trunks and Umbrellas etc.

Have Case Will Travel
102 Ballards Lane
Finchley, N3
01-346 0109

PARKES

142 Ballards Lane, Finchley, N3
01-346 1416

MAIN AGENT — G-PLAN
PARKER KNOLL and BEAUTILITY

SUBSTANTIAL DISCOUNTS ON ALL FURNITURE AND BEDDING

Credit Facilities

ROBERT & ALAN FURNISHINGS LTD.

invite you to call and inspect their extensive range of FURNISHING FABRICS
CURTAIN MAKING,
LOOSE COVERS AND UPHOLSTERY
MADE TO YOUR OWN SPECIFICATION
REPRODUCTION FURNITURE • TERYLENE NETS

24 BALLARDS LANE, FINCHLEY, N3. 01-346 1245

**FINCHLEY CASH
REGISTERS
LIMITED**

1162 HIGH ROAD, N20 0RA

ELECTRONIC CASH
REGISTERS
FROM £230.00RECONDITIONED
N.C.R.s
FROM £79.00ALL MAKES OF TILL
ROLLS SUPPLIED

01-446 0320/4929

**D. R. FIELD
LTD.***Electrical
Contractors***01-446 2366**Domestic,
Commercial and
Factory work
undertaken

N.I.C.E.I.C. Approved

**HILLSIDE
HAIR
FASHIONS**855 High Road
N12**01-445 0360***The best hairstyling
for both men and
women at competitive
prices*

YOUR MAIN

*Clarks*FITTING
SPECIALIST

Established 1891

**FINCHLEY
SHOE STORES**
831 High Road,
North Finchley
Tel: 445 3361*Closed Thursday***PETITE
JEWELLERS**Offer 15% Discount
on all watchesStockists of Gold
and Silver JewelleryWatch repairs on
premises**853 High Road
N20
Tel: 445 9010****The
Collection**

Clothes for Him

*Your Local discount
fashion centre***829 High Road
Finchley, N12
Tel: 01-445 5112****BEZAZ**674 High Road, N.12
01-445 8231Stockist of latest
styles in children
and teenage clothes.Also
fashion accessories
and schoolwear.Prices to suit
your pockets.
Our speciality
Tee-shirts printed
while you wait.**Best news ever
on DIY prices
in N. Finchley**Famous names
like Dulux, Wymura,
Solvite, Tetron.Top quality paints,
wallcoverings, tiles, tools and
home improvement materials.
All at incredibly low prices.**Ripolin**

Home Improvement centre

778 High Road, North Finchley.**1st** IN SERVICE
IN STOCKWHOLESALE
AUTOMOTIVE PARTS
and ACCESSORIES
from:**R. LE MAR
LTD.**1003 High Road,
Finchley
445-6331/2
17-19 Eldon Road,
Wood Green
888-2430/1827**RENATO
GASPARDIS**

for

Fancy Lighting
Fancy Glassware
and
Fancy Ornaments*Fancy a Look?***857 High Road
London, N12
01-445 3319****Train for
Wine Shop
Management****Greater London Area**Gough Brothers Limited, a subsidiary of Scottish
and Newcastle Breweries are looking for young
people over the age of 20, wishing to make a career
in retail management.If you are ambitious, energetic and have a confident
manner and good common sense, we would like you
to join our next training scheme. We will train you in
all aspects of Wine Shop Management including
sales and marketing techniques, branch administra-
tion, product knowledge, stock control and
customer handling.Whilst training you will be earning a salary of £3588
— £3827 depending on age together with travel
allowance. On satisfactory completion of your
training programme it is anticipated that you will be
promoted to Relief Manager earning £3947 — £4186
plus travel allowance. Finally, your success as Relief
Manager could mean further promotion to manager
of your own shop, like the one featured in this paper,
with an increase in salary plus an annual bonus.For more information and an
application form, please telephone
our Personnel Department on
01-640 5131.**GOUGH BROTHERS**WINE MERCHANTS
3, JUSTIN MANOR, 341 LONDON ROAD, MITCHAM
SURREY CR4 4BE Tel: 01-640 5131**CHIX
CHOX**GOOD FOOD
GOOD SERVICE
GOOD PRICES793 High Road
N12
01-445 2016**ODDBINS
WINE & SPIRIT
MERCHANTS**

600 WINES

from
£42 to 99p822 Finchley
High Road
Tel: 446 3697OPEN
Mon.—Sat. 9 am — 7
pm**TIREMAN TYRE
SALES**304 BALLARDS LANE, N12
PHONE 445 5444TYRES. BATTERIES. PUNCTURES.
ELECTRONIC WHEEL BALANCE
AND TRACKINGOPEN 8.30—5.30
SAT. 8.30—4.30

B/Card — A/Card — Diners Club

**NEXT MONTH'S
FEATURE****FINCHLEY ROAD AND
GOLDERS GREEN ROAD
FOR****ADVERTISING RATES
TELEPHONE 366 4626/7**

Letters to the editor



First 205 bus at work

I enclose a photograph (see above), taken by me outside Colindale Underground Station of the first bus at work on London Transport's new 205 service on Saturday, May 17.

The bus is an AEC Swift 67-seater single decker new to LTE in 1971. It is allocated to Edgware Garage who are responsible for the 205 service. The driver is Mr. A. V. Jones.

Your readers may be interested to know that the 205 route is likely to be the last new London Transport service to be operated by this particular type of AEC Swift bus. Indeed, it is likely to be one of the last routes to operate them at all. Those at

Edgware Garage are planned for replacement by new Metro-buses, possibly by the end of 1980. All AEC Swifts should be withdrawn from service in the next 18 months or so.

P. Hoskins,
12 Tavistock Road,
St. Helier Estate,
Carshalton, Surrey

(Note: The 205 bus route serves the Grahame Park Estate and links Mill Hill Broadway with the Edgware Road, Colindale. There is a 10p flat rate fare and the bus runs at half-hourly intervals except on Sundays when there is no service. The last bus leaves Mill Hill Broadway at 10.01 pm.)

Cancer research plea

May I refer to the letter from the Public Relations Officer, Jigsaw Committee, Cancer Research Campaign, in Civic News.

I have had intimate and distressing experience of this disease and of its painful advance to its terminal state.

With sympathy and understanding I would like to suggest that Cancer Research Campaigners let the public know whether any of the money collected is allocated to grants for researchers who are exploring, developing and perfecting alternatives to the use of animals in preventive and arresting research into cancer in its many forms. Alternatives to the use of animals need to be encouraged and they need to be publicised.

Trusts have been formed to allocate grants to researchers exploring alternatives to animals in laboratories. These Trusts are memorials to humans whose memory is worthy of keeping alive. To name a few of such, there is the Lawson Tait Trust. The Humane Research Trust, the Lord Dowding Trust and that sponsored by the Vegan Society as a memorial to Dr. Frey Ellis,

who until his death, was President of the Society; there is also the Dr. Hadwen Trust.

I would like to mention the Marie Curie Memorial Foundation for the welfare of cancer sufferers, which provides homes for such patients and sends skilled nurses, specially trained in the nursing of cancer sufferers who attend to the needs of such patients in their own homes.

Violet I. Mitchell (Miss),
7 Langford Road,
Cockfosters

Plots to let

We have one or two plots — and there is always a turnover — on the Observatory allotments site, reached via Harley Avenue, Mill Hill.

Contact our plots secretary, Dr. Ivor Brown, 11 Limes Avenue, Mill Hill, NW7 (tel. 959 7713).

John Hart (Chairman),
11 Mountview, NW7
(Tel. 959 5182)

Letters to the editor should be sent to: Civic News, Town Hall, The Burroughs, Hendon, NW4 4BG.

Pavement problems

As a long-time campaigner for pedestrians' rights, I welcome the Council's decision to act against pavement parkers.

Meanwhile, it is a pleasure to report that in my part of the Borough many motorists are co-operating by parking correctly close to the kerb. A number of residential roads are thereby much improved in appearance and pedestrians can walk with more convenience and safety. Friern Park deserves honourable mention. A black mark for some adjacent roads.

It is particularly annoying to find grass verges spoilt by thoughtless parking.

M. C. Hodgkinson,
26 Beech Lawns, N12

I am 78 and fairly spry for my age but am getting afraid to go out and post a letter because of the young people (not necessarily children) who appear to think that the pavements are cycling tracks to which they have undisputed rights.

I have never as much as heard a bicycle bell sounded as a warning. In fact very few of the bicycles concerned appear to have a bell to ring.

The roads in my immediate neighbourhood are very quiet indeed and well suited for young people to train where to ride.

Life is hard enough on the elderly, goodness knows, without this unnecessary hazard. Please, can something be done about it.

D. E. Burton (Mrs.),
48 Russell Gardens,
Golders Green

I wholeheartedly agree with those correspondents who are pleased that the Council are attempting to clamp down on motorists parking on pavements. The road is meant for the motor vehicle and the pavement for pedestrians.

However, in fairness to the motorist, I do not think that one can blame them wholly for the considerable damage to public footpaths, although the motor car that is parked continuously on the pavement will cause structural damage. The largest share of the blame must go to heavy vehicles. Motor cars do not smash up large sections of paving stones and in my area where the pavements have only just finished relaying pavements the evidence is there to be seen. No family motor car could cause this amount of damage.

It seems that the drivers of vehicles, as a matter of course, mount pavements even in the quietest roads where there is no danger whatsoever of damage to their vehicles. I also consider that by parking on the pavement, especially on busy roads such as Friern Barnet Lane and the High Road, Whetstone, motorists are giving further licence for road users to travel at speeds beyond the limit.

There are many exceedingly wide pavements that could be reduced to form parking bays. This would enable car owners to park their vehicles with some measure of safety.

Is this 'pie in the sky'?

E. J. Tett (Mrs.),
46 Rasper Road,
Whetstone

Volunteers wanted

The Jewish Society for the Mentally Handicapped (JSMH) was founded two and a half years ago as a registered charity aiming to work within the community.

One of our most successful projects has been the integration of a number mildly retarded children and teenagers into an ordinary youth group.

This summer, we are organising a play scheme for children aged between six and 12. The project will be run by an educational psychologist but she needs voluntary helpers who can make a firm commitment to work with the children for at least one session.

No particular qualification or skill is necessary, although people who can play a musical instrument, have interests in drama, painting, craft work, puppets, swimming and riding will find tremendous scope for their talents!

I am sure that the volunteers will gain as much as the children and I hope that you will be able to join us.

We will, of course, pay all expenses.

Place: Edgware Federation Synagogue.

Times: 4th—15th August (Mon.—Fri.).

Sessions are 10 am to 1 pm and 1 pm and 4 pm.

Further information from Mrs. Rhona Quinn, 24 Lakeview, Edgware (tel. 958 6852).

Olga Deamer, Wembley

Happy Holidays

THROUGHOUT the Borough entertainments, sports and play schemes are being organised for the school holiday.

Last month *Barnet Civic News* listed the main Holiday Play Schemes. For details of those contact the Youth and Community Service of the Education Office at Friern Barnet Town Hall, telephone 368 1255.

This month we list the entertainments being staged in the Borough's parks.

There are also two play leadership schemes being held, in Oak Hill Park, East Barnet, and Watling Park, Burnt Oak. These run from 10 am to 12 noon and 2 pm to 4 pm on weekdays from July 28 to August 1 and August 11 to 29. Children just turn up for these sessions which are under the guidance of a selected youth leader.

Why not learn to swim?

CRASH COURSES for children who want to learn to swim are being organised at Copthall Swimming Complex in a series of ten-day courses, from Monday to Friday, for two weeks. The charge is £8 for ten lessons.

The first course, runs from

Monday, July 28, to Friday, August 8; the second, from Monday, August 11, to Friday, August 22; and the third, from Tuesday, August 26, to Friday, September 5 (one day short because of the Bank Holiday and the cost is £7.20). Bookings should be made at Copthall Pool in person. For information telephone 203 4187.

A course in personal survival geared towards the Amateur Swimming Association bronze, silver and gold medals, is also being organised. This runs from Tuesday, August 26, to Friday, August 29, and Monday, September 1, to Friday, September 5. The cost of nine half-hour lessons is £7.20. Details from Copthall Pool.

Or try a new skill?

CENTRE POINT, the arts and leisure centre based on Grahame Park School, is open throughout the summer holidays, offering varied programmes of recreation and sport.

These include pottery and screen printing courses from July 28 to August 8. Enquiries to Centre Point, Corner Mead, Grahame Park. Telephone 205 7113.

EDGWAREBURY PARK, EDGWAREBURY LANE

11 am

TUESDAY	
July 29	Les Nottle, Adventures of Mr. Punch
August 5	Richard Stupple, Uncle Richard
August 12	Bob Freeman, The Wizard
August 19	Roy Grout, Children's Entertainer
August 26	John Peake, Peake of Perfection

JULY
Mon. 28

Wed. 30

AUGUST

Mon. 4

Wed. 6

Fri. 8

Mon. 11

Wed. 13



ENTERTAINMENT

MONDAY

11 am
Watling Park
Watling Avenue
Burnt Oak

July 28-Aug. 2
Aug. 4-9
Aug. 11-16
Aug. 18-23
Aug. 25-30
Sept. 1-6

Vernon Sisters
Les Nottle
John Peake
Bob Freeman
Roy Grout
Derilea

3 pm
Grahame Park
Hendon

Vernon Sisters
Les Nottle
John Peake
Bob Freeman
Roy Grout
Derilea

TUESDAY

11 am
Halliwick
Recreation Ground
Coppetts Road

Vernon Sisters
Les Nottle
John Peake
Bob Freeman
Roy Grout
Derilea



WOOLCO DEPARTMENT STORE



SUMMER BONANZA SALE
COMMENCING MONDAY, 14th JULY
FOR 2 WEEKS
DOORS OPEN 9 a.m.
HUGE BARGAINS IN ALL DEPARTMENTS

HERTFORDSHIRES LARGEST SINGLE FLOORED FAMILY STORE

- 50 Bargain packed depts.
- Credit Shopping
- FREE parking for over 1000 cars
- Late shopping 8pm Tues-Fri.
- Modern while U wait or shop tyre fitting bay
- Restaurant for lunch or snacks

IN FACT THE ONE STOP SHOP THATS GOT THE LOT!

OPENING HOURS: Mon 9am-6pm, Tues Wed Thurs Fri 10am-8pm, Sat 9am-6pm.

Woolco Department Stores, 98 Town Centre, Hatfield, Herts. Tel: 66161 66162 68924

OLD COURT HOUSE, WOOD STREET, BARNET

3 pm

Grout, Children's
Entertainer
Nottle, Adventures of Mr.
Punch
Freeman, The Wizard
Alden, Magic and Punch
and Judy
Peake, Peake of
Perfection
ard Stuppel, Uncle Richard
Amaze

Mon. 18 Roy Grout, Children's
Entertainer
Wed. 20 Ron Alden, Magic and Punch
and Judy
Thur. 21 Uncle Arnold, Fun and Magic
Fri. 22 Richard Stuppel, Uncle
Richard
Mon. 25 Bob Freeman, The Wizard
Wed. 27 John Peake, Peake of
Perfection
SEPT.
Fri. 5 John Peake, Peake of
Perfection

**VICTORIA RECREATION GROUND,
NEW BARNET**

3 pm

TUESDAY

July 19 Les Nottle, Adventures of Mr.
Punch
August 5 Richard Stuppel, Uncle
Richard
August 12 Bob Freeman, The Wizard
August 19 Roy Grout, Children's
Entertainer
August 26 John Peake, Peake of
Perfection



EVENTS IN THE BOROUGH'S PARKS

FRIDAY

FRIDAY	WEDNESDAY	THURSDAY	FRIDAY	SATURDAY
3 pm	11 am	11 am	3 pm	3 pm
Wingrove Park	West Hendon Park	Riverside Walk	Mill Hill Park	Hendon Park
Edgware Road	Goldsmith Ave.	Lullington Garth	Wise Lane	Queens Road
Edgware		Woodside Park	Mill Hill	Hendon
Vernon Sisters	Vernon Sisters	Vernon Sisters	Vernon Sisters	Vernon Sisters
Les Nottle	Les Nottle	Les Nottle	Les Nottle	Les Nottle
John Peake	John Peake	John Peake	John Peake	John Peake
Bob Freeman	Bob Freeman	Bob Freeman	Bob Freeman	Bob Freeman
Roy Grout	Roy Grout	Roy Grout	Roy Grout	Roy Grout
Derilea	Derilea	Derilea	Derilea	Derilea

LAWSONS

SHED 6' x 5'
FOR ONLY £99.99

PLUS A HUGE RANGE OF OTHER SIZES TO CHOOSE FROM

LADDERS

LOTS OF SIZES AT

40% OFF MRP

SPECIAL JULY OFFER

11ft 3in extends to 20ft 5in **£49.00**
12ft 11in extends to 23ft 9in **£56.00**

LIMITED STOCKS

LADDER STAND-OFF FOR ONLY £14.00

GREENHOUSES

TOP QUALITY FULL SIZE
6ft 3in x 4ft 4in **£89.00**
6ft 3in x 8ft 5in **£99.99**
8ft 4in x 10ft 5in **£199.00**

all pre-packed ready for you to take away

AUTOMATIC VENTILATOR CONTROL FOR £10.50
WATER BUTTS, STAGING, SHELVING

1208 High Road, Whetstone N.20

opposite Ever Ready tower block **01-446 1321**

301 Burnt Oak Broadway, Edgware

opposite Edgware General Hospital **01-952 0111**

ABBAY TIMBER & FENCING CO.

63 Lowlands Road, Harrow

rear of Harrow on the Hill station

01 864 0088

FENCING

Creosoted Boarding and Rails, Rustic and Interwoven Fence Panels, Timber and Concrete Posts, Wire Mesh and Chainlink Fencing with Angle Iron and Concrete Posts, Oak Fencing and Posts, Gates, Repair Spurs and Rail Brackets, Trellis, Rustic Garden Poles, 8ft and 10ft long.

DOORS

Over 2,000 doors are held in stock at our branches. If we do not have your door in stock we can supply within days.

PLYWOOD

Plasterboard Blockboard
Chipboard Hardboard
Insulation Board

IROKO BENCHES

4ft 0in **£43.00**
5ft 0in **£49.00**

PICNIC SETS

3ft 9in **£39.00**

TIMBER

SAWN and PLANED
SOFT WOOD
SOFTWOOD MOULDINGS
SKIRTINGS
TONGUE and GROOVED
FLOORINGS
TONGUE and GROOVED
CLADDINGS
SASH STILE and
FRAME SECTIONS
TILE BATTENS
RAMIN MOULDINGS
DOOR LININGS

TREATED
SOFTWOOD

4ft 9in **£44.00**

L & K GLASS

Are your local stockist for **GALLEON DOUBLE GLAZING**

REPLACEMENT WINDOWS

- ★ ANODISED ALUMINIUM
- ★ TESTED AND WEATHERPROOF
- ★ SINGLE OR DOUBLE UNITS



PATIO DOORS AND SECONDARY DOUBLE GLAZING
ESTIMATES WITHOUT OBLIGATION

73 WOODHOUSE ROAD, N12. Tel 445 6860

NAME:

ADDRESS:

Tel. No:

Send Coupon for details to:
GALLEON DOUBLE GLAZING (LONDON), FREEPOST, FINCHLEY, N12.
Tel: 01-445 6860

I require details (Tick Box) Replacement Windows Patio Doors
Single or double glazed units Secondary double glazing

Irene Joss at Thirty-One

all prices slashed for
clearance of current
season's fabulous fashions

SUITS NOW £65 FROM £115
DRESSES NOW £49 FROM £75
AND £25 FROM £45

THE DEMAND FOR OUR
SUN-SYSTEM HAS
BEEN SO GREAT

WE NEED MORE SPACE
OPEN SUNDAYS 10-1

TUE. WED THURS FRI 10-5

THIRTY-ONE BELL LANE HENDON NW4
TEL: 01-203 2909 PARKING NO PROBLEM

SCRAP METAL

WE ARE CASH BUYERS
OF ALL FORMS OF SCRAP METAL
FACTORY COLLECTION SERVICE AVAILABLE
For the latest information and best prices:

TELEPHONE: 368 5444

New Southgate Metals Ltd
Station Road Goods Yard
New Southgate, N11

(On bridge over North Circular Road)

the
fashion
centre

57 Ballards
Lane, N3
Next to Post Office



**ALL BUTTE
KNIT DRESSES
1/2 PRICE**

NORMAN
LINTON
STOCKIST

HOLIDAY DRESSES
£10.99 ALL SIZES

BARCLAYCARD

VISA



TOTTERIDGE HOTEL AND RESTAURANT

A small Country House Hotel of charm and
quality. An ideal and favourite place for your
Accommodation, Wedding, Company Meeting,
or Private Party.

Unquestionably some of the very best food,
service, and atmosphere for miles around.

TOTTERIDGE VILLAGE, LONDON N20 8AE
TELEPHONE 01-445 3666



CREST BATHROOMS

OPENING OFFERS
DISCOUNTS ON OUR DISCOUNTS

MIRA SHOWERS
40% OFF M.R.P.

ACCESS ACCEPTED



NOW OPEN

SHIRES,
TWYFORDS, ARMITAGE,
IDEAL STANDARD, MARLEY, LOTUS,
CARRON, MIX & MATCH

COMPLETE INSTALLATION SERVICE AVAILABLE

2 STATION PARADE, CANONS PARK, STANMORE

TELEPHONE 01-951 0244

NEXT DOOR TO CANONS PARK STATION

CHEF'S DELIGHT

Top Quality Food at REASONABLE PRICES
★ CHILDREN'S MENU



Main Course including Ice Cream and Beverage

Cowboys Choice: Bangers and Beans
Captain's Choice
Fish Fingers and Chips
Special Take-away section:
148 HIGH STREET, BARNET
726 HIGH ROAD,
NORTH FINCHLEY, N12

E.J. (CEBRAS)

Catering equipment
Service Engineer
Corgi Gas Registered
Prompt and efficient service given.
Water boilers serviced and de-scoured.
All catering equipment serviced

Tel: 200-0403

BE SURE BEFORE YOU OPEN THE DOOR



COME ALONG TO
CEPCO
AND SEE OUR DISPLAY OF
DOOR ENTRY SYSTEMS

WE HAVE MODELS WITH VIDEO OR WITHOUT VIDEO

COMPETITIVE PRICES : 48 HOUR DELIVERY : INSTALLATION SERVICE

We also stock a wide range of:

- ★ INTERCOMS
 - ★ RADIO TELEPHONES AND PAGERS
 - ★ BURGLAR ALARMS
- Expert advice always available

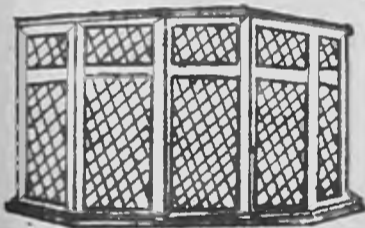


- ★ MULTI-FUNCTION TELEPHONES
- ★ FIRE PROTECTION SYSTEMS
- ★ SECURITY AND SURVEILLANCE SYSTEMS

COMMUNICATIONS & ELECTRONIC PRODUCTS CO.

176 COPENHAGEN ST N1

TEL: 837 2266/278 3627



DON'T CATCH COLD THIS WINTER !!

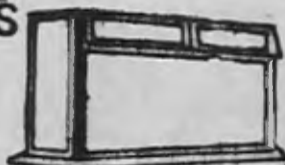
ADD WARMTH AND COLOUR TO YOUR HOME WITH

TEMPO windows

FREE DOOR

01-790 0361/2

- * CHOICE OF 132 COLOURS IN 75 MICRON FINISH
- * FREE ESTIMATES
- * FREE INSTALLATION



NAME
ADDRESS

Tel. No.
Send coupon for full details to:-
FREEPOST, London, E14. No. 7BR.

Tempo Windows, 659 Commercial Road
London, E14. Tel.: 01-790 0361/2

I require details on (tick box)
 Leaded Windows Contemporary Windows
 Patio Doors Residential Doors
 Replacement Windows

CRACKERS CHILDREN'S HOLIDAY SCHEMES

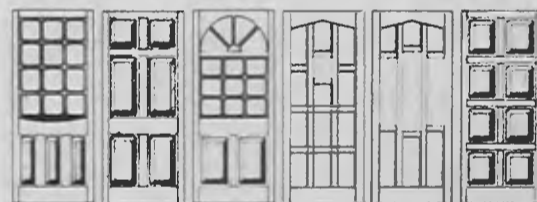
(Non-residential)
Whetstone, North Finchley

For children aged 5-8 years, 9-13 years commencing July 28th)

Activities include: Tee-shirt printing, Enamelling, Glass painting, Model football machines, Metalwork, Tin casting, Drama, Guitar instruction, Arts and craft, Cookery, beading, Dance, Electric model making, etc., Film shows, Indoor and outdoor sports (full-size sports hall) Full-day coach outings to Bekonscot Model Village/High Wycombe/Woburn Abbey etc.

Cooked lunches included, professional and experienced adult leaders. Ratio one leader to 10 children.
For further details and brochures telephone June 01-445 3358 or Sylvie 01-445 2978

BEWARE OF IMITATIONS



Many more styles.

Make sure you contact the experts before choosing your new front door.

We are London's leading door specialists with many years experience in the supply, construction and fitting of top quality hardwood doors.

Our staff will give you free, professional advice on the right styles and materials to fit your needs (and your door frames) thus ensuring your new door will keep its appearance and give years of lasting value.

- ★ Any size to order
- ★ Matching garage doors
- ★ Frames' screens & architraves
- ★ FREE survey and estimate
- ★ Expert fitting service
- ★ Full range of locks and fittings

Call in or send now for our free colour brochure.

COTSWOOD

Cotswood Door Specialists Ltd
5 Hampden Way Southgate N14
Tel: 01 368 1664



SPEND SUNDAY MORNING AT

DAVID JACOBS TILE CENTRE

18 Bowes Road, N11 (North Circular Road) 881 0141

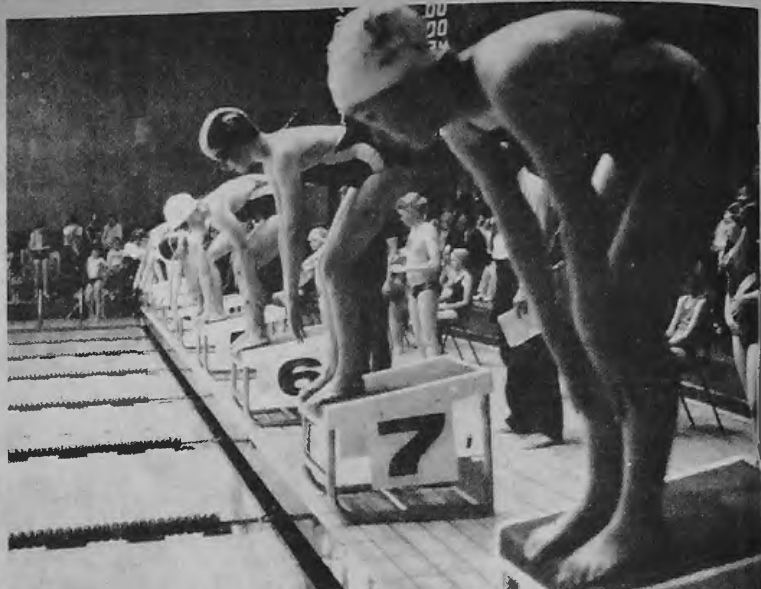
PERSONAL SERVICE
FREE TECHNICAL
ADVICE - FREE
DELIVERY WITHIN 10
MILE RADIUS
OPEN EVENINGS
BY
APPOINTMENT

Mon - Thurs
9 am - 6 pm
Fri 9 am - 1 pm

Sun
9 30 am - 1 30 pm
CLOSED
SATURDAY



Youth holds the reins and the photographer's eye as this young rider prepares to enter her class in the Horse Show



All set to make a splash in the junior age group swimming championships at Cophall Pool



A Shaftesbury Harrier takes the High Jump in style during the Youth Athletes Competitions on Sunday

BARNET SPORTS GALA

Middlesex team chosen



The Deputy Mayor, Councillor Victor Lyon, presents the awards for the girls 800 metres: Melinda Cave (Moat Mount) came first with Velda John-Phillips (Bishop Douglass) second and Rosalind Espir (Harrow) third.

BARNET SPORTS GALA is a showpiece for sporting events, bringing thousands of competitors to Barnet Cophall Sports Complex.

From their performances in the Middlesex Schools Athletic Championships young athletes from Barnet Schools will go forward to represent Middlesex in the All England Schools Athletic Championships in Liverpool on July 11 and 12. They are: Jonathan Bruck (Ashmole School) jnr boys 200m; Connor Mullucci (Finchley Catholic High) jnr boys 400m; Eric Kimani (Christ's College) jnr boys 800m; Barry Pasea (Orange Hill) jnr boys long jump; Mark Roberts (Queen Elizabeth's) inter boys discus; David Sweeney (St. James' Catholic High) snr boys 5000m; Jane Kitchen (Moat Mount) jnr girls 800m; Marcia McNeil (Moat Mount) jnr girls javelin; Jackie Wellesley (Edgware) inter girls 400m hurdles; Patricia Udo (St. James' Catholic High) snr girls 100m; Julia Avis (Orange Hill) snr girls discus.



These smart turnouts in the Trade Driving Class were a popular feature of the Horse Show.



Mr. Bob Wilson, manager of the Trustee Savings Bank, Hendon, presents the TSB trophy to Haringey Athletic Club, winners of the 10km open road race.



Putting the 'Vroom' into soccer in the Motoball competition as a shot heads for goal.



An event for all ages — the Copthall Fun Run organised by Barnet and District Athletic Club.



Miss Kristel Hill of Wellside Close, Barnet, one of the successful competitors in the show jumping.

Help in times of stress

MENTAL health problems can affect everyone, all age groups and walks of life — young adults who are having difficulties striking out on their own and making friends; inexperienced parents with demanding toddlers; men and women of middle age who need to adapt to their children leaving home and to retirement; and the elderly who may face bereavement and isolation.

A variety of emotional problems may result from such circumstances, including persistent anxiety, depression, hostility or suspicion towards others, a loss of interest in life and feelings of being overwhelmed by insurmountable obstacles.

A considerable proportion of people with these troubles may not need to enter a psychiatric hospital, others may have been helped in hospital, but may still feel the need to have a place they can turn to: one which provides an accepting and encouraging atmosphere in which individuals may regain or develop their ability to cope independently of professional care.

Here in the Borough, a new centre is to be opened in July to

help meet the needs of people with this kind of problem. The centre is in a large, older style family house at 154 Station Road, Hendon.

Financially the project has been made possible by joint funding with the Area Health Authority, the Borough's Social Services Department being responsible for its management and running. Up to 30 people will be able to attend on the basis which suits them best — anything from one afternoon a week to full-time attendance during a really bad patch.

The members of the Station Road Centre will have the chance to deal with tension through relaxation training; become aware of how to get on better with others; and how to handle the problems of everyday living.

They will be encouraged to build up new interests and hobbies, such as D.I.Y., table games, gardening and painting — activities which can be pursued in their life outside the centre.

They will have the opportunity to discuss and work out their personal difficulties with other

members and the staff, who will have experience in mental health day centre work and qualifications in psychology, art therapy and psychiatric social work. The members themselves will have a vital part to play in the running of the centre — in preparing the midday meal, making and repairing articles for the centre and in organising their own drop-in café-club.

It is also intended that the facilities of the building will be available for other members of the caring professions to hold meetings or discussion groups, for the local branch of MIND to run their information service and weekend social club, and as a venue for courses on mental health issues.

CONTACT POINT

Information about the centre can be obtained from Melanie Bray, the organiser, who would be pleased to hear from you, either by phone on 349 9121, extension 178, or by letter to 154 Station Road, Hendon, NW4.

CALL IN AT YOUR CALLPOINT

CALLPOINTS — that is the name for a new neighbourhood service for people who need help, information or advice in the Social Services field.

New Barnet Area Office of the Social Services Department, Area Team A, has opened two local sub-offices which are manned one day a week. The idea is to move out into the community and have offices — or Callpoints — which are most accessible to the public.

One Callpoint is at the Old Bull Community Centre, near Barnet Church, and is open on Wednesday afternoons. The other is at Dollis Valley Community Centre, and is open on Thursday afternoons. Opening hours: 3.30 to 5.30 pm.

A social worker and a Citizen's Advice Bureau member will be on duty and able to deal with a wide range of queries.

The Callpoints are informal and it is hoped that people will drop in for helpful advice. Details can be obtained from Area Team A on 449 5511.

**Buy direct
from Manufacturer**

**Ten Year
Guarantee**

**Delivery
Period 6 weeks**

**Silver or White
Finish**

**Loan facilities
with Tax Relief**

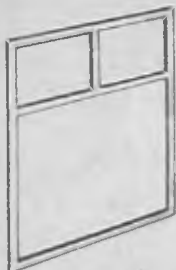
**FREE!
Security locks on all
opening windows**

**FREE Quotations
without
obligation**

Highlight Windows are a local reputable company who have been trading in this area for nearly ten years.

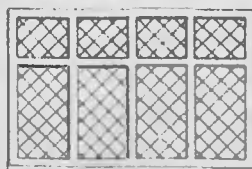
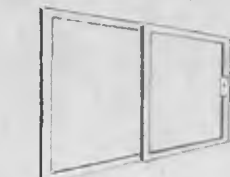
You will receive unbeatable, prompt, personal attention from a

company that cares about its customers and knows all about window design and house construction in this area — you can even visit our factory and see your windows being made.



REPLACEMENT WINDOWS IN MAINTENANCE FREE ALUMINIUM enhance the appearance of your home whilst saving on those large heating bills and eliminating irritating draughts. Over 20 different designs to choose from including Georgian and Lead Light effect.

PATIO DOORS replace those draughty and rotting trench doors with beautiful maintenance free aluminium patio doors. All doors are double glazed using 6mm float glass as standard and are normally fitted in one day. Bring your garden into the home with a 'Highlight' patio door.



**Highlight
WINDOWS LIMITED**

**FROM
£7.00
A WEEK
FOR A FULLY GLAZED
HOME!**

**FREE
COLOUR
BROCHURE
SENT**



**Call us now - on
WATFORD 30656**

Post this coupon today

We are interested in

- Double Glazing Residential Doors
 Loan Plan with Tax Relief
 Replacement Windows Patio Doors

NAME

ADDRESS

TEL NO

Send to FREE POST Highlight Windows Ltd
4 MELINITE ESTATE, BRIXTON ROAD, WATFORD,
HERTFORDSHIRE WD2 5SL
OR TELEPHONE: WATFORD 30656

Skating to a success

BARNET Roller Skating Club, who train at Ashmole Sports Centre, Southgate, Saturday afternoons under their coach, Mr. Ernie Ansell, competed in the Invicta Trophy Team event at Buckmore Park, Chatham, on Sunday June 1. Forty-three teams entered and the competition was split into three heats.

Barnet's team of **Marie Nutt** (aged 11), **Julie Cooper** (12) and **Graham Ansell** (11), shown in our picture left to right, gave a superb performance to win their heat and qualify for the final. The first four teams in each of the three heats contested the final in which Barnet came second to take the silver medal.

The Casino Trophy for dance couples under 16 was held at Buckmore Park the same day. The club entered two couples, both skating in their first competition as partners. Darren Lauchlan (13) and Julia Cooper (12) were a creditable sixth out of 20 entries. Graham Ansell and Marie Nutt were 11th.



BRING OUT YOUR BOOKS

FINCHLEY ROTARIANS are supporting the Ranfurly Library Service, a charity which is fighting illiteracy by sending good, useful books as free gifts to developing countries where English is spoken or taught, and where educational, social and economic progress is hampered by lack of books and the money with which to buy them.

This is a do-it-yourself library scheme in which everyone can help. The demand for books is high and the service has already delivered more than eight million books to 80 countries.

All types of books are required — new and second hand, hardbacks or paper covers. But they must be in good condition.

The books most urgently needed are those suitable for children and teenagers, such as leisure reading for children and young people, general education books for primary, secondary and higher school students. But also wanted are fiction and non-fiction for adults, magazines and periodicals.

If you can spare such books contact Mr. Tony Elkan, secretary, Finchley Rotary Club's International Service Committee, who will arrange collection. Or take the books to either of the Williams Sports Shops at 366 Ballards Lane, Tally Ho Corner, North Finchley, or Gateway House, 328 Regents Park Road, Finchley.

CONGRATULATIONS

Mr. Kenneth Harrison, of West Hill Way, Totteridge, Chief Librarian of the former Borough of Hendon from 1958 to 1961 and for the past 19 years Chief Librarian for the Borough of Westminster, has been awarded the OBE in the Birthday Honours List.

GODDARDS

Builders Merchants, Roofing Contractors

BARNET ROAD, ARKLEY, HERTS.

400 yards from "The Gate" Public House

We supply all heavyside building materials
From a bag of sand to a tipper load of ballast
We deliver in your area at no extra charge, even on
Saturday mornings

The yard opens at 8.00 am and closes at 5.30 each weekday, manned throughout the lunch period, and we are open on Saturdays from 8.00 am to 12.00 midday.

We sell nails by the pound, aggregates by the bag. Single paving slabs, in fact no job is too small. On the other hand, should the family saloon be just too small we can deliver, always within 24 hours, sometimes the same day. And don't despair if you can't get into the office to pay us, we accept C.O.D.

Ring for service: 01-449 1181
01-449 8069

PS Your Roof in Good Order?
Let us Quote You
We are Roof Tiling specialists

Gutterfast

Aluminium Seamless Guttering

Regutter your house from only £2.50 per week

Guaranteed 10 years against leaks



- ★ No more costly maintenance
- ★ No more gutter painting
- ★ Classic lines, large capacity
- ★ 30 year life expectancy
- ★ Usually made and fitted in one day
- ★ Superb quality
- ★ Tough stove enamelled finish

Locally Represented Tel 572 2196

Gutterfast Ltd.
115 Bath Road,
Hounslow, Middx.

GUTTERFAST - THE GUTTER THAT LASTS

To: Gutterfast Ltd.
Freepost, Hounslow, TW3 1BR

I am interested in Gutterfast Guttering and would like

Free Estimate Full Details
Name
Address

Telephone

Barclaycard and Access welcome

FRIERN BARNET SUMMER SHOW, AUGUST 15 & 16

Festival of Arts, Crafts and Fun

Art and horticulture, charity stalls and children's entertainments, fireworks and floral art come together in a festival of family fun — Friern Barnet Summer Show.

The setting is Friary Park, and the dates, Friday and Saturday, August 15 and 16. It is an event to mark in the family diary for this summer show offers something of interest for everyone.

Which is as it should be, for it grew out of the grim wartime days as a celebration of the Dig for Victory campaign under which everyone used their gardens to grow produce or keep chickens and even pigs, and a way to give the children of bomb-torn London a two-day holiday.

This year the Summer Show is putting a special accent on craft with a craft market and demonstrations. People with special skills who would like to take a stall, demonstrate their craft and sell their

products should contact the show's organiser, telephone 349 9121 Ext. 36.

The art exhibition is open to all local artists and there are special competitions for children and schools. The art exhibition organiser is Mr. Timothy Johnson, a local artist and in recent years this aspect of the Summer Show has grown in interest and stature.

One of the big attractions is the horticultural show with its produce, floral art, and handcrafts. At the end of the show there is a sale of produce in the horticultural marquee, the money raised going to help local housebound residents.

This year there will be a special event for handicapped children on the Saturday morning with entertainment and light refreshments. All handicapped children living in the borough are welcome, with their escorts. And senior citizens will also be given free admission to this event.

Add to all this a three-ring exemption

dog show, a baby show, children's sports and fancy dress parade, continuous entertainment, a fun fair and pony rides, and a special display by the dog handlers of Barnet Council Parks Constables Section, and it can be seen that there really is something for everyone to enjoy.

The show ends in an explosion of colour, at 9.30 pm on Saturday, with the Grand Fireworks Display. So be sure to come to Friary Park on August 15 and 16.

Enquiries

More information and details of schedules and entries can be obtained from:

The Show's Organiser
London Borough of Barnet
Gateway House
322 Regents Park Road
Finchley, N3
Telephone 349 9121 Ext 36

The full programme

FRIDAY AUGUST 15

10.00 am Judging of entries in the Produce, Floral Art, Domestic Hobbies and Handicrafts, Winemaking sections — in the main exhibition marquee.

From 2.00 pm Craft Demonstrations in the Arts and Craft Marquee (separate leaflet, available at the Show for times).

2.30 pm Children's Fancy Dress Parade — under cover if wet.

3.30 pm Children's Sports (if wet — will be held on Saturday at 5.00 pm).

4.30 pm John Peake — The Peak of Perfection — Children's Entertainer — Magic and Fun.

4.45 pm Display by Guard Dogs of the London Borough of Barnet Parks Constables Section.

5.00 pm Penalty Kick Competition for teams from Boys' Clubs Heats and Final.

From 6.00 pm Craft Demonstrations in the Arts and Craft Marquee (separate leaflet, available at the Show, for times).

6.30 pm Children's Pet Show — under cover if wet.

6.30 pm John Peake — Children's Entertainer.

SATURDAY AUGUST 16

10 am to 12 noon Special Event for Handicapped Children (free admission for senior citizens). Richard Stupple of the Inner Magic Circle — Magic; Punch and Judy, Clown Roma and his dog — Hobby Horse Races.

From 1 pm Exemption Dog Show — Three Rings for Showing and Training Classes. Under licence from the Kennel Club.

From 2 pm Craft Demonstrations in the Art and Craft Marquee.

2.15 pm Richard Stupple of the Inner Magic Circle, Magic and Punch and Judy.

2.30 pm Baby Show — Classes 1 and 2.

2.45 pm Clown Roma with Hobby Horse International.

3.15 pm approx. Baby Show — Classes 3 and 4.

4.30 pm Clown Roma.

5 pm Children's Sports — if not held on Friday.

5.30 pm Baby Show prizegiving.

6 pm Richard Stupple.

From 6 pm Craft Demonstrations in the Art and Craft Marquee.

7.30 pm Official Prizegiving — in the Theatre Tent. Trophies presented by the Mayor of the London Borough of Barnet, Councillor Mrs. Edna James.

8.30 pm Exhibition Marquees Close.

9 pm Sale of produce in the Horticultural Marquee.

9.30 pm Grand Fireworks Display.

VOICE OF YOUTH

BARNET COUNCIL OF YOUTH is running a membership drive to recruit young people keen to express the views of youth on the services and facilities in the borough.

Membership is open to all ages between 14 and 25 who are members of a youth organisation affiliated to the Barnet Youth and Community Service.

The Council of Youth meets at Friern Barnet Town Hall in the Council Chamber on the first Thursday of every month. The next meeting is on September 4 at 8 pm, when anyone in the qualifying age group will be welcome to attend.

In the past year the Council of Youth have organised visits to Swaylands School for handicapped children, run discos, entered a float in Finchley Carnival, and above all acted as a forum for the exchange of ideas and opinions. And these ideas go forward to the Borough Council.

The link between the Council of Youth and the local authority is the Youth and Community Services Office of the borough's Education Department. For details contact the honorary secretary, Clare Murphy, 16 Woodbury Gardens, N20, telephone 445 7489.

Local holiday care schemes

THE COUNCIL'S Education Department is organising a holiday care scheme for the children who attend Mapledown School which caters for children with severe learning problems.

The scheme will run from August 4 to 22 and the leaders will be from the school's own teaching and welfare staff.

Another holiday scheme is being run by the London Borough of Brent for physically handicapped children at Grove Park School. This will be attended by many Barnet children.

MOTORING GUIDE & SERVICES

TOYOTA

**Come to Pannell's and view the
EXCITING RANGE OF TOYOTA CARS
FROM THE STARLET TO THE SUPER CROWN**

The Starlet from £3,094
The Corolla from £3,249
The Carina from £3,919
The Celica from £4,397

The Cressida from £4,538
The Corona from £5,268
The Crown from £8,500

All models currently in stock — **COME AND HAVE A TEST DRIVE**
Full servicing and after sales service. Export and leasing facilities available.

PANNELL'S OF LONDON

HORNSEY N.8
01-348 4407

GOLDERS GREEN N.W.11
01-455 3563/4

FINCHLEY N.2
01-349 2792/3

BALLARDS GARAGE

SAAB Sales and Service

FREE 24 Hour LOAN of our
new model SAAB 900 Automatic
with Power Steering
WITHOUT OBLIGATION

Enjoy the pleasure of Sweden's
best buy for one full day

We also have available a selection of
guaranteed used Saabs which carry the
"Saab Safeguard Motor Insurance
Scheme" which saves approximately 50%
on premium.

*A telephone call today will enable us to
acquaint you with the best deal in new or
used Saabs which will carry the Ballards
personal guarantee of satisfaction.*

204-206 Ballards Lane
Finchley N3
Tel: 346 6696



SAVE YOUR MONEY!!

**PAY LESS
FOR
YOUR
CAR SPARES**

COMPLETE D.I.Y. MOTORISTS SERVICE

SPECIALISTS IN CAR SERVICING SPARES, STARTER MOTORS,
ALTERNATORS, RADIATORS, SHOCK ABSORBERS, TUNGSTON
BATTERIES, ETC.

LUCAS AGENTS

TRADE SUPPLIED — SPEEDY DELIVERY.

SPECIAL OFFER: GIRLING gas shock absorbers
30% off list price. Offer closes 31st July, 1980.

STOCKISTS OF C.B. RADIO ACCESSORIES
Open Mon.—Sat. 8.30 am—6.00 pm
Sun. 10.00 am—1.00 pm

CAR SPARES (FINCHLEY)

151 BALLARDS LANE, FINCHLEY, N3
PHONE: 349 0524

TEMPLE FORTUNE GARAGE LTD.

1089 Finchley Road,
London NW11 0QJ.
455 9955



RENAULT

**THE OLDEST ESTABLISHED RENAULT DEALER
IN THE LONDON BOROUGH OF BARNET**



RENAULT

PETROL PRICES UP YET AGAIN NOW MORE THAN EVER BEFORE



- ★ 6-YEAR GUARANTEE AGAINST RUST AND CORROSION
- ★ OPERATING ON 2-STAR PETROL
- ★ 10,000 MILES SERVICE INTERVAL

THINK VOLKSWAGEN — THINK
Walter Scott Motors (London) Ltd
99 Chaseside, Southgate, N14
Telephone: 01-882 3012
**WE HAVE TO OFFER
A BETTER SERVICE**



**SPECIAL 2 YEAR EXTENDED
WARRANTY ON ALL VAUXHALLS
BOUGHT FROM US!**



It's easy to buy a new Vauxhall from us — because we've extended Vauxhall's warranty for a whole year more to two years' cover on production of this advert. All Vauxhalls in stock ready for immediate delivery.

TELEPHONE FOR MORE DETAILS!

AUTOPORT (LAP) LTD.

ALLUM LANE, ELSTREE, HERTS.
(Next to Elstree and Borehamwood station)

Telephone 953 9041/3618

EXCELLENT SERVICING FACILITIES AND EXTENSIVE RANGE OF
QUALITY USED CARS

VAUXHALL



THE LION'S SHARE

5%

FOR ONE MONTH ONLY
YOU HAVE THE OPTION
OF ONE YEAR ROAD
FUND LICENCE PLUS
FULL TANK OF PETROL
PLUS FREE RADIO AND
FITTING OR UNDERSEAL
5% INTEREST RATE ON
THE WHOLE PEUGEOT
RANGE.

**BRENT CROSS
GARAGE Ltd**

202 6101/5 or
202 4710

HENDON WAY, NW4



PIONEER SUPER DEALER

MAIN AGENTS AND DISTRIBUTORS FOR:
PIONEER, BLAUPUNKT STAR DEALER, SANYO, PHILIPS, JENSEN,
SHARP, UHER, NATIONAL PANASONIC, ETC

Britax Weather-Shield Sunroofs
20% OFF SUN HATCH INSTALLATIONS

TWO SIZES NOW AVAILABLE

ELECTRIC WINDOWS, CAR BURGLAR ALARMS, CHILD SEATS &
HARNESSES, REAR ADULT SEAT-BELTS, AUXILIARY LAMPS,
REAR WASH-WIPES, AIR HORNS, ELECTRONIC IGNITIONS
ALL INSTALLED BY QUALIFIED ENGINEERS

KAYMAR IN-CAR HI-FI

70 HIGH STREET, EDWARE, MIDDLESEX. 01-952 1506
or when closed ring Teledata on 01-200 0200

BOB THOMAS (MOTOR CYCLES)

of

THE FINCHLEY HONDA CENTRE

Full Sales Service and Spares. Excellent allowances on Part Exchange.



201 & 207 REGENTS PARK ROAD
FINCHLEY, N3 3LN. Tel: 01-346 4083



Your Councillors

EAST FINCHLEY

East Finchley Ward is an area of contrast with turn-of-the-century housing and new council estates being built on its northern boundaries. There is a strong immigrant population but also a keen sense of community and the Neighbourhood Centre is a focal point for advice and a popular meeting place.



COUNCILLOR MRS. BARBARA LANGSTONE was elected to the Council in 1978 having contested East Finchley previously, though unsuccessfully, in 1974.

She finds herself in the thick of politics at local and national level — as a councillor and as the wife of Roy Langstone, Conservative agent for the Prime Minister's constituency of Finchley. 'I have been involved ever since I joined the Young Conservatives at the age of 17', she told Civic News. For six years she was private secretary to a Member of Parliament and later she worked in the Finchley constituency office for several years.

Barbara found herself actively campaigning in local issues when she fought against the move to comprehensive education while she was secretary of the Parent/Teacher Association of Woodhouse School, where her son Antony was a pupil. Today she is a governor of Woodhouse and Friern Barnet Schools as well as Bishop Douglass and Manorside, Martin and Tudor group of primary schools.

She serves on Education, Social Services and Libraries and Arts committees of the Council and is Vice-Chairman of the newly-formed Building Resources Committee. She was a founder member of Barnet/Finchley Community Health Council, is a London Boroughs' nominee on North West Thames Regional Health Authority and represents Barnet Council on Barnet Health Area Joint Consultative Committee.

She is on the management committee of East Finchley Neighbourhood Centre and has recently been elected to the Women's Section of Finchley Branch of the Royal British Legion.

Barbara also manages a part-time job and with little spare time finds that she often has to blend her private interests into her political life.



COUNCILLOR MARY PHILLIPS is a member of a family all dedicated to voluntary and community service, and deeply concerned with the local community.

Born in Finchley and educated at Manorside and Henrietta Barnett Schools she went to training college in Doncaster and returned to teach at Oakleigh Infants School until her marriage in 1954 to Godfrey Phillips whom she met in the Finchley Young Conservatives. For the past 14 years she has been a nursery teacher at Goodwyn School, Mill Hill.

She has four children. Her eldest son, David, is an assistant youth leader at Alyth Youth Centre; Julian, now married, worked with handicapped children as a volunteer in swimming and riding courses; Michael has represented Barnet in the badminton team for the Youth Games since 1977, and Susan, has taken over where Julian left off and is an assistant youth leader at Alyth.

Mary Phillips won her East Finchley seat in 1978 and serves on the Town Planning Committee on which she is vice-chairman of the Central Divisional sub-committee; General Purposes Committee and Carnival and Shows Committee, and is a panel member for Finchley Carnival. She is also on Finchley Old People's Welfare Committee, taking a particular interest in the Herbert Wilmot luncheon club.

She is a Governor of a group of primary schools, the borough's special schools, and of Christ's College and Bishop Douglass. She also serves on the management committee of Finchley Neighbourhood Centre and has recently been elected to Finchley and Whetstone Chamber of Commerce.

Her own special activities include volunteer help for disabled swimming at John Grooms and she takes a great interest in the Council for Christians and Jews.



COUNCILLOR STAN SORRELL is serving on his second Council. He was a member of Hackney Council from 1968 to 1971 and soon after that moved to this borough. He became active in local politics and in 1978 won his East Finchley seat for the Conservatives.

'Politics for me is a lifestyle,' he said. 'I have been a political animal for as long as I can remember. People are surprised when they know that I am a Conservative Councillor and an active Trade Unionist, but I see no conflict. It is all a matter of what you believe and putting your belief into action, whether at work or in the community. I believe in the freedom of the individual.'

Stan is a bus driver for London Transport and a former branch chairman of the Transport and General Workers Union. He is also Vice-chairman of Finchley and Friern Barnet Conservative Association with responsibility for membership.

On the Council he serves on the Public Works Committee, for which his work experience is invaluable and where his opposition to traffic management schemes is often controversial. He is always consulted on such matters as bus routes and parking problems.

He is also on the Housing Committee, in which he takes a special interest. 'I have been a council tenant myself and I know the problems first hand,' he told Civic News.

He is also on Allotments Committee and London Transport liaison committee. He is a school manager for two groups of primary schools and a governor of Christ's College. He is also president by invitation of North Finchley Allotments League — although he himself is no gardener.

MAZDA MONTROSE



NOW IS THE TIME TO LEASE OR BUY

£500

**HOLIDAY OR
FREE PETROL OR
PART EXCHANGE
BONUS**

ON ALL MONTROSE PURCHASES

CALL IN TODAY FOR FULL DETAILS TO

Porter Bros.

(MOTOR ENGINEERS) LTD.

Station Road, Radlett. Tel: 6711

Best P/X prices — or Big Discount!!

DATSUN — TOWER

FOR IMMEDIATE DELIVERY
ON ALL DATSUN MODELS



DATSUN

Coupe

• Spares • Service • Sales

Thames Rico Garages Ltd., Finchley Road NW3
(corner of Hendon Way). Tel. 01-435 6043

★ **C & R Motors** ★
CRASH REPAIRS

SPECIALISTS IN ACCIDENT and
BODY REPAIRS

PANEL BEATING and SPRAYING

*Appointed Repairers to all major
Insurance Companies*

Telephone: 01-368 9379

COMPETITIVE RATES
FREE ESTIMATES

Rear of 25 Hamden Square
Southgate, N14

G D K CAR ELECTRICS

THE GARAGE, WOTTON GROVE
FINCHLEY CENTRAL N3

Tel.: 349 1014

Specialising in

RADIO ALARM
SPOT/FOG LIGHT FITTING
FAULT FINDING
WIRING

STARTERS
DYNAMOS
ALTERNATORS
EXCHANGE UNITS FITTED
WHILE YOU WAIT

Wheels

Motor Caravans also available

**VAN &
TRUCK
RENTALS**

VANS AND TRUCKS 6 cwt to 44 tons (32 tons GVW) FOR U.K.

7 ST ALBANS
ROAD, BARNET
449-1137

OTHER LOCAL
DEPOTS:
BARKING
594-7889
710456

ENFIELD
366 4321

LEA VALLEY
(9) 710 456

FORD

£11.54

a week

Based on a four year lease period
All prices quoted are
exclusive of VAT

Phone **JIM ROGERS**
346 6222

ALEXANDRA

offer you —

- ★ Modern dual-controlled cars
- ★ D.o.E. qualified instructors
- ★ Door-to-door service
- ★ Trial hour £3.50
- ★ Established 11 years

**WE NEVER FORGET
YOU
HAVE A CHOICE**

106A Alexandra Park Road
Muswell Hill, N10
01-883 8579

AUTO ELECTRICAL SERVICES (HARROW) LTD.

Offers a full electrical service for all makes of British and Foreign cars.

All kinds of electrical repairs and replacements undertaken.

A full selection of radios, Hi-Fi's and C.B. accessories in stock including Pioneer, Radiomobile, Philips and Lucas car radios supplied and fitted.

Main agent for Lucas, A.C. Delco, Motorcraft and Smiths Components.

6-8 Whitchurch Parade, Whitchurch Lane, Edgware

01-952 4372

IT'S TYRE BARGAIN TIME



FULLY GUARANTEED
TUBELESS TYRES FROM



£7.90
+ VAT

ELECTRONIC WHEEL BALANCING
PUNCTURE REPAIRS FREE FITTING

We specialise in
JAGUAR/DAIMLER/FERRARI
PORSCHE
HUGE DISCOUNTS ON ALL MAKES

**BLUE STAR
BATTERIES**

FROM ONLY

£14.50 + VAT



Save! Save! at **FIVEWAYS TYRES**
1 PAGE STREET, NW 7
OPEN 7 DAYS A WEEK 203 2088/5381

YOUR CAR COLLECTED & DELIVERED

Serviced and maintained on all the latest diagnostic equipment.
Work carried out by trained mechanics at very competitive prices.

ALL MOT WORK CARRIED OUT

DOOR-TO-DOOR SERVICE

Tel: 986-4445
907-0379

459 2680 EVES. ONLY

AUTO TALK



- Retail Sales
- Fast, Reliable Parts Service



40 New cars for Immediate Delivery
Demonstrations at Your Home or Office

Fleet Sales and Leasing

Specialist Servicing

Always a Large Selection of Ex Demo and One Owner Used Cars

THE PROFESSIONALS

LONDON SPORTS CAR CENTRE

Gemini House, High Street, Edgware, Middlesex
01-952 6171

GET GOOD PERFORMANCE PLUS ECONOMY FROM YOUR CAR

Have your engine tuned with Bosch Electronic Equipment

Ring Euro Auto Tune
01-446 3342

Evenings and Weekends also

LIDO BODY REPAIR CENTRE

COMPREHENSIVE CRASH REPAIRS BY EXPERTS

ACCIDENT RECOVERIES AT COMPETITIVE RATES

APPROVED BY LEADING INSURANCE COMPANIES

255 LORDSHIP LANE N 17

TEL: 01-808 2313



LEICESTER ROAD GARAGE LTD.
18 LEICESTER ROAD, NEW BARNET HERTS.

Telephone:
01-449 7048/4587

Self-Drive Car Hire

Servicing, Coachwork and Mechanical Repairs

GOLF CONVERTIBLE
UN-REGISTERED £7,000
TEL: 368 3128

ACTION THIS WEEK SAVES ££'s



* Electronic Wheel Balancing * FREE Tyre Safety Check



BIG SAVINGS on Tyres and Batteries for all British and Imported Cars.



COCKFOSTERS

114 Cockfosters Road. Tel: 449 7515

FOR SALE: DIRECTOR'S CAR

GRANADA G.L. 3 LITRE, S REG FULLY AUTOMATIC. POWER STEERING. STEREO. FULLY MAINTAINED IN EXCELLENT CONDITION £2,950

TELEPHONE: 366 4626 or 360 3953

CHEMISTS' ROTA

THE BASIS of this rota was supplied by the Barnet Family Practitioner Committee and lists those chemists which are open by agreement during evenings, Sundays and Bank holidays. To help residents we are hoping to print this rota on a monthly basis if space permits. Any other chemist open outside normal shopping hours on a regular basis may send details to Civic News, Town Hall, The Burroughs, Hendon, NW4.

BARNET

Sundays/Bank holidays 11.30 pm—12.30 pm.
Weekdays 6—7 pm
Sun 13.7 to Fri 18.7 Parry Jones, 61 High Street.
Sun 20.7 to Fri 25.7 Boots, 142 High St.
Sun 27.7 to Fri 1.8 A. Wilkinson, 190 High St.
Sun 3.8 to Fri 8.8 C. Harris, 16 Greenhill Pde.
Sun 10.8 to Fri 15.8 Parry Jones, 61 High St.

FINCHLEY CENTRAL

Weekdays 6—7 pm. Sundays 11.30 am—12.30 pm.
Bank holidays 11 am—12 noon.
Mon Adrian Russells, 158 Ballards Lane.
Tues Newtons, 332 Regents Park Rd.
Wed Newtons, 332 Regents Park Rd.
Thur Garnett Pickles, 73 Ballards Lane.
Fri Boots, 110 Ballards Lane.
Sun Kings, 222 Regents Park Rd.

FINCHLEY CHURCH END

Weekdays 6—7 pm. Sundays 12 noon—1 pm.
Mondays, Tuesdays, Thursdays, Fridays and
Sundays: Gordon Smith, 176 Long Lane.

NORTH FINCHLEY

No Sunday rota. Weekdays 6—7 pm. Bank holidays
12 noon—1 pm.
Mon 14.7 to Fri 18.7 Charles Sampson, 839 High
Rd.
Mon 21.7 to Fri 25.7 Auklands, 321 Ballards Lane.
Mon 28.7 to Fri 1.8 A. Leiter, 601 High Rd.
Mon 4.8 to Fri 8.8 Charles Sampson, 839 High Rd.
Mon 11.8 to Fri 15.8 Auklands, 321 Ballards Lane.

EAST FINCHLEY

Monday to Saturday to 9 pm. Sundays/Bank
Holidays 12 noon to 1 pm.
Cory Bros, 168 High Road.
Monday to Saturday to 7 pm.
Shilcrofts, 32 High Road.

WHETSTONE AND SOUTHGATE

Sundays/Bank holidays 11.30 am—12.30 pm.
Weekdays excluding Saturdays 6—7 pm.
Mon 14.7 to Sun 20.7 Aldington & Jones, 23
Hampden Sq N14.
Mon 21.7 to Sun 27.7 Co-op, 245 Oakleigh Road,
N20.
Mon 28.7 to Sun 3.8 Aldington & Jones, 23
Hampden Sq N14.
Mon 4.8 to Sun 10.8 H. J. Shore, 87 Russell Lane,
N20.
Mon 11.8 to Sun 17.8 Aldington & Jones, 23
Hampden Sq N14.

FRIERN BARNET

Weekdays 6—6.30 pm. No Sunday rota.
Mondays, Tuesdays, Thursdays, Fridays: Kings-
woods, 209 Woodhouse Rd.
Mondays to Fridays 6 to 7 pm H. Haria, 25 Friern
Barnet Rd.

GOLDERS GREEN

Weekdays including Sundays (except Thursdays*)
6—7 pm. Sundays/Bank holidays 12 noon—1 pm.
Mon 14.7 to Sun 20.7 Landys, 1191 Finchley Rd.
Mon 21.7 to Sun 27.7 Boots, 638 Finchley Rd.
Mon 28.7 to Sun 3.8 G. S. Raivid, 229 Golders
Green Rd.
Mon 4.8 to Sun 10.8 G. John, 768 Finchley Rd.*
Mon 11.8 to Sun 17.8 Warman Freed, 45 Golders
Green Rd.
*Thursdays 2.15 to 6.30pm G. John, 768 Finchley
Rd.

BURNT OAK & EDGWARE

Weekdays 6—7 pm. Early closing days 5—6 pm.
Bank holidays 11 am—12 noon.
Mon 14.7 to Fri 18.7 Heron Pharmacy, 193
Edgware Rd, The Hyde*.
Mon 21.7 to Fri 25.7 Derek Clarke, 85 Station Rd.
Edgware.†
Mon 28.7 to Fri 1.8 Heron Pharmacy, 6 Silkstream
Pde, Watling Avenue, Burnt Oak.
Mon 4.8 to Fri 8.8 Heron Pharmacy, 193
Edgware Rd, The Hyde.*
Mon 11.8 to Fri 15.8 Derek Clarke, 85 Station Rd.
Edgware.†
*Not Thursdays. † Derek Clarke also open Mon to
Fri to 9pm: Sat to 6pm: Sun and Bank Holidays,
10am-1pm.

EMERGENCY DENTAL SERVICE

For the emergency dental service on Saturdays,
Sundays and Bank Holidays between 9.30 am and
noon.
Hendon and Edgware, phone 205 0337
Finchley and Barnet, phone 446 1222

Hodgkinsons

THE EXCLUSIVE MAN'S SHOP

with



SUN & AIR

BOYS' CLOTHING

COMES TO WHETSTONE

WE AIM TO SATISFY YOUR TOTAL CLOTHING
NEEDS, FROM THE HAT TO THE SHOE AND
EVERYTHING IN BETWEEN. WE PROVIDE
TRADITIONAL & MODERN STYLES IN
ENGLISH & CONTINENTAL CLOTHING IN A
WARM FRIENDLY & COURTEOUS
ATMOSPHERE.

Now at:

1304 HIGH ROAD,
WHETSTONE, N20.
01-445 5974

3-4 PRINCES PARADE,
HIGH ST., POTTERS BAR,
Tel: Potters Bar 53230

NORTH LONDON'S MAIN STOCKISTS OF PERMOGLAZE PAINTS

for quality decorating
Full British Standard colour range
in Gloss, Emulsion & Eggshell

WE
GUARANTEE
THE BEST IN
PERSONAL
SERVICE AND
EXPERT
ADVICE

10 LITRE
WHITE
PAMASTIC
EMULSION
£12.90
PLUS VAT



THE BEST IN
MASONRY PAINT

LARGE
SELECTION
OF ENGLISH
CONTINENTAL
WALLCOVERING
AND
WALLPAPER
AT
SUBSTANTIAL
DISCOUNTS

SANDERSON
WALLCOVERING
SPECIALISTS

WINCHMORE COLORSALES LTD
859 Green Lanes, Winchmore Hill,
N.21. Tel: 01-360 6344

R. & H. MALKA LTD.

KOSHER BUTCHERS & POULTERERS

174 DEANS LANE, EDGWARE

Give us a ring for your next Deep Freezer order
We are Specialists at this modern way of buying
Competitive Prices and packed to your own requirements
Free Delivery and a 10 per cent Discount on all orders over £40.00 for Meat

FRESH POULTRY DELIVERED DAILY
Only the best Quality Meats etc leave our shop

SERVICE AND CIVILITY
AT ALL TIMES

SUNDAY OPEN 9 a.m. — 1 p.m.

PHONE: 959-5112/1923 FOR A CHAT TO RUTH

UP AND OVER GARAGE DOORS

ALL SIZES AVAILABLE

SUPPLY — FITTING — REPAIRS — PARTS
SPECIALISTS IN REMOTE-CONTROL DOORS
FREE BROCHURES ON REQUEST

PHONE: 01-898 7234 (Day or Evening)

SHOWROOM: 122 HIGH STREET, WHITTON, TWICKENHAM



CENTRAL HEATING INSTALLED BY THE EXPERTS



WE OFFER THE MOST ECONOMIC
GAS CENTRAL HEATING BOILER IN
EUROPE GIVING UP TO 30% LESS IN
RUNNING COSTS!

THE BENEFITS:

- ★ ROOM TO ROOM WARMTH
- ★ ABUNDANT HOT WATER
- ★ LOW RUNNING COSTS
- ★ EXPERTLY FITTED INSTALLATION
- ★ FULL 12 MONTHS GUARANTEE
- ★ PROMPT TIDY TRADESMEN
- ★ AFTER SALES SERVICING
- ★ FINANCE FACILITIES AVAILABLE

Plus low budget prices that you can afford.

CALL US NOW FOR YOUR FREE
ESTIMATE AND SURVEY

01-881 1941

COMBI SERVICES LTD



HENDON CHINA SHOP

for

TOP GRADE FINE BONE CHINA

Tea & Dinner Services,
Hand Cut Crystal,
Stainless Steel oven to table.
at HIGHLY COMPETITIVE PRICES
Call & Inspect without obligation

OPEN Mon—Sat, 9.00 am—5.30 pm
Sundays, 10.00 am—1.00 pm

31 Watford Way
Hendon Central, NW4
Phone: 202 9037

BARNET CIVIC NEWS
THE LARGEST CIRCULATING
MEDIA WITHIN THE BOROUGH.
110,000 ISSUED FREE

NIGHTSPOT Baileys

127 THE PARADE, WATFORD

Watford 43034 / 39848

SEE AND EXPERIENCE THE NEW
BAILEYS CABARET DISCO CLUB
re-opening on
THURSDAY, SEPTEMBER 4
with a new luxurious self-contained discotheque

JULIET'S
and an Autumn and Winter Season of
Great International Acts appearing on

THU. 4th to SAT. 6th SEP.	PATTI BOULAYE	★	W/C MON. 10th NOV.	Brotherhood of Man
W/C MON. 22nd SEP.	TOMMY COOPER	★	W/C MON. 1st DEC.	MIKE REID
W/C MON. 13th OCT.	Gerry & the Pacemakers	★	W/C MON. 22nd DEC.	THE NEW SEEKERS
W/C MON. 3rd NOV.	THE FOUR TOPS	★	W/C MON. 15th SEP.	LIQUID GOLD
W/C MON. 24th NOV.	THE HOLLIES	★	W/C MON. 6th OCT.	THE BARRON KNIGHTS
W/C MON. 15th DEC.	LULU	★	W/C MON. 27th OCT.	THE GRUMBLEWEEDS
W/C MON. 8th SEP.	BROTHER LEES	★	W/C MON. 17th NOV.	LITTLE & LARGE
W/C MON. 29th SEP.	THE DRIFTERS	★	W/C MON. 8th DEC.	THE NOLANS
W/C MON. 20th OCT.	MARTIN ST. JAMES	★	W/C MON. 29th DEC.	GARY GLITTER

Special reduced rates for parties of 20 or more always available.

EXCLUSIVE OPENING OFFER

25% REDUCTION FOR BOOKINGS ANY NIGHT IN SEPTEMBER IF YOU BOOK NOW (for parties of 4 or more)

I'm interested in booking people to see
on (date)
Name
Address
Tel.

Please complete the above form and send to Nadine Buckley at the above address, or telephone on Watford 43034 / 39848 for further details.

¼ MILLION
READERS WILL
SEE BARNET
CIVIC NEWS
EACH MONTH
FOR ADVERTISING
RATES 366 4626

RICHARDSON & SONS (BUILDERS)
01-882 3549

Roof work, Gutters,
Plastering, Plumbing
Bathroom and Kitchen
conversions a speciality

01-882 3549

Home is: a warm and friendly atmosphere, caring and imagination

In a quiet corner of Barnet's countryside, overlooking Brunswick Park, surrounded by gardens and with hens clucking in the back yard, stand two pleasant cottage-style buildings — Abbots Lodge and Brunswick Lodge. Together they provide a scheme for caring for the elderly, many of whom are disabled, which has put Barnet's Social Services Department in the forefront of this work and has attracted visits from leading sociologists from as far afield as Canada and Israel.

The two homes are complementary. Abbots Lodge, built eight years ago, is for 55 physically disabled elderly residents, many confined to wheelchairs, but all retaining their mental faculties and able to make their own decisions.

Brunswick Lodge is for 30 confused elderly residents who need continual guidance and help.

Despite having two separate buildings, by the sharing of resources, Barnet has overcome many of the problems which are found in the more traditional residential homes for old people.

Indeed in many areas tradition has been swept aside in a concept which makes these homes more like hotels than hostels.

Abbots Lodge with its carpeted lounge hall, pretty single and double bedrooms each with matching curtains and bedspreads individually chosen, and its own licensed bar and candle-lit dining room is far removed from most people's concept of an old people's home.

The superintendent, Arthur Westbury, and his wife, Margaret, who is Matron, have brought in some almost revolutionary ideas.

Instead of set meal times breakfast is served from 8 to 10 am, lunch from 11.30 am to 1.30 pm and the evening meal from 4.30 to 6.30 pm. In the evening when the main serving is over, residents can entertain their friends and families to private dinners with wine, a charge being made to cover the cost of the guests.



Happiness is a walk in the sunshine in Brunswick Lodge garden for residents and staff, with Matron, Mrs. Margaret Westbury (centre).

Arthur Westbury who began his nursing service as a 12-year-old St. John Ambulance Brigade cadet helping in an old people's home, has very definite ideas about elderly people maintaining their independence.

'People don't all rise and retire at the same time when they live in their own homes, so why should they here? This is their home and they must have as much freedom as we can possibly give them.'

So there is a choice of menu. Drinks can be ordered from the bar and residents are free to come and go as they

please, to visit friends or go shopping. But for those unable to get out there is a shop in the lodge, run by one of the residents.

There are two lounges. The less mobile residents use the ground floor lounge, often knitting and crocheting things for the home's annual bazaar. Theresa, a care assistant, who has been at Abbots Lodge since it opened, is on duty in this lounge. This constant attendance is important because the residents are able to relax more if they can see someone always at hand to help if needed. The upstairs lounge is used by the more mobile residents.

There are regular visitors to the home. Pupils from Southaw School come in every lunch time, and services are held in the home by local clergy of many denominations.

The kitchens at Abbots Lodge are very busy as all the food is cooked there including the cakes. Very few convenience foods are used and all the meat and vegetables are fresh.

Certainly the eggs are: the chickens however are not there just to produce eggs. They are part of the environment. Many elderly residents recalled their youth when chickens in the backyard were part of everyday life. And so there is a small duckpond and the chicken run.

But the real pets of Abbots Lodge are the eight budgerigars who live in an aviary built in the upstairs hall.

Across the gardens is Brunswick Lodge, a single storey building for 30 elderly confused people.

Here too Margaret Westbury has taken great care in choosing colour schemes to make the lodge a home-like place. There are carpeted floors and flowers, and often the residents are given little presents of sweets or cigarettes.



Theresa, a care assistant, is always on duty in the main lounge at Abbots Lodge to help residents with problems. Here she helps with a knitting pattern.

Their homes are: Abbots Lodge and Brunswick Lodge

In Brunswick Lodge there have to be set meal times but as much freedom as possible is given to the residents. Whereas in an ordinary home they could be a disturbing influence on other residents, here they are allowed to move furniture about, wander round or even clean the windows just as they please. The atmosphere is light and happy, and although the residents may talk of subjects which to them are real, and are in fact figments of their imagination, this is understood by the staff who have a caring and compassionate attitude.

It is, in many ways, the staff who make these homes a success. Arthur Westbury, trained at Selly Oak Hospital, Birmingham, has more than 25 years experience in this type of work. He and his wife were once the youngest superintendent and matron in the country. Many of their staff have been with them since Abbots Lodge opened, and their caring attitude has won praise from the many visitors who come to the two lodges.



The superintendent, Mr. Arthur Westbury, acts as barman in the residents' own private bar at Abbots Lodge, one of the most popular features of the home.

AU PAIRS, DEMI PAIRS, DEMI PAYANTS available

Let Jolaine take the strain by providing busy mums with help in the home and baby sitting. Short- or long-term stays.

★ Jolaine Paying Guest Agency, Spare Room — Extra income. Families urgently required for paying guests part or full board.

JOLAINE AU PAIR & DOMESTIC

01-441 0640

9.30 am—5 pm Mon.—Fri.

HOOVER

ELECTROLUX SERVICE

Work guaranteed.
Quotations Free. Hoover
trained engineers.
Hoover cleaners and
Hoovermatics wanted.

Contact P. Jarvis

01-441 5152

D. H. BARKER FOR HOME FREEZER ORDERS

*FINEST QUALITY
MEAT AT
COMPETITIVE PRICES*

**8 HIGH STREET
POTTERS BAR, HERTS
Telephone: Potters Bar 45675**

EDGWARE STRIPPING CO.

Doors stripped from £7.50
IN-SITU STRIPPING AND
WAXING UNDERTAKEN

FREE COLLECTION & DELIVERY

TEL: 951 0646 ANYTIME

D. S. Repairs and Service

Washing Machines
Tumble-Driers
Dishwashers
Spin-Driers

Manufacturer
Trained Engineer

Telephone: 200 5246

HENDON OFFICE SERVICES

for all your office requirements

PRINTING ★ PHOTOCOPYING ★

TYPING ★ STATIONERY ★

OFFICE FURNITURE (new and used)

55 Watford Way,
Hendon NW4 3AX
Tel. 01-202 8621

ROSHAN B.A.

HAND ANALYST
(Palmist)

Phone 01-368 1843
(Anytime — Any day)

ESTABLISHED
1977

COSYTOP

LOFT INSULATORS

GOVERNMENT GRANTS AVAILABLE

Our Installations are Guaranteed to meet
Council Approval.
Our Materials to BS 5803.
Free Estimates

**Phone: Potters Bar 50079;
Waltham Cross 21279**

Views of the past



ABOVE: A view along the Edgware Road in 1890. A major highway since Roman times (Watling Street), the number of coaching inns in the photograph reflects its continuing importance as a main route into London from the north.



LEFT: In 1905. By 1904 the electric tram service had reached Station Road, Edgware, from Cricklewood. The shop on the left of Sears Cash Stores offers a cycle and motor service, advertising the premises with a wheel from the penny farthing bicycle over the door.

RIGHT: In 1928. The tram, partly obscured by a gas lamp standard, is a C-type open top vehicle of the Metropolitan Electric Tramways operating on route 66 which ran from Acton to Canons Park until 1936.



BELOW: There are 40 years between this photograph and that of one at the top right. The Old George Inn (extreme right) remains unchanged with a wooden water trough at the roadside.



THESE are four of a set of five postcards of Edgware High Street available for sale at all borough libraries, price 30p.

Postcards can also be obtained singly at Church Farm House Museum, Greyhound Hill, Hendon, at 6p each.

If you have any old photographs for reproduction in postcard size then the Libraries Department will be pleased to hear from you on 202 5625.

Forming a new branch

I am trying to form a branch of the Arthritis and Rheumatism Council in the Edgware, Burnt Oak and surrounding areas which do not already have their own branch.

Six million people in Britain suffer from Arthritis, it affects young and old. Many people in this area will suffer from some form of rheumatism in their lifetime. It is extremely painful, and even crippling.

I appeal to young and old, schools, clubs and churches, to devote a little time to raise funds for the Research Council, which is making good progress, but urgently needs more money. Please write, or ring evenings, 906 0409.

Mrs. O'Neill-Alexander,
9 Gilbert Grove,
Edgware

Indian dance classes

It has been a great pleasure reading your edition of Civic News monthly.

It certainly does inform the residents what goes on in the borough.

Your readers may like to know that Indian dance classes are being conducted at Queen Elizabeth's Sports Centre. A lot of interest has been shown by Indian and English dancers in this ancient art.

The classes in Barnet are fairly recent, hence many friends and residents may find this interesting.

R. P. Ranah (Miss),
31 Weirdale Avenue,
N20

Pedestrians at risk

With reference to your article 'Cycling Menace on Pavements', I would like to express my agreement with Mrs. Moore.

I write, not as a senior citizen, but as a younger member of society. I am getting rather fed up with children of all ages careering down pavements, scattering pedestrians in their path. They may as well scrap the section at the back of the Highway Code for 'pedal cyclists' especially the lines: pedal cyclists must not wilfully ride on a footpath by the side of any road made or set apart for the use of foot passengers.

R. Newman,
Finchley, N12

Looking for shops

The Sue Ryder Foundation are urgently seeking a shop/s in Barnet or surrounding areas and we would be very pleased to hear from anyone who has or knows of such premises.

We are interested in renting or borrowing a shop. We have found that landlords are more amenable to lending because they know that empty premises are open targets for vandals and that they have their rates paid by the Charity in occupation.

Our successful shop in Whetstone closed in January and is sadly missed by customers and the Charity.

These shops are now a very familiar part of the shopping scene and provide a three-way service. Obviously they provide urgently needed funds, they serve the customers of whom there is an ever increasing number and who wish to support a good cause, and the very willing helpers enjoy the company.

We are still collecting goods and small furniture on a moderate scale so if your readers have goods or information re

premises I would be delighted to hear from them.

Mrs. J. Sumpter,
Area Organiser,
69 Parkside Drive,
Watford, Herts
Tel: Watford 26085

Your help is needed

Yvette Walczak and Sheila Burns, Senior Lecturers at the Polytechnic of North London, are currently engaged in research for their book on children's views and reactions to their parents' divorce.

They would be pleased to hear either from parents who are divorced or have been separated for two years and who are willing to let their children be approached and interviewed or from adults whose parents were divorced or separated before they were 18, and who are either living or working in the Greater London area.

For further information please contact the Polytechnic of North London (day time) 607 2789 extension 5011 or 5014 or (evenings):

Yvette Walczak 888 9520
Louise Klinger 346 5405
Sheila Burns 259 1980

The Polytechnic of
North London,
Highbury Grove, N5

SUMMER SALE
STARTS 28th JUNE

TRADE CARPETS WAREHOUSE

SUMMER SALE
STARTS 28th JUNE

DIRECT TO THE PUBLIC!

The largest selection of remnants
full and part rolls in the UK

More carpet bargains than you have ever seen. 100s of remnants and roll ends. Many under half price. Big stocks of off-cuts, ideal for lounge, bedrooms, kitchen, bathroom, hall, stairs and landings.

If we haven't got it nobody has. Cash and carry or same day delivery. Estimating and expert fitting service available. Whatever your requirements we feel sure we can supply.

TRADE CARPETS WAREHOUSE

197 KENTISH TOWN ROAD, NW5

(corner of Prince of Wales Road). TEL: 485 4600

Open Monday-Saturday 9 a.m. - 6 p.m. Late Friday until 8 p.m.

AIDS AMNESTY WEEK

THE OCCUPATIONAL therapists group of Barnet Social Services are declaring an Aids Amnesty Week throughout the borough. The dates: Monday to Friday, July 21 to 25.

toilet seats, commodes — all types of aids. And they ask: "Please look in cupboards, under the stairs, in the garden shed, in the loft. Even under the bed. Check that the aids are clean and bring them back."

So during Aids Amnesty Week an occupational therapist will be available at each area team offices in the borough between 10 am and 12 noon to take telephone calls and arrange for the return of the aids.

The aim is to get back many of the special medical and disablement aids which people borrow during times of illness and disability, and which then go missing because they are pushed into store cupboards and attics instead of being returned to the Social Services.

So Aids Amnesty Week is an appeal to the public to return to the local authority any aids which they are no longer using. Social Services are looking for mobility and bathing aids, special chairs, high

The area team offices are:

Team A:

28/30 Station Road, New Barnet. Telephone 449 5511.

Team B:

Fiboard House, Oakleigh Gardens, N20. Telephone 446 4354 or 446 4350.

Team C:

Barnard House, 158 Burnt Oak Broadway, Edgware. Telephone 952 7722.

Team D:

16/17 Sentinal Square, Hendon. Telephone 202 5233.

Team E:

294/296 Regents Park Road, Finchley. Telephone 349 2651.

Team F:

Tudor House, Llanvanor Road, NW2. Telephone 458 8344 or 458 8340.

CLASSIFIED ADVERTS ARTICLES WANTED
All furniture and antiques wanted urgently. Prompt attention. Cash paid. Tel. 445-9039 anytime.

BUSINESS SERVICES
Bet and grow rich... by consistently drawing large profits from your Bookmaker. For details please send s.a.e. to Mr. Pearse, Pearse Racing Investments, Dept. C.I.B., 279 Cricklewood Lane, Childs Hill, London, NW2 2JJ.

ANIMAL HOMES
Kind homes needed for rescued cats and kittens. Daytime 952-2381, ext. 445. Eves. 205-7883

BARNET CIVIC NEWS

The only media which covers the entire London Borough of Barnet, issued free each month to 110,000 households and businesses, your advertising in this publication will give you the widest possible circulation for the lowest cost. The London Borough of Barnet includes Barnet, Arkley, Totteridge, Mill Hill, Edgware, Burnt Oak, Hendon, Finchley, Golders Green, Oakleigh Park, New Barnet, Whetstone, Friern Barnet, New Southgate, Hampstead Garden Suburb, parts of Elstree and Cricklewood. By advertising in this publication you will reach approximately 250,000 readers each month. For all display, trade or recruitment advertisements phone 01-366 4626/7, 01-367 0246. Our staff will be pleased to assist you. For classified insertions use the coupon below.

USE BARNET CIVIC NEWS FOR CLASSIFIED ADVERTISING

110,000 COPIES FOR £1.00 PER LINE 2 LINES MINIMUM

CLASSIFIED ADVERTISEMENT FORM — BLOCK CAPITALS PLEASE — One word per box

Remember!
This publication will reach upwards of 250,000 readers! Send your copy coupon and remittance to the publishers. Cheques and postal orders made payable to Laurence Marshall (Advertisers) Ltd.

Name Tel.

Address

I enclose remittance value No. of insertions

LAURENCE MARSHALL (ADVERTISERS) LTD
PUBLICITY HOUSE, 12 GENOTIN TERRACE, ENFIELD EN1 2AF
Phone: 01-366 4626-7 01-367 0246

SITUATIONS VACANT

WHY BE ONE OF THE TWO MILLION UNEMPLOYED

BE YOUR OWN BOSS NO CAPITAL OUTLAY
WORK LOCALLY NO LIMIT ON EARNINGS
NO EXPERIENCE NECESSARY

BE A PART- OR FULL-TIME
CREDIT CANVASSER FOR

MYRES (IDEAL SUPPLIES) LTD.
153 PHILIP LANE, N15
808 2928

TOOL MAKERS

required

**MUST BE EXPERIENCED IN PRESS
TOOL AND/OR MOULD MAKING**

We are a precision engineering company and can offer work which is varied and interesting in a well-equipped toolroom. Good conditions and comprehensive rates of pay. Why not call and see us?

For further details please contact the
Personnel Department,

COUNTING INSTRUMENTS LTD
5 Elstree Way, Borehamwood, Herts
Telephone: 01-953 4151

**Our television campaign has
created enormous demand
for our products which are
the most advanced in the
home improvement market.
Our sales force earn
£200-£500 per week.**

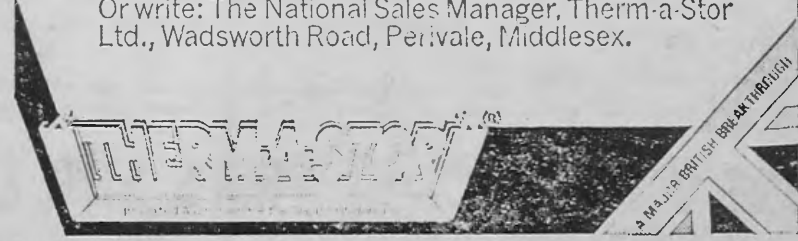
We offer full training with high basic salary and commission.

If you are:

- * Over 21
- * A Car Owner
- * Ambitious and hardworking
- * Free to commence immediate training
- * Looking for a rewarding career

Then telephone John Moran on 01-997 6686 for immediate interview.

Or write: The National Sales Manager, Therm-a-Stor Ltd., Wadsworth Road, Perivale, Middlesex.



LONDON BOROUGH OF BARNET SOCIAL SERVICES DIRECTORATE

ADMINISTRATIVE ASSISTANT

GRADE AP.3 — SALARY £4,971 to £5,520 per annum inclusive

Required in the Central Administrative Division dealing with the administrative procedures relating to the provision of telephone assistance under the Chronically Sick and Disabled Persons Act, 1970. The postholder will be responsible for processing requests for telephone assistance received from the Area Offices, the payment of telephone bills and the issuing of accounts for call charges to clients. Must be able to work on own initiative, often under pressure, and supervise a clerical assistant.

Further details from DAVID HUGHES, Tel: 349-9121, Ext. 314.

Separation allowance and 100 per cent removal expenses payable and possible temporary housing accommodation. Additional leave at Bank Holidays.

Application forms (Ref. 448) from Director of Social Services, Winston House, Dollis Park, Finchely, N3 1HB. Tel: 01-349 9121, Ext. 90.

Closing Date: 25 July, 1980.

Opportunities at Boosey & Hawkes

Currently we are looking for the following people to join the company:

INSPECTORS

To carry out the patrol inspection of manufacturing areas and random selected inspection of components during manufacture. Must have worked in an engineering environment. Preferred age 25-plus, 40-hour week.

PRESS TOOL SETTER

Experience of tube drawing an advantage. Preferred age 35-plus, 40-hour week.

We pay highly competitive salaries and work a 35-hour week unless stated, finishing at 2 p.m. on Fridays. A wide range of benefits include a pension scheme and subsidised canteen.

If you are interested in any of these posts, please write to, or telephone:

Mr L. Blood, Personnel Manager
BOOSEY & HAWKES
MUSICAL INSTRUMENTS LIMITED
Deansbrook Road, Edgware, Middx
Tel. 01-952 7711

BOOSEY & HAWKES

You give us:

- your commitment to an exacting, demanding job.
- your ability to deal with people.
- your qualifications for Clerical Officer: 5 'O' levels including English Language (at grades A, B or C from Summer 1975 examination) or CSE (Grade I only). School leavers taking examinations shortly may apply.
- registered disabled candidates with or without the required qualifications may apply.

Clerical Officers in Hendon

Apply in writing to:
Department of Health and Social Security,
10 Finchley Lane,
London NW4 1DP

We give you:

- a job that's hard work but very satisfying.
- the opportunity to work close to home.
- a friendly atmosphere to work in.
- training when you start so that you're soon quite confident and competent.
- contact with people on the phone or over the counter. This can be difficult but you soon learn to cope.
- four weeks paid holidays.
- flexitime and non-contributory pension scheme.
- Clerical Officers: starting salary of £2,721 at age 16; £3,382 at age 18 and £4,034 at age 21 rising to £5,252 by annual increments.

DHSS
round the corner

MACHINE SHOP ENGINEER

required as working supervisor for projects of prototype and short run nature, in a traditional machine shop, new equipped with copy/digital readout centre lathes and programmable milling machines.

Age immaterial, good prospects of advancement.

Apply to:

Mr. Courtney or
Mr. D'Alton,
Laser Engineering (Developments) Ltd.,
89 Worship Street,
London EC2.
Tel: 01-247 9961

THE WORKS DEPARTMENT

of this famous independent hospital is looking for additional staff.

If you have a skill which could be of use to us, come and discuss the benefits of working for the Manor House Hospital with the senior engineer, Mike Skeet.

Further information and application form from the Assistant Secretary (Support Services)

MANOR HOUSE HOSPITAL
North End Road
Golders Green
London NW11 7HX
Telephone 01-455 6601



Cost Analyst

M.E.L. are part of the Professional Electronic Equipment Division of the International Philips Group of Companies.

We now have a vacancy for a Cost Analyst to work in our Cost Administration Section. This section is involved in modern data processing systems which provide a key part of the financial service which is the basis of operational results, pricing decisions and the evaluation of forward plans.

Applicants should be aged 24+, be able to communicate effectively with all levels of staff and preferably be studying for a professional qualification.

Accuracy in the preparation of statements and reports is essential and a knowledge of computerisation is desirable.

The position is progressive and permanent and carries excellent conditions of employment.

If you are interested, please write or telephone for an application form to: Miss H. Tucker, Personnel Officer, M.E.L./Watson, West End Lane, Barnet, Herts. Tel: 01-449 4404.

AREA SERVICE & COMMISSIONING ENGINEER

Barnet, North London Area

Required by expanding electronics company to commission and maintain to a high standard, hospital communications systems including pocket paging LF and HF frequencies.

A good working knowledge of transistorised circuitry is required and experience of logic circuitry would be an advantage.

The applicant should be capable of working with the minimum of supervision.

He/she will be required to work from home and provide prompt and efficient service for our customers in his area.

Company car provided. Non-contributory Life Assurance Scheme, other allowances and Pension Scheme.

Please apply, in writing, giving fullest details to Mr T. L. Julier
CASS ELECTRONICS LTD.
Crabtree Road
Thorpe
Egham, Surrey TW20 8RN

CASS

M E L

WATSON

URGENTLY REQUIRED FOR CONTRACT AND PERMANENT POSITIONS

Electrical R & D Engineers, colour scanning, experience in analog and digital logic design essential. Ability to work from engineering drawings. Software/Hardware. Excellent Rates.

ELECTRICAL DESIGN ENGINEER

to HNC. 2/3 years' experience with electrical test equipment. Knowledge of batteries essential. £5,000 p.a.

TOOLMAKER

Must have served an apprenticeship and had at least 4 years' experience. Moulding and Press tools. £120 p.w.

MAINTENANCE ELECTRICIAN

to C. & G. and at least 5 years' experience. Able to work without supervision. £100 p.w.

Lots more skilled and unskilled vacancies available.

Please phone Tricia on
01-801 3131

INJECTION MOULD DRAUGHTSMAN

Varied interesting injection mould work, including trade moulding and in-house products.

Subsidised canteen, four weeks' holiday, salary negotiable.

This position is open to both male and female.

Please apply to Mr. R. Marley
STADIUM LTD
Queensway
Enfield, Middlesex
Telephone 01-804 4343

Stadium

Manufacturers of Plastic Mouldings for Industry, Building Products, Car, Motorcycle & Cycle Accessories.

DO YOU SINCERELY WANT A HIGH INCOME?

YES it is selling

YES it is a quality product

YES you will receive the finest training and support available.

A ground floor opportunity for **Salesmen/Women** or those seeking a professional opening in selling in their own area.

Phone: Milton Keynes (0908) 606888

or write to:

Mr. A Froud,
34 Mullton Place,
Fishermead,
Milton Keynes,
Bucks.

Manufacturers of Lighting Fittings

urgently require the following staff

SHEET METAL WORKERS

Must be experienced

* Permanent Job * Top Rates of Pay * Overtime * Pension Scheme

* Overalls Provided

CONTACT RAY CHARLES

AT RADA + SLR

HIGH STREET, POTTERS BAR

(adjoining Bus Station)

TELEPHONE POTTERS BAR 43401



Industrial Sales Representative

Waste Disposal Services

Hales Containers, Southern England's leading Waste Disposal company, require a Sales Representative to promote their services to Industry, Hotels, Local Authorities, Building Contractors and retail outlets within the North London and South Hertfordshire areas.

Applicants should be 23 to 30 years of age, preferably having sales experience and educated to 'O' level standard.

The successful applicant will be based at the Company's Tottenham Depot, from which a large fleet of specialised container vehicles is operated.

Salary will be competitive and a range of benefits includes free life assurance, contributory pension scheme, subsidised BUPA membership and a company car.

Please telephone Mr B. J. Morse, Sales Manager, Hales Containers Limited, Delamare Road, Cheshunt, Waltham Cross, Hertfordshire. Tel: Waltham Cross 27441.

THE GROUP

SCHOOL LEAVERS

Are you seeking an interesting job with good prospects, a good salary and pleasant working conditions? Do you, or will you have at least four 'O' levels including English and Maths?

Are you willing to work to ensure a rewarding and happy future?

Then telephone Mr. D. Mears on 01-440 5222 and ask about a career with one of the country's leading insurance companies.

GENERAL ACCIDENT ASSURANCE
New Barnet

WE HELP

TO FILL YOUR

SITS-VAC

FOR

FULL DETAILS

TELEPHONE

366-4626/7

367-0246

GOLDEN JUBILEE

50 Years of Service to Sport in Finchley

SPORTS SALE

PRE-SEASON INCENTIVES
E.G. FOOTBALLS
BOOTS
RSL FEATHER SHUTTLES

END OF SEASON REDUCTIONS
E.G. CRICKET BATS
TENNIS RACKETS
CLOTHING
FOOTWEAR

REDUCTIONS ON EVERYTHING

FINISHED RANGES AT SILLY PRICES E.G. RUNNING SPIKES 5p PAIR (25 PAIRS ONLY)

STARTS 9.00 am, 12th to 26th JULY, 1980

CLOSED ALL DAY THURSDAY

POLICE NOTICE: PLEASE DO NOT OBSTRUCT TRAFFIC OR NEIGHBOURING SHOPS WHILST QUEUING

Your  INTERSPORT shop

WILLIAMS SPORTS

366 Ballards Lane, Tally Ho Corner, Finchley, N12. Tel: 445 3596
Gateway House, 328 Regents Park Road, N3. Tel: 346 2398

"ENGLAND'S BEST"

BATHROOM CENTRE

AS SAID BY MANUFACTURERS

A BATHROOM TO SUIT EVERYBODY

Including fittings £195-£3,000

OUR GUARANTEE

We guarantee to refund the difference if you buy a bathroom suite from us and see it sold for less elsewhere.

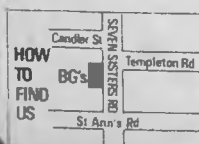


★ LOW CREDIT FACILITIES AVAILABLE ★

BUILDERS GALORE

602/4 Seven Sisters Road,
Tottenham, N15

Tel. 802-6493/6696 800-2538



OPEN SUNDAYS
9am-2pm
Closed Saturdays



WE DELIVER
ANYWHERE

