

Barnet Borough News

(In association with Marketing Media)

No. 8 July 1985



113,000 Copies



Barnet Council's monthly magazine for residents

British Bathroom Centre

Europe's Number One



At the British Bathroom Centre we believe in setting a standard. We have on display in our showrooms the best bathroom products Europe has to offer, among them we have the Kaldewei range of luxury baths, whirlpools and showers.

We also have a vast selection of bathroom suites ranging from Victorian to the very modern as well as our own exclusive hand decorated chinaware and matching tiles.

All this spread out over three floors, so come and visit us and see for yourself what makes us the number 1 in Bathrooms.

British Bathroom Centre

Europe's Number One

602-4 Seven Sisters Road

London N15 6HT

Tel. 01-802 6696/6493

01-800 2538/0536

Opening hours 9am-6pm

Sun 9am-2pm

"THE TELEPHONE EXCHANGE"

Now offer a **FREE DEMONSTRATION** of the **TRAVELPHONE CELLULAR COMMUNICATIONS** service which includes:

- * Portable and Vehicle Mounted Cellphones with features including call forwarding, three party conferencing, no answer transfer and call waiting.
- * Comprehensive leasing facilities (if required)
- * Full installation and maintenance facilities.
- * Computerised billing including itemised invoices and call barring option.



TRAVELPHONE
A Service from Digital Paging



**Sales
Installation
Service**

TRAVELPHONE

AVAILABLE NOW THROUGH:

HEAD OFFICE and SHOWROOM at: THE TELEPHONE EXCHANGE

166 DEANS LANE EDGWARE, MIDDX.

also at: Owen Owen, High Road
Finchley, N12

Tel: 01-906 4500

RAVENSCROFT SCHOOL

Barnet Lane, N20 8AZ

SUMMER FAIR

Saturday 6th July, at 2 pm

Many attractions; guest celebrity; Anthony, the Lightning Portrait Artist; The Plantagenet Marching Drum Band; Inflatable Castle; many stalls; cream teas and refreshments will be served; instant cash prize lottery; raffle

Entrance 20p (accompanied children free)

FAIRWAY PRIMARY SCHOOL
FAIRWAY MILL HILL NW7

SUMMER FETE

SATURDAY JULY 13th 1985.
2pm — 4pm

Attractions include: Roundabout
Trampoline ● lots of stalls ● games
displays ● Refreshments & Raffle

Admission: Adults 20p Children 10p

Security



THE
PROFESSIONALS
FOR THE
LATEST IN
SECURITY SYSTEMS

HAVE THE PIECE OF MIND OF HAVING ONE OF
OUR BURGLAR ALARM SYSTEMS INSTALLED IN
YOUR PREMISES (HOME - OFFICE - SHOP)

WE CAN ALSO SUPPLY AND INSTALL CLOSE
CIRCUIT TV, LIGHT SWITCHING, AUTOMATIC
DOOR OPENER, AUTOMATIC GATE OPENER

WE CAN SUPPLY + INSTALL THE
SLAVE-DOR AUTOMATIC GARAGE
DOOR OPERATOR TO YOUR
EXISTING UP AND OVER, OR
WINGED GARAGE DOORS
FREE SURVEY + ESTIMATES

PHONE

889 - 3342

1a MAIDSTONE RD. NEW SOUTHGATE N11 2TR

£1,000 instant
credit available
36.3%

Villa del Bosco Ltd

SALE STARTS JUNE 29th, 1985

FREE
DELIVERY

★ Specialist in
Leather & Dralon
Suites ★ Dining
room suites ★
Pictures ★ Bars ★
Coffee tables ★
Chandeliers ★ etc.



GREAT CLEARANCE SALE
TO MAKE WAY FOR
MASSIVE DELIVERY
FROM ITALY . . .
OUR PRICES ARE
RIDICULOUSLY LOW!

HURRY! HURRY! SALE ENDS JULY 6th, 1985

THE LATEST DESIGNS IN ITALIAN FURNITURE DUE IN STOCK WITHIN 2-3 WEEKS

256/258 West Hendon Broadway (main Edgware Rd) NW9 01-202 3241/3074

EVERYTHING
MUST
GO

CONTENTS

July 1985

	page
Carnival & Gala	6
Helplines	7
What's On	10-12
Sun & Fun Time	13
What's On, Arts	14
Housing	15
World Games	16, 17
Artscene	19
Transport	20
Motors	22, 23
Jobs	24, 25

EDITORIAL ADDRESS

Barnet Borough News,
London Borough of Barnet,
The Town Hall,
The Burroughs,
Hendon NW4 4BG
Tel. 01-202 8282,
exts. 71 and 75

ADVERTISING ADDRESS

Marketing Media,
K House,
Two Monks Way,
off Monkville Avenue,
Golders Green, NW11 0AF
Tel. 01-209 1655

Advertising Manager
Lesley Mitchell

Barnet Borough News is a monthly magazine carrying news of Council activities and community organisations. The What's On in Barnet diary is open to local organisations and carries a comprehensive list of events and meetings taking place within the Borough.

Barnet Borough News is distributed door-to-door throughout the Borough reaching some 113,000 homes and businesses. Further copies are sent to libraries and council offices. The cost of production and distribution will be offset by advertising.

Barnet Borough News is edited by the Press Office of Barnet Council by Bill White, Rosemary Jude and Fiona Harcombe.

The co-publishers are the London Borough of Barnet and Marketing Media. Editorial features are the copyright of Barnet Council.

Copies of most photographs can be obtained by contacting the Editor.

Front cover

Barnet Sports Gala in progress at Copthall Stadium, off the Great North Way, Hendon. The stadium boasts one of the finest running tracks in Europe with eight lanes for long distance races and an additional four for the sprints. It is fully equipped for all field and track events.

Thumbs up for Copthall



Award time — the Mayor, Cllr Barbara Langstone, displays the commemorative plaque, watched by (left to right) Alan Burrridge, Cllr Tom McKendry, Cllr David Burton, Peter Yarranton, Andy Clarke, Roy Langstone, Alan Hime, Cllr Mrs Edna James, Alan Stringer, Cllr David Clarke and Andy Sutch.

AN APPEAL for support for the Copthall Indoor Stadium and Sports Complex was made by Councillor David Burton to the Chairman of Greater London and South East Regional Council for Sport and Recreation, Mr Peter Yarranton, at a ceremony at Copthall Pools on June 6.

Sports Council representatives were there to present the award to Copthall Pools as the best managed swimming complex in London and the South East. Councillor Burton, a protagonist for the development of the complex from the early years of Barnet Borough and in whose mayoral year the pools and running track at the stadium were opened by royalty, seized the opportunity.

'You have seen how well we manage our pools. Now give us your backing for our plans for

Copthall. As a country we are miles behind our continental neighbours in our sports facilities. I believe we should have financial support from the EEC if we can get this complex moving. You can help. We want your support and encouragement to build the indoor complex this area needs.'

Copthall, with its three pools and extensive training programmes, was named best managed pool in the region in the 1984 Sports Council Management Awards.

Peter Yarranton congratulated the borough on the way the pools are used: 'Swimming was my sport and I can speak from experience when I say how well this pool is managed. The judging report carried the sentence — "All the members of the panel agreed — Excellent".'

Alan Hime, baths manager, emphasised that it was a team award and a borough award. 'The pool,' he said, 'as you can see it today is the same as it was last week and will be next week and the same as it was on the day the judges came round.'

The Mayor, Cllr Barbara Langstone, congratulated the pools staff. The award reflected the service they gave to the public and the borough was extremely proud of the swimming complex.

Among those present were Cllr David Clarke, chairman of Development and Estates Committee, Alan Burrridge, regional officer for the Sports Council, Andy Sutch, senior regional officer, and Andy Clarke, deputy manager at Copthall.

Join in the Mayor's twin appeal

A PACKED programme lies ahead to raise money for the Mayor of Barnet's Appeal in aid of the local St John Ambulance Brigade and Red Cross.

At the Appeal Committee's first meeting ideas ranged from marathons and sponsored badminton and swimming events to car boot sales, musical evenings, car rallies and the civic charity ball on February 27.

The first event of the year was on June 30 — a 10-mile sponsored walk round Edgware, starting at

Deansbrook Road, Burnt Oak, organised by Popat Shah, whose pharmacy has become a hub of charity fund raising.

On Sunday, July 7, there will be a charity cricket match — Mayor's XI v The Town — at Copthall Sports Complex. The match is organised by Cllr Tim Sims with Fred Harris, sports editor of the Hendon Times, as captain of the Town Team.

The Mayor, Cllr Mrs Barbara Langstone, is hoping that people

from all over the borough will join in and support the organised programme and run their own fund-raising events. 'The St John Ambulance and Red Cross members give such wonderful service in this borough. Now we all have a chance to say thank you to them — and have fun at the same time,' she said.

Donations may be sent to The Mayor's Appeal Fund, Mayor's Parlour, Town Hall, The Burroughs, Hendon, NW4 4BG.

Lead levels — no major problems

BARNET'S Environmental Health Department recently completed a survey of lead levels in premises in the borough where young children spend much of their time. The results confirm that there are no major problems. However, a number of general and specific recommendations have been made to reduce levels found.

Public concern in recent years has focused mainly on lead emitted from petrol engines and the Government's intention to limit lead

pollution from cars in the next few years has been well publicised. Fortunately, lead pollution from road traffic in Barnet is not considered excessive compared with other parts of London and so the survey was concentrated on possible local sources such as paint, water, food, toys and craft materials.

A total of 186 premises including infant and junior schools, day nurseries, children's homes and playgrounds were visited and more

than 3,800 samples of materials submitted for analysis.

Following the inspections and assessment of results, individual sets of recommendations have been made in respect of each of the buildings and general guidance given on measures to prevent or reduce the possible intake of lead by children, such as the use of lead free non-toxic paints.

Copies of a report on the survey are available in the borough's reference libraries.

FINCHLEY CARNIVAL

THERE'S a circus theme to this year's Finchley Carnival with clowns, globe trotting, performing ponies and an escapologist. It's all happening at Victoria Park, Finchley, starting at 5pm on Wednesday, July 10, and running through to a grand barbecue at 8pm on Saturday, July 13.

And as 1985 is International Youth Year young people are playing a leading role in the programme.

Come to the Carnival. The funfair opens on Wednesday evening, there's a start to the seven-a-side football and the Eddie Monsoon Band is in the theatre marquee.

Thursday, from 2pm to 7pm, there's a special welcome for senior citizens and handicapped people. Entry and entertainment is free and refreshments are included. If you can, bring an elderly friend or relative or give a lift to a handicapped resident. The programme

includes a jazz band and circus variety acts.

The cat show opens at 1pm and in the evening there is square dancing and an international concert. The mobile libraries present story time at 3.45 and 5.15pm and the children will have their own entertainer from 4.15pm.

Friday is children's day with the schools entertaining and a young superstars competition in the evening. The baby show is in the theatre marquee, there's short tennis demonstrations, a folk concert and more jazz and circus acts.

Saturday is Carnival procession day. In the morning the Carnival Queen, Marie Otigba, and her attendants will tour Finchley, arriving at Avenue House at 11.45am. The procession itself will set off from East End Road at 1.20pm and the Mayor will take the salute at the main

gates of Victoria Park at 1.40pm as the procession moves up to Tally Ho Corner. Back in the park there are football finals, Enfield Drum and Trumpet Corps, Greek dancing, a dog show, Postman Pat and face painting, a fancy dress parade for the children, puppets and a display by the St John Ambulance Brigade.

Barnet Council of Youth are hosting the barbecue. There's a folk concert in the marquee and a host of entertainments.

Every day there are charity stalls, pony rides, the funfair and tennis demonstrations by the Sanyo squad.

Admission is 40p on Thursday and Friday and 65p on Saturday (children 20p and 25p), under fives free. Programmes are available now at libraries and the Information Centre, Ravensfield House, The Burroughs, Hendon (opposite the Town Hall). Full details from the Shows Organiser, tel: 349 9121 ext 441.

Barnet Sports Gala

WIND and blustery rain interspersed with sunshine had little effect on Barnet Sports Gala at Cophall on Friday, Saturday and Sunday, June 7 to 9.

Barnet pupils triumphed and won all three trophies in the Middlesex Schools Athletic Championships. Twelve Barnet pupils will represent Middlesex in the All England Schools Championships in Hull, July 13-14:

Girls: Michelle Robinson, Edgware School (jun shot); Marcia Walker, St Mary's (int 200m); Jackie Ageypong, St James' Catholic High (int 80m hurdles); Georgina Honley, Woodhouse (sen 400m).

Boys: Spiros Mousaura, Edgware (jun 400m); Peter Jones, Ravenscroft (jun high jump); G. J. 'Zach' Zacharia, Queen Elizabeth's Boys (jun discuss); Stephen Wirth, Mill Hill County (int steepchase); Robert Pope, Finchley Catholic High (int discus); Sean Powell, Edgware (int hammer); Eddie Brown, Edgware (int hammer); Patrick Walker, Woodhouse (sen hurdles).

The horse show attracted a huge entry and ran through to dark on Sunday. The Saturday dressage alone involved over 150 horses.

American football was a big attraction, but all the popular events and road races were well supported.



W. Gibbs of Barnet in the finals of the Intermediate Boys Hurdles.



K. Elliott of Richmond in the Junior Girls javelin.



Georgina Honley of Woodhouse Sixth Form College and Barnet Ladies Athletic Club, set a new Championships record in the senior girls 400m with her time of 56.2sec. She will be making a strong bid for the All England title in Hull later this month.



Working out for the dressage events in the horse show. Photos by John Rifkim. Tel: 958 1370.

Headlines

Looking into complaints

LEASEHOLDERS and tenants living in private blocks of flats in the borough who wish to complain about the way their landlord maintains their properties should contact Barnet Council's Environmental Health team.

They will investigate complaints and, where the complaints are justified, will take the matter up with the landlord. The Council has power to order owners to carry out repairs in tenanted flats and common areas such as halls, staircases and lifts. If the Council's requirements are not met the Council can carry out the work and reclaim the cost and it can take landlords to court in some circumstances. The law relating to leasehold properties is more complicated but the environmental health team can offer advice and help.

Following national publicity about the condition of many of these blocks, the Government set up a committee of inquiry which is expected to report later this year.

Barnet's Environmental Health Department have started a survey of mixed leasehold and tenanted blocks in the borough and hope to

have full local information available at about the same time.

At their last meeting the General Purposes Committee discussed a petition from a group of leaseholders and tenants in the borough asking the council to establish a legal service to protect the rights of vulnerable leaseholders and tenants who are suffering chronic problems in their homes through the neglect of absentee landlords. The petition also asked the Environmental Health Service to take every action possible to get urgent maintenance for their homes.

Decision

The committee decided that because of the facilities which already exist, such as Citizens' Advice Bureaux and Barnet Housing Aid, not to establish a legal service as suggested, but that all complaints should be dealt with by the Environmental Health Department who may have the power to take action. The petitioners have been informed.

Residents with complaints should contact the department at Grove Lodge, 287 Regents Park Road, Finchley, N3 3JY (tel. 349 9121).

Councillors' and MPs' surgeries

CHIPPING BARNET

John Major, GLC councillor, and a borough councillor available Saturday, July 20, 10.30am to 12 noon, 163 High St, Barnet.

Sydney Chapman, MP, and a borough councillor available Saturday, July 6 and August 3, 10.30am to 12 noon, 163 High St, Barnet.

Arkley Ward — Councillor Wilf Lipman (Conservative) available Friday, July 19 and August 2, 7.30pm, Dollis Valley Community Centre.

FINCHLEY AND FRIERN BARNET

Conservative councillors available Saturday July 6, 10.30am to 12 noon, 212 Ballards Lane, N3. No August surgery.

Margaret Thatcher, MP, can be contacted by constituents only at her local Constituency Office, 212 Ballards Lane, N3, telephone 445 4292.

East Finchley Ward — Labour Councillors available Saturdays, July 6, 13, 20, 27 and August 3 & 10, 10am to 11.30am, East Finchley Neighbourhood Centre, Church Lane, N2.

St Paul's Ward — Labour councillor available Wednesdays, July 10, 17, 24, 31 and August

7, 7pm to 8pm, Northside School, Percy Rd, N12.

HENDON NORTH

John Gorst, MP, available Friday, July 19 by appointment (959 1446), 2 Apex Parade, Selvage Lane, Mill Hill. Conservative councillors available by appointment at above number and address, Wednesdays, July 10, 17, 24, 31 and August 7.

Colindale Ward — Labour councillors available Saturday, July 27, 11am to 12 noon, St Augustine's Church, Grahame Park.

HENDON SOUTH

Peter Thomas, MP, available by appointment with secretary Mary Lucas (219 4079). Conservative councillors available for consultation (202 7484)

West Hendon — Phone Cllr Tim Sims (734 8080, office hours) for appointment at West Hendon Ex-Servicemen's Club, The Broadway, NW9. Cllrs Doreen Neall and Agnes Slocombe available by appointment 203 1916.

EURO MP

John Marshall, Euro MP, may be contacted at 2 Birkdale Rd, London, W5, for appointments.

do you need our support...

THE WIGMORE CHAIR
Orthopaedic back support, plus a higher frame for ease of getting in and out.



WALKING FRAMES
Made from lightweight aluminium tubing, available in various designs.



OVER-BED TABLES
With full height adjustment and angle facilities plus book ledge. Various models available.

THE CONTROLLED COMFORT BED
Attractive mahogany power-operated fully adjustable bed. Provides excellent support and comfort when resting or sleeping. Remote hand control unit maintains independence.



THE ELITE POWER CHAIR
The ultimate in power chair comfort and style. Features include Kerbmaster attachment, anti-tipping wheels, safety belt and 2 rechargeable 12v batteries. Can fold down or be dismantled for easy transport.



If you are disabled or have friends or relatives in need of help then you can rely on John Bell & Croyden for full support.

A visit to our Wigmore Street showroom where you can see the most comprehensive range of Invalid Aids in the country could be most beneficial. Our friendly expert staff are available to offer professional advice on walking aids, orthopaedic beds, incontinence garments, support stockings, surgical appliances, wheelchairs, back aids, and anything else to provide whatever support is needed. Just ask, we'll be glad to help.

John Bell & Croyden
54 Wigmore Street
London W1H 0AU
Telephone: 01-935 5555

invalid aids
JB&C

NEW HEAD FOR HOLMEWOOD

Mr Robin F. Metters is to be the new headmaster of Holmewood School in Woodside Park following the retirement of Rev. Rady.

Mr Metters has a B.Ed degree from Southampton University. He has taught languages and games in preparatory schools in the Surrey area, and has been Senior Master of Scaitcliffe School in Egham since 1979. He is 35 and a keen yachtsman.

Holmewood has had only four heads in the 100 years of its existence, the last two having given 50 and 25 years service to the school respectively, so Mr Metters brings new blood to the school in addition to a wealth of experience in preparatory schools.

A festival is planned for the next school year to mark the centenary year of Holmewood along with the arrival of its new headmaster.



1885

HOLMEWOOD SCHOOL

WOODSIDE PARK · LONDON N12

(adjacent to Woodside Park Underground Station)

Holmewood is an old-established preparatory school for boys aged 5-13+ years. Tuition follows the Common Entrance syllabus for entry to Public Schools at the age of 13+.

Centenary Year Bursaries are being offered this year for boys 10 and 11 years old with exceptional ability. Interested parents should contact the school without delay.

A prospectus may be obtained from the Secretary
(Telephone 01-445 9670)

K. P. TELECOMS

01-952 0160



CURLEW. CORDLESS PHONE

UNBEATABLE PRICES

APPROVED

for use with telecommunications systems run by British Telecommunications in accordance with the conditions in the instructions for use



KBX6
2 Exchange lines
6 Extensions



EX 300 E
The ultimate in cordless telephones

2000X
MOBILE CELLULAR TELEPHONE NOW IN STOCK



APPROVED INSTALLERS FOR KEY TELEPHONE SYSTEMS

STOCKISTS OF LEADING BRAND NAMES
PANASONIC ANSWER MACHINES
PLESSY HAND SETS
PAGING SYSTEMS • CELLULAR PHONES

Also approved installers for key telephone systems
Trade and retail supplied

Open Mon-Sat 9am-6pm. Closed Sundays

Stockists of

British
TELECOM INPHONE

IN TOUCH · IN TONE · INPHONE

NEW PAGING SYSTEMS NOW IN STOCK

106 HIGH STREET, EDGWARE
TELEPHONE 01-952 0160



S&B Commercials Ltd

"Dealer of Excellence Award"

The van and truck centre S&B Commercials started the year in fine style with the award of a 'Dealer of Excellence' accolade from M.A.N. VW.

Recognising high-standards in both sales and back-up services, the award is given only to the top 12 of M.A.N. VW's 400-odd UK dealers.

Underlining the Welham Green company's achievement is the fact that the award was made in only the second year of S&B's dealership.

A commercial vehicle centre for a decade, the company changed its name from Sellers & Batty and took on the M.A.N. VW franchise after a management buy-out in 1982.

The site and workshops situated at Huggins Lane, Welham Green, now provide and maintain a comprehensive range of commercials ranging from five cwt vans up to full-weight tractors.

Baby of the family is the new Golf Van, a car derivative offering more than 50 cubic feet of load space and a choice of petrol or diesel power.

Also based on the Golf is the Caddy, available as an open pick-up or with 'Truckman' or 'Hi-Line' tops covering 88 and 150 cu ft.

The mid-range is covered by VW's LT and Transporter chassis, each available with a variety of bodies.

The LT comes in panel, high-roof and drop-side versions, or as a chassis or double cab model — with payloads ranging from 1,505 to 2,995 kg.

Transporters in various guises will serve as luxury personnel carriers, as crewbuses, as delivery vans or open pick-ups carrying nine executives in comfort or up to 1,290 kg with ease.

The range has enabled S&B to extend its services to smaller business of every type, from the newsagent to the greengrocer or butcher, so that light commercial vehicles now account for 20 per cent of the company's workshop activity.

S&B has workshops that are hard to match, with 15,000 sq ft of service bays that will hold 30 heavy trucks; computerised diagnostic equipment capable of performing 100 tests in half an hour and full tachograph facilities.

To care for the VW line properly, S&B has increased staff by 50 per cent to 60 in the last two years.

The company runs a 24-hour emergency recovery and part ser-



Mr Michael Heelas, (left) Managing Director of VAG UK presents the golden award to Ron Holmes the Managing Director of S&B Commercials.

vice from computer-controlled stores holding over 300,000 spares.

Latest expansion was the launch in January of a regular twilight shift, working until midnight to help get customers back on the road.

S&B plans to extend this to full 24-hour working by the end of the year in response to a constant demand for fast service.

Talking about service they offer 'Fixed Servicing Prices' for all makes and models, so for a free quotation please contact service reception. There is no need to have your vehicle off the road.

All in all, S&B Commercials

seems well placed to join M.A.N. VW's dozen top dealers at next year's 'Dealer of Excellence' ceremony.

STOP PRESS . . . STOP PRESS . . . For a very limited period we can offer unrepeatable deals on the VW range of LT and Transporter models. These are NEW REGISTRATION VEHICLES that are registered by the 31st August 1985.

Ring Tony Ryder, sales office manager on (07072) 61111 ext 202 for fleet enquiries ring Paul Mead Sales Director and ask for Ext 203 but hurry its first come first served!!

ADVERTISING FEATURE

S&B Commercials Ltd

MAIN DISTRIBUTORS FOR COMMERCIAL VEHICLES



M.A.N. Medium Range trucks



6cwt-38 tonne

Full Range Volkswagen Commercial Vehicles

Golf Van, transporter and LT range.



Full 24 hour workshop facilities and parts service.

Sales, Contract Hire and Vehicle Leasing.



S&B Commercials Ltd

Huggins Lane, Welham Green, Hatfield AL9 7LA
Tel: Hatfield (07072) 61111. Telex; 28192

What's On

WHAT'S ON IN BARNET is a monthly list of activities taking place in the Borough.

Your entry, and contact telephone number, should be sent to the Borough News, Town Hall, The Burroughs, Hendon, NW4 4BG, tel. 202 8282, ext. 479.

Entries for the August issue must be received by Monday, July 15 and before that date if possible.

*Asterisk denotes regular weekly meeting.

Please check whether meetings are being held during the August holiday period.

Saturday, July 6

*North London Rambling Club organise Saturday walks. Contact (SAE) Ray Todd, 31 Blair Close, St Paul's Rd, London N1 2YP.

Sunday, July 7

The Manor House Centre for Judaism, 80 East End Rd, N3. Illustrated talk 'Just Like it Was' by Harry Blacker. 8pm. 346 2288

*Sailing and sailboarding, Wembley Sailing Club, Birchen Grove, NW9. 455 5073

*Mind in Barnet 'Libra' Club, Etchingham Park Day Centre, Etchingham Park Rd, Finchley. 3.30pm. 455 2850

Monday, July 8

*Bells Hill Prams & Pushchairs, St Stephen's Church Hall, Bells Hill, Barnet. 1.30pm.

*Community Links in Cameras, photography group primarily for disabled, 43 Flower Lane, NW7. 1.30pm Contact Maria Bartha 346 9789

*Barnet Blind Bowls Club, Finchley Tudor. 449 7058.

Tuesday, July 9

*Prams and Pushchairs, club for mothers and young children, Union Church, Northiam, Totteridge. 2pm. 445 7287

*Friern Barnet and Totteridge Camera Club, Totteridge Library, Totteridge Lane, beginners to advanced. 8pm. 445 2617

*Animation Workshop, animation and trick photography, Studio 10, Old Bull Arts Centre, 68 High St, Barnet. 4pm. 75p a session. 449 0048

*Hendon and Edgware 18 Plus Group, Games Room, Royal Oak Pub, Finchley Rd, Temple Fortune. 8.15 pm. 205 1455

*Barnet Blind Bowls Club, STC Sports ground, New Southgate, 2pm. 449 7058

*Mind in Barnet Luncheon/Social Club (in term time), The Old Barn, Tarling Rd, East Finchley. 1.30pm. 202 5845

*British Red Cross Society, 10 Downage, Hendon. Sale of nearly new clothes 10am-3pm. 203 0567/1654

Wednesday, July 10

Pensioners' Voice (Barnet), Wes-

ley Hall, High St, Barnet. 1.30pm. 361 2787

*National Council for the Divorced Separated, North West London Branch. Friendly club evening near Brent St, Hendon. Details: 226 3752, 203 5739/3269

*North London and District Divorced/Separated Club, St Paul's Church, High Rd, New Southgate. 8pm. 363 4130/452 3591.

*Club 81 for unattached people 24-45, Torrington Arms, High Rd, Finchley. 9pm. 349 0026.

*Barnet YHA Group, 1st Lyons-down Scout Hut, York Rd, New Barnet. 8pm. 449 1553/445 3492

*Bingo is back! St Alphage Church Hall, Playfield Rd, Burnt Oak. 8pm

Thursday, July 11

Pensioners' Voice (East Finchley), East Finchley Library, 226 High Rd. 2pm. 883 2155

*Moving Picture Set, Old Bull Arts Centre, 68 High St, Barnet. 7.30pm. 449 0048

*Rollerskating, Ashmole Sports Centre, Burleigh Gdns, Southgate. Under 11s 6pm. 368 4984

*Brookside Methodist Church Boys' Brigade, East Barnet. Pre-Junior 6-8, 6.15pm; Juniors 8-11, 6.30pm; Company 11+ 8pm. 441 2042

*Hendon Chess Club, Hyde United Reformed Church, Edgware Rd, Colindale. 7.30pm. Welcome players of any age or strength. 952 3129

*Mind in Barnet Thursday Club, 154 Station Rd, Hendon. 7.45pm 202 5845

*High Barnet Woodcraft Folk, Underhill School, Mays Lane, Barnet. 6-9 yrs, 6pm (440 5369); 10-13 yrs. 7.15pm (440 2426)

*Carpentry for disabled, John Grooms, Stoneyfields Rd, Edgware. 1.30pm. Ring Ian at CRAB 346 9789.

Friday, July 12

*Hendon & Hampstead Garden Suburb Camera Club, Fellowship House, Willifield Way, NW11. 8pm. 205 6053

*Barnet and Finchley Photographic Soc, rear of 37a Salisbury Rd, Barnet. 8pm. 368 3917

*Barnet Blind Bowls Club, Old Court House Rec. 2-5pm. 449 7058

*Finchley Cine Society, Avenue House, East End Rd, N3. 8pm. 346 4265

Saturday, July 13

British Tinnitus Assn (NW London), Meritage Club, Church End, Hendon. 2pm. 444 9657

Monday, July 15

Hampstead Garden Suburb Antiques Circle, Community Room, Bigwood House, Bigwood Rd, NW11. 8pm. 202 0269

Tuesday, July 16

Single, widowed and divorced (25-65), Finchley area. 8pm. 889 0513/441 5532

The Manor House Centre for Judaism, 80 East End Rd, N3. '1881 and After: The Russian Jewish Exodus'. 8pm. 346 2288

Friern Barnet Amnesty Group, Ovington Room, rear St John's Church, Friern Barnet Rd, N11. 8.15pm. 361 3320

Wednesday, July 17

Finchley Soc, — walk around Southgate. Meet Southgate Station 6.30pm.

Sunday, July 21

The Manor House Centre for Judaism, 80 East End Rd, N3. 'Reminiscences from the Tailoring Trade' by Mick Mindel. 8pm. 346 2288

Thursday, July 25

Pensioners' Voice (Whetstone & Finchley), N Finchley Library, Ravensdale Ave. 1.30pm. 445 7413

Barnet Community Health Council meeting, Finchley Memorial Hospital, Granville Rd, N12. 7.30pm. 959 2038

Saturday, July 27

RSPB (Potters Bar & Barnets Group) coffee morning, 31 Mymms Drive, Brookmans Park. Stalls. 10.30am-12.30pm.

Sunday, July 28

Exemption Dog Show, Brook Farm Open Space, High Rd, Whetstone. Obedience, pedigree and novelty classes. Entries from 11am. Fees to Collie Rescue. 883 4504/801 0208

Tuesday, July 30

Pensioner to Pensioner Advisory Centre, Hartley Hall, Flower Lane, NW7. 2-4pm.

Wednesday, July 31

Pensioners' Voice, Golders Green & Dist, Trinity Church Hall, Rodborough Rd, NW11. 1.15pm. 455 7952

Saturday, August 3

Arthritis and Rheumatism Council (Golders Green, E Finchley and Hampstead Garden Suburb), charity lunch, Unitarian church, Hoop Lane, NW11. Cost £1. 12.30-2pm. 455 5511

Wednesday, August 7

Barnet Animal Rights Group, Christ Church, High Rd, N Finchley. 8pm. 440 1715

Thursday, August 8

Pensioners' Voice (East Finchley), E Finchley Library, 226 High Rd. 2pm. 883 2155

Saturday, August 10

British Tinnitus Assn (NW London), Meritage Club, Church End, Hendon. 2pm. 444 9657

Keep fit

Mondays

*Stretch and shape, Christchurch Hall, High Rd, North Finchley. 11 am. 349 1449 (also Fridays)

*Pensioners Health Group, Methodist Hall, Rodborough Rd, NW11. 2pm. 794 6376. 60p session.

*Get Fit & Trim Workouts to music, St John's Hall, Friern

Barnet Lane, N20. 6.45pm. 440 5811. Also Wednesdays 7.50pm.

*Aerobics, Christchurch Hall, High Rd, N12. 10am. 349 1449

Tuesdays

*Popmobility/aerobics, Queen Elizabeth Centre, Meadway, Barnet. 7pm and 8pm. 441 2933

*Keep Fit, Centre Point, Corner Mead, Grahame Park. 7.30pm. 205 713

*Aerobics, Manorside School, Squires Lane, N3 8pm. 349 1449 (also Thursdays 7.30pm)

*Yogacise 7.15pm; body-tune, dance, keep fit, 8.10pm, All Saints School, Oakleigh Rd N, Whetstone. Also Thursdays and daytime classes. 441 1336

Wednesdays

*Popmobility, Centre Point, Grahame Park. 7.30-9.30pm. 205 7113

*Yoga for people with handicaps. Special class, St Mary's Hall, East Barnet. Gentle movement, breathing, relaxation. 4-6pm. Qualified teacher. Other classes available. 440 1828

*Aerobics, Cophall Swimming Pool, Page St, Mill Hill. 9.45am. 349 1449

*Keep-fit conditioning, Old Bull Arts Centre, 68 High St, Barnet. 12.30pm. £1 per session 449 0048

*Mixed Volley Ball Training Club, Queen Elizabeth Centre, Meadway, Barnet. Juniors 6pm; seniors 7pm. 441 2933

*Get Fit & Trim Workouts, Manor Drive Hall, N20. 10.15am (creche). 440 5811. Also Fridays.

Thursdays

*Mixed exercise class for people with problem backs, Queen Elizabeth's Girls' School, Meadway, Barnet. 8pm. 445 6986

*Aerobics, Centre Point, Meadway, Grahame Park. 8pm. 205 7113

*Yoga. British Wheel trained teacher, Union Church, Northiam, N20. 7-8pm. 349 2972

Martial Arts

Mondays

*North London Karate Club, Mill Hill School, The Ridgeway, Mill Hill. 8-9pm, 9-10pm. 440/7733/8633

*Barnet Shotokan Karate Centre. Recreation Hall, Barnet General Hospital, Wellhouse Lane, Barnet. 6-7pm children; 7-8.30pm adults. 449 3150

*Cobra Karate Club, Christ's College School, Hendon Lane, N3. Beginners 7pm; advanced 8pm. 959 4338

*Watling Karate Club, Watling Boys' Club, Dryfield Rd, Burnt Oak. Under 12, 6-7pm; over 12, 7-8pm. 40p a session (and Wednesdays)

*Pak Mei Kung Fu Club, Edgware Sports Centre, Goldsmith Ave. 8pm. 959 2605

What's On

Tuesdays

*Karate, Centre Point, Corner Mead, Grahame Park. 7-13 yr. olds 6pm; 13 plus 7pm. 205 7113 (also Thursdays)

*Pak Mei Kung Fu Club, All Saints Church Hall, Durham Rd, N2. 7pm. 959 2605

*Hampstead Garden Suburb Shotokan Karate Centre, Nautilus Fitness Club, 39 Market Place, Falloden Way, NW11. 7.30pm. 959 8228/97 30917

Wednesdays

*Barnet Shotokan Karate Centre. Children's Karate, Lyonsdown Hall, Lyonsdown Rd, New Barnet. 4.15-5.15pm. Minimum age 8 yrs. 449 3150

*Cobra Karate Club, Christ's College School, Hendon Lane, N3. Beginners 7pm; advanced 8pm. 959 4338

*Judo for children, Pymmes Youth Centre, East Barnet Lower School, Westbrook Crescent, E Barnet. 6.30-7.30pm; 7.30-8.30pm. 440 6473

Thursdays

*North London Karate Club, Mill Hill School, The Ridgeway, Mill Hill. 8-9pm, 9-10pm. 440 7733/8633

*Judo for Adults, Pymmes Youth Centre, East Barnet Lower School, Westbrook Crescent, Barnet. 7.30-9pm. 440 6473

Fridays

*Shin Do Kwai Kendo Club,

Whitefield School (gym) Claremont Rd, NW2. 7.30pm. 863 7574

Fetes

Saturday, July 6

Finchley Catholic High School PTA garden fete, Woodside Lane, N12. Admission 10p. 2-5pm.

Oak Lodge School Assn Summer Fayre, Heath View, N2. 2-4.30pm. Admission 10p (5p concessions).

July 11-13

Finchley Carnival, Victoria Park, Ballards Lane, Finchley. Programmes from libraries and Council offices.

Saturday, July 20

Arkley '85 Gala Fair, Arkley Village Hall, opp The Gate Pub. 2pm. 959 8918

Horticulture and floral art

Saturday, July 6

Finchley Horticultural Soc Summer Show, Christchurch School, Hilton Ave, N12. 2.30-5pm.

Tuesday, July 9

Mill Hill Flower Club, Harwood Hall, Mill Hill B'way. 'Flowers from the home'. 8pm. 959 3530

Thursday, July 11

Barnet & District Fuchsia Soc, Council Offices, Wood St. Speaker: Mr P Waters. 8pm. 0727 59989

Tuesday, July 16

Totteridge Floral Art Club, Totteridge Village Hall, Badgers Croft. Thro' the Looking Glass. 2pm. 445 9307

Wednesday, July 17

Hendon Floral Art Group, West Hendon Community Centre, Marsh Drive. 'Lucky Dip'. 7.30pm. 346 8916

Saturday, July 27

Barnet & Dist Fuchsia Soc Summer Show, St Mary's Hall, Church Hill Rd, E Barnet. 2.30pm. 0727 59989

Thursday, August 8

Barnet & District Fuchsia Soc, Council offices, Wood St. Open discussion. 8pm. 0727 59989

Bridge/Whist

Mondays

*Intermediate Bridge Class, 41 Northumberland Rd, New Barnet. 7.30pm. 449 0960. Also Tuesdays, 10am

Wednesdays

*Intermediate bridge class, 41 Northumberland Rd, New Barnet. 2pm. 449 0960

Thursdays

*Bridge intermediate classes, St

Michael's School, Nether St, N Finchley. 7.45pm 349 4707

*Northside Bridge Club, E Finchley Methodist Church Annexe, High Rd. Duplicate first Thursday, rubber remaining Thursdays.

*NW London Duplicate Bridge Club, Michael Sobell Centre, Limes Ave, NW11. Admission £1.50. 7.45pm. 455 3745

Fridays

*Beginners' bridge class, 41 Northumberland Rd, New Barnet. 7.30pm. 449 0960

*Barnet Old People's Welfare Committee Whist Club, The Fern Room, Salisbury Road, Barnet. 2pm. 441 4853

Saturday, July 6

Ashley Evening TWG Whist Drive, Mill Hill Free Church, Salcombe Gdns. Admission 50p. 7.30pm.

Women's clubs

Thursday, July 11

Finchley Granville (Afternoon) TWG, Finchley Methodist Hall, Ballards Lane. 'History of Harrods'. 2pm. 455 2227

Monday, July 15

Mill Hill Highwood TWG, Hartley Hall, Flower Lane. Music Hall and the lost art of entertaining. 2pm. 959 1994

Wednesday, July 17

Woodside Park Afternoon TWG,

COME TO SULLIVANS

SULLIVANS Independence Day Celebration is just one of the exciting theme nights on tap for this summer.

The evening's entertainment includes Mrs Thatcher, Ronnie and Gerry Hart (our resident magician — American of course). There will be special offers on our American Lagers and a special Independence Day Cocktail. Not forgetting that during Happy Hour (7-8.30 every evening) you can get two cocktails for the price of one (HIC)!! So get those Stetsons on and cheerleader pompoms out and saunter down to Sullivans for a great night out. You won't feel out of it in fancy dress either as all the staff will be dressed American Flavour.

Children can eat FREE every Saturday Lunchtime

On Saturdays we offer two children (under 12) to have a meal free of charge (providing they are accompanied by an adult). Return on Sunday lunchtime and you can relax with a free orange juice and the newspapers — compliments of Sullivans.

Lunchtime

Weekday lunches are ideal for businessmen to entertain their clients in our large attractive restaurant. Or come and enjoy our Bar-Bites like chicken wings, loaded skins etc. These can also be enjoyed in our extensive garden (bring a brolley!). And early evening is an ideal time to come and sample our pitchers of Pimms, Sangria and Buck Fizz (if you're driving, don't forget your car!!).

Happy Hour every evening 7.00-8.30pm.
Lunch 11.30-3pm, Dinner 5.30-11.30pm, Mon-Sat.
Sunday Lunch 12.00-3.30pm, Dinner 5.30-11pm.

We do advise you to book table reservations:

Tel: 01-455 3812
ADVERTISING FEATURE

JULY 4th



AMERICAN INDEPENDENCE DAY

**SPECIAL MENU AT SULLIVANS
ONLY £6.00 per person**

MENU

CLAM CHOWDER

GUACOMOLE BURGER

or
RIBS

served with a Dinner Salad
choice of fried or baked potato

HOT FUDGE SUNDAE

**BOOK NOW PHONE
01-455 3812** LIMITED SPACES
SO HURRY!

★DRESS AMERICAN FLAVOUR★

**SULLIVANS RESTAURANT & BAR, GOLDERS GREEN RD,
GOLDERS GREEN, NW11 (North Circular End)**

What's On

Old Finchleians Club House, Southover, N12. 2.15pm. 445 0911

Friday, July 19

Broadfields Evening TWG, Orange Hill Junior School, Hammonde Close, Edgware. 7.30pm. 958 5718

Barnet Afternoon TWG, Church House, Wood St. 2pm. 449 0367

Tuesday, July 23

Finchley Redbourne TWG, Etchingham Park Day Centre, Etchingham Park Rd, N3. 7.45 pm. 349 3365

Thursday, August 1

East Barnet Valley TWG, St John's Church Hall, Mowbray Rd, New Barnet. 2.15pm. 449 8601/3885

Tuesday, August 6

Friern Barnet Friary TWG, Christ Church URC Hall, Bellevue Rd, N11. 2pm. 445 8011

Thursday, August 8

Broadway Mill Hill TWG, Hartley Hall, Flower Lane, Garden meeting. 2pm. 954 1684

Late entries

Saturday July 6

Ravenscroft School Summer Fair, Barnet Lane, N20. Guest celebrity. Admission 20p (accompanied children free). 2pm.

Flower Lane Social Education

Centre Summer Fete and Bazaar, 41 Flower Lane, Mill Hill. Admission 20p, 2pm.

St Mary's School, The Downage, Hendon. Ye Olde Summer Fayre. Variety of stalls. Admission 10p. 1.30-4.30pm.

Monday July 8

London Hash House Harriers — Highgate Wood and Village. 7pm start. Highgate Tube Stn. 349 2338.

Saturday July 13

Fairway School Summer Fete, The Fairway, Edgware. 2-4pm.

Tuesday July 16

Royal British Legion (North Finchley), Legionway, Summers Lane, N12. 8pm. 445 9911.

Friday July 26

Barnet Ratepayers & Residents Assn, Arkley and Hadley Wards, WRVS Luncheon Room, Salisbury Rd, Barnet. 8pm, surgery 7.30pm.

Wednesday July 31

Federation of Ratepayers & Residents Assns. of LBB, N Finchley Library, Ravensdale Ave. 8pm.

Tuesday August 6

Royal British Legion Women's Section (N. Finchley), Legionway, Summers Lane, N12. 8pm. 445 9911.

Monday August 5

London Hash House Harriers — Totteridge and Whetstone. 7pm start Totteridge Stn. 349 2338.

Council meetings

Members of the public are invited to attend council and committee meetings in the Town Hall, Hendon, except where stated.

Monday, July 8: Finance; Western Area Road Safety, 7.30pm.

Tuesday July 16: Education sub-committees.

Wednesday July 17: Planning sub-committees; Eastern Area Road Safety, Town Hall, Friern Barnet, 7.45pm.

Tuesday July 23: Council Meeting.

Monday July 29: Housing.

Tuesday July 30: Public Works; Social Services.

Tuesday August 6: Education.

Wednesday August 7: Town Planning and Research.

July at the Old Bull: Fri 12, Dial Square Cabaret, 8pm; Mon 22, Day of Dance, 10am-3pm; Wed 24, Puppet Show for children, 2-4pm; Thurs 25, Circus for children, 10am-1pm; Sat 27, Box 3 Women's Theatre Company, 8pm; Mon 29, day of dance with Deep See Dancers, 10am-3pm. 68 High St, Barnet. 449 0048.

DISCOVER TRENT PARK

LOCAL residents have an opportunity to discover new aspects of Trent Park, Cockfosters, on Middlesex Polytechnic's one-week Ecology Field Course, August 1-8.

Part of the Polytechnic's Summer School, the course is suitable for students and anyone with an enthusiasm for ecology and natural history.

Taught by biology Lecturer Brian Shutes, author of the Trent Park Natural History Guide, the course is a practical introduction to an unusual, unpolluted and unexploited environment.

The fee is £55. Further information from the Summer School Office, Middlesex Polytechnic, Trent Park, Cockfosters Road, Barnet, Herts. Tel: 440 5181.

Animation

Middlesex Polytechnic offers designers, teachers and computing professionals a one-week programme of lectures and workshops, Introduction to Computer Graphics, July 15-19, at their Bounds Green location.

Emphasis will be placed on computer animation. Programme fee: £350.

Information and reservations: Marion Locke, Consultancy Services Organisation, Middlesex Polytechnic, Bounds Green Road, London N11 2NQ. Tel: 368 1299.

SALE ON AT

VALLEY FURNISHING

for

QUALITY BEDS & FURNITURE AT HUGE REDUCTIONS

WE PRIDE OURSELVES IN THE EXTRA PERSONAL SERVICE THAT WE GIVE AND OFFER YOU SAME DAY DELIVERY FROM OUR STOCK!

FOLDING BEDS FROM £25.00

MATTRESSES OF ALL SHAPES AND SIZES ARE AVAILABLE SEPARATELY

We also furnish houses, flats for letting/renting and old peoples' homes

INSTANT CREDIT FACILITIES AVAILABLE UP TO £1,000 SUBJECT TO STATUS

VALLEY FURNISHING

114 BRENT STREET, HENDON NW4

YOU ARE ONLY A PHONE CALL AWAY

Tel: 202 4666 Car park at rear

BARNET, HERTS

Two sites
approx. 0.3 and 0.5 acres

Suitable for Light Industrial Development
(Outline planning consent)

FREEHOLD For Sale By Tender

For further details please contact:

London Borough of Barnet
Directorate of Technical Services
Development Division

Land Agency Group

Gateway House

332 Regents Park Road

Finchley N3 2LP

Tel: 01-349 9121 Ext. 503/327

LONDON BOROUGH
barnet



Parks programme

BARNET COUNCIL have arranged a lively programme of entertainments in the parks throughout the summer holidays from July 22 to August 30. At 11am and 3pm, there will be entertainers, such as Punch and Judy and clowns.

Where to go:

Monday mornings: Watling Park, Burnt Oak; *West Hendon Playing Fields, Goldsmith Road.

Monday afternoons: Grahame Park, Colindale; *Montrose Playing Fields, Colindale.

Tuesday mornings: Halliwick Recreation Ground, New Southgate; *Bittacy Hill Park, Mill Hill.

Tuesday afternoons: Stonegrove Park, Edgware; *Cherry Tree Woods, East Finchley.

Wednesday mornings: Avenue House Park, East End Road, Finchley; *Swan Lane, Whetstone.

Wednesday afternoons: Friary Park, Friern Barnet Lane; *Old Court House, Wood Street, Barnet.

Thursday mornings: Riverside Walk, Lullington Garth, Woodside Park; *Edgwarebury Park, Edgware.

Thursday afternoons: Mill Hill Park, Wise Lane; *Victoria Recreation Ground, New Barnet.

Friday mornings: Victoria Park, Finchley; *Childs Hill Park, Golders Green.

Friday afternoons: Basing Hill Park, Hendon Way; *Hendon Park, Queens Road.

*Denotes weeks July 29-Aug 2; Aug 12-16; Aug 26-30 only.

Who to see:

July 22 to 26: Bob Freeman.

July 29 to Aug 2: Les Nottle and †Dennis Patten.

Aug 5 to 9: Vernon Sisters.

Aug 12 to 16: Don Robertson and †Roy Grout.

Aug 19 to 23: Richard Stuppel.

Aug 26 to 30: John Peake and †Derilea.

†Denotes parks marked with *above. Full programmes at libraries or Information Centre, Ravensfield House, The Burroughs, Hendon. Tel: 202 8282.



AT local parks, there are games, sports, and activities for kids aged five to 14.

Play leaders will keep the programme rolling with sports, board games, painting, acting and fun.

Turn up and join in. Sessions run for two hours starting at 10am and 2pm.

It's all happening at:
West Hendon Playing Fields,
Watling Park, Burnt Oak.
Lyttelton Playing Field, East Finchley.
Oak Hill Park, East Barnet.

SUN TIME . . .



Book bus

ONCE upon a time — well actually from July 29 to August 16 — a book bus is touring Barnet.

Inside, Barnet's Libraries and Arts Service have a special collection of books for children to look at. Outside, sit comfortably for storytime and fun activities.

Every afternoon at 2.30pm the bus will be taking young explorers aboard at:

July 29: Sunnyhill Park, Hendon.

July 30: Oakhill Park, East Barnet.

July 31: Cherry Tree Wood, East Finchley.

Aug 1: Watling Park, Burnt Oak.

Aug 2: Bittacy Hill Park, Mill Hill East.

Aug 5: Old Court House Recreation Grounds, Barnet.

Aug 6: Clitterhouse Playing Fields, Cricklewood.

Aug 7: West Hendon Playing Field.

Aug 8: Victoria Park, Finchley.

Aug 9/10: Friern Barnet Summer Show.

Aug 12: Stonegrove Park, Edgware.

Aug 13: Avenue House Grounds, Finchley.

Aug 14: Grahame Park.

Aug 15: Friary Park, Friern Barnet.

Aug 16: Mill Hill Park.

Watersplash

COPTHALL Pools are going all out to get Barnet swimming with crash courses for beginners, improvers, silver and gold medallists and diving.

The crash courses are for 10 lessons, Monday to Friday, for two weeks starting on July 22, August 5 and August 19 (nine lessons missing Bank Holiday). Cost £15 for 10 lessons, £13.50 for nine lessons. There are also Duckling classes for four-year-olds at £12 for 10 lessons.

Full details available at the Pools and bookings can be made in person, or phone 203 4187 for details.



Sailing base

THROUGHOUT the holidays the Welsh Harp Youth Sailing Base is open four days a week for canoeing, sailing and windsurfing.

The base caters for young people aged 12 to 20. Opening hours, Tuesday and Wednesday 2 to 5pm and 6 to 8pm; Saturday and Sunday 10am to 1pm and 2pm to 5pm. Phone the centre first on 202 6672 as numbers are limited.



Athletics coaching

TWO OF Britain's top athletes are coaching Barnet's youngsters at Copthall Stadium.

Training by Shaftesbury Harriers, is open to all 11- to 16-year-olds, 40p a two-hour session. No need to book. The idea is to encourage participation and develop skills for likely young athletes.

Video, weight training and practical work outs are supervised by Paul Brice, international hurdler, and Fred Salle, AAA's long jump champion and No 1 in the country.

Sessions start at 10.30am and 1.30pm every weekday over four weeks: July 23-26; Aug 5-9; Aug 12-16; and Aug 19-23.



Summer sun

MANORHILL Centre, North Finchley, are running a four week Summer Sunshine Scheme for seven to 11-year-olds, from July 22 to August 16.

The programme includes activities using the hall and gymnasium and outings to Thorpe Park, Southend and a cinema, at £10 a week per child. They should bring a packed lunch as the day runs from 9am to 4pm.

Booking forms from the manager, Manorhill Centre, Finchley Manorhill School, Summers Lane, North Finchley, N12. Tel: 368 3616.

. . . FUN TIME

Ashmole 5 to 50+



ASHMOLE Centre's summer programme is bursting with activities for the whole community from four to 50 plus.

It runs from July 22 for three weeks plus a special week from August 12 to 16.

Mornings: 9-10.45am, Junior Trampastics, trampoline, ropes and sports, £1. 10.45am-12.45pm, Junior Arts and Crafts, materials supplied, £1.30. Sort-O-Sport for 7-13 age group, swimming, sport and drama, £1.50 session; £6 for week booked in advance. Mon to Fri July 22 to Aug 9 (not Tuesdays July 24 and 31).

Afternoons: Your Move — board games and competitions for 8 to 14-year-olds. 2-5pm. £1.50 or £6 for week booked in advance.

Family casual — parents and family welcome with 8 to 15-year-olds. Three hours of sport, swimming, and activities, adults £1.20; under 16s, 70p. Full four weeks.

Casual roller skating 6 to 18-year-olds, 1 to 2pm, 50p, three weeks. Junior tennis, 11 to 14-year-olds, 11am; 7 to 10-year-olds, 12 noon, £5.50 a week, full four weeks.

August 12 to 16. Rendezvous Recreation, for the 50-plus age group. 40p a session. 9 to 11am and

11am to 1pm.

Dance Specials. Deep See Dancers creative workshops. July 23, Space Age; July 30, Underwater World. Under-sevens, mornings; over-sevens, afternoons. Book by July 14, £2.30. On the day, £2.80.

Multisports



CENTRE POINT, Grahame Park, offer a varied programme of multisports, specialist coaching and swimming.

For three weeks, from July 22 to August 16, there is a two-hour multisport session from 9.30am at 75p a session. Under sixes welcome, accompanied by a parent.

At 11.30am there is coaching in FA Superskills, trampolining and tennis. Costs £4.50 a week bookable in advance.

For four weeks starting July 22 there are crash courses in swimming, £4.50 a week bookable in advance. And the pool will be open from 2 to 4pm for public swimming, adults 60p, children 30p.

For two weeks from August 19 to 30 there will be outdoor sports sessions meeting outside the youth club at 2pm Monday to Friday.

Details from the manager, Centre Point, Corner Mead, Grahame Park Way, NW9. Tel: 205 7113.

QE's famous four



TWO NEW sports, golf and archery, as well as tennis and football, are the main holiday activities at Queen Elizabeth Centre, Barnet.

They are running a series of concentrated courses on a weekly basis for three weeks starting on July 22, July 26 and August 8.

Football is four hours daily, 10.30am to 3pm with a half hour for lunch. For £15, youngsters aged seven to 16, can train for the FA superskills awards.

Tennis, for ages seven-plus, is in three-hour sessions taken by LTA-approved instructors. Rackets provided.

Archery, for the eight to 16s is in two-hour sessions from 2pm for £12 a week, equipment supplied.

Golf, for the over eights, at Finchley Golf Range, Summers Lane, at 2.30 to 3pm, must be booked through the Centre. Cost £10 a week.

All courses should be booked in advance. Phone the manager on 441 2933. For the same three weeks there are casual activities with Pay-as-you-Play every morning 10am to noon, 80p; and casual swimming from 2 to 4pm, 60p, under 16s 30p. In the mornings there are beginners classes at £4.50 a week.

What's On in the Arts

Music

Mondays

*Guitar classes — beginners welcome. The Old Bull Arts Centre, 68 High St, Barnet. £1. 6.30-7.30pm. 449 5189

Tuesdays

*The Apollo Singers, Wilberforce Hall, Wilberforce Rd, W Hendon. 7.45pm. 959 1244

*Hendon String Orchestra, Whitefields School, Claremont Rd, NW2. 8pm. 455 5005

Thursdays

*London Pro Arte Choir, Mill Hill East Free Church, Salcombe Gdns, Mill Hill. 7.30pm 959 1659

Saturday, July 13

Finchley Chamber Choir, Finchley Methodist Church, Ballards Lane. Rossini's Petite Messe Solennelle. Tickets £2 (concessions £1.25). 7.45pm. 346 0502

Sunday, July 14

Manor House Soc recital by Vivienne Bellos, soprano, and Alexander Knapp, piano. The Manor House, 80 East End Rd, N3. 8pm. 346 2288

Wednesday, July 17

Mill Hill Gramophone Soc, Union Church, Mill Hill B'way. 8pm. 959 5097

Dance

Saturday, July 6

Finchley Sequence Dance Club, Church Hall, St Philip's, Gravel Hill, N3. 7.30pm.

Mondays

*CRAB dance club for disabled, West Hendon Community Centre, Marsh Drive, NW9. 7pm. Contact Jane Forde 346 9789

Tuesdays

*Sequence dancing, 20th Century Sequence Dancing Club, All Saints Hall, Oakleigh Rd North, Whetstone. 7.45pm. 440 6508

*Tap dancing, Centrepont, Grahame Park. Under 12s 6.15pm; all ages 6.45pm. 205 7113

*Wheelchair dancing, Grahame Park Community Centre, The Concourse, NW9. 1.30-3pm. 346 9789. Transport available.

Wednesdays

*Contemporary Dance Classes for Adults, Queen Elizabeth's Sports Centre, Meadway, Barnet. 7.45-8.45pm. £1.25 per class or £5 per half-term. 441 5984

*CRAB dance workshop for 12 to 18-year-olds with a view to forming Barnet youth dance company, Friern Barnet County School. 6.30-8pm. No experience necessary. Contact Jane Forde on 346 9789.

*Sequence dancing, Martin School, High Rd, East Finchley. Mountfield Old Time & Modern Sequence Dance Club. 8pm. 959 5185

*Friary Sequence Dance Club, Manor Drive Methodist Church Hall, N20. 8pm 446 4816

Thursdays

*Finchley Sequence Dance Club, Martin School, High Rd, E Finchley. 7.30pm

Fridays

*Latin & ballroom, Subud Hall, 97 E Barnet Rd, New Barnet. 8.30pm. 449 3336/6034

Saturday, July 13

Finchley Sequence Dance Club, Church Hall, St Philip the Apostle, Gravel Hill, N3. 7.30pm.

*Children's disco & ballroom, Subud Hall, 97 E Barnet Rd, New Barnet. 11.30am. 449 3336/6034

Monday, July 15

Chipping Barnet Folk Dance Club, Church House, Wood St, Barnet. 8pm. 449 3317/4425 & 441 3865

Saturday, July 27

LBB Youth & Community Service International Youth Year folk dancing display, Grahame Park

Centre Point, Corner Mead, NW9. 7.30pm. 368 1255, ext 316.

Saturday, August 3

20th Century Sequence Dancing Club, Queen Elizabeth Centre, Meadway, Barnet. 7.30pm. 440 6506

Saturday, August 10

Finchley Sequence Dance Club, Church Hall, St Philip the Apostle, Gravel Hill, N3. 7.30pm.

Drama

Mondays

*Drama workshops for people with learning difficulties with SHAPE, Old Bull Arts Centre, 68 High St, Barnet. 4-6pm. 449 5189

Wednesdays

*Incognito Theatre Group, Theatre, Friern Barnet. 8pm. 886 5791

*East Finchley Theatre Group, Methodist Church Hall, High Rd, N2 7.30pm. 883 2633

*Drama class for 5-7 yrs, The Old Bull Arts Centre, 68 High St, Barnet. 4-5pm. 50p. 449 0048

Fortnightly drama classes for adults, The Old Bull Arts Centre, 68 High St, Barnet. 6.30pm. £1. 449 0048 (July 10).

Thursdays

*Drama workshop for people with mobility difficulties with SHAPE, Old Bull Arts Centre, 68 High St, Barnet. 1.30-3.30 pm. 449 5189

Exhibitions

July 9-20

Barnet Guild of Artists 37th Annual Exhibition, Church House, Wood St, Barnet. Open Mon-Sat, 11am-7pm (close 6pm 20th).

July 13-September 8

Church Farm House Museum, Greyhound Hill, Hendon. Miss Holgate's Hendon — 'A Victo-

rian Lady's Sketchbook.' Opening hours: Weekdays (except Tuesday) 10am-1pm, 2-5.30pm; Tuesday 10am-1pm; Sunday 2-5.30pm. 203 0130.

Monday, July 15

Open Art Exhibition, Old Bull Arts Centre, 68 High St, Barnet.

Until July 19

Paintings by Nail Payza, The Gallery, Totteridge Library, Totteridge Lane, N20. Library opening hours.

July 20-August 24

Paintings and pastels by Mary Bence, Hendon Library, The Burroughs. Library opening hours.

Saturday, July 27

LBB Youth and Community Service International Youth Year exhibition of art, Grahame Park Centre Point, Corner Mead, NW9. Open: 10am-6pm. 202 2757

Until July 28

The Museum of the Jewish East End, The Sternberg Centre, The Manor House, 80 East End Rd, N3. 'A Century of Migration — Jewish Settlement in the East End'. Open: Sunday to Thursday, 10am-5pm. 346 2288

Until August 10

Prints by Julia Wilson, Finchley Library, Ravensdale Ave. Library opening hours.

Pop, rock and Western

Saturday, July 6

Earthmovers Club present live bands, Old Bull Arts Centre, 68 High St, Barnet. 8pm. 449 0048 (also July 20)

Sundays

*Top Rock and Blues Bands, Torrington Arms Pub, Lodge Lane, High Rd, N Finchley. 8.30pm. 445 4710 (also Fridays)

*Bernie Tyrell's Sunday Jazz, Salisbury Hotel, High St, Barnet. 12-2pm

THROUGH Barnet Borough News may I tell all residents about the dedicated work of voluntary helpers who produce the weekly Barnet Talking Newspaper for blind and partially-sighted residents.

Every Thursday morning our administration team which includes two blind helpers, open the returned pouches, take out the cassettes, erase and rewind them. Then all registers and records are processed ready for the evening's production.

In the afternoon the editorial team select the news from the local papers, prepare and edit the scripts. In the evening a team of four readers in our studios guided by the producer, Alan Stout, who is also chairman, and his engineer, process the weekly newspaper on to a master tape.

The readings last approximately one hour and from the master tape our fast copiers produce over 300

cassettes of local news which are placed in the pouches addressed to our listeners. They are delivered to the Post Office by 11pm and usually reach our 'readers' by first post Saturday. Many of them who live alone play the tape more than once and welcome our readers' voices which they get to know well.

The 'readers' reverse the label on the pouch, return the cassettes on Monday and the cycle starts all over again each Thursday morning.

This service is provided every week of the year and we would like to reach more blind and partially-sighted people in the borough. So if you know anyone who might like to receive the Talking Newspaper, please let us know. If really necessary we will provide a play-back machine. The cassettes are free.

I am a 'new boy' but as an OAP

myself I am able to testify to the dedication of our teams of helpers and all the contacts who keep us up to date with news of our 'readers'.

Of course, the service is costly, and we depend on voluntary contributions. Apart from the relatively small items such as cassettes our equipment is expensive. The fast copiers alone cost about £2,000 each and two are already nearing the end of their useful life.

Please write to or telephone me if you would like to help in one of our three teams. The administration team meets on Thursday morning in our studio, the editorial team on the same afternoon in Ewen Hall, Wood Street, Barnet, and the production team in our studio at 7pm the same evening. We need regular help but this does not mean every single week as we have two or three

teams to ease the burden.

If you would like a talk about Barnet Talking Newspaper, afternoons or evenings, for your church, club, school or any other organisation, I can oblige. If you are able to send a donation, please do so to our treasurer, Dennis Baker, 2 Flower Gate, Arkley, Herts.

We would welcome any company, organisation or school to sponsor the work we are doing. Also individuals who would act as contacts for all areas of the borough to tell us of any difficulties our 'readers' are experiencing with their play-back machines or cassettes.

We have 333 'readers' and would like many more.

Charles Tavner,
Public Relations Officer,
62 Highview Avenue,
Edgware, HA8 9UA
(Tel: 958 8826)

Talking Newspaper



Home sales go mobile

BARNET'S housing sales team are in the vanguard of promotional ideas. They have taken to wheels. The yellow vans which service our housing estates carry vinyl adverts for 'The Sale of the Century' - the tremendous bargains for tenants who purchase their council houses. These have been designed by Rodney Saunders Associates of Elstree for the sales campaign.

In 1984/5, 845 Barnet tenants became house owners compared with 605 in 1983/4, and 1,108 tenants began the process of buying their own council home under the Right to Buy scheme, an increase of 237. So 1984/5 set a new record.

Tenants can purchase their homes at very large discounts on market value. These run from 30% to 60% for tenants with 30 or more years tenancy. For details contact the sales team at Stag House, 94 Burnt Oak Broadway, Edgware, tel: 952 8911.



Sale of the Century

Great opportunity for **COUNCIL TENANTS** to buy their own homes
Contact: SALES TEAM 01-952 8911



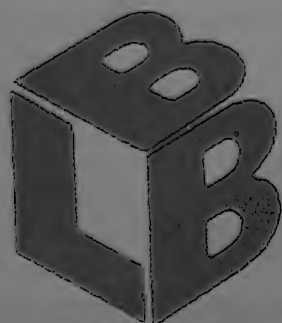
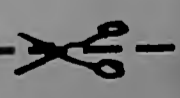
Why go digging for Gold, when you're sitting on a GOLDMINE!



**AMAZING DISCOUNTS!
 FREE ADVICE!
 SHARED OWNERSHIP!
 TAX RELIEF!**

**SPECIAL READER OFFER TO
 ALL LONDON BOROUGH BARNET
 COUNCIL TENANTS!!**

**SEND FOR YOUR FREE RIGHT TO
 BUY PACK OR PHONE OUR
 SALES TEAM ON 01-952 8911**



PLEASE SEND ME MY RIGHT TO BUY PACK TODAY.

Post coupon to:
 London Borough
Barnet
 STAG HOUSE
 94 Burnt Oak Broadway
 Edgware, Middx.

NAME _____

ADDRESS _____

TELEPHONE NUMBER _____

DIRECTORATE OF HOUSING SERVICES

IBBN2

W WORLD GAMES



LONDON 1985
JULY 25 - AUGUST 4



World Games is a competitive showcase for 24 different sports which are not in the present Olympic programme.

World Games, to be held in London in 1985, will provide a unique opportunity to view these exciting sports. Although many of these are relatively unknown in the UK, they are extremely popular in other parts of the world.

World Games competitors, the leading individual or team exponents of their sport, will each be invited by their International Federations to take part.

Archery (Field)

A form of target archery around a hilly course with 28 targets. Two competitions for men and women: freestyle (sights and stabilisers allowed) and barebow (no accuracy aids, just instinct and judgement). Unmarked hunter round July 27; marked field round July 28.

Body Building

Competition is judged for balance between massive muscularity and power, and more refined, shapely, beauty. Male and female competitions by weight category: 70Kg and over 90Kg (men) and 52Kg (women) on July 27; 80Kg and 90Kg (men) and over 52Kg (women) on July 28.

Casting

The skills practised by anglers world-wide transferred to dry land, testing both accuracy and technique. Men's and women's events: spinning distance single and double-handed August 2; fly/multiplier accuracy skish and spinning accuracy arenberg August 3; fly distance single/double-handed August 4.

Handball

5-a-side German sport played on a 50x20 metre outdoor grass court bisected by a cord at volleyball-net height. Teams have up to three hits to return ball over cord, and the ball may bounce between hits. 5 matches per day, with 6 teams competing in a round-robin tournament.

Fin Swimming

Similar to normal competitive swimming but with swim fins and snorkel breathing apparatus or miniature tanks. Men's and women's individual and 4-person relay races of varying distances between 50 and 800 metres per swimmer.

Karate

Non-contact martial art combining thrust, blows and kicks to designated parts of opponent's body, judged on a points system. July 27 - women's Kumite (3 divisions) and Kata, and men's Kata and Kumite (-60Kg); July 28 - men's Kumite (-65Kg to open weight).

Korfball

Dutch development of basketball. 8-player teams (4 men, 4 women) on a 40 x 20 metre indoor court, with baskets similar to netball but much higher. 6 teams will compete in a round-robin tournament, with 3 matches on each of the first 3 days and 6 on the final day.

Lifesaving

The identifiable elements of aquatic rescue developed into a rigorous discipline. Five individual events for men and women, plus one team event over the 2 days of competition, all mixing surface and submerged swimming with obstacles and towing weighted dummies.

Netball

Women's sport on 30 x 15 metre court. 7-a-side teams with designated positions, score by putting ball through 3 metre high net. 6 teams will compete in a round-robin tournament, 5 matches per day.

Petanque

Form of boules to be played by teams of 3 players. Object is to get your team's boules closer to cochonnet (jack) than opposition's. 6 teams will compete in a round-robin tournament.

Powerlifting

Lifters, classified in 3 body weights, will perform 3 lifts: squat, bench press and dead lift. Best performances in each category added together to give overall total.

Racquetball

Similar to squash but on a larger court and played with a more compact racket. Ball may bounce off all walls and ceiling. Competition will comprise both men's and women's singles.

Roller Skating (Artistic)

The grace and skill of ice skating transferred to roller skates. Three categories: men's and women's individual freestyle, pairs and dance pairs. All events judged with points for technique, style and interpretation.

Roller Hockey

5-a-side non-contact indoor hockey on roller skates. Special skates and great skill make for a fast, exciting and competitive game. 6 teams will compete in a round-robin tournament, with 3 matches per session.

Roller Skating (Speed)

Resembles cycle racing more than speed ice skating. 9 men's and women's events on an outdoor circuit. Race distances will be from 300 metres to half and full marathon.

For further information please contact: World Games London Office, Crystal Palace National Sports Centre, POB 718, Norwood, London SE19 2BD.

Softball

Women's competition only at World Games. Similar to baseball but with bigger ball and more chubby bat. Otherwise same rules and skills. 6 teams will compete in a round-robin tournament.

Speedway

Hugely popular form of motorcycle racing around 300-400 metre oval circuits on specially designed machines. World Games event will be a pairs competition for 14 riders. Each pair will race against all the others, points system to determine the overall winners.

Taekwondo

Contact martial art (demonstration sport at 1988 Olympics), mixing blocks, kicks and punches with emphasis on mental approach. World Games will be a men's competition over 8 weight categories - 4 categories each day.

Ten-pin Bowling

As played worldwide by some 150 million people. 4-7Kg balls rolled down 18 metre-length lanes in order to knock down ten pins. August 2 - mixed pairs; August 3 and 4 - men's and women's individual competition.

Trampoline

Three events, each men's and women's: individual and synchronised, both with phase of compulsory movements and then voluntary routine; and tumbling, on a special track with 'mount' onto trampoline, and 'dismount' off it. Judged event, with marks for aesthetics weighted by degree of difficulty.

Tug of War

In two team weight classes, middle (640Kg) and light-heavy (720Kg). 8-man teams must pull opposition 4 metres. Matches are best of three pulls. Competition is round-robin involving 6 teams in each weight category.

Water Skiing

3 categories: slalom - side to side down a double row of buoys; tricks - two 20-second passes mixing trick holds, turns and skiing positions; jump - 3 attempts per skier, longest wins. July 26 - preliminary rounds tricks (M/W), jump (W); July 27 - preliminary rounds slalom (M/W), jump (M), finals tricks (M/W) and slalom (W); July 28 - finals slalom (M) and jump (M/W).

Wrestling (Sombo)

Developed in USSR from amalgamation of many regional styles. Competitors wear judo-style uniforms, and locks as well as throws count. Contests over 6 minutes can be won outright by perfect throw, or on points awarded by judges. Men's and women's event over 10 weight categories each. August 1 - preliminary rounds; August 2 - finals.



World games for Copthall

AUGUST 1-4

COPTHALL Sports Complex, one of the finest centres in the South East, has been chosen as one of the lead venues for the World Games lining up with Crystal Palace and Wembley.

Altogether 1,600 competitors will converge on London from July 25 to August 4 to take part in this multi-sport festival which presents a showcase for non-Olympic sports.

The games are being supported by the Japan Shipbuilding Industry Foundation with

sponsorship by Puma, international shoe and equipment manufacturers and the marketing consultants are West Nally.

Copthall, with its fine athletics stadium and swimming complex set in 138 acres of sports ground, with parking for 700 cars and easy access from the M1, M25, North Circular Road and A41, was a clear contender as host venue.

1985 is the silver jubilee of the complex. The former Borough of Hendon established



The stadium.



The training pool.

the sports centre in 1960 and under the Borough of Barnet the centre has developed to provide an athletics stadium second to none, a swimming complex which regularly hosts international short course meets and grounds which can cater for traditional and unusual sports.

For the World Games all eyes will be on the Stadium, venue for five sports. One of the big attractions will be the Tug-of-war, and there will be Petanque — a version of the French game

of boules, possibly very similar to the game played by Drake when the Armada was sighted.

Faustball is the original of volleyball and is a lively spectator sport as players dive for the ball to make a return.

Softball is a version of baseball nearer to British rounders and will be a women's event.

The fifth event is Casting — the skill of the angler on dry land with accuracy, distance and skill are tested to a fine degree.

BARNET COPTHALL SPORTS CENTRE STADIUM

PRESENTS

ON AUGUST 1st 2nd 3rd & 4th



WORLD GAMES 1985

LONDON 1985

FACILITIES

- ★ 3 JAVELIN AREAS
- ★ 2 HAMMER AREAS
- ★ 3 DISCUS AREAS
- ★ 2 SHOT PUT AREAS
- ★ ALL TRACK EVENTS
- ★ POLE VAULTING
- ★ HIGH JUMP
- ★ LONG JUMP
- ★ TRIPLE JUMP

ALL WEATHER
SURFACE TRACK
"OLYMPRENE"

WE WILL TAKE ANY
TYPE OF SPORTING
EVENT IN THE
CENTRE

All equipment is supplied at no charge for all athletic events and for public training sessions.

AMENITIES

- ★ PICNIC AREAS
- ★ REFRESHMENTS
- ★ PLEASANT WALKING AREAS
- ★ FREE ADMISSION (For most events)
- ★ AMPLE PARKING FOR CARS & COACHES

THE SPORTS STADIUM IS SET IN 150 ACRES OF BEAUTIFUL PARK LAND WITH EASY ACCESS FROM . . . M1, M4 & M3 via A406 & A41, For tube & bus service ring

01-349 9121



FOR THE VERY BEST IN OUTDOOR & TRACK EVENTS LOOK NO FURTHER THAN BARNET COPTHALL SPORTS CENTRE STADIUM

GREAT NORTH WAY, HENDON, LONDON NW4 TEL: 01-349 9121

EXPERT STAFF ON SITE ARE WELL TRAINED TO CATER FOR THE NEEDS OF ANY EVENT

INFORMATION & BOOKING OF THE STADIUM:
RING SPORTS LETTING OFFICE MRS D McCOLE 01-349 9121

GODWINS PLUMBING SUPPLIES



SINK TOP — £110 complete with mixer.
Available in several colours.

DELIVERY 2-3 DAYS



ANTIQUK KITCHENS

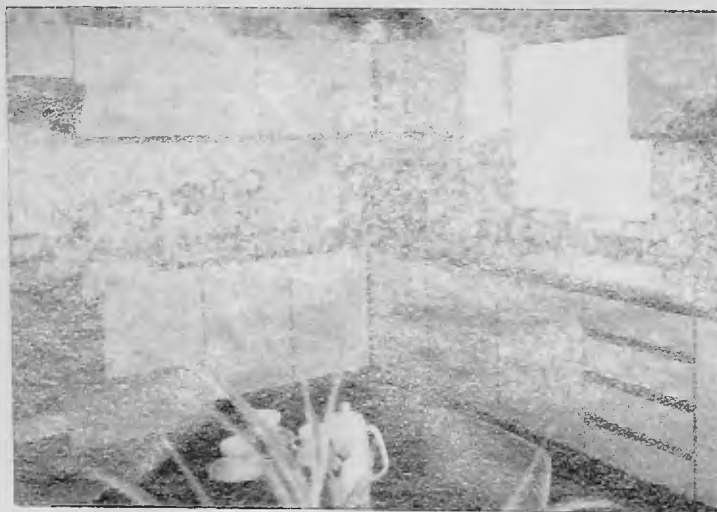
ANTIQUK CHESTNUT · VENETIAN OAK
PLUS OTHER RANGES

		Contract range
1000 SINK BASE	£99.50	£37.90
500 BASE UNIT	£99.50	£27.80
500 DRAWER UNIT	£104.00	£39.80
1000 STD WALL UNIT	£89.60	£29.60
600 STD WALL UNIT	£53.00	£20.00
1000 TALL WALL UNIT	£110.00	£38.00
500 TALL WALL UNIT	£60.00	£20.00
1000 LEADED WALL UNIT	£119.00	—
500 LEADED WALL UNIT	£69.00	—
LARDER UNIT	£160.00	£59.00

300, 400, 500, 600 LARDER UNIT and PULLOUT UNITS available.
Monoblock sink mixer with hot spray £28.00
Waste Disposal from £65.00. Prices + VAT

SUPERB VALUE FOR MONEY. FLATPACK KITCHENS. EASY TO ASSEMBLE.
DELIVERY 2-3 DAYS. CREATE YOUR OWN INDIVIDUAL KITCHEN.
DESIGN SERVICE AVAILABLE

THE LATEST DESIGN IN KITCHEN TECHNOLOGY NEW
COLOURED SINK TOPS THAT WILL NOT SCRATCH OR CHIP



CONTRACT KITCHENS AVAILABLE IN
WHITE WITH DESIGNER HANDLES
Red, beige and blue.



FRADURA SINK TOPS £199 INCLUDING ALL LUXURY
ACCESSORIES + VAT



FORDHAM MISTRAL SINK TOP IN
WHITE £145 + VAT AND ACCESSORIES

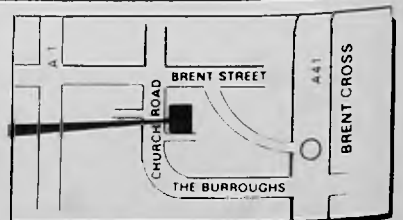


4/5 APEX PARADE, SELVA LANE,
APEX CORNER, MILL HILL NW7
Tel: 01-959 3344 Trade Centre.

FREE
DELIVERY

Godwins
Plumbing Supplies

OFFICIAL SPONSORS OF BARNET FOOTBALL CLUB
ALL PRICES EXCLUSIVE VAT



Main Bathroom Showroom
49 CHURCH ROAD, HENDON NW4
Tel: 01-203 1095

Artscene

The art of celebration in world youth year

BARNET Youth and Community Service are celebrating United Nations International Youth Year in style in July with an art and entertainment day aimed specifically at 13 to 25 year olds.

The event, on July 27, will consist of an exhibition of art by young people and an international folk dancing display.

Young artists aged 13-21 are being invited to submit work — provided it is not on a large scale — to be professionally displayed at Grahame Park Centre Point.

Entries can include paint-

ings, photographs, pottery and (small!) sculpture.

On the day the exhibition will be open from 10am-6pm in the main hall. There are no prizes, but friendly experts will be there from 2-4pm to talk to artists. Some encouragement and constructive criticism always helps.

Organiser Peter Thorn, western district youth and community officer, hopes that young people who have submitted work will help to create an 18ft by 5ft mural on the day.

The theme will be 'Youth' and it will be co-ordinated by a worker from Community and Recreational Arts in Barnet.

The finished piece, on wooden panels, will remain at Grahame Park on permanent display.

Craft workers will be demonstrating their techniques, too, and visitors will be able to join in.

Paintings entered for the event should not be larger than 5ft by 3ft and submissions must be received by June 28 at The District Youth and Community Office, Hendon School, Golders Rise, Hendon, NW4, tel: 202 2757.

Although the official date for entries is June 28, the organisers are prepared to take some late entries, so ring Peter Thorn

quickly on the number above if you are interested.

The folk dancing display will take place from 7.30-10.30pm with an interval for refreshments. It will include dances by Greek, Cypriot, Indian, Irish and other ethnic groups from the borough.

People wishing to join in should wear traditional costumes of the dance and be aged between 15 and 25.

Further information from: The Co-ordinator, The Youth and Community Office, Education Department, Town Hall, Friern Barnet, tel: 368 1255 ext 316.

PLAYTIME

DO YOU have the sort of child who gets bored very easily during the summer holidays? If so, then the answer to that problem could lie with **CRAB (Community and Recreational Arts in Barnet)**.

They have a range of activities for youngsters throughout the summer but this month are concentrating on involving them in the Grahame Park Festival on July 27.

CRAB workers will start preparing for the event with the children on July 22 at the Grahame Park Adventure Playground and continue for the rest of the week.

Further details, contact CRAB on 346 9789.

Old Bull drama

THE Old Bull Arts Centre is extending the range of classes on offer to actors and musicians.

First on the agenda are guitar classes, providing tuition for all levels of achievement, including beginners. They run on Mondays, 6.30-7.30pm, fee £1, until July 15.

Adults are getting new drama classes on alternate Wednesdays (first one this month July 10) after 6.30pm, only £1 per session.

And budding child actors, aged five to seven, have their own afternoons on Wednesdays from 4-5pm, fee 50p.

The Old Bull is at 68 High Street, High Barnet, tel: 449 0048.



MEMBERS of the Canada Villa Youth Club, Mill Hill, were hoppin' to try poppin' when a group of American street dancers visited their club. The five mixed-race dancers from New York, who call themselves The Magnificent Force, gave a free breakdance and body-popping workshop under the auspices of Jane Forde, of CRAB,

who has been working on dance with youngsters.

The Force were brought to Britain with a grant from the Albany Empire, Deptford, where they performed for the public.

Pictured: Gilbert Kennedy (left) and Steve Glavin (right), two of the street dancers, with the young enthusiasts.

Life in East End — Jewish experience

JEWISH settlement in the East End is the subject of an exhibition at the Manor House, Finchley, throughout this month.

It shows, through photographs, documents and artefacts, the vitality and communal spirit of life in the area from the beginning of this century to the end of the last world war.

This represents the Museum of the Jewish East End's contribution to the Festival of Jewry, now drawing to a close.

In the past they have held travelling exhibitions at a number of venues, including the Royal Festival Hall, but this is the first held at Manor House, East End Road, the museum's base.

The show, which ends on July 28, traces the history of migration and settlement in the locality and recreates scenes from the life of the area, evoking an immigrant home, a Friendly Society meeting, a tailoring workshop and a bak-

ery, among others.

The museum is also staging a programme of educational and cultural events, ranging from an illustrated talk by artist, author and cartoonist Harry Blacker to a lecture by Prof Jonathan Frankel of the Hebrew University of Jerusalem.

The exhibition is free, talks £1 (free to Museum Friends). Details and further information, tel: Rickie Burman, museum co-ordinator, 346 2288, ext 175.

Borough Development Plan

TOWARDS 2000 — getting there

Feature Three in our Borough Development Plan series takes a look at the Transportation Topic Study, now approved after its full discussion and consultation period.

If there is one subject close to the heart of Barnet residents it's transport. Congested roads, curtailed bus routes, changes in rail services have us all phoning local councillors, writing to MPs and expressing viewpoints in the local press.

Which is why the TTS, the Transportation Topic Study, at £1.50 should be a best seller. It deals with the current and future scope of transport in the borough and its impact on the environment and lives of residents.

The introduction, looks at the Council and other authorities such as British Rail and London Regional Transport which control our transport.

After a brief historical review the topic study surveys trends in patterns of journeys from the daily commuter to the household shopper and the growth of car ownership in the borough.

National, regional and London-wide transport policies are reviewed and their objectives listed. This builds up a data base against which new policies can be assessed.

Then come a wide ranging study of the problems which exist and any scope for improvement. Each area of the transport scene in the borough is covered separately and policies put forward which would enable the Council to take action and bring in improvements.

The various headings are:

- Roads and Traffic; ● Traffic Management; ● Public Transport;
- Road and rail freight; ● Parking;
- Cyclists; ● Pedestrians; ● Road Safety.

The main problems relating to roads and traffic are the volume of traffic using the highway network, the use of borough roads by through traffic, and congestion of the roads.

The main problem in traffic management is the need to develop balanced schemes which are publicly acceptable and result in an overall benefit to traffic flow and the local environment.

Unreliability of bus services, shortcomings in east west links across the borough and the relative inaccessibility of certain areas of the borough are seen as the major problems for public transport.

For road and rail freight the concern is for the volume of heavy goods vehicles on borough roads, their environmental impact, the unsuitability of many roads for heavy vehicles and on-street parking by lorries.

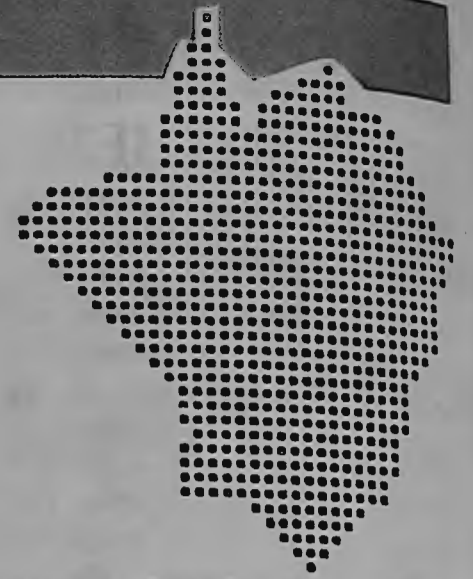
There are problems of on-street parking and a lack of off-street parking for cars as well as waiting restrictions being ignored.

The main problems identified for cyclists are the dangers of sharing road space with other vehicles and the lack of separate cycle routes.

Pedestrians face conflict with vehicular traffic, the difficulty of altering the road system to accommodate improved pedestrian facilities and the fact that many measures designed to safeguard pedestrians are very expensive.

The main concern with regard to road safety is the need to ensure that in the design of new developments and environmental schemes the safety of road users is taken fully into account.

The study also considers a number of specific major projects which are either under way or will be within the development plan



period. These include completion of the M25 round London and various improvements along the A406 North Circular Road; British Rail's Midland Line suburban electric services; a new bus garage at Edgware where it is proposed to provide a new bus station. It is likely that a lorry park will be provided in the borough; the GLC have proposed a London-wide night time and weekend lorry ban; and cycle routes are planned.

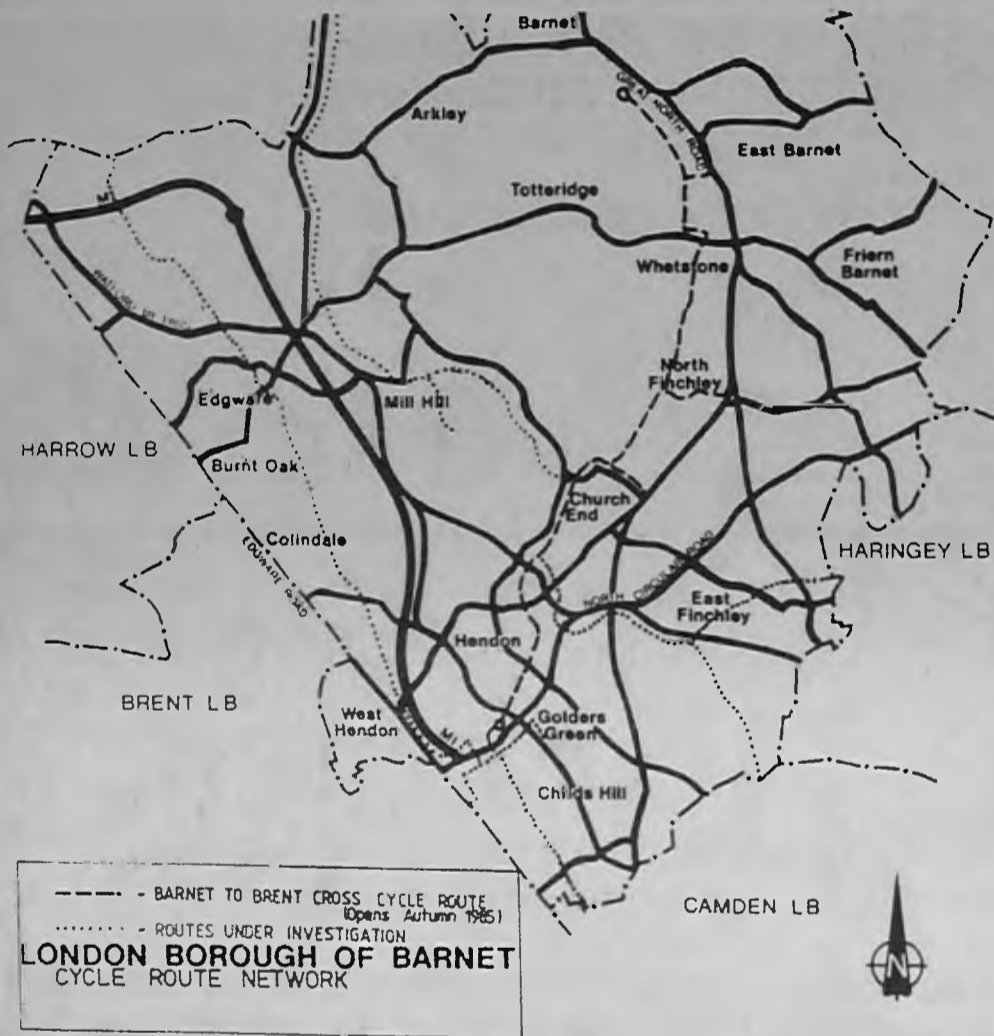
The Transportation Topic Study includes maps which illustrate the road network, vehicle flows, facilities for public transport, road and rail freight and cyclists and the location of vehicle parks. An appendix sets out the council's parking standards.



The Borough Development Plan is being produced to guide and influence development within the borough over the next 10 years. It is based on a series of topic studies which outline planning and development policies against a background of local conditions.

Copies of these topic studies can be obtained, on receipt of the appropriate fee, from the Controller of Development Services, Planning Group, Gateway House, 322, Regents Park Road, Finchley, N3 2LP. Copies available for reference in local libraries.

Residents and local groups who wish to be kept informed on the Borough Development Plan or comment on future topic studies — Green Belt; Social and Community Services; Recreation and Leisure; Education — can write to the above address.



Barnet's first major cycle route, a seven mile run from Chipping Barnet to Brent Cross, opens in the Autumn. Designed by Barnet's traffic engineers and funded by the GLC, the route follows a network of side roads and paths through parks along the course of Dollis Brook. At all points bikes are segregated from pedestrians.

PHONE FOR DETAILS

MOTORCYCLISTS
MOPED RIDERS
SCOOTERISTS

BEGINNERS COURSE only £6.00 inc VAT
2x2 hours of instruction for learners

TRAINING

FIRST TWO HOURS: 'Off Road' on Saturday mornings from 10.00am to 12.00 noon at Ashmole School, Cecil Road, London N14.

SECOND TWO HOURS: 'On Road' on Sunday mornings (approximately 14 days later) at the Road Safety Centre, Church Farm, Church Hill Road, East Barnet.

FURTHER DETAILS: Contact 01-349 9121 Ext 423.

Money Matters

WHY BOTHER?

Why bother to work for academic certificates and recognition? — a common phrase these days. Britain is still a manufacturing nation, but we, as a nation, are going through a phase of re-development and introducing all the new ideas that high technology can bring. To do this, the country needs good qualified mechanical engineers. Barnet College offers the first important steps towards such qualifications with a nationally recognised BTEC National Diploma of Certificate in Mechanical and Production Engineering.

These courses at Barnet are run in two ways. First by way of three-year day release certificate courses for those already in industry and wish to obtain academic qualifications; second; there is a two year full-time course for those young people who wish to obtain a BTEC Diploma in mechanical and production engineering. This course gives a broad base of technical education from which employment and higher education are the natural progressions. The course provides the necessary formal education in mathematics, engineering sciences, material and manufacturing technologies. It also provides the practical aspects in the mechanical, elec-

trical and electronic workshops as well as the design and manufacture of a project. Industrial visits and applications are emphasised throughout the courses.

Entry qualifications for the Diploma are normally an 'O' level or a reasonable grade of CSE in English, Mathematics and a Science subject. Are you interested in Mechanical engineering but do not have the suitable entry qualifications? Barnet College can still provide the solution with a one-year full-time Technician Studies course. This is a new course which replaces the previous Pre-Diploma course and is updated to provide nationally accepted qualifications for entry to the BTEC National Diplomas in Mechanical, Production and Electronic Engineering, Computer Technology, Computer Studies and Science. This course provides tuition in mathematical, science, communications engineering studies and information technology. Access to modern equipment together with an opportunity to establish skills in computer operations; the mechanical and electrical workshops is fundamental in the course.

Why don't you bother to check with the Faculty of Technology at Barnet College to check YOUR future in Mechanical and Production Engineering.

Barnet College

Full-time vocational courses in

TECHNOLOGY

Technical Studies
Computer Technology
Mechanical & Production
Engineering
Science

SOCIAL STUDIES

Pre-Caring
(with GCE programme)
Community Care

BUSINESS ADMINISTRATION

General Reception

Write now for further details to
Barnet College of Further Education
Wood Street, Barnet, Herts EN5 4AZ
Telephone 01-440 6321

LONDON BOROUGH OF BARNET YOUTH TRAINING SCHEME — HORTICULTURE

Are you aged 16 or 17 and interested in training for a career in horticulture?

If so, the Council can offer you a one-year training programme, providing day release training at local colleges leading to Phase I City and Guilds Certificate in Horticulture and practical work experience in the Council's parks and open spaces.

The Government's training allowance of £26.25 per week (under review) will be payable.

If you wish to know more, please contact Mrs Liz Osman at Friern Barnet Area Careers Office, Town Hall Annexe, 321 Colney Hatch Lane, Friern Barnet N11. Tel: 01-368 1255.

Closing Date: August 16th, 1985.

Interviews will be held in September 1985.



FREE ADVICE — ON YOUR DOORSTEP

CHARTERED ACCOUNTANTS

We provide a full range of professional accountancy and taxation services, for Limited Companies, Small Businesses and the Self Employed, including:

- | | |
|---------------|------------------------|
| ★ AUDITS | ★ TAXATION |
| ★ ACCOUNTS | ★ CASH FLOWS |
| ★ BOOKKEEPING | ★ MORTGAGES |
| ★ PAYE | ★ PENSIONS |
| ★ VAT | ★ COMPUTER CONSULTANCY |

Let us visit you, at your convenience, to discuss your requirements, we will not charge you for this initial meeting and will not oblige you to take the matter further.

JUST CALL THE NUMBER BELOW —
DAYS, EVENINGS OR WEEKENDS
AND LET US SEE HOW WE CAN HELP YOU.

THEMIS & CO

01-368 5930

PERRYS OF EDGWARE



Come to Perrys in Edgware for the complete Ford commercial range, they are offering excellent deals on part exchange and leasing has never been easier. Low deposit and finance can be arranged, and now with the new diesel engine in the Escort and Transit you can save even more money on the fuel bill. The Ford P100 Pick-Up can offer the best of both worlds, the P100 Pick-Up is a functional commercial vehicle suitable for both business use and as a general domestic runabout, it is a competitively priced, strong, reliable vehicle, and no other type of vehicle has the same versatility as the P100. It has a capacity of 1.20 cubic metres with the tonneau cover fitted (a range of truckman tops are also available) in addition the commercial user will appreciate the tax and VAT advantages. Telephone 952 2353 and ask for Bob Adams, commercial manager, who will give you the best deal around.

ADVERTISING FEATURE



HENLYS



NEVER BEFORE HAVE WE INVITED
YOU TO BUY AUSTIN ROVER
CURRENT MODELS AT SUCH
CRAZY PRICES!!!

CHOOSE FROM THE FULL RANGE:

METROS from £3,725

MAESTROS from £4,750

MONTEGO SALOONS and ESTATES
from £5,095

*Prices include:
delivery, plates and six months road tax*

TEL: 346-0081 & 349 1221
HENLYS, HENLYS CORNER, NORTH
CIRCULAR ROAD, LONDON NW11

PERRYS



FOR THE COMPLETE FORD COMMERCIAL RANGE

- **PURCHASE**
 - **LOW DEPOSITS**
 - **FINANCE**
 - **EXCELLENT PART EXCHANGE**
 - **LEASING**
- GO PERRYS**

Call us
TODAY
for details of
the range



01-952 2353



EDGWARE...we're going places!
The garage you'd recommend to a friend
51/55 High Street, Edgware

A job with the Borough

BARNET SOCIAL SERVICES

OPPORTUNITIES FOR INNOVATORS IN RESIDENTIAL CARE OF ELDERLY PEOPLE

Can you offer us the following?

CARE? FLEXIBILITY? INNOVATION? SENSE OF HUMOUR AND COMMITMENT?

If you can, and have relevant experience in working with elderly people, the following exciting posts should interest you:

1. Deputy Officer-in-Charge

— Lonsdale (Ref. 351)

A purpose-built setting at East Finchley offering 52 places and a further day-care facility.

SALARY: GRADE 6 £9,771 to £10,764 per annum inclusive.

We are looking for someone to enhance aspects of individuality throughout the residents' home and encourage resident participation in decisions and daily living. We will be developing a key worker system involving care staff in personalising care, programme planning, and residents' reviews.

The successful candidate will undertake a full deputising function in the absence of the Officer-in-Charge and have the ability to work constructively with others. Supervision, staff development, administrative skills and active participation in developing the home are essential requirements.

Qualifications: CQSW, C.S.S. or equivalent.

Applications from employees of the GLC or Metropolitan County Councils with relevant experience will be welcome.

2. Assistant Officer-in-Charge

— Meadowside (Ref. 318)

A purpose-built house situated in Woodside Park, North Finchley, offering 60 places, incorporating a 10 place, semi-independent unit.

SALARY: GRADE 5 £8,919 to £10,542 per annum inclusive.

For the past two years Meadowside has developed a positive exciting approach to caring for their elderly residents. We are seeking an officer who will be in tune with the aims and objectives of the setting and be able to make a positive contribution to Meadowside's forward plans. Experience of administration, staff supervision and development, essential.

Qualifications: C.Q.S., C.S.S., or equivalent.

Applications from employees of the GLC or MCCs with relevant experience will be welcome.

3. Careworker

— Abbots Lodge (Ref. 341)

A purpose-built home at New Southgate, N11, offering 55 places.

SALARY: GRADE 3 £7,212 to £8,403 per annum inclusive.

As a junior member of the Management Team with special responsibility for organising activities, promoting "self-help" groups and co-ordinating creative and therapeutic programmes. Enthusiasm and a strong commitment to improving the quality of the social, emotional and intellectual life of the residents is essential.

Occasional 'ON-CALL' duties required for which £10.03 per night payable.

This post is subject to London and Metropolitan Government Staff Commission procedures and priority consideration will be given to applicants from the GLC and other London Boroughs alongside internal applicants. If no appointment can be made from within these categories, other candidates will be considered.

4. Day Careworkers (2 posts)

Beach Lodge (Ref. 296) and Lonsdale (Ref. 702 T/L)

The post at Lonsdale is under a time limited contract to be reviewed in January 1986.

Both situated in Finchley, offering day-care facilities to a limited number of frail, elderly people living in the community. These two well established exciting schemes offer a viable alternative to residential care.

SALARY: GRADE 3 £7,212 to £8,403 per annum inclusive.

Successful candidates will need experience in working with elderly people and be good organisers and resource managers. You will, together with the staff team, offer residents and day-care clients a full range of activities.

CAR OWNER/DRIVERS essential as clients will need to be transported to and from home. Essential user car allowance payable.

The post at Beach Lodge is subject to LMGSC procedures and priority consideration will be given to applicants from GLC and other London Boroughs alongside internal applicants. If no appointment can be made from within these categories other candidates will be considered.

Further information can be obtained from Officer-in-Charge of respective Homes; telephone numbers are as follows:

ABBOTS LODGE	01-361 1271
BEACH LODGE	01-342 5522
LONSDALE	01-349 2186
MEADOWSIDE	01-446 0234

or contact:

ANN MARSHALL, MANAGEMENT OFFICER
Tel: 01-446 1488

For all the above posts we offer an exciting range of in-service training courses.

Application forms (quoting appropriate ref.) from Director of Social Services, 1331 High Road, Whetstone N20. Tel: 01-446 6857 (24-hour answering service).

Closing Date: July 19, 1985.

An authority
committed to
equal opportunities



An authority
committed to
equal opportunities

JAMES ROUSSEAU D.C.N.D. local CHIROPRACTOR**For Musculo-Skeletal Pain & Disorders**

Conditions Treated by Chiropractor: Back pain, sciatica and other leg pain. Neck and arm pain. Pins and needles plus other numbness sensations. Hip, knee, wrist, foot and ankle problems.

Clinic times and days:

Natural Therapy Clinic, 3A Southend Road, Hampstead NW3. Tel: 794 8531.
Tuesdays 10am-5pm.

Wood Street Clinic, 113 Wood Street, Barnet. Tel: 441 0231 or 449 7656.
Thursdays 10am-8pm.

Mill Hill Clinic, 4 Sunnyfield, Mill Hill NW7. Tel: 959 1341.
Fridays 9.30am-12.30pm.

Neals Yard Therapy Rooms, 2 Neals Yard, Covent Garden, London WC2. Tel: 379 7662.
Mondays 9am-1pm. Wednesdays 9am-3pm.

What is CHIROPRACTIC?

Chiropractic is an independent branch of medicine which specialises in the diagnosis and treatment of disorders of the joints, particularly those of the spine, and their effects on the nervous system.

The nervous system communicates with the body via the spine. Normal spinal function helps to ensure normal, vital nervous impulses.

Spinal function is affected by injuries, sport, work, posture, exercise, habits, child-birth etc.

The role of the chiropractor then, is to ensure normal spinal function by specific, gentle adjustments of the spine and the pelvis. In order to aid diagnosis X-rays may be needed in certain cases.

Regular chiropractic check-ups for the whole family are recommended as preventative medicine.

About 50% of all people who consult a chiropractor do so because of back-pain. Other complaints most frequently helped by chiropractors include: neck and arm pain; headaches; sciatica and other leg pain; hip and knee problems; pins and needles or numbness sensations; wrist, elbow, ankle and foot pain can also be treated.

Often problems apparently not related to the spine are helped by regular chiropractic care e.g. some migraines, asthma etc.

Only in Britain is Chiropractic virtually an unknown science (often confused with Chiropodists, which is totally different). In USA Chiropractors are primary health care providers, making up the largest branch of alternative medicine.

*Halcyon Days***A NEW CONCEPT IN RETIREMENT ACCOMMODATION OF QUALITY**

Halcyon Days provide at The Old Rectory near Hitchin a beautiful well-appointed country residence set amidst three acres of gardens, offering a new concept in the care of the retired elderly.

Short-stay and convalescent guests welcome.

ACCOMMODATION: Single and double rooms available, furnished or part furnished as preferred. All with 24-hour emergency call system, sanitary unit, tea-making facilities, central heating, television and telephone points.

SERVICE: Luxurious dining room offering choice of daily menus, which will care for special diets. Meals with friends and relatives. Hairdressing salon, visiting chiropodist, physiotherapist.

LEISURE: Heated swimming pool, bowling green and croquet lawn, residents' bar, three lounges (one no-smoking), and library

If these facilities make retirement sound a pleasant experience, please write to:



The Old Rectory, Church Lane, Graveley, near Hitchin, Herts
or telephone Stevenage 315588 for more detailed information.

Secretarial Assistants**(two posts)****Salary £5,895-£7,077 per annum inclusive Scale 2/3**

Applicants should have previous secretarial experience and be proficient in shorthand and/or audio typing. One post will be responsible for assisting a small group of Solicitors/Legal Assistants and the other will provide secretarial and clerical assistance to officers responsible for ceremonial and other administrative work.

We offer 20 days' annual holiday with additional leave at most Bank Holidays; 36-hour week — flexible working hours in operation; interest-free loans for season tickets; staff restaurant.

These posts are subject to LMGSC procedures and priority consideration will be given to applicants from the GLC and other London Boroughs alongside internal applicants. If no appointment can be made from within these categories, other candidates will be considered.

Application forms from the Personnel Officer, Room 35, Ravensfield House, The Burroughs, Hendon, NW4 4BE, tel: 202 8282 ext 481 (202 6602 outside office hours).

Closing Date: July 18, 1985. Ref: SA(2)

Welfare Assistant**SALARY: (GRADE NA II) £4,385-£4,730 per annum inclusive.**

Required for 32½ hours per week at The Hyde Infants' School, The Hyde NW9 6LE. Duties include reception of children into

school and administering first aid, for which a current St John's or Red Cross certificate is required. A flexible approach to the job is essential to carry out a wide variety of non-teaching duties.

This post is subject to London and Metropolitan Government Staff Commission procedures and priority consideration will be given to applicants from the GLC and other London Boroughs alongside internal applicants. If no appointment can be made from within these categories, other candidates will be considered.

Closing Date: July 19, 1985

Application forms from Director of Educational Services, Town Hall, Friern Barnet, London N11 3DL. Tel: 368 1255 ext 221 quoting reference.

Ref: ADM/S/053/5.1.1.

Assistant Youth Leader (Part-time)

Rendezvous Youth & Community Centre, Coppetts Road N10

Do you have interests, skills and experience in dealing with young people?

Our centres provide general and specialist activities for all ages such as sport, drama and outdoor pursuits. If you feel you have something to offer and can encourage and motivate young people, contact Liz Bird for an informal chat, tel: 444 7839 (evenings).

The appointment is for a maximum of 7½ hours per week (evenings) and the hourly rate is between £4.18-£6.42 according to qualifications and experience. Applications from employees of the GLC and Metropolitan County Councils with relevant experi-

ence will be welcome.

Application form from Director of Education Services, Town Hall, Friern Barnet, London N11 3DL. Tel: 368 1255 ext 221, quoting reference.

Closing Date: July 19, 1985.

Ref: ADM/E/VS.

Library Assistants**(1 full-time post — 36 hours per week)****(2 part-time posts — 18 hours per week)**

Salary: SC 1/2 — £3,474-£6,426 per annum inc. (pro rata), according to age and experience (minimum salary at 21 years £5,094 per annum inc. pro rata).

We are looking for keen and enthusiastic persons for our busy Church End Library. Evening and Saturday work included, but time and a half will be paid for hours worked on Saturdays. Interesting and varied duties. Experience or working with the public an advantage.

These posts are subject to LMGSC procedures and priority consideration will be given to applicants from the GLC and other London Boroughs alongside internal applicants. If no appointment can be made from within these categories, other candidates will be considered.

Application forms and further details from Borough Librarian, Ravensfield House, The Burroughs, Hendon NW4 4BE. Tel: 202 5625 ext 48.

Closing Date: July 19, 1985.

An authority
committed to
equal opportunities

LONDON BOROUGH
barnet

An authority
committed to
equal opportunities

BILLBOARD

CALL
IAN FLYNN
for
UPHOLSTERY
(10 years experience)

All types of surfaces covered

- * Domestic furniture
- * Restaurant
- * Pubs
- * Car seats

You name it I will cover it!

For FREE ESTIMATES phone
906 2411

**YOUNG
TELESALES
PERSON
REQUIRED**

for **Barnet Borough News**

Good telephone manner and enthusiasm essential. Experience preferred but not necessary as training will be given.

Telephone for appointment to
**Ms Malone
209 1655**

VIDEO YOUR WEDDING

Capture your special occasion forever. Filmed by professionals.

Competitive rates. VHS or Beta copies.

Call in and see our demonstration at our studio.



VIDEO TAKE 1
46 Watling Avenue
Burnt Oak 952 8182


YOUR CATERING PROBLEMS ARE OVER...

Experienced Temporary Staff available for — Waitressing Bars — Cooks — General Asst

Make that special occasion run smoothly. No worries! Contact Rose Matthews on 906 3661 — 906 0911 or 207 3199 (24 hrs)

.....

If you require a temping position and have experience make an appointment today!



LADIES

For permanent removal of unwanted body & facial hair

ELECTROLYSIS
treatment available

Also:

- * Tweeze Epilation
- * Waxing
- * Manicures
- * Pedicures

TEL 959 8086

NAUTILUS FITNESS CLUB

**FIT
SLIM**

NAUTILUS GYM, DANCE, JACUZZI
SAUNA, STEAM 458 5909
MARKET PLACE, NW11

FREE

**'G' FORCE CONTACT
TREE FORCE**

HEDGES reduced/removed, fruit trees pruned (getting late now), roses pruned, major tree work, root removal.

OVERGROWN GARDENS cleared, outbuildings/sheds taken down, house rubbish, furniture/carpets, etc, removed.

VILLAGE NURSERIES
01 959 3025

Very special prices for OAPs and disabled people

THE CAMBRIDGE DIET

Clinically tested for 14 years
Used by over 5 million people

Safe — Effective

Programmes to
LOSE WEIGHT
and then
MAINTAIN YOUR IDEAL BODY WEIGHT
with

THE CAMBRIDGE DIET
For information contact your Independent Cambridge Counsellor

Telephone: 209 1368

**E. & D. BUTLER
Steam/Pressure
Cleaning**



- * PATHS
- * PATIOS
- * POOLS
- * DRIVES
- * STAIRS
- * GARAGES

ALL MOSS REMOVED
FREE ESTIMATE
NO JOB TOO SMALL

01-952 4460
01-286 2556

We can clean any surface!

PLEASE NOTE WE ARE NOT CARPET CLEANERS

JF VALET SERVICE

DOMESTIC  COMMERCIAL

CARPET AND UPHOLSTERY CLEANERS

We do:

- * General fabric cleaning
- * Cutains
- * Stain proofing
- * Flame retardant
- * Anti static
- * Acoustic ceilings

CARPETS ONLY
7p sq ft

CURTAINS ONLY
10p sq ft

3-PIECE SUITES ONLY
£19

FULLY-INSURED **01-449 0209** 24-hour ALSO CAR VALETING

Dear Reader,

If you have any complaints about the distribution of Barnet Borough News or if you know anyone who lives in the Borough and is not receiving a copy then please phone **446 6519** and ask for the Distribution Department

KNIGHTS

WOOD

off Springwood Crescent, Edgware

An exceptional development
of studios, 1 & 2 bedroom apartments
and 1, 2 & 3 bedroom houses.



Developed by Barratt Luton Limited
in conjunction with the London Borough
of Barnet.

Preference will be given to tenants in
rented council accommodation and on the
housing waiting list.

Prices on application.

Full details are available from the Housing Dept.,
London Borough of Barnet, 65, Watford Way,
Hendon, London NW4 3AY.
Telephone: 01-202 8282

or from Barratt Luton Limited, P.O. Box 5,
Barratt House, 668 Hitchin Road, Luton,
Beds LU2 7XJ. Telephone: Luton (0582) 422771

Barratt

**London Borough
Barnet**

The Good Old Days from GODWIN'S



"These are just a selection of styles from The Good Old Days, and are available from Captain Godwin."



Beautiful solid mahogany vanity units, all variations complete with Formica tops . . . For added luxury, tiled tops are available.
Ask for Tony Quinn
Ring 01-203 1095



OLD STYLE BRASS MIXERS

Bath Mixer Shower.....	£99
Basin Taps	£45
Mono Basin Mixers.....	£60
Mono Bidet Mixers.....	£70
8" Basin Mixer.....	£75
Also Available in: VAT	
Chrome, Red, Yellow, Blue, Green.	



REGAL ANTIQUE DESIGN

Bath Mixer Shower.....	£220
Bath Taps (pair).....	£73
8" Basin Mixer.....	£80
4" Basin Mixer.....	£75
Mono Basin Mixer.....	£75
Mono Bidet Mixer (pair).....	£60
Regal Antique Bath Grps and VAT	
Accessories to Match Available	



LUXURY SUITES BY SANITAN . . .

Basin & Ped Plain	£245	Cistern Dec	£110
Basin & Ped Dec	£305	Roll Top Bath	£365
Pan only Plain	£150	Claw Feet	£64
Pan only Dec	£185	Brass Cradle Bath Shower Mixer	£99
Cistern Plain	£80	Brass Basin Taps (pair)	£45
All Brass Accessories Available		+ VAT	

4/5 APEX PARADE, SELVAGE LANE, APEX CORNER, MILL HILL NW7. TELEPHONE: 01-959 3344
49 CHURCH ROAD, HENDON, LONDON NW4. TELEPHONE: 01-203 1095

Turn to page 16. See maps for directions. **FREE LOCAL DELIVERY**