



119,000 copies

# BARNET BOROUGH NEWS



MEMBER OF VERIFIED FREE DISTRIBUTION LTD  
THE HALLMARK OF TRUSTED DISTRIBUTION

Barnet Council's monthly magazine for residents No. 53 MARCH 1989



In this issue:  
Housing news  
Dance Festival  
Health report

No Smoking  
Day  
Wednesday  
March 8th



Our branch at  
46a Ballards Lane



Gordon Williams, ACIB  
Business Centre Manager

## FURTHER BOOST AT BARCLAYS FINCHLEY CENTRAL BUSINESS CENTRE



Mike Airey, ACIB,  
Corporate Manager



Full Management  
Team



Personal Banker  
Team



Alice Patrick  
Area Sales Officer

Our Corporate Management Team has been further expanded, augmenting our already large Corporate Team of experienced professionals. Mike Airey, ACIB, is Newcastle born and bred and is married with a daughter aged 2. He has a wide range of Branch and Regional Office experience and his appointment demonstrates our commitment to continually improving the Barclays service to the business community in Finchley.

A prompt response to business financial requirements is the keystone to good service. No matter what size or type of business you operate the Corporate Team will offer sound practical advice, backed by a comprehensive range of flexible financial services, tailored to meet your specific business needs. We will be happy to talk to you on your own premises, or at our Business Centre.

All businessmen are now aware that by 1992 a single market is proposed in Europe — Barclays is well placed to assist current, and prospective, importers and exporters wishing to take full advantage of this market.

Whatever your requirement, whether a self-employed trader, a firm or a company — you need look no further for a comprehensive corporate banking service.

The needs of the private customer are recognised as being just as important as those of our corporate customers and a Personal Sector Manager is responsible solely to attend to their requirements. His team of Personal Bankers is supported by an Area Sales Officer based at the Business Centre and together they have expertise in a wide range of banking services.

They are always available to help and advise on any financial problem, calling upon specialists from other arms of the Barclays Group if necessary.

The new Barclays Bank Account will meet all our personal customers' needs. Barclays was the first Bank to announce the transaction free Bank Account. There are three options, with interest payable on two of them. Call in to see one of our Personal Bankers and they will explain to you which option will give you most benefit.

For a comprehensive personal banking service — you need look no further.



46a Ballards Lane, Finchley,  
London, N3 2BB

Telephone:

01-346 9256 and 01-349 4745

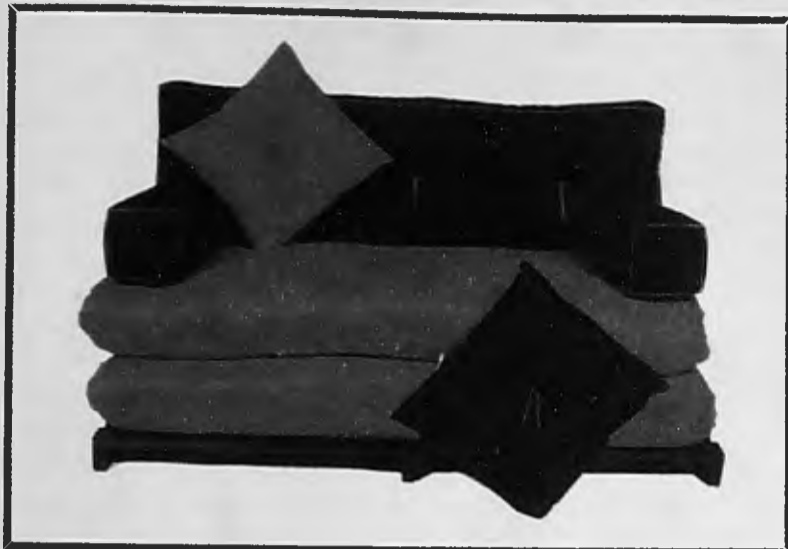
Fax No: 01-346 0082

MEMBER OF IMRO



# FUTONS

THERE'S A **FUTON** IN YOUR FUTURE!  
COLOURFUL SOFAS & STYLISH BEDS



Cotton fibre and wool filling is enclosed in cotton drill fabric. Composition and flexibility make a beautiful sofa by day and a comfortable, healthy bed at night. The bases which complement our full-colour and white Futon are handmade in natural, stained or varnished wood.

**(Price Range £55 to £350)**

Visit our showroom (Monday to Saturday 9.30am to 6pm.  
Sundays and Bank Holidays 11am to 5pm.)

**FUTON FURNISHINGS**

Lincoln Road, East Finchley,  
London N2 Tel: 01 - 444 7249



## THE HARRIS & BAKER COLLECTION

A comprehensive range of furniture will  
be exhibited on stand no: 14  
at the 1989 Ideal Home Exhibition

**FOR A FREE COLOUR BROCHURE**  
Write to, Harris & Baker Ltd  
**FREEPOST**

17 Argall Ave, Leyton,  
London E10 7BR  
or **PHONE 01 558 6294**

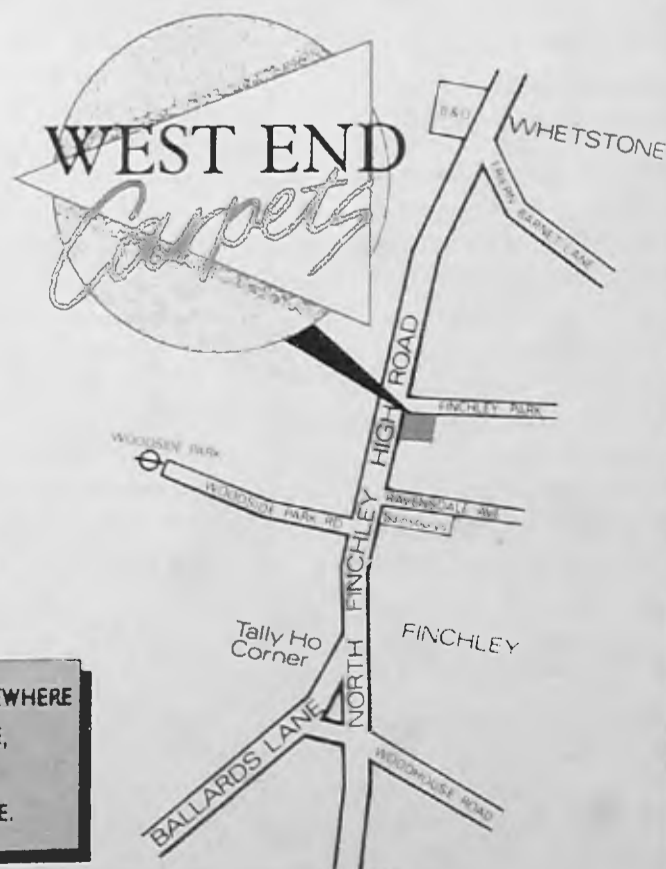
# WE'VE DONE UP OUR PLACE. Now You Can Too.

If you're looking for  
quality with economy in  
your carpet requirements  
look no further!

We have over 5000  
carpets to choose from.

Talk to carpet experts  
and enjoy our friendly  
service.

We're open Monday to  
Saturday, 9-5.30.



**STOCK CARPETS  
INSTALLED WITHIN  
48 HOURS**

**FREE** FITTING  
on most  
carpets on display  
**FREE** DELIVERY

**ROOM-SIZE  
REMNANTS**  
From our  
Cash & Carry

IF YOU'VE SEEN A CARPET ELSEWHERE  
& THOUGHT IT WAS NICE,  
TELL US WHICH MAKE  
& WE'LL BETTER THE PRICE.

928 HIGH ROAD · NORTH FINCHLEY · N12 · 446 5331/2/3/4 Mon-Sat 9-5.30

LONDON BOROUGH  
OF BARNET  
The Town Hall  
Hendon NW4 4BG  
For information phone:  
202 8282



## CONTENTS

Councillors' surgeries	7
Artscene .....	8
Allotments .....	13
Dance Festival .....	14
Find a family .....	17
Schools solve problems .....	18
'No Smoking Day' .....	19
Tale of the Easter Bunny	30
Barnet Diary .....	31-38
Property .....	36-39

### EDITORIAL ADDRESS

The Town Hall,  
Hendon NW4 4BG  
Tel. 01-202 8282,  
exts. 2071, 2072 & 2073  
Editors: Bill White,  
Rosemary Jude and Joy  
Myers

### ADVERTISING ADDRESS

Marketing Media  
Management  
4 Bellevue Mews  
Bellevue Road  
Friern Barnet N11 3EF  
Tel: 01-361 4223

Advertising Manager  
Lynette Fernandes

Barnet Borough News is  
published by Barnet  
Council and Marketing  
Media Management.

The VFD certified net  
distribution from July to  
December 1988 is  
116,140. It is distributed  
to homes and  
businesses throughout  
the borough. It is also  
available from libraries.

## FRONT COVER

Twenty schools took part in the 1989 Barnet Schools Dance Festival at Copthall School, Mill Hill. The emphasis was on strong rhythms, from 20s jazz to rock 'n' roll and Caribbean drums. See page 14.

# Council issues pollution warnings

BARNET Council are preparing tender specifications for major work to be carried out on the Finchley low level sewer which runs more than 100 ft below ground through the Finchley Central area.

It will be about three weeks before contractors are appointed. Meanwhile the over-pumping system which diverts the flow from Gordon Road through to a Hendon sewer on Finchley Golf Course is working satisfactorily. The 8-inch submersible pump is inside the manhole and is working well.

More than 50 notices warning of the danger of pollution have been

posted along the banks of Dollis Brook.

Mr. Graham Beattie, controller of engineering services, has appealed to parents to warn their children not to play near the brook until fear of pollution is over. 'We are treating this as a serious emergency,' he said. 'And I would like to thank the public for the way they have responded and co-operated with us.'

The blockage in the sewer became apparent on February 10. Barnet Council responded by delivering warning letters to residents and began taking sewage away from

the area by a fleet of tankers.

A team tried to get into the sewer to find out what was causing the blockage but the atmosphere was lethal and they were unable to work in the area.

Now plans are in hand to drive a new shaft down to the 100-year-old sewer close to the blocked area. This will take several weeks to complete.

'I apologise to residents for the inconvenience and can assure them that the Council and Thames Water are determined that the work will go ahead as quickly as possible and that all precautions possible are being taken,' Mr Beattie said.

## OBITUARIES

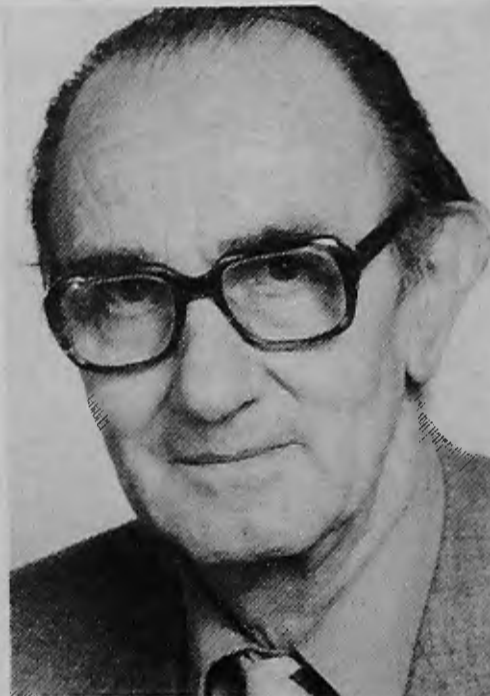
It is with regret that we announce the deaths of Cllr Wilf Lipman, Deputy Mayor of Barnet, on Thursday, January 26, and Mr Norman James 'Jimmy' Sapstead, O.B.E., Mayor of Barnet in 1978/79 and Mayor of the former Borough of Finchley in 1962/63, on Saturday, January 28.

Cllr Lipman was also Deputy Mayor during Cllr Denis Dippel's year as Mayor of Barnet in 1986/87.

The Mayor of Barnet, Cllr Don Goodman, paid the following tribute to Cllr Lipman. 'He was a friend as well as a fellow Councillor. During this year we built up a strong personal relationship which has embraced both our families,' he said.

Cllr Lipman, of 15 Saddlescombe Way Finchley, was 69. He was elected to the Council in 1982 for the Arkley Ward, and served on the Housing, Town Planning and Research and Allotments committees. He was chairman of the Northern Area Planning Sub-Committee. He also served on a number of outside authorities and was chairman or served on a number of Boards of Governors of Barnet Schools.

He served in the RAF from 1940 to 1946. He held directorships in the DIY wholesale distribution



Cllr Wilf Lipman

field and ran his own business until retiring. He leaves a widow, Joyce, and a son, Keith.

Mr Sapstead lived at 19 Barnwell Drive, Hockley, Essex, having previously lived in Chandos Avenue, Whetstone for many years. Born in London in 1911 he came to Finchley in 1919. He joined the Finchley and Friern Barnet Conservative Association in 1929 and became vice-chairman for five years before beginning a nine-year spell as chairman which ended when he became Mayor of Barnet.

During his years with the former Finchley Borough Council and Barnet Borough Council he served on every major committee.



Mr Jimmy Sapstead

He notched up an impressive record with the Metropolitan Police Constabulary, with whom he served during World War Two, and received a 25 years' long service medal.

He served on numerous outside organisations in the borough and was interested in all forms of international friendship.

After completing his tireless work with the Council in 1982, he was presented with a Vellum of Appreciation in 1983 when the Leader of the Council, Cllr Leslie Pym, described him as 'the epitome of reliability and unselfish service.'

He leaves a widow, Rene, and two sons, Richard and Derek.

## STILL TIME TO GO TO THE BALL

THERE'S still time for you to get tickets for the biggest event of the year in aid of the Mayor of Barnet's Appeal for Lifeline — the Civic Ball.

The ball, at the Intercontinental Hotel, London, on Thursday, March 23, is always one of the highlights of the calendar of events and you are invited to attend. You are assured of a warm welcome from the Mayor and Mayoress, Cllr Don and Mrs Mary Goodman.

It is a convivial evening out with a four-course meal, dancing, a tombola and an auction with an excellent range of prizes.

Tickets are on sale at £27.50 and can be obtained from the secretary, Mrs Pat Signy, 223 Great North Way, Hendon, Tel 203 0962. Tables will seat 10 or 12 people although a few larger ones can be arranged on request. So book your places now.

Gifts are still wanted for the tombola and auction and offers will be welcomed by Mrs Signy.

The ball should help to swell the appeal fund which now stands at £30,000. Lifeline gives elderly people a telephone with an emergency call system

### Other events

**Saturday, March 4:** Darts Tournament at the STC Sports and Social Club, Oakleigh Road South, New Southgate, 3.30pm Contact the organiser, Vic Challis, c/o Town Hall, The Burroughs, Hendon NW4 4GB, Tel. 202 8282 ext. 2010 (work) or 346 7813 (home), for details

**Saturday, March 11:** Sponsored swim at Barnet Copthall Pools. Contact Gerald Kirby, Tel. 346 9236 (evenings).

**FREE NHS EYE TESTS  
ENDS 31ST MARCH**  
Book an appointment early  
to save yourself £15 on an eyetest

**WE ARE AMONG THE BEST IN LONDON FOR PRICES AND QUALITY**

SOFT LENSES £49  
GAS PERMEABLE £65  
EXTENDED WEAR £69  
EXTENDED WEAR  
GAS PERMEABLE £95

COSMETIC LENSES  
COLOUR CHANGER  
(Mistique) £150  
COLOUR ENHANCER  
£125  
½ PRICE FRAME OFFERS

Brand New on the Market  
**WEEKLY DISPOSABLE LENSES**  
Require no cleaning or solutions  
£246 per year

All prices for contact lenses include  
● **FREE** Consultation ● **FREE** Starter Pack  
● 1 Hour Service on Soft and Extended Wear ● No Extras

**FRIERN BARNET (MAJORS) OPTICIANS**  
219 Woodhouse Road, Friern Barnet (Nr Town Hall) N12  
Tel: 01 368 4091  
OPEN MON - SAT 9-5.30pm. HALF DAY WED & SAT

**TUFNELL PARK OPTICIANS**  
141 Fortess Road, Tuftnell Park NW5.  
Tel: 01 267 0183 & 267 1216  
OPEN MON - SAT 9.30-6.30pm.  
Nearest Tube: TUFNELL PARK (1 min)  
ON SITE OPTICAL LAB  
All prices + VAT



## Cosy Interiors

**WALLPAPER AND COLOUR CO-ORDINATION;  
THROUGHOUT THE HOME  
PLUS ACCESSORIES**

7 CHURCH LANE EAST FINCHLEY, N2  
**01 - 444 3073**

Most brand names available - eg. Warners,  
Monkwell, Dovedale, Skopos, Lavra, Ashley,  
Brian Yates Coles and many more.

**Specialist curtain service available**  
Open Mon - Sat 9am - 5pm  
Access & Barclaycard

# NEW SUPER HI LINE OR LO LINE ECONOMY FITTED BEDROOMS FROM £79 FOOT RUN

**HI-LINE SUPER** fitted wardrobes make most use of your room height being 88" or 94" high plus infill panel to ceiling. Both ranges are made in various widths (not just 18" doors) to make fuller use of your wall size. Superb selection of finishes. We plan and EXPERTLY fit **FREE**.

**SLIDING DOOR** high quality wardrobes. Silent gliding and **MONO** construction not relying on fixing to your ceiling.

**LO-LINE** Fitted Wardrobes are 82" HIGH (similar height to most self-assembly wardrobes) but are superb quality. FROM £79 per foot run a 10 FEET WIDTH costs £790 in super melamine finish. COMPLETE WARDROBES with backs, hanging rail and quality handles **EXPERTLY FITTED** to back and side walls, levelled to floor and with **SPACE OR LARGE IN FILL** panel to ceiling.

**WARDROBES** Also delivered and assembled only (not fitted) from £53 per foot width (10 foot width £530).

**CREDIT TERMS** LICENSED BROKER. ASK FOR WRITTEN DETAILS.

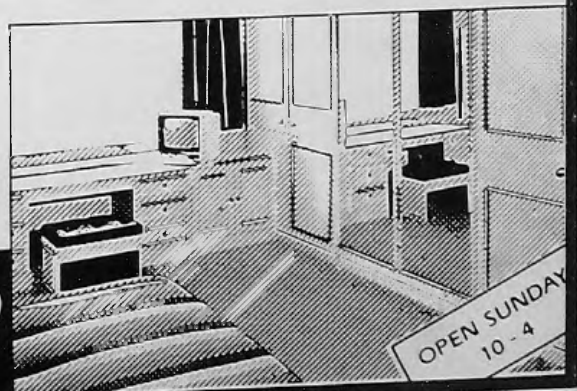
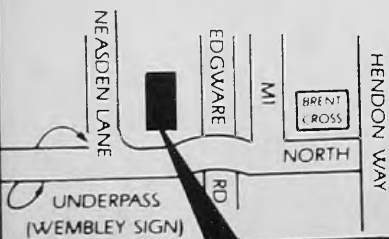
**FACTORY AND SHOWROOM**

719 NORTH CIRCULAR ROAD NW2.

Telephone 01-450 6581

OPEN EVERY DAY (SUN 10-4)

We can afford to give you a better deal.



# STATON



## LOFT LADDER INSTALLATION

**2 Stage £56.50 + VAT**

**3 Stage £82.50 + VAT**

*Boarding, Lighting, Insulation and Conversion our speciality*

*We fit evenings and weekends at your convenience*

MANUFACTURER: ABRU HENDERSON

LIGHTWEIGHT ALUMINIUM



STVC

# SATELLITE VISION

The World's Entertainment in your home at a Touch of a Button

Systems Expertly Supplied and Fitted

We use the latest small 60cm square dish.

Demonstrations & Further Information call **01 368 5190**

24 hr. answer phone. Office hours 6.30pm-9pm

or 840 7000 message service, Quote No. 0806 197

**SKY CHANNEL IS HERE !!**

## Safe and Secure in Wembley

FINDING somewhere safe to keep precious documents, family heirlooms and even computer discs, has always been a problem. Banks are fine but opening hours are a problem. Under the mattress is uncomfortable as well as risky, and the safe behind the Constable print is not possible in 9in cavity walls.

Which is why the new Self Service Deposit Centre in Harrow Road, Wembley Triangle, is such a find.

### Data Safe

Security is high, containers are fireproof. Up to three people can share a locker which is ideal for small family businesses, and the Data Safe cares for computer discs at constant temperature in a dust-free atmosphere. There are 19 different safe deposit box sizes.

Safe Deposits Ltd at Bank House are open seven days a week for long hours.

Customers have their own security ID card which has no name or address if it is lost or stolen. A palm-print identity

reader makes these cards absolutely individual. Customers also have their own PIN numbers.

Four different alarm systems have been used and the Timelock is so sophisticated that it cannot be over-ridden manually — a lesson learned from the Knightsbridge incident.

You can hire a locker for as little as £1.50 a week (£75 a year) and you pay a refundable deposit.

There is total confidentiality as clients are not accompanied by staff.

The setting is attractive, with wall to wall carpets, plants and background music. There are even changing rooms where clients can put on their jewellery before attending a function.

### Contact

To find out more contact Safe Deposit Lockers plc at 335/337 Harrow Road, Wembley Triangle, Wembley, Middx HA9 6BB. Tel: 903 5255

# FIRE!! BURGLARY!!

## HIGHEST SECURITY FOR THE LOWEST RATES

Jewellery ● Cash  
Passport ● Wills

*To celebrate our first anniversary we are offering*

Deeds ● Company Documents ● Back Up Computer Discs / Tapes

**£50 DISCOUNT ON FIRST YEAR'S RENTAL CHARGE OF ANY ONE OF OUR LOCKERS**

*The offer applies for a limited period only or bring in the coupon below to qualify at anytime*

Points to remember :- ● Designed to resist all known forms of modern criminal attack. ● The best and latest equipment with the most advanced and highly sophisticated technology from Sweden, West Germany, Japan, U.S.A. and U.K. ● Constant T.V. surveillance + electronic alarm system. ● Direct linked with Central Station (24hrs). ● Annual rental charge entitles you to visit your locker as often as you wish. ● Open 7 days a week (including Bank Holidays) Long and convenient hours.

RENT A LOCKER FROM

**£25**

+VAT PER ANNUM OR 50P PER WEEK

આજે જ લોકર બુક કરાવો

\* સુરક્ષાથી ભરપુર - રાત-દિવસ સતત ચોકી પહેરો.

**QUALITY, ABSOLUTE CONFIDENTIALITY, TOTAL SECURITY and EFFICIENCY**

For further information please write, telephone or visit us.

**SAFE DEPOSIT LOCKERS plc**  
BANK HOUSE 335 / 337 HARROW ROAD, WEMBLEY TRIANGLE, WEMBLEY, MIDDLESEX HA9 6BB  
TELEPHONE: 01 - 903 5255

Bring in this coupon to claim

**£50**

DISCOUNT On first year's rental of any size locker

## Councillors' & MPs' Surgeries

### Chipping Barnet

Sydney Chapman, MP, first Saturday of month 10.30am to 12 noon, The Trustees Room, Church House, Wood St, Barnet.

Arkley Ward — Conservative councillors, first and third Fridays of month 7.30pm, Dollis Valley Community Centre.

Brunswick Park Ward — Conservative councillors available second Saturday of month, 10.30am to 12 noon, Monkfrith Boys' Club hall, Osidge Lane, N14.

East Barnet Ward — Cllr Olwen Evans (Conservative), first Saturday of month 10.30am to noon, Community Centre, Victoria Rd, New Barnet. Contact Cllrs Mrs Mamie Perry and John Perry on 368 4368 for personal appointment.

Hadley Ward — Contact Conservative Cllrs. Mrs Gill Bull 446 7684, Mrs Carol Cender 441 6325, John Hoyle 441 5077.

Totteridge Ward — Contact Conservative Cllrs. Mrs Joan Levinson 368 3298, Victor Lyon 446 4423, Vic Usher 445 4248.

Labour councillors available first Saturday of month 10.30 to 11.30am, 104 East Barnet Road, New Barnet.

### Finchley & Friern Barnet

Margaret Thatcher, MP, for constituents only, via constituency office, tel 445 4292.

Conservative councillors, first Saturday of month 10.30am to noon, 212 Ballards Lane, N3

East Finchley — Labour councillors every Saturday, 10am to 11.30am, East Finchley Neighbourhood Centre, Church Lane N2.

Finchley Ward — Cllr Mrs Barbara Langstone can be contacted on 445 5443.

St Paul's Ward — Labour councillors Naren Davé, Michael Freeman and Kitty Lyons, every Saturday 11am to 12 noon. Tally Ho Labour Party Stall, North Finchley.

Woodhouse Ward — Labour councillors Mike Harris, Dennis Reed and Rudolf Vis, every Thursday, 6.30-7.30pm, Friern Barnet Town Hall, N11. Also Saturdays at Tally Ho, Finchley.

Friern Barnet Ward — Contact Cllrs Chris Platford (368 6817), Brian Salinger (368 1329), John Tiplady (445 5734).

### Hendon North

John Gorst, MP. March 17, by appointment. Tel 959 1446 or via constituency office, 2 Apex Parade, Selvage Lane, Mill Hill. Conservative councillors, Grahame Park, first Wednesday of month, and Mill Hill, every Wednesday.

Burnt Oak — Cllrs Ellis (959 6191), Shamash (458 2679), Williams (906 0576), every Saturday, 10.30am to noon, Labour Hall, Back Lane, Burnt Oak (952 5771).

Colindale — Cllrs Hillman (202 7792), McKendry (444 0594), Manson (455 6379), available first and fourth Saturday each month, 2-3pm, St Augustine's, Grahame Park.

### Hendon South

John Marshall, MP, via constituency office (202 7484) by appointment, see local press for details.

Childs Hill — Social and Liberal Democrat councillors every second Tuesday of month 7-8pm, Garth Hall Community Centre, Mortimer Close, Granville Rd, NW2. Cllrs Cohen (445 3981), Palmer (455 5140), Stone (450 0762).

West Hendon — Cllr Tim Sims (Labour), first Saturday of month 11am to noon, West Hendon Youth Club, 44 Park Road, NW4 or phone (734 8080, office hours) for appointment at West Hendon Ex-Servicemen's Club, The Broadway, NW9. Labour Cllrs Doreen Neall (202 9927) and Agnes Slocombe (202 4074) by appointment.

### Euro MP

John Marshall, Euro MP, contact Euro agent: 440 7328.

## Caring groups in Barnet

IN last month's Borough News we published a list of Carers groups which meet in the Borough of Barnet. Here is a list of other caring groups in the area and the days and times they meet.

**Relatives Group for Speech Disordered Patients**, Burnt Oak Library, Burnt Oak. Meet first Tuesday in each month, 2-4pm. Contact: Mrs Val Brown, speech therapist, Egware General Hospital, tel: 952 2381.

**Relative Support Group**, run by MIND and community psychiatric nurses, at 2 School Way, Woodhouse Road, North Finchley. Every Monday, 7-9pm. Contact: Sue Towns, 446 1654.

**Epilepsy Support Group**, Trinity Church Centre, Nether Street, North Finchley. Third Monday in month, 7.30-9.30pm. Contact Mrs Muriel Springer, group secretary, 7 Greville Lodge, Woodside Park Road, North Finchley, 446 2003.

**Parents Support and Information Group** for parents with special needs. The Toy Library, Barnet Social Services, 5 Oakleigh Gardens, Whetstone. Details from Jill Bamber or Rosemary Allegranza, 446 4354, or Jeffrina Smith, 440 5111.

**Michael Sobell Centre**, Limes

Avenue, Golders Green, run a Bereavement and Loss Group on Tuesday at 2pm; a Carers Group on Wednesdays at 2pm; a Survivors and Refugees Group on alternate Thursdays at 5pm; and also a Reminiscences Group. Contact: Norma Zwaig or Mora Hebbes, 458 7411.

**Leaside Day Centre**, 58a Holden Road, North Finchley. Third Wednesday in month, 8pm. Contact: Julia Meadows, 449 0889, or Sandra Minter, 446 2603.

**Springwood Day Centre**, Springwood Crescent, Egware. Second Tuesday of month, 7-9pm. Contact: Eve Luxford, 952 7722, or Janet Byrne, 346 9723/8644.

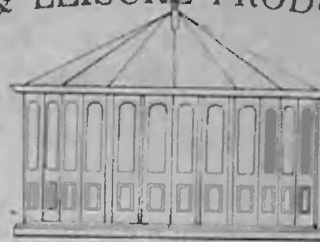
**Alzheimers Disease Society**, Relatives Support Group, Blue Beetle Hall, St Mary's Church, Church End, Hendon. First Tuesday of month, 8.15pm. Contact: Ilse Boas, 958 8324.

**Friend in Need**, Carers Group, East Barnet Baptist Church, Crescent Road, East Barnet. Last Friday of month, 11am-1pm. Contact: Alison Miller, 449 8225.

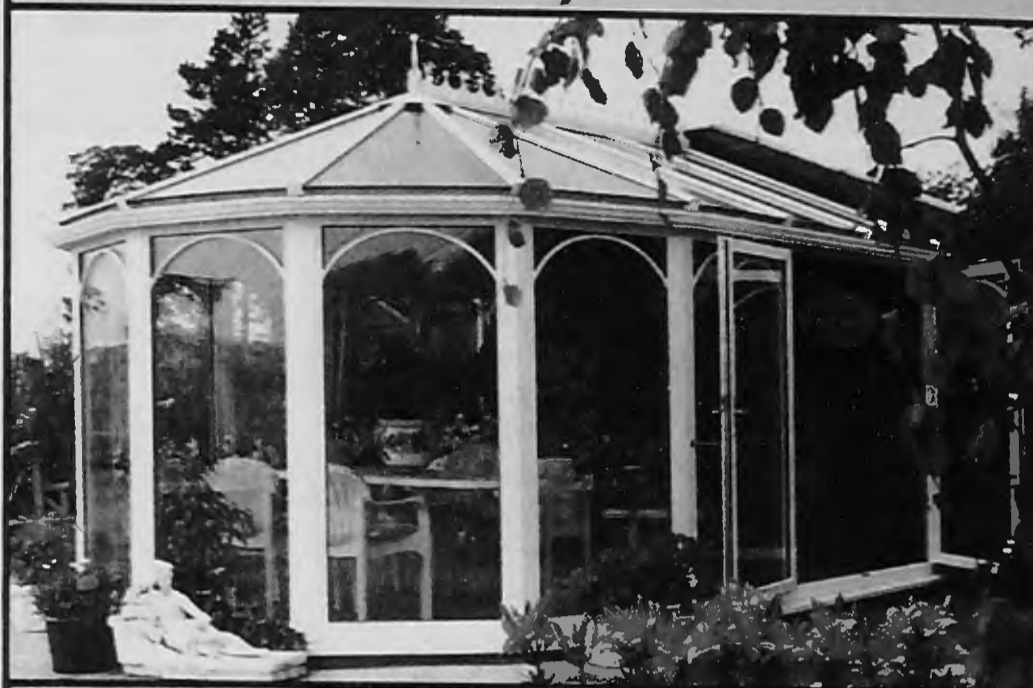
**Flightways**, Carers Group, Flightways Day Centre, Grahame Park, once a month. Details from Nicola Bergamaschi or Sheridan Lynch. 205 5803.

## CAVENDISH HOUSE

HOME & LEISURE PRODUCTS LTD



### Conservatories of Distinction



- ★ Local based company
- ★ 100's of satisfied customers
- ★ Any size and design
- ★ Double glazed for all year useage
- ★ Maintenance free construction
- ★ Free design service — quotations
- ★ Survey — planning — building work
- ★ Installation — unconditional guarantee



Visit our permanent exhibition at  
COUNTRY GARDENS CENTRE  
THE OLD SWIMMING POOL SITE,  
DAWS LANE, off MILL HILL CIRCUS  
TELEPHONE 0865 890557  
OR SEND FREEPOST COUPON

For free survey, design and quotation without obligation post this coupon to Cavendish House Home and Leisure Products Ltd, Freeport, Oxford, OX3 9BR (no stamp required)  
I am interested in further information

Name .....

Address .....

..... Tel .....

BBN 1/89

# Community in Focus



Alex Adams

## Captured Images

IMAGES of life expressed in the photomontages of artist Alex Adams are on display at the Dollisfield Gallery, Totteridge Library, Totteridge, from March 7 to 25.

The series of exhibitions arranged by Barnet's Arts Office at the Dollisfield has brought a variety of visual delights to the Gallery, and this latest display adds an exciting new dimension to the artistic activity on offer in the Borough.

Opening times for the exhibition are: Tuesdays and Wednesdays 10am to 1pm, 2pm to 8pm; Fridays 10am to 1pm, 2pm to 5.30pm and Saturdays 10am to 1pm, 2pm to 4pm.

CRAB, Community and Recreational Arts in Barnet, is exhibiting the work of disabled photographers, CLIC, at the Old Bull Arts Centre, 68 High Street, Barnet, until March 11.

Crab is presenting a varied selection of work, some of which was produced at Community Focus, Crab's newly opened, wheelchair accessible dark room and studio at Grahame Park.

Here's what's on at Community Focus, Tedder Lounge, Wiggins Mead, Grahame Park Way. Mondays, 1-30-3.30-m: CLIC (photography group for disabled people), beginners and interme-

diate levels can learn proceeding, printing and develop their personal work.

Wednesdays 10am to 3.30pm/6pm to 9pm: Open access to all. Assistance with dark room work is available.

Wednesdays, 3.30 to 5.30pm: After School group for eight to 18 year-olds and their friends. Some transport available.

Thursdays 1.30-3.30pm: City and Guilds Class.

People are invited to join the workshops, form new groups or book the studio and darkroom for their own work.

Details from CRAB 346 9789.



Tedder Lounge studio

## Art from the Arctic

THE customs and traditions of a Canadian Arctic people are reflected in soapstone animal carvings and vivid prints, which are on show at the Old Bull Arts Centre, High Street, Barnet from April 10 to May 6.

This exhibition of Inuit culture, explores the changing life of people who were called Eskimos, a word which means 'eaters of raw meat'. The name has changed to Inuit, meaning 'the people', and this not only reflects the preference of the Inuit themselves but changing trends in their lifestyle.

Houses have replaced igloos and snowmobiles have virtually take over from dogs and sleds as over-land transport.

### Likeness

There is no Inuit word for art. They use a word which means model or likeness and, to the Inuit, a carving or print embodies the concept of a spirit. One artist explained: 'A white man, if he is going to buy a carving, buys it purely by the appearance. The white people do not consider the meaning of a carving, simply the appearance.'

# BEDWORLD

## OVER 3000 BEDS MUST GO!!

CHOOSE FROM SILENTNIGHT, DORLUX, RELYON, SLEEPEZEE, REST ASSURED, MYERS, STAPLES, VI-SPRUNG, LAYEZEE & MANY MORE

## DISCOUNTS OF UPTO 50%

- ★ Choice of over 500 beds
- ★ Disposal of old beds

- ★ Local same day delivery
- ★ Expert advice

4'6" Sealy Mattress was £125	NOW £99
4'6" Silentnight Mattress was £139	NOW £99
4'6" Sleepzee Monaco Set was £549	NOW £459
3' Perfecta Drawer Divan Set was £149	NOW £99
3' Silentnight Deep Drawer Set was £140	NOW £119
4'6" Vi-Spring Earl Set was £590	NOW £539
5' Vi-Spring Earl Set was £689	NOW £599
3' Slumberland Ivory 2 Drawer Divan Set was £259	NOW £199
4'6" Boston Heritage Ortho Set was £389	NOW £329
5' Relyon Orthorest Divan Set was £489	NOW £389
4'6" Staples Duchess was £899	NOW £699
4'6" Relyon Braemar was £875	NOW £599

Relyon Nova Bed-Settee from £99

Silentnight 4' 6 4 Drawer Divan only £199

Cigno Brass Bed was £899 Now £659

95 Fore Street  
Edmonton N18  
01-807 3331

470 - 472  
Kingsland Road  
Hackney E8  
01-254 2534

26 East Barnet Road  
New Barnet, Herts  
(next to Sainsburys)  
01-441 7875



# WOODSIDE PARK SCHOOL

**A few places available for both boys and girls in the preparatory department (8+)**



PRE-PREPARATORY DEPARTMENT & PLAYGROUP  
**(HOLMEWOOD)**  
88 Woodside Park Rd N12

PREPARATORY DEPARTMENT  
**(ST. ALBANS)**  
Woodside Lane N12

**A long established Preparatory School for children from 3-13 years. Tuition follows the Common Entrance syllabus for entry to Public School at the age of 13+ (11+ for girls)**  
**Apply to the Preparatory Department**  
**Telephone: 01 - 445 2333**



The

The Cock at Cockfosters has re-opened after a short closure for re-decoration. The new decor is comfortable, relaxing and attractive and features a restaurant area serving the finest in value-for-money meals.

Starters include Meaty Mushrooms, stuffed with sausage meat and deep fried, and Chicken Wings, chicken marinated in spices and roasted. These are followed by some mouthwatering main courses like Spicy Chicken Chasseur and exotic Grilled Tuna Steaks. There are crisp refreshing salads, Light Bites from the bar and Daily Specials on the blackboard.

All the dishes are homemade and are very reasonably priced representing Benskin's best in hospitality.

*Reservations welcome.*

Martyn and Chris Dobson  
The Cock  
Cockfosters  
Barnet EN4 9HU  
01-449 7160

## HEMOCARE CENTRE

SAFETECH LTD  
**THE HEMOCARE CENTRE**  
DECORATORS & D.I.Y. MERCHANTS

**PAINTS & WALLPAPERS**  
VINYLs Telephone: 01-440 4787

OPEN TILL

**Complete Dulux trade and retail range from stock**

5 litres trade matt colours £12.95  
2.5 litres retail vinyl matt and silk colour £7.90

**Complete Crown trade and retail range from stock**

1.25 litres Plus 2 non-drip gloss £3.00  
5 litres white trade matt £8.75  
5 litres white trade gloss £10.99  
5 litres magnolia trade gloss £12.99  
5 litres white trade undercoat £10.99  
5 litres magnolia trade matt £8.75  
5 litres magnolia trade silk £9.15

### WALL COVERINGS

Complete range of Crown anaglypta, supaglypta and luxury blown vinyls. Also range of coloured blown vinyls plus over 300 different books to choose from, here or at home.

**OPEN**  
**MONDAY -**  
**FRIDAY**  
8am-7pm  
**SATURDAY**  
8am-6pm

### FIREPLACES

Fibrous plaster fire surrounds from £100  
Fibrous plaster ceiling roses from £10  
Coving and mouldings from £4 per meter

14 Church Hill Road,  
East Barnet, Herts, EN 8TB  
01 - 440 4787

## FOR ALL REPRODUCTION FURNITURE DIRECT FROM FACTORY



**Temple  
Furniture**  
19 Glenhaven Avenue  
Borehamwood  
Herts  
01 - 207 3208

## SATELLITE TELEVISION



**WHY SETTLE FOR JUST THE NORMAL 4 CHANNELS WHEN YOU CAN CHOOSE FROM 35 EXTRA CHANNELS.**

**SYSTEM START FROM £200 INC. VAT Excl. Installation**

**N. L. SUPPLIES (01) 361 9532**

## Local expert on satellite TV

SINCE the launch of the Astra Satellite in December, the public have become increasingly aware of satellite television. Up to 16 extra channels can be added to an ordinary television set for as little as £200 plus an installation fee.

Having been established for five years, expert Jeffrey Wright, the proprietor of NLS finds it encouraging that the popularity of satellite television has increased with recent

years. Jeffrey can see the day when satellite television will be as popular as video recorders.

The systems are generally maintenance free. NLS offers a full year's guarantee on parts and labour, and an extended five-year warranty is available at an extra cost.

For further details Tel: Jeffrey at NLS on 361 9532.

Advertisement feature

## A brand new 24hr service

Drainstormers offer a brand new service which is available 24 hours a day, seven days a week.

Their professional, fully-trained engineers carry out a wide range of jobs including drain clearing and cleaning; all types of plumbing; hot water and central heating installations and services.

These services are both for the general public and the commercial

sector for which Drainstormers offer a yearly maintenance contract on sanitary and water installations with unlimited cover.

All their work is fully guaranteed, so if anyone has an immediate problem or would like further information, telephone 01-449 9117. Drainstormers accept all major credit cards.

Advertisement feature

## EMERGENCY DRAIN CLEARING

Plumbing + central heating engineers.  
Specialists in high pressure water jetting.

**01-449 9117**

ALL WORK GUARANTEED

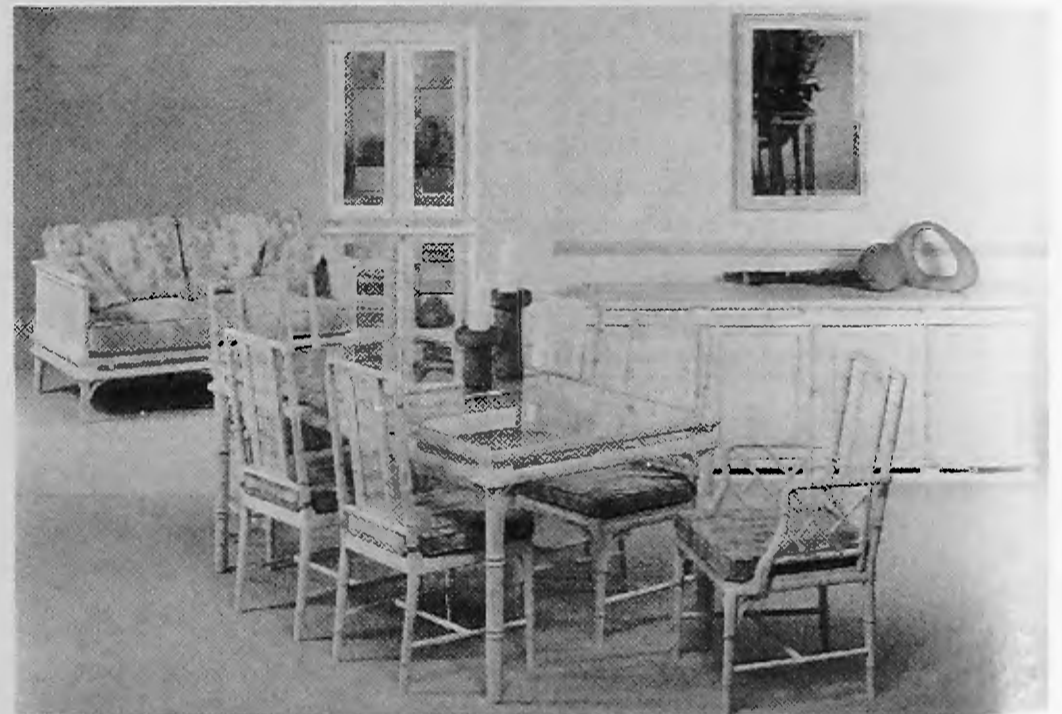
Major credit cards accepted



**24 hour service**

# DRAINSTORMERS

## Reproduction furniture



After managing a showroom in Kensington, Keith and Irene Horridge opened their first shop with their three sons, Jonathan, Giles and Rupert. Business bloomed, so in March last year they decided to expand the business by opening up another showroom in Radlett.

Both showrooms have an extensive range of quality furniture to suit all tastes, but Sheraton specialise mainly in high quality reproduction furniture. Some of their most

popular ranges include Parker and Farr Ash dining furniture which comes with a range of pastel shades to match almost any decor. The solid oak hand-polished furniture has also proved popular.

You can find Sheraton Home Furniture at Lower Road, Chorleywood, and 297 Watling Street, Radlett. If you are looking to make your home look beautiful, Sheraton will be well worth a visit.

Advertisement feature

## ANNIVERSARY SPECIAL OFFERS

### 15% OFF COMPLETE SUITES



Dining furniture by Tichmarch & Goodwin, Ercol, Rackstraw, Burtons, Reprodux, Jaycee, Old Charm, Charles Barr and Youngers, Top quality upholstery by Art Forma, Parkers & Farr, Colins & Hayes, Derwent, Bridgecraft, Wade, Parker Knoll and Cintique, Loose cover suites, mahogany, yew, oak and pine. Olympus bedroom furniture, Beds and Carpets.

**SHERATON HOUSE FURNISHERS**  
297 WATLING ST  
RADLETT  
0923 85 5386

5-6 SHERATON HOUSE  
LOWER RD, CHORLEYWOOD  
09278 3457

Opening times 9.15am - 5.30 closed Wed. OPEN SUNDAYS FOR VIEWING 11 am - 4 pm (Chorleywood only) All credit cards accepted

**SMALL REMOVALS AND DELIVERIES UNDERTAKEN ANYTIME**

REASONABLE RATES TELEPHONE IAN

**01 440 4986**

## CALDER ASPHALT

We Strip and recover old roofs

- MASTIC ASPHALT
- THREE LAYER BUILT-UP FELT
- MODERN HIGH PERFORMANCE ROOFING

Fully Insured & Guaranteed

**CALDER ASPHALT**  
1-3 Fox Lane, Palmers Green  
London N13 4AB



Established 1966



**01-882 4524/5**

## Hear this and help

IS there anybody out there who can help our local branch of the National Deaf Children's Society?

We urgently need to replace money spent last year taking a group of families on holiday to Somerset, a trip to Thorpe Park and an annual party for 35 of the children in our group.

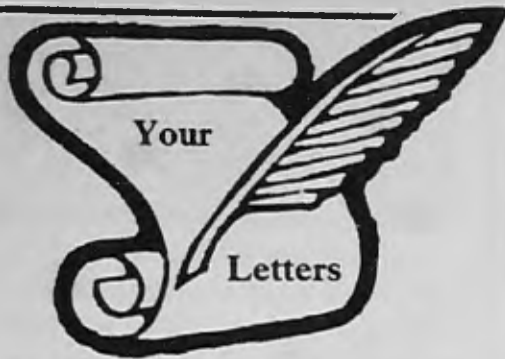
Although the other events we organise, such as talks, are inexpensive and we can apply to larger charities such as Help a London Child for medical equipment, we must replace our funds before we can plan any outings for this year.

We would like to organise a car boot sale and are hoping that a supermarket, friendly publican or church might be kind enough to lend us their car park when not in use.

Any money raised will be used to help hearing-impaired children from Haringey, Islington and Enfield as well as Barnet and Finchley.

If you can help us we would be very grateful. Please telephone Carol Wilson, the number is 01-449 5328.

**Carol Wilson (Mrs)**  
**Hon. Secretary**  
**National Deaf Children's Society**  
**North London Branch**  
**37 New Park**  
**New Barnet**  
**EN4 9QD**



## Waltham Walk

THE Waltham Walk, an annual two-day challenge expedition, has been run since 1970, and each year attracts teams from all over the South East of England. Around 70 teams of three (male and female) from youth organisations take part. The event, which this year takes place on May 20 and 21, is also suitable for Duke of Edinburgh's award training.

For further information please contact us on 0285-861416 or 527 4532.

**Michael Wilding**  
**Chairman WW89 Committee**  
**The Boys' Brigade**

## Squadron reunion

I AM trying to contact ex-members of 846 Naval Air Squadron (1943-45).

Ex-members (all ranks) of 846 Fleet Air Arm Squadron 1943-45 are asked to contact me, Arthur Howes (021 354 8335) for news of our second reunion, after a very successful first one on board H.M.S. *Belfast* on the Thames.

**A. Howes**  
 20 Coleshill Road  
 Sutton Coldfield B75 5AA

## BBN PEOPLE

### our heritage

DEREK WARREN, honorary warden of Darlands Lake Nature Reserve, Totteridge, has been nominated for the Times/PM Environment Award. He has done voluntary work for the environment for many years.

As leader of Finchley Watch Club, Derek is playing an important role in educating the younger generation. Watch is a wildlife and environment club for children of eight and over. Derek leads the meetings once a month, sometimes at Darlands Lake or College Farm, or at local woods and ponds.

In 1988 Derek supervised British Trust for Conservation Volunteers in deepening parts of the lake, building a bridge and putting up fencing. Local people and Watch club members continued the job of clearing up after the hurricane. He leads walks for general and specialist groups and organises scientific surveys of the vegetation, flora and fauna with the aid of specialists. (The next Open Day at the Reserve is 16th April.)

Derek, who lives in Wentworth Avenue, Finchley, is involved in long-term planning for local nature reserves as a Council member of the Herts and Middlesex Wildlife Trust and is active in fundraising for the Trust.

The winner of the award will

receive a prize of £5,000 to be spent on the environmental project.

### Chamber Chairman

GODFREY DYSON, FSVA, Chartered Surveyor, is the new chairman of the Edgware and Burnt Oak Chamber of Commerce. His practice is in the centre of Edgware.

He has been a committee member for a number of years and represents the Chamber on Barnet's Western Area Road Safety Committee.

He sees the new Broadwalk Shopping Centre in Station Road as a means of revitalising the centre of Edgware.

### Industrial scholarship

MARK BEVAN, a student on the Institute of Management course at Barnet College, has won the Industrial Scholarship 1988, given by the Institute of Supervisory Management. The scholarship is awarded to the student whose project is judged to be the best in the country.

He has used his scholarship to spend a term at Durham University researching the development of small businesses.

# poggenpohl

## The ultimate fitted kitchen.



## It's fitted to you.

If you come along to see the superb Poggenpohl kitchens in our showroom, you're very likely to want to buy one.

It's then we'll take the measure of you.

The measure of your kitchen, its shape, its angles, the level (or not so level) of your floor.

And your measurements. Because every Poggenpohl is tailor-made to suit the individual, as well as every kitchen space.

All of this before we ask you which style you want.

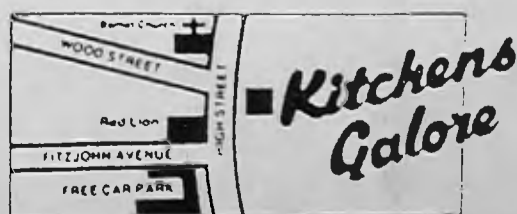
The reason why we take this care in detailed planning is simple. We've the years of experience to know you expect it. Pay us a visit.

# poggenpohl



**Kitchens Galore**  
 64/66 High Street  
 Barnet.

Telephone:  
 01-441 2606.



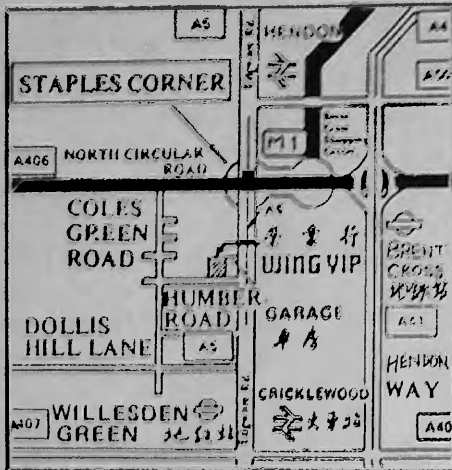
OPEN TUESDAY TO  
 SATURDAY  
 9.00am-5.30pm  
 CLOSED ALL DAY  
 MONDAY

# 榮業行

**LARGE SELECTION  
OF AUTHENTIC  
JAPANESE FOODS**

## WING YIP

**Genuine Chinese groceries and provisions**



The new Wing Yip store south of Staples Corner now offers Britain's biggest choice Chinese groceries and provisions.

Imported by us direct from China and Far East, our range covers all restaurant and family needs, including fresh frozen and packaged foods, drinks, packaging and kitchen utensils.

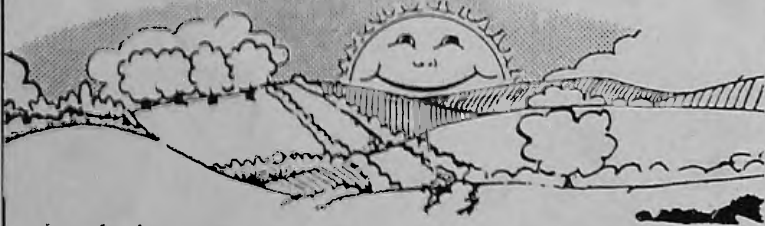
We have a large free car park and are open from 9.30 am to 7 pm every evening, Monday to Saturday.

**Wing Yip, 395 Edgware Road, Staples Corner, London NW2 6LN**  
(Entrance in Humber Rd., off Edgware Rd.) **Tel: 01-450 0422**

## Oriental flavour on the Edgware Road

*There's a touch of Eastern Promise  
In the heart of North West Two.  
There's an oriental flavour  
That is waiting there for you.  
It's the Wing Yip supermarket  
That is London's first and best  
Where restaurants and caterers know  
That East has come to West.  
It's an oriental palace  
Just along the Edgware Road,  
To the south of the North Circular  
In Cricklewood Post Code.  
From China, Asia, India,  
Japan — it's just a feast  
Of all the lovely flavours  
That are coming from the East.  
Mr Wing Yip came to England,  
Back in Nineteen Fifty-nine  
When he opened his first restaurant  
For Ipswich folk to dine.  
Then he moved into the Midlands  
To enthusiastic praise  
From retailers and restaurants  
And Chinese take-aways.  
He opened stores in Manchester  
And now he's come to where  
He can show the folk of London  
All his oriental fare.  
So come down now to Cricklewood.  
Don't be inhibited.  
There's a treasure house of flavour  
At Wing Yip Limited.*

## A BRIGHTER BARNET



Let's keep our borough clean and tidy!  
Don't be a litter lout!

- **PUT YOUR LITTER IN THE BIN**
- **BOTTLE BANKS** are situated at:

1. Strafford Road, Stapylton Road Car Park, Chipping Barnet.
2. Behind Tesco's in Ballards Lane.
3. Lodge Lane Car Park, North Finchley.

**DUMPING IS GETTING MORE  
EXPENSIVE AND CAN COST  
YOU A FINE — UP TO £1,000**

**DON'T BE CAUGHT — USE THE FACILITIES PROVIDED BY**



## CALDER CONSTRUCTION

- Conversions
- Renovation Work
- Extensions
- Property Maintenance
- Approved Local Authority Contractors
- Advice & Estimates

### CALDER CONSTRUCTION

1-3 Fox Lane, Palmers Green  
London N13 4AB



Established 1966

**01-882 4524/5**

## FINCHLEY NURSERIES

**BURTON HOLE LANE  
MILL HILL  
01 959 2124**

A wide and varied selection of vegetable plants will be available over the next few months.

Visit one of the loveliest garden centres in the area, for all your garden requirements.

## SPECIAL OFFER

### SECOND HAND

39yrs male, not Tom Cruise -  
But better than Qusimodo

**Caring, Considerate, Kind**  
5ft 4 Mancunian, exiled in  
London since Jan - due to  
work location in North  
London.

**WANTS** female owner,  
between 25-35. Children OK.  
Send Photo + Tel. Phone to:  
Box RB1 BBN  
4 Bellevue Mews, Bellevue  
Road, London N11 3EF

## Going To A Ball?

**NOTHING TO WEAR?**

**Tel: 01-952 9980**



**LADY EVE**  
has a  
collection  
of ballgowns  
and cocktail  
dresses  
elegantly  
styled for the  
discerning  
woman.

**LADY EVE**  
Dress Hire

# Grow your own vegetables

IF you want to be sure of really fresh vegetables and to know just what chemicals have been used to grow them — then it's time you phoned Barnet's Allotment office and took on a plot of your own.

An allotment is really a miniature small holding where you can grow vegetables, fruit and flowers with plenty of space and loads of encouragement from your new friends on the neighbouring plots.

Here you are, living on the edge of London with all the City bright lights and entertainment on your doorstep — and you can still turn dreams of getting away from it all into reality with a touch of the Good Life.

And Barnet have an offer which few first time allotment holders can resist. We will prepare your plot for you, doing the first initial rotivation so you start with a clean, fairly easy to manage allotment garden.

There could not be a better time to start. It is spring. You can sow your potatoes, onions and carrots now and harvest in late summer.

1989 is Food and Farming Year. Even the Post Office are joining in with a 19p stamp which looks like the winning entry in the summer show.

Wherever you live in Barnet you are near an allotment site. Some are managed by the Council, others are

leased by the local allotment society who run the site on behalf of all the allotment holders.

The interests of the allotment gardeners are looked after, firstly by the local society and then by the Barnet Federation of Allotment Societies.

All this adds up to a fund of expertise and friendship ready to help the beginner and encourage the enthusiast.

Most sites have good access, water laid on and are fenced off. Over the years Barnet has ploughed back the rents into improving the sites.

Plots sizes vary slightly but the base is a 10-pole plot. What's a pole? It's an old standard measurement and means that your allotment will measure about 30ft by 100ft or 10 metres by 30 metres.

And you get this for just £13 a year plus £3.50 a year for water. Many sites have a trading hut which buys in bulk and sells a bargain prices to the gardeners.

Contact Colin Nash, Allotments Office, Directorate of Technical Services, Barnet House, 1255 High Road, Whetstone N20 0EJ. Tel: 446 8511 Ext 4479. Or Ted Green, Secretary, Barnet Federation of Allotment Societies, 65 Ravensdale Avenue, North Finchley N12 9HR. Tel: 445 9305

Your local  
**FRIENDLY GARDEN CENTRE**  
is still  
**T. SIMMONS & SON**  
LTD

166 NETHER STREET (Nr. West Ave)  
FINCHLEY N3 Tel: 01 346 2245

**ROSE ● SHRUBS ● PLANTS & TREES**  
**STONE & TERRACOTTA**  
**POTS & URNS ● GARDEN SUNDRIES**  
**ALLIBERT GARDEN FURNITURE**

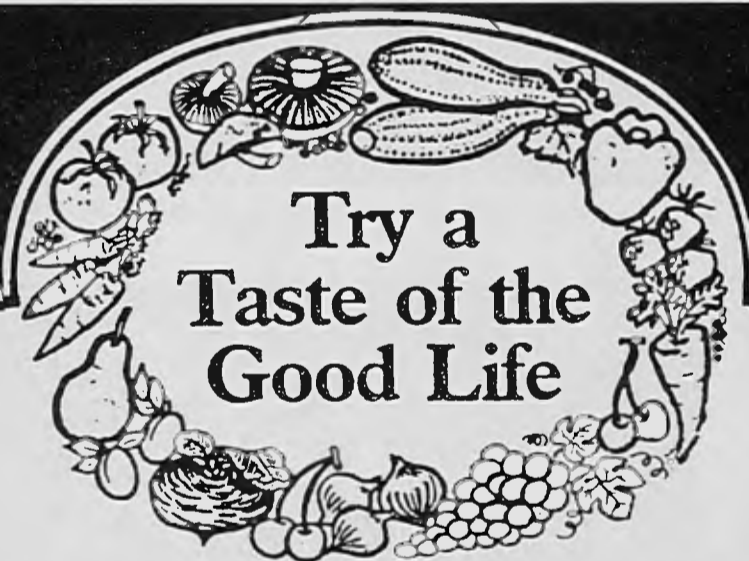
**In Pleasant & Friendly Surroundings**  
**COME AND FIND US**

**MARCH**  
**OFFER**

Fill your garden with  
our large selection of

**BUDGET**  
**SHRUBS**

**£3.25 each 5 for £15**



Try a  
**Taste of the**  
**Good Life**

**Join the 4,000 Barnet people**  
**who already enjoy allotment gardening.**

This popular leisure activity combines exercise,  
relaxation and a great sense of satisfaction with healthy,  
fresh food production all year round.

What other pastime can offer all of this?

Even more, it's inexpensive and suits people of all ages.

To find out more about renting an allotment garden near you, please contact:

Colin Nash

Directorate of Technical Services, Barnet House, 1255 High Road,  
Whetstone N20 0EJ Telephone: 446 8511 Ext. 4479

LONDON BOROUGH  
**barnet**  
Directorate of Technical Services



Dollis Junior School, Mill Hill, reached back to the 1920s with Lindy Hopping, a combination of charleston and jive.



Christchurch Junior School, Barnet, in a traditional fisherman's reel called the Flamborough Sword Dance.

## Dancing Days

TWENTY schools took part in the 1989 Barnet Schools Dance Festival, held at Copthall School on Tuesday, February 7.

This year the schools placed an emphasis on strong rhythms, from 20s jazz to rock 'n' roll, and Caribbean drums.

Festival organiser Jane Forde said it was a great success because the children obviously enjoyed it all so much.



Young acrobatics and the music of Last of the Summer Wine. Norah Batty's legs were never like these!



St. Michael's School, Finchley, combined modern dance with a religious theme in *The Mission*.



Martin Junior School, East Finchley, used the drums and beat of the West Indies for their presentation, *Caribbean Swim*.

RALLY to spring and summer by taking part in the Borough of Barnet Volkswagen Ratings Tournament at Hendon Park, starting on Saturday, April 22 and running for nine days. Full daily sessions at weekends and evenings only midweek.

This is an opportunity to play competition tennis whatever your standard. You will find yourself competing against players of your own standard.

## TENNIS MAKES THE RATINGS

The entry fee is £5 and there are some fantastic prizes to be won. In fact, no-one goes away empty-handed as the winner in each match goes on to a new round — and the loser takes away the set of Penn tennis balls from their match.

Barbara Davis, of the Lawn Tennis Association, says that rat-

ings tournaments have been held throughout England for the past 43 years and Barnet players have always given these tournaments full support. She welcomes the news that the borough is now to hold its own tournament.

Phone Barbara Davis, the tournament co-ordinator, on 446 4620 for application forms.

This news comes in the second issue of *Deuce*, Barnet Recreation Group's tennis newsheet.

It is packed with information, such as where to find a short tennis course suitable for children of all ages; names and addresses of local tennis clubs and an offer no tennis addict could resist — an expert service to answer your particular tennis questions. Tennis information on 446 8511, ext 4668.

# Get help from experts

PERSONAL Development Associates opened for business on August 1, 1984. It drew together three partners each with personal expertise in the commercial training world.

They were Kate Murphy, an industrial psychologist who had been working as a consultant to a number of large commercial companies; John Jenkins, an experienced counsellor who had established a major industrial training unit for a national voluntary organisation; and Keith Leighton, an experienced exponent of training using the outside world.

Their experience and clients were pooled together to establish this new, creative and initiating organisation in the world of vocational and commercial management training.

Since 1984 the company has developed and gone through a variety of changes, currently having more than 20 staff working in three divisions — a Management Development Consultancy; YTS Training; and Vocational Training. While all three divisions are based from the Finchley Head Office, the Management Development and YTS work takes place throughout the country.

The Vocational Training concentrates in North London and provides a wide variety of skill training, some within the Employment Training Programme and some outside.

Training is provided in book-keeping and accounts; word processing; secretarial/office skills; computing; English as a second language; typing and shorthand.

All courses are geared towards vocational qualifications and delegates are involved in a continuous assessment of their progress.

There are special courses for those who have been away from work for some time — bringing up families or looking after elderly relatives — and are now ready to return. Many people feel they are out of touch with modern technology and need to refresh and update their skills. Their confidence often needs a boost and PDA's trainers and placement officers are skilled at helping achieve this.

Within the Employment Training Programme every trainee is offered the opportunity of work experience while continuing to develop skills and confidence. During this time they continue to receive their training allowance. Through this method many trainees are successful in finding permanent work. For those who are not successful PDA's caring staff are able to guide trainees through the back-up and support of external agencies to find jobs suitable to their needs.

PDA (Training) Ltd is well placed to help with any vocational or management training needs. For many more details of courses or help you can receive contact Jane Mahon, Tel. 446 4155.

*Advertisement feature*

## OVERWEIGHT?

WITH THE HELP OF OUR DOCTORS  
A SUBSTANTIAL WEIGHT LOSS  
CAN BE ACHIEVED AT THE

### BARNET DIET CENTRE

BY COMBINING CORRECT DIET  
AND MEDICATION  
FOR FURTHER INFORMATION  
TEL: 01-361 3137/8

## BDC

2 BELLEVUE ROAD, FRIERN BARNET N11 3ET  
(OFF FRIERN BARNET ROAD)

## Bumpsadaisy



A Wide Selection of  
Designer Outfits For  
All Occasions  
to fit 8-20



- ☆ Weddings/Balls
- ☆ Dinner Dances/After 6
- ☆ Every Day
- ☆ Winter Sun Holidays
- ☆ Swimwear

Call Penelope - Mill Hill  
01-959 1856 If answerphone is on PLEASE  
leave your details, I WILL call you back.  
The Established Specialist for  
Maternity Wear Hire



OF MILL HILL  
ESTABLISHED 25 YEARS

**We clean Curtains, Carpets and  
Upholstery Beautifully**

■ HOMES ■ OFFICES ■  
■ HOTELS ■ RESTAURANTS ■

Full repair, alteration and adaption service.

Express service upon request.

All Curtains Hand Finished.

01 - 959 6996 / 7066

24 hour answering service

62 The Broadway, Mill Hill NW7



# OPPORTUNITIES FOR WOMEN

WOULD YOU LIKE:

- \* A NEW CAREER
  - \* TO RE-VITALISE YOUR OLD SKILLS
- WE CAN PROVIDE YOU WITH  
UNLIMITED TRAINING AT  
NO EXPENSE



- TYPING -
- WORD PROCESSING -
- SECRETARIAL SKILLS -
- COMPUTER LITERACY -
- INFORMATION TECHNOLOGY -

Personal Development Associates Training Ltd are experienced trainers in many fields, as part of our involvement in the Government's Employment Training Scheme, we are able to offer high level training to the following groups:

- Women who have been away from the work place for more than two years, due to domestic commitments
- Anyone unemployed for more than six months
- Lone parents (childcare allowances available)
- Special conditions apply to those people newly unemployed, who require this type of training, as the shortage of skilled people in this area has been recognized

A training allowance of approximately £10-£12 will be paid to **all** trainees. This is **additional** to unemployment benefit or any other benefit. Help with travel costs is also available.

Hours can be flexible to suit domestic arrangements.

If you are interested please contact Wendy on 446 - 4155



**PERSONAL DEVELOPMENT ASSOCIATES TRAINING LTD.**  
Partners in NETA Ltd. An Equal Opportunities Employer.

# The DOG SHOP



SHAMPOOING . CUTTING . GROOMING  
 Now open in Barnet. Every dogs dream, we cater for all breeds. Our fully trained staff will clip, shampoo, trim nails and groom to perfection  
 Transport service available on request  
 Telephone now for further details and appointments  
 01 - 449 1802

## DENTAL HOME VISITING SERVICE FOR

Housebound, Handicapped, Elderly and Infirm. NHS treatment free to those claiming income support.

**AVRIL KAY**  
 LDS RCS Eng.

**Tel: 445-7879**  
 for an appointment

## Kay & Kompany

REDKEN APPOINTED SALON

Hair, Health and Beauty for Men & Women

- ▼ PRECISION CUTTING
- ▼ ARTISTIC COLOURING
- ▼ SPECIALISED PERMING
- ▼ BEAUTY TREATMENTS

NO GIMMICKS JUST A GOOD PROFESSIONAL SERVICE

- WE LISTEN
- WE ADVISE
- WE RECOMMEND
- WE KNOW

\* Late Nights Thurs / Frys \*

69 COLNEY HATCH LANE, MUSWELL HILL N10 01-883 5528



## GET THE SKELETONS OUT OF YOUR CUPBOARD!

MANY CHILDREN AND ADULTS DIE FROM ACCIDENTAL POISONING. MEDICINES, TABLETS AND CHEMICALS CAN BE DANGEROUS. DO NOT HOARD THEM IN YOUR HOME. TAKE THEM TO YOUR NEAREST PHARMACY FOR SAFE DISPOSAL.



**MEDICINES WITH CARE**  
**CAMPAIGN 3RD APR — 11TH APR**

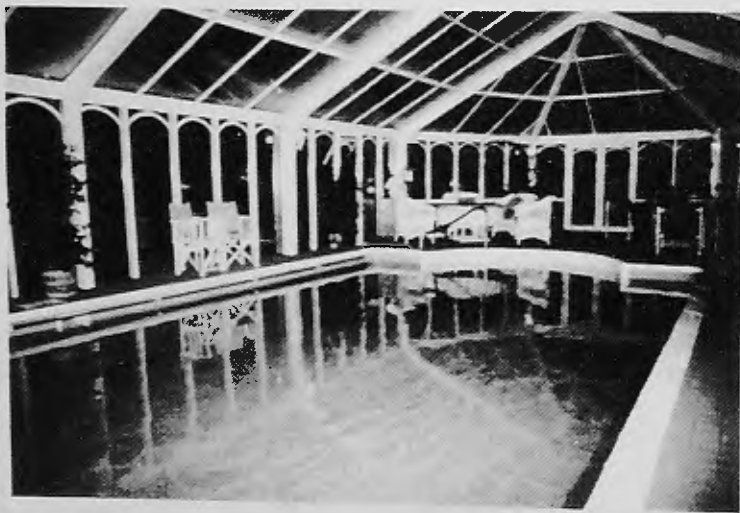
**YOUR LOCAL COLLECTION POINT IS YOUR LOCAL CHEMIST.**

A JOINT CAMPAIGN BY



Barnet Environmental Health taking care

ANY ENQUIRIES TO  
**MICHAEL BEAMAN**  
 ON 01-952 9204



## CHISWELL POOLS LTD



Your local experts for indoor or outdoor swimming pools, spa baths + saunas. Full after sales service.

Sole distributors for "Cascade" the only pool with an insurance backed guarantee.

126 Hempstead Road, Kings Langley, Hertfordshire WD4 8AL

**Tel: (09277) 69822 / 62908**



**DRUGS.**

**IS HALF THE PROBLEM NOT BEING ABLE TO TALK ABOUT IT ?**

**DRUGS** Concern are experienced listeners. We don't preach. But we do offer advice. If you've got caught up in drugs at any level, from heroin through to legal drugs like tranquillisers and alcohol, or you know someone who has and are worried about them, we might be able to help.

Our completely confidential services of one-to-one counselling, supportive groups, help with detoxification are all here if you want them. We can even look after your children if you want to bring them with you.

Don't wait. If you're concerned about drugs the best thing to do is to ring our number right now, and come in for a chat.

Also if you need clean needles & syringes, please phone us and we'll tell you where you can get them.

**DRUG CONCERN**  
 BARNET  
 PHONE 200 9525 OR 200 9575.

## NEWS!

### Medicine Cabinet Reshuffle

A MAJOR Medicine Cabinet reshuffle is expected in April and the Home Secretary, Mrs Ann T Biotic, who was prescribed a year ago to combat an infection, will probably be one of the first to go.

April 3 to 11 is Barnet's campaign to clear old drugs out of medicine cupboards.

#### Spring clean

Spearheading the major spring clean are Barnet's Environmental Health Department, Family Practitioner Committee and Health Authority who are inviting residents to take old or unwanted medicines to their local chemist.

The borough's Environmental Health Department will safely dispose of the medicines. In 1986 a similar campaign resulted in 1,500kg of medicines being returned.

Michael Beaman, District Pharmaceutical Officer for the Area Health Authority said: 'Stockpiling of medicines in the home is not simply due to overprescribing by doctors, but to patients not completing courses of treatment, hoarding medicines or duplicating prescriptions.

'A number of doctors already prescribe 28-day quantities, particularly for the elderly, and we hope to promote this practice more widely.

'Medicines may have a limited shelf life so there is little point in hoarding them. Patients should think twice before requesting a repeat prescription and consult their doctor or pharmacist if in doubt,' he added.

The campaign, called 'Medicines With Care', will also highlight safety of medicines in the home. The use of child-resistant containers for tablets has already dramatically reduced the numbers of youngsters with analgesic poisoning being admitted to hospital.

Leaflets giving advice on medicine safety will be distributed during the campaign.

# Finding Families

The recent television series on ITV 'Find a Family' highlighted the needs of children in care who require permanent homes, either through long-term fostering or adoption.

In Barnet there are currently 133 children in care, of whom half already live with families. Eight children are waiting for families who can offer a permanent homes and among them are:

#### Mandy

Mandy is 20 months old. A normal healthy little girl for whom an adoptive family is needed.

She enjoys the company of adults and other children as well as being able to occupy herself in play. Mandy is of mixed parentage and a family is sought where one parent is of black Afro-Caribbean origin.

#### Andrew

Andrew is four months old. He has Downs Syndrome which means he needs extra stimulation and special education to reach his maximum potential. He will also need surgery to correct a physical disability.

#### Luke

Luke is six. He is unable to live at home but wants to keep regular

contact with his mother. He needs to be the youngest child in a family and to have firm boundaries set, as he can get boisterous and excited

#### TV series

The television programmes highlighted the special needs of many youngsters including those from ethnic minority backgrounds, children with disabilities, family groups of two or more children, teenagers or children who may have been neglected or abused.

Barnet is seeking short-term foster families for children with a range of needs and from many different backgrounds. Enquiries are therefore welcomed from families, couples or single people of different religions and ethnic backgrounds.

Payments made to foster families recognise the skills and expertise needed and Barnet's level of payment is amongst the highest in London. A 25 per cent increase in the payments comes into effect next month and will then range from £54.50 to £200 a week.

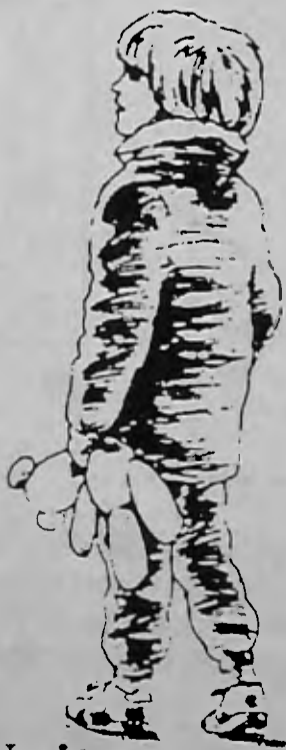
#### Contact

Get in touch with Barnet's Fostering and Adoption Section now. They are at Park House, 16 High Road, N2 9PJ. Tel: 883 5562. And they really want to hear from YOU! So do the children.

## DID YOU SEE "FIND A FAMILY" PROGRAMMES ON INDEPENDENT TELEVISION?

Are you interested in fostering or adopting a child like those featured?

FIND A FAMILY



Would you like to find out more about Barnet children awaiting new families?

If so, please contact:-

Barnet's Fostering & Adoption Unit  
Park House, 16 High Road, East Finchley,  
London N2 9PJ

Tel: 01 - 883 5562

LONDON BOROUGH  
**barnet**

# Balloons and giants solve the problems

BFG — the Big Friendly Giant — a favourite character from the children's novel by Roald Dahl, is helping the 130 pupils at Wessex Gardens Junior School, Golders Green, with a special project which started last April.

## Six schools

Wessex Gardens is one of six junior and infant schools in Barnet taking part in a three-year national project. Practical Problem Solving is a new approach to learning with special emphasis on science, design and technology.

The other Barnet schools involved are Wessex Gardens Infants; Clitterhouse Junior and Infants, Cricklewood; Our Lady of Lourdes Junior, Finchley; and Whittings Hill Junior, Barnet.

The main objective is to encourage a problem solving approach to learning.

## Tool design

On Thursday, February 9, Wessex headmaster Ieuan Renowden, set aside the whole day for the children to work entirely on problem solving throughout the curriculum. One of the projects was to design a tool the BFG could use to



Hot air over Clitterhouse as 120 balloons are released.

pick up things from the floor.

In the evening the school was packed with parents invited to see the results and try their own hand at problem-solving.

## Up, up and away

Clitterhouse Junior School are working on a communications project, and on Friday, February 10, all 120 children in the school let off a gas-filled balloon in the playground under the supervision of headmistress Mrs Ann Edwards.

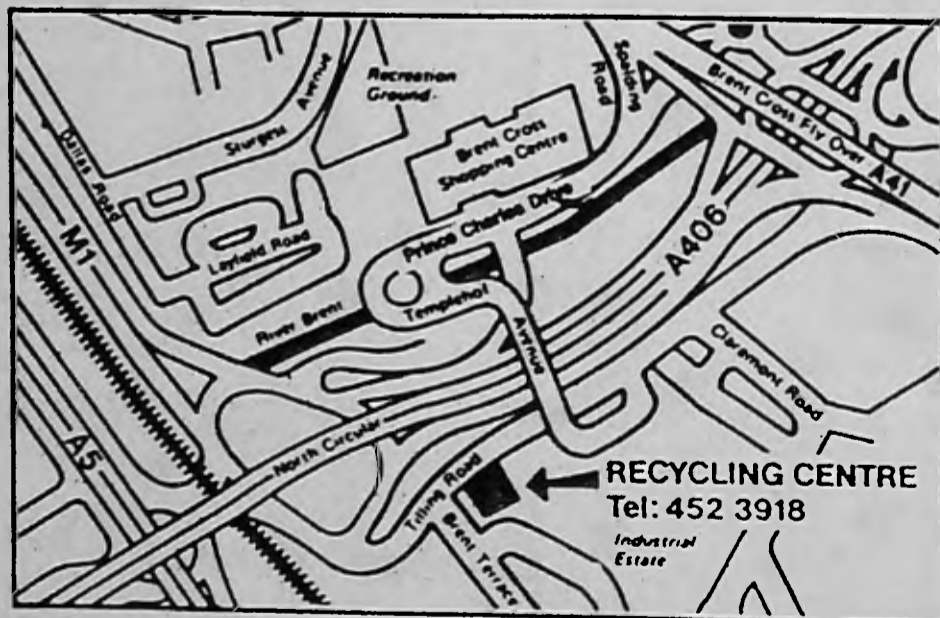
Labels were attached to them for a response which will tell the children where the balloons fell and the distance travelled.



Tools, timber and technology add up to fun for these Wessex School pupils.

# LONDON BOROUGH BARNET WASTE RECYCLING CENTRES

The London Borough of Barnet has two Recycling Centres where the public are encouraged to bring glass containers, old clothing and furnishings, metal goods and cans, waste sump oil . . . for recycling which saves energy resources.



The Centres are at:

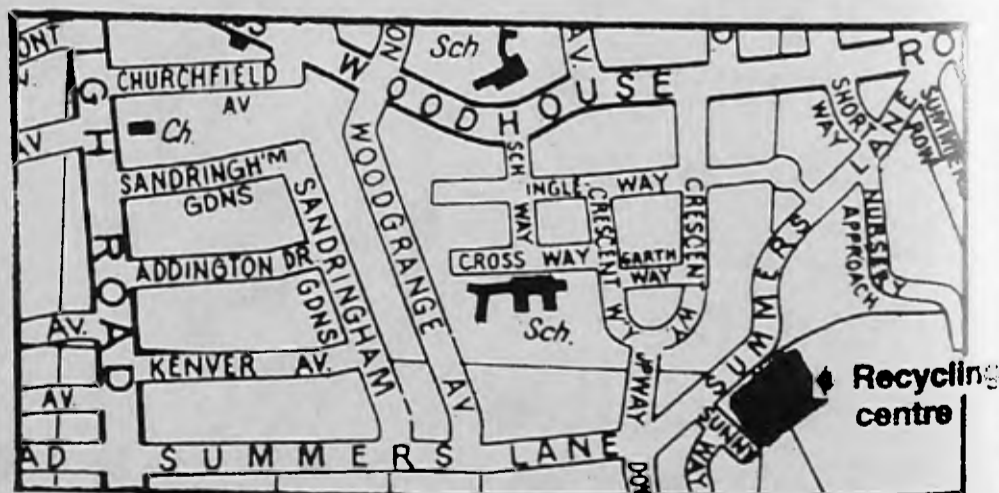
**BRENT CROSS**, Tilling Road, NW2 (Tel: 452 3918) (see map)

**Opening hours** Mon-Sat: 08.00-16.00.  
Sun 08.00-1600

**SUMMERS LANE**, Finchley, N12 (Tel: 368 8083) (Between Woodhouse Road and High Road, North Finchley)

**Opening hours** Mon-Sat: 08.00-16.00.  
Sun: 08.00-1600

In addition, the Centres also accept bulky items and garden waste that borough refuse vehicles cannot accept. There is no charge to householders for this service.



● BOTTLE BANKS are situated at:

1. Stapleton Road car park Chipping Barnet.
2. Behind Tesco's in Ballards Lane.
3. Lodge Lane Car Park, North Finchley.

The Engineering Services Division of the Directorate of Technical Services



# 'NO SMOKING DAY'

GIVING up smoking is easier said than done. This year national 'No Smoking Day' is Wednesday, March 8, and for tobacco addicts it is another chance to try and stop smoking, at least for that day.

Barnet's Chief Environmental Health Officer, Geoff Fish, said: 'At least 50,000 people a year are giving up smoking but for the 14 million people who still smoke, why not make March 8 the day when you stop?'

For years smokers have been deluged with statistics about the health risks but this year they are also asked to think about environmental damage.

## Slogan

Ash trees not ashtrays! This could be the slogan for 1989. The production of tobacco brings environmental destruction in some countries. The curing of the tobacco leaves in a wood-fired barn for one year will use trees from nearly five million hectares of land. In simple terms that works out at about one tree a fortnight for the smoker who puffs 20-a-day.

Land planted for tobacco is land not planted for essential foodstuffs. In Sri Lanka, where hillsides were cleared first for the planting and then the curing of tobacco, soil erosion is now a critical problem.

Geoff Fish urges smokers: 'Break

the habit of a lifetime and give up. Decide on a day, why not Wednesday, March 8, and stick to it. Make it a big day. Do something special and plan a treat at the end of the day as a reward.'

To help get over those first few days, follow this advice:

- Try and change your routine for a few weeks so that you can avoid the situations in which you know you will want to smoke.

- Take each day as it comes. If you feel a strong urge to smoke then do something else instead. Find things to help you relax.

- Do something active. Play some sport or go for a walk or a run. You will begin to notice an improvement in your breathing immediately.

- After your first enthusiasm has worn off, keep at it. Do not be tempted to smoke even the odd cigarette as this can lead to two, three or more.

On March 8 look out for No Smoking Exhibitions in Council buildings with as receptacle in which to place those UNWANTED CIGARETTES.

A 'Smokers Guide to Giving Up' is available free of charge from the Environmental Health Department, Barnet House, 1255 High Road, Whetstone N20 0EJ, Tel. 446 8511, or Barnet Health Promotion Unit, Oak Lane Clinic, London N2 8LT, Tel. 346 9371.

ENVIRONMENT WEEK, 1989

## Tackle the Grots on the Landscape

**OPERATION EYESORE** is the new initiative launched by the Civic Trust for Environment Week, April 22 to May 1, when the public are invited to tackle local black spots.

The Finchley Society's outline plans include a Springclean Day on April 22 when members will carry out a litter clear up, concentrating on Lovers Walk and Lodge Lane car park alleyways. The following day, Sunday April 23, Bill Tyler will conduct an 'architectural walk' and the Society's meeting on April 27 will feature Trent Park. On Saturday, April 29, members hope to replant the horse trough in Nether Street, Church End.

Anyone else who wants to join the Operation Eyesore scheme, which is sponsored by British Tele-

com, can get help from the Civic Trust who say: 'You don't have to look far for eyesores — the small plots of land covered in abandoned grot which, with care and attention, could become pocket parks; the litter spoiling our environment or the graffiti covered walls.'

Contact the Trust at 17 Carlton House Terrace, London W1Y 5AW. Tel: 930 0914, if possible before Friday, March 31, for their free booklet 'Ideas to Get You Started' or to give details of events being held during Environment Week.

Barnet "Keep Barnet Tidy Committee" are hoping that local groups will join in and inform Colin Doolan on 202 8282 Ext 2013 of their projects or write to Keep Barnet Tidy, Town Hall, Hendon NW4 4BJ.

## Katie Boyle visits Hendon

Katie Boyle, popular T.V. and radio personality and agony aunt has agreed to talk to the Hendon South Friends of the Library, on Monday March 6 at 8.30pm at The Hendon Library, The Burroughs, Hendon. Her talk will start promptly at 8.30pm and Katie would welcome questions on any subject. Please come early to get good seats.

# National NO SMOKING DAY



## FREE ENTRY WORD SEARCH PUZZLE COMPETITION

X C A R B O N M O N O X I D E  
 S I A V F F U P G N I N R A W  
 G G P R E V E N T I O N P S A  
 N A I R C O S T T W F B M U D  
 U R H Y E I E E R I F S E O Y  
 I E G R N B N S N Q U Z B D R  
 T T U B I A P O S R U Q U R O  
 N T O X T U I C G O R Y R A T  
 A E C E O T D E H E L G N Z A  
 N K I T C X R T G N N L H A R  
 G J M I I Y L N L I M L E H I  
 I L D B N A A U N A O A I M P  
 L D T A E D N Q S T Q S P F S  
 A V E H A G A M E S Y H P M E  
 M R A H S O C C A B O T P B R

### Find the Words

The 31 words listed below can be found in the puzzle in horizontal, vertical, diagonal and reverse directions. All the words relate to smoking, health and National No Smoking Day.

Circle the words in the square as you find them and check them off the list.

Stain	Lungs	Warning	Air
Cough	Hazardous	Addiction	Nicotine
Butt	Prevention	Surgery	Carcinogen
Respiratory	Health	Puff	Burn
Danger	Cigarette	Ash	Harm
Smell	Carbon Monoxide	Malignant	Cost
Tar	Emphysema	Tobacco	Habit
Life	Fire	Quit	

Name .....

Address .....

.....

.....

Please return your entry to the London Borough of Barnet Environmental Health Department, Barnet House, 1255 High Road, London, N20 0EJ by 17th March 1989.

The first correct entry drawn out

will win a prize.

 **Barnet Environmental Health**  
 taking care

## KENWOOD NURSING HOME

32, Alexandra Grove, Finchley N12

is celebrating its first anniversary since re-opening after a comprehensive rebuilding programme in 1987. Registered by Barnet Health Authority to care for post-operative convalescent, terminally ill and longstay patients and accepted by Medical Insurance organisations, the Home aims to provide, at reasonable fees, an excellent standard of nursing care combined with all the attributes of a quality establishment.

Kenwood is situated in a pleasant, easily accessible residential road and offers:

- ▷ 24 hour nursing care by qualified staff
- ▷ En-suite facilities in many rooms
- ▷ Single or sharing accommodation — all with colour T.V. and telephone points
- ▷ Passenger and chair lift
- ▷ Full double glazing
- ▷ Fire resistant furnishings in all rooms
- ▷ Special diets catered for.

For further details  
telephone: The Administrator — **01-445 5112.**

## Nursing and Residential Homes

WHEN YOU RETIRE, START LIVING  
AT **SPRINGVIEW**

WE COMBINE ALL THE COMFORTS  
OF YOUR OWN HOME WITH THE  
LUXURIES OF A FIRST-CLASS  
HOTEL AT RATES YOU CAN AFFORD.



Phone or visit  
us today. Judge  
for yourself that  
we offer so  
much more.

**SPRINGVIEW**

10 Crescent Road, Enfield.  
01-446 2117/367 9966

*Belmont  
Lodge*

## BELMONT LODGE

Residential Home for  
the elderly



In the Autumn of your years there is no need to be lonely or worried about looking after yourself.

Come and live at Belmont Lodge, where there is a happy family atmosphere which is not found in larger residential homes.

Our qualified staff will care for you, their only concern is for your comfort and happiness.

- Private telephone + T.V. point in each room
- Short stays can be arranged.

BROCHURE ON APPLICATION TO  
OFFICE: 01-959 4083  
or MATRON: 0923 222610

*Why not just pay us a Visit!*

59 Belmont Road, Bushey, Herts  
Registered with Hertfordshire County Council

## PERSONAL & PROFESSIONAL SERVICE



INSTANT  
CREDIT FACILITIES  
AVAILABLE UP TO  
£1,000  
SUBJECT TO  
STATUS

GOOD  
QUALITY  
SINGLE BED  
£80

GOOD  
QUALITY  
DOUBLE BED  
£132

*We specialise in*

**BEDS • SUITES • FIRE SIDE CHAIRS**

We also furnish houses, flats for letting/renting and old peoples homes

Mattresses of all  
shapes and sizes are  
available separately

**SAME  
DAY  
DELIVERY**

**FOLDING BEDS  
FROM  
£30.00**

**VALLEY FURNISHING**

**114 BRENT STREET, HENDON NW4**

**YOU ARE ONLY A PHONE CALL AWAY**

**Tel: 202 4666** Car park at rear

# Planning For the Leisure Years

Advertisement feature

## Northgate's High Standards

NOT many nursing homes in London offer a hydro-therapy pool among their facilities but at Northgate House, 12 Hornsey Lane, Highgate, physio-therapy and hydro-therapy play a large part in the daily care of its residents.

Matron Valerie Swan and her team of dedicated staff provide the best in dignified nursing care and believe that the quality of life

should be given the highest priority.

Northgate House offer five-star accommodation at affordable prices and its proximity to all means of public transport ensures easy access for visitors who are always welcome.

Write to the above address or telephone 281 3511 for further information.

### RETIREMENT HOME OF QUALITY LADIES

★ TWO ROOMS AVAILABLE NOW

Single ground-floor rooms, with 24 hour care. We also have a resident matron. All of this is excellent value for money.

Tel: 0223 208010

Acorn Lodge

94 Ermine Way, Arrington, Herts

NORTHGATE HOUSE



NURSING HOME

We recognise the significance to safeguard that treasured sense of independence within a secure and happy environment. The importance of privacy and personal choice.

However, under personal supervision of the Matron our residents receive the very best of professional nursing care 24 hours a day.

Together with the outstanding facilities of our superb therapeutic wing, including physiotherapy unit, healthcare becomes a pleasure.

All in all Northgate House really does offer you more.

For further details or an informal visit, please contact Matron on 01-281-3511.



12 HORNSEY LANE, HIGHGATE N6 5LX

## GABLE HOUSE NURSING & RETIREMENT HOMES



### ELSTREE LAWNS Nursing Home



Barnet Lane, Elstree,  
Herts WD6 3RD  
Tel: 01-207 3255

### HADLEY LAWNS Nursing & Retirement Home



Kitts End Road,  
Hadley Highstone, Herts  
Tel: 01-449 0324

### HEATHGROVE LODGE Nursing Home



837 Finchley Road,  
London NW11  
Tel: 01-458 3545

- Long and short stays welcomed
- Varied and appetising meals (all dietary requirements catered for)
- Close to local shops and amenities
- Experienced friendly and caring staff
- Reasonable fee structure
- Registered with Local Authority and RNHA
- Superb facilities and decor
- Single and Double rooms, majority with en-suite facilities

Other homes in Suffolk, Hampshire, Newcastle, Yorkshire, Kent, Surrey Essex and Sussex

FOR FURTHER DETAILS AND COLOUR BROCHURES DESCRIBING ALL OUR OTHER HOMES  
PLEASE CONTACT US ON 01-446 8151

---

**CHIEF EXECUTIVE AND TOWN  
CLERK'S DEPARTMENT**

---

**Clerical Assistant****Part Time****Salary: £3,877-£4,086 p.a. inc.****HOURS: 18 hours per week  
including Saturdays**

If you are seeking part-time work and are over 21 years of age, then you may like to work as a Clerical Assistant in our Registration of Births, Deaths and Marriages Section which is situated at 182 Burnt Oak Broadway, Edgware. You will join a friendly team where you will undertake various clerical duties, including typing and some reception work, as well as acting from time to time as Deputy to a Registrar, for which additional payments will be made. The additional hours will involve working full time (36 hours per week when required, and as you are covering the absence of other staff in a small office, could be for up to 26 weeks per annum. Previous experience in Registration work would be an advantage. For further information please contact Mr A Amoss on 01-952 0876.

**Closing Date: 9th March 1989****Applications forms available from  
address No. 1. Please quote  
reference 600/83.**

---

**DIRECTORATE OF SOCIAL  
SERVICES**

---

**Clerical Assistant****Part Time****Salary: £3,877-£4,086 p.a. inc.****HOURS: 18 hours per week  
including Saturdays**

If you are seeking part-time work and are over 21 years of age, then you may like to work as a Clerical Assistant in our Registration of Births, Deaths and Marriages Section which is situated at 182 Burnt Oak Broadway, Edgware. You will join a friendly team where you will undertake various clerical duties, including typing and some reception work, as well as acting from time to time as Deputy to a Registrar, for which additional payments will be made. The additional hours will involve working full time (36 hours per week when required) and as you are covering the absence of other staff in a small office, could be for up to 26 weeks per annum. Previous experience in Registration work would be an advantage. For further information please contact Mr A Amoss on 01-952 0876.

**Closing Date: 9th March 1989****Applications forms available from  
address No. 1. Please quote  
reference 600/83.****Community Worker/  
Social Worker****Salary £11,580 — £14,334 p.a.  
inc.****Plus Essential Car Allowance**

This vacancy is based in our South East Area Team (Cricklewood, Childs Hill and Finchley). Community work has been well developed in the very diverse part of the borough and the job offers the opportunity for a wide variety of developmental work, including:—

- Support and consolidation of existing community projects
- Work with the Asian community
- Neighbourhood forums and community advice centres
- Liaison with local grants aided independent organisations
- Development of new community groups and networks

We are looking for a qualified, enthusiastic and creative person to mobilise and develop local interest and initiatives. You must have a clean, valid driving licence.

Informal inquiries to Mike Learner on 01-444 4411.

**Closing Date: 10th March 1989  
Interview Date: 31st March 1989****Application forms are available from  
address No. 4. Please quote  
reference 633/164****Residential settings for  
children and young people  
Finchley and Barnet areas****Careworkers****Salary: £8,346 — £9,411 p.a. inc.**

We need mature, responsible people to work as part of a team providing understanding, care and control for groups of up to 10 young people at Parkhurst Road, N11 and Glencairn, N12.

We also have vacancies for permanent Relief Careworkers to help out at different settings as required. Relevant experience would be an advantage though in-service training and supervision will be provided.

For further information, contact Debbie Gabriel, Glencairn, (Ref: 514) on 01-445 4035 — or Jim Highland, Parkhurst Road, (Ref: 489) on 01-368 9191.

For information on Relief Posts, (Ref Nos. 484/527) contact Dave Fry, Management Officer, on 01-446 1488 ext 4271 — or Ian Anderson, Head of Home, on 01-440 8943.

**Closing Date: 10th March 1989**

Ref: 633/489/514

Ref: 633/484/527

**Application forms available from  
address No. 4, quoting appropriate  
reference:****Managerial  
Opportunities****Helping people with learning  
difficulties**

We have vacancies for Deputy Managers at the following settings where the emphasis is on social development, self advocacy and 'normalisation'.

**Deputy Manager****Salary: £14,724 p.a. inc.**

Broadfields Social Education Centre, Edgware.

Besides staff management security and general administrative duties, you will take special responsibility for assessment and programme planning including liaison with colleges.

Ref: 633/229

**Deputy Managers****Salary: Up to £13,566 p.a. inc.****Flower Lane, NW7 Ref: 633/222****Rosa Morison, Barnet Ref: 633/813**

These are temporary posts for approximately six months, to cover for staff on maternity leave.

If you are an experienced, energetic and enthusiastic manager with a firm commitment to users rights, we would like to hear from you.

Informal enquiries to Mike Davies, Broadfields, on 01-958 3435 or Michael Campbell, Flower Lane, on 01-959 7494 or Andrew Cowling, Rosa Morison, on 01-449 0712.

**Closing Date: 10th March 1989****Interview Date: 31st March 1989****Application forms from address No  
4. Please quote appropriate  
reference.****CARE OF OLDER PEOPLE  
The Cedars, New Barnet****Day Care Worker****Salary: £9,093 — £10,593 p.a. inc.  
Plus Essential User Car  
Allowance**

Are you committed to maintaining the independence of older people? Then assist us in running our Day Care Scheme providing social and practical support, enabling people to remain in their own homes within the community. You will be responsible for the physical, social and emotional care of older people, visiting their homes, assisting in transport to and from the setting and planning and organising activity programmes. You should have a caring attitude, relevant experience and a clean current driving licence.

A 39 hour week operates to include some weekend working.

For informal discussion contact Pauline Burnell, Manager, on 01-449 9252 or

# LOCAL OPPORTUNITIES

- Regularly reviewed wages
- Generous leave entitlements
- Pleasant working conditions • Opportunities for advancement
- In-service training/supervision • Worthwhile employment helping the community

For full-time posts we offer - canteen facilities, a minimum of 20 days basic annual leave and additional leave at most Bank Holidays. Assistance with housing, 100% of removal expenses and interest-free loans for annual seasons tickets may be available in approved cases.

Anna Marshall, Management Officer,  
on 01-446 1488 ext 4261.

**Closing Date: 10th March 1989**

Application forms available from  
address No 4. Please quote  
reference 633/703

## SERVICES FOR THE PHYSICALLY HANDICAPPED Flightways Day Centre, NW9

### Day Care Workers

Salary: £9,093 — £10,917  
(£11,580 if qualified)

These are new posts in a lively, exciting centre for adults with physical disabilities. As a 'Keyworker' you will organise and facilitate group work programmes to maximise personal development and undertake some personal care tasks.

Preference will be given to those with experience in work with people with disabilities in music, computers or other relevant skills.

For an informal discussion/possible visit, contact Sheridan Lynch, Manager, on 01-205 5803.

**Closing Date: 10th March 1989**  
**Interview Date: 20th March 1989**

Application forms from address No  
4. Please quote reference 633/216/  
1019

### Social Worker

Part Time — 18 hours per week  
(Adult Placement, Edgware)

Salary: £5,790 — £7,167 p.a. inc.  
Plus Essential Car Allowance  
and Loan Scheme

We need a lively, imaginative, qualified Social Worker to participate in developing our service which places

vulnerable, elderly or disabled people with families. You would recruit, assess and support Carers, many of whom are from ethnic minorities. This position is out-posted to our Area Team based in Burnt Oak. Informal enquiries welcomed by Mary Rice, telephone 01-883 5562/3 or Jackie Meyer on 01-952 7722.

**Closing Date: 10th March 1989**  
**Interview Date: 22nd March 1989**

Application forms are available from  
address No 4. Please quote  
reference 633/461B

## COMMUNITY CARE FOR HIGHLY DEPENDENT PEOPLE

### Home Careworkers

Part Time

Salary: £7,755 — £8,928 p.a. inc.  
Pro rata for Part Time. HOURS:  
20 per week. Worked Flexibly  
over 7 days

We need Part-Time Home Careworkers to work in this exciting new service. If you are a caring, responsible person and able to work on your own initiative within a small friendly team, please contact Peter Dunn or Pam Hedgecoe on 440 0987 for further details.

Car owner preferred (car allowance payable and possible assistance with car purchase).

**Closing Date: 9th March 1989**  
**Interview Date: 6th April 1989**

Application form from address No 4.  
Please quote reference 633/918

## Switchboard Operator/ Clerk

Salary: Up to £8,172 p.a. inc.

This vacancy is at our North Area Team (New Barnet).

Successful applicants will need to demonstrate:

- The ability to operate a simple switchboard.
- Relate sympathetically to members of the public, staff and other agencies.
- The ability to act on your own initiative
- Provide additional support as required.

Informal enquiries to Mavis Hendry on  
01-449 5511.

**Closing Date: 10th March 1989**

Application forms are available from  
address No. 4. Please quote  
reference 633/639.

where to apply

1. Recruitment Office, 16/17  
Sentinel Square, Brent Street,  
Hendon, London NW4 2EN  
Tel: 01-202 8282 Ext 2372  
(01-202 6602 24 hr ansaphone  
outside office hours).
2. Assistant Controller (Support  
Services),  
Barnet House, 1255 High Road,  
Whetstone, London N20 0EJ.  
Tel: 01-446 8511 Ext 4454
3. Director of Educational  
Services, Town Hall, Friern  
Barnet, London N11 3DL  
Tel: 01-368 1255
4. Director of Social Services,  
Ivy House, 1331 High Road,  
Whetstone, London N20 9HZ  
Tel: 446 6857  
(24 hr answering service)
5. Borough Librarian  
Ravensfield House,  
The Burroughs, Hendon.  
London NW4 4BE  
Tel: 01-202 5625 Ext 48

Please quote the reference number

With a  
good employer

AN AUTHORITY COMMITTED TO EQUAL OPPORTUNITIES

LONDON BOROUGH  
**barnet**

---

## DIRECTORATE OF SOCIAL SERVICES

---

### NORTHGATE CLINIC Regional Unit — NW9

#### Social Worker

Qualified Part Time

Salary: £5,790 — £7,167 p.a. inc.

#### Plus Essential Car Allowance and Loan Scheme

We need a lively, imaginative, qualified Social Worker to participate in developing our service which places vulnerable, elderly or disabled people with families.

You would recruit, assess and support Carers, many of whom are from ethnic minorities. This position is out-posted to our Area Team based in Burnt Oak. Informal enquiries welcomed by Mary Rice, telephone 01-883 5562/3 or Jackie Meyer on 01-952 7722.

*Closing Date: 10th March 1989*

*Interview Date: 22nd March 1989*

Application forms are available from address No 4. Please quote reference 633/461B

### SPECIAL NEEDS UNIT, NW7

#### Assistant Manager

Salary: Up to £13,566 p.a. inc.  
Ref: 633/991

#### Day Care Workers

Salary: £8,727 — £10,917  
(£11,580 if qualified)  
Ref: 633/992/994

Flower Lane Social Education Centre offers services to 60 adults with learning difficulties by providing a broad range of classes and activities, both in the centre and community. The Social Education Centre is currently in the process of developing a Special Needs Unit for individuals needing support to address their challenging behaviour. Although this will be partially self-contained for nine people, its primary aim will be to offer integrated but specialised services within the centre. As 'Keyworkers', you will be responsible for individual assessments, reviews and programme planning which advocates for the rights of individuals.

Additionally, the Assistant Manager will be responsible for programme management, development of the unit and for the running of the centre in the absence of Senior Management. Your background in either teaching or day centre work and your commitment to progressive services should lead you

to telephone Michael Campbell, Manager, or Cathy Kerr, Deputy, on 01-959 7494 for further information.

*Closing Date: 9th March 1989*  
*Interview Date: 22nd March 1989*

Application forms are available from address No 4, Please quote appropriate reference number.

---

## DIRECTORATE OF HOUSING AND ENVIRONMENTAL SERVICES

---

### Central Purchasing Manager

Salary: Up to £25,821 p.a. inc.

As Barnet's first Purchasing Manager, you will be responsible for establishing a central unit to take advantage of the Authority's purchasing power, amounting to some £14 million per annum.

You will have wide experience of large scale, multi commodity purchasing, preferably, but not necessarily, gained in the public sector. Corporate membership of the Institute of Purchasing and Supply is essential. We therefore seek a person whose style is both dynamic and innovative, is an excellent motivator, possesses the ability to communicate effectively at all levels and is keen to provide a first-class service to our user department. This is an ideal opportunity to develop the overall purchasing strategy and take a leading role in all aspects of the Council's procurement function. Our comprehensive benefits package includes car/mobility allowance/car leasing, generous relocation and resettlement benefits, excellent pension scheme.

So, if you have a commitment to quality and value for money, telephone Roger Osborn on 01-446 8511 ext 4827, for more information.

*Closing Date: 9th March 1989*

Application forms available from address No 1. Please quote reference 9/4/0001

### Mobile Warden

Salary: £8,346 — £8,928 p.a. inc.  
L.W.

We are looking for someone with previous experience of working with the elderly. A First Aid qualification is desirable.

Your duties will include visiting Sheltered Schemes in the absence of the Resident Warden, dealing with a range of emergencies which may arise and liaising with outside agencies when required. This also includes a number of protected blocks in the Borough that are linked to the Central Warden Alarm System. Although the tenants live independently, you need to be

genuinely concerned with their physical and mental well-being.

A 36-hour week is worked but you will be required to participate in a stand-by rota in order to provide emergency cover for which an additional allowance will be paid.

As the duties of this post will cover the whole Borough, a car owner/driver is preferred, for which an Essential User Car Allowance is payable. Car loan/car leasing facilities are also available.

*Closing Date: 9th March 1989*

Application forms are available from address No 1, Please quote reference 9/1/3640

### Resident Warden

Barnet

Salary: £7,755 — £8,172 p.a. inc.

The tenants live independently in this Sheltered Scheme and the Warden is expected to deal with a range of emergencies which arise from time to time.

Ideally, you should have had previous experience of working with the elderly, be genuinely concerned with their physical and mental well-being and be able to liaise with outside agencies when required.

A high degree of commitment is required. This is an ideal opportunity to use your skills, to encourage community activities and foster a social atmosphere in the scheme.

Although cleaners are employed in Sheltered Schemes, the Warden is responsible for the overall cleanliness, security and smooth running of the Scheme.

The Scheme consists of 41 flats and a communal lounge. The Warden's accommodation is a 2 bedroomed, 4 person flat (1st floor — not suitable for pets) and is on a service tenancy basis, rent and rate free in lieu of any overtime worked.

*Closing Date: 9th March 1989*

Application forms available from address No 1. Please quote reference 9/1/3614

---

## BOROUGH TREASURER'S DEPARTMENT

---

### Accountancy Assistant

Salary: £7,755 — £8,928 p.a. inc.

This post is within the Payments Group located at Hendon Town Hall. It would suit a person interested in a career in Local Government. Experience in working in a busy invoice processing environment would be useful.

Our current creditors system is being replaced, therefore data processing and keyboard experience would be advantageous. You should be numerate, have the ability to work

# LOCAL OPPORTUNITIES

- Regularly reviewed wages
- Generous leave entitlements
- Pleasant working conditions • Opportunities for advancement
- In-service training/supervision • Worthwhile employment helping the community

For full-time posts we offer - canteen facilities, a minimum of 20 days basic annual leave and additional leave at most Bank Holidays. Assistance with housing, 100% of removal expenses and interest-free loans for annual seasons tickets may be available in approved cases.

under pressure and also be able to communicate effectively. You will work as part of a team and full training will be given.

The opportunity exists to join an excellent pension scheme.

**Closing Date: 9th March 1989**

Application forms from address No 1. Please quote reference 601/120.

## Technical and Managerial Posts

### BOROUGH TREASURER'S DEPARTMENT

#### Senior Accountant

Salary: £15,015-£19,915 p.a. inc. A Casual User Car Allowance is attached to this post.

**Closing Date: 9th March 1989**

Application forms available from address No 1. Please quote reference 601/96

#### Group Leader

Salary: £11,580-£12,312 p.a. inc.

**Closing Date: 9th March 1989**

For application forms contact address No 1. Please quote reference 601/393

### CHIEF EXECUTIVE AND TOWN CLERK'S DEPARTMENT

#### Principal Local Land Charges Clerk

Salary: Up to £15,396 p.a. inc. L.W.

**Closing Date: 9th March 1989**

Application forms available from address No 1. Please quote reference 600/116

### BOROUGH LIBRARIAN

#### Arts Officer

Salary: £15,015-£16,254 p.a. inc. L.W. Plus car allowance and removal expenses

**Closing Date: 13th March, 1989**

Application forms and further details from the Borough Librarian, address No 5. Please quote reference 607/223

### DIRECTORATE OF SOCIAL SERVICES

#### Management Officer

South East Area (North West London)

Salary: £15,015-£16,254 p.a. inc. Plus Essential Car Allowance and Loan Scheme

We are seeking a Management Officer to be responsible for field work staff working with children and families.

Informal inquiries to Mike Learner, Principal Management Officer on 01-444 4411.

**Closing Date: 10th March 1989**

**Interview Date: 4th April 1989**

Application forms are available from the Director of Social Services, address No 4. Please quote reference 633/159

#### Young People with Learning Difficulties Deputy Head

Salary: Up to £13,170 p.a. inc.

Further details from Andy Nicholls on 01-445 8034.

**Closing Date: 10th March 1989**

**Interview Date: 21st March 1989**

Application forms available from the Director of Social Services, address No 4. Please quote reference 633/500

### Where to apply

1. Recruitment Office, 16/17 Sentinel Square, Brent Street, Hendon, London NW4 2EN  
Tel: 01-202 8282 Ext 2372  
(01-202 6602 24 hr ansaphone outside office hours).
2. Assistant Controller (Support Services), Barnet House, 1255 High Road, Whetstone, London N20 0EJ.  
Tel: 01-446 8511 Ext 4454
3. Director of Educational Services, Town Hall, Friern Barnet, London N11 3DL  
Tel: 01-368 1255
4. Director of Social Services, Ivy House, 1331 High Road, Whetstone, London N20 9HZ  
Tel: 446 6857  
(24 hr answering service)
5. Borough Librarian, Ravensfield House, The Burroughs, Hendon, London NW4 4BE  
Tel: 01-202 5625 Ext 48

Please quote the reference number

with a good employer

AN AUTHORITY COMMITTED TO EQUAL OPPORTUNITIES

LONDON BOROUGH  
**barnet**

## Fresh Low Fat Milks . . .



**delivered to your door  
by Express Dairy**

Do you know that Express can deliver a whole range of Low Fat Milks to your door. Place a Low Fat Milk order with your milkman and get started on enjoying the goodness of milk in a healthy way. There are three types to choose from:

**SEMI-SKIMMED (STRIPEY TOP)** The taste of whole milk but with half the fat removed, it contains 30% fewer calories than whole milk.

Average fat content 1.5 - 1.8%.

**SKIMMED (CHECK TOP)** The ideal milk for calorie controlled diets, because virtually all the cream has been removed. Only 103 calories per half pint. Average fat content 0.1% (not suitable for under 5's).

**VITAL** Virtually no fat (0.1%) but with a full milk taste. Each half pint of Vital contains the full recommended daily amount of calcium for adults.

### MILKMEN VACANCIES

Tel: 01-446 4411

for further information

YOUR CHOICE FOR FRESHNESS,  
VALUE AND GUARANTEED QUALITY



NATIONAL INSTITUTE FOR MEDICAL RESEARCH

Medical Research Council

NATIONAL INSTITUTE FOR  
MEDICAL RESEARCH

## TECHNICAL OFFICER

A vacancy has arisen for a Technical Officer to control various building works at the Mill Hill Site. Reporting to the Deputy Building Services Officer he/she will be required to interpret user briefs, prepare drawings, specifications and tender documentation, liaise with Senior Personnel and consultants, supervise contractors and attend site meetings etc.

The applicant should preferably be qualified with ONC, TEC or equivalent in Engineering with experience or Building Services. The post is graded as professional and Technology Officer with salary range from £11,016 to £14,570 inclusive of London Weighting and Pension Supplement and rising to £16,258 with performance based increments. The Institute offers excellent working conditions in pleasant rural surroundings with good recreational, sports and social facilities.

Please telephone for an application form on 01-959 3666, extension 2270, or write to: Mr. N. J. Bowry, Personnel Officer, NIMR, The Ridgeway, Mill Hill, London NW7 1AA, quoting job reference 0744/ABS.

Closing date for completed applications will be 10th March 1989.

An Equal Opportunities Employer

### Manual and Craft vacancies

#### DIRECTORATE OF SOCIAL SERVICES

#### Care Assistant

Part Time

RATE OF PAY: £3.52 per hour  
inc.

HOURS: 25 hours per week  
Weekend/Public Holiday  
Enhanced Rate of Pay Applies

The Cedars, a setting for 33 elderly people in New Barnet, has a vacancy for part time Care Assistant. Duties include providing personal care to our clients, ie helping at meal-times, dressing, toileting and bathing.

Closing Date: 9th March 1989

Please apply to The Officer-in-Charge, The Cedars, 12 Richmond Road, New Barnet, Herts. Telephone 01-449 9252. Please quote reference 633/CA

#### Home Care Assistant

RATE OF PAY: £3.75 per hour

We are looking for a caring person to work in the East Finchley area.

The post is basically to rehabilitate, on a short term basis, persons discharged from hospital on a planned basis, or to prevent admission to hospital. In-service training is possible for the right applicant.

Closing Date: 9th March 1989

Please apply to Mrs Dorothy Hollins, South East Area Team, 16 High Road, East Finchley, N2. Telephone 01-883 7349. Please quote reference 633/HCA

#### DIRECTORATE OF TECHNICAL SERVICES

#### WORKS SERVICES GROUP Building Cleaners

Temporary

RATE OF PAY: £3.17 per hour

HOURS: 2.5 per day  
Monday to Friday

We have vacancies for temporary Building Cleaners to work in the Barnet Area. You will be required to work

between 4 pm to 6.30 pm, five days per week, until August 1989.

Closing Date: 9th March 1989

If you are interested, please call in at Summers Lane Depot, Summers Lane, London N12 or telephone 01-361 0012. Please quote reference DTS/BC.

#### BOROUGH LIBRARIAN'S DEPARTMENT

#### Caretaker

(Non Resident)

RATE OF PAY: £131 approx. inc.  
HOURS: 39 hours per week  
Plus Saturday working with  
enhanced pay

Caretaker (non resident) wanted at Childs Hill Library/Relief, 320 Cricklewood Lane, London, NW2 2QE.

Closing Date: 11th March 1989

Application forms and further details from Borough Librarian, address No 5. Please quote reference 607/CT

For list of addresses  
see page 23 & 25

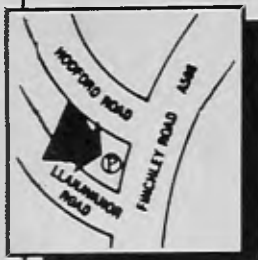
# VOLVO

In Golders Green



**FOR COMPLETE VOLVO SERVICE**  
SALES • SERVICE • PARTS

**PANNELLS**



**01 458 9458**

779-781  
**FINCHLEY ROAD,  
GOLDERS GREEN,  
NW11 8DN.**

**PRE - OWNED**

CHOOSE FROM OUR  
EXTENSIVE RANGE  
OF WARRANTED  
PER - OWNED  
VOLVOS.

## HENDON COLLEGE OPEN LEARNING CENTRE

### GET ON COURSE FOR NEW LEARNING OPPORTUNITIES

Enrol one of our flexible training programmes:

#### COMPUTER BASED TRAINING WORKSHOPS:

"Hands-on" training at fixed times in the week OR on a drop-in basis using specially designed packages and supported by a tutor. Learn at your own pace under supervision. Courses available in:

Introduction to Business Computing

Introduction to Wordstar Professional  
Word Processing

Wordstar Professional Continuation Course

Introduction to D. Base 3+

Getting the Best Out of Your PC

Elementary Book-keeping

Computerised Accounts

Introduction to Lotus 1-2-3

#### OPEN COLLEGE:

Gain new skills and abilities in a wide variety of subjects. Over 50 courses available — many linked to TV series. Includes Beginners Electronics, Time Management, Effective Selling, Marketing etc.

**RING 202 6727**

## LAUNCH 1989 NEW FROM PIONEER

### 5 MIDI SYSTEMS COMING SHORTLY

- S - 11** INFRA-RED REMOTE CONTROL, TURNTABLE, TUNER, MULTI-PROGRAMME SYSTEM TIMER, **AMPLIFIER 33 WATTS PER CHANNEL, GRAPHIC EQUALIZER, TWIN CASSETTE DECK.** FULL LOGIC CONTROL, DOUBLE AUTO REVERSE, A.S.E.S. EDIT 2-WAY SPEAKERS (C. D EXTRA). **£329.90**
- S - 22** INFRA-RED REMOTE CONTROL, TURNTABLE, TUNER AUTO TUNING, MULTI-PROGRAMME SYSTEM TIMER, **AMPLIFIER 40 WATTS PER CHANNEL, GRAPHIC EQUALIZER 7 BAND ELECTRONIC, TWIN CASSETTE DECK DOUBLE AUTO REVERSE 2-WAY SPEAKERS (C.D EXTRA).** **£379.90**
- S - 33** INFRA-RED REMOTE CONTROL, TURNTABLE, TUNER AUTO-TUNING, MULTI-PROGRAMME SYSTEM TIMER, **AMPLIFIER 40 WATTS PER CHANNEL, GRAPHIC EQUALIZER, TWIN CASSETTE DECK DOUBLE REVERSE RECORDING, 3 WAY SPEAKERS** **£499.90**
- S - 15 CDT** INFRA-RED REMOTE CONTROL, TURNTABLE, TUNER, **AMPLIFIER 33 WATTS PER CHANNEL MOTOR DRIVE, VOLUME CONTROL, GRAPHIC EQUALIZER, TWIN CASSETTE DECK DOUBLE AUTO REVERSE. 2 WAY SPEAKERS INTEGRATED TWIN COMPACT DISC PLAYER** **£469.90**
- S - 15 CDM** INFRA-RED CONTROL, TURNTABLE, TUNER, **AMPLIFIER, 33 WATTS PER CHANNEL, GRAPHIC EQUALIZER, TWIN CASSETTE DECK, 2 WAY SPEAKERS INTERGRATED COMPACT DISC PLAYER ACCOMMODATES, SIX DISC MAGAZINES** **£499.90**

C.D. PLAYERS FOR S-11, S-22, S-33, SINGLE £179.99 6 DISC £219.90

Also full range of separates in stock by — A. R. DENON, DUAL, KENWOOD, LUXMAN, MARANTZ, NAD, ONKYO, PROTON, ROTEL, RUARK, SANSUI, TEAC, THORENS, and YAMAHA — call for our great prices.



849 HIGH ROAD  
LONDON N12  
TEL: 445 - 1443 / 445 - 3267

# ANALOG AUDIO

INSTANT CREDIT  
UP TO £1,000  
VISA + ACCESS WELCOME

# Like a chance to hop into our local Big Red Bus Ads - FREE?



## Keep us POSTED!

**DO YOU RUN A PUB, RESTAURANT, OR WINE BAR, A SHOP, THEATRE, COMMUNITY CENTRE, KID'S CLUB, SPORTS CLUB OR FIXTURE, NIGHT CLUB, WORKSHOP, LOCAL EVENT - OR ANYTHING ELSE PEOPLE WOULD LIKE TO KNOW ABOUT?**

You could be in the local newspapers absolutely FREE OF CHARGE, in a lively information advertisement - courtesy of London Buses.



We're getting ready to advertise our Big Red Bus routes for 1989. You've seen our ads, telling you about great places to visit, and things to do in your local area. So, if you're interested - and interesting - we'd like to hear from you, as long as you're legal, decent, honest and on or near a Big Red Bus route.

Write now to Sophie Rush, Big Red Bus Campaign, 82 Baker Street, London W1M 2AE.

Give us full details, including your Name, Address and Telephone number, enclosing relevant printed information, if available.

Don't delay - first come, first served.\*



\*London Buses reserve the right not to publish any information supplied. Any information received cannot be returned. On acceptance, London Buses reserve the right of editorial control. Any proposed copy will be carefully checked with you for accuracy, by telephone, before going to press.

*'That's our bus'*

## Nature Notes

### MARCH

By Clive Herbert

THIS is the month when amphibians steal the show having returned to breeding ponds following winter hibernation. While frog spawn is noticeable in large clumps near the pond edge, toads prefer the deeper water and produce a long 'string' of eggs. Newt eggs are hardest to find because they are laid singly and wrapped in a folded leaf for protection.

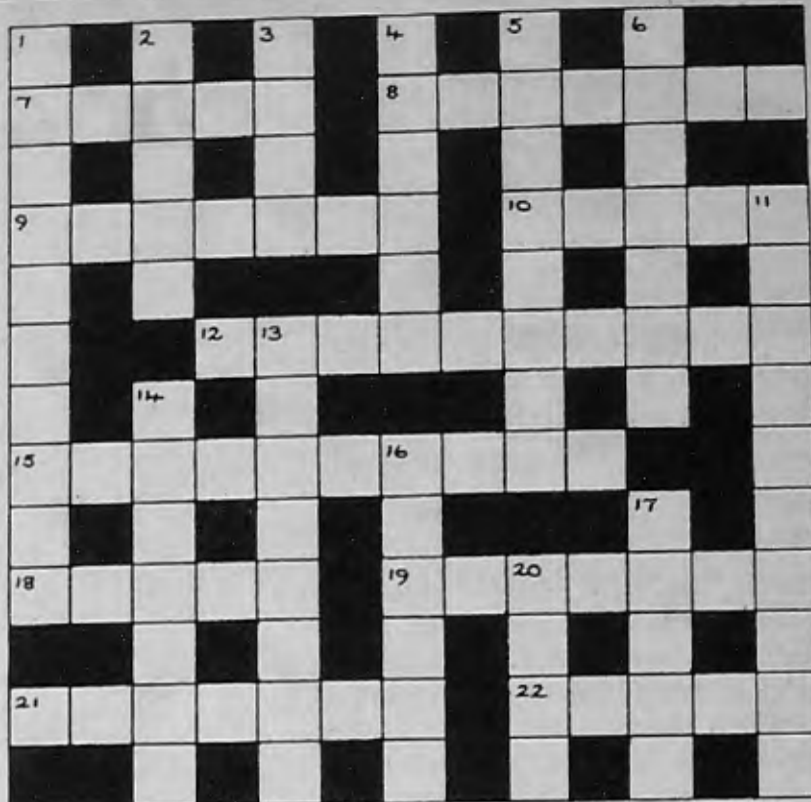
All readers are invited to my talk on Amphibians at North Finchley Library on March 8, starting at 8 pm. After the slide show, the local groups of the Herts and Middlesex Wildlife Trust and London Wildlife Trust will be launching a special Borough Pond Survey. This is quite appropriate as all amphibians have to return to water to breed — no ponds, no tadpoles!

Unfortunately, in many parts of Britain there has been an alarming decline in this valuable wildlife habitat. Our pond enquiry is vital to find out if such loss applies to this borough. Latest maps show about 200 ponds marked — now you can help us discover how many remain.

Your help is needed to visit these ponds and complete a simple record sheet which has been designed so that there is no need to identify any plant or animal — everyone can take part! Full details will be available at the talk, but if you cannot attend, telephone 440 6314 to register your offer of help.

## CRYPTIC CROSSWORD

THE first correct entry out of the hat for the March cryptic crossword will receive a £5 book token. Entries should reach the Editor, Barnet Borough News, Town Hall, The Burroughs, Hendon NW4 4BG, by Tuesday, March 14. Please include your name and address.



### ACROSS

- 7 The striking ottoman holds a costly item (5)
- 8 The wolves take a long time to find the box (7)
- 9 Seeking retribution, I make a statement about the duff information (7)
- 10 In Gareth I can detect a truly moral quality (5)
- 12 To clamber all over the Page 3 girl is not the real thing (5,5)
- 15 Look out over the troubled strife! It's dangerous and spreading! (6,4)
- 18 Half his zeal goes in support of the animal (5)
- 19 The storm is too darn blustery (7)
- 21 Mistake between army and church leads to a great row (7)
- 22 Speak about the fine first, lady! (5)

### DOWN

- 1 The Australian genius is part of film history (6,2,2)
- 2 For example, old people will give an article if encouraged to do so (5)
- 3 'E leaves the stage behind for

a fast buck (4)

- 4 'Be a pal, sir!' he said in a roundabout way (6)
- 5 The baby gives a good laugh to the queen (8)
- 6 The old Western has painful skin (7)
- 11 'Cor!' Ed howls. 'This is freezing!' (4,6)
- 13 The shipwrecked company finds an escape route (8)
- 14 Because it's illegal, Adam's loss is hidden in the untidy byre (7)
- 16 The mechanic is better prepared than his rivals (6)
- 17 Rod swallows nothing from the vessel (5)
- 20 Look back at the dance (4)

The answers to the February crossword were:

### ACROSS

4, Canteen; 8, Trowel; 9, Egg-cups; 10 Remain; 11, Molars; 12, Consomme; 18, Interest; 20, Carton; 21, Studio; 22, Capital; 23, Fringe; 24, Destiny.

### DOWN

1, Attract; 2, Comment; 3, Mexico; 5, Argument; 6, Tickle; 7, Expert; 13, Maintain; 14, Pendant; 15, Strokes; 16, Carafe; 17, Strict; 19, Extort.

The winner was Erica Evershed, 3 Colebrook Way, New Southgate. N11 1SZ

## Easter fun and activities

THERE'S loads of fun and activities for children during the Easter holidays. As it is not possible to give all the details of what is taking place, telephone the numbers below for further information.

Barnet Copthall Pools off the Great North Way, Hendon, and Page Street, Mill Hill, are running courses daily from March 28 to 31 and April 3 to 7. To book telephone 203 4187. See advertisement on page 33 for details.

★ ★ ★

Ashmole Centre, Burleigh Gardens, Southgate N14 are staging courses, activities and fun sessions. Tel. 368 4984. For swimming activities at Church Farm Pool, East Barnet, telephone the Ashmole Centre.

★ ★ ★

Queen Elizabeth's Centre, Meadway, Barnet, are running pay as you play sessions and swimming courses. Tel. 441 2933.

★ ★ ★

The Old Barn, Tarling Road, East Finchley, will be open from March 28 to 31 and April 3 to 7 from 9am to 6pm. The programme includes sport, crafts, entertainment and outings. Tel. 349 4613.

Manorhill Centre, Summers Lane, North Finchley, have an Easter Adventure programme for eight days from March 29 to 31 and April 3 to 7, with sporting activities and outings. Cost is £40 for the eight days, £25 for five days and £15 for three days. There is also a Football Fun Week from April 3 to 7, cost £25. Tel. 368 6316.

## Social Services goes multi-lingual

BARNET'S Social Services Department goes multi-lingual on Monday, March 20, with the launch of an interpreting service for clients or potential clients whose first language is not English.

There will be a phone-in service with days and times set aside for each of six languages.

The time table is: Mondays, 10am-4pm Bengali, and 1-4pm Greek; Tuesdays, 1-4pm Urdu; Wednesdays 1-4pm, Hindi; Thursdays, 1-4pm Gujarati; Fridays 1-4pm, Punjabi.

Phone 01-444 3772 on the day and times appropriate to the language needed.

## A Deed of Friendship



A civic exchange: The Mayor of Barnet, Cllr Don Goodman (right) presents the illuminated parchment recording the twinning of Barnet and Chaville to the chairman and secretary of the Friends of Chaville, Cllr Vic Usher and Mrs Janet Copping.

THE 25-year-old twinning of the Borough of Barnet with the town of Chaville in France has at last been recognised with a document. A fine illuminated vellum showing hands joined in friendship and the crests of the two towns.

The Mayor of Barnet, Cllr Don Goodman, presented the document to Cllr Vic Usher, chairman of the Friends of Chaville, and Mrs Janet Copping, secretary, at a meeting in the Town Hall, Hendon.

In fact the twinning goes back

more than 30 years when the former urban district of Friern Barnet formed the twinning with Chaville.

When the London Borough of Barnet was established the Council agreed to adopt all the existing twin towns and this parchment records that decision taken on December 15, 1964.

Today there are Anglo-French sporting exchanges and a two-way visit of school children as well as exchanges between the Friends of Chaville and the Amis de Barnet.



# Why the Easter Bunny is now chocolate flavoured

**NEW technology and a department geared to public service with a clear set of objectives means that Barnet's Environmental Health Department is ready to meet the challenge of increased demand and new legislation.**

This is claimed by Geoff Fish, Barnet's chief environmental health officer, who reports a 'successful year' in the department's annual report for 1987/88. It shows environmental health staff coping with food and hygiene problems, housing standards, environmental pollution and a range of services, such as rodent control, essential in an urban setting.

He points out that this is a significant time for the field of environmental health.

- There will be increased responsibilities in the health and safety enforcement area.
- New housing proposals will bring added pressures as the various Housing Acts are applied to an expanding private rented sector.
- Water privatisation may lead to a greater monitoring role.
- A new system for improvement grants is to be introduced.
- And the department is now heavily involved in health-related projects such as AIDS, heart disease and non-smoking campaigns.



## Barnet in front

The report shows that Barnet was in the forefront of the current concern for salmonella in poultry. It was one of six local authorities to assist the Public Health Laboratory in a survey into the extent of salmonella bacteria in frozen and chilled poultry.

This survey showed that almost half the chickens examined for the salmonella bacteria showed positive. Even so Barnet was below average as the reported totals for the six boroughs showed that 64 per cent of frozen birds and 54 per cent of chilled birds were positive.

In response the borough issued cooking guidelines as the bacteria are killed by thorough cooking. The public were warned of the dangers of cross contamination if raw food is stored or displayed next to cooked meats.

In March, 1988, Barnet issued guidelines on the safe cooking and storage of rice. These were published in the local newspapers and also in Chinese in a European edition of a Chinese newspaper!

Basic food hygiene courses have been given to local authority and health authority staff involved in catering and plans are in hand to extend this service to the private sector.

## Food complaints

During the year the department investigated 251 food complaints, the largest single sector referring to bread and confectionery (65 complaints), followed by meat and poultry (48 complaints).

Where appropriate, prosecution followed. A Milton Keynes manufacturer was fined £1,000 for sup-



plying a ham product containing a fly.

A local company provided a sample of a chocolate Easter Bunny which was 68 per cent below the legal minimum of cocoa solids. For this Easter it will be labelled a chocolate flavoured bunny.

## Pollution complaints

Over 600 complaints about pollution were reported. These included an investigation into lead levels in cultivated land near major roads; polluted streams; emissions from chimneys and advice on maintenance to avoid the transmission of Legionnaires disease.



## Water sampling

The good news is that the regular testing of tap water supplies shows the public supply during 1987/88 was safe and wholesome. Seven premises were found to have plumbing corrosion but all water tests were satisfactory.



## Asbestos

Complaints and enquiries regarding the presence of asbestos rose to 800. Increased numbers of samples were taken for analysis. Much of the problem is found in insulation and unsatisfactory conditions were discovered in blocks of flats, offices, warehouses and laundrettes.

## Noise complaints

The number of noise investigations rose by six per cent with residents complaining about building noise, airships, clay pigeon shooting and discos.

## Residential problems

Complaints about housing conditions, including disrepair, lack of amenities, overcrowding and unfit premises resulted in 264 statutory notices being served on landlords to put matters right.



The demand for housing in London, particularly from young single people, has meant an increase in houses used for multiple occupation. Such tenants are 10 times more at risk from fire and one of the major operations in the Residential Division has been to ensure that adequate fire precautions exist. More than 1,200 inspections of such housing was made.

The department also dealt with more complaints about rubbish dumping. Clearing up involves tracing the owners of the land, serving notice on them to clear the site, and if necessary undertaking the work through the Council and recharging.

## Improvement grants

Most of the available improvement grant money is targeted towards priority groups such as disabled people, people on supplementary benefit and people liv-

ing in unfit homes.

During the year 473 house renovation grants were approved, totalling more than £1.5 million.

## Ancillary Section



Perhaps one of the best-known activities of the environmental health service is that of pest control. Rats, wasps, pigeons and certain insects are sure to have the team in action.

This work comes under the general title of the ancillary section which also deals with special cleaning, Red Cross collection and deliveries, the collection and destruction of clinical waste and disinfection.

The full report adds up to 36 pages which bear out the department's slogan: Professionals promoting public health.

## ADVICE ON EGGS

BARNET'S Environmental Health Department has issued advice on the use and storage of raw eggs.

Environmental Health officers advise the public to avoid eating raw eggs or uncooked foods made from them, such as home-made mayonnaise, home-made mousse, almond paste and home-made ice cream.

Commercially produced eggs are normally manufactured with pasteurised egg and are safe to use. Caterers have been advised to use only pasteurised eggs for uncooked egg dishes.

- Eggs should be stored in a cool dry place.
- Eggs should be stored away from possible contaminants like raw meat.
- First eggs in, first eggs out.
- Hands should be washed before and after handling eggs.
- Cracked eggs should not be used.
- Work surfaces, equipment and containers should be regularly cleaned and always cleaned when preparing different dishes.
- Egg dishes should be eaten as soon as possible.
- All eggs should be cooked thoroughly.

# ★ Barnet Diary ★

Entries for the April issue must be received by March 10, and before that date if possible. New entries start on April 8.

## Council Meetings

Members of the public are invited to attend Council and committee meetings in the Town Hall, Hendon, at 7pm.

### Monday March 6

Housing; Development and Estates

### Tuesday March 7

Public Works; Social Services

### Thursday March 9

Council — special rates meeting

### Monday March 13

General Purposes

### Tuesday March 14

Education

### Wednesday March 15

Town Planning and Research

### Thursday March 16

Establishment

### Tuesday March 21

Allotments

### Wednesday March 22

Grants

### Wednesday March 29

Planning Sub-Committees

### Monday April 3

Finance

### Tuesday April 4

Education Sub-Committees

## General

### Monday March 6

Barnet Friends of the Earth. 8pm. For details 440 1366/449 5830 (also Mar 20)

### Tuesday March 7

Finchley Council of Christians & Jews. 'Questions & Answers Evening'. Methodist Hall, Ballards La. N3 8pm. Admission free.

Barnet Anglo-French Club Mtg. Council Chambers, 29 Wood St. Barnet. 8pm. All those with an interest in France are welcome. Further details, 440 6805 (also Mar 21)

### Wednesday March 8

Barnet Family Practitioner Ctte. FPC House, 313 Ballards La. N12. 2pm. 446 5351 (also Apr 5)

Finchley Antiques Appreciation Group. Talk 'The Golden Age of English Furniture' by Douglas Mackay. Avenue Hse, East End Rd, N3. 7.50pm. 203 3735 (also Mar 22). Talk 'The Wimpole Hall Collection' by Graham Damant, followed by visit on Apr 2)

### Saturday March 11

Key Stamp Fair, Methodist Church Hall, Ballards La. N3. 10am. Admission free. 446 1562

### Tuesday March 14

N London Holiday Fellowship Group. Spring Social. 455 2558 (also Mar 21). Talk on 'The Work of St Dunstan's', contact 346 6795; Apr 5, Visit to London Toy & Model Museum, nr Kensington Gdns. Contact 367 9436)

### Thursday March 16

London Fire & Civil Defence Authority. County Hall, London SE1. Scrutiny Sub-Ctte. Mtg. 2.30pm. For details Mr T. Mendes, 633 3634 (also Mar 23, personnel Ctte. Mtg. 2pm. Contact Mrs C. Eustace, 633 7715; Apr 6, Policy & Resources Ctte. Mtg. 2pm. Contact Mrs S. Miller, 633 8162) All mtgs. are open to the public

Barnet Community Health Council. Finchley Memorial Hospital. 7.30pm. 959 2038

### March 16-23

Leukaemia Research Fund Bridge Week. Raise money to fight leukaemia. For details contact Jonathan Wilkes 405 0101: 43 Gt Ormond St, WC1N 3JJ

### Wednesday March 29

Fed. of Ratepayers & Residents Assns of LBB. N Finchley Library, Ravensdale Ave, N12. AGM. 8pm. 449 0807

Barnet & District Local History Scty. Barnet Museum, Wood St. 8.15. 361 9165

### Thursday March 30

Family Reading Group. Edgware Library, Hale Lane. 4pm. Contact the library (958 5550) for details

### Monthly

Barnet Animal Rights Group. Quaker Mtg Hse, 58 Alexandra Grove, N12. 8pm. 440 1715 (1st Wed)

Finchley and Dist Philatelic Scty. Avenue House, Ctte Rm 1, East End Rd, N3. 7.30pm. 883 8724 (1st and 3rd Wed)

Philosophy of Yoga. Discussion Mtg. Patanjali Yoga Cntr, 190 Watford Way, Hendon. 4pm. 203 0062 (1st Sat)

Hendon and Dist. Cage Birds Assn. Labour Hall, Back La. (off Watling Ave) Burnt Oak. 7.30pm. 205 2647 (2nd Tues)

Middx. Business Club. Hertford Lodge, East End Rd. N3. 346 2187 (usually 2nd Tues)

Hendon Tropical Fish Keeping Scty. Hendon Library, The Burroughs. 8pm. 458 5826 (2nd and 4th Thur)

Royal British Legion (N Finchley). Legionway, Summers La. N12. 8pm. 445 9911 (3rd Tues)

N Middx Family History Scty. Barnet Branch, Church Hse, Wood St, Barnet. 7.45pm. 441 0529 (3rd Tues)

Friern Barnet Amnesty Group. Jubilee Room, St James' Church, Friern Barnet La. N12. 8pm. 368 9487 (3rd Tues)

Barnet Ratepayers and Residents Assn (Arkeley and Hadley). Harold Fern Room, Salisbury Rd. 8pm; Surgery 7.30pm 449 0807 (last Fri)

### Weekdays

John Grooms Activities Centre for physically handicapped people. Edgware Way, Edgware. Range of daily activities. 959 2418

### Mondays

Edgware & Dist. Canine Train-

ing Scty. St Alphage Hall, Playfield Rd. Burnt Oak. Ring Class 8.15pm; Obedience Training 9.15pm. 0923 35968

RAF Assn. Royal British Legion Hall, Legionway, Summers La. N12. 8pm. 883 5722

New Barnet Literary & Debating Scty. Foyer Rooms, Lyonsdown Hall, Lyonsdown Rd. 8pm. 449 0440

Needing friendship and an uplift to life? Visit Salisbury Chapel, Salisbury Rd. Barnet. 2.15pm. 449 7026

Hendon College Adult Literacy classes for students with special needs. Thirleby Rd, Burnt Oak. 7pm. 200 8300 ext 241, Gus Ayling

Bushmead Dog Training Club, Bushmead Social Club, Hamonde Close, Edgware, 7.30pm. For details, 958 4081/200 0621

### Tuesdays

Colindale Community Care. Mtg open to people in Colindale over 50 yrs. Talks, outings etc. Hyde UR Church, Edgware Rd. NW9. 10am. 205 2621

Hendon College Adult Literacy classes for students whose first language is not English. Montagu Rd. Centre, Hendon. 7pm. 200 8300 ext 241, Gus Ayling

Hendon College Adult Literacy classes. Thirleby Rd, Burnt Oak. 7pm. 200 8300 ext 241, Gus Ayling

The Old Pals Club. For the over 50s. Old Barn Centre, Tarling Rd, N2. 2pm. 349 4613

### Wednesdays

Barnet Literary Scty. Lectures on world fiction. Trinity Church, Hodford Rd. NW11. 8pm. 348 5093/445 4725

Bingo. St Alphage Church Hall, Playfield Rd. Burnt Oak. 8pm.

Hendon College Adult Numeracy classes. Grahame Park, Corner Mead. 7pm. 200 8300 ext 241, Gus Ayling

### Thursdays

Jubilee Group. St John's URC small hall, Mowbray Rd. New Barnet. Welcomes anyone at home during the day. Creche available. 1.30pm. 449 4275

Bingo. Community Centre, Victoria Rd. New Barnet. 7.30pm. 440 2573

Finchley Games Club. Leaside Day Centre, Holden Rd. N12. Board & role playing games. 13+. 6.30pm. 346 2327

PHAB-integrated social club for physically-handicapped & able-bodied people. Golders Green area. 8.30pm. 450 4180

Hendon College Adult Literacy classes. Montagu Rd Centre, Hendon. 7pm. 200 8300 ext 241, Gus Ayling

Hendon Dog Training Club. Finchley Sea Cadet Hall, Long La, N3. Beginners 6.45pm 8-wk courses. Details 455 9820

### Fridays

Mixed Activities. Old Barn Centre, Tarling Rd. N2. All ages. Creche available. 1pm. 349 4613

Bingo. BSCA Centre, Mays La. Barnet. 8pm. 441 9387

### Saturdays

Social Effectiveness Workshops. 10am. 202 3373

## Advice & Support Groups

### Tuesday March 7

Barnet Homebirth Support Group. 5 Horsham Ave, N12. 10am. For details, 441 6582

### Monthly

Alzheimer's Disease Scty (Barnet Branch). Relatives' Group. The Blue Beetle Hall, St Mary's Church, Hendon La, N3. 8.15pm. 958 8324. (1st Tues)

National Schizophrenia Fellow. Health Centre, 23 Temple Fortune La. NW11. 8pm. 455 5133 (2nd Tues)

Oakleigh Carers Group. Health Centre, Oakleigh Rd. Nth. N20. 2pm. 368 8350 (2nd Fri)

British Tinnitus Assn NW London. Meritage Club, Church End, Hendon. 2pm. 349 9353 (2nd Sat)

British Epilepsy Support Group, Trinity Church Hall, Nether St, N12. 'Panel on Employment' with representatives from Barnet Health Authority, Barnet Borough Council, Boots Ltd, STC & Tesco. 7.30pm. 446 2003 (3rd Mon)

Barnet Action for Mental Health, 154 Station Rd, Hendon. 7.30pm. 203 5879 (last Mon)

### Weekly

#### Sundays

MIND in Barnet 'Libra' Club. Day Centre, Etchingham Pk Rd. N3. 3.30pm. 455 2850

#### Weekdays

Advice service on social security, housing, consumer matters etc. East Finchley Neighbourhood Centre, 42 Church La. N2. 10am-12 noon, 2-4pm. (Tues 6-7-m; Tues 7-8.30pm for legal advice). 444 6265

#### Mondays

MIND in Barnet. Relative Support Group. 2 Schoolway, N12. 7-9pm. 446 1654

#### Tuesdays

MIND in Barnet. Luncheon/Social Club. 2 Schoolway, N12. 10am-4pm. 446 1654 (also Wed, Thur & Fri)

MIND in Barnet. Women's Group. United Reform Church, Wood St. Barnet. 7.30-9.30pm. 446 1654

Emotions Anonymous (emotional living problems). Friends Mtg Hse, 120 Heath St. NW3. 8pm. (also Fri)

Al-Anon (help for families & friends of problem drinkers). Carey Room, Trinity Church Cntr, Nether St. N12. 8pm. Information for other local mtgs 403 0888 (24hr service)

#### Wednesdays

MIND in Barnet. Advice Centre, 2 Schoolway, N12. 10am-4pm. By appt. 446 1654/

6470

MIND in Barnet. Men's Group. 2 Schoolway, N12. 6.30-8.30pm. 446 6470

Alcoholics Anonymous. Closed mtg for alcoholics. Community Cntr, 154 Station Rd. Hendon. 8pm. 352 3001 (also Fri & Sat)

Alcoholics Anonymous. Open mtg for those involved with recovery from alcoholism. Salvation Army Hall, Brampton Grove, Hendon. 12.30pm. 352 3001. (also Thur 8pm at Health Clinic, 23 Temple Fortune La. NW11)

### Thursdays

MIND in Barnet. Advice Centre. 154 Station Rd. Hendon. 8-10pm. 446 1654 (also Thursday Club, 8pm)

MIND in Barnet. Women's Drop in Centre, Trinity Church, Rodborough Rd. Golders Grn. 10am-1pm (relaxation 11am). 446 1654

## Bridge, Whist & Chess

### Monthly

Whist Drive. Day Centre, Friern Barnet Lane, N11. 8pm. 368 4278 (1st Sat)

### Weekly

#### Mondays

Bridge Club. Old Barn Centre, Tarling Rd. N2. 1pm. 349 4613

Partner Whist Drive. St Peter's Church Hall, Somerset/Lyonsdown Rds. New Barnet. 8pm. Admission 40p. 441 1591

Bridge classes. 41 Northumberland Rd. New Barnet. 2pm & 7.30pm. 449 0960 (also Tues 10am & 7.30pm, Wed 2pm & 7.30pm)

Bridge class, 2nd yr students. Woodside Park Club, Southover, N12. 8pm. 445 1108 (also Tues)

'Bridge Builders', all levels & ages. Sobell Hse, Limes Ave. NW11. 7.45pm. £1.50 (£2 beginners instruction). 458 7411

Barnet Chess Club. The Fern Room, Salisbury Rd. Barnet. 7.30pm. 959 6837

#### Wednesdays

Whist Drive (Friern Barnet Council for Voluntary Service). Friern Barnet Town Hall Canteen. 10am. 368 4278

#### Thursdays

Northside Bridge Club. E Finchley Methodist Church Annexe, High Rd. Duplicate (1st Thur), rubber remaining Thursdays, 7.30pm. 445 7788

Bridge for over 70s. Alyth Social Club, Alyth Gdns. NW11. Noon. 458 5674

NW London Duplicate Bridge Club. Michael Sobell Centre, Limes Ave. NW11. 7.45pm. Admission £2. 455 3745

Finchley Chess Club. Day Centre, Etchingham Pk Rd. N3. 7.30pm.

Hendon Chess Club. Albany College, 413 Hendon Way, Hendon Central. 7.30pm. 958 6505

#### Fridays

The Fern Room Whist Club. Salisbury Rd. Barnet. 2pm. 441 4853

# Barnet Diary



## Dance

### Monday March 6

Chipping Barnet Folk Dance Club. Church Hse, Wood St. 7.45pm. £1. 449 4425 (also **Mar 20, Apr 3**)

### Saturday March 11

Mountfield Club Sequence Dance. St Mary's Hall, Hendon La, N3. 7.30pm. Details 959 5185

### Thursday March 16

Circassian Circle Folk Dance Club. Harwood Hall, Mill Hill Bdway. 7.45pm. 75p. 950 5756 (also **Mar 30**)

### Monthly

20th Century Sequence Dancing Club. Southgate Upper Sch, Sussex Way, Cockfosters. 7.30pm. 360 2586 (1st **Sat**)

Finchley Sequence Dance Club. St Philip's Hall, Gravel Hill, N3. 7pm. 346 8675 (2nd **Sat**)

### Weekly

Ballet, tap, modern jazz & choreography. Classes for all ages from 3 yrs+. Michael Sobell House, Golders Green. For details phone 794 3027

### Mondays

CRAB Dance Club for disabled. Woodhouse College, Woodhouse Rd. N12. 7.30pm. £1. 346 9789

Contemporary Modern/Disco & Ballroom/Latin classes for children of all ages and abilities. Friary Hall, Whetstone. 440 8530.

Chinese Dance class. Barnet Drama Centre, 142 High Rd, E Finchley. 10.30am. £3 per session. 883 9957 (also **Sat**, 3.30pm) (also **Fri**, Tap Dance, 4-7 yrs, 4.10pm; 7-11 yrs, 5pm)

### Tuesdays

20th Century Sequence Dancing Club. All Saints Hall, Oakleigh Rd. Nth. N20. 7.45pm. 360 2586

Tap dancing. Centrepoint, Graham Park. Under 12s 6.15pm; 12+ & adult beginners 7pm; intermediates 7.30pm. 205 7113

Wheelchair dancing. Graham Park Community Centre, The Concourse, NW9. Transport available. 1.30pm. 346 9789

Hampstead & Dist. Scots Assn. Golders Green Parish Church Hall, West Heath Drive, NW11. 8pm. 870 6131  
Contemporary modern/disco classes (4-14yrs). Lyonsdown Hall, Lyonsdown Rd. New Barnet. Beginners 4.30pm; advanced 6pm. 440 8530

### Wednesdays

West Hendon Old Time & Modern Sequence Dance Club. St Matthias Church Hall, Rushgrove Ave. NW9. 8pm. 952 8529

Mountfield Old Time & Modern Sequence Dance Club. Mar-

tin Sch, High Rd. N2. In term-time. 8pm. 959 5185

Friary Sequence Dance Club. Manor Drive Methodist Church Hall, N20. 8pm. 883 3202

American Square Dancing classes. Watling Community Centre, Orange Hill Rd. Edgware. 8pm. £1. 906 1582  
Odox Youth Dance Co. Friern Barnet County Sch, Hemington Ave. N11. 12-21 yrs. 6-10pm. 346 9789

Tap classes. Adults. St Paul's Church Hall, The Ridgeway, Mill Hill. 9.15pm. 906 0854

Kids Fun Jazz Dance (11-14 yrs), Drama Centre, 142 High Rd, E Finchley. 4pm. 883 7029

Sequence with instruction, 7.30-9pm. Social dancing for beginners (Ballroom & Latin) 9-10.30pm. Subud Hall, 97 East Barnet Rd. 449 3336/6034 (also **Fri**, Ballroom & Latin dancing for beginners & improvers, 8.30-10.30pm)

### Thursdays

De Bohun Sequence Dancing. Christ Church Parish Cntr, Waterfall Rd. N14. 8pm. 886 9878

Finchley Sequence Dance Club. Martin Sch, High Rd. N2. 7.30pm. 346 8675

Pre-Primary Ballet (3-5 years) 4pm; Primary Tap 4.45pm; Primary Modern 5.30pm. E Barnet Baptist Hall. 368 5871 (also **Fri 4pm**, Primary to Elementary Ballet)

### Fridays

Dance & movement to music, (3-5 yrs). Friends Mtg. Hse, Leicester Rd. New Barnet. 5pm. 440 8530

Contemporary Modern/Disco classes from beginners to formation and medal work. Stretch and dance classes for 15-25yrs. Movement to music and dance for the under 5s. Friends Mtg Hse, New Barnet. 440 8530

### Saturdays

Jazz dance for beginners (15-50 yrs!), Drama Centre, 142 High Rd, E Finchley, 11.30am. 883 7029

## Drama

Non-Stop Workshop Theatre Co with centres i Finchley, Stanmore & Southgate areas. Shows for 5-18 yr olds. Raises money for research into leukaemia. For information call Laura, 346 5507

### Weekly

#### Mondays

Drama Centre, 142 High Rd. N2. Drama and video class for adults. 7.30pm. £1.20 per session. 883 9957 (also **Wed**, 5-7yrs 4pm; 7-11yrs 5.30pm & **Fri**, 11-16yrs 6.30pm & **Sat**, 11yrs+ 10am) (also **Circus Skills**, **Wed**. 8+ 5pm; 50p; adults 7pm, £1)

#### Tuesdays

Dunelm Players. St Peter Le Poer Church Hall, Albion Ave. N10. 8pm. 906 4187/800 6891 (Sun 6.30pm nr. production)

#### Wednesdays

Incognito Theatre Group, Friern Barnet. 8pm. 368 0202

East Finchley Theatre Group. Methodist Church Hall, High Rd. N2. 7.30pm. 043871 5167

Gainsborough Theatre Club. The Centre, Gainsborough Rd. N12. 8.15pm. 441 4432  
Nether Never Drama Group. Disablement Assn (Barnet), Trinity Church Cntr, Nether St. N12. 8.30pm. 446 6935

## Countryside and Wildlife

### Sunday March 5

Herts & Middx Wildlife Trust. See the small mammals at Darlands Lake Nature Reserve. Meet 9am, The Close, by Orange Tree PH, Totteridge La, N20. 346 5258 (also **Mar 12**, Conservation work at the reserve, meet 10.30am, The Close or on the reserve during the day)

Mill Hill Watch Club. (Children 8yrs+). Small mammals at Darlands Lake Nature Reserve. Meet 8.40am Daws Lane Car Park or 9am The Close, by Orange Tree PH, Totteridge La (also 2pm, Frog Watch. Inspection of several ponds in Mill Hill. Meet Daws Lane Car Park) (also **Apr 2**, 2pm. Watchers find treasure in a churchyard). For details (eves only) 959 6708/441 0899/959 3087

RSPB Potters Bar & Barnet. Outing to Batch Wood, St Albans. For details 0707 58430 (also outings on **Mar 11** to Pagharn Harbour; **Mar 22** to Cassiobury Pk; **Apr 2** to Amwell Pitts)

### Wednesday March 8

Illustrated talk 'Amphibians & Pond Survey in Barnet' by Clive Herbert. N Finchley Library, Ravensdale Ave, N12. 8pm. 346 5258

### Sunday March 12

RSPB (N London). Caoch outing to Ouse Washes RSPB Reserve. £6. To book, 368 3644 (also **Mar 19**, car outing to Abberton Reservoir & Tollesbury. To book 885 3318)

### Monday March 13

RSPB Potters Bar & Barnet. Oakmere Hse, High St, Potters Bar. Talk on 'Kingfishers' by David Boag. 8pm. (also **Mar 14**, Lyonsdown Church Hall, East Barnet, 2.15pm). 0707 58430

### Saturday March 18

Finchley Watch Group (8-14 yrs). Investigate frogs & other things at Trent Park. Parents can come too. For details, 346 5258  
Golders Green Watch Club for children 8+). For details 458 2669 (after 6pm weekdays) or 440 6314 (weekends)

### Monthly

Middx Caving Group, St Mary's Hall, Hendon La. N3. 8pm. 803 6008 (1st **Wed**)

RSPB (N London). Indoor mtg. Chris Mead, Head of ringing section of BTO. 'Bird Migration'. Holy Innocents Church Hall, Tottenham La, N8, 7.45pm. Admission £1, non-members £1.50. 801 8581 (2nd **Thur**)

### Weekly Sundays

N London Holiday Fellowship Group. Rambles in Home Counties. 346 6795/444 5847

NW London HF Club. Rambles in Home Counties. For details & other activities 997 6079

### Wednesdays

Barnet YHA Group. 1st Lyonsdown Scout Hut, York Rd. New Barnet. 8pm. 449 1553/0707 58940

### Saturdays

N London Rambling Club. For details of organised walks, S.A.E. to Joyce Adlington, 4 Melbourne Way, Enfield, Middx. EN1 1XF

## 18+ Groups

### Monthly

Rotaract Club (Mill Hill). 18-28yrs. Mill Hill Tennis Club, Sylvan Ave. NW7. 8.15pm. 444 9291 (1st and 3rd **Mon**)

Rotaract Club (Barnet). Barnet Cricket Club, Barnet La. 8pm. 441 5892 (1st & 3rd **Wed**)

Rotaract Club (Finchley). Moss Hall Tavern, Ballards La. N12. 8.30pm. 445 1393 (1st & 3rd **Wed**)

Rotaract Club (Friern Barnet & Whetstone). Bull & Butcher Pub, High Rd. N20. 8.15pm. 346 0438 (1st & 3rd **Thur**)

Rotaract Club (Hampstead, Hendon & Golders Grn). 18-29 yrs. Upstairs room, Jack Straw's Castle PH, North End Way, NW3. 8pm. 458 6789 (2nd & 4th **Mon**)

Rotaract Club (Edgware & Stanmore), The Green Man Pub, Honeypot La. Stanmore. 8.15pm. (2nd & 4th **Wed**)

Orbit Club NW London (25-40). Moss Hall Tavern, Ballards La. N12. 8.30pm. 906 2080 (2nd **Wed**)

### Weekly Sundays

Barnet 18+ Group. Bull & Butcher Pub, 1277 High Rd. N20. Activities for people 18-30yrs. 8.30pm. 0707 53536

### Tuesday

Hendon & Edgware 18+ Group. Games Room, Royal Oak Pub, Finchley Rd. Temple Fortune. 8.30pm. 952 2243

## Fetes, Fairs & Sales

### Saturday March 4

Deanery Overseas Sale. Church House, Wood St. Barnet. proceeds to BMMF for work in Nepal. 10.30am. 440 3859

Local auction of glassware, silverware, books, toys, etc. Church Hill Sch, Burlington Rise, E Barnet. 1pm, viewing from 10.30am. Admission 30p. For details, 361 8358

### Saturday March 11

Guide Dogs for the Blind Assn. Barnet Branch. Jumble Sale, Church House, Wood St, Barnet. 10am

### Saturday March 18

Coffee Morning in aid of the Dr French Memorial Home, 13

Nether St, N12. 10.30am. 25p. 445 4353

### Tuesdays

British Red Cross Scty. 10 Donway, Hendon. Sale of newly new clothes. 10am-3pm.

### Wednesdays

Sale of clothing and bric-a-brac. British Red Cross Scty. (Barnet). St. Albans Rd. 9.30am-3.30pm. 449 8969

## Horticulture and Floral Art

### Monday March 6

Finchley Chrysanthemum Scty. AGM. Manorside Sch, Squires La, N3. 8pm. 445 1742 (also **Apr 3**, Mtg)

### Tuesday March 14

Friern Barnet Floral Art Club. Christ Church Hall, Oakleigh Rd. Nth. N20. 8pm. 446 0783 (also **Mar 28**)

### Wednesday March 15

New Barnet Amateur Gardeners' & Floral Art Scty. St Peter's Church Hall, Lyonsdown Rd. 8pm. Members 50p, visitors 75p. 449 4470

Finchley Horticultural Scty. AGM. Moss Hall Jun Sch. Nether St. N3. 8pm. 346 4359

### Saturday April 1

Barnet Horticultural Scty Spring Show. Ewen Hall, Wood St. 2.30pm. 441 6696

### Monthly

Barnet and-Dist. Fuchsia Scty. Methodist Hall, Brookside. E Barnet. 7.30pm. 440 4985 (2nd **Mon**)

Mill Hill Flower Club. Harwood Hall, Mill Hill Bdway. 8pm. 959 3530 (2nd **Tues**)

Hendon Horticultural Scty. Hendon Library, The Burroughs. Seasonal Evening. 8pm. 203 1187 (2nd **Wed**)

Barnet Flower Arrangement Scty. Lyonsdown Hall, Lyonsdown Road, New Barnet. 8pm. 0707 57199 (2nd **Thur**)

Totteridge Floral Art Group. Badgers Croft, Totteridge Village. 2pm. 445 9307 (2nd **Tues**)

Hendon Floral Art Group. St John's Church Hall, Ashdon Rd. NW4. 7.45pm. 446 8916 (3rd **Wed**)

### Weekly

#### Saturdays/Sundays

Mill Hill Horticultural & Allotment Scty. Hartley Close. Trading hut open Sat 2.30-4pm; Sun 10.30am-12.15pm. Garden plots to let. 959 1230

New Barnet (Clifford Rd) Allotment Scty. Tudor Sports Ground. Site shop (membership 50p p.a.) open Sat/Sun 10.30am-12.30pm. Plots to let. 449 2647

Wise Lane Horticultural & Allotment Scty. Moorlands Ave. Mill Hill. Trading hut open Sat 2.30-4pm; Sun 11am-1pm. Garden plots to let. 959 3493

### Sundays

Burnt Oak Horticultural Scty. Trading hut, Back Lane r/o Woodcroft Hall. 10.30am-noon.



## Thursdays

Sangetsu Japanese Flower Arranging classes. 125 North End Rd. NW11. 10am & 2pm. 455 8949

## Keep Fit

## Weekly Sundays

Aerobics. Queen Elizabeth's Centre, Meadway, Barnet. 10.30am. 441 2933 (also **Thur** 7pm)

Yoga classes. Patanjali Yoga Centre. 190 Watford Way, Hendon. Advanced 4pm. 203 0062 (also at 32 Cotswood Gdns, Hendon Way, NW2. Beginners & mixed 7.30pm. 455 7070)

Body Tone-up. St Mark's Church Hall, Woodville Rd, New Barnet. 11am. 368 0881 (eves)

## Weekdays

Weight training instruction. Hendon Sports Centre, Algernon Rd. 6pm Mon-Thur. 5.30pm Fri. £2 per session or £20 per term. 202 6027

## Mondays

Stretch, tone & trim to music. Brookside Methodist Church, E Barnet. 10.15am. Creche. 440 5811

Yoga. St Mary's Church Hall, Hendon La. N3. 7pm. 455 2476 (also **Wed** 9.45am)

Body Conditioning classes. Christ Church, Oakleigh Rd. Nth. N20. 7pm. 445 1846 (also **Wed** 10am, **Thur** 7.15pm)

Aerobic workout. Mill Hill Sch. Sports Centre, The Ridgeway. 7pm. £2. 958 7596 (also **Thur** 8pm)

Popmobility. Hendon Sports Centre, Algernon Rd. 7.30pm. £2. 202 6027 (also **Thur**)

Aerobic advanced class. Manor-side Sch. Squires La. N3. No beginners. 8pm. 349 1449

Keep Fit. Manorhill Centre, Summers La. N12. 7pm. 368 6316

Low Impact Aerobics & Stretch. All Saints Church Hall, Oakleigh Rd. Nth. N20. 7.30pm. 368 5514 (also **Wed**)

Body Conditioning course. St Andrew's Church Hall, Alexandra Park Rd. Muswell Hill. 9.45am. Creche available. 444 4284 (also **Wed, Fri**)

Aerobics 9.30am & Body Conditioning 10.30am. St Mary's Hall, Hendon La. N3. In term-time. 349 1449

Pensioners Health Group, Methodist Hall, Rodborough Rd. NW11. 2pm. 60p incl. tea. 794 6376

Weight and fitness training. Mill Hill Sch. Sports Centre, The Ridgeway. 8.15pm. 906 2322

Aerobics. Hendon College, Corner Mead, Grahame Park. 8pm. 906 1721

Tai-Chi for all. St Edward's

Church Hall, Finchley Rd, Hoop La, Golders Grn. 8pm. 458 9842 (also **Wed**)

Stretch 'n' Tone (with creche), Drama Centre, 142 High Rd. E Finchley, 10.30am. 883 7029 (also **Fri**)

## Tuesdays

Stretch, tone and trim to music. Church Hall, Freston Gardens, Cockfosters. 8.15pm. (Am workouts, creche available). 440 5811

Body workshop, exercise and beauty. Christ Church Hall, The Green, Southgate. 8.15pm. 368 3831

Keep Fit. Queen Elizabeth's Centre, Meadway, Barnet. 7.15pm. 441 2933

Aerobics. Manor-side Sch, Squires La. N3 8pm. 349 1449 (also **Thur** 8pm)

Ladies Keep Fit, all ages. Hendon Sch, Golders Rise, off Brent St. 7.30pm. 349 0400 (also **Thur**)

Body Tone-up. Oaktree Special Sch, Chase Side, Southgate. 7.30pm. 368 0881 (also **Thur**, 7pm; beginners 8pm)

Gannets Slimming Club. East Barnet. 8pm. £2. 449 4277

Body Focus exercise/dance class. Lyonsdown Hall, New Barnet. 10.15am. £1.70, incl. creche. 368 5871

Aerobics. Copthall Pools 12.30pm & Hartley Hall, Flower La. NW7. 6.30pm. 906 1721

Aerobics class. The Body Factory, Mill Hill Bdwy, NW7. 7pm. £3 per class. All levels welcome. 202 0982 (also **Thurs**) (also **Wed & Sat** 10.15am)

Exercise to music aerobics class. UR Church, Wood St, Barnet. 8pm. £1.80

Stretch 'n' Tone. Drama Centre, 142 High Rd, E Finchley. 8.15pm 883 7029

Keep Fit. Barnet Drama Centre, 142 High Rd, E Finchley. 10.30am. £3/£5 for 2 sessions. 883 9957 (also **Wed**) (also **Tai Chi** Movement class, **Wed** 7.30pm & **Sat** 4pm, £4 per session) (also **Thur**, Exercise Class for Mothers & Toddlers, 2pm, £1.20 per session)

## Wednesdays

Popmobility. St Mary Magdalen Parish Cntr, Athenaeum Rd. N20. 8.30pm. 070787 5162

Stretch, tone & trim to music. Manor Drive Methodist Church Hall, N20. 10.15am. Creche facilities. 440 5811 (also **Fri**)

Aerobics 9.45am, Body Conditioning 11am. Copthall Pools. In term-time. 203 4187

Health & Beauty, exercise/movement classes. Christ Church Hall, High Rd. N12. 7.15pm. 504 1644

Keep Fit. Manorhill Centre, Summers La. N12. 8pm. Circuit-training 7pm. 368 6316

Body Conditioning/Keep Fit class. Canada Villa Centre, Pursley Rd. NW7. Creche available. 2pm. £1.50. 959 2811

Weight Mates Slimming Club. St Mary Magdalen Church Hall, Holders Hill Rd. NW4. 10am. 455 4814

Keep Fit. St Paul's Church Hall, The Ridgeway Mill Hill.

8.15pm. 906 0854

Relax and become supple with Yoga. Totteridge Village Hall, Badgers Croft, N20. 1.30pm. 445 2171

Hatha Yoga. Beginners classes for ladies. St Mary's Church Hall, Church Hill Rd, E Barnet. 7.45pm. 441 1336 (also **Tues** 1.45pm) (also **Wed**, Limbering class, 7pm) Low impact aerobics, 7pm. Stretch 'n' Tone, 8pm. E Finchley Library, N2. 883 7029

## Thursdays

Contemporary jazz work-out for beginners. Body Action. 40 High St, Barnet. 10.30am. For details 449 2822.

Get Fit Club for young and old. St Stephen's Hospital, Mays La. Barnet. 7.30pm. £1.50. 906 0974

Mixed exercise class for people with problem backs. Q.E. Girls' Sch, Meadway, Barnet. 8pm. 445 6986

Yoga. Mixed ability class. British Wheel trained teacher. Union Church Hall, Northiam, N20. 7pm. 349 2972

British Wheel of Yoga Teachers Diploma Course. Barnet. 7pm. 440 1828

Body Focus exercise/dance class. E Barnet Baptist Hall, Crescent Rd. 8.30pm. £1.70. 368 5871

Limber, stretch & dance. Hampstead Gdn. Suburb Institute, NW11. 6 & 7.30pm. 455 9951

Ladies Keep Fit. Hendon Sports Centre, Algernon Rd. 10am. £1.80. 202 6027

Yoga for people with handicaps. Gentle movement,

● LOTS TO DO COPTHALL ● LOTS TO DO AT COPTHALL ● LOTS TO DO AT COPTHALL ●

# SPRING INTO SUMMER AT COPTHALL POOLS



## BOOKING DATES

### WEEKLY TERM COURSES

PRIORITY BOOKING WEEK - for those people already on our courses

Monday 13th March - Saturday 18th March

10.30am - 6.30pm each weekday

9am - 1.30pm Saturday

NO PRIORITY BOOKINGS CAN BE MADE AFTER 1.30PM ON SATURDAY 18TH MARCH

OPEN BOOKING - for new customers begins on Sunday 19th March at 9.30am

### CRASH COURSES - EASTER HOLIDAYS

Book any time Monday 13th February onwards

BOOKING CAN ONLY BE MADE IN PERSON AT COPTHALL POOLS. NO TELEPHONE OR POSTAL RESERVATIONS CAN BE ACCEPTED.

All enquiries to:  
Sports Officer,  
Barnet Copthall Centre Swimming Pools,  
Great North Way, Hendon,  
London NW4 1PS

Tel: 01 - 203 4187

## EASTER HOLIDAY CRASH COURSES

Course 1: Tuesday 28th March - Saturday 1st April

Course 2: Monday 3rd April - Friday 7th April

### SWIMMING

Duckling Classes £9.00 (5 X 20 minutes)

Children & Adult Classes £11.25 (5 X 30 minutes)

### DUCKLING CLASSES (Daily)

9.20am, 9.40am, 10am, 10.20am, 10.40am, 11am

### CHILDREN LEARN TO SWIM CLASSES (Daily)

9.15am, 9.45am, 10.15am, 10.45am

Beginners 1, 2 & 3 Intermediate OR advanced

### ADULT LEARN TO SWIM CLASSES (Daily)

11.30am Beginners, Intermediate, Advanced

### DIVING - 7 years and over (Daily)

9.15am, 9.45am, 10.15am

### KARATE £12.50 (5 X 60 minutes) (Daily)

10 - 11am 5-8 year olds

11 - 12 noon 9 years and over

LONDON BOROUGH  
**barnet**  
Directorate of Technical Services

● LOTS TO DO COPTHALL ● LOTS TO DO AT COPTHALL ● LOTS TO DO AT COPTHALL ●

# Barnet Diary



breathing & relaxation. Qualified teacher. Stanhope Rd Centre, N12. 1.30pm. Other classes available. 440 1828  
 Aerobics. Copthall Pools 12.30pm, Tenby Hall, Tenby Rd. Edgware 7.45pm. 906 1721  
 Beginners' Aerobics class, Queen Elizabeth's Centre, Meadway, Barnet. 7.30pm. £1.80 per session. 441 2933

**Fridays**  
 Aerobics 9.30am, Body Conditioning 10.30am. Christ Church Hall, High Rd. N12. In term-time. 349 1449

**Saturdays**  
 Keep Fit. St Mark's Church Hall, Woodville Rd. New Barnet. 11am 368 0881  
 Body-Tune Dancestyle keep fit. St Mary's Church Hall, Church Hill Rd, E Barnet. 9.45am. 441 1336 (also **Mon** 7.15pm, **Tues** 7.45pm)  
 Men's exercise class, 9.30am. Low impact aerobics, 10.30am. Drama Centre, 142 High Rd, E Finchley. 883 7029

## Martial Arts

**Mondays**  
 N London Karate Club. Mill Hill Sch, The Ridgeway. 8pm &

9pm. 440 7733/8633 (also **Thur**)  
 Cobra Karate Club, Christ's College Sch, Hendon La. N3. Beginners 7pm, advanced 8pm. 959 4338 (also **Wed**)  
 New Barnet Jiu Jitsu Club. Scout Hut, York Rd. New Barnet. 7.30pm. 886 6758/555 4037 (also **Tues**, children 6pm, seniors 7.30pm)  
 Judo. The Old Finchleians Memorial Grnd, Southover N12. Children 7pm, adults 8.30pm. 444 0156/445 7406 (also **Thur**)

Sport Karate Club. T.S. Barrosa, Daw La. Mill Hill. (Barnet Karate Squad Coach). 7pm. 906 1701 (also **Thur**)  
 Shaolin Nam-Pai-Chuan. Hodford Hall, Hodford Rd, NW11. 6.30pm. 455 8407 (also **Sat**)  
 Meadway Ju-Jitsu club BJJ. MAC. Friern Barnet La, N20. 7.30pm. £2.50 for 2hr 5th Dan tuition. 445 6252 (also **Tues**)

**Tuesdays**  
 Shotokan Karate Club. Christ's College, Hendon La. N3. Adults and beginners. 8pm. 202 3171 (also **Thur**)  
 Karate. Centre Point, Corner Mead, Grahame Pk. 7-13yrs 6pm, 13yrs+ and adults 7pm. 906 1701 (also **Thur**, 7pm & 8pm)  
 Barnet Goju-Ryo Karate Club (traditional Okinawan Goju-Ryu). Queen Elizabeth's Centre, Meadway, Barnet. Children 6pm, adults 7pm. 449 8997 (also **Thur**)

Kateda. Self-defence of body and mind. Ages 12-60. Man-

orhill Centre, Summers La. N12. 7pm. 884 2011/423 4570

**Wednesdays**  
 Watling SKC, Watling Community Centre, Orange Hill Rd. Burnt Oak. Juniors 7pm. adults 8pm. 906 1701  
 Judo for children, Pymmes Youth Centre, East Barnet Lower Sch, Westbrook Crescent. 6.30pm, 7.30pm. 440 6473 (Adults, **Thur** 7.30pm)  
 Kateda Self Defence Assn. King Alfred Sch, North End Rd. NW11. 7pm. 866 3058  
 Finchley Karate Club (Okinawan Goju-Ryu Karate). Mansorside Sch, Squires La N3. Children 7pm, adults 8pm. 346 9505 (also **Fri**)  
 N London Gojukan. Finchley Synagogue, Hutton Grove N12. 8-14yrs. 6.30pm. 449 3150

**Thursdays**  
 Aikido. Queen Elizabeth's Centre, Meadway, Barnet. 8pm. 0707 53462  
 Women's self defence. Manorhill Centre, Summers La. N12. 7.30pm. £9 for 6 week course. 368 6316  
 Woman's self defence. Lyonsdown Judo Club, Lyonsdown Hall, Lyonsdown Rd, New Barnet. 8pm. 440 1406  
 Shaolin Nam-Pai-Chuan. Elderkin Hall, Trinity Church, Rodborough Rd, NW11. 6.45pm. 455 8407  
 Shaolin Nam-Pai-Chuan. St Mary's Church Hall, Greyhound Hill, NW4. 8pm. 203 5452

**Fridays**  
 Shin Do Kwai Kendo Club.

Whitefield Sch. gym, Clarendon Rd. NW2. 8.30pm. 863 7574  
 Lyonsdown Judo Club. Lyonsdown Hall, Lyonsdown Rd. New Barnet. 8-15yrs 7.30pm, adults 8.45pm. 440 1406

## Music

**Tuesday March 7**  
 East Barnet Library Gramophone Scty. 85 Brookhill Rd. 8pm. 440 4376 (also **Mar 21, Apr 4**)

**Monday March 13**  
 Hendon Music Scty. Colin Arenstein and Robert Hoy Guitar Duo. Hendon Library, The Burroughs. 8pm. 203 2355

**Tuesday March 14**  
 Hendon Library Gramophone Scty. The Burroughs. 7.45pm. 202 5625 (also **Mar 28**)

**Thursday March 16**  
 Friern Barnet Library Gramophone Scty. Friern Barnet Rd. N11. 8.10pm. 361 2787 (also **Mar 30**)

**Wednesday March 22**  
 Edgware & District Organ Scty. Watling Community Centre, Orange Hill Rd. 8pm. £2 (per guest) 953 3291

**Weekly Sundays**  
 Jazz, Blues & Rock music. The Torrington Arms, High Rd. N12. 8.30pm. 445 4710 (also **Fri**)

**Mondays**  
 Barnet Orchestra at Hendon. Hendon Sch, Golders Rise, NW4. 8pm. 205 2418  
 Finchley Choral Scty. Moss Hall Jun. Sch, Nether St. N3. 7.45pm. 445 4968  
 Manor House Hospital Operatic Scty. Manor Hse Hospital, North End Rd. NW11. 7.30pm. 346 0237  
 Tudor Orchestra. E Finchley Methodist Church, High Rd. Players welcome all sections, esp. brass. 7.30pm. 445 0563  
 Mill Hill Operatic Scty. Hartley Hall, Flower La. 8pm. 959 2848  
 'Music Hall' rehearsals. Entertaining the elderly in Barnet. Baptist Church Hall, Green Lanes, N13. 7.45pm. 449 4507  
 Choir for Japanese Ladies. Trinity Church, Hodford Rd, NW11. 1pm. 202 3585

**Tuesdays**  
 The Apollo Singers. Wilberforce Hall, Wilberforce Rd. NW9. 7.45pm. 959 1244  
 Hendon String Orchestra. Whitefields Sch, Clarendon Rd. NW2. 8pm. 455 5005  
 Finchley Chamber Choir. Methodist Church, Ballards La. N3. 7.30pm. 346 0502  
 Barnet College Choir. Varied light music. St John's Church Hall, Friern Barnet la, N20. 1.30pm. 445 0384  
 All Saints Church Choir. Durham Rd, N2. Rehearsals 8pm. Sunday mornings singing a mass setting, psalm and an anthem. Singers or would-be singers please



# CHILDREN'S ACTIVITY HOLIDAYS



IN STANMORE AT EASTER DAY CAMPS 3-14 YEARS

- FOOTBALL ● GO KARTS ●
- COMPUTERS ● SWIMMING ●
- ARCHERY ● DRAMA ●
- HORSERIDING ●

are only a few of the many exciting activities available

## NOT TO BE MISSED !!!

TEL: ESCAPADE ACTIVITY HOLIDAYS  
 01 445 2978 / 446 6637

★ RESIDENTIAL HOLIDAYS IN DERBYSHIRE FOR 6-18 YEARS OLDS



## LONDON BOROUGH OF BARNET

# EASTER BANK HOLIDAY REFUSE COLLECTIONS

Working arrangements for refuse collections including wheeled bin areas

## NORMAL COLLECTION

Monday, 20th to Thursday 23rd March 1989

### Collection arrangements:

- Friday, 24 March (Public Holiday) . . . . . No collection
- Monday, 27 March (Public Holiday) . . . . . No collection
- Tuesday, 28th March . . . . . Monday's collection
- Wednesday, 29th March . . . . . Tuesday's collection
- Thursday, 30th March . . . . . Wednesday's collection
- Friday, 31st March . . . . . Thursday's collection
- Saturday, 1st April . . . . . Friday's collection (Double)



# Barnet Diary

contact organist and choir-  
master Geoffrey Hanson on  
444 9214

## Wednesdays

N London Morning Orchestra.  
Friends Mtg Hse, Win-  
chmore Hill, N21. 10.30am.  
360 2013

Finchley & Friern Barnet Op-  
eratic Scty. St Andrew's  
Church Hall, Alexandra Pk  
Rd. N10. New members wel-  
come, esp. men. 7.45pm.  
368 0770

Barnet Band. Q.E. Boys' Sch.  
Queens Rd. Brass & reed  
players needed. 7.30pm.  
449 3057

Barnet Choral Scty. Church  
Hse, Wood St. 7.45pm. 440  
1157

## Thursdays

Barnet Schs. Brass Ensemble  
& Training Band. Moss Hall  
Schs, Nether St. N12. 5pm.  
349 4195

London Pro Arte Choir. Mill Hill  
East Free Church, Salcombe  
Gdns. 7.30pm. 203 7111

Finchley Chamber Orchestra.  
Moss Hall Jun Sch, Nether  
St. N3. 7.30pm. 886 2629

Prehamwood Operatic Scty.  
Fairway Hall. Welcomes new  
members. 8pm. 906 1453

## Fridays

Barnet Schs Wind Orchestra.  
Friern Barnet County Sch.

Hemington Ave. N11. 5pm.  
349 4195

Ionian Clarinet Choir. Christ  
Church, Oakleigh Pk Nth.  
N20. 8.15pm. 445 7095

## Saturdays

Barnet Schools Music Centres:  
Finchley, Moss Hall School,  
Nether St. N12; Hendon, St  
Mary's CE Lower School,  
Sunningfields Rd; East Bar-  
net Upper Sch, Chestnut  
Grove, Cat Hill. 9.30am. 349  
4195

Hampstead Gdn Suburb Youth  
Music Centre. Henrietta Bar-  
nett Sch, Bigwood Hse, Big-  
wood Rd. NW11. 2½-15yrs.  
All musical activities. 9am-  
12.45pm. 907 8018

## Pensioners' Clubs

### Monthly

Golders Green & Dist. Pen-  
sioners' Assn. Trinity  
Church, Rodborough Rd.  
NW11. 1.15pm. 455 7952  
(1st Wed)

Pensioners' Voice (Barnet).  
Methodist Hall, Brookside, E  
Barnet. 1.30pm. 441 3185  
(2nd Wed)

Civil Service Pensioners'  
Alliance. Avenue Hse, East  
End Rd. N3. 10am. 445 4821  
(3rd Thur)

Pensioners' Voice (Colindale/  
Burnt Oak). Burnt Oak Lib-  
rary, Watling Ave. 1.30pm.  
906 2161 (last Thur)

Pensioners' Voice (Whetstone/  
Finchley). N Finchley Lib-  
rary, Ravensdale Ave. 2pm.  
346 6762 (last Thur)

## Weekdays

WRVS E Barnet Lunch Club.  
54-60 Brookhill Rd, New Bar-  
net. Noon. 449 5025 (be-  
tween 10am-2pm)

## Weekly

### Mondays

Handicraft Club for 60+. Ever-  
green Centre, 54-60  
Brookhill Rd. New Barnet.  
2pm. 449 8690

Club for Active Retired. Day  
Centre, Friern Barnet La.  
N11. 11am-4pm. 368 4278

Hadley Darby & Joan Club.  
Memorial Hall, Hadley High-  
stone. 2pm. 441 4853

Village Club for 60+. St Mary's  
Church Hall, Church Hill Rd.  
E. Barnet. 1pm. 449 2383

### Tuesdays

Pensioners Lunch Club. E Fin-  
chley Neighbourhood Cen-  
tre, 42 Church La. N2. Noon.  
444 6265 (also Fri; Mon,  
Asian Vegetarian Menu)

Alyth Social Club (70+). Alyth  
Gdns. Finchley Rd. NW11.  
Noon-3pm. Ploughman's  
Lunch 60p. 458 5674

Luncheon Club for elderly,  
homebound & lonely. Day  
Centre, Friern Barnet La.  
N11. 10am-4pm. Club. 2-  
4pm. 368 4278 (also Wed &  
Thur)

Union St. Evergreen Club.  
Ewen Hall, Wood St. Barnet.  
2pm. 441 4853

Fern Evergreen Club. Fern  
Room, Salisbury Rd. Barnet.  
2pm. 441 4853

Osidge Club for 60+. Monkfrith  
Boys' Club Hall, Osidge La.  
E Barnet. 2pm. 368 2402

Mount Club for 60+. Baptist  
Church Hall, Grove Rd. New

Barnet. 1pm. 440 6180  
Lyonsdown Club for 60+.  
Evergreen Centre, Brookhill  
Rd. New Barnet. 1.30pm.  
449 1277/361 2853

Bingo. Old Barn Centre, Tarling  
Rd. N2. 2pm. 349 4613

WRVS High Barnet Lunch  
Club. Salisbury Rd. Noon.  
449 0158 (between 10am-  
2pm) (also Thur & Fri)

## Wednesdays

Mays Lane Evergreen Club. St  
Stephen's Church Hall, Bells  
Hill, Barnet. 2pm. 441 4853

West Hendon over 60s Lunch  
& Social Club. Community  
Centre, Marsh Drive, NW9.  
Lunch noon; Social Club  
1.30pm. 202 5057

Leisure Club for 60+. St  
James' Church Hall, E. Bar-  
net Rd. New Barnet. 1.30pm.  
449 5697

Asian Meditation and Music.  
Methodist Church, Rodbor-  
ough Rd. Golders Grn. 12-  
4pm. Free admission & re-  
freshments. 202 2751/440  
4633 (also Thurs & Fri)

Barnet Asians Old People  
Assn. Free classes in read-  
ing and writing English. Trin-  
ity Church, Hodford Rd,  
NW11. 1-4pm. 202 2751

## Thursdays

Pensioners Friendship Club'.  
North Rd. Community Cen-  
tre, Burnt Oak. 1.45pm. 591  
2362

Roundabout Club pensioners  
group. Friary Hall, URC,  
Oakleigh Park Nth. N20.  
2pm. 441 3185

Hoop Lane Thursday. Drop in  
for a coffee & a chat. Unitar-  
ian Room, Hoop Lane

NW11. 10.30am.  
Golden Circle Club. The Salva-  
tion Army Hall, Brampton  
Grove, Hendon. 1.30pm. 203  
4823

The Torrington Park Pension-  
ers' Club. Health Centre,  
Torrington Pk. N12. 2pm.  
446 4201 (alt Thur

Thursday Club for 60+. Ever-  
green Centre, Brookhill Rd.  
New Barnet. 1.30pm. 441  
1269

## Fridays

Edgware Friday Club for Senior  
Citizens. Methodist Church  
Hall, Garratt Rd. Edgware.  
10am. 952 3908

Young in Heart. Conservative  
Hall, Barnfield Rd. Burnt  
Oak. 1.30pm. 952 3513

Club for the Elderly. Day Cen-  
tre, Friern Barnet La. N11.  
2-4pm. 368 4278 (Special  
activities 1st Fri)

Bells Hill Evergreen Club. St  
Stephen's Church Hall, Bells  
Hill, Barnet. 2pm. 441 4853

Over 60's Club. The Salvation  
Army Hall, Hertford Rd. E.  
Finchley. 2.30pm

Oakhill Club for 60+. Ever-  
green Centre, Brookhill R.  
New Barnet. 1.30pm. 440  
2573

## Photography Arts & Crafts

### Monthly

Barnet Ceramic & Glass Scty.  
East Barnet Upper Sch,  
Chestnut Grove, off Cat Hill.  
446 1022 (1st Wed)

Milldon Art Scty. Christmas  
Party. Harwood Hall, Union



## Hamsptead Garden Suburb Institute

Central Square, NW11 7BN

01 - 455 9951

## ADULT AND JUNIOR COURSES

### APRIL - JULY 1989

*This is just a selection - ask for our summer leaflet!*

### \* Art & Craft \*

*Sculpture (Casting), Painting & Drawing,  
Stained Glass, Colour Making.*

### \* Holiday Languages \*

*Spanish, Portuguese, French, Italian, Greek, German.*

### \* General Interests \*

*The Romantic Poets, Play Reading, Street Theatre,  
Sight & Sound (Reading Music).*

### \* Physical Activities \*

*Tennis (Beginners, Intermediate & Advanced),  
Self Defence (Women), Yoga Day.*

### \* Junior Courses \*

*Art, Pottery, Tennis, Multi-Sport.*

**Term begins 10th April, 1989**

THAT'S WHAT FRIENDS ARE FOR!!



FOUNDER  
MEMBER



## X.U.K. CHILDREN'S ACTIVITY CAMPS

DAY — 3-14 YEARS  
RESIDENTIAL — 6-18 YEARS  
EASTER AND SUMMER

An exceptional programme of sports, arts and excursions.  
Renowned for our caring qualified staff (ratio 1:5)  
Afternoon camps (Poolside Puffins £35 + VAT)  
Crash Courses Swimming & Tennis  
and Spring Term Swimming Courses.

CAMPS AT:  
EDGWARE

(NORTH LONDON COLLEGIATE)  
FINCHLEY (POOLSIDE MANOR)  
MALVERN and AVON

Telephone: 01-349 1444/1945  
NOBODY DOES IT BETTER!



ANTIQUES & COLLECTORS FAIR  
450 STALLS

## HARROW LEISURE CENTRE

EASTER MONDAY 27th MARCH

ADMISSION TO TRADE FROM 9.30am £2 with card  
ADMISSION TO PUBLIC 11am -5pm £1.

FREE CAR PARKING: Foreign exchange: Refreshments: Bar.

HARROW LEISURE CENTRE, Christchurch Avenue, Harrow,  
Middx. Nearest station: Harrow & Wealdstone B.R and Tube.  
Courtesy coaches from station and town car parks AA signposted

All enquiries and bookings to JAX FAIRS

Tel: (0444) 400570

# Barnet Diary



Church, The Broadway, NW7. 7.30pm. 907 5740 (1st Wed)

## Weekly Sundays

'Taster' Workshops for beginners in mixed arts. The Neighbourhood Centre, 42 Church La. N2. 2.30pm. £1, 70p conces. 883 2832/444 6265

## Mondays

Art classes. Courses in life drawing, portraiture, still life, general drawing and painting, colour theory and practice graphics. Beginners, intermediate, advanced. All Saints Arts Centre, 122 Oakleigh Rd. Nth. N20. 445 8388/445 4654

Community Links in Cameras (Clic), photography group of disabled people. 43 Flower La. NW7. 1.30pm. 346 9789 (also Thur)

## Tuesdays

Finchley Writers' Workshop. Moss Hall Tavern. 6pm. 349 1948

Studio North Three adult classes in art. College Farm, Fitzalan Rd. N3. 10am-1pm. 959 1498/6175

Finchley & Dist. Model Aircraft Club, Manorside Sch,

Squires La. N3. 14 yrs+. 8pm. 904 5449

Friern Barnet & Totteridge Camera Club, Totteridge Library, Totteridge La. Beginners to advanced. 8pm. 445 2617

Art & Craft Workshop for Children. Barnet Drama Centre, 142 High Rd. E Finchley. 6pm. £1.20 per session. 883 9957

## Wednesdays

Machine knitting class. Old Barn Centre, Tarling Rd. N2. Tuition at all levels. 1pm. 349 4613 (also Thur)

Chanticleer Camera Club, The Minchenden Assn Clubhouse, Bramley Rd. N14. 8pm. 888 5669

Hornsey Cine — Scene Two. St Peter Le Poer Hall, Albion Ave. N10. 8.15pm.

Art classes. All abilities and media. All Saints' Arts Centre, 122 Oakleigh Rd Ntd, N20. 1.30-5pm; 7-9.30pm. £2 per hour. 445 8338

## Thursdays

Sculpture class for women. Old Barn Centre, Tarling Rd. N2. 7.30pm. 349 4613 for enrolment details.

## Fridays

Barnet & Finchley Photographic Scty. rear of 37a Salisbury Rd. Barnet. 8pm. 886 7071

Finchley Cine Scty. Avenue Hse, East End Rd. N3. 8pm. 346 4265

Hendon & Hampstead Garden Suburb Camera Club, Fellowship Hse, Willifield Way, NW11. 8pm. 205 6053

## Playgroups & Under 5s

### Weekdays

Crescent Playgroup. E Barnet Baptist Church Hall. 9.30am. 449 5095

Under 5's activities. Old Barn Centre, Tarling Rd. N2. 9.30am. 349 4613

### Weekly

#### Mondays

Tumble Tots. Gym for the under 5's. Hodford Hall, Hodford Rd. NW11. 959 4261 (also Fri at St. Mary's Hall, Hendon La. N3)

Bells Hill Prams & Pushchairs. St Stephen's Church Hall, Bells Hill, Barnet. 1.30pm. 441 9501

Church Farm Pre-school Activities Group. Barnet College Annexe, off Church Hill Rd. E Barnet. 10am. 368 9893

#### Tuesdays

Teddy Tots for mums and toddlers, newborn babies and mums-to-be. Woodcroft Evangelical Church (Gervase Rd. entrance) Burnt Oak. 10.30am. 200 8909

123 Club for mothers, babies & toddlers. Christ Church Hall, High Rd. N12. 9.30am & 1.15pm. In term-time. 368 4659

Bottoms Up. A club for mothers with first babies. Jubilee Room, St James' Church, Friern Barnet La. N20. 2.30pm. 361 3320

Mother & Toddler Group. Mill Hill Synagogue, Brock-

enhurst Gdns. NW7. 10am. 958 9550

Mums & Toddlers. Quinta Youth Club, Mays La. Barnet. 9.30am. 25p. 449 2914 (also Thur)

### Wednesdays

Parent & Toddler Time. East Barnet Baptist Church Hall. 1.45pm. 449 5320 (also Fri)

See-Saw Club for babies and toddlers with special needs. North Road Community Centre, Burnt Oak Bdw. 9.30am. 441 3714

Mums, Babies & Toddlers Club. St Barnabas Church, Holden Rd. N12. 10am. 368 0367 (also Thur)

Mother & Toddler Group. Yeshuron Synagogue, Stonegrove, Edgware. 10am. 958 9550

### Thursdays

Parent & Toddler Time. Victoria Centre, Victoria Rd. New Barnet. 1pm. 449 5511

Tumble Tots, physical activity for pre-school children 6mths-5yrs. Social Centre, Sacred Heart of Mary Immaculate, Mill Hill Bdw. Classes all day from 9.30am. 958 6579

Bounce, a group for children under 5 with special needs. New Barnet Community Centre, 48-50 Victoria Road. 1.30pm. 50p. 441 7044

Jumping Beans, pre-school gymnastics. Canada Villa Centre, Pursley Rd. NW7. 10am. £2 enrolment, £1 per session. 959 2811

Mother & Toddler Gymnastics (up to 4yrs). Hendon Sports

Centre, Algernon Rd. 12.45pm, 1.30pm (2.15pm 2 1/2-4yrs only). £1.50 per family. 202 6027

E Finchley Toy Library. Herbert Wilmot Youth Centre, Eagans Close, N2. Over 500 toys. 3pm. 883 0244 (also Fri 10.30am)

### Fridays

Mums & Toddlers Group. Day centre. Friern Barnet La. N11. 10am. 368 4278

## Singles Clubs

### Monthly

Finchley Solo Club for widowed, divorced & single (25-65). 8pm. 445 9810/444 8743 (1st & 3rd Tues)

### Weekly Mondays

Barnet Thirty Plus Group. Badminton at Queen Elizabeth's Centre, Meadway, Barnet. 8pm. Details of other activities. 959 7084

### Wednesdays

NW London Branch of National Council for the Divorced & Separated. Friendly club evening nr Brent St. Hendon. 455 6967 (day) 959 4231 (evs)

N London & Dist. Divorced/Separated Club. St Paul's Church, High Rd. New Southgate. 8pm. 0707 42849

### Thursdays

Club 81 (25-45). Old Red Lion PH, Barnet Hill, Barnet. 9pm. 883 2363 (wkdays, 1-5pm)

## NOTICE

**YOU MUST READ THIS IF YOU'RE SELLING YOUR HOME !!**

**NO MATTER WHAT THE COST OF YOUR PROPERTY - WE ONLY CHARGE**

**£750**

**+ VAT SOLE AGENCY £1,000 +VAT**

**JOINT AGENCY - IF YOU SELL THROUGH US !!**

**NO SALE - NO FEE !! NO CATCHES !! NO HIDDEN EXTRAS !!**

**01 - 449 - 7000**

Your independent estate agent in Barnet. Scimitar Hse. 119-121 East Barnet Rd.

**GERRARD BROS.**

A GROUP COMPANY OF SCIMITAR HOMES PLC.

## CALDER ROOFING

We Strip and recover old roofs

- Slating & Tiling
- Lead & Zinc Work
- Asphalt & Built-up Felt
- Advice & Estimates

Fully Insured & Guaranteed

### CALDER ROOFING

1-3 Fox Lane, Palmers Green London N13 4AB



Established 1966

**01-882 4524/5**



**25 TEA CHESTS**

@ £1 each  
Phone: 361 4223

## Bairstow Lves NEW HOMES

### Walker Court . Palmers Green



**SITE SALES NO. 01-882 7982**

**Palmers Green 01-882 8383**

Beautiful new 1 and 2 bedroom apartments for the over 55's. Fitted carpets, curtains and kitchen appliance.



## A NEW YEAR - A NEW LIFESTYLE

### Luxury Retirement Apartments

#### North Finchley N12

Prices From **£79,600**

Site Sales Centre  
**01-445 1780**

Sales Office  
**01-446 4236**





## Sport

### Sunday March 12

London Hash House Harriers. Clowning around Oxford Circus. 11am. Oxford Circus u/g stn. (also Mar 17, St Patrick's Night down Green Lanes. 7pm. Manor House u/g stn. Please wear something green)

### Monthly

St Christopher's Cycling Club. Easy rides. Tally Ho Post Office, N12. 10am. 346 6609/361 2281 (1st Sun)

### Weekly

#### Sundays

Finchley Section of W London DA Cyclists' Touring Club organise rides. 361 9851/446 2634

Tennis and Short Tennis for 5yrs to adult. Christ's College Lower Sch, East End Rd. N3. Details Manorhill Centre, 368 6316

Shaftesbury Barnet Harriers training sessions. Copthall Stadium. Gt Nth Way, NW4. 11am. 200 1584 (also Tues 6pm; for athletes, Thur 6pm)

### Mondays

Squash. Mill Hill Sports Centre,

The Ridgeway. Juniors 6.30pm; adult beginners 7.15pm; adult intermediates 8pm. 906 2322

Monarchs Sports Club for people with physical and mental handicap. Bishop Douglass Sch, Hamilton Rd. N2 7.45pm. 50p. 202 4684/953 3276

Cranbourne Badminton Club. Hampstead Gdn. Suburb. New experienced players welcome. 346 5655

Morning Badminton Club. Hartley Hall, Mill Hill. Vacancies for experienced players. 959 4867

Weights & Fitness training for ladies. Mill Hill Sch. Sports Centre, The Ridgeway. 8.15pm. 906 2322 (also Tues, 8pm)

Women's Sport for Fun. Manorhill Centre, Summers La. N12. 8pm. 368 6316

### Tuesdays

Golf lessons. Mill Hill Sch. Sports Centre, The Ridgeway. 7.30pm. 906 2322

Basketball. 9-16yrs. Christ's College Lower Sch, East End Rd. N3. 6pm. Details Manorhill Centre, 368 6316

Elmgate Badminton Club. Church Hall, Rectory La. Edgware. Vacancies. 8pm. 959 4757

Barnet & Dist. Athletic Club training session. Copthall Stadium. 7pm. (Under 11yrs, 5pm) 368 6754

Speedwell Badminton Club for Ladies. Moderate to good standard. Christ Church Hall, High Rd. N12. 1.45pm. 449 6401

Finchley Angling Scty. Moss Hall Tavern, Ballards La. N12. Prospective members welcome. 8.30pm. 458 2530

### Wednesdays

Mixed Volley Ball Training Club. Queen Elizabeth's Centre, Meadway, Barnet. 8pm. 441 2933

Badminton. Mill Hill Sch. Sports Centre, The Ridgeway. Juniors. 6.15pm, adults 7.15pm. 906 2322

St. Margaret's Badminton Club. Rectory La. Edgware. Vacancies. 8pm. 959 3822/440 4572/0923 246953

### Thursdays

Weight training. Mill Hill Sch. Sports Centre, The Ridgeway. Intermediates 8pm, beginners 9pm. 906 2322

Barnet & Dist. Athletic Club training session. Clubhouse, Victoria Rd. New Barnet. 7pm. 368 6754

Badminton Club, Christ Church URC, Bellevue Hall, Bellevue Rd. N11. 8pm. 449 8476

Redwing Badminton Club for Ladies. Christ Church Hall, High Rd. N12. Vacancies for average/good players. 1.30pm. 446 3454/346 5377

Squash for ladies. All levels, equipment provided. Middx County Cricket & Squash Club, East End Rd, N3. 9.45am. £1. Supevised creche, £1 per child. For details, 346 8020 (10am-noon, wkdays)

### Fridays

Basketball sessions for seniors. Mill Hill Sch. Sports Centre, The Ridgeway. 7pm.

£2. 906 2322

St George's Swimming Club. Q.E. Boys Sch. Pool. Teaching 5yrs up to adult, 6-8pm; adult swimmers & non swimmers, 8-9pm. 440 4990

Barnet Blind Bowls Club. TAVR Drill Hall, 444 High Rd, N12. 2pm. 449 7058

## Women's Clubs

### Tuesday March 14

Edgware League of Jewish Women mtg. Bring & Buy, bridge & games. Edgware United Synagogue. 1.30pm. 958 6154.

### Monthly

Ashley TWG, Mill Hill East Free Church, Salcombe Gdns. 7.30pm. 906 1952 (1st Thur)

Barnet Afternoon TWG, Church House, Wood St. 2pm. 449 0367 (3rd Fri)

Barnet Evening TWG, Church House, Wood St. 7.45pm. 440 1526 (1st Wed)

Broadway Mill Hill TWG, Hartley Hall, Flower Lane, 2pm. 959 0995 (2nd Thur)

Chipping Barnet WI, Church House, Wood St, Barnet. 10am. 440 8807 (2nd Thur)

East Barnet Monkfrith TWG, British Legion Hall, Nursery Rd, N14. 1.45pm. 0707 57092 (1st Thur)

East Barnet (Osidge) TWG, Small Hall, Brookside Methodist Church. 7.45pm. 368 7346 (2nd Tues)

East Barnet Valley TWG, Lyonsdown Hall, Lyonsdown Rd, New Barnet. 2.15pm.

449 8601/3885 (1st Thur) Finchley Church End TWG, St Mary's Church Hall, Hendon Lane, N3. 2.15pm. 455 7152 (4th Wed)

Finchley Granville TWG, Finchley Methodist Hall, Ballards Lane, N3. 2pm. 346 7056 (2nd Thur)

Friern Barnet & Whetstone TWG, Manor Drive Methodist Church, York Way, N20. 2.15pm. 446 4816 (3rd Tues)

Friern Barnet Friary TWG, Christ Church URC Hall, Bellevue Rd, N11. 2pm. 361 9623 (1st Tues)

Golders Green TWG, St Alban's Church Hall, Golders Green. 2pm. 455 4156 (1st Mon)

Hampstead Garden Suburb TWG, St Jude's Church Rooms, Central Sq, NW11. 2pm. 458 3706 (1st Mon)

Mill Hill Afternoon TWG, Harwood Hall, The Broadway, NW7. 2pm. 959 1505 (2nd Wed)

Mill Hill Highwood, TWG, Hartley Hall, Flower Lane. 2pm. 959 1994 (3rd Mon)

Montrose WI, Parish Room, St Alphage Church, Montrose Ave. 7.45pm. 205 4960 (4th Tues)

National Council of Women, Barnet & Dist, St John's URC Hall, Mowbray Rd, New Barnet. 1.30pm. 20p. 368 1442 (4th Mon)

New Barnet Evening TWG, Brookside Methodist Church Hall, E Barnet. 7.30pm. 440 1394 (1st Mon)

Royal British Legion Women's Section (N Finchley), Legion-

## IF YOU'RE IN THE MARKET FOR A SMALLER HOME, HERE'S A SPACIOUS ALTERNATIVE.



**2/3 BEDROOMS, 231 SQ.FT. LIVING ROOM, 2 BATHROOMS,  
UTILITY ROOM AND A RATHER RELAXING BALCONY.**

If you're hesitating about moving to a luxury flat because they're simply too small, Ashwood Lodge was designed for you. This exclusive development consists of just nine elegant apartments, of which five have already been sold.

Priced from £190,000, the apartments are not only large but very stylish. They are

superbly appointed with every fitting you could possibly need. The kitchen, designed by Richard Crisp is as beautiful as it is functional. A highly sophisticated security and fire detection system is installed. And each apartment has a garage.

So if you would like to view a refined environment with space a plenty, call either of the joint agents, Ellis & Co or Adam Kennedy.

## ASHWOOD LODGE WINCHMORE HILL N21



**Ellis  
& Co.**

Ellis & Co, 22 High Street,  
Barnet EN5 5RH. Tel: 01 441 5588.

Adam Kennedy, The Town House,  
48 London Road, Enfield EN2 6EL.  
Tel: 01 366 1266.



**ADAM KENNEDY**

# Barnet Diary



way, Summers Lane, N12. 8pm. 445 991 (1st Tues)  
 Totteridge Wl. Village Hall, Badgers Croft, Totteridge Lane, N20. 7.30pm. 445 5700 (1st Tues)  
 Wives Group, Mill Hill East Church Hall, Salcombe Gdns. 8pm. 906 0489 (Mar 7, 21)  
 Woodside Park Afternoon TWG, Old Finchleians Club House, Southover, N12. 2pm. 445 0911 (3rd Wed)

## Fortnightly

National Women's Register (Barnet Branch). Discussion Group. For details 445 4927 (alt. Wed eves)

## Weekly Tuesdays

Barnet Asian Women's Assn. 1 Friern Pk, N12. Vegetarian lunch. 12.30pm. Religious Mtg. 'Satsang' 1.30pm

## Wednesdays

Barnet Asian Women's Assn. Craft classes, talks, Oak La Clinic, N2. 1pm

## Thursdays

Women's Friendship Club. Union Church, Northiam, N12. 2.15pm. 445 6945

Ridgeway Club (Nat. Assn. of Women's Clubs). Evergreen Centre, Brookhill Rd. E Barnet. 7.45pm. 449 2852

## Fridays

Barnet Asian Women's Assn. 1 Friern Pk, N12. Harmonium music classes 11am. Armchair keep fit 12.30pm. Vegetarian lunch 1.30pm. Games, cultural discussions 2.30pm

## Saturdays

Barnet Asian Women's Assn.

Swimming classes. Squires Lane Pool, N3. 4.30pm

## Youth

### Weekly Weekdays

After School Club. Old Barn Centre, Tarling Rd. N2. 3.30pm. 349 4613

### Mondays

Quinta Youth Club. Intermediates (8-16yrs) 6.30pm. 30p. 449 2914 (also Wed 6.30pm. Juniors (8-12yrs) 20p)

1st Barnet Boys' Brigade. Ewen Hall, Wood St. Juniors, 6.30pm. 440 7537 (also Thur anchor boys 6pm; company sec. 7pm & girls 7.30pm)

3rd Barnet Boys' Brigade, URC, Chesterfield Rd. Juniors, 6.45pm. 440 2915 (also Tues anchor boys 6.15pm & company sec. 7.30pm)

1st Hendon Boys' Brigade.

Watling URC, Eversfield Gdns. NW7. Juniors, 6.30pm. 959 4736

4th Hendon Boys' Brigade. The Hyde URC. Juniors, 6.30pm. 0727 53832 (also Fri company sec. 8.15pm)

St John Ambulance 1st Finchley Badger Set, Finchley Methodist Church, Ballards La. N3. Age 6+. 6.15pm. 207 3036

6th East Barnet Brownie Pack, E Barnet Baptist Church Hall, E Barnet Rd. 6pm. 440 6811

10th Hendon Brownie Pack. St Mary Magdalen Church Hall, Holders Hill Rd. 6.30pm

### Tuesdays

1st Childs Hill Guides (10-14yrs), All Saints Church Hall, Church Walk, NW2. 6.45pm. 458 5549

120 (Hendon) Sqn Air Training Corps. Boys & girls 13-16yrs. Colchester Rd. Edgware. 7.30pm. (also Fri & Sun 10am)

1374 East Barnet Sqn Air

Training Corps (13-16yrs). Gloucester Rd. New Barnet. 7.30pm. 440 0263 (also Thur)

### Thursdays

1st Friern Barnet Boys' Brigade. Manor Drive Methodist Church Hall, N20. Boys 5-

18yrs. 5.30-10pm. 361 9698  
 Brookside Methodist Church Boys' Brigade, E Barnet. Pre-junior 6-8yrs 6.15pm; juniors 8-11yrs 6.30pm; Company 11yrs+ 8pm. 441 2042

2nd Finchley Badger Set. Manorhill Sch. Gym, Summers La. N12. Boys & girls 6yrs+ 7pm. 207 3036

### Fridays

5th Hendon Boys' Brigade St James' URC, Heather Walk, Edgware. Juniors 6.30pm; Company sec. 8pm. 958 4922

St John Ambulance Finchley Cadets. Finchley Open Air Pool (Pavilion), High Rd. N12. 10yrs+. 7pm. 207 3036



## Saturday March 4

Brahms 'German Requiem' sung by the Parish Church Choir with Alan Parish organist, conductor Terence Atkins. St John the Baptist Church, Wood St, Barnet. 7.30pm. £3, £2 conces. 449 7760

Barnet Orchestra present Mozart Symphony No. 29 & Flute Concerto No. 1. Soloist Jane Pickles & Brahms, Symphony No. 1. St John the Apostle Church, High Rd, N20. 7.30pm. Tickets £3, children £1.75. 205 2418

## Saturday March 11

Finchley Music Centre Concert. Moss Hall Jun Sch, Nether St, N12. 10am

## Friday March 17

Barnet Schools Wind Orchestra & Barnet Schools Jazz Ensemble Concert. Woodhouse Sixth Form College, Woodhouse Rd, N12. 7.45pm

## Saturday March 18

East Barnet Music Centre Concert. E Barnet Sch, Chestnut Grove, E Barnet. 10am  
 Hendon Music Centre Concert. St Mary's Secondary Sch, Sunningfields Rd, NW4. 7.30pm

Finchley Chamber Orchestra present Schumann, Overture, Scherzo & Finale; Beethoven, 'Ah perfido' (Concerto Aria); Mahler, Symphony No. 4. Soprano Alison Wary. Conductor David Ladi. Trinity Church, Nether St, N12. 7.45pm. £3.75, £2.50 conces. 341 6568

Finchley Choral Scty present Arthur Wills, An English Requiem; Tchaikovsky, Serenade; Schubert, Mass in G Major. Lisa Clarke, soprano, Stephen Douse, tenor, Nicholas Sears, baritone, Gerald Barnes, organist, Woodside Sinfonia. Conductor Michael Hamm. St Barnabas Church, Holden Rd, N12. 7.45pm. Tickets £3.50, children & students £2. 346 0108

London Pro Arte Choir presents A Spring Concert. Works by Bach, Purcell, Lotti & Faure's Requiem. Conductor, Leon Lovett, organist Robin Kimber. St Michael's Church, Flower La, NW7. 7.30pm. Tickets £4 at door or from Vera Rowe, 959 5909

## See Saw Children's Theatre

Christ Church Hall, High Rd. N Finchley has facilities for the disabled. Bus routes to Tally Ho Corner are 13, 17, 26, 82, 125, 221, 260 & 263. Tickets £1.50, conces. available. 446 4864

## Saturday March 18

Puppet works present Salty Tales. Puppets with lots of music. Ages 3-7. Doors open 10.30am, show begins 11am.

## Friday March 31

Circus Bumbelini presents Catastrophe, Marvels, Monsters & Mayhem. Songs, somersaults & circus. Ages 4-11. Doors open 2pm, show begins 2.30pm

## Friday April 7

The Brokrol and Quack Show. Eccentric clowning. Ages 3-12. Doors open 2pm, show begins 2.30pm

## Exhibitions

### Until March 12

'Up, Up and Away', exhibition of Microlight aircraft and 'Call to Readiness' expansion years of the RAF 1934-39. (also 'War Artists of the 2nd World War', a permanent exhibition). RAF Museum, Grahame Park Way, NW9. Admission charges. Further details 205 2266 (also starting Mar 22, Aviation Poster Art Exhibition)

### Until March 23

'The Garden of Eden'. Exhibition of recent work from the Seychelles by Judith Jacobs. N Finchley Library, Ravensdale Ave, N12

### Until March 30

'Fresh Faces'. Exhibition of paintings, drawings, prints & sculpture by Addi Cohen-Ziv, Jane Hasseck, Adam Kops, Rina Thea Selby & Margaret Sutton. The Sternberg Centre, East End Rd, N3. 346 2288

### March 2-19

Paintings, pastels & sculpture by Kay Gallwey, Leonard Bennetts & Robert Jones. The Bow House Gallery, 35 Wood St, Barnet. 440 4672

### March 7-25

Alex Adams. Exhibition of arresting images captured in photo-montage. Dollisfield Gallery, Totteridge La, N20. (also Apr 4-22, Exhibition of paintings by Elwin Harewood). Details & Sales, Arts Office 202 1903 (24hrs)

### March 11-April 8

'Inside and Out'. A mixed exhibition of new work by Margie Bedford. Hendon Library, The Burroughs, NW4

## March 18-April 30

'Flight in Art'. Paintings & drawings of aviation in World Wars 1 & 2 from the collection of David Cohen. Church Farm House Museum, Greyhound Hill, NW4. Admission free. 203 0130

## Mixed Exhibitions

College Farm Gallery, Fitzalan Rd, N3. Entry to Farm £1. 50p conces incl admission to Gallery (1st Sun & open

## Old Bull Arts Centre

### 68 High Street, Barnet. 449 5189

Phone for details. Ticket prices do not include 25p membership, or 50p children's membership of Bulls Eye Club.

### Sunday March 5

New Savoyards perform a selection of excerpts from the works of Gilbert & Sullivan. 8pm. £5, £3.50 conces.

### Friday March 10

Graeae. Workshop in drama for the disabled. 10am. Admission free  
 Adzido Pan African Dance Ensemble perform Coming Home — Selections. Dances from across Africa. 8pm. £4, £3 conces.

### Saturday March 11

African Drum & Dance Workshop with Norman Stephenson & Stephen Blagrove two members of Adzido. 2pm. £4, £3 conces.

### Saturdays March 11 & 18

Egyptian Dance Workshop with Bedonia Omar. Explore Raqs Sharqi an exuberant dance for women from the Middle East. 10am. £3, £2 conces.

### Sunday March 12

History Walk around the footpaths of Chipping Barnet

Town Centre with John Heathfield. 3pm. £2. Proceeds in aid of Appeal for Access for the Disabled

Strings & Things (for Children) with puppeteer Stephen Mottram. Demonstration of string puppetry in a series of exciting episodes followed by a look at how to make simple string puppets at home 3pm. £1.50, £2 adults

The Kimbara Brothers. a trio playing guitar music in the style of Django Reinhardt. 8pm. £2, £1.50 conces.

### March 13-April 8

Exhibition of work by Stuart Ross, local painter of landscapes

### March 16 & 17

Timon of Athens performed by Red Shift demonstrating their inventive and radical interpretation of Shakespeare's play. 8pm. £3 conces.

### Saturday March 18

East India Co. performance that mixes Western instruments and sounds of India. 8pm. £4, £3 conces.

### March 30 & 31

Temba Theatre Co. perform 'Mother Poem' by Eddie Brathwaite. A poetic elegy to his beloved homeland by a leading Caribbean poet. 8pm. £4, £3 conces.

### April 4-8

Easter Holiday Drama Workshop for Children with Bronwen Rowton ending in a final Sat afternoon performance (4pm — tickets £1) for adults to see their children's work. 10am-4pm daily (Tues. 10am-2pm). £12.50

Afternoon Arts for the over 50s. Series ranging from old time music hall and tea dances to drawing and drama workshops. 2pm. £1 incl. refreshments. (alt. Tues)

Jazz on a Sunday night. Launch of a new season of jazz in the studio. £2, £1.50 conces. (alt. Sun)

FOR A ROOM WITH A VIEW . . .

# ROOFLIGHTS & SKYLIGHTS

ROOF WINDOWS  
AND ALLIED  
SPECIALIST  
ROOFING  
PRODUCTS  
FITTING SERVICE AVAILABLE

VISIT OUR SHOW ROOM AT:

123 EAST BARNET ROAD, NEW BARNET, HERTS. EN4 8RF TEL: 01 - 449 4989



## THE OSPREY MANAGEMENT COMPANY LIMITED

### HEATHSIDE

The most prestigious retirement development in North London. We now have 1 and 2 bedroom flats available.

- House Secretary
- Therapy Room
- Residents Drawing Room
- Guest Suite
- Close to Golders Hill Park

For further details, please ring: 01 209 0121.

# Hotblack & Co.



EAST FINCHLEY, N2  
£89,950 LEASEHOLD



HAMPSTEAD GARDEN SUBURB, NW11  
£165,000 FREEHOLD



HAMPSTEAD GARDEN SUBURB, NW11  
£215,000 FREEHOLD



HAMPSTEAD, NW3  
£290,000 LEASEHOLD



HAMPSTEAD GARDEN SUBURB, NW11  
£380,000 LEASEHOLD



HAMPSTEAD GARDEN SUBURB, N2  
£590,000 FREEHOLD

01-458 8411

17 Market Place  
Hampstead Garden Suburb  
NW11 6JY



# GODWIN'S

# ASTORIA RANGE

Designs of the 1920s and 1930s that are timeless.



### ● ASTORIA RANGE ●

	logo only
Basin	229.00
Pedestal	122.00
Bidet Monobloc	229.00
Cistern (including fittings)	234.00
Closet	229.00
Seat	99.00
Inset Basin (octagonal)	175.00
(non-logo only)	

Prices Plus VAT

### ● ASTORIA TOILET FITTINGS ●

Shroud, Ebony Black, Pine or Dark Satin

### ● ASTORIA FITTINGS ●

	ANTIQUE or CHROME
1/2in Basin Pillar Taps Waste & Plug	140.00
3 Hole Basin Set Waste & Plug	220.00
3/4in Bath Pillar Taps Waste & Plug	180.00
Bath Shower Mixer Waste & Plug	460.00
Bath Filler Waste & Plug	248.00
Monobloc Mixer Waste & Plug	210.00

Prices Plus VAT

### ● SHOWERS ●

Lace Shower Curtain & Liner	60.00
Shower Tray 800mm	150.00
Bath Shower Screen	443.00
Shower Door 765mm	480.00
Corner Enclosure 765mm	720.00
Compensating Shower Profiles (pair)	40.00
1/2in 2 Hole Shower Unit with:	
Wall Knuckle/Handset/Hose	A: 270.00
or with: Fixer Riser	B: 340.00
or with: Sliding Rail/Handset/Hose	C: 330.00
Thermostatic Mixer with Fixed Head	D: 499.00
1 1/2in Shower Waste	15.00

Prices plus VAT

### ● VICTORIAN ACCESSORIES ●

Shelf	ANTIQUE 60.00	Towel Rail (28 1/2in)	43.00
Towel Ring	29.00	Soap Dish	43.00
Towel Rail (21 1/2in)	43.00	Toothbrush Holder	40.00
		Single Tumbler Holder	30.00

Double Tumbler Holder	42.00
Toilet Roll Holder	42.00
Single Robe Hook	12.00
Treble Robe Hook	26.00
Magnetic Soap Holder	26.00
Bath Sign	10.00
Toilet	10.00
Extendable Soap/Sponge Rack	99.00
As above with Mirror	124.00

Prices plus VAT

### ● HEATED TOWEL RAILS ●

	ANTIQUE or CHROME
Heated Towel Rail inc Valves	385.00
Heated Towel Rail with Ladder Rack inc Valves	440.00
Heated Towel Rail with Radiator inc Valves	445.00

Prices plus VAT

### ● SANITAN WALL TILES ●

All Patterned Tiles (border, corner & inset) each at	2.60
White Background Tiles per sq yd	16.00
†l/h or r/h must be specified	
VICTORIAN GARDEN	
6in x 6in Border	3.50
6in x 6in Inset	3.50
6in x 6in Corner	3.50
6in x 6in (9 Panel Picture Display)	39.00

Prices plus VAT

### ● SANITAN FLOOR TILES ●

CERAMIC	
Per Sq Yd	28.00
(specify black, brown or grey key colour)	

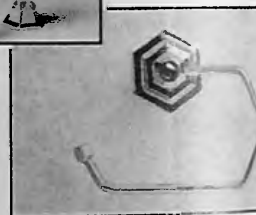
Prices plus VAT



ACCESSORIES AVAILABLE IN CHROME ONLY

◆ 1/2in Pillar Taps

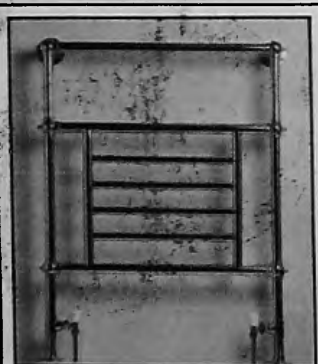
◆ Bath Shower Mixer Taps



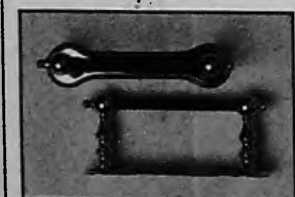
### ● MIRRORS ●

Rectangular Mirror Chrome	64.00	Odeon	236.00
Rectangular Mirror Antique	75.00	Ritz	219.00
Victorian (Wood Surround)	295.00	Berkeley	219.00
Gallery Shelf Mirror	219.00	Hexagonal Mirror Chrome Only	79.00

Prices plus VAT



Heated Towel Rail



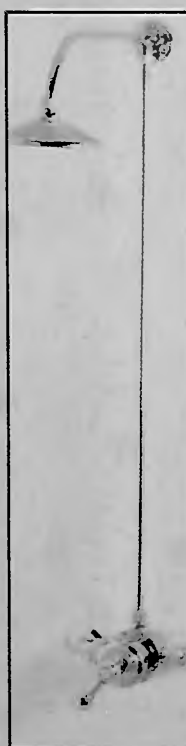
Toilet Roll Holder



Bath and Toilet Signs



Extendable Soap/Sponge Rack with and without mirror



Wholesale Bathroom Warehouse  
28 Rushgrove Avenue  
Colindale NW9  
Tel: 01-200 0508

Trade Centre  
4/5 Apex Parade, Selvage Lane  
Mill Hill NW7  
Tel: 01-959 3344

Showroom & Design Centre  
49 Church Road,  
Hendon NW4  
Tel: 01-203 1095

Trade & Showroom Centre  
176 High Road  
East Finchley N2  
Tel: 01-444 2311

Central London Showroom  
103 Lancaster Road  
North Kensington W11  
Tel: 01-792 8091